

DIVISION ASSIGNMENT LIST				1. Branch Bugaboo Scrub II		2. Division/Group Fargo Group 1		
3. Incident Name Georgia Bay Complex				4. Operational Period Date: 5-19-07 Time: 0700 - 2000				
5. Operations Personnel								
Operations Chief		David Abernathy O-738 5-19 Rich Gray O-77 5-23 Bill Woodyard O-136 5/21		Division/ICT3		David Ziegler O-742 5/19 Shane Crimm STSP O-737 5/19		
Branch Director		Buck Kline O-553 5/23		Safety Officer		Harry Kepler O-66 5/29 Andy Meadows O-936 5/28		
6. Resources Assigned this Period								
Strike Team/Task Force/ Resource Designator		Leader / Name		Last Shift Date	Number Persons	Trans. Needed	Drop Off PT./Time	Pick Up PT./Time
ST# 22 TF Eng T3 TFLD O-149		Mike Leach		5/24	13	N	Superior Pine 0700	Superior Pine 2000
AZS Eng T6 E-58		Walters/Reitz/Westerman		5/24		N	Superior Pine 0700	Superior Pine 2000
Rye 66 T3 E-66		Thompson/Biggs/bennett		5/24		N	Superior Pine 0700	Superior Pine 2000
CO Platte Canyon T3 E-65		Brugett/Tighe/Popovich		5/24		N	Superior Pine 0700	Superior Pine 2000
COS #312 T3 E-67		Roetker/Lack/Groome		5/24		N	Superior Pine 0700	Superior Pine 2000
ST# 23 GFC ST Engines T6 O-618		Bryan Spillers		5/28		N	Superior Pine 0700	Superior Pine 2000
Mitchell E-1019		Sheffield/Redding		5/28		N	Superior Pine 0700	Superior Pine 2000
Early E-1016		Robinson/Moore		5/28		N	Superior Pine 0700	Superior Pine 2000
Johnson E-1021		Fowler/Garbutt		5/28		N	Superior Pine 0700	Superior Pine 2000
PVT Smokey Mt II E-42		Scroggs/Little		5/19		N	Superior Pine 0700	Superior Pine 2000
PVT Smokey Mt III E-43		Bartlett/Benton		5/19		N	Superior Pine 0700	Superior Pine 2000
ST# 24 GAS STPL T3 O-578		Randy Teal		6/4	7	N	Edith Comm 0700	Edith Comm 2000
GAS Coweta 70 E-2048		Griglen		6/4		N	Edith Comm 0700	Edith Comm 2000
GAS Coweta 72 E-2047		Stone		6/4		N	Edith Comm 0700	Edith Comm 2000
GAS Walton 62/72 T5 E-1047		Christopher		6/4		N	Edith Comm 0700	Edith Comm 2000
GA DOT WT + 1Supervisor					2	N	Edith Comm 0700	Edith Comm 2000
GA DOT WT					1	N	Edith Comm 0700	Edith Comm 2000
GA DOT WT					1	N	Edith Comm 0700	Edith Comm 2000
7. Control Operations Structure defense preparation along with positioning equipment to manage and mitigate any threats posed by uncontrolled fires.								
8. Special Instructions Remain in communications. Be alert for traffic on Highways. Stay Hydrated. Ensure all personnel wear PPE. Take spot WX forecasts every hour. Clinch County Fire/EMA - Jesse Booth 25*255 919-482-3700 LCES implemented by 1000 and notify OPS when completed								
9. Division/Group Communication Summary								
Function	Frequency	System	Channel	Function	Frequency	System	Channel	
Command		King NIFC		Logistics		King NIFC		
Tactical Div/Group	Fargo Group 1	King NIFC	Talk Group 2 Ch. 11	Air to Ground	Talk Group 1	King NIFC	Ch. 13	
Prepared by (Resource Unit Leader) Gibbs/ Register / Brent (T)		Approved by (Planning Section Chief) <i>/s/Les Rogers</i>			Date May 18, 2007		Time 1900	

DIVISION ASSIGNMENT LIST				1. Branch Bugaboo Scrub II		2. Division/Group Fargo Group 1		
3. Incident Name Georgia Bay Complex				4. Operational Period Date: 5-19-07 Time: 0700 - 2000				
5. Operations Personnel								
Operations Chief		David Abernathy O-738 5-19 Rich Gray O-77 5-23 Bill Woodyard O-136 5/21		Division/ICT3		David Ziegler O-742 5/19 Shane Crimm STSP O-737 5/19		
Branch Director		Buck Kline O-553 5/23		Safety Officer		Harry Kepler O-66 5/29 Andy Meadows O-936 5/28		
6. Resources Assigned this Period								
Strike Team/Task Force/ Resource Designator		Leader / Name		Last Shift Date	Number Persons	Trans. Needed	Drop Off PT./Time	Pick Up PT./Time
ST# 22 TF Eng T3 TFLD O-149		Mike Leach		5/24	13	N	Superior Pine 0700	Superior Pine 2000
AZS Eng T6 E-58		Walters/Reitz/Westerman		5/24		N	Superior Pine 0700	Superior Pine 2000
Rye 66 T3 E-66		Thompson/Biggs/bennett		5/24		N	Superior Pine 0700	Superior Pine 2000
CO Platte Canyon T3 E-65		Brugett/Tighe/Popovich		5/24		N	Superior Pine 0700	Superior Pine 2000
COS #312 T3 E-67		Roetker/Lack/Groome		5/24		N	Superior Pine 0700	Superior Pine 2000
ST# 23 GFC ST Engines T6 O-618		Bryan Spillers		5/28		N	Superior Pine 0700	Superior Pine 2000
Mitchell E-1019		Sheffield/Redding		5/28		N	Superior Pine 0700	Superior Pine 2000
Early E-1016		Robinson/Moore		5/28		N	Superior Pine 0700	Superior Pine 2000
Johnson E-1021		Fowler/Garbutt		5/28		N	Superior Pine 0700	Superior Pine 2000
PVT Smokey Mt II E-42		Scroggs/Little		5/19		N	Superior Pine 0700	Superior Pine 2000
PVT Smokey Mt III E-43		Bartlett/Benton		5/19		N	Superior Pine 0700	Superior Pine 2000
ST# 24 GAS STPL T3 O-578		Randy Teal		6/4	7	N	Edith Comm 0700	Edith Comm 2000
GAS Coweta 70 E-2048		Griglen		6/4		N	Edith Comm 0700	Edith Comm 2000
GAS Coweta 72 E-2047		Stone		6/4		N	Edith Comm 0700	Edith Comm 2000
GAS Walton 62/72 T5 E-1047		Christopher		6/4		N	Edith Comm 0700	Edith Comm 2000
GA DOT WT + 1Supervisor					2	N	Edith Comm 0700	Edith Comm 2000
GA DOT WT					1	N	Edith Comm 0700	Edith Comm 2000
GA DOT WT					1	N	Edith Comm 0700	Edith Comm 2000
7. Control Operations Structure defense preparation along with positioning equipment to manage and mitigate any threats posed by uncontrolled fires.								
8. Special Instructions Remain in communications. Be alert for traffic on Highways. Stay Hydrated. Ensure all personnel wear PPE. Take spot WX forecasts every hour. Clinch County Fire/EMA – Jesse Booth 25*255 919-482-3700 LCES implemented by 1000 and notify OPS when completed								
9. Division/Group Communication Summary								
Function	Frequency	System	Channel	Function	Frequency	System	Channel	
Command		King NIFC		Logistics		King NIFC		
Tactical Div/Group	Fargo Group 1	King NIFC	Talk Group 2 Ch. 11	Air to Ground	Talk Group 1	King NIFC	Ch. 13	
Prepared by (Resource Unit Leader) Gibbs/ Register / Brent (T)		Approved by (Planning Section Chief) <i>/s/Les Rogers</i>			Date May 18, 2007		Time 1900	

DIVISION ASSIGNMENT LIST			1. Branch Bugaboo Scrub II		2. Division/Group Fargo Group 2 Page 1 of 2		
3. Incident Name Georgia Bay Complex			4. Operational Period Date: 5-19-07 Time: 0700 - 2000				
5. Operations Personnel							
Operations Chief		David Abernathy O-738 5-19 Rich Gray O-77 5-23 Bill Woodyard O-136 5/21		Division/ICT3		Rusty Smith O-743 5/19 Shane Crimm STSP O-737 5/19	
Branch Director		Buck Kline O-553 5/23		Safety Officer		Harry Kepler O-66 5/29 Andy Meadows O-936 5/28	
6. Resources Assigned this Period							
Strike Team/Task Force/ Resource Designator		Leader / Name	Last Shift Date	Number Persons	Trans. Needed	Drop Off PT./Time	Pick Up PT./Time
TF2 TFLD O-156		Matt Young	5/24	1	N	Superior Pine 0700	2000
DOZB O-147		R. Briggs	5/23	3	N	Superior Pine 0700	2000
ARK T1 DOZ E-28		Vines	Off Duty	1	N	Superior Pine 0700	2000
Timberline D6 Doz T2 E-1084		Lashley			N	Superior Pine 0700	2000
DOZB O-146		Seekins	5/22	1	N	Superior Pine 0700	2000
ST# 10 GFC ST Tractor Plow T3 O-874		Donnie Brannon	5/23	4	N	Superior Pine 0700	2000
Jenkins 72 E-1218		Gay	5/23		N	Superior Pine 0700	2000
Tattnal 72 E-1216		Terrell	5/23		N	Superior Pine 0700	2000
Emanuel 71 E-2612		Claxton	5/23		N	Superior Pine 0700	2000
7. Control Operations Hold and improve fire break and coordinate suppression with adjacent resources							
8. Special Instructions Remain in communications. Be alert for traffic on Highways. Stay Hydrated. Take spot WX forecasts every hour. Ensure all personnel wear PPE. Clinch County Fire/EMA – Jesse Booth 25*255 919-482-3700 LCES implemented by 1000 and notify OPS when completed.							
9. Division/Group Communication Summary							
Function	Frequency	System	Channel	Function	Frequency	System	Channel
Command		King NIFC		Logistics		King NIFC	
Tactical Div/Group	Fargo Group 2	King NIFC	Talk Group 2 Ch. 5	Air to Ground	Talk Group 1	King NIFC	Ch. 13
Prepared by (Resource Unit Leader) Richard Gibbs / Dennis Register / Karen Brent (T)		Approved by (Planning Section Chief) <i>/s/Les Rogers</i>		Date May 18, 2007		Time 1900	

DIVISION ASSIGNMENT LIST				1. Branch Bugaboo Scrub II		2. Division/Group Fargo Group 2 Page 2 of 2	
3. Incident Name Georgia Bay Complex				4. Operational Period Date: 5-18-07 Time: 0700 - 2000			
5. Operations Personnel							
Operations Chief		David Abernathy O-738 5-19 Rich Gray O-77 5-23 Bill Woodyard O-136 5/21		Division/ICT3		Rusty Smith O-743 5/19 Shane Crimm STSP O-737 5/19	
Branch Director		Buck Kline O-553 5/23		Safety Officer		Harry Kepler O-66 5/27 Andy Meadows O-936 5/28	
6. Resources Assigned this Period							
Strike Team/Task Force/ Resource Designator		Leader / Name	Last Shift Date	Number Persons	Trans. Needed	Drop Off PT./Time	Pick Up PT./Time
TFLD O-157		Chris Bartlett	5/24	1	N	Superior Pine 0700	2000
ST# 25 LA STPL T2 O-661		Mike Smith	R&R	11	N	Superior Pine 0700	2000
LAS 81 TPL T2 E-1102		Stokes/Swett	R&R	2	N	Superior Pine 0700	2000
LAS 82 TPL T2 E-1103		Switzer/Purvis	R&R	2	N	Superior Pine 0700	2000
ST# 26 STPL O-148		Andy Barnett	5/24	1	N	Superior Pine 0700	2000
TXS Tractor Plow T2 E-1452		Ramsey P. Williams	5/22 5/30	2	N	Superior Pine 0700	2000
TXS Tractor Plow T2 E-1453		Mitchell/Bell	5/30	2	N	Superior Pine 0700	2000
TXS Tractor Plow T2 E-1376		Elrod/Wiley	5/25	2	N	Superior Pine 0700	2000
ST# 16 GFC STPL T2 E-1343		Ty Hayman	5/27	4	N	Superior Pine 0700	2000
GFC T2 Liberty 61/71 E-1344		Campbell	5/27		N	Superior Pine 0700	2000
GFC T2 Long 61/71 E-1345		Kitchens	5/27		N	Superior Pine 0700	2000
GFC Bryon 61/71 E-1346		Driggers	5/27		N	Superior Pine 0700	2000
TF# 4 TFLD O-152		David Hamilton	5/24	1	N	Superior Pine 0700	2000
ALS Doz T2 E-1110		Robinson/Taggart	5/31	2	N	Superior Pine 0700	2000
ALS Doz T2 E-1109		Chesser/Knighten	5/31	2	N	Superior Pine 0700	2000
TF# 5 TFLD O-744		Brendon McNeil (T)	5/19	4	N	Superior Pine 0700	2000
<i>Lee Ind. T1 Doz Komatsu E1085</i>		<i>Harold</i>		1	N	Superior Pine 0700	2000
<i>Lee Ind. T1 Doz Komatsu E1193</i>		<i>Sermans</i>		1	N	Superior Pine 0700	2000
7. Control Operations Hold and improve fire break and coordinate suppression with adjacent resources							
8. Special Instructions Remain in communications. Be alert for traffic on Highways. Stay Hydrated. Take spot WX forecasts every hour. Ensure all personnel wear PPE. Clinch County Fire/EMA – Jesse Booth 25*255 919-482-3700 LCES implemented by 1000 and notify OPS when completed.							
9. Division/Group Communication Summary							
Function	Frequency	System	Channel	Function	Frequency	System	Channel
Command		King NIFC		Logistics		King NIFC	
Tactical Div/Group	Fargo Group 2	King NIFC	Talk Group 2 Ch. 5	Air to Ground	Talk Group 1	King NIFC	Ch. 13
Prepared by (Resource Unit Leader) Richard Gibbs / Dennis Register / Karen Brent (T)		Approved by (Planning Section Chief) <i>/s/Les Rogers</i>			Date May 18, 2007		Time 1900

DIVISION ASSIGNMENT LIST				1. Branch Bugaboo Scrub II		2. Division/Group Fargo Group 3	
3. Incident Name Georgia Bay Complex				4. Operational Period Date: 5-19-07 Time: 0700 - 2000			
5. Operations Personnel							
Operations Chief		David Abernathy O-738 5-19 Rich Gray O-77 5-23 Bill Woodyard O-136 5/21		Division/ICT3		Jim Davis O-604 5/23 Shane Crimm STSP O-737 5/19	
Branch Director		Buck Kline		Safety Officer		Harry Kepler O-66 5/29 Andy Meadows O-936 5/28	
6. Resources Assigned this Period							
Strike Team/Task Force/ Resource Designator		Leader / Name	Last Shift Date	Number Persons	Trans. Needed	Drop Off PT./Time	Pick Up PT./Time
TFLD O-154 O-158		Blain Tarbell Waylon Poowegup(T)	5/25	2	N	Superior Pine 0700	2000
ST# 9 STEN 132		O- Van Kamen	5/25	1	N	Superior Pine 0700	2000
CA/INF #32 T3 E-75		Richard Napoles	5/26	5	N	Superior Pine 0700	2000
LNF T3 E-64		Reynolds	5/25	5	N	Superior Pine 0700	2000
GFC T3 E-2656		Flood/Laughlin	5/27	2	N	Superior Pine 0700	2000
GFC Wheeler 86 E-1017		Williams / Bellflower	6/3	2		Superior Pine 0700	2000
TF# 6 150		O- Ron Baar	5/24	1	N	Superior Pine 0700	2000
Support Fire T6 E-12		Zuehlke	5/24	2	N	Superior Pine 0700	2000
DNR Engine T6 E-541		Camack/Castleberry	5/30	2	N	Superior Pine 0700	2000
7. Control Operations Structure defense preparation along with positioning equipment to manage and mitigate any threats posed by uncontrolled fires.							
8. Special Instructions Remain in communications Stay Hydrated. Ensure all personnel wear PPE. Be alert for traffic on Highways Take spot WX forecasts every hour. Clinch County Fire/EMA – Jesse Booth 25*255 919-482-3700 LCES implemented by 1000 and notify OPS when completed.							
9. Division/Group Communication Summary							
Function	Frequency	System	Channel	Function	Frequency	System	Channel
Command		King NIFC		Logistics		King NIFC	
Tactical Div/Group	Fargo Group 3	King NIFC	Talk Group 2 Ch. 8	Air to Ground	Talk Group 1	King NIFC	Ch. 13
Prepared by (Resource Unit Leader) Richard Gibbs / Dennis Register / Karen Brent (T)			Approved by (Planning Section Chief) <i>/s/Les Rogers</i>			Date May 18, 2007	Time 1900

		1. Branch Sweat Farm Fire		2. Division/Group Law Enforcement / Arson Group			
3. Incident Name Georgia Bay Complex		4. Operational Period Date: 5-19-07 Time: 0700 - 2000					
5. Operations Personnel							
Operations Chief				Division/ICT3			
Branch Director				Safety Officer			
6. Resources Assigned this Period							
Strike Team/Task Force/ Resource Designator	Leader / Name	Last Shift Date	Number Persons	Trans. Needed	Drop Off PT./Time	Pick Up PT./Time	
V DOF	William Neff			N	0700	2000	
G.B.I	Tom Crawford			N	0700	2000	
GA. Fire Marshal	Brian Clavier			N	0700	2000	
V DOF	David Edwards			N	0700	2000	
V DOF	Ken Mohler			N	0700	2000	
V DOF	Cody Daniels			N	0700	2000	
LAS	Jim Baldwin			N	0700	2000	
LAS	Mark Singleton			N	0700	2000	
Wv DOF	Leo Lester			N	0700	2000	
WV DOF	Art Yagel			N	0700	2000	
TN DOF	Greg Whitehead			N	0700	2000	
TN DOF	Pete Merz			N	0700	2000	
MS DOF	Matt Steed			N	0700	2000	
PA DOF	Lee Jordan			N	0700	2000	
PA DOF	Robert McJillan			N	0700	2000	
7. Control Operations							
8. Special Instructions Remain in communications. Be alert for traffic on Highways Stay Hydrated. Notify Division of spot fires or reburns							
9. Division/Group Communication Summary							
Function	Frequency	System	Channel	Function	Frequency	System	Channel
Command		King NIFC		Logistics		King NIFC	
Tactical Div/Group		King NIFC		Air to Ground		King NIFC	
Prepared by (Resource Unit Leader) Richard Gibbs / Dennis Register / Karen Brent (T)		Approved by (Planning Section Chief) <i>/s/Les Rogers</i>		Date May 18, 2007		Time 1900	

DIVISION ASSIGNMENT LIST		1. Branch Sweat Farm Fire		2. Division/Group Prevention Team Task Force			
3. Incident Name Georgia Bay Complex		4. Operational Period Date: 5-19-07 Time: 06:30 - 2200					
5. Operations Personnel							
Operations Chief	David Abernathy O-738 5-19 Rich Gray O-77 5-15		Division/ICT3				
Branch Director			Safety Officer				
6. Resources Assigned this Period							
Strike Team/Task Force/ Resource Designator	Leader / Name	Last Shift Date	Number Persons	Trans. Needed	Drop Off PT./Time	Pick Up PT./Time	
Team Leader	John R. Warner O-177	05/29					
Team Member	Sandra Taylor O-178	05/30					
Team Member/PIO	Donna Wilson O-30.2	05/25					
Team Liaison Officer GA	Roger Lane O-580	05/30					
7. Control Operations							
8. Special Instructions							
<ol style="list-style-type: none"> 1. AM Briefing with Branch/county and local officials in Fargo (Wilson/Taylor) 2. Attend town hall meeting in Fargo – update residents on fire transition on management team members 3. Firewise “Living with Fire” prepared to go to press Monday, May 21st – reaching 80,000 (Warner) 4. Complete contacting SE regional papers to insert Living with Fire inserts 5. Develop a flyer and rack card to go out to Georgia State Parks and visitors for Memorial Day week (Taylor/Warner) 6. Review PSAs sent to Sharon Dolliver for final voice over for running week of Memorial Holiday 							
9. Division/Group Communication Summary							
Function	Frequency	System	Channel	Function	Frequency	System	Channel
Command		King NIFC		Logistics		King NIFC	
Tactical Div/Group		King NIFC		Air to Ground		King NIFC	
Prepared by (Resource Unit Leader) Gibbs/Moorehead		Approved by (Planning Section Chief) /s/Les Rogers		Date 5/13/07		Time 1900	

WEATHER FORECAST

FORECAST NO: 30

NAME OF FIRE: Georgia Bay Complex

PREDICTION FOR: Day & Night Ops

UNIT: Georgia Forestry Commission

SHIFT DATE: Sat 05/19/07

SIGNED: John Quagliariello

TIME AND DATE 1800

Incident Meteorologist

FORECAST ISSUED: 05/18/07

WEATHER DISCUSSION: High pressure will continue to build over the complex through the weekend, keeping dry conditions in place.

The main concern is:

1. Very dry conditions today and Sunday

WEATHER FORECAST DAY SHIFT SATURDAY:***...CRITICAL RELATIVE HUMIDITY VALUES POSSIBLE TODAY...*****WEATHER:** Mostly sunny and dry.**MAX TEMPERATURES:** 82 to 86 (24 hour trend ~ little change)**MIN HUMIDITY:** 23-27%, except 19 to 23% near fire perimeters (24 hour trend ~ 3 percent lower)**20 FT WINDS:** Northeast 7 to 11 mph with gusts to 17 mph. Winds shifting east after 1630 at Knee-Knocker and 1700 at Sweat Farm Rd. and Bugaboo Scrub II.**STABILITY/INVERSION:** Inversion around 800 ft dissipating by 0900. Mixing heights around 6500 ft. Dispersion index around 47. Haines Index 5.

WEATHER FORECAST NIGHT SHIFT SATURDAY NIGHT:**WEATHER:** Clear.**MIN TEMPERATURES:** 51 to 55, except 48 to 52 near Bugaboo Scrub II & Roundabout.**MAX HUMIDITY:** Recovery around 65 percent near the fire perimeter and around 85 percent elsewhere.**20 FT WINDS:** East 4 to 8 mph early in the evening, then becoming light and variable.**STABILITY/INVERSION:** Inversion around 300 ft beginning to develop after 2100. Dispersion index around 3.

OUTLOOK FOR SUNDAY:

Sunny. High temperatures 84 to 88. Minimum RH values 21 to 25%. Light and variable winds, becoming northeast 3 to 6 mph late in the morning, then shifting east-southeast 6 to 10 mph in the afternoon.

EXTENDED...MONDAY THROUGH THURSDAY:

Monday: Mostly clear. Lows in the mid 50s. Highs in the mid 80s. East winds 5 to 10 mph.

Tuesday: Partly cloudy. Lows around 60. Highs in the mid 80s. East winds around 10 mph.

Wednesday and Thursday: Mostly cloudy with scattered showers and thunderstorms. Lows in the mid 60s. Highs in the lower 80s. Northeast winds 5 to 15 mph.

 WEATHER FORECAST

SAFETY MESSAGE

Incident:

Georgia Bay Complex

Date:

May 19, 2007

Time:

Day & Night Shift

Major Hazards and Risks:

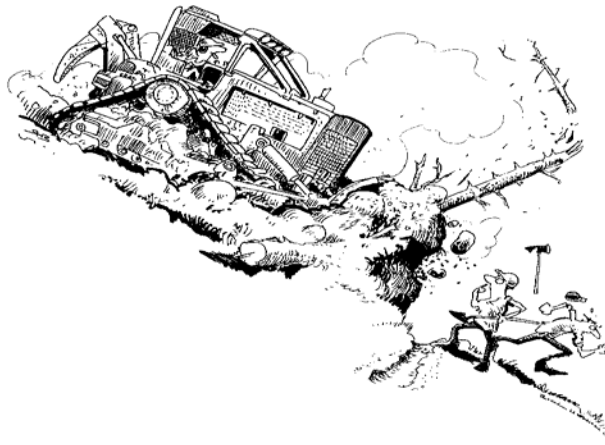
- Weather
- Snags
- Initial Attack
- Wildland Urban Interface
- Reburn near the line
- Complacency
- Driving/Travel
- Aircraft Operations

“Safety is an Attitude, approach every task with Safety First”

ATTITUDE/Complacency- affects our judgment and how we respond to hazards on the fire line such as snags or even driving. We get familiar with a particular Division and think it will be the same as yesterday, but sometimes it's not the same. Yesterday's green tree may have burned out from a burnout operation and a slight breeze will send it down. **THERE is still FIRE OUT THERE!**

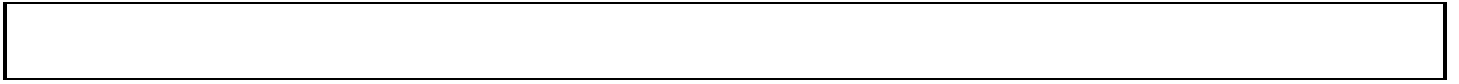
GOOD NEWS - most of you are doing an outstanding job - keep up the good work with attention to **SAFETY!**

PREDICTABLE = PREVENTABLE



5. UNINFORMED ON STRATEGY, TACTICS AND HAZARDS

Safety Team : Brian Beisel, Harry Kepler, Ronnie Hamm
Steve Snider, Tim Sampson, John Orton, Andy Meadows
Larry Miller, Phil Spor, Pete Stewart & Rodney Bell



Fire Behavior Forecast

<u>Forecast No. 30</u>	<u>Prediction for Day Shift</u>
<u>Name of Fire: Georgia Bay Complex</u>	<u>Shift Date: Tuesday May 19, 2007</u>
<u>Time and Date Forecast Issued</u> <u>1800 hrs 5/18/2007</u>	<u>Signed : <i>John Robertson</i></u> <u>Fire Behavior Analyst</u>

Weather Summary (See Detailed Weather Forecast in the IAP):

A high pressure system with very dry air is in place over the fires. Northeasterly winds until about 1630 to 1700 switching to the east 7 -11 mph with gusts to 17. Max temperature near 86 degrees and RH as low as 19% near the fire and 23% elsewhere. Haines Index 5.

General Fire Behavior: Dry weather will continue to keep live fuel at critically low moisture contents. Fine fuels will once again reach moisture contents as low as 4% where exposed to full sun. In shaded areas fine fuel moisture will reach 7%. These moisture contents combined with winds to 17 mph will once again combine to produce very active to extreme fire behavior potential after mid day. Fuels in full sun will burn more readily. Fire behavior will pickup shortly after the inversion lifts and increase until 1600. Peak burning will occur around 1600 and continue until 1900. The initiation of torching and spotting is most likely to occur during the late afternoon. Spotting out to 100 yards is possible from single or group tree torching. Young unburned closed canopy plantations and southern rough fuel will be the most active. Crowning is likely in unburned swamp shrubs with longer range spotting up to ¼ mile possible. The atmosphere remains unstable so any fire in unburned fuel has the potential for large fire growth.

Specific Fire Behavior:

Sweat Farm Road: The low RH, critically low live fuel moisture and wind will continue to provide an opportunity for torching to occur in pine fuels and swamp shrub fuels. As a result, interior fire has the potential to spot over the line under the influence of the northeast winds after mid day. Fire runs to the southwest are possible out of the swamp shrub fuels into pine where lines are not completely burned out.

Kneeknocker: Re-burn is possible from any hold over fire especially after 1400. Torching in the scorched shrub layer could move into the crowns causing spotting down wind. Wind shift from the east about 1630.

Roundabout: Burn out of organic soils will continue. By mid afternoon the potential exists for re-burn in needle cast and shrub fuels. Torching with spotting across lines is possible where flare-ups occur northeast of any fireline. Sea breeze east winds won't affect the fire until after 1800.

Initial Attack: Hold over lightning fires and other ignitions will be fast to develop after a few hours of sun. Fire spread and spotting will be toward the southwest. Pine and southern rough fuels present the greatest threat for high to very high fire behavior.

Air Operations: Inversions will persist until 0900. Smoke will continue to limit visibility on the west flanks and interiors.

Safety: Constantly evaluate the fire's potential. Heads up for a wind shift as the sea breeze kicks in after 1630 to 1700. Winds will switch from the northeast to the east.

INCIDENT ACTION PLAN SAFETY ANALYSIS										1. Incident Name Georgia Bay Complex		2. Date 5/19/2007		3. Time Day & Night Shift									
LCES* Analysis of Tactical Applications Lookouts Communications Escape routes Safety zones										Other Risk Analysis													
Branch	Indirect Fireline	Burn out Operations	Power lines	Night operations	Frontal Assault	Anchor Points	Extreme Conditions	Reburn Potential	Unburned Area	Insects, snakes	LCES Mitigations						Other Risk Mitigations						
Sweat Farm	1, 3, 4, 5, 7, 10	1, 3, 4, 5, 6, 10, 13	15, 16	1, 7, 11, 14, 19, 22, 34	1, 3, 4, 5, 7, 22, 29	7	1, 6, 7, 8, 10, 24	1, 3, 5, 7, 9, 16	1, 3, 5, 7, 9, 16	1, 3, 5, 7, 9, 16	2	1. Establish & maintain LCES. Report LCES checks twice daily to DIVS on line & staging.						18. Take plenty rest breaks and encourage to drink water NOW through briefings. 19. Watch out for complacency and fatigue. Utilize Fire Departments for structure protection. Tailgate briefings on WUI hazards. 20. Defensive driving will be addressed in all briefings. 21. All personnel must meet the 2:1 work/rest ratio. Line supervisors and Safety will monitor closely.					
	2. Look UP, DOWN and AROUND - Use protective spray with deet on skin (Not on Nomex), permethrin can be used on nomex clothing. Do Not try to catch or kill snakes!						1, 3, 4, 5, 6, 7, 8, 9, 10, 11, 12, 13, 14, 15, 16, 17, 18, 19, 20, 21, 22, 23, 24, 25, 26, 27, 28, 29, 30, 31, 32, 33																
	3. Post experienced Lookouts. Make sure LCES is in place and make known.						1, 3, 4, 5, 6, 7, 8, 9, 10, 11, 12, 13, 14, 15, 16, 17, 18, 19, 20, 21, 22, 23, 24, 25, 26, 27, 28, 29, 30, 31, 32, 33																
	4. Use Air Attack as Lookout.						1, 3, 4, 5, 6, 7, 8, 9, 10, 11, 12, 13, 14, 15, 16, 17, 18, 19, 20, 21, 22, 23, 24, 25, 26, 27, 28, 29, 30, 31, 32, 33																
Fargo	1, 3, 4, 5, 7, 10	1, 3, 4, 5, 6, 7, 10, 13	15, 16	1, 7, 11, 14, 19, 22, 34	1, 3, 4, 5, 7, 22, 29	7	1, 6, 7, 8, 10, 24	1, 3, 5, 7, 9, 16	1, 3, 5, 7, 9, 16	1, 3, 5, 7, 9, 16	2	5. Flag escape routes on right side of escape route facing outward. Create new escape routes as you progress. Maintain LCES at all times.						22. Line Supervisors will provide clear, concise briefings. 23. Recognize, Communicate & Avoid Hazmat situations. 24. Refer to the Evacuation Plan for the ICP. 25. Review Wildland Urban "Watch Out" situations. Pg 11 IRPG					
	6. Post lookout for Snags, Runs, and Spot Fires.						1, 3, 4, 5, 6, 7, 8, 9, 10, 11, 12, 13, 14, 15, 16, 17, 18, 19, 20, 21, 22, 23, 24, 25, 26, 27, 28, 29, 30, 31, 32, 33																
	7. Use secure anchor points that will not be compromised for observed fire behavior.						1, 3, 4, 5, 6, 7, 8, 9, 10, 11, 12, 13, 14, 15, 16, 17, 18, 19, 20, 21, 22, 23, 24, 25, 26, 27, 28, 29, 30, 31, 32, 33																
	8. FBA/Meteorologist develop weather watch system.						1, 3, 4, 5, 6, 7, 8, 9, 10, 11, 12, 13, 14, 15, 16, 17, 18, 19, 20, 21, 22, 23, 24, 25, 26, 27, 28, 29, 30, 31, 32, 33																
IA Groups(ICP, Manor, Swi	1, 3, 4, 5, 7, 10	1, 3, 4, 5, 6, 7, 10, 13	15, 16	1, 7, 11, 14, 19, 22, 34	1, 3, 4, 5, 7, 22, 29	7	1, 6, 7, 8, 10, 24	1, 3, 5, 7, 9, 16	1, 3, 5, 7, 9, 16	1, 3, 5, 7, 9, 16	2	9. All Firefighters must review current weather, predicted weather & fire behavior forecast.						26. Ensure Traffic Planning is safe and enforced. Heed Defensive Driving techniques noted in Safety Messages. 27. Avoid trash dumps in line construction & avoid smoke from dumps 28. Relocate staging area when driving conditions warrant. 29. Air Attack and/or lead plane will always be in the air to coordinate aircraft.					
	10. Keep Firefighters informed of any changes in predicted weather, consider at least a two day weather pattern when planning burnout operations.						1, 3, 4, 5, 6, 7, 8, 9, 10, 11, 12, 13, 14, 15, 16, 17, 18, 19, 20, 21, 22, 23, 24, 25, 26, 27, 28, 29, 30, 31, 32, 33																
	11. Refer to IRPG, pg. 12 on Power Line Hazards.						1, 3, 4, 5, 6, 7, 8, 9, 10, 11, 12, 13, 14, 15, 16, 17, 18, 19, 20, 21, 22, 23, 24, 25, 26, 27, 28, 29, 30, 31, 32, 33																
	12. Observe all traffic signals and speed limits.						1, 3, 4, 5, 6, 7, 8, 9, 10, 11, 12, 13, 14, 15, 16, 17, 18, 19, 20, 21, 22, 23, 24, 25, 26, 27, 28, 29, 30, 31, 32, 33																
Knee Knocker/Roundabout	1, 3, 4, 5, 7, 10	1, 3, 4, 5, 6, 7, 10, 13	15, 16	1, 7, 11, 14, 19, 22, 34	1, 3, 4, 5, 7, 22, 29	7	1, 6, 7, 8, 10, 24	1, 3, 5, 7, 9, 16	1, 3, 5, 7, 9, 16	1, 3, 5, 7, 9, 16	2	13. Ensure any burnout operations have been clearly communicated to ALL, prior to burning.						30. Personnel on ground will stay out of drop zones. 31. Use spotter when backing vehicle(s). 32. Use bandanna to filter smoke in heavy smoke areas. 33. ALL vehicles and equipment must have lights on when running. Plastic colverts under some roads have burned and are collapsing under heavy loads, DIVS will coordinate which roads transport and tractors will use. GSP (912) 287-6500 : EMA (912) 287-4499. 34. Use blinking lights or glow sticks on back of helmet or backpack to be seen by equipment operators.					
	14. Night Dispatch will be assign for each night operational period.						1, 3, 4, 5, 6, 7, 8, 9, 10, 11, 12, 13, 14, 15, 16, 17, 18, 19, 20, 21, 22, 23, 24, 25, 26, 27, 28, 29, 30, 31, 32, 33																
	15. Scout ahead of tractor operations to avoid making contact with power poles and guide wires when tying into roads. Power companies are working in some DIVS, avoid all down lines as they may become charged.						1, 3, 4, 5, 6, 7, 8, 9, 10, 11, 12, 13, 14, 15, 16, 17, 18, 19, 20, 21, 22, 23, 24, 25, 26, 27, 28, 29, 30, 31, 32, 33																
	16. Review IRPG pg. 75 when thunderstorms are predicted or observed.						1, 3, 4, 5, 6, 7, 8, 9, 10, 11, 12, 13, 14, 15, 16, 17, 18, 19, 20, 21, 22, 23, 24, 25, 26, 27, 28, 29, 30, 31, 32, 33																

Prepared by (Name and Position)

ICS 215A Brian Beisel SOF1 (T)

Georgia Bay Complex – Sweat Farm (Group 1)

INCIDENT RADIO COMMUNICATIONS PLAN		1. Incident Name Georgia Bay Complex		2. Date/Time Prepared 5- 18 -2007	3. Operational Period Date/Time 5- 19-2007
4. BASIC RADIO CHANNEL UTILIZATION					
Radio Type/Cache	Channel	Function	Frequency/Tone	Assignment	Remarks
King NIFC	1	Command Ware EMA Repeater	158.7825/162.2 153.7625/162.2 Narrow Band	Command Rpt	Sweat Farm
King NIFC	2	Okee North Repeater	164.575 /206.5 163.150 / 206.5 Narrow Band	Command Rpt	Big Turnaround ICP
King NIFC	3	GA Mutual Aid	154.280 154.280	Structural & Tactical	
King NIFC	4	911 & Structural Coordinator Rptr.	154.445/ 118.8 154.010/118.8	Emergency Traffic	This is a heavy traffic channel, use only for Emergency Traffic
King NIFC	5	Tactical	159.285 Rx & Tx	Fargo Group 2	Southern COMPACT
King NIFC	6	Tactical	168.050 Rx & Tx Narrow Band	Divs. E Divs. Y,Z,WB, WC	Fireline
King NIFC	7	Tactical	168.600 Rx & Tx Narrow Band	Divs. G Divs. Swing/IA	Fireline
King NIFC	8	Tactical	164.1375 Rx & Tx Narrow Band	Fargo Group 3 Divs. WA, EE,EF,EG,EH	Fireline
King NIFC	9	Tactical	168.775 Rx & Tx Narrow Band	Divs. H Divs. EA,EB,EC,ED	Fireline
King NIFC	10	Tactical	169.900 Rx & Tx Narrow Band	Divs. I, J, K Divs. E,AA,BB,CC,DD	Fireline
King NIFC	11	Tactical	168.200 Rx & Tx Narrow Band	Divs.A,B,C,D ICP Group, Fargo Group 1 DivWD,WE,WF,WG,WH	Fireline
King NIFC	12	Air to Ground	167.950 167.950/110.9 Narrow Band	Federal Air to Ground	
King NIFC	13	Air To Ground	159.390 Rx & Tx	Georgia Air to Ground	
King NIFC	14	Air Guard	168.625 168.625/110.9 Narrow Band	Air Emergency Only	Air Emergency Only
5. Prepared By (Communications Unit) Carl Bridges/ COML					

Georgia Bay Complex - Bugaboo (Group 2)

INCIDENT RADIO COMMUNICATIONS PLAN		1. Incident Name Georgia Bay Complex		2. Date/Time Prepared 5- 18 -2007	3. Operational Period Date/Time 5- 19-2007
4. BASIC RADIO CHANNEL UTILIZATION					
Radio Type/Cache	Channel	Function	Frequency/Tone	Assignment	Remarks
King NIFC	1	GFC Fargo Repeater	159.120/107.2 151.370/123.0	Command Rpt	Bugaboo Brush
King NIFC	2	Okee North Repeater	164.575 /206.5 163.150 / 206.5 Narrow Band	Command Rpt	Big Turnaround ICP
King NIFC	3	GA Mutual Aid	154.280 154.280	Structural & Tactical	
King NIFC	4	911 & Structural Coordinator Rptr.	154.445/ 118.8 154.010/118.8	Emergency Traffic	This is a heavy traffic channel, use only for Emergency Traffic
King NIFC	5	Tactical	159.285 Rx & Tx	Fargo Group 2	Southern COMPACT
King NIFC	6	Tactical	168.050 Rx & Tx Narrow Band	Divs. E Divs. Y,Z,WB, WC	Fireline
King NIFC	7	Tactical	168.600 Rx & Tx Narrow Band	Divs. G Divs. Swing/IA	Fireline
King NIFC	8	Tactical	164.1375 Rx & Tx Narrow Band	Fargo Group 3 Divs. WA, EE,EF,EG,EH	Fireline
King NIFC	9	Tactical	168.775 Rx & Tx Narrow Band	Divs.H Divs. EA,EB,EC,ED	Fireline
King NIFC	10	Tactical	169.900 Rx & Tx Narrow Band	Divs. I, J, K Divs. E,AA,BB,CC,DD	Fireline
King NIFC	11	Tactical	168.200 Rx & Tx Narrow Band	Divs.A,B,C,D ICP Group, Fargo Group 1 DivWD,WE,WF,WG,WH	Fireline
King NIFC	12	Air to Ground	167.950 167.950/110.9 Narrow Band	Federal Air to Ground	
King NIFC	13	Air To Ground	159.390 Rx & Tx	Georgia Air to Ground	
King NIFC	14	Air Guard	168.625 168.625/110.9 Narrow Band	Air Emergency Only	Air Emergency Only
5. Prepared By (Communications Unit) Carl Bridges/ COML					

Georgia Bay Complex – Kneeknocker/Roundabout (Group 3)

INCIDENT RADIO COMMUNICATIONS PLAN		1. Incident Name Georgia Bay Complex		2. Date/Time Prepared 5- 18 -2007	3. Operational Period Date/Time 5- 19-2007
4. BASIC RADIO CHANNEL UTILIZATION					
Radio Type/Cache	Channel	Function	Frequency/Tone	Assignment	Remarks
King NIFC	1	Mobile to Mobile	159.390 RX & Tx	Breakout	Kneeknocker & Roundabout
King NIFC	2	Mobile to Base	159.390 Rx 159.225 Tx	Breakout	Kneeknocker & Roundabout
King NIFC	3	GA Mutual Aid	154.280 154.280	Race Track Fire	Structural & Tactical
King NIFC	4	Tactical	159.285 Rx & Tx	As needed	Southeastern Compact
King NIFC	5	Tactical	164.1375 Rx & Tx		
King NIFC	6	Tactical	168.775 Rx & Tx	Roundabout A & B	
King NIFC	7	Tactical	169.900 Rx & Tx	Roundabout C & D	
King NIFC	8	Tactical	168.200 Rx & Tx	Kneeknocker	
King NIFC	9	Tactical	159.270 Rx & Tx	Ft. Mudge Fire	Red Channel
King NIFC	10	Tactical	159.420 Rx & Tx	Forest Drive Fire	White Channel
King NIFC	11	Tactical	159.330 Rx & Tx		Blue Channel
King NIFC	12	Air to Ground	169.200 Rx & Tx	Kneeknocker	Air to Ground Dedicated to this complex
King NIFC	13	Air Guard	168.625 168.625/110.9 Narrow Band	Air Emergency Only	Air Emergency Only
King NIFC	14	Knee Repeater	159.465 Rx 151.145 Tx	Command Repeater	Kneeknocker only

5. Prepared By (Communications Unit)
Carl Bridges/ COML

ICS-206 MEDICAL PLAN	1. Incident Name Georgia Bay Complex	2. Date Prepared 5/18/07	3. Time Prepared 18:00	4. Operational Period 5/19/07 DAY & NIGHT SHIFT							
5. Incident Medical Aid Station											
Medical Aid Stations			Location				Paramedics				
							Yes	No			
Medical Unit Big Turnaround 912-496-4359	912-496-4359		100 yards west of ICP in the double wide trailer				X				
Medical Unit Georgia Bay 912-218-9101	912-218-9101		Georgia Forestry Headquarters ICP				X				
John (Steve) Spangler 540-320-4838	540-320-4838		Assigned By DIVS – Big Turnaround – East Divisions				EMT				
6. Transportation											
A. Ambulance Services											
Name		Address			Phone		Paramedics				
							Yes	No			
Ware County EMS		Waycross Georgia (911 to activate)			912-281-9467 Linc 1*96*116		X				
Charlton Memorial EMS		1203 N Third St Folkston Ga (911 to activate)			888-255-4961 Linc 1*25*3468		X				
Fargo County EMS		Fargo (911 to activate)					X				
Air Ambulance Service											
Trauma 1		Jacksonville, FL (26 min/air)			1-800-223-4878		X				
AirMed		Augusta, GA (2 hrs/air)			888-792-9245		X				
Lifeflight		Jacksonville, FL (35 min/air)			877-870-7779		X				
B. Incident Ambulances											
Name		Location				Paramedics					
						Yes No					
Ware County EMS		Waycross (Natl. Guard Armory - 718 Garlington Ave)				X					
Charlton EMS		Folkston				X					
Ware County EMS		Fargo (Fargo Unit – 41 First Street – Fargo, GA 31631)				X					
7. Hospitals											
Name		Address		Travel Time		Phone		Helipad		Burn Center	
				Air	Grnd			Yes	No	Yes	No
Charlton Memorial		1203 N 3 rd St Folkston N30°50.54 W082°18.4		10 min	20 min.	912-496-2531		X			X
Satilla Regional		410 Darling Ave Waycross Ga N31°13.56 W82°21.058		15 min	30 min	912-283-3030		X			X
Shands Hospital (level I)		Jacksonville, FL N 30 20 97 W 82 13 992		45 min	1.5 hrs	800-223-4878		X		X	
Memorial Hospital		Savannah, GA 4700 Waters 3200.7 8107.6		40 min		912-350-8999		X			X
Shands Burn Center		Gainesville, FL 29 38.33 N 082 20.73W		45 min		352-265-0300		X		X	
Doctor's Hospital Joseph Still Burn Center		August,GA (Chief Burn Ctr 3328.943 8205.422		90 min	3 ½ hrs	877-863-9595 706-863-9595		X		X	
8. Medical Emergency Procedures											
Identify any EMT's and Paramedics in your crews. All medical emergencies will be reported to the Division Supervisor who will assume command.											
<ol style="list-style-type: none"> Provide medical care & stabilize patient. Call 911 Notify Communications via radio or cell phone (936)545-6198. Communications will clear radio traffic for medical emergency. Notify Dispatch, provide ONE on site contact person, notify dispatch if that changes.. <ul style="list-style-type: none"> Provide location (road intersection, GPS coordinates). Number of patients Type of injury or illness – Is it life threatening? Provide vital signs if available. EMT's on scene and/or needed Type of transportation needed Com will notify ambulance and coordinate with IC, SOF, MEDL 											
<i>*CREW EMT'S (ALL LEVELS) WILL FUNCTION AT THE BASIC LEVEL UNLESS SPECIFICALLY ASSIGNED TO THE INCIDENT AS AN EMT SINGLE RESOURCE</i>											
Helibase – ICP Waycross: 31 07.23 X 82 15.23											
Helispots – Fargo Base Camp: 30 47 30.02 X 82 22 39.5 (4 mi mrker Hwy 177 – Stephen C. Foster St. Prk) H-114 and 30 41.739 X 82 33.961 (Hwy 441 - golf course) H-113											
9. Prepared by (Medical Unit Leader) Susan Long (912) 218-9101 Linc 1*18*7480, Robert Carswell (T)						10. Reviewed by (Safety Officer) Brian Beisel SOF (912)218-7726 Linc 1*18*4223					

AIR OPERATIONS SUMMARY		PREPARED BY: P.J.Pearson		PREPARED DATE/TIME 5/18/07 1600	
1. INCIDENT NAME: Sweat Farm Road Fire		2. OPERATIONAL PERIOD: Day Shift 5/19//07		START TIME: 0700	END TIME: 2000
		SUNRISE: 0634	SUNSET: 2018		
3. REMARKS (Safety Notes, Hazards, Air Operations Special Equipment, etc.): High Towers in Area Look Up, Look Down, Look Around Waycross Helibase—31 14.95 X 82 23.73 Pogo Helibase-30 18.25 X 82 07.69 ICP Helibase 31 07.23 X 82 15.23 All dispatches will come through the ICP in Waycross for state aviation resources LOOK UP, LOOK DOWN, LOOK ALL AROUND			4. MEDEVAC A/C: N17HX—Pogo Helibase		5. TFR: In Place Radius: Rectangle to 3000 MSL_ Altitude: _3000= MSL NW corner Lat 31 09 02 Long 82 32 04 SE corner Lat 30 53 17 Long 82 02 48:
6. PERSONNEL		Phone	7. FREQUENCIES		8. FIXED-WING # Avail / Type/ Make-Model / FAA N# / Base(s)
AOBD: P.J.Pearson 979-220-1217 AOBD: Ron Hollifield-Lake City			AIR/AIR FW:	122.575 122.825 122.925	Airtankers 00-Type I 20-Type I 22-Type I 09-Type II 10-Type II
ATGS: L.Mars—Waycross O. Martin(T) Waycross J. Robinson--Waycross C.Cross-Lake City			AIR/AIR RW:	122.575	
State Aviation Lead Waycross Airport Mike Leverette			AIR/GROUND:	122.925	Leadplanes Lead B-2 ASM Lead 1-4
ASGS: Jack Finley-Pogo Bob Yeager-Lake City			COMMAND:		Base FAX #:
HEBM: Lon Patterson (T)-- Waycross		979-220-0522	COMMAND RPT	Rx: Tx:	ATGS Aircraft 90K—Beach Baron—L. Mars w/ O.Martin (T) 01Q—Cessna 401—K. Walsh 82-Z—King Air—C.Cross Lake City
ATB MGR:			DECK FREQ:		
HEBM: Tom Kennedy (TK) 912-496-4415 HEBM: Mike O'Leary (POGO) 239-450-2481 HEBM: Dave Langley 505-240-3649			TOLC FREQ:		Other Flight follow with Pogo Helibase or Waycross Helibase IA Air Attack for State--- Cessna 182's and CH-47 or UH 60's Bell 407-Chopper 7 IA for the Okefenokee is 38Y (Okee 6) Approved Helispots—Refer to Okefenokee NWR Despite Map One GNG Helicopter will remain at Waycross Airport for IA at all times
Pogo Helibase 912-496-4415 Waycross Dispatch 912-338-5982			FLIGHT FOLLOW		
				RX 164.625 TX 163.150 TONE 103.5	

Fargo Helibase—(GolfCourse) N 30 41 27.3 x W 82 34 02.0 Stephen Foster SP (Pocket) N30 47 32.2 x W82 22 39..6						ALL AIRCRAFT Call Air Attack when entering TFR--- Waycross Helibase will call Pogo as a back up!!! NOTE NEW HELIBASE LOCATIONS ALL FLIGHTS WILL BE CLEARED WITH AOB
--	--	--	--	--	--	--

9. HELICOPTERS (Use Additional Sheets As Necessary)

FAA N#	TY	MAKE/MODEL	BASE	AVAIL	START	REMARKS	FAA N#	TY	MAKE/MODEL	BASE	AVAIL	START	REMARKS
N5BH	I	Sikorsky S-70A-27	Pogo	0900	0930	Bucket Drops	N5738Y	III	Bell 206	Pogo	0900	0930	Recon/ Admin/ IA
N4503E	I	Sikorsky S-61N	Pogo	0900	0930	Bucket drops	N12HX	III	Bell 407	Pogo	0900	0930	Admin/ Recon
N15HX	II	Bell 205++	Pogo	0900	0930	Bucket drops	Chopper 7	III	Bell 407	Waycross	0900	0930	State IA-Bucket drops as needed
N17HX II	II	BELL 205++	Pogo	0900	0930	Bucket Drops	90K	I	Baron	Waycross	0900	0930	ATGS
	I	UH-60	Waycross	0900	0930	IA for State	62-Z	I	King Air	Lake City	0800	0930	ATGS
	I	UH-60	Waycross	0900	0930	IA for State							
	I	CH-47	Waycross	0900	0930	IA for State							
01Q	i	Cessna 401	Waycross	0900	0930	ATGS							
		Cessna 182	Waycross	0900	0930	Aerial Detection							

10. TASK/MISSION/ASSIGNMENT (Type/Function includes: Air Tactical, Retardant, Recon, Personnel Transport, Water Dropping, S&R, etc.)

TYPE/FUNCTION	NAME OF PERSONNEL OR CARGO (if applicable) OR INSTRUCTIONS FOR TACTICAL AIRCRAFT	MISSION START	FLY FROM	FLY TO
Type II Helicopter	Operation and Logistic Support	0930	Helibase	Fire and Return
Type III Helicopter	Operation and Logistic Support	0930	Helibase	Fire and Return
Type I Helicopter	Operation and Logistic Support	0930	Helibase	Fire and Return
ATGS Platforms	Aerial Supervision of all Aircraft over Incidents	0930	Waycross Airport & Lake City	Fire and Return
State Detection Fixed Wing	Aerial Detection and IA for New Fire Starts	0930	Waycross Airport	Fire and Return

Sweat Farm Road Phone Roster 5-19-07

NAME	POSITION	PHONE NUMBERS	LINC ID
COMMAND & GENERAL STAFF		912-285-6046	Fax 912-285-6014
Paul Hannemann	IC	912-218-5108	18*11878
Billy Leitch	LOFR	912-218-9325	18*12022
Shawn Alexander	LOFR	912-218-9232	18*7378
Skippy Reeves	LOFR	912-218-9359	18*12756
Warren Bielenberg	PIO	912-218-9319	18*11959
John Warner	PRTL	936-546-3164	
Donna Wilson	PRTM	540-797-6241	
Sandra Taylor	PRTM	936-546-3554	
Brian Beisel	SOF	912-218-7726	18*4203
Rodney Bell	SOF	912-218-7132	18*11932
Anthony Meadows	SOF	252-229-0161	
Glenn Bailey	SOF	912-218-4786	18*4451
Harry Kepler	SOF	912-218-8325	18*7145
John Orton	SOF	912-218-4958	18*4899
Larry Miller	SOF	912-218-9355	18*12622
Phil Spor	SOF	912-218-9215	18*11832
Pete Stewart	SOF	912-218-8965	18*7610
Tim Sampson	SOF	912-218-9215	18*11832
Steve Snider	SOF	912-218-9308	18*10090
Ronnie Hamm	SOF 2	979-268-3782	
OPERATIONS		912-285-6039	
David Abernathy	OSC	912-218-5414	18*11904
Rich Gray	OSC	979-218-9909	18*11907
Bill Woodyard	OSC	912-218-9323	18*11981
Bill Bryant	OPBD	912-218-8343	18*4212
George Glenn	TFLD	706-551-2324	
Brendon McNeil	TFLD (t)	979-220-1406	
Bob Habeck	DIVS	912-218-9324	18*11985
Mike Appling	DIVS	912-218-9343	18*12314
Heath Morton	DIVS	912-218-7135	18*11946
Jay Collett	DIVS	912-218-9320	18*11960
Jeff Davis	DIVS	912-218-9320	18*11960
Jim Davis	DIVS	912-218-9307	18*10062
Mike Benefield	DIVS	912-218-8226	18*4523
Nate Leising	DIVS	912-218-9352	18*12520
William Johnson	DIVS	912-218-7132	18*11923
David Zeigler	DIVS (t)	936-546-3085	
Rusty Smith	DIVS (t)	936-546-3104	
Jerome Harvey	STPS		18*1608
Shane Crimm	STPS	912-218-9306	18*7065
William Neff	LE/Arson	912-287-4499	18*13485
Ron Baar	STEN		
Mark Stinson	STEN	512-940-7700	
Mike Purcell	STEN	706-237-0718	
BIG TURNAROUND OPS SEC		912-496-4173	
CSX RAIL ROAD OPERATIONS- Dixon		912-270-0699	
AIR OPERATIONS		912-285-6039	
P.J. Pearson	AOPD	979-220-1217	
Lon Patterson	HCMG	912-218-9313	18*19887
Don Mitchell	Air ASGS	912-218-9358	18*12670
TY Isbell	Air Ops	912-218-8937	18*6167
FINANCE		912-285-6038	
Jill Lipsey	FSC	979-218-3106 ©	
Verma Coleman	FSC (t)	912-285-6038	
Barbara Hatch	Buying Team	478-5502998	478-550-2999
Cathy Oliveras	Comp/Claims	912-285-6038	
Miguel Martinez	Comp/Claims	912-285-6038	
Carolyn Riggs	COST	912-285-6038	
Stephanie Elledge	TIME	912-285-6038	
Penny Brown	Procurement	912-285-6038	
Bob Drown	EQTR	912-285-6038	
Eunice Vankuren	PTRC	912-285-6038	

Karen Stripling	PTRC	912-285-6038	
Sweat Farm Road Phone Roster 5-19-07			
NAME	POSITION	PHONE NUMBERS	LINC ID
PLANNING		912-285-6046	
Les Rogers	PSC	912-218-7586	18*6871
Chris Brenzel	SITL	760-822-2257	
Dan Ochocki	SITL	970-903-1957	
Brian Pope	SITL(t)	936-546-3164	
Russell Lykins	SITL(t)	936-546-1616	
Richard Gibbs	RESL	979-220-0577	
Wes Moorehead	RESL(t)	936-546-1642	
Rusty Brown	CTSP	479-973-6231 (P)	
Brad Smith	FBAN	979-220-1389	
Doug Williams	FOBS	912-218-9316	18*11828
Gary White	FOBS	912-218-9358	18*12670
Kevin Winter	GISS	912-285-6052	
Buster Robinson	GISS	936-546-8783	
John Quagliariello	IMET	912-218-9309	18*10247
Rich Dottellis	DOCL	936-546-3138	
Carl Lunggrin	DMOB	912-218-9361	18*12771
Scott Corley	SCKN		
Jason Keiningham	SCKN(t)	979-218-3108	
Shawn Whitley	SCKN(t)	936-545-7184	
David Hicks	IRIN	541-554-0143	
Dennis Evans	THSP	912-218-8325	18*7145
Lewis Kerney	TNSP	423-650-3006	
LOGISTICS		912-285-6091	Fax 912-285-6111
Susan Cornett	LSC	936-546-1952	
Ted Grisey	LSC @ FARGO	912-218-9356	
Carl Bridges	COML	936-545-6198	
Susan Long	MEDL	912-218-9101	18*7480
Robert Carswell	MEDL	912-218-9101	18*7480
Roger Atkinson	SECM	479-970-3038	
Tony Bolton	SECL	601-405-9027	
Wayne Garmen	BCMG	912-218-9141	18*11862
Kevin Pierce	BCMG(t)	936-546-1523	
Stephen Kelley	BCMG (FARGO	912-218-9360	18*12765
Chuck Barber	ump Crew Manag	912-218-9342	18*12299
Georgia State Patrol	Dispatcher	912-287-6500	
Michelle Sanchez	EQPM	912-281-8279	
Keith Skinner	EQPM	936-546-8133	
Jimmy Caldwell	FAC	912-281-8266	
Terry Seward	FDUL	912-218-9321	18*11964
William Lee	Fuel Truck	912-218-9017	18*6682
Guy Gillispe	Ground Support	912-218-7103	18*6748
Mike Summers	GSUL	936-546-1957	
John Wall	Hotel Manger	912-218-9354	18*12616
Sussie Burford	IADP	936-546-3071	
Terry Lemmon	ORDM	936-546-1953	
Daniel Wilson	RCDM	936-546-1729	
Todd Nightengale	STAM (FARGO)	936-546-3163	
Larry Bennett	SUPL	936-546-1732	
Steve Moore	FARGO	912-218-9344	18*12374
Bobby Weaver	THSP	936-546-8010	
John Rush	THSP	936-546-1883	
Larry Brown	GDC	912-218-9366	11*32283
Don Shugart	GDC	912-218-9371	11*32063
Sylvester Hall	GDC	912-218-9367	11*32054
Tommy Maddox	GDC	912-218-9374	11*32069
MISC.			
COMMAND DISPATCH		912-218-9044	18*6870
PUBLIC INFORMATION		912-218-9319	18*11959
WAYCROSS DISTRICT OFFICE		912-218-7695	18*11671
MACON DISPATCH		912-218-9232	18*7378
MOP UP COMMAND			18*4918

FARGO BASE		912-218-8907	18*7532

KNEEKNOCKER AND ROUNDABOUT Phone Roster 5-19-2007			
	POSITION	PHONE NUMBERS	LINC ID
OPERATIONS Kneeknocker	LOFR	912-218-6552	1*18*4166
NAME	DIVS	706-836-7712	1*18*2013
Barry Chesser	STPL		1*18*4279
Steve Abbott	OPBD		1*18*11266
John Godwin			
Brantley McManus			
	DIVS	912-218-9315	18*11625
OPERATIONS Roundabout 9	STPL		
Steve Miller			
Donald Bennett			
	Ken Lee	912-218-2012	1*44*1081
		912-717-3330	
OTHER AGENCIES	Button Lee	904-699-1619	1*25*323
Brantley County Fire Coordinator	Billy Lartz	912-282-8730	
Nahunta FD Fire Chief	Robert Thomas	912-217-1638	1*11*2001
EMA / 911 Director	T. Trowbridge	912-614-1658	1*25*1130
Brantley County Sheirff	T. Trowbridge	© 912-223-2815	
DNR, ENGB	Sam Williams	229-212-0124	
DNR ENOP	David Moore		
Atkinson EMA IC	Diane May		
Atkinson GEMA Coordinator			
North End Resource Advisor	Dean Easton	912-496-7366	ext 235
South End Resource Advisor	Doug Nuss	912-286-3110	

IMPORTANT FINANCE INFORMATION

ALL CREW TIME REPORTS AND EMERGENCY EQUIPMENT SHIFT TICKETS SHOULD BE TURNED IN TO FINANCE AT THE END OF EACH SHIFT ON A DAILY BASIS. SUPERVISORS SIGNING THESE TIME REPORTS SHOULD ENSURE THE FOLLOWING:

- **PLEASE WRITE THE FIRE NAME YOU ARE WORKING ON YOUR CTR'S AND/OR SHIFT TICKETS – THIS IS VERY IMPORTANT FOR FEMA REIMBURSEMENT.**
- **THE “O” NUMBER SHOULD BE LISTED ON THE CREW TIME REPORT**
- **COMPLETE 1 (one) CREW TIME REPORT FOR EACH PERSON WITH AN “O” NUMBER**
- **“E” NUMBERS SHOULD BE LISTED ON THE EMERGENCY EQUIPMENT SHIFT TICKET(S)**
- **CORRECT DATES ARE IMPERATIVE!**
- **SUPERVISORS – PLEASE REVIEW THE CTR'S/SHIFT TICKET'S YOU ARE ASKED TO SIGN**

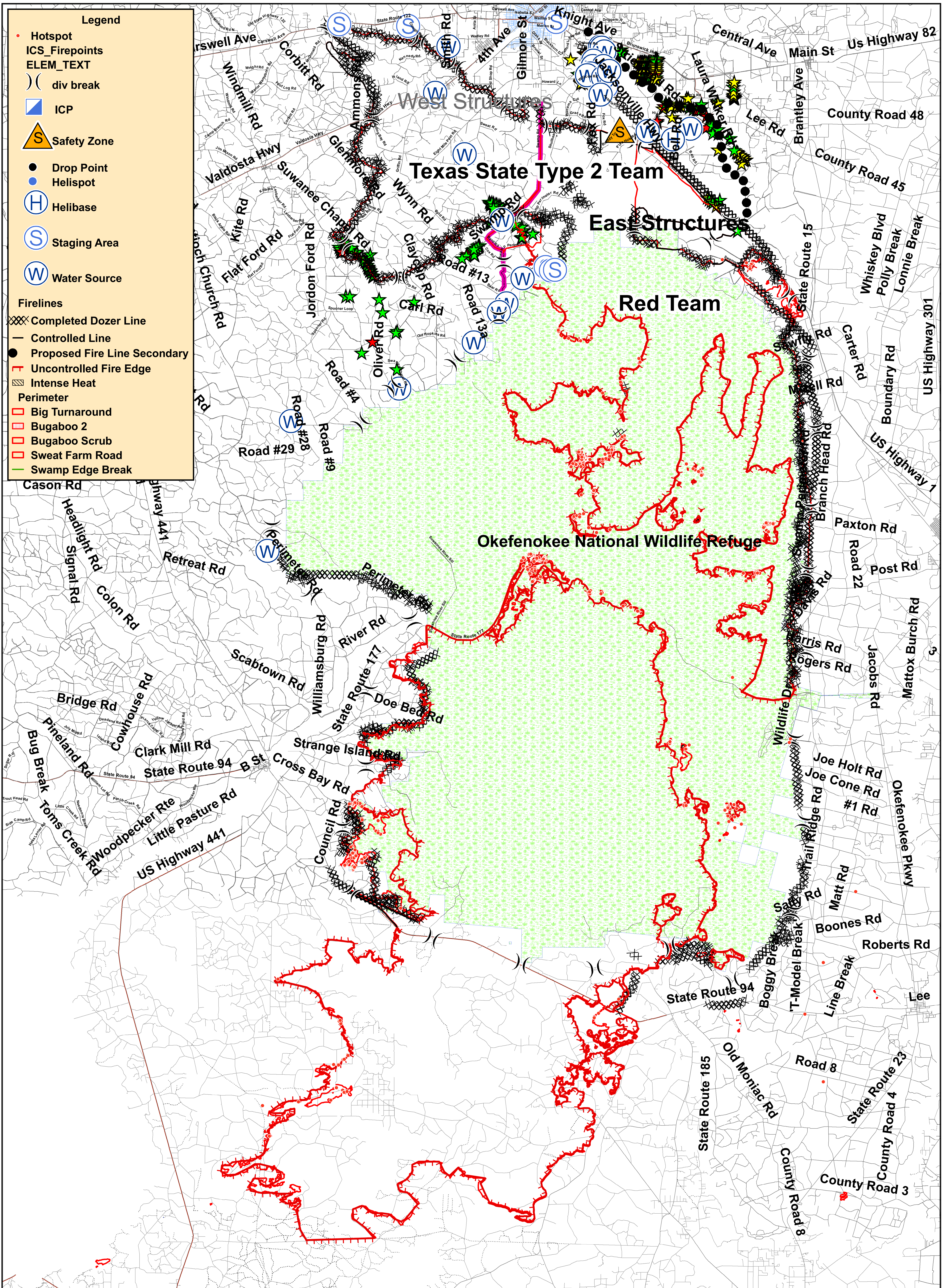
HUMAN RESOURCES MESSAGE



ATTITUDE

The longer I live, the more I realize the impact of attitude on life. Attitude, to me, is more important than facts, it is more important than the past, than education, than money, than circumstances, than failures, than successes, than what other people think or say or do. It is more important than appearance, giftedness or skill, it will make or break a company...a church...a home. The remarkable thing is we have a choice every day regarding the attitude we will embrace for that day. We cannot change our past. We cannot change the fact that people will act in a certain way. We cannot change the inevitable. The only thing we can do is play on the one string we have, and that is our attitude...I am convinced that life is 10% what happens to me and 90% how I react to it. And so it is with you. We are in charge of our Attitudes.

Paul Hannemann, Incident Commander



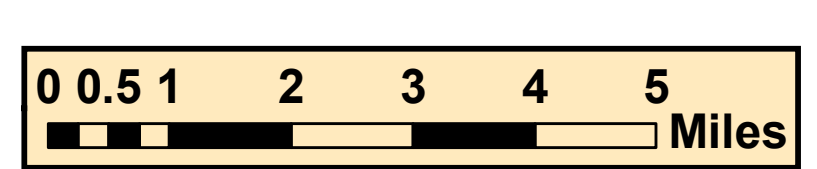
Legend

- Hotspot
- ICS_Firepoints
- ELEM_TEXT
- () div break
- ICP
- Safety Zone
- Drop Point
- Helispot
- Helibase
- Staging Area
- Water Source

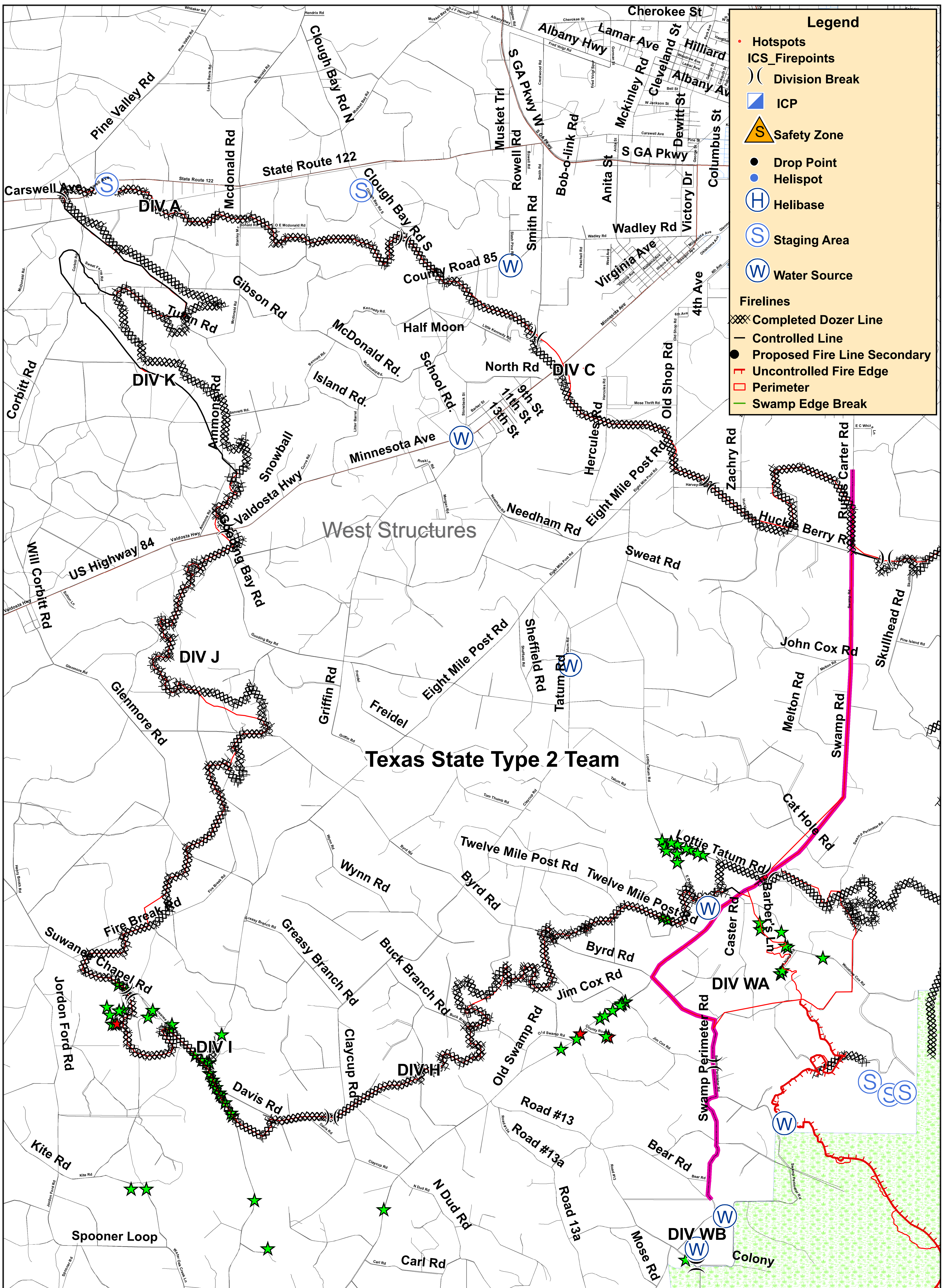
Firelines

- Completed Dozer Line
- Controlled Line
- Proposed Fire Line Secondary
- Uncontrolled Fire Edge
- Intense Heat
- Perimeter
- Big Turnaround
- Bugaboo 2
- Bugaboo Scrub
- Sweat Farm Road
- Swamp Edge Break

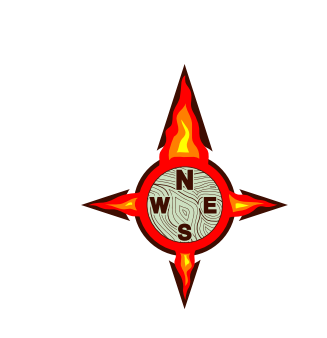
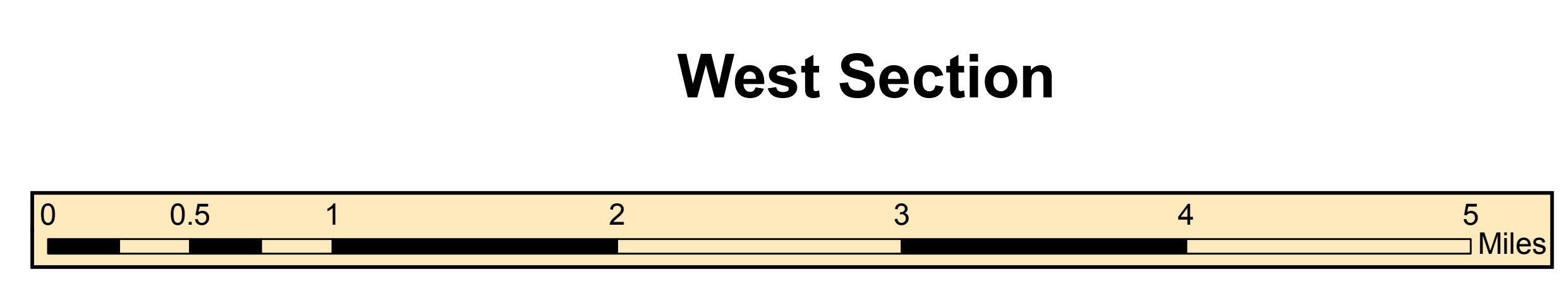
Georgia Bay Complex
Tiled IAP Map
05-19-2007



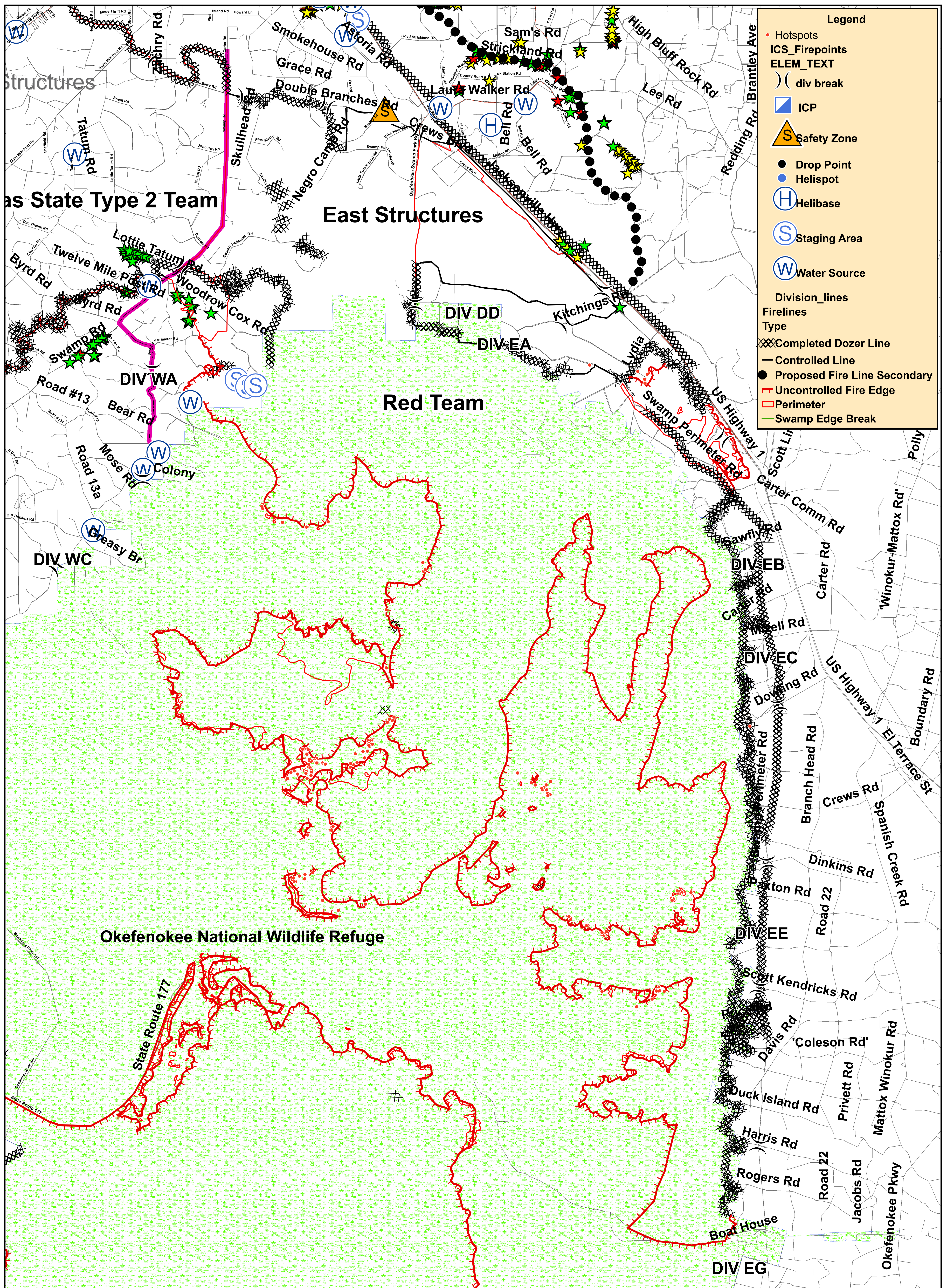
Map By: Jim Pugh
May 19, 2007
Perimeter as of
May 18, 2007 1030



Georgia Bay Complex
Bugaboo Scrub
Tiled IAP Map
05-19-2007



Map By: Jim Pugh
May 19, 2007
Perimeter as of
May 18, 2007 1030



Legend

- Hotspots
- ICS Firepoints
- ELEM_TEXT
- div break
- ICP
- Safety Zone
- Drop Point
- Helispot
- Helibase
- Staging Area
- Water Source

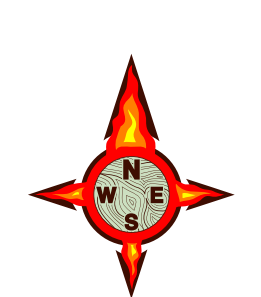
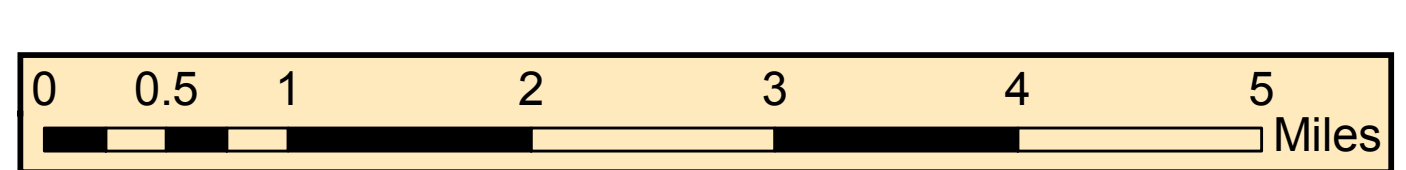
Division_lines

Firelines

Type

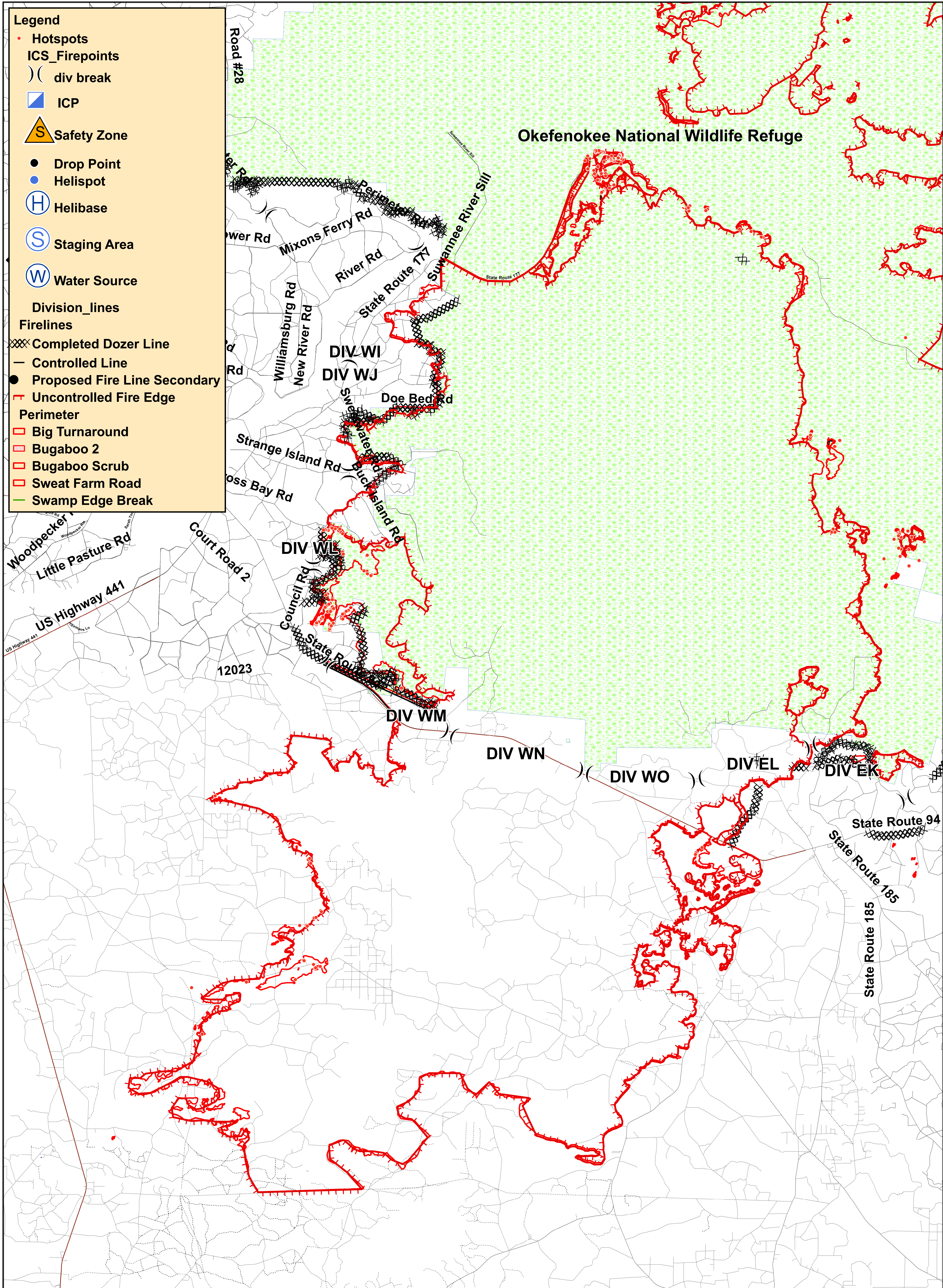
- Completed Dozer Line
- Controlled Line
- Proposed Fire Line Secondary
- Uncontrolled Fire Edge
- Perimeter
- Swamp Edge Break

Georgia Bay Complex
Big Turnaround Fire
Tiled IAP Map
05-19-2007



Map By: Jim Pugh
May 19, 2007
Perimeter as of
May 18, 2007 1030

East Section



Legend

- Hotspots
- ICS_Firepoints
-) (div break
- ▣ ICP
- ▲ Safety Zone
- Drop Point
- Helispot
- ⊕ Helibase
- ⊙ Staging Area
- ⊙ Water Source

Division_lines

Firelines

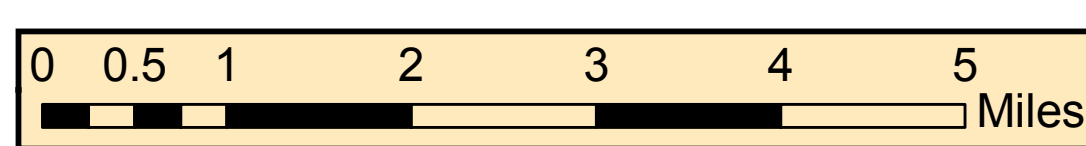
- ▤ Completed Dozer Line
- Controlled Line
- Proposed Fire Line Secondary
- ▬ Uncontrolled Fire Edge

Perimeter

- ▭ Big Turnaround
- ▨ Bugaboo 2
- ▨ Bugaboo Scrub
- ▨ Sweat Farm Road
- Swamp Edge Break

Georgia Bay Complex
 Bugaboo Scrub Fire / Bugaboo 2
 Tiled IAP Map
 05-19-2007

South Section



Map By: Jim Pugh
 May 19, 2007
 Perimeter as of
 May 18 2007 1030



Georgia Bay Complex

Sweat Farm Rd. Fire

Bugaboo Scrub II Fire

Incident Action Plan

Saturday

May 19, 2007

GA-GAS-0097028



GEMA

INCIDENT OBJECTIVES	1. Incident Name Georgia Bay Complex	2. Date Prepared 5/18/07	3. Time Prepared 1830									
4. Operational Period 05/19/2007 Day and Swing Shift												
5. General Control Objectives For The Incident (Include Alternatives) <ol style="list-style-type: none"> 1. Conduct all operations in a safe, cost effective, and efficient maner, and do so in an atmosphere free of discriminatory or harassing remarks or actions. 2. Manage fires within the Georgia Bay Complex, as assigned by the Georgia Forestry Commission, by providing relief for local resources, identifying and mitigating hazards, establishing LCES, and following 2 to 1 work to rest guidelines. 3. Maintain communications and information flow with resources and Georgia Forestry Commission Protection staff with timely and accurate situational updates. 4. Provide accurate cost accountability and documentation of expenditures for the duration of the incident. 5. Develop and maintain coordination with local fire departments, local EOC directors, the Georgia Emergency Management Agency, the Southern Area Red Team IMT, the Southern Area Blue Team IMT, GOAL, and private industry. 6. Keep the Bugaboo fire east of State Hwy 177, east of State Hwy 94 from Fargo to the Florida state line. 7. Keep the Sweat Farm Fire south of the town of Waycross and Highway 122, west of Highway 1, north and west of swamp road, and east of the town of Manor. 8. Keep the Kneeknocker and Roundabout fires within the current established fire lines / perimeters. 												
6. Weather Forecast For Period <p>Moslty sunny and dry. Highs 82 to 86. Minimum RH's 23-27%, except 19 to 23% near fire perimeters. Northeast 7 to 11 mph with gusts to 17 mph. Winds shifting east after 1630 at Knee-Knocker, 1700 at Sweat Farm Rd. and Bugaboo Scrub II, and 1800 at Roundabout.</p>												
7. General Safety Message <p>Keep all resources informed on strategies, tactics, changes, and identified hazards. Everyone should be informed on existing and expected conditions. Give driving your full attention. Remember to have LCES in place prior to engagement on IA.</p>												
8. ATTACHEMENTS (X IF ATTACHED) <table style="width: 100%; border: none;"> <tr> <td style="width: 33%;"><input checked="" type="checkbox"/> Organization List - ICS 203</td> <td style="width: 33%;"><input checked="" type="checkbox"/> Medical Plan - ICS 206</td> <td style="width: 33%;"><input checked="" type="checkbox"/> Tailgate Briefing Form _____</td> </tr> <tr> <td><input checked="" type="checkbox"/> Division Assignment Lists - ICS 204</td> <td><input checked="" type="checkbox"/> Incident Map - separate</td> <td>(safety, weather, fire behavior)</td> </tr> <tr> <td><input checked="" type="checkbox"/> Communications Plan - ICS 205</td> <td><input type="checkbox"/> Traffic Plan</td> <td><input type="checkbox"/> _____</td> </tr> </table>				<input checked="" type="checkbox"/> Organization List - ICS 203	<input checked="" type="checkbox"/> Medical Plan - ICS 206	<input checked="" type="checkbox"/> Tailgate Briefing Form _____	<input checked="" type="checkbox"/> Division Assignment Lists - ICS 204	<input checked="" type="checkbox"/> Incident Map - separate	(safety, weather, fire behavior)	<input checked="" type="checkbox"/> Communications Plan - ICS 205	<input type="checkbox"/> Traffic Plan	<input type="checkbox"/> _____
<input checked="" type="checkbox"/> Organization List - ICS 203	<input checked="" type="checkbox"/> Medical Plan - ICS 206	<input checked="" type="checkbox"/> Tailgate Briefing Form _____										
<input checked="" type="checkbox"/> Division Assignment Lists - ICS 204	<input checked="" type="checkbox"/> Incident Map - separate	(safety, weather, fire behavior)										
<input checked="" type="checkbox"/> Communications Plan - ICS 205	<input type="checkbox"/> Traffic Plan	<input type="checkbox"/> _____										
9. Prepared By (Planning Section Chief) /S/ Les Rogers	10. Approved By (Incident Commander) /S/ Paul Hannemann											

ORGANIZATION ASSIGNMENT LIST		9.	Operations Section	
1. Incident Name		Chief	Rich Gray / Bill Woodyard	
Georgia Bay Complex		Planning Ops	David Abernathy	
2. Date	3. Time	a.	Sweat Farm Road Branch - Divisions/Groups	
May 18, 2007	2000	Branch Director		
4. Operational Period		Division/ICT3	A,B,C,D	D. Lachapelle/A. Crouch (T)
May 19, 2007 0700-2000		Division/ICT3	H	Heath Morton
5.	Incident Commander and Staff		Division/ICT3	I,J,K
Incident Commander	Paul Hannemann	Group	ICP Group	Mike Appling
Liason	Shane Crimm	Group	Manor	Jay Collett
Liason	Bob Houseman	Group	Day Shift/Stctr	Nate Leising
Safety Officer	Brian Beisel	Group	Swing Shift/Stctr	Bob Habeck
Information Officer	Bielenberg/ Amen/ Thompson/ Stone/ Polant/ Eck/ Withnall	Group	LE/Arson	Mike Heath
6.	Agency Representatives		Group	Prevention
Agency	Name			
GFC District 8	Frank Sorrells			
GFC District 10	Willard Fell			
GFC Protection Dept.	Alan Dozier			
Charlton Co. Liason	Billy Lietch			
GEMA	Allen Robinson	b.	Bugaboo Scrub II Branch - Divisions/Groups	
7.	Planning Section		Branch Director	Buck Kline
Chief	Les Rogers	Group	Fargo Group 1	Shane Crimm / David Zeigler
Deputy	Shane Brown	Group	Fargo Group 2	Rusty Smith / Shane Crimm
Resources Unit	Richard Gibbs / Dennis Register / Karen Brent (T)	Group	Fargo Group 3	Jim Davis / Shane Crimm
Situation Unit	D. Ochocki R. Lykins(T) B. Pope(T)	Group	Fargo Night Shift	Doug Mattox
Documentation Unit				
Demobilization Unit	Carl Lundgren			
Computer Tech	Rusty Brown / Trey Spivey	c.	Kneeknocker/Roundabout - Divisions/Groups	
Fire Behavior Analyst	John Robertson	Branch Director	Kneeknocker/Roundabout	S. Miller
Incident Meteorologist	John Quagliariello	Group	Kneeknocker	S. Abbott
Status/Check In	J. Keiningham(T) / S. Whitley(T) / R. Dottellis(T)	Division	Roundabout Div. A & D	B. McCarty
Field Observer	Williams / White	Division	Roundabout Div. B & C	J. Jones
GIS	J. Pugh / A. Gareau / B. Robinson	Division		
Infrared Interpreter	L. Barnum / D. Hicks			
Training Specialist	Lewis Kearney			
8.	Logistics Section		d.	Air Operations Branch
Chief	Susan Cornett	Air Operations Branch Director	P.J. Pearson	
Facilities Unit	Jimmy Caldwell	Helibase Manager	D. Langley / L. Patterson(T)	
Supply Unit	Larry Bennett	Air Support Supervisor		
Food Unit	Terry Seward	GFC Air Operations	Mike Leverette	
Base Camp Manager	Karraker/Garman/Pierce(T)	Air Tanker Coordinator		
Ground Support Unit	G. Gillespie / M. Summers	10.	Finance Section	
Ordering Manager	R. Siemens / K Rhoden	Chief	Jill Lipsey / V. Coleman (T)	
Security Manager	Roger Atkinson	Incident Business Advisor	Lila Johnson	
Medical Unit	Susan Long / R. Carswell (T)	Time Unit Leader	Stephanie Elledge	
Communications Unit	Carl Bridges	Buying Team	Barbara Hatch	
Initial Attack Dispatcher	Susie Burford	Personnel Time Recorder	Karen Stripling/Eunice Vankuren	
Hotel Manager	John Wall	Equipment Time Recorder	Bob Drown / Amy Treadwell (T)	
Equipment Manager	M. Sanchez	Procurement	Penny Brown	
Mechanic	English/Skinner/Crane/McNeal	Cost Unit	Carolyn Riggs	
Technical Specialist	Bobby Weaver / John Rush	Comp/Claims	Miguel Martinez/Cathy Oliveras	
Receiving & Distribution Manager	Daniel Wilson	Prepared by (Resource Unit Leader)		
Camp Crew	TN JC #3/Barber	Richard Gibbs / Dennis Register / Karen Brent (T)		

DIVISION ASSIGNMENT LIST				1. Branch Sweat Farm Fire		2. Division/Group A-B-C-D	
3. Incident Name Georgia Bay Complex				4. Operational Period Date: 5-19-07 Time: 0700 - 2000			
5. Operations Personnel							
Operations Chief		David Abernathy O-738 5-19 Rich Gray O-77 5-23 Bill Woodyard O-136 5-21		Division/ICT3		David Lachapelle Alan Crouch (T)	
Branch Director				Safety Officer		Phil Spor O-59 5/20	
6. Resources Assigned this Period							
Strike Team/Task Force/ Resource Designator		Leader / Name		Last Shift Date	Number Persons	Trans. Needed	Pick Up PT./Time
ST#1 TNS ST Eng T6 O-1026		Scott Smith		5/31	9	N	2000
TN Eng S5UW93 E-1359		Long/Cantrell		5/31			2000
TN Eng 5649 E-1372		Harmond/Steele		5/31			2000
TN Eng S5YD39 E-1360		Wooden/Brown		5/31			2000
TN Eng E-232		Hobbs/Kirby		5/31			2000
Columbia Martinez WT E-1227		Thomas/Hutcherson		5/31	2	N	2000
ST#2 GFC ST Tractor Plow T3 E-2602.1		Randy Mosley		5/24	4	N	2000
GFC JD 650 E-2603		Taylor		5/24			2000
GFC JD 650 E-2604		Harden		5/24			2000
GFC JD 650 E-2605		Calhoun		5/24			2000
7. Control Operations Patrol, mop up and mitigate as well respond to any threats posed by the fire.							
8. Special Instructions Watch out for Snags Remain in communications. Be alert for traffic on Highways Stay Hydrated. Ensure all personnel wear PPE. Take spot WX forecasts hourly. Keep tractors loaded and ready to move if not being used on the line Have constant communication with logging operation in fire area: Buck Rodenberry: 912-2764990 Linc 18*5865 LCES implemented by 1000 and notify OPS when completed.							
9. Division/Group Communication Summary							
Function	Frequency	System	Channel	Function	Frequency	System	Channel
Command		King NIFC		Logistics		King NIFC	
Tactical Div/Group	DIV A,B,C,D	King NIFC	Talk Group 1 Ch. 11	Air to Ground	Talk Group 1	King NIFC	Ch. 13
Prepared by (Resource Unit Leader) Richard Gibbs / Dennis Register / Karen Brent (T)		Approved by (Planning Section Chief) <i>/s/Les Rogers</i>		Date May 18, 2007		Time 1900	

DIVISION ASSIGNMENT LIST			1. Branch Sweat Farm Fire		2. Division/Group H			
3. Incident Name Georgia Bay Complex			4. Operational Period Date: 5-19-07 Time: 0700 - 2000					
5. Operations Personnel								
Operations Chief		David Abernathy O-738 5-19 Rich Gray O-77 5-23 Bill Woodyard O-136 5-21		Division/ICT3		Heath Morton O-941 5/23		
Branch Director				Safety Officer		Steve Snider O-186 5/26		
6. Resources Assigned this Period								
Strike Team/Task Force/ Resource Designator		Leader / Name		Last Shift Date	Number Persons	Trans. Needed	Drop Off PT./Time	Pick Up PT./Time
ST# 3GFC ST Engines T6+PU E-2659		Mike Purcell		5/26	11	N	0700	2000
Pickens 86 E-1117		Davis/Keene		5/26		N	0700	2000
Paulding 86 E-1098		Cornett/Henderson		5/26		N	0700	2000
Heard 86 E-1015		Price/Singleton		5/26		N	0700	2000
Upton 86 E-1132		Sanders/Shifflett		5/26		N	0700	2000
Lowndes Co. WT E-2678		Hughes/Lindburg		5/19	2	N	0700	2000
Murray 86 E-1022		Jones / Burnett		5/20	2	N	0700	2000
TF# 1 SC TF w/ T6 ENG O-1049		Bruce Ballentine		5/31	7	N	0700	2000
JD 700 SB E-2738		Boyce/Porter		5/31		N	0700	2000
SCS ENG T6 E-2737		Connally/Heitcamp		5/31		N	0700	2000
SCS ENG T6 E-9007		Craig/ Folk		5/31		N	0700	2000
ST# 4 GFC ST Tractor Plow T3 O-855		George Glenn		5/22	4	N	0700	2000
GAS Jefferson 73 T3 E-1000		Mercier		5/22		N	0700	2000
GAS Burke 70 T4 E-1001		Pearson		5/22		N	0700	2000
GFC Burke 72 T4 E-1002		Cheely		5/22		N	0700	2000
7. Control Operations Patrol, mop up and mitigate as well as respond to any threats posed by the fire.								
8. Special Instructions Remain in communications. Be alert for traffic on Highways Stay Hydrated. Ensure all personnel wear PPE. Take spot RX forecasts every hour. LCES implemented by 1000 and notify OPS when completed.								
9. Division/Group Communication Summary								
Function		System	Channel	Function	Frequency	System	Channel	
Command		King NIFC		Logistics		King NIFC		
Tactical Div/Group	DIV - H	King NIFC	Talk Group 1 Ch.9	Air to Ground	Talk Group 1	King NIFC	Ch. 13	
Prepared by (Resource Unit Leader) Richard Gibbs / Dennis Register / Karen Brent (T)		Approved by (Planning Sect. Ch.) /s/Les Rogers			Date May 18, 2007		Time 1900	

DIVISION ASSIGNMENT LIST				1. Branch Sweat Farm Fire		2. Division/Group I-J-K		
3. Incident Name Georgia Bay Complex				4. Operational Period Date: 5-19-07 Time: 0700 - 2000				
5. Operations Personnel								
Operations Chief		David Abernathy O-738 5-19 Rich Gray O-77 5-23 Bill Woodyard O-136 5-21		Division/ICT3		Ron Swan 6/4		
Branch Director				Safety Officer		Rodney Bell O-935 5/28		
6. Resources Assigned this Period								
Strike Team/Task Force/ Resource Designator		Leader / Name		Last Shift Date	Number Persons	Trans. Needed	Drop Off PT./Time	Pick Up PT./Time
ST# 7 LAS ST Engines T6 O-656		Robert Smith		5/18	9	N	0700	2000
LAS Engine E-1070		Watson/Eddlman		5/18		N	0700	2000
LAS Engine E-1071		Blackman/Redmond		5/18		N	0700	2000
LAS Engine E-1072		Tilley/Knowles		5/18		N	0700	2000
ST# 8 LAS ST Engines T6 O-655		Brett Lane		5/18	7	N	0700	2000
LAS Engine E-1075		Harris/Poole		5/18		N	0700	2000
LAS Engine E-1074		Graham/Sandell		5/18		N	0700	2000
LAS Engine E-1073		Smith/Cannon		5/18		N	0700	2000
LAS Engine E-1076		Turner/Colman		5/18		N	0700	2000
Laurens Co. WT E-1228		Underwood/Edwards		5/23	2	N	0700	2000
ST# 18 ALS STPL O-84		Dan Lindley		5/18	9	N	0700	2000
ALS Doz T3 E1398		Coburn/McCain		5/18		N	0700	2000
ALS Tractor Plow T3 E-1399		King/Nolan		5/18		N	0700	2000
OK Tractr Plw T3 E-1468		Akard/Jacobs		6/1		N	0700	2000
OK Tractr Plw T3 E-1469		Wayman/Tunnell		6/1		N	0700	2000
7. Control Operations Patrol, mop up and mitigate as well as respond to any threats posed by the fire.								
8. Special Instructions Contact for I/A dispatches is County Ranger Billy Leitch 912-218-9325 Linc 18*12022 Drive defensively- watch for city traffic. Be alert for traffic on Highways. Ensure all personnel wear PPE. Stay Hydrated. Take spot WX forecasts every hour. Remain in communications with resources and contractor. Contractor's link #: 18*14052 LCES implemented by 1000 and notify OPS when completed								
9. Division/Group Communication Summary								
Function	Frequency	System	Channel	Function	Frequency	System	Channel	
Command		King NIFC		Logistics		King NIFC		
Tactical Div/Group	DIV I, J, K	King NIFC	Talk Group 1 Ch. 10	Air to Ground	Talk Group 1	King NIFC	13	
Prepared by (Resource Unit Leader) Richard Gibbs / Dennis Register / Karen Brent (T)		Approved by (Planning Section Chief) /s/Les Rogers			Date 5/18/07		Time 1900	

DIVISION ASSIGNMENT LIST			1. Branch Sweat Farm Fire		2. Division/Group ICP GROUP			
3. Incident Name Georgia Bay Complex			4. Operational Period Date: 5-19-07 Time: 0700 - 2000					
5. Operations Personnel								
Operations Chief		David Abernathy O-738 5-19 Rich Gray O-77 5-23 Bill Woodyard O-136 5-21		Division/ICT3		Mike Appling O-223 5/31		
Branch Director				Safety Officer		Tim Sampson O-180 5/26		
6. Resources Assigned this Period								
Strike Team/Task Force/ Resource Designator		Leader / Name		Last Shift Date	Number Persons	Trans. Needed	Drop Off PT./Time	Pick Up PT./Time
ST# 14 GFC T3 ST Tractor Plow O-1101		Levy Rentz		6/2	6	N	Folkston 0700	ICP 2000
Worth 71		E-1465.2		Barwick	6/2	N	Folkston 0700	ICP 2000
NC DOZB		E-1105		Cook	5/31	N	Folkston 0700	ICP 2000
NC Dozer T3		E-1106		Strider	5/31	N	Folkston 0700	ICP 2000
Turner 70		E-2079		Jackson O-1102	6/2	N	Folkston 0700	ICP 2000
Grady 71		E-2080		Bulter O-1103	6/2	N	Folkston 0700	ICP 2000
7. Control Operations Position Equipment to Manage and Mitigate any Threats Posed by Uncontrolled Fires.								
8. Special Instructions Contact for I/A dispatches is County Ranger Billy Leitch 912-276-4001 Linc 18*12022 Drive defensively- watch for city traffic Be alert for traffic on Highways Ensure all personnel wear PPE. Stay Hydrated. Take spot WX forecasts every hour. Remain in communications with resources and contractor. Contractor's link #: 18*14052 LCES implemented by 1000 and notify OPS when completed.								
9. Division/Group Communication Summary								
Function	Frequency	System	Channel	Function	Frequency	System	Channel	
Command		King NIFC		Logistics		King NIFC		
Tactical Div/Group	ICP Group	King NIFC	Talk Group 1 Ch. 11	Air to Ground	Talk Group 1	King NIFC	Ch. 13	
Prepared by (Resource Unit Leader) Richard Gibbs / Dennis Register / Karen Brent (T)		Approved by (Planning Section Chief) /s/Les Rogers			Date 5/18/07		Time 1900	

DIVISION ASSIGNMENT LIST				1. Branch Sweat Farm Fire		2. Division/Group MANOR GROUP	
3. Incident Name Georgia Bay Complex				4. Operational Period Date: 5-19-07 Time: 0700 - 2000			
5. Operations Personnel							
Operations Chief		David Abernathy O-738 5-19 Rich Gray O-77 5-23 Bill Woodyard O-136 5-21		Division/ICT3		Jay Collett O-250 5/31	
Branch Director				Safety Officer		Larry Miller O-38 5/28	
6. Resources Assigned this Period							
Strike Team/Task Force/ Resource Designator		Leader / Name	Last Shift Date	Number Persons	Trans. Needed	Drop Off PT./Time	Pick Up PT./Time
ST# 15 GFC ST Tractor Plow T3		Lonnie Calloway	5/27	4	N	Swamp Church 0700	Manor 2000
Evans 70 E-1199		Sykes	5/27		N	Swamp Church 0700	Manor 2000
Jenkins 70 E-1198		Lane	5/27		N	Swamp Church 0700	Manor 2000
Bulloch 70 E-1200		Wells	5/27		N	Swamp Church 0700	Manor 2000
TFLD O-155		Loren Suazo	5/24	1	N	Swamp Church 0700	Manor 2000
ST# 17 STEN (T) O-183		Reggie Day	5/26	5	N	Swamp Church 0700	Manor 2000
VAF Engine T6 E-57		Collett	5/21		N	Swamp Church 0700	Manor 2000
NMF Engine T6 E-56		Trujillo	5/22		N	Swamp Church 0700	Manor 2000
NMF Eng #236 T6 E-60		Alirez	5/22		N	Swamp Church 0700	Manor 2000
ST#19 NC ST TractorPlow T2 E-2660		Dean Lucas	5/27	1	N	Swamp Church 0700	Manor 2000
NC Mechanic E-2661		David Corey	5/27	1	N	Swamp Church 0700	Manor 2000
NC TPL T2 E-2662		Shepherd / Bell	5/27	2	N	Swamp Church 0700	Manor 2000
NC TPL T2 E-2663		Endicott / Dunn	5/27	2	N	Swamp Church 0700	Manor 2000
NC TPL T2 E-2664		Sidbury / Huttlinger	5/27	2	N	Swamp Church 0700	Manor 2000
7. Control Operations Position Equipment to Manage and Mitigate any Threats Posed by Uncontrolled Fires.							
8. Special Instructions Drive defensively- watch for city traffic. Remain in communications with resources and contractor. Contractor's link #: 18*14052 Be alert for traffic on Highways. Stay Hydrated. Ensure all personnel wear PPE. Take spot WX forecasts every hour. LCES implemented by 1000 and notify OPS when completed.							
9. Division/Group Communication Summary							
Function	Frequency	System	Channel	Function	Frequency	System	Channel
Command		King NIFC		Logistics		King NIFC	
Tactical Div/Group	Manor Group	King NIFC	Talk Group 1 Ch. 11	Air to Ground	Talk Group 1	King NIFC	Ch. 13
Prepared by (Resource Unit Leader) Richard Gibbs / Dennis Register / Karen Brent (T)			Approved by (Planning Section Chief) <i>/s/Les Rogers</i>		Date May 18, 2007		Time 1900

DIVISION ASSIGNMENT LIST				1. Branch Sweat Farm Fire		2. Division/Group Day Shift/Structure Protection		
3. Incident Name Georgia Bay Complex				4. Operational Period Date: 5-19-07 Time: 0700 - 2000				
5. Operations Personnel								
Operations Chief		David Abernathy O-738 5-19 Rich Gray O-77 5-23 Bill Woodyard O-136 5-21		Division/ICT3		Nate Leising O-97 5/20 Jerome Harvey O-889 5/24-6/1		
Branch Director				Safety Officer				
6. Resources Assigned this Period								
Strike Team/Task Force/ Resource Designator		Leader / Name		Last Shift Date	Number Persons	Trans. Needed	Drop Off PT./Time	Pick Up PT./Time
GA DOC TF		Rick Huggins 11*3204 cell 770-330-7246			1	N	Diversion Center	Diversion Center
		Don Shugart 54*240			1	N	Diversion Center1000	Diversion Center2000
		Larry Brown 11*32063			1	N	Diversion Center1000	Diversion Center2000
GDC Autry T1		Delk		5/21	5	N	Diversion Center1000	Diversion Center2000
GDC Wilcox T1		Culpepper		5/21	5	N	Diversion Center1000	Diversion Center2000
GDC Telfair T3		Thomas		5/21	6	N	Diversion Center1000	Diversion Center2000
GDC Montgomery Rescue		Helms/Sharp		5/21	6	N	Diversion Center1000	Diversion Center2000
GDC Macon T6		Price		5/21	8	N	Diversion Center1000	Diversion Center2000
GDC Dooly T6		Hudson		5/21	3	N	Diversion Center1000	Diversion Center2000
GDC Dooly WT				5/21	2	N	Diversion Center1000	Diversion Center2000
GDC Wayne T3		Horton		5/21	2	N	Diversion Center1000	Diversion Center2000
GDC Wayne T6				5/21	2	N	Diversion Center1000	Diversion Center2000
GDC Wayne WT				5/21	2	N	Diversion Center1000	Diversion Center2000
GSP T3		Rogers		5/21	3	N	Diversion Center1000	Diversion Center2000
GSP Rescue				5/21	3		Diversion Center1000	Diversion Center2000
GDC West GA. H/C		Roberts		5/21	8	N	Diversion Center1000	Diversion Center2000
GDC Lee Arendale H/C		Maher		5/21	10	N	Diversion Center1000	Diversion Center2000
GDC Paulding H/C		Cox/Foley		5/21	8	N	Diversion Center1000	Diversion Center2000
7. Control Operations Provide population/structure/infrastructure protection and preparation where needed. Continue to Gather GIS Data. Provide Mop Up around structures and support Division Mop Up. Coordinate with Red Team where applicable. Provide Firewise and Fire Prevention information to the public. Coordinate with DIVS.								
8. Special Instructions Remain in communications. Stay Hydrated. Be alert for traffic on Highways Ensure all personnel wear PPE. Way Cross Structures GEMA 40 Southern Linc 18*11049 Red Team Structures Contact Info. Bill Bell 18*12537 Dennis Hackett 404-354-4415 or 352-279-6977 5/16 Jessie Jordan Ware Co. FD 44*4042 912-281-6541 Ware County Fuel Tender -- Tony Leverett 912-288-3295 Clinch County Fire/EMA - Jesse Booth 25*255 919-482-3700 LCES implemented by 1000 and notify OPS when completed.								
9. Division/Group Communication Summary								
Function	Frequency	System	Channel	Function	Frequency	System	Channel	
Command		King NIFC		Logistics		King NIFC		
Tactical Div/Group	DIV - Day Structure	King NIFC	Talk Group1 Ch. 3	Air to Ground	Talk Group 1	King NIFC	Ch. 13	
Prepared by (Resource Unit Leader) Gibbs / Register / Brent (T)		Approved by (Planning Section Chief) /s/Les Rogers			Date 5/18/07		Time 1900	

DIVISION ASSIGNMENT LIST				1. Branch Bugaboo Scrub II		2. Division/Group Fargo Night Shift	
3. Incident Name Georgia Bay Complex				4. Operational Period Date: 5-19-07 Time: 1800 - 0600			
5. Operations Personnel							
Operations Chief		David Abernathy O-738 5-19 Rich Gray O-77 5-23		Division		Doug Mattox 6/4	
Branch Director		Buck Kline		Safety Officer		Pete Stewart	
6. Resources Assigned this Period							
Strike Team/Task Force/ Resource Designator		Leader / Name	Last Shift Date	Number Persons	Trans. Needed	Drop Off PT./Time	Pick Up PT./Time
ST# 21 GFC ST Tractor Plow T3 E-2714		Alfred Lucas O-1005	5/28	4	N	Fargo 1500	Fargo 0300
GFC TPL E-2694 O-1006		A. Smith	5/28		N	Fargo 1500	Fargo 0300
GFC TPL E-2696 O-1008		C. Thomas	5/28		N	Fargo 1500	Fargo 0300
GFC TPL E-2695 O-1007		D. Veal	5/28		N	Fargo 1500	Fargo 0300
GEMA Grady WT E-2601		Micah Freeman	5/22	1	N	Fargo 1500	Fargo 0300
ST# 20 STEN T6 O-153		Dave Larsen	5/24	7	N	Fargo 1500	Fargo 0300
TX PVT Engine E-44		Sims/Judd	5/20		N	Fargo 1500	Fargo 0300
TX PVT #701 Engine E-45		Mclnis / Mclnis	5/20		N	Fargo 1500	Fargo 0300
TXF #31 Engine E-46		Beakley/Salcido Calahan	5/20		N	Fargo 1500	Fargo 0300
USFS Engine T6 E-47		Woodward/Pannell	5/22	2	N	Fargo 1500	Fargo 0300
S/T 28 STEN O-179		Craig Gilbert	5/25	1	N	Fargo 1500	Fargo 0300
LA ENG T6 E-2841		Hall/Dunn	6/2	2	N	Fargo 1500	Fargo 0300
VA-VAF ENG T6 E-4		Ramey/Lament/Proctor	5/26	3	N	Fargo 1500	Fargo 0300
AZ-COF ENG T6 E-2		Rokosh/Grondin Moe/Hart	5/26	4	N	Fargo 1500	Fargo 0300
AZ SFD ENG T6 E-1		Ingrao/Kreun/Wells	5/26	3	N	Fargo 1500	Fargo 0300
CO-PSF ENG T6 E-3		Muir/Zanotto/Rigaud	5/26	3	N	Fargo 1500	Fargo 0300
7. Control Operations Patrol and Mop Up West of Swamp Rd. Provide Structure Protection as needed. Coordinate with DIVS							
8. Special Instructions Remain in communications. Be alert for traffic on Highways. Stay Hydrated. Ensure all personnel wear PPE. Take spot forecasts every hour. Stinson strike team will patrol and mop up west of Swamp Rd. Remainder of resources assigned to Fargo will assist with structure protection and related activities Clinch County Fire/EMA – Jesse Booth 25*255 919-482-3700 LCES implemented by 1000 and notify OPS when completed.							
9. Division/Group Communication Summary							
Function	Frequency	System	Channel	Function	Frequency	System	Channel
Command		King NIFC		Logistics		King NIFC	
Tactical Div/Group	DIV - Swing Shift	King NIFC	Talk Group 2 Ch. 7	Air to Ground	Talk Group 1	King NIFC	
Prepared by (Resource Unit Leader) Gibbs / Register / Brent (T)			Approved by (Planning Section Chief) <i>/s/Les Rogers</i>			Date May 18, 2007	Time 1900

DIVISION ASSIGNMENT LIST				1. Branch Sweat Farm Fire / Bugaboo Scrub II		2. Division/Group Swing Shift / Structures Group			
3. Incident Name Georgia Bay Complex				4. Operational Period Date: 5-19-07		Time: 1500 - 0300			
5. Operations Personnel									
Operations Chief		David Abernathy O-738 5-19 Rich Gray O-77 5-15			Division/ICT3		Bob Habeck O-101 5/19		
Branch Director		Buck Kline			Safety Officer		Ronnie Hamm O-1020 5/29		
6. Resources Assigned this Period									
Strike Team/Task Force/ Resource Designator		Leader / Name		Last Shift Date	Number Persons	Trans. Needed	Drop Off PT./Time		Pick Up PT./Time
TF2 STEN T6 Engine O-682		Mark Stinson		5/21	1	N	Swamp Rd 1500		Swamp Rd 0300
TX Eng 4460 E-1181		Sinderud/ Kelley		5/21	1	N	Swamp Rd 1500		Swamp Rd 0300
GA-GAS ENG T6 E-2065		Ross/Carrol		5/23	2	N	Swamp Rd 1500		Swamp Rd 0300
GA-GAS ENG T6 E-1906		Joy/Berry		5/23	2	N	Swamp Rd 1500		Swamp Rd 0300
MN PVT #6 Engine E-26		G. Rock-C. Tucker		5/29	2	N	Swamp Rd 1500		Swamp Rd 0300
7. Control Operations									
Patrol and Mop Up West of Swamp Rd. Provide Structure Protection as needed. Coordinate with DIVS									
8. Special Instructions									
Remain in communications. Be alert for traffic on Highways. Stay Hydrated. Ensure all personnel wear PPE. Take spot forecasts every hour.									
Stinson strike team will patrol and mop up west of Swamp Rd.									
Remainder of resources assigned to Fargo will assist with structure protection and related activities									
Clinch County Fire/EMA – Jesse Booth 25*255 919-482-3700									
LCES implemented by 1000 and notify OPS when completed.									
9. Division/Group Communication Summary									
Function	Frequency	System	Channel	Function	Frequency	System	Channel		
Command		King NIFC		Logistics		King NIFC			
Tactical Div/Group	DIV - Swing Shift	King NIFC	Talk Group 2 Ch. 7	Air to Ground	Talk Group 1	King NIFC			
Prepared by (Resource Unit Leader) Gibbs / Register / Brent (T)			Approved by (Planning Section Chief) <i>/s/Les Rogers</i>			Date May 18, 2007		Time 1900	