



Georgia Bay Complex

Sweat Farm Rd. Fire

Bugaboo Scrub II Fire

Incident Action Plan

Sunday

May 20, 2007

GA-GAS-0097028



GEMA

INCIDENT OBJECTIVES	1. Incident Name Georgia Bay Complex	2. Date Prepared 5/19/07	3. Time Prepared 1830									
4. Operational Period 05/20/2007 Day and Swing Shift												
5. General Control Objectives For The Incident (Include Alternatives) <ol style="list-style-type: none"> 1. Conduct all operations in a safe, cost effective, and efficient manner, and do so in an atmosphere free of discriminatory or harassing remarks or actions. 2. Manage fires within the Georgia Bay Complex, as assigned by the Georgia Forestry Commission, by providing relief for local resources, identifying and mitigating hazards, establishing LCES, and following 2 to 1 work to rest guidelines. 3. Maintain communications and information flow with resources and Georgia Forestry Commission Protection staff with timely and accurate situational updates. 4. Provide accurate cost accountability and documentation of expenditures for the duration of the incident. 5. Develop and maintain coordination with local fire departments, local EOC directors, the Georgia Emergency Management Agency, the Southwestern Area Team IMT, the Southern Area Blue Team IMT, GOAL, and private industry. 6. Keep the Bugaboo fire east of State Hwy 177, east of State Hwy 94 from Fargo to the Florida state line. 7. Keep the Sweat Farm Fire south of the town of Waycross and Highway 122, west of Highway 1, north and west of swamp road, and east of the town of Manor. 8. Keep the Kneeknocker and Roundabout fires within the current established fire lines / perimeters. 												
6. Weather Forecast For Period <p>...RED FLAG WARNING THIS AFTERNOON FOR CRITICAL RELATIVE HUMIDITY VALUES...</p> <p>Sunny and dry. Highs 84 to 88. Minimum RH's 20-24%, except 16 to 20% near fire perimeters. Northeast winds 3 to 6 mph, becoming east 6 to 10 mph with gusts to 14 mph around midday, then shifting southeast late.</p>												
7. General Safety Message <p>Keep all resources informed on strategies, tactics, changes, and identified hazards. Everyone should be informed on existing and expected conditions. Give driving your full attention. Remember to have LCES in place prior to engagement on IA.</p>												
8. ATTACHEMENTS (X IF ATTACHED) <table style="width: 100%; border: none;"> <tr> <td style="width: 33%;"><input checked="" type="checkbox"/> Organization List - ICS 203</td> <td style="width: 33%;"><input checked="" type="checkbox"/> Medical Plan - ICS 206</td> <td style="width: 33%;"><input checked="" type="checkbox"/> Tailgate Briefing Form (safety, weather, fire behavior)</td> </tr> <tr> <td><input checked="" type="checkbox"/> Division Assignment Lists - ICS 204</td> <td><input checked="" type="checkbox"/> Incident Map - separate</td> <td><input type="checkbox"/> _____</td> </tr> <tr> <td><input checked="" type="checkbox"/> Communications Plan - ICS 205</td> <td><input type="checkbox"/> Traffic Plan</td> <td><input type="checkbox"/> _____</td> </tr> </table>				<input checked="" type="checkbox"/> Organization List - ICS 203	<input checked="" type="checkbox"/> Medical Plan - ICS 206	<input checked="" type="checkbox"/> Tailgate Briefing Form (safety, weather, fire behavior)	<input checked="" type="checkbox"/> Division Assignment Lists - ICS 204	<input checked="" type="checkbox"/> Incident Map - separate	<input type="checkbox"/> _____	<input checked="" type="checkbox"/> Communications Plan - ICS 205	<input type="checkbox"/> Traffic Plan	<input type="checkbox"/> _____
<input checked="" type="checkbox"/> Organization List - ICS 203	<input checked="" type="checkbox"/> Medical Plan - ICS 206	<input checked="" type="checkbox"/> Tailgate Briefing Form (safety, weather, fire behavior)										
<input checked="" type="checkbox"/> Division Assignment Lists - ICS 204	<input checked="" type="checkbox"/> Incident Map - separate	<input type="checkbox"/> _____										
<input checked="" type="checkbox"/> Communications Plan - ICS 205	<input type="checkbox"/> Traffic Plan	<input type="checkbox"/> _____										
9. Prepared By (Planning Section Chief) /S/ Les Rogers	10. Approved By (Incident Commander) /S/ Paul Hannemann											

ORGANIZATION ASSIGNMENT LIST		9.	Operations Section	
1. Incident Name		Chief	Rich Gray / Bill Woodyard	
Georgia Bay Complex		Planning Ops	David Abernathy	
2. Date	3. Time	a.	Branch 1	
May 19, 2007	2000	Branch Director		
4. Operational Period		Division/ICT3	A,B,C,D	D. Lachapelle/A. Crouch (T)
May 20, 2007 0700-2000		Division/ICT3	H	Heath Morton
5. Incident Commander and Staff		Division/ICT3	I,J,K	Ron Swan
Incident Commander	Paul Hannemann	Group	ICP Group	Mike Appling
Liason	Shane Crimm	Group	Manor	Jay Collett
Safety Officer	Brian Beisel	Group	Day Shift/Stctr	Nate Leising / J. Harvey
Information Officer	Bielenberg/ Amen/ Pinea/Stone/ Polant/ Weston	Group	Swing Shift/Stctr	Pete Villa
		Group	LE/Arson	Mike Heath
6. Agency Representatives		Group	Prevention	John Warner
Agency	Name	Division	WA	Lucus Santio
GFC District 8	Frank Sorrells	Division	WB-WE	Richard Gonzalas
GFC District 10	Willard Fell	Division	WF-WG	Unstaffed
GFC Protection Dept.	Alan Dozier	Division	WH-WJ	Jim Davis
Charlton Co. Liason	Billy Lietch	Division	WK-WM	F. Pingiczer / J. Smith
GEMA	Allen Robinson	b.	Branch 1	
7. Planning Section		Branch Director	Buck Kline	
Chief	Les Rogers	Group	Fargo Night Shift	Doug Mattox
Deputy	Shane Brown	Group		
Resources Unit	Dennis Register / Karen Brent (T)	Group		
Situation Unit	D. Ochocki R. Lykins(T) B. Pope(T)	Group		
Documentation Unit				
Demobilization Unit	Carl Lundgren			
Computer Tech	Rusty Brown / Trey Spivey	c.	Branch 2	
Fire Behavior Analyst	John Robertson	Branch Director	Kneeknocer/Roundabout	S. Miller
Incident Meteorologist	John Quagliariello	Group	Kneekknocker	S. Abbott
Status/Check In	J. Keiningham(T) / S. Whitley(T) / R. Dottellis(T)	Division	Roundabout Div. A & D	B. McCarty
Field Observer	Williams / White	Division	Roundabout Div. B & C	J. Jones
GIS	J. Pugh / A. Gareau / B. Robinson	Division		
Infrared Interperter	L. Barnum / D. Hicks			
Training Specialist	Lewis Kearney			
8. Logistics Section		d.	Air Operations Branch	
Chief	Susan Cornett	Air Operations Branch Director	P.J. Pearson	
Facilities Unit	Jimmy Caldwell	Helibase Manager	D. Langley / L. Patterson(T)	
Supply Unit	Larry Bennett	Air Support Supervisor		
Food Unit	Terry Seward	GFC Air Operations	Mike Leverette	
Base Camp Manager	Karraker/Garman/Pierce(T)	Air Tanker Coordinator		
Ground Support Unit	G. Gillespie / M. Summers	10.	Finance Section	
Ordering Manager	R. Siemens / K Rhoden	Chief	Jill Lipsey / V. Coleman (T)	
Security Manager	Roger Atkinson	Incident Business Advisor	Lila Johnson	
Medical Unit	R. Carswell (T)	Time Unit Leader	Stephanie Elledge	
Communications Unit	Carl Bridges	Buying Team	Barbara Hatch	
Initial Attack Dispatcher	Susie Burford	Personnel Time Recorder	Karen Stripling/Eunice Vankuren	
Hotel Manager	John Wall	Equipment Time Recorder	Bob Drown / Amy Treadwell (T)	
Equipment Manager	M. Sanchez	Procurement	Penny Brown	
Mechanic	English/Skinner/Crane/McNeal	Cost Unit	Carolyn Riggs	
Technical Specialist	Bobby Weaver / John Rush	Comp/Claims	Miguel Martinez	
Receiving & Distribution Manager	Daniel Wilson	Prepared by (Resource Unit Leader) Dennis Register / Karen Brent (T)		
Camp Crew	TN JC #3/Barber			

DIVISION ASSIGNMENT LIST				1. Branch Sweat Farm Fire		2. Division/Group A-B-C-D	
3. Incident Name Georgia Bay Complex				4. Operational Period Date: 5-20-07 Time: 0700 - 2000			
5. Operations Personnel							
Operations Chief		David Abernathy O-738 5-23 Rich Gray O-77 5-23 Bill Woodyard O-136 5-23		Division/ICT3		David Lachapelle O-226 6/3 Alan Crouch (T) O-239 6/3	
Branch Director				Safety Officer		Phil Spor O-59 5/20	
6. Resources Assigned this Period							
Strike Team/Task Force/ Resource Designator		Leader / Name		Last Shift Date	Number Persons	Trans. Needed	Pick Up PT./Time
ST#1 TNS ST Eng T6 O-1026		Scott Smith		5/31	9	N	0700 2000
TN Eng 2733 E-1359		Long/Cantrell		5/31			0700 2000
TN Eng 2731 E-1372		Harmond/Steele		5/31			0700 2000
TN Eng 2730 E-1360		Wooden/Brown		5/31			0700 2000
TN Eng 2732 E-232		Hobbs/Kirby		5/31			0700 2000
Columbia Martinez WT E-1227		Thomas/Hutcherson		5/31	2	N	0700 2000
ST#2 GFC ST Tractor Plow T3 E-2602.1		Randy Mosley		5/24	4	N	0700 2000
GFC JD 650 E-2603		Taylor		5/24			0700 2000
GFC JD 650 E-2604		Harden		5/24			0700 2000
GFC JD 650 E-2605		Calhoun		5/24			0700 2000
TFS TRPL T2		Stettlocker					
TFS TRPL T5		Russell					
TFS TRPL T5							
7. Control Operations Patrol, mop up and mitigate as well respond to any threats posed by the fire.							
8. Special Instructions Watch out for Snags Remain in communications. Be alert for traffic on Highways Stay Hydrated. Ensure all personnel wear PPE. Take spot WX forecasts hourly. Keep tractors loaded and ready to move if not being used on the line Have constant communication with logging operation in fire area: Buck Rodenberry: 912-2764990 Linc 18*5865 LCES implemented by 1000 and notify OPS when completed.							
9. Division/Group Communication Summary							
Function	Frequency	System	Channel	Function	Frequency	System	Channel
Command		King NIFC		Logistics		King NIFC	
Tactical Div/Group	DIV A,B,C,D	King NIFC	Talk Group 1 Ch. 11	Air to Ground	Talk Group 1	King NIFC	Ch. 13
Prepared by (Resource Unit Leader) Dennis Register / Karen Brent (T)		Approved by (Planning Section Chief) <i>/s/Les Rogers</i>			Date May 19, 2007		Time 1900

DIVISION ASSIGNMENT LIST				1. Branch Sweat Farm Fire		2. Division/Group H		
3. Incident Name Georgia Bay Complex				4. Operational Period Date: 5-20-07 Time: 0700 - 2000				
5. Operations Personnel								
Operations Chief		David Abernathy O-738 5-23 Rich Gray O-77 5-23 Bill Woodyard O-136 5-23		Division/ICT3		Heath Morton O-941 5/23		
Branch Director				Safety Officer		Steve Snider O-186 5/26		
6. Resources Assigned this Period								
Strike Team/Task Force/ Resource Designator		Leader / Name		Last Shift Date	Number Persons	Trans. Needed	Drop Off PT./Time	Pick Up PT./Time
ST# 3GFC ST Engines T6+PU E-2659		Mike Purcell		5/26	9	N	0700	2000
Pickens 86 E-1117		Davis/Keene		5/26		N	0700	2000
Paulding 86 E-1098		Cornett/Henderson		5/26		N	0700	2000
Heard 86 E-1015		Price/Singleton		5/26		N	0700	2000
Upson 86 E-1132		Sanders/Shifflett		5/26		N	0700	2000
Murray 86 E-1022		Jones / Burnett		5/20	2	N	0700	2000
WAT2 N.Jenkins E-2858		Lane/Bragg		6/3	2	N	0700	2000
TF# 1 SC TF w/ T6 ENG O-1049		Bruce Ballentine		5/31	7	N	0700	2000
JD 700 SB E-2738		Boyce/Porter		5/31		N	0700	2000
SCS ENG T6 E-2737		Connally/Heitcamp		5/31		N	0700	2000
SCS ENG T6 E-9007		Craig/ Folk		5/31		N	0700	2000
ST# 4 GFC ST Tractor Plow T3 O-855		George Glenn		5/22	4	N	0700	2000
GAS Jefferson 73 T3 E-1000		Mercier		5/22		N	0700	2000
GAS Burke 70 T4 E-1001		Pearson		5/22		N	0700	2000
GFC Burke 72 T4 E-1002		Cheely		5/22		N	0700	2000
7. Control Operations Patrol, mop up and mitigate as well as respond to any threats posed by the fire.								
8. Special Instructions Remain in communications. Be alert for traffic on Highways Stay Hydrated. Ensure all personnel wear PPE. Take spot RX forecasts every hour. LCES implemented by 1000 and notify OPS when completed.								
9. Division/Group Communication Summary								
Function		System	Channel	Function	Frequency	System	Channel	
Command		King NIFC		Logistics		King NIFC		
Tactical Div/Group	DIV - H	King NIFC	Talk Group 1 Ch.9	Air to Ground	Talk Group 1	King NIFC	Ch. 13	
Prepared by (Resource Unit Leader) Dennis Register / Karen Brent (T)		Approved by (Planning Sect. Ch.) /s/Les Rogers			Date May 19, 2007		Time 1900	

DIVISION ASSIGNMENT LIST				1. Branch Sweat Farm Fire		2. Division/Group I-J-K		
3. Incident Name Georgia Bay Complex				4. Operational Period Date: 5-20-07 Time: 0700 - 2000				
5. Operations Personnel								
Operations Chief		David Abernathy O-738 5-23 Rich Gray O-77 5-23 Bill Woodyard O-136 5-23		Division/ICT3		Ron Swan O-264 6/3		
Branch Director				Safety Officer		Rodney Bell O-935 5/28		
6. Resources Assigned this Period								
Strike Team/Task Force/ Resource Designator		Leader / Name		Last Shift Date	Number Persons	Trans. Needed	Drop Off PT./Time	Pick Up PT./Time
ST# 7 LAS ST Engines T6 O-1092		Henry Childress		6/4	8	N	0700	2000
LAS Engine E-1070		Mango/Hilton		6/4		N	0700	2000
LAS Engine E-1071		Wager/Holmes		6/4		N	0700	2000
LAS Engine E-1072		West/Tichy		6/4		N	0700	2000
ST# 8 LAS ST Engines T6 O-1093		Jay Meadows		6/4	9	N	0700	2000
LAS Engine E-1075		Wright/Bolyer		6/4		N	0700	2000
LAS Engine E-1074		Moseley/Carter		6/4		N	0700	2000
LAS Engine E-1073		Duckett/Martin		6/4		N	0700	2000
LAS Engine E-1076		Polk/Hughes		6/4		N	0700	2000
Laurens Co. WT E-1228		Underwood/Edwards		6/4	2	N	0700	2000
ST# 18 ALS STPL O-1069		Jason Berry		6/2	4	N	0700	2000
ALS T/P T3 E-1398		Berry/Bartlett		6/2		N	0700	2000
ALS T/P T3 E-1399		Williams/Barker		6/2		N	0700	2000
OK T/P T2 E-1468		Akard/Jacobs		6/1		N	0700	2000
OK T/P T2 E-1469		Wayman/Tunnell		6/1		N	0700	2000
7. Control Operations Patrol, mop up and mitigate as well as respond to any threats posed by the fire.								
8. Special Instructions Contact for I/A dispatches is County Ranger Billy Leitch 912-218-9325 Linc 18*12022 Drive defensively- watch for city traffic. Be alert for traffic on Highways. Ensure all personnel wear PPE. Stay Hydrated. Take spot WX forecasts every hour. Remain in communications with resources and contractor. Contractor's link #: 18*14052 LCES implemented by 1000 and notify OPS when completed								
9. Division/Group Communication Summary								
Function	Frequency	System	Channel	Function	Frequency	System	Channel	
Command		King NIFC		Logistics		King NIFC		
Tactical Div/Group	DIV I, J, K	King NIFC	Talk Group 1 Ch. 10	Air to Ground	Talk Group 1	King NIFC	13	
Prepared by (Resource Unit Leader) Dennis Register / Karen Brent (T)		Approved by (Planning Section Chief) /s/Les Rogers			Date 5/19/07		Time 1900	

DIVISION ASSIGNMENT LIST		1. Branch Sweat Farm Fire		2. Division/Group ICP GROUP				
3. Incident Name Georgia Bay Complex		4. Operational Period Date: 5-20-07 Time: 0700 - 2000						
5. Operations Personnel								
Operations Chief		David Abernathy O-738 5-23		Division/ICT3		Mike Appling O-223 5/31		
		Rich Gray O-77 5-23						
		Bill Woodyard O-136 5-23						
Branch Director				Safety Officer				
6. Resources Assigned this Period								
Strike Team/Task Force/ Resource Designator		Leader / Name		Last Shift Date	Number Persons	Trans. Needed	Drop Off PT./Time	Pick Up PT./Time
ST# 15 GFC ST Tractor Plow T3		Lonnie Calloway		5/27	4	N	Swamp Church 0700	Manor 2000
Evans 70 E-1199		Sykes		5/27		N	Swamp Church 0700	Manor 2000
Jenkins 70 E-1198		Lane		5/27		N	Swamp Church 0700	Manor 2000
Bulloch 70 E-1200		Wells		5/27		N	Swamp Church 0700	Manor 2000
7. Control Operations Position Equipment to Manage and Mitigate any Threats Posed by Uncontrolled Fires.								
8. Special Instructions Contact for I/A dispatches is County Ranger Billy Leitch 912-276-4001 Linc 18*12022 Drive defensively- watch for city traffic Be alert for traffic on Highways Ensure all personnel wear PPE. Stay Hydrated. Take spot WX forecasts every hour. Remain in communications with resources and contractor. Contractor's link #: 18*14052 LCES implemented by 1000 and notify OPS when completed.								
9. Division/Group Communication Summary								
Function	Frequency	System	Channel	Function	Frequency	System	Channel	
Command		King NIFC		Logistics		King NIFC		
Tactical Div/Group	ICP Group	King NIFC	Talk Group 1 Ch. 11	Air to Ground	Talk Group 1	King NIFC	Ch. 13	
Prepared by (Resource Unit Leader) Dennis Register / Karen Brent (T)		Approved by (Planning Section Chief) /s/Les Rogers			Date 5/19/07		Time 1900	

DIVISION ASSIGNMENT LIST				1. Branch Sweat Farm Fire		2. Division/Group MANOR GROUP		
3. Incident Name Georgia Bay Complex				4. Operational Period Date: 5-20-07 Time: 0700 - 2000				
5. Operations Personnel								
Operations Chief		David Abernathy O-738 5-23 Rich Gray O-77 5-23 Bill Woodyard O-136 5-23		Division/ICT3		Jay Collett O-250 5/21		
Branch Director				Safety Officer		Larry Miller O-38 5/28		
6. Resources Assigned this Period								
Strike Team/Task Force/ Resource Designator		Leader / Name		Last Shift Date	Number Persons	Trans. Needed	Drop Off PT./Time	Pick Up PT./Time
TFLD O-155		Loren Suazo		5/24	1	N	Swamp Church 0700	Manor 2000
ST# 17 STEN (T) O-183		Reggie Day		5/26	5	N	Swamp Church 0700	Manor 2000
VAF Engine T6 E-57		Collett		5/21	2	N	Swamp Church 0700	Manor 2000
NMF Engine T6 E-56		Trujillo		5/25	3	N	Swamp Church 0700	Manor 2000
NMF Eng #236 T6 E-60		Alirez		5/22	3	N	Swamp Church 0700	Manor 2000
ST#19 NC ST TractorPlow T2 E-2660		Dean Lucas		5/27	1	N	Swamp Church 0700	Manor 2000
NC Mechanic E-2661		David Corey		5/27	1	N	Swamp Church 0700	Manor 2000
NC TPL T2 E-2662		Shepherd / Bell		5/27	2	N	Swamp Church 0700	Manor 2000
NC TPL T2 E-2663		Endicott / Dunn		5/27	2	N	Swamp Church 0700	Manor 2000
NC TPL T2 E-2664		Sidbury / Huttlinger		5/27	2	N	Swamp Church 0700	Manor 2000
7. Control Operations Position Equipment to Manage and Mitigate any Threats Posed by Uncontrolled Fires.								
8. Special Instructions Drive defensively- watch for city traffic. Remain in communications with resources and contractor. Contractor's link #: 18*14052 Be alert for traffic on Highways. Stay Hydrated. Ensure all personnel wear PPE. Take spot WX forecasts every hour. LCES implemented by 1000 and notify OPS when completed.								
9. Division/Group Communication Summary								
Function	Frequency	System	Channel	Function	Frequency	System	Channel	
Command		King NIFC		Logistics		King NIFC		
Tactical Div/Group	Manor Group	King NIFC	Talk Group 1 Ch. 11	Air to Ground	Talk Group 1	King NIFC	Ch. 13	
Prepared by (Resource Unit Leader) Dennis Register / Karen Brent (T)			Approved by (Planning Section Chief) <i>/s/Les Rogers</i>			Date May 19, 2007	Time 1900	

DIVISION ASSIGNMENT LIST			1. Branch Sweat Farm Fire		2. Division/Group Day Shift/Structure Protection		
3. Incident Name Georgia Bay Complex			4. Operational Period Date: 5-20-07 Time: 0700 - 2000				
5. Operations Personnel							
Operations Chief		David Abernathy O-738 5-23 Rich Gray O-77 5-23 Bill Woodyard O-136 5-23		Division/ICT3		Nate Leising O-97 5/20 Jerome Harvey O-889 5/24-6/1	
Branch Director				Safety Officer			
6. Resources Assigned this Period							
Strike Team/Task Force/ Resource Designator		Leader / Name		Last Shift Date	Number Persons	Trans. Needed	Pick Up PT./Time
GA DOC TF		Rick Huggins 11*3204 cell 770-330-7246			1	N	Diversion Center
		Don Shugart 54*240			1	N	Diversion Center1000
		Larry Brown 11*32063			1	N	Diversion Center2000
GDC Autry	T1	Delk		5/21	5	N	Diversion Center1000
GDC Wilcox	T1	Culpepper		5/21	5	N	Diversion Center1000
GDC Telfair	T3	Thomas		5/21	6	N	Diversion Center1000
GDC Montgomery	Rescue	Helms/Sharp		5/21	6	N	Diversion Center1000
GDC Macon	T6	Price		5/21	8	N	Diversion Center1000
GDC Dooly	T6	Hudson		5/21	3	N	Diversion Center1000
GDC Dooly	WT			5/21	2	N	Diversion Center1000
GDC Wayne	T3	Horton		5/21	2	N	Diversion Center1000
GDC Wayne	T6			5/21	2	N	Diversion Center1000
GDC Wayne	WT			5/21	2	N	Diversion Center1000
GSP	T3	Rogers		5/21	3	N	Diversion Center1000
GSP	Rescue			5/21	3		Diversion Center1000
GDC West GA.	H/C	Roberts		5/21	8	N	Diversion Center1000
GDC Lee Arendale	H/C	Maher		5/21	10	N	Diversion Center1000
GDC Paulding	H/C	Cox/Foley		5/21	8	N	Diversion Center1000
7. Control Operations Provide population/structure/infrastructure protection and preparation where needed. Continue to Gather GIS Data. Provide Mop Up around structures and support Division Mop Up. Coordinate with Red Team where applicable. Provide Firewise and Fire Prevention information to the public. Coordinate with DIVS.							
8. Special Instructions Remain in communications. Stay Hydrated. Be alert for traffic on Highways Ensure all personnel wear PPE. Way Cross Structures GEMA 40 Southern Linc 18*11049 Red Team Structures Contact Info. Bill Bell 18*12537 Dennis Hackett 404-354-4415 or 352-279-6977 5/16 Jessie Jordan Ware Co. FD 44*4042 912-281-6541 Ware County Fuel Tender -- Tony Leverett 912-288-3295 Clinch County Fire/EMA - Jesse Booth 25*255 919-482-3700 LCES implemented by 1000 and notify OPS when completed.							
9. Division/Group Communication Summary							
Function	Frequency	System	Channel	Function	Frequency	System	Channel
Command		King NIFC		Logistics		King NIFC	
Tactical Div/Group	DIV - Day Structure	King NIFC	Talk Group1 Ch. 3	Air to Ground	Talk Group 1	King NIFC	Ch. 13
Prepared by (Resource Unit Leader) Dennis Register / Karen Brent (T)		Approved by (Planning Section Chief) /s/Les Rogers			Date 5/19/07		Time 1900

DIVISION ASSIGNMENT LIST				1. Branch Bugaboo Scrub II		2. Division/Group Fargo Night Shift	
3. Incident Name Georgia Bay Complex				4. Operational Period Date: 5-20-07 Time: 1800 - 0600			
5. Operations Personnel							
Operations Chief		David Abernathy O-738 5-23 Rich Gray O-77 5-23		Division		Doug Mattox O-221 6/4	
Branch Director		Buck Kline		Safety Officer		Pete Stewart 6/4	
6. Resources Assigned this Period							
Strike Team/Task Force/ Resource Designator		Leader / Name		Last Shift Date	Number Persons	Trans. Needed	Pick Up PT./Time
ST# 21 GFC ST Tractor Plow T3 E-2714		Alfred Lucas O-1005		5/28	4	N	Fargo 0600
GFC TPL E-2694 O-1006		A. Smith		5/28		N	Fargo 0600
GFC TPL E-2696 O-1008		C. Thomas		5/28		N	Fargo 0600
GFC TPL E-2695 O-1007		D. Veal		5/28		N	Fargo 0600
GEMA Grady WT E-2601		Micah Freeman		5/22	1	N	Fargo 0600
ST# 20 STEN T6 O-153		Dave Larsen		5/24	7	N	Fargo 0600
TX PVT Engine E-44		Sims/Judd		5/20		N	Fargo 0600
TX PVT #701 Engine E-45		McInis / McInis		5/20		N	Fargo 0600
TXF #31 Engine E-46		Beakley/Salcido Calahan		5/20		N	Fargo 0600
TX PVT Engine T6 E-47		Woodward/Pannell		5/22	2	N	Fargo 0600
S/T 28 STEN O-179		Craig Gilbert		5/25	1	N	Fargo 0600
LA ENG T6 E-2841		Hall/Dunn		5/31	2	N	Fargo 0600
VA-VAF ENG T6 E-4		Ramey/Lament/Proctor		5/26	3	N	Fargo 0600
AZ-COF ENG T6 E-2		Rokosh/Grondin Moe/Hart		5/26	4	N	Fargo 0600
AZ SFD ENG T6 E-1		Ingrao/Kreun/Wells		5/26	3	N	Fargo 0600
CO-PSF ENG T6 E-3		Muir / Zanotto/ Rigaud		5/26	3	N	Fargo 0600
7. Control Operations Patrol and Mop Up West of Swamp Rd. Provide Structure Protection as needed. Coordinate with DIVS							
8. Special Instructions Remain in communications. Be alert for traffic on Highways. Stay Hydrated. Ensure all personnel wear PPE. Take spot forecasts every hour. Stinson strike team will patrol and mop up west of Swamp Rd. Remainder of resources assigned to Fargo will assist with structure protection and related activities Clinch County Fire/EMA – Jesse Booth 25*255 919-482-3700 LCES implemented by 1000 and notify OPS when completed.							
9. Division/Group Communication Summary							
Function	Frequency	System	Channel	Function	Frequency	System	Channel
Command		King NIFC		Logistics		King NIFC	
Tactical Div/Group	DIV - Swing Shift	King NIFC	Talk Group 2 Ch. 7	Air to Ground	Talk Group 1	King NIFC	
Prepared by (Resource Unit Leader) Dennis Register / Karen Brent (T)		Approved by (Planning Section Chief) /s/Les Rogers			Date May 19, 2007		Time 1900

DIVISION ASSIGNMENT LIST				1. Branch Sweat Farm Fire		2. Division/Group Swing Shift / Structures Group			
3. Incident Name Georgia Bay Complex				4. Operational Period Date: 5-20-07		Time: 1500 - 0300			
5. Operations Personnel									
Operations Chief		David Abernathy O-738 5-23 Rich Gray O-77 5-15			Division/ICT3		Pete Villa O-387 6/4		
Branch Director					Safety Officer				
6. Resources Assigned this Period									
Strike Team/Task Force/ Resource Designator		Leader / Name		Last Shift Date	Number Persons	Trans. Needed	Drop Off PT./Time		Pick Up PT./Time
TF2 STEN T6 Engine O-682		Mark Stinson		5/21	1	N	Swamp Rd 1500		Swamp Rd 0300
TX Eng 4460 E-1181		Sinderud/ Kelley		5/21	1	N	Swamp Rd 1500		Swamp Rd 0300
GA-GAS ENG T6 E-2834		Ross/Carrol		5/23	2	N	Swamp Rd 1500		Swamp Rd 0300
GA-GAS ENG T6 E-2835		Joy/Berry		5/23	2	N	Swamp Rd 1500		Swamp Rd 0300
MN PVT #6 Engine E-26		G. Rock-C. Tucker		5/29	2	N	Swamp Rd 1500		Swamp Rd 0300
7. Control Operations									
Patrol and Mop Up West of Swamp Rd. Provide Structure Protection as needed. Coordinate with DIVS									
8. Special Instructions									
Remain in communications. Be alert for traffic on Highways. Stay Hydrated. Ensure all personnel wear PPE. Take spot forecasts every hour.									
Stinson strike team will patrol and mop up west of Swamp Rd.									
Remainder of resources assigned to Fargo will assist with structure protection and related activities									
Clinch County Fire/EMA - Jesse Booth 25*255 919-482-3700									
LCES implemented by 1000 and notify OPS when completed.									
9. Division/Group Communication Summary									
Function	Frequency	System	Channel	Function	Frequency	System	Channel		
Command		King NIFC		Logistics		King NIFC			
Tactical Div/Group	DIV - Swing Shift	King NIFC	Talk Group 2 Ch. 7	Air to Ground	Talk Group 1	King NIFC			
Prepared by (Resource Unit Leader) Dennis Register / Karen Brent (T)			Approved by (Planning Section Chief) <i>/s/Les Rogers</i>			Date May 19, 2007		Time 1900	

DIVISION ASSIGNMENT LIST				1. Branch		2. Division/Group WA		
3. Incident Name Georgia Bay Complex				4. Operational Period Date: 5/20/07		Time: 0700-2000		
5. Operations Personnel								
Operations Chief		David Abernathy O-738 5-23 Rich Gray O-77 5-23 Bill Woodyard O-136 5-23		Division/ICT3		Lucus Santio		
Branch Director				Safety Officer		Tim Sampson O-180 5/26		
6. Resources Assigned this Period								
Strike Team/Task Force/ Resource Designator		Leader / Name		Last Shift Date	Number Persons	Trans. Needed	Drop Off PT./Time	Pick Up PT./Time
TF #3 O-156		Matt Young		5/24	1	N	Swamp Rd 0800	Swamp Rd 2000
Timberline WAT1 #2		Goodman				N	Swamp Rd 0800	Swamp Rd 2000
Tender 5500 gal. WAT1						N	Swamp Rd 0800	Swamp Rd 2000
Smith #1 WAT2						N	Swamp Rd 0800	Swamp Rd 2000
Smith #2 WAT2						N	Swamp Rd 0800	Swamp Rd 2000
Pump		Douglas				N	Swamp Rd 0800	Swamp Rd 2000
7. Control Operations Patrol and monitor water levels in dip sites. Maintain pump operations.								
8. Special Instructions Use Okefenokee Refuge North Repeater for backup Command Communications through Big Turnaround Dispatch if necessary.								
9. Division/Group Communication Summary								
Function	Frequency	System	Channel	Function	Frequency	System	Channel	
Command		King NIFC		Logistics		King NIFC		
Tactical Div/Group	WA	King NIFC	Talk Group 1 Channel 8	Air to Ground		King NIFC		
Prepared by (Resource Unit Leader) Dennis Register / Karen Brent (T)		Approved by (Planning Section Chief) <i>/s/Les Rogers</i>			Date May 19, 2007		Time 1900	

DIVISION ASSIGNMENT LIST				1. Branch		2. Division/Group WB – WE Page 1 of 2	
3. Incident Name Georgia Bay Complex				4. Operational Period Date: 5/20/07		Time: 0700-2000	
5. Operations Personnel							
Operations Chief		David Abernathy O-738 5-23 Rich Gray O-77 5-23 Bill Woodyard O-136 5-23		Division/ICT3		Richard Gonzalas O-936 6/3	
Branch Director		Buck Kline		Safety Officer		Andy Meadows O-936 5/28	
6. Resources Assigned this Period							
Strike Team/Task Force/ Resource Designator	Leader / Name	Last Shift Date	Number Persons	Trans. Needed	Drop Off PT./Time	Pick Up PT./Time	
TF #4 TFLD O-152	David Hamilton	5/24	1	N	Fargo 0800	Fargo 2000	
AL TP T2 E-1110	Robinson / Taggart	5/31	2	N	Fargo 0800	Fargo 2000	
AL TP T2 E-1109	Chesser / Knighten	5/31	2	N	Fargo 0800	Fargo 2000	
Lee DOZ 1 (KG) E-1085	Harold		1	N	Fargo 0800	Fargo 2000	
Lee DOZ 1 (KG) E-1193	Sermans		1	N	Fargo 0800	Fargo 2000	
DOZB O-146	Patrick Seekins	5/22	1	N	Fargo 0800	Fargo 2000	
GFC ST #24 STPL T3 O-578	Randy Teal	6/4	1	N	Fargo 0800	Fargo 2000	
GFC TP T3 E-2048	Griglen	6/4	1	N	Fargo 0800	Fargo 2000	
GFC TP T3 E-2047	Stone	6/4	1	N	Fargo 0800	Fargo 2000	
GFC TP T3 E-1047	Christopher	6/4	1	N	Fargo 0800	Fargo 2000	
GFC ST # 10 TP T3 O-874	Donnie Brannon	5/23	1	N	Fargo 0800	Fargo 2000	
GFC TP T3 E-1216	Terrell	5/23	1	N	Fargo 0800	Fargo 2000	
GFC TP T3 E-1218	Gay	5/23	1	N	Fargo 0800	Fargo 2000	
GFC TP T3 E-2612	Claxton	5/23	1	N	Fargo 0800	Fargo 2000	
GFC ST #16 T2 E-1343	Ty Hayman	5/27	1	N	Fargo 0800	Fargo 2000	
GFC TP T2 E-1344	Campbell	5/27	1	N	Fargo 0800	Fargo 2000	
GFC TP T2 E-1345	Kitchens	5/27	1	N	Fargo 0800	Fargo 2000	
GFC TP T2 E-1346	Driggers	5/27	1	N	Fargo 0800	Fargo 2000	
7. Control Operations Prep swamp perimeter and interior pine plantations from WB to WE in preparations for burnout.							
8. Special Instructions Use Okefenokee Refuge North Repeater for backup Command Communications through Big Turnaround Dispatch if necessary.							
9. Division/Group Communication Summary							
Function	Frequency	System	Channel	Function	Frequency	System	Channel
Command		King NIFC		Logistics		King NIFC	
Tactical Div/Group	WB-WE	King NIFC	Talk Group 1 Channel 5	Air to Ground		King NIFC	
Prepared by (Resource Unit Leader) Dennis Register / Karen Brent (T)		Approved by (Planning Section Chief) <i>/s/Les Rogers</i>		Date May 19, 2007		Time 1900	

DIVISION ASSIGNMENT LIST				1. Branch		2. Division/Group WB - WE Page 2 of 2	
3. Incident Name Georgia Bay Complex				4. Operational Period Date: 5/20/07		Time: 0700-2000	
5. Operations Personnel							
Operations Chief		David Abernathy O-738 5-23		Division/ICT3		Richard Gonzalas O-936 6/3	
		Rich Gray O-77 5-23					
		Bill Woodyard O-136 5-23					
Branch Director		Buck Kline		Safety Officer		Andy Meadows O-936 5/28	
6. Resources Assigned this Period							
Strike Team/Task Force/ Resource Designator	Leader / Name	Last Shift Date	Number Persons	Trans. Needed	Drop Off PT./Time	Pick Up PT./Time	
TF #12 TFLD O-152	Tylan Martin		1	N	Fargo 0800	Fargo 2000	
DOZ1	Beillings		1	N	Fargo 0800	Fargo 2000	
DOZ1	Manning		1	N	Fargo 0800	Fargo 2000	
DOZ1	Arnold		1	N	Fargo 0800	Fargo 2000	
NPS Eng. 6	Scronca		2	N	Fargo 0800	Fargo 2000	
CHIP	Hodge		1	N	Fargo 0800	Fargo 2000	
CHIP	Bowzard		1	N	Fargo 0800	Fargo 2000	
CHIP			1	N	Fargo 0800	Fargo 2000	
7. Control Operations Prep swamp perimeter and interior pine plantations from WB to WE in preparations for burnout.							
8. Special Instructions Use Okefenokee Refuge North Repeater for backup Command Communications through Big Turnaround Dispatch if necessary.							
9. Division/Group Communication Summary							
Function	Frequency	System	Channel	Function	Frequency	System	Channel
Command		King NIFC		Logistics		King NIFC	
Tactical Div/Group	WB-WE	King NIFC	Talk Group 1 Channel 5	Air to Ground		King NIFC	
Prepared by (Resource Unit Leader) Dennis Register / Karen Brent (T)		Approved by (Planning Section Chief) <i>/s/Les Rogers</i>		Date May 19, 2007		Time 1900	

DIVISION ASSIGNMENT LIST				1. Branch		2. Division/Group WH – WJ Page 1 of 2	
3. Incident Name Georgia Bay Complex				4. Operational Period Date: 5/20/07		Time: 0700-2000	
5. Operations Personnel							
Operations Chief		David Abernathy O-738 5-23 Rich Gray O-77 5-23 Bill Woodyard O-136 5-23		Division/ICT3		Jim Davis O-604 5/23	
Branch Director		Buck Kline		Safety Officer		Harry Kepler O-66 5/29	
6. Resources Assigned this Period							
Strike Team/Task Force/ Resource Designator		Leader / Name		Last Shift Date	Number Persons	Trans. Needed	Pick Up PT./Time
TFLR O-154		Blain Tarbell		5/25	2	N	Fargo 0800
O-158		Waylon Pooweap (T)		5/25			Fargo 2000
ST# 14 GFC T3 ST TP O-1101		Levy Rentz		6/2	6	N	Fargo 0800
GFC Worth 71 E-1465.2		Barwick		6/2	1	N	Fargo 0800
NC DOZB E-1105		Strider		5/31	1	N	Fargo 0800
NC Dozer T3 E-1106		Cook		5/31	1	N	Fargo 0800
GFC Turner 70 E-2079		Jackson		6/2	1	N	Fargo 0800
GFC Grady 71 E-2080		Bulter		6/2	1	N	Fargo 0800
DOZB O-147		R. Briggs		5/24	1	N	Fargo 0800
PVT DOZ2 E-1084		Lashley			1	N	Fargo 0800
ST #22 STEN O-149		Mike Leach		5/24	1	N	Fargo 0800
AZ Eng.6 E-58		Walters/Reitz/Westerman		5/24	3	N	Fargo 0800
Rye Eng. 3 E-66		Thompson/Biggs/Bennett		5/24	3	N	Fargo 0800
CO USFS Eng.3 E-65		Brugett/Tighe/Popvich		5/24	3	N	Fargo 0800
CO COS Eng.6 E-67		Roetker/Lock/Groome		5/24	3	N	Fargo 0800
ST #9 STEN O-132		VanKomen		5/25	1	N	Fargo 0800
CA-INF Eng.3 E-75		Napoles		5/26	5	N	Fargo 0800
NM-LMF Eng.3 E-64		Reynolds		5/25	5	N	Fargo 0800
GFC Eng. 6 E-2656		Flood / Laughlin		5/27	2	N	Fargo 0800
GFC Eng.6 E-1017		Williams/Bellflower		6/3	2	N	Fargo 0800
7. Control Operations This includes Stephen Foster State Park. Assure hose line is in place and working. Assist with controlling fire as it progresses along the peninsula.							
8. Special Instructions See communications plan for closest Command Repeater to Division. Division and STPS keep Branch Director informed of status in progress.							
9. Division/Group Communication Summary							
Function	Frequency	System	Channel	Function	Frequency	System	Channel
Command		King NIFC		Logistics		King NIFC	
Tactical Div/Group	WH-WJ	King NIFC	Talk Group 1 Channel10	Air to Ground		King NIFC	
Prepared by (Resource Unit Leader) Dennis Register / Karen Brent (T)		Approved by (Planning Section Chief) /s/Les Rogers			Date May 19, 2007		Time 1900

DIVISION ASSIGNMENT LIST				1. Branch		2. Division/Group WH - WJ Page 2 of 2	
3. Incident Name Georgia Bay Complex				4. Operational Period Date: 5/20/07		Time: 0700-2000	
5. Operations Personnel							
Operations Chief		David Abernathy O-738 5-23		Division/ICT3		Jim Davis O-604 5/23	
		Rich Gray O-77 5-23				STPS Gary Waters	
		Bill Woodyard O-136 5-23					
Branch Director		Buck Kline		Safety Officer		Harry Kepler O-66 5/29	
6. Resources Assigned this Period							
Strike Team/Task Force/ Resource Designator		Leader / Name		Last Shift Date	Number Persons	Trans. Needed	Pick Up PT./Time
TF #6 O-150		Ron Barr		5/24	1	N	Fargo 2000
Support Fire Eng. 6 E-12		Zuehike		5/24	2	N	Fargo 2000
DNR Eng. 6 E-541		Camack/Castleberry		5/22	2	N	Fargo 2000
TXTNF Eng.5		Klawinsky			4	N	Fargo 2000
ST #23 TFLR O-618		Bryan Spillers		5/28	1	N	Fargo 2000
GFC Eng.6 E-1019		Sheffield/Redding		5/28	2	N	Fargo 2000
GFC Eng.6 E-1016		Robinson/Moore		5/28	2	N	Fargo 2000
GFC Eng.6 E-1021		Fowler/Garbutt		5/28	2	N	Fargo 2000
PVT Smokey Mtn. Eng6 E-42		Scroggs/Little		6/4	2	N	Fargo 2000
PVT Smokey Mtn. Eng6 E-43		Bartlett/Benton		6/4	2	N	Fargo 2000
GA DOT WT+1 Supervisor					2	N	Fargo 2000
GA DOT WT					1	N	Fargo 2000
GA DOT WT					1	N	Fargo 2000
7. Control Operations This includes Stephen Foster State Park. Assure hose line is in place and working. Assist with controlling fire as it progresses along the peninsula.							
8. Special Instructions See communications plan for closest Command Repeater to Division. Division and STPS keep Branch Director informed of status in progress.							
9. Division/Group Communication Summary							
Function	Frequency	System	Channel	Function	Frequency	System	Channel
Command		King NIFC		Logistics		King NIFC	
Tactical Div/Group	WH-WJ	King NIFC	Talk Group 1 Channel 10	Air to Ground		King NIFC	
Prepared by (Resource Unit Leader) Dennis Register / Karen Brent (T)			Approved by (Planning Section Chief) <i>/s/Les Rogers</i>		Date May 19, 2007		Time 1900

DIVISION ASSIGNMENT LIST				1. Branch		2. Division/Group WK - WM			
3. Incident Name Georgia Bay Complex				4. Operational Period Date: 5/20/07		Time: 0700-2000			
5. Operations Personnel									
Operations Chief		David Abernathy O-738 5-23 Rich Gray O-77 5-23 Bill Woodyard O-136 5-23		Division/ICT3		Frank Pingiczer Jaymes Smith			
Branch Director		Buck Kline		Safety Officer		John Orton O-68 6/3			
6. Resources Assigned this Period									
Strike Team/Task Force/ Resource Designator		Leader / Name		Last Shift Date	Number Persons	Trans. Needed	Drop Off PT./Time	Pick Up PT./Time	
ST #25 LA-LAS O-66		Mike Smith		R/R	5	N	Fargo / 0800	Fargo / 2000	
LA T/P T2 E-1102		Cornett / Weatherford		06/03		N	Fargo / 0800	Fargo / 2000	
LA T/P T2 E-1103		Marcantel / Bass		06/03		N	Fargo / 0800	Fargo / 2000	
ST #26 O-148		Andy Barnett		05/24	7	N	Fargo / 0800	Fargo / 2000	
TxTxs T/P T2 E-1452		Ramsey / Williams		05/22 5/30		N	Fargo / 0800	Fargo / 2000	
TxTxs T/P T2 E-1453		Mitchell / Bell		05/30		N	Fargo / 0800	Fargo / 2000	
TxTxs T/P T2 E-1376		Elrod / Wiley		05/25		N	Fargo / 0800	Fargo / 2000	
7. Control Operations Patrol and mop up along fire line.									
8. Special Instructions Keep Branch Director informed of status in progress.									
9. Division/Group Communication Summary									
Function		Frequency		System	Channel	Function	Frequency	System	Channel
Command				King NIFC		Logistics		King NIFC	
Tactical Div/Group		WK-WM		King NIFC	Talk Group 1 Channel 11	Air to Ground		King NIFC	
Prepared by (Resource Unit Leader) Dennis Register / Karen Brent (T)			Approved by (Planning Section Chief) <i>/s/Les Rogers</i>			Date May 19, 2007		Time 1900	

DIVISION ASSIGNMENT LIST			1. Branch Sweat Farm Fire		2. Division/Group Prevention Team Task Force		
3. Incident Name Georgia Bay Complex			4. Operational Period Date: 5-20-07 Time: 06:30 - 2200				
5. Operations Personnel							
Operations Chief		David Abernathy O-738 5-19 Rich Gray O-77 5-15		Division/ICT3			
Branch Director				Safety Officer			
6. Resources Assigned this Period							
Strike Team/Task Force/ Resource Designator	Leader / Name	Last Shift Date	Number Persons	Trans. Needed	Drop Off PT./Time	Pick Up PT./Time	
Team Leader	John R. Warner O-177	05/29					
Team Member	Sandra Taylor O-178	05/30					
Team Member/PIO	Donna Wilson O-30.2	05/25					
Team Liaison Officer GA	Roger Lane O-580	05/30					
7. Control Operations							
8. Special Instructions							
<ol style="list-style-type: none"> 1. Look into Georgia Times-Union paper for inserting Firewise "Living with Fire" (Wilson) 2. Finalize delivery of digital format of insert for Monday, May 21st – reaching 80,000 (Warner) 3. Complete contacting SE regional papers to insert Living with Fire inserts (Wilson/Taylor) 4. Develop a flyer and rack card to go out to Georgia State Parks and visitors for Memorial Day week (Taylor/Wilson/Warner) 5. Check with State Parks for information and rules/regs needed on flyers (Wilson) 6. Suggest to Sharon Dolliver that GFC use a clipping service to capture media on fires and related activities (Warner) 							
9. Division/Group Communication Summary							
Function	Frequency	System	Channel	Function	Frequency	System	Channel
Command		King NIFC		Logistics		King NIFC	
Tactical Div/Group		King NIFC		Air to Ground		King NIFC	
Prepared by (Resource Unit Leader) Dennis Register / Karen Brent (T)		Approved by (Planning Section Chief) /s/Les Rogers			Date 5/19/07		Time 1900

		1. Branch Sweat Farm Fire		2. Division/Group Law Enforcement / Arson Group			
3. Incident Name Georgia Bay Complex		4. Operational Period Date: 5-20-07 Time: 0700 - 2000					
5. Operations Personnel							
Operations Chief				Division/ICT3			
Branch Director				Safety Officer			
6. Resources Assigned this Period							
Strike Team/Task Force/ Resource Designator	Leader / Name	Last Shift Date	Number Persons	Trans. Needed	Drop Off PT./Time	Pick Up PT./Time	
V DOF	William Neff			N	0700	2000	
G.B.I	Tom Crawford			N	0700	2000	
GA. Fire Marshal	Brian Clavier			N	0700	2000	
V DOF	David Edwards			N	0700	2000	
V DOF	Ken Mohler			N	0700	2000	
V DOF	Cody Daniels			N	0700	2000	
LAS	Jim Baldwin			N	0700	2000	
LAS	Mark Singleton			N	0700	2000	
Wv DOF	Leo Lester			N	0700	2000	
WV DOF	Art Yagel			N	0700	2000	
TN DOF	Greg Whitehead			N	0700	2000	
TN DOF	Pete Merz			N	0700	2000	
MS DOF	Matt Steed			N	0700	2000	
PA DOF	Lee Jordan			N	0700	2000	
PA DOF	Robert McJillan			N	0700	2000	
7. Control Operations							
8. Special Instructions Remain in communications. Be alert for traffic on Highways Stay Hydrated. Notify Division of spot fires or reburns							
9. Division/Group Communication Summary							
Function	Frequency	System	Channel	Function	Frequency	System	Channel
Command		King NIFC		Logistics		King NIFC	
Tactical Div/Group		King NIFC		Air to Ground		King NIFC	
Prepared by (Resource Unit Leader) Dennis Register / Karen Brent (T)		Approved by (Planning Section Chief) <i>/s/Les Rogers</i>		Date May 19, 2007		Time 1900	

☐ WEATHER FORECAST

FORECAST NO: 31

NAME OF FIRE: Georgia Bay Complex

PREDICTION FOR: Day & Night Ops

UNIT: Georgia Forestry Commission

SHIFT DATE: Sat 05/20/07

SIGNED: John Quagliariello

TIME AND DATE 1800

Incident Meteorologist

FORECAST ISSUED: 05/19/07

WEATHER DISCUSSION: High pressure will continue to build over the complex into early next week, keeping very dry conditions in place.

The main concern is:

1. Red Flag Warning this afternoon due to critical relative humidity values.

WEATHER FORECAST DAY SHIFT SUNDAY: (See table for specific incident forecasts)

...RED FLAG WARNING THIS AFTERNOON FOR CRITICAL RELATIVE HUMIDITY VALUES...

WEATHER: Sunny and dry.

MAX TEMPERATURES: 84 to 88 (24 hour trend ~ 4 degrees higher)

MIN HUMIDITY: 20-24%, except 16 to 20% near fire perimeters (24 hour trend ~ 2 percent lower)

20 FT WINDS: Northeast 3 to 6 mph, becoming east 6 to 10 mph with gusts to 14 mph around midday, then shifting southeast late.

STABILITY/INVERSION: Inversion around 300 ft dissipating by 0900. Mixing heights around 7000 ft.

Dispersion index around 40. Haines Index 5.

	Sweat Farm Rd.	Bugaboo Scrub II	Roundabout	Knee-Knocker
Max Temperature:	85-87°	85-87°	86-88°	83-85°
Min Humidity:	20-24%	20-24%	18-22%	23-27%
Seabreeze Passage:	1800	1800	1900	1730

WEATHER FORECAST NIGHT SHIFT SUNDAY NIGHT:

WEATHER: Clear and cool.

MIN TEMPERATURES: 50 to 54.

MAX HUMIDITY: Recovery around 70 percent near the fire perimeter and around 90 percent elsewhere.

20 FT WINDS: Southeast 4 to 8 mph early in the evening, then becoming light and variable.

STABILITY/INVERSION: Inversion around 300 ft beginning to develop after 2100. Dispersion index around 4.

OUTLOOK FOR MONDAY:

Mostly Sunny and dry. High temperatures 85 to 89. Minimum RH values 22 to 26%. Light and variable winds, becoming east-southeast 4 to 8 mph around midday.

EXTENDED...TUESDAY THROUGH FRIDAY:

Tuesday: Partly cloudy. Lows in the upper 50s. Highs in the mid 80s. East winds around 10 mph.

Wednesday: Partly cloudy with isolated showers and thunderstorms. Lows in the lower 60s. Highs in the lower 80s. East winds 10 to 15 mph.

Thursday: Partly cloudy with isolated showers and thunderstorms. Lows in the lower 60s. Highs in the mid 80s. East winds 10 to 15 mph.

Friday: Partly cloudy. Lows in the lower 60s. Highs in the mid 80s. East winds around 10 mph.

SAFETY MESSAGE**Incident:**

Georgia Bay Complex

Date:

May 20, 2007

Time:

Day & Night Shift

Major Hazards and Risks:

- **Fire Behavior**
- **Snags**
- **Dehydration**
- **Fatigue**
- **“Critters”**
- **Driving/Travel**

NARRATIVE:

Be alert to an increase in fire behavior with the predicted weather. We are forecasted to experience lower humidity values which should result in more fire activity. The history of this incident demands that everyone be fully aware of the predicted fire behavior. Maintain LCES at all times!

Snags are also a main concern. Identify and remove, when possible, all hazard trees where fire personnel will be present. If we are unable to remove the hazard, flag the snag and keep personnel a safe distance away. Night operations should be done from control lines and scouted in daylight whenever possible. Do not go interior in snag areas with no or limited visibility!

Driving continues to be priority. The best solution to most driving hazards is to simply reduce our speed. Be alert to varied speed limits in and around town and ensure that all incident personnel are in compliance with all traffic laws!

The weather has cooled, but we need to continue to stress hydration. We haven't experienced any dehydration problems. Keep up the good work!

This incident is likely to continue for some time. We have worked some extended shifts and numerous personnel have extended their assignments. Fatigue is an enemy of all firefighters. Take advantage of our accommodations and get quality rest between shifts.

We have several furry and scaled “friends” sharing our work area. Be respectful of their territory and do not agitate the local wildlife. Do not feed the alligators for the same reason that we do not feed bears. Also be aware that the female alligators are extremely protective of their young at this time of the year. Maintain safe distances, they are extremely quick for short distances!

SAFETY OFFICERS: Brian Beisel, Ronnie Hamm, Harry Kepler, Steve Snider, Tim Sampson, John Orton, Andy Meadows, Larry Miler, Phil Spor, Pete Stewart, and Rodney Bell.

Fire Behavior Forecast

<u>Forecast No. 31</u>	<u>Prediction for Day Shift</u>
<u>Name of Fire: Georgia Bay Complex</u>	<u>Shift Date: May 20, 2007</u>
<u>Time and Date Forecast Issued</u> <u>1800 hrs 5/19/2007</u>	<u>Signed : John Robertson</u> <u>Fire Behavior Analyst</u>

Weather Summary (See Detailed Weather Forecast in the IAP):

A high pressure system with very dry air remains in place over the fires. Northeasterly winds to 6 mph in the morning then east at 10 mph after mid day with gusts to 14 mph. The sea breeze will move winds around to the southeast after about 1800. Max temperature near 88 degrees and RH as low as 16% near the fire and 20% elsewhere. Haines Index 5.

General Fire Behavior: Fine dead fuel will drop to 3 to 6% in the afternoon. Dry fine fuels in combination of low live fuel moisture content and winds to 14 mph will create the potential for extreme fire behavior in unburned fuels during the afternoon. Southern rough fuels could reach spread rates of 120 ch/hr with 20 foot flame lengths. Expect surface spread of 10 to 15 ch/hr with 3 to 4 foot flames in swamp shrub fuels and 40 ch/hr during crowning runs. Spotting up to ¼ mile is possible. Peak burning will occur around 1600 and continue until 1900. Spotting up to ¼ mile is possible. Spotting out to 100 yards is possible from shrub or tree torching in re-burns. The probability of ignition is 50% in the shade and near 100% in the sun. The potential for large fire growth is enhanced with the unstable atmosphere.

Specific Fire Behavior:

Sweat Farm Road: Re-burn remains the primary concern on this fire. Expect a surface fire in needles and leaves with 5 ch/hr spread and 3 ft flame length with torching in scorched shrubs and trees with associated spotting. A possibility for fire to spread or spot out of the swamp exists, particularly late in the day. If this occurs rapid spread down wind with torching and spotting in the southern rough and young pine plantations. Sea breeze to arrive about 1800.

Bugaboo Scrub: Spotting to the west from burn outs as they back to the east is still possible. Expect spread down wind with torching and spotting in the southern rough fuels and young pine plantations. Sea breeze effect after 1800 may increase chance of spotting.

Kneeknocker: Re-burn is possible from any hold over fire especially after 1400. Torching in the scorched shrub layer could move into the crowns causing spotting down wind. Wind shift from the east about 1730.

Roundabout: Burn out of organic soils will continue. By mid afternoon the potential exists for re-burn in needle cast and shrub fuels. Torching with spotting across lines is possible where flare-ups occur northeast or east of any fireline. East winds expected at 1900.

Initial Attack: Ignitions in unburned fuels will be fast to develop after a few hours of sun. Fire spread and spotting will be toward the southwest in the morning and westerly in the afternoon.

Air Operations: Inversions will persist until 0900. Smoke will continue to limit visibility.

Safety: Dry conditions equate to easier ignition and quicker acceleration of the fire. Pay particular attention wind direction and speed. Any torching will create spot fires down wind. Pay attention to fire in the swamp, post lookouts as needed.

INCIDENT ACTION PLAN SAFETY ANALYSIS										1. Incident Name Georgia Bay Complex		2. Date 5/20/2007		3. Time Day & Night Shift									
LCES* Analysis of Tactical Applications Lookouts Communications Escape routes Safety zones										Other Risk Analysis													
Branch	Indirect Fireline	Burn out Operations	Power lines	Night operations	Frontal Assault	Anchor Points	Extreme Conditions	Reburn Potential	Unburned Area	Insects, snakes	LCES Mitigations						Other Risk Mitigations						
Sweat Farm	1, 3, 4, 5, 7, 10	1, 3, 4, 5, 6, 10, 13	15, 16	1, 7, 11, 14, 19, 22, 34	1, 3, 4, 5, 7, 22, 29	7	1, 6, 7, 8, 10, 24	1, 3, 5, 7, 9, 16	1, 3, 5, 7, 9, 16	1, 3, 5, 7, 9, 16	2	1. Establish & maintain LCES. Report LCES checks twice daily to DIVS on line & staging.						18. Take plenty rest breaks and encourage to drink water NOW through briefings. 19. Watch out for complacency and fatigue. Utilize Fire Departments for structure protection. Tailgate briefings on WUI hazards. 20. Defensive driving will be addressed in all briefings. 21. All personnel must meet the 2:1 work/rest ratio. Line supervisors and Safety will monitor closely.					
											2. Look UP, DOWN and AROUND - Use protective spray with deet on skin (Not on Nomex), permethrin can be used on nomex clothing. Do Not try to catch or kill snakes!												
											3. Post experienced Lookouts. Make sure LCES is in place and make known.												
											4. Use Air Attack as Lookout.												
Div WA-WM/Fargo	1, 3, 4, 5, 7, 10	1, 3, 4, 5, 6, 7, 10, 13	15, 16	1, 7, 11, 14, 19, 22, 34	1, 3, 4, 5, 7, 22, 29	7	1, 6, 7, 8, 10, 24	1, 3, 5, 7, 9, 16	1, 3, 5, 7, 9, 16	1, 3, 5, 7, 9, 16	2	5. Flag escape routes on right side of escape route facing outward. Create new escape routes as you progress. Maintain LCES at all times.						22. Line Supervisors will provide clear, concise briefings. 23. Recognize, Communicate & Avoid Hazmat situations. 24. Refer to the Evacuation Plan for the ICP. 25. Review Wildland Urban "Watch Out" situations. Pg 11 IRPG					
											6. Post lookout for Snags, Runs, and Spot Fires.												
											7. Use secure anchor points that will not be compromised for observed fire behavior.												
											8. FBA/Meteorologist develop weather watch system.												
IA Groups(ICP, Manor, Swi	1, 3, 4, 5, 7, 10	1, 3, 4, 5, 6, 7, 10, 13	15, 16	1, 7, 11, 14, 19, 22, 34	1, 3, 4, 5, 7, 22, 29	7	1, 6, 7, 8, 10, 24	1, 3, 5, 7, 9, 16	1, 3, 5, 7, 9, 16	1, 3, 5, 7, 9, 16	2	9. All Firefighters must review current weather, predicted weather & fire behavior forecast.						26. Ensure Traffic Planning is safe and enforced. Heed Defensive Driving techniques noted in Safety Messages. 27. Avoid trash dumps in line construction & avoid smoke from dumps 28. Relocate staging area when driving conditions warrant. 29. Air Attack and/or lead plane will always be in the air to coordinate aircraft.					
											10. Keep Firefighters informed of any changes in predicted weather, consider at least a two day weather pattern when planning burnout operations.												
											11. Refer to IRPG, pg. 12 on Power Line Hazards.												
											12. Observe all traffic signals and speed limits.												
Knee Knecker/Roundabout	1, 3, 4, 5, 7, 10	1, 3, 4, 5, 6, 7, 10, 13	15, 16	1, 7, 11, 14, 19, 22, 34	1, 3, 4, 5, 7, 22, 29	7	1, 6, 7, 8, 10, 24	1, 3, 5, 7, 9, 16	1, 3, 5, 7, 9, 16	1, 3, 5, 7, 9, 16	2	13. Ensure any burnout operations have been clearly communicated to ALL, prior to burning.						30. Personnel on ground will stay out of drop zones. 31. Use spotter when backing vehicle(s). 32. Use bandanna to filter smoke in heavy smoke areas. 33. ALL vehicles and equipment must have lights on when running. Plastic colverts under some roads have burned and are collapsing under heavy loads, DIVS will coordinate which roads transport and tractors will use. GSP (912) 287-6500 : EMA (912) 287-4499. 34. Use blinking lights or glow sticks on back of helmet or backpack to be seen by equipment operators.					
											14. Night Dispatch will be assign for each night operational period.												
											15. Scout ahead of tractor operations to avoid making contact with power poles and guide wires when tying into roads. Power companies are working in some DIVS, avoid all down lines as they may become charged.												
											16. Review IRPG pg. 75 when thunderstorms are predicted or observed.												

Prepared by (Name and Position)

ICS 215A Brian Beisel SOF1 (T)

Georgia Bay Complex – Sweat Farm (Group 1)

INCIDENT RADIO COMMUNICATIONS PLAN		1. Incident Name Georgia Bay Complex		2. Date/Time Prepared 5- 19 -2007	3. Operational Period Date/Time 5- 20-2007
4. BASIC RADIO CHANNEL UTILIZATION					
Radio Type/Cache	Channel	Function	Frequency/Tone	Assignment	Remarks
King NIFC	1	Command Ware EMA Repeater	158.7825/162.2 153.7625/162.2 Narrow Band	Command Rpt	Sweat Farm
King NIFC	2	Okee North Repeater	164.575 /206.5 163.150 / 206.5 Narrow Band	Command Rpt	Big Turnaround ICP
King NIFC	3	GA Mutual Aid	154.280 154.280	Structural & Tactical	
King NIFC	4	911 & Structural Coordinator Rptr.	154.445/ 118.8 154.010/118.8	Emergency Traffic	This is a heavy traffic channel, use only for Emergency Traffic
King NIFC	5	Tactical	159.285 Rx & Tx	Fargo Group 2	Southern COMPACT
King NIFC	6	Tactical	168.050 Rx & Tx Narrow Band	Divs. E Divs. Y,Z,WB, WC	Fireline
King NIFC	7	Tactical	168.600 Rx & Tx Narrow Band	Divs. G Divs. Swing/IA	Fireline
King NIFC	8	Tactical	164.1375 Rx & Tx Narrow Band	Fargo Group 3 Divs. WA, EE,EF,EG,EH	Fireline
King NIFC	9	Tactical	168.775 Rx & Tx Narrow Band	Divs. H Divs. EA,EB,EC,ED	Fireline
King NIFC	10	Tactical	169.900 Rx & Tx Narrow Band	Divs. I, J, K Divs. E,AA,BB,CC,DD	Fireline
King NIFC	11	Tactical	168.200 Rx & Tx Narrow Band	Divs.A,B,C,D ICP Group, Fargo Group 1 DivWD,WE,WF,WG,WH	Fireline
King NIFC	12	Air to Ground	167.950 167.950/110.9 Narrow Band	Federal Air to Ground	
King NIFC	13	Air To Ground	159.390 Rx & Tx	Georgia Air to Ground	
King NIFC	14	Air Guard	168.625 168.625/110.9 Narrow Band	Air Emergency Only	Air Emergency Only
5. Prepared By (Communications Unit) Carl Bridges/ COML					

Georgia Bay Complex – Kneeknocker/Roundabout (Group 3)

INCIDENT RADIO COMMUNICATIONS PLAN		1. Incident Name Georgia Bay Complex		2. Date/Time Prepared 5- 19 -2007	3. Operational Period Date/Time 5- 20-2007
4. BASIC RADIO CHANNEL UTILIZATION					
Radio Type/Cache	Channel	Function	Frequency/Tone	Assignment	Remarks
King NIFC	1	Mobile to Mobile	159.390 RX & Tx	Breakout	Kneeknocker & Roundabout
King NIFC	2	Mobile to Base	159.390 Rx 159.225 Tx	Breakout	Kneeknocker & Roundabout
King NIFC	3	GA Mutual Aid	154.280 154.280	Race Track Fire	Structural & Tactical
King NIFC	4	Tactical	159.285 Rx & Tx	As needed	Southeastern Compact
King NIFC	5	Tactical	164.1375 Rx & Tx		
King NIFC	6	Tactical	168.775 Rx & Tx	Roundabout A & B	
King NIFC	7	Tactical	169.900 Rx & Tx	Roundabout C & D	
King NIFC	8	Tactical	168.200 Rx & Tx	Kneeknocker	
King NIFC	9	Tactical	159.270 Rx & Tx	Ft. Mudge Fire	Red Channel
King NIFC	10	Tactical	159.420 Rx & Tx	Forest Drive Fire	White Channel
King NIFC	11	Tactical	159.330 Rx & Tx		Blue Channel
King NIFC	12	Air to Ground	169.200 Rx & Tx	Kneeknocker	Air to Ground Dedicated to this complex
King NIFC	13	Air Guard	168.625 168.625/110.9 Narrow Band	Air Emergency Only	Air Emergency Only
King NIFC	14	Knee Repeater	159.465 Rx 151.145 Tx	Command Repeater	Kneeknocker only

5. Prepared By (Communications Unit)
Carl Bridges/ COML

Georgia Bay Complex - Bugaboo (Group 2)

INCIDENT RADIO COMMUNICATIONS PLAN		1. Incident Name Georgia Bay Complex		2. Date/Time Prepared 5- 19 -2007	3. Operational Period Date/Time 5- 20-2007
4. BASIC RADIO CHANNEL UTILIZATION					
Radio Type/Cache	Channel	Function	Frequency/Tone	Assignment	Remarks
King NIFC	1	GFC Fargo Repeater	159.120/107.2 151.370/123.0	Command Rpt	Bugaboo Brush
King NIFC	2	Okee North Repeater	164.575 /206.5 163.150 / 206.5 Narrow Band	Command Rpt	Big Turnaround ICP
King NIFC	3	GA Mutual Aid	154.280 154.280	Structural & Tactical	
King NIFC	4	911 & Structural Coordinator Rptr.	154.445/ 118.8 154.010/118.8	Emergency Traffic	This is a heavy traffic channel, use only for Emergency Traffic
King NIFC	5	Tactical	159.285 Rx & Tx	Fargo Group 2	Southern COMPACT
King NIFC	6	Tactical	168.050 Rx & Tx Narrow Band	Divs. E Divs. Y,Z,WB, WC	Fireline
King NIFC	7	Tactical	168.600 Rx & Tx Narrow Band	Divs. G Divs. Swing/IA	Fireline
King NIFC	8	Tactical	164.1375 Rx & Tx Narrow Band	Fargo Group 3 Divs. WA, EE,EF,EG,EH	Fireline
King NIFC	9	Tactical	168.775 Rx & Tx Narrow Band	Divs.H Divs. EA,EB,EC,ED	Fireline
King NIFC	10	Tactical	169.900 Rx & Tx Narrow Band	Divs. I, J, K Divs. E,AA,BB,CC,DD	Fireline
King NIFC	11	Tactical	168.200 Rx & Tx Narrow Band	Divs.A,B,C,D ICP Group, Fargo Group 1 DivWD,WE,WF,WG,WH	Fireline
King NIFC	12	Air to Ground	167.950 167.950/110.9 Narrow Band	Federal Air to Ground	
King NIFC	13	Air To Ground	159.390 Rx & Tx	Georgia Air to Ground	
King NIFC	14	Air Guard	168.625 168.625/110.9 Narrow Band	Air Emergency Only	Air Emergency Only
5. Prepared By (Communications Unit) Carl Bridges/ COML					

ICS-206 MEDICAL PLAN	1. Incident Name Georgia Bay Complex	2. Date Prepared 5/19/07	3. Time Prepared 18:00	4. Operational Period 5/20/07 DAY & NIGHT SHIFT							
5. Incident Medical Aid Station											
Medical Aid Stations		Location		Paramedics							
				Yes	No						
Medical Unit Big Turnaround	912-496-4359	100 yards west of ICP in the double wide trailer		X							
Medical Unit Georgia Bay	912-218-9101	Georgia Forestry Headquarters ICP		X							
John (Steve) Spangler 540-320-4838		Assigned By DIVS – Big Turnaround – East Divisions			EMT						
6. Transportation											
A. Ambulance Services											
Name		Address		Phone							
				Paramedics							
				Yes	No						
Ware County EMS		Waycross Georgia (911 to activate)		912-281-9467 Linc 1*96*116							
Charlton Memorial EMS		1203 N Third St Folkston Ga (911 to activate)		888-255-4961 Linc 1*25*3468							
Clinch County EMS		Fargo (911 to activate)									
Air Ambulance Service											
Trauma 1		Jacksonville, FL (26 min/air)		1-800-223-4878							
AirMed		Augusta, GA (2 hrs/air)		1-888-792-9245							
Lifeflight (155.340)		Jacksonville, FL (35 min/air)		1-877-870-7779							
B. Incident Ambulances											
Name		Location		Paramedics							
				Yes	No						
Ware County EMS		Fargo (Fargo Unit – 41 First Street – Fargo, GA 31631)		X							
Charlton EMS		Folkston		X							
7. Hospitals											
Name		Address		Travel Time		Phone		Helipad		Burn Center	
				Air	Grnd			Yes	No	Yes	No
Charlton Memorial		1203 N 3 rd St Folkston N 30°50.8 W 82°00.1		10 min	20 min.	912-496-2531		X			X
Satilla Regional		410 Darling Ave Waycross Ga N 31°13.56 W 82°21.058		15 min	30 min	912-283-3030		X			X
Shands Hospital (level I)		Jacksonville, FL N 30°20 97 W 82° 13 992		45 min	1.5 hrs	800-223-4878		X		X	
Memorial Hospital		Savannah, GA 4700 Waters 3200.7 8107.6		40 min		912-350-8999		X			X
Shands Burn Center		Gainesville, FL 38.33 N 082 20.73W		45 min		352-265-0300		X		X	
Doctor's Hospital Joseph Still Burn Center		August,GA (Chief Burn Ctr 3328.943 8205.422		90 min	3 ½ hrs	877-863-9595 706-863-9595		X		X	
8. Medical Emergency Procedures											
<p>Identify any EMT's and Paramedics in your crews. All medical emergencies will be reported to the Division Supervisor who will assume command.</p> <ol style="list-style-type: none"> 1) Provide medical care & stabilize patient. 2) Call 911 3) Notify Communications via radio or cell phone (936)545-6198. 4) Communications will clear radio traffic for medical emergency. 5) Notify Dispatch, provide ONE on site contact person, notify dispatch if that changes <ul style="list-style-type: none"> o Provide location (road intersection, GPS coordinates). o Number of patients o Type of injury or illness – Is it life threatening? Provide vital signs if available. o EMT's on scene and/or needed o Type of transportation needed 6) Com will notify ambulance and coordinate with IC, SOF, MEDL 						<p>*CREW EMT'S (ALL LEVELS) WILL FUNCTION AT THE BASIC LEVEL UNLESS SPECIFICALLY ASSIGNED TO THE INCIDENT AS AN EMT SINGLE RESOURCE.</p>					
<p>Helibase – ICP Waycross: 31 07.23 X 82 15.23 Helispots – Fargo Base Camp: 30 47 30.02 X 82 22 39.5 (4 mi mrker Hwy 177 – Stephen C. Foster St. Prk) H-114 and 30 41.739 X 82 33.961 (Hwy 441 - golf course) H-113</p>											
9. Prepared by (Medical Unit Leader) Robert Carswell (T) (912) 218-9101 Linc 1*18*7480						10. Reviewed by (Safety Officer) Brian Beisel SOF (912)218-7726 Linc 1*18*4223					

AIR OPERATIONS SUMMARY		PREPARED BY: P.J.Pearson			PREPARED DATE/TIME 5/19//07 1600			
1. INCIDENT NAME: Sweat Farm Road Fire		2. OPERATIONAL PERIOD: Day Shift 5/20//07		START TIME: 0700	END TIME: 2000	SUNRISE: 0634	SUNSET: 2018	
3. REMARKS (Safety Notes, Hazards, Air Operations Special Equipment, etc.): High Towers in Area Look Up, Look Down, Look Around Waycross Helibase—31 14.95 X 82 23.73 Pogo Helibase-30 18.25 X 82 07.69 ICP Helibase 31 07.23 X 82 15.23 All dispatches will come through the ICP in Waycross for state aviation resources LOOK UP, LOOK DOWN, LOOK ALL AROUND				4. MEDEVAC A/C: N17HX—Pogo Helibase		5. TFR: In Place Radius: Rectangle to 3000 MSL_ Altitude: _3000= MSL NW corner Lat 31 09 02 Long 82 32 04 SE corner Lat 30 53 17 Long 82 02 48:		
6. PERSONNEL		Phone	7. FREQUENCIES		AM	FM	8. FIXED-WING # Avail / Type/ Make-Model / FAA N# / Base(s)	
AOBD: Ted Stevens 912-218-9313 18*19887			AIR/AIR FW:		122.575 122.825 122.925	167.950	Airtankers 00-Type I 20-Type I 22-Type I 09-Type II 10-Type II	
AOBD: Ron Hollifield-Lake City			AIR/AIR RW:		122.575			
ATGS: L.Mars—Waycross O. Martin(T) Waycross J. Robinson--Waycross C.Cross-Lake City			AIR/AIR RW:		122.575			
State Aviation Lead Waycross Airport Mike Leverette			AIR/GROUND:		122.925	151.145	Leadplanes Lead B-2 ASM Lead 1-4	
ASGS: Jack Finley-Pogo Bob Yeager-Lake City			COMMAND:				Base FAX #:	
HEBM: Lon Patterson (T)-- Waycross		979-220- 0522	COMMAND RPT		Rx:	Tx:	ATGS Aircraft 90K—Beach Baron—L. Mars w/ O.Martin (T) 01Q—Cessna 401—K. Walsh 82-Z—King Air—C.Cross Lake City	
ATB MGR:			DECK FREQ:					
HEBM: Tom Kennedy (TK) 912- 496-4415			TOLC FREQ:				Other	
HEBM: Mike O'Leary (POGO) 239- 450-2481							Flight follow with Pogo Helibase or Waycross Helibase IA Air Attack for State--- Cessna 182's and CH-47 or UH 60's Bell 407-Chopper 7 IA for the Okefenokee is 38Y (Okee 6) Approved Helispots—Refer to Okefenokee NWR Despite Map	
HEBM: Dave Langley 505-240-3649							One GNG Helicopter will remain at Waycross Airport for IA at all times	
Pogo Helibase 912-496-4415 Waycross Dispatch 912-338-5982			FLIGHT FOLLOW			RX 164.625 TX 163.150 TONE 103.5		

Fargo Helibase—(GolfCourse) N 30 41 27.3 x W 82 34 02.0 Stephen Foster SP (Pocket) N30 47 32.2 x W82 22 39..6					ALL AIRCRAFT Call Air Attack when entering TFR--- Waycross Helibase will call Pogo as a back up!!! NOTE NEW HELIBASE LOCATIONS ALL FLIGHTS WILL BE CLEARED WITH AOB
--	--	--	--	--	--

9. HELICOPTERS (Use Additional Sheets As Necessary)

FAA N#	TY	MAKE/MODEL	BASE	AVAIL	START	REMARKS	FAA N#	TY	MAKE/MODEL	BASE	AVAIL	START	REMARKS
N5BH	I	Sikorsky S-70A-27	Pogo	0900	0930	Bucket Drops	N5738Y	III	Bell 206	Pogo	0900	0930	Recon/ Admin/ IA
N4503E	I	Sikorsky S-61N	Pogo	0900	0930	Bucket drops	N12HX	III	Bell 407	Pogo	0900	0930	Admin/ Recon
N15HX	II	Bell 205++	Pogo	0900	0930	Bucket drops	Chopper 7	III	Bell 407	Waycross	0900	0930	State IA-Bucket drops as needed
N17HX II	II	BELL 205++	Pogo	0900	0930	Bucket Drops	90K	I	Baron	Waycross	0900	0930	ATGS
	I	UH-60	Waycross	0900	0930	IA for State	62-Z	I	King Air	Lake City	0800	0930	ATGS
	I	UH-60	Waycross	0900	0930	IA for State							
	I	CH-47	Waycross	0900	0930	IA for State							
01Q	i	Cessna 401	Waycross	0900	0930	ATGS							
		Cessna 182	Waycross	0900	0930	Aerial Detection							

10. TASK/MISSION/ASSIGNMENT (Type/Function includes: Air Tactical, Retardant, Recon, Personnel Transport, Water Dropping, S&R, etc.)

TYPE/FUNCTION	NAME OF PERSONNEL OR CARGO (if applicable) OR INSTRUCTIONS FOR TACTICAL AIRCRAFT	MISSION START	FLY FROM	FLY TO
Type II Helicopter	Operation and Logistic Support	0930	Helibase	Fire and Return
Type III Helicopter	Operation and Logistic Support	0930	Helibase	Fire and Return
Type I Helicopter	Operation and Logistic Support	0930	Helibase	Fire and Return
ATGS Platforms	Aerial Supervision of all Aircraft over Incidents	0930	Waycross Airport & Lake City	Fire and Return
State Detection Fixed Wing	Aerial Detection and IA for New Fire Starts	0930	Waycross Airport	Fire and Return

Sweat Farm Road Phone Roster 5-19-07

NAME	POSITION	PHONE NUMBERS	LINC ID
COMMAND & GENERAL STAFF		912-285-6046	Fax 912-285-6014
Paul Hannemann	IC	912-218-5108	18*11878
Billy Leitch	LOFR	912-218-9325	18*12022
Shawn Alexander	LOFR	912-218-9232	18*7378
Skippy Reeves	LOFR	912-218-9359	18*12756
Warren Bielenberg	PIO	912-218-9319	18*11959
Bernie Pineda	PIO	478-550-2989	
Laura Polant	PIO	912-218-81-82	1*18*9688
Jan Amen	PIO	936-546-1004	
Michelle Weston	PIO	907-317-7247	
James Stone	PIO	912-218-8267	
John Warner	PRTL	936-546-3164	
Donna Wilson	PRTM	540-797-6241	
Sandra Taylor	PRTM	936-546-3554	
Brian Beisel	SOF	912-218-7726	18*4203
Rodney Bell	SOF	912-218-7132	18*11932
Anthony Meadows	SOF	252-229-0161	
Glenn Bailey	SOF	912-218-4786	18*4451
Harry Kepler	SOF	912-218-8325	18*7145
John Orton	SOF	912-218-4958	18*4899
Larry Miller	SOF	912-218-9355	18*12622
Phil Spor	SOF	912-218-9215	18*11832
Pete Stewart	SOF	912-218-8965	18*7610
Tim Sampson	SOF	912-218-9215	18*11832
Steve Snider	SOF	912-218-9308	18*10090
Ronnie Hamm	SOF 2	979-268-3782	
OPERATIONS		912-285-6039	
David Abernathy	OSC	912-218-5414	18*11904
Rich Gray	OSC	979-218-9909	18*11907
Bill Woodyard	OSC	912-218-9323	18*11981
Bill Bryant	OPBD	912-218-8343	18*4212
George Glenn	TFLD	706-551-2324	
Brendon McNeil	TFLD (t)	979-220-1406	
Bob Habeck	DIVS	912-218-9324	18*11985
Mike Appling	DIVS	912-218-9343	18*12314
Heath Morton	DIVS	912-218-7135	18*11946
Jay Collett	DIVS	912-218-9320	18*11960
Jeff Davis	DIVS	912-218-9320	18*11960
Jim Davis	DIVS	912-218-9307	18*10062
Mike Benefield	DIVS	912-218-8226	18*4523
Nate Leising	DIVS	912-218-9352	18*12520
William Johnson	DIVS	912-218-7132	18*11923
David Zeigler	DIVS (t)	936-546-3085	
Rusty Smith	DIVS (t)	936-546-3104	
Jerome Harvey	STPS		18*1608
Shane Crimm	STPS	912-218-9306	18*7065
William Neff	LE/Arson	912-287-4499	18*13485
Ron Baar	STEN		
Mark Stinson	STEN	512-940-7700	
Mike Purcell	STEN	706-237-0718	
BIG TURNAROUND OPS SEC		912-496-4173	
CSX RAIL ROAD OPERATIONS- Dixon		912-270-0699	
AIR OPERATIONS		912-285-6039	
P.J. Pearson	AOPD	979-220-1217	
Lon Patterson	HCMG	912-218-9313	18*19887
Don Mitchell	Air ASGS	912-218-9358	18*12670
TY Isbell	Air Ops	912-218-8937	18*6167
FINANCE		912-285-6038	
Jill Lipsey	FSC	979-218-3106 ©	
Verma Coleman	FSC (t)	912-285-6038	
Barbara Hatch	Buying Team	912-285-6112 Hard Line 505-660-0399 Cell	
Miguel Martinez	Comp/Claims	912-285-6038	
Carolyn Riggs	COST	912-285-6038	
Stephanie Elledge	TIME	912-285-6038	
Penny Brown	Procurement	912-285-6038	
Bob Drown	EQTR	912-285-6038	

Eunice Vankuren	PTRC	912-285-6038	
Karen Stripling	PTRC	912-285-6038	

Sweat Farm Road Phone Roster 5-19-07

NAME	POSITION	PHONE NUMBERS	LINC ID
PLANNING		912-285-6046	
Les Rogers	PSC	912-218-7586	18*6871
Chris Brenzel	SITL	760-822-2257	
Dan Ochocki	SITL	970-903-1957	
Brian Pope	SITL(t)	936-546-3164	
Russell Lykins	SITL(t)	936-546-1616	
Richard Gibbs	RESL	979-220-0577	
Wes Moorehead	RESL(t)	936-546-1642	
Rusty Brown	CTSP	479-973-6231 (P)	
Brad Smith	FBAN	979-220-1389	
Doug Williams	FOBS	912-218-9316	18*11828
Gary White	FOBS	912-218-9358	18*12670
Kevin Winter	GISS	912-285-6052	
Buster Robinson	GISS	936-546-8783	
John Quagliariello	IMET	912-218-9309	18*10247
Rich Dottellis	DOCL	936-546-3138	
Carl Lunggrin	DMOB	912-218-9361	18*12771
Scott Corley	SCKN		
Jason Keiningham	SCKN(t)	979-218-3108	
Shawn Whitley	SCKN(t)	936-545-7184	
David Hicks	IRIN	541-554-0143	
Dennis Evans	THSP	912-218-8325	18*7145
Lewis Kerney	TNSP	423-650-3006	
LOGISTICS		912-285-6091	Fax 912-285-6111
Susan Cornett	LSC	936-546-1952	
Ted Grisey	LSC @ FARGO	912-218-9356	
Carl Bridges	COML	936-545-6198	
Susan Long	MEDL	912-218-9101	18*7480
Robert Carswell	MEDL	912-218-9101	18*7480
Roger Atkinson	SECM	479-970-3038	
Tony Bolton	SECL	601-405-9027	
Wayne Garman (Camp for the Blind)	BCMG	478-550-3000	18*11862
Kevin Pierce	BCMG(t)	936-546-1523	
Stephen Kelley	BCMG (FARGO)	912-218-9360	18*12765
Chuck Barber	Camp Crew Manage	912-218-9342	18*12299
Georgia State Patrol	Dispatcher	912-287-6500	
Michelle Sanchez	EQPM	912-281-8279	
Keith Skinner	EQPM	936-546-8133	
Jimmy Caldwell	FAC	912-281-8266	
Terry Seward	FDUL	912-218-9321	18*11964
William Lee	Fuel Truck	912-218-9017	18*6682
Guy Gillispe	Ground Support	912-218-7103	18*6748
Mike Summers	GSUL	936-546-1957	
John Wall	Hotel Manger	912-218-9354	18*12616
Sussie Burford	IADP	936-546-3071	
Terry Lemmon	ORDM	936-546-1953	
Daniel Wilson	RCDM	936-546-1729	
Todd Nightengale	STAM (FARGO)	936-546-3163	
Larry Bennett	SUPL	936-546-1732	
Steve Moore	FARGO	912-218-9344	18*12374
Bobby Weaver	THSP	936-546-8010	
John Rush	THSP	936-546-1883	
Larry Brown	GDC	912-218-9366	11*32283
Don Shugart	GDC	912-218-9371	11*32063
Sylvester Hall	GDC	912-218-9367	11*32054
Tommy Maddox	GDC	912-218-9374	11*32069
MISC.			
COMMAND DISPATCH		912-218-9044	18*6870
PUBLIC INFORMATION		912-218-9319	18*11959
WAYCROSS DISTRICT OFFICE		912-218-7695	18*11671
MACON DISPATCH		912-218-9232	18*7378
MOP UP COMMAND			18*4918
FARGO BASE		912-218-8907	18*7532

KNEEKNOCKER AND ROUNDABOUT Phone Roster 5-19-2007			
NAME	POSITION	PHONE NUMBERS	LINC ID
OPERATIONS Kneeknocker			
Barry Chesser (Kneeknocker)	Technical Specialist	912-218-6552	Line 1*18*4166
Steve Abbott	DIVS	770-550-1868	Line 1*18*1628
Earl Roberson	Technical Specialist	912-218-8344	Line 1*18*4279
John Godwin	DIVS		Line 1*18*3213
Tom Crews	STEN	404-535-2226	Line 1*18*11725
Michael Hughes	TFLD	912-218-9510	Line 1*18*11266
OPERATIONS Roundabout 912-422-3140			
Paul Gillis	Technical Specialist		Line 1*18*20684
Steve Miller	OPD		Line 1*18*11625
Jamie Smith	DIVS		Line 1*18*4755
Mickey Tucker	TFLD		Line 1*46*20684
Danny Kelly	STPL		Line 1*18*14115
Donald Bennett	Water Handling		Line 1*18*12983
Brent McCarty			Line 1*18*12585
Lucky Jones			Line 1*18*5198
OTHER AGENCIES			
Brantley County Fire Coordinator	Ken Lee	912-218-2012	1*44*1081
		912-717-3330	
Nahunta FD Fire Chief	Button Lee	904-699-1619	1*25*323
		912-282-8730	
EMA / 911 Director	Billy Lartz	912-217-1638	1*11*2001
Brantley County Sheirff	Robert Thomas	912-614-1658	1*25*1130
DNR, ENGB	T. Trowbridge	© 912-223-2815	
DNR ENOP	Sam Williams	229-212-0124	
Atkinson EMA IC	David Moore		
Atkinson GEMA Coordinator	Diane May		
North End Resource Advisor	Dean Easton	912-496-7366	ext 235
South End Resource Advisor	Doug Nuss	912-286-3110	
Joint Information Center	Waycross	1-866-380-9966	

IMPORTANT FINANCE INFORMATION

ALL CREW TIME REPORTS AND EMERGENCY EQUIPMENT SHIFT TICKETS SHOULD BE TURNED IN TO FINANCE AT THE END OF EACH SHIFT ON A DAILY BASIS. SUPERVISORS SIGNING THESE TIME REPORTS SHOULD ENSURE THE FOLLOWING:

- **PLEASE WRITE THE FIRE NAME YOU ARE WORKING ON YOUR CTR'S AND/OR SHIFT TICKETS – THIS IS VERY IMPORTANT FOR FEMA REIMBURSEMENT.**
- **THE “O” NUMBER SHOULD BE LISTED ON THE CREW TIME REPORT**
- **COMPLETE 1 (one) CREW TIME REPORT FOR EACH PERSON WITH AN “O” NUMBER**
- **“E” NUMBERS SHOULD BE LISTED ON THE EMERGENCY EQUIPMENT SHIFT TICKET(S)**
- **CORRECT DATES ARE IMPERATIVE!**
- **SUPERVISORS – PLEASE REVIEW THE CTR'S/SHIFT TICKET'S YOU ARE ASKED TO SIGN**

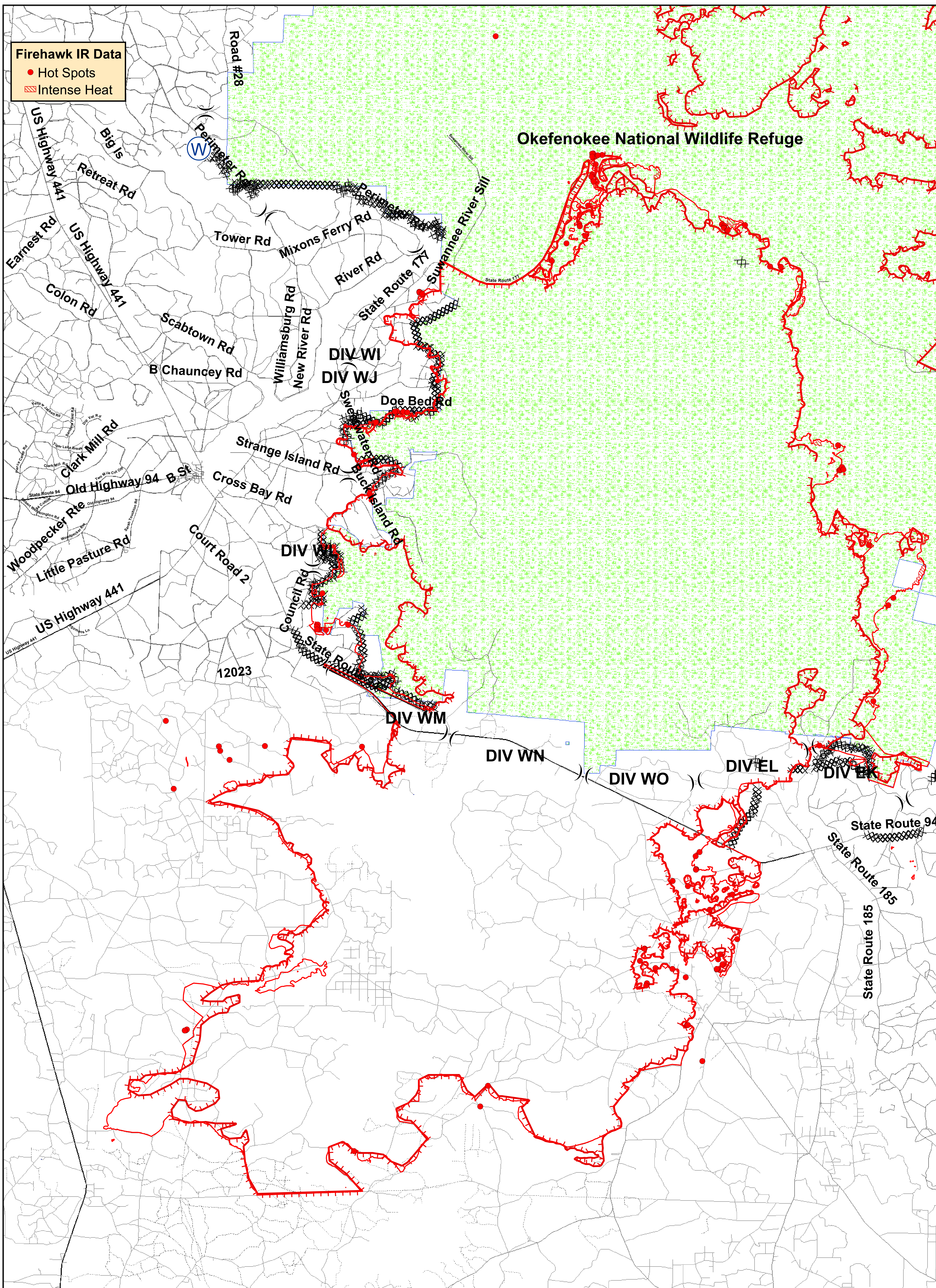
HUMAN RESOURCES MESSAGE



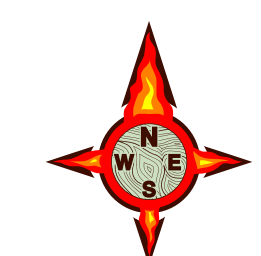
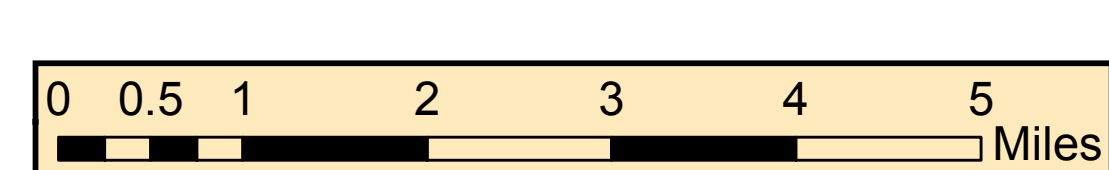
ATTITUDE

The longer I live, the more I realize the impact of attitude on life. Attitude, to me, is more important than facts, it is more important than the past, than education, than money, than circumstances, than failures, than successes, than what other people think or say or do. It is more important than appearance, giftedness or skill, it will make or break a company...a church...a home. The remarkable thing is we have a choice every day regarding the attitude we will embrace for that day. We cannot change our past. We cannot change the fact that people will act in a certain way. We cannot change the inevitable. The only thing we can do is play on the one string we have, and that is our attitude...I am convinced that life is 10% what happens to me and 90% how I react to it. And so it is with you. We are in charge of our Attitudes.

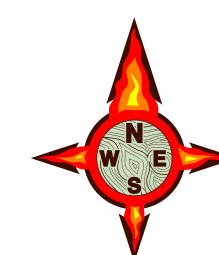
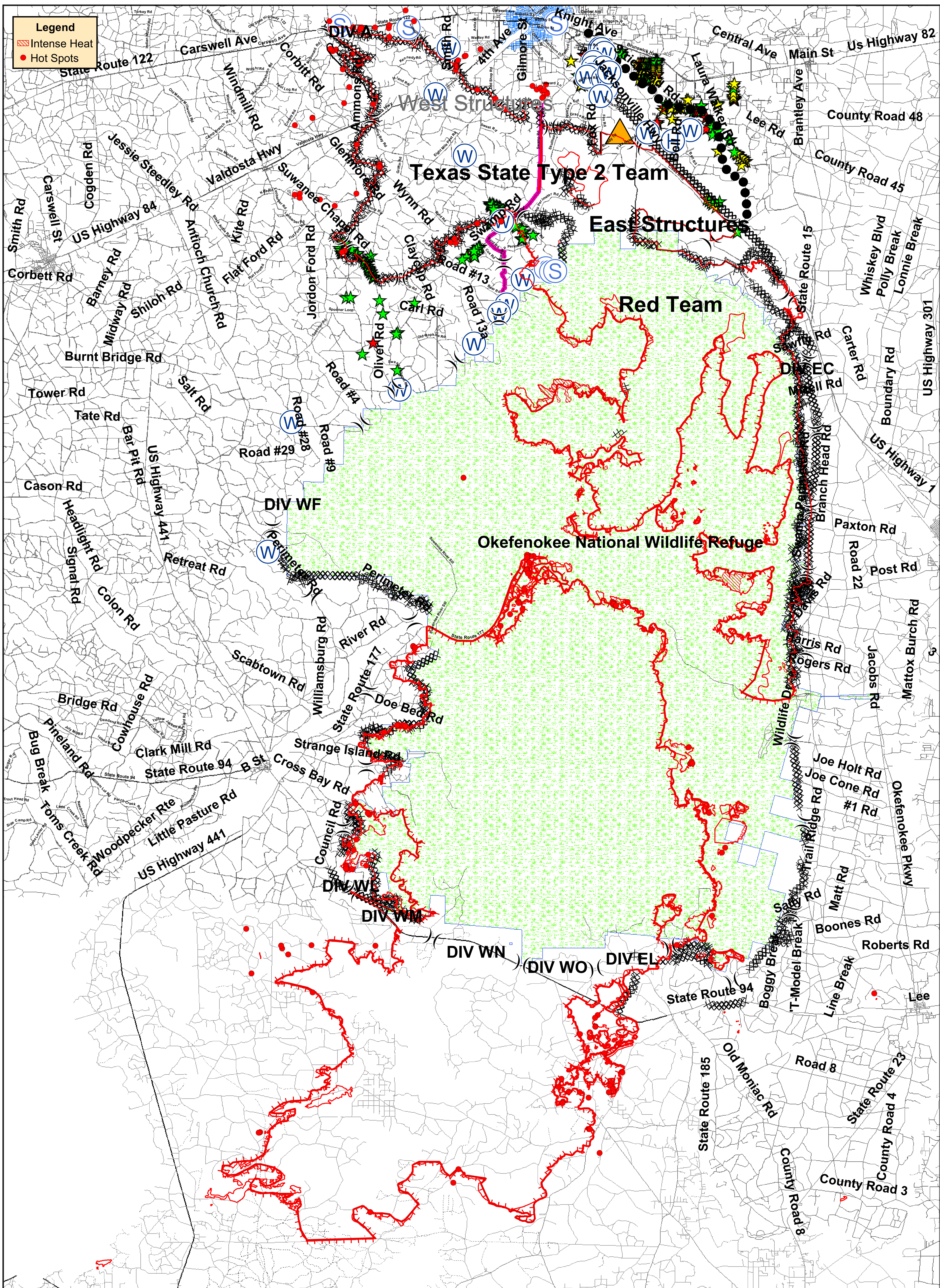
Paul Hannemann, Incident Commander

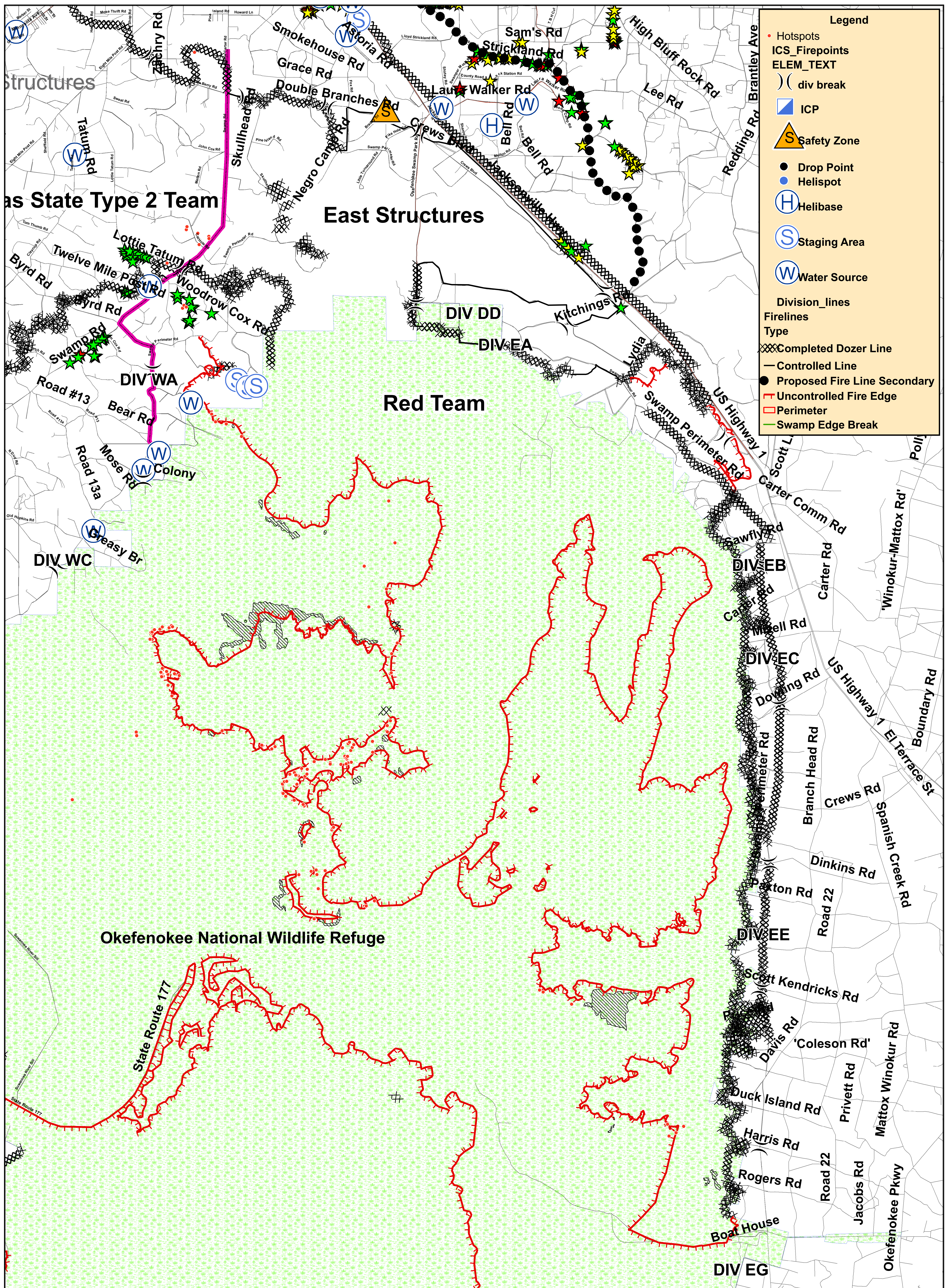


Georgia Bay Complex
 Bugaboo Scrub Fire / Bugaboo 2
 Tiled IAP Map
 05-20-2007



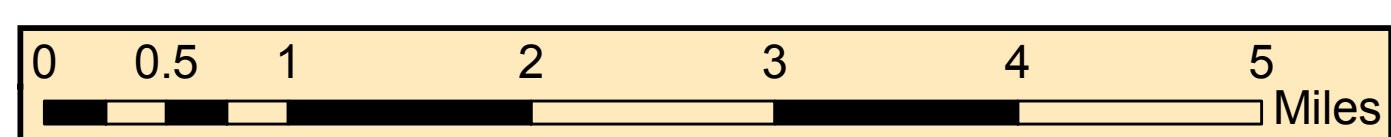
Map By: Jim Pugh
 May 20, 2007
 Perimeter as of
 May 19 2007 0730





East Section

Georgia Bay Complex
Big Turnaround Fire
Tiled IAP Map
05-20-2007



Map By: Jim Pugh
May 20, 2007
Perimeter as of
May 19, 2007 0730

Firehawk IR Data - 05-18-2007
 ● 20070519_FloridaBugaboo_Firehawk_isolated_spots
 □ 20070519_sweat_farm_perimeter_0446

Legend

ICS Firepoints

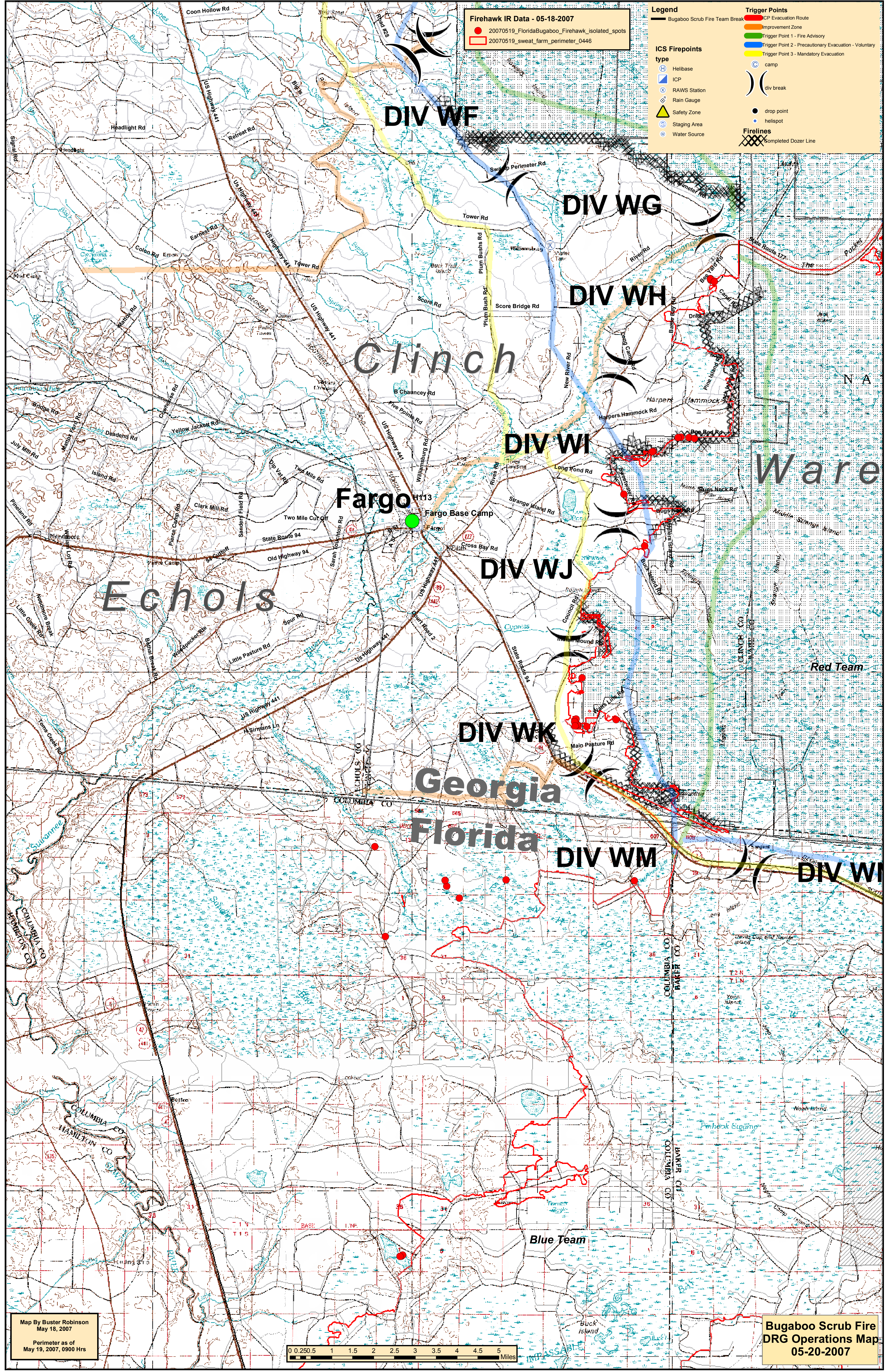
- Helibase
- ICP
- RAWS Station
- Rain Gauge
- Safety Zone
- Staging Area
- Water Source

Trigger Points

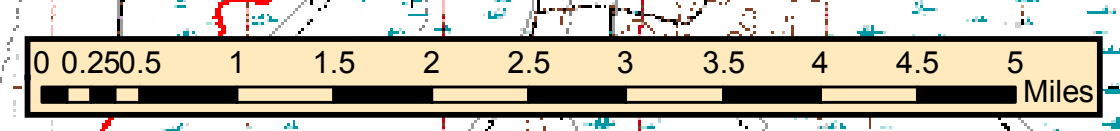
- ICP Evacuation Route
- Improvement Zone
- Trigger Point 1 - Fire Advisory
- Trigger Point 2 - Precautionary Evacuation - Voluntary
- Trigger Point 3 - Mandatory Evacuation
- camp
- div break
- drop point
- helispot

Firelines

- Completed Dozer Line



Map By Buster Robinson
 May 18, 2007
 Perimeter as of
 May 19, 2007, 0900 Hrs



**Bugaboo Scrub Fire
 DRG Operations Map
 05-20-2007**

