



Georgia Bay Complex

Sweat Farm Rd. Fire

Bugaboo Scrub II Fire

Incident Action Plan

Monday

May 21, 2007

GA-GAS-0097028



GEMA

INCIDENT OBJECTIVES	1. Incident Name Georgia Bay Complex	2. Date Prepared 5/20/07	3. Time Prepared 1830									
4. Operational Period 05/21/2007 Day and Swing Shift												
5. General Control Objectives For The Incident (Include Alternatives) <ul style="list-style-type: none"> 1. Conduct all operations in a safe, cost effective, and efficient manner, and do so in an atmosphere free of discriminatory or harassing remarks or actions. 2. Manage fires within the Georgia Bay Complex, as assigned by the Georgia Forestry Commission, by providing relief for local resources, identifying and mitigating hazards, establishing LCES, and following 2 to 1 work to rest guidelines. 3. Maintain communications and information flow with resources and Georgia Forestry Commission Protection staff with timely and accurate situational updates. 4. Provide accurate cost accountability and documentation of expenditures for the duration of the incident. 5. Develop and maintain coordination with local fire departments, local EOC directors, the Georgia Emergency Management Agency, the Southwestern Area Team IMT, the Southern Area Blue Team IMT, GOAL, and private industry. 6. Keep the Bugaboo fire east of State Hwy 177, east of State Hwy 94 from Fargo to the Florida state line. 7. Keep the Sweat Farm Fire south of the town of Waycross and Highway 122, west of Highway 1, north and west of swamp road, and east of the town of Manor. 8. Keep the Kneeknocker and Roundabout fires within the current established fire lines / perimeters. 												
6. Weather Forecast For Period <p style="text-align: center;">...RED FLAG WARNING THIS AFTERNOON FOR CRITICAL RELATIVE HUMIDITY VALUES...</p> WEATHER: Sunny and dry. MAX TEMPERATURES: 86 to 89 (24 hour trend ~ same) MIN HUMIDITY: 20-24%, except 17 to 20% near fire perimeters (24 hour trend ~ same) 20 FT WINDS: Southeast 2 to 5 mph, increasing to 6 to 10 mph around 11 am. Gusting to 14 mph in the afternoon. STABILITY/INVERSION: Inversion up to 400 ft dissipating by 0930. Mixing heights around 6500 ft. Afternoon Dispersion index around 55. Haines Index 5.												
7. General Safety Message <p>Keep all resources informed on strategies, tactics, changes, and identified hazards. Everyone should be informed on existing and expected conditions. Give driving your full attention. Remember to have LCES in place prior to engagement on IA.</p>												
8. ATTACHEMENTS (X IF ATTACHED) <table style="width: 100%; border: none;"> <tr> <td style="width: 33%;"><input checked="" type="checkbox"/> Organization List - ICS 203</td> <td style="width: 33%;"><input checked="" type="checkbox"/> Medical Plan - ICS 206</td> <td style="width: 33%;"><input checked="" type="checkbox"/> Tailgate Briefing Form (safety, weather, fire behavior)</td> </tr> <tr> <td><input checked="" type="checkbox"/> Division Assignment Lists - ICS 204</td> <td><input checked="" type="checkbox"/> Incident Map - separate</td> <td></td> </tr> <tr> <td><input checked="" type="checkbox"/> Communications Plan - ICS 205</td> <td><input type="checkbox"/> Traffic Plan</td> <td><input type="checkbox"/> _____</td> </tr> </table>				<input checked="" type="checkbox"/> Organization List - ICS 203	<input checked="" type="checkbox"/> Medical Plan - ICS 206	<input checked="" type="checkbox"/> Tailgate Briefing Form (safety, weather, fire behavior)	<input checked="" type="checkbox"/> Division Assignment Lists - ICS 204	<input checked="" type="checkbox"/> Incident Map - separate		<input checked="" type="checkbox"/> Communications Plan - ICS 205	<input type="checkbox"/> Traffic Plan	<input type="checkbox"/> _____
<input checked="" type="checkbox"/> Organization List - ICS 203	<input checked="" type="checkbox"/> Medical Plan - ICS 206	<input checked="" type="checkbox"/> Tailgate Briefing Form (safety, weather, fire behavior)										
<input checked="" type="checkbox"/> Division Assignment Lists - ICS 204	<input checked="" type="checkbox"/> Incident Map - separate											
<input checked="" type="checkbox"/> Communications Plan - ICS 205	<input type="checkbox"/> Traffic Plan	<input type="checkbox"/> _____										
9. Prepared By (Planning Section Chief) /S/ Les Rogers	10. Approved By (Incident Commander) /S/ Paul Hannemann											

ORGANIZATION ASSIGNMENT LIST		9.	Operations Section	
1. Incident Name		Chief	Rich Gray / Bill Woodyard	
Georgia Bay Complex		Planning Ops	David Abernathy	
2. Date	3. Time	a.	Branch 1	
May 20, 2007	2000	Branch Director	Buck Kline	
4. Operational Period		Division/ICT3	A,B,C,D	D. Lachapelle/A. Crouch (T)
May 21, 2007 0700-2000		Division/ICT3	H	Heath Morton
5. Incident Commander and Staff		Division/ICT3	I,J,K	Ron Swann
Incident Commander	Paul Hannemann	Group	ICP Group	Mike Appling
Liason	Joel Hambricht	Group	Manor	Jay Collett
Safety Officer	Ronnie Hamm	Group	Day Shift/Stctr	Dennis Keen
Information Officer	Bielenberg/ Amen/ Pinea/Stone/ Polant/ Weston	Group	Swing Shift/Stctr	Pete Villa
		Group	LE/Arson	Mike Heath
6. Agency Representatives		Group	Prevention	John Warner
Agency	Name	Division	WA	Lucus Santio
GFC District 8	Frank Sorrells	Division	WB-WE	Richard Gonzalas
GFC District 10	Willard Fell	Division	WF-WG	Unstaffed
GFC Protection Dept.	Alan Dozier	Division	WH-WJ	Jim Davis
Charlton Co. Liason	Billy Lietch	Division	WK-WM	F. Pingiczer / J. Smith
GEMA	Allen Robinson	b.	Branch 1	
7. Planning Section		Branch Director	Buck Kline	
Chief	Les Rogers	Group	Fargo Night Shift	Doug Mattox
Deputy	Shane Brown	Group		
Resources Unit	Dennis Register / Karen Brent (T)	Group		
Situation Unit	Dan Ochocki / Chris Brenzel	Group		
Documentation Unit				
Demobilization Unit	Carl Lundgren			
Computer Tech	Rusty Brown / Trey Spivey	c.	Branch 2	
Fire Behavior Analyst		Branch Director	Kneeknocer/Roundabout	S. Miller
Incident Meteorologist	John Pendergrast	Group	Kneeknocer	S. Abbott
Status/Check In	J. Keiningham(T) / R. Dottellis(T) / C. O'Bryan	Division	Roundabout Div. A & D	B. McCarty
Field Observer	Gary White	Division	Roundabout Div. B & C	J. Jones
GIS	A. Gareau / J. Pugh (T)	Division		
Infrared Interperter	Lance Barnum			
Training Specialist	Lewis Kearney			
8. Logistics Section		d.	Air Operations Branch	
Chief	Susan Cornett	Air Operations Branch Director	Bob Seigler	
Facilities Unit	Jimmy Caldwell	Helibase Manager	D. Langley / L. Patterson(T)	
Supply Unit	Larry Bennett	Air Support Supervisor		
Food Unit	Terry Seward	GFC Air Operations	Mike Leverette	
Base Camp Manager	Karraker/Garman/Pierce(T)	Air Tanker Coordinator		
Ground Support Unit	G. Gillespie / M. Summers	10.	Finance Section	
Ordering Manager	R. Siemens / K Rhoden	Chief	J. Lipsey / V. Coleman(T)	
Security Manager	Roger Atkinson	Incident Business Advisor	Paul Palmitto	
Medical Unit	R. Carswell (T)	Time Unit Leader	Stephanie Elledge	
Communications Unit	Carl Bridges	Buying Team	Barbara Hatch	
Initial Attack Dispatcher	Susie Burford	Personnel Time Recorder	Karen Stripling/Eunice Vankuren	
Hotel Manager	John Wall	Equipment Time Recorder	B.Drown / M.Derendoff A.Treadwell (T)	
Equipment Manager	M. Sanchez	Procurement	Penny Brown	
Mechanic	English/Skinner/Crane/McNeal	Cost Unit	Carolyn Riggs	
Technical Specialist	Bobby Weaver / John Rush	Comp/Claims	M. Martinez / C. Oliveras	
Receiving & Distribution Manager	Daniel Wilson	Prepared by (Resource Unit Leader) Dennis Register / Karen Brent (T)		
Camp Crew	TN JC #3/Barber			

DIVISION ASSIGNMENT LIST				1. Branch Sweat Farm Fire		2. Division/Group A-B-C-D		
3. Incident Name Georgia Bay Complex				4. Operational Period Date: 5-21-07 Time: 0800 - 2000				
5. Operations Personnel								
Operations Chief		David Abernathy O-738 5-23 Rich Gray O-77 5-23 Bill Woodyard O-136 5-23		Division/ICT3		David Lachapelle O-226 5/31 912-218-7103 18*6748 Alan Crouch (T) O-239 5/31		
Branch Director		Buck Kline 18*1615		Safety Officer		Larry Miller O-38 5/28		
6. Resources Assigned this Period								
Strike Team/Task Force/ Resource Designator		Leader / Name		Last Shift Date	Number Persons	Trans. Needed	Drop Off PT./Time	Pick Up PT./Time
ST#1 TNS ST Eng T6 O-1026		Scott Smith		5/31	11	N	0700	2000
TN Eng 2733 E-1359		Long/Cantrell		5/31		N	0700	2000
TN Eng 2731 E-1372		Harmond/Steele		5/31		N	0700	2000
TN Eng 2730 E-1360		Wooden/Brown		5/31		N	0700	2000
TN Eng 2732 E-232		Hobbs/Kirby		5/31		N	0700	2000
Columbia Martinez WT E-1227		Thomas/Hutcherson		5/31		N	0700	2000
ST#2 GFC ST Tractor Plow T3 E-2602.1		Randy Mosley		5/24	4	N	0700	2000
GFC JD 650 E-2603		Taylor		5/29		N	0700	2000
GFC JD 650 E-2604		Harden		5/29		N	0700	2000
GFC JD 650 E-2605		Calhoun		5/29		N	0700	2000
7. Control Operations Patrol, mop up and mitigate as well respond to any threats posed by the fire.								
8. Special Instructions Watch out for Snags Remain in communications. Be alert for traffic on Highways Stay Hydrated. Ensure all personnel wear PPE. Take spot WX forecasts hourly. Keep tractors loaded and ready to move if not being used on the line Have constant communication with logging operation in fire area: Buck Rodenberry: 912-2764990 Linc 18*5865 LCES implemented by 1000 and notify OPS when completed.								
9. Division/Group Communication Summary								
Function	Frequency	System	Channel	Function	Frequency	System	Channel	
Command		King NIFC		Logistics		King NIFC		
Tactical Div/Group	DIV A,B,C,D	King NIFC	Talk Group 1 Ch. 11	Air to Ground	Talk Group 1	King NIFC	Ch. 13	
Prepared by (Resource Unit Leader) Dennis Register / Karen Brent (T)		Approved by (Planning Section Chief) <i>/s/Les Rogers</i>			Date May 20, 2007		Time 1900	

DIVISION ASSIGNMENT LIST			1. Branch Sweat Farm Fire		2. Division/Group H								
3. Incident Name Georgia Bay Complex			4. Operational Period Date: 5-21-07 Time: 0800 - 2000										
5. Operations Personnel													
Operations Chief		David Abernathy O-738 5-23 Rich Gray O-77 5-23 Bill Woodyard O-136 5-23		Division/ICT3		Heath Morton O-941 5/23 912-218-7135 18*11946							
Branch Director		Buck Kline 18*1615		Safety Officer		Steve Snider O-186 5/26							
6. Resources Assigned this Period													
Strike Team/Task Force/ Resource Designator		Leader / Name		Last Shift Date	Number Persons	Trans. Needed	Drop Off PT./Time	Pick Up PT./Time					
ST# 3GFC ST Engines T6 E-2659		Mike Purcell		5/26	9	N	0800	2000					
Pickens 86 E-1117		Davis/Keene		5/26		N	0800	2000					
Paulding 86 E-1098		Cornett/Henderson		5/26		N	0800	2000					
Heard 86 E-1015		Price/Singleton		5/26		N	0800	2000					
Upson 86 E-1132		Sanders/Shifflett		5/26		N	0800	2000					
Murray 86 E-1022		Jones / Burnett		5/20	2	N	0800	2000					
WAT2 N.Jenkins E-2858		Lane/Bragg		6/3	2	N	0800	2000					
TF# 1 SC TF w/ T6 ENG O-1049		Bruce Ballentine		5/31	7	N	0800	2000					
JD 700 SB E-9006		Boyce/Porter		5/31		N	0800	2000					
SCS ENG T6 E-2737		Connally/Heitcamp		5/31		N	0800	2000					
SCS ENG T6 E-2738		Craig/ Folk		5/31		N	0800	2000					
ST#19 NC ST T/P T2 E-2660		Dean Lucas		5/27	1	N	0800	2000					
NC Mechanic E-2661		David Corey		5/27	1	N	0800	2000					
NC TPL T2 E-2662		Shepherd / Bell		5/27	2	N	0800	2000					
NC TPL T2 E-2663		Endicott / Dunn		5/27	2	N	0800	2000					
NC TPL T2 E-2664		Sidbury / Huttlinger		5/27	2	N	0800	2000					
7. Control Operations Patrol, mop up and mitigate as well as respond to any threats posed by the fire.													
8. Special Instructions Remain in communications. Be alert for traffic on Highways Stay Hydrated. Ensure all personnel wear PPE. Take spot RX forecasts every hour. LCES implemented by 1000 and notify OPS when completed.													
9. Division/Group Communication Summary													
Function		System		Channel		Function		Frequency		System		Channel	
Command		King NIFC				Logistics				King NIFC			
Tactical Div/Group		King NIFC		Talk Group 1 Ch.9		Air to Ground		Talk Group 1		King NIFC		Ch. 13	
Prepared by (Resource Unit Leader) Dennis Register / Karen Brent (T)				Approved by (Planning Sect. Ch.) /s/Les Rogers				Date May 20, 2007		Time 1900			

DIVISION ASSIGNMENT LIST				1. Branch Sweat Farm Fire		2. Division/Group I-J-K	
3. Incident Name Georgia Bay Complex				4. Operational Period Date: 5-21-07 Time: 0800 - 2000			
5. Operations Personnel							
Operations Chief		David Abernathy O-738 5-23 Rich Gray O-77 5-23 Bill Woodyard O-136 5-23		Division/ICT3		Ron Swann O-264 6/3 540-969-7474	
Branch Director		Buck Kline 18*1615		Safety Officer		Rodney Bell O-935 5/28	
6. Resources Assigned this Period							
Strike Team/Task Force/ Resource Designator		Leader / Name		Last Shift Date	Number Persons	Trans. Needed	Drop Off PT./Time Pick Up PT./Time
ST# 7 LAS ST Engines T6 O-1092		Henry Childress		6/4	8	N	0800 2000
LAS Engine E-1070		Moseley/Carter		6/4		N	0800 2000
LAS Engine E-1071		Wager/Holmes		6/4		N	0800 2000
LAS Engine E-1072		West/Tichy		6/4		N	0800 2000
ST# 8 LAS ST Engines T6 O-1093		Jay Meadows		6/4	9	N	0800 2000
LAS Engine E-1075		Wright/Bolyer		6/4		N	0800 2000
LAS Engine E-1074		Mango/Hilton		6/4		N	0800 2000
LAS Engine E-1073		Duckett/Martin		6/4		N	0800 2000
LAS Engine E-1076		Polk/Hughes		6/4		N	0800 2000
Laurens Co. WT E-1228		Underwood/Edwards		6/4	2	N	0800 2000
ST# 18 ALS STPL O-1069		Jason Berry		6/2	4	N	0800 2000
ALS T/P T3 E-1398		Williams / Barker		6/2		N	0800 2000
ALS T/P T3 E-1399		Berry/Bartlett		6/2		N	0800 2000
OK T/P T2 E-1468		Akard/Jacobs		6/1		N	0800 2000
OK T/P T2 E-1469		Wayman/Tunnell		6/1		N	0800 2000
7. Control Operations Patrol, mop up and mitigate as well as respond to any threats posed by the fire.							
8. Special Instructions Contact for I/A dispatches is County Ranger Billy Leitch 912-218-9325 Linc 18*12022 Drive defensively- watch for city traffic. Be alert for traffic on Highways. Ensure all personnel wear PPE. Stay Hydrated. Take spot WX forecasts every hour. Remain in communications with resources and contractor. Contractor's link #: 18*14052 LCES implemented by 1000 and notify OPS when completed							
9. Division/Group Communication Summary							
Function	Frequency	System	Channel	Function	Frequency	System	Channel
Command		King NIFC		Logistics		King NIFC	
Tactical Div/Group	DIV I, J, K	King NIFC	Talk Group 1 Ch. 10	Air to Ground	Talk Group 1	King NIFC	13
Prepared by (Resource Unit Leader) Dennis Register / Karen Brent (T)		Approved by (Planning Section Chief) /s/Les Rogers		Date 5/20/07		Time 1900	

DIVISION ASSIGNMENT LIST				1. Branch Sweat Farm Fire		2. Division/Group ICP GROUP		
3. Incident Name Georgia Bay Complex				4. Operational Period Date: 5-21-07 Time: 0800 - 2000				
5. Operations Personnel								
Operations Chief		David Abernathy O-738 5-23		Division/ICT3		Mike Appling O-223 5/30		
		Rich Gray O-77 5-23						
		Bill Woodyard O-136 5-23						
Branch Director		Buck Kline		Safety Officer				
6. Resources Assigned this Period								
Strike Team/Task Force/ Resource Designator		Leader / Name		Last Shift Date	Number Persons	Trans. Needed	Drop Off PT./Time	Pick Up PT./Time
ST# 15 GFC ST Tractor Plow T3		Lonnie Calloway		5/27	4	N	Folkston 0800	Folkston 2000
Evans 70 E-1199		Sykes		5/27		N	Folkston 0800	Folkston 2000
Jenkins 70 E-1198		Lane		5/27		N	Folkston 0800	Folkston 2000
Bulloch 70 E-1200		Wells		5/27		N	Folkston 0800	Folkston 2000
7. Control Operations Position Equipment to Manage and Mitigate any Threats Posed by Uncontrolled Fires.								
8. Special Instructions Contact for I/A dispatches is County Ranger Billy Leitch 912-276-4001 Linc 18*12022 Drive defensively- watch for city traffic Be alert for traffic on Highways Ensure all personnel wear PPE. Stay Hydrated. Take spot WX forecasts every hour. Remain in communications with resources and contractor. Contractor's link #: 18*14052 LCES implemented by 1000 and notify OPS when completed.								
9. Division/Group Communication Summary								
Function	Frequency	System	Channel	Function	Frequency	System	Channel	
Command		King NIFC		Logistics		King NIFC		
Tactical Div/Group	ICP Group	King NIFC	Talk Group 1 Ch. 11	Air to Ground	Talk Group 1	King NIFC	Ch. 13	
Prepared by (Resource Unit Leader) Dennis Register / Karen Brent (T)		Approved by (Planning Section Chief) /s/Les Rogers			Date 5/20/07		Time 1900	

DIVISION ASSIGNMENT LIST			1. Branch Sweat Farm Fire		2. Division/Group MANOR GROUP		
3. Incident Name Georgia Bay Complex			4. Operational Period Date: 5-21-07 Time: 0800 - 2000				
5. Operations Personnel							
Operations Chief		David Abernathy O-738 5-23 Rich Gray O-77 5-23 Bill Woodyard O-136 5-23		Division/ICT3		Jay Collett O-250 5/21 540-292-1038 Greg Arkle	
Branch Director				Safety Officer		Larry Miller O-38 5/28	
6. Resources Assigned this Period							
Strike Team/Task Force/ Resource Designator		Leader / Name	Last Shift Date	Number Persons	Trans. Needed	Drop Off PT./Time	Pick Up PT./Time
TFLD O-155		Loren Suazo	5/24	1	N	Swamp Church 0800	Manor 2000
ST# 17 STEN (T) O-183		Reggie Day	5/26	5	N	Swamp Church 0800	Manor 2000
VAF Engine T6 E-57		Collett	5/21	2	N	Swamp Church 0800	Manor 2000
NMF Engine T6 E-56		Trujillo	5/25	3	N	Swamp Church 0800	Manor 2000
NMF Eng #236 T6 E-60		Alirez	5/22	3	N	Swamp Church 0800	Manor 2000
ST# 4 GFC ST TP T3 O-855		George Glenn	5/22	4	N	Swamp Church 0800	Manor 2000
GAS Jefferson 73 T3 E-1000		Mercier	5/22		N	Swamp Church 0800	Manor 2000
GAS Burke 70 T4 E-1001		Pearson	5/22		N	Swamp Church 0800	Manor 2000
GFC Burke 72 T4 E-1002		Cheely	5/22		N	Swamp Church 0800	Manor 2000
7. Control Operations Position Equipment to Manage and Mitigate any Threats Posed by Uncontrolled Fires.							
8. Special Instructions Drive defensively- watch for city traffic. Remain in communications with resources and contractor. Contractor's link #: 18*14052 Be alert for traffic on Highways. Stay Hydrated. Ensure all personnel wear PPE. Take spot WX forecasts every hour. LCES implemented by 1000 and notify OPS when completed.							
9. Division/Group Communication Summary							
Function	Frequency	System	Channel	Function	Frequency	System	Channel
Command		King NIFC		Logistics		King NIFC	
Tactical Div/Group	Manor Group	King NIFC	Talk Group 1 Ch. 11	Air to Ground	Talk Group 1	King NIFC	Ch. 13
Prepared by (Resource Unit Leader) Dennis Register / Karen Brent (T)		Approved by (Planning Section Chief) <i>/s/Les Rogers</i>			Date May 20, 2007		Time 1900

DIVISION ASSIGNMENT LIST			1. Branch Sweat Farm Fire		2. Division/Group Day Shift/Structure Protection		
3. Incident Name Georgia Bay Complex			4. Operational Period Date: 5-21-07 Time: 0800 - 2000				
5. Operations Personnel							
Operations Chief		David Abernathy O-738 5-23 Rich Gray O-77 5-23 Bill Woodyard O-136 5-23		Division/ICT3		Dennis Keen - Ware Co. Fire Dept.	
Branch Director				Safety Officer			
6. Resources Assigned this Period							
Strike Team/Task Force/ Resource Designator		Leader / Name	Last Shift Date	Number Persons	Trans. Needed	Drop Off PT./Time	Pick Up PT./Time
GA DOC TF		Rick Huggins 11*3204 cell 770-330-7246		1	N	Diversion Center0800	Diversion Center2000
		Don Shugart 54*240		1	N	Diversion Center0800	Diversion Center2000
		Larry Brown 11*32063		1	N	Diversion Center0800	Diversion Center2000
GDC Wilcox T1		Culpepper	5/21	5	N	Diversion Center0800	Diversion Center2000
GDC Montgomery Rescue		Helms/Sharp	5/21	6	N	Diversion Center0800	Diversion Center2000
GDC Dooly T6		Hudson	5/21	3	N	Diversion Center0800	Diversion Center2000
GDC Dooly WT			5/21	2	N	Diversion Center0800	Diversion Center2000
GDC Wayne T3		Horton	5/21	2	N	Diversion Center0800	Diversion Center2000
GDC Wayne T6			5/21	2	N	Diversion Center0800	Diversion Center2000
GDC Wayne WT			5/21	2	N	Diversion Center0800	Diversion Center2000
GSP T3		Rogers	5/21	3	N	Diversion Center0800	Diversion Center2000
GSP Rescue			5/21	3		Diversion Center0800	Diversion Center2000
GDC West GA. H/C		Roberts	5/21	8	N	Diversion Center0800	Diversion Center2000
GDC Lee Arendale H/C		Yearwood	5/21	10	N	Diversion Center0800	Diversion Center2000
GDC Paulding H/C		Cox/Foley	5/21	8	N	Diversion Center0800	Diversion Center2000
7. Control Operations Provide population/structure/infrastructure protection and preparation where needed. Continue to Gather GIS Data. Provide Mop Up around structures and support Division Mop Up. Coordinate with Red Team where applicable. Provide Firewise and Fire Prevention information to the public. Coordinate with DIVS.							
8. Special Instructions Remain in communications. Stay Hydrated. Be alert for traffic on Highways Ensure all personnel wear PPE. Way Cross Structures GEMA 40 Southern Linc 18*11049 Red Team Structures Contact Info. Bill Bell 18*12537 Dennis Hackett 404-354-4415 or 352-279-6977 5/16 Jessie Jordan Ware Co. FD 44*4042 912-281-6541 Ware County Fuel Tender -- Tony Leverett 912-288-3295 Dennis Keen Ware Co. Fire Dept. - 912-337-3414 Linc - 1*44*977 Clinch County Fire/EMA - Jesse Booth 25*255 919-482-3700 LCES implemented by 1000 and notify OPS when completed.							
9. Division/Group Communication Summary							
Function	Frequency	System	Channel	Function	Frequency	System	Channel
Command		King NIFC		Logistics		King NIFC	
Tactical Div/Group	DIV - Day Structure	King NIFC	Talk Group1 Ch. 3	Air to Ground	Talk Group 1	King NIFC	Ch. 13
Prepared by (Resource Unit Leader) Dennis Register / Karen Brent (T)		Approved by (Planning Section Chief) /s/Les Rogers			Date 5/20/07		Time 1900

DIVISION ASSIGNMENT LIST				1. Branch Bugaboo Scrub II		2. Division/Group Night Shift	
3. Incident Name Georgia Bay Complex				4. Operational Period Date: 5-21-07 Time: 1800 - 0600			
5. Operations Personnel							
Operations Chief		David Abernathy O-738 5-23 Rich Gray O-77 5-23		Division		Doug Mattox O-221 6/4	
Branch Director		Buck Kline 18*1615		Safety Officer		Pete Stewart 6/4	
6. Resources Assigned this Period							
Strike Team/Task Force/ Resource Designator		Leader / Name		Last Shift Date	Number Persons	Trans. Needed	Pick Up PT./Time
ST# 21 GFC ST Tractor Plow T3 E-2714		Alfred Lucas O-1005		5/28	4	N	Fargo 0600
GFC TPL E-2694	O-1006	A. Smith		5/28		N	Fargo 0600
GFC TPL E-2696	O-1008	C. Thomas		5/28		N	Fargo 0600
GFC TPL E-2695	O-1007	D. Veal		5/28		N	Fargo 0600
GEMA Grady WT E-2601		Micah Freeman		5/22	1	N	Fargo 0600
ST# 20 STEN T6 O-153		Dave Larsen		5/24	7	N	Fargo 0600
TX PVT Engine	E-44	Sims/Judd		5/20		N	Fargo 0600
TX PVT #701 Engine	E-45	McInis / McInis		5/20		N	Fargo 0600
TXF #31 Engine	E-46	Neill/Chumley/Martin		6/3		N	Fargo 0600
TX PVT Engine T6	E-47	Woodward/Pannell		5/22	2	N	Fargo 0600
WAT2	E-2601	Grady		5/22	2	N	Fargo 0600
S/T 28 STEN O-179		Craig Gilbert		5/25	1	N	Fargo 0600
LA ENG T6	E-2841	Hall/Dunn		5/31	2	N	Fargo 0600
VA-VAF ENG T6	E-4	Ramey/Lament/Proctor		5/26	3	N	Fargo 0600
AZ-COF ENG T6	E-2	Rokosh/Grondin Moe/Hart		5/26	4	N	Fargo 0600
AZ SFD ENG T6	E-1	Ingrao/Kreun/Wells		5/26	3	N	Fargo 0600
CO-PSF ENG T6	E-3	Muir / Zanotto/ Rigaud		5/26	3	N	Fargo 0600
7. Control Operations Patrol and Mop Up West of Swamp Rd. Provide Structure Protection as needed. Coordinate with DIVS							
8. Special Instructions Remain in communications. Be alert for traffic on Highways. Stay Hydrated. Ensure all personnel wear PPE. Take spot forecasts every hour. Stinson strike team will patrol and mop up west of Swamp Rd. Remainder of resources assigned to Fargo will assist with structure protection and related activities Clinch County Fire/EMA – Jesse Booth 25*255 919-482-3700 LCES implemented by 1000 and notify OPS when completed.							
9. Division/Group Communication Summary							
Function	Frequency	System	Channel	Function	Frequency	System	Channel
Command		King NIFC		Logistics		King NIFC	
Tactical Div/Group	DIV - Swing Shift	King NIFC	Talk Group 2 Ch. 7	Air to Ground	Talk Group 1	King NIFC	
Prepared by (Resource Unit Leader) Dennis Register / Karen Brent (T)		Approved by (Planning Section Chief) /s/Les Rogers		Date May 20, 2007		Time 1900	

DIVISION ASSIGNMENT LIST				1. Branch Sweat Farm Fire		2. Division/Group Swing Shift / Structures Group			
3. Incident Name Georgia Bay Complex				4. Operational Period Date: 5-21-07		Time: 1200 - 2400			
5. Operations Personnel									
Operations Chief		David Abernathy O-738 5-23 Rich Gray O-77 5-15			Division/ICT3		Pete Villa O-387 6/4 912-218-8226 18*4523		
Branch Director					Safety Officer				
6. Resources Assigned this Period									
Strike Team/Task Force/ Resource Designator		Leader / Name		Last Shift Date	Number Persons	Trans. Needed	Drop Off PT./Time		Pick Up PT./Time
TF-2 STEN T6 Engine O-682		Mark Stinson		5/21	1	N	Swamp Rd 1200		Swamp Rd 2400
TX Eng 4460 E-1181		Sinderud/ Kelley		5/21	1	N	Swamp Rd 1200		Swamp Rd 2400
GA-GAS ENG T6 E-2834		Merkison/Carrol		5/23	2	N	Swamp Rd 1200		Swamp Rd 2400
GA-GAS ENG T6 E-2835		Joy/Berry		5/23	2	N	Swamp Rd 1200		Swamp Rd 2400
MN PVT #6 Engine E-26		G. Rock-C. Tucker		5/29	2	N	Swamp Rd 1200		Swamp Rd 2400
TF-7 T/P O-8114		Raymond Uballe		6/1	1	N	Swamp Rd 1200		Swamp Rd 2400
TX-TXS T/P T4 E-8110		Sides/Halloquist		6/1	2	N	Swamp Rd 1200		Swamp Rd 2400
TX-TXS T/P T4 E-8111		Maynard/Hartstein		6/1	2	N	Swamp Rd 1200		Swamp Rd 2400
TX-TXS T/P T4 E-8112		Witt/Sunda		6/1	2	N	Swamp Rd 1200		Swamp Rd 2400
7. Control Operations									
Patrol and Mop Up West of Swamp Rd. Provide Structure Protection as needed. Coordinate with DIVS									
8. Special Instructions									
Remain in communications. Be alert for traffic on Highways. Stay Hydrated. Ensure all personnel wear PPE. Take spot forecasts every hour.									
Stinson strike team will patrol and mop up west of Swamp Rd.									
Remainder of resources assigned to Fargo will assist with structure protection and related activities									
Clinch County Fire/EMA - Jesse Booth 25*255 919-482-3700									
LCES implemented by 1000 and notify OPS when completed.									
9. Division/Group Communication Summary									
Function	Frequency	System	Channel	Function	Frequency	System	Channel		
Command		King NIFC		Logistics		King NIFC			
Tactical Div/Group	DIV - Swing Shift	King NIFC	Talk Group 2 Ch. 7	Air to Ground	Talk Group 1	King NIFC			
Prepared by (Resource Unit Leader) Dennis Register / Karen Brent (T)			Approved by (Planning Section Chief) <i>/s/Les Rogers</i>			Date May 20, 2007		Time 1900	

DIVISION ASSIGNMENT LIST				1. Branch		2. Division/Group WA	
3. Incident Name Georgia Bay Complex				4. Operational Period Date: 5/21/07		Time: 0800-2000	
5. Operations Personnel							
Operations Chief		David Abernathy O-738 5-23		Division/ICT3		Lucus Santio O-8113 5/25	
		Rich Gray O-77 5-23				435-790-7094	
		Bill Woodyard O-136 5-23					
Branch Director				Safety Officer		Tim Sampson O-180 5/26	
6. Resources Assigned this Period							
Strike Team/Task Force/ Resource Designator		Leader / Name		Last Shift Date	Number Persons	Trans. Needed	Drop Off PT./Time
TF #3 O-156		Matt Young		5/24	1	N	Swamp Rd 0800
Timberline WAT1 #2		Goodman				N	Swamp Rd 0800
Tender 5500 gal. WAT1						N	Swamp Rd 0800
Smith #1 WAT2						N	Swamp Rd 0800
Smith #2 WAT2						N	Swamp Rd 0800
Pump		Douglas				N	Swamp Rd 0800
7. Control Operations Patrol and monitor water levels in dip sites. Maintain pump operations.							
8. Special Instructions Use Okefenokee Refuge North Repeater for backup Command Communications through Big Turnaround Dispatch if necessary.							
9. Division/Group Communication Summary							
Function	Frequency	System	Channel	Function	Frequency	System	Channel
Command		King NIFC		Logistics		King NIFC	
Tactical Div/Group	WA	King NIFC	Talk Group 1 Channel 8	Air to Ground		King NIFC	
Prepared by (Resource Unit Leader) Dennis Register / Karen Brent (T)		Approved by (Planning Section Chief) <i>/s/Les Rogers</i>			Date May 20, 2007		Time 1900

DIVISION ASSIGNMENT LIST				1. Branch		2. Division/Group WB – WE Page 1 of 3	
3. Incident Name Georgia Bay Complex				4. Operational Period Date: 5/21/07		Time: 0800-2000	
5. Operations Personnel							
Operations Chief		David Abernathy O-738 5-23 Rich Gray O-77 5-23 Bill Woodyard O-136 5-23		Division/ICT3		Richard Gonzalas O-936 6/3	
Branch Director		Buck Kline		Safety Officer		Andy Meadows O-936 5/28	
6. Resources Assigned this Period							
Strike Team/Task Force/ Resource Designator	Leader / Name	Last Shift Date	Number Persons	Trans. Needed	Drop Off PT./Time	Pick Up PT./Time	
TF #4 TFLD O-152	David Hamilton	5/24	1	N	Fargo 0800	Fargo 2000	
AL DOZ T2 E-1110	Robinson / Taggart	5/31	2	N	Fargo 0800	Fargo 2000	
AL DOZ T2 E-1109	Chesser / Knighten	5/31	2	N	Fargo 0800	Fargo 2000	
Lee DOZ 1 (KG) E-1085	Harold		1	N	Fargo 0800	Fargo 2000	
Lee DOZ 1 (KG) E-1193	Sermans		1	N	Fargo 0800	Fargo 2000	
DOZB O-146	Patrick Seekins	5/22	1	N	Fargo 0800	Fargo 2000	
SC-FMF TP T2 E-8000.1	Beasley / Avesing	5/31	2	N	Fargo 0800	Fargo 2000	
GFC ST # 10 TP T3 O-874	Donnie Brannon	5/23	1	N	Fargo 0800	Fargo 2000	
GFC TP T3 E-1216	Terrell	5/23	1	N	Fargo 0800	Fargo 2000	
GFC TP T3 E-1218	Gay	5/23	1	N	Fargo 0800	Fargo 2000	
GFC TP T3 E-2612	Claxton	5/23	1	N	Fargo 0800	Fargo 2000	
GFC ST #16 T2 E-1343	Ty Hayman	5/27	1	N	Fargo 0800	Fargo 2000	
GFC TP T2 E-1344	Campbell	5/27	1	N	Fargo 0800	Fargo 2000	
GFC TP T2 E-1345	Kitchens	5/27	1	N	Fargo 0800	Fargo 2000	
GFC TP T2 E-1346	Driggers	5/27	1	N	Fargo 0800	Fargo 2000	
7. Control Operations Prep swamp perimeter and interior pine plantations from WB to WE in preparations for burnout.							
8. Special Instructions Use Okefenokee Refuge North Repeater for backup Command Communications through Big Turnaround Dispatch if necessary.							
9. Division/Group Communication Summary							
Function	Frequency	System	Channel	Function	Frequency	System	Channel
Command		King NIFC		Logistics		King NIFC	
Tactical Div/Group	WB-WE	King NIFC	Talk Group 1 Channel 5	Air to Ground		King NIFC	
Prepared by (Resource Unit Leader) Dennis Register / Karen Brent (T)		Approved by (Planning Section Chief) <i>/s/Les Rogers</i>		Date May 20, 2007		Time 1900	

DIVISION ASSIGNMENT LIST			1. Branch		2. Division/Group WB – WE Page 2 of 3		
3. Incident Name Georgia Bay Complex			4. Operational Period Date: 5/21/07		Time: 0800-2000		
5. Operations Personnel							
Operations Chief	David Abernathy O-738 5-23 Rich Gray O-77 5-23 Bill Woodyard O-136 5-23			Division/ICT3		Richard Gonzalas O-936 6/3	
Branch Director	Buck Kline			Safety Officer		Andy Meadows O-936 5/28	
6. Resources Assigned this Period							
Strike Team/Task Force/ Resource Designator	Leader / Name	Last Shift Date	Number Persons	Trans. Needed	Drop Off PT./Time		Pick Up PT./Time
TFLD	O-8101	David North	5/31	1	N	Fargo 0800	Fargo 2000
TFLD	O-8105	Joe Remick	5/31	1	N	Fargo 0800	Fargo 2000
TF #12 TFLD							
DOZ1		Beillings		1	N	Fargo 0800	Fargo 2000
DOZ1		Manning		1	N	Fargo 0800	Fargo 2000
DOZ1		Arnold		1	N	Fargo 0800	Fargo 2000
NPS Eng. 6		Scronca		2	N	Fargo 0800	Fargo 2000
CHIP PVT		Hodge		1	N	Fargo 0800	Fargo 2000
CHIP PVT		Bowzard		1	N	Fargo 0800	Fargo 2000
CHIP PVT	E-8113	Landers		1	N	Fargo 0800	Fargo 2000
DOZB	O-8102	Reed Callis	5/31	1	N	Fargo 0800	Fargo 2000
DOZB	O-8109	James Hartley	5/31	1	N	Fargo 0800	Fargo 2000
DOZB	O-8108	Marc LeClair	5/31	1	N	Fargo 0800	Fargo 2000
DOZB (CHIPPER)	O-8111	Terry Warlick	5/31	1	N	Fargo 0800	Fargo 2000
7. Control Operations Prep swamp perimeter and interior pine plantations from WB to WE in preparations for burnout.							
8. Special Instructions Use Okefenokee Refuge North Repeater for backup Command Communications through Big Turnaround Dispatch if necessary.							
9. Division/Group Communication Summary							
Function	Frequency	System	Channel	Function	Frequency	System	Channel
Command		King NIFC		Logistics		King NIFC	
Tactical Div/Group	WB-WE	King NIFC	Talk Group 1 Channel 5	Air to Ground		King NIFC	
Prepared by (Resource Unit Leader) Dennis Register / Karen Brent (T)		Approved by (Planning Section Chief) /s/Les Rogers			Date May 20, 2007		Time 1900

DIVISION ASSIGNMENT LIST			1. Branch		2. Division/Group WF - WG		
3. Incident Name Georgia Bay Complex			4. Operational Period		Date: 5/21/07		Time: 0800-2000
5. Operations Personnel							
Operations Chief	David Abernathy O-738 5-23			Division/ICT3			
	Rich Gray O-77 5-23						
	Bill Woodyard O-136 5-23						
Branch Director	Buck Kline			Safety Officer			
6. Resources Assigned this Period							
Strike Team/Task Force/ Resource Designator	Leader / Name		Last Shift Date	Number Persons	Trans. Needed	Drop Off PT./Time	Pick Up PT./Time
GFC ST #24 STPL T3 O-578	Randy Teal		6/4	1	N	Fargo 0800	Fargo 2000
GFC TP T3	E-2048	Griglen	6/4	1	N	Fargo 0800	Fargo 2000
GFC TP T3	E-2047	Stone	6/4	1	N	Fargo 0800	Fargo 2000
GFC TP T3	E-1047	Christopher	6/4	1	N	Fargo 0800	Fargo 2000
7. Control Operations							
8. Special Instructions							
9. Division/Group Communication Summary							
Function	Frequency	System	Channel	Function	Frequency	System	Channel
Command		King NIFC		Logistics		King NIFC	
Tactical Div/Group		King NIFC		Air to Ground		King NIFC	
Prepared by (Resource Unit Leader) Dennis Register / Karen Brent (T)		Approved by (Planning Section Chief) <i>/s/Les Rogers</i>			Date May 20, 2007		Time 1900

DIVISION ASSIGNMENT LIST				1. Branch		2. Division/Group	
3. Incident Name Georgia Bay Complex				4. Operational Period Date: 5/21/07		Time: 0800-2000	
5. Operations Personnel							
Operations Chief		David Abernathy O-738 5-23 Rich Gray O-77 5-23 Bill Woodyard O-136 5-23		Division/ICT3		Jim Davis O-604 5/23 912-218-9307 18*10062 STPS Gary Waters 205-365-6651	
Branch Director		Buck Kline		Safety Officer		Harry Kepler O-66 5/29	
6. Resources Assigned this Period							
Strike Team/Task Force/ Resource Designator	Leader / Name	Last Shift Date	Number Persons	Trans. Needed	Drop Off PT./Time	Pick Up PT./Time	
TFLR O-154	Blain Tarbell	5/25	2	N	Fargo 0800	Fargo 2000	
O-158	Waylon Poowegup (T)	5/25					
ST #9 STEN O-132	Van Komen	5/25	1	N	Fargo 0800	Fargo 2000	
CA-INF Eng.3 E-75	Napoles	5/26	5	N	Fargo 0800	Fargo 2000	
NM-LNF Eng.3 E-64	Reynolds	5/25	5	N	Fargo 0800	Fargo 2000	
GFC Eng. 3 E-2656	Flood / Laughlin	5/27	2	N	Fargo 0800	Fargo 2000	
GA DOT WT+1 Supervisor			2	N	Fargo 0800	Fargo 2000	
TF #6 O-150	Ron Barr	5/24	1	N	Fargo 0800	Fargo 2000	
Support Fire Eng. 6 E-12	Zuehlke	5/24	2	N	Fargo 0800	Fargo 2000	
DNR Eng. 6 E-541	Camack/Castleberry	5/22	2	N	Fargo 0800	Fargo 2000	
TXTNF Eng.5	Klawinsky		4	N	Fargo 0800	Fargo 2000	
WY-RSD T6 E-8007	Evans/Lancaster/Gregory	5/24	3	N	Fargo 0800	Fargo 2000	
NM-RON T6 E-8008	Curnett/Lucero/Reta	5/25	3	N	Fargo 0800	Fargo 2000	
WY-RAD T6 E-8114	Laird/Murry/cook	5/24	3	N	Fargo 0800	Fargo 2000	
ST #23 TFLR O-618	Bryan Spillers	5/22	1	N	Fargo 0800	Fargo 2000	
GFC Eng.5 E-1019	Sheffield/Redding	5/22	2	N	Fargo 0800	Fargo 2000	
GFC Eng.5 E-1016	Robinson/Moore	5/28	2	N	Fargo 0800	Fargo 2000	
GFC Eng.6 E-1021	Fowler/Garbutt	5/28	2	N	Fargo 0800	Fargo 2000	
PVT Smokey Mtn. Eng6 E-42	Willix/Little	6/4	2	N	Fargo 0800	Fargo 2000	
PVT Smokey Mtn. Eng6 E-43	Halford/Benton	6/4	2	N	Fargo 0800	Fargo 2000	
7. Control Operations This includes Stephen Foster State Park. Assure hose line is in place and working. Assist with controlling fire as it progresses along the peninsula.							
8. Special Instructions See communications plan for closest Command Repeater to Division. Division and STPS keep Branch Director informed of status in progress.							
9. Division/Group Communication Summary							
Function	Frequency	System	Channel	Function	Frequency	System	Channel
Command		King NIFC		Logistics		King NIFC	
Tactical Div/Group	WH-WJ	King NIFC	Talk Group 1 Channel10	Air to Ground		King NIFC	
Prepared by (Resource Unit Leader) Dennis Register / Karen Brent (T)		Approved by (Planning Section Chief) /s/Les Rogers		Date May 20, 2007		Time 1900	

DIVISION ASSIGNMENT LIST				1. Branch		2. Division/Group WK - WM		
3. Incident Name Georgia Bay Complex				4. Operational Period Date: 5/21/07		Time: 0800-2000		
5. Operations Personnel								
Operations Chief		David Abernathy O-738 5-23 Rich Gray O-77 5-23 Bill Woodyard O-136 5-23		Division/ICT3		Frank Pingiczer Jaymes Smith		
Branch Director		Buck Kline		Safety Officer		John Orton O-68 6/3		
6. Resources Assigned this Period								
Strike Team/Task Force/ Resource Designator		Leader / Name		Last Shift Date	Number Persons	Trans. Needed	Drop Off PT./Time	Pick Up PT./Time
ST #26 O-148		Andy Barnett		05/24	7	N	Fargo / 0800	Fargo / 2000
TxTxs T/P T2 E-1452		Ramsey / Williams		05/22 5/30		N	Fargo / 0800	Fargo / 2000
TxTxs T/P T2 E-1453		Mitchell / Bell		05/30		N	Fargo / 0800	Fargo / 2000
TxTxs T/P T2 E-1376		Elrod / Wiley		05/25		N	Fargo / 0800	Fargo / 2000
ST #22 STEN O-149		Mike Leach		5/24	1	N	Fargo 0800	Fargo 2000
AZ Eng.6 E-58		Walters/Reitz/Westerman		5/24	3	N	Fargo 0800	Fargo 2000
Rye Eng. 3 E-66		Thompson/Biggs/Bennett		5/24	3	N	Fargo 0800	Fargo 2000
CO USFS Eng.3 E-65		Brugett/Tighe/Popvich		5/24	3	N	Fargo 0800	Fargo 2000
CO COS Eng.6 E-67		Roetker/Lock/Groome		5/24	3	N	Fargo 0800	Fargo 2000
GA DOT WT					1	N	Fargo 0800	Fargo 2000
GA DOT WT					1	N	Fargo 0800	Fargo 2000
ST #5		Mike Schmidt				N	Fargo 0800	Fargo 2000
WY-CPS T6 E-8000		Finn/Oden/Ratcliff		5/26	3	N	Fargo 0800	Fargo 2000
AZ-Brush T6 E-94		Albright/Price/Blake		5/26	3	N	Fargo 0800	Fargo 2000
CO-COS T6 E-97		Woodrich/White/ Mann/McCrary		5/27	4	N	Fargo 0800	Fargo 2000
Platte Canyon T6 E-96		Elk Nation/Warbal/Davis			3	N	Fargo 0800	Fargo 2000
AZ-AZS T6 E-95		Myers/Penrod/McNeil		6/3	3	N	Fargo 0800	Fargo 2000
7. Control Operations Patrol and mop up along fire line.								
8. Special Instructions Keep Branch Director informed of status in progress.								
9. Division/Group Communication Summary								
Function	Frequency	System	Channel	Function	Frequency	System	Channel	
Command		King NIFC		Logistics		King NIFC		
Tactical Div/Group	WK-WM	King NIFC	Talk Group 1 Channel 11	Air to Ground		King NIFC		
Prepared by (Resource Unit Leader) Dennis Register / Karen Brent (T)		Approved by (Planning Section Chief) <i>/s/Les Rogers</i>			Date May 20, 2007		Time 1900	

DIVISION ASSIGNMENT LIST				1. Branch I		2. Division/Group Kneeknocker	
3. Incident Name Georgia Bay Complex Kneeknocker				4. Operational Period Date: 05/21/2007 Time: 0800-2000			
5. Operations Personnel							
Operations Branch Director		Steve Miller /Brantley McManus		Technical Specialist (RA)		Barry Chesser	
Group Supervisor		Steve Abbott		Safety Officer		Paul Boucher	
6. Resources Assigned This Period							
Strike Team/Task Force/ Resource Designator	Leader	Number Persons	Trans Needed	Drop Off PT/Time	Pick Up PT/Time		
STEN	Tom Crews (STEN)	(5/24) 1	No	Fireline 0900	Fireline1900		
Colorado Type 6 ENG San Isabel NF E-9	Alex Rudney (ENGB) Robert Dickamore Justin M. Campbell	(5/24) 3	No	Fireline 0900	Fireline1900		
Colorado Type 6 ENG Upper Pine River Brush 66 E-14	Paul Black (ENG) Paul Valdez	(5/25) 2	No	Fireline 0900	Fireline1900		
West Virginia Type 6 ENG E-7	Brandon Harden (ENGB) William Snodgrass Kyle Garris	(5/25) 3	No	Fireline 0900	Fireline1900		
Arizona Type 6 ENG Lakeside Brush 212 E-12	Corey Valichnac (ENGB) Jason Todora Jake Valichnac	(5/25) 3	No	Fireline 0900	Fireline1900		
Tractor Plow Task Force	John Godwin E-5020 Seminole-32	(5/22) 1	No	Fireline 0900	Fireline1900		
JD 650 DOZ4 Brooks 62/72 E-5031	Ronald Bryant	(5/23) 1	No	Fireline 0900	Fireline1900		
JD 650 DOZ4 Early 61/71 E-5023	Aarron Reichard	(5/23) 1	No	Fireline 0900	Fireline1900		
JD 650 DOZ4 Grady 60/70 E-5021	Mark Bryant	(5/23) 1	No	Fireline 0900	Fireline1900		
Breakout							
North Carolina Task Force	Micheal Huges(TFLD) ENG# 760 T6 E-5190	(5/27) 1	No	Kneeknocker Staging 0900	Kneeknocker Staging 2000		
JD 750 DOZ2 E-5194	Jason O'neal	(5/27) 1	No	Kneeknocker Staging 0900	Kneeknocker Staging 2000		
CAT D5H DOZ3 E-5195	Bobby Phelps	(5/27) 1	No	Kneeknocker Staging 0900	Kneeknocker Staging 2000		
CAT D5H DOZ3 E-5193	James Scott	(5/27) 1	No	Kneeknocker Staging 0900	Kneeknocker Staging 2000		
Engine Type 6 ENG# 740 E-5191	Ferrell Banks	(5/27) 1	No	Kneeknocker Staging 0900	Kneeknocker Staging 2000		
Engine Type 6 ENG# 761 E-5198	Christopher Smith	(5/27) 1	No	Kneeknocker Staging 0900	Kneeknocker Staging 2000		
Engine Type 6 ENG# 1356 E-5199	Chris Holyfield	(5/27) 1	No	Kneeknocker Staging 0900	Kneeknocker Staging 2000		
NC Service Truck w/Mechanic E-5192	Jeff McPherson	(5/27) 1	No	Kneeknocker Staging 0900	Kneeknocker Staging 2000		
MUC Task Force 1 & 2	Garry Atteberry 1*18*627	50	NO	Fireline 0900	Fireline 1900		
7. Operations Hold line, improve mop up, and monitor fire activity for Kneeknocker							
8. Special Instructions For Air Support use the following UTM Coordinates: Kneeknocker E 04014, N 34558 For structure protection call 911!							
9. Division/Group Communication Summary							
Function	Frequency	System	Channel	Function	Frequency	System	Channel
Command				Logistics			
Tactical Div/Group	168.200	Tactical	10	Air to Ground	169.200		14
Prepared By (Resource Unit Leader)		Approved By (Planning Sect. Ch.)		Date		Time	
Bill Widrig		/s/ Les Rogers		05/20/07		1730	

DIVISION ASSIGNMENT LIST			1. Branch II		2. Division/Group Roundabout A/D		
3. Incident Name Roundabout Fire			4. Operational Period Date: 05/21/2007 Time: 0800- 2000				
5. Operations Personnel							
Ops Branch Director	Steve Millier/Brantley McManus		Division/Group Supervisor	Brent McCarty 1*18*12585 (5/20)			
Technical Specialist (RA)	Paul Gillis		Safety Officer	Jerry Dombrowske			
6. Resources Assigned this Period							
Strike Team/Task Force/ Resource Designator	Leader	Number Persons	Trans. Needed	Drop Off PT./Time	Pick Up PT./Time		
Arkansas T-3 TP TF	Eric Smith (STPL) 1*18*9200	(6-5) 1	No	Fireline 0900	Fireline 2000		
JD 650 DOZ4 SO-22831	D. Pope/ R. Lane	(5-31) 2	No	Fireline 0900	Fireline 2000		
CAT D-5G DOZ3 SO-23568	J. Johnston/ T. Phillips	(5-31) 2	No	Fireline 0900	Fireline 2000		
Cat D-5 LGP DOZ3 SO-23562	J. Hoopengartner/ J. Williams	(5-31) 2	No	Fireline 0900	Fireline 2000		
Coffee Co. Water Tend.	Ralph Jowers	1	No	Fireline 0900	Fireline 2000		
Wildland Fire Engine T3 E-2055 Gun-runner	Heath Rowan (5/19) Reggie Simons (5/22)	2	No	Fireline 0900	Fireline 2000		
Atkinson Co. Road Dept. Motor-Grader	Jessie Stanfield Joey Anderson	2	No	Fireline 0900	Fireline 2000		
Williams TF	Tommy Williams (TFLD)	(5-30) 1	No	Fireline 0900	Fireline 2000		
Twiggs 86 T-6 ENG	Larry Rowland Bledsoe	(5-30) 2	No	Fireline 0900	Fireline 2000		
Peach 86 Type 6 Engine	Randell Frazier Kevin Meeks	(5/22) 2	No	Fireline 0900	Fireline 2000		
Donald Bennett	Water Handling Specialist	1	No	Fireline 0900	Fireline 2000		
7. Control Operations Hold containment lines, improve mop up into edge of bays, address hot spots, and monitor fire activity.							
8. Special Instructions Do not drive on canal roads due to under burning and falling trees. Be aware of snags and other hazards. For Air Support use the following UTM Coordinates 315206 East 3463551 North. For Structure Protection Support/Engines Call 911.							
9. Division/Group Communication Summary							
Function	Frequency	System	Channel	Function	Frequency	System	Channel
Command		King NIFC		Logistics		King NIFC	
Tactical Div/Group	168.775	King NIFC	USFS 9 Tactical 8	Air to Ground	169.200	King NIFC	14 (Air to ground)
Prepared by (Resource Unit Ldr.) Bill Widrig		Approved by (Planning Sect. Ch.) /s/ Les Rogers		Date 5/20/2007		Time 2000	

DIVISION ASSIGNMENT LIST			1. Branch II		2. Division/Group Roundabout B/C			
3. Incident Name Roundabout Fire			4. Operational Period Date: 5/21/2007 Time: 0800 - 2000					
5. Operations Personnel								
Ops Branch Director		Steve Millier /Brantley McManus		Division/Group Supervisor		Lucky Jones 1*18* 5198		
Technical Specialist (RA)		Paul Gillis		Safety Officer		Jerry Dombrowske		
6. Resources Assigned this Period								
Strike Team/Task Force/ Resource Designator		Leader		Number Persons	Trans. Needed	Drop Off PT./Time	Pick Up PT./Time	
Single Resource Engine								
Wyoming Type 6 ENG BLM E-8		Kevin Moreno Jim Gates Bob Evans		(5/25) 3	No	Fireline 0900	Fireline 2000	
Oklahoma Type 6 ENG BIA# 8661 E-5		Jerry Fletcher Ron Fields Clyde Crosnoe		(5/26) 3	No	Fireline 0900	Fireline 2000	
JD Track Hoe		Quinton Dillingham		1	No	Fireline 0900	Fireline 2000	
DOT 5000 gal. Water Tender		Chad Sowell		1	No	Fireline 0900	Fireline 2000	
7. Control Operations Hold containment lines, improve mop up into edge of bays, address hot spots, and monitor fire activity.								
8. Special Instructions Do not drive on canal roads due to under burning and falling trees. Be aware of snags and other hazards. For Air Support use the following UTM Coordinates 315206 East 3463551 North. For Structure Protection Support/Engines Call 911.								
9. Division/Group Communication Summary								
Function	Frequency	System	Channel	Function	Frequency	System	Channel	
Command		King NIFC		Logistics		King NIFC		
Tactical Div/Group	168.775	King NIFC	USFS 9 Tactical 8	Air to Ground	169.200	King NIFC	14 (air to ground)	
Prepared by (Resource Unit Ldr.) Bill Widrig			Approved by (Planning Sect. Ch.) /s/ Les Rogers			Date 5/20/2007		Time 2000

DIVISION ASSIGNMENT LIST			1. Branch II		2. Division/Group Roundabout Breakout		
3. Incident Name Roundabout Fire			4. Operational Period Date: 5/21/2007 Time: 0800– 2000				
5. Operations Personnel							
Ops Branch Director		Steve Miller/Brantley McManus		Division/Group Supervisor			
Technical Specialist (RA)				Safety Officer		Jerry Dombrowske	
6. Resources Assigned this Period							
Strike Team/Task Force/ Resource Designator	Leader		Number Persons	Trans. Needed	Drop Off PT./Time		Pick Up PT./Time
TP Task Force 1	Earl Roberson		1	No	Roundabout Staging / 0900		Roundabout Staging / 2000
CAT D-4H DOZ3 Berrien-72	Josh Rowan		1	No	Roundabout Staging / 0900		Roundabout Staging / 2000
JD 750C DOZ2 Ware -71	Hilton Bennett		1	No	Roundabout Staging / 0900		Roundabout Staging / 2000
JD 750C DOZ2 Echols-70	Greame Treloar		1	No	Roundabout Staging / 0900		Roundabout Staging / 2000
7. Control Operations Task Force 1 : Respond to and suppress breakouts and spot overs on the Roundabout fire. Stage at Roundabout Staging area and wait dispatch. Breakout Task Force 1 should be readily available for suppressing breakouts on the Roundabout Fire within 3 minutes after dispatch.							
8. Special Instructions For Air Support use the following UTM Coordinates 315206 East 3463551 North For Structure Protection Support/Engines for Roundabout fire Call 911 : Also notify David Moore EMA IC (Linc# 1*11*4801) or Diane May GEMA Coordinator (Linc# 1*11*4818)							
9. Division/Group Communication Summary							
Function	Frequency	System	Channel	Function	Frequency	System	Channel
Command		King NIFC		Logistics		King NIFC	
Tactical Div/Group		King NIFC		Air to Ground		King NIFC	
Prepared by (Resource Unit Ldr.) Bill Widrig		Approved by (Planning Sect. Ch.) /s/ Les Rogers			Date 5/20/2007		Time 2000

		1. Branch Sweat Farm Fire		2. Division/Group Law Enforcement / Arson Group			
3. Incident Name Georgia Bay Complex		4. Operational Period Date: 5-21-07 Time: 0700 - 2000					
5. Operations Personnel							
Operations Chief				Division/ICT3			
Branch Director				Safety Officer			
6. Resources Assigned this Period							
Strike Team/Task Force/ Resource Designator	Leader / Name	Last Shift Date	Number Persons	Trans. Needed	Drop Off PT./Time	Pick Up PT./Time	
V DOF	William Neff			N	0700	2000	
G.B.I	Tom Crawford			N	0700	2000	
GA. Fire Marshal	Brian Clavier			N	0700	2000	
V DOF	David Edwards			N	0700	2000	
V DOF	Ken Mohler			N	0700	2000	
V DOF	Cody Daniels			N	0700	2000	
LAS	Jim Baldwin			N	0700	2000	
LAS	Mark Singleton			N	0700	2000	
Wv DOF	Leo Lester			N	0700	2000	
WV DOF	Art Yagel			N	0700	2000	
TN DOF	Greg Whitehead			N	0700	2000	
TN DOF	Pete Merz			N	0700	2000	
MS DOF	Matt Steed			N	0700	2000	
PA DOF	Lee Jordan			N	0700	2000	
PA DOF	Robert McJillan			N	0700	2000	
7. Control Operations							
8. Special Instructions Remain in communications. Be alert for traffic on Highways Stay Hydrated. Notify Division of spot fires or reburns							
9. Division/Group Communication Summary							
Function	Frequency	System	Channel	Function	Frequency	System	Channel
Command		King NIFC		Logistics		King NIFC	
Tactical Div/Group		King NIFC		Air to Ground		King NIFC	
Prepared by (Resource Unit Leader) Dennis Register / Karen Brent (T)		Approved by (Planning Section Chief) <i>/s/Les Rogers</i>		Date May 20, 2007		Time 1900	

DIVISION ASSIGNMENT LIST			1. Branch Sweat Farm Fire		2. Division/Group Prevention Team Task Force		
3. Incident Name Georgia Bay Complex			4. Operational Period Date: 5-21-07 Time: 06:30 - 2200				
5. Operations Personnel							
Operations Chief		David Abernathy O-738 5-22		Division/ICT3			
		Rich Gray O-77 5-22					
Branch Director				Safety Officer			
6. Resources Assigned this Period							
Strike Team/Task Force/ Resource Designator	Leader / Name		Last Shift Date	Number Persons	Trans. Needed	Drop Off PT./Time	Pick Up PT./Time
Team Leader	John R. Warner O-177		05/29				
Team Member	Sandra Taylor O-178		05/30				
Team Member/PIO	Donna Wilson O-30.2		05/25				
Team Liaison Officer GA	Roger Lane O-580		05/30				
7. Control Operations							
8. Special Instructions							
<ol style="list-style-type: none"> 1. Visit State Park to interview Park Manager on needs for upcoming Memorial Day weekend flyer (Warner/Wilson/Taylor). 2. Conduct assessment on Reed Bingham State Park and follow-up with letter and overview (Team) 3. Made contact with Georgia Times-Union paper for inserting Firewise "Living with Fire". However will not know answer until Monday AM (Wilson) 4. Pick up finalize digital format of insert Sunday from NC IMT in Waycross for Monday, May 21st - reaching 80,000 (Warner) 5. Discuss with Roger Lane the final numbers of inserts needed, paper distribution range in SE GA, final cost (Warner) 6. Complete development of flyer and rack card to go out to Georgia State Parks and visitors for Memorial Day week (Taylor/Wilson/Warner) for submission AM Monday. (Wilson/Taylor) 7. Hahunta Health Fair with Fire information and insert distribution. Also Smokey will make an appearance. (Wilson/Taylor) 8. Noon meeting with Type I from Southwest IMT - IC/PIO/Liaison to review Prevention Team objectives/mission (Team) 							
9. Division/Group Communication Summary							
Function	Frequency	System	Channel	Function	Frequency	System	Channel
Command		King NIFC		Logistics		King NIFC	
Tactical Div/Group		King NIFC		Air to Ground		King NIFC	
Prepared by (Resource Unit Leader) Dennis Register / Karen Brent (T)		Approved by (Planning Section Chief) /s/Les Rogers			Date 5/20/07		Time 1900

WEATHER FORECAST

FORECAST NO: 32

NAME OF FIRE: Georgia Bay Complex

PREDICTION FOR: Day & Night Ops

UNIT: Georgia Forestry Commission

SHIFT DATE: Mon 05/21/07

SIGNED: John Pendergrast

TIME AND DATE 1800

Incident Meteorologist

FORECAST ISSUED: 05/20/07

WEATHER DISCUSSION: High pressure over the eastern US will keep critically dry weather in place through Tuesday.

The main concern is:

1. Red Flag Warning this afternoon due to critical relative humidity. Afternoon wind increase.

WEATHER FORECAST DAY SHIFT MONDAY: (See table for specific incident forecasts)

...RED FLAG WARNING THIS AFTERNOON FOR CRITICAL RELATIVE HUMIDITY VALUES...

WEATHER: Sunny and dry.

MAX TEMPERATURES: 86 to 89 (24 hour trend ~ same)

MIN HUMIDITY: 20-24%, except 17 to 20% near fire perimeters (24 hour trend ~ same)

20 FT WINDS: Southeast 2 to 5 mph, increasing to 6 to 10 mph around 11 am. Gusting to 14 mph in the afternoon.

STABILITY/INVERSION: Inversion up to 400 ft dissipating by 0930. Mixing heights around 6500 ft. Afternoon Dispersion index around 55. Haines Index 5.

	Sweat Farm Rd.	Bugaboo Scrub II	Roundabout	Knee-Knocker
Max Temperature:	85-87°	85-87°	86-89°	84-86°
Min Humidity:	19-23%	20-24%	18-22%	21-24%
Seabreeze Passage:	1700	1700	1830	1600

WEATHER FORECAST NIGHT SHIFT MONDAY NIGHT:

WEATHER: Clear and mild with patchy dense smoke/fog by daybreak.

MIN TEMPERATURES: 57 to 61.

MAX HUMIDITY: Recovery around 70 percent near the fire perimeter 95 to 100 percent elsewhere.

20 FT WINDS: Southeast 4 to 8 mph early in the evening, decreasing to 2 mph or less after 11 pm..

STABILITY/INVERSION: Inversion around 300 ft beginning to develop after 2100. Dispersion index around

OUTLOOK FOR TUESDAY:

Mostly Sunny and continued dry. High temperatures 85 to 88. Minimum RH values 23 to 27%. Southeast winds 5 to 10 mph, increasing to 9 to 13 mph with gusts to 18 mph around midday.

EXTENDED...WEDNESDAY THROUGH SATURDAY:

Wednesday: Partly cloudy and breezy. Lows in the lower 60s. Highs in the mid 80s. East winds increasing to 10 to 20 mph.

Thursday through Saturday: Partly cloudy with isolated showers or thunderstorms. Lows in the mid 60s. Highs in the mid 80s. East to Southeast winds 10 to 15 mph.

SAFETY MESSAGE

Incident:

Georgia Bay Complex

Date:

May 21, 2007

Time:

Day & Night Shift

Major Hazards and Risks:

- **Fire Behavior**
- **Communications**
- **Road Conditions**
- **Fatigue**
- **Visablity**
- **Driving**

NARRATIVE:

Be alert to an increase in fire behavior with the predicted weather. We are forecasted to experience lower humidity values which should result in more fire activity. The history of this incident demands that everyone be fully aware of the predicted fire behavior. Maintain LCES at all times!

We are working at times in very limited visibility. The combination of dust and smoke can at certain times limit visibility to near zero. Night operations are extremely hampered by these conditions. When we mix equipment with ground personnel, it requires extreme caution. We have received some high visibility lights which ground personnel can pick up at the supply unit. Use of these lights will greatly increase our visibility, but we need to continue to exercise extreme caution when these conditions persist.

Some of our access roads to the fireline are becoming impassable to two wheeled drive and heavy equipment vehicles. When working a new area, ensure that it has been scouted for travel, turn around spots, and possible staging areas.

This incident is likely to continue for some time. We have worked some extended shifts and numerous personnel have extended their assignments. Fatigue is an enemy of all firefighters. Take advantage of our accommodations and get quality rest between shifts.

Our communications plan is a complex one because of the amount of fire activity and our large area of coverage. Become familiar with your assigned frequencies and test their coverage before the actual need arises.

SAFETY OFFICERS: Ronnie Hamm, Harry Kepler, Steve Snider, Tim Sampson, John Orton, Andy Meadows, Larry Miller, Pete Stewart, Rodney Bell, Jerry Dombrowske, and Paul Boucher

Fire Behavior Forecast

<u>Forecast No. 32</u>	<u>Prediction for Day Shift</u>
<u>Name of Fire: Georgia Bay Complex</u>	<u>Shift Date: Monday May 21, 2007</u>
<u>Time and Date Forecast Issued</u> <u>1800 hrs 5/20/2007</u>	<u>Signed : <i>John Robertson</i></u> <u>Fire Behavior Analyst</u>

Weather Summary (See Detailed Weather Forecast in the IAP):

Sunny day with RED FLAG warning for low RH again today. South easterly winds to 5 mph in the morning then increasing to 10 mph after 1100 hours with gusts to 14 mph in the afternoon. The sea breeze will kick in between 1600 and 1830 depending on distance from the ocean. Max temperature near 89 degrees and RH as low 18 to 21%. Haines Index 5.

General Fire Behavior: Fine dead fuel will reach to 3 to 6% again this afternoon. Expect increased fire activity earlier in the day, perhaps as early as noon. Once again a potential exists for extreme fire behavior by mid to late afternoon in unburned fuels. Southern rough fuels could reach spread rates up to 120 ch/hr with 20 foot flame lengths. Expect surface spread of 10 to 15 ch/hr with 3 to 4 foot flames in swamp shrub fuels and 40 ch/hr during crowning runs. Spotting up to ¼ mile is likely. Peak burning will occur around 1500 and continue until 2000. Spotting up to ¼ mile is possible. Spotting out to 100 yards is possible from shrub or tree torching in re-burns. The probability of ignition is 50% in the shade and near 100% in the sun. The potential for large fire growth is enhanced with the unstable atmosphere.

Specific Fire Behavior:

Sweat Farm Road: The potential for more slopovers or runs out of the swamp fuels still exists. Escapes will spread rapidly down wind with torching and spotting in the southern rough and young pine plantations. Any spots will develop rapidly by afternoon. Sea breeze expected about 1700 increasing fire behavior as it arrives. Re-burn is still a concern in this fire. Expect a surface fire in needles and leaves with 5 ch/hr spread and 3 ft flame length with torching in scorched shrubs and trees with associated spotting.

Bugaboo Scrub: Spotting to the west from burnouts is still possible. Expect spread down wind to the northwest with torching and spotting in the southern rough fuels and young pine plantations. Sea breeze effect after 1700 will increase chance of spotting.

Kneeknocker: Re-burn is possible from any hold over fire especially after 1300. Torching in the scorched shrub layer could move into the crowns causing spotting down wind. Sea breeze expected to arrive about 1630. This may provide a trigger for a re-burn.

Roundabout: Burn out of organic soils will continue. By mid afternoon the potential exists for re-burn in needle cast and shrub fuels. Torching with spotting across lines is possible where flare-ups occur east of any fireline. Stronger southeast winds expected by 1830.

Initial Attack: Ignitions in unburned fuels will be fast to develop after a few hours of sun. Fire spread will include torching and spotting in southern rough with crowning in young pine. Spread will be toward the northwest.

Air Operations: Inversions will persist until 0900. Smoke will continue to limit visibility.

Safety: Look up to watch for wind changes and smoke columns, look around for fuel changes and spots and look down for smokes.

INCIDENT ACTION PLAN SAFETY ANALYSIS										1. Incident Name Georgia Bay Complex		2. Date 5/21/2007		3. Time Day & Night Shift									
LCES* Analysis of Tactical Applications Lookouts Communications Escape routes Safety zones										Other Risk Analysis													
Branch	Indirect Fireline	Burn out Operations	Power lines	Night operations	Frontal Assault	Anchor Points	Extreme Conditions	Reburn Potential	Unburned Area	Insects, snakes	LCES Mitigations						Other Risk Mitigations						
Sweat Farm	1, 3, 4, 5, 7, 10	1, 3, 4, 5, 6, 10, 13	15, 16	1, 7, 11, 14, 19, 22, 34	1, 3, 4, 5, 7, 22, 29	7	1, 6, 7, 8, 10, 24	1, 3, 5, 7, 9, 16	1, 3, 5, 7, 9, 16	1, 3, 5, 7, 9, 16	2	1. Establish & maintain LCES. Report LCES checks twice daily to DIVS on line & staging.						18. Take plenty rest breaks and encourage to drink water NOW through briefings. 19. Watch out for complacency and fatigue. Utilize Fire Departments for structure protection. Tailgate briefings on WUI hazards. 20. Defensive driving will be addressed in all briefings. 21. All personnel must meet the 2:1 work/rest ratio. Line supervisors and Safety will monitor closely.					
	2. Look UP, DOWN and AROUND - Use protective spray with deet on skin (Not on Nomex), permethrin can be used on nomex clothing. Do Not try to catch or kill snakes!										1, 3, 23, 27, 32, 33	12, 20, 26, 28, 31, 33	1, 23, 3, 10, 27	3, 5, 11, 19, 23, 25, 26, 27, 29, 30									
	3. Post experienced Lookouts. Make sure LCES is in place and make known.										1, 3, 23, 27, 32, 33	12, 20, 26, 28, 31, 33	1, 23, 3, 10, 27	3, 5, 11, 19, 23, 25, 26, 27, 29, 30									
	4. Use Air Attack as Lookout.										1, 3, 23, 27, 32, 33	12, 20, 26, 28, 31, 33	1, 23, 3, 10, 27	3, 5, 11, 19, 23, 25, 26, 27, 29, 30									
Div WA-WM/Fargo	1, 3, 4, 5, 7, 10	1, 3, 4, 5, 6, 7, 10, 13	15, 16	1, 7, 11, 14, 19, 22, 34	1, 3, 4, 5, 7, 22, 29	7	1, 6, 7, 8, 10, 24	1, 3, 5, 7, 9, 16	1, 3, 5, 7, 9, 16	1, 3, 5, 7, 9, 16	2	5. Flag escape routes on right side of escape route facing outward. Create new escape routes as you progress. Maintain LCES at all times.						22. Line Supervisors will provide clear, concise briefings. 23. Recognize, Communicate & Avoid Hazmat situations. 24. Refer to the Evacuation Plan for the ICP. 25. Review Wildland Urban "Watch Out" situations. Pg 11 IRPG					
	6. Post lookout for Snags, Runs, and Spot Fires.										1, 3, 23, 27, 32, 33	12, 20, 26, 28, 31, 33	1, 23, 3, 10, 27	3, 5, 11, 19, 23, 25, 26, 27, 29, 30									
	7. Use secure anchor points that will not be compromised for observed fire behavior.										1, 3, 23, 27, 32, 33	12, 20, 26, 28, 31, 33	1, 23, 3, 10, 27	3, 5, 11, 19, 23, 25, 26, 27, 29, 30									
	8. FBA/Meteorologist develop weather watch system.										1, 3, 23, 27, 32, 33	12, 20, 26, 28, 31, 33	1, 23, 3, 10, 27	3, 5, 11, 19, 23, 25, 26, 27, 29, 30									
IA Groups(ICP, Manor, Swi	1, 3, 4, 5, 7, 10	1, 3, 4, 5, 6, 7, 10, 13	15, 16	1, 7, 11, 14, 19, 22, 34	1, 3, 4, 5, 7, 22, 29	7	1, 6, 7, 8, 10, 24	1, 3, 5, 7, 9, 16	1, 3, 5, 7, 9, 16	1, 3, 5, 7, 9, 16	2	9. All Firefighters must review current weather, predicted weather & fire behavior forecast.						26. Ensure Traffic Planning is safe and enforced. Heed Defensive Driving techniques noted in Safety Messages. 27. Avoid trash dumps in line construction & avoid smoke from dumps 28. Relocate staging area when driving conditions warrant. 29. Air Attack and/or lead plane will always be in the air to coordinate aircraft.					
	10. Keep Firefighters informed of any changes in predicted weather, consider at least a two day weather pattern when planning burnout operations.										1, 3, 23, 27, 32, 33	12, 20, 26, 28, 31, 33	1, 23, 3, 10, 27	3, 5, 11, 19, 23, 25, 26, 27, 29, 30									
	11. Refer to IRPG, pg. 12 on Power Line Hazards.										1, 3, 23, 27, 32, 33	12, 20, 26, 28, 31, 33	1, 23, 3, 10, 27	3, 5, 11, 19, 23, 25, 26, 27, 29, 30									
	12. Observe all traffic signals and speed limits.										1, 3, 23, 27, 32, 33	12, 20, 26, 28, 31, 33	1, 23, 3, 10, 27	3, 5, 11, 19, 23, 25, 26, 27, 29, 30									
Knee Knecker/Roundabout	1, 3, 4, 5, 7, 10	1, 3, 4, 5, 6, 7, 10, 13	15, 16	1, 7, 11, 14, 19, 22, 34	1, 3, 4, 5, 7, 22, 29	7	1, 6, 7, 8, 10, 24	1, 3, 5, 7, 9, 16	1, 3, 5, 7, 9, 16	1, 3, 5, 7, 9, 16	2	13. Ensure any burnout operations have been clearly communicated to ALL, prior to burning.						30. Personnel on ground will stay out of drop zones. 31. Use spotter when backing vehicle(s). 32. Use bandanna to filter smoke in heavy smoke areas. 33. ALL vehicles and equipment must have lights on when running. Plastic colverts under some roads have burned and are collapsing under heavy loads, DIVS will coordinate which roads transport and tractors will use. GSP (912) 287-6500 : EMA (912) 287-4499. 34. Use blinking lights or glow sticks on back of helmet or backpack to be seen by equipment operators.					
	14. Night Dispatch will be assign for each night operational period.										1, 3, 23, 27, 32, 33	12, 20, 26, 28, 31, 33	1, 23, 3, 10, 27	3, 5, 11, 19, 23, 25, 26, 27, 29, 30									
	15. Scout ahead of tractor operations to avoid making contact with power poles and guide wires when tying into roads. Power companies are working in some DIVS, avoid all down lines as they may become charged.										1, 3, 23, 27, 32, 33	12, 20, 26, 28, 31, 33	1, 23, 3, 10, 27	3, 5, 11, 19, 23, 25, 26, 27, 29, 30									
	16. Review IRPG pg. 75 when thunderstorms are predicted or observed.										1, 3, 23, 27, 32, 33	12, 20, 26, 28, 31, 33	1, 23, 3, 10, 27	3, 5, 11, 19, 23, 25, 26, 27, 29, 30									

Prepared by (Name and Position)

ICS 215A Brian Beisel SOF1 (T)

Georgia Bay Complex – Sweat Farm (Group 1)

INCIDENT RADIO COMMUNICATIONS PLAN		1. Incident Name Georgia Bay Complex		2. Date/Time Prepared 5- 20 -2007	3. Operational Period Date/Time 5- 21-2007
4. BASIC RADIO CHANNEL UTILIZATION					
Radio Type/Cache	Channel	Function	Frequency/Tone	Assignment	Remarks
King NIFC	1	Command Ware EMA Repeater	158.7825/162.2 153.7625/162.2 Narrow Band	Command Rpt	Sweat Farm
King NIFC	2	Okee North Repeater	164.575 /206.5 163.150 / 206.5 Narrow Band	Command Rpt	Big Turnaround ICP
King NIFC	3	GA Mutual Aid	154.280 154.280	Structural & Tactical	
King NIFC	4	911 & Structural Coordinator Rptr.	154.445/ 118.8 154.010/118.8	Emergency Traffic	This is a heavy traffic channel, use only for Emergency Traffic
King NIFC	5	Tactical	159.285 Rx & Tx	Fargo Group 2	Southern COMPACT
King NIFC	6	Tactical	168.050 Rx & Tx Narrow Band	Divs. E Divs. Y,Z,WB, WC	Fireline
King NIFC	7	Tactical	168.600 Rx & Tx Narrow Band	Divs. G Divs. Swing/IA	Fireline
King NIFC	8	Tactical	164.1375 Rx & Tx Narrow Band	Fargo Group 3 Divs. WA, EE,EF,EG,EH	Fireline
King NIFC	9	Tactical	168.775 Rx & Tx Narrow Band	Divs. H Divs. EA,EB,EC,ED	Fireline
King NIFC	10	Tactical	169.900 Rx & Tx Narrow Band	Divs. I, J, K Divs. E,AA,BB,CC,DD	Fireline
King NIFC	11	Tactical	168.200 Rx & Tx Narrow Band	Divs.A,B,C,D ICP Group, Fargo Group 1 DivWD,WE,WF,WG,WH	Fireline
King NIFC	12	Air to Ground	167.950 167.950/110.9 Narrow Band	Federal Air to Ground	
King NIFC	13	Air To Ground	159.390 Rx & Tx	Georgia Air to Ground	
King NIFC	14	Air Guard	168.625 168.625/110.9 Narrow Band	Air Emergency Only	Air Emergency Only
5. Prepared By (Communications Unit) Carl Bridges/ COML					

Georgia Bay Complex - Bugaboo (Group 2)

INCIDENT RADIO COMMUNICATIONS PLAN		1. Incident Name Georgia Bay Complex		2. Date/Time Prepared 5- 20 -2007	3. Operational Period Date/Time 5- 21-2007
4. BASIC RADIO CHANNEL UTILIZATION					
Radio Type/Cache	Channel	Function	Frequency/Tone	Assignment	Remarks
King NIFC	1	GFC Fargo Repeater	159.120/107.2 151.370/123.0	Command Rpt	Bugaboo Brush
King NIFC	2	Okee North Repeater	164.575 /206.5 163.150 / 206.5 Narrow Band	Command Rpt	Big Turnaround ICP
King NIFC	3	GA Mutual Aid	154.280 154.280	Structural & Tactical	
King NIFC	4	911 & Structural Coordinator Rptr.	154.445/ 118.8 154.010/118.8	Emergency Traffic	This is a heavy traffic channel, use only for Emergency Traffic
King NIFC	5	Tactical	159.285 Rx & Tx	Fargo Group 2	Southern COMPACT
King NIFC	6	Tactical	168.050 Rx & Tx Narrow Band	Divs. E Divs. Y,Z,WB, WC	Fireline
King NIFC	7	Tactical	168.600 Rx & Tx Narrow Band	Divs. G Divs. Swing/IA	Fireline
King NIFC	8	Tactical	164.1375 Rx & Tx Narrow Band	Fargo Group 3 Divs. WA, EE,EF,EG,EH	Fireline
King NIFC	9	Tactical	168.775 Rx & Tx Narrow Band	Divs.H Divs. EA,EB,EC,ED	Fireline
King NIFC	10	Tactical	169.900 Rx & Tx Narrow Band	Divs. I, J, K Divs. E,AA,BB,CC,DD	Fireline
King NIFC	11	Tactical	168.200 Rx & Tx Narrow Band	Divs.A,B,C,D ICP Group, Fargo Group 1 DivWD,WE,WF,WG,WH	Fireline
King NIFC	12	Air to Ground	167.950 167.950/110.9 Narrow Band	Federal Air to Ground	
King NIFC	13	Air To Ground	159.390 Rx & Tx	Georgia Air to Ground	
King NIFC	14	Air Guard	168.625 168.625/110.9 Narrow Band	Air Emergency Only	Air Emergency Only
5. Prepared By (Communications Unit) Carl Bridges/ COML					

Georgia Bay Complex – Kneeknocker/Roundabout (Group 3)

INCIDENT RADIO COMMUNICATIONS PLAN		1. Incident Name Georgia Bay Complex		2. Date/Time Prepared 5- 20 -2007	3. Operational Period Date/Time 5- 21-2007
4. BASIC RADIO CHANNEL UTILIZATION					
Radio Type/Cache	Channel	Function	Frequency/Tone	Assignment	Remarks
King NIFC	1	Mobile to Mobile	159.390 RX & Tx	Breakout	Kneeknocker & Roundabout
King NIFC	2	Mobile to Base	159.390 Rx 159.225 Tx	Breakout	Kneeknocker & Roundabout
King NIFC	3	GA Mutual Aid	154.280 154.280	Race Track Fire	Structural & Tactical
King NIFC	4	Tactical	159.285 Rx & Tx	As needed	Southeastern Compact
King NIFC	5	Tactical	164.1375 Rx & Tx		
King NIFC	6	Tactical	168.775 Rx & Tx	Roundabout A & B	
King NIFC	7	Tactical	169.900 Rx & Tx	Roundabout C & D	
King NIFC	8	Tactical	168.200 Rx & Tx	Kneeknocker	
King NIFC	9	Tactical	159.270 Rx & Tx	Ft. Mudge Fire	Red Channel
King NIFC	10	Tactical	159.420 Rx & Tx	Forest Drive Fire	White Channel
King NIFC	11	Tactical	159.330 Rx & Tx		Blue Channel
King NIFC	12	Air to Ground	169.200 Rx & Tx	Kneeknocker	Air to Ground Dedicated to this complex
King NIFC	13	Air Guard	168.625 168.625/110.9 Narrow Band	Air Emergency Only	Air Emergency Only
King NIFC	14	Knee Repeater	159.465 Rx 151.145 Tx	Command Repeater	Kneeknocker only

5. Prepared By (Communications Unit)
Carl Bridges/ COML

ICS-206 MEDICAL PLAN	1. Incident Name Georgia Bay Complex	2. Date Prepared 5/20/07	3. Time Prepared 18:00	4. Operational Period 5/21/07 DAY & NIGHT SHIFT							
5. Incident Medical Aid Station											
Medical Aid Stations		Location		Paramedics							
				Yes	No						
Medical Unit Big Turnaround	912-496-4359	100 yards west of ICP in the double wide trailer		X							
Medical Unit Georgia Bay	912-218-9101	Georgia Forestry Headquarters ICP		X							
Lenny Throckmorton & Danny Ray		Assigned to DIVS – WA - WE		X							
John (Steve) Spangler 540-320-4838		Assigned By DIVS – Big Turnaround – East Divisions			EMT						
6. Transportation											
A. Ambulance Services											
Name		Address		Phone							
				Paramedics							
				Yes	No						
Ware County EMS		Waycross Georgia (911 to activate)		912-281-9467 Linc 1*96*116							
Charlton Memorial EMS		1203 N Third St Folkston Ga (911 to activate)		888-255-4961 Linc 1*25*3468							
Clinch County EMS		Fargo (911 to activate)									
Air Ambulance Service											
Trauma 1		Jacksonville, FL (26 min/air)		1-800-223-4878							
AirMed		Augusta, GA (2 hrs/air)		1-888-792-9245							
Lifeflight (155.340)		Jacksonville, FL (35 min/air)		1-877-870-7779							
B. Incident Ambulances											
Name		Location		Paramedics							
				Yes	No						
Ware County EMS		Fargo (Fargo Unit – 41 First Street – Fargo, GA 31631)		X							
Charlton EMS		Folkston		X							
7. Hospitals											
Name		Address		Travel Time		Phone		Helipad		Burn Center	
				Air		Grnd		Yes		No	
				min		min.		Yes		No	
Charlton Memorial		1203 N 3 rd St Folkston N 30°50.8 W 82°00.1		10 min		20 min.		912-496-2531		X	
Satilla Regional		410 Darling Ave Waycross Ga N 31°13.56 W 82°21.058		15 min		30 min		912-283-3030		X	
Shands Hospital (level I)		Jacksonville, FL N 30°20 97 W 82° 13 992		45 min		1.5 hrs		800-223-4878		X	
Memorial Hospital		Savannah, GA 4700 Waters 3200.7 8107.6		40 min				912-350-8999		X	
Shands Burn Center		Gainesville, FL 38.33 N 082 20.73W		45 min				352-265-0300		X	
Doctor's Hospital Joseph Still Burn Center		August, GA (Chief Burn Ctr 3328.943 8205.422		90 min		3 ½ hrs		877-863-9595 706-863-9595		X	
8. Medical Emergency Procedures											
<p>Identify any EMT's and Paramedics in your crews. All medical emergencies will be reported to the Division Supervisor who will assume command.</p> <ol style="list-style-type: none"> 1) Provide medical care & stabilize patient. 2) Call 911 3) Notify Communications via radio or cell phone (936)545-6198. 4) Communications will clear radio traffic for medical emergency. 5) Notify Dispatch, provide ONE on site contact person, notify dispatch if that changes <ul style="list-style-type: none"> o Provide location (road intersection, GPS coordinates). o Number of patients o Type of injury or illness – Is it life threatening? Provide vital signs if available. o EMT's on scene and/or needed o Type of transportation needed 6) Com will notify ambulance and coordinate with IC, SOF, MEDL 						<p>*CREW EMT'S (ALL LEVELS) WILL FUNCTION AT THE BASIC LEVEL UNLESS SPECIFICALLY ASSIGNED TO THE INCIDENT AS AN EMT SINGLE RESOURCE.</p>					
<p>Helibase – ICP Waycross: 31 07.23 X 82 15.23 Helispots – Fargo Base Camp: 30 47 30.02 X 82 22 39.5 (4 mi mrker Hwy 177 – Stephen C. Foster St. Prk) H-114 and 30 41.739 X 82 33.961 (Hwy 441 - golf course) H-113</p>											
9. Prepared by (Medical Unit Leader) Robert Carswell (T) (912) 218-9101 Linc 1*18*7480											
10. Reviewed by (Safety Officer) Ronnie Hamm SOF2 (979)268-3782											

AIR OPERATIONS SUMMARY		PREPARED BY: P.J.Pearson			PREPARED DATE/TIME 5/20/07 1600	
1. INCIDENT NAME: Sweat Farm Road Fire		2. OPERATIONAL PERIOD: Day Shift 5/21//07		START TIME: 0700	END TIME: 2000	SUNRISE: 0625 SUNSET: 2023
3. REMARKS (Safety Notes, Hazards, Air Operations Special Equipment, etc.): High Towers in Area Look Up, Look Down, Look Around Waycross Helibase—31 14.95 X 82 23.73 Pogo Helibase-30 18.25 X 82 07.69 ICP Helibase 31 07.23 X 82 15.23 All dispatches will come through the ICP in Waycross for state aviation resources LOOK UP, LOOK DOWN, LOOK ALL AROUND				4. MEDEVAC A/C: N17HX—Pogo Helibase		5. TFR: In Place Radius: Rectangle to 3000 MSL_ Altitude: _3000= MSL NW corner Lat 31 09 02 Long 82 32 04 SE corner Lat 30 53 17 Long 82 02 48:
6. PERSONNEL		Phone	7. FREQUENCIES	AM	FM	8. FIXED-WING # Avail / Type/ Make-Model / FAA N# / Base(s)
APBD: Bob Seifert 828-231-4560 AOBD: Ron Hollifield-Lake City			AIR/AIR FW:	122.575 122.825 122.925	167.950	Airtankers 00-Type I 20-Type I 22-Type I 09-Type II 10-Type II
ATGS: L.Mars—Waycross O. Martin(T) Waycross			AIR/AIR RW:	122.575		Leadplanes Lead B-2 ASM Lead 1-4 Base FAX #:
State Aviation Lead Waycross Airport Mike Leverette			AIR/GROUND:	122.925	151.145	ATGS Aircraft 90K—Beach Baron—L. Mars w/ O.Martin (T) 01Q—Cessna 401—K. Walsh 82-Z—King Air—C.Cross Lake City
ASGS:			COMMAND:			Other Flight follow with Pogo Helibase or Waycross Helibase IA Air Attack for State--- Cessna 182's and CH-47 or UH 60's Bell 407-Chopper 7 IA for the Okefenokee is 38Y (Okee 6) Approved Helispots—Refer to Okefenokee NWR Despite Map
HEBM:			COMMAND RPT	Rx:	Tx:	
ATB MGR:			DECK FREQ:			
HEBM: Dave Langley 505-240-3649			TOLC FREQ:			
Pogo Helibase 912-496-4415 Waycross Dispatch 912-338-5982			FLIGHT FOLLOW		RX 164.625 TX 163.150 TONE 103.5	

State Detection Fixed Wing	Aerial Detection and IA for New Fire Starts	0930	Waycross Airport	Fire and Return
----------------------------	---	------	------------------	-----------------

Sweat Farm Road Phone Roster 5-21-07

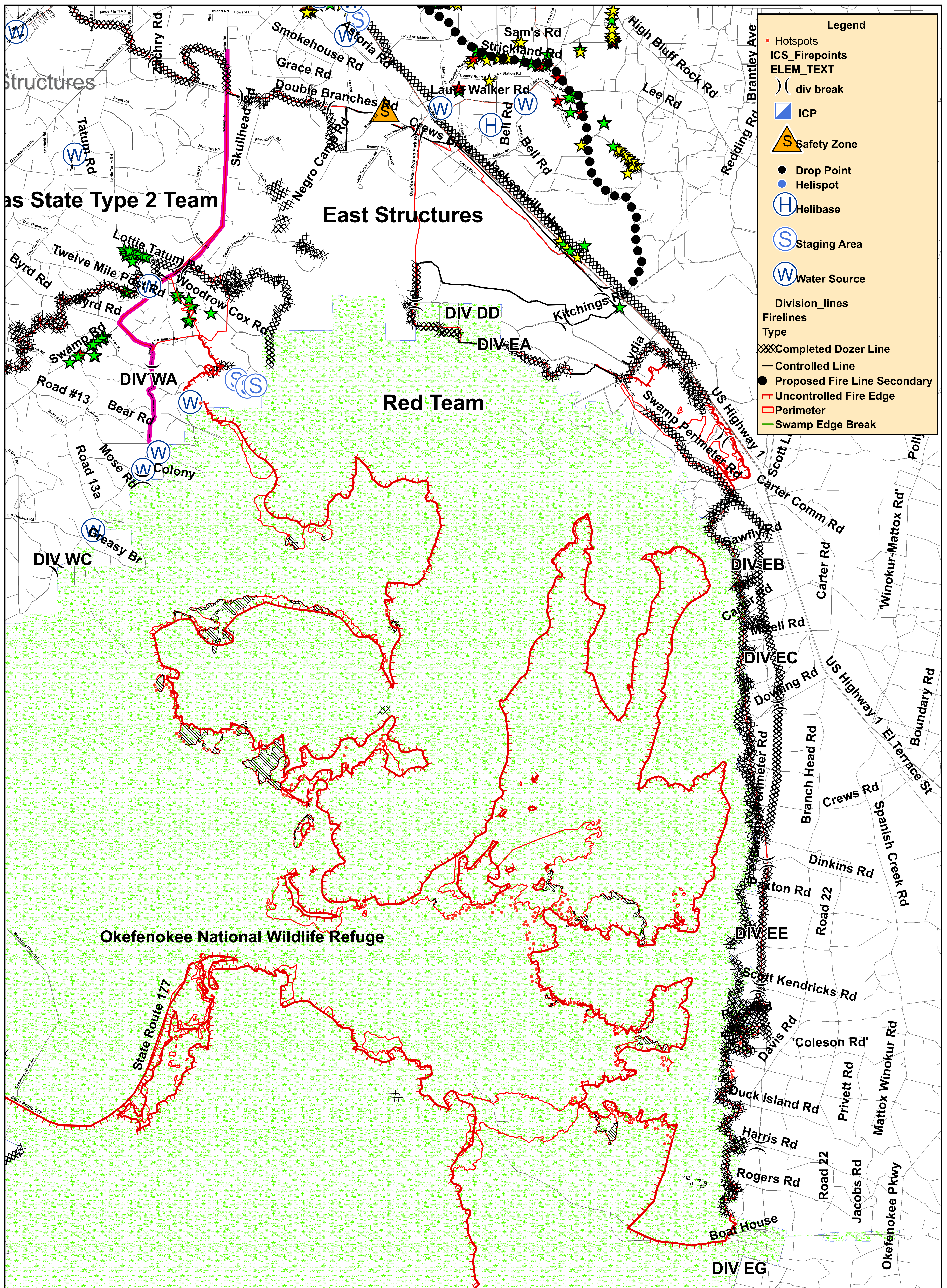
NAME	POSITION	PHONE NUMBERS	LINC ID
COMMAND & GENERAL STAFF		912-285-6046	Fax 912-285-6014
Paul Hannemann	IC	912-218-5108	18*11878
Billy Leitch	LOFR	912-218-9325	18*12022
Shawn Alexander	LOFR	912-218-9232	18*7378
Skippy Reeves	LOFR	912-218-9359	18*12756
Warren Bielenberg	PIO	912-218-9319	18*11959
Bernie Pineda	PIO	478-550-2989	
Laura Polant	PIO	912-218-8182	1*18*9688
Jan Amen	PIO	936-546-1004	
Michelle Weston	PIO	907-317-7247	
James Stone	PIO	912-218-8267	
John Warner	PRTL	936-546-3164	
Donna Wilson	PRTM	540-797-6241	
Sandra Taylor	PRTM	936-546-3554	
Ronnie Hamm	SOF 2	979-268-3782	
Rodney Bell	SOF	912-218-7132	18*11932
Andy Meadows	SOF	252-229-0161	
Harry Kepler	SOF	912-218-8325	18*7145
John Orton	SOF	912-218-4958	18*4899
Larry Miller	SOF	912-218-9355	18*12622
Pete Stewart	SOF	912-218-8965	18*7610
Tim Sampson	SOF	912-218-9215	18*11832
Steve Snider	SOF	912-218-9308	18*10090
OPERATIONS		912-285-6039	
David Abernathy	OSC	912-218-5414	18*11904
Rich Gray	OSC	979-218-9909	18*11907
Bill Woodyard	OSC	912-218-9323	18*11981
	OPBD	912-218-8343	18*4212
George Glenn	TFLD	706-551-2324	
	TFLD (t)	979-220-1406	
Doug Mattox	DIVS	912-218-9324	18*11985
Mike Appling	DIVS	912-218-9343	18*12314
Heath Morton	DIVS	912-218-7135	18*11946
Jay Collett	DIVS	912-218-9320	18*11960
Jim Davis	DIVS	912-218-9307	18*10062
Pete Villa	DIVS	912-218-8226	18*4523
David LaChapelle	DIVS	912-218-7103	18*6748
Ron Swan	DIVS	912-218-9141	18*11862
	DIVS	912-218-9352	18*12520
Lucus Santio	DIVS	435-790-7094	
Richard Gonzalas	DIVS		
F.Pingiczer	DIVS		
Jerome Harvey	STPS		18*1608
	STPS	912-218-9306	18*7065
William Neff	LE/Arson	912-287-4499	18*13485
Ron Baar	STEN		
Mark Stinson	STEN	512-940-7700	
Mike Purcell	STEN	706-237-0718	
BIG TURNAROUND OPS SEC		912-496-4173	
CSX RAIL ROAD OPERATIONS- Dixon		912-270-0699	
AIR OPERATIONS		912-285-6039	
Bob Seigler	AOPD	828-231-4560	
	HCMG	912-218-9313	18*19887
	Air ASGS		
David Langley	Helibase Mgr.	912-218-8937	18*6167
FINANCE		912-285-6038	
Jill Lipsey	FSC	912-285-6038 Landline	979-218-3106 ©
Verma Coleman	FSC (t)	912-285-6038	
Paul Palmitte	IBA	478-681-6111	
Barbara Hatch	Buying Team	912-285-6112 Hard Line 505-660-0399 Cell	
Miguel Martinez	Comp/Claims	912-285-6038	
Carolyne Riggs	COST	912-285-6038	
Stephanie Elledge	TIME	912-285-6038	
Penny Brown	Procurement	912-285-6038	
Mary Jane Derendoff	EQTR	912-285-6038	
Bob Drown	EQTR	912-285-6038	
Eunice Vankuren	PTRC	912-285-6038	

Karen Stripling	PTRC	912-285-6038	
-----------------	------	--------------	--

Sweat Farm Road Phone Roster 5-21-07

NAME	POSITION	PHONE NUMBERS	LINC ID
PLANNING			
		912-285-6046	
Les Rogers	PSC	912-218-7586	18*6871
Chris Brenzel	SITL	760-822-2257	
Dan Ochocki	SITL	970-903-1957	
Rusty Brown	CTSP	479-973-6231 (P)	
	FBAN		
Doug Williams	FOBS	912-218-9316	18*11828
Gary White	FOBS	912-218-9358	18*12670
Buster Robinson	GISS	936-546-8783	
John Pendergrast	IMET	912-218-9309	18*10247
Rich Dottellis	DOCL	936-546-3138	
Carl Lunggrin	DMOB	912-218-9361	18*12771
Jason Keiningham	SCKN(t)	979-218-3108	
David Hicks	IRIN	541-554-0143	
	THSP		
Lewis Kerney	TNSP	423-650-3006	
LOGISTICS			
		912-285-6091	Fax 912-285-6111
Susan Cornett	LSC	936-546-1952	
Ted Grisey	LSC @ FARGO	912-218-9356	
Carl Bridges	COML	936-545-6198	
Robert Carswell	MEDL	912-218-9101	18*7480
Roger Atkinson	SECM	479-970-3038	
Tony Bolton	SEC1	601-405-9027	
Wayne Garman (Camp for the Blind)	BCMG	478-550-3000	18*11862
	BCMG(t)	936-546-1523	
Stephen Kelley	BCMG (FARGO)	912-218-9360	18*12765
Chuck Barber	Camp Crew Manager	912-218-9342	18*12299
Georgia State Patrol	Dispatcher	912-287-6500	
Michelle Sanchez	EQPM	912-281-8279	
Keith Skinner	EQPM	936-546-8133	
	FAC	912-281-8266	
Terry Seward	FDUL	912-218-9321	18*11964
William Lee	Fuel Truck	912-218-9017	18*6682
Mike Summers	GSUL	936-546-1957	
John Wall	Hotel Manger	912-218-9354	18*12616
Sussie Burford	IADP	936-546-3071	
Terry Lemmon	ORDM	936-546-1953	
Daniel Wilson	RCDM	936-546-1729	
Todd Nightengale	STAM (FARGO)	936-546-3163	
	SUPL	936-546-1732	
Steve Moore	FARGO	912-218-9344	18*12374
Bobby Weaver	THSP	936-546-8010	
John Rush	THSP	936-546-1883	
Larry Brown	GDC	912-218-9366	11*32283
Don Shugart	GDC	912-218-9371	11*32063
Sylvester Hall	GDC	912-218-9367	11*32054
Tommy Maddox	GDC	912-218-9374	11*32069
MISC.			
COMMAND DISPATCH		912-218-9044	18*6870
PUBLIC INFORMATION		912-218-9319	18*11959
WAYCROSS DISTRICT OFFICE		912-218-7695	18*11671
MACON DISPATCH		912-218-9232	18*7378
MOP UP COMMAND			18*4918
FARGO BASE		912-218-8907	18*7532

KNEEKNOCKER AND ROUNDABOUT Phone Roster 5-21-2007			
NAME	POSITION	PHONE NUMBERS	LINC ID
OPERATIONS Kneeknocker			
Barry Chesser (Kneeknocker)	Technical Specialist	912-218-6552	Linc 1*18*4166
Steve Abbott	DIVS	770-550-1868	Linc 1*18*1628
Earl Roberson	Technical Specialist	912-218-8344	Linc 1*18*4279
John Godwin	DIVS		Linc 1*18*3213
Tom Crews	STEN	404-535-2226	Linc 1*18*11725
Michael Hughes	TFLD	912-218-9510	Linc 1*18*11266
OPERATIONS Roundabout 912-422-3140			
Paul Gillis	Technical Specialist		Linc 1*18*20684
Steve Miller	OPBD		Linc 1*18*11625
Jamie Smith	DIVS		Linc 1*18*4755
Mickey Tucker	TFLD		Linc 1*46*20684
Danny Kelly	STPL		Linc 1*18*14115
Donald Bennett	Water Handling		Linc 1*18*12983
Brent McCarty	DIVS		Linc 1*18*12585
Lucky Jones	DIVS		Linc 1*18*5198
OTHER AGENCIES			
Brantley County Fire Coordinator	Ken Lee	912-218-2012	1*44*1081
		912-717-3330	
Nahunta FD Fire Chief	Button Lee	904-699-1619	1*25*323
		912-282-8730	
EMA / 911 Director	Billy Lartz	912-217-1638	1*11*2001
Brantley County Sheirff	Robert Thomas	912-614-1658	1*25*1130
DNR, ENGB	T. Trowbridge	© 912-223-2815	
DNR ENOP	Sam Williams	229-212-0124	
Atkinson EMA IC	David Moore		
Atkinson GEMA Coordinator	Diane May		
North End Resource Advisor	Dean Easton	912-496-7366	ext 235
South End Resource Advisor	Doug Nuss	912-286-3110	
Joint Information Center	Waycross	1-866-380-9966	



Legend

- Hotspots
- ICS_Firepoints
- ELEM_TEXT
- div break
- ICP
- Safety Zone
- Drop Point
- Helispot
- Helibase
- Staging Area
- Water Source

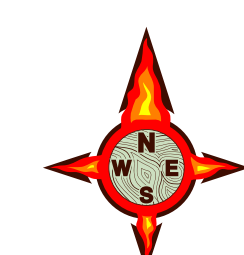
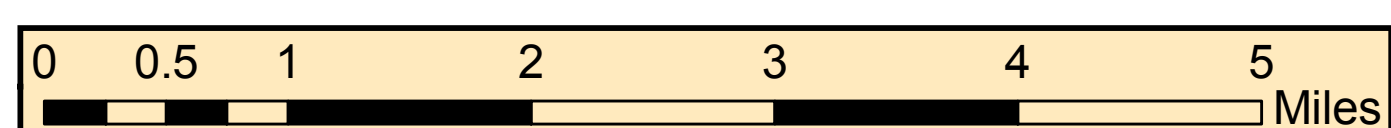
Division_lines

Firelines

Type

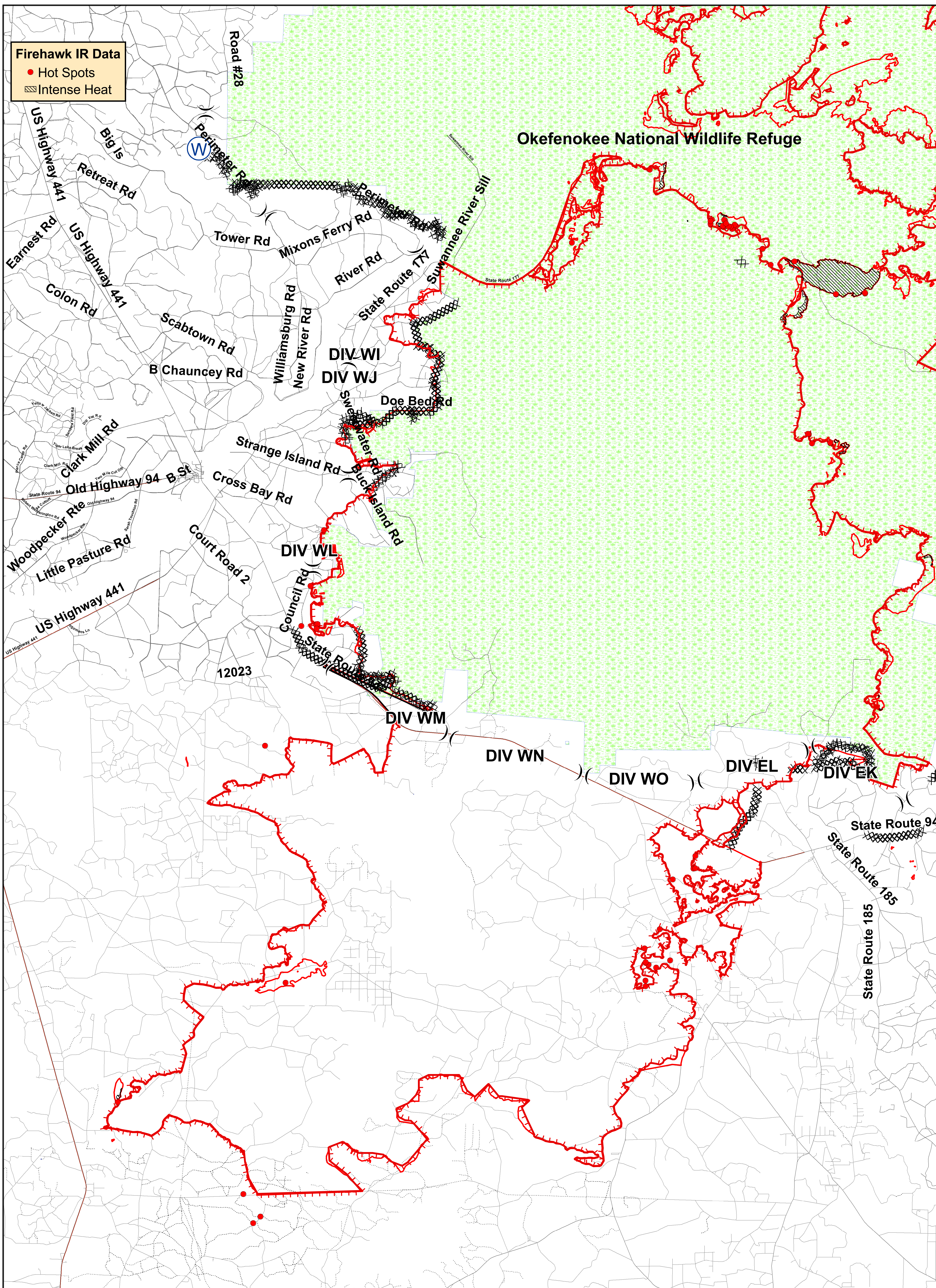
- Completed Dozer Line
- Controlled Line
- Proposed Fire Line Secondary
- Uncontrolled Fire Edge
- Perimeter
- Swamp Edge Break

Georgia Bay Complex
Big Turnaround Fire
Tiled IAP Map
05-21-2007



Map By: Jim Pugh
May 21, 2007
Perimeter as of
May 20, 2007 0630

East Section



Firehawk IR Data

- Hot Spots
- Intense Heat

Okefenokee National Wildlife Refuge

DIV WI
DIV WJ

DIV WL

DIV WM

DIV WN

DIV WO

DIV EL

DIV EK

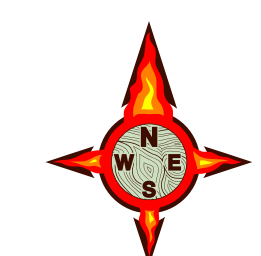
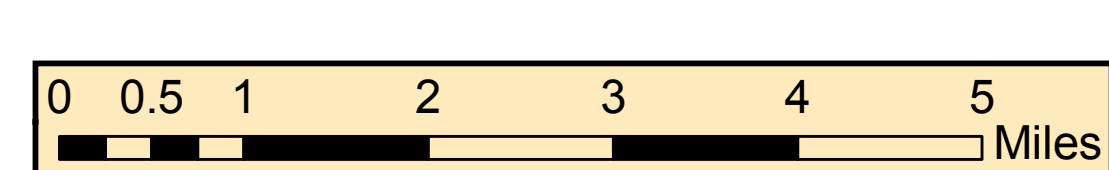
US Highway 144
Earnest Rd
Colon Rd
Woodpecker Rte
Little Pasture Rd
US Highway 441

Retreat Rd
US Highway 441
Scabtown Rd
B Chauncey Rd
Old Highway 94 B St
Court Road 2
12023
Tower Rd
Mixons Ferry Rd
River Rd
State Route 177
Swarner Rd
Strange Island Rd
Council Rd
State Route 177

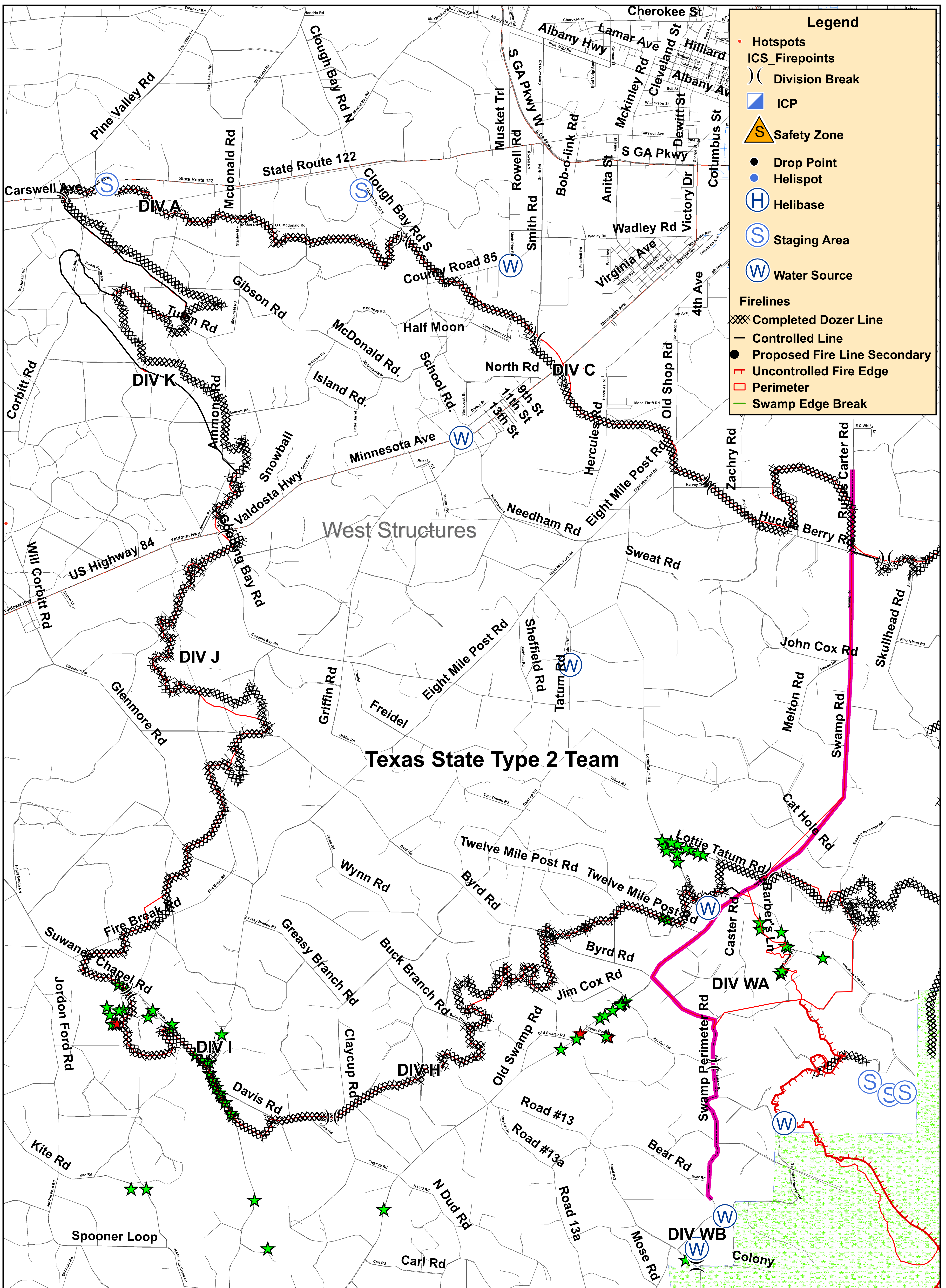
State Route 94
State Route 185
State Route 185

**Georgia Bay Complex
Bugaboo Scrub Fire / Bugaboo 2
Tiled IAP Map
05-21-2007**

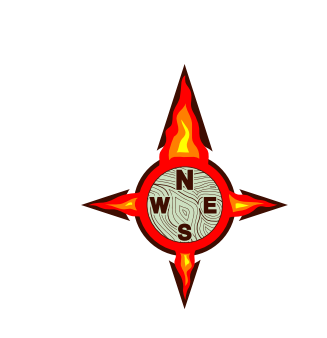
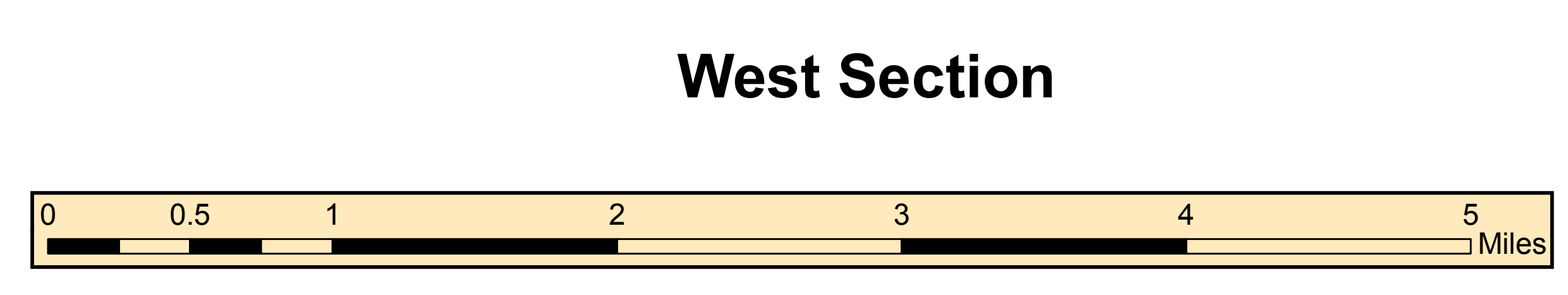
South Section



**Map By: Jim Pugh
May 21, 2007
Perimeter as of
May 20 2007 0630**

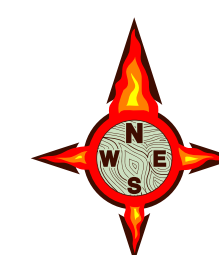
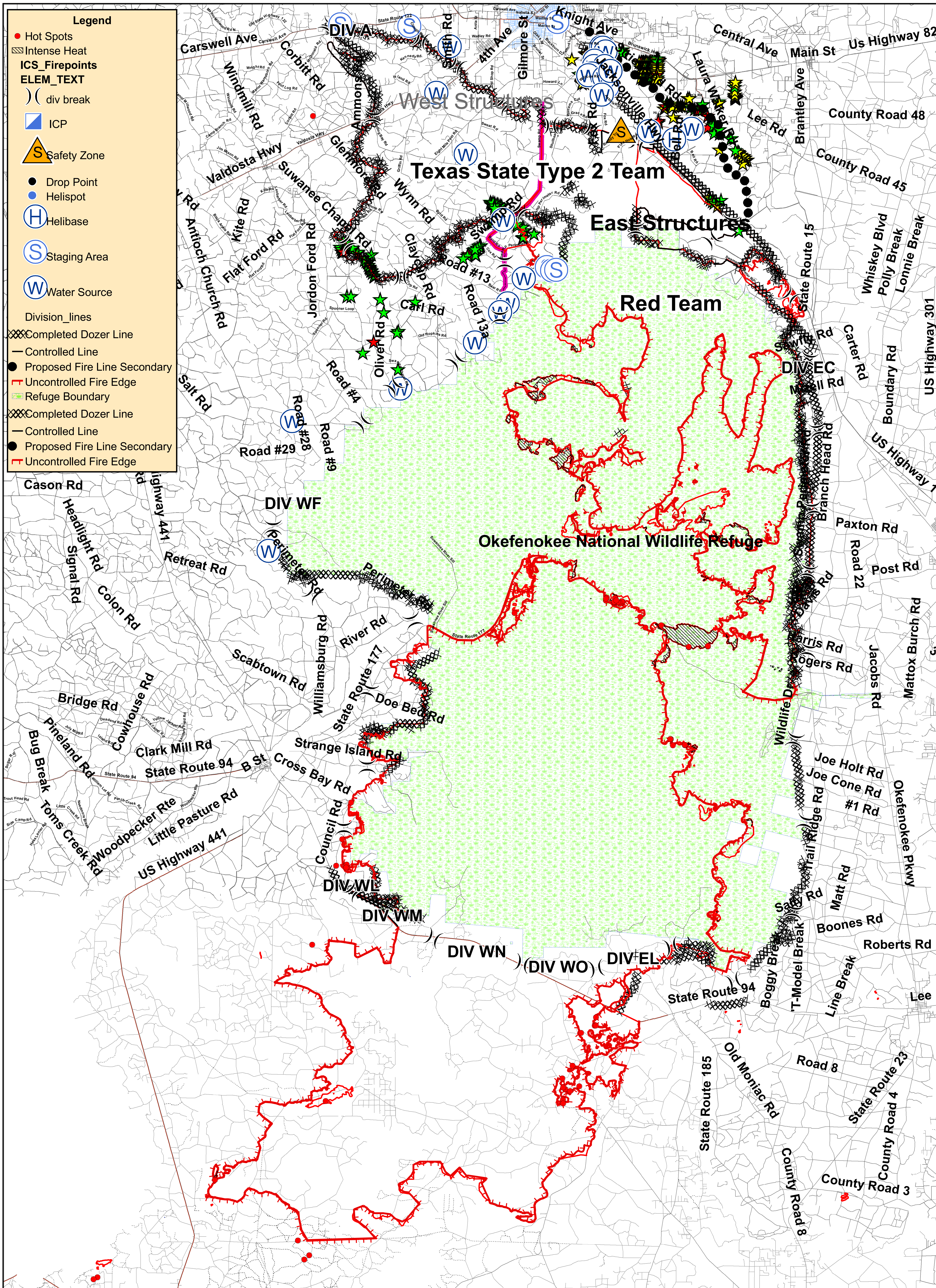


Georgia Bay Complex
Bugaboo Scrub
Tiled IAP Map
05-21-2007



Map By: Jim Pugh
May 21, 2007
Perimeter as of
May 20, 2007 0630

West Section



IMPORTANT FINANCE INFORMATION

ALL CREW TIME REPORTS AND EMERGENCY EQUIPMENT SHIFT TICKETS SHOULD BE TURNED IN TO FINANCE AT THE END OF EACH SHIFT ON A DAILY BASIS. SUPERVISORS SIGNING THESE TIME REPORTS SHOULD ENSURE THE FOLLOWING:

- **PLEASE WRITE THE FIRE NAME YOU ARE WORKING ON YOUR CTR'S AND/OR SHIFT TICKETS – THIS IS VERY IMPORTANT FOR FEMA REIMBURSEMENT.**
- **THE “O” NUMBER SHOULD BE LISTED ON THE CREW TIME REPORT**
- **COMPLETE 1 (one) CREW TIME REPORT FOR EACH PERSON WITH AN “O” NUMBER**
- **“E” NUMBERS SHOULD BE LISTED ON THE EMERGENCY EQUIPMENT SHIFT TICKET(S)**
- **CORRECT DATES ARE IMPERATIVE!**
- **SUPERVISORS – PLEASE REVIEW THE CTR'S/SHIFT TICKET'S YOU ARE ASKED TO SIGN**

