



Georgia Bay Complex

Sweat Farm Rd. Fire

Bugaboo Scrub II Fire

Incident Action Plan
Thursday
May 24, 2007



GEMA

INCIDENT OBJECTIVES	1. Incident Name Georgia Bay Complex	2. Date Prepared 5/23/07	3. Time Prepared 1830
4. Operational Period 05/24/2007 Day and Swing Shift			
5. General Control Objectives For The Incident (Include Alternatives) <ol style="list-style-type: none"> 1. Provide for the safety of the public and assigned incident resources through effective hazard / risk assessment and mitigation. 2. Provide timely and accurate information updates to the GFC, cooperators, affected communities, and other stakeholders. 3. Provide accurate cost accountability and documentation of expenditures for the duration of the incident. 4. Develop and maintain coordination with local fire departments, local EOC directors, GEMA, other IMT's deployed in the area, GOAL, and private industry. 5. Provide support on initial and extended attack fires as requested by the 2 Southeast Georgia GFC districts. 6. Ensure a safe and effective transfer of command. 7. Keep the Bugaboo fire east of State Hwy 177, east of State Hwy 94 from Fargo to the Florida state line. 8. Keep the Sweat Farm Fire south of the town of Waycross and Highway 122, west of Highway 1, north and west of swamp road, and east of the town of Manor. 9. Keep the Kneeknocker and Roundabout fires within the current established fire lines / perimeters. 			
6. Weather Forecast For Period			
<u>WEATHER FORECAST DAY SHIFT THURSDAY:</u> (See table for specific incident forecasts)			
WEATHER: Partly cloudy and becoming breezy. A 20 percent chance of showers.			
MAX TEMPERATURES: 82 to 85 (24 hour trend ~ same)			
MIN HUMIDITY: 38 to 42 (24 hour trend ~ 2 % higher)			
20 FT WINDS: East 5 to 10 mph early, increasing to 10 to 15 mph with gusts to 20 mph around 1100. Becoming East 15 to 20 mph in the afternoon.			
STABILITY/INVERSION: Mixing heights 5500 ft. Afternoon Dispersion index around 60. Haines Index 3-4 (moderate).			
7. General Safety Message Breezy, gusty winds can push fire even though higher humidity values are predicted. The history of this incident demands that everyone be fully aware of the predicted fire behavior. Maintain LCES at all times!			
8. ATTACHEMENTS (X IF ATTACHED)			
<input checked="" type="checkbox"/> Organization List - ICS 203	<input checked="" type="checkbox"/> Medical Plan - ICS 206	<input checked="" type="checkbox"/> Tailgate Briefing Form	
<input checked="" type="checkbox"/> Division Assignment Lists - ICS 204	<input checked="" type="checkbox"/> Incident Map - separate	(safety, weather, fire behavior)	
<input checked="" type="checkbox"/> Communications Plan - ICS 205	<input type="checkbox"/> Traffic Plan	<input type="checkbox"/> _____	
9. Prepared By (Planning Section Chief) /S/ John Howard/Don Watson	10. Approved By (Incident Commander) /S/ Reid Hildreth/Dan Brandon		

ORGANIZATION ASSIGNMENT LIST		9.	Operations Section	
1. Incident Name		Chief	Lee Burwell	
Georgia Bay Complex		Planning Ops	John Nicols / Jeff Burns (T)	
2. Date	3. Time	a.	Sweet Farm Road Branch	
May 23, 2007	2000	Branch Director	Buck Kline	
4. Operational Period		Division/ICT3	A,B,C,D	D. Lachapelle
May 24, 2007 0700-2000		Division/ICT3	H	Paul Brna/A.Crouch(T)/Arnold(T)
5.	Incident Commander and Staff		Division/ICT3	I,J,K
Incident Commander	Reid Hildreth	Group	ICP Group	Mike Appling
Deputy	Dan Brandon	Group	Manor	Greg Arkle
Liason	J.Hambright/G. Thompson	Group	Structure Grp #1 – Day Shift	Dennis Keen
Safety Officer	Mike Huffman / Mark Luellen	Group	Structure Grp #2 Swing Shift	Pete Villa
Information Officer	Bielenberg/Pineda/Stone/Polant/Weston/MacDonald/Steltz	Division	WA	Lucus Santio
6.	Agency Representatives		Division	WB-WE
Agency	Name	Division	WF-WH	Richard Gonzalas
GFC District 8	Frank Sorrells	Group	Fargo Night Shift	Phillip Wall
GFC District 10	Willard Fell			Doug Mattox/Jonathan Wilson
GFC Protection Dept.	Alan Dozier			
Charlton Co. Liason	Billy Lietch			
GEMA	Allen Robinson	b.	Bugaboo Scub II Branch	
7.	Planning Section		Branch Director	Amery Wells
Chief	John Howard			
Deputy	Don Watson (T)	Division	WI-WJ	R. Adkins
Resources Unit	B. Pickens / D. Register / M. Cheek	Division	WK-WM	J. Smith
Situation Unit	D. Ochocki / C. Brenzel / G. Smith (T)	Special Groups		
Documentation Unit	Annie Lott	Group	LE/Arson	Mike Heath
Demobilization Unit	Mary Lou Dozier	Group	Prevention	John Warner
CTSP	Garvin/ Vallieries / Chadwell	c.	Kneeknocker/Roundabout Branch	
Fire Behavior Analyst	Gary Curcio	Branch Director	Kneeknocker/Roundabout	McManus
Incident Meteorologist	John Pendergrast	Group	Kneeknocker	S. Abbott
Status/Check In	C. O'Bryan / R. Dottellis(T) / C. Liv (T)	Division	Roundabout Div. A & D	B. McCarty
Field Observer	White / Hurdle / Howell (T)	Division	Roundabout Div. B & C	J. Jones
GIS	Leatherwood / Gareau / Pugh (T) / Sumner (T)			
Infrared Interpreter	Lance / Barnum			
Training Specialist	Lewis Kearney			
8.	Logistics Section		d.	Air Operations Branch
Chief	Troy Cleland / Travis Ruff	Air Operations Branch Director	Bob Seigler	
Facilities Unit	Clyde Leggins	Helibase Manager	W. Langston / D. Langley	
Supply Unit	Keith Walters	Air Support Supervisor	Ray Dew	
Food Unit	Chris Hubacker	GFC Air Operations	Mike Leverette	
Base Camp Manager	C. Knapp / R. Garman / S. Kelly	Air Tanker Coordinator		
Ground Support Unit	G. Cox / M. Summers	10.	Finance Section	
Ordering Manager	Travis Shidal / Benjamin Hauck	Chief	Marlene Sherrod / J. Johnson (T)	
Security Manager	Roger Atkinson	Incident Business Advisor	Paul Palmitto	
Medical Unit	W. Williams / R. Carswell (T)	Time Unit Leader	Mavis Gragg	
Communications Unit	Larry Sharpe	Buying Team	Barbara Hatch	
Initial Attack Dispatcher		Personnel Time Recorder	K. Stripling / E. Vankuren	
Hotel Manager		Equipment Time Recorder	B.Drown / M.Derendoff A.Treadwell (T)	
Equipment Manager	Danny Hayes	Procurement	Sheila Head / R. Chellberg (T)	
Mechanic		Cost Unit	Chris Overman / Ron Myers	
Technical Specialist	Bobby Weaver / John Rush	Comp/Claims	M. Martinez / C. Oliveras	
Receiving & Distribution Manager	Jamie Logan	Prepared by (Resource Unit Leader) Bill Pickens / Michael Cheek / Dennis Register		
Camp Crew	TN JC #3/Barber			

☐ WEATHER FORECAST

FORECAST NO: 35

NAME OF FIRE: Georgia Bay Complex

PREDICTION FOR: Day & Night Ops

UNIT: Georgia Forestry Commission

SHIFT DATE: Tue 05/24/07

SIGNED: *John Pendergrast*

TIME AND DATE 1800

Incident Meteorologist

FORECAST ISSUED: 05/23/07

WEATHER DISCUSSION: High pressure over the Carolinas will remain in place through Friday. East to Northeast winds...with higher afternoon gusts can be expected today. isolated showers are also possible.

The **main concern is:**

1. Breezy and gusty east winds in the afternoon

WEATHER FORECAST DAY SHIFT THURSDAY: (See table for specific incident forecasts)

WEATHER: Partly cloudy and becoming breezy. A 20 percent chance of showers.

MAX TEMPERATURES: 82 to 85 (24 hour trend ~ same)

MIN HUMIDITY: 38 to 42 (24 hour trend ~ 2 % higher)

20 FT WINDS: East 5 to 10 mph early, increasing to 10 to 15 mph with gusts to 20 mph around 1100.

Becoming East 15 to 20 mph in the afternoon.

STABILITY/INVERSION: Mixing heights 5500 ft. Afternoon Dispersion index around 60. Haines Index 3-4 (moderate).

	Sweat Farm Rd.	Bugaboo Scrub II	Roundabout	Knee-Knocker
<i>Max Temperature:</i>	82-85°	83-86°	84-87°	82-85°
<i>Min Humidity:</i>	34 to 42%	34-38%	32-36%	40-45%
<i>Seabreeze Passage:</i>	N/A	N/A	N/A	N/A

WEATHER FORECAST NIGHT SHIFT THURSDAY NIGHT: Breezy winds will slowly diminish after dusk.

WEATHER: Partly cloudy. Breezy in the early evening. A 20 percent chance of showers.

MIN TEMPERATURES: 60 to 63.

MAX HUMIDITY: Recovery around 70 percent near the fire perimeter 90 to 95 percent elsewhere.

20 FT WINDS: East 10 mph in the evening becoming 4 to 8 mph late.

STABILITY/INVERSION: No Inversion expected.

OUTLOOK FOR FRIDAY:

Partly cloudy and dry. Becoming breezy in the afternoon. High temperatures 82 to 85. Minimum RH values 35 to 40%. Northeast winds 4 to 8 mph during the morning becoming East 8 to 14 mph with peak gusts to 20 mph in the afternoon.

EXTENDED: SATURDAY THROUGH TUESDAY:

Saturday: Partly cloudy. Lows in the low 60s. Highs in the mid 80s. East to Southeast winds 5 mph increasing to 10 mph with higher gusts in an afternoon sea breeze.

Sunday through Monday: Partly cloudy with a 20 percent chance of showers. Lows in the mid 60s. highs in the upper 80s. Southeast winds 5 to 10 mph becoming gusty to 15 mph with a late sea breeze each afternoon.

Tuesday: Partly cloudy with a 20 percent chance of showers or thunderstorms. Southeast winds 5 to 10 mph with gusts to 15 mph in the afternoon.

TAILGATE BRIEFING SHEET 2 OF 2

SAFETY MESSAGE

Incident:

Georgia Bay Complex

Date:

May 24, 2007

Time:

Day & Night Shift

Major Hazards and Risks:

◦ Weather

◦ Fire Behavior

◦ Snags

◦ Air Operations

◦ Reburn Potential

◦ Driving

Breezy, gusty winds can push fire even though higher humidity values are predicted. The history of this incident demands that everyone be fully aware of the predicted fire behavior. Maintain LCES at all times!

Driving continues to be priority on and off the incident. Be alert to varied speed limits in and around town and ensure that all incident personnel are in compliance with all traffic laws!

When the opportunity arises to utilize aircraft, please remember to adhere to the basic air operations safety guidelines. Ensure that communications are maintained (**know your air to ground frequency**) and that proper distance is given to working aircraft. Stay clear of all dip sites.

Predicted winds can produce snag problems, be alert when working around them. Post lookouts if needed.

Needle cast is still producing reburn potential. Keep this in consideration when evaluating escape routes and safety zones.

SAFETY OFFICERS: Michael Huffman, Mark Luellen, Ronnie Hamm, Harry Kepler, Steve Snider, Tim Sampson, John Orton, Andy Meadows, Larry Miller, Pete Stewart, Rodney Bell, Jerry Dombrowske, Paul Boucher, and Keith Jenkins

INCIDENT ACTION PLAN SAFETY ANALYSIS

1. Incident Name
Georgia Bay Complex

2. Date
5-24-07

3. Time
0800-2000

LCES Analysis of Tactical Applications
Lookouts Communications Escape routes Safety zones

Other Risk Analysis

Branch/Divisions	Indirect Fireline	Burnout Operation	Anchor Points	Extreme Conditions	Unburned Area	Snags	Reburn Potential	Road Conditions			LCES Mitigations	Traffic	Fatigue/Hydration	Communications	Multi Aircraft	Heavy Equipment	Helicopter Dip Sites	Organic Soils					Other Risk Mitigations
Sweat Farm	x	x	x	x	x	x		x	x		Lookouts posted, crews act as lookouts also, Known and identified escape routes Adequate safety zones identified Burn lights, drive alert to traffic in the dusty conditions	x	x	x	x	x	x						Tailgate briefings, Morning Briefing Refer to weather and safety message in IAP, post lookouts, stay away from dip sites, If you have questions-ASK! Drink adequate fluids, take frequent breaks
Bugaboo Scrub II	x	x	x	x	x	x		x	x		Lookouts posted, crews act as lookouts also, Known and identified escape routes Adequate safety zones identified Burn lights, drive alert to traffic in the dusty conditions	x	x	x	x	x	x						Tailgate briefings, Morning Briefing, Refer to weather and safety message in IAP, post lookouts, stay away from dip sites, If you have questions-ASK! Drink adequate fluids, take frequent breaks
Roundabout	x			x	x	x		x	x		Lookouts posted, crews act as lookouts also, Known and identified escape routes Adequate safety zones identified Burn lights, drive alert to traffic in the dusty conditions	x	x	x	x	x	x	x					Tailgate briefings, Morning Briefing, Refer to weather and safety message in IAP, post lookouts, stay away from dip sites, If you have questions-ASK! Drink adequate fluids, take frequent breaks Stay out of burn and avoid footing in white ash
Knee-knocker	x			x	x	x		x	x		Lookouts posted, crews act as lookouts also, Known and identified escape routes Adequate safety zones identified Burn lights, drive alert to traffic in the dusty conditions	x	x	x	x	x	x						Tailgate briefings, Morning Briefing, Refer to weather and safety message in IAP, post lookouts, stay away from dip sites, If you have questions-ASK! Drink adequate fluids, take frequent breaks

Prepared by (Name and Position)

Michael Huffman- Safety Officer

Fire Behavior Forecast

<u>Forecast No. 33</u>	<u>Prediction for Day Shift</u>
<u>Name of Fire: Ga Bay Complex /Sweat Farm Road</u>	<u>Shift Date: Thursday May 24, 2007</u>
<u>Time and Date Forecast Issued</u> <u>1800 hrs 5/23/2007</u>	<u>Signed : Gary Curcio</u> <u>Fire Behavior Analyst</u>

Weather Summary (See Detailed Weather Forecast in the IAP):

The RH recovery last night was 97 % of normal but with the dryness of fuels, it wasn't good enough to impede fire growth. Moderate surface winds & an adverse fire behavior wind profile facilitated breakovers. The forecasted weather today is expected to duplicate what was experienced yesterday. The issue now is we have additional fireline perimeter to contend with and an abundant source of fresh ignition material. Be alert and anticipate the "**gradual and very significant**" increase in windspeeds and gustiness through the course of the day (**AM – 5 to 10, late morning 10 to 15 & late afternoon 15 to 20mph**). These "**easterly**" 20-foot winds will again be coupled with a **minimum RH** will range from **32-43%**.

General Fire Behavior:

Yesterday afternoon, fuel moistures for the dead fuels and live shrubs in combination with the fire weather facilitated long distance spotting (**> ½ mile**), high rates of spreads **60 to 105 chains** per hour and a towering (**>10,000ft.**), boiling smoke column. With today's forecasted weather, active fires are again a serious potential for new & rapid growth. Spotting, torching and crowning will generate extreme rates of spread. Surface fires can quickly get up into the crowns of the pine plantations where the southern shrubs are > 5 ft.

Today's "**no**" inversion is expected. Expect fire activity to start at 1000 hrs. Extreme fire behavior is likely in all fuels (Pine Plantations/Southern Rough and Swamp shrubs). The time period for extreme burning is 1500 to 1830 Hrs. Following sunset, fire spread will still be fairly rapid. It will not be until after midnight that windspeeds become light.

Specific Fire Behavior:

Sweat Farm: Divisions WB, & WC and Bugaboo Scrub: Divisions WG, WH & WI – experienced breakovers yesterday and are subject to a repeat performance as **POI is 60%**. With east winds increasing in speeds through the course of the day and the increased presence of skies that are more sunny, the potential for slop-overs, or break-overs increases. The Gum-Maple-Bay is not serving as a barrier just delaying runs out of the swamp. New spot fires can be easily start and spread rapidly in adjacent southern rough and young pine plantations. **The same fire behavior can be experienced today.**

Roundabout: Any sleepers will continue to be a threat. The shrub fuels where they have been scorched can very easily move to the crowns and generate new spot fires.

Kneeknocker: Had organic soil burning and continues to be a concern. Strong winds will foster re-burn potential but this is well inside the perimeter. Any needle cast or browned shrub fuels are prime candidates for re-burn throughout the afternoon.

Initial Attack: With the moderately strong east winds developing through the day, fire starts can develop fast in all fuels. These winds can fan many reburns in the needles cast stands and / dead shrub areas.

Air Operations: With the light inversion smoke will not limit aircraft. Smoke production is expected to be plentiful but winds will keep visibility clear. The western perimeters of the fires will be impacted by smoke production. Winds speeds & gusts need to be monitored.

Safety: Take the time to repeatedly assess your fire perimeter's weather & the fire's behavior. We need to be alert when all fires' transition from just active too extremely active. At all times know where your escape routes are, and know, that you can reach them.

DIVISION ASSIGNMENT LIST				1. Branch Sweat Farm		2. Division/Group A-B-C-D	
3. Incident Name Georgia Bay Complex				4. Operational Period Date: 5-24-07 Time: 0800 - 2000			
5. Operations Personnel							
Operations Chief		Lee Burwell John Nicols Jeff Burns		Division/ICT3		David Lachapelle O-226 5/31 912-218-7103 18*6748	
Branch Director		Buck Kline 18*1615		Safety Officer		Larry Miller O-38 5/28	
6. Resources Assigned this Period							
Strike Team/Task Force/ Resource Designator		Leader / Name		Last Shift Date	Number Persons	Trans. Needed	Pick Up PT./Time
ST#1 TNS ST Eng T6 O-1026		Scott Smith		5/31	11	N	2000
TN Eng E-2733		Long/Cantrell		5/31		N	2000
TN Eng E-2731		Harmond/Steele		5/31		N	2000
TN Eng E-2730		Wooden/Brown		5/31		N	2000
TN Eng E-2732		Hobbs/Kirby		5/31		N	2000
Columbia Martinez WT E-1227		Thomas/Hutcherson		5/31		N	2000
ST#2 GFC ST TP T3 E-2602.1		Randy Mosley		5/29	4	N	2000
GFC JD 650 E-2603		Taylor		5/29		N	2000
GFC JD 650 E-2604		Harden		5/29		N	2000
GFC JD 650 E-2605		Calhoun		5/29		N	2000
7. Control Operations Patrol, mop up and mitigate as well respond to any threats posed by the fire.							
8. Special Instructions Watch out for Snags Remain in communications. Be alert for traffic on Highways Stay Hydrated. Ensure all personnel wear PPE. Take spot WX forecasts hourly. Keep tractors loaded and ready to move if not being used on the line Have constant communication with logging operation in fire area: Buck Rodenberry: 912-2764990 Linc 18*5865 LCES implemented by 1000 and notify OPS when completed.							
9. Division/Group Communication Summary							
Function	Frequency	System	Channel	Function	Frequency	System	Channel
Command		King NIFC		Logistics		King NIFC	
Tactical Div/Group	168.200	King NIFC	Talk Group 1 Ch. 11	Air to Ground	159.390	King NIFC	Ch. 13
Prepared by (Resource Unit Leader) Pickens / Cheek /Register		Approved by (Planning Section Chief) /s/John Howard / Don Watson			Date May 23, 2007		Time 1900

DIVISION ASSIGNMENT LIST			1. Branch Sweat Farm		2. Division/Group H Page 1 of 2								
3. Incident Name Georgia Bay Complex			4. Operational Period Date: 5-24-07 Time: 0800 - 2000										
5. Operations Personnel													
Operations Chief		Lee Burwell John Nicols Jeff Burns		Division/ICT3		Paul Brna O-295 6/5 Alan Crouch (T) O-239 5/31 Charles Arnold (T) O-1197 6/5							
Branch Director		Buck Kline 18*1615		Safety Officer		Steve Snider O-186 5/26							
6. Resources Assigned this Period													
Strike Team/Task Force/ Resource Designator		Leader / Name		Last Shift Date	Number Persons	Trans. Needed	Drop Off PT./Time	Pick Up PT./Time					
TFLD O-156		Matt Young		5/24	1	N	0800	2000					
ST#19 NC ST T/P T2 E-2660		Dean Lucas		5/27	1	N	0800	2000					
NC Mechanic E-2661		David Corey		5/27	1	N	0800	2000					
NC TPL T2 E-2662		Shepherd / Bell		5/27	2	N	0800	2000					
NC TPL T2 E-2663		Endicott / Dunn		5/27	2	N	0800	2000					
NC TPL T2 E-2664		No oper. / Huttlinger		5/27	2	N	0800	2000					
SC-FMF TP T2 E-125		Beasley / Avesing		5/31	2	N	0800	2000					
TF# 1 SC TF w/ T6 ENG O-1049		Bruce Ballentine		5/31	7	N	0800	2000					
JD 700 SB E-9006		Boyce/Porter		5/31		N	0800	2000					
SCS ENG T6 E-2737		Connally/Heitcamp		5/31		N	0800	2000					
SCS ENG T6 E-2738		Craig/ Folk		5/31		N	0800	2000					
7. Control Operations Patrol, mop up and mitigate as well as respond to any threats posed by the fire.													
8. Special Instructions Remain in communications. Be alert for traffic on Highways. Stay Hydrated. Ensure all personnel wear PPE. Take spot RX forecasts every hour. LCES implemented by 1000 and notify OPS when completed.													
9. Division/Group Communication Summary													
Function		System		Channel		Function		Frequency		System		Channel	
Command		King NIFC				Logistics				King NIFC			
Tactical Div/Group		168.775		King NIFC		Talk Group 1 Ch.9		Air to Ground		159.390		King NIFC Ch. 13	
Prepared by (Resource Unit Leader) Pickens / Cheek / Register				Approved by (Planning Sect. Ch.) /s/John Howard / Don Watson				Date May 23, 2007		Time 1900			

DIVISION ASSIGNMENT LIST			1. Branch Sweat Farm Fire		2. Division/Group H Page 2 of 2		
3. Incident Name Georgia Bay Complex			4. Operational Period Date: 5-24-07 Time: 0800 - 2000				
5. Operations Personnel							
Operations Chief		Lee Burwell John Nicols Jeff Burns		Division/ICT3		Paul Brna O-295 6/5 Alan Crouch (T) O-239 5/31 Charles Arnold (T) O-1197 6/5	
Branch Director		Buck Kline 18*1615		Safety Officer		Steve Snider O-186 5/26	
6. Resources Assigned this Period							
Strike Team/Task Force/ Resource Designator		Leader / Name		Last Shift Date	Number Persons	Trans. Needed	Pick Up PT./Time
ST # 4 GFC ST TP T3		Jimmy Kennedy		6/5	1	N	2000
GAS TP T3 E-2848		Washington / Pate		6/5	2	N	2000
GAS TP T4 E-2849		Sumner / Johnson		6/5	2	N	2000
GFC TP T4 E-2850		Houston / Vance		6/5	2	N	2000
ST # 29							
STPL O-1178		Trent Ingram		6/3	1	N	2000
GA-GAS TP T3 E-2844		Stephens		6/3	1	N	2000
GA-GAS TP T3 E-2845		Brook		6/3	1	N	2000
GA-GAS TP T3 E-2846		Baker		6/3	1	N	2000
7. Control Operations Patrol, mop up and mitigate as well as respond to any threats posed by the fire.							
8. Special Instructions Remain in communications. Be alert for traffic on Highways. Stay Hydrated. Ensure all personnel wear PPE. Take spot RX forecasts every hour. LCES implemented by 1000 and notify OPS when completed.							
9. Division/Group Communication Summary							
Function		System		Channel		Function	
Command		King NIFC				Logistics	
Tactical Div/Group		King NIFC		Talk Group 1 Ch.9		Air to Ground	
168.775						159.390	
						King NIFC	
						Ch. 13	
Prepared by (Resource Unit Leader) Pickens / Cheek / Register			Approved by (Planning Sect. Ch.) /s/John Howard / Don Watson			Date May 23, 2007	
						Time 1900	

DIVISION ASSIGNMENT LIST			1. Branch Sweat Farm		2. Division/Group I-J-K		
3. Incident Name Georgia Bay Complex			4. Operational Period Date: 5-24-07 Time: 0800 - 2000				
5. Operations Personnel							
Operations Chief	Lee Burwell John Nicols Jeff Burns		Division/ICT3		Ron Swann O-264 6/3 540-969-7474		
Branch Director	Buck Kline 18*1615		Safety Officer		Rodney Bell O-935 5/28		
6. Resources Assigned this Period							
Strike Team/Task Force/ Resource Designator	Leader / Name	Last Shift Date	Number Persons	Trans. Needed	Drop Off PT./Time	Pick Up PT./Time	
ST# 7 LAS ST Engines T6 O-1092	Jay Meadows		6/1	1	N	0800	2000
LAS Engine	E-1074	Moseley/Carter	6/1	2	N	0800	2000
LAS Engine	E-1071	Wager/Holmes	6/1	2	N	0800	2000
LAS Engine	E-1072	West/Tichy	6/1	2	N	0800	2000
ST# 8 LAS ST Engines T6 O-1093	Henry Childress		6/1	1	N	0800	2000
LAS Engine	E-1075	Wright/Bolyer	6/1	2	N	0800	2000
LAS Engine	E-1070	Mango/Hilton	6/1	2	N	0800	2000
LAS Engine	E-1073	Duckett/Martin	6/1	2	N	0800	2000
LAS Engine	E-1076	Polk/Hughes	6/1	2	N	0800	2000
Laurens Co. WT	E-1228	Underwood/Edwards	5/23	2	N	0800	2000
ST# 18 ALS STPL O-1069	Jason Berry		6/2	1	N	0800	2000
ALS T/P T3	E-1398	Williams / Barker	6/2	2	N	0800	2000
ALS DOZ. T2	E-1399	Berry/Bartlett	6/2	2	N	0800	2000
OK T/P T2	E-1468	Akard/Jacobs	6/1	2	N	0800	2000
OK T/P T2	E-1469	Wayman/Tunnell	6/1	2	N	0800	2000
7. Control Operations Patrol, mop up and mitigate as well as respond to any threats posed by the fire.							
8. Special Instructions Contact for I/A dispatches is County Ranger Billy Leitch 912-218-9325 Linc 18*12022 Drive defensively- watch for city traffic. Be alert for traffic on Highways. Ensure all personnel wear PPE. Stay Hydrated. Take spot WX forecasts every hour. Remain in communications with resources and contractor. Contractor's link #: 18*14052 LCES implemented by 1000 and notify OPS when completed							
9. Division/Group Communication Summary							
Function	Frequency	System	Channel	Function	Frequency	System	Channel
Command		King NIFC		Logistics		King NIFC	
Tactical Div/Group	169.900	King NIFC	Talk Group 1 Ch. 10	Air to Ground	159.390	King NIFC	13
Prepared by (Resource Unit Leader) Pickens / Cheek /Register		Approved by (Planning Section Chief) /s/John Howard / Don Watson		Date 5/23/07		Time 1900	

DIVISION ASSIGNMENT LIST			1. Branch Sweat Farm		2. Division/Group ICP GROUP		
3. Incident Name Georgia Bay Complex			4. Operational Period Date: 5-24-07 Time: 0800 - 2000				
5. Operations Personnel							
Operations Chief		Lee Burwell John Nicols Jeff Burns		Division/ICT3		Mike Appling O-223 5/30	
Branch Director		Buck Kline		Safety Officer			
6. Resources Assigned this Period							
Strike Team/Task Force/ Resource Designator		Leader / Name	Last Shift Date	Number Persons	Trans. Needed	Drop Off PT./Time	Pick Up PT./Time
ST# 15 GFC ST Tractor Plow T3		Lonnie Calloway	5/27	4	N	Folkston 0800	Folkston 2000
Evans 70 E-1199		Sykes	5/27		N	Folkston 0800	Folkston 2000
Jenkins 70 E-1198		Lane	5/27		N	Folkston 0800	Folkston 2000
Bulloch 70 E-1200		Wells	5/27		N	Folkston 0800	Folkston 2000
7. Control Operations Position Equipment to Manage and Mitigate any Threats Posed by Uncontrolled Fires.							
8. Special Instructions Contact for I/A dispatches is County Ranger Billy Leitch 912-276-4001 Linc 18*12022 Drive defensively- watch for city traffic Be alert for traffic on Highways Ensure all personnel wear PPE. Stay Hydrated. Take spot WX forecasts every hour. Remain in communications with resources and contractor. Contractor's link #: 18*14052 LCES implemented by 1000 and notify OPS when completed.							
9. Division/Group Communication Summary							
Function	Frequency	System	Channel	Function	Frequency	System	Channel
Command		King NIFC		Logistics		King NIFC	
Tactical Div/Group	168.200	King NIFC	Talk Group 1 Ch. 11	Air to Ground	159.390	King NIFC	Ch. 13
Prepared by (Resource Unit Leader) Pickens / Cheek /Register		Approved by (Planning Section Chief) /s/John Howard / Don Watson			Date 5/23/07		Time 1900

DIVISION ASSIGNMENT LIST				1. Branch Sweat Farm		2. Division/Group MANOR GROUP	
3. Incident Name Georgia Bay Complex				4. Operational Period Date: 5-24-07 Time: 0800 - 2000			
5. Operations Personnel							
Operations Chief		Lee Burwell John Nicols Jeff Burns		Division/ICT3		Greg Arkle 912-218-7726 18*4203	
Branch Director				Safety Officer		Larry Miller O-38 5/28	
6. Resources Assigned this Period							
Strike Team/Task Force/ Resource Designator		Leader / Name	Last Shift Date	Number Persons	Trans. Needed	Drop Off PT./Time	Pick Up PT./Time
TFLD O-155		Loren Suazo	5/24	1	N	Swamp Church 0800	Manor 2000
ST# 17 STEN (T) O-183		Reggie Day	5/26	1	N	Swamp Church 0800	Manor 2000
NMF Engine T6 E-56		Trujillo	5/25	3	N	Swamp Church 0800	Manor 2000
NMF Eng #236 T6 E-60		Hartley	6/5	3	N	Swamp Church 0800	Manor 2000
7. Control Operations Position Equipment to Manage and Mitigate any Threats Posed by Uncontrolled Fires.							
8. Special Instructions Drive defensively- watch for city traffic. Remain in communications with resources and contractor. Contractor's link #: 18*14052 Be alert for traffic on Highways. Stay Hydrated. Ensure all personnel wear PPE. Take spot WX forecasts every hour. LCES implemented by 1000 and notify OPS when completed.							
9. Division/Group Communication Summary							
Function	Frequency	System	Channel	Function	Frequency	System	Channel
Command		King NIFC		Logistics		King NIFC	
Tactical Div/Group	168.200	King NIFC	Talk Group 1 Ch. 11	Air to Ground	159.390	King NIFC	Ch. 13
Prepared by (Resource Unit Leader) Pickens / Cheek /Register		Approved by (Planning Section Chief) /s/John Howard / Don Watson			Date May 23, 2007		Time 1900

DIVISION ASSIGNMENT LIST				1. Branch Sweat Farm		2. Division/Group Structure Protection Group #1 DAY Shift	
3. Incident Name Georgia Bay Complex				4. Operational Period Date: 5-24-07 Time: 0800 - 2000			
5. Operations Personnel							
Operations Chief		Lee Burwell John Nicols Jeff Burns		Division/ICT3		Dennis Keen - Ware Co. Fire Dept. 912-337-3414	
Branch Director				Safety Officer			
6. Resources Assigned this Period							
Strike Team/Task Force/ Resource Designator		Leader / Name	Last Shift Date	Number Persons	Trans. Needed	Drop Off PT./Time	Pick Up PT./Time
GA DOC TF		Rick Huggins 11*3204 cell 770-330-7246		1	N	Diversion Center0800	Diversion Center2000
		Don Shugart 54*240		1	N	Diversion Center0800	Diversion Center2000
		Larry Brown 11*32063		1	N	Diversion Center0800	Diversion Center2000
GDC Wilcox T1		Culpepper	5/21	5	N	Diversion Center0800	Diversion Center2000
GDC Montgomery Rescue		Helms/Sharp	5/21	6	N	Diversion Center0800	Diversion Center2000
GDC Dooly T6		Hudson	5/21	3	N	Diversion Center0800	Diversion Center2000
GDC Dooly WT			5/21	2	N	Diversion Center0800	Diversion Center2000
GDC Wayne T3		Horton	5/21	2	N	Diversion Center0800	Diversion Center2000
GDC Wayne T6			5/21	2	N	Diversion Center0800	Diversion Center2000
GDC Wayne WT			5/21	2	N	Diversion Center0800	Diversion Center2000
GSP T3		Rogers	5/21	3	N	Diversion Center0800	Diversion Center2000
GSP Rescue			5/21	3		Diversion Center0800	Diversion Center2000
GDC West GA. H/C		Roberts	5/21	8	N	Diversion Center0800	Diversion Center2000
GDC Lee Arendale H/C		Yearwood	5/21	10	N	Diversion Center0800	Diversion Center2000
GDC Paulding H/C		Cox/Foley	5/21	8	N	Diversion Center0800	Diversion Center2000
7. Control Operations Provide population/structure/infrastructure protection and preparation where needed. Continue to Gather GIS Data. Provide Mop Up around structures and support Division Mop Up. Coordinate with Red Team where applicable. Provide Firewise and Fire Prevention information to the public. Coordinate with DIVS.							
8. Special Instructions Way Cross Structures GEMA 40 Southern Linc 18*11049 Red Team Structures Contact Info. Bill Bell 18*12537 Dennis Hackett 404-354-4415 or 352-279-6977 5/16 Jessie Jordan Ware Co. FD 44*4042 912-281-6541 Ware County Fuel Tender -- Tony Leverett 912-288-3295 Dennis Keen Ware Co. Fire Dept. - 912-337-3414 Linc - 1*44*977 Clinch County Fire/EMA - Jesse Booth 25*255 919-482-3700 LCES implemented by 1000 and notify OPS when completed.							
9. Division/Group Communication Summary							
Function	Frequency	System	Channel	Function	Frequency	System	Channel
Command		King NIFC		Logistics		King NIFC	
Tactical Div/Group	154.280	King NIFC	Talk Group1 Ch. 3	Air to Ground	159.390	King NIFC	Ch. 13
Prepared by (Resource Unit Leader) Pickens / Cheek / Register		Approved by (Planning Section Chief) /s/John Howard / Don Watson			Date 5/23/07		Time 1900

DIVISION ASSIGNMENT LIST			1. Branch Sweat Farm		2. Division/Group Night Shift			
3. Incident Name Georgia Bay Complex			4. Operational Period Date: 5-24-07 Time: 1800 - 0600					
5. Operations Personnel								
Operations Chief		Lee Burwell John Nicols Jeff Burns		Division		Doug Mattox O-221 6/4 Jonathan Wilson O-1132		
Branch Director		Buck Kline 18*1615		Safety Officer		Pete Stewart 6/4		
6. Resources Assigned this Period								
Strike Team/Task Force/ Resource Designator		Leader / Name		Last Shift Date	Number Persons	Trans. Needed	Drop Off PT./Time	Pick Up PT./Time
TFLD O-153		Dave Larsen		5/30	1	N	WA-WD	WA-WD
ST# 21 GFC ST Tractor Plow T3 E-2714		Alfred Lucas O-1005		5/28	4	N	WA-WD	WA-WD
GFC TPL E-2694 O-1006		A. Smith		5/28		N	WA-WD	WA-WD
GFC TPL E-2696 O-1008		C. Thomas		5/28		N	WA-WD	WA-WD
GFC TPL E-2695 O-1007		D. Veal		5/28		N	WA-WD	WA-WD
ST# 20 T6		Dan Muir		5/26	6	N	WA-WD	WA-WD
TX PVT Engine E-44		Sims/Judd		5/30		N	WA-WD	WA-WD
TX PVT #701 Engine E-45		McInis / McInis		5/30		N	WA-WD	WA-WD
TXF #31 Engine E-46		Neill/Chumley/Martin		6/3		N	WA-WD	WA-WD
TX PVT Engine T6 E-47		Woodward/Pannell		5/22	2	N	WA-WD	WA-WD
WAT2 E-2601		Grady		5/22	2	N	WA-WD	WA-WD
S/T 28 STEN O-179		Craig Gilbert		5/27	1	N	Fargo 1800	Fargo 0600
LA ENG T6 E-2841		Hall/Dunn		5/31	2	N	Fargo 1800	Fargo 0600
VA-VAF ENG T6 E-4		Ramey/Lament/Proctor		5/26	3	N	Fargo 1800	Fargo 0600
AZ-COF ENG T6 E-2		Rokosh/Grondin Moe/Hart		5/26	4	N	Fargo 1800	Fargo 0600
AZ SFD ENG T6 E-1		Ingrao/Kreun/Wells		5/26	3	N	Fargo 1800	Fargo 0600
CO-PSF ENG T6 E-3		Zanotto/ Rigaud		5/26	3	N	Fargo 1800	Fargo 0600
7. Control Operations Patrol and Mop Up West of Swamp Rd. Provide Structure Protection as needed. Coordinate with DIVS								
8. Special Instructions Remain in communications. Be alert for traffic on Highways. Stay Hydrated. Ensure all personnel wear PPE. Take spot forecasts every hour. Stinson strike team will patrol and mop up west of Swamp Rd. Remainder of resources assigned to Fargo will assist with structure protection and related activities Clinch County Fire/EMA – Jesse Booth 25*255 919-482-3700 LCES implemented by 1000 and notify OPS when completed.								
9. Division/Group Communication Summary								
Function	Frequency	System	Channel	Function	Frequency	System	Channel	
Command		King NIFC		Logistics		King NIFC		
Tactical Div/Group	168.600	King NIFC	Talk Group 2 Ch. 7	Air to Ground	159.390	King NIFC	13	
Prepared by (Resource Unit Leader) Pickens / Cheek /Register		Approved by (Planning Section Chief) /s/John Howard / Don Watson			Date May 23, 2007		Time 1900	

DIVISION ASSIGNMENT LIST				1. Branch Sweat Farm		2. Division/Group		
3. Incident Name Georgia Bay Complex				4. Operational Period Date: 5-24-07		Time: 1200 - 2400		
5. Operations Personnel								
Operations Chief		Lee Burwell John Nicols Jeff Burns		Division/ICT3		Pete Villa O-203 6/1 912-218-8226 18*4523		
Branch Director				Safety Officer				
6. Resources Assigned this Period								
Strike Team/Task Force/ Resource Designator		Leader / Name		Last Shift Date	Number Persons	Trans. Needed	Drop Off PT./Time	Pick Up PT./Time
ST-2 STEN T6 Engine O-682		Mark Stinson		5/21	1	N		
Eng 4460 E-1181		Sinderud/ Kelley		5/21	1	N		
GA-GAS ENG T6 E-2834		Fortenberry/Hulsey		6/6	2	N		
GA-GAS ENG T6 E-2835		Sweatman/Sisk		6/6	2	N		
MN PVT #6 Engine E-26		G. Rock-C. Tucker		6/1	2	N		
TF-7 T/P E-113.3		Raymond Uballe		6/1	1	N		
TX-TXS T/P T4 E-113		Sides/Halloquist		6/1	2	N		
TX-TXS T/P T4 E-112		Cooke Hartstein		5/23 6/1	2	N		
TX-TXS T/P T4 E-114		Witt/Sunda		6/1	2	N		
ST#3		Purcell						
ST# 3GFC ST Engines T6 E-2659		Mike Purcell		6/2	9	N		
Pickens 86 E-1117		Davis/Keene		6/2		N		
Paulding 86 E-1098		Cornett/Henderson		6/2		N		
Heard 86 E-1015		Price/Singleton		5/26		N		
Upson 86 E-1132		Sanders/Shifflett		5/26		N		
Murray 86 E-1022		Chase/Jackson		6/4	2	N		
WAT2 N.Jenkins E-2858		Lane/Bragg		6/3	2	N		
7. Control Operations								
Patrol and Mop Up West of Swamp Rd. Provide Structure Protection as needed. Coordinate with DIVS								
8. Special Instructions								
Patrol and mop up west of Swamp Rd.								
Remainder of resources assigned to Fargo will assist with structure protection and related activities;								
Clinch County Fire/EMA – Jesse Booth 25*255 919-482-3700								
LCES implemented by 1000.								
9. Division/Group Communication Summary								
Function	Frequency	System	Channel	Function	Frequency	System	Channel	
Command		King NIFC		Logistics		King NIFC		
Tactical Div/Group	168.200	King NIFC	Talk Group 1 Ch. 7	Air to Ground	159.390	King NIFC	13	
Prepared by (Resource Unit Leader) Pickens / Cheek /Register		Approved by (Planning Section Chief) /s/John Howard / Don Watson		Date May 23, 2007		Time 1900		

DIVISION ASSIGNMENT LIST			1. Branch Sweat Farm		2. Division/Group			
3. Incident Name Georgia Bay Complex			4. Operational Period Date: 5/24/07		Time: 0800-2000			
5. Operations Personnel								
Operations Chief		Lee Burwell John Nicols Jeff Burns		Division/ICT3		Lucus Santio O-8113 5/25 435-790-7094		
Branch Director		Buck Kline		Safety Officer		Tim Sampson O-180 5/26		
6. Resources Assigned this Period								
Strike Team/Task Force/ Resource Designator		Leader / Name		Last Shift Date	Number Persons	Trans. Needed	Drop Off PT./Time	Pick Up PT./Time
Timberline WAT1 #2		Goodman			1	N		
Tender 5500 gal. WAT1 E-118		Hawk / Black III			1	N		
Smith #1 WAT2 E-119		Webb			1	N		
Smith #2 WAT2 E-180		Smith			1	N		
Smith #3 WAT2 E-179		Smith			1			
Pump E-120		Douglas			1	N		
EMT		Lenny Throckmorton 804-467-9576			1	N		
EMT		Thomas Nails			1	N		
7. Control Operations Control operations and locations will be assigned by OPS at the 0800 Breifing								
8. Special Instructions Be available if needed to assist on Divisions WA, WB, WC, WD and WE.								
9. Division/Group Communication Summary								
Function		Frequency		System		Channel		
Command				King NIFC				
Tactical Div/Group		164.1375		King NIFC		Talk Group 1 Channel 8		
				Air to Ground		159.390		
				King NIFC		13		
Prepared by (Resource Unit Leader) Pickens / Cheek /Register			Approved by (Planning Section Chief) /s/John Howard / Don Watson			Date May 23, 2007		Time 1900

DIVISION ASSIGNMENT LIST			1. Branch Sweat Farm		2. Division/Group Page 1 of 2		
3. Incident Name Georgia Bay Complex			4. Operational Period Date: 5/24/07 Time: 0800-2000				
5. Operations Personnel							
Operations Chief		Lee Burwell John Nicols Jeff Burns		Division/ICT3		Richard Gonzalez O-253 6/3 912-218-9352 18*1250	
Branch Director		Buck Kline		Safety Officer		Andy Meadows O-936 5/28	
6. Resources Assigned this Period							
Strike Team/Task Force/ Designator	Resource	Leader / Name	Last Shift Date	Number Persons	Trans. Needed	Drop Off PT./Time	Pick Up PT./Time
TF #4 TFLD	O-152	David Hamilton	5/24	1	N		
AL DOZ T2	E-1110	Robinson / Taggart	5/31	2	N		
AL DOZ T2	E-1109	Chesser / Knighten	5/31	2	N		
Lee DOZ 1 (KG)	E-1085	Harold		1	N		
Lee DOZ 1 (KG)	E-1193	Sermans		1	N		
Timberline Doz. wKG	E-184	Lankford		1	N		
Timberline DOZ2	E-1084	Lashley		1	N		
GFC ST # 10 TP T3	O-874	Brian Haire	5/23	1	N		
GFC TP T3	E-1216	Terrell	5/23	1	N		
GFC TP T3	E-1218	Gay	5/23	1	N		
GFC TP T3	E-2612	Claxton	5/23	1	N		
GFC ST #16 T2	E-1343	Ty Hayman	5/27	1	N		
GFC TP T2	E-1344	Campbell	5/27	1	N		
GFC TP T2	E-1345	Kitchens	5/27	1	N		
GFC TP T2	E-1346	Driggers	5/27	1	N		
DOZB	O-147	R. Briggs	5/24	1	N		
7. Control Operations Control operations and locations will be assigned by OPS at the 0800 Briefing							
8. Special Instructions Use Okefenokee Refuge North Repeater for backup Command Communications through Big Turnaround Dispatch if necessary.							
9. Division/Group Communication Summary							
Function	Frequency	System	Channel	Function	Frequency	System	Channel
Command		King NIFC		Logistics		King NIFC	
Tactical Div/Group	168.600	King NIFC	Talk Group 1 Channel 7	Air to Ground	159.390	King NIFC	13
Prepared by (Resource Unit Leader) Pickens / Cheek / Register		Approved by (Planning Section Chief) /s/John Howard / Don Watson			Date May 23, 2007		Time 1900

DIVISION ASSIGNMENT LIST			1. Branch Sweat Farm		2. Division/Group Page 2 of 2		
3. Incident Name Georgia Bay Complex			4. Operational Period Date: 5/24/07		Time: 0800-2000		
5. Operations Personnel							
Operations Chief	Lee Burwell John Nicols Jeff Burns		Division/ICT3		Richard Gonzalas	O-936	6/3
Branch Director	Buck Kline		Safety Officer		Andy Meadows	O-936	5/28
6. Resources Assigned this Period							
Strike Team/Task Force/ Resource Designator	Leader / Name	Last Shift Date	Number Persons	Trans. Needed	Drop Off PT./Time	Pick Up PT./Time	
TF #12							
TFLD	O-288	Joe Remick	5/31	1	N		
CHIP PVT	E-104	Hurst		1	N		
DOZB	O-298	Reed Callis	5/31	1	N		
ST# 14 GFC T3 ST TP	O-1101	Levy Rentz	6/2	6	N		
GFC Worth 71	E-1465.2	Barwick	6/2	1	N		
NC DOZB	E-1105	Strider	5/31	1	N		
NC Dozer T3	E-1106	Cook	5/31	1	N		
GFC Turner 70	E-2079	Jackson	6/2	1	N		
GFC Grady 71	E-2080	Bulter	6/2	1	N		
7. Control Operations Control operations and locations will be assigned by OPS at the 0800 Briefing							
8. Special Instructions Use Okefenokee Refuge North Repeater for backup Command Communications through Big Turnaround Dispatch if necessary.							
9. Division/Group Communication Summary							
Function	Frequency	System	Channel	Function	Frequency	System	Channel
Command		King NIFC		Logistics		King NIFC	
Tactical Div/Group	168.600	King NIFC	Talk Group 1 Channel 7	Air to Ground	159.390	King NIFC	13
Prepared by (Resource Unit Leader) Pickens / Cheek / Register		Approved by (Planning Section Chief) /s/John Howard / Don Watson		Date May 23, 2007		Time 1900	

DIVISION ASSIGNMENT LIST				1. Branch Sweat Farm		2. Division/Group	
3. Incident Name Georgia Bay Complex				4. Operational Period Date: 5/24/07		Time: 0800-2000	
5. Operations Personnel							
Operations Chief		Lee Burwell John Nicols Jeff Burns		Division/ICT3		Phillip Wall 6/5 252-229-7135	
Branch Director		Buck Kline		Safety Officer			
6. Resources Assigned this Period							
Strike Team/Task Force/ Designator	Resource	Leader / Name	Last Shift Date	Number Persons	Trans. Needed	Drop Off PT./Time	Pick Up PT./Time
TFLD	O-297	David North	5/31	1	N		
GFC ST #24 STPL T3 O-578		Randy Teal	6/4	1	N		
GFC TP T3	E-2048	Griglen	6/4	1	N		
GFC TP T3	E-2047	Stone	6/4	1	N		
GFC TP T3	E-1047	Christopher	6/4	1	N		
Chipper	E-105	Peake		1	N		
Chipper	E-106	Carter		1	N		
Chipper	E-103	Fordham					
CHIP PVT	E-103	Landers		1	N		
CHIP	E-107	Allen		1	N		
DOZB	O-299	James Hartley	5/31	1	N		
DOZB	O-282	Marc LeClair	5/31	1	N		
7. Control Operations Control operations and locations will be assigned by OPS at the 0800 Briefing							
8. Special Instructions Stay hydrated mixing water and power drinks. Be aware of column(s) that may develop in Okefenokee Swamp and pass along to adjoining divisions.							
9. Division/Group Communication Summary							
Function	Frequency	System	Channel	Function	Frequency	System	Channel
Command		King NIFC		Logistics		King NIFC	
Tactical Div/Group	168.050	King NIFC	Talk Group2 Channel 6	Air to Ground	159.390	King NIFC	13
Prepared by (Resource Unit Leader) Pickens / Cheek /Register		Approved by (Planning Section Chief) /s/John Howard / Don Watson		Date May 23, 2007		Time 1900	

DIVISION ASSIGNMENT LIST				1. Branch Bugaboo Scrub II		2. Division/Group	
3. Incident Name Georgia Bay Complex				4. Operational Period Date: 5/24/07		Time: 0800-2000	
5. Operations Personnel							
Operations Chief		Lee Burwell John Nicols Jeff Burns		Division/ICT3		Ricky Adkins 6/5 910-340-1362 STPS Gary Waters 205-365-6651	
Branch Director		Amery Wells		Safety Officer		Harry Kepler O-66 5/29	
6. Resources Assigned this Period							
Strike Team/Task Force/ Resource Designator		Leader / Name		Last Shift Date	Number Persons	Trans. Needed	Pick Up PT./Time
TFLD O-154		Blain Tarbell		5/25	2	N	
O-158		Waylon Poowegup (T)		5/25			
		Chris Bartlett					
ST #9 STEN O-132		Van Komen		5/25	1	N	
CA-INF Eng.3 E-75		Napoles		5/26	5	N	
NM-LNF Eng.3 E-64		Reynolds		5/25	5	N	
GFC Eng. 3 E-2656		Flood / Laughlin		5/26	2	N	
GA DOT WT+1 Supervisor					2	N	
GA-GAS Eng. T6 E-1017		Williams/Bell/Flower			3	N	
TF #6 O-150		Ron Barr		5/24	1	N	
Support Fire Eng. 6 E-12		Zuehlke		5/24	2	N	
Engine E-290							
WY-RSD T6 E-8007		Evans/Lancaster/Gregory		5/24	3	N	
NM-RON T6 E-98		Curnett/Lucero/Reta		5/24	3	N	
WY-RAD T6 E-8114		Laird/Murry/cook		5/24	3	N	
ST #23 TFLR O-618		Bryan Spillers		5/22	1	N	
GFC Eng.5 E-1019		Sheffield/Redding		5/22	2	N	
GFC Eng.5 E-1016		Robinson/Moore		5/28	2	N	
GFC Eng.6 E-1021		Williams / Josey		5/28	2	N	
PVT Smokey Mtn. Eng6 E-42		Willix/Gibson		6/4	2	N	
PVT Smokey Mtn. Eng6 E-43		Halford/Benton		6/4	2	N	
7. Control Operations Control operations and locations will be assigned by OPS at the 0800 Briefing.							
8. Special Instructions See communications plan for closest Command Repeater to Division. Division and STPS keep Branch Director informed of status in progress.							
9. Division/Group Communication Summary							
Function	Frequency	System	Channel	Function	Frequency	System	Channel
Command		King NIFC		Logistics		King NIFC	
Tactical Div/Group	159.285	King NIFC	Talk Group 1 Channel 5	Air to Ground	159.390	King NIFC	13
Prepared by (Resource Unit Leader) Pickens / Cheek /Register		Approved by (Planning Section Chief) /s/John Howard / Don Watson			Date May 23, 2007		Time 1900

DIVISION ASSIGNMENT LIST				1. Branch Bugaboo Scrub II		2. Division/Group WK-WM	
3. Incident Name Georgia Bay Complex				4. Operational Period Date: 5/24/07		Time: 0800-2000	
5. Operations Personnel							
Operations Chief	Lee Burwell John Nicols Jeff Burns			Division/ICT3	Jaymes Smith 5/28		
Branch Director	Amery Wells			Safety Officer	John Orton O-68 6/3		
6. Resources Assigned this Period							
Strike Team/Task Force/ Resource Designator	Leader / Name		Last Shift Date	Number Persons	Trans. Needed	Drop Off PT./Time	Pick Up PT./Time
ST #26 O-148	Andy Barnett		05/25	7	N	Fargo/0800	Fargo/2000
TxTx T/P T2 E-1452	Ramsey / Williams		05/22 5/30		N	Fargo/0800	Fargo/2000
TxTx T/P T2 E-1453	Mitchell / Bell		05/30		N	Fargo/0800	Fargo/2000
TxTx T/P T2 E-1376	Elrod / Wiley		05/25		N	Fargo/0800	Fargo/2000
ST #22 STEN O-149	Mike Leach		5/24	1	N	Fargo/0800	Fargo/2000
AZ Eng.6 E-58	Walters/Reitz/Westerman		5/24	3	N	Fargo/0800	Fargo/2000
Rye Eng. 3 E-66	Thompson/Biggs/Bennett		5/24	3	N	Fargo/0800	Fargo/2000
CO USFS Eng.3 E-65	Brugett/Tighe/Popvich		5/24	3	N	Fargo/0800	Fargo/2000
CO COS Eng.6 E-67	Roetker/Lock/Groome		5/24	3	N	Fargo/0800	Fargo/2000
GA DOT WT				1	N	Fargo/0800	Fargo/2000
GA DOT WT				1	N	Fargo/0800	Fargo/2000
ST #5	Mike Schmidt O-8103				N	Fargo/0800	Fargo/2000
WY-CPS T6 E-101	Finn/Oden/Ratcliff		6/3	3	N	Fargo/0800	Fargo/2000
AZ-Brush T6 E-97	Albright/Price/Blake		5/26	3	N	Fargo/0800	Fargo/2000
CO-COS T6 E-94	Woodrich/White/ Mann/McCrary		5/27	4	N	Fargo/0800	Fargo/2000
Platte Canyon T6 E-95	Elk Nation/Warbal/Davis			3	N	Fargo/0800	Fargo/2000
AZ-AZS T6 E-96	Myers/Penrod/McNeil		6/3	3	N	Fargo/0800	Fargo/2000
7. Control Operations Patrol and mop up along fire line.							
8. Special Instructions Keep Branch Director informed of status in progress.							
9. Division/Group Communication Summary							
Function	Frequency	System	Channel	Function	Frequency	System	Channel
Command		King NIFC		Logistics		King NIFC	
Tactical Div/Group	164.1375	King NIFC	Talk Group 1 Channel 8	Air to Ground	159.390	King NIFC	13
Prepared by (Resource Unit Leader) Pickens / Cheek / Register		Approved by (Planning Section Chief) /s/John Howard / Don Watson			Date May 23, 2007		Time 1900

DIVISION ASSIGNMENT LIST			1. Branch Sweat Farm Fire		2. Division/Group Prevention Team Task Force			
3. Incident Name Georgia Bay Complex			4. Operational Period Date: 5-24-07 Time: 0630 - 2200					
5. Operations Personnel								
Operations Chief		Lee Burwell John Nicols Jeff Burns		Division/ICT3				
Branch Director				Safety Officer				
6. Resources Assigned this Period								
Strike Team/Task Force/ Resource Designator		Leader / Name		Last Shift Date	Number Persons	Trans. Needed	Drop Off PT./Time	Pick Up PT./Time
Team Leader		John R. Warner O-177		05/29	1	N	0630	2200
Team Member		Sandra Taylor O-178		05/30	1	N	0630	2200
Team Member/PIO		Donna Wilson O-30.2		05/25	1	N	0630	2200
Team Liaison Officer GA		Roger Lane O-580		05/30	1	N	0630	2200
7. Control Operations								
<p>*Slauson returning to team on 05/25/07</p> <p>*Wilson demob on 05/24 traveling on 05/25</p>								
8. Special Instructions								
<ol style="list-style-type: none"> Wilson to demob Deliver copies of Living with Fire and flyers to State Parks and GFC offices Complete team evaluations of individuals Complete Transition reports and documentation Compile "to do list" for incoming team members 								
9. Division/Group Communication Summary								
Function		Frequency		System		Channel		
Command				King NIFC				
Tactical Div/Group				King NIFC				
				Logistics				
				Air to Ground				
Prepared by (Resource Unit Leader) Pickens / Cheek /Register			Approved by (Planning Section Chief) /s/John Howard / Don Watson			Date 5/23/07		Time 1900

		1. Branch Sweat Farm Fire		2. Division/Group Law Enforcement / Arson Group			
3. Incident Name Georgia Bay Complex		4. Operational Period Date: 5-24-07 Time: 0700 - 2000					
5. Operations Personnel							
Operations Chief		Group Leader		Brian Richards 912-218-9312 18*10639			
Branch Director		Safety Officer					
6. Resources Assigned this Period							
Strike Team/Task Force/ Resource Designator	Leader / Name	Last Shift Date	Number Persons	Trans. Needed	Drop Off PT./Time	Pick Up PT./Time	
BLM				N	0700	2000	
G.B.I	Tom Crawford			N	0700	2000	
GA. Fire Marshal	Brian Clavier			N	0700	2000	
V DOF	Blair Dalton			N	0700	2000	
V DOF	Dennis Gaston			N	0700	2000	
V DOF	John Pine			N	0700	2000	
V DOF	Chris Owens						
LAS	Jim Baldwin			N	0700	2000	
LAS	Mark Singleton			N	0700	2000	
Wv DOF	Leo Lester			N	0700	2000	
WV DOF	Art Yagel			N	0700	2000	
TN DOF	Greg Whitehead			N	0700	2000	
TN DOF	Pete Merz			N	0700	2000	
MS DOF	Matt Steed			N	0700	2000	
PA DOF	Lee Jordan			N	0700	2000	
PA DOF	Robert McJillan			N	0700	2000	
7. Control Operations Immediately report suspicious activity directly to Brian Richards							
8. Special Instructions Remain in communications. Be alert for traffic on Highways Stay Hydrated. Notify Division of spot fires or returns							
9. Division/Group Communication Summary							
Function	Frequency	System	Channel	Function	Frequency	System	Channel
Command		King NIFC		Logistics		King NIFC	
Tactical Div/Group		King NIFC		Air to Ground		King NIFC	
Prepared by (Resource Unit Leader) Pickens / Cheek / Register		Approved by (Planning Section Chief) /s/John Howard / Don Watson		Date May 23, 2007		Time 1900	

Georgia Bay Complex - Bugaboo (Group 2)

INCIDENT RADIO COMMUNICATIONS PLAN		1. Incident Name Georgia Bay Complex		2. Date/Time Prepared 5- 23 -2007	3. Operational Period Date/Time 5- 24-2007
4. BASIC RADIO CHANNEL UTILIZATION					
Radio Type/Cache	Channel	Function	Frequency/Tone	Assignment	Remarks
King NIFC	1	GFC Fargo Repeater	159.120/107.2 151.370/123.0	Command Rpt	Bugaboo Brush
King NIFC	2	Fire Tower Repeater	159.225 /203.5 151.280/203.5	Command Rpt	South of Homerville
King NIFC	3	GA Mutual Aid	154.280 154.280	Structural & Tactical	
King NIFC	4	911 & Structural Coordinator Rptr.	154.445/ 118.8 154.010/118.8	Emergency Traffic	This is a heavy traffic channel, use only for Emergency Traffic
King NIFC	5	Tactical	159.285 Rx & Tx	Fargo Group 2	Southern COMPACT
King NIFC	6	Tactical	168.050 Rx & Tx Narrow Band	Divs. E Divs. Y,Z,WB, WC	Fireline
King NIFC	7	Tactical	168.600 Rx & Tx Narrow Band	Divs. G Divs. Swing/IA	Fireline
King NIFC	8	Tactical	164.1375 Rx & Tx Narrow Band	Fargo Group 3 Divs. WA, EE,EF,EG,EH	Fireline
King NIFC	9	Tactical	168.775 Rx & Tx Narrow Band	Divs.H Divs. EA,EB,EC,ED	Fireline
King NIFC	10	Tactical	169.900 Rx & Tx Narrow Band	Divs. I, J, K Divs. E,AA,BB,CC,DD	Fireline
King NIFC	11	Tactical	168.200 Rx & Tx Narrow Band	Divs.A,B,C,D ICP Group, Fargo Group 1 DivWD,WE,WF,WG,WH	Fireline
King NIFC	12	Air to Ground	167.950 167.950/110.9 Narrow Band	Federal Air to Ground	
King NIFC	13	Air To Ground	159.390 Rx & Tx	Georgia Air to Ground	
King NIFC	14	Air Guard	168.625 168.625/110.9 Narrow Band	Air Emergency Only	Air Emergency Only
5. Prepared By (Communications Unit) LARRY SHARPE/ COML					

Georgia Bay Complex – Kneeknocker/Roundabout (Group 3)

INCIDENT RADIO COMMUNICATIONS PLAN		1. Incident Name Georgia Bay Complex		2. Date/Time Prepared 5- 23 -2007	3. Operational Period Date/Time 5- 24-2007
4. BASIC RADIO CHANNEL UTILIZATION					
Radio Type/Cache	Channel	Function	Frequency/Tone	Assignment	Remarks
King NIFC	1	Mobile to Mobile	159.390 RX & Tx	Breakout	Kneeknocker & Roundabout
King NIFC	2	Mobile to Base	159.390 Rx 159.225 Tx	Breakout	Kneeknocker & Roundabout
King NIFC	3	GA Mutual Aid	154.280 154.280	Race Track Fire	Structural & Tactical
King NIFC	4	Tactical	159.285 Rx & Tx	As needed	Southeastern Compact
King NIFC	5	Tactical	164.1375 Rx & Tx		
King NIFC	6	Tactical	168.775 Rx & Tx	Roundabout AD	
King NIFC	7	Tactical	169.900 Rx & Tx	Roundabout BC	
King NIFC	8	Tactical	168.200 Rx & Tx	Kneeknocker	
King NIFC	9	Tactical	159.270 Rx & Tx	Ft. Mudge Fire	Red Channel
King NIFC	10	Tactical	159.420 Rx & Tx	Forest Drive Fire	White Channel
King NIFC	11	Tactical	159.330 Rx & Tx		Blue Channel
King NIFC	12	Air to Ground	169.200 Rx & Tx	Kneeknocker	Air to Ground Dedicated to this complex
King NIFC	13	Air Guard	168.625 168.625/110.9 Narrow Band	Air Emergency Only	Air Emergency Only
King NIFC	14	Knee Repeater	159.465 Rx 151.145 Tx	Command Repeater	Kneeknocker only
5. Prepared By (Communications Unit) LARRY SHARPE/ COML					

Georgia Bay Complex – Sweat Farm (Group 1)

INCIDENT RADIO COMMUNICATIONS PLAN		1. Incident Name Georgia Bay Complex		2. Date/Time Prepared 5- 23-2007	3. Operational Period Date/Time 5- 24-2007
4. BASIC RADIO CHANNEL UTILIZATION					
Radio Type/Cache	Channel	Function	Frequency/Tone	Assignment	Remarks
King NIFC	1	Command Ware EMA Repeater	158.7825/162.2 153.7625/162.2 Narrow Band	Command Rpt	Sweat Farm
King NIFC	2	Fire Tower Repeater	159.225 /203.5 151.280/203.5	Command Rpt	South of Homerville
King NIFC	3	GA Mutual Aid	154.280 154.280	Structural & Tactical	
King NIFC	4	911 & Structural Coordinator Rptr.	154.445/ 118.8 154.010/118.8	Emergency Traffic	This is a heavy traffic channel, use only for Emergency Traffic
King NIFC	5	Tactical	159.285 Rx & Tx	Fargo Group 2	Southern COMPACT
King NIFC	6	Tactical	168.050 Rx & Tx Narrow Band	Divs. E Divs. Y,Z,WB, WC	Fireline
King NIFC	7	Tactical	168.600 Rx & Tx Narrow Band	Divs. G Divs. Swing/IA	Fireline
King NIFC	8	Tactical	164.1375 Rx & Tx Narrow Band	Fargo Group 3 Divs. WA, EE,EF,EG,EH	Fireline
King NIFC	9	Tactical	168.775 Rx & Tx Narrow Band	Divs. H Divs. EA,EB,EC,ED	Fireline
King NIFC	10	Tactical	169.900 Rx & Tx Narrow Band	Divs. I, J, K Divs. E,AA,BB,CC,DD	Fireline
King NIFC	11	Tactical	168.200 Rx & Tx Narrow Band	Divs.A,B,C,D ICP Group, Fargo Group 1 DivWD,WE,WF,WG,WH	Fireline
King NIFC	12	Air to Ground	167.950 167.950/110.9 Narrow Band	Federal Air to Ground	
King NIFC	13	Air To Ground	159.390 Rx & Tx	Georgia Air to Ground	
King NIFC	14	Air Guard	168.625 168.625/110.9 Narrow Band	Air Emergency Only	Air Emergency Only
5. Prepared By (Communications Unit) LARRY SHARPE/ COML					

ICS-206 MEDICAL PLAN	1. Incident Name Georgia Bay Complex	2. Date Prepared 5/23/07	3. Time Prepared 1200	4. Operational Period 5/24/07 DAY & NIGHT SHIFT				
5. Incident Medical Aid Station								
Medical Aid Stations		Location		Paramedics				
				Yes No				
Medical Unit Georgia Bay	912-218-9101	Georgia Forestry Headquarters ICP - Carswell (MEDL)		EMT				
Medical Unit Fargo		Fargo Base – Anderson (MEDL)		X EMT				
6. Transportation								
A. Ambulance Services								
Name		Address		Phone				
				Paramedics				
				Yes No				
Ware County EMS		Waycross Georgia (911 to activate)		912-281-9467 Linc 1*96*116				
Charlton Memorial EMS		1203 N Third St Folkston Ga (911 to activate)		888-255-4961 Linc 1*25*3468				
Clinch County EMS		Fargo (911 to activate)						
Air Ambulance Service								
Trauma 1		Jacksonville, FL (26 min/air)		1-800-223-4878				
AirMed		Augusta, GA (2 hrs/air)		1-888-792-9245				
Lifeflight (155.340)		Jacksonville, FL (35 min/air)		1-877-870-7779				
B. Incident Ambulances								
Name		Location		Paramedics				
				Yes No				
Ware County EMS		Fargo (Fargo Unit – 41 First Street – Fargo, GA 31631)		X				
7. Hospitals								
Name	Address	Travel Time		Phone	Helipad		Burn Center	
		Air	Grnd		Yes	No	Yes	No
Charlton Memorial	1203 N 3 rd St Folkston N 30°50.8 W 82°00.1	10 min	20 min.	912-496-2531	X			X
Satilla Regional	410 Darling Ave Waycross Ga N 31°13.56 W 82°21.058	15 min	30 min	912-283-3030	X			X
Shands Hospital (level I)	Jacksonville, FL N 30°20 97 W 82° 13 992	45 min	1.5 hrs	800-223-4878	X		X	
Memorial Hospital	Savannah, GA 4700 Waters 3200.7 8107.6	40 min		912-350-8999	X			X
Shands Burn Center	Gainesville, FL 38.33 N 082 20.73W	45 min		352-265-0300	X		X	
Doctor's Hospital Joseph Still Burn Center	August, GA (Chief Burn Ctr 3328.943 8205.422	90 min	3 ½ hrs	877-863-9595 706-863-9595	X		X	
8. Medical Emergency Procedures								
<p>Identify any EMT's and Paramedics in your crews. All medical emergencies will be reported to the Division Supervisor who will assume command.</p> <p>1) Provide medical care & stabilize patient. 2) Call 911 3) Notify Communications via radio over Command Channel. 4) Communications will clear radio traffic for medical emergency. 5) Notify Dispatch, provide ONE on site contact person, notify dispatch if that changes</p> <ul style="list-style-type: none"> o Provide location (road intersection, GPS coordinates). o Number of patients o Type of injury or illness – Is it life threatening? Provide vital signs if available. o EMT's on scene and/or needed o Type of transportation needed <p>6) Com will notify ambulance and coordinate with IC, SOF, MEDL</p>								
<div style="border: 3px double black; padding: 10px; width: fit-content; margin: auto;"> <p>*CREW EMT'S (ALL LEVELS) WILL FUNCTION AS FIRST RESPONDERS UNLESS SPECIFICALLY ASSIGNED TO THE INCIDENT AS A LINE MEDIC</p> </div>								
<p>Helibase – ICP Waycross: 31 07.23 X 82 15.23 Helispots – Fargo Base Camp: 30 47 30.02 X 82 22 39.5 (4 mi mrker Hwy 177 – Stephen C. Foster St. Prk) H-114 and 30 41.739 X 82 33.961 (Hwy 441 - golf course) H-113</p>								
9. Prepared by (Medical Unit Leader) (GA) Robert Carswell (T) (912) 218-9101 Linc 1*18*7480 (NC) Wayne Williams (919) 801-4264			10. Reviewed by (Safety Officer) (NC) Mike Huffman (919) 218-9060					

AIR OPERATIONS SUMMARY		PREPARED BY: Bob Seigler			PREPARED DATE/TIME 5/23//07 1600			
1. INCIDENT NAME: Georgia Bay Complex		2. OPERATIONAL PERIOD: Day Shift 5/24/07			START TIME: 0700	END TIME: 2000	SUNRISE: 0629	SUNSET: 2023
3. REMARKS (Safety Notes, Hazards, Air Operations Special Equipment, etc.): Waycross Helibase—31 14.95 X 82 23.73 Pogo Helibase-30 44.25 X 82 07.69 Braganza Helispot 31 07.23 X 82 15.23 ALL AIRTANKER REQUESTS THRU OKEE DISPATCH <ul style="list-style-type: none"> • Avoid take-off / landing over ICP, • All dispatches will come through the ICP in Waycross for state aviation resources, • High Towers in Area, • LOOK UP, LOOK DOWN, LOOK ALL AROUND, • Aircraft Dispatching Priorities: <ul style="list-style-type: none"> 1. Life 2. Structures Threatened 3. Initial Attack 4. Fire threatening perimeter control lines 					4. MEDEVAC A/C: N17HX—Pogo Helibase		5. TFR: In Place Radius: Rectangle to 3000 MSL_ Altitude: _3000= MSL NW corner Lat 31 09 02 Long 82 32 04 SE corner Lat 30 53 17 Long 82 02 48:	
6. PERSONNEL		Phone	7. FREQUENCIES		AM	FM		8. FIXED-WING # Avail / Type/ Make-Model / FAA N# / Base(s)
AOBD: Bob Seigler		828-231-4560	AIR/AIR FW:		122.575 E/sd 122.825 scdry 122.925 GA IA 123.125 W/sd			Airtankers @ 00-Type I LCQ OCF 20-Type I 22-Type I 09-Type II 43-Type I 21-Type I
ATGS: L.Mars—Waycross			AIR/AIR RW:		122.575 E/sd 123.125 W/sd			Leadplanes Lead B-2 ASM Lead 1-4
State Aviation Lead Waycross Airport Mike Leverette			AIR/GROUND:		122.925	151.145 GA IA 167.950 Swt. Farm		Base FAX #:
ASGS: Ray Dew			COMMAND:					
Waycross HEBM: Dave Langley		505-240-3649	COMMAND RPT		Rx:	Tx:		ATGS Aircraft 90K—Beach Baron—L. Mars 01Q—Cessna 401—K. Walsh 0EB—King Air—C.Cross Lake City
ATB MGR:			DECK FREQ:					
Braganza Helispot HESM: Wayne Langston Dip Site Mgr: Walter Thompson			TOLC FREQ:					
Pogo Helibase		912-496-4415	FLIGHT FOLLOW					
Waycross Helibase		912-338-5982						
Fargo Helibase—(Golf Course) N 30 41 27.3 x W 82 34 02.0 Stephen Foster SP (Pocket) N 30 47 32.2 x W 82 22 39..6								
							Other Flight follow with Pogo Helibase or Waycross Helibase IA Air Attack for State--- Cessna 182's and UH 60's Bell 407-Chopper 7 Approved Helispots—Refer to Okefenokee NWR Despite Map One GNG Helicopter will remain at Waycross Airport for IA at all times ALL AIRCRAFT Call Air Attack when entering TFR--- Waycross Helibase will call Pogo as a back up!!! ALL FLIGHTS WILL BE CLEARED WITH AOBD 107Z - IR-RW Cobra	

9. HELICOPTERS (Use Additional Sheets As Necessary)													
FAA N#	TY	MAKE/MODEL	BASE	AVAIL	START	REMARKS	FAA N#	TY	MAKE/MODEL	BASE	AVAIL	START	REMARKS
N5BH	I	Sikorsky S-70A-27	Pogo	0900	0930	Bucket Drops	N5738Y	III	Bell 206	Pogo	0900	0930	Recon/ Admin/ IA
N4503E	I	Sikorsky S-61N	Pogo	0900	0930	Bucket drops	N12HX	III	Bell 407	Pogo	0900	0930	Admin/ Recon
N15HX	II	Bell 205++	Pogo	0900	0930	Bucket drops	Chopper 7	III	Bell 407	Waycross	0900	0930	State IA-Bucket drops as needed
N17HX II	II	BELL 205++	Pogo	0900	0930	Bucket Drops	90K	I	Baron	Waycross	0900	0930	ATGS
	I	UH-60	Waycross	0900	0930	IA for State	62-Z	I	King Air	Lake City	0800	0930	ATGS
	I	UH-60	Waycross	0900	0930	IA for State							
01Q	i	Cessna 401	Waycross	0900	0930	ATGS							
		Cessna 182	Waycross	0900	0930	Aerial Detection							

10. TASK/MISSION/ASSIGNMENT (Type/Function includes: Air Tactical, Retardant, Recon, Personnel Transport, Water Dropping, S&R, etc.)						
TYPE/FUNCTION	NAME OF PERSONNEL OR CARGO (if applicable) OR INSTRUCTIONS FOR TACTICAL AIRCRAFT			MISSION START	FLY FROM	FLY TO
Type II Helicopter	Operation and Logistic Support			0930	Helibase	Fire and Return
Type III Helicopter	Operation and Logistic Support			0930	Helibase	Fire and Return
Type I Helicopter	Operation and Logistic Support			0930	Helibase	Fire and Return
ATGS Platforms	Aerial Supervision of all Aircraft over Incidents			0930	Waycross Airport & Lake City	Fire and Return
State Detection Fixed Wing	Aerial Detection and IA for New Fire Starts			0930	Waycross Airport	Fire and Return

Sweat Farm Road Phone Roster 5-24-07

NAME	POSITION	PHONE NUMBERS	LINC ID
COMMAND & GENERAL STAFF		912-285-6046	Fax 912-285-6014
Reid Hildreth	IC	912-218-5108	18*11878
Dan Brandon	DPIC	704-616-2252	
Gary Thompson	LOFR	919-548-5836	
Bruce MacDonald	PIO	912-218-9319	18*11959
Diane Steltz	PIO	919-548-5831	
Warren Bielenberg	PIO		
Bernie Pineda	PIO	478-550-2989	
Laura Polant	PIO	912-218-8182	1*18*9688
Jan Amen	PIO	936-546-1004	
Michelle Weston	PIO	907-317-7247	
James Stone	PIO	912-218-8267	
John Warner	PRTL	936-546-3164	
Donna Wilson	PRTM	540-797-6241	
Sandra Taylor	PRTM	936-546-3554	
Mike Huffman	SOF 2	919-218-9060	
Mark Luellen	SOF2(T)	919-356-9487	
Rodney Bell	SOF	912-218-7132	18*11932
Andy Meadows	SOF	252-229-0161	
Harry Kepler	SOF	912-218-8325	18*7145
John Orton	SOF	912-218-4958	18*4899
Larry Miller	SOF	912-218-9355	18*12622
Pete Stewart	SOF	912-218-8965	18*7610
Tim Sampson	SOF	912-218-9215	18*11832
Steve Snider	SOF	912-218-9308	18*10090
Agency Reps			
Billy Leitch	LOFR	912-218-9325	18*12022
Shawn Alexander	LOFR	912-218-9232	18*7378
Skippy Reeves	LOFR	912-218-9359	18*12756
OPERATIONS		912-285-6039	
John Nicols	OSC	912-218-5414	18*11904
Lee Burwell	OSC	979-218-9909	18*11907
Jeff Burns	OSC	912-218-9323	18*11981
Amery Wells	OPBD	912-218-8343	18*4212
Doug Mattox	DIVS	912-218-9324	18*11985
Mike Appling	DIVS	912-218-9343	18*12314
Heath Morton	DIVS	912-218-7135	18*11946
Jay Collett	DIVS	912-218-9320	18*11960
Jim Davis	DIVS	912-218-9307	18*10062
Pete Villa	DIVS	912-218-8226	18*4523
David LaChapelle	DIVS	912-218-7103	18*6748
Ron Swan	DIVS	912-218-9141	18*11862
Richard Gonzalas	DIVS	912-218-9352	18*12520
Lucus Santio	DIVS	435-790-7094	
Ricky Adkins	DIVS	910-340-1362	
Phillip Wall	DIVS	252-229-7135	
F.Pingiczer	DIVS		
William Neff	LE/Arson	912-287-4499	18*13485
BIG TURNAROUND OPS SEC		912-496-4173	
CSX RAIL ROAD OPERATIONS- Dixon		912-270-0699	
AIR OPERATIONS		912-285-6039	
Bob Seigler	AOPD	828-231-4560	
Ray Dew	ASGS	478-550-2990	
Wayne Langston	HEB2	919-920-4906	
David Langley	HEB1	912-218-8937	18*6167
FINANCE		912-285-6038	
Marlene Sherrod	FSC	912-285-6038 Landline	252-904-6877 cell
Jennifer Johnson	FSC (t)	919-698-2457	
Paul Palmitte	IBA	478-681-6111	
Barbara Hatch	Buying Team	912-285-6112 Hard Line	505-660-0399 Cell
Miguel Martinez	Comp/Claims	912-285-6038	
Christine Overman	COST	252-312-5238	
Mavis Gragg	TIME	828-757-6647	
Richard Chellberg	Procurement (t)	336-239-1442	
Mary Jane Derendoff	EQTR	912-285-6038	
Bob Drown	EQTR	912-285-6038	
Eunice Vankuren	PTRC	912-285-6038	
Karen Stripling	PTRC	912-285-6038	

Sweat Farm Road Phone Roster 5-24-07

NAME	POSITION	PHONE NUMBERS	LINC ID
PLANNING			
		912-285-6046	
John Howard	PSC	912-218-7586	18*6871
Don Watson	DPSC	910-334-0033	
Bill Pickens	RESL	919-218-2802	
Michael Cheek	RESL	704-616-0747	
Chris Brenzel	SITL	760-822-2257	
Dan Ochocki	SITL	970-903-1957	
Greg Smith	SITL	828-506-0672	
Annie Lott	DOCL	919-333-8410	
Leslie Chadwell	CTSP		
Gary Curcio	FBAN	919-810-5623	
Theresa Hurdle	FOBS	912-218-9316	18*11828
Gary White	FOBS	912-218-9358	18*12670
Tim Howell	FOBS (t)	828-508-2386	
Bill Leatherwood	GISS	828-450-2665	
Buster Robinson	GISS	936-546-8783	
Will Sumner	GISS (t)	919-218-6285	
John Pendergrast	IMET	912-218-9309	18*10247
Chris Liv	SCKN(t)	252-567-0830	
Rich Dottellis	SCKN(t)	936-546-3138	
Mary Lou Dozier	DMOB	912-218-9361	18*12771
David Hicks	IRIN	541-554-0143	
Lewis Kerney	TNSP	423-650-3006	
LOGISTICS			
		912-285-6091	Fax 912-285-6111
Troy Cleland	LSC	252-229-1997	
Travis Ruff	LSC (t)	828-413-4440	
Ted Grisey	LSC @ FARGO	912-218-9356	
Larry Sharpe	COML	919-218-0992	
Wayne Williams	MEDL (t)	919-801-4264	
Robert Carswell	MEDL (t)	912-218-9101	18*7480
Lenny Throckmorton	EMT	804-467-9576	
Thomas Nails	EMT		
Roger Atkinson	SECM	479-970-3038	
Tony Bolton	SEC1	601-405-9027	
Wayne Garman (Camp for the Blind)	BCMG	478-550-3000	18*11862
Chuck Barber	Camp Crew Manager	912-218-9342	18*12299
Georgia State Patrol	Dispatcher	912-287-6500	
Danny Hayes	EQPM	828-292-4007	
Michelle Sanchez	EQPM	912-281-8279	
Keith Skinner	EQPM	936-546-8133	
Clyde Leggins	FACL	828-443-2294	
Chris Hubacker	FDUL	912-218-9321	18*11964
William Lee	Fuel Truck	912-218-9017	18*6682
Greg Cox	GSUL	910-334-0027	
Mike Summers	GSUL	936-546-1957	
Travis Shidal	ORDM	704-473-0430	
Jaime Logan	RCDM	828-361-3606	
Todd Nightengale	STAM (FARGO)	936-546-3163	
Keith Walters	SUPL	336-214-2426	
Steve Moore	FARGO	912-218-9344	18*12374
Bobby Weaver	THSP	936-546-8010	
John Rush	THSP	936-546-1883	
Larry Brown	GDC	912-218-9366	11*32283
Don Shugart	GDC	912-218-9371	11*32063
Sylvester Hall	GDC	912-218-9367	11*32054
Tommy Maddox	GDC	912-218-9374	11*32069
MISC.			
COMMAND DISPATCH		912-218-9044	18*6870
PUBLIC INFORMATION		912-218-9319	18*11959
WAYCROSS DISTRICT OFFICE		912-287-4915	
MACON DISPATCH		912-218-9232	18*7378
MOP UP COMMAND			18*4918
FARGO BASE		912-218-8907	18*7532

OTHER INCIDENT MANAGEMENT TEAMS

SOUTHWEST AREA IMT: BIG TURNAROUND Phone Roster

NAME	PHONE NUMBERS		
COMMAND STAFF	912-496-4177		
PLANNING	912-496-4173		
OPERATIONS	912-496-4132		
AIR OPERATIONS	912-496-4415		
FINANCE	912-496-4102		
LOGISTICS	912-816-5749		
EXPANDED DISPATCH	912-496-3162		
COMMUNICATIONS	912-496-2111		

SOUTHERN BLUE TEAM: FLORIDA BUGABOO Phone Roster 5-24-07

NAME	PHONE NUMBERS		
INFORMATION	386-719-2739		
OPERATIONS	386-719-2743		
COMMUNICATIONS	386-719-2748		
FLORIDA INTERAGENCY COORDINATION	850-580-6885		
OPERATIONS Kneeknocker			
Barry Chesser (Kneeknocker)	Technical Specialist	912-218-6552	Linc 1*18*4166
Steve Abbott	DIVS	770-550-1868	Linc 1*18*1628
Earl Roberson	Technical Specialist	912-218-8344	Linc 1*18*4279
John Godwin	DIVS		Linc 1*18*3213

OPERATIONS Roundabout 912-422-3140

Paul Gillis	Technical Specialist		Linc 1*18*20684
Steve Miller	OPBD		Linc 1*18*11625
Jamie Smith	DIVS		Linc 1*18*4755
Brent McCarty	DIVS		Linc 1*18*12585
Lucky Jones	DIVS		Linc 1*18*5198

OTHER AGENCIES

Brantley County Fire Coordinator	Ken Lee	912-218-2012	1*44*1081
		912-717-3330	
Nahunta FD Fire Chief	Button Lee	904-699-1619	1*25*323
		912-282-8730	
EMA / 911 Director	Billy Lartz	912-217-1638	1*11*2001
Brantley County Sheirff	Robert Thomas	912-614-1658	1*25*1130
Clinch County Sheriff		912-487-5316	
WareCounty Sheriff		912-287-4325	
Charleton County Sheriff		912-496-7321	
DNR, ENGB	T. Trowbridge	© 912-223-2815	
DNR ENOP	Sam Williams	229-212-0124	
Atkinson EMA IC	David Moore		
Atkinson GEMA Coordinator	Diane May		
North End Resource Advisor	Dean Easton	912-496-7366	ext 235
South End Resource Advisor	Doug Nuss	912-286-3110	
Joint Information Center	Waycross	1-866-380-9966	

Tile 1
North Carolina IMT

Tile 2
Branch I
Southwest IMT

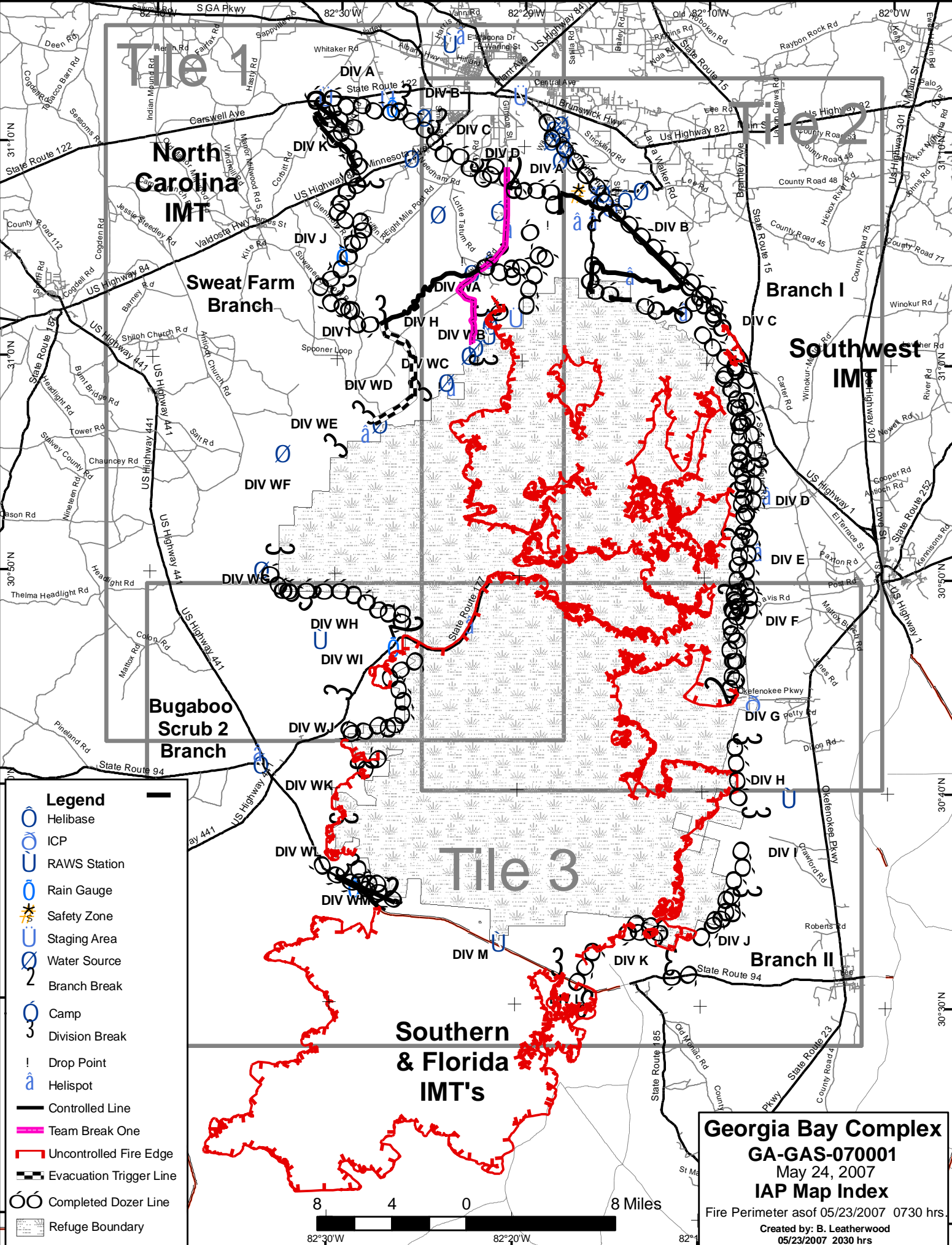
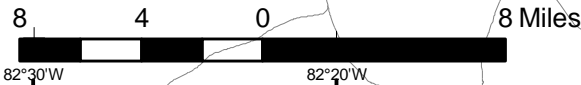
Tile 3
Southern & Florida IMT's
Branch II

Sweet Farm Branch

Bugaboo Scrub 2 Branch

Georgia Bay Complex
GA-GAS-070001
 May 24, 2007
IAP Map Index
 Fire Perimeter as of 05/23/2007 0730 hrs.
 Created by: B. Leatherwood
 05/23/2007 2030 hrs

- Legend**
- Helibase
 - ICP
 - RAWS Station
 - Rain Gauge
 - Safety Zone
 - Staging Area
 - Water Source
 - Branch Break
 - Camp
 - Division Break
 - Drop Point
 - Helispot
 - Controlled Line
 - Team Break One
 - Uncontrolled Fire Edge
 - Evacuation Trigger Line
 - Completed Dozer Line
 - Refuge Boundary



Tile 1
North Carolina IMT

Tile 2

Tile 3

Sweet Farm Branch

Branch I

Southwest IMT

Bugaboo Scrub 2 Branch

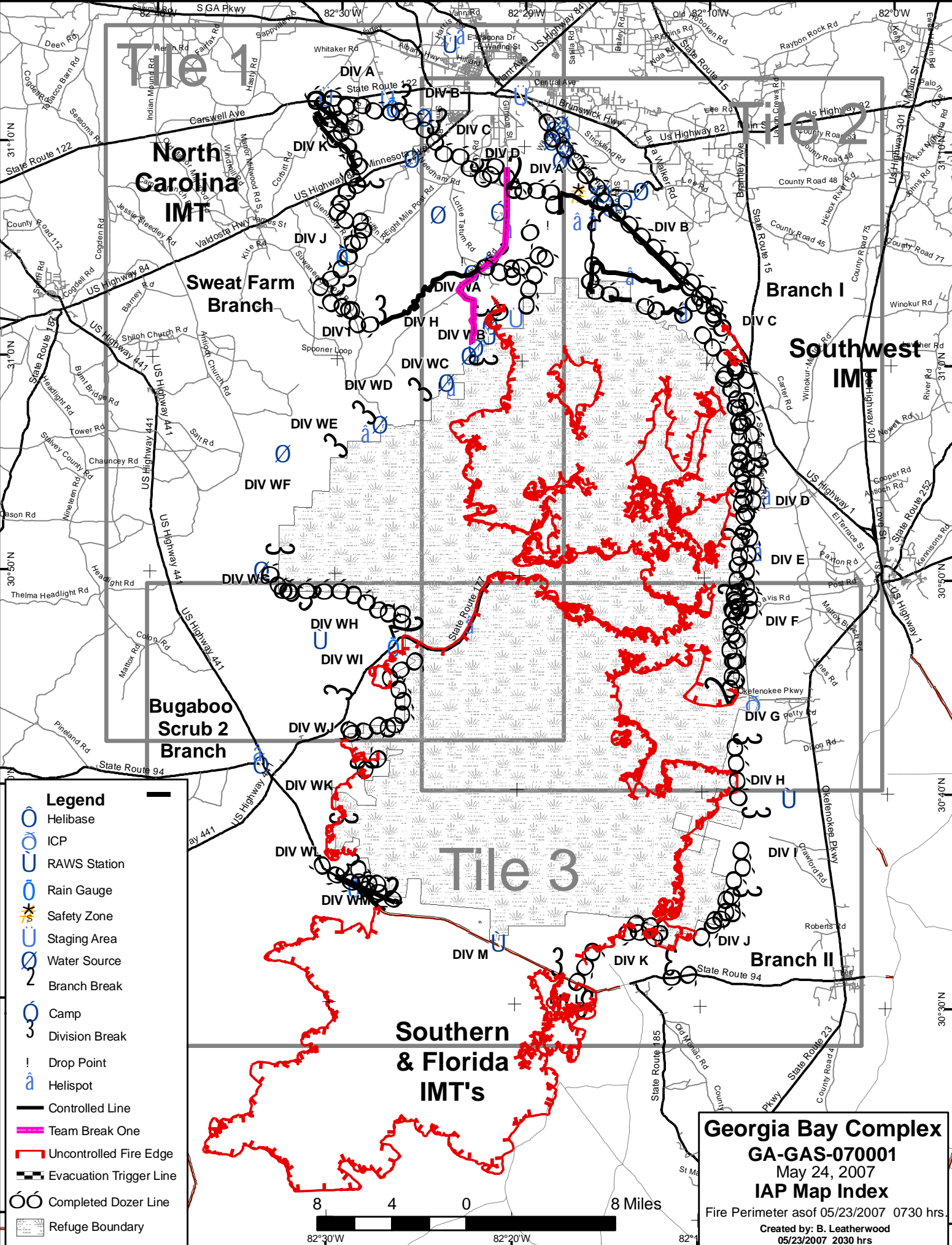
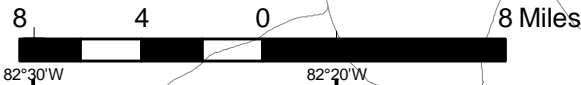
Branch II

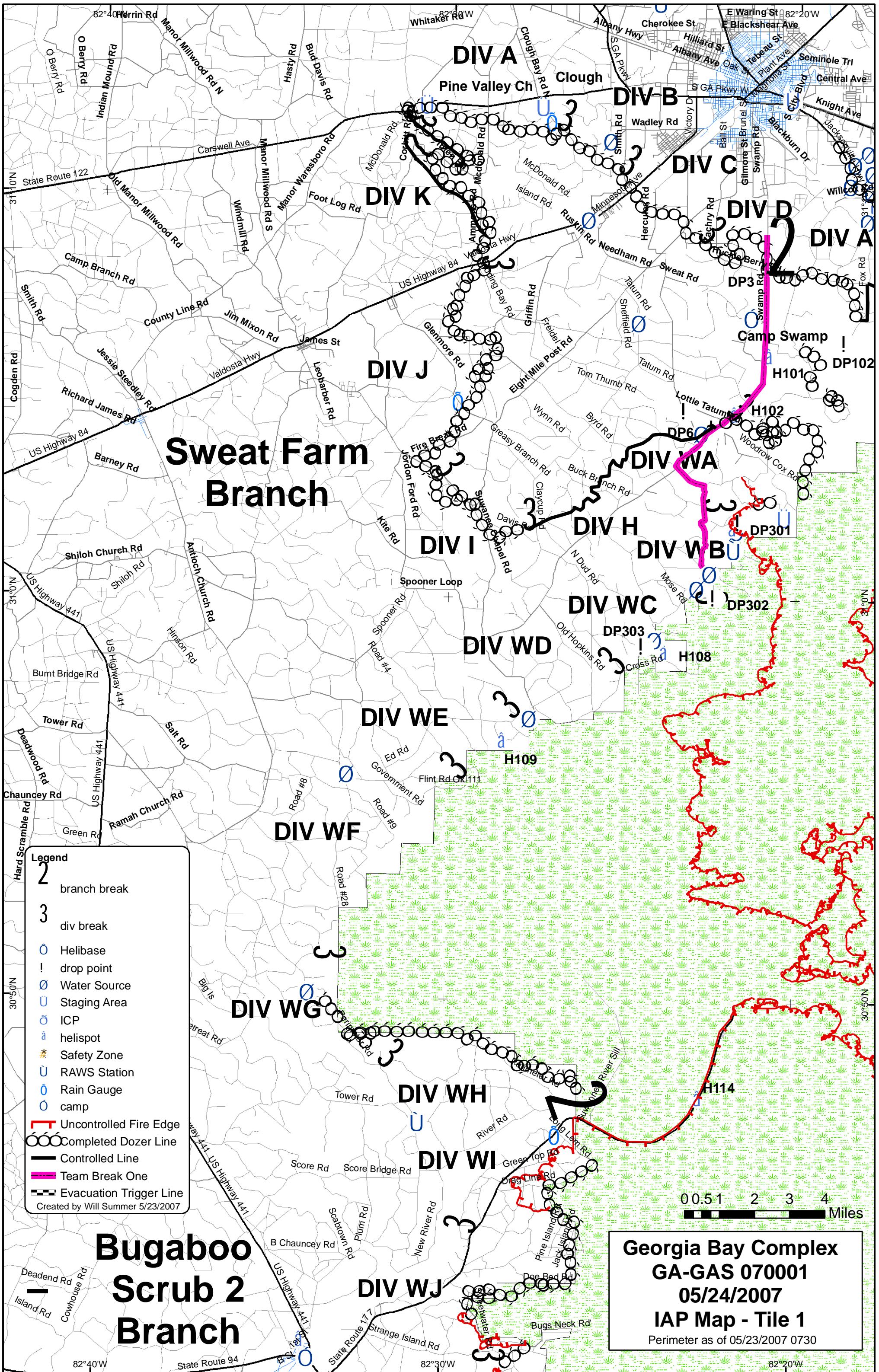
Southern & Florida IMT's

Georgia Bay Complex
GA-GAS-070001
May 24, 2007
IAP Map Index

Fire Perimeter as of 05/23/2007 0730 hrs.
Created by: B. Leatherwood
05/23/2007 2030 hrs

- Legend**
- Helibase
 - ICP
 - RAWS Station
 - Rain Gauge
 - Safety Zone
 - Staging Area
 - Water Source
 - Branch Break
 - Camp
 - Division Break
 - Drop Point
 - Helispot
 - Controlled Line
 - Team Break One
 - Uncontrolled Fire Edge
 - Evacuation Trigger Line
 - Completed Dozer Line
 - Refuge Boundary





Legend

- 2 branch break
- 3 div break
- Helibase
- ! drop point
- Water Source
- Staging Area
- ICP
- ⓐ helispot
- ★ Safety Zone
- RAWs Station
- Rain Gauge
- camp
- Uncontrolled Fire Edge
- Completed Dozer Line
- Controlled Line
- Team Break One
- Evacuation Trigger Line

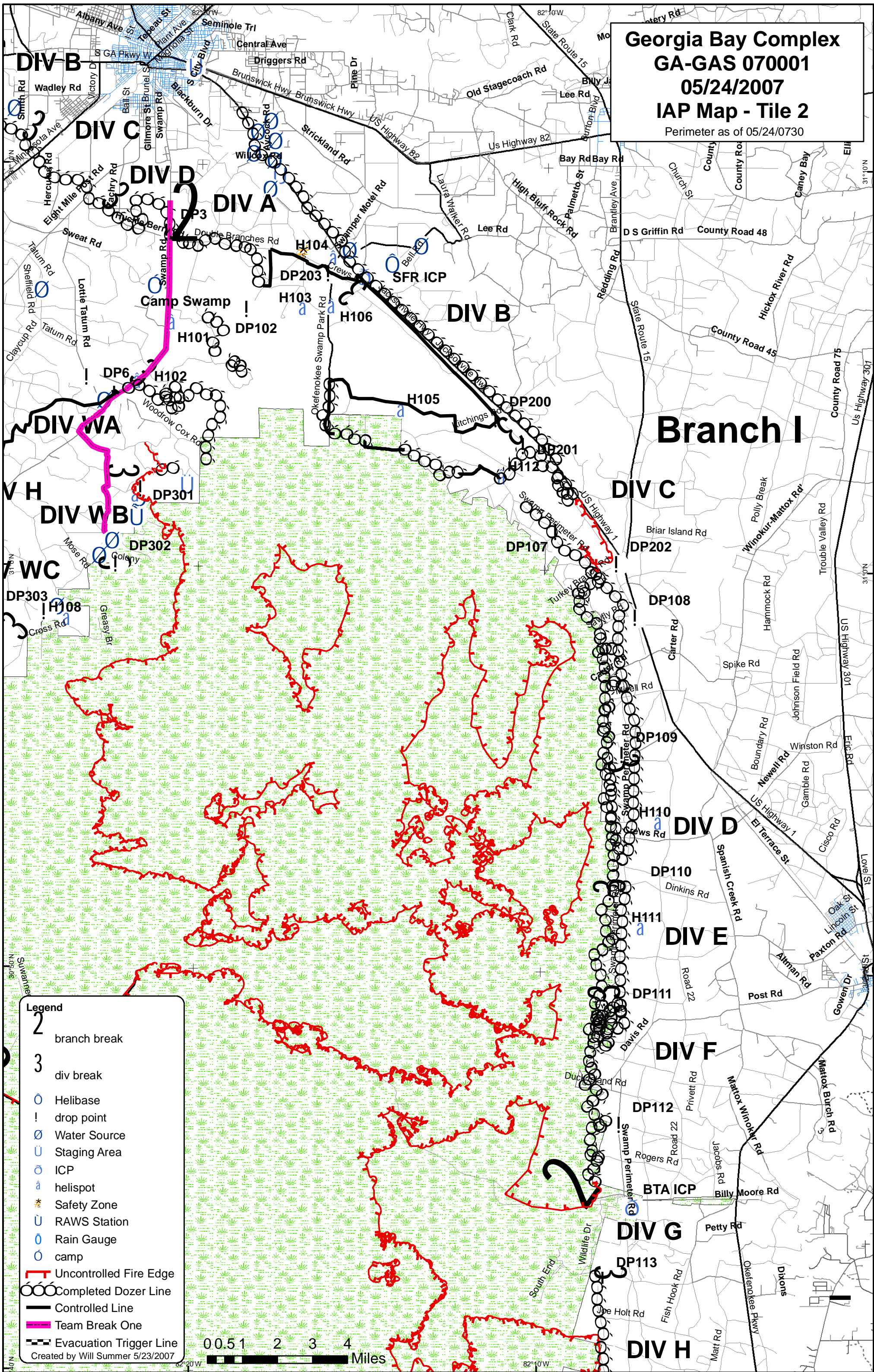
Created by Will Summer 5/23/2007

Georgia Bay Complex
GA-GAS 070001
05/24/2007
IAP Map - Tile 1
 Perimeter as of 05/23/2007 0730

Bugaboo
Scrub 2
Branch

Sweat Farm
Branch

Georgia Bay Complex
GA-GAS 070001
05/24/2007
IAP Map - Tile 2
 Perimeter as of 05/24/0730



- Legend**
- 2 branch break
 - 3 div break
 - Helibase
 - ! drop point
 - Water Source
 - Staging Area
 - ICP
 - ⊙ helispot
 - ★ Safety Zone
 - RAWS Station
 - Rain Gauge
 - camp
 - Uncontrolled Fire Edge
 - Completed Dozer Line
 - Controlled Line
 - Team Break One
 - Evacuation Trigger Line

0 0.5 1 2 3 4 Miles

Created by Will Summer 5/23/2007

