



Georgia Bay Complex

Sweat Farm Rd. Fire

Bugaboo Scrub II Fire

Incident Action Plan

Friday

May 25, 2007



GEMA

INCIDENT OBJECTIVES	1. Incident Name Georgia Bay Complex	2. Date Prepared 5/24/07	3. Time Prepared 1830
4. Operational Period 05/25/2007 Day and Swing Shift			
5. General Control Objectives For The Incident (Include Alternatives) <ol style="list-style-type: none"> 1. Provide for the safety of the public and assigned incident resources through effective hazard / risk assessment and mitigation. 2. Provide timely and accurate information updates to the GFC, cooperators, affected communities, and other stakeholders. 3. Provide accurate cost accountability and documentation of expenditures for the duration of the incident. 4. Develop and maintain coordination with local fire departments, local EOC directors, GEMA, other IMT's deployed in the area, GOAL, and private industry. 5. Provide support on initial and extended attack fires as requested by the 2 Southeast Georgia GFC districts. 6. Keep the Sweat Farm Road and Bugaboo Scrub II fires: <ul style="list-style-type: none"> • South of US 84 (Valdosta Highway) • East of Antioch Church Rd. • North of timber company Road #29 • East of Swamp Perimeter Rd. 7. Keep the Kneeknocker and Roundabout fires within the current established fire lines / perimeters. 			
6. Weather Forecast For Period			
<p><u>WEATHER FORECAST DAY SHIFT FRIDAY:</u></p> <p>WEATHER: Partly cloudy. A 20 percent chance of morning sprinkles.</p> <p>MAX TEMPERATURES: 81 to 84 (24 hour trend ~ 1 deg lower)</p> <p>MIN HUMIDITY: 38 to 42 (24 hour trend ~ same)</p> <p>20 FT WINDS: Northeast 5 mph early, becoming East and increasing to 10 to 15 mph with occasional gusts to 20 mph in the afternoon.</p> <p>STABILITY/INVERSION: Mixing heights 6000 ft. Afternoon Dispersion index around 65. Haines Index 4 (moderate). Transport winds East 20 mph.</p>			
7. General Safety Message			
<p>Breezy, gusty winds can push fire the same as yesterday. Everyone be fully aware of the predicted fire behavior. Plan and act accordingly. Maintain LCES at all times!</p>			
8. ATTACHEMENTS (X IF ATTACHED)			
<input checked="" type="checkbox"/> Organization List - ICS 203	<input checked="" type="checkbox"/> Division Assignment List - ICS 204	<input checked="" type="checkbox"/> Phone List	
<input checked="" type="checkbox"/> Fire Behavior Forecast	<input checked="" type="checkbox"/> Air Ops Summary-ICS 220	<input checked="" type="checkbox"/> Maps	
<input checked="" type="checkbox"/> Weather Forecast	<input checked="" type="checkbox"/> Communications Plan - ICS 205	<input checked="" type="checkbox"/> Unit Log- ICS 214	
<input checked="" type="checkbox"/> Safety Message	<input checked="" type="checkbox"/> Medical Plan - ICS 206	<input type="checkbox"/>	
<input checked="" type="checkbox"/> Incident Action Plan Safety Analysis -ICS 215	<input type="checkbox"/>	<input type="checkbox"/>	
9. Prepared By (Planning Section Chief)	10. Approved By (Incident Commander)		
<i>/S/ John Howard/Don Watson</i>	<i>/S/ Reid Hildreth/Dan Brandon</i>		

ORGANIZATION ASSIGNMENT LIST		9.	Operations Section	
1. Incident Name		Chief	Lee Burwell	
Georgia Bay Complex		Planning Ops	John Nichols / Jeff Burns (T)	
2. Date	3. Time	a.	Sweat Farm Road Branch	
May 24, 2007	2000	Branch Director	Buck Kline	
4. Operational Period		Division/ICT3	A,B,C,D	D. Lachapelle
May 25, 2007 0800-2000		Division/ICT3	Firing Group	Paul Brna/A.Crouch(T)/Arnold(T)
5.	Incident Commander and Staff		Division/ICT3	I,J,K
Incident Commander	Reid Hildreth	Division	WA	Lucus Santio
Deputy	Dan Brandon	Division	WB,WC,WD,WE	Richard Gonzalez
Liason	J.Hambright/G. Thompson	Division	WF,WG,WH	Phillip Wall
Safety Officer	Mike Huffman / Mark Luellen	Group	Structure Grp #2 Swing Shift	Pete Villa
Information Officer	MacDonald / Steltz / Weston / Berglund / Pineda	Group	Night Shift	Doug Mattox/Jonathan Wilson
6.	Agency Representatives		Group	ICP Group
Agency	Name	Group	Manor	Greg Arkle
GFC District 8	Frank Sorrells	Group	Structure Grp #1 – Day Shift	Dennis Keen
GFC District 10	Willard Fell	Group	Night Shift	Doug Mattox/Jonathan Wilson
GFC Protection Dept.	Alan Dozier			
Charlton Co. Liason	Billy Lietch			
GEMA	Allen Robinson	b.	Bugaboo Scub II Branch	
7.	Planning Section		Branch Director	Amery Wells
Chief	John Howard			
Deputy	Don Watson (T)	Division	WI,WJ	R. Adkins
Resources Unit	B. Pickens / D. Register / M. Cheek	Division	WK,WL,WM	J. Smith
Situation Unit	D. Ochocki / C. Brenzel / G. Smith (T)		Special Groups	
Documentation Unit	Annie Lott	Group	LE/Arson	Mike Heath
Demobilization Unit	Mary Lou Dozier	Group	Prevention	John Warner
CTSP	Garvin/ Vallieries / Chadwell	c.	Kneeknocker/Roundabout Branch	
Fire Behavior Analyst	Gary Curcio	Branch Director	Kneeknocker/Roundabout	McManus
Incident Meteorologist	John Pendergrast	Group	Kneeknocker	S. Abbott
Status/Check In	C. O'Bryan / R.Dottellis(T) / C.Liv(T)	Division	Roundabout Div. A & D	B. McCarty
Field Observer	White / Hurdle / Howell (T)	Division	Roundabout Div. B & C	J. Jones
GIS	Leatherwood / Gareau / Pugh (T) / Sumner (T)			
Infrared Interpreter	Lance / Barnum			
Training Specialist				
8.	Logistics Section		d.	Air Operations Branch
Chief	Troy Cleland / Travis Ruff	Air Operations Branch Director	Bob Seigler	
Facilities Unit	Clyde Leggins	Helibase Manager	W. Langston / D. Langley	
Supply Unit	Keith Walters	Air Support Supervisor	Ray Dew	
Food Unit	Chris Hubacker	GFC Air Operations	Mike Leverette	
Base Camp Manager	C. Knapp / R. Garman / S. Kelly	Air Tanker Coordinator		
Ground Support Unit	G. Cox / M. Summers	10.	Finance Section	
Ordering Manager	Travis Shidal / Benjamin Hauck	Chief	Marlene Sherrod / J. Johnson (T)	
Security Manager	Roger Atkinson	Incident Business Advisor	Paul Palmoitto	
Medical Unit	W. Williams / R. Carswell (T)	Time Unit Leader	Mavis Gragg	
Communications Unit	Larry Sharpe	Buying Team	Barbara Hatch	
Initial Attack Dispatcher		Personnel Time Recorder	K. Stripling / E. Vankuren	
Hotel Manager		Equipment Time Recorder	B.Drown / M.Derendoff A.Treadwell (T)	
Equipment Manager	Danny Hayes	Procurement	Sheila Head / R. Chellberg (T)	
Mechanic		Cost Unit	Chris Overman / Ron Myers	
Technical Specialist	Bobby Weaver / John Rush	Comp/Claims	M. Martinez / C. Oliveras	
Receiving & Distribution Manager	Jamie Logan	Prepared by (Resource Unit Leader) Bill Pickens / Michael Cheek / Dennis Register		
Camp Crew	TN JC #3/Barber			

TAILGATE BRIEFING SHEET

Signature/Date

☐ WEATHER FORECAST

FORECAST NO: 36

NAME OF FIRE: Georgia Bay Complex

PREDICTION FOR: Day & Night Ops

UNIT: Georgia Forestry Commission

SHIFT DATE: Fri 05/25/07

SIGNED: *John Pendergrast*

TIME AND DATE 1800

Incident Meteorologist

FORECAST ISSUED: 05/24/07

WEATHER DISCUSSION: High pressure will remain centered over the Carolinas into Saturday. East to Northeast winds...with higher afternoon gusts can be expected today. isolated showers are also possible.

The main concern is:

1. Gusty east winds in the afternoon

WEATHER FORECAST DAY SHIFT FRIDAY: (See table for specific incident forecasts)

WEATHER: Partly cloudy. A 20 percent chance of morning sprinkles.

MAX TEMPERATURES: 81 to 84 (24 hour trend ~ 1 deg lower)

MIN HUMIDITY: 38 to 42 (24 hour trend ~ same)

20 FT WINDS: Northeast 5 mph early, becoming East and increasing to 10 to 15 mph with occasional gusts to 20 mph in the afternoon.

STABILITY/INVERSION: Mixing heights 6000 ft. Afternoon Dispersion index around 65. Haines Index 4 (moderate). Transport winds East 20 mph.

	Sweet Farm Rd.	Bugaboo Scrub II	Roundabout	Knee-Knocker
Max Temperature:	81-84°	82-85°	84-87°	82-85°
Min Humidity:	38 to 42%	34-38%	31-35%	40-45%
Seabreeze Passage:	N/A	N/A	N/A	N/A

WEATHER FORECAST NIGHT SHIFT FRIDAY NIGHT: Breezy winds will diminish after 9 pm.

WEATHER: Partly cloudy. Breezy in the early evening. A 20 percent chance of an overnight shower.

MIN TEMPERATURES: 60 to 63.

MAX HUMIDITY: Recovery around 70 percent near the fire perimeter 90 to 95 percent elsewhere.

20 FT WINDS: East 10 mph in the evening becoming 2 to 4 mph late.

STABILITY/INVERSION: Moderate inversion below 400 ft. smoke movement W to SW. Dispersion 3.

OUTLOOK FOR SATURDAY:

Partly cloudy and dry. High temperatures 83 to 86. Minimum RH values 33 to 38%. Northeast winds 4 to 8 mph during the morning becoming East 8 to 14 mph with peak gusts to 20 mph in the afternoon.

EXTENDED: SUNDAY THROUGH WEDNESDAY:

Saturday: Partly cloudy. Lows in the low 60s. Highs in the mid 80s. East to Southeast winds 5 mph increasing to 10 mph with gusts to 15 mph in an afternoon sea breeze.

Sunday through Monday: Partly cloudy with a 20 percent chance of showers. Lows in the mid 60s. highs in the upper 80s. Southeast winds 5 to 10 mph with gusts to 15 mph in a late sea breeze each afternoon.

Tuesday: Partly cloudy with a 20 percent chance of showers or thunderstorms. Southeast winds 5 to 10 mph with gusts to 15 mph in the afternoon.

TAILGATE BRIEFING SHEET

SAFETY MESSAGE

Incident:

Georgia Bay Complex

Date:

May 25, 2007

Time:

Day & Night Shift

Major Hazards and Risks:

◦ Weather

◦ Fire Behavior

◦ Accountability

◦ Air Operations

◦ Reburn Potential

◦ Driving

◦ Fatigue

◦ Holiday Traffic

Breezy, gusty winds can push fire the same as yesterday. Everyone be fully aware of the predicted fire behavior. Plan and act accordingly. Maintain LCES at all times!

Know and account for personnel assigned to you and ensure you make contact with them. Crews also make the connection with your supervisor.

When the opportunity arises to utilize aircraft, please remember to adhere to the basic air operations safety guidelines. Ensure that communications are maintained (**know your air to ground frequency**) and that proper distance is given to working aircraft.

The holiday weekend begins today, so expect heavier traffic and congestion on major highways as well as "sight seers" interested in the fire show.

Driving continues to be priority on and off the incident. Be alert to varied speed limits in and around town and ensure that all incident personnel are in compliance with all traffic laws! Stop...Look...Listen...Live! Watch for multiple tracks at railroad crossings where there are no traffic guards.

Needle cast is still producing reburn potential. Keep this in consideration when evaluating escape routes and safety zones.

Shifts have gone long and extra hours can produce accumulative fatigue. Be sure to adhere to 2-to1-work rest ratio or mitigate before next shift.

SAFETY OFFICERS: Michael Huffman, Mark Luellen, Ronnie Hamm, Harry Kepler, Steve Snider, Tim Sampson, John Orton, Andy Meadows, Larry Miller, Pete Stewart, Rodney Bell, Jerry Dombrowske, Paul Boucher, and Keith Jenkins

INCIDENT ACTION PLAN SAFETY ANALYSIS	1. Incident Name Georgia Bay Complex	2. Date 5-25-07	3. Time Day & Night Shift
---	---	--------------------	------------------------------

LCES* Analysis of Tactical Applications Lookouts Communications Escape routes Safety zones	Other Risk Analysis
--	---------------------

Branch/Divisions	Indirect Fireline	Burnout Operation	Anchor Points	Extreme Fire Behavior Potential	Unburned Area	Snags	Power Lines	Reburn Potential	Road Conditions	LCES Mitigation's	Traffic	Fatigue/Hydration	Communications	Multi Aircraft	Heavy Equipment	Helicopter Dip Sites	Organic Soils	Accountability	Other Risk Mitigation's
	Sweet Farm	X	X	X	X	X	X	X	X	X	Lookouts posted, scout ahead for hazards, Known and identified escape routes Adequate safety zones identified Burn head lights, drive alert to traffic in the dusty conditions Scout ahead of tractor operations to avoid guy wires and poles Be aware of holiday weekend traffic	X	X	X	X	X	X		X
Bugaboo Scrub II	X	X	X	X	X	X		X	X	Lookouts posted, scout ahead for hazards Known and identified escape routes Adequate safety zones identified Burn head lights, drive alert to traffic in the dusty conditions Be aware of holiday weekend traffic	X	X	X	X	X	X		X	Make contact with assigned resources and know where they are. Attend Morning Briefing, Tailgate briefings Make contact with assigned resources and know where they are. Attend Morning Briefing, Tailgate briefings Refer to weather and safety message in IAP, post lookouts, stay away from dip sites, If you have questions-ASK! Drink adequate fluids, take frequent breaks.
Roundabout	X			X	X	X		X	X	Lookouts posted, scout ahead for hazards, Known and identified escape routes Adequate safety zones identified Burn head lights, drive alert to traffic in the dusty conditions Be aware of holiday weekend traffic	X	X	X	X	X	X	X	X	Make contact with assigned resources and know where they are. Attend Morning Briefing, Tailgate briefings Refer to weather and safety message in IAP, post lookouts, stay away from dip sites, If you have questions-ASK! Drink adequate fluids, take frequent breaks. Stay out of burn and avoid footing in white ash
Knee-knocker	X			X	X	X		X	X	Lookouts posted, scout ahead for hazards , Known and identified escape routes Adequate safety zones identified Burn head lights, drive alert to traffic in the dusty conditions Be aware of holiday weekend traffic	X	X	X	X	X	X		X	Make contact with assigned resources and know where they are. Attend Morning Briefing, Tailgate briefings Refer to weather and safety message in IAP, post lookouts, stay away from dip sites, If you have questions-ASK! Drink adequate fluids, take frequent breaks.

Prepared by (Name and Position)
Michael Huffman– Safety Officer

Fire Behavior Forecast

<u>Forecast No. 35</u>	<u>Prediction for Day Shift</u>
<u>Name of Fire: Ga Bay Complex /Sweat Farm Road</u>	<u>Shift Date: Friday May 25, 2007</u>
<u>Time and Date Forecast Issued</u> <u>1800 hrs 5/24/2007</u>	<u>Signed : Gary Curcio</u> <u>Fire Behavior Analyst</u>

Weather Summary (See Detailed Weather Forecast in the IAP):

The RH recovery could have been the best so far with high RH & the possibility of scattered showers. Yesterday moderate surface winds & a lighter but still adverse fire behavior wind profile supported breakovers again **along Division WP**. Today's forecasted weather is expected to be a repeat of what was experienced yesterday. **The exception is: "late afternoon winds will not achieve the MAX's experienced the last two days.** Be alert to the "subtle" wind shift from NE to E and the "**moderate**" windspeed (**AM – NE 5, becoming E 10 to 15 late afternoon**). **Minimum RH** will again hold at **32-43%**.

General Fire Behavior: Yesterday breakovers started earlier as an adverse wind profile generated windspeeds at 20 mph at 600ft. The combination of the surface and upper air winds, & available fuels contributed to develop churning smoke columns. Extreme fire behavior started early. Yesterday, spotting was experienced ¼ to ½ mile, rates of spreads 60 to 80 chains per hour and smoke columns still topped (>10,000ft.). Today's weather will engage the fires later in the morning, 1100 hrs. They become serious again for new fire growth and can be intense but will not spread as fast. Spotting, torching and crowning can still generate extreme rates of spread. Surface fires can quickly get up into the crowns of the pine plantations where the southern shrubs are > 5ft.

A shallow inversion is expected in the early AM & will temporarily cap fire activity.

Specific Fire Behavior:

Sweat Farm: Yesterday Divisions WP had several breakovers and **Bugaboo Scrub 2 Division WH** had multiple spotovers. These Divisions are subject to a repeat performance as **Probability of Ignition is still 60%**. Spot fires or breakovers can be started easily and spread rapidly in the southern rough and young pine plantations. During the peak burning period, 1500 through 1800 hrs., expected fire behavior:

ROS = 50 chains Flame Length = 4 ft (flanks) / 11 ft (head) Spotting = ¼ mile

When torching & spotting occurs, these values of fire behavior will be exceeded.

Roundabout & Kneeknocker Fires: Continue to be a threat for sleepers or reburn. The shrub fuels where they have been scorched can very easily move to the crowns and generate new spot fires. Roundabout still has organic soil burning. Lighter winds today reduce the risk of these fires, however they are still candidates for re-burn throughout the afternoon.

Initial Attack: Fuels are still critically dry and new spot fires or breakovers can still develop rapidly making initial attack essential.

Air Operations: With light inversion smoke can limit aircraft in the morning. Smoke production is expected to be plentiful, but late morning winds will clear up visibility. The western perimeters of the fires will be impacted by smoke production.

Safety: Fire activity has repeated itself for the last three days. Take the time to repeatedly assess your fire perimeter's weather & the fire's behavior. The transition of the fires will be less observable today. At all times know where your escape routes are, and know, that you can reach them.

DIVISION ASSIGNMENT LIST			1. Branch Sweat Farm		2. Division/Group A-B-C-D			
3. Incident Name Georgia Bay Complex			4. Operational Period Date: 5-25-07 Time: 0800 - 2000					
5. Operations Personnel								
Operations Chief		Lee Burwell John Nichols Jeff Burns		Division/ICT3		David Lachapelle O-226 5/31 912-218-7103 18*6748		
Branch Director		Buck Kline 18*1615		Safety Officer		Larry Miller O-38 5/28		
6. Resources Assigned this Period								
Strike Team/Task Force/ Resource Designator		Leader / Name		Last Shift Date	Number Persons	Trans. Needed	Drop Off PT./Time	Pick Up PT./Time
ST#1 TNS ST Eng T6 O-1026		Scott Smith		5/31	11	N	0700	2000
TN Eng E-2733		Long/Cantrell		5/31		N	0700	2000
TN Eng E-2731		Harmond/Steele		5/31		N	0700	2000
TN Eng E-2730		Wooden/Brown		5/31		N	0700	2000
TN Eng E-2732		Hobbs/Kirby		5/31		N	0700	2000
Columbia Martinez WT E-1227		Thomas/Hutcherson		5/31		N	0700	2000
ST#2 GFC ST TP T3 E-2602.1		Randy Mosley		5/29	4	N	0700	2000
GFC JD 650 E-2603		Taylor		5/29		N	0700	2000
GFC JD 650 E-2604		Harden		5/29		N	0700	2000
GFC JD 650 E-2605		Calhoun		5/29		N	0700	2000
7. Control Operations Patrol, mop up and mitigate as well respond to any threats posed by the fire.								
8. Special Instructions Have constant communication with logging operation in fire area: Buck Rodenberry: 912-2764990 Linc 18*5865								
9. Division/Group Communication Summary								
Function	Frequency	System	Channel	Function	Frequency	System	Channel	
Command		King NIFC		Air to Ground Federal	167.950 167.950/110.9 narrow band	King NIFC	Group 1 Ch. 12	
Tactical Div/Group	168.200	King NIFC	Group 1 Ch. 11	Air to Ground Georgia	159.390 Rx & Tx	King NIFC	Group 1 Ch. 13	
Prepared by (Resource Unit Leader) Pickens / Cheek /Register		Approved by (Planning Section Chief) /s/John Howard / Don Watson			Date May 24, 2007		Time 1900	

DIVISION ASSIGNMENT LIST				1. Branch Sweat Farm		2. Division/Group I-J-K		
3. Incident Name Georgia Bay Complex				4. Operational Period Date: 5-25-07 Time: 0800 - 2000				
5. Operations Personnel								
Operations Chief		Lee Burwell John Nichols Jeff Burns		Division/ICT3		Ron Swann O-264 6/3 540-969-7474		
Branch Director		Buck Kline 18*1615		Safety Officer		Rodney Bell 5/28 912-218-7132		
6. Resources Assigned this Period								
Strike Team/Task Force/ Resource Designator		Leader / Name		Last Shift Date	Number Persons	Trans. Needed	Drop Off PT./Time	Pick Up PT./Time
ST# 7 LAS ST Engines T6 O-1092		Jay Meadows		6/1	1	N	0800	2000
LAS Engine		E-1074	Moseley/Carter	6/1	2	N	0800	2000
LAS Engine		E-1071	Wager/Holmes	6/1	2	N	0800	2000
LAS Engine		E-1072	West/Tichy	6/1	2	N	0800	2000
ST# 8 LAS ST Engines T6 O-1093		Henry Childress		6/1	1	N	0800	2000
LAS Engine		E-1075	Wright/Bolyer	6/1	2	N	0800	2000
LAS Engine		E-1070	Mango/Hilton	6/1	2	N	0800	2000
LAS Engine		E-1073	Duckett/Martin	6/1	2	N	0800	2000
LAS Engine		E-1076	Polk/Hughes	6/1	2	N	0800	2000
Laurens Co. WT		E-1228	Underwood/Edwards	5/23	2	N	0800	2000
ST# 18 ALS STPL O-1069		Jason Berry		6/2	1	N	0800	2000
ALS T/P T3		E-1398	Williams / Barker	6/2	2	N	0800	2000
ALS DOZ. T2		E-1399	Berry/Bartlett	6/2	2	N	0800	2000
OK T/P T2		E-1468	Akard/Jacobs	6/1	2	N	0800	2000
OK T/P T2		E-1469	Wayman/Tunnell	6/1	2	N	0800	2000
7. Control Operations Patrol, mop up and mitigate as well as respond to any threats posed by the fire.								
8. Special Instructions Contact for I/A dispatches is County Ranger Billy Leitch 912-218-9325 Linc 18*12022 LCES implemented by 1000 and notify OPS when completed								
9. Division/Group Communication Summary								
Function	Frequency	System	Channel	Function	Frequency	System	Channel	
Command		King NIFC		Air to Ground Federal	167.950 167.950/110.9 narrow band	King NIFC	Group 1 Ch. 12	
Tactical Div/Group	169.900	King NIFC	Group 1 Ch. 10	Air to Ground Georgia	159.390 Rx & Tx	King NIFC	Group 1 Ch. 13	
Prepared by (Resource Unit Leader) Pickens / Cheek /Register			Approved by (Planning Section Chief) /s/John Howard / Don Watson			Date 5/24/07	Time 1900	

DIVISION ASSIGNMENT LIST				1. Branch Sweat Farm		2. Division/Group		
3. Incident Name Georgia Bay Complex				4. Operational Period Date: 5/25/07		Time: 0800-2000		
5. Operations Personnel								
Operations Chief		Lee Burwell/John Nichols Jeff Burns		Division/ICT3		Lucus Santio O-8113 5/25 435-790-7094		
Branch Director		Buck Kline		Safety Officer		Tim Sampson O-180 5/26 912-218-9215		
6. Resources Assigned this Period								
Strike Team/Task Force/ Resource Designator		Leader / Name		Last Shift Date	Number Persons	Trans. Needed	Drop Off PT./Time	Pick Up PT./Time
Timberline WAT1 #2		Goodman			1	N		
Tender 5500 gal. WAT1 E-118		Hawk / Black III			1	N		
Smith #1 WAT2 E-119		Webb			1	N		
Smith #2 WAT2 E-180		Smith			1	N		
Smith #3 WAT2 E-179		Smith			1			
Pump E-120		Douglas			1	N		
EMT		Lenny Throckmorton 804-467-9576			1	N		
EMT		Thomas Nails			1	N		
7. Control Operations Control operations and locations will be assigned by OPS at the 0800 Breifing								
8. Special Instructions Be available if needed to assist on Divisions WA, WB, WC, WD and WE.								
9. Division/Group Communication Summary								
Function	Frequency	System	Channel	Function	Frequency	System	Channel	
Command		King NIFC		Air to Ground Federal	167.950 167.950/110.9 Narrow band	King NIFC	Group 1 Ch. 12	
Tactical Div/Group		King NIFC		Air to Ground Georgia IA	159.390	King NIFC	Group 1 Ch. 13	
Prepared by (Resource Unit Leader) Pickens / Cheek /Register		Approved by (Planning Section Chief) /s/John Howard / Don Watson		Date May 24, 2007		Time 1900		

DIVISION ASSIGNMENT LIST				1. Branch Sweat Farm		2. Division/Group Page 1 of 2		
3. Incident Name Georgia Bay Complex				4. Operational Period Date: 5/25/07		Time: 0800-2000		
5. Operations Personnel								
Operations Chief		Lee Burwell/John Nichols Jeff Burns		Division/ICT3		Richard Gonzalez O-253 6/3 912-218-9352 18*1250		
Branch Director		Buck Kline		Safety Officer		Andy Meadows O-936 5/28 252-229-0161		
6. Resources Assigned this Period								
Strike Team/Task Force/ Resource Designator		Leader / Name		Last Shift Date	Number Persons	Trans. Needed	Drop Off PT./Time	Pick Up PT./Time
TF #4 TFLD O-152		David Hamilton		5/24	1	N		
AL DOZ T2		E-1110 Robinson / Taggart		5/31	2	N		
AL DOZ T2		E-1109 Chesser / Knighten		5/31	2	N		
Lee DOZ 1 (KG)		E-1085 Harold			1	N		
Lee DOZ 1 (KG)		E-1193 Sermans			1	N		
Timberline Doz. wKG		E-184 Lankford			1	N		
Timberline DOZ2		E-1084 Lashley			1	N		
GFC ST # 10 TP T3 O-874		Brian Haire		5/23	1	N		
GFC TP T3		E-1216 Terrell		5/23	1	N		
GFC TP T3		E-1218 Gay		5/23	1	N		
GFC TP T3		E-2612 Claxton		5/23	1	N		
GFC ST #16 T2 E-1343		Ty Hayman		5/27	1	N		
GFC TP T2		E-1344 Campbell		5/27	1	N		
GFC TP T2		E-1345 Kitchens		5/27	1	N		
GFC TP T2		E-1346 Driggers		5/27	1	N		
DOZB		O-147 R. Briggs		5/24	1	N		
7. Control Operations Control operations and locations will be assigned by OPS at the 0800 Briefing								
8. Special Instructions Use Okefenokee Refuge North Repeater for backup Command Communications through Big Turnaround Dispatch if necessary.								
9. Division/Group Communication Summary								
Function		Frequency		System		Channel		
Command				King NIFC		Air to Ground Federal 167.950 167.950/110.9 Narrow band		
Tactical Div/Group				King NIFC		Air to Ground Georgia IA 159.390		
Prepared by (Resource Unit Leader) Pickens / Cheek / Register				Approved by (Planning Section Chief) /s/John Howard / Don Watson				
Date May 24, 2007				Time 1900				

DIVISION ASSIGNMENT LIST				1. Branch Sweat Farm		2. Division/Group Page 2 of 2	
3. Incident Name Georgia Bay Complex				4. Operational Period Date: 5/25/07		Time: 0800-2000	
5. Operations Personnel							
Operations Chief		Lee Burwell/John Nichols Jeff Burns		Division/ICT3		Richard Gonzalez O-936 6/3	
Branch Director		Buck Kline		Safety Officer		Andy Meadows O-936 5/28	
6. Resources Assigned this Period							
Strike Team/Task Force/ Resource Designator		Leader / Name	Last Shift Date	Number Persons	Trans. Needed	Drop Off PT./Time	Pick Up PT./Time
TF #12							
TFLD O-288		Joe Remick	5/31	1	N		
CHIP PVT E-104		Hurst		1	N		
DOZB O-298		Reed Callis	5/31	1	N		
ST# 14 GFC T3 ST TP O-1101		Levy Rentz	6/2	6	N		
GFC Worth 71 E-1465.2		Barwick	6/2	1	N		
NC DOZB E-1105		Strider	5/31	1	N		
NC Dozer T3 E-1106		Cook	5/31	1	N		
GFC Turner 70 E-2079		Jackson	6/2	1	N		
GFC Grady 71 E-2080		Bulter	6/2	1	N		
7. Control Operations Control operations and locations will be assigned by OPS at the 0800 Briefing							
8. Special Instructions Use Okefenokee Refuge North Repeater for backup Command Communications through Big Turnaround Dispatch if necessary.							
9. Division/Group Communication Summary							
Function	Frequency	System	Channel	Function	Frequency	System	Channel
Command		King NIFC		Air to Ground Federal	167.950 167.950/110.9 Narrow band	King NIFC	Group 1 Ch. 12
Tactical Div/Group		King NIFC		Air to Ground Georgia IA	159.390	King NIFC	Group 1 Ch. 13
Prepared by (Resource Unit Leader) Pickens / Cheek / Register			Approved by (Planning Section Chief) /s/John Howard / Don Watson			Date May 24, 2007	Time 1900

DIVISION ASSIGNMENT LIST				1. Branch Sweat Farm		2. Division/Group	
3. Incident Name Georgia Bay Complex				4. Operational Period Date: 5/25/07		Time: 0800-2000	
5. Operations Personnel							
Operations Chief		Lee Burwell/John Nichols Jeff Burns		Division/ICT3		Phillip Wall 6/5 252-229-7135	
Branch Director		Buck Kline		Safety Officer			
6. Resources Assigned this Period							
Strike Team/Task Force/ Resource Designator		Leader / Name	Last Shift Date	Number Persons	Trans. Needed	Drop Off PT./Time	Pick Up PT./Time
TFLD O-297		David North	5/31	1	N		
GFC ST #24 STPL T3 O-578		Randy Teal	6/4	1	N		
GFC TP T3 E-2048		Griglen	6/4	1	N		
GFC TP T3 E-2047		Stone	6/4	1	N		
GFC TP T3 E-1047		Christopher	6/4	1	N		
Chipper E-105		Peake		1	N		
Chipper E-106		Carter		1	N		
Chipper E-103		Fordham					
CHIP PVT E-103		Landers		1	N		
CHIP E-107		Allen		1	N		
DOZB O-299		James Hartley	5/31	1	N		
DOZB O-282		Marc LeClair	5/31	1	N		
7. Control Operations Control operations and locations will be assigned by OPS at the 0800 Briefing							
8. Special Instructions Be aware of column(s) that may develop in Okefenokee Swamp and pass along to adjoining divisions.							
9. Division/Group Communication Summary							
Function	Frequency	System	Channel	Function	Frequency	System	Channel
Command		King NIFC		Air to Ground Federal	167.950 167.950/110.9 Narrowband	King NIFC	Group 1 Ch. 12
Tactical Div/Group		King NIFC		Air to Ground Georgia IA	159.390	King NIFC	Group 1 Ch. 13
Prepared by (Resource Unit Leader) Pickens / Cheek /Register		Approved by (Planning Section Chief) /s/John Howard / Don Watson			Date May 24, 2007		Time 1900

DIVISION ASSIGNMENT LIST				1. Branch Sweat Farm		2. Division/Group Night Shift	
3. Incident Name Georgia Bay Complex				4. Operational Period Date: 5-25-07 Time: 1800 - 0600			
5. Operations Personnel							
Operations Chief		Lee Burwell John Nichols Jeff Burns		Division		Doug Mattox O-221 6/4 Jonathan Wilson O-1132	
Branch Director		Buck Kline 18*1615		Safety Officer		Pete Stewart 912-218-8965 6/4	
6. Resources Assigned this Period							
Strike Team/Task Force/ Resource Designator		Leader / Name		Last Shift Date	Number Persons	Trans. Needed	Pick Up PT./Time
TFLD O-153		Dave Larsen		5/30	1	N	WA-WD
ST# 21 GFC ST Tractor Plow T3 E-2714		Alfred Lucas O-1005		5/28	4	N	WA-WD
GFC TPL E-2694 O-1006		A. Smith		5/28		N	WA-WD
GFC TPL E-2696 O-1008		C. Thomas		5/28		N	WA-WD
GFC TPL E-2695 O-1007		D. Veal		5/28		N	WA-WD
ST# 20 T6		Dan Muir		5/26	6	N	WA-WD
TX PVT Engine E-44		Sims/Judd		5/30		N	WA-WD
TX PVT #701 Engine E-45		McInis / McInis		5/30		N	WA-WD
TXF #31 Engine E-46		Neill/Chumley/Martin		6/3		N	WA-WD
TX PVT Engine T6 E-47		Woodward/Pannell		5/22	2	N	WA-WD
WAT2 E-2601		Grady		5/22	2	N	WA-WD
S/T 28 STEN O-179		Craig Gilbert		5/27	1	N	Fargo 1800
LA ENG T6 E-2841		Hall/Dunn		5/31	2	N	Fargo 1800
VA-VAF ENG T6 E-4		Ramey/Lament/Proctor		5/26	3	N	Fargo 1800
AZ-COF ENG T6 E-2		Rokosh/Grondin Moe/Hart		5/26	4	N	Fargo 1800
AZ SFD ENG T6 E-1		Ingrao/Kreun/Wells		5/26	3	N	Fargo 1800
CO-PSF ENG T6 E-3		Zanotto/ Rigaud		5/26	3	N	Fargo 1800
7. Control Operations Patrol and Mop Up West of Swamp Rd. Provide Structure Protection as needed. Coordinate with DIVS ; Clinch County Fire/EMA - Jesse Booth 25*255 919-482-3700							
9. Division/Group Communication Summary							
Function	Frequency	System	Channel	Function	Frequency	System	Channel
Command		King NIFC		Air to Ground Federal	167.950 167.950/110.9 Narrow band	King NIFC	Group 2 Ch. 12
Tactical Div/Group	168.600	King NIFC	Group 2 Ch. 7	Air to Ground Georgia IA	159.390	King NIFC	Group 2 Ch. 13
Prepared by (Resource Unit Leader) Pickens / Cheek /Register		Approved by (Planning Section Chief) /s/John Howard / Don Watson			Date May 24, 2007		Time 1900

DIVISION ASSIGNMENT LIST				1. Branch Sweat Farm		2. Division/Group		
3. Incident Name Georgia Bay Complex				4. Operational Period Date: 5-25-07		Time: 1200 - 2400		
5. Operations Personnel								
Operations Chief		Lee Burwell John Nichols Jeff Burns		Division/ICT3		Pete Villa O-203 6/1 912-218-8226 18*4523		
Branch Director				Safety Officer				
6. Resources Assigned this Period								
Strike Team/Task Force/ Resource Designator		Leader / Name		Last Shift Date	Number Persons	Trans. Needed	Drop Off PT./Time	Pick Up PT./Time
ST-2 STEN T6 Engine O-682		Mark Stinson		5/21	1	N		
Eng 4460 E-1181		Sinderud/ Kelley		5/21	1	N		
GA-GAS ENG T6 E-2834		Fortenberry/Hulsey		6/6	2	N		
GA-GAS ENG T6 E-2835		Sweatman/Sisk		6/6	2	N		
MN PVT #6 Engine E-26		G. Rock-C. Tucker		6/1	2	N		
TF-7 T/P E-113.3		Raymond Uballe		6/1	1	N		
TX-TXS T/P T4 E-113		Sides/Halloquist		6/1	2	N		
TX-TXS T/P T4 E-112		Cooke Hartstein		5/23 6/1	2	N		
TX-TXS T/P T4 E-114		Witt/Sunda		6/1	2	N		
ST#3		Purcell						
ST# 3GFC ST Engines T6 E-2659		Mike Purcell		6/2	9	N		
Pickens 86 E-1117		Davis/Keene		6/2		N		
Paulding 86 E-1098		Cornett/Henderson		6/2		N		
Heard 86 E-1015		Price/Singleton		5/26		N		
Upson 86 E-1132		Sanders/Shifflett		5/26		N		
Murray 86 E-1022		Chase/Jackson		6/4	2	N		
WAT2 N.Jenkins E-2858		Lane/Bragg		6/3	2	N		
7. Control Operations Patrol and Mop Up West of Swamp Rd. Provide Structure Protection as needed. Coordinate with DIVS								
8. Special Instructions Remainder of resources assigned to Fargo will assist with structure protection and related activities; Clinch County Fire/EMA - Jesse Booth 25*255 919-482-3700								
9. Division/Group Communication Summary								
Function	Frequency	System	Channel	Function	Frequency	System	Channel	
Command		King NIFC		Air to Ground Federal	167.950 167.950/110.9 Narrow band	King NIFC	Group 1 Ch. 12	
Tactical Div/Group		King NIFC		Air to Ground Georgia IA	159.390	King NIFC	Group 1 Ch. 13	
Prepared by (Resource Unit Leader) Pickens / Cheek /Register		Approved by (Planning Section Chief) /s/John Howard / Don Watson			Date May 24, 2007		Time 1900	

DIVISION ASSIGNMENT LIST			1. Branch Sweat Farm		2. Division/Group ICP GROUP		
3. Incident Name Georgia Bay Complex			4. Operational Period Date: 5-25-07 Time: 0800 - 2000				
5. Operations Personnel							
Operations Chief		Lee Burwell John Nichols Jeff Burns		Division/ICT3		Mike Appling O-223 5/30	
Branch Director		Buck Kline		Safety Officer			
6. Resources Assigned this Period							
Strike Team/Task Force/ Resource Designator		Leader / Name	Last Shift Date	Number Persons	Trans. Needed	Drop Off PT./Time	Pick Up PT./Time
ST# 15 GFC ST Tractor Plow T3		Lonnie Calloway	5/27	4	N	Folkston 0800	Folkston 2000
Evans 70 E-1199		Sykes	5/27		N	Folkston 0800	Folkston 2000
Jenkins 70 E-1198		Lane	5/27		N	Folkston 0800	Folkston 2000
Bulloch 70 E-1200		Wells	5/27		N	Folkston 0800	Folkston 2000
7. Control Operations Position Equipment to Manage and Mitigate any Threats Posed by Uncontrolled Fires.							
8. Special Instructions Remain in communications with resources and contractor. Contractor's link #: 18*14052 LCES implemented by 1000 and notify OPS when completed.							
9. Division/Group Communication Summary							
Function	Frequency	System	Channel	Function	Frequency	System	Channel
Command		King NIFC		Air to Ground Federal	167.950 167.950/110.9 Narrow band	King NIFC	Group 1 Ch. 12
Tactical Div/Group	168.200	King NIFC	Group 1 Ch. 11	Air to Ground Georgia IA	159.390	King NIFC	Group 1 Ch. 13
Prepared by (Resource Unit Leader) Pickens / Cheek /Register		Approved by (Planning Section Chief) /s/John Howard / Don Watson			Date 5/24/07		Time 1900

DIVISION ASSIGNMENT LIST			1. Branch Sweat Farm		2. Division/Group MANOR GROUP		
3. Incident Name Georgia Bay Complex			4. Operational Period Date: 5-25-07 Time: 0800 - 2000				
5. Operations Personnel							
Operations Chief		Lee Burwell John Nichols Jeff Burns		Division/ICT3		Greg Arkle 912-218-7726 18*4203	
Branch Director				Safety Officer		Larry Miller O-38 5/28 912-218-9355	
6. Resources Assigned this Period							
Strike Team/Task Force/ Resource Designator		Leader / Name	Last Shift Date	Number Persons	Trans. Needed	Drop Off PT./Time	Pick Up PT./Time
TFLD		Andrew Lane	6/7	1	N	Swamp Church 0800	Manor 2000
ST# 17 STEN (T) O-183		Reggie Day	5/26	1	N	Swamp Church 0800	Manor 2000
NMF Engine T6 E-56		Trujillo	5/25	3	N	Swamp Church 0800	Manor 2000
NMF Eng #236 T6 E-60		Hartley	6/5	3	N	Swamp Church 0800	Manor 2000
7. Control Operations Position Equipment to Manage and Mitigate any Threats Posed by Uncontrolled Fires.							
8. Special Instructions LCES implemented by 1000 and notify OPS when completed.							
9. Division/Group Communication Summary							
Function	Frequency	System	Channel	Function	Frequency	System	Channel
Command		King NIFC		Air to Ground Federal	167.950 167.950/110.9 narrow band	King NIFC	Group 1 Ch 12
Tactical Div/Group	168.200	King NIFC	Group 1 Ch. 11	Air to Ground Georgia IA	159.390 Rx & Tx	King NIFC	Group 1 Ch. 13
Prepared by (Resource Unit Leader) Pickens / Cheek /Register		Approved by (Planning Section Chief) /s/John Howard / Don Watson		Date May 24, 2007		Time 1900	

DIVISION ASSIGNMENT LIST				1. Branch Sweat Farm		2. Division/Group Structure Protection Group #1 DAY Shift	
3. Incident Name Georgia Bay Complex				4. Operational Period Date: 5-25-07 Time: 0800 - 2000			
5. Operations Personnel							
Operations Chief		Lee Burwell John Nichols Jeff Burns		Division/ICT3		Dennis Keen - Ware Co. Fire Dept. 912-337-3414 Linc - 1*44*977	
Branch Director				Safety Officer			
6. Resources Assigned this Period							
Strike Team/Task Force/ Resource Designator		Leader / Name	Last Shift Date	Number Persons	Trans. Needed	Drop Off PT./Time	Pick Up PT./Time
GA DOC TF		Rick Huggins 11*3204 cell 770-330-7246		1	N	Diversion Center0800	Diversion Center2000
		Don Shugart 54*240		1	N	Diversion Center0800	Diversion Center2000
		Larry Brown 11*32063		1	N	Diversion Center0800	Diversion Center2000
GDC Wilcox T1		Culpepper	5/21	5	N	Diversion Center0800	Diversion Center2000
GDC Montgomery Rescue		Helms/Sharp	5/21	6	N	Diversion Center0800	Diversion Center2000
GDC Dooly T6		Hudson	5/21	3	N	Diversion Center0800	Diversion Center2000
GDC Dooly WT			5/21	2	N	Diversion Center0800	Diversion Center2000
GDC Wayne T3		Horton	5/21	2	N	Diversion Center0800	Diversion Center2000
GDC Wayne T6			5/21	2	N	Diversion Center0800	Diversion Center2000
GDC Wayne WT			5/21	2	N	Diversion Center0800	Diversion Center2000
GSP T3		Rogers	5/21	3	N	Diversion Center0800	Diversion Center2000
GSP Rescue			5/21	3		Diversion Center0800	Diversion Center2000
GDC West GA. H/C		Roberts	5/21	8	N	Diversion Center0800	Diversion Center2000
GDC Lee Arendale H/C		Yearwood	5/21	10	N	Diversion Center0800	Diversion Center2000
GDC Paulding H/C		Cox/Foley	5/21	8	N	Diversion Center0800	Diversion Center2000
7. Control Operations Provide population/structure/infrastructure protection and preparation where needed. Continue to Gather GIS Data. Provide Mop Up around structures and support Division Mop Up. Coordinate with Red Team where applicable. Provide Firewise and Fire Prevention information to the public. Coordinate with DIVS.							
8. Special Instructions Way Cross Structures GEMA 40 Southern Linc 18*11049 Dennis Hackett 404-354-4415 or 352-279-6977 5/16 Jessie Jordan Ware Co. FD 44*4042 912-281-6541 Ware County Fuel Tender -- Tony Leverett 912-288-3295 Clinch County Fire/EMA -- Jesse Booth 25*255 919-482-3700 Dennis Keen Ware Co. Fire Dept. - 912-337-3414 Linc - 1*44*977 LCES implemented by 1000 and notify OPS when completed.							
9. Division/Group Communication Summary							
Function	Frequency	System	Channel	Function	Frequency	System	Channel
Command		King NIFC		Air to Ground Federal	167.950 167.950/110.9 narrow band	King NIFC	Group 1 Ch 12
Tactical Div/Group	154.280	King NIFC	Group1 Ch. 3	Air to Ground Georgia	159.390 Rx & Tx	King NIFC	Group 1 Ch. 13
Prepared by (Resource Unit Leader) Pickens / Cheek / Register		Approved by (Planning Section Chief) /s/John Howard / Don Watson		Date 5/24/07		Time 1900	

DIVISION ASSIGNMENT LIST			1. Branch Sweat Farm		2. Division/Group Firing Group Page 1 of 2					
3. Incident Name Georgia Bay Complex			4. Operational Period Date: 5-25-07 Time: 0800 - 2000							
5. Operations Personnel										
Operations Chief		Lee Burwell John Nichols Jeff Burns		Division/ICT3		Paul Brna O-295 6/5 Alan Crouch (T) O-239 5/31 Charles Arnold (T) O-1197 6/5				
Branch Director		Buck Kline 18*1615		Safety Officer		Steve Snider O-186 5/26 912-218-9308				
6. Resources Assigned this Period										
Strike Team/Task Force/ Resource Designator		Leader / Name		Last Shift Date	Number Persons	Trans. Needed	Drop Off PT./Time	Pick Up PT./Time		
TFLD					1	N	0800	2000		
ST#19 NC ST T/P T2		E-2660	Dean Lucas	5/27	1	N	0800	2000		
NC Mechanic		E-2661	David Corey	5/27	1	N	0800	2000		
NC TPL T2		E-2662	Shepherd / Bell	5/27	2	N	0800	2000		
NC TPL T2		E-2663	Endicott / Dunn	5/27	2	N	0800	2000		
NC TPL T2		E-2664	No oper. / Huttlinger	5/27	2	N	0800	2000		
SC-FMF TP T2		E-125	Beasley / Avesing	5/31	2	N	0800	2000		
TF# 1 SC TF w/ T6 ENG		O-1049	Bruce Ballentine	5/31	7	N	0800	2000		
JD 700 SB		E-9006	Boyce/Porter	5/31		N	0800	2000		
SCS ENG T6		E-2737	Connally/Heitcamp	5/31		N	0800	2000		
SCS ENG T6		E-2738	Craig/ Folk	5/31		N	0800	2000		
7. Control Operations Backfire along swamp edge break, as directed by the DIVS or OPS, to secure and hold the fire perimeter.										
8. Special Instructions LCES implemented by 1000 and notify OPS when completed.										
9. Division/Group Communication Summary										
Function		System		Channel		Function		Frequency	System	Channel
Command		King NIFC				Air to Ground Federal		167.950 167.950/110.9 narrow band	King NIFC	Group 1 Ch. 12
Tactical Div/Group		King NIFC				Air to Ground Georgia		159.390 Rx & Tx	King NIFC	Group1 Ch. 13
Prepared by (Resource Unit Leader) Pickens / Cheek / Register			Approved by (Planning Sect. Ch.) /s/John Howard / Don Watson			Date May 24, 2007		Time 1900		

DIVISION ASSIGNMENT LIST			1. Branch Sweat Farm Fire		2. Division/Group Firing Group Page 2 of 2								
3. Incident Name Georgia Bay Complex			4. Operational Period Date: 5-25-07 Time: 0800 - 2000										
5. Operations Personnel													
Operations Chief		Lee Burwell John Nichols Jeff Burns		Division/ICT3		Paul Brna O-295 6/5 Alan Crouch (T) O-239 5/31 Charles Arnold (T) O-1197 6/5							
Branch Director		Buck Kline 18*1615		Safety Officer		Steve Snider O-186 5/26 912-218-9308							
6. Resources Assigned this Period													
Strike Team/Task Force/ Resource Designator		Leader / Name		Last Shift Date	Number Persons	Trans. Needed	Drop Off PT./Time	Pick Up PT./Time					
ST # 4 GFC ST TP T3		Jimmy Kennedy		6/5	1	N	0800	2000					
GAS TP T3 E-2848		Washington / Pate		6/5	2	N	0800	2000					
GAS TP T4 E-2849		Sumner / Johnson		6/5	2	N	0800	2000					
GFC TP T4 E-2850		Houston / Vance		6/5	2	N	0800	2000					
ST # 29													
STPL O-1178		Trent Ingram		6/3	1	N	0800	2000					
GA-GAS TP T3 E-2844		Stephens		6/3	1	N	0800	2000					
GA-GAS TP T3 E-2845		Brook		6/3	1	N	0800	2000					
GA-GAS TP T3 E-2846		Baker		6/3	1	N	0800	2000					
7. Control Operations Backfire along swamp edge break, as directed by the DIVS or OPS, to secure and hold the fire perimeter.													
8. Special Instructions LCES implemented by 1000 and notify OPS when completed.													
9. Division/Group Communication Summary													
Function		System		Channel		Function		Frequency		System		Channel	
Command		King NIFC				Air to Ground Federal		167.950 167.950/110.9 narrow band		King NIFC		Group 1 Ch. 12	
Tactical Div/Group		King NIFC				Air to Ground Georgia		159.390 Rx & Tx		King NIFC		Group 1 Ch. 13	
Prepared by (Resource Unit Leader) Pickens / Cheek / Register				Approved by (Planning Sect. Ch.) /s/John Howard / Don Watson				Date May 24, 2007		Time 1900			

DIVISION ASSIGNMENT LIST			1. Branch Bugaboo Scrub II		Division/Group page 1 Of 2		
3. Incident Name Georgia Bay Complex			4. Operational Period Date: 5/25/07 Time: 0800-2000				
5. Operations Personnel							
Operations Chief		Lee Burwell John Nichols Jeff Burns		Division/ICT3		Ricky Adkins 6/5 910-340-1362 STPS Gary Waters 205-365-6651	
Branch Director		Amery Wells		Safety Officer		Harry Kepler O-66 5/29 912-218-8325	
6. Resources Assigned this Period							
Strike Team/Task Force/ Resource Designator	Leader / Name	Last Shift Date	Number Persons	Trans. Needed	Drop Off PT./Time	Pick Up PT./Time	
TFLD	O-154 O-158	Blain Tarbell Waylon Poowegup (T) Chris Bartlett	5/25 5/25	2	N		
ST #9 STEN	O-132	Van Komen	5/25	1	N		
CA-INF Eng.3	E-75	Napoles	5/26	5	N		
NM-LNF Eng.3	E-64	Reynolds	5/25	5	N		
GFC Eng. 3	E-2656	Flood / Laughlin	5/26	2	N		
GA DOT WT+1 Supervisor				2	N		
GA-GAS Eng. T6	E-1017	Williams/Bell/Flower		3	N		
TF #6	O-150	Ron Barr	5/24	1	N		
Support Fire Eng. 6	E-12	Zuehlke	5/24	2	N		
Engine	E-290						
WY-RSD T6	E-8007	Evans/Lancaster/Gregory	5/24	3	N		
NM-RON T6	E-98	Curnett/Lucero/Reta	5/24	3	N		
WY-RAD T6	E-8114	Laird/Murry/cook	5/24	3	N		
ST #23 TFLR	O-618	Bryan Spillers	5/22	1	N		
GFC Eng.5	E-1019	Sheffield/Redding	5/22	2	N		
GFC Eng.5	E-1016	Robinson/Moore	5/28	2	N		
GFC Eng.6	E-1021	Williams / Josey	5/28	2	N		
PVT Smokey Mtn. Eng6	E-42	Willix/Gibson	6/4	2	N		
PVT Smokey Mtn. Eng6	E-43	Halford/Benton	6/4	2	N		
7. Control Operations Control operations and locations will be assigned by OPS at the 0800 Briefing.							
8. Special Instructions See communications plan for closest Command Repeater to Division. Division and STPS keep Branch Director informed of status in progress.							
9. Division/Group Communication Summary							
Function	Frequency	System	Channel	Function	Frequency	System	Channel
Command		King NIFC		Air to Ground Federal	167.950 167.950/110.9 Narrow band	King NIFC	Group 1 Ch. 12
Tactical Div/Group		King NIFC		Air to Ground Georgia IA	159.390	King NIFC	Group 1 Ch. 13
Prepared by (Resource Unit Leader) Pickens / Cheek /Register		Approved by (Planning Section Chief) /s/John Howard / Don Watson			Date May 24, 2007		Time 1900

DIVISION ASSIGNMENT LIST				1. Branch Bugaboo Scrub II		2. Division/Group page 2 of 2	
3. Incident Name Georgia Bay Complex				4. Operational Period Date: 5/25/07		Time: 0800-2000	
5. Operations Personnel							
Operations Chief		Lee Burwell John Nichols Jeff Burns		Division/ICT3		Ricky Adkins 6/5 910-340-1362 STPS Gary Waters 205-365-6651	
Branch Director		Amery Wells		Safety Officer		Harry Kepler O-66 5/29 912-218-8325	
6. Resources Assigned this Period							
Strike Team/Task Force/ Resource Designator		Leader / Name		Last Shift Date	Number Persons	Trans. Needed	Pick Up PT./Time
STPL O-157		Chris Barlett		5/25	1	N	
ST #25 LA-LAS O-661		Mike Smith		6/6	5	N	
LA T/P T2 E-1102		Cornett / Weatherford		06/03		N	
LA T/P T2 E-1103		Marcantel / Bass		06/03		N	
8. Control Operations This includes Stephen Foster State Park. Assure hose line is in place and working. Assist with controlling fire as it progresses along the peninsula.							
9. Special Instructions See communications plan for closest Command Repeater to Division. Division and STPS keep Branch Director informed of status in progress.							
9. Division/Group Communication Summary							
Function	Frequency	System	Channel	Function	Frequency	System	Channel
Command		King NIFC		Air to Ground Federal	167.950 167.950/110.9 Narrow band	King NIFC	Group 1 Ch. 12
Tactical Div/Group		King NIFC		Air to Ground Georgia IA	159.390	King NIFC	Group 1 Ch. 13
Prepared by (Resource Unit Leader) Pickens / Cheek / Register		Approved by (Planning Section Chief) /s/John Howard / Don Watson			Date May 24, 2007		Time 1900

DIVISION ASSIGNMENT LIST				1. Branch Bugaboo Scrub II		2. Division/Group WK-WM	
3. Incident Name Georgia Bay Complex				4. Operational Period Date: 5/25/07		Time: 0800-2000	
5. Operations Personnel							
Operations Chief	Lee Burwell/John Nichols Jeff Burns			Division/ICT3	Jaymes Smith 5/28		
Branch Director	Amery Wells			Safety Officer	John Orton O-68 6/3 912-218-4958		
6. Resources Assigned this Period							
Strike Team/Task Force/ Resource Designator	Leader / Name		Last Shift Date	Number Persons	Trans. Needed	Drop Off PT./Time	Pick Up PT./Time
ST #26 O-148	Andy Barnett		05/25	7	N	Fargo/0800	Fargo/2000
TxTx T/P T2 E-1452	Ramsey / Williams		05/22 5/30		N	Fargo/0800	Fargo/2000
TxTx T/P T2 E-1453	Mitchell / Bell		05/30		N	Fargo/0800	Fargo/2000
TxTx T/P T2 E-1376	Elrod / Wiley		05/25		N	Fargo/0800	Fargo/2000
ST #22 STEN O-149	Mike Leach		5/24	1	N	Fargo/0800	Fargo/2000
AZ Eng.6 E-58	Walters/Reitz/Westerman		5/24	3	N	Fargo/0800	Fargo/2000
Rye Eng. 3 E-66	Thompson/Biggs/Bennett		5/24	3	N	Fargo/0800	Fargo/2000
CO USFS Eng.3 E-65	Brugett/Tighe/Popvich		5/24	3	N	Fargo/0800	Fargo/2000
CO COS Eng.6 E-67	Roetker/Lock/Groome		5/24	3	N	Fargo/0800	Fargo/2000
GA DOT WT				1	N	Fargo/0800	Fargo/2000
GA DOT WT				1	N	Fargo/0800	Fargo/2000
ST #5	Mike Schmidt O-8103				N	Fargo/0800	Fargo/2000
WY-CPS T6 E-101	Finn/Oden/Ratcliff		6/3	3	N	Fargo/0800	Fargo/2000
AZ-Brush T6 E-97	Albright/Price/Blake		5/26	3	N	Fargo/0800	Fargo/2000
CO-COS T6 E-94	Woodrich/White/ Mann/McCrary		5/27	4	N	Fargo/0800	Fargo/2000
Platte Canyon T6 E-95	Elk Nation/Warbal/Davis			3	N	Fargo/0800	Fargo/2000
AZ-AZS T6 E-96	Myers/Penrod/McNeil		6/3	3	N	Fargo/0800	Fargo/2000
7. Control Operations Patrol and mop up along fire line.							
8. Special Instructions Keep Branch Director informed of status in progress.							
9. Division/Group Communication Summary							
Function	Frequency	System	Channel	Function	Frequency	System	Channel
Command		King NIFC		Air to Ground Federal	167.950 167.950/110.9 Narrow band	King NIFC	Group 1 Ch. 12
Tactical Div/Group	164.1375	King NIFC	Group 1 Ch. 8	Air to Ground Georgia IA	159.390	King NIFC	Group 1 Ch. 13
Prepared by (Resource Unit Leader) Pickens / Cheek / Register		Approved by (Planning Section Chief) /s/John Howard / Don Watson			Date May 24, 2007		Time 1900

DIVISION ASSIGNMENT LIST		1. Branch Kneeknocker		2. Division/Group All Divisions			
3. Incident Name Georgia Bay Complex		4. Operational Period Date: 05/25/2007 Time: 0800-2000					
5. Operations Personnel							
Operations Branch Director	Brantley McManus		Technical Specialist (RA)		Barry Chesser		
Group Supervisor	Steve Abbott 5/28		Safety Officer		Paul Boucher		
6. Resources Assigned This Period							
Strike Team/Task Force/ Resource Designator	Leader	Number Persons	Trans Needed	Drop Off PT/Time	Pick Up PT/Time		
STEN	Tom Crews (STEN)	(5/30) 1	No	Fireline 0900	Fireline 1900		
Colorado Type 6 ENG San Isabel NF E-9	Alex Rudney (ENGB) Robert Dickamore Justin M. Campbell	(5/26) 3	No	Fireline 0900	Fireline 1900		
Colorado Type 6 ENG Upper Pine River Brush 66 E-14	Paul Black (ENG) Paul Valdez	(5/25) 2	No	Fireline 0900	Fireline 1900		
West Virginia Type 6 ENG E-7	Brandon Harden (ENGB) William Snodgrass Kyle Garris	(5/25) 3	No	Fireline 0900	Fireline 1900		
Arizona Type 6 ENG Lakeside Brush 212 E-12	Corey Valichnac (ENGB) Jason Todora Jake Valichnac	(5/25) 3	No	Fireline 0900	Fireline 1900		
Breakout							
North Carolina Task Force	Micheal Huges(TFLD) ENG# 760 T6 E-5190	(5/27) 1	No	Kneeknocker Staging 0900	Kneeknocker Staging 2000		
JD 750 DOZ2 E-5194	Jason O'neal	(5/27) 1	No	Kneeknocker Staging 0900	Kneeknocker Staging 2000		
CAT D5H DOZ3 E-5195	Bobby Phelps	(5/27) 1	No	Kneeknocker Staging 0900	Kneeknocker Staging 2000		
CAT D5H DOZ3 E-5193	James Scott	(5/27) 1	No	Kneeknocker Staging 0900	Kneeknocker Staging 2000		
Engine Type 6 ENG# 740 E-5191	Ferrell Banks	(5/27) 1	No	Kneeknocker Staging 0900	Kneeknocker Staging 2000		
Engine Type 6 ENG# 761 E-5198	Christopher Smith	(5/27) 1	No	Kneeknocker Staging 0900	Kneeknocker Staging 2000		
Engine Type 6 ENG# 1356 E-5199	Chris Holyfield	(5/27) 1	No	Kneeknocker Staging 0900	Kneeknocker Staging 2000		
NC Service Truck w/Mechanic E-5192	Jeff McPherson	(5/27) 1	No	Kneeknocker Staging 0900	Kneeknocker Staging 2000		
MUC Task Force 4	Garry Atteberry 1*18*627	46	NO	Fireline 0900	Fireline 1900		
7. Operations Hold line, improve mop up, and monitor fire activity for Kneeknocker using MUC 4 . Hold line, improve mop up, and monitor fire activity for Racetrack using MUC 5 .							
8. Special Instructions For Air Support use the following UTM Coordinates: Kneeknocker E 04014, N 34558 For structure protection call 911!							
9. Division/Group Communication Summary							
Function	Frequency	System	Channel	Function	Frequency	System	Channel
Command				Logistics			
Tactical Div/Group	168.200	GRP 3 Tactical	8	Air to Ground	169.200		12
Prepared By (Resource Unit Leader) Bill Widrig		Approved By (Planning Sect. Ch.) /s/ John Howard		Date 05/24/07		Time 1730	

DIVISION ASSIGNMENT LIST				1. Branch Roundabout		2. Division/Group A/D	
3. Incident Name Georgia Bay Complex				4. Operational Period Date: 05/25/2007 Time: 0800- 2000			
5. Operations Personnel							
Ops Branch Director		Brantley McManus		Division/Group Supervisor		Rufus Crutchfield 6/4	
Technical Specialist (RA)				Safety Officer		Jerry Dombrovsk	
6. Resources Assigned this Period							
Strike Team/Task Force/ Resource Designator		Leader		Number Persons	Trans. Needed	Drop Off PT./Time	Pick Up PT./Time
Arkansas T-3 TP TF		Eric Smith (STPL) 1*18*9200		(6-5) 1	No	Fireline 0900	Fireline 2000
JD 650 DOZ4 SO-22831		D. Pope/ R. Lane		(5-31) 2	No	Fireline 0900	Fireline 2000
CAT D-5G DOZ3 SO-23568		J. Johnston/ T. Phillips		(5-31) 2	No	Fireline 0900	Fireline 2000
Cat D-5 LGP DOZ3 SO-23562		J. Hoopengartner/ J. Williams		(5-31) 2	No	Fireline 0900	Fireline 2000
Wildland Fire Engine T3 E-2055 Gun-runner		Randal Frasier		2	No	Fireline 0900	Fireline 2000
Atkinson Co. Road Dept. Motor-Grader		Jessie Stanfield Joey Anderson		2	No	Fireline 0900	Fireline 2000
Williams TF		Tommy Williams (TFLD)		(5-30) 1	No	Fireline 0900	Fireline 2000
Twiggs 86 T-6 ENG		Larry Rowland Bledsoe		(5-30) 2	No	Fireline 0900	Fireline 2000
Peach 86		Nick Tresco		2	No	Fireline 0900	Fireline 2000
7. Control Operations Hold containment lines, improve mop up into edge of bays, address hot spots, and monitor fire activity.							
8. Special Instructions Do not drive on canal roads due to under burning and falling trees. Be aware of snags and other hazards. For Air Support use the following UTM Coordinates 315206 East 3463551 North. For Structure Protection Support/Engines Call 911.							
9. Division/Group Communication Summary							
Function	Frequency	System	Channel	Function	Frequency	System	Channel
Command		King NIFC		Logistics		King NIFC	
Tactical Div/Group	168.775	King NIFC	USFS 9 GRP 3 Tactical 6	Air to Ground	169.200	King NIFC	12
Prepared by (Resource Unit Ldr.) Bill Widrig		Approved by (Planning Sect. Ch.) /s/ John Howard			Date 5/24/2007		Time 2000

DIVISION ASSIGNMENT LIST			1. Branch Roundabout		2. Division/Group B/C		
3. Incident Name Georgia Bay Complex			4. Operational Period Date: 5/25/2007 Time: 0800 - 2000				
5. Operations Personnel							
Ops Branch Director		Brantley McManus		Division/Group Supervisor		Lucky Jones 1*18* 5198	
Technical Specialist (RA)				Safety Officer		Jerry Dombrowske	
6. Resources Assigned this Period							
Strike Team/Task Force/ Resource Designator		Leader		Number Persons	Trans. Needed	Drop Off PT./Time	Pick Up PT./Time
Single Resource Engine							
Wyoming Type 6 ENG BLM E-8		Kevin Moreno Jim Gates Bob Evans		(5/25) 3	No	Fireline 0900	Fireline 2000
Oklahoma Type 6 ENG BIA# 8661 E-5		Jerry Fletcher Ron Fields Clyde Crosnoe		(5/26) 3	No	Fireline 0900	Fireline 2000
JD Track Hoe		Quinton Dillingham		1	No	Fireline 0900	Fireline 2000
DOT 5000 gal. Water Tender		Chad Sowell		1	No	Fireline 0900	Fireline 2000
7. Control Operations Hold containment lines, improve mop up into edge of bays, address hot spots, and monitor fire activity.							
8. Special Instructions Do not drive on canal roads due to under burning and falling trees. Be aware of snags and other hazards. For Air Support use the following UTM Coordinates 315206 East 3463551 North. For Structure Protection Support/Engines Call 911.							
9. Division/Group Communication Summary							
Function	Frequency	System	Channel	Function	Frequency	System	Channel
Command		King NIFC		Logistics		King NIFC	
Tactical Div/Group	169.900	King NIFC	USFS 9 GRP 3 Tactical 7	Air to Ground	169.200	King NIFC	12
Prepared by (Resource Unit Ldr.) Bill Widrig		Approved by (Planning Sect. Ch.) /s/ John Howard			Date 5/24/2007		Time 2000

DIVISION ASSIGNMENT LIST			1. Branch Roundabout		2. Division/Group Breakout		
3. Incident Name Georgia Bay Complex			4. Operational Period Date: 5/25/2007 Time: 0800– 2000				
5. Operations Personnel							
Ops Branch Director		Brantley McManus		Division/Group Supervisor			
Technical Specialist (RA)				Safety Officer		Jerry Dombrowske	
6. Resources Assigned this Period							
Strike Team/Task Force/ Resource Designator		Leader		Number Persons	Trans. Needed	Drop Off PT./Time	Pick Up PT./Time
CAT D-4H DOZ3 Berrien-72		Josh Rowan		1	No	Roundabout Staging / 0900	Roundabout Staging / 2000
JD 750C DOZ2 Ware -71		Hilton Bennett		1	No	Roundabout Staging / 0900	Roundabout Staging / 2000
JD 750C DOZ2 Echols-70		Greame Treloar		1	No	Roundabout Staging / 0900	Roundabout Staging / 2000
7. Control Operations Task Force 1 : Respond to and suppress breakouts and spot overs on the Roundabout fire. Stage at Roundabout Staging area and wait dispatch. Breakout Task Force 1 should be readily available for suppressing breakouts on the Roundabout Fire within 3 minutes after dispatch.							
8. Special Instructions For Air Support use the following UTM Coordinates 315206 East 3463551 North For Structure Protection Support/Engines for Roundabout fire Call 911 : Also notify David Moore EMA IC (Linc# 1*11*4801) or Diane May GEMA Coordinator (Linc# 1*11*4818)							
9. Division/Group Communication Summary							
Function	Frequency	System	Channel	Function	Frequency	System	Channel
Mobile to Mobile	159.390	King NIFC	Group 3 1	Logistics		King NIFC	
Mobile to Base	159.390 Rx 159.225 Tx	King NIFC	Group 3 2	Air to Ground	169.200	King NIFC	12
Prepared by (Resource Unit Ldr.) Bill Widrig		Approved by (Planning Sect. Ch.) /s/ John Howard			Date 5/24/2007		Time 2000

		1. Branch		2. Division/Group Law Enforcement / Arson Group			
3. Incident Name Georgia Bay Complex		4. Operational Period Date: 5-25-07 Time: 0700 - 2000					
5. Operations Personnel							
Operations Chief		LE TEAM Leader		Brian Richards 912-218-9312 18*10639			
Branch Director		Safety Officer					
6. Resources Assigned this Period							
Strike Team/Task Force/ Resource Designator	Leader / Name	Last Shift Date	Number Persons	Trans. Needed	Drop Off PT./Time	Pick Up PT./Time	
G.B.I	Tom Crawford		1	N	0700	2000	
GA. Fire Marshal	Brian Clavier		1	N	0700	2000	
V DOF	Blair Dalton		1	N	0700	2000	
V DOF	Dennis Gaston		1	N	0700	2000	
V DOF	John Pine		1	N	0700	2000	
V DOF	Chris Owens		1				
LAS	Jim Baldwin		1	N	0700	2000	
LAS	Mark Singleton		1	N	0700	2000	
Wv DOF	Leo Lester		1	N	0700	2000	
WV DOF	Art Yagel		1	N	0700	2000	
TN DOF	Greg Whitehead		1	N	0700	2000	
TN DOF	Pete Merz		1	N	0700	2000	
MS DOF	Matt Steed		1	N	0700	2000	
PA DOF	Lee Jordan		1	N	0700	2000	
PA DOF	Robert McJillan		1	N	0700	2000	
7. Control Operations Immediately report suspicious activity directly to Brian Richards							
8. Special Instructions See Comm Plan for Frequency assigned to Div team is located at.							
9. Division/Group Communication Summary							
Function	Frequency	System	Channel	Function	Frequency	System	Channel
Command		King NIFC		Logistics		King NIFC	
Tactical Div/Group		King NIFC		Air to Ground		King NIFC	
Prepared by (Resource Unit Leader) Pickens / Cheek / Register		Approved by (Planning Section Chief) /s/John Howard / Don Watson		Date May 24, 2007		Time 1900	

DIVISION ASSIGNMENT LIST			1. Branch		2. Division/Group Prevention Team Task Force		
3. Incident Name Georgia Bay Complex			4. Operational Period Date: 5-25-07 Time: 0630 - 2200				
5. Operations Personnel							
Operations Chief		Lee Burwell John Nichols Jeff Burns		Division/ICT3			
Branch Director				Safety Officer			
6. Resources Assigned this Period							
Strike Team/Task Force/ Resource Designator	Leader / Name	Last Shift Date	Number Persons	Trans. Needed	Drop Off PT./Time	Pick Up PT./Time	
Team Leader	John R. Warner O-177	05/29	1	N	0630	2200	
Team Member	Sandra Taylor O-178	05/30	1	N	0630	2200	
Team Member/PIO	G. Slauson		1	N	0630	2200	
Team Liaison Officer GA	Roger Lane O-580	05/30	1	N	0630	2200	
7. Control Operations							
<p>*Slauson returning to team on 05/25/07</p> <p>*Wilson demob on 05/24 traveling on 05/25</p>							
8. Special Instructions							
<ol style="list-style-type: none"> Wilson to demob Deliver copies of Living with Fire and flyers to State Parks and GFC offices Complete team evaluations of individuals Complete Transition reports and documentation Compile "to do list" for incoming team members 							
9. Division/Group Communication Summary							
Function	Frequency	System	Channel	Function	Frequency	System	Channel
Command		King NIFC		Logistics		King NIFC	
Tactical Div/Group		King NIFC		Air to Ground		King NIFC	
Prepared by (Resource Unit Leader) Pickens / Cheek /Register		Approved by (Planning Section Chief) /s/John Howard / Don Watson		Date 5/24/07		Time 1900	

DIVISION ASSIGNMENT LIST			1. Branch		2. Division/Group Fireline Maintenance Group		
3. Incident Name Georgia Bay Complex			4. Operational Period		Date: 5/25/07		Time: 0800-2000
5. Operations Personnel							
Operations Chief	Lee Burwell/John Nichols Jeff Burns		Division/ICT3				
Branch Director	Buck Kline		Safety Officer				
6. Resources Assigned this Period							
Strike Team/Task Force/ Resource Designator	Leader / Name	Last Shift Date	Number Persons	Trans. Needed	Drop Off PT./Time	Pick Up PT./Time	
TIMBERLINE HARROW #1 E-2836	Tommy Hodges	6/4/07	1	N	0800	2000	
TIMBERLINE HARROW #2 E-2837	TBD		1	N	0800	2000	
TIMBERLINE HARROW #3 E-2838	TBD		1	N	0800	2000	
TIMBERLINE HARROW #4 E-2839	TBD		1	N	0800	2000	
TIMBERLINE HARROW #5 E-2840	TBD		1	N	0800	2000	
7. Control Operations Maintain fireline as needed by branch director.							
8. Special Instructions Use Okefenokee Refuge North Repeater for backup Command Communications through Big Turnaround Dispatch if necessary.							
9. Division/Group Communication Summary							
Function	Frequency	System	Channel	Function	Frequency	System	Channel
Command		King NIFC		Air to Ground Federal	167.950 167.950/110.9 Narrow band	King NIFC	Group 1 Ch.12
Tactical Div/Group		King NIFC		Air to Ground Georgia IA	159.390	King NIFC	Group 1 Ch. 13
Prepared by (Resource Unit Leader) Pickens / Cheek / Register		Approved by (Planning Section Chief) /s/John Howard / Don Watson			Date May 24, 2007		Time 1900

Georgia Bay Complex - Bugaboo (Group 2)

INCIDENT RADIO COMMUNICATIONS PLAN		1. Incident Name Georgia Bay Complex		2. Date/Time Prepared 5- 24 -2007	3. Operational Period Date/Time 5- 25-2007
4. BASIC RADIO CHANNEL UTILIZATION					
Radio Type/Cache	Channel	Function	Frequency/Tone	Assignment	Remarks
King NIFC	1	GFC Fargo Repeater	159.120/107.2 151.370/123.0	Command Rpt	Bugaboo Brush
King NIFC	2	Fire Tower Repeater	159.225 /203.5 151.280/203.5	Command Rpt	South of Homerville
King NIFC	3	GA Mutual Aid	154.280 154.280	Structural & Tactical	
King NIFC	4	911 & Structural Coordinator Rptr.	154.445/ 118.8 154.010/118.8	Emergency Traffic	This is a heavy traffic channel, use only for Emergency Traffic
King NIFC	5	Tactical	159.285 Rx & Tx	Divs. WH, WI, WJ	Southern COMPACT
King NIFC	6	Tactical	168.050 Rx & Tx Narrow Band	Divs. E, WF, WG, WS	Fireline
King NIFC	7	Tactical	168.600 Rx & Tx Narrow Band	Divs. WB, WC, WD, WE, Swing I/A, Night	Fireline
King NIFC	8	Tactical	164.1375 Rx & Tx Narrow Band	Divs. WA, WK, WL, WM	Fireline
King NIFC	9	Tactical	168.775 Rx & Tx Narrow Band	Divs.H, WN, WO, WP, WQ, WR, WT	Fireline
King NIFC	10	Tactical	169.900 Rx & Tx Narrow Band	Divs. I, J, K, WV	Fireline
King NIFC	11	Tactical	168.200 Rx & Tx Narrow Band	Divs.A,B,C,D, WU, ICP & ManorGroup	Fireline
King NIFC	12	Air to Ground	167.950 167.950/110.9 Narrow Band	Federal Air to Ground	
King NIFC	13	Air To Ground	159.390 Rx & Tx	Georgia Air to Ground	
King NIFC	14	Air Guard	168.625 168.625/110.9 Narrow Band	Air Emergency Only	Air Emergency Only
5. Prepared By (Communications Unit) LARRY SHARPE/ COML					

Georgia Bay Complex – Sweat Farm (Group 1)

INCIDENT RADIO COMMUNICATIONS PLAN		1. Incident Name Georgia Bay Complex		2. Date/Time Prepared 5- 24-2007	3. Operational Period Date/Time 5- 25-2007
4. BASIC RADIO CHANNEL UTILIZATION					
Radio Type/Cache	Channel	Function	Frequency/Tone	Assignment	Remarks
King NIFC	1	Command Ware EMA Repeater	158.7825/162.2 153.7625/162.2 Narrow Band	Command Rpt	Sweat Farm
King NIFC	2	Fire Tower Repeater	159.225 /203.5 151.280/203.5	Command Rpt	South of Homerville
King NIFC	3	GA Mutual Aid	154.280 154.280	Structural & Tactical	
King NIFC	4	911 & Structural Coordinator Rprtr.	154.445/ 118.8 154.010/118.8	Emergency Traffic	This is a heavy traffic channel, use only for Emergency Traffic
King NIFC	5	Tactical	159.285 Rx & Tx	Divs. WH,WI,WJ	Southern COMPACT
King NIFC	6	Tactical	168.050 Rx & Tx Narrow Band	Divs. E, WF, WG, WS	Fireline
King NIFC	7	Tactical	168.600 Rx & Tx Narrow Band	Divs. WB, WC, WD, WE, Swing/IA, Night	Fireline
King NIFC	8	Tactical	164.1375 Rx & Tx Narrow Band	Divs. WA, WK, WL, WM	Fireline
King NIFC	9	Tactical	168.775 Rx & Tx Narrow Band	Divs. H, WN, WO, WP, WQ, WR, WT	Fireline
King NIFC	10	Tactical	169.900 Rx & Tx Narrow Band	Divs. I, J, K , WV	Fireline
King NIFC	11	Tactical	168.200 Rx & Tx Narrow Band	Divs.A,B,C,D, WU ICP & Manor Group	Fireline
King NIFC	12	Air to Ground	167.950 167.950/110.9 Narrow Band	Federal Air to Ground	
King NIFC	13	Air To Ground	159.390 Rx & Tx	Georgia Air to Ground	
King NIFC	14	Air Guard	168.625 168.625/110.9 Narrow Band	Air Emergency Only	Air Emergency Only

5. Prepared By (Communications Unit)
LARRY SHARPE/ COML

Georgia Bay Complex – Kneeknocker/Roundabout (Group 3)

INCIDENT RADIO COMMUNICATIONS PLAN		1. Incident Name Georgia Bay Complex		2. Date/Time Prepared 5- 24 -2007	3. Operational Period Date/Time 5- 25-2007
4. BASIC RADIO CHANNEL UTILIZATION					
Radio Type/Cache	Channel	Function	Frequency/Tone	Assignment	Remarks
King NIFC	1	Mobile to Mobile	159.390 RX & Tx	Breakout	Kneeknocker & Roundabout
King NIFC	2	Mobile to Base	159.390 Rx 159.225 Tx	Breakout	Kneeknocker & Roundabout
King NIFC	3	GA Mutual Aid	154.280 154.280	Race Track Fire	Structural & Tactical
King NIFC	4	Tactical	159.285 Rx & Tx	As needed	Southeastern Compact
King NIFC	5	Tactical	164.1375 Rx & Tx		
King NIFC	6	Tactical	168.775 Rx & Tx	Roundabout AD	
King NIFC	7	Tactical	169.900 Rx & Tx	Roundabout BC	
King NIFC	8	Tactical	168.200 Rx & Tx	Kneeknocker	
King NIFC	9	Tactical	159.270 Rx & Tx	Ft. Mudge Fire	Red Channel
King NIFC	10	Tactical	159.420 Rx & Tx	Forest Drive Fire	White Channel
King NIFC	11	Tactical	159.330 Rx & Tx		Blue Channel
King NIFC	12	Air to Ground	169.200 Rx & Tx	Kneeknocker	Air to Ground Dedicated to this complex
King NIFC	13	Air Guard	168.625 168.625/110.9 Narrow Band	Air Emergency Only	Air Emergency Only
King NIFC	14	Knee Repeater	159.465 Rx 151.145 Tx /114.8	Command Repeater	Kneeknocker only
5. Prepared By (Communications Unit) LARRY SHARPE/ COML					

ICS-206 MEDICAL PLAN	1. Incident Name Georgia Bay Complex	2. Date Prepared 5/24/07	3. Time Prepared 1200	4. Operational Period 5/25/07 DAY & NIGHT SHIFT				
5. Incident Medical Aid Station								
Medical Aid Stations		Location		Paramedics				
				Yes No				
Medical Unit Georgia Bay	912-218-9101	Georgia Forestry Headquarters ICP - Carswell (MEDL)		EMT				
Medical Unit Fargo		Fargo Welcome Center – Anderson (MEDL)		X EMT				
6. Transportation								
A. Ambulance Services								
Name		Address		Phone				
				Paramedics				
				Yes No				
Ware County EMS		Waycross Georgia (911 to activate)		912-281-9467 Linc 1*96*116				
Charlton Memorial EMS		1203 N Third St Folkston Ga (911 to activate)		888-255-4961 Linc 1*25*3468				
Fargo EMS Staging Unit		Fargo (911 to activate)		Ask for Fargo Staging EMS				
Air Ambulance Service								
Trauma 1		Jacksonville, FL (26 min/air)		1-800-223-4878				
AirMed		Augusta, GA (2 hrs/air)		1-888-792-9245				
Lifeflight (155.340)		Jacksonville, FL (35 min/air)		1-877-870-7779				
B. Incident Ambulances								
Name		Location		Paramedics				
				Yes No				
Ware County EMS		Fargo (Fargo Unit – 41 First Street – Fargo, GA 31631)		X				
7. Hospitals								
Name	Address	Travel Time		Phone	Helipad		Burn Center	
		Air	Grnd		Yes	No	Yes	No
Charlton Memorial	1203 N 3 rd St Folkston N 30°50.8 W 82°00.1	10 min	20 min.	912-496-2531	X			X
Satilla Regional	410 Darling Ave Waycross Ga N 31°13.56 W 82°21.058	15 min	30 min	912-283-3030	X			X
Shands Hospital (level I)	Jacksonville, FL N 30°20 97 W 82° 13 992	45 min	1.5 hrs	800-223-4878	X		X	
Memorial Hospital	Savannah, GA 4700 Waters 3200.7 8107.6	40 min		912-350-8999	X			X
Shands Burn Center	Gainesville, FL 38.33 N 082 20.73W	45 min		352-265-0300	X		X	
Doctor's Hospital Joseph Still Burn Center	August,GA (Chief Burn Ctr 3328.943 8205.422	90 min	3 ½ hrs	877-863-9595 706-863-9595	X		X	
8. Medical Emergency Procedures								
<p>Identify any EMT's and Paramedics in your crews. All medical emergencies will be reported to the Division Supervisor who will assume command.</p> <ol style="list-style-type: none"> 1) Provide medical care & stabilize patient. 2) Call 911 3) Notify Communications via radio over Command Channel. 4) Communications will clear radio traffic for medical emergency. 5) Notify Dispatch, provide ONE on site contact person, notify dispatch if that changes <ul style="list-style-type: none"> o Provide location (road intersection, GPS coordinates). o Number of patients o Type of injury or illness – Is it life threatening? Provide vital signs if available. o EMT's on scene and/or needed o Type of transportation needed 6) Com will notify ambulance and coordinate with IC, SOF, MEDL 					<p>*CREW EMT'S (ALL LEVELS) WILL FUNCTION AS FIRST RESPONDERS UNLESS SPECIFICALLY ASSIGNED TO THE INCIDENT AS A LINE MEDIC</p>			
<p>Helibase – ICP Waycross: 31 07.23 X 82 15.23 Helispots – Fargo Base Camp: 30 47 30.02 X 82 22 39.5 (4 mi mrker Hwy 177 – Stephen C. Foster St. Prk) H-114 and 30 41.739 X 82 33.961 (Hwy 441 - golf course) H-113</p>								
9. Prepared by (Medical Unit Leader) (GA) Robert Carswell (T) (912) 218-9101 Linc 1*18*7480 (NC) Wayne Williams (919) 801-4264					10. Reviewed by (Safety Officer) (NC) Mike Huffman (919) 218-9060			

AIR OPERATIONS SUMMARY		PREPARED BY: Bob Seigler			PREPARED DATE/TIME 5/24/07 1900			
1. INCIDENT NAME: Georgia Bay Complex		2. OPERATIONAL PERIOD: Day Shift 5/25/07			START TIME: 0700	END TIME: 2000	SUNRISE: 0628	SUNSET: 2024
3. REMARKS (Safety Notes, Hazards, Air Operations Special Equipment, etc.): Waycross Helibase—31 14.95 X 82 23.73 Pogo Helibase-30 44.25 X 82 07.69 Braganza Helispot 31 07.23 X 82 15.23 AIR TANKER REQUESTS THRU POGO <ul style="list-style-type: none"> • Avoid take-off / landing over ICP • All dispatches will come through the ICP in Waycross for state aviation resources. • High Towers in Area, • LOOK UP, LOOK DOWN, LOOK ALL AROUND • Aircraft Dispatching Priorities: <ul style="list-style-type: none"> 1. Life 2. Structures Threatened 3. Initial Attack 4. Fire threatening perimeter control lines 					4. MEDEVAC A/C: N17HX—Pogo Helibase		5. TFR: In Place Radius: Rectangle to 3000 MSL_ Altitude: _3000= MSL NW corner Lat 31 09 02 Long 82 32 04 SE corner Lat 30 53 17 Long 82 02 48:	
6. PERSONNEL		Phone	7. FREQUENCIES	AM	FM	8. FIXED-WING # Avail / Type/ Make-Model / FAA N# / Base(s)		
AOBD: Bob Seigler		828-231-4560	AIR/AIR FW:	122.575 E/sd 122.825 scdry 122.925 GA IA 123.125 W/sd		Airtankers @ 06-Type I LCQ & OCF 20-Type I 22-Type I 09-Type II 43-Type I 21-Type I		
ATGS: T. Doragan—Waycross			AIR/AIR RW:	122.575 E/sd 123.125 W/sd 122.925 GA IA		Leadplanes Lead B-2 ASM Lead 1-4 Base FAX #:		
State Aviation Lead Waycross Airport Mike Leverette			AIR/GROUND:		151.145 GA IA 167.950 Swt. Farm	ATGS Aircraft 90K—Beach Baron—T. Doragan 01Q—Cessna 401—K. Walsh 0EB—King Air—C.Cross Lake City		
ASGS: Ray Dew		478-550-2990	COMMAND:			Other		
Waycross HEBM: Dave Langley		505-240-3649	COMMAND RPT	Rx:	Tx:	Flight follow with Pogo Helibase or Waycross Helibase IA Air Attack for State--- Cessna 182's and UH 60's Bell 407-Chopper 7 Approved Helispots—Refer to Okefenokee NWR Despite Map One GNG Helicopter will remain at Waycross Airport for IA at all times ALL AIRCRAFT Call Air Attack when entering TFR---		
ATB MGR:			DECK FREQ:					
Braganza Helispot HESM: Wayne Langston Dip Site Mgr: Walter Thompson		919-920-4906	TOLC FREQ:					
Pogo Helibase Davis Helibase Waycross Helibase		912-496-4415 912-496-3765 912-338-5982	FLT FOLLOWING: Pogo Helibase Waycross Helibase		RX 164.625 TX 163.150 TONE 103.5			

Fargo Helibase—(Golf Course) N 30 41 27.3 x W 82 34 02.0 Stephen Foster SP (Pocket) N 30 47 32.2 x W 82 22 39..6					Waycross Helibase will call Pogo as a back up!!! ALL FLIGHTS WILL BE CLEARED WITH AOB 107Z - IR-RW Cobra
---	--	--	--	--	---

9. HELICOPTERS (Use Additional Sheets As Necessary)

FAA N#	TY	MAKE/MODEL	BASE	AVAIL	START	REMARKS	FAA N#	TY	MAKE/MODEL	BASE	AVAIL	START	REMARKS
N5BH	I	Sikorsky S-70A-27	Pogo	0900	0930	Bucket Drops	N5738Y	III	Bell 206	Pogo	0900	0930	Recon/ Admin/ IA
N4503E	I	Sikorsky S-61N	Pogo	0900	0930	Bucket drops	N12HX	III	Bell 407	Pogo	0900	0930	Admin/ Recon
N15HX	II	Bell 205++	Pogo	0900	0930	Bucket drops	Chopper 7	III	Bell 407	Waycross	0900	0930	State IA-Bucket drops as needed
N17HX II	II	BELL 205++	Pogo	0900	0930	Bucket Drops	90K	I	Baron	Waycross	0900	0930	ATGS
	I	UH-60	Waycross	0900	0930	IA for State	62-Z	I	King Air	Lake City	0800	0930	ATGS
	I	UH-60	Waycross	0900	0930	IA for State							
01Q	i	Cessna 401	Waycross	0900	0930	ATGS							
		Cessna 182	Waycross	0900	0930	Aerial Detection							

10. TASK/MISSION/ASSIGNMENT (Type/Function includes: Air Tactical, Retardant, Recon, Personnel Transport, Water Dropping, S&R, etc.)						
TYPE/FUNCTION	NAME OF PERSONNEL OR CARGO (if applicable) OR INSTRUCTIONS FOR TACTICAL AIRCRAFT			MISSION START	FLY FROM	FLY TO
Type II Helicopter	Operation and Logistic Support			0930	Helibase	Fire and Return
Type III Helicopter	Operation and Logistic Support			0930	Helibase	Fire and Return
Type I Helicopter	Operation and Logistic Support			0930	Helibase	Fire and Return
ATGS Platforms	Aerial Supervision of all Aircraft over Incidents			0930	Waycross Airport & Lake City	Fire and Return
State Detection Fixed Wing	Aerial Detection and IA for New Fire Starts			0930	Waycross Airport	Fire and Return

HUMAN RESOURCE MESSAGE

Look around you at all the people working here:
They are your TEAMMATES.

Effective teamwork requires everyone doing their part. Whatever your job is here - on the fire line, at the ICP, or elsewhere -- it is important to our success.

Do your job well, do it with pride, do it safely.

"If you are going to achieve excellence in big things, you develop the habit in little matters. Excellence is not an exception, it is a prevailing attitude." -- *Colin Powell, former Secretary of State & US Army 4 star General*

No matter what your role is on the fire, you may contact us for assistance with any "people" concern. If we can't help you directly, we'll make every effort to find someone who can.

Gary Samaha, HRSP
404-357-1516

Andrew Quillen, HRSP(T)
404-202-1547

Local Business Signs

At a muffler shop: "No appointment necessary. We'll hear you coming."

At a car wash shop: "Satisfaction guaranteed or your dirt back."

At an optometrist's office: "If you don't see what you're looking for, you've come to the right place."

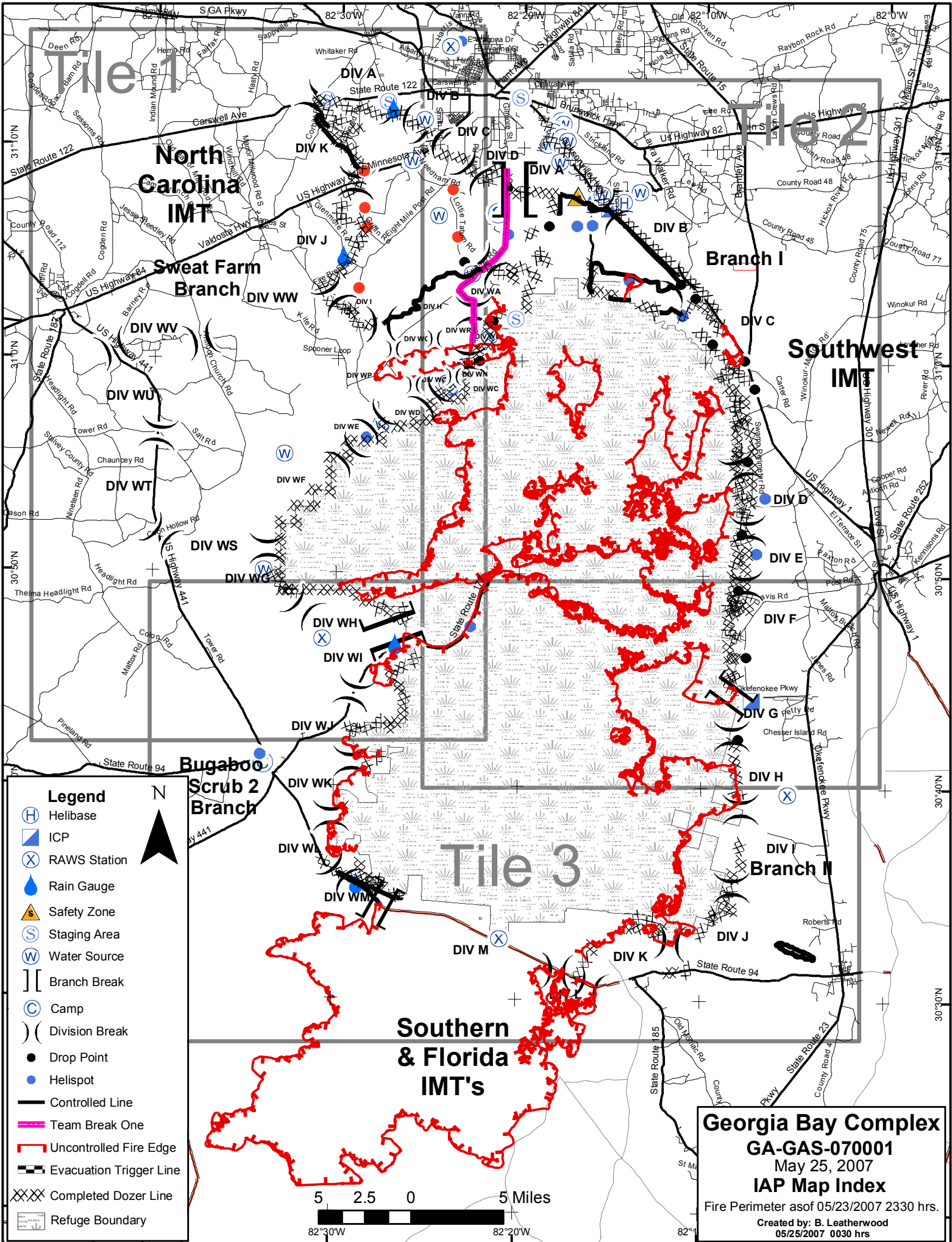
Sweat Farm Road Phone Roster 5-25-07

NAME	POSITION	PHONE NUMBERS	LINC ID
COMMAND & GENERAL STAFF		912-285-6046	Fax 912-285-6014
Reid Hildreth	IC	912-218-5108	18*11878
Dan Brandon	DPIC	704-616-2252	
Gary Thompson	LOFR	919-548-5836	
Joel Hambright	LOFR (Fargo)	912-218-9316	
Bruce MacDonald	PIO	912-218-9319	18*11959
Diane Steltz	PIO	919-548-5831	
Bernie Pineda	PIO	478-550-2989	
Michelle Weston	PIO	912-281-8267	
Tom Berglund	PIO	478-550-2981	
John Warner	PRTL	936-546-3164	
Donna Wilson	PRTM	540-797-6241	
Sandra Taylor	PRTM	936-546-3554	
Mike Huffman	SOF 2	919-218-9060	
Mark Luellen	SOF2(T)	919-356-9487	
Rodney Bell	SOF	912-218-7132	18*11932
Andy Meadows	SOF	252-229-0161	
Harry Kepler	SOF	912-218-8325	18*7145
John Orton	SOF	912-218-4958	18*4899
Larry Miller	SOF	912-218-9355	18*12622
Pete Stewart	SOF	912-218-8965	18*7610
Tim Sampson	SOF	912-218-9215	18*11832
Steve Snider	SOF	912-218-9308	18*10090
Agency Reps			
Billy Leitch	LOFR	912-218-9325	18*12022
Shawn Alexander	LOFR	912-218-9232	18*7378
Skippy Reeves	LOFR	912-218-9359	18*12756
OPERATIONS		912-285-6039	
John Nicols	OSC	912-218-9323	18*11981
Lee Burwell	OSC	979-218-9909	18*11907
Jeff Burns	OSC	912-218-5414	18*11904
Amery Wells	OPBD	912-218-8343	18*4212
Doug Mattox	DIVS	912-218-9324	18*11985
Mike Appling	DIVS	912-218-9343	18*12314
Heath Morton	DIVS	912-218-7135	18*11946
Jay Collett	DIVS	912-218-9320	18*11960
Jim Davis	DIVS	912-218-9307	18*10062
Pete Villa	DIVS	912-218-8226	18*4523
David LaChapelle	DIVS	912-218-7103	18*6748
Ron Swan	DIVS	912-218-9141	18*11862
Richard Gonzalas	DIVS	912-218-9352	18*12520
Lucus Santio	DIVS	435-790-7094	
Ricky Adkins	DIVS	910-340-1362	
Phillip Wall	DIVS	252-229-7135	
F.Pingiczer	DIVS		
William Neff	LE/Arson	912-287-4499	18*13485
BIG TURNAROUND OPS SEC		912-496-4173	
CSX RAIL ROAD OPERATIONS- Dixon		912-270-0699	
AIR OPERATIONS		912-285-6039	
Bob Seigler	AOPD	828-231-4560	
Ray Dew	ASGS	478-550-2990	
Wayne Langston	HEB2	919-920-4906	
David Langley	HEB1	912-218-8937	18*6167
FINANCE		912-285-6038	
Marlene Sherrrod	FSC	912-285-6038 Landline	252-904-6977 cell
Jennifer Johnson	FSC (t)	919-698-2457	
Paul Palmoitto	IBA	478-681-6111	
Barbara Hatch	Buying Team	912-285-6112 Hard Line	505-660-0399 Cell
Miguel Martinez	Comp/Claims	912-285-6038	
Christine Overman	COST	252-312-5238	
Mavis Gragg	TIME	828-757-6647	
Richard Chellberg	Procurement (t)	336-239-1442	
Mary Jane Derendoff	EQTR	912-285-6038	
Bob Drown	EQTR	912-285-6038	
Eunice Vankuren	PTRC	912-285-6038	
Karen Stripling	PTRC	912-285-6038	

Sweat Farm Road Phone Roster 5-25-07

NAME	POSITION	PHONE NUMBERS	LINC ID
PLANNING		912-285-6046	
John Howard	PSC	912-218-7586	18*6871
Don Watson	DPSC	910-334-0033	
Bill Pickens	RESL	919-218-2802	
Michael Cheek	RESL	704-616-0747	
Chris Brenzel	SITL	760-822-2257	
Dan Ochocki	SITL	970-903-1957	
Greg Smith	SITL	828-506-0672	
Annie Lott	DOCL	919-333-8410	
Leslie Chadwell	CTSP	919-218-6451	
Gary Curcio	FBAN	919-810-5623	
Theresa Hurdle	FOBS	912-218-9316	18*11828
Gary White	FOBS	912-218-9358	18*12670
Tim Howell	FOBS (t)	828-508-2386	
Bill Leatherwood	GISS	828-450-2665	
Buster Robinson	GISS	936-546-8783	
Will Sumner	GISS (t)	919-218-6285	
John Pendergrast	IMET	912-218-9309	18*10247
Chris Liv	SCKN(t)	252-567-0830	
Rich Dottellis	SCKN(t)	936-546-3138	
Mary Lou Dozier	DMOB	912-218-9361	18*12771
David Hicks	IRIN	541-554-0143	
LOGISTICS		912-285-6091	Fax 912-285-6111
ORDERING		912-285-6068	
Troy Cleland	LSC	252-229-1997	
Travis Ruff	LSC (t)	828-413-4440	
Ted Grisey	LSC @ FARGO	912-218-9356	
Larry Sharpe	COML	919-218-0992	
Wayne Williams	MEDL (t)	919-801-4264	
Robert Carswell	MEDL (t)	912-218-9101	18*7480
Lenny Throckmorton	EMT	804-467-9576	
Thomas Nails	EMT		
Roger Atkinson	SECM	479-970-3038	
Tony Bolton	SECI	601-405-9027	
Wayne Garman (Camp for the Blind)	BCMG	478-550-3000	18*11862
Chuck Barber	Camp Crew Manager	912-218-9342	18*12299
Danny Hayes	EQPM	828-292-4007	
Michelle Sanchez	EQPM	912-281-8279	
Keith Skinner	EQPM	936-546-8133	
Clyde Leggins	FACL	828-443-2294	
Chris Hubacker	FDUL	912-218-9321	18*11964
William Lee	Fuel Truck	912-218-9017	18*6682
Greg Cox	GSUL	910-334-0027	
Mike Summers	GSUL	936-546-1957	
Travis Shidal	ORDM	704-473-0430	
Jaime Logan	RCDM	828-361-3606	
Todd Nightengale	STAM (FARGO)	936-546-3163	
Keith Walters	SUPL	336-214-2426	
Steve Moore	FARGO	912-218-9344	18*12374
Bobby Weaver	THSP	936-546-8010	
John Rush	THSP	936-546-1883	
Larry Brown	GDC	912-218-9366	11*32283
Don Shugart	GDC	912-218-9371	11*32063
Sylvester Hall	GDC	912-218-9367	11*32054
Tommy Maddox	GDC	912-218-9374	11*32069
MISC.			
COMMAND DISPATCH		912-218-9044	18*6870
PUBLIC INFORMATION		912-218-9319	18*11959
WAYCROSS DISTRICT OFFICE		912-287-4915	
MACON DISPATCH		912-218-9232	18*7378
MOP UP COMMAND			18*4918
FARGO BASE		912-218-8907	18*7532

OTHER INCIDENT MANAGEMENT TEAMS			
SOUTHWEST AREA IMT: BIG TURNAROUND Phone Roster			
NAME	PHONE NUMBERS		
<i>COMMAND STAFF</i>	912-496-4177		
<i>PLANNING</i>	912-496-4173		
<i>OPERATIONS</i>	912-496-4132		
<i>AIR OPERATIONS</i>	912-496-4415		
<i>FINANCE</i>	912-496-4102		
<i>LOGISTICS</i>	912-816-5749		
<i>EXPANDED DISPATCH</i>	912-496-3162		
<i>COMMUNICATIONS</i>	912-496-2111		
SOUTHERN BLUE TEAM: FLORIDA BUGABOO Phone Roster 5-24-07			
NAME	PHONE NUMBERS		
<i>INFORMATION</i>	386-719-2739		
<i>OPERATIONS</i>	386-719-2743		
<i>COMMUNICATIONS</i>	386-719-2748		
<i>FLORIDA INTERAGENCY COORDINATION</i>	850-580-6885		
OPERATIONS Kneeknocker			
Barry Chesser (Kneeknocker)	Technical Specialist	912-218-6552	Linc 1*18*4166
Steve Abbott	DIVS	770-550-1868	Linc 1*18*1628
Earl Roberson	Technical Specialist	912-218-8344	Linc 1*18*4279
John Godwin	DIVS		Linc 1*18*3213
OPERATIONS Roundabout 912-422-3140			
Paul Gillis	Technical Specialist		Linc 1*18*20684
Steve Miller	OPBD		Linc 1*18*11625
Jamie Smith	DIVS		Linc 1*18*4755
Brent McCarty	DIVS		Linc 1*18*12585
Lucky Jones	DIVS		Linc 1*18*5198
OTHER AGENCIES			
Brantley County Fire Coordinator	Ken Lee	912-218-2012	1*44*1081
		912-717-3330	
Nahunta FD Fire Chief	Button Lee	904-699-1619	1*25*323
		912-282-8730	
EMA / 911 Director	Billy Lartz	912-217-1638	1*11*2001
Georgia State Patrol	Dispatcher	912-287-6500	
Brantley County Sheirff	Robert Thomas	912-614-1658	1*25*1130
Clinch County Sheriff		912-487-5316	
WareCounty Sheriff		912-287-4325	
Charleton County Sheriff		912-496-7321	
DNR, ENGB	T. Trowbridge	© 912-223-2815	
DNR ENOP	Sam Williams	229-212-0124	
Atkinson EMA IC	David Moore		
Atkinson GEMA Coordinator	Diane May		
North End Resource Advisor	Dean Easton	912-496-7366	ext 235
South End Resource Advisor	Doug Nuss	912-286-3110	
Joint Information Center	Waycross	1-866-380-9966	



Legend

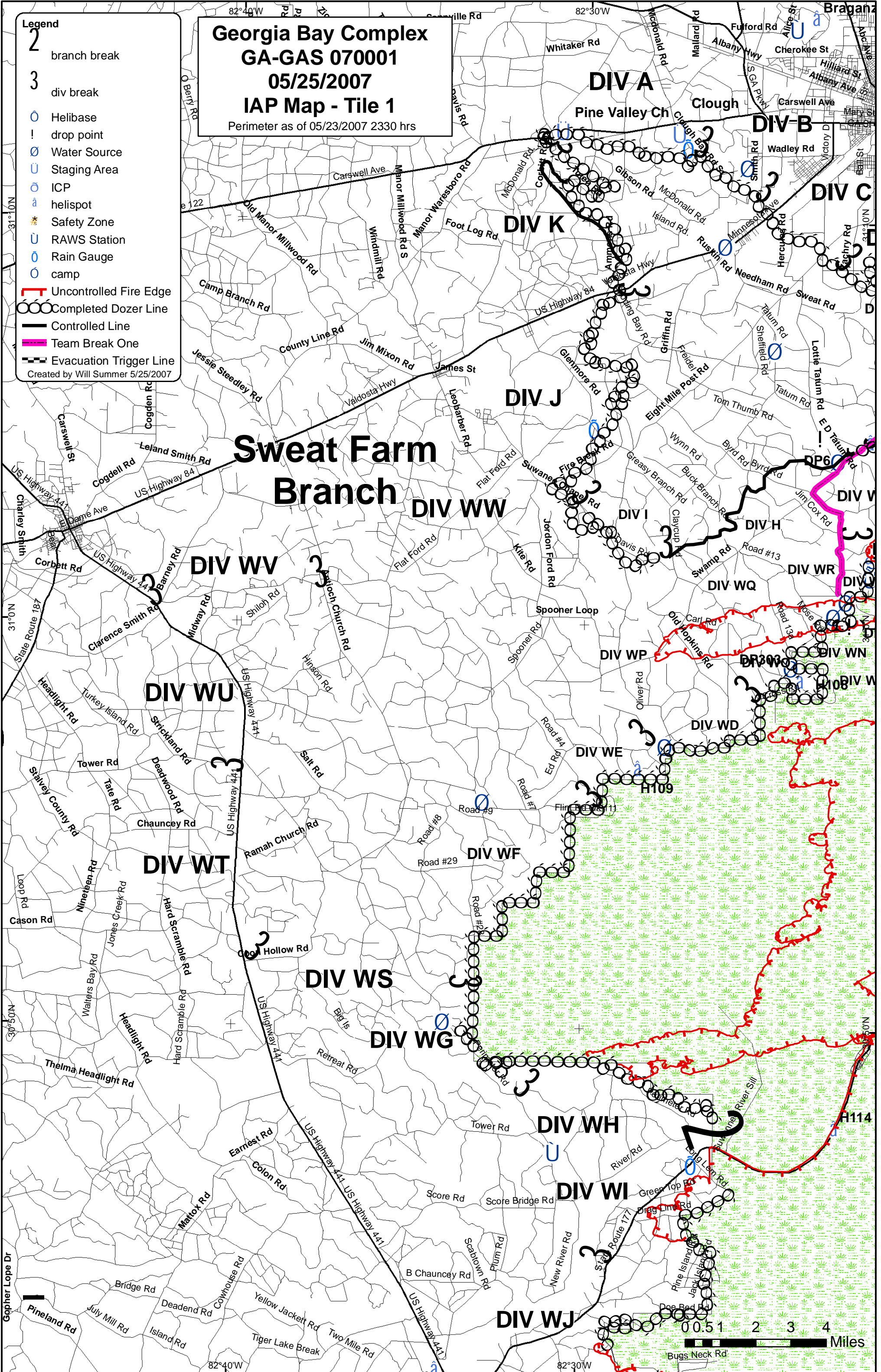
- Helibase
- ICP
- RAWS Station
- Rain Gauge
- Safety Zone
- Staging Area
- Water Source
- Branch Break
- Camp
- Division Break
- Drop Point
- Helispot
- Controlled Line
- Team Break One
- Uncontrolled Fire Edge
- Evacuation Trigger Line
- Completed Dozer Line
- Refuge Boundary

5 2.5 0 5 Miles

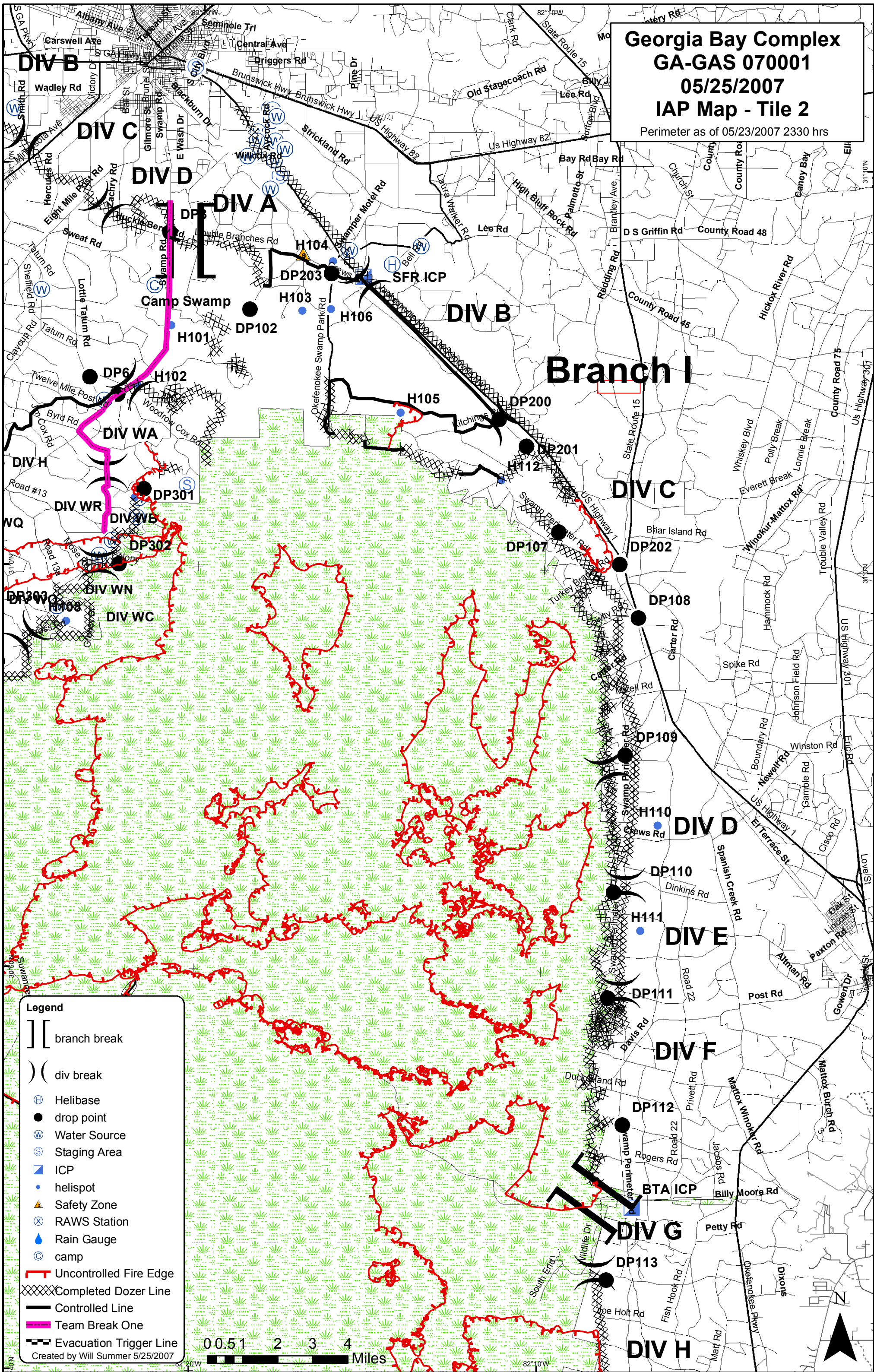
Georgia Bay Complex
GA-GAS-070001
 May 25, 2007
IAP Map Index
 Fire Perimeter as of 05/23/2007 2330 hrs.
 Created by: B. Leatherwood
 05/25/2007 0030 hrs

Georgia Bay Complex
GA-GAS 070001
05/25/2007
IAP Map - Tile 1
 Perimeter as of 05/23/2007 2330 hrs

- Legend**
- 2 branch break
 - 3 div break
 - Helibase
 - ! drop point
 - Water Source
 - Staging Area
 - ICP
 - helispot
 - ★ Safety Zone
 - RAWS Station
 - Rain Gauge
 - camp
 - Uncontrolled Fire Edge
 - Completed Dozer Line
 - Controlled Line
 - Team Break One
 - Evacuation Trigger Line
- Created by Will Summer 5/25/2007



Georgia Bay Complex
GA-GAS 070001
05/25/2007
IAP Map - Tile 2
 Perimeter as of 05/23/2007 2330 hrs



- Legend**
- ┌ ┐ branch break
 -) (div break
 - ⊕ Helibase
 - drop point
 - ⊙ Water Source
 - ⊙ Staging Area
 - ⊙ ICP
 - helispot
 - ▲ Safety Zone
 - ⊗ RAWS Station
 - ⊙ Rain Gauge
 - ⊙ camp
 - Uncontrolled Fire Edge
 - ⊗ Completed Dozer Line
 - Controlled Line
 - Team Break One
 - Evacuation Trigger Line
- Created by Will Summer 5/25/2007

0.5 1 2 3 4 Miles



