

Sweat Farm Fire Bugaboo Scrub 2 Fire *Incident Action Plan*

Wednesday

June 6, 2007

All Operational Periods



INCIDENT OBJECTIVES	1. Incident Name Sweat Farm Fire Bugaboo Scrub II Fire	2. Date Prepared 6/05/07	3. Time Prepared 1830	
4. Operational Period 06/06/2007 All Operational Periods				
5. General Control Objectives For The Incident (Include Alternatives)				
<ul style="list-style-type: none"> 1. Provide for the safety of the public and assigned incident resources through effective hazard / risk assessment and mitigation. 2. Provide timely and accurate information updates to the GFC, cooperators, affected communities, and other stakeholders. 3. Provide accurate cost accountability and documentation of expenditures for the duration of the incident. 4. Develop and maintain coordination with local fire departments, local EOC directors, GEMA, other IMT's deployed in the area, GOAL, and private industry. 5. Provide support on initial and extended attack fires as requested by Georgia GFC District 8 and District 10. 6. Conduct all incident activities in a manner free of discrimination, harassment, and inappropriate behavior. 7. Keep the Sweat Farm Road and Bugaboo Scrub II branches contained within the current established perimeter. On the Cox Prairie branch prevent fire from crossing Okeefenokee NWR boundary. 				
6. Weather Forecast For Period				
WEATHER: Partly cloudy through 1000, then mostly sunny around noon, followed by a few cumulus developing in the afternoon.				
MAX TEMPERATURES: 91-95 (24 hour trend ~ 3 degrees higher)				
MIN HUMIDITY: 33 to 40% (24 hour trend 10% lower)				
20 FT WINDS: West-Southwest winds 3-5 mph through 0900, then becoming West-southwest 5-10 mph, with gusts as high as 20 mph.				
STABILITY/INVERSION: Mixing heights near 7000 ft. Afternoon Dispersion index 58. Haines Index 4 (low). Transport winds SW 8 mph through 1000, the becoming West around 14 mph. Inversion near 800 feet, lifting and then dissipating by 1000.				
	Sweat Farm Rd.	Bugaboo Scrub II	Roundabout	Knee-Knocker
<i>Max Temperature:</i>	92-95°	91-93°	93-96°	93-96°
<i>Min Humidity:</i>	35-40%	35-40%	33-38%	33-38%
<i>Seabreeze Passage:</i>	N/A	N/A	N/A	N/A
7. General Safety Message				
SEE ATTACHED SAFETY MESSAGE.				
8. ATTACHEMENTS (X IF ATTACHED)				
<input checked="" type="checkbox"/> Organization List - ICS 203	<input checked="" type="checkbox"/> Division Assignment List - ICS 204	<input checked="" type="checkbox"/> Phone List		
<input checked="" type="checkbox"/> Fire Behavior Forecast	<input checked="" type="checkbox"/> Air Ops Summary-ICS 220	<input checked="" type="checkbox"/> Maps		
<input checked="" type="checkbox"/> Weather Forecast	<input checked="" type="checkbox"/> Communications Plan - ICS 205	<input checked="" type="checkbox"/> Unit Log- ICS 214		
<input checked="" type="checkbox"/> Safety Message	<input checked="" type="checkbox"/> Medical Plan - ICS 206	<input type="checkbox"/>		
9. Prepared By (Planning Section Chief) Vicky Edge		10. Approved By (Incident Commander) Troy Floyd		

ORGANIZATION ASSIGNMENT LIST		9.	Operations Section	
1. Incident Name		Field Ops	Brantley McManus	
Sweat Farm and Bugaboo Fire		Planning Ops	Tommy Hawkins/Steve Gray (T)	
2. Date	3. Time	a.	Sweat Farm Road Branch	
June 05, 2007	2000	Branch Director	Buck Kline	
4. Operational Period		Branch SOF	David Benovitch	
June 06, 2007 All Operational Periods		Division/ICT3	A,B,C,D,I,J,K	Shawn Pearson
5.	Command	Division	H-WA,WQ,WR,Z	Jerome Harvey
Incident Commander	Troy Floyd	Division	WW – WX	Reed Callis
Liason	Beryl Budd	Group	Sweat Mop-up	Robert Stewart
Safety Officer	Munns/Godwin/Beasley	Group	Prep	John Ward
Information Officer	Pineda/Asrow/Spinrad/Bruner			
Human Resources	Monica Schwalbach Sherri Cummings (T)			
6.	Agency Representatives	b.	Cox Prairie Branch	
Agency	Name	Branch Director	Brent McCarty	
GFC District 8	Frank Sorrells	Branch Safety	Charles Wood	
GFC District 10	Willard Fell	Division	WG	David Colton
GFC Protection Dept	Alan Dozier	Division	WF	Michelle Ekstrom
Charlton Co. Liason	Billy Lietch	Division	WE	John Truett
GEMA	Allen Robinson	Division	WH	J. Hessel/S. Alexander
GOAL	Skippy Reeves	Division	Cox Branch Mop	Greg Arkle
Okefenokee NWR	George Constentine			
Superior Timber	Andy Stone	c.	Bugaboo Scrub II Branch	
GA DNR	Joe Yeager	Branch Director	Levy Rentz	
		Branch Safety	Keith Jenkins	
7.	Planning Section	Division	WI,WJ	Steve Abbott
Chief	Vicki Edge	Division	WK,WL,WM	Larry Sears
Resources Unit	Thomas Barrett/Jamie Leigh-Powell (T)	Division	Bugaboo Mop-up	D.Mattox/Larry Bennett
Situation Unit	Steve Chapman			
Documentation Unit	Jamie Powell	d.	Special Groups	
Demobilization Unit	Dennis Sharp/Harold West	Group	LE/Arson	Mike Heath
CTSP	Trey Spivey/Rusty Brown	Group	Prevention	Slauson/Sorenson
Fire Behavior Analyst				
Incident Meteorologist	Jon Pelton	e.	Kneeknocker/Roundabout Branch	
Status/Check In	Sharon Hale/Carol O'Bryan/Keith Murphy	Group	Kneeknocker	Ed Keith
Field Observer	Burnette Masten(T)/Shepherdson/Shافر	Division	Roundabout A & D	Tim Oliveras
GIS	Barnes / Bailey	Division	Roundabout B & C	H. Kibbe
Infrared Interpreter	Bob Malcolm/Brenda Miller			
8.	Logistics Section	f.	Air Operations Branch	
Chief	Willie Boston/Cornett/LaChance (Fargo)	Air Operations Branch Director	George Martin	
Facilities Unit	Jimmy Caldwell	Helibase Manager	Kevin Kozak	
Supply Unit	Terry Lemmon	Air Support Supervisor		
Food Unit	Scott Roper	GFC Air Operations	Mike Leverette	
Base Camp Manager	Knapp / Garman/ Dunets/ Whitaker	Air Tanker Coordinator		
Ground Support Unit	Mike Summer/Michele Sanchez	10.	Finance Section	
Equipment Manager	Clint Ozier	Chief	Grace Reid	
Ordering Manager	Benjamin Hauck/Terry Berger	Incident Business Advisor	Paul Palmiotto	
Security Manager	Peggy Browning	Time Unit Leader	Vicky Kitchens	
Medical Unit	Mark Millirons	Purchasing Team	Barbara Hatch/James Conner	
Communications Unit	Howard Ure	Procurement	Shelia Head	
RCDM	Croker/Wilson/Hayman	Cost Unit	Reggie Lanier	
		Comp/Claims	Miguel Martinez	
		Prepared by (Resource Unit Leaders) Thomas Barrett/Jamie Powell (T)		

TAILGATE BRIEFING SHEET

☐ WEATHER FORECAST

FORECAST NO: 48

NAME OF FIRE: Sweat Farm/Bugaboo Scrub II
Roundabout/Kneeknocker

PREDICTION FOR: Day Ops

UNIT: Georgia Forestry Commission

SHIFT DATE: Wednesday 06/06/07

SIGNED: *Jon Pelton*

TIME AND DATE

Incident Meteorologist

FORECAST ISSUED: 1900 hours 06/5/07

WEATHER DISCUSSION: An upper level ridge will begin to build back into the area today, leading to only minimal chances of precipitation. Temperatures will also warm and heat indices will approach 100 degrees on Thursday.

The main concerns is:

1. Warming temperatures and higher heat indices.

WEATHER FORECAST DAY SHIFT WEDNESDAY: (See table for specific incident forecasts)

WEATHER: Partly cloudy through 1000, then mostly sunny around noon, followed by a few cumulus developing in the afternoon.

MAX TEMPERATURES: 91-95 (24 hour trend ~ 3 degrees higher)

MIN HUMIDITY: 33 to 40% (24 hour trend 10% lower)

20 FT WINDS: West-Southwest winds 3-5 mph through 0900, then becoming West-southwest 5-10 mph, with gusts as high as 20 mph.

STABILITY/INVERSION: Mixing heights near 7000 ft. Afternoon Dispersion index 58. Haines Index 4 (low). Transport winds SW 8 mph through 1000, the becoming West around 14 mph. Inversion near 800 feet, lifting and then dissipating by 1000.

	Sweat Farm Rd.	Bugaboo Scrub II	Roundabout	Knee-Knocker
Max Temperature:	92-95°	91-93°	93-96°	93-96°
Min Humidity:	35-40%	35-40%	33-38%	33-38%
Seabreeze Passage:	N/A	N/A	N/A	N/A

WEATHER FORECAST NIGHT SHIFT WEDNESDAY NIGHT:

WEATHER: Mostly clear in the evening, then partly cloudy with patchy dense fog late.

MIN TEMPERATURES: 67-72

MAX HUMIDITY: 90-100%

20 FT WINDS: SSW 3-7 mph

STABILITY/INVERSION: A strong nocturnal low level inversion is expected around 500 feet, with localized visibilities of a quarter of mile or less in fog/smoke after 0200, especially Bugaboo Scrub. Smoke drift NE. Dispersion 2.

OUTLOOK FOR THURSDAY:

Partly cloudy. Highs in the mid 90s. Min RH 35 to 40 percent. Southwest winds 3 to 5 mph through 1000, then south winds 5 to 10 mph with gusts up to 20 mph in the afternoon. Mixing height 6800 feet, dispersion index 47, transport winds SSE 10 mph.

EXTENDED: FRIDAY THROUGH SUNDAY: High pressure will remain across the region, bringing warmer weather, with only a chance of showers and thunderstorms each afternoon. Any precipitation will be driven by seabreeze effects. Heat indices will also be high.

Friday: Partly cloudy. A 30 percent chance of afternoon showers or thunderstorms Lows 68 to 73 and Highs in the mid 90s. West winds 5 to 10 mph, with afternoon gusts to 15 mph. Min RH 38 to 43 percent.

Saturday through Sunday: Variable clouds. A 30 percent chance of afternoon showers or thunderstorms each day. Lows around 70 and Highs in the mid 90s. West winds 5 to 10 mph with afternoon gusts to 15 mph. Min RH 38 to 43 percent.

Fire Behavior Forecast

<u>Forecast No. 47</u>	<u>Prediction for Wednesday</u>
<u>Name of Fire: Sweat Farm Road/Bugaboo Scrub 2</u>	<u>Operational Period: June 6th, 2007</u>
<u>Time Issued: 1700 hrs</u> <u>Date Forecast Issued: 6/5/2007</u>	<u>Signed : Gary Curcio</u> <u>Fire Behavior Analyst</u>

Weather Summary:

Yesterday thunderstorms developed in the fire areas generating showers over Roundabout & Bugaboo Scrub 2 fires while missing Sweat Farm & Kneeknocker. This morning's cloud cover will be beneficial as it will trap surface moisture and slow the drying of forest fuels. In the afternoon as cloud cover dissipates sky conditions will provide an opportunity for the direct sunlight to reach forest fuels. This is still positive as the burn period today should be shortened and for the first time in two weeks windspeeds will be the lowest they have been, SW 5 to 10 mph.

General Fire Behavior:

Yesterday's fire behavior was limited to the organic soils or hot spots along the firelines. This activity was centered on Divisions WI, WH, WG, & WW. Mop-up crews extended themselves 50 ft in from the fireline probing and looking for smoldering fires to mop-up. Today's fire behavior is expected to be the same, very minimal. It is another day for forest fuels to dry. The priority is for locating sleepers in firebreaks or brush fuels that have re-burn potential.

The Pine Plantations (4 to 7 ft tall pine saplings with grass & low shrubs or Sawtimber sized plantations with southern shrub evergreen species 4 to 6 ft. tall) will be the first fuels to support surface fires by the middle of the burning window (1430 hrs – 2000hrs). The bays comprised of high southern shrubs species (bay, fedderbush, & galberry) remain unavailable for another day. As they have received the most benefit from the heavy rain from the weekend and two days of isolated thunderstorm showers. They require an additional drying. Wind directions remain highly favorable & minimize the possibility of fire escapes from Divisions with organic burning. The Probability of Ignition is 40%. The following Fire Behavior is being provided to assist in time distance operational planning.

Specific Fire Behavior: All Fires & All Branches especially

<u>Fuels type</u>	<u>Spread</u>	<u>Flame</u>	<u>Spotting</u>
Young pine plantation 4 to 7ft tall with grasses dominating	10ch/hr	3 - 5 ft.	200 ft.

Isolated Bays with hi shrub

These will be very difficult to ignite since they will retain the beneficial influence of the rain from Friday's rain event as well as the isolated showers from Monday & Tuesday afternoons.

Pine & Cypress

same as above

Pine Plantation w/ low & sparse southern rough*

6ch/hr

2 – 3 ft.

200 ft.

**note when the southern rough is > 4 ft tall & dense these plantations can easily support crown fire runs.*

Air Operations:

There are no restrictions on air operations as the skies will be clear. There will be the development of cumulus clouds. Smoke production is expected to be very minimal. Aircraft should be advised that there will be less erratic winds than yesterday and very little thunderstorms development in the afternoon.

Safety:

Areas of deep duff or organic burning have weakened tree root systems are subject to gravity fall or wind throw. Stay alert to this serious safety hazard.

TAILGATE BRIEFING SHEET

☐ SAFETY MESSAGE

Incident:

Sweat Farm/Bugaboo Scrub II

Date:

June 6, 2007

Time:

Day

Major Hazards and Risks:

◦ Weather

◦ Lightning

◦ Accountability

◦ Snags

◦ Driving

◦ Footing

◦ Wildlife

◦ Transition

Hot conditions will occur with the possibility of isolated showers and thunderstorms. Refer to page 75 in your Incident Response Pocket Guide for lightning mitigation. Be sure to stay hydrated. Plan and act accordingly. Maintain LCES at all times!

In the mop-up process, wear your PPE. Wear eye protection as needed, as eye injuries are common.

Snags are present, so be alert to any in your assignment area. Trees growing in peat soils can have weakened and burnt roots due to under ground burning that will allow them to fall without warning. Park vehicles a safe distance away from trees. Roads can be blocked quickly by falling trees and snags. If you are working around pumps, post a lookout for these snags. Maintain safe driving speeds and distances.

While driving, soft road shoulders and sloppy off road conditions could be a problem. Watch your footing on equipment and slippery ground surfaces.

Today is transition day for the overhead team. This is always a possible opportunity for confusion. Be sure that you know who you work for and tie in with the new our new leadership. We look forward to working with you.

Following the recent rains, snakes and alligators are out in force. Remain aware of your surroundings and maintain a safe distance from the local wildlife.

SAFETY OFFICERS: Mark Munns, John Godwin , Larry Miller, Paul Boucher, Pete Stewart, Keith Jenkins, Alan Alsobrook, Roy Leach, David Benavitch, Al Augustine, Sam Wilbanks, Phillip Spor, Larry Klock, Charlie Shelby, Jerry Dombrowske, Don Ranney, Robert "Boyd" Gossard, and Charles Wood

Fire Order #6:

Be alert. Keep calm. Think clearly. Act decisively.

Watch Out Situation #6:

Instructions and assignments not clear.

INCIDENT ACTION PLAN SAFETY ANALYSIS	1. Incident Name	2. Date	3. Time
	Sweat Farm/Bugaboo Scrub II	6-06-07	Day

LCES* Analysis of Tactical Applications											Other Risk Analysis											
Branch/Divisions	Lookouts Communications Escape routes Safety zones										Other Risk Mitigation's											
	Indirect Fireline	Burnout Operation	Anchor Points	Fire Behavior	Unburned Area	Snags	Power Lines	Reburn Potential	Road Conditions	Direct Line	Traffic	Fatigue/Hydration	Communications	Multi Aircraft	Heavy Equipment	Helicopter Dip Sites	Organic Soils	Accountability	Lightning	Wildlife		
Sweat Farm	X	X	X	X	X	X	X	X	X	X	Lookouts posted, scout ahead for hazards, Known & identified escape routes Adequate safety zones identified Burn head lights, drive traffic in the dusty conditions Scout ahead of tractor operations to avoid guy wires and poles While driving be aware of potential for soft road shoulders, and sloppy off road conditions	X	X	X	X	X	X		X	X	X	Make contact with assigned resources & know where they are. Attend Morning Briefing, Conduct tailgate briefings prior to beginning line assignment Post lookouts, stay away from dip sites, If you have questions-ASK! Drink adequate fluids, take frequent breaks. Lighting, refer to IRPG, page 75. Use caution with footing on equipment and slick ground. Watch out for snakes and alligators.
Bugaboo Scrub II	X	X	X	X	X	X		X	X	X	Lookouts posted, scout ahead for hazards Known & identified escape routes Adequate safety zones identified Burn head lights, drive alert to traffic in the dusty conditions While driving be aware of potential for soft road shoulders, and sloppy off road conditions	X	X	X	X	X	X	X	X	X	X	Make contact with assigned resources & know where they are. Attend Morning Briefing, Conduct tailgate briefings prior to beginning line assignment Make contact with assigned resources and know where they are. Attend Morning Briefing, Tailgate briefings Post lookouts, stay away from dip sites, If you have questions-ASK! Drink adequate fluids, take frequent breaks. Lighting, refer to IRPG, page 75. Use caution with footing on equipment and slick ground. Watch out for snakes and alligators
Prairie Cox	X	X	X	X	X	X		X	X		Lookouts posted, scout ahead for hazards, Known & identified escape routes Adequate safety zones identified Burn head lights, drive alert to traffic in the dusty conditions While driving be aware of potential for soft road shoulders, and sloppy off road conditions	X	X	X	X	X	X	X	X	X	X	Make contact with assigned resources & know where they are. Attend Morning Briefing, Conduct tailgate briefings prior to beginning line assignment Post lookouts, stay away from dip sites, If you have questions-ASK! Drink adequate fluids, take frequent breaks. Stay out of burn and avoid footing in white ash Lighting, refer to IRPG, page 75. Use caution with footing on equipment and slick ground. Watch out for snakes and alligators

Prepared by (Name and Position)
Mark Luellen- Safety Officer

DIVISION ASSIGNMENT LIST			1. Branch Sweat Farm		2. Division/Group H,WA,WQ,WR,Z Page 1 of 2			
3. Incident Name Sweat Farm Fire			4. Operational Period Date: 6-6-07 Time: 0700 – 1900 DAY					
5. Operations Personnel								
Field Ops Planning Ops	Brantley McManus Tommy Hawkins/Steve Gray		Division/ICT3		Jerome Harvey 18*1608			
Branch Director	Buck Kline 18*1615		Branch Safety Officer Division Safety Officer		David Benavitch 540-968-6226 18*10090 Sam Wilbanks 530-906-2253			
6. Resources Assigned this Period								
Strike Team/Task Force/ Resource Designator		Leader / Name		Last Shift Date	Number Persons	Trans. Needed	Drop Off PT./Time	Pick Up PT./Time
TF#3 TFLD		Dan Muir (T)		6-11	1	N	0700	1900
Timberline WAT1 #1 E-117		Goodman			1	N	0700	1900
WAT2Smith #2 E-180		Smith			1	N	0700	1900
Smith #3 WAT2 E-179		Smith			1	N	0700	1900
Pump E-120		Douglas			1	N	0700	1900
TF # 6 TFLD 0-454		Tom McKibbin		6/7	1	N	0700	1900
ENG T6 Wildlands 2 E-307				6/12	2	N	0700	1900
ENG T6 Wildlands 1 E-308				6/12	2	N	0700	1900
ENG T6 NPS 640 E-309		Vick/Whitmore/Hajdik		6/9	3	N	0700	1900
ENG T3 Wildland 3 E-310		Sweeney/Brooks		6/11	2	N	0700	1900
ENG T3 FWS 2132 E-311		Dunlap/Garcia/Verderber		6/7	3	N	0700	1900
7. Control Operations Hold, Monitor, and Mop up 100 feet inside the fire lines. Re-supply dip sites 301, 303 and dip site on Rd. #4. Evaluate rehab needs.								
8. Special Instructions Look out for Loggers!								
9. Division/Group Communication Summary								
Function		System	Channel	Function	Frequency	System	Channel	
Command		King NIFC		Air to Ground Federal	167.950 167.950/110.9 narrow band	King NIFC	Group 1 Ch. 12	
Tactical Div/Group	164.1375	King NIFC	Grp 1/ Grp 11 TAC 8	Air to Ground Georgia	159.390 Rx & Tx	King NIFC	Group1 Ch. 13	
Prepared by (Resource Unit Leader) Thomas Barrett / Jamie Powell (T)		Approved by (Planning Sect. Ch.) /s/Vicki Edge			Date June 05, 2007		Time 1900	

DIVISION ASSIGNMENT LIST			1. Branch Sweat Farm		2. Division/Group H,WA,WQ,WR,Z		
3. Incident Name Sweat Farm Fire			4. Operational Period Date: 6/6/07 Time: 0700-1900 DAY				
5. Operations Personnel							
Field Ops Planning Ops	Brantley McManus Tommy Hawkins/Steve Gray		Division/ICT3		Jerome Harvey 18*1608		
Branch Director	Buck Kline 18*1615		Branch Safety Division Safety		David Benavitch - 540-968-6226 18*10090 Sam Wilbanks 530-906-2253		
6. Resources Assigned this Period							
Strike Team/Task Force/ Resource Designator	Leader / Name	Last Shift Date	Number Persons	Trans. Needed	Drop Off PT./Time	Pick Up PT./Time	
TFLD	O-344	Greg Vollhaber	6/10	1	N	0700	1900
STEN ST#25	O-453	Mike Lee		1	N	0700	1900
ENG T6 West Metro Brush 11	E-302	Corbett/Welter/ Felton	6/15	3	N	0700	1900
ENG T6 Ra-Cour 4632	E-303	Logan/Reyes/Yowell	6/16	3	N	0700	1900
ENG T6 PVT	E-304	Hill/Dosch/Dayer	6/14	3	N	0700	1900
ENG T6 Rocky Mtn Fire 2431	E-305	Wenzel/Griffith/ Halee	6/14	3	N	0700	1900
ENG T6 Show Low Brush 344	E-306	Jessop/Barth/Irwin	6/6	3	N	0700	1900
DOZB	O-299	James Hartley	6/6	1	N	0700	1900
AL DOZ T2	E-1110	Johnson/Barrett	6/13	1	N	0700	1900
AL DOZ T2	E-1109	Mathews/Craft	6/13	1	N	0700	1900
7. Control Operations Remove and rehab fallen trees from control lines. Spread slash piles in young pine plantations and mop up 100' inside control lines. Evaluate rehab needs.							
8. Special Instructions Look Out For Loggers							
9. Division/Group Communication Summary							
Function	Frequency	System	Channel	Function	Frequency	System	Channel
Command		King NIFC		Air to Ground Federal	167.950 167.950/110.9 Narrow band	King NIFC	Group 1 Ch.12
Tactical Div/Group	159.285	King NIFC	Grp 1/ Grp 11 Ch. 5	Air to Ground Georgia IA	159.390	King NIFC	Group 1 Ch. 13
Prepared by (Resource Unit Leader) Thomas Barrett / Jamie Powell (T)		Approved by (Planning Section Chief) /s/Vicky Edge		Date June 05, 2007		Time 1900	

DIVISION ASSIGNMENT LIST				1. Branch Sweat Farm		2. Division/Group WX – WW		
3. Incident Name Sweat Farm Fire				4. Operational Period Date: 6-6-07 Time: 0700 - 1900 DAY				
5. Operations Personnel								
Field Ops Planning Ops		Brantley McManus Tommy Hawkins/Steve Gray		Division/ICT3		Reed Callis 6/12 912-218-9215 18*1832		
Branch Director		Buck Kline 18*1615		Branch Safety Officer Division Safety Office		D Benavitch 540-968-3782 18*10090 6/12 Larry Milller 912-218-9355 6/6 / Phil Spor 6-13		
6. Resources Assigned this Period								
Strike Team/Task Force/ Resource Designator		Leader / Name		Last Shift Date	Number Persons	Trans. Needed	Drop Off PT./Time	Pick Up PT./Time
TFLD O-341		Ted Mellot		6/10	1	N	DP 305 / 0700	DP 305 / 1900
ST#19 NC ST TPL T2 E-2660		Young / Gregory		6/10	1	N	DP 305 / 0700	DP 305 / 1900
NC TPL T2 E-2662		Rees/ Haywood		6/10	2	N	DP 305 / 0700	DP 305 / 1900
NC TPL T2 E-2663		Marsh/ Buddy Love		6/10	2	N	DP 305 / 0700	DP 305 / 1900
NC TPL T2 E-2664		McDonald / Moyer		6/10	2	N	DP 305 / 0700	DP 305 / 1900
DOZB O-288		Joe Remick		6/5	1	N	DP 305 / 0700	DP 305 / 1900
ST# 3 GFC ST Engines T6 E-2659		Roger Garrard		6/17	1	N	DP 305 / 0700	DP 305 / 1900
ENG-Pickens 86 E-1117		Brooks/Gamlin		6-17	2	N	DP 305 / 0700	DP 305 / 1900
ENG-Heard 86 E-1015		Bryan/Reynolds		6/8	2	N	DP 305 / 0700	DP 305 / 1900
ENG-Upson 86 E-1132		Lindsey/Albritton		6/8	2	N	DP 305 / 0700	DP 305 / 1900
ENG-Murray 86 E-1022		Greeson/Harkins		6-17	2	N	DP 305 / 0700	DP 305 / 1900
7. Control Objectives Remove and rehab fallen trees from control lines. Spread slash piles in young pine plantations and mop up 100' inside control lines. Evaluate rehab needs.								
8. Special Instructions LCES implemented by 1000 and notify OPS when completed.								
Division/Group Communication Summary								
Function	Frequency	System	Channel	Function	Frequency	System	Channel	
Command		King NIFC		Air to Ground Federal	167.950 167.950/110.9 Narrow band	King NIFC	Group 1 Ch.12	
Tactical Div/Group	168.600	King NIFC	Grp 1/ Grp 11 Ch. 7	Air to Ground Georgia IA	159.390	King NIFC	Group 1 Ch. 13	
Prepared by (Resource Unit Leader) Thomas Barrett / Jamie Powell (T)		Approved by (Planning Section Chief) /s/Vicky Edge			Date June 05, 2007		Time 1900	

DIVISION ASSIGNMENT LIST				1. Branch Sweat Farm		2. Division/Group Mop Up	
3. Incident Name Sweat Farm Fire				4. Operational Period Date: 6-6-07 Time: 0700 – 1900 Day			
5. Operations Personnel							
Operations Chief		Field: Brantley McManus Planning: Tommy Hawkins/Steve Gray		Division		Robert Stewart 912-218-2954 6-14 18*5929	
Branch Director		Buck Kline 18*1615		Safety Officer		Robert "Boyd" Gossard 406-210-1661 6/16	
6. Resources Assigned this Period							
Strike Team/Task Force/ Resource Designator		Leader / Name		Last Shift Date	Number Persons	Trans. Needed	Pick Up PT./Time
STEN O-472		Mark Duffey		6/14	1	N	2000
ENG T6 SFS #61 E-334		Sherman/Hobby/Abramson		6/15	3	N	2000
ENG T6 TX-BTP E-331		Ivans/Olson/Semtko		6/14	3	N	2000
TX PVT Engine E-44		Judd / Lambert		6/12	1	N	DP 305
TX PVT #701 Engine E-45		Weaver / Lott		6/12	1	N	DP 305
TXF #31 Engine E-46		Prewitt/Chavers/Wichman				N	DP 305
ST#2 GFC ST TP T3 O-1304		Rusty Meadows		6/11	4	N	2000
TP GFC JD 650 E-2917		Jason Wingate		6/11		N	2000
TP GFC JD 650 E-2918		Donald Anderson		6/11		N	2000
TP GFC JD 650 E-2919		David Rewis		6/11		N	2000
WAT2Smith #1 E-119		Webb			1	N	1900
WAT2 Biellings E-3048					1	N	1900
7. Control Operations Patrol and Mop Up 100' inside burn West of Swamp Rd. Provide Structure Protection as needed. Coordinate with DIVS. Evaluate rehab needs.							
8. Special instructions							
9. Division/Group Communication Summary							
Function	Frequency	System	Channel	Function	Frequency	System	Channel
Command		King NIFC		Air to Ground Federal	167.950 167.950/110.9 Narrow band	King NIFC	Group 2 Ch. 12
Tactical Div/Group	168.050	King NIFC	Grp 1/ Grp 11 Ch. 6	Air to Ground Georgia IA	159.390	King NIFC	Group 2 Ch. 13
Prepared by (Resource Unit Leader) Thomas Barrett / Jamie Powell (T)		Approved by (Planning Section Chief) /s/Vicky Edge			Date June 05, 2007		Time 1900

DIVISION ASSIGNMENT LIST				1. Branch Sweat Farm		2. Division/Group Prep Group		
3. Incident Name Sweat Farm Fire				4. Operational Period Date: 6/6/07		Time: 0700-1900 Day		
5. Operations Personnel								
Field Ops Operations Chief		Brantley McManus Tommy Hawkins/Steve Gray		Division/ICT3		John Ward 6/13		
Branch Director		Buck Kline 18*1615		Branch Safety Officer Division Safety Officer		David Benavitch – 540-968-6226 18*10090 Robert “Boyd” Gossard		
6. Resources Assigned this Period								
Strike Team/Task Force/ Resource Designator		Leader / Name		Last Shift Date	Number Persons	Trans. Needed	Drop Off PT./Time	Pick Up PT./Time
TFLD O-345		Victor Morvin		6/8	1	N	DP 305 / 0700	DP 305 / 1900
ST # 4 GFC ST TP T3 O-1447		Mark Sparrow		6/17	1	N	DP 305 / 0700	DP 305 / 1900
TP T3-GAS E-2848		Simmons		6/17	2	N	DP 305 / 0700	DP 305 / 1900
TP T4-GAS E-2849		Miles		6/17	2	N	DP 305 / 0700	DP 305 / 1900
TP T4-GFC E-2850		Wagnor		6/17	2	N	DP 305 / 0700	DP 305 / 1900
ST# 21 GFC ST Tractor Plow T3 O-1308		David Moore		6/11	4	N	DP 305	DP 305
GFC TPL E-2921 O-1309		Tim Crosby		6/11		N	DP 305	DP 305
GFC TPL E-2922 O-1310		Phil Welcher		6/11		N	DP 305	DP 305
GFC TPL E-2923 O-1311		Lex Williams		6/11		N	DP 305	DP 305
DOZ 1- Handcock		Handcock, Mike			1		DP 305 / 0700	DP 305 / 1900
DOZ1-Biellings E-1146		Bielling, Jimmy			1	N	DP 305 / 0700	DP 305 / 1900
DOZ1Rowland (KG)E-1087		Manning, Don			1	N	DP 305 / 0700	DP 305 / 1900
STPL O-1442		D. Bishop		6/17	1	N	DP 305 / 0700	DP 305 / 1900
GFC TPL E-2987		Bonner		6/17	1	N	DP 305 / 0700	DP 305 / 1900
GFC TPL E-2N98		Hudson		6/17	1	N	DP 305 / 0700	DP 305 / 1900
GFC TPL E-2989		Griffin		6/17	1	N	DP 305 / 0700	DP 305 / 1900
7. Control Operations Tie in with DIV. WE and continue to construct prep lines on WE to WF. Evaluate rehab needs.								
8. Special Instructions E-1087 and Handcock DOZ do not have a hauling unit.								
9. Division/Group Communication Summary								
Function	Frequency	System	Channel	Function	Frequency	System	Channel	
Command		King NIFC		Air to Ground Federal	167.950 167.950/110.9 Narrow band	King NIFC	Group 1 Ch. 12	
Tactical Div/Group	168.775	King NIFC	Grp 1/ Grp 11 TAC 9	Air to Ground Georgia IA	159.390	King NIFC	Group 1 Ch. 13	
Prepared by (Resource Unit Leader) Thomas Barrett / Jamie Powell (T)		Approved by (Planning Section Chief) /s/Vicky Edge			Date June 05, 2007		Time 1900	

DIVISION ASSIGNMENT LIST				1. Branch Cox Prairie Branch		2. Division/Group WE	
3. Incident Name Sweat Farm Fire				4. Operational Period Date: 6/6/07		Time: 0800-2000 Day	
5. Operations Personnel							
Field Ops Planning Ops	Brantley McManus Tommy Hawkins/Steve Gray			Division/ICT3	John Truett 0-420 18*12299 912-218-9342		6/13
Branch Director	Brent McCarty 912-218-9513 18*9313			Branch Safety officer Division Safety Officer	Charles Wood 912-218-9322 Alan Alsobrooke 423-506-7785		6/15 6/9
6. Resources Assigned this Period							
Strike Team/Task Force/ Resource Designator	Leader / Name		Last Shift Date	Number Persons	Trans. Needed	Drop Off PT./Time	Pick Up PT./Time
ST #23 STEN O-459	T. Nickerson		6/13	1	N	DP 310 / 0800	DP 310 / 2000
ENG T6 Wildland#104 E-314	Wimmer/Bolllson		6/13	2	N	DP 310 / 0800	DP 310 / 2000
ENG T6 B&R#42 E-315	Guion/McCarthy		6/13	2	N	DP 310 / 0800	DP 310 / 2000
ENG T6 Rampart #469 E-316	Hunkler/Marlin		6/13	2	N	DP 310 / 0800	DP 310 / 2000
ENG T6 Canyon Lake #654 E-317	Albrecht/Sieg		6/13	2	N	DP 310 / 0800	DP 310 / 2000
ENG T6 Canyon Lake #651 E-651	Mavor / Welch		6/13	2	N	DP 310 / 0800	DP 310 / 2000
7. Control Operations Locate and identify fuel loading hazards and begin mop up strategies 100' inside control lines. Evaluate rehab Needs.							
8. Special Instructions Be aware of column(s) that may develop in Okefenokee Swamp and pass along to adjoining divisions. Share Resources with WF as needed							
9. Division/Group Communication Summary							
Function	Frequency	System	Channel	Function	Frequency	System	Channel
Command		King NIFC		Air to Ground Federal	167.950 167.950/110.9 Narrowband	King NIFC	Group 1 Ch. 12
Tactical Div/Group	168.200	King NIFC	Grp 2/Grp 12 Ch 11	Air to Ground Georgia IA	159.390	King NIFC	Group 1 Ch. 13
Prepared by (Resource Unit Leader) Thomas Barrett / Jamie Powell (T)		Approved by (Planning Section Chief) S/ Vicky Edge			Date June 05, 2007		Time 1900

DIVISION ASSIGNMENT LIST			1. Branch Cox Prairie Branch		2. Division/Group WF		
3. Incident Name Sweat Farm Fire			4. Operational Period Date: 6/6/07		Time: 0800-2000 Day		
5. Operations Personnel							
Field Ops Planning Ops	Brantley McManus Tommy Hawkins/Steve Gray		Division/ICT3		Michele Ekstrom 0-342		6/10
Branch Director	Brent McCarty 912-218-9513 18*9313		Branch Safety officer Division Safety Officer		Charles Wood 912-218-9322		6/11
					Alan Alsobrook 912-218-9322		6/9
6. Resources Assigned this Period							
Strike Team/Task Force/ Resource Designator	Leader / Name		Last Shift Date	Number Persons	Trans. Needed	Drop Off PT./Time	Pick Up PT./Time
TFLD O-334	Norma May		6/8	1	N	Fargo/0800	Fargo/2000
PVT Smokey Mtn. Eng6	E-43	Bartlett / MaMahon		2	N	Fargo/0800	Fargo/2000
GFC Eng.5	E-1016	Robinson/Moore		2	N	Fargo/0800	Fargo/2000
GFC Eng.6	E-1021	Fowler / Barbutt	6/10	2	N	Fargo/0800	Fargo/2000
Support Fire Eng. 6	E-12	Zuehlke	6/9	2	N	Fargo/0800	Fargo/2000
C-8 Twin Peaks		Church/Crumpton	6/15	20	N	Fargo/0800	Fargo/2000
TF-2 STEN T6 Engine O-682	Mark Stinson		6/6	1	N	DP 305 / 1200	DP 305 / 2400
ENG 4460	E-1181	Cable/Bera/Hagger	6/17	3	N	DP 305 / 1200	DP 305 / 2400
ENG T6 GA-GAS	E-2835	Fortenberry/Hulsey	6/6	2	N	DP 305 / 1200	DP 305 / 2400
ENG T6GA-GAS	E-2834	Sweatman/Sisk	6/6	2	N	DP 305 / 1200	DP 305 / 2400
ENG T6 MN PVT #6	E-26	Bahneman/ Reinsgold	6/15	2	N	DP 305 / 1200	DP 305 / 2400
7. Control Operations Begin mop up 100' inside control lines at WG division. Evaluate rehab needs.							
8. Special Instructions Be aware of column(s) that may develop in Okefenokee Swamp and pass along to adjoining divisions. Share Resources with WE as needed.							
9. Division/Group Communication Summary							
Function	Frequency	System	Channel	Function	Frequency	System	Channel
Command		King NIFC		Air to Ground Federal	167.950 167.950/110.9 Narrowband	King NIFC	Group 1 Ch. 12
Tactical Div/Group	168.200	King NIFC	Grp 2/Grp12 Ch 11	Air to Ground Georgia IA	159.390	King NIFC	Group 1 Ch. 13
Prepared by (Resource Unit Leader) Thomas Barrett / Jamie Powell (T)		Approved by (Planning Section Chief) S/ Vicky Edge		Date June 05, 2007		Time 1900	

DIVISION ASSIGNMENT LIST			1. Branch Cox Prairie Branch		2. Division/Group WG		
3. Incident Name Sweat Farm Fire			4. Operational Period Date: 6/6/07		Time: 0800-2000 Day		
5. Operations Personnel							
Field Ops Planning Ops	Brantley McManus Tommy Hawkins/Steve Gray		Division/ICT3		David Colton		
Branch Director	Brent McCarty		Branch Safety officer Division Safety Officer		Charles Wood – 912-218-9322 Alan Alsobrook- 912-218-9322		
6. Resources Assigned this Period							
Strike Team/Task Force/ Resource Designator	Leader / Name	Last Shift Date	Number Persons	Trans. Needed	Drop Off PT./Time	Pick Up PT./Time	
STEN	O-407	Barry Green	6/11	1	N	0800	2000
STEN (T)	0-409	Sandoval	6/11	1	N	0800	2000
ENG T6 WAX	E-259	Kocher/Mcelhinny/ Stephens	6/11	3	N	0800	2000
ENG T6 Leech	E-260	Finn/ White/ Dronillard	6/11	3	N	0800	2000
ENG T6 Golden	E-261	Martin/McCann/McTaggard	6/11	3	N	0800	2000
ENG T6 ME-SHR	E-262	Hatch/Gore/Becker	6/11	3	N	0800	2000
ENG T6 Desoto	E-263	Parrish/Iser/Guarjardo	6/11	3	N	0800	2000
WT Robbins Forestry	E-251	Frank Sallett	6/7	1	N	0800	2000
STEN		Jared Delay	6/16	1	N	0800	2000
ENG OK ANA	E-320	Chibbity/Tossee/Tossee	6/16	3	N	0800	2000
ENG OK ANA	E-321	Stands/Gooday/Solis	6/16	3	N	0800	2000
ENG AR OUF	E-323	Ballard/Watkins	6/16	2	N	0800	2000
ENG CO PSF	E-344	Price/Noblay/McGee	6/16	3	N	0800	2000
ENG AR OUF	E-322	Rose/McFarland	6/16	2	N	0800	2000
STPL	O-1458	Jon Albertson	6/17	1	N	0800	2000
STPL(t)	O-1466	Glen Coley	6/17	1	N	0800	2000
TPL T3 NCNCS	E-2998	Owen/Singleton	6/17	2	N	0800	2000
TPL T3 NCNCS	E-2997	Strickland	6/17	2	N	0800	2000
TPL T3 NCNCS	E-3000	Paul	6/17	2	N	0800	2000
7. Control Operations Begin mop up 100' inside control lines, and hot spots. Also improve control lines where needed. Evaluate rehab needs.							
8. Special Instructions Be aware of column(s) that may develop in Okefenokee Swamp and pass along to adjoining divisions.							
9. Division/Group Communication Summary							
Function	Frequency	System	Channel	Function	Frequency	System	Channel
Command		King NIFC		Air to Ground Federal	167.950 167.950/110.9 Narrowband	King NIFC	Group 1 Ch. 12
Tactical Div/Group	168.200	King NIFC	Grp 2/ Grp 12 Ch 11	Air to Ground Georgia IA	159.390	King NIFC	Group 1 Ch. 13
Prepared by (Resource Unit Leader) Thomas Barrett / Jamie Powell (T)		Approved by (Planning Section Chief) S/ Vicky Edge		Date June 05, 2007		Time 1900	

DIVISION ASSIGNMENT LIST				1. Branch Cox Prairie Branch		2. Division/Group WH				
3. Incident Name Sweat Farm Fire				4. Operational Period Date: 6/6/07		Time: 0800-2000 Day				
5. Operations Personnel										
Field Ops Planning Ops		Brantley McManus Tommy Hawkins/Steve Gray			Division Supervisor		Joe Hessel / Shawn Alexander Brad Reed (T) O-318			
Branch Director		Brent McCarty			Branch Safety officer Division Safety Officer		Charles Wood- 912-218-9322 Larry Klock 719-289-4848			
6. Resources Assigned this Period										
Strike Team/Task Force/ Resource Designator		Leader / Name			Last Shift Date	Number Persons	Trans. Needed	Drop Off PT./Time		Pick Up PT./Time
ST# 7 LAS ST ENG O-444		Marc Rudkin			6/15	1	N	Fargo/0800		Fargo/2000
ENG LAS Engine E-1076		Bankston/Redmon			6/15	2	N	Fargo/0800		Fargo/2000
ENG-LAS Engine T6 E-1071		Thompson/Bankston			6/15	2	N	Fargo/0800		Fargo/2000
ENG LAS Engine E-1075		Harris/Slack			6/15	2	N	Fargo/0800		Fargo/2000
ST# 8 LAS ST ENG T6 O-1371		Bob Smith			6/15	1	N	Fargo/0800		Fargo/2000
ENG-LAS Engine T6 E-1074		Goings/Graham			6/15	2	N	Fargo/0800		Fargo/2000
ENG LAS Engine E-1070		Davis/Tresclair			6/15	2	N	Fargo/0800		Fargo/2000
ENG LAS Engine E-1073		Tradewell/Honeycutt			6/15	2	N	Fargo/0800		Fargo/2000
ENG-LAS Engine T6 E-1072		Turreau/Carrier			6/15	2	N	Fargo/0800		Fargo/2000
ST #25 LA-LAS O-1386		Henry Childress			6/15	1	N	Fargo/0800		Fargo/2000
LA T/P T2 E-1102		Stokes/Marcantel			6/15	2	N	Fargo/0800		Fargo/2000
LA T/P T2 E-1103		Eaves/Miller/Carpenter			6/15	3	N	Fargo/0800		Fargo/2000
7. control operations: Work hot spots and improve control lines where needed, mop up 100' inside control lines. Evaluate rehab needs.										
8. Special Instructions See communications plan for closest Command Repeater to Division. Division and STPS keep Branch Director informed of status in progress.										
9. Division/Group Communication Summary										
Function	Frequency	System	Channel	Function	Frequency	System	Channel			
Command		King NFC		Air to Ground Federal	167.950 167.950/110.9 Narrow band	King NFC	Group 1 Ch. 12			
Tactical Div/Group	169.900	King NFC	Grp 2/Grp 12 Ch 10	Air to Ground Georgia IA	159.390	King NFC	Group 1 Ch. 13			
Prepared by (Resource Unit Leader) Thomas Barrett / Jamie Powell (T)			Approved by (Planning Section Chief) S/ Vicky Edge			Date June 05, 2007		Time 1900		

DIVISION ASSIGNMENT LIST				1. Branch Cox Prairie		2. Division/Group Mop Up	
3. Incident Name Sweat Farm Fire				4. Operational Period Date: 6-6-07		Time: 0700 – 1900 Day	
5. Operations Personnel							
Field Ops Planning Ops	Brantley McManus Tommy Hawkins/Steve Gray			Division/ICT3	Greg Arkle O-326 6/11		
Branch Director	Brent McCarty			Branch Safety Officer Division Safety Officer	Charles Wood Don Ranne 541-377-1633 6/15		
6. Resources Assigned this Period							
Strike Team/Task Force/ Resource Designator		Leader / Name	Last Shift Date	Number Persons	Trans. Needed	Drop Off PT./Time	Pick Up PT./Time
TF-15 T/P	O-1450	Jeff Durant	6/15	1	N	DP 305 / 1200	DP 305 / 2400
T/P T4 TX-TXS	E-113	Teel/Upchurch	6/15	2	N	DP 305 / 1200	DP 305 / 2400
T/P T4 TX-TXS	E-121	Upton/Kuhnert	6/15	2	N	DP 305 / 1200	DP 305 / 2400
T/P T4 TX-TXS	E-114	Whitt/Cooke	6/7	2	N	DP 305 / 1200	DP 305 / 2400
ST# 18 ALS TP							
T/P T3 ALS	E-1398			2	N	0700	1900
T/P T2ALS	E-1399			2	N	0700	1900
TF# 1 SC	O-1354	J. Brucke	6/13	7	N	0700	1900
TP JD 700 SB	E-9006	Rogers/Cooper	6/13		N	0700	1900
ENG T6 SCS	E-2974	Whidden/Nicholson	6/13		N	0700	1900
ENG T6 SCS	E-2738	Weeks/Brunson	6/13		N	0700	1900
TFLD	O-317	Andrew Lane	6/6	1	N	DP 305 / 1200	DP 305 / 2400
ST# 17							
NMF Engine T6	E-56	Roybal	6/8	3	N	DP 305 / 1200	DP 305 / 2400
NMF Eng #236 T6	E-60	Housler	6/5	3	N	DP 305 / 1200	DP 305 / 2400
TFLD(t)	O-333	David Grant	6/7	1	N	DP 305 / 1200	DP 305 / 2400
Tender 5500 gal. WAT1	E-118	Hawk / Black III		1	N		
7. Control Operations							
Coordinate Division assignments with Branch Director and DIVS. Evaluate rehab needs.							
8. Special Instructions							
Remainder of resources assigned to Fargo will assist with structure protection and related activities; Clinch County Fire/EMA – Jesse Booth 25*255 919-482-3700							
9. Division/Group Communication Summary							
Function	Frequency	System	Channel	Function	Frequency	System	Channel
Command		King NIFC		Air to Ground Federal	167.950 167.950/110.9 Narrow band	King NIFC	Group 1 Ch. 12
Tactical Div/Group	168.050	King NIFC	Grp2/Grp 12 Ch 6	Air to Ground Georgia IA	159.390	King NIFC	Group 1 Ch. 13
Prepared by (Resource Unit Leader) Thomas Barrett / Jamie Powell (T)		Approved by (Planning Section Chief) S/ Vicky Edge			Date June 05, 2007		Time 1900

DIVISION ASSIGNMENT LIST				1. Branch Bugaboo Scrub II		Division/Group WI - WJ pg. 1 of 2	
3. Incident Name Bugaboo Fire				4. Operational Period Date: 6/6/07		Time: 0800-2000 Day	
5. Operations Personnel							
Operations Chief		Field: Brantley McManus Planning: Tommy Hawkins/Steve Gray		Division Supervisor		Steve Abbott 912-218-9307 18*10062	
Branch Director		Levy Rentz 912-218-9306 18*7065		Branch Safety Officer		Keith Jenkins 478-550-2991 6/6	
				Division Safety Officer		Roy Leach 6/9	
6. Resources Assigned this Period							
Strike Team/Task Force/ Resource Designator		Leader / Name		Last Shift Date	Number Persons	Trans. Needed	Drop Off PT./Time
TFLD O-346		William Emery		6/9	1	N	Fargo / 0800
ST #9 STEN O-336		Don Thomas		6/7	1	N	Fargo / 0800
ENG-CA-INF Eng.32 T3 E-75		Dave Nelson		6/7	5	N	Fargo / 0800
ENG- WYRAD Eng 392 T6 E-99		T.J. Murry		6/7	3	N	Fargo / 0800
ENG- WYRSD Eng 493 T6 E-246		Derrick Youngerman		6/7	3	N	Fargo / 0800
WT-GA DOT+1 Supervisor					2	N	Fargo / 0800
ST# 11 STEN O-320		Justin Erickson		6/5	1	N	Fargo / 0800
ENG-GFC Mitchell 86 T6 E-1019		Brown/ Baldwin		6/7 6/10	2	N	Fargo / 0800
ENG- Smokey Mtn. Eng6 E-42					2	N	Fargo / 0800
WT-GA DOT+1 Supervisor					2	N	Fargo / 0800
TF# 4 TFLD O-447		Mathew Martens		6/14	1	N	Fargo / 0800
C 5.4 Camp Crew		Squad Boss Fagens		6/6	4	Y	Fargo / 0800
WT 5500gal Tipton&Young E-278		Donnie Cooper		6/10	1	N	Fargo / 0800
THSP Pump 0-1326		Wayne Daniels		6/10	1	N	Fargo / 0800
7. Control Operations ; Utilize engines and skidgines to mop up all hot spots 100 ft. into burn. Utilize squad to establish progressive hose lay on left flank of spot over. Supplement hose lay with 5500 gal. tender. Utilize dozers in conjunction with hand crew mop up. Evaluate rehab needs.							
8. Special Instructions ; Provide Transport for crews from Fargo staging to line, have crew back at camp by 1830.							
9. Division/Group Communication Summary							
Function	Frequency	System	Channel	Function	Frequency	System	Channel
Command		King NIFC		Air to Ground Federal	167.950 167.950/110.9 Narrow band	King NIFC	Group 1 Ch. 12
Tactical Div/Group	159.285	King NIFC	Grp 2/Grp12 Ch 5	Air to Ground Georgia IA	159.390	King NIFC	Group 1 Ch. 13
Prepared by (Resource Unit Leader) Thomas Barrett / Jamie Leigh-Powell		Approved by (Planning Section Chief) Vicky Edge		Date June 05, 2007		Time 2000	

DIVISION ASSIGNMENT LIST				1. Branch Bugaboo Scrub II		Division/Group WI - WJ pg. 2 of 2		
3. Incident Name Bugaboo Fire				4. Operational Period Date: 6/6/07		Time: 0800-2000 Day		
5. Operations Personnel								
Operations Chief		Field: Brantley McManus Planning: Tommy Hawkins/Steve Gray		Division Supervisor STPS		Steve Abbott 912-218-9307 18*10062		
Branch Director		Levy Rentz 912-218-9306 18*7065		Branch Safety Officer Division Safety Officer		Keith Jenkins 478-550-2991 6/6 Roy Leach 6/9		
6. Resources Assigned this Period								
Strike Team/Task Force/ Resource Designator		Leader / Name		Last Shift Date	Number Persons	Trans. Needed	Drop Off PT./Time	Pick Up PT./Time
DOZB		Foster Smith						
DOZ Timberline E-184		Tiner, Henry			1	N	DP 305 / 0700	DP 305 / 1900
DOZ 1 Timberline (KG) E-1084		Lashley, Kenneth			1	N	DP 305 / 0700	DP 305 / 1900
ST# 13 STEN		Justin Hanley O-408		6/12	1	N	Fargo / 0800	Fargo / 1900
STEN(T)		Erik Peterson O-410		6/12	1	N	Fargo / 0800	Fargo / 1900
ENG T6 #302 SNF NM E-264		Chinana/Martinez/ Waquie/Tafoye		6/12	1	N	Fargo / 0800	Fargo / 1900
ENG T6 Hoosier 22 E-265		Wilson/Williamson/ Ayer		6/12	1	N	Fargo / 0800	Fargo / 1900
ENG T6 #763 E-266		Jordan/Buckman/ Paulson		6/12	1	N	Fargo / 0800	Fargo / 1900
ENG T6 Las Vegas E-267		Valdez/Garcia/ Swanson		6/12	1	N	Fargo / 0800	Fargo / 1900
ENG T6 Chippewa 58 E-268		Neylan/Roberts/Smith		6/12	1	N	Fargo / 0800	Fargo / 1900
SKID- Robbins Skidgine E-252		Donald Robbins agt. Rep.			1	N	Fargo/0800	Fargo/2000
SKID- Robbins Skidgine E-253					1	N	Fargo/0800	Fargo/2000
SKID- Robbins Skidgine E-254					1	N	Fargo/0800	Fargo/2000
WT Robbins 6000 gal. E-251					1	N	Fargo/0800	Fargo/2000
7. Control Operations: Utilize engines and skidgines to mop up all hot spots 100 ft. into burn. Utilize squad to establish progressive hose lay on left flank of spot over. Supplement hose lay with 5500 gal. tender. Utilize dozers in conjunction with hand crew mop up. Evaluate rehab needs.								
8. Special Instructions: See communications plan for closest Command Repeater to Division. Division and STPS keep Branch Director informed of status in progress.								
9. Division/Group Communication Summary								
Function	Frequency	System	Channel	Function	Frequency	System	Channel	
Command		King NIFC		Air to Ground Federal	167.950 167.950/110.9 Narrow band	King NIFC	Group 1 Ch. 12	
Tactical Div/Group	159.285	King NIFC	Grp 2/Grp12 Ch 5	Air to Ground Georgia IA	159.390	King NIFC	Group 1 Ch. 13	
Prepared by (Resource Unit Leader) Thomas Barrett / Jamie Leigh-Powell		Approved by (Planning Section Chief) Vicky Edge		Date June 05, 2007		Time 2000		

DIVISION ASSIGNMENT LIST				1. Branch Bugaboo Scrub II		2. Division/Group WK-WM		
3. Incident Name Bugaboo Fire				4. Operational Period Date: 6/6/07		Time: 0800-2000 Day		
5. Operations Personnel								
Operations Chief		Field: Brantley McManus Planning: Tommy Hawkins/Steve Gray		Division/ICT3		Larry Sears O-380 6/9		
Branch Director		Levy Rentz 912-218-9306 18*7065		Branch Safety Officer Division Safety Officer		Keith Jenkins 478-550-2991 6/6 Al Augustine 912-218-4958 6/12		
6. Resources Assigned this Period								
Strike Team/Task Force/ Resource Designator		Leader / Name		Last Shift Date	Number Persons	Trans. Needed	Drop Off PT./Time	Pick Up PT./Time
TF# 5 TFLD O-352		Robert Lutrell		6/10	1	N	Fargo/0800	Fargo/2000
ENG-Platte Canyon Z T3 E-65		Laurion / McDonald / Milligan		6/8	3	N	Fargo/0800	Fargo/2000
ENG T6 COS #312 E-67		Roetker/McConnell		6/9	2	N	Fargo/0800	Fargo/2000
WT- GA DOT 1500 gal.					1	N	Fargo/0800	Fargo/2000
WT GA DOT 1000 gal.								Fargo/2000
ENG- Platte Canyon T6 E-95		Sugaski/Reese/ Linnelan		6/8	3	N	Fargo/0800	Fargo/2000
ST # 22 STEN O-584		Terry Quigley		6/10	1	N	Fargo/0800	Fargo/2000
STEN(T) O-586		Alan Benson		6/10	1	N	Fargo/0800	Fargo/2000
ENG- WY-CPS T6 E-101		Young/Murr/Pepple		6-19	3	N	Fargo/0800	Fargo/2000
ENG-CO-COS T6 E-94		Seeley/Fitzpatrick/Mc Curry		6/9	3	N	Fargo/0800	Fargo/2000
DOZB O-343		Robert Raade		6/8	1	N	DP 305 / 0700	DP 305 / 1900
DOZB		Greg Henry			1	N	DP 305 / 0700	DP 305 / 1900
DOZ Lee 1 E-1085		Wayar, Harold			1	N	DP 305 / 0700	DP 305 / 1900
DOZ 1 Lee E-1193		Sermans,Jason			1	N	DP 305 / 0700	DP 305 / 1900
7. Control Operations Mop up all hot spots along fire perimeter 100' into the burn. Utilize excavators and dozers to tear down smoldering berms and mop up with engines. Coordinate with DOT motor grader to improve sandy roads. Evaluate rehab needs.								
8. Special Instructions Keep Branch Director informed of status and progress.								
9. Division/Group Communication Summary								
Function	Frequency	System	Channel	Function	Frequency	System	Channel	
Command		King NIFC		Air to Ground Federal	167.950 167.950/110.9 Narrow band	King NIFC	Group 1 Ch. 12	
Tactical Div/Group	164.1375	King NIFC	Grp 2/Grp12 Ch. 8	Air to Ground Georgia IA	159.390	King NIFC	Group 1 Ch. 13	
Prepared by (Resource Unit Leader) Thomas Barrett / Jamie Leigh-Powell		Approved by (Planning Section Chief) Vicky Edge		Date June 05, 2007		Time 2000		

DIVISION ASSIGNMENT LIST				1. Branch Bugaboo Scrub II		2. Division/Group Bugaboo Mop Up		
3. Incident Name Bugaboo Fire				4. Operational Period Date: 6-6-07		Time: 0700 - 2000 Day		
5. Operations Personnel								
Operations Chief		Field: Brantley McManus Planning: Tommy Hawkins/Steve Gray		Division/ICT3		Doug Mattox O-221 6/6 Larry Bennett O-1509 6/19		
Branch Director		Levy Rentz 912-218-9306 18*7065		Branch Safety Officer Division Safety Officer		Keith Jenkins 478-550-2991 Pete Stewart 912-218-8965 6/12		
6. Resources Assigned this Period								
Strike Team/Task Force/ Resource Designator		Leader / Name		Last Shift Date	Number Persons	Trans. Needed	Drop Off PT./Time	Pick Up PT./Time
S/T 28 STEN O-1240		George Barbee		6/8	1	N	0700	2000
LA ENG T6 E-2841		Chatham/Mathews		6/13	2	N	0700	2000
VA-VAF ENG T6 E-4		Annas/Bell/Jacobs		6/14	3	N	0700	2000
CO-PSF ENG T6 E-3		Howard/Banueios / Brogan		6/8	3	N	0700	2000
ST# 24 GAS STPL O-1232		Royce Davis		6/7	1	N	0700	2000
TP T3 Mitchell 61 E-2881		Baird		6/7	1	N	0700	2000
TP T3 Seminole 71 E-2880		Green		6/7	1	N	0700	2000
TP T3 Brooks 72 E-2882		Hughes		6/7	1	N	0700	2000
ST# 30 STEN O-470		Cameron Eck		6/14	1	N	0700	2000
ENG T6 VAVAF E-325		Slosser/Carter/Blevins		6/14	1	N	0700	2000
ENG T6 Alcon E-330		Trujillo/Salas/Martines		6/14	1	N	0700	2000
ENG T6 GAGAS E-329		Paulton/Barcus/Fricke		6/14	1	N	0700	2000
ENG T6 MDS#1 E-332		Alvers/Diefenderfer		6/14	1	N	0700	2000
7. Control Operations								
Patrol and Mop Up fireline along Bugaboo Branch. Evaluate rehab needs. Be prepared to support other divisions as requested by Branch Director.								
8. Special Instructions								
Remainder of resources assigned to Fargo will assist with structure protection and related activities; Clinch County Fire/EMA - Jesse Booth 25*255 919-482-3700								
9. Division/Group Communication Summary								
Function	Frequency	System	Channel	Function	Frequency	System	Channel	
Command		King NIFC		Air to Ground Federal	167.950 167.950/110.9 Narrow band	King NIFC	Group 1 Ch. 12	
Tactical Div/Group	168.775	King NIFC	Grp 2/Grp12 CH 9	Air to Ground Georgia IA	159.390	King NIFC	Group 1 Ch. 13	
Prepared by (Resource Unit Leader) Thomas Barrett / Jamie Leigh-Powell		Approved by (Planning Section Chief) Vicky Edge		Date June 05, 2007		Time 1900		

		1. Branch		2. Division/Group Law Enforcement / Arson Group			
3. Incident Name Sweat Farm Fire		4. Operational Period Date: 6-06-07 Time: 0700 - 2000 Day					
5. Operations Personnel							
Operations Chief		LE TEAM Leader		Brian Richards 912-218-9312 6/7 18*10639			
Branch Director		Safety Officer					
6. Resources Assigned this Period							
Strike Team/Task Force/ Resource Designator	Leader / Name	Last Shift Date	Number Persons	Trans. Needed	Drop Off PT./Time	Pick Up PT./Time	
GA. Fire Marshal	Brian Clavier		1	N	0700	2000	
MS DOF	Brandon Herdry	6/12	1	N	0700	2000	
LA DOF	Jim Hilton	6/13	1	N	0700	2000	
TN DOF	Marianne Cheaves	6/12	1	N	0700	2000	
TN DOF	Max Thomas	6/12	1	N	0700	2000	
PA DOF	Terry Smith	6/17	1	N	0700	2000	
LA DOF	Charlie Greer	6/13	1	N	0700	2000	
TX DOF	David Hamrick	6/12	1	N	0700	2000	
TX DOF	Marvin Miller	6/12	1	N	0700	2000	
VA DOF	Rodger Moyer	6/16	1	N	0700	2000	
VA DOF	Brad Whittington	6/17	1	N	0700	2000	
USDA /FS	Jill Forth	6/16	1	N	0700	2000	
USDA/FS	Don Harris	6/12	1	N	0700	2000	
MS DOF	Brandon Hendry	6/12	1	N	0700	2000	
PA DOF	Shawn Turner	6/17	1	N	0700	2000	
7. Control Operations Immediately report suspicious activity to Brian Richards through the Incident Operations Branch Director.							
8. Special Instructions See Comm Plan for Frequency and Channel of the Division the LE Team Member is working.							
9. Division/Group Communication Summary							
Command		King NIFC		Logistics		King NIFC	Channel
Tactical Div/Group		King NIFC		Air to Ground		King NIFC	
Prepared by (Resource Unit Leader) Thomas Barrett		Approved by (Planning Section Chief) Vicky Edge		Date June 05, 2007		Time 1900	

DIVISION ASSIGNMENT LIST				1. Branch Sweat Farm Fire		2. Division/Group Prevention Team Task Force	
3. Incident Name Sweat Farm Fire				4. Operational Period Date: 6-06-07 Time: 06:30 - 2200 Day			
5. Operations Personnel							
Operations Chief				Division/ICT3			
Branch Director				Safety Officer			
6. Resources Assigned this Period							
Strike Team/Task Force/ Resource Designator	Leader / Name	Last Shift Date	Number Persons	Trans. Needed	Drop Off PT./Time	Pick Up PT./Time	
Team Liaison Officer GA	Roger Lane O-580						
Team Leader - GFC	Gayle Slauson* O-581	06/15					
Team Leader (T)	James Sorenson O-478	06/15					
Team Member	Cindy Frenzel O-350	06/09					
Team Member	Rich Reuse O-485						
7. Control Operations							
8. Special Instructions							
<ol style="list-style-type: none"> Work closely with the GA Arson Task Force on distribution of materials in area affected by arson fires or questionable starts. Planning for a Tuesday meeting with both teams to working focusing efforts Transition new team members and leader in and finalize documentation at IMT Review team accomplishments, expected staffing needs, goals, targets for next two weeks Photographs of interface homes and structures saved from fire by Firewise practices – send to Alan Dozier ASAP Tie in and work closely with lead PIOs and Liaisons with NCIMT and Southwest IMT concerning fire occurrences, community preparedness, evacuation planning, town hall meetings for areas affected by continuing wildfire danger Information flyers developed and mailed to Sharon Dolliver for GA branding, return products hopefully by Wednesday, May 30 							
9. Division/Group Communication Summary							
Function	Frequency	System	Channel	Function	Frequency	System	Channel
Command		King NIFC		Logistics		King NIFC	
Tactical Div/Group		King NIFC		Air to Ground		King NIFC	
Prepared by (Resource Unit Leader) Thomas Barrett		Approved by (Planning Section Chief) Vicky Edge		Date 6/05/07		Time 1900	

AIR OPERATIONS SUMMARY		PREPARED BY: George Martin		PREPARED DATE/TIME 6/05/07 1900	
1. INCIDENT NAME: Georgia Bay Complex		2. OPERATIONAL PERIOD: Day Shift 6/06/07		START TIME: 0700	END TIME: 2000
				SUNRISE: 0625	SUNSET: 2029
3. REMARKS (Safety Notes, Hazards, Air Operations Special Equipment, etc.): Waycross Helibase—31 14.95 X 82 23.73 Pogo Helibase-30 44.25 X 82 07.69 Braganza Helispot 31 07.23 X 82 15.23 AIR TANKER REQUESTS THRU POGO <u>Waycross Dispatch Advise Waycross Helibase of ACFT Dispatch near Georgia Bay Complex TFR</u> • Avoid take-off / landing over ICP • All dispatches will come through the ICP in Waycross for state aviation resources. • High Towers in Area, • LOOK UP, LOOK DOWN, LOOK ALL AROUND PERSONNEL STAY CLEAR OF ACTIVE DIPSITES • Aircraft Dispatching Priorities: 1. Life 2. Structures Threatened 3. Initial Attack 4. Fire threatening perimeter control lines				4. MEDEVAC A/C: Trauma 1 @ Jacksonville 26min: 1-800-223-4878	
				5. TFR: In Place Radius: Rectangle to 3000 MSL_ Altitude: 3000= MSL NW corner Lat 31 09 02 Long 82 32 04 SE corner Lat 30 53 17 Long 82 02 48:	
6. PERSONNEL		Phone	7. FREQUENCIES	AM	FM
AOBD: George Martin		770-654-7904 ICP FAX: 912-285-6014	AIR/AIR FW: A/A Discretionary: IA/Breakouts 125.225	122.575 E/sd 122.825 scdry 122.925 GA IA 123.125 W/sd	
ATGS: T. Dorigan—Waycross J. Lane—Waycross			AIR/AIR RW: A/A Discretionary: IA/Breakouts 125.225	122.575 E/sd 123.125 W/sd 122.925 GA IA	
State Aviation Lead Waycross Airport Mike Leverette			AIR/GROUND:	151.145 GA IA 167.950 Swt. Farm	
ASGS: Johnny Stephens			COMMAND: CH 1		
Waycross HEBM: Kevin Kozak		360-791-2520	COMMAND RPT	Rx:	Tx:
Waycross HB & Braganza HS:			DECK FREQ:		163.100
Braganza Helispot HESM: Dip Site Mgr: Walter Thompson		803-221-1081	TOLC FREQ: Rx: 151.145 Tx: 151.145		
Pogo Helibase		912-496-4415	FLT FOLLOWING:		
Davis Helibase		912-496-3765	Pogo Helibase		
Waycross Helibase		912-218-8937	Waycross		
GA Forestry Hangar		912-338-5982	Helibase		
8. FIXED-WING # Avail / Type/ Make-Model / FAA N# / Base(s)					
Air Tankers @ T-20 / OCF / P3 LCQ & OCF T-43 / LCQ / P2V					
Leadplanes LP/ASM @ OCF L-4-9 LP/ASM @ LCQ Base FAX #:					
ATGS Aircraft 90K—Beach Baron—T. Dorigan—Waycross 79N—Cessna 340—J. Lane—Waycross					
Other Flight follow with Pogo Helibase or Waycross Helibase IA Air Attack for State--- Cessna 182's and GA NG HEAVIES Bell 407-Chopper 7 Approved Helispots—Refer to Okefenokee NWR Dip Site Map One GNG Helicopter will remain at Waycross Airport					

Fargo Helibase—(Golf Course) N 30 41 27.3 x W 82 34 02.0 Stephen Foster SP (Pocket) N 30 47 32.2 x W 82 22 39..6					for IA at all times ALL AIRCRAFT Call Air Attack when entering TFR--- Waycross Helibase will call Pogo as a back up!!! ALL FLIGHTS WILL BE CLEARED WITH AOB
---	--	--	--	--	---

9. HELICOPTERS (Use Additional Sheets As Necessary)

HEAVY HELICOPTERS @ DAVIS HELIBASE & POGO HELIBASE

FAA N#	TY	MAKE/MODEL	BASE	AVAIL	START	REMARKS	FAA N#	TY	MAKE/MODEL	BASE	AVAIL	START	REMARKS
N5BH	I	Sikorsky S-70A-27	Davis	0900	0930	Bucket Drops	N5843	III	Bell 206-L4	Pogo	0900	0930	Recon/ Admin/ IA
N4503E	I	Sikorsky S-61N	Davis	0900	0930	Bucket drops	351CH	III	AS-350 B3	Waycross	0900	0930	GA IA / Recon / Bucket Drops
6MW	I	K-MAX	Davis	0900	0930	Bucket drops	Chopper 7/7GF	III	Bell 407	Waycross	0900	0930	GA IA / Recon / Bucket Drops
1KA	I	K-MAX	Davis	0900	0930	Bucket Drops	Okee 6	III	Bell 206 B3	Pogo	0900	0930	Recon/Bucket Drops
6-AZ	1	S-61	Davis	0900	0930	Bucket Drops	90K		Baron	Waycross	0900	0930	ATGS
901CH	2	S-58T	Pogo	0900	0930	Bucket Drops	79N		Cessna 340	Waycross	0900	0930	ATGS
							1AF (LA)		Cessna 182	Waycross	0900	0900	Aerial Detection
71K (GA)		Cessna 185	Waycross	0900	0930	Aerial Detection GA	2AF (LA)		Cessna 182	Waycross	0900	0930	Aerial Detection
11H (GA)		Cessna 182	Waycross	0900	0930	Aerial Detection GA	98E (GA)		Cessna 182	Waycross	0900	0930	Aerial Detection

10. TASK/MISSION/ASSIGNMENT (Type/Function includes: Air Tactical, Retardant, Recon, Personnel Transport, Water Dropping, S&R, etc.)

TYPE/FUNCTION	NAME OF PERSONNEL OR CARGO (if applicable) OR INSTRUCTIONS FOR TACTICAL AIRCRAFT	MISSION START	FLY FROM	FLY TO
Type II Helicopter	Operation and Logistic Support	0930	Helibase	Fire and Return
Type III Helicopter	Operation and Logistic Support	0930	Helibase	Fire and Return
Type I Helicopter	Operation and Logistic Support	0930	Helibase	Fire and Return
ATGS Platforms	Aerial Supervision of all Aircraft over Incidents	0930	Waycross Airport	Fire and Return
State Detection Fixed Wing	Aerial Detection and IA for New Fire Starts	0930	Waycross Airport	Fire and Return

Sweat Farm Road

Group 1 for 14 ch. radios (Group 11 for 16 ch. radios)

INCIDENT RADIO COMMUNICATIONS PLAN		1. Incident Name Sweat Farm Road Fire		2. Date/Time Prepared 6/05/2007		3. Operational Period Date/Time 6/06/2007	
4. BASIC RADIO CHANNEL UTILIZATION							
Radio Type/Cache	Channel	Function	Frequency/Tone	Assignment	Remarks		
King NIFC	1	Command Ware EMA Repeater	158.7825/162.2 153.7625/162.2 Narrow Band	Command Rpt	Sweat Farm		
King NIFC	2	Fire Tower Repeater	159.225 /203.5 151.280/203.5	Command Rpt	South of Homerville		
King NIFC	3	GA Mutual Aid	154.280 154.280	Structural & Tactical			
King NIFC	4	911 & Structural Coordinator Rptr.	154.445/ 118.8 154.010/118.8	Emergency Traffic	This is a heavy traffic channel, use only for Emergency Traffic		
King NIFC	5	Tactical	159.285 Rx & Tx	WI, WJ, WQ, WR	Southern COMPACT		
King NIFC	6	Tactical	168.050 Rx & Tx Narrow Band	WV, Cox Prairie Mop-up Sweat Farm Mop-up	Fireline		
King NIFC	7	Tactical	168.600 Rx & Tx Narrow Band	WX, WY	Fireline		
King NIFC	8	Tactical	164.1375 Rx & Tx Narrow Band	H, Z, WA, WL, WK, WM, WW	Fireline		
King NIFC	9	Tactical	168.775 Rx & Tx Narrow Band	Prep Group Bugaboo Mop-up	Fireline		
King NIFC	10	Tactical	169.900 Rx & Tx Narrow Band	Divs. I, J, K, WH, WS, WT, WU	Fireline		
King NIFC	11	Tactical	168.200 Rx & Tx Narrow Band	Divs. A, B, C, D, WE, WF, WG Manor Group	Fireline		
King NIFC	12	Air to Ground	167.950 167.950/110.9 Narrow Band	Federal Air to Ground			
King NIFC	13	Air To Ground	159.390 Rx & Tx	Georgia Air to Ground	INITIAL ATTACK		
King NIFC	14	Air Guard	168.625 168.625/110.9 Narrow Band	Air Emergency Only	Air Emergency Only		
King NIFC	15	TACTICAL RPTR.	159.240/203.5 151.400/203.5	Bugaboo and Cox Prarie Tactical Rptr.	Foster Repeater		
King NIFC	16	Air Guard	168.625 168.625/110.9 Narrow Band	Air Emergency Only	Air Emergency Only		

5. Prepared By (Communications Unit)
LARRY SHARPE/ COML

Cox Prairie and Bugaboo Scrub II Branches
Group 2 for 14 ch. Radios (Group 12 for 16 ch. radios)

INCIDENT RADIO COMMUNICATIONS PLAN		1. Incident Name Bugaboo Scrub 2		2. Date/Time Prepared 6/05/2007		3. Operational Period Date/Time 6/06/2007	
4. BASIC RADIO CHANNEL UTILIZATION							
Radio Type/Cache	Channel	Function	Frequency/Tone	Assignment	Remarks		
King NIFC	1	GFC Fargo Repeater	159.120/107.2 151.370/123.0	Command Rpt	Sweat Farm		
King NIFC	2	Fire Tower Repeater	159.225 /203.5 151.280/203.5	Command Rpt	South of Homerville		
King NIFC	3	GA Mutual Aid	154.280 154.280	Structural & Tactical			
King NIFC	4	911 & Structural Coordinator Rptr.	154.445/ 118.8 154.010/118.8	Emergency Traffic	This is a heavy traffic channel, use only for Emergency Traffic		
King NIFC	5	Tactical	159.285 Rx & Tx	WI, WJ, WQ, WR	Southern COMPACT		
King NIFC	6	Tactical	168.050 Rx & Tx Narrow Band	WV, Cox Prarie Mop-up Sweat Farm Mop-up	Fireline		
King NIFC	7	Tactical	168.600 Rx & Tx Narrow Band	WX, WY	Fireline		
King NIFC	8	Tactical	164.1375 Rx & Tx Narrow Band	Divs. H, Z, WA, WL, WK,WM, WW	Fireline		
King NIFC	9	Tactical	168.775 Rx & Tx Narrow Band	Breakout Group Prep Group Bugaboo Mop-up	Fireline		
King NIFC	10	Tactical	169.900 Rx & Tx Narrow Band	Divs. I, J, K, WH, WS, WT, WU	Fireline		
King NIFC	11	Tactical	168.200 Rx & Tx Narrow Band	A, B, C, D, WE, WF, WG Manor Group	Fireline		
King NIFC	12	Air to Ground	167.950 167.950/110.9 Narrow Band	Federal Air to Ground			
King NIFC	13	Air To Ground	159.390 Rx & Tx	Georgia Air to Ground	INITIAL ATTACK		
King NIFC	14	Air Guard	168.625 168.625/110.9 Narrow Band	Air Emergency Only	Air Emergency Only		
King NIFC	15	TACTICAL RPTR.	159.240/203.5 151.400/203.5	Bugaboo and Cox Prarie Tactical Rptr.	Foster Repeater		
King NIFC	16	Air Guard	168.625 168.625/110.9 Narrow Band	Air Emergency Only	Air Emergency Only		

5. Prepared By (Communications Unit)
LARRY SHARPE/ COML

Group 3 for 14 ch. radios/ Group 13 for 16 ch. radios

Kneeknocker/Roundabout

INCIDENT RADIO COMMUNICATIONS PLAN		1. Incident Name Kneeknocker		2. Date/Time Prepared 6-05-07	3. Operational Period Date/Time 6-06-07
4. BASIC RADIO CHANNEL UTILIZATION					
Radio Type/Cache	Channel	Function	Frequency/Tone	Assignment	Remarks
King NIFC	1	Mobile to Mobile	159.390 RX & Tx	Breakout	Kneeknocker & Roundabout
King NIFC	2	Mobile to Base	159.390 Rx 159.225 Tx	Breakout	Kneeknocker & Roundabout
King NIFC	3	GA Mutual Aid	154.280 154.280	Race Track Fire	Structural & Tactical
King NIFC	4	Tactical	159.285 Rx & Tx	As needed	Southeastern Compact
King NIFC	5	Tactical	164.1375 Rx & Tx		
King NIFC	6	Tactical	168.775 Rx & Tx	Roundabout AD	
King NIFC	7	Tactical	169.900 Rx & Tx	Roundabout BC	
King NIFC	8	Tactical	168.200 Rx & Tx	Kneeknocker	
King NIFC	9	Tactical	159.270 Rx & Tx	Ft. Mudge Fire	Red Channel
King NIFC	10	Tactical	159.420 Rx & Tx	Forest Drive Fire	White Channel
King NIFC	11	Tactical	159.330 Rx & Tx		Blue Channel
King NIFC	12	Air to Ground	169.200 Rx & Tx	Kneeknocker	Air to Ground Dedicated to this complex
King NIFC	13	Air Guard	168.625 168.625/110.9 Narrow Band	Air Emergency Only	Air Emergency Only
King NIFC	14	Knee Repeater	159.465 Rx 151.145 Tx /114.8	Command Repeater	Kneeknocker only
5. Prepared By (Communications Unit) LARRY SHARPE/ COML					

MEDICAL PLAN	1. Incident Name Sweat Farm Road Fire	2. Date Prepared 6/05/07	3. Time Prepared 1200	4. Operational Period 6/06/07 DAY & NIGHT SHIFT							
5. Incident Medical Aid Station											
Medical Aid Stations		Location			Paramedics Yes No						
Medical Unit 912-218-9101		Georgia Forestry Headquarters ICP - Millirons (MEDL)			EMT						
Medical Unit Fargo		Fargo Welcome Center – Anderson (MEDL)			Yes EMT						
6. Transportation											
A. Ambulance Services											
Name		Address		Phone		Paramedics Yes No					
Ware County EMS		Waycross Georgia (911 to activate)		912-281-9467 Linc 1*96*116		Yes					
Fargo EMS Staging Unit		Call Fargo Communications		Ask for Fargo Staging EMS		Yes					
Air Ambulance Service											
Trauma 1		Jacksonville, FL (26 min/air)		1-800-223-4878		Yes					
AirMed		Augusta, GA (2 hrs/air)		1-888-792-9245		Yes					
Lifeflight (155.340)		Jacksonville, FL (35 min/air)		1-877-870-7779		Yes					
B. Incident Ambulances											
Name		Location			Paramedics Yes No						
Ware County EMS		Waycross (Drop Point 305)			Yes						
Ware County EMS		Fargo (Fargo Unit – 41 First Street – Fargo, GA 31631)			Yes						
7. Hospitals											
Name		Address		Travel Time Air Ground		Phone		Helipad Yes No		Burn Center Yes No	
Satilla Regional		410 Darling Ave Waycross Ga N 31°13.56 W 82°21.058		15 min 30 min		912-283-3030		Yes		No	
Clinch Memorial Hospital		1050 Valdosta HWY Hommerville, GA		45 min		912-487-5211 ext 4502				No	
South Georgia Medical Center		2501 N. Patterson St. Valdosta, GA 31602		60 min		229-333-1000					
Memorial Hospital		Savannah, GA 4700 Waters 3200.7 8107.6		40 min		912-350-8999		Yes		No	
Shands Hospital (level I)		Jacksonville, FL N 30°20'97 W 82° 13 992		45 min 1.5 hrs		800-223-4878		Yes		Yes	
Shands Burn Center		Gainesville, FL 38.33 N 082 20.73W		45 min		352-265-0300		Yes		Yes	
Doctor's Hospital Joseph Still Burn Center		August,GA (Chief Burn Ctr 3328.943 8205.422		90 min 3 ½ hrs		877-863-9595 706-863-9595		Yes		Yes	
8. Medical Emergency Procedures											
<p>Identify any EMTs and Paramedics in your crews. All medical emergencies will be reported to the Division Supervisor who will assume command and notify Line Medics.</p> <ol style="list-style-type: none"> Provide medical care & stabilize patient. Call 911 Notify Communications via radio over Command Channel. Communications will clear radio traffic for medical emergency. Notify the Field Ops Section Chief. Com will notify ambulance and coordinate with IC, SOF, MEDL <p>Helispots – Braganza Sweat Farm ICP: 31 07.23 X 82 15.23 Helispots – Fargo Base Camp: H-114 (4 mi marker Hwy 177 – Stephen C. Foster St. Prk) 30 47 30.02 X 82 22 39.5 H-113 (Hwy 441 - golf course) 30 41.739 X 82 33.961</p>						<p>INJURY REPORTING PROCESS:</p> <p>Nature of Injury: _____</p> <p>Location of Patient: _____</p> <p>Transportation Requested by: Air ___ Ground ___</p> <p>Pick Up Point: _____</p> <p>Lat _____ Long _____</p> <p>Patient Unit ID: _____</p> <p>Is an EMT w/Patient: Yes ___ No ___</p> <p>Age: _____ Sex: Male ___ Female ___</p> <p>MAJOR EMERGENCIES – Secure the area and identify witness for later investigation. Keep an accurate log of events.</p> <p>NOTE: Do not give Patients Name over the radio.</p>					
Prepared by (Medical Unit Leader) Mark Millirons (912) 218-9101 Linc 1*18*7480						10. Reviewed by (Safety Officer) Mark Munns					

Human Resource Message

Greetings!

The Georgia IMT has assumed command of the incident. As we transition to more of a patrol and mop-up phase, we want to emphasize the importance of keeping your performance edge, maintaining your situational awareness, and relying on teamwork as we implement our plan for the day. Keep up the good work you've been doing. *Always treat others with courtesy, dignity and respect.* And remember that we are guests in the community. Be safe and have a great day!

Sherri Cummings, HRSP-T
478-550-2604



PLEASE NOTIFY DEMOB ABOUT YOUR AIR TRAVEL REQUEST
A MINIMUM OF 48 HOURS IN ADVANCE

SWEAT FARM RD. AND BUGABOO FIRES

DEMOB CONTACT @ WAYCROSS ICP– Harold (912) 218-9361

ROUNABOUT AND KNEEKNOCKER FIRES

DEMOB CONTACT @ WAYCROSS ICP: DENNIS SHARP (478) 550-2604

PLEASE COME BY AND CHECK ON YOUR TRAVEL – AIR OR OTHERWISE

ACTUAL CHECKOUT PROCEDURE

When final approval and instructions are obtained the Demob U/L will:

1. Give the Crew Boss, Liaison Officer, or individual:
 - A. The Demob checkout ICS-221
 - B. Instructions for going through checkout phases

THE RELEASED CREW BOSS OR INDIVIDUAL OVERHEAD WILL:

1. Turn in all issued items, except communications gear, to the Supply Unit and obtain their release on the Demob Checkout ICS-221.
2. Obtain Communication Unit clearance on the Demob checkout showing all communication equipment has been returned.
3. Obtain Facilities Unit clearance on the Demob checkout showing that their area was left in good condition.
4. Obtain Ground Support Unit or Supply Unit clearance on the Demob checkout indicating that all vehicles and keys were returned, and that contract equipment has been inspected.
5. Obtain Documentation Unit clearance on the Demob checkout indicating all Performance evaluations have been completed and also all IS-214's.
6. Resolve all time discrepancies with the Time Unit the evening before departure.
7. Sign their time reports before leaving the ICP.
8. Obtain Time Unit clearance on the Demob checkout for personnel time.
9. Obtain Time Unit clearance on the Demob checkout showing that all time on contracted equipment has been reported, agreed upon and signed.
10. Return the final release sheet ICS-221 to the Demob U/L.

TRAVEL RESTRICTIONS AND INSTRUCTIONS

REST REQUIREMENTS

We will release no person from the Incident without first obtaining 8 hours of rest, unless specifically approved by the I.C.

TRAVEL LIMITATIONS

All Federal employees must be able to arrive at their home unit before 2200 hours.

All agency personnel will meet their own agency's travel limitations when returning to their home unit. Also, out of area resources will be required to meet local and regional requirements due to travel arrangements.

TRAVEL ROUTES

All return travel will be by the most direct route, and documented on ICS-214's.

Federal and State government employees returning via their own agency's vehicles will plan the most direct, most practical routes to their home units.

TRAVEL INFORMATION

Crews and/or other resources that must travel long distances to home units should file a route plan (RON) with Demob and check-in with their home unit dispatch.

COMMERCIAL AIR/GROUND TRANSPORTATION

Demob Unit will negotiate through the local Dispatch Center and Coordination Center any air transportation and/or ground transportation. Don't forget to give 48 hr. notice.

Sweat Farm Road Phone Roster 6-05-07

NAME	POSITION	PHONE NUMBERS	LINC ID
COMMAND & GENERAL STAFF			
		912-285-6046	Fax 912-285-6014
Troy Floyd	IC	706-676-0168	
Sherri Cummings	HRSP		
Beryl Budd	LOFR	912-218-7218	
Keith Suttles	LOFR (Fargo)	912-218-9316	18*11828
Jenny Lynn Bruner	PIO	912-218-9319	18*11959
Bernie Pineda	PIO	478-550-2989	
Edith Asrow	PIO	912-281-8267	
David Elkowitz	PIO	912-218-8182	18*6988
Mark Munns	SOF 2	919-218-9060	
John Godwin	SOF2	919-356-9487	
Keith Jenkins	SOF(Bugaboo Br)	478-550-2991	
David Benevitch	SOF(Sweat Farm Br)	540-968-6226	18*10090
Tim Oliverius	SOF (Cox Branch)	912-218-9322	18*11932
Al Augustine	SOF	912-218-4958	18*4899
Larry Miller	SOF	912-218-9355	18*12622
Pete Stewart	SOF		
Alan Alsobrooke	SOF	912-218-9322	
Roy Leach	SOF	559-719-0876	
Sam Wilbanks	SOF	530-906-2253	
Robert Gossard	SOF2		
Shelby Charley	SOF2		
Phillip Spor	SOF2	541-993-9940	
James Burton	SOF		
Larry Klock	SOF	719-289-4848	
Agency Reps			
Billy Leitch		912-218-9325	18*12022
Skippy Reeves		912-218-9359	18*12756
George Constantino		912-398-7680	
Andy Stone		912-637-5261	
Joe Yeager		912-816-8732	
OPERATIONS			
		912-285-6039	
Brantley McManus	OSC	912-218-9313	18*9313
Tommy Hawkins	OSC	979-218-9909	18*11907
Steve Gray	OSC	912-218-5414	18*11904
Brent McCarty	OPBD	912-218-8343	18*4212
Levy Rentz	OPBD		
Buck Kline	OPBD		18*1615
Doug Mattox	DIVS	912-218-9324	18*11985
Mike Appling	DIVS	912-218-9343	18*12314
Greg Arkle	DIVS	912-218-1126	
Rick Witzke	DIVS	912-218-9215	18*1832
Joe Hessel	DIVS		
Keith Jenkins	DIVS	478-550-2991	
Aitor Bidaburu	DIVS		
Richard Gonzalas	DIVS	912-218-9352	18*12520
Jerome Harvey	DIVS		18*1608
Michelle Ekstrom	DIVS		
Steve Abbott	DIVS	912-218-9307	18*10062
Brian Richards	LE/Arson	912-287-4499	18*13485
BIG TURNAROUND OPS SEC		912-496-4173	
CSX RAIL ROAD OPERATIONS- Dixon		912-270-0699	
AIR OPERATIONS			
		912-285-6039	
George Martin	AOPD		
	ASGS	478-550-2990	
	HEB2	919-920-4906	
Kevin Kozak	HEB1(T)	360-791-2520	18*6167
FINANCE			
		Time	478-550-2995
Grace Reid	FSC	912-285-6038 Landline	252-904-6977 cell
Paul Palmiotto	IBA	478-681-6111	
Barbara Hatch	Buying Team	912-285-6112 Hard Line	505-660-0399 Cell
Miguel Martinez	Comp/Claims	912-285-6038	
Reggie Lanier	COST	919-218-2568	
Vicky Kitchens	TIME		
Shelia Head	Procurement (t)		
Amy Treadwell	EQTR	912-285-6038	

Sweat Farm Road Phone Roster 6-05-07

NAME	POSITION	PHONE NUMBERS	LINC ID
PLANNING			
		912-285-6046	
Vicky Edge	PSC	912-218-7586	18*6871
Thomas Barrett	RESL	912-218-9009	18*6418
Steve Chapman	SITL		
Jamie Leigh-Powell	DOCL		
Trey Spivey	CTSP		
Rusty Brown	CTSP		
Ann Shepherdson	FOBS	912-281-2866	
Ken Masten	FOBS(t)	770-530-6548	
Phil Shafer	FOBS	530-394-8120	
Keith Burnette	FOBS	602-317-6133	
Charles Bailey	GISS		
Jon Pelton	IMET	912-218-9309	18*10247
Keith Murphy	SCKN(t)		
Harold West	DMOB	912-218-9361	18*12771
Brenda Miller	IRIN (T)	601-209-3476	
LOGISTICS			
		912-285-6091	Fax 912-285-6111
ORDERING			
		912-285-6068	
Willie Boston	LSC		
	LSC (t)	828-413-4440	
Fred LaChance	LSC @ FARGO	912-637-5270	541-398-1670 cell
	COML	919-218-0992	
	MEDL (t)	912-218-9101/919-901-4264	18*7480
Chris Kramer	EMT	320-279-0214	
Dwight Dold	EMT	254-734-5374	
Wayne Garman (Camp for the Blind)	BCMG	478-550-3000	
Fredrick Dunets (Camp for the Blind-Night)	BCMG	912-218-9354	
Danté Whittaker, Sr. (ICP)	BCMG (T)	478-550-2985	
Chuck Barber	Camp Crew Manager	912-218-9342	18*12299
	EQPM	828-292-4007	
Michelle Sanchez	EQPM	912-281-8279	
	FACL	828-443-2294	
	FDUL	912-218-9321	18*11964
	GSUL	910-334-0027	
Mike Summers	GSUL	936-546-1957	
	ORDM	704-473-0430	
	RCDM	828-361-3606	
	SUPL	336-214-2426	
Steve Moore	FARGO	912-218-9307	18*10062
Joe Anderson	MEDL(T) Fargo	912-637-5405	18*11849
George Price	EQPM Fargo	912-218-9318	18*11916
Wayne Brasher	BCMG Fargo	912-218-8965	18*7610
Charlie Souders	RCDM Fargo	912-637-5270	
Cliff Brice	Hotels Fargo	912-218-9344	18*12374
Larry Brown	GDC	912-218-9366	11*32283
Don Shugart	GDC	912-218-9371	11*32063
Sylvester Hall	GDC	912-218-9367	11*32054
Tommy Maddox	GDC	912-218-9374	11*32069
MISC.			
COMMAND DISPATCH		912-218-9044	18*6870
PUBLIC INFORMATION		912-218-9319	18*11959
WAYCROSS DISTRICT OFFICE		912-287-4915	
MACON DISPATCH		912-218-9232	18*7378
MOP UP COMMAND			18*4918
FARGO BASE		912-218-8907	18*7532
Waycross Helibase		912-218-8937	

OTHER INCIDENT MANAGEMENT TEAMS

SOUTHERN AREA RED TEAM Phone Roster

NAME	PHONE NUMBERS		
COMMAND STAFF	912-496-4177		
PLANNING	912-496-4173		
OPERATIONS	912-496-4132		
AIR OPERATIONS	912-496-4415		
FINANCE	912-496-4102		
LOGISTICS	912-816-5749		
EXPANDED DISPATCH	912-496-3162		
COMMUNICATIONS	912-496-2111		

FLORIDA STATE RED TEAM and ATLANTA NIMO TEAM Roster 5-24-07

NAME	PHONE NUMBERS		
INFORMATION	386-719-2739		
OPERATIONS	386-719-2743		
COMMUNICATIONS	386-719-2748		
FLORIDA INTERAGENCY COORDINATION	850-580-6885		

OPERATIONS Kneeknocker

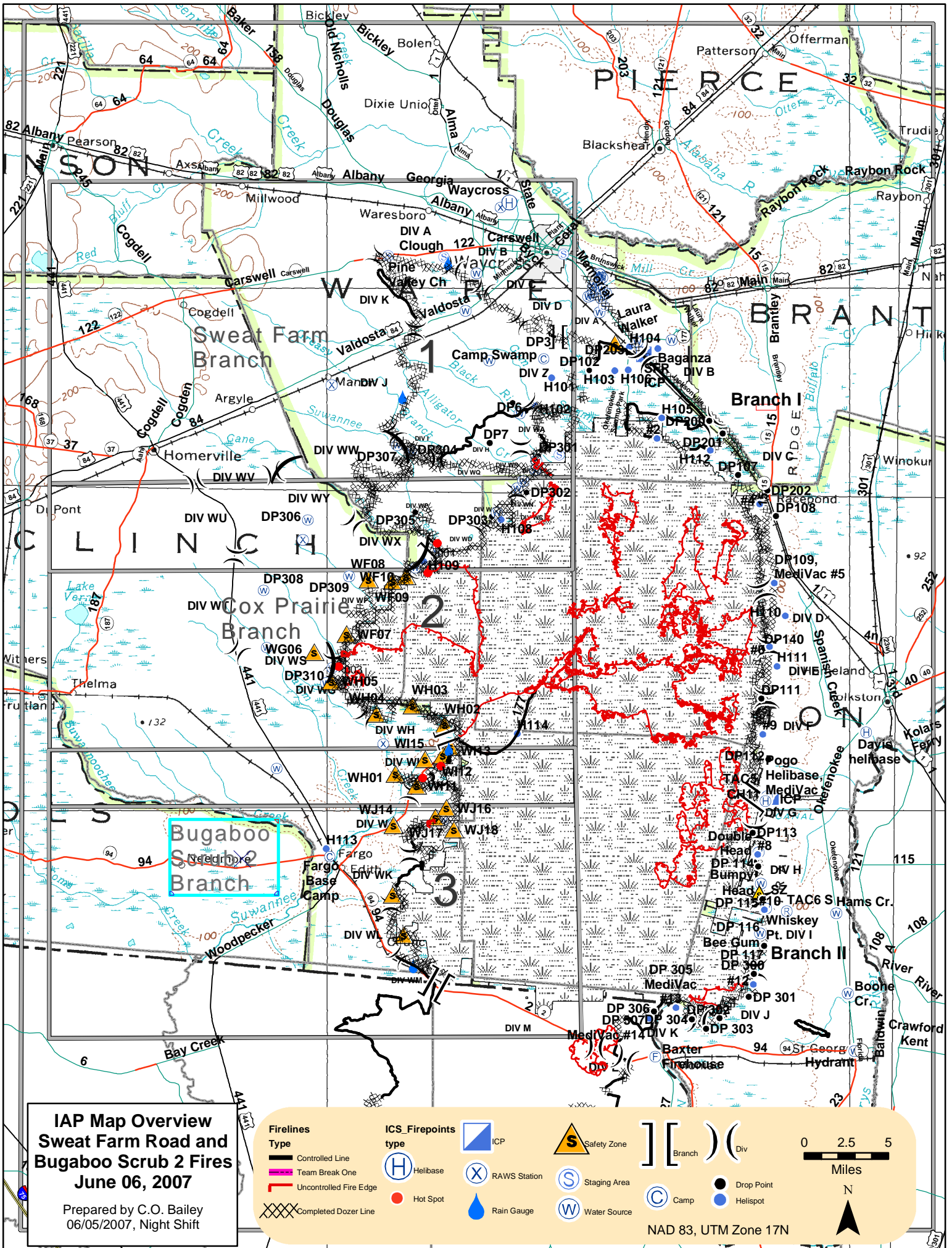
Barry Chesser (Kneeknocker)	Technical Specialist	912-218-6552	Linc 1*18*4166
Ed Keith	DIVS	770-550-1868	Linc 1*18*1628

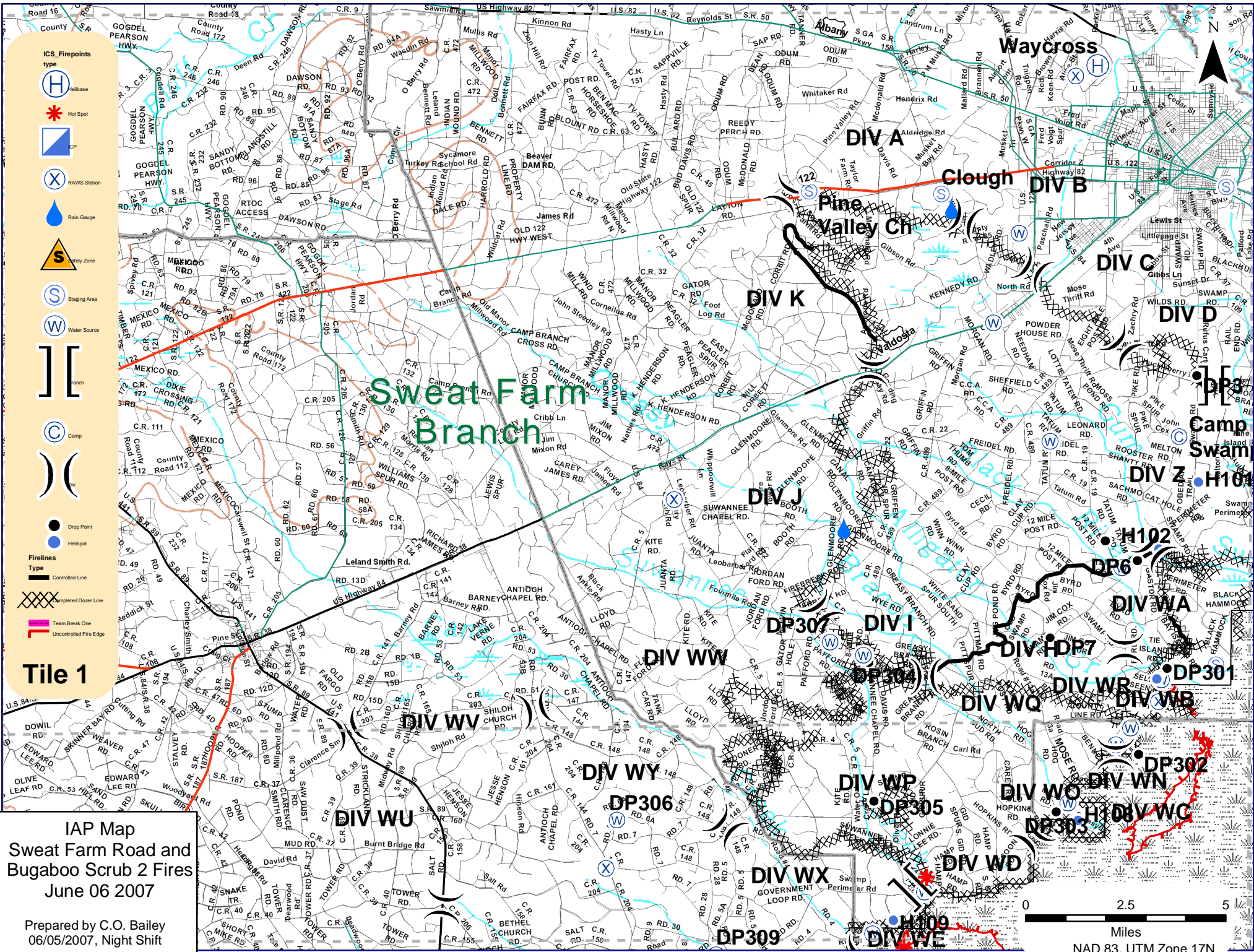
OPERATIONS Roundabout 912-422-3140

Rufus Crutchfield	DIVS		Linc 1*18*12585
Harold Kibbe	DIVS	231-920-5085	Linc 1*18*5198
FINANCE		478-550-2982	912-285-6014

OTHER AGENCIES

Brantley County Fire Coordinator	Ken Lee	912-218-2012	1*44*1081
		912-717-3330	
Nahunta FD Fire Chief	Button Lee	904-699-1619	1*25*323
		912-282-8730	
EMA / 911 Director	Billy Lartz	912-217-1638	1*11*2001
Georgia State Patrol	Dispatcher	912-287-6500	
Brantley County Sheriff	Robert Thomas	912-614-1658	1*25*1130
Clinch County Sheriff		912-487-5316	
WareCounty Sheriff		912-287-4325	
Charleton County Sheriff		912-496-7321	
DNR, ENGB	T. Trowbridge	© 912-223-2815	
DNR ENOP	Sam Williams	229-212-0124	
Atkinson EMA IC	David Moore		
Atkinson GEMA Coordinator	Diane May		
North End Resource Advisor	Dean Easton	912-496-7366	ext 235
South End Resource Advisor	Doug Nuss	912-286-3110	
Joint Information Center	Waycross	1-866-380-9966	





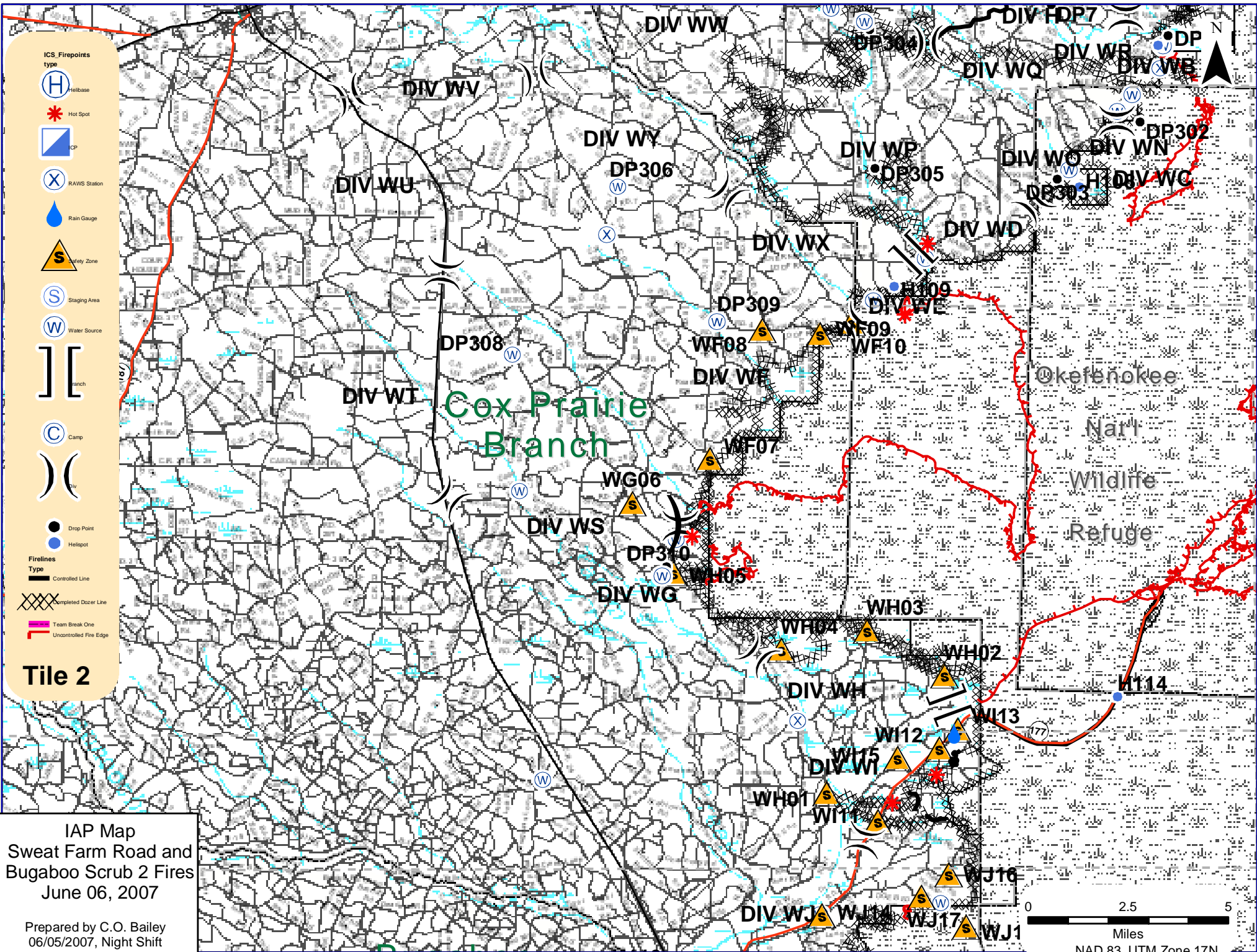
- ICS Firepoints type**
- Helibase
 - Hot Spot
 - ICP
 - RAWS Station
 - Rain Gauge
 - Safety Zone
 - Staging Area
 - Water Source
 - Branch
 - Camp
 - Drop Point
 - Helispot
- Firelines Type**
- Controlled Line
 - Completed Dozer Line
 - Team Break One
 - Uncontrolled Fire Edge

Tile 1

IAP Map
 Sweet Farm Road and
 Bugaboo Scrub 2 Fires
 June 06 2007

Prepared by C.O. Bailey
 06/05/2007, Night Shift

0 2.5 5
 Miles
 NAD 83, UTM Zone 17N



Cox Prairie Branch

Okefenokee Natl Wildlife Refuge

DIV WV

DIV WY

DIV WW

DIV WQ

DIV WB

DIV WU

DP306

DIV WP

DIV WO

DIV WN

DIV WX

DIV WD

DP309

DIV WE

WF08

WF09

WF10

DIV WF

WF07

WG06

DIV WS

DP310

DIV WG

WH04

WH03

DIV WH

WH02

WJ15

DIV WJ

WJ13

WH01

WJ11

WJ16

DIV WJ

WJ14

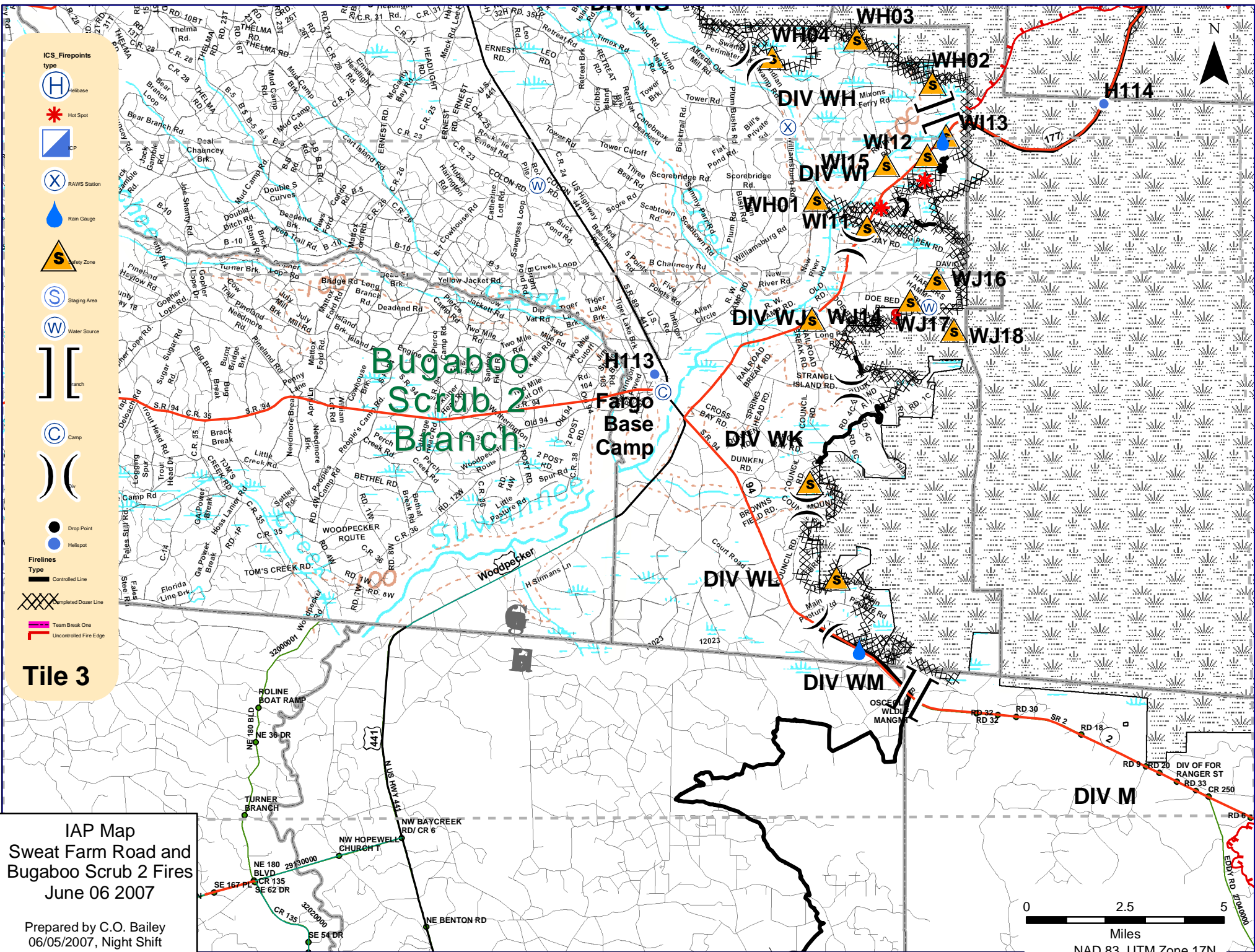
WJ17

WJ1

W114

0 2.5 5

Miles
 NAD 83, UTM Zone 17N



IAP Map
 Sweat Farm Road and
 Bugaboo Scrub 2 Fires
 June 06 2007

Prepared by C.O. Bailey
 06/05/2007, Night Shift

Miles
 NAD 83, UTM Zone 17N

