



# Sweat Farm Fire

## Incident Action Plan

*Friday*

June 22, 2007

**All Operational Periods**



**GEMA**

<b>INCIDENT OBJECTIVES</b>	1. Incident Name Sweat Farm and Bugaboo Scrub II Fires	2. Date Prepared 6/21/07	3. Time Prepared 1830
	4. Operational Period <b>06/22/2007 All Operational Periods</b>		
5. General Control Objectives For The Incident (Include Alternatives)			
1. Provide for the safety of the public and assigned incident resources through effective hazard / risk assessment and mitigation. 2. Provide timely and accurate information updates to the GFC, cooperators, affected communities, and other stakeholders. 3. Provide accurate cost accountability and documentation of expenditures for the duration of the incident. 4. Develop and maintain coordination with local fire departments, local EOC directors, GEMA, other IMT's deployed in the area, GOAL, and private industry. 5. Provide support on fires as requested by Georgia GFC District 8 and District 10. 6. Conduct all incident activities in a manner free of discrimination, harassment, and inappropriate behavior. 7. Keep the Sweat Farm Road, Kneeknocker, and Roundabout fires contained within the current established perimeters. 8. Assist with identifying and mitigating Emergency & Temporary Repairs.			
6. Weather Forecast For Period			
<b>WEATHER:</b> Partly Cloudy.			
<b>MAX TEMPERATURES:</b> 88-92 (Up 4 to 7)			
<b>MIN HUMIDITY:</b> 34 to 38% (Down 20 to 30%)			
<b>20 FT WINDS:</b> Northeast 5 to 8 mph becoming Southeast after 4 pm with gusts up to 15 mph in the afternoon.			
<b>STABILITY/INVERSION:</b> Mixing heights near 5300 ft. Afternoon Dispersion index 50. Haines Index 4 (Low). Transport winds NE 10-12 MPH.			
<b>LAL: 1</b>			
7. General Safety Message			
<b>SEE ATTACHED SAFETY MESSAGE.</b>			
8. ATTACHEMENTS (X IF ATTACHED)			
<input checked="" type="checkbox"/> Organization List - ICS 203	<input checked="" type="checkbox"/> Division Assignment List - ICS 204	<input checked="" type="checkbox"/> Phone List	
<input checked="" type="checkbox"/> Fire Behavior Forecast	<input checked="" type="checkbox"/> Air Ops Summary-ICS 220	<input checked="" type="checkbox"/> Maps	
<input checked="" type="checkbox"/> Weather Forecast	<input checked="" type="checkbox"/> Communications Plan - ICS 205	<input checked="" type="checkbox"/> Unit Log- ICS 214	
<input checked="" type="checkbox"/> Safety Message	<input checked="" type="checkbox"/> Medical Plan - ICS 206	<input type="checkbox"/>	
9. Prepared By (Planning Section Chief)		10. Approved By (Incident Commander)	

ORGANIZATION ASSIGNMENT LIST		9.	Operations Section	
1. Incident Name		Field Ops	David Colton (T)	
Sweat Farm Fire		Planning Ops	Steve Gray (T)	
2. Date	3. Time	<b>a.</b>	<b>Sweat Farm</b>	
June 21, 2007	2000			
4. Operational Period		Group	Mop Up/ETR Group 1	Mike Brunson
<b>June 22, 2007 All Operational Periods</b>		Group	Mop Up/ETR Group 2	Jerome Harvey
<b>5.</b>	<b>Command</b>			
Incident Commander	Eric Harris			
Liaison				
Safety Officer	Mark Munns/John Barnes			
Information Officer	William Spinrad			
Human Resources	Sherri Cummings (T)			
<b>6.</b>	<b>Agency Representatives</b>			
Agency	Name			
GFC District 8	Frank Sorrells			
GFC District 10	Willard Fell			
GFC Protection Dept	Alan Dozier			
GEMA	Alan Robinson			
GOAL	Skippy Reeves			
Okefenokee NWR	Maury Bedford			
Superior Timber	Andy Stone			
GA DNR	Joe Yeager			
		<b>e.</b>	<b>Special Groups</b>	
<b>7.</b>	<b>Planning Section</b>		Group	ETR / DINS Ken Luckow
Chief	Shane Brown			
Resources Unit	Richard Gibbs/Jamie Leigh-Powell(T)			
Situation Unit				
Documentation Unit	Jamie Leigh-Powell			
Demobilization Unit	Harold West / John Martel			
CTSP	Trey Spivey/Rusty Brown			
THSP	Ken Luckow			
Incident Meteorologist	Daniel Byrd		<b>f.</b>	<b>Air Operations Branch</b>
Status/Check In	Keith Murphy/Shawn Whitley		Air Operations Branch Director	
GISS	Blount / Whitworth/Burnett		Air Support Supervisor Johnny Stephens	
			Helibase Manager Melvin Tate/Denise Croker (T)	
<b>8.</b>	<b>Logistics Section</b>		GFC Air Operations	Mike Leverette
Chief	Willie Boston / Susan Cornett		HELM	Josh Ingle/Randy Carter
Facilities Unit	Tom Lambert/Jimmy Caldwell		HECM	James Ballard
Hotel Manager	John Wall		HECM (T)	Wesley Whisanhunt/Ray Brundage
Supply Unit	Terry Lemmon		ABRO	Ron Chisholm
Food Unit	Chris Barnes			
Base Camp Manager	Fred Dunets			
Base Camp Manager	Ronnie Jones		<b>10.</b>	<b>Finance Section</b>
Ground Support Unit	Mike Summer/Michele Sanchez		Chief	Grace Reid
Equipment Manager	Willie Griffis		Incident Business Advisor	Lila Johnson
Ordering Manager	Tom French		Time Unit Leader	Vickie Kitchens
Security Manager	Stephen Wilson/Don Poovey		Purchasing Team Leader	James Conner
Medical Unit	Joe Anderson		EQTR Lead	Amy Treadwell
Communications Unit	Howard Ure/Kelly Towe		Cost Unit	Eillene Crouse
RCDM			Comp/Claims	Miguel Martinez
			Prepared by (Resource Unit Leaders) Richard Gibbs/Jamie Powell (T)	

# TAILGATE BRIEFING SHEET

## ☐ WEATHER FORECAST

FORECAST NO: 64

PREDICTION FOR: Day Ops

SHIFT DATE: Friday 06/22/07

TIME AND DATE

FORECAST ISSUED: 1900 hours 06/21/07

NAME OF FIRE: Sweat Farm

UNIT: Georgia Forestry Commission

SIGNED: *Dan Byrd*

Incident Meteorologist

**WEATHER DISCUSSION:** High pressure and dry conditions will prevail over the fire for the next few days. Afternoon highs will warm to near 90 today and into the mid to upper 90s through weekend. Relative humidity's will fall into the low 30 percent range during the afternoon's before the sea breeze moves in. Expect an increase in moisture over the area by Monday and continuing through Tuesday with isolated afternoon showers and thunderstorms.

### **WEATHER FORECAST DAY SHIFT FRIDAY:**

WEATHER: Partly Cloudy.

MAX TEMPERATURES: 88-92 (Up 4 to 7)

MIN HUMIDITY: 34 to 38% (Down 20 to 30%)

20 FT WINDS: Northeast 5 to 8 mph becoming Southeast after 4 pm with gusts up to 15 mph in the afternoon.

STABILITY/INVERSION: Mixing heights near 5300 ft. Afternoon Dispersion index 50. Haines Index 4 (Low).

Transport winds NE 10-12 MPH.

LAL: 1

### **WEATHER FORECAST FOR FRIDAY NIGHT:**

WEATHER: Partly cloudy becoming clear overnight.

MIN TEMPERATURES: 65-68

MAX HUMIDITY: 95-100%

20 FT WINDS: Variable 2 to 4 mph.

STABILITY/INVERSION: Dispersion index 3.

### **OUTLOOK FOR SATURDAY:**

Partly cloudy. Highs 94-97. Southwest winds 5 to 8 mph, with gusts up to 12 mph. Min RH 30 to 35%. Mixing Height 6100 feet, dispersion index 45, Transport winds SE 10-13 mph.

### **Extended Forecast:**

**Sunday...** Partly Cloudy. Lows 66 to 69. Highs 95 to 98. Min RH 28 to 33%. Southwest winds 5-10 G15 mph.

**Monday...** Partly Cloudy with Isolated Showers and Thunderstorms. Chance of wetting rains 20 percent. Lows 66 to 69. Highs 92 to 95. Min RH 30 to 35%. Northeast Winds 5 to 10 G15 mph.

**Tuesday...** Partly Cloudy with isolated afternoon Showers and Thunderstorms. Chance of wetting rains 20 percent. Lows 66 to 69. Highs 93 to 96. Min RH 30 to 35%. Southeast Winds 5-10 G15 mph.

### **EXTRA INFORMATION:**

#### **Waycross Sun data**

Sunrise Today : 626 AM

Sunset Tonight: 837 PM

#### **Thursday Raws Max/Min/Min RH and Precip.**

FWRS-08 Manor: 86/70/57 .00 inches

Waycross RAWS: 81/71/71 .00 inches

FWRS-03 Perimeter: 84/70/68 .00 inches

FWRS-09 Church: 84/71/62 .01 inches

# TAILGATE BRIEFING SHEET 2 OF 2

## □ SAFETY MESSAGE

Incident:

Sweat Farm Road

Date:

June 22, 2007

Time:

Day

## Major Hazards and Risks:

- **Driving**
- **Hydration**
- **Snags**
- **Communications**

**Driving** – Those driving home must adhere to the travel standards created for your safety outlined in the Interagency Business Handbook, as well as your home agency standards. All vehicles on the incident should drive with headlights on and watch out for contractor and logging traffic on incident roads.

**Hydration** – Temperatures are starting to rise today. Be sure to drink plenty of WATER before, during and after shift. Drink 4 waters to every Gatorade and remember to keep your coolers clean.

**Snags** – Soft soil from rain and previous fire damage will continue the increase of snag fall. Scan areas that you park your vehicles and equipment, as well as, any area you are working for potential snags. Mitigate the ones you can do so safely and communicate ones you can't.

**Communications** – Communicate all changes in activity and locations through DIVS. Field test your programming on your handheld radio prior to reporting out to the fireline. Ensure quality tailgate briefing with any resources working in your area.

## IRPG Note for First Aide:

### SPECIFIC TREATMENTS

**Bleeding:** Direct pressure, elevate, and pressure point.

**Shock:** Lay patient down, elevate feet, keep warm and replace fluids if conscious.

**Fractures:** Splint joints above and below injury and monitor pulse past injury away from body.

**Bee Sting (anaphylaxis):** Life threatening see if the patient has a sting kit and transport immediately.

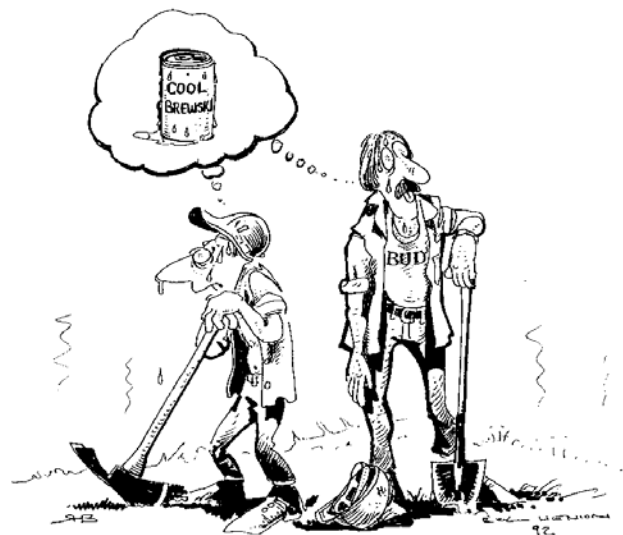
**Burns:** Remove heat source, cool with water, dry wrap and replace fluids.

**Diarrhea:** Drink fluids in large quantities.

**Eye injuries:** Wash out foreign material, don't open swollen eyes, leave impaled objects and pad and bandage both eyes.

**Heat exhaustion:** Skin gray, cool and clammy. Rest in cool place and replace electrolytes.

**Heat stroke:** Skin dry, red, temperature hot. Cool and transport immediately.



14. WEATHER IS GETTING HOTTER AND DRIER

Safety Officers: Mark Munns, Harry Kepler  
Charles Woods and John Barnes

INCIDENT ACTION PLAN SAFETY ANALYSIS							1. Incident Name Sweat Farm			2. Date 6/22/2007			3. Time Day Shift					
LCES* Analysis of Tactical Applications Lookouts Communications Escape routes Safety zones							Other Risk Analysis											
Branch	Indirect Fireline	Burn out Operations	Power lines	Road Conditions	Frontal Assault	Anchor Points	Extreme Conditions	Reburn Potential	Snags	Insects, snakes	LCES Mitigations	Smoke	Traffic & Railroad	Communications	Structure Protection	Fatigue/Hydration	Multi-aircraft	Other Risk Mitigations
Sweat Farm	1, 3, 4, 5, 7, 8, 10		15, 11	12, 20	1, 3, 4, 5, 7, 8, 24	8	7, 10	1, 3, 5, 7, 10	6	2	1. Establish & maintain LCES. Report LCES checks twice daily to DIVS on line & staggng. 2. Look UP,DOWN and AROUND - Use protective spray with deet on skin (Not on Nomex), permethrin can be used on nomex clothing. Do Not try to catch or kill snakes! 3. Post experienced Lookouts. Make sure LCES is in place and make known. 4. Use Air Attack as Lookout.		20, 22, 26, 28, 31, 33	1, 3, 10, 14, 24		18, 21		18. Take plenty rest breaks and encourage to drink water NOW through briefings.  20. Defensive driving will be addressed in all briefings. 21. All personnel must meet the 2:1 work/rest ratio. Line supervisors and Safety will monitor closely. 22. Notify EOC of need to close CSX track adjacent track to ensure safety of firefighters due to excessive smoke or fire activity.
											5. Flag escape routes on right side of escape route facing outward. Create new escape routes as you progress.Maintain LCES at all times. 6. Identify,mark & mitigate.  7. FBA/Metereoroligist to develop weather watch system. 8. Ensure Fireline is Anchored to black or manmade/natural barrier.							24. Line Supervisors will provide clear, concise briefings. 26. Ensure Traffic Planning is safe and enforced. Heed Defensive Driving techniques noted in Safety Messages.  28. Relocate staging area when driving conditions warrant. 31. Use spotter when backing vehicle(s).
											10. Keep Firefighters informed of any changes in predicted weather, consider at least a two day weather pattern when planning burnout operations. 11. Refer to IRPG, pg. 12 on Power Line Hazards.  12. Observe all traffic signals and speed limits.  14. Ensure GOOD tailgate briefings with resources unable to attend Operational Briefing (Include Ops, Logs, Fin & Plans info.).							33. ALL vehicles and equipment must have lights on when running. Plastic culverts under some roads have burned and are collapsing under heavy loads, DIVS will coordinate which roads transport and tractors will use. GSP (912) 287-6500 : EMA (912) 287-4499.
											15. Scout ahead of tractor operations to avoid making contact with power poles and guide wires when tying into roads. Power companies are working in some DIVS, avoid all down lines as they may become charged.							

Prepared by (Name and Position)	ICS 215A	Mark Munns SOF2
---------------------------------	----------	-----------------

<b>DIVISION ASSIGNMENT LIST</b>				1. Branch		2. Division/Group <b>MOP UP / ETR GROUP 1</b>		
3. Incident Name <b>Sweat Farm Fire</b>				4. Operational Period Date: <b>6-22-07</b> Time: <b>0800 - 2000</b> <b>DAY</b>				
5. Operations Personnel								
Field Ops Planning Ops		<b>David Colton (T)</b> <b>Steve Gray(T)</b>		Group Supervisor		<b>Mike Brunson</b> <b>6/29</b>		
Branch Director Branch Safety				Group Safety				
6. Resources Assigned this Period								
Strike Team/Task Force/ Resource Designator		Leader / Name		Last Shift	Number Persons	Trans. Needed	Drop Off PT./Time	Pick Up PT./Time
<b>TF #2</b>		<b>Mickey Walley</b>		6/28	1	N	0800	2000
<b>STEN O-1605</b>		<b>Durwin Carter</b>		6/29	1	N	0800	2000
LAS Engine T6 E-1076		Lee / Basso		6/29	2	N	0800	2000
LAS Engine T6 E-2841		Goodwin / Lampkin		6/28	2	N	0800	2000
LAS Engine T6 E-1075		Poole / Sandell		6/29	2	N	0800	2000
LAS Engine T6 E-1073		Williams/Smith		6/29	2	N	0800	2000
LAS Engine T6 E-1074		Cannon/Smith		6/29	2	N	0800	2000
<b>STPL O-1654</b>		<b>Steve Anderson</b>		7/02	1	N	0800	2000
TXS TP T4 E-113		Fife/Williams		7/1	2	N	0800	2000
TXS TP T2 E-3109		McCallie/Burnett		6/28	2	N	0800	2000
TXS TP T2 E-3111		Ramsey/Kaiser		6/28	2	N	0800	2000
Excavator Lee E-3123					1	N	0800	2000
ENG LAS Engine T6 E-1073		Williams/Smith		6/29	2	N	0800	2000
ENG LAS Engine T6 E-1074		Cannon/Smith		6/29	2	N	0800	2000
TXS ENG T6 E-1181		Wobus/Rex		7/1	2	N	0800	2000
<b>DINS O-1572</b>		<b>Bert Early</b>		6/24	1	N	0800	2000
7. Control Operations Hold, and improve containment lines. Continue to address hot spots, and mop up. Respond to returns as necessary, and evaluate ETR needs. Coordinate movement of resources with other Groups as needed								
8. Special Instructions <b>Concentrate on Divisions A-B-C-D-H-J-K-Z-WA-WQ-WR</b>								
9. Division/Group Communication Summary								
Function	Frequency	System	Channel	Function	Frequency	System	Channel	
Command	158.7825/162.2 Rx 153.7625/162.2 Tx Narrow Band	King NIFC	Group 11 1	Air to Ground Sweat Farm/Big Turnaround	Dependant on location, refer to ICS-205	King NIFC	Group 11 2-3-4-5	
Tactical Div/Group	168.200 Rx & Tx Narrow Band	King NIFC	Group 11 11	Air to Ground Georgia	159.390 Rx & Tx	King NIFC	Group 11 Ch. 13	
Prepared by (Resource Unit Leader) Richard Gibbs / Jamie Powell (T)		Approved by (Planning Section Chief) /s/Shane Brown			Date June 21, 2007		Time 1900	

<b>DIVISION ASSIGNMENT LIST</b>				1. Branch		2. Division/Group <b>MOP UP/ETR GROUP 2</b>		
3. Incident Name <b>Sweat Farm Fire</b>				4. Operational Period Date: <b>6-22-07</b> Time: <b>0800 – 2000</b> Day				
5. Operations Personnel								
Field Ops Operations Chief		<b>David Colton (T) Steve Gray (T)</b>		Group Supervisor		<b>Jerome Harvey 18*1608</b> <b>6/22</b>		
Branch Director Branch Safety				Group Safety Officer				
6. Resources Assigned this Period								
Strike Team/Task Force/ Resource Designator		Leader / Name		Last Shift Date	Number Persons	Trans. Needed	Drop Off PT./Time	Pick Up PT./Time
<b>TF #3</b> <b>O-567</b>		<b>Chris Stevenson</b>		7/1	1	N	0800	2000
<b>STLD</b> <b>O-1647</b>		<b>Todd Nightingale</b>		6/26	1	N	0800	2000
TXS TP T4 E-114		Buckner / Baker		7/1	2	N	0800	2000
TXS TP T4 E-112		O'Bryan / Shew		7/1	2	N	0800	2000
Excavator (Good Job) E-3173		Corbin			1	N	0800	2000
Excavator (Good Job) E-2925		Stevens			1	N	0800	2000
<b>DINS</b> <b>O-1584</b>		<b>David Streetman</b>		6/26	1	N	0800	2000
<b>STPL</b> <b>O-1626</b>		<b>Mike Smith</b>		7/1	1	N	0800	2000
LAS TP T2 E-1103		Marcantel/Sweat		6/29	2	N	0800	2000
LA T/P T2 E-1102		Weatherford/Wager		6/29	2	N	0800	2000
Excavator (Nichols) E-3191					1	N	0800	2000
Excavator (Nichols) E-3192					1	N	0800	2000
<b>DINS</b> <b>O-1571</b>		<b>Dennis Martin</b>		6/27	1	N	0800	2000
<b>TF #4</b> <b>O-1545</b>		<b>Shane Crimm</b>		6/24	1	N	0800	2000
<b>STEN</b> <b>O-1590</b>		<b>Jeff Anders</b>		6/29	2	N	0800	2000
ENG LAS Engine T6 E-1070		Simmons/Smith		6/29	2	N	0800	2000
ENG-LAS Engine T6 E-1071		Smith/Blackwell		6/29	2	N	0800	2000
ENG-LAS Engine T6 E-1072		Tilley/West		6/29	2	N	0800	2000
TXS TP T3 JD650 E-3116		Elrod/Teel		6/28	2	N	0800	2000
Motor Grader (Smith) E-1314		Hendly			1	N	0800	2000
7. Control Operations								
Hold, and improve containment lines. Continue to address hot spots, and mop up. Respond to reburns as necessary, and evaluate ETR needs. Coordinate movement of resources with other groups as needed								
<b>8. Special instructions</b>								
Concentrate efforts in DIVS I,WW,WX,WP, WB, WD, WO								
9. Division/Group Communication Summary								
Function	Frequency	System	Channel	Function	Frequency	System	Channel	
Command	158.7825/162.2 Rx 153.7625/162.2 Tx Narrow Band	King NIFC	Group 11 1	Air to Ground : Sweat Farm / Big Turnaround!	Dependant on location, refer to ICS-205	King NIFC	Group 11 2-3-4-5	
Tactical Div/Group	168.050 Rx & Tx Narrow Band	King NIFC	Group 11 8	Air to Ground  Georgia IA	159.390 Rx & Tx	King NIFC	Group 11 Ch. 13	
Prepared by (Resource Unit Leader)		Approved by (Planning Section Chief)		Date		Time		
Richard Gibbs / Jamie Powell (T)		/s/Shane Brown		June 21, 2007		1900		



<b>DIVISION ASSIGNMENT LIST</b>			1. Branch		2. Division/Group <b>ETR DINS GROUP</b>		
3. Incident Name <b>Sweat Farm Fire / Big Turnaround /Bugaboo Scrub</b>			4. Operational Period Date: <b>6-22-07</b> Time: <b>0800 - 2000</b> DAY				
5. Operations Personnel							
Field Ops Planning Ops		Group Leader		<b>Ken Luckow</b> <b>6/23</b>			
Branch Director Branch Safety		Group Safety Office					
6. Resources Assigned this Period							
Strike Team/Task Force/ Resource Designator		Leader / Name	Last Shift Date	Number Persons	Trans. Needed	Drop Off PT./Time	Pick Up PT./Time
DINS O-1585		Chad Pritchett	6/26	1	N	0800	2000
DINS O-1583		Chad David	6/25	1	N	0800	2000
DINS O-1582		Mary Griffin	6/25	1	N	0800	2000
DINS O-1581		Mark McClure	6/24	1	N	0800	2000
DINS O-1580		Bo Chesser	6/24	1	N	0800	2000
DINS O-1573		Bryan Snow	6/24	1	N	0800	2000
7. Control Objectives							
8. Special Instructions  Tie in with CA FUMT #2 DIVS before working outside of Sweat Farm Rd Fire delegation							
Division/Group Communication Summary							
Function	Frequency	System	Channel	Function	Frequency	System	Channel
Command	Depends on location. Refer to ICS-205	King NIFC	Group 11 2,3,4,5	Air to Ground Federal	170.000 Rx & Tx Narrow Band	King NIFC	Group 11 Ch.12
Tactical Div/Group	168.600 Rx & Tx	King NIFC	Group 11 7	Air to Ground Georgia IA	159.390 Rx & Tx	King NIFC	Group 11 Ch. 13
Prepared by (Resource Unit Leader) Richard Gibbs / Jamie Powell (T)		Approved by (Planning Section Chief) /s/Shane Brown			Date June 21, 2007		Time 1900

AIR OPERATIONS SUMMARY		PREPARED BY: Johnny Stephens			PREPARED DATE/TIME 6/21/07 1900	
1. INCIDENT NAME: Sweat Farm Road		2. OPERATIONAL PERIOD: START TIME: END TIME: SUNRISE: SUNSET:				
		Day Shift 6/22/07 0800 1900 0626 2037				
3. REMARKS (Safety Notes, Hazards, Air Operations Special Equipment, etc.): <b>AIR TANKER REQUESTS THRU POGO</b>				4. MEDEVAC A/C:		5. TFR: Released 6/18/07
<ul style="list-style-type: none"> <li>All dispatches will come through the ICP in Waycross for state aviation resources. <u>Waycross Dispatch Advise Waycross Helibase of ACFT Dispatch</u></li> <li>PERSONNEL STAY CLEAR OF ACTIVE DIPSITES</li> <li>Aircraft Dispatching Priorities:               <ol style="list-style-type: none"> <li>Life</li> <li>Structures Threatened</li> <li>Initial Attack</li> <li>Fire threatening perimeter control lines</li> </ol> </li> </ul>				<b>Trauma 1 @ Jacksonville 26min: 1-800-223-4878</b>		
6. PERSONNEL		Phone	7. FREQUENCIES	AM	FM	8. FIXED-WING
ASGS: Johnny Stephens		360-463-0988	AIR/AIR FW:	125.225.		# Avail / Type/ Make-Model / FAA N# / Base(s)
		ICP FAX: 912-285-6014	A/A Discretionary: IA/Breakouts	122.925 GA IA 125.225		Air Tankers @ LCQ.
						Lead planes LP/14 @ LCQ
			AIR/AIR RW:	125.225		Waycross Helibase—31 14.95 X 82 23.73 Pogo Helibase-30 44.25 X 82 07.69 Braganza Helispot- 31 07.23 X 82 15.23
			A/A Discretionary: IA/Breakouts	122.925 GA IA 125.225		-Avoid take-off / landing over ICP -High Towers in Area, -LOOK UP, LOOK DOWN, LOOK ALL AROUND
-State Aviation Lead Mike Leverette -Sweat Farm Operations		478-951-2835 912-285-6039	AIR/GROUND:	Georgia IA	159.390	Fargo Helibase (Golf Course) N 30 41 27.3 x W 82 34 02.0 Stephen Foster SP (Pocket) N 30 47 32.2 x W 82 22 39..6
Waycross HEBM: Melvin Tate Denise Croker-T		850-768-0008 912-218-8937	AIR/GROUND	Big Turnaround Sweat Farm	Will be Chs. 2-3- 4-5 in the Como Plan.	Other
Waycross HB & Braganza HS:			DECK FREQ:		163.100	
Braganza Helispot (Helitack will be available for aircraft landing and departing Braganza Helispot)			TOLC FREQ: (Braganza Helispot)		Rx: 151.145 Tx: 151.145	-Aircraft flight follow with Waycross on the Sweat Farm - Flight follow with Pogo on the Big Turnaround. -IA Air Attack for State--- Cessna 182's -Approved Helispots—Refer to Okefenokee NWR Dip Site Map -ALL FLIGHTS WILL BE CLEARED WITH ASGS
Pogo Helibase Waycross Helibase GA Forestry Hangar Waycross District Dispatch		912-496-4415 912-218-8937 912-338-5982 912-287-4915	FLT FOLLOWING:	Flight following will be on primary or secondary air to air freqs.		

9. HELICOPTERS (Use Additional Sheets As Necessary)

**BIG TURNAROUND AVIATION RESOURCES**

**SWEAT FARM ROAD AVIATION RESOURCES**

FAA N#	TY	MAKE/MODEL	BASE	AVAIL	START	REMARKS	FAA N#	TYPE	MAKE/MODEL	BASE	AVAIL	START	REMARKS
116AZ HT-766	1	S-61	Pogo	0900	0930	Bucket drops	N5843	3	Bell 206-L3	Waycross	0900	0930	Recon/ Admin/ IA/ Bucket drops
OKE 6 (N5738Y)	3	Bell 206-B3	Pogo	0900	0930	Recon/ Admin/ IA Bucket drops	71K (GA)	NA	Cessna 185	Waycross	0900	0930	IA, Aerial Det.
							11H (GA)	NA	Cessna 182	Waycross	0900	0930	IA, Aerial Det.

10. TASK/MISSION/ASSIGNMENT (Type/Function includes: Air Tactical, Retardant, Recon, Personnel Transport, Water Dropping, S&R, etc.)

TYPE/FUNCTION	NAME OF PERSONNEL OR CARGO (if applicable) OR INSTRUCTIONS FOR TACTICAL AIRCRAFT	MISSION START	FLY FROM	FLY TO
Type I Helicopter	Operation and Logistic Support	0930	Helibase	Fire and Return
Type II Helicopter	Operation and Logistic Support	0930	Helibase	Fire and Return
Type III Helicopter	Operation and Logistic Support	0930	Helibase	Fire and Return
ATGS Platforms	Aerial Supervision of all Aircraft over Incidents	0930	Waycross Airport	Fire and Return
State Detection Fixed Wing	Aerial Detection and IA for New Fire Starts	0930	Waycross Airport	Fire and Return

INCIDENT RADIO COMMUNICATIONS PLAN		1. Incident Name <b>Sweat Farm Road Fire</b>		2. Date/Time Prepared <b>06/21/07</b>		3. Operational Period Date/Time <b>06/22/07</b>	
4. BASIC RADIO CHANNEL UTILIZATION							
Radio Type/Cache	Channel	Function	Frequency/Tone	Assignment	Remarks		
King NIFC	1	Ware EMA Rptr Narrow Band	158.7825 /162.2 Rx 153.7625 /162.2 Tx N	Command Repeater	Sweat Farm		
King NIFC	2	Okee North / Air to Ground	164.575 Rx 163.150 /206.5 Tx N	ETR Command Link North Locations	OKR Waycross Linked to 4 & 5		
King NIFC	3	Okee South / Air to Ground	164.775 Rx 163.150 /123.0 Tx N	ETR Command Link South Locations	OKR EDDY Linked to 4 & 5		
King NIFC	4	Okee East / Air to Ground	164.625 Rx 163.150 /103.5 Tx N	ETR Command Link East Locations	OKR Admin Linked to 2 & 5		
King NIFC	5	Okee West / Air to Ground	167.125 Rx 163.150 /156.7 Tx N	ETR Command Link West Locations	OKR Foster Linked to 2 & 4		
King NIFC	6	Tactical	154.280 Rx & Tx W	Structual & Tactical	Fire Line Tac. Mutual Aid		
King NIFC	7	Tactical	168.600 Rx & Tx N	ETR Group	Fire line Tac		
King NIFC	8	Tactical	168.050 Tx & Rx N	Mop up/ETR#2	Fire Line Tac.		
King NIFC	9	Tactical	159.285 Rx & Tx N	Unassigned	Fire Line Tac S.E. Compact		
ccccKing NIFC	10	Tactical	169.900 Rx & Tx N	Contingency Group	Fire Line Tac.		
King NIFC	11	Tactical	168.200 Rx & Tx N	Mop up/ETR#1	Fire Line Tac.		
King NIFC	12						
King NIFC	13	Air To Ground	159.390 Rx & Tx W	Ga. I/A			
King NIFC	14	Air Guard	168.625 Rx&Tx Tx 110.9 N	All Groups/Divs.	EMERGENCY CONTACT or redirect with incident aircraft		
5. Prepared By (Communications Unit) Kelly Towe							

<b>MEDICAL PLAN</b>	1. Incident Name <b>Sweat Farm Road Fire</b>	2. Date Prepared <b>6/21/07</b>	3. Time Prepared <b>1600</b>	4. Operational Period <b>DAY SHIFT</b>							
5. Incident Medical Aid Station											
Medical Aid Stations		Location			Paramedics Yes No						
Medical Unit / Waycross	478-550-2988	Georgia Forestry Headquarters ICP - Anderson (MEDL)				EMT					
Joe Anderson 18*11849	912-218-9317	Waycross Medical Facility, 478-550-2988				EMT					
After Hours Contact											
Joe Anderson (MEDL)		Comfort Inn Waycross Room 208		912-283-3300 ex. 208 478-550-2988 cell							
6. Transportation											
A. Ambulance Services											
Name		Address		Phone		Paramedics Yes No					
Clinch County EMS		Homerville, GA Sherriffs Department		912-487-3250		Yes					
Ware County EMS		Waycross Georgia (911 to activate)		912-281-9467 Linc 1*96*116		Yes					
Air Ambulance Service											
Trauma 1 (155.340)		Jacksonville, FL (26 min/air)		1-800-223-4878		Yes					
AirMed		Augusta, GA (2 hrs/air)		1-888-792-9245		Yes					
Lifeflight (155.340)		Jacksonville, FL (35 min/air)		1-877-870-7779		Yes					
7. Hospitals											
Name		Address		Travel Time Air Ground		Phone		Helipad Yes No		Burn Center Yes No	
Satilla Regional		410 Darling Ave Waycross Ga N 31°13.56 W 82°21.058		15 min 30 min		912-283-3030		Yes			No
Clinch Memorial Hospital		1050 Valdosta HWY Hommerville, GA		45 min		912-487-5211 ext 4502					No
South Georgia Medical Center		2501 N. Patterson St. Valdosta, GA 31602		60 min		229-333-1000					
Memorial Hospital		Savannah, GA 4700 Waters 3200.7 8107.6		40 min		912-350-8999		Yes			No
Shands Hospital (level I)		Jacksonville, FL N 30°20' 97 W 82° 13 992		45 min 1.5 hrs		800-223-4878		Yes		Yes	
Shands Burn Center		Gainesville, FL 38.33 N 082 20.73W		45 min		352-265-0300		Yes		Yes	
Doctor's Hospital Joseph Still Burn Center		August,GA (Chief Burn Ctr 3328.943 8205.422		90 min 3 ½ hrs		877-863-9595 706-863-9595		Yes		Yes	
8. Medical Emergency Procedures											
<p>Identify any EMTs and Paramedics in your crews. All medical emergencies will be reported to the Division Supervisor who will assume command, call 911 and notify communications: non-emergency or emergency medical.</p> <ol style="list-style-type: none"> <li>Handle all injuries/ illnesses according to the 2006 IRPG page 37.</li> <li>Division Sup will assume command, call 911 and ensure communication is notified.</li> <li>Communication will notify ambulance and coordinate with IC, SOF, MEDL</li> </ol> <p><b>Helispots – Braganza Sweat Farm ICP: 31 07.23 X 82 15.23</b></p> <p><b>Helispots – Fargo Base Camp:</b></p> <p><b>H-114 (4 mi marker Hwy 177 – Stephen C. Foster St. Prk) 30 47 30.02 X 82 22 39.5</b></p> <p><b>H-113 (Hwy 441 - golf course) 30 41.739 X 82 33.961</b></p> <p><b>NIGHT TIME EMERGENCIES CONTACT – Joe Anderson at the Comfort Inn, 912-283-3300, room 208.</b></p>											
Prepared by (Medical Unit Leader) <b>Joe Anderson (MEDL)</b>						10. Reviewed by (Safety Officer) <b>Mark Munns</b>					

# DEMOBILIZATION PROCEDURES

## A. How will it happen?

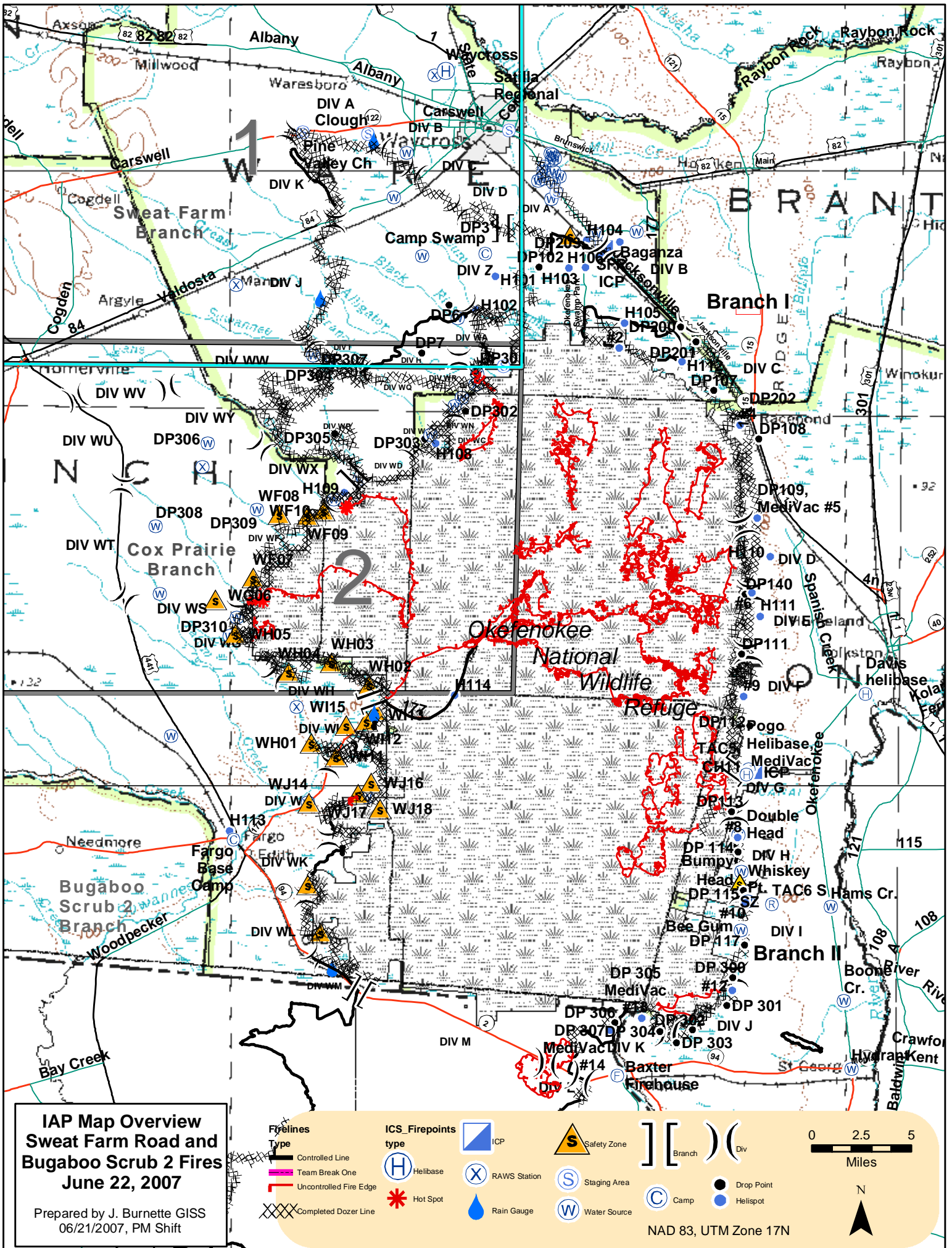
1. Your supervisor declares your position excess.
2. The Section Chief agrees and notifies the Demob Unit Leader.
3. The Demob Unit Leader has a 24+ hour window to reassign you to another incident or arrange for transportation to your home unit.

## B. What can you do to expedite the process?

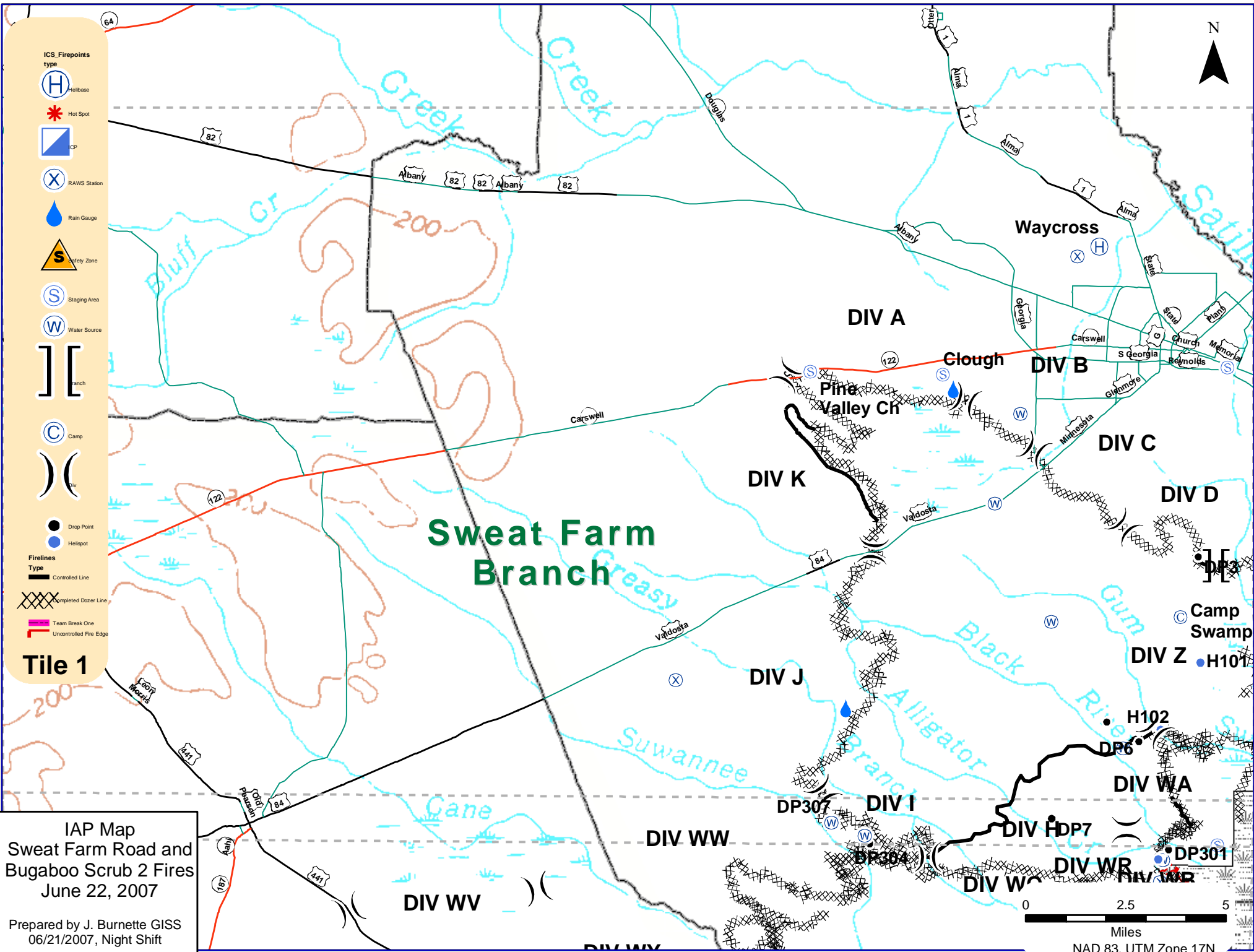
1. Turn in all time reports and equipment use records to **Time**.
2. If you have equipment, have an inspection completed by **Ground Support**.
3. Turn in any non-essential items you have checked out to **Supply** or **Communications**.
4. Complete and turn in Unit Logs on a daily basis to **Documentation** and get a Performance Evaluation from your supervisor (you keep the original and a copy goes to the files)
5. If there is any change in your status, notify **Demob** immediately.
6. Check the Demob Board on a regular basis. Be available to move within a 1 to 2 hour notice.

# Sweat Farm Road Phone Roster 6-22-07

NAME	POSITION	PHONE NUMBERS	LINC ID	NAME	POSITION	PHONE NUMBERS	LINC ID
<b>COMMAND &amp; GENERAL STAFF</b>				<b>FINANCE</b>			
		<b>912-285-6046</b>	<b>Fax 912-285-6014</b>			<b>912-285-6038</b>	
Eric Harris	IC	912-592-5758	18*1613		<b>Time</b>	478-550-2995	
Sherrri Cummings	HRSP	912-218-9342	18*12299		<b>Roundabout</b>	478-550-5982	
Bill Spinrad	PIO	912-281-8267		Grace Reid	FSC	912-285-6038	
Mark Munns	SOF2	912-218-9308	18*10090	James Conner	BUYT	912-285-6112	229-938-2952 cell
Charles Wood	SOF	912-218-9322	18*11974	Eillen Crouse	COST	912-285-6038	
John Barnes	SOF	912-218-6552	18*4166	Miguel Martinez	Comp/Claims	912-285-6038	760-420-8910 cell
Harry Kepler	SOF	912-218-9316	18*11828	Vickie Kitchens	TIME	478-550-2995	
<b>Agency Reps</b>				Amy Treadwell			
						EQTR	912-285-6038
Billy Leitch		912-218-9325	18*12022	<b>LOGISTICS</b>			
Skippy Reeves		912-218-9359	18*12756			<b>ORDERING</b>	<b>912-285-6068</b>
George Constentino		912-398-7680		Willie Boston	LSC	770-328-3186	
Andy Stone		912-637-5261		Susan Cornett	LSC	936-546-1952	
Joe Yeager		912-816-8732		Howard Ure	COML	936-671-2698	
<b>OPERATIONS</b>				Joe Anderson			
		<b>912-285-6039</b>				MEDL	912-637-5405
Steve Gray	OSC	912-218-5414	18*11904	Jim Caldwell	FACL	478-550-2985	18*11849
David Colton	OSC	912-218-9358	18*12670	Fredrick Dunets (Camp for the Blind-Night)	BCMG	912-218-9354	
Jerome Harvey	DIVS		18*1608	John Wall	Hotel Manager	936-546-3109	
Mike Brunson	DIVS		18*12656	Mike Summers	GSUL	936-546-1957	
Shane Crimm	TFLD	979-218-2405	18*11907	Michelle Sanchez	GSUL	912-281-8276	
Dick Young	FUEL		18*6682	Terry Lemmon	SUPL	936-546-1953	
CSX RAIL ROAD OPERATIONS- Dixon		912-270-0699		Tom French	ORDM	208-634-6947	
<b>AIR OPERATIONS</b>				Dennis M Evans			
		<b>912-285-6039</b>				THSP	478-957-9709
Johnny Stephens	ASGS	360-463-0988		<b>OTHER INCIDENT MANAGEMENT TEAMS</b>			
<b>SEE AIR OPS SUMMARY (220)</b>				<b>California FUMT #2 Phone Roster</b>			
<b>PLANNING</b>				<b>NAME</b>			
		<b>912-285-6046</b>		<b>PHONE NUMBERS</b>			
Shane Brown	PSC	979-220-1540	18*6871	<i>INFORMATION</i>		912-496-4176	
Richard Gibbs	RESL	979-220-0577		<i>PLANNING</i>		912-496-4173	
Jamie Leigh-Powell	DOCL	912-285-6046		<i>OPERATIONS</i>		912-496-4132	
Trey Spivey / Rusty Brown	CTSP	912-285-6046		<i>AIR OPERATIONS</i>		912-496-4415	
Billy Whitworth / Josh Burnett	GISS	912-285-6046		<i>FINANCE</i>		912-496-4102	
Harry Blount	GISS	803-397-2914		<i>LOGISTICS</i>		719-334-6525	601-201-1776
Harold West	DMOB	912-218-7726	18*4203	<i>EXPANDED DISPATCH</i>		912-496-3162	
Buford Sanders	THSP	478-951-8238		<i>COMMUNICATIONS</i>		912-496-4175	
Daniel Byrd	IMET	912-218-9309	18*6871	<b>ETR SPECIALISTS</b>			
<b>MISC.</b>				Ken Luckow			
						912-218-9513	18*11725
COMMAND DISPATCH		912-218-9044	18*6870	Bryan Snow			18*12520
MACON DISPATCH		912-218-9232	18*7378	Bert Early		912-218-9512	18*11583
				Mark McClure		912-28-9320	18*11960
				John Colberg		912-218-9343	18*12314
				Bo Chesser		912-218-9360	18*12765
				Chad David		912-218-8965	18*7610
				Mary Griffen		404-535-2630	18*5261
				Chad Pritchett		912-218-8343	18*4212
				David Streetman		912-218-9307	18*10062
				Dennis Martin		912-218-7218	18*7042







IAP Map  
 Sweet Farm Road and  
 Bugaboo Scrub 2 Fires  
 June 22, 2007

Prepared by J. Burnette GISS  
 06/21/2007, Night Shift

