



Sweat Farm Fire

Incident Action Plan

Saturday

June 23, 2007

All Operational Periods



GEMA

INCIDENT OBJECTIVES	1. Incident Name Sweat Farm and Bugaboo Scrub II Fires	2. Date Prepared 6/22/07	3. Time Prepared 1830
	4. Operational Period 06/23/2007 All Operational Periods		
5. General Control Objectives For The Incident (Include Alternatives)			
1. Provide for the safety of the public and assigned incident resources through effective hazard / risk assessment and mitigation. 2. Provide timely and accurate information updates to the GFC, cooperators, affected communities, and other stakeholders. 3. Provide accurate cost accountability and documentation of expenditures for the duration of the incident. 4. Develop and maintain coordination with local fire departments, local EOC directors, GEMA, other IMT's deployed in the area, GOAL, and private industry. 5. Provide support on fires as requested by Georgia GFC District 8 and District 10. 6. Conduct all incident activities in a manner free of discrimination, harassment, and inappropriate behavior. 7. Keep the Sweat Farm Road, Kneeknocker, and Roundabout fires contained within the current established perimeters. 8. Assist with identifying and mitigating Emergency & Temporary Repairs.			
6. Weather Forecast For Period			
WEATHER: Partly Cloudy. MAX TEMPERATURES: 95-98 (Up 2 to 4) MIN HUMIDITY: 28 to 33% (Down 2 to 3%) 20 FT WINDS: Southwest 5 to 10 mph. STABILITY/INVERSION: Mixing heights near 7500 ft. Afternoon Dispersion index 50. Haines Index 4 (Low). Transport winds SW 8-10 MPH. LAL: 1			
7. General Safety Message			
SEE ATTACHED SAFETY MESSAGE.			
8. ATTACHEMENTS (X IF ATTACHED)			
<input checked="" type="checkbox"/> Organization List - ICS 203	<input checked="" type="checkbox"/> Division Assignment List - ICS 204	<input checked="" type="checkbox"/> Phone List	
<input checked="" type="checkbox"/> Fire Behavior Forecast	<input checked="" type="checkbox"/> Air Ops Summary-ICS 220	<input checked="" type="checkbox"/> Maps	
<input checked="" type="checkbox"/> Weather Forecast	<input checked="" type="checkbox"/> Communications Plan - ICS 205	<input checked="" type="checkbox"/> Unit Log- ICS 214	
<input checked="" type="checkbox"/> Safety Message	<input checked="" type="checkbox"/> Medical Plan - ICS 206	<input type="checkbox"/>	
9. Prepared By (Planning Section Chief)		10. Approved By (Incident Commander)	

TAILGATE BRIEFING SHEET

☐ WEATHER FORECAST

FORECAST NO: 65

PREDICTION FOR: Day Ops

SHIFT DATE: Saturday 06/23/07

TIME AND DATE

FORECAST ISSUED: 1900 hours 06/22/07

NAME OF FIRE: Sweat Farm

UNIT: Georgia Forestry Commission

SIGNED: Dan Byrd

Incident Meteorologist

WEATHER DISCUSSION: High pressure and dry conditions will continue to prevail over the area for the next few days. Afternoon highs will warm into the mid to upper 90s today and this will continue through Monday. The relative humidity will fall into the upper 20 to low 30 percent range during the late afternoon. Expect a slight increase in moisture over the area Tuesday and continuing through Wednesday with isolated afternoon showers and thunderstorms.

WEATHER FORECAST DAY SHIFT SATURDAY:

WEATHER: Partly Cloudy.

MAX TEMPERATURES: 95-98 (Up 2 to 4)

MIN HUMIDITY: 28 to 33% (Down 2 to 3%)

20 FT WINDS: Southwest 5 to 10 mph.

STABILITY/INVERSION: Mixing heights near 7500 ft. Afternoon Dispersion index 50. Haines Index 4 (Low). Transport winds SW 8-10 MPH.

LAL: 1

WEATHER FORECAST FOR SATURDAY NIGHT:

WEATHER: Partly cloudy becoming clear overnight.

MIN TEMPERATURES: 66-69

MAX HUMIDITY: 95-100%

20 FT WINDS: Variable 2 to 4 mph.

STABILITY/INVERSION: Dispersion index 4.

OUTLOOK FOR SUNDAY:

Partly cloudy. Highs 95-98. Southwest winds 5 to 8 mph, with gusts up to 12 mph. Min RH 28 to 33%. Mixing Height 8000 feet, dispersion index 70, Transport winds SE 10-13 mph.

Extended Forecast:

Monday... Partly Cloudy. Lows 66 to 69. Highs 93 to 96. Min RH 30 to 35%. Southeast Winds 5 to 10 G15 mph.

Tuesday... Partly Cloudy with isolated afternoon Showers and Thunderstorms. Chance of wetting rains 20 percent. Lows 66 to 69. Highs 88 to 92. Min RH 30 to 35%. Southeast Winds 5-10 G15 mph.

Wednesday... Partly Cloudy with isolated afternoon Showers and Thunderstorms. Chance of wetting rains 20 percent. Lows 66 to 69. Highs 88 to 92. Min RH 30 to 35%. Southeast winds 5-10 G15 mph.

EXTRA INFORMATION:

Waycross Sun data

Sunrise Today : 626 AM

Sunset Tonight: 837 PM

Fridays' Raws Max/Min/Min RH and Precip.

FWRS-08 Manor: 95/66/31 .00 inches

Waycross RAWS: 91/69/38 .00 inches

FWRS-09 Church: 95/68/34 .00 inches

TAILGATE BRIEFING SHEET 1 OF 1

□ SAFETY MESSAGE

Safety Officer: **John Barnes**

Incident:

Date:

Time:

Sweat Farm Road

June 23, 2007

Day

Major Hazards and Risks:

- **Driving**
- **Hydration**
- **Equipment**

Driving – Please be aware of situation around you when driving. Watch out for the other driver that may be distracted by their thoughts of work, play, family, talking, or just daydreaming. We strive to be safe drivers – but we meet hundreds of cars in a short stretch – things could go wrong with anyone of them, driving home you could meet thousands. Look ahead, behind and to the side – SITUATIONAL AWARENESS!

Hydration – Temperatures are expected to be high next few days. Be sure to drink plenty of WATER before, during and after shift. It takes time to hydrate your body – if you become thirsty then process of dehydration has begun. Drink 4 waters to every Powerade and remember to keep your coolers clean.

Equipment - Keep your distance from heavy equipment; make sure operator knows your location. Don't approach moving equipment until you are sure operator is aware of your presence. Watch for swinging log ends and domino effect of moving trees!

IRPG Note for Duty:

Be proficient in your job, both technically and as a leader

- Take charge when in charge.
- Adhere to professional standard operating procedures.
- Develop a plan to accomplish given objectives.

Make sound and timely decisions

- Maintain situation awareness in order to anticipate needed actions.
- Develop contingencies and consider consequences.
- Improvise within the leader's intent to handle a rapidly changing environment.

Ensure that tasks are understood, supervised and accomplished

- Issue clear instructions.
- Observe and assess actions in progress without micro-managing.
- Use positive feedback to modify duties, tasks, and assignments when appropriate.



INCIDENT ACTION PLAN SAFETY ANALYSIS										1. Incident Name Sweat Farm		2. Date 6/23/2007		3. Time Day Shift				
LCES* Analysis of Tactical Applications Lookouts Communications Escape routes Safety zones										Other Risk Analysis								
Branch	Indirect Fireline	Burn out Operations	Power lines	Road Conditions	Frontal Assault	Anchor Points	Extreme Conditions	Reburn Potential	Snags	Insects, snakes	LCES Mitigations	Smoke	Traffic & Railroad	Communications	Structure Protection	Fatigue / Hydration	Multi-aircraft	Other Risk Mitigations
Sweat Farm	1, 3, 4, 5, 7, 8, 10		15, 11	12, 20	1, 3, 4, 5, 7, 8, 24	8	7, 10	1, 3, 5, 7, 10	6	2	1. Establish & maintain LCES. Report LCES checks twice daily to DIVS on line & staggng. 2. Look UP,DOWN and AROUND - Use protective spray with deet on skin (Not on Nomex), permethrin can be used on nomex clothing. Do Not try to catch or kill snakes! 3. Post experienced Lookouts. Make sure LCES is in place and make known. 4. Use Air Attack as Lookout.	20, 22, 26, 28, 31, 33	1, 3, 10, 14, 24			18, 21		18. Take plenty rest breaks and encourage to drink water NOW through briefings. 20. Defensive driving will be addressed in all briefings. 21. All personnel must meet the 2:1 work/rest ratio. Line supervisors and Safety will monitor closely. 22. Notify EOC of need to close CSX track adjacent track to ensure safety of firefighters due to excessive smoke or fire activity.
											5. Flag escape routes on right side of escape route facing outward. Create new escape routes as you progress.Maintain LCES at all times. 6. Identify,mark & mitigate. 7. FBA/Metereoroligist to develop weather watch system. 8. Ensure Fireline is Anchored to black or manmade/natural barrier.							24. Line Supervisors will provide clear, concise briefings. 26. Ensure Traffic Planning is safe and enforced. Heed Defensive Driving techniques noted in Safety Messages. 28. Relocate staging area when driving conditions warrant. 31. Use spotter when backing vehicle(s).
											10. Keep Firefighters informed of any changes in predicted weather, consider at least a two day weather pattern when planning burnout operations. 11. Refer to IRPG, pg. 12 on Power Line Hazards. 12. Observe all traffic signals and speed limits. 14. Ensure GOOD tailgate briefings with resources unable to attend Operational Briefing (Include Ops, Logs, Fin & Plans info.).							33. ALL vehicles and equipment must have lights on when running. Plastic culverts under some roads have burned and are collapsing under heavy loads, DIVS will coordinate which roads transport and tractors will use. GSP (912) 287-6500 : EMA (912) 287-4499.
											15. Scout ahead of tractor operations to avoid making contact with power poles and guide wires when tying into roads. Power companies are working in some DIVS, avoid all down lines as they may become charged.							

Prepared by (Name and Position) ICS 215A Mark Munns SOF2

DIVISION ASSIGNMENT LIST				1. Branch		2. Division/Group MOP UP / ETR GROUP 1			
3. Incident Name Sweat Farm Fire				4. Operational Period Date: 6-23-07 Time: 0800 - 2000 DAY					
5. Operations Personnel									
Field Ops Planning Ops		David Colton (T) Steve Gray(T)		Group Supervisor		Mike Brunson 18*12656 6/29			
Branch Director Branch Safety				Group Safety					
6. Resources Assigned this Period									
Strike Team/Task Force/ Resource Designator		Leader / Name		Last Shift	Number Persons	Trans. Needed	Drop Off PT./Time	Pick Up PT./Time	
TF #2		O-1655		Mickey Walley	6/28	1	N	0800	2000
STPL		O-1654		Steve Anderson	6/28	1	N	0800	2000
TXS TP T4		E-113		Fife / Williams	6/25	2	N	0800	2000
TXS TP T2		E-3109		McCallie / Burnett	6/28	2	N	0800	2000
TXS TP T2		E-3111		Ramsey / Kaiser	6/28	2	N	0800	2000
Excavator Lee		E-3123				1	N	0800	2000
DINS		O-1572		Bert Early	6/24	1	N	0800	2000
7. Control Operations									
Hold, and improve containment lines. Continue to address hot spots, and mop up. Respond to reburns as necessary, and evaluate ETR needs.									
Coordinate movement of resources with other Groups as needed									
8. Special Instructions									
Concentrate on Divisions A-B-C-D-H-J-K-Z-WA-WQ-WR									
9. Division/Group Communication Summary									
Function	Frequency	System	Channel	Function	Frequency	System	Channel		
Command	158.7825/162.2 Rx 153.7625/162.2 Tx Narrow Band	King NIFC	Group 11 1	Air to Ground Sweat Farm/Big Turnaround	Dependant on location, refer to ICS-205	King NIFC	Group 11 2-3-4-5		
Tactical Div/Group	168.200 Rx & Tx Narrow Band	King NIFC	Group 11 11	Air to Ground Georgia	159.390 Rx & Tx	King NIFC	Group 11 Ch. 13		
Prepared by (Resource Unit Leader) Richard Gibbs / Jamie Powell (T)			Approved by (Planning Section Chief) /s/Shane Brown			Date June 22, 2007		Time 1900	

DIVISION ASSIGNMENT LIST				1. Branch		2. Division/Group MOP UP/ETR GROUP 2		
3. Incident Name Sweat Farm Fire				4. Operational Period Date: 6-23-07 Time: 0800 – 2000 Day				
5. Operations Personnel								
Field Ops Operations Chief		David Colton (T) Steve Gray (T)		Group Supervisor		Neal Edmondson 7/5 478-973-6263		
Branch Director Branch Safety				Group Safety Officer				
6. Resources Assigned this Period								
Strike Team/Task Force/ Resource Designator		Leader / Name		Last Shift Date	Number Persons	Trans. Needed	Drop Off PT./Time	Pick Up PT./Time
TF #3 O-567		Chris Stevenson		7/1	1	N	0800	2000
STPL O-1647		Todd Nightingale		6/25	1	N	0800	2000
TXS TP T4 E-114		Etheridge / Baker		6/28	2	N	0800	2000
TXS TP T4 E-112		O'Bryan / Shew		6/28	2	N	0800	2000
Excavator (Good Job) E-3173		Corbin			1	N	0800	2000
Excavator (Good Job) E-2925		Stevens			1	N	0800	2000
DINS O-1584		David Streetman		6/26	1	N	0800	2000
STPL O-1626		Mike Smith		6/24	1	N	0800	2000
LAS TP T2 E-1103		Marcantel / Sweat		6/24	2	N	0800	2000
LA TP T2 E-1102		Weatherford / Wager		6/24	2	N	0800	2000
Excavator (Nichols) E-3191					1	N	0800	2000
Excavator (Nichols) E-3192					1	N	0800	2000
DINS O-1571		Dennis Martin		6/27	1	N	0800	2000
TF #4 O-1545		Shane Crimm		6/25	1	N	0800	2000
TXS TP T3 JD650 E-3116		Elrod / Teel		6/25	2	N	0800	2000
TXS ENG T3 E-3091		Wobus / Rex		6/25	2	N	0800	2000
TXS ENG T6 E-1181		Skinner / Dyer		6/25	2	N	0800	2000
Motor Grader (Smith) E-1314		Hendly			1	N	0800	2000
7. Control Operations								
Hold, and improve containment lines. Continue to address hot spots, and mop up. Respond to reburns as necessary, and evaluate ETR needs. Coordinate movement of resources with other groups as needed								
8. Special instructions								
Concentrate efforts in DIVS I,WW,WX,WP, WB, WD, WO								
9. Division/Group Communication Summary								
Function	Frequency	System	Channel	Function	Frequency	System	Channel	
Command	158.7825/162.2 Rx 153.7625/162.2 Tx Narrow Band	King NIFC	Group 11 1	Air to Ground : Sweat Farm / Big Turnaround	Dependant on location, refer to ICS-205	King NIFC	Group 11 2-3-4-5	
Tactical Div/Group	168.050 Rx & Tx Narrow Band	King NIFC	Group 11 8	Air to Ground Georgia IA	159.390 Rx & Tx	King NIFC	Group 11 Ch. 13	
Prepared by (Resource Unit Leader) Richard Gibbs / Jamie Powell (T)			Approved by (Planning Section Chief) /s/Shane Brown		Date June 22, 2007		Time 1900	

DIVISION ASSIGNMENT LIST			1. Branch		2. Division/Group ETR DINS GROUP			
3. Incident Name Sweat Farm Fire / Big Turnaround /Bugaboo Scrub			4. Operational Period Date: 6-23-07 Time: 0800 - 2000 DAY					
5. Operations Personnel								
Field Ops Planning Ops		Group Leader		Ken Luckow		6/23		
				912-218-9513		18*11725		
Branch Director Branch Safety		Group Safety Office						
6. Resources Assigned this Period								
Strike Team/Task Force/ Resource Designator		Leader / Name	Last Shift Date	Number Persons	Trans. Needed	Drop Off PT./Time	Pick Up PT./Time	
DINS O-1585		Chad Pritchett	6/26	1	N	0800	2000	
DINS O-1583		Chad David	6/25	1	N	0800	2000	
DINS O-1582		Mary Griffin	6/25	1	N	0800	2000	
DINS O-1581		Mark McClure	6/24	1	N	0800	2000	
DINS O-1580		Bo Chesser	6/24	1	N	0800	2000	
DINS O-1573		Bryan Snow	6/24	1	N	0800	2000	
7. Control Objectives								
8. Special Instructions								
Tie in with CA FUMT #2 DIVS before working outside of Sweat Farm Rd Fire delegation								
Division/Group Communication Summary								
Function	Frequency	System	Channel	Function	Frequency	System	Channel	
Command	Depends on location. Refer to ICS-205	King NIFC	Group 11 2,3,4,5	Air to Ground Federal	170.000 Rx & Tx Narrow Band	King NIFC	Group 11 Ch.12	
Tactical Div/Group	168.600 Rx & Tx	King NIFC	Group 11 7	Air to Ground Georgia IA	159.390 Rx & Tx	King NIFC	Group 11 Ch. 13	
Prepared by (Resource Unit Leader) Richard Gibbs / Jamie Powell (T)		Approved by (Planning Section Chief) /s/Shane Brown			Date June 22, 2007		Time 1900	

AIR OPERATIONS SUMMARY		PREPARED BY: Johnny Stephens	PREPARED DATE/TIME 6/22/07 1900		
1. INCIDENT NAME: Sweat Farm Road		2. OPERATIONAL PERIOD: Day Shift 6/23/07	START TIME: 0800	END TIME: 1900	SUNRISE: 0626 SUNSET: 2037
3. REMARKS (Safety Notes, Hazards, Air Operations Special Equipment, etc.): AIR TANKER REQUESTS THRU POGO			4. MEDEVAC A/C:		5. TFR: Released 6/18/07
<ul style="list-style-type: none"> All dispatches will come through the ICP in Waycross for state aviation resources. <u>Waycross Dispatch Advise Waycross Helibase of ACFT Dispatch</u> PERSONNEL STAY CLEAR OF ACTIVE DIPSITES Aircraft Dispatching Priorities: <ol style="list-style-type: none"> Life Structures Threatened Initial Attack Fire threatening perimeter control lines 			Trauma 1 @ Jacksonville 26min: 1-800-223-4878		
6. PERSONNEL	Phone	7. FREQUENCIES	AM	FM	8. FIXED-WING
ASGS: Johnny Stephens	360-463-0988 ICP FAX: 912-285-6014	AIR/AIR FW: A/A Discretionary: IA/Breakouts	125.225. 122.925 GA IA 125.225		# Avail / Type/ Make-Model / FAA N# / Base(s) Air Tankers @ LCQ. Lead planes
		AIR/AIR RW: A/A Discretionary: IA/Breakouts	125.225 122.925 GA IA 125.225		T-20 / LCQ / P3 (Day Off <u>Sun</u>) T-43 / LCQ / P2V(Day Off <u>Mon</u>) LP/14 @ LCQ
-State Aviation Lead Mike Leverette -Sweat Farm Operations	478-951-2835 912-285-6039	AIR/GROUND:	Georgia IA	159.390	<i>Waycross Helibase</i> —31 14.95 X 82 23.73 <i>Pogo Helibase</i> -30 44.25 X 82 07.69 <i>Braganza Helispot</i> - 31 07.23 X 82 15.23 -Avoid take-off / landing over ICP -High Towers in Area, -LOOK UP, LOOK DOWN, LOOK ALL AROUND <i>Fargo Helibase</i> (Golf Course) N 30 41 27.3 x W 82 34 02.0 <i>Stephen Foster SP</i> (Pocket) N 30 47 32.2 x W 82 22 39..6
Waycross HEBM: Denise Croker-T	912-218-8937	AIR/GROUND - Will be Chs. - 2-3-4-5- in the Como. Plan.	Big Turnaround Sweat Farm	Will be Chs. 2-3-4-5 in the Como Plan.	
Waycross HB & Braganza HS:		DECK FREQ:		163.100	Other
Braganza Helispot (Helitack will be available for aircraft landing and departing Braganza Helispot)		TOLC FREQ: (Braganza Helispot)		Rx: 151.145 Tx: 151.145	-Aircraft flight follow with Waycross on the Sweat Farm - Flight follow with Pogo on the Big Turnaround. -IA Air Attack for State--- Cessna 182's -Approved Helispots—Refer to Okefenokee NWR Dip Site Map -ALL FLIGHTS WILL BE CLEARED WITH ASGS
<i>Pogo Helibase</i> <i>Waycross Helibase</i> GA Forestry Hangar Waycross District Dispatch	912-496-4415 912-218-8937 912-338-5982 912-287-4915	FLT FOLLOWING: .	Flight following will be on primary or secondary air to air freqs.		

9. HELICOPTERS (Use Additional Sheets As Necessary)

BIG TURNAROUND AVIATION RESOURCES

SWEAT FARM ROAD AVIATION RESOURCES

FAA N#	TY	MAKE/MODEL	BASE	AVAIL	START	REMARKS	FAA N#	TYPE	MAKE/MODEL	BASE	AVAIL	START	REMARKS
116AZ HT-766	1	S-61	Pogo	0900	0930	Bucket drops	N5843	3	Bell 206-L3	Waycross	0900	0930	Recon/ Admin/ IA/ Bucket drops
OKE 6 (N5738Y)	3	Bell 206-B3	Pogo	0900	0930	Recon/ Admin/ IA Bucket drops	71K (GA)	NA	Cessna 185	Waycross	0900	0930	IA, Aerial Det.
							11H (GA)	NA	Cessna 182	Waycross	0900	0930	IA, Aerial Det.

10. TASK/MISSION/ASSIGNMENT (Type/Function includes: Air Tactical, Retardant, Recon, Personnel Transport, Water Dropping, S&R, etc.)

TYPE/FUNCTION	NAME OF PERSONNEL OR CARGO (if applicable) OR INSTRUCTIONS FOR TACTICAL AIRCRAFT	MISSION START	FLY FROM	FLY TO
Type I Helicopter	Operation and Logistic Support	0930	Helibase	Fire and Return
Type II Helicopter	Operation and Logistic Support	0930	Helibase	Fire and Return
Type III Helicopter	Operation and Logistic Support	0930	Helibase	Fire and Return
ATGS Platforms	Aerial Supervision of all Aircraft over Incidents	0930	Waycross Airport	Fire and Return
State Detection Fixed Wing	Aerial Detection and IA for New Fire Starts	0930	Waycross Airport	Fire and Return

INCIDENT RADIO COMMUNICATIONS PLAN		1. Incident Name Sweat Farm Road Fire		2. Date/Time Prepared 06/21/07		3. Operational Period Date/Time 06/23/07	
4. BASIC RADIO CHANNEL UTILIZATION							
Radio Type/Cache	Channel	Function	Frequency/Tone	Assignment	Remarks		
King NIFC	1	Ware EMA Rptr Narrow Band	158.7825 /162.2 Rx 153.7625 /162.2 Tx N	Command Repeater	Sweat Farm		
King NIFC	2	Okee North / Air to Ground	164.575 Rx 163.150 /206.5 Tx N	ETR Command Link North Locations	OKR Waycross Linked to 4 & 5		
King NIFC	3	Okee South / Air to Ground	164.775 Rx 163.150 /123.0 Tx N	ETR Command Link South Locations	OKR EDDY Linked to 4 & 5		
King NIFC	4	Okee East / Air to Ground	164.625 Rx 163.150 /103.5 Tx N	ETR Command Link East Locations	OKR Admin Linked to 2 & 5		
King NIFC	5	Okee West / Air to Ground	167.125 Rx 163.150 /156.7 Tx N	ETR Command Link West Locations	OKR Foster Linked to 2 & 4		
King NIFC	6	Tactical	154.280 Rx & Tx W	Structual & Tactical	Fire Line Tac. Mutual Aid		
King NIFC	7	Tactical	168.600 Rx & Tx N	ETR Group	Fire line Tac		
King NIFC	8	Tactical	168.050 Tx & Rx N	Mop up/ETR#2	Fire Line Tac.		
King NIFC	9	Tactical	159.285 Rx & Tx N	Unassigned	Fire Line Tac S.E. Compact		
ccccKing NIFC	10	Tactical	169.900 Rx & Tx N	Contingency Group	Fire Line Tac.		
King NIFC	11	Tactical	168.200 Rx & Tx N	Mop up/ETR#1	Fire Line Tac.		
King NIFC	12						
King NIFC	13	Air To Ground	159.390 Rx & Tx W	Ga. I/A			
King NIFC	14	Air Guard	168.625 Rx&Tx Tx 110.9 N	All Groups/Divs.	EMERGENCY CONTACT or redirect with incident aircraft		
5. Prepared By (Communications Unit) Kelly Towe							

MEDICAL PLAN	1. Incident Name Sweat Farm Road Fire	2. Date Prepared 6/22/07	3. Time Prepared 1600	4. Operational Period DAY SHIFT				
5. Incident Medical Aid Station								
Medical Aid Stations		Location		Paramedics Yes No				
Medical Unit / Waycross	478-550-2988	Georgia Forestry Headquarters ICP - Anderson (MEDL)		EMT				
Joe Anderson 18*11849	912-218-9317	Waycross Medical Facility, 478-550-2988		EMT				
After Hours Contact								
Joe Anderson (MEDL)		Comfort Inn Waycross Room 208		912-283-3300 ex. 208 478-550-2988 cell				
6. Transportation								
A. Ambulance Services								
Name	Address		Phone	Paramedics Yes No				
Clinch County EMS	Homerville, GA Sherriffs Department		912-487-3250	Yes				
Ware County EMS	Waycross Georgia (911 to activate)		912-281-9467 Linc 1*96*116	Yes				
B. Air Ambulance Service								
Trauma 1 (155.340)	Jacksonville, FL (26 min/air)		1-800-223-4878	Yes				
AirMed	Augusta, GA (2 hrs/air)		1-888-792-9245	Yes				
Lifeflight (155.340)	Jacksonville, FL (35 min/air)		1-877-870-7779	Yes				
7. Hospitals								
Name	Address	Travel Time Air Ground		Phone	Helipad Yes No		Burn Center Yes No	
Satilla Regional	410 Darling Ave Waycross Ga N 31°13.56 W 82°21.058	15 min	30 min	912-283-3030	Yes			No
Clinch Memorial Hospital	1050 Valdosta HWY Hommerville, GA		45 min	912-487-5211 ext 4502				No
South Georgia Medical Center	2501 N. Patterson St. Valdosta, GA 31602		60 min	229-333-1000				
Memorial Hospital	Savannah, GA 4700 Waters 3200.7 8107.6	40 min		912-350-8999	Yes			No
Shands Hospital (level I)	Jacksonville, FL N 30°20' 97 W 82° 13 992	45 min	1.5 hrs	800-223-4878	Yes		Yes	
Shands Burn Center	Gainesville, FL 38.33 N 082 20.73W	45 min		352-265-0300	Yes		Yes	
Doctor's Hospital Joseph Still Burn Center	August, GA (Chief Burn Ctr 3328.943 8205.422	90 min	3 ½ hrs	877-863-9595 706-863-9595	Yes		Yes	
8. Medical Emergency Procedures								
<p>Identify any EMTs and Paramedics in your crews. All medical emergencies will be reported to the Division Supervisor who will assume command, call 911 and notify communications: non-emergency or emergency medical.</p> <ol style="list-style-type: none"> Handle all injuries/ illnesses according to the 2006 IRPG page 37. Division Sup will assume command, call 911 and ensure communication is notified. Communication will notify ambulance and coordinate with IC, SOF, MEDL <p>Helispots – Braganza Sweat Farm ICP: 31 07.23 X 82 15.23</p> <p>Helispots – Fargo Base Camp:</p> <p>H-114 (4 mi marker Hwy 177 – Stephen C. Foster St. Prk) 30 47 30.02 X 82 22 39.5</p> <p>H-113 (Hwy 441 - golf course) 30 41.739 X 82 33.961</p> <p style="text-align: center;">NIGHT TIME EMERGENCIES CONTACT – Joe Anderson at the Comfort Inn, 912-283-3300, room 208.</p>								
Prepared by (Medical Unit Leader) Joe Anderson (MEDL)				10. Reviewed by (Safety Officer) John Barnes				

DEMOBILIZATION PROCEDURES

A. HOW WILL IT HAPPEN?

1. Your supervisor declares your position excess.
2. The Section Chief agrees and notifies the Demob Unit Leader.
3. The Demob Unit Leader has a 24+ hour window to reassign you to another incident or arrange for transportation to your home unit.

B. WHAT CAN YOU DO TO EXPEDITE THE PROCESS?

1. Turn in all time reports and equipment use records to **Time.**
2. If you have equipment, have an inspection completed by **Ground Support.**
3. Turn in any non-essential items you have checked out to **Supply** or **Communications.**
4. Complete and turn in Unit Logs on a daily basis to **Documentation** and get a Performance Evaluation from your supervisor (you keep the original and a copy goes to the files)
5. If there is any change in your status, notify **Demob** immediately.
6. Check the Demob Board on a regular basis. Be available to move within a 1 to 2 hour notice.

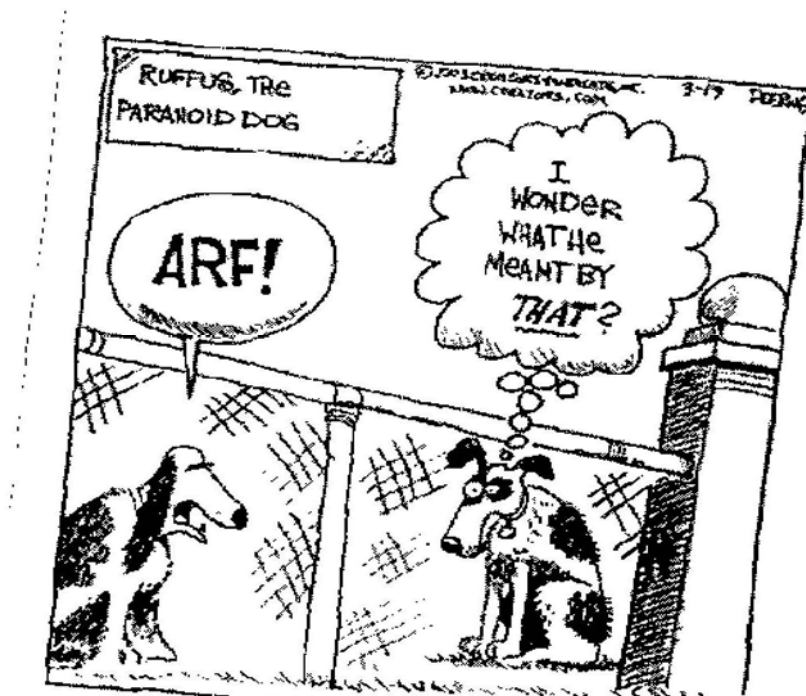
Human Resource Message

"Seek first to understand."

'Seek first to understand' means you are more interested in understanding others and less in having others understand you. To master communication, understanding comes first. When you understand where people are coming from, then being understood flows naturally. When you try to be understood before you understand others, communication may break down and you may end up with a battle of wits.

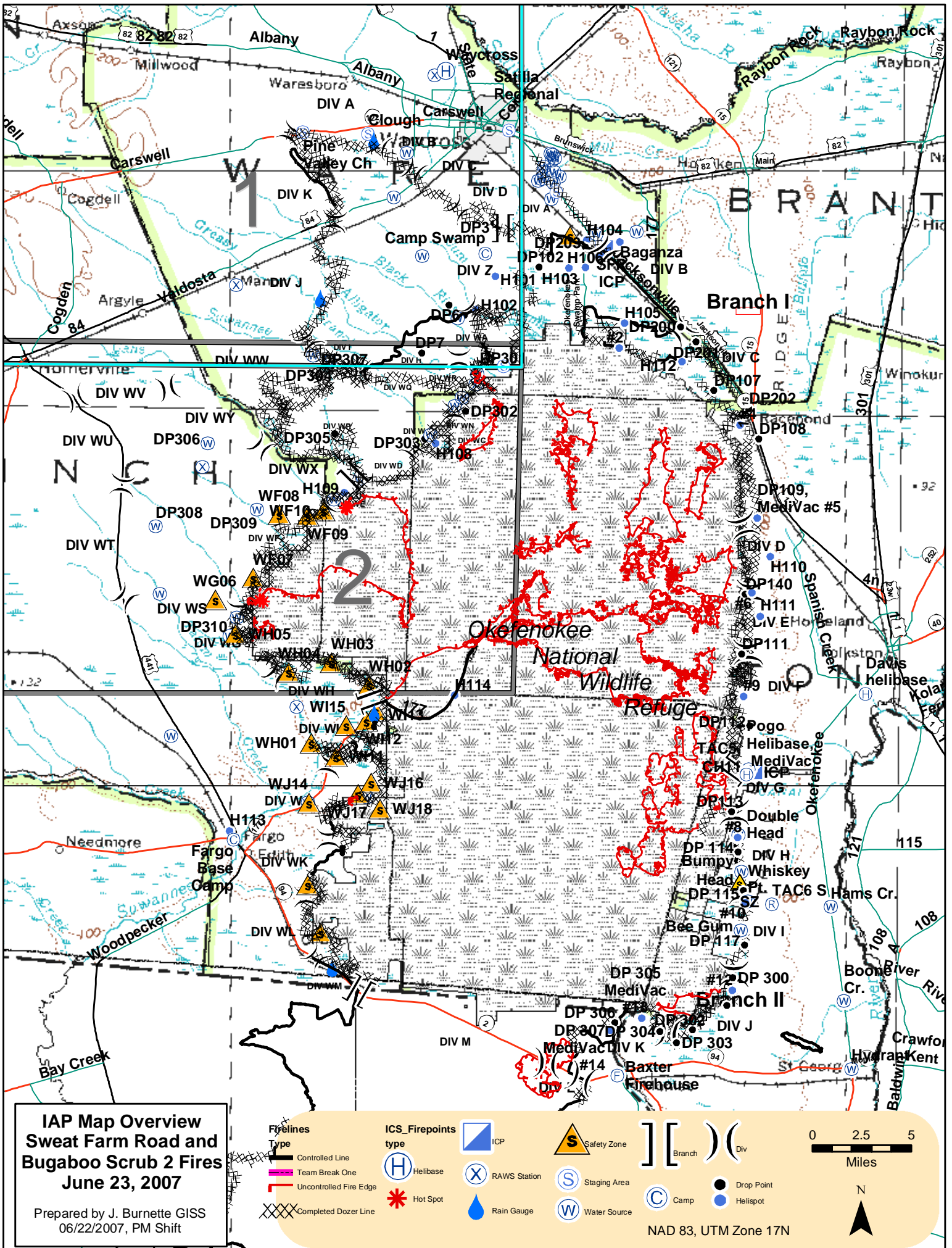
'Seeking first to understand' isn't about who is right or wrong; it is a philosophy of effective communication. When you practice trying to understand what others are trying to say, you will notice that they will feel a better connection with you. And that is the first step in gaining a real appreciation for one another. So, take the time to seek understanding in your communications today. And have a great day!

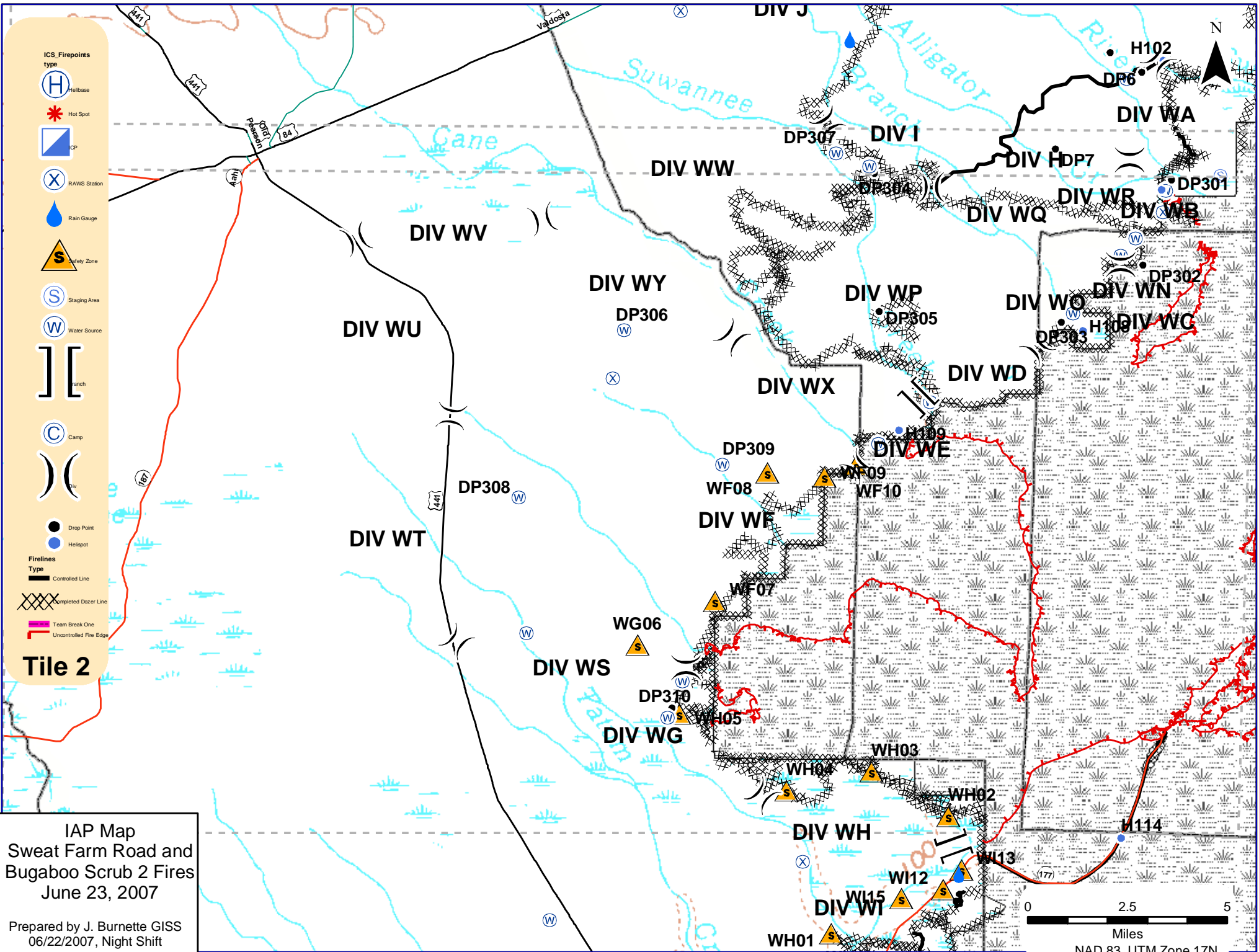
Sherri Cummings
Human Resource Specialist (T)



Sweat Farm Road Phone Roster 6-23-07

NAME	POSITION	PHONE NUMBERS	LINC ID	NAME	POSITION	PHONE NUMBERS	LINC ID
COMMAND & GENERAL STAFF				LOGISTICS			
		912-285-6046	Fax 912-285-6014			912-285-6091	Fax 912-285-6111
Eric Harris	IC	912-592-5758	18*1613		ORDERING	912-285-6068	
John Barnes	SOF	912-218-6552	18*4166	Willie Boston	LSC	770-328-3186	
Agency Reps				Susan Cornett	LSC	936-546-1952	
Billy Leitch		912-218-9325	18*12022	Howard Ure	COML	936-671-2698	
George Constantino		912-398-7680		Joe Anderson	MEDL	912-637-5405	18*11849
Andy Stone		912-637-5261		Jim Caldwell	FACL	478-550-2985	
Joe Yeager		912-816-8732		John Wall	Hotel Manager	936-546-3109	
OPERATIONS				912-285-6039	Mike Summers	GSUL	936-546-1957
Steve Gray	OSC	912-218-5414	18*11904	Michelle Sanchez	GSUL	912-281-8276	
David Colton	OSC	912-218-9358	18*12670	Terry Lemmon	SUPL	936-546-1953	
Neal Edmondson	DIVS	478-973-6263		Tom French	ORDM	208-634-6947	
Mike Brunson	DIVS		18*12656	Dennis M Evans	THSP	478-957-9709	
Shane Crimm	TFLD	979-218-2405	18*11907	OTHER INCIDENT MANAGEMENT TEAMS			
Dick Young	FUEL		18*6682	California FUMT #2 Phone Roster			
CSX RAIL ROAD OPERATIONS- Dixon				912-270-0699	NAME	PHONE NUMBERS	
AIR OPERATIONS				912-285-6039	<i>INFORMATION</i>	912-496-4176	
Johnny Stephens	ASGS	360-463-0988		<i>PLANNING</i>	912-496-4173		
SEE AIR OPS SUMMARY (220)				<i>OPERATIONS</i>	912-496-4132		
PLANNING				912-285-6046	<i>AIR OPERATIONS</i>	912-496-4415	
Shane Brown	PSC	912-218-7586	18*6871	<i>FINANCE</i>	912-496-4102		
Richard Gibbs	RESL	979-220-0577		<i>LOGISTICS</i>	719-334-6525	601-201-1776	
Jamie Leigh-Powell	DOCL	912-285-6046		<i>EXPANDED DISPATCH</i>	912-496-3162		
Trey Spivey / Rusty Brown	CTSP	912-285-6046		<i>COMMUNICATIONS</i>	912-496-4175		
Billy Whitworth / Josh Burnett	GISS	912-285-6046		ETR SPECIALISTS			
Harry Blount	GISS	803-397-2914		Ken Luckow		912-218-9513	18*11725
Harold West	DMOB	912-218-7726	18*4203	Bryan Snow			18*12520
Buford Sanders	THSP	478-951-8238		Bert Early		912-218-9512	18*11583
Daniel Byrd	IMET	912-218-9309	18*6871	Mark McClure		912-28-9320	18*11960
FINANCE				912-285-6038	John Colberg	912-218-9343	18*12314
	Time	478-550-2995		Bo Chesser		912-218-9360	18*12765
Reggie Lanier	FSC	912-285-6038		Chad David		912-218-8965	18*7610
James Conner	BUYT	912-285-6112	229-938-2952 cell	Mary Griffen		404-535-2630	18*5261
Eillen Crouse	COST	912-285-6038		Chad Pritchett		912-218-8343	18*4212
Miguel Martinez	COMP/CLMS	912-285-6038	760-420-8910 cell	David Streetman		912-218-9307	18*10062
Vickie Kitchens	TIME	478-550-2995		Dennis Martin		912-218-7218	18*7042
Barb McElderrey/Serena Wicka	EQTR	912-285-6038		MISC.			
				COMMAND DISPATCH		912-218-9044	18*6870
				MACON DISPATCH		912-218-9232	18*7378





IAP Map
 Sweet Farm Road and
 Bugaboo Scrub 2 Fires
 June 23, 2007

Prepared by J. Burnette GISS
 06/22/2007, Night Shift

NAD 83, UTM Zone 17N

