



Sweat Farm Fire

Incident Action Plan

Tuesday

June 26, 2007

All Operational Periods



INCIDENT OBJECTIVES	1. Incident Name Sweat Farm and Bugaboo Scrub II Fires	2. Date Prepared 6/25/07	3. Time Prepared 1830
	4. Operational Period 06/26/2007 All Operational Periods		
5. General Control Objectives For The Incident (Include Alternatives)			
1. Provide for the safety of the public and assigned incident resources through effective hazard / risk assessment and mitigation. 2. Provide timely and accurate information updates to the GFC, cooperators, affected communities, and other stakeholders. 3. Provide accurate cost accountability and documentation of expenditures for the duration of the incident. 4. Develop and maintain coordination with local fire departments, local EOC directors, GEMA, other IMT's deployed in the area, GOAL, and private industry. 5. Provide support on fires as requested by Georgia GFC District 8 and District 10. 6. Conduct all incident activities in a manner free of discrimination, harassment, and inappropriate behavior. 7. Keep the Sweat Farm Road, Kneeknocker, and Roundabout fires contained within the current established perimeters. 8. Assist with identifying and mitigating Emergency & Temporary Repairs.			
6. Weather Forecast For Period			
Patchy fog before 8am. Otherwise, partly sunny with a high near 94. Calm wind becoming east between 6 and 9 mph.			
7. General Safety Message			
SEE ATTACHED SAFETY MESSAGE.			
8. ATTACHEMENTS (X IF ATTACHED)			
<input checked="" type="checkbox"/> Organization List - ICS 203		<input checked="" type="checkbox"/> Division Assignment List - ICS 204	<input checked="" type="checkbox"/> Phone List
<input checked="" type="checkbox"/> Fire Behavior Forecast		<input checked="" type="checkbox"/> Air Ops Summary-ICS 220	<input checked="" type="checkbox"/> Maps
<input checked="" type="checkbox"/> Weather Forecast		<input checked="" type="checkbox"/> Communications Plan - ICS 205	<input checked="" type="checkbox"/> Unit Log- ICS 214
<input checked="" type="checkbox"/> Safety Message		<input checked="" type="checkbox"/> Medical Plan - ICS 206	<input type="checkbox"/>
9. Prepared By (Planning Section Chief)		10. Approved By (Incident Commander)	

ICS 202

NFES 1326

ORGANIZATION ASSIGNMENT LIST		9.	Operations Section	
1. Incident Name		Field Ops	Danny Maddox	
Sweat Farm Fire		Planning Ops		
2. Date	3. Time	a.	Sweat Farm	
June 25, 2007	2000			
4. Operational Period		Group	Mop Up/ETR Group 1	Mike Brunson
June 26, 2007 All Operational Periods		Group	Mop Up/ETR Group 2	Neal Edmondson
5.	Command			
Incident Commander	Eric Harris			
Safety Officer	John Barnes			
Information Officer	Daniel Westcot			
6.	Agency Representatives			
Agency	Name			
GFC District 8	Frank Sorrells			
GFC District 10	Willard Fell			
GFC Protection Dept	Alan Dozier			
GEMA	Alan Robinson			
GOAL	Jim Barrett			
Okefenokee NWR	Maury Bedford			
		e.	Special Groups	
7.	Planning Section	Group	ETR / DINS	
Chief	Shane Brown			
Resources Unit	Carol O'Bryan			
Situation Unit				
Documentation Unit	Phillis Keffer			
Demobilization Unit	James Krakowski			
CTSP				
Incident Meteorologist		f.	Air Operations Branch	
Status/Check In		AOBD		
GISS	Billy Whitworth	Air Support Supervisor	Johnny Stephens	
8.	Logistics Section	GFC Air Operations	Mike Leverette	
Chief	Susan Cornett	HELM	Josh Ingle	
Facilities Unit	Tom Lambert/Jimmy Caldwell	HECM	Andrew Registor	
Hotel Manager	John Wall	HECM	Charles Bolt	
Supply Unit	Terry Lemmon	ABRO	Ron Chisholm	
Food Unit	Chris Barnes			
Base Camp Manager	Ronnie Jones	10.	Finance Section	
Ground Support Unit	Mike Summer/Michele Sanchez	Chief	Reggie Lanier	
Equipment Manager	RJ Garman	Incident Business Advisor	Lila Johnson	
Ordering Manager	Tom French	Time Unit Leader	Vickie Kitchens	
Security Manager	Don Poovey	Purchasing Team Leader	James Conner	
Medical Unit	Joe Anderson	EQTR Lead	Barb McElderrey/Serena Wicka	
Communications Unit	Howard Ure	Cost Unit	Eillene Crouse	
RCDM	Ronnie Jones	Comp/Claims	Miguel Martinez	
		Prepared by (Resource Unit Leader) Carol O'Bryan		

TAILGATE BRIEFING SHEET

☐ WEATHER FORECAST

FORECAST NO: 68

PREDICTION FOR: Day Ops

SHIFT DATE: Tuesday 06/26/07

TIME AND DATE

FORECAST ISSUED: 1700 hours 06/25/07

NAME OF FIRE: Sweat Farm

UNIT: Georgia Forestry Commission

WEATHER DISCUSSION: A 20% chance of showers and thunderstorms before 2am. Patchy fog before 8am. Otherwise, partly cloudy, with a high near 94. Calm wind becoming east between 7 and 10 mph.

WEATHER FORECAST DAY SHIFT TUESDAY:

WEATHER: Partly Sunny.

MAX TEMPERATURES: 90-94 (Steady)

MIN HUMIDITY: 38 to 43% (Steady)

20 FT WINDS: East 7 to 10 mph.

WEATHER FORECAST FOR TUESDAY NIGHT:

WEATHER: 20 % chance of showers and t-storms. Low around 71. East winds between 3 and 10 mph.

MIN TEMPERATURES: 68-71

MAX HUMIDITY: 95-100%

20 FT WINDS: Variable 3 to 10 mph.

STABILITY/INVERSION: Dispersion index 4.

OUTLOOK FOR WEDNESDAY:

Patchy dense fog after 2am. Otherwise partly cloudy, with a high near 93. Calm winds becoming east between 7 and 10 mph.

Extended Forecast:

Wednesday... Patchy dense fog after 2am. Otherwise partly cloudy, with a high near 93. Calm winds becoming east between 7 and 10 mph.

Thursday... Partly Cloudy with Scattered afternoon Showers and Thunderstorms. Chance of wetting rains 30 percent. Lows 66 to 69. Highs 89 to 93. Min RH 40 to 45%. Southeast winds 5-10 G15 mph.

Friday... Partly Cloudy with Scattered afternoon Showers and Thunderstorms. Chance of wetting rains 50 percent. Lows 66 to 69. Highs 88 to 92. Min RH 45 to 50%. Southeast Winds 5 to 10 G15 mph.

EXTRA INFORMATION:

Waycross Tues data

Sunrise Today : 627 AM

Sunset Tonight: 837 PM

TAILGATE BRIEFING SHEET 1 OF 1

☐ SAFETY MESSAGE

Safety Officer: **John Barnes**

Incident:

Date:

Time:

Sweat Farm Road

June 26, 2007

Day

Major Hazards and Risks:

◦ **Driving**

◦ **Communication**

◦ **Hydration**

◦ **Equipment**

Driving – Commercial traffic is heavy, esp. Log trucks. Please be aware of situation around you when driving. Beware the inattentive driver! Look ahead, behind, and to the side – **SITUATIONAL AWARENESS!**

Communication – Our ETR operations are intermixed with Big Turnaround's suppression forces. We need to make contact with their leaders on the ground – preferably face to face with DIVS/TFLDs. Find out their objectives/locations and provide ours. **Make sure your local radio has Sweat Farm frequencies! Test with another radio – transmit and receive.**

Hydration – Temperatures are expected to be high again. Be sure to drink plenty of WATER before, during and after shift.

Equipment - Keep your distance from heavy equipment, make sure operator knows your location. Don't approach moving equipment until you are sure operator is aware of your presence and he has stopped operations. Watch for swinging log ends and domino effect of moving trees, and snags! Also watch for

Sand gnats -- Who are they?

Scientific Name: *Culicoides furens*

Common Name: Sand gnat

Sand gnats as we call them, are members of the family Ceratopogonidae or "biting midge" family. The sand gnat that seems to be at its worst when the fishing is at its best! It hatches out in mass numbers when the temperature and season are just right for outdoor activity. Sand gnats are insects and therefore have a typical insect life-cycle which consists of four primary stages: egg, larva, pupa and adult. Eggs are laid in marsh mud, decaying plant material, and even standing water. Female gnats bite humans and other animals to extract a blood meal that is necessary for the successful development of their eggs.

So why does it hurt like mad when a gnat takes a meal from your arm or, even worse, your scalp? The secret is in the mouth parts. Sand gnats don't just puncture your skin like mosquitoes do. Instead they rip it open using sharp cutting teeth located on the mandible. After inserting two sharp, sword-like blades into the skin as anchors, the sand gnat uses the cutting teeth to rip up the skin and get the blood flowing. As if that weren't enough, the gnat then squirts a chemical into the open wound to inhibit blood clotting. The tiny pool of blood that forms is then sucked up through a straw-like structure called the proboscis. Some human victims have allergic reactions to the chemical and must endure itchy red spots or even swollen welts.

The Importance of Sand Gnats

It is their painful bite that makes sand gnats important to coastal Georgia's tourism economy. Tourists who are interested in outdoor activities are more likely to cancel their plans if the gnats are going to ruin the experience. This results in a loss of business for industries depending upon tourism dollars. So why not attempt to control sand gnat outbreaks? Because sand gnats are integral features of a healthy saltmarsh ecosystem, controlling them with pesticides is neither successful nor good for the marshes. Larval gnats share space in the marsh with young fish and shellfish species that are commercially and recreationally valuable to our economy. Pesticide application would negatively impact both target species, sand gnats, and non-target species like juvenile fish. Additionally, sand gnat larvae are an important food source for other animals found in Georgia's saltmarshes and estuaries. **Protect Yourself From Bites**

Wear lightweight long-sleeve shirts and long pants. Button your shirt collar or wear a bandanna to protect your neck. Wear a hat or cap to keep the gnats out of your hair. Apply an insect repellent on exposed areas of skin. Be sure to read the product label and instructions for applying the repellent.

INCIDENT ACTION PLAN SAFETY ANALYSIS											1. Incident Name Sweat Farm		2. Date 6/26/2007		3. Time Day Shift									
LCES* Analysis of Tactical Applications Lookouts Communications Escape routes Safety zones											Other Risk Analysis													
Branch	Indirect Fireline	Burn out Operations	Power lines	Road Conditions	Frontal Assault	Anchor Points	Extreme Conditions	Reburn Potential	Snags	Insects, snakes	LCES Mitigations						Smoke	Traffic & Railroad	Communications	Structure Protection	Fatigue / Hydration	Multi-aircraft	Other Risk Mitigations	
Sweat Farm	1, 3, 4, 5, 7, 8, 10		15, 11	12, 20	1, 3, 4, 5, 7, 8, 24	8	7, 10	1, 3, 5, 7, 10	6	2	1. Establish & maintain LCES. Report LCES checks twice daily to DIVS on line & tagging. 2. Look UP, DOWN and AROUND - Use protective spray with deet on skin (Not on Nomex), permethrin can be used on nomex clothing. Do Not try to catch or kill snakes! 3. Post experienced Lookouts. Make sure LCES is in place and make known. 4. Use Air Attack as Lookout.						20, 22, 26, 28, 31, 33	1, 3, 10, 14, 24		18, 21	18. Take plenty rest breaks and encourage to drink water NOW through briefings. 20. Defensive driving will be addressed in all briefings. 21. All personnel must meet the 2:1 work/rest ratio. Line supervisors and Safety will monitor closely. 22. Notify EOC of need to close CSX track adjacent track to ensure safety of firefighters due to excessive smoke or fire activity.			
											5. Flag escape routes on right side of escape route facing outward. Create new escape routes as you progress. Maintain LCES at all times. 6. Identify, mark & mitigate. 7. FBA/Metereoroligist to develop weather watch system. 8. Ensure Fireline is Anchored to black or manmade/natural barrier.											24. Line Supervisors will provide clear, concise briefings. 26. Ensure Traffic Planning is safe and enforced. Heed Defensive Driving techniques noted in Safety Messages. 28. Relocate staging area when driving conditions warrant. 31. Use spotter when backing vehicle(s).		
											10. Keep Firefighters informed of any changes in predicted weather, consider at least a two day weather pattern when planning burnout operations. 11. Refer to IRPG, pg. 12 on Power Line Hazards. 12. Observe all traffic signals and speed limits. 14. Ensure GOOD tailgate briefings with resources unable to attend Operational Briefing (Include Ops, Logs, Fin & Plans info.).											33. ALL vehicles and equipment must have lights on when running. Plastic culverts under some roads have burned and are collapsing under heavy loads, DIVS will coordinate which roads transport and tractors will use. GSP (912) 287-6500 : EMA (912) 287-4499.		
											15. Scout ahead of tractor operations to avoid making contact with power poles and guide wires when tying into roads. Power companies are working in some DIVS, avoid all down lines as they may become charged.													
Prepared by (Name and Position)										ICS 215A		Mark Munns SOF2												

DIVISION ASSIGNMENT LIST				1. Branch		2. Division/Group MOP UP / ETR GROUP 1	
3. Incident Name Sweat Farm Fire				4. Operational Period Date: 6-26-07 Time: 0800 - 2000 DAY			
5. Operations Personnel							
Field Ops Planning Ops	Danny Maddox			Group Supervisor	Mike Brunson 18*12656		
Branch Director Branch Safety				Group Safety			
6. Resources Assigned this Period							
Strike Team/Task Force/ Resource Designator	Leader / Name	Last Shift	Number Persons	Trans. Needed	Drop Off PT./Time	Pick Up PT./Time	
TF #2	O-1655	Mickey Walley	6/28	1	N	0800	2000
STPL	O-1654	Steve Anderson	6/27	1	N	0800	2000
TXS TP T2	E-3109	McCallie / Burnett	6/27	2	N	0800	2000
TXS TP T2	E-3111	Ramsey / Kaiser	6/27	2	N	0800	2000
Excavator Lee	E-3123			1	N	0800	2000
DINS	O-1572	Bert Early	6/30	1	N	0800	2000
7. Control Operations Hold, and improve containment lines. Continue to address hot spots, and mop up. Respond to reburns as necessary, and evaluate ETR needs. Coordinate movement of resources with other Groups as needed							
8. Special Instructions Concentrate on Divisions A-B-C-D-E-F							
9. Division/Group Communication Summary							
Function	Frequency	System	Channel	Function	Frequency	System	Channel
Command	158.7825/162.2 Rx 153.7625/162.2 Tx Narrow Band	King NIFC	Group 11 1	Air to Ground Sweat Farm/Big Turnaround	Dependant on location, refer to ICS-205	King NIFC	Group 11 2-3-4-5
Tactical Div/Group	168.200 Rx & Tx Narrow Band	King NIFC	Group 11 11	Air to Ground Georgia	159.390 Rx & Tx	King NIFC	Group 11 Ch. 13
Prepared by (Resource Unit Leader) Carol O'Bryan		Approved by (Planning Section Chief) /s/Shane Brown			Date June 25, 2007		Time 1900

DIVISION ASSIGNMENT LIST				1. Branch		2. Division/Group MOP UP/ETR GROUP 2	
3. Incident Name Sweat Farm Fire				4. Operational Period Date: 6-26-07 Time: 0800 – 2000 Day			
5. Operations Personnel							
Field Ops Operations Chief		Danny Maddox		Group Supervisor		Neal Edmondson 7/5 912-218-9314 18*11049	
Branch Director Branch Safety				Group Safety Officer			
6. Resources Assigned this Period							
Strike Team/Task Force/ Resource Designator		Leader / Name		Last Shift Date	Number Persons	Trans. Needed	Pick Up PT./Time
TF #3 O-567		Chris Stevenson		7/1	1	N	0800 2000
STPL O-1668		Keith Skinner		6/27	1	N	0800 2000
TXS TP T4 E-114		Etheridge / Baker		6/27	2	N	0800 2000
TXS TP T4 E-112		Williams / Shew		6/27	2	N	0800 2000
Excavator (Good Job) E-3173		Corbin			1	N	0800 2000
Excavator (Good Job) E-2925		Stevens			1	N	0800 2000
STPL O-1626		Mike Smith		7/1	1	N	0800 2000
LAS TP T2 E-1103		Marcantel / Sweat		7/1	2	N	0800 2000
LA TP T2 E-1102		Weatherford / Wager		7/1	2	N	0800 2000
Excavator (Nichols) E-3191					1	N	0800 2000
Excavator (Nichols) E-3192					1	N	0800 2000
DINS O-1571		John Coleburg		7/1	1	N	0800 2000
Motor Grader (Smith) E-1314		Hendly			1	N	0800 2000
7. Control Operations							
Hold, and improve containment lines. Continue to address hot spots, and mop up. Respond to reburns as necessary, and evaluate ETR needs. Coordinate movement of resources with other groups as needed							
8. Special instructions							
Concentrate efforts in DIVS I,WW,WX,WP, WB, WD, WO							
9. Division/Group Communication Summary							
Function	Frequency	System	Channel	Function	Frequency	System	Channel
Command	158.7825/162.2 Rx 153.7625/162.2 Tx Narrow Band	King NIFC	Group 11 1	Air to Ground : Sweat Farm / Big Turnaround	Dependant on location, refer to ICS-205	King NIFC	Group 11 2-3-4-5
Tactical Div/Group	168.050 Rx & Tx Narrow Band	King NIFC	Group 11 8	Air to Ground Georgia IA	159.390 Rx & Tx	King NIFC	Group 11 Ch. 13
Prepared by (Resource Unit Leader) Carol O'Bryan		Approved by (Planning Section Chief) /s/Shane Brown		Date June 25, 2007		Time 1900	

AIR OPERATIONS SUMMARY		PREPARED BY: Johnny Stephens		PREPARED DATE/TIME 6/24/07 1900	
1. INCIDENT NAME: Sweat Farm Road		2. OPERATIONAL PERIOD: START TIME: END TIME: SUNRISE: SUNSET:			
		Day Shift 6/26/07 0800 1900 0627 2037			
3. REMARKS (Safety Notes, Hazards, Air Operations Special Equipment, etc.): AIR TANKER REQUESTS THRU POGO <ul style="list-style-type: none"> All dispatches will come through the ICP in Waycross for state aviation resources. Waycross Dispatch Advise Waycross Helibase of ACFT Dispatch PERSONNEL STAY CLEAR OF ACTIVE DIPSITES Aircraft Dispatching Priorities: <ol style="list-style-type: none"> Life Structures Threatened Initial Attack Fire threatening perimeter control lines 				4. MEDEVAC A/C: Trauma 1 @ Jacksonville 26min: 1-800-223-4878	
				5. TFR: Released 6/18/07	
6. PERSONNEL		Phone	7. FREQUENCIES	AM	FM
HELM: Josh Ingle	406-461-4433	AIR/AIR FW:	122.925 GA IA		
	ICP FAX: 912-285-6014	:			
		AIR/AIR RW:	122.925 GA IA		
-State Aviation Lead Mike Leverette -Sweat Farm Operations	478-951-2835 912-285-6039	AIR/GROUND:	Georgia IA	159.390	
Waycross HEBM:		AIR/GROUND	Big Turnaround Sweat Farm	170.000	
				All Groups Ch. 12	
Waycross HB & Braganza HS:		DECK FREQ:		163.100	
Braganza Helispot (Helitack will be available for aircraft landing and departing Braganza Helispot)		TOLC FREQ: (Braganza Helispot)		Rx: 151.145 Tx: 151.145	
Pogo Helibase Waycross Helibase GA Forestry Hangar Waycross District Dispatch	912-496-4415 912-218-8937 912-338-5982 912-287-4915	FLT FOLLOWING:	Flight following will be on primary or secondary air to air freqs.		
		8. FIXED-WING # Avail / Type/ Make-Model / FAA N# / Base(s)			
		Air Tankers @ LCQ. Lead planes LP/14 @ LCQ Call FICC for up Date 850-523-8600			
		Waycross Helibase—31 14.95 X 82 23.73 Pogo Helibase-30 44.25 X 82 07.69 Braganza Helispot- 31 07.23 X 82 15.23 -Avoid take-off / landing over ICP -High Towers in Area, -LOOK UP, LOOK DOWN, LOOK ALL AROUND Fargo Helibase (Golf Course) N 30 41 27.3 x W 82 34 02.0 Stephen Foster SP (Pocket) N 30 47 32.2 x W 82 22 39..6			
		Other			
		-Aircraft flight follow with Waycross on the Sweat Farm - Flight follow with Pogo on the Big Turnaround. -IA Air Attack for State--- Cessna 182's -Approved Helispots—Refer to Okefenokee NWR Dip Site Map -ALL FLIGHTS WILL BE on a General Message CLEARED WITH OPS or the IC.			

9. HELICOPTERS (Use Additional Sheets As Necessary)							SWEAT FARM ROAD AVIATION RESOURCES							
BIG TURNAROUND AVIATION RESOURCES														
FAA N#	TY	MAKE/MODEL	BASE	AVAIL	START	REMARKS	FAA N#	TYPE	MAKE/MODEL	BASE	AVAIL	START	REMARKS	
116AZ HT-766	1	S-61	Pogo	0900	0930	Bucket drops	N5843	3	Bell 206-L3	Waycross	0900	0930	Recon/ Admin/ IA/ Bucket drops	
OKE 6 (N5738Y)	3	Bell 206-B3	Pogo	0900	0930	Recon/ Admin/ IA Bucket drops	71K (GA)	NA	Cessna 185	Waycross	0900	0930	IA, Aerial Det.	
							11H (GA)	NA	Cessna 182	Waycross	0900	0930	IA, Aerial Det.	
10. TASK/MISSION/ASSIGNMENT (Type/Function includes: Air Tactical, Retardant, Recon, Personnel Transport, Water Dropping, S&R, etc.)														
TYPE/FUNCTION		NAME OF PERSONNEL OR CARGO (if applicable) OR INSTRUCTIONS FOR TACTICAL AIRCRAFT							MISSION START		FLY FROM		FLY TO	
Type I Helicopter		Operation and Logistic Support							0930		Helibase		Fire and Return	
Type II Helicopter		Operation and Logistic Support							0930		Helibase		Fire and Return	
Type III Helicopter		Operation and Logistic Support							0930		Helibase		Fire and Return	
ATGS Platforms		Aerial Supervision of all Aircraft over Incidents							0930		Waycross Airport		Fire and Return	
State Detection Fixed Wing		Aerial Detection and IA for New Fire Starts							0930		Waycross Airport		Fire and Return	

INCIDENT RADIO COMMUNICATIONS PLAN			1. Incident Name Sweat Farm Road Fire	2. Date/Time Prepared 06/21/07	3. Operational Period Date/Time 06/26/07
4. BASIC RADIO CHANNEL UTILIZATION					
Radio Type/Cache	Channel	Function	Frequency/Tone	Assignment	Remarks
King NIFC	1	Ware EMA Rptr Narrow Band	158.7825 /162.2 Rx 153.7625 /162.2 Tx N	Command Repeater	Sweat Farm
King NIFC	2	Okee North / Air to Ground	164.575 Rx 163.150 /206.5 Tx N	ETR Command Link North Locations	OKR Waycross Linked to 4 & 5
King NIFC	3	Okee South / Air to Ground	164.775 Rx 163.150 /123.0 Tx N	ETR Command Link South Locations	OKR EDDY Linked to 4 & 5
King NIFC	4	Okee East / Air to Ground	164.625 Rx 163.150 /103.5 Tx N	ETR Command Link East Locations	OKR Admin Linked to 2 & 5
King NIFC	5	Okee West / Air to Ground	167.125 Rx 163.150 /156.7 Tx N	ETR Command Link West Locations	OKR Foster Linked to 2 & 4
King NIFC	6	Tactical	154.280 Rx & Tx W	Structual & Tactical	Fire Line Tac. Mutual Aid
King NIFC	7	Tactical	168.600 Rx & Tx N	ETR Group	Fire line Tac
King NIFC	8	Tactical	168.050 Tx & Rx N	Mop up/ETR#2	Fire Line Tac.
King NIFC	9	Tactical	159.285 Rx& Tx N	Unnasigned	Fire Line Tac S.E. Compact
ccccKing NIFC	10	Tactical	169.900 Rx & Tx N	Contingency Group	Fire Line Tac.
King NIFC	11	Tactical	168.200 Rx & Tx N	Mop up/ETR#1	Fire Line Tac.
King NIFC	12	Air to Ground	170.000 Rx & Tx N	All Groups	Common Air to Ground Sweat Farm & Big Turnaround
King NIFC	13	Air To Ground	159.390 Rx & Tx W	Ga. I/A	
King NIFC	14	Air Guard	168.625 Rx&Tx Tx 110.9 N	All Groups/Divs.	EMERGENCY CONTACT or redirect with incident aircraft
5. Prepared By (Communications Unit) Howard Ure					

ICS 205

NFS 1330

*** Channels 2,3,4,5, are (UHF) linked together and shared with BIG TURN AROUND COMM. When transmitting you must select the channel closest .**

MEDICAL PLAN	1. Incident Name Sweat Farm Road Fire	2. Date Prepared 6/22/07	3. Time Prepared 1600	4. Operational Period DAY SHIFT					
5. Incident Medical Aid Station									
Medical Aid Stations		Location			Paramedics Yes No				
Medical Unit / Waycross 478-550-2988		Georgia Forestry Headquarters ICP - Anderson (MEDL)				EMT			
Joe Anderson 18*11849 912-218-9317		Waycross Medical Facility, 478-550-2988				EMT			
After Hours Contact									
Joe Anderson (MEDL)		Comfort Inn Waycross Room 208		912-283-3300 ex. 208 478-550-2988 cell					
6. Transportation									
A. Ambulance Services									
Name		Address		Phone		Paramedics Yes No			
Clinch County EMS		Homerville, GA Sherriffs Department		912-487-3250		Yes			
Ware County EMS		Waycross Georgia (911 to activate)		912-281-9467 Linc 1*96*116		Yes			
B. Air Ambulance Service									
Trauma 1 (155.340)		Jacksonville, FL (26 min/air)		1-800-223-4878		Yes			
AirMed		Augusta, GA (2 hrs/air)		1-888-792-9245		Yes			
Lifeflight (155.340)		Jacksonville, FL (35 min/air)		1-877-870-7779		Yes			
7. Hospitals									
Name		Address		Travel Time Air Ground		Helipad Yes No		Burn Center Yes No	
Satilla Regional		410 Darling Ave Waycross Ga N 31°13.56 W 82°21.058		15 min 30 min		912-283-3030		Yes	
Clinch Memorial Hospital		1050 Valdosta HWY Hommerville, GA		45 min		912-487-5211 ext 4502		No	
South Georgia Medical Center		2501 N. Patterson St. Valdosta, GA 31602		60 min		229-333-1000			
Memorial Hospital		Savannah, GA 4700 Waters 3200.7 8107.6		40 min		912-350-8999		Yes	
Shands Hospital (level I)		Jacksonville, FL N 30°20' 97 W 82° 13 992		45 min 1.5 hrs		800-223-4878		Yes	
Shands Burn Center		Gainesville, FL 38.33 N 082 20.73W		45 min		352-265-0300		Yes	
Doctor's Hospital Joseph Still Burn Center		August,GA (Chief Burn Ctr 3328.943 8205.422		90 min 3 ½ hrs		877-863-9595 706-863-9595		Yes	
8. Medical Emergency Procedures									
<p>Identify any EMTs and Paramedics in your crews. All medical emergencies will be reported to the Division Supervisor who will assume command, call 911 and notify communications: non-emergency or emergency medical.</p> <ol style="list-style-type: none"> 1. Handle all injuries/ illnesses according to the 2006 IRPG page 37. 2. Division Sup will assume command, call 911 and ensure communication is notified. 3. Communication will notify ambulance and coordinate with IC, SOF, MEDL <p>Helispots – Braganza Sweat Farm ICP: 31 07.23 X 82 15.23</p> <p>Helispots – Fargo Base Camp:</p> <p>H-114 (4 mi marker Hwy 177 – Stephen C. Foster St. Prk) 30 47 30.02 X 82 22 39.5</p> <p>H-113 (Hwy 441 - golf course) 30 41.739 X 82 33.961</p> <p>NIGHT TIME EMERGENCIES CONTACT – Joe Anderson at the Comfort Inn, 912-283-3300, room 208.</p>									
Prepared by (Medical Unit Leader) Joe Anderson (MEDL)						10. Reviewed by (Safety Officer) John Barnes			

DEMOBILIZATION PROCEDURES

A. HOW WILL IT HAPPEN?

1. Your supervisor declares your position excess.
2. The Section Chief agrees and notifies the Demob Unit Leader.
3. The Demob Unit Leader has a 24+ hour window to reassign you to another incident or arrange for transportation to your home unit.

B. WHAT CAN YOU DO TO EXPEDITE THE PROCESS?

1. Turn in all time reports and equipment use records to **Time.**
2. If you have equipment, have an inspection completed by **Ground Support.**
3. Turn in any non-essential items you have checked out to **Supply** or **Communications.**
4. Complete and turn in Unit Logs on a daily basis to **Documentation** and get a Performance Evaluation from your supervisor (you keep the original and a copy goes to the files)
5. If there is any change in your status, notify **Demob** immediately.
6. Check the Demob Board on a regular basis. Be available to move within a 1 to 2 hour notice.

Human Resource Message

"Seize the Moment."

‘Seizing the moment’ means taking advantage of opportunities that present themselves as the world changes around you. To be most effective, you need to take stock of where you are, maintain perspective of the big picture, and recognize when course corrections would benefit the overall plan.

Change brings both opportunity and risk... It is important to maintain your situational awareness, look for ways to make the most progress, and adapt your strategy and tactics as conditions change.

Remember that we are here as a team and it is essential to stay together as we implement the plan. Enjoy the excitement, seize the moments that are presented to you, and have a safe day!

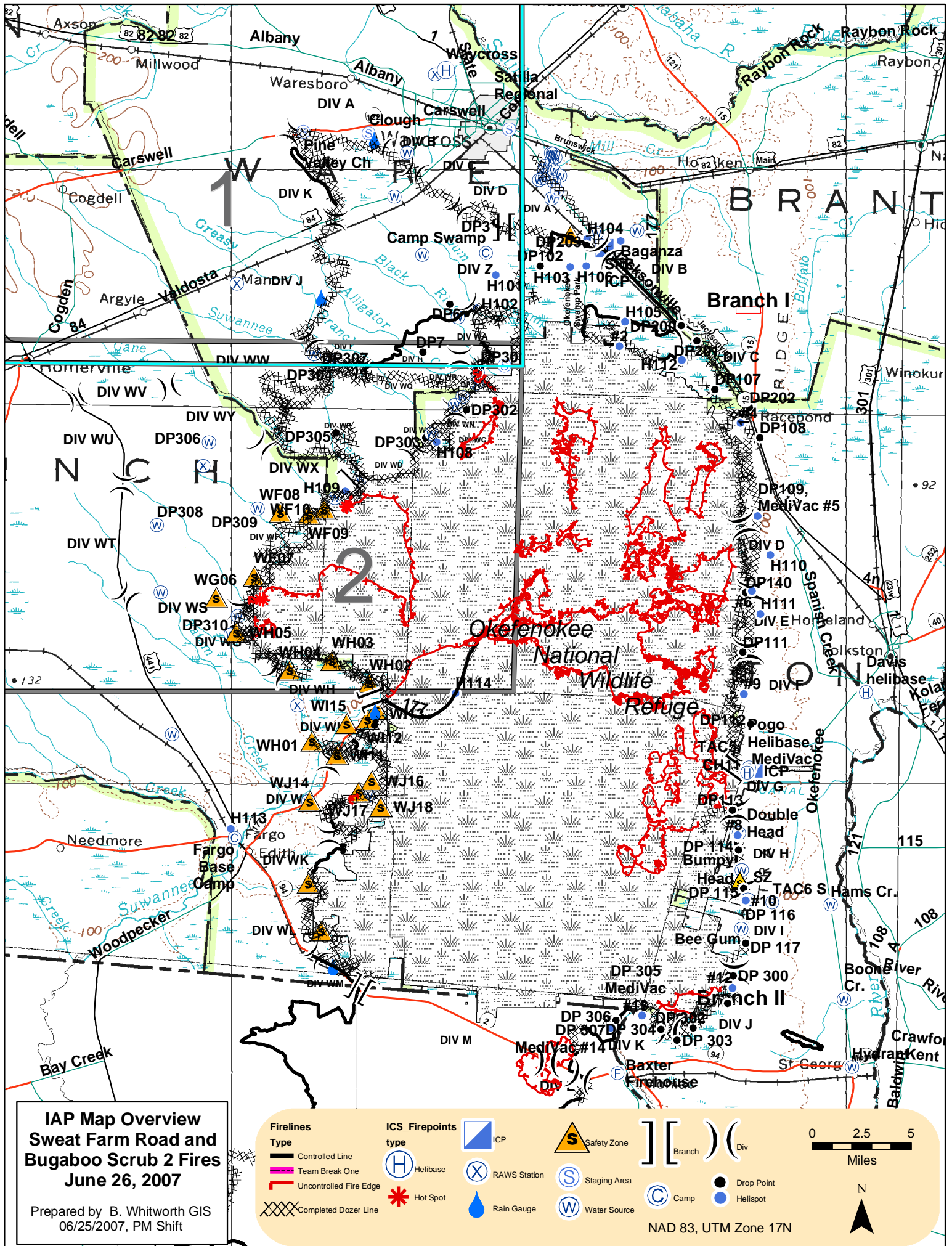
“Seize the moment of excited curiosity on any subject to solve your doubts; for if you let it pass, the desire may never return, and you may remain in ignorance”
(quote from William Wirt, 1772-1834).

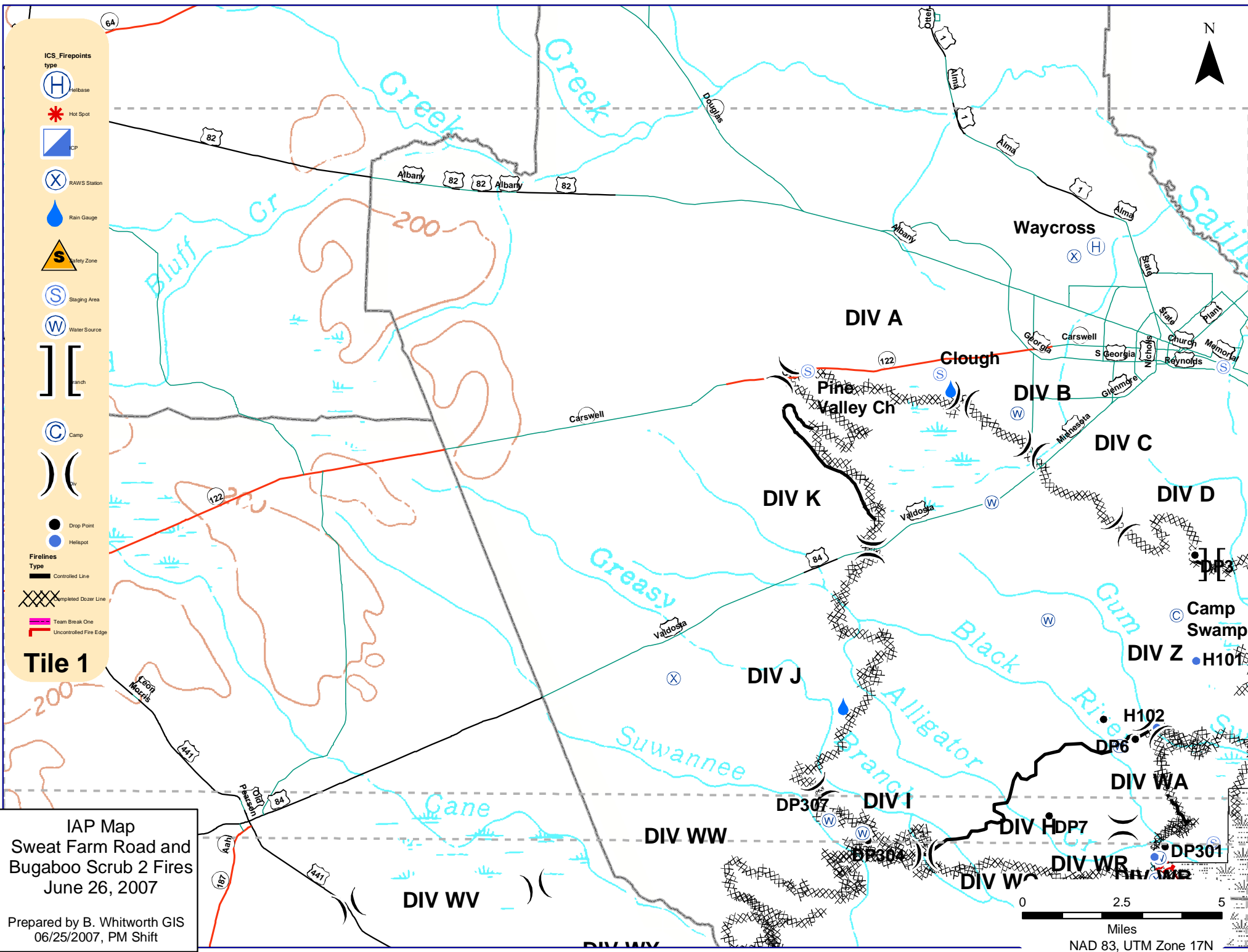


"Life does have a slow lane, you know!"

Sweat Farm Road Phone Roster 6-26-07

NAME	POSITION	PHONE NUMBERS	LINC ID	NAME	POSITION	PHONE NUMBERS	LINC ID
COMMAND & GENERAL STAFF		912-285-6046	Fax 912-285-6014	LOGISTICS		912-285-6091	Fax 912-285-6111
Eric Harris	IC	912-592-5758	18*1613		ORDERING	912-285-6068	
John Barnes	SOF	912-218-6552	18*4166	Susan Cornett	LSC	936-546-1952	
Agency Reps				Howard Ure	COML	936-671-2698	
Billy Leitch		912-218-9325	18*12022	Jim Caldwell	FACL	478-550-2985	
George Constentino		912-398-7680		Tom Lambert	FACL	478-550-2997	
Andy Stone		912-637-5261		John Wall	Hotel Manager	936-546-3109	
Joe Yeager		912-816-8732		Mike Summers	GSUL	936-546-1957	
OPERATIONS		912-285-6039		Michelle Sanchez	GSUL	912-281-8276	
Danny Maddox	OSC	912-218-5414	18*11904	Terry Lemmon	SUPL	936-546-1953	
Neal Edmondson	DIVS	912-218-9314	18*11049	Tom French	ORDM	208-634-6947	
Mike Brunson	DIVS		18*12656	Joe Anderson	MEDL	912-218-9317	
Shane Crimm	TFLD	979-218-2405	18*11907	OTHER INCIDENT MANAGEMENT TEAMS			
Dick Young	FUEL		18*6682	California FUMT #2 Phone Roster			
CSX RAIL ROAD OPERATIONS- Dixon		912-270-0699		NAME	PHONE NUMBERS		
				<i>INFORMATION</i>	912-496-4176		
AIR OPERATIONS		912-285-6039		<i>PLANNING</i>	912-496-4173		
Johnny Stephens	ASGS	360-463-0988		<i>OPERATIONS</i>	912-496-4132		
SEE AIR OPS SUMMARY (220)				<i>AIR OPERATIONS</i>	912-496-4415		
PLANNING		912-285-6046		<i>FINANCE</i>	912-496-4102		
Shane Brown	PSC	912-218-7586	18*6871	<i>LOGISTICS</i>	719-334-6525	601-201-1776	
Carol O'Bryan	RESL	936-546-1217		<i>EXPANDED DISPATCH</i>	912-496-3162		
Billy Whitworth	GISS	912-285-6046		<i>COMMUNICATIONS</i>	478-550-3001		
				ETR SPECIALISTS			
				Bryan Snow			18*12520
				Bert Early		912-218-9512	18*11583
				John Colberg		912-218-9343	18*12314
FINANCE		912-285-6038		Mary Griffen		404-535-2630	18*5261
	Time	478-550-2995		Chad Pritchett		912-218-8343	18*4212
Reggie Lanier	FSC	912-285-6038		Dennis Martin		912-218-7218	18*7042
James Conner	BUYT	912-285-6112	229-938-2952 cell				
Eillen Crouse	COST	912-285-6038					
Miguel Martinez	COMP/CLMS	912-285-6038	760-420-8910 cell				
Vickie Kitchens	TIME	478-550-2995		MISC.			
Barb McElderrey/Serena Wicka	EQTR	912-285-6038		COMMAND DISPATCH		912-218-9044	18*6870
				MACON DISPATCH		912-218-9232	18*7378





**Sweat Farm Road and
Bugaboo Scrub II**
June 26, 2007

Perimeter as of 2213 EDT
15 June 2007

**Bugaboo Scrub II
(West of NWR Boundary)**
5,061 Acres

Sweat Farm Road
82,523 Acres

**Big Turnaround Complex /
Florida Bugaboo**
484,143 Acres

✳ Mitigated ETR Assessment Points
as of 6/24/2007 1757

✳ ETR Assessment Points
as of 6/24/2007

Helibase	Medevac sites
ICP	Easy to Defend
Safety Zone	Moderate to Defend
Staging Area	Difficult to Defend
Water Source	Okfenokee NWR
Camp	County Boundary
Division Break	Swamp Edge Break
Drop Point	Firelines
Helispot	Completed Dozer Line
RAWS Station	Uncontrolled Fire Edge
Rain Gauge	Controlled Line
	GFC Area of Suppression Responsibility (06/13/07)
	Fed. Area of Suppression Responsibility (06/13/07) by B. Whitworth

