



# Sweat Farm Fire

## Incident Action Plan

*Wednesday*

June 27, 2007

**All Operational Periods**



**GEMA**

<b>INCIDENT OBJECTIVES</b>	1. Incident Name Sweat Farm and Bugaboo Scrub II Fires	2. Date Prepared 6/26/07	3. Time Prepared 1830
	4. Operational Period <b>06/27/2007 All Operational Periods</b>		
5. General Control Objectives For The Incident (Include Alternatives)			
<ol style="list-style-type: none"> <li>1. Provide for the safety of the public and assigned incident resources through effective hazard / risk assessment and mitigation.</li> <li>2. Provide timely and accurate information updates to the GFC, cooperators, affected communities, and other stakeholders.</li> <li>3. Provide accurate cost accountability and documentation of expenditures for the duration of the incident.</li> <li>4. Develop and maintain coordination with local fire departments, local EOC directors, GEMA, other IMT's deployed in the area, GOAL, and private industry.</li> <li>5. Provide support on fires as requested by Georgia GFC District 8 and District 10.</li> <li>6. Conduct all incident activities in a manner free of discrimination, harassment, and inappropriate behavior.</li> <li>7. Keep the Sweat Farm Road, Kneeknocker, and Roundabout fires contained within the current established perimeters.</li> <li>8. Assist with identifying and mitigating Emergency &amp; Temporary Repairs.</li> </ol>			
6. Weather Forecast For Period			
Patchy fog before 8am. Otherwise, partly sunny with a high near 94. Calm wind becoming east between 6 and 9 mph.			
7. General Safety Message			
<b>SEE ATTACHED SAFETY MESSAGE.</b>			
8. ATTACHEMENTS (X IF ATTACHED)			
<input checked="" type="checkbox"/> Organization List - ICS 203	<input checked="" type="checkbox"/> Division Assignment List - ICS 204	<input checked="" type="checkbox"/> Phone List	
<input checked="" type="checkbox"/> Fire Behavior Forecast	<input checked="" type="checkbox"/> Air Ops Summary-ICS 220	<input checked="" type="checkbox"/> Maps	
<input checked="" type="checkbox"/> Weather Forecast	<input checked="" type="checkbox"/> Communications Plan - ICS 205	<input checked="" type="checkbox"/> Unit Log- ICS 214	
<input checked="" type="checkbox"/> Safety Message	<input checked="" type="checkbox"/> Medical Plan - ICS 206	<input type="checkbox"/>	
9. Prepared By (Planning Section Chief)		10. Approved By (Incident Commander)	

ORGANIZATION ASSIGNMENT LIST		9.	Operations Section	
1. Incident Name		Field Ops	Danny Maddox	
Sweat Farm Fire		Planning Ops		
2. Date	3. Time	<b>a.</b>	<b>Sweat Farm</b>	
June 26, 2007	2000			
4. Operational Period		Group	Mop Up/ETR Group 1	Mike Brunson
<b>June 27, 2007 All Operational Periods</b>		Group	Mop Up/ETR Group 2	Neal Edmondson
<b>5.</b>	<b>Command</b>			
Incident Commander	Eric Harris			
Safety Officer	John Barnes			
Information Officer	Daniel Westcot			
<b>6.</b>	<b>Agency Representatives</b>			
Agency	Name			
GFC District 8	Frank Sorrells			
GFC District 10	Willard Fell			
GFC Protection Dept	Alan Dozier			
GEMA	Alan Robinson			
GOAL	Jim Barrett			
Okefenokee NWR	Maury Bedford			
<b>7.</b>	<b>Planning Section</b>		<b>e.</b>	<b>Special Groups</b>
Chief	Shane Brown		Group	ETR / DINS
Resources Unit	Carol O'Bryan			
Situation Unit				
Documentation Unit	Phyllis Keffer			
Demobilization Unit	James Krakowski			
CTSP				
Incident Meteorologist			<b>f.</b>	<b>Air Operations Branch</b>
Status/Check In			AOBD	
GISS	Billy Whitworth		Air Support Supervisor	Johnny Stephens
<b>8.</b>	<b>Logistics Section</b>		GFC Air Operations	Mike Leverette
Chief	Susan Cornett		HELM	Josh Ingle
Facilities Unit	Tom Lambert/Jimmy Caldwell		HECM	Andrew Registor
Hotel Manager	John Wall		HECM	Charles Bolt
Supply Unit	Terry Lemmon		ABRO	Ron Chisholm
Food Unit	Chris Barnes			
Base Camp Manager	Ronnie Jones		<b>10.</b>	<b>Finance Section</b>
Ground Support Unit	Mike Summer/Michele Sanchez		Chief	Reggie Lanier
Equipment Manager	RJ Garman		Incident Business Advisor	Lila Johnson
Ordering Manager	Tom French		Time Unit Leader	Vickie Kitchens
Security Manager	Don Poovey		Purchasing Team Leader	James Conner
Medical Unit	Robert Carswell		EQTR Lead	Barb McElderrey/Serena Wicka
Communications Unit	Howard Ure		Cost Unit	Eillene Crouse
RCDM	Ronnie Jones		Comp/Claims	Miguel Martinez
			Prepared by (Resource Unit Leader) Carol O'Bryan	

# TAILGATE BRIEFING SHEET

## ☐ WEATHER FORECAST

FORECAST NO: 68

NAME OF FIRE: Sweat Farm

PREDICTION FOR: Day Ops

UNIT: Georgia Forestry Commission

SHIFT DATE: **Wednesday 06/27/07**

TIME AND DATE

FORECAST ISSUED: 1900 hours 06/26/07

**WEATHER DISCUSSION:** Patchy fog before 8am. Otherwise, partly cloudy with a high near 89. Calm wind becoming east between 10 and 13 mph. Chance of precipitation is 30%.

---

### **WEATHER FORECAST DAY SHIFT WEDNESDAY:**

**WEATHER:** Variable Cloudiness.

**MAX TEMPERATURES:** 89-93 (Steady)

**MIN HUMIDITY:** 41 to 46% (Steady)

**20 FT WINDS:** East 6 to 10 mph.

**STABILITY/INVERSION:** Mixing heights near 5330 ft. Afternoon Dispersion index 48. Haines Index 3 (Normal). Transport winds E 5-11 MPH.

**LAL: 1**

### **WEATHER FORECAST FOR WEDNESDAY NIGHT:**

**WEATHER:** Partly cloud, with a low around 71. Chance of precipitation is 30%.

**MIN TEMPERATURES:** 69-73

**MAX HUMIDITY:** 95-100%

**20 FT WINDS:** Variable 6 to 10 mph.

**STABILITY/INVERSION:** Dispersion index 7.

### **OUTLOOK FOR THURSDAY:**

Partly cloudy, with a high near 88. Calm winds becoming east between 4 and 7 mph. Chance of precipitation is 30%.

### **Extended Forecast:**

**Thursday...** Partly cloudy, with a high near 88. Calm winds becoming east between 4 and 7 mph. Chance of precipitation is 30%.

**Friday...** Chance of showers, with thunderstorms also possible after 2:00pm. Partly Cloudy with a high near 90. Chance of precipitation is 40%.

**Saturday...** Chance of showers. Partly cloudy, with a high near 92. Chance of precipitation is 40%

---

### **EXTRA INFORMATION:**

#### **Waycross Wed data**

*Sunrise Today :* 627 AM

*Sunset Tonight:* 837 PM

INCIDENT ACTION PLAN SAFETY ANALYSIS										1. Incident Name Sweat Farm		2. Date 6/27/2007		3. Time Day Shift				
LCES* Analysis of Tactical Applications Lookouts Communications Escape routes Safety zones										Other Risk Analysis								
Branch	Indirect Fireline	Burn out Operations	Power lines	Road Conditions	Frontal Assault	Anchor Points	Extreme Conditions	Reburn Potential	Snags	Insects, snakes	LCES Mitigations	Smoke	Traffic & Railroad	Communications	Structure Protection	Fatigue / Hydration	Multi-aircraft	Other Risk Mitigations
Sweat Farm	1, 3, 4, 5, 7, 8, 10		15, 11	12, 20	1, 3, 4, 5, 7, 8, 24	8	7, 10	1, 3, 5, 7, 10	6	2	1. Establish & maintain LCES. Report LCES checks twice daily to DIVS on line & staggng. 2. Look UP,DOWN and AROUND - Use protective spray with deet on skin (Not on Nomex), permethrin can be used on nomex clothing. Do Not try to catch or kill snakes! 3. Post experienced Lookouts. Make sure LCES is in place and make known. 4. Use Air Attack as Lookout.	20, 22, 26, 28, 31, 33	1, 3, 10, 14, 24			18, 21		18. Take plenty rest breaks and encourage to drink water NOW through briefings.  20. Defensive driving will be addressed in all briefings. 21. All personnel must meet the 2:1 work/rest ratio. Line supervisors and Safety will monitor closely. 22. Notify EOC of need to close CSX track adjacent track to ensure safety of firefighters due to excessive smoke or fire activity.
											5. Flag escape routes on right side of escape route facing outward. Create new escape routes as you progress.Maintain LCES at all times. 6. Identify,mark & mitigate.  7. FBA/Metereoroligist to develop weather watch system. 8. Ensure Fireline is Anchored to black or manmade/natural barrier.							24. Line Supervisors will provide clear, concise briefings. 26. Ensure Traffic Planning is safe and enforced. Heed Defensive Driving techniques noted in Safety Messages.  28. Relocate staging area when driving conditions warrant. 31. Use spotter when backing vehicle(s).
											10. Keep Firefighters informed of any changes in predicted weather, consider at least a two day weather pattern when planning burnout operations. 11. Refer to IRPG, pg. 12 on Power Line Hazards.  12. Observe all traffic signals and speed limits.  14. Ensure GOOD tailgate briefings with resources unable to attend Operational Briefing (Include Ops, Logs, Fin & Plans info.).							33. ALL vehicles and equipment must have lights on when running. Plastic culverts under some roads have burned and are collapsing under heavy loads, DIVS will coordinate which roads transport and tractors will use. GSP (912) 287-6500 : EMA (912) 287-4499.
											15. Scout ahead of tractor operations to avoid making contact with power poles and guide wires when tying into roads. Power companies are working in some DIVS, avoid all down lines as they may become charged.							

Prepared by (Name and Position) ICS 215A Mark Munns SOF2

<b>DIVISION ASSIGNMENT LIST</b>				1. Branch		2. Division/Group <b>MOP UP / ETR GROUP 1</b>			
3. Incident Name <b>Sweat Farm Fire</b>				4. Operational Period Date: <b>6-27-07</b> Time: <b>0800 - 2000</b> <b>DAY</b>					
5. Operations Personnel									
Field Ops Planning Ops		<b>Danny Maddox</b>		Group Supervisor		<b>Mike Brunson</b> <b>18*12656</b> <b>6/29</b>			
Branch Director Branch Safety				Group Safety					
6. Resources Assigned this Period									
Strike Team/Task Force/ Resource Designator		Leader / Name		Last Shift	Number Persons	Trans. Needed	Drop Off PT./Time	Pick Up PT./Time	
<b>TF #2</b>		<b>O-1655</b>		<b>Mickey Walley</b>	<b>6/28</b>	<b>1</b>	<b>N</b>	<b>0800</b>	<b>2000</b>
<b>STPL</b>		<b>O-1654</b>		<b>Steve Anderson</b>	<b>6/27</b>	<b>1</b>	<b>N</b>	<b>0800</b>	<b>2000</b>
TXS TP T2		E-3109		McCallie / Burnett	6/27	2	N	0800	2000
TXS TP T2		E-3111		Ramsey / Kaiser	6/27	2	N	0800	2000
Excavator Lee		E-3123				1	N	0800	2000
<b>DINS</b>		<b>O-1572</b>		<b>Bert Early</b>	<b>6/30</b>	<b>1</b>	<b>N</b>	<b>0800</b>	<b>2000</b>
7. Control Operations									
Hold, and improve containment lines. Continue to address hot spots, and mop up. Respond to reburns as necessary, and evaluate ETR needs.									
Coordinate movement of resources with other Groups as needed									
8. Special Instructions									
Concentrate on Divisions A-B-C-D-E-F									
9. Division/Group Communication Summary									
Function	Frequency	System	Channel	Function	Frequency	System	Channel		
Command	158.7825/162.2 Rx 153.7625/162.2 Tx Narrow Band	King NIFC	Group 11 1	Air to Ground Sweat Farm/Big Turnaround	Dependant on location, refer to ICS-205	King NIFC	Group 11 2-3-4-5		
Tactical Div/Group	168.200 Rx & Tx Narrow Band	King NIFC	Group 11 11	Air to Ground Georgia	159.390 Rx & Tx	King NIFC	Group 11 Ch. 13		
Prepared by (Resource Unit Leader) Carol O'Bryan			Approved by (Planning Section Chief) /s/Shane Brown			Date June 26, 2007		Time 1900	

<b>DIVISION ASSIGNMENT LIST</b>				1. Branch		2. Division/Group <b>MOP UP/ETR GROUP 2</b>	
3. Incident Name <b>Sweat Farm Fire</b>				4. Operational Period Date: <b>6-27-07</b> Time: <b>0800 – 2000</b> Day			
5. Operations Personnel							
Field Ops Operations Chief		<b>Danny Maddox</b>		Group Supervisor		<b>Neal Edmondson</b> <b>7/5</b> <b>912-218-9314</b> <b>18*11049</b>	
Branch Director Branch Safety				Group Safety Officer			
6. Resources Assigned this Period							
Strike Team/Task Force/ Resource Designator		Leader / Name		Last Shift Date	Number Persons	Trans. Needed	Drop Off PT./Time
<b>TF #3</b> <b>O-567</b>		<b>Chris Stevenson</b>		7/1	1	N	0800
<b>STPL</b> <b>O-1668</b>		<b>Keith Skinner</b>		6/27	1	N	0800
TXS TP T4 E-114		Etheridge / Baker		6/27	2	N	0800
TXS TP T4 E-112		Williams / Shew		6/28	2	N	0800
Excavator (Good Job) E-3173		Corbin			1	N	0800
Excavator (Good Job) E-2925		Stevens			1	N	0800
<b>STPL</b> <b>O-1626</b>		<b>Mike Smith</b>		7/1	1	N	0800
LAS TP T2 E-1103		Marcantel / Sweat		7/1	2	N	0800
LA TP T2 E-1102		Weatherford / Wager		7/1	2	N	0800
Excavator (Nichols) E-3191					1	N	0800
Excavator (Nichols) E-3192					1	N	0800
<b>DINS</b> <b>O-1571</b>		<b>Dennis Martin</b>		6/27	1	N	0800
Motor Grader (Smith) E-1314		Hendly			1	N	0800
7. Control Operations							
Hold, and improve containment lines. Continue to address hot spots, and mop up. Respond to returns as necessary, and evaluate ETR needs. Coordinate movement of resources with other groups as needed							
<b>8. Special instructions</b>							
Concentrate efforts in DIVS I,WW,WX,WP, WB, WD, WO							
9. Division/Group Communication Summary							
Function	Frequency	System	Channel	Function	Frequency	System	Channel
Command	158.7825/162.2 Rx 153.7625/162.2 Tx Narrow Band	King NIFC	Group 11 1	Air to Ground : Sweat Farm / Big Turnaround	Dependant on location, refer to ICS-205	King NIFC	Group 11 2-3-4-5
Tactical Div/Group	168.050 Rx & Tx Narrow Band	King NIFC	Group 11 8	Air to Ground  Georgia IA	159.390 Rx & Tx	King NIFC	Group 11 Ch. 13
Prepared by (Resource Unit Leader) Carol O'Bryan		Approved by (Planning Section Chief) /s/Shane Brown		Date June 26, 2007		Time 1900	





AIR OPERATIONS SUMMARY		PREPARED BY: Johnny Stephens	PREPARED DATE/TIME 6/24/07 1900			
1. INCIDENT NAME: Sweat Farm Road		2. OPERATIONAL PERIOD: Day Shift 6/27/07	START TIME: 0800	END TIME: 1900	SUNRISE: 0627	SUNSET: 2037
3. REMARKS (Safety Notes, Hazards, Air Operations Special Equipment, etc.): <b>AIR TANKER REQUESTS THRU POGO</b> <ul style="list-style-type: none"> <li>All dispatches will come through the ICP in Waycross for state aviation resources. <u>Waycross Dispatch Advise Waycross Helibase of ACFT Dispatch</u></li> <li>PERSONNEL STAY CLEAR OF ACTIVE DIPSITES</li> <li>Aircraft Dispatching Priorities:               <ol style="list-style-type: none"> <li>Life</li> <li>Structures Threatened</li> <li>Initial Attack</li> <li>Fire threatening perimeter control lines</li> <li><u>Recons THRU. OPS/IC</u></li> </ol> </li> </ul>				4. MEDEVAC A/C: <b>Trauma 1 @ Jacksonville 26min: 1-800-223-4878</b>		5. TFR: Released 6/18/07
6. PERSONNEL	Phone	7. FREQUENCIES	AM	FM	8. FIXED-WING	# Avail / Type/ Make-Model / FAA N# / Base(s)
HELM: Josh Ingle	406-461-4433  ICP FAX: 912-285-6014	AIR/AIR FW:  :	122.925 GA IA		Air Tankers @ LCQ. Lead planes Call FICC for up Date	T-20 / LCQ / P3 (Day Off <u>Sun</u> ) T-43 / LCQ / P2V(Day Off <u>Mon</u> ) LP/14 @ LCQ 850-523-8600
		AIR/AIR RW:	122.925 GA IA		Waycross Helibase—31 14.95 X 82 23.73 Pogo Helibase-30 44.25 X 82 07.69 Braganza Helispot- 31 07.23 X 82 15.23 -Avoid take-off / landing over ICP -High Towers in Area, -LOOK UP, LOOK DOWN, LOOK ALL AROUND Fargo Helibase (Golf Course) N 30 41 27.3 x W 82 34 02.0 Stephen Foster SP (Pocket) N 30 47 32.2 x W 82 22 39.6	
-State Aviation Lead Mike Leverette -Sweat Farm Operations	478-951-2835 912-285-6039	AIR/GROUND:	Georgia IA	159.390	Other	
Waycross HEBM:		AIR/GROUND - Will be Chs. - 2-3-4-5- in the Como. Plan.	Big Turnaround Sweat Farm	Will be Chs. 2-3-4-5 in the Como Plan.		
Waycross HB & Braganza HS:		DECK FREQ:		163.100		
Braganza Helispot (Helitack will be available for aircraft landing and departing Braganza Helispot)		TOLC FREQ: (Braganza Helispot)		Rx: 151.145 Tx: 151.145	-Aircraft flight follow with Waycross on the Sweat Farm - Flight follow with Pogo on the Big Turnaround. -IA Air Attack for State--- Cessna 182's -Approved Helispots—Refer to Okefenokee NWR Dip Site Map -ALL FLIGHTS WILL BE on a General Message CLEARED WITH OPS or the IC.	
Pogo Helibase Waycross Helibase GA Forestry Hangar Waycross District Dispatch	912-496-4415 912-218-8937 912-338-5982 912-287-4915	FLT FOLLOWING:	Flight following will be on primary or secondary air to air freqs.			

9. HELICOPTERS (Use Additional Sheets As Necessary)

**BIG TURNAROUND AVIATION RESOURCES**

**SWEAT FARM ROAD AVIATION RESOURCES**

FAA N#	TY	MAKE/MODEL	BASE	AVAIL	START	REMARKS	FAA N#	TYPE	MAKE/MODEL	BASE	AVAIL	START	REMARKS
116AZ HT-766	1	S-61	Pogo	0900	0930	Bucket drops	N5843	3	Bell 206-L3	Waycross	0900	0930	Recon/ Admin/ IA/ Bucket drops
OKE 6 (N5738Y)	3	Bell 206-B3	Pogo	0900	0930	Recon/ Admin/ IA Bucket drops	71K (GA)	NA	Cessna 185	Waycross	0900	0930	IA, Aerial Det.
							11H (GA)	NA	Cessna 182	Waycross	0900	0930	IA, Aerial Det.

10. TASK/MISSION/ASSIGNMENT (Type/Function includes: Air Tactical, Retardant, Recon, Personnel Transport, Water Dropping, S&R, etc.)

TYPE/FUNCTION	NAME OF PERSONNEL OR CARGO (if applicable) OR INSTRUCTIONS FOR TACTICAL AIRCRAFT	MISSION START	FLY FROM	FLY TO
Type I Helicopter	Operation and Logistic Support	0930	Helibase	Fire and Return
Type II Helicopter	Operation and Logistic Support	0930	Helibase	Fire and Return
Type III Helicopter	Operation and Logistic Support	0930	Helibase	Fire and Return
ATGS Platforms	Aerial Supervision of all Aircraft over Incidents	0930	Waycross Airport	Fire and Return
State Detection Fixed Wing	Aerial Detection and IA for New Fire Starts	0930	Waycross Airport	Fire and Return

INCIDENT RADIO COMMUNICATIONS PLAN		1. Incident Name <b>Sweat Farm Road Fire</b>		2. Date/Time Prepared <b>06/21/07</b>		3. Operational Period Date/Time <b>06/27/07</b>	
4. BASIC RADIO CHANNEL UTILIZATION							
Radio Type/Cache	Channel	Function	Frequency/Tone	Assignment	Remarks		
King NIFC	1	Ware EMA Rptr Narrow Band	158.7825 /162.2 Rx 153.7625 /162.2 Tx N	Command Repeater	Sweat Farm		
King NIFC	2	Okee North / Air to Ground	164.575 Rx 163.150 /206.5 Tx N	ETR Command Link North Locations	OKR Waycross Linked to 4 & 5		
King NIFC	3	Okee South / Air to Ground	164.775 Rx 163.150 /123.0 Tx N	ETR Command Link South Locations	OKR EDDY Linked to 4 & 5		
King NIFC	4	Okee East / Air to Ground	164.625 Rx 163.150 /103.5 Tx N	ETR Command Link East Locations	OKR Admin Linked to 2 & 5		
King NIFC	5	Okee West / Air to Ground	167.125 Rx 163.150 /156.7 Tx N	ETR Command Link West Locations	OKR Foster Linked to 2 & 4		
King NIFC	6	Tactical	154.280 Rx & Tx W	Structual & Tactical	Fire Line Tac. Mutual Aid		
King NIFC	7	Tactical	168.600 Rx & Tx N	ETR Group	Fire line Tac		
King NIFC	8	Tactical	168.050 Tx & Rx N	Mop up/ETR#2	Fire Line Tac.		
King NIFC	9	Tactical	159.285 Rx& Tx N	Unassigned	Fire Line Tac S.E. Compact		
ccccKing NIFC	10	Tactical	169.900 Rx & Tx N	Contingency Group	Fire Line Tac.		
King NIFC	11	Tactical	168.200 Rx & Tx N	Mop up/ETR#1	Fire Line Tac.		
King NIFC	12	Air to Ground	170.000 Rx & Tx N	All Groups	Common Air to Ground Sweat Farm & Big Turnaround		
King NIFC	13	Air To Ground	159.390 Rx & Tx W	Ga. I/A			
King NIFC	14	Air Guard	168.625 Rx&Tx Tx 110.9 N	All Groups/Divs.	EMERGENCY CONTACT or redirect with incident aircraft		
5. Prepared By (Communications Unit) Howard Ure							

<b>MEDICAL PLAN</b>	1. Incident Name <b>Sweat Farm Road Fire</b>	2. Date Prepared <b>6/22/07</b>	3. Time Prepared <b>1600</b>	4. Operational Period <b>DAY SHIFT</b>							
<b>5. Incident Medical Aid Station</b>											
<b>Medical Aid Stations</b>		<b>Location</b>		<b>Paramedics Yes No</b>							
Medical Unit / Waycross	478-550-2988	Georgia Forestry Headquarters ICP - Anderson (MEDL)		EMT							
Joe Anderson 18*11849	912-218-9317	Waycross Medical Facility, 478-550-2988		EMT							
<b>After Hours Contact</b>											
Joe Anderson (MEDL)		Comfort Inn Waycross Room 208		912-283-3300 ex. 208 478-550-2988 cell							
<b>6. Transportation</b>											
<b>A. Ambulance Services</b>											
<b>Name</b>		<b>Address</b>		<b>Phone</b>							
<b>Paramedics Yes No</b>											
Clinch County EMS	Homerville, GA Sherriffs Department		912-487-3250								
Ware County EMS	Waycross Georgia (911 to activate)		912-281-9467 Linc 1*96*116								
<b>B. Air Ambulance Service</b>											
Trauma 1 (155.340)	Jacksonville, FL (26 min/air)		1-800-223-4878								
AirMed	Augusta, GA (2 hrs/air)		1-888-792-9245								
Lifeflight (155.340)	Jacksonville, FL (35 min/air)		1-877-870-7779								
<b>7. Hospitals</b>											
<b>Name</b>		<b>Address</b>		<b>Travel Time Air Ground</b>		<b>Phone</b>		<b>Helipad Yes No</b>		<b>Burn Center Yes No</b>	
Satilla Regional		410 Darling Ave Waycross Ga N 31°13.56 W 82°21.058		15 min 30 min		912-283-3030		Yes		No	
Clinch Memorial Hospital		1050 Valdosta HWY Hommerville, GA		45 min		912-487-5211 ext 4502				No	
South Georgia Medical Center		2501 N. Patterson St. Valdosta, GA 31602		60 min		229-333-1000					
Memorial Hospital		Savannah, GA 4700 Waters 3200.7 8107.6		40 min		912-350-8999		Yes		No	
Shands Hospital (level I)		Jacksonville, FL N 30°20' 97 W 82° 13 992		45 min 1.5 hrs		800-223-4878		Yes		Yes	
Shands Burn Center		Gainesville, FL 38.33 N 082 20.73W		45 min		352-265-0300		Yes		Yes	
Doctor's Hospital Joseph Still Burn Center		August, GA (Chief Burn Ctr 3328.943 8205.422		90 min 3 ½ hrs		877-863-9595 706-863-9595		Yes		Yes	
<b>8. Medical Emergency Procedures</b>											
Identify any EMTs and Paramedics in your crews. All medical emergencies will be reported to the Division Supervisor who will assume command, call 911 and notify communications: non-emergency or emergency medical.											
1. Handle all injuries/ illnesses according to the 2006 IRPG page 37.											
2. Division Sup will assume command, call 911 and ensure communication is notified.											
3. Communication will notify ambulance and coordinate with IC, SOF, MEDL											
<b>Helispots – Braganza Sweat Farm ICP: 31 07.23 X 82 15.23</b>											
<b>Helispots – Fargo Base Camp:</b>											
<b>H-114 (4 mi marker Hwy 177 – Stephen C. Foster St. Prk) 30 47 30.02 X 82 22 39.5</b>											
<b>H-113 (Hwy 441 - golf course) 30 41.739 X 82 33.961</b>											
<b>NIGHT TIME EMERGENCIES CONTACT – Joe Anderson at the Comfort Inn, 912-283-3300, room 208.</b>											
Prepared by (Medical Unit Leader) <b>Robert Carswell (MEDL)</b>						10. Reviewed by (Safety Officer) <b>John Barnes</b>					

# DEMOBILIZATION PROCEDURES

## **A. HOW WILL IT HAPPEN?**

1. Your supervisor declares your position excess.
2. The Section Chief agrees and notifies the Demob Unit Leader.
3. The Demob Unit Leader has a 24+ hour window to reassign you to another incident or arrange for transportation to your home unit.

## **B. WHAT CAN YOU DO TO EXPEDITE THE PROCESS?**

1. Turn in all time reports and equipment use records to **Time.**
2. If you have equipment, have an inspection completed by **Ground Support.**
3. Turn in any non-essential items you have checked out to **Supply** or **Communications.**
4. Complete and turn in Unit Logs on a daily basis to **Documentation** and get a Performance Evaluation from your supervisor (you keep the original and a copy goes to the files)
5. If there is any change in your status, notify **Demob** immediately.
6. Check the Demob Board on a regular basis. Be available to move within a 1 to 2 hour notice.

# Human Resource Message



**If you ever get so angry that your internal combustion could make you feel like this, take a few minutes to calm down!  
Try to treat others as you would like to be treated.**

How about a joke for ya?  
How do you stop a grease fire in the kitchen?  
You backburn the dining room!!!

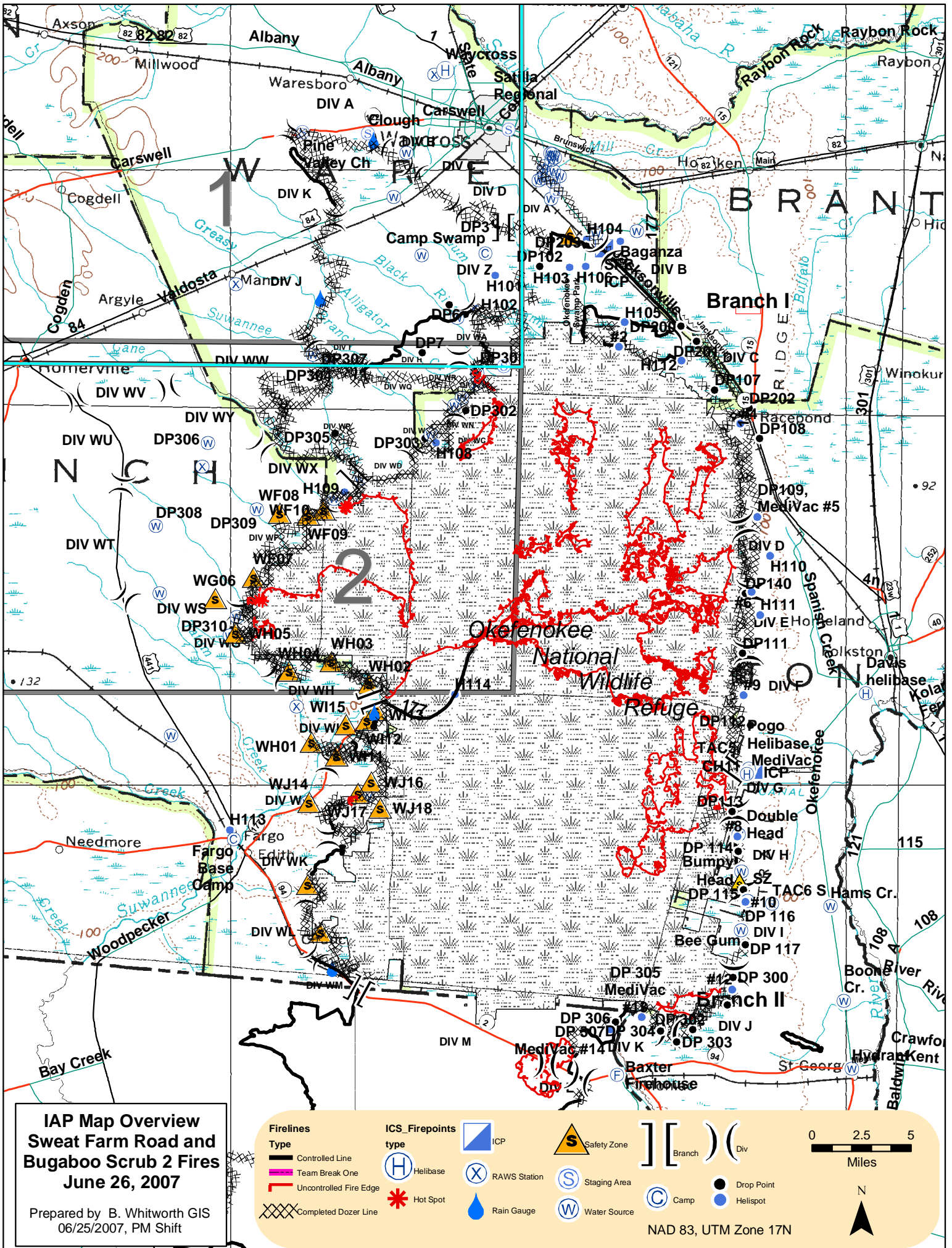
**Incident Human Resource Specialist is:**



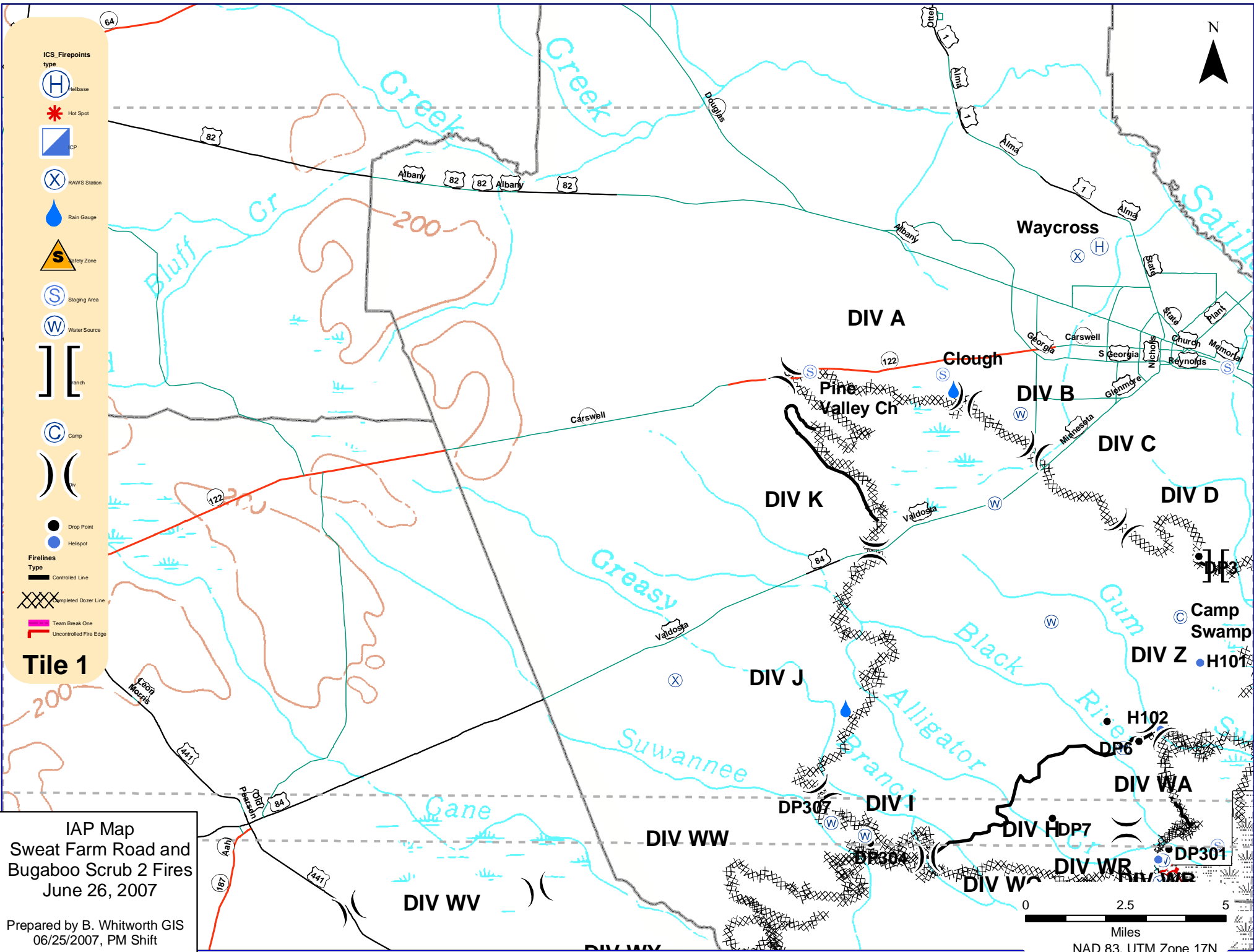
## Sweat Farm Road Phone Roster 6-27-07

NAME	POSITION	PHONE NUMBERS	LINC ID	NAME	POSITION	PHONE NUMBERS	LINC ID
<b>COMMAND &amp; GENERAL STAFF</b>				<b>LOGISTICS</b>			
		<b>912-285-6046</b>	<b>Fax 912-285-6014</b>			<b>912-285-6091</b>	<b>Fax 912-285-6111</b>
Eric Harris	IC	912-592-5758	18*1613	<b>ORDERING</b>		<b>912-285-6068</b>	
John Barnes	SOF	912-218-6552	18*4166	Susan Cornett	LSC	936-546-1952	
<b>Agency Reps</b>				Howard Ure	COML	936-671-2698	
Billy Leitch		912-218-9325	18*12022	Jim Caldwell	FACL	478-550-2985	
George Constantino		912-398-7680		Tom Lambert	FACL	478-550-2997	
Andy Stone		912-637-5261		John Wall	Hotel Manager	936-546-3109	
Joe Yeager		912-816-8732		Mike Summers	GSUL	936-546-1957	
<b>OPERATIONS</b>		<b>912-285-6039</b>		Michelle Sanchez	GSUL	912-281-8276	
Danny Maddox	OSC	912-218-5414	18*11904	Terry Lemmon	SUPL	936-546-1953	
Neal Edmondson	DIVS	912-218-9314	18*11049	Tom French	ORDM	208-634-6947	
Mike Brunson	DIVS		18*12656	Joe Anderson	MEDL	912-218-9317	
Dick Young	FUEL		18*6682	<b>OTHER INCIDENT MANAGEMENT TEAMS</b>			
CSX RAIL ROAD OPERATIONS- Dixon				<b>California FUMT #2 Phone Roster</b>			
		912-270-0699		<b>NAME</b>	<b>PHONE NUMBERS</b>		
				<i>INFORMATION</i>	912-496-4176		
<b>AIR OPERATIONS</b>		<b>912-285-6039</b>		<i>PLANNING</i>	912-496-4173		
Johnny Stephens	ASGS	360-463-0988		<i>OPERATIONS</i>	912-496-4132		
<b>SEE AIR OPS SUMMARY (220)</b>				<i>AIR OPERATIONS</i>	912-496-4415		
<b>PLANNING</b>		<b>912-285-6046</b>		<i>FINANCE</i>	912-496-4102		
Shane Brown	PSC	912-218-7586	18*6871	<i>LOGISTICS</i>	719-334-6525	601-201-1776	
Carol O'Bryan	RESL	936-546-1217		<i>EXPANDED DISPATCH</i>	912-496-3162		
Billy Whitworth	GISS	912-285-6046		<i>COMMUNICATIONS</i>	478-550-3001		
				<b>ETR SPECIALISTS</b>			
				Bert Early		912-218-9512	18*11583
				John Colberg		912-218-9343	18*12314
				Dennis Martin		912-218-7218	18*7042
<b>FINANCE</b>		<b>912-285-6038</b>		Jamie Kent			
	<b>Time</b>	478-550-2995					
Reggie Lanier	FSC	912-285-6038					
James Conner	BUYT	912-285-6112	229-938-2952 cell				
Eillen Crouse	COST	912-285-6038					
Miguel Martinez	COMP/CLMS	912-285-6038	760-420-8910 cell				
Vickie Kitchens	TIME	478-550-2995		<b>MISC.</b>			
Barb McElderrey/Serena Wicka	EQTR	912-285-6038		COMMAND DISPATCH		912-218-9044	18*6870
				MACON DISPATCH		912-218-9232	18*7378







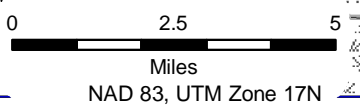


- ICS Firepoints type**
- Helibase
  - Hot Spot
  - ICP
  - RAWS Station
  - Rain Gauge
  - Safety Zone
  - Staging Area
  - Water Source
  - Ranch
  - Camp
  - Div
  - Drop Point
  - Helispot
- Firelines Type**
- Controlled Line
  - Completed Dozer Line
  - Team Break One
  - Uncontrolled Fire Edge

**Tile 1**

IAP Map  
 Sweat Farm Road and  
 Bugaboo Scrub 2 Fires  
 June 26, 2007

Prepared by B. Whitworth GIS  
 06/25/2007, PM Shift





# TAILGATE BRIEFING SHEET 1 OF 1

## ☐ SAFETY MESSAGE

Safety Officer: **John Barnes**

Incident:

Date:

Time:

**Sweat Farm Road**

**June 27, 2007**

**Day**

Major Hazards and Risks:

- **Driving**
- **Communication**
- **Hydration**
- **Equipment**

**Driving** – Commercial traffic is heavy, esp. Log trucks. Please be aware of situation around you when driving. Beware the inattentive driver! Look ahead, behind, and to the side – SITUATIONAL AWARENESS! **Swamp Rd. has no paved shoulders. Things can get pretty tight with a log truck meeting you going 65 MPH!**

**Communication** – Our ETR operations are intermixed with Big Turnaround’s suppression forces. Make contact with these persons. Find out their objectives/locations and provide ours. **Make sure your local radio has Sweat Farm frequencies! Test with another radio – transmit and receive.**

**Hydration** – Temperatures are expected to be high again. Be sure to drink plenty of WATER before, during and after shift.

**Equipment** - Keep your distance from heavy equipment, make sure operator knows your location. Don’t approach moving equipment until you are sure operator is aware of your presence and he has stopped operations. Watch for swinging log ends and domino effect of moving trees, and snags! Also watch for “critters” that may be escaping from disrupted debris piles.

### **Thought for the day.**

We have more or less established a routine with our operations. Same job - different area. This is good in operational efficiency but could be bad in recognizing new hazards.

The hazards you identified in your work area are no longer hazards when you leave the area. Remember - there are new hazards in a new work area. They could be feet from where you just moved from. Please search out these new hazards and mitigate the risk of harm (hard hats, leggings, safety belts), eliminate them, or leave the area. This is a constant process – every time you move.

Persons assigned to ICP have a good handle on hazards in the general area. If you enter your vehicle and hit the highway there are constantly new hazards – sometimes every second. A vehicle that is coming toward you (either behind, ahead or from the side) is a hazard until it passes. Within an instant there is another one – a new hazard.

Please be vigilant in looking for danger. Routine can cause complacency which may cause inattentiveness in recognizing new dangers. Just because you survived the last hazard does mean that the next one can’t hurt you. **Don’t let up!**

**Hope for the best---plan for the worst!**