



Honey Prairie Complex Incident Action Plan

Operational Period

Sunday, June 19, 2011

0900 – 2100

2000 - 0800

Honey Prairie Fire Codes

GA-OKR-000001

Cost Codes

FWS – 9141-F25M-2J

NPS – 5023 F25M E11

USFS – PRF25M_1502BLM – F25M

FLA – DOF – Use FWS Code

GA – OKRA – Use FWS Code

Initial Attack – F4PM



**Southern Area
Type I Incident Management Team
Unified Incident Commanders**

Mike Quesinberry

Mark Crow

Buck Kline

<http://inciweb.org>

INCIDENT OBJECTIVES	1. INCIDENT NAME Honey Prairie Complex	2. DATE PREPARED 6/18/11	3. TIME PREPARED 1800
4. OPERATIONAL PERIOD (DATE/TIME) Sunday, June 19, 2011 0900 - 2100 2000 - 0800			
5. GENERAL CONTROL OBJECTIVES FOR THE INCIDENT (INCLUDE ALTERNATIVES) 1. Provide for safety of incident personnel and public in all incident operations. 2. Maintain a positive working relationship with all State and Federal partners and adjacent landowners and cooperators. Inform, involve and communicate incident planning and operations with all partners. 3. Contain all fires that are within the Okefenokee National Wildlife Refuge, inside the Refuge and/or inside the swamp edge break if possible. 4. Use full suppression strategies and tactics to minimize damage to private timberlands and improvements and to prevent fires outside the Refuge from entering the Refuge. 5. Assist in management and suppression of additional fires (new starts or breakouts) in the vicinity as approved by Agency Administrators and Unified Incident Commanders. 6. Manage the fires cost-effectively consistent with the values at risk. 7. Implement structure protection as necessary for at-risk facilities and communities.			
6. WEATHER FORECAST FOR OPERATIONAL PERIOD See attached forecast for area specific weather information.			
7. GENERAL SAFETY MESSAGE Drive defensively and use spotter when backing. Ensure LCES is in place and known by all personnel. Drink plenty of water and take frequent rest breaks. Ensure proper use of PPE during all operations.			
8. Attachments <input checked="" type="checkbox"/> if attached <input checked="" type="checkbox"/> Organization List (ICS 203) <input checked="" type="checkbox"/> Incident Map <input checked="" type="checkbox"/> Safety Message <input checked="" type="checkbox"/> Assignment List (ICS 204) <input type="checkbox"/> Traffic Plan <input type="checkbox"/> Demobilization Procedures <input checked="" type="checkbox"/> Communications Plan (ICS 205) <input checked="" type="checkbox"/> Human Resources <input checked="" type="checkbox"/> Unit Log <input checked="" type="checkbox"/> Medical Plan (ICS 206) <input checked="" type="checkbox"/> Phone List			
9. PREPARED BY (PLANNING SECTION CHIEF) Janan Hay Sharp		10. APPROVED BY (INCIDENT COMMANDER) /s/Mike Quesinberry / s/Mark Crow / s/Buck Kline	

ORGANIZATION ASSIGNMENT LIST		9. Operations Section		
1. Incident Name Honey Prairie Fire GA-OKR-000001		Chief	Lea Wofford/ Danny Bryant	
		Planning	Tom Lowry	
		Night Ops	Lea Wofford	
2. Date 6/19/2011	3. Time 1000hrs	a. WEST BRANCH - Divisions/Groups		
4. Operational Period 6/19/2011 0900-2100 / 2000-0800		OPBD	J. Schwartz/ G.Sanders	
		Division	Z, A, B, C	M. Heard/ R. Woods (T)
5. Incident Commander and Staff		Division	D, E, F,G	J. Collett/ J. Rourks/ P. Varnedoe (T)
Incident Commander	Mike Quesinberry/ Mark Crow / Buck Kline	Division	Night Shift West	E. Wooten
Deputy IC	Mike Wilkins	b. NORTH BRANCH - Divisions/Groups		
Safety Officer	Brian Beisel/ Pat Sheridan/ Dave Shore/	OPBD	Shawn Pearson	
Information Officer	CJ Norvell/ Joe Mazzeo	Division	N, O	J. Brabender
Liason Officer	Woody Lipps	Division	T	C. Clayton
6 a. Agency Administrators		c. EAST BRANCH - Divisions/Groups		
FWS	Curt McCasland	OPBD	J. Teutrine	
FWS	Mindy Gautreaux	Division	H, I, J, K	H. Kibbe
		Division	L	J. Rengo
b. Agency Representatives		Division	M	M. Decoteau
GFC	Frank Sorrels	Group	East Branch Cont. Grp	J. Brand
FLDOF	James Karels	Group	Structure Protection	R. Roberts
USFS AREP	Ivan Greene	Group	Firing	R. MacDonald/ D. Snow
FWS AREP	Mike Housh	Division	Night Shift East	E. Contreras
GEMA AREP	Alan Robinson/ Diane Adams	d. Air Operations Branch - Honey Prairie		
GFC AREP	Buck Kline	Air Operations Branch Director	Terry Harris	
7. Planning Section		Air Support Group Supervisor	Dale Douglas/ Mike Mowery	
Chief	Janan Hay Sharp	Pogo Helibase Manager	Robin Vinovich	
Resources Unit	Sue Wilder/ Pete Fischer/ Dennis Sharp/ Richard Aubuchon	d. Air Operations Branch-Waycross		
Status Check-in	Josh Burnette / Patti Davis	Air Tactical Group Supervisor	Josh Mathisen	
Situation Unit	Jason Hatersley	d. Air Operations Branch - Fargo		
IMET	Heath Hockenberry / Jelesma	Fargo Helibase Manager		
Fire Behavior Analyst	Mark Clere/ Phil Perkins	10. Finance Section		
Demobilization Unit	Henry Hickerson	Chief	Diane Taylor/ Theresa Ott (T)	
GIS	Jason Braunstein/ Scott Hamlet/ Ann Braun (T)	Personnel Time	Glenda Lindsay	
CTSP	Deb Croston/ Dan Leduc	Procurement	Sheryl Helmick	
TNSP	Nicole May	Equipment Time	Debbie Phillips/ Dorothy Curtis	
8. Logistics Section		Cost	Susan Deimel	
Chief	Bill Lisowsky	Buying Team	Denise Storms	
Supply Unit	Cindy Schiffer			
Ground Support Unit	Joe Emberson			
Security Manager	Woody Lipps/ Derick Breedlove (T)			
Communications Unit	Claude Gilleland/ George Rosenthal (T)			
Medical Unit	Shanna Ellis			
Ordering Manager	Sandy Rhodes			
Facilities	Dave Collins	Prepared by: Sue Wilder (RESL)		



To: All Incident Personnel, Honey Prairie Complex

As Southern Area National Type I Incident Commander, I am committed to a policy of “zero tolerance” of inappropriate behavior during incident operations. Any form of harassment, discriminatory practices, or disrespectful behavior will not be tolerated. Known or reported acts will be dealt with appropriately.

I am particularly concerned about the perception that alcohol has a place in any of the Incident Facilities. It is not appropriate to indulge in alcoholic beverages during any fire assignment.

The National Team from the Southern Region has a policy of “NO ALCOHOL” from the time of dispatch until the time of physical release from the Incident. Members of the Team voluntarily comply with this policy; all incident personnel will be expected to do so also.

We endorse, support, and expect an attitude of mutual respect for all incident personnel and the public we serve. We also, endorse the attitude and work ethic that places “Safety First, every time on every Incident.” We expect nothing less.

/s/ Mike Quesinberry
Incident Commander
Southern Area Type I Incident Management Team



Fire Weather Forecast



FORECAST NO: 43 (day)

NAME OF FIRE: Honey Prairie Complex

PREDICTION FOR: Day Shift

UNIT: Okefenokee National Wildlife Refuge

SHIFT DATE: Sunday 6/19/11

SIGNED: Heath Hockenberry/Jon Jelsema (T)
Incident Meteorologists

TIME AND DATE

FORECAST ISSUED: 6/18/11 at 1700

WEATHER DISCUSSION: Hot and dry conditions are expected through the middle of the week. Higher Relative Humidities and better chances for rain are expected by late week.

WEATHER FORECAST FOR SUNDAY: Mostly sunny. Areas of smoke through mid morning on the eastern side of the fire.

MAXIMUM TEMPERATURES: 95-99F
MINIMUM HUMIDITY: 30-35%
20 FT WINDS: AM: W 7-10 G15 mph
PM: SW 9-13 G19 mph.

STABILITY/INVERSION: Morning inversion to 400 feet through 8 am, then rising to 7000 feet by 1400.
TRANSPORT WINDS: W 17 mph.
DISPERSION INDEX: 70, Good.
Chance of Precipitation: 10%.
LAL 1

WEATHER FORECAST FOR SUNDAY NIGHT: Mostly Clear. Areas of smoke are expected to limit visibility through mid morning Monday on the eastern portion of the fire.

MINIMUM TEMPERATURES: 70-74F.
MAXIMUM HUMIDITY: 88-93%
20 FT WINDS: SW wjnds 9-13 G19 mph early, becoming W 5-8 mph after midnight.
STABILITY/INVERSION: Inversion lowering to 400 feet by 2300.
DISPERSION INDEX: 5
Chance of Precipitation: 10%
LAL 1

OUTLOOK FOR MONDAY: Mostly sunny. High temperatures 97-101 F. Min RH 27-32%. W winds 7-10 G15 mph. *Dispersion 55, average.*

EXTENDED FORECAST:

	TUESDAY	WEDNESDAY	THURSDAY
MINIMUM TEMP	72°	72°	72°
MAXIMUM TEMP	100°	99°	96°
MINIMUM RH	27-32%	29-34%	35-40%
20 FT. WINDS	W 5-8 mph	SW 4-7 mph	SW 4-7 mph
SKY	Mostly Sunny	Mostly Sunny	Partly Cloudy
WEATHER	NONE	NONE	Scattered Thunderstorms
CHANCE PRECIP	10%	10%	30%

FIRE BEHAVIOR FORECAST

Fire: Honey Prairie Complex	Unit: GA-OKR-000001	Prediction for <u>Day & Night</u> Shift
Forecast # 42 Issued: 06/18/2011 1630 hrs	Signed: Mark Clere/Phil Perkins	Shift Date: Sunday 06/19/2011

GENERAL FIRE BEHAVIOR

Fuels around the Okefenokee Wildlife Refuge are predominately Fuel Model 7 (Southern Rough). Large to moderate acreage tracts of commercial timberland are mixed in throughout the entire perimeter surrounding the refuge. Fast moving wildfires with extremely high flame lengths and rapid rates of spread occur within the swamp. As fire transitions to the upland, torching and crown fires are common. Long Range spotting is possible.

Indicators of Increased Fire Activity

- Relative humidity dropping below 45%
- Winds above 10 mph
- Heavy fuel loadings
- Fine dead fuel moisture 8% or less
- Dispersion above 70

SPECIFIC FIRE BEHAVIOR Fuels within the perimeter of the "Swamp" consist of a variety of species. Lyonia (Fetter Bush) and Gallberry dominate shrub fuels within the interior and have the ability to cause intense heat build up along a flaming front. Firebrands can and will come out of these swamps if fire reaches the canopy. Strands of pine occur near the upland extending into the interior of the swamp. These strands increase the possibility of torching and crown fires as it moves into the upland fuels.

All Branches:

Fuel Type	Rates of Spread	Flame Length	Spotting Distance	Firebrand Ignition
Winds at 6 – 10, G 18 mph @ 20'				
Shrub Fuels	116-24, 37 ch/hr.	10 - 32 feet	2/10 – 6/10 mile	79%
Southern Rough	26-42, 70 ch/hr	12 - 35 feet	2/10 – 6/10 mile	79%
Timber Litter-Reburn	1-5 ch/hr.	2-3 feet	1/10 mile	79%
Small Pine Plantation w/grasses	25-40, 67 ch/hr	7- 18 feet	2/10 – /10 mile	79%

One hour fine dead fuel moisture will begin to drop to 4%-5%, keeping it at critical levels. 1000 hour fuels are around 12 to 16%. Extensive mop up is required.

Should a fire run(s) occur, expect winds in the area to potentially increase above predicted levels. This would increase Flame Lengths and ROS above predictions. Heavier firebrands can also be lifted higher and further increasing likelihood of spots to max predictions.

In areas where fuels have been herbicided, expect quick ignitions and extreme heat, very fast.

Each day the water table is dropping creating more duff layer and organic fuels available for burning and/or reburning, latest moisture reading as low as 16%..

West	A	Watch for spots into unburned in park and for smoldering/ creeping fire to threaten the boardwalk. Deep water penetration is needed here.	North	N- O	Fuels drying out more within the swamp from rain – may start to see more activity today, no major runs, but due expect some islands of hot areas. On the hill fuels are dry enough for runs to occur.
	D- E	Continued heat near perimeter and if firing ops were not completed then spotting is expected during operations		East	M L
	B	SW winds will continue to possible spot and run along east side of finger		J- H	Continued potential for spots, will burn hot and fast if started. 1.5 mph spread includes spotting
	Z	Expect it to continue to back towards / along perimeter, flanking interior			

Night Ops – still some high winds through much of shift, Expect high ROS similar to daytime, decreasing to around 15 ch/hr through 2300. Dispersion Index of 5 – fairly decent for nighttime.

Expect fire to continue to spread until RH's greater than 80%, intense runs will cause RH levels near the fire edge to drop below 60% over 100' away. Lighting line will be hampered above 70% RH

Air Operations: Inversion lifting by 0900 today. Mixing heights will be 7000 feet.

SAFETY:

WINDS – we will have more definite winds from the west through Saturday. Holding line along East Branch continues to be a concern. **THUNDERSTORMS** these will/can cause severe winds that can create extreme fire behavior, when winds over 30 ROS can be 2 mph and greater.

FUELS: Reburn is an issue. Watch for pockets of cured shrubs or blankets of red needles beginning to cover the forest floor. 1000 and 10,000 hour fuels as well as deep duff pockets are providing the heat source. Weather is staying hot and dry! Stay focused, and ensure LCES is in place before starting operations. Watch for standing burning snags that can fall without warning. *Energy Release Component (ERC) continues to be above the 97th percentile for this area.*

HEALTH AND SAFETY MESSAGE

SAFETY starts with *YOU*

We are ALL accountable for SAFE behaviors

INCIDENT: Honey Prairie Fire

DATE: Sunday, June 19, 2011

TIME: Day and Night Shifts

Major Hazards and Risks: **Driving**
 Heavy Equipment
 Fatigue/Dehydration
 Medical plan

Driving – Remains our #1 risk. Even though we have had some rain in the area, roads are dry and dusty. Drive slow and when dusty conditions reduce visibility reduce speed for the conditions. When backing, get someone to assist. It's always good to have an extra set of eyes.

Heavy Equipment-There is a lot of equipment being used on this incident. Be sure to allow for sufficient space when working in the same area as heavy equipment. Be sure when approaching equipment that the operator is aware you are there. During night operations wear clothing with reflective strips and have your headlight on so you can be seen. A flashing safety light should be used to improve visibility during dark hours.

Fatigue/Dehydration – It is hot and dry so stay hydrated. Water is the best choice. Supply has ice chests and plenty of bottled water and sports drinks. There is no reason to become dehydrated. Pace yourself and take frequent breaks out of the direct sun. Be aware of the signs of dehydration. Disorientation, nausea, and slurred speech are indicators of dehydration. If you observe this behavior in anyone move the affected individual into the shade and get them to begin drinking water immediately.

Medical Plan – Medical emergencies can happen at any time. Line supervisors must take some time each day to determine where the nearest medical help is and understand medical protocols. Locate, GPS and if necessary, prepare helispots for potential emergencies. Advise all line personnel of potential helispot locations during tailgate briefings.

Remember the “ABCs” of Safety

Always Be Careful

Blue Team Safety Officers Brian Beisel & Pat Sheridan welcome information on safety topics. Please contact either of us at any time.

LCES must be in place prior throughout the entire operational period. Remember to reevaluate if you move locations during the day.

DIVISION ASSIGNMENT LIST			1. Branch West		2. Division Z, A, B, C (Page 1 of 2)		
3. Incident Name: Honey Prairie Complex			4. Operational Period Date: 6/19/2011 Time: Day: 0900-2100				
5. Operations Personnel							
Operations	Lea Wofford/Danny Bryant		OPBD		Greg Sanders		
Planning Ops	Tom Lowry		Division Supervisor		Michael Heard/Jeff Dion/Rob Woods (t)		
Safety Officer	Brian Beisel						
6. Resources Assigned this Period							
Strike Team/Task Force/ Resource Designator	Leader / Name / Designator		Last Shift Date	Num. Per.	Drop Off PT./Time		Pick Up PT./Time
TPL3 Francis Marion 62 (E-170)	Chandler Taylor (E-170.5)		6/26	2	Fargo 0900		Fargo 2100
Water Tender Type 2 (E-93)	William Davis		6/22	1	Fargo 0900		Fargo 2100
ENG6 (E-640)					Fargo 0900		Fargo 2100
ENG6 (E-628) Red Rock#3	Peter Stephenson		PVT	3	Fargo 0900		Fargo 2100
ENG6 (E-5011) Smokey Mt 209			PVT	2	Fargo 0900		Fargo 2100
ENG6 (E-5012) Smokey Mt 301			PVT	2	Fargo 0900		Fargo 2100
ENG6 FS-NEB (E-634)	Cory Richardson		7/2	3	Fargo 0900		Fargo 2100
Excavator (E-505)	Lee Douglas or Johnny Smith		PVT	1	Fargo 0900		Fargo 2100
Dump Truck (E-529)	Craig Smith		PVT	1	Fargo 0900		Fargo 2100
Dump Truck (E-506)	Josh Smith		PVT	1	Fargo 0900		Fargo 2100
Grader (E-380)	S. Met		PVT	1	Fargo 0900		Fargo 2100
Grader (E-597)	Jason Merrit		PVT	1	Fargo 0900		Fargo 2100
TPL2 (E-652)					Fargo 0900		Fargo 2100
TPL2 (E-653)					Fargo 0900		Fargo 2100
SOF2	Steve Holman			1	Fargo 0900		Fargo 2100
7. Control Operations							
<ul style="list-style-type: none"> Conduct burnout operations in Divs A around Stephen Foster State Park as necessary. Contain all fires outside refuge boundary. Patrol and mop up within 100' of fire perimeter line. Monitor fire progression and contain south of Strange Island Road, east of swamp break edge and/or Council Road and north of Cypress Creek. Monitor fire impacts to Stephen Foster State Park. E-628 Red Rock#3, E-5011, E-5012 assist with burn out and holding with Superior Pine on DIV Z. 							
8. Special Instructions							
<ul style="list-style-type: none"> Safely push down with equipment all snags whether on fire or not that are a threat to success or tactical operations. Snags to push must be identified by Operations Overhead. Ensure that tractors are cleaned and free of debris daily. Examine work area for fire weakened snags. Ensure LCES are in place before operations begin and stay hydrated. Additional resources will be available from GFC, Florida DOF, FWS, and local cooperators. Drive defensively and with lights on at all times. See Medical plan for EMT support. 							
9. Division/Group Communication Summary							
Function	Frequency	System	Channel	Function	Frequency	System	Channel
Command	See ICS205	KING NIFC		Logistics	See ICS205	KING NIFC	
N. Okee Repeater							
Tactical Div/Group	See ICS205	KING NIFC		Air to Ground	See ICS205	KING NIFC	
Prepared by (Resource Unit Ldr.) P. Fischer		Approved by (Planning Sect. Ch.)			Date June 18, 2011		Time 1930

DIVISION ASSIGNMENT LIST			1. Branch West		2. Division Z, A, B, C (Page 2 of 2)		
3. Incident Name: Honey Prairie Complex			4. Operational Period Date: 6/19/2011 Time: Day: 0900-2100				
5. Operations Personnel							
Operations	Lea Wofford/Danny Bryant		OPBD		Greg Sanders		
Planning Ops	Tom Lowry		Division Supervisor		Michael Heard/Jeff Dion/Rob Woods (t)		
Safety Officer	Brian Beisel						
6. Resources Assigned this Period							
Strike Team/Task Force/ Resource Designator	Leader / Name / Designator		Last Shift Date	Num. Per.	Drop Off PT./Time		Pick Up PT./Time
TPL3 (E-649) Bear Country	P. Barrett		PVT	2	Fargo 0900		Fargo 2100
STEN	Adam Rogers (O-5022)		6/21	1	Fargo 0900		Fargo 2100
STEN	Kirk Jess			1	Fargo 0900		Fargo 2100
ENG6 Mark Twain (E-5017)	Crow		6/28	3	Fargo 0900		Fargo 2100
ENG6 Protemps (E-520)	David Jones		PVT 6/20	2	Fargo 0900		Fargo 2100
ENG6 (E-519)	Parker		PVT 6/22	2	Fargo 0900		Fargo 2100
ENG6 (E-584) CNNF 161	R. Newman		6/26	3	Fargo 0900		Fargo 2100
ENG6 (E-5018) MES#3	Gene Harris		6/27	2	Fargo 0900		Fargo 2100
TLD	Steve Nemore (O-485)		6/18	1	Fargo 0900		Fargo 2100
Tigercat 822-Feller Buncher (E-524)	Henry Welsh		6/22	1	Fargo 0900		Fargo 2100
Feller-Buncher (E-523)				1	Fargo 0900		Fargo 2100
F-450/Support Truck (E-527)	Jeremy Bell		PVT	1	Fargo 0900		Fargo 2100
DZ TYPE 2 (E-652) Dugger Doz			PVT	1	Fargo 0900		Fargo 2100
DZ TYPE 2 (E-653) Dugger Doz			PVT	1	Fargo 0900		Fargo 2100
7. Control Operations							
<ul style="list-style-type: none"> Conduct burnout operations in Divs A around Stephen Foster State Park as necessary. Contain all fires outside refuge boundary. Patrol and mop up within 100' of fire perimeter line. Monitor fire progression and contain south of Strange Island Road, east of swamp break edge and/or Council Road and north of Cypress Creek. Monitor fire impacts to Stephen Foster State Park. E-628 Red Rock#3, E-5011, E-5012 assist with burn out and holding with Superior Pine on DIV Z. 							
8. Special Instructions							
<ul style="list-style-type: none"> Safely push down with equipment all snags whether on fire or not that are a threat to success or tactical operations. Snags to push must be identified by Operations Overhead. Ensure that tractors are cleaned and free of debris daily. Examine work area for fire weakened snags. Ensure LCES are in place before operations begin and stay hydrated. Additional resources will be available from GFC, Florida DOF, FWS, and local cooperators. Drive defensively and with lights on at all times. See Medical plan for EMT support. 							
9. Division/Group Communication Summary							
Function	Frequency	System	Channel	Function	Frequency	System	Channel
Command	See ICS205	KING NIFC		Logistics	See ICS205	KING NIFC	
N. Okee Repeater							
Tactical Div/Group	See ICS205	KING NIFC		Air to Ground	See ICS205	KING NIFC	
Prepared by (Resource Unit Ldr.) P. Fischer		Approved by (Planning Sect. Ch.)			Date June 18, 2011		Time 1930

DIVISION ASSIGNMENT LIST			1. Branch West		2. Division D, E, F, G Page 1 of 2		
3. Incident Name Honey Prairie Complex			4. Operational Period Date: 6/19/2011 Time: 0900-2100				
5. Operations Personnel							
Operations	Lea Wofford/Danny Bryant		Branch Director	Greg Sanders			
Planning Ops	Tom Lowry		Division Supervisor	Jay Collett/James Rourks/Jeff Muenster/Paul Varnadoe (t)			
Safety Officer	Brian Beisel						
6. Resources Assigned this Period							
Strike Team / Task Force / Resource Designator		Leader / Name / Designator		Last Shift Date	Num. Per.	Drop Off PT./Time	Pick Up PT./Time
TFD (IA)		Joe Burgett (O-491)		7/6	1	Fargo 0900	Fargo 2100
DOZB		Micheal Tummins			1	Fargo 0900	Fargo 2100
ENG6 (E-641)		Mike Mattsen			2	Fargo 0900	Fargo 2100
ENG6 (E-681)		Chip Harris			2	Fargo 0900	Fargo 2100
ENG6 (E-639)		Keith Peck			2	Fargo 0900	Fargo 2100
ENG6 (E-637)		Durango		PVT	2	Fargo 0900	Fargo 2100
CT2IA (C-10) NEP #1		Justin Deforest		7/1	20	Fargo 0900	Fargo 2100
DOZ TYPE 2 (E-498) (IA)		Marston Lee Holbrooke		6/27	1	Fargo 0900	Fargo 2100
DOZ TYPE 3 (E-642)		Reggie Bray (E-642.1)			2	Fargo 0900	Fargo 2100
TPL3 (E-499)		Roy Rowan		6/18	1	Fargo 0900	Fargo 2100
Clinch County Grader (E-228)		Seven Hendricks		CO.	1	Fargo 0900	Fargo 2100
Grader (E-530)		Lucas Corbit		6/25	1	Fargo 0900	Fargo 2100
ENG6 (E-702) Delaware 2		Guy Copper			3	Fargo 0900	Fargo 2100
ENG6 (E-703) IL-SHF		Jason Rose			3	Fargo 0900	Fargo 2100
SOF2		Steve Ripley/Allen Farnworth/Dave Shore			3	Fargo 0900	Fargo 2100
7. Control Operations							
<ul style="list-style-type: none"> Conduct burn out operations in Divs E starting at Drop Point 25 and proceeding west along Swamp Edge Break to Drop Point 34 as conditions allow. Contain all fires outside refuge boundary. Monitor and patrol south end of West Branch. Mop up all hot spots within 100' of the fire perimeter. Mop up and patrol Moccasin Fire. Burn as necessary to keep fire within swamp edge break. 							
8. Special Instructions							
<ul style="list-style-type: none"> Safely push down with equipment all snags, whether on fire or not, that are a threat to success or tactical operations. Snags to push must be identified by Operations Overhead. Ensure LCEs are in place before operations begin and stay hydrated. See medical plan for EMT support. Drive defensively and with lights on at all times. Ensure that tractors are cleaned and free of debris daily. Examine work area for fire weakened snags. 							
9. Division/Group Communication Summary							
Function	Frequency	System	Channel	Function	Frequency	System	Channel
Command N. Okee Repeater	See ICS205	KING NIFC		Logistics		KING NIFC	
Tactical Div/Group	See ICS205	KING NIFC		Air to Ground	See ICS205	KING NIFC	
Prepared by (Resource Unit Ldr.) P. Fischer		Approved by (Planning Sect. Ch.)			Date June 18, 2011		Time 1930

DIVISION ASSIGNMENT LIST				1. Branch West		2. Division D, E, F, G Page 2 of 2	
3. Incident Name Honey Prairie Complex				4. Operational Period Date: 6/19/2011 Time: 0900-2100			
5. Operations Personnel							
Operations	Lea Wofford/Danny Bryant			Branch Director	Greg Sanders		
Planning Ops	Tom Lowry			Division Supervisor	Jay Collett/James Rourks/Jeff Muenster/Paul Varnadoe (t)		
Safety Officer	Brian Beisel						
6. Resources Assigned this Period							
Strike Team / Task Force / Resource Designator		Leader / Name / Designator		Last Shift Date	Num. Per.	Drop Off PT./Time	Pick Up PT./Time
TFLD		Paul Churchill			1	Fargo 0900	Fargo 2100
TFLD (t)		Robert Vick			1	Fargo 0900	Fargo 2100
ENG6 (E-403)					2		
ENG6 (E-404) MN-SUF		Travis Durkin			3	Fargo 0900	Fargo 2100
ENG6 (E-391)Gunflint		John Focht			3	Fargo 0900	Fargo 2100
7. Control Operations							
<ul style="list-style-type: none"> Conduct burn out operations in Divs E starting at Drop Point 25 and proceeding west along Swamp Edge Break to Drop Point 34 as conditions allow. Contain all fires outside refuge boundary. Monitor and patrol south end of West Branch. Mop up all hot spots within 100' of the fire perimeter. Mop up and patrol Moccasin Fire. Burn as necessary to keep fire within swamp edge break. 							
8. Special Instructions							
<ul style="list-style-type: none"> Safely push down with equipment all snags, whether on fire or not, that are a threat to success or tactical operations. Snags to push must be identified by Operations Overhead. Ensure LCES are in place before operations begin and stay hydrated. See medical plan for EMT support. Drive defensively and with lights on at all times. Ensure that tractors are cleaned and free of debris daily. Examine work area for fire weakened snags. 							
9. Division/Group Communication Summary							
Function	Frequency	System	Channel	Function	Frequency	System	Channel
Command	See ICS 205	KING NIFC		Logistics		KING NIFC	
N. Okee Repeater							
Tactical Div/Group	See ICS 205	KING NIFC		Air to Ground	See ICS 205	KING NIFC	
Prepared by (Resource Unit Ldr.) P. Fischer		Approved by (Planning Sect. Ch.)			Date June 18, 2011		Time 1930

DIVISION ASSIGNMENT LIST			1. Branch North		2. Division N		
3. Incident Name Honey Prairie Complex			4. Operational Period Date: 6/19/2011 Time: 0900-2100				
5. Operations Personnel							
Operations	Lea Wofford/Danny Bryant		Branch Director		Jon Teutrine		
Planning Ops	Tom Lowry		Division Supervisor		Joe Brabender		
Safety Officer	Brian Beisel						
6. Resources Assigned this Period							
Strike Team/Task Force/ Resource Designator		Leader / Name / Designator	Last Shift Date	Num. Per.	Drop Off PT./Time		Pick Up PT./Time
TFLD		Nathaniel "Seth" Pierce (O-425)	6/18	1	Refuge 0900		Refuge 2100
ENG6 (E-589)		Bryan Kanouse	PVT	2	Refuge 0900		Refuge 2100
ENG6 (E-590)		Shawn Kanouse	PVT	2	Refuge 0900		Refuge 2100
ENG6 (E-593)		John Wise Carver	PVT	2	Refuge 0900		Refuge 2100
ENG6 (E-585) MN-MNA		Jon Finn	PVT	2	Refuge 0900		Refuge 2100
ENG6 (E-576)		Greg Rock	PVT	2	Refuge 0900		Refuge 2100
ENG6 (E-630)		A. Johnson		2	Refuge 0900		Refuge 2100
WT(E-677) T&Y Construction			PVT	1	Refuge 0900		Refuge 2100
SOF2		S. Counts		1	Refuge 0900		Refuge 2100
7. Control Operations							
<ul style="list-style-type: none"> Recon potential control lines and examine area snag removal Continue to establish contingency firelines to contain fire south of Double Branch Rd., east of Skull Head Rd., and north of Refuge Boundary. Burn out as necessary to keep fire within refuge perimeter. 							
8. Special Instructions							
<ul style="list-style-type: none"> Safely push down with equipment all snags whether on fire or not that are a threat to success or tactical operations. Ensure LCES are in place before operations begin. Stay hydrated. See medical plan for EMT support. Drive defensively and with lights on at all times. Boggy terrain: Be careful and aware when working around this type of area. 							
9. Division/Group Communication Summary							
Function	Frequency	System	Channel	Function	Frequency	System	Channel
Command	See ICS205	KING NIFC		Logistics		KING NIFC	
Tactical Div/Group	See ICS205	KING NIFC		Air to Ground	See ICS205	KING NIFC	
Prepared by (Resource Unit Ldr.) P. Fischer		Approved by (Planning Sect. Ch.)			Date June 18, 2011		Time 1800

DIVISION ASSIGNMENT LIST				1. Branch North	2. Division O			
3. Incident Name Honey Prairie Complex				4. Operational Period Date: 6/19/2011 Time: 0900-2100				
5. Operations Personnel								
Operations	Lea Wofford/Danny Bryant			Branch Director	Jon Teutrine			
Planning Ops	Tom Lowry			Division Supervisor	Jeremy Bennett			
Safety Officer	Brian Beisel							
6. Resources Assigned this Period								
Strike Team/Task Force/ Resource Designator	Leader / Name / Designator	Last Shift Date	Num. Per.	Drop Off PT./Time	Pick Up PT./Time			
TFLD	Pennigton	6/21	1	Refuge 0900	Refuge 2100			
DOZ –TYPE 2 (E-514)		6/22	1	Refuge 0900	Refuge 2100			
GA TPL2 (E5081)	Hollingsworth		1	Refuge 0900	Refuge 2100			
GA TPL2 (E5082)	Burke		1	Refuge 0900	Refuge 2100			
GA TPL2 (E5114)	Brown		1	Refuge 0900	Refuge 2100			
DOZ –TYPE 2 (E-513)	Aaron Tipton	6/21	1	Refuge 0900	Refuge 2100			
DOZ –TYPE 2 (E-552)	Dan Cole	6/22	1	Refuge 0900	Refuge 2100			
TFLD	Deana Harms		1	Refuge 0900	Refuge 2100			
Feller Buncher (E-526)	Amos Geiger	6/26	1	Refuge 0900	Refuge 2100			
TKUT SERVICE TRUCK (E-527)			1	Refuge 0900	Refuge 2100			
PIERCE-TIMBER-FELLER-BUNCHER (E-537)			1	Refuge 0900	Refuge 2100			
TK711 Feller Buncher (E-525)	James Marshall	PVT	1	Refuge 0900	Refuge 2100			
ENG6 (E-706) PAALF 21	Gery Kolesar	7/1	3	Refuge 0900	Refuge 2100			
SOF2	S. Counts		1	Refuge 0900	Refuge 2100			
7. Control Operations <ul style="list-style-type: none"> Recon potential control lines and examine area snag removal Continue to establish contingency firelines to contain fire south of Double Branch Rd., east of Skull Head Rd., and north of Refuge Boundary. Burn out as necessary to keep fire within refuge perimeter. 								
8. Special Instructions <ul style="list-style-type: none"> Safely push down with equipment all snags whether on fire or not that are a threat to success or tactical operations. Ensure LCES are in place before operations begin. Stay hydrated. See medical plan for EMT support. Drive defensively and with lights on at all times. Boggy terrain: Be careful and aware when working around this type of area. 								
9. Division/Group Communication Summary								
Function	Frequency	System	Channel	Function	Frequency	System	Channel	
Command	See ICS 205	KING NIFC		Logistics		KING NIFC		
Tactical Div/Group	See ICS 205	KING NIFC		Air to Ground	See ICS 205	KING NIFC		
Prepared by (Resource Unit Ldr.) P. Fischer		Approved by (Planning Sect. Ch.)			Date June 18, 2011		Time 1800	

DIVISION ASSIGNMENT LIST			1. Branch North		2. Division T			
3. Incident Name Honey Prairie Complex			4. Operational Period Date: 6/19/2011 Time: 0900-2100					
5. Operations Personnel								
Operations	Lea Wofford/Danny Bryant		Branch Director		Jon Teutrine			
Planning Ops	Tom Lowry		Group Supervisor		Lance Roberts			
Safety Officer	Brian Beisel							
6. Resources Assigned this Period								
Strike Team/Task Force/ Resource Designator	Leader/ Name / Designator		Last Shift Date	Num. Per.	Drop Off PT./Time		Pick Up PT./Time	
NOT STAFFED								
7. Control Operations <ul style="list-style-type: none"> Recon potential control lines and examine area for snag removal Improve swamp break boundaries for fire breaks 								
8. Special Instructions <ul style="list-style-type: none"> Safely push down with equipment all snags whether on fire or not that are a threat to success or tactical operations. Ensure LCES are in place before operations begin. Stay hydrated. See medical plan for EMT support. Drive defensively and with lights on at all times. Boggy terrain: Be careful and aware when working around this type of area. 								
9. Division/Group Communication Summary								
Function	Frequency	System	Channel		Function	Frequency	System	Channel
Command Ware Co. Clinch & North Okee	See ICS205	KING NIFC			Logistics		KING NIFC	
Tactical Div/Group	See ICS205	KING NIFC			Air to Ground	See ICS205	KING NIFC	
Prepared by (Resource Unit Ldr.) P. Fischer			Approved by (Planning Sect. Ch.)			Date June 18, 2011		Time 1800

DIVISION ASSIGNMENT LIST			1. Branch East		2. Division J, K		
3. Incident Name Honey Prairie Complex			4. Operational Period Date: 6/19/2011 Time: 0900-2100				
5. Operations Personnel							
Operations	Lea Wofford/Danny Bryant		Branch Director		Shawn Pearson		
Planning Ops	Tom Lowry		Division Supervisor		Harold Kibbe (O-5027)		
Safety Officer	Pat Sheridan						
6. Resources Assigned this Period							
Strike Team/Task Force/ Resource Designator	Leader/ Name / Designator		Last Shift Date	Num. Per.	Drop Off PT./Time	Pick Up PT./Time	
STEN	Tim Diaz (O-493)		6/20	1	Refuge 0900	Refuge 2100	
Eng6 PVT Attack-1 (E-135)	Ed Kleinan		PVT	2	Refuge 0900	Refuge 2100	
Eng6 PVT Nat'l Fire (E-136)	Mark Spears		PVT	2	Refuge 0900	Refuge 2100	
Eng6 PVT Wildlands 8 (E-137)	Joe Saugter		PVT/6/30	2	Refuge 0900	Refuge 2100	
Eng6 PVT Nat'l Fire #4 (E-179)	David Carter		PVT/6/18	2	Refuge 0900	Refuge 2100	
ENG6 OK-CFI (E-441)	Davidson		PVT	3	Refuge 0900	Refuge 2100	
ENG6 CUGA EE61 (E-413)	Bradley Cop		6/27	3	Refuge 0900	Refuge 2100	
ENG6 MOMTF 9523 (E-438)	Timothy Perren (E438.1)		6/30	3	Refuge 0900	Refuge 2100	
WT (E-560)	Woody Brangon		6/25	1	Refuge 0900	Refuge 2100	
Water Tender (E-232)	Timberline Water Tenders		6/26	1	Refuge 0900	Refuge 2100	
WT (E-559)	Ira Mayberry		PVT	1	Refuge 0900	Refuge 2100	
CT2 (C-9)	Ryder Bennett		7/1	20	Refuge 0900	Refuge 2100	
Contract KG Blade (E-5059)	Rowland Enterprises		PVT	1	Refuge 0900	Refuge 2100	
Contract KG Blade (E-5058)	Rowland Enterprises		PVT	1	Refuge 0900	Refuge 2100	
TPL2 (with plow)	Black Water NWA			1	Refuge 0900	Refuge 2100	
SOF2	John Pollard			1	Refuge 0900	Refuge 2100	
7. Control Operations							
<ul style="list-style-type: none"> Contain all fires outside refuge boundary. Provide initial attack for GFC and fires outside the refuge boundary. Patrol all spots outside refuge boundary. Patrol and mop up all accessible fire line. Mop up all hot spots within 100' of the fire perimeter. Continue to provide protection to the Chesser Homestead by maintaining an adequate water supply via portable pump at location. 							
8. Special Instructions							
<ul style="list-style-type: none"> Safely push down with equipment all snags whether on fire or not that are a threat to success or tactical operations. Ensure LCES are in place before operations begin. Stay hydrated. Drive defensively and with lights on at all times. See medical plan for EMT support Examine work area for fire weakened snags. 							
9. Division/Group Communication Summary							
	Function	Frequency	Channel	Function	Frequency	System	Channel
Command N. Okee Repeater	See ICS205	KING NIFC		Logistics		KING NIFC	
Tactical Div/Group	See ICS205	KING NIFC		Air to Ground	See ICS205	KING NIFC	
Prepared by (Resource Unit Ldr.) P. Fischer		Approved by (Planning Sect. Ch.)			Date June 18, 2011		Time 1800

DIVISION ASSIGNMENT LIST			1. Branch East		2. Division L		
3. Incident Name Honey Prairie Complex			4. Operational Period Date: 6/19/2011 Time: 0900-2100				
5. Operations Personnel							
Operations	Lea Wofford/Danny Bryant		Branch Director		Shawn Pearson		
Planning Ops	Tom Lowry		Division Supervisor		Jeff Rengo		
Safety Officer	Pat Sheridan						
6. Resources Assigned this Period							
Strike Team/Task Force/ Resource Designator	Leader / Name / Designator		Last Shift Date	Num. Per.	Drop Off PT./Time		Pick Up PT./Time
Water Tender (E-232)			PVT	1	Refuge 0900		Refuge 2100
ENG6 (E-708)	G. Painter			3	Refuge 0900		Refuge 2100
ENG6 (E-709) Iowa 952	J. Gooder			3	Refuge 0900		Refuge 2100
ENG6 (E-710) Hightower	Vankuiken			3	Refuge 0900		Refuge 2100
SOF2	Steve Counts						
7. Control Operations							
<ul style="list-style-type: none"> Mop up all spots outside refuge boundary. Mop up all spots within 100 feet of perimeter. Set up drop points, escape routes and safety zones. 							
8. Special Instructions							
<ul style="list-style-type: none"> Safely push down with equipment all snags whether on fire or not that are a threat to success or tactical operations. Ensure LCES are in place before operations begin. Stay hydrated. Drive defensively and with lights on at all times. See medical plan for EMT support Examine work area for fire weakened snags. 							
9. Division/Group Communication Summary							
	Function	Frequency	Channel	Function	Frequency	System	Channel
Command N. Okee Repeater	See ICS205	KING NIFC		Logistics		KING NIFC	
Tactical Div/Group	See ICS205	KING NIFC		Air to Ground	See ICS205	KING NIFC	
Prepared by (Resource Unit Ldr.) P. Fischer		Approved by (Planning Sect. Ch.)			Date June 18, 2011		Time 1800

DIVISION ASSIGNMENT LIST			1. Branch East		2. Division M		
3. Incident Name Honey Prairie Complex			4. Operational Period Date: 6/19/2011 Time: 0900-2100				
5. Operations Personnel							
Operations	Lea Wofford/Danny Bryant		Branch Director		Shawn Pearson		
Planning Ops	Tom Lowry		Division Supervisor		Mitch Decoteau		
Safety Officer	Pat Sheridan						
6. Resources Assigned this Period							
SIEN	Pedro Villa (O-5024)	6/28	1	Refuge 0900	Refuge 2100		
SIEN	Curtis Weaver (t)	6/26	1	Refuge 0900	Refuge 2100		
ENG6 (E-385) Red Lake	Roland Lussier	6/26	2	Refuge 0900	Refuge 2100		
ENG6 (E-5014) Tx Fire 157		6/26	2	Refuge 0900	Refuge 2100		
ENG6 MN #739 (E-5016)	Steven Grove (E-5016.1)	6/28	3	Refuge 0900	Refuge 2100		
Water Tender (E-231)		PVT	1	Refuge 0900	Refuge 2100		
Type II IA CREW (Pat Rick) (1/2 to "Firing")	Derek Osborne	7/3	10	Refuge 0900	Refuge 2100		
ENG6 T6 -161 (E-584)	Russ Newman	6/27	2	Refuge 0900	Refuge 2100		
TRFD	Zack Pennington	6/24	1	Refuge 0900	Refuge 2100		
ENG6 (E-407) White Earth #2	Jesse Londo	6/26	2	Refuge 0900	Refuge 2100		
ENG6 (E-518) Caddo #1	Parker	6/22	3	Refuge 0900	Refuge 2100		
				Refuge 0900	Refuge 2100		
SOF2	Seve Counts		1	Refuge 0900	Refuge 2100		
7. Control Operations							
<ul style="list-style-type: none"> Contain all fires outside refuge boundary. Scout line in preparation of burnout and continue burnout to keep ahead of main fire. Mop up all spots outside refuge boundary. Mop up all spots within 100 feet of perimeter Set up drop points, escape routes and safety zones. 							
8. Special Instructions							
<ul style="list-style-type: none"> Safely push down with equipment all snags whether on fire or not that are a threat to success or tactical operations. Ensure LCES are in place before operations begin. Stay hydrated. Drive defensively and with lights on at all times. See medical plan for EMT support Examine work area for fire weakened snags. 							
9. Division/Group Communication Summary							
	Function	Frequency	Channel	Function	Frequency	System	Channel
Command	See ICS205	KING NIFC		Logistics		KING NIFC	
N. Okee Repeater							
Tactical Div/Group	See ICS205	KING NIFC		Air to Ground	See ICS205	KING NIFC	
Prepared by (Resource Unit Ldr.) P. Fischer		Approved by (Planning Sect. Ch.)			Date June 18, 2011		Time 1800

DIVISION ASSIGNMENT LIST			1. Branch East		2. Group East Branch Contingency Group		
3. Incident Name Honey Prairie Complex			4. Operational Period Date: 6/19/2011 Time: 0900-2100				
5. Operations Personnel							
Operations		Lea Wofford/Danny Bryant		Branch Director		Shawn Pearson	
Planning Ops		Tom Lowry		Group Supervisor		Jeremy Brand / James Brook, FLDF (IA)	
Safety Officer		**Refer to special instructions					
6. Resources Assigned this Period							
Strike Team/Task Force/ Resource Designator		Leader/ Name / Designator		Last Shift Date	Num. Per.	Drop Off PT./Time	Pick Up PT./Time
STEN		Linden McNeilus (O-557)		6/28	1	Refuge 0900	Refuge 2100
TFLD		Chad Cook (O-402)		6/18	1	Refuge 0900	Refuge 2100
STEN		Gubbels (O-556)		6/28	1	Refuge 0900	Refuge 2100
TPL2 GAOKR 53 (E-23)		Randy McClain		FWS	1	Refuge 0900	Refuge 2100
TPL2 GAOKR 56 (E-22)		Cory Bryant		FWS	1	Refuge 0900	Refuge 2100
TPL2 SC SAR 922 (E-7)		David Pasord		6/28	1	Refuge 0900	Refuge 2100
TPL2 GAOKR 54 (E-21)		Fed Privett (O-15)		FWS	1	Refuge 0900	Refuge 2100
Local Road Crew					7	Refuge 0900	Refuge 2100
ENG6 ME-MHR (E-405) (IA)		Brandon Harriman (E-405.1)		6/25	3	Refuge 0900	Refuge 2100
ENG5 (E-503) (IA)		Dean Vanderbleek		6/18	2	Refuge 0900	Refuge 2100
ENG5 (E-502) (IA)		Greg Curry		6/18	2	Refuge 0900	Refuge 2100
ENG6 K & L Farms (E-5013)		Rick Gordon		6/30	3	Refuge 0900	Refuge 2100
ENG6 Attack #1 (E-5002)		Reper Knight		6/30	2	Refuge 0900	Refuge 2100
Water Tender 2 (E-512) (IA)		Jerry Honeycutt		PVT	1	Refuge 0900	Refuge 2100
Water Tender 2 (E-533)		Sonny			1	Refuge 0900	Refuge 2100
ENG6 (E-519)		Chris Smith			2	Refuge 0900	Refuge 2100
7. Control Operations							
<ul style="list-style-type: none"> • Provide initial attack for GFC and fires outside the refuge boundary. • Provide initial attack for Okefenokee Wildlife Refuge. • Support incident resources as requested. 							
8. Special Instructions							
<ul style="list-style-type: none"> • *Notify the identified Safety Officer responsible for such specific division when relocating accordingly. • Safely push down with equipment all snags whether on fire or not that are a threat to success or tactical operations. • Ensure LCES are in place before operations begin. Stay hydrated. • Drive defensively and with lights on at all times. • See medical plan for EMT support • Examine work area for fire weakened snags. 							
9. Division/Group Communication Summary							
Function	Frequency	System	Channel	Function	Frequency	System	Channel
Command	See ICS205	KING NIFC		Logistics		KING NIFC	
N. Okee Repeater							
Tactical Div/Group	See ICS205	KING NIFC		Air to Ground	See ICS205	KING NIFC	
Prepared by (Resource Unit Ldr.) P. Fischer		Approved by (Planning Sect. Ch.)			Date June 18, 2011		Time 1800

DIVISION ASSIGNMENT LIST				1. Branch EAST		2. Division Honey Prairie Structure Protection Group		
3. Incident Name Honey Prairie Complex				4. Operational Period Date: 6/19/2011 Time: 0900-2100				
5. Operations Personnel								
Operations	Lea Wofford/Danny Bryant			Branch Director		Jon Teutrine / Shawn Pearson		
Planning Ops	Tom Lowry			Group Supervisor		Randy Jones/Bob Dixon		
Safety Officer	**Refer to special instructions							
6. Resources Assigned this Period								
Strike Team/Task Force/ Resource Designator	Leader/ Name / Designator			Last Shift Date	Num. Per.	Drop Off PT./Time	Pick Up PT./Time	
NORTH BRANCH								
STEN	Jim Edgar (O-5021)			6/28	1	Refuge 0900	Refuge 2100	
ENG6 Wildlands #4 (E-5004)	David Hardy			PVT	2	Refuge 0900	Refuge 2100	
ENG6 Wildlands #3 (E-5006)	Keith Hawk			PVT	2	Refuge 0900	Refuge 2100	
ENG6 Wildlands #1(E-5009)	Bill Peterson			PVT	2	Refuge 0900	Refuge 2100	
ENG6 VA 1 (E-5015)	Richard Miles			PVT	3	Refuge 0900	Refuge 2100	
Ware County Fire Department	Jessie Gordon				1	Refuge 0900	Refuge 2100	
EASTBRANCH								
GFC Pump Unit 57609 (E-51) Pull vehicle (E-52)						Refuge 0900	Refuge 2100	
Pump (E-292)	Stanley Crews			PVT	1	Refuge 0900	Refuge 2100	
Pump (E-293)	Danny Kelley (O-517)			6/22	1	Refuge 0900	Refuge 2100	
Water Tender (E-92)	Justin			PVT	1	Refuge 0900	Refuge 2100	
7. Control Operations <ul style="list-style-type: none"> • Provide structure protection to Swamp Park. • Provide structure protection on all branches if necessary. 								
8. Special Instructions <ul style="list-style-type: none"> • *Notify the identified Safety Officer responsible for such specific division when relocating accordingly. • Safely push down with equipment all snags whether on fire or not that are a threat to success or tactical operations. • See Medical Plan for EMT support. • Ensure LCES are in place before operations begin. Stay hydrated. • Drive defensively and with lights on at all times. • Boggy terrain: Be careful and aware when working around this type of area. 								
9. Division/Group Communication Summary								
Function	Frequency	System	Channel		Function	Frequency	System	Channel
Command Ware Co.	See ICS205	KING NIFC			Logistics		KING NIFC	
Clinch & North Okee								
Tactical Div/Group	See ICS205	KING NIFC			Air to Ground	See ICS205	KING NIFC	
Prepared by (Resource Unit Ldr.) P. Fischer			Approved by (Planning Sect. Ch.)			Date June 18, 2011		Time 1800

DIVISION ASSIGNMENT LIST			1. Branch East		2. Group Firing Group		
3. Incident Name Honey Prairie Complex			4. Operational Period Date: 6/19/2011 Time: 0900-2100				
5. Operations Personnel							
Operations	Lea Wofford/Danny Bryant		Branch Director		Shawn Pearson		
Planning Ops	Tom Lowry		Group Supervisor		Dwight Snow/Russell MacDonald		
Field Ops			Air Attack Supervisor				
Safety Officer	**Refer to special instructions						
6. Resources Assigned this Period							
Strike Team/Task Force/ Resource Designator	Leader/ Name / Designator		Last Shift Date	Num. Per.	Drop Off PT./Time		Pick Up PT./Time
ENG6 NCNCF #91 (E-13)	Lonny Staleup		6/18	2	Refuge 0900		Refuge 2100
ENG6 GAOKR #42 (E-3)	Nick Hawkins (O-289)		FWS	2	Refuge 0900		Refuge 2100
ENG6 WV-MOF (E-522)	Kevin Taylor		6/21	4	Refuge 0900		Refuge 2100
GAOKR Marsh Master 50				1	Refuge 0900		Refuge 2100
Type II IA CREW (Pat Rick) (1/2)	Derek Osborne		7/3	10	Refuge 0900		Refuge 2100
ENG6 AR-BUP 301 (E-439)	Jim Hanes		6/26	3			
7. Control Operations							
<ul style="list-style-type: none"> Assist with firing, holding and mop up operations in East Branch. 							
8. Special Instructions							
<ul style="list-style-type: none"> *Notify the identified Safety Officer responsible for such specific division when relocating accordingly. Safely push down with equipment all snags whether on fire or not that are a threat to success or tactical operations. Ensure LCES are in place before operations begin. Stay hydrated. Drive defensively and with lights on at all times. See medical plan for EMT support Examine work area for fire weakened snags. 							
9. Division/Group Communication Summary							
Function	Frequency	KING NIFC	Channel	Function	Frequency	System	Channel
Command	See ICS205			Logistics		KING NIFC	
N. Okee Repeater							
Tactical Div/Group	See ICS205			Air to Ground	See ICS205	KING NIFC	
Prepared by (Resource Unit Ldr.) P. Fischer					Date June 18, 2011		Time 1800

INCIDENT RADIO COMMUNICATIONS PLAN ICS-205			Incident Name Honey Prairie			GROUP 22		Date/Time Prepared 06/17/2011-18:00		Operational Period Date/Time 6/19/2011 0900-2100/2100-0900	
Ch #	Function	Channel Name	Assignment	RX Freq	NW	RX Tone/NAC	TX Freq	N W	TX Tone/NAC	Mode A,D or M	Remarks
1	Command	West Okee Repeater	Sec West Branch CMD	167.1250	N	156.7	163.1500	N	156.7	A	Stephen Foster State Park
2	Command	South Okee Repeater	Sec East/West Branch CMD	164.7750	N	123.0	163.1500	N	123.0	A	Eddy Florida
3	Command	East Okee Repeater	PRIMARY East Branch CMD	164.6250	N	103.5	163.1500	N	103.5	A	Refuge Headquarters
4	Tactical	NIFC C2	PRIMARY West Branch CMD	168.100	N	CSQ	170.4500	N	123.0	A	NOT linked to OKEE System
5	Command	North Okee Repeater	PRIMARY North Branch CMD	164.5750	N	206.5	163.1500	N	206.5	A	Waycross
6	Air-Ground	Air to Ground	PRIMARY	166.9375	N	CSQ	166.9375	N	CSQ	A	
7	Tactical	MOB-MOB	GFC Contingency	159.3900	W	CSQ	159.3900	W	156.7	A	
8	Tactical	V-Fire 21W WHITE	Structure Protection Group	154.2800	W	CSQ	154.2800	W	156.7	A	
9	Tactical	USFS 9	DIV H, I, J, K, N, O, T	168.7750	N	CSQ	168.7750	N	CSQ	A	
10	Tactical	S.E. Compact	DIV M	159.2850	W	CSQ	159.2850	W	CSQ	A	
11	Tactical	USFS 11	DIV A,B,C,Z	168.2000	N	CSQ	168.2000	N	CSQ	A	
12	Tactical	Refuge Tac 1	DIV L	168.3500	N	CSQ	168.3500	N	CSQ	A	
13	Tactical	FL 190	DIV D, E, F, G	151.2725	N	CSQ	151.2725	N	CSQ	A	
14	Command	DIV J RPT	East Branch	170.4125	N	CSQ	165.9625	N	123.0	A	NOT linked to OKEE System
15	Air-Ground	Air to Ground	SECONDARY	166.9000	N	CSQ	166.9000	N	CSQ	A	
16	EMERGENCY	AIR Guard	Air OPS.	168.6250	N	CSQ	168.6250	N	110.9	A	
Prepared by (Communications Unit) Claude Gilleland – (678) 316-4615 Incident Dispatcher: 912-536-8047					Cloning at ICP communications, briefings, and East Message Center.						

The convention calls for frequency lists to show four digits after the decimal place, followed by either an “N” or a “W”, depending on whether the frequency is narrow or wide band. **Mode** refers to either “A” or “D” indicating analog or digital (e.g. Project 25) or “M” indicating mixed mode. All channels are shown as if programmed in a control station, base stations, mobile or portable radio.

MEDICAL PLAN	1. Incident Name Honey Prairie Complex	2. Date Prepared 6/18/2011	3. Time Prepared 1300	4. Operational Period 6/19/2011 DAY & NIGHT SHIFT			
5. Incident Medical Aid Station							
Medical Aid Stations	Location			Paramedics Yes No			
Medical Unit	Honey Prairie Complex ICP Lodge 5 912-637-5236 / 912-678-2053 / 318-229-6515			X			
WEST BRANCH	Day shift: Jesse Wilkes 870-710-4570 Darian Stevens 540-878-6553 Night shift: Brad Burns (Contingency) 404-354-4870			X			
EAST BRANCH AID STATION	Day shift: Brent Weldon 334-462-1062 John Bajda 218-340-0169 Night shift: Dean Carpenter 912-531-0956 Nic Marsh 208-871-5975 East Branch Medical Unit Office - 912-387-6787			X			
Ambulance Services							
Name	Address	Phone		Paramedics Yes No			
Clinch County EMS (WEST SIDE)	West Branch Council Road & HWY 94	Channels 4, 11, 13 478-308-4775 EMS Incident Cell		Yes			
Ware County EMS (NORTHSIDE)	Waycross, Georgia (911 to activate)	912-281-9467		Yes			
Charlton County EMS (EAST SIDE)	Folkston, GA (911 to activate)	912-496-7321		Yes			
Air Ambulance Service							
Trauma 1	Jacksonville, FL (26 min/air)	1-800-223-4878		Yes			
AirMed	Augusta, GA (2 hrs/air)	1-888-792-9245		Yes			
Lifeflight (155.340)	Jacksonville, FL (35 min/air)	1-877-870-7779		Yes			
Air Evac	Waycross, GA	1-800-247-3822		Yes			
7. Hospitals							
Name	Address	Travel Time Air Ground		Phone	Helipad Yes No	Burn Center Yes No	
Satilla Regional	410 Darling Ave Waycross Ga N 31°13.56 W 82°21.058	15 min	45 min	912-283-3030	Yes	No	
Clinch Memorial Hospital (WEST SIDE)	1050 Valdosta HWY Homerville, GA		25 min	912-487-5211 ext 4502		No	
Charlton Memorial Hospital (EAST SIDE)	1203 3 rd St. Folkston, GA		50 min	912-496-2531		No	
Memorial Hospital	Savannah, GA 4700 Waters 3200.7 8107.6	40 min		912-350-8999	Yes	No	
Shands Hospital (level I)	Jacksonville, FL N 30°20' 97 W 82° 13 992	45 min	1.5 hrs	800-223-4878	Yes	Yes	
Shands Burn Center	Gainesville, FL 38.33 N 082.20.73W	45 min		352-265-0300	Yes	Yes	
8. Medical Emergency Procedures							
Identify any EMTs and Paramedics in your crews. All medical emergencies will be reported to the Division Supervisor or designee who will assume command and notify Line Medics. <ol style="list-style-type: none"> 1. Provide medical care & stabilize patient. 2. Notify Communications via radio over Command Channel 3. Communications will clear radio traffic for medical emergency 4. Com will notify MEDL via landline at 912-637-5236 5. Com will notify ambulance and coordinate with IC, SOF, OPS 					Helispots - Pocket Helispot - 30 47 30.02 X 82 22 39.5 (WEST SIDE) (4 mi marker Hwy 177 - Stephen C. Foster St. Prk) Fargo helibase - 30 41.42 X 82 33.97 (WEST SIDE) (Hwy 441 - golf course) POGO helibase - 30.44.03 X 82.07.41 (EAST SIDE) (OKEE refuge helibase) *ALTERNATE AT SCENE ESTABLISHED BY LOCAL FIRE RESCUE OR ON SCENE PERSONNEL.		
Prepared by (Medical Unit Leader) Shanna Ellis, MEDL and Rich D'Orazio MEDL(T), as prepared.					10. Reviewed by (Safety Officer) Brian Beisel SOF1		

Training Specialist

Hi! If you are a Trainee or working on a Position Task Book, please check-in with me at the Suwanee River Eco-Lodge ICP. I'd like to meet you and record your progress while on the Honey Prairie Fire. I will also alternately attend morning briefings on the East and West sides of the fire- to assist you if you cannot drive to the ICP.

I look forward to working with you!

**My name is Nicole May, TNSP, Blue Team. Phone number @
ICP: 1-912-637-5252**

FINANCE – EQUIPMENT/TIME

Thank you to everyone utilizing the crew swap sheet: Keep up the great work!!

- **E #s are “CRITICAL” for payment “PLEASE” put them on your shift tickets.**
- **Any hours over 16 must have justification in the remarks section of your shift ticket.**

Need Your HELP:

Tony Keene: Please use your E# on your shift tickets

Mike Crane: Correct E# is 504

James S Dean: Please contact Equipment time ASAP need your E#

Buddy Wood: please use E#500 on all shift tickets

CADD0: Your E# is 518

We need to chat:

C-7	Pat Rick	Need receipts for lodging
E-92	Orange Springs	Missing shift ticket 6/15
E-229	Charlton Co	Need shift tickets on grader
E-247	R Daniels	Missing shift tkt for 6/14-6/15
E-382	GFC Leuliette	Need vehicle clarification – Need to see you.
E-403	MD engine	Missing Shift Tickets 6/14-6/15
E-407	White Earth #2	CTR Clarification please
E-439	Clayton Heffley	Need casual hire information
E-441	Chloeta	Need to clarify fuel tkt discrepancy
E-452	Pelham	Need over 16 justification for 6/16
E-461	Jason Butts	Shift ticket missing for 6/11
E-640	Barton	Clarification of Dates on travel tickets
E-664/665	Tim Prep	Need Travel Shift Tickets
E-5084.1	Mitchell63	Missing Shift Ticket 6/13

ENGINE CREW SWAP SHEET

Date _____

To: Time Finance Facilities Plans Ops. Check in

From: OPS

Subject: Engine Crew Swap

Person Leaving _____

E # _____ or O# _____

Date Leaving _____

Phone # _____

Last Shift Worked _____

Hotel _____

Date Checked Out of Hotel _____

Transportation to Airport _____ No _____ Yes _____ Date _____
Time _____

Person Arriving _____

E # _____ or O# _____

Date Arriving _____

First Shift Worked _____

Phone# _____

Emergency Contact
Name _____

Emergency Contact Phone# _____

Transportation from Airport _____ No _____ Yes _____ Date _____
_____ Time

Lodging Needed _____ Yes _____ No

Self Sufficient _____ Yes _____ No

9. HELICOPTERS (Use Additional Sheets As Necessary)													
FAA N#	TY	MAKE/MODEL	BASE	AVAIL	START	REMARKS	FAA N#	TY	MAKE/MODEL	BASE	AVAIL	START	REMARKS
N36BH	1	SIKORSKY S-70	Fargo	0730	0830	Josh Ingle 406-439-0347							
N61SC	1	SIKORSKY S-61	Fargo	0730	0830	Jody Pettit 208-290-4670							
N161KA	1	KAMAN, K1200	Waycross	0730	0830	Marshal Wallace 509-668-1593							
06901	2	UH1H	Fargo	0730	0830	Matt Ingram 541-510-4062							
206G	2	UHIH	Fargo	0730	0830	Mike Yearwood 530-310-3511							
N662H	3	Bell 206-L4	Fargo	0730	0830	Jeff Polack							
6JC	3	Bell B-3	Pogo	0730	0830	E T Collinsworth 912-496-4415							

AIR OPERATIONS SUMMARY					
10. TASK/MISSION/ASSIGNMENT (Type/Function includes Air Tactical, Retardant, Recon, Personnel Transport, Water Dropping, S&R, etc.)					
			MISSION START	FLY FROM	FLY TO

DEMOBLIZATION REQUESTS

Need Date of Birth:

O-480 Keith Jefferson

O-5022 Adam Rogers

O-297 Even Collinsworth

O-497 Matthew Sands

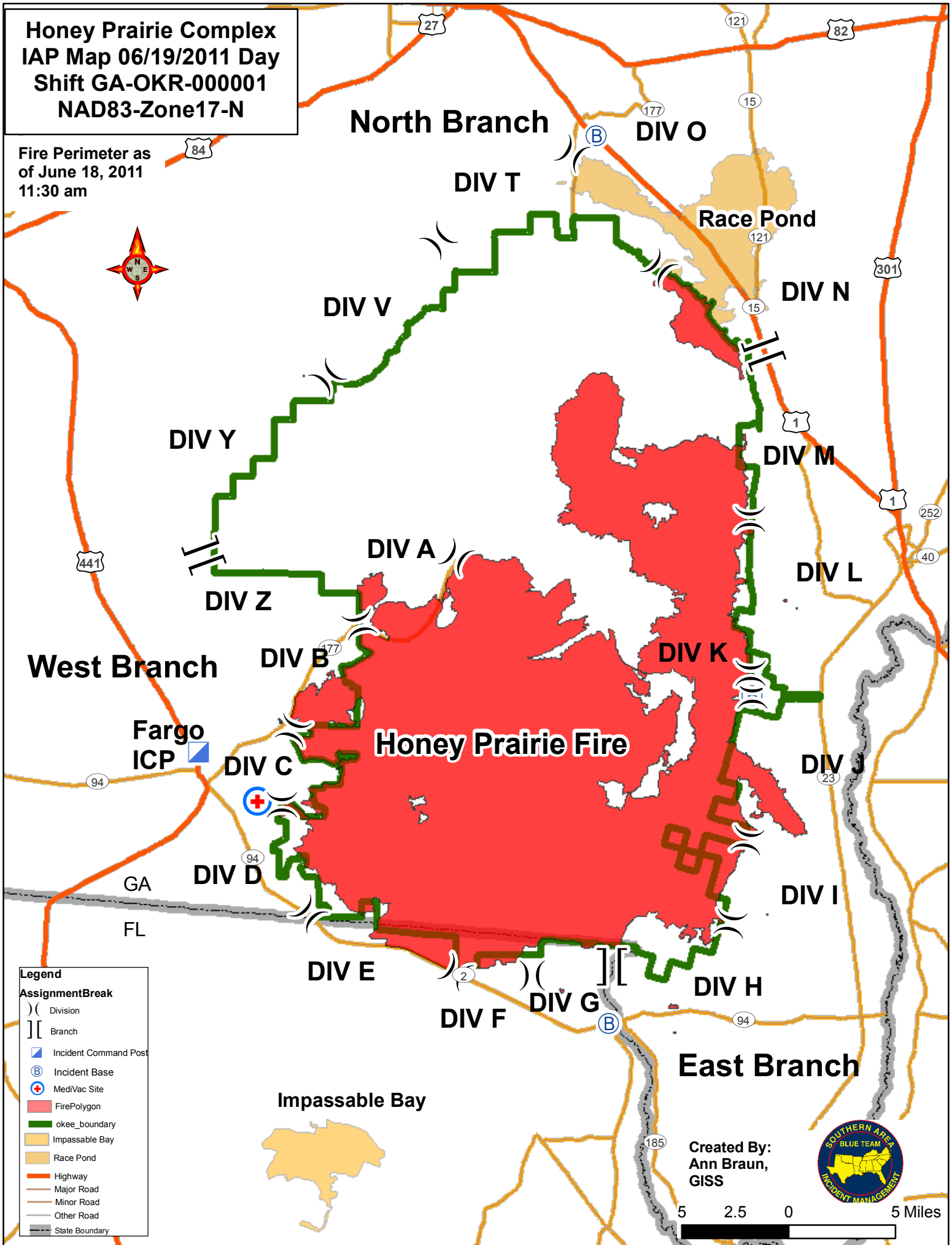
Call Henry @ 912-637-5241

Projected Demobilization

RequestNumber	ResourceName	Kind	UnitID	TravelMethod	Jetport	Demob Date
O-493	DIAZ, TIMOTHY	STEN	CASRF	A/R	MFR	06/20/2011
E-502.1	CATLETT, PAUL	ENGB	FLFNF	POV		06/20/2011
O-490	LOUKS, LAURA	HECM	MIHMF	A/R	GRR	06/20/2011
O-5026	CONTRERAS, ELEUTERIO	DIVS	INHOF	A/R	SPS	06/20/2011
E-503.1	VANDERBLEEK, RAYMOND "DEAN"	ENGB	FLFNF	POV		06/20/2011
O-417.38	D'ORAZIO, RICHARD	MEDL	FLFLS	AIR	RSW	06/20/2011
E-529	SMITH, CRAIG	THSP	GAOKRC	POV		06/20/2011
O-487	JAEGER, KEN	HECM	NHWMF	A/R	PWM	06/20/2011
O-417.45	BROWN, BYRON	PROC	DCWOF	AIR	DCA	06/20/2011
O-295.23	JONES, RANDY	STPS	FLFIC	AOV		06/20/2011
E-503.2	PLASTER, JACK	ENOP	FLFNF	POV		06/20/2011
E-502.2	WILLOUGHBY, JEREMY	ENOP	FLFNF	POV		06/20/2011
O-494	CANTERBURY, ARTHUR M	TFLD	MDBWR	A/R	BWI	06/20/2011
O-480	JEFFERSON, KEITH	PIOF	ARBUP	AIR	SGF	06/21/2011
O-476	BURNS, DAVID	EMTB	ARARS	AIR	XNA	06/21/2011
O-486	PETTIT, VIRGINIA (JODY)	HMGB	IDIPF	A/R	GEG	06/21/2011
E-525	MARSHALL, JAMES	THSP	GAOKRC	POV		06/21/2011
O-297	COLLINSWORTH, EVEN	HMGB	NMGNF	AIR	TUS	06/21/2011
O-497	SANDS, MATTHEW	DIVS	MIHMFC	AIR	GRR	06/21/2011
O-401	JOHNSTON, PETER	EMTP	COCOLX	A/R	COS	06/21/2011
E-527	BELL, JEREMY	THSP	GAOKRC	POV		06/21/2011
O-426	CHURCHILL, PAUL	TFLD	SCFMF	AOV		06/21/2011
O-477	CARPENTER, DEAN	EMTP	ARARS	AIR	XNA	06/21/2011
O-417.25	CLERE, MARK	FBAN	FLFNF	POV		06/21/2011
O-417.22	AUBUCHON, RICHARD	RESL	GAR08	POV		06/21/2011
O-5022	ROGERS, ADAM	STEN	KSHOA	A/R	MCI	06/21/2011
O-503	DECOTEAU, MITCHEL	DIVS	ARBUP	A/R	SGF	06/21/2011
O-501	HINDMAN, JOSHUA	SEC1	SCSCC	AOV		06/21/2011

**Honey Prairie Complex
IAP Map 06/19/2011 Day
Shift GA-OKR-000001
NAD83-Zone17-N**

Fire Perimeter as
of June 18, 2011
11:30 am



Legend

AssignmentBreak

-) (Division
-] [Branch
- ▣ Incident Command Post
- Ⓟ Incident Base
- ⊕ MediVac Site
- FirePolygon
- ▬ okee_boundary
- Impassable Bay
- Race Pond
- ▬ Highway
- ▬ Major Road
- ▬ Minor Road
- ▬ Other Road
- ▬ State Boundary

Created By:
Ann Braun,
GISS

