

Honey Prairie Complex

Incident Action Plan

Operational Period
Day Shift (0800-2100)
Swing Shift (1200-2400)

Monday July 4, 2011

Honey Prairie Fire Codes

GA-OKR-000001

Cost Codes

FWS – 9141-F25M-2J

NPS – 5023 F25M E11

USFS – PRF25M_1502 BLM – F25M

FLA – DOF – Use FWS Code

GA – OKRA – Use FWS Code

Initial Attack – F4PM

INCIDENT OBJECTIVES	1. INCIDENT NAME Honey Prairie Complex	2. DATE PREPARED 7/3/11	3. TIME PREPARED 1800
4. OPERATIONAL PERIOD (DATE/TIME) Monday July 4, 2011 Day (0800 – 2100) and Swing (1200 – 2400)			
5. GENERAL CONTROL OBJECTIVES FOR THE INCIDENT (INCLUDE ALTERNATIVES) 1. Provide for safety of incident personnel and public in all incident operations. 2. Maintain a positive working relationship with all State and Federal partners and adjacent landowners and cooperators. Inform, involve and communicate incident planning and operations with all partners. 3. Contain all fires that are within the Okefenokee National Wildlife Refuge, inside the Refuge and/or inside the swamp edge break if possible. 4. Use full suppression strategies and tactics to minimize damage to private timberlands and improvements and to prevent fires outside the Refuge from entering the Refuge. 5. Assist in management and suppression of additional fires (new starts or breakouts) in the vicinity as approved by Agency Administrators and Unified Incident Commanders. 6. Manage the fires cost-effectively consistent with the values at risk. 7. Implement structure protection as necessary for at-risk facilities and communities.			
6. WEATHER FORECAST FOR OPERATIONAL PERIOD See attached forecast for area specific weather information.			
7. GENERAL SAFETY MESSAGE Drive defensively and use spotter when backing. Ensure LCES is in place and known by all personnel. Drink plenty of water and take frequent rest breaks. Ensure proper use of PPE during all operations.			
8. Attachments <input checked="" type="checkbox"/> if attached <input checked="" type="checkbox"/> Organization List (ICS 203) <input checked="" type="checkbox"/> Incident Map <input checked="" type="checkbox"/> Safety Message <input checked="" type="checkbox"/> Assignment List (ICS 204) <input type="checkbox"/> Traffic Plan <input type="checkbox"/> Demobilization Procedures <input checked="" type="checkbox"/> Communications Plan (ICS 205) <input checked="" type="checkbox"/> Human Resources <input checked="" type="checkbox"/> Unit Log <input checked="" type="checkbox"/> Medical Plan (ICS 206) <input checked="" type="checkbox"/> Phone List			
9. PREPARED BY (PLANNING SECTION CHIEF) Tim Roide		10. APPROVED BY (INCIDENT COMMANDER) /s/Mike Wilde /s/Gary Beauchamp /s/Buck Kline	

ORGANIZATION ASSIGNMENT LIST		9. Operations Section	
1. Incident Name Honey Prairie Complex - DAY SHIFT GA-OKR-000001		Chief	Tom Romanello / Dave Easton (t)
		Planning	Dave French / Andy Delmas (t)
2. Date 7/3/2011	3. Time 1000 hrs	a. WEST BRANCH - Divisions/Groups	
4. Operational Period 7/4/2011 Day (0800-2100) Swing (1200 – 2400)		OPBD	Bob Schindelar
5. Incident Commander and Staff		Division	A, B, C Mike Almas / Micah Johnson (t)
Incident Commander	Mike Wilde / Gary Beauchamp / Buck Kline Mike Dondero (Deputy)	Division	D, E, F, G Tam Cook
Safety Officers	Todd Baumer / Randy Turrill (t)	Division	T, V Quincy Chung
Information Officer	Don Carpenter / Brandon Hampton / Jason Curry (t)	Division	Y (DAY) Chris Casey / Joe Alyea (t)
		Division	Y (SWING) Patrick Morgan / Nicole Hallisey (t)
6a. Agency Administrators		Division	Z Larry Peabody
FWS	Curt McCasland	Group	IA-WEST Dave Congas
FWS	Mindy Gautreaux	Group	Structure Protection Steven Morefield
6b. Agency Representatives		b. EAST BRANCH - Divisions/Groups	
FWS Liason	Skippy Reeves	OPBD	Larry Luckett
GFC	Frank Sorrels	Division	H, I, J, K Rick Witzke / Gregory Gulan (t)
FLDOF	James Karels	Division	L, M Mike Womack / Jason Butler / Alex Abols (t)
FWS AREP	Mike Housh	Division	N, O Jay Riewesthal / Mike Burow (t)
FWS-Refuge PAO	Art Webster	Group	IA-EAST John Huschke
GEMA AREP	Alan Robinson/ Diane Adams	Group	Roads
USFS AREP	Ivan Greene		
7. Planning Section		d. Air Operations Branch - Honey Prairie	
Chief	Tim Roide / Dave Silvius		
Resources Unit	Kathy Geier-Hayes / Teri Coy / Patty Eder (t)	Air Operations Branch Director	Dewey Warner
Situation Unit	John Noneman	Air Support Group Supervisor	John Burke / Mark Degregorio
IMET	Coleen Decker / Scott Kennedy (t)	ATGS-Lake City	Dave Custer / Bruce Dikken (t)
Fire Behavior Analyst	Gary Brunk / Steven Cobb (t)	d. Air Operations Branch-Waycross	
Demobilization Unit	Bruce Waite	Waycross Helibase Manger	Melvin Tate / Josh Ingle
GIS	Mickey Pillars / Jerry Petruzalek	d. Air Operations Branch - Fargo	
CTSP	Greg Peterson	Fargo Helibase Manager	Paul Borcherding
TNSP	Kevin Kranz / Will Worthwine	ATGS	Carl MaGill
8. Logistics Section		10. Finance Section	
Chief	Terry O'Connell	Chief	Kendra Sabo / Brenda Deberg (t)
Supply Unit	Kenny Deberg	Time Unit	Shelly Schaff (T)
Ground Support Unit	Bernie Lyons / Justin Langford (t)	Procurement	Byron Brown/ Sherry Helmick (t)
Security Manager	Steven Peterson / Dave Clark	Comp Claims Unit	Ed Harris / Doris Doster (t)
Communications Unit	Greg Ely	Cost	Glenn Beagle / Janice Lowe (t)
Medical Unit	Jeff Voskamp / Bill Erlach / Mike Evers (t)	Buying Team	Tami Thompson
Facilities	Fred Dunets / Leslie Fonger		
Food	Alan Maza		
		Prepared by:	Kathy Geier-Hayes (RESL)

DIVISION ASSIGNMENT LIST			1. Branch West		2. Division A, B, C		
3. Incident Name: Honey Prairie Complex			4. Operational Period Date: ##### 7/4/2011 Time: ##### Day: 0800-2100				
5. Operations Personnel							
Operations	Tom Romanello/Dave Easton(t)		Branch Director	Bob Shindelar 7/6			
Planning Ops	Dave French/Andy Delmas (t)		Division Supervisor	Mike Almas 7/6 - Micah Johnson (t) 7/10			
Safety Officer	Todd Baumer/Randy Turrill (t)						
6. Resources Assigned this Period							
Strike Team/Task Force/ Resource Designator	Leader / Name / Designator	Last Shift Date	Num. Per.	Drop Off PT./Time	Pick Up PT./Time		
TFLD (O-686)	David DeMeyere	7/4 - Fed	1				
TFLD (O-726)	Kevin Taylor (t)	7/8 - Fed	1				
ENG6 (E5002) Attack#1	Eric Finnigan	PVT	2				
ENG6 (E-807)	T. Caudill	7/5 - Fed	3				
ENG6 (E-900)	Kujawa	7/8 - Fed	2				
DOZ (E-170) Francis Marion	John Christopher	7/1 - Fed	2				
DOZB (O-707)	Lance Smiskin	7/5 - Fed	1				
TFLD (O-673)	Rath Rethlake	7/4 - Fed	1				
TFLD (E-5017.9)	Keith Kelley(t)	7/10 - Fed	1				
TPL2 (E-652)	Ike Harvey	7/29 - PVT	1				
TPL2 (E-653)	Easton Dugger	7/5 - PVT	1				
WAT2 (E-93)	William Davis	7/5 - PVT	1				
ENG6 (E-405)	Brett Gore	7/8 - FWS					
ENG6 (E-5017) MOMTF 9504	Erin Yeoman	7/10 - Fed	5				
ENG6 (E-907) Eagle Staff	Lance Eagle Staff	7/8 - Fed					
Doz (E-646)/E-723 trans	Philip Dueitt	7/17 - PVT	1				
TPL (E-760)	Jason McCall	7/5 - Fed	1				
SOF2 (O-702)	Bruce Barrett	7/6 - Fed	1				
EMTP (O-767)	Evan Dean	7/8 - Fed	1				
EMTB (O-848)	Bert Hyde	7/12 - Fed	1				
TFLD (O-897)	Terry George	7/9 - Fed	1				
TFLD (O-898)	Joel McCraw (t)	7/9 - Fed	1				
7. Control Operations							
<ul style="list-style-type: none"> Scatter piles within Battle Bay RD area in DIV B. See Buck Kline for specifics. Patrol and mop up within 100' of fire perimeter line. Monitor fire impacts to Stephen Foster State Park. Patrol and control reburn. 							
8. Special Instructions							
<ul style="list-style-type: none"> Examine work area for fire weakened snags. Ensure LCES are in place before operations begin and stay hydrated. Additional resources will be available from GFC, Florida DOF, FWS, and local cooperators. Drive defensively and with lights on at all times. See Medical plan for EMT support. Implement MIST tactics 							
9. Division/Group Communication Summary							
Function	Frequency	System	Channel	Function	Frequency	System	Channel
Command N.Okee Repeater	See ICS 205	KING NIFC		Logistics	See ICS 205	KING NIFC	
Tactical Div/Group	See ICS 205	KING NIFC		Air to Ground	See ICS 205	KING NIFC	
Prepared by (Resource Unit Ldr.) Teri Coy		Approved by (Planning Sect. Ch.) /s/ Tim Roide			Date July 4, 2011	Time 1930	

DIVISION ASSIGNMENT LIST				1. Branch West		2. Division D, E, F, G	
3. Incident Name Honey Prairie Complex				4. Operational Period Date: ##### 7/4/2011 Time: #####0800-2100			
5. Operations Personnel							
Operations		Tom Romanello/Dave Easton(t)		Branch Director		Bob Shindelar 7/6	
Planning Ops		Dave French/Andy Delmas (t)		Division Supervisor		Tam Cook	
Safety Officer		Todd Baumer/Randy Turrill (t)					
6. Resources Assigned this Period							
Strike Team / Task Force / Resource Designator		Leader / Name / Designator		Last Shift Date	Num. Per.	Drop Off PT./Time	Pick Up PT./Time
TFLD (O-491)		Joe Burgett		7/6 - FWS	1		
TFLD (O-688)		Dan Bill (t)		7/5 - Fed	1		
ENG6 (E-821)		R Ricke		7/6 - City/SD	3		
ENG6 (E-824)		J. Morgan		7/5 - City/SD	3		
WT (E-700)		Cahoon		7/6 - PVT	1		
HEBQ (O-708)		Andy Murrin		7/5 - Fed	1		
Clinch County Grader (E-228)		Steven Hendricks		GAOKR	1		
TPL3 (E-499)		John Schwab/Roy Dowan		7/13 - FL	1		
ENG6 (E-134)		Paul McDavid		7/27 - PVT	1		
ENG5 (E-503)		Jim Garrison		7/18 - PVT	2		
ENG6 (E-709)		Jason Gooder		7/17 - PVT	3		
EMTB (O-849)		Kyle Meadows- Barber		7/10 - MO	1		
EMTP (O-730)		Shane Powers		7/7 - AK	1		
SOF2 (O-805)		Troy Shaddox		7/9 - Fed	1		
7. Control Operations <ul style="list-style-type: none"> Monitor and patrol south end of West Branch. Mop up all hot spots within 100' of the fire perimeter. Mop up and patrol Moccasin Fire. Patrol and control return. 							
8. Special Instructions <ul style="list-style-type: none"> Ensure LCES are in place before operations begin and stay hydrated. See medical plan for EMT support. Drive defensively and with lights on at all times. Examine work area for fire weakened snags. If communications needed with Impassable Bay Fire – use Channel 11 (168.2000) Implement MIST tactics 							
9. Division/Group Communication Summary							
Function	Frequency	System	Channel	Function	Frequency	System	Channel
Command N. Okee repeater	See ICS 205	KING NIFC		Logistics		KING NIFC	
Tactical Div/Group	See ICS 205	KING NIFC		Air to Ground	See ICS 205	KING NIFC	
Prepared by (Resource Unit Ldr.) Teri Coy		Approved by (Planning Sect. Ch.) /s/ Tim Roide			Date July 4, 2011		Time 1930

DIVISION ASSIGNMENT LIST			1. Branch West		2. Division T, V		
3. Incident Name Honey Prairie Complex			4. Operational Period Date: ##### 7/4/2011 Time: #####0800-2100				
5. Operations Personnel							
Operations	Tom Romanello/Dave Easton(t)		Branch Director	Bob Shindelar 7/6			
Planning Ops	Dave French/Andy Delmas (t)		Division Supervisor	Quincy Chung 7/9			
Safety Officer	Todd Baumer/Randy Turrill (t)		Division Supervisor				
6. Strike Team/Task Force/ Resource Designator							
	Leader / Name / Designator	Last Shift Date	Num. Per.	Drop Off PT./Time	Pick Up PT./Time		
TFLD (O-709)	JR. Callis	7/5 - Fed	1				
DOZB (O-591)	Micheal Tummins	7/5 - Fed	1				
Feller-Buncher (E-524)	Timmy Carter	GSOKR	1				
Feller-Buncher (E-526)	Kenneth Claxton	GSOKR	1				
Grader (E-530)	Woody Bargeron	PVT	1				
TPL2 (E-606)		MD	1				
7. Control Operations							
<ul style="list-style-type: none"> Recon potential control lines and examine area for snag removal Improve swamp break boundaries for fire breaks, work w/resource advisor Coordinate potential burn-out w/READ and Refuge Personnel Use Refuge Personnel for any burn-out activities. 							
8. Special Instructions							
<ul style="list-style-type: none"> Make contact with the Resource Advisor before using machical equipment. Safely push down with equipment all snags whether on fire or not that are a threat to success or tactical operations. Ensure LCES are in place before operations begin. Stay hydrated. See medical plan for EMT support. Drive defensively and with lights on at all times. Boggy terrain: Be careful and aware when working around this type of area. 							
9. Division/Group Communication Summary							
Function	Frequency	System	Channel	Function	Frequency	System	Channel
Command Ware Co. Clinch & North Okee	See ICS 205	KING NIFC		Logistics		KING NIFC	#####
Tactical Div/Group	See ICS 205	KING NIFC		Air to Ground	See ICS 205	KING NIFC	
Prepared by (Resource Unit Ldr.) Teri Coy		Approved by (Planning Sect. Ch.) /s/ Tim Roide			Date #####July 4, 2011		Time 1800

DIVISION ASSIGNMENT LIST			1. Branch West		2. Division Y - Day		1 of 2	
3. Incident Name Honey Prairie Complex			4. Operational Period Date: ##### 7/4/2011 Time: #####0800-2100					
5. Operations Personnel								
Operations		Tom Romanello/Dave Easton(t)		Branch Director		Bob Shindelar 7/6		
Planning Ops		Dave French/Andy Delmas (t)		Division Supervisor		Chris Casey 7/7 - Joe Alyea 7/6		
Safety Officer		Todd Baumer/Randy Turrill (t)						
6. Resources Assigned this Period								
Strike Team/Task Force/ Resource Designator		Leader / Name / Designator		Last Shift Date	Num. Per.	Drop Off PT./Time		Pick Up PT./Time
STEN (O-758)		Linda Davis		7/6 - Fed	1			
STEN (O-739)		Rodney Weeks		7/6 - Fed	1			
ENG6 (E-815) WIS Mellen 9244		Chad Gottbeheit		7/6 - WIDNR	2			
ENG6 (E-816) WIS 9247		Jacob Bonack		7/6 - WIDNR	2			
ENG6 (E-817) WIS Dell 9593		Scott Fischer		7/6 - WIDNR	2			
ENG6 (E-818) WIS Babcock 9597		Dale Rochan		7/6 - WIDNR	2			
ENG6 (E-819)		C. Queen		7/6 - WIDNR	3			
WT (E-512)		Ken Swane		7/9 - PVT	1			
ENG6 (E-2) Okefenokee 41				FWS	2			Refuge
Grader (E-597)				PVT	1	GAOKR		
ENG6 (E-808)		Craig Kostizewski		7/6 - Fed	3			
WTDR (E-560)		Tipton #2		7/25 - PVT	1			
DOZB (O-712)		Jason Oney		7/5 - Fed	1			
DOZB (O-843)		Joseph Chastain (t)		7/10 - Fed	1			
Transport for E-943.				7/8 - PVT		GAOKR		
EMTP (O-766)		Peggy Miller		7/6 - Fed	1			
EMTB (O-733)		David Moore		7/7 - Fed	1			
SOF2 (O-891)		Herschels Holman		7/18 FL	1			
7. Control Operations <ul style="list-style-type: none"> • Make contact with the Resource Advisor before using machical equipment. • Recon potential controllines and examine area for snag removal • Improve swamp break boundaries for fire breaks 								
8. Special Instructions <ul style="list-style-type: none"> • Safely push down with equipment all snags whether on fire or not that are a threat to success or tactical operations. • Ensure LCES are in place before operations begin. Stay hydrated. • See medical plan for EMT support. • Drive defensively and with lights on at all times. • Boggy terrain: Be careful and aware when working around this type of area. 								
9. Division/Group Communication Summary								
Function	Frequency	System	Channel		Function	Frequency	System	Channel
Command Ware Co. Clinch & North Okee	See ICS 205	KING NIFC			Logistics		KING NIFC	#####
Tactical Div/Group	See ICS 205	KING NIFC			Air to Ground	See ICS 205	KING NIFC	
Prepared by (Resource Unit Ldr.) Teri Coy			Approved by (Planning Sect. Ch.) /s/ Tim Roide			Date #####July 4, 2011		Time 1730

DIVISION ASSIGNMENT LIST			1. Branch West		2. Division Y - Swing		
3. Incident Name Honey Prairie Complex			4. Operational Period Date: ##### 7/4/2011 Time: #####1200-2400				
5. Operations Personnel							
Operations	Tom Romanello/Dave Easton(t)		Branch Director		Bob Shindelar 7/6		
Planning Ops	Dave French/Andy Delmas (t)		Division Supervisor		Patrick Morgan / Nicole Hallisey (t)		
Safety Officer	Todd Baumer/Randy Turrill (t)						
6. Resources Assigned this Period							
Strike Team/Task Force/ Resource Designator	Leader / Name / Designator	Last Shift Date	Num. Per.	Drop Off PT./Time	Pick Up PT./Time		
TFLD (O-582)	Seth Grimm	7/5 - FWS	1				
ENG6 (E-533)	Leland Bass	7/6 - GAGAS	2				
ENG6 (E-382)	Joseph Berry	7/6 - GAGAS	2				
ENG6 (E-81)	Chris Buchanan	7/6 - GAGAS	2				
ENG6 (E-76)	Darrell Husky	7/6 - GAGAS	2				
ENG6 (E-78)	Kenneth Harkins(E-78.7)	7/6 - GAGAS	2				
ENG6 (E-80)	James Mashburn	7/6 - GAGAS	2				
ENG6 (E-115)	Westley Sisk	7/6 - GAGAS	2				
TFLD (O-741)	Ron Sams	7/7 - GAGAS	1				
WAT2 (E-954)	Tim Griffen	PVT GAOKR	1				
EMTP (O-640)	Mike Fincham	7/6 - Fed	1				
EMTB (O-678)	Alex Lynn	7/5 - Fed	1				
7. Control Operations <ul style="list-style-type: none"> • Make contact with the Resource Advisor before using machical equipment. • Recon potential controllines and examine area for snag removal • Improve swamp break boundaries for fire breaks 							
8. Special Instructions <ul style="list-style-type: none"> • Safely push down with equipment all snags whether on fire or not that are a threat to success or tactical operations. • Ensure LCES are in place before operations begin. Stay hydrated. • See medical plan for EMT support. • Drive defensively and with lights on at all times. • Boggy terrain: Be careful and aware when working around this type of area. 							
9. Division/Group Communication Summary							
Function	Frequency	System	Channel	Function	Frequency	System	Channel
Command Ware Co. Clinch & North Okee	See ICS 205	KING NIFC		Logistics		KING NIFC	#####
Tactical Div/Group	See ICS 205	KING NIFC		Air to Ground	See ICS 205	KING NIFC	
Prepared by (Resource Unit Ldr.) Teri Coy		Approved by (Planning Sect. Ch.) /s/ Tim Roide			Date #####July 4, 2011		Time 1730

DIVISION ASSIGNMENT LIST			1. Branch West		2. Division Z		
3. Incident Name: Honey Prairie Complex			4. Operational Period Date: ##### 7/4/2011 Time: ##### Day: 0800-2100				
5. Operations Personnel							
Operations	Tom Romanello/Dave Easton(t)		Branch Director		Bob Shindelar 7/8		
Planning Ops	Dave French/Andy Delmas (t)		Division Supervisor		Larry Peabody 7/6		
Safety Officer	Todd Baumer/Randy Turrill (t)						
6. Resources Assigned this Period							
Strike Team/Task Force/ Resource Designator		Leader / Name / Designator	Last Shift Date	Num. Per.	Drop Off PT./Time		Pick Up PT./Time
TFLD (O-678)		Bobette Rowe	7/5 - Fed	1			
TFLD (O-792)		Dennis Wilson (t)	7/7 - Fed	1			
ENG5(E-502)		Greg Curry	7/13 - PVT	2			
ENG6 (E-5011) Smokey Mt 209		G. Barlett	7/10 - PVT	2			
ENG6 (E-5012) Smokey Mt 301		P. Shrimplin	7/12 - PVT	2			
ENG6 (E-904)		R Hill	7/8 - City/CO	3			
ENG6 (E-905)		T. Steakley	7/8 - City/CO	3			
TFLD (O-760)		David Poukish	7/6 - MT	1			
ENG6 (E-392)		Frank Paukert(E-392.7)	7/7 - Fed	3			
ENG6 (E-5010)		C. Tevebaugh(E-5010.1)	7/3 PVT	3			
ENG6 (E-5008)		Maige/Walton	7/8 PVT	2			
ENG6 (E-901)		Matheson	7/9 - Fed	4			
ENG6 (E-5007)		Jeff Bradley(E-5007.1)	7/8 - PVT	2			
TFLD (O-672)		Randy Lee	7/5 - ID	1			
HCT2IA (C-14) Pat Rick 20B		Dustin Eldred	7/20 - PVT	20			
Cumberland Gap Module (O-836)		Sasha Ernst	7/5 - Fed	7			
TFLD (O-743)		Bernard Hamilton	7/6 - OH	1			
ENG6 (E-809) TX Refuge 2462		M. Villarreal	7/6 - FWS	2			
ENG6 (E-806) FWS GDR 603		Mark Romagosa	7/6 - FWS	3			
ENG6 (E-838) MNSB Refuge 6232		Jeanne Whitefeather	7/7 - FWS	3			
ENG6 (E-796) PH 5722		Cory Highfill	7/6 - Fed	3			
ENG6 (E-850) TNCNF		Michael Haisten	7/7 - Fed	3			
EMTP (O-847)		Levi Clymer	7/11 - Fed	1			
SOF2 (O-891)		Herschels Holman	7/18 FL	1			
7. Control Operations <ul style="list-style-type: none"> Contain all fires outside refuge boundary. Patrol and mop up within 100' of fire perimeter line. 							
8. Special Instructions <ul style="list-style-type: none"> Ensure that tractors are cleaned and free of debris daily. Examine work area for fire weakened snags. Ensure LCES are in place before operations begin and stay hydrated. Additional resources will be available from GFC, Florida DOF, FWS, and local cooperators. Drive defensively and with lights on at all times. See Medical plan for EMT support. Implement MIST tactics 							
9. Division/Group Communication Summary							
Function	Frequency	System	Channel	Function	Frequency	System	Channel
Command N.Okee Repeater	See ICS 205	KING NIFC		Logistics	See ICS 205	KING NIFC	
Tactical Div/Group	See ICS 205	KING NIFC		Air to Ground	See ICS 205	KING NIFC	
Prepared by (Resource Unit Ldr.) Teri Coy		Approved by (Planning Sect. Ch.) /s/ Tim Roide			Date July 4, 2011		Time 1930

DIVISION ASSIGNMENT LIST				1. Branch West	2. Division West - Initial Attack		
3. Incident Name: Honey Prairie Complex				4. Operational Period Date: ##### 7/4/2011 Time: ##### Day: 0800-2100			
5. Operations Personnel							
Operations	Tom Romanello/Dave Easton(t)			Branch Director	Bob Shindelar 7/6		
Planning Ops	Dave French/Andy Delmas (t)			Division Supervisor	Dave Congos 7/5		
Safety Officer	Todd Baumer/Randy Turrill (t)						
6. Resources Assigned this Period							
Strike Team/Task Force/ Resource Designator	Leader / Name / Designator			Last Shift Date	Num. Per.	Drop Off PT./Time	Pick Up PT./Time
STEN (O-844)	Gary Glintenkamp			7/11 - FWS	1		
ENG6 (E-906)	Jay Wickham			7/9 - SD	3		
ENG6 (E-404)	Nicole Salmer			7/9 - Fed	3		
ENG6 (E-939)	Justin Finklea			7/9 - FWS	3		
HEQB (O-714)	Charles White			7/5 - Fed	1		
DOZ3 (E-651)	Paul Funderbuck			7/15 - PVT	1	GSOKR	
DOZ3 (E-650)	Doug Williams			7/15 - PVT	1		
STPL (O-5039)	Todd Milam			7/10 GA	1		
TPL (E-914)				GAGAS	1		
TPL (E-915)				GAGAS	1		
TPL (E-916)				GAGAS	1		
WAT3 (E-517)	Larry Bartlett			7/4 - PVT	1		
SOF2 (O-805)	Troy Shaddox			7/9 - Fed	1		
7. Control Operations <ul style="list-style-type: none"> Respond to Initial Attack as requested Initial attack IC will communicate size up information to Honey Prairie incident communications 							
8. Special Instructions							
9. Division/Group Communication Summary							
Function	Frequency	System	Channel	Function	Frequency	System	Channel
Command N.Okee Repeater	See ICS 205	KING NIFC		Logistics	See ICS 205	KING NIFC	
Tactical Div/Group	See ICS 205	KING NIFC		Air to Ground	See ICS 205	KING NIFC	
Prepared by (Resource Unit Ldr.) Teri Coy			Approved by (Planning Sect. Ch.) /s/ Tim Roile			Date July 4, 2011	Time 1930

DIVISION ASSIGNMENT LIST			1. Branch East		2. Division H/ I/J/K		Pg 1 of 2
3. Incident Name Honey Prairie Complex			4. Operational Period Date: ##### 7/4/2011 Time: #####0800-2100				
5. Operations Personnel							
Operations	Tom Romanello/Dave Easton(t)		Branch Director		Larry Lockett 7/4		
Planning Ops	Dave French/Andy Delmas (t)		Division Supervisor		Rick Witzke 7/4 / Gregory Gulan (t) 7/5		
Safety Officer	Todd Baumer/Randy Turrill (t)						
6. Resources Assigned this Period							
Strike Team/Task Force/ Resource Designator	Leader / Name / Designator		Last Shift Date	Num. Per.	Drop Off PT./Time	Pick Up PT./Time	
STEN (O-493)	Tim Diaz		7/6	1			
ENG6 (E-135) Attack-1	Ed Kleiman		7/16 PVT	2			
ENG6 (E-136) Nat'l Fire	Earl Wooten		7/2 PVT	2			
ENG6 (E-137) Wildlands 8	A. Radford		7/10 PVT	2			
ENG6 (E-179) Nat'l Fire #4	Jimmy Wills		7/13 PVT	2			
ENG6 (E-892) TNCNF 301	David Ives		7/7	3			
ENG6 (E-899) MIUPC 61	D. Karlovich		7/8	3			
ENG6 (E-822) WBD 3651	Joel Peters		7/7	3			
WT (E-559)	Ira Mayberry		7/8 PVT	1			
Pump (E-293)			7/30	1		Pump is on a Trailer	
EMTB (O-637)	Rick Sparks		7/8	1			
EMTP (O-731)	Keith Barker		7/5	1			
SOF2 (O-808)	Charles Severson		7/9	1			
7. Control Operations							
<ul style="list-style-type: none"> Contain all fires outside refuge boundary. Patrol and control reburn Provide initial attack for GFC and fires outside the refuge boundary. Patrol all spots outside refuge boundary. Patrol and mop up all accessible fire line. Mop up all hot spots within 100' of the fire perimeter. Continue to provide protection to the Chesser Homestead by maintaining an adequate water supply via portable pump at location. 							
8. Special Instructions							
<ul style="list-style-type: none"> Ensure LCES are in place before operations begin. Stay hydrated. Drive defensively and with lights on at all times. See medical plan for EMT support Examine work area for fire weakened snags Implement MIST tactics 							
9. Division/Group Communication Summary							
	Function	Frequency	Channel	Function	Frequency	System	Channel
Command N. Okee Repeater	See ICS 205	KING NIFC		Logistics		KING NIFC	
Tactical Div/Group	See ICS 205			Air to Ground	See ICS 205	NIFC	
Prepared by (Resource Unit Ldr.) Patty Eder (t)		Approved by (Planning Sect. Ch.) /s/ Tim Roide			Date July 4, 2011		Time 1800

DIVISION ASSIGNMENT LIST		1. Branch East		2. Division L, M			
3. Incident Name Honey Prairie Complex		4. Operational Period Date: ##### 7/4/2011 Time: #####0800-2100					
5. Operations Personnel							
Operations	Tom Romanello/Dave Easton(t)	Branch Director	Larry Luckett 7/4				
Planning Ops	Dave French/Andy Delmas (t)	Division Supervisor	Mike Womack 7/4, Jason Butler, Alex Abols (t)				
Safety Officer	Todd Baumer/Randy Turrill (t)						
6. Resources Assigned this Period							
Strike Team/Task Force/ Resource Designator	Leader / Name / Designator	Last Shift Date	Num. Per.	Drop Off PT./Time	Pick Up PT./Time		
STEN (O-690)	Ed Guidi	7/5	1				
ENG6 (E-893)MIHMF 251	Paul Lyden	7/9	3				
ENG6 (E-894) MOMTF 862	Greg Carlson	7/8	3				
ENG6 (E-895) MOMTF 9505	Timothy Bray	7/8	3				
ENG6 (E-898) MDS #4	James Harris	7/8	2				
TFLD (O-839)	Tim Wharton	7/7	1				
TFLD (O-841)	James Flue (t)	7/10	1				
ENG6 (E-385) Red Lake	Gilbert Juarez	7/9	3				
ENG6 (E-5014) Tx Fire 157	Curtis Weaver	7/9	3				
ENG6 (E-407) White Earth #2	Seve Lafiniere	7/9	3				
ENG6 (E-826)	Steve Melton	7/8 PVT	2				
EMTP (O-731)	Keith Barker	7/5	1				
EMTB (O-639)	Jeff Cummings	7/5	1				
SOF2 (O-659)	Terry Trapp		1				
7. Control Operations							
<ul style="list-style-type: none"> Contain all fires outside refuge boundary. Patrol and control reburn Mop up all spots outside refuge boundary and within 100 feet of perimeter 							
8. Special Instructions							
<ul style="list-style-type: none"> Ensure LCES are in place before operations begin. Stay hydrated. Drive defensively and with lights on at all times. See medical plan for EMT support Examine work area for fire weakened snags. Implement MIST tactics 							
9. Division/Group Communication Summary							
	Function	Frequency	Channel	Function	Frequency	System	Channel
Command N. Okee Repeater	See ICS 205	KING NIFC		Logistics		KING NIFC	
Tactical Div/Group	See ICS 205	KING NIFC		Air to Ground	See ICS 205	KING NIFC	
Prepared by (Resource Unit Ldr.) Patty Eder (t)	Approved by (Planning Sect. Ch.) /s/ Tim Roide			Date	July 4, 2011		Time 1800

DIVISION ASSIGNMENT LIST		1. Branch	East		2. Division	East Initial Attack	
3. Incident Name Honey Prairie Complex		4. Operational Period Date: ##### 7/4/2011 Time: #####0800-2100					
5. Operations Personnel							
Operations	Tom Romanello/Dave Easton(t)		Branch Director		Larry Luckett 7/4		
Planning Ops	Dave French/Andy Delmas (t)		Division Supervisor		John Huschke 7/12		
Safety Officer	Todd Baumer/Randy Turrill (t)						
6. Resources Assigned this Period							
Strike Team/Task Force/ Resource Designator	Leader / Name / Designator	Last Shift Date	Num. Per.	Drop Off PT./Time	Pick Up PT./Time		
TFLD (O-685)	Jeff Robinson	7/6	1				
ENG6 (E-390) WICNF 461	T. Borman	7/10	2				
ENG6 (E-5003)Cranes #2	D. Crane	7/14 PVT	2				
ENG6 (E-79) GAS Coweta	William Lee	7/6	2				
ENG6 (E-77) GAS Chattooga	Dean Cornett	7/6	2				
WT (E-92)	Justin/Ellis	PVT	1				
DOZB (O-711)	Dennis Huenergardt	7/5	1				
TPL3 (E-500) NFFS	Buddy Woody	7/6	2				
TPL3 (E-649) Bear Co		7/16 PVT	2				
ENG6 (E-3) Okefenokee Refuge	Angie Carl	7/10	2				
		7/12					
SOF2 (O-703)	Larry Klock	7/6	1				
7. Control Operations <ul style="list-style-type: none"> Respond to Initial Attack as requested Patrol and control return Initial attack IC will communicate sizeup information to the Honey Prairie communication. 							
8. Special Instructions							
9. Division/Group Communication Summary							
	Function	Frequency	Channel	Function	Frequency	System	Channel
Command N. Okee Repeater	See ICS 205	KING NIFC		Logistics		KING NIFC	
Tactical Div/Group	See ICS 205	KING NIFC		Air to Ground	See ICS 205	KING NIFC	
Prepared by (Resource Unit Ldr.) Patty Eder (t)		Approved by (Planning Sect. Ch.) /s/ Tim Roide			Date July 4, 2011		Time 1800

9. HELICOPTERS (Use Additional Sheets As Necessary)													
FAA N#	TY	MAKE/MODEL	BASE	AVAIL	START	REMARKS	FAA N#	TY	MAKE/MODEL	BASE	AVAIL	START	REMARKS
N36BH A-35	1	SIKORSKY S-70	Waycross	0830		Zeve Huntina 406-439-6768	N61SC A-	1	SIKORSKY S-61 assigned	Fargo	0830		Ray Leppala 218-966-6443
206G A-19	2	UHIH Return to Service	Waycross	0830		Mike Yearwood 530-310-3511	N161KA A-	1	KAMAN, K1200 assigned	Fargo	0830		Hans Egholm 585-278-4206
06901 A-17	2	UH1H	Waycross	0830		Cindy Bradley 559-916-9355	N662H A-29	3	Bell 206-L4	Fargo	0830		Jeff Polack 208-816-3447
N818MC	3	AS-350 B3	Waycross/ Fargo as needed	0830		George Violante 307-330-5904							
							6JC A-1	3	Bell B-3 Local Unit Aircraft	Pogo	0830		Ronald Nixon 540-392-5569

AIR OPERATIONS SUMMARY					
10. TASK/MISSION/ASSIGNMENT (Type/Function includes Air Tactical, Retardant, Recon, Personnel Transport, Water Dropping, S&R, etc.)					
			MISSION START	FLY FROM	FLY TO
Expect Recons with Ops IC's			11:00 / 1300 / 1600 and as requested	FARGO Waycross	Fire
ATGS in T3 Helo to direct buckets			As needed	FARGO	
Expect Recons with FBA and LTAN			1300	FARGO	
Air Attack	Expect a Mission today for orientation		1400	Lake City ATB	Fire
T1 Helos Bucket Work	Objective to slow fire spread in light fuels		As needed		



Fire Weather Forecast



FORECAST NO: 58

NAME OF FIRE: Honey Prairie Complex

PREDICTION FOR: 7/4/11

UNIT: Okefenokee National Wildlife Refuge

FORECAST ISSUED: 7/3/11 at 1900

SIGNED: Scott Kennedy (T)/Coleen Decker
Incident Meteorologists

WEATHER DISCUSSION: High pressure will continue across the area into Monday, then will slide to the south through the middle of the week. Scattered afternoon and evening thunderstorms are expected to return by the middle of the week.

TODAY: Patchy fog before 0900, becoming Partly Cloudy.

MAXIMUM TEMPERATURES: 92-96 degrees.

MINIMUM HUMIDITY: 33-38%.

20 FT WINDS: AM: S 4-7 mph.

PM: ESE 6-10 G15 mph.

STABILITY/INVERSION: Morning inversion to 250 feet through 1000, then rising to 7000 feet by 1500.

TRANSPORT WINDS: S 8 mph, becoming ENE 12 mph in the afternoon.

DISPERSION INDEX: 50, Average.

Chance of Precipitation: 10%.

LAL: 1

TONIGHT: Mainly Clear. Patchy fog developing after 0200 hours and continuing through 0900 Tuesday.

MINIMUM TEMPERATURES: 67-71 degrees.

MAXIMUM HUMIDITY: 90-100%.

20 FT WINDS: ESE 4-8 mph, becoming variable 2 mph.

STABILITY/INVERSION: Inversion to 250 feet by 2200 hours.

DISPERSION INDEX: 2, poor.

Chance of Precipitation: 0%

LAL: 1

OUTLOOK FOR TUESDAY: Partly Cloudy with isolated afternoon Thunderstorms. Winds WSW 4-7 mph, becoming ESE 4-8G12 mph with sea breeze push between 1600-1700. High temperatures 92 to 96. Min RH 37-42%. Chance of Rain 20%. Dispersion 45, Average.

EXTENDED FORECAST: High pressure will be centered south of the area with scattered thunderstorms each afternoon. Easterly winds are expected to develop each afternoon with a sea breeze push.

	WEDNESDAY	THURSDAY	FRIDAY
MINIMUM TEMP	69°	71°	71°
MAXIMUM TEMP	95°	94°	95°
MINIMUM RH	40-45%	43-47%	43-47%
20 FT. WINDS	AM: W 4-7 mph PM: ESE 4-8 mph late	AM: W 4-7 mph PM: ESE 4-8 mph late	AM: W 4-7 mph PM: ESE 4-8 mph late
SKY	Partly Cloudy	Partly Cloudy	Partly Cloudy
WEATHER	Scattered Afternoon Thunderstorms	Scattered Afternoon Thunderstorms	Scattered Afternoon Thunderstorms
CHANCE PRECIP	30%	30%	30%

FIRE BEHAVIOR FORECAST

Fire: Honey Prairie Complex	Unit: GA-OKR-000001	Prediction for <u>Day</u> Shift
Forecast # 57 Issued: 07/03/2011 1830 hrs	Signed: Gary Brunk/Steve Cobb(T)	Shift Date: Monday 07/04/11

GENERAL FIRE BEHAVIOR

Fuels around the Okefenokee Wildlife Refuge are predominately Fuel Model 7 (Southern Rough). Large to moderate acreage tracts of commercial timberland are mixed in throughout the entire perimeter surrounding the refuge. Fast moving wildfires with extremely high flame lengths and rapid rates of spread occur within the swamp. As fire transitions to the upland, torching and crown fires are common. Long Range spotting is possible.

Indicators/Threshold for Increased Fire Activity

- Relative humidity dropping below 45%
- Winds above 10 mph
- Heavy fuel loadings
- Fine dead fuel moisture 8% or less
- Dispersion above 70

SPECIFIC FIRE BEHAVIOR

- **Fire behavior today should be similar to yesterday. Unburned surface fuels within the fire perimeter will actively burn with the continued warm and dry conditions. Expect slightly higher RH's and lower wind speeds than yesterday. Stay alert as more re-burns will occur today.**
- **Pockets of heat near the fire perimeter in Divisions Y & Z will become active again by late morning. The possibility for short to mid range spotting continues if fuels are exposed to stronger winds, generally considered to be 10mph MFWS. Thunderstorms may begin to develop by Tuesday.**

Fuel Type	Rates of Spread	Flame Length	Spotting Distance	Firebrand Ignition
Winds at 6-10 G15 @ 20"				
Shrub Fuels	11 - 17, 28 ch/hr.	10 - 15 feet	2/10 - 5/10 mile	68%
Southern Rough	16 - 29, 37 ch/hr	6 - 10 feet	2/10 - 5/10 mile	68%
Timber Litter-Reburn	2 - 3, 4 ch/hr.	2 - 4 feet	2/10 - 5/10 mile	68%
Small Pine Plantation w/grasses	15 - 27, 46 ch/hr	7 - 11 feet	1/10 - 3/10 mile	69%

One hour fine dead fuel moisture is at 5% for Monday. 1000 hour fuels are drier than normal for this time of year. Extensive mop up is required. There is reburn potential in all divisions due to the amount of needle cast.

Should a fire run(s) occur, expect winds in the area to potentially increase above predicted levels. This would increase Flame Lengths and ROS above predictions. Heavier firebrands can also be lifted higher and further increasing likelihood of spots to max predictions. In areas where fuels have been herbicided, expect quick ignitions and extreme heat, very fast.

NOTE- FIRE BEHAVIOR CALCULATIONS ARE FOR FIRES IN UNBURNED FUELS INCLUDING NEW IA STARTS.

West	A	<i>Reburn potential with accumulation of leaves and red needles. Falling snags still pose a threat to fire personnel and the boardwalk. SE Winds Today</i>	West	T/V	<i>If SE winds align today, pay attention to the possibility of the fire pushing towards the division's perimeter. SE Winds Today</i>
	B-G	<i>Warmer wx increases reburn potential from needle cast. Be heads-up for falling Snags. SE Winds Today</i>			
	Y-Z	<i>Expect continued drying on Sunday and an increase in fire behavior. SE winds are forecast Today-Tuesday. Spotting potential remains as forecasted winds will lay smoke over the lines.</i>	East	H, I, J, K, L, M, N, O	<i>Potential for reburn in pine stands from needle cast. Watch for falling snags. Winds should remain favorable today for the entire Branch.</i>

Night Ops – Expect another night of minimal fire behavior after 2200. Areas of patchy fog will develop after 0200. Fire behavior will primarily be limited to burning out heavy fuels in Divisions Y & Z and the interior. RH's will recover to 90 – 100%. Winds over the entire fire are forecast from the ESE at 4-8 mph becoming variable to 2 mph after midnight. Dispersion Index of 2 –poor for nighttime.

Air Operations: Patchy fog before 0900 becoming partly cloudy. Mixing heights will be 7000 feet by 1500.

SAFETY:

WINDS – Stay abreast of changing wx conditions throughout the entire shift. **THUNDERSTORMS** - these severe winds can create extreme fire behavior, with winds gusting over 30 mph. **SNAGS** – Snags are falling in all Divisions – will be influenced by Thunderstorm outflow winds.

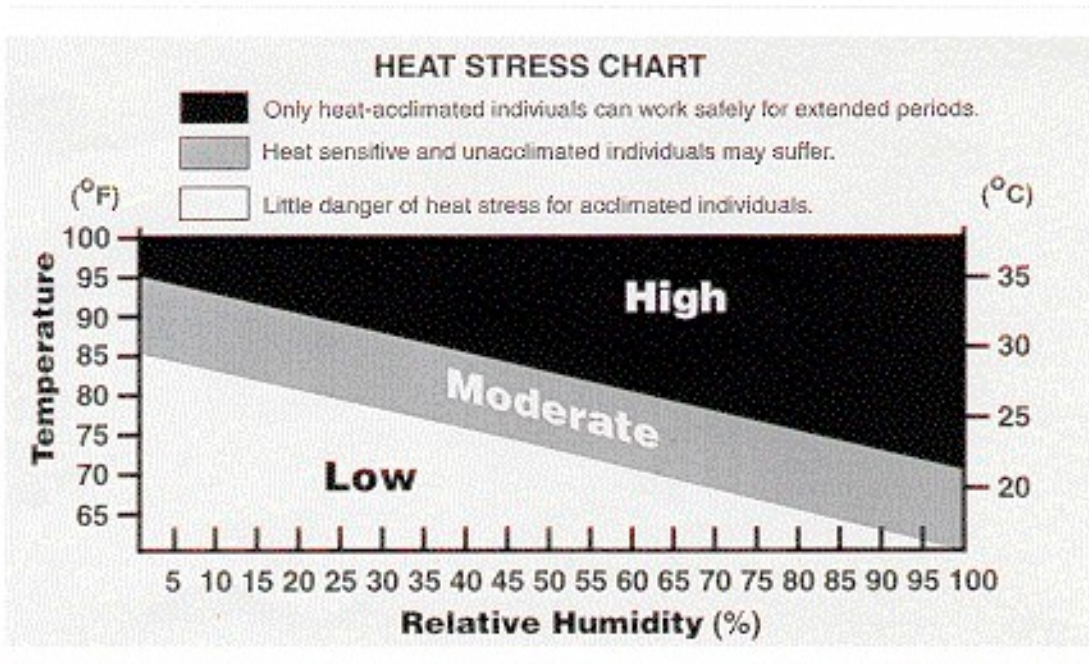
FUELS: Reburn is an issue. Watch for pockets of cured shrubs or blankets of red needles beginning to cover the forest floor. 1000 and 10,000 hour fuels as well as deep duff pockets are providing the heat source. Stay focused, and put LCES in place before starting operations. Watch for standing burning snags that can fall without warning. *Energy Release Component (ERC) continues to be above the 90th percentile for this area.*

HONEY PRAIRIE COMPLEX
HEALTH & SAFETY MESSAGE
Monday July 4, 2011

Safety Briefing EVERY DAY for Every Firefighter on the Fireline

Fireline: Do NOT become complacent. By constantly paying attention to L C E S and fireline basics, they become ingrained - good habits!

Hot, Dry Weather & Dehydration: Water is best - drink a little often rather than a lot infrequently. The amount of water needed depends on how much energy is being expended!



We have an excellent safety record - Keep Up the Good Work!

Lookouts Communications Escape Routes Safety Zones

Incident Safety Officers: Todd Baumer SOF2, Randy Turrill SOF2(t)

MEDICAL PLAN	1. Emergency #	2. Date	3. Time	4. Shift	
Honey Prairie Complex		7/03/2011	1800	7/04/2011 DAY SHIFT	
5. Incident Medical Aid Station					
<u>Medical Aid Stations</u>	<u>Location</u>			Paramedics Yes No	
Medical Unit (ICP)	Honey Prairie Complex ICP (Lodge 5) 912-637-5236 Jeff Voskamp MEDL 912-286-1648 Bill Erlach MEDL (T) 912-286-1674 Michael Evers MEDL (T) 719-640-8991			X	
WEST BRANCH (Line EMT)	Evan Dean 503-975-6444 & Bert Hyde 218-349-0934 (A,B,C DIV) Shane Powers 907-388-3885 & Kyle Barber 417-239-9135 (D,E,F,G DIV) Peggy Miller 240-793-4238 & Dave Moore 513-616-9192 (Y 0800-2000) Michael Fincham 530-859-8507 & Alex Lynn 909-477-9276 (Y DIV 1200-2400) Levi Clymer 417-658-5155 (Z DIV)			X	
EAST BRANCH (Line EMT)	Rick Sparks 912- 531-9527 (H,I,J,K DIV) Keith Barker 224-330-7798 (H,I,J,K,L,M DIV) Jeff Cummings 317-730-6653 (L,M DIV)			X	
Ambulance Services					
Name	Address	Phone	Paramedic Yes No		
Clinch County EMS (WEST SIDE)	West Branch Council Road & HWY 94	Channels 4, 11, 13 912-286-1673 EMS Incident Cell	Yes	#	
Ware County EMS (NORTHSIDE)	Waycross, Georgia (911 to activate)	912-281-9467	Yes	#	
Charlton County EMS (EAST SIDE)	Folkston, GA (911 to activate)	912-496-7321	Yes	#	
Air Ambulance Service					
Trauma 1	Jacksonville, FL (26 min/air)	1-800-223-4878	Yes	#	
AirMed	Augusta, GA (2 hrs/air)	1-888-792-9245	Yes	#	
Lifeflight (freq. 155.340)	Jacksonville, FL (35 min/air)	1-877-870-7779	Yes	#	
Air Evac	Waycross, GA	1-800-247-3822	Yes	#	
US Coast Guard (Heli-Rescue)	Savannah GA	1-912-652-4646	Yes	#	
7. Hospitals					
Name	Address	Travel Time Air Ground	Phone	Helipad Yes No	Burn Center Yes No
Satilla Regional	410 Darling Ave Waycross Ga N 31°13.56 W 82°21.058	15 min 45 min	912-283-3030	Yes	No
Clinch Memorial Hospital (WEST SIDE)	1050 Valdosta HWY Homerville, GA	25 min	912-487-5211 ext 4502		No
Charlton Memorial Hospital (EAST SIDE)	1203 3 rd St. Folkston, GA	50 min	912-496-2531		No
Memorial Hospital	Savannah, GA 4700 Waters 3200.7 8107.6	40 min	912-350-8999	Yes	No
Shands Hospital (level I)	Jacksonville, FL N 30°20'97 W 82° 13' 992	45 min 1.5 hrs	800-223-4878	Yes	Yes
Shands Burn Center	Gainesville, FL 38.33 N 082 20.73W	45 min	352-265-0300	Yes	Yes

8. Medical Emergency Procedures

1. Notify DIVS of medical problem
2. DIVS notifies COML and MEDL
3. MEDL contacts POC for following
 - a. # of pts
 - b. Status of pts medical problem
 - c. Location of pts
 - d. Transport method
 - e. Necessary resources
4. MEDL coordinates medevac/patient transport with SOF2, OPS2 and other relevant resources.

Definitions(that need to be standardized or categories):

Life threatening injury: an injury that could mean the loss of life, limb, or eyesight
 Minor injury: an injury that results in the removal of a pt from the line but with less urgency as a life threatening injury
 Medevac: the most urgent transport of a pt suffering from a life threatening injury
 Patient transport: transport for minor injuries
 Medical problem: a physical or mental ailment that occurs to an individual; to include illnesses and traumatic injuries
 Point of contact (POC): individual who will be directly advocating for patient care and transport (line medic, crew boss, DIVS etc)

*Request that FFTR/Engine crews or single resources let MEDL know if they have any EMTs or Paramedics and if they have equipment with them.

HELISPOTS

Pocket Helispot 30 47 30.02 x 82 22 39.5 (West side), mile marker 4, HWY 177 Steven C. Foster State Park
 Fargo Helibase 30 41.42 x 82 33.97 (West side), HWY 441- Golf course, Fargo

POGO Helibase 30.44.03 x 82.07.41 (East side)

Evac

Rd. 32 and 32A, N 30° 53.280 W 082° 33.880

Tatum Rd. Pond N 30° 50.280 W 082° 33.857

*Alternate site can be established following guidelines for safety found with IRPG and local EMS resources.

Prepared by (Medical Unit Leader) Michael Evers MEDL (T)/Bill Erlach MEDL (T)

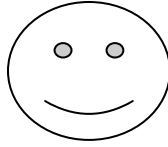
10. Reviewed by (Safety Officer) Randy Turrill SOF2

INCIDENT RADIO COMMUNICATIONS PLAN ICS-205			Incident Name Honey Prairie			GROUP 22		Date/Time Prepared 07/03/2011-18:00		Operational Period Date/Time 7/04/2011 0900-2100/2100-0900	
Ch #	Function	Channel Name	Assignment	RX Freq	NW	RX Tone/NAC	TX Freq	N W	TX Tone/NAC	Mode A,D or M	Remarks
1	Command	West Okee Repeater	Sec West Branch CMD	167.1250	N	156.7	163.1500	N	156.7	A	Stephen Foster State Park
2	Command	South Okee Repeater	Sec East/West Branch CMD	164.7750	N	123.0	163.1500	N	123.0	A	Eddy Florida
3	Command	East Okee Repeater	PRIMARY East Branch CMD	164.6250	N	103.5	163.1500	N	103.5	A	Refuge Headquarters
4	Tactical	NIFC C2	PRIMARY West Branch CMD	168.100	N	CSQ	170.4500	N	123.0	A	NOT linked to OKEE System
5	Command	North Okee Repeater	PRIMARY North Branch CMD	164.5750	N	206.5	163.1500	N	206.5	A	Waycross
6	Air-Ground	Air to Ground	PRIMARY	166.9375	N	CSQ	166.9375	N	CSQ	A	
7	Tactical	MOB-MOB	GFC Contingency	159.3900	W	CSQ	159.3900	W	156.7	A	
8	Tactical	V-Fire 21W WHITE	Structure Protection Group	154.2800	W	CSQ	154.2800	W	156.7	A	
9	Tactical	USFS 9	DIV J, K, O, T, M	168.7750	N	CSQ	168.7750	N	CSQ	A	
10	Tactical	S.E. Compact	DIV	159.2850	W	CSQ	159.2850	W	CSQ	A	
11	Tactical	USFS 11	DIV A,B,C,Z, N	168.2000	N	CSQ	168.2000	N	CSQ	A	
12	Tactical	Refuge Tac 1	DIV L, H, I	168.3500	N	CSQ	168.3500	N	CSQ	A	
13	Tactical	FL 190	DIV D, E, F, G	151.2725	N	CSQ	151.2725	N	CSQ	A	
14	Command	DIV J RPT	East Branch	170.4125	N	CSQ	165.9625	N	123.0	A	NOT linked to OKEE System
15	Air-Ground	Air to Ground	SECONDARY	166.9000	N	CSQ	166.9000	N	CSQ	A	
16	EMERGENCY	AIR Guard	Air OPS.	168.6250	N	CSQ	168.6250	N	110.9	A	
Prepared by (Communications Unit) Greg Ely: 912-387-6813 Incident Dispatcher: 912-286-1660					Cloning at ICP communications and briefings,						

The convention calls for frequency lists to show four digits after the decimal place, followed by either an "N" or a "W", depending on whether the frequency is narrow or wide band. **Mode** refers to either "A" or "D" indicating analog or digital (e.g. Project 25) or "M" indicating mixed mode. All channels are shown as if programmed in a control station, base stations, mobile or portable radio.

FINANCE – EQUIPMENT/TIME

Tip for the day: 7/4/11



PLEASE HELP US OUT:

	Tim Milan, GFC	Need your E#
	Schuetz, Dave	Use E#904 on shift tickets
	Chris Queen	Use E# 819 on shift tickets
E-405	ME-forest	Shift Tickets???
E-497	Orange Springs	Missing shift ticket 6/29
E-499/511	Wild land fire	Need pink copy of shift tickets as well
E-504	GFC61745	Need shift tickets if still on fire
E-957	GFC	Missing 7/1 shift ticket
O-482	Clark, David	Missing CTR 6/26
O-493	Diaz, Tim	Missing CTR 6/24
O-707	Smiskin, L	See Time, need more info

IF YOUR ARE GETTING CLOSE TO TIMING OUT PLEASE
SPEAK WITH YOUR FIRE LINE SUPERVISOR **ASAP.**

CREW SWAP FORMS MUST BE COMPLETED AND TURNED
INTO CHECK-IN/FINANCE NO LESS THAN 2 DAYS IN
ADVANCE OR YOU WILL DONATE YOUR PAY TO A LOCAL
CHARITY!!!

**DMOB for July 4 to July 7 Questions?? Issues??
Contact DMOB-Bruce @ 912-637-5241**

Number	Name	Kind	UnitID	Travel Metho d	Jet- port	Travel Date
E-5002	ATTACK 1 ENG6	ENG6	FLFNF	POV		07/04/2011
E-5002.1	HAWK, ROBERT	THSP	FLFNF	POV		07/04/2011
E-5011.6	MYERS, CHIP	ENOP	NCNCF	POV		07/04/2011
E-5012.3	GIBBS, ROBBIE	ENOP	NCNCF	POV		07/04/2011
E-5012.5	HOWARD, LEE	ENOP	NCNCF	POV		07/04/2011
E-517.1	BARTLETT, LARRY	THSP	NCNCC	POV		07/04/2011
E-646.2	DUEITT, PHILIP	DZOP	MSMNF	POV		07/04/2011
E-795	ENGINE - T7 - GFC4201850	ENG7	GAGAS			07/04/2011
E-941	ENGINE - T6 - CNF - 201	ENG6	TNCNF	AOV		07/04/2011
E-941.1	TRENTHAM, DENNIS	ENGB	TNCNF	AOV	TRI	07/04/2011
E-941.3	EUBANKS, JEREMY DON	FFT2	TNCNF	AOV	CHA	07/04/2011
O-652	KLINE, CLARENCE R	ICT2	GAGAS	AOV	JAX	07/04/2011
O-659	TRAPP, TERRY L	SOF2	PANAF	AIR	RHI	07/04/2011
E-735	NANTAHALA ENG6 11-2	ENG6	NCNCC	AOV		07/05/2011
E-735.1	BOONE, JASON	ENGB	NCNCC	AOV	AVL	07/05/2011
E-735.2	ROWLAND, JOEY	FFT1	NCNCC	AOV	AVL	07/05/2011
E-735.3	DRYMAN, SAM	ENGB	NCNCC	AOV	AVL	07/05/2011
E-736	ENGINE - T6 - NC-NCF NANTAHALA	ENG6	NCNCC	AOV		07/05/2011
E-736.1	MCCLURE, RICHARD	ENGB	NCNCC	AOV	AVL	07/05/2011
E-736.2	SOUTHARD, MARTIN O	FFT1	NCNCC	AOV	AVL	07/05/2011
E-736.3	BELL, BRYAN	FFT1	NCNCC	AOV	AVL	07/05/2011
O-442	ODEGARD, DERRICK	HECM	MNBNR	A/R	MSP	07/05/2011
O-454	MESSERSCHMIDT, WILLIAM	RADO	MNMNS	AIR	CWA	07/05/2011
O-459	INGLE, JOSHUA	HMGB	MTHNF	A/R	HLN	07/05/2011
O-500	ZABKA, RONALD	SPUL	NHWMF	AIR	MHT	07/05/2011
O-654	NIXON, RONALD BLANE	HMGB	VAVAF	A/R	ROA	07/05/2011
O-655	CHUMBLEY, MATHEW MERLE	HECM	VAVAF	AIR	ROA	07/05/2011
O-657	SWITZER, COLIN	ABRO	CALNF	AIR	RNO	07/05/2011
O-658	MARTENS, PETER	ABRO	CALNF	AIR	RNO	07/05/2011
O-671	BUROW, MICHAEL D	TFLD	MTKDC	A/R	FCA	07/05/2011
O-673	RETHLAKE, ZACHARY CLAYTON	TFLD	MNMNS	AIR	MSP	07/05/2011
O-674	GALLIMORE, YANU L	STEN	ORMED	AIR	MFR	07/05/2011
O-677	DANEK, BRADLEY M	EMTB	COPBC	AIR	DEN	07/05/2011
O-682	WITZKE, RICHARD V	DIVS	MIHMF	AIR	TVC	07/05/2011
O-684	WOMACK, MICHAEL C	DIVS	VAVAS	AOV		07/05/2011
O-686	DEMEYERE, DAVID	TFLD	LABBR	AOV		07/05/2011
O-688	BILL, DAN D	STEN	IDSCF	AIR	IDA	07/05/2011
O-721	HERSEL, JORGE J	RCDM	VAVAF	AOV		07/05/2011
O-727	LUCKETT, LARRY M	DIVS	GACHF	REN		07/05/2011
O-774	BOEHLKE, SHANON	PIOF	MTR01	A/R	MSO	07/05/2011
E-497.2	JETER, LESLIE	DRIV	FLFNF	POV		07/06/2011
E-529	DUMP TRUCK	TDMP	GAOKRC	POV		07/06/2011
E-529.2	WATSON, RON	DRIV	GAOKRC	POV		07/06/2011
E-739	BELLAIRE ENGINE 57 - T4 - 4-2	ENG4	MIMIS	POV		07/06/2011
E-739.1	BAKER, BRET L	ENGB	MIMIS	POV	TVC	07/06/2011
E-739.2	CROSS, DEREK C	FFT2	MIMIS	POV	TVC	07/06/2011
E-739.3	JACOBS, KEVIN R	FFT2	MIMIS	POV	TVC	07/06/2011
E-760	DOZER W/PLOW JD450 1826	TPL3	MOMTF	AOV	STL	07/06/2011
E-760.1	MCCALL, JASON M	TPOP	MOMTF	AOV	STL	07/06/2011

Number	Name	Kind	UnitID	Travel Method	Jet-port	Travel Date
E-79	GAS ENG6 COWETA 86	ENG6	GAGAS	AOV		07/06/2011
E-807	ENGINE - T6 - E-21 - EASTERN D	ENG6	VAVAF	AOV		07/06/2011
E-807.1	CAUDILL, TODD MATTHEW	ENGB	VAVAF	AOV		07/06/2011
E-807.2	SHAW JR, LARRY DOUGLAS	FFT1	VAVAF	AOV		07/06/2011
E-807.3	MCCLOUD, ERIC CHARLES	FFT2	VAVAF	AOV		07/06/2011
E-808	ENGINE - T6 - E-22, MARIENVILL	ENG6	PAALF	AOV		07/06/2011
E-808.1	KOSTRZEWSKI, CRAIG	ENGB	PAALF	AOV		07/06/2011
E-808.3	MCCORMICK, JAMES	FFT1	WVMOF	AOV	PIT	07/06/2011
E-808.4	CHASE, JORDAN A	FFT2	PAALF	AOV	ERI	07/06/2011
E-824	ENGINE - T6 - RAPID CITY - BRU	ENG6	SDRCFX	AOV	RAP	07/06/2011
E-824.1	MORGAN, JOSHUA T	ENGB	SDRCFX	AOV	RAP	07/06/2011
E-824.2	LAROCHE, KRISTOPHER	FFT1	SDRCFX	AOV	RAP	07/06/2011
E-824.3	RASMUSSEN, ALEXANDER	FFT2	SDRCFX	AOV	RAP	07/06/2011
E-93	WATER TENDER 10	WTS2	FLFNF	POV		07/06/2011
O-482	CLARK, DAVID	SECM	MOMTF	AIR	STL	07/06/2011
O-496	SULLIVAN II, THOMAS VERN	EQPM	MSMNF	AOV	JAN	07/06/2011
O-567	BARBER, LADONNA	INCM	OKOKS	AIR	TXK	07/06/2011
O-582	GRIMM, SETH	TFLD	MNBNR	A/R	MSP	07/06/2011
O-591	TUMMINS, MICHAEL	DOZB	TNTNS	AIR	BNA	07/06/2011
O-631	PETRUZALEK, JERRY R	GISS	WICNF	AIR	RHI	07/06/2011
O-639	CUMMINGS, JEFFREY KIM	EMTB	INIIC	A/R	IND	07/06/2011
O-656	KERR, MITCHELL D	HECM	VAVAF	AOV		07/06/2011
O-672	LEE, RANDY R	TFLD	IDPLS	AIR	COE	07/06/2011
O-678	LYNN, ALEXANDER	EMTB	CAANCC	A/R	BUR	07/06/2011
O-681	CONGOS, DAVID	DIVS	MNMRA	AIR	GRB	07/06/2011
O-687	ROWE, BOBETTE	TFLD	IDCTF	AIR	IDA	07/06/2011
O-690	GUIDI, ED	STEN	CACNF	AIR	SAN	07/06/2011
O-695	DILLON, WALLACE	HECM	MOMTF	AIR	STL	07/06/2011
O-696	ALDEN, DYLAN K	HECM	NHWMF	AIR	PWM	07/06/2011
O-699	DOSTER, DORIS	THSP	NCNCF	AOV	AVL	07/06/2011
O-707	SMISKIN, LANCE	DOZB	WAOWF	AIR	YKM	07/06/2011
O-708	MURRIN, ANDY K	DOZB	ORROC	AIR	EUG	07/06/2011
O-709	CALLIS, REED J	DOZB	WAPSC	AIR	SEA	07/06/2011
O-711	HUENERGARDT, DENNIS	DOZB	OREIC	AIR	EUG	07/06/2011
O-712	ONEY, JASON	DOZB	ORUMF	AIR	ALW	07/06/2011
O-713	HEENAN, ERIC R	DOZB	ORROD	AIR	EUG	07/06/2011
O-714	WHITE, CHARLES L	DOZB	ORROD	AIR	EUG	07/06/2011
O-715	GULAN, GREGORY S	TFLD	WICNF	AIR	RHI	07/06/2011
O-723	BROWN, CAROL JANINE	IBA1	VAVIC	A/R	DCA	07/06/2011
O-731	BARKER, KEITH	EMTP	COLACX	AIR	ORD	07/06/2011
O-734	HAMILTON, CHARLES T	LSC1	NYNYS	A/R	ISP	07/06/2011
O-779	RENSHAW, JARED	RCDM	GAOKR			07/06/2011
O-836	CUMBERLAND GAP WILDLAND FIRI	HCU	FLBCPC	AOV		07/06/2011
O-836.1	ERNST, SASHA	CRWB	FLBCPC	AOV		07/06/2011
O-836.2	COPE, ERIC KEITH	FFT1	FLBCPC	AOV		07/06/2011
O-836.3	TALLEY, RICHARD NATHAN	FFT2	FLBCPC	AOV		07/06/2011
O-836.4	ALVARADO, HUMA	FALA	FLBCPC	AOV		07/06/2011
O-836.5	WORTHINGTON, ERIC	FFT1	FLBCPC	AOV		07/06/2011
O-836.6	KLEIN JR, ROBERT	FFT2	FLBCPC	AOV		07/06/2011
O-836.7	PAXTON, WILEY	FFT1	FLBCPC	AOV		07/06/2011
C-13	CREW - CAMP - PINE KNOT JCC -	CC	KYDBF	AOV		07/07/2011
C-13.2	CANTRELL, DEREK	CAMP	KYDBF	AOV		07/07/2011
C-13.3	HINES, DARRYL	CAMP	KYDBF	AOV		07/07/2011

Number	Name	Kind	UnitID	Travel Method	Jet-port	Travel Date
C-13.4	HINTON, JAMAR	CAMP	KYDBF	AOV		07/07/2011
C-13.5	MCCOMBS, DANIEL	CAMP	KYDBF	AOV		07/07/2011
C-13.6	REYES-ORTIZ, LUCIA	CAMP	KYDBF	AOV		07/07/2011
C-13.7	PEMBERTON, DAVID	CAMP	KYDBF	AOV		07/07/2011
C-13.8	DIXON, JOHN E	CACB	KYDBF	AOV	LEX	07/07/2011
E-382	HABERSHAM 86	ENG6	GAGAS	AOV		07/07/2011
E-382.2	CHRISTIAN, BRANDON NEIL	FFT2	GAGAS	AOV	ATL	07/07/2011
E-382.3	BERRY, JOSEPH E	ENGB	GAGAS	AOV	ATL	07/07/2011
E-500	NFFS- TRACTOR/PLOW T3-167284	TPL3	FLFNF	POV		07/07/2011
E-500.1	NORTH FL FORESTRY, XX	TRTL	FLFNF	POV		07/07/2011
E-500.5	WOOD, BUDDY	ENOP	FLFNF	POV		07/07/2011
E-500.6	JOHNSON, DON	ENOP	FLFNF	POV		07/07/2011
E-533	GAS ENG6	ENG6	GAGAS	AOV		07/07/2011
E-533.3	BASS, LELAND	ENGB	GAGAS			07/07/2011
E-533.4	BRANNON, CAREY	ENOP	GAGAS	AOV		07/07/2011
E-700	TIPTON #1 WATER TENDER	WATU		POV		07/07/2011
E-729.7	MORK, CHRIS	STEN	MTCES	AOV	HLN	07/07/2011
E-76	GAS ENG6 PICKENS 86	ENG6	GAGAS	AOV		07/07/2011
E-76.7	HUSKEY, DARRELL	ENGB	GAGAS	AOV		07/07/2011
E-76.8	RIDLEY, JEREMY	ENOP	GAGAS	AOV		07/07/2011
E-77.7	CORNETT, BRANDON	ENGB	GAGAS	AOV		07/07/2011
E-77.8	DUNN, ROBERT	ENOP	GAGAS	AIR		07/07/2011
E-78	GAS ENG6 MURRAY 86	ENG6	GAGAS	AOV		07/07/2011
E-78.7	HARKINS, KENNETH	ENGB	GAGAS	AOV		07/07/2011
E-78.8	RIDLEY, JUSTIN	FFT2	GAGAS	AOV		07/07/2011
E-79.8	LEE, WILLIAM	ENGB	GAGAS	AOV		07/07/2011
E-79.9	PHILLIPS, PAUL	FFT2	GAGAS	AOV		07/07/2011
E-796	PLEASANT HILL ENG 5722	ENG6	ARAOC	AOV	LIT	07/07/2011
E-796.1	HIGHFILL, CORY DON	ENGB	ARAOC	AOV	LIT	07/07/2011
E-796.2	HIGHFILL, JEFF	FFT2	AROZF	AOV	FSM	07/07/2011
E-796.3	JAMES, ROBERT P	FFT2	AROZF	AOV	FSM	07/07/2011
E-80.7	MASHBURN, JAMES	ENGB	GAGAS	AOV		07/07/2011
E-80.8	WILKINSON, DAMEON	ENOP	GAGAS	AOV		07/07/2011
E-806	ENGINE - T6 - GDR 603	ENG6	VAGDR			07/07/2011
E-806.1	ROMAGOSA, MARK A	ENGB	VAVAFN			07/07/2011
E-806.2	THOMPSON, MELISA ANNE	FFT2	VAGDR		ORF	07/07/2011
E-806.3	KEEL JR, RALPH MAYO	FFT1	VAGDR		ORF	07/07/2011
E-808.2	TALBOT, PAUL J	ENGB	MNMNS	AIR	MSP	07/07/2011
E-809	TX REFUGE ENG 2462	ENG6	TXSRR	AOV		07/07/2011
E-809.1	VILLARREAL, MEDARDO	ENGB	TXSRR	AOV	MFE	07/07/2011
E-809.2	WILLIAMS, THAD	FFT2	TXSRR	AOV	LIT	07/07/2011
E-81.7	BUCHANAN, CHRISTOPHER	ENGB	GAGAS	AOV		07/07/2011
E-81.8	GORE, DANNY	ENOP	GAGAS	AOV		07/07/2011
E-815	MELLEN ENGINE 9244	ENG6	WIWIS	AIR	LSE	07/07/2011
E-815.1	ZENZ, ERIC S	ENOP	WIWIS	AIR	LSE	07/07/2011
E-815.2	GOTTBEHEUT, CHAD E	ENGB	WIWIS	AIR	GRB	07/07/2011
E-816	WISCONSIN ENG 9247	ENG6	WIWIS	AIR		07/07/2011
E-816.1	STEARNS, PAUL R	ENOP	WIWIS	AIR	RHI	07/07/2011
E-816.2	BONACK, JACOB C	ENGB	WIWIS	AIR	RHI	07/07/2011
E-817	WISCONSIN DELLS 9593	ENG6	WIWIS	AIR	RHI	07/07/2011
E-817.1	WINDMOELLER, RICHARD T	ENOP	WIWIS	AIR	RHI	07/07/2011
E-817.2	FISCHER, SCOTT D	ENGB	WIWIS	AIR	GRB	07/07/2011
E-818	BABCOCK ENG6-WIS - 9597	ENOP	WIWIS	A/R	CWA	07/07/2011
E-818.1	GLAZER, KENNETH J	ENOP	WIWIS	A/R	CWA	07/07/2011

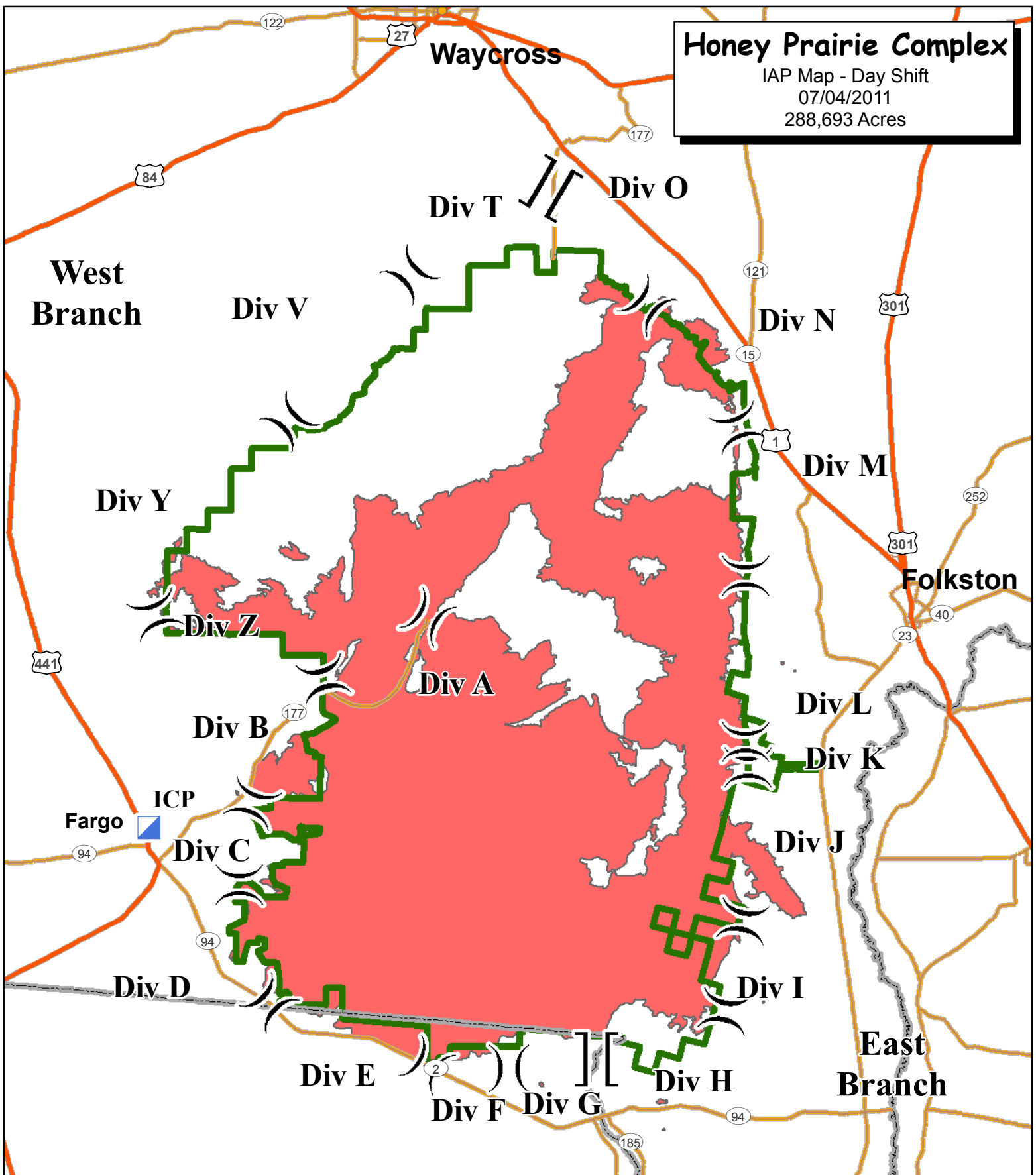
Number	Name	Kind	UnitID	Travel Method	Jet-port	Travel Date
E-818.2	ROCHON, DALE S	ENGB	WIWIS	A/R	DLH	07/07/2011
E-821	ENGINE - T6 - RAPID CITY - BRU	ENG6	SDRCFX	AOV	RAP	07/07/2011
E-821.1	RICKE, RYAN	ENGB	SDRCFX	AOV	RAP	07/07/2011
E-821.2	O'CONNOR, ERIC L	ENGB	SDRCFX	AOV	RAP	07/07/2011
E-821.3	MANINGAS, CALEN	FFT1	SDRCFX	AOV	RAP	07/07/2011
E-853	KALEIGH WATERTENDER	WAT3		POV		07/07/2011
E-853.1	TOMLINSON, KERRY	DRIV		POV		07/07/2011
E-926	PICKUP - AWD - SOS - RED LODGE	PU	MTSOS			07/07/2011
O-491	BURGETT, JOEL	TFLD	COPBS	A/R	DEN	07/07/2011
O-493	DIAZ, TIMOTHY	STEN	CASRF	A/R	MFR	07/07/2011
O-640	FINCHAM, MICHAEL D	EMTP	CASHF	AIR	RDD	07/07/2011
O-683	PEABODY, LARRY	DIVS	CATNF	AIR	SMF	07/07/2011
O-685	ROBINSON, JEFF	TFLD	ORDEF	A/R	RDM	07/07/2011
O-693	JOHNSON, ROSEMARY	PTRC	MNCPF	AIR	BJI	07/07/2011
O-694	THOMPSON, CATHERINE JAYNE	PTRC	MNCPF	AIR	BJI	07/07/2011
O-702	BARRETT, BRUCE B	SOF2	MNVOP	AIR	INL	07/07/2011
O-703	KLOCK, LARRY JAMES	SOF2	COPBC	A/R	COS	07/07/2011
O-738	DAVIS, LINDA	STEN	IDIPF	AIR	GEG	07/07/2011
O-739	WEEKS, RODNEY JAY	STEN	IDCDC	AIR	GEG	07/07/2011
O-743	HAMILTON, BERNARD T	TFLD	OHOHS	AIR	CMH	07/07/2011
O-745	WILHITE, ROGER D	EQPM	OKOKS	AIR	FSM	07/07/2011
O-749	SHINDELAR, BOBBY	OPBD	IDBOF	A/R	SMF	07/07/2011
O-752	ALMAS, MIKE	DIVS	IDIPF	AIR	GEG	07/07/2011
O-754	SILVIEUS, DAVID JOHN	PSC2	MIHIF	A/R	ESC	07/07/2011
O-755	COY, TERI L	RESL	WYBHF	A/R	COD	07/07/2011
O-760	POUKISH, DAVID M	DOZB	MTMDC	AIR	MSO	07/07/2011
O-766	MILLER, PEGGY	EMTP	MTFNF	AIR	FCA	07/07/2011
O-799	TATE, MELVIN L	HEB1	FLFLS	POV	PFN	07/07/2011
O-817	STRICKLAND, VIVIAN	DRIV	GAOKR	POV		07/07/2011
O-818	ROGERS, SHERYL	DRIV	GAOKR	POV		07/07/2011

Honey Prairie Complex

IAP Map - Day Shift

07/04/2011

288,693 Acres



-]] Branch Break
-) (Division Break
- Incident Command Post

- Highway
- Major Road
- State Boundary

- ▭ Refuge Boundary
- Fire Area



