

# Honey Prairie Complex

## Incident Action Plan

Operational Period  
Day Shift (0800-2100)  
Swing Shift (1200-2400)

Tuesday July 5, 2011

### Honey Prairie Fire Codes

*GA-OKR-000001*

#### **Cost Codes**

FWS – 9141-F25M-2J

NPS – 5023 F25M E11

USFS – PRF25M\_1502 BLM – F25M

FLA – DOF – Use FWS Code

GA – OKRA – Use FWS Code

Initial Attack – F4PM

<b>INCIDENT OBJECTIVES</b>	<b>1. INCIDENT NAME</b> Honey Prairie Complex	<b>2. DATE PREPARED</b> 7/4/11	<b>3. TIME PREPARED</b> 1800
<b>4. OPERATIONAL PERIOD (DATE/TIME)</b> Tuesday July 5, 2011 Day (0800 – 2100) and Swing (1200 – 2400)			
<b>5. GENERAL CONTROL OBJECTIVES FOR THE INCIDENT (INCLUDE ALTERNATIVES)</b> 1. Provide for safety of incident personnel and public in all incident operations. 2. Maintain a positive working relationship with all State and Federal partners and adjacent landowners and cooperators. Inform, involve and communicate incident planning and operations with all partners. 3. Contain all fires that are within the Okefenokee National Wildlife Refuge, inside the Refuge and/or inside the swamp edge break if possible. 4. Use full suppression strategies and tactics to minimize damage to private timberlands and improvements and to prevent fires outside the Refuge from entering the Refuge. 5. Assist in management and suppression of additional fires (new starts or breakouts) in the vicinity as approved by Agency Administrators and Unified Incident Commanders. 6. Manage the fires cost-effectively consistent with the values at risk. 7. Implement structure protection as necessary for at-risk facilities and communities.			
<b>6. WEATHER FORECAST FOR OPERATIONAL PERIOD</b> See attached forecast for area specific weather information.			
<b>7. GENERAL SAFETY MESSAGE</b> Drive defensively and use spotter when backing. Ensure LCES is in place and known by all personnel. Drink plenty of water and take frequent rest breaks. Ensure proper use of PPE during all operations.			
<b>8. Attachments</b> <input checked="" type="checkbox"/> if attached <input checked="" type="checkbox"/> Organization List (ICS 203) <input checked="" type="checkbox"/> Incident Map <input checked="" type="checkbox"/> Safety Message <input checked="" type="checkbox"/> Assignment List (ICS 204) <input type="checkbox"/> Traffic Plan <input type="checkbox"/> Demobilization Procedures <input checked="" type="checkbox"/> Communications Plan (ICS 205) <input checked="" type="checkbox"/> Human Resources <input checked="" type="checkbox"/> Unit Log <input checked="" type="checkbox"/> Medical Plan (ICS 206) <input checked="" type="checkbox"/> Phone List			
<b>9. PREPARED BY (PLANNING SECTION CHIEF)</b> Tim Roide		<b>10. APPROVED BY (INCIDENT COMMANDER)</b> /s/Mike Wilde /s/Gary Beauchamp /s/Buck Kline	

ORGANIZATION ASSIGNMENT LIST		9. Operations Section	
<b>1. Incident Name</b> <b>Honey Prairie Complex - DAY SHIFT</b> GA-OKR-000001		Chief	Tom Romanello / Dave Easton (t)
		Planning	Dave French / Andy Delmas (t)
<b>2. Date</b> 7/4/2011	<b>3. Time</b> 1000 hrs	<b>a. WEST BRANCH - Divisions/Groups</b>	
<b>4. Operational Period</b> 7/5/2011 Day (0800-2100) Swing (1200 – 2400)		OPBD	Bob Schindelar
<b>5. Incident Commander and Staff</b>		Division	A, B, C
Incident Commander	Mike Wilde / Gary Beauchamp / Trent Ingram / Mike Dueitt Mike Dondero (Deputy)	Division	D, E, F, G
Safety Officers	Todd Baumer / Randy Turrill (t)	Division	T
Information Officer	Don Carpenter / Brandon Hampton / Jason Curry (t)	Division	V
		Division	Y (DAY)
<b>6a. Agency Administrators</b>		Division	Y (SWING)
FWS	Curt McCasland	Division	Z
FWS	Mindy Gautreaux	Group	IA-WEST and Structure Group
<b>6b. Agency Representatives</b>		<b>b. EAST BRANCH - Divisions/Groups</b>	
FWS Liason	Skippy Reeves	OPBD	Russ Lane
GFC	Frank Sorrels	Division	H, I, J, K
FLDOF	James Karels		Charles Severson / Matt Filbert / Gregory Gulan (t)
FWS AREP	Mike Housh	Division	L, M
FWS-Refuge PAO	Art Webster	Division	N, O
GEMA AREP	Alan Robinson/ Diane Adams	Group	IA-EAST
USFS AREP	Ivan Greene	Group	Roads
<b>7. Planning Section</b>		<b>d. Air Operations Branch - Honey Prairie</b>	
Chief	Tim Roide / Dave Silvius	Air Operations Branch Director	Dewey Warner / Chris Schenck (t)
Resources Unit	Kathy Geier-Hayes / Teri Coy / Patty Eder (t)	Air Support Group Supervisor	John Burke / Mark Degregorio
Situation Unit	John Noneman	ATGS-Lake City	Dave Custer / Bruce Dikken (t)
IMET	Coleen Decker / Scott Kennedy (t)	<b>d. Air Operations Branch-Waycross</b>	
Fire Behavior Analyst	Gary Brunk / Steven Cobb (t)	Waycross Helibase Manger	Melvin Tate / Josh Ingle
Demobilization Unit	Bruce Waite	<b>d. Air Operations Branch - Fargo</b>	
GIS	Mickey Pillars / Jerry Petruzalek	Fargo Helibase Manager	Paul Borcherding
CTSP	Greg Peterson	ATGS	Carl MaGill
TNSP	Kevin Kranz	<b>10. Finance Section</b>	
<b>8. Logistics Section</b>		Chief	Kendra Sabo / Brenda Deberg (t)
Chief	Terry O'Connell	Time Unit	Shelly Schaff (t)
Supply Unit	Kenny Deberg	Procurement	Byron Brown/ Sherry Helmick (t)
Ground Support Unit	Bernie Lyons / Justin Langford (t)	Comp Claims Unit	Ed Harris / Doris Doster (t)
Security Manager	Steven Peterson	Cost	Glenn Beagle / Janice Lowe (t)
Communications Unit	Greg Ely	Buying Team	Tami Thompson
Medical Unit	Jeff Voskamp / Bill Erlach / Mike Evers (t)		
Facilities	Fred Dunets / Leslie Fonger		
Food	Bob Kookan		
		Prepared by:	Kathy Geier-Hayes (RESL)

DIVISION ASSIGNMENT LIST			1. Branch <b>West</b>		2. Division <b>A, B, C</b>		1 of 2		
3. Incident Name: <b>Honey Prairie Complex</b>			4. Operational Period Date: ##### 7/5/2011					Time: ##### Day: 0800-2100	
5. Operations Personnel									
<b>Operations</b>	Tom Romanello/Dave Easton(t)		<b>Branch Director</b>		Bob Shindelar 7/6				
<b>Planning Ops</b>	Dave French/Andy Delmas (t)		<b>Division Supervisor</b>		Mike Almas 7/6 - Micah Johnson (t) 7/10				
<b>Safety Officer</b>	Todd Baumer/Randy Turrill (t)								
6. Resources Assigned this Period									
Strike Team/Task Force/ Resource Designator	Leader / Name / Designator	Last Shift Date	Num. Per.	Drop Off PT./Time	Pick Up PT./Time				
<b>TFLD (O-897)</b>	<b>Terry George</b>	7/9	1						
<b>TFLD (O-898)</b>	<b>Joel McCraw (t)</b>	7/9	1						
<b>TFLD (E-5017.9)</b>	<b>Keith Kelley(t)</b>	7/10	1						
<b>DOZB (O-707)</b>	<b>Lance Smiskin</b>	7/5	1						
ENG6 (E-5002) Attack#1	Eric Finnigan	7/4	2	PVT					
ENG6 (E-807)	Todd Caudill	7/5	3						
ENG6 (E-900)	Richard Kujawa	7/8	2						
DOZ (E-170) Francis Marion	John Christopher	7/1	2						
TPL2 (E-652)	Ike Harvey	7/29	1	PVT					
TPL2 (E-653)	Easton Dugger	7/5	1	PVT					
WAT2 (E-93)	William Davis	7/5	1	PVT					
ENG6 (E-405)	Brett Gore	7/8	3						
ENG6 (E-5017) MOMTF 9504	Erin Yeoman	7/10	5						
ENG6 (E-907) Eagle Staff	Lance Eagle Staff	7/8	2						
Doz (E-646)/E-723 trans	Terry Jefferson	7/17	1						
TPL (E-760)	Jason McCall	7/5	1						
<b>SOF2 (O-702)</b>	<b>Bruce Barrett</b>	7/6	1						
<b>EMTP (O-767)</b>	<b>Evan Dean</b>	7/8	1						
7. Control Operations									
<ul style="list-style-type: none"> <li>Patrol and mop up within 100' of fire perimeter line.</li> <li>Monitor fire impacts to Stephen Foster State Park.</li> <li>Patrol and control return.</li> </ul>									
8. Special Instructions									
<ul style="list-style-type: none"> <li>Examine work area for fire weakened snags.</li> <li>Ensure LCES are in place before operations begin and stay hydrated.</li> <li>Additional resources will be available from GFC, Florida DOF, FWS, and local cooperators.</li> <li>Drive defensively and with lights on at all times.</li> </ul>									
9. Division/Group Communication Summary									
Function	Frequency	System	Channel	Function	Frequency	System	Channel		
Command N.Okee Repeater	See ICS 205	KING NIFC		Logistics	See ICS 205	KING NIFC			
Tactical Div/Group	See ICS 205	KING NIFC		Air to Ground	See ICS 205	KING NIFC			
Prepared by (Resource Unit Ldr.) Patty Eder (t)		Approved by (Planning Sect. Ch.) /s/ Tim Roide			Date July 4, 2011		Time 1930		

DIVISION ASSIGNMENT LIST			1. Branch <b>West</b>		2. Division <b>A, B, C</b>		2 of 2	
3. Incident Name: <b>Honey Prairie Complex</b>			4. Operational Period Date: ##### 7/5/2011 Time: ##### Day: 0800-2100					
5. Operations Personnel								
<b>Operations</b>	Tom Romanello/Dave Easton(t)		<b>Branch Director</b>		Bob Shindelar 7/6			
<b>Planning Ops</b>	Dave French/Andy Delmas (t)		<b>Division Supervisor</b>		Mike Almas 7/6 - Micah Johnson (t) 7/10			
<b>Safety Officer</b>	Todd Baumer/Randy Turrill (t)							
6. Resources Assigned this Period								
Strike Team/Task Force/ Resource Designator	Leader / Name / Designator	Last Shift Date	Num. Per.	Drop Off PT./Time	Pick Up PT./Time			
<b>S/T ENG6 MT STEN(E-990)</b>	<b>Jess Hauer</b>	7/18	1					
ENG6 (E-990.1)	Tara Browning	7/18	2					
ENG6 (E-990.2)	Nate Tschida	7/18	3					
ENG6 (E-990.3)	Brad Roe	7/18	3					
ENG6 (E-990.4)	Lawrence Lelone	7/18	3					
ENG6 (E-990.5)	Renee Cambell	7/18	2					
ENG6 (E-994)	Pat Norquay	7/18	3					
<b>TFLD (O-900)</b>	<b>Phill Millette</b>	7/18	1					
7. Control Operations								
<ul style="list-style-type: none"> <li>Patrol and mop up within 100' of fire perimeter line.</li> <li>Monitor fire impacts to Stephen Foster State Park.</li> <li>Patrol and control return.</li> </ul>								
8. Special Instructions								
<ul style="list-style-type: none"> <li>Examine work area for fire weakened snags.</li> <li>Ensure LCES are in place before operations begin and stay hydrated.</li> <li>Additional resources will be available from GFC, Florida DOF, FWS, and local cooperators.</li> <li>Drive defensively and with lights on at all times.</li> </ul>								
9. Division/Group Communication Summary								
Function	Frequency	System	Channel	Function	Frequency	System	Channel	
Command N.Okeee Repeater	See ICS 205	KING NIFC		Logistics	See ICS 205	KING NIFC		
Tactical Div/Group	See ICS 205	KING NIFC		Air to Ground	See ICS 205	KING NIFC		
Prepared by (Resource Unit Ldr.) Teri Coy		Approved by (Planning Sect. Ch.) /s/ Tim Roide			Date July 4, 2011		Time 1930	

<b>DIVISION ASSIGNMENT LIST</b>				1. Branch <b>West</b>		2. Division <b>D, E, F, G</b>	
3. Incident Name <b>Honey Prairie Complex</b>				4. Operational Period Date: ##### 7/5/2011      Time: #####0800-2100			
5. Operations Personnel							
<b>Operations</b>		Tom Romanello/Dave Easton(t)		<b>Branch Director</b>		Bob Shindelar 7/6	
<b>Planning Ops</b>		Dave French/Andy Delmas (t)		<b>Division Supervisor</b>		Tam Cook	
<b>Safety Officer</b>		Todd Baumer/Randy Turrill (t)					
6. Resources Assigned this Period							
Strike Team / Task Force / Resource Designator		Leader / Name / Designator		Last Shift Date	Num. Per.	Drop Off PT./Time	Pick Up PT./Time
<b>TFLD (O-491)</b>		<b>Joe Burgett</b>		7/6	1		
<b>TFLD (O-688)</b>		<b>Dan Bill (t)</b>		7/5	1		
ENG6 (E-821)		R Ricke		7/6	3		
ENG6 (E-824)		J. Morgan		7/5	3		
WT (E-700)		Cahoon		7/6	1	PVT	
<b>HEBQ (O-708)</b>		<b>Andy Murrin</b>		7/5	1		
Clinch County Grader (E-228)		Steven Hendricks			1		
TPL3 (E-499)		John Schwab/Roy Dowan		7/13	1		
ENG6 (E-134)		Paul McDavid		7/27	3	PVT	
ENG5 (E-503)		Jim Garrison		7/18	2	PVT	
ENG6 (E-709)		Jason Gooder		7/17	3	PVT	
<b>EMTB (O-849)</b>		<b>Kyle Meadows- Barber</b>		7/10	1		
<b>EMTP (O-730)</b>		<b>Shane Powers</b>		7/ 7	1		
<b>SOF2 (O-805)</b>		<b>Troy Shaddox</b>		7/9	1		
7. Control Operations <ul style="list-style-type: none"> <li>Monitor and patrol south end of West Branch.</li> <li>Mop up all hot spots within 100' of the fire perimeter.</li> <li>Patrol and control return.</li> </ul>							
8. Special Instructions <ul style="list-style-type: none"> <li>Ensure LCES are in place before operations begin and stay hydrated.</li> <li>See medical plan for EMT support.</li> <li>Drive defensively and with lights on at all times.</li> <li>Examine work area for fire weakened snags.</li> <li>If communications needed with Impassable Bay Fire – use Channel 11 (168.2000)</li> </ul>							
9. Division/Group Communication Summary							
Function	Frequency	System	Channel	Function	Frequency	System	Channel
Command N. Okee repeater	See ICS 205	KING NIFC		Logistics		KING NIFC	
Tactical Div/Group	See ICS 205	KING NIFC		Air to Ground	See ICS 205	KING NIFC	
Prepared by (Resource Unit Ldr.) Patty Eder (t)			Approved by (Planning Sect. Ch.) /s/ Tim Roide			Date July 4, 2011	
						Time 1930	

<b>DIVISION ASSIGNMENT LIST</b>				1. Branch <b>West</b>		2. Division <b>T</b>	
3. Incident Name <b>Honey Prairie Complex</b>				4. Operational Period Date: ##### 7/5/2011      Time: #####0800-2100			
5. Operations Personnel							
<b>Operations</b>	Tom Romanello/Dave Easton(t)			<b>Branch Director</b>		Bob Shindelar 7/6	
<b>Planning Ops</b>	Dave French/Andy Delmas (t)			<b>Division</b>		Steve Mullis 7/7	
<b>Safety Officer</b>	Todd Baumer/Randy Turrill (t)						
6. Resources Assigned this Period							
Strike Team/Task Force/ Resource Designator		Leader / Name / Designator		Last Shift Date	Num. Per.	Drop Off PT./Time	Pick Up PT./Time
<b>STEN (E-831.1)</b>		<b>Steven Morefield</b>		7/9	1		
<b>S/T Type 6 OR STEN (E-831.2)</b>		<b>John Montgomery (t)</b>		7/9	1		
ENG6 (E-831.3)				7/9	4		
ENG6 (E-831.4)				7/9	4		
ENG6 (E-831.5)				7/9	3		
ENG6 (E-831.6)				7/9	3		
ENG6 (E-831.7)				7/9	3		
7. Control Operations							
<ul style="list-style-type: none"> <li>Recon potential control lines and examine area for snag removal</li> <li>Improve swamp break boundaries for fire breaks, work w/resource advisor</li> <li>Coordinate potential burn-out w/READ and refuge personnel</li> <li>Use refuge personnel for any burn-out activities.</li> </ul>							
8. Special Instructions							
<ul style="list-style-type: none"> <li>Make contact with the Resource Advisor before using mechanical equipment.</li> <li>Safely push down with equipment all snags whether on fire or not that are a threat to success or tactical operations.</li> <li>Ensure LCES are in place before operations begin. Stay hydrated.</li> <li>Drive defensively and with lights on at all times.</li> <li>Boggy terrain: Be careful and aware when working around this type of area.</li> </ul>							
9. Division/Group Communication Summary							
Function	Frequency	System	Channel	Function	Frequency	System	Channel
Command Ware Co. Clinch & North Okee	See ICS 205	KING NIFC		Logistics		KING NIFC	
Tactical Div/Group	See ICS 205	KING NIFC		Air to Ground	See ICS 205	KING NIFC	
Prepared by (Resource Unit Ldr.) Patty Eder (t)		Approved by (Planning Sect. Ch.) /s/ Tim Roide			Date July 4, 2011		Time 1800

DIVISION ASSIGNMENT LIST			1. Branch <b>West</b>		2. Division <b>V</b>		
3. Incident Name <b>Honey Prairie Complex</b>			4. Operational Period Date: ##### 7/5/2011 Time: #####0800-2100				
5. Operations Personnel							
<b>Operations</b>	Tom Romanello/Dave Easton(t)		<b>Branch Director</b>		Bob Shindelar 7/6		
<b>Planning Ops</b>	Dave French/Andy Delmas (t)		<b>Division Supervisor</b>		Quincy Chung 7/9		
<b>Safety Officer</b>	Todd Baumer/Randy Turrill (t)		<b>Division Supervisor</b>				
6. Strike Team/Task Force/ Resource Designator							
	Leader / Name / Designator	Last Shift Date	Num. Per.	Drop Off PT./Time	Pick Up PT./Time		
<b>TFLD (O-709)</b>	<b>JR. Callis</b>	7/5	1				
<b>DOZB (O-591)</b>	<b>Michael Tummins</b>	7/5	1				
Feller-Buncher (E-524)	Timmy Carter		1				
Feller-Buncher (E-526)	Kenneth Claxton		1				
Grader (E-530)	Woody Bargeron		1	PVT			
TPL2 (E-606)		7/17	1				
<b>EMTB (O-733)</b>	<b>David Moore</b>	7/7	1				
<b>DOZB (O-906)</b>	<b>Evans Karp</b>	7/9	1				
ENG6 (E-992)	Steve Spangler	7/18	3				
ENG6 (E-995)		7/7	3				
ENG6 (E-996)		7/7	3				
7. Control Operations							
<ul style="list-style-type: none"> <li>Recon potential control lines and examine area for snag removal</li> <li>Improve swamp break boundaries for fire breaks, work w/resource advisor</li> <li>Coordinate potential burn-out w/READ and Refuge Personnel</li> <li>Use Refuge personnel for any burn-out activities.</li> </ul>							
8. Special Instructions							
<ul style="list-style-type: none"> <li>Make contact with the Resource Advisor before using machanical equipment.</li> <li>Safely push down with equipment all snags whether on fire or not that are a threat to success or tactical operations.</li> <li>Ensure LCES are in place before operations begin. Stay hydrated.</li> <li>Drive defensively and with lights on at all times.</li> <li>Boggy terrain: Be careful and aware when working around this type of area.</li> </ul>							
9. Division/Group Communication Summary							
Function	Frequency	System	Channel	Function	Frequency	System	Channel
Command Ware Co. Clinch & North Okee	See ICS 205	KING NIFC		Logistics		KING NIFC	#####
Tactical Div/Group	See ICS 205	KING NIFC		Air to Ground	See ICS 205	KING NIFC	
Prepared by (Resource Unit Ldr.) Patty Eder (t)		Approved by (Planning Sect. Ch.) /s/ Tim Roide			Date #####July 4, 2011		Time 1800



DIVISION ASSIGNMENT LIST			1. Branch <b>West</b>		2. Division <b>Y - Day</b>		1 of 2		
3. Incident Name <b>Honey Prairie Complex</b>			4. Operational Period Date: ##### 7/5/2011 Time: #####0800-2100						
5. Operations Personnel									
<b>Operations</b>		Tom Romanello/Dave Easton(t)		<b>Branch Director</b>		Bob Shindelar 7/6			
<b>Planning Ops</b>		Dave French/Andy Delmas (t)		<b>Division Supervisor</b>		Chris Casey 7/7 - Joe Alyea 7/6			
<b>Safety Officer</b>		Todd Baumer/Randy Turrill (t)							
6. Resources Assigned this Period									
Strike Team/Task Force/ Resource Designator		Leader / Name / Designator		Last Shift Date	Num. Per.	Drop Off PT./Time		Pick Up PT./Time	
<b>STEN (O-758)</b>		<b>Linda Davis</b>		7/6	1				
<b>STEN (O-739)</b>		<b>Rodney Weeks</b>		7/6	1				
ENG6 (E-815) WIS Mellen 9244		Chad Gottbeheit		7/6	2				
ENG6 (E-816) WIS 9247		Jacob Bonack		7/6	2				
ENG6 (E-817) WIS Dell 9593		Scott Fischer		7/6	2				
ENG6 (E-818) WIS Babcock 9597		Dale Rochan		7/6	2				
ENG6 (E-819)		Chris Queen		7/6	3				
WT (E-512)		Ken Swane		7/9	1	PVT			
ENG6 (E-808)		Craig Kostizewski		7/6	3				
WTDR (E-560)		Tipton #2		7/25	1	PVT			
<b>DOZB (O-712)</b>		<b>Jason Oney</b>		7/5	1				
<b>DOZB (O-843)</b>		<b>Joseph Chastain (t)</b>		7/10	1				
Transport for E-943.				7/8		PVT			
<b>EMTP (O-766)</b>		<b>Peggy Miller</b>		7/6	1				
<b>SOF2 (O-891)</b>		<b>Steve Holman</b>		7/18	1				
7. Control Operations <ul style="list-style-type: none"> <li>Make contact with the Resource Advisor before using mechanical equipment.</li> <li>Recon potential controllines and examine area for snag removal</li> <li>Improve swamp break boundaries for fire breaks</li> </ul>									
8. Special Instructions <ul style="list-style-type: none"> <li>Safely push down with equipment all snags whether on fire or not that are a threat to success or tactical operations.</li> <li>Ensure LCES are in place before operations begin. Stay hydrated.</li> <li>Drive defensively and with lights on at all times.</li> <li>Boggy terrain: Be careful and aware when working around this type of area.</li> </ul>									
9. Division/Group Communication Summary									
Function	Frequency	System	Channel		Function	Frequency	System	Channel	
Command Ware Co. Clinch & North Okee	See ICS 205	KING NIFC			Logistics		KING NIFC	#####	
Tactical Div/Group	See ICS 205	KING NIFC			Air to Ground	See ICS 205	KING NIFC		
Prepared by (Resource Unit Ldr.) Teri Coy		Approved by (Planning Sect. Ch.) /s/ Tim Roide				Date #####July 4, 2011		Time 1730	

<b>DIVISION ASSIGNMENT LIST</b>			1. Branch <b>West</b>		2. Division <b>Y - Day</b>		2 of 2
3. Incident Name <b>Honey Prairie Complex</b>				4. Operational Period Date: ##### 7/5/2011      Time: #####0800-2100			
<b>5. Operations Personnel</b>							
<b>Operations</b>	Tom Romanello/Dave Easton(t)			<b>Branch Director</b>		Bob Shindelar 7/6	
<b>Planning Ops</b>	Dave French/Andy Delmas (t)			<b>Division Supervisor</b>		Chris Casey 7/7 - Joe Alyea 7/6	
<b>Safety Officer</b>	Todd Baumer/Randy Turrill (t)						
<b>6. Resources Assigned this Period</b>							
Strike Team/Task Force/ Resource Designator	Leader / Name / Designator	Last Shift Date	Num. Per.	Drop Off PT./Time	Pick Up PT./Time		
ENG6 (E-584) WI-FS	Chris Geidel	7/6	1				
WT (E-716)	Donny Griffis	7/28	1	PVT			
DOZ (E-943)	Ray Capman	7/7	1	PVT			
TPL2 (E-497)	Leslie Jeter		1	PVT			
7. Control Operations <ul style="list-style-type: none"> <li>• Make contact with the Resource Advisor before using mechanical equipment.</li> <li>• Recon potential controllines and examine area for snag removal</li> <li>• Improve swamp break boundaries for fire breaks</li> </ul>							
8. Special Instructions <ul style="list-style-type: none"> <li>• Safely push down with equipment all snags whether on fire or not that are a threat to success or tactical operations.</li> <li>• Ensure LCES are in place before operations begin. Stay hydrated.</li> <li>• Drive defensively and with lights on at all times.</li> <li>• Boggy terrain: Be careful and aware when working around this type of area.</li> </ul>							
<b>9. Division/Group Communication Summary</b>							
Function	Frequency	System	Channel	Function	Frequency	System	Channel
Command Ware Co. Clinch & North Okee	See ICS 205	KING NIFC		Logistics		KING NIFC	#####
Tactical Div/Group	See ICS 205	KING NIFC		Air to Ground	See ICS 205	KING NIFC	
Prepared by (Resource Unit Ldr.) Teri Coy		Approved by (Planning Sect. Ch.) /s/ Tim Roide			Date #####July 4, 2011		Time 1730

DIVISION ASSIGNMENT LIST			1. Branch <b>West</b>		2. Division <b>Y - Swing</b>		
3. Incident Name <b>Honey Prairie Complex</b>			4. Operational Period Date: ##### 7/5/2011 Time: #####1200-2400				
5. Operations Personnel							
<b>Operations</b>	Tom Romanello/Dave Easton(t)		<b>Branch Director</b>		Bob Shindelar 7/6		
<b>Planning Ops</b>	Dave French/Andy Delmas (t)		<b>Division Supervisor</b>		Patrick Morgan / Nicole Hallisey (t)		
<b>Safety Officer</b>	Todd Baumer/Randy Turrill (t)						
6. Resources Assigned this Period							
Strike Team/Task Force/ Resource Designator	Leader / Name / Designator	Last Shift Date	Num. Per.	Drop Off PT./Time	Pick Up PT./Time		
<b>TFLD (O-582)</b>	<b>Seth Grimm</b>	7/5	1				
ENG6 (E-533)	Leland Bass	7/6	2				
ENG6 (E-382)	Joseph Berry	7/6	2				
ENG6 (E-81)	Chris Buchanan	7/6	2				
ENG6 (E-76)	Darrell Husky	7/6	2				
ENG6 (E-78)	Kenneth Harkins(E-78.7)	7/6	2				
ENG6 (E-80)	James Mashburn	7/6	2				
ENG6 (E-115)	Westley Sisk	7/6	2				
<b>TFLD (O-741)</b>	<b>Ron Sams</b>	7/7	1				
WAT2 (E-954)	Tim Griffen		1	PVT			
<b>EMTP (O-640)</b>	<b>Mike Fincham</b>	7/6	1				
<b>EMTB (O-678)</b>	<b>Alex Lynn</b>	7/5	1				
<b>SOF2 (O-892)</b>	<b>Steven Ripley</b>	7/17	1				
7. Control Operations <ul style="list-style-type: none"> <li>Make contact with the Resource Advisor before using mechanical equipment.</li> <li>Recon potential controllines and examine area for snag removal</li> <li>Improve swamp break boundaries for fire breaks</li> </ul>							
8. Special Instructions <ul style="list-style-type: none"> <li>Safely push down with equipment all snags whether on fire or not that are a threat to success or tactical operations.</li> <li>Ensure LCES are in place before operations begin. Stay hydrated.</li> <li>Drive defensively and with lights on at all times.</li> <li>Boggy terrain: Be careful and aware when working around this type of area.</li> </ul>							
9. Division/Group Communication Summary							
Function	Frequency	System	Channel	Function	Frequency	System	Channel
Command Ware Co. Clinch & North Okee	See ICS 205	KING NIFC		Logistics		KING NIFC	#####
Tactical Div/Group	See ICS 205	KING NIFC		Air to Ground	See ICS 205	KING NIFC	
Prepared by (Resource Unit Ldr.) Teri Coy		Approved by (Planning Sect. Ch.) /s/ Tim Roide			Date #####July 4, 2011		Time 1730

DIVISION ASSIGNMENT LIST			1. Branch <b>West</b>		2. Division <b>Z</b>		
3. Incident Name: <b>Honey Prairie Complex</b>			4. Operational Period Date: ##### 7/5/2011      Time: ##### Day: 0800-2100				
5. Operations Personnel							
<b>Operations</b>	Tom Romanello/Dave Easton(t)		<b>Branch Director</b>		Bob Shindelar 7/6		
<b>Planning Ops</b>	Dave French/Andy Delmas (t)		<b>Division Supervisor</b>		Larry Peabody 7/13		
<b>Safety Officer</b>	Todd Baumer/Randy Turrill (t)						
6. Resources Assigned this Period							
Strike Team/Task Force/ Resource Designator		Leader / Name / Designator	Last Shift Date	Num. Per.	Drop Off PT./Time		Pick Up PT./Time
<b>TFLD (O-678)</b>		<b>Bobette Rowe</b>	7/5	1			
<b>TFLD (O-792)</b>		<b>Dennis Wilson (t)</b>	7/7	1			
ENG5(E-502)		Greg Curry	7/13	2	PVT		
ENG6 (E-5011) Smokey Mt 209		G. Barlett	7/10	2	PVT		
ENG6 (E-5012) Smokey Mt 301		P. Shrimplin	7/12	2	PVT		
ENG6 (E-904)		R Hill	7/8	3			
ENG6 (E-905)		T. Steakley	7/8	3			
<b>TFLD (O-760)</b>		<b>David Poukish</b>	7/6	1			
ENG6 (E-392)		Frank Paukert(E-392.7)	7/7	3			
ENG6 (E-5010)		C. Tevebaugh(E-5010.1)	7/12	3	PVT		
ENG6 (E-5008)		Maige/Walton	7/8	2	PVT		
ENG6 (E-901)		Matheson	7/9	4			
ENG6 (E-5007)		Jeff Bradley(E-5007.1)	7/8	2	PVT		
<b>TFLD (O-672)</b>		<b>Randy Lee</b>	7/5	1			
HCT2IA (C-14) Pat Rick 20B		Dustin Eldred	7/20	20	PVT		
Cumberland Gap Module (O-836)		Sasha Ernst	7/5	7			
<b>TFLD (O-743)</b>		<b>Bernard Hamilton</b>	7/7	1			
ENG6 (E-809) TX Refuge 2462		M. Villarreal	7/6	2			
ENG6 (E-806) FWS GDR 603		Mark Romagosa	7/6	3			
ENG6 (E-838) MNSB Refuge 6232		Jeanne Whitefeather	7/7	3			
ENG6 (E-796) PH 5722		Cory Highfill	7/6	3			
ENG6 (E-850) TNCNF		Michael Haisten	7/7	3			
<b>EMTP (O-847)</b>		<b>Levi Clymer</b>	7/11	1			
<b>SOFF2 (O-891)</b>		<b>Steve Holman</b>	7/18	1			
7. Control Operations							
<ul style="list-style-type: none"> <li>Contain all fires outside refuge boundary.</li> <li>Patrol and mop up within 100' of fire perimeter line.</li> </ul>							
8. Special Instructions							
<ul style="list-style-type: none"> <li>Ensure that tractors are cleaned and free of debris daily. Examine work area for fire weakened snags.</li> <li>Ensure LCES are in place before operations begin and stay hydrated.</li> <li>Additional resources will be available from GFC, Florida DOF, FWS, and local cooperators.</li> <li>Drive defensively and with lights on at all times.</li> <li>See Medical plan for EMT support.</li> <li>Implement MIST tactics</li> </ul>							
9. Division/Group Communication Summary							
Function	Frequency	System	Channel	Function	Frequency	System	Channel
Command N.Okee Repeater	See ICS 205	KING NIFC		Logistics	See ICS 205	KING NIFC	
Tactical Div/Group	See ICS 205	KING NIFC		Air to Ground	See ICS 205	KING NIFC	
Prepared by (Resource Unit Ldr.) Teri Coy		Approved by (Planning Sect. Ch.) /s/ Tim Roide			Date July 4, 2011		Time 1930

<b>DIVISION ASSIGNMENT LIST</b>				1. Branch <b>West</b>	2. Division <b>West - Initial Attack and Structure Protection</b>		
3. Incident Name: <b>Honey Prairie Complex</b>				4. Operational Period Date: ##### 7/5/2011 Time: ##### Day: 0800-2100			
5. Operations Personnel							
<b>Operations</b>	Tom Romanello/Dave Easton(t)			<b>Branch Director</b>	Bob Shindelar 7/6		
<b>Planning Ops</b>	Dave French/Andy Delmas (t)			<b>Division Supervisor</b>	Dave Congos 7/5		
<b>Safety Officer</b>	Todd Baumer/Randy Turrill (t)						
6. Resources Assigned this Period							
Strike Team/Task Force/ Resource Designator	Leader / Name / Designator	Last Shift Date	Num. Per.	Drop Off PT./Time	Pick Up PT./Time		
<b>STEN (O-844)</b>	<b>Gary Glintenkamp</b>	7/8	1				
ENG6 (E-906)	Jay Wickham	7/9	3				
ENG6 (E-404)	Nicole Salmer	7/9	3				
ENG6 (E-939)	Justin Finklea		3				
<b>HEQB (O-714)</b>	<b>Charles White</b>	7/5	1				
DOZ3 (E-651)	Paul Funderbuck	7/15	1	PVT			
DOZ3 (E-650)	Doug Williams	7/15	1	PVT			
<b>STPL (O-5039)</b>	<b>Todd Milam</b>	7/10	1				
TPL (E-914)		7/11	1				
TPL (E-915)		7/11	1				
TPL (E-916)		7/11	1				
WAT3 (E-517)	Larry Bartlett	7/4	1	PVT			
<b>SOF2 (O-805)</b>	<b>Troy Shaddox</b>	7/9	1				
7. Control Operations <ul style="list-style-type: none"> <li>Respond to Initial Attack as requested</li> <li>Initial attack IC will communicate size up information to Honey Prairie incident communications</li> </ul>							
8. Special Instructions							
9. Division/Group Communication Summary							
Function	Frequency	System	Channel	Function	Frequency	System	Channel
Command N.Okee Repeater	See ICS 205	KING NIFC		Logistics	See ICS 205	KING NIFC	
Tactical Div/Group	See ICS 205	KING NIFC		Air to Ground	See ICS 205	KING NIFC	
Prepared by (Resource Unit Ldr.) Teri Coy		Approved by (Planning Sect. Ch.) /s/ Tim Roide			Date July 4, 2011		Time 1930

<b>DIVISION ASSIGNMENT LIST</b>			1. Branch <b>East</b>		2. Division <b>H/ I/J/K</b>		
3. Incident Name <b>Honey Prairie Complex</b>			4. Operational Period Date: ##### 7/5/2011      Time: #####0800-2100				
5. Operations Personnel							
<b>Operations</b>	Tom Romanello/Dave Easton(t)		<b>Branch Director</b>		Russ Lane 7/8		
<b>Planning Ops</b>	Dave French/Andy Delmas (t)		<b>Division Supervisor</b>		Charles Severson/Matt Filbert Gregory Gulan (t) 7/5		
<b>Safety Officer</b>	Todd Baumer/Randy Turrill (t)						
6. Resources Assigned this Period							
Strike Team/Task Force/ Resource Designator	Leader / Name / Designator		Last Shift Date	Num. Per.	Drop Off PT./Time	Pick Up PT./Time	
<b>TFLD (O-814)</b>	<b>Troy Boschee</b>		7/8	1			
<b>TFLD (O-813)</b>	<b>Robert Bengson (t)</b>		7/8	1			
<b>STEN (O-493)</b>	<b>Tim Diaz</b>		7/6	1			
ENG6 (E-135) Attack-1	Ed Kleiman		7/16	2	PVT		
ENG6 (E-136) Nat'l Fire	Jay Cates		7/17	2	PVT		
ENG6 (E-137) Wildlands 8	A. Radford		7/10	2	PVT		
ENG6 (E-179) Nat'l Fire #4	Jimmy Wills		7/13	2	PVT		
ENG6 (E-892) TNCNF 301	David Ives		7/7	3			
ENG6 (E-899) MIUPC 61	D. Karlovich		7/8	3			
ENG6 (E-822) WBD 3651	Joel Peters		7/7	3			
WT (E-559)	Ira Maybery		7/8	1	PVT		
Pump (E-293)			7/30	1		Pump is on a Trailer	
<b>EMTB (O-637)</b>	<b>Rick Sparks</b>		7/8	1			
<b>EMTP (O-731)</b>	<b>Keith Barker</b>		7/5	1			
<b>SOF2 (O-808)</b>	<b>Larry Klock</b>		7/9	1			
7. Control Operations							
<ul style="list-style-type: none"> <li>Contain all fires outside refuge boundary.</li> <li>Patrol and control return</li> <li>Provide initial attack for GFC and fires outside the refuge boundary.</li> <li>Patrol all spots outside refuge boundary.</li> <li>Patrol and mop up all accessible fire line. Mop up all hot spots within 100' of the fire perimeter.</li> <li>Continue to provide protection to the Chesser Homestead by maintaining an adequate water supply via portable pump at location.</li> </ul>							
8. Special Instructions							
<ul style="list-style-type: none"> <li>Ensure LCES are in place before operations begin. Stay hydrated.</li> <li>Drive defensively and with lights on at all times.</li> <li>See medical plan for EMT support</li> <li>Examine work area for fire weakened snags</li> </ul>							
9. Division/Group Communication Summary							
	Function	Frequency	Channel	Function	Frequency	System	Channel
Command N. Okee Repeater	See ICS 205	KING NIFC		Logistics		KING NIFC	
Tactical Div/Group	See ICS 205			Air to Ground	See ICS 205	NIFC	
Prepared by (Resource Unit Ldr.) Patty Eder (t)		Approved by (Planning Sect. Ch.) /s/ Tim Roide			Date July 4, 2011		Time 1800

<b>DIVISION ASSIGNMENT LIST</b>			1. Branch <b>East</b>		2. Division <b>L, M</b>		
3. Incident Name <b>Honey Prairie Complex</b>			4. Operational Period Date: ##### 7/5/2011      Time: #####0800-2100				
5. Operations Personnel							
<b>Operations</b>	Tom Romanello/Dave Easton(t)		<b>Branch Director</b>	Russ Lane 7/8			
<b>Planning Ops</b>	Dave French/Andy Delmas (t)		<b>Division Supervisor</b>	Jason Butler, Alex Abols (t)			
<b>Safety Officer</b>	Todd Baumer/Randy Turrill (t)						
6. Resources Assigned this Period							
Strike Team/Task Force/ Resource Designator	Leader / Name / Designator		Last Shift Date	Num. Per.	Drop Off PT./Time		Pick Up PT./Time
<b>STEN (O-690)</b>	<b>Ed Guidi</b>		7/5	1			
<b>TFLD (O-839)</b>	<b>Tim Wharton</b>		7/7	1			
<b>TFLD (O-431)</b>	<b>James Flue (t)</b>		7/10	1			
ENG6 (E-893)MIHMF 251	Paul Lyden		7/9	3			
ENG6 (E-894) MOMTF 862	Greg Carlson		7/8	3			
ENG6 (E-895) MOMTF 9505	Timothy Bray		7/8	3			
ENG6 (E-898) MDS #4	James Harris		7/8	2			
ENG6 (E-385) Red Lake	Gilbert Juarez		7/9	3			
ENG6 (E-5014) Tx Fire 157	Curtis Weaver		7/9	3			
ENG6 (E-407) White Earth #2	Seve Lafriniere		7/9	3			
ENG6 (E-826)	Steve Melton		7/8 PVT	2			
<b>EMTP (O-731)</b>	<b>Keith Barker</b>		7/5	1			
<b>SOF2 (O-659)</b>	<b>Terry Trapp</b>		7/9	1			
7. Control Operations							
<ul style="list-style-type: none"> <li>Contain all fires outside refuge boundary.</li> <li>Patrol and control reburn</li> <li>Mop up all spots outside refuge boundary and within 100 feet of perimeter</li> </ul>							
8. Special Instructions							
<ul style="list-style-type: none"> <li>Ensure LCES are in place before operations begin. Stay hydrated.</li> <li>Drive defensively and with lights on at all times.</li> <li>See medical plan for EMT support</li> <li>Examine work area for fire weakened snags.</li> </ul>							
9. Division/Group Communication Summary							
	Function	Frequency	Channel	Function	Frequency	System	Channel
Command N. Okee Repeater	See ICS 205	KING NIFC		Logistics		KING NIFC	
Tactical Div/Group	See ICS 205	KING NIFC		Air to Ground	See ICS 205	KING NIFC	
Prepared by (Resource Unit Ldr.) Patty Eder (t)	Approved by (Planning Sect. Ch.) /s/ Tim Roide			Date July 4, 2011		Time 1800	

DIVISION ASSIGNMENT LIST				1. Branch <b>East</b>		2. Division <b>N/O</b>		
3. Incident Name <b>Honey Prairie Complex</b>				4. Operational Period Date: ##### 7/5/2011 Time: #####0800-2100				
5. Operations Personnel								
<b>Operations</b>		Tom Romanello/Dave Easton(t)		<b>Branch Director</b>		Russ Lane 7/8		
<b>Planning Ops</b>		Dave French/Andy Delmas (t)		<b>Division Supervisor</b>		Jay Riewestahl 7/7/Mike Burow (t)		
<b>Safety Officer</b>		Todd Baumer/Randy Turrill (t)						
6. Resources Assigned this Period								
Strike Team/Task Force/ Resource Designator		Leader / Name / Designator		Last Shift Date	Num. Per.	Drop Off PT./Time	Pick Up PT./Time	
<b>HEQB (O-713)</b>		<b>Eric Heenan</b>		7/5	1			
ENG6 (E-922) GAPDR		Nathen Herron		7/7	2			
ENG6 (E-897) MDBWR		J. Beck		7/8	2			
ENG6 (E-5006) Wildlands #3		Keith Hawk		7/11	2	PVT		
<b>SOF2 (O-807)</b>		<b>Chuck Stanton</b>		7/9	1			
ENG6 (E-3) Okefenokee Refuge		Angie Carl		7/10	2			
ENG6 (E-5003)Cranes #2		D. Crane		7/14	2	PVT		
ENG6 (E-993) Bush Fire		Philips Quochoytewa		7/19	2	PVT		
<b>EMTB (O-848)</b>		<b>Bert Hyde</b>		7/12	1			
7. Control Operations <ul style="list-style-type: none"> <li>Patrol and mop up 100' inside fire perimeter.</li> <li>Recon potential control lines and examine area snag removal</li> <li>Continue to establish contingency firelines to contain fire south of Double Branch Rd., east of Skull Head Rd., and north of Refuge Boundary.</li> <li>Keep fire within refuge boundary.</li> </ul>								
8. Special Instructions <ul style="list-style-type: none"> <li>Safely push down with equipment all snags whether on fire or not that are a threat to success or tactical operations.</li> <li>Ensure LCES are in place before operations begin. Stay hydrated.</li> <li>See medical plan for EMT support.</li> <li>Drive defensively and with lights on at all times.</li> <li>Boggy terrain: Be careful and aware when working around this type of area.</li> <li>If HP fire escapes the NE Break the Great Basin team will command suppression w/assistance from the GFC. If Race Pond escapes to the south GFC will command w/assistance by the Great Basin. DIVS should make daily contact w/ Race Pond DIVS on scene.</li> </ul>								
9. Division/Group Communication Summary								
Function	Frequency	System	Channel		Function	Frequency	System	Channel
Command	See ICS 205	KING NIFC			Logistics		KING NIFC	#####
Tactical Div/Group	See ICS 205	KING NIFC			Air to Ground	See ICS 205	KING NIFC	
Prepared by (Resource Unit Ldr.) Patty Eder (t)		Approved by (Planning Sect. Ch.) /s/ Tim Roide			Date #####July 4, 2011		Time 1730	



<b>DIVISION ASSIGNMENT LIST</b>			1. Branch <b>East</b>		2. Division <b>East Initial Attack</b>		
3. Incident Name <b>Honey Prairie Complex</b>			4. Operational Period Date: ##### 7/5/2011      Time: #####0800-2100				
5. Operations Personnel							
<b>Operations</b>	Tom Romanello/Dave Easton(t)		<b>Branch Director</b>		Russ Lane 7/8		
<b>Planning Ops</b>	Dave French/Andy Delmas (t)		<b>Division Supervisor</b>		John Huschke 7/12		
<b>Safety Officer</b>	Todd Baumer/Randy Turrill (t)						
6. Resources Assigned this Period							
Strike Team/Task Force/ Resource Designator	Leader / Name / Designator	Last Shift Date	Num. Per.	Drop Off PT./Time	Pick Up PT./Time		
<b>TFLD (O-685)</b>	<b>Jeff Robinson</b>	7/6	1				
ENG6 (E-390) WICNF 461	T. Borman	7/10	2				
ENG6 (E-79) GAS Coweta	William Lee	7/6	2				
ENG6 (E-77) GAS Chattooga	Dean Cornett	7/6	2				
WT (E-92)	Justin/Ellis		1	PVT			
<b>DOZB (O-711)</b>	<b>Dennis Huenergardt</b>	7/5	1				
TPL3 (E-500) NFFS	Buddy Woods	7/6	2				
TPL3 (E-649) Bear Co	Mike Kikendale	7/16	2	PVT			
7. Control Operations							
<ul style="list-style-type: none"> <li>Respond to Initial Attack as requested</li> <li>Patrol and control return</li> <li>Initial attack IC will communicate sizeup information to the Honey Prairie communication.</li> </ul>							
8. Special Instructions							
9. Division/Group Communication Summary							
	Function	Frequency	Channel	Function	Frequency	System	Channel
Command N. Okee Repeater	See ICS 205	KING NIFC		Logistics		KING NIFC	
Tactical Div/Group	See ICS 205	KING NIFC		Air to Ground	See ICS 205	KING NIFC	
Prepared by (Resource Unit Ldr.) Patty Eder (t)	Approved by (Planning Sect. Ch.) /s/ Tim Roide			Date	July 4, 2011		Time 1800

DIVISION ASSIGNMENT LIST			1. Branch	<b>ALL</b>		2. Division	<b>Roads Group</b>	
3. Incident Name: <b>Honey Prairie Complex</b>			4. Operational Period Date: ##### 7/5/2011		Time: ##### Day: 0800-2100			
5. Operations Personnel								
<b>Operations</b>	Tom Romanello/Dave Easton(t)		<b>Branch Director</b>					
<b>Planning Ops</b>	Dave French/Andy Delmas (t)		<b>Division Supervisor</b>					
<b>Safety Officer</b>	Todd Baumer/Randy Turrill (t)							
6. Resources Assigned this Period								
Strike Team/Task Force/ Resource Designator		Leader / Name / Designator	Last Shift Date	Num. Per.	Drop Off PT./Time		Pick Up PT./Time	
<b>EQPM(O-746)</b>		Gary Hurst (T) 912-387-6787	7/12	1				
Excavator (E-505)		Lee Douglas or Johnny Smith	7/8	1	PVT			
Dump Truck (E-529)		Craig Smith	7/5	1	PVT			
Dump Truck (E-506)		Josh Smith	7/8	1	PVT			
Grader (E-380)		Jason Merrit	7/20	1	PVT			
Grader (E-597)				1				
ENG6 (E-2) Okefenokee 41				1				
7. Control Operations								
<ul style="list-style-type: none"> <li>Coordinate efforts w/ resource advisor and logistics</li> </ul>								
8. Special Instructions								
<ul style="list-style-type: none"> <li>Ensure that tractors are cleaned and free of debris daily. Examine work area for fire weakened snags.</li> <li>Ensure LCES are in place before operations begin and stay hydrated.</li> <li>Additional resources will be available from GFC, Florida DOF, FWS, and local cooperators.</li> <li>Drive defensively and with lights on at all times.</li> <li>See Medical plan for EMT support.</li> <li>Implement MIST tactics</li> </ul>								
9. Division/Group Communication Summary								
Function	Frequency	System	Channel	Function	Frequency	System	Channel	
Command	See ICS 205	KING NIFC		Logistics	See ICS 205	KING NIFC		
N.Okee Repeater	See ICS 205							
Tactical Div/Group	See ICS 205	KING NIFC		Air to Ground	See ICS 205	KING NIFC		
Prepared by (Resource Unit Ldr.) Patty Eder (t)		Approved by (Planning Sect. Ch.) /s/ Tim Roide			Date 7/4/2011		Time 1930	

AIR OPERATIONS SUMMARY		PREPARED BY: <i>Chris Schenck</i> AOB (T)			PREPARED DATE/TIME: 7/4/2011 1700			
1. INCIDENT NAME: HONEY PRAIRIE		2. OPERATIONAL PERIOD DATE: <b>7/5/2011</b>			START TIME: 0800	END TIME: 2015	SUNRISE: <b>0631</b>	SUNSET: <b>2037</b> Waycross
<b>3. REMARKS</b> (Safety Notes, Hazards, Air Operations Special Equipment, etc.) <b>RETARDANT NOT ALLOWED IN OKENOKEE REFUGE</b> <ul style="list-style-type: none"> <li>-PILOTS-WATCH FO BIG BIG BIRDS</li> <li>-OTHER GENERAL AVIATION AND MILITARY AIRCRAFT</li> <li>-NOTE THAT SOME TOWERS ARE NOT MARKED ON SECTIONAL CHARTS.THESE TOWERS COULD BE UP TO 250 FEET TALL</li> <li>-ALL FIREFIGHTING AIRCRAFT NEED TO SQUAWK 1255. FLY WITH LIGHTS ON.</li> <li>MTR's TRANSECT FIRE TRAFFIC AREA BOTH IR &amp; VFR MAY BECOME ACTIVE THIS WEEK</li> </ul> -HEADS UP WHEN PERFORMING WATER DROPS AROUND CREWS ON THE GROUND <ul style="list-style-type: none"> <li>-MAINTAIN CLEAR COMMUNICATIONS</li> <li>CREWS STAY AWAY FROM WATER DROPS INCLUDING APPROACH AND DEPARTURES</li> </ul> <ul style="list-style-type: none"> <li>-FARGO HELIBASE LOCATION: 1/4 MILE NORTH OF THE BP GAS STATION at golf course</li> <li>-AIRCRAFT WILL BE ORDERED AND DISPATCHED UTILIZING LATITUDE AND LONGITUDE-DEGREES DECIMAL MINUTES</li> </ul> <ul style="list-style-type: none"> <li><b>SMOKE AND VISABILITY MAY REQUIRE FLEXABILITY IN MISSIONS AND FUEL PLANNING</b></li> <li><b>BE READY FOR POSSIBLE IA WORKIG WITH GA FORESTRY RESOURCES</b></li> </ul> -AIRCRAFT PRIORITIES <ol style="list-style-type: none"> <li>PUBLIC AND FIREFIGHTER SAFETY</li> <li>PROTECTION OF PROPERTY AND RESOURCES</li> <li>INITIAL ATTACK</li> <li>POTENTIAL PROBLEM FIRES</li> <li>UNSTAFFED FIRES</li> </ol>				<b>4. MEDEVAC A/C:</b> <b>Fargo Helibase</b> <b>N662H</b> <b>Waycross</b> <b>N818MC</b>  Frequency: <b>HEAR FM 155.340W*</b> *This may need to be programmed for a medivac.		<b>5. TFR HONEY PRAIRIE FDC 1 / 0249</b> <b>At and below 3000' msl. AM 122.375</b>  1. IMMEDIATE NOTIFICATION OF INTRUSIONS ARE TO BE PLACED WITH THE AIR SPACE COORDINATOR AT FICC OR THE FAA.  AIR TANKER LAKE CITY T-22 DAY OFF TUE & WED July 5, 6 LEAD PLANES: 1 @ LAKE CITY LEAD 14  FARGO HELIBASE: Lat 30 41.42 Long 82 33.97 POGO HELIBASE: Lat 30 44.03 Long 82 07.41 POCKET HELISPOT Lat 30.48 Long 82.22 HOMERVILLE AIRPORT Lat 31 03.35 Long 82 46.45 WAYCROSS AIRPORT Lat 31 14.9 Long 82 23.7		
6. PERSONNEL		Phone	7. FREQUENCIES	AM	FM	8. FIXED WING # Available/ Type/ Make-Model/FAA N# / Bases		
AOBD: Dewey Warner		702-469-2280	AIR/AIR FW	122.575		GFC SATILLA DISPATCH: 912-287-4915		
AOBD (t): Chris Schenck		208-431-0177	AIR/AIR RW-FF	122.375		<b>LAKE CITY TANKER BASE: 386-758-9078</b>		
ASGS: John Burke		435-590-8680	Georgia AIR/AIR	122.075	159.390/156.7	LAKE CITY TANKER BASE FAX: 386-752-8901		
AIR OPS Desk		912-637-5254	NATIONAL FLIGHT FOLLOWING		168.650N	<b>POGO HELIBASE: 912-496-4415 FAX 912-496-7077</b>		
AIR OPS FAX		912-637-5237				<b>WAYCROSS HELIBASE: 912-287-4479 FAX 912-287-4458</b>		
ATGS: Lake City N5078E						<b>FARGO HELIBASE 530-310-3526</b>		
ATGS: Dave Custer Lake City N135BA		406-529-4888				FICC: AIRCRAFT 850-523-8600 Ext. 3636		
ATGS:Carl MaGill Fargo T3 HELO		541-519-0850				FICC FAX FOR AIRCRAFT ORDERS: 850-576-8314		
HEB1 FARGO HEB2 Paul Borcharding		541-377-5200	AIR/GROUND: PRIMARY		166.9375	AIRSPACE COORDINATOR: Marion Harris 850-520-8623 ext. 3		
HEB2 WAYCROSS HEB2 Melvin Tate		850-849-0405	AIR/GROUND: SECONDARY		166.9000	AVIATION CONFERENCE CALL: 866-785-8109 PIN 3223898#		
ABRO Peter Martins		530-310-3526	GEORGIA AIR/GROUND Dozers		159.285 W			
			FLORIDA I.A.AIR/AIR-AIR/GROUND	122.925	170.475N			
			COMMAND: (Simplex)					
			COMMAND RPT <b>SEE ICS 205</b>	Rx:	Tx:			
			DECK FREQ:		163.100**	**Note: deck should be used for mission request or Air to ground .		
			TOLC:					

9. HELICOPTERS (Use Additional Sheets As Necessary)													
FAA N#	TY	MAKE/MODEL	BASE	AVAIL	START	REMARKS	FAA N#	TY	MAKE/MODEL	BASE	AVAIL	START	REMARKS
N36BH A-35	1	SIKORSKY S-70	Waycross	0830		Zeve Huntina 406-439-6768	N61SC A-	1	SIKORSKY S-61	Fargo	0830		Ray Leppala 218-966-6443
206G A-19	2	UHIH Return to Service	Waycross	0830		Mike Yearwood 530-310-3511	N662H A-29	3	Bell 206-L4	Fargo	0830		Jeff Polack 208-816-3447
06901 A-17	2	UH1H	Waycross	0830		Cindy Bradley 559-916-9355	ON ORDER	1		Fargo			
N818MC	3	AS-350 B3	Waycross/ Fargo as needed	0830		George Violante 307-330-5904	6JC A-1	3	Bell B-3 Local Unit Aircraft	Pogo	0830		Reggie Forcine 912-614-4041

AIR OPERATIONS SUMMARY					
10. TASK/MISSION/ASSIGNMENT (Type/Function includes Air Tactical, Retardant, Recon, Personnel Transport, Water Dropping, S&R, etc.)					
			MISSION START	FLY FROM	FLY TO
Expect Recons with Ops IC's			11:00 / 1300 / 1600 and as requested	FARGO Waycross	Fire
ATGS in T3 Helo to direct buckets			As needed	FARGO	
Expect Recons with FBA and LTAN			1300	FARGO	
Air Attack	Expect a Mission today for orientation		1400	Lake City ATB	Fire
T1 Helos Bucket Work	Objective to slow fire spread in light fuels		As needed		



# Fire Weather Forecast



**FORECAST NO:** 59

**NAME OF FIRE:** Honey Prairie Complex

**PREDICTION FOR:** 7/5/11

**UNIT:** Okefenokee National Wildlife Refuge

**FORECAST ISSUED:** 7/4/11 at 1900

**SIGNED:** Scott Kennedy (T)/Coleen Decker  
Incident Meteorologists

**WEATHER DISCUSSION:** High pressure will remain East of the area this week. Scattered afternoon and evening thunderstorms are expected to return by Wednesday and become more widespread by Friday.

**TODAY:** Partly Cloudy with isolated afternoon Thunderstorms, mainly West Branch where instability is expected to be greater.

**MAXIMUM TEMPERATURES:** 94-97 degrees.

**MAXIMUM HEAT INDEX:** 100 degrees.

**MINIMUM HUMIDITY:** 35-40%.

**20 FT WINDS:** AM: (0800-1400) WSW 4-7 G10 mph.

PM: (1400-1700) Variable 4-8 mph.

(1700-1900) ESE 6-10 G15 mph.

**STABILITY/INVERSION:** Morning inversion to 250 feet through 1000, then rising to 8000 feet by 1500.

**TRANSPORT WINDS:** S 8 mph.

**DISPERSION INDEX:** 40, Fair.

**CHANCE OF PRECIPITATION:** 20%.

**LIGHTNING ACTIVITY LEVEL:** 2.

**TONIGHT:** Partly Cloudy with isolated afternoon Thunderstorms in the evening.

**MINIMUM TEMPERATURES:** 67-71 degrees.

**MAXIMUM HUMIDITY:** 90-100%.

**20 FT WINDS:** ESE 4-8 mph, becoming variable 2 mph.

**STABILITY/INVERSION:** Inversion to 250 feet by 2200 hours.

**DISPERSION INDEX:** 3, poor.

**CHANCE OF PRECIPITATION:** 20%

**LAL:** 2

**OUTLOOK FOR WEDNESDAY:** Partly Cloudy with scattered afternoon Thunderstorms. Winds SE 4-7G10 mph, becoming ESE 4-8G13 mph with sea breeze push between 1700-1900. High temperatures 93 to 97. Min RH 37-42%. Chance of Rain 30%. Dispersion 30, Fair.

**EXTENDED FORECAST:** Moisture will be increasing around High Pressure centered East of the area. Easterly winds are expected to develop each afternoon with a sea breeze push.

	THURSDAY	FRIDAY	SATURDAY
<b>MINIMUM TEMP</b>	71°	72°	73°
<b>MAXIMUM TEMP</b>	94°	95°	94°
<b>MINIMUM RH</b>	40-45%	43-47%	43-47%
<b>20 FT. WINDS</b>	AM: SE 4-7 mph PM: ESE 5-10 mph late	AM: W 4-7 mph PM: ESE 4-8 mph late	AM: W 4-7 mph PM: ESE 4-8 mph late
<b>SKY</b>	Partly Cloudy	Partly Cloudy	Partly Cloudy
<b>WEATHER</b>	Scattered Afternoon Thunderstorms	Scattered Afternoon Thunderstorms	Scattered Afternoon Thunderstorms
<b>CHANCE PRECIP</b>	30%	40%	40%

**FIRE BEHAVIOR FORECAST**

<b>Fire: Honey Prairie Complex</b>	<b>Unit: GA-OKR-000001</b>	<b>Prediction for Day Shift</b>
<b>Forecast # 58 Issued: 07/04/2011 1830 hrs</b>	<b>Signed: Gary Brunk/Steve Cobb(T)</b>	<b>Shift Date: Tuesday 07/05/11</b>

**GENERAL FIRE BEHAVIOR**

Fuels around the Okefenokee Wildlife Refuge are predominately Fuel Model 7 (Southern Rough). Large to moderate acreage tracts of commercial timberland are mixed in throughout the entire perimeter surrounding the refuge. Fast moving wildfires with extremely high flame lengths and rapid rates of spread occur within the swamp. As fire transitions to the upland, torching and crown fires are common. Long Range spotting is possible.

**Indicators/Threshold for Increased Fire Activity**

- **Relative humidity dropping below 45%**
- **Winds above 10 mph**
- **Heavy fuel loadings**
- **Fine dead fuel moisture 8% or less**
- **Dispersion above 70**
- **\* Items in BOLD are predicted to occur today\***

**SPECIFIC FIRE BEHAVIOR**

- **Fire behavior today has the potential to significantly increase due to possible afternoon thunderstorms! A combination of sea breezes and cumulous development may provide the "trigger" for extreme fire behavior beginning at 1700, Until then expect similar weather conditions as yesterday.**
- **Pockets of heat near the fire perimeter in Divisions Y & Z will become active again by mid morning. The possibility for short to mid range spotting continues especially if thunderstorms occur within the fire area.**

Fuel Type	Rates of Spread	Flame Length	Spotting Distance	Firebrand Ignition
<b>Winds at 6-10 G15 @ 20"</b>				
Shrub Fuels	10 - 17, 27 ch/hr.	10 - 15 feet	2/10 - 4/10 mile	60%
Southern Rough	14 - 26, 44 ch/hr	6 - 10 feet	2/10 - 4/10 mile	60%
Timber Litter-Reburn	1 - 3, 3 ch/hr.	1 - 3 feet	2/10 - 4/10 mile	60%
Small Pine Plantation w/grasses	14 - 25, 43 ch/hr	6 - 10 feet	1/10 - 3/10 mile	60%

**One hour fine dead fuel moisture is at 6% for Tuesday.** 1000 hour fuels are drier than normal for this time of year. Extensive mop up is required. There is reburn potential in all divisions due to the amount of needle cast.

Should a fire run(s) occur, expect winds in the area to potentially increase above predicted levels. This would increase Flame Lengths and ROS above predictions. Heavier firebrands can also be lifted higher and further increasing likelihood of spots to max predictions. In areas where fuels have been herbicided, expect quick ignitions and extreme heat, very fast.

**NOTE- FIRE BEHAVIOR CALCULATIONS ARE FOR FIRES IN UNBURNED FUELS INCLUDING NEW IA STARTS.**

West	A	Reburn potential with accumulation of leaves and red needles. Falling snags still pose a threat to fire personnel and the boardwalk. <b>ESE Winds Today after 1700</b>	West	T/V	If SE winds align today, pay attention to the possibility of the fire pushing towards the division's perimeter. <b>ESE Winds Today after 1700</b>
	B-G	Warmer wx increases reburn potential from needle cast. Be heads-up for falling Snags. <b>ESE Winds Today after 1700</b>			
	Y-Z	Expect continued drying on Tuesday and an increase in fire behavior. <b>ESE winds are forecast after 1700. Spotting potential will increase dramatically if T'Storms occur.</b>	East	H, I J, K L,M N,O	Potential for reburn in pine stands from needle cast. Watch for falling snags. Winds should remain favorable today for the entire Branch. <b>ESE Winds Today after 1700</b>

**Night Ops** – Expect another night of minimal fire behavior after 2200. Fire behavior will primarily be limited to burning out heavy fuels in Divisions Y & Z and the interior. RH's will recover to 90 – 100%. Winds over the entire fire are forecast from the ESE at 4-8 mph becoming variable to 2 mph. Dispersion Index of 2 –poor for nighttime.

**Air Operations:** Expect thick smoke over most of the fire area today. Winds will increase if T'Storms develop.

**SAFETY:**

**WINDS** – Stay abreast of changing wx conditions throughout the entire shift. **THUNDERSTORMS** - these severe winds can create extreme fire behavior, with winds gusting over 30 mph. **SNAGS – Snags are falling in all Divisions – will be influenced by Thunderstorm outflow winds.**

**FUELS:** Reburn is an issue. Watch for pockets of cured shrubs or blankets of red needles beginning to cover the forest floor. 1000 and 10,000 hour fuels as well as deep duff pockets are providing the heat source. Stay focused, and put LCES in place before starting operations. Watch for standing burning snags that can fall without warning. *Energy Release Component (ERC) continues to be above the 90<sup>th</sup> percentile for this area.*

**Southern Area Blue Team  
LCES Analysis of Tactical Actions**

Incident Name: Honey Prairie Complex				Date and Time Prepared: July 02, 2011 1600 hrs				Operational Period: Day and Swing July 03, 2011								
	Location on Incident															
	Divisions/Groups															
TACTICAL HAZARDS	A,B,C	D,E,F,G	H, I	J, K	L	M	N	O	T	V	Y	Z	ICP	PM Ops	Struct Prot Grp	Mitigations
Powerlines	*	*	*	*	*	*	*	*	*	*	*	*		*	*	Assume all power lines are charged. Avoid all contact with downed lines.
Complacency	*	*	*	*	*	*	*	*	*	*	*	*		*	*	Follow work/rest guidelines.
Indirect Fireline									*	*	*	*		*		LCES; IRPG Pg. 10, Indirect Attack; Burnout as possible.
Unburned Area Reburn Potential	*	*	*	*	*	*	*	*	*	*	*	*		*	*	LCES, Utilize Air Attack if Available. Know Predicted Weather and Fire Behavior Forecast.
Hazard Trees	*	*	*	*	*	*	*	*	*	*	*	*		*	*	IRPG Pg. 80, Identify and flag hazard trees. Look Up, Down and Around
Hazardous Materials	*	*	*	*	*	*	*	*	*	*	*	*		*	*	IRPG Pg. 26-27, HAZMAT. Identify and map propane tanks, electric lines, septic tanks and determine bridge wgt. limits prior to use.
Vehicle Use (Travel 1HR+, Roads)	*	*	*	*	*	*	*	*	*	*	*	*		*	*	Park vehicles for egress. Follow traffic plan. Use seat belts, drive with headlights on and keep windshields clean. Use spotters. Drive Defensively. Use multiple camp locations to reduce drive time.
Communications																Ensure radio is cloned with the current communications plan. LCES
Structure Protection	*											*				Use structure protection checklist, PPE, Triage. Utilize Local Fire Departments
Air Operations (multiple aircraft, line support)	*	*	*	*	*	*	*	*	*	*	*	*		*		Monitor Air Guard at all times. Flight follow through Dispatch. Keep drop areas clear of personnel.
Mechanical Equipment	*	*	*	*	*	*	*	*	*	*	*	*		*	*	Use PPE, ensure all safety devices are functional. Operator must see you before approaching equipment. Maintain proper distance away from equipment working in the area.
Escape Routes Safety Zones	*	*	*	*	*	*	*	*	*	*	*	*		*	*	LCES, Establish and identify safety zones & escape routes. Know where these are located and the route to them. IRPG p.7
Thunderstorm Safety	*	*	*	*	*	*	*	*	*	*	*	*		*	*	Keep an eye on changes in weather. Take hourly weather observations. Comms will provide weather updates when needed
Wildlife	*	*	*	*	*	*	*	*	*	*	*	*		*	*	Keep food items off the line and use refuse containers around camp. Use insect repellent as needed. Use caution around water as wildlife is concentrated.
Sun Exposure	*	*	*	*	*	*	*	*	*	*	*	*		*	*	Use sunblock as needed.
Heat	*	*	*	*	*	*	*	*	*	*	*	*		*	*	Hydrate prior to going on line and all during the day. Recognize the signs of heat related injuries. Take frequent breaks throughout the work period.
Railroad Crossings	*	*	*	*	*	*	*	*	*	*	*	*	*	*	*	Visually check all railroad crossings to ensure track is clear. Do not bunch up, leave room for other vehicles to cross. Don't try to "beat" the train.
													Safety Officers: Todd Baumer, SOF2, Randy Turrill, SOF2 (t)			

**Incident:**  
Honey Prairie

**Date:**  
07/05/2011

**Shift:**  
Day/Swing



# **SAFETY MESSAGE**

## **SAFETY IS OUR FIRST PRIORITY**

*Fire fighter safety comes first on every fire, every time*



### **SAFETY THOUGHT**

75% of Americans are chronically dehydrated. At 2% dehydration, performance will fall off by 10-20% and is the #1 trigger of daytime fatigue.

<b>MAJOR HAZARDS AND RISKS</b>		
<ul style="list-style-type: none"><li>• <b>FATIGUE and DEHYDRATION</b></li><li>• <b>SNAGS</b></li><li>• <b>WILDLIFE</b></li><li>• <b>SLIP, TRIP, and FALL</b></li></ul>	<ul style="list-style-type: none"><li>• <b>VEHICLE TRAVEL TIME, DISTANCE, and SPEED</b></li><li>• <b>SPOTTING, TORCHING and RE-BURN POTENTIAL</b></li></ul>	<ul style="list-style-type: none"><li>• <b>LIGHTNING, ERRATIC WIND, DOWNDRAFTS, and RAIN</b></li><li>• <b>EXTREME FIRE BEHAVIOR, BLOW-UP CONDITIONS</b></li></ul>

### **Avoiding and Treating Blisters**

Blisters form when the skin rubs against another surface, causing friction. First, a tear occurs within the upper layers of the skin (the epidermis), forming a space between the layers while leaving the surface intact. Then fluid seeps into the space.

#### **Prevention-- to prevent blisters, you need to minimize friction.**

- Boots should fit comfortably, with about a thumb's width between your longest toe and the end of the shoe. Narrow shoes can cause blisters on the big toe and little toe. A shallow toe box can lead to blisters on the tops of the toes, while loose shoes can create blisters on the tips of the toes.
- If possible, do not remove the skin of the blister.
- Wear layers of socks
- Keep feet dry--socks made from polypropylene or other new synthetics can wick moisture away from the skin more effectively than wool or cotton can.
- Carry extra pairs of socks to change into if your socks become too damp.
- Use padded insoles to decrease friction in a specific area.
- Use foot powders and spray antiperspirants that contain aluminum chlorhydrate or aluminum chloride to decrease moisture.
- A thin layer of petroleum jelly can also be applied to the feet to decrease friction.
- You can apply cloth tape or duct tape over areas prone to blistering before beginning work activity.
- If blisters form, apply prompt treatment.

### **DOZER/TRACTOR PLOW OPERATIONS**

Dozers/tractor plows provide suppression and support capability for fire operations. When working on or around dozers on the fireline, it is important to respect the following guidelines:

- There is no safe place around a working dozer.
- When working a dozer or tractor plow, stay at least 100 feet in front or 50 feet behind the equipment. In timber, distances should be increased to 2 1/2 times the canopy height.
- Allow no one but the operator to ride on the equipment.
- Do not use a dozer or tractor plow without a canopy or brush guard and radio communications.
- Operators will wear required PPE and carry a fire shelter.
- Do not get too far ahead of a firing crew during firing operations.
- Tractor plow operators should wear headgear protection for head, face, eyes, and ears while also providing radio reception and ventilation capabilities.

**PPE mandatory for fire duty: fire shelter, hard hat, eye protection, hearing protection, first aid kit, Nomex pants and shirt, gloves, boots, and other specialized PPE required for specific tasks.**

**Safety Officers: Todd Baumer SOF2, Randy Turrill SOF2(t)**



<b>MEDICAL PLAN</b>	1. 医疗站名称 <b>Honey Prairie Complex</b>	2. 日期 <b>7/04/2011</b>	3. 电话 <b>1800</b>	4. 日期 <b>7/05/2011 DAY SHIFT</b>
---------------------	--	---------------------------	----------------------	-------------------------------------

**5. Incident Medical Aid Station**

<u>Medical Aid Stations</u>	<u>Location</u>	Paramedics Yes No	
<b>Medical Unit (ICP)</b>	<b>Honey Prairie Complex ICP</b> (Lodge 5) 912-637-5236 Jeff Voskamp MEDL 912-286-1648 Bill Erlach MEDL (T) 912-286-1674 Michael Evers MEDL (T) 719-640-8991	X	
<b>WEST BRANCH (Line EMT)</b>	Evan Dean 503-975-6444 ( <b>A,B,C DIV</b> ) Shane Powers 907-388-3885 & Kyle Barber 417-239-9135 ( <b>D,E,F,G DIV</b> ) Dave Moore 513-616-9192 ( <b>V DIV</b> ) Peggy Miller 240-793-4238 ( <b>Y 0800-2000</b> ) Michael Fincham 530-859-8507 & Alex Lynn 909-477-9276 ( <b>Y DIV 1200-2400</b> ) Levi Clymer 417-658-5155 ( <b>Z DIV</b> )	X	
<b>EAST BRANCH (Line EMT)</b>	Rick Sparks 912- 531-9527 ( <b>H,I,J,K DIV</b> ) Keith Barker 224-330-7798 ( <b>H,I,J,K,L,M DIV</b> ) Bert Hyde 218-349-0934 ( <b>L,M DIV</b> )	X	

**Ambulance Services**

Name	Address	Phone	Paramedic Yes No	
<b>Clinch County EMS (WEST SIDE)</b>	West Branch Council Road & HWY 94	<b>Channels 4, 11, 13</b> <b>912-286-1673 EMS Incident Cell</b>	Yes	#
<b>Ware County EMS (NORTHSIDE)</b>	Waycross, Georgia ( <b>911 to activate</b> )	<b>912-281-9467</b>	Yes	#
<b>Charlton County EMS (EAST SIDE)</b>	Folkston, GA ( <b>911 to activate</b> )	<b>912-496-7321</b>	Yes	#

**Air Ambulance Service**

<b>Trauma 1</b>	Jacksonville, FL (26 min/air)	<b>800-223-4878 (freq. 155.340)</b>	Yes	#
<b>AirMed</b>	Augusta, GA (2 hrs/air)	<b>1-888-792-9245(freq. 155.340)</b>	Yes	#
<b>Lifeflight</b>	Jacksonville, FL (35 min/air)	<b>1-877-870-7779(freq. 155.340)</b>	Yes	#
<b>Air Evac</b>	Waycross, GA	<b>1-800-247-3822(freq. 155.340)</b>	Yes	#
<b>US Coast Guard (Heli-Rescue)</b>	Savannah GA	<b>1-912-652-4646 (freq. 155.340)</b>	Yes	#

**7. Hospitals**

Name	Address	Travel Time		Phone	Helipad		Burn Center	
		Air	Ground		Yes	No	Yes	No
<b>Satilla Regional</b>	410 Darling Ave Waycross Ga N 31°13.56 W 82°21.058	15 min	45 min	912-283-3030	Yes			No
<b>Clinch Memorial Hospital (WEST SIDE)</b>	1050 Valdosta HWY Homerville, GA		25 min	912-487-5211 ext 4502	Yes			No
<b>Charlton Memorial Hospital (EAST SIDE)</b>	1203 3 <sup>rd</sup> St. Folkston, GA		50 min	912-496-2531				No
<b>Memorial Hospital</b>	Savannah, GA 4700 Waters 3200.7 8107.6	40 min		912-350-8999	Yes			No
<b>Shands Hospital (level I)</b>	Jacksonville, FL N 30°20'97 W 82° 13' 992	45 min	1.5 hrs	800-223-4878	Yes		Yes	
<b>Shands Burn Center</b>	Gainesville, FL 38.33 N 082 20.73W	45 min		352-265-0300	Yes		Yes	

**8. Medical Emergency Procedures**

1. Notify DIVS of medical problem
2. DIVS notifies COML and MEDL
3. MEDL contacts POC for following
  - a. # of pts
  - b. Status of pts medical problem
  - c. Location of pts
  - d. Transport method
  - e. Necessary resources
4. MEDL coordinates medevac/patient transport with SOF2, OPS2 and other relevant resources.

Life threatening injury: an injury that could mean the loss of life, limb, or eyesight  
Minor injury: an injury that results in the removal of a pt from the line but with less urgency as a life threatening injury  
Medevac: the most urgent transport of a pt suffering from a life threatening injury  
 Patient transport: transport for minor injuries  
Medical problem: a physical or mental ailment that occurs to an individual; to include illnesses and traumatic injuries  
Point of contact (POC): individual who will be directly advocating for patient care and transport (line medic, crew boss, DIVS etc)

\*Request that FFTR/Engine crews or single resources let MEDL know if they have any EMTs or Paramedics and if they have equipment with them.

**HELISPOTS**

Pocket Helispot 30 47 30.02 x 82 22 39.5 (West side), mile marker 4, HWY 177 Steven C. Foster State Park  
 Fargo Helibase 30 41.42 x 82 33.97 (West side), HWY 441- Golf course, Fargo  
 POGO Helibase 30.44.03 x 82.07.41 (East side)

**Evac Yankee**

Helispot 6  
 Rd. 32 and 32A, N 30° 53.280 W 082° 33.880  
 Helispot 7  
 Tatum Rd. Pond N 30° 50.280 W 082° 33.857

\*Alternate site can be established following guidelines for safety found with IRPG and local EMS resources.

Prepared by: Michael Evers MEDL (T)/Bill Erlach MEDL (T)

10. Reviewed by: Randy Turrill SOF2

INCIDENT RADIO COMMUNICATIONS PLAN ICS-205			Incident Name <b>Honey Prairie</b>			<b>GROUP 22</b>		Date/Time Prepared 07/04/2011-18:00		Operational Period Date/Time 7/05/2011 0900-2100/2100-0900	
Ch #	Function	Channel Name	Assignment	RX Freq	NW	RX Tone/NAC	TX Freq	N W	TX Tone/NAC	Mode A,D or M	Remarks
1	Command	West Okee Repeater	Sec West Branch CMD	167.1250	N	156.7	163.1500	N	156.7	A	Stephen Foster State Park
2	Command	South Okee Repeater	Sec East/West Branch CMD	164.7750	N	123.0	163.1500	N	123.0	A	Eddy Florida
3	Command	East Okee Repeater	PRIMARY East Branch CMD	164.6250	N	103.5	163.1500	N	103.5	A	Refuge Headquarters
4	Tactical	NIFC C2	PRIMARY West Branch CMD	168.100	N	CSQ	170.4500	N	123.0	A	NOT linked to OKEE System
5	Command	North Okee Repeater	PRIMARY North Branch CMD	164.5750	N	206.5	163.1500	N	206.5	A	Waycross
6	Air-Ground	Air to Ground	PRIMARY	166.9375	N	CSQ	166.9375	N	CSQ	A	
7	Tactical	MOB-MOB	GFC Contingency	159.3900	W	CSQ	159.3900	W	156.7	A	
8	Tactical	V-Fire 21W WHITE	Structure Protection Group&I.A.	154.2800	W	CSQ	154.2800	W	156.7	A	
9	Tactical	USFS 9	DIV J, K, O, T, V,M	168.7750	N	CSQ	168.7750	N	CSQ	A	
10	Tactical	S.E. Compact	DIV	159.2850	W	CSQ	159.2850	W	CSQ	A	
11	Tactical	USFS 11	DIV A,B,C,Z, N	168.2000	N	CSQ	168.2000	N	CSQ	A	
12	Tactical	Refuge Tac 1	DIV L, H, I	168.3500	N	CSQ	168.3500	N	CSQ	A	
13	Tactical	FL 190	DIV D, E, F, G	151.2725	N	CSQ	151.2725	N	CSQ	A	
14	Command	DIV J RPT	East Branch	170.4125	N	CSQ	165.9625	N	123.0	A	NOT linked to OKEE System
15	Air-Ground	Air to Ground	SECONDARY	166.9000	N	CSQ	166.9000	N	CSQ	A	
16	<b>EMERGENCY</b>	<b>AIR Guard</b>	<b>Air OPS.</b>	<b>168.6250</b>	<b>N</b>	<b>CSQ</b>	<b>168.6250</b>	<b>N</b>	<b>110.9</b>	<b>A</b>	
Prepared by (Communications Unit) Greg Ely: 912-387-6813 Incident Dispatcher: 912-286-1660						<b>Cloning at ICP communications and briefings,</b>					

The convention calls for frequency lists to show four digits after the decimal place, followed by either an "N" or a "W", depending on whether the frequency is narrow or wide band. **Mode** refers to either "A" or "D" indicating analog or digital (e.g. Project 25) or "M" indicating mixed mode. All channels are shown as if programmed in a control station, base stations, mobile or portable radio.

## FINANCE – EQUIPMENT/TIME

*Tip for the day: 7/5/11*



**We Need Your HELP:**

	Tim Milan, GFC	Need your E#
E-76	GFC/GAS	MISSING 7/1 SHIFT TICKETS
E-293	GFC PUMP	MISSING SHIFT TICKETS 6/17- CURRENT
E-497	Orange Springs	Missing shift ticket 6/29
E-502	WILDLAND FIRE	MISSING SHIFT TICKETS 6/27-29
E-504	GFC61745	Need shift tickets if still on fire
E-957	GFC	Missing 7/1 shift ticket
E-990	MT STRIKE TEAM	PLEASE COME SIGN STAGING TIME

IF YOUR ARE GETTING CLOSE TO TIMING OUT PLEASE  
SPEAK WITH YOUR FIRE LINE SUPERVISOR **ASAP.**

**CREW SWAP FORMS ARE AVAILABLE FROM PLANS**  
**MUST BE COMPLETED AND**  
**RETURNED TO PLANS FOR APPROVAL**  
**NO LESS THAN 2 DAYS IN ADVANCE !!!**

**DMOB for July 5 to July 8    Questions?? Issues??  
Contact DMOB-Bruce @ 912-637-5241**

Number	Name	Kind	UnitID	TravelM ethod	Jet- port	Travel Date
E-735	NANTAHALA ENG6 11-2	ENG6	NCNCC	AOV		07/05/2011
E-735.1	BOONE, JASON	ENGB	NCNCC	AOV	AVL	07/05/2011
E-735.2	ROWLAND, JOEY	FFT1	NCNCC	AOV	AVL	07/05/2011
E-735.3	DRYMAN, SAM	ENGB	NCNCC	AOV	AVL	07/05/2011
E-736	ENGINE - T6 - NC-NCF NANTAHALA	ENG6	NCNCC	AOV		07/05/2011
E-736.1	MCCLURE, RICHARD	ENGB	NCNCC	AOV	AVL	07/05/2011
E-736.2	SOUTHARD, MARTIN O	FFT1	NCNCC	AOV	AVL	07/05/2011
E-736.3	BELL, BRYAN	FFT1	NCNCC	AOV	AVL	07/05/2011
O-442	ODEGARD, DERRICK	HECM	MNBNR	A/R	MSP	07/05/2011
O-500	ZABKA, RONALD	SPUL	NHWMF	AIR	MHT	07/05/2011
O-654	NIXON, RONALD BLANE	HMGB	VAVAF	A/R	ROA	07/05/2011
O-655	CHUMBLEY, MATHEW MERLE	HECM	VAVAF	AIR	ROA	07/05/2011
O-684	WOMACK, MICHAEL C	DIVS	VAVAS	AOV		07/05/2011
O-686	DEMEYERE, DAVID	TFLD	LABBR	AOV		07/05/2011
O-721	HERSEL, JORGE J	RCDM	VAVAF	AOV		07/05/2011
O-727	LUCKETT, LARRY M	DIVS	GACHF	REN		07/05/2011
O-774	BOEHLKE, SHANON	PIOF	MTR01	A/R	MSO	07/05/2011
O-850	LOWE, JANICE	COST	GAR08	REN	ATL	07/05/2011
E-497.2	JETER, LESLIE	DRIV	FLFNF	POV		07/06/2011
E-529	DUMP TRUCK	TDMP	GAOKRC	POV		07/06/2011
E-529.2	WATSON, RON	DRIV	GAOKRC	POV		07/06/2011
E-739	BELLAIRE ENGINE 57 - T4 - 4-2	ENG4	MIMIS	POV		07/06/2011
E-739.1	BAKER, BRET L	ENGB	MIMIS	POV	TVC	07/06/2011
E-739.2	CROSS, DEREK C	FFT2	MIMIS	POV	TVC	07/06/2011
E-739.3	JACOBS, KEVIN R	FFT2	MIMIS	POV	TVC	07/06/2011
E-760	DOZER W/PLOW JD450 1826	TPL3	MOMTF	AOV	STL	07/06/2011
E-760.1	MCCALL, JASON M	TPOP	MOMTF	AOV	STL	07/06/2011
E-807	ENGINE - T6 - E-21 - EASTERN D	ENG6	VAVAF	AOV		07/06/2011
E-807.1	CAUDILL, TODD MATTHEW	ENGB	VAVAF	AOV		07/06/2011
E-807.2	SHAW JR, LARRY DOUGLAS	FFT1	VAVAF	AOV		07/06/2011
E-807.3	MCCLOUD, ERIC CHARLES	FFT2	VAVAF	AIR	TRI	07/06/2011
E-824.1	MORGAN, JOSHUA T	ENGB	SDRCFX	AOV	RAP	07/06/2011
E-824.2	LAROCHE, KRISTOPHER	FFT1	SDRCFX	AOV	RAP	07/06/2011
E-824.3	RASMUSSEN, ALEXANDER	FFT2	SDRCFX	AOV	RAP	07/06/2011
E-93	WATER TENDER 10	WTS2	FLFNF	POV		07/06/2011
O-482	CLARK, DAVID	SECM	MOMTF	AIR	STL	07/06/2011
O-496	SULLIVAN II, THOMAS VERN	EQPM	MSMNF	AOV	JAN	07/06/2011
O-567	BARBER, LADONNA	INCM	OKOKS	AIR	TXK	07/06/2011
O-582	GRIMM, SETH	TFLD	MNBNR	A/R	MSP	07/06/2011
O-591	TUMMINS, MICHAEL	DOZB	TNTNS	AIR	BNA	07/06/2011
O-631	PETRUZALEK, JERRY R	GISS	WICNF	AIR	RHI	07/06/2011
O-639	CUMMINGS, JEFFREY KIM	EMTB	INIIC	AIR	IND	07/06/2011
O-656	KERR, MITCHELL D	HECM	VAVAF	AOV		07/06/2011
O-672	LEE, RANDY R	TFLD	IDPLS	AIR	COE	07/06/2011
O-678	LYNN, ALEXANDER	EMTB	CAANF	A/R	ONT	07/06/2011
O-681	CONGOS, DAVID	DIVS	MNMRA	AIR	EAU	07/06/2011
O-687	ROWE, BOBETTE	TFLD	IDCTF	AIR	IDA	07/06/2011
O-690	GUIDI, ED	STEN	CACNF	AIR	SAN	07/06/2011
O-695	DILLON, WALLACE	HECM	MOMTF	AIR	STL	07/06/2011
O-696	ALDEN, DYLAN K	HECM	NHWMF	AIR	PWM	07/06/2011
O-699	DOSTER, DORIS	THSP	NCNCF	AOV	AVL	07/06/2011
O-707	SMISKIN, LANCE	DOZB	WAOWF	AIR	YKM	07/06/2011

Number	Name	Kind	UnitID	TravelM ethod	Jet- port	Travel Date
O-709	CALLIS, REED J	DOZB	WAPSC	AIR	SEA	07/06/2011
O-711	HUENERGARDT, DENNIS	DOZB	OREIC	AIR	EUG	07/06/2011
O-712	ONEY, JASON	DOZB	ORUMF	AIR	ALW	07/06/2011
O-713	HEENAN, ERIC R	DOZB	ORROD	AIR	EUG	07/06/2011
O-714	WHITE, CHARLES L	DOZB	ORROD	AIR	EUG	07/06/2011
O-715	GULAN, GREGORY S	TFLD	WICNF	AIR	RHI	07/06/2011
O-723	BROWN, CAROL JANINE	IBA1	VAVIC	A/R	DCA	07/06/2011
O-734	HAMILTON, CHARLES T	LSC1	NYNYS	A/R	ISP	07/06/2011
O-779	RENSHAW, JARED	RCDM	GAOKR	POV		07/06/2011
O-836	CUMBERLAND GAP WILDLAND FIRE	HCU	FLBCPC	AOV		07/06/2011
O-836.1	ERNST, SASHA	CRWB	FLBCPC	AOV		07/06/2011
O-836.2	COPE, ERIC KEITH	FFT1	FLBCPC	AOV		07/06/2011
O-836.3	TALLEY, RICHARD NATHAN	FFT2	FLBCPC	AOV		07/06/2011
O-836.4	ALVARADO, HUMA	FALA	FLBCPC	AOV		07/06/2011
O-836.5	WORTHINGTON, ERIC	FFT1	FLBCPC	AOV		07/06/2011
O-836.6	KLEIN JR, ROBERT	FFT2	FLBCPC	AOV		07/06/2011
O-836.7	PAXTON, WILEY	FFT1	FLBCPC	AOV		07/06/2011
O-893	LUCKETT, LARRY M	OPBD	GACHF	REN		07/06/2011
C-13	CREW - CAMP - PINE KNOT JCC -	CC	KYDBF	AOV		07/07/2011
E-382	HABERSHAM 86	ENG6	GAGAS	AOV		07/07/2011
E-382.2	CHRISTIAN, BRANDON NEIL	FFT2	GAGAS	AOV	ATL	07/07/2011
E-382.3	BERRY, JOSEPH E	ENGB	GAGAS	AOV	ATL	07/07/2011
E-500	NFFS- TRACTOR/PLOW T3-167284	TPL3	FLFNF	POV		07/07/2011
E-500.1	NORTH FL FORESTRY, XX	TRTL	FLFNF	POV		07/07/2011
E-500.5	WOODS, BUDDY	ENOP	FLFNF	POV		07/07/2011
E-500.6	JOHNSON, DON	ENOP	FLFNF	POV		07/07/2011
E-533	GAS ENG6	ENG6	GAGAS	AOV		07/07/2011
E-533.3	BASS, LELAND	ENGB	GAGAS			07/07/2011
E-533.4	BRANNON, CAREY	ENOP	GAGAS	AOV		07/07/2011
E-700	TIPTON #1 WATER TENDER	WATU		POV		07/07/2011
E-729.7	MORK, CHRIS	STEN	MTCES	AOV	HLN	07/07/2011
E-76	GAS ENG6 PICKENS 86	ENG6	GAGAS	AOV		07/07/2011
E-76.7	HUSKEY, DARRELL	ENGB	GAGAS	AOV		07/07/2011
E-76.8	RIDLEY, JEREMY	ENOP	GAGAS	AOV		07/07/2011
E-77.7	CORNETT, BRANDON	ENGB	GAGAS	AOV		07/07/2011
E-77.8	DUNN, ROBERT	ENOP	GAGAS	AIR		07/07/2011
E-78	GAS ENG6 MURRAY 86	ENG6	GAGAS	AOV		07/07/2011
E-78.7	HARKINS, KENNETH	ENGB	GAGAS	AOV		07/07/2011
E-78.8	RIDLEY, JUSTIN	FFT2	GAGAS	AOV		07/07/2011
E-79	GAS ENG6 COWETA 86	ENG6	GAGAS	AOV		07/07/2011
E-79.8	LEE, WILLIAM	ENGB	GAGAS	AOV		07/07/2011
E-79.9	PHILLIPS, PAUL	FFT2	GAGAS	AOV		07/07/2011
E-796	PLEASANT HILL ENG 5722	ENG6	ARAOC	AOV	LIT	07/07/2011
E-796.1	HIGHFILL, CORY DON	ENGB	ARAOC	AOV	LIT	07/07/2011
E-796.2	HIGHFILL, JEFF	FFT2	AROZF	AOV	FSM	07/07/2011
E-796.3	JAMES, ROBERT P	FFT2	AROZF	AOV	FSM	07/07/2011
E-80.7	MASHBURN, JAMES	ENGB	GAGAS	AOV		07/07/2011
E-80.8	WILKINSON, DAMEON	ENOP	GAGAS	AOV		07/07/2011
E-806	ENGINE - T6 - GDR 603	ENG6	VAGDR			07/07/2011
E-806.1	ROMAGOSA, MARK A	ENGB	VAVAFN			07/07/2011
E-806.2	THOMPSON, MELISA ANNE	FFT2	VAGDR		ORF	07/07/2011
E-806.3	KEEL JR, RALPH MAYO	FFT1	VAGDR		ORF	07/07/2011
E-808	ENGINE - T6 - E-22, MARIENVILL	ENG6	PAALF	AOV		07/07/2011
E-808.1	KOSTRZEWSKI, CRAIG	ENGB	PAALF	AOV		07/07/2011
E-808.2	TALBOT, PAUL J	ENGB	MNMNS	AIR	MSP	07/07/2011

Number	Name	Kind	UnitID	TravelM ethod	Jet- port	Travel Date
E-808.3	MCCORMICK, JAMES	FFT1	WVMOF	AOV	PIT	07/07/2011
E-808.4	CHASE, JORDAN A	FFT2	PAALF	AOV	ERI	07/07/2011
E-809	TX REFUGE ENG 2462	ENG6	TXSRR	AOV		07/07/2011
E-809.1	VILLARREAL, MEDARDO	ENGB	TXSRR	AOV	MFE	07/07/2011
E-809.2	WILLIAMS, THAD	FFT2	TXSRR	AOV	LIT	07/07/2011
E-81.7	BUCHANAN, CHRISTOPHER	ENGB	GAGAS	AOV		07/07/2011
E-81.8	GORE, DANNY	ENOP	GAGAS	AOV		07/07/2011
E-815	MELLEN ENGINE 9244	ENG6	WIWIS	AIR	LSE	07/07/2011
E-815.1	ZENZ, ERIC S	ENOP	WIWIS	AIR	LSE	07/07/2011
E-815.2	GOTTBEHEUT, CHAD E	ENGB	WIWIS	AIR	GRB	07/07/2011
E-816	WISCONSIN ENG 9247	ENG6	WIWIS	AIR		07/07/2011
E-816.1	STEARNS, PAUL R	ENOP	WIWIS	AIR	RHI	07/07/2011
E-816.2	BONACK, JACOB C	ENGB	WIWIS	AIR	RHI	07/07/2011
E-817	WISCONSIN DELLS 9593	ENG6	WIWIS	AIR	RHI	07/07/2011
E-817.1	WINDMOELLER, RICHARD T	ENOP	WIWIS	AIR	RHI	07/07/2011
E-817.2	FISCHER, SCOTT D	ENGB	WIWIS	AIR	GRB	07/07/2011
E-818	BABCOCK ENG6-WIS - 9597	ENG6	WIWIS	A/R	CWA	07/07/2011
E-818.1	GLAZER, KENNETH J	ENOP	WIWIS	A/R	CWA	07/07/2011
E-818.2	ROCHON, DALE S	ENGB	WIWIS	A/R	DLH	07/07/2011
E-821.1	RICKE, RYAN	ENGB	SDRCFX	AOV	RAP	07/07/2011
E-821.2	O'CONNOR, ERIC L	ENGB	SDRCFX	AOV	RAP	07/07/2011
E-821.3	MANINGAS, CALEN	FFT1	SDRCFX	AOV	RAP	07/07/2011
E-853	KALEIGH WATERTENDER	WAT3		POV		07/07/2011
E-853.1	TOMLINSON, KERRY	DRIV		POV		07/07/2011
E-926	PICKUP - AWD - SOS - RED LODGE	PU	MTSOS			07/07/2011
O-491	BURGETT, JOEL	TFLD	COPBS	A/R	DEN	07/07/2011
O-493	DIAZ, TIMOTHY	STEN	CASRF	A/R	MFR	07/07/2011
O-574.24	HELMICK, SHERRY D	PROC	VAVAF	REN	ROA	07/07/2011
O-640	FINCHAM, MICHAEL D	EMTP	CASHF	AIR	RDD	07/07/2011
O-685	ROBINSON, JEFF	TFLD	ORDEF	A/R	RDM	07/07/2011
O-693	JOHNSON, ROSEMARY	PTRC	MNCPF	AIR	BJI	07/07/2011
O-694	THOMPSON, CATHERINE JAYNE	PTRC	MNCPF	AIR	BJI	07/07/2011
O-702	BARRETT, BRUCE B	SOF2	MNVOP	AIR	INL	07/07/2011
O-703	KLOCK, LARRY JAMES	SOF2	COPBC	A/R	COS	07/07/2011
O-738	DAVIS, LINDA	STEN	IDIPF	AIR	GEG	07/07/2011
O-745	WILHITE, ROGER D	EQPM	OKOKS	AIR	FSM	07/07/2011
O-749	SHINDELAR, BOBBY	OPBD	IDBOF	A/R	SMF	07/07/2011
O-752	ALMAS, MIKE	DIVS	IDIPF	AIR	GEG	07/07/2011
O-754	SILVIEUS, DAVID JOHN	PSC2	MIHIF	A/R	ESC	07/07/2011
O-755	COY, TERI L	RESL	WYBHF	A/R	COD	07/07/2011
O-760	POUKISH, DAVID M	DOZB	MTMDC	AIR	MSO	07/07/2011
O-766	MILLER, PEGGY	EMTP	MTFNF	AIR	FCA	07/07/2011
O-799	TATE, MELVIN L	HEB1	FLFLS	POV	PFN	07/07/2011
O-817	STRICKLAND, VIVIAN	DRIV	GAOKR	POV		07/07/2011
O-818	ROGERS, SHERYL	DRIV	GAOKR	POV		07/07/2011
A-29	POGO HELI - T3S - N662H - B20	HMOD	IDNPF	A/R		07/08/2011
A-29.1	POLACK, JEFF	HMGB	IDNPF	A/R	LWS	07/08/2011
A-29.2	BALL, KATHERINE	HECM	IDNPF	A/R	LWS	07/08/2011
A-29.3	RATCLIFF, PAUL M	HECM	IDNPF	A/R	LWS	07/08/2011
A-42	HELICOPTER - T3S - 818MC	HEL3	WYWRA	AOV		07/08/2011
A-42.11	ROBERTS, ADRIEN	FFT2	WYWRA	AOV	RIW	07/08/2011
A-42.2	MITCHELL, DON	HMGB	WYWRA	AOV	RIW	07/08/2011
A-42.3	MCBATH, JEFF	HMGB	WYWRA	AOV	BIL	07/08/2011
A-42.4	VIOLANTE, GEORGE	HMGB	WYWRA	AOV	RIW	07/08/2011
A-42.5	UNDERWOOD, KAY	HECM	WYWRA	AOV	RIW	07/08/2011

Number	Name	Kind	UnitID	TravelM ethod	Jet- port	Travel Date
A-42.6	WARFEL, CHESTER	HECM	WYWRA	AOV	RIW	07/08/2011
A-42.8	KEENEN, KEITH	HECM	WYWRA	AOV	RIW	07/08/2011
A-42.9	SMITH, THEODORE D	HECM	WYWRA	AOV	RIW	07/08/2011
E-115	GAS ENG6 LUMPKIN 86	ENG6	GAGAS	AOV		07/08/2011
E-115.8	SISK, WESLEY J	ENGB	GAGAS	AOV	ATL	07/08/2011
E-115.9	CARTER, EARL L	FFT2	GAGAS	AOV	ATL	07/08/2011
E-392	IL-SHF-40	ENG6	ILSHF	AOV		07/08/2011
E-392.7	PAUKERT JR, FRANK J	ENGB	ILSHF	AOV	MWA	07/08/2011
E-392.8	HANCOCK, MIKE DALE	FFT2	ILSHF		MWA	07/08/2011
E-392.9	ZEILER, CHUCK	FFT2	ILILS	AOV	MWA	07/08/2011
E-522.1	TAYLOR, KEVIN	ENGB	WVMOF	AOV		07/08/2011
E-819	MOUNTAIN VIEW FIRE 2237	ENG6	COFTC	AOV		07/08/2011
E-819.1	QUEEN, CHRIS	ENGB	COFTC	AIR	DEN	07/08/2011
E-819.2	NORRIS, RANDALL	FFT1	COFTC	AIR	DEN	07/08/2011
E-819.3	SORENSEN, DUSTIN	FFT1	COFTC	AIR	DEN	07/08/2011
E-822	ENGINE - T6 - WBD - #3651	ENG6	WYWBD	AOV		07/08/2011
E-822.1	PETERS, JOEL	ENGB	WYWBD	AOV	RIW	07/08/2011
E-822.2	CORNWELL, TANNER	FFT2	WYWBD	AOV		07/08/2011
E-822.3	OSBON, JORDEN R	FFT2	WYWBD	AOV	RIW	07/08/2011
E-822.4	BUDD, JACOB	FFT1	WYWBD	AOV	RIW	07/08/2011
E-838	ENGINE - T6 - MNSBR - E-6232	ENG6	MNMFC	AOV	MSP	07/08/2011
E-838.1	WHITEFEATHER, JEANNE K	ENGB	MNMFC	AOV	MSP	07/08/2011
E-838.2	ANDERSON, LUKE LAWRENCE	ENGB	MNMFC	AOV	MSP	07/08/2011
E-838.3	WIIG, CODY WAYNE	ENGB	MNMFC	AOV	MSP	07/08/2011
E-850	TNCNF	ENG6	GAGIC	AOV		07/08/2011
E-850.1	MARTIN, COLT LOGAN	FFT2	GAGIC	AOV		07/08/2011
E-850.2	PARKER, SHAUN	ENGB	GAGIC	AOV	ATL	07/08/2011
E-850.3	HAISTEN, MICHAEL C	ENGB	GAGIC	AOV	ATL	07/08/2011
E-892	ENGINE - T6 - CNF - 301	ENG6	TNCNF	AOV		07/08/2011
E-892.1	IVES, DAVID	ENGB	TNCNF	AOV	CHA	07/08/2011
E-892.2	RICE, MICHAEL L	ENOP	TNCNF	AOV	TRI	07/08/2011
E-892.3	TAYLOR, ERIC S	FFT2	TNCNF	AOV	TYS	07/08/2011
E-922	ENGINE - T6 - FWS	ENG6	GAPDR	AOV		07/08/2011
E-922.1	HERRON, NATHAN	ENGB	GAPDR	AOV		07/08/2011
E-943	ORANGE SPRINGS CONST. #2	TPL3	GAOKR	POV		07/08/2011
E-943.1	MATCHETT, HUGH	TPOP	GAOKR	POV		07/08/2011
O-549	TEAL, DEWEY R	FACL	GACHF	POV		07/08/2011
O-679	DECKER, COLEEN	IMET	IDWXW	A/R	BOI	07/08/2011
O-692	HARRIS, EDWARD V	COMP	LAKIF	AIR	AEX	07/08/2011
O-730	POWERS, SHANE	EMTP	AKLCSC	AIR	XNA	07/08/2011
O-732	EVERS, MICHAEL R	EMTP	COPBC	AIR	COS	07/08/2011
O-733	MOORE JR, DAVID A	EMTB	KYDBF		CVG	07/08/2011
O-741	SAMS, ROD	TFLD	ORCOC	AIR	RDM	07/08/2011
O-742	ALYEA, JOSEPH	TFLD	MIHMF	A/R	MBS	07/08/2011
O-743	HAMILTON, BERNARD T	TFLD	OHOHS	AIR	CMH	07/08/2011
O-750	CASEY, CHRISTOPHER E	DIVS	VTGMF	A/R	BTV	07/08/2011
O-751	RIEWESTAHL, JAY E	DIVS	WIWIS	AIR	CWA	07/08/2011
O-761	LANE, RUSSELL	OSC1	OR582S	AIR	PDX	07/08/2011
O-767	DEAN, EVAN	EMTP	ORWSA	A/R	PDX	07/08/2011
O-778	CROSS, BRUCE N	COML	VAVAF	AOV	ROA	07/08/2011
O-819	BLANTON, MINDY	DRIV	GAOKR	POV		07/08/2011
O-839	WHARTON, TIM	TFLD	TNCNF	AOV	TRI	07/08/2011
O-862.62	SCHENCK, CHRIS M	AOBD	IDSTF	A/R	TWF	07/08/2011
O-901	SOPER, KIM JOHN	SOPL	IDCTF	A/R	SLC	07/08/2011

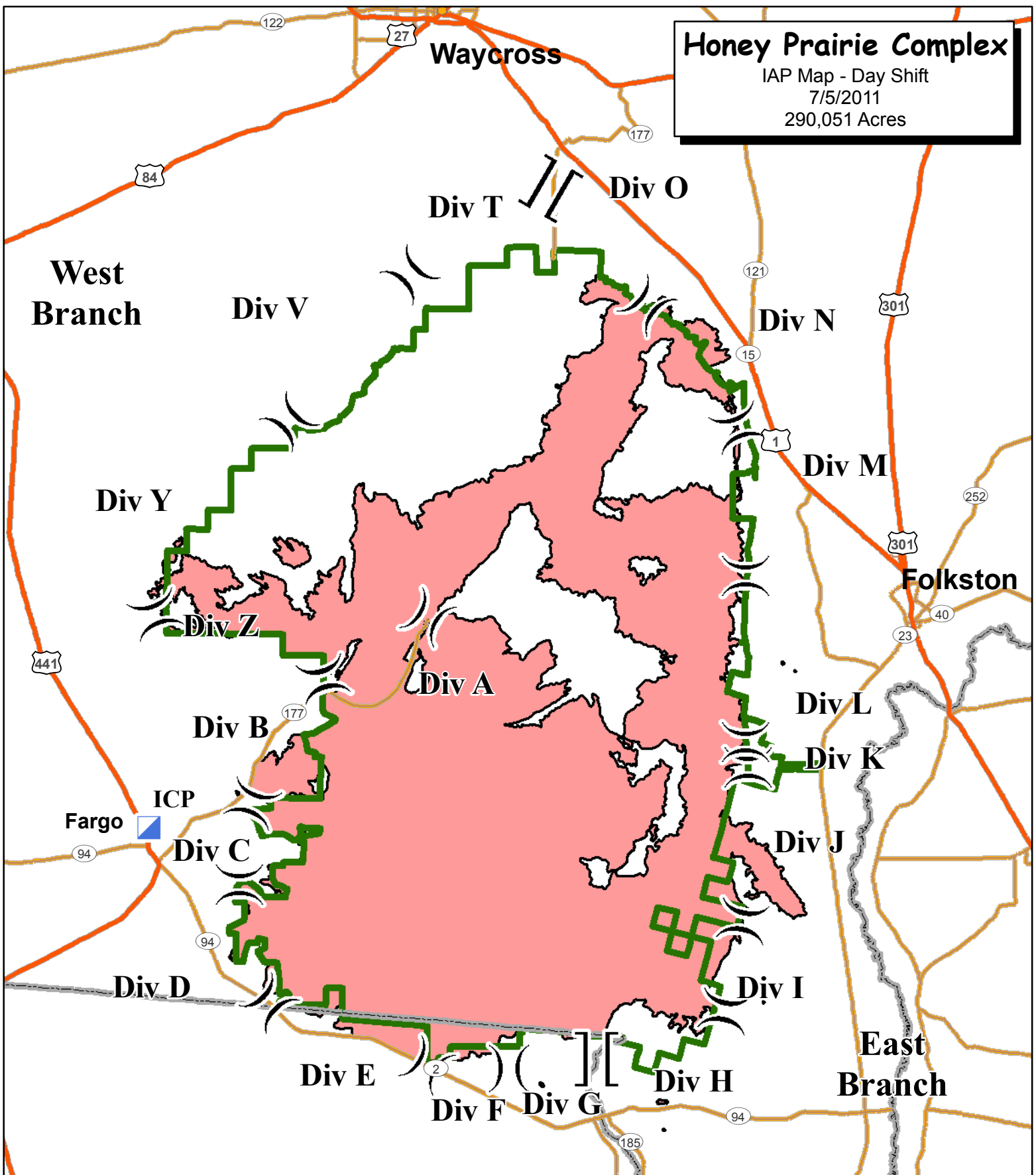


# Honey Prairie Complex

IAP Map - Day Shift

7/5/2011

290,051 Acres



- ]] Branch Break
- ) ( Division Break
- Incident Command Post

- Highway
- Major Road
- State Boundary

- ▭ Refuge Boundary
- Fire Area



