

Honey Prairie Complex

Incident Action Plan

Operational Period
Day Shift (0800-2100)
Night Shift (1800-0600)

Wednesday July 6, 2011

Honey Prairie Fire Codes

GA-OKR-000001

Cost Codes

FWS – 9141-F25M-2J

NPS – 5023 F25M E11

USFS – PRF25M_1502 BLM – F25M

FLA – DOF – Use FWS Code

GA – OKRA – Use FWS Code

Initial Attack – F4PM

INCIDENT OBJECTIVES	1. INCIDENT NAME Honey Prairie Complex	2. DATE PREPARED 7/5/11	3. TIME PREPARED 1800
4. OPERATIONAL PERIOD (DATE/TIME) Wednesday July 6, 2011 Day (0800 – 2100) and Night (1800 – 0600)			
5. GENERAL CONTROL OBJECTIVES FOR THE INCIDENT (INCLUDE ALTERNATIVES) 1. Provide for safety of incident personnel and public in all incident operations. 2. Maintain a positive working relationship with all State and Federal partners and adjacent landowners and cooperators. Inform, involve and communicate incident planning and operations with all partners. 3. Contain all fires that are within the Okefenokee National Wildlife Refuge, inside the Refuge and/or inside the swamp edge break if possible. 4. Use full suppression strategies and tactics to minimize damage to private timberlands and improvements and to prevent fires outside the Refuge from entering the Refuge. 5. Assist in management and suppression of additional fires (new starts or breakouts) in the vicinity as approved by Agency Administrators and Unified Incident Commanders. 6. Manage the fires cost-effectively consistent with the values at risk. 7. Implement structure protection as necessary for at-risk facilities and communities.			
6. WEATHER FORECAST FOR OPERATIONAL PERIOD See attached forecast for area specific weather information.			
7. GENERAL SAFETY MESSAGE Drive defensively and use spotter when backing. Ensure LCES is in place and known by all personnel. Drink plenty of water and take frequent rest breaks. Ensure proper use of PPE during all operations.			
8. Attachments <input checked="" type="checkbox"/> if attached <input checked="" type="checkbox"/> Organization List (ICS 203) <input checked="" type="checkbox"/> Incident Map <input checked="" type="checkbox"/> Safety Message <input checked="" type="checkbox"/> Assignment List (ICS 204) <input type="checkbox"/> Traffic Plan <input type="checkbox"/> Demobilization Procedures <input checked="" type="checkbox"/> Communications Plan (ICS 205) <input checked="" type="checkbox"/> Human Resources <input checked="" type="checkbox"/> Unit Log <input checked="" type="checkbox"/> Medical Plan (ICS 206) <input checked="" type="checkbox"/> Phone List			
9. PREPARED BY (PLANNING SECTION CHIEF) Tim Roide		10. APPROVED BY (INCIDENT COMMANDER) /s/Mike Wilde /s/Gary Beauchamp /s/Trent Ingram	

ORGANIZATION ASSIGNMENT LIST		9. Operations Section	
1. Incident Name Honey Prairie Complex GA-OKR-000001		Chief	Tom Romanello / Dave Easton (t)
		Planning	Dave French / Andy Delmas (t)
2. Date 7/5/2011	3. Time 1000 hrs	a. WEST BRANCH - Divisions/Groups	
4. Operational Period 7/6/2011 Day (0800-2100) Night (1800 – 0600)		OPBD	Bob Schindelar
5. Incident Commander and Staff		Division	A, B, C Mike Almas / Micah Johnson (t)
Incident Commander	Mike Wilde / Gary Beauchamp / Trent Ingram / Mike Dueitt Mike Dondero (Deputy)	Division	D, E, F, G Tam Cook
Safety Officers	Todd Baumer / Randy Turrill (t)	Division	T Steve Mullis
Information Officer	Don Carpenter / Brandon Hampton / Jason Curry (t)	Division	V Quincy Chung / Greg Suszek (t)
		Division	V, Y (NIGHT) Patrick Morgan / Nicole Hallisey (t)
6a. Agency Administrators		Division	Y (DAY) Chris Casey / Joe Alyea (t)
FWS	Curt McCasland	Division	Z Larry Peabody
FWS	Mindy Gautreaux	Group	IA-WEST and Structure Group Don Hammack
6b. Agency Representatives		b. EAST BRANCH - Divisions/Groups	
FWS Liason	Skippy Reeves	OPBD	Russ Lane
GFC	Frank Sorrels	Division	H, I, J, K Matt Filbert / Dean Karlovich (t)
FLDOF	James Karels	Division	L, M Jason Butler / Alex Abols (t)
FWS AREP	Mike Housh	Division	N, O Jay Riewesthal / Steve Griffin
FWS-Refuge PAO	Art Webster	Group	IA-EAST John Huschke
GEMA AREP	Alan Robinson / Diane Adams	Group	Roads
USFS AREP	Ivan Greene		
7. Planning Section		d. Air Operations Branch - Honey Prairie	
Chief	Tim Roide / Dave Silvieux	Air Operations Branch Director	Dewey Warner / Chris Schenck (t)
Resources Unit	Kathy Geier-Hayes / Teri Coy / Patty Eder (t)	Air Support Group Supervisor	John Burke / Mark Degregorio
Situation Unit	John Noneman	ATGS-Lake City	Dave Custer / Bruce Dikken (t)
IMET	Coleen Decker / Scott Kennedy (t)	d. Air Operations Branch-Waycross	
Fire Behavior Analyst	Gary Brunk / Steven Cobb (t)	Waycross Helibase Manger	Melvin Tate / Josh Ingle
Demobilization Unit	Bruce Waite	d. Air Operations Branch - Fargo	
GIS	Mickey Pillars / Jerry Petruzalek	Fargo Helibase Manager	Paul Borcherding
CTSP	Greg Peterson	ATGS	Carl MaGill
TNSP	Kevin Kranz		
8. Logistics Section		10. Finance Section	
Chief	Terry O'Connell	Chief	Kendra Sabo / Brenda Deberg (t)
Supply Unit	Kenny Deberg	Time Unit	Shelly Schaff (t)
Ground Support Unit	Bernie Lyons / Justin Langford (t)	Procurement	Byron Brown / Sherry Helmick (t)
Security Manager	Steven Peterson	Comp Claims Unit	Ed Harris / Doris Doster (t)
Communications Unit	Greg Ely	Cost	Glenn Beagle / Janice Lowe (t)
Medical Unit	Jeff Voskamp / Bill Erlach / Mike Evers (t)	Buying Team	Tami Thompson
Facilities	Fred Dunets / Leslie Fonger		
Food	Bob Kooken		
		Prepared by:	Kathy Geier-Hayes (RESL)

DIVISION ASSIGNMENT LIST			1. Branch West		2. Division A, B, C		1 of 2
3. Incident Name: Honey Prairie Complex			4. Operational Period Date: ##### 7/6/2011 Time: ##### Day: 0800-2100				
5. Operations Personnel							
Operations	Tom Romanello/Dave Easton(t)		Branch Director		Bob Shindelar 7/6		
Planning Ops	Dave French/Andy Delmas (t)		Division Supervisor		Mike Almas 7/6 - Micah Johnson (t) 7/10		
Safety Officer	Todd Baumer/Randy Turrill (t)						
6. Resources Assigned this Period							
Strike Team/Task Force/ Resource Designator	Leader / Name / Designator	Last Shift Date	Num. Per.	Drop Off PT./Time	Pick Up PT./Time		
TFLD (O-897)	Terry George	7/9	1				
TFLD (O-898)	Joel McCraw (t)	7/9	1				
TFLD (E-5017.9)	Keith Kelley (t)	7/10	1				
DOZB (O-707)	Lance Smiskin	7/5	1				
ENG6 (E-5002) Attack#1	Eric Finnigan	7/4	2	PVT			
ENG6 (E-807)	Todd Caudill	7/5	3				
ENG6 (E-900)	Richard Kujawa	7/9	2				
DOZ (E-170) Francis Marion	John Christopher	7/1	2				
TPL2 (E-652)	Ike Harvey	7/29	1	PVT			
TPL2 (E-653)	Easton Dugger	7/11	1	PVT			
WAT2 (E-93)	William Davis	7/10	1	PVT			
ENG6 (E-405)	Brett Gore	7/8	3				
ENG6 (E-5017) MOMTF 9504	Erin Yeoman	7/10	5				
ENG6 (E-907) Eagle Staff	Lance Eagle Staff	7/8	2				
Doz (E-646)/E-723 trans	Terry Jefferson	7/17	1				
TPL (E-760)	Jason McCall	7/5	1				
SOF2 (O-702)	Bruce Barrett	7/6	1				
EMTP (O-767)	Evan Dean	7/8	1				
7. Control Operations							
<ul style="list-style-type: none"> Patrol and mop up within 100' of fire perimeter line. Monitor fire impacts to Stephen Foster State Park. Patrol and control return. 							
8. Special Instructions							
<ul style="list-style-type: none"> Examine work area for fire weakened snags. Ensure LCES are in place before operations begin and stay hydrated. Additional resources will be available from GFC, Florida DOF, FWS, and local cooperators. Drive defensively and with lights on at all times. 							
9. Division/Group Communication Summary							
Function	Frequency	System	Channel	Function	Frequency	System	Channel
Command N.Okee Repeater	See ICS 205	KING NIFC		Logistics		KING NIFC	
Tactical Div/Group	See ICS 205	KING NIFC		Air to Ground	See ICS 205	KING NIFC	
Prepared by (Resource Unit Ldr.) Teri Coy		Approved by (Planning Sect. Ch.) /s/ Tim Roide			Date July 5, 2011		Time 1930

DIVISION ASSIGNMENT LIST			1. Branch West		2. Division D, E, F, G		
3. Incident Name Honey Prairie Complex			4. Operational Period Date: ##### 7/6/2011 Time: #####0800-2100				
5. Operations Personnel							
Operations	Tom Romanello/Dave Easton(t)		Branch Director		Bob Shindelar 7/6		
Planning Ops	Dave French/Andy Delmas (t)		Division Supervisor		Tam Cook		
Safety Officer	Todd Baumer/Randy Turrill (t)						
6. Resources Assigned this Period							
Strike Team / Task Force / Resource Designator		Leader / Name / Designator		Last Shift Date	Num. Per.	Drop Off PT./Time	Pick Up PT./Time
TFLD (O-491)		Joe Burgett		7/6	1		
TFLD (O-915)		Hans Ohme		7/18	1		
TFLD (O-915)		Matt Ingram		7/18	1		
ENG6 (E-821)		R Ricke		7/6	3		
ENG6 (E-824)		J. Morgan		7/5	3		
WT (E-700)		Cahoon		7/13	1		
ENG6 (E-821)		R Ricke		7/13	3		
HEBQ (O-708)		Andy Murrin		7/12	1		
Clinch County Grader (E-228)		Steven Hendricks			1		
TPL3 (E-499)		Dean Vanderbleak		7/13	1		
ENG6 (E-134)		Paul McDavid		7/27	3	PVT	
ENG5 (E-503)		Jim Garrison		7/18	2	PVT	
ENG6 (E-709)		Jason Walker		7/17	3	PVT	
EMTB (O-849)		Kyle Meadows- Barber		7/10	1		
SOF2 (O-805)		Troy Shaddox		7/9	1		
7. Control Operations							
<ul style="list-style-type: none"> Monitor and patrol south end of West Branch. Mop up all hot spots within 100' of the fire perimeter. Patrol and control return. 							
8. Special Instructions							
<ul style="list-style-type: none"> Ensure LCES are in place before operations begin and stay hydrated. See medical plan for EMT support. Drive defensively and with lights on at all times. Examine work area for fire weakened snags. If communications needed with Impassable Bay Fire - use Channel 11 (168.2000) 							
9. Division/Group Communication Summary							
Function	Frequency	System	Channel	Function	Frequency	System	Channel
Command N. Okee repeater	See ICS 205	KING NIFC		Logistics		KING NIFC	
Tactical Div/Group	See ICS 205	KING NIFC		Air to Ground	See ICS 205	KING NIFC	
Prepared by (Resource Unit Ldr.) Teri Coy		Approved by (Planning Sect. Ch.) /s/ Tim Roide			Date July 5, 2011		Time 1930

DIVISION ASSIGNMENT LIST				1. Branch West		2. Division T	
3. Incident Name Honey Prairie Complex				4. Operational Period Date: ##### 7/5/2011 Time: #####0800-2100			
5. Operations Personnel							
Operations	Tom Romanello/Dave Easton(t)			Branch Director		Bob Shindelar 7/6	
Planning Ops	Dave French/Andy Delmas (t)			Division		Steve Mullis 7/7	
Safety Officer	Todd Baumer/Randy Turrill (t)						
6. Resources Assigned this Period							
Strike Team/Task Force/ Resource Designator		Leader / Name / Designator		Last Shift Date	Num. Per.	Drop Off PT./Time	Pick Up PT./Time
STEN (E-831.1)		Steven Morefield		7/9	1		
S/T Type 6 OR STEN (E-831.2)		John Montgomery (t)		7/9	1		
ENG6 (E-831.3)				7/9	4		
ENG6 (E-831.4)				7/9	4		
ENG6 (E-831.5)				7/9	3		
ENG6 (E-831.6)				7/9	3		
ENG6 (E-831.7)				7/9	3		
EMTP (O-730)		Shane Powers		7/7	1		
7. Control Operations							
<ul style="list-style-type: none"> Recon potential control lines and examine area for snag removal Improve swamp break boundaries for fire breaks, work w/resource advisor Coordinate potential burn-out w/READ and refuge personnel Use refuge personnel for any burn-out activities. 							
8. Special Instructions							
<ul style="list-style-type: none"> Make contact with the Resource Advisor before using mechanical equipment. Safely push down with equipment all snags whether on fire or not that are a threat to success or tactical operations. Ensure LCES are in place before operations begin. Stay hydrated. Drive defensively and with lights on at all times. Boggy terrain: Be careful and aware when working around this type of area. 							
9. Division/Group Communication Summary							
Function	Frequency	System	Channel	Function	Frequency	System	Channel
Command Ware Co. Clinch & North Okee	See ICS 215	KING NIFC		Logistics		KING NIFC	
Tactical Div/Group	See ICS 215	KING NIFC		Air to Ground	See ICS 215	KING NIFC	
Prepared by (Resource Unit Ldr.) Patty Eder (t)		Approved by (Planning Sect. Ch.) /s/ Tim Roide			Date July 5, 2011		Time 1800

DIVISION ASSIGNMENT LIST		1. Branch West		2. Division V			
3. Incident Name Honey Prairie Complex		4. Operational Period Date: ##### 7/6/2011 Time: #####0800-2100					
5. Operations Personnel							
Operations	Tom Romanello/Dave Easton(t)	Branch Director	Bob Shindelar 7/6				
Planning Ops	Dave French/Andy Delmas (t)	Division Supervisor	Quincy Chung 7/9 - Greg Suszek 7/19				
Safety Officer	Todd Baumer/Randy Turrill (t)	Division Supervisor					
6. Strike Team/Task Force/ Resource Designator							
	Leader / Name / Designator	Last Shift Date	Num. Per.	Drop Off PT./Time	Pick Up PT./Time		
TFLD O-899	Bob Schober	7/18	1				
TFLD O-942	Ben Krupski	7/18	1				
Feller-Buncher (E-524)	Josh Burdy		1				
Feller-Buncher (E-526)	James Marshall	7/16	1				
Grader (E-530)	Woody Bargeron	7/19	1	PVT			
TPL2 (E-606)	Cody	7/17	1				
EMTB (O-733)	David Moore	7/7	1				
DOZB (O-906)	Evan Karp	7/9	1				
ENG6 (E-992)	Steve Spangler	7/18	3				
ENG6 (E-995)	Aaron Bailey		3				
ENG6 (E-996)	Dustin Picking	7/23	3				
ENG6 (E-980)	Amos Stone						
ENG6 (E-2)	Arthur Lauroie						
ENG6 (E-3)	Angie Carl	7/10					
ENG6 (E-5003)	D. Crane	7/14					
ENG6 (E-1000)	Paul Rampinini	7/19					
ENG6 (E-1001)	Dick Sypher	7/19					
KG Dozer							
KG Dozer							
7. Control Operations <ul style="list-style-type: none"> Recon potential control lines and examine area for snag removal Improve swamp break boundaries for fire breaks, work w/resource advisor Coordinate potential burn-out w/READ and Refuge Personnel Use Refuge personnel for any burn-out activities. 							
8. Special Instructions <ul style="list-style-type: none"> Make contact with the Resource Advisor before using machanical equipment. Safely push down with equipment all snags whether on fire or not that are a threat to success or tactical operations. Ensure LCES are in place before operations begin. Stay hydrated. Drive defensively and with lights on at all times. Boggy terrain: Be careful and aware when working around this type of area. 							
9. Division/Group Communication Summary							
Function	Frequency	System	Channel	Function	Frequency	System	Channel
Command Ware Co. Clinch & North Okee	See ICS 205	KING NIFC		Logistics		KING NIFC	
Tactical Div/Group	See ICS 205	KING NIFC		Air to Ground	See ICS 205	KING NIFC	
Prepared by (Resource Unit Ldr.) Patty Eder (t)		Approved by (Planning Sect. Ch.) /s/ Tim Roide		Date #####July 5, 2011		Time 1800	

DIVISION ASSIGNMENT LIST			1. Branch West		2. Division Y - Day		1 of 2		
3. Incident Name Honey Prairie Complex			4. Operational Period Date: ##### 7/6/2011 Time: #####0800-2100						
5. Operations Personnel									
Operations		Tom Romanello/Dave Easton(t)		Branch Director		Bob Shindelar 7/6			
Planning Ops		Dave French/Andy Delmas (t)		Division Supervisor		Chris Casey 7/7 - Gary Smith 7/19 - Joe Alyea 7/6			
Safety Officer		Todd Baumer/Randy Turrill (t)							
6. Resources Assigned this Period									
Strike Team/Task Force/ Resource Designator		Leader / Name / Designator		Last Shift Date	Num. Per.	Drop Off PT./Time		Pick Up PT./Time	
TFLD (O-917)		Dan Helterline		7/19	1				
TFLD (O-920)		Aaron Schneider		7/19	1				
STEN (O-758)		Linda Davis		7/6	1				
STEN (O-739)		Rodney Weeks		7/10	1				
ENG6 (E-815) WIS Mellen 9244		Chad Gottbeheit		7/6	2				
ENG6 (E-816) WIS 9247		Jacob Bonack		7/6	2				
ENG6 (E-817) WIS Dell 9593		Scott Fischer		7/6	2				
ENG6 (E-818) WIS Babcock 9597		Dale Rochan		7/6	2				
ENG6 (E-819)		Chris Queen		7/6	3				
WT (E-512)		Ken Swane		7/9	1	PVT			
ENG6 (E-808)		Craig Kostizewski		7/6	3				
WTDR (E-560)		Tipton #2		7/25	1	PVT			
DOZB (O-843)		Joseph Chastain (t)		7/10	1				
DOZ (E-943)		Ray Capman		7/7	1	PVT			
TPL2 (E-497)		Leslie Jeter		?	1	PVT			
Transport for E-943.				7/8		PVT			
EMTP (O-766)		Peggy Miller		7/6	1				
SOF2 (O-891)		Steve Holman		7/18	1				
7. Control Operations									
<ul style="list-style-type: none"> • Make contact with the Resource Advisor before using mechanical equipment. • Recon potential controllines and examine area for snag removal • Improve swamp break boundaries for fire breaks • E-815, E-816, E-817, and E-818 must be at ICP at 1300 for demob. 									
8. Special Instructions									
<ul style="list-style-type: none"> • Safely push down with equipment all snags whether on fire or not that are a threat to success or tactical operations. • Ensure LCES are in place before operations begin. Stay hydrated. • Drive defensively and with lights on at all times. • Boggy terrain: Be careful and aware when working around this type of area. 									
9. Division/Group Communication Summary									
Function		Frequency		System		Channel			
Command Ware Co. Clinch & North Okee		See ICS 205		KING NIFC				Logistics	
Tactical Div/Group		See ICS 205		KING NIFC				Air to Ground	
Prepared by (Resource Unit Ldr.) Teri Coy		Approved by (Planning Sect. Ch.) /s/ Tim Roide				Date #####July 5, 2011		Time 1730	

DIVISION ASSIGNMENT LIST			1. Branch West		2. Division Z		
3. Incident Name: Honey Prairie Complex			4. Operational Period Date: ##### 7/5/2011 Time: ##### Day: 0800-2100				
5. Operations Personnel							
Operations	Tom Romanello/Dave Easton(t)		Branch Director		Bob Shindelar 7/6		
Planning Ops	Dave French/Andy Delmas (t)		Division Supervisor		Larry Peabody 7/13		
Safety Officer	Todd Baumer/Randy Turrill (t)						
6. Resources Assigned this Period							
Strike Team/Task Force/ Resource Designator		Leader / Name / Designator	Last Shift Date	Num. Per.	Drop Off PT./Time		Pick Up PT./Time
TFLD (O-919)		Jesse Knox	7/18	1			
TFLD (O-792)		Dennis Wilson (t)	7/23	1			
TFLD (O-921)		Brad Hall (t)	7/18	1			
ENG5(E-502)		Greg Curry	7/13	2	PVT		
ENG6 (E-5011) Smokey Mt 209		Gary Barlett	7/10	2	PVT		
ENG6 (E-5012) Smokey Mt 301		Paul Shrimplin	7/12	2	PVT		
ENG6 (E-904)		Ron Hill	7/8	3			
ENG6 (E-905)		Tiffany Steakley	7/8	3			
TFLD (O-760)		David Poukish	7/6	1			
ENG6 (E-392)		Frank Paukert(E-392.7)	7/7	3			
ENG6 (E-5010)		C. Tevebaugh(E-5010.1)	7/12	3	PVT		
ENG6 (E-5008)		Maige/Walton	7/17	2	PVT		
ENG6 (E-901)		Matheson	7/9	4			
ENG6 (E-5007)		Jeff Bradley(E-5007.1)	7/17	2	PVT		
HCT2IA (C-14) Pat Rick 20B		Dustin Eldred	7/8	20	PVT		
TFLD (O-743)		Bernard Hamilton	7/7	1			
ENG6 (E-809) TX Refuge 2462		M. Villarreal	7/6	2			
ENG6 (E-806) FWS GDR 603		Mark Romagosa	7/6	3			
ENG6 (E-838) MNSB Refuge 6232		Jeanne Whitefeather	7/7	3			
ENG6 (E-796) PH 5722		Cory Highfill	7/6	3			
ENG6 (E-850) TNCNF		Michael Haisten	7/7	3			
EMTP (O-847)		Levi Clymer	7/11	1			
SOF2 (O-891)		Steve Holman	7/18	1			
7. Control Operations							
<ul style="list-style-type: none"> Contain all fires outside refuge boundary. Patrol and mop up within 100' of fire perimeter line. 							
8. Special Instructions							
<ul style="list-style-type: none"> Ensure that tractors are cleaned and free of debris daily. Examine work area for fire weakened snags. Ensure LCES are in place before operations begin and stay hydrated. Additional resources will be available from GFC, Florida DOF, FWS, and local cooperators. Drive defensively and with lights on at all times. See Medical plan for EMT support. Implement MIST tactics 							
9. Division/Group Communication Summary							
Function	Frequency	System	Channel	Function	Frequency	System	Channel
Command N.Okee Repeater	See ICS 205	KING NIFC		Logistics		KING NIFC	
Tactical Div/Group	See ICS 205	KING NIFC		Air to Ground	See ICS 205	KING NIFC	6
Prepared by (Resource Unit Ldr.) Teri Coy		Approved by (Planning Sect. Ch.) /s/ Tim Roide		Date July 5, 2011		Time 1930	

DIVISION ASSIGNMENT LIST				1. Branch West	2. Division West - Initial Attack and Structure Protection		
3. Incident Name: Honey Prairie Complex				4. Operational Period Date: ##### 7/6/2011 Time: ##### Day: 0800-2100			
5. Operations Personnel							
Operations	Tom Romanello/Dave Easton(t)			Branch Director	Bob Shindelar 7/6		
Planning Ops	Dave French/Andy Delmas (t)			Division Supervisor	Don Hammick		
Safety Officer	Todd Baumer/Randy Turrill (t)						
6. Resources Assigned this Period							
Strike Team/Task Force/ Resource Designator	Leader / Name / Designator		Last Shift Date	Num. Per.	Drop Off PT./Time	Pick Up PT./Time	
STEN (O-844)	Gary Glintenkamp		7/8	1			
ENG6 (E-906)	Jay Wickham		7/9	3			
ENG6 (E-404)	Nicole Salmer		7/9	3			
ENG6 (E-939)	Justin Finklea			3			
DOZ3 (E-651)	Paul Funderbuck		7/15	1	PVT		
DOZ3 (E-650)	Doug Williams		7/15	1	PVT		
STPL (O-5039)	Todd Milam		7/10	1			
TPL (E-914)			7/11	1			
TPL (E-915)			7/11	1			
TPL (E-916)			7/11	1			
WAT3 (E-517)	Larry Bartlett		7/12	1	PVT		
SOF2 (O-805)	Troy Shaddox		7/9	1			
7. Control Operations <ul style="list-style-type: none"> Respond to Initial Attack as requested Initial attack IC will communicate size up information to Honey Prairie incident communications 							
8. Special Instructions							
9. Division/Group Communication Summary							
Function	Frequency	System	Channel	Function	Frequency	System	Channel
Command N.Okee Repeater	See ICS 205	KING NIFC		Logistics	See ICS 205	KING NIFC	
Tactical Div/Group	See ICS 205	KING NIFC		Air to Ground	See ICS 205	KING NIFC	
Prepared by (Resource Unit Ldr.) Teri Coy		Approved by (Planning Sect. Ch.) /s/ Tim Roide			Date July 5, 2011		Time 1930

DIVISION ASSIGNMENT LIST			1. Branch West		2. Division V,Y Night		
3. Incident Name Honey Prairie Complex			4. Operational Period Date: ##### 7/6/2011 Time: #####1800-0600				
5. Operations Personnel							
Operations	Tom Romanello/Dave Easton(t)		Branch Director		Bob Shindelar 7/6		
Planning Ops	Dave French/Andy Delmas (t)		Division Supervisor		Patrick Morgan / Nicole Hallisey (t)		
Safety Officer	Todd Baumer/Randy Turrill (t)						
6. Resources Assigned this Period							
Strike Team/Task Force/ Resource Designator	Leader / Name / Designator	Last Shift Date	Num. Per.	Drop Off PT./Time	Pick Up PT./Time		
TFLD (O-938)	Bill Altman	7/19	1				
ENG6 (E-593)	Leland Bass	7/6	2				
ENG6 (E-382)	Joseph Berry	7/6	2				
ENG6 (E-81)	Chris Buchanan	7/6	2				
ENG6 (E-76)	Darrell Husky	7/6	2				
ENG6 (E-78)	Kenneth Harkins(E-78.7)	7/6	2				
ENG6 (E-80)	James Mashburn	7/6	2				
ENG6 (E-115)	Westley Sisk	7/6	2				
TFLD (O-741)	Ron Sams	7/7	1				
WAT2 (E-954)	Jim Griffen	7/11	1				
EMTP (O-640)	Mike Fincham	7/6	1				
EMTB (O-678)	Alex Lynn	7/8	1				
ENG (E-975)	Nort Phillips	7/14	2				
ENG (E-973)	Heath Seers	7/14	2				
SOF2 (O-892)	Steven Ripley	7/17	1				
7. Control Operations <ul style="list-style-type: none"> Make contact with the Resource Advisor before using mechanical equipment. Recon potential controllines and examine area for snag removal Improve swamp break boundaries for fire breaks 							
8. Special Instructions <ul style="list-style-type: none"> Safely push down with equipment all snags whether on fire or not that are a threat to success or tactical operations. Ensure LCES are in place before operations begin. Stay hydrated. Drive defensively and with lights on at all times. Boggy terrain: Be careful and aware when working around this type of area. 							
9. Division/Group Communication Summary							
Function	Frequency	System	Channel	Function	Frequency	System	Channel
Command Ware Co. Clinch & North Okee	See ICS 205	KING NIFC		Logistics		KING NIFC	#####
Tactical Div/Group	See ICS 205	KING NIFC		Air to Ground	See ICS 205	KING NIFC	
Prepared by (Resource Unit Ldr.) Teri Coy		Approved by (Planning Sect. Ch.) /s/ Tim Roide			Date #####July 5, 2011		Time 1730

DIVISION ASSIGNMENT LIST			1. Branch East		2. Division H/ I/J/K		
3. Incident Name Honey Prairie Complex			4. Operational Period Date: ##### 7/6/2011 Time: #####0800-2100				
5. Operations Personnel							
Operations	Tom Romanello/Dave Easton(t)		Branch Director		Russ Lane 7/8		
Planning Ops	Dave French/Andy Delmas (t)		Division Supervisor		Matt Filbert/Dean Karlovich (t)		
Safety Officer	Todd Baumer/Randy Turrill (t)						
6. Resources Assigned this Period							
Strike Team/Task Force/ Resource Designator	Leader / Name / Designator		Last Shift Date	Num. Per.	Drop Off PT./Time	Pick Up PT./Time	
TFLD (O-814)	Troy Boschee		7/8	1			
TFLD (O-813)	Robert Bengson (t)		7/8	1			
STEN (O-493)	Tim Diaz		7/6	1			
ENG6 (E-135) Attack-1	Ed Kleiman		7/16	2	PVT		
ENG6 (E-136) Nat'l Fire	Jay Cates		7/17	2	PVT		
ENG6 (E-137) Wildlands 8	A. Radford		7/10	2	PVT		
ENG6 (E-179) Nat'l Fire #4	Jimmy Wills		7/13	2	PVT		
ENG6 (E-892) TNCNF 301	David Ives		7/7	3			
ENG6 (E-899) MIUPC 61	D. Karlovich		7/8	3			
ENG6 (E-822) WBD 3651	Joel Peters		7/7	3			
WT (E-559)	Ira Maybery		7/8	1	PVT		
Pump (E-293)			7/30	1		Pump is on a Trailer	
SOF2 (O-808)	Charles Severson		7/8	1			
EMTB (O-637)	Rick Sparks		7/8	1			
EMTP (O-731)	Keith Barker		7/23	1			
7. Control Operations							
<ul style="list-style-type: none"> Contain all fires outside refuge boundary. Patrol and control reburn Provide initial attack for GFC and fires outside the refuge boundary. Patrol all spots outside refuge boundary. Patrol and mop up all accessible fire line. Mop up all hot spots within 100' of the fire perimeter. Continue to provide protection to the Chesser Homestead by maintaining an adequate water supply via portable pump at location. 							
8. Special Instructions							
<ul style="list-style-type: none"> Ensure LCES are in place before operations begin. Stay hydrated. Drive defensively and with lights on at all times. See medical plan for EMT support Examine work area for fire weakened snags 							
9. Division/Group Communication Summary							
	Function	Frequency	Channel	Function	Frequency	System	Channel
Command N. Okee Repeater	See ICS 205	KING NIFC		Logistics		KING NIFC	
Tactical Div/Group	See ICS 205			Air to Ground	See ICS 205	KING NIFC	
Prepared by (Resource Unit Ldr.) Patty Eder (t)		Approved by (Planning Sect. Ch.) /s/ Tim Roide			Date July 5, 2011		Time 1800

DIVISION ASSIGNMENT LIST			1. Branch East		2. Division L, M	
3. Incident Name Honey Prairie Complex			4. Operational Period Date: ##### 7/5/2011 Time: #####0800-2100			
5. Operations Personnel						
Operations	Tom Romanello/Dave Easton(t)		Branch Director		Russ Lane 7/8	
Planning Ops	Dave French/Andy Delmas (t)		Division Supervisor		Jason Butler, Alex Abols (t)	
Safety Officer	Todd Baumer/Randy Turrill (t)					
6. Resources Assigned this Period						
Strike Team/Task Force/ Resource Designator	Leader / Name / Designator	Last Shift Date	Num. Per.	Drop Off PT./Time	Pick Up PT./Time	
TFLD (O-839)	Tim Wharton	7/7	1			
TFLD (O-431)	James Flue (t)	7/10	1			
STEN (E-385.7)	Gilbert Juarez	7/9	1			
ENG6 (E-893)MIHMF 251	Paul Lyden	7/9	3			
ENG6 (E-894) MOMTF 862	Greg Carlson	7/8	3			
ENG6 (E-895) MOMTF 9505	Timothy Bray	7/8	3			
ENG6 (E-898) MDS #4	James Harris	7/8	2			
ENG6 (E-385) Red Lake	Gilbert Juarez	7/9	3			
ENG6 (E-5014) Tx Fire 157	Curtis Weaver	7/9	3			
ENG6 (E-407) White Earth #2	Seve Lafriere	7/9	3			
ENG6 (E-826)	Steve Melton	7/8	2	PVT		
EMTB (O-848)	Bert Hyde	7/12	1			
EMTP (O-731)	Keith Barker	7/22	1			
SOF2 (O-659)	Terry Trapp	7/9	1			
7. Control Operations						
<ul style="list-style-type: none"> Contain all fires outside refuge boundary. Patrol and control reburn Mop up all spots outside refuge boundary and within 100 feet of perimeter 						
8. Special Instructions						
<ul style="list-style-type: none"> Ensure LCES are in place before operations begin. Stay hydrated. Drive defensively and with lights on at all times. See medical plan for EMT support Examine work area for fire weakened snags. 						
9. Division/Group Communication Summary						
	Function	Frequency	Channel	Function	Frequency	System
Command N. Okee Repeater	See ICS 205	KING NIFC		Logistics		KING NIFC
Tactical Div/Group	See ICS 205	KING NIFC		Air to Ground	See ICS 205	KING NIFC
Prepared by (Resource Unit Ldr.) Patty Eder (t)	Approved by (Planning Sect. Ch.) /s/ Tim Roide			Date July 5, 2011	Time 1800	

DIVISION ASSIGNMENT LIST				1. Branch East		2. Division N/O	
3. Incident Name Honey Prairie Complex				4. Operational Period Date: ##### 7/6/2011 Time: #####0800-2100			
5. Operations Personnel							
Operations		Tom Romanello/Dave Easton(t)		Branch Director		Russ Lane 7/8	
Planning Ops		Dave French/Andy Delmas (t)		Division Supervisor		Jay Riewestahl 7/7 Steve Griffin 7/20	
Safety Officer		Todd Baumer/Randy Turrill (t)					
6. Resources Assigned this Period							
Strike Team/Task Force/ Resource Designator		Leader / Name / Designator		Last Shift Date	Num. Per.	Drop Off PT./Time	Pick Up PT./Time
ENG6 (E-977)		Luke Smith		7/19	4		
ENG6 (E-922) GAPDR		Nathen Herron		7/7	2		
ENG6 (E-897) MDBWR		J. Beck		7/8	2		
ENG6 (E-5006) Wildlands #3		Keith Hawk		7/11	2	PVT	
ENG6 (E-993) Bush Fire		Philips Quochoytewa		7/18	2	PVT	
EMTB (O-848)		Bert Hyde		7/12	1		
SOF2 (O-807)		Chuck Stanton		7/11	1		
7. Control Operations <ul style="list-style-type: none"> Patrol and mop up 100' inside fire perimeter. Recon potential control lines and examine area snag removal Continue to establish contingency firelines to contain fire south of Double Branch Rd., east of Skull Head Rd., and north of Refuge Boundary. Keep fire within refuge boundary. 							
8. Special Instructions <ul style="list-style-type: none"> Safely push down with equipment all snags whether on fire or not that are a threat to success or tactical operations. Ensure LCES are in place before operations begin. Stay hydrated. See medical plan for EMT support. Drive defensively and with lights on at all times. Boggy terrain: Be careful and aware when working around this type of area. If HP fire escapes the NE Break the Great Basin team will command suppression w/assistance from the GFC. If Race Pond escapes to the south GFC will command w/assistance by the Great Basin. DIVS should make daily contact w/ Race Pond DIVS on scene. 							
9. Division/Group Communication Summary							
Function	Frequency	System	Channel	Function	Frequency	System	Channel
Command N. Okee Repeater	See ICS 205	KING NIFC		Logistics		KING NIFC	#####
Tactical Div/Group	See ICS 205	KING NIFC		Air to Ground	See ICS 205	KING NIFC	
Prepared by (Resource Unit Ldr.) Patty Eder (t)		Approved by (Planning Sect. Ch.) /s/ Tim Roide			Date #####July 5, 2011		Time 1730

DIVISION ASSIGNMENT LIST			1. Branch East		2. Division East Initial Attack		
3. Incident Name Honey Prairie Complex			4. Operational Period Date: ##### 7/5/2011 Time: #####0800-2100				
5. Operations Personnel							
Operations	Tom Romanello/Dave Easton(t)		Branch Director		Russ Lane 7/8		
Planning Ops	Dave French/Andy Delmas (t)		Division Supervisor		John Huschke 7/12		
Safety Officer	Todd Baumer/Randy Turrill (t)						
6. Resources Assigned this Period							
Strike Team/Task Force/ Resource Designator	Leader / Name / Designator		Last Shift Date	Num. Per.	Drop Off PT./Time	Pick Up PT./Time	
TFLD (O-685)	Jeff Robinson		7/6	1			
TFLD (O-941)	Shawn Denowh		7/20	1			
ENG6 (E-390) WICNF 461	T. Borman		7/10	2			
ENG6 (E-79) GAS Coweta	William Lee		7/6	2			
ENG6 (E-77) GAS Chattooga	Dean Cornett		7/6	2			
WT (E-92)	Justin/Ellis			1	PVT		
DOZB (O-711)	Dennis Huenergardt		7/10	1			
TPL3 (E-500) NFFS	Buddy Woods		7/6	2			
TPL3 (E-649) Bear Co	Mike Kikendale		7/14	2	PVT		
ENG6 (E-978)	Dennis Gillmer		7/19	3			
ENG6 (E-979)	Mark Smith		7/19	4			
ENG6 (E-974)	Scott Kregness		7/19	3			
ENG6 (E-976)	Roscoe Benoy		7/19	3			
SOF2 (O-703)	Larry Klock		7/7				
7. Control Operations							
<ul style="list-style-type: none"> Respond to Initial Attack as requested Patrol and control return Initial attack IC will communicate sizeup information to the Honey Prairie communication. 							
8. Special Instructions							
9. Division/Group Communication Summary							
	Function	Frequency	Channel	Function	Frequency	System	Channel
Command N. Okee Repeater	See ICS 205	KING NIFC		Logistics		KING NIFC	
Tactical Div/Group	See ICS 205	KING NIFC		Air to Ground	See ICS 205	KING NIFC	
Prepared by (Resource Unit Ldr.) Patty Eder (t)	Approved by (Planning Sect. Ch.) /s/ Tim Roide			Date July 5, 2011		Time 1800	

AIR OPERATIONS SUMMARY		PREPARED BY: <i>Chris Schenck</i> AOB (T)			PREPARED DATE/TIME: 7/5/2011 1700	
1. INCIDENT NAME: HONEY PRAIRIE		2. OPERATIONAL PERIOD DATE: 76/2011		START TIME: 0800	END TIME: 2015	SUNRISE: 0631 SUNSET: 2037 Waycross
3. REMARKS (Safety Notes, Hazards, Air Operations Special Equipment, etc.) RETARDANT NOT ALLOWED IN OKENOKEE REFUGE <ul style="list-style-type: none"> -PILOTS-WATCH FOR REAL BIG BIRDS -WATCH FOR GENERAL AVIATION AND MILITARY AIRCRAFT -NOTE THAT SOME TOWERS ARE NOT MARKED ON SECTIONAL CHARTS.THESE TOWERS COULD BE UP TO 250 FEET TALL -ALL FIREFIGHTING AIRCRAFT NEED TO SQUAWK 1255. FLY WITH LIGHTS ON. MTR's TRANSECT FIRE TRAFFIC AREA BOTH IR & VFR MAY BECOME ACTIVE THIS WEEK -HEADS UP WHEN PERFORMING WATER DROPS AROUND CREWS ON THE GROUND <ul style="list-style-type: none"> -MAINTAIN CLEAR COMMUNICATIONS CREWS STAY AWAY FROM WATER DROPS INCLUDING APPROACH AND DEPARTURES <ul style="list-style-type: none"> -FARGO HELIBASE LOCATION: 1/4 MILE NORTH OF THE BP GAS STATION at golf course -AIRCRAFT WILL BE ORDERED AND DISPATCHED UTILIZING LATITUDE AND LONGITUDE-DEGREES DECIMAL MINUTES <ul style="list-style-type: none"> SMOKE AND VISABILITY MAY REQUIRE FLEXABILITY IN MISSIONS AND FUEL PLANNING BE READY FOR POSSIBLE IA WORKIG WITH GA/ FL FORESTRY RESOURCES -AIRCRAFT PRIORITIES <ol style="list-style-type: none"> PUBLIC AND FIREFIGHTER SAFETY PROTECTION OF LIFE, PROPERTY AND RESOURCES INITIAL ATTACK POTENTIAL PROBLEM FIRES UNSTAFFED FIRES 				4. MEDEVAC A/C: Fargo Helibase N662H Waycross N818MC Frequency: HEAR FM 155.340W* *This may need to be programmed for a medivac.		5. TFR HONEY PRAIRIE FDC 1 / 0249 At and below 3000' msl. AM 122.375 1. IMMEDIATE NOTIFICATION OF INTRUSIONS ARE TO BE PLACED WITH THE AIR SPACE COORDINATOR AT FICC OR THE FAA. AIR TANKER LAKE CITY T-22 DAY OFF WED July 6 LEAD PLANES: 1 @ LAKE CITY LEAD 14 FARGO HELIBASE: Lat 30 41.42 Long 82 33.97 POGO HELIBASE: Lat 30 44.03 Long 82 07.41 POCKET HELISPOT Lat 30.48 Long 82.22 HOMERVILLE AIRPORT Lat 31 03.35 Long 82 46.45 WAYCROSS AIRPORT Lat 31 14.9 Long 82 23.7
6. PERSONNEL		Phone	7. FREQUENCIES	AM	FM	8. FIXED WING # Available/ Type/ Make-Model/FAA N# / Bases
AOBD: Dewey Warner		702-469-2280	AIR/AIR FW	122.575		GFC SATILLA DISPATCH: 912-287-4915
AOBD (t): Chris Schenck		208-431-0177	AIR/AIR RW-FF	122.375		
ASGS: John Burke		435-590-8680	Georgia AIR/AIR	122.075	159.390/156.7	LAKE CITY TANKER BASE: 386-758-9078
AIR OPS Desk		912-637-5254	NATIONAL FLIGHT FOLLOWING		168.650N	LAKE CITY TANKER BASE FAX: 386-752-8901
AIR OPS FAX		912-637-5237				
ATGS: Tim Caughlin/Melanie Fullman (T)		715-684-9862	AIR/GROUND: PRIMARY		166.9375	
ATGS: Dave Custer Lake City		406-529-4888	AIR/GROUND: SECONDARY		166.9000	POGO HELIBASE: 912-496-4415 FAX 912-496-7077
ATGS: Carl McGill Fargo off 7/7-8		541-519-0850				
HEB1 FARGO HEB2 Paul Borcharding		541-377-5200	GEORGIA AIR/GROUND Dozers		159.285 W	WAYCROSS HELIBASE: 912-287-4479 FAX 912-287-4458
HEB2 WAYCROSS HEB2 Melvin Tate		850-849-0405	FLORIDA I.A.AIR/AIR-	122.925		
ABRO Peter Martins		530-310-3526	FLORIDA I.A. AIR/GROUND		170.4750N	FARGO HELIBASE 530-310-3526
			COMMAND: (Simplex) SEE ICS 205			FICC: AIRCRAFT 850-523-8600 Ext. 3636
			COMMAND RPT SEE ICS 205	Rx:	Tx:	FICC FAX FOR AIRCRAFT ORDERS: 850-576-8314 AIRSPACE COORDINATOR: Marion Harris 850-520-8623 ext. 3630 AVIATION CONFERENCE CALL: 866-785-8109 PIN 3223898#
			DECK FREQ:		163.100**	**Note: deck should be used for mission request or Air to ground .
			TOLC:			

9. HELICOPTERS (Use Additional Sheets As Necessary)													
FAA N#	TY	MAKE/MODEL	BASE	AVAIL	START	REMARKS	FAA N#	TY	MAKE/MODEL	BASE	AVAIL	START	REMARKS
N36BH A-35	1	SIKORSKY S-70	Waycross	0830		Zeve Huntina 406-439-6768	N61SC A-	1	SIKORSKY S-61	Fargo	0830		Ray Leppala 218-966-6443
206G A-19	2	UH1H Return to Service?	Waycross	0830		Mike Yearwood 530-310-3511	N662H A-29	3	Bell 206-L4	Fargo	0830		Jeff Polack 208-816-3447
06901 A-17	2	UH1H	Waycross	0830		Cindy Bradley 559-916-9355	26MW A-62	1	K1200	Fargo	1200?		Kirby Cook 406-381-1212
N818MC	3	AS-350 B3	Waycross/ Fargo as needed	0830		George Violante 307-330-5904	6JC A-1	3	Bell B-3 Local Unit Aircraft	Pogo	0830		Reggie Forcine 912-614-4041
9.5 Fixed wing													
AA 53L	1	C-337	Lake City	0830		Tim Callahan Melanie Fullman (T) 715-684-9862	AA N135BA	1	B -65	Lake City	0830		Dave Custer 406-529-4888

AIR OPERATIONS SUMMARY					
10. TASK/MISSION/ASSIGNMENT (Type/Function includes Air Tactical, Retardant, Recon, Personnel Transport, Water Dropping, S&R, etc.)					
			MISSION START	FLY FROM	FLY TO
Expect Recons with Ops IC's			11:00 / 1300 / 1600 and as requested	FARGO Waycross	Fire
ATGS in T3 Helo to direct buckets			As needed	FARGO	
Expect Recons with FBA and LTAN			1300	FARGO	
Air Attack	Expect a Mission today for orientation		1400	Lake City ATB	Fire
T1 Helos Bucket Work	Objective to slow fire spread in light fuels		As needed		



Fire Weather Forecast



FORECAST NO: 60

NAME OF FIRE: Honey Prairie Complex

PREDICTION FOR: 7/6/11

UNIT: Okefenokee National Wildlife Refuge

FORECAST ISSUED: 7/5/11 at 1900

SIGNED: Scott Kennedy (T)/Coleen Decker
Incident Meteorologists

WEATHER DISCUSSION: High pressure will remain East of the area this week. Moist southerly flow will bring scattered Thunderstorms each afternoon and evening.

TODAY: Partly Cloudy with scattered Thunderstorms.

MAXIMUM TEMPERATURES: 93-97 degrees.

MAXIMUM HEAT INDEX: 102 degrees.

MINIMUM HUMIDITY: 37-42%.

20 FT WINDS: AM: WSW 4-7 G12 mph.

PM: SSE 5-8 G14 mph, becoming ESE after 1800.

STABILITY/INVERSION: Morning inversion to 250 feet through 1000, then rising to 6000 feet by 1500.

TRANSPORT WINDS: S 8 mph.

DISPERSION INDEX: 45, Fair.

CHANCE OF PRECIPITATION: 30%.

LIGHTNING ACTIVITY LEVEL: 3.

TONIGHT: Partly Cloudy with scattered Thunderstorms in the evening. Patchy fog developing after 0200.

MINIMUM TEMPERATURES: 69-72 degrees.

MAXIMUM HUMIDITY: 90-100%.

20 FT WINDS: ESE 4-8 mph, becoming variable 2 mph.

STABILITY/INVERSION: Inversion to 250 feet by 2200 hours.

DISPERSION INDEX: 2, poor.

CHANCE OF PRECIPITATION: 30%

LAL: 3

OUTLOOK FOR THURSDAY: Partly Cloudy with scattered afternoon Thunderstorms. Winds WSW 4-7G12 mph, becoming ESE 5-8G14 mph with seabreeze push between 1700-1900. High temperatures 92 to 96. Min RH 40-45%. Chance of Rain 30%. Dispersion 50, Fair.

EXTENDED FORECAST:

	FRIDAY	SATURDAY	SUNDAY
MINIMUM TEMP	71°	72°	73°
MAXIMUM TEMP	95°	94°	95°
MINIMUM RH	43-47%	43-47%	45-50%
20 FT. WINDS	AM: W 4-7 mph PM: ESE 5-10 mph	AM: W 4-7 mph PM: ESE 5-10 mph	AM: W 4-7 mph PM: ESE 4-8 mph
SKY	Partly Cloudy	Partly Cloudy	Partly Cloudy
WEATHER	Scattered Afternoon Thunderstorms	Scattered Afternoon Thunderstorms	Scattered Afternoon Thunderstorms
CHANCE PRECIP	40%	40%	40%

FIRE BEHAVIOR FORECAST

Fire: Honey Prairie Complex	Unit: GA-OKR-000001	Prediction for <u>Day and Night Shift</u>
Forecast #59 Issued: 07/05/2011 1830 hrs	Signed: Gary Brunk/Steve Cobb(T)	Shift Date: Wednesday 07/06/11

GENERAL FIRE BEHAVIOR

Fuels around the Okefenokee Wildlife Refuge are predominately Fuel Model 7 (Southern Rough). Large to moderate acreage tracts of commercial timberland are mixed in throughout the entire perimeter surrounding the refuge. Fast moving wildfires with extremely high flame lengths and rapid rates of spread occur within the swamp. As fire transitions to the upland, torching and crown fires are common. Long Range spotting is possible.

Indicators/Threshold for Increased Fire Activity

- **Relative humidity dropping below 45%**
- Winds above 10 mph
- **Heavy fuel loadings**
- **Fine dead fuel moisture 8% or less**
- Dispersion above 70
- *** Items in BOLD are predicted to occur today***

SPECIFIC FIRE BEHAVIOR

- **Fire behavior today has the potential to significantly increase due to possible afternoon thunderstorms! A combination of sea breezes and cumulous development may provide the "trigger" for extreme fire behavior beginning at 1800. Until then expect similar weather conditions as yesterday.**
- **Pockets of heat near the fire perimeter in Divisions Y will become active again by late morning. The possibility for short to mid range spotting continues especially if thunderstorms occur within the fire area.**

Fuel Type	Rates of Spread	Flame Length	Spotting Distance	Firebrand Ignition
Winds at 5-18 G14 @ 20"				
Shrub Fuels	9 - 14, 25 ch/hr.	9 - 14 feet	1/10 - 4/10 mile	60%
Southern Rough	12 - 20, 40 ch/hr	5 - 9 feet	1/10 - 4/10 mile	60%
Timber Litter-Reburn	1 - 2, 4 ch/hr.	1 - 3 feet	2/10 - 4/10 mile	59%
Small Pine Plantation w/grasses	12 - 14, 40 ch/hr	6 - 10 feet	1/10 - 3/10 mile	60%

One hour fine dead fuel moisture is at 6% for Wednesday. 1000 hour fuels are drier than normal for this time of year.

There is reburn potential in all divisions due to the amount of needle cast. Should a fire run(s) occur, expect winds in the area to potentially increase above predicted levels. This would increase Flame Lengths and ROS above predictions. Heavier firebrands can also be lifted higher and further increasing likelihood of spots to max predictions. **In areas where fuels have been herbicided, expect quick ignitions and extreme heat, very fast and group tree torching producing spotting problems.**

NOTE- FIRE BEHAVIOR CALCULATIONS ARE FOR FIRES IN UNBURNED FUELS INCLUDING NEW IA STARTS.

West	A	<i>Reburn potential with accumulation of leaves and red needles. Falling snags still pose a threat to fire personnel and the boardwalk. ESE Winds Today after 1800</i>	West	T/V	<i>If South winds align today, pay attention to the possibility of fire pushing towards the division's perimeter. ESE Winds Today after 1800</i>
	B-G	<i>Warmer wx increases reburn potential from needle cast. Be heads-up for falling Snags. ESE Winds Today after 1800</i>			
	Y-Z	<i>Intense fire will continue with possible fire burning thru hardwood stringer north of DP44 and moving north along Div Y perimeter. ESE winds are forecast after 1800.</i>	East	H, I J, K L, M N, O	<i>Div 0 - South to east southeast winds could intensity smoldering fuels that showed up yesterday, pushing fire north into division's perimeter. ESE Winds Today after 1800</i>

Night Ops – Expect another night of minimal fire behavior after 2200. Patchy fog developing after 0200. Fire behavior will primarily be limited to burning out heavy fuels in Divisions Y & Z and the interior. RH's will recover to 90 – 100 after midnight. Winds over the entire fire are forecast from the ESE at 4-8 mph becoming variable to 2 mph. Dispersion Index of 2 –poor for nighttime.

Air Operations: After 1000, areas of smoke over fire area. Winds will increase if T'Storms develop.

SAFETY:

WINDS – Stay abreast of changing wx conditions throughout the entire shift. **THUNDERSTORMS** - these severe winds can create extreme fire behavior, with winds gusting over 30 mph. **SNAGS** – Snags are falling in all Divisions – will be influenced by Thunderstorm outflow winds.

FUELS: Reburn is an issue. Watch for pockets of cured shrubs or blankets of red needles beginning to cover the forest floor. 1000 and 10,000 hour fuels as well as deep duff pockets are providing the heat source. Stay focused, and put LCES in place before starting operations. Watch for standing burning snags that can fall without warning. *Energy Release Component (ERC) continues to be above the 90th percentile for this area.*

**WILDE GREAT BASIN IMT2
LCES Analysis of Tactical Actions**

Incident Name: Honey Prairie Complex				Date and Time Prepared: July 05, 2011 1600 hrs										Operational Period: Day and Night July 06, 2011				
TACTICAL HAZARDS	Location on Incident													ICP	PM Ops	Struct Prot Grp	Mitigations	
	A,B,C	D,E,F,G	H, I	J, K	L	M	N	O	T	V	Y	Z						
Powerlines	*	*	*	*	*	*	*	*	*	*	*	*	*			*	*	Assume all power lines are charged. Avoid all contact with downed lines.
Complacency	*	*	*	*	*	*	*	*	*	*	*	*	*			*	*	Follow work/rest guidelines.
Indirect Fireline									*	*	*	*	*			*		LCES; IRPG Pg. 10, Indirect Attack; Burnout as possible.
Unburned Area Reburn Potential	*	*	*	*	*	*	*	*	*	*	*	*	*			*	*	LCES, Utilize Air Attack if Available. Know Predicted Weather and Fire Behavior Forecast.
Hazard Trees	*	*	*	*	*	*	*	*	*	*	*	*	*			*	*	IRPG Pg. 80, Identify and flag hazard trees. Look Up, Down and Around
Hazardous Materials	*	*	*	*	*	*	*	*	*	*	*	*	*			*	*	IRPG Pg. 26-27, HAZMAT. Identify and map propane tanks, electric lines, septic tanks and determine bridge wgt. limits prior to use.
Vehicle Use (Travel 1HR+, Roads)	*	*	*	*	*	*	*	*	*	*	*	*	*			*	*	Park vehicles for egress. Follow traffic plan. Use seat belts, drive with headlights on and keep windshields clean. Use spotters. Drive Defensively. Use multiple camp locations to reduce drive time.
Communications																		Ensure radio is cloned with the current communications plan. LCES
Structure Protection	*												*					Use structure protection checklist, PPE, Triage. Utilize Local Fire Departments
Air Operations (multiple aircraft, line support)	*	*	*	*	*	*	*	*	*	*	*	*	*			*		Monitor Air Guard at all times. Flight follow through Dispatch. Keep drop areas clear of personnel.
Mechanical Equipment	*	*	*	*	*	*	*	*	*	*	*	*	*			*	*	Use PPE, ensure all safety devices are functional. Operator must see you before approaching equipment. Maintain proper distance away from equipment working in the area.
Escape Routes Safety Zones	*	*	*	*	*	*	*	*	*	*	*	*	*			*	*	LCES, Establish and identify safety zones & escape routes. Know where these are located and the route to them. IRPG p.7
Thunderstorm Safety	*	*	*	*	*	*	*	*	*	*	*	*	*			*	*	Keep an eye on changes in weather. Take hourly weather observations. Comms will provide weather updates when needed
Wildlife	*	*	*	*	*	*	*	*	*	*	*	*	*			*	*	Keep food items off the line and use refuse containers around camp. Use insect repellent as needed. Use caution around water as wildlife is concentrated.
Sun Exposure	*	*	*	*	*	*	*	*	*	*	*	*	*			*	*	Use sunblock as needed.
Heat	*	*	*	*	*	*	*	*	*	*	*	*	*			*	*	Hydrate prior to going on line and all during the day. Recognize the signs of heat related injuries. Take frequent breaks throughout the work period.
Railroad Crossings	*	*	*	*	*	*	*	*	*	*	*	*	*			*	*	Visually check all railroad crossings to ensure track is clear. Do not bunch up, leave room for other vehicles to cross. Don't try to "beat" the train.
Safety Officers:													Todd Baumer, SOF2, Randy Turrill, SOF2 (t)					



Safety Message 7/6/2011

Today's discussion is from "This Day in History"

"Lessons Learned" serve as brief summaries of powerful learning opportunities. You can use these summaries as a foundation and launch point for further dialogue and discussion. Apply these lessons learned to yourself, your crew, and your unit.

PART IV—South Canyon Fire, Colorado, 1994 (Last of a Four-Part Series)

Incident Summary: On July 2, 1994, seven miles west of Glenwood Springs, Colorado, lightning ignites a fire in piñon-pine and juniper on a ridge at the base of Storm King Mountain. The entire general area, in a one-year drought, is experiencing low humidities and record-high temperatures. Over the next two days, the South Canyon Fire increases in size. Initial attack resources are assigned. Four days later, on July 6, a dry cold front moves into the fire area. As winds and fire activity increases, the fire makes several rapid runs. Fourteen firefighters perish as they try to outrun the flames.

July 6—Summary of Activities

A total of 36 fires are now burning on this BLM District. During the night, due to the hazards of rolling rocks, the smokejumpers abandon their line construction on the South Canyon Fire up on Storm King Mountain. The fire continues to flare-up throughout the night. A cold front pushing 30-35 mph winds is predicted to occur at 3:00 p.m. today. A red flag warning has been issued for these frontal winds.

4:30 a.m.: The 11 firefighters from yesterday return and begin their almost 4-hour hike up the east drainage to the fire—where they clear Helispot 2.

8:45 a.m.: The day's tactical plan calls for improving the fireline on the ridge between Helispots 1 and 2. The jumpers and a newly ordered hotshot crew will construct hand line along the fire's edge on its western flank.

9:30 a.m.: The IC and Jumper-in-Charge take a helicopter recon flight. The Jumper-in-Charge and a jumper on the ground discuss lack of safety areas on the fire. It is decided to continue with the original suppression plan. At 10:30 a.m., 8 more smoke jumpers land at the fire. They are assigned to reinforce line building on the west flank. By 11 a.m., the hotshot crew arrives at the helibase to be shuttled up to the fire.

12:00 p.m.: Winds increase—with gusts up to 30 mph.
12:30 p.m.: The hotshot crew Superintendent and 9 of his crew arrive at Helispot 2. The IC, Jumper-in-Charge, and hotshot Superintendent agree to send these 9 hotshots down the west flank to reinforce the jumpers.

1:00 p.m.: A flare-up on the west flank forces some of the jumpers to retreat up the fireline toward the top of the ridge. They discuss safety concerns about building this fireline. After a helicopter water drop, they move back down the hill and continue building fireline.

3:00 p.m.: The remaining 10 hotshots arrive at Helispot 2 to widen the handline and put out spot fires along the ridge. Twenty minutes later, the predicted cold front moves into the fire area. Strong winds immediately increase the fire activity. Within 45 minutes, water drops are no longer effective. The fire makes rapid runs with 100-foot flame lengths. In response, firefighters start walking back up the fireline.

4:00 p.m.: The fire blows up. It crosses the drainage and runs up the ridge. A spot fire is observed on the east side of the drainage below a retreating crew. Forty mph winds push the blow-up to the ridge in two minutes.

Fourteen firefighters who try to outrun the flames perish: ***Kathi Beck, Tami Bickett, Scott Blecha, Levi Brinkley, Robert Browning, Doug Dunbar, Terri Hagen, Bonnie Holtby, Rob Johnson, Jon Kelso, Don Mackey, Roger Roth, James Thrash and Richard Tyler.***

Lessons Learned Discussion Points

- A primary objective of every operational fire plan is to keep firefighters out of entrapment situations.
- Discuss how the basics of LCES can help prevent getting into an entrapment situation. (Reference page 6 in your IRPG for this discussion).
- One recommendation from the South Canyon fire review was that *every* firefighter should carry a radio. Discuss how radios can be used to increase situational awareness.
- Explain why experience alone isn't enough to protect you in an entrapment situation such as the one that took firefighter's lives on the South Canyon Fire.
- What are some tell-tell signs that your work environment is becoming increasingly hazardous?

Resources: *South Canyon Fire Investigation*. 1994. http://wildfirelessons.net/documents/S_Canyon_AIReport_1994.pdf
Virtual Staff Ride of the South Canyon fire. http://www.fireleadership.gov/toolbox/staffride/library_staff_ride9.html
Incident Response Pocket Guide

"This Day in History" is a collaborative project between "6 Minutes for Safety" and the Wildland Fire Lessons Learned Center.

Safety Officers: Todd Baumer, SOF2 and Randy Turrill, SOF2 (t)

MEDICAL PLAN	1 7E, 1-# 'æ ~# Honey Prairie Complex	' ~#B'0'0'0' ,# 7/05/2011	7E ~#B'0'0'0' ,# 1800	20'0'0'-11' ~# ~# 7/06/2011 DAY & NIGHT OPS
---------------------	---	-------------------------------------	---------------------------------	---

5. Incident Medical Aid Station

<u>Medical Aid Stations</u>	<u>Location</u>	Paramedics Yes No	
Medical Unit (ICP)	Honey Prairie Complex ICP (Lodge 5) 912-637-5236 Jeff Voskamp MEDL 912-286-1648 Bill Erlach MEDL (T) 912-286-1674 Michael Evers MEDL (T) 719-640-8991	X	
WEST BRANCH (Line EMT)	Evan Dean 503-975-6444 (A,B,C DIV) Kyle Barber 417-239-9135 (D,E,F,G DIV) Shane Powers 907-388-3885 (T DIV) Dave Moore 513-616-9192 (V DIV) Peggy Miller 240-793-4238 (Y DIV Day) Michael Fincham 530-859-8507 & Alex Lynn 909-477-9276 (Y&V DIV Night) Levi Clymer 417-658-5155 (Z DIV)	X	
EAST BRANCH (Line EMT)	Rick Sparks 912- 531-9527 (H,I,J,K DIV) Keith Barker 224-330-7798 (H,I,J,K,L,M DIV) Bert Hyde 218-349-0934 (L,M DIV)	X	

Ambulance Services

Name	Address	Phone	Paramedic	
			Yes	No
Clinch County EMS (WEST SIDE)	West Branch Council Road & HWY 94	Channels 4, 11, 13 912-286-1673 EMS Incident Cell	Yes	#
Ware County EMS (NORTHSIDE)	Waycross, Georgia (911 to activate)	912-281-9467	Yes	#
Charlton County EMS (EAST SIDE)	Folkston, GA (911 to activate)	912-496-7321	Yes	#

Air Ambulance Service

Trauma 1	Jacksonville, FL (26 min/air)	800-223-4878 (freq. 155.340)	Yes	#
AirMed	Augusta, GA (2 hrs/air)	1-888-792-9245(freq. 155.340)	Yes	#
Lifeflight	Jacksonville, FL (35 min/air)	1-877-870-7779(freq. 155.340)	Yes	#
Air Evac	Waycross, GA	1-800-247-3822(freq. 155.340)	Yes	#
US Coast Guard (Heli-Rescue)	Savannah GA	1-912-652-4646 (freq. 155.340)	Yes	#

7. Hospitals

Name	Address	Travel Time		Phone	Helipad		Burn Center	
		Air	Ground		Yes	No	Yes	No
Satilla Regional	410 Darling Ave Waycross Ga N 31'13.56 W 82'21.058	15 min	45 min	912-283-3030	Yes			No
Clinch Memorial Hospital (WEST SIDE)	1050 Valdosta HWY Homerville, GA		25 min	912-487-5211 ext 4502	Yes			No
Charlton Memorial Hospital (EAST SIDE)	1203 3 rd St. Folkston, GA		50 min	912-496-2531				No
Memorial Hospital	Savannah, GA 4700 Waters 3200.7 8107.6	40 min		912-350-8999	Yes			No
Shands Hospital (level I)	Jacksonville, FL N 30'20 97 W 82' 13 992	45 min	1.5 hrs	800-223-4878	Yes		Yes	
Shands Burn Center	Gainesville, FL 38.33 N 082 20.73W	45 min		352-265-0300	Yes		Yes	

8. Medical Emergency Procedures

1. Notify DIVS of medical problem
2. DIVS notifies COML and MEDL
3. MEDL contacts POC for following
 - a. # of pts
 - b. Status of pts medical problem
 - c. Location of pts
 - d. Transport method
 - e. Necessary resources
4. MEDL coordinates medevac/patient transport with SOF2, OPS2 and other relevant resources.

HELISPOTS
 Pocket Helispot 30 47 30.02 x 82 22 39.5 (West side), mile marker 4, HWY 177 Steven C. Foster State Park
 Fargo Helibase 30 41.42 x 82 33.97 (West side), HWY 441- Golf course, Fargo
 POGO Helibase 30.44.03 x 82.07.41 (East side)

Evac Yankee
 Helispot 6
 Rd. 32 and 32A, N 30° 53.280 W 082° 33.880
 Helispot 7
 Tatum Rd. Pond N 30° 50.280 W 082° 33.857
 *Alternate site can be established following guidelines for safety found with IRPG and local EMS resources.

Life threatening injury: an injury that could mean the loss of life, limb, or eyesight
Minor injury: an injury that results in the removal of a pt from the line but with less urgency as a life threatening injury
Medevac: the most urgent transport of a pt suffering from a life threatening injury
 Patient transport: transport for minor injuries
Medical problem: a physical or mental ailment that occurs to an individual; to include illnesses and traumatic injuries
Point of contact (POC): individual who will be directly advocating for patient care and transport (line medic, crew boss, DIVS etc)

*Request that FFTR/Engine crews or single resources let MEDL know if they have any EMTs or Paramedics and if they have equipment with them.

Prepared by: Michael Evers MEDL (T)/Bill Erlach MEDL (T)

10. Reviewed by: Randy Turrill SOF2

INCIDENT RADIO COMMUNICATIONS PLAN ICS-205			Incident Name Honey Prairie			GROUP 22		Date/Time Prepared 07/05/2011-18:00		Operational Period Date/Time 7/06/2011 0800-2100/1800-0600	
Ch #	Function	Channel Name	Assignment	RX Freq	NW	RX Tone/NAC	TX Freq	N W	TX Tone/NAC	Mode A,D or M	Remarks
1	Command	West Okee Repeater	Sec West Branch CMD	167.1250	N	156.7	163.1500	N	156.7	A	Stephen Foster State Park
2	Command	South Okee Repeater	Sec East/West Branch CMD	164.7750	N	123.0	163.1500	N	123.0	A	Eddy Florida
3	Command	East Okee Repeater	PRIMARY East Branch CMD	164.6250	N	103.5	163.1500	N	103.5	A	Refuge Headquarters
4	Tactical	NIFC C2	PRIMARY West Branch CMD	168.100	N	CSQ	170.4500	N	123.0	A	NOT linked to OKEE System
5	Command	North Okee Repeater	PRIMARY North Branch CMD	164.5750	N	206.5	163.1500	N	206.5	A	Waycross
6	Air-Ground	Air to Ground	PRIMARY	166.9375	N	CSQ	166.9375	N	CSQ	A	
7	Tactical	MOB-MOB	GFC Contingency	159.3900	W	CSQ	159.3900	W	156.7	A	
8	Tactical	V-Fire 21W WHITE	Structure Protection Group&I.A.	154.2800	W	CSQ	154.2800	W	156.7	A	
9	Tactical	USFS 9	DIV A,B,C J, K, O, T, V,M	168.7750	N	CSQ	168.7750	N	CSQ	A	
10	Tactical	S.E. Compact	DIV	159.2850	W	CSQ	159.2850	W	CSQ	A	
11	Tactical	USFS 11	DIV Z, N,Y	168.2000	N	CSQ	168.2000	N	CSQ	A	
12	Tactical	Refuge Tac 1	DIV L, H, I	168.3500	N	CSQ	168.3500	N	CSQ	A	
13	Tactical	FL 190	DIV D, E, F, G	151.2725	N	CSQ	151.2725	N	CSQ	A	
14	Command	DIV J RPT	East Branch	170.4125	N	CSQ	165.9625	N	123.0	A	NOT linked to OKEE System
15	Air-Ground	Air to Ground	SECONDARY	166.9000	N	CSQ	166.9000	N	CSQ	A	
16	EMERGENCY	AIR Guard	Air OPS.	168.6250	N	CSQ	168.6250	N	110.9	A	
Prepared by (Communications Unit) Greg Ely: 912-387-6813 Incident Dispatcher: 912-286-1660					Cloning at ICP communications and briefings,						

The convention calls for frequency lists to show four digits after the decimal place, followed by either an "N" or a "W", depending on whether the frequency is narrow or wide band. **Mode** refers to either "A" or "D" indicating analog or digital (e.g. Project 25) or "M" indicating mixed mode. All channels are shown as if programmed in a control station, base stations, mobile or portable radio.

FINANCE – EQUIPMENT/TIME

Tip for the day: 7/6/11



We Need Your HELP:

Please turn in SHIFT TICKETS and/or CTRS to show days off. This will keep your name off this list. THANK YOU!!

	Maine 6170	Use E# 996 on shift tickets
	Tim Milan, GFC	Need your E#
E-293	GFC PUMP	MISSING SHIFT TICKETS 6/17-CURRENT
E-502	WILDLAND FIRE	Need shift tickets for down time 6/27-29 and new operator needs to check in at ICP
E-957	GFC	Missing 7/1 shift ticket
E-990	MT STRIKE TEAM	PLEASE COME SIGN STAGING TIME
E-5010	Pat Rick	Which meals??? B, L, D
E-5014	Texas fire	Missing shift ticket 7/2
O-708	Murnin, Andy	Need end time on 7/4

IF YOUR ARE GETTING CLOSE TO TIMING OUT PLEASE SPEAK WITH YOUR FIRE LINE SUPERVISOR ASAP.

CREW SWAP FORMS ARE AVAILABLE FROM PLANS
MUST BE COMPLETED AND
RETURNED TO PLANS FOR APPROVAL
NO LESS THAN 3 DAYS IN ADVANCE !!!

**DMOB for July 6 to July 9
Contact DMOB-Bruce @ 912-637-5241**

**IF YOU ARE TRAVELLING HOME BY AIR AND WILL BE TRANSPORTED TO JACKSONVILLE
THE DAY BEFORE YOUR FLIGHT BY GROUND SUPPORT - YOU NEED TO COMPLETE THE
DEMOB PROCESS BE READY TO LEAVE ICP BY 1430 HOURS**

Number	Name	Kind	UnitID	TravelM ethod	Jet- port	Travel Date
E-497.2	JETER, LESLIE	DRIV	FLFNF	POV		07/06/2011
E-529.2	WATSON, RON	DRIV	GAOKRC	POV		07/06/2011
E-739	BELLAIRE ENGINE 57 - T4 - 4-2	ENG4	MIMIS	POV		07/06/2011
E-739.1	BAKER, BRET L	ENGB	MIMIS	POV	TVC	07/06/2011
E-739.2	CROSS, DEREK C	FFT2	MIMIS	POV	TVC	07/06/2011
E-739.3	JACOBS, KEVIN R	FFT2	MIMIS	POV	TVC	07/06/2011
E-760	DOZER W/PLOW JD450 1826	TPL3	MOMTF	AOV	STL	07/06/2011
E-760.1	MCCALL, JASON M	TPOP	MOMTF	AOV	STL	07/06/2011
E-807	ENGINE - T6 - E-21 - EASTERN D	ENG6	VAVAF	AOV		07/06/2011
E-807.1	CAUDILL, TODD MATTHEW	ENGB	VAVAF	AOV		07/06/2011
E-807.2	SHAW JR, LARRY DOUGLAS	FFT1	VAVAF	AOV		07/06/2011
E-824.1	MORGAN, JOSHUA T	ENGB	SDRCFX	AOV	RAP	07/06/2011
E-824.2	LAROCHE, KRISTOPHER	FFT1	SDRCFX	AOV	RAP	07/06/2011
E-824.3	RASMUSSEN, ALEXANDER	FFT2	SDRCFX	AOV	RAP	07/06/2011
E-93	WATER TENDER 10	WTS2	FLFNF	POV		07/06/2011
O-496	SULLIVAN II, THOMAS VERN	EQPM	MSMNF	AOV	JAN	07/06/2011
O-779	RENSHAW, JARED	RCDM	GAOKR	POV		07/06/2011
C-13	CREW - CAMP - PINE KNOT JCC -	CC	KYDBF	AOV		07/07/2011
E-382	HABERSHAM 86	ENG6	GAGAS	AOV		07/07/2011
E-382.2	CHRISTIAN, BRANDON NEIL	FFT2	GAGAS	AOV	ATL	07/07/2011
E-382.3	BERRY, JOSEPH E	ENGB	GAGAS	AOV	ATL	07/07/2011
E-500	NFFS- TRACTOR/PLOW T3-167284	TPL3	FLFNF	POV		07/07/2011
E-500.1	NORTH FL FORESTRY, XX	TRTL	FLFNF	POV		07/07/2011
E-500.5	WOODS, BUDDY	ENOP	FLFNF	POV		07/07/2011
E-500.6	JOHNSON, DON	ENOP	FLFNF	POV		07/07/2011
E-533	GAS ENG6	ENG6	GAGAS	AOV		07/07/2011
E-533.3	BASS, LELAND	ENGB	GAGAS			07/07/2011
E-533.4	BRANNON, CAREY	ENOP	GAGAS	AOV		07/07/2011
E-700	TIPTON #1 WATER TENDER	WATU		POV		07/07/2011
E-729.7	MORK, CHRIS	STEN	MTCES	AOV	HLN	07/07/2011
E-76	GAS ENG6 PICKENS 86	ENG6	GAGAS	AOV		07/07/2011
E-76.7	HUSKEY, DARRELL	ENGB	GAGAS	AOV		07/07/2011
E-76.8	RIDLEY, JEREMY	ENOP	GAGAS	AOV		07/07/2011
E-77	GAS ENG6 CHATTOOGA 86	ENG6	GAGAS	AOV		07/07/2011
E-77.7	CORNETT, BRANDON	ENGB	GAGAS	AOV		07/07/2011
E-77.8	DUNN, ROBERT	ENOP	GAGAS	AIR		07/07/2011
E-78	GAS ENG6 MURRAY 86	ENG6	GAGAS	AOV		07/07/2011
E-78.7	HARKINS, KENNETH	ENGB	GAGAS	AOV		07/07/2011
E-78.8	RIDLEY, JUSTIN	FFT2	GAGAS	AOV		07/07/2011
E-79	GAS ENG6 COWETA 86	ENG6	GAGAS	AOV		07/07/2011
E-79.8	LEE, WILLIAM	ENGB	GAGAS	AOV		07/07/2011
E-79.9	PHILLIPS, PAUL	FFT2	GAGAS	AOV		07/07/2011
E-796	PLEASANT HILL ENG 5722	ENG6	ARAOC	AOV	LIT	07/07/2011
E-796.1	HIGHFILL, CORY DON	ENGB	ARAOC	AOV	LIT	07/07/2011
E-796.2	HIGHFILL, JEFF	FFT2	AROZF	AOV	FSM	07/07/2011
E-796.3	JAMES, ROBERT P	FFT2	AROZF	AOV	FSM	07/07/2011

Number	Name	Kind	UnitID	TravelM ethod	Jet- port	Travel Date
E-80.7	MASHBURN, JAMES	ENGB	GAGAS	AOV		07/07/2011
E-80.8	WILKINSON, DAMEON	ENOP	GAGAS	AOV		07/07/2011
E-806	ENGINE - T6 - GDR 603	ENG6	VAGDR			07/07/2011
E-806.1	ROMAGOSA, MARK A	ENGB	VAVAFN			07/07/2011
E-806.2	THOMPSON, MELISA ANNE	FFT2	VAGDR		ORF	07/07/2011
E-806.3	KEEL JR, RALPH MAYO	FFT1	VAGDR		ORF	07/07/2011
E-808	ENGINE - T6 - E-22, MARIENVILL	ENG6	PAALF	AOV		07/07/2011
E-808.1	KOSTRZEWSKI, CRAIG	ENGB	PAALF	AOV		07/07/2011
E-808.3	MCCORMICK, JAMES	FFT1	WVMOF	AOV	PIT	07/07/2011
E-808.4	CHASE, JORDAN A	FFT2	PAALF	AOV	ERI	07/07/2011
E-809	TX REFUGE ENG 2462	ENG6	TXSRR	AOV		07/07/2011
E-809.1	VILLARREAL, MEDARDO	ENGB	TXSRR	AOV	MFE	07/07/2011
E-809.2	WILLIAMS, THAD	FFT2	TXSRR	AOV	LIT	07/07/2011
E-81.7	BUCHANAN, CHRISTOPHER	ENGB	GAGAS	AOV		07/07/2011
E-81.8	GORE, DANNY	ENOP	GAGAS	AOV		07/07/2011
E-815	MELLEN ENGINE 9244	ENG6	WIWIS	AIR	LSE	07/07/2011
E-815.1	ZENZ, ERIC S	ENOP	WIWIS	AIR	LSE	07/07/2011
E-815.2	GOTTBEHEUT, CHAD E	ENGB	WIWIS	AIR	GRB	07/07/2011
E-816	WISCONSIN ENG 9247	ENG6	WIWIS	AIR		07/07/2011
E-816.1	STEARNS, PAUL R	ENOP	WIWIS	AIR	RHI	07/07/2011
E-816.2	BONACK, JACOB C	ENGB	WIWIS	AIR	RHI	07/07/2011
E-817	WISCONSIN DELLS 9593	ENG6	WIWIS	AIR	RHI	07/07/2011
E-817.1	WINDMOELLER, RICHARD T	ENOP	WIWIS	AIR	RHI	07/07/2011
E-817.2	FISCHER, SCOTT D	ENGB	WIWIS	AIR	GRB	07/07/2011
E-818	BABCOCK ENG6-WIS - 9597	ENG6	WIWIS	A/R	CWA	07/07/2011
E-818.1	GLAZER, KENNETH J	ENOP	WIWIS	AIR	CWA	07/07/2011
E-818.2	ROCHON, DALE S	ENGB	WIWIS	AIR	DLH	07/07/2011
E-821.1	RICKE, RYAN	ENGB	SDRCFX	AOV	RAP	07/07/2011
E-821.2	O'CONNOR, ERIC L	ENGB	SDRCFX	AOV	RAP	07/07/2011
E-821.3	MANINGAS, CALEN	FFT1	SDRCFX	AOV	RAP	07/07/2011
E-853	KALEIGH WATERTENDER	WAT3		POV		07/07/2011
E-853.1	TOMLINSON, KERRY	DRIV		POV		07/07/2011
E-926	PICKUP - AWD - SOS - RED LODGE	PU	MTSOS			07/07/2011
O-491	BURGETT, JOEL	TFLD	COPBS	A/R	DEN	07/07/2011
O-493	DIAZ, TIMOTHY	STEN	CASRF	A/R	MFR	07/07/2011
O-574.24	HELMICK, SHERRY D	PROC	VAVAF	REN	ROA	07/07/2011
O-640	FINCHAM, MICHAEL D	EMTP	CASHF	AIR	RDD	07/07/2011
O-685	ROBINSON, JEFF	TFLD	ORDEF	A/R	RDM	07/07/2011
O-693	JOHNSON, ROSEMARY	PTRC	MNCPF	AIR	BJI	07/07/2011
O-694	THOMPSON, CATHERINE JAYNE	PTRC	MNCPF	AIR	BJI	07/07/2011
O-703	KLOCK, LARRY JAMES	SOF2	COPBC	A/R	COS	07/07/2011
O-738	DAVIS, LINDA	STEN	IDIPF	AIR	GEG	07/07/2011
O-742	ALYEA, JOSEPH	TFLD	MIHMF	A/R	FNT	07/07/2011
O-745	WILHITE, ROGER D	EQPM	OKOKS	AIR	FSM	07/07/2011
O-754	SILVIEUS, DAVID JOHN	PSC2	MIHIF	A/R	ESC	07/07/2011
O-755	COY, TERI L	RESL	WYBHF	A/R	COD	07/07/2011
O-760	POUKISH, DAVID M	DOZB	MTMDC	AIR	MSO	07/07/2011
O-766	MILLER, PEGGY	EMTP	MTFNF	AIR	FCA	07/07/2011
O-799	TATE, MELVIN L	HEB1	FLFLS	POV	PFN	07/07/2011
O-817	STRICKLAND, VIVIAN	DRIV	GAOKR	POV		07/07/2011
O-818	ROGERS, SHERYL	DRIV	GAOKR	POV		07/07/2011
A-29	POGO HELI - T3S - N662H - B20	HMOD	IDNPF	A/R		07/08/2011
A-29.1	POLACK, JEFF	HMGB	IDNPF	A/R	LWS	07/08/2011

Number	Name	Kind	UnitID	TravelM ethod	Jet- port	Travel Date
A-29.2	BALL, KATHERINE	HECM	IDNPF	A/R	LWS	07/08/2011
A-29.3	RATCLIFF, PAUL M	HECM	IDNPF	A/R	LWS	07/08/2011
A-42	HELICOPTER - T3S - 818MC	HEL3	WYWRA	AOV		07/08/2011
A-42.11	ROBERTS, ADRIEN	FFT2	WYWRA	AOV	RIW	07/08/2011
A-42.2	MITCHELL, DON	HMGB	WYWRA	AOV	RIW	07/08/2011
A-42.3	MCBATH, JEFF	HMGB	WYWRA	AOV	BIL	07/08/2011
A-42.4	VIOLANTE, GEORGE	HMGB	WYWRA	AOV	RIW	07/08/2011
A-42.5	UNDERWOOD, KAY	HECM	WYWRA	AOV	RIW	07/08/2011
A-42.6	WARFEL, CHESTER	HECM	WYWRA	AOV	RIW	07/08/2011
A-42.8	KEENEN, KEITH	HECM	WYWRA	AOV	RIW	07/08/2011
A-42.9	SMITH, THEODORE D	HECM	WYWRA	AOV	RIW	07/08/2011
E-115	GAS ENG6 LUMPKIN 86	ENG6	GAGAS	AOV		07/08/2011
E-115.8	SISK, WESLEY J	ENGB	GAGAS	AOV	ATL	07/08/2011
E-115.9	CARTER, EARL L	FFT2	GAGAS	AOV	ATL	07/08/2011
E-392	IL-SHF-40	ENG6	ILSHF	AOV		07/08/2011
E-392.7	PAUKERT JR, FRANK J	ENGB	ILSHF	AOV	MWA	07/08/2011
E-392.8	HANCOCK, MIKE DALE	FFT2	ILSHF		MWA	07/08/2011
E-392.9	ZEILER, CHUCK	FFT2	ILILS	AOV	MWA	07/08/2011
E-522.1	TAYLOR, KEVIN	ENGB	WVMOF	AOV		07/08/2011
E-819	MOUNTAIN VIEW FIRE 2237	ENG6	COFTC	AOV		07/08/2011
E-819.1	QUEEN, CHRIS	ENGB	COFTC	AIR	DEN	07/08/2011
E-819.2	NORRIS, RANDALL	FFT1	COFTC	AIR	DEN	07/08/2011
E-819.3	SORENSEN, DUSTIN	FFT1	COFTC	AIR	DEN	07/08/2011
E-822	ENGINE - T6 - WBD - #3651	ENG6	WYWBD	AOV		07/08/2011
E-822.1	PETERS, JOEL	ENGB	WYWBD	AOV	RIW	07/08/2011
E-822.2	CORNWELL, TANNER	FFT2	WYWBD	AOV		07/08/2011
E-822.3	OSBON, JORDEN R	FFT2	WYWBD	AOV	RIW	07/08/2011
E-822.4	BUDD, JACOB	FFT1	WYWBD	AOV	RIW	07/08/2011
E-838	ENGINE - T6 - MNSBR - E-6232	ENG6	MNMFC	AOV		07/08/2011
E-838.1	WHITEFEATHER, JEANNE K	ENGB	MNMFC	AOV	MSP	07/08/2011
E-838.2	ANDERSON, LUKE LAWRENCE	ENGB	MNMFC	AIR	MSP	07/08/2011
E-838.3	WIIG, CODY WAYNE	ENGB	MNMFC	AIR	MSP	07/08/2011
E-850	TNCNF	ENG6	GAGIC	AOV		07/08/2011
E-850.1	MARTIN, COLT LOGAN	FFT2	GAGIC	AOV		07/08/2011
E-850.2	PARKER, SHAUN	ENGB	GAGIC	AOV	ATL	07/08/2011
E-850.3	HAISTEN, MICHAEL C	ENGB	GAGIC	AOV	ATL	07/08/2011
E-892	ENGINE - T6 - CNF - 301	ENG6	TNCNF	AOV		07/08/2011
E-892.1	IVES, DAVID	ENGB	TNCNF	AOV	CHA	07/08/2011
E-892.2	RICE, MICHAEL L	ENOP	TNCNF	AOV	TRI	07/08/2011
E-892.3	TAYLOR, ERIC S	FFT2	TNCNF	AOV	TYS	07/08/2011
E-922	ENGINE - T6 - FWS	ENG6	GAPDR	AOV		07/08/2011
E-922.1	HERRON, NATHAN	ENGB	GAPDR	AOV		07/08/2011
E-943	ORANGE SPRINGS CONST. #2	TPL3	GAOKR	POV		07/08/2011
E-943.1	MATCHETT, HUGH	TPOP	GAOKR	POV		07/08/2011
O-549	TEAL, DEWEY R	FACL	GACHF	POV		07/08/2011
O-679	DECKER, COLEEN	IMET	IDWXW	A/R	BOI	07/08/2011
O-692	HARRIS, EDWARD V	COMP	LAKIF	AIR	AEX	07/08/2011
O-730	POWERS, SHANE	EMTP	AKLCSC	AIR	XNA	07/08/2011
O-732	EVERS, MICHAEL R	EMTP	COPBC	AIR	COS	07/08/2011
O-733	MOORE JR, DAVID A	EMTB	KYDBF		CVG	07/08/2011
O-741	SAMS, ROD	TFLD	ORCOC	AIR	RDM	07/08/2011
O-743	HAMILTON, BERNARD T	TFLD	OHSHS	AIR	CMH	07/08/2011
O-750	CASEY, CHRISTOPHER E	DIVS	VTGMF	AIR	BTV	07/08/2011
O-751	RIEWESTAHL, JAY E	DIVS	WIWIS	AIR	CWA	07/08/2011

Number	Name	Kind	UnitID	TravelM ethod	Jet- port	Travel Date
O-761	LANE, RUSSELL	OSC1	OR582S	AIR	PDX	07/08/2011
O-767	DEAN, EVAN	EMTP	ORWSA	A/R	PDX	07/08/2011
O-778	CROSS, BRUCE N	COML	VAVAF	AOV	ROA	07/08/2011
O-785	BROWN, BYRON B	PROC	VAVIC	AIR	DCA	07/08/2011
O-819	BLANTON, MINDY	DRIV	GAOKR	POV		07/08/2011
O-839	WHARTON, TIM	TFLD	TNCNF	AOV	TRI	07/08/2011
O-862.62	SCHENCK, CHRIS M	AOBD	IDSTF	A/R	TWF	07/08/2011
O-901	SOPER, KIM JOHN	SOPL	IDCTF	A/R	SLC	07/08/2011
O-907	MULLIS, SCOTT	DIVS	CORYEX	A/R	ABQ	07/08/2011
C-14	PATRICK CREW 20B	HC2	NCNCF	POV	AVL	07/09/2011
E-293	DOUGHTRY-LEE PUMP	MISC	GAGAS	AOV		07/09/2011
E-405	MAINE ENGINE	ENG6	MEMHR	AOV		07/09/2011
E-405.4	GORE, BRETT	ENGB	NJWKR		AVP	07/09/2011
E-405.5	SHARPE, PRESTON J	FFT2	VAR5R		ORF	07/09/2011
E-405.6	JONES, LOGAN D	FFT2	VAR5R		ORF	07/09/2011
E-5007.1	BRADLEY, JEFFREY	FFT2	FLFNF	POV		07/09/2011
E-559	MULLENIX WATER TENDER T2	WAT2	ARAOC	POV		07/09/2011
E-826	2003 FORD F-350 TYPE 6 WHITE T	ENG6	GAOKR	POV		07/09/2011
E-826.1	MELTON, STEVEN	ENGB	GAOKR	POV		07/09/2011
E-826.2	NASH, ERIC	ENOP	GAOKR	POV		07/09/2011
E-894	ENGINE - T6 - 862	ENG6	MOMOC	AOV		07/09/2011
E-894.1	CARLSON, GREGORY	ENGB	MOMOC	AOV	SGF	07/09/2011
E-894.2	BOSSERMAN, HEATHER	FFT2	MOMOC	AOV	STL	07/09/2011
E-894.3	SHELBY, JENNIFER E	FFT2	MOMOC	AOV	STL	07/09/2011
E-895	ENGINE - T6 - 9505	ENG6	MOMTF	AOV		07/09/2011
E-895.1	BRAY, TIMOTHY	ENGB	MOMTF	AOV	STL	07/09/2011
E-895.2	DUFF, AMY	ENGB	MOMTF	AOV	STL	07/09/2011
E-895.3	MOORE, AARON	FFT1	MOMTF	AOV	STL	07/09/2011
E-897	ENGINE - T6 - MD-BWR	ENG6	MDBWR	AOV		07/09/2011
E-897.1	BECK, JONATHAN F	ENGB	MDBWR	AIR	BWI	07/09/2011
E-897.2	COLES, CHAD H	FFT2	MDBWR	AIR	BWI	07/09/2011
E-898	ENGINE - TYPE 6 - MDS #4	ENG6	MDMDS	AOV		07/09/2011
E-898.1	HARRIS, JAMES EDWIN	ENGB	MDMDS	AOV	BWI	07/09/2011
E-898.2	STUPAK, BRIAN JOSEPH	ENGB	MDMDS	AOV	BWI	07/09/2011
E-899	ENGINE - T6 - E-61	ENG6	MIUPC	AOV		07/09/2011
E-899.1	KARLOVICH, DEAN	ENGB	MIUPC	AOV	RHI	07/09/2011
E-899.2	BROWN, SHAWN P	FFT2	MIUPC	AOV	IWD	07/09/2011
E-899.3	BAER, BILL H	FFT2	MIUPC	AOV	RHI	07/09/2011
E-900	ENGINE - T6 - GUN 622	ENG6	MNMFC	AOV		07/09/2011
E-900.1	KUJAWA, RICHARD TRACY	ENGB	MNMFC	AOV	DLH	07/09/2011
E-900.2	GOLDSMITH, CASEY	FFT2	MNMFC	AOV		07/09/2011
E-900.3	PORTER, JEREMY GARRETT	FFT2	MNMFC	AOV	DLH	07/09/2011
E-904	ENGINE - T6 - LOVELAND FIRE &	ENG6	COACIX	AOV		07/09/2011
E-904.1	HILL, RONALD JOHN	ENGB	COACIX	AOV	DEN	07/09/2011
E-904.2	SCHUETZ, DAVID WAYNE	ENGB	COACIX	AOV	DEN	07/09/2011
E-904.3	SANDOLI, CJ "CHRIS"	FFT1	COACIX	AOV	DEN	07/09/2011
E-905	ENGINE - T6 - BERTHOUD FPD - E	ENG6	COFTS	POV		07/09/2011
E-905.1	STEAKLEY, TIFFANY T	ENGB	COFTS	POV	DEN	07/09/2011
E-905.2	KITZMAN, MONTY J	FFT2	COFTS	POV	DEN	07/09/2011
E-905.3	WEBSTER, KERRY	FFT2	COBTDX	POV		07/09/2011
E-907	ENGINE - T6 - CRA - A01002	ENG6	SDCRA	AOV		07/09/2011
E-907.1	EAGLE STAFF, LANCE C	ENGB	SDCRA	AOV	RAP	07/09/2011
E-907.2	THIN ELK, FLORENTINE B	FFT1	SDCRA	AOV	RAP	07/09/2011

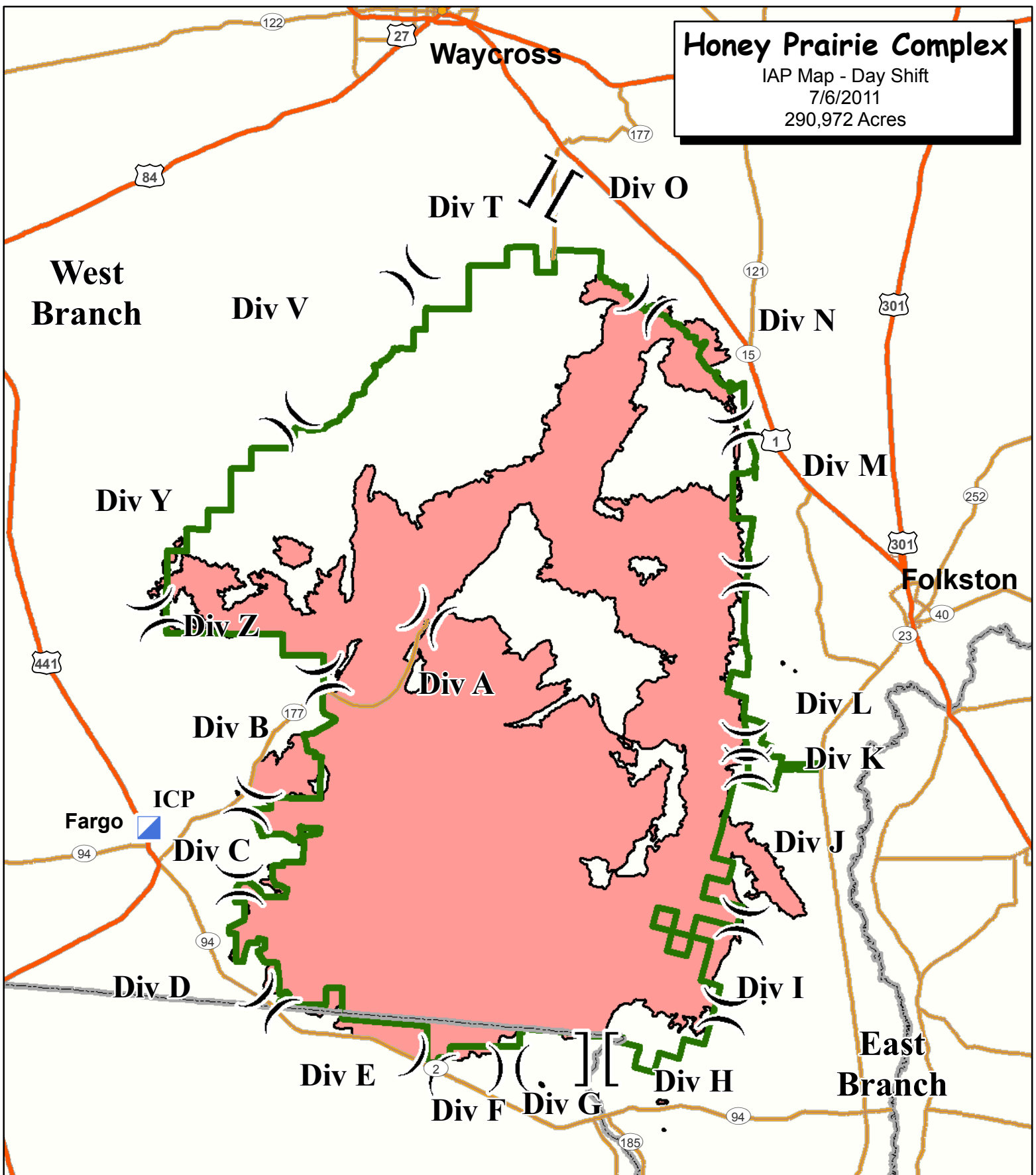
Number	Name	Kind	UnitID	TravelM ethod	Jet- port	Travel Date
E-925	MECHANIC TRUCK A48102	TKUT	GAOKR	POV		07/09/2011
E-925.1	CROSBY, STEPHEN	DRIV	GAOKR	POV		07/09/2011
O-635	RUMPH, CLAY FRANKLIN	SEC1	MNMNA	AIR	DLH	07/09/2011
O-637	SPARKS, RICHARD A	EMTB	WIWIC	AIR	RHI	07/09/2011
O-645	INGRAM, LAURA M	PA50	VAVAF	REN	ROA	07/09/2011
O-658	MARTENS, PETER	ABRO	CALNF	AIR	RNO	07/09/2011
O-678	LYNN, ALEXANDER	EMTB	CAANF	A/R	ONT	07/09/2011
O-786	DUNN, JAMES	BCMG	WAQNT	AIR	SEA	07/09/2011
O-808	SEVERSON, CHARLES FRANKLIN	SOF2	ORSUF	AIR	EUG	07/09/2011
O-811	BLATT, STEPHEN	SPUL	OHWAF	A/R	CMH	07/09/2011
O-813	BENGSON JR, ROBERT ELI	TFLD	MNSBR	AIR	MSP	07/09/2011
O-814	BOSCHEE, TROY RICHARD	TFLD	MNFFR	A/R	FAR	07/09/2011
O-821	SUTKOWSKI, MATTHEW M	HMGB	SCACR	AOV	CHS	07/09/2011
O-824	KENNEDY, SCOTT	IMET	NCNCC	A/R	EWN	07/09/2011
O-825	JOHNSON, EVAN	EQPM	ORDEF	AIR	RDM	07/09/2011
O-844	GLINTENKAMP, GARY	STEN	NYLIR	AOV	JFK	07/09/2011

Honey Prairie Complex

IAP Map - Day Shift

7/6/2011

290,972 Acres



-]] Branch Break
-) (Division Break
- Incident Command Post

- Highway
- Major Road
- - - State Boundary

- ▭ Refuge Boundary
- ▭ Fire Area



