

# Honey Prairie Complex

*GA-OKR-000001*

## Incident Action Plan

Operational Period  
Friday July 8, 2011

Day Shift (0800-2100)  
Night Shift (1800-0600)

### **Accounting Codes**

FWS – 9141-F25M-2J

NPS – 5023 F25M E11

BLM – F25M

USFS – PRF25M\_1502

Initial Attack – F4PM

<b>INCIDENT OBJECTIVES</b>	<b>1. INCIDENT NAME</b> Honey Prairie Complex	<b>2. DATE PREPARED</b> 7/7/11	<b>3. TIME PREPARED</b> 1800
<b>4. OPERATIONAL PERIOD (DATE/TIME)</b> Friday July 8, 2011 Day (0800 – 2100) and Night (1800 – 0600)			
<b>5. GENERAL CONTROL OBJECTIVES FOR THE INCIDENT (INCLUDE ALTERNATIVES)</b> 1. Provide for safety of incident personnel and public in all incident operations. 2. Maintain a positive working relationship with all State and Federal partners and adjacent landowners and cooperators. Inform, involve and communicate incident planning and operations with all partners. 3. Contain all fires that are within the Okefenokee National Wildlife Refuge, inside the Refuge and/or inside the swamp edge break if possible. 4. Use full suppression strategies and tactics to minimize damage to private timberlands and improvements and to prevent fires outside the Refuge from entering the Refuge. 5. Assist in management and suppression of additional fires (new starts or breakouts) in the vicinity as approved by Agency Administrators and Unified Incident Commanders. 6. Manage the fires cost-effectively consistent with the values at risk. 7. Implement structure protection as necessary for at-risk facilities and communities.			
<b>6. WEATHER FORECAST FOR OPERATIONAL PERIOD</b> See attached forecast for area specific weather information.			
<b>7. GENERAL SAFETY MESSAGE</b> Drive defensively and use spotter when backing. Ensure LCES is in place and known by all personnel. Drink plenty of water and take frequent rest breaks. Ensure proper use of PPE during all operations.			
<b>8. Attachments</b> <input checked="" type="checkbox"/> if attached <input checked="" type="checkbox"/> Organization List (ICS 203) <input checked="" type="checkbox"/> Incident Map <input checked="" type="checkbox"/> Safety Message <input checked="" type="checkbox"/> Assignment List (ICS 204) <input type="checkbox"/> Traffic Plan <input type="checkbox"/> Demobilization Procedures <input checked="" type="checkbox"/> Communications Plan (ICS 205) <input checked="" type="checkbox"/> Human Resources <input checked="" type="checkbox"/> Unit Log <input checked="" type="checkbox"/> Medical Plan (ICS 206) <input checked="" type="checkbox"/> Phone List			
<b>9. PREPARED BY (PLANNING SECTION CHIEF)</b> Tim Roide		<b>10. APPROVED BY (INCIDENT COMMANDER)</b> /s/Mike Wilde /s/Gary Beauchamp /s/Trent Ingram	

ORGANIZATION ASSIGNMENT LIST		9. Operations Section	
1. Incident Name <b>Honey Prairie Complex</b> GA-OKR-000001		Chief	Tom Romanello / Dave Easton (t)
		Planning	Dave French / Andy Delmas (t)
2. Date 7/7/2011	3. Time 1000 hrs	<b>a. WEST BRANCH - Divisions/Groups</b>	
4. Operational Period 7/8/2011 Day (0800-2100) Night (1800 – 0600)		OPBD	Bob Schindelar
5. Incident Commander and Staff		Division	A, B, C
Incident Commander	Mike Wilde / Gary Beauchamp / Trent Ingram / Mike Dueitt Mike Dondero (Deputy)	Division	D, E, F, G
Safety Officers	Todd Baumer	Division	T
Information Officer	Don Carpenter / Brandon Hampton / Jason Curry (t)	Division	V
<b>6a. Agency Administrators</b>		Division	Y (DAY)
		Division	V, Y (NIGHT)
FWS	Curt McCasland	Division	Z
FWS	Mindy Gautreaux	Group	IA-WEST and Structure Group
<b>6b. Agency Representatives</b>			
FWS Liason	Skippy Reeves	<b>b. EAST BRANCH - Divisions/Groups</b>	
GFC	Frank Sorrels	OPBD	Russ Lane
FLDOF	James Karels	Division	H, I, J, K
FWS AREP	Mike Housh	Division	L, M
FWS-Refuge PAO	Art Webster	Division	N, O
GEMA AREP	Alan Robinson / Diane Adams	Group	IA-EAST
USFS AREP	Ivan Greene	Group	Roads
<b>7. Planning Section</b>			
Chief	Tim Roide	<b>d. Air Operations Branch - Honey Prairie</b>	
Resources Unit	Kathy Geier-Hayes / Fred Noack / Patty Eder (t)	Air Operations Branch Director	Dewey Warner
Situation Unit	John Noneman	Air Support Group Supervisor	John Burke / Mark Degregorio
IMET	Coleen Decker / Scott Kennedy (t)	ATGS-Lake City	Tim Caughlin / Melanie Fullman
Fire Behavior Analyst	Gary Brunk / Steven Cobb (t)	<b>d. Air Operations Branch-Waycross</b>	
Demobilization Unit	Bruce Waite	Waycross Helibase Manger	Melvin Tate
GIS	Mickey Pillars / Jerry Petruzalek	<b>d. Air Operations Branch - Fargo</b>	
CTSP	Greg Peterson	Fargo Helibase Manager	Paul Borcharding
TNSP	Kevin Kranz	ATGS	Carl MaGill
<b>8. Logistics Section</b>		<b>10. Finance Section</b>	
Chief	Terry O'Connell	Chief	Kendra Sabo / Brenda Deberg (t)
Supply Unit	Kenny Deberg	Time Unit	Shelly Schaff (t)
Ground Support Unit	Bernie Lyons / Justin Langford (t)	Procurement	Byron Brown / Sherry Helmick (t)
Security Manager	Steven Peterson	Comp Claims Unit	Ed Harris / Doris Doster (t)
Communications Unit	Greg Ely	Cost	Glenn Beagle / Janice Lowe (t)
Medical Unit	Jeff Voskamp / Bill Erlach (t) / Mike Evers (t)	Buying Team	Rita Loper
Facilities	Fred Dunets / Leslie Fonger	IBA	Ron Knowles
Food	Bob Kooken		
		Prepared by:	Kathy Geier-Hayes (RESL)

DIVISION ASSIGNMENT LIST				1. Branch <b>West</b>		2. Division <b>A, B, C</b>	
3. Incident Name: <b>Honey Prairie Complex</b>				4. Operational Period Date: ##### 7/8/2011 Time: ##### Day: 0800-2100			
5. Operations Personnel							
<b>Operations</b>	Tom Romanello/Dave Easton(t)			<b>Branch Director</b>	Bob Shindelar 7/11		
<b>Planning Ops</b>	Dave French/Andy Delmas (t)			<b>Division Supervisor</b>	Mike Almas 7/11 / Micah Johnson (t) 7/10		
<b>Safety Officer</b>	Todd Baumer						
6. Resources Assigned this Period							
Strike Team/Task Force/ Resource Designator	Leader / Name / Designator	Last Shift Date	Num. Per.	Drop Off PT./Time	Pick Up PT./Time		
<b>TFLD (O-897)</b>	<b>Terry George</b>	7/10	1				
<b>TFLD (O-898)</b>	<b>Joel McCraw (t)</b>	7/10	1				
<b>TFLD (O-900)</b>	<b>Phill Millette</b>	7/18	1				
<b>TFLD (O-940)</b>	<b>Greg Jacobson</b>	7/19	1				
<b>TFLD (E-5017.9)</b>	<b>Keith Kelley (t)</b>	7/10	1				
ENG6 (E-807)	Todd Caudill	7/11 ?	3				
ENG6 (E-900)	Richard Kujawa	7/8	2				
ENG6 (E-5002) Attack#1	Hank Kight	7/20	2	PVT			
TPL3 (E-170) Francis Marion	John Christopher	7/11	2				
<b>STEN (O-949)</b>	<b>Nikia Hernandez</b>	7/19	1				
TPL2 (E-652)	Ike Harvey	7/28	1	PVT			
TPL2 (E-653)	Easton Dugger	7/11	1	PVT			
WAT2 (E-93)	William Davis	7/10	1	PVT			
ENG6 (E-405)	Brett Gore	7/8	3				
ENG6 (E-907) Eagle Staff	Lance Eagle Staff	7/8	2				
ENG6 (E-994)	Pat Norquay	7/18	3				
ENG6 (E-5017) MOMTF 9504	Erin Yeoman	7/10	5				
DOZ3 (E-646)/E-723 trans	Phil Dueitt	7/19	1	PVT			
<b>SOF2 (O-702)</b>	<b>Bruce Barrett</b>	7/11	1				
<b>EMTP (O-984)</b>	<b>Bob Eaton</b>	7/20	1				
7. Control Operations <ul style="list-style-type: none"> <li>Patrol and mop up within 100' of fire perimeter line.</li> <li>Monitor fire impacts to Stephen Foster State Park.</li> <li>Patrol and control reburn.</li> </ul>							
8. Special Instructions <ul style="list-style-type: none"> <li>Examine work area for fire weakened snags.</li> <li>Ensure LCES are in place before operations begin and stay hydrated.</li> <li>Additional resources will be available from GFC, Florida DOF, FWS, and local cooperators.</li> <li>Drive defensively and with lights on at all times.</li> </ul>							
9. Division/Group Communication Summary							
Function	Frequency	System	Channel	Function	Frequency	System	Channel
Command N Okee Repeater	RX 164.5750/206.5 TX 163.150/206.5	KING NIFC	5	Logistics		KING NIFC	
Tactical Div/Group	RX 168.775 TX 168.7750	KING NIFC	9	Air to Ground	RX 166.9375 TX 166.9375	KING NIFC	6
Prepared by (Resource Unit Ldr.) Fred Noack		Approved by (Planning Sect. Ch.) /s/ Tim Roide			Date July 7, 2011		Time 1930

<b>DIVISION ASSIGNMENT LIST</b>			1. Branch <b>West</b>		2. Division <b>D, E, F, G</b>		
3. Incident Name <b>Honey Prairie Complex</b>			4. Operational Period Date: ##### 7/8/2011 Time: #####0800-2100				
5. Operations Personnel							
<b>Operations</b>	Tom Romanello/Dave Easton(t)		<b>Branch Director</b>		Bob Shindelar 7/11		
<b>Planning Ops</b>	Dave French/Andy Delmas (t)		<b>Division Supervisor</b>		Tam Cook / Thomas Herold 7/20		
<b>Safety Officer</b>	Todd Baumer						
6. Resources Assigned this Period							
Strike Team / Task Force / Resource Designator		Leader / Name / Designator		Last Shift Date	Num. Per.	Drop Off PT./Time	Pick Up PT./Time
<b>TFLD (O-916)</b>		<b>Hans Ohme</b>		7/18	1		
<b>TFLD (O-926)</b>		<b>Matt Ingram</b>		7/18	1		
WT (E-700)		Lee Cahoon		7/17	1		
<b>HEQB (O-708)</b>		<b>Andy Murrin</b>		7/12	2	PVT	
Clinch County Grader (E-228)		Steven Hendricks		7/11	1		
TPL3 (E-499)		Roy Rowan		7/14	2	PVT	
ENG6 (E-134)		Paul McDavid		7/20	3	PVT	
ENG5 (E-503)		Dean Vanderbleek		7/16	2	PVT	
ENG6 (E-709)		Jason Walker		7/16	3	PVT	
ENG6 (E-821)		Ryan Ricke		7/12	3		
ENG6 (E-824)		Joshua Morgan		7/12	3		
<b>EMTB (O-849)</b>		<b>Kyle Meadows- Barber</b>		7/11	1		
<b>SOF2 (O-805)</b>		<b>Troy Shaddox</b>		7/15			
7. Control Operations							
<ul style="list-style-type: none"> <li>Monitor and patrol south end of West Branch.</li> <li>Mop up all hot spots within 100' of the fire perimeter.</li> <li>Patrol and control return.</li> </ul>							
8. Special Instructions							
<ul style="list-style-type: none"> <li>Ensure LCES are in place before operations begin and stay hydrated.</li> <li>See medical plan for EMT support.</li> <li>Drive defensively and with lights on at all times.</li> <li>Examine work area for fire weakened snags.</li> <li>If communications needed with Impassable Bay Fire - use Channel 11 (168.2000)</li> </ul>							
9. Division/Group Communication Summary							
Function	Frequency	System	Channel	Function	Frequency	System	Channel
<b>Command</b> <b>S Okee Repeater</b>	RX 164.7750/123.0 TX 163.150/123.0	KING NIFC	2	Logistics		KING NIFC	
Tactical Div/Group	RX 151.2725 TX 151.2725	KING NIFC	13	Air to Ground	RX 166.9375 TX 166.9375	KING NIFC	6
Prepared by (Resource Unit Ldr.) Fred Noack		Approved by (Planning Sect. Ch.) /s/ Tim Roide			Date July 7, 2011		Time 1930

<b>DIVISION ASSIGNMENT LIST</b>				1. Branch <b>West</b>		2. Division <b>T</b>	
3. Incident Name <b>Honey Prairie Complex</b>				4. Operational Period Date: ##### 7/8/2011      Time: #####0800-2100			
5. Operations Personnel							
<b>Operations</b>	Tom Romanello/Dave Easton(t)			<b>Branch Director</b>		Bob Shindelar 7/11	
<b>Planning Ops</b>	Dave French/Andy Delmas (t)			<b>Division</b>		Brian Rhodes 7/20 / Todd Haynes (t) 7/20	
<b>Safety Officer</b>	Todd Baumer						
6. Resources Assigned this Period							
Strike Team/Task Force/ Resource Designator		Leader / Name / Designator		Last Shift Date	Num. Per.	Drop Off PT./Time	Pick Up PT./Time
<b>TFLD (O-946)</b>		<b>Stephen Filmore</b>		7/19	1		
<b>STEN (E-831.1)</b>		<b>Steven Morefield</b>		7/9	1		
<b>STEN (O-952)</b>		<b>Vincent Plummer</b>		7/19	1		
<b>S/T Type 6 OR STEN (E-831.2)</b>		<b>John Montgomery (t)</b>		7/9	1		
ENG6 (E-831.3)				7/9	4		
ENG6 (E-831.4)				7/9	4		
ENG6 (E-831.5)				7/9	3		
ENG6 (E-831.6)				7/9	3		
ENG6 (E-831.7)				7/9	3		
WAT1 (E-1019)		Raymond Novello		7/21	1	PVT	
WAT2 (E-1021)		Charlie Brown		7/19	1	PVT	
TPL2 (E-986)		David Hauser		7/26	1	PVT	
<b>EMTP (O-730)</b>		<b>Shane Powers</b>		7/13	1		
<b>EMTP (O-982)</b>		<b>Jeff Halladay</b>		?	1		
<b>SOF2 (O-973)</b>		<b>Larry Dorshorst</b>		7/20	1		
7. Control Operations							
<ul style="list-style-type: none"> <li>Recon potential control lines and examine area for snag removal</li> <li>Improve swamp break boundaries for fire breaks, work w/resource advisor</li> <li>Coordinate potential burn-out w/READ and refuge personnel</li> <li>Use refuge personnel for any burn-out activities.</li> </ul>							
8. Special Instructions							
<ul style="list-style-type: none"> <li>Make contact with the Resource Advisor before using mechanical equipment.</li> <li>Safely push down with equipment all snags whether on fire or not that are a threat to success or tactical operations.</li> <li>Ensure LCES are in place before operations begin. Stay hydrated.</li> <li>Drive defensively and with lights on at all times.</li> <li>Boggy terrain: Be careful and aware when working around this type of area.</li> </ul>							
9. Division/Group Communication Summary							
Function	Frequency	System	Channel	Function	Frequency	System	Channel
Command N Okee Repeater	RX 164.5750/206.5 TX 163.150/206.5	KING NIFC	5	Logistics		KING NIFC	
Tactical Div/Group	RX 168.775 TX 168.775	KING NIFC	9	Air to Ground	RX 166.9375 TX 166.9375	KING NIFC	6
Prepared by (Resource Unit Ldr.) Fred Noack		Approved by (Planning Sect. Ch.) /s/ Tim Roide			Date July 7, 2011		Time 1800

DIVISION ASSIGNMENT LIST		1. Branch <b>West</b>		2. Division <b>V</b>		1 of 2	
3. Incident Name <b>Honey Prairie Complex</b>		4. Operational Period Date: ##### 7/7/2011 Time: #####0800-2100					
5. Operations Personnel							
<b>Operations</b>	Tom Romanello/Dave Easton(t)	<b>Branch Director</b>	Bob Shindelar 7/11				
<b>Planning Ops</b>	Dave French/Andy Delmas (t)	<b>Division Supervisor</b>	Quincy Chung 7/9 / Greg Suszek 7/19				
<b>Safety Officer</b>	Todd Baumer	<b>Division Supervisor</b>					
6. Strike Team/Task Force/ Resource Designator							
	Leader / Name / Designator	Last Shift Date	Num. Per.	Drop Off PT./Time	Pick Up PT./Time		
<b>TFLD (O-906)</b>	<b>Evan Karp</b>	7/18	1				
<b>TFLD (O-978)</b>	<b>Jacob Thelen (t)</b>	7/19	1				
<b>TFLD (O-942)</b>	<b>Ben Krupski</b>	7/19	1				
<b>STEN (O-948)</b>	<b>Glen Palfrey</b>	7/20	1				
<b>STEN (O-1000)</b>	<b>Waylon Meek (t)</b>	7/20	1				
Feller-Buncher (E-524)	Josh Burdy	7/21	1	PVT			
Feller-Buncher (E-526)	James Marshall	7/16	1	PVT			
Grader (E-530)	Woody Bargeron	?	1	PVT			
TPL2 (E-606)	Cody Daniels	7/17	1				
ENG6 (E-2)	Arthur Lauroie	?	2				
ENG6 (E-3)	Angie Carl	?	2				
ENG6 (E-992)	Steve Spangler	7/18	3	PVT			
ENG6 (E-995)	Aaron Bailey	7/9	3				
ENG6 (E-996)	Dustin Picking	7/9	3				
ENG6 (E-980)	Amos Stone	7/9	2				
ENG6 (E-1085)	Donald Crane	7/14	2	PVT			
ENG6 (E-1000)	Paul Rampinini	7/19	2	PVT			
ENG6 (E-1001)	Dick Sypher	7/19	2	PVT			
ENG6 (E-1053)	Timmerman	7/27	3	PVT			
ENG6 (E-1064)	Greg Nichols	7/21	3				
Skidder (E-981)	Tiner		1	PVT			
WTS3 (E-233)			1	PVT			
7. Control Operations							
<ul style="list-style-type: none"> <li>Recon potential control lines and examine area for snag removal</li> <li>Improve swamp break boundaries for fire breaks, work w/resource advisor</li> <li>Coordinate potential burn-out w/READ and Refuge Personnel</li> <li>Use Refuge personnel for any burn-out activities.</li> </ul>							
8. Special Instructions							
<ul style="list-style-type: none"> <li>Make contact with the Resource Advisor before using mechanical equipment.</li> <li>Safely push down with equipment all snags whether on fire or not that are a threat to success or tactical operations.</li> <li>Ensure LCES are in place before operations begin. Stay hydrated.</li> <li>Drive defensively and with lights on at all times.</li> <li>Boggy terrain: Be careful and aware when working around this type of area.</li> </ul>							
9. Division/Group Communication Summary							
Function	Frequency	System	Channel	Function	Frequency	System	Channel
Command N Okee Repeater	RX 164.5750/206.5 TX 163.150/206.5	KING NIFC	5	Logistics		KING NIFC	
Tactical Div/Group	RX 151.2725 TX 151.2725	KING NIFC	13	Air to Ground	RX 166.9375 TX 166.9375	KING NIFC	6
Prepared by (Resource Unit Ldr.) Fred Noack		Approved by (Planning Sect. Ch.) /s/ Tim Roide			Date #####July 7, 2011		Time 1800





DIVISION ASSIGNMENT LIST				1. Branch <b>West</b>		2. Division <b>Y - Day</b>		1 of 2	
3. Incident Name <b>Honey Prairie Complex</b>				4. Operational Period Date: ##### 7/8/2011 Time: #####0800-2100					
5. Operations Personnel									
<b>Operations</b>		Tom Romanello/Dave Easton(t)			<b>Branch Director</b>		Bob Shindelar 7/11		
<b>Planning Ops</b>		Dave French/Andy Delmas (t)			<b>Division Supervisor</b>		Gary Smith 7/19, Dan Helterline (t) 7/19		
<b>Safety Officer</b>		Todd Baumer							
6. Resources Assigned this Period									
Strike Team/Task Force/ Resource Designator		Leader / Name / Designator		Last Shift Date	Num. Per.	Drop Off PT./Time		Pick Up PT./Time	
TFLD (O-920)		Aaron Schneider		7/18	1				
TFLD (O-991)		Adam Wolf		7/21	1				
STEN (O-739)		Rodney Weeks		7/11	1				
STEN (O-954)		Brian Ebert		7/20	1				
STEN (O-979)		Sam Lindblom (t)		7/20	1				
HEQB (O-960)		Paul Pelligrini		7/20	1				
ENG6 (E-584)				7/10	2				
ENG6 (E-838)		Chris Mursu		7/21	3				
ENG6 (E-997)		Jack Weer		7/20	2				
ENG6 (E-998)		John Stebner		7/20	2				
ENG6 (E-1004)		Doug Scott		7/19	2	PVT			
ENG6 (E-1005)		Dave Hardy		7/19	2	PVT			
ENG6 (E-1010)		Jene-Paul Matson		7/18	2	PVT			
ENG6 (E-1011)		Doug Williams		7/18	2	PVT			
ENG6 (E-1012)		Glenn		7/18	2	PVT			
ENG6 (E-1014)		Doug Vankuiken		7/19	3	PVT			
ENG6 (E-1015)		Robert Burton		7/20	3	PVT			
ENG6 (E-1016)		James Mangine		7/20	3	PVT			
ENG5 (E-1036)		Nicholas Villa		7/10	3				
ENG5 (E-1046)		Erin Yeoman		7/21	3				
ENG6 (E-1056)		John Wisecarver		7/28	3	PVT			
7. Control Operations <ul style="list-style-type: none"> <li>Make contact with the Resource Advisor before using mechanical equipment.</li> <li>Recon potential controllines and examine area for snag removal</li> <li>Improve swamp break boundaries for fire breaks</li> </ul>									
8. Special Instructions <ul style="list-style-type: none"> <li>Safety push down with equipment all snags whether on fire or not that are a threat to success or tactical operations.</li> <li>Ensure LCES are in place before operations begin. Stay hydrated.</li> <li>Drive defensively and with lights on at all times.</li> <li>Boggy terrain: Be careful and aware when working around this type of area.</li> </ul>									
9. Division/Group Communication Summary									
Function	Frequency	System	Channel	Function	Frequency	System	Channel		
Command N Okee Repeater	RX 164.5750/206.5 TX 163.150/206.5	KING NIFC	5	Logistics		KING NIFC	#####		
Tactical Div/Group	RX 151.2725 TX 151.2725	KING NIFC	13	Air to Ground	RX 166.9375 TX 166.9375	KING NIFC	6		
Prepared by (Resource Unit Ldr.) Fred Noack			Approved by (Planning Sect. Ch.) /s/ Tim Roide			Date #####July 7, 2011		Time 1730	

DIVISION ASSIGNMENT LIST				1. Branch <b>West</b>		2. Division <b>Y - Day</b>		2 of 2	
3. Incident Name <b>Honey Prairie Complex</b>				4. Operational Period Date: ##### 7/8/2011 Time: #####0800-2100					
5. Operations Personnel									
<b>Operations</b>		Tom Romanello/Dave Easton(t)			<b>Branch Director</b>		Bob Shindelar 7/11		
<b>Planning Ops</b>		Dave French/Andy Delmas (t)			<b>Division Supervisor</b>		Gary Smith 7/19, Dan Helterline (t) 7/19		
<b>Safety Officer</b>		Todd Baumer							
6. Resources Assigned this Period									
Strike Team/Task Force/ Resource Designator		Leader / Name / Designator		Last Shift Date	Num. Per.	Drop Off PT./Time		Pick Up PT./Time	
WT2 (E-512)		Ken Swane		7/11	1	PVT			
WT2 (E-560)		Tipton #2		?	1	PVT			
WTS1 (E-716)		Donny Griffis		?	1	PVT			
WT2 (E-1024)		Richard Jones		7/28	1	PVT			
<b>DOZB (O-843)</b>		<b>Joseph Chastain (t)</b>		7/10	1				
<b>DOZB (O-1004)</b>		<b>Derek Cooper</b>		7/20	1				
<b>DOZB (O-1008)</b>		<b>Zack Culver (t)</b>		7/21	1				
TPL2 (E-497)		Leslie Jeter		7/9	1	PVT			
TPL3 (E-943)		Ray Capman		?	1	PVT			
TPL3 (E-984)		Junior House		7/27	1	PVT			
TPL2 (E-985)		Aaron Tipton		7/27	1	PVT			
<b>SOF2 (O-891)</b>		<b>Steve Holman</b>		7/17	1				
<b>EMTP (O-766)</b>		<b>Peggy Miller</b>		7/11	1				
7. Control Operations <ul style="list-style-type: none"> <li>Make contact with the Resource Advisor before using mechanical equipment.</li> <li>Recon potential controllines and examine area for snag removal</li> <li>Improve swamp break boundaries for fire breaks</li> </ul>									
8. Special Instructions <ul style="list-style-type: none"> <li>Safely push down with equipment all snags whether on fire or not that are a threat to success or tactical operations.</li> <li>Ensure LCES are in place before operations begin. Stay hydrated.</li> <li>Drive defensively and with lights on at all times.</li> <li>Boggy terrain: Be careful and aware when working around this type of area.</li> </ul>									
9. Division/Group Communication Summary									
Function	Frequency	System	Channel	Function	Frequency	System	Channel		
Command N Okee Repeater	RX 164.5750/206.5 TX 163.150/206.5	KING NIFC	5	Logistics		KING NIFC	#####		
Tactical Div/Group	RX 151.2725 TX 151.2725	KING NIFC	13	Air to Ground	RX 166.9375 TX 166.9375	KING NIFC	6		
Prepared by (Resource Unit Ldr.) Fred Noack		Approved by (Planning Sect. Ch.) /s/ Tim Roide			Date #####July 7, 2011			Time 1730	

DIVISION ASSIGNMENT LIST			1. Branch <b>West</b>		2. Division <b>V,Y Night</b>		
3. Incident Name <b>Honey Prairie Complex</b>			4. Operational Period Date: ##### 7/8/2011 Time: #####1800-0600				
5. Operations Personnel							
<b>Operations</b>	Tom Romanello/Dave Easton(t)			<b>Branch Director</b>	Bob Shindelar 7/11		
<b>Planning Ops</b>	Dave French/Andy Delmas (t)			<b>Division Supervisor</b>	Patrick Morgan / Jacquie Parks / Nicole Hallisey (t)		
<b>Safety Officer</b>	Todd Baumer						
6. Resources Assigned this Period							
Strike Team/Task Force/ Resource Designator	Leader / Name / Designator	Last Shift Date	Num. Per.	Drop Off PT./Time	Pick Up PT./Time		
<b>TFLD (O-938)</b>	<b>Bill Altman</b>	7/19	1				
<b>TFLD (O-944)</b>	<b>Dave Marion</b>	?	1				
ENG6 (E-76)	Chris Henderson	7/20	2				
ENG6 (E-78)	Kevin Cline	7/20	2				
ENG6 (E-80)	Dane Bass	7/20	2				
ENG6 (E-81)	Troy Helms	7/20	2				
ENG6 (E-973)	Heath Seers	7/19	2	PVT			
ENG6 (E-975)	Nort Phillips	7/19	2	PVT			
ENG6 (E-1081)	Tim Joy	7/21	2				
ENG6 (E-1082)	Brad Gregory	7/21	2				
ENG6 (E-1083)	Tony Harkins	7/21	2				
WAT2 (E-954)	Jim Griffens	7/11	1	PVT			
<b>SOF2 (O-892)</b>	<b>Steven Ripley</b>	7/17	1				
<b>EMTP (O-640)</b>	<b>Mike Fincham</b>	7/10	1				
<b>EMTB (O-983)</b>	<b>Dominic Burchett</b>	?	1				
7. Control Operations <ul style="list-style-type: none"> <li>Make contact with the Resource Advisor before using mechanical equipment.</li> <li>Recon potential controllines and examine area for snag removal</li> <li>Improve swamp break boundaries for fire breaks</li> </ul>							
8. Special Instructions <ul style="list-style-type: none"> <li>Safely push down with equipment all snags whether on fire or not that are a threat to success or tactical operations.</li> <li>Ensure LCES are in place before operations begin. Stay hydrated.</li> <li>Drive defensively and with lights on at all times.</li> <li>Boggy terrain: Be careful and aware when working around this type of area.</li> </ul>							
9. Division/Group Communication Summary							
Function	Frequency	System	Channel	Function	Frequency	System	Channel
Command N Okee Repeater	RX 164.5750/206.5 TX 163.150/206.5	KING NIFC	5	Logistics		KING NIFC	#####
Tactical Div/Group	RX 151.2725 TX 151.2725	KING NIFC	13	Air to Ground	RX 166.9375 TX 166.9375	KING NIFC	6
Prepared by (Resource Unit Ldr.) Fred Noack		Approved by (Planning Sect. Ch.) /s/ Tim Roide			Date #####July 7, 2011		Time 1730

DIVISION ASSIGNMENT LIST				1. Branch <b>West</b>		2. Division <b>Z</b>	
3. Incident Name: <b>Honey Prairie Complex</b>				4. Operational Period Date: ##### 7/8/2011 Time: ##### Day: 0800-2100			
5. Operations Personnel							
<b>Operations</b>	Tom Romanello/Dave Easton(t)			<b>Branch Director</b>	Bob Shindelar 7/11		
<b>Planning Ops</b>	Dave French/Andy Delmas (t)			<b>Division Supervisor</b>	Larry Peabody 7/13 / Jesse Knox (t) 7/18		
<b>Safety Officer</b>	Todd Baumer						
6. Resources Assigned this Period							
Strike Team/Task Force/ Resource Designator	Leader / Name / Designator	Last Shift Date	Num. Per.	Drop Off PT./Time	Pick Up PT./Time		
<b>TFLD (O-889)</b>	<b>Kris Larson</b>	7/19	1				
<b>TFLD (O-792)</b>	<b>Dennis Wilson (t)</b>	7/12	1				
<b>TFLD (O-921)</b>	<b>Brad Hall (t)</b>	7/18	1				
<b>STEN (O-955)</b>	<b>Randy Scherr</b>	7/19	1				
ENG5(E-502)	Saul Irving	7/13	2	PVT			
ENG6 (E-901)	Robert Matheson	7/9	4				
ENG6 (E-904)	Ron Hill	7/8	3				
ENG6 (E-905)	Tiffany Steakley	7/8	3				
ENG6 (E-1052)	Bryan Schlater	7/28	3	PVT			
ENG6 (E-1057)	Troy Mueller	7/20	3				
ENG6 (E-1067)	Shaun Moore	7/28	3				
ENG6 (E-5007)	Jeff Bradley(E-5007.1)	?	2	PVT			
ENG6 (E-5008)	Maige/Walton	7/17	2	PVT			
ENG6 (E-5010)	C. Tevebaugh(E-5010.1)	7/12	3	PVT			
ENG6 (E-5011) Smokey Mt 209	Gary Barlett	7/10	2	PVT			
ENG6 (E-5012) Smokey Mt 301	Paul Shrimplin	7/11	2	PVT			
HCT2IA (C-14) Pat Rick 20B	Dustin Eldred	7/8	20	PVT			
<b>EMTP (O-847)</b>	<b>Levi Clymer</b>	7/11	1				
<b>SOF2 (O-891)</b>	<b>Steve Holman</b>	7/17	1				
7. Control Operations							
<ul style="list-style-type: none"> <li>Contain all fires outside refuge boundary.</li> <li>Patrol and mop up within 100' of fire perimeter line.</li> </ul>							
8. Special Instructions							
<ul style="list-style-type: none"> <li>Ensure that tractors are cleaned and free of debris daily. Examine work area for fire weakened snags.</li> <li>Ensure LCES are in place before operations begin and stay hydrated.</li> <li>Additional resources will be available from GFC, Florida DOF, FWS, and local cooperators.</li> <li>Drive defensively and with lights on at all times.</li> <li>See Medical plan for EMT support.</li> <li>Implement MIST tactics</li> </ul>							
9. Division/Group Communication Summary							
Function	Frequency	System	Channel	Function	Frequency	System	Channel
Command N Okee Repeater	RX 164.5750/206.5 TX 163.150/206.5	KING NIFC	5	Logistics		KING NIFC	
Tactical Div/Group	RX 168.200 TX 168.200	KING NIFC	11	Air to Ground	RX 166.9375 TX 166.9375	KING NIFC	6
Prepared by (Resource Unit Ldr.) Fred Noack		Approved by (Planning Sect. Ch.) /s/ Tim Roide			Date July 7, 2011		Time 1930

<b>DIVISION ASSIGNMENT LIST</b>				1. Branch <b>West</b>	2. Division <b>West - Initial Attack and Structure Protection</b> 1 of 2		
3. Incident Name: <b>Honey Prairie Complex</b>				4. Operational Period Date: ##### 7/8/2011 Time: ##### Day: 0800-2100			
5. Operations Personnel							
<b>Operations</b>	Tom Romanello/Dave Easton(t)			<b>Branch Director</b>	Bob Shindelar 7/11		
<b>Planning Ops</b>	Dave French/Andy Delmas (t)			<b>Division Supervisor</b>	Don Hammack 7/19 / Bob Schober (t) 7/18		
<b>Safety Officer</b>	Todd Baumer						
6. Resources Assigned this Period							
Strike Team/Task Force/ Resource Designator	Leader / Name / Designator			Last Shift Date	Num. Per.	Drop Off PT./Time	Pick Up PT./Time
<b>STEN (O-844)</b>	<b>Gary Glintenkamp</b>			7/8	1		
<b>STEN (O-947)</b>	<b>Jesse Register</b>			7/20	1		
<b>STEN (O-951)</b>	<b>Jerry Van Dyne</b>			7/20	1		
<b>STEN (O-990)</b>	<b>Joe Sampson</b>				1		
<b>STEN (E-650.3)</b>	<b>Paul Catlett (t)</b>			7/9	1		
<b>STPL (O-809)</b>	<b>Todd Milam</b>			7/10	1		
<b>HEQB (O-958)</b>	<b>Tim Boyce</b>			7/20	1		
ENG6 (E-404)	Nicole Selmer			7/9	3		
ENG6 (E-906)	Jay Wickham			7/9	3		
ENG6 (E-939)	Eddie Harsh			7/9	3		
ENG6 (E-1013)	William Paulton			7/20	3	PVT	
ENG6 (E-1045)	Tony English			7/28	3	PVT	
ENG6 (E-1048)	Joseph Jarrells			7/21	3		
ENG6 (E-1049)	James Dowd			7/20	3		
ENG6 (E-1054)	Shawn Kanouse			7/28	3	PVT	
ENG6 (E-1055)	Brian Kanouse			7/28	3	PVT	
DOZ3 (E-650)	Bill Rimes			7/15	1	PVT	
DOZ3 (E-651)	Danny Cerezo			7/14	1	PVT	
7. Control Operations							
<ul style="list-style-type: none"> <li>Respond to Initial Attack as requested</li> <li>Initial attack IC will communicate size up information to Honey Prairie incident communications</li> </ul>							
8. Special Instructions							
9. Division/Group Communication Summary							
Function	Frequency	System	Channel	Function	Frequency	System	Channel
Command N Okee Repeater	RX 164.5750/206.5 TX 163.150/206.5	KING NIFC	5	Logistics	See ICS 205	KING NIFC	
Tactical Div/Group	RX 154.280 TX 154,280/156.7	KING NIFC	8	Air to Ground	RX 166.9375 TX 166.9375	KING NIFC	6
Prepared by (Resource Unit Ldr.) Fred Noack			Approved by (Planning Sect. Ch.) /s/ Tim Roide			Date July 7, 2011	Time 1930



<b>DIVISION ASSIGNMENT LIST</b>			1. Branch <b>East</b>		2. Division <b>H/ I/J/K</b>		
3. Incident Name <b>Honey Prairie Complex</b>			4. Operational Period Date: ##### 7/8/2011      Time: #####0800-2100				
5. Operations Personnel							
<b>Operations</b>	Tom Romanello/Dave Easton(t)		<b>Branch Director</b>		Russ Lane 7/15		
<b>Planning Ops</b>	Dave French/Andy Delmas (t)		<b>Division Supervisor</b>		Matt Filbert 7/18 /Dean Karlovich (t) 7/8		
<b>Safety Officer</b>	Todd Baumer						
6. Resources Assigned this Period							
Strike Team/Task Force/ Resource Designator	Leader / Name / Designator		Last Shift Date	Num. Per.	Drop Off PT./Time	Pick Up PT./Time	
<b>TFLD (O-814)</b>	<b>Troy Boschee</b>		7/8	1			
<b>TFLD (O-813)</b>	<b>Robert Bengson (t)</b>		7/8	1			
<b>TFLD (O-945)</b>	<b>Walter Mendoza</b>		7/20	1			
<b>STEN (O-950)</b>	<b>Larry Larson</b>		7/20	1			
ENG6 (E-135) Attack-1	Ed Kleiman		7/15	2	PVT		
ENG6 (E-136) Nat'l Fire	Jay Cates		7/16	2	PVT		
ENG6 (E-137) Wildlands 8	A. Radford		7/10	2	PVT		
ENG6 (E-179) Nat'l Fire #4	Ramey Hiers		7/13	2	PVT		
ENG6 (E-899) MIUPC 61	D. Karlovich		7/8	3			
WT (E-559)	Ira Mayberry		7/9	1	PVT		
Pump (E-293)			7/8	1		Pump is on a Trailer	
<b>SOF2 (O-808)</b>	<b>Charles Severson</b>		7/8	1		Off 7/9- 7/10 back 7/11	
<b>EMTB (O-637)</b>	<b>Rick Sparks</b>		7/8	1			
<b>EMTP (O-981)</b>	<b>Kurt Berge</b>		7/22	1			
7. Control Operations							
<ul style="list-style-type: none"> <li>• Contain all fires outside refuge boundary.</li> <li>• Patrol and control reburn</li> <li>• Provide initial attack for GFC and fires outside the refuge boundary.</li> <li>• Patrol all spots outside refuge boundary.</li> <li>• Patrol and mop up all accessible fire line. Mop up all hot spots within 100' of the fire perimeter.</li> <li>• Continue to provide protection to the Chesser Homestead by maintaining an adequate water supply via portable pump at location.</li> </ul>							
8. Special Instructions							
<ul style="list-style-type: none"> <li>• Ensure LCES are in place before operations begin. Stay hydrated.</li> <li>• Drive defensively and with lights on at all times.</li> <li>• See medical plan for EMT support</li> <li>• Examine work area for fire weakened snags</li> </ul>							
9. Division/Group Communication Summary							
	Function	Frequency	Channel	Function	Frequency	System	Channel
Command E Okee Repeater	RX 164.6250/103.5 TX 163.150/103.5	KING	3	Logistics		KING NIFC	
DIV J Repeater	RX 170.4125 TX 165.9625/123.0	NIFC	14				
Tactical Div/Group	RX 168.350 TX 168.350	KING NIFC	12	Air to Ground	RX 166.9375 TX 166.9375	KING NIFC	6
Prepared by (Resource Unit Ldr.) Patty Eder (t)		Approved by (Planning Sect. Ch.) /s/ Tim Roide			Date July 7, 2011		Time 1800

<b>DIVISION ASSIGNMENT LIST</b>		1. Branch <b>East</b>		2. Division <b>L, M</b>			
3. Incident Name <b>Honey Prairie Complex</b>		4. Operational Period Date: ##### 7/8/2011      Time: #####0800-2100					
5. Operations Personnel							
<b>Operations</b>	Tom Romanello/Dave Easton(t)	<b>Branch Director</b>		Russ Lane 7/15			
<b>Planning Ops</b>	Dave French/Andy Delmas (t)	<b>Division Supervisor</b>		Jason Butler, Ray Miller 7/20, Alex Abols (t)			
<b>Safety Officer</b>	Todd Baumer						
6. Resources Assigned this Period							
Strike Team/Task Force/ Resource Designator	Leader / Name / Designator	Last Shift Date	Num. Per.	Drop Off PT./Time	Pick Up PT./Time		
<b>TFLD (O-937)</b>	<b>Kevin Elmstrom</b>	7/20	1				
<b>TFLD (O-841)</b>	<b>James Flue (t)</b>	7/10	1				
<b>TFLD (O-993)</b>	<b>Drew Daily</b>	7/22	1				
ENG6 (E-893)MIHMF 251	Paul Lyden	7/9	3				
ENG6 (E-894) MOOZP 862	Greg Carlson	7/8	3				
ENG6 (E-895) MOMTF 9505	Timothy Bray	7/8	3				
ENG6 (E-898) MDS #4	James Harris	7/13	2				
ENG6 (E-385) Red Lake	Gilbert Juarez	7/9	3				
ENG6 (E-5014) Tx Fire 157	Curtis Weaver	7/9	3				
ENG6 (E-407) White Earth #2	Seve Lafiniere	7/9	3				
ENG6 (E-826)	Steve Melton	7/8	2	PVT			
<b>EMTP (O-731)</b>	<b>Keith Barker</b>	7/10	1				
<b>SOF2 (O-659)</b>	<b>Terry Trapp</b>	7/9	1				
7. Control Operations							
<ul style="list-style-type: none"> <li>Contain all fires outside refuge boundary.</li> <li>Patrol and control reburn</li> <li>Mop up all spots outside refuge boundary and within 100 feet of perimeter</li> </ul>							
<ul style="list-style-type: none"> <li>8. Special Instructions</li> <li>Ensure LCES are in place before operations begin. Stay hydrated.</li> <li>Drive defensively and with lights on at all times.</li> <li>See medical plan for EMT support</li> <li>Examine work area for fire weakened snags.</li> </ul>							
9. Division/Group Communication Summary							
	Function	Frequency	Channel	Function	Frequency	System	Channel
Command E Okee Repeater	RX 164.625/103.5 TX 163.150/103.5	KING NIFC	3	Logistics		KING NIFC	
Tactical Div/Group	RX 168.775 TX 168.775	KING NIFC	9	Air to Ground	RX 166.9375 TX 166.9375	KING NIFC	6
Prepared by (Resource Unit Ldr.) Patty Eder (t)	Approved by (Planning Sect. Ch.) /s/ Tim Roide			Date July 7, 2011		Time 1800	



DIVISION ASSIGNMENT LIST				1. Branch <b>East</b>		2. Division <b>N/O</b>	
3. Incident Name <b>Honey Prairie Complex</b>				4. Operational Period Date: ##### 7/8/2011      Time: #####0800-2100			
5. Operations Personnel							
<b>Operations</b>	Tom Romanello/Dave Easton(t)			<b>Branch Director</b>	Russ Lane 7/15		
<b>Planning Ops</b>	Dave French/Andy Delmas (t)			<b>Division Supervisor</b>	Steve Griffin 7/18		
<b>Safety Officer</b>	Todd Baumer						
6. Resources Assigned this Period							
Strike Team/Task Force/ Resource Designator	Leader / Name / Designator	Last Shift Date	Num. Per.	Drop Off PT./Time	Pick Up PT./Time		
<b>TFLD (O-936)</b>	<b>Ernest Schmidt</b>	7/19	1				
<b>TFLD (O-807)</b>	<b>Mark Whipps</b>	7/19	1				
<b>STEN (O-994)</b>	<b>Jim Edgar</b>	7/21	1				
ENG6 (E-977)	Luke Smith	7/19	4				
ENG6 (E-897) MDBWR	J. Beck	7/8	2				
ENG6 (E-5006) Wildlands #3	Keith Hawk	7/11	2	PVT			
ENG6 (E-993) Bush Fire	Philips Quochoytewa	7/18	2	PVT			
<b>EMTB (O-848)</b>	<b>Bert Hyde</b>	7/11	1				
<b>SOF2 (O-807)</b>	<b>Chuck Stanton</b>	7/9	1		Two days off/ back 7/12		
7. Control Operations <ul style="list-style-type: none"> <li>Patrol and mop up 100' inside fire perimeter.</li> <li>Recon potential control lines and examine area snag removal</li> <li>Continue to establish contingency firelines to contain fire south of Double Branch Rd., east of Skull Head Rd., and north of Refuge Boundary.</li> <li>Keep fire within refuge boundary.</li> </ul>							
8. Special Instructions <ul style="list-style-type: none"> <li>Safely push down with equipment all snags whether on fire or not that are a threat to success or tactical operations.</li> <li>Ensure LCES are in place before operations begin. Stay hydrated.</li> <li>See medical plan for EMT support.</li> <li>Drive defensively and with lights on at all times.</li> <li>Boggy terrain: Be careful and aware when working around this type of area.</li> <li>If HP fire escapes the NE Break the Great Basin team will command suppression w/assistance from the GFC. If Race Pond escapes to the south GFC will command w/assistance by the Great Basin. DIVS should make daily contact w/ Race Pond DIVS on scene.</li> </ul>							
9. Division/Group Communication Summary							
Function	Frequency	System	Channel	Function	Frequency	System	Channel
Command N Okee Repeater	RX 164.5750/206.5 TX 163.150/206.5	KING NIFC	5	Logistics		KING NIFC	#####
Tactical Div/Group	RX 168.200 TX 168.200	KING NIFC	11	Air to Ground	RX 166.9375 TX 166.9375	KING NIFC	6
Prepared by (Resource Unit Ldr.) Patty Eder (t)		Approved by (Planning Sect. Ch.) /s/ Tim Roide		Date #####July 7, 2011		Time 1730	

DIVISION ASSIGNMENT LIST		1. Branch <b>East</b>		2. Division <b>East Initial Attack</b>			
3. Incident Name <b>Honey Prairie Complex</b>		4. Operational Period Date: ##### 7/8/2011 Time: #####0800-2100					
5. Operations Personnel							
<b>Operations</b>	Tom Romanello/Dave Easton(t)		<b>Branch Director</b>	Russ Lane 7/15			
<b>Planning Ops</b>	Dave French/Andy Delmas (t)		<b>Division Supervisor</b>	John Huschke 7/12			
<b>Safety Officer</b>	Todd Baumer						
6. Resources Assigned this Period							
Strike Team/Task Force/ Resource Designator	Leader / Name / Designator	Last Shift Date	Num. Per.	Drop Off PT./Time	Pick Up PT./Time		
<b>TFLD (O-941)</b>	<b>Shawn Denowh</b>	7/19	1				
<b>TFLD (O-943)</b>	<b>Steven Clark</b>	7/22	1				
ENG6 (E-77) GAGAS 86	Andrew Gamlin	7/20	2				
ENG6 (E-390) WICNF 461	T. Borman	7/10	2				
WT3 (E-92)	Justin/Ellis		1	PVT			
<b>DOZB (O-959)</b>	<b>Zac Cogle</b>	7/20	1				
<b>STDZ (O-1014)</b>	<b>Dennis Huenergardt</b>	7/10	1				
TPL3 (E-649) Bear Co	Mike Kikendale	7/14	2	PVT			
TPL3 (E-500) NFFS	Buddy Woods	7/16	2				
ENG6 (E-978)	Dennis Gillmer	7/10	3		2 days R&R on 7/11 and 7/12		
ENG6 (E-979)	Mark Smith	7/10	4				
ENG6 (E-974)	Scott Kregness	7/10	3				
ENG6 (E-976)	Roscoe Benoy	7/10	3				
ENG6 (E-79)		7/7			Need to check in		
ENG6 (E-1084)	Mike Dean	7/20	2				
<b>SOF2 (O-703)</b>	<b>Larry Klock</b>	7/11	1				
7. Control Operations <ul style="list-style-type: none"> <li>Respond to Initial Attack as requested</li> <li>Patrol and control return</li> <li>Initial attack IC will communicate sizeup information to the Honey Prairie communication.</li> </ul>							
8. Special Instructions							
9. Division/Group Communication Summary							
	Function	Frequency	Channel	Function	Frequency	System Channel	
Command E Okee Repeater	RX 164.625/103.5 TX 163.150/103.5	KING NIFC	3	Logistics		KING NIFC	
Tactical Div/Group	RX 168.775 TX 168.775	KING NIFC	9	Air to Ground	RX 166.9375 TX 166.9375	KING NIFC 6	
Prepared by (Resource Unit Ldr.) Patty Eder (t)	Approved by (Planning Sect. Ch.) /s/ Tim Roide		Date July 7, 2011	Time 1800			



AIR OPERATIONS SUMMARY		PREPARED BY: <i>Chris Schenck</i> AOB (T)			PREPARED DATE/TIME: 7/7/2011 1700		
1. INCIDENT NAME: HONEY PRAIRIE		2. OPERATIONAL PERIOD DATE: 7/8/2011		START TIME: 0800	END TIME: 2015	SUNRISE: 0632 SUNSET: 2037 Waycross	
<b>3. REMARKS</b> (Safety Notes, Hazards, Air Operations Special Equipment, etc.) <b>RETARDANT NOT ALLOWED IN OKENOKEE REFUGE</b> <ul style="list-style-type: none"> <li>-PILOTS-WATCH FOR REAL BIG BIRDS AND SMALL ONES TOO</li> <li>-WATCH FOR GENERAL AVIATION AND MILITARY AIRCRAFT</li> <li>-NOTE THAT SOME TOWERS ARE NOT MARKED ON SECTIONAL CHARTS.THESE TOWERS COULD BE UP TO 250 FEET TALL</li> <li>-ALL FIREFIGHTING AIRCRAFT NEED TO SQUAWK 1255. FLY WITH LIGHTS ON.</li> <li>MTR's TRANSECT FIRE TRAFFIC AREA BOTH IR &amp; VFR MAY BECOME ACTIVE THIS WEEK</li> </ul> -HEADS UP WHEN PERFORMING WATER DROPS AROUND CREWS ON THE GROUND <ul style="list-style-type: none"> <li>-MAINTAIN CLEAR COMMUNICATIONS</li> <li>CREWS STAY AWAY FROM WATER DROPS INCLUDING APPROACH AND DEPARTURES</li> <li>-FARGO HELIBASE LOCATION: 1/4 MILE NORTH OF THE BP GAS STATION at 9 hole golf course</li> <li>-AIRCRAFT WILL BE ORDERED AND DISPATCHED UTILIZING LATITUDE AND LONGITUDE-DEGREES DECIMAL MINUTES</li> </ul> <ul style="list-style-type: none"> <li><b>SMOKE AND VISABILITY MAY REQUIRE FLEXABILITY IN MISSIONS AND FUEL PLANNING</b></li> <li><b>BE READY FOR POSSIBLE IA WORKIG WITH GA/ FL FORESTRY RESOURCES</b></li> <li><b>Listen on command for fire WX broadcast for T storms</b></li> </ul> -AIRCRAFT PRIORITIES <ol style="list-style-type: none"> <li>PUBLIC AND FIREFIGHTER SAFETY</li> <li>PROTECTION OF LIFE, PROPERTY AND RESOURCES</li> <li>INITIAL ATTACK</li> <li>POTENTIAL PROBLEM FIRES</li> <li>UNSTAFFED FIRES</li> </ol>				<b>4. MEDEVAC A/C:</b> Fargo Helibase N662H Waycross N818MC  Frequency: <b>HEAR FM 155.340W*</b> <b>*This may need to be programmed for a medivac.</b>		<b>5. TFR HONEY PRAIRIE FDC 1 / 0249</b> <b>At and below 3000' msl. AM 122.375</b>  1. IMMEDIATE NOTIFICATION OF INTRUSIONS ARE TO BE PLACED WITH THE AIR SPACE COORDINATOR AT FICC OR THE FAA.  <b>NO AIR TANKER at LAKE CITY</b> FARGO HELIBASE: Lat 30 41.42 Long 82 33.97 POGO HELIBASE: Lat 30 44.03 Long 82 07.41 POCKET HELISPOT Lat 30.48 Long 82.22 HOMERVILLE AIRPORT Lat 31 03.35 Long 82 46.45 WAYCROSS AIRPORT Lat 31 14.9 Long 82 23.7	
<b>6. PERSONNEL</b>		<b>Phone</b>	<b>7. FREQUENCIES</b>	<b>AM</b>	<b>FM</b>	<b>8. FIXED WING # Available/ Type/ Make-Model/FAA N# / Bases</b>	
AOBD: Dewey Warner		702-469-2280	AIR/AIR FW	122.575		GFC SATILLA DISPATCH: 912-287-4915	
AOBD Incoming FL IMT2 Tim Elder		863-243-1438	AIR/AIR RW-FF	122.375			
ASGS: John Burke		435-590-8680	Georgia AIR/AIR	122.075	159.390/156.7	<b>LAKE CITY TANKER BASE: 386-758-9078</b>	
AIR OPS Desk		912-637-5254	NATIONAL FLIGHT FOLLOWING		168.650N	LAKE CITY TANKER BASE FAX: 386-752-8901	
AIR OPS FAX		912-637-5237					
ATGS: Tim Caughlin/Melanie Fullman (T)		715-684-9862	AIR/GROUND: PRIMARY		166.9375		
ATGS: Lake City		406-529-4888	AIR/GROUND: SECONDARY		166.9000	<b>POGO HELIBASE: 912-496-4415 FAX 912-496-7077</b>	
ATGS: Carl MaGill Fargo		541-519-0850					
HEB1 FARGO HEB2 Paul Borcharding		541-377-5200	GEORGIA AIR/GROUND Dozers		159.285 W	<b>WAYCROSS HELIBASE: 912-287-4479 FAX 912-287-4458</b>	
HEB2 WAYCROSS HEB2 Melvin Tate		850-849-0405	FLORIDA I.A.AIR/AIR-	122.925			
ABRO Peter Martins		530-310-3526	FLORIDA I.A. AIR/GROUND		170.4750N	<b>FARGO HELIBASE 530-310-3526</b>	
			COMMAND: (Simplex) <b>SEE ICS 205</b>			<b>FICC: AIRCRAFT 850-523-8600 Ext. 3636</b>	
			COMMAND RPT <b>SEE ICS 205</b>	Rx:	Tx:	<b>FICC FAX FOR AIRCRAFT ORDERS: 850-576-8314</b> <b>AIRSPACE COORDINATOR: Marion Harris 850-520-8623 ext. 3630</b> <b>AVIATION CONFERENCE CALL: 866-785-8109 PIN 3223898#</b>	
			DECK FREQ:		163.100**	**Note: deck should be used for mission request or Air to ground .	
			TOLC:				

9. HELICOPTERS (Use Additional Sheets As Necessary)													
FAA N#	TY	MAKE/MODEL	BASE	AVAIL	START	REMARKS	FAA N#	TY	MAKE/MODEL	BASE	AVAIL	START	REMARKS
N36BH A-35	1	SIKORSKY S-70	Waycross	0830		Zeve Huntina 406-439-6768	N61SC A-	1	SIKORSKY S-61	Fargo	0830		Ray Leppala 218-966-6443
206G A-19	2	UH1H Finally in Service!	Waycross	0830		Mike Yearwood 530-310-3511	N662H A-29	3	Bell 206-L4	Fargo	0830		Jeff Polack 208-816-3447
06901 A-17	2	UH1H	Waycross	0830		Cindy Bradley 559-916-9355	26MW A-62	1	Kmax 1200	Fargo s	0830		Kirby Cook 406-381-1212
N818MC	3	AS-350 B3	Waycross/ Fargo as needed	0830		George Violante 307-330-5904	6JC A-1	3	Bell B-3 Local Unit Aircraft	Pogo	0830		Jeff McBath 858-357-3242 or Reggie Forcine 912-614-4041
<b>9.5 Fixed wing</b>													
AA 53L	1	C-337	Lake City	0830		Tim Caughlin Melanie Fullman (T) 715-684-9862	AA N135BA	1	B -65	Lake City	0830		No ATGS

AIR OPERATIONS SUMMARY					
10. TASK/MISSION/ASSIGNMENT (Type/Function includes Air Tactical, Retardant, Recon, Personnel Transport, Water Dropping, S&R, etc.)					
			MISSION START	FLY FROM	FLY TO
Expect Recons with Ops IC's			11:00 / 1300 / 1600 and as requested	FARGO Waycross	Fire
ATGS in T3 Helo to direct buckets	Off today		As needed	FARGO	
Expect Recons with FBA and LTAN			1300	FARGO	
Air Attack	Stagger missions for coverage from 1200 to 1900 earlier will be requested by phone		1200	Lake City ATB	Fire
T1 Helos Bucket Work	Objective to slow fire spread in light fuels		As needed		



# Fire Weather Forecast



**FORECAST NO:** 62

**NAME OF FIRE:** Honey Prairie Complex

**PREDICTION FOR:** Day and Night Shifts  
**SHIFT DATE:** 7/8/11

**UNIT:** Okefenokee National Wildlife Refuge

**FORECAST ISSUED:** 7/7/11 at 1900

**SIGNED:** Scott Kennedy (T)/Coleen Decker  
Incident Meteorologists

**WEATHER DISCUSSION:** High pressure will remain East of the area while a broad area of low pressure over the Northern Gulf of Mexico slowly migrates West. Moist southerly flow will bring scattered to numerous Showers and Thunderstorms through Monday.

**TODAY:** Patchy morning Fog, otherwise Mostly Cloudy with numerous Showers and Thunderstorms.

**MAXIMUM TEMPERATURES:** 89-93 degrees.

**MINIMUM HUMIDITY:** 45-55%.

**20 FT WINDS:** AM: SW 4-7 G12 mph.  
PM: S 5-8 G14 mph.

**STABILITY/INVERSION:** Morning inversion to 250 feet through 1000, then rising to 5000 feet by 1500.

**TRANSPORT WINDS:** SSW 12 mph.

**DISPERSION INDEX:** 50, Average

**CHANCE OF PRECIPITATION:** 70%.

**LIGHTNING ACTIVITY LEVEL:** 3.

**TONIGHT:** Mostly Cloudy with scattered Showers and Thunderstorms.

**MINIMUM TEMPERATURES:** 72-75 degrees.

**MAXIMUM HUMIDITY:** 90-100%.

**20 FT WINDS:** SW 4-8 mph.

**STABILITY/INVERSION:** Inversion to 250 feet by 2200 hours.

**DISPERSION INDEX:** 5, poor.

**CHANCE OF PRECIPITATION:** 40%

**LIGHTNING ACTIVITY LEVEL:** 2

**OUTLOOK FOR SATURDAY:** Mostly Cloudy with numerous Showers and Thunderstorms. Winds SSW 5-10G18 mph. High temperatures 90 to 94. Min RH 45-55%. Chance of Rain 60%. Dispersion 40, Fair.

**EXTENDED FORECAST:**

	SUNDAY	MONDAY	TUESDAY
<b>MINIMUM TEMP</b>	73°	73°	73°
<b>MAXIMUM TEMP</b>	93°	94°	94°
<b>MINIMUM RH</b>	45-50%	45-50%	45-50%
<b>20 FT. WINDS</b>	AM: SW 4-7 mph PM: SW 5-10G15 mph	AM: ENE 4-7 mph PM: ESE 5-8 mph	AM: WNW 4-7 mph PM: ESE 4-7 mph
<b>SKY</b>	Mostly Cloudy	Partly Cloudy	Partly Cloudy
<b>WEATHER</b>	Scattered Thunderstorms	Scattered Thunderstorms	Scattered Thunderstorms
<b>CHANCE PRECIP</b>	50%	40%	30%

**FIRE BEHAVIOR FORECAST**

<b>Fire: Honey Prairie Complex</b>	<b>Unit: GA-OKR-000001</b>	<b>Prediction for Day Shift</b>
<b>Forecast #61 Issued: 07/07/2011 1830 hrs</b>	<b>Signed: /S/ Gary Brunk /S/Steve Cobb(T)</b>	<b>Shift Date: Friday 07/08/11</b>

**GENERAL FIRE BEHAVIOR**

Fuels around the Okefenokee Wildlife Refuge are predominately Fuel Model 7 (Southern Rough). Large to moderate acreage tracts of commercial timberland are mixed in throughout the entire perimeter surrounding the refuge. Fast moving wildfires with extremely high flame lengths and rapid rates of spread occur within the swamp. As fire transitions to the upland, torching and crown fires are common. Long Range spotting is possible.

**Indicators/Threshold for Increased Fire Activity**

- Relative humidity dropping below 45%
- Winds above 10 mph
- **Heavy fuel loadings**
- Fine dead fuel moisture 8% or less
- Dispersion above 70
- **\* Items in BOLD are predicted to occur today\***

**SPECIFIC FIRE BEHAVIOR**

- **Fire behavior today will be low to moderate due to isolated areas of moisture received last two days, increased cloud cover, and dense smoke over the fire area.**
- **Areas which have shown active fire behavior over the past several days will continue to burn where they did not receive moisture. Expect to see low rates of spread, reduced flame lengths, and smoldering of large fuels.**

Fuel Type	Rates of Spread	Flame Length	Spotting Distance	Firebrand Ignition
<b>Winds at 5 -8 G12 @ 20'</b>				
Shrub Fuels	2 - 8 ch/hr	2 - 8 feet	1/10 – 3/10 mile	30%
Southern Rough	3 – 9 ch/hr	3 - 5 feet	1/10 – 2/10 mile	30%
Timber Litter-Reburn	1 - 2 ch/hr	1 - 2 feet	2/10 – 3/10 mile	29%
Small Pine Plantation w/grasses	2 - 10 ch/hr	2 - 6 feet	1/10 – 2/10 mile	30%

**One hour fine dead fuel moisture is at 11% for Friday.** 1000 hour fuels are drier than normal for this time of year. There is reburn potential in all divisions due to the amount of needle cast. Should a fire run(s) occur, expect winds in the area to potentially increase above predicted levels. This would increase Flame Lengths and ROS above predictions. Heavier firebrands can also be lifted higher and further increasing likelihood of spots to max predictions. **In areas where fuels have been herbicided, expect quick ignitions and extreme heat, very fast and group tree torching producing spotting problems.**

**NOTE- FIRE BEHAVIOR CALCULATIONS ARE FOR FIRES IN UNBURNED FUELS INCLUDING NEW IA STARTS.**

West	A	<i>Wetter wx reduces reburn potential. Falling snags still pose a threat to fire personnel and the boardwalk. <b>60% chance of rain</b></i>	West	T/V	<i>Active fire spread to the North will be reduced due to higher fuel moistures and possibility of rain. Be heads-up for falling snags . <b>60% chance of rain</b></i>
	B-G	<i>Wetter wx decreases reburn potential from needle cast. Be heads-up for falling Snags. . <b>60% chance of rain</b></i>			
	Y-Z	<i>Reduced fire activity will occur today as fuels become moister. Areas of heat will remain near Div Y/Z perimeter. Be heads-up for falling snags. <b>60% chance of rain</b></i>	East	H, I J, K L, M N, O	<i>Div 0 – Wetter wx decreases reburn potential from needle cast. Be heads-up for falling snags. <b>60% chance of rain</b></i>

**Night Ops** – Expect another night of minimal fire behavior with areas of heavy smoke. Mostly cloudy with 40 % chance of scattered showers and thunderstorms. Fire behavior will primarily be limited to smoldering heavy fuels in Divisions Y & Z and the interior. Winds over the entire fire are forecast from the SW 4-8 mph. Dispersion Index of 5 –poor for nighttime.

**Air Operations:** Expect areas of heavy smoke all day.

**SAFETY:**

**WINDS** – Stay abreast of changing wx conditions throughout the entire shift. **THUNDERSTORMS** - these severe winds can create extreme fire behavior, with winds gusting over 30 mph. **SNAGS – Snags are falling in all Divisions – will be influenced by Thunderstorm outflow winds.**

**FUELS:** Reburn is an issue. Watch for pockets of cured shrubs or blankets of red needles beginning to cover the forest floor. 1000 and 10,000 hour fuels as well as deep duff pockets are providing the heat source. Stay focused, and put LCES in place before starting operations. Watch for standing burning snags that can fall without warning. *Energy Release Component (ERC) continues to be above the 90<sup>th</sup> percentile for this area.*

**Southern Area Blue Team  
LCES Analysis of Tactical Actions**

Incident Name: Honey Prairie Complex				Date and Time Prepared: July 06, 2011 1600 hrs				Operational Period: Day and Night July 08, 2011								
	Location on Incident															
	Divisions/Groups															
TACTICAL HAZARDS	A,B,C	D,E,F,G	H, I	J, K	L	M	N	O	T	V	Y	Z	ICP	PM Ops	Struct Prot Grp	Mitigations
Powerlines	*	*	*	*	*	*	*	*	*	*	*	*		*	*	Assume all power lines are charged. Avoid all contact with downed lines.
Complacency	*	*	*	*	*	*	*	*	*	*	*	*		*	*	Follow work/rest guidelines.
Indirect Fireline									*	*	*	*		*		LCES; IRPG Pg. 10, Indirect Attack; Burnout as possible.
Unburned Area Reburn Potential	*	*	*	*	*	*	*	*	*	*	*	*		*	*	LCES, Utilize Air Attack if Available. Know Predicted Weather and Fire Behavior Forecast.
Hazard Trees	*	*	*	*	*	*	*	*	*	*	*	*		*	*	IRPG Pg. 80, Identify and flag hazard trees. Look Up, Down and Around
Hazardous Materials	*	*	*	*	*	*	*	*	*	*	*	*		*	*	IRPG Pg. 26-27, HAZMAT. Identify and map propane tanks, electric lines, septic tanks and determine bridge wgt. limits prior to use.
Vehicle Use (Travel 1HR+, Roads)	*	*	*	*	*	*	*	*	*	*	*	*		*	*	Park vehicles for egress. Follow traffic plan. Use seat belts, drive with headlights on and keep windshields clean. Use spotters. Drive Defensively. Use multiple camp locations to reduce drive time.
Communications																Ensure radio is cloned with the current communications plan. LCES
Structure Protection	*								*	*	*	*				Use structure protection checklist, PPE, Triage. Utilize Local Fire Departments
Air Operations (multiple aircraft, line support)	*	*	*	*	*	*	*	*	*	*	*	*		*		Monitor Air Guard at all times. Flight follow through Dispatch. Keep drop areas clear of personnel.
Mechanical Equipment	*	*	*	*	*	*	*	*	*	*	*	*		*	*	Use PPE, ensure all safety devices are functional. Operator must see you before approaching equipment. Maintain proper distance away from equipment working in the area.
Escape Routes Safety Zones	*	*	*	*	*	*	*	*	*	*	*	*		*	*	LCES, Establish and identify safety zones & escape routes. Know where these are located and the route to them. IRPG p.7
Thunderstorm Safety	*	*	*	*	*	*	*	*	*	*	*	*		*	*	Keep an eye on changes in weather. Take hourly weather observations. Comms will provide weather updates when needed
Wildlife	*	*	*	*	*	*	*	*	*	*	*	*		*	*	Keep food items off the line and use refuse containers around camp. Use insect repellent as needed. Use caution around water as wildlife is concentrated.
Sun Exposure	*	*	*	*	*	*	*	*	*	*	*	*		*	*	Use sunblock as needed.
Heat	*	*	*	*	*	*	*	*	*	*	*	*		*	*	Hydrate prior to going on line and all during the day. Recognize the signs of heat related injuries. Take frequent breaks throughout the work period.
Railroad Crossings	*	*	*	*	*	*	*	*	*	*	*	*	*	*	*	Visually check all railroad crossings to ensure track is clear. Do not bunch up, leave room for other vehicles to cross. Don't try to "beat" the train.
													Safety Officers: Todd Baumer, SOF2, Randy Turrill, SOF2 (t)			



<b>Incident:</b> HONEY PRAIRIE COMPLEX	<b>Date:</b> JULY 8, 2011	<b>Shift:</b> DAY/NIGHT
---	------------------------------	----------------------------



# **SAFETY MESSAGE**

## **SAFETY IS OUR FIRST PRIORITY**



*Fire fighter safety comes first on every fire, every time*

### **SAFETY THOUGHT**

The roads are going to get greasy with the predicted rain. Adjust driving speeds, following distances and routes accordingly.

**Remember-If it's predictable, it's preventable. Recognize potential hazards ahead of time.**



### **MAJOR HAZARDS AND RISKS**

- FATIGUE and DEHYDRATION
- SNAGS
- WILDLIFE
- SLIPS, TRIPS, and FALLS

- VEHICLE TRAVEL TIME, DISTANCE and SPEED
- TORCHING, SPOTTING and REBURN POTENTIAL

- LIGHTNING, ERRATIC WINDS, DOWNDRAFTS AND RAIN
- DIRT AND GRAVEL ROADS TURNING MUDDY & GREASY

### USE THE INCIDENT RESPONSE POCKET GUIDE DAILY

Assess The Situation

Identify Hazards

Determine Hazard Controls

## **A PROCEDURAL APPROACH TO SAFETY**

In a fire situation there are subjective hazards that we as firefighters create, and there are objective hazards such as fire entrapment, snags, rolling debris, and terrain that are inherent to firefighting. The subjective hazards we have control over just by using our attitudes and abilities. The objective hazards we cannot eliminate. The possibility of injury or entrapment is always there, the probability may be large or small. We must take steps to reduce the risks associated with our actions. By using a set procedure each operational period, we can minimize exposure to hazards and better ensure our safety by taking the following steps.

- Determine what the assignment is
- Identify the hazards
- Analyze the risks
- Implement steps to ensure safety
- Re-analyze the situation as it changes



# **FIRE SAFETY BEGINS WITH U**

*Team Safety Officers*

**Todd Baumer, SOF2**

**Randy Turrill, SOF2(t)**

MEDICAL PLAN	1. 5. 1. # # Honey Prairie Complex	7. 07/2011	7. 1800	2. 08/2011 DAY SHIFT	
<b>5. Incident Medical Aid Station</b>					
<b>Medical Aid Stations</b>	<b>Location</b>	Paramedics Yes No			
<b>Medical Unit (ICP)</b>	Honey Prairie Complex ICP (Lodge 5) 912-637-5236 Jeff Voskamp MEDL 912-286-1648 Bill Erlach MEDL (T) 912-286-1674 Michael Evers MEDL (T) 719-640-8991	X			
<b>WEST BRANCH (Line EMT)</b>	Bob Eaton 919-423-1055 (A,B,C DIV) Kyle Barber 417-239-9135 (D,E,F,G DIV) Shane Powers 907-388-3885 & Jefferson Hallady (T DIV) Evan Dean 503-975-6444 (V DIV) Peggy Miller 240-793-4238 (Y 0800-2000) Michael Fincham 530-859-8507 & Dominique Burchett 801-558-5444 (Y DIV Night) Levi Clymer 417-658-5155 (Z DIV)	X			
<b>EAST BRANCH (Line EMT)</b>	Rick Sparks 912- 531-9527& Kurt Burge (H,I,J,K DIV) Keith Barker 224-330-7798 (L,M DIV) Bert Hyde 218-349-0934 (N,O DIV)	X			
<b>Ambulance Services</b>					
<b>Name</b>	<b>Address</b>	<b>Phone</b>	Paramedic Yes No		
<b>Clinch County EMS (WEST SIDE)</b>	West Branch Council Road & HWY 94	Channels 4, 11, 13 912-286-1673 EMS Incident Cell	Yes	#	
<b>Ware County EMS (NORTHSIDE)</b>	Waycross, Georgia (911 to activate)	912-281-9467	Yes	#	
<b>Charlton County EMS (EAST SIDE)</b>	Folkston, GA (911 to activate)	912-496-7321	Yes	#	
<b>Air Ambulance Service</b>					
<b>Trauma 1</b>	Jacksonville, FL (26 min/air)	800-223-4878 (freq. 155.340)	Yes	#	
<b>AirMed</b>	Augusta, GA (2 hrs/air)	1-888-792-9245(freq. 155.340)	Yes	#	
<b>Lifeflight</b>	Jacksonville, FL (35 min/air)	1-877-870-7779(freq. 155.340)	Yes	#	
<b>Air Evac</b>	Waycross, GA	1-800-247-3822(freq. 155.340)	Yes	#	
<b>US Coast Guard (Heli-Rescue)</b>	Savannah GA	1-912-652-4646 (freq. 155.340)	Yes	#	
<b>7. Hospitals</b>					
<b>Name</b>	<b>Address</b>	<b>Travel Time Air Ground</b>	<b>Phone</b>	<b>Helipad Yes No</b>	<b>Burn Center Yes No</b>
<b>Satilla Regional</b>	410 Darling Ave Waycross Ga N 31'13.56 W 82'21.058	15 min 45 min	912-283-3030	Yes	No
<b>Clinch Memorial Hospital (WEST SIDE)</b>	1050 Valdosta HWY Homerville, GA	25 min	912-487-5211 ext 4502	Yes	No
<b>Charlton Memorial Hospital (EAST SIDE)</b>	1203 3 <sup>rd</sup> St. Folkston, GA	50 min	912-496-2531		No
<b>Memorial Hospital</b>	Savannah, GA 4700 Waters 3200.7 8107.6	40 min	912-350-8999	Yes	No
<b>Shands Hospital (level I)</b>	Jacksonville, FL N 30'20 97 W 82' 13 992	45 min 1.5 hrs	800-223-4878	Yes	Yes
<b>Shands Burn Center</b>	Gainesville, FL 38.33 N 082 20.73W	45 min	352-265-0300	Yes	Yes
<b>8. Medical Emergency Procedures</b>					
<ol style="list-style-type: none"> <li>Notify DIVS of medical problem</li> <li>DIVS notifies COML and MEDL</li> <li>MEDL contacts POC for following <ol style="list-style-type: none"> <li># of pts</li> <li>Status of pts medical problem</li> <li>Location of pts</li> <li>Transport method</li> <li>Necessary resources</li> </ol> </li> <li>MEDL coordinates medevac/patient transport with SOF2, OPS2 and other relevant resources.</li> </ol> <p><u>Life threatening injury</u>: an injury that could mean the loss of life, limb, or eyesight  <u>Minor injury</u>: an injury that results in the removal of a pt from the line but with less urgency as a life threatening injury  <u>Medevac</u>: the most urgent transport of a pt suffering from a life threatening injury  Patient transport: transport for minor injuries  <u>Medical problem</u>: a physical or mental ailment that occurs to an individual; to include illnesses and traumatic injuries  <u>Point of contact (POC)</u>: individual who will be directly advocating for patient care and transport (line medic, crew boss, DIVS etc)  *Request that FFTR/Engine crews or single resources let MEDL know if they have any EMTs or Paramedics and if they have equipment with them.</p>			<b>HELISPOTS</b> Pocket Helispot 30 47 30.02 x 82 22 39.5 (West side), mile marker 4, HWY 177 Steven C. Foster State Park Fargo Helibase 30 41.42 x 82 33.97 (West side), HWY 441- Golf course, Fargo POGO Helibase 30.44.03 x 82.07.41 (East side) <b>Evac Yankee</b> Helispot 6 Rd. 32 and 32A, N 30° 53.280 W 082° 33.880 Helispot 7 Tatum Rd. Pond N 30° 50.280 W 082° 33.857 *Alternate site can be established following guidelines for safety found with IRPG and local EMS resources.		
Prepared by: Michael Evers MEDL (T)/Bill Erlach MEDL (T)			10. Reviewed by: Randy Turrill SOF2		

INCIDENT RADIO COMMUNICATIONS PLAN ICS-205			Incident Name <b>Honey Prairie</b>			<b>GROUP 22</b>		Date/Time Prepared 07/07/2011-18:00		Operational Period Date/Time 7/08/2011 0800-2100/1800-0600	
Ch #	Function	Channel Name	Assignment	RX Freq	NW	RX Tone/NAC	TX Freq	N W	TX Tone/NAC	Mode A,D or M	Remarks
1	Command	West Okee Repeater	Sec West Branch CMD	167.1250	N	156.7	163.1500	N	156.7	A	Stephen Foster State Park
2	Command	South Okee Repeater	Sec East/West Branch CMD	164.7750	N	123.0	163.1500	N	123.0	A	Eddy Florida
3	Command	East Okee Repeater	PRIMARY East Branch CMD	164.6250	N	103.5	163.1500	N	103.5	A	Refuge Headquarters
4	Command	NIFC C2	PRIMARY West Branch CMD	168.100	N	CSQ	170.4500	N	123.0	A	NOT linked to OKEE System
5	Command	North Okee Repeater	PRIMARY North Branch CMD	164.5750	N	206.5	163.1500	N	206.5	A	Waycross
6	Air-Ground	Air to Ground	PRIMARY	166.9375	N	CSQ	166.9375	N	CSQ	A	
7	Tactical	MOB-MOB	GFC Contingency	159.3900	W	CSQ	159.3900	W	156.7	A	
8	Tactical	V-Fire 21W WHITE	Structure Protection Group&I.A.	154.2800	W	CSQ	154.2800	W	156.7	A	
9	Tactical	USFS 9	DIV A,B,C, L, M T, M & (East I/A)	168.7750	N	CSQ	168.7750	N	CSQ	A	
10	Tactical	S.E. Compact	DIV	159.2850	W	CSQ	159.2850	W	CSQ	A	
11	Tactical	USFS 11	DIV Z, N, O	168.2000	N	CSQ	168.2000	N	CSQ	A	
12	Tactical	Refuge Tac 1	DIV H, I, J, K	168.3500	N	CSQ	168.3500	N	CSQ	A	
13	Tactical	FL 190	DIV D, E, F, G, V, Y	151.2725	N	CSQ	151.2725	N	CSQ	A	
14	Command	DIV J RPT	East Branch	170.4125	N	CSQ	165.9625	N	123.0	A	NOT linked to OKEE System
15	Air-Ground	Air to Ground	SECONDARY	166.9000	N	CSQ	166.9000	N	CSQ	A	
16	EMERGENCY	AIR Guard	Air OPS.	168.6250	N	CSQ	168.6250	N	110.9	A	
Prepared by (Communications Unit) Greg Ely: 912-387-6813 Incident Dispatcher: 912-286-1660					<b>Cloning at ICP communications and briefings,</b>						

The convention calls for frequency lists to show four digits after the decimal place, followed by either an "N" or a "W", depending on whether the frequency is narrow or wide band. **Mode** refers to either "A" or "D" indicating analog or digital (e.g. Project 25) or "M" indicating mixed mode. All channels are shown as if programmed in a control station, base stations, mobile or portable radio.

## FINANCE – EQUIPMENT/TIME

*Tip for the day: 7/8/11*



**We Need Your HELP:**

Please turn in SHIFT TICKETS and/or CTRS to show days off. This will keep your name off this list. **THANK YOU!!**

E-980	Daniel Boone	??? Impassible Bay demob
E-293	GFC PUMP	MISSING SHIFT TICKETS 6/17-CURRENT
E-502	WILDLAND FIRE	Need shift tickets for down time 6/27-29 and new operator needs to check in at ICP

IF YOU ARE GETTING CLOSE TO TIMING OUT PLEASE  
SPEAK WITH YOUR FIRE LINE SUPERVISOR **ASAP.**

### **\*\*\*TRAINING MESSAGE\*\*\***

If you are a trainee please see the training specialist early in your assignment and be prepared to produce the following: current task book and redcard, your contact information, contact information of home unit or to whom training package should be sent, Home unit contact information of your trainer/evaluator. Having this information before you demob will expedite the process when you do.

When you are ready to demob please bring your task book with the evaluation records and an Incident Personnel Performance Rating completed by your trainer/evaluator. Thank you!

Training Specialist located in the Eco Lodge at ICP in Fargo  
Kevin Kranz

**DMOB for July 8 to July 11  
Contact DMOB-Bruce @ 912-637-5241**

**IF YOU ARE TRAVELLING HOME BY AIR AND WILL BE TRANSPORTED TO JACKSONVILLE  
THE DAY BEFORE YOUR FLIGHT BY GROUND SUPPORT - YOU NEED TO COMPLETE THE  
DEMOB PROCESS AND BE READY TO LEAVE ICP BY 1300 or 1700 HRS**

Number	Name	Kind	UnitID	TravelM ethod	Jet- port	Travel Date
A-42	HELICOPTER - T3S - 818MC	HEL3	WYWRA	AOV		07/08/2011
A-42.11	ROBERTS, ADRIEN	FFT2	WYWRA	AOV	RIW	07/08/2011
A-42.2	MITCHELL, DON	HMGB	WYWRA	AOV	RIW	07/08/2011
A-42.3	MCBATH, JEFF	HMGB	WYWRA	AOV	BIL	07/08/2011
A-42.4	VIOLANTE, GEORGE	HMGB	WYWRA	AOV	RIW	07/08/2011
A-42.5	UNDERWOOD, KAY	HECM	WYWRA	AOV	RIW	07/08/2011
A-42.6	WARFEL, CHESTER	HECM	WYWRA	AOV	RIW	07/08/2011
A-42.8	KEENEN, KEITH	HECM	WYWRA	AOV	RIW	07/08/2011
A-42.9	SMITH, THEODORE D	HECM	WYWRA	AOV	RIW	07/08/2011
E-115	GAS ENG6 LUMPKIN 86	ENG6	GAGAS	AOV		07/08/2011
E-115.8	SISK, WESLEY J	ENGB	GAGAS	AOV	ATL	07/08/2011
E-115.9	CARTER, EARL L	FFT2	GAGAS	AOV	ATL	07/08/2011
E-392	MALLORY, BRADLEY	ENG6	ILSHF	AOV		07/08/2011
E-392.7	PAUKERT JR, FRANK J	ENGB	ILSHF	AOV	MWA	07/08/2011
E-392.8	HANCOCK, MIKE DALE	FFT2	ILSHF		MWA	07/08/2011
E-392.9	ZEILER, CHUCK	FFT2	ILILS	AOV	MWA	07/08/2011
E-522.1	TAYLOR, KEVIN	ENGB	WVMOF	AOV		07/08/2011
E-819.1	QUEEN, CHRIS	ENGB	COFTC	AIR	DEN	07/08/2011
E-822	ENGINE - T6 - WBD - #3651	ENG6	WYWBD	AOV		07/08/2011
E-822.1	PETERS, JOEL	ENGB	WYWBD	AOV	RIW	07/08/2011
E-822.2	CORNWELL, TANNER	FFT2	WYWBD	AOV		07/08/2011
E-822.3	OSBON, JORDEN R	FFT2	WYWBD	AOV	RIW	07/08/2011
E-822.4	BUDD, JACOB	FFT1	WYWBD	AOV	RIW	07/08/2011
E-850	TNCNF	ENG6	GACHF	AOV		07/08/2011
E-850.3	HAISTEN, MICHAEL C	ENGB	GAGIC	AOV	ATL	07/08/2011
E-892	ENGINE - T6 - CNF - 301	ENG6	TNCNF	AOV		07/08/2011
E-892.1	IVES, DAVID	ENGB	TNCNF	AOV	CHA	07/08/2011
E-892.2	RICE, MICHAEL L	ENOP	TNCNF	AOV	TRI	07/08/2011
E-892.3	TAYLOR, ERIC S	FFT2	TNCNF	AOV	TYS	07/08/2011
E-922.1	HERRON, NATHAN	ENGB	GAPDR	AOV		07/08/2011
E-943	ORANGE SPRINGS CONST. #2	TPL3	GAOKR	POV		07/08/2011
E-943.1	MATCHETT, HUGH	TPOP	GAOKR	POV		07/08/2011
E-990	ENGINE - STRIKE TEAM - T6 - MI	ES6	MTMDC			07/08/2011
O-549	TEAL, DEWEY R	FACL	GACHF	POV		07/08/2011
O-679	DECKER, COLEEN	IMET	IDWXW	A/R	BOI	07/08/2011
O-691	CUSTER, DAVID E	ATGS	MTLNF	AIR	MSO	07/08/2011
O-741	SAMS, ROD	TFLD	ORCOC	AIR	RDM	07/08/2011
O-778	CROSS, BRUCE N	COML	VAVAF	AOV	ROA	07/08/2011
O-839	WHARTON, TIM	TFLD	TNCNF	AOV	TRI	07/08/2011
E-293	DOUGHTRY-LEE PUMP	MISC	GAGAS	AOV		07/09/2011
E-405	MAINE ENGINE	ENG6	MEMHR	AOV		07/09/2011
E-405.4	GORE, BRETT	ENGB	NJWKR	AIR	AVP	07/09/2011
E-405.5	SHARPE, PRESTON J	FFT2	VAR5R	POV	ORF	07/09/2011
E-405.6	JONES, LOGAN D	FFT2	VAR5R	POV	ORF	07/09/2011
E-5007.1	BRADLEY, JEFFREY	FFT2	FLFNF	POV		07/09/2011
E-559	MULLENIX WATER TENDER T2	WAT2	ARAOC	POV		07/09/2011
E-826	2003 FORD F-350 TYPE 6 WHITE T	ENG6	GAOKR	POV		07/09/2011
E-826.1	MELTON, STEVEN	ENGB	GAOKR	POV		07/09/2011
E-826.2	NASH, ERIC	ENOP	GAOKR	POV		07/09/2011

Number	Name	Kind	UnitID	TravelM ethod	Jet- port	Travel Date
E-894	ENGINE - T6 - 862	ENG6	MOOZP	AOV		07/09/2011
E-894.1	CARLSON, GREGORY	ENGB	MOOZP	AOV	SGF	07/09/2011
E-894.2	BOSSERMAN, HEATHER	FFT2	MOOZP	AOV	STL	07/09/2011
E-894.3	SHELBY, JENNIFER E	FFT2	MOOZP	AOV	STL	07/09/2011
E-895	ENGINE - T6 - 9505	ENG6	MOMTF	AOV		07/09/2011
E-895.1	BRAY, TIMOTHY	ENGB	MOMTF	AOV	STL	07/09/2011
E-895.2	DUFF, AMY	ENGB	MOMTF	AOV	STL	07/09/2011
E-895.3	MOORE, AARON	FFT1	MOMTF	AOV	STL	07/09/2011
E-897.1	BECK, JONATHAN F	ENGB	MDBWR	AIR	BWI	07/09/2011
E-897.2	COLES, CHAD H	FFT2	MDBWR	AIR	BWI	07/09/2011
E-899	ENGINE - T6 - E-61	ENG6	MIUPC	AOV		07/09/2011
E-899.1	KARLOVICH, DEAN	ENGB	MIUPC	AOV	RHI	07/09/2011
E-899.2	BROWN, SHAWN P	FFT2	MIUPC	AOV	IWD	07/09/2011
E-899.3	BAER, BILL H	FFT2	MIUPC	AOV	RHI	07/09/2011
E-900	ENGINE - T6 - GUN 622	ENG6	MNMFC	AOV		07/09/2011
E-900.1	KUJAWA, RICHARD TRACY	ENGB	MNMFC	AOV	DLH	07/09/2011
E-900.2	GOLDSMITH, CASEY	FFT2	MNMFC	AOV		07/09/2011
E-900.3	PORTER, JEREMY GARRETT	FFT2	MNMFC	AOV	DLH	07/09/2011
E-904	ENGINE - T6 - LOVELAND FIRE &	ENG6	COACIX	AOV		07/09/2011
E-904.1	HILL, RONALD JOHN	ENGB	COACIX	AOV	DEN	07/09/2011
E-904.2	SCHUETZ, DAVID WAYNE	ENGB	COACIX	AOV	DEN	07/09/2011
E-904.3	SANDOLI, CJ "CHRIS"	FFT1	COACIX	AOV	DEN	07/09/2011
E-905.1	STEAKLEY, TIFFANY T	ENGB	COFTS	AIR	DEN	07/09/2011
E-905.2	KITZMAN, MONTY J	FFT2	COFTS	AIR	DEN	07/09/2011
E-905.3	WEBSTER, KERRY	FFT2	COBTDX	AIR	DEN	07/09/2011
E-907.1	EAGLE STAFF, LANCE C	ENGB	SDCRA	AIR	RAP	07/09/2011
E-907.2	THIN ELK, FLORENTINE B	FFT1	SDCRA	AIR	RAP	07/09/2011
O-645	INGRAM, LAURA M	PA50	VAVAF	REN	ROA	07/09/2011
O-658	MARTENS, PETER	ABRO	CALNF	AIR	RNO	07/09/2011
O-678	LYNN, ALEXANDER	EMTB	CAANF	A/R	ONT	07/09/2011
O-786	DUNN, JAMES	BCMG	WAQNT	AIR	SEA	07/09/2011
O-811	BLATT, STEPHEN	SPUL	OHWAF	A/R	CMH	07/09/2011
O-813	BENGSOON JR, ROBERT ELI	TFLD	MNSBR	AIR	MSP	07/09/2011
O-814	BOSCHEE, TROY RICHARD	TFLD	MNFFR	AIR	FAR	07/09/2011
O-821	SUTKOWSKI, MATTHEW M	HMGB	SCACR	AOV	CHS	07/09/2011
O-824	KENNEDY, SCOTT	IMET	NCNCC	A/R	EWN	07/09/2011
O-825	JOHNSON, EVAN	EQPM	ORDEF	AIR	RDM	07/09/2011
O-844	GLINTENKAMP, GARY	STEN	NYLIR	AOV	JFK	07/09/2011
E-385	RED LAKE ENG6	ENG6	MNMFC	AOV		07/10/2011
E-385.7	JUAREZ, GILBERT	ENGB	MNRLA	AOV	BJI	07/10/2011
E-385.8	HARRIS, JOSEPH	FFT2	MNRLA	AOV	BJI	07/10/2011
E-385.9	AUGINASH, JUSTIN	FFT2	MNRLA	AOV	BJI	07/10/2011
E-404.7	SELMER, NICOLE LOUISE	ENGB	MNSUF	AIR	DLH	07/10/2011
E-404.8	ROERICK, JAMES HERMAN	FFT2	MNSUF	AIR	DLH	07/10/2011
E-404.9	SWANSON, SCOTT DAVID	FFT2	MNSUF	AIR	DLH	07/10/2011
E-407.7	LAFRINIERE, STEVEN	ENGB	MNMNA	AIR	BJI	07/10/2011
E-407.8	AUGINAUSH JR, WILLIAM	FFT2	MNMNA	AIR	BJI	07/10/2011
E-407.9	LARSON, CHAD	FFT2	MNMNA	AIR	BJI	07/10/2011
E-5014	ENG6 N TEXAS FIRE 157	ENG6	TXTXF	AOV		07/10/2011
E-530.2	BAY, ?	THSP	GAOKR	POV		07/10/2011
E-831	ENGINE S/T - T6 - EASTERN OREG	ES4	ORBIC	AOV	RDM	07/10/2011
E-831.1	MOREFIELD, STEVEN	TFLD	ORBUD	AIR	RDM	07/10/2011
E-831.2	MONTGOMERY, JOHN CODY	TFLD	ORPRD	AIR	RDM	07/10/2011
E-831.3.1	DAVIES, BAXTER	FFT2	ORMAR	AIR	BOI	07/10/2011
E-831.3.2	DAVIS, DAMON ANDREW	ENGB	ORMAR	AIR	BOI	07/10/2011

Number	Name	Kind	UnitID	TravelM ethod	Jet- port	Travel Date
E-831.3.3	LUMLEY, BRIAN	ENGB	ORBUD	AIR	BOI	07/10/2011
E-831.3.4	DOBSON, ZACH	FFT2	ORBUD	AIR	BOI	07/10/2011
E-831.4.1	ISHIDA, MITCHELL	ENGB	ORLAD	AIR	RDM	07/10/2011
E-831.4.2	BRAZEAL, TREVOR	FFT2	ORLAD	AIR	RDM	07/10/2011
E-831.4.3	JOHNSON, KYLE	FFT2	ORLAD	AIR	RDM	07/10/2011
E-831.5.1	HASKINS, MATTHEW R	ENGB	ORLAD	AIR	LMT	07/10/2011
E-831.5.2	ATKINSON, STEVEN	FFT2	ORLAD	AIR	LMT	07/10/2011
E-831.5.3	CLEMENS, KASEY	FFT2	ORLAD	AIR	LMT	07/10/2011
E-831.6.1	SKAAR, KASEY	ENGB	ORPRD	AIR	RDM	07/10/2011
E-831.6.2	HARING, MICHAEL JOHN	FFT2	ORPRD	AIR	RDM	07/10/2011
E-831.6.3	KRAMER, BRANDON	FFT2	ORPRD	AIR	RDM	07/10/2011
E-831.7.1	MASON, DANIEL WAYNE	ENGB	ORVAD	AIR	BOI	07/10/2011
E-831.7.2	MCDANIEL, JORDAN J	FFT2	ORVAD	AIR	RDM	07/10/2011
E-831.7.3	DELONG, LUCILLE I	FFT1	ORVAD	AIR	BOI	07/10/2011
E-893.4	LYDEN, PAUL J	ENGB	MIHMF	AIR	MBS	07/10/2011
E-893.6	HEPLER, TERRY WAYNARD	FFT2	MIHMF	AIR	MBS	07/10/2011
E-893.7	WHITE, AARON LEE	FFT2	MIHMF	AIR	MBS	07/10/2011
E-901	ENGINE - T6 - 631 USFS BEAVER	ENG6	UTFIF	AOV		07/10/2011
E-901.1	MATHESON, ROBERT CLAY	ENGB	UTFIF	AOV	CDC	07/10/2011
E-901.2	LIMB, ZACHARY CHAD	FFT2	UTFIF	AOV	SLC	07/10/2011
E-901.3	YARDLEY, STETSON DANNY	FFT2	UTFIF	AOV	SLC	07/10/2011
E-901.4	PANKRATZ, NATHAN	FFT2	TXTXF	AOV	IAH	07/10/2011
E-906.1	WICKHAM, JAY	ENGB	SDSDS	AIR	RAP	07/10/2011
E-906.2	WARREN, DENYS MICHAEL	FFT1	SDSDS	AIR	RAP	07/10/2011
E-906.3	KEITH, NATHAN	FFT2	SDSDS	AIR	RAP	07/10/2011
E-914	TRACTOR - PLOW - T2 - GFC1097	TPL2	GAGAS	AOV		07/10/2011
E-915	TRACTOR - PLOW - T4 - GFC	TPL2	GAGAS	AOV		07/10/2011
E-916	TRACTOR - PLOW - T2 - GFC1075	TPL2	GAGAS	AOV		07/10/2011
E-916.1	TRANSPORT TRACTOR/TRAILER	TRTL	GAGAS	POV		07/10/2011
E-939	ENGINE - T6 - KY-LBF E162	ENG6	ARWHR			07/10/2011
E-939.4	HARSH, JOSEPH	ENGB	ARWHR	AOV		07/10/2011
E-939.5	HARRIS, ROBERT	FFT2	ARWHR	AOV		07/10/2011
E-980	ENGINE - T6 - STEARNS E161	ENG6	KYDBF	POV		07/10/2011
E-980.1	STONE, LARRY AMOS	ENGB	KYDBF	POV	LEX	07/10/2011
E-980.2	METZMEIER JR, FRANK JOSEPH	FFT2	KYDBF	POV	TYS	07/10/2011
O-484	YEARWOOD, MIKE	HMGB	CALNF	A/R	RNO	07/10/2011
O-631	PETRUZALEK, JERRY R	GISS	WICNF	AIR	RHI	07/10/2011
O-637	SPARKS, RICHARD A	EMTB	WIWIC	AIR	RHI	07/10/2011
O-659	TRAPP, TERRY L	SOF2	PANAF	AIR	RHI	07/10/2011
O-693	JOHNSON, ROSEMARY	PTRC	MNCPF	AIR	BJI	07/10/2011
O-694	THOMPSON, CATHERINE JAYNE	PTRC	MNCPF	AIR	BJI	07/10/2011
O-802	WALLER, WILLIAM GARY	GSUL	MSMNF	AOV	MEM	07/10/2011
O-826	CHAPIN, RANDY	GSUL	MSMSS	AIR	JAN	07/10/2011
O-827	LIGONS, CLIFFORD D	BCMG	WAGPF	AIR	PDX	07/10/2011
O-829	DISTEFANO, PETER	BCMG	NYNYX	AIR	JFK	07/10/2011
O-837	BURNETTE, ROBERT D	SEC1	GACHF	AOV	ATL	07/10/2011
O-862.7	CHUNG, QUINCY	DIVS	IDFCD	AIR	BOI	07/10/2011
C-20	CREW - CAMP - PINE KNOT JCC -	CC	KYDBF	AOV	TYS	07/11/2011
C-20.1	NELSON, BOBBY R	CACB	KYDBF	AOV	TYS	07/11/2011
C-20.2	KOHLER, LINDSEY	CAMP	KYDBF	AOV		07/11/2011
C-20.4	DOLLONS, ROBERT	CAMP	KYDBF	AOV		07/11/2011
C-20.5	ROSS, BRANDON	CAMP	KYDBF	AOV		07/11/2011
C-20.6	WELLMAN, JONATHAN	CAMP	KYDBF	AOV		07/11/2011
C-20.9	MCCOMB, DANIEL	CAMP	KYDBF	AOV	TYS	07/11/2011
E-1036	ENGINE - T5 - SWS - ANACONDA U	ENG5	MTSWS	AOV		07/11/2011

Number	Name	Kind	UnitID	TravelM ethod	Jet- port	Travel Date
E-1036.1	VILLA, NICHOLAS D	ENGB	MTSWS	AOV	BTM	07/11/2011
E-1036.2	SPEHAR, TRISTON R	FFT2	MTSWS	AOV	BTM	07/11/2011
E-1036.3	ORRINO, CORY L	FFT2	MTSWS	AOV	BTM	07/11/2011
E-137	ENG6 WILDLANDS 8	ENG6	FLFNF	POV		07/11/2011
E-137.5	RADFORD, AARON	ENGB	FLFNF	POV		07/11/2011
E-390	WISCONSIN ENG 461	ENG6	WICNF	AOV		07/11/2011
E-390.4	BORMANN, TYLER	ENGB	WICNF	AIR		07/11/2011
E-390.5	MOFFITT, ANDREW	ENGB	WICNF	AIR		07/11/2011
E-390.6	SLOAN II, DAVID	ENGB	WICNF	AIR		07/11/2011
E-5011	ENG6 SMOKEY MTN #209	ENG6	NCNCF	POV		07/11/2011
E-5012.6	SHRIMPLING, PATRICK	ENOP	NCNCF	POV		07/11/2011
E-5017	ENGT6 MARK TWAIN E9504	ENG6	MOMTF	AOV		07/11/2011
E-5017.8	OLIVER, DOUGLAS	FFT2	MOMOC	AIR	STL	07/11/2011
E-5017.9	KELLY, KEITH	FFT1	MOMTF	AOV		07/11/2011
E-584	ENG6 CNNF E161	ENG6	WICNF	AOV		07/11/2011
E-914.1	TRANSPORT TRACTOR TRAILER	TRTL	GAGAS	AOV		07/11/2011
E-914.2	DURHAM, WILLIAM HUNTER	TPOP	GAGAS	AOV	ALB	07/11/2011
E-915.1	TRUCK - TRACTOR - GFC4202366	TRAC	GAGAS	AOV		07/11/2011
E-915.2	MEADOWS, DEREK	TPOP	GAGAS	AOV		07/11/2011
E-916.2	TAYLOR, HARVEY	TPOP	GAGAS	AOV		07/11/2011
E-93	WATER TENDER 10	WTS2	FLFNF	POV		07/11/2011
E-93.1	DAVIS, WILLIAM	DRIV	FLFNF	POV		07/11/2011
E-957	DECATU ENGINE 31- T7 -	ENG7	GAGAS	AOV		07/11/2011
E-974	ENG6 RED ROCK FIRE -	ENG6	WIR09	POV		07/11/2011
E-976	ENG6 RED ROCK FIRE -	ENG6	WIR09	POV		07/11/2011
E-977	ENGINE - T6 - IPF - D1 - E-31	ENG6	IDIPF	AOV		07/11/2011
E-977.1	SMITH, LUKE	ENGB	IDIPF	AOV	GEG	07/11/2011
E-977.2	NORRIS, PAUL	ENGB	IDIPF	AOV	GEG	07/11/2011
E-977.3	RATCLIFFE, EVAN ANDREW	FFT1	IDIPF	AOV	GEG	07/11/2011
E-977.7	LEWIS, CODY	FFT1	IDIPF		GEG	07/11/2011
E-978	ENGINE - T6 - PLS - E1161	ENG6	IDPLS	POV		07/11/2011
E-979	ENGINE - T6 - CMS - 43F53	ENG6	IDCMS	AOV		07/11/2011
O-1014	HUENERGARDT, DENNIS	STDZ	ORWIF		EUG	07/11/2011
O-379	RENSHAW, JARED	DRIV	GAOKR	POV		07/11/2011
O-419	RIPLEY, STEVEN	SOF2	FLFNF	POV		07/11/2011
O-527	CURTIS, DOROTHY	EQTR	WYCPS	AIR	CPR	07/11/2011
O-635	RUMPH, CLAY FRANKLIN	SEC1	MNMNA	AIR	DLH	07/11/2011
O-648	WILKERSON, DAVID L	PIO2	OKOKS	AIR	TUL	07/11/2011
O-711	HUENERGARDT, DENNIS	THSP	OREIC	AIR	EUG	07/11/2011
O-731	BARKER, KEITH	EMTP	COLACX	AIR	ORD	07/11/2011
O-739	WEEKS, RODNEY JAY	STEN	IDCDC	AIR	GEG	07/11/2011
O-799	TATE, MELVIN L	HEB1	FLFLS	POV	PFN	07/11/2011
O-809	MILAM, TODD M	STPL	GAGAS	AOV	ALB	07/11/2011
O-840	JOHNSON, MICAH DARRELL	TFLD	MIHMF	A/R	MBL	07/11/2011
O-841	FLUE, JAMES R	TFLD	ALALF	AOV	MGM	07/11/2011
O-843	CHASTAIN, JOSEPH T	DOZB	GACHF	AOV	ATL	07/11/2011
O-851	CARL, ANGELA	ENGB	NCALR	POV	CLT	07/11/2011
O-897	GEORGE, TERRY	STEN	ORWWF	AIR	BOI	07/11/2011
O-898	MCCRAW, JOEL	STEN	ORWWF	AIR	BOI	07/11/2011

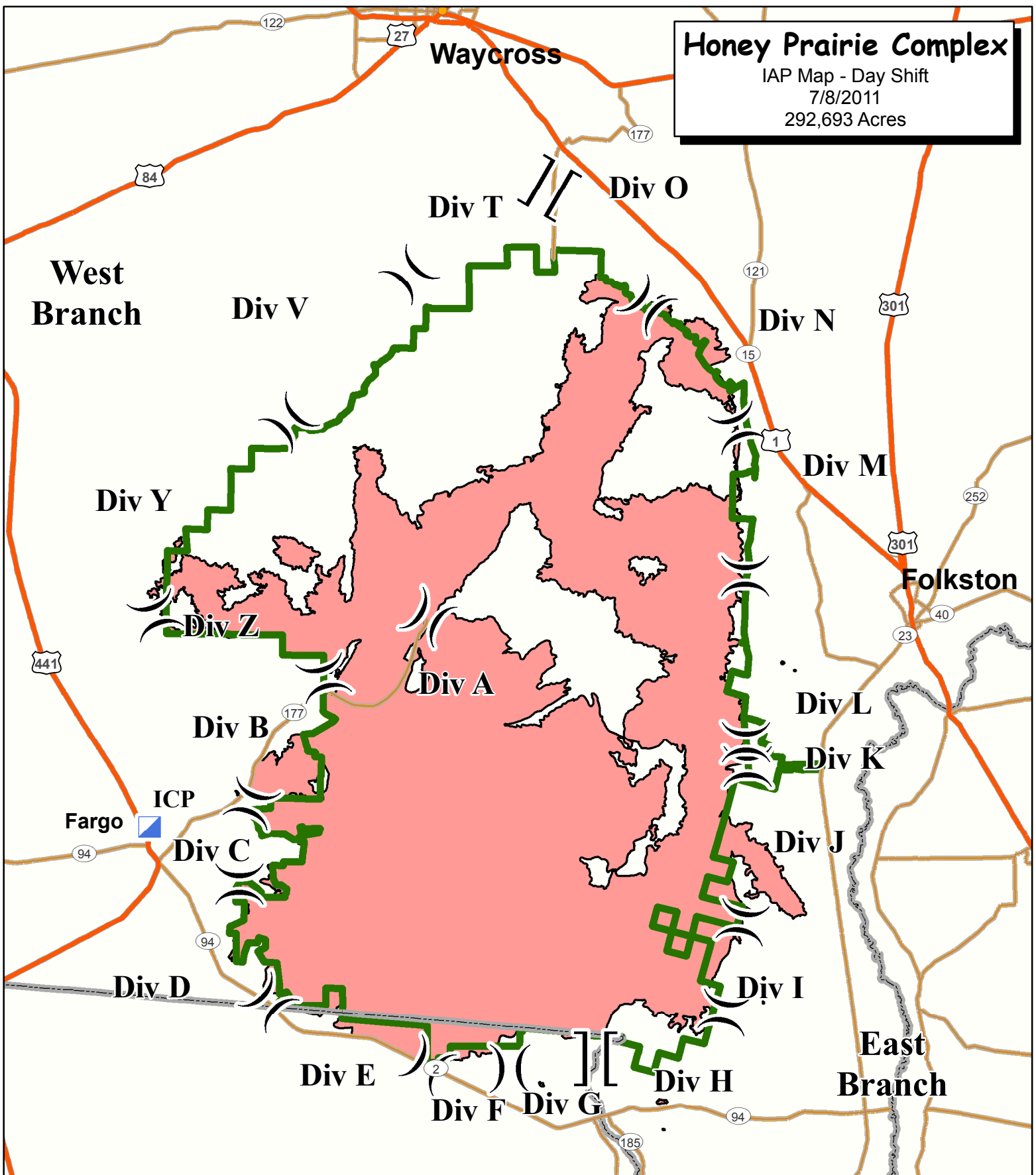


# Honey Prairie Complex

IAP Map - Day Shift

7/8/2011

292,693 Acres



- ]] Branch Break
- ) ( Division Break
- Incident Command Post

- Highway
- Major Road
- - - State Boundary

- ▭ Refuge Boundary
- Fire Area



