

Honey Prairie Complex

GA-OKR-000001

Incident Action Plan

Operational Period
Saturday July 9, 2011

Day Shift (0800-2100)
Night Shift (1800-0600)

Accounting Codes

FWS – 9141-F25M-2J

NPS – 5023 F25M E11

BLM – F25M

USFS – PRF25M_1502

Initial Attack – F4PM

INCIDENT OBJECTIVES	1. INCIDENT NAME Honey Prairie Complex	2. DATE PREPARED 7/8/11	3. TIME PREPARED 1800
4. OPERATIONAL PERIOD (DATE/TIME) Saturday July 9, 2011 Day (0800 – 2100) and Night (1800 – 0600)			
5. GENERAL CONTROL OBJECTIVES FOR THE INCIDENT (INCLUDE ALTERNATIVES) 1. Provide for safety of incident personnel and public in all incident operations. 2. Maintain a positive working relationship with all State and Federal partners and adjacent landowners and cooperators. Inform, involve and communicate incident planning and operations with all partners. 3. Contain all fires that are within the Okefenokee National Wildlife Refuge, inside the Refuge and/or inside the swamp edge break if possible. 4. Use full suppression strategies and tactics to minimize damage to private timberlands and improvements and to prevent fires outside the Refuge from entering the Refuge. 5. Assist in management and suppression of additional fires (new starts or breakouts) in the vicinity as approved by Agency Administrators and Unified Incident Commanders. 6. Manage the fires cost-effectively consistent with the values at risk. 7. Implement structure protection as necessary for at-risk facilities and communities.			
6. WEATHER FORECAST FOR OPERATIONAL PERIOD See attached forecast for area specific weather information.			
7. GENERAL SAFETY MESSAGE Drive defensively and use spotter when backing. Ensure LCES is in place and known by all personnel. Drink plenty of water and take frequent rest breaks. Ensure proper use of PPE during all operations.			
8. Attachments <input checked="" type="checkbox"/> if attached <input checked="" type="checkbox"/> Organization List (ICS 203) <input checked="" type="checkbox"/> Incident Map <input checked="" type="checkbox"/> Safety Message <input checked="" type="checkbox"/> Assignment List (ICS 204) <input type="checkbox"/> Traffic Plan <input type="checkbox"/> Demobilization Procedures <input checked="" type="checkbox"/> Communications Plan (ICS 205) <input checked="" type="checkbox"/> Human Resources <input checked="" type="checkbox"/> Unit Log <input checked="" type="checkbox"/> Medical Plan (ICS 206) <input checked="" type="checkbox"/> Phone List			
9. PREPARED BY (PLANNING SECTION CHIEF) Ed Flowers		10. APPROVED BY (INCIDENT COMMANDER) /s/ Don West /s/Gary Beauchamp /s/Trent Ingram /s/Mike Dueitt	

ORGANIZATION ASSIGNMENT LIST		9. Operations Section	
1. Incident Name Honey Prairie Complex GA-OKR-000001		Chief	Rick Dolan 7/22
		Planning	Butch Hall 7/22
2. Date 7/8/2011	3. Time 1000 hrs	a. WEST BRANCH - Divisions/Groups	
4. Operational Period 7/9/2011 Day (0800-2100) Night (1800 – 0600)		OPBD	Bob Schindelar 7/11 / Tom Donohoe 7/22
5. Incident Commander and Staff		Division	A, B, C Mike Almas 7/10 / Micah Johnson (t) 7/10
Incident Commander	Don West/Verne Reggal (Dep)/Trent Ingram/Mike Dueitt	Division	D, E, F, G Thomas Herold 7/19
Liason Officer	Gary Beauchamp		
Safety Officers	Barry Coulliette 7/22	Division	T Brian Rhodes 7/20 / Todd Haynes (t) 7/19
Information Officer	Ludie Bond 7/22	Division	V Shawn Duggar 7/22 Bryce Thomas (t) 7/22 Greg Suszek (t) 7/19
6a. Agency Administrators		Division	Y (DAY) Gary Smith 7/19 / Dan Helterline (t) 7/19
		Division	V, Y (NIGHT) Jacquie Parks 7/21
FWS	Curt McCasland	Division	Z Larry Peabody 7/10 / Jesse Knox (t) 7/18
FWS	Mindy Gautreaux	Group	IA-WEST and Structure Group Don Hammack 7/19 / Bob Schober (t) 7/18
6b. Agency Representatives		b. EAST BRANCH - Divisions/Groups	
FWS Liason	Skippy Reeves	OPBD	Russ Lane 7/12
GFC	Frank Sorrels	Division	H, I, J, K Matt Filbert 7/18 / Dean Karlovich (t) 7/18
FLDOF	James Karels	Division	L, M Ray Miller 7/20
FWS AREP	Mike Housh	Division	N, O Steve Griffin 7/19
FWS-Refuge PAO	Art Webster	Group	IA-EAST John Huschke 7/12
GEMA AREP	Alan Robinson / Diane Adams	Group	Roads
USFS AREP	Ivan Greene		
7. Planning Section		d. Air Operations Branch - Honey Prairie	
Chief	Ed Flowers 7/22	Air Operations Branch Director	Tim Elder 7/22
Resources Unit	Wilbur Priest 7/22/Fred Noack	Air Support Group Supervisor	Mark Degregorio
Situation Unit	Scott Crosby 7/22	ATGS-Lake City	Tim Caughlin / Melanie Fullman (t)
IMET	Joe Goudsward / Mike Bettwy	d. Air Operations Branch-Waycross	
Fire Behavior Analyst	Gary Brunk 7/13 / Steven Cobb (t) 7/15 / John Kern 7/22	Waycross Helibase Manger	Melvin Tate
Demobilization Unit	Tim Wilkinson 7/22	d. Air Operations Branch - Fargo	
GIS	Sue Leverette 7/22	Fargo Helibase Manager	Brain Campbell/Steve Croy (t)
CTSP	Randy Fountain 7/22 / Charlie Bolen 7/17	ATGS-Fargo	Carl McGill
TNSP			
8. Logistics Section		10. Finance Section	
Chief	Shane Locke/Butch Mallet 7/22	Chief	Betty Palmiotto/Linda Starling 7/22
Supply Unit	Rhonda Hughes 7/22	Time Unit	Frances Matheny 7/22
Ground Support Unit	James Thompson/Jay Throup	Procurement	John Watson 7/22
ORDM	Abe Phillipson 7/22	Comp Claims Unit	Alvin Welch/Katrina Bryant 7/22
Communications Unit	Brian Mathews 7/22	Cost	Lisa Ridley 7/22
Medical Unit	Joe Fowler 7/22/Mike Evers (t) 7/11	Buying Team	Rita Loper
Facilities	Mel Reese 7/22	IBA	Ron Knowles
Food	Nat Wright 7/22/Bob Kooken 7/17		
RCDM	Gary Sisson 7/22		
		Prepared by:	Wilbur Priest RESL

DIVISION ASSIGNMENT LIST			1. Branch West		2. Division A, B, C		
3. Incident Name: Honey Prairie Complex			4. Operational Period Date: ##### 7/9/2011 Time: ##### Day: 0800-2100				
5. Operations Personnel							
Operations	Rick Dolan 7/22	Branch Director		Bob Shindelar 7/11 Tom Donohoe 7/22			
Planning Ops	Butch Hall 7/22	Division Supervisor		Mike Almas 7/10 / Micah Johnson (t) 7/10			
Safety Officer	Barry Coulliette 7/22						
6. Resources Assigned this Period							
Strike Team/Task Force/ Resource Designator	Leader / Name / Designator	Last Shift Date	Num. Per.	Drop Off PT./Time	Pick Up PT./Time		
TFLD (O-897)	Terry George	7/10	1				
TFLD (O-898)	Joel McCraw (t)	7/10	1				
TFLD (O-900)	Phill Millette	7/18	1				
TFLD (O-940)	Greg Jacobson	7/19	1				
TFLD (E-5017.9)	Keith Kelley (t)	7/10	1				
ENG6 (E-807)	Todd Caudill	7/11 ?	3				
ENG6 (E-900)	Richard Kujawa	7/11	2				
ENG6 (E-5002) Attack#1	Hank Kight	7/20	2	PVT			
TPL3 (E-170) Francis Marion	John Christopher	7/11	2				
STEN (O-949)	Nikia Hernandez	7/19	1				
ENG6 (E-1065)	Mike Carnelli	7/22	3				
ENG6 (E-1066)	Eric Jones	7/21	3				
ENG6 (E-907) Eagle Staff	Lance Eagle Staff	?	2				
ENG6 (E-1059)	Daniel Ross	7/22	3				
ENG6 (E-994)	Pat Norquay	7/18	3				
ENG6 (E-5017) MOMTF 9504	Erin Yeoman	7/10	5				
DOZ3 (E-646)/E-723 trans	Phil Dueitt	7/19	1	PVT			
WAT2 (E-93)	William Davis	7/10	1	PVT			
SOF2 (O-702)	Bruce Barrett	7/11	1				
EMTP (O-984)	Bob Eaton	7/20	1				
7. Control Operations							
<ul style="list-style-type: none"> Patrol and mop up within 100' of fire perimeter line. Monitor fire impacts to Stephen Foster State Park. Patrol and control return. 							
8. Special Instructions							
<ul style="list-style-type: none"> Examine work area for fire weakened snags. Ensure LCES are in place before operations begin and stay hydrated. Additional resources will be available from GFC, Florida DOF, FWS, and local cooperators. Drive defensively and with lights on at all times. 							
9. Division/Group Communication Summary							
Function	Frequency	System	Channel	Function	Frequency	System	Channel
Command N Okee Repeater	RX 164.5750/206.5 TX 163.150/206.5	KING NIFC	5	Logistics		KING NIFC	
Tactical Div/Group	RX 168.775 TX 168.7750	KING NIFC	9	Air to Ground	RX 166.9375 TX 166.9375	KING NIFC	6
Prepared by (Resource Unit Ldr.) Fred Noack		Approved by (Planning Sect. Ch.) /s/ Ed Flowers			Date 7/8/2011		Time 1930

DIVISION ASSIGNMENT LIST			1. Branch West		2. Division D, E, F, G		
3. Incident Name Honey Prairie Complex			4. Operational Period Date: ##### 7/9/2011 Time: #####0800-2100				
5. Operations Personnel							
Operations	Rick Dolan 7/22		Branch Director		Bob Shindelar 7/11 Tom Donohoe 7/22		
Planning Ops	Butch Hall 7/22		Division Supervisor		Toby Herold 7/20		
Safety Officer	Barry Coulliette 7/22						
6. Resources Assigned this Period							
Strike Team / Task Force / Resource Designator		Leader / Name / Designator		Last Shift Date	Num. Per.	Drop Off PT./Time	Pick Up PT./Time
TFLD (O-916)		Hans Ohme		7/18	1		
TFLD (O-926)		Matt Ingram		7/18	1		
WT (E-700)		Lee Cahoon		7/17	1		
HEQB (O-708)		Andy Murrin		7/12	2	PVT	
Clinch County Grader (E-228)		Steven Hendricks		7/11	1		
TPL3 (E-499)		Roy Rowan		7/14	2	PVT	
ENG6 (E-134)		Paul McDavid		7/20	3	PVT	
ENG5 (E-503)		Dean Vanderbleek		7/16	2	PVT	
ENG6 (E-709)		Jason Walker		7/16	3	PVT	
ENG6 (E-821)		Ryan Ricke		7/12	3		
ENG6 (E-824)		Joshua Morgan		7/12	3		
EMTB (O-849)		Kyle Meadows- Barber		7/11	1		
SOF2 (O-805)		Troy Shaddox		7/15			
7. Control Operations							
<ul style="list-style-type: none"> Monitor and patrol south end of West Branch. Mop up all hot spots within 100' of the fire perimeter. Patrol and control return. 							
8. Special Instructions							
<ul style="list-style-type: none"> Ensure LCES are in place before operations begin and stay hydrated. See medical plan for EMT support. Drive defensively and with lights on at all times. Examine work area for fire weakened snags. If communications needed with Impassable Bay Fire - use Channel 11 (168.2000) 							
9. Division/Group Communication Summary							
Function	Frequency	System	Channel	Function	Frequency	System	Channel
Command S Okee Repeater	RX 164.7750/123.0 TX 163.150/123.0	KING NIFC	2	Logistics		KING NIFC	
Tactical Div/Group	RX 151.2725 TX 151.2725	KING NIFC	13	Air to Ground	RX 166.9375 TX 166.9375	KING NIFC	6
Prepared by (Resource Unit Ldr.) Fred Noack		Approved by (Planning Sect. Ch.) /s/ Ed Flowers			Date July 8, 2011		Time 1930

DIVISION ASSIGNMENT LIST				1. Branch West		2. Division T	
3. Incident Name Honey Prairie Complex				4. Operational Period Date: ##### 7/9/2011 Time: #####0800-2100			
5. Operations Personnel							
Operations	Rick Dolan 7/22			Branch Director	Bob Shindelar 7/11 Tom Donohoe 7/22		
Planning Ops	Butch Hall 7/22			Division	Brian Rhodes 7/20 / Todd Haynes (t) 7/19		
Safety Officer	Barry Coulliette 7/22						
6. Resources Assigned this Period							
Strike Team/Task Force/ Resource Designator		Leader / Name / Designator		Last Shift Date	Num. Per.	Drop Off PT./Time	Pick Up PT./Time
TFLD (O-946)		Stephen Filmore		7/19	1		
STEN (E-831.1)		Steven Morefield		7/9	1		
STEN (O-952)		Vincent Plummer		7/19	1		
S/T Type 6 OR STEN (E-831.2)		John Montgomery (t)		7/9	1		
ENG6 (E-831.3)		Brian Lumley		7/9	4		
ENG6 (E-831.4)		Mitchell Ishida		7/9	4		
ENG6 (E-831.5)		Mathew Haskins		7/9	3		
ENG6 (E-831.6)		Kasey Skaar		7/9	3		
ENG6 (E-831.7)		Daniel Mason		7/9	3		
WAT1 (E-1019)		Raymond Novello		7/21	1	PVT	
WAT2 (E-1021)		Charlie Brown		7/19	1	PVT	
TPL2 (E-986)		David Hauser		7/26	1	PVT	
EMTP (O-730)		Shane Powers		7/13	1		
EMTP (O-982)		Jeff Halladay		?	1		
SOF2 (O-973)		Larry Dorshorst		7/20	1		
7. Control Operations							
<ul style="list-style-type: none"> Recon potential control lines and examine area for snag removal Improve swamp break boundaries for fire breaks, work w/resource advisor Coordinate potential burn-out w/READ and refuge personnel Use refuge personnel for any burn-out activities. 							
8. Special Instructions							
<ul style="list-style-type: none"> Make contact with the Resource Advisor before using mechanical equipment. Safely push down with equipment all snags whether on fire or not that are a threat to success or tactical operations. Ensure LCES are in place before operations begin. Stay hydrated. Drive defensively and with lights on at all times. Boggy terrain: Be careful and aware when working around this type of area. 							
9. Division/Group Communication Summary							
Function	Frequency	System	Channel	Function	Frequency	System	Channel
Command N Okee Repeater	RX 164.5750/206.5 TX 163.150/206.5	KING NIFC	5	Logistics		KING NIFC	
Tactical Div/Group	RX 168.775 TX 168.775	KING NIFC	9	Air to Ground	RX 166.9375 TX 166.9375	KING NIFC	6
Prepared by (Resource Unit Ldr.) Fred Noack		Approved by (Planning Sect. Ch.) /s/ Ed Flowers			Date July 8, 2011		Time 1800

DIVISION ASSIGNMENT LIST			1. Branch West		2. Division V		1 of 2	
3. Incident Name Honey Prairie Complex			4. Operational Period Date: ##### 7/9/2011 Time: #####0800-2100					
5. Operations Personnel								
Operations		Rick Dolan 7/22		Branch Director		Bob Shindelar 7/11 Tom Donohoe 7/22		
Planning Ops		Butch Hall 7/22		Division Supervisor		Shawn Duggar/Bryce Thomas (t) 7/22		
Safety Officer		Barry Coulliette 7/22		Division Supervisor		Greg Suszek 7/19		
6. Strike Team/Task Force/ Resource Designator								
Resource Designator		Leader / Name / Designator		Last Shift Date	Num. Per.	Drop Off PT./Time		Pick Up PT./Time
TFLD (O-906)		Evan Karp		7/18	1			
TFLD (O-978)		Jacob Thelen (t)		7/19	1			
TFLD (O-942)		Ben Krupski		7/19	1			
STEN (O-948)		Glen Palfrey		7/20	1			
STEN (O-1000)		Waylon Meek (t)		7/20	1			
Feller-Buncher (E-524)		Josh Burdy		7/21	1	PVT		
Feller-Buncher (E-526)		James Marshall		7/16	1	PVT		
Grader (E-530)		Woody Bargeron		?	1	PVT		
TPL2 (E-606)		Cody Daniels		7/17	1			
ENG6 (E-2)		Arthur Lauroie		?	2			
ENG6 (E-3)		Angie Carl		?	2			
ENG6 (E-992)		Steve Spangler		7/18	3	PVT		
ENG6 (E-995)		Aaron Bailey		7/9	3			
ENG6 (E-996)		Dustin Picking		7/9	3			
ENG6 (E-980)		Amos Stone		7/9	2			
ENG6 (E-1085)		Don Crane		7/14	2	PVT		
ENG6 (E-1000)		Paul Rampinini		7/19	2	PVT		
ENG6 (E-1001)		Dick Sypher		7/19	2	PVT		
ENG6 (E-1053)		Timmerman		7/27	3	PVT		
ENG6 (E-1064)		Greg Nichols		7/21	3			
ENG6 (E-1062)		Tyler Quintano		7/22	3	PVT		
ENG6 (E-1063)		Brad Finch		7/22	3	PVT		
7. Control Operations								
<ul style="list-style-type: none"> Recon potential control lines and examine area for snag removal Improve swamp break boundaries for fire breaks, work w/resource advisor Coordinate potential burn-out w/READ and Refuge Personnel Use Refuge personnel for any burn-out activities. 								
8. Special Instructions								
<ul style="list-style-type: none"> Make contact with the Resource Advisor before using mechanical equipment. Safely push down with equipment all snags whether on fire or not that are a threat to success or tactical operations. Ensure LCES are in place before operations begin. Stay hydrated. Drive defensively and with lights on at all times. Boggy terrain: Be careful and aware when working around this type of area. 								
9. Division/Group Communication Summary								
Function	Frequency	System	Channel	Function	Frequency	System	Channel	
Command N Okee Repeater	RX 164.5750/206.5 TX 163.150/206.5	KING NIFC	5	Logistics		KING NIFC		
Tactical Div/Group	RX 151.2725 TX 151.2725	KING NIFC	13	Air to Ground	RX 166.9375 TX 166.9375	KING NIFC	6	
Prepared by (Resource Unit Ldr.) Fred Noack		Approved by (Planning Sect. Ch.) /s/ Ed Flowers			Date #####July 8, 2011		Time 1800	

DIVISION ASSIGNMENT LIST			1. Branch West	2. Division V	2 of 2		
3. Incident Name Honey Prairie Complex			4. Operational Period Date: ##### 7/9/2011 Time: #####0800-2100				
5. Operations Personnel							
Operations	Rick Dolan 7/22	Branch Director	Bob Shindelar 7/11 Tom Donohoe 7/22				
Planning Ops	Butch Hall 7/22	Division Supervisor	Shawn Duggar/Bryce Thomas (t) 7/22				
Safety Officer	Barry Coulliette 7/22	Division Supervisor	Greg Suszek 7/19				
6. Strike Team/Task Force/ Resource Designator							
	Leader / Name / Designator	Last Shift Date	Num. Per.	Drop Off PT./Time	Pick Up PT./Time		
TFLD (O-986)	Mike Harnois	7/22	1				
DOZB (O-1001)	Roy Cribb	7/20	1				
KG Dozer							
KG Dozer							
Skidder (E-981)	Henry Tiner	7/25	1	PVT			
SOF2 (O-972)	Larry Bunge	7/19	1				
EMTP (O-767)	Evan Dean	7/12	1				
7. Control Operations							
<ul style="list-style-type: none"> Recon potential control lines and examine area for snag removal Improve swamp break boundaries for fire breaks, work w/resource advisor Coordinate potential burn-out w/READ and Refuge Personnel Use Refuge personnel for any burn-out activities. 							
8. Special Instructions							
<ul style="list-style-type: none"> Make contact with the Resource Advisor before using machanical equipment. Safely push down with equipment all snags whether on fire or not that are a threat to success or tactical operations. Ensure LCES are in place before operations begin. Stay hydrated. Drive defensively and with lights on at all times. Boggy terrain: Be careful and aware when working around this type of area. 							
9. Division/Group Communication Summary							
Function	Frequency	System	Channel	Function	Frequency	System	Channel
Command N Okee Repeater	RX 164.5750/206.5 TX 163.150/206.5	KING NIFC	5	Logistics		KING NIFC	
Tactical Div/Group	RX 151.2725 TX 151.2725	KING NIFC	13	Air to Ground	RX 166.9375 TX 166.9375	KING NIFC	6
Prepared by (Resource Unit Ldr.) Fred Noack		Approved by (Planning Sect. Ch.) /s/ Ed Flowers		Date #####July 8, 2011		Time 1800	

DIVISION ASSIGNMENT LIST				1. Branch West		2. Division Y - Day		1 of 2	
3. Incident Name Honey Prairie Complex				4. Operational Period Date: ##### 7/9/2011 Time: #####0800-2100					
5. Operations Personnel									
Operations		Rick Dolan 7/22			Branch Director		Bob Shindelar 7/11 Tom Donohoe 7/22		
Planning Ops		Butch Hall 7/22			Division Supervisor		Gary Smith 7/19, Dan Helterline (t) 7/19		
Safety Officer		Barry Coulliette 7/22							
6. Resources Assigned this Period									
Strike Team/Task Force/ Resource Designator		Leader / Name / Designator		Last Shift Date	Num. Per.	Drop Off PT./Time		Pick Up PT./Time	
TFLD (O-920)		Aaron Schneider		7/18	1				
TFLD (O-991)		Adam Wolf (t)		7/21	1				
STEN (O-739)		Rodney Weeks		7/11	1				
TFLD (O-954)		Brian Ebert (t)		7/20	1				
STEN (O-979)		Sam Lindblom (t)		7/20	1				
ENG6 (E-1071)		Brandon Morris		7/22	3				
ENG6 (E-584)		Cris Geidel		7/24	2				
ENG6 (E-838)		Chris Mursu		7/21	3				
ENG6 (E-997)		Jack Weer		7/20	2				
ENG6 (E-998)		John Stebner		7/20	2				
ENG6 (E-1004)		Doug Scott		7/19	2	PVT			
ENG6 (E-1005)		Dave Hardy		7/19	2	PVT			
ENG6 (E-1010)		Jene-Paul Matson		7/18	2	PVT			
ENG6 (E-1011)		Doug Williams		7/18	2	PVT			
ENG6 (E-1012)		Glenn		7/18	2	PVT			
ENG6 (E-1014)		Greg Curry		7/19	3	PVT			
ENG6 (E-1015)		Robert Burton		7/20	3	PVT			
ENG6 (E-1016)		James Mangine		7/20	3	PVT			
ENG5 (E-1036)		Nicholas Villa		7/10	3				
ENG5 (E-1046)		Karen Mobley		7/21	3				
ENG6 (E-1056)		John Wisecarver		7/28	3	PVT			
7. Control Operations <ul style="list-style-type: none"> • Make contact with the Resource Advisor before using mechanical equipment. • Recon potential controllines and examine area for snag removal • Improve swamp break boundaries for fire breaks 									
8. Special Instructions <ul style="list-style-type: none"> • Safely push down with equipment all snags whether on fire or not that are a threat to success or tactical operations. • Ensure LCES are in place before operations begin. Stay hydrated. • Drive defensively and with lights on at all times. • Boggy terrain: Be careful and aware when working around this type of area. 									
9. Division/Group Communication Summary									
Function	Frequency	System	Channel	Function	Frequency	System	Channel		
Command N Okee Repeater	RX 164.5750/206.5 TX 163.150/206.5	KING NIFC	5	Logistics		KING NIFC	#####		
Tactical Div/Group	RX 151.2725 TX 151.2725	KING NIFC	13	Air to Ground	RX 166.9375 TX 166.9375	KING NIFC	6		
Prepared by (Resource Unit Ldr.) Fred Noack			Approved by (Planning Sect. Ch.) /s/ Ed Flowers			Date #####July 8, 2011		Time 1730	

DIVISION ASSIGNMENT LIST				1. Branch West		2. Division Y - Day		2 of 2	
3. Incident Name Honey Prairie Complex				4. Operational Period Date: ##### 7/9/2011 Time: #####0800-2100					
5. Operations Personnel									
Operations		Rick Dolan 7/22			Branch Director		Bob Shindelar 7/11 Tom Donohoe 7/22		
Planning Ops		Butch Hall 7/22			Division Supervisor		Gary Smith 7/19, Dan Helterline (t) 7/19		
Safety Officer		Barry Coulliette 7/22							
6. Resources Assigned this Period									
Strike Team/Task Force/ Resource Designator		Leader / Name / Designator		Last Shift Date	Num. Per.	Drop Off PT./Time		Pick Up PT./Time	
HEQB (O-960)		Paul Pelligrini		7/20	1				
WT2 (E-512)		Ken Swane		7/11	1	PVT			
WT2 (E-560)		Tipton #2		?	1	PVT			
WTS1 (E-716)		Lee Tuten		7/26	1	PVT			
WT2 (E-1024)		Richard Jones		7/28	1	PVT			
WT (E-1017)		Gene Ball		?	1	GAOKR			
DOZB (O-843)		Joseph Chastain (t)		7/10	1				
DOZB (O-1004)		Derek Cooper		7/20	1				
DOZB (O-1008)		Zack Culver (t)		7/21	1				
TPL2 (E-497)		Leslie Jeter		7/9	1	PVT			
TPL3 (E-943)		Ray Capman		?	1	PVT			
TPL3 (E-984)		Junior House		7/27	1	PVT			
TPL2 (E-985)		Aaron Tipton		7/27	1	PVT			
SOF2 (O-891)		Steve Holman		7/17	1				
EMTP (O-766)		Peggy Miller		7/11	1				
7. Control Operations <ul style="list-style-type: none"> Make contact with the Resource Advisor before using mechanical equipment. Recon potential controllines and examine area for snag removal Improve swamp break boundaries for fire breaks 									
8. Special Instructions <ul style="list-style-type: none"> Safely push down with equipment all snags whether on fire or not that are a threat to success or tactical operations. Ensure LCES are in place before operations begin. Stay hydrated. Drive defensively and with lights on at all times. Boggy terrain: Be careful and aware when working around this type of area. 									
9. Division/Group Communication Summary									
Function	Frequency	System	Channel	Function	Frequency	System	Channel		
Command N Okee Repeater	RX 164.5750/206.5 TX 163.150/206.5	KING NIFC	5	Logistics		KING NIFC	#####		
Tactical Div/Group	RX 151.2725 TX 151.2725	KING NIFC	13	Air to Ground	RX 166.9375 TX 166.9375	KING NIFC	6		
Prepared by (Resource Unit Ldr.) Fred Noack		Approved by (Planning Sect. Ch.) /s/ Ed Flowers			Date #####July 8, 2011			Time 1730	

DIVISION ASSIGNMENT LIST				1. Branch West		2. Division V,Y Night	
3. Incident Name Honey Prairie Complex				4. Operational Period Date: ##### 7/9/2011 Time: #####1800-0600			
5. Operations Personnel							
Operations	Rick Dolan 7/22			Branch Director	Bob Shindelar 7/11 Tom Donohoe 7/22		
Planning Ops	Butch Hall 7/22			Division Supervisor	Jacquie Parks		
Safety Officer	Barry Coulliette 7/22						
6. Resources Assigned this Period							
Strike Team/Task Force/ Resource Designator	Leader / Name / Designator	Last Shift Date	Num. Per.	Drop Off PT./Time	Pick Up PT./Time		
TFLD (O-938)	Bill Altman	7/19	1				
TFLD (O-944)	Dave Marion	?	1				
ENG6 (E-76)	Chris Henderson	7/20	2				
ENG6 (E-78)	Kevin Cline	7/20	2				
ENG6 (E-80)	Dane Bass	7/20	2				
ENG6 (E-81)	Troy Helms	7/20	2				
ENG6 (E-973)	Heath Seers	7/19	2	PVT			
ENG6 (E-975)	Nort Phillips	7/19	2	PVT			
ENG6 (E-1081)	Tim Joy	7/21	2				
ENG6 (E-1082)	Brad Gregory	7/21	2				
ENG6 (E-1083)	Tony Harkins	7/21	2				
WAT2 (E-954)	Jim Griffens	7/11	1	PVT			
SOF2 (O-892)	Steven Ripley	7/17	1				
SOF2 (O-997)	Bob Habeck	7/22	1				
EMTP (O-640)	Mike Fincham	7/10	1				
EMTB (O-983)	Dominic Burchett	7/22	1				
7. Control Operations <ul style="list-style-type: none"> Make contact with the Resource Advisor before using mechanical equipment. Recon potential controllines and examine area for snag removal Improve swamp break boundaries for fire breaks 							
8. Special Instructions <ul style="list-style-type: none"> Safely push down with equipment all snags whether on fire or not that are a threat to success or tactical operations. Ensure LCES are in place before operations begin. Stay hydrated. Drive defensively and with lights on at all times. Boggy terrain: Be careful and aware when working around this type of area. 							
9. Division/Group Communication Summary							
Function	Frequency	System	Channel	Function	Frequency	System	Channel
Command N Okee Repeater	RX 164.5750/206.5 TX 163.150/206.5	KING NIFC	5	Logistics		KING NIFC	#####
Tactical Div/Group	RX 151.2725 TX 151.2725	KING NIFC	13	Air to Ground	RX 166.9375 TX 166.9375	KING NIFC	6
Prepared by (Resource Unit Ldr.) Fred Noack		Approved by (Planning Sect. Ch.) /s/ Ed Flowers		Date #####July 8, 2011		Time 1730	

DIVISION ASSIGNMENT LIST				1. Branch West	2. Division Z		
3. Incident Name: Honey Prairie Complex				4. Operational Period Date: ##### 7/9/2011 Time: ##### Day: 0800-2100			
5. Operations Personnel							
Operations	Rick Dolan 7/22			Branch Director	Bob Shindelar 7/11 Tom Donohoe 7/22		
Planning Ops	Butch Hall 7/22			Division Supervisor	Larry Peabody 7/10 / Jesse Knox (t) 7/18		
Safety Officer	Barry Coulliette 7/22						
6. Resources Assigned this Period							
Strike Team/Task Force/ Resource Designator	Leader / Name / Designator	Last Shift Date	Num. Per.	Drop Off PT./Time	Pick Up PT./Time		
TFLD (O-889)	Kris Larson	7/19	1				
TFLD (O-792)	Dennis Wilson (t)	7/12	1				
TFLD (O-921)	Brad Hall (t)	7/18	1				
STEN (O-955)	Randy Scherr	7/19	1				
ENG6 (E-392)	Tyson Taylor	7/21	3				
ENG5(E-502)	Saul Irving	7/13	2	PVT			
ENG6 (E-901)	Robert Matheson	7/9	4				
ENG6 (E-1047)	Thomas Sherman	7/21	3	PVT			
ENG6 (E-1051)	Kyle Zuehlke	7/21	3	PVT			
ENG6 (E-1052)	Ryan Schlater	7/28	3	PVT			
ENG6 (E-1057)	Troy Mueller	7/20	3				
ENG6 (E-1067)	Shaun Moore	7/28	3				
ENG6 (E-5007)	Jeff Bradley(E-5007.1)	?	2	PVT			
ENG6 (E-5008)	Maige/Walton	7/17	2	PVT			
ENG6 (E-5010)	C. Tevebaugh(E-5010.1)	7/12	3	PVT			
ENG6 (E-5011) Smokey Mt 209	Gary Barlett	7/10	2	PVT			
ENG6 (E-5012) Smokey Mt 301	Paul Shrimplin	7/11	2	PVT			
ENG6 (E-392)	Tyson Taylor	7/21	3				
HCT2IA (C-14) Pat Rick 20B	Dustin Eldred	7/9	20	PVT			
EMTP (O-847)	Levi Clymer	7/11	1				
SOF2 (O-891)	Steve Holman	7/17	1				
7. Control Operations							
<ul style="list-style-type: none"> Contain all fires outside refuge boundary. Patrol and mop up within 100' of fire perimeter line. 							
8. Special Instructions							
<ul style="list-style-type: none"> Ensure that tractors are cleaned and free of debris daily. Examine work area for fire weakened snags. Ensure LCES are in place before operations begin and stay hydrated. Additional resources will be available from GFC, Florida DOF, FWS, and local cooperators. Drive defensively and with lights on at all times. See Medical plan for EMT support. Implement MIST tactics 							
9. Division/Group Communication Summary							
Function	Frequency	System	Channel	Function	Frequency	System	Channel
Command N Okee Repeater	RX 164.5750/206.5 TX 163.150/206.5	KING NIFC	5	Logistics		KING NIFC	
Tactical Div/Group	RX 168.200 TX 168.200	KING NIFC	11	Air to Ground	RX 166.9375 TX 166.9375	KING NIFC	6
Prepared by (Resource Unit Ldr.) Fred Noack		Approved by (Planning Sect. Ch.) /s/ Ed Flowers			Date July 8, 2011		Time 1930

DIVISION ASSIGNMENT LIST				1. Branch West	2. Division West - Initial Attack and Structure Protection 1 of 2		
3. Incident Name: Honey Prairie Complex				4. Operational Period Date: ##### 7/9/2011 Time: ##### Day: 0800-2100			
5. Operations Personnel							
Operations	Rick Dolan 7/22			Branch Director	Bob Shindelar 7/11 Tom Donohoe 7/22		
Planning Ops	Butch Hall 7/22			Division Supervisor	Don Hammack 7/19 / Bob Schober (t) 7/18		
Safety Officer	Barry Coulliette 7/22						
6. Resources Assigned this Period							
Strike Team/Task Force/ Resource Designator	Leader / Name / Designator			Last Shift Date	Num. Per.	Drop Off PT./Time	Pick Up PT./Time
STEN (O-947)	Jesse Register			7/20	1		
STEN (O-951)	Jerry Van Dyne			7/20	1		
STEN (O-990)	Joe Sampson				1		
STEN (E-650.3)	Paul Catlett (t)			7/9	1		
STPL (O-809)	Todd Milam			7/10	1		
HEQB (O-958)	Tim Boyce			7/20	1		
ENG6 (E-404)	Nicole Selmer			7/9	3		
ENG6 (E-906)	Jay Wickham			7/9	3		
ENG6 (E-939)	Eddie Harsh			7/9	3		
ENG6 (E-1013)	William Paulton			7/20	3	PVT	
ENG6 (E-1045)	Andrew English			7/28	3	PVT	
ENG6 (E-1048)	Joseph Jarrells			7/21	3		
ENG6 (E-1049)	James Dowd			7/20	3		
ENG6 (E-1054)	Shawn Kanouse			7/28	3	PVT	
ENG6 (E-1055)	Brian Kanouse			7/28	3	PVT	
ENG6 (E-1050)	Kyle Varel			7/20	3		
ENG6 (E-1075)	David Jones			7/20	3		
DOZ3 (E-650)	Bill Rimes			7/15	1	PVT	
DOZ3 (E-651)	Danny Cerezo			7/14	1	PVT	
WAT3 (E-233)	Isiah Moore			?	1	PVT	
7. Control Operations <ul style="list-style-type: none"> Respond to Initial Attack as requested Initial attack IC will communicate size up information to Honey Prairie incident communications 							
8. Special Instructions Continue to monitor the Coal, Levy, and Shantee Fires.							
9. Division/Group Communication Summary							
Function	Frequency	System	Channel	Function	Frequency	System	Channel
Command N Okee Repeater	RX 164.5750/206.5 TX 163.150/206.5	KING NIFC	5	Logistics	See ICS 205	KING NIFC	
Tactical Div/Group	RX 154.280 TX 154,280/156.7	KING NIFC	8	Air to Ground	RX 166.9375 TX 166.9375	KING NIFC	6
Prepared by (Resource Unit Ldr.) Fred Noack		Approved by (Planning Sect. Ch.) /s/ Ed Flowers			Date July 8, 2011		Time 1930

DIVISION ASSIGNMENT LIST				1. Branch West		2. Division West - Initial Attack and Structure Protection 2 of 2	
3. Incident Name: Honey Prairie Complex				4. Operational Period Date: ##### 7/9/2011 Time: ##### Day: 0800-2100			
5. Operations Personnel							
Operations		Rick Dolan 7/22		Branch Director		Bob Shindelar 7/11 Tom Donohoe 7/22	
Planning Ops		Butch Hall 7/22		Division Supervisor		Don Hammack 7/19 / Bob Schober (t) 7/18	
Safety Officer		Barry Coulliette 7/22					
6. Resources Assigned this Period							
Strike Team/Task Force/ Resource Designator	Leader / Name / Designator	Last Shift Date	Num. Per.	Drop Off PT./Time	Pick Up PT./Time		
TPL2 (E-914)	Hunter Durham	7/9	1				
TPL4 (E-915)	Derek Meadows	7/9	1				
TPL2 (E-916)	Harvey Taylor	7/9	1				
TPL (E-987)	Butch Duiett	7/27	1	PVT			
WAT3 (E-517)	Larry Bartlett	7/12	1	PVT			
SOF2 (O-805)	Troy Shaddox	7/15	1				
7. Control Operations <ul style="list-style-type: none"> Respond to Initial Attack as requested Initial attack IC will communicate size up information to Honey Prairie incident communications 							
8. Special Instructions Continue to monitor the Coal, Levy, and Shantee Fires.							
9. Division/Group Communication Summary							
Function	Frequency	System	Channel	Function	Frequency	System	Channel
Command N Okee Repeater	RX 164.5750/206.5 TX 163.150/206.5	KING NIFC	5	Logistics	See ICS 205	KING NIFC	
Tactical Div/Group	RX 154.280 TX 154,280/156.7	KING NIFC	8	Air to Ground	RX 166.9375 TX 166.9375	KING NIFC	6
Prepared by (Resource Unit Ldr.) Fred Noack		Approved by (Planning Sect. Ch.) /s/ Ed Flowers			Date July 8, 2011		Time 1930

DIVISION ASSIGNMENT LIST			1. Branch East		2. Division H/ I/J/K		
3. Incident Name Honey Prairie Complex			4. Operational Period Date: ##### 7/9/2011 Time: #####0800-2100				
5. Operations Personnel							
Operations	Rick Dolan 7/22			Branch Director	Russ Lane 7/12		
Planning Ops	Butch Hall 7/22			Division Supervisor	Matt Filbert 7/18		
Safety Officer	Barry Coulliette 7/22						
6. Resources Assigned this Period							
Strike Team/Task Force/ Resource Designator	Leader / Name / Designator	Last Shift Date	Num. Per.	Drop Off PT./Time	Pick Up PT./Time		
TFLD (O-945)	Walter Mendoza	7/20	1				
STEN (O-950)	Larry Larson	7/20	1				
ENG6 (E-135) Attack-1	Billy Taylor	?	2	PVT			
ENG6 (E-136) Nat'l Fire	Jeremiah Cates	7/16	2	PVT			
ENG6 (E-137) Wildlands 8	A. Radford	7/10	2	PVT			
ENG6 (E-179) Nat'l Fire #4	Ramey Hiers	7/19	2	PVT			
ENG6 (E-899) MIUPC 61	D. Karlovich	7/8	3				
ENG6 (E-1069) Tallahassee E26	William Abbott	7/21	3				
WT (E-559)	Ira Maybery	?	1	PVT			
Pump (E-293)		7/8	1		Pump is on a Trailer		
EMTP (O-981)	Kurt Berge	7/22	1				
7. Control Operations							
<ul style="list-style-type: none"> Contain all fires outside refuge boundary. Patrol and control reburn Provide initial attack for GFC and fires outside the refuge boundary. Patrol all spots outside refuge boundary. Patrol and mop up all accessible fire line. Mop up all hot spots within 100' of the fire perimeter. Continue to provide protection to the Chesser Homestead by maintaining an adequate water supply via portable pump at location. 							
8. Special Instructions							
<ul style="list-style-type: none"> Ensure LCES are in place before operations begin. Stay hydrated. Drive defensively and with lights on at all times. See medical plan for EMT support Examine work area for fire weakened snags 							
9. Division/Group Communication Summary							
	Function	Frequency	Channel	Function	Frequency	System	Channel
Command E Okee Repeater	RX 164.6250/103.5 TX 163.150/103.5	KING	3	Logistics		KING NIFC	
DIV J Repeater	RX 170.4125 TX 165.9625/123.0	NIFC	14				
Tactical Div/Group	RX 168.350 TX 168.350	KING NIFC	12	Air to Ground	RX 166.9375 TX 166.9375	KING NIFC	6
Prepared by (Resource Unit Ldr.) Fred Noack		Approved by (Planning Sect. Ch.) /s/ Ed Flowers			Date July 8, 2011		Time 1800

DIVISION ASSIGNMENT LIST		1. Branch East		2. Division L, M			
3. Incident Name Honey Prairie Complex		4. Operational Period Date: ##### 7/9/2011 Time: #####0800-2100					
5. Operations Personnel							
Operations	Rick Dolan 7/22	Branch Director		Russ Lane 7/15			
Planning Ops	Butch Hall 7/22	Division Supervisor		Ray Miller 7/20			
Safety Officer	Barry Coulliette 7/22						
6. Resources Assigned this Period							
Strike Team/Task Force/ Resource Designator	Leader / Name / Designator	Last Shift Date	Num. Per.	Drop Off PT./Time	Pick Up PT./Time		
TFLD (O-937)	Kevin Elmstrom	7/20	1				
TFLD (O-841)	James Flue (t)	7/10	1				
TFLD (O-993)	Drew Daily	7/22	1				
ENG6 (E-385) Red Lake	Gilbert Juarez	7/9	3				
ENG6 (E-407) White Earth #2	Steve Lafriniere	7/9	3				
ENG6 (E-819)	Brett Eismann	7/21	3				
ENG6 (E-826)	Steve Melton	R&R	2	PVT	Return on 7/11 for 14 days		
ENG6 (E-893)MIHMF 251	Paul Lyden	7/9	3				
ENG6 (E-894) MOOZP 862	William Mier	7/22	3				
ENG6 (E-895) MOMTF 9505	Blake Knisley	7/22	3				
ENG6 (E-898) MDS #4	James Harris	7/13	2				
ENG6 (E-1061) SM36	Steve Woodrick	7/21	3				
ENG6 (E-5014) TX Fire 157	Curtis Weaver	7/9	3				
EMTP (O-731)	Keith Barker	7/10	1				
SOF2 (O-659)	Terry Trapp	7/9	1				
7. Control Operations							
<ul style="list-style-type: none"> Contain all fires outside refuge boundary. Patrol and control reburn Mop up all spots outside refuge boundary and within 100 feet of perimeter 							
<ul style="list-style-type: none"> 8. Special Instructions Ensure LCES are in place before operations begin. Stay hydrated. Drive defensively and with lights on at all times. See medical plan for EMT support Examine work area for fire weakened snags. 							
9. Division/Group Communication Summary							
	Function	Frequency	Channel	Function	Frequency	System	Channel
Command E Okee Repeater	RX 164.625/103.5 TX 163.150/103.5	KING NIFC	3	Logistics		KING NIFC	
Tactical Div/Group	RX 168.775 TX 168.775	KING NIFC	9	Air to Ground	RX 166.9375 TX 166.9375	KING NIFC	6
Prepared by (Resource Unit Ldr.) Fred Noack	Approved by (Planning Sect. Ch.) /s/ Ed Flowers		Date July 8, 2011	Time 1800			

DIVISION ASSIGNMENT LIST				1. Branch East		2. Division N/O	
3. Incident Name Honey Prairie Complex				4. Operational Period Date: ##### 7/9/2011 Time: #####0800-2100			
5. Operations Personnel							
Operations		Rick Dolan 7/22		Branch Director		Russ Lane 7/15	
Planning Ops		Butch Hall 7/22		Division Supervisor		Steve Griffin 7/18	
Safety Officer		Barry Coulliette 7/22					
6. Resources Assigned this Period							
Strike Team/Task Force/ Resource Designator		Leader / Name / Designator		Last Shift Date	Num. Per.	Drop Off PT./Time	Pick Up PT./Time
TFLD (O-936)		Ernest Schmidt		7/19	1		
TFLD (O-807)		Mark Whipps		7/19	1		
STEN (O-989)		Max Twombly		7/21	1		
STEN (O-994)		Jim Edgar		7/21	1		
ENG6 (E-897) MDBWR		Ephraim Diefenderfer		7/22	2		
ENG6 (E-977) IPF E-31		Luke Smith		7/19	4		
ENG6 (E-993) Bush Fire		Philips Quochoytewa		7/18	2	PVT	
ENG6 (E-1058)		Michael Keil		7/20	3		
ENG6 (E-1060)		Paul Amundson		7/21	3		
ENG6 (E-1070)		Gregory Rock		7/21	3		
ENG6 (E-1072)		Butch Murphy		7/21	3		
ENG6 (E-1074)		Stevenson		7/20	3		
ENG6 (E-5006) Wildlands #3		Keith Hawk		7/15	2	PVT	
EMTB (O-848)		Bert Hyde		7/11	1		
SOF2 (O-807)		Chuck Stanton		7/9	1		Two days off/ back 7/12
7. Control Operations <ul style="list-style-type: none"> Patrol and mop up 100' inside fire perimeter. Recon potential control lines and examine area snag removal Continue to establish contingency firelines to contain fire south of Double Branch Rd., east of Skull Head Rd., and north of Refuge Boundary. Keep fire within refuge boundary. 							
8. Special Instructions <ul style="list-style-type: none"> Safely push down with equipment all snags whether on fire or not that are a threat to success or tactical operations. Ensure LCES are in place before operations begin. Stay hydrated. See medical plan for EMT support. Drive defensively and with lights on at all times. Boggy terrain: Be careful and aware when working around this type of area. If HP fire escapes the NE Break the Great Basin team will command suppression w/assistance from the GFC. If Race Pond escapes to the south GFC will command w/assistance by the Great Basin. DIVS should make daily contact w/ Race Pond DIVS on scene. STEN Twombly and Engines 1058, 1060, 1070, 1072, 1074 be ready to respond to IA in Swamp Park. 							
9. Division/Group Communication Summary							
Function	Frequency	System	Channel	Function	Frequency	System	Channel
Command N Okee Repeater	RX 164.5750/206.5 TX 163.150/206.5	KING NIFC	5	Logistics		KING NIFC	#####
Tactical Div/Group	RX 168.200 TX 168.200	KING NIFC	11	Air to Ground	RX 166.9375 TX 166.9375	KING NIFC	6
Prepared by (Resource Unit Ldr.) Fred Noack		Approved by (Planning Sect. Ch.) /s/ Ed Flowers			Date #####July 8, 2011		Time 1730

DIVISION ASSIGNMENT LIST				1. Branch East		2. Division East Initial Attack	
3. Incident Name Honey Prairie Complex				4. Operational Period Date: ##### 7/9/2011 Time: #####0800-2100			
5. Operations Personnel							
Operations	Rick Dolan 7/22			Branch Director	Russ Lane 7/15		
Planning Ops	Butch Hall 7/22			Division Supervisor	John Huschke 7/12, Shawn Denowh (t) 7/19		
Safety Officer	Barry Coulliette 7/22						
6. Resources Assigned this Period							
Strike Team/Task Force/ Resource Designator	Leader / Name / Designator	Last Shift Date	Num. Per.	Drop Off PT./Time	Pick Up PT./Time		
TFLD (O-943)	Steven Clark	7/22	1				
DOZB (O-959)	Zac Cogle	7/20	1				
STDZ (O-1014)	Dennis Huenergardt	7/10	1				
ENG6 (E-77) GAGAS 86	Andrew Gamlin	7/20	2				
ENG6 (E-79)		7/7			Need to check in		
ENG6 (E-390) WICNF 461	T. Borman	7/10	2				
ENG6 (E-974)	Steve Shykes	7/10	3				
ENG6 (E-978)	Dennis Gillmer	7/10	3		2 days R&R on 7/11 and 7/12		
ENG6 (E-979)	Mark Smith	7/10	4				
ENG6 (E-976)	Roscoe Benoy	7/10	3				
ENG6 (E-1084)	Mike Dean	7/20	2				
TPL3 (E-500) NFFS	Don Johnson	7/16	2		Driver - Mike Walker		
TPL3 (E-649) Bear Co	Mike Kikendale	7/14	2	PVT	Driver - Parker Barrett		
WT3 (E-92)	Justin/Ellis		1	PVT			
SOF2 (O-703)	Larry Klock	7/11	1				
7. Control Operations <ul style="list-style-type: none"> Respond to Initial Attack as requested Patrol and control return Initial attack IC will communicate sizeup information to the Honey Prairie communication. 							
8. Special Instructions							
9. Division/Group Communication Summary							
	Function	Frequency	Channel	Function	Frequency	System	Channel
Command E Okee Repeater	RX 164.625/103.5 TX 163.150/103.5	KING NIFC	3	Logistics		KING NIFC	
Tactical Div/Group	RX 168.775 TX 168.775	KING NIFC	9	Air to Ground	RX 166.9375 TX 166.9375	KING NIFC	6
Prepared by (Resource Unit Ldr.) Patty Eder (t)		Approved by (Planning Sect. Ch.) /s/ Ed Flowers			Date July 8, 2011		Time 1800

AIR OPERATIONS SUMMARY		PREPARED BY: Tim Elder AOBD			PREPARED DATE/TIME: 7/8/2011 1700				
1. INCIDENT NAME: HONEY PRAIRIE		2. OPERATIONAL PERIOD DATE: 7/9/2011			START TIME: 0800	END TIME: 2015	SUNRISE: 0633	SUNSET: 2037	Waycross
3. REMARKS (Safety Notes, Hazards, Air Operations Special Equipment, etc.) RETARDANT NOT ALLOWED IN OKENOKEE REFUGE <ul style="list-style-type: none"> -WATCH FOR GENERAL AVIATION AND MILITARY AIRCRAFT -NOTE THAT SOME TOWERS ARE NOT MARKED ON SECTIONAL CHARTS.THESE TOWERS COULD BE UP TO 250 FEET TALL -ALL FIREFIGHTING AIRCRAFT NEED TO SQUAWK 1255. FLY WITH LIGHTS ON. MTR's TRANSECT FIRE TRAFFIC AREA BOTH IR & VFR MAY BECOME ACTIVE THIS WEEK -HEADS UP WHEN PERFORMING WATER DROPS AROUND CREWS ON THE GROUND <ul style="list-style-type: none"> -MAINTAIN CLEAR COMMUNICATIONS CREWS STAY AWAY FROM WATER DROPS INCLUDING APPROACH AND DEPARTURES -FARGO HELIBASE LOCATION: 1/4 MILE NORTH OF THE BP GAS STATION at 9 hole golf course -AIRCRAFT WILL BE ORDERED AND DISPATCHED UTILIZING LATITUDE AND LONGITUDE-DEGREES DECIMAL MINUTES <ul style="list-style-type: none"> SMOKE AND VISABILITY MAY REQUIRE FLEXABILITY IN MISSIONS AND FUEL PLANNING BE READY FOR POSSIBLE IA WORKIG WITH GA/ FL FORESTRY RESOURCES Listen on command for fire WX broadcast for T storms -AIRCRAFT PRIORITIES <ol style="list-style-type: none"> PUBLIC AND FIREFIGHTER SAFETY PROTECTION OF LIFE, PROPERTY AND RESOURCES INITIAL ATTACK POTENTIAL PROBLEM FIRES UNSTAFFED FIRES 					4. MEDEVAC A/C: Fargo Helibase N662H Waycross N818MC Frequency: HEAR FM 155.340W* *This may need to be programmed for a medivac.		5. TFR HONEY PRAIRIE FDC 1 / 0249 At and below 3000' msl. AM 122.375 1. IMMEDIATE NOTIFICATION OF INTRUSIONS ARE TO BE PLACED WITH THE AIR SPACE COORDINATOR AT FICC OR THE FAA. NO AIR TANKER at LAKE CITY FARGO HELIBASE: Lat 30 41.42 Long 82 33.97 POGO HELIBASE: Lat 30 44.03 Long 82 07.41 POCKET HELISPOT Lat 30.48 Long 82.22 HOMERVILLE AIRPORT Lat 31 03.35 Long 82 46.45 WAYCROSS AIRPORT Lat 31 14.9 Long 82 23.7		
6. PERSONNEL	Phone	7. FREQUENCIES	AM	FM	8. FIXED WING # Available/ Type/ Make-Model/FAA N# / Bases				
AOBD: Tim Elder ASGS: (T) Don Nicholas	863-243-1438	AIR/AIR FW AIR/AIR RW-FF Georgia AIR/AIR	122.575 122.375 122.075	159.390/156.7 168.650N	GFC SATILLA DISPATCH: 912-287-4915 LAKE CITY TANKER BASE: 386-758-9078 LAKE CITY TANKER BASE FAX: 386-752-8901				
AIR OPS Desk AIR OPS FAX	912-637-5254 912-637-5237	NATIONAL FLIGHT FOLLOWING			POGO HELIBASE: 912-496-4415 FAX 912-496-7077				
ATGS: Tim Caughlin / Melanie Fullman (T) ATGS: Lake City ATGS: Carl McGill Fargo	715-684-9862 406-529-4888 541-519-0850	AIR/GROUND: PRIMARY AIR/GROUND: SECONDARY		166.9375 166.9000	WAYCROSS HELIBASE: 912-287-4479 FAX 912-287-4458				
HEB1 FARGO: Brian Campbell HEB1 (T) Fargo: Steve Croy HEB21WAYCROSS HEB1 Melvin Tate	404-772-5405 540-265-5100 530-310-3526	GEORGIA AIR/GROUND Dozers FLORIDA I.A.AIR/AIR- FLORIDA I.A. AIR/GROUND	122.925	159.285 W 170.4750N	FARGO HELIBASE 530-310-3526 ABRO – Fargo HB Kim Malgren 208-830-6290				
		COMMAND: (Simplex) SEE ICS 205			FICC: AIRCRAFT 850-523-8600 Ext. 3636				
		COMMAND RPT SEE ICS 205	Rx:	Tx:	FICC FAX FOR AIRCRAFT ORDERS: 850-576-8314 AIRSPACE COORDINATOR: Marion Harris 850-523-8600 ext. 3612				
		DECK FREQ:		163.100**	**Note: deck should be used for mission request or Air to ground .				

TOLC:

9. HELICOPTERS (Use Additional Sheets As Necessary)

FAA N#	TY	MAKE/MODEL	BASE	AVAIL	START	REMARKS	FAA N#	TY	MAKE/MODEL	BASE	AVAIL	START	REMARKS
N36BH A-35	1	SIKORSKY S-70	Waycross	0830		Zeve Huntina 406-439-6768	N61SC A-	1	SIKORSKY S-61	Fargo	0830		Ray Leppala 218-966-6443
206G A-19	2	UH1H Finally in Service!	Waycross	0830		Mike Yearwood 530-310-3511	N662H A-29	3	Bell 206-L4	Fargo	0830		Jeremy Beeson 208-507-1649
06901 A-17	2	UH1H	Waycross	0830		Cindy Bradley 559-916-9355	26MW A-62	1	Kmax 1200	Fargo	0830		Kirby Cook 406-381-1212
N818MC	3	AS-350 B3	Waycross/ Fargo as needed	0830		George Violante 307-330-5904	6JC A-1	3	Bell B-3 Local Unit Aircraft	Pogo	0830		Jeff McBath 858-357-3242 or Reggie Forcine 912-614-4041

9.5 Fixed wing

AA 53L	1	C-337	Lake City	0830		Tim Caughlin Melanie Fullman (T) 715-684-9862	AA N135BA	1	B -65	Lake City	0830		

AIR OPERATIONS SUMMARY

10. TASK/MISSION/ASSIGNMENT (Type/Function includes Air Tactical, Retardant, Recon, Personnel Transport, Water Dropping, S&R, etc.)

		MISSION START	FLY FROM	FLY TO
Expect Recon with Ops IC's		11:00 / 1300 / 1600 and as requested	FARGO Waycross	Fire
ATGS in T3 Helo to direct buckets		As needed	FARGO	
Expect Recon with FBA and LTAN		1300	FARGO	
Air Attack	Stagger missions for coverage from 1200 to 1900 earlier will be requested by phone	1200	Lake City ATB	Fire
T1 Helos Bucket Work		As needed		



Fire Weather Forecast



FORECAST NO: 63

NAME OF FIRE: Honey Prairie Complex

PREDICTION FOR: Day and Night Shifts
SHIFT DATE: 7/9/11

UNIT: Okefenokee National Wildlife Refuge

FORECAST ISSUED: 7/8/11 at 1900

SIGNED: Mike Bettwy (T) / Joe Goudsward
Incident Meteorologists

WEATHER DISCUSSION: A weak surface low pressure system will remain in the area today with plenty of moisture and daytime heating resulting in mainly afternoon showers and thunderstorms. Although the surface low will move off to the east on Sunday, the remnants of an upper level low pressure system and a stationary frontal boundary just to the north will again result in showers and thunderstorms.

TODAY: Patchy morning fog, otherwise mostly cloudy with numerous showers and thunderstorms, especially in the afternoon.

MAXIMUM TEMPERATURES: 90-94 degrees

MINIMUM HUMIDITY: 45-55%

20 FT WINDS: AM: SSW 3-7 mph
PM: SW 8-11 G17 mph

STABILITY/INVERSION: Morning inversion to 250 feet through 1000, then rising to 5000 feet by 1400

TRANSPORT WINDS: SW 14 mph

DISPERSION INDEX: 45, Average

CHANCE OF PRECIPITATION: 70%

PRECIPITATION AMOUNTS: 0.25"-0.75" with locally heavier amounts in thunderstorms

LIGHTNING ACTIVITY LEVEL: 3

TONIGHT: Mostly cloudy with a chance of showers and thunderstorms, mainly during the evening. Patchy fog.

MINIMUM TEMPERATURES: 73-76 degrees

MAXIMUM HUMIDITY: 90-100%

20 FT WINDS: SW 3-7 mph

STABILITY/INVERSION: Inversion to 250 feet by 2200 hours

DISPERSION INDEX: 4, Poor

CHANCE OF PRECIPITATION: 40%

LIGHTNING ACTIVITY LEVEL: 2

OUTLOOK FOR SUNDAY: Mostly cloudy with showers and thunderstorms. Winds SW 5-10G16 mph. High temperatures 90 to 94. Min RH 45-55%. Chance of Rain 60%. Dispersion 35, Fair.

EXTENDED FORECAST:

	MONDAY	TUESDAY	WEDNESDAY
MINIMUM TEMP	75°	75°	76°
MAXIMUM TEMP	94°	95°	95°
MINIMUM RH	45-50%	40-45%	40-45%
20 FT. WINDS	AM: ENE 3-7 mph PM: ESE 5-8 mph	AM: WNW 4-7 mph PM: ESE 4-8 mph	AM: WNW 3-7 mph PM: SSE 5-9 mph
SKY	Partly Cloudy	Partly Cloudy	Partly Cloudy
WEATHER	Scattered T-Storms	Scattered T-Storms	Scattered T-Storms
CHANCE PRECIP	50%	40%	40%

FIRE BEHAVIOR FORECAST

Fire: Honey Prairie Complex	Unit: GA-OKR-000001	Prediction for <u>Day/Night</u> Shifts
Forecast #62 Issued: 07/08/2011 1830 hrs	Signed: /S/ Gary Brunk /S/Steve Cobb(T)	Shift Date: Saturday 07/09/11

GENERAL FIRE BEHAVIOR

Fuels around the Okefenokee Wildlife Refuge are predominately Fuel Model 7 (Southern Rough). Large to moderate acreage tracts of commercial timberland are mixed in throughout the entire perimeter surrounding the refuge. Fast moving wildfires with extremely high flame lengths and rapid rates of spread occur within the swamp. As fire transitions to the upland, torching and crown fires are common. Long Range spotting is possible.

Indicators/Threshold for Increased Fire Activity

- Relative humidity dropping below 45%
- **Winds above 10 mph**
- **Heavy fuel loadings**
- Fine dead fuel moisture 8% or less
- Dispersion above 70
- *** Items in BOLD are predicted to occur today***

SPECIFIC FIRE BEHAVIOR

Fire behavior will be influenced by recent precipitation. Areas on the East Branch have remained dry while areas on the West Branch have received up to 2+ inches of rain.

Expect the fire to continue to move through the shrub fuels with moderate rates of spread and creep through the hardwood stands. Afternoon instability will lead to both T'storm development and more active smoke columns.

Fuel Type	Rates of Spread	Flame Length	Spotting Distance	Firebrand Ignition
Winds at 8 -11 G 17				
Shrub Fuels	8 - 14 ch/hr	6 - 10 feet	1/10 – 4/10 mile	30%
Southern Rough	10 – 16 ch/hr	4 - 7 feet	2/10 – 4/10 mile	30%
Timber Litter-Reburn	1 - 2 ch/hr	1 - 2 feet	2/10 – 3/10 mile	30%
Small Pine Plantation w/grasses	8 - 16 ch/hr	4 - 8 feet	1/10 – 3/10 mile	30%

One hour fine dead fuel moisture is at 11% for Saturday. 1000 hour fuels are drier than normal for this time of year. There is reburn potential in all divisions due to the amount of needle cast. Should a fire run(s) occur, expect winds in the area to potentially increase above predicted levels. This would increase Flame Lengths and ROS above predictions. Heavier firebrands can also be lifted higher and further increasing likelihood of spots to max predictions. **In areas where fuels have been herbicided, expect quick ignitions and extreme heat, very fast and group tree torching producing spotting problems.**

NOTE- FIRE BEHAVIOR CALCULATIONS ARE FOR FIRES IN UNBURNED FUELS INCLUDING NEW IA STARTS.

West	A	<i>Wetter wx reduces reburn potential. Falling snags still pose a threat to fire personnel and the boardwalk. 70% chance of rain</i>	West	T/V	<i>Active fire spread to the North will be reduced due to higher fuel moistures and the possibility of more rain. Be heads-up for falling snags . 70% chance of rain</i>
	B-G	<i>Wetter wx decreases reburn potential from needle cast. Be heads-up for falling Snags. 70% chance of rain</i>			
	Y Z	<i>Fire activity will remain moderate today as fuels have received moisture. Areas of heat will remain near Div Y/Z perimeter. Be heads-up for falling snags. 70% chance of rain</i>	East	H, I J, K L,M N,O	<i>Div 0 – No reported significant precipitation. Areas of active heat will continue to spread to the North and East. Heads-up for falling snags. 70% chance of rain</i>

Night Ops – Expect another night of minimal fire behavior with areas of heavy smoke. Mostly cloudy with 40 % chance of scattered showers and thunderstorms. Fire behavior after 2100 will primarily be limited to smoldering in heavy fuels in Divisions Y & Z and the interior. Winds over the entire fire are forecast from the SW 3-7 mph. Dispersion Index of 4 –poor for nighttime.

Air Operations: Expect areas of heavy smoke all day especially in the North.

SAFETY:

WINDS – Stay abreast of changing wx conditions throughout the entire shift. **THUNDERSTORMS** - these severe winds can create extreme fire behavior, with winds gusting over 30 mph. **SNAGS** – **Snags are falling in all Divisions – will be influenced by Thunderstorm outflow winds.**

FUELS: Reburn is an issue. Watch for pockets of cured shrubs or blankets of red needles beginning to cover the forest floor. 1000 and 10,000 hour fuels as well as deep duff pockets are providing the heat source. Stay focused, and put LCES in place before starting operations. Watch for standing burning snags that can fall without warning. *Energy Release Component (ERC) continues to be above the 90th percentile for this area.*

LCES Analysis of Tactical Actions

Incident Name: Honey Prairie Complex				Date and Time Prepared: July 08, 2011 1600 hrs												Operational Period: Day and Night July 09, 2011		
Location on Incident																		
Divisions/Groups																		
TACTICAL HAZARDS	A,B,C	D,E,F,G	H, I	J, K	L	M	N	O	T	V	Y	Z	ICP	PM Ops	Struct Prot Grp	Mitigations		
Powerlines	*	*	*	*	*	*	*	*	*	*	*	*			*	Assume all power lines are charged. Avoid all contact with downed lines.		
Complacency	*	*	*	*	*	*	*	*	*	*	*	*		*	*	Follow work/rest guidelines.		
Indirect Fireline									*	*	*	*				LCES; IRPG Pg. 10, Indirect Attack; Burnout as possible.		
Anchor Points	*	*	*	*	*	*	*	*	*	*	*	*				Ensure fireline is anchored. Use natural features when possible. Use Local Resource Advisor		
Extreme Conditions (Spotting, Wind)																LCES, Establish Trigger Points. Maintain Situational Awareness. Establish Lookouts as needed. Follow MAP actions.		
Unburned Area Reburn Potential	*	*	*	*	*	*	*	*	*	*	*	*			*	LCES, Utilize Air Attack if Available. Know Predicted Weather and Fire Behavior Forecast.		
Hazard Trees	*	*	*	*	*	*	*	*	*	*	*	*			*	IRPG Pg. 80, Identify and flag hazard trees. Look Up, Down and Around		
Hazardous Materials	*	*	*	*	*	*	*	*	*	*	*	*			*	IRPG Pg. 26-27, HAZMAT. Identify and map propane tanks, electric lines, septic tanks and determine bridge wgt. limits prior to use.		
Vehicle Use (Travel 1HR+, Roads)	*	*	*	*	*	*	*	*	*	*	*	*		*	*	Park vehicles for egress. Follow traffic plan. Use seat belts, drive with headlights on and keep windshields clean. Use spotters. Drive Defensively. Use multiple camp locations to reduce drive time.		
Communications																Ensure radio is cloned with the current communications plan. LCES		
Structure Protection		*		*	*		*		*	*	*	*				Use structure protection checklist, PPE, Triage. Utilize Local Fire Departments		
Air Operations (multiple aircraft, line support)	*	*	*	*	*	*	*	*	*	*	*	*				Monitor Air Guard at all times. Flight follow through Dispatch. Keep drop areas clear of personnel.		
Mechanical Equipment	*	*	*	*	*	*	*	*	*	*	*	*			*	Use PPE, ensure all safety devices are functional. Operator must see you before approaching equipment. Maintain proper distance away from equipment working in the area.		
Escape Routes Safety Zones	*	*	*	*	*	*	*	*	*	*	*	*			*	LCES, Establish and identify safety zones & escape routes. Know where these are located and the route to them. IRPG p.7		
Thunderstorm Safety	*	*	*	*	*	*	*	*	*	*	*	*		*	*	Keep an eye on changes in weather. Take hourly weather observations. Comms will provide weather updates when needed.		
Wildlife	*	*	*	*	*	*	*	*	*	*	*	*		*	*	Keep food items off the line and use refuse containers around camp. Use insect repellent as needed. Use caution around water as wildlife is concentrated.		
Sun Exposure	*	*	*	*	*	*	*	*	*	*	*	*		*	*	Use sunblock as needed.		
Night Operations										*	*					Maintain situational awareness. Refer to pages 6 & 7 of IRPG. Ensure headlamps are available and working. Maintain spacing between resources.		
Heat	*	*	*	*	*	*	*	*	*	*	*	*		*	*	Hydrate prior to going on line and all during the day. Recognize the signs of heat related injuries. Take frequent breaks throughout the work period.		
Air Quality																Rotate personnel frequently out of smoke. Ensure off-line rest is clear of smoke.		
Railroad Crossings	*	*	*	*	*	*	*	*	*	*	*	*			*	Visually check all railroad crossings to ensure track is safe to cross. Don't bunch up, leave room for other vehicles to cross. Don't try to beat the train.		
Safety Officers Barry Coulliette SOF2																		

SAFETY MESSAGE

SAFETY IS OUR FIRST PRIORITY

Fire fighter safety comes first on every fire, every time

SAFETY THOUGHT

Most accidents happen as a result of unsafe acts, poor attitudes, or a combination of the two.

MAJOR HAZARDS AND RISKS

- **VEHICLE TRAVEL TIME, DISTANCE, MUDDY ROADS AND SPEED**
- **SNAGS**
- **WILDLIFE**
- **LOGGING OPERATIONS/ HEAVY TRUCK TRAFFIC**
- **FATIGUE and DEHYDRATION**
- **TORCHING, SPOTTING and REBURN POTENTIAL**
- **LIGHTNING, ERRATIC WINDS, DOWN DRAFS and RAIN**

10 STANDARD FIRE ORDERS

FIRE BEHAVIOR

1. Keep informed on fire weather conditions and forecasts.
2. Know what your fire is doing at all times.
3. Base all actions on current and expected behavior of the fire.

FIRELINE SAFETY

4. Identify escape routes and safety zones, and make them known.
5. Post lookouts when there is possible danger.
6. Be alert. Keep calm. Think clearly. Act decisively.

ORGANIZATIONAL CONTROL

7. Maintain prompt communication with your forces, your supervisor and adjoining forces.
8. Give clear instructions and insure they are understood.
9. Maintain control of your forces at all times.

IF YOU CONSIDER 1-9, THEN

10. Fight fire aggressively, having provided for safety first.

18 SITUATIONS THAT SHOUT WATCH OUT

- **Fire not scouted and sized up**
- **In country not seen in daylight**
- **Safety zones and escape routes not identified**
- **Unfamiliar with weather and local factors influencing fire behavior**
- **Uninformed on strategy, tactics, and hazards**
- **Instructions and assignments not clear**
- **No communication link with crew members or supervisor**
- **Constructing line without safe anchor point**
- **Building fireline downhill with fire below**
- **Attempting frontal assault on fire**
- **Unburned fuel between you and fire**
- **Cannot see main fire, not in contact with anyone who can**
- **On a hillside where rolling material can ignite fuel below**
- **Weather becoming hotter and dryer**
- **Wind increases and/or changes direction**
- **Getting frequent spots across line**
- **Terrain and fuels make escape to safety zones difficult**
- **Taking nap near fireline**

Beginning of each operational period, circle each "Watch Out Situation" that applies. Remember, the more situations you are in, the probability of entrapment may be higher unless everything goes as planned.

MEDICAL PLAN	1. 医疗站名称 # Honey Prairie Complex	2. 医疗站地址 # 7/08/2011	3. 医疗站电话 # 1800	4. 医疗站班次 # 7/09/2011 DAY SHIFT
5. Incident Medical Aid Station				
Medical Aid Stations	Location			Paramedics Yes No
Medical Unit (ICP)	Honey Prairie Complex ICP (Lodge 5) 912-637-5236 Joe Fowler MEDL 912-286-1648 Michael Evers MEDL (T) 912-286-1674			X
WEST BRANCH (Line EMT)	Bob Eaton 919-423-1055 (A,B,C DIV) Kyle Barber 417-239-9135 (D,E,F,G DIV) Shane Powers 907-388-3885 & Jefferson Halladay 801-518-9857 (T DIV) Evan Dean 503-975-6444 (V DIV) Peggy Miller 240-793-4238 (Y 0800-2000) Michael Fincham 530-859-8507 & Dominique Burchett 801-558-5444 (Y DIV Night) Levi Clymer 417-658-5155 (Z DIV)			X
EAST BRANCH (Line EMT)	Kurt Berge 801-404-6434 (H,I,J,K DIV) Keith Barker 224-330-7798 (L,M DIV) Bert Hyde 218-349-0934 (N,O DIV)			X
Ambulance Services				
Name	Address	Phone	Paramedic Yes No	
Clinch County EMS (WEST SIDE)	West Branch Council Road & HWY 94	Channels 4, 11, 13 912-286-1673 EMS Incident Cell	Yes	#
Ware County EMS (NORTHSIDE)	Waycross, Georgia (911 to activate)	912-281-9467	Yes	#
Charlton County EMS (EAST SIDE)	Folkston, GA (911 to activate)	912-496-7321	Yes	#
Air Ambulance Service				
Trauma 1	Lake City, FL (16 min/air to Fargo ICP)	1-800-223-4878(freq. 155.340)	Yes	#
Trauma 1	Jacksonville, FL (26 min/air to Fargo ICP)	1-800-223-4878(freq. 155.340)	Yes	#
AirMed	Augusta, GA (2 hrs/air to Fargo ICP)	1-888-792-9245(freq. 155.340)	Yes	#
Lifeflight	Jacksonville, FL (35 min/air to Fargo ICP)	1-877-870-7779(freq. 155.340)	Yes	#
Air Evac	Waycross, GA (17 min/air to Fargo ICP)	1-800-247-3822(freq. 155.340)	Yes	#
US Coast Guard (Heli-Rescue)	Savannah GA	1-912-652-4646 (freq. 155.340)	Yes	#
7. Hospitals				
Name	Address	Travel Time Air Ground	Phone	Helipad Yes No Burn Center Yes No
Satilla Regional	410 Darling Ave Waycross Ga N 31°13.56 W 82°21.058	18 min 45 min	912-283-3030	Yes No No
Clinch Memorial Hospital (WEST SIDE)	1050 Valdosta HWY Homerville, GA	25 min	912-487-5211 ext 4502	Yes No No
Charlton Memorial Hospital (EAST SIDE)	1203 3 rd St. Folkston, GA	50 min	912-496-2531	Yes No No
Memorial Hospital	Savannah, GA 4700 Waters 3200.7 8107.6	30 min	912-350-8999	Yes No No
Shands Hospital (level I)	Jacksonville, FL N 30°20' 97 W 82° 13 992	26 min 1.5 hrs	800-223-4878	Yes No Yes
Shands Burn Center	Gainesville, FL 38.33 N 082 20.73W	33 min 1.5 hrs	352-265-0300	Yes No Yes
8. Medical Emergency Procedures				
<ol style="list-style-type: none"> Notify DIVS of medical problem DIVS notifies COML and MEDL MEDL contacts POC for following <ol style="list-style-type: none"> # of pts Status of pts medical problem Location of pts Transport method Necessary resources MEDL coordinates medevac/patient transport with SOF2, OPS2 and other relevant resources. <p>Life threatening injury: an injury that could mean the loss of life, limb, or eyesight Minor injury: an injury that results in the removal of a pt from the line but with less urgency as a life threatening injury Medevac: the most urgent transport of a pt suffering from a life threatening injury Patient transport: transport for minor injuries Medical problem: a physical or mental ailment that occurs to an individual; to include illnesses and traumatic injuries Point of contact (POC): individual who will be directly advocating for patient care and transport (line medic, crew boss, DIVS etc) *Request that FFTR/Engine crews or single resources let MEDL know if they have any EMTs or Paramedics and if they have equipment with them.</p>		HELISPOTS Pocket Helispot 30 47 30.02 x 82 22 39.5 (West side), mile marker 4, HWY 177 Steven C. Foster State Park Fargo Helibase 30 41.42 x 82 33.97 (West side), HWY 441- Golf course, Fargo POGO Helibase 30.44.03 x 82.07.41 (East side) Evac Yankee Helispot 6 Rd. 32 and 32A, N 30° 53.280 W 082° 33.880 Helispot 7 Tatum Rd. Pond N 30° 50.280 W 082° 33.857 *Alternate site can be established following guidelines for safety found with IRPG and local EMS resources.		
Prepared by: Michael Evers MEDL (T)/Joe Fowler MEDL		10. Reviewed by: Barry Coulliette SOF		

INCIDENT RADIO COMMUNICATIONS PLAN ICS-205			Incident Name Honey Prairie			GROUP 22		Date/Time Prepared 07/87/2011-18:00		Operational Period Date/Time 7/09/2011 0800-2100/1800-0600	
Ch #	Function	Channel Name	Assignment	RX Freq	NW	RX Tone/NAC	TX Freq	N W	TX Tone/NAC	Mode A,D or M	Remarks
1	Command	West Okee Repeater	Sec West Branch CMD	167.1250	N	156.7	163.1500	N	156.7	A	Stephen Foster State Park
2	Command	South Okee Repeater	Sec East/West Branch CMD	164.7750	N	123.0	163.1500	N	123.0	A	Eddy Florida
3	Command	East Okee Repeater	PRIMARY East Branch CMD	164.6250	N	103.5	163.1500	N	103.5	A	Refuge Headquarters
4	Command	NIFC C2	PRIMARY West Branch CMD	168.100	N	CSQ	170.4500	N	123.0	A	NOT linked to OKEE System
5	Command	North Okee Repeater	PRIMARY North Branch CMD	164.5750	N	206.5	163.1500	N	206.5	A	Waycross
6	Air-Ground	Air to Ground	PRIMARY	166.9375	N	CSQ	166.9375	N	CSQ	A	
7	Tactical	MOB-MOB	GFC Contingency	159.3900	W	CSQ	159.3900	W	156.7	A	
8	Tactical	V-Fire 21W WHITE	Structure Protection Group&I.A.	154.2800	W	CSQ	154.2800	W	156.7	A	
9	Tactical	USFS 9	DIV A,B,C, L, M T, M & (East I/A)	168.7750	N	CSQ	168.7750	N	CSQ	A	
10	Tactical	S.E. Compact	DIV	159.2850	W	CSQ	159.2850	W	CSQ	A	
11	Tactical	USFS 11	DIV Z, N, O	168.2000	N	CSQ	168.2000	N	CSQ	A	
12	Tactical	Refuge Tac 1	DIV H, I, J, K	168.3500	N	CSQ	168.3500	N	CSQ	A	
13	Tactical	FL 190	DIV D, E, F, G, V, Y	151.2725	N	CSQ	151.2725	N	CSQ	A	
14	Command	DIV J RPT	East Branch	170.4125	N	CSQ	165.9625	N	123.0	A	NOT linked to OKEE System
15	Air-Ground	Air to Ground	SECONDARY	166.9000	N	CSQ	166.9000	N	CSQ	A	
16	EMERGENCY	AIR Guard	Air OPS.	168.6250	N	CSQ	168.6250	N	110.9	A	
Prepared by (Communications Unit) Brian Matthews Incident Dispatcher: 912-286-1660					Cloning at ICP communications and briefings,						

The convention calls for frequency lists to show four digits after the decimal place, followed by either an "N" or a "W", depending on whether the frequency is narrow or wide band. **Mode** refers to either "A" or "D" indicating analog or digital (e.g. Project 25) or "M" indicating mixed mode. All channels are shown as if programmed in a control station, base stations, mobile or portable radio.

FINANCE – EQUIPMENT/TIME

Tip for the day: 7/9/11



We Need Your HELP:

Please turn in SHIFT TICKETS and/or CTRS to show days off. This will keep your name off this list. THANK YOU!!

E-819	Mtn View Fire	Missing Shift Tkt 6/28
E-1036	MT DNR	Coop Agreement??
O-911	Miller, Ray	Why no meal breaks???

**IF YOU ARE GETTING CLOSE TO TIMING OUT PLEASE
SPEAK WITH YOUR FIRE LINE SUPERVISOR ASAP.**

**DMOB for July 9 to July 12
Contact DMOB - Tim @ 912-637-5241**

IF YOU ARE TRAVELLING HOME BY AIR AND WILL BE TRANSPORTED TO JACKSONVILLE THE DAY BEFORE YOUR FLIGHT BY GROUND SUPPORT - YOU NEED TO COMPLETE THE DEMOB PROCESS AND BE READY TO LEAVE ICP BY 1300 or 1700 HRS

IF YOU ARE TRAVELLING HOME BY AIR YOU NEED TO CONTRACT DMOB TO VERIFY I HAVE THE CORRECT NAME AS IT APPEARS ON YOUR PICTURE ID YOU WILL USE TO GET THROUGH AIRPORT SECURITY AS WELL AS YOUR DATE OF BIRTH AND DESTINATION JETPORT.

Number	Name	Kind	UnitID	TravelM ethod	Jet- port	Travel Date
E-293	DOUGHTRY-LEE PUMP	MISC	GAGAS	AOV		07/09/2011
E-503.4	RADFORD, RONNIE	FFT2	FLFNF	POV		07/09/2011
E-559	MULLENIX WATER TENDER T2	WAT2	ARAOC	POV		07/09/2011
E-894.1	CARLSON, GREGORY	ENGB	MOOZP	AOV	SGF	07/09/2011
E-894.2	BOSSERMAN, HEATHER	FFT2	MOOZP	AOV	STL	07/09/2011
E-894.3	SHELBY, JENNIFER E	FFT2	MOOZP	AOV	STL	07/09/2011
E-895.1	BRAY, TIMOTHY	ENGB	MOMTF	AOV	STL	07/09/2011
E-895.2	DUFF, AMY	ENGB	MOMTF	AOV	STL	07/09/2011
E-895.3	MOORE, AARON	FFT1	MOMTF	AOV	STL	07/09/2011
E-899	ENGINE - T6 - E-61	ENG6	MIUPC	AOV		07/09/2011
E-899.1	KARLOVICH, DEAN	ENGB	MIUPC	AOV	RHI	07/09/2011
E-899.2	BROWN, SHAWN P	FFT2	MIUPC	AOV	IWD	07/09/2011
E-899.3	BAER, BILL H	FFT2	MIUPC	AOV	RHI	07/09/2011
E-905	ENGINE - T6 - BERTHOUD FPD - E	ENG6	COFTS	POV		07/09/2011
E-907	ENGINE - T6 - CRA - A01002	ENG6	SDCRA	AOV		07/09/2011
O-645	INGRAM, LAURA M	PA50	VAVAF	REN	ROA	07/09/2011
C-14	PATRICK CREW 20B	HC2	NCNCF	POV	AVL	07/10/2011
E-385	RED LAKE ENG6	ENG6	MNMFC	AOV		07/10/2011
E-385.7	JUAREZ, GILBERT	ENGB	MNRLA	AOV	BJI	07/10/2011
E-385.8	HARRIS, JOSEPH	FFT2	MNRLA	AOV	BJI	07/10/2011
E-385.9	AUGINASH, JUSTIN	FFT2	MNRLA	AOV	BJI	07/10/2011
E-404.7	SELMER, NICOLE LOUISE	ENGB	MNSUF	AIR	DLH	07/10/2011
E-404.8	ROERICK, JAMES HERMAN	FFT2	MNSUF	AIR	DLH	07/10/2011
E-404.9	SWANSON, SCOTT DAVID	FFT2	MNSUF	AIR	DLH	07/10/2011
E-407.7	LAFRINIERE, STEVEN	ENGB	MNMNA	AIR	BJI	07/10/2011
E-407.8	AUGINAUSH JR, WILLIAM	FFT2	MNMNA	AIR	BJI	07/10/2011
E-407.9	LARSON, CHAD	FFT2	MNMNA	AIR	BJI	07/10/2011
E-5014	ENG6 N TEXAS FIRE 157	ENG6	TXTXF	AOV		07/10/2011
E-530.2	BAY, ?	THSP	GAOKR	POV		07/10/2011
E-831.1	MOREFIELD, STEVEN	TFLD	ORBUD	AIR	RDM	07/10/2011
E-831.2	MONTGOMERY, JOHN CODY	TFLD	ORPRD	AIR	RDM	07/10/2011
E-831.3.1	DAVIES, BAXTER	FFT2	ORMAR	AIR	BOI	07/10/2011
E-831.3.2	DAVIS, DAMON ANDREW	ENGB	ORMAR	AIR	BOI	07/10/2011
E-831.3.3	LUMLEY, BRIAN	ENGB	ORBUD	AIR	BOI	07/10/2011
E-831.3.4	DOBSON, ZACH	FFT2	ORBUD	AIR	BOI	07/10/2011
E-831.4.1	ISHIDA, MITCHELL	ENGB	ORLAD	AIR	RDM	07/10/2011
E-831.4.2	BRAZEAL, TREVOR	FFT2	ORLAD	AIR	RDM	07/10/2011
E-831.4.3	JOHNSON, KYLE	FFT2	ORLAD	AIR	RDM	07/10/2011
E-831.5.1	HASKINS, MATTHEW R	ENGB	ORLAD	AIR	LMT	07/10/2011
E-831.5.2	ATKINSON, STEVEN	FFT2	ORLAD	AIR	LMT	07/10/2011
E-831.5.3	CLEMENS, KASEY	FFT2	ORLAD	AIR	LMT	07/10/2011
E-831.6.1	SKAAR, KASEY	ENGB	ORPRD	AIR	RDM	07/10/2011
E-831.6.2	HARING, MICHAEL JOHN	FFT2	ORPRD	AIR	RDM	07/10/2011

Number	Name	Kind	UnitID	TravelM ethod	Jet- port	Travel Date
E-831.6.3	KRAMER, BRANDON	FFT2	ORPRD	AIR	RDM	07/10/2011
E-831.7.1	MASON, DANIEL WAYNE	ENGB	ORVAD	AIR	BOI	07/10/2011
E-831.7.2	MCDANIEL, JORDAN J	FFT2	ORVAD	AIR	RDM	07/10/2011
E-831.7.3	DELONG, LUCILLE I	FFT1	ORVAD	AIR	BOI	07/10/2011
E-893.4	LYDEN, PAUL J	ENGB	MIHMF	AIR	MBS	07/10/2011
E-893.6	HEPLER, TERRY WAYNARD	FFT2	MIHMF	AIR	MBS	07/10/2011
E-893.7	WHITE, AARON LEE	FFT2	MIHMF	AIR	MBS	07/10/2011
E-901	ENGINE - T6 - 631 USFS BEAVER	ENG6	UTFIF	AOV		07/10/2011
E-901.1	MATHESON, ROBERT CLAY	ENGB	UTFIF	AOV	CDC	07/10/2011
E-901.2	LIMB, ZACHARY CHAD	FFT2	UTFIF	AOV	SLC	07/10/2011
E-901.3	YARDLEY, STETSON DANNY	FFT2	UTFIF	AOV	SLC	07/10/2011
E-901.4	PANKRATZ, NATHAN	FFT2	TXTXF	AOV	IAH	07/10/2011
E-906.1	WICKHAM, JAY	ENGB	SDSDS	AIR	RAP	07/10/2011
E-906.2	WARREN, DENYS MICHAEL	FFT1	SDSDS	AIR	RAP	07/10/2011
E-906.3	KEITH, NATHAN	FFT2	SDSDS	AIR	RAP	07/10/2011
E-914	TRACTOR - PLOW - T2 - GFC1097	TPL2	GAGAS	AOV		07/10/2011
E-915	TRACTOR - PLOW - T4 - GFC	TPL4	GAGAS	AOV		07/10/2011
E-916	TRACTOR - PLOW - T2 - GFC1075	TPL2	GAGAS	AOV		07/10/2011
E-916.1	TRANSPORT TRACTOR/TRAILER	TRTL	GAGAS	POV		07/10/2011
E-939	ENGINE - T6 - KY-LBF E162	ENG6	ARWHR	AOV		07/10/2011
E-939.4	HARSH, JOSEPH	ENGB	ARWHR	AOV		07/10/2011
E-939.5	HARRIS, ROBERT	FFT2	ARWHR	AOV		07/10/2011
E-980	ENGINE - T6 - STEARNS E161	ENG6	KYDBF	POV		07/10/2011
E-980.1	STONE, LARRY AMOS	ENGB	KYDBF	POV	LEX	07/10/2011
E-980.2	METZMEIER JR, FRANK JOSEPH	FFT2	KYDBF	POV	TYS	07/10/2011
O-484	YEARWOOD, MIKE	HMGB	CALNF	A/R	RNO	07/10/2011
O-631	PETRUZALEK, JERRY R	GISS	WICNF	AIR	RHI	07/10/2011
O-637	SPARKS, RICHARD A	EMTB	WIWIC	AIR	RHI	07/10/2011
O-659	TRAPP, TERRY L	SOF2	PANAF	AIR	RHI	07/10/2011
O-693	JOHNSON, ROSEMARY	PTRC	MNCPF	AIR	BJI	07/10/2011
O-694	THOMPSON, CATHERINE JAYNE	PTRC	MNCPF	AIR	BJI	07/10/2011
O-802	WALLER, WILLIAM GARY	GSUL	MSMNF	AOV	MEM	07/10/2011
O-826	CHAPIN, RANDY	GSUL	MSMSS	AIR	JAN	07/10/2011
O-827	LIGONS, CLIFFORD D	BCMG	WAGPF	AIR	PDX	07/10/2011
O-829	DISTEFANO, PETER	BCMG	NYNYX	AIR	JFK	07/10/2011
O-837	BURNETTE, ROBERT D	SEC1	GACHF	AOV	ATL	07/10/2011
C-20	CREW - CAMP - PINE KNOT JCC -	CC	KYDBF	AOV	TYS	07/11/2011
C-20.1	NELSON, BOBBY R	CACB	KYDBF	AOV	TYS	07/11/2011
C-20.2	KOHLER, LINDSEY	CAMP	KYDBF	AOV		07/11/2011
C-20.4	DOLLONS, ROBERT	CAMP	KYDBF	AOV		07/11/2011
C-20.5	ROSS, BRANDON	CAMP	KYDBF	AOV		07/11/2011
C-20.6	WELLMAN, JONATHAN	CAMP	KYDBF	AOV		07/11/2011
C-20.9	MCCOMB, DANIEL	CAMP	KYDBF	AOV	TYS	07/11/2011
E-1036.1	VILLA, NICHOLAS D	ENGB	MTSWS	AIR	BTM	07/11/2011
E-1036.2	SPEHAR, TRISTON R	FFT2	MTSWS	AIR	BTM	07/11/2011
E-1036.3	ORRINO, CORY L	FFT2	MTSWS	AIR	BTM	07/11/2011
E-137	ENG6 WILDLANDS 8	ENG6	FLFNF	POV		07/11/2011
E-137.5	RADFORD, AARON	ENGB	FLFNF	POV		07/11/2011
E-390	WISCONSIN ENG 461	ENG6	WICNF	AOV		07/11/2011
E-390.4	BORMANN, TYLER	ENGB	WICNF	AIR	RHI	07/11/2011
E-390.5	MOFFITT, ANDREW	ENGB	WICNF	AIR	RHI	07/11/2011
E-390.6	SLOAN II, DAVID	ENGB	WICNF	AIR	RHI	07/11/2011
E-5012.6	SHRIMPLING, PATRICK	ENOP	NCNCF	POV		07/11/2011

Number	Name	Kind	UnitID	TravelM ethod	Jet- port	Travel Date
E-5017	ENGT6 MARK TWAIN E9504	ENG6	MOMTF	AOV		07/11/2011
E-5017.7	YEOMAN, ERIN	ENGB	MOMTF	AOV		07/11/2011
E-5017.8	OLIVER, DOUGLAS	FFT2	MOMOC	AIR	STL	07/11/2011
E-5017.9	KELLY, KEITH	FFT1	MOMTF	AOV		07/11/2011
E-584	ENG6 CNNF E161	ENG6	WICNF	AOV		07/11/2011
E-584.2	EUCOLONO, JOE	ENOP	WICNF	AIR	DLH	07/11/2011
E-808.2	TALBOT, PAUL J	ENGB	MNMNS	AIR	MSP	07/11/2011
E-914.1	TRANSPORT TRACTOR TRAILER	TRTL	GAGAS	AOV		07/11/2011
E-914.2	DURHAM, WILLIAM HUNTER	TPOP	GAGAS	AOV	ALB	07/11/2011
E-915.1	TRUCK - TRACTOR - GFC4202366	TRAC	GAGAS	AOV		07/11/2011
E-915.2	MEADOWS, DEREK	TPOP	GAGAS	AOV		07/11/2011
E-916.2	TAYLOR, HARVEY	TPOP	GAGAS	AOV		07/11/2011
E-93	WATER TENDER 10	WTS2	FLFNF	POV		07/11/2011
E-93.1	DAVIS, WILLIAM	DRIV	FLFNF	POV		07/11/2011
E-957	DECATU ENGINE 31- T7 -	ENG7	GAGAS	AOV		07/11/2011
E-976	ENG6 RED ROCK FIRE -	ENG6	WIR09	POV		07/11/2011
E-977	ENGINE - T6 - IPF - D1 - E-31	ENG6	IDIPF	AOV		07/11/2011
E-977.1	SMITH, LUKE	ENGB	IDIPF	AIR	GEG	07/11/2011
E-977.2	NORRIS, PAUL	ENGB	IDIPF	AIR	GEG	07/11/2011
E-977.3	RATCLIFFE, EVAN ANDREW	FFT1	IDIPF	AIR	GEG	07/11/2011
E-977.4	ORTON, JENNIFER MARIE	FFT1	IDIPF	AIR	GEG	07/11/2011
E-978	ENGINE - T6 - PLS - E1161	ENG6	IDPLS	POV		07/11/2011
E-979	ENGINE - T6 - CMS - 43F53	ENG6	IDCMS	AOV		07/11/2011
O-1014	HUENERGARDT, DENNIS	STDZ	ORWIF		EUG	07/11/2011
O-379	RENSHAW, JARED	DRIV	GAOKR	POV		07/11/2011
O-419	RIPLEY, STEVEN	SOF2	FLFNF	POV		07/11/2011
O-527	CURTIS, DOROTHY	EQTR	WYCPS	AIR	CPR	07/11/2011
O-635	RUMPH, CLAY FRANKLIN	SEC1	MNMNA	AIR	DLH	07/11/2011
O-648	WILKERSON, DAVID L	PIO2	OKOKS	AIR	TUL	07/11/2011
O-683	PEABODY, LARRY	DIVS	CATNF	AIR	SMF	07/11/2011
O-708	MURRIN, ANDY K	DOZB	ORROC	AIR	EUG	07/11/2011
O-711	HUENERGARDT, DENNIS	THSP	OREIC	AIR	EUG	07/11/2011
O-730	POWERS, SHANE	EMTP	AKLCSC	AIR	FAI	07/11/2011
O-731	BARKER, KEITH	EMTP	COLACX	AIR	ORD	07/11/2011
O-752	ALMAS, MIKE	DIVS	IDIPF	AIR	GEG	07/11/2011
O-799	TATE, MELVIN L	HEB1	FLFLS	POV	PFN	07/11/2011
O-809	MILAM, TODD M	STPL	GAGAS	AOV	ALB	07/11/2011
O-840	JOHNSON, MICAH DARRELL	TFLD	MIHMF	A/R	MBL	07/11/2011
O-841	FLUE, JAMES R	TFLD	ALALF	AOV	MGM	07/11/2011
O-843	CHASTAIN, JOSEPH T	DOZB	GACHF	AOV	ATL	07/11/2011
O-851	CARL, ANGELA	ENGB	NCALR	POV	CLT	07/11/2011
E-137.6	SILVESTRO, JASON	ENOP	FLFNF	POV		07/12/2011
E-170	TP3 FRANCIS MARION 62	TPL3	SCFMF	AOV		07/12/2011
E-170.7	CHRISTOPHER, JOHN MICHAEL	TPOP	SCFMF	AOV	CHS	07/12/2011
E-170.8	MARSHALL, ALEXANDER R	FFT1	SCFMF	AOV	CHS	07/12/2011
E-5010	PATRICK ENG6	ENG6	TNTNC	POV		07/12/2011
E-5012.3	GIBBS, ROBBIE	ENOP	NCNCF	POV		07/12/2011
E-512	TIPTON & YOUNG WATER TENDER	WAT2	NCNCF	POV		07/12/2011
E-512.2	SWANE, KEN	DRIV	NCNCF	POV		07/12/2011
E-653	JD 700 J DOZ	TPL2	FLFLS	POV		07/12/2011
E-653.1	DUGGER, EUSTON	DZOP	FLFLS	POV		07/12/2011
E-807	ENGINE - T6 - E-21 - EASTERN D	ENG6	VAVAF	AOV		07/12/2011
E-900	ENGINE - T6 - GUN 622	ENG6	MNMFC	AOV		07/12/2011

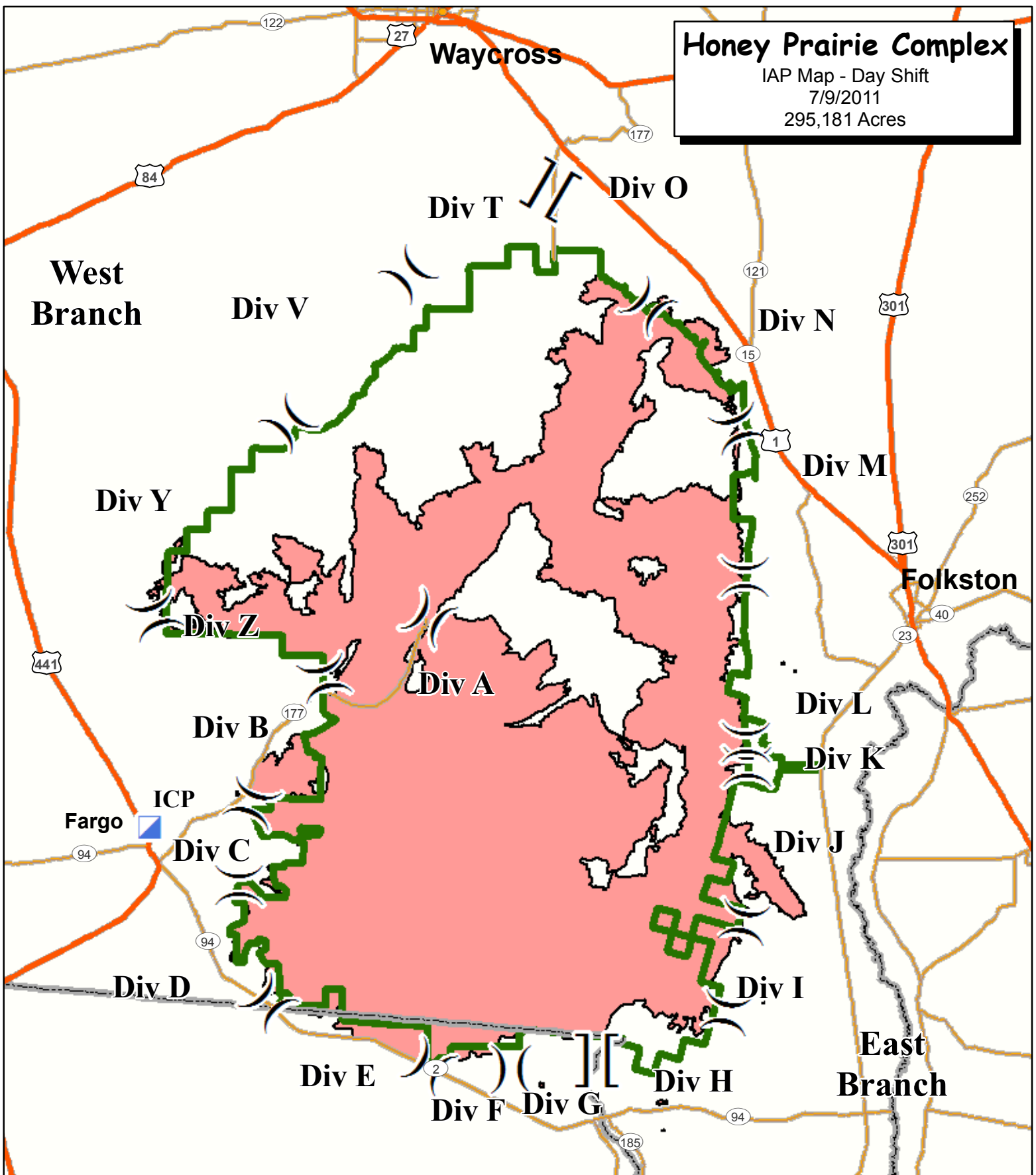
Number	Name	Kind	UnitID	TravelM ethod	Jet- port	Travel Date
E-900.1	KUJAWA, RICHARD TRACY	ENGB	MNMFC	AOV	DLH	07/12/2011
E-900.2	GOLDSMITH, CASEY	FFT2	MNMFC	AOV		07/12/2011
E-900.3	PORTER, JEREMY GARRETT	FFT2	MNMFC	AOV	DLH	07/12/2011
E-954	HUGHESTREE PLANTING(VOLVO 4.	WAT2	GAOKR	POV		07/12/2011
E-995	ENGINE - T6 - MES #6156	ENG6	MEMES	AOV		07/12/2011
E-995.4	LAVOIE, ARTHUR S	CRWB	MEMES	AIR	PWM	07/12/2011
E-995.5	BAILEY, AARON J	FFT2	MEMES	AIR	BGR	07/12/2011
E-995.6	POTVIN, LUCIEN	FFT2	MEMES	AIR	BGR	07/12/2011
E-996	ENGINE - T6 - MES #6170	ENG6	MEMES			07/12/2011
E-996.4	PICKERING, DUSTIN E	ENGB	MEMES	AIR	BGR	07/12/2011
E-996.5	HUNTER, ISAAC R	FFT2	MEMHR	AIR	BGR	07/12/2011
E-996.6	HAMILTON, CAMERON R	FFT2	MEMES	AIR	BGR	07/12/2011
O-368	JOHNSON, HARDY	DRIV	GAOKR	POV		07/12/2011
O-537	LINDSAY, GLENDA	PTRC	ORUPF	AIR	EUG	07/12/2011
O-702	BARRETT, BRUCE B	SOF2	MNVOP	AIR	INL	07/12/2011
O-703	KLOCK, LARRY JAMES	SOF2	COPBC	A/R	COS	07/12/2011
O-728	MULLEN, BRENDAN	ABRO	MTBDF	A/R	BTM	07/12/2011
O-739	WEEKS, RODNEY JAY	STEN	IDCDC	AIR	GEG	07/12/2011
O-749	SHINDELAR, BOBBY	OPBD	IDBOF	A/R	SMF	07/12/2011
O-766	MILLER, PEGGY	EMTP	MTFNF	AIR	FCA	07/12/2011
O-771	PHELPS, RICH	PIO1	CALPF	AIR	SMX	07/12/2011
O-775	HORNER, JR, JACK LEO	PIO1	COPBS	A/R	EWN	07/12/2011
O-835	COOK, CHAD	TFLD	NCNCF	AOV	CLT	07/12/2011
O-847	CLYMER, BRETT L	EMTP	MOMOS	AIR	XNA	07/12/2011
O-848	HYDE III, BERT WALLACE	EMTB	MNSUF	AIR	DLH	07/12/2011
O-849	MEADOWS BARBER, KYLE I	EMTB	MOMOS	AIR	SGF	07/12/2011

Honey Prairie Complex

IAP Map - Day Shift

7/9/2011

295,181 Acres



-]] Branch Break
-) (Division Break
- ▣ Incident Command Post

- Highway
- Major Road
- - - State Boundary

- ▭ Refuge Boundary
- ▭ Fire Area



