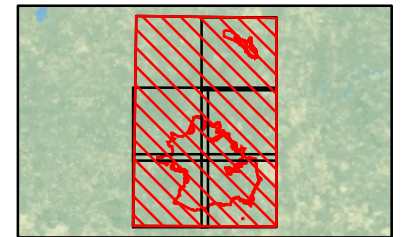
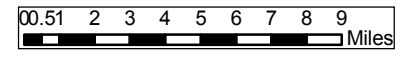
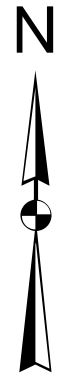
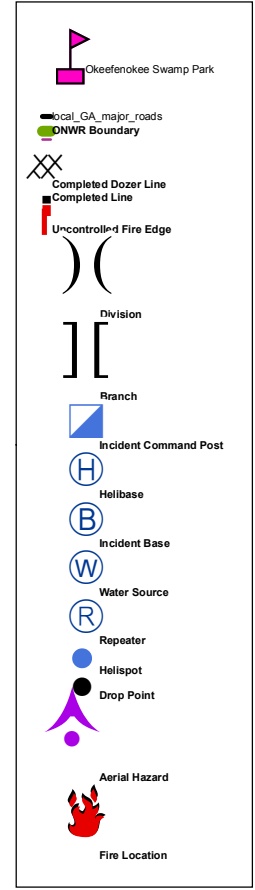
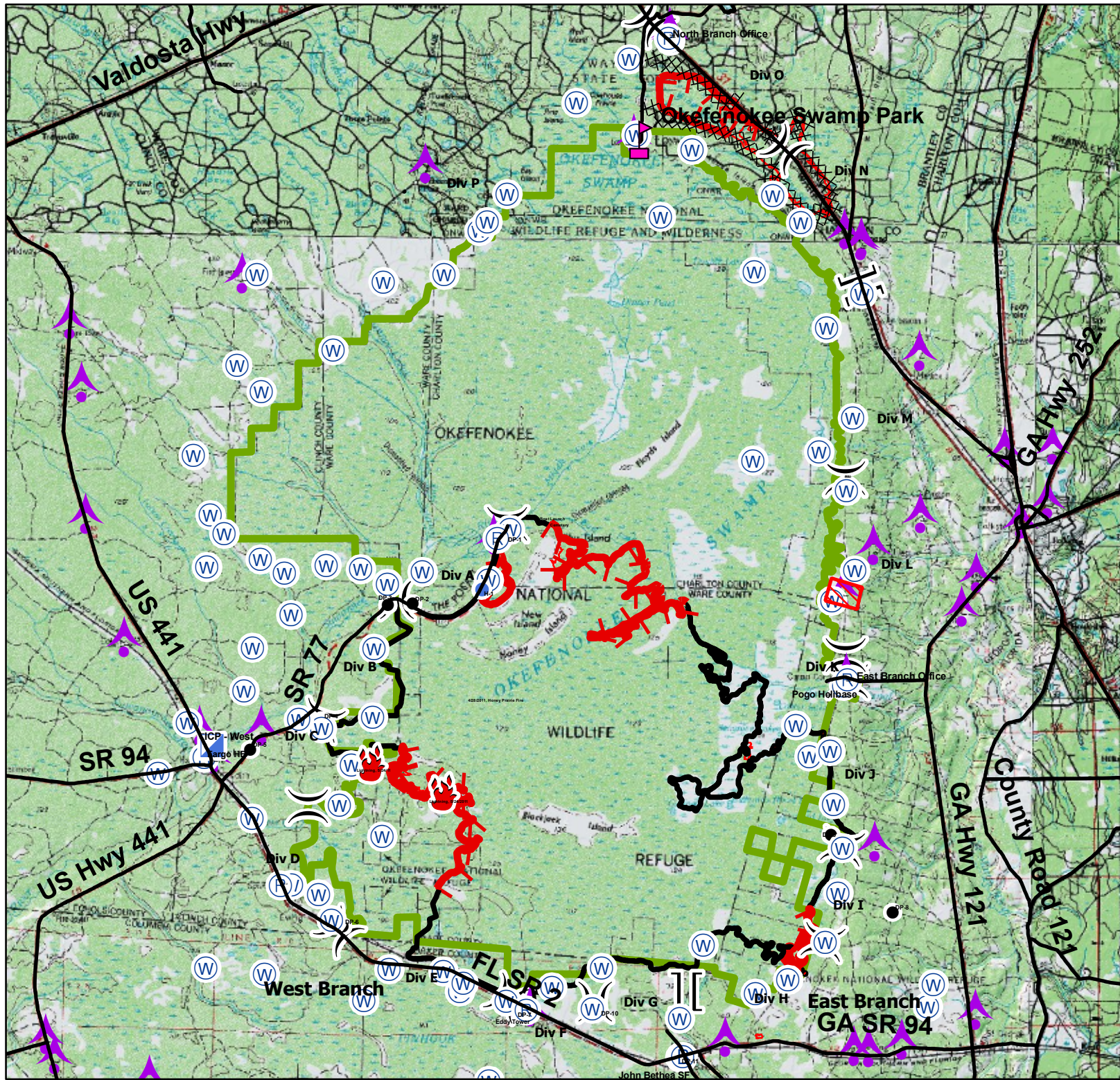


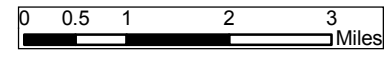
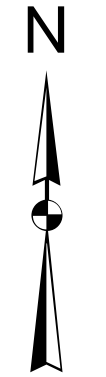
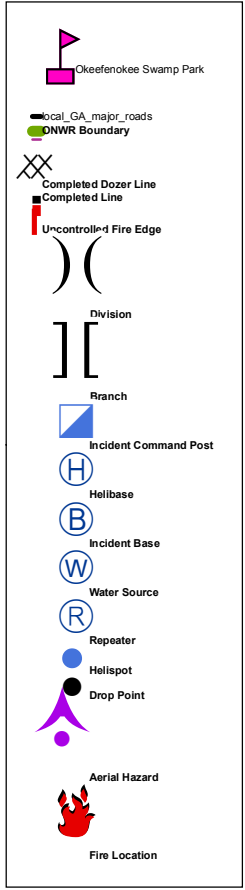
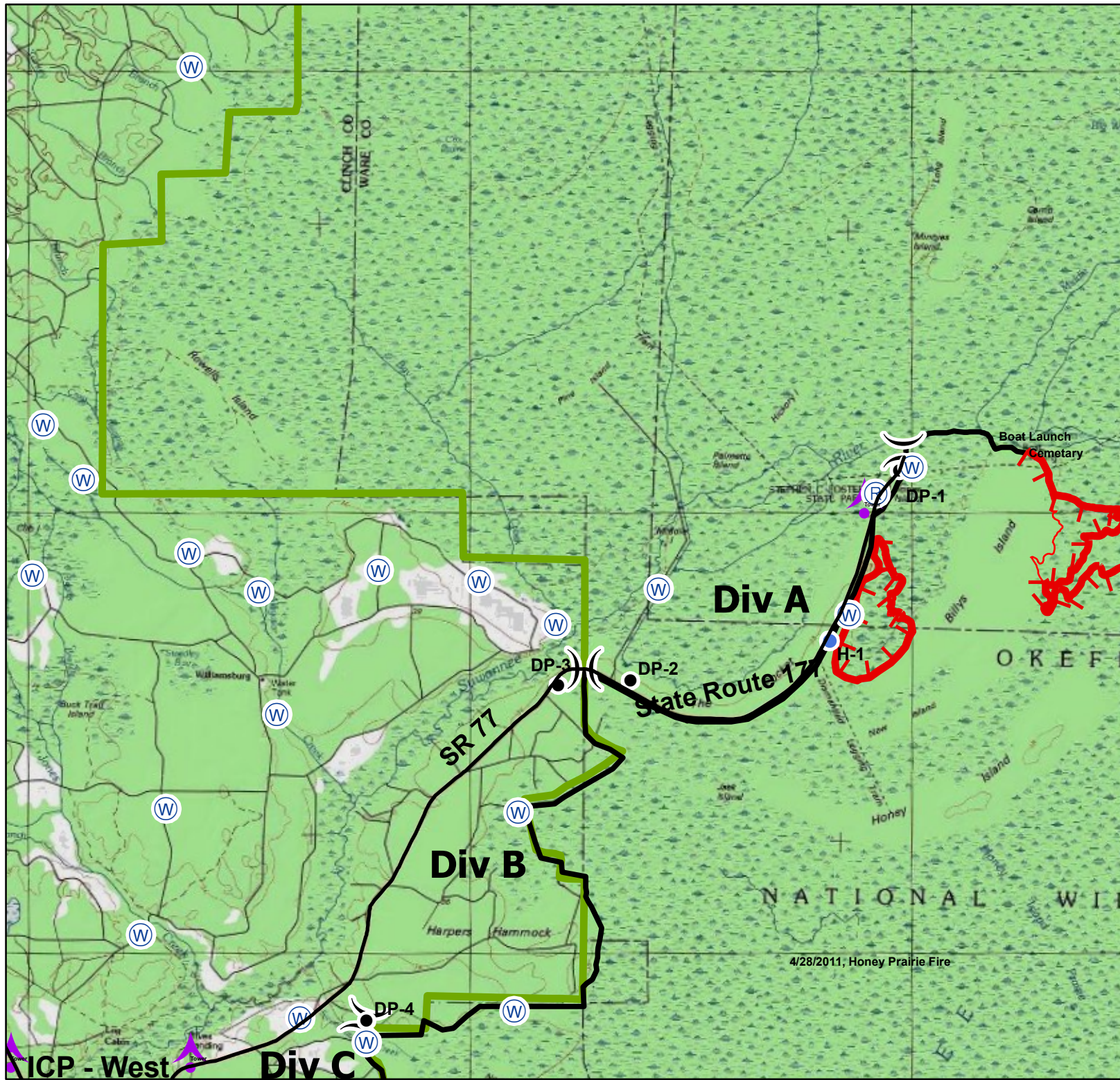
**Honey Prairie Complex**  
**GA-OKR-000001**  
**5/30/2011 1630**  
**157,682 Acres**  
**NAD83-Z17 MJE**

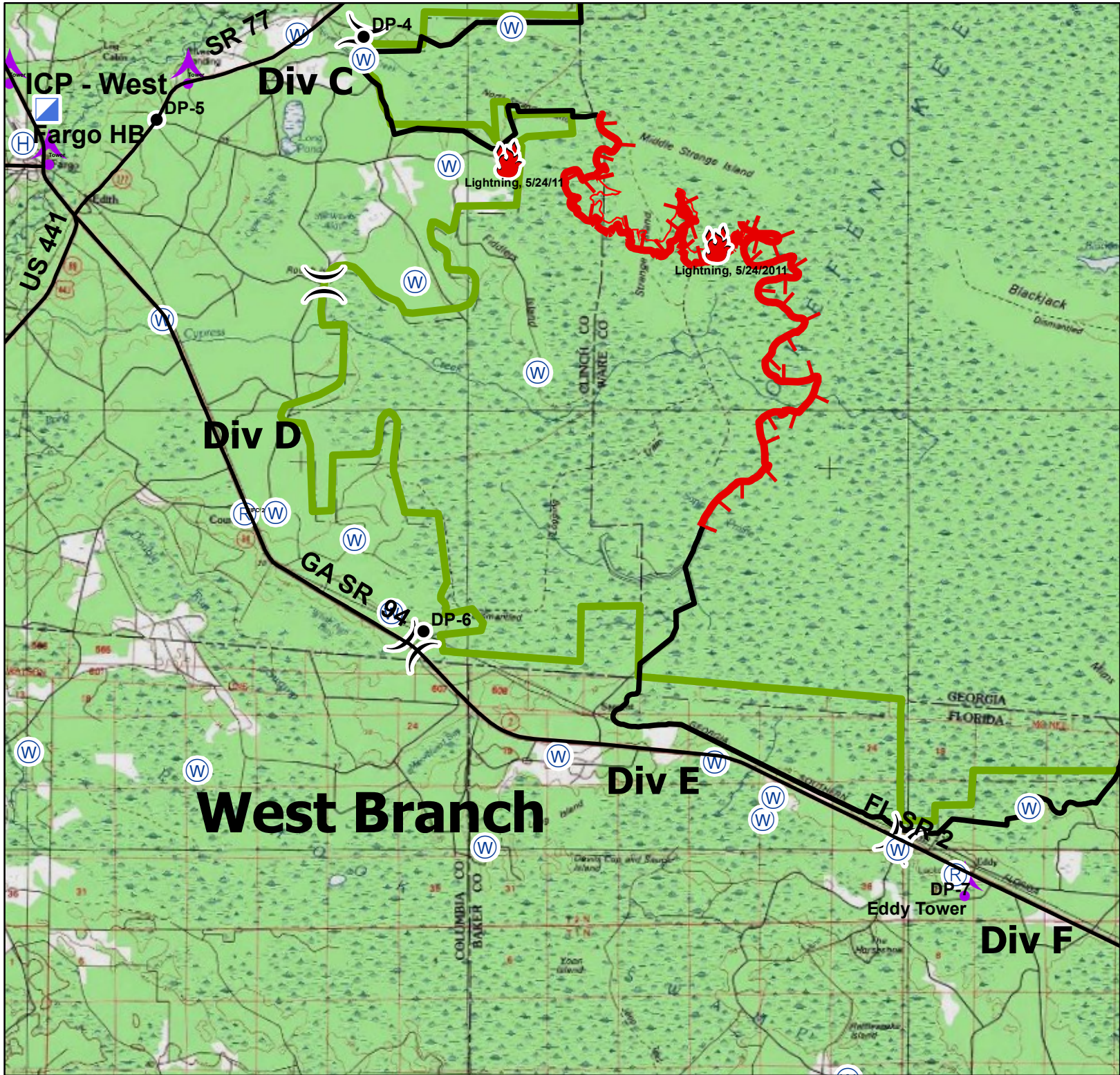
**Honey Prairie Fire 150,428 Acres**  
**Racepond Fire 7,254 Acres**



**Honey Prairie Complex**  
**GA-OKR-000001**  
**5/30/2011 1630**  
**157,682 Acres**  
**NAD83-Z17 MJE**

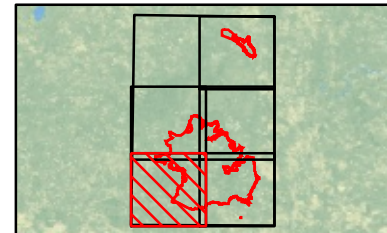
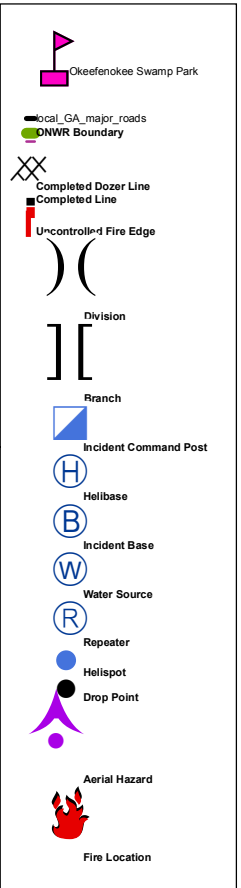
**Honey Prairie Fire 150,428 Acres**  
**Racepond Fire 7,254 Acres**





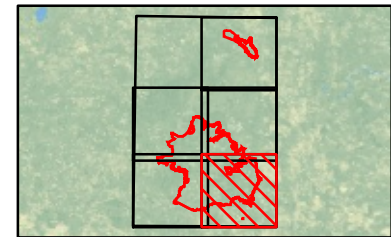
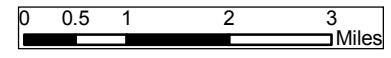
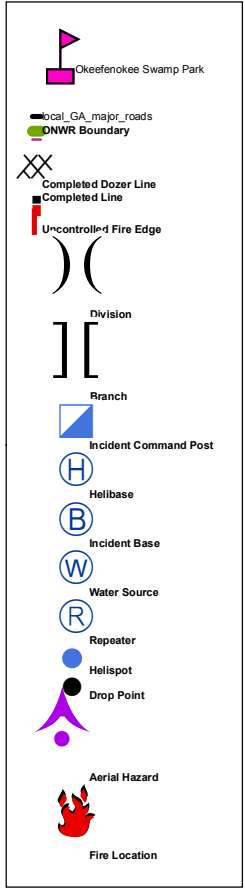
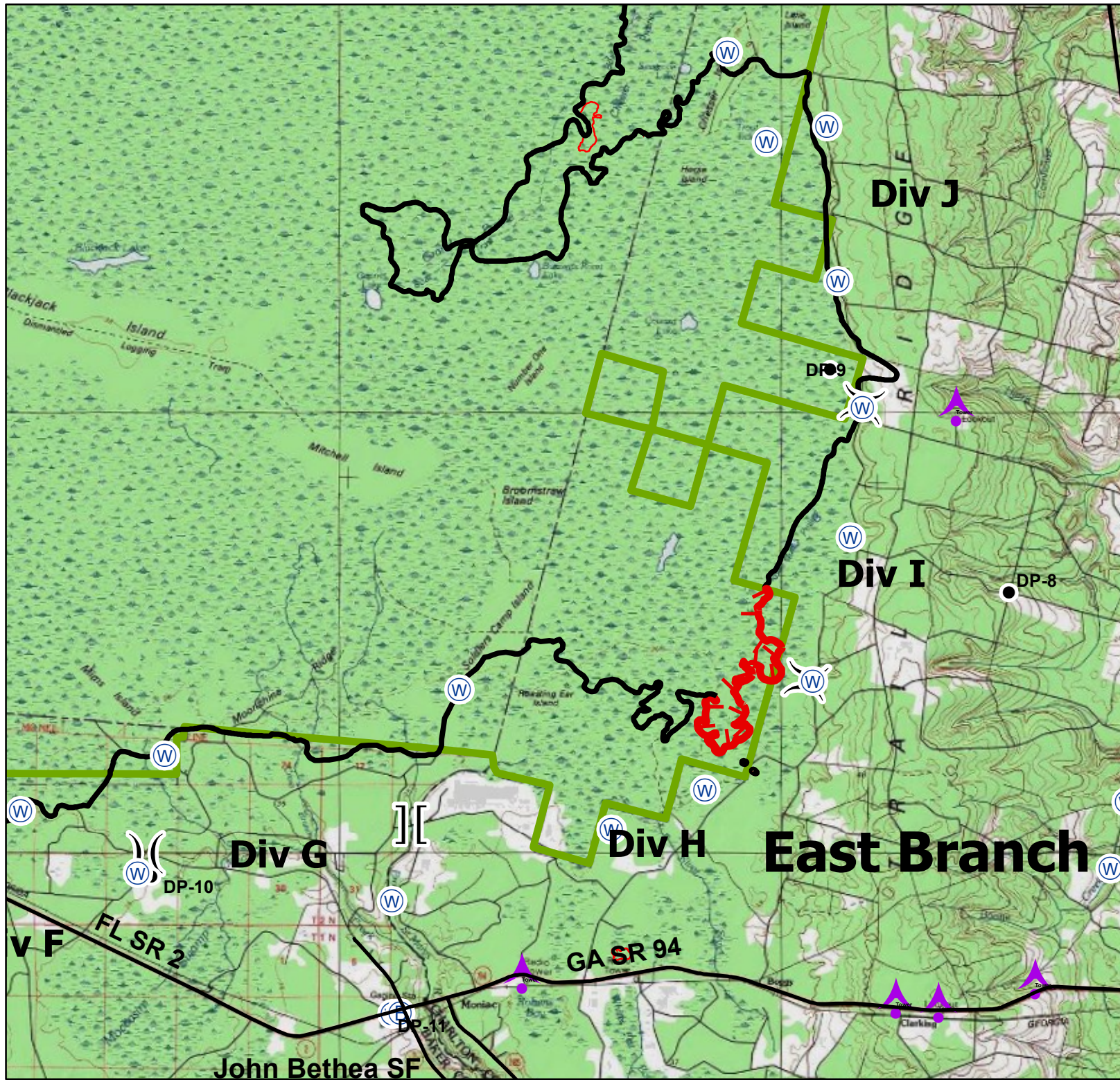
**Honey Prairie Complex**  
**GA-OKR-000001**  
**5/30/2011 1630**  
**157,682 Acres**  
**NAD83-Z17 MJE**

**Honey Prairie Fire 150,428 Acres**  
**Racepond Fire 7,254 Acres**



**Honey Prairie Complex**  
**GA-OKR-000001**  
**5/30/2011 1630**  
**157,682 Acres**  
**NAD83-Z17 MJE**

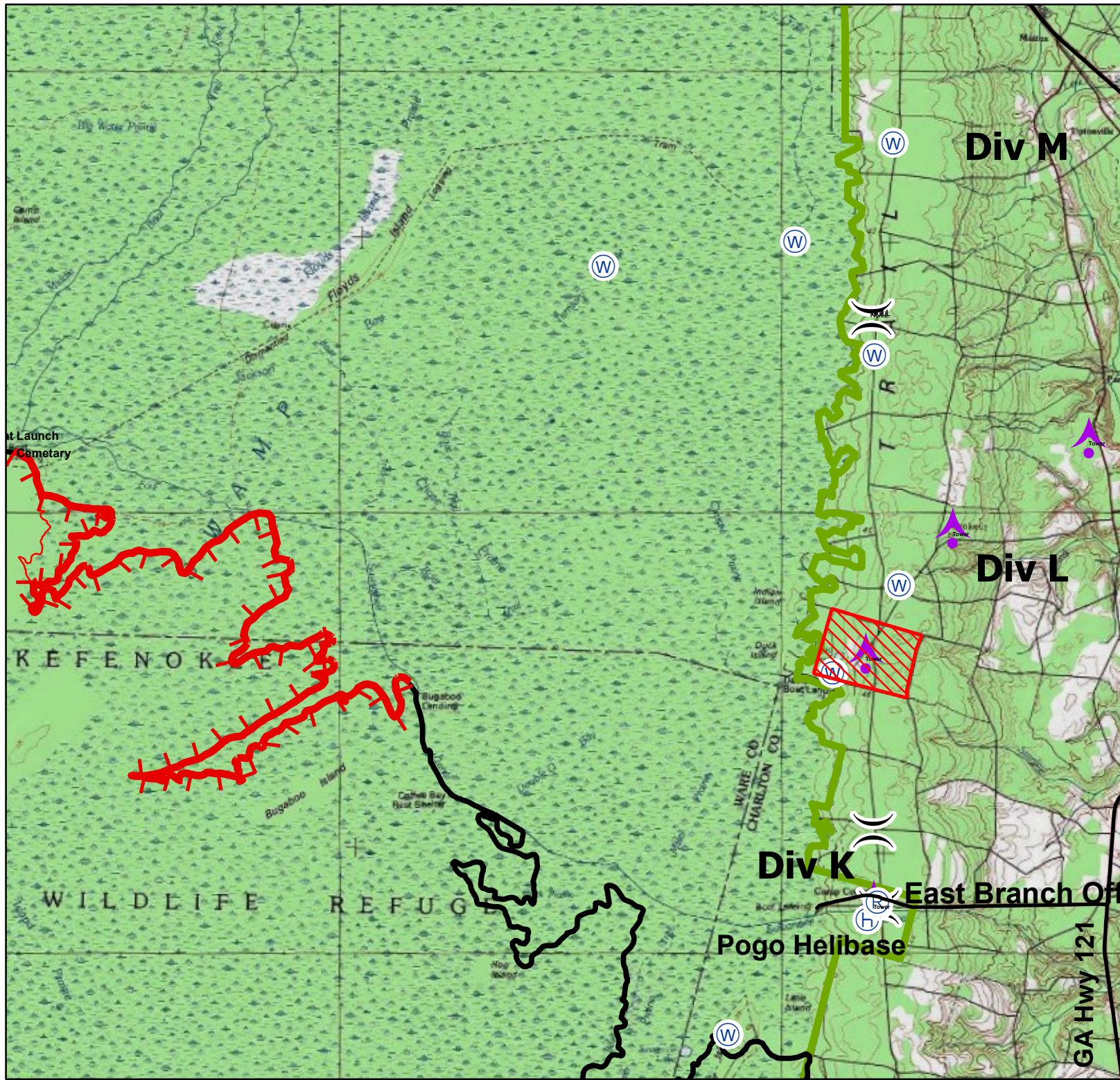
**Honey Prairie Fire 150,428 Acres**  
**Racepond Fire 7,254 Acres**



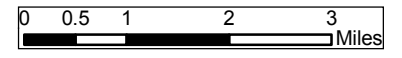
John Bethea SF

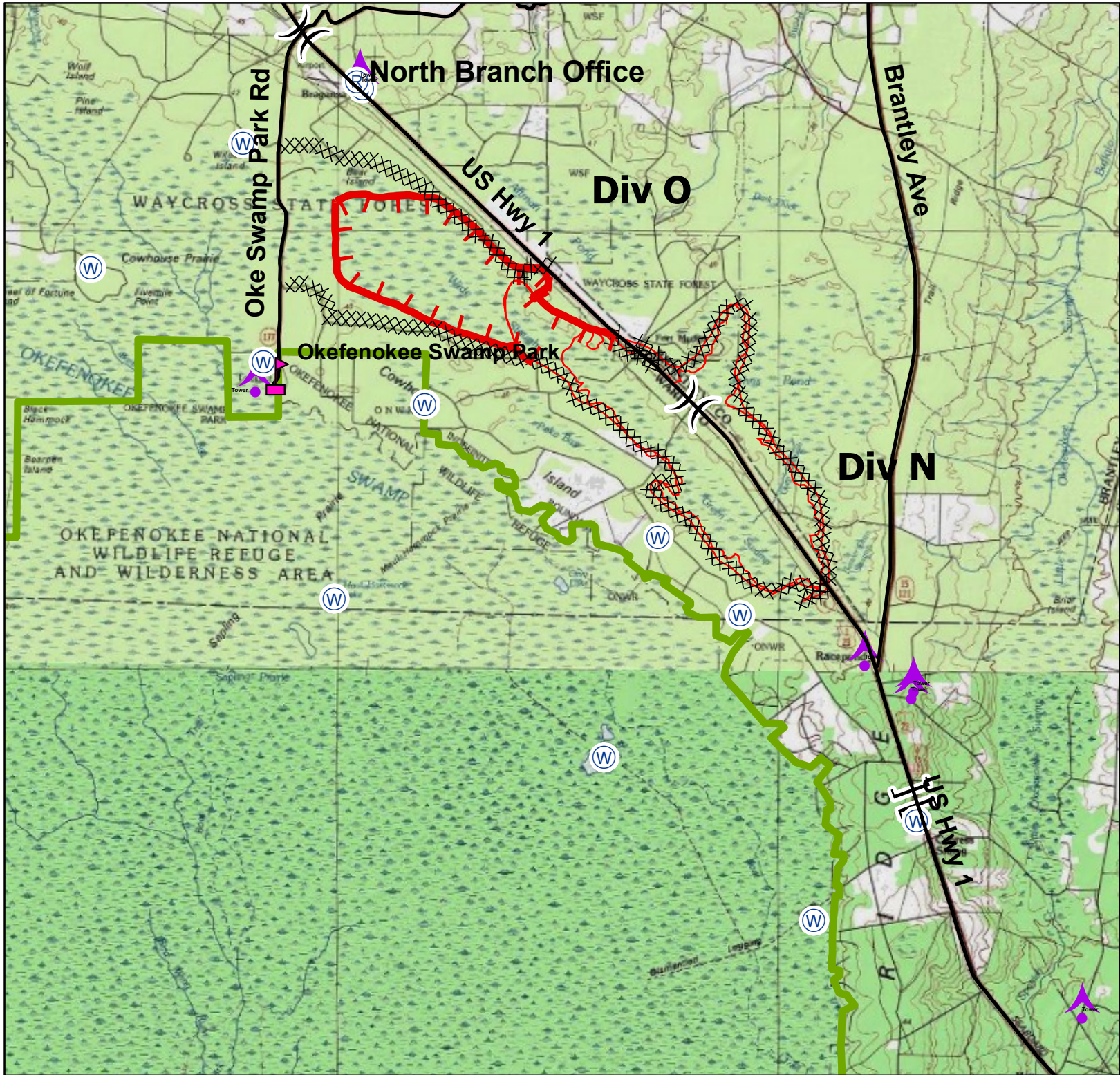
**Honey Prairie Complex**  
**GA-OKR-000001**  
**5/30/2011 1630**  
**157,682 Acres**  
**NAD83-Z17 MJE**

**Honey Prairie Fire 150,428 Acres**  
**Racepond Fire 7,254 Acres**



- Okefenokee Swamp Park
- Local\_GA\_major\_roads
- DNWR Boundary
- Completed Dozer Line
- Completed Line
- Uncontrolled Fire Edge
- Division
- Branch
- Incident Command Post
- Helibase
- Incident Base
- Water Source
- Repeater
- Helispot
- Drop Point
- Aerial Hazard
- Fire Location





**Honey Prairie Complex**  
**GA-OKR-000001**  
**5/30/2011 1630**  
**157,682 Acres**  
**NAD83-Z17 MJE**

**Honey Prairie Fire 150,428 Acres**  
**Racepond Fire 7,254 Acres**

- Okefenokee Swamp Park
- Local GA major roads
- DNR Boundary
- Completed Dozer Line
- Completed Line
- Uncontrolled Fire Edge
- Division
- Branch
- Incident Command Post
- Helibase
- Incident Base
- Water Source
- Repeater
- Helispot
- Drop Point
- Aerial Hazard
- Fire Location

