

# North Branch

# Division A,B,Z

GA-OKR-000001  
Operations Map

June 18, 2011

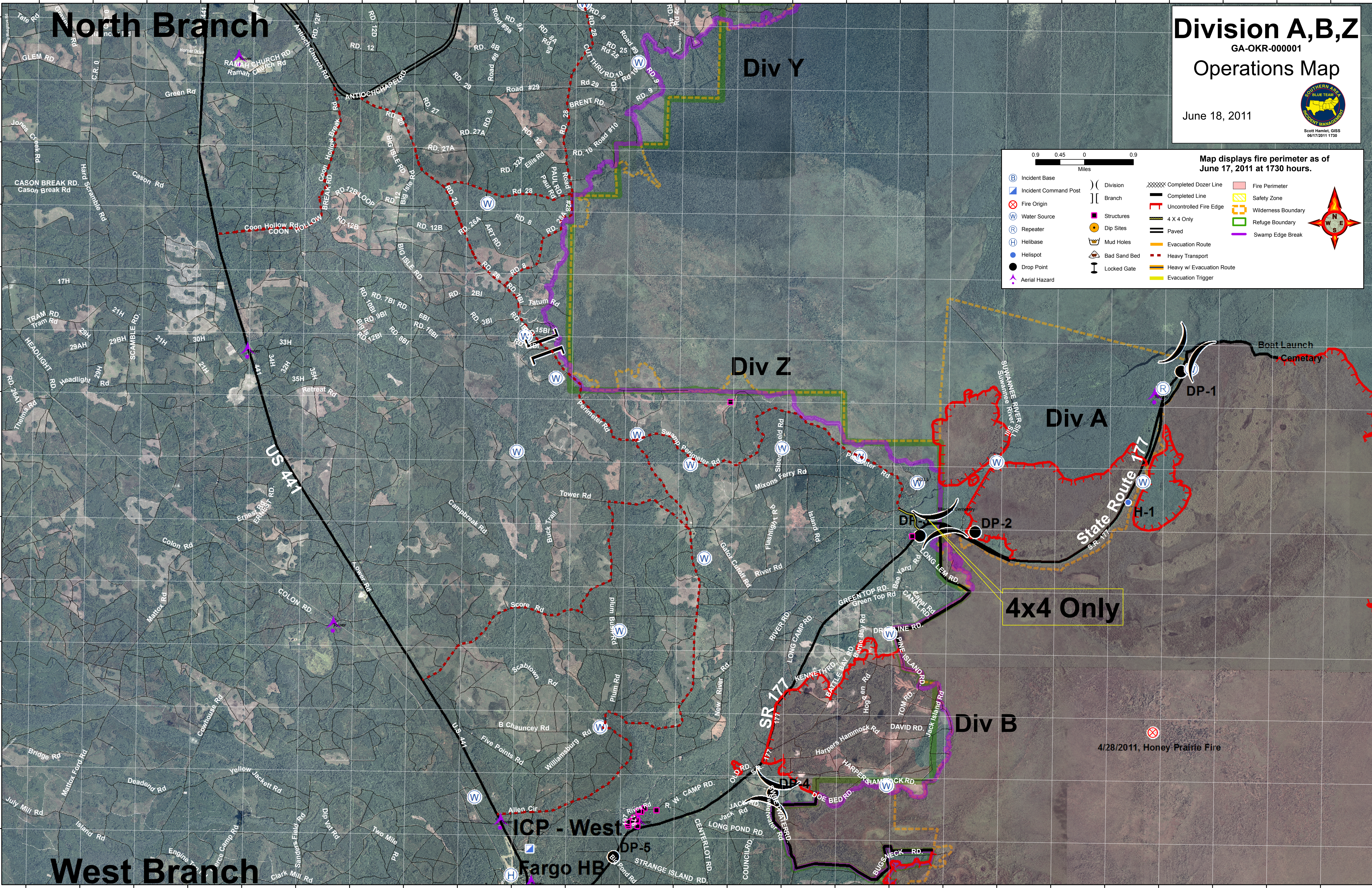


Scott Hamlet, GIS  
06/17/2011 1730

0.9 0.45 0 0.9  
Miles

Map displays fire perimeter as of June 17, 2011 at 1730 hours.

(B) Incident Base	( ) Division	XXXXX Completed Dozer Line	▭ Fire Perimeter
▭ Incident Command Post	Branch	— Completed Line	▭ Safety Zone
⊗ Fire Origin	■ Structures	— Uncontrolled Fire Edge	▭ Wilderness Boundary
(W) Water Source	● Dip Sites	— 4 X 4 Only	▭ Refuge Boundary
(R) Repeater	⌒ Mud Holes	— Paved	▭ Swamp Edge Break
(H) Helibase	⌒ Bad Sand Bed	— Evacuation Route	
● Helispot	⌒ Locked Gate	— Heavy Transport	
● Drop Point		— Heavy w/ Evacuation Route	
⚡ Aerial Hazard		— Evacuation Trigger	



# West Branch

ICP - West

Fargo HB

4x4 Only

4/28/2011, Honey Prairie Fire