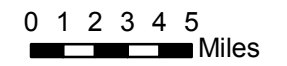


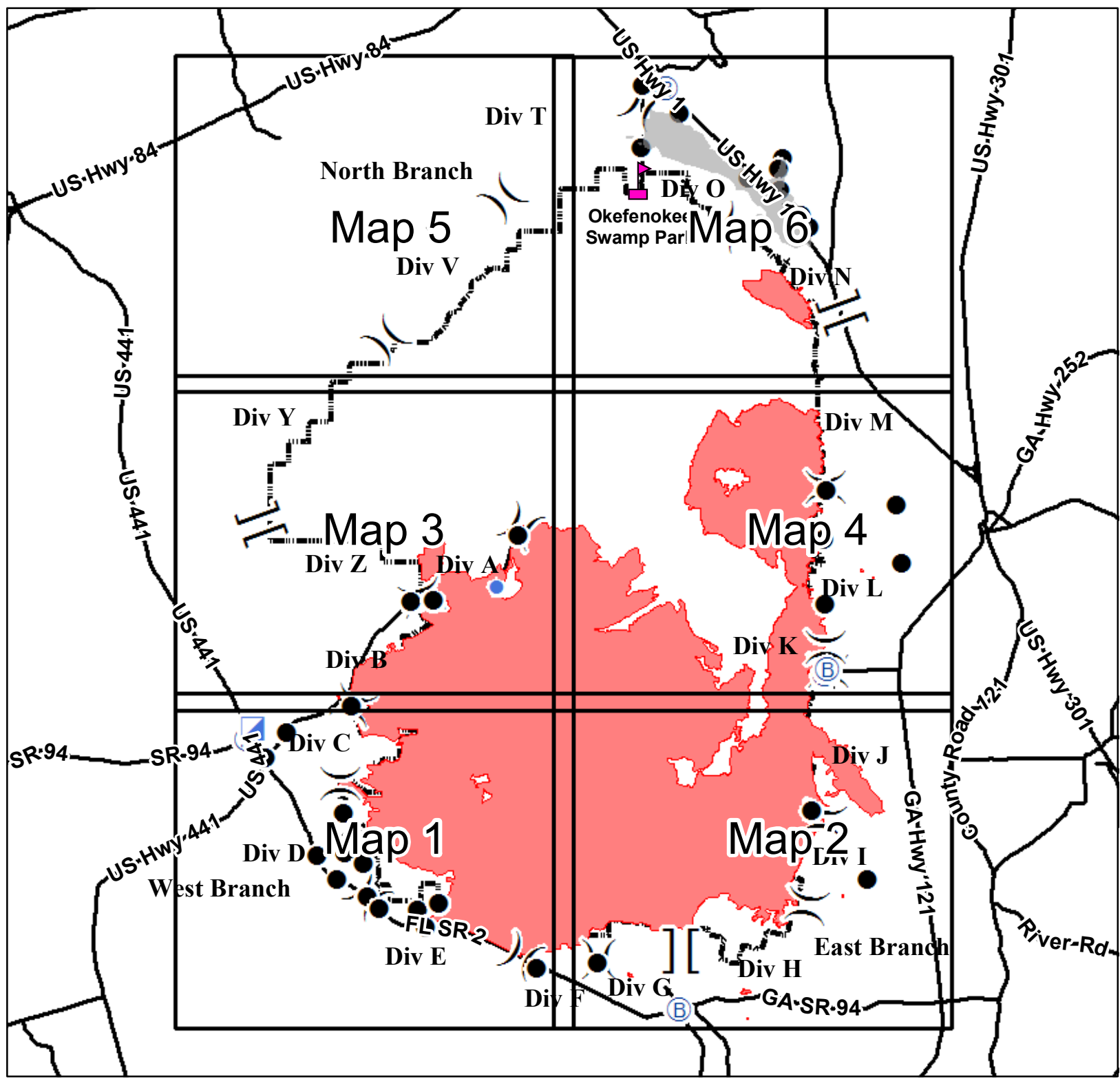
Honey Prairie Complex
GA-OKR-000001
6/18/2011, Day Shift
NAD83-Zone17-N

IAP Map Index

- Legend**
- Okefenokee Swamp Park
 - Incident Command Post
 - Helibase
 - Incident Base
 - Water Source
 - Repeater
 - Helispot
 - Drop Point
 - Aerial Hazard
 - Division
 - Branch
 - Completed Dozer Line
 - Completed Line
 - Uncontrolled Fire Edge
 - ONWR Boundary
 - Structures
 - Roads




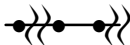
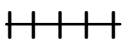


Created By:
 Ann Braun, GISS
 6/17/2011 1800



**Honey Prairie
Complex
GA-OKR-000001
NAD83-Zone17-N**

**Division C & D
Transportation Map**

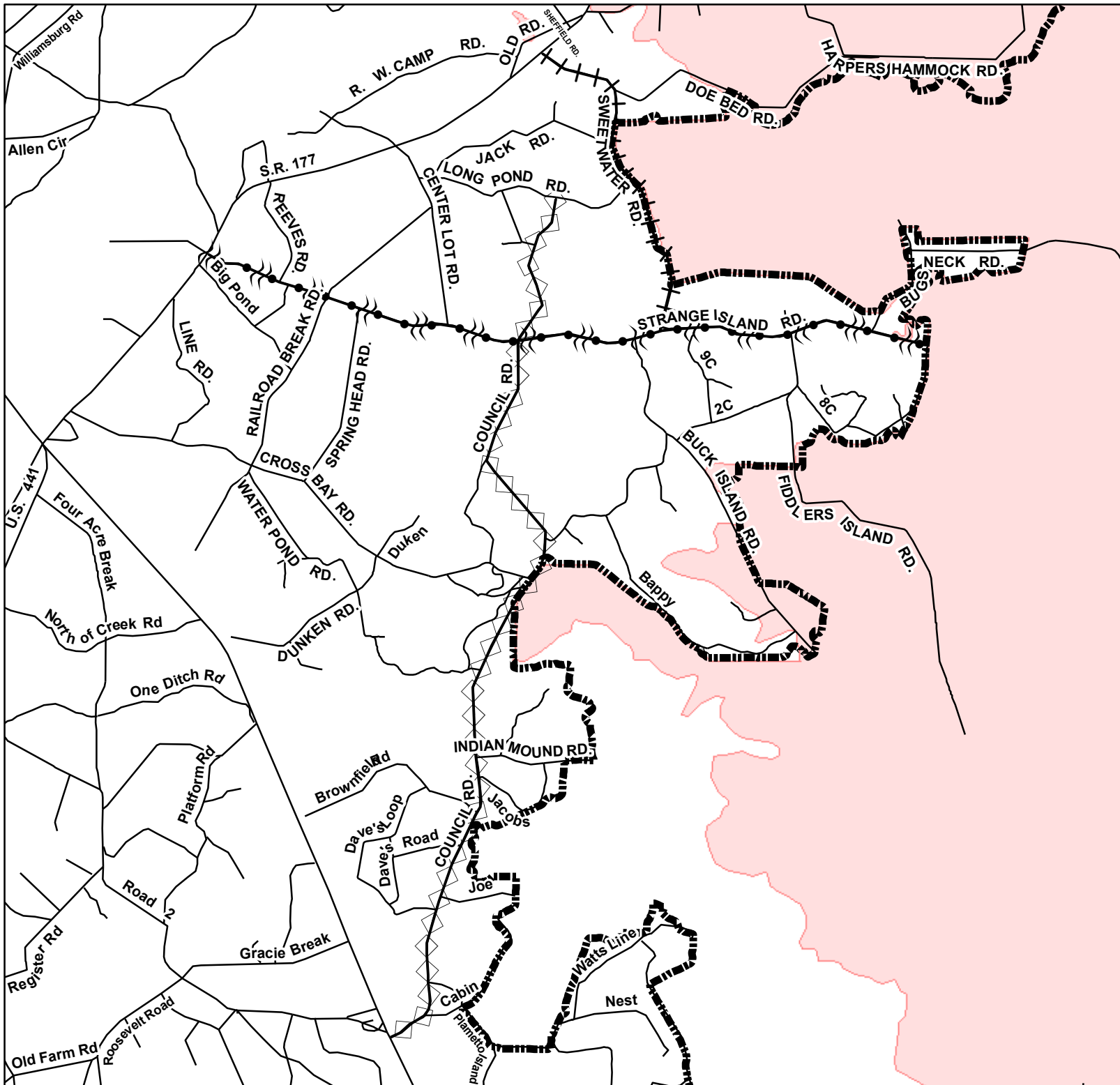
Legend

-  Council Rd
Open to all vehicles
-  Strange Island Rd
Transport / Tenders Only
-  Sweetwater Rd
Engines Only
-  Roads
-  Swamp Edge Break



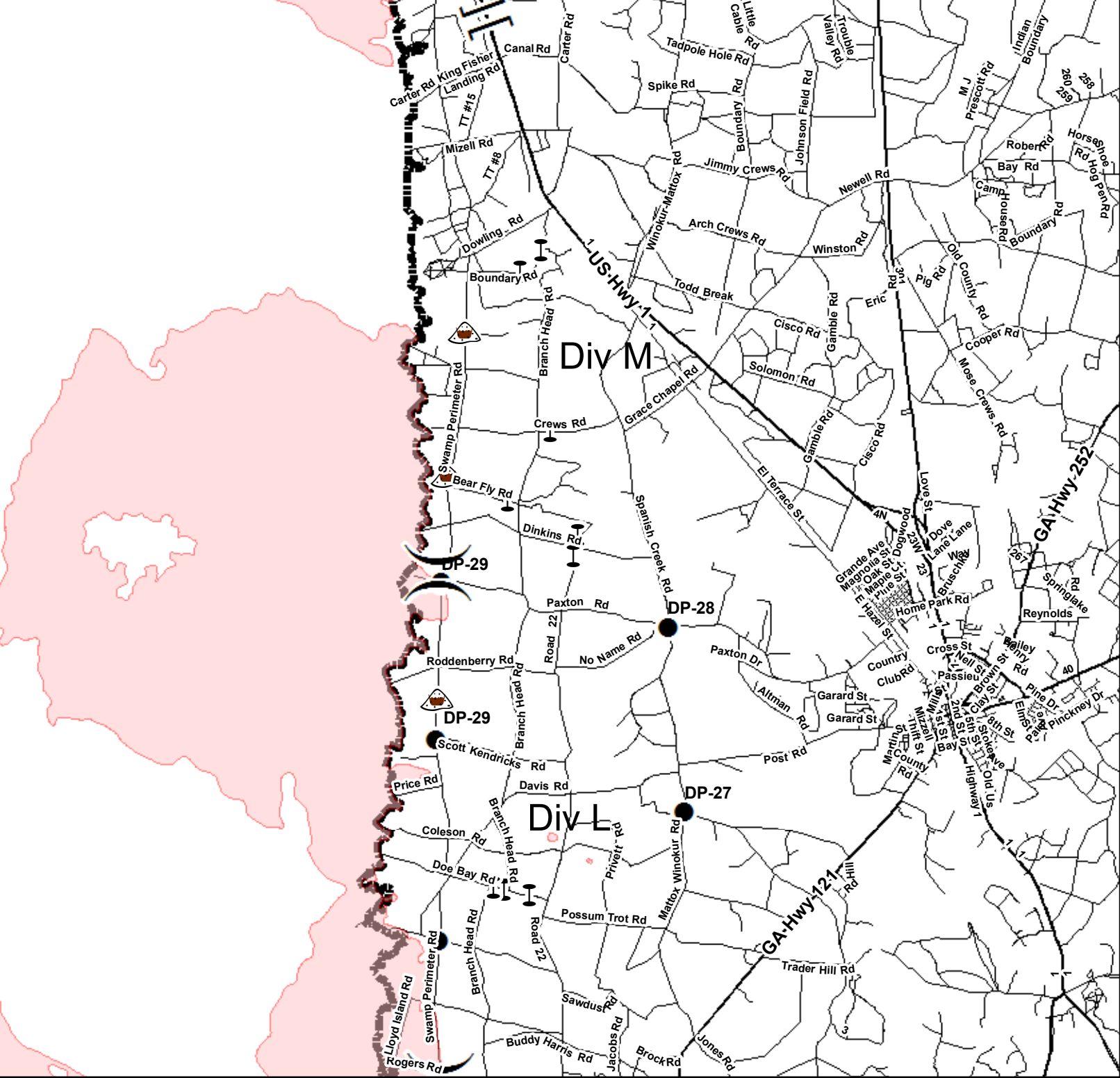
0 0.5 1
Miles

Created By:
Ann Braun, GISS
6/18/2011 1800



Honey Prairie Complex GA-OKR-000001 NAD83-Zone17-N

Division L & M Transportation Map



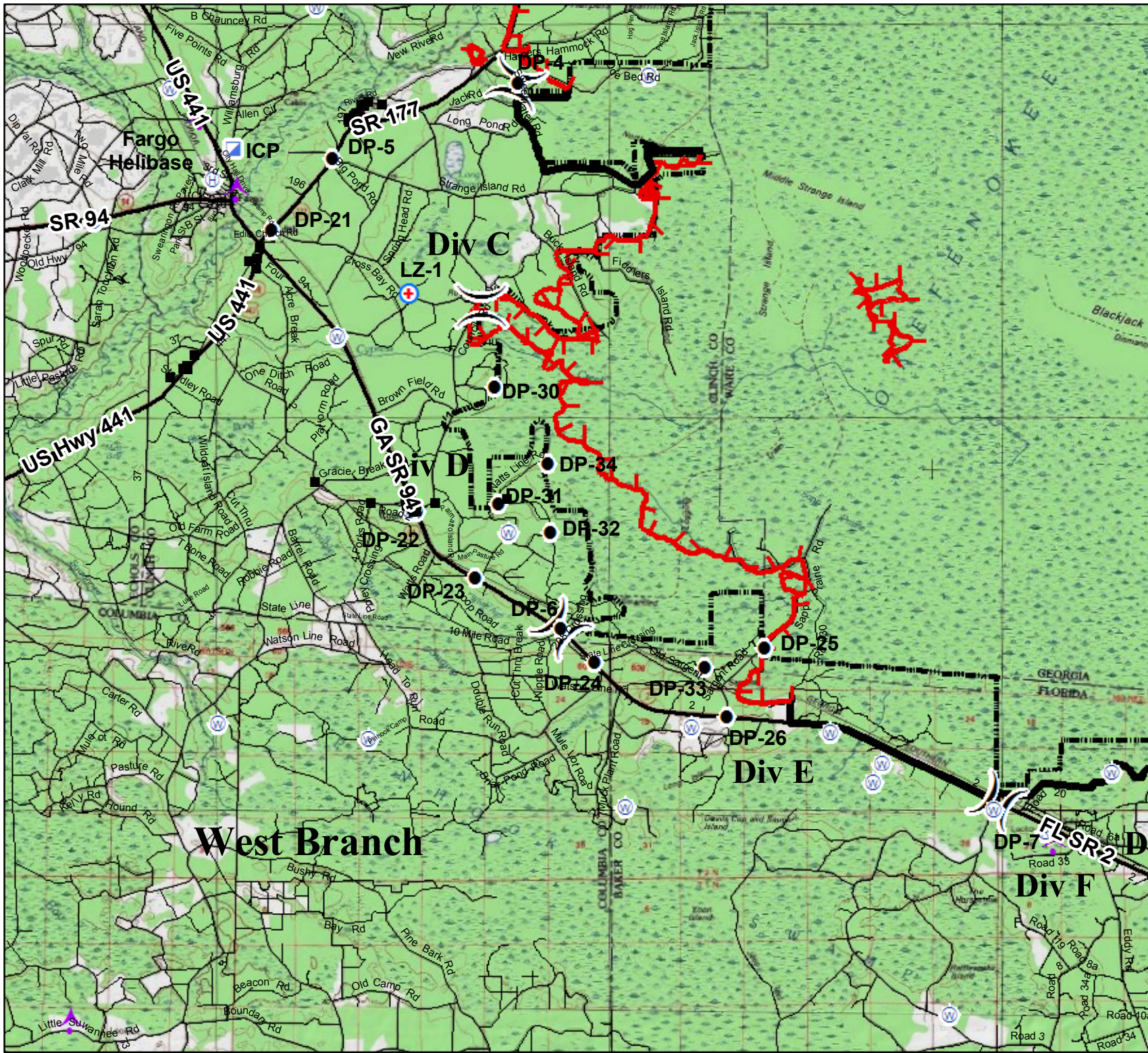
- Legend**
- Helibase
 - Incident Base
 - Drop Point
 - Division
 - Completed Dozer Line
 - Uncontrolled Fire Edge
 - Swamp Edge Break
 - Bad Sand Beds
 - Locked Gate



0 0.5 1
Miles

Created By:
Ann Braun, GIS
6/17/2011 1800

Honey Prairie Complex
GA-OKR-00001
6/18/2011, Day Shift
NAD83-Zone17-N

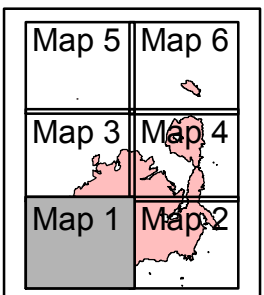


- Legend**
- Okefenokee Swamp Park
 - Incident Command Post
 - Helibase
 - Incident Base
 - Water Source
 - MediVac Site
 - Repeater
 - Helispot
 - Structures
 - Drop Point
 - Aerial Hazard
 - Division
 - Branch
 - Completed Dozer Line
 - Completed Line
 - Uncontrolled Fire Edge
 - ONWR Boundary
 - Structures
 - Roads

Fire perimeter as of
6/17/2011 1800



0 0.5 1 2
Miles



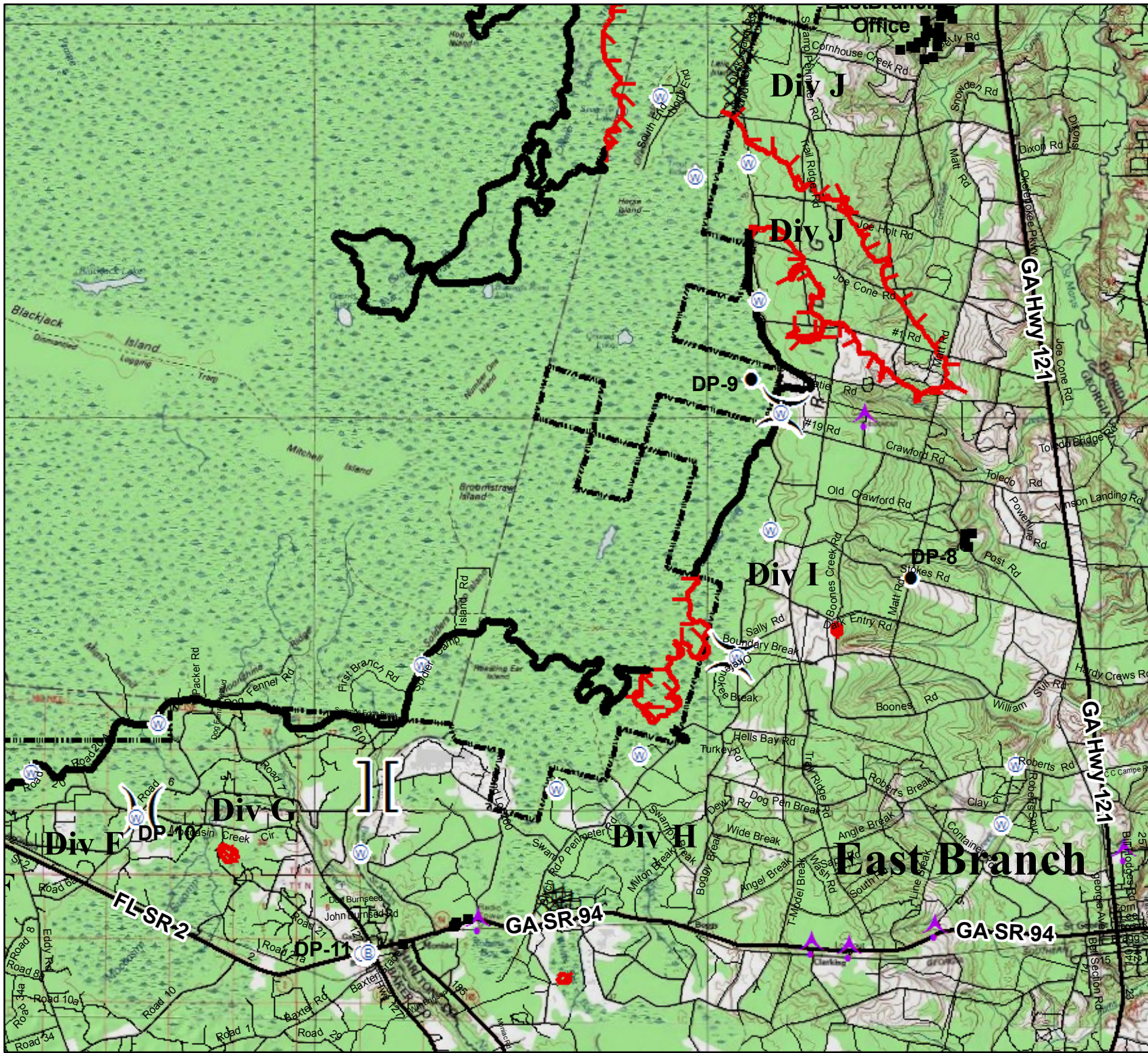
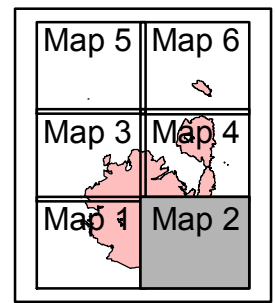
Honey Prairie Complex
GA-OKR-000001
6/18/2011, Day Shift
NAD83-Zone17-N

- Legend**
- Okefenokee Swamp Park
 - Incident Command Post
 - Helibase
 - Incident Base
 - Water Source
 - MediVac Site
 - Repeater
 - Helispot
 - Structures
 - Drop Point
 - Aerial Hazard
 - Division
 - Branch
 - Completed Dozer Line
 - Completed Line
 - Uncontrolled Fire Edge
 - ONWR Boundary
 - Structures
 - Roads

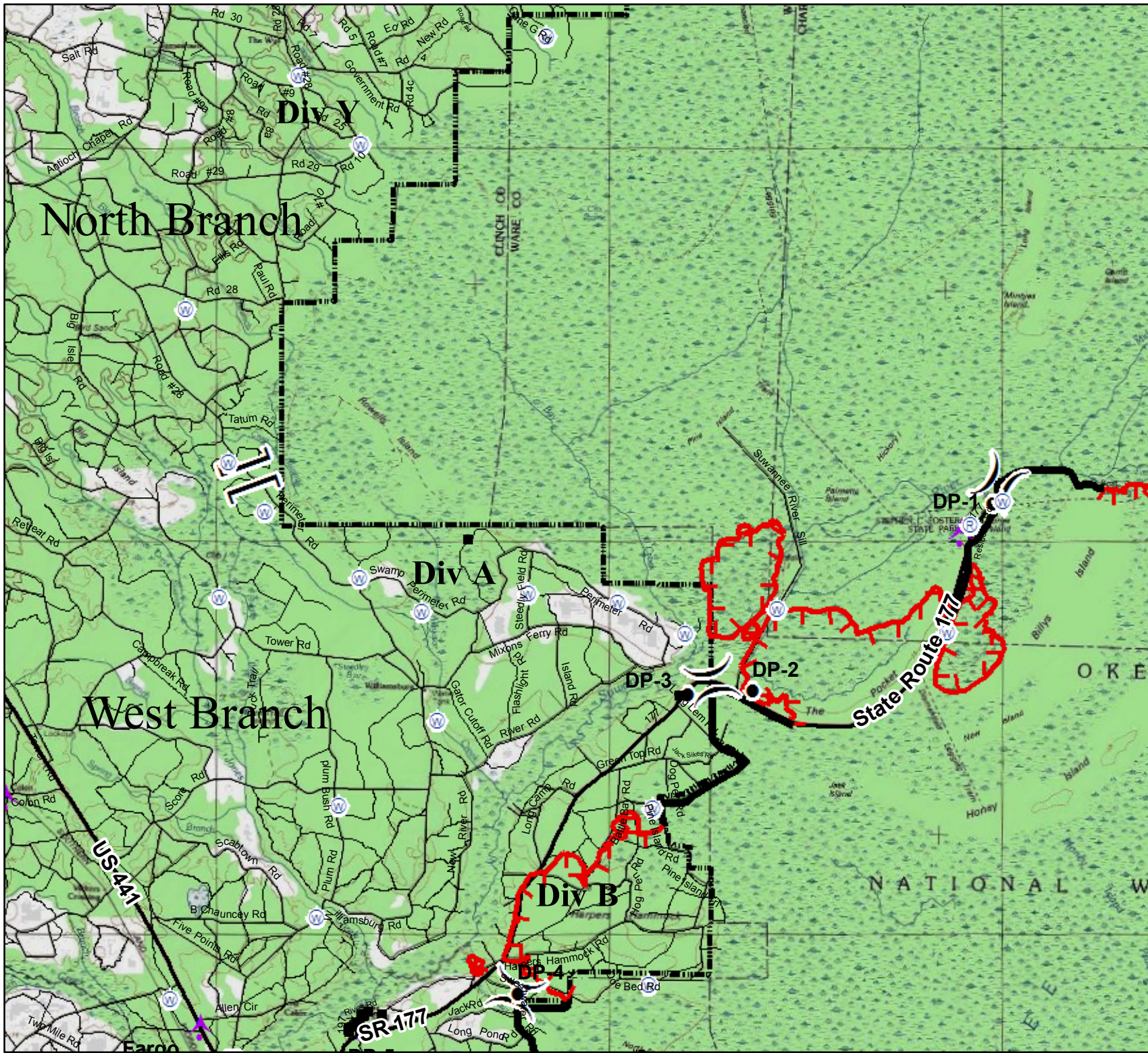
Fire perimeter as of
6/17/2011 1800



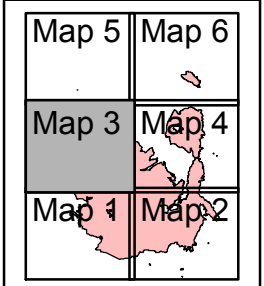
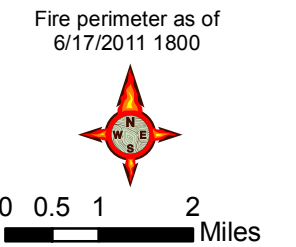
0 0.5 1 2
Miles



Honey Prairie Complex
GA-OKR-000001
6/18/2011, Day Shift
NAD83-Zone17-N

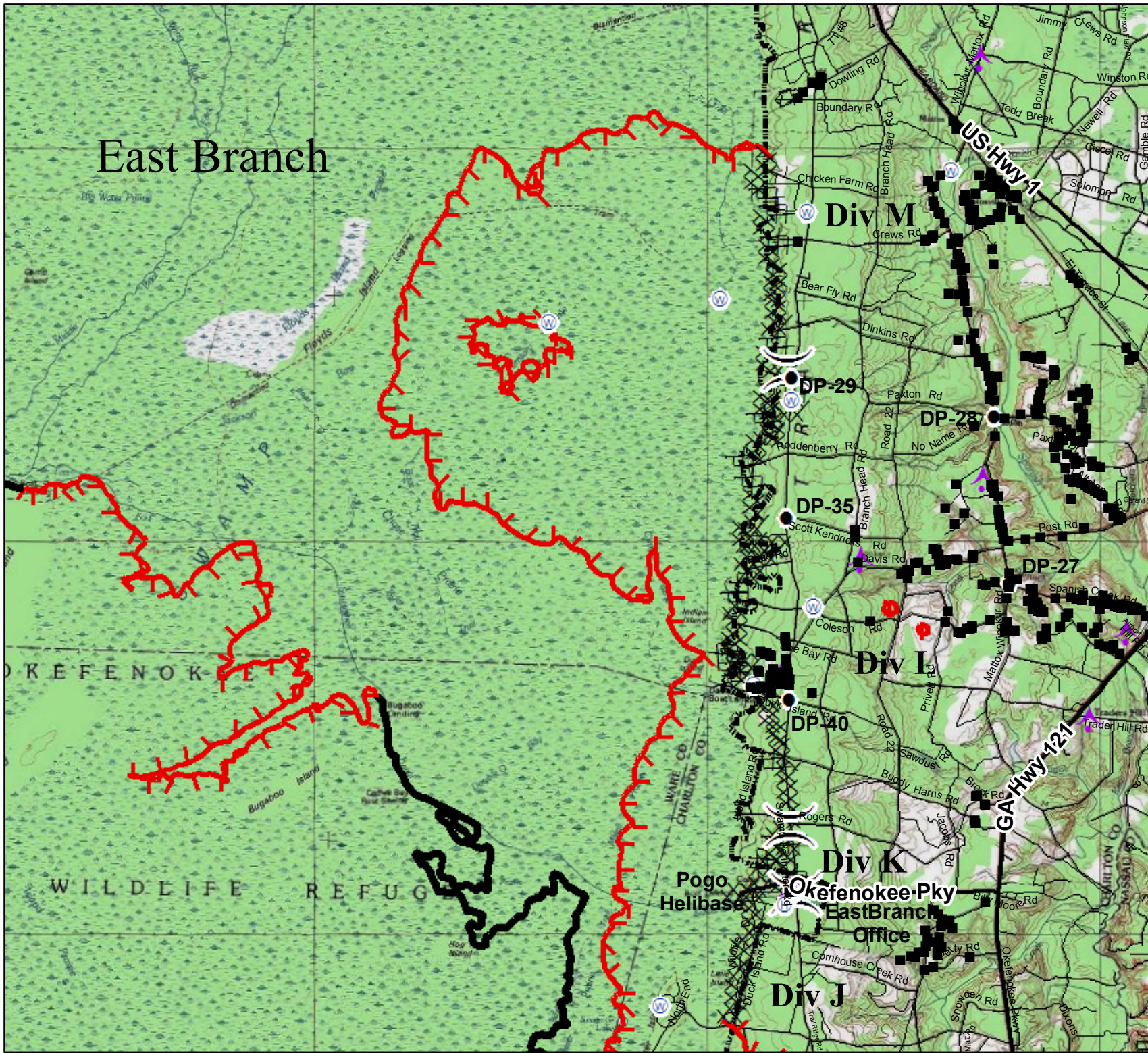


- Legend**
- Okefenokee Swamp Park
 - Incident Command Post
 - Helibase
 - Incident Base
 - Water Source
 - MediVac Site
 - Repeater
 - Helispot
 - Structures
 - Drop Point
 - Aerial Hazard
 - Division
 - Branch
 - Completed Dozer Line
 - Completed Line
 - Uncontrolled Fire Edge
 - ONWR Boundary
 - Structures
 - Roads



Honey Prairie Complex
GA-OKR-000001
6/18/2011, Day Shift
NAD83-Zone17-N

East Branch

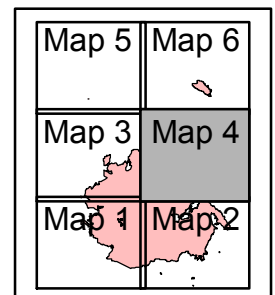


- Legend**
- Okefenokee Swamp Park
 - Incident Command Post
 - Helibase
 - Incident Base
 - Water Source
 - MediVac Site
 - Repeater
 - Helispot
 - Structures
 - Drop Point
 - Aerial Hazard
 - Division
 - Branch
 - Completed Dozer Line
 - Completed Line
 - Uncontrolled Fire Edge
 - ONWR Boundary
 - Structures
 - Roads

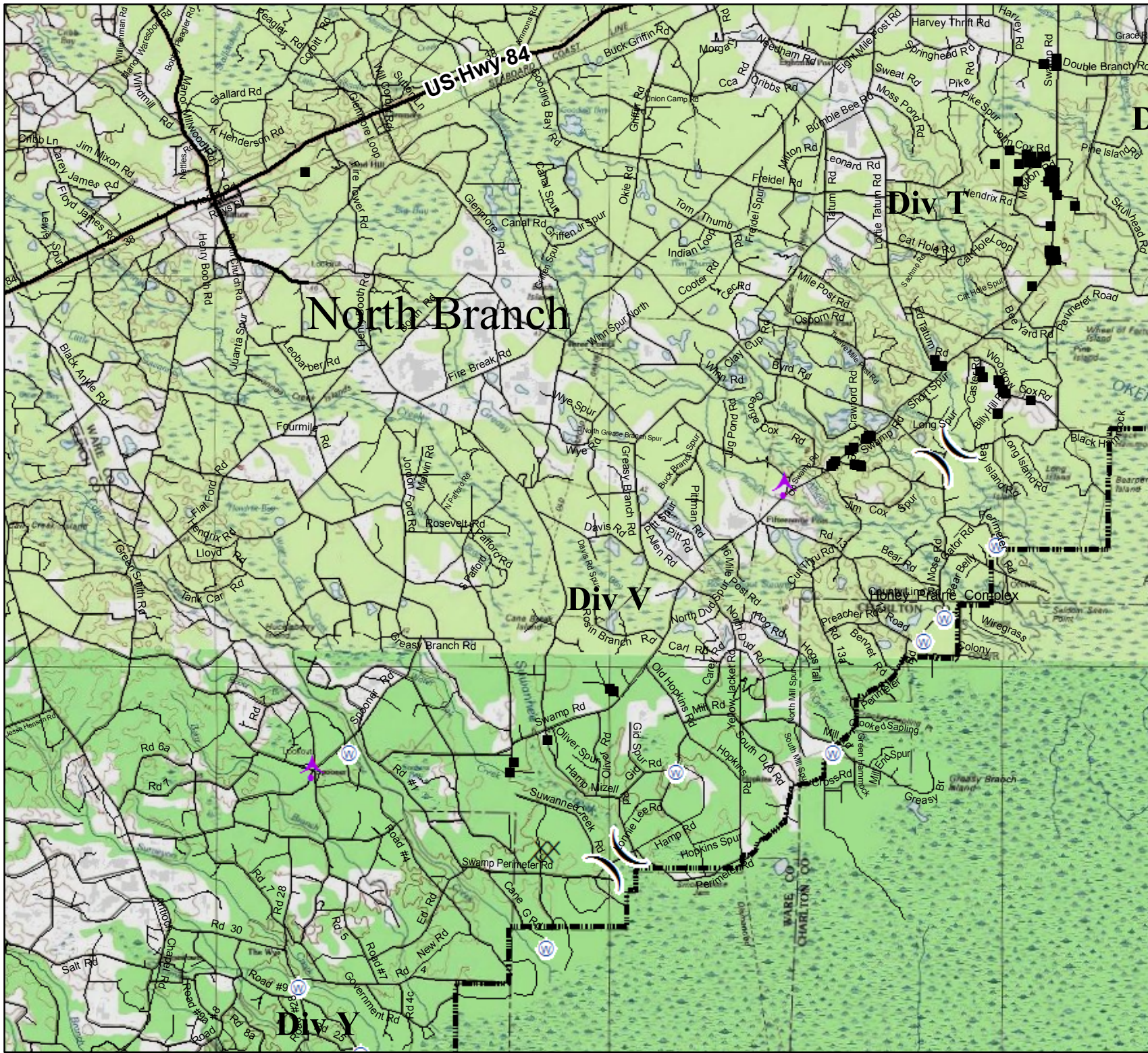
Fire perimeter as of
6/17/2011 1800



0 0.5 1 2
Miles



Honey Prairie Complex
GA-OKR-00001
6/18/2011, Day Shift
NAD83-Zone17-N

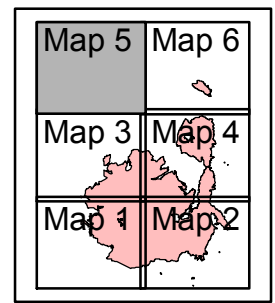


- Legend**
- Okefenokee Swamp Park
 - Incident Command Post
 - Helibase
 - Incident Base
 - Water Source
 - MediVac Site
 - Repeater
 - Helispot
 - Structures
 - Drop Point
 - Aerial Hazard
 - Division
 - Branch
 - Completed Dozer Line
 - Completed Line
 - Uncontrolled Fire Edge
 - ONWR Boundary
 - Structures
 - Roads

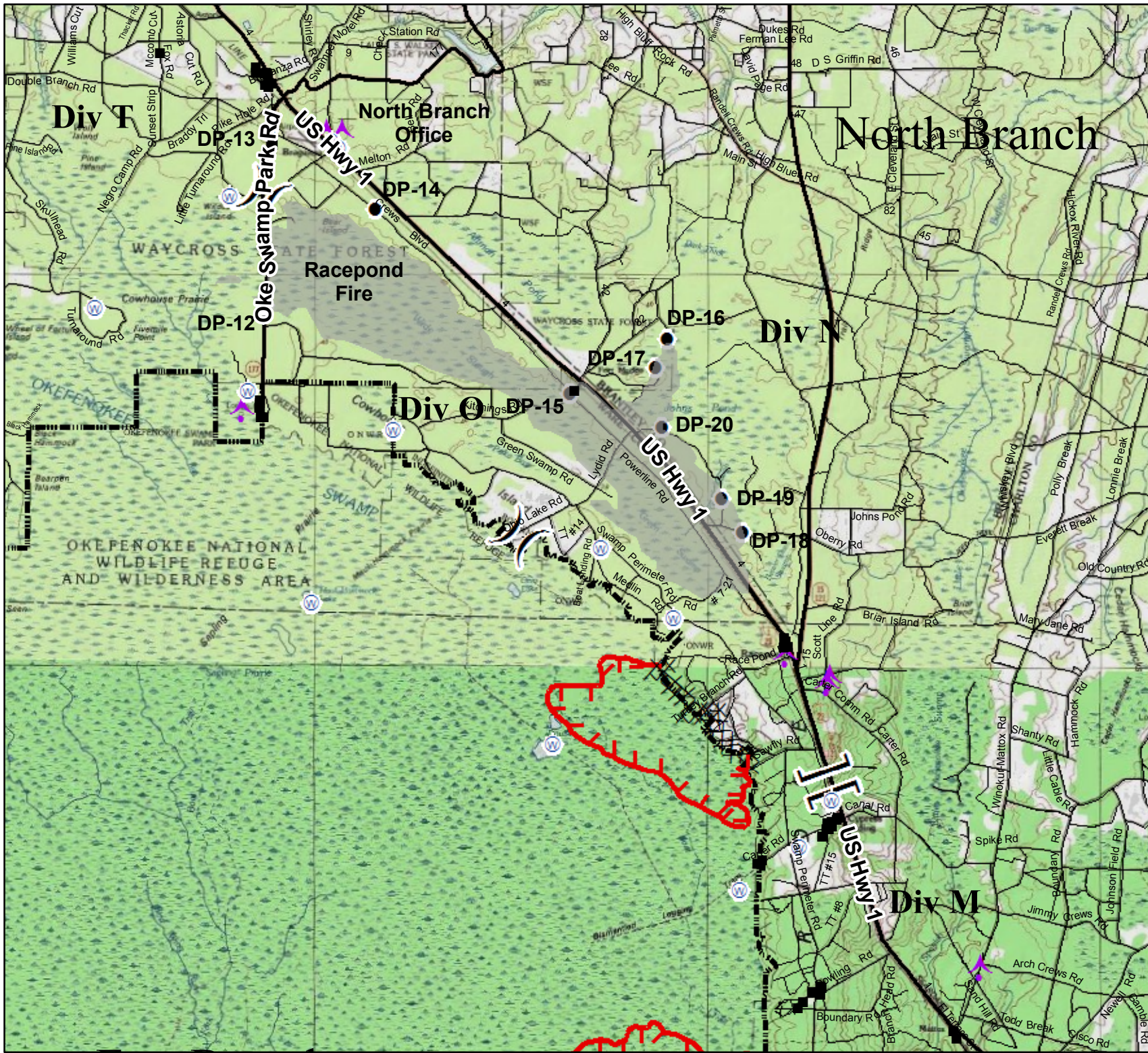
Fire perimeter as of
6/17/2011 1800



0 0.5 1 2
Miles



Honey Prairie Complex
GA-OKR-00001
6/18/2011, Day Shift
NAD83-Zone17-N



- Legend**
- Okefenokee Swamp Park
 - Incident Command Post
 - Helibase
 - Incident Base
 - Water Source
 - MediVac Site
 - Repeater
 - Helispot
 - Structures
 - Drop Point
 - Aerial Hazard
 - Division
 - Branch
 - Completed Dozer Line
 - Completed Line
 - Uncontrolled Fire Edge
 - ONWR Boundary
 - Structures
 - Roads

Fire perimeter as of 6/17/2011 1800



0 0.5 1 2 Miles

