

*Honey Prairie Complex*

GA-OKR-000001

# INCIDENT ACTION PLAN

Operational Period

Monday

August 29, 2011  
0800-2000

Incident Commander  
Trent Ingram  
Kris Butler(T)

**Accounting Codes**

FWS – 9141-F25M-2J

NPS – 5023 F25M E11

BLM – F25M

USFS – PRF25M\_1502

Initial Attack – F4PM



*An Equal Opportunity  
Employer & Service Provider*

Letter from GFC Incident Commander:

To: All Honey Prairie Incident Personnel

As A Georgia Forestry Commission Type 3 Incident Commander, I am committed to a policy of “zero tolerance” of inappropriate behavior during incident operations. Any form of harassment, discriminatory practices, or disrespectful behavior will not be tolerated.

Guidelines on in-appropriate behavior both “on Duty” and “off Duty” while assigned are addressed within each agencies policies. Our Team expects all incident personnel to follow established government policies for behavior along with all Illegal drug and alcohol directives.

Our Incident Management Team endorses and supports an attitude of mutual respect for all personnel and the public we serve.

We expect a strong work ethic and an attitude of Safety at all times!

Sincerely,

/s/ Trent Ingram

Incident Commander  
Georgia Forestry Commission Type 3 Incident Management Team

<b>INCIDENT OBJECTIVES</b>	<b>1. INCIDENT NAME</b> Honey Prairie Complex	<b>2. DATE PREPARED</b> 8/28/11	<b>3. TIME PREPARED</b> 1700
<b>4. OPERATIONAL PERIOD (DATE/TIME)</b> Monday, August 29, 2011 0800 – 2000			
<b>5. GENERAL CONTROL OBJECTIVES FOR THE INCIDENT (INCLUDE ALTERNATIVES)</b>			
<ol style="list-style-type: none"> <li>1. Provide for safety of incident personnel and public in all incident operations.</li> <li>2. Maintain a positive working relationship with all adjacent landowners, cooperators State and Federal partners. Inform, involve and communicate incident planning and operations with all partners.</li> <li>3. Contain all fires that are within the Okefenokee National Wildlife Refuge, inside the Refuge and/or inside the swamp edge break if possible.</li> <li>4. In cooperation with local land owners and communities, use full suppression strategies and tactics to minimize damage to private timberlands and structural improvements and to prevent fires outside the Refuge from entering the Refuge.</li> <li>5. Assist in management and suppression of additional fires (new starts or breakouts) in the vicinity as approved by Agency Administrators and Incident Commander.</li> <li>6. Protect all cultural and archeological sites and structures within the refuge.</li> <li>7. Manage the fires cost-effectively consistent with the values at risk.</li> <li>8. Coordinate suppression actions with assigned Refuge Resource Advisors</li> </ol>			
<b>6. WEATHER FORECAST FOR OPERATIONAL PERIOD</b> See attached forecast for area specific weather information.			
<b>7. GENERAL SAFETY MESSAGE</b> Drive defensively and use spotter when backing. Ensure LCES is in place and known by all personnel. Drink plenty of water and take frequent rest breaks. Ensure proper use of PPE during all operations.			
<b>8. Attachments</b> <input checked="" type="checkbox"/> if attached			
<input checked="" type="checkbox"/> Organization List (ICS 203)	<input checked="" type="checkbox"/> Incident Map	<input checked="" type="checkbox"/> Safety Message	
<input checked="" type="checkbox"/> Assignment List (ICS 204)	<input type="checkbox"/> Traffic Plan	<input type="checkbox"/> Demobilization Procedures	
<input checked="" type="checkbox"/> Communications Plan (ICS 205)		<input checked="" type="checkbox"/> Unit Log	
<input checked="" type="checkbox"/> Medical Plan (ICS 206)	<input checked="" type="checkbox"/> Phone List		
<b>9. PREPARED BY (PLANNING SECTION CHIEF)</b> Anthony Petellat	<b>10. APPROVED BY (INCIDENT COMMANDER)</b> Trent Ingram		

ORGANIZATION ASSIGNMENT LIST		9. Operations Section		
<b>1. Incident Name</b> Honey Prairie Complex GA-OKR-000001		Chief	Kris Butler 9/2	
<b>2. Date</b> 8/28/2011		<b>3. Time</b> 1000 hrs		
<b>4. Operational Period</b> 8/29/2011 0800 - 2000		<b>a. Divisions/Groups</b>		
<b>5. Incident Commander and Staff</b>				
Incident Commander	Trent Ingram 9/7 Kris Butler (T) 9/1	Group	East Group	Jeff Quick 9/6
Safety Officer	Harry Kepler 9/11, Ronnie Taylor 9/6, Mark Sparrow (T) 9/3	Group	West Group	Shannon Bowman 9/1
Information Officer	Jim Burkhardt, Art Webster			
<b>6a. Agency Administrators</b>				
FWS	Curt McCasland			
FWS	Mindy Gautreaux			
<b>6b. Agency Representatives</b>		<b>b. Divisions/Groups</b>		
GFC	Frank Sorrells			
FLFFS	James Karels			
FWS AREP	Mike Housh			
FWS-Refuge PAO	Art Webster			
GEMA AREP	Alan Robinson / Diane Adams			
USFS AREP	Ivan Greene			
<b>7. Planning Section</b>		<b>c. AIR OPERATIONS BRANCH - Honey Prairie</b>		
Chief	Dave Fogler 9/11	Waycross Helibase Mgr	Melvin Tate 9/8	
Resource Advisors	Ron Phernetton, Reggie Forcine Rocky Chesser			
Resources Unit	Josh Burnette 9/2			
IMET	Coleen Decker 9/6			
Situation Unit				
FBAN		<b>d. AIR OPERATIONS BRANCH - Pogo</b>		
Demob Unit				
Documentation				
GIS				
CTSP				
SCKN				
<b>8. Logistics Section</b>		<b>10. Finance Section</b>		
Chief	Steve Blackwell 9/2	Chief	Reggie Lanier 9/2	
Supply Unit	Linda Blondeau 9/8	Time Unit		
GSUL	Dan Chappell 8/29	Cost	Lorna Radcliff 9/3	
ORDM		PTRC		
COML	Roy Fortenberry 9/2	EQTR	Jeremy Hughes 9/2	
Medical Unit		IBA		
Facilities				
BCMG	Rusty Brown 9/3	Purchasing Agent	Rodrigo Silva	
SECM	Weldon Young 9/8			
COMT				
RADO	Bill Messerschmidt 8/31			
RCDM				
		Prepared by: Dave Fogler	PSC	

<b>DIVISION ASSIGNMENT LIST</b>			1. Branch		2. Division <b>East Group</b>		
3. Incident Name <b>Honey Prairie Complex</b>			4. Operational Period Date: <b>8/29/2011</b> Time: <b>0800-2000</b>				
5. Operations Personnel							
<b>Operations</b>	Kris Butler 9/1			<b>Branch Director</b>			
				<b>Division Supervisor</b>		Jeff Quick 9/6	
<b>Safety Officer</b>	Harry Kepler 9/11, Mark Sparrow (T) 9/3			<b>Division Supervisor</b>			
6. Resources Assigned this Period							
Strike Team/Task Force/ Resource Designator	Leader / Name / Designator			Last Shift Date	Num. Per.	Drop Off PT./Time	Crew Names
<b>TFD (O-5) GAOKR</b>	<b>Rocky Chesser</b>			<b>R&amp;R</b>	1		Sage @ Refuge HQ
TPL GAOKR 56 (E-22)	Fed Privett (O-15)				1		Sage @ Refuge HQ
TPL GA OKR 54 (E-21)	Dave Pafford (O-1196)				1		Sage @ Refuge HQ
TPL GA OKR 53 (E-23)	Unstaffed						
Motorgrader							
<b>TFD (O-1221)</b>	<b>Carolyn Blatz</b>			9/8	1		
<b>TFD (O-1216)</b>	<b>James Mashburn (T)</b>			9/6	1		
Charlton Eng 86 (E-1252) GAGAS	Bryan Spillers (O-1189)			9/1	2		Brandon Simmons (O-1190) <b>EMT</b>
Franklin 86 (E-1273) GAGAS	Rusty Carroll (O-1198)			9/1	2		Payton Turner (O-1199)
Chattooga 86 (E-77) GAGAS	Leland Bass (E-77.15)			9/1	2		Darryl Huskey (E-77.16)
Jones Eng 86 (E-81) GAGAS	Ricky Williams (E-81.15)			9/1	2		Jason Butts (E-81.16)
7. Control Operations							
<ul style="list-style-type: none"> <li>Respond to Initial Attack as requested</li> <li>Patrol and control rebum</li> <li>Initial attack IC will communicate sizeup information to the Honey Prairie communication.</li> <li>Make contact with the resource advisor before using mechanical equipment.</li> <li>Improve swamp break boundaries for fire breaks, work with resource advisor.</li> </ul>							
8. Special Instructions							
<ul style="list-style-type: none"> <li>Ensure LCES are in place before operations begin. Stay hydrated.</li> <li>Drive defensively with lights on at all times.</li> <li>Boggy terrain: Be careful and aware when working around this type of area.</li> </ul>							
9. Division/Group Communication Summary							
	Function	Frequency	Channel	Function	Frequency	System	Channel
Command E Okee Repeater	RX 164.625/ 103.5 TX 163.150/ 103.5	KING NIFC	3	Logistics		KING NIFC	
Tactical Div/Group	RX 168.775 TX 168.775	KING NIFC	9	Air to Ground	RX 166.9375 TX 166.9375	KING NIFC	6
Prepared by (Resource Unit Ldr.) Josh Burnette		Approved by (Planning Sect. Ch.) Anthony Petellat			Date August 28, 2011		Time 1800

DIVISION ASSIGNMENT LIST				1. Branch		2. Division <b>West Group</b>	
3. Incident Name <b>Honey Prairie Complex</b>				4. Operational Period Date: 8/29/2011 Time: 0800-2000			
5. Operations Personnel							
<b>Operations</b>		Kris Butler 9/1		<b>Branch Director</b>			
<b>Safety Officer</b>		Ronnie Taylor 9/6		<b>Division Supervisor</b>		Shannon Bowman 9/1	
6. Resources Assigned this Period							
Strike Team/Task Force/ Resource Designator	Leader / Name / Designator	Last Shift Date	Num. Per.	Drop Off PT./Time	Crew Names		
<b>TFLD (O-899)</b>	<b>Bob Schober</b>	9/3	1				
GA PDR ENG6 (E-1253) FWS	Nathan Herron	8/28	3		T. Price, M. Smith		
FWS ENG6 (E-1287)(GACHF) FWS	Curtis Shell	9/5	3		B. Walker, K. Taylor		
MN Eng 6232 (E-838) MNMFC FWS	Eric Earhart	9/2	3		J. Wollin, A. Bucholz		
Monroe 86 (E-1084) GAGAS	Justin Dillon	9/2	2		Chris Dunn		
TPL Wayne 72 (E-1275) GAGAS	Kyle Herrin (E-1275.1)	9/2	1				
TPL Jeff Davis 71 (E-1278) GAGAS	David Rewis	9/1	1				
TPL Lowndes 73 (E-1279) GAGAS	Stephen Spradley	9/1	1				
GA ENG6 (E-2) GAOKR	Greg Gilreath (O-1225)	9/11	2		Alice Brown (O-1226)		
Merritt Island ENG6 (E-1302) FL-MIR	Ryan Roche (O-1231)	9/11	2		Wyatt Brouillard (O-1232)		
<b>TFLD (O-1213)</b>	<b>Jason Squires</b>	9/6	1				
DOZ Wilkes 70 (E-1267) GAGAS	Abe Blackburn	9/1	1				
DOZ Wilkes 73 (E-1266) GAGAS	Dameon Wilkinson	9/1	1				
DOZ Baldwin 70 (E-1265) GAGAS	Daniel Gore	9/1	1				
PVT Excavator (E-1268)	Foster Smith		1				
<b>EMT</b>	<b>Brent Weldon (O-1211)</b>	<b>9/3</b>	<b>1</b>		<b>334-462-1062</b>		
7. Control Operations							
<ul style="list-style-type: none"> <li>Respond to Initial Attack as requested</li> <li>Patrol and control rebum</li> <li>Initial attack IC will communicate sizeup information to the Honey Prairie communication.</li> <li>Make contact with the resource advisor before using mechanical equipment.</li> <li>Improve swamp break boundaries for fire breaks, work with resource advisor.</li> </ul>							
8. Special Instructions							
<ul style="list-style-type: none"> <li>Ensure LCES are in place before operations begin. Stay hydrated.</li> <li>Drive defensively and with lights on at all times.</li> <li>Boggy terrain: Be careful and aware when working around this type of area.</li> </ul>							
9. Division/Group Communication Summary							
Function	Frequency	System	Channel	Function	Frequency	System	Channel
Command N Okee Repeater	RX 164.5750/206.5 TX 163.150/206.5	KING NIFC	5	Logistics		KING NIFC	
Tactical Div/Group	RX 168.775 TX 168.775	KING NIFC	9	Air to Ground	RX 166.9375 TX 166.9375	KING NIFC	6
Prepared by (Resource Unit Ldr.) Josh Bumette		Approved by (Planning Sect. Ch.) Anthony Petellat			Date August 28, 2011		Time 1800

# AIR OPERATIONS SUMMARY

Prepared By: Melvin Tate, HEBM

Prepared Date: 8.28.2011

Prepared Time: 1800

<b>1. INCIDENT NAME:</b> <b>Honey Prairie</b>	<b>2. OPS PERIOD DATE:</b> <b>August 29, 2011</b>	<b>START TIME:</b> <b>0830</b>	<b>END TIME:</b> <b>1900</b>	<b>SUNRISE:</b> <b>0703</b>	<b>SUNSET:</b> <b>1958</b>
<b>3. REMARKS (Safety Notes, Hazards, Air Operations Special Equipment, etc ALL FLIGHT REQUESTS GO DIRECTLY TO HELIBASE Afternoon thunderstorms</b> <i>NOTE: Latitude/Longitude format is "Degrees-Minutes-Decimal Minutes" (example: N30 41.42 W082 33.97) helibase convert if necessary</i>				<b>5. TFR #:</b> Canceled 7/27/11 <b>SEE and AVOID!!!</b>	

PERSONNEL	NAME	PHONE #	FREQUENCIES	AM	FM	
HEB2 Waycross HB	Melvin Tate Desk Cell	912-287-4479 850-849-0405	AIR/ AIR FW	None assigned		<b>AIRTANKERS / LEAD PLANES - None Available</b>  <b>OTHER:</b> <b>Waycross Airport Helibase: 912-287-4479</b> <b>Waycross Airport Helibase Fax: 912-287-4458</b> <b>ICP Helispot is Waycross Airport Helibase</b> <b>Okefenokee Dispatch: 912-496-7366 X230</b>  <b>Waycross Airport: N 31 16.16 10 W82 33.38</b>  <b>BERGANZA HELISPOT N 31 07.22 W082 15.22 * don't use unless cleared with AOB.</b> <b>POGO HELISPOT: N30 44.03 W082 07.41</b>
ABRO	Darold Williams Desk Cell	912-287-4479 386-383-6288	AIR/ AIR RW-FF	122.375		
			Georgia AIR/GRND (Smokey - Dozers)		159.285 W	
			AIR/GROUND PRIMARY		166.9375	
			AIR/GROUND ALTERNATE		166.9000	
			TOLC		168.0125	
			AIR GUARD		168.625 T110.9	

## 9. HELICOPTERS (Use Additional Sheets as Necessary)

FAA N#	TY	MAKE/ MODEL	BASE	AVAIL	MANAGER	FAA N#	T Y	MAKE/ MODEL	BASE	AVAIL	MANAGER
161KA	1	K-1200	Waycross	0830	Nick Gavin 509-668-1596						
1CH	3	AS320-B3	Waycross	0830	Kevin Merrell 505-504-4613						
699RH	1	K-1200	Waycross	0830	Al Driesbach 805-479-1837						

## 10. TASK/ MISSION/ ASSIGNMENT (Type/ function includes: Air Tactical, Retardant, Recon, Personnel Transport, Bucket Operations, SAR, etc.)

TYPE/FUNCTION	NAME OF PERSONNEL OR CARGO (If applicable) or instructions for tactical aircraft	MISSION START	FLY FROM	FLY TO
Bucket Ops/	1KA	As Requested	Waycross	
Recon	<b>All FLIGHT REQUESTS GO THROUGH HELIBASE, 57Z</b>	As Requested/scheduled	Waycross/Pogo	
Medevac	1CH	As Requested	Waycross	



# Fire Weather Forecast



**FORECAST NO:** 114

**NAME OF FIRE:** Honey Prairie Complex

**PREDICTION FOR:** Day Shift  
**SHIFT DATE:** MONDAY 8/29/11

**UNIT:** Okefenokee National Wildlife Refuge

**FORECAST ISSUED:** 8/28/11 at 1600

**SIGNED:** Coleen Decker, IMET

**WEATHER DISCUSSION:** The dry upper level airmass left in the wake of Hurricane Irene will be replaced by higher pressure building in from the South. Moisture will be on the increase as Southerly winds take hold late. Although thunderstorms are possible this afternoon and evening, storms are more likely on Tuesday and Wednesday as the sea-breeze front increases.

**TODAY:** Mostly sunny. Becoming partly cloudy after 1400 with isolated afternoon thunderstorms.

**MAXIMUM TEMPERATURES:** 97°  
**PM HEAT INDEX:** 100°  
**MINIMUM HUMIDITY:** 28-30%  
**20 FT WINDS:** AM: SW 5-8 mph  
PM: SSW 8 to 10 with gusts 12 to 15 mph  
**STABILITY/INVERSION:** 7000 feet  
**TRANSPORT WINDS:** SW 10-15 mph  
**DISPERSION INDEX:** 65, Very Good  
**CHANCE OF PRECIPITATION:** 10%  
**PRECIPITATION AMOUNTS:** Up to a tenth of an inch  
**LIGHTNING ACTIVITY LEVEL:** 1...becoming 2 after 1700 hours

**TONIGHT:** Isolated thunderstorms until midnight. Then mostly cloudy. Southwest wind 5 to 8 mph becoming South overnight. Low temperatures 70 to 73°. Humidity recovery after 0300 near 100%.

**TUESDAY:** High pressure will build over the area which will draw an easterly moisture fetch with the return of the afternoon sea breeze front. Expect Partly cloudy skies and scattered afternoon and evening thunderstorms. Storms could be strong with gusty winds.

**MAXIMUM TEMPERATURES:** 93-95°  
**PM HEAT INDEX:** 95-100°  
**MINIMUM HUMIDITY:** 40 %  
**20 FT WINDS:** Southeast 5-8 mph becoming East after 1100 hours  
**STABILITY/INVERSION:** 6000 feet  
**TRANSPORT WINDS:** S 10 mph  
**DISPERSION INDEX:** 60, Good  
**CHANCE OF PRECIPITATION:** 30%  
**LIGHTNING ACTIVITY LEVEL:** 3

**EXTENDED FORECAST:** The sea breeze will enhance the onshore moisture flow each afternoon and evening with a chance of thunderstorms. Otherwise temperatures will be near climatological normals with lows in the upper 60s and afternoon highs near 90 degrees.

	WEDNESDAY	THURSDAY	FRIDAY
<b>SKY/WEATHER</b>	Partly Cloudy Chance of thunderstorms	Partly Cloudy Chance of thunderstorms	Partly Cloudy Chance of thunderstorms
<b>PRECIP</b>	20%	30%	30%
<b>20 FT. WINDS</b>	PM: NE 5-8 mph	PM: NE 5-8 mph	PM: NE 5-8 mph
<b>MIN/MAX</b>	72/ 93	70/ 92	72/ 93



**FIRE BEHAVIOR FORECAST**

<b>Fire: Honey Prairie Complex</b>	<b>Unit: GA-OKR-000001</b>	<b>Prediction for Day Shift</b>
<b>Forecast #113 Issued: 08/28/2011 1830 hrs</b>	<b>Signed: Dave Fogler</b>	<b>Shift Date: Monday 08/29/2011</b>

**GENERAL FIRE BEHAVIOR**

Fuels around the Okefenokee Wildlife Refuge are predominately Fuel Model 7 (Southern Rough). Large to moderate acreage tracts of commercial timberland are mixed in throughout the entire perimeter surrounding the refuge. Fast moving wildfires with extremely high flame lengths and rapid rates of spread occur within the swamp.

**Indicators/Threshold for Increased Fire Activity**

- **Relative humidity dropping below 45%**
- **Winds above 10 mph**
- **Heavy fuel loadings**
- **Fine dead fuel moisture 8% or less**
- **Dispersion above 70**
- \* **Items in BOLD are predicted to occur today\***

**SPECIFIC FIRE BEHAVIOR**

- **Interior smoldering and some flare ups are possible, especially if winds increase.**
- **Expect fire to continue spreading through the shrub fuels with low rates of spread and minimal flame lengths.**
- **LIGHTNING ACTIVITY LEVEL 1**

<b>Fuel Type</b>	<b>Rates of Spread</b>	<b>Flame Length</b>	<b>Spotting Distance</b>	<b>Firebrand Ignition</b>
<b>Winds at 3 - 6 mph</b>				
Shrub Fuels – SH4	3 – 5 ch/hr	1 - 2 feet	1/10 – 2/10 MILE	59%
Heavy Southern Rough- SH8	8 – 12 ch/hr	6 - 7 feet	1/10 – 2/10 MILE	59%
Timber Litter-Reburn TL8	3 – 5 ch/hr	2 - 3 feet	1/10 – 2/10 MILE	59%
Small Pine Plantation w/grasses GR5	9 – 15 ch/hr	4 - 5 feet	1/10 – 2/10 MILE	59%

**One hour fine dead fuel moisture is at 6% for MONDAY:** Areas remain dry and burning continues. 1,000 hour fuels are drier than normal for this time of year. There is re-burn potential; mainly on the west side of the fire due to the amount of needle cast, fallen trees and scorched shrubs. Should wind become stronger than predicted, expect fire behavior to increase above predicted levels. **In areas where fuels have been herbicided, expect quick ignitions, extreme heat, quicker rates-of-spread, and possible group tree torching potentially producing spotting problems.**

**NOTE- FIRE BEHAVIOR CALCULATIONS ARE FOR FIRES IN UNBURNED FUELS INCLUDING NEW IA STARTS.**

**All Divisions:**

*The fire continues a slow spread through the thick bays and muck soils. Roots and fallen trees are protecting heat sources allowing the fire to burn organic soils from the bottom up. Be heads-up for falling trees.*

**Air Operations:** Expect possible areas of smoke.


**SAFETY:**

**WINDS –** Stay abreast of changing wx conditions throughout the entire shift. **THUNDERSTORMS -** these severe winds can create extreme fire behavior, with winds gusting over 30 mph. **Live Trees/SNAGS – are falling in all Divisions – will be influenced by Thunderstorm outflow winds.** **FUELS:** Watch for pockets of cured shrubs or blankets of red needles beginning to cover the forest floor, re-burn is still possible. 1,000 and 10,000 hour fuels as well as deep duff pockets are providing the heat source. 100 and 1000 hour fuels are still below average in moisture content. Stay focused, and put LCES in place before starting operations. *Energy Release Component (ERC) is running near average for this time of year.*

# HEALTH AND SAFETY MESSAGE

***SAFETY*** starts with ***YOU***

We are **ALL** accountable for **SAFE** behaviors

INCIDENT: HONEY PRAIRIE	DATE: AUGUST 29, 2011 TIME: 0800
<b>Major Hazards and Risks:</b> <b>MOP-UP OPERATION</b> <b>COMPLACENCY</b> <b>DRIVING</b>	
<i>Narrative:</i> <p>MOP-UP = There are several hazards associated with mop-up; Ash pits, Snags, Stump Holes, Re-Burns and Logging Operations in the area. Use caution, follow established safety procedures and wear all appropriate PPE.</p> <p>COMPLACENCY = Keep your firefighter head in the job at hand. These fuels are severely drought Stressed and will dry out quickly after a shower. Be prepared to respond to flare ups, Re-burns, and new starts.</p> <p>DRIVING = Seatbelts must be worn at all times, the use of seatbelts increases your chance of survival in an accident by 50%. Keep headlights on at all times and utilize emergency lights when warranted. Slow down on smoky and dusty road conditions. Use a spotter when backing on the fireline.</p>	
<p><b>Watch Out Situation of the Day</b></p>  <p>11. UNBURNED FUEL BETWEEN YOU AND THE FIRE</p>	<p><b>LOOK UP, LOOK DOWN, LOOK AROUND</b></p> <p><b>LOOK UP</b> = Check the sky for any weather changes Such as building or approaching thunderstorms, wind Shifts or increasing in speed. Watch for air operations And water drops. Look for snags.</p> <p><b>LOOK DOWN</b> = Watch your footing. Keep an eye out For snakes, bees nests and observe fine fuels on the Ground.</p> <p><b>LOOK AROUND</b> = Check fuel loading in the area, general terrain, current fire behavior and ladder fuels. Keep an eye on fellow firefighters for signs of heat Stress and smoke inhalation.</p>

Incident Safety Officer: MARK SPARROW

INCIDENT ACTION PLAN SAFETY ANALYSIS										1. Incident Name Honey Prairie Fire		2. Date 8/29/2011		3. Time Day Shift	
LCES* Analysis of Tactical Applications Lookouts Communications Escape routes Safety zones										Other Risk Analysis					
Divisions	Indirect Fireline	Power lines / Snags	Road Conditions	Frontal Assault	Extreme Conditions	Railroad	Wildlife, Insects	LCES Mitigations	Smoke	Traffic/Driving	Communications	Fatigue/Hydration	School Buses / Children	Other Risk Mitigations	
All Divisions	1, 2, 3, 4, 5, 7, 8, 10, 14	2, 6, 11, 15, 17	12, 20, 26	1, 2, 3, 4, 5, 7, 8, 14	7, 10	1	2, 23, 28	1. Establish & maintain LCES. Report LCES checks twice daily to DIVS on line & staggings.	24	12 17 19 20 22, 26, 27	1, 3, 10 14 19 24 25	16 18 21	26	16. Take adequate rest breaks and encourage to drink water NOW through briefings.	
								2. Look UP,DOWN and AROUND						17. Defensive driving will be addressed in all briefings.	
								3. Post experienced Lookouts. Make sure LCES is in place and make known.						18. All personnel must meet the 2:1 work/rest ratio. Line supervisors and Safety will monitor closely.	
								4. Use Aerial Resources as Lookout if available.						19. Notify Operation and Safety of Railroad track issues to ensure safety of firefighters.	
								5. Flag escape routes on right side of escape route facing outward. Create new escape routes as you progress and identify Safety Zones on the ground and maps.						20. Ensure Traffic Planning is safe and enforced. Heed Defensive Driving techniques noted in Safety Messages.	
								6. Identify, mark & mitigate.						21. Relocate staging area when driving conditions warrant.	
								7. FBAN/Meteorologist to monitor weather updates and advisories.						22. Use spotter when backing vehicle(s).	
								8. Ensure Fireline is Anchored to black or manmade/natural barrier.						23. For insects, use protective spray with deet on skin (Not on Nomex), permethrin can be used on nomex clothing	
								10. Keep Firefighters informed of any changes in predicted weather, consider at least a two day weather pattern when planning Strategic Firing operations.						24. Establish smoke/fog signs on roadways. Coordinate with Department of Transportation.	
								11. Refer to IRPG, pg. 12 on Power Line Hazards.						25. Follow establish communication plan, flight follow through dispatch	
								12. Observe all traffic signals and speed limits. Drive with lights on.						26. Watch-out for school buses and for children along the edge of roadway and crossing the road.	
								14. Ensure GOOD tailgate briefings with resources unable to attend Operational Briefing (Include Ops, Logs, Fin & Plans info.).							
								15. Scout ahead of tractor operations to avoid making contact with power poles and guide wires when tying into roads. Power companies are working in some DIVS, avoid all down lines as they may become charged.						27. Treat all intersections as 4-way stops	
														28. Bears, Gators, and some snakes are dangerous. Do not approach or feed wildlife at any time.	

Prepared by (Name and Position)

ICS 215A

Harry Kepler; SOF

<b>MEDICAL PLAN</b>	<b>Incident Name</b> Honey Prairie Complex	<b>Date Prepared</b> 08/28/2011	<b>Time Prepared</b> 1000	<b>Operational Period</b> 08/29/2011
---------------------	---	------------------------------------	------------------------------	---

**5. Incident Medical Aid Station**

<u>Medical Aid Stations</u>	<u>Location</u>	Paramedics Yes No	
MEDICAL UNIT (ICP EMT)	Honey Prairie Complex ICP- No MEDL		
WEST SIDE (Line EMT)	****Brent Weldon 334-462-1062 (BLS Kit)****	X	
EAST SIDE (Line EMT)	****Brandon Simmons (EMT) Charlton 86 (10 person medical kit only)****		X

**Ambulance Services**

Name	Address	Phone	Paramedic Yes No	
Clinch County EMS (West)	Homerville, GA (911 to activate)	912-487-5315	Yes	
Ware County EMS (North)	Waycross, Georgia (911 to activate)	912-287-4335	Yes	
Charlton County EMS (East)	Folkston, GA (911 to activate)	912-496-2281	Yes	

**Air Ambulance Service**

Trauma 1	Lake City, FL	1-800-223-4878	Yes	
Trauma 1	Jacksonville, FL	1-800-223-4878	Yes	
AirMed	Augusta, GA	1-888-792-9245	Yes	
Lifeflight	Jacksonville, FL	1-877-870-7779	Yes	
Air Evac	Waycross, GA	1-800-247-3822	Yes	
US Coast Guard (Heli-Rescue)	Savannah GA	1-912-652-4646	Yes	

**7. Hospitals**

Name	Address	LAT-LON	Phone	Helipad		Burn Center	
				Yes	No	Yes	No
Satilla Regional	410 Darling AVE. Waycross, GA	N 31' 13.509 W 82' 20.853	(912) -283-3030	Yes			No
Clinch Memorial Hospital (WEST SIDE)	1050 Valdosta HWY Homerville, GA	N 31' 01.977 W 82 45.851	(912) -487-5211 ext 4502	Yes			No
Charlton Memorial Hospital (EAST SIDE)	1203 3 <sup>rd</sup> Street Folkston, GA	N 30' 50.713 W 82' 00.302	(912) -496-2531	Yes			No
Savannah Memorial Hospital	4700 Waters AVE Savannah, GA	N 32' 01.538 W 81' 05.298	(912) -350-8999	Yes			No
Shands Hospital (Level I)	655 West 8 <sup>th</sup> Street Jacksonville, FL	N 30' 20.97 W 81' 39.92	(800) -223-4878	Yes		Yes	
Shands Burn Center	1600 Southwest Archer Road Gainesville, FL	N 29' 38.33 W 82' 20.55	(352) -265-0300	Yes		Yes	

**8. Medical Emergency Procedures**

**Identify any EMTs and Paramedics in your crews. All medical emergencies will be reported to the Division Supervisor who will assume command and notify Line Medics.**

**On scene personnel will:**

1. Provide medical care & stabilize patient.
2. Call 911 if possible or call phone #'s above for EMS and provide the information requested.
3. Notify Communications via radio over Command Channel
4. Communications will clear radio traffic for medical emergency.
5. Communications will confirm 911 has been notified coordinate with IC, SOF.
6. DIVS will notify the Field Ops Section Chief.

**MAJOR EMERGENCIES – Secure the area and identify witness for later investigation. Keep an accurate log of events. NOTE: Do not give Patients Name over the radio!**

INJURY REPORTING PROCESS:

Nature of Injury: \_\_\_\_\_

Location of Patient: \_\_\_\_\_

Transportation Requested by: Air\_\_\_ Ground\_\_\_

Pick Up Point: \_\_\_\_\_

Lat: \_\_\_\_\_ Long: \_\_\_\_\_

Patient Unit ID: \_\_\_\_\_

Is an EMT w/Patient: Yes\_\_\_ No\_\_\_

Age: \_\_\_\_\_ Sex: Male\_\_\_ Female\_\_\_

Weight (If Air Evac. is needed): \_\_\_\_\_

**HELISPOTS**

NAME	LAT-LON	LOCATION
<b>Pocket Helispot</b>	N 30' 47.500 W 82' 22.659	(West side), mile marker 4, HWY 177 Steven C. Foster State Park
<b>Fargo Helispot</b>	N 30' 40.945 W 82' 33.640	(West side), HWY 441- Steven C. Foster Visitor Center
<b>POGO Helibase</b>	N 30' 44.219 W 82' 07.689	(East side) Adjacent to Okee Refuge Shop

**Evac Yankee**

<b>Helispot 6</b>	N 30' 53.280 W 82' 33.880	Road 32 and 32A
<b>Helispot 7</b>	N 30' 50.280 W 82' 33.857	Tatum Road Pond

**\*Alternate site can be established following guidelines for safety found with IRPG and local EMS resources.**

Prepared by: Harry Kepler, SOF

10. Reviewed by: Harry Kepler, SOF

INCIDENT RADIO COMMUNICATIONS PLAN ICS-205			Incident Name <b>Honey Prairie</b>			<b>GROUP 22</b>		Date/Time Prepared 08/28/2011-18:00		Operational Period Date/Time 8/29/2011 0800-2000	
Ch #	Function	Channel Name	Assignment	RX Freq	NW	RX Tone/NAC	TX Freq	N W	TX Tone/NAC	Mode A,D or M	Remarks
1	Command	West Okee Repeater	Sec West Branch CMD	167.1250	N	156.7	163.1500	N	156.7	A	Stephen Foster State Park
2	Command	South Okee Repeater	Sec East/West Branch CMD	164.7750	N	123.0	163.1500	N	123.0	A	Eddy Florida
3	Command	East Okee Repeater	PRIMARY East Branch CMD	164.6250	N	103.5	163.1500	N	103.5	A	Refuge Headquarters
5	Command	North Okee Repeater	PRIMARY North Branch CMD	164.5750	N	206.5	163.1500	N	206.5	A	Waycross
6	Air-Ground	Air to Ground	PRIMARY	166.9375	N	CSQ	166.9375	N	CSQ	A	
7	Tactical	MOB-MOB	GFC Contingency	159.3900	W	CSQ	159.3900	W	156.7	A	
8	Tactical	V-Fire 21W WHITE	West group Secondary	154.2800	W	CSQ	154.2800	W	156.7	A	
9	Tactical	USFS 9	East/West Groups	168.7750	N	CSQ	168.7750	N	CSQ	A	
10	Tactical	S.E. Compact		159.2850	W	CSQ	159.2850	W	CSQ	A	
11	Tactical	USFS 11	East Group Secondary	168.2000	N	CSQ	168.2000	N	CSQ	A	
12	Tactical	Refuge Tac 1	East Group	168.3500	N	CSQ	168.3500	N	CSQ	A	
13	Tactical	FL 190		151.2725	N	CSQ	151.2725	N	CSQ	A	
15	Air-Ground	Air to Ground	SECONDARY	166.9000	N	CSQ	166.9000	N	CSQ	A	
16	EMERGENCY	AIR Guard	Air OPS.	168.6250	N	CSQ	168.6250	N	110.9	A	
Prepared by (Communications Unit) Roy Fortenberry, COML Incident Dispatcher: 912-286-1660						<b>Cloning at ICP communications and briefings,</b>					

The convention calls for frequency lists to show four digits after the decimal place, followed by either an "N" or a "W", depending on whether the frequency is narrow or wide band. **Mode** refers to either "A" or "D" indicating analog or digital (e.g. Project 25) or "M" indicating mixed mode. All channels are shown as if programmed in a control station, base stations, mobile or portable radio.

## Fire Information IAP messages

1. Public and firefighter safety remains the top priority for this incident.
2. Fire managers for the refuge have coordinated suppression efforts with the Georgia Forestry Commission and the Greater Okefenokee Association of Landowners (GOAL) representing federal and state agencies, industry and private landowners. Through this Unified Command, the partners support the chosen strategy as the appropriate management response to protect adjacent valuable commercial timber, isolated homes scattered on private land, and critical wildlife habitat for threatened and endangered species.
3. Fire is a natural component of the Okefenokee ecosystem; since the refuges creation in 1937, there have been hundreds of wildfires that have burned thousands of acres here. The plants and animals on the refuge are well adapted to survive periodic wildfires.
4. Past experience has shown that conventional fire suppression tactics do not work well inside the swamp. Humans have never been successful in controlling fires within the swamp; only “mother nature” has done this. Attempting suppression within the swamp is ineffective, costly, wastes firefighting resources and needlessly endangers firefighter safety.
5. Fire on the refuge is usually fought by reinforcing firelines along the Swamps Edge Break, including areas of private land, to keep the fire contained within the swamp.
6. Okefenokee National Wildlife Refuge typically employs a contain and control strategy to manage fire; containing it within the swamp and actively suppressing it outside of the swamp in the upland forest.

### Commonly asked question:

1. Why won't this fire go out? What will it take? Surface burning of available fuels is only part of the current problem. Peat beds (partially decayed vegetation normally floating in a vertical column of water) is what supports these surface fuels. Unfortunately, the current dry conditions have allowed a portion of the peat beds to dry out and the surface burn has transferred into the peat beds and is now burning subsurface. There are now two sources of heat and available fuel that must be extinguished. The current spotty, localized rain storms can have some effect on the surface burns but do not do much to control subsurface burns. It will take a big rain storm blanketing the entire swamp (remember the swamp is huge –over 650 square miles in size) dropping a minimum of 6-8 inches of rain. As the water levels in the swamp slowly rise as a result of the rain, the peat beds will become water saturated again eliminating one source of the fire. As the surface of the swamp becomes covered by water, burning surface fuels will be extinguished as well. Burning fuels that extend above these water levels (dead and drying trees/shrubs) may continue to burn until they fall over or burn up. Fire that exists in upland habitat on islands within the swamp may also continue to burn but it will be confined to that immediate area by the swamp waters surrounding the island. This is not something that will likely occur overnight. It may take days, weeks, or even months. The refuge has experienced fire events that were not declared officially out for well over a year after the main firefighting effort had ceased.

<b>HONEY PRAIRIE PHONE LIST</b>			<b>08/29/11</b>
<b>Incident</b>	<b>Communication</b>	<b>(Hours: 0700-2000)</b>	<b>912-286-1660</b>
<b>AGENCY OFFICIALS</b>			<b>OPERATIONS</b>
Curt McCasland	602-359-0013	USFWS AA	Trent Ingram 229-726-0285
Mindy Gautreaux	912-282-7500	USFWS Deputy AA	<b>DIVISIONS</b>
Frank Sorrells	912-381-7503	GFC AA	Shannon Bowman 404-772-5319 West Group
James Karels	850-228-7763	FL DOF AA	Jeff Quick 928-499-9420 East Group
Diane Adams	912-266-5421	GEMA	<b>AIR OPERATIONS</b>
Mike Housh	912-281-1575	USFWS AREP	Melvin Tate 850-849-0405 HEB1
<b>COMMAND - IC</b>			912-287-4479 WAYCROSS AIRPORT
Trent Ingram	229-726-0285		
Kris Butler (T)	770-280-7684		
<b>RESOURCE ADVISORS</b>			<b>LANDOWNERS</b>
Ron Phernetton	912-276-2349	Resource Advisor	Jim Barrett 229-356-1993 Langdale/GOAL Chairman
Rocky Chesser	912-276-3232	Resource Advisor	Wesley Langdale 229-220-2602 Langdale
Reggie Forcine	912-614-4041	Resource Advisor	Hal Rowe 229-412-3133 Langdale
<b>INFORMATION 912-496-2566</b>			Langdale Office 229-242-7450 Langdale Office
Jim Burkhart	912-282-1159	Fire Information	Mike Conlon 386-365-3882 Rayonier Unit Supervisor
<b>SAFETY OFFICERS</b>			Ray Carter 386-288-6626 Rayonier
Ronnie Taylor	850-768-2241	404-772-5406	Ed Carter 386-288-6626 Rayonier
Mark Sparrow (T)	706-968-1895		Doug Nuss 912-390-1037 Rayonier
Harry Kepler	205-292-7764		Randall McCrady 912-283-4077 Rayonier
<b>DISPATCH</b>			Colin Myerson 229-506-1565 Superior Pine Products Co
Okefenokee Dsp	912-496-7366	Okefenokee	Robbie Lee 229-356-0526 Superior Pine Products Co
Suwannee Dispatch	386-758-5700	Fla wildfires, other	Superior Pine Office 912-637-5261 Superior Pine Products Co
Honey Prairie Dspth	912-286-1660	Honey Prairie ICP	Al Alexander 850-843-0104 The Forestry Co
Waycross Dispatch	912-287-4915	Ga wildfires, other	Savell Schmidt 850-843-1181 The Forestry Co
GA DNR	1-800-241-4113	Hunting Issues	John Bogue 850-843-1192 The Forestry Co
<b>LOGISTICS 256-497-8490 fax 912-287-6542</b>			Joe Hopkins 912-276-0911 Toledo Timber
Steve Blackwell	256-497-8490	LSC	Chris Gowan 912-276-0965 Toledo Timber
Linda Blondeau	770-658-4789	Ordering Manager	Martin Bell 912-283-0583 Swamp Park
Weldon Young	414-312-1389	Security	Crystal Peebles 352-316-0632 FIA
Bill Messerschmidt	715-581-1694	RADO	Steve Davis 912-614-1828 Davis Community
Roy Fortenberry	706-897-8020	COML	Trevor Fortner 912-599-9271 Little Suwannee
Dan Chappell	404-772-5399	EQPM	Tim Jarrell 912-223-7120 Hancock Forest Mgmt.
<b>PLANNING 912-287-6565 FAX 912-287-6541</b>			
Dave Fogler		Planning Section Chief	<b>RAILROADS</b>
Coleen Decker	208-871-7468	IMET	Norfolk Southern 800-453-2530
Josh Burnette	706-331-9313	RESL	Sid Moody 904-318-7983 Norfolk Southern Railroad
<b>FINANCE 912-287-6568 FAX 912-287-6564</b>			Chad Edwards 404-582-4909 Norfolk Southern Railroad
Reggie Lanier		Finance Section Chief	Eric Sams 904-576-9907
Rodrigo Silva	256-497-8334	Purchasing Agent	Emergency Dispatch 404-529-1597 Norfolk Southern Railroad
Buying Team	256-497-8334		CSX Randy Dixon 912-270-0699
Buying Team Fax	912-287-6557		CSX Dispatch 800-232-0144
<b>FEDERAL</b>			
Okefenokee Fire Shop	912-496-4181		<b>COUNTY</b>
Okefenokee NWR HQ	912-496-7366		912-496-7229 Charlton County EMA
Okefenokee NWR	912-637-5322		John F. Meyer - 912-496-2549 Charlton County Commissioners
Okefenokee Visitor	912-496-7836		Dobie Conner 912-496-7321 Charlton County Sheriff
<b>STATE</b>			Jesse Booth 912-520-0061 Clinch County EMA
GFC Fargo Office	912-637-5270		Jonathan Daniel 912-281-5158 Ware County EMA
GFC Satilla District	912-287-4915		Jessie Jordan 912-816-6063 Ware County Fire Dept
Jason Gillis	912-314-9233	GFC Satilla Mgr.	Joe Morris 912-281-6020 Ware County Sheriff
			Robbie Sutton 912-599-9027 Tri County 911
			Georgia State Patrol 912-287-6500
			Travis Griffin 912-281-5790 Laura Walker State Park

## DMOB Report josh Sept

RequestNun	ResourceName	KindCode	UnitID	TravelMethod	Jetport	DemobDate
E-2	OKR ENG6 41 (E-2) GAOKR	ENG6	GAOKR	AOV		08/29/2011
E-1263	FLS FORD F250 PETELLAT	PU	FLFLS	AOV		08/29/2011
E-3	OKR ENG6 42 (E-3) GAOKR	ENG6	GAOKR	AOV		08/29/2011
O-1187	DEMAS, JASON	ICT3	GACHF	AOV		08/29/2011
O-1157	HERRON, NATHAN	ENGB	GAPDR	AOV		08/29/2011
O-1158	PRICE, TOBY	FFT1	GAPDR	AOV		08/29/2011
O-1185	PETELLAT, ANTHONY	PSC2	FLFNF	AOV		08/29/2011
O-1134	CHAPPELL, JAMES	EQPM	GAGAS	AOV		08/30/2011
O-1184	SMITH, MATTHEW	FFT2	GAPDR	AOV		08/31/2011
E-1266.2	WILKINSON, DAMEON	TPOP	GAGAS	AOV		09/01/2011
E-1265.1	GAS TRANSPORT BALDWIN 60	TRTL	GAGAS	AOV		09/01/2011
E-1280	GAS TRANSPORT JEFF DAVIS 61	TRTL	GAGAS	AOV		09/01/2011
E-1268	HUGHES TREE PLANTING	EXCA	GAOKR	POV		09/01/2011
E-1266.1	GAS TRANSPORT WILKES 63	TRTL	GAGAS	AOV		09/01/2011
E-1269	FLS PU BOWMAN	PU	FLFLS	AOV		09/01/2011
E-1278.1	REWIS, DAVID	TPOP	GAGAS	AOV		09/01/2011
E-1267.1	GAS TRANSPORT WILKES 60	TRTL	GAGAS	AOV		09/01/2011
E-7	TRACTOR PLOW	TPL2	GASAR	AOV		09/01/2011
E-1266	TPL GAS WILKES 73	TPL5	GAGAS	AOV		09/01/2011
E-1265	GAS TPL5 BALDWIN 70	TPL5	GAGAS	AOV		09/01/2011
E-1267	GAS TPL WILKES 70	TPL5	GAGAS	AOV		09/01/2011
E-1278	GAS TPL3 JEFF DAVIS 71	TPL3	GAGAS	AOV		09/01/2011
O-1195	BOWMAN, SHANNON	DIVS	FLFNF	AOV		09/01/2011
E-1265.2	GORE, DANIEL	TPOP	GAGAS	AOV		09/01/2011
E-1267.2	BLACKBURN, ABRON	TPOP	GAGAS	AOV		09/01/2011
O-1171	MESSERSCHMIDT, WILLIAM E	RADO	MNMNS	AIR	CWA	09/01/2011
E-1271	HUGHES TREE PLANTING PU	PU	GAOKR	AOV		09/01/2011
O-1189	SPILLERS, BRYAN	ENGB	GAGAS	AOV		09/02/2011
E-81.15	WILLIAMS, RICHARD	ENGB	GAGAS	AOV		09/02/2011
E-77.16	HUSKEY, DARRYL	FFT2	GAGAS	AOV		09/02/2011
O-1196	PAFFORD, DAVID	TPOP	NCPER	AOV		09/02/2011
E-81	ENG6 JONES 86 (E-81) GAGAS	ENG6	GAGAS	AOV		09/02/2011
A-83	AS 350 B3 #351CH	HEL3	NMCIF	AIR	ABQ	09/02/2011
E-77.15	BASS, LELAND	ENGB	GAGAS	AOV		09/02/2011
E-77	ENG6 CHATTOOGA 86 (E-77)	ENG6	GAGAS	AOV		09/02/2011
E-1273	GAS ENG6 FRANKLIN 86	ENG6	GAGAS	AOV		09/02/2011
O-1190	SIMMONS, BRANDON	FFT2	GAGAS	AOV		09/02/2011
E-1281	GAS TRANSPORT LOWNDES 63	TRTL	GAGAS	AOV		09/02/2011
O-1198	CARROLL, RUSTY	ENGB	GAGAS	AOV		09/02/2011
O-1197	BUTLER, KRIS	DIVS	GAGAS	AOV		09/02/2011
E-1279	GAS TPL LOWNDES 73	TPL2	GAGAS	AOV		09/02/2011
E-81.16	BUTTS, JASON	FFT2	GAGAS	AOV		09/02/2011
O-1203	SPRADLEY, STEPHEN	DZOP	GAGAS	AOV		09/02/2011
E-1272	GAS PU TAYLOR 31	PU	GAGAS	AOV		09/02/2011
E-1252	CHARLTON 86	ENG6	GAGAS	AOV		09/02/2011
O-1199	TURNER, JOHN PAYTON	FFT2	GAGAS	AOV		09/02/2011
E-1282	GAS PU LUMKIN 31	PU	GAGAS	AOV		09/02/2011
O-1204	BURNETTE, JOSH	RESL	GAGAS	AOV		09/03/2011
A-83.4	DELSANTO, BRYAN	HECM	NMCIF	AIR	ABQ	09/03/2011
E-1286	FORD VAN	AUTO	GAGAS	AOV		09/03/2011
O-1206	BLACKWELL, STEPHEN	SPUL	GAGAS	AOV		09/03/2011
E-838.15	BUCHALZ, AARON	FFT2	MNFFR	AIR	FAR	09/03/2011
A-83.2	MERRILL, KEVIN	HMGB	NMCIF	AIR	ABQ	09/03/2011
E-1290	HUGHES PU	PU	GAGAS	AOV		09/03/2011
E-1275	HERRIN, JONATHAN	TPOP	GAGAS	AOV		09/03/2011
E-1264	PU GFC#1589	PU	GAGAS	AOV		09/03/2011
E-1270	GFC COMMO VAN	AUTO	GAGAS	AOV		09/03/2011
E-1084.8	DUNN, CHRISTOPHER	FFT2	GAGAS	AOV		09/03/2011
E-838.13	EARHART, ERIC	ENGB	MNWWR	AIR	FSD	09/03/2011



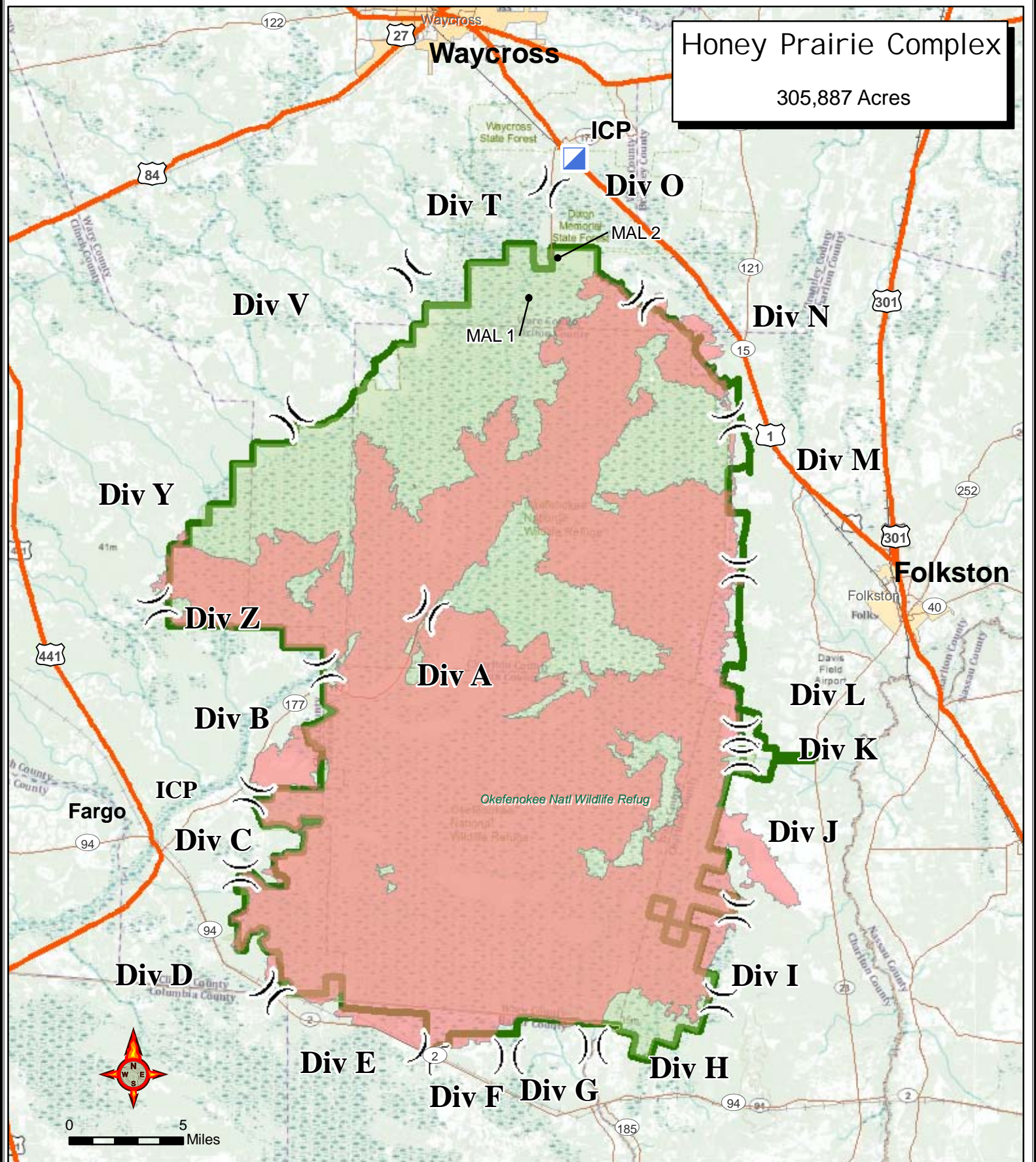
## DMOB Report josh Sept

RequestNun	ResourceName	KindCode	UnitID	TravelMethod	Jetport	DemobDate
E-838.14	WOLLIN, JASON	FFT2	MNRYR	AIR	FAR	09/03/2011
A-83.3	HERNANDEZ, KARINA	HECM	NMCIF	AIR	ABQ	09/03/2011
E-1283	COOSA PU	PU	GAGAS	AOV		09/03/2011
E-1084.7	DILLON, JUSTIN	ENGB	FLFLS	AOV		09/03/2011
E-1284	FL PU ACS#12361	PU	FLFLS	AOV		09/03/2011
O-1207	BROWN, EARL "RUSTY"	BCMG	GAGAS	AOV		09/03/2011
E-1277	WAYNE 62	TRTL	GAGAS	AOV		09/03/2011
E-1275	WAYNE 72	TPL3	GAGAS	AOV		09/03/2011
O-1194	FORTENBERRY, ROY	COML	GAGAS	AOV		09/03/2011
E-1285	WALKER 31	PU	GAGAS	AOV		09/03/2011
E-1261	GAS LUMPKIN 31 SPARROW	PU	GAGAS	AOV		09/04/2011
E-1287.1	WALKER, BENJAMIN	FFT2	SCSRF	AOV		09/04/2011
O-899	SCHOBER, ROBERT	DOZB	AKAKD	AIR	FAI	09/04/2011
O-1210	HUGHES, JEREMY	PTRC	GAGAS	AOV		09/04/2011
E-1293	FL-FLS AUTO ACS288D4	AUTO	FLFLS	AOV		09/04/2011
O-1212	RADCLIFF, LORNA	COST	FLFNF	AOV		09/04/2011
O-1181	SPARROW, MARK	TFLD	GAGAS	AOV		09/04/2011
E-1291	BLS KIT W/AED	MISC	ALAIC	POV		09/04/2011
O-1211	WELDON, BRENT	EMTP	ALAIC	POV		09/04/2011
O-1188	LANIER, REGGIE	FSC2	GAGAS	AOV		09/04/2011

Record Count: 79

# Honey Prairie Complex

305,887 Acres



- Incident Command Post
- Uncontrolled Fire Edge
- Completed Dozer Line
- Completed Line
- Refuge Boundary
- FirePolygon

Division

Perimeter as of 8/26/2011 1600  
J. Burnette GISS



