

Honey Prairie Complex

GA-OKR-000001

INCIDENT ACTION PLAN

Operational Period

Saturday

September 3, 2011
0800-2000

Incident Commander
Trent Ingram
Bob Schober (T)

Accounting Codes

FWS – 9141-F25M-2J

NPS – 5023 F25M E11

BLM – F25M

USFS – PRF25M_1502

Initial Attack – F4PM



*An Equal Opportunity
Employer & Service Provider*

Letter from GFC Incident Commander:

To: All Honey Prairie Incident Personnel

As A Georgia Forestry Commission Type 3 Incident Commander, I am committed to a policy of “zero tolerance” of inappropriate behavior during incident operations. Any form of harassment, discriminatory practices, or disrespectful behavior will not be tolerated.

Guidelines on in-appropriate behavior both “on Duty” and “off Duty” while assigned are addressed within each agencies policies. Our Team expects all incident personnel to follow established government policies for behavior along with all Illegal drug and alcohol directives.

Our Incident Management Team endorses and supports an attitude of mutual respect for all personnel and the public we serve.

We expect a strong work ethic and an attitude of Safety at all times!

Sincerely,

/s/ Trent Ingram

Incident Commander
Georgia Forestry Commission Type 3 Incident Management Team

INCIDENT OBJECTIVES	1. INCIDENT NAME Honey Prairie Complex	2. DATE PREPARED 9/2/11	3. TIME PREPARED 1700
4. OPERATIONAL PERIOD (DATE/TIME) Saturday, September 3, 2011 0800 – 2000			
5. GENERAL CONTROL OBJECTIVES FOR THE INCIDENT (INCLUDE ALTERNATIVES) 1. Provide for safety of incident personnel and public in all incident operations. 2. Maintain a positive working relationship with all adjacent landowners, cooperators, State and Federal partners. Inform, involve and communicate incident planning and operations with all partners. 3. Contain all fires that are within the Okefenokee National Wildlife Refuge, inside the Refuge and/or inside the swamp edge break if possible. 4. In cooperation with local land owners and communities, use full suppression strategies and tactics to minimize damage to private timberlands and structural improvements and to prevent fires outside the Refuge from entering the Refuge. 5. Assist in management and suppression of additional fires (new starts or breakouts) in the vicinity as approved by Agency Administrators and Incident Commander. 6. Protect all cultural and archeological sites and structures within the refuge. 7. Manage the fires cost-effectively consistent with the values at risk. 8. Coordinate suppression actions with assigned Refuge Resource Advisors			
6. WEATHER FORECAST FOR OPERATIONAL PERIOD See attached forecast for area specific weather information.			
7. GENERAL SAFETY MESSAGE Drive defensively and use spotter when backing. Ensure LCES is in place and known by all personnel. Drink plenty of water and take frequent rest breaks. Ensure proper use of PPE during all operations.			
8. Attachments <input checked="" type="checkbox"/> if attached <input checked="" type="checkbox"/> Organization List (ICS 203) <input checked="" type="checkbox"/> Incident Map <input checked="" type="checkbox"/> Safety Message <input checked="" type="checkbox"/> Assignment List (ICS 204) <input type="checkbox"/> Traffic Plan <input type="checkbox"/> Demobilization Procedures <input checked="" type="checkbox"/> Communications Plan (ICS 205) <input checked="" type="checkbox"/> Unit Log <input checked="" type="checkbox"/> Medical Plan (ICS 206) <input checked="" type="checkbox"/> Phone List			
9. PREPARED BY (PLANNING SECTION CHIEF) Dave Fogler		10. APPROVED BY (INCIDENT COMMANDER) Trent Ingram	

ORGANIZATION ASSIGNMENT LIST		9. Operations Section		
1. Incident Name Honey Prairie Complex GA-OKR-000001		Chief	Bob Schober (T) 9/10	
2. Date 9/2/2011		3. Time 1500 hrs		
4. Operational Period 9/3/2011 0800 - 2000		a. Divisions/Groups		
5. Incident Commander and Staff				
Incident Commander	Trent Ingram 9/7 Bob Schober (T) 9/10	Group	East Group	Jeff Quick 9/6
Safety Officer	Harry Kepler 9/11, Ronnie Taylor 9/6, Mark Sparrow (T) 9/3	Group	West Group	Tony Harkins(T) 9/12
Information Officer	Art Webster			
6a. Agency Administrators				
FWS	Curt McCasland			
FWS	Mindy Gautreaux			
6b. Agency Representatives		b. Divisions/Groups		
GFC	Frank Sorrells			
FLFFS	James Karels			
FWS AREP	Mike Housh			
FWS-Refuge PAO	Art Webster			
GEMA AREP	Alan Robinson / Diane Adams			
USFS AREP	Ivan Greene			
7. Planning Section		c. AIR OPERATIONS BRANCH - Honey Prairie		
Chief	Dave Fogler 9/11	Waycross Helibase Mgr	Melvin Tate 9/24	
Resource Advisors	Ron Phernetton, Reggie Forcine Rocky Chesser			
Resources Unit	Chuck Norvell 9/14			
IMET	Coleen Decker 9/6			
Situation Unit				
FBAN		d. AIR OPERATIONS BRANCH - Pogo		
Demob Unit				
Documentation				
GIS				
CTSP				
SCKN				
8. Logistics Section		10. Finance Section		
Chief	Steve Blackwell 9/9	Chief	Reggie Lanier 9/4	
Supply Unit	Linda Blondeau 9/8	Time Unit		
EQPM	Kenneth Edge 9/11	Cost	Lorna Radcliff 9/3	
ORDM		PTRC		
COML	Roy Fortenberry 9/9	EQTR	Jeremy Hughes 9/4	
Medical Unit		IBA		
Facilities				
BCMG		Purchasing Agent	Rodrigo Silva	
SECM	Weldon Young 9/8			
COMT				
RADO				
RCDM				
		Prepared by: Dave Fogler		PSC

DIVISION ASSIGNMENT LIST		1. Branch		2. Division East Group			
3. Incident Name Honey Prairie Complex		4. Operational Period Date: 9/3/2011 Time: 0800-2000					
5. Operations Personnel							
Operations	Bob Schober (T) 9/10			Branch Director			
				Division Supervisor		Jeff Quick 9/6	
Safety Officer	Harry Kepler, Mark Sparrow (T) 9/3			Division Supervisor			
6. Resources Assigned this Period							
Strike Team/Task Force/ Resource Designator		Leader / Name / Designator		Last Shift Date	Num. Per.	Drop Off PT./Time	Crew Names
TRD (O-5) GAOKR		Rocky Chesser			1		Sage @ Refuge HQ
TPL GAOKR 56 (E-22)		Fed Privett (O-15)			1		Sage @ Refuge HQ
TPL GA OKR 54 (E-21)		Dave Pafford (O-1196)			1		Sage @ Refuge HQ
TPL GA OKR 53 (E-23)		Unstaffed					
Motorgrader							
Barrow 86 (E-1310) GAGAS		Tim Joy (O-1239)		9/15	2		Tony Strickland (O-1240)
TRD (O-1213)		Jason Squires		9/6	1		
DOZ Wilkes 73 (E-1266) GAGAS		Dameon Wilkinson		9/7	1		
DOZ Baldwin 70 (E-1265) GAGAS		Daniel Gore		9/7	1		
PVT Excavator (E-1268)		Foster Smith			2		
Timberline Skidder (E-1305)					1		
7. Control Operations							
<ul style="list-style-type: none"> Respond to Initial Attack as requested Patrol and control rebum Initial attack IC will communicate sizeup information to the Honey Prairie communication. Make contact with the resource advisor before using mechanical equipment. Improve swamp break boundaries for fire breaks, work with resource advisor. 							
8. Special Instructions							
<ul style="list-style-type: none"> Ensure LCES are in place before operations begin. Stay hydrated. Drive defensively with lights on at all times. Boggy terrain: Be careful and aware when working around this type of area. 							
9. Division/Group Communication Summary							
	Function	Frequency	Channel	Function	Frequency	System	Channel
Command E Okee Repeater	RX 164.625/ 103.5 TX 163.150/ 103.5	KING NIFC	3	Logistics		KING NIFC	
Tactical Div/Group	RX 168.775 TX 168.775	KING NIFC	9	Air to Ground	RX 166.9375 TX 166.9375	KING NIFC	6
Prepared by (Resource Unit Ldr.) Josh Burnette		Approved by (Planning Sect. Ch.) Dave Fogler			Date September 2, 2011		Time 1800

AIR OPERATIONS SUMMARY

Prepared By: Melvin Tate, HEBM

Prepared Date: 9.2.2011

Prepared Time: 1800

1. INCIDENT NAME: Honey Prairie	2. OPS PERIOD DATE: September 3, 2011	START TIME: 0830	END TIME: 1900	SUNRISE: 0706	SUNSET: 1952
3. REMARKS (Safety Notes, Hazards, Air Operations Special Equipment, etc ALL FLIGHT REQUESTS GO DIRECTLY TO HELIBASE Afternoon thunderstorms <i>NOTE: Latitude/Longitude format is "Degrees-Minutes-Decimal Minutes" (example: N30 41.42 W082 33.97) helibase convert if necessary</i>					5. TFR #: Canceled 7/27/11 SEE and AVOID!!!

PERSONNEL	NAME	PHONE #	FREQUENCIES	AM	FM	
HEB2 Waycross HB	Melvin Tate Desk Cell	912-287-4479 850-849-0405	AIR/ AIR FW	None assigned		AIRTANKERS / LEAD PLANES - None Available OTHER: Waycross Airport Helibase: 912-287-4479 Waycross Airport Helibase Fax: 912-287-4458 ICP Helispot is Waycross Airport Helibase Okefenokee Dispatch: 912-496-7366 X230 Waycross Airport: N 31 16.16 10 W82 33.38 BERGANZA HELISPOT N 31 07.22 W082 15.22 * don't use unless cleared with AOB. POGO HELISPOT: N30 44.03 W082 07.41
ABRO	Darold Williams Desk Cell	912-287-4479 386-383-6288	AIR/ AIR RW-FF	122.375		
			Georgia AIR/GRND (Smokey - Dozers)		159.285 W	
			AIR/GROUND PRIMARY		166.9375	
			AIR/GROUND ALTERNATE		166.9000	
			TOLC		168.0125	
			AIR GUARD		168.625 T110.9	

9. HELICOPTERS (Use Additional Sheets as Necessary)

FAA N#	TY	MAKE/ MODEL	BASE	AVAIL	MANAGER	FAA N#	T Y	MAKE/ MODEL	BASE	AVAIL	MANAGER
1CH	3	AS320-B3	Waycross	0830	Mike Bryson 970-759-2718						

10. TASK/ MISSION/ ASSIGNMENT (Type/ function includes: Air Tactical, Retardant, Recon, Personnel Transport, Bucket Operations, SAR, etc.)

TYPE/FUNCTION	NAME OF PERSONNEL OR CARGO (If applicable) or instructions for tactical aircraft	MISSION START	FLY FROM	FLY TO
Bucket Ops/	1CH	As Requested	Waycross	
Recon	All FLIGHT REQUESTS GO THROUGH HELIBASE, 1CH	As Requested/scheduled	Waycross/Pogo	
Medevac	1CH	As Requested	Waycross	



Fire Weather Forecast



FORECAST NO: 119
PREDICTION FOR: Day Shift
SHIFT DATE: SATURDAY 9/3/11

NAME OF FIRE: Honey Prairie Complex
UNIT: Okefenokee National Wildlife Refuge

FORECAST ISSUED: 9/2/11 at 1700

SIGNED: Coleen Decker, IMET

WEATHER DISCUSSION: The Honey Prairie Fire will be positioned between two tropical storms Today through Wednesday. This will be an active weather pattern punctuated by wind shifts and periods of thunderstorms. The cloud cover associated with these storms will begin to filter in tonight.

TODAY: Mostly sunny, with increasing clouds. Isolated storms possible.

MAXIMUM TEMPERATURES: 92°
PM HEAT INDEX: 95°
MINIMUM HUMIDITY: 30-35%
20 FT WINDS: SE 12 mph with gusts to 20 mph
STABILITY/INVERSION: 5500 feet
TRANSPORT WINDS: SE 20 mph
DISPERSION INDEX: 60, Very Good
CHANCE OF PRECIPITATION: 20%
PRECIPITATION AMOUNTS: Isolated quarter to half inch after 1600 hours
LIGHTNING ACTIVITY LEVEL: 2, Isolated

TONIGHT: . Mostly cloudy. Chance of thunderstorms. SE wind 10 mph. Low temperature 75°.

SUNDAY: Cloudy. Moderate Rain with embedded thunderstorms.

MAXIMUM TEMPERATURES: 83-88°
PM HEAT INDEX: 95°
MINIMUM HUMIDITY: 55-60 %
20 FT WINDS: SSE 10-15 mph
STABILITY/INVERSION: 5000 feet
TRANSPORT WINDS: S 20 mph
DISPERSION INDEX: 50, Good
CHANCE OF PRECIPITATION: 80%
LIGHTNING ACTIVITY LEVEL: 4, Frequent lightning

EXTENDED FORECAST Widespread wetting rain Monday with up to 4 inches precipitation. Tapering off to scattered showers and thunderstorms Tuesday and Wednesday.

	MONDAY	TUESDAY	WEDNESDAY
SKY/WEATHER	Mostly Cloudy. Scattered Storms.	Partly Cloudy. Chance of Thunderstorms.	Partly Cloudy. Chance of Thunderstorms.
PRECIP	30%	40%	40%
20 FT. WINDS	PM: S 15 mph	PM: SW 5-8 mph	PM: SW 5-8 mph
MIN/MAX	72/ 88	72/ 85	72/ 87

FIRE BEHAVIOR FORECAST

Fire: Honey Prairie Complex	Unit: GA-OKR-000001	Prediction for Day Shift
Forecast #118 Issued: 09/2/2011 1830 hrs	Signed: Dave Fogler	Shift Date: Friday 09/3/2011

GENERAL FIRE BEHAVIOR

Fuels around the Okefenokee Wildlife Refuge are predominately Fuel Model 7 (Southern Rough). Large to moderate acreage tracts of commercial timberland are mixed in throughout the entire perimeter surrounding the refuge. Fast moving wildfires with extremely high flame lengths and rapid rates of spread occur within the swamp.

Indicators/Threshold for Increased Fire Activity

- **Relative humidity dropping below 45%**
- **Winds above 10 mph**
- **Heavy fuel loadings**
- **Fine dead fuel moisture 8% or less**
- Dispersion above 70

* Items in **BOLD ITALICS** are predicted to occur today*

SPECIFIC FIRE BEHAVIOR

- Interior smoldering and some flare ups are possible, especially if winds increase.
- Expect fire to continue spreading through the shrub fuels with low rates of spread and minimal flame lengths.

LIGHTNING ACTIVITY LEVEL 2

Fuel Type	Rates of Spread	Flame Length	Spotting Distance	Firebrand Ignition
Winds at 6-8 mph				
Shrub Fuels	6-20 ch/hr	6 - 7 ft	1/10 MILE	50%
Southern Rough	15-30 ch/hr	10 -15 ft	1/10 MILE	50%
Reburn	3 – 5 ch/hr	2 - 3 ft	1/10 MILE	50%
Small PL Pines	15-30 ch/hr	10 -15 ft	1/10 MILE	50%

One hour fine dead fuel moisture is at 5% for Tuesday: Areas remain dry and burning continues. 1,000 hour fuels are drier than normal for this time of year. There is re-burn potential; mainly on the west side of the fire due to the amount of needle cast, fallen trees and scorched shrubs. Should wind become stronger than predicted, expect fire behavior to increase above predicted levels. **In areas where fuels have been herbicided, expect quick ignitions, extreme heat, quicker rates-of-spread, and possible group tree torching potentially producing spotting problems.**

NOTE- OTHER THAN THE RE-BURN, FIRE BEHAVIOR CALCULATIONS ARE FOR FIRES IN UNBURNED FUELS INCLUDING NEW IA STARTS.

All Divisions:

The fire continues a slow spread through the thick bays and muck soils. Roots and fallen trees are protecting heat sources allowing the fire to burn organic soils from the bottom up. Keep a heads-up for falling trees.

Air Operations: Expect possible areas of smoke.

SAFETY:

WINDS – Stay abreast of changing wx conditions throughout the entire shift.

THUNDERSTORMS - these severe winds can create extreme fire behavior, with winds gusting over 30 mph **Live Trees/SNAGS – are falling in all Divisions and will be influenced by Thunderstorm outflow winds.**

FUELS: Watch for pockets of cured shrubs or blankets of red needles beginning to cover the forest floor, re-burn is continuing in some areas. 1,000 and 10,000 hour fuels as well as deep duff pockets are providing the heat source. 100 and 1000 hour fuels are still below average in moisture content. Stay focused, and put LCES in place before starting operations.

Energy Release Component (ERC) is running WELL ABOVE AVERAGE for this time of year.

HEALTH AND SAFETY MESSAGE

SAFETY starts with ***YOU***

We are **ALL** accountable for **SAFE** behaviors

INCIDENT: HONEY PRAIRIE	DATE: SEPTEMBER 3, 2011	TIME: 0800
-------------------------	-------------------------	------------

Major Hazards and Risks:

COMPLACENCY
HYDRATION
PERSONAL PROTECTION EQUIPMENT

Narrative: **COMPLACENCY** = Stay focused on the tasks at hand but remember all fires have the potential to flare up. This fire has many unburned areas within the fire perimeter. Each of these may cause problems, particularly if the weather is hot, low relative humidity, with wind.

HYDRATION = With hotter temperatures the chances for a heat related incident is elevated. Pace Yourself...take advantage of breaks. Drink plenty water throughout the day and Continue hydration even while off shift.

PPE = All persons near the fire line will wear all required PPE. Keep hardhat on while taking breaks On the line.

SAFETY IS JOB #1 on every fire. Everyone is responsible for safety.



17. TERRAIN AND FUELS MAKE ESCAPE TO SAFETY ZONES DIFFICULT

HAZARD TREE SAFETY

Environmental conditions that increase snag hazards:

Strong winds

Night operations

Steep slopes

Diseased or bug-kill areas

HAZARD TREE INDICATORS;

Trees have been burning for an extended period

High risk tree species (rot and shallow root system)

Numerous down trees

Dead or broken tops and limbs overhead

Accumulation of down limbs

Absence of needles, bark or limbs

Leaning or hung-up trees

INCIDENT ACTION PLAN SAFETY ANALYSIS										1. Incident Name Honey Prairie Fire		2. Date 9/3/2011		3. Time Day Shift	
LCES* Analysis of Tactical Applications Lookouts Communications Escape routes Safety zones										Other Risk Analysis					
Divisions	Indirect Fireline	Power lines / Snags	Road Conditions	Frontal Assault	Extreme Conditions	Railroad	Wildlife, Insects	LCES Mitigations	Smoke	Traffic/Driving	Communications	Fatigue/Hydration	School Buses / Children	Other Risk Mitigations	
All Divisions	1, 2, 3, 4, 5, 7, 8, 10, 14	2, 6, 11, 15, 17	12, 20, 26	1, 2, 3, 4, 5, 7, 8, 14	7, 10	1	2, 23, 28	1. Establish & maintain LCES. Report LCES checks twice daily to DIVS on line & staging.	24	12, 17, 19, 20, 22, 26, 27	1, 3, 10, 14, 19, 24, 25	16, 18, 21	26	16. Take adequate rest breaks and encourage to drink water NOW through briefings.	
								2. Look UP, DOWN and AROUND						17. Defensive driving will be addressed in all briefings.	
								3. Post experienced Lookouts. Make sure LCES is in place and make known.						18. All personnel must meet the 2:1 work/rest ratio. Line supervisors and Safety will monitor closely.	
								4. Use Aerial Resources as Lookout if available.						19. Notify Operation and Safety of Railroad track issues to ensure safety of firefighters.	
								5. Flag escape routes on right side of escape route facing outward. Create new escape routes as you progress and identify Safety Zones on the ground and maps.						20. Ensure Traffic Planning is safe and enforced. Heed Defensive Driving techniques noted in Safety Messages.	
								6. Identify, mark & mitigate.						21. Relocate staging area when driving conditions warrant.	
								7. FBAN/Meteorologist to monitor weather updates and advisories.						22. Use spotter when backing vehicle(s).	
								8. Ensure Fireline is Anchored to black or manmade/natural barrier.						23. For insects, use protective spray with deet on skin (Not on Nomex), permethrin can be used on nomex clothing	
								10. Keep Firefighters informed of any changes in predicted weather, consider at least a two day weather pattern when planning Strategic Firing operations.						24. Establish smoke/fog signs on roadways. Coordinate with Department of Transportation.	
								11. Refer to IRPG, pg. 12 on Power Line Hazards.						25. Follow establish communication plan, flight follow through dispatch	
								12. Observe all traffic signals and speed limits. Drive with lights on.						26. Watch-out for school buses and for children along the edge of roadway and crossing the road.	
								14. Ensure GOOD tailgate briefings with resources unable to attend Operational Briefing (Include Ops, Logs, Fin & Plans info.).							
								15. Scout ahead of tractor operations to avoid making contact with power poles and guide wires when tying into roads. Power companies are working in some DIVS, avoid all down lines as they may become charged.						27. Treat all intersections as 4-way stops	
														28. Bears, Gators, and some snakes are dangerous. Do not approach or feed wildlife at any time.	

Prepared by (Name and Position)

ICS 215A

Harry Kepler; SOF

MEDICAL PLAN	Incident Name Honey Prairie Complex	Date Prepared 09/02/2011	Time Prepared 1000	Operational Period 09/03/2011
---------------------	-----------------------------------------------	------------------------------------	------------------------------	-----------------------------------------

5. Incident Medical Aid Station

<u>Medical Aid Stations</u>	<u>Location</u>	Paramedics Yes No	
MEDICAL UNIT (ICP EMT)	Honey Prairie Complex ICP- No MEDL		
WEST SIDE (Line EMT)	****Brent Weldon 334-462-1062 (BLS Kit)****	X	
EAST SIDE (Line EMT)			

Ambulance Services

Name	Address	Phone	Paramedic Yes No	
Clinch County EMS (West)	Homerville, GA (911 to activate)	912-487-5315	Yes	
Ware County EMS (North)	Waycross, Georgia (911 to activate)	912-287-4335	Yes	
Charlton County EMS (East)	Folkston, GA (911 to activate)	912-496-2281	Yes	

Air Ambulance Service

Trauma 1	Lake City, FL	1-800-223-4878	Yes	
Trauma 1	Jacksonville, FL	1-800-223-4878	Yes	
AirMed	Augusta, GA	1-888-792-9245	Yes	
Lifeflight	Jacksonville, FL	1-877-870-7779	Yes	
Air Evac	Waycross, GA	1-800-247-3822	Yes	
US Coast Guard (Heli-Rescue)	Savannah GA	1-912-652-4646	Yes	

7. Hospitals

Name	Address	LAT-LON	Phone	Helipad Yes No		Burn Center Yes No	
Satilla Regional	410 Darling AVE. Waycross, GA	N 31' 13.509 W 82' 20.853	(912) -283-3030	Yes			No
Clinch Memorial Hospital (WEST SIDE)	1050 Valdosta HWY Homerville, GA	N 31' 01.977 W 82 45.851	(912) -487-5211 ext 4502	Yes			No
Charlton Memorial Hospital (EAST SIDE)	1203 3 rd Street Folkston, GA	N 30' 50.713 W 82' 00.302	(912) -496-2531	Yes			No
Savannah Memorial Hospital	4700 Waters AVE Savannah, GA	N 32' 01.538 W 81' 05.298	(912) -350-8999	Yes			No
Shands Hospital (Level I)	655 West 8 th Street Jacksonville, FL	N 30' 20.97 W 81' 39.92	(800) -223-4878	Yes		Yes	
Shands Burn Center	1600 Southwest Archer Road Gainesville, FL	N 29' 38.33 W 82' 20.55	(352) -265-0300	Yes		Yes	

8. Medical Emergency Procedures

Identify any EMTs and Paramedics in your crews. All medical emergencies will be reported to the Division Supervisor who will assume command and notify Line Medics.

On scene personnel will:

1. Provide medical care & stabilize patient.
2. Call 911 if possible or call phone #'s above for EMS and provide the information requested.
3. Notify Communications via radio over Command Channel
4. Communications will clear radio traffic for medical emergency.
5. Communications will confirm 911 has been notified coordinate with IC, SOF.
6. DIVS will notify the Field Ops Section Chief.

MAJOR EMERGENCIES – Secure the area and identify witness for later investigation. Keep an accurate log of events. NOTE: Do not give Patients Name over the radio!

INJURY REPORTING PROCESS:

Nature of Injury: _____

Location of Patient: _____

Transportation Requested by: Air ___ Ground ___

Pick Up Point: _____

Lat: _____ Long: _____

Patient Unit ID: _____

Is an EMT w/Patient: Yes ___ No ___

Age: ___ Sex: Male ___ Female ___

Weight (If Air Evac. is needed): _____

HELISPOTS

NAME	LAT-LON	LOCATION
Pocket Helispot	N 30' 47.500 W 82' 22.659	(West side), mile marker 4, HWY 177 Steven C. Foster State Park
Fargo Helispot	N 30' 40.945 W 82' 33.640	(West side), HWY 441- Steven C. Foster Visitor Center
POGO Helibase	N 30' 44.219 W 82' 07.689	(East side) Adjacent to Okee Refuge Shop

Evac Yankee

Helispot 6	N 30' 53.280 W 82' 33.880	Road 32 and 32A
Helispot 7	N 30' 50.280 W 82' 33.857	Tatum Road Pond

***Alternate site can be established following guidelines for safety found with IRPG and local EMS resources.**

Prepared by: Harry Kepler, SOF

10. Reviewed by: Harry Kepler, SOF

INCIDENT RADIO COMMUNICATIONS PLAN ICS-205			Incident Name Honey Prairie			GROUP 22		Date/Time Prepared 09/02/2011-18:00		Operational Period Date/Time 9/3/2011 0800-2000	
Ch #	Function	Channel Name	Assignment	RX Freq	NW	RX Tone/NAC	TX Freq	N W	TX Tone/NAC	Mode A,D or M	Remarks
1	Command	West Okee Repeater	Sec West Branch CMD	167.1250	N	156.7	163.1500	N	156.7	A	Stephen Foster State Park
2	Command	South Okee Repeater	Sec East/West Branch CMD	164.7750	N	123.0	163.1500	N	123.0	A	Eddy Florida
3	Command	East Okee Repeater	PRIMARY East Branch CMD	164.6250	N	103.5	163.1500	N	103.5	A	Refuge Headquarters
5	Command	North Okee Repeater	PRIMARY North Branch CMD	164.5750	N	206.5	163.1500	N	206.5	A	Waycross
6	Air-Ground	Air to Ground	PRIMARY	166.9375	N	CSQ	166.9375	N	CSQ	A	
7	Tactical	MOB-MOB	GFC Contingency	159.3900	W	CSQ	159.3900	W	156.7	A	
8	Tactical	V-Fire 21W WHITE	West group Secondary	154.2800	W	CSQ	154.2800	W	156.7	A	
9	Tactical	USFS 9	East/West Groups	168.7750	N	CSQ	168.7750	N	CSQ	A	
10	Tactical	S.E. Compact		159.2850	W	CSQ	159.2850	W	CSQ	A	
11	Tactical	USFS 11	East Group Secondary	168.2000	N	CSQ	168.2000	N	CSQ	A	
12	Tactical	Refuge Tac 1	East Group	168.3500	N	CSQ	168.3500	N	CSQ	A	
13	Tactical	FL 190		151.2725	N	CSQ	151.2725	N	CSQ	A	
15	Air-Ground	Air to Ground	SECONDARY	166.9000	N	CSQ	166.9000	N	CSQ	A	
16	EMERGENCY	AIR Guard	Air OPS.	168.6250	N	CSQ	168.6250	N	110.9	A	
Prepared by (Communications Unit) Roy Fortenberry, COML Incident Dispatcher: 404-772-5384						Cloning at ICP communications and briefings,					

The convention calls for frequency lists to show four digits after the decimal place, followed by either an "N" or a "W", depending on whether the frequency is narrow or wide band. **Mode** refers to either "A" or "D" indicating analog or digital (e.g. Project 25) or "M" indicating mixed mode. All channels are shown as if programmed in a control station, base stations, mobile or portable radio.

Fire Information IAP messages

1. Public and firefighter safety remains the top priority for this incident.
2. Fire managers for the refuge have coordinated suppression efforts with the Georgia Forestry Commission and the Greater Okefenokee Association of Landowners (GOAL) representing federal and state agencies, industry and private landowners. Through this Unified Command, the partners support the chosen strategy as the appropriate management response to protect adjacent valuable commercial timber, isolated homes scattered on private land, and critical wildlife habitat for threatened and endangered species.
3. Fire is a natural component of the Okefenokee ecosystem; since the refuges creation in 1937, there have been hundreds of wildfires that have burned thousands of acres here. The plants and animals on the refuge are well adapted to survive periodic wildfires.
4. Past experience has shown that conventional fire suppression tactics do not work well inside the swamp. Humans have never been successful in controlling fires within the swamp; only “mother nature” has done this. Attempting suppression within the swamp is ineffective, costly, wastes firefighting resources and needlessly endangers firefighter safety.
5. Fire on the refuge is usually fought by reinforcing firelines along the Swamps Edge Break, including areas of private land, to keep the fire contained within the swamp.
6. Okefenokee National Wildlife Refuge typically employs a contain and control strategy to manage fire; containing it within the swamp and actively suppressing it outside of the swamp in the upland forest.

Commonly asked question:

1. Why won't this fire go out? What will it take? Surface burning of available fuels is only part of the current problem. Peat beds (partially decayed vegetation normally floating in a vertical column of water) is what supports these surface fuels. Unfortunately, the current dry conditions have allowed a portion of the peat beds to dry out and the surface burn has transferred into the peat beds and is now burning subsurface. There are now two sources of heat and available fuel that must be extinguished. The current spotty, localized rain storms can have some effect on the surface burns but do not do much to control subsurface burns. It will take a big rain storm blanketing the entire swamp (remember the swamp is huge –over 650 square miles in size) dropping a minimum of 6-8 inches of rain. As the water levels in the swamp slowly rise as a result of the rain, the peat beds will become water saturated again eliminating one source of the fire. As the surface of the swamp becomes covered by water, burning surface fuels will be extinguished as well. Burning fuels that extend above these water levels (dead and drying trees/shrubs) may continue to burn until they fall over or burn up. Fire that exists in upland habitat on islands within the swamp may also continue to burn but it will be confined to that immediate area by the swamp waters surrounding the island. This is not something that will likely occur overnight. It may take days, weeks, or even months. The refuge has experienced fire events that were not declared officially out for well over a year after the main firefighting effort had ceased.

HONEY PRAIRIE PHONE LIST			09/03/11		
Incident		Communication		(Hours: 0800-2000) 912-286-1660	
AGENCY OFFICIALS			OPERATIONS		
Curt McCasland	602-359-0013	USFWS AA		Trent Ingram	229-726-0285
Mindy Gautreaux	912-282-7500	USFWS Deputy AA		Bob Schober (T)	404-772-5400
Frank Sorrells	912-381-7503	GFC AA		DIVISIONS	
James Karels	850-228-7763	FL DOF AA		Tony Harkins (T)	706-897-9414 West Group
Diane Adams	912-266-5421	GEMA		Jeff Quick	928-499-9420 East Group
Mike Housh	912-281-1575	USFWS AREP			
COMMAND - IC			AIR OPERATIONS		
Trent Ingram	229-726-0285			Melvin Tate	850-849-0405 HEB1
					912-287-4479 WAYCROSS AIRPORT
RESOURCE ADVISORS			LANDOWNERS		
Ron Phernetton	912-276-2349	Resource Advisor		Jim Barrett	229-356-1993 Langdale/GOAL Chairman
Rocky Chesser	912-276-3232	Resource Advisor		Wesley Langdale	229-220-2602 Langdale
Reggie Forcine	912-614-4041	Resource Advisor		Hal Rowe	229-412-3133 Langdale
INFORMATION 912-496-2566					
Art Webster		Fire Information		Langdale Office	229-242-7450 Langdale Office
SAFETY OFFICERS					
Ronnie Taylor	850-768-2241	404-772-5406		Mike Conlon	386-365-3882 Rayonier Unit Supervisor
Mark Sparrow (T)	706-968-1895			Ray Carter	386-288-6626 Rayonier
Harry Kepler	205-292-7764			Ed Carter	386-288-6626 Rayonier
DISPATCH					
Okeefenokee Dsp	912-496-7366	Okeefenokee		Doug Nuss	912-390-1037 Rayonier
Suwannee Dispatch	386-758-5700	Fla wildfires, other		Randall McCrady	912-283-4077 Rayonier
Honey Prairie Dspth	404-772-5384	Honey Prairie ICP		Colin Myerson	229-506-1565 Superior Pine Products Co
Waycross Dispatch	912-287-4915	Ga wildfires, other		Robbie Lee	229-356-0526 Superior Pine Products Co
GA DNR	1-800-241-4113	Hunting Issues		Superior Pine Office	912-637-5261 Superior Pine Products Co
LOGISTICS 256-497-8490 fax 912-287-6542					
Steve Blackwell	256-497-8490	LSC		Al Alexander	850-843-0104 The Forestry Co
Linda Blondeau	770-658-4789	Ordering Manager		Savell Schmidt	850-843-1181 The Forestry Co
Weldon Young	414-312-1389	Security		John Bogue	850-843-1192 The Forestry Co
Tom Lambert	229-343-0838	FACL		Joe Hopkins	912-276-0911 Toledo Timber
Roy Fortenberry	706-897-8020	COML		Chris Gowan	912-276-0965 Toledo Timber
Kenneth Edge	404-772-5399	EQPM		Martin Bell	912-283-0583 Swamp Park
				Crystal Peoples	352-316-0632 FIA
				Steve Davis	912-614-1828 Davis Community
				Trevor Fortner	912-599-9271 Little Suwannee
				Tim Jarrell	912-223-7120 Hancock Forest Mgmt.
PLANNING 912-287-6565 FAX 912-287-6541			RAILROADS		
Dave Fogler	352-442-2895	Planning Section Chief		Norfolk Southern	800-453-2530
Coleen Decker	208-871-7468	IMET		Sid Moody	904-318-7983 Norfolk Southern Railroad
Chuck Norvell	678-314-9824	RESL		Chad Edwards	404-582-4909 Norfolk Southern Railroad
FINANCE 912-287-6568 FAX 912-287-6564					
Reggie Lanier		Finance Section Chief		Eric Sams	904-576-9907
Rodrigo Silva	256-497-8334	Purchasing Agent		Emergency Dispatch	404-529-1597 Norfolk Southern Railroad
Buying Team	256-497-8334			CSX Randy Dixon	912-270-0699
Buying Team Fax	912-287-6557			CSX Dispatch	800-232-0144
FEDERAL			COUNTY		
Okefenokee Fire Shop	912-496-4181				912-496-7229 Charlton County EMA
Okefenokee NWR HQ	912-496-7366			John F. Meyer -	912-496-2549 Charlton County
Okefenokee NWR	912-637-5322			Dobie Conner	912-496-7321 Charlton County Sheriff
Okefenokee Visitor	912-496-7836			Jesse Booth	912-520-0061 Clinch County EMA
				Jonathan Daniel	912-281-5158 Ware County EMA
STATE					
GFC Fargo Office	912-637-5270			Jessie Jordan	912-816-6063 Ware County Fire Dept
GFC Satilla District	912-287-4915			Joe Morris	912-281-6020 Ware County Sheriff
Jason Gillis	912-314-9233	GFC Satilla Mgr.		Robbie Sutton	912-599-9027 Tri County 911
				Georgia State Patrol	912-287-6500
				Travis Griffin	912-281-5790 Laura Walker State Park

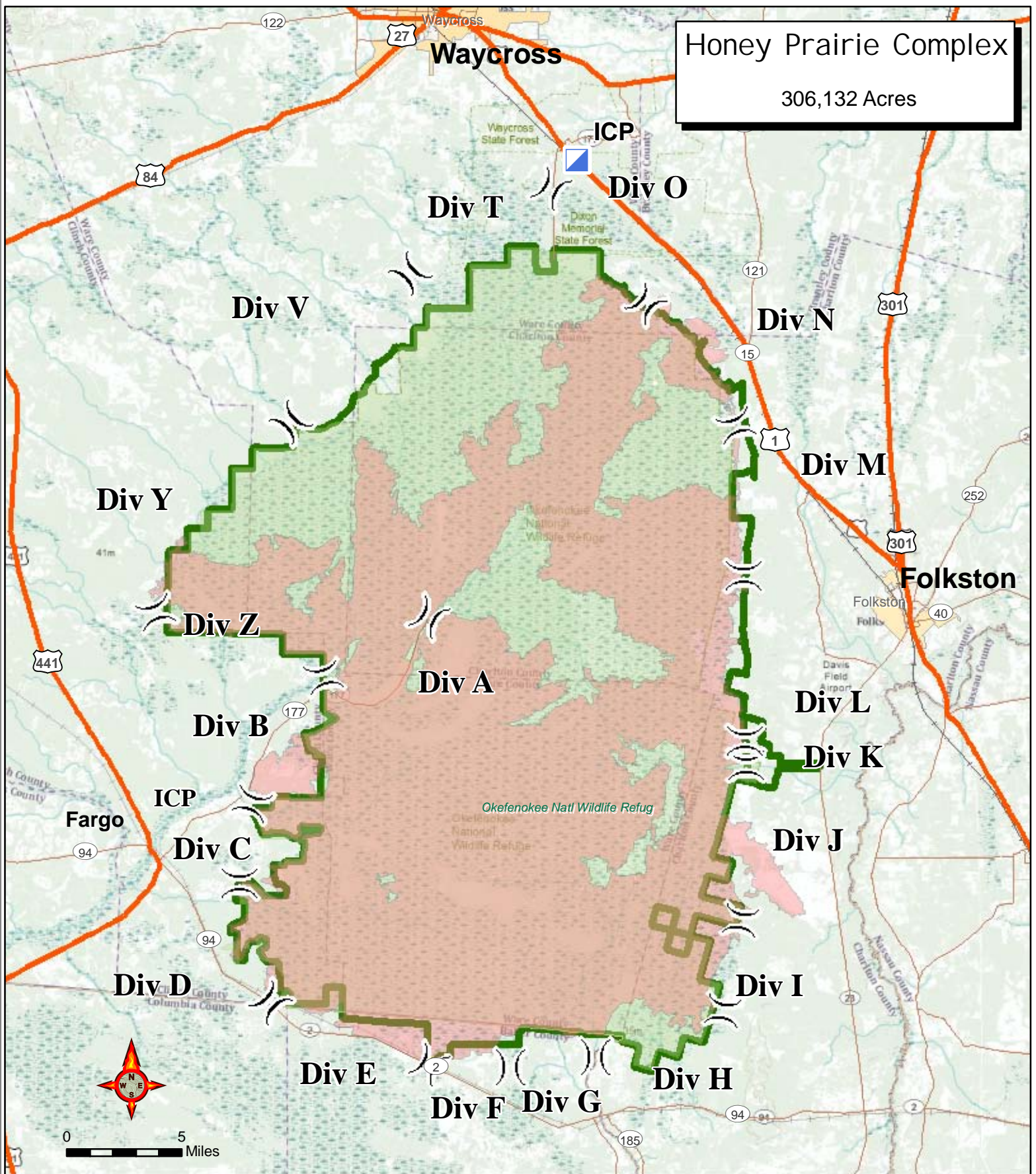
DMOB Report josh Sept

RequestNun	ResourceName	KindCode	UnitID	TravelMethod	Jetport	DemobDate
E-1284	FL PU ACS#12361	PU	FLFLS	AOV		09/03/2011
E-1084.7	DILLON, JUSTIN	ENGB	FLFLS	AOV		09/03/2011
E-1084	GA ENG6 (E-1084) GAGAS	ENG6	GAGAS	AOV		09/03/2011
A-83.2	MERRILL, KEVIN	HMGB	NMCIF	AIR	ABQ	09/03/2011
E-1084.8	DUNN, CHRISTOPHER	FFT2	GAGAS	AOV		09/03/2011
E-1261	GAS LUMPKIN 31 SPARROW	PU	GAGAS	AOV		09/04/2011
E-1287.1	WALKER, BENJAMIN	FFT2	SCSRF	AOV		09/04/2011
E-1293	FL-FLS AUTO ACS288D4	AUTO	FLFLS	AOV		09/04/2011
O-1212	RADCLIFF, LORNA	COST	FLFNF	AOV		09/04/2011
O-1181	SPARROW, MARK	TFLD	GAGAS	AOV		09/04/2011
E-1291	BLS KIT W/AED	MISC	ALAIC	POV		09/04/2011
O-1210	HUGHES, JEREMY	PTRC	GAGAS	AOV		09/05/2011
O-1188	LANIER, REGGIE	FSC2	GAGAS	AOV		09/05/2011
E-1264	PU GFC#1589	PU	GAGAS	AOV		09/05/2011
E-1290	HUGHES PU	PU	GAGAS	AOV		09/05/2011
E-1287.2	TAYLOR, KELLY	FFT2	GACHFR	AOV		09/06/2011
E-1287	CHATTAHOOCHE NF ENG	ENG6	GACHFR	AOV		09/06/2011
E-1287.3	SHELL, CURTIS	ENGB	GACHFR	AOV		09/06/2011
O-1216	MASHBURN, JAMES	TFLD	GAGAS	AOV		09/07/2011
O-1218	TAYLOR, RONALD	SOF2	FLFLSC	POV		09/07/2011
E-1295	GFC PU#1743	AUTO	GAGAS	AOV		09/07/2011
E-1294	ECHOLS 32	PU	GAGAS	AOV		09/07/2011
O-1220	QUICK, JEFF	DIVS	AZPNF	A/R	PHX	09/07/2011
O-1213	SQUIRES, RICHARD	TFLD	GAGAS	AOV		09/07/2011
O-1209	INGRAM, TRENT	ICT3	GAGAS	AOV		09/08/2011
E-1266.1	GAS TRANSPORT WILKES 63	TRTL	GAGAS	AOV		09/08/2011
O-1177	BLONDEAU, LINDA	SPUL	MTLCF	AIR	BZN	09/08/2011
E-1265.1	GAS TRANSPORT BALDWIN 60	TRTL	GAGAS	AOV		09/08/2011
E-1265.2	GORE, DANIEL	TPOP	GAGAS	AOV		09/08/2011
E-871	ENTERPRISE DODGE PU	PU	GAOKR	REN		09/08/2011
E-1289	INGRAM PU	PU	GAGAS	AOV		09/08/2011
E-1266	TPL GAS WILKES 73	TPL5	GAGAS	AOV		09/08/2011
E-1265	GAS TPL5 BALDWIN 70	TPL5	GAGAS	AOV		09/08/2011
E-1266.2	WILKINSON, DAMEON	TPOP	GAGAS	AOV		09/08/2011
O-1217	GLYDUS, ROBERT	SEC1	PAALF	AOV		09/09/2011
E-1297	ENTERPRISE JEEP LIBERTY	SUV	GAOKR	AOV		09/09/2011
O-1215	YOUNG, WELDON	SECM	ILSHF	AOV		09/09/2011
O-1221	BLATZ, CAROLYN	TFLD	PANAF	AIR	STL	09/09/2011

Record Count: 38

Honey Prairie Complex

306,132 Acres



 Incident Command Post

 Completed Line

 Division

 Uncontrolled Fire Edge

 Refuge Boundary

 Completed Dozer Line

 Fire Polygon

Perimeter as of 8/31/2011 1100 Hrs
J. Burnette GISS

**INCIDENT
MANAGEMENT**
T E A M

GEORGIA FORESTRY
COMMISSION



