

Honey Prairie Complex

GA-OKR-000001

INCIDENT ACTION PLAN

Operational Period

Tuesday

September 6, 2011
0800-2000

Incident Commander
Trent Ingram
Bob Schober (T)

Accounting Codes

FWS – 9141-F25M-2J

NPS – 5023 F25M E11

BLM – F25M

USFS – PRF25M_1502

Initial Attack – F4PM



*An Equal Opportunity
Employer & Service Provider*

Letter from GFC Incident Commander:

To: All Honey Prairie Incident Personnel

As A Georgia Forestry Commission Type 3 Incident Commander, I am committed to a policy of “zero tolerance” of inappropriate behavior during incident operations. Any form of harassment, discriminatory practices, or disrespectful behavior will not be tolerated.

Guidelines on in-appropriate behavior both “on Duty” and “off Duty” while assigned are addressed within each agencies policies. Our Team expects all incident personnel to follow established government policies for behavior along with all Illegal drug and alcohol directives.

Our Incident Management Team endorses and supports an attitude of mutual respect for all personnel and the public we serve.

We expect a strong work ethic and an attitude of Safety at all times!

Sincerely,

/s/ Trent Ingram

Incident Commander
Georgia Forestry Commission Type 3 Incident Management Team

| | | | |
|---|---|---|---------------------------------|
| INCIDENT OBJECTIVES | 1. INCIDENT NAME Honey Prairie Complex | 2. DATE PREPARED 9/5/11 | 3. TIME PREPARED 1700 |
| 4. OPERATIONAL PERIOD (DATE/TIME) Tuesday, September 6, 2011 0800 – 2000 | | | |
| 5. GENERAL CONTROL OBJECTIVES FOR THE INCIDENT (INCLUDE ALTERNATIVES) 1. Provide for safety of incident personnel and public in all incident operations. 2. Maintain a positive working relationship with all adjacent landowners, cooperators, State and Federal partners. Inform, involve and communicate incident planning and operations with all partners. 3. Contain all fires that are within the Okefenokee National Wildlife Refuge, inside the Refuge and/or inside the swamp edge break if possible. 4. In cooperation with local land owners and communities, use full suppression strategies and tactics to minimize damage to private timberlands and structural improvements and to prevent fires outside the Refuge from entering the Refuge. 5. Assist in management and suppression of additional fires (new starts or breakouts) in the vicinity as approved by Agency Administrators and Incident Commander. 6. Protect all cultural and archeological sites and structures within the refuge. 7. Manage the fires cost-effectively consistent with the values at risk. 8. Coordinate suppression actions with assigned Refuge Resource Advisors | | | |
| 6. WEATHER FORECAST FOR OPERATIONAL PERIOD See attached forecast for area specific weather information. | | | |
| 7. GENERAL SAFETY MESSAGE Drive defensively and use spotter when backing. Ensure LCES is in place and known by all personnel. Drink plenty of water and take frequent rest breaks. Ensure proper use of PPE during all operations. | | | |
| 8. Attachments <input checked="" type="checkbox"/> if attached <input checked="" type="checkbox"/> Organization List (ICS 203) <input checked="" type="checkbox"/> Incident Map <input checked="" type="checkbox"/> Safety Message <input checked="" type="checkbox"/> Assignment List (ICS 204) <input type="checkbox"/> Traffic Plan <input type="checkbox"/> Demobilization Procedures <input checked="" type="checkbox"/> Communications Plan (ICS 205) <input checked="" type="checkbox"/> Unit Log <input checked="" type="checkbox"/> Medical Plan (ICS 206) <input checked="" type="checkbox"/> Phone List | | | |
| 9. PREPARED BY (PLANNING SECTION CHIEF) Dave Fogler | | 10. APPROVED BY (INCIDENT COMMANDER) Trent Ingram | |

| ORGANIZATION ASSIGNMENT LIST | | 9. Operations Section | | |
|---|---|---|-----------------------|--|
| 1. Incident Name Honey Prairie Complex GA-OKR-000001 | | Chief | Bob Schober (T) 9/10 | |
| 2. Date 9/5/2011 | | 3. Time 1500 hrs | | |
| 4. Operational Period 9/6/2011 0800 - 2000 | | a. Divisions/Groups | | |
| 5. Incident Commander and Staff | | | | |
| Incident Commander | Trent Ingram 9/7 Bob Schober (T) 9/10 | Group | East Group | |
| Safety Officer | Harry Kepler 9/11, Ronnie Taylor 9/6, | Group | West Group | Jeff Quick 9/6 Tony Harkins(T) 9/12 |
| Information Officer | Art Webster | | | |
| 6a. Agency Administrators | | | | |
| FWS | Curt McCasland | | | |
| FWS | Mindy Gautreaux | | | |
| 6b. Agency Representatives | | b. Divisions/Groups | | |
| GFC | Frank Sorrells | | | |
| FLFFS | James Karels | | | |
| FWS AREP | Mike Housh | | | |
| FWS-Refuge PAO | Art Webster | | | |
| GEMA AREP | Alan Robinson / Diane Adams | | | |
| USFS AREP | Ivan Greene | | | |
| 7. Planning Section | | c. AIR OPERATIONS BRANCH - Honey Prairie | | |
| Chief | Dave Fogler 9/11 | | | |
| Resource Advisors | Ron Phernetton, Reggie Forcine Rocky Chesser | Waycross Helibase Mgr | Melvin Tate 9/24 | |
| Resources Unit | Chuck Norvell 9/14 | | | |
| IMET | Coleen Decker 9/9 | | | |
| Situation Unit | | | | |
| FBAN | | d. AIR OPERATIONS BRANCH - Pogo | | |
| Demob Unit | | | | |
| Documentation | | | | |
| GIS | | | | |
| CTSP | | | | |
| SCKN | | | | |
| 8. Logistics Section | | 10. Finance Section | | |
| Chief | Steve Blackwell 9/9 | Chief | Grace Reid 9/18 | |
| Supply Unit | Linda Blondeau 9/8 | Time Unit | | |
| EQPM | Kenneth Edge 9/11 | Cost | | |
| ORDM | | PTRC | Carolyn Sweatman 9/18 | |
| COML | Roy Fortenberry 9/9 | EQTR | | |
| Medical Unit | | IBA | | |
| Facilities | Tom Lambert 9/13 | | | |
| BCMG | | Purchasing Agent | Rodrigo Silva | |
| SECM | Weldon Young 9/8 Robert Glydus 9/8 | | | |
| COMT | | | | |
| RADO | | | | |
| RCDM | | | | |
| | | Prepared by: Dave Fogler | PSC | |

| | | | | | | | |
|--|--------------------------------------|---|---------|-------------------------------|----------------------------|-------------------|--------------------------|
| DIVISION ASSIGNMENT LIST | | 1. Branch | | 2. Division East Group | | | |
| 3. Incident Name Honey Prairie Complex | | 4. Operational Period Date: 9/6/2011 Time: 0800-2000 | | | | | |
| 5. Operations Personnel | | | | | | | |
| Operations | Bob Schober (T) 9/10 | | | Branch Director | | | |
| | | | | Division Supervisor | | | |
| Safety Officer | Harry Kepler, | | | Division Supervisor | | | |
| 6. Resources Assigned this Period | | | | | | | |
| Strike Team/Task Force/ Resource Designator | | Leader / Name / Designator | | Last Shift Date | Num. Per. | Drop Off PT./Time | Crew Names |
| TFLD (O-1213) | | Jason Squires | | 9/6 | 1 | | |
| DOZ Wilkes 73 (E-1266) GAGAS | | Dameon Wilkinson | | 9/7 | 1 | | |
| DOZ Baldwin 70 (E-1265) GAGAS | | Daniel Gore | | 9/7 | 1 | | |
| Barrow 86 (E-1310) GAGAS | | Tim Joy (O-1239) | | 9/15 | 2 | | Tony Strickland (O-1240) |
| PVT Excavator (E-1268) | | Foster Smith | | | 1 | | |
| Timberline Skidder (E-1305) | | | | | 1 | | |
| TPL GA OKR 53 (E-23) | | Unstaffed | | | | | |
| Motorgrader | | Available as needed | | | | | Staged at Refuge HQ |
| | | | | | | | |
| | | | | | | | |
| | | | | | | | |
| | | | | | | | |
| | | | | | | | |
| | | | | | | | |
| | | | | | | | |
| | | | | | | | |
| | | | | | | | |
| | | | | | | | |
| | | | | | | | |
| 7. Control Operations | | | | | | | |
| <ul style="list-style-type: none"> Respond to Initial Attack as requested Patrol and control reburn Initial attack IC will communicate sizeup information to the Honey Prairie communication. Make contact with the resource advisor before using mechanical equipment. Improve swamp break boundaries for fire breaks, work with resource advisor. | | | | | | | |
| 8. Special Instructions | | | | | | | |
| <ul style="list-style-type: none"> Ensure LCES are in place before operations begin. Stay hydrated. Drive defensively with lights on at all times. Boggy terrain: Be careful and aware when working around this type of area. | | | | | | | |
| 9. Division/Group Communication Summary | | | | | | | |
| | Function | Frequency | Channel | Function | Frequency | System | Channel |
| Command E Okee Repeater | RX 164.625/103.5 TX 163.150/103.5 | KING NIFC | 3 | Logistics | | KING NIFC | |
| Tactical Div/Group | RX 168.775 TX 168.775 | KING NIFC | 9 | Air to Ground | RX 166.9375 TX 166.9375 | KING NIFC | 6 |
| Prepared by (Resource Unit Ldr.) Chuck Norvell | | Approved by (Planning Sect. Ch.) Dave Fogler | | | Date September 5, 2011 | | Time 1800 |

| DIVISION ASSIGNMENT LIST | | | | 1. Branch | | 2. Division West Group | |
|--|---------------------------------------|---|-----------------|---|----------------------------|--------------------------------------|--------------|
| 3. Incident Name Honey Prairie Complex | | | | 4. Operational Period Date: 9/6/2011 Time: 0800-2000 | | | |
| 5. Operations Personnel | | | | | | | |
| Operations | | Bob Schober (T) 9/10 | | Branch Director | | | |
| Safety Officer | | Ronnie Taylor 9/6 | | Division Supervisor | | Jeff Quick 9/6 Tony Harkins (T) 9/12 | |
| 6. Resources Assigned this Period | | | | | | | |
| Strike Team/Task Force/ Resource Designator | | Leader / Name / Designator | Last Shift Date | Num. Per. | Drop Off PT./Time | Crew Names | |
| TFLD (O-1221) | | Carolyn Blatz | 9/8 | 1 | | | |
| TFLD (O-1216) | | James Mashburn (T) | 9/6 | 1 | | | |
| FWS ENG6 (E-1287)(GACHF) FWS | | Curtis Shell | 9/5 | 2 | | K. Taylor | |
| MN Eng 6232 (E-838) MNMFC FWS | | Mark Fondriest | 9/15 | 2 | | Trevor Elg | |
| GA ENG6 (E-2) GAOKR # 41 | | Greg Gilreath (O-1225) | 9/11 | 2 | | Alice Brown (O-1226) | |
| FS ENG6 (E-1313) WICNF | | Bob Raade (E-1313.1/.2/.3) | 9/18 | 3 | | Chad Jacobson / Randy Carlson | |
| BIA ENG6 (E-1318) WIMEA | | Adam Waukau | 9/18 | 3 | | Curtis Wayka / Jamie Guzman | |
| NPS ENG6 (E-1319) WIAIP | | Damon Panek | 9/19 | 3 | | Tom Richardson / Jim Miller | |
| Meritt Isl #31 ENG6 (E-1302) FL-MIR | | Ryan Roche (O-1231) | 9/11 | 2 | | Wyatt Brouillard (O-1232) | |
| DO22 Ware 71 (E-1314) GAGAS | | Eric Smith | 9/15 | 1 | | | |
| DO22 Glynn 71 (E-1315) GAGAS | | Tim Redick | 9/15 | 1 | | | |
| | | | | | | | |
| TFLD (O-5) GAOKR | | Rocky Chesser | | 1 | | | |
| TPL GAOKR 56 (E-22) | | Fed Privett (O-15) | | 1 | | | |
| TPL GA OKR 55 (E-23) | | Cory Bryant (O-9) | | 1 | | | |
| TPL GA OKR 54 (E-21) | | Unstaffed | | | | | |
| | | | | | | | |
| Cat D6 (E-1312) Pierce Timber Co. | | | | 1 | | | |
| Excavator (E-1311) Pierce Timber Co. | | | | 1 | | | |
| | | | | | | | |
| EMT | | Brent Weldon (O-1211) | 9/10 | 1 | | 334-462-1062 | |
| | | | | | | | |
| | | | | | | | |
| | | | | | | | |
| | | | | | | | |
| 7. Control Operations | | | | | | | |
| <ul style="list-style-type: none"> Respond to Initial Attack as requested Patrol and control reburn Initial attack IC will communicate sizeup information to the Honey Prairie communication. Make contact with the resource advisor before using mechanical equipment. Improve swamp break boundaries for fire breaks, work with resource advisor. | | | | | | | |
| 8. Special Instructions | | | | | | | |
| <ul style="list-style-type: none"> Ensure LCES are in place before operations begin. Stay hydrated. Drive defensively and with lights on at all times. Boggy terrain: Be careful and aware when working around this type of area. | | | | | | | |
| 9. Division/Group Communication Summary | | | | | | | |
| Function | Frequency | System | Channel | Function | Frequency | System | Channel |
| Command N Okee Repeater | RX 164.5750/206.5 TX 163.150/206.5 | KING NIFC | 5 | Logistics | | KING NIFC | |
| Tactical Div/Group | RX 168.775 TX 168.775 | KING NIFC | 9 | Air to Ground | RX 166.9375 TX 166.9375 | KING NIFC | 6 |
| Prepared by (Resource Unit Ldr.) Chuck Norvell | | Approved by (Planning Sect. Ch.) Dave Fogler | | | Date September 5, 2011 | | Time 1800 |



Fire Weather Forecast



FORECAST NO: 122
PREDICTION FOR: Day Shift
SHIFT DATE: TUESDAY 9/6/11

NAME OF FIRE: Honey Prairie Complex
UNIT: Okefenokee National Wildlife Refuge

FORECAST ISSUED: 9/5/11 at 1600

SIGNED: Coleen Decker, IMET

WEATHER DISCUSSION: The remnants of Tropical Storm Lee will team up with a strong cold front today. This will produce thunderstorms...possibly severe...with strong wind gusts and abundant lightning. Heavy rain is possible between 1100 and 1400 hours. Field personnel should maintain good LCES and be prepared for damaging winds and possible tornadoes.

TODAY: Cloudy. Very unstable and windy with numerous showers and thunderstorms.

MAXIMUM TEMPERATURES: 85-88°
PM HEAT INDEX: 95°
MINIMUM HUMIDITY: 70 %
20 FT WINDS: South-Southwest 15 mph with gusts to 25 mph
STABILITY/INVERSION: 4000 feet
TRANSPORT WINDS: Southwest 20-30 mph
DISPERSION INDEX: 60, Good
CHANCE OF PRECIPITATION: 100%
PRECIPITATION AMOUNTS: Up to an inch
LIGHTNING ACTIVITY LEVEL: 5, Abundant lightning

TONIGHT: Chance of showers and thunderstorms in the evening. Partly cloudy.

WEDNESDAY: Drier flow will filter in from the West today for mostly sunny conditions.

MAXIMUM TEMPERATURES: 88°
PM HEAT INDEX: 95°
MINIMUM HUMIDITY: 40%
20 FT WINDS: West 15 mph
STABILITY/INVERSION: 4000 feet
TRANSPORT WINDS: West 20 mph
DISPERSION INDEX: 55, Good
CHANCE OF PRECIPITATION: 20%
LIGHTNING ACTIVITY LEVEL: 2, A few thunderstorms

EXTENDED FORECAST Drier air will continue to filter into the area on Thursday.

| | THURSDAY | FRIDAY | SATURDAY |
|--------------|-----------------|----------------|----------------|
| SKY/WEATHER | Mostly Sunny. | Partly Cloudy. | Partly Cloudy. |
| PRECIP | 0% | | |
| 20 FT. WINDS | PM: NW 5-10 mph | PM: 12-15 mph | PM: 12-15 mph |
| MIN/MAX | 62/88 | 68/88 | 68/88 |

FIRE BEHAVIOR FORECAST

| | | |
|--|---------------------|--------------------------------------|
| Fire: Honey Prairie Complex | Unit: GA-OKR-000001 | Prediction for Day Shift |
| Forecast #121 Issued: 09/5/2011 1830 hrs | Signed: Dave Fogler | Shift Date: Tuesday 09/6/2011 |

GENERAL FIRE BEHAVIOR
 Fuels around the Okefenokee Wildlife Refuge are predominately Fuel Model 7 (Southern Rough). Large to moderate acreage tracts of commercial timberland are mixed in throughout the entire perimeter surrounding the refuge. Fast moving wildfires with extremely high flame lengths and rapid rates of spread occur within the swamp.

Indicators/Threshold for Increased Fire Activity

- Relative humidity dropping below 45%
 - ***Winds above 10 mph***
 - ***Heavy fuel loadings***
 - Fine dead fuel moisture 8% or less
 - Dispersion above 70
- * Items in **BOLD ITALICS** are predicted to occur today*

SPECIFIC FIRE BEHAVIOR

- Interior smoldering and some flare ups are possible, especially if winds increase.
- Expect fire to continue spreading through the shrub fuels with low rates of spread and minimal flame lengths.

LIGHTNING ACTIVITY LEVEL 5

| Fuel Type | Rates of Spread | Flame Length | Spotting Distance | Firebrand Ignition |
|---------------------------|--|------------------|-------------------|--------------------|
| Winds at 15-25 mph | Forecast is for areas that have NOT received any wetting rain | | | |
| Shrub Fuels | 13-25 ch/hr | 6 - 7 ft | 1/10 MILE | 50% |
| Southern Rough | 20-50 ch/hr | 10 -15 ft | 1/10 MILE | 50% |
| Reburn | 6-12 ch/hr | 2 - 3 ft | 1/10 MILE | 50% |
| Small PL Pines | 20-50 ch/hr | 10 -15 ft | 1/10 MILE | 50% |

One hour fine dead fuel moisture is at 9% for Tuesday: Areas remain dry and burning continues. 1,000 hour fuels are drier than normal for this time of year. There is re-burn potential; mainly on the west side of the fire due to the amount of needle cast, fallen trees and scorched shrubs. Should wind become stronger than predicted, expect fire behavior to increase above predicted levels. **In areas where fuels have been herbicided, expect quick ignitions, extreme heat, quicker rates-of-spread, and possible group tree torching potentially producing spotting problems.**

NOTE- OTHER THAN THE RE-BURN, FIRE BEHAVIOR CALCULATIONS ARE FOR FIRES IN UNBURNED FUELS INCLUDING NEW IA STARTS.

All Divisions:

The fire continues a slow spread through the thick bays and muck soils. Roots and fallen trees are protecting heat sources allowing the fire to burn organic soils from the bottom up. Keep a heads-up for falling trees.

Air Operations: Expect possible areas of smoke.

SAFETY:

WINDS – Stay abreast of changing wx conditions throughout the entire shift.

THUNDERSTORMS - these severe winds can create extreme fire behavior, with winds gusting over 30 mph
Live Trees/SNAGS – are falling in all Divisions and will be influenced by Thunderstorm outflow winds.

FUELS: Watch for pockets of cured shrubs or blankets of red needles beginning to cover the forest floor, re-burn is continuing in some areas. 1,000 and 10,000 hour fuels as well as deep duff pockets are providing the heat source. 100 and 1000 hour fuels are still below average in moisture content. Stay focused, and put LCES in place before starting operations.

Energy Release Component (ERC) is running WELL ABOVE AVERAGE for this time of year.

SAFETY MESSAGE



CONTINGENCY PLAN
BE PREPARED FOR ANYTHING

| INCIDENT ACTION PLAN SAFETY ANALYSIS | | | | | | | | | | 1. Incident Name Honey Prairie Fire | | 2. Date 9/6/2011 | | 3. Time Day Shift | |
|---|---|------------------------------|------------------|--|--------------------|----------|-------------------|--|-------|--|--|---------------------|-------------------------|--|--|
| LCES* Analysis of Tactical Applications Lookouts Communications Escape routes Safety zones | | | | | | | | | | Other Risk Analysis | | | | | |
| Divisions | Indirect Fireline | Power lines / Snags | Road Conditions | Frontal Assault | Extreme Conditions | Railroad | Wildlife, Insects | LCES Mitigations | Smoke | Traffic/Driving | Communications | Fatigue/Hydration | School Buses / Children | Other Risk Mitigations | |
| All Divisions | 1, 2, 3, 4, 5, 7, 8, 10, 14 | 2, 6, 11, 15, 17 | 12, 20, 26 | 1, 2, 3, 4, 5, 7, 8, 14 | 7, 10 | 1 | 2, 23, 28 | 1. Establish & maintain LCES. Report LCES checks twice daily to DIVS on line & staging. | 24 | 12 17 19 20 22, 26, 27 | 1, 3, 10 14 19 24 25 | 16 18 21 | 26 | 16. Take adequate rest breaks and encourage to drink water NOW through briefings. | |
| | | | | | | | | 2. Look UP, DOWN and AROUND | | | | | | 17. Defensive driving will be addressed in all briefings. | |
| | | | | | | | | 3. Post experienced Lookouts. Make sure LCES is in place and make known. | | | | | | 18. All personnel must meet the 2:1 work/rest ratio. Line supervisors and Safety will monitor closely. | |
| | | | | | | | | 4. Use Aerial Resources as Lookout if available. | | | | | | 19. Notify Operation and Safety of Railroad track issues to ensure safety of firefighters. | |
| | | | | | | | | 5. Flag escape routes on right side of escape route facing outward. Create new escape routes as you progress and identify Safety Zones on the ground and maps. | | | | | | 20. Ensure Traffic Planning is safe and enforced. Heed Defensive Driving techniques noted in Safety Messages. | |
| | | | | | | | | 6. Identify, mark & mitigate. | | | | | | 21. Relocate staging area when driving conditions warrant. | |
| | | | | | | | | 7. FBAN/Meteorologist to monitor weather updates and advisories. | | | | | | 22. Use spotter when backing vehicle(s). | |
| | | | | | | | | 8. Ensure Fireline is Anchored to black or manmade/natural barrier. | | | | | | 23. For insects, use protective spray with deet on skin (Not on Nomex), permethrin can be used on nomex clothing | |
| | | | | | | | | 10. Keep Firefighters informed of any changes in predicted weather, consider at least a two day weather pattern when planning Strategic Firing operations. | | | | | | 24. Establish smoke/fog signs on roadways. Coordinate with Department of Transportation. | |
| | | | | | | | | 11. Refer to IRPG, pg. 12 on Power Line Hazards. | | | | | | 25. Follow establish communication plan, flight follow through dispatch | |
| | | | | | | | | 12. Observe all traffic signals and speed limits. Drive with lights on. | | | | | | 26. Watch-out for school buses and for children along the edge of roadway and crossing the road. | |
| | | | | | | | | 14. Ensure GOOD tailgate briefings with resources unable to attend Operational Briefing (Include Ops, Logs, Fin & Plans info.). | | | | | | | |
| | | | | | | | | 15. Scout ahead of tractor operations to avoid making contact with power poles and guide wires when tying into roads. Power companies are working in some DIVS, avoid all down lines as they may become charged. | | | | | | 27. Treat all intersections as 4-way stops | |
| | | | | | | | | | | | | | | 28. Bears, Gators, and some snakes are dangerous. Do not approach or feed wildlife at any time. | |

Prepared by (Name and Position)

ICS 215A

Harry Kepler; SOF

AIR OPERATIONS SUMMARY

Prepared By: Melvin Tate, HEBM

Prepared Date: 9.3.2011

Prepared Time: 1800

| | | | | | |
|--|--|-----------------------------------|---------------------------------|--------------------------------|--|
| 1. INCIDENT NAME: Honey Prairie | 2. OPS PERIOD DATE: September 6, 2011 | START TIME: 0830 | END TIME: 1900 | SUNRISE: 0710 | SUNSET: 1950 |
| 3. REMARKS (Safety Notes, Hazards, Air Operations Special Equipment, etc ALL FLIGHT REQUESTS GO DIRECTLY TO HELIBASE Afternoon thunderstorms <i>NOTE: Latitude/Longitude format is "Degrees-Minutes-Decimal Minutes" (example: N30 41.42 W082 33.97) helibase convert if necessary</i> | | | | | 5. TFR #: Canceled 7/27/11 SEE and AVOID!!! |

| PERSONNEL | NAME | PHONE # | FREQUENCIES | AM | FM | |
|------------------------|---------------------------------|------------------------------|---------------------------------------|------------------|----------------|---|
| HEB2 Waycross HB | Melvin Tate Desk Cell | 912-287-4479 850-849-0405 | AIR/ AIR FW | None assigned | | AIRTANKERS / LEAD PLANES - None Available OTHER: Waycross Airport Helibase: 912-287-4479 Waycross Airport Helibase Fax: 912-287-4458 ICP Helispot is Waycross Airport Helibase Okefenokee Dispatch: 912-496-7366 X230 Waycross Airport: N 31 16.16 10 W82 33.38 BERGANZA HELISPOT N 31 07.22 W082 15.22 * don't use unless cleared with AOB. POGO HELISPOT: N30 44.03 W082 07.41 |
| ABRO | Darold Williams Desk Cell | 912-287-4479 386-383-6288 | AIR/ AIR RW-FF | 122.375 | | |
| | | | Georgia AIR/GRND (Smokey - Dozers) | | 159.285 W | |
| | | | AIR/GROUND PRIMARY | | 166.9375 | |
| | | | AIR/GROUND ALTERNATE | | 166.9000 | |
| | | | TOLC | | 168.0125 | |
| | | | AIR GUARD | | 168.625 T110.9 | |

9. HELICOPTERS (Use Additional Sheets as Necessary)

| FAA N# | TY | MAKE/ MODEL | BASE | AVAIL | MANAGER | FAA N# | T Y | MAKE/ MODEL | BASE | AVAIL | MANAGER |
|--------|----|-------------|----------|-------|--------------------------|--------|-----|-------------|------|-------|---------|
| 1CH | 3 | AS320-B3 | Waycross | 0830 | Mike Bryson 970-759-2718 | | | | | | |
| | | | | | | | | | | | |

10. TASK/ MISSION/ ASSIGNMENT (Type/ function includes: Air Tactical, Retardant, Recon, Personnel Transport, Bucket Operations, SAR, etc.)

| TYPE/FUNCTION | NAME OF PERSONNEL OR CARGO (If applicable) or instructions for tactical aircraft | MISSION START | FLY FROM | FLY TO |
|---------------|---|------------------------|---------------|--------|
| Bucket Ops/ | 1CH | As Requested | Waycross | |
| Recon | All FLIGHT REQUESTS GO THROUGH HELIBASE, 1CH | As Requested/scheduled | Waycross/Pogo | |
| Medevac | 1CH | As Requested | Waycross | |
| | | | | |

| | | | | |
|---------------------|---|------------------------------------|------------------------------|---|
| MEDICAL PLAN | Incident Name Honey Prairie Complex | Date Prepared 09/02/2011 | Time Prepared 1000 | Operational Period 09/06/2011 |
|---------------------|---|------------------------------------|------------------------------|---|

5. Incident Medical Aid Station

| <u>Medical Aid Stations</u> | <u>Location</u> | Paramedics Yes No |
|-------------------------------|--|----------------------|
| MEDICAL UNIT (ICP EMT) | Honey Prairie Complex ICP- No MEDL | |
| WEST SIDE (Line EMT) | ****Brent Weldon 334-462-1062 (BLS Kit)**** | X |
| EAST SIDE (Line EMT) | | |

Ambulance Services

| Name | Address | Phone | Paramedic | |
|----------------------------|-------------------------------------|--------------|-----------|----|
| | | | Yes | No |
| Clinch County EMS (West) | Homerville, GA (911 to activate) | 912-487-5315 | Yes | |
| Ware County EMS (North) | Waycross, Georgia (911 to activate) | 912-287-4335 | Yes | |
| Charlton County EMS (East) | Folkston, GA (911 to activate) | 912-496-2281 | Yes | |

Air Ambulance Service

| | | | | |
|------------------------------|------------------|----------------|-----|--|
| Trauma 1 | Lake City, FL | 1-800-223-4878 | Yes | |
| Trauma 1 | Jacksonville, FL | 1-800-223-4878 | Yes | |
| AirMed | Augusta, GA | 1-888-792-9245 | Yes | |
| Lifeflight | Jacksonville, FL | 1-877-870-7779 | Yes | |
| Air Evac | Waycross, GA | 1-800-247-3822 | Yes | |
| US Coast Guard (Heli-Rescue) | Savannah GA | 1-912-652-4646 | Yes | |

7. Hospitals

| Name | Address | LAT-LON | Phone | Helipad | | Burn Center | |
|---|---|------------------------------|-----------------------------|---------|----|-------------|----|
| | | | | Yes | No | Yes | No |
| Satilla Regional | 410 Darling AVE. Waycross, GA | N 31' 13.509 W 82' 20.853 | (912) -283-3030 | Yes | | | No |
| Clinch Memorial Hospital (WEST SIDE) | 1050 Valdosta HWY Homerville, GA | N 31' 01.977 W 82 45.851 | (912) -487-5211 ext 4502 | Yes | | | No |
| Charlton Memorial Hospital (EAST SIDE) | 1203 3 rd Street Folkston, GA | N 30' 50.713 W 82' 00.302 | (912) -496-2531 | Yes | | | No |
| Savannah Memorial Hospital | 4700 Waters AVE Savannah, GA | N 32' 01.538 W 81' 05.298 | (912) -350-8999 | Yes | | | No |
| Shands Hospital (Level I) | 655 West 8 th Street Jacksonville, FL | N 30' 20.97 W 81' 39.92 | (800) -223-4878 | Yes | | Yes | |
| Shands Burn Center | 1600 Southwest Archer Road Gainesville, FL | N 29' 38.33 W 82' 20.55 | (352) -265-0300 | Yes | | Yes | |

8. Medical Emergency Procedures

Identify any EMTs and Paramedics in your crews. All medical emergencies will be reported to the Division Supervisor who will assume command and notify Line Medics.

On scene personnel will:

1. Provide medical care & stabilize patient.
2. Call 911 if possible or call phone #'s above for EMS and provide the information requested.
3. Notify Communications via radio over Command Channel
4. Communications will clear radio traffic for medical emergency.
5. Communications will confirm 911 has been notified coordinate with IC, SOF.
6. DIVS will notify the Field Ops Section Chief.

MAJOR EMERGENCIES – Secure the area and identify witness for later investigation. Keep an accurate log of events. NOTE: Do not give Patients Name over the radio!

INJURY REPORTING PROCESS:

Nature of Injury: _____

Location of Patient: _____

Transportation Requested by: Air ___ Ground ___

Pick Up Point: _____

Lat: _____ Long: _____

Patient Unit ID: _____

Is an EMT w/Patient: Yes ___ No ___

Age: ___ Sex: Male ___ Female ___

Weight (If Air Evac. is needed): _____

HELISPOTS

| NAME | LAT-LON | LOCATION |
|------------------------|------------------------------|---|
| Pocket Helispot | N 30' 47.500 W 82' 22.659 | (West side), mile marker 4, HWY 177 Steven C. Foster State Park |
| Fargo Helispot | N 30' 40.945 W 82' 33.640 | (West side), HWY 441- Steven C. Foster Visitor Center |
| POGO Helibase | N 30' 44.219 W 82' 07.689 | (East side) Adjacent to Okee Refuge Shop |

Evac Yankee

| | | |
|-------------------|------------------------------|-----------------|
| Helispot 6 | N 30' 53.280 W 82' 33.880 | Road 32 and 32A |
| Helispot 7 | N 30' 50.280 W 82' 33.857 | Tatum Road Pond |

***Alternate site can be established following guidelines for safety found with IRPG and local EMS resources.**

Prepared by: Harry Kepler, SOF

10. Reviewed by: Harry Kepler, SOF

| INCIDENT RADIO COMMUNICATIONS PLAN ICS-205 | | | Incident Name Honey Prairie | | | GROUP 22 | | Date/Time Prepared 09/02/2011-18:00 | | Operational Period Date/Time 9/6/2011 0800-2000 | |
|---|------------|---------------------|---------------------------------------|----------|----|---|----------|--|-------------|---|---------------------------|
| Ch # | Function | Channel Name | Assignment | RX Freq | NW | RX Tone/NAC | TX Freq | N W | TX Tone/NAC | Mode A,D or M | Remarks |
| 1 | Command | West Okee Repeater | Sec West Branch CMD | 167.1250 | N | 156.7 | 163.1500 | N | 156.7 | A | Stephen Foster State Park |
| 2 | Command | South Okee Repeater | Sec East/West Branch CMD | 164.7750 | N | 123.0 | 163.1500 | N | 123.0 | A | Eddy Florida |
| 3 | Command | East Okee Repeater | PRIMARY East Branch CMD | 164.6250 | N | 103.5 | 163.1500 | N | 103.5 | A | Refuge Headquarters |
| 5 | Command | North Okee Repeater | PRIMARY North Branch CMD | 164.5750 | N | 206.5 | 163.1500 | N | 206.5 | A | Waycross |
| 6 | Air-Ground | Air to Ground | PRIMARY | 166.9375 | N | CSQ | 166.9375 | N | CSQ | A | |
| 7 | Tactical | MOB-MOB | GFC Contingency | 159.3900 | W | CSQ | 159.3900 | W | 156.7 | A | |
| 8 | Tactical | V-Fire 21W WHITE | West group Secondary | 154.2800 | W | CSQ | 154.2800 | W | 156.7 | A | |
| 9 | Tactical | USFS 9 | East/West Groups | 168.7750 | N | CSQ | 168.7750 | N | CSQ | A | |
| 10 | Tactical | S.E. Compact | | 159.2850 | W | CSQ | 159.2850 | W | CSQ | A | |
| 11 | Tactical | USFS 11 | East Group Secondary | 168.2000 | N | CSQ | 168.2000 | N | CSQ | A | |
| 12 | Tactical | Refuge Tac 1 | East Group | 168.3500 | N | CSQ | 168.3500 | N | CSQ | A | |
| 13 | Tactical | FL 190 | | 151.2725 | N | CSQ | 151.2725 | N | CSQ | A | |
| 15 | Air-Ground | Air to Ground | SECONDARY | 166.9000 | N | CSQ | 166.9000 | N | CSQ | A | |
| 16 | EMERGENCY | AIR Guard | Air OPS. | 168.6250 | N | CSQ | 168.6250 | N | 110.9 | A | |
| Prepared by (Communications Unit) Roy Fortenberry, COML Incident Dispatcher: 404-772-5384 | | | | | | Cloning at ICP communications and briefings, | | | | | |

The convention calls for frequency lists to show four digits after the decimal place, followed by either an "N" or a "W", depending on whether the frequency is narrow or wide band. **Mode** refers to either "A" or "D" indicating analog or digital (e.g. Project 25) or "M" indicating mixed mode. All channels are shown as if programmed in a control station, base stations, mobile or portable radio.

Fire Information IAP messages

1. Public and firefighter safety remains the top priority for this incident.
2. Fire managers for the refuge have coordinated suppression efforts with the Georgia Forestry Commission and the Greater Okefenokee Association of Landowners (GOAL) representing federal and state agencies, industry and private landowners. Through this Unified Command, the partners support the chosen strategy as the appropriate management response to protect adjacent valuable commercial timber, isolated homes scattered on private land, and critical wildlife habitat for threatened and endangered species.
3. Fire is a natural component of the Okefenokee ecosystem; since the refuges creation in 1937, there have been hundreds of wildfires that have burned thousands of acres here. The plants and animals on the refuge are well adapted to survive periodic wildfires.
4. Past experience has shown that conventional fire suppression tactics do not work well inside the swamp. Humans have never been successful in controlling fires within the swamp; only “mother nature” has done this. Attempting suppression within the swamp is ineffective, costly, wastes firefighting resources and needlessly endangers firefighter safety.
5. Fire on the refuge is usually fought by reinforcing firelines along the Swamps Edge Break, including areas of private land, to keep the fire contained within the swamp.
6. Okefenokee National Wildlife Refuge typically employs a contain and control strategy to manage fire; containing it within the swamp and actively suppressing it outside of the swamp in the upland forest.

Commonly asked question:

1. Why won't this fire go out? What will it take? Surface burning of available fuels is only part of the current problem. Peat beds (partially decayed vegetation normally floating in a vertical column of water) is what supports these surface fuels. Unfortunately, the current dry conditions have allowed a portion of the peat beds to dry out and the surface burn has transferred into the peat beds and is now burning subsurface. There are now two sources of heat and available fuel that must be extinguished. The current spotty, localized rain storms can have some effect on the surface burns but do not do much to control subsurface burns. It will take a big rain storm blanketing the entire swamp (remember the swamp is huge –over 650 square miles in size) dropping a minimum of 6-8 inches of rain. As the water levels in the swamp slowly rise, as a result of the rain, the peat beds will become water saturated again eliminating one source of the fire. As the surface of the swamp becomes covered by water, burning surface fuels will be extinguished as well. Burning fuels that extend above these water levels (dead and drying trees/shrubs) may continue to burn until they fall over or burn up. Fire that exists in upland habitat on islands within the swamp may also continue to burn but it will be confined to that immediate area by the swamp waters surrounding the island. This is not something that will likely occur overnight. It may take days, weeks, or even months. The refuge has experienced fire events that were not declared officially out for well over a year after the main firefighting effort had ceased.

| HONEY PRAIRIE PHONE LIST | | | 09/06/11 | | |
|--|----------------|------------------------|-----------------------|--|--|
| Incident | | Communication | | (Hours: 0800-2000) 912-286-1660 | |
| AGENCY OFFICIALS | | | OPERATIONS | | |
| Curt McCasland | 602-359-0013 | USFWS AA | | Trent Ingram | 229-726-0285 |
| Mindy Gautreaux | 912-282-7500 | USFWS Deputy AA | | Bob Schober (T) | 404-772-5400 |
| Frank Sorrells | 912-381-7503 | GFC AA | | DIVISIONS | |
| James Karels | 850-228-7763 | FL DOF AA | | Tony Harkins (T) | 706-897-9414 West Group |
| Diane Adams | 912-266-5421 | GEMA | | Jeff Quick | 928-499-9420 East Group |
| Mike Housh | 912-281-1575 | USFWS AREP | | | |
| COMMAND - IC | | | AIR OPERATIONS | | |
| Trent Ingram | 229-726-0285 | | | Melvin Tate | 850-849-0405 HEB1 |
| | | | | | 912-287-4479 WAYCROSS AIRPORT |
| RESOURCE ADVISORS | | | LANDOWNERS | | |
| Ron Phernetton | 912-276-2349 | Resource Advisor | | Jim Barrett | 229-356-1993 Langdale/GOAL Chairman |
| Rocky Chesser | 912-276-3232 | Resource Advisor | | Wesley Langdale | 229-220-2602 Langdale |
| Reggie Forcine | 912-614-4041 | Resource Advisor | | Hal Rowe | 229-412-3133 Langdale |
| INFORMATION 912-496-2566 | | | | | |
| Art Webster | | Fire Information | | Langdale Office | 229-242-7450 Langdale Office |
| SAFETY OFFICERS | | | | | |
| Ronnie Taylor | 850-768-2241 | 404-772-5406 | | Mike Conlon | 386-365-3882 Rayonier Unit Supervisor |
| Harry Kepler | 205-292-7764 | | | Ray Carter | 386-288-6626 Rayonier |
| | | | | Ed Carter | 386-288-6626 Rayonier |
| DISPATCH | | | | | |
| Okeefenokee Dsp | 912-496-7366 | Okeefenokee | | Doug Nuss | 912-390-1037 Rayonier |
| Suwannee Dispatch | 386-758-5700 | Fla wildfires, other | | Randall McCrady | 912-283-4077 Rayonier |
| Honey Prairie Dspth | 404-772-5384 | Honey Prairie ICP | | Colin Myerson | 229-506-1565 Superior Pine Products Co |
| Waycross Dispatch | 912-287-4915 | Ga wildfires, other | | Robbie Lee | 229-356-0526 Superior Pine Products Co |
| GA DNR | 1-800-241-4113 | Hunting Issues | | Superior Pine Office | 912-637-5261 Superior Pine Products Co |
| LOGISTICS 256-497-8490 fax 912-287-6542 | | | | | |
| Steve Blackwell | 256-497-8490 | LSC | | Al Alexander | 850-843-0104 The Forestry Co |
| Linda Blondeau | 770-658-4789 | Ordering Manager | | Savell Schmidt | 850-843-1181 The Forestry Co |
| Weldon Young | 414-312-1389 | Security | | John Bogue | 850-843-1192 The Forestry Co |
| Tom Lambert | 229-343-0838 | FACL | | Joe Hopkins | 912-276-0911 Toledo Timber |
| Roy Fortenberry | 706-897-8020 | COML | | Chris Gowan | 912-276-0965 Toledo Timber |
| Kenneth Edge | 404-772-5399 | EQPM | | Martin Bell | 912-283-0583 Swamp Park |
| | | | | Crystal Peeples | 352-316-0632 FIA |
| PLANNING 912-287-6565 FAX 912-287-6541 | | | | | |
| Dave Fogler | 352-442-2895 | Planning Section Chief | | Steve Davis | 912-614-1828 Davis Community |
| Coleen Decker | 208-871-7468 | IMET | | Trevor Fortner | 912-599-9271 Little Suwannee |
| Chuck Norvell | 678-314-9824 | RESL | | Tim Jarrell | 912-223-7120 Hancock Forest Mgmt. |
| FINANCE 912-287-6568 FAX 912-287-6564 | | | | | |
| Grace Reid | | Finance Section Chief | | RAILROADS | |
| Rodrigo Silva | 256-497-8334 | Purchasing Agent | | Norfolk Southern | 800-453-2530 |
| Buying Team | 256-497-8334 | | | Sid Moody | 904-318-7983 Norfolk Southern Railroad |
| Buying Team Fax | 912-287-6557 | | | Chad Edwards | 404-582-4909 Norfolk Southern Railroad |
| | | | | Eric Sams | 904-576-9907 |
| FEDERAL | | | | | |
| Okefenokee Fire Shop | 912-496-4181 | | | Emergency Dispatch | 404-529-1597 Norfolk Southern Railroad |
| Okefenokee NWR HQ | 912-496-7366 | | | CSX Randy Dixon | 912-270-0699 |
| Okefenokee NWR | 912-637-5322 | | | CSX Dispatch | 800-232-0144 |
| Okefenokee Visitor | 912-496-7836 | | | | |
| STATE | | | | | |
| GFC Fargo Office | 912-637-5270 | | | COUNTY | |
| GFC Satilla District | 912-287-4915 | | | | 912-496-7229 Charlton County EMA |
| Jason Gillis | 912-314-9233 | GFC Satilla Mgr. | | John F. Meyer - | 912-496-2549 Charlton County |
| | | | | Dobie Conner | 912-496-7321 Charlton County Sheriff |
| | | | | Jesse Booth | 912-520-0061 Clinch County EMA |
| | | | | Jonathan Daniel | 912-281-5158 Ware County EMA |
| | | | | Jessie Jordan | 912-816-6063 Ware County Fire Dept |
| | | | | Joe Morris | 912-281-6020 Ware County Sheriff |
| | | | | Robbie Sutton | 912-599-9027 Tri County 911 |
| | | | | Georgia State Patrol | 912-287-6500 |
| | | | | Travis Griffin | 912-281-5790 Laura Walker State Park |

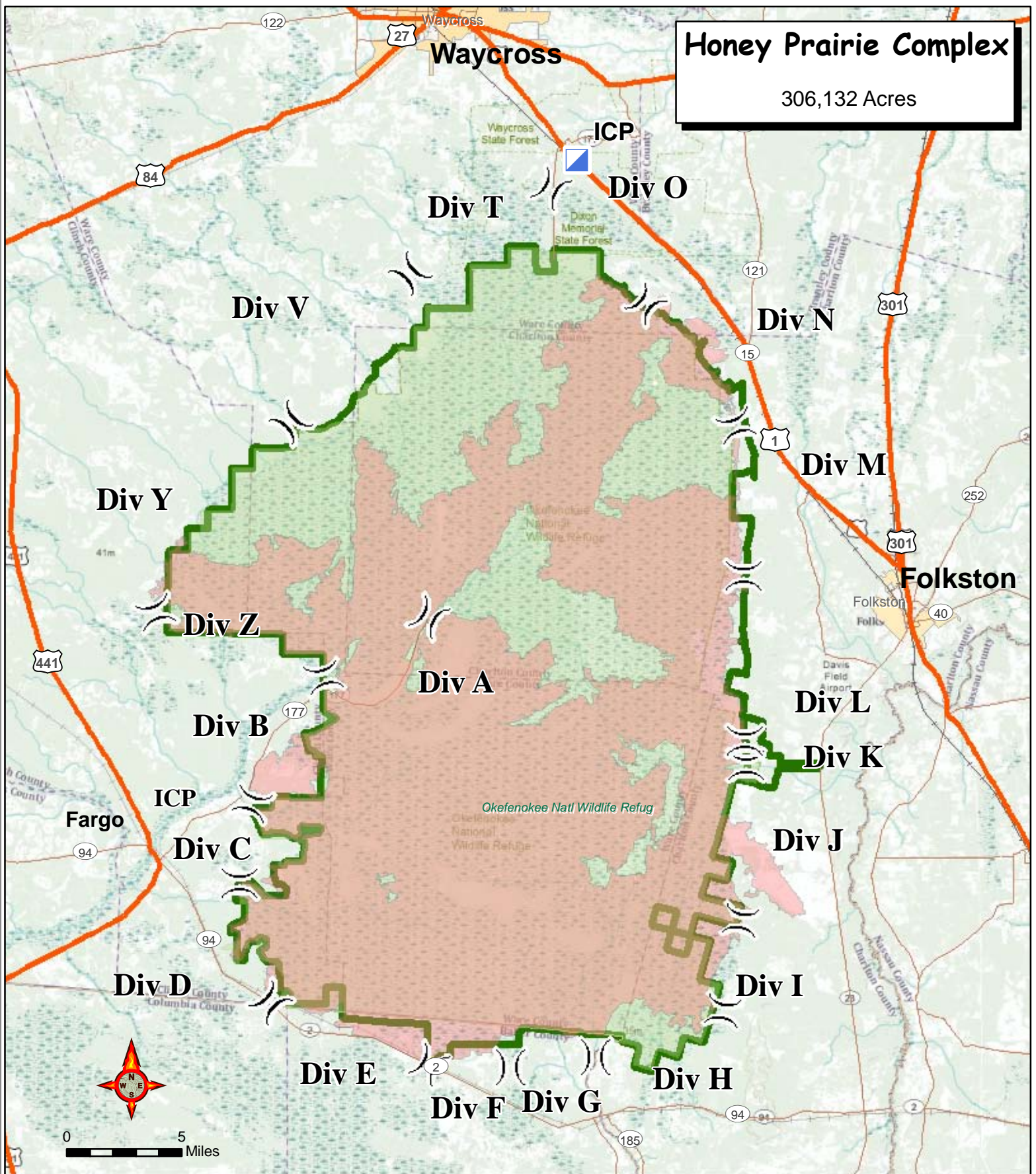
DMOB Report Sept

| RequestNun | ResourceName | KindCode | UnitID | TravelMethod | Jetport | DemobDate |
|------------|---------------------------|----------|--------|--------------|---------|------------|
| E-1287 | CHATTAHOOCHE NF ENG | ENG6 | GACHFR | AOV | | 09/06/2011 |
| E-1287.3 | SHELL, CURTIS | ENGB | GACHFR | AOV | | 09/06/2011 |
| E-1287.2 | TAYLOR, KELLY | FFT2 | GACHFR | AOV | | 09/06/2011 |
| E-1295 | GFC PU#1743 | AUTO | GAGAS | AOV | | 09/07/2011 |
| O-1213 | SQUIRES, RICHARD | TFLD | GAGAS | AOV | | 09/07/2011 |
| O-1216 | MASHBURN, JAMES | TFLD | GAGAS | AOV | | 09/07/2011 |
| O-1218 | TAYLOR, RONALD | SOF2 | FLFLSC | POV | | 09/07/2011 |
| E-1294 | ECHOLS 32 | PU | GAGAS | AOV | | 09/07/2011 |
| O-1220 | QUICK, JEFF | DIVS | AZPNF | A/R | PHX | 09/07/2011 |
| E-1265.1 | GAS TRANSPORT BALDWIN 60 | TRTL | GAGAS | AOV | | 09/08/2011 |
| E-1266.2 | WILKINSON, DAMEON | TPOP | GAGAS | AOV | | 09/08/2011 |
| E-1265.2 | GORE, DANIEL | TPOP | GAGAS | AOV | | 09/08/2011 |
| E-871 | ENTERPRISE DODGE PU | PU | GAOKR | REN | | 09/08/2011 |
| E-1289 | INGRAM PU | PU | GAGAS | AOV | | 09/08/2011 |
| E-1266 | TPL GAS WILKES 73 | TPL5 | GAGAS | AOV | | 09/08/2011 |
| E-1265 | GAS TPL5 BALDWIN 70 | TPL5 | GAGAS | AOV | | 09/08/2011 |
| E-1266.1 | GAS TRANSPORT WILKES 63 | TRTL | GAGAS | AOV | | 09/08/2011 |
| O-1209 | INGRAM, TRENT | ICT3 | GAGAS | AOV | | 09/08/2011 |
| O-1217 | GLYDUS, ROBERT | SEC1 | PAALF | AOV | | 09/09/2011 |
| O-1221 | BLATZ, CAROLYN | TFLD | PANAF | AIR | STL | 09/09/2011 |
| E-1297 | ENTERPRISE JEEP LIBERTY | SUV | GAOKR | AOV | | 09/09/2011 |
| O-1215 | YOUNG, WELDON | SECM | ILSHF | AOV | | 09/09/2011 |
| E-1285 | WALKER 31 | PU | GAGAS | AOV | | 09/10/2011 |
| O-1214 | DECKER, COLEEN | IMET | IDWXW | AIR | BOI | 09/10/2011 |
| O-1206 | BLACKWELL, STEPHEN | SPUL | GAGAS | AOV | | 09/10/2011 |
| E-1299 | ENTERPRISE JEEP WRANGLER | SUV | GAOKR | AOV | | 09/10/2011 |
| E-1300 | ENTERPRISE JEEP GRAND | SUV | GAOKR | AOV | | 09/10/2011 |
| E-1270 | GFC COMMO VAN | AUTO | GAGAS | AOV | | 09/10/2011 |
| O-1194 | FORTENBERRY, ROY | COML | GAGAS | AOV | | 09/10/2011 |
| E-1298 | ENTERPRISE CHEVY SUBURBAN | SUV | GAOKR | AOV | | 09/10/2011 |
| O-1211 | WELDON, BRENT | EMTP | ALAIC | POV | | 09/11/2011 |
| O-1226 | BROWN, ALICE | FFT2 | GACHF | AOV | | 09/11/2011 |
| O-1186 | BURKHART, JAMES | PIO2 | GAOKR | AOV | | 09/11/2011 |
| O-899 | SCHOBER, ROBERT DWAYNE | DOZB | AKAKD | AIR | FAI | 09/11/2011 |
| O-1225 | GILREATH, GREG | ENGB | GACHF | AOV | | 09/12/2011 |
| O-1232 | BROUILLARD, WYATT | FFT2 | FLMIR | AOV | | 09/12/2011 |
| E-1302 | MERRITT ISLAND ENG #31 | ENG6 | FLMIR | AOV | | 09/12/2011 |
| O-1224 | EDGE, KENNETH | EQPM | GAGAS | AOV | | 09/12/2011 |
| O-1176 | KEPLER, HARRY | SOF2 | ALALF | AIR | BHM | 09/12/2011 |
| E-1301 | FOGLER P/U | PU | FLFLS | AOV | | 09/12/2011 |
| O-1227 | FOGLER, DAVE | PSC2 | FLFLS | AOV | | 09/12/2011 |
| E-1296 | TREUTLEN 32 | PU | GAGAS | AOV | | 09/12/2011 |
| O-1231 | ROCHE, RYAN | ENGB | FLLRR | AOV | | 09/12/2011 |
| O-857 | EASTON, DEAN | THSP | GAOKR | AOV | JAX | 09/13/2011 |
| O-1233 | LAMBERT, THOMAS | FACL | GAGAS | AOV | | 09/14/2011 |
| E-1303 | HARKINS PU, UNION 31 | PU | GAGAS | AOV | | 09/14/2011 |
| O-1229 | HARKINS, TONY | DIVS | GAGAS | AOV | | 09/14/2011 |
| E-1305 | TIMBERLINE SKIDDER W/ | SK | GAOKR | POV | | 09/14/2011 |
| E-1304 | LAMBERT PU | PU | GAGAS | AOV | | 09/14/2011 |

Record Count: 49

Honey Prairie Complex

306,132 Acres



- Incident Command Post
- Uncontrolled Fire Edge
- Completed Dozer Line
- Completed Line
- Refuge Boundary
- Fire Polygon

Division

Perimeter as of 8/31/2011 1100 Hrs
J. Burnette GISS



| | | | |
|------------------------------------|---|------------------------------------|-----------------------|
| UNIT LOG | 1. Incident Name Honey Prairie Complex | 2. Date Prepared | 3. Time Prepared |
| | 4. Unit Name/Designators | 5. Unit Leader (Name and Position) | 6. Operational Period |
| 7. Personnel Roster Assigned | | | |
| Name | ICS Position | Home Base | |
| | | | |
| | | | |
| | | | |
| | | | |
| | | | |
| | | | |
| | | | |
| | | | |
| | | | |
| | | | |
| | | | |
| | | | |
| | | | |
| | | | |
| | | | |
| | | | |
| | | | |
| | | | |
| | | | |
| | | | |
| 8. Activity Log | | | |
| Time | Major Events | | |
| | | | |
| | | | |
| | | | |
| | | | |
| | | | |
| | | | |
| | | | |
| | | | |
| | | | |
| | | | |
| | | | |
| | | | |
| | | | |
| | | | |
| | | | |
| | | | |
| | | | |
| | | | |
| | | | |
| | | | |
| | | | |
| 9. Prepared by (Name and Position) | | | |