

Honey Prairie Complex

GA-OKR-000001

INCIDENT ACTION PLAN

Operational Period

Monday

September 19, 2011

0800-2000

Incident Commander

Rick Dolan

Bryce Thomas (T)

Accounting Codes

FWS – 9141-F25M-2J

NPS – 5023 F25M E11

BLM – F25M

USFS – PRF25M_1502

Initial Attack – F4PM





GEORGIA FORESTRY
COMMISSION



*An Equal Opportunity
Employer & Service Provider*

Letter from Incident Commander:

To: All Honey Prairie Incident Personnel

As a Type 3 Incident Commander, I am committed to a policy of “zero tolerance” of inappropriate behavior during incident operations. Any form of harassment, discriminatory practices, or disrespectful behavior will not be tolerated.

Guidelines on in-appropriate behavior both “on Duty” and “off Duty” while assigned are addressed within each agencies policies. Our Team expects all incident personnel to follow established government policies for behavior along with all Illegal drug and alcohol directives.

Our Incident Management Team endorses and supports an attitude of mutual respect for all personnel and the public we serve.

We expect a strong work ethic and an attitude of Safety at all times!

Sincerely,

/s Rick Dolan

Incident Commander
Type 3 Incident Management Team

INCIDENT OBJECTIVES	1. INCIDENT NAME Honey Prairie Complex	2. DATE PREPARED 9/18/11	3. TIME PREPARED 1700
4. OPERATIONAL PERIOD (DATE/TIME) Monday, September 19, 2011 0800 – 2000			
5. GENERAL CONTROL OBJECTIVES FOR THE INCIDENT (INCLUDE ALTERNATIVES) 1. Provide for safety of incident personnel and public in all incident operations. 2. Maintain a positive working relationship with all adjacent landowners, cooperators, State and Federal partners. Inform, involve and communicate incident planning and operations with all partners. 3. Contain all fires that are within the Okefenokee National Wildlife Refuge, inside the Refuge and/or inside the swamp edge break if possible. 4. In cooperation with local land owners and communities, use full suppression strategies and tactics to minimize damage to private timberlands and structural improvements and to prevent fires outside the Refuge from entering the Refuge. 5. Assist in management and suppression of additional fires (new starts or breakouts) in the vicinity as approved by Agency Administrators and Incident Commander. 6. Protect all cultural and archeological sites and structures within the refuge. 7. Manage the fires cost-effectively consistent with the values at risk. 8. Coordinate suppression actions with assigned Refuge Resource Advisors			
6. WEATHER FORECAST FOR OPERATIONAL PERIOD See attached forecast for area specific weather information.			
7. GENERAL SAFETY MESSAGE Drive defensively and use spotter when backing. Ensure LCES is in place and known by all personnel. Drink plenty of water and take frequent rest breaks. Ensure proper use of PPE during all operations.			
8. Attachments <input checked="" type="checkbox"/> if attached <input checked="" type="checkbox"/> Organization List (ICS 203) <input checked="" type="checkbox"/> Incident Map <input checked="" type="checkbox"/> Safety Message <input checked="" type="checkbox"/> Assignment List (ICS 204) <input type="checkbox"/> Traffic Plan <input type="checkbox"/> Demobilization Procedures <input checked="" type="checkbox"/> Communications Plan (ICS 205) <input checked="" type="checkbox"/> Unit Log <input checked="" type="checkbox"/> Medical Plan (ICS 206) <input checked="" type="checkbox"/> Phone List			
9. PREPARED BY (PLANNING SECTION CHIEF) Joe Bishop		10. APPROVED BY (INCIDENT COMMANDER) Richard Dolan	

ORGANIZATION ASSIGNMENT LIST		9. Operations Section		
1. Incident Name Honey Prairie Complex GA-OKR-000001		Chief	Bryce Thomas (T) 10/1	
2. Date 9/18/2011	3. Time 1500 hrs	a. Divisions/Groups		
4. Operational Period 9/19/2011 0800 - 2000				
5. Incident Commander and Staff				
Incident Commander	Rick Dolan 9/21 Bryce Thomas (T) 10/1	Group	East Group	Bruce Miller 9/20 TFLD
Safety Officer	Ronald Taylor 9/25 / Hank McKinley 9/23 Ray Durham 9/28	Group	West Group	Mike Work 9/23 Mark Sparrow 9/27
Information Officer	Art Webster			
6a. Agency Administrators				
FWS	Curt McCasland			
FWS	Mindy Gautreaux			
6b. Agency Representatives		b. Divisions/Groups		
GFC	Frank Sorrells			
FLFFS	James Karels			
FWS AREP	Mike Housh			
FWS-Refuge PAO	Art Webster			
GEMA AREP	Alan Robinson / Diane Adams			
USFS AREP	Ivan Greene			
7. Planning Section		c. AIR OPERATIONS BRANCH - Honey Prairie		
Chief	Joe Bishop (T) 9/27	Waycross Helibase Mgr		Melvin Tate 9/24
Resource Advisors	Ron Phernetton, Reggie Forcine Rocky Chesser			
Resources Unit	Greg Strenkowski 9/30			
IMET	Heath Hockenberry 9/22			
Situation Unit	Joe Bishop 9/27			
FBAN		d. AIR OPERATIONS BRANCH - Pogo		
Demob Unit				
Documentation				
GIS				
CTSP				
SCKN				
8. Logistics Section		10. Finance Section		
Chief	Tom Lambert 9/19	Chief	Grace Reid 9/19	
Supply Unit	Linda Blondeau 9/24	Time Unit		
EQPM	Tim Jones 9/24	Cost		
ORDM		PTRC		
COML		EQTR		
Medical Unit	Andrew Gill 9/25	IBA		
RCDM	Jayson Brockmeyer 10/2			
Facilities	Tom Lambert 9/19			
BCMG	Daniel Crouch 9/23	Purchasing Agent	Fredrick Cheeks 9/23	
SECM	Lindel Gregory 9/30 Chris Schrupp 9/22 Scott DeVore 9/23			
COMT	Marcus Brinkerhoff 9/22			
RADO				
Mechanic	Harold Smith 9/28			
		Prepared by: Joe Bishop	PSC (T)	

DIVISION ASSIGNMENT LIST			1. Branch		2. Division REHAB Group	
3. Incident Name Honey Prairie Complex			4. Operational Period Date: 9/19/2011 Time: 0800-2000			
5. Operations Personnel						
Operations	Bryce Thomas (T)10/1		Branch Director			
			Division Supervisor			
Safety Officer	Hank McKinley 9/22 / Ray Durham 9/28		Division Supervisor			
6. Resources Assigned this Period						
Strike Team/Task Force/ Resource Designator	Leader / Name / Designator	Last Shift Date	Num. Per.	Drop Off PT./Time	Crew Names	
TFLD (O-1213)	Bruce Miller	9/27	1			
PVT Excavator (E-1327)	Pierce Timber Co.		1		Mngr's Cell# 912-548-4369	
PVT Excavator (E-1326)	Hughes Tree Planting		2		Mngr's Cell# 912-218-0360	
7. Control Operations						
<ul style="list-style-type: none"> • Respond to Initial Attack as requested • Patrol and control reburn • Initial attack IC will communicate sizeup information to the Honey Prairie communication. • Make contact with the resource advisor before using mechanical equipment. • Continue to work with resource advisor on Refuge rehab objectives. 						
8. Special Instructions						
<ul style="list-style-type: none"> • Ensure LCES are in place before operations begin. Stay hydrated. • Drive defensively with lights on at all times. • Boggy terrain: Be careful and aware when working around this type of area. 						
9. Division/Group Communication Summary						
	Function	Frequency	Channel	Function	Frequency	System Channel
Command E Okee Repeater	RX 164.625/103.5 TX 163.150/103.5	KING NIFC	3	Logistics		KING NIFC
Tactical Div/Group	RX 168.775 TX 168.775	KING NIFC	9	Air to Ground	RX 166.9375 TX 166.9375	KING NIFC 6
Prepared by (Resource Unit Ldr.) Greg Strenkowski		Approved by (Planning Sect. Ch.) Joe Bishop (T)		Date September 18, 2011		Time 1800

DIVISION ASSIGNMENT LIST				1. Branch West		2. Division Y (East-Fire)	
3. Incident Name Honey Prairie Complex				4. Operational Period Date: 9/19/2011 Time: 0800-2000			
5. Operations Personnel							
Operations		Bryce Thomas (T)10/1		Division Supervisor		Mike Work 9/23	
Safety Officer		Hank McKinley 9/22		Ronald Taylor 9/24		Division Supervisor Mark Sparrow (T) 9/27	
6. Resources Assigned this Period							
Strike Team/Task Force/ Resource Designator		Leader / Name / Designator		Last Shift Date	Num. Per.	Drop Off PT./Time	Crew Names
TFLD (O-1267) FL		John DeWolfe 9/27		Cell # 404-844-7042	1		
FL DO22 L-51 (E-1336)		John Hayes (O-1282)		9/27	1		
FL DO22 L-55 (E-1337)		Abe Phillipson (O-1283)		9/27	1		
FL DO22 L-67 (E-1384)		Danny Caraway (O-1284)		9/27	1		
FL DO22 OPS-37 (E-1340)		Larry Davie (O-1280)		9/27	1		
FL DO22 G-33 (E-1403)		Charles DeHoff (O-1281)		9/27	1		
FL DO22 G-87 (E-1339)		Pat Hathcox (O-1279)		9/27	1		
PVT Cat D8K (E-1355)		Richie Nevitt		Tim Prep Inc	1		Mngr's Cell # 904-759-0561
PVT Cat D8K (E-1360)		Wayne Turner		Rowland Land Clearing	1		Mngr's Cell # 912-278-4318
GA ICT3 (O-1303)		Buck Kline		9/20	1		
GA TFLD (T) (O-1304)		Jason Squires		9/20	1		
GA TFLD (T) (O-1305)		Wes Merkinson		9/20	1		
GA TFLD (O-1306)		Jamie Smith		9/20	1		
GA 8-DO22				9/20	8		
EMT		Andrew Gill		9/25	1		
7. Control Operations <ul style="list-style-type: none"> Respond to Initial Attack as requested Secure fire's edge, and mop up 200-feet in, (upland areas only). Initial attack IC will communicate sizeup information to the Honey Prairie communication. Improve swamp break boundaries for fire breaks, work with resource advisor. 							
8. Special Instructions <ul style="list-style-type: none"> Ensure LCES are in place before operations begin. Stay hydrated. Drive defensively and with lights on at all times. Boggy terrain: Be careful and aware when working around this type of area. 							
9. Division/Group Communication Summary							
Function	Frequency	System	Channel	Function	Frequency	System	Channel
Command N Okee Repeater	RX 164.5750/206.5 TX 163.150/206.5	KING NIFC	5	Logistics		KING NIFC	
Tactical Div/Group	RX 168.775 TX 168.775	KING NIFC	9	Air to Ground	RX 166.9375 TX 166.9375	KING NIFC	6
Prepared by (Resource Unit Ldr.) Greg Strenkowski		Approved by (Planning Sect. Ch.) Joe Bishop (T)			Date September 18, 2011		Time 1800

DIVISION ASSIGNMENT LIST				1. Branch West		2. Division Y (175-Fire)	
3. Incident Name Honey Prairie Complex				4. Operational Period Date: 9/19/2011 Time: 0800-2000			
5. Operations Personnel							
Operations		Bryce Thomas (T)10/1		Division Supervisor		Mike Work 9/23	
Safety Officer		Hank McKinley 9/22 Ronald Taylor 9/24		Division Supervisor		Mark Sparrow (T) 9/27	
6. Resources Assigned this Period							
Strike Team/Task Force/ Resource Designator		Leader / Name / Designator		Last Shift Date	Num. Per.	Drop Off PT./Time	Crew Names
TFLD (O-1266) FL		Kenneth Harvey 9/27		Cell # 404-276-1998	1		
TFLD (T) GA		Tim Redick		9/21	1		
FL ENG6 L-116 (E-1334)		Victor Memmoli (1275)		9/27	2		Jarad Dorrier (O-1274)
FL ENG6 O-104 (E-1335)		Rodney Durbin (O-1276)		9/27	2		Jonathan Wilson (O-1273)
FL ENG6 G-115 (E-1333)		Mike Josey (O-1277)		9/27	2		Jim Dunnigan (O-1272)
FL ENG6 P-114 (E-1325)		Berry Tye (O-1278)		9/27	2		John Kerney (O-1271)
FL ENG6 E-27 (E-1405)		Gordan Black (O-1313)		9/30	2		Elizabeth Lesley (O-1314)
NC ENG6 PLE1 (E-1364)		Kenny Powell		9/29	2		Lisa Borel
FWS GAPDR 51 (E-1391)		John Mason (E-1391.1)		10/3	2		Matthew Smith (E-1391.2)
TFLD (O-1302) FL		David Carter		9/29	1		
FL ENG6 B-114 (E-1396)		Jason Longfellow		9/29	2		Mark Reddich
FL ENG6 G-106 (E-1395)		Charles Shewey		9/29	2		Johnathan Lambert
GA ENG6 Habersham 86 (E-1394)		Leland Bass (E-1394.1)		9/30	2		Payton Turner(E-1394.2)
GA ENG6 Union 86 (E-1369)		Brad Gregory (E-1369.2)		9/29	2		Blake Melton (E-1369.1)
SC ENG6 (E-1366) SC-SAR		Robert Heiseg		9/28	2		Robert Wyatt (E-1366.2)
GA ENG6 Monroe 86 (E-1392)		Greg Waters		10/1	2		Robert Hargrove
GA ENG6 Polk 86 (E-1393)		Anthony Keene (E-1393.1)		10/3	2		Timothy Sosebee (E-1393.2)
7. Control Operations							
<ul style="list-style-type: none"> Respond to Initial Attack as requested Mop up and monitor fire's edge, and mop up 200-feet in,(upland areas only) Initial attack IC will communicate sizeup information to the Honey Prairie communication. Improve swamp break boundaries for fire breaks, work with resource advisor. 							
8. Special Instructions							
<ul style="list-style-type: none"> Ensure LCES are in place before operations begin. Stay hydrated. Drive defensively and with lights on at all times. Boggy terrain: Be careful and aware when working around this type of area. 							
9. Division/Group Communication Summary							
Function	Frequency	System	Channel	Function	Frequency	System	Channel
Command N Okee Repeater	RX 164.5750/206.5 TX 163.150/206.5	KING NIFC	5	Logistics		KING NIFC	
Tactical Div/Group	RX 168.775 TX 168.775	KING NIFC	9	Air to Ground	RX 166.9375 TX 166.9375	KING NIFC	6
Prepared by (Resource Unit Ldr.) Greg Strenkowski		Approved by (Planning Sect. Ch.) Joe Bishop (T)			Date September 18, 2011		Time 1800

DIVISION ASSIGNMENT LIST				1. Branch West		2. Division Z (10A)	
3. Incident Name Honey Prairie Complex				4. Operational Period Date: 9/19/2011 Time: 0800-2000			
5. Operations Personnel							
Operations		Bryce Thomas (T)10/1		Division Supervisor		Mike Work 9/23	
Safety Officer		Hank McKinley 9/22		Ronald Taylor 9/24		Division Supervisor Mark Sparrow (T) 9/27	
6. Resources Assigned this Period							
Strike Team/Task Force/ Resource Designator		Leader / Name / Designator		Last Shift Date	Num. Per.	Drop PT	Crew Names
TFLD (O-1246)		Zack Rethlake 9/20		612-220-8059	1		
MN Eng 6232 (E-838) MNMFC FWS		Mark Fondriest		9/22	2		Trevor Elg
FS ENG6 (E-1313) WICNF		Bob Raade (E-1313.1) 9/25		10/6	3		Tom Richardson 9/21 / Jim Miller 9/25
BIA ENG6 (E-1318) WIMEA		Adam Waukau		10/4	3		Curtis Wayka / Jamie Guzman
NPS ENG6 (E-1319) WIAIP		Damon Panek (EMT)		9/21	1		Unstaffed
Meritt Isl #31 ENG6 (E-1302) FL-MIR		Brian Bagozzi (O-1262)		9/25	2		Jessica Vincent (O-1263)
GA ENG6 (E-2) GAOKR # 41		Brian Phippen (O-1259)		9/25	2		Tommy Crews
GA ENG6 (E-3) GAOKR # 42		James Farmer (O-1311)		10/2	2		Robert Alonzo
TPL GA OKR 55 (E-23)		Dave Pafford					
FL DO22 (E-1400)		Robert Dorminey		10/1	1		
TFLD (O-5) GAOKR		Rocky Chesser		912-276-3232	1		
TPL GAOKR 56 (E-22)		Fed Privett (O-15)			1		
TPL GA OKR 54 (E-21)		Cory Bryant (O-9)			1		
Timberline Skidder (E-1305)					1		
FWS Motorgrader (E-1356)		Harry Bentley (O-1286)		9/28	1		
PVT Motorgrader (E-1390)		Junior Thomas		Tim Prep Inc.	1		Mngr's Cell# 904-759-0561
PVT Motorgrader (E-1359)		Buddy Pittman		Hughes Tree Planting	1		Mngr's Cell# 912-218-0360
PVT Dump Truck 30-Ton (E-1362)		Josh Smith			1		
PVT Dump Truck 30-Ton (E-1358)		Craig Smith			1		
PVT Excavator (E-1357)		Johnny Smith			1		
7. Control Operations							
<ul style="list-style-type: none"> Establish control check lines. Secure fire's edge, and mop up 50-feet in, in the upland areas. Respond to Initial Attack as requested. Initial attack IC will communicate sizeup information to the Honey Prairie communication. Improve swamp break boundaries for fire breaks, work with resource advisor. 							
8. Special Instructions							
<ul style="list-style-type: none"> Ensure LCES are in place before operations begin. Stay hydrated. Drive defensively and with lights on at all times. Boggy terrain: Be careful and aware when working around this type of area. 							
9. Division/Group Communication Summary							
Function	Frequency	System	Channel	Function	Frequency	System	Channel
Command N Okee Repeater	RX 164.5750/206.5 TX 163.150/206.5	KING NIFC	5	Logistics		KING NIFC	
Tactical Div/Group	RX 168.775 TX 168.775	KING NIFC	9	Air to Ground	RX 166.9375 TX 166.9375	KING NIFC	6
Prepared by (Resource Unit Ldr.) Greg Strenkowski		Approved by (Planning Sect. Ch.) Joe Bishop (T)			Date September 18, 2011		Time 1800



Fire Weather Forecast



FORECAST NO: 135
PREDICTION FOR: Day Shift
SHIFT DATE: MONDAY 9/19/11

NAME OF FIRE: Honey Prairie Complex
UNIT: Okefenokee National Wildlife Refuge

FORECAST ISSUED: 9/18/11 at 1600

SIGNED: *Heath Hockenberry*, IMET

WEATHER DISCUSSION: The stalled cold front draped over northern Florida will continue to provide a focal point for showers and thunderstorms through Wednesday. The front is forecast to move off to the east Wednesday afternoon, and be replaced by high pressure. The fire will remain in northeast to easterly flow with the high pressure system firmly in place. A cold front will move out of the central Plains and approach Georgia by the end of the week.

TODAY: Mostly cloudy with scattered, mainly afternoon showers and thunderstorms.

MAXIMUM TEMPERATURES: 84°
MINIMUM HUMIDITY: 48 to 54%
20 FT WINDS: Northeast to North; 5 to 10 mph, gusts to 19 mph.
STABILITY/INVERSION: 4000 feet
TRANSPORT WINDS: Northeast; 8 to 17 mph.
DISPERSION INDEX: 30, Fair
CHANCE OF PRECIPITATION: 30%
LIGHTNING ACTIVITY LEVEL: 3

TONIGHT: Mostly Cloudy with scattered showers and isolated thunderstorms.
Low level smoke and fog.
Northeast wind to 5 to 9 mph. Low temperature 67°.

TUESDAY: Mostly cloudy with scattered showers and isolated thunderstorms.

MAXIMUM TEMPERATURES: 85°
MINIMUM HUMIDITY: 52 to 57%
20 FT WINDS: Northeast to East 5 to 10 mph.
STABILITY/INVERSION: 4500 feet
TRANSPORT WINDS: East-Northeast 10 to 12 mph.
DISPERSION INDEX: 30, Fair
CHANCE OF PRECIPITATION: 50%
LIGHTNING ACTIVITY LEVEL: 3

EXTENDED FORECAST A cold front approaches Thursday into Friday, with increasing moisture.

	WEDNESDAY	THURSDAY	FRIDAY
SKY/WEATHER	Mostly cloudy. Showers and thunderstorms possible.	Mostly cloudy. A chance of showers and thunderstorms	Mostly cloudy with scattered showers and thundershowers
THUNDER/PRECIP	50 %	50 %	40%
20 FT. WINDS	East 5 to 11 mph.	Southeast 4 to 8 mph.	Wind shifting northwest 6 to 10 mph
MIN/MAX	68/88	67/88	69/90

FIRE BEHAVIOR FORECAST

Fire: Honey Prairie Complex	Unit: GA-OKR-000001	Prediction for Day Shift
Forecast #134 Issued: 09/18/2011 1600 hrs	Signed: Joe Bishop	Shift Date: Monday 09/19/2011

GENERAL FIRE BEHAVIOR

Fuels around the Okefenokee Wildlife Refuge are predominately Fuel Model 7 (Southern Rough). Large to moderate acreage tracts of commercial timberland are mixed in throughout the entire perimeter surrounding the refuge. Fast moving wildfires with extremely high flame lengths and rapid rates of spread occur within and around the swamp.

Indicators/Threshold for Increased Fire Activity

- Relative humidity below 45%
- ***Winds above 10 mph***
- ***Heavy fuel loadings***
- ***Fine dead fuel moisture 8% or less***
- Dispersion above 70

* Items in BOLD ITALICS are predicted to occur today*

SPECIFIC FIRE BEHAVIOR

- Interior smoldering and some flare ups are possible, especially if winds increase.
- Expect fire to continue spreading through the shrub fuels with low rates of spread and minimal flame lengths.

LIGHTNING ACTIVITY LEVEL 2

Fuel Type	Rates of Spread	Flame Length	Spotting Distance	Firebrand Ignition
Winds at 4-14 mph	Possible NORTH WINDS could lead to control problems			
Shrub Fuels (sh8)	4-18 ch/hr	5-9 ft	UP to 3/10 MILE	40%
Southern Rough (7)	6-27 ch/hr	3-6 ft	UP to 3/10 MILE	40%
Reburn (9)	2-9 ch/hr	2 - 3 ft	UP to 3/10 MILE	40%
Small PL Pines (4)	14-73 ch/hr	9-19 ft	UP to 3/10 MILE	40%

One hour fine dead fuel moisture is at 8% for Monday: Areas remain dry and burning continues. 1,000 hour fuels are drier than normal for this time of year. There is re-burn potential; mainly on the west side of the fire due to the amount of needle cast, fallen trees and scorched shrubs. Should wind become stronger than predicted, expect fire behavior to increase above predicted levels. **In areas where fuels have been herbicided, expect quick ignitions, extreme heat, quicker rates-of-spread, and possible group tree torching potentially producing spotting problems.**

NOTE- OTHER THAN THE RE-BURN, FIRE BEHAVIOR CALCULATIONS ARE FOR FIRES IN UNBURNED FUELS INCLUDING NEW IA STARTS.

All Divisions:

The fire continues a slow spread through the thick bays and muck soils. Roots and fallen trees are protecting heat sources allowing the fire to burn organic soils from the bottom up. Keep a heads-up for falling trees.

Air Operations: Expect possible areas of smoke.

SAFETY:

WINDS – Stay abreast of changing wx conditions throughout the entire shift.

THUNDERSTORMS - these severe winds can create extreme fire behavior, with winds gusting over 30 mph **Live Trees/SNAGS** – are falling in all Divisions and will be influenced by Thunderstorm outflow winds.

FUELS: Watch for pockets of cured shrubs or blankets of red needles beginning to cover the forest floor, re-burn is continuing in some areas. 1,000 and 10,000 hour fuels as well as deep duff pockets are providing the heat source. 100 and 1000 hour fuels are still below average in moisture content. Stay focused, and put LCES in place before starting operations.

Energy Release Component (ERC) is running *WELL ABOVE AVERAGE* for this time of year.

INCIDENT ACTION PLAN SAFETY ANALYSIS										1. Incident Name Honey Prairie Fire		2. Date 9/19/2011		3. Time Day Shift		
LCES* Analysis of Tactical Applications Lookouts Communications Escape routes Safety zones										Other Risk Analysis						
Divisions	Indirect Fireline	Power lines / Snags	Road Conditions	Frontal Assault	Extreme Conditions	Railroad	Wildlife, Insects	LCES Mitigations	Smoke	Traffic/Driving	Communications	Fatigue/Hydration	School Buses / Children	Other Risk Mitigations		
All Divisions 1, 2, 3, 4, 5, 6, 7, 8, 9, 10, 11, 12, 13, 14, 15, 16, 17, 18, 19, 20, 21, 22, 23, 24, 25, 26, 27, 28							2, 23, 28	1. Establish & maintain LCES. Report LCES checks twice daily to DIVS on line & staging.	24	12 17 19 20 22, 26, 27	1, 3, 10 14 19 24 25	16 18 21	26	16. Take adequate rest breaks and encourage to drink water NOW through briefings.		
								2. Look UP,DOWN and AROUND						17. Defensive driving will be addressed in all briefings.		
								3. Post experienced Lookouts. Make sure LCES is in place and make known.						18. All personnel must meet the 2:1 work/rest ratio. Line supervisors and Safety will monitor closely.		
								4. Use Aerial Resources as Lookout if available.						19. Notify Operation and Safety of Railroad track issues to ensure safety of firefighters.		
								5. Flag escape routes on right side of escape route facing outward. Create new escape routes as you progress and identify Safety Zones on the ground and maps.						20. Ensure Traffic Planning is safe and enforced. Heed Defensive Driving techniques noted in Safety Messages.		
								6. Identify, mark & mitigate.						21. Relocate staging area when driving conditions warrant.		
								7. FBAN/Meteorologist to monitor weather updates and advisories.						22. Use spotter when backing vehicle(s).		
								8. Ensure Fireline is Anchored to black or manmade/natural barrier.						23. For insects, use protective spray with deet on skin (Not on Nomex), permethrin can be used on nomex clothing		
								10. Keep Firefighters informed of any changes in predicted weather, consider at least a two day weather pattern when planning Strategic Firing operations.						24. Establish smoke/fog signs on roadways. Coordinate with Department of Transportation.		
								11. Refer to IRPG, pg. 12 on Power Line Hazards.						25. Follow establish communication plan, flight follow through dispatch		
								12. Observe all traffic signals and speed limits. Drive with lights on.						26. Watch-out for school buses and for children along the edge of roadway and crossing the road.		
								14. Ensure GOOD tailgate briefings with resources unable to attend Operational Briefing (Include Ops, Logs, Fin & Plans info.).						27. Treat all intersections as 4-way stops		
								15. Scout ahead of tractor operations to avoid making contact with power poles and guide wires when tying into roads. Power companies are working in some DIVS, avoid all down lines as they may become charged.						28. Bears, Gators, and some snakes are dangerous. Do not approach or feed wildlife at any time.		
Prepared by (Name and Position)							ICS 215A	Hank McKinley/Ronald Taylor; SOF								

AIR OPERATIONS SUMMARY

Prepared By: Melvin Tate, HEBM

Prepared Date: 9.18.2011

Prepared Time: 1800

1. INCIDENT NAME: Honey Prairie	2. OPS PERIOD DATE: September 19, 2011	START TIME: 0830	END TIME: 1900	SUNRISE: 0716	SUNSET: 1931
3. REMARKS (Safety Notes, Hazards, Air Operations Special Equipment, etc ALL FLIGHT REQUESTS GO DIRECTLY TO HELIBASE Afternoon thunderstorms <i>NOTE: Latitude/Longitude format is "Degrees-Minutes-Decimal Minutes" (example: N30 41.42 W082 33.97) helibase convert if necessary</i>					5. TFR #: Canceled 7/27/11 SEE and AVOID!!!

PERSONNEL	NAME	PHONE #	FREQUENCIES	AM	FM	
HEB2 Waycross HB	Melvin Tate Desk Cell	912-287-4479 850-849-0405	AIR/ AIR FW	None assigned		AIRTANKERS / LEAD PLANES - None Available OTHER: Waycross Airport Helibase: 912-287-4479 Waycross Airport Helibase Fax: 912-287-4458 ICP Helispot is Waycross Airport Helibase Okefenokee Dispatch: 912-496-7366 X230 Waycross Airport: N 31 16.16 10 W82 33.38 BERGANZA HELISPOT N 31 07.22 W082 15.22 * don't use unless cleared with AOB. POGO HELISPOT: N30 44.03 W082 07.41
ABRO	Darold Williams Desk Cell	912-287-4479 386-383-6288	AIR/ AIR RW-FF	122.375		
			Georgia AIR/GRND (Smokey - Dozers)		159.285 W	
			AIR/GROUND PRIMARY		166.9375	
			AIR/GROUND ALTERNATE		166.9000	
			AIR GUARD		168.625 T110.9	

9. HELICOPTERS (Use Additional Sheets as Necessary)

FAA N#	TY	MAKE/ MODEL	BASE	AVAIL	MANAGER	FAA N#	T Y	MAKE/ MODEL	BASE	AVAIL	MANAGER
1CH	3	AS320-B3	Waycross	0830	Mike Bryson 970-759-2718						
9RH	1	K-max	Waycross	0830	Tracy Dott (805) 722-0170						

10. TASK/ MISSION/ ASSIGNMENT (Type/ function includes: Air Tactical, Retardant, Recon, Personnel Transport, Bucket Operations, SAR, etc.)

TYPE/FUNCTION	NAME OF PERSONNEL OR CARGO (If applicable) or instructions for tactical aircraft	MISSION START	FLY FROM	FLY TO
Bucket Ops/	9RH	As Requested	Waycross	
Recon	All FLIGHT REQUESTS GO THROUGH HELIBASE, 1CH	As Requested/scheduled	Waycross/Pogo	
Medevac	1CH	As Requested	Waycross	

INCIDENT RADIO COMMUNICATIONS PLAN ICS-205			Incident Name Honey Prairie			GROUP 22		Date/Time Prepared 09/02/2011-18:00		Operational Period Date/Time 9/19/2011 0800-2000	
Ch #	Function	Channel Name	Assignment	RX Freq	NW	RX Tone/NAC	TX Freq	N W	TX Tone/NAC	Mode A,D or M	Remarks
1	Command	West Okee Repeater	Sec West Branch CMD	167.1250	N	156.7	163.1500	N	156.7	A	Stephen Foster State Park
2	Command	South Okee Repeater	Sec East/West Branch CMD	164.7750	N	123.0	163.1500	N	123.0	A	Eddy Florida
3	Command	East Okee Repeater	PRIMARY East Branch CMD	164.6250	N	103.5	163.1500	N	103.5	A	Refuge Headquarters
5	Command	North Okee Repeater	PRIMARY North Branch CMD	164.5750	N	206.5	163.1500	N	206.5	A	Waycross
6	Air-Ground	Air to Ground	PRIMARY	166.9375	N	CSQ	166.9375	N	CSQ	A	
7	Tactical	MOB-MOB	GFC Contingency	159.3900	W	CSQ	159.3900	W	156.7	A	
8	Tactical	V-Fire 21W WHITE	West group Secondary	154.2800	W	CSQ	154.2800	W	156.7	A	
9	Tactical	USFS 9	East/West Groups	168.7750	N	CSQ	168.7750	N	CSQ	A	
10	Tactical	S.E. Compact		159.2850	W	CSQ	159.2850	W	CSQ	A	
11	Tactical	USFS 11	East Group Secondary	168.2000	N	CSQ	168.2000	N	CSQ	A	
12	Tactical	Refuge Tac 1	East Group	168.3500	N	CSQ	168.3500	N	CSQ	A	
13	Tactical	FL 190		151.2725	N	CSQ	151.2725	N	CSQ	A	
15	Air-Ground	Air to Ground	SECONDARY	166.9000	N	CSQ	166.9000	N	CSQ	A	
16	EMERGENCY	AIR Guard	Air OPS.	168.6250	N	CSQ	168.6250	N	110.9	A	
Prepared by (Communications Unit) Marcus Brinkerhoff COML Incident Dispatcher: 404-772-5384						Cloning at ICP communications and briefings,					

The convention calls for frequency lists to show four digits after the decimal place, followed by either an "N" or a "W", depending on whether the frequency is narrow or wide band. **Mode** refers to either "A" or "D" indicating analog or digital (e.g. Project 25) or "M" indicating mixed mode. All channels are shown as if programmed in a control station, base stations, mobile or portable radio.

MEDICAL PLAN	Incident Name Honey Prairie Complex	Date Prepared 09/02/2011	Time Prepared 1000	Operational Period 09/19/2011
---------------------	---	------------------------------------	------------------------------	---

5. Incident Medical Aid Station

<u>Medical Aid Stations</u>	<u>Location</u>	Paramedics Yes No
MEDICAL UNIT (ICP EMT)	Honey Prairie Complex ICP- No MEDL	
WEST SIDE (Line EMT)	****Andrew Gill 404-772-5402 (BLS Kit)****	X
EAST SIDE (Line EMT)	****Andrew Gill 404-772-5402 (BLS Kit)****	

Ambulance Services

Name	Address	Phone	Paramedic Yes No
Clinch County EMS (West)	Homerville, GA (911 to activate)	912-487-5315	Yes
Ware County EMS (North)	Waycross, Georgia (911 to activate)	912-287-4335	Yes
Charlton County EMS (East)	Folkston, GA (911 to activate)	912-496-2281	Yes

Air Ambulance Service

Trauma 1	Lake City, FL	1-800-223-4878	Yes
Trauma 1	Jacksonville, FL	1-800-223-4878	Yes
AirMed	Augusta, GA	1-888-792-9245	Yes
Lifeflight	Jacksonville, FL	1-877-870-7779	Yes
Air Evac	Waycross, GA	1-800-247-3822	Yes
US Coast Guard (Heli-Rescue)	Savannah GA	1-912-652-4646	Yes

7. Hospitals

Name	Address	LAT-LON	Phone	Helipad Yes No	Burn Center Yes No
Satilla Regional	410 Darling AVE. Waycross, GA	N 31' 13.509 W 82' 20.853	(912) -283-3030	Yes	No
Clinch Memorial Hospital (WEST SIDE)	1050 Valdosta HWY Homerville, GA	N 31' 01.977 W 82 45.851	(912) -487-5211 ext 4502	Yes	No
Charlton Memorial Hospital (EAST SIDE)	1203 3 rd Street Folkston, GA	N 30' 50.713 W 82' 00.302	(912) -496-2531	Yes	No
Savannah Memorial Hospital	4700 Waters AVE Savannah, GA	N 32' 01.538 W 81' 05.298	(912) -350-8999	Yes	No
Shands Hospital (Level I)	655 West 8 th Street Jacksonville, FL	N 30' 20.97 W 81' 39.92	(800) -223-4878	Yes	Yes
Shands Burn Center	1600 Southwest Archer Road Gainesville, FL	N 29' 38.33 W 82' 20.55	(352) -265-0300	Yes	Yes

8. Medical Emergency Procedures

Identify any EMTs and Paramedics in your crews. All medical emergencies will be reported to the Division Supervisor who will assume command and notify Line Medics.

On scene personnel will:

1. Provide medical care & stabilize patient.
2. Call 911 if possible or call phone #'s above for EMS and provide the information requested.
3. Notify Communications via radio over Command Channel
4. Communications will clear radio traffic for medical emergency.
5. Communications will confirm 911 has been notified coordinate with IC, SOF.
6. DIVS will notify the Field Ops Section Chief.

MAJOR EMERGENCIES – Secure the area and identify witness for later investigation. Keep an accurate log of events. NOTE: Do not give Patients Name over the radio!

INJURY REPORTING PROCESS:

Nature of Injury: _____

Location of Patient: _____

Transportation Requested by: Air ___ Ground ___

Pick Up Point: _____

Lat: _____ Long: _____

Patient Unit ID: _____

Is an EMT w/Patient: Yes ___ No ___

Age: ___ Sex: Male ___ Female ___

Weight (If Air Evac. is needed): _____

HELISPOTS

NAME	LAT-LON	LOCATION
Pocket Helispot	N 30' 47.500 W 82' 22.659	(West side), mile marker 4, HWY 177 Steven C. Foster State Park
Fargo Helispot	N 30' 40.945 W 82' 33.640	(West side), HWY 441- Steven C. Foster Visitor Center
POGO Helibase	N 30' 44.219 W 82' 07.689	(East side) Adjacent to Okee Refuge Shop

Evac Yankee

Helispot 6	N 30' 53.280 W 82' 33.880	Road 32 and 32A
Helispot 7	N 30' 50.280 W 82' 33.857	Tatum Road Pond

***Alternate site can be established following guidelines for safety found with IRPG and local EMS resources.**

Prepared by: Harry Kepler, SOF

10. Reviewed by: Harry Kepler, SOF

HONEY PRAIRIE PHONE LIST			09/19/11		
Incident		Communication		(Hours: 0800-2000) 912-286-1660	
AGENCY OFFICIALS			OPERATIONS		
Curt McCasland	602-359-0013	USFWS AA			
Mindy Gautreaux	912-282-7500	USFWS Deputy AA		Bryce Thomas (T)	850-625-6634
Frank Sorrells	912-381-7503	GFC AA		DIVISIONS	
James Karels	850-228-7763	FL DOF AA		Mike Work	904-705-3926 West Group
Diane Adams	912-266-5421	GEMA		Mark Sparrow	706-968-1895 West Group
Mike Housh	404-772-5380	USFWS AREP		Bruce Miller TFLD	770-280-7684 East Group
COMMAND - IC			AIR OPERATIONS		
Richard Dolan	352-353-5101	Incident Commander		Melvin Tate	850-849-0405 HEB 1
Bryce Thomas (T)	850-625-6634				912-287-4479 WAYCROSS AIRPORT
RESOURCE ADVISORS			LANDOWNERS		
Ron Phernetton	912-276-2349	Resource Advisor		Jim Barrett	229-356-1993 Langdale/GOAL Chairman
Rocky Chesser	912-276-3232	Resource Advisor		Wesley Langdale	229-220-2602 Langdale
Reggie Forcine	912-614-4041	Resource Advisor		Hal Rowe	229-412-3133 Langdale
INFORMATION 912-496-2566					
Art Webster		Fire Information		Langdale Office	229-242-7450 Langdale Office
SAFETY OFFICERS					
Hank McKinley	West Branch	404-558-4476		Mike Conlon	386-365-3882 Rayonier Unit Supervisor
Ronald Taylor	West Branch	850-768-2241		Ray Carter	386-288-6626 Rayonier
Ray Durham	Rehab Group	404-772-5553		Ed Carter	386-288-6626 Rayonier
DISPATCH					
Okefenokee Dsp	912-496-7366	Okefenokee		Doug Nuss	912-390-1037 Rayonier
Suwannee Dispatch	386-758-5700	Fla wildfires, other		Randall McCrady	912-283-4077 Rayonier
Honey Prairie Dspth	404-772-5384	Honey Prairie ICP		Colin Myerson	229-506-1565 Superior Pine Products Co
Waycross Dispatch	912-287-4915	Ga wildfires, other		Robbie Lee	229-356-0526 Superior Pine Products Co
GA DNR	1-800-241-4113	Hunting Issues		Superior Pine Office	912-637-5261 Superior Pine Products Co
LOGISTICS 256-497-8490 fax 912-287-6542					
Tom Lambert	258-497-8490	LSC/FACL		Al Alexander	850-843-0104 The Forestry Co
Linda Blondeau	770-658-4789	Ordering Manager		Savell Schmidt	850-843-1181 The Forestry Co
Lindel Gregory	404-772-5401	Security		John Bogue	850-843-1192 The Forestry Co
Daniel Crouch	352-206-5651	BCMG		Joe Hopkins	912-276-0911 Toledo Timber
Marcus Brinkerhoff	404-772-5384	COML		Chris Gowan	912-276-0965 Toledo Timber
James Chappell	404-772-5318	EQPM		Martin Bell	912-283-0583 Swamp Park
Tim Jones	404-772-5399	GSUL		Crystal Peeples	352-316-0632 FIA
Jayson Brockmeyer	907-347-5511	RCDM		Steve Davis	912-614-1828 Davis Community
Harold Smith	404-772-5405	Mechanic		Trevor Fortner	912-599-9271 Little Suwannee
Andrew Gill	404-772-5402	EMTB		Tim Jarrell	912-223-7120 Hancock Forest Mgmt.
PLANNING 912-287-6565 FAX 912-287-6541					
Joseph Bishop	404-772-5317	PSC2 (T)		RAILROADS	
Joseph Bishop	404-772-5317	SITL		Norfolk Southern	800-453-2530
Heath Hockenberry	404-772-5393	IMET		Sid Moody	904-318-7983 Norfolk Southern Railroad
Greg Strenkowski	912-287-6565	RESL/DMOB		Chad Edwards	404-582-4909 Norfolk Southern Railroad
FINANCE Finance FAX 912-287-6564					
Grace Reid	770-658-6641	Finance Section Chief		Eric Sams	904-576-9907
Fredrick Cheeks	256-497-8334	Purchasing Agent		Emergency Dispatch	404-529-1597 Norfolk Southern Railroad
	912-287-6557	Buying Team Fax		CSX Randy Dixon	912-270-0699
All Contractors 912-287-6568	All Contractors				
FEDERAL Federal					
Okefenokee Fire Shop	912-496-4181			CSX Dispatch	800-232-0144
Okefenokee NWR HQ	912-496-7366			COUNTY	
Okefenokee NWR	912-637-5322				912-496-7229 Charlton County EMA
Okefenokee Visitor	912-496-7836			John F. Meyer -	912-496-2549 Charlton County Commissioners
STATE State					
GFC Fargo Office	912-637-5270			Dobie Conner	912-496-7321 Charlton County Sheriff
GFC Satilla District	912-287-4915			Jesse Booth	912-520-0061 Clinch County EMA
Jason Gillis	912-314-9233	GFC Satilla Mgr.		Jonathan Daniel	912-281-5158 Ware County EMA
				Jessie Jordan	912-816-6063 Ware County Fire Dept
				Joe Morris	912-281-6020 Ware County Sheriff
				Robbie Sutton	912-599-9027 Tri County 911
				Georgia State Patrol	912-287-6500
				Travis Griffin	912-281-5790 Laura Walker State Park

DMOB Report Sept

RequestNun	ResourceName	KindCode	UnitID	TravelMethod	Jetport	DemobDate
E-1383.2	LANIER 61	TRTL	GAGAS			09/20/2011
E-1375.1	REGISTER, ANDREW	DZOP	GAGAS	AOV		09/20/2011
E-1385	WARE 71	DOZ2	GAGAS			09/20/2011
E-1382.1	SIKES, JAMES	DZOP	GAGAS	AOV		09/20/2011
E-1383.1	LIVINGSTON, JONATHAN	DZOP	GAGAS	AOV		09/20/2011
E-1307	REID PICKUP	PU	GAGAS	AOV		09/20/2011
E-1372	COFFEE 73	DOZ2	GAGAS			09/20/2011
E-1382	ECHOLS 72	DOZ2	GAGAS			09/20/2011
E-1388.2	BERRIEN 63	TRTL	GAGAS			09/20/2011
E-1378	COFFEE 70	DOZ2	GAGAS			09/20/2011
E-1383	LANIER 71	DOZ2	GAGAS			09/20/2011
E-1388	BERRIEN 73	DOZ2	GAGAS			09/20/2011
O-1233	LAMBERT, THOMAS	FACL	GAGAS	AOV		09/20/2011
E-1385.2	WARE 61	TRTL	GAGAS			09/20/2011
E-1388.1	CHAKMACK, WILLIAM	DZOP	GAGAS	AOV		09/20/2011
E-1378.1	HARPER, DEREK	DZOP	GAGAS	AOV		09/20/2011
E-1375.2	CLINCH 62	TRTL	GAGAS			09/20/2011
E-1375	CLINCH 72	DOZ2	GAGAS			09/20/2011
E-1378.2	COFFE 60	DOZ2	GAGAS			09/20/2011
E-1372	SPIVEY, TREY	DZOP	GAGAS	AOV		09/20/2011
E-1304	LAMBERT PU	PU	GAGAS	AOV		09/20/2011
E-1372.2	COFFEE 61	TRTL	GAGAS			09/20/2011
O-1236	REID, GRACE	FSC2	GAGAS	AOV		09/20/2011
E-1382.2	ECHOLS 61	TRTL	GAGAS			09/20/2011
A-83.8	VINCENT, RYAN	HMGB	COSJF	AIR	DRO	09/21/2011
A-83.7	BRYSON, MICHAEL	HMGB	COSJD	AIR	DRO	09/21/2011
O-1246	RETHLAKE, ZACK	TFLD	MNMNS	A/R	MSP	09/21/2011
E-1229	TRLR COMMUNICATIONS	TRLR	GAOKR			09/22/2011
E-1324	DOLAN PICKUP	PU	FLFLS			09/22/2011
O-1292	DOTT, TRACY	HMGB	CALPF	A/R	LAX	09/22/2011
E-1319.1	PANEK, DAMON	ENGB	WIAIP	AOV		09/22/2011
O-1259	PIPPEN, ANTHONY (BRIAN)	ENGB	FLSMR	AOV		09/22/2011
O-1257	DOLAN, RICHARD W	ICT3	FLFLS	AOV		09/22/2011
E-1319.2	RICHARDSON, THOMAS	FFT2	WIAIP	AOV		09/22/2011
O-1245	CHEEKS, FREDERICK	BUYL	ALALF	AOV		09/23/2011
O-1251	SCHRUPP, CHRISTOPHER	SEC1	WISCP	AOV		09/23/2011
E-1225	MOBILE OFFICE TRAILER	TRLR	GAGAS			09/23/2011
O-1242	REDICK, TIMOTHY	TPOP	GAGAS	AOV		09/23/2011
E-838.17	ELG, TREVER	FFT2	MNWWR	AIR	MSP	09/23/2011
A-83	AS 350 B3 #351CH	HEL3	NMCIF	AIR	ABQ	09/23/2011
O-1248	MCKINLEY, HENRY	SOFR	ALALS	POV		09/23/2011
O-1249	BRINKERHOFF, MARCUS	COMT	UTCDC	AIR	CDC	09/23/2011
E-1226	MOBILE OFFICE TRAILER	TRLR	GAGAS			09/23/2011
O-1255	HOCKENBERRY, HEATH	IMET	IDWXW	A/R	BOI	09/23/2011
E-1224	MOBILE OFFICE TRAILER	TRLR	GAGAS			09/23/2011
E-838.16	FONDRIEST, MARK	ENGB	MNDLR	AIR	FAR	09/23/2011
E-1328	WORK PU	PU	FLFLS			09/24/2011
O-1250	DEVORE, SCOTT	SEC1	FLEVP	AOV		09/24/2011
O-1258	WORK, MIKE	DIVS	FLFLS	AOV		09/24/2011
O-1253	CROUCH, DANIEL	BCMG	FLFLS	AOV		09/24/2011

Record Count: 50

Hunter Encounters and Confrontations

Archery season is open. Crews are likely to encounter hunters either hunting or scouting in the area of the Swamp Edge Break.

Expect many questions about the fire operations and how long the fire will continue to burn. It's a good idea to review the Fire Information section of the plan for a good explanation of what to expect in the coming months. The majority of the hunters will be friendly but should you have a confrontation with someone:

1. Politely excuse yourself and leave the area immediately;
2. Notify your supervisor;
3. Notify the Security Manager by radio or phone:

SECM – Lindel Gregroy 404-772-5401

4. If necessary, call the Georgia DNR at 1-800-241-4113 with a description of the person, vehicle, and the nature of the confrontation. Georgia DNR will send an officer to handle the situation.

Fire Information IAP messages

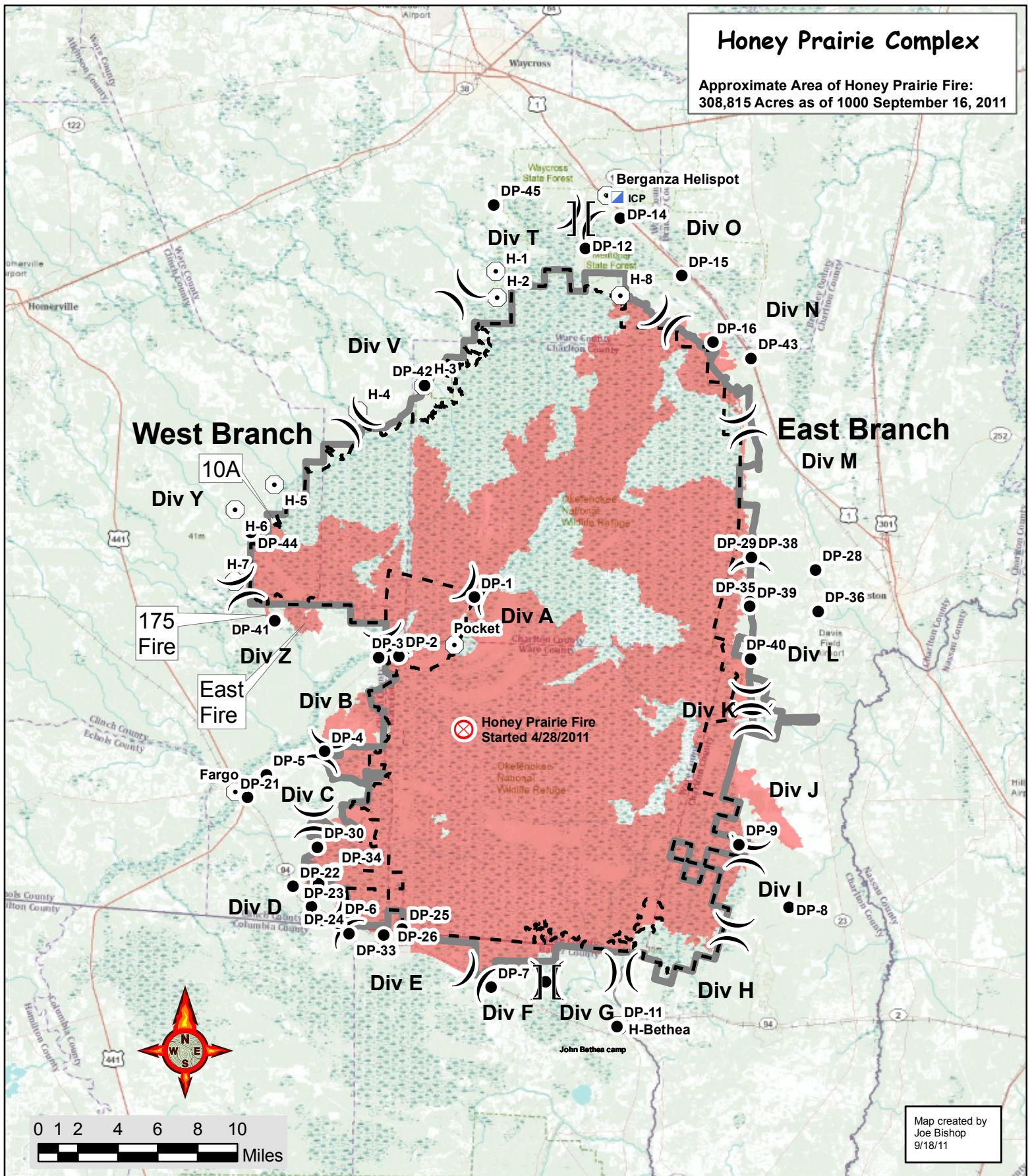
1. Public and firefighter safety remains the top priority for this incident.
2. Fire managers for the refuge have coordinated suppression efforts with the Georgia Forestry Commission and the Greater Okefenokee Association of Landowners (GOAL) representing federal and state agencies, industry and private landowners. Through this Unified Command, the partners support the chosen strategy as the appropriate management response to protect adjacent valuable commercial timber, isolated homes scattered on private land, and critical wildlife habitat for threatened and endangered species.
3. Fire is a natural component of the Okefenokee ecosystem; since the refuges creation in 1937, there have been hundreds of wildfires that have burned thousands of acres here. The plants and animals on the refuge are well adapted to survive periodic wildfires.
4. Past experience has shown that conventional fire suppression tactics do not work well inside the swamp. Humans have never been successful in controlling fires within the swamp; only “mother nature” has done this. Attempting suppression within the swamp is ineffective, costly, wastes firefighting resources and needlessly endangers firefighter safety.
5. Fire on the refuge is usually fought by reinforcing firelines along the Swamps Edge Break, including areas of private land, to keep the fire contained within the swamp.
6. Okefenokee National Wildlife Refuge typically employs a contain and control strategy to manage fire; containing it within the swamp and actively suppressing it outside of the swamp in the upland forest.

Commonly asked question:










1. Why won't this fire go out? What will it take? Surface burning of available fuels is only part of the current problem. Peat beds (partially decayed vegetation normally floating in a vertical column of water) is what supports these surface fuels. Unfortunately, the current dry conditions have allowed a portion of the peat beds to dry out and the surface burn has transferred into the peat beds and is now burning subsurface. There are now two sources of heat and available fuel that must be extinguished. The current spotty, localized rain storms can have some effect on the surface burns but do not do much to control subsurface burns. It will take a big rain storm blanketing the entire swamp (remember the swamp is huge –over 650 square miles in size) dropping a minimum of 6-8 inches of rain. As the water levels in the swamp slowly rise, as a result of the rain, the peat beds will become water saturated again eliminating one source of the fire. As the surface of the swamp becomes covered by water, burning surface fuels will be extinguished as well. Burning fuels that extend above these water levels (dead and drying trees/shrubs) may continue to burn until they fall over or burn up. Fire that exists in upland habitat on islands within the swamp may also continue to burn but it will be confined to that immediate area by the swamp waters surrounding the island. This is not something that will likely occur overnight. It may take days, weeks, or even months. The refuge has experienced fire events that were not declared officially out for well over a year after the main firefighting effort had ceased.

Honey Prairie Complex

Approximate Area of Honey Prairie Fire:
308,815 Acres as of 1000 September 16, 2011



Map created by
Joe Bishop
9/18/11

-  Fire Origin
-  Honey Prairie Fire
-  Incident Command Post
-  Drop Point
-  Helispot
-  Branch Break
-  Division Break
-  Refuge Boundary
-  Wilderness Boundary



SAFETY MESSAGE



DON'T BECOME COMPLACENT!

MAINTAIN SITUATION AWARENESS (SA)