

# Honey Prairie Complex

*GA-OKR-000001*

## INCIDENT ACTION PLAN

Operational Period

Monday

September 26, 2011

0800-2000

**Incident Commander**

**Rick Dolan**

**Bryce Thomas (T)**

Accounting Codes

FWS - 9141-F25M-2J

NPS - 5023 F25M E11

BLM - F25M

USFS - PRF25M\_1502

Initial Attack - F4PM



GEORGIA FORESTRY  
COMMISSION



*An Equal Opportunity  
Employer & Service Provider*

Letter from Incident Commander:

To: All Honey Prairie Incident Personnel

As a Type 3 Incident Commander, I am committed to a policy of “zero tolerance” of inappropriate behavior during incident operations. Any form of harassment, discriminatory practices, or disrespectful behavior will not be tolerated.

Guidelines on in-appropriate behavior both “on Duty” and “off Duty” while assigned are addressed within each agencies policies. Our Team expects all incident personnel to follow established government policies for behavior along with all Illegal drug and alcohol directives.

Our Incident Management Team endorses and supports an attitude of mutual respect for all personnel and the public we serve.

We expect a strong work ethic and an attitude of Safety at all times!

Sincerely,

/s Rick Dolan

Incident Commander  
Type 3 Incident Management Team

<b>INCIDENT OBJECTIVES</b>	<b>1. INCIDENT NAME</b> Honey Prairie Complex	<b>2. DATE PREPARED</b> 9/25/11	<b>3. TIME PREPARED</b> 1700
<b>4. OPERATIONAL PERIOD (DATE/TIME)</b> Monday, September 26, 2011 0800 – 2000			
<b>5. GENERAL CONTROL OBJECTIVES FOR THE INCIDENT (INCLUDE ALTERNATIVES)</b> 1. Provide for safety of incident personnel and public in all incident operations. 2. Maintain a positive working relationship with all adjacent landowners, cooperators, State and Federal partners. Inform, involve and communicate incident planning and operations with all partners. 3. Contain all fires that are within the Okefenokee National Wildlife Refuge, inside the Refuge and/or inside the swamp edge break if possible. 4. In cooperation with local land owners and communities, use full suppression strategies and tactics to minimize damage to private timberlands and structural improvements and to prevent fires outside the Refuge from entering the Refuge. 5. Assist in management and suppression of additional fires (new starts or breakouts) in the vicinity as approved by Agency Administrators and Incident Commander. 6. Protect all cultural and archeological sites and structures within the refuge. 7. Manage the fires cost-effectively consistent with the values at risk. 8. Coordinate suppression actions with assigned Refuge Resource Advisors			
<b>6. WEATHER FORECAST FOR OPERATIONAL PERIOD</b> See attached forecast for area specific weather information.			
<b>7. GENERAL SAFETY MESSAGE</b> Drive defensively and use spotter when backing. Ensure LCES is in place and known by all personnel. Drink plenty of water and take frequent rest breaks. Ensure proper use of PPE during all operations.			
<b>8. Attachments</b> <input checked="" type="checkbox"/> if attached <input checked="" type="checkbox"/> Organization List (ICS 203) <input checked="" type="checkbox"/> Incident Map <input checked="" type="checkbox"/> Safety Message <input checked="" type="checkbox"/> Assignment List (ICS 204) <input type="checkbox"/> Traffic Plan <input type="checkbox"/> Demobilization Procedures <input checked="" type="checkbox"/> Communications Plan (ICS 205) <input checked="" type="checkbox"/> Unit Log <input checked="" type="checkbox"/> Medical Plan (ICS 206) <input checked="" type="checkbox"/> Phone List			
<b>9. PREPARED BY (PLANNING SECTION CHIEF)</b> Joe Bishop		<b>10. APPROVED BY (INCIDENT COMMANDER)</b> Richard Dolan	

ORGANIZATION ASSIGNMENT LIST		9. Operations Section	
<b>1. Incident Name</b> Honey Prairie Complex GA-OKR-000001		Chief	Bryce Thomas (T) 10/1
<b>2. Date</b> 9/25/2011 <b>3. Time</b> 1500 hrs		<b>a. Divisions/Groups</b>	
<b>4. Operational Period</b> 9/26/2011      0800 - 2000			
<b>5. Incident Commander and Staff</b>			
Incident Commander	Rick Dolan 9/26 Steve Gray 10/9 Bryce Thomas (T) 10/1	Group	East Group Bruce Miller 9/27 TFLD
Safety Officer	Leonard Kempf 10/5 Ray Durham 9/28 Tommy Hawkins 10/8	Group	West Group Mike Work 9/30 Mark Sparrow 9/27
Information Officer	Art Webster		
<b>6a. Agency Administrators</b>			
FWS	Curt McCasland		
FWS	Mindy Gautreaux		
<b>6b. Agency Representatives</b>		<b>b. Divisions/Groups</b>	
GFC	Frank Sorrells		
FLFFS	James Karels		
FWS AREP	Mike Housh		
FWS-Refuge PAO	Art Webster		
GEMA AREP	Alan Robinson / Diane Adams		
USFS AREP	Ivan Greene		
<b>7. Planning Section</b>		<b>c. AIR OPERATIONS BRANCH - Honey Prairie</b>	
Chief	Joe Bishop (T) 9/27	Waycross Helibase Mgr	Kevin Merrill 9/29
Resource Advisors	Ron Phernetton, Reggie Forcine		
Resources Unit	Greg Strenkowski 9/30		
IMET	Jon Jelsema 10/3		
Situation Unit	Joe Bishop 9/27		
FBAN		<b>d. AIR OPERATIONS BRANCH - Pogo</b>	
Demob Unit	Greg Strenkowski 9/30		
Documentation			
GIS			
CTSP			
SCKN			
<b>8. Logistics Section</b>		<b>10. Finance Section</b>	
Chief	Shane Locke 10/2	Chief	Lila Johnson 10/2
Supply Unit	Teresa (Tracy) Stelman 10/6	Time Unit	Vickie Hulsizer 10/3
Ground Support	Steve Blackwell 10/9	Cost	
Ground Support	Dan Chappell (T) 10/13	PTRC	Teresa Kregl-Barber 10/2
COML	James (Ronnie) Sumler 10/5	EQTR	
EMTB	Andrew Gill 10/2	IBA	
RCDM	Jayson Brockmeyer 10/2		
Facilities	Daniel Crouch (T) 9/30		
SECM	Lindel Gregory 9/30 Chris Schrupp 9/30	Purchasing Agent	Fredrick Cheeks 10/6
COMT			
RADO			
Mechanic	Harold Smith 9/28		
		Prepared by: Joe Bishop	PSC (T)

DIVISION ASSIGNMENT LIST		1. Branch		2. Division <b>REHAB Group</b>			
3. Incident Name <b>Honey Prairie Complex</b>		4. Operational Period Date: <b>9/26/2011</b> Time: <b>0800-2000</b>					
5. Operations Personnel							
<b>Operations</b>	Bryce Thomas (T)10/1		<b>Branch Director</b>				
			<b>Division Supervisor</b>				
<b>Safety Officer</b>	Leonard Kempf 10/5 / Ray Durham 9/28		<b>Division Supervisor</b>				
6. Resources Assigned this Period							
Strike Team/Task Force/ Resource Designator	Leader / Name / Designator	Last Shift Date	Num. Per.	Drop Off PT./Time	Crew Names		
<b>TFLD (O-1247)</b>	<b>Bruce Miller</b>	9/27	1				
FWS Motorgrader (E-1356)	Harry Bentley (O-1286)	9/28	1				
PVT Excavator (E-1326)	Hughes Tree Planting		2		Mngr's Cell# 912-218-0360		
PVT DOZ2 (E-1413)	Pierce Timber Co.	10/4	1				
7. Control Operations							
<ul style="list-style-type: none"> <li>Patrol fire perimeter</li> <li>Initial attack IC will communicate sizeup information to the Honey Prairie communication.</li> <li>Make contact with the resource advisor before using mechanical equipment.</li> <li>Continue to work with resource advisor on Refuge rehab objectives.</li> </ul>							
8. Special Instructions							
<ul style="list-style-type: none"> <li>Ensure LCES are in place before operations begin. Stay hydrated.</li> <li>Drive defensively with lights on at all times and use extra caution on wet or dry roads.</li> <li>Boggy terrain: Be careful and aware when working around this type of area.</li> <li>Avoid areas with potential tree fall.</li> </ul>							
9. Division/Group Communication Summary							
	Function	Frequency	Channel	Function	Frequency	System	Channel
Command E Okee Repeater	RX 164.625/103.5 TX 163.150/103.5	KING NIFC	3	Logistics		KING NIFC	
Tactical Div/Group	RX 168.775 TX 168.775	KING NIFC	9	Air to Ground	RX 166.9375 TX 166.9375	KING NIFC	6
Prepared by (Resource Unit Ldr.) <b>Greg Strenkowski</b>		Approved by (Planning Sect. Ch.) <b>Joe Bishop (T)</b>		Date <b>September 25, 2011</b>		Time <b>1800</b>	

DIVISION ASSIGNMENT LIST				1. Branch <b>West</b>		2. Division <b>Y (East-Fire)</b>	
3. Incident Name <b>Honey Prairie Complex</b>				4. Operational Period Date: 9/26/2011 Time: 0800-2000			
5. Operations Personnel							
<b>Operations</b>	Bryce Thomas (T)10/1			<b>Division Supervisor</b>	Mike Work 9/30		
<b>Safety Officer</b>	Leonard Kempf 10/5	Tommy Hawkins 10/8		<b>Division Supervisor</b>	Mark Sparrow (T) 9/27		
6. Resources Assigned this Period							
Strike Team/Task Force/ Resource Designator		Leader / Name / Designator		Last Shift Date	Num. Per.	Drop Off PT./Time	Crew Names
<b>TFLD (O-1267) FL</b>		<b>John DeWolfe 9/27</b>		Cell # 404-844-7042	1		
FL DOZ2 L-51 (E-1336)		John Hayes (O-1282)		9/27	1		
FL DOZ2 L-55 (E-1337)		Abe Phillipson (O-1283)		9/27	1		
FL DOZ2 L-67 (E-1338)		Danny Caraway (O-1284)		9/27	1		
FL DOZ2 OPS-37 (E-1340)		Larry Davie (O-1280)		9/27	1		
FL DOZ2 G-33 (E-1403)		Charles DeHoff (O-1281)		9/27	1		
FL DOZ2 G-87 (E-1339)		Pat Hathcox (O-1279)		9/27	1		
<b>TFLD (O-1266) FL</b>		<b>Kenneth Harvey 9/27</b>		Cell # 404-276-1998	1		
FL ENG6 L-116 (E-1334)		Victor Memmoli (O-1309)		9/27	2		Jarad Dorrier (O-1274)
FL ENG6 O-104 (E-1335)		Rodney Durbin (O-1276)		9/27	2		Jonathan Wilson (O-1273)
FL ENG6 G-115 (E-1333)		Mike Josey (O-1277)		9/27	2		Jim Dunnigan (O-1272)
FL ENG6 P-114 (E-1332)		Berry Tye (O-1278)		9/27	2		John Kearney (O-1271)
FL LXR -ENG6 E-27 (E-1405)		Jordan Black (O-1313)		9/30	2		Elizabeth Lesley (O-1323)
NC ENG6 PLE1 (E-1364)		Kenny Powell (E-1364.1)		9/29	2		Lisa Borel (E-1364.2)
FWS GAPDR 51 (E-1391)		John Mason (E-1391.1)		10/2	2		Matthew Smith (E-1391.2)
<b>EMTB</b>		<b>Andrew Gill (O-1261)</b>		<b>10/2</b>	<b>1</b>		
7. Control Operations <ul style="list-style-type: none"> <li>Respond to Initial Attack as requested</li> <li>Secure fire's edge, and mop up 200-feet in, (upland areas only).</li> <li>Initial attack IC will communicate sizeup information to the Honey Prairie communication.</li> <li>Improve swamp break boundaries for fire breaks, work with resource advisor.</li> </ul>							
8. Special Instructions <ul style="list-style-type: none"> <li>Ensure LCES are in place before operations begin. Stay hydrated.</li> <li>Drive defensively and with lights on at all times and use extra caution on wet or dry roads.</li> <li>Boggy terrain: Be careful and aware when working around this type of area.</li> <li>Avoid areas with potential tree fall</li> </ul>							
9. Division/Group Communication Summary							
Function	Frequency	System	Channel	Function	Frequency	System	Channel
Command N Okee Repeater	RX 164.5750/206.5 TX 163.150/206.5	KING NIFC	5	Logistics		KING NIFC	
Tactical Div/Group	RX 168.775 TX 168.775	KING NIFC	9	Air to Ground	RX 166.9375 TX 166.9375	KING NIFC	6
Prepared by (Resource Unit Ldr.) Greg Strenkowski		Approved by (Planning Sect. Ch.) Joe Bishop (T)			Date September 25, 2011		Time 1800

DIVISION ASSIGNMENT LIST				1. Branch <b>West</b>		2. Division <b>Y (175-Fire)</b>	
3. Incident Name <b>Honey Prairie Complex</b>				4. Operational Period Date: 9/26/2011 Time: 0800-2000			
5. Operations Personnel							
<b>Operations</b>	Bryce Thomas (T)10/1			<b>Division Supervisor</b>	Mike Work 9/30		
<b>Safety Officer</b>	Leonard Kempf 10/5	Tommy Hawkins 10/8		<b>Division Supervisor</b>	Mark Sparrow (T) 9/27		
6. Resources Assigned this Period							
Strike Team/Task Force/ Resource Designator	Leader / Name / Designator	Last Shift Date	Num. Per.	Drop Off PT./Time	Crew Names		
<b>TFLD (O-1302) FL</b>	<b>David Carter</b>	9/29	1				
FL ENG6 B-114 (E-1396)	Jason Longfellow (E-1396.2)	9/29	2		Mark Reddich (E-1396.1)		
FL ENG6 G-106 (E-1395)	Charles Shewey (E-1395.2)	9/29	2		Johnathan Lambert (E-1395.1)		
GA ENG6 Habersham 86 (E-1394)	Leland Bass (E-1394.1)	9/30	2		Payton Turner(E-1394.2)		
GA ENG6 Union 86 (E-1369)	Brad Gregory (E-1369.2)	9/29	2		Blake Melton (E-1369.1)		
SC ENG6 (E-1366) SC-SAR	Robert Heiseg (E-1366.1)	9/28	2		Robert Wyatt (E-1366.2)		
GA ENG6 Monroe 86 (E-1392)	Greg Waters (E-1392.1)	10/1	2		Robert Hargrove (E-1392.2)		
GA ENG6 Polk 86 (E-1393)	Anthony Keene (E-1393.1)	10/2	2		Timothy Sosebee (E-1393.2)		
7. Control Operations							
<ul style="list-style-type: none"> <li>Respond to Initial Attack as requested</li> <li>Mop up and monitor fire's edge, and mop up 200-feet in,( upland areas only)</li> <li>Initial attack IC will communicate sizeup information to the Honey Prairie communication.</li> <li>Improve swamp break boundaries for fire breaks, work with resource advisor.</li> </ul>							
8. Special Instructions							
<ul style="list-style-type: none"> <li>Ensure LCES are in place before operations begin. Stay hydrated.</li> <li>Drive defensively and with lights on at all times and use extra caution on wet or dry roads.</li> <li>Boggy terrain: Be careful and aware when working around this type of area.</li> <li>Avoid areas with potential tree fall</li> </ul>							
9. Division/Group Communication Summary							
Function	Frequency	System	Channel	Function	Frequency	System	Channel
Command N Okee Repeater	RX 164.5750/206.5 TX 163.150/206.5	KING NIFC	5	Logistics		KING NIFC	
Tactical Div/Group	RX 168.775 TX 168.775	KING NIFC	9	Air to Ground	RX 166.9375 TX 166.9375	KING NIFC	6
Prepared by (Resource Unit Ldr.) Greg Strenkowski		Approved by (Planning Sect. Ch.) Joe Bishop (T)			Date September 25, 2011		Time 1800

DIVISION ASSIGNMENT LIST				1. Branch <b>West</b>		2. Division <b>Z (10A)</b>	
3. Incident Name <b>Honey Prairie Complex</b>				4. Operational Period Date: 9/26/2011 Time: 0800-2000			
5. Operations Personnel							
<b>Operations</b>	Bryce Thomas (T)10/1			<b>Division Supervisor</b>	Mike Work 9/30		
<b>Safety Officer</b>	Leonard Kempf 10/5	Tommy Hawkins 10/8		<b>Division Supervisor</b>	Mark Sparrow (T) 9/27		
6. Resources Assigned this Period							
Strike Team/Task Force/ Resource Designator		Leader / Name / Designator		Last Shift Date	Num. Per.	Drop PT	Crew Names
<b>TFLD</b>		<b>Raymond Franco (O-1318)</b>		10/4	1		
BIA ENG6 (E-1318) WIMEA		Adam Waukau (E-1318.1)		10/4	3		Curtis Wayka (E-1318.3)/ Jamie Guzman (E-1318.2)
NPS ENG6 (E-1319) WIAIP		Michael Larson (E-1319,4)		10/5	3		Sawyer Grooms(E-1319.5) / James Strezishar Jr. (E-1319.6)
GA ENG6 (E-2) GAOKR # 41		Donald Stanley (O-1327)		10/5	2		Tommy Crews (O-8) 9/30
GA ENG6 (E-3) GAOKR # 42		James Farmer (O-1311)		9/26	1		TBA
TPL GA OKR 53 (E-23)		Unstaffed			1		
FL DO22 (E-1400)		Robert Dorminey (O-1312)		10/1	1		
<b>TFLD</b>		<b>Rocky Chesser (O-5)</b>		912-276-3232			
TPL GAOKR 56 (E-22)		Cory Bryant (O-9)			1		
TPL GA OKR 54 (E-21)		Dave Pafford (O-1297)			1		
PVT Motorgrader (E-1390)		Junior Thomas		Tim Prep Inc.	1		Mngr's Cell# 904-759-0561
PVT Excavator (E-1327)		Pierce Timber Co.			1		Mngr's Cell# 912-548-4369
7. Control Operations							
<ul style="list-style-type: none"> <li>Establish control check lines.</li> <li>Secure fire's edge, and mop up 50-feet in, in the upland areas.</li> <li>Respond to Initial Attack as requested.</li> <li>Initial attack IC will communicate sizeup information to the Honey Prairie communication.</li> <li>Improve swamp break boundaries for fire breaks, work with resource advisor.</li> </ul>							
8. Special Instructions							
<ul style="list-style-type: none"> <li>Ensure LCES are in place before operations begin. Stay hydrated.</li> <li>Drive defensively and with lights on at all times and use extra caution on wet or dry roads.</li> <li>Boggy terrain: Be careful and aware when working around this type of area.</li> <li>Avoid areas of potential tree fall.</li> </ul>							
9. Division/Group Communication Summary							
Function	Frequency	System	Channel	Function	Frequency	System	Channel
Command N Okee Repeater	RX 164.5750/206.5 TX 163.150/206.5	KING NIFC	5	Logistics		KING NIFC	
Tactical Div/Group	RX 168.775 TX 168.775	KING NIFC	9	Air to Ground	RX 166.9375 TX 166.9375	KING NIFC	6
Prepared by (Resource Unit Ldr.) Greg Strenkowski		Approved by (Planning Sect. Ch.) Joe Bishop (T)			Date September 25, 2011		Time 1800





# Fire Weather Forecast



**FORECAST NO:** 142  
**PREDICTION FOR:** Day Shift  
**SHIFT DATE:** Monday 9/26/11

**NAME OF FIRE:** Honey Prairie Complex  
**UNIT:** Okefenokee National Wildlife Refuge

**FORECAST ISSUED:** 9/25/11 at 1600

**SIGNED:** Jon Jelsema, IMET

**WEATHER DISCUSSION:** High pressure will build in from the west today and remain the dominant weather feature through Tuesday. Increasingly hot and dry conditions can be expected, along with minimal chances for rainfall.

**TODAY:** Partly cloudy with a slight chance of showers and thunderstorms, mainly after 1600.

**MAXIMUM TEMPERATURES:** 92°  
**MINIMUM HUMIDITY:** 44 to 49%  
**20 FT WINDS:** Southwest 4 to 7 mph, becoming South in the afternoon.  
**STABILITY/INVERSION:** 6500 feet  
**TRANSPORT WINDS:** Southwest 10 mph.  
**DISPERSION INDEX:** 30, Fair  
**CHANCE OF PRECIPITATION:** 20%  
**LIGHTNING ACTIVITY LEVEL:** 2

**TONIGHT:** Partly Cloudy with a slight chance of showers and thunderstorms in the evening, then becoming Mostly Clear. Southwest winds 2 to 4 mph, becoming West 1 to 3 mph after midnight. Low temperature 68°.

**TUESDAY:** Mostly Sunny.

**MAXIMUM TEMPERATURES:** 93°  
**MINIMUM HUMIDITY:** 35 to 40%  
**20 FT WINDS:** West-northwest 5 to 8 mph.  
**STABILITY/INVERSION:** 7000 feet  
**TRANSPORT WINDS:** West-northwest 10 mph.  
**DISPERSION INDEX:** 40, Fair  
**CHANCE OF PRECIPITATION:** 10%  
**LIGHTNING ACTIVITY LEVEL:** 1

**EXTENDED FORECAST** High pressure will remain the dominant weather feature through Thursday. A cold front is expected to move through the region on Friday.

	<b>WEDNESDAY</b>	<b>THURSDAY</b>	<b>FRIDAY</b>
<b>SKY/WEATHER</b>	Partly Cloudy	Partly Cloudy with isolated showers and thunderstorms	Partly cloudy with isolated showers and thunderstorms
<b>THUNDER/PRECIP</b>	10 %	20 %	20%
<b>20 FT. WINDS</b>	West 6 to 9 mph	West 5 to 8 mph	Northwest 5 to 8 mph.
<b>MIN/MAX</b>	66/93	68/91	67/90
<b>Relative Humidity</b>	30 to 35%	35 to 40%	40 to 45%

## FIRE BEHAVIOR FORECAST

Fire: Honey Prairie Complex	Unit: GA-OKR-000001	Prediction for Day Shift
Forecast #142 Issued: 09/25/2011 1600 hrs	Signed: Joe Bishop	Shift Date: <b>Monday 09/26/2011</b>

**GENERAL FIRE BEHAVIOR**  
 Fuels around the Okefenokee Wildlife Refuge are predominately Fuel Model 7 (Southern Rough). Large to moderate acreage tracts of commercial timberland are mixed in throughout the entire perimeter surrounding the refuge. Fast moving wildfires with extremely high flame lengths and rapid rates of spread occur within and around the swamp.

Indicators/Threshold for Increased Fire Activity

- Relative humidity below 45%
  - Winds above 10 mph
  - **Heavy fuel loadings**
  - Fine dead fuel moisture 8% or less
  - Dispersion above 70
- \* Items in BOLD ITALICS are predicted to occur today\*

### SPECIFIC FIRE BEHAVIOR

- Interior smoldering and some flare ups are possible.
- Expect fire to continue to slowly creep through organic leaf mats, muck soils, and un-burnt shrubs. Smoldering will continue in dead woody material.

### LIGHTNING ACTIVITY LEVEL 2

Fuel Type	Rates of Spread	Flame Length	Spotting Distance	Firebrand Ignition
<b>Winds at 4-7 mph</b>	Possible NORTH WINDS could lead to control problems			
Shrub Fuels (sh8)	<b>3-5ch/hr</b>	<b>4-5 ft</b>	UP to 1/10 MILE	40%
Southern Rough (7)	<b>4-7 ch/hr</b>	<b>2-3 ft</b>	UP to 1/10 MILE	40%
Reburn (9)	<b>1-2 ch/hr</b>	<b>1-2 ft</b>	UP to 1/10 MILE	40%
Small PL Pines (4)	<b>11-20 ch/hr</b>	<b>8-10 ft</b>	UP to 1/10 MILE	40%

**One hour fine dead fuel moisture is at 9% for Monday:** Some areas on the west branch may have received a trace to 0.5 inches of rainfall. Smoldering in the duff and larger fuels will continue. 1,000 hour fuels remain drier than normal for this time of year. Re-burn potential and any additional fire spread in un-burnt fuels will be minimal where rainfall was received. Areas that have continued to dry have potential for reburn. New starts are possible from the lightning strikes.

**NOTE- OTHER THAN THE RE-BURN, FIRE BEHAVIOR CALCULATIONS ARE FOR FIRES IN UNBURNED FUELS INCLUDING NEW IA STARTS.**

### All Divisions:

*The fire continues a slow spread through the thick bays and muck soils. Roots and fallen trees are protecting heat sources allowing the fire to burn organic soils from the bottom up. Keep a heads-up for falling trees.*

**Air Operations:** Expect possible areas of smoke.

**SAFETY:**

**WINDS** – Stay abreast of changing wx conditions throughout the entire shift.

**THUNDERSTORMS** - these severe winds can create extreme fire behavior, with winds gusting over 30 mph  
**Live Trees/SNAGS** – are falling in all Divisions and will be influenced by Thunderstorm outflow winds.

**FUELS:** Watch for pockets of cured shrubs or blankets of needle cast. Reburn is possible in some area. 1,000 and 10,000 hour fuels as well as deep duff pockets are providing a heat source. 100 and 1000 hour fuels are still below average in moisture content. Stay focused, and put LCES in place before starting operations.

**Energy Release Component (ERC) is running *WELL ABOVE AVERAGE* for this time of year.**

# SAFETY MESSAGE



If you see a Moose. Drink some water.  
If you see a white Moose drink a lot more water!

INCIDENT ACTION PLAN SAFETY ANALYSIS										1. Incident Name Honey Prairie Fire		2. Date 9/26/2011		3. Time Day Shift		
LCES* Analysis of Tactical Applications Lookouts Communications Escape routes Safety zones										Other Risk Analysis						
Divisions	Indirect Fireline	Power lines / Snags	Road Conditions	Frontal Assault	Extreme Conditions	Railroad	Wildlife, Insects	LCES Mitigations	Smoke	Traffic/Driving	Communications	Fatigue/Hydration	School Buses / Children	Other Risk Mitigations		
All Divisions 1, 2, 3, 4, 5, 6, 7, 8, 9, 10, 11, 12, 13, 14, 15, 16, 17, 18, 19, 20, 21, 22, 23, 24, 25, 26, 27, 28								1. Establish & maintain LCES. Report LCES checks twice daily to DIVS on line & staging.	24	12 17 19 20 22, 26, 27	1, 3, 10 14 19 24 25	16 18 21	26	16. Take adequate rest breaks and encourage to drink water NOW through briefings.		
								2. Look UP,DOWN and AROUND						17. Defensive driving will be addressed in all briefings.		
								3. Post experienced Lookouts. Make sure LCES is in place and make known.						18. All personnel must meet the 2:1 work/rest ratio. Line supervisors and Safety will monitor closely.		
								4. Use Aerial Resources as Lookout if available.						19. Notify Operation and Safety of Railroad track issues to ensure safety of firefighters.		
								5. Flag escape routes on right side of escape route facing outward. Create new escape routes as you progress and identify Safety Zones on the ground and maps.						20. Ensure Traffic Planning is safe and enforced. Heed Defensive Driving techniques noted in Safety Messages.		
								6. Identify, mark & mitigate.						21. Relocate staging area when driving conditions warrant.		
								7. FBAN/Meteorologist to monitor weather updates and advisories.						22. Use spotter when backing vehicle(s).		
								8. Ensure Fireline is Anchored to black or manmade/natural barrier.						23. For insects, use protective spray with deet on skin (Not on Nomex), permethrin can be used on nomex clothing		
								10. Keep Firefighters informed of any changes in predicted weather, consider at least a two day weather pattern when planning Strategic Firing operations.						24. Establish smoke/fog signs on roadways. Coordinate with Department of Transportation.		
								11. Refer to IRPG, pg. 12 on Power Line Hazards.						25. Follow establish communication plan, flight follow through dispatch		
								12. Observe all traffic signals and speed limits. Drive with lights on.						26. Watch-out for school buses and for children along the edge of roadway and crossing the road.		
								14. Ensure GOOD tailgate briefings with resources unable to attend Operational Briefing (Include Ops, Logs, Fin & Plans info.).						27. Treat all intersections as 4-way stops		
								15. Scout ahead of tractor operations to avoid making contact with power poles and guide wires when tying into roads. Power companies are working in some DIVS, avoid all down lines as they may become charged.						28. Bears, Gators, and some snakes are dangerous. Do not approach or feed wildlife at any time.		
Prepared by (Name and Position)							ICS 215A	Hank McKinley/Ronald Taylor; SOF								

# AIR OPERATIONS SUMMARY

Prepared By: Kevin Merrill, HEBM Prepared Date: 9.25.2011

Prepared Time: 1800

<b>1. INCIDENT NAME:</b> Honey Prairie	<b>2. OPS PERIOD DATE:</b> September 26, 2011	<b>START TIME:</b> 0830	<b>END TIME:</b> 1900	<b>SUNRISE:</b> 0721	<b>SUNSET:</b> 1926
<b>3. REMARKS (Safety Notes, Hazards, Air Operations Special Equipment, etc ALL FLIGHT REQUESTS GO DIRECTLY TO HELIBASE Afternoon thunderstorms</b> <i>NOTE: Latitude/Longitude format is "Degrees-Minutes-Decimal Minutes" (example: N30 41.42 W082 33.97) helibase convert if necessary</i>				<b>5. TFR #:</b> Canceled 7/27/11 SEE and AVOID!!!	

PERSONNEL	NAME	PHONE #	FREQUENCIES	AM	FM	
HEB2 Waycross HB	Kevin Merrill Desk Cell	912-287-4479 503-504-4613	AIR/ AIR FW	None assigned		<b>AIRTANKERS / LEAD PLANES - None Available</b>  <b>OTHER:</b> <b>Waycross Airport Helibase: 912-287-4479</b> <b>Waycross Airport Helibase Fax: 912-287-4458</b> <b>ICP Helispot is Waycross Airport Helibase</b> <b>Okefenokee Dispatch: 912-496-7366 X230</b>  <b>Waycross Airport: N 31 16.16 10 W82 33.38</b>  <b>BERGANZA HELISPOT N 31 07.22 W082 15.22 * don't use unless cleared with AOB.</b> <b>POGO HELISPOT: N30 44.03 W082 07.41</b>
ABRO	Darold Williams Desk Cell	912-287-4479 386-383-6288	AIR/ AIR RW-FF	122.375		
			Georgia AIR/GRND (Smokey - Dozers)		159.285 W	
			AIR/GROUND PRIMARY		166.9375	
			AIR/GROUND ALTERNATE		166.9000	
			AIR GUARD		168.625 T110.9	

## 9. HELICOPTERS (Use Additional Sheets as Necessary)

FAA N#	TY	MAKE/ MODEL	BASE	AVAIL	MANAGER	FAA N#	T Y	MAKE/ MODEL	BASE	AVAIL	MANAGER
1CH	3	AS320-B3	Waycross	0830	Robert Dodgen 970-799-1176						
9RH	1	K-max	Waycross	0830	Al Driesbach (805) 479-1837						

## 10. TASK/ MISSION/ ASSIGNMENT (Type/ function includes: Air Tactical, Retardant, Recon, Personnel Transport, Bucket Operations, SAR, etc.)

TYPE/FUNCTION	NAME OF PERSONNEL OR CARGO (If applicable) or instructions for tactical aircraft	MISSION START	FLY FROM	FLY TO
Bucket Ops/	9RH	As Requested	Waycross	
Recon	<b>All FLIGHT REQUESTS GO THROUGH HELIBASE, 1CH</b>	As Requested/scheduled	Waycross/Pogo	
Medevac	1CH	As Requested	Waycross	

INCIDENT RADIO COMMUNICATIONS PLAN ICS-205			Incident Name <b>Honey Prairie</b>			<b>GROUP 22</b>		Date/Time Prepared 09/25/2011-18:00		Operational Period Date/Time 9/26/2011 0800-2000	
Ch #	Function	Channel Name	Assignment	RX Freq	NW	RX Tone/NAC	TX Freq	N W	TX Tone/NAC	Mode A,D or M	Remarks
1	Command	West Okee Repeater	Sec West Branch CMD	167.1250	N	156.7	163.1500	N	156.7	A	Stephen Foster State Park
2	Command	South Okee Repeater	Sec East/West Branch CMD	164.7750	N	123.0	163.1500	N	123.0	A	Eddy Florida
3	Command	East Okee Repeater	PRIMARY East Branch CMD	164.6250	N	103.5	163.1500	N	103.5	A	Refuge Headquarters
5	Command	North Okee Repeater	PRIMARY North Branch CMD	164.5750	N	206.5	163.1500	N	206.5	A	Waycross
6	Air-Ground	Air to Ground	PRIMARY	166.9375	N	CSQ	166.9375	N	CSQ	A	
7	Tactical	MOB-MOB	GFC Contingency	159.3900	W	CSQ	159.3900	W	156.7	A	
8	Tactical	V-Fire 21W WHITE	West group Secondary	154.2800	W	CSQ	154.2800	W	156.7	A	
9	Tactical	USFS 9	East/West Groups	168.7750	N	CSQ	168.7750	N	CSQ	A	
10	Tactical	S.E. Compact		159.2850	W	CSQ	159.2850	W	CSQ	A	
11	Tactical	USFS 11	East Group Secondary	168.2000	N	CSQ	168.2000	N	CSQ	A	
12	Tactical	Refuge Tac 1	East Group	168.3500	N	CSQ	168.3500	N	CSQ	A	
13	Tactical	FL 190		151.2725	N	CSQ	151.2725	N	CSQ	A	
15	Air-Ground	Air to Ground	SECONDARY	166.9000	N	CSQ	166.9000	N	CSQ	A	
16	EMERGENCY	AIR Guard	Air OPS.	168.6250	N	CSQ	168.6250	N	110.9	A	
Prepared by (Communications Unit) Ronnie Sumler COML Incident Dispatcher: 404-772-5384						<b>Cloning at ICP communications and briefings,</b>					

The convention calls for frequency lists to show four digits after the decimal place, followed by either an "N" or a "W", depending on whether the frequency is narrow or wide band. **Mode** refers to either "A" or "D" indicating analog or digital (e.g. Project 25) or "M" indicating mixed mode. All channels are shown as if programmed in a control station, base stations, mobile or portable radio.

<b>MEDICAL PLAN</b>	Incident Name <b>Honey Prairie Complex</b>	Date Prepared <b>09/02/2011</b>	Time Prepared <b>1000</b>	Operational Period <b>09/26/2011</b>
---------------------	---	------------------------------------	------------------------------	---

**5. Incident Medical Aid Station**

<u>Medical Aid Stations</u>	<u>Location</u>	Paramedics Yes	No
<b>MEDICAL UNIT (ICP EMT)</b>	<b>Honey Prairie Complex ICP- No MEDL</b>		
<b>WEST SIDE (Line EMT)</b>	<b>**** Andrew Gill 404-772-5402 (BLS Kit)****</b>		
<b>EAST SIDE (Line EMT)</b>	<b>**** Andrew Gill 404-772-5402 (BLS Kit)****</b>		

**Ambulance Services**

Name	Address	Phone	Paramedic	
			Yes	No
Clinch County EMS (West)	Homerville, GA (911 to activate)	912-487-5315	Yes	
Ware County EMS (North)	Waycross, Georgia (911 to activate)	912-287-4335	Yes	
Charlton County EMS (East)	Folkston, GA (911 to activate)	912-496-2281	Yes	

**Air Ambulance Service**

Trauma 1	Lake City, FL	1-800-223-4878	Yes	
Trauma 1	Jacksonville, FL	1-800-223-4878	Yes	
AirMed	Augusta, GA	1-888-792-9245	Yes	
Lifeflight	Jacksonville, FL	1-877-870-7779	Yes	
Air Evac	Waycross, GA	1-800-247-3822	Yes	
US Coast Guard (Heli-Rescue)	Savannah GA	1-912-652-4646	Yes	

**7. Hospitals**

Name	Address	LAT-LON	Phone	Helipad		Burn Center	
				Yes	No	Yes	No
Satilla Regional	410 Darling AVE. Waycross, GA	N 31' 13.509 W 82' 20.853	(912) -283-3030	Yes			No
Clinch Memorial Hospital (WEST SIDE)	1050 Valdosta HWY Homerville, GA	N 31' 01.977 W 82 45.851	(912) -487-5211 ext 4502	Yes			No
Charlton Memorial Hospital (EAST SIDE)	1203 3 <sup>rd</sup> Street Folkston, GA	N 30' 50.713 W 82' 00.302	(912) -496-2531	Yes			No
Savannah Memorial Hospital	4700 Waters AVE Savannah, GA	N 32' 01.538 W 81' 05.298	(912) -350-8999	Yes			No
Shands Hospital (Level I)	655 West 8 <sup>th</sup> Street Jacksonville, FL	N 30' 20.97 W 81' 39.92	(800) -223-4878	Yes		Yes	
Shands Burn Center	1600 Southwest Archer Road Gainesville, FL	N 29' 38.33 W 82' 20.55	(352) -265-0300	Yes		Yes	

**8. Medical Emergency Procedures**

**Identify any EMTs and Paramedics in your crews. All medical emergencies will be reported to the Division Supervisor who will assume command and notify Line Medics.**

**On scene personnel will:**

1. Provide medical care & stabilize patient.
2. Call 911 if possible or call phone #'s above for EMS and provide the information requested.
3. Notify Communications via radio over Command Channel
4. Communications will clear radio traffic for medical emergency.
5. Communications will confirm 911 has been notified coordinate with IC, SOF.
6. DIVS will notify the Field Ops Section Chief.

**MAJOR EMERGENCIES – Secure the area and identify witness for later investigation. Keep an accurate log of events. NOTE: Do not give Patients Name over the radio!**

INJURY REPORTING PROCESS:

Nature of Injury: \_\_\_\_\_

Location of Patient: \_\_\_\_\_

Transportation Requested by: Air \_\_\_ Ground \_\_\_

Pick Up Point: \_\_\_\_\_

Lat: \_\_\_\_\_ Long: \_\_\_\_\_

Patient Unit ID: \_\_\_\_\_

Is an EMT w/Patient: Yes \_\_\_ No \_\_\_

Age: \_\_\_ Sex: Male \_\_\_ Female \_\_\_

Weight (If Air Evac. is needed): \_\_\_\_\_

**HELISPOTS**

NAME	LAT-LON	LOCATION
<b>Pocket Helispot</b>	N 30' 47.500 W 82' 22.659	(West side), mile marker 4, HWY 177 Steven C. Foster State Park
<b>Fargo Helispot</b>	N 30' 40.945 W 82' 33.640	(West side), HWY 441- Steven C. Foster Visitor Center
<b>POGO Helibase</b>	N 30' 44.219 W 82' 07.689	(East side) Adjacent to Okee Refuge Shop

**Evac Yankee**

<b>Helispot 6</b>	N 30' 53.280 W 82' 33.880	Road 32 and 32A
<b>Helispot 7</b>	N 30' 50.280 W 82' 33.857	Tatum Road Pond

**\*Alternate site can be established following guidelines for safety found with IRPG and local EMS resources.**

Prepared by: Harry Kepler, SOF

10. Reviewed by: Harry Kepler, SOF

<b>HONEY PRAIRIE</b>			<b>PHONE LIST</b>			<b>09/26/11</b>		
<b>Incident</b>		<b>Communication</b>		<b>(Hours: 0800-2000)</b>		<b>912-286-1660</b>		
<b>AGENCY OFFICIALS</b>			<b>OPERATIONS</b>					
Curt McCasland	602-359-0013	USFWS AA		Bryce Thomas (T)	850-625-6634			
Mindy Gautreaux	912-282-7500	USFWS Deputy AA						
Frank Sorrells	912-381-7503	GFC AA		<b>DIVISIONS</b>				
James Karels	850-228-7763	FL DOF AA		Mike Work	904-705-3926	West Group		
Diane Adams	912-266-5421	GEMA		Mark Sparrow	706-968-1895	West Group		
Mike Housh	404-772-5380	USFWS AREP		Bruce Miller TFLD	770-280-7684	East Group		
<b>COMMAND - IC</b>			<b>AIR OPERATIONS</b>					
Richard Dolan	352-353-5101	Incident Commander		Kevin Merrill	503-504-4613	HEB1		
Steve Gray	770-655-8002	Incident Commander			912-287-4479	WAYCROSS AIRPORT		
Bryce Thomas	850-625-6634	ICT3 (T)						
<b>RESOURCE ADVISORS</b>			<b>LANDOWNERS</b>					
Ron Phernetton	912-276-2349	Resource Advisor		Jim Barrett	229-356-1993	Langdale/GOAL Chairman		
Rocky Chesser	912-276-3232	Resource Advisor		Wesley Langdale	229-220-2602	Langdale		
Reggie Forcine	912-614-4041	Resource Advisor		Hal Rowe	229-412-3133	Langdale		
<b>INFORMATION 912-496-2566</b>			Langdale Office 229-242-7450 Langdale Office					
Art Webster		Fire Information		Mike Conlon	386-365-3882	Rayonier Unit Supervisor		
<b>SAFETY OFFICERS</b>			Ray Carter 386-288-6626 Rayonier					
Lenny Kempf	West Branch	715-661-0728		Ed Carter	386-288-6626	Rayonier		
Ray Durham	Rehab Group	404-772-5553		Doug Nuss	912-390-1037	Rayonier		
Tommy Hawkins	West Branch	404-558-4476		Randall McCrady	912-283-4077	Rayonier		
<b>DISPATCH</b>			Colin Myerson 229-506-1565 Superior Pine Products Co					
Okefenokee Dsp	912-496-7366	Okefenokee		Robbie Lee	229-356-0526	Superior Pine Products Co		
Suwannee Dispatch	386-758-5700	Fla wildfires, other		Superior Pine Office	912-637-5261	Superior Pine Products Co		
Honey Prairie Dspth	404-772-5384	Honey Prairie ICP		Al Alexander	850-843-0104	The Forestry Co		
Waycross Dispatch	912-287-4915	Ga wildfires, other		Savell Schmidt	850-843-1181	The Forestry Co		
GA DNR	1-800-241-4113	Hunting Issues		John Bogue	850-843-1192	The Forestry Co		
<b>LOGISTICS 256-497-8490 fax 912-287-6542</b>			Joe Hopkins 912-276-0911 Toledo Timber					
Shane Locke	404-772-5400	LSC		Chris Gowan	912-276-0965	Toledo Timber		
Lindel Gregory	404-772-5401	Security		Martin Bell	912-283-0583	Swamp Park		
Daniel Crouch	258-497-8490	FACL (T)		Crystal Peebles	352-316-0632	FIA		
James (Ronnie) Sumler	850-361-9163	COML		Steve Davis	912-614-1828	Davis Community		
James Chappell	404-772-5318	GSUL (T)		Trevor Fortner	912-599-9271	Little Suwannee		
Steve Blackwell	423-605-3793	GSUL		Tim Jarrell	912-223-7120	Hancock Forest Mgmt.		
Jayson Brockmeyer	907-347-5511	RCDM		<b>RAILROADS</b>				
Harold Smith	404-772-5405	Mechanic		Norfolk Southern	800-453-2530			
Andrew Gill	404-772-5402	EMTB		Sid Moody	904-318-7983	Norfolk Southern Railroad		
Tracy Stelman	209-325-0548	SPUL		Chad Edwards	404-582-4909	Norfolk Southern Railroad		
<b>PLANNING 912-287-6565 FAX 912-287-6541</b>			Eric Sams 904-576-9907					
Joseph Bishop	404-772-5317	PSC2 (T)/SITL		Emergency Dispatch	404-529-1597	Norfolk Southern Railroad		
Jon Jelsema	240-499-6637	IMET		CSX Randy Dixon	912-270-0699			
Greg Strenkowski	478-951-2421	RESL/DMOB		CSX Dispatch	800-232-0144			
<b>FINANCE 912-287-6544 FAX 912-287-6564</b>			<b>COUNTY</b>					
Lila Johnson	770-658-6641	Finance Section Chief			912-496-7229	Charlton County EMA		
Fredrick Cheeks	256-497-8334	Purchasing Agent		John F. Meyer -	912-496-2549	Charlton County Commissioners		
	912-287-6557	Buying Team Fax		Dobie Conner	912-496-7321	Charlton County Sheriff		
<b>All Contractors 912-287-6568</b>	<b>All Contractors</b>		Jesse Booth 912-520-0061 Clinch County EMA					
<b>FEDERAL Federal</b>			Jonathan Daniel 912-281-5158 Ware County EMA					
Okefenokee Fire Shop	912-496-4181			Jessie Jordan	912-816-6063	Ware County Fire Dept		
Okefenokee NWR HQ	912-496-7366			Joe Morris	912-281-6020	Ware County Sheriff		
Okefenokee NWR	912-637-5322			Robbie Sutton	912-599-9027	Tri County 911		
Okefenokee Visitor	912-496-7836			Georgia State Patrol	912-287-6500			
<b>STATE State</b>			Travis Griffin 912-281-5790 Laura Walker State Park					
GFC Fargo Office	912-637-5270							
GFC Satilla District	912-287-4915							
Jason Gillis	912-314-9233	GFC Satilla Mgr.						



# Hunter Encounters and Confrontations

Archery season is open. Crews are likely to encounter hunters either hunting or scouting in the area of the Swamp Edge Break.

Expect many questions about the fire operations and how long the fire will continue to burn. It's a good idea to review the Fire Information section of the plan for a good explanation of what to expect in the coming months. The majority of the hunters will be friendly but should you have a confrontation with someone:

1. Politely excuse yourself and leave the area immediately;
2. Notify your supervisor;
3. Notify the Security Manager by radio or phone:

SECM – Lindel Gregroy 404-772-5401

4. If necessary, call the Georgia DNR at 1-800-241-4113 with a description of the person, vehicle, and the nature of the confrontation. Georgia DNR will send an officer to handle the situation.

## Fire Information IAP messages

1. Public and firefighter safety remains the top priority for this incident.
2. Fire managers for the refuge have coordinated suppression efforts with the Georgia Forestry Commission and the Greater Okefenokee Association of Landowners (GOAL) representing federal and state agencies, industry and private landowners. Through this Unified Command, the partners support the chosen strategy as the appropriate management response to protect adjacent valuable commercial timber, isolated homes scattered on private land, and critical wildlife habitat for threatened and endangered species.
3. Fire is a natural component of the Okefenokee ecosystem; since the refuges creation in 1937, there have been hundreds of wildfires that have burned thousands of acres here. The plants and animals on the refuge are well adapted to survive periodic wildfires.
4. Past experience has shown that conventional fire suppression tactics do not work well inside the swamp. Humans have never been successful in controlling fires within the swamp; only “mother nature” has done this. Attempting suppression within the swamp is ineffective, costly, wastes firefighting resources and needlessly endangers firefighter safety.
5. Fire on the refuge is usually fought by reinforcing firelines along the Swamps Edge Break, including areas of private land, to keep the fire contained within the swamp.
6. Okefenokee National Wildlife Refuge typically employs a contain and control strategy to manage fire; containing it within the swamp and actively suppressing it outside of the swamp in the upland forest.

### Commonly asked question:

1. Why won't this fire go out? What will it take? Surface burning of available fuels is only part of the current problem. Peat beds (partially decayed vegetation normally floating in a vertical column of water) is what supports these surface fuels. Unfortunately, the current dry conditions have allowed a portion of the peat beds to dry out and the surface burn has transferred into the peat beds and is now burning subsurface. There are now two sources of heat and available fuel that must be extinguished. The current spotty, localized rain storms can have some effect on the surface burns but do not do much to control subsurface burns. It will take a big rain storm blanketing the entire swamp (remember the swamp is huge –over 650 square miles in size) dropping a minimum of 6-8 inches of rain. As the water levels in the swamp slowly rise, as a result of the rain, the peat beds will become water saturated again eliminating one source of the fire. As the surface of the swamp becomes covered by water, burning surface fuels will be extinguished as well. Burning fuels that extend above these water levels (dead and drying trees/shrubs) may continue to burn until they fall over or burn up. Fire that exists in upland habitat on islands within the swamp may also continue to burn but it will be confined to that immediate area by the swamp waters surrounding the island. This is not something that will likely occur overnight. It may take days, weeks, or even months. The refuge has experienced fire events that were not declared officially out for well over a year after the main firefighting effort had ceased.

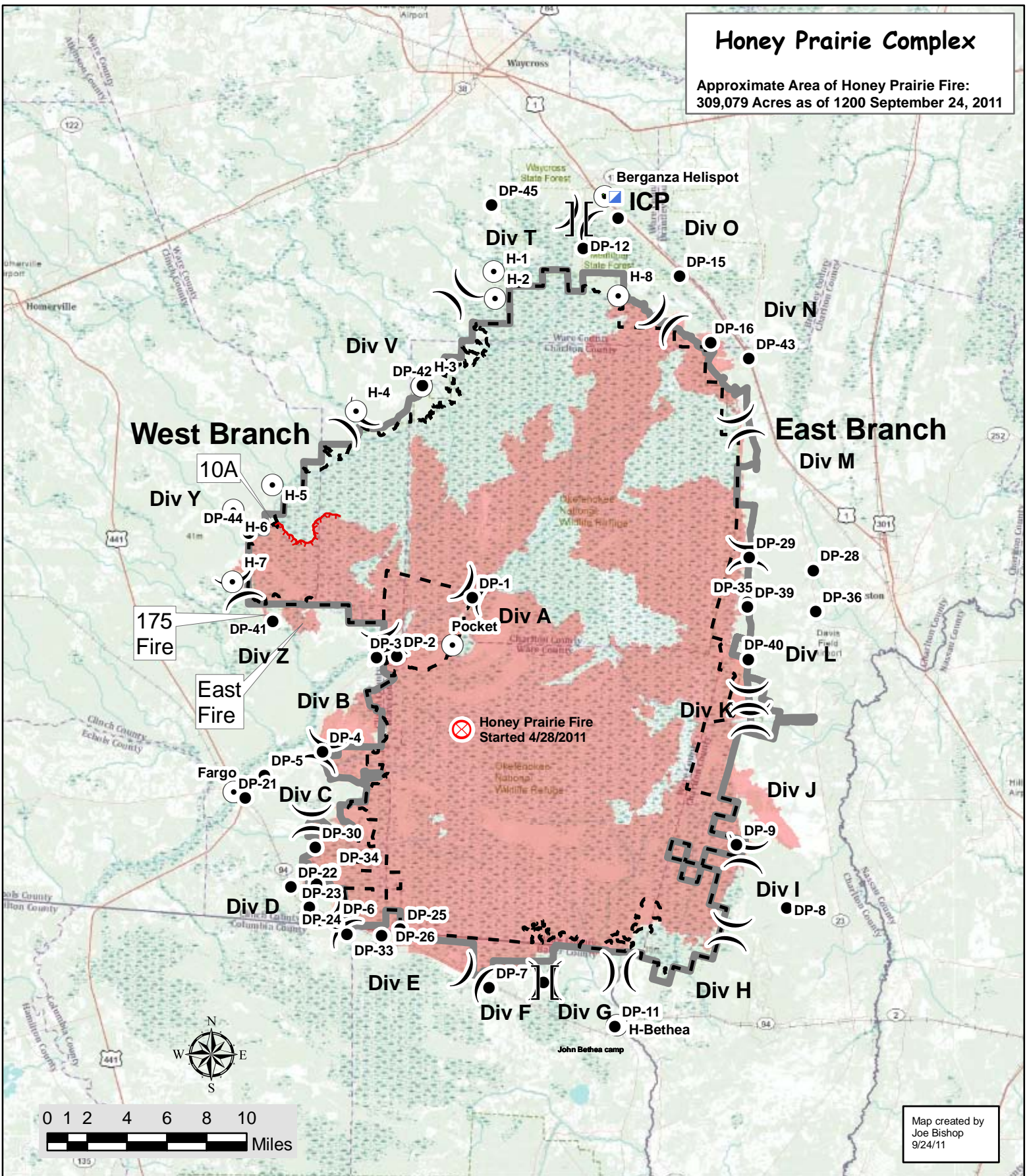
## DMOB Report Sept

RequestNun	ResourceName	KindCode	UnitID	TravelMethod	Jetport	DemobDate
O-1257	DOLAN, RICHARD W	ICT3	FLFIC	AOV		09/27/2011
E-1324	DOLAN PICKUP	PU	FLFLS			09/27/2011
O-1311	FARMER, JAMIE	ENGB	FLLSR	AOV		09/27/2011
E-1403	FLFLS TRP3 G-33	TPL3	FLFLS	AOV		09/28/2011
E-1338	JD650 T-682	TPL3	FLFLS			09/28/2011
E-1337	JD650 T-483	TPL3	FLFLS			09/28/2011
E-1333	GAINSVILLE-115	ENG6	FLFLS			09/28/2011
E-1340	JD650 T-372	TPL2	FLFLS			09/28/2011
O-1282	HAYES, JOHN	DZOP	FLFNF	AOV		09/28/2011
O-1307	JOSEY, MICHAEL	ENGB	FLFNF	AOV		09/28/2011
E-1345	INTERNATIONAL TRANSPORT	TRTL	FLFLS			09/28/2011
O-1273	WILSON, JONATHON	ENGB	FLFNF	AOV		09/28/2011
O-1284	CARAWAY, DANIEL	DZOP	FLFNF	AOV		09/28/2011
E-1330	SPARROW PU	PU	GAGAS	AOV		09/28/2011
O-1278	TYE, BARRY	ENGB	FLFNF	AOV		09/28/2011
O-1283	PHILIPSON, ABRAHAM	DZOP	FLFNF	AOV		09/28/2011
E-1343	STERLING TRANSPORT	TRTL	FLFLS			09/28/2011
O-1247	MILLER, BRUCE	TFLD	WVNRP	AOV		09/28/2011
O-1266	HARVEY, KENNETH	TFLD	FLFNF	AOV		09/28/2011
E-1342	STERLING TRANSPORT	TRTL	FLFLS			09/28/2011
E-1332	PERRY-114	ENG6	FLFLS			09/28/2011
O-1267	DEWOLFE, JOHN	TFLD	FLFNF	AOV		09/28/2011
O-1271	KEARNEY, JOHN	ENOP	FLFNF	AOV		09/28/2011
E-1329	BISHOP PU	PU	FLFLS			09/28/2011
E-1365	SERVICE TRUCK	SV	FLFLS			09/28/2011
O-1279	HATHCOX, PATRICK	DZOP	FLFNF			09/28/2011
O-1274	DORRIER, JARAD	ENGB	FLFNF	AOV		09/28/2011
E-1339	JD550 T-288	TPL3	FLFLS			09/28/2011
E-1336	JD650 T-400	TPL2	FLFLS			09/28/2011
E-1344	INTERNATIONAL TRANSPORT	TRTL	FLFLS			09/28/2011
O-1281	DEHOFF, CHARLES	DZOP	FLFNF	AOV		09/28/2011
O-1272	DUNNIGAN, JAMES	EQPM	GAGAS	PAS		09/28/2011
O-1276	DURBIN, RODNEY	ENGB	FLFNF	AOV		09/28/2011
O-1286	BENTLEY, HARRY	THSP	GASAR	AOV		09/28/2011
O-1280	DAVIE, LARRY	DZOP	FLFNF	AOV		09/28/2011
E-1346	STERLING TRANSPORT	TRTL	FLFLS			09/28/2011
E-1349	HARVEY PU	PU	FLFLS	AOV		09/28/2011
O-1265	BISHOP, JOSEPH	PSC2	FLFIC	AOV		09/28/2011
O-1269	SMITH, HAROLD F.	MEC	FLFNF	AOV		09/28/2011
E-1334	LAKELAND-116	ENG6	FLFLS			09/28/2011
E-1335	ORLANDO-104	ENG6	FLFLS			09/28/2011
O-1264	SPARROW, MARK	DIVS	GAGAS	AOV		09/28/2011
O-1309	MEMMOLI, VICTOR	ENGB	FLFNF	AOV		09/28/2011
O-15	PRIVETT, FED	TPIA	GAOKR	AOV		09/29/2011
E-1354	DEWOLF PU	PU	FLFLS			09/29/2011
E-1363	DURHAM PU	PU	FLFLS			09/29/2011
E-1366.1	HEISEY, ROBERT	ENGB	GASAR	AOV		09/29/2011
E-1366.2	WYATT, ROBERT	ENOP	GASAR	AOV		09/29/2011
E-1366	SAVANAH ENGINE E-1366	ENG6	GASAR	AOV		09/29/2011
O-1268	DURHAM, RAY	SOF2	FLFNF	AOV		09/29/2011

Record Count: 50

# Honey Prairie Complex

Approximate Area of Honey Prairie Fire:  
309,079 Acres as of 1200 September 24, 2011



Map created by  
Joe Bishop  
9/24/11

	Fire Origin		Helispot		Refuge Boundary
	Honey Prairie Fire Area		Drop Point		Wilderness Boundary
	Uncontrolled Fire Edge		Branch Break		
	Incident Command Post		Division Break		

