

Honey Prairie
Complex
GA-OKR-000001
Incident Action Plan

Operational Period
Thursday

October 6, 2011
0800-2000

Incident Commander
Steve Gray
Bryce Thomas (T)

Accounting Codes

FWS - 9141-F25M-2J

NPS - 5023 F25M E11

BLM - F25M

USFS - PRF25M_1502

Initial Attack - F4PM



*An Equal Opportunity
Employer & Service Provider*

Letter from GFC Incident Commander:

To: All Honey Prairie Incident Personnel

As a Type 3 Incident Commander, I am committed to a policy of “zero tolerance” of inappropriate behavior during incident operations. Any form of harassment, discriminatory practices, or disrespectful behavior will not be tolerated.

Guidelines on in-appropriate behavior both “on Duty” and “off Duty” while assigned are addressed within each agencies policies. Our Team expects all incident personnel to follow established government policies for behavior along with all Illegal drug and alcohol directives.

Our Incident Management Team endorses and supports an attitude of mutual respect for all personnel and the public we serve.

We expect a strong work ethic and an attitude of Safety at all times!

Sincerely,

/s/ Steve Gray

Incident Commander
Type 3 Incident Management Team

INCIDENT OBJECTIVES	1. INCIDENT NAME Honey Prairie Complex	2. DATE PREPARED 10/05/11	3. TIME PREPARED 1700
4. OPERATIONAL PERIOD (DATE/TIME) Wednesday, October 6, 2011 0800 – 2000			
5. GENERAL CONTROL OBJECTIVES FOR THE INCIDENT (INCLUDE ALTERNATIVES) 1. Provide for safety of incident personnel and public in all incident operations. 2. Maintain a positive working relationship with all adjacent landowners, cooperators, State and Federal partners. Inform, involve and communicate incident planning and operations with all partners. 3. Contain all fires that are within the Okefenokee National Wildlife Refuge, inside the Refuge and/or inside the swamp edge break if possible. 4. In cooperation with local land owners and communities, use full suppression strategies and tactics to minimize damage to private timberlands and structural improvements and to prevent fires outside the Refuge from entering the Refuge. 5. Assist in management and suppression of additional fires (new starts or breakouts) in the vicinity as approved by Agency Administrators and Incident Commander. 6. Protect all cultural and archeological sites and structures within the refuge. 7. Manage the fires cost-effectively consistent with the values at risk. 8. Coordinate suppression actions with assigned Refuge Resource Advisors			
6. WEATHER FORECAST FOR OPERATIONAL PERIOD See attached forecast for area specific weather information.			
7. GENERAL SAFETY MESSAGE Drive defensively and use spotter when backing. Ensure LCES is in place and known by all personnel. Drink plenty of water and take frequent rest breaks. Ensure proper use of PPE during all operations.			
8. Attachments <input checked="" type="checkbox"/> if attached <input checked="" type="checkbox"/> Organization List (ICS 203) <input checked="" type="checkbox"/> Incident Map <input checked="" type="checkbox"/> Safety Message <input checked="" type="checkbox"/> Assignment List (ICS 204) <input type="checkbox"/> Traffic Plan <input type="checkbox"/> Demobilization Procedures <input checked="" type="checkbox"/> Communications Plan (ICS 205) <input checked="" type="checkbox"/> Unit Log <input checked="" type="checkbox"/> Medical Plan (ICS 206) <input checked="" type="checkbox"/> Phone List			
9. PREPARED BY (PLANNING SECTION CHIEF) David Fogler		10. APPROVED BY (INCIDENT COMMANDER) Steve Gray	

ORGANIZATION ASSIGNMENT LIST		9. Operations Section	
1. Incident Name Honey Prairie Complex GA-OKR-000001		Chief	Bryce Thomas (T) 10/7
2. Date 10/05/2011	3. Time 1500 hrs	a. Branch/Divisions/Groups	
4. Operational Period 10/06/2011 0800 - 2000		West Branch	
5. Incident Commander and Staff			
Incident Commander	Steve Gray 10/9 Bryce Thomas (T) 10/7	Rehab Group	Richard McGhee 10/18 John Molve (T) 10/13
Safety Officer	Tommy Hawkins 10/12	Refuge Group	Richard McGhee 10/18 John Molve (T) 10/13
Information Officer	Art Webster	Division Y /Z	Richard McGhee 10/18 John Molve (T) 10/13
		Division Z 10A)	Richard McGhee 10/18 John Molve (T) 10/13
6a. Agency Administrators			
FWS	Curt McCasland		
FWS	Mindy Gautreaux		
6b. Agency Representatives			
		b. Branch/Divisions/Groups	
GFC	Frank Sorrells		
FLFFS	James Karels		
FWS AREP	Mike Housh		
FWS-Refuge PAO	Art Webster		
GEMA AREP	Alan Robinson / Diane Adams		
USFS AREP	Ivan Greene		
Charlton Co EMA	Bruce Young		
7. Planning Section			
Chief	Dave Fogler 10/14	c. AIR OPERATIONS BRANCH - Honey Prairie	
Resource Advisors	Ron Phernetton, Reggie Forcine	Waycross Helibase Mgr	Melvin Tate 10/14
Resources Unit			
IMET	JR Rothfuss 10/16		
Situation Unit			
FBAN		d. AIR OPERATIONS BRANCH - Pogo	
Demob Unit	Chuck Norvell 10/09		
Documentation			
GIS			
CTSP			
SCKN			
8. Logistics Section		10. Finance Section	
Chief	Steve Blackwell (T) 10/9	Chief	Amy Treadwell 10/16
Supply Unit	Teresa (Tracy) Stelman 10/6	Time Unit	Vickie Hulsizer 10/11
Ground Support	Dan Chappell (T) 10/13	Cost	
COML	James (Ronnie) Sumler 10/12	PTRC	
EQPM	Dan Chappell (T) 10/13	EQTR	
RCDM	Dan Chappell (T) 10/13	IBA	
Facilities	Rusty Brown 10/13		
SECM	Michael Tipton 10/19 James Willett 10/13	Purchasing Agent	Fredrick Cheeks 10/6
COMT			
EMTB	David Moore 10/15		
Mechanic			
Base Camp Mngr	Rusty Brown 10/13		
		Prepared by: Dave Fogler	PSC2

DIVISION ASSIGNMENT LIST	1. Branch	2. Division REHAB Group
3. Incident Name Honey Prairie Complex	4. Operational Period Date: 10/06/2011 Time: 0800-2000	

Operations	Bryce Thomas (T)10/7	Branch Director	
Resource Advisor	Reggie Forcine	Division Supervisor	Richard McGhee 10/18
Safety Officer	Tommy Hawkins 10/12	Division Supervisor	John Molve (T) 1013

6. Resources Assigned this Period

Strike Team/Task Force/ Resource Designator	Leader / Name / Designator	Last Shift Date	Num. Per.	Drop Off PT./Time	Crew Names
TFLD (O-1332)	Brian Delasantos	10/12	1		720-314-5073
FWS Motorgrader (E-1356)	Unstaffed				
PVT DOZ2 (E-1424)	Pierce Timber Co.		1		Mngr's Cell# 912-548-4369
PVT DOZ2 (E-1413)	Pierce Timber Co.		1		Mngr's Cell# 912-548-4369
PVT Excavator (E-1327)	Pierce Timber Co.		1		Mngr's Cell# 912-548-4369
Timberline Skidder (E-1305)	Timber Line Forest Service		1		Mngr's Cell# 912-218-0360
PVT Excavator (E-1326)	Hughes Tree Planting		2		Mngr's Cell# 912-218-0360
PVT Motorgrader (E-1390)	Tim Prep Inc.		1		Mngr's Cell# 904-759-0561
PVT Excavator (E-1433)	Johnny Smith & CO.		1		Mngr's Cell# 912-599-0680
PVT 12-ton Mack dump truck (E-1334)	Johnny Smith & CO.		1		Mngr's Cell# 912-599-0680
PVT 12-ton Kenworth dp trk (E-1335)	Johnny Smith & CO.		1		Mngr's Cell# 912-599-0680

7. Control Operations
- Patrol fire perimeter
 - Initial attack IC will communicate sizeup information to the Honey Prairie communication.
 - Make contact with the resource advisor before using mechanical equipment.
 - Continue to work with resource advisor on Refuge rehab objectives.

8. Special Instructions
- Ensure LCES are in place before operations begin. Stay hydrated.
 - Drive defensively with lights on at all times and use extra caution on wet or dry roads.
 - Boggy terrain: Be careful and aware when working around this type of area.
 - Avoid areas with potential tree fall.

9. Division/Group Communication Summary

	Function	Frequency	Channel	Function	Frequency	System	Channel
Command N Okee Repeater	RX 164.575/206.5 TX 163.150/206.5	KING NIFC	5	Logistics		KING NIFC	
Tactical Div/Group	RX 168.775 TX 168.775	KING NIFC	9	Air to Ground	RX 166.9375 TX 166.9375	KING NIFC	6

Prepared by (Resource Unit Ldr.) Chuck Norvell	Approved by (Planning Sect. Ch.) David Fogler	Date October 5, 2011	Time 1800
---	--	-------------------------	--------------

DIVISION ASSIGNMENT LIST				1. Branch West		2. Division Refuge Group		
3. Incident Name Honey Prairie Complex				4. Operational Period Date: 10/06/2011 Time: 0800-2000				
5. Operations Personnel								
Operations		Bryce Thomas (T)10/7						
				Division Supervisor		Richard McGhee 10/18		
Safety Officer		Tommy Hawkins 10/12		Division Supervisor		John Molve (T) 10/13		
6. Resources Assigned this Period								
Strike Team/Task Force/ Resource Designator		Leader / Name / Designator		Last Shift Date		Num. Per.	Drop Off PT./Time	Crew Names
TFLD		Rocky Chesser (O-5)				1		912-276-3232
TPL GAOKR 56 (E-22)		Matt Brown (O-1345)				1		
TPL GA OKR 54 (E-21)		Charles Johnson (O-1335)				1		
7. Control Operations <ul style="list-style-type: none"> Respond to Initial Attack as requested Secure fire's edge, and mop up 200-feet in, (upland areas only). Initial attack IC will communicate sizeup information to the Honey Prairie communication. Improve swamp break boundaries for fire breaks, work with resource advisor. 								
8. Special Instructions <ul style="list-style-type: none"> Ensure LCES are in place before operations begin. Stay hydrated. Drive defensively and with lights on at all times and use extra caution on wet or dry roads. Boggy terrain: Be careful and aware when working around this type of area. Avoid areas with potential tree fall 								
9. Division/Group Communication Summary								
Function	Frequency		System	Channel	Function	Frequency	System	Channel
Command W Okee Repeater	RX 167.125/156.7 TX 163.150/156.7		KING NIFC	1	Logistics		KING NIFC	
Tactical Div/Group	RX 168.775 TX 168.775		KING NIFC	9	Air to Ground	RX 166.9375 TX 166.9375	KING NIFC	6
Prepared by (Resource Unit Ldr.) Chuck Norvell			Approved by (Planning Sect. Ch.) David Fogler			Date October 5, 2011		Time 1800

DIVISION ASSIGNMENT LIST				1. Branch West		2. Division Y / Z									
3. Incident Name Honey Prairie Complex				4. Operational Period Date: 10/06/2011 Time: 0800-2000											
5. Operations Personnel															
Operations		Bryce Thomas (T)10/7													
				Division Supervisor		Richard McGhee 10/18									
Safety Officer		Tommy Hawkins 10/12		Division Supervisor		John Molve (T) 10/13									
6. Resources Assigned this Period															
Strike Team/Task Force/ Resource Designator		Leader / Name / Designator		Last Shift Date		Num. Per.	Drop Off PT./Time	Crew Names							
STEN (T) (E-1394.1) GA		Leland Bass		10/7		1		770-280-7684							
GA ENG6 Habersham 86 (E-1394)		Rusty Carroll(O-1351)		10/14		2		Aubrey Brown (O-1351)							
GA ENG6 Monroe 86 (E-1392)		David Carter (TFLD) 10/6				2		Ben Godowns (E-1392.3)10/15							
GA ENG6 Polk 86 (E-1393)		Anthony Keene (E-1393.1)		10/9		2		Timothy Sosebee (E-1393.2)							
FL ENG6 B-114 (E-1396)		Jason Longfellow (E-1396.2)		10/6		2		Mark Reddich (E-1396.1)							
FL ENG6 G-106 (E-1395)		Charles Shewey (E-1395.2)		10/6		2		Johnathan Lambert (E-1395.1)							
FL ENG6 C-920 (E-1431)		Shane McGowen		10/14		2		Walter Bowers							
TFLD (T) (O-1333)		Wes Merkison		10/9		1		912-552-3821							
GA TPL3 Lanier 70 (E-1418)		Stewart McIntosh		10/9		1									
GA TPL3 ATCO 71 (E-1420)		Derek Harper		10/9		1									
GA TPL3 Appling 72 (E-1417)		Josh Yawn		10/9		1									
GA TPL3 Brantley 72 (E-1419)		David Smith		10/9		1									
EMTB		David Moore (O-1344)		10/15		1									
7. Control Operations															
<ul style="list-style-type: none"> Respond to Initial Attack as requested Mop up and monitor fire's edge, and mop up 200-feet in,(upland areas only) Initial attack IC will communicate sizeup information to the Honey Prairie communication. Improve swamp break boundaries for fire breaks, work with resource advisor. 															
8. Special Instructions															
<ul style="list-style-type: none"> Goto Argyle turn down Antioch Church Rd. Turn down Rd. 28, then Turn on Rd 26, to Perimeter Rd. Stage at DP41 until DIVS Authorizes movement. Avoid Confrontations with bear hunters (Thursday, Friday, and Saturday only). Ensure LCES are in place before operations begin. Stay hydrated. Drive defensively and with lights on at all times and use extra caution on wet or dry roads. Boggy terrain: Be careful and aware when working around this type of area. Avoid areas with potential tree fall 															
9. Division/Group Communication Summary															
Function		Frequency		System		Channel		Function		Frequency		System		Channel	
Command W Okee Repeater		RX 167.125/156.7 TX 163.150/156.7		KING NIFC		1		Logistics				KING NIFC			
Tactical Div/Group		RX 168.775 TX 168.775		KING NIFC		9		Air to Ground		RX 166.9375 TX 166.9375		KING NIFC		6	
Prepared by (Resource Unit Ldr.) Chuck Norvell				Approved by (Planning Sect. Ch.) Dave Fogler				Date October 5, 2011				Time 1800			

DIVISION ASSIGNMENT LIST				1. Branch West		2. Division Z (10A)	
3. Incident Name Honey Prairie Complex				4. Operational Period Date: 10/06/2011 Time: 0800-2000			
5. Operations Personnel							
Operations		Bryce Thomas (T)10/7					
				Division Supervisor		Richard McGhee 10/18	
Safety Officer		Tommy Hawkins 10/12		Division Supervisor		John Molve (T) 10/13	
6. Resources Assigned this Period							
Strike Team/Task Force/ Resource Designator	Leader / Name / Designator	Last Shift Date	Num. Per.	Drop PT	Crew Names		
TFLD	Richard McGhee (O-1356)	10/18	1		256-497-8490		
TFLD (T)	Joseph Taranto (O-1353)	10/17	1		850-653-5371		
FL ENG6 (E-1438)	Danny Cerezo (E-1438.1)	10/19	2		Edward Parrish (E-1438)		
FL ENG6 (E-1437)	Edward Vuolo (E-1437.1)	10/19	2		Kevin Ogden (E-1437)		
GA ENG6 (E-2) GAOKR # 41	Brian Pippin (O-1381)	10/19	2		Nicolas Hawkins (O-1341) 10/12		
GA ENG6 (E-3) GAOKR # 42	Unstaffed		0				
NPS ENG6 (E-1319) WIAIP	Panek Damon (E-1319.1)	10/19	2		Jason Charette (E-1319.2)		
FWS NCDOR ENG6 PLE1 (E-1364)	Eric Meekins (O-1343)	10/13	2		Donald Harris (O-1342)		
FWS GAPDR ENG6 51 (E-1391)	John Mason (E-1391.1)	10/9	2		Matthew Smith (E-1391.2)		
TPL4 GA ENG6 OKR 53 (E-23)	Unstaffed		0				
TPL2 FL (E-1400)	Robert Dorminey (O-1312)	10/8	1				
7. Control Operations							
<ul style="list-style-type: none"> Establish control check lines. Secure fire's edge, and mop up 50-feet in, in the upland areas. Respond to Initial Attack as requested. Initial attack IC will communicate sizeup information to the Honey Prairie communication. Improve swamp break boundaries for fire breaks, work with resource advisor. 							
8. Special Instructions							
<ul style="list-style-type: none"> Goto Argyle turn down Antioch Church Rd, Turn on Rd. 28, Stage at DP44 until DIVS Authorizes movement. Avoid Confrontations with bear hunters (Thursday, Friday, and Saturday only). Ensure LCES are in place before operations begin. Stay hydrated. Drive defensively and with lights on at all times and use extra caution on wet or dry roads. Boggy terrain: Be careful and aware when working around this type of area. Avoid areas of potential tree fall. 							
9. Division/Group Communication Summary							
Function	Frequency	System	Channel	Function	Frequency	System	Channel
Command W Okee Repeater	RX 167.125/156.7 TX 163.150/156.7	KING NIFC	1	Logistics		KING NIFC	
Tactical Div/Group	RX 168.775 TX 168.775	KING NIFC	9	Air to Ground	RX 166.9375 TX 166.9375	KING NIFC	6
Prepared by (Resource Unit Ldr.) Chuck Norvell		Approved by (Planning Sect. Ch.) David Fogler			Date October 5, 2011		Time 1800



Fire Weather Forecast



FORECAST NO: 152
PREDICTION FOR: Day Shift
SHIFT DATE: Thursday 10/06/11

NAME OF FIRE: Honey Prairie Complex
UNIT: Okefenokee National Wildlife Refuge

FORECAST ISSUED: 10/05/11 at 1600

SIGNED: Joel Rothfuss, IMET

WEATHER DISCUSSION: High pressure will remain north of the area with a developing low pressure system to the south. The pressure gradient continues to increase across the area with increasing wind. Low level moisture increases with afternoon showers possible.

TODAY: . Partly cloudy. Possible late afternoon isolated showers on east side of fire.

MAXIMUM TEMPERATURES: 82-84
MINIMUM HUMIDITY: 40 to 45%
20 FT WINDS: Northeast 2 to 5 mph, becoming Northeast to East 10 to 13 mph with gusts to 16-18 mph in the afternoon.
STABILITY/INVERSION: 5500 feet
TRANSPORT WINDS: Northeast 20 mph
DISPERSION INDEX: 70, Very Good
CHANCE OF PRECIPITATION: 10%
LIGHTNING ACTIVITY LEVEL: 1

TONIGHT: Partly cloudy. Low temperature 52-55. Winds Northeast 3 to 6 mph.

Friday: Partly cloudy. A Slight chance of afternoon showers. Winds increasing.

MAXIMUM TEMPERATURES: 80-82°
MINIMUM HUMIDITY: 45-48%
20 FT WINDS: Northeast 5-8 mph becoming Northeast to East 12 to 15 mph in the afternoon with gusts to 20 mph.
STABILITY/INVERSION: 5400 feet
TRANSPORT WINDS: Northeast 25 mph.
DISPERSION INDEX: 75, Very Good.
CHANCE OF PRECIPITATION: 20%
LIGHTNING ACTIVITY LEVEL: 1

EXTENDED FORECAST: High pressure north of the area with a low pressure center developing south. Northeast to east winds increasing. Becoming mostly cloudy with a chance of rain showers and possible thunderstorms.

	SATURDAY	SUNDAY	MONDAY
SKY/WEATHER	Mostly Cloudy with a slight chance of showers	Mostly Cloudy with a chance of showers and thunderstorms	Mostly Cloudy with numerous showers and thunderstorms
THUNDER/PRECIP	20%	50%	60%
20 FT. WINDS	Northeast to east 11 to 14 mph with gusts to 20 mph	Northeast 12 mph with gusts to 20 mph	Northeast 12 to 15 mph with gusts to 25 mph
MIN/MAX	60/80	63/78	65/82
Relative Humidity	47 to 50%	55 to 60%	55 to 60%

FIRE BEHAVIOR FORECAST

Fire: Honey Prairie Complex	Unit: GA-OKR-000001	Prediction for Day Shift
Forecast #152 Issued: 10/5/2011 1600 hrs	Signed: David Fogler	Shift Date: Thursday 10/6/2011

GENERAL FIRE BEHAVIOR
 Fuels around the Okefenokee Wildlife Refuge are predominately Fuel Model 7 (Southern Rough). Large to moderate acreage tracts of commercial timberland are mixed in throughout the entire perimeter surrounding the refuge. Fast moving wildfires with extremely high flame lengths and rapid rates of spread occur within and around the swamp.

Indicators/Threshold for Increased Fire Activity

- Relative humidity below 45%**
 - Fine dead fuel moisture 8% or less**
 - Winds above 10 mph**
 - Dispersion above 70**
 - Heavy fuel loadings**
- * Items in BOLD ITALICS are predicted to occur today*

SPECIFIC FIRE BEHAVIOR

- Interior smoldering may become active burning with flare ups and re-burn possible.
- Expect fire to continue smoldering with potential open flame as heated areas are fanned by winds. Backing fire will progress in organic leaf mats, muck soils, and un-burnt shrubs in the Refuge Wilderness swamp area.

LIGHTNING ACTIVITY LEVEL 1

	Rates of Spread	Flame Length	Spotting Distance	Firebrand Ignition
Winds at 6-9 mph	Winds will be brisk from the Northeast - East			
Small PL Pines (4)	35-60 ch/hr	14-18 ft	UP to 2/10 MILE	50%
Southern Rough (7)	15-25 ch/hr	4-6 ft	UP to 2/10 MILE	50%
Reburn (9)	4-8 ch/hr	2-3 ft	UP to 2/10 MILE	50%
Shrub Fuels (sh8)	10-17 ch/hr	7-9 ft	UP to 2/10 MILE	50%

One hour fine dead fuel moisture is 7% for Thursday: Smoldering in the duff and larger fuels will continue. 1,000 hour fuels remain drier than normal for this time of year. Re-burn potential is likely due to lower humidity's in the areas that have received minimal rainfall. The uncontrolled fire edge in the Wilderness swamp will continue to burn through organic soils, leaf litter and downed woody material. If contiguous fuels are ignited, spread and spotting potential will increase due to lower humidity and higher winds

NOTE- OTHER THAN THE RE-BURN, FIRE BEHAVIOR CALCULATIONS ARE FOR FIRES IN UNBURNED FUELS INCLUDING NEW IA STARTS.

All Divisions:

The fire continues a slow spread through the thick bays and muck soils. Roots and fallen trees are protecting heat sources allowing the fire to burn organic soils from the bottom up. Keep a heads-up for falling trees. Re-burn potential is likely.

Air Operations: Expect an increase in smoke from the fire.

SAFETY:

Brisk Winds – Watch for increasing winds throughout the afternoon

Live Trees/SNAGS – are falling in all Divisions and will be influenced by Increased winds.

FUELS: Watch for pockets of cured shrubs or blankets of needle cast. Re-burn is possible in some area. 1,000 and 10,000 hour fuels as well as deep duff pockets are providing a heat source. 100 and 1000 hour fuels are still below average in moisture content. Stay focused, and put LCES in place before starting operations.

Energy Release Component (ERC) is running WELL ABOVE AVERAGE for this time of year.

Safety Message

INCIDENT: Honey Prairie Fire

DATE: 10/06/2011

TIME: 0800

Major Hazards and Risks: Hunters Drug and Alcohol Hydration

Hunters in area – Tomorrow starts the Bear hunt again for three days, Be aware of increased traffic of bear hunters in the area. We are also in the middle of Muzzle Loader and Archery season. We will coordinate travel routes and activities around the area to minimize the impact on the hunters, but we still have a job to do.

Drug and Alcohol – We represent the USFWS, your agency as well as the fire organization as a whole, Therefore we must be professional in our actions. We must be ready to complete the mission at hand, so we must be fit for Duty at a moments notice.

Hydration – With the weather getting dryer and the increased activity of the fire, make sure you stay hydrated. By the time you get thirsty you are behind the curve, start early in the morning drinking water. Remember the proper ratio of 3 waters to 1 sport drink. If you are not downloading throughout the day you are not drinking enough water.

Keep your Situational Awareness up!



"HERE'S MY PLAN - YOU HIT THE GROUND RUNNING."

LCES

LCES must be established and known to **ALL** firefighters **BEFORE** it is needed.

Lookout(s)

Communication(s)

Escape Route(s)

Safety Zone(s)

- Survivable without a fire shelter
- Back into clean burn
- Natural features (rock areas, water, meadows)
- Constructed sites (clearcuts, roads, helispots)
- Scouted for size and hazards
- Upslope?
- Downwind?
- Heavy Fuels?

Escape time and safety zone size requirements will change as fire behavior changes.

More heat impact = Larger safety zone

IRPG Page 6

Safety Officers: Tommy Hawkins

INCIDENT ACTION PLAN SAFETY ANALYSIS											1. Incident Name Honey Prairie Fire		2. Date 10/6/2011		3. Time Day Shift	
LCES* Analysis of Tactical Applications Lookouts Communications Escape routes Safety zones											Other Risk Analysis					
Divisions	Indirect Fireline	Power lines / Snags	Road Conditions	Frontal Assault	Extreme Conditions	Railroad	Logging Operations	Wildlife, Insects	LCES Mitigations	Smoke	Traffic/Driving	Communications	Fatigue/Hydration	School Buses / Children	Other Risk Mitigations	
All Divisions	1, 2, 3, 4, 5, 7, 8, 10, 14	2, 6, 11, 15, 17	12, 20, 26	1, 2, 3, 4, 5, 7, 8, 14	7, 10	1	2, 3, 5, 6, 20, 21, 24, 28	2, 23, 28	1. Establish & maintain LCES. Report LCES checks twice daily to DIVS on line & staging. 2. Look UP, DOWN and AROUND 3. Post experienced Lookouts. Make sure LCES is in place and make known. 4. Use Aerial Resources as Lookout if available.	24	12, 17, 19, 20, 22, 26, 27	1, 3, 10, 14, 19, 24, 25	16, 18, 21	26	16. Take adequate rest breaks and encourage to drink water NOW through briefings. 17. Defensive driving will be addressed in all briefings. 18. All personnel must meet the 2:1 work/rest ratio. Line supervisors and Safety will monitor closely. 19. Notify Operation and Safety of Railroad track issues to ensure safety of firefighters.	
									5. Flag escape routes on right side of escape route facing outward. Create new escape routes as you progress and identify Safety Zones on the ground and maps. 6. Identify, mark & mitigate. 7. FBAN/Meteorologist to monitor weather updates and advisories. 8. Ensure Fireline is Anchored to black or manmade/natural barrier.						20. Ensure Traffic Planning is safe and enforced. Heed Defensive Driving techniques noted in Safety Messages. 21. Relocate staging area when driving conditions warrant. 22. Use spotter when backing vehicle(s). 23. For insects, use protective spray with deet on skin (Not on Nomex), permethrin can be used on nomex clothing	
									10. Keep Firefighters informed of any changes in predicted weather, consider at least a two day weather pattern when planning Strategic Firing operations. 11. Refer to IRPG, pg. 12 on Power Line Hazards. 12. Observe all traffic signals and speed limits. Drive with lights on. 14. Ensure GOOD tailgate briefings with resources unable to attend Operational Briefing (Include Ops, Logs, Fin & Plans info.).						24. Establish smoke/fog signs on roadways. Coordinate with Department of Transportation. 25. Follow establish communication plan, flight follow through dispatch 26. Watch-out for school buses and for children along the edge of roadway and crossing the road.	
									15. Scout ahead of tractor operations to avoid making contact with power poles and guide wires when tying into roads. Power companies are working in some DIVS, avoid all down lines as they may become charged.						27. Treat all intersections as 4-way stops 28. Bears, Gators, and some snakes are dangerous. Do not approach or feed wildlife at any time.	
Prepared by (Name and Position)							ICS 215A	Tommy Hawkins SOF								

AIR OPERATIONS SUMMARY

Prepared By: Kevin Merrill, HEB1

Prepared Date: 9.30.2011

Prepared Time: 1600

1. INCIDENT NAME: Honey Prairie	2. OPS PERIOD DATE: October 6, 2011	START TIME: 0830	END TIME: 2000	SUNRISE: 0727	SUNSET: 1912
3. REMARKS (Safety Notes, Hazards, Air Operations Special Equipment, etc ALL FLIGHT REQUESTS GO DIRECTLY TO HELIBASE Afternoon thunderstorms NOTE: Latitude/Longitude format is "Degrees-Minutes-Decimal Minutes" (example: N30 41.42 W082 33.97)				5. TFR #: Canceled 7/27/11 SEE and AVOID!!!	

PERSONNEL	NAME	PHONE #	FREQUENCIES	AM	FM	
HEB2 Waycross HB	Melvin Tate Desk Cell	912-287-4479 850-849-0405	AIR/ AIR	122.375		AIRTANKERS / LEAD PLANES - None Available OTHER: <u>Waycross Airport Helibase: 912-287-4479</u> <u>Waycross Airport Helibase Fax: 912-287-4458</u> <u>ICP Helispot is Waycross Airport Helibase</u> <u>Okefenokee Dispatch: 912-496-7366 X230</u> <u>Waycross Airport: N 31 16.16 10 W82 33.38</u> <u>BERGANZA HELISPOT N 31 07.22 W082 15.22 * don't use unless cleared with AOB.</u> <u>POGO HELISPOT: N30 44.03 W082 07.41</u>
ABRO	Darold Williams Desk Cell	912-287-4479 386-383-6288				
			Georgia AIR/GRND (Smokey - Dozers)		159.285 W	
			AIR/GROUND PRIMARY		166.9375	
			AIR/GROUND ALTERNATE		166.9000	
			AIR GUARD		168.625 T110.9	

9. HELICOPTERS (Use Additional Sheets as Necessary)

FAA N#	TY	MAKE/ MODEL	BASE	AVAIL	MANAGER	FAA N#	TY	MAKE/ MODEL	BASE	AVAIL	MANAGER
351CH	3	AS350-B3	Waycross	0830	Jackie Heesacker 970-903-0133						
699RH	1	K-max	Waycross	0830	Tracy Dott (805) 722-0170						

10. TASK/ MISSION/ ASSIGNMENT (Type/ function includes: Air Tactical, Retardant, Recon, Personnel Transport, Bucket Operations, SAR, etc.)

TYPE/FUNCTION	NAME OF PERSONNEL OR CARGO (If applicable) or instructions for tactical aircraft	MISSION START	FLY FROM	FLY TO
Bucket Ops/	699RH	As Requested	Waycross	
Recon	351CH	As Requested	Waycross	
Medevac	351CH	As Requested	Waycross	

INCIDENT RADIO COMMUNICATIONS PLAN ICS-205			Incident Name Honey Prairie			GROUP 22		Date/Time Prepared 10/4/2011-18:00		Operational Period Date/Time 10/06/2011 0800-2000	
Ch #	Function	Channel Name	Assignment	RX Freq	NW	RX Tone/NAC	TX Freq	N W	TX Tone/NAC	Mode A,D or M	Remarks
1	Command	West Okee Repeater	Sec West Branch CMD	167.1250	N	156.7	163.1500	N	156.7	A	Stephen Foster State Park
2	Command	South Okee Repeater	Sec East/West Branch CMD	164.7750	N	123.0	163.1500	N	123.0	A	Eddy Florida
3	Command	East Okee Repeater	PRIMARY East Branch CMD	164.6250	N	103.5	163.1500	N	103.5	A	Refuge Headquarters
5	Command	North Okee Repeater	PRIMARY North Branch CMD	164.5750	N	206.5	163.1500	N	206.5	A	Waycross
6	Air-Ground	Air to Ground	PRIMARY	166.9375	N	CSQ	166.9375	N	CSQ	A	
7	Tactical	MOB-MOB	GFC Contingency	159.3900	W	CSQ	159.3900	W	156.7	A	
8	Tactical	V-Fire 21W WHITE	West group Secondary	154.2800	W	CSQ	154.2800	W	156.7	A	
9	Tactical	USFS 9	East/West Groups	168.7750	N	CSQ	168.7750	N	CSQ	A	
10	Tactical	S.E. Compact		159.2850	W	CSQ	159.2850	W	CSQ	A	
11	Tactical	USFS 11	East Group Secondary	168.2000	N	CSQ	168.2000	N	CSQ	A	
12	Tactical	Refuge Tac 1	East Group	168.3500	N	CSQ	168.3500	N	CSQ	A	
13	Tactical	FL 190		151.2725	N	CSQ	151.2725	N	CSQ	A	
15	Air-Ground	Air to Ground	SECONDARY	166.9000	N	CSQ	166.9000	N	CSQ	A	
16	EMERGENCY	AIR Guard	Air OPS.	168.6250	N	CSQ	168.6250	N	110.9	A	
Prepared by (Communications Unit) Ronnie Sumler COML Incident Dispatcher: 404-772-5384						Cloning at ICP communications and briefings,					

The convention calls for frequency lists to show four digits after the decimal place, followed by either an "N" or a "W", depending on whether the frequency is narrow or wide band. **Mode** refers to either "A" or "D" indicating analog or digital (e.g. Project 25) or "M" indicating mixed mode. All channels are shown as if programmed in a control station, base stations, mobile or portable radio.

MEDICAL PLAN	Incident Name Honey Prairie Complex	Date Prepared 09/02/2011	Time Prepared 1000	Operational Period 10/6/2011
---------------------	---	------------------------------------	------------------------------	--

5. Incident Medical Aid Station

<u>Medical Aid Stations</u>	<u>Location</u>	Paramedics Yes	No
MEDICAL UNIT (ICP EMT)	Honey Prairie Complex ICP- No MEDL		
WEST SIDE (Line EMT)	****David Moore 513-616-9192 (BLS Kit)****		
EAST SIDE (Line EMT)	****David Moore 513-616-9192 (BLS Kit)****		

Ambulance Services

Name	Address	Phone	Paramedic	
			Yes	No
Clinch County EMS (West)	Homerville, GA (911 to activate)	912-487-5315	Yes	
Ware County EMS (North)	Waycross, Georgia (911 to activate)	912-287-4335	Yes	
Charlton County EMS (East)	Folkston, GA (911 to activate)	912-496-7321	Yes	

Air Ambulance Service

Trauma 1	Lake City, FL	1-800-223-4878	Yes	
Trauma 1	Jacksonville, FL	1-800-223-4878	Yes	
AirMed	Augusta, GA	1-888-792-9245	Yes	
Lifeflight	Jacksonville, FL	1-877-870-7779	Yes	
Air Evac	Waycross, GA	1-800-247-3822	Yes	
US Coast Guard (Heli-Rescue)	Savannah GA	1-912-652-4646	Yes	

7. Hospitals

Name	Address	LAT-LON	Phone	Helipad		Burn Center	
				Yes	No	Yes	No
Satilla Regional	410 Darling AVE. Waycross, GA	N 31' 13.509 W 82' 20.853	(912) -283-3030	Yes			No
Clinch Memorial Hospital (WEST SIDE)	1050 Valdosta HWY Homerville, GA	N 31' 01.977 W 82 45.851	(912) -487-5211 ext 4502	Yes			No
Charlton Memorial Hospital (EAST SIDE)	1203 3 rd Street Folkston, GA	N 30' 50.713 W 82' 00.302	(912) -496-2531	Yes			No
Savannah Memorial Hospital	4700 Waters AVE Savannah, GA	N 32' 01.538 W 81' 05.298	(912) -350-8999	Yes			No
Shands Hospital (Level I)	655 West 8 th Street Jacksonville, FL	N 30' 20.97 W 81' 39.92	(800) -223-4878	Yes		Yes	
Shands Burn Center	1600 Southwest Archer Road Gainesville, FL	N 29' 38.33 W 82' 20.55	(352) -265-0200	Yes		Yes	

8. Medical Emergency Procedures

Identify any EMTs and Paramedics in your crews. All medical emergencies will be reported to the Division Supervisor who will assume command and notify Line Medics.

On scene personnel will:

1. Provide medical care & stabilize patient.
2. Call 911 if possible or call phone #'s above for EMS and provide the information requested.
3. Notify Communications via radio over Command Channel
4. Communications will clear radio traffic for medical emergency.
5. Communications will confirm 911 has been notified coordinate with IC, SOF.
6. DIVS will notify the Field Ops Section Chief.

MAJOR EMERGENCIES – Secure the area and identify witness for later investigation. Keep an accurate log of events. NOTE: Do not give Patients Name over the radio!

INJURY REPORTING PROCESS:

Nature of Injury: _____

Location of Patient: _____

Transportation Requested by: Air ___ Ground ___

Pick Up Point: _____

Lat: _____ Long: _____

Patient Unit ID: _____

Is an EMT w/Patient: Yes ___ No ___

Age: ___ Sex: Male ___ Female ___

Weight (If Air Evac. is needed): _____

HELISPOTS

NAME	LAT-LON	LOCATION
Pocket Helispot	N 30' 47.500 W 82' 22.659	(West side), mile marker 4, HWY 177 Steven C. Foster State Park
Fargo Helispot	N 30' 40.945 W 82' 33.640	(West side), HWY 441- Steven C. Foster Visitor Center
POGO Helibase	N 30' 44.219 W 82' 07.689	(East side) Adjacent to Okee Refuge Shop

Evac Yankee

Helispot 6	N 30' 53.280 W 82' 33.880	Road 32 and 32A
Helispot 7	N 30' 50.280 W 82' 33.857	Tatum Road Pond

***Alternate site can be established following guidelines for safety found with IRPG and local EMS resources.**

Prepared by: Tommy Hawkins SOF

10. Reviewed by: Tommy Hawkins, SOF

HONEY PRAIRIE PHONE LIST

10/06/11

Incident

Communication

(Hours: 0800-2000)

912-286-1660

AGENCY	OFFICIALS	
Curt McCasland	602-359-0013	USFWS AA
Mindy Gautreaux	912-282-7500	USFWS Deputy AA
Frank Sorrells	912-381-7503	GFC AA
James Karels	850-228-7763	FL DOF AA
Diane Adams	912-266-5421	GEMA
Mike Housh	404-772-5380	USFWS AREP
Bruce Young	912-390-0147	Charlton EMA
COMMAND - IC		
Steve Gray	770-655-8002	Incident Commander
Bryce Thomas	850-625-6634	ICT3 (T)
RESOURCE	ADVISORS	
Ron Phernetton	912-276-2349	Resource Advisor
Rocky Chesser	912-276-3232	Resource Advisor
Reggie Forcine	912-614-4041	Resource Advisor
INFORMATION	912-496-2566	
Art Webster		Fire Information
SAFETY OFFICERS		
Tommy Hawkins	404-558-4476	LEAD SOF
DISPATCH		
Okeefenokee Dsp	912-496-7366	Okeefenokee
Suwannee Dispatch	386-758-5700	Fla wildfires, other
Honey Prairie Dspth	404-772-5384	Honey Prairie ICP
Waycross Dispatch	912-287-4915	Ga wildfires, other
GA DNR	1-800-241-4113	Hunting Issues
LOGISTICS	912-287-6540	fax 912-287-6542
Steve Blackwell	423-605-3793	LSC (T)
Michael Tipton	706-633-6419	Security
Rusty Brown	478-973-6231	FACL (T)/BCMG (T)
James (Ronnie)	850-361-9163	COML
James Chappell	404-772-5318	GSUL (T)
James Chappell	404-772-5318	EQPM (T)
James Chappell	404-772-5318	RCDM (T)
David Moore	513-616-9192	EMT
Tracy Stelman	209-352-0548	SPUL
PLANNING	912-287-6565	FAX 912-287-6541
Dave Fogler	352-442-2895	PSC2/SITL
JR Rothfuss	240-778-5019	IMET
Chuck Norvell	912-287-6565	RESL/DMOB
FINANCE	912-287-6544	FAX 912-287-6564
Amy Treadwell	912-287-6544	FSC2
Fredrick Cheeks	256-497-8334	Purchasing Agent
	912-287-6557	Buying Team Fax
All Contractors	912-287-6568	All Contractors
FEDERAL	Federal	
Okefenokee Fire Shop	912-496-4181	
Okefenokee NWR HQ	912-496-7366	
Okefenokee NWR	912-637-5322	
Okefenokee Visitor	912-496-7836	
STATE	State	
GFC Fargo Office	912-637-5270	
GFC Satilla District	912-287-4915	
Jason Gillis	912-314-9233	GFC Satilla Mgr.

OPERATIONS		
Bryce Thomas (T)	850-625-6634	
DIVISIONS		
Richard McGhee	256-497-8490	West Group
John Molve (T)	404-772-5553	West Group
AIR OPERATIONS		
Melvin Tate	850-849-0405	HEB1
	912-287-4479	WAYCROSS AIRPORT
LANDOWNERS		
Jim Barrett	229-356-1993	Langdale/GOAL Chairman
Wesley Langdale	229-220-2602	Langdale
Hal Rowe	229-412-3133	Langdale
Langdale Office	229-242-7450	Langdale Office
Mike Conlon	386-365-3882	Rayonier Unit Supervisor
Ray Carter	386-288-6626	Rayonier
Ed Carter	386-288-6626	Rayonier
Doug Nuss	912-390-1037	Rayonier
Randall McCrady	912-283-4077	Rayonier
Colin Myerson	229-506-1565	Superior Pine Products Co
Robbie Lee	229-356-0526	Superior Pine Products Co
Superior Pine Office	912-637-5261	Superior Pine Products Co
Al Alexander	850-843-0104	The Forestry Co
Savell Schmidt	850-843-1181	The Forestry Co
John Bogue	850-843-1192	The Forestry Co
Joe Hopkins	912-276-0911	Toledo Timber
Chris Gowan	912-276-0965	Toledo Timber
Martin Bell	912-283-0583	Swamp Park
Crystal Peebles	352-316-0632	FIA
Steve Davis	912-614-1828	Davis Community
Trevor Fortner	912-599-9271	Little Suwannee
Tim Jarrell	912-223-7120	Hancock Forest Mgmt.
RAILROADS		
Norfolk Southern	800-453-2530	
Sid Moody	904-318-7983	Norfolk Southern Railroad
Chad Edwards	404-582-4909	Norfolk Southern Railroad
Eric Sams	904-576-9907	
Emergency Dispatch	404-529-1597	Norfolk Southern Railroad
CSX Randy Dixon	912-270-0699	
CSX Dispatch	800-232-0144	
COUNTY		
	912-496-7229	Charlton County EMA
John F. Meyer -	912-496-2549	Charlton County Commissioners
Dobie Conner	912-496-7321	Charlton County Sheriff
Jesse Booth	912-520-0061	Clinch County EMA
Jonathan Daniel	912-281-5158	Ware County EMA
Jessie Jordan	912-816-6063	Ware County Fire Dept
Joe Morris	912-281-6020	Ware County Sheriff
Robbie Sutton	912-599-9027	Tri County 911
Georgia State Patrol	912-287-6500	
Travis Griffin	912-281-5790	Laura Walker State Park

DMOB Report Oct

RequestNun	ResourceName	KindCode	UnitID	TravelMethod	Jetport	DemobDate
E-1389	FLFLS THOMAS PU	PU	FLFLS	AOV		10/08/2011
O-1300	THOMAS, BRYCE	ICT3	FLFNF	AOV		10/08/2011
O-1301	GREGORY, LINDEL	SECM	MOOZP	AOV		10/08/2011
E-1394.1	BASS, LELAND	STEN	GAGAS			10/08/2011
E-1416	HAWKINS PU	PU	GAGAS	AOV		10/09/2011
O-1312	DORMINEY, ROBERT	TPOP	FLFNF	AOV		10/09/2011
O-1296	MENDOZA JR, BENNY	HECM	NMCIF	AIR	ABQ	10/09/2011
E-1393.2	SOSEBEE, TIMOTHY	FFT2	GAGAS	AOV		10/10/2011
E-1414	BLACKWELL PU WALKER 31	PU	GAGAS	AOV		10/10/2011
E-1391	FWS GAPDR 51	ENG6	GAPDR	AOV		10/10/2011
E-1393	GA ENG6 POLK 86	ENG6	GAGAS	AOV		10/10/2011
E-1393.1	KEENE, ANTHONY (TONY)	ENGB	GAGAS	AOV		10/10/2011
O-1324	BLACKWELL, STEPHEN	GSUL	GAGAS	AOV		10/10/2011
E-1391.1	MASON, JOHN	ENGB	GAPDR	AOV		10/10/2011
O-1328	GRAY, J. STEVE	ICT3	GAGAS	AOV		10/10/2011
E-1391.2	SMITH, MATTHEW	FFT2	GAPDR	AOV		10/10/2011
E-1418	LANIER 70	DOZ3	GAGAS			10/11/2011
O-1186	BURKHART, JAMES	PIO2	GAOKR	AOV		10/11/2011
O-1331	NORVELL, RAYMOND	RESL	GAGAS	AOV		10/11/2011
E-1421	NORVELL PU	PU	GAGAS			10/11/2011
E-1422	BROWN VAN	VAN	GAGAS			10/11/2011
E-1418.1	LANIER 60	TRTL	GAGAS			10/11/2011
E-1418.2	MCINTOSH, STEWART	TPOP	GAGAS	AOV		10/11/2011
O-1333	MERKISON, ROBERT (WES)	TFLD	GAGAS	AOV		10/12/2011
E-1419.1	BRANTLEY 62	TRTL	GAGAS			10/12/2011
E-1420	ATCO 71	TPL3	GAGAS			10/12/2011
E-1420.2	HARPER, DEREK	TPOP	GAGAS	AOV		10/12/2011
E-1427	MERKISON PU	PU	GAGAS			10/12/2011
E-1417	APPLING 72	TPL3	GAGAS			10/12/2011
E-1417.2	YAWN, JOSH	TPOP	GAGAS			10/12/2011
E-1419.2	SMITH, DAVID	TPOP	GAGAS	AOV		10/12/2011
E-1419	BRANTLY 72	TPL3	GAGAS			10/12/2011
O-1291	HULSIZER, VICKIE	TIME	IDIPF	AIR	GEG	10/12/2011
E-1420.1	ATCO 61	TRTL	GAGAS			10/12/2011
E-1417.1	APPLING 62	TRTL	GAGAS			10/12/2011
O-1329	HAWKINS, TOMMY	SOF2	GAGAS	AOV		10/13/2011
E-290	FWS FORD F-350 LIC# I482444	PU	GAOKR	AOV		10/13/2011
O-1317	SUMLER, JAMES (RONNIE)	COML	FLFIC	AOV		10/13/2011
O-1341	HAWKINS, NICHOLAS	FFT2	GAOKR	POV		10/13/2011
O-1332	DELASANTOS, BRIAN	TFLD	COPBS	AIR	DEN	10/13/2011
O-1335	JOHNSON, CHARLES	TPOP	GASAR	AOV		10/13/2011
E-1430	MOLVE PU	PU	FLFLS			10/14/2011
O-1342	HARRIS, DONALD	ENOP	NCALR	AOV		10/14/2011
A-87	KMAX N699RH	HEL1	CALPF	AOV	SPB	10/14/2011
O-1340	WILLETT, JAMES	SEC1	FLFNF	AOV		10/14/2011
E-1431.2	BOWERS, WALTER	ENOP	FLFLS	AOV		10/14/2011
O-1343	MEEKINS, ERIC	ENGB	NCALR	AOV		10/14/2011
O-1347	MOLVE, JOHN	DIVS	FLFLS	AOV		10/14/2011
E-1431	CHIPOLA 920	ENG6	FLFLS			10/14/2011
O-1336	MCCARTY, BRENT	DIVS	GAGAS	AOV		10/14/2011
E-1428	MCCARTY PU	PU	GAGAS			10/14/2011
E-1431.1	MCGOWEN, WILLIAM 'STEVE'	ENGB	FLFLS	AOV		10/14/2011

Record Count: 52

Hunter Encounters and Confrontations

Bear, Archery, and Muzzle Loader season is now open. Crews are likely to encounter hunters either hunting or scouting in the area of the Swamp Edge Break. Bear Hunter will be running dogs and chasing the pack in vehicles on narrow dusty roads to intercept bears. Use Caution traveling as hunters may not be paying attention and traveling at excessive speeds.

Avoid contact as much as possible. The least amount of impact we have on their hunting area the better off we will be. Expect many questions about the fire operations and how long the fire will continue to burn. It's a good idea to review the Fire Information section of the plan for a good explanation of what to expect in the coming months.

The majority of the hunters will be friendly but should you have a confrontation with someone:

1. Politely excuse yourself and leave the area immediately;
2. Notify your supervisor;
3. Notify the Security Manager by radio or phone:

SECM – Michael Tipton 706-633-6419

Or

GA DNR Gary Simmons 912-282-2406 Cell

4. If necessary, call the Georgia DNR at 1-800-241-4113 with a description of the person, vehicle and Tag number, and the nature of the confrontation. Georgia DNR will send an officer to handle the situation.

Fire Information IAP messages

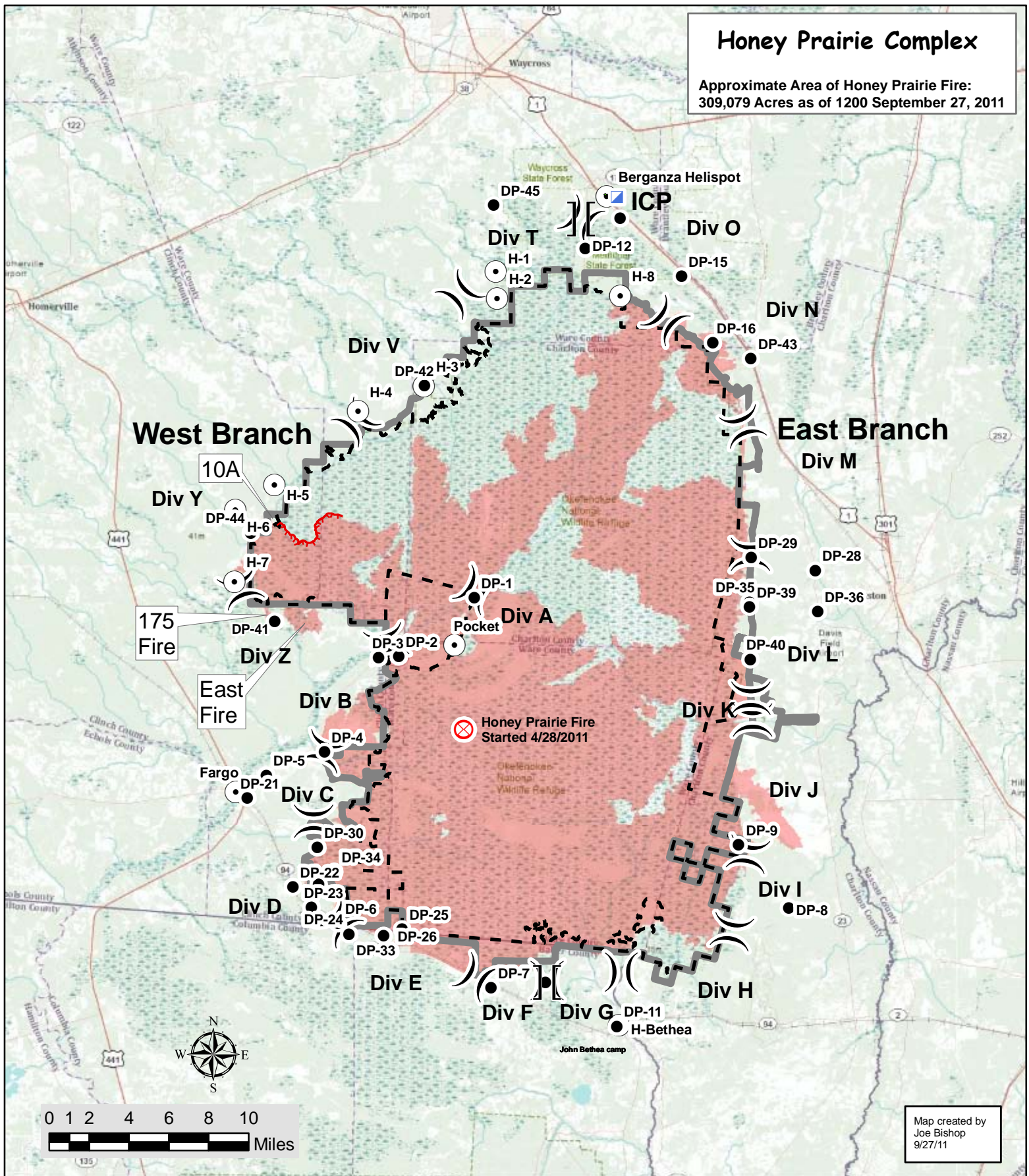
1. Public and firefighter safety remains the top priority for this incident.
2. Fire managers for the refuge have coordinated suppression efforts with the Georgia Forestry Commission and the Greater Okefenokee Association of Landowners (GOAL) representing federal and state agencies, industry and private landowners. Through this Unified Command, the partners support the chosen strategy as the appropriate management response to protect adjacent valuable commercial timber, isolated homes scattered on private land, and critical wildlife habitat for threatened and endangered species.
3. Fire is a natural component of the Okefenokee ecosystem; since the refuges creation in 1937, there have been hundreds of wildfires that have burned thousands of acres here. The plants and animals on the refuge are well adapted to survive periodic wildfires.
4. Past experience has shown that conventional fire suppression tactics do not work well inside the swamp. Humans have never been successful in controlling fires within the swamp; only “mother nature” has done this. Attempting suppression within the swamp is ineffective, costly, wastes firefighting resources and needlessly endangers firefighter safety.
5. Fire on the refuge is usually fought by reinforcing firelines along the Swamps Edge Break, including areas of private land, to keep the fire contained within the swamp.
6. Okefenokee National Wildlife Refuge typically employs a contain and control strategy to manage fire; containing it within the swamp and actively suppressing it outside of the swamp in the upland forest.

Commonly asked question:

1. Why won't this fire go out? What will it take? Surface burning of available fuels is only part of the current problem. Peat beds (partially decayed vegetation normally floating in a vertical column of water) is what supports these surface fuels. Unfortunately, the current dry conditions have allowed a portion of the peat beds to dry out and the surface burn has transferred into the peat beds and is now burning subsurface. There are now two sources of heat and available fuel that must be extinguished. The current spotty, localized rain storms can have some effect on the surface burns but do not do much to control subsurface burns. It will take a big rain storm blanketing the entire swamp (remember the swamp is huge –over 650 square miles in size) dropping a minimum of 6-8 inches of rain. As the water levels in the swamp slowly rise, as a result of the rain, the peat beds will become water saturated again eliminating one source of the fire. As the surface of the swamp becomes covered by water, burning surface fuels will be extinguished as well. Burning fuels that extend above these water levels (dead and drying trees/shrubs) may continue to burn until they fall over or burn up. Fire that exists in upland habitat on islands within the swamp may also continue to burn but it will be confined to that immediate area by the swamp waters surrounding the island. This is not something that will likely occur overnight. It may take days, weeks, or even months. The refuge has experienced fire events that were not declared officially out for well over a year after the main firefighting effort had ceased.

Honey Prairie Complex

Approximate Area of Honey Prairie Fire:
309,079 Acres as of 1200 September 27, 2011



Map created by
Joe Bishop
9/27/11

- Fire Origin
- Honey Prairie Fire Area
- Uncontrolled Fire Edge
- Incident Command Post
- Helispot
- Drop Point
- Branch Break
- Division Break
- Refuge Boundary
- Wilderness Boundary



UNIT LOG		1. Incident Name Honey Prairie Complex	2. Date Prepared	3. Time Prepared
4. Unit Name/Designators		5. Unit Leader (Name and Position)		6. Operational Period
7. Personnel Roster Assigned				
Name		ICS Position		Home Base
8. Activity Log				
Time		Major Events		
9. Prepared by (Name and Position)				