

Honey Prairie Complex

GA-OKR-000001

INCIDENT ACTION PLAN

Operational Period

Wednesday

August 10, 2011

0800-2000

Incident Commander

Steve Gray

Accounting Codes

FWS – 9141-F25M-2J

NPS – 5023 F25M E11

BLM – F25M

USFS – PRF25M_1502

Initial Attack – F4PM



*An Equal Opportunity
Employer & Service Provider*

Letter from GFC Incident Commander:

To: All Honey Prairie Incident Personnel

As A Georgia Forestry Commission Type 3 Incident Commander, I am committed to a policy of “zero tolerance” of inappropriate behavior during incident operations. Any form of harassment, discriminatory practices, or disrespectful behavior will not be tolerated.

Guidelines on in-appropriate behavior both “on Duty” and “off Duty” while assigned are addressed within each agencies policies. Our Team expects all incident personnel to follow established government policies for behavior along with all Illegal drug and alcohol directives.

Our Incident Management Team endorses and supports an attitude of mutual respect for all personnel and the public we serve.

We expect a strong work ethic and an attitude of Safety at all times!

Sincerely,

/s/ Steve Gray

Incident Commander
Georgia Forestry Commission Type 3 Incident Management Team

INCIDENT OBJECTIVES	1. INCIDENT NAME Honey Prairie Complex	2. DATE PREPARED 8/9/11	3. TIME PREPARED 1700												
4. OPERATIONAL PERIOD (DATE/TIME) Wednesday, August 10, 2011 0800 – 2000															
5. GENERAL CONTROL OBJECTIVES FOR THE INCIDENT (INCLUDE ALTERNATIVES) <ol style="list-style-type: none"> 1. Provide for safety of incident personnel and public in all incident operations. 2. Maintain a positive working relationship with all adjacent landowners, cooperators State and Federal partners. Inform, involve and communicate incident planning and operations with all partners. 3. Contain all fires that are within the Okefenokee National Wildlife Refuge, inside the Refuge and/or inside the swamp edge break if possible. 4. In cooperation with local timberland owners, use full suppression strategies and tactics to minimize damage to private timberlands and improvements and to prevent fires outside the Refuge from entering the Refuge. 5. Assist in management and suppression of additional fires (new starts or breakouts) in the vicinity as approved by Agency Administrators and Incident Commander. 6. Protect all cultural and archeological sites and structures within the refuge, with particular attention to facilities at Okefenokee Swamp Park. 7. Manage the fires cost-effectively consistent with the values at risk. 8. Implement structure protection as necessary for at-risk facilities and communities. 9. Coordinate suppression actions with assigned Refuge Resource Advisors 															
6. WEATHER FORECAST FOR OPERATIONAL PERIOD See attached forecast for area specific weather information.															
7. GENERAL SAFETY MESSAGE <p>Drive defensively and use spotter when backing. Ensure LCES is in place and known by all personnel. Drink plenty of water and take frequent rest breaks. Ensure proper use of PPE during all operations.</p>															
8. Attachments (<input checked="" type="checkbox"/> if attached) <table border="0" style="width: 100%;"> <tr> <td><input checked="" type="checkbox"/> Organization List (ICS 203)</td> <td><input checked="" type="checkbox"/> Incident Map</td> <td><input checked="" type="checkbox"/> Safety Message</td> </tr> <tr> <td><input checked="" type="checkbox"/> Assignment List (ICS 204)</td> <td><input type="checkbox"/> Traffic Plan</td> <td><input type="checkbox"/> Demobilization Procedures</td> </tr> <tr> <td><input checked="" type="checkbox"/> Communications Plan (ICS 205)</td> <td></td> <td><input checked="" type="checkbox"/> Unit Log</td> </tr> <tr> <td><input checked="" type="checkbox"/> Medical Plan (ICS 206)</td> <td><input checked="" type="checkbox"/> Phone List</td> <td></td> </tr> </table>				<input checked="" type="checkbox"/> Organization List (ICS 203)	<input checked="" type="checkbox"/> Incident Map	<input checked="" type="checkbox"/> Safety Message	<input checked="" type="checkbox"/> Assignment List (ICS 204)	<input type="checkbox"/> Traffic Plan	<input type="checkbox"/> Demobilization Procedures	<input checked="" type="checkbox"/> Communications Plan (ICS 205)		<input checked="" type="checkbox"/> Unit Log	<input checked="" type="checkbox"/> Medical Plan (ICS 206)	<input checked="" type="checkbox"/> Phone List	
<input checked="" type="checkbox"/> Organization List (ICS 203)	<input checked="" type="checkbox"/> Incident Map	<input checked="" type="checkbox"/> Safety Message													
<input checked="" type="checkbox"/> Assignment List (ICS 204)	<input type="checkbox"/> Traffic Plan	<input type="checkbox"/> Demobilization Procedures													
<input checked="" type="checkbox"/> Communications Plan (ICS 205)		<input checked="" type="checkbox"/> Unit Log													
<input checked="" type="checkbox"/> Medical Plan (ICS 206)	<input checked="" type="checkbox"/> Phone List														
9. PREPARED BY (PLANNING SECTION CHIEF) Keith Mousel		10. APPROVED BY (INCIDENT COMMANDER) Steve Gray													

ORGANIZATION ASSIGNMENT LIST		9. Operations Section		
1. Incident Name Honey Prairie Complex GA-OKR-000001		Chief	Steve Gray 8/20	
2. Date 8/09/2011		3. Time 1000 hrs		
4. Operational Period 8/10/2011 0800 - 2000		a. Divisions/Groups		
5. Incident Commander and Staff				
Incident Commander	Steve Gray 8/20	Group	East Group	Steve Abbott 8/20
Safety Officer	Tom Lail 8/11	Group	West Group	John Raulerson 8/17
Information Officer	Art Webster			
6a. Agency Administrators				
FWS	Curt McCasland			
FWS	Mindy Gautreaux			
6b. Agency Representatives		b. Divisions/Groups		
GFC	Frank Sorrells			
FLDOF	James Karels			
FWS AREP	Mike Housh			
FWS-Refuge PAO	Art Webster			
GEMA AREP	Alan Robinson / Diane Adams			
USFS AREP	Ivan Greene			
7. Planning Section		c. AIR OPERATIONS BRANCH - Honey Prairie		
Chief	Keith Mousel 8/15	Waycross Helibase Mgr	Melvin Tate 8/14	
Resource Advisors	Ron Phernetton, Jessica Bowen, Rocky Chesser			
Resources Unit	Thomas Barrett 8/20			
Situation Unit				
8. Logistics Section		d. AIR OPERATIONS BRANCH - Pogo		
FBAN	Keith Mousel 8/15			
Demob Unit				
Documentation				
GIS				
CTSP				
SCKN				
8. Logistics Section		10. Finance Section		
Chief	Randy Teal 8/21	Chief		
Supply Unit		Time Unit	Vickie Hulsizer 8/18	
GSUL	Dan Chappell 8/12	Cost	Susan Beasley 8/21	
ORDM	Linda Blondeau 8/22	PTRC	Carol Layton 8/18	
COML		EQTR	David Epps 8/17	
Medical Unit		IBA	Carla Schamber	
Facilities	Neal Edmondson 8/20			
Food		Purchasing Agent	Rhonda Vickerman 8/15 Anna Bryant 8/16	
SEC1				
COMT	Phillip Anderson 8/20			
RADO	Bill Messerschmidt 8/19			
RCDM	Jeffrey Smith 8/12			
		Prepared by: Thomas Barrett	RESL	

DIVISION ASSIGNMENT LIST			1. Branch		2. Division East Group		
3. Incident Name Honey Prairie Complex			4. Operational Period Date: 8/10/2011 Time: 0800-2000				
5. Operations Personnel							
Operations		Steve Gray 8/20		Branch Director			
				Division Supervisor		Steve Abbott 8/20	
Safety Officer		Tom Lail 8/11		Division Supervisor			
6. Resources Assigned this Period							
Strike Team/Task Force/ Resource Designator		Leader / Name / Designator		Last Shift Date	Num. Per.	Drop Off PT./Time	Crew Names
READ (O-559) GAOKR		Jessica Bowen			1	912-536-2995	
TFLD (O-5) GAOKR		Rocky Chesser			1		
TPL SC 922 (E-7) SCSCC		Adam McCullough (E-7.8)		8/11	1		Stage @ Refuge HQ
TPL GAOKR 56 (E-22)		Fed Privett (O-15)			1		Stage @ Refuge HQ
TPL GA OKR 54 (E-21)		Cory Bryant (O-9)			1		Stage @ Refuge HQ
TPL GAOKR 53 (E-23)		Unstaffed					
TFLD (O-1156)		Seth Pierce		8/15	1		
Chattooga 86 (E-77) GAGAS		Hilton Bennett (T) (E-77.14)		8/17	2		Josh Shelton
Charlton Eng 86 (E-1252) GAGAS		Matthew Rymer (E-78.14)		8/17	2		Simon Bishop (E-78.15) EMT
Jones Eng 86 (E-81) GAGAS		Troy Helms (E-81.13)		8/17	2		Jessie Boles (E-81.14)
Dawson 86 (E-1082) GAGAS		C. Sweatman (E-1082.5)		8/17	2	Satilla D.O.	A. Brown (E-1082.6)
7. Control Operations							
<ul style="list-style-type: none"> Respond to Initial Attack as requested Patrol and control reburn Initial attack IC will communicate sizeup information to the Honey Prairie communication. Make contact with the resource advisor before using mechanical equipment. Improve swamp break boundaries for fire breaks, work with resource advisor. Safely push down with equipment all snags whether on fire or not that are a threat to success or tactical operations. 							
8. Special Instructions							
<ul style="list-style-type: none"> Ensure LCES are in place before operations begin. Stay hydrated. Drive defensively with lights on at all times. Boggy terrain: Be careful and aware when working around this type of area. 							
9. Division/Group Communication Summary							
	Function	Frequency	Channel	Function	Frequency	System	Channel
Command E Okee Repeater	RX 164.625/103.5 TX 163.150/103.5	KING NIFC	3	Logistics		KING NIFC	
Tactical Div/Group	RX 168.775 TX 168.775	KING NIFC	9	Air to Ground	RX 166.9375 TX 166.9375	KING NIFC	6
Prepared by (Resource Unit Ldr.) Thomas Barrett		Approved by (Planning Sect. Ch.) Keith Mousel			Date August 9, 2011		Time 1800

AIR OPERATIONS SUMMARY

Prepared By: Melvin Tate, HEBM

Prepared Date: 8.09.2011

Prepared Time: 1800

1. INCIDENT NAME: Honey Prairie	2. OPS PERIOD DATE: August 10, 2011	START TIME: 0830	END TIME: 1900	SUNRISE: 0652	SUNSET: 2018
3. REMARKS (Safety Notes, Hazards, Air Operations Special Equipment, etc ALL FLIGHT REQUESTS GO DIRECTLY TO HELIBASE Afternoon thunderstorms <i>NOTE: Latitude/Longitude format is "Degrees-Minutes-Decimal Minutes" (example: N30 41.42 W082 33.97) helibase convert if necessary</i>				5. TFR #: Canceled 7/27/11 SEE and AVOID!!!	

PERSONNEL	NAME	PHONE #	FREQUENCIES	AM	FM	
HEB2 Waycross HB	Melvin Tate Desk Cell	912-287-4479 850-849-0405	AIR/ AIR FW	None assigned		AIRTANKERS / LEAD PLANES - None Available OTHER: Waycross Airport Helibase: 912-287-4479 Waycross Airport Helibase Fax: 912-287-4458 ICP Helispot is Waycross Airport Helibase Okefenokee Dispatch: 912-496-7366 X230 Waycross Airport: N 31 16.16 10 W82 33.38 BERGANZA HELISPOT N 31 07.22 W082 15.22 * don't use unless cleared with AOB. POGO HELISPOT: N30 44.03 W082 07.41
ABRO	Darold Williams Desk Cell	912-287-4479 386-383-6288	AIR/ AIR RW-FF	122.375		
			Georgia AIR/GRND (Smokey - Dozers)		159.285 W	
			AIR/GROUND PRIMARY		166.9375	
			AIR/GROUND ALTERNATE		166.9000	
			TOLC		168.0125	
			AIR GUARD		168.625 T110.9	

9. HELICOPTERS (Use Additional Sheets as Necessary)

FAA N#	TY	MAKE/ MODEL	BASE	AVAIL	MANAGER	FAA N#	T Y	MAKE/ MODEL	BASE	AVAIL	MANAGER
26MW	1	K-1200	Waycross	0830	Kirby Cook 406-381-1212						
57Z	3	206-L4	Waycross	0830	Travis Taylor 208-241-0399						

10. TASK/ MISSION/ ASSIGNMENT (Type/ function includes: Air Tactical, Retardant, Recon, Personnel Transport, Bucket Operations, SAR, etc.)

TYPE/FUNCTION	NAME OF PERSONNEL OR CARGO (If applicable) or instructions for tactical aircraft	MISSION START	FLY FROM	FLY TO
Bucket Ops/	26MW	As Requested	Waycross	
Recon	All FLIGHT REQUESTS GO THROUGH HELIBASE, 57Z	As Requested/scheduled	Waycross/Pogo	
Medevac	57Z	As Requested	Waycross	



Fire Weather Forecast



FORECAST NO: 95

NAME OF FIRE: Honey Prairie Complex

PREDICTION FOR: Day Shift
SHIFT DATE: Wednesday 8/10/11

UNIT: Okefenokee National Wildlife Refuge

FORECAST ISSUED: 8/9/11 at 1600

SIGNED: Keith Mousel/FBAN

WEATHER DISCUSSION: A MOIST WESTERLY FLOW WILL CONTINUE ON WEDNESDAY BUT THUNDERSTORM COVERAGE WILL BE MUCH LOWER. DRIER AIR MOVES IN ON THURSDAY BEHIND A WEAK TROUGH. THIS WILL RESULT IN ONLY ISOLATED SHOWERS AND STORMS THURSDAY THROUGH SATURDAY. TEMPERATURES WILL BE VERY HOT EACH AFTERNOON. RELATIVE HUMIDITIES WILL BOTTOM OUT AROUND 35 PERCENT BOTH THURSDAY AND FRIDAY. HIGH DISPERSION INDICES WILL ALSO BE POSSIBLE. WINDS WILL BE MUCH LIGHTER...GENERALLY LESS THAN 10 MPH.

TODAY: Partly cloudy.

MAXIMUM TEMPERATURES: 96° - 100°
PM HEAT INDEX: 105° - 110°
MINIMUM HUMIDITY: 40 - 45%
20 FT WINDS: AM: W 8 mph
PM: W - 8 mph
STABILITY/INVERSION: 6500 feet
TRANSPORT WINDS: NW 15 mph
DISPERSION INDEX: 59, GOOD
CHANCE OF PRECIPITATION: 20%
PRECIPITATION AMOUNTS: Less than a tenth an inch.
LIGHTNING ACTIVITY LEVEL: 3

TONIGHT: Clear. Calm winds. Low temperatures 75° - 79°. Max RH 90-100%.

Thursday: Partly cloudy.

MAXIMUM TEMPERATURES: 99 - 103°
PM HEAT INDEX: 105° - 110°
MINIMUM HUMIDITY: 32-37%
20 FT WINDS: AM: NW 5 mph.
PM: W 7 mph
TRANSPORT WINDS: NW 15 mph
DISPERSION INDEX: 71 VERY GOOD
CHANCE OF PRECIPITATION: 20%
LIGHTNING ACTIVITY LEVEL: 2

EXTENDED FORECAST:

	FRIDAY	SATURDAY	SUNDAY
SKY/WEATHER	Partly Cloudy / Scattered Showers and Thunderstorms	Partly Cloudy / Scattered Showers and Thunderstorms	Partly Cloudy / Scattered Showers and Thunderstorms
CHANCE PRECIP	20%	40%	50%
20 FT. WINDS	PM: NW 5 mph	PM: NW 5 mph	PM: W -5 - 10 mph
IN/MAX TEMPS	70 / 90+	70 / 90+	70 / 90+

FIRE BEHAVIOR FORECAST

Fire: Honey Prairie Complex	Unit: GA-OKR-000001	Prediction for Day Shift
Forecast #94 Issued: 08/09/2011 1830 hrs	Signed: Keith Mousel	Shift Date: Wednesday 08/08/2011

GENERAL FIRE BEHAVIOR

Fuels around the Okefenokee Wildlife Refuge are predominately Fuel Model 7 (Southern Rough). Large to moderate acreage tracts of commercial timberland are mixed in throughout the entire perimeter surrounding the refuge. Fast moving wildfires with extremely high flame lengths and rapid rates of spread occur within the swamp.

Indicators/Threshold for Increased Fire Activity

- Relative humidity dropping below 45%
- Winds above 10 mph
- Heavy fuel loadings
- Fine dead fuel moisture 8% or less
- Dispersion above 70
- * Items in **BOLD** are predicted to occur today*

SPECIFIC FIRE BEHAVIOR

- Fire behavior activity will continue to heat up during this drying trend.
- Interior smoldering and some flare ups are possible, especially if winds increase.
- Expect fire to continue spreading through the shrub fuels with low rates of spread and minimal flame lengths. LAL 3

Fuel Type	Rates of Spread	Flame Length	Spotting Distance	Firebrand Ignition
Winds at 8 - 13				
Shrub Fuels – SH4	3 – 5 ch/hr	1 – 2 feet	1/10 - 2/10 mile	52 %
Heavy Southern Rough- SH8	6 – 12 ch/hr	6 – 7 feet	1/10 – 2/10 mile	52 %
Timber Litter-Reburn TL8	2 – 4 ch/hr	2 – 3 feet	1/10 – 2/10 mile	52 %
Small Pine Plantation w/grasses GR5	7 – 13 ch/hr	4 – 5 feet	1/10 – 2/10 mile	52 %

One hour fine dead fuel moisture is at 7% for Wednesday. Areas remain dry and burning continues. 1,000 hour fuels are drier than normal for this time of year. There is re-burn potential; mainly on the west side of the fire due to the amount of needle cast, fallen trees and scorched shrubs. Should wind become stronger than predicted, expect fire behavior to increase above predicted levels. **In areas where fuels have been herbicided, expect quick ignitions, extreme heat, quicker rates-of-spread, and possible group tree torching potentially producing spotting problems.**

NOTE- FIRE BEHAVIOR CALCULATIONS ARE FOR FIRES IN UNBURNED FUELS INCLUDING NEW IA STARTS.

All Divisions:

The fire continues a slow spread through the thick bays and muck soils. Roots and fallen trees are protecting heat sources allowing the fire to burn organic soils from the bottom up. Be heads-up for falling trees.

**STANDARD FIREFIGHTING ORDER # 1
KEEP INFORMED ON FIRE WEATHER CONDITIONS AND FORECASTS.**

Air Operations: Expect possible areas of smoke especially on the west and north side of the fire.

SAFETY:

WINDS – Stay abreast of changing wx conditions throughout the entire shift. **THUNDERSTORMS** - these severe winds can create extreme fire behavior, with winds gusting over 30 mph. **Live Trees/SNAGS** – are falling in all Divisions – will be influenced by Thunderstorm outflow winds. **FUELS:** Watch for pockets of cured shrubs or blankets of red needles beginning to cover the forest floor, re-burn is still possible. 1,000 and 10,000 hour fuels as well as deep duff pockets are providing the heat source. 100 and 1000 hour fuels are still below average in moisture content. Stay focused, and put LCES in place before starting operations. *Energy Release Component (ERC) is running near average for this time of year.*

SAFETY MESSAGE

August 10, 2011

Major Hazards and Risk

Driving
Hygiene
High Temperatures
Dehydration
Thunder Storms
Complacency
Logging Operations
Wildlife



Mitigations

Please drive the posted speed limit or less. Remember you are ambassadors for the fire and for the refuge. Be a professional. Arrive alive drive the posted speed limit and wear your seat belt.

To prevent the spreading of germs wash your hands often. It is especially important before you eat.

It is going to be over 100 degrees again today. Stay hydrated take frequent breaks

Thunderstorms have the ability produce strong winds heavy rain and frequent lightning. Take refuge to your vehicles and insure you are parked in a safe place. Any tree is capable of falling under strong wind events.

Seeing and doing the same things every day leads to complacency. Stay alert to all the known hazards. Conduct tail gate safety sessions.

Logging operations are on the increase. Pay attention to log trucks and logging equipment working in your environment and give them room. Avoid logging operations if at all possible.

Do not feed or harass alligators.

Safety Officer,

Tom Lail



INCIDENT ACTION PLAN SAFETY ANALYSIS										1. Incident Name Honey Prairie Fire		2. Date 8/10/2011		3. Time Day Shift		
LCES* Analysis of Tactical Applications Lookouts Communications Escape routes Safety zones										Other Risk Analysis						
LCES Mitigations										Smoke	Traffic/Driving	Communications	Fatigue/Hydration	School Buses / Children	Other Risk Mitigations	
Divisions	Indirect Fireline	Power lines / Snags	Road Conditions	Frontal Assault	Extreme Conditions	Railroad	Wildlife, Insects									
All Divisions	1, 2, 3, 4, 5, 7, 8, 10, 14	2, 6, 11, 15, 17	12, 20, 26	1, 2, 3, 4, 5, 7, 8, 14	7, 10	1	2, 23, 28	1. Establish & maintain LCES. Report LCES checks twice daily to DIVS on line & staggng. 2. Look UP,DOWN and AROUND 3. Post experienced Lookouts. Make sure LCES is in place and make known. 4. Use Aerial Resources as Lookout if available.	24	12, 17, 19, 20, 22, 26, 27	1, 3, 10, 14, 19, 24, 25		16, 18, 21	26	16. Take adequate rest breaks and encourage to drink water NOW through briefings. 17. Defensive driving will be addressed in all briefings. 18. All personnel must meet the 2:1 work/rest ratio. Line supervisors and Safety will monitor closely. 19. Notify Operation and Safety of Railroad track issues to ensure safety of firefighters.	
								5. Flag escape routes on right side of escape route facing outward. Create new escape routes as you progress and identify Safety Zones on the ground and maps. 6. Identify, mark & mitigate. 7. FBAN/Meteorologist to monitor weather updates and advisories. 8. Ensure Fireline is Anchored to black or manmade/natural barrier.							20. Ensure Traffic Planning is safe and enforced. Heed Defensive Driving techniques noted in Safety Messages. 21. Relocate staggng area when driving conditions warrant. 22. Use spotter when backing vehicle(s). 23. For insects, use protective spray with deet on skin (Not on Nomex), permethrin can be used on nomex clothing	
								10. Keep Firefighters informed of any changes in predicted weather, consider at least a two day weather pattern when planning Strategic Firing operations. 11. Refer to IRPG, pg. 12 on Power Line Hazards. 12. Observe all traffic signals and speed limits. Drive with lights on. 14. Ensure GOOD tailgate briefings with resources unable to attend Operational Briefing (Include Ops, Logs, Fin & Plans info.).							24. Establish smoke/fog signs on roadways. Coordinate with Department of Transportation. 25. Follow establish communication plan, flight follow through dispatch 26. Watch-out for school buses and for children along the edge of roadway and crossing the road.	
								15. Scout ahead of tractor operations to avoid making contact with power poles and guide wires when tying into roads. Power companies are working in some DIVS, avoid all down lines as they may become charged.							27. Treat all intersections as 4-way stops 28. Bears, Gators, and some snakes are dangerous. Do not approach or feed wildlife at any time.	

MEDICAL PLAN	Incident Name Honey Prairie Complex	Date Prepared 8/09/2011	Time Prepared 1000	Operational Period 8/10/2011
---------------------	-----------------------------------------------	-----------------------------------	------------------------------	----------------------------------------

5. Incident Medical Aid Station

<u>Medical Aid Stations</u>	<u>Location</u>	Paramedics Yes	No
MEDICAL UNIT (ICP EMT)	Honey Prairie Complex ICP- No MEDL Phillip Anderson (EMT-Intermediate) (678)-230-0952		X
WEST SIDE (None)	Safety Officer has a 10 person medical kit		X
EAST SIDE (Line EMT)	****Simon Bishop (EMT) Charlton 86 (10 person medical kit only)**** Safety Officer has a 10 person medical kit		X

Ambulance Services

Name	Address	Phone	Paramedic	
			Yes	No
Clinch County EMS (WEST SIDE)	Homerville, GA (911 to activate)	912-487-5211 ext. 4567	Yes	
Ware County EMS (NORTHSIDE)	Waycross, Georgia (911 to activate)	912-281-9467	Yes	
Charlton County EMS (EAST SIDE)	Folkston, GA (911 to activate)	912-496-7321	Yes	

Air Ambulance Service

Trauma 1	Address	Travel Time	Phone	Paramedic	
				Yes	No
	Lake City, FL (16 min/air to Fargo ICP)		1-800-223-4878(freq. 155.340)	Yes	
	Jacksonville, FL (26 min/air to Fargo ICP)		1-800-223-4878(freq. 155.340)	Yes	
AirMed	Augusta, GA (2 hrs/air to Fargo ICP)		1-888-792-9245(freq. 155.340)	Yes	
Lifeflight	Jacksonville, FL (35 min/air to Fargo ICP)		1-877-870-7779(freq. 155.340)	Yes	
Air Evac	Waycross, GA (17 min/air to Fargo ICP)		1-800-247-3822(freq. 155.340)	Yes	
US Coast Guard (Heli-Rescue)	Savannah GA		1-912-652-4646 (freq. 155.340)	Yes	

7. Hospitals

Name	Address	Travel Time		Phone	Helipad		Burn Center	
		Air	Ground		Yes	No	Yes	No
Satilla Regional	410 Darling Ave Waycross Ga N 31°13.56 W 82°21.058	18 min	45 min	912-283-3030	Yes			No
Clinch Memorial Hospital (WEST SIDE)	1050 Valdosta HWY Homerville, GA		25 min	912-487-5211 ext 4502	Yes			No
Charlton Memorial Hospital (EAST SIDE)	1203 3 rd St. Folkston, GA		50 min	912-496-2531	Yes			No
Memorial Hospital	Savannah, GA 4700 Waters 3200.7 8107.6	30 min		912-350-8999	Yes			No
Shands Hospital (level I)	Jacksonville, FL N 30°20'97 W 82° 13 992	26 min	1.5 hrs	800-223-4878	Yes		Yes	
Shands Burn Center	Gainesville, FL 38.33 N 082 20.73W	33 min	1.5 hrs	352-265-0300	Yes		Yes	

8. Medical Emergency Procedures

Identify any EMTs and Paramedics in your crews. All medical emergencies will be reported to the Division Supervisor who will assume command and notify Line Medics.

On scene personnel will:

1. Provide medical care & stabilize patient.
2. Call 911 if possible and provide the information requested.
3. Notify Communications via radio over Command Channel
4. Communications will clear radio traffic for medical emergency.
5. Communications will confirm 911 has been notified coordinate with IC, SOF.
6. DIVS will notify the Field Ops Section Chief.

MAJOR EMERGENCIES – Secure the area and identify witness for later investigation. Keep an accurate log of events.

NOTE: Do not give Patients Name over the radio!

HELISPOTS

Pocket Helispot 30 47 30.02 x 82 22 39.5 (West side), mile marker 4, HWY 177 Steven C. Foster State Park

Fargo Helispot 30 40.945 x 082 33.640 (West side), HWY 441- Steven C. Foster Visitor Center

POGO Helibase 30.44.03 x 82.07.41 (East side)

Evac Yankee

Helispot 6

Rd. 32 and 32A, N 30° 53.280 W 082° 33.880

Helispot 7

Tatum Rd. Pond N 30° 50.280 W 082° 33.857

***Alternate site can be established following guidelines for safety found with IRPG and local EMS resources.**

INJURY REPORTING PROCESS:

Nature of Injury: _____

Location of Patient: _____

Transportation Requested by: Air___ Ground___

Pick Up Point: _____

Lat: _____ Long: _____

Patient Unit ID: _____

Is an EMT w/Patient: Yes___ No___

Age: _____ Sex: Male___ Female___

Weight (If Air Evac. is needed): _____

Prepared by: Phillip Anderson (EMT Intermediate)

10. Reviewed by: Shane Barrow, SOFR

INCIDENT RADIO COMMUNICATIONS PLAN ICS-205			Incident Name Honey Prairie			GROUP 22		Date/Time Prepared 08/09/2011-18:00		Operational Period Date/Time 8/10/2011 0800-2000	
Ch #	Function	Channel Name	Assignment	RX Freq	NW	RX Tone/NAC	TX Freq	N W	TX Tone/NAC	Mode A,D or M	Remarks
1	Command	West Okee Repeater	Sec West Branch CMD	167.1250	N	156.7	163.1500	N	156.7	A	Stephen Foster State Park
2	Command	South Okee Repeater	Sec East/West Branch CMD	164.7750	N	123.0	163.1500	N	123.0	A	Eddy Florida
3	Command	East Okee Repeater	PRIMARY East Branch CMD	164.6250	N	103.5	163.1500	N	103.5	A	Refuge Headquarters
5	Command	North Okee Repeater	PRIMARY North Branch CMD	164.5750	N	206.5	163.1500	N	206.5	A	Waycross
6	Air-Ground	Air to Ground	PRIMARY	166.9375	N	CSQ	166.9375	N	CSQ	A	
7	Tactical	MOB-MOB	GFC Contingency	159.3900	W	CSQ	159.3900	W	156.7	A	
8	Tactical	V-Fire 21W WHITE	West group Secondary	154.2800	W	CSQ	154.2800	W	156.7	A	
9	Tactical	USFS 9	East/West Groups	168.7750	N	CSQ	168.7750	N	CSQ	A	
10	Tactical	S.E. Compact		159.2850	W	CSQ	159.2850	W	CSQ	A	
11	Tactical	USFS 11	East Group Secondary	168.2000	N	CSQ	168.2000	N	CSQ	A	
12	Tactical	Refuge Tac 1	East Group	168.3500	N	CSQ	168.3500	N	CSQ	A	
13	Tactical	FL 190		151.2725	N	CSQ	151.2725	N	CSQ	A	
15	Air-Ground	Air to Ground	SECONDARY	166.9000	N	CSQ	166.9000	N	CSQ	A	
16	EMERGENCY	AIR Guard	Air OPS.	168.6250	N	CSQ	168.6250	N	110.9	A	
Prepared by (Communications Unit) Phillip Anderson, COMT/COML Incident Dispatcher: 912-286-1660						Cloning at ICP communications and briefings,					

The convention calls for frequency lists to show four digits after the decimal place, followed by either an "N" or a "W", depending on whether the frequency is narrow or wide band. **Mode** refers to either "A" or "D" indicating analog or digital (e.g. Project 25) or "M" indicating mixed mode. All channels are shown as if programmed in a control station, base stations, mobile or portable radio.

Honey Prairie Fire Incident Information

Here are some key points that we like to make when discussing this fire with the public.

1. Public and firefighter safety remains the top priority for this incident.
2. Past experience has shown that conventional fire suppression tactics do not work well inside the swamp. Humans have never been successful in controlling fires within the swamp; only “mother nature” has done this. Attempting suppression within the swamp is ineffective, costly, wastes firefighting resources and needlessly endangers firefighter safety.
3. Fire on the refuge is usually fought by reinforcing firelines along the Swamps Edge Break, including areas of private land, to keep the fire contained within the swamp.
4. Homeowners and other land owners can minimize the potential for damage to their homes by creating defensible space through firewise landscaping, thinning, etc..
5. Fire enhances the health of the Okefenokee ecosystem and is a force of nature that sustains the diversity and richness of a wide variety of species that makes the Okefenokee a world-famous ecosystem and natural area.

HONEY PRAIRIE PHONE LIST			08/10/11
Incident	Communication	(Hours: 0700-2000)	912-286-1660
AGENCY OFFICIALS			OPERATIONS
Curt McCasland	602-359-0013	USFWS AA	Steve Gray 770-655-8002
Mindy Gautreaux	912-282-7500	USFWS Deputy AA	DIVISIONS
Frank Sorrells	912-381-7503	GFC AA	John Raulerson 386-961-1209 West Group
James Karels	850-228-7763	FL DOF AA	Steve Abbott 706-836-7712 East Group
Diane Adams	912-266-5421	GEMA	AIR OPERATIONS
Mike Housh	912-281-1575	USFWS AREP	Melvin Tate 912-287-4479 HEB2 - WAYCROSS
COMMAND			850-849-0405 cell
Steve Gray	770-655-8002	IC	LANDOWNERS
RESOURCE ADVISORS			Jim Barrett 229-356-1993 Langdale/GOAL Chairman
Ron Phernetton	912-276-2349	Resource Advisor	Wesley Langdale 229-220-2602 Langdale
Jessica Bowen	912-536-2995	Resource Advisor	Hal Rowe 229-412-3133 Langdale
Rocky Chesser	912-276-3232	Resource Advisor	Langdale Office 229-242-7450 Langdale Office
INFORMATION 912-496-2566			Mike Conlon 386-365-3882 Rayonier Unit Supervisor
Art Webster	912-496-7366(233)	Fire Information	Ray Carter 386-288-6626 Rayonier
SAFETY			Ed Carter 386-288-6626 Rayonier
Tommy Lail	404-772-5338	Safety Officer	Doug Nuss 912-390-1037 Rayonier
Shane Barrow	706-699-2412	Safety Officer	Randall McCrady 912-283-4077 W 912-288-0877 C Rayonier
DISPATCH			Colin Myerson 229-506-1565 Superior Pine Products Co
Okefenokee Dsp	912-496-7366	Okefenokee	Robbie Lee 229-356-0526 Superior Pine Products Co
Suwannee Dispatch	386-758-5700	Fla wildfires, other	Superior Pine Office 912-637-5261 Superior Pine Products Co
Honey Prairie Dspth	912-286-1660	Honey Prairie ICP	Al Alexander 850-843-0104 The Forestry Co
Waycross Dispatch	912-287-4915	Ga wildfires, other	Savell Schmidt 850-843-1181 The Forestry Co
LOGISTICS 404-772-5336 fax 912-287-6542			John Bogue 850-843-1192 The Forestry Co
Randy Teal	404-772-5336	LSC	Joe Hopkins 912-276-0911 Toledo Timber
Neal Edmondson	478-973-6263	Facilities	Chris Gowan 912-276-0965 Toledo Timber
Phillip Anderson	678-230-0952	Communication	Martin Bell 912-283-0583 Swamp Park
Linda Blondeau	770-658-4789	Ordering Manager	Crystal Peeples 352-316-0632 FIA
Bill Messerschmidt	715-581-1694	RADO	Steve Davis 912-614-1828 Davis Community
PLANNING 912-287-6565 FAX 912-287-6541			Trevor Fortner 912-599-9271 Little Suwannee
Keith Mousel	850-228-7756	Planning Section Chief	Tim Jarrell 912-223-7120 Hancock Forest Mgmt.
Thomas Barrett	478-689-5144	RESL	RAILROADS
FINANCE 912-287-6568 FAX 912-287-6564			Norfolk Southern 800-453-2530
Vickie Hulsizer		Finance Section Chief	Sid Moody 904-318-7983 Norfolk Southern Railroad
Rhonda Vickerman	541-891-1067	Purchasing Agent	Chad Edwards 404-582-4909 Norfolk Southern Railroad
Anna Bryant	540-520-1799	Purchasing Agent	Eric Sams 904-576-9907
Buying Team Fax	912-287-6557		Norfolk So 404-529-1597
Carla Schamber	541-223-1907	IBA	CSX Randy Dixon 912-270-0699
FEDERAL			CSX Dispatch 800-232-0144
Okefenokee Fire Shop	912-496-4181		COUNTY
Okefenokee NWR HQ	912-496-7366		
Okefenokee NWR	912-637-5322		912-496-7229 Charlton County EMA
Okefenokee Visitor	912-496-7836		John F. Meyer - 912-496-2549 Charlton County Commissioners
STATE			Dobie Conner 912-496-7321 Charlton County Sheriff
GFC Fargo Office	912-637-5270		Jesse Booth 912-520-0061 Clinch County EMA
GFC Satilla District	912-287-4915		Jonathan Daniel 912-281-5158 Ware County EMA
Blair Joiner	229-237-9026	GFC Clinch Chief Ranger	Jessie Jordan 912-816-6063 Ware County Fire Dept
Jason Gillis	912-314-9233	GFC Satilla Mgr.	Joe Morris 912-281-6020 Ware County Sheriff
Brian Gray	229-894-4628	Stephen Foster State Park	Robbie Sutton 912-599-9027 Tri County 911
			Georgia State Patrol 912-287-6500

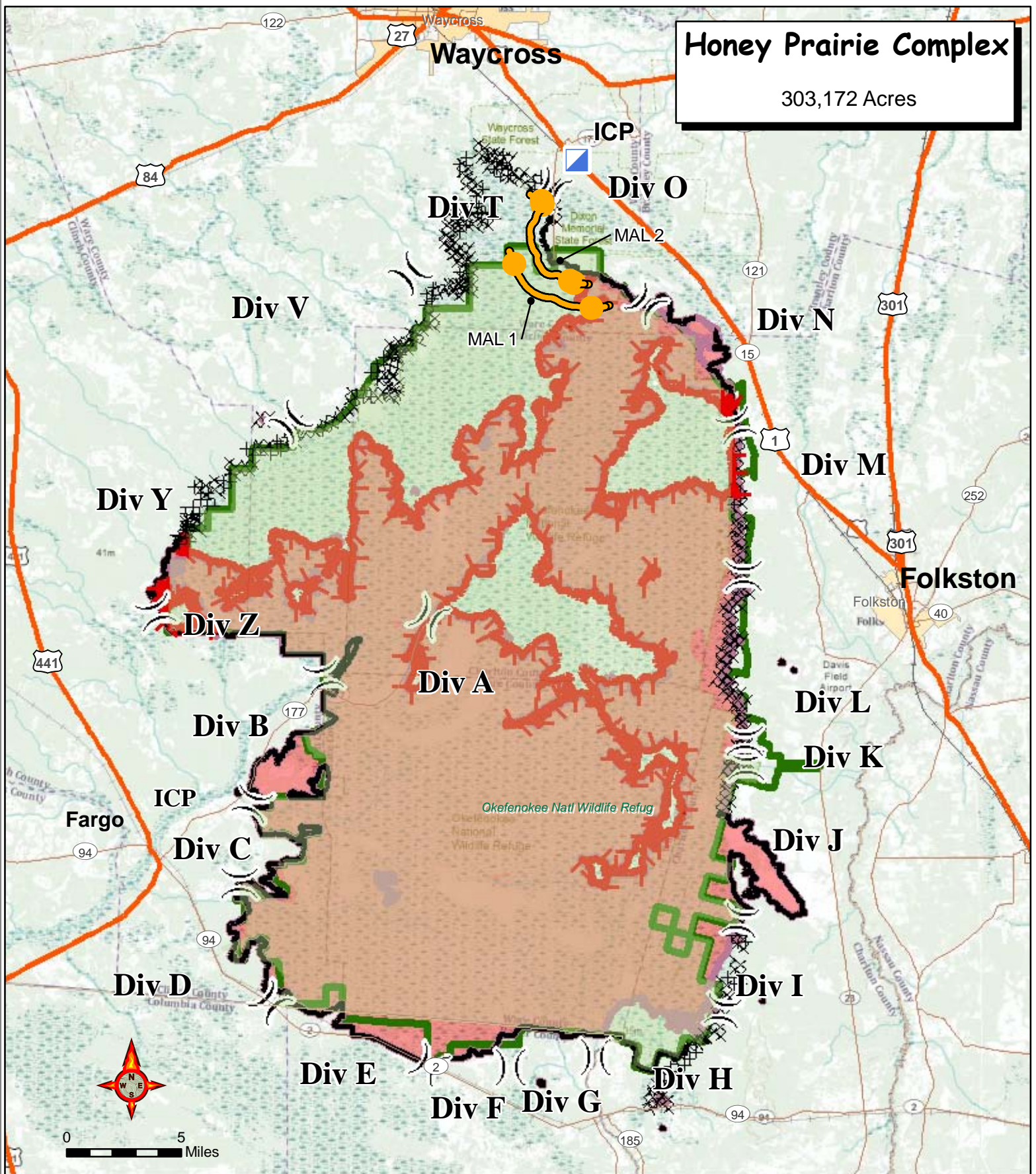
DMOB Report

RequestNun	ResourceName	KindCode	UnitID	TravelMethod	Jetport	DemobDate
O-1130	TUTTLE, JACOB	SEC1	GAPDR	AOV		08/11/2011
E-7.7	MCCULLOUGH, ADAM	TPOP	GASAR	AOV		08/12/2011
A-81.1	COOK, KIRBY	HMGB	MTBRF	AIR	MSO	08/12/2011
O-1147	SOILEAU, JOHN D.	SECM	LALIC	AOV		08/12/2011
O-1083	LAIL, TOMMY	SOF2	VAVAF	AIR	SHD	08/12/2011
O-1134	CHAPPELL, JAMES	EQPM	GAGAS	AOV		08/13/2011
O-1149	SMITH, JEFFERY	RCDM	KYKYS	AIR	LEX	08/13/2011
O-1094	HAWKINS, TREVOR	FFT2	GAOKR	POV		08/13/2011
O-560	PHERNETTON, RONALD	READ	GAOKR	AOV		08/14/2011
O-1132	NEUMANN, JORDAN	SEC1	FLEVP	AOV		08/14/2011
O-1158	PRICE, TOBY	FFT1	GAPDR	AOV		08/15/2011
E-1212	CHEVY BLAZER	SUV	FLFLS	AOV	TPA	08/15/2011
O-1157	HERRON, NATHAN	ENGB	GAPDR	AOV		08/15/2011

Record Count: 13

Honey Prairie Complex

303,172 Acres



- Incident Command Post
- Uncontrolled Fire Edge
- Completed Dozer Line
- Completed Line
- Refuge Boundary
- FirePolygon

Division

Perimeter as of 7/30/2011 1200
C. Bailey GISS



