

*Honey Prairie Complex*

GA-OKR-000001

# INCIDENT ACTION PLAN

Operational Period

Saturday

August 13, 2011

0800-2000

Incident Commander

Steve Gray

**Accounting Codes**

FWS – 9141-F25M-2J

NPS – 5023 F25M E11

BLM – F25M

USFS – PRF25M\_1502

Initial Attack – F4PM



*An Equal Opportunity  
Employer & Service Provider*

Letter from GFC Incident Commander:

To: All Honey Prairie Incident Personnel

As A Georgia Forestry Commission Type 3 Incident Commander, I am committed to a policy of “zero tolerance” of inappropriate behavior during incident operations. Any form of harassment, discriminatory practices, or disrespectful behavior will not be tolerated.

Guidelines on in-appropriate behavior both “on Duty” and “off Duty” while assigned are addressed within each agencies policies. Our Team expects all incident personnel to follow established government policies for behavior along with all Illegal drug and alcohol directives.

Our Incident Management Team endorses and supports an attitude of mutual respect for all personnel and the public we serve.

We expect a strong work ethic and an attitude of Safety at all times!

Sincerely,

/s/ Steve Gray

Incident Commander  
Georgia Forestry Commission Type 3 Incident Management Team

<b>INCIDENT OBJECTIVES</b>	<b>1. INCIDENT NAME</b> Honey Prairie Complex	<b>2. DATE PREPARED</b> 8/12/11	<b>3. TIME PREPARED</b> 1700												
<b>4. OPERATIONAL PERIOD (DATE/TIME)</b> Saturday, August 13, 2011 0800 – 2000															
<b>5. GENERAL CONTROL OBJECTIVES FOR THE INCIDENT (INCLUDE ALTERNATIVES)</b> <ol style="list-style-type: none"> <li>1. Provide for safety of incident personnel and public in all incident operations.</li> <li>2. Maintain a positive working relationship with all adjacent landowners, cooperators State and Federal partners. Inform, involve and communicate incident planning and operations with all partners.</li> <li>3. Contain all fires that are within the Okefenokee National Wildlife Refuge, inside the Refuge and/or inside the swamp edge break if possible.</li> <li>4. In cooperation with local timberland owners, use full suppression strategies and tactics to minimize damage to private timberlands and improvements and to prevent fires outside the Refuge from entering the Refuge.</li> <li>5. Assist in management and suppression of additional fires (new starts or breakouts) in the vicinity as approved by Agency Administrators and Incident Commander.</li> <li>6. Protect all cultural and archeological sites and structures within the refuge, with particular attention to facilities at Okefenokee Swamp Park.</li> <li>7. Manage the fires cost-effectively consistent with the values at risk.</li> <li>8. Implement structure protection as necessary for at-risk facilities and communities.</li> <li>9. Coordinate suppression actions with assigned Refuge Resource Advisors</li> </ol>															
<b>6. WEATHER FORECAST FOR OPERATIONAL PERIOD</b> See attached forecast for area specific weather information.															
<b>7. GENERAL SAFETY MESSAGE</b> Drive defensively and use spotter when backing. Ensure LCES is in place and known by all personnel. Drink plenty of water and take frequent rest breaks. Ensure proper use of PPE during all operations.															
<b>8. Attachments ( <input checked="" type="checkbox"/> if attached)</b> <table border="0" style="width: 100%;"> <tr> <td><input checked="" type="checkbox"/> Organization List (ICS 203)</td> <td><input checked="" type="checkbox"/> Incident Map</td> <td><input checked="" type="checkbox"/> Safety Message</td> </tr> <tr> <td><input checked="" type="checkbox"/> Assignment List (ICS 204)</td> <td><input type="checkbox"/> Traffic Plan</td> <td><input type="checkbox"/> Demobilization Procedures</td> </tr> <tr> <td><input checked="" type="checkbox"/> Communications Plan (ICS 205)</td> <td></td> <td><input checked="" type="checkbox"/> Unit Log</td> </tr> <tr> <td><input checked="" type="checkbox"/> Medical Plan (ICS 206)</td> <td><input checked="" type="checkbox"/> Phone List</td> <td></td> </tr> </table>				<input checked="" type="checkbox"/> Organization List (ICS 203)	<input checked="" type="checkbox"/> Incident Map	<input checked="" type="checkbox"/> Safety Message	<input checked="" type="checkbox"/> Assignment List (ICS 204)	<input type="checkbox"/> Traffic Plan	<input type="checkbox"/> Demobilization Procedures	<input checked="" type="checkbox"/> Communications Plan (ICS 205)		<input checked="" type="checkbox"/> Unit Log	<input checked="" type="checkbox"/> Medical Plan (ICS 206)	<input checked="" type="checkbox"/> Phone List	
<input checked="" type="checkbox"/> Organization List (ICS 203)	<input checked="" type="checkbox"/> Incident Map	<input checked="" type="checkbox"/> Safety Message													
<input checked="" type="checkbox"/> Assignment List (ICS 204)	<input type="checkbox"/> Traffic Plan	<input type="checkbox"/> Demobilization Procedures													
<input checked="" type="checkbox"/> Communications Plan (ICS 205)		<input checked="" type="checkbox"/> Unit Log													
<input checked="" type="checkbox"/> Medical Plan (ICS 206)	<input checked="" type="checkbox"/> Phone List														
<b>9. PREPARED BY (PLANNING SECTION CHIEF)</b> Keith Mousel		<b>10. APPROVED BY (INCIDENT COMMANDER)</b> Steve Gray													

ORGANIZATION ASSIGNMENT LIST		9. Operations Section		
<b>1. Incident Name</b> Honey Prairie Complex GA-OKR-000001		Chief	Steve Gray 8/20	
<b>2. Date</b> 8/12/2011		<b>3. Time</b> 1000 hrs		
<b>4. Operational Period</b> 8/13/2011 0800 - 2000		<b>a. Divisions/Groups</b>		
<b>5. Incident Commander and Staff</b>				
Incident Commander	Steve Gray 8/20	Group	East Group	Steve Abbott 8/20
Safety Officer	Frank Gibbs 8/24	Group	West Group	John Raulerson 8/17
Information Officer	Jim Burkhart			
<b>6a. Agency Administrators</b>				
FWS	Curt McCasland			
FWS	Mindy Gautreaux			
<b>6b. Agency Representatives</b>		<b>b. Divisions/Groups</b>		
GFC	Frank Sorrells			
FLDOF	James Karels			
FWS AREP	Mike Housh			
FWS-Refuge PAO	Art Webster			
GEMA AREP	Alan Robinson / Diane Adams			
USFS AREP	Ivan Greene			
<b>7. Planning Section</b>		<b>c. AIR OPERATIONS BRANCH - Honey Prairie</b>		
Chief	Keith Mousel 8/15	Waycross Helibase Mgr		Melvin Tate 8/14
Resource Advisors	Ron Phernetton, Jessica Bowen, Rocky Chesser			
Resources Unit	Thomas Barrett 8/20			
Situation Unit				
<b>8. Logistics Section</b>		<b>d. AIR OPERATIONS BRANCH - Pogo</b>		
FBAN	Keith Mousel 8/15			
Demob Unit				
Documentation				
GIS				
CTSP				
SCKN				
<b>10. Finance Section</b>		<b>10. Finance Section</b>		
Chief	Randy Teal 8/20	Chief	Susan Beasley (T) 8/21	
Supply Unit		Time Unit		
GSUL		Cost	Vickie Hulsizer (T) 8/18	
ORDM	Linda Blondeau 8/22	PTRC	Carol Layton 8/18	
COML		EQTR	David Epps 8/20	
Medical Unit		IBA	Carla Schamber 8/19	
Facilities	Neal Edmondson 8/20			
Food		Purchasing Agent	Rhonda Vickerman 8/15 Anna Bryant 8/16	
SECM	Rebecca Francis 8/25			
COMT	Phillip Anderson 8/20			
RADO	Bill Messerschmidt 8/19			
RCDM				
		Prepared by: Thomas Barrett		RESL

DIVISION ASSIGNMENT LIST		1. Branch		2. Division <b>East Group</b>			
3. Incident Name <b>Honey Prairie Complex</b>		4. Operational Period Date: <b>8/13/2011</b> Time: <b>0800-2000</b>					
5. Operations Personnel							
<b>Operations</b>	Steve Gray 8/20	<b>Branch Director</b>					
		<b>Division Supervisor</b>		Steve Abbott 8/20			
<b>Safety Officer</b>	Frank Gibbs 8/24	<b>Division Supervisor</b>					
6. Resources Assigned this Period							
Strike Team/Task Force/ Resource Designator	Leader / Name / Designator	Last Shift Date	Num. Per.	Drop Off PT./Time	Crew Names		
<b>READ (O-559) GAOKR</b>	<b>Jessica Bowen</b>		1	912-536-2995			
<b>TFLD (O-5) GAOKR</b>	<b>Rocky Chesser</b>		1				
TPL SC 922 (E-7) SCSCC	Charles Johnson (E-7.8)	8/25	1		Stage @ Refuge HQ		
TPL GAOKR 56 (E-22)	Fed Privett (O-15)		1		Stage @ Refuge HQ		
TPL GA OKR 54 (E-21)	Cory Bryant (O-9)		1		Stage @ Refuge HQ		
TPL GAOKR 53 (E-23)	Unstaffed						
<b>TFLD (O-1156)</b>	<b>Seth Pierce</b>	8/15	1				
<b>TFLD (T) (O-1178)</b>	<b>Ron Calhoun</b>	8/24	1				
Chattooga 86 (E-77) GAGAS	Josh Shelton (E-77.13)	8/17	1				
Charlton Eng 86 (E-1252) GAGAS	Matthew Rymer (E-78.14)	8/17	2		Simon Bishop (E-78.15) <b>EMT</b>		
Jones Eng 86 (E-81) GAGAS	Troy Helms (E-81.13)	8/17	2		Jessie Boles (E-81.14)		
Dawson 86 (E-1082) GAGAS	C. Sweatman (E-1082.5)	8/17	2		A. Brown (E-1082.6)		
7. Control Operations							
<ul style="list-style-type: none"> <li>Respond to Initial Attack as requested</li> <li>Patrol and control return</li> <li>Initial attack IC will communicate sizeup information to the Honey Prairie communication.</li> <li>Make contact with the resource advisor before using mechanical equipment.</li> <li>Improve swamp break boundaries for fire breaks, work with resource advisor.</li> <li>Safely push down with equipment all snags whether on fire or not that are a threat to success or tactical operations.</li> </ul>							
8. Special Instructions							
<ul style="list-style-type: none"> <li>Ensure LCES are in place before operations begin. Stay hydrated.</li> <li>Drive defensively with lights on at all times.</li> <li>Boggy terrain: Be careful and aware when working around this type of area.</li> </ul>							
9. Division/Group Communication Summary							
	Function	Frequency	Channel	Function	Frequency	System	Channel
Command E Okee Repeater	RX 164.625/103.5 TX 163.150/103.5	KING NIFC	3	Logistics		KING NIFC	
Tactical Div/Group	RX 168.775 TX 168.775	KING NIFC	9	Air to Ground	RX 166.9375 TX 166.9375	KING NIFC	6
Prepared by (Resource Unit Ldr.) Thomas Barrett		Approved by (Planning Sect. Ch.) Keith Mousel		Date <b>August 12, 2011</b>		Time 1800	

DIVISION ASSIGNMENT LIST				1. Branch		2. Division <b>West Group</b>	
3. Incident Name <b>Honey Prairie Complex</b>				4. Operational Period Date: 8/13/2011 Time: 0800-2000			
5. Operations Personnel							
<b>Operations</b>		Steve Gray 8/20		<b>Branch Director</b>			
				<b>Division Supervisor</b>		John Raulerson 8/17	
<b>Safety Officer</b>		Frank Gibbs 8/24					
6. Resources Assigned this Period							
Strike Team/Task Force/ Resource Designator		Leader / Name / Designator		Last Shift Date	Num. Per.	Drop Off PT./Time	Crew Names
<b>READ (O-559) GAOKR</b>		<b>Jessica Bowen</b>			1		912-536-2995
<b>TFLD (O-899)</b>		<b>Bob Schober</b>		8/18	1		
<b>STPL (T) (O-1179)</b>		<b>Josh Rowan</b>		8/24	1		
GA PDR ENG6 (E-1253) FWS		Nathan Herron		8/28	3		T. Price, T. Hawkins
ME ENG6 (E-405)(MEMHR)FWS		Brandon Harriman		8/22	3		C. Stearns, C. Roderick <b>EMT</b>
MN Eng 6232 (E-838) MNMFC FWS		Blair Mace		8/19	3		M. Fondriest, T. Saxton
Monroe 86 (E-1084) GAGAS		George Barbee		8/18	2		Jared Penny
TPL Appling 70 (E-1165) GAGAS		Joseph A. Smith Jr. (O-1116)		8/19	1		
TPL Glynn 72 (E-1175) GAGAS		Robert L. Danley (O-1121)		8/19	1		
TPL Echols 71 (E-1247) GAGAS		James Sikes		8/18	1		
TPL Glynn 71 (E-1249) GAGAS		Jason Harris		8/18	1		
GA ENG6 (E-2) GAOKR		<b>unstaffed</b>					
7. Control Operations							
<ul style="list-style-type: none"> <li>Respond to Initial Attack as requested</li> <li>Patrol and control return</li> <li>Initial attack IC will communicate sizeup information to the Honey Prairie communication.</li> <li>Make contact with the resource advisor before using mechanical equipment.</li> <li>Improve swamp break boundaries for fire breaks, work with resource advisor.</li> <li>Safely push down with equipment all snags whether on fire or not that are a threat to success or tactical operations.</li> </ul>							
8. Special Instructions							
<ul style="list-style-type: none"> <li>Ensure LCES are in place before operations begin. Stay hydrated.</li> <li>Drive defensively and with lights on at all times.</li> <li>Boggy terrain: Be careful and aware when working around this type of area.</li> </ul>							
9. Division/Group Communication Summary							
Function	Frequency	System	Channel	Function	Frequency	System	Channel
Command N Okee Repeater	RX 164.5750/206.5 TX 163.150/206.5	KING NIFC	5	Logistics		KING NIFC	
Tactical Div/Group	RX 168.775 TX 168.775	KING NIFC	9	Air to Ground	RX 166.9375 TX 166.9375	KING NIFC	6
Prepared by (Resource Unit Ldr.) Thomas Barrett		Approved by (Planning Sect. Ch.) Keith Mousel			Date August 12, 2011		Time 1800

# AIR OPERATIONS SUMMARY

Prepared By: Melvin Tate, HEBM

Prepared Date: 8.12.2011

Prepared Time: 1800

<b>1. INCIDENT NAME:</b> Honey Prairie	<b>2. OPS PERIOD DATE:</b> August 13, 2011	<b>START TIME:</b> 0830	<b>END TIME:</b> 1900	<b>SUNRISE:</b> 0653	<b>SUNSET:</b> 2015
<b>3. REMARKS (Safety Notes, Hazards, Air Operations Special Equipment, etc ALL FLIGHT REQUESTS GO DIRECTLY TO HELIBASE Afternoon thunderstorms</b> <i>NOTE: Latitude/Longitude format is "Degrees-Minutes-Decimal Minutes" (example: N30 41.42 W082 33.97) helibase convert if necessary</i>					<b>5. TFR #:</b> Canceled 7/27/11 <b>SEE and AVOID!!!</b>

PERSONNEL	NAME	PHONE #	FREQUENCIES	AM	FM	
HEB2 Waycross HB	Melvin Tate Desk Cell	912-287-4479 850-849-0405	AIR/ AIR FW	None assigned		<b>AIRTANKERS / LEAD PLANES - None Available</b>  <b>OTHER:</b> <b>Waycross Airport Helibase: 912-287-4479</b> <b>Waycross Airport Helibase Fax: 912-287-4458</b> <b>ICP Helispot is Waycross Airport Helibase</b> <b>Okefenokee Dispatch: 912-496-7366 X230</b>  <b>Waycross Airport: N 31 16.16 10 W82 33.38</b>  <b>BERGANZA HELISPOT N 31 07.22 W082 15.22 * don't use unless cleared with AOB.</b> <b>POGO HELISPOT: N30 44.03 W082 07.41</b>
ABRO	Darold Williams Desk Cell	912-287-4479 386-383-6288	AIR/ AIR RW-FF	122.375		
			Georgia AIR/GRND (Smokey - Dozers)		159.285 W	
			AIR/GROUND PRIMARY		166.9375	
			AIR/GROUND ALTERNATE		166.9000	
			TOLC		168.0125	
			AIR GUARD		168.625 T110.9	

## 9. HELICOPTERS (Use Additional Sheets as Necessary)

FAA N#	TY	MAKE/ MODEL	BASE	AVAIL	MANAGER	FAA N#	T Y	MAKE/ MODEL	BASE	AVAIL	MANAGER
26MW	1	K-1200	Waycross	0830	Jerrid Silva 406-370-8390						
57Z	3	206-L4	Waycross	0830	Travis Taylor 208-241-0399						

## 10. TASK/ MISSION/ ASSIGNMENT (Type/ function includes: Air Tactical, Retardant, Recon, Personnel Transport, Bucket Operations, SAR, etc.)

TYPE/FUNCTION	NAME OF PERSONNEL OR CARGO (If applicable) or instructions for tactical aircraft	MISSION START	FLY FROM	FLY TO
Bucket Ops/	26MW	As Requested	Waycross	
Recon	<b>All FLIGHT REQUESTS GO THROUGH HELIBASE, 57Z</b>	As Requested/scheduled	Waycross/Pogo	
Medevac	57Z	As Requested	Waycross	



# Fire Weather Forecast



**FORECAST NO:** 98

**NAME OF FIRE:** Honey Prairie Complex

**PREDICTION FOR:** Day Shift  
**SHIFT DATE:** Saturday 8/13/11

**UNIT:** Okefenokee National Wildlife Refuge

**FORECAST ISSUED:** 8/12/11 at 1600

**SIGNED:** Keith Mousel/FBAN

**WEATHER DISCUSSION:** HOT TEMPERATURES WITH HEAT INDICES AROUND 105 ACROSS INLAND AREAS ARE EXPECTED DURING THE WEEKEND. RH VALUES WILL BE SLIGHTLY HIGHER THAN IN RECENT DAYS. WINDS WILL BE LESS THAN 15 MPH. A PREVAILING WESTERLY FLOW WILL KEEP THE EAST COAST SEA BREEZE NEAR THE COAST THIS WEEKEND.

**TODAY:** Partly Cloudy  
**MAXIMUM TEMPERATURES:** 95 - 100°  
**PM HEAT INDEX:** 103° - 109°  
**MINIMUM HUMIDITY:** 47-53%  
**20 FT WINDS:** AM: E 2 mph  
PM: SE - 3 mph  
**STABILITY/INVERSION:** 5700 feet  
**TRANSPORT WINDS:** NW 9 mph  
**DISPERSION INDEX:** 31, Fair  
**CHANCE OF PRECIPITATION:** 40%  
**PRECIPITATION AMOUNTS:** Less than a tenth an inch.  
**LIGHTNING ACTIVITY LEVEL:** 3

**TONIGHT:** Clear. Calm winds. Low temperatures 70 - 75°. Max RH 90-100%.

**SUNDAY:** Partly Cloudy  
**MAXIMUM TEMPERATURES:** 90 - 95  
**PM HEAT INDEX:** 100° - 105°  
**MINIMUM HUMIDITY:** 47 - 54%  
**20 FT WINDS:** AM: SW 4 mph.  
PM: W 8 mph  
**TRANSPORT WINDS:** W 15 mph  
**DISPERSION INDEX:** 54 GOOD  
**CHANCE OF PRECIPITATION:** 30%  
**LIGHTNING ACTIVITY LEVEL:** 3

**EXTENDED FORECAST:**

	MONDAY	TUESDAY	WEDNESDAY
<b>SKY/WEATHER</b>	Partly Cloudy / Scattered Showers and Thunderstorms	Partly Cloudy / Scattered Showers and Thunderstorms	Partly Cloudy / Scattered Showers and Thunderstorms
<b>CHANCE PRECIP</b>	20%	20%	20%
<b>20 FT. WINDS</b>	PM: W 10 mph	PM: NW 5 - 10 mph	PM: E 5 mph
<b>IN/MAX TEMPS</b>	70 / 90+	70 / 90+	70 / 90+



**FIRE BEHAVIOR FORECAST**

<b>Fire: Honey Prairie Complex</b>	<b>Unit: GA-OKR-000001</b>	<b>Prediction for Day Shift</b>
<b>Forecast #96 Issued: 08/12/2011 1830 hrs</b>	<b>Signed: Keith Mousel</b>	<b>Shift Date: Saturday 08/13/2011</b>

**GENERAL FIRE BEHAVIOR**

Fuels around the Okefenokee Wildlife Refuge are predominately Fuel Model 7 (Southern Rough). Large to moderate acreage tracts of commercial timberland are mixed in throughout the entire perimeter surrounding the refuge. Fast moving wildfires with extremely high flame lengths and rapid rates of spread occur within the swamp.

**Indicators/Threshold for Increased Fire Activity**

- Relative humidity dropping below 45%
- Winds above 10 mph
- **Heavy fuel loadings**
- **Fine dead fuel moisture 8% or less**
- Dispersion above 70
- **\* Items in BOLD are predicted to occur today\***

**SPECIFIC FIRE BEHAVIOR**

- Interior smoldering and some flare ups are possible, especially if winds increase.
- Expect fire to continue spreading through the shrub fuels with low rates of spread and minimal flame lengths.
- **LIGHTNING ACTIVITY LEVEL 3**

Fuel Type	Rates of Spread	Flame Length	Spotting Distance	Firebrand Ignition
<b>Winds at 4 – 8 mph</b>				
Shrub Fuels – SH4	1 – 2 ch/hr	1 feet	1/10	44%
Heavy Southern Rough- SH8	2 – 4 ch/hr	4 feet	1/10	44%
Timber Litter-Reburn TL8	1 – 2 ch/hr	1 – 2 feet	1/10	44%
Small Pine Plantation w/grasses GR5	2 – 4 ch/hr	2 – 3 feet	1/10	44%

**One hour fine dead fuel moisture is at 8% for Saturday:** Areas remain dry and burning continues. 1,000 hour fuels are drier than normal for this time of year. There is re-burn potential; mainly on the west side of the fire due to the amount of needle cast, fallen trees and scorched shrubs. Should wind become stronger than predicted, expect fire behavior to increase above predicted levels. **In areas where fuels have been herbicided, expect quick ignitions, extreme heat, quicker rates-of-spread, and possible group tree torching potentially producing spotting problems.**

**NOTE- FIRE BEHAVIOR CALCULATIONS ARE FOR FIRES IN UNBURNED FUELS INCLUDING NEW IA STARTS.**

**All Divisions:**

*The fire continues a slow spread through the thick bays and muck soils. Roots and fallen trees are protecting heat sources allowing the fire to burn organic soils from the bottom up. Be heads-up for falling trees.*

**Air Operations:** Expect possible areas of smoke especially on the west and north side of the fire.

**SAFETY:**

**WINDS** – Stay abreast of changing wx conditions throughout the entire shift. **THUNDERSTORMS** - these severe winds can create extreme fire behavior, with winds gusting over 30 mph. **Live Trees/SNAGS** – are falling in all Divisions – will be influenced by Thunderstorm outflow winds. **FUELS:** Watch for pockets of cured shrubs or blankets of red needles beginning to cover the forest floor, re-burn is still possible. 1,000 and 10,000 hour fuels as well as deep duff pockets are providing the heat source. 100 and 1000 hour fuels are still below average in moisture content. Stay focused, and put LCES in place before starting operations. *Energy Release Component (ERC) is running near average for this time of year.*

# SAFETY MESSAGE

August 13, 2011

## ➤ Major Hazards and Ris

Dehydration

Insects

Wildlife

Hygiene

Logging Operations

Thunder Storms

Driving

Complacency



## ➤ Mitigations

The heat index is again going to be over 100 degrees again today. Drink water frequently to stay hydrated take frequent breaks. Drink water before you get thirsty and limit your Gatorade consumption. Keep an eye on your physical condition and everybody around you. Some heat dehydration symptoms to look for:

Heavy Sweating \* Extreme Weakness \* Nausea \* Muscle cramps \* Elevated Body Temperature

Dizziness \* Confusion \* Clammy \* Pale Complexion \* Fast and Shallow Breathing

Mosquitoes are more than just a nuisance: they can transmit disease to people. Mosquitoes are most active during the hours of dawn and dusk.

Pay attention to your environment give all wildlife an opportunity to leave, do not feed or harass any animals especially alligators. Avoid areas where you see hunting dogs and people scouting for the up coming hunting season.

To prevent the spreading of germs wash your hands often. By washing your hands, you rinse away germs, protecting yourself and others. It is especially important before you eat.

Logging operations are on the increase. Avoid logging operations if at all possible, and communicate these areas to your supervisor.

When thunderstorms approach get off the fire line and take refuge in your vehicle.

Wearing your seat belt will save your life. Drive at the posted speed limit or less and always use your headlights.

Seeing and doing the same things every day leads to complacency. Stay alert to all the hazards. Conduct tailgate safety briefings .

Safety Officer: Frank Gibbs

INCIDENT ACTION PLAN SAFETY ANALYSIS										1. Incident Name Honey Prairie Fire		2. Date 8/13/2011		3. Time Day Shift		
LCES* Analysis of Tactical Applications Lookouts Communications Escape routes Safety zones										Other Risk Analysis						
LCES Mitigations										Smoke	Traffic/Driving	Communications	Fatigue/Hydration	School Buses / Children	Other Risk Mitigations	
Divisions	Indirect Fireline	Power lines / Snags	Road Conditions	Frontal Assault	Extreme Conditions	Railroad	Wildlife, Insects									
All Divisions	1, 2, 3, 4, 5, 7, 8, 10, 14	2, 6, 11, 15, 17	12, 20, 26	1, 2, 3, 4, 5, 7, 8, 14	7, 10	1	2, 23, 28	1. Establish & maintain LCES. Report LCES checks twice daily to DIVS on line & staggings. 2. Look UP, DOWN and AROUND	24	12, 17, 19, 20, 22, 26, 27	1, 3, 10, 14, 19, 24, 25	16, 18, 21	26	16. Take adequate rest breaks and encourage to drink water NOW through briefings. 17. Defensive driving will be addressed in all briefings. 18. All personnel must meet the 2:1 work/rest ratio. Line supervisors and Safety will monitor closely. 19. Notify Operation and Safety of Railroad track issues to ensure safety of firefighters.		
							5. Flag escape routes on right side of escape route facing outward. Create new escape routes as you progress and identify Safety Zones on the ground and maps. 6. Identify, mark & mitigate.							20. Ensure Traffic Planning is safe and enforced. Heed Defensive Driving techniques noted in Safety Messages. 21. Relocate staging area when driving conditions warrant. 22. Use spotter when backing vehicle(s). 23. For insects, use protective spray with deet on skin (Not on Nomex), permethrin can be used on nomex clothing		
							10. Keep Firefighters informed of any changes in predicted weather, consider at least a two day weather pattern when planning Strategic Firing operations. 11. Refer to IRPG, pg. 12 on Power Line Hazards. 12. Observe all traffic signals and speed limits. Drive with lights on. 14. Ensure GOOD tailgate briefings with resources unable to attend Operational Briefing (Include Ops, Logs, Fin & Plans info.).							24. Establish smoke/fog signs on roadways. Coordinate with Department of Transportation. 25. Follow establish communication plan, flight follow through dispatch 26. Watch-out for school buses and for children along the edge of roadway and crossing the road.		
							15. Scout ahead of tractor operations to avoid making contact with power poles and guide wires when tying into roads. Power companies are working in some DIVS, avoid all down lines as they may become charged.							27. Treat all intersections as 4-way stops 28. Bears, Gators, and some snakes are dangerous. Do not approach or feed wildlife at any time.		

MEDICAL PLAN	Incident Name <b>Honey Prairie Complex</b>	Date Prepared <b>08/12/2011</b>	Time Prepared <b>1000</b>	Operational Period <b>08/13/2011</b>
--------------	---	------------------------------------	------------------------------	---

**5. Incident Medical Aid Station**

<u>Medical Aid Stations</u>	<u>Location</u>	Paramedics Yes	No
MEDICAL UNIT (ICP EMT)	Honey Prairie Complex ICP- No MEDL <b>Phillip Anderson (EMT-Intermediate) (678)-230-0952</b>		X
WEST SIDE (None)	Safety Officer has a 10 person medical kit		X
EAST SIDE (Line EMT)	****Simon Bishop (EMT) Charlton 86 (10 person medical kit only)**** Safety Officer has a 10 person medical kit		X

**Ambulance Services**

Name	Address	Phone	Paramedic Yes	No
Clinch County EMS (West)	Homerville, GA (911 to activate)	912-487-5211 ext. 4567	Yes	
Ware County EMS (North)	Waycross, Georgia (911 to activate)	912-281-9467	Yes	
Charlton County EMS (East)	Folkston, GA (911 to activate)	912-496-7321	Yes	

**Air Ambulance Service**

Trauma 1	Address	Phone	Paramedic Yes	No
Trauma 1	Lake City, FL	1-800-223-4878	Yes	
Trauma 1	Jacksonville, FL	1-800-223-4878	Yes	
AirMed	Augusta, GA	1-888-792-9245	Yes	
Lifeflight	Jacksonville, FL	1-877-870-7779	Yes	
Air Evac	Waycross, GA	1-800-247-3822	Yes	
US Coast Guard (Heli-Rescue)	Savannah GA	1-912-652-4646	Yes	

**7. Hospitals**

Name	Address	LAT-LON	Phone	Helipad Yes	No	Burn Center Yes	No
Satilla Regional	410 Darling AVE. Waycross, GA	N 31' 13.509 W 82' 20.853	(912) -283-3030	Yes			No
Clinch Memorial Hospital (WEST SIDE)	1050 Valdosta HWY Homerville, GA	N 31' 01.977 W 82 45.851	(912) -487-5211 ext 4502	Yes			No
Charlton Memorial Hospital (EAST SIDE)	1203 3 <sup>rd</sup> Street Folkston, GA	N 30' 50.713 W 82' 00.302	(912) -496-2531	Yes			No
Savannah Memorial Hospital	4700 Waters AVE Savannah, GA	N 31' 1.829 W 81' 5.320	(912) -350-8999	Yes			No
Shands Hospital (Level I)	655 West 8 <sup>th</sup> Street Jacksonville, FL	N 30' 20.97 W 81' 39.92	(800) -223-4878	Yes		Yes	
Shands Burn Center	1600 Southwest Archer Road Gainesville, FL	N 29' 38.33 W 82' 20.55	(352) -265-0300	Yes		Yes	

**8. Medical Emergency Procedures**

**Identify any EMTs and Paramedics in your crews. All medical emergencies will be reported to the Division Supervisor who will assume command and notify Line Medics.**

**On scene personnel will:**

1. Provide medical care & stabilize patient.
2. Call 911 if possible and provide the information requested.
3. Notify Communications via radio over Command Channel
4. Communications will clear radio traffic for medical emergency.
5. Communications will confirm 911 has been notified coordinate with IC, SOF.
6. DIVS will notify the Field Ops Section Chief.

**MAJOR EMERGENCIES – Secure the area and identify witness for later investigation. Keep an accurate log of events. NOTE: Do not give Patients Name over the radio!**

**HELISPOTS**

NAME	LAT-LON	LOCATION
<b>Pocket Helispot</b>	N 30' 47.500 W 82' 22.659	(West side), mile marker 4, HWY 177 Steven C. Foster State Park
<b>Fargo Helispot</b>	N 30' 40.945 W 82' 33.640	(West side), HWY 441- Steven C. Foster Visitor Center
<b>POGO Helibase</b>	N 30' 44.219 W 82' 07.689	(East side) Adjacent to Okee Refuge Shop
<b>Evac Yankee</b>		
<b>Helispot 6</b>	N 30' 53.280 W 82' 33.880	Road 32 and 32A
<b>Helispot 7</b>	N 30' 50.280 W 82' 33.857	Tatum Road Pond

**\*Alternate site can be established following guidelines for safety found with IRPG and local EMS resources.**

**INJURY REPORTING PROCESS:**

Nature of Injury: \_\_\_\_\_

Location of Patient: \_\_\_\_\_

Transportation Requested by: Air \_\_\_ Ground \_\_\_

Pick Up Point: \_\_\_\_\_

Lat: \_\_\_\_\_ Long: \_\_\_\_\_

Patient Unit ID: \_\_\_\_\_

Is an EMT w/Patient: Yes \_\_\_ No \_\_\_

Age: \_\_\_ Sex: Male \_\_\_ Female \_\_\_

Weight (If Air Evac. is needed): \_\_\_\_\_

Prepared by: Phillip Anderson (EMT Intermediate)

10. Reviewed by: Frank Gibbs, SOF

INCIDENT RADIO COMMUNICATIONS PLAN ICS-205			Incident Name <b>Honey Prairie</b>			<b>GROUP 22</b>		Date/Time Prepared 08/12/2011-18:00		Operational Period Date/Time 8/13/2011 0800-2000	
Ch #	Function	Channel Name	Assignment	RX Freq	NW	RX Tone/NAC	TX Freq	N W	TX Tone/NAC	Mode A,D or M	Remarks
1	Command	West Okee Repeater	Sec West Branch CMD	167.1250	N	156.7	163.1500	N	156.7	A	Stephen Foster State Park
2	Command	South Okee Repeater	Sec East/West Branch CMD	164.7750	N	123.0	163.1500	N	123.0	A	Eddy Florida
3	Command	East Okee Repeater	PRIMARY East Branch CMD	164.6250	N	103.5	163.1500	N	103.5	A	Refuge Headquarters
5	Command	North Okee Repeater	PRIMARY North Branch CMD	164.5750	N	206.5	163.1500	N	206.5	A	Waycross
6	Air-Ground	Air to Ground	PRIMARY	166.9375	N	CSQ	166.9375	N	CSQ	A	
7	Tactical	MOB-MOB	GFC Contingency	159.3900	W	CSQ	159.3900	W	156.7	A	
8	Tactical	V-Fire 21W WHITE	West group Secondary	154.2800	W	CSQ	154.2800	W	156.7	A	
9	Tactical	USFS 9	East/West Groups	168.7750	N	CSQ	168.7750	N	CSQ	A	
10	Tactical	S.E. Compact		159.2850	W	CSQ	159.2850	W	CSQ	A	
11	Tactical	USFS 11	East Group Secondary	168.2000	N	CSQ	168.2000	N	CSQ	A	
12	Tactical	Refuge Tac 1	East Group	168.3500	N	CSQ	168.3500	N	CSQ	A	
13	Tactical	FL 190		151.2725	N	CSQ	151.2725	N	CSQ	A	
15	Air-Ground	Air to Ground	SECONDARY	166.9000	N	CSQ	166.9000	N	CSQ	A	
16	EMERGENCY	AIR Guard	Air OPS.	168.6250	N	CSQ	168.6250	N	110.9	A	
Prepared by (Communications Unit) Phillip Anderson, COMT/COML Incident Dispatcher: 912-286-1660						<b>Cloning at ICP communications and briefings,</b>					

The convention calls for frequency lists to show four digits after the decimal place, followed by either an "N" or a "W", depending on whether the frequency is narrow or wide band. **Mode** refers to either "A" or "D" indicating analog or digital (e.g. Project 25) or "M" indicating mixed mode. All channels are shown as if programmed in a control station, base stations, mobile or portable radio.

## Honey Prairie Fire Incident Information

Here are some key point that we like to make when discussing this fire with the public.

1. Public and firefighter safety remains the top priority for this incident.
2. Past experience has shown that conventional fire suppression tactics do not work well inside the swamp. Humans have never been successful in controlling fires within the swamp; only “mother nature” has done this. Attempting suppression within the swamp is ineffective, costly, wastes firefighting resources and needlessly endangers firefighter safety.
3. Fire on the refuge is usually fought by reinforcing firelines along the Swamps Edge Break, including areas of private land, to keep the fire contained within the swamp.
4. Homeowners and other land owners can minimize the potential for damage to their homes by creating defensible space through firewise landscaping, thinning, etc..
5. Fire enhances the health of the Okefenokee ecosystem and is a force of nature that sustains the diversity and richness of a wide variety of species that makes the Okefenokee a world-famous ecosystem and natural area.

<b>HONEY PRAIRIE PHONE LIST</b>			<b>08/13/11</b>
<b>Incident</b>	<b>Communication</b>	<b>(Hours: 0700-2000)</b>	<b>912-286-1660</b>
<b>AGENCY OFFICIALS</b>			<b>OPERATIONS</b>
Curt McCasland	602-359-0013	USFWS AA	Steve Gray 770-655-8002
Mindy Gautreaux	912-282-7500	USFWS Deputy AA	<b>DIVISIONS</b>
Frank Sorrells	912-381-7503	GFC AA	John Raulerson 386-961-1209 West Group
James Karels	850-228-7763	FL DOF AA	Steve Abbott 706-836-7712 East Group
Diane Adams	912-266-5421	GEMA	<b>AIR OPERATIONS</b>
Mike Housh	912-281-1575	USFWS AREP	Melvin Tate 912-287-4479 HEB2 - WAYCROSS
<b>COMMAND</b>			850-849-0405 cell
Steve Gray	770-655-8002	IC	<b>LANDOWNERS</b>
<b>RESOURCE ADVISORS</b>			Jim Barrett 229-356-1993 Langdale/GOAL Chairman
Ron Phernetton	912-276-2349	Resource Advisor	Wesley Langdale 229-220-2602 Langdale
Jessica Bowen	912-536-2995	Resource Advisor	Hal Rowe 229-412-3133 Langdale
Rocky Chesser	912-276-3232	Resource Advisor	Langdale Office 229-242-7450 Langdale Office
<b>INFORMATION 912-496-2566</b>			Mike Conlon 386-365-3882 Rayonier Unit Supervisor
Jim Burkhart	912-282-1159	Fire Information	Ray Carter 386-288-6626 Rayonier
<b>SAFETY OFFICERS</b>			Ed Carter 386-288-6626 Rayonier
Frank Gibbs	863-441-1022	404-772-5338	Doug Nuss 912-390-1037 Rayonier
<b>DISPATCH</b>			Randall McCrady 912-283-4077 Rayonier
Okefenokee Dsp	912-496-7366	Okefenokee	Colin Myerson 229-506-1565 Superior Pine Products Co
Suwannee Dispatch	386-758-5700	Fla wildfires, other	Robbie Lee 229-356-0526 Superior Pine Products Co
Honey Prairie Dspth	912-286-1660	Honey Prairie ICP	Superior Pine Office 912-637-5261 Superior Pine Products Co
Waycross Dispatch	912-287-4915	Ga wildfires, other	Al Alexander 850-843-0104 The Forestry Co
GA DNR	1-800-241-4113	Hunting Issues	Savell Schmidt 850-843-1181 The Forestry Co
<b>LOGISTICS 404-772-5336 fax 912-287-6542</b>			John Bogue 850-843-1192 The Forestry Co
Randy Teal	404-772-5336	LSC	Joe Hopkins 912-276-0911 Toledo Timber
Neal Edmondson	478-973-6263	Facilities	Chris Gowan 912-276-0965 Toledo Timber
Phillip Anderson	678-230-0952	Communication	Martin Bell 912-283-0583 Swamp Park
Linda Blondeau	912-287-6540	Ordering Manager	Crystal Peeples 352-316-0632 FIA
Bill Messerschmidt	715-581-1694	RADO	Steve Davis 912-614-1828 Davis Community
<b>PLANNING 912-287-6565 FAX 912-287-6541</b>			Trevor Fortner 912-599-9271 Little Suwannee
Keith Mousel	850-228-7756	Planning Section Chief	Tim Jarrell 912-223-7120 Hancock Forest Mgmt.
Thomas Barrett	478-689-5144	RESL	<b>RAILROADS</b>
<b>FINANCE 912-287-6568 FAX 912-287-6564</b>			Norfolk Southern 800-453-2530
Vickie Hulsizer		Finance Section Chief	Sid Moody 904-318-7983 Norfolk Southern Railroad
Rhonda Vickerman	541-891-1067	Purchasing Agent	Chad Edwards 404-582-4909 Norfolk Southern Railroad
Anna Bryant	540-520-1799	Purchasing Agent	Eric Sams 904-576-9907
Buying Team Fax	912-287-6557		Norfolk So 404-529-1597
Carla Schamber	541-223-1907	IBA	CSX Randy Dixon 912-270-0699
<b>FEDERAL</b>			CSX Dispatch 800-232-0144
Okefenokee Fire Shop	912-496-4181		<b>COUNTY</b>
Okefenokee NWR HQ	912-496-7366		
Okefenokee NWR	912-637-5322		912-496-7229 Charlton County EMA
Okefenokee Visitor	912-496-7836		John F. Meyer - 912-496-2549 Charlton County Commissioners
<b>STATE</b>			Dobie Conner 912-496-7321 Charlton County Sheriff
GFC Fargo Office	912-637-5270		Jesse Booth 912-520-0061 Clinch County EMA
GFC Satilla District	912-287-4915		Jonathan Daniel 912-281-5158 Ware County EMA
Blair Joiner	229-237-9026	GFC Clinch Chief Ranger	Jessie Jordan 912-816-6063 Ware County Fire Dept
Jason Gillis	912-314-9233	GFC Satilla Mgr.	Joe Morris 912-281-6020 Ware County Sheriff
Brian Gray	229-894-4628	Stephen Foster State Park	Robbie Sutton 912-599-9027 Tri County 911
			Georgia State Patrol 912-287-6500
			Travis Griffin 912-281-5790 Laura Walker State Park

## DMOB Report

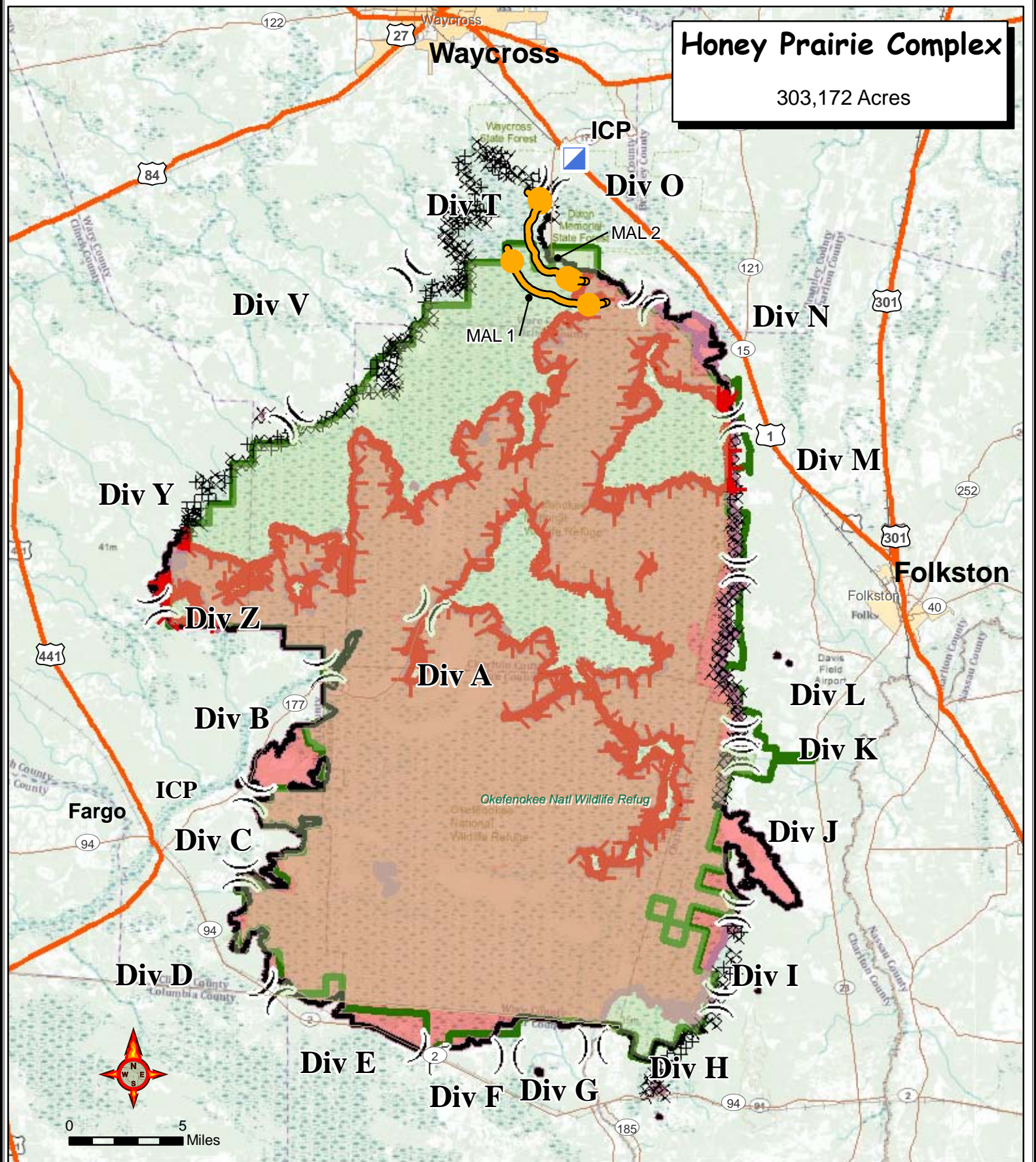
RequestNun	ResourceName	KindCode	UnitID	TravelMethod	Jetport	DemobDate
O-1094	HAWKINS, TREVOR	FFT2	GAOKR	POV		08/13/2011
O-1149	SMITH, JEFFERY	RCDM	KYKYS	AIR	LEX	08/13/2011
O-1132	NEUMANN, JORDAN	SEC1	FLEVP	AOV		08/14/2011
E-1212	CHEVY BLAZER	SUV	FLFLS	AOV	TPA	08/15/2011
E-1237	GA ENG7(E-1237) PICKENS	ENG7	GAGAS	AOV		08/16/2011
O-1152	VICKERMAN, RHONDA	PA25	ORFWF	AIR	LMT	08/16/2011
O-1170	MOUSEL, KEITH	PSC2	FLFLS	AOV		08/16/2011
O-1156	PIERCE, NATHANIEL SETH	TFLD	GAGAS	AOV		08/16/2011
O-1161	BRYANT, ANNA	PA10	VAVAF	AIR	ROA	08/17/2011
E-1249	GLENN 71 (E-1249) GAGAS	TPL3	GAGAS	AOV		08/18/2011
O-1163	RAULERSON, JOHN W	DIVS	FLFLS	AOV		08/18/2011
E-1239	FL ACS28158 RAULERSON	PU	FLFLS	AOV		08/18/2011
E-1238	PICKUP (E-1238) GAGAS EPPS	PU	GAGAS	AOV		08/18/2011
E-78.15	BISHOP, SIMON	FFT2	GAGAS	AOV		08/18/2011
E-81.14	BOLES, JESSIE	FFT2	GAGAS	AOV		08/18/2011
E-1248	ECHOLS 61 (E-1248)	TRTL	GAGAS	AOV		08/18/2011
E-1082.5	SWEATMAN, CAROLYN	ENGB	GAGAS	AOV		08/18/2011
E-1247	ECHOLS 71 (E-1247) TPL GAGAS	TPL3	GAGAS	AOV		08/18/2011
E-1249.2	HARRIS, JASON	TPIA	GAGAS	AOV		08/18/2011
E-1082.6	BROWN, AUBREY	FFT2	GAGAS	AOV		08/18/2011
E-78.14	RYMER, MATT	ENGB	GAGAS	AOV		08/18/2011
E-1247.2	SIKES, JAMES	FFT2	GAGAS	AOV		08/18/2011
E-81.13	HELMS JR, TROY	ENGB	GAGAS	AOV		08/18/2011
E-1250	GLYNN 61 (E-1250) GAGAS	TRTL	GAGAS	AOV		08/18/2011
E-77.13	SHELTON, KENNETH	ENGB	GAGAS	AOV		08/18/2011

Record Count: 25



# Honey Prairie Complex

303,172 Acres



- Incident Command Post
- Uncontrolled Fire Edge
- Completed Dozer Line
- Completed Line
- Refuge Boundary
- FirePolygon

) ( Division

Perimeter as of 7/30/2011 1200  
C. Bailey GISS



