

Honey Prairie Complex

GA-OKR-000001

INCIDENT ACTION PLAN

Operational Period

Thursday

August 18, 2011

0800-2000

Incident Commanders

Steve Gray

Jason Demas

Accounting Codes

FWS – 9141-F25M-2J

NPS – 5023 F25M E11

BLM – F25M

USFS – PRF25M_1502

Initial Attack – F4PM



*An Equal Opportunity
Employer & Service Provider*

Letter from GFC Incident Commander:

To: All Honey Prairie Incident Personnel

As A Georgia Forestry Commission Type 3 Incident Commander, I am committed to a policy of “zero tolerance” of inappropriate behavior during incident operations. Any form of harassment, discriminatory practices, or disrespectful behavior will not be tolerated.

Guidelines on in-appropriate behavior both “on Duty” and “off Duty” while assigned are addressed within each agencies policies. Our Team expects all incident personnel to follow established government policies for behavior along with all Illegal drug and alcohol directives.

Our Incident Management Team endorses and supports an attitude of mutual respect for all personnel and the public we serve.

We expect a strong work ethic and an attitude of Safety at all times!

Sincerely,

/s/ Steve Gray

Incident Commander
Georgia Forestry Commission Type 3 Incident Management Team

INCIDENT OBJECTIVES	1. INCIDENT NAME Honey Prairie Complex	2. DATE PREPARED 8/17/11	3. TIME PREPARED 1700												
4. OPERATIONAL PERIOD (DATE/TIME) Thursday, August 18, 2011 0800 – 2000															
5. GENERAL CONTROL OBJECTIVES FOR THE INCIDENT (INCLUDE ALTERNATIVES) <ol style="list-style-type: none"> 1. Provide for safety of incident personnel and public in all incident operations. 2. Maintain a positive working relationship with all adjacent landowners, cooperators State and Federal partners. Inform, involve and communicate incident planning and operations with all partners. 3. Contain all fires that are within the Okefenokee National Wildlife Refuge, inside the Refuge and/or inside the swamp edge break if possible. 4. In cooperation with local land owners and communities, use full suppression strategies and tactics to minimize damage to private timberlands and structural improvements and to prevent fires outside the Refuge from entering the Refuge. 5. Assist in management and suppression of additional fires (new starts or breakouts) in the vicinity as approved by Agency Administrators and Incident Commander. 6. Protect all cultural and archeological sites and structures within the refuge. 7. Manage the fires cost-effectively consistent with the values at risk. 8. Coordinate suppression actions with assigned Refuge Resource Advisors 															
6. WEATHER FORECAST FOR OPERATIONAL PERIOD See attached forecast for area specific weather information.															
7. GENERAL SAFETY MESSAGE Drive defensively and use spotter when backing. Ensure LCES is in place and known by all personnel. Drink plenty of water and take frequent rest breaks. Ensure proper use of PPE during all operations.															
8. Attachments <input checked="" type="checkbox"/> if attached <table border="0" style="width: 100%;"> <tr> <td><input checked="" type="checkbox"/> Organization List (ICS 203)</td> <td><input checked="" type="checkbox"/> Incident Map</td> <td><input checked="" type="checkbox"/> Safety Message</td> </tr> <tr> <td><input checked="" type="checkbox"/> Assignment List (ICS 204)</td> <td><input type="checkbox"/> Traffic Plan</td> <td><input type="checkbox"/> Demobilization Procedures</td> </tr> <tr> <td><input checked="" type="checkbox"/> Communications Plan (ICS 205)</td> <td></td> <td><input checked="" type="checkbox"/> Unit Log</td> </tr> <tr> <td><input checked="" type="checkbox"/> Medical Plan (ICS 206)</td> <td><input checked="" type="checkbox"/> Phone List</td> <td></td> </tr> </table>				<input checked="" type="checkbox"/> Organization List (ICS 203)	<input checked="" type="checkbox"/> Incident Map	<input checked="" type="checkbox"/> Safety Message	<input checked="" type="checkbox"/> Assignment List (ICS 204)	<input type="checkbox"/> Traffic Plan	<input type="checkbox"/> Demobilization Procedures	<input checked="" type="checkbox"/> Communications Plan (ICS 205)		<input checked="" type="checkbox"/> Unit Log	<input checked="" type="checkbox"/> Medical Plan (ICS 206)	<input checked="" type="checkbox"/> Phone List	
<input checked="" type="checkbox"/> Organization List (ICS 203)	<input checked="" type="checkbox"/> Incident Map	<input checked="" type="checkbox"/> Safety Message													
<input checked="" type="checkbox"/> Assignment List (ICS 204)	<input type="checkbox"/> Traffic Plan	<input type="checkbox"/> Demobilization Procedures													
<input checked="" type="checkbox"/> Communications Plan (ICS 205)		<input checked="" type="checkbox"/> Unit Log													
<input checked="" type="checkbox"/> Medical Plan (ICS 206)	<input checked="" type="checkbox"/> Phone List														
9. PREPARED BY (PLANNING SECTION CHIEF) Anthony Petellat		10. APPROVED BY (INCIDENT COMMANDER) Steve Gray													

ORGANIZATION ASSIGNMENT LIST		9. Operations Section		
1. Incident Name Honey Prairie Complex GA-OKR-000001		Chief	Steve Gray 8/20	
2. Date 8/17/2011		3. Time 1000 hrs		
4. Operational Period 8/18/2011 0800 - 2000		a. Divisions/Groups		
5. Incident Commander and Staff				
Incident Commander	Steve Gray 8/20 Jason Demas (T) 8/28	Group	East Group	Steve Abbott 8/20
Safety Officer	Frank Gibbs 8/24 Harry Kepler 8/26	Group	West Group	Shannon Bowman 8/31
Information Officer	Jim Burkhart			
6a. Agency Administrators				
FWS	Curt McCasland			
FWS	Mindy Gautreaux			
6b. Agency Representatives		b. Divisions/Groups		
GFC	Frank Sorrells			
FLDOF	James Karels			
FWS AREP	Mike Housh			
FWS-Refuge PAO	Art Webster			
GEMA AREP	Alan Robinson / Diane Adams			
USFS AREP	Ivan Greene			
7. Planning Section		c. AIR OPERATIONS BRANCH - Honey Prairie		
Chief	Anthony Petellat 8/28	Waycross Helibase Mgr		Kirby Cook
Resource Advisors	Ron Phernetton Rocky Chesser			
Resources Unit	Thomas Barrett 8/20			
Situation Unit				
8. Logistics Section		d. AIR OPERATIONS BRANCH - Pogo		
FBAN				
Demob Unit				
Documentation				
GIS				
CTSP				
SCKN				
8. Logistics Section		10. Finance Section		
Chief	Randy Teal 8/20	Chief	Susan Beasley (T) 8/21	
Supply Unit	Linda Blondeau 8/22	Time Unit		
GSUL	Dan Chappell	Cost	Vickie Hulsizer (T) 8/18	
ORDM		PTRC	Carol Layton 8/18	
COML		EQTR	David Epps 8/20	
Medical Unit		IBA	Carla Schamber 8/19	
Facilities	Neal Edmondson 8/20			
Food		Purchasing Agent	Rhonda Vickerman	
SECM	Rebecca Francis 8/25			
COMT	Phillip Anderson 8/20			
RADO	Bill Messerschmidt 8/19			
RCDM				
		Prepared by: Thomas Barrett		RESL

DIVISION ASSIGNMENT LIST			1. Branch		2. Division East Group		
3. Incident Name Honey Prairie Complex			4. Operational Period Date: 8/18/2011 Time: 0800-2000				
5. Operations Personnel							
Operations	Steve Gray 8/20			Branch Director			
				Division Supervisor		Steve Abbott 8/20	
Safety Officer	Harry Kepler 8/26			Division Supervisor			
6. Resources Assigned this Period							
Strike Team/Task Force/ Resource Designator		Leader / Name / Designator		Last Shift Date	Num. Per.	Drop Off PT./Time	Crew Names
TFLD (O-5) GAOKR		Rocky Chesser			1		
TPL SC 922 (E-7) SCSCC		Charles Johnson (E-7.8)		8/25	1		Stage @ Refuge HQ
TPL GAOKR 56 (E-22)		Fed Privett (O-15)			1		Stage @ Refuge HQ
TPL GA OKR 54 (E-21)		Cory Bryant (O-9)			1		Stage @ Refuge HQ
TPL GAOKR 53 (E-23)		Unstaffed					
TFLD (O-1181)		Mark Sparrow		8/27	1		
TFLD (T) (O-1178)		Ron Calhoun		8/24	1		
Chattooga 86 (E-77) GAGAS		Leland Bass (E-77.15)		9/1	2		Darryl Huskey (E-77.16)
Charlton Eng 86 (E-1252) GAGAS		Brian Spillers (O-1189)		9/1	2		Brandon Simmons (O-1190) EMT
Jones Eng 86 (E-81) GAGAS		Ricky Williams (E-81.15)		9/1	2		Jason Butts (E-81.16)
Franklin 86 (E-1273) GAGAS		Rusty Carroll (O-1198)		9/1	2		John Turner (O-1199)
7. Control Operations <ul style="list-style-type: none"> Respond to Initial Attack as requested Patrol and control reburn Initial attack IC will communicate sizeup information to the Honey Prairie communication. Make contact with the resource advisor before using mechanical equipment. Improve swamp break boundaries for fire breaks, work with resource advisor. 							
8. Special Instructions <ul style="list-style-type: none"> Ensure LCES are in place before operations begin. Stay hydrated. Drive defensively with lights on at all times. Boggy terrain: Be careful and aware when working around this type of area. 							
9. Division/Group Communication Summary							
	Function	Frequency	Channel	Function	Frequency	System	Channel
Command E Okee Repeater	RX 164.625/103.5 TX 163.150/103.5	KING NIFC	3	Logistics		KING NIFC	
Tactical Div/Group	RX 168.775 TX 168.775	KING NIFC	9	Air to Ground	RX 166.9375 TX 166.9375	KING NIFC	6
Prepared by (Resource Unit Ldr.) Thomas Barrett		Approved by (Planning Sect. Ch.) Anthony Petellat			Date August 17, 2011		Time 1800

DIVISION ASSIGNMENT LIST				1. Branch		2. Division West Group	
3. Incident Name Honey Prairie Complex				4. Operational Period Date: 8/18/2011 Time: 0800-2000			
5. Operations Personnel							
Operations	Steve Gray 8/20			Branch Director			
				Division Supervisor		Shannon Bowman 8/31	
Safety Officer	Frank Gibbs 8/24						
6. Resources Assigned this Period							
Strike Team/Task Force/ Resource Designator		Leader / Name / Designator		Last Shift Date	Num. Per.	Drop Off PT./Time	Crew Names
TFLD (O-899)		Bob Schober		9/3	1		
GA PDR ENG6 (E-1253) FWS		Nathan Herron		8/28	3		T. Price, M. Smith
ME ENG6 (E-405)(MEMHR)FWS		Brandon Harriman		8/22	3		C. Stearns, C. Roderick EMT
MN Eng 6232 (E-838) MNMFC FWS		Blair Mace		8/19	3		M. Fondriest, T. Saxton
Monroe 86 (E-1084) GAGAS		George Barbee		8/18	2		Jared Penny
TPL Appling 70 (E-1165) GAGAS		Joseph A. Smith Jr. (O-1116)		8/19	1		
TPL Glynn 72 (E-1175) GAGAS		Robert L. Danley (O-1121)		8/19	1		
TPL Jeff Davis 71 (E-1278) GAGAS		David Rewis		9/1	1		
TPL Lowndes 73 (E-1279) GAGAS		Stephen Spradley		9/1	1		
STPL (T) (O-1179)		Josh Rowan		8/24	1		
DOZ Wilkes 70 (E-1267) GAGAS		Abe Blackburn		9/1	1		
DOZ Wilkes 73 (E-1266) GAGAS		Dameon Wilkinson		9/1	1		
DOZ Baldwin 70 (E-1265) GAGAS		Daniel Gore		9/1	1		
GA ENG6 (E-2) GAOKR		unstaffed					
7. Control Operations							
<ul style="list-style-type: none"> Respond to Initial Attack as requested Patrol and control return Initial attack IC will communicate sizeup information to the Honey Prairie communication. Make contact with the resource advisor before using mechanical equipment. Improve swamp break boundaries for fire breaks, work with resource advisor. 							
8. Special Instructions							
<ul style="list-style-type: none"> Ensure LCES are in place before operations begin. Stay hydrated. Drive defensively and with lights on at all times. Boggy terrain: Be careful and aware when working around this type of area. 							
9. Division/Group Communication Summary							
Function	Frequency	System	Channel	Function	Frequency	System	Channel
Command N Okee Repeater	RX 164.5750/206.5 TX 163.150/206.5	KING NIFC	5	Logistics		KING NIFC	
Tactical Div/Group	RX 168.775 TX 168.775	KING NIFC	9	Air to Ground	RX 166.9375 TX 166.9375	KING NIFC	6
Prepared by (Resource Unit Ldr.) Thomas Barrett		Approved by (Planning Sect. Ch.) Anthony Petellat			Date August 17, 2011		Time 1800

AIR OPERATIONS SUMMARY

Prepared By: Melvin Tate, HEBM

Prepared Date: 8.17.2011

Prepared Time: 1800

1. INCIDENT NAME: Honey Prairie	2. OPS PERIOD DATE: August 18, 2011	START TIME: 0830	END TIME: 1900	SUNRISE: 0657	SUNSET: 2010
3. REMARKS (Safety Notes, Hazards, Air Operations Special Equipment, etc ALL FLIGHT REQUESTS GO DIRECTLY TO HELIBASE Afternoon thunderstorms <i>NOTE: Latitude/Longitude format is "Degrees-Minutes-Decimal Minutes" (example: N30 41.42 W082 33.97) helibase convert if necessary</i>				5. TFR #: Canceled 7/27/11 SEE and AVOID!!!	

PERSONNEL	NAME	PHONE #	FREQUENCIES	AM	FM	
HEB2 Waycross HB	Kirby Cook Desk Cell	912-287-4479 406-381-1212	AIR/ AIR FW	None assigned		AIRTANKERS / LEAD PLANES - None Available OTHER: Waycross Airport Helibase: 912-287-4479 Waycross Airport Helibase Fax: 912-287-4458 ICP Helispot is Waycross Airport Helibase Okefenokee Dispatch: 912-496-7366 X230 Waycross Airport: N 31 16.16 10 W82 33.38 BERGANZA HELISPOT N 31 07.22 W082 15.22 * don't use unless cleared with AOB. POGO HELISPOT: N30 44.03 W082 07.41
ABRO	Darold Williams Desk Cell	912-287-4479 386-383-6288	AIR/ AIR RW-FF	122.375		
			Georgia AIR/GRND (Smokey - Dozers)		159.285 W	
			AIR/GROUND PRIMARY		166.9375	
			AIR/GROUND ALTERNATE		166.9000	
			TOLC		168.0125	
			AIR GUARD		168.625 T110.9	

9. HELICOPTERS (Use Additional Sheets as Necessary)

FAA N#	TY	MAKE/ MODEL	BASE	AVAIL	MANAGER	FAA N#	T Y	MAKE/ MODEL	BASE	AVAIL	MANAGER
26MW	1	K-1200	Waycross	0830	Jerrid Silva 406-370-8390						
57Z	3	206-L4	Waycross	0830	Travis Taylor 208-241-0399						

10. TASK/ MISSION/ ASSIGNMENT (Type/ function includes: Air Tactical, Retardant, Recon, Personnel Transport, Bucket Operations, SAR, etc.)

TYPE/FUNCTION	NAME OF PERSONNEL OR CARGO (If applicable) or instructions for tactical aircraft	MISSION START	FLY FROM	FLY TO
Bucket Ops/	26MW	As Requested	Waycross	
Recon	All FLIGHT REQUESTS GO THROUGH HELIBASE, 57Z	As Requested/scheduled	Waycross/Pogo	
Medevac	57Z	As Requested	Waycross	



Fire Weather Forecast



FORECAST NO: 103

NAME OF FIRE: Honey Prairie Complex

PREDICTION FOR: Day Shift
SHIFT DATE: THURSDAY 8/18/11

UNIT: Okefenokee National Wildlife Refuge

FORECAST ISSUED: 8/17/11 at 1600

SIGNED: Anthony Petellat

WEATHER DISCUSSION: FOR THURSDAY... A NEARLY STATIONARY SURFACE BOUNDARY WILL LINGER NEAR THE FLORIDA-GEORGIA BORDER AND GRADUALLY WEAKEN THROUGH THURSDAY. THIS BOUNDARY ALONG WITH THE EAST COAST SEA BREEZE WILL FOCUS MAINLY AFTERNOON THUNDERSTORMS...MORE NUMEROUS OVER NORTHEAST FLORIDA. WINDS MAY REACH 15 MPH WITH THE EAST COAST SEABREEZE DURING THE AFTERNOON HOURS. RH`S WILL REMAIN ABOVE 40 PERCENT.

TODAY: Partly Cloudy

MAXIMUM TEMPERATURES: 93 - 95°
PM HEAT INDEX: 97 - 101°
MINIMUM HUMIDITY: 40-45%
20 FT WINDS: AM: NE 4 mph
PM: E 6 mph

STABILITY/INVERSION: 6600 feet
TRANSPORT WINDS: NE 8 mph
DISPERSION INDEX: 46, Good
CHANCE OF PRECIPITATION: 20%
PRECIPITATION AMOUNTS: Less than a quarter of an inch.
LIGHTNING ACTIVITY LEVEL: 3

TONIGHT: Mostly Clear. SE winds at 4 mph. Low temperatures ~70°. Max RH 95 - 100%.

FRIDAY: PARTLY CLOUDY

MAXIMUM TEMPERATURES: 94 - 97
PM HEAT INDEX: 100° - 105°
MINIMUM HUMIDITY: 40 - 45 %
20 FT WINDS: AM: LIGHT AND VARIABLE.
PM: SW 6 mph

TRANSPORT WINDS: W 7 mph
DISPERSION INDEX: 41, Good
CHANCE OF PRECIPITATION: 20%
LIGHTNING ACTIVITY LEVEL: 2

EXTENDED FORECAST:

	SATURDAY	SUNDAY	MONDAY
SKY/WEATHER	Partly Cloudy / Scattered Showers and Thunderstorms	Partly Cloudy / Scattered Showers and Thunderstorms	Partly Cloudy / Scattered Showers and Thunderstorms
CHANCE PRECIP	20%	20%	40%
20 FT. WINDS	PM: E 5 mph	PM: E 5 - 10 mph	PM: S 5 - 10 mph
MIN/MAX TEMPS	70/ 90+	70 / 90+	70 / 90+

FIRE BEHAVIOR FORECAST

Fire: Honey Prairie Complex	Unit: GA-OKR-000001	Prediction for Day Shift
Forecast #102 Issued: 08/17/2011 1830 hrs	Signed: Anthony Petellat	Shift Date: Thursday 08/18/2011

GENERAL FIRE BEHAVIOR

Fuels around the Okefenokee Wildlife Refuge are predominately Fuel Model 7 (Southern Rough). Large to moderate acreage tracts of commercial timberland are mixed in throughout the entire perimeter surrounding the refuge. Fast moving wildfires with extremely high flame lengths and rapid rates of spread occur within the swamp.

Indicators/Threshold for Increased Fire Activity

- **Relative humidity dropping below 45%**
- Winds above 10 mph
- **Heavy fuel loadings**
- **Fine dead fuel moisture 8% or less**
- Dispersion above 70
- *** Items in BOLD are predicted to occur today***

SPECIFIC FIRE BEHAVIOR

- Interior smoldering and some flare ups are possible, especially if winds increase.
- Expect fire to continue spreading through the shrub fuels with low rates of spread and minimal flame lengths.
- **LIGHTNING ACTIVITY LEVEL 3**

Fuel Type	Rates of Spread	Flame Length	Spotting Distance	Firebrand Ignition
Winds at 4 - 6 mph				
Shrub Fuels – SH4	1 – 2 ch/hr	1 - 2 feet	0 – 1/10 MILE	51%
Heavy Southern Rough- SH8	3 – 5 ch/hr	4 - 5 feet	0 – 1/10 MILE	51%
Timber Litter-Reburn TL8	1 – 2 ch/hr	1 - 2 feet	0 – 1/10 MILE	51%
Small Pine Plantation w/grasses GR5	3 – 5 ch/hr	2 - 3 feet	0 – 1/10 MILE	51%

One hour fine dead fuel moisture is at 7% for THURSDAY: Areas remain dry and burning continues. 1,000 hour fuels are drier than normal for this time of year. There is re-burn potential; mainly on the west side of the fire due to the amount of needle cast, fallen trees and scorched shrubs. Should wind become stronger than predicted, expect fire behavior to increase above predicted levels. **In areas where fuels have been herbicided, expect quick ignitions, extreme heat, quicker rates-of-spread, and possible group tree torching potentially producing spotting problems.**

NOTE- FIRE BEHAVIOR CALCULATIONS ARE FOR FIRES IN UNBURNED FUELS INCLUDING NEW IA STARTS.

All Divisions:

The fire continues a slow spread through the thick bays and muck soils. Roots and fallen trees are protecting heat sources allowing the fire to burn organic soils from the bottom up. Be heads-up for falling trees.

Air Operations: Expect possible areas of smoke.

SAFETY:

WINDS – Stay abreast of changing wx conditions throughout the entire shift. **THUNDERSTORMS** - these severe winds can create extreme fire behavior, with winds gusting over 30 mph. **Live Trees/SNAGS** – are falling in all Divisions – will be influenced by Thunderstorm outflow winds. **FUELS:** Watch for pockets of cured shrubs or blankets of red needles beginning to cover the forest floor, re-burn is still possible. 1,000 and 10,000 hour fuels as well as deep duff pockets are providing the heat source. 100 and 1000 hour fuels are still below average in moisture content. Stay focused, and put LCES in place before starting operations. *Energy Release Component (ERC) is running near average for this time of year.*

SAFETY MESSAGE

Incident:

Honey Prairie Fire

Date: August 18th 2011

Time: 0800-1900

Major Hazard and Risks:

- **Heat / Dehydration**
- **Driving**
- **Logging operations in and around the fire**

Narrative:

- **Drink water before you are thirsty, dehydration takes days to recover from. Take needed breaks**
- **Plan your route and avoid boggy and congested areas. Drive at a speed safe for the conditions**
- **Stay clear of logging operations and give log trucks the road when possible**

DISPERSION LEVEL CHART:

Dispersion Range: 0-40 = Stable air, lower fire intensity, less long range spotting.

Dispersion Range: 41-70 = Moderately unstable air, increased fire intensity and long range spotting.

Dispersion Range: 70+ = Unstable air, high amounts of lifting, intense fire activity, potential for significant long range spotting and plume dominated wildfires.

Fight fire **aggressively**, but provide for safety first.

Initiate all action based on **current and expected fire behavior**.

Recognize **current weather** conditions and obtain **forecasts**.

Ensure **instructions** are given and understood.

Obtain current information on fire **status**

Remain in **communication** with crew members, your supervisor, and adjoining forces

Determine **safety zones** and **escape routes**.

Establish lookouts in potentially hazardous situations.

Retain **control** at all times

Stay **alert**, keep **calm**, **think** clearly, and **act** decisively.



Safety Officers: Frank & Harry

INCIDENT ACTION PLAN SAFETY ANALYSIS										1. Incident Name Honey Prairie Fire		2. Date 8/18/2011		3. Time Day Shift	
LCES* Analysis of Tactical Applications Lookouts Communications Escape routes Safety zones										Other Risk Analysis					
Divisions	Indirect Fireline	Power lines / Snags	Road Conditions	Frontal Assault	Extreme Conditions	Railroad	Wildlife, Insects	LCES Mitigations	Smoke	Traffic/Driving	Communications	Fatigue/Hydration	School Buses / Children	Other Risk Mitigations	
All Divisions	1, 2, 3, 4, 5, 7, 8, 10, 14	2, 6, 11, 15, 17	12, 20, 26	1, 2, 3, 4, 5, 7, 8, 14	7, 10	1	2, 23, 28	1. Establish & maintain LCES. Report LCES checks twice daily to DIVS on line & staggings. 2. Look UP, DOWN and AROUND 3. Post experienced Lookouts. Make sure LCES is in place and make known. 4. Use Aerial Resources as Lookout if available.	24	12, 17, 19, 20, 22, 26, 27	1, 3, 10, 14, 19, 24, 25	16, 18, 21	26	16. Take adequate rest breaks and encourage to drink water NOW through briefings. 17. Defensive driving will be addressed in all briefings. 18. All personnel must meet the 2:1 work/rest ratio. Line supervisors and Safety will monitor closely. 19. Notify Operation and Safety of Railroad track issues to ensure safety of firefighters.	
								5. Flag escape routes on right side of escape route facing outward. Create new escape routes as you progress and identify Safety Zones on the ground and maps. 6. Identify, mark & mitigate. 7. FBAN/Meteorologist to monitor weather updates and advisories. 8. Ensure Fireline is Anchored to black or manmade/natural barrier.						20. Ensure Traffic Planning is safe and enforced. Heed Defensive Driving techniques noted in Safety Messages. 21. Relocate staging area when driving conditions warrant. 22. Use spotter when backing vehicle(s). 23. For insects, use protective spray with deet on skin (Not on Nomex), permethrin can be used on nomex clothing	
								10. Keep Firefighters informed of any changes in predicted weather, consider at least a two day weather pattern when planning Strategic Firing operations. 11. Refer to IRPG, pg. 12 on Power Line Hazards. 12. Observe all traffic signals and speed limits. Drive with lights on. 14. Ensure GOOD tailgate briefings with resources unable to attend Operational Briefing (Include Ops, Logs, Fin & Plans info.).						24. Establish smoke/fog signs on roadways. Coordinate with Department of Transportation. 25. Follow establish communication plan, flight follow through dispatch 26. Watch-out for school buses and for children along the edge of roadway and crossing the road.	
								15. Scout ahead of tractor operations to avoid making contact with power poles and guide wires when tying into roads. Power companies are working in some DIVS, avoid all down lines as they may become charged.						27. Treat all intersections as 4-way stops 28. Bears, Gators, and some snakes are dangerous. Do not approach or feed wildlife at any time.	

Prepared by (Name and Position)

ICS 215A

Frank Gibbs, Harry Kepler; SOF

MEDICAL PLAN	Incident Name Honey Prairie Complex	Date Prepared 08/17/2011	Time Prepared 1000	Operational Period 08/18/2011
---------------------	---	------------------------------------	------------------------------	---

5. Incident Medical Aid Station

<u>Medical Aid Stations</u>	<u>Location</u>	Paramedics Yes	No
MEDICAL UNIT (ICP EMT)	Honey Prairie Complex ICP- No MEDL Phillip Anderson (EMT-Intermediate) (678)-230-0952		X
WEST SIDE (Line EMT)	****Chad Roderick (EMT) ME ENG E-405 (10 person medical kit only)****		X
EAST SIDE (Line EMT)	****Brandon Simmons (EMT) Charlton 86 (10 person medical kit only)****		X

Ambulance Services

Name	Address	Phone	Paramedic	
			Yes	No
Clinch County EMS (West)	Homerville, GA (911 to activate)	912-487-5211 ext. 4567	Yes	
Ware County EMS (North)	Waycross, Georgia (911 to activate)	912-281-9467	Yes	
Charlton County EMS (East)	Folkston, GA (911 to activate)	912-496-7321	Yes	

Air Ambulance Service

Trauma 1	Lake City, FL	1-800-223-4878	Yes	
Trauma 1	Jacksonville, FL	1-800-223-4878	Yes	
AirMed	Augusta, GA	1-888-792-9245	Yes	
Lifeflight	Jacksonville, FL	1-877-870-7779	Yes	
Air Evac	Waycross, GA	1-800-247-3822	Yes	
US Coast Guard (Heli-Rescue)	Savannah GA	1-912-652-4646	Yes	

7. Hospitals

Name	Address	LAT-LON	Phone	Helipad		Burn Center	
				Yes	No	Yes	No
Satilla Regional	410 Darling AVE. Waycross, GA	N 31' 13.509 W 82' 20.853	(912) -283-3030	Yes			No
Clinch Memorial Hospital (WEST SIDE)	1050 Valdosta HWY Homerville, GA	N 31' 01.977 W 82 45.851	(912) -487-5211 ext 4502	Yes			No
Charlton Memorial Hospital (EAST SIDE)	1203 3 rd Street Folkston, GA	N 30' 50.713 W 82' 00.302	(912) -496-2531	Yes			No
Savannah Memorial Hospital	4700 Waters AVE Savannah, GA	N 31' 1.829 W 81' 5.320	(912) -350-8999	Yes			No
Shands Hospital (Level I)	655 West 8 th Street Jacksonville, FL	N 30' 20.97 W 81' 39.92	(800) -223-4878	Yes		Yes	
Shands Burn Center	1600 Southwest Archer Road Gainesville, FL	N 29' 38.33 W 82' 20.55	(352) -265-0300	Yes		Yes	

8. Medical Emergency Procedures

Identify any EMTs and Paramedics in your crews. All medical emergencies will be reported to the Division Supervisor who will assume command and notify Line Medics.

On scene personnel will:

1. Provide medical care & stabilize patient.
2. Call 911 if possible and provide the information requested.
3. Notify Communications via radio over Command Channel
4. Communications will clear radio traffic for medical emergency.
5. Communications will confirm 911 has been notified coordinate with IC, SOF.
6. DIVS will notify the Field Ops Section Chief.

MAJOR EMERGENCIES – Secure the area and identify witness for later investigation. Keep an accurate log of events. NOTE: Do not give Patients Name over the radio!

HELISPOTS

NAME	LAT-LON	LOCATION
Pocket Helispot	N 30' 47.500 W 82' 22.659	(West side), mile marker 4, HWY 177 Steven C. Foster State Park
Fargo Helispot	N 30' 40.945 W 82' 33.640	(West side), HWY 441- Steven C. Foster Visitor Center
POGO Helibase	N 30' 44.219 W 82' 07.689	(East side) Adjacent to Okee Refuge Shop
Evac Yankee		
Helispot 6	N 30' 53.280 W 82' 33.880	Road 32 and 32A
Helispot 7	N 30' 50.280 W 82' 33.857	Tatum Road Pond

***Alternate site can be established following guidelines for safety found with IRPG and local EMS resources.**

INJURY REPORTING PROCESS:

Nature of Injury: _____

Location of Patient: _____

Transportation Requested by: Air ___ Ground ___

Pick Up Point: _____

Lat: _____ Long: _____

Patient Unit ID: _____

Is an EMT w/Patient: Yes ___ No ___

Age: ___ Sex: Male ___ Female ___

Weight (If Air Evac. is needed): _____

Prepared by: Phillip Anderson (EMT Intermediate)

10. Reviewed by: Frank Gibbs, SOF

INCIDENT RADIO COMMUNICATIONS PLAN ICS-205			Incident Name Honey Prairie			GROUP 22		Date/Time Prepared 08/17/2011-18:00		Operational Period Date/Time 8/18/2011 0800-2000	
Ch #	Function	Channel Name	Assignment	RX Freq	NW	RX Tone/NAC	TX Freq	N W	TX Tone/NAC	Mode A,D or M	Remarks
1	Command	West Okee Repeater	Sec West Branch CMD	167.1250	N	156.7	163.1500	N	156.7	A	Stephen Foster State Park
2	Command	South Okee Repeater	Sec East/West Branch CMD	164.7750	N	123.0	163.1500	N	123.0	A	Eddy Florida
3	Command	East Okee Repeater	PRIMARY East Branch CMD	164.6250	N	103.5	163.1500	N	103.5	A	Refuge Headquarters
5	Command	North Okee Repeater	PRIMARY North Branch CMD	164.5750	N	206.5	163.1500	N	206.5	A	Waycross
6	Air-Ground	Air to Ground	PRIMARY	166.9375	N	CSQ	166.9375	N	CSQ	A	
7	Tactical	MOB-MOB	GFC Contingency	159.3900	W	CSQ	159.3900	W	156.7	A	
8	Tactical	V-Fire 21W WHITE	West group Secondary	154.2800	W	CSQ	154.2800	W	156.7	A	
9	Tactical	USFS 9	East/West Groups	168.7750	N	CSQ	168.7750	N	CSQ	A	
10	Tactical	S.E. Compact		159.2850	W	CSQ	159.2850	W	CSQ	A	
11	Tactical	USFS 11	East Group Secondary	168.2000	N	CSQ	168.2000	N	CSQ	A	
12	Tactical	Refuge Tac 1	East Group	168.3500	N	CSQ	168.3500	N	CSQ	A	
13	Tactical	FL 190		151.2725	N	CSQ	151.2725	N	CSQ	A	
15	Air-Ground	Air to Ground	SECONDARY	166.9000	N	CSQ	166.9000	N	CSQ	A	
16	EMERGENCY	AIR Guard	Air OPS.	168.6250	N	CSQ	168.6250	N	110.9	A	
Prepared by (Communications Unit) Phillip Anderson, COMT/COML Incident Dispatcher: 912-286-1660						Cloning at ICP communications and briefings,					

The convention calls for frequency lists to show four digits after the decimal place, followed by either an "N" or a "W", depending on whether the frequency is narrow or wide band. **Mode** refers to either "A" or "D" indicating analog or digital (e.g. Project 25) or "M" indicating mixed mode. All channels are shown as if programmed in a control station, base stations, mobile or portable radio.

Honey Prairie Fire Incident Information

Here are some key point that we like to make when discussing this fire with the public.

1. Public and firefighter safety remains the top priority for this incident.
2. Past experience has shown that conventional fire suppression tactics do not work well inside the swamp. Humans have never been successful in controlling fires within the swamp; only “mother nature” has done this. Attempting suppression within the swamp is ineffective, costly, wastes firefighting resources and needlessly endangers firefighter safety.
3. Fire on the refuge is usually fought by reinforcing firelines along the Swamps Edge Break, including areas of private land, to keep the fire contained within the swamp.
4. Homeowners and other land owners can minimize the potential for damage to their homes by creating defensible space through firewise landscaping, thinning, etc..
5. Fire enhances the health of the Okefenokee ecosystem and is a force of nature that sustains the diversity and richness of a wide variety of species that makes the Okefenokee a world-famous ecosystem and natural area.

HONEY PRAIRIE PHONE LIST			08/18/11
Incident	Communication	(Hours: 0700-2000)	912-286-1660
AGENCY OFFICIALS			OPERATIONS
Curt McCasland	602-359-0013	USFWS AA	Steve Gray 770-655-8002 404-772-5343
Mindy Gautreaux	912-282-7500	USFWS Deputy AA	DIVISIONS
Frank Sorrells	912-381-7503	GFC AA	Shannon Bowman 850-450-7647 West Group
James Karels	850-228-7763	FL DOF AA	Steve Abbott 706-836-7712 East Group
Diane Adams	912-266-5421	GEMA	AIR OPERATIONS
Mike Housh	912-281-1575	USFWS AREP	Melvin Tate 912-287-4479 HEB2 - WAYCROSS
COMMAND - IC			850-849-0405 cell
Steve Gray	770-655-8002	404-772-5343	LANDOWNERS
Jason Demas	706-633-6811		Jim Barrett 229-356-1993 Langdale/GOAL Chairman
RESOURCE ADVISORS			Wesley Langdale 229-220-2602 Langdale
Ron Phernetton	912-276-2349	Resource Advisor	Hal Rowe 229-412-3133 Langdale
Rocky Chesser	912-276-3232	Resource Advisor	Langdale Office 229-242-7450 Langdale Office
INFORMATION 912-496-2566			Mike Conlon 386-365-3882 Rayonier Unit Supervisor
Jim Burkhardt	912-282-1159	Fire Information	Ray Carter 386-288-6626 Rayonier
SAFETY OFFICERS			Ed Carter 386-288-6626 Rayonier
Frank Gibbs	863-441-1022	404-772-5406	Doug Nuss 912-390-1037 Rayonier
Harry Kepler	205-292-7764		Randall McCrady 912-283-4077 Rayonier
DISPATCH			Colin Myerson 229-506-1565 Superior Pine Products Co
Okefenokee Dsp	912-496-7366	Okefenokee	Robbie Lee 229-356-0526 Superior Pine Products Co
Suwannee Dispatch	386-758-5700	Fla wildfires, other	Superior Pine Office 912-637-5261 Superior Pine Products Co
Honey Prairie Dspth	912-286-1660	Honey Prairie ICP	Al Alexander 850-843-0104 The Forestry Co
Waycross Dispatch	912-287-4915	Ga wildfires, other	Savell Schmidt 850-843-1181 The Forestry Co
GA DNR	1-800-241-4113	Hunting Issues	John Bogue 850-843-1192 The Forestry Co
LOGISTICS 256-497-8490 fax 912-287-6542			Joe Hopkins 912-276-0911 Toledo Timber
Randy Teal	256-497-8490	LSC	Chris Gowan 912-276-0965 Toledo Timber
Neal Edmondson	478-973-6263	Facilities	Martin Bell 912-283-0583 Swamp Park
Phillip Anderson	678-230-0952	Communication	Crystal Peeples 352-316-0632 FIA
Linda Blondeau	770-658-4789	Ordering Manager	Steve Davis 912-614-1828 Davis Community
Rebecca Francis	414-232-4923	Security	Trevor Fortner 912-599-9271 Little Suwannee
Bill Messerschmidt	715-581-1694	RADO	Tim Jarrell 912-223-7120 Hancock Forest Mgmt.
PLANNING 912-287-6565 FAX 912-287-6541			RAILROADS
Anthony Petellat	352-442-2897	Planning Section Chief	Norfolk Southern 800-453-2530
Thomas Barrett	478-689-5144	RESL	Sid Moody 904-318-7983 Norfolk Southern Railroad
FINANCE 912-287-6568 FAX 912-287-6564			Chad Edwards 404-582-4909 Norfolk Southern Railroad
Susan Beasley	850-637-5980	Finance Section Chief	Eric Sams 904-576-9907
Rhonda Vickerman	541-891-1067	Purchasing Agent	Norfolk So 404-529-1597
Buying Team	256-497-8334		CSX Randy Dixon 912-270-0699
Buying Team Fax	912-287-6557		CSX Dispatch 800-232-0144
Carla Schamber	541-223-1907	IBA	COUNTY
FEDERAL			
Okefenokee Fire Shop	912-496-4181		912-496-7229 Charlton County EMA
Okefenokee NWR HQ	912-496-7366		John F. Meyer - 912-496-2549 Charlton County Commissioners
Okefenokee NWR	912-637-5322		Dobie Conner 912-496-7321 Charlton County Sheriff
Okefenokee Visitor	912-496-7836		Jesse Booth 912-520-0061 Clinch County EMA
STATE			Jonathan Daniel 912-281-5158 Ware County EMA
GFC Fargo Office	912-637-5270		Jessie Jordan 912-816-6063 Ware County Fire Dept
GFC Satilla District	912-287-4915		Joe Morris 912-281-6020 Ware County Sheriff
Jason Gillis	912-314-9233	GFC Satilla Mgr.	Robbie Sutton 912-599-9027 Tri County 911
Brian Gray	229-894-4628	Stephen Foster State Park	Georgia State Patrol 912-287-6500
			Travis Griffin 912-281-5790 Laura Walker State Park

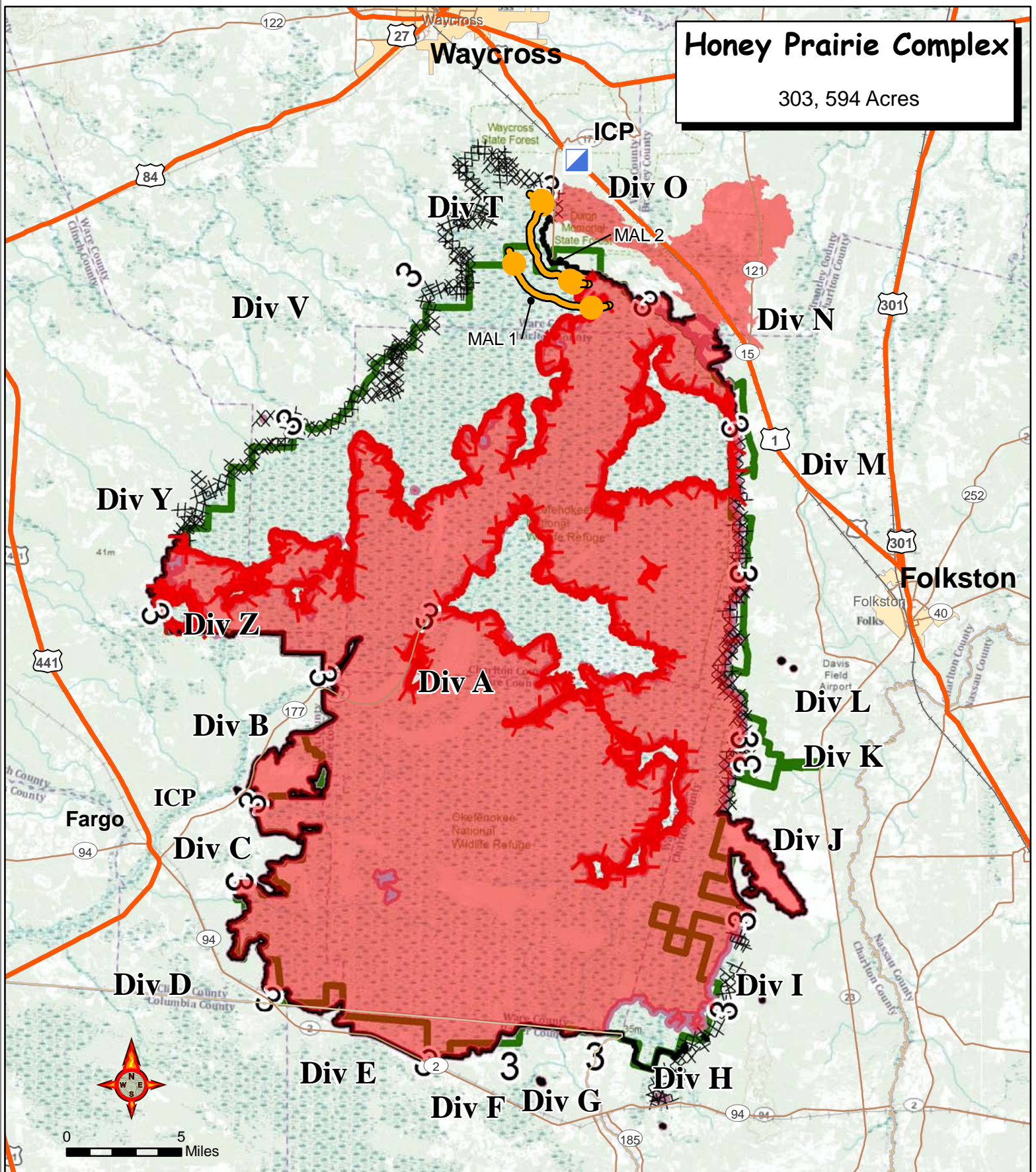
DMOB Report

RequestNun	ResourceName	KindCode	UnitID	TravelMethod	Jetport	DemobDate
E-1082	GA ENG 6 (E-1082) GAGAS	ENG6	GAGAS	POV		08/18/2011
E-1249	GLENN 71 (E-1249) GAGAS	TPL3	GAGAS	AOV		08/18/2011
E-78.15	BISHOP, SIMON	FFT2	GAGAS	AOV		08/18/2011
E-81.14	BOLES, JESSIE	FFT2	GAGAS	AOV		08/18/2011
O-1163	RAULERSON, JOHN W	DIVS	FLFLS	AOV		08/18/2011
E-1239	FL ACS28158 RAULERSON	PU	FLFLS	AOV		08/18/2011
E-1248	ECHOLS 61 (E-1248)	TRTL	GAGAS	AOV		08/18/2011
E-1249.2	HARRIS, JASON	TPIA	GAGAS	AOV		08/18/2011
E-1082.5	SWEATMAN, CAROLYN	ENGB	GAGAS	AOV		08/18/2011
E-1247	ECHOLS 71 (E-1247) TPL GAGAS	TPL3	GAGAS	AOV		08/18/2011
E-78.14	RYMER, MATT	ENGB	GAGAS	AOV		08/18/2011
E-1082.6	BROWN, AUBREY	FFT2	GAGAS	AOV		08/18/2011
E-1247.2	SIKES, JAMES	FFT2	GAGAS	AOV		08/18/2011
E-81.13	HELMS JR, TROY	ENGB	GAGAS	AOV		08/18/2011
E-1250	GLYNN 61 (E-1250) GAGAS	TRTL	GAGAS	AOV		08/18/2011
E-77.13	SHELTON, KENNETH	ENGB	GAGAS	AOV		08/18/2011
O-1112	WILLIAMS, DAROLD	ABRO	FLFNF	POV		08/19/2011
O-1155	LAYTON, CAROL	PTRC	GAGAS	POV		08/19/2011
E-1084.6	PENNY, JARED	FFT2	GAGAS	AOV		08/19/2011
A-75.14	WRIGHT, LAUREL	HECM	IDCTF	AIR	PIH	08/19/2011
E-1084.5	BARBEE, GEORGE	ENGB	GAGAS	AOV		08/19/2011
E-1175	GLYNN 72 TPL3	TPL3	GAGAS	AOV		08/20/2011
O-1151	SCHAMBER, CARLA	IBA2	ORSUF	A/R	PDX	08/20/2011
E-838.11	FONDRIEST, MARK	FFT2	MNMFC	AIR	FAR	08/20/2011
E-1165	APPLING 70 TPL2	TPL2	GAGAS	AOV		08/20/2011
O-1162	HULSIZER, VICKIE	TIME	IDIPF	AIR	GEG	08/20/2011
E-1166	APPLING 60 LOWBOY	LOWB	GAGAS	AOV		08/20/2011
E-1176	GLYNN 62 LOWBOY	LOWB	GAGAS	AOV		08/20/2011
O-1116	SMITH, JOSEPH	TPOP	GAGAS	AOV		08/20/2011
E-838.10	MACE, BLAIR	ENGB	MNMFC	AIR	FAR	08/20/2011
O-1121	DANLEY, ROBERT	TPOP	GAGAS	AOV		08/20/2011
E-838.12	SAXTON, TAMARA	FFT2	MNMFC	AIR	GFK	08/20/2011
O-1129	TEAL, DEWEY R	FACL	GACHF	POV	ATL	08/21/2011
O-1169	EDMONDSON, NEAL	BCMG	GAGAS	AOV		08/21/2011
O-1154	EPPS, DAVID	PTRC	GAGAS	AOV		08/21/2011
O-1167	ANDERSON, PHILLIP	COMT	GAGAS	AOV		08/21/2011
E-1238	PICKUP (E-1238) GAGAS EPPS	PU	GAGAS	AOV		08/21/2011
E-1241	GFC PU ANDERSON	PU	GAGAS	AOV		08/21/2011
E-1196	PU EDMONSON	PU	GAGAS	AOV		08/21/2011
O-1172	GRAY, STEVE	ICT3	GAGAS	AOV		08/21/2011
O-1164	BARRETT, THOMAS	RESL	GAGAS	AOV		08/21/2011
E-77.14	BENNETT, BARRY	FFT1	GAGAS	AOV		08/21/2011
E-1251	GA PU (E-1252) GRAY GAGAS	PU	GAGAS	AOV		08/21/2011
E-1242	GFC PU (E-1242) ENG7 ABBOTT	ENG7	GAGAS	AOV		08/21/2011
O-1165	ABBOTT, STEVE	DIVS	GAGAS	AOV		08/21/2011
E-1240	BARRETT PU	PU	GAGAS	AOV		08/21/2011
E-1257	FLS BEASLEY SUV	SUV	FLFLS	AOV		08/22/2011
O-1174	BEASLEY, SUSAN	FSC2	FLFNF	AOV		08/22/2011
E-405.13	RODERICK, CHAD	FFT2	MEMHR	AIR	BDL	08/23/2011
O-1177	BLANDEAU, LINDA	SPUL	MTLCF	AIR	BZN	08/23/2011
E-405	ME ENG6 (E-405) MEMHR	ENG6	MEMHR	AOV		08/23/2011
A-75.15	GILL, VALERIE	HECM	IDCTF	AIR	PIH	08/23/2011
E-405.11	HARRIMAN, BRANDON	ENGB	MEMHR	AIR	BGR	08/23/2011
A-75.16	AUTENRIETH, BRIAN	HECM	IDCTF	AIR	PIH	08/23/2011
A-75.13	TAYLOR, TRAVIS	HMG B	IDCTF	AIR	PIH	08/23/2011
O-1152	VICKERMAN, RHONDA	PA25	ORFWF	AIR	LMT	08/23/2011
E-405.12	STEARNS, CORY	FFT2	MEMHR	AIR	BGR	08/23/2011

Record Count: 57

Honey Prairie Complex

303, 594 Acres



- Incident Command Post
- Uncontrolled Fire Edge
- Completed Dozer Line
- Completed Line
- Refuge Boundary
- FirePolygon

3 Division

Perimeter as of 7/30/2011 1200
C. Bailey GISS

