

**Honey Prairie
Complex**
GA-OKR-000001
Incident Action Plan

Operational Period
Thursday
November 17, 2011
0700-1900

**Incident Commander
Shawn Pearson**

Accounting Codes
FWS - 9141-F25M-2J NPS - 5023 F25M E11
BLM - F25M USFS - PRF25M_1502
Initial Attack - F4PM



*An Equal Opportunity
Employer & Service Provider*

Letter from Honey Prairie Incident Commander:

To: All Honey Prairie Incident Personnel

As a Type 3 Incident Commander, I am committed to a policy of “zero tolerance” of inappropriate behavior during incident operations. Any form of harassment, discriminatory practices, or disrespectful behavior will not be tolerated.

Guidelines on in-appropriate behavior both “on Duty” and “off Duty” while assigned are addressed within each agencies policies. Our Team expects all incident personnel to follow established government policies for behavior along with all Illegal drug and alcohol directives.

Our Incident Management Team endorses and supports an attitude of mutual respect for all personnel and the public we serve.

We expect a strong work ethic and an attitude of Safety at all times!

Sincerely,

/s/ Shawn Pearson

Incident Commander
Type 3 Incident Management Team

INCIDENT OBJECTIVES	1. INCIDENT NAME Honey Prairie Complex	2. DATE PREPARED 11/16/11	3. TIME PREPARED 1700
4. OPERATIONAL PERIOD (DATE/TIME) November 17, 2011 0700 – 1900			
5. GENERAL CONTROL OBJECTIVES FOR THE INCIDENT (INCLUDE ALTERNATIVES) 1. Provide for safety of incident personnel and public in all incident operations. 2. Maintain a positive working relationship with all adjacent landowners, cooperators, State and Federal partners. Inform, involve and communicate incident planning and operations with all partners. 3. Contain all fires that are within the Okefenokee National Wildlife Refuge, inside the Refuge and/or inside the swamp edge break if possible. 4. In cooperation with local land owners and communities, use full suppression strategies and tactics to minimize damage to private timberlands and structural improvements and to prevent fires outside the Refuge from entering the Refuge. 5. Assist in management and suppression of additional fires (new starts or breakouts) in the vicinity as approved by Agency Administrators and Incident Commander. 6. Protect all cultural and archeological sites and structures within the refuge. 7. Manage the fires cost-effectively consistent with the values at risk. 8. Coordinate suppression actions with assigned Refuge Resource Advisors			
6. WEATHER FORECAST FOR OPERATIONAL PERIOD See attached forecast for area specific weather information.			
7. GENERAL SAFETY MESSAGE Drive defensively and use spotter when backing. Ensure LCES is in place and known by all personnel. Drink plenty of water and take frequent rest breaks. Ensure proper use of PPE during all operations.			
8. Attachments <input checked="" type="checkbox"/> if attached <input checked="" type="checkbox"/> Organization List (ICS 203) <input checked="" type="checkbox"/> Incident Map <input checked="" type="checkbox"/> Safety Message <input checked="" type="checkbox"/> Assignment List (ICS 204) <input type="checkbox"/> Traffic Plan <input type="checkbox"/> Demobilization Procedures <input checked="" type="checkbox"/> Communications Plan (ICS 205) <input checked="" type="checkbox"/> Unit Log <input checked="" type="checkbox"/> Medical Plan (ICS 206) <input checked="" type="checkbox"/> Phone List			
9. PREPARED BY (Planning Section Chief) David Utley		10. APPROVED BY (INCIDENT COMMANDER) Shawn Pearson	

ORGANIZATION ASSIGNMENT LIST		9. Operations Section	
1. Incident Name Honey Prairie Complex GA-OKR-000001		Chief	
2. Date 11/16/2011	3. Time 1500 hrs	a. Branch/Divisions/Groups	
4. Operational Period 11/17/2011 0700 - 1900		West Branch	
5. Incident Commander and Staff			
Incident Commander	Shawn Pearson 11/24		
Safety Officer	Derrick Heckman 11/24	Division Y/Z/10a	Brent McCarty 11/21
Information Officer	Art Webster		
6a. Agency Administrators			
FWS	Curt McCasland		
FWS	Mindy Gautreaux		
6b. Agency Representatives		b. Branch/Divisions/Groups	
GFC	Frank Sorrells		
FLFFS	James Karels		
FWS AREP	Mike Housh		
FWS-Refuge PAO	Art Webster		
GEMA AREP	Alan Robinson / Diane Adams		
USFS AREP	Ivan Greene		
Charlton Co EMA	Bruce Young		
7. Planning Section			
Chief	David Utley 11/22	c. AIR OPERATIONS BRANCH - Honey Prairie	
Resource Advisors	Ron Phernetton, Reggie Forcine		
Resources Unit			
IMET			
Situation Unit			
FBAN		d. AIR OPERATIONS BRANCH - Pogo	
Demob Unit			
Documentation			
CTSP			
SCKN			
8. Logistics Section		10. Finance Section	
Chief	Steven Blackwell 11/25	Chief	Amy Treadwell 11/25
Supply Unit	Amy Weaver 11/23	Time Unit	
Ground Support		Cost	
COMT	Anthony Erringer 11/23	PTRC	Penny Brown 11/25
EQPM		EQTR	
RCDM		IBA	
BCMG			
SECM		Purchasing Agent	Jammie Lindsay 11/23
COMT			
EMTB			
ORDM			
		Prepared by: David Utley (PSC)	

DIVISION ASSIGNMENT LIST				1. Branch West		2. Division Y / Z / 10a	
3. Incident Name Honey Prairie Complex				4. Operational Period Date: 11/17/2011 Time: 0700-1900			
5. Operations Personnel							
Operations		Division Supervisor		Brent McCarty 11/21 229-938-8718			
Safety Officer		Derrick Heckman (205) 283-3539					
6. Resources Assigned this Period							
Strike Team/Task Force/ Resource Designator		Leader / Name / Designator		Last Shift Date	Num. Per.	Drop Off PT./Time	Crew Names
TFLD (t)		James Mashburn (O-1442)		11/26	1	ICP 0800	478-363-1627
TPL3 Pierce 62 (E-1479)		Christopher Carter (E-1479.2)		11/26	1	ICP 0800	
TPL2 Appling 60 (E-1480)		Andy Smith (E-1480.2)		11/26	1	ICP 0800	
TPL3 Charlton 61 (E-1481)		Barry Rowell (E-1481.2)		11/26	1	ICP 0800	
TFLD		Tony Harkins (O-1449)		11/28	1	ICP 0800	706-897-9414
GA ENG6 Union 86 (E-1464)		Leland Bass (O-1450)		11/27	2	ICP 0800	Don Gibbs (O-1451)
GA ENG6 Monroe 86 (E-1392)		Paul Phillips (O-1444)		11/28	2	ICP 0800	Chris Babb (O-1445)
GA ENG6 (E-2) GAOKR # 41		Tony Keene (O-1443)		11/26	2	ICP 0800	William Short (O-1437)
HEQB		Cory Bryant			1	ICP 0800	912-276-0078
TPL GAOKR 56 (E-22)		Unstaffed					
FWS Motorgrader (E-1356)		Unstaffed					
GA ENG6 (E-3) GAOKR # 42		Unstaffed					
TPL4 GAOKR 53 (E-23)		Unstaffed					
TPL GA OKR 54 (E-21)		Unstaffed					
7. Control Operations							
<ul style="list-style-type: none"> Respond to Initial Attack as requested Mop up minimum 50 ft in along SEB and 200-feet in on upland areas, also monitor fire's edge for any control issues. Initial attack IC will communicate sizeup information to the Honey Prairie communication. Improve swamp break boundaries for fire breaks, work with resource advisor. 							
8. Special Instructions							
<ul style="list-style-type: none"> Staging will be at Tatum Pond Avoid Confrontations with hunters. Ensure LCES are in place before operations begin. Stay hydrated. Drive defensively and with lights on at all times and use extra caution on wet or dry roads. Boggy terrain: Be careful and aware when working around this type of area. Avoid areas with potential tree fall 							
9. Division/Group Communication Summary							
Function	Frequency	System	Channel	Function	Frequency	System	Channel
Command W Okee Repeater	RX 167.125/156.7 TX 163.150/156.7	KING NIFC	1	Logistics		KING NIFC	
Tactical Div/Group	RX 168.775 TX 168.775	KING NIFC	9	Air to Ground	RX 166.9375 TX 166.9375	KING NIFC	6
Prepared by (PSC) David Utley		Approved by (IC) Shawn Pearson			Date November 16, 2011		Time 1700

SAFETY MESSAGE

Firefighter Safety is our #1 Priority

INCIDENT: Honey Prairie Fire

DATE:11/17/11 TIME: 0700-1900

“an idiot with a plan is much better than a genius without”T. Boone Pickens

REMEMBER: The fire is about out but not completely out, all fireline personnel need to know their Escape Routes and where their Safety Zones are, at all times. Good black burned areas are available to use for safety zones. Be prepared for hot line at any time; either for Initial Attack or for reacting to a problem area on the fire.

Common Denominators of Fire Behavior on Tragedy Fires: Most fires are innocent in appearance before the “flare-ups” or “blow-ups”. In some cases tragedies occur in the mop-up stage. Look inside the Fireline Handbook for Fire Safety Basics.

In case of high winds, lightning, or rain events, pull out to a safe area (crew rigs) to wait for more favorable conditions. Wind will bring down additional snags and will put a lot of dust / ash in the air. Anyone on an exposed area or under a large tree is in danger during a lightning storm. Footing and driving conditions become treacherous with rain.

When should you wash your hands?

You should wash your hands often, probably more often than you do now. It is especially important to wash your hands –

- Before, during, and after you prepare food
- Before you eat.
- After you use the bathroom.
- Before putting in contact lenses.
- After handling animals.
- When your hands are dirty, and more frequently if someone around you is ill.

Crew Briefing

It is absolutely essential that everyone on the fire line receives a thorough briefing. Supervisors must ensure that the briefing includes the weather, fire behavior, safety message, communications plan, medical plan, and the Special Instructions on the Division Assignment Form.

Derrick Heckman, SOF2 (T)

ALL ESCAPE ROUTES MARKED IN “PINK” FLAGGING

INCIDENT ACTION PLAN SAFETY ANALYSIS										1. Incident Name Honey Prairie Fire		2. Date 11/17/2011		3. Time Day Shift		
LCES* Analysis of Tactical Applications Lookouts Communications Escape routes Safety zones										Other Risk Analysis						
Divisions										Other Risk Mitigations						
Indirect Fireline	Power lines / Snags	Road Conditions	Frontal Assault	Snags	Extreme Conditions	Railroad	Logging Operations	Wildlife, Insects	LCES Mitigations	Smoke	Traffic/Driving	Communications	Hunting season	Fatigue/Hydration	School Buses / Children	
1, 2, 3, 4, 5, 7, 8, 10, 14	2, 6, 11, 15, 17	12, 20, 26	1, 2, 3, 4, 5, 7, 10, 14	1, 2, 3, 4, 5, 7, 8, 10, 14, 17	7, 10	1	2, 3, 5, 6, 20, 21, 24	2, 23, 28	1. Establish & maintain LCES. Report LCES checks twice daily to DIVS on line & staging. 2. Look UP, DOWN and AROUND 3. Post experienced Lookouts. Make sure LCES is in place and make known. 4. Use Aerial Resources as Lookout if available.	24	12, 17, 19, 20, 22, 26, 27	1, 3, 10, 14, 19, 24, 25	29	16, 18, 21	26	16. Take adequate rest breaks and encourage to drink water NOW through briefings. 17. Defensive driving will be addressed in all briefings. 18. All personnel must meet the 2:1 work/rest ratio. Line supervisors and Safety will monitor closely. 19. Notify Operation and Safety of Railroad track issues to ensure safety of firefighters.
									5. Flag escape routes on right side of escape route facing outward. Create new escape routes as you progress and identify Safety Zones on the ground and maps. 6. Identify, mark & mitigate. 7. FBAN/Meteorologist to monitor weather updates and advisories. 8. Ensure Fireline is Anchored to black or manmade/natural barrier.						20. Ensure Traffic Planning is safe and enforced. Heed Defensive Driving techniques noted in Safety Messages. 21. Relocate staging area when driving conditions warrant. 22. Use spotter when backing vehicle(s). 23. For insects, use protective spray with deet on skin (Not on Nomex), permethrin can be used on nomex clothing	
									10. Keep Firefighters informed of any changes in predicted weather, consider at least a two day weather pattern when planning Strategic Firing operations. 11. Refer to IRPG, pg. 12 on Power Line Hazards. 12. Observe all traffic signals and speed limits. Drive with lights on. 14. Ensure GOOD tailgate briefings with resources unable to attend Operational Briefing (Include Ops, Logs, Fin & Plans info.).						24. Establish smoke/fog signs on roadways. Coordinate with Department of Transportation. 25. Follow establish communication plan, flight follow through dispatch 26. Watch-out for school buses and for children along the edge of roadway and crossing the road.	
									15. Scout ahead of tractor operations to avoid making contact with power poles and guide wires when tying into roads. Power companies are working in some DIVS, avoid all down lines as they may become charged.						27. Treat all intersections as 4-way stops 28. Bears, Gators, and some snakes are dangerous. Do not approach or feed wildlife at any time. 29. Wear Hunter safety vest at all times when in the fire area. Be respectful and aware of hunters in your area.	

WEATHER FORECAST

11-17-11

SKY/WEATHER.....MOSTLY CLOUDY (70-80 PERCENT) THEN BECOMING
MOSTLY SUNNY (25-35 PERCENT). CHANCE OF SHOWERS
AND THUNDERSTORMS EARLY IN THE MORNING...THEN
SLIGHT CHANCE OF THUNDERSTORMS EARLY IN THE
MORNING. SLIGHT CHANCE OF SHOWERS EARLY IN THE
MORNING.

MAX TEMPERATURE.....NEAR 74.

MIN HUMIDITY.....42 PERCENT.

WIND (20 FT).....NORTH WINDS 7 TO 14 MPH WITH GUSTS TO NEAR 25
MPH.

LAL.....1 UNTIL 0800...THEN 2 UNTIL 0900...THEN 1.

MIXING HEIGHT.....800-2400 FT AGL INCREASING TO 2200-3300 FT AGL
IN THE AFTERNOON.

MIXING WINDS.....NORTHWEST 13 TO 22 MPH.

DISPERSION INDEX....70.

CHANCE OF PCPN.....10 PERCENT.

LVORI.....MISSING.

TIME (EST)	6 AM	8 AM	10 AM	NOON	2 PM	4 PM
SKY (%).....	87	76	58	35	21	15
WEATHER COV.....	CHANCE	S CHC	S CHC			
WEATHER TYPE....	TSTORM	RNSHWR	RNSHWR	NONE	NONE	NONE
TEMP.....	65	65	70	73	74	72
RH.....	96	96	79	56	45	41
20 FT WIND.....	W 8	W 9	W 12	NW 14	NW 14	N 14
20 FT WIND GUST..	15	15	20	25	25	20
MIX HGT (FT)....	800	1200	1900	2800	3200	2900
TRANSPORT WIND..	W 13	W 15	NW 18	NW 21	NW 22	NW 21
LVORI.....	M	M	M	M	M	M
DISPERSION INDX..	M	M	M	M	M	M
CHC OF PCPN (%)..	40	20	10	10	0	0
LAL.....	1	2	1	1	1	1

FIRE BEHAVIOR FORECAST

Fire name: Honey Prairie	Forecast # 1 Long Term	Prediction for: Oct, Nov, Dec 2011
Forecast Issued: October 2011	Signed: Troy Floyd FBAN	Shift Date; ALL

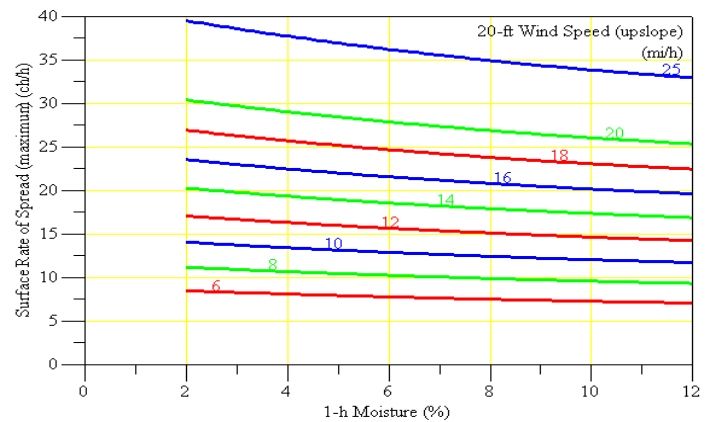
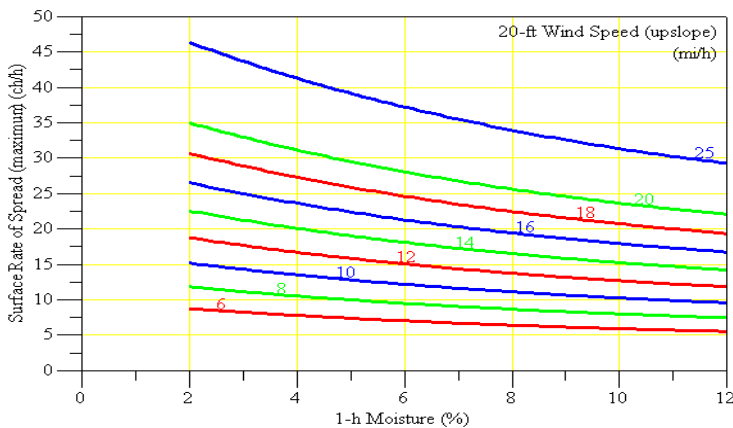
Weather Summary: This fire behavior forecast is designed to be used with the daily fire weather forecast produced by the National Weather Service or field observations you take near the fire line.

General Fire Behavior: The Seasonal fire situation within and around the Okefenokee swamp has been driven by historic drought. Muck fuels within much of the swamp interior will continue to burn until substantial rainfall has occurred. Prolonged dry periods, periods with low RHs and High Winds will be the most probable situations for increased fire behavior. Major concerns are flare-ups that are near the containment lines threatening to spot or slop over onto the uplands. Pine Fuels and Southern Rough along the uplands are conducive to rapid rates of spread, torching, crowning and spotting.

Instructions for use- Start with second page to obtain your 1 hour Fuel moisture. Then use Charts below for outputs.

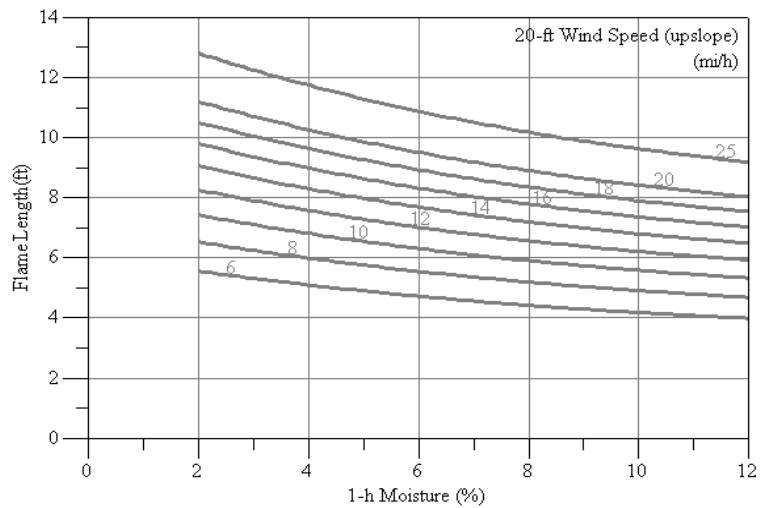
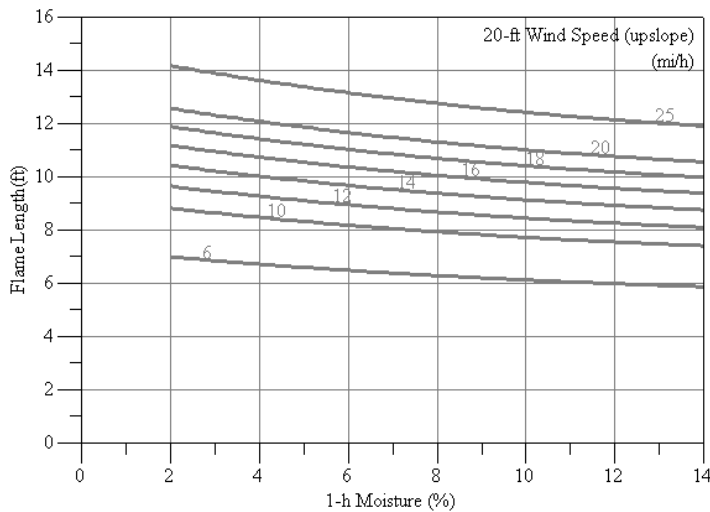
Fuel Model (7) Southern Rough (Table Below)

Shrub Fuels (sh8) Palmetto and Galberry (Table Below)



Flame Lengths FM (7) Table Below

Flame Lengths (sh8) Table Below



To calculate Rates of Spread and Flame Lengths

Use the graphs above starting on the bottom with your 1 hr Fuel moisture, Trace upwards to the wind line then turn left to get your Rates of spread and Flame Lengths.*Use next page to calculate your 1 hour fuel Moisture.**

Reference Fuel Moisture
Day Time
0800 - 1959

1	Relative Humidity (%)																				
	Dry Bulb Temp. (F)	0 - 4	5 - 9	10 - 14	15 - 19	20 - 24	25 - 29	30 - 34	35 - 39	40 - 44	45 - 49	50 - 54	55 - 59	60 - 64	65 - 69	70 - 74	75 - 79	80 - 84	85 - 89	90 - 94	95 - 99
10 - 29	1	2	2	3	4	5	5	6	7	8	8	8	9	9	10	11	12	12	13	13	14
30 - 49	1	2	2	3	4	5	5	6	7	7	7	8	9	9	10	10	11	12	13	13	13
50 - 69	1	2	2	3	4	5	5	6	6	7	7	8	8	9	9	10	11	12	12	12	13
70 - 89	1	1	2	2	3	4	5	5	6	7	7	8	8	8	9	10	10	11	12	12	13
90 - 109	1	1	2	2	3	4	5	5	6	7	7	8	8	8	9	10	10	11	12	12	13
109 +	1	1	2	2	3	4	4	5	6	7	7	8	8	8	9	10	10	11	12	12	12

Dead Fuel Moisture Content Corrections
Nov. Dec. Jan.

2E		EXPOSED					
		Exposed - Less than 50% shading of surface fuels					
ASPCT	Slope	0800 to	1000 to	1200 to	1400 to	1600 to	1800 to
	S	L 0 - 30%	L 5	L 4	L 3	L 2	L 4
2S		SHADED					
		Shaded - Greater than or equal to 50% shading of surface fuels					
S	All	5	5	5	5	5	5

Instructions to calculate 1 hour FDFM

Step (1) Use top table to get reference fuel moisture: Use predicted or taken weather OBS of temperature (Dry Bulb) and Relative Humidity. Follow the chart from left (Dry Bulb) and (RH) top of chart. In the numbers field where both meet you will get your Reference Fuel Moisture.

(2) Use the above table (2E) for exposed fuels or (2S) for shaded fuels or cloudy days. At the top of the table select time of day then to the left of the Table select 0-30% slope and locate your Fuel Moisture content correction number.

(3) Add your reference Fuel Moisture to the Dead Fuel moisture content correction. This will give you your 1hr FDFM.

INCIDENT RADIO COMMUNICATIONS PLAN ICS-205			Incident Name Honey Prairie			GROUP 22		Date/Time Prepared 11/16/2011-16:00		Operational Period Date/Time 11/17/2011 0700-1900	
Ch #	Function	Channel Name	Assignment	RX Freq	NW	RX Tone/NAC	TX Freq	N W	TX Tone/NAC	Mode A,D or M	Remarks
1	Command	West Okee Repeater	Sec West Branch CMD	167.1250	N	156.7	163.1500	N	156.7	A	Stephen Foster State Park
2	Command	South Okee Repeater	Sec East/West Branch CMD	164.7750	N	123.0	163.1500	N	123.0	A	Eddy Florida
3	Command	East Okee Repeater	PRIMARY East Branch CMD	164.6250	N	103.5	163.1500	N	103.5	A	Refuge Headquarters
5	Command	North Okee Repeater	PRIMARY North Branch CMD	164.5750	N	206.5	163.1500	N	206.5	A	Waycross
7	Tactical	MOB-MOB	GFC Contingency	159.3900	W	CSQ	159.3900	W	156.7	A	
8	Tactical	V-Fire 21W WHITE	West group Secondary	154.2800	W	CSQ	154.2800	W	156.7	A	
9	Tactical	USFS 9	East/West Groups	168.7750	N	CSQ	168.7750	N	CSQ	A	
10	Tactical	S.E. Compact		159.2850	W	CSQ	159.2850	W	CSQ	A	
11	Tactical	USFS 11	East Group Secondary	168.2000	N	CSQ	168.2000	N	CSQ	A	
12	Tactical	Refuge Tac 1	East Group	168.3500	N	CSQ	168.3500	N	CSQ	A	
13	Tactical	FL 190		151.2725	N	CSQ	151.2725	N	CSQ	A	
16	EMERGENCY	AIR Guard	Air OPS.	168.6250	N	CSQ	168.6250	N	110.9	A	
Prepared by (Communications Unit) Anthony Erringer COMT 404-772-5384						Cloning at ICP communications and briefings,					

The convention calls for frequency lists to show four digits after the decimal place, followed by either an "N" or a "W", depending on whether the frequency is narrow or wide band. **Mode** refers to either "A" or "D" indicating analog or digital (e.g. Project 25) or "M" indicating mixed mode. All channels are shown as if programmed in a control station, base stations, mobile or portable radio.

MEDICAL PLAN	Incident Name Honey Prairie Complex	Date Prepared 11/15/2011	Time Prepared 1000	Operational Period 11/16/2011
---------------------	---	------------------------------------	------------------------------	---

5. Incident Medical Aid Station

<u>Medical Aid Stations</u>	<u>Location</u>	Paramedics Yes	No
Honey Prairie EMT	****Ware County EMT 256-497-8388****		No

Ambulance Services

Name	Address	Phone	Paramedic Yes	No
Clinch County EMS (West)	Homerville, GA (911 to activate)	912-487-5315	Yes	
Ware County EMS (North)	Waycross, Georgia (911 to activate)	912-287-4335	Yes	
Charlton County EMS (East)	Folkston, GA (911 to activate)	912-496-7321	Yes	

Air Ambulance Service

Trauma 1	Lake City, FL	1-800-223-4878	Yes	
Trauma 1	Jacksonville, FL	1-800-223-4878	Yes	
AirMed	Augusta, GA	1-888-792-9245	Yes	
Lifeflight	Jacksonville, FL	1-877-870-7779	Yes	
Air Evac	Waycross, GA	1-800-247-3822	Yes	
US Coast Guard (Heli-Rescue)	Savannah GA	1-912-652-4646	Yes	

7. Hospitals

Name	Address	LAT-LON	Phone	Helipad Yes	No	Burn Center Yes	No
Satilla Regional	410 Darling AVE. Waycross, GA	N 31' 13.509 W 82' 20.853	(912) -283-3030	Yes			No
Clinch Memorial Hospital (WEST SIDE)	1050 Valdosta HWY Homerville, GA	N 31' 01.977 W 82 45.851	(912) -487-5211 ext 4502	Yes			No
Charlton Memorial Hospital (EAST SIDE)	1203 3 rd Street Folkston, GA	N 30' 50.713 W 82' 00.302	(912) -496-2531	Yes			No
Savannah Memorial Hospital	4700 Waters AVE Savannah, GA	N 32' 01.538 W 81' 05.298	(912) -350-8999	Yes			No
Shands Hospital (Level I)	655 West 8 th Street Jacksonville, FL	N 30' 20.97 W 81' 39.92	(800) -223-4878	Yes		Yes	
Shands Burn Center	1600 Southwest Archer Road Gainesville, FL	N 29' 38.33 W 82' 20.55	(352) -265-0200	Yes		Yes	

8. Medical Emergency Procedures

Identify any EMTs and Paramedics in your crews. All medical emergencies will be reported to the Division Supervisor who will assume command and notify Line Medics.

On scene personnel will:

1. Provide medical care & stabilize patient.
2. Call 911 if possible or call phone #'s above for EMS and provide the information requested.
3. Notify Communications via radio over Command Channel
4. Communications will clear radio traffic for medical emergency.
5. Communications will confirm 911 has been notified coordinate with IC, SOF.
6. DIVS will notify the IC.

MAJOR EMERGENCIES – Secure the area and identify witness for later investigation. Keep an accurate log of events. NOTE: Do not give Patients Name over the radio!

INJURY REPORTING PROCESS:

Nature of Injury: _____

Location of Patient: _____

Transportation Requested by: Air ___ Ground ___

Pick Up Point: _____

Lat: _____ Long: _____

Patient Unit ID: _____

Is an EMT w/Patient: Yes ___ No ___

Age: ___ Sex: Male ___ Female ___

Weight (If Air Evac. is needed): _____

HELISPOTS

NAME	LAT-LON	LOCATION
Pocket Helispot	N 30' 47.500 W 82' 22.659	(West side), mile marker 4, HWY 177 Steven C. Foster State Park
Fargo Helispot	N 30' 40.945 W 82' 33.640	(West side), HWY 441- Steven C. Foster Visitor Center
POGO Helibase	N 30' 44.219 W 82' 07.689	(East side) Adjacent to Okee Refuge Shop

Evac Yankee

Helispot 6	N 30' 53.280 W 82' 33.880	Road 32 and 32A
Helispot 7	N 30' 50.280 W 82' 33.857	Tatum Road Pond

***Alternate site can be established following guidelines for safety found with IRPG and local EMS resources.**

Prepared by: Derrick Heckman SOF2(T)

10. Reviewed by: Derrick Heckman , SOF2(T)

HONEY PRAIRIE PHONE LIST

11/17/11

Incident

Communication

(Hours: 0700-1900)

912-286-1660

AGENCY		OFFICIALS		OPERATIONS		
Curt McCasland	602-359-0013	USFWS AA				
Mindy Gautreaux	912-282-7500	USFWS Deputy AA				
Frank Sorrells	912-381-7503	GFC AA				
James Karels	850-228-7763	FL DOF AA				
Diane Adams	912-266-5421	GEMA				
Mike Housh	404-772-5380	USFWS AREP				
	912-281-1575					
Bruce Young	912-390-0147	Charlton EMA				
COMMAND - IC						
Shawn Pearson	208-659-9591	Incident Commander				
RESOURCE		ADVISORS		LANDOWNERS		
Ron Phernetton	912-276-2349	Resource Advisor		Jim Barrett	229-356-1993	Langdale/GOAL Chairman
Rocky Chesser	912-276-3232	Resource Advisor		Wesley Langdale	229-220-2602	Langdale
Reggie Forcine	912-614-4041	Resource Advisor		Hal Rowe	229-412-3133	Langdale
INFORMATION						
Art Webster	912-286-3110	Fire Information		Langdale Office	229-242-7450	Langdale Office
SAFETY OFFICERS						
Derrick Heckman	205-283-3539	Safety Officer (t)		Mike Conlon	386-365-3882	Rayonier Unit Supervisor
				Ray Carter	386-288-6626	Rayonier
				Ed Carter	386-288-6626	Rayonier
				Doug Nuss	912-390-1037	Rayonier
DISPATCH		FAX		Randall McCrady	912-283-4077	Rayonier
Okeefenokee Dsp	912-496-7366	Okeefenokee		Colin Myerson	229-506-1565	Superior Pine Products Co
Suwannee Dispatch	386-758-5700	Fla wildfires, other		Robbie Lee	229-356-0526	Superior Pine Products Co
Honey Prairie Dspth	404-772-5384	Honey Prairie ICP		Superior Pine Office	912-637-5261	Superior Pine Products Co
Waycross Dispatch	912-287-4915	Ga wildfires, other		Al Alexander	850-843-0104	The Forestry Co
GA DNR	1-800-241-4113	Hunting Issues		Savell Schmidt	850-843-1181	The Forestry Co
LOGISTICS		912-287-6540		fax 912-287-6565		
Stephen Blackwell	256-497-8490	LSC2		John Bogue	850-843-1192	The Forestry Co
Amy Weaver	404-772-5553	SUPPLY/ORDERING		Joe Hopkins	912-276-0911	Toledo Timber
Anthony Erringer	404-772-5384	COMT				
				Chris Gowan	912-276-0965	Toledo Timber
				Martin Bell	912-283-0583	Swamp Park
				Crystal Peebles	352-316-0632	FIA
				Steve Davis	912-614-1828	Davis Community
				Trevor Fortner	912-599-9271	Little Suwannee
				Tim Jarrell	912-223-7120	Hancock Forest Mgmt.
PLANNING		912-287-6568		FAX 912-287-6565		
David Utley	404-772-5389	Plans Chief				
FINANCE		912-287-6544		FAX 912-287-6564		
Amy Treadwell	770-658-6641	Finance Chief		Norfolk Southern	800-453-2530	
Penny Brown		PTRC		Sid Moody	904-318-7983	Norfolk Southern Railroad
Jammie Lindsay	801-891-2702	Purchasing Agent		Chad Edwards	404-582-4909	Norfolk Southern Railroad
	912-287-6557	Buying Team Fax		Eric Sams	904-576-9907	
All Contractors	912-287-6568	All Contractors		Emergency Dispatch	404-529-1597	Norfolk Southern Railroad
FEDERAL		Federal		RAILROADS		
Okefenokee Fire Shop	912-496-4181			CSX Randy Dixon	912-270-0699	
Okefenokee NWR HQ	912-496-7366			CSX Dispatch	800-232-0144	
Okefenokee NWR	912-637-5322					
Okefenokee Visitor	912-496-7836					
STATE		State		COUNTY		
GFC Fargo Office	912-637-5270				912-496-7229	Charlton County EMA
GFC Satilla District	912-287-4915			John F. Meyer -	912-496-2549	Charlton County Commissioners
Jason Gillis	912-314-9233	GFC Satilla Mgr.		Dobie Conner	912-496-7321	Charlton County Sheriff
				Jesse Booth	912-520-0061	Clinch County EMA
				Jonathan Daniel	912-281-5158	Ware County EMA
				Jessie Jordan	912-816-6063	Ware County Fire Dept
				Joe Morris	912-281-6020	Ware County Sheriff
				Robbie Sutton	912-599-9027	Tri County 911
				Georgia State Patrol	912-287-6500	
				Travis Griffin	912-281-5790	Laura Walker State Park

PENDING DEMOBS 11/17

RequestNumber	ResourceName	Kind	UnitID	TravelMethod	DemobDate
O-1441	BROWN, PENNY	PTR	GAGA	AOV	11/21/2011
E-1483	GFC-SEDAN-BROWN	AUT	GAGA	AOV	11/21/2011
E-1475	GFC-PU-MCCARTY	PU	GAGA		11/22/2011
O-1434	MCCARTY, BRENT	DIV	GAGA		11/22/2011
O-1443	KEENE, ANTHONY	ENG	GAGA	AOV	11/22/2011
E-1486	GFC-ENG-MASHBURN	ENG	GAGA	AOV	11/22/2011
E-1481.1	GFC-TRAILER-CHARL	TRA	GAGA	AOV	11/22/2011
E-1481	GFC-TRACTOR-CHAR	TPL	GAGA	AOV	11/22/2011
E-1481.2	ROWELL, BARRY	TPI	GAGA	AOV	11/22/2011
E-1479	GFC-TRACTOR-PIERC	TPL	GAGA	AOV	11/22/2011
E-1479.1	GFC-TRAILER-PIERCE	TRA	GAGA	AOV	11/22/2011
E-1479.2	CARTER,	TPO	GAGA		11/22/2011
E-1480	GFC-TRACTOR-APPLI	TPL	GAGA	AOV	11/22/2011
E-1480.1	GFC-TRAILER-APPLIN	TRA	GAGA	AOV	11/22/2011
E-1480.2	SMITH, ANDY	TPO	GAGA	AOV	11/22/2011
O-1442	MASHBURN, JAMES	TFL	GAGA	AOV	11/22/2011
O-1437	SHORT, WILLIAM	FFT	GAGA		11/22/2011
O-1449	HARKINS, TONY	TFL	GAGA	AOV	11/22/2011
E-1484	GFC-ENG-HARKINS	ENG	GAGA	AOV	11/22/2011
O-1408	PEARSON, SHAWN	DIV	IDIPF	A/R	11/23/2011
O-1435	UTLEY, DAVID	PSC	FLFNF	AOV	11/23/2011
E-1474	FFS-SUV-UTLEY	SUV	FLFLS	AOV	11/23/2011
O-1446	ERRINGER, ANTHONY	CO	NMCIF	AIR	11/23/2011
O-1440	HECKMAN, DERRICK	SOF	ALALF	POV	11/24/2011
O-1439	TREADWELL, AMY	FSC	GAGA	AOV	11/24/2011
E-1482	GFC-PU-TREADWELL	PU	GAGA	AOV	11/24/2011
O-1448	BLACKWELL,	LSC	GAGA	AOV	11/24/2011
E-1485	GFC-ENG-BLACKWELL	ENG	GAGA	AOV	11/24/2011
E-1476	GFC-PU-WEAVER	PU	GAGA		11/24/2011
O-1432	WEAVER, AMY	SPU	GAGA	AOV	11/24/2011
O-1436	LINDSAY, JAMMIE	PA5	UTNU	A/R	11/26/2011
E-1464	GFC-ENG-UNION	ENG	GAGA	AOV	11/28/2011
E-1392	GFC-ENG-MONROE	ENG	GAGA		11/28/2011
O-1450	BASS, LELAND	ENG	GAGA	AOV	11/28/2011
O-1451	GIBBS, DON	FFT	GAGA	AOV	11/28/2011
O-1444	PAUL, PHILLIPS	ENG	GAGA	AOV	11/28/2011
O-1445	BABB, CHRIS	FFT	GAGA	AOV	11/28/2011

Record Count: 37

Fire Information IAP messages

1. Public and firefighter safety remains the top priority for this incident.
2. Fire managers for the refuge have coordinated suppression efforts with the Georgia Forestry Commission and the Greater Okefenokee Association of Landowners (GOAL) representing federal and state agencies, industry and private landowners. Through this Unified Command, the partners support the chosen strategy as the appropriate management response to protect adjacent valuable commercial timber, isolated homes scattered on private land, and critical wildlife habitat for threatened and endangered species.
3. Fire is a natural component of the Okefenokee ecosystem; since the refuges creation in 1937, there have been hundreds of wildfires that have burned thousands of acres here. The plants and animals on the refuge are well adapted to survive periodic wildfires.
4. Past experience has shown that conventional fire suppression tactics do not work well inside the swamp. Humans have never been successful in controlling fires within the swamp; only “mother nature” has done this. Attempting suppression within the swamp is ineffective, costly, wastes firefighting resources and needlessly endangers firefighter safety.
5. Fire on the refuge is usually fought by reinforcing firelines along the Swamps Edge Break, including areas of private land, to keep the fire contained within the swamp.
6. Okefenokee National Wildlife Refuge typically employs a contain and control strategy to manage fire; containing it within the swamp and actively suppressing it outside of the swamp in the upland forest.

Commonly asked question:

1. Why won't this fire go out? What will it take? Surface burning of available fuels is only part of the current problem. Peat beds (partially decayed vegetation normally floating in a vertical column of water) is what supports these surface fuels. Unfortunately, the current dry conditions have allowed a portion of the peat beds to dry out and the surface burn has transferred into the peat beds and is now burning subsurface. There are now two sources of heat and available fuel that must be extinguished. The current spotty, localized rain storms can have some effect on the surface burns but do not do much to control subsurface burns. It will take a big rain storm blanketing the entire swamp (remember the swamp is huge –over 650 square miles in size) dropping a minimum of 6-8 inches of rain. As the water levels in the swamp slowly rise, as a result of the rain, the peat beds will become water saturated again eliminating one source of the fire. As the surface of the swamp becomes covered by water, burning surface fuels will be extinguished as well. Burning fuels that extend above these water levels (dead and drying trees/shrubs) may continue to burn until they fall over or burn up. Fire that exists in upland habitat on islands within the swamp may also continue to burn but it will be confined to that immediate area by the swamp waters surrounding the island. This is not something that will likely occur overnight. It may take days, weeks, or even months. The refuge has experienced fire events that were not declared officially out for well over a year after the main firefighting effort had ceased.

Hunter Encounters and Confrontations

Hunting season is now open. Crews are likely to encounter hunters either hunting or scouting in the area of the Swamp Edge Break. Hunting is often done with the aid of dogs and the hunters will be chasing the pack in vehicles on narrow dusty roads to intercept game. Use Caution traveling as hunters may not be paying attention and traveling at excessive speeds.

Avoid contact as much as possible. The least amount of impact we have on their hunting area the better off we will be. Expect many questions about the fire operations and how long the fire will continue to burn. It's a good idea to review the Fire Information section of the plan for a good explanation of what to expect in the coming months. The majority of the hunters will be friendly but should you have a confrontation with someone:

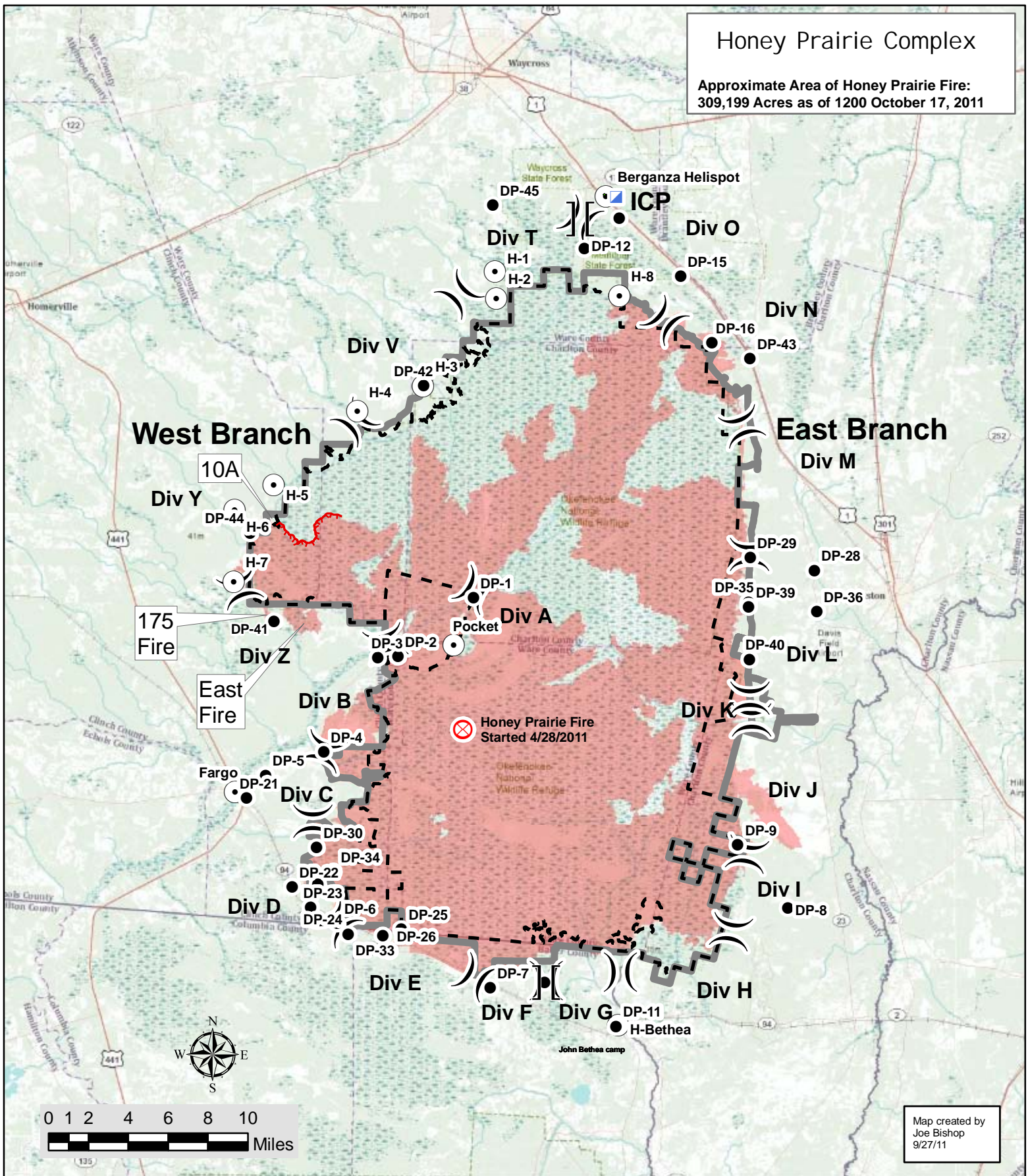
1. Politely excuse yourself and leave the area immediately;
2. Notify your supervisor;
3. Notify the local DNR Officer by radio or phone:

GA DNR Gary Simmons 912-282-2406 Cell










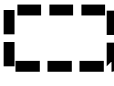
4. If necessary, call the Georgia DNR at 1-800-241-4113 with a description of the person, vehicle and Tag number, and the nature of the confrontation. Georgia DNR will send an officer to handle the situation.

Honey Prairie Complex

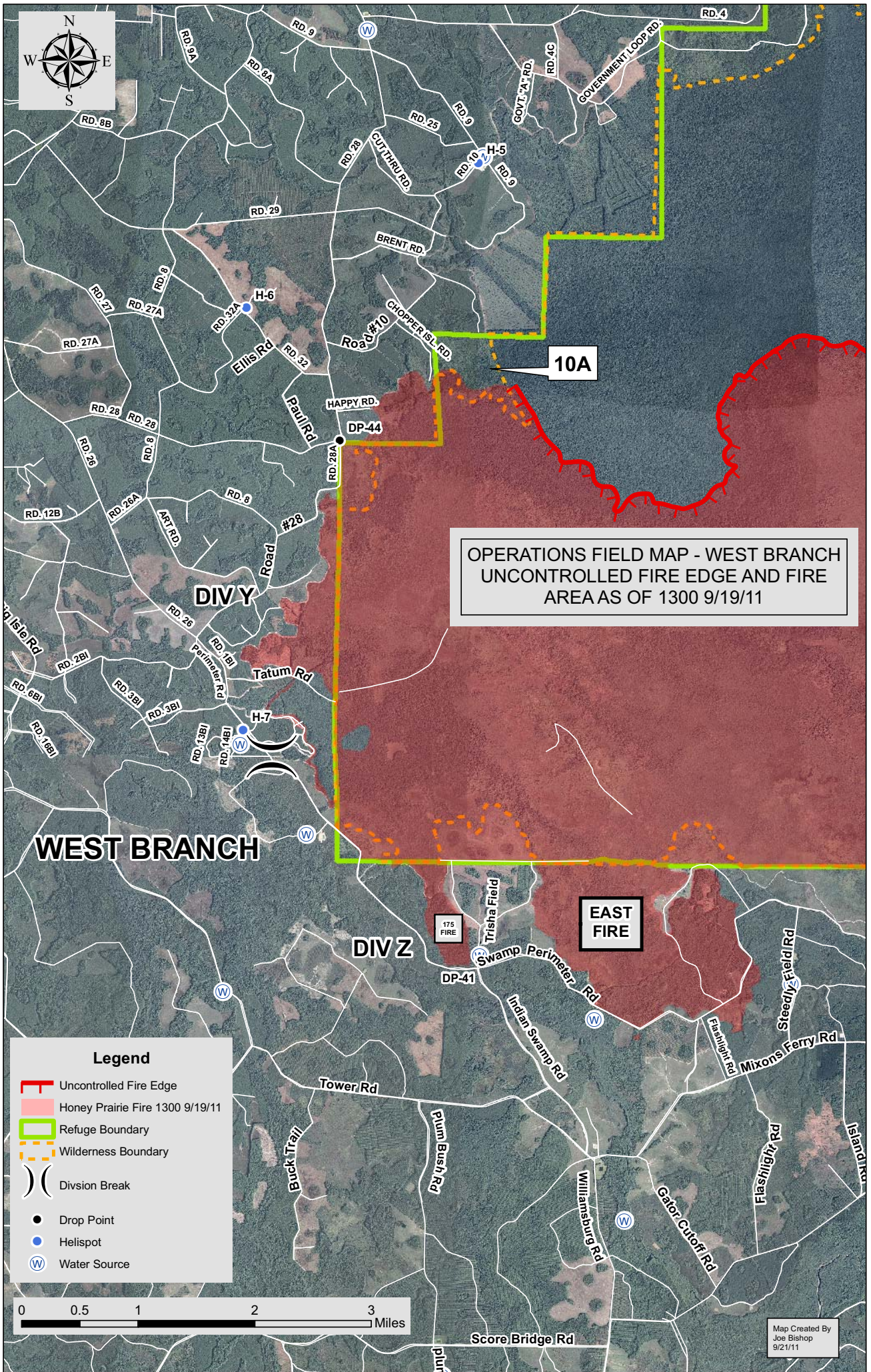
Approximate Area of Honey Prairie Fire:
309,199 Acres as of 1200 October 17, 2011



Map created by
Joe Bishop
9/27/11

-  Fire Origin
-  Honey Prairie Fire Area
-  Uncontrolled Fire Edge
-  Incident Command Post
-  Helispot
-  Drop Point
-  Branch Break
-  Division Break
-  Refuge Boundary
-  Wilderness Boundary





OPERATIONS FIELD MAP - WEST BRANCH
UNCONTROLLED FIRE EDGE AND FIRE
AREAS OF 1300 9/19/11

Legend

- Uncontrolled Fire Edge
- Honey Prairie Fire 1300 9/19/11
- Refuge Boundary
- Wilderness Boundary
- Division Break
- Drop Point
- Helispot
- Water Source



Map Created By
Joe Bishop
9/21/11

