

**Honey Prairie  
Complex**  
*GA-OKR-000001*  
**Incident Action Plan**

Operational Period  
Friday  
November 18, 2011  
0700-1900

**Incident Commander  
Shawn Pearson**

**Accounting Codes**  
**FWS - 9141-F25M-2J      NPS - 5023 F25M E11**  
**BLM - F25M              USFS - PRF25M\_1502**  
**Initial Attack - F4PM**



*An Equal Opportunity  
Employer & Service Provider*

Letter from Honey Prairie Incident Commander:

To: All Honey Prairie Incident Personnel

As a Type 3 Incident Commander, I am committed to a policy of “zero tolerance” of inappropriate behavior during incident operations. Any form of harassment, discriminatory practices, or disrespectful behavior will not be tolerated.

Guidelines on in-appropriate behavior both “on Duty” and “off Duty” while assigned are addressed within each agencies policies. Our Team expects all incident personnel to follow established government policies for behavior along with all Illegal drug and alcohol directives.

Our Incident Management Team endorses and supports an attitude of mutual respect for all personnel and the public we serve.

We expect a strong work ethic and an attitude of Safety at all times!

Sincerely,

/s/ Shawn Pearson

Incident Commander  
Type 3 Incident Management Team

<b>INCIDENT OBJECTIVES</b>	<b>1. INCIDENT NAME</b> Honey Prairie Complex	<b>2. DATE PREPARED</b> 11/17/11	<b>3. TIME PREPARED</b> 1700
<b>4. OPERATIONAL PERIOD (DATE/TIME)</b>  November 18, 2011 0700 – 1900			
<b>5. GENERAL CONTROL OBJECTIVES FOR THE INCIDENT (INCLUDE ALTERNATIVES)</b> 1. Provide for safety of incident personnel and public in all incident operations. 2. Maintain a positive working relationship with all adjacent landowners, cooperators, State and Federal partners. Inform, involve and communicate incident planning and operations with all partners. 3. Contain all fires that are within the Okefenokee National Wildlife Refuge, inside the Refuge and/or inside the swamp edge break if possible. 4. In cooperation with local land owners and communities, use full suppression strategies and tactics to minimize damage to private timberlands and structural improvements and to prevent fires outside the Refuge from entering the Refuge. 5. Assist in management and suppression of additional fires (new starts or breakouts) in the vicinity as approved by Agency Administrators and Incident Commander. 6. Protect all cultural and archeological sites and structures within the refuge. 7. Manage the fires cost-effectively consistent with the values at risk. 8. Coordinate suppression actions with assigned Refuge Resource Advisors			
<b>6. WEATHER FORECAST FOR OPERATIONAL PERIOD</b> See attached forecast for area specific weather information.			
<b>7. GENERAL SAFETY MESSAGE</b> Drive defensively and use spotter when backing. Ensure LCES is in place and known by all personnel. Drink plenty of water and take frequent rest breaks. Ensure proper use of PPE during all operations.			
<b>8. Attachments</b> <input checked="" type="checkbox"/> if attached <input checked="" type="checkbox"/> Organization List (ICS 203) <input checked="" type="checkbox"/> Incident Map <input checked="" type="checkbox"/> Safety Message <input checked="" type="checkbox"/> Assignment List (ICS 204) <input type="checkbox"/> Traffic Plan <input type="checkbox"/> Demobilization Procedures <input checked="" type="checkbox"/> Communications Plan (ICS 205) <input checked="" type="checkbox"/> Unit Log <input checked="" type="checkbox"/> Medical Plan (ICS 206) <input checked="" type="checkbox"/> Phone List			
<b>9. PREPARED BY (Planning Section Chief)</b> David Utley		<b>10. APPROVED BY (INCIDENT COMMANDER)</b> Shawn Pearson	

ORGANIZATION ASSIGNMENT LIST		9. Operations Section	
<b>1. Incident Name</b> Honey Prairie Complex GA-OKR-000001		Chief	
<b>2. Date</b> 11/17/2011	<b>3. Time</b> 1500 hrs	<b>a. Branch/Divisions/Groups</b>	
<b>4. Operational Period</b> 11/18/2011 0700 - 1900		West Branch	
<b>5. Incident Commander and Staff</b>			
Incident Commander	Shawn Pearson 11/22		
Safety Officer	Derrick Heckman 11/24	Division Y/Z/10a	Brent McCarty 11/21
Information Officer	Art Webster		
<b>6a. Agency Administrators</b>			
FWS	Curt McCasland		
FWS	Mindy Gautreaux		
<b>6b. Agency Representatives</b>		<b>b. Branch/Divisions/Groups</b>	
GFC	Frank Sorrells		
FLFFS	James Karels		
FWS AREP	Mike Housh		
FWS-Refuge PAO	Art Webster		
GEMA AREP	Alan Robinson / Diane Adams		
USFS AREP	Ivan Greene		
Charlton Co EMA	Bruce Young		
<b>7. Planning Section</b>			
Chief	David Utley 11/22	<b>c. AIR OPERATIONS BRANCH - Honey Prairie</b>	
Resource Advisors	Ron Phernetton, Reggie Forcine		
Resources Unit			
IMET			
Situation Unit			
FBAN		<b>d. AIR OPERATIONS BRANCH - Pogo</b>	
Demob Unit			
Documentation			
CTSP			
SCKN			
<b>8. Logistics Section</b>		<b>10. Finance Section</b>	
Chief	Steven Blackwell 11/23	Chief	Amy Treadwell 11/23
Supply Unit	Amy Weaver 11/24	Time Unit	
Ground Support		Cost	
COMT	Anthony Erringer 11/22	PTRC	Penny Brown 11/21
EQPM		EQTR	
RCDM		IBA	
BCMG			
SECM		Purchasing Agent	Jammie Lindsay 11/22
COMT			
EMTB			
ORDM			
		Prepared by: David Utley (PSC)	

<b>DIVISION ASSIGNMENT LIST</b>				1. Branch <b>West</b>		2. Division <b>Y / Z / 10a</b>	
3. Incident Name <b>Honey Prairie Complex</b>				4. Operational Period Date: 11/18/2011 Time: 0700-1900			
5. Operations Personnel							
<b>Operations</b>		<b>Division Supervisor</b>		Brent McCarty 11/21 <b>229-938-8718</b>			
<b>Safety Officer</b>		Derrick Heckman (205) 283-3539					
6. Resources Assigned this Period							
Strike Team/Task Force/ Resource Designator		Leader / Name / Designator		Last Shift Date	Num. Per.	Drop Off PT./Time	Crew Names
<b>TFLD (t)</b>		<b>James Mashburn (O-1442)</b>		11/21	1	ICP 0800	<b>478-363-1627</b>
TPL3 Pierce 62 (E-1479)		Christopher Carter (E-1479.2)		11/21	1	ICP 0800	
TPL2 Appling 60 (E-1480)		Andy Smith (E-1480.2)		11/21	1	ICP 0800	
TPL3 Charlton 61 (E-1481)		Barry Rowell (E-1481.2)		11/21	1	ICP 0800	
<b>TFLD</b>		<b>Tony Harkins (O-1449)</b>		11/21	1	ICP 0800	<b>706-897-9414</b>
GA ENG6 Union 86 (E-1464)		Leland Bass (O-1450)		11/27	2	ICP 0800	Don Gibbs (O-1451)
GA ENG6 Monroe 86 (E-1392)		Paul Phillips (O-1444)		11/27	2	ICP 0800	Chris Babb (O-1445)
GA ENG6 (E-2) GAOKR # 41		Tony Keene (O-1443)		11/21	2	ICP 0800	William Short (O-1437)
<b>HEQB</b>		<b>Cory Bryant</b>			1	ICP 0800	<b>912-276-0078</b>
TPL GAOKR 56 (E-22)		Unstaffed					
FWS Motorgrader (E-1356)		Unstaffed					
GA ENG6 (E-3) GAOKR # 42		Unstaffed					
TPL4 GAOKR 53 (E-23)		Unstaffed					
TPL GA OKR 54 (E-21)		Unstaffed					
7. Control Operations							
<ul style="list-style-type: none"> <li>Respond to Initial Attack as requested</li> <li>Mop up minimum 50 ft in along SEB and 200-feet in on upland areas, also monitor fire's edge for any control issues.</li> <li>Initial attack IC will communicate sizeup information to the Honey Prairie communication.</li> <li>Improve swamp break boundaries for fire breaks, work with resource advisor.</li> </ul>							
8. Special Instructions							
<ul style="list-style-type: none"> <li>Staging will be at Tatum Pond</li> <li>Avoid Confrontations with hunters.</li> <li>Ensure LCES are in place before operations begin. Stay hydrated.</li> <li>Drive defensively and with lights on at all times and use extra caution on wet or dry roads.</li> <li>Boggy terrain: Be careful and aware when working around this type of area.</li> <li>Avoid areas with potential tree fall</li> </ul>							
9. Division/Group Communication Summary							
Function	Frequency	System	Channel	Function	Frequency	System	Channel
Command W Okee Repeater	RX 167.125/156.7 TX 163.150/156.7	KING NIFC	1	Logistics		KING NIFC	
Tactical Div/Group	RX 168.775 TX 168.775	KING NIFC	9	Air to Ground	RX 166.9375 TX 166.9375	KING NIFC	6
Prepared by (PSC) David Utley		Approved by (IC) Shawn Pearson			Date November 17, 2011		Time 1700

# SAFETY MESSAGE

## Firefighter Safety is our #1 Priority

INCIDENT: Honey Prairie Fire

DATE:11/18/11 TIME: 0700-1900

*It's been a long season! - A person's attitude plays a major role in SAFETY! How's Yours?*

### **REMEMBER:**

**Fatigue/personal welfare** – Take care of yourself by getting adequate rest and eating properly. Remember to account for long term, cumulative fatigue when planning operations.

**Complacency** – Stay vigilant and expect the unexpected. It is at this stage of the fire that people will become complacent and let their guard down. Maintain your situational awareness regardless of your assignment.

**Slips, Trips, & Falls**- Take the best routes. Go Slow. Take care of your feet. Watch for ditches, washes, and muck. Watch out for gators and snakes. Watch out for stump holes. Go around logs- not over.

### **Snag hazard alert checklist.**

**Snags are falling or have fallen in work area.**

- The burned area has burned severely, or for days where you are working.
- Working in a hazard tree area and the wind picks up in intensity.
- You are taking a break in a hazard tree area (lunch, drop points, etc).
- Tree heights within fire perimeter equal or exceed distance to control lines.
- Thick under story or forest canopy where treetop visibility is limited.
- Escape routes and access routes pass through hazard tree areas.
- In a hurry to get through a snag area, not paying attention to the trees.
- Individual safety assessment daily, don't rely on previous looks / flagging.
- Complacency, with long uneventful periods, snag awareness guard lets down.

**LOOK UP**

**AROUND**

**AND LIVE!**

ALL ESCAPE ROUTES MARKED IN "PINK" FLAGGING

*Derrick Heckman, SOF2 (T)*



INCIDENT ACTION PLAN SAFETY ANALYSIS										1. Incident Name Honey Prairie Fire		2. Date 11/18/2011		3. Time Day Shift		
LCES* Analysis of Tactical Applications Lookouts Communications Escape routes Safety zones										Other Risk Analysis						
Divisions										Other Risk Mitigations						
Indirect Fireline	Power lines / Snags	Road Conditions	Frontal Assault	Snags	Extreme Conditions	Railroad	Logging Operations	Wildlife, Insects	LCES Mitigations	Smoke	Traffic/Driving	Communications	Hunting season	Fatigue/Hydration	School Buses / Children	
1, 2, 3, 4, 5, 7, 8, 10, 14	2, 6, 11, 15, 17	12, 20, 26	1, 2, 3, 4, 5, 7, 10, 14	1, 2, 3, 4, 5, 7, 8, 10, 14, 17	7, 10	1	2, 3, 5, 6, 20, 21, 24	2, 23, 28	1. Establish & maintain LCES. Report LCES checks twice daily to DIVS on line & staging. 2. Look UP, DOWN and AROUND 3. Post experienced Lookouts. Make sure LCES is in place and make known. 4. Use Aerial Resources as Lookout if available.	24	12, 17, 19, 20, 22, 26, 27	1, 3, 10, 14, 19, 24, 25	29	16, 18, 21	26	16. Take adequate rest breaks and encourage to drink water NOW through briefings. 17. Defensive driving will be addressed in all briefings. 18. All personnel must meet the 2:1 work/rest ratio. Line supervisors and Safety will monitor closely. 19. Notify Operation and Safety of Railroad track issues to ensure safety of firefighters.
									5. Flag escape routes on right side of escape route facing outward. Create new escape routes as you progress and identify Safety Zones on the ground and maps. 6. Identify, mark & mitigate. 7. FBAN/Meteorologist to monitor weather updates and advisories. 8. Ensure Fireline is Anchored to black or manmade/natural barrier.						20. Ensure Traffic Planning is safe and enforced. Heed Defensive Driving techniques noted in Safety Messages. 21. Relocate staging area when driving conditions warrant. 22. Use spotter when backing vehicle(s). 23. For insects, use protective spray with deet on skin (Not on Nomex), permethrin can be used on nomex clothing	
									10. Keep Firefighters informed of any changes in predicted weather, consider at least a two day weather pattern when planning Strategic Firing operations. 11. Refer to IRPG, pg. 12 on Power Line Hazards. 12. Observe all traffic signals and speed limits. Drive with lights on. 14. Ensure GOOD tailgate briefings with resources unable to attend Operational Briefing (Include Ops, Logs, Fin & Plans info.).						24. Establish smoke/fog signs on roadways. Coordinate with Department of Transportation. 25. Follow establish communication plan, flight follow through dispatch 26. Watch-out for school buses and for children along the edge of roadway and crossing the road.	
									15. Scout ahead of tractor operations to avoid making contact with power poles and guide wires when tying into roads. Power companies are working in some DIVS, avoid all down lines as they may become charged.						27. Treat all intersections as 4-way stops 28. Bears, Gators, and some snakes are dangerous. Do not approach or feed wildlife at any time. 29. Wear Hunter safety vest at all times when in the fire area. Be respectful and aware of hunters in your area.	



# WEATHER FORECAST

11-18-11

	TONIGHT	FRI	FRI NIGHT	SAT
CLOUD COVER	MCLEAR	MCLEAR	PCLDY	PCLDY
CHANCE PRECIP (%)	0	0	0	20
WEATHER TYPE	NONE	NONE	NONE	SHOWERS
TEMP	39	63	40	71
RH (%)	77	29	100	52
20FT WND MPH (AM)		NE 9		NE 5
20FT WND MPH (PM)	N 8 G16	E 11 G16	NE 5	E 6
PRECIP DURATION				1
PRECIP BEGIN				7 AM
PRECIP END				6 PM
PRECIP AMOUNT	0.00	0.00	0.00	0.01
LAL	1	1	1	1
MIXING HEIGHT(FT-AGL)	400	3800	300	3800
TRANSPORT WND (MPH)	NE 14	E 22	E 10	E 14
DISPERSION INDEX	6	61	6	31
MAX LVORI	5		9	

### FIRE BEHAVIOR FORECAST

<b>Fire name: Honey Prairie</b>	<b>Forecast # 1 Long Term</b>	<b>Prediction for: Oct, Nov, Dec 2011</b>
<b>Forecast Issued: October 2011</b>	<b>Signed: Troy Floyd FBAN</b>	<b>Shift Date; ALL</b>

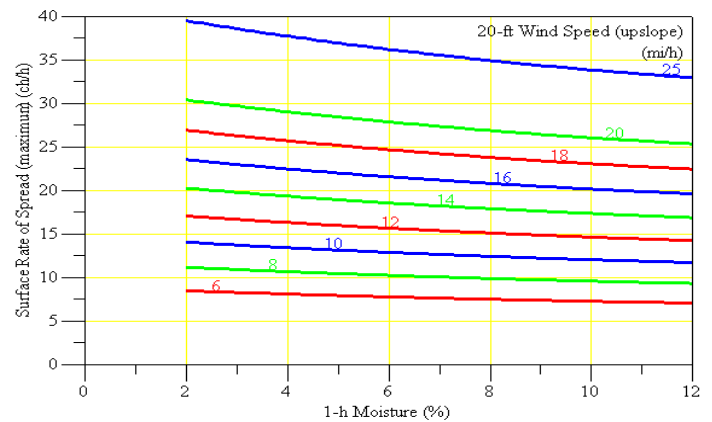
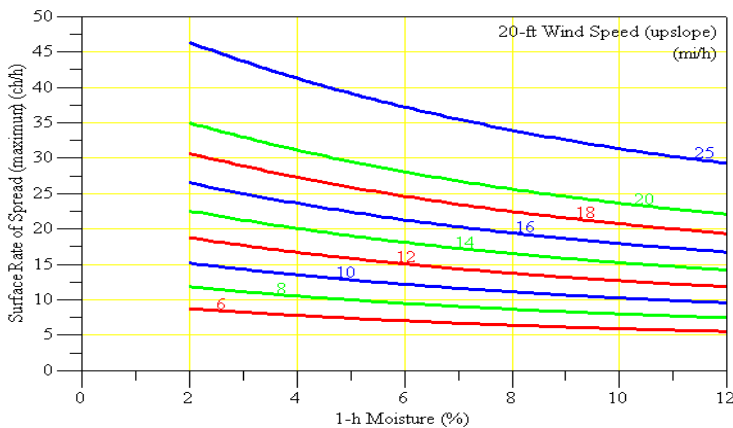
**Weather Summary:** This fire behavior forecast is designed to be used with the daily fire weather forecast produced by the National Weather Service or field observations you take near the fire line.

**General Fire Behavior:** The Seasonal fire situation within and around the Okefenokee swamp has been driven by historic drought. Muck fuels within much of the swamp interior will continue to burn until substantial rainfall has occurred. Prolonged dry periods, periods with low RHs and High Winds will be the most probable situations for increased fire behavior. Major concerns are flare-ups that are near the containment lines threatening to spot or slop over onto the uplands. Pine Fuels and Southern Rough along the uplands are conducive to rapid rates of spread, torching, crowning and spotting.

**Instructions for use-** Start with second page to obtain your 1 hour Fuel moisture. Then use Charts below for outputs.

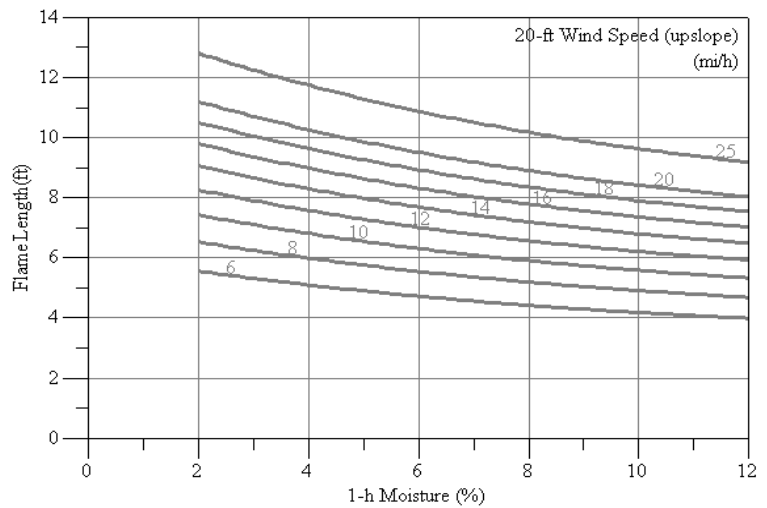
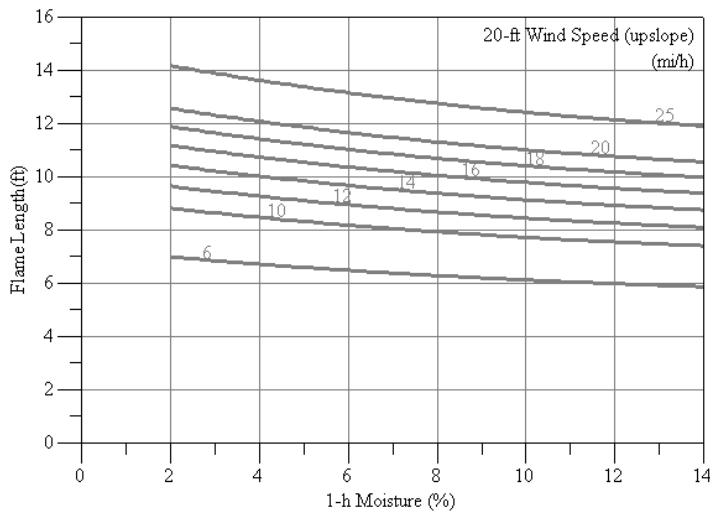
**Fuel Model (7) Southern Rough (Table Below)**

**Shrub Fuels (sh8) Palmetto and Galberry (Table Below)**



**Flame Lengths FM (7) Table Below**

**Flame Lengths (sh8) Table Below**



**To calculate Rates of Spread and Flame Lengths**

**Use the graphs above starting on the bottom with your 1 hr Fuel moisture, Trace upwards to the wind line then turn left to get your Rates of spread and Flame Lengths.\*\*\*Use next page to calculate your 1 hour fuel Moisture.**

**Reference Fuel Moisture**  
**Day Time**  
**0800 - 1959**

<b>1</b>	Relative Humidity (%)																				
	Dry Bulb Temp. (F)	0 - 4	5 - 9	10 - 14	15 - 19	20 - 24	25 - 29	30 - 34	35 - 39	40 - 44	45 - 49	50 - 54	55 - 59	60 - 64	65 - 69	70 - 74	75 - 79	80 - 84	85 - 89	90 - 94	95 - 99
10 - 29	1	2	2	3	4	5	5	6	7	8	8	8	9	9	10	11	12	12	13	13	14
30 - 49	1	2	2	3	4	5	5	6	7	7	7	8	9	9	10	10	11	12	13	13	13
50 - 69	1	2	2	3	4	5	5	6	6	7	7	8	8	9	9	10	11	12	12	12	13
70 - 89	1	1	2	2	3	4	5	5	6	7	7	8	8	8	9	10	10	11	12	12	13
90 - 109	1	1	2	2	3	4	5	5	6	7	7	8	8	8	9	10	10	11	12	12	13
109 +	1	1	2	2	3	4	4	5	6	7	7	8	8	8	9	10	10	11	12	12	12

**Dead Fuel Moisture Content Corrections**  
**Nov. Dec. Jan.**

<b>2E</b>		<b>EXPOSED</b>					
		Exposed - Less than 50% shading of surface fuels					
ASPCT	Slope	0800 to	1000 to	1200 to	1400 to	1600 to	1800 to
	S	L 0 - 30%	L 5	L 4	L 3	L 2	L 4
<b>2S</b>		<b>SHADED</b>					
		Shaded - Greater than or equal to 50% shading of surface fuels					
S	All	5	5	5	5	5	5

**Instructions to calculate 1 hour FDFM**

*Step (1) Use top table to get reference fuel moisture: Use predicted or taken weather OBS of temperature (Dry Bulb) and Relative Humidity. Follow the chart from left (Dry Bulb) and (RH) top of chart. In the numbers field where both meet you will get your Reference Fuel Moisture.*

*(2) Use the above table (2E) for exposed fuels or (2S) for shaded fuels or cloudy days. At the top of the table select time of day then to the left of the Table select 0-30% slope and locate your Fuel Moisture content correction number.*

*(3) Add your reference Fuel Moisture to the Dead Fuel moisture content correction. This will give you your 1hr FDFM.*

INCIDENT RADIO COMMUNICATIONS PLAN ICS-205			Incident Name <b>Honey Prairie</b>			<b>GROUP 22</b>		Date/Time Prepared 11/17/2011-16:00		Operational Period Date/Time 11/18/2011 0700-1900	
Ch #	Function	Channel Name	Assignment	RX Freq	NW	RX Tone/NAC	TX Freq	N W	TX Tone/NAC	Mode A,D or M	Remarks
1	Command	West Okee Repeater	Sec West Branch CMD	167.1250	N	156.7	163.1500	N	156.7	A	Stephen Foster State Park
2	Command	South Okee Repeater	Sec East/West Branch CMD	164.7750	N	123.0	163.1500	N	123.0	A	Eddy Florida
3	Command	East Okee Repeater	PRIMARY East Branch CMD	164.6250	N	103.5	163.1500	N	103.5	A	Refuge Headquarters
5	Command	North Okee Repeater	PRIMARY North Branch CMD	164.5750	N	206.5	163.1500	N	206.5	A	Waycross
7	Tactical	MOB-MOB	GFC Contingency	159.3900	W	CSQ	159.3900	W	156.7	A	
8	Tactical	V-Fire 21W WHITE	West group Secondary	154.2800	W	CSQ	154.2800	W	156.7	A	
9	Tactical	USFS 9	East/West Groups	168.7750	N	CSQ	168.7750	N	CSQ	A	
10	Tactical	S.E. Compact		159.2850	W	CSQ	159.2850	W	CSQ	A	
11	Tactical	USFS 11	East Group Secondary	168.2000	N	CSQ	168.2000	N	CSQ	A	
12	Tactical	Refuge Tac 1	East Group	168.3500	N	CSQ	168.3500	N	CSQ	A	
13	Tactical	FL 190		151.2725	N	CSQ	151.2725	N	CSQ	A	
16	EMERGENCY	AIR Guard	Air OPS.	168.6250	N	CSQ	168.6250	N	110.9	A	
Prepared by (Communications Unit) Anthony Erringer COMT 404-772-5384						<b>Cloning at ICP communications and briefings,</b>					

The convention calls for frequency lists to show four digits after the decimal place, followed by either an "N" or a "W", depending on whether the frequency is narrow or wide band. **Mode** refers to either "A" or "D" indicating analog or digital (e.g. Project 25) or "M" indicating mixed mode. All channels are shown as if programmed in a control station, base stations, mobile or portable radio.

<b>MEDICAL PLAN</b>	Incident Name <b>Honey Prairie Complex</b>	Date Prepared <b>11/17/2011</b>	Time Prepared <b>1000</b>	Operational Period <b>11/18/2011</b>
---------------------	---	------------------------------------	------------------------------	---

**5. Incident Medical Aid Station**

<u>Medical Aid Stations</u>	<u>Location</u>	Paramedics Yes	No
Honey Prairie EMT	<b>****Ware County EMT 256-497-8388****</b>		<b>No</b>

**Ambulance Services**

Name	Address	Phone	Paramedic Yes	No
Clinch County EMS (West)	Homerville, GA (911 to activate)	912-487-5315	Yes	
Ware County EMS (North)	Waycross, Georgia (911 to activate)	912-287-4335	Yes	
Charlton County EMS (East)	Folkston, GA (911 to activate)	912-496-7321	Yes	

**Air Ambulance Service**

Trauma 1	Lake City, FL	1-800-223-4878	Yes	
Trauma 1	Jacksonville, FL	1-800-223-4878	Yes	
AirMed	Augusta, GA	1-888-792-9245	Yes	
Lifeflight	Jacksonville, FL	1-877-870-7779	Yes	
Air Evac	Waycross, GA	1-800-247-3822	Yes	
US Coast Guard (Heli-Rescue)	Savannah GA	1-912-652-4646	Yes	

**7. Hospitals**

Name	Address	LAT-LON	Phone	Helipad Yes	No	Burn Center Yes	No
Satilla Regional	410 Darling AVE. Waycross, GA	N 31' 13.509 W 82' 20.853	(912) -283-3030	Yes			No
Clinch Memorial Hospital (WEST SIDE)	1050 Valdosta HWY Homerville, GA	N 31' 01.977 W 82 45.851	(912) -487-5211 ext 4502	Yes			No
Charlton Memorial Hospital (EAST SIDE)	1203 3 <sup>rd</sup> Street Folkston, GA	N 30' 50.713 W 82' 00.302	(912) -496-2531	Yes			No
Savannah Memorial Hospital	4700 Waters AVE Savannah, GA	N 32' 01.538 W 81' 05.298	(912) -350-8999	Yes			No
Shands Hospital (Level I)	655 West 8 <sup>th</sup> Street Jacksonville, FL	N 30' 20.97 W 81' 39.92	(800) -223-4878	Yes		Yes	
Shands Burn Center	1600 Southwest Archer Road Gainesville, FL	N 29' 38.33 W 82' 20.55	(352) -265-0200	Yes		Yes	

**8. Medical Emergency Procedures**

**Identify any EMTs and Paramedics in your crews. All medical emergencies will be reported to the Division Supervisor who will assume command and notify Line Medics.**

**On scene personnel will:**

1. Provide medical care & stabilize patient.
2. Call 911 if possible or call phone #'s above for EMS and provide the information requested.
3. Notify Communications via radio over Command Channel
4. Communications will clear radio traffic for medical emergency.
5. Communications will confirm 911 has been notified coordinate with IC, SOF.
6. DIVS will notify the IC.

**MAJOR EMERGENCIES – Secure the area and identify witness for later investigation. Keep an accurate log of events. NOTE: Do not give Patients Name over the radio!**

INJURY REPORTING PROCESS:

Nature of Injury: \_\_\_\_\_

Location of Patient: \_\_\_\_\_

Transportation Requested by: Air \_\_\_ Ground \_\_\_

Pick Up Point: \_\_\_\_\_

Lat: \_\_\_\_\_ Long: \_\_\_\_\_

Patient Unit ID: \_\_\_\_\_

Is an EMT w/Patient: Yes \_\_\_ No \_\_\_

Age: \_\_\_ Sex: Male \_\_\_ Female \_\_\_

Weight (If Air Evac. is needed): \_\_\_\_\_

**HELISPOTS**

NAME	LAT-LON	LOCATION
<b>Pocket Helispot</b>	N 30' 47.500 W 82' 22.659	(West side), mile marker 4, HWY 177 Steven C. Foster State Park
<b>Fargo Helispot</b>	N 30' 40.945 W 82' 33.640	(West side), HWY 441- Steven C. Foster Visitor Center
<b>POGO Helibase</b>	N 30' 44.219 W 82' 07.689	(East side) Adjacent to Okee Refuge Shop

**Evac Yankee**

<b>Helispot 6</b>	N 30' 53.280 W 82' 33.880	Road 32 and 32A
<b>Helispot 7</b>	N 30' 50.280 W 82' 33.857	Tatum Road Pond

**\*Alternate site can be established following guidelines for safety found with IRPG and local EMS resources.**

Prepared by: Derrick Heckman SOF2(T)

10. Reviewed by: Derrick Heckman , SOF2(T)

# HONEY PRAIRIE PHONE LIST

11/18/11

## Incident

## Communication

(Hours: 0700-1900)

912-286-1660

AGENCY	OFFICIALS	
Curt McCasland	602-359-0013	USFWS AA
Mindy Gautreaux	912-282-7500	USFWS Deputy AA
Frank Sorrells	912-381-7503	GFC AA
James Karels	850-228-7763	FL DOF AA
Diane Adams	912-266-5421	GEMA
Mike Housh	404-772-5380	USFWS AREP
	912-281-1575	
Bruce Young	912-390-0147	Charlton EMA
COMMAND - IC		
Shawn Pearson	208-659-9591	Incident Commander
RESOURCE	ADVISORS	
Ron Phernetton	912-276-2349	Resource Advisor
Rocky Chesser	912-276-3232	Resource Advisor
Reggie Forcine	912-614-4041	Resource Advisor
INFORMATION		
Art Webster	912-286-3110	Fire Information
SAFETY OFFICERS		
Derrick Heckman	205-283-3539	Safety Officer (t)
DISPATCH	912-496-3332	FAX
Okeefenokee Dsp	912-496-7366	Okeefenokee
Suwannee Dispatch	386-758-5700	Fla wildfires, other
Honey Prairie Dspth	404-772-5384	Honey Prairie ICP
Waycross Dispatch	912-287-4915	Ga wildfires, other
GA DNR	1-800-241-4113	Hunting Issues
LOGISTICS	912-287-6540	fax 912-287-6565
Stephen Blackwell	256-497-8490	LSC2
Amy Weaver	404-772-5553	SUPPLY/ORDERING
Anthony Erringer	404-772-5384	COMT
PLANNING	912-287-6568	FAX 912-287-6565
David Utley	404-772-5389	Plans Chief
FINANCE	912-287-6544	FAX 912-287-6564
Amy Treadwell	770-658-6641	Finance Chief
Penny Brown		PTRC
Jammie Lindsay	801-891-2702	Purchasing Agent
	912-287-6557	Buying Team Fax
All Contractors	912-287-6568	All Contractors
FEDERAL	Federal	
Okefenokee Fire Shop	912-496-4181	
Okefenokee NWR HQ	912-496-7366	
Okefenokee NWR	912-637-5322	
Okefenokee Visitor	912-496-7836	
STATE	State	
GFC Fargo Office	912-637-5270	
GFC Satilla District	912-287-4915	
Jason Gillis	912-314-9233	GFC Satilla Mgr.

OPERATIONS		
DIVISIONS		
Brent McCarty	229-938-8718	Division Y/Z/10a
AIR OPERATIONS		
LANDOWNERS		
Jim Barrett	229-356-1993	Langdale/GOAL Chairman
Wesley Langdale	229-220-2602	Langdale
Hal Rowe	229-412-3133	Langdale
Langdale Office	229-242-7450	Langdale Office
Mike Conlon	386-365-3882	Rayonier Unit Supervisor
Ray Carter	386-288-6626	Rayonier
Ed Carter	386-288-6626	Rayonier
Doug Nuss	912-390-1037	Rayonier
Randall McCrady	912-283-4077	Rayonier
Colin Myerson	229-506-1565	Superior Pine Products Co
Robbie Lee	229-356-0526	Superior Pine Products Co
Superior Pine Office	912-637-5261	Superior Pine Products Co
Al Alexander	850-843-0104	The Forestry Co
Savell Schmidt	850-843-1181	The Forestry Co
John Bogue	850-843-1192	The Forestry Co
Joe Hopkins	912-276-0911	Toledo Timber
Chris Gowan	912-276-0965	Toledo Timber
Martin Bell	912-283-0583	Swamp Park
Crystal Peebles	352-316-0632	FIA
Steve Davis	912-614-1828	Davis Community
Trevor Fortner	912-599-9271	Little Suwannee
Tim Jarrell	912-223-7120	Hancock Forest Mgmt.
RAILROADS		
Norfolk Southern	800-453-2530	
Sid Moody	904-318-7983	Norfolk Southern Railroad
Chad Edwards	404-582-4909	Norfolk Southern Railroad
Eric Sams	904-576-9907	
Emergency Dispatch	404-529-1597	Norfolk Southern Railroad
CSX Randy Dixon	912-270-0699	
CSX Dispatch	800-232-0144	
COUNTY		
	912-496-7229	Charlton County EMA
John F. Meyer -	912-496-2549	Charlton County Commissioners
Dobie Conner	912-496-7321	Charlton County Sheriff
Jesse Booth	912-520-0061	Clinch County EMA
Jonathan Daniel	912-281-5158	Ware County EMA
Jessie Jordan	912-816-6063	Ware County Fire Dept
Joe Morris	912-281-6020	Ware County Sheriff
Robbie Sutton	912-599-9027	Tri County 911
Georgia State Patrol	912-287-6500	
Travis Griffin	912-281-5790	Laura Walker State Park

## Fire Information IAP messages

1. Public and firefighter safety remains the top priority for this incident.
2. Fire managers for the refuge have coordinated suppression efforts with the Georgia Forestry Commission and the Greater Okefenokee Association of Landowners (GOAL) representing federal and state agencies, industry and private landowners. Through this Unified Command, the partners support the chosen strategy as the appropriate management response to protect adjacent valuable commercial timber, isolated homes scattered on private land, and critical wildlife habitat for threatened and endangered species.
3. Fire is a natural component of the Okefenokee ecosystem; since the refuges creation in 1937, there have been hundreds of wildfires that have burned thousands of acres here. The plants and animals on the refuge are well adapted to survive periodic wildfires.
4. Past experience has shown that conventional fire suppression tactics do not work well inside the swamp. Humans have never been successful in controlling fires within the swamp; only “mother nature” has done this. Attempting suppression within the swamp is ineffective, costly, wastes firefighting resources and needlessly endangers firefighter safety.
5. Fire on the refuge is usually fought by reinforcing firelines along the Swamps Edge Break, including areas of private land, to keep the fire contained within the swamp.
6. Okefenokee National Wildlife Refuge typically employs a contain and control strategy to manage fire; containing it within the swamp and actively suppressing it outside of the swamp in the upland forest.

### Commonly asked question:

1. Why won't this fire go out? What will it take? Surface burning of available fuels is only part of the current problem. Peat beds (partially decayed vegetation normally floating in a vertical column of water) is what supports these surface fuels. Unfortunately, the current dry conditions have allowed a portion of the peat beds to dry out and the surface burn has transferred into the peat beds and is now burning subsurface. There are now two sources of heat and available fuel that must be extinguished. The current spotty, localized rain storms can have some effect on the surface burns but do not do much to control subsurface burns. It will take a big rain storm blanketing the entire swamp (remember the swamp is huge –over 650 square miles in size) dropping a minimum of 6-8 inches of rain. As the water levels in the swamp slowly rise, as a result of the rain, the peat beds will become water saturated again eliminating one source of the fire. As the surface of the swamp becomes covered by water, burning surface fuels will be extinguished as well. Burning fuels that extend above these water levels (dead and drying trees/shrubs) may continue to burn until they fall over or burn up. Fire that exists in upland habitat on islands within the swamp may also continue to burn but it will be confined to that immediate area by the swamp waters surrounding the island. This is not something that will likely occur overnight. It may take days, weeks, or even months. The refuge has experienced fire events that were not declared officially out for well over a year after the main firefighting effort had ceased.

# Hunter Encounters and Confrontations

Hunting season is now open. Crews are likely to encounter hunters either hunting or scouting in the area of the Swamp Edge Break. Hunting is often done with the aid of dogs and the hunters will be chasing the pack in vehicles on narrow dusty roads to intercept game. Use Caution traveling as hunters may not be paying attention and traveling at excessive speeds.

Avoid contact as much as possible. The least amount of impact we have on their hunting area the better off we will be. Expect many questions about the fire operations and how long the fire will continue to burn. It's a good idea to review the Fire Information section of the plan for a good explanation of what to expect in the coming months. The majority of the hunters will be friendly but should you have a confrontation with someone:

1. Politely excuse yourself and leave the area immediately;
2. Notify your supervisor;
3. Notify the local DNR Officer by radio or phone:

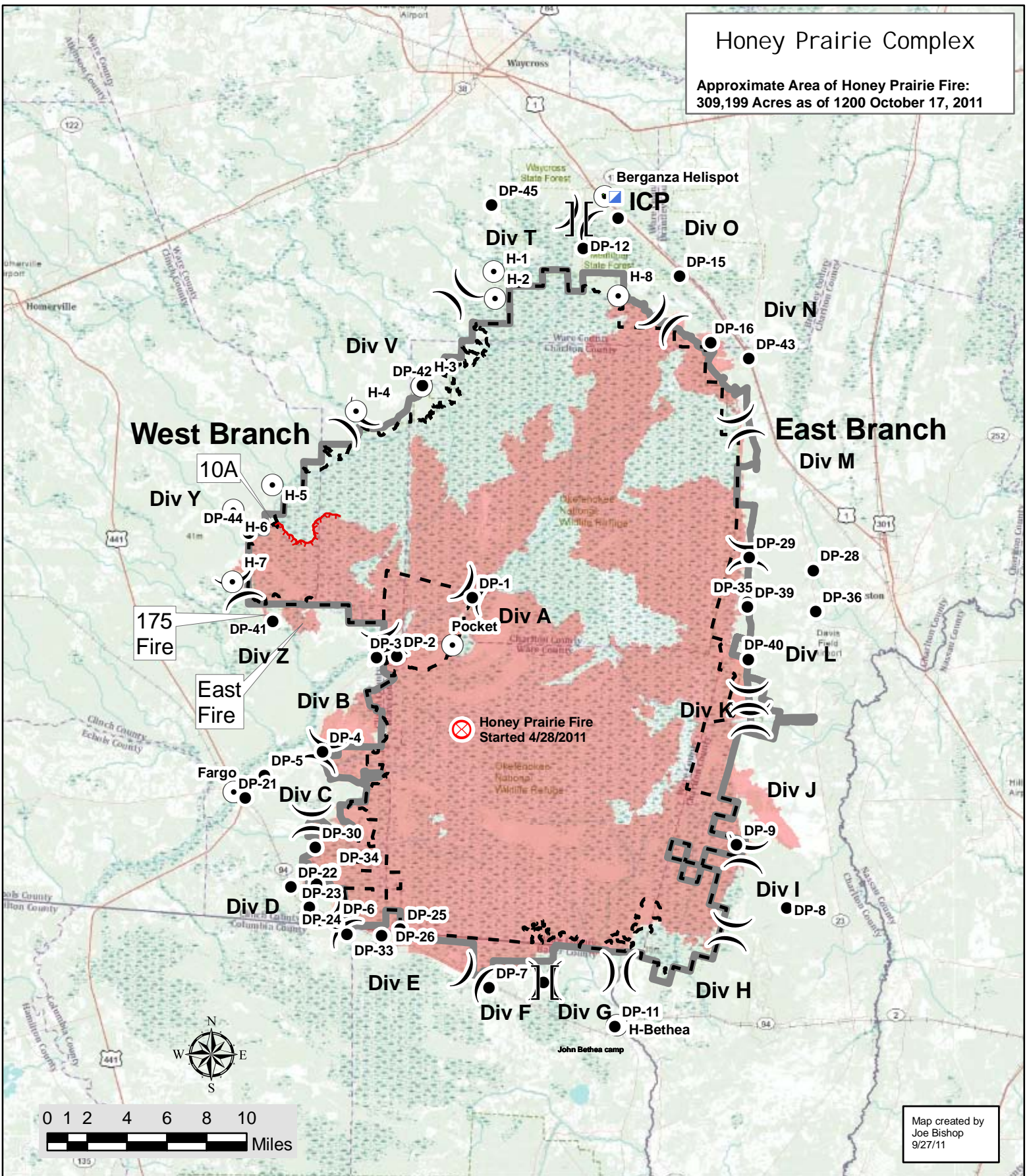
GA DNR Gary Simmons 912-282-2406 Cell

4. If necessary, call the Georgia DNR at 1-800-241-4113 with a description of the person, vehicle and Tag number, and the nature of the confrontation. Georgia DNR will send an officer to handle the situation.



# Honey Prairie Complex

Approximate Area of Honey Prairie Fire:  
309,199 Acres as of 1200 October 17, 2011



Map created by  
Joe Bishop  
9/27/11

	Fire Origin		Helispot		Refuge Boundary
	Honey Prairie Fire Area		Drop Point		Wilderness Boundary
	Uncontrolled Fire Edge		Branch Break		
	Incident Command Post		Division Break		



