

# Honey Prairie Complex

*GA-OKR-000001*

## Incident Action Plan

Operational Period

SATURDAY  
JULY 23, 2011  
0800-2000

Incident Commander  
Troy Floyd

**Accounting Codes**

FWS – 9141-F25M-2J

NPS – 5023 F25M E11

BLM – F25M

USFS – PRF25M\_1502

Initial Attack – F4PM

<b>INCIDENT OBJECTIVES</b>	<b>1. INCIDENT NAME</b> Honey Prairie Complex	<b>2. DATE PREPARED</b> 7/22/11	<b>3. TIME PREPARED</b> 1800												
<b>4. OPERATIONAL PERIOD (DATE/TIME)</b> Saturday, July 23, 2011 0800 – 2000															
<b>5. GENERAL CONTROL OBJECTIVES FOR THE INCIDENT (INCLUDE ALTERNATIVES)</b> <ol style="list-style-type: none"> <li>1. Provide for safety of incident personnel and public in all incident operations.</li> <li>2. Maintain a positive working relationship with all adjacent landowners, cooperators State and Federal partners. Inform, involve and communicate incident planning and operations with all partners.</li> <li>3. Contain all fires that are within the Okefenokee National Wildlife Refuge, inside the Refuge and/or inside the swamp edge break if possible.</li> <li>4. In cooperation with local timberland owners, use full suppression strategies and tactics to minimize damage to private timberlands and improvements and to prevent fires outside the Refuge from entering the Refuge.</li> <li>5. Assist in management and suppression of additional fires (new starts or breakouts) in the vicinity as approved by Agency Administrators and Unified Incident Commanders.</li> <li>6. Protect all cultural and archeological sites and structures within the refuge, with particular attention to facilities at Okefenokee Swamp Park.</li> <li>7. Manage the fires cost-effectively consistent with the values at risk.</li> <li>8. Implement structure protection as necessary for at-risk facilities and communities.</li> <li>9. Coordinate suppression actions with assigned Refuge Resource Advisors</li> </ol>															
<b>6. WEATHER FORECAST FOR OPERATIONAL PERIOD</b> See attached forecast for area specific weather information.															
<b>7. GENERAL SAFETY MESSAGE</b> Drive defensively and use spotter when backing. Ensure LCES is in place and known by all personnel. Drink plenty of water and take frequent rest breaks. Ensure proper use of PPE during all operations.															
<b>8. Attachments (☐ if attached)</b> <table border="0" style="width: 100%;"> <tr> <td><input type="checkbox"/> Organization List (ICS 203)</td> <td><input type="checkbox"/> Incident Map</td> <td><input type="checkbox"/> Safety Message</td> </tr> <tr> <td><input type="checkbox"/> Assignment List (ICS 204)</td> <td><input type="checkbox"/> Traffic Plan</td> <td><input type="checkbox"/> Demobilization Procedures</td> </tr> <tr> <td><input type="checkbox"/> Communications Plan (ICS 205)</td> <td><input type="checkbox"/> Finance Message</td> <td><input type="checkbox"/> Unit Log</td> </tr> <tr> <td><input type="checkbox"/> Medical Plan (ICS 206)</td> <td><input type="checkbox"/> Phone List</td> <td></td> </tr> </table>				<input type="checkbox"/> Organization List (ICS 203)	<input type="checkbox"/> Incident Map	<input type="checkbox"/> Safety Message	<input type="checkbox"/> Assignment List (ICS 204)	<input type="checkbox"/> Traffic Plan	<input type="checkbox"/> Demobilization Procedures	<input type="checkbox"/> Communications Plan (ICS 205)	<input type="checkbox"/> Finance Message	<input type="checkbox"/> Unit Log	<input type="checkbox"/> Medical Plan (ICS 206)	<input type="checkbox"/> Phone List	
<input type="checkbox"/> Organization List (ICS 203)	<input type="checkbox"/> Incident Map	<input type="checkbox"/> Safety Message													
<input type="checkbox"/> Assignment List (ICS 204)	<input type="checkbox"/> Traffic Plan	<input type="checkbox"/> Demobilization Procedures													
<input type="checkbox"/> Communications Plan (ICS 205)	<input type="checkbox"/> Finance Message	<input type="checkbox"/> Unit Log													
<input type="checkbox"/> Medical Plan (ICS 206)	<input type="checkbox"/> Phone List														
<b>9. PREPARED BY (PLANNING SECTION CHIEF)</b> Ed Flowers / Greg Strenkowski		<b>10. APPROVED BY (INCIDENT COMMANDER)</b> Don West / Troy Floyd													

ORGANIZATION ASSIGNMENT LIST		9. Operations Section		
1. Incident Name <b>Honey Prairie Complex</b> GA-OKR-000001		Chief	Buck Kline 8/5	
		Planning	Steve Gray 8/1	
2. Date 7/22/2011	3. Time 1000 hrs	<b>a. WEST BRANCH - Divisions/Groups</b>		
4. Operational Period 7/23/2011 0800 - 2000		OPBD	Brent McCarty 8/2	
5. Incident Commander and Staff		Division	A-B-C-D-E-F-G	Charles Arnold 8/1
Incident Commander	Troy Floyd	Division	T-V	Heath Morton 8/4
Liason Officer				
Safety Officers	Tommy Hawkins / Jamie Munns	Division	Y-Z	Mike Lee 8/2
Information Officer	Jenny Lynn Bruner / Denise Croker			
<b>6a. Agency Administrators</b>				
FWS	Curt McCasland	Group	IA-WEST and Structure Group	Trent Ingram 8/5
FWS	Mindy Gautreaux			
<b>6b. Agency Representatives</b>				
FWS Liason	Skippy Reeves	<b>b. EAST BRANCH - Divisions/Groups</b>		
GFC	Frank Sorrels	OPBD	Brett Waters 7/25	
FLDOF	James Karels	Division	H-I-J-K-L	Rufus Crutchfield 8/4
FWS AREP	Mike Housh			
FWS-Refuge PAO	Art Webster	Division	M-N-O	Tracy Mobley 8/1
GEMA AREP	Alan Robinson / Diane Adams	Group	IA-EAST	Billy Taylor 7/26
USFS AREP	Ivan Greene	Group	Roads	Bert Earley (THSP) 7/27
<b>7. Planning Section</b>				
Chief	Greg Strenkowski	<b>c. AIR OPERATIONS BRANCH - Honey Prairie</b>		
Dep Chief		Air Operations Branch Director		Joseph Bistryski
Resources Unit	Josh Burnette / Rodney West / Randy Lownes 8/2	Air Support Group Supervisor		
Situation Unit	Keith Murphy(T)			
IMET	John Franks			
FBAN	John Kern	<b>d. AIR OPERATIONS BRANCH - Pogo</b>		
Demob Unit	Harold West	Pogo Helibase Manager		Jay Matsen 7/23
Documentation		ATGS-Pogo		Everett Wenigar 7/30
GIS	Charles Bailey			
CTSP	Rusty Brown			
TNSP				
<b>8. Logistics Section</b>		<b>10. Finance Section</b>		
Chief	Willie Boston	Chief	Lila Johnson	
Supply Unit	Amy Weaver (T)	Deputy	Amy Treadwell	
GSUL	Tim Jones / Steve Blackwell	Time Unit	Darline Matheny	
ORDM	Cindy Tisdell 7/24	Procurement	John Watson	
COML	Kelly Towe	Comp Claims Unit	Kurt Hine	
Medical Unit	Mark Millirons	Cost	Grace Reid / Tom Steele	
Facilities	Thomas Lambert / Dennis Evans	Buying Team	Rita Loper	
Food	Bob Kookan 8/2			
SEC1	Don Cockman	IBA	James Meredith	
BCMG				
EQPM	Richard Young (T), JohnnyBarwick, Kenneth Edge			
		Prepared by: R Lownes	RESL	

DIVISION ASSIGNMENT LIST			1. Branch <b>West</b>		2. Division <b>A, B, C, D, E, F, G</b>		
3. Incident Name: <b>Honey Prairie Complex</b>			4. Operational Period Date: 7/23/2011 Time: Day: 0800-2000				
5. Operations Personnel							
<b>Operations</b>	Buck Kline 8/5		<b>Branch Director</b>		Brent McCarty 8/2		
<b>Planning Ops</b>	Steve Gray 8/1		<b>Division Supervisor</b>		Charles Arnold 8/1		
<b>Safety Officer</b>							
6. Resources Assigned this Period							
Strike Team/Task Force/ Resource Designator	Leader / Name / Designator	Last Shift Date	Num. Per.	Drop Off PT./Time	Pick Up PT./Time		
<b>TFLD (O-960)</b>	<b>Paul Pelligrini</b>	8/1	1				
<b>STPL (O-1055)</b>	<b>Royce Davis</b>	7/23	1				
ENG6 (E-821)	Robert Thompson	7/24	3				
ENG6 (E-824)	Chris Brubaker	7/24	3				
ENG6 (E-405)	Brett Gore	7/24	3				
ENG6 (E-1076) MOMTF 9504	Tim Perren	7/29	3		Out of Service 7/25		
TPL3 (E-914)	Fred Robinson	7/23	1				
TPL3 (E-1138)	Jim Reynolds	7/23	1				
TPL3 (E-1139)	Stan Jackson	7/23	1				
<b>SOF2 (O-1068)</b>	<b>Jamey Burnsed</b>	7/25	1				
<b>EMTP (O-847)</b>	<b>Levi Clymer</b>	7/28	1				
7. Control Operations							
<ul style="list-style-type: none"> <li>Patrol and mop up within 100' of fire perimeter line.</li> <li>Monitor fire impacts to Stephen Foster State Park.</li> <li>Patrol and control reburn.</li> </ul>							
8. Special Instructions							
<ul style="list-style-type: none"> <li>Examine work area for fire weakened snags.</li> <li>Ensure LCES are in place before operations begin and stay hydrated.</li> <li>Additional resources will be available from GFC, Florida DOF, FWS, and local cooperators.</li> <li>Drive defensively and with lights on at all times.</li> <li>Continue to complete Suppression Damage Assessment Survey.</li> </ul>							
9. Division/Group Communication Summary							
Function	Frequency	System	Channel	Function	Frequency	System	Channel
Command N Okee Repeater	RX 164.5750/206.5 TX 163.150/206.5	KING NIFC	5	Logistics		KING NIFC	
Tactical Div/Group	RX 168.775 TX 168.7750	KING NIFC	9	Air to Ground	RX 166.9375 TX 166.9375	KING NIFC	6
Prepared by (Resource Unit Ldr.) Randy Lownes		Approved by (Planning Sect. Ch.) Greg Strenkowski		Date 7/22/2011		Time 1900	

DIVISION ASSIGNMENT LIST				1. Branch West		2. Division T, V	
3. Incident Name <b>Honey Prairie Complex</b>				4. Operational Period Date: 7/23/2011 Time: 0800-2000			
5. Operations Personnel							
Operations	Buck Kline 8/5			Branch Director	Brent McCarty 8/2		
Planning Ops	Steve Gray 8/1			Division Supervisor	Heath Morton 8/4		
Safety Officer							
6. Resources Assigned this Period							
Strike Team/Task Force/ Resource Designator	Leader / Name / Designator	Last Shift Date	Num. Per.	Drop Off PT./Time	Pick Up PT./Time		
<b>TFLD (O-942)</b>	<b>Ben Krupski</b>	8/1	1				
ENG6 (E-2)	TBA	?	1				
ENG6 (E-3)	George Pelt	?	2				
ENG6 (E-995)	Mike Daigle	7/25	3				
ENG6 (E-996)	John Cousins	7/25	3				
TPL2 (E-986)	David Hauser	?	1	PVT			
TPL2 (E-988)	Jonathon Houser	7/30	1	PVT			
Skidder (E-981)	Henry Tiner	7/25	1	PVT			
Grader (E-530)	Lucious Corbett	7/27	1	PVT			
<b>SOF2 (O-891)</b>	<b>Steve Holman</b>	8/1	1				
<b>EMTP (E-1153)</b>	<b>Wes Lathen</b>	7/25	1				
7. Control Operations							
<ul style="list-style-type: none"> <li>Recon potential control lines and examine area for snag removal</li> <li>Improve swamp break boundaries for fire breaks, work w/resource advisor</li> <li>Coordinate potential burn-out w/READ and refuge personnel</li> <li>Use refuge personnel for any burn-out activities.</li> <li>Coordinate potential burn-out w/ READ and refuge personnel.</li> <li>Use refuge personnel for any burnout activities.</li> </ul>							
8. Special Instructions							
<ul style="list-style-type: none"> <li>Make contact with the Resource Advisor before using mechanical equipment.</li> <li>Safely push down with equipment all snags whether on fire or not that are a threat to success or tactical operations.</li> <li>Ensure LCES are in place before operations begin. Stay hydrated.</li> <li>Drive defensively and with lights on at all times.</li> <li>Boggy terrain: Be careful and aware when working around this type of area.</li> <li>Continue to complete Suppression Damage Assessment Survey.</li> </ul>							
9. Division/Group Communication Summary							
Function	Frequency	System	Channel	Function	Frequency	System	Channel
Command N Okee Repeater	RX 164.5750/206.5 TX 163.150/206.5	KING NIFC	5	Logistics		KING NIFC	
Tactical Div/Group	RX 168.775 TX 168.775	KING NIFC	9	Air to Ground	RX 166.9375 TX 166.9375	KING NIFC	6
Prepared by (Resource Unit Ldr.) Randy Lownes		Approved by (Planning Sect. Ch.) Greg Strenkowski		Date July 22, 2011		Time 1800	

DIVISION ASSIGNMENT LIST				1. Branch <b>West</b>		2. Division <b>Y, Z</b>	
3. Incident Name <b>Honey Prairie Complex</b>				4. Operational Period Date: 7/23/2011 Time: 0800-2000			
5. Operations Personnel							
<b>Operations</b>	Buck Kline 8/5			<b>Branch Director</b>	Brent McCarty 8/2		
<b>Planning Ops</b>	Steve Gray 8/1			<b>Division Supervisor</b>	Mike Lee 8/2		
<b>Safety Officer</b>							
6. Resources Assigned this Period							
Strike Team/Task Force/ Resource Designator	Leader / Name / Designator	Last Shift Date	Num. Per.	Drop Off PT./Time	Pick Up PT./Time		
<b>TFLD (O-920)</b>	<b>Aaron Schneider</b>	8/1	1				
<b>TFLD (O-954)</b>	<b>Brian Ebert (t)</b>	8/1	1				
<b>STEN (O-955)</b>	<b>Randy Scherr</b>	8/1	1				
TPL3 (E-943)	Leslie Jeter	7/26	1	PVT			
TPL3 (E-984)	Daniel Cole	7/31	1	PVT			
TPL2 (E-985)	Junior House	7/27	1	PVT			
ENG6 (E-392)	Bobbi Archdale	8/4	3				
ENG6 (E-838)	Duane King	8/4	2				
ENG6 (E-404)	John Knapper	7/23	3		Crew swap 7/24		
ENG6 (E-939)	Chad Ingle	7/23	3		Crew swap 7/24		
WAT2 (E-954)	Sonny Moore	7/23	1	PVT			
<b>SO2 (O-1097)</b>	<b>Rodney Weeks</b>	7/30	1				
<b>EMIP (E-1152)</b>	<b>Chad Simons</b>	7/26	1				
7. Control Operations <ul style="list-style-type: none"> <li>Make contact with the Resource Advisor before using mechanical equipment.</li> <li>Recon potential controllines and examine area for snag removal</li> <li>Improve swamp break boundaries for fire breaks</li> <li>Patrol and mop up within 100' of fire perimeter line.</li> </ul>							
8. Special Instructions <ul style="list-style-type: none"> <li>Safely push down with equipment all snags whether on fire or not that are a threat to success or tactical operations.</li> <li>Ensure LCES are in place before operations begin. Stay hydrated.</li> <li>Drive defensively and with lights on at all times.</li> <li>Boggy terrain: Be careful and aware when working around this type of area.</li> <li>Continue to complete Suppression Damage Assessment Survey.</li> </ul>							
9. Division/Group Communication Summary							
Function	Frequency	System	Channel	Function	Frequency	System	Channel
Command N Okee Repeater	RX 164.5750/206.5 TX 163.150/206.5	KING NIFC	5	Logistics		KING NIFC	
Tactical Div/Group	RX 151.2725 TX 151.2725	KING NIFC	13	Air to Ground	RX 166.9375 TX 166.9375	KING NIFC	6
Prepared by (Resource Unit Ldr.) Randy Lownes		Approved by (Planning Sect. Ch.) Greg Strenkowski		Date July 22, 2011		Time 1730	

<b>DIVISION ASSIGNMENT LIST</b>				1. Branch <b>West</b>	2. Division <b>West - Initial Attack and Structure Protection</b>		
3. Incident Name: <b>Honey Prairie Complex</b>				4. Operational Period Date: 7/23/2011 Time: 0800-2000			
5. Operations Personnel							
<b>Operations</b>	Buck Kline 8/5			<b>Branch Director</b>	Brent McCarty 8/2		
<b>Planning Ops</b>	Steve Gray 8/1			<b>Division Supervisor</b>	Trent Ingram 8/5		
<b>Safety Officer</b>							
6. Resources Assigned this Period							
Strike Team/Task Force/ Resource Designator	Leader / Name / Designator			Last Shift Date	Num. Per.	Drop Off PT./Time	Pick Up PT./Time
<b>TFLD (O-899)</b>	<b>Bob Schober</b>			8/2	1		
ENG6 (E-1075)	David Jones			7/25	3		
TPL Appling 70 (E-1165)	Joseph A. Smith Jr. (O-1116)			8/3	1		
TPL Clinch 72 (E-1167)	William A. Register (O-1117)			8/3	1		
TPL Clinch 75 (E-1169)	Christopher J. Henderson (O-1118)			8/3	1		
TPL Glynn 72 (E-1175)	Robert L. Danley (O-1121)			8/3	1		
TPL Jeff Davis 70 (E-1177)	Berry J. Bohannon (O-1122)			8/3	1		
<b>EMT</b>	Contact Honey Prairie Dispatch						
<b>SO2 (O-1083)</b>	<b>Tommy Lail</b>			7/26	1		
7. Control Operations <ul style="list-style-type: none"> <li>Respond to Initial Attack as requested</li> <li>Initial attack IC will communicate size up information to Honey Prairie incident communications</li> </ul>							
8. Special Instructions							
9. Division/Group Communication Summary							
Function	Frequency	System	Channel	Function	Frequency	System	Channel
Command N Okee Repeater	RX 164.5750/206.5 TX 163.150/206.5	KING NIFC	5	Logistics	See ICS 205	KING NIFC	
Tactical Div/Group	RX 154.280 TX 154,280/156.7	KING NIFC	8	Air to Ground	RX 166.9375 TX 166.9375	KING NIFC	6
Prepared by (Resource Unit Ldr.) Randy Lownes		Approved by (Planning Sect. Ch.) Greg Strenkowski			Date July 22, 2011		Time 1930

<b>DIVISION ASSIGNMENT LIST</b>		1. Branch <b>East</b>		2. Division <b>H, I, J, K, L</b>			
3. Incident Name <b>Honey Prairie Complex</b>		4. Operational Period Date: <b>7/23/2011</b> Time: <b>0800-2000</b>					
5. Operations Personnel							
<b>Operations</b>	Buck Kline 8/5		<b>Branch Director</b>		Brett Waters 7/25		
<b>Planning Ops</b>	Steve Gray 8/1		<b>Division Supervisor</b>		Rufus Crutchfield 8/4		
<b>Safety Officer</b>							
6. Resources Assigned this Period							
Strike Team/Task Force/ Resource Designator	Leader / Name / Designator		Last Shift Date	Num. Per.	Drop Off PT./Time		Pick Up PT./Time
<b>TFLD (O-937)</b>	<b>Kevin Elmstrom</b>		8/1	1			
ENG6 (E-77) GAGAS 86	Dean Cornett		8/3	2			
ENG6 (E-893) MIHMF 251	Martel Knipe		7/23	3			
<b>EMTB (O-1077)</b>	<b>Michael Graham</b>		7/26	1			
<b>SOF2 (O-1067)</b>	<b>Larry Morse</b>		7/24	1			
7. Control Operations							
<ul style="list-style-type: none"> <li>Contain all fires outside refuge boundary.</li> <li>Patrol and control reburn.</li> <li>Patrol and mop up all accessible fire line. Mop up all hot spots within 100' of the fire perimeter.</li> <li>Continue to back haul excess equipment from the line.</li> <li>Continue to work with resource advisors when conducting rehabilitation work.</li> </ul>							
8. Special Instructions							
<ul style="list-style-type: none"> <li>Ensure LCES are in place before operations begin. Stay hydrated.</li> <li>Drive defensively and with lights on at all times.</li> <li>See medical plan for EMT support</li> <li>Examine work area for fire weakened snags</li> <li>Continue to complete Suppression Damage Assessment Survey.</li> </ul>							
9. Division/Group Communication Summary							
	Function	Frequency	Channel	Function	Frequency	System	Channel
Command E Okee Repeater	RX 164.6250/103.5 TX 163.150/103.5	KING	3	Logistics		KING NIFC	
DIV J Repeater	RX 170.4125 TX 165.9625/123.0	NIFC	14				
Tactical Div/Group	RX 168.350 TX 168.350	KING NIFC	12	Air to Ground	RX 166.9375 TX 166.9375	KING NIFC	6
Prepared by (Resource Unit Ldr.) Randy Lownes		Approved by (Planning Sect. Ch.) Greg Strenkowski			Date July 22, 2011		Time 1800



DIVISION ASSIGNMENT LIST			1. Branch <b>East</b>		2. Division <b>M, N, O</b>		
3. Incident Name <b>Honey Prairie Complex</b>			4. Operational Period Date: 7/23/2011 Time: 0800-2000				
5. Operations Personnel							
<b>Operations</b>	Buck Kline 8/5		<b>Branch Director</b>		Brett Waters 7/25		
<b>Planning Ops</b>	Steve Gray 8/1		<b>Division Supervisor</b>		Tracy Mobley 8/1		
<b>Safety Officer</b>							
6. Resources Assigned this Period							
Strike Team/Task Force/ Resource Designator		Leader / Name / Designator	Last Shift Date	Num. Per.	Drop Off PT./Time	Pick Up PT./Time	
<b>TFLD (O-941)</b>		<b>Shawn Denowh</b>	8/1	1			
<b>TFLD (O-994)</b>		<b>Jim Edgar</b>	8/1	1			
ENG6 (E-76)		Stacy Cantrell	8/3	2			
ENG6 (E-78)		Adam Greeson	8/3	2			
ENG6 (E-80)		Ricky Williams	8/3	2			
ENG6 (E-81)		Russell Fowler	8/3	2			
ENG6 (E-977) IPF E-31		Louie Feltman	7/23	4			
ENG6 (E-1133)		Chris Wright	7/26	2			
<b>EMTB (O-1124)</b>		<b>Jackie Aultman</b>	8/3	1		218-491-1351 cell	
<b>SOF2 (O-1067)</b>		<b>Larry Morse</b>	7/24	1			
7. Control Operations <ul style="list-style-type: none"> <li>Patrol and mop up 100' inside fire perimeter.</li> <li>Recon potential control lines and examine area snag removal</li> <li>Keep fire within refuge boundary.</li> <li>Continue to back haul excess equipment from the fire line.</li> <li>Continue to work with resource advisors when conducting rehabilitation work</li> </ul>							
8. Special Instructions <ul style="list-style-type: none"> <li>If the fire reaches <b>Mgt Activity Line (MAL) 1</b> cooperators and adjacent landowners will be notified. If the fire reaches <b>MAL 2</b> a meeting will be held at the Swamp Park with adjacent landowners and cooperators.</li> <li>Safely push down with equipment all snags whether on fire or not that are a threat to success or tactical operations.</li> <li>Ensure LCES are in place before operations begin. Stay hydrated.</li> <li>See medical plan for EMT support.</li> <li>Drive defensively and with lights on at all times.</li> <li>Boggy terrain: Be careful and aware when working around this type of area.</li> <li>Continue to complete Suppression Damage Assessment Survey.</li> </ul>							
9. Division/Group Communication Summary							
Function	Frequency	System	Channel	Function	Frequency	System	Channel
Command N Okee Repeater	RX 164.5750/206.5 TX 163.150/206.5	KING NIFC	5	Logistics		KING NIFC	
Tactical Div/Group	RX 168.200 TX 168.200	KING NIFC	11	Air to Ground	RX 166.9375 TX 166.9375	KING NIFC	6
Prepared by (Resource Unit Ldr.) Randy Lownes		Approved by (Planning Sect. Ch.) Greg Strenkowski			Date July 22, 2011		Time 1730

DIVISION ASSIGNMENT LIST		1. Branch	East		2. Division	East Initial Attack	
3. Incident Name <b>Honey Prairie Complex</b>			4. Operational Period Date: 7/23/2011 Time: 0800-2000				
5. Operations Personnel							
Operations	Buck Kline 8/5		Branch Director	Brett Waters 7/25			
Planning Ops	Steve Gray 8/1		Division Supervisor	Billy Taylor 7/26			
Safety Officer			Division Supervisor				
6. Resources Assigned this Period							
Strike Team/Task Force/ Resource Designator	Leader / Name / Designator		Last Shift Date	Num. Per.	Drop Off PT./Time	Pick Up PT./Time	
<b>TFLD (O-943)</b>	<b>Steven Clark</b>		8/1	1			
<b>STEN (t) (O-1018)</b>	<b>Greg Thomas</b>		7/23	1			
ENG6 (E-978)	Dennis Gillmer		7/26	3			
ENG6 (E-390) WICNF 461	Lloyd Pete		7/24	3			
ENG6 (E-1081)	Paul Bryant		8/3	2			
ENG6 (E-1082)	Tommy Williams		8/3	2			
ENG6 (E-1083)	Wesley Sisk		8/3	2			
ENG6 (E-1084)	Jody Price		?	2			
HCT2IA (C-14) Pat Rick 20B	Dustin Eldred		7/25	20	PVT		
WT3 (E-92)	Justin Ennis / Jeff Ellis		7/27	1	PVT		
TPL Camden 70 (E-1162)	James D Armstrong (O-1115)		8/3	1			
TPL Ware71 (E-1171)	Barry H. Bennett (O-1119)		8/3	1			
TPL Ware 72 (E-1173)	Thomas D. Whitley (O-1120)		8/3	1			
<b>SOF2 (O-1067)</b>	<b>Larry Morse</b>		7/24	1			
EMT	Contact Honey Prairie Dispatch						
7. Control Operations							
<ul style="list-style-type: none"> <li>Respond to Initial Attack as requested</li> <li>Patrol and control return</li> <li>Initial attack IC will communicate sizeup information to the Honey Prairie communication.</li> </ul>							
8. Special Instructions							
9. Division/Group Communication Summary							
	Function	Frequency	Channel	Function	Frequency	System	Channel
Command E Okee Repeater	RX 164.625/103.5 TX 163.150/103.5	KING NIFC	3	Logistics		KING NIFC	
Tactical Div/Group	RX 168.775 TX 168.775	KING NIFC	9	Air to Ground	RX 166.9375 TX 166.9375	KING NIFC	6
Prepared by (Resource Unit Ldr.) Randy Lownes		Approved by (Planning Sect. Ch.) Greg Strenkowski		Date July 22, 2011		Time 1800	

DIVISION ASSIGNMENT LIST			1. Branch <b>ALL</b>		2. Division <b>Roads Group</b>		
3. Incident Name: <b>Honey Prairie Complex</b>			4. Operational Period Date: 7/23/2011		Time: Day: 0800-2000		
5. Operations Personnel							
Operations	Buck Kline 8/5		Branch Director		Brett Waters 7/25		
Planning Ops	Steve Gray 8/1		Division Supervisor				
Safety Officer							
6. Resources Assigned this Period							
Strike Team/Task Force/ Resource Designator	Leader / Name / Designator	Last Shift Date	Num. Per.	Drop Off PT./Time	Pick Up PT./Time		
THSP (O-1088)	Bert Earley	7/27	1				
HEQB (O-1090)	Jonathan Luepke	7/28	1				
Excavator (E-505)	Don Murray	?	1	PVT, West Branch			
Excavator (E-596)	Kenneth Enfinger	?	1				
Dump Truck (E-506)	Craig Smith	?	1	PVT, West Branch			
Dump Truck (E-529)	Ron Watson	?	1	PVT, West Branch			
Dump Truck (E-1074)		?	1	PVT, West Branch			
Dump Truck (E-1079)	Dennis Kight	?	1	PVT, West Branch			
Grader (E-228)	Steven Hendricks	?	1	CNTY, West Branch			
Grader (E-230)	Buddy Pittman	?	1	PVT, East Branch			
Grader (E-380)	Jason Merrit	?	1	PVT, East Branch			
Grader (E-597)	David Prpoes	?	1	PVT, West Branch			
WT (E-1022)	Louis Butler	?	1	PVT, East Branch			
7. Control Operations							
<ul style="list-style-type: none"> <li>Coordinate efforts w/ resource advisor and logistics</li> <li>Notify Division Supervisor(s) when entering and leaving division.</li> </ul>							
8. Special Instructions							
<ul style="list-style-type: none"> <li>Ensure that tractors are cleaned and free of debris daily. Examine work area for fire weakened snags.</li> <li>Ensure LCES are in place before operations begin and stay hydrated.</li> <li>Additional resources will be available from GFC, Florida DOF, FWS, and local cooperators.</li> <li>Drive defensively and with lights on at all times.</li> <li>See Medical plan for EMT support.</li> <li>Implement MIST tactics</li> </ul>							
9. Division/Group Communication Summary							
Function	Frequency	System	Channel	Function	Frequency	System	Channel
Command	See ICS 205	KING NIFC		Logistics	See ICS 205	KING NIFC	
N.Okee Repeater							
Tactical Div/Group	See ICS 205	KING NIFC		Air to Ground	See ICS 205	KING NIFC	
Prepared by (Resource Unit Ldr.) Randy Lownes		Approved by (Planning Sect. Ch.) Greg Strenkowski			Date 7/22/2011		Time 1930

# AIR OPERATIONS SUMMARY

Prepared By: Joe Bistryski, AOB

Prepared Date: 7.22.2011

Prepared Time: 1800

<b>1. INCIDENT NAME:</b> Honey Prairie	<b>2. OPS PERIOD DATE:</b> July 23, 2011	<b>START TIME:</b> 0830	<b>END TIME:</b> 1900	<b>SUNRISE:</b> 0640	<b>SUNSET:</b> 2032
---	---	----------------------------	--------------------------	-------------------------	------------------------

**3. REMARKS (Safety Notes, Hazards, Air Operations Special Equipment, etc.):**  
*No fire is ever the same. No flight is ever the same. The fire you fly today will not be the same as the fire you flew yesterday. Be alert to your environment and changing conditions.*

**NOTE: Latitude/Longitude format is "Degrees-Minutes-Decimal Minutes" (example: N30 41.42 W082 33.97)**

**5. TFR #:** 1/0249  
(Box) 3000' MSL

PERSONNEL	NAME	PHONE #	FREQUENCIES	AM	FM	
AOBD	Joe Bistryski	Cell 801-518-2797 Desk 912-637-5254	AIR/ AIR FW	122.575		AIRTANKERS / LEAD PLANES - None Available Local ATGS AIRCRAFT- 57Z
ASGS	Jay Matsen	206-218-8230	AIR/ AIR RW-FF	122.375		OTHER: Pogo Helibase: 912-496-4415 / FAX 912-496-2797 ICP Helispot: 404-772-5317 Oketfenokee Dispatch: 912-496-7366 X230
ATGS Pogo	Everett Weniger	406-381-4176	Georgia AIR/AIR	122.075		ICP HELISPOT: N30 40.945 W082 33.640 BERGANZA HELISPOT N 31 07.22 W082 15.22 POGO HELIBASE: N30 44.03 W082 07.41
HEB1 Pogo HB	Lee Kessler	Desk 912-496-4415 Cell 218-398-2709	Georgia AIR/GRND (Smokey - Dozers)		159.285 W	
HEB1 Pogo HB (T)	Jeff McBath	858-357-3242	AIR/GROUND PRIMARY		166.9375	
			AIR/GROUND ALTERNATE		166.9000	
			TOLC		168.0125	
			AIR GUARD		168.625 T110.9	

## 9. HELICOPTERS (Use Additional Sheets as Necessary)

FAA #	TY	MAKE/ MODEL	BASE	AVAIL	MANAGER	FAA #	T	MAKE/ MODEL	BASE	AVAIL	MANAGER
N36BH	1	S-70	Pogo	0830	Mike Ryan 406-925-1337	N818MC	3	AS-350B3	Pogo	0830	Juan Edar 307-330-8285
26MW	1	K-1200	Pogo	0830	Kirby Cook 406-381-1212	57Z	3	206-L4	Pogo	0830	Cindy Austin 208-241-3957
<b>10. TASK/ MISSION/ ASSIGNMENT (Type/ function includes: Air Tactical, Retardant, Recon, Personnel Transport, Bucket Operations, SAR, etc.)</b>											
<b>TYPE/FUNCTION</b>						<b>NAME OF PERSONNEL OR CARGO (if applicable) or instructions for tactical aircraft</b>					
Bucket Ops			N36BH, 26MW			As Requested			Fargo/Waycross		
Air Tactical			57Z			1200 / As Requested			Lake City/Fargo		
Recon			All recon missions must have direct approval by the AOB, 818MC, 57Z			As Requested			Fargo/Pogo		
Medevac			N818MC			As Requested			Fargo/Waycross		



# Fire Weather Forecast



**FORECAST NO:** 77

**NAME OF FIRE:** Honey Prairie Complex

**PREDICTION FOR:** Day Shift  
**SHIFT DATE:** 7/23/11

**UNIT:** Okefenokee National Wildlife Refuge

**FORECAST ISSUED:** 7/22/11 at 1600

**SIGNED:** John Franks  
Incident Meteorologist

**WEATHER DISCUSSION:** High pressure will remain the large-scale pattern over the fire through the weekend. Isolated shower and thunderstorm activity will remain possible and could form within the perimeter of the fire. Fair weather cumulus clouds will not be deep enough to limit the amount of sun or keep high temperatures at bay. Heat index values will still top 105 degrees for much of the fire.

**TODAY:** Partly cloudy and hot. An isolated thunderstorm is possible in the afternoon.

**MAXIMUM TEMPERATURES:** 95-99 degrees  
**PM HEAT INDEX:** 100-105 degrees  
**MINIMUM HUMIDITY:** 36-46%  
**20 FT WINDS:** AM: WSW 2-5 mph  
PM: SW 5-9 G15 mph

**STABILITY/INVERSION:** Morning inversion to 300 feet through 0800, rising to 6400 feet by 1500  
**TRANSPORT WINDS:** SW 13 mph  
**DISPERSION INDEX:** 53, Good  
**CHANCE OF PRECIPITATION:** 20%  
**PRECIPITATION AMOUNTS:** Less than 0.10", higher amounts in thunderstorms  
**LIGHTNING ACTIVITY LEVEL:** 2

**TONIGHT:** Partly cloudy. A 20% chance of an evening shower or thunderstorm. Winds WSW 2-4 mph. Low temperatures 72-76. Max RH 85-95%.

**SUNDAY:** Partly cloudy and continued hot with isolated showers and thunderstorms in the afternoon.

**MAXIMUM TEMPERATURES:** 95-99 degrees  
**PM HEAT INDEX:** 103-108 degrees  
**MINIMUM HUMIDITY:** 38-48%  
**20 FT WINDS:** AM: SSW 2-5 mph  
PM: SSW 6-10 G15 mph

**TRANSPORT WINDS:** SW 13 mph  
**DISPERSION INDEX:** 60, Good  
**CHANCE OF PRECIPITATION:** 20%  
**LIGHTNING ACTIVITY LEVEL:** 2

**EXTENDED FORECAST:**

	MONDAY	TUESDAY	WEDNESDAY
<b>SKY/WEATHER</b>	Partly Cloudy / Scattered T-Storms	Mostly Cloudy / Showers and T-Storms Likely	Partly Cloudy / Scattered T-Storms
<b>CHANCE PRECIP</b>	30%	60%	50%
<b>MINIMUM RH</b>	43-53%	48-58%	48-58%
<b>20 FT. WINDS</b>	AM: SW 3-6 mph PM: SW 7-10 mph	AM: SW 3-5 mph PM: SW 6-10 mph	AM: SW 2-3 mph PM: WSW 5-9 mph
<b>IN/MAX TEMPS</b>	74 / 95	74 / 93	71 / 91

**FIRE BEHAVIOR FORECAST**

<b>Fire: Honey Prairie Complex</b>	<b>Unit: GA-OKR-000001</b>	<b>Prediction for Day Shift</b>
<b>Forecast #76 Issued: 07/22/2011 1830 hrs</b>	<b>Signed: /S/John Kern</b>	<b>Shift Date: Saturday 07/23/11</b>

**GENERAL FIRE BEHAVIOR**

Fuels around the Okefenokee Wildlife Refuge are predominately Fuel Model 7 (Southern Rough). Large to moderate acreage tracts of commercial timberland are mixed in throughout the entire perimeter surrounding the refuge. Fast moving wildfires with extremely high flame lengths and rapid rates of spread occur within the swamp.

**Indicators/Threshold for Increased Fire Activity**

- **Relative humidity dropping below 45%**
- **Winds above 10 mph**
- **Heavy fuel loadings**
- **Fine dead fuel moisture 8% or less**
- Dispersion above 70
- **\* Items in BOLD are predicted to occur today\***

**SPECIFIC FIRE BEHAVIOR**

- **Fire behavior will begin to show greater reburn (needlecast, shrubs, and downed trees). It has been 5 days since rainfall. Some movement of fire through interior green areas is likely.**
- **Expect fire to continue spreading through the shrub fuels with low rates of spread and minimal flame lengths. Expect areas with high heat concentrations to increase fire intensity over the next few days. LAL 2**

Fuel Type	Rates of Spread	Flame Length	Spotting Distance	Firebrand Ignition
<b>Winds at 3 - 10 G 16 mph</b>				
Shrub Fuels – SH4	1 - 7 ch/hr	1 - 2 feet	1/10 - 2/10 mile	57%
Heavy Southern Rough- SH8	3 – 15 ch/hr	4 -8 feet	1/10 -2/10 mile	56%
Timber Litter-Reburn TL8	2 - 5 ch/hr	2 - 3 feet	1/10 - 2/10 mile	56%
Small Pine Plantation w/grasses GR5	3 – 17 ch/hr	2 - 5 feet	1/10 – 2/10 mile	56%

**One hour fine dead fuel moisture is at 6% for Saturday.** Moisture from repeated rains have reduced the fire threat, HOWEVER fine fuels are drying out quickly. 1,000 hour fuels again drier than normal for this time of year. There is reburn potential in all divisions due to the amount of needle cast and fallen trees. Should wind become stronger than predicted, expect fire behavior to increase above predicted levels. Heavier firebrands can also be lifted higher and further increasing likelihood of spots to max predictions. **In areas where fuels have been herbicided, expect quick ignitions and extreme heat, quick rate-of – spread, and group tree torching producing spotting problems.**

**NOTE- FIRE BEHAVIOR CALCULATIONS ARE FOR FIRES IN UNBURNED FUELS INCLUDING NEW IA STARTS.**

<b>West</b>	<b>A</b>	<i>Falling snags still pose a threat to fire personnel and the boardwalk. <b>20% chance of rain</b></i>	<b>East</b>	<b>T/V</b>	<i>Rains did fall in this area however fire will continue a slow spread to the North and west. Be heads-up for falling snags. <b>20% chance of rain</b></i>
	<b>B-G</b>	<i>Be heads-up for falling snags. <b>20% chance of rain</b></i>		<b>H, I J, K L,M N,O</b>	<i>Rains did fall in this area. Heads-up for falling snags. <b>20% chance of rain</b></i>
	<b>Y Z</b>	<i>Fine Fuels are drying out quickly. Areas of heat will remain near Div Y/Z perimeter with possible flare-ups in moderate to high fuel loadings. Be heads-up for falling snags. <b>20% chance of rain</b></i>			

**Night Ops – No Night Operations are Planned.** Scattered showers and thunderstorms will continue with patchy fog developing after midnight.

**Air Operations:** Expect possible areas of heavy smoke especially on the east side of the fire.

**SAFETY:**

**WINDS –** Stay abreast of changing wx conditions throughout the entire shift. **THUNDERSTORMS -** these severe winds can create extreme fire behavior, with winds gusting over 30 mph. **SNAGS – Snags are falling in all Divisions – will be influenced by Thunderstorm outflow winds.** **FUELS:** Watch for pockets of cured shrubs or blankets of red needles beginning to cover the forest floor. 1,000 and 10,000 hour fuels as well as deep duff pockets are providing the heat source. Stay focused, and put LCES in place before starting operations. Watch for standing burning snags that can fall without warning. *Energy Release Component (ERC) has come back up with the lower RH.*

**LCES Analysis of Tactical Actions**

Incident Name: Honey Prairie Complex		Date and Time Prepared: July 22, 2011 1600 hrs							Operational Period: Day July 23, 2011	
		Location on Incident								
		Divisions/Groups								
TACTICAL HAZARDS	A, B, C, D, E, F, G	H, I, J, K, L	M, N, O	T, V	Y, Z	Roads Group	ICP	Initial Attack	Mitigations	
Powerlines	*	*	*	*	*	*	*	*	Assume all power lines are charged. Avoid all contact with downed lines.	
Complacency	*	*	*	*	*	*	*	*	Follow work/rest guidelines.	
Indirect Fireline				*	*			*	LCES; IRPG Pg. 10, Indirect Attack; Burnout as possible.	
Anchor Points	*	*	*	*	*			*	Ensure fireline is anchored. Use natural features when possible. Use Local Resource Advisor	
Extreme Conditions (Spotting, Wind)									LCES, Establish Trigger Points. Maintain Situational Awareness. Establish Lookouts as needed. Follow MAP actions.	
Unburned Area Reburn Potential	*	*	*	*	*			*	LCES, Utilize Air Attack if Available. Know Predicted Weather and Fire Behavior Forecast.	
Hazard Trees	*	*	*	*	*			*	IRPG Pg. 80, Identify and flag hazard trees. Look Up, Down and Around	
Hazardous Materials	*	*	*	*	*	*		*	IRPG Pg. 26-27, HAZMAT. Identify and map propane tanks, electric lines, septic tanks and determine bridge wgt. limits prior to use.	
Vehicle Use (Travel 1HR+, Roads)	*	*	*	*	*	*		*	Park vehicles for egress. Follow traffic plan. Use seat belts, drive with headlights on and keep windshields clean. Use spotters. Drive Defensively. Use multiple camp locations to reduce drive time.	
Communications	*	*	*	*	*	*			Ensure radio is cloned with the current communications plan. LCES	
Structure Protection			*	*				*	Use structure protection checklist, PPE, Triage. Utilize Local Fire Departments	
Air Operations (multiple aircraft, line support)	*	*	*	*	*			*	Monitor Air Guard at all times. Flight follow through Dispatch. Keep drop areas clear of personnel.	
Mechanical Equipment	*	*	*	*	*			*	Use PPE, ensure all safety devices are functional. Operator must see you before approaching equipment. Maintain proper distance away from equipment working in the area.	
Escape Routes Safety Zones	*	*	*	*	*			*	LCES, Establish and identify safety zones & escape routes. Know where these are located and the route to them. IRPG p.7	
Thunderstorm Safety	*	*	*	*	*			*	Keep an eye on changes in weather. Take hourly weather observations. Comms will provide weather updates when needed.	
Wildlife	*	*	*	*	*			*	Keep food items off the line and use refuse containers around camp. Use insect repellent as needed. Use caution around water as wildlife is concentrated.	
Sun Exposure	*	*	*	*	*			*	Use sunblock as needed.	
Heat	*	*	*	*	*			*	Hydrate prior to going on line and all during the day. Recognize the signs of heat related injuries. Take frequent breaks throughout the work period.	
Air Quality	*			*	*	*		*	Rotate personnel frequently out of smoke. Ensure off-line rest is clear of smoke.	
Railroad Crossings	*	*	*	*	*	*		*	Visually check all railroad crossings to ensure track is safe to cross. Don't bunch up, leave room for other vehicles to cross. Don't try to beat the train.	
							Safety Officer: Mark Munns			

# SAFETY MESSAGE

JULY 23, 2011

## Major Hazards and Risk

### Dehydration

Insects

Wildlife

Hygiene

Logging Operations

Thunder Storms

Driving

Complacency



## Mitigations

The heat index is again going to be over 100 degrees again today. Drink water frequently to stay hydrated take frequent breaks. Drink water before you get thirsty. Keep an eye on your physical condition and everybody around you. Some of the symptoms to look for:

Heavy Sweating \* Extreme Weakness \* Nausea \* Muscle cramps \* Elevated Body Temperature

Dizziness \* Confusion \* Clammy \* Pale Complexion \* Fast and Shallow Breathing

Mosquitoes are more than just a nuisance: they can transmit disease to people. Mosquitoes are most active during the hours of dawn and dusk.

Alligators are on the move now as well as other wildlife. Pay attention to your environment give all wildlife an opportunity to leave do not feed or harass any animals especially alligators.

To prevent the spreading of germs wash your hands often. By washing your hands, you rinse away germs, protecting yourself and others. It is especially important before you eat.

Logging operations are on the increase. Avoid logging operations if at all possible.

When thunderstorms approach take refuge in your vehicle.

Wearing your seat belt will save your life. Drive at the posted speed limit or less.

Seeing and doing the same things every day leads to complacency. Stay alert to all the hazards. Conduct tail gate safety sessions.

Safety Officers,

Tommy Hawkins

Mark Munns



MEDICAL PLAN	Incident Name Honey Prairie Complex	Date Prepared 7/22/2011	Time Prepared 1800	Operational Period 7/23/2011	
<b>5. Incident Medical Aid Station</b>					
<u>Medical Aid Stations</u>	<u>Location</u>			Paramedics Yes No	
MEDICAL UNIT (ICP)	Honey Prairie Complex ICP- Lodge 5 (912)-637-5236 Mark Millirons (EMT)MEDL (706)741-4216			X	
WEST BRANCH (Line EMT)	Levi Clymer(EMT-P)(417)658-5155 (A,B,C,D,E,F,G DIV) Wes Lathen (EMT-P)(435)760-8481 (T,V DIV) Chad Simons (EMT-P)(404)772-5344/ (Y,Z DIV) (West IA) will be covered by line medic if needed			X	
EAST BRANCH (Line EMT)	Michael Graham(EMT-B)(912)-286-1674 (H,I,J,K,L DIV) Jackie Aultman 218-491-1351(EMT- B)(M,N,O DIV) (East IA) will be covered by line medic if needed.			X	
<b>Ambulance Services</b>					
Name	Address	Phone	Paramedic Yes No		
Clinch County EMS (WEST SIDE)	West Branch Council Road & HWY 94	Channels 4, 11, 13 912-286-1673 EMS Incident Cell	Yes		
Ware County EMS (NORTHSIDE)	Waycross, Georgia (911 to activate)	912-281-9467	Yes		
Charlton County EMS (EAST SIDE)	Folkston, GA (911 to activate)	912-496-7321	Yes		
<b>Air Ambulance Service</b>					
Trauma 1	Lake City , FL (16 min/air to Fargo ICP)	1-800-223-4878(freq. 155.340)	Yes		
Trauma 1	Jacksonville, FL (26 min/air to Fargo ICP)	1-800-223-4878(freq. 155.340)	Yes		
AirMed	Augusta, GA (2 hrs/air to Fargo ICP)	1-888-792-9245(freq. 155.340)	Yes		
Lifeflight	Jacksonville, FL (35 min/air to Fargo ICP)	1-877-870-7779(freq. 155.340)	Yes		
Air Evac	Waycross, GA (17 min/air to Fargo ICP)	1-800-247-3822(freq. 155.340)	Yes		
US Coast Guard (Heli-Rescue)	Savannah GA	1-912-652-4646 (freq. 155.340)	Yes		
<b>7. Hospitals</b>					
Name	Address	Travel Time Air Ground	Phone	Helipad Yes No	Burn Center Yes No
Satilla Regional	410 Darling Ave Waycross Ga N 31°13.56 W 82°21.058	18 min 45 min	912-283-3030	Yes	No
Clinch Memorial Hospital (WEST SIDE)	1050 Valdosta HWY Homerville, GA	25 min	912-487-5211 ext 4502	Yes	No
Charlton Memorial Hospital (EAST SIDE)	1203 3 <sup>rd</sup> St. Folkston, GA	50 min	912-496-2531	Yes	No
Memorial Hospital	Savannah, GA 4700 Waters 3200.7 8107.6	30 min	912-350-8999	Yes	No
Shands Hospital (level I)	Jacksonville, FL N 30°20'97 W 82° 13'992	26 min 1.5 hrs	800-223-4878	Yes	Yes
Shands Burn Center	Gainesville, FL 38.33 N 082 20.73W	33 min 1.5 hrs	352-265-0300	Yes	Yes
<b>8. Medical Emergency Procedures</b>					
1. Notify DIVS of medical problem 2. DIVS notifies COML and MEDL 3. MEDL contacts POC for following a. # of pts b. Status of pts medical problem c. Location of pts d. Transport method e. Necessary resources 4. MEDL coordinates medevac/patient transport with SOF2, OPS2 and other relevant resources.			<b>HELISPOTS</b> Pocket Helispot 30 47 30.02 x 82 22 39.5 (West side), mile marker 4, HWY 177 Steven C. Foster State Park Fargo Helispot 30 40.945 x 082 33.640 (West side), HWY 441- Steven C. Foster Visitor Center POGO Helibase 30.44.03 x 82.07.41 (East side) <b>Evac Yankee</b> Helispot 6 Rd. 32 and 32A, N 30° 53.280 W 082° 33.880 Helispot 7 Tatum Rd. Pond N 30° 50.280 W 082° 33.857 *Alternate site can be established following guidelines for safety found with IRPG and local EMS resources.		
<p><u>Life threatening injury:</u> an injury that could mean the loss of life, limb, or eyesight  <u>Minor injury:</u> an injury that results in the removal of a pt from the line but with less urgency as a life threatening injury  <u>Medevac:</u> the most urgent transport of a pt suffering from a life threatening injury  Patient transport: transport for minor injuries  <u>Medical problem:</u> a physical or mental ailment that occurs to an individual; to include illnesses and traumatic injuries  <u>Point of contact (POC):</u> individual who will be directly advocating for patient care and transport (line medic, crew boss, DIVS etc)  *Request that FFTR/Engine crews or single resources let MEDL know if they have any EMTs or Paramedics and if they have equipment with them.</p>					
Prepared by: Mark Millirons (EMT)MEDL			10. Reviewed by: Barry Coulliette SOF		

INCIDENT RADIO COMMUNICATIONS PLAN ICS-205		Incident Name		Date/Time Prepared		Operational Period Date/Time					
		<b>Honey Prairie</b>		<b>GROUP 22</b>		07/22/2011-18:00 7/23/2011 0800-2000					
Ch #	Function	Channel Name	Assignment	RX Freq	NW	RX Tone/NAC	TX Freq	NW	TX Tone/NAC	Mode A,D or M	Remarks
1	Command	West Okee Repeater	Sec West Branch CMD	167.1250	N	156.7	163.1500	N	156.7	A	Stephen Foster State Park
2	Command	South Okee Repeater	Sec East/West Branch CMD	164.7750	N	123.0	163.1500	N	123.0	A	Eddy Florida
3	Command	East Okee Repeater	PRIMARY East Branch CMD	164.6250	N	103.5	163.1500	N	103.5	A	Refuge Headquarters
4	Command	NIFC C2	PRIMARY West Branch CMD	168.100	N	CSQ	170.4500	N	123.0	A	NOT linked to OKEE System
5	Command	North Okee Repeater	PRIMARY North Branch CMD	164.5750	N	206.5	163.1500	N	206.5	A	Waycross
6	Air-Ground	Air to Ground	PRIMARY	166.9375	N	CSQ	166.9375	N	CSQ	A	
7	Tactical	MOB-MOB	GFC Contingency Structure Protection Group West I.A.	159.3900	W	CSQ	159.3900	W	156.7	A	
8	Tactical	V-Fire 21W WHITE	Protection Group West I.A.	154.2800	W	CSQ	154.2800	W	156.7	A	
9	Tactical	USFS 9	DIV A,B,C, D,E,F,G,T&V (East I/A)	168.7750	N	CSQ	168.7750	N	CSQ	A	
10	Tactical	S.E. Compact	DIV	159.2850	W	CSQ	159.2850	W	CSQ	A	
11	Tactical	USFS 11	DIV M,N,O	168.2000	N	CSQ	168.2000	N	CSQ	A	
12	Tactical	Refuge Tac 1	DIV H, I, J, K,L	168.3500	N	CSQ	168.3500	N	CSQ	A	
13	Tactical	FL 190	DIV Y,Z	151.2725	N	CSQ	151.2725	N	CSQ	A	
14	Command	DIV J RPT	East Branch	170.4125	N	CSQ	165.9625	N	123.0	A	NOT linked to OKEE System
15	Air-Ground	Air to Ground	SECONDARY	166.9000	N	CSQ	166.9000	N	CSQ	A	
16	EMERGENCY	AIR Guard	Air OPS.	168.6250	N	CSQ	168.6250	N	110.9	A	
Prepared by (Communications Unit) Brian Mathews Incident Dispatcher: 912-286-1660											
<b>Cloning at ICP communications and briefings,</b>											

The convention calls for frequency lists to show four digits after the decimal place, followed by either an "N" or a "W", depending on whether the frequency is narrow or wide band. **Mode** refers to either "A" or "D" indicating analog or digital (e.g. Project 25) or "M" indicating mixed mode. All channels are shown as if programmed in a control station, base stations, mobile or portable radio.

## HONEY PRAIRIE PHONE LIST

07/23/11

**Incident**

**Communication**

**(Hours: 0700-2100)**

**912-286-1660**

AGENCY OFFICIALS			OPERATIONS 912-637-5248		
Curt McCasland	602-359-0013	USFWS AA	Steve Gray	404-772-5389	Planning Operations
Mindy Gautreaux	912-282-7500	USFWS Deputy AA	Buck Kline	229-460-2062	Field Operations
Frank Sorrells	912-381-7503	GFC AA			
James Karels	850-228-7763	FL DOF AA			
Diane Adams	912-266-5421	GEMA			
Mike Housh	912-281-1575	USFWS AREP			
COMMAND			WEST BRANCH		
Troy Floyd	706-676-0168	IC	Brent McCarty	229-938-8718	West Branch
		Deputy IC	Charles Arnold	423-802-6507	DIVS A, B, C, D, E, F, G
		Unified IC (FWS)	Heath Morton	423-240-7509	DIVS V, T
			Mike Lee	770-576-9594	DIVS Y, Z
			Trent Ingram	229-726-0285	West IA
LIAISON			EAST BRANCH		
Skippy Reeves	912-387-5923	Liaison Officer FWS	Brett Waters	406-581-6198	East Branch
Gary Beauchamp	352-620-4424	Liaison Officer (FL)			
INFORMATION 912-637-5247			Rufus Crutchfield	478-986-7466	DIVS H, I, J, K, L
Jenny Lyn Bruner	770-550-6003	Fire Information	Tracy Mobley	706-346-4052	DIVS M, N, O
Denise Croker	770-548-8092	PIO1	Billy Taylor	850-544-2229	East IA
Mark Wurdeman	912-496-2566	Fire Information (JIC)			
SAFETY			AIR OPERATIONS 912-637-5254 FAX 912-637-5237		
Tommy Hawkins	706-676-7538	Safety Officer	Joseph Bistrski	801-518-2797	Air Ops Branch
Mark Munns	706-401-5903	Safety Officer	Jay Matsen	206-218-8230	ASGS (cell)
Mark Millirons	706-741-4216	Medical Unit Leader	Evertt Weniger	406-381-4176	Fargo Helibase
Field EMT	912-286-1674	Medical Unit Leader	Carl Magill	541-519-0850	ATGS - Fargo
Medical Unit	912-637-5236		Lee Kessler	218-398-2708	HEB2 - POGO
Tom Lail	404-772-5338	Safety Officer	Jeff McBain	858-357-3242	HEB2 (t) - POGO
DISPATCH			PLANNING 912-637-5241 FAX 912-637-5237		
Okeefenokee Dsp	912-496-7366	Okeefenokee	Greg Strenkowski	478-951-2421	Planning Section Chief
Suwannee Dispatch	386-758-5700	Fla wildfires, other	Keith Murphy (t)	912-637-5241	Situation Unit Leader
Waycross Dispatch	912-287-4915	Ga wildfires, other	DEMOB	912-637-5241	
			John Franks	513-519-5818	IMET
					FBAN
LOGISTICS West			FINANCE 912-637-5244 FAX 912-496-4710		
Willie Boston	770-328-3186	LSC	Lila Johnson	770-658-6641	Finance Section Chief
			Rita Loper	912-281-6876	Buying Team Leader
Thomas Lambert	912-637-5251	FACL	Ron Knowles	907-230-4945	Business Advisor
			Duane Welch	404-558-8859	Comp Claims
			=	404-844-7042	(cell)
			James Meredith	404-805-6806	IBA
Hotel Mgr	912-637-5251	Lodging			
Kevin Reish	404-276-1998	Security Manager			
Tim Jones	912-387-6480	GSUL			
Steve Blackwell	404-772-5330				
Bob Kookan		Food Unit Leader			
Amy Weaver (t)	912-637-5239	SPUL			
Kelly Towe	478-308-4770	COML			

<b>ORDERING</b>		<b>FAX 912-637-5240</b>
Cindy Tisdell	912-637-5262	Ordering Manager
<b>LOGISTICS</b>		<b>East</b>
	<b>912-496-2111</b>	
	<b>912-496-4710</b>	<b>Fax</b>
		<b>LSC</b>
John Crain	404-772-5363	Base Camp Mgr
	256-497-8388	Supply Unit Leader
Joe Hoisington	530-905-3715	EQPM
Bert Earley	229-854-5229	Roads?THSP
	239-887-1817	Security Manager
Medical Unit	912-387-6787	
Tim Cashdollar	912-387-6787	EQPM
EAST MSG CTR	912-496-4698	
<b>COOPERATORS</b>		
<b>COUNTY</b>		
	912-496-7229	Charlton County EMA
John F. Meyer - Chairman	912-496-2549	Charlton County Commissioners
Dobie Conner	912-496-7321	Charlton County Sheriff
Jesse Booth	912-520-0061	Clinch County EMA
Jonathan Daniel	912-281-5158	Ware County EMA
Jessie Jordan	912-816-6063	Ware County Fire Dept
Joe Morris	912-281-6020	Ware County Sheriff
Robbie Sutton	912-599-9027	Tri County 911
<b>STATE</b>		
GFC Fargo District Office	912-637-5270	
GFC Satilla District Office	912-287-4915	
Blair Joiner	229-237-9026	GFC Clinch Chief Ranger
Jason Gillis	912-314-9233 912-637-5504	GFC Satilla Assistant Mgr.
Brian Gray	229-894-4628 912-673-5274	Stephen Foster State Park
Travis Griffin	912-281-5790	Laura Walker State Park
Crystal Paulk-Buchanan	404-535-1048	GEMA PIO
Georgia Highway Patrol	912-287-6500	
<b>FEDERAL</b>		
Okefenokee Fire Shop	912-496-4181	
Okefenokee NWR HQ (East)	912-496-7366	
Okefenokee NWR (West)	912-637-5322	
Okefenokee Visitor Center	912-496-7836	

<b>LANDOWNERS</b>		
Jim Barrett	229-412-3133	Langdale/GOAL Chairman
Wesley Langdale	229-220-2602	Langdale
Hal Rowe	229-412-3133	Langdale
Langdale Office	229-242-7450	Langdale Office
Mike Conlon	386-365-3882	Rayonier Unit Supervisor
Ray Carter	386-288-6626	Rayonier
Ed Carter	386-288-6626	Rayonier
Doug Nuss	912-390-1037	Rayonier
Randall McCrady	912-283-4077 W 912-288-0877 C	Rayonier
Colin Myerson	229-506-1565	Superior Pine Products Co
Robbie Lee	229-356-0526	Superior Pine Products Co
Eric Harris	912-637-5597	Superior Pine Products Co
Superior Pine Office	912-637-5261	Superior Pine Products Co
Al Alexander	850-843-0104	The Forestry Co
Savell Schmidt	850-843-1181	The Forestry Co
John Bogue	850-843-1192	The Forestry Co
Joe Hopkins	912-276-0911	Toledo Timber
Chris Gowan	912-276-0965	Toledo Timber
Martin Bell	912-283-0583	Swamp Park
Crystal Peeples	352-316-0632	FIA
Steve Davis	912-614-1828	Davis Community
Trevor Fortner	912-599-9271	Little Suwannee
Tim Jarrell	912-223-7120	Hancock Forest Mgmt.
<b>RAILROADS</b>		
Norfolk Southern	800-453-2530	
Sid Moody	904-318-7983	Norfolk Southern Railroad
Chad Edwards	404-582-4909	Norfolk Southern Railroad
	540-797-9918	
Eric Sams	904-576-9907	
Norfolk So Emergency Dispatch	404-529-1597	
CSX Randy Dixon	912-270-0699	
CSX Dispatch	800-232-0144	

# FINANCE

07/23/11

## EQUIPMENT

EVERYONE, PLEASE put E#'s on top right corner of shift ticket.  
East side fuel supplier: Please send all fuel books to Finance daily.

E-526 Pierce Timber - Missing Tickets 6/29 - 7/02, 7/16 to present

E-1158 H&H Construction - Need time on Shift Ticket for Ticket and needs signed for 7/19

## TIME

A-54.2 Kerry Koskela - Please check in with Finance

O-9 Cory Bryant - Missing CTR for 7/14 to present

IF POSSIBLE, PLEASE COME BY FINANCE AND REVIEW YOUR TIME THE DAY BEFORE YOU DEMOB. ALSO, *BRING YOUR LAST CTR'S AND SHIFT TICKETS WITH YOU* TO FINANCE WHEN YOU DEMOB RATHER THAN TURNING IN AT THE BRIEFING IN THE MORNING. THIS WILL HELP AVOID DELAYS THE DAY OF DEMOB. THANKS.

WHEN DEMOBING FINANCE SHOULD BE THE NEXT TO THE LAST SECTION YOU GET SIGNED OFF ON YOUR CHECKOUT FORM WITH DEMOB UNIT BEING THE LAST. WE WILL CHECK YOUR TIME FOR YOU PRIOR TO EVERYTHING ELSE BEING SIGNED OFF, BUT WILL NOT SIGN OFF TIME UNTIL THE OTHER SECTIONS ARE DONE.

## Upcomming Demobs

Number	Name	Kind	Unit	Travel	Jetport	DemobDate
E-497.2	JETER, LESLIE	DRIV	FLFNF	POV		07/23/2011
E-894	ENGINE - T6 - 862	ENG6	MOOZP	AOV		07/23/2011
E-894.4	MIER, WILLIAM	ENGB	MOOZP		SGF	07/23/2011
E-894.5	SOKOLOWSKI,	FFT2	MOOZP	AOV	STL	07/23/2011
E-894.6	COLE, BRITTANY	FFT2	MOOZP		STL	07/23/2011
E-895	ENGINE - T6 - 9505	ENG6	MOMTF	AOV		07/23/2011
E-895.4	KNISLEY, BLAKE	ENGB	IAWTR		FSD	07/23/2011
E-895.5	OAK, JOSHUA	FFT1	MOMTF		BZN	07/23/2011
E-895.6	BODIMER, WILLIAM R	FFT1	MOMTF		STL	07/23/2011
E-1065	T6-BOULDER CITY	ENG6	COFTS	AOV		07/23/2011
E-1065.1	EVANS, MARK E	ENGB	COFTS	AOV	DEN	07/23/2011
E-1065.2	CARNELLI, MICHAEL	ENGB	COFTS	AOV	DEN	07/23/2011
E-1065.3	SPURR, TIMOTHY	FFT2	COFTS	AOV	DEN	07/23/2011
O-986	HARNOIS, MICHAEL W	STEN	WICNF	AIR	RHI	07/23/2011
O-1003	DOMINGUES, JERICK	HMGB	CALNF	A/R	RNO	07/23/2011
O-1043	LANG, EDWARD J	SEC2	GACHF	AOV	ATL	07/23/2011
O-1064	HITT, WILLIAM E	FACL	WYCDC	AIR	RIW	07/23/2011
O-1111.24	SABO, KENDRA	FSC2	ORFWF	AIR	RDM	07/23/2011
O-1111.35	LACEY, ANDREW	DMOB	ORUMF	AIR	ALW	07/23/2011
A-42.3	MCBATH, JEFF	HMGB	WYWRA	AIR	CPR	07/24/2011
A-42.6	WARFEL, CHESTER	HECM	WYWRA	AIR	RIW	07/24/2011
A-42.9	SMITH, THEODORE D	HECM	WYWRA	AIR	RIW	07/24/2011
E-404	MINNESOTA ENG6	ENG6	MNSUF	AOV	DLH	07/24/2011
E-404.10	SAUMER, ZACH	FFT1	MNSUF		DLH	07/24/2011
E-404.11	KNAPPER, JON	ENGB	MNSUF		DLH	07/24/2011
E-404.12	MACHO, LUKE PAUL	ENGB	MNSUF		DLH	07/24/2011
E-853	KALEIGH	WAT3		POV		07/24/2011
E-853.2	HATTON, TRENT	DRIV		POV		07/24/2011
E-893	ENGINE - T6 - E251	ENG6	MIHMF	AOV	MBS	07/24/2011
E-893.8	KNIFE, MARTEL	ENGB	MIHMF		TVC	07/24/2011
E-893.9	SMITH, AARON	FFT2	MIHMF		MBS	07/24/2011
E-893.10	FELSKE, MATTHEW	FFT2	MIHMF		MBS	07/24/2011
E-914	TRACTOR - PLOW - T2	TPL2	GAGAS	AOV		07/24/2011
E-914.4	ROBINSON, FRED	DRIV	GAGAS	AOV		07/24/2011
E-939	ENGINE - T6 - KY-LBF	ENG6	ARWHR	AOV		07/24/2011
E-939.6	CASTO, DANIEL	ENGB	KYLBFB	AOV	BNA	07/24/2011
E-939.7	INGLE, CHAD G	ENGB	KYLBFB	AOV	BNA	07/24/2011
E-939.8	KENNEDY, ANDREW J	FFT2	KYLBFB	AOV	BNA	07/24/2011
E-954	GRIFFIN, JIM	DRIV	GAOKR	POV		07/24/2011
E-954	HUGHESTREE	WAT2	GAOKR	POV		07/24/2011
E-969.1	TOMLINSON, KERRY	GRD	GAOKR	POV		07/24/2011
E-977	ENGINE - T6 - IPF - D1	ENG6	IDIPF	AOV		07/24/2011
E-977.5	FELTMANN, HAROLD	ENGB	IDIPF		GEG	07/24/2011
E-977.6	MONTREUIL, PATRICK	ENGB	IDIPF		GEG	07/24/2011
E-977.7	LEWIS, CODY	FFT1	IDIPF			07/24/2011
E-977.8	WISE, KASARA	FFT2	IDIPF		GEG	07/24/2011
E-1137	ENGINE - T7 -	ENG7	GAGAS	AOV		07/24/2011
E-1138	TRACTOR - PLOW - T3	TPL3	GAGAS	AOV		07/24/2011
E-1138.1	TRUCK - TRACTOR -	PU	GAGAS	AOV		07/24/2011
E-1138.2	REYNOLDS, JIM	TPOP	GAGAS	AOV	ALB	07/24/2011
E-1139	TRACTOR - PLOW - T2	TPL2	GAGAS	AOV		07/24/2011
E-1139.1	TRUCK - TRACTOR -	PU	GAGAS	AOV		07/24/2011
E-1139.2	JACKSON, STAN	TPOP	GAGAS	AOV		07/24/2011
O-534	ROGERS, MIKE	DRIV	GAOKR	POV		07/24/2011
O-895	LAMENT, ELIZABETH	RADO	VAVAF	AOV	ROA	07/24/2011
O-1013	HOISINGTON,	EQPM	CAKNF	AIR	MFR	07/24/2011
O-1018	THOMAS, GREG	STEN	TNTNS	AIR	CHA	07/24/2011
O-1020	MATSEN, JAY	HEB1	WAMSF	AIR	SEA	07/24/2011
O-1041	REISH, KEVIN	SECM	NYUDP	AIR	AVP	07/24/2011

## Upcomming Demobs

Number	Name	Kind	Unit	Travel	Jetport	DemobDate
O-1042	WALDROOP, STEVEN	SEC1	NCNCF	AOV	AVL	07/24/2011
O-1055	DAVIS, ROYCE A	STPL	GAGAS	AOV	ALB	07/24/2011
E-390	WISCONSIN ENG 461	ENG6	WICNF	AOV		07/25/2011
E-390.3	PETE, LLOYD	ENOP	WICNF	AOV	RHI	07/25/2011
E-390.8	PARMENTIER,	FFT2	WICNF		RHI	07/25/2011
E-390.9	GUMM JR, JAMES V	FFT2	WIGLA		RHI	07/25/2011
E-405	MAINE FWS ENGINE	ENG6	MEMHR	AOV		07/25/2011
E-405.4	GORE, BRETT	ENGB	NJWKR	AOV	AVP	07/25/2011
E-405.7	LINDSEY, ELIZABETH J	ENGB	MEMHR	AOV	BGR	07/25/2011
E-405.8	CURRIER, AARON J	FFT2	MEMHR	AOV	BGR	07/25/2011
E-821	ENGINE - T6 - RAPID	ENG6	SDRCFX	AOV	RAP	07/25/2011
E-821.4	THOMPSON, ROBERT	ENGB	SDSDS	AOV	RAP	07/25/2011
E-821.5	LANGE, JOSH	FFT1	SDSDS	AOV	RAP	07/25/2011
E-821.6	DENTON, LEVI B	FFT1	SDSDS	AOV	RAP	07/25/2011
E-824	ENGINE - T6 - RAPID	ENG6	SDRCFX	AOV	RAP	07/25/2011
E-824.4	JOHNSON, ALAN J	ENGB	SDSDS	AOV	RAP	07/25/2011
E-824.5	BRUBAKER, CHRIS	ENGB	SDSDS	AOV	RAP	07/25/2011
E-824.6	KAHLER, MATHEW S	FFT1	SDSDS	AOV	RAP	07/25/2011
O-876	KNOWLES, RONALD	IBA1	AKR10	A/R	JNU	07/25/2011
O-961	WURDEMAN, MARK A	PIO1	MNMNS	AIR	MSP	07/25/2011
O-998.40	DUNN, GREG	PIO2	FLFLS	AOV		07/25/2011
O-1049	HOWARD, VONNIE	SEC1	MSMNF	AOV	JAN	07/25/2011
O-1061	JACOBI-YEATON,	ABRO	NHWMF	AIR	MHT	07/25/2011
O-1063	TISDELL, CINDY LEE	ORDM	MNMNS	AIR	BJI	07/25/2011
O-1067	MORSE, CHARLES	SOF2	FLFLS	AOV		07/25/2011
C-14.21	ADAMS, MATTHEW	FFT2	NCNCF	POV	AVL	07/26/2011
C-14.22	OAKES, DANIEL	FFT2	NCNCF	POV	AVL	07/26/2011
C-14.23	GORDON, BRIAN	ICT5	NCNCF	POV	AVL	07/26/2011
C-14.24	ENGLE, DAVID	ICT5	NCNCF	POV	AVL	07/26/2011
E-228	CLINCH COUNTY	GRD	GAOKR	AOV		07/26/2011
E-228.1	HENDRICKS, STEVEN	DRIV	GAOKR	AOV		07/26/2011
E-981	TIMBERLINE	SK	GAOKR	POV		07/26/2011
E-981.1	TINER, HENRY	DRIV	GAOKR	POV		07/26/2011
E-995	ENGINE - T6 - MES	ENG6	MEMES	AOV		07/26/2011
E-995.7	DAIGLE, MICHAEL N	ENGB	MEMES	AOV	PQI	07/26/2011
E-995.8	BABIN, STEVEN	FFT2	MEMES	AOV	PQI	07/26/2011
E-995.9	MADORE, SHAWN	FFT2	MEMES	AOV	BGR	07/26/2011
E-996.7	COUSINS, JOHN L	ENGB	MEMES	AOV	BGR	07/26/2011
E-1022.1	TUTEN, LEE	DRIV	GAOKR	POV		07/26/2011
E-1153	ALS BAG WITH	MISC	UTNUC	AIR	SLC	07/26/2011
E-1153	LATHEN, WES	EMTP	UTNUC	AIR	SLC	07/26/2011
O-998.14	KERN, JOHN	FBAN	FLFLS	AOV	TPA	07/26/2011
O-1068	BURNSSED, JAMES	SOF2	FLFLS	POV		07/26/2011
O-1070	WATERS, BRETT	OPBD	MTMSO	AIR	BIL	07/26/2011
O-1072	ANGELO, DANIEL	ENGB	MNBGR	AIR	FAR	07/26/2011

Record Count: 104

# Joint Information Center Fire Update

Fire Update for Friday, July 22, 2011 ~ 10 a.m.

Fire Information: [www.inciweb.org](http://www.inciweb.org)



## Honey Prairie Fire Complex: 302,680 acres, 70% contained

Winds will continue to come out of the west/southwest pushing smoke from the Honey Prairie Fire towards communities on the east side of the fire, such as Hoboken, Nahunta and Folkston. No rain has occurred on the fire complex in the last 5 days with no significant chance of rain predicted for the next four days. Fuels continue to dry out as the predicted relative humidity decreases and temperature increases. Smoke and open flames were observed on the northwest area of the fire indicating the potential for a continued increase in fire activity. The Florida Interagency Management Green Team is being replaced by a Georgia Forestry Commission Incident Management Team to manage the fire complex.

## Okefenokee National Wildlife Refuge Partially Reopens

Wildfire within the Okefenokee National Wildlife Refuge has decreased to the point where the major entrances to the refuge will reopen for visitors on Saturday, July 23. The Kingfisher Landing will continue to be closed.

Visitors to the east entrance, 11 miles southwest of Folkston, GA, are encouraged to stop by the Richard S. Bolt Visitor Center, where you can plan your visit at the information desk, shop in the bookstore, watch an award-winning movie, and try out fun interactive exhibits about the Okefenokee. The visitor center is open 9 am – 5 pm daily.

Impacts from the wildfire can be observed throughout the area around the visitor center, Swamp Island Drive and the Suwannee Canal. From the visitor center, visitors can hike the Cane Pole, Canal Diggers, or the Longleaf Pine Trails. A two mile portion of the Suwannee Canal and a half mile of canoe trail into the Chesser Prairie will be open for self-guided day trips by canoe or kayak. Motor boating is not recommended due to the low water levels. All day use boats must be off the water by 5 pm.

The east entrance gate is open from 1/2 hour before sunrise - 7:30 pm. Swamp Island Drive is open for driving, bicycling, and hiking from 1/2 hour before sunrise - 7 pm. Visitors are welcomed to walk around the grounds of the Chesser Island Homestead, hike the Homestead Trail or the Deer Stand Trail. The Tom Chesser house, closed for the summer, will reopen in September. The entire Swamp Boardwalk and half of the Ridley's Island Trail were damaged by fire and will be closed until the boardwalks are replaced.

Joy Campbell, owner of the Okefenokee Adventures refuge concession is excited to offer guided motor boat, canoe, and kayak tours. She urges visitors to "please keep in mind that the water level in the Swamp is still low and we can't fill our boats to capacity. Please plan accordingly by giving yourself enough time to sign up and possibly wait for the next available tour." Reservations are required for the guided canoe/kayak tours. Please call (912) 496-7156 at least 24 hours ahead to make a reservation.

Stephen C. Foster State Park has partially reopened. The office, picnic area, and museum are open from 8 am to 5 pm The park's trails, boat rentals, camping, and cabins remain closed. Call (912) 637-5274 for updates.

Okefenokee Swamp Park reopens on a limited basis beginning Friday, July 22, 2011 for the Eye on Nature Show and Train Tours. Boat tours are currently unavailable due to low water conditions. The Swamp Park is open every day from 9 am to 5:30 pm Call (912) 283-0583 for more information.



[georgiafireinformationcenter@gmail.com](mailto:georgiafireinformationcenter@gmail.com)

**912-496-2566**

### Assigned Resources

41 Engines  
17 Dozers  
4 Water Tenders  
4 Helicopters  
1 Crew  
367 Personnel

[www.inciweb.org](http://www.inciweb.org)

[www.fws.gov/okefenokee](http://www.fws.gov/okefenokee)

[www.gatrees.org](http://www.gatrees.org)

The Georgia Fire Information Center will be open from 8 am – 7 pm daily to help assist the public and media with up to date information on all fires across Southeast Georgia and Okefenokee National Wildlife Refuge. Please contact us at 912-496-2566 or [georgiafireinformationcenter@gmail.com](mailto:georgiafireinformationcenter@gmail.com).

**Cooperators:** Okefenokee National Wildlife Refuge; Georgia Forestry Commission; Florida Forest Service; U.S. Forest Service; Greater Okefenokee Association of Landowners (GOAL); Georgia Emergency Management Agency; Rayonier; Superior Pine; Langdale; GDOT; GSP; FLDOT; Georgia DNR; Georgia Aviation Authority; Georgia National Guard; Georgia DOC; County Fire Departments; Toledo Manufacturing Company; Charlton, Ware and Clinch Counties; and the Cities of Folkston and Homerville.

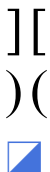
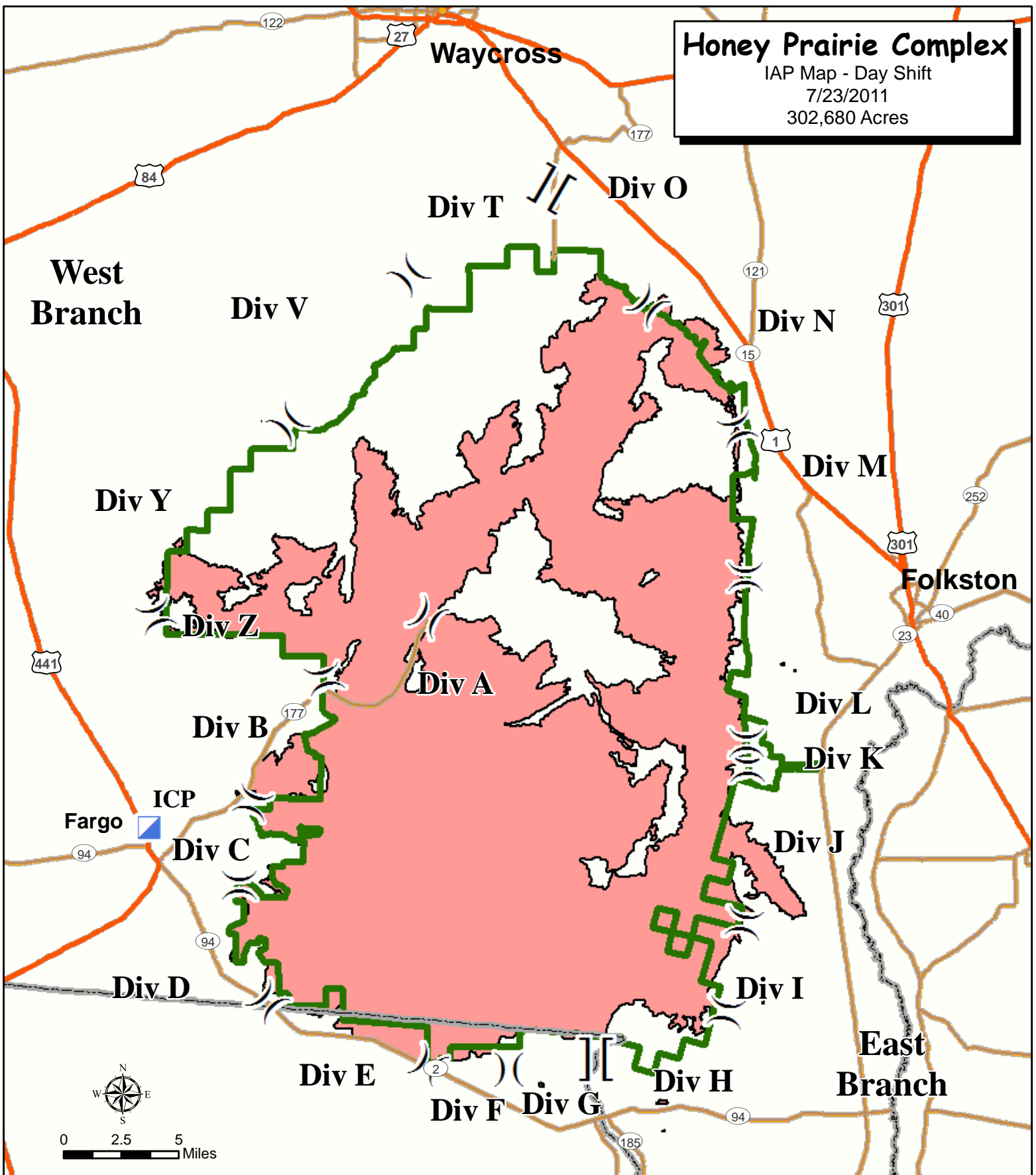


# Honey Prairie Complex

IAP Map - Day Shift

7/23/2011

302,680 Acres



Branch Break

Division Break

Incident Command Post

Highway

Major Road

State Boundary



Refuge Boundary



Fire Area



Interagency Incident Management  
**GREEN TEAM**  
Perimeter as of  
7/21/2011 1800  
S. Leverette

<b>UNIT LOG</b>	1. Incident Name Honey Prairie Complex	2. Date Prepared	3. Time Prepared
	4. Unit Name/Designators	5. Unit Leader (Name and Position)	6. Operational Period
7. Personnel Roster Assigned			
Name	ICS Position	Home Base	
8. Activity Log			
Time	Major Events		
9. Prepared by (Name and Position)			