

Honey Prairie Complex

GA-OKR-000001

Incident Action Plan

Operational Period

S unday

JULY 24, 2011

0800-2000

Incident Commander

Troy Floyd

Accounting Codes

FWS – 9141-F25M-2J

NPS – 5023 F25M E11

BLM – F25M

USFS – PRF25M_1502

Initial Attack – F4PM

INCIDENT OBJECTIVES	1. INCIDENT NAME Honey Prairie Complex	2. DATE PREPARED 7/23/11	3. TIME PREPARED 1800												
4. OPERATIONAL PERIOD (DATE/TIME) Sunday, July 24, 2011 0800 – 2000															
5. GENERAL CONTROL OBJECTIVES FOR THE INCIDENT (INCLUDE ALTERNATIVES) <ol style="list-style-type: none"> 1. Provide for safety of incident personnel and public in all incident operations. 2. Maintain a positive working relationship with all adjacent landowners, cooperators State and Federal partners. Inform, involve and communicate incident planning and operations with all partners. 3. Contain all fires that are within the Okefenokee National Wildlife Refuge, inside the Refuge and/or inside the swamp edge break if possible. 4. In cooperation with local timberland owners, use full suppression strategies and tactics to minimize damage to private timberlands and improvements and to prevent fires outside the Refuge from entering the Refuge. 5. Assist in management and suppression of additional fires (new starts or breakouts) in the vicinity as approved by Agency Administrators and Unified Incident Commanders. 6. Protect all cultural and archeological sites and structures within the refuge, with particular attention to facilities at Okefenokee Swamp Park. 7. Manage the fires cost-effectively consistent with the values at risk. 8. Implement structure protection as necessary for at-risk facilities and communities. 9. Coordinate suppression actions with assigned Refuge Resource Advisors 															
6. WEATHER FORECAST FOR OPERATIONAL PERIOD See attached forecast for area specific weather information.															
7. GENERAL SAFETY MESSAGE Drive defensively and use spotter when backing. Ensure LCES is in place and known by all personnel. Drink plenty of water and take frequent rest breaks. Ensure proper use of PPE during all operations.															
8. Attachments (☐ if attached) <table border="0" style="width: 100%;"> <tr> <td><input type="checkbox"/> Organization List (ICS 203)</td> <td><input type="checkbox"/> Incident Map</td> <td><input type="checkbox"/> Safety Message</td> </tr> <tr> <td><input type="checkbox"/> Assignment List (ICS 204)</td> <td><input type="checkbox"/> Traffic Plan</td> <td><input type="checkbox"/> Demobilization Procedures</td> </tr> <tr> <td><input type="checkbox"/> Communications Plan (ICS 205)</td> <td><input type="checkbox"/> Finance Message</td> <td><input type="checkbox"/> Unit Log</td> </tr> <tr> <td><input type="checkbox"/> Medical Plan (ICS 206)</td> <td><input type="checkbox"/> Phone List</td> <td></td> </tr> </table>				<input type="checkbox"/> Organization List (ICS 203)	<input type="checkbox"/> Incident Map	<input type="checkbox"/> Safety Message	<input type="checkbox"/> Assignment List (ICS 204)	<input type="checkbox"/> Traffic Plan	<input type="checkbox"/> Demobilization Procedures	<input type="checkbox"/> Communications Plan (ICS 205)	<input type="checkbox"/> Finance Message	<input type="checkbox"/> Unit Log	<input type="checkbox"/> Medical Plan (ICS 206)	<input type="checkbox"/> Phone List	
<input type="checkbox"/> Organization List (ICS 203)	<input type="checkbox"/> Incident Map	<input type="checkbox"/> Safety Message													
<input type="checkbox"/> Assignment List (ICS 204)	<input type="checkbox"/> Traffic Plan	<input type="checkbox"/> Demobilization Procedures													
<input type="checkbox"/> Communications Plan (ICS 205)	<input type="checkbox"/> Finance Message	<input type="checkbox"/> Unit Log													
<input type="checkbox"/> Medical Plan (ICS 206)	<input type="checkbox"/> Phone List														
9. PREPARED BY (PLANNING SECTION CHIEF) Greg Strenkowski		10. APPROVED BY (INCIDENT COMMANDER) Troy Floyd													

ORGANIZATION ASSIGNMENT LIST		9. Operations Section		
1. Incident Name Honey Prairie Complex GA-OKR-000001		Chief	Buck Kline 8/5	
		Planning	Steve Gray 8/1	
2. Date 7/23/2011	3. Time 1000 hrs	a. WEST BRANCH - Divisions/Groups		
4. Operational Period 7/24/2011 0800 - 2000		OPBD	Brent McCarty 8/2	
5. Incident Commander and Staff		Division	A-B-C-D-E-F-G	Charles Arnold 8/1
Incident Commander	Troy Floyd 8/5	Division	T-V	Heath Morton 8/4
Liason Officer				
Safety Officers	Tommy Hawkins 8/4 Mark Munns 8/5	Division	Y-Z	Mike Lee 8/2
Information Officer	Jenny Lynn Bruner 8/4 Denise Croker 8/5			
6a. Agency Administrators				
FWS	Curt McCasland	Group	IA-WEST and Structure Group	Trent Ingram 8/5
FWS	Mindy Gautreaux			
6b. Agency Representatives				
FWS Liason	Skippy Reeves	b. EAST BRANCH - Divisions/Groups		
GFC	Frank Sorrels	OPBD	Brett Waters 7/25	
FLDOF	James Karels	Division	H-I-J-K-L	Rufus Crutchfield 8/4
FWS AREP	Mike Housh			
FWS-Refuge PAO	Art Webster	Division	M-N-O	Tracy Mobley 8/1
GEMA AREP	Alan Robinson / Diane Adams	Group	IA-EAST	Billy Taylor 7/26
USFS AREP	Ivan Greene	Group	Roads	Bert Earley (THSP) 7/27
7. Planning Section				
Chief	Greg Strenkowski 8/5	c. AIR OPERATIONS BRANCH - Honey Prairie		
Dep Chief		Air Operations Branch Director		Joseph Bistryski 8/4
Resources Unit	Josh Burnette 8/5 Randy Lownes 8/2	Air Support Group Supervisor		Brian Campbell 8/7
Situation Unit	Keith Murphy(T) 8/4			
IMET	John Franks 8/3			
FBAN	John Kern 7/25	d. AIR OPERATIONS BRANCH - Pogo		
Demob Unit	Harold West 8/5	Pogo Helibase Manager		Lee Kessler 7/27
Documentation		ATGS-Pogo		Everett Wenigar 7/30
GIS	Charles Bailey 8/5			
CTSP	Rusty Brown 8/5			
SCKN	Mike Jones 8/5			
8. Logistics Section		10. Finance Section		
Chief	Willie Boston 8/5	Chief	Lila Johnson 8/5	
Supply Unit	Amy Weaver (T) 8/5	Deputy	Amy Treadwell 8/5	
GSUL	Tim Jones 8/5 Steve Blackwell 8/5	Time Unit	Darline Matheney 8/5	
ORDM	Cindy Tisdell 7/24 Jim Grimes 8/5	Procurement	John Watson 7/28	
COML	Kelly Towe 8/5	Comp Claims Unit	Kurt Hine 8/5	
Medical Unit	Mark Millirons 8/5	Cost	Grace Reid 8/5 / Tom Steele 8/5	
Facilities	Thomas Lambert 8/4 Dennis Evans 8/5 Jeremy Hughes 8/5	Buying Team	Judy Reddin 8/3	
Food	Bob Kookan 8/2 / Chris Barnes 8/5			
SEC1	Don Cockman 7/28	IBA	James Meredith 7/30	
COMT	Roy Fortenberry 8/5			
EQPM	Richard Young (T) 8/5 JohnnyBarwick 8/4 Kenneth Edge 8/5			
		Prepared by: R Lownes	RESL	

DIVISION ASSIGNMENT LIST				1. Branch West		2. Division A, B, C, D, E, F, G	
3. Incident Name: Honey Prairie Complex				4. Operational Period Date: 7/24/2011 Time: Day: 0800-2000			
5. Operations Personnel							
Operations	Buck Kline 8/5			Branch Director	Brent McCarty 8/2		
Planning Ops	Steve Gray 8/1			Division Supervisor	Charles Arnold 8/1		
Safety Officer							
6. Resources Assigned this Period							
Strike Team/Task Force/ Resource Designator	Leader / Name / Designator	Last Shift Date	Num. Per.	Drop Off PT./Time	Pick Up PT./Time		
TFLD (O-960)	Paul Pelligrini	8/1	1				
SDENG6 (E-821) SDRCFX	Robert Thompson	7/24	3				
SDENG6 (E-824) SDRCFX	Chris Brubaker	7/24	3				
MEENG6 (E-405) MEMHR	Brett Gore	7/24	3				
ENG6 (E-1076) MOMTF 9504	Tim Perren	7/29	3		Out of Service 7/25		
SOF2 (O-1068)	Jamey Burnsed	7/25	1				
EMTP (O-847)	Levi Clymer	7/28	1				
7. Control Operations							
<ul style="list-style-type: none"> Patrol and mop up within 100' of fire perimeter line. Monitor fire impacts to Stephen Foster State Park. Patrol and control reburn. 							
8. Special Instructions							
<ul style="list-style-type: none"> Examine work area for fire weakened snags. Ensure LCES are in place before operations begin and stay hydrated. Additional resources will be available from GFC, Florida DOF, FWS, and local cooperators. Drive defensively and with lights on at all times. Continue to complete Suppression Damage Assessment Survey. 							
9. Division/Group Communication Summary							
Function	Frequency	System	Channel	Function	Frequency	System	Channel
Command N Okee Repeater	RX 164.5750/206.5 TX 163.150/206.5	KING NIFC	5	Logistics		KING NIFC	
Tactical Div/Group	RX 168.775 TX 168.7750	KING NIFC	9	Air to Ground	RX 166.9375 TX 166.9375	KING NIFC	6
Prepared by (Resource Unit Ldr.) Randy Lownes		Approved by (Planning Sect. Ch.) Greg Strenkowski		Date 7/23/2011		Time 1900	

DIVISION ASSIGNMENT LIST				1. Branch West		2. Division T, V	
3. Incident Name Honey Prairie Complex				4. Operational Period Date: 7/24/2011 Time: 0800-2000			
5. Operations Personnel							
Operations	Buck Kline 8/5			Branch Director	Brent McCarty 8/2		
Planning Ops	Steve Gray 8/1			Division Supervisor	Heath Morton 8/4		
Safety Officer							
6. Resources Assigned this Period							
Strike Team/Task Force/ Resource Designator		Leader / Name / Designator		Last Shift Date	Num. Per.	Drop Off PT./Time	Pick Up PT./Time
TFLD (O-942)		Ben Krupski		8/1	1		
ENG6 (E-2) GAOKR		Unstaffed					
ENG6 (E-3) GAOKR		Unstaffed					
ENG 6156 (E-995) MEMES		Mike Daigle		7/25	3		
ENG 6170 (E-996) MEMES		John Cousins		7/25	3		
Tipton/Young TPL2 (E-986) GAOKR		David Hauser		7/30	1	PVT	Rotating Operators
Tipton/Young TPL2 (E-988) GAOKR		Jonathon Houser		7/30	1	PVT	Rotating Operators
Timberline Skidder (E-981) GAOKR		Henry Tiner		7/25	1	PVT	
Cat Grader (E-530) GAOKR		Lucious Corbett		7/27	1	PVT	
SOF2 (O-891)		Steve Holman		8/1	1		
EMTP (E-1153)		Wes Lathen		7/25	1		
7. Control Operations							
<ul style="list-style-type: none"> Recon potential control lines and examine area for snag removal Improve swamp break boundaries for fire breaks, work w/resource advisor Coordinate potential burn-out w/READ and refuge personnel Use refuge personnel for any burn-out activities. Coordinate potential burn-out w/ READ and refuge personnel. Use refuge personnel for any burnout activities. 							
8. Special Instructions							
<ul style="list-style-type: none"> Make contact with the Resource Advisor before using mechanical equipment. Safely push down with equipment all snags whether on fire or not that are a threat to success or tactical operations. Ensure LCES are in place before operations begin. Stay hydrated. Drive defensively and with lights on at all times. Boggy terrain: Be careful and aware when working around this type of area. Continue to complete Suppression Damage Assessment Survey. 							
9. Division/Group Communication Summary							
Function	Frequency	System	Channel	Function	Frequency	System	Channel
Command N Okee Repeater	RX 164.5750/206.5 TX 163.150/206.5	KING NIFC	5	Logistics		KING NIFC	
Tactical Div/Group	RX 168.775 TX 168.775	KING NIFC	9	Air to Ground	RX 166.9375 TX 166.9375	KING NIFC	6
Prepared by (Resource Unit Ldr.) Randy Lownes		Approved by (Planning Sect. Ch.) Greg Strenkowski			Date July 23, 2011		Time 1800

DIVISION ASSIGNMENT LIST				1. Branch West		2. Division Y, Z	
3. Incident Name Honey Prairie Complex				4. Operational Period Date: 7/23/2011 Time: 0800-2000			
5. Operations Personnel							
Operations	Buck Kline 8/5			Branch Director	Brent McCarty 8/2		
Planning Ops	Steve Gray 8/1			Division Supervisor	Mike Lee 8/2		
Safety Officer							
6. Resources Assigned this Period							
Strike Team/Task Force/ Resource Designator	Leader / Name / Designator		Last Shift Date	Num. Per.	Drop Off PT./Time	Pick Up PT./Time	
TFLD (O-920)	Aaron Schneider		7/26	1			
TFLD (O-954)	Brian Ebert (t)		7/24	1			
Orange Sprgs TPL3 (E-943) GAOKR	Leslie Jeter		7/26	1	PVT		
Tipton/YoungTPL3 (E-984) GAOKR	Daniel Cole		7/31	1	PVT		
Tipton/YoungTPL2 (E-985) GAOKR	Junior House		7/27	1	PVT		
IL Eng 40 (E-392) ILSHF	Bobbi Archdale		8/4	3			
MN Eng 6232 (E-838) MNMFC	Duane King		8/4	2			
MN Eng 652(E-404) MNSUF	John Knapper		8/4	3		Crew swap 7/24	
AR Eng 162(E-939) ARWHR	Chad Ingle		8/4	3		Crew swap 7/24	
Hughes WAT2 (E-954) GAOKR	Lester James		8/4	1	PVT		
SOF2 (O-1097)	Rodney Weeks		7/30	1			
EMTP (E-1152)	Chad Simons		7/26	1			
7. Control Operations <ul style="list-style-type: none"> Make contact with the Resource Advisor before using mechanical equipment. Recon potential controllines and examine area for snag removal Improve swamp break boundaries for fire breaks Patrol and mop up within 100' of fire perimeter line. 							
8. Special Instructions <ul style="list-style-type: none"> Safely push down with equipment all snags whether on fire or not that are a threat to success or tactical operations. Ensure LCES are in place before operations begin. Stay hydrated. Drive defensively and with lights on at all times. Boggy terrain: Be careful and aware when working around this type of area. Continue to complete Suppression Damage Assessment Survey. 							
9. Division/Group Communication Summary							
Function	Frequency	System	Channel	Function	Frequency	System	Channel
Command N Okee Repeater	RX 164.5750/206.5 TX 163.150/206.5	KING NIFC	5	Logistics		KING NIFC	
Tactical Div/Group	RX 151.2725 TX 151.2725	KING NIFC	13	Air to Ground	RX 166.9375 TX 166.9375	KING NIFC	6
Prepared by (Resource Unit Ldr.) Randy Lownes		Approved by (Planning Sect. Ch.) Greg Strenkowski		Date July 23, 2011		Time 1730	

DIVISION ASSIGNMENT LIST				1. Branch West	2. Division West - Initial Attack and Structure Protection		
3. Incident Name: Honey Prairie Complex				4. Operational Period Date: 7/24/2011 Time: 0800-2000			
5. Operations Personnel							
Operations	Buck Kline 8/5			Branch Director	Brent McCarty 8/2		
Planning Ops	Steve Gray 8/1			Division Supervisor	Trent Ingram 8/5		
Safety Officer							
6. Resources Assigned this Period							
Strike Team/Task Force/ Resource Designator	Leader / Name / Designator	Last Shift Date	Num. Per.	Drop Off PT./Time	Pick Up PT./Time		
TFLD (O-899)	Bob Schober	8/2	1				
IN ENG 6711(E-1075) INBOR	David Jones (OOS?)	7/25	3		On 5 day extension		
TPL Appling 70 (E-1165) GAGAS	Joseph A. Smith Jr. (O-1116) (OOS?)	8/3	1				
TPL Clinch 72 (E-1167) GAGAS	William A. Register (O-1117)	8/3	1				
TPL Clinch 75 (E-1169) GAGAS	Christopher J. Henderson (O-1118)	8/3	1				
TPL Glynn 72 (E-1175) GAGAS	Robert L. Danley (O-1121)	8/3	1				
TPL Jeff Davis 70 (E-1177) GAGAS	Berry J. Bohannon (O-1122)	8/3	1				
EMT	Contact Honey Prairie Dispatch						
SOF2 (O-1083)	Tommy Lail	8/11	1		R&R 7/27,28		
7. Control Operations <ul style="list-style-type: none"> Respond to Initial Attack as requested Initial attack IC will communicate size up information to Honey Prairie incident communications 							
8. Special Instructions							
9. Division/Group Communication Summary							
Function	Frequency	System	Channel	Function	Frequency	System	Channel
Command N Okee Repeater	RX 164.5750/206.5 TX 163.150/206.5	KING NIFC	5	Logistics	See ICS 205	KING NIFC	
Tactical Div/Group	RX 154.280 TX 154,280/156.7	KING NIFC	8	Air to Ground	RX 166.9375 TX 166.9375	KING NIFC	6
Prepared by (Resource Unit Ldr.) Randy Lownes		Approved by (Planning Sect. Ch.) Greg Strenkowski			Date July 23, 2011		Time 1930

DIVISION ASSIGNMENT LIST			1. Branch East		2. Division H, I, J, K, L		
3. Incident Name Honey Prairie Complex			4. Operational Period Date: 7/24/2011 Time: 0800-2000				
5. Operations Personnel							
Operations	Buck Kline 8/5		Branch Director		Brett Waters 7/25		
Planning Ops	Steve Gray 8/1		Division Supervisor				
Safety Officer							
6. Resources Assigned this Period							
Strike Team/Task Force/ Resource Designator	Leader / Name / Designator		Last Shift Date	Num. Per.	Drop Off PT./Time		Pick Up PT./Time
TFLD (O-937)	Kevin Elmstrom		8/1	1			
GA ENG 86 (E-77) GAGAS	Dean Cornett		8/3	2			
EMTB (O-1077)	Michael Graham		7/26	1			
SOF2 (O-1067)	Larry Morse		7/24	1			
7. Control Operations							
<ul style="list-style-type: none"> Contain all fires outside refuge boundary. Patrol and control reburn. Patrol and mop up all accessible fire line. Mop up all hot spots within 100' of the fire perimeter. Continue to back haul excess equipment from the line. Continue to work with resource advisors when conducting rehabilitation work. 							
8. Special Instructions							
<ul style="list-style-type: none"> Ensure LCES are in place before operations begin. Stay hydrated. Drive defensively and with lights on at all times. See medical plan for EMT support Examine work area for fire weakened snags Continue to complete Suppression Damage Assessment Survey. 							
9. Division/Group Communication Summary							
	Function	Frequency	Channel	Function	Frequency	System	Channel
Command E Okee Repeater	RX 164.6250/103.5 TX 163.150/103.5	KING	3	Logistics		KING NIFC	
DIV J Repeater	RX 170.4125 TX 165.9625/123.0	NIFC	14				
Tactical Div/Group	RX 168.350 TX 168.350	KING NIFC	12	Air to Ground	RX 166.9375 TX 166.9375	KING NIFC	6
Prepared by (Resource Unit Ldr.) Randy Lownes		Approved by (Planning Sect. Ch.) Greg Strenkowski			Date July 23, 2011		Time 1800

DIVISION ASSIGNMENT LIST			1. Branch East		2. Division M, N, O		
3. Incident Name Honey Prairie Complex			4. Operational Period Date: 7/24/2011 Time: 0800-2000				
5. Operations Personnel							
Operations	Buck Kline 8/5		Branch Director		Brett Waters 7/25		
Planning Ops	Steve Gray 8/1		Division Supervisor		Tracy Mobley 8/1		
Safety Officer							
6. Resources Assigned this Period							
Strike Team/Task Force/ Resource Designator		Leader / Name / Designator	Last Shift Date	Num. Per.	Drop Off PT./Time	Pick Up PT./Time	
TFLD (O-941)		Shawn Denowh	7/26	1			
TFLD (O-994)		Jim Edgar	7/24	1			
Pickens Eng 86 (E-76) GAGAS		Stacy Cantrell	8/3	2			
Murray Eng 86 (E-78) GAGAS		Adam Greeson	8/3	2			
Putnam Eng 86 (E-80) GAGAS		Ricky Williams	8/3	2			
Jones Eng 86 (E-81) GAGAS		Russell Fowler	8/3	2			
ID ENG 31 (E-977) IDIPF		Louie Feltman	7/26	4 ??			
ENG6 (E-1133)		Chris Wright	7/26	2			
EMTB (O-1124)		Jackie Aultman	8/3	1		218-491-1351 cell	
SOF2 (O-1067)		Larry Morse	7/24	1			
7. Control Operations <ul style="list-style-type: none"> Patrol and mop up 100' inside fire perimeter. Recon potential control lines and examine area snag removal Keep fire within refuge boundary. Continue to back haul excess equipment from the fire line. Continue to work with resource advisors when conducting rehabilitation work 							
8. Special Instructions <ul style="list-style-type: none"> If the fire reaches Mgt Activity Line (MAL) 1 cooperators and adjacent landowners will be notified. If the fire reaches MAL 2 a meeting will be held at the Swamp Park with adjacent landowners and cooperators. Safely push down with equipment all snags whether on fire or not that are a threat to success or tactical operations. Ensure LCES are in place before operations begin. Stay hydrated. See medical plan for EMT support. Drive defensively and with lights on at all times. Boggy terrain: Be careful and aware when working around this type of area. Continue to complete Suppression Damage Assessment Survey. 							
9. Division/Group Communication Summary							
Function	Frequency	System	Channel	Function	Frequency	System	Channel
Command N Okee Repeater	RX 164.5750/206.5 TX 163.150/206.5	KING NIFC	5	Logistics		KING NIFC	
Tactical Div/Group	RX 168.200 TX 168.200	KING NIFC	11	Air to Ground	RX 166.9375 TX 166.9375	KING NIFC	6
Prepared by (Resource Unit Ldr.) Randy Lownes		Approved by (Planning Sect. Ch.) Greg Strenkowski			Date July 23, 2011		Time 1730

DIVISION ASSIGNMENT LIST			1. Branch East		2. Division East Initial Attack		
3. Incident Name Honey Prairie Complex			4. Operational Period Date: 7/24/2011 Time: 0800-2000				
5. Operations Personnel							
Operations	Buck Kline 8/5		Branch Director		Brett Waters 7/25		
Planning Ops	Steve Gray 8/1		Division Supervisor		Rufus Crutchfield 8/4		
Safety Officer			Division Supervisor				
6. Resources Assigned this Period							
Strike Team/Task Force/ Resource Designator		Leader / Name / Designator		Last Shift Date	Num. Per.	Drop Off PT./Time	Pick Up PT./Time
TFLD (O-943)		Steven Clark		8/1	1		
STEN (O-955)		Randy Scheer		8/1	1		
ID ENG 1161 (E-978) IDPLS		Dennis Gillmer		7/26	3		
WI ENG 461 (E-390) WICNF		Lloyd Pete		7/24	3		
ENG6 (E-1081) GAGAS		Paul Bryant		8/3	2		
ENG6 (E-1082) GAGAS		Tommy Williams		8/3	2		
ENG6 (E-1083) GAGAS		Wesley Sisk		8/3	2		
ENG6 (E-1084) GAGAS		Jody Price		8/4	2		
HC2IA (C-14) Pat Rick NCNCF		Dustin Eldred		8/1	20	PVT	On extension
FL WT3 (E-92) FLFNF		Justin Ennis / Jeff Ellis		7/27	1	PVT	
TPL Camden 70 (E-1162) GAGAS		James D Armstrong (O-1115)		8/3	1		
TPL Ware71 (E-1171) GAGAS		Barry H. Bennett (O-1119)		8/3	1		
TPL Ware 72 (E-1173) GAGAS		Thomas D. Whitley (O-1120)		8/3	1		
SOF2 (O-1067)		Larry Morse		7/24	1		
EMT		Contact Honey Prairie Dispatch					
7. Control Operations							
<ul style="list-style-type: none"> Respond to Initial Attack as requested Patrol and control return Initial attack IC will communicate sizeup information to the Honey Prairie communication. 							
8. Special Instructions							
9. Division/Group Communication Summary							
	Function	Frequency	Channel	Function	Frequency	System	Channel
Command E Okee Repeater	RX 164.625/103.5 TX 163.150/103.5	KING NIFC	3	Logistics		KING NIFC	
Tactical Div/Group	RX 168.775 TX 168.775	KING NIFC	9	Air to Ground	RX 166.9375 TX 166.9375	KING NIFC	6
Prepared by (Resource Unit Ldr.) Randy Lownes		Approved by (Planning Sect. Ch.) Greg Strenkowski			Date July 23, 2011		Time 1800

DIVISION ASSIGNMENT LIST				1. Branch ALL	2. Division Roads Group		
3. Incident Name: Honey Prairie Complex				4. Operational Period Date: 7/24/2011		Time: Day: 0800-2000	
5. Operations Personnel							
Operations	Buck Kline 8/5			Branch Director	Brett Waters 7/25 / Brent McCarty 8/2		
Planning Ops	Steve Gray 8/1			Division Supervisor			
Safety Officer							
6. Resources Assigned this Period							
Strike Team/Task Force/ Resource Designator	Leader / Name / Designator	Last Shift Date	Num. Per.	Drop Off PT./Time	Pick Up PT./Time		
THSP (O-1088)	Bert Earley	7/27	1				
HEQB (O-1090)	Jonathan Luepke	7/28	1				
EQPM (O-1111.45)	Johnny Barwick	8/4	1				
Smith Excavator (E-505) GAOKR	Don Murray	7/27	1	PVT, West Branch			
Clinch Co. Grader (E-228) GAOKR	Steven Hendricks	7/25	1	CNTY, West Branch			
Smith Grader (E-597) GAOKR	David Prpoes	7/27	1	PVT, West Branch			
Smith Dump Truck (E-529) GAOKR	Ron Watson	7/27	1	PVT, West Branch			
Smith Dump Truck (E-506) GAOKR	Craig Smith	7/27	1	PVT, West Branch			
Hughes Grader (E-230) GAOKR	Buddy Pittman	7/31	1	PVT, East Branch			
J Smith Grader (E-380) GAOKR	Jason Merrit	7/27	1	PVT, East Branch			
Kobelco Excavator (E-596)GAOKR	Kenneth Enfinger	7/31	1	PVT, East Branch			
Lankford Dump Trk(E-1078) GAOKR		8/20	1	PVT, East Branch			
Herbert Dump Truck (E-1079)GAOKR	Dennis Kight	8/20	1	PVT, East Branch			
7. Control Operations							
<ul style="list-style-type: none"> Coordinate efforts w/ resource advisor and logistics Notify Division Supervisor(s) when entering and leaving division. 							
8. Special Instructions							
<ul style="list-style-type: none"> Ensure that tractors are cleaned and free of debris daily. Examine work area for fire weakened snags. Ensure LCES are in place before operations begin and stay hydrated. Additional resources will be available from GFC, Florida DOF, FWS, and local cooperators. Drive defensively and with lights on at all times. See Medical plan for EMT support. Implement MIST tactics 							
9. Division/Group Communication Summary							
Function	Frequency	System	Channel	Function	Frequency	System	Channel
Command N.Okee Repeater	See ICS 205	KING NIFC		Logistics	See ICS 205	KING NIFC	
Tactical Div/Group	See ICS 205	KING NIFC		Air to Ground	See ICS 205	KING NIFC	
Prepared by (Resource Unit Ldr.) Randy Lownes		Approved by (Planning Sect. Ch.) Greg Strenkowski			Date 7/23/2011		Time 1930

AIR OPERATIONS SUMMARY

Prepared By: Joe Bistryski, AOB

Prepared Date: 7.23.2011

Prepared Time: 1800

1. INCIDENT NAME: Honey Prairie	2. OPS PERIOD DATE: July 24, 2011	START TIME: 0830	END TIME: 1900	SUNRISE: 0643	SUNSET: 2032
3. REMARKS (Safety Notes, Hazards, Air Operations Special Equipment, etc.): <i>Afternoon thunderstorms predicted. Discuss risk mitigations in morning briefings. Be alert to your environment and changing conditions. Ground resources monitor Air-to Ground frequency for ATGS contact.</i>					5. TFR #: 1/0249 (Box) 3000' MSL
NOTE: Latitude/Longitude format is "Degrees-Minutes-Decimal Minutes" (example: N30 41.42 W082 33.97)					

PERSONNEL	NAME	PHONE #	FREQUENCIES	AM	FM	
AOBD	Joe Bistryski	Cell 801-518-2797 Desk 912-637-5254	AIR/ AIR FW	122.575		AIRTANKERS / LEAD PLANES - None Available Local ATGS AIRCRAFT- 57Z
ASGS	Brian Campbell	404-772-5405	AIR/ AIR RW-FF	122.375		OTHER: Pogo Helibase: 912-496-4415 / FAX 912-496-2797
ATGS Pogo	Everett Weniger	406-381-4176	Georgia AIR/AIR	122.075		ICP Helispot: 404-772-5317 Oketenokee Dispatch: 912-496-7366 X230
HEB1 Pogo HB	Lee Kessler	Desk 912-496-4415 Cell 218-398-2709	Georgia AIR/GRND (Smokey - Dozers)		159.285 W	ICP HELISPOT: N30 40.945 W082 33.640 BERGANZA HELISPOT N 31 07.22 W082 15.22 * don't use unless cleared with AOB.
HEB1 Pogo HB (T)	Jeff McBath	858-357-3242	AIR/GROUND PRIMARY		166.9375	POGO HELIBASE: N30 44.03 W082 07.41
			AIR/GROUND ALTERNATE		166.9000	
			TOLC		168.0125	
			AIR GUARD		168.625 T110.9	

9. HELICOPTERS (Use Additional Sheets as Necessary)

FAA #	TY	MAKE/ MODEL	BASE	AVAIL	MANAGER	FAA #	T	MAKE/ MODEL	BASE	AVAIL	MANAGER
N36BH	1	S-70	Pogo	0830	Mike Ryan 406-925-1337	N818MC	3	AS-350B3	Pogo	0830	Juan Edar 307-330-8285
26MW	1	K-1200	Pogo	0830	Kirby Cook 406-381-1212	57Z	3	206-L4	Pogo	0830	Cindy Austin 208-241-3957
10. TASK/ MISSION/ ASSIGNMENT (Type/ function includes: Air Tactical, Retardant, Recon, Personnel Transport, Bucket Operations, SAR, etc.)											
TYPE/FUNCTION						NAME OF PERSONNEL OR CARGO (if applicable) or instructions for tactical aircraft					
Bucket Ops			N36BH, 26MW			As Requested			Pogo		
Air Tactical			57Z			1200 / As Requested			Pogo		
Recon			All recon missions must have direct approval by the AOB, 818MC, 57Z			As Requested			Pogo		
Medevac			N818MC			As Requested			Pogo		



Fire Weather Forecast



FORECAST NO: 78

NAME OF FIRE: Honey Prairie Complex

PREDICTION FOR: Day Shift
SHIFT DATE: 7/24/11

UNIT: Okefenokee National Wildlife Refuge

FORECAST ISSUED: 7/23/11 at 1700

SIGNED: John Franks
Incident Meteorologist

WEATHER DISCUSSION: A ridge of high pressure along and south of the fire will keep partly cloudy skies and an isolated chance for thunderstorms in the forecast for another day.

TODAY: Morning fog, otherwise partly cloudy, hot and humid. Isolated thunderstorms are possible in the afternoon.

MAXIMUM TEMPERATURES: 95-99 degrees
PM HEAT INDEX: 103-108 degrees
MINIMUM HUMIDITY: 40-50%
20 FT WINDS: AM: WSW 1-3 mph
PM: W 4-8 mph
STABILITY/INVERSION: Inversion to 300 feet through 0800, rising to 6800 feet by 1500
TRANSPORT WINDS: SW 11 mph
DISPERSION INDEX: 62, Good
CHANCE OF PRECIPITATION: 20%
PRECIPITATION AMOUNTS: Less than 0.10", higher amounts in thunderstorms
LIGHTNING ACTIVITY LEVEL: 2

TONIGHT: Clearing. A 20% chance of an evening thunderstorm. Winds WSW 2-4 mph. Low temperatures 70-75. Max RH 90-100%.

MONDAY: Partly cloudy and continued hot with isolated showers and thunderstorms in the afternoon.

MAXIMUM TEMPERATURES: 95-99 degrees
PM HEAT INDEX: 102-107 degrees
MINIMUM HUMIDITY: 36-46%
20 FT WINDS: AM: WSW 2-4 mph
PM: SSW 6-10 G15 mph
TRANSPORT WINDS: SW 14 mph
DISPERSION INDEX: 66, Good
CHANCE OF PRECIPITATION: 30%
LIGHTNING ACTIVITY LEVEL: 3

EXTENDED FORECAST:

	TUESDAY	WEDNESDAY	THURSDAY
SKY/WEATHER	Mostly Cloudy / Showers and T-Storms Likely	Mostly Cloudy / Scattered T-Storms	Partly Cloudy / Scattered T-Storms
CHANCE PRECIP	60%	40%	30%
MINIMUM RH	48-58%	48-58%	43-53%
20 FT. WINDS	AM: SW 3-5 mph PM: SW 6-10 mph	AM: SW 2-3 mph PM: WSW 5-9 mph	AM: SW 3-6 mph PM: SW 7-10 mph
IN/MAX TEMPS	72 / 92	70 / 90	72 / 94

FIRE BEHAVIOR FORECAST

Fire: Honey Prairie Complex	Unit: GA-OKR-000001	Prediction for Day Shift
Forecast #77 Issued: 07/23/2011 1830 hrs	Signed: /S/John Kern	Shift Date: Sunday 07/24/11

GENERAL FIRE BEHAVIOR

Fuels around the Okefenokee Wildlife Refuge are predominately Fuel Model 7 (Southern Rough). Large to moderate acreage tracts of commercial timberland are mixed in throughout the entire perimeter surrounding the refuge. Fast moving wildfires with extremely high flame lengths and rapid rates of spread occur within the swamp.

Indicators/Threshold for Increased Fire Activity

- **Relative humidity dropping below 45%**
- Winds above 10 mph
- **Heavy fuel loadings**
- Fine dead fuel moisture 8% or less
- Dispersion above 70
- *** Items in BOLD are predicted to occur today***

SPECIFIC FIRE BEHAVIOR

- **Fire behavior should be slow to develop today after the past few day's rains.**
- **Interior smoldering and some flare ups are possible, especially if winds increase.**
- **Expect fire to continue spreading through the shrub fuels with low rates of spread and minimal flame lengths. LAL 2**

Fuel Type	Rates of Spread	Flame Length	Spotting Distance	Firebrand Ignition
Winds at 3 - 10 G 16 mph				
Shrub Fuels – SH4	1 - 3 ch/hr	1 - 2 feet	1/10 mile	32%
Heavy Southern Rough- SH8	3 – 7 ch/hr	3 -6 feet	1/10 mile	32%
Timber Litter-Reburn TL8	1 - 2 ch/hr	1 - 2 feet	1/10 mile	32%
Small Pine Plantation w/grasses GR5	2 – 6 ch/hr	2 - 3 feet	1/10 mile	32%

One hour fine dead fuel moisture is at 10% for Sunday. Moisture from repeated rains have reduced the fire threat. 1,000 hour fuels again drier than normal for this time of year. There is reburn potential in all divisions due to the amount of needle cast and fallen trees. Should wind become stronger than predicted, expect fire behavior to increase above predicted levels. Heavier firebrands can also be lifted higher and further increasing likelihood of spots to max predictions. **In areas where fuels have been herbicided, expect quick ignitions and extreme heat, quick rate-of –spread, and group tree torching producing spotting problems.**

NOTE- FIRE BEHAVIOR CALCULATIONS ARE FOR FIRES IN UNBURNED FUELS INCLUDING NEW IA STARTS.

West	A	<i>Falling snags still pose a threat to fire personnel and the boardwalk. 20% chance of rain</i>	West	T/V	<i>Rains did fall in this area however fire will continue a slow spread to the North and west. Be heads-up for falling snags. 20% chance of rain</i>
	B-G	<i>Be heads-up for falling snags. 20% chance of rain</i>		East	H, I J, K L, M N, O
	Y Z	<i>Areas of heat will remain near Div Y/Z perimeter with possible flare-ups in moderate to high fuel loadings. Be heads-up for falling snags. 20% chance of rain</i>			

Night Ops – No Night Operations are Planned. Scattered showers and thunderstorms will continue with patchy fog developing after midnight.

Air Operations: Expect possible areas of heavy smoke especially on the east side of the fire.

SAFETY:

WINDS – Stay abreast of changing wx conditions throughout the entire shift. **THUNDERSTORMS -** these severe winds can create extreme fire behavior, with winds gusting over 30 mph. **SNAGS – Snags are falling in all Divisions – will be influenced by Thunderstorm outflow winds.** **FUELS:** Watch for pockets of cured shrubs or blankets of red needles beginning to cover the forest floor. 1,000 and 10,000 hour fuels as well as deep duff pockets are providing the heat source. Stay focused, and put LCES in place before starting operations. Watch for standing burning snags that can fall without warning. *Energy Release Component (ERC) is running near average for this time of year.*

HEALTH AND SAFETY MESSAGE

SAFETY starts with *YOU*

We are ALL accountable for SAFE behaviors

INCIDENT: Honey Prairie Fire

DATE: 7/24/11

TIME: 0800

Major Hazards and Risks:

Animals / Insects
Communications
Heat / Hydration
Driving

Animals / Insects – Some Alligators are looking for food and can run faster than you! Continuously scan your area for gators, snakes, bears and bees. Active Wasp nest have been found on inactive pumps. Let coworkers and supervisor know if you are allergic.

Communications – As several resources are timing out and many other positions are transitioning. Ensure good in briefings and communicate hazards/watchouts. Even if you have been assigned to the fire before, expect changes and continuously build your situational awareness.

Heat / Hydration – Higher temperatures will promote dehydration; drink WATER continuously prior to, during and after shift to ensure hydration. Remember that carbonated drinks can contribute to dehydration as well, so more water intake is required to stay properly hydrated if you don't avoid them

Driving – ATVs and UTVs need to slow down. Only trained operators should be driving ATVs. Expect crowded parking areas in Swamp Park and park where you have adequate space. Watch Out for those other drivers and they may not be watching out for you!.

Remember, Stupid Hurts...



Look Up, Look Down, Look Around

- ***Look Up:** Check the sky for any weather changes such as building or approaching thunderstorms, wind shifts or increasing in speed. Watch for air operations and water drops. Look for snags.
- ***Look Down:** Watch your footing. Keep an eye out for snakes, bees and observe fine fuels on the ground.
- * **Look Around** Check fuel loading in the area, general terrain, current fire behavior and ladder fuels. Keep an eye on fellow firefighters for signs of heat stress and smoke inhalation.

Incident Safety Officers: Mark Munns, Tommy Hawkins, Jamey Burnsed, Steve Holman, Rodney Weeks, Tommy Lail, and Larry Morse

1. Establish & maintain LCES. Report LCES checks twice daily to DIVS.
2. Look UP,DOWN and AROUND - Flag and Communicate.
3. Follow downhill fireline checklist.
4. Take plenty rest breaks and encourage to drink water NOW through briefings.
5. Watch out for complacency. Supervisors need to keep constant surveillance for early signs and address.
6. Observe 30/30 Rule: Reference Incident Response Pocket Guide. Look for new starts.
7. Post experienced Lookouts. Make sure LCES is in place and make known.
8. Utilize Fire Departments for structure protection. Tailgate briefings on urban interface hazards.
9. Defensive driving will be addressed in all briefings.
10. Utilize public "Community Meetings" to warn public of fire hazards/traffic.
11. All personnel must meet the 2:1 work/rest ratio. Safety Team will monitor closely.
12. Maintain LCES at all times.
13. Use Air Attack as Lookout.
14. Post lookout for Snags, Rolling Material, and Spot Fires below line.
15. Ensure Fireline is Anchored.
16. All Firefighters know current weather, predicted weather & fire behavior forecast.
17. Line Supervisors will provide clear, concise briefings.
18. Flag hazard trees & snags, post lookouts when working in vicinity of snags.
19. FBA/Meteorologist to develop weather watch system.
20. Keep Firefighters informed of any changes in predicted weather.
21. Recognize & Avoid Hazmat situations.
22. Utilize Hazmat Response Teams.
23. Use Spike Camps to limit travel times.
24. Ensure Traffic Planning is safe and enforced.
25. Use Helicopter transport when driving conditions warrant.
26. Review Structural "Watch Out" situations.
27. Abandon Structures before Safety is compromised.
28. Air Attack and/or lead plane will always be in the air to coordinate aircraft.
29. Pilots will be briefed on strategy and tactics.
30. Personnel on ground will stay out of drop zones.
31. Observe all traffic signals and speed limits.
32. Use spotter when backing vehicle(s).
33. Refer to Fireline Handbook on Power Line Hazards.
34. Burn aerial fuels & avoid as a safety zone.
35. Construct direct line with immediate burn out of fuels.

MEDICAL PLAN	Incident Name Honey Prairie Complex	Date Prepared 7/23/2011	Time Prepared 1800	Operational Period 7/24/2011	
5. Incident Medical Aid Station					
<u>Medical Aid Stations</u>	<u>Location</u>			Paramedics Yes No	
MEDICAL UNIT (ICP)	Honey Prairie Complex ICP- Lodge 5 (912)-637-5236 Mark Millirons (EMT)MEDL (706)741-4216 (24 Hours) - Jameson Inn, Waycross Robert Carswell (EMT) MEDL (912)286-1648 - Days Inn, Waycross			X	
WEST BRANCH (Line EMT)	Levi Clymer(EMT-P)(417)658-5155 (A,B,C,D,E,F,G DIV) - LaQuinta, Valdosta Wes Lathen (EMT-P)(435)760-8481 (T,V DIV) - LaQuinta, Valdosta Chad Simons (EMT-P)(404)772-5344/ (Y,Z DIV) - LaQuinta, Valdosta (West IA) will be covered by line medic if needed			X	
EAST BRANCH (Line EMT)	Michael Graham(EMT-B)(912)-286-1674 (H,I,J,K,L DIV) - LaQuinta, Valdosta Jackie Aultman 218-491-1351(EMT- B)(M,N,O DIV) - Comfort Inn, Waycross (East IA) will be covered by line medic if needed.			X	
Ambulance Services					
Name	Address	Phone	Paramedic Yes No		
Clinch County EMS (WEST SIDE)	West Branch Council Road & HWY 94	Channels 4, 11, 13 912-286-1673 EMS Incident Cell	Yes		
Ware County EMS (NORTHSIDE)	Waycross, Georgia (911 to activate)	912-281-9467	Yes		
Charlton County EMS (EAST SIDE)	Folkston, GA (911 to activate)	912-496-7321	Yes		
Air Ambulance Service					
Trauma 1	Lake City , FL (16 min/air to Fargo ICP)	1-800-223-4878(freq. 155.340)	Yes		
Trauma 1	Jacksonville, FL (26 min/air to Fargo ICP)	1-800-223-4878(freq. 155.340)	Yes		
AirMed	Augusta, GA (2 hrs/air to Fargo ICP)	1-888-792-9245(freq. 155.340)	Yes		
Lifeflight	Jacksonville, FL (35 min/air to Fargo ICP)	1-877-870-7779(freq. 155.340)	Yes		
Air Evac	Waycross, GA (17 min/air to Fargo ICP)	1-800-247-3822(freq. 155.340)	Yes		
US Coast Guard (Heli-Rescue)	Savannah GA	1-912-652-4646 (freq. 155.340)	Yes		
7. Hospitals					
Name	Address	Travel Time Air Ground	Phone	Helipad Yes No	Burn Center Yes No
Satilla Regional	410 Darling Ave Waycross Ga N 31°13.56 W 82°21.058	18 min 45 min	912-283-3030	Yes	No
Clinch Memorial Hospital (WEST SIDE)	1050 Valdosta HWY Homerville, GA	25 min	912-487-5211 ext 4502	Yes	No
Charlton Memorial Hospital (EAST SIDE)	1203 3 rd St. Folkston, GA	50 min	912-496-2531	Yes	No
Memorial Hospital	Savannah, GA 4700 Waters 3200.7 8107.6	30 min	912-350-8999	Yes	No
Shands Hospital (level I)	Jacksonville, FL N 30°20'97 W 82° 13'992	26 min 1.5 hrs	800-223-4878	Yes	Yes
Shands Burn Center	Gainesville, FL 38.33 N 082 20.73W	33 min 1.5 hrs	352-265-0300	Yes	Yes
8. Medical Emergency Procedures					
Identify any EMTs and Paramedics in your crews. All medical emergencies will be reported to the Division Supervisor who will assume command and notify Line Medics.			<u>INJURY REPORTING PROCESS:</u>		
<ol style="list-style-type: none"> 1. Provide medical care & stabilize patient. 2. Call 911 3. Notify Communications via radio over Command Channel. 4. Communications will clear radio traffic for medical emergency. 5. Notify the Field Ops Section Chief. 6. Com will notify ambulance and coordinate with IC, SOF, MEDL 			Nature of Injury: _____		
			Location of Patient: _____		
			Transportation Requested by: Air___ Ground___		
			Pick Up Point: _____		
			Lat _____ Long _____		
			Patient Unit ID: _____		
			Is an EMT w/Patient: Yes___ No___		
			Age: _____ Sex: Male___ Female___		
MAJOR EMERGENCIES – Secure the area and identify witness for later investigation. Keep an accurate log of events.					
NOTE: Do not give Patients Name over the radio					
HELISPOTS Pocket Helispot 30 47 30.02 x 82 22 39.5 (West side), mile marker 4, HWY 177 Steven C. Foster State Park Fargo Helispot 30 40.945 x 082 33.640 (West side), HWY 441- Steven C. Foster Visitor Center POGO Helibase 30.44.03 x 82.07.41 (East side) Evac Yankee Helispot 6 Rd. 32 and 32A, N 30° 53.280 W 082° 33.880 Helispot 7 Tatum Rd. Pond N 30° 50.280 W 082° 33.857 *Alternate site can be established following guidelines for safety found with IRPG and local EMS resources.					
Prepared by: Mark Millirons (EMT)MEDL			10. Reviewed by: Mark Munns, SOF		

INCIDENT RADIO COMMUNICATIONS PLAN ICS-205		Incident Name Honey Prairie		GROUP 22		Date/Time Prepared 07/23/2011-18:00		Operational Period Date/Time 7/24/2011 0800-2000			
Ch #	Function	Channel Name	Assignment	RX Freq	NW	RX Tone/NAC	TX Freq	NW	TX Tone/NAC	Mode A,D or M	Remarks
1	Command	West Okee Repeater	Sec West Branch CMD	167.1250	N	156.7	163.1500	N	156.7	A	Stephen Foster State Park
2	Command	South Okee Repeater	Sec East/West Branch CMD	164.7750	N	123.0	163.1500	N	123.0	A	Eddy Florida
3	Command	East Okee Repeater	PRIMARY East Branch CMD	164.6250	N	103.5	163.1500	N	103.5	A	Refuge Headquarters
4	Command	NIFC C2	PRIMARY West Branch CMD	168.100	N	CSQ	170.4500	N	123.0	A	NOT linked to OKEE System
5	Command	North Okee Repeater	PRIMARY North Branch CMD	164.5750	N	206.5	163.1500	N	206.5	A	Waycross
6	Air-Ground	Air to Ground	PRIMARY	166.9375	N	CSQ	166.9375	N	CSQ	A	
7	Tactical	MOB-MOB	GFC Contingency Structure Protection Group West I.A.	159.3900	W	CSQ	159.3900	W	156.7	A	
8	Tactical	V-Fire 21W WHITE	Protection Group West I.A.	154.2800	W	CSQ	154.2800	W	156.7	A	
9	Tactical	USFS 9	DIV A,B,C, D,E,F,G,T&V (East I/A)	168.7750	N	CSQ	168.7750	N	CSQ	A	
10	Tactical	S.E. Compact	DIV	159.2850	W	CSQ	159.2850	W	CSQ	A	
11	Tactical	USFS 11	DIV M,N,O	168.2000	N	CSQ	168.2000	N	CSQ	A	
12	Tactical	Refuge Tac 1	DIV H, I, J, K,L	168.3500	N	CSQ	168.3500	N	CSQ	A	
13	Tactical	FL 190	DIV Y,Z	151.2725	N	CSQ	151.2725	N	CSQ	A	
14	Command	DIV J RPT	East Branch	170.4125	N	CSQ	165.9625	N	123.0	A	NOT linked to OKEE System
15	Air-Ground	Air to Ground	SECONDARY	166.9000	N	CSQ	166.9000	N	CSQ	A	
16	EMERGENCY	AIR Guard	Air OPS.	168.6250	N	CSQ	168.6250	N	110.9	A	
Prepared by (Communications Unit) Kelly Towe, COML Incident Dispatcher: 912-286-1660											
Cloning at ICP communications and briefings,											

The convention calls for frequency lists to show four digits after the decimal place, followed by either an "N" or a "W", depending on whether the frequency is narrow or wide band. **Mode** refers to either "A" or "D" indicating analog or digital (e.g. Project 25) or "M" indicating mixed mode. All channels are shown as if programmed in a control station, base stations, mobile or portable radio.

HONEY PRAIRIE PHONE LIST

07/23/11

Incident

Communication

(Hours: 0700-2100)

912-286-1660

AGENCY OFFICIALS			OPERATIONS 912-637-5248		
Curt McCasland	602-359-0013	USFWS AA	Steve Gray	404-772-5389	Planning Operations
Mindy Gautreaux	912-282-7500	USFWS Deputy AA	Buck Kline	229-460-2062	Field Operations
Frank Sorrells	912-381-7503	GFC AA			
James Karels	850-228-7763	FL DOF AA			
Diane Adams	912-266-5421	GEMA			
Mike Housh	912-281-1575	USFWS AREP			
COMMAND			WEST BRANCH		
Troy Floyd	706-676-0168	IC	Brent McCarty	229-938-8718	West Branch
		Deputy IC	Charles Arnold	423-802-6507	DIVS A, B, C, D, E, F, G
		Unified IC (FWS)	Heath Morton	423-240-7509	DIVS V, T
			Mike Lee	770-576-9594	DIVS Y, Z
			Trent Ingram	229-726-0285	West IA
LIAISON			EAST BRANCH		
Skippy Reeves	912-387-5923	Liaison Officer FWS	Brett Waters	406-581-6198	East Branch
Gary Beauchamp	352-620-4424	Liaison Officer (FL)			
INFORMATION 912-637-5247			Rufus Crutchfield	478-986-7466	DIVS H, I, J, K, L
Jenny Lyn Bruner	770-550-6003	Fire Information	Tracy Mobley	706-346-4052	DIVS M, N, O
Denise Croker	770-548-8092	PIO1	Billy Taylor	850-544-2229	East IA
Mark Wurdeman	912-496-2566	Fire Information (JIC)			
SAFETY			AIR OPERATIONS 912-637-5254 FAX 912-637-5237		
Tommy Hawkins	706-676-7538	Safety Officer	Joseph Bistrski	801-518-2797	Air Ops Branch
Mark Munns	706-401-5903	Safety Officer	Jay Matsen	206-218-8230	ASGS (cell)
Mark Millirons	706-741-4216	Medical Unit Leader	Evertt Weniger	406-381-4176	Fargo Helibase
Field EMT	912-286-1674	Medical Unit Leader	Carl Magill	541-519-0850	ATGS - Fargo
Medical Unit	912-637-5236		Lee Kessler	218-398-2708	HEB2 - POGO
Tom Lail	404-772-5338	Safety Officer	Jeff McBain	858-357-3242	HEB2 (t) - POGO
DISPATCH			PLANNING 912-637-5241 FAX 912-637-5237		
Okeefenokee Dsp	912-496-7366	Okeefenokee	Greg Strenkowski	478-951-2421	Planning Section Chief
Suwannee Dispatch	386-758-5700	Fla wildfires, other	Keith Murphy (t)	912-637-5241	Situation Unit Leader
Waycross Dispatch	912-287-4915	Ga wildfires, other	DEMOB	912-637-5241	
			John Franks	513-519-5818	IMET
					FBAN
LOGISTICS West			FINANCE 912-637-5244 FAX 912-496-4710		
Willie Boston	770-328-3186	LSC	Lila Johnson	770-658-6641	Finance Section Chief
			Rita Loper	912-281-6876	Buying Team Leader
Thomas Lambert	912-637-5251	FACL	Ron Knowles	907-230-4945	Business Advisor
			Duane Welch	404-558-8859	Comp Claims
			=	404-844-7042	(cell)
			James Meredith	404-805-6806	IBA
Hotel Mgr	912-637-5251	Lodging			
Kevin Reish	404-276-1998	Security Manager			
Tim Jones	912-387-6480	GSUL			
Steve Blackwell	404-772-5330				
Bob Kookan		Food Unit Leader			
Amy Weaver (t)	912-637-5239	SPUL			
Kelly Towe	478-308-4770	COML			

ORDERING		FAX 912-637-5240
Cindy Tisdell	912-637-5262	Ordering Manager
LOGISTICS		East
	912-496-2111	
	912-496-4710	Fax
		LSC
John Crain	404-772-5363	Base Camp Mgr
	256-497-8388	Supply Unit Leader
Joe Hoisington	530-905-3715	EQPM
Bert Earley	229-854-5229	Roads?THSP
	239-887-1817	Security Manager
Medical Unit	912-387-6787	
Tim Cashdollar	912-387-6787	EQPM
EAST MSG CTR	912-496-4698	
COOPERATORS		
COUNTY		
	912-496-7229	Charlton County EMA
John F. Meyer - Chairman	912-496-2549	Charlton County Commissioners
Dobie Conner	912-496-7321	Charlton County Sheriff
Jesse Booth	912-520-0061	Clinch County EMA
Jonathan Daniel	912-281-5158	Ware County EMA
Jessie Jordan	912-816-6063	Ware County Fire Dept
Joe Morris	912-281-6020	Ware County Sheriff
Robbie Sutton	912-599-9027	Tri County 911
STATE		
GFC Fargo District Office	912-637-5270	
GFC Satilla District Office	912-287-4915	
Blair Joiner	229-237-9026	GFC Clinch Chief Ranger
Jason Gillis	912-314-9233 912-637-5504	GFC Satilla Assistant Mgr.
Brian Gray	229-894-4628 912-673-5274	Stephen Foster State Park
Travis Griffin	912-281-5790	Laura Walker State Park
Crystal Paulk-Buchanan	404-535-1048	GEMA PIO
Georgia Highway Patrol	912-287-6500	
FEDERAL		
Okefenokee Fire Shop	912-496-4181	
Okefenokee NWR HQ (East)	912-496-7366	
Okefenokee NWR (West)	912-637-5322	
Okefenokee Visitor Center	912-496-7836	

LANDOWNERS		
Jim Barrett	229-412-3133	Langdale/GOAL Chairman
Wesley Langdale	229-220-2602	Langdale
Hal Rowe	229-412-3133	Langdale
Langdale Office	229-242-7450	Langdale Office
Mike Conlon	386-365-3882	Rayonier Unit Supervisor
Ray Carter	386-288-6626	Rayonier
Ed Carter	386-288-6626	Rayonier
Doug Nuss	912-390-1037	Rayonier
Randall McCrady	912-283-4077 W 912-288-0877 C	Rayonier
Colin Myerson	229-506-1565	Superior Pine Products Co
Robbie Lee	229-356-0526	Superior Pine Products Co
Eric Harris	912-637-5597	Superior Pine Products Co
Superior Pine Office	912-637-5261	Superior Pine Products Co
Al Alexander	850-843-0104	The Forestry Co
Savell Schmidt	850-843-1181	The Forestry Co
John Bogue	850-843-1192	The Forestry Co
Joe Hopkins	912-276-0911	Toledo Timber
Chris Gowan	912-276-0965	Toledo Timber
Martin Bell	912-283-0583	Swamp Park
Crystal Peeples	352-316-0632	FIA
Steve Davis	912-614-1828	Davis Community
Trevor Fortner	912-599-9271	Little Suwannee
Tim Jarrell	912-223-7120	Hancock Forest Mgmt.
RAILROADS		
Norfolk Southern	800-453-2530	
Sid Moody	904-318-7983	Norfolk Southern Railroad
Chad Edwards	404-582-4909	Norfolk Southern Railroad
	540-797-9918	
Eric Sams	904-576-9907	
Norfolk So Emergency Dispatch	404-529-1597	
CSX Randy Dixon	912-270-0699	
CSX Dispatch	800-232-0144	

FINANCE

07/24/11

EQUIPMENT

EVERYONE, PLEASE put E#'s on top right corner of shift ticket.

East side fuel supplier: Please send all fuel books to Finance daily.

E-247	Donald Daniels - Shift ticket for 7/21 needs contractor signature
E-526	Pierce Timber - Missing Tickets 6/29 - 7/02, 7/16 to present
E-1151	Bert Earley - Need contractor signature
E-1158	H&H Construction - 7/19 shift ticket needs time & supervisor signature

TIME

O-9	Cory Bryant - Missing CTR for 7/14 to present
-----	---

IF POSSIBLE, PLEASE COME BY FINANCE AND REVIEW YOUR TIME THE DAY BEFORE YOU DEMOB. ALSO, **BRING YOUR LAST CTR'S AND SHIFT TICKETS WITH YOU** TO FINANCE ***WHEN YOU DEMOB*** RATHER THAN TURNING IN AT THE BRIEFING IN THE MORNING. THIS WILL HELP AVOID DELAYS THE DAY OF DEMOB. THANKS.

WHEN DEMOBING FINANCE SHOULD BE THE NEXT TO THE LAST SECTION YOU GET SIGNED OFF ON YOUR CHECKOUT FORM WITH DEMOB UNIT BEING THE LAST. WE WILL CHECK YOUR TIME FOR YOU PRIOR TO EVERYTHING ELSE BEING SIGNED OFF, BUT WILL NOT SIGN OFF TIME UNTIL THE OTHER SECTIONS ARE DONE.

Upcomming_Demobs

Number	Name	Kind	Unit	Travel	Jetport	DemobDate
E-497.2	JETER, LESLIE	DRI	FLFNF	POV		07/23/2011
O-986	HARNOIS, MICHAEL W	STE	WICN	AIR	RHI	07/23/2011
O-1064	HITT, WILLIAM E	FAC	WYCD	AIR	RIW	07/23/2011
A-42.3	MCBATH, JEFF	HM	WYW	AIR	CPR	07/24/2011
A-42.6	WARFEL, CHESTER	HEC	WYW	AIR	RIW	07/24/2011
A-42.9	SMITH, THEODORE D	HEC	WYW	AIR	RIW	07/24/2011
E-2	OKR ENG6 41	ENG	GAOK	AOV		07/24/2011
E-3	OKR ENG6 42	ENG	GAOK	AOV		07/24/2011
E-853	KALEIGH	WA		POV		07/24/2011
E-853.2	HATTON, TRENT	DRI		POV		07/24/2011
E-914	TRACTOR - PLOW - T2	TPL	GAGA	AOV		07/24/2011
E-914.4	ROBINSON, FRED	DRI	GAGA	AOV		07/24/2011
E-939	ENGINE - T6 - KY-LBF	ENG	ARWH	AOV		07/24/2011
E-939.6	CASTO, DANIEL	ENG	KYLB	AOV	BNA	07/24/2011
E-939.7	INGLE, CHAD G	ENG	KYLB	AOV	BNA	07/24/2011
E-939.8	KENNEDY, ANDREW J	FFT	KYLB	AOV	BNA	07/24/2011
E-954	GRIFFIN, JIM	DRI	GAOK	POV		07/24/2011
E-969.1	TOMLINSON, KERRY	GR	GAOK	POV		07/24/2011
E-977.5	FELTMANN, HAROLD	ENG	IDIP		GEG	07/24/2011
E-977.6	MONTREUIL, PATRICK	ENG	IDIP		GEG	07/24/2011
E-977.7	LEWIS, CODY	FFT	IDIP			07/24/2011
E-977.8	WISE, KASARA	FFT	IDIP		GEG	07/24/2011
E-1137	ENGINE - T7 -	ENG	GAGA	AOV		07/24/2011
E-1138	TRACTOR - PLOW - T3	TPL	GAGA	AOV		07/24/2011
E-1138.1	TRUCK - TRACTOR -	PU	GAGA	AOV		07/24/2011
E-1138.2	REYNOLDS, JIM	TPO	GAGA	AOV	ALB	07/24/2011
E-1139	TRACTOR - PLOW - T2	TPL	GAGA	AOV		07/24/2011
E-1139.1	TRUCK - TRACTOR -	PU	GAGA	AOV		07/24/2011
E-1139.2	JACKSON, STAN	TPO	GAGA	AOV		07/24/2011
O-534	ROGERS, MIKE	DRI	GAOK	POV		07/24/2011
O-1020	MATSEN, JAY	HEB	WAMS	AIR	SEA	07/24/2011
O-1055	DAVIS, ROYCE A	STP	GAGA	AOV	ALB	07/24/2011
E-390	WISCONSIN ENG 461	ENG	WICN	AOV		07/25/2011
E-390.3	PETE, LLOYD	ENO	WICN	AOV	RHI	07/25/2011
E-390.8	PARMENTIER,	FFT	WICN		RHI	07/25/2011
E-390.9	GUMM JR, JAMES V	FFT	WIGLA		RHI	07/25/2011
E-404.10	SAUMER, ZACH	FFT	MNSU		DLH	07/25/2011
E-404.11	KNAPPER, JON	ENG	MNSU		DLH	07/25/2011
E-404.12	MACHO, LUKE PAUL	ENG	MNSU		DLH	07/25/2011
E-405	MAINE FWS ENGINE	ENG	MEMH	AOV		07/25/2011
E-405.4	GORE, BRETT	ENG	NJWK	AOV	AVP	07/25/2011
E-405.7	LINDSEY, ELIZABETH J	ENG	MEMH	AOV	BGR	07/25/2011
E-405.8	CURRIER, AARON J	FFT	MEMH	AOV	BGR	07/25/2011
E-821	ENGINE - T6 - RAPID	ENG	SDRC	AOV	RAP	07/25/2011
E-821.4	THOMPSON, ROBERT	ENG	SDSD	AOV	RAP	07/25/2011
E-821.5	LANGE, JOSH	FFT	SDSD	AOV	RAP	07/25/2011
E-821.6	DENTON, LEVI B	FFT	SDSD	AOV	RAP	07/25/2011
E-824	ENGINE - T6 - RAPID	ENG	SDRC	AOV	RAP	07/25/2011
E-824.4	JOHNSON, ALAN J	ENG	SDSD	AOV	RAP	07/25/2011
E-824.5	BRUBAKER, CHRIS	ENG	SDSD	AOV	RAP	07/25/2011
E-824.6	KAHLER, MATHEW S	FFT	SDSD	AOV	RAP	07/25/2011
O-954	EBERT, BRIAN C	STE	CAEN	AIR	SMF	07/25/2011
O-961	WURDEMAN, MARK A	PIO	MNMN	AIR	MSP	07/25/2011
O-994	EDGAR, JIM	STE	MNMN	AIR	RST	07/25/2011
O-998.40	DUNN, GREG	PIO	FLFLS	AOV		07/25/2011
O-1061	JACOBI-YEATON,	ABR	NHWM	AIR	MHT	07/25/2011
O-1063	TISDELL, CINDY LEE	OR	MNMN	AIR	BJI	07/25/2011
O-1067	MORSE, CHARLES	SOF	FLFLS	AOV		07/25/2011
C-14.21	ADAMS, MATTHEW	FFT	NCNC	POV	AVL	07/26/2011

Upcomming_Demobs

Number	Name	Kind	Unit	Travel	Jetport	DemobDate
C-14.22	OAKES, DANIEL	FFT	NCNC	POV	AVL	07/26/2011
C-14.23	GORDON, BRIAN	ICT5	NCNC	POV	AVL	07/26/2011
C-14.24	ENGLE, DAVID	ICT5	NCNC	POV	AVL	07/26/2011
E-228	CLINCH COUNTY	GR	GAOK	AOV		07/26/2011
E-228.1	HENDRICKS, STEVEN	DRI	GAOK	AOV		07/26/2011
E-981	TIMBERLINE	SK	GAOK	POV		07/26/2011
E-981.1	TINER, HENRY	DRI	GAOK	POV		07/26/2011
E-995	ENGINE - T6 - MES	ENG	MEME	AOV		07/26/2011
E-995.7	DAIGLE, MICHAEL N	ENG	MEME	AOV	PQI	07/26/2011
E-995.8	BABIN, STEVEN	FFT	MEME	AIR	PQI	07/26/2011
E-995.9	MADORE, SHAWN	FFT	MEME	AOV	BGR	07/26/2011
E-996.7	COUSINS, JOHN L	ENG	MEME	AOV	BGR	07/26/2011
E-1153	LATHEN, WES	EMT	UTNU	AIR	SLC	07/26/2011
O-998.14	KERN, JOHN	FBA	FLFLS	AOV	TPA	07/26/2011
O-1068	BURNSD, JAMES	SOF	FLFLS	POV		07/26/2011
O-1070	WATERS, BRETT	OPB	MTMS	AIR	BIL	07/26/2011
O-1072	ANGELO, DANIEL	ENG	MNBG	AIR	FAR	07/26/2011
E-977	ENGINE - T6 - IPF - D1	ENG	IDIPF	AOV		07/27/2011
E-978	ENGINE - T6 - PLS -	ENG	IDPLS	POV		07/27/2011
E-978.1	GILLMER, DENNIS	ENG	IDIPF	POV	GEG	07/27/2011
E-978.2	FEARON, RYAN	FFT	IDPLS	POV	GEG	07/27/2011
E-978.3	GUIDRY, MYKEL	FFT	IDSJS	POV	GEG	07/27/2011
E-986	TIPTON & YOUNG	TPL	GAOK	POV		07/27/2011
E-986.1	DAVID, HOUSER	DZO	GAOK	POV		07/27/2011
E-996	ENGINE - T6 - MES	ENG	MEME	AOV	BGR	07/27/2011
E-996.8	TYNE, BRIAN C	FFT	MEME	AOV	BGR	07/27/2011
E-996.9	SIMMONS, MICHAEL J	FFT	MEMH	AIR	BGR	07/27/2011
E-1075	ENGINE - T6 - 6711	ENG	INBOR	AOV		07/27/2011
E-1075.1	JONES, DAVID H	ENG	INBOR	AOV	SDF	07/27/2011
E-1075.2	SMITH, BRANDON W	FFT	INBOR	AOV	SDF	07/27/2011
E-1075.3	WINCHELL, MAX	FFT	ININS	AOV	STL	07/27/2011
E-1133	ENGINE - T6 - FLMIR	ENG	FLMIR	AOV		07/27/2011
E-1133.1	WRIGHT,	ENG	FLMIR	AOV		07/27/2011
E-1152	ALS BAG WITH	MIS	UTNU	AIR	SLC	07/27/2011
E-1152.1	SIMONS, CHAD	EMT	UTNU	AIR	SLC	07/27/2011
E-1153	ALS BAG WITH	MIS	UTNU	AIR	SLC	07/27/2011
O-888	MURPHY, BRIAN	HEC	ILCOR	AIR	STL	07/27/2011
O-920	SCHNEIDER, AARON	TFL	ORSU	AIR	EUG	07/27/2011
O-941	DENOWH, SHAWN A	TFL	IDPAF	AIR	BOI	07/27/2011
O-1056	WRIGHT,	ENG	FLMIR	AOV	MCO	07/27/2011
O-1069	CHITWOOD, SANDI	EQT	ORSU	AIR	PDX	07/27/2011
O-1071	CRAIN, JOHN A	RCD	FLFLS	POV	TPA	07/27/2011
O-1077	GRAHAM, MICHAEL	EMT	ARAR	AIR	XNA	07/27/2011
O-1080	TAYLOR, WILLIAM E	DIV	FLFLS	AOV	TLH	07/27/2011
O-1085	CASHDOLLAR,	EQP	FLFLS	AOV		07/27/2011
O-1094	HAWKINS, TREVOR	FFT	GAOK	POV		07/27/2011

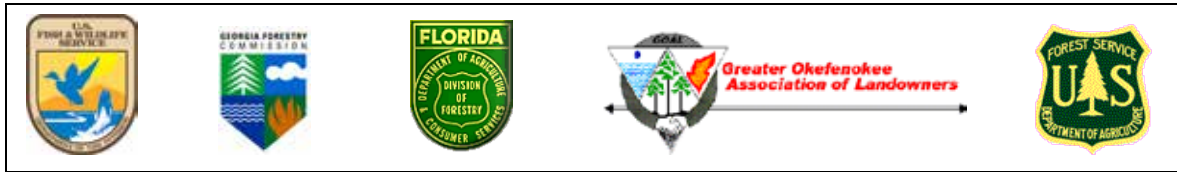
Record Count: 105

Crew Information

Sunday July 24, 2011
912-496-2566

www.gatrees.org
www.fws.gov/okefenokee

Fire Information: www.inciweb.org
georgiafireinformationcenter@gmail.com



Honey Prairie Fire Complex: 302,680 acres, 70% contained

Wildlife Habitat Talking Points

- Wildlife populations were not adversely impacted by the fire. Some animals were seen returning to the burned areas days after the fire had passed. Regrowth of plants in burned areas was also seen shortly after the fire.
- Fire is necessary on the Refuge to maintain a mosaic of habitats that many fire-adapted species need to survive in both the Okefenokee NWR and its surrounding uplands to sustain its plant and animal communities.
- Fire enhances the health of the Okefenokee ecosystem and is a force of nature that sustains the diversity and richness of a wide variety of species that make the Okefenokee a world-famous ecosystem and natural area.
- Ash from the fire reverses acidification of water in the swamp, improving water quality and conditions for fish and amphibians at Okefenokee.
- Fire in the swamp maintains wetland "prairies" by clearing them of woody plants, which would otherwise develop into forested bogs and eventually hardwood forest.
- Fire in the uplands around the swamp sustains rare natural and fire-tolerant longleaf pine forest, burning out competing shrub understory. The Refuge contains 33,000 acres of upland forest, once dominated by longleaf pine extending from Virginia to south Florida and from the Atlantic Ocean to mid-Texas, about 60-90 million acres in all. Today, only 4-5 million acres of this native habitat remains.
- The long-leaf pine forest around the edge of the swamp requires fire to maintain its species diversity and to reduce harmful competition from other plant species. Fire opens the upland forest, improving conditions for species such as the red-cockaded woodpecker, gopher tortoise, indigo snake, fox squirrel, turkey, quail and many ground-nesting birds.
- As the shrub understory in the upland forest has been reduced, native plants such as wiregrass, ground oak, blueberries and others are making a comeback.
- Habitat for the endangered red-cockaded woodpecker is protected by raking duff and needle cast from the base of trees prior to annual burning or wildfire season. All trees on the Refuge containing nests are clearly marked by a stripe of white paint, to facilitate their protection during fires and fire management operations.

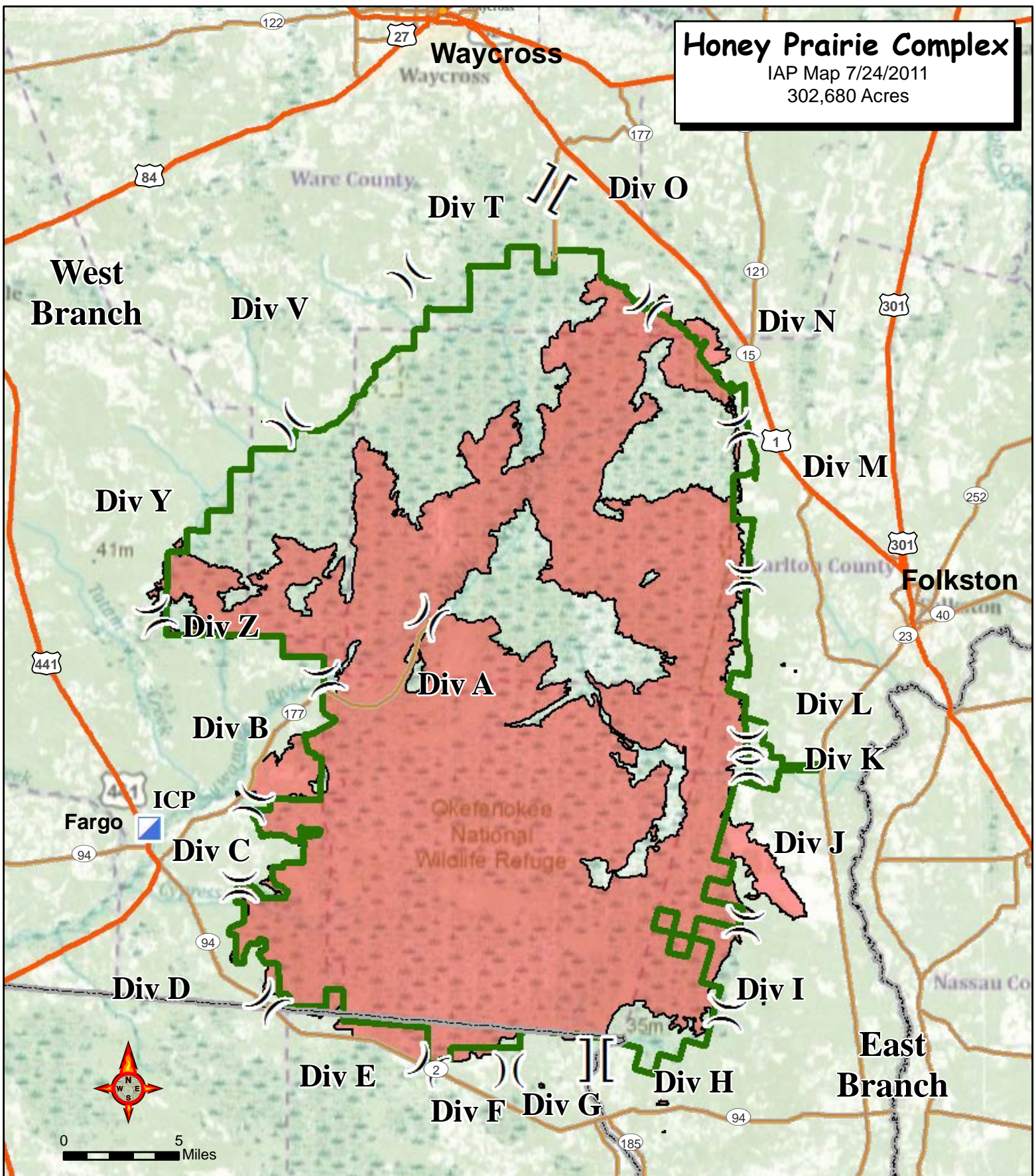
LOST AND FOUND ITEMS

If you have lost items please check with information section and see if we have it!

If you have found items and can't locate owner please bring to Information and give us detail as to where and when you found it.

Honey Prairie Complex

IAP Map 7/24/2011
302,680 Acres



Branch Break
Division Break
Incident Command Post

Highway
Major Road
State Boundary

Refuge Boundary
Fire Area

Perimeter as of 7/21/2011 1800
C. Bailey GISS

INCIDENT
MANAGEMENT
TEAM

