

# **Honey Prairie Complex**

*GA - OKR - 000001*

## **Incident Action Plan**

Operational Period

**TUESDAY**

JULY 26, 2011

0800-2000

**Incident Commander  
Troy Floyd**

**Accounting Codes**

FWS – 9141-F25M-2J

NPS – 5023 F25M E11

BLM – F25M

USFS – PRF25M\_1502

Initial Attack – F4PM

<b>INCIDENT OBJECTIVES</b>	<b>1. INCIDENT NAME</b> Honey Prairie Complex	<b>2. DATE PREPARED</b> 7/25/11	<b>3. TIME PREPARED</b> 1800												
<b>4. OPERATIONAL PERIOD (DATE/TIME)</b> Tuesday, July 26, 2011 0800 – 2000															
<b>5. GENERAL CONTROL OBJECTIVES FOR THE INCIDENT (INCLUDE ALTERNATIVES)</b> <ol style="list-style-type: none"> <li>1. Provide for safety of incident personnel and public in all incident operations.</li> <li>2. Maintain a positive working relationship with all adjacent landowners, cooperators State and Federal partners. Inform, involve and communicate incident planning and operations with all partners.</li> <li>3. Contain all fires that are within the Okefenokee National Wildlife Refuge, inside the Refuge and/or inside the swamp edge break if possible.</li> <li>4. In cooperation with local timberland owners, use full suppression strategies and tactics to minimize damage to private timberlands and improvements and to prevent fires outside the Refuge from entering the Refuge.</li> <li>5. Assist in management and suppression of additional fires (new starts or breakouts) in the vicinity as approved by Agency Administrators and Unified Incident Commanders.</li> <li>6. Protect all cultural and archeological sites and structures within the refuge, with particular attention to facilities at Okefenokee Swamp Park.</li> <li>7. Manage the fires cost-effectively consistent with the values at risk.</li> <li>8. Implement structure protection as necessary for at-risk facilities and communities.</li> <li>9. Coordinate suppression actions with assigned Refuge Resource Advisors</li> </ol>															
<b>6. WEATHER FORECAST FOR OPERATIONAL PERIOD</b> See attached forecast for area specific weather information.															
<b>7. GENERAL SAFETY MESSAGE</b> Drive defensively and use spotter when backing. Ensure LCES is in place and known by all personnel. Drink plenty of water and take frequent rest breaks. Ensure proper use of PPE during all operations.															
<b>8. Attachments (☐ if attached)</b> <table border="0" style="width: 100%;"> <tr> <td>☐ Organization List (ICS 203)</td> <td>☐ Incident Map</td> <td>☐ Safety Message</td> </tr> <tr> <td>☐ Assignment List (ICS 204)</td> <td>☐ Traffic Plan</td> <td>☐ Demobilization Procedures</td> </tr> <tr> <td>☐ Communications Plan (ICS 205)</td> <td>☐ Finance Message</td> <td>☐ Unit Log</td> </tr> <tr> <td>☐ Medical Plan (ICS 206)</td> <td>☐ Phone List</td> <td></td> </tr> </table>				☐ Organization List (ICS 203)	☐ Incident Map	☐ Safety Message	☐ Assignment List (ICS 204)	☐ Traffic Plan	☐ Demobilization Procedures	☐ Communications Plan (ICS 205)	☐ Finance Message	☐ Unit Log	☐ Medical Plan (ICS 206)	☐ Phone List	
☐ Organization List (ICS 203)	☐ Incident Map	☐ Safety Message													
☐ Assignment List (ICS 204)	☐ Traffic Plan	☐ Demobilization Procedures													
☐ Communications Plan (ICS 205)	☐ Finance Message	☐ Unit Log													
☐ Medical Plan (ICS 206)	☐ Phone List														
<b>9. PREPARED BY (PLANNING SECTION CHIEF)</b> Greg Strenkowski		<b>10. APPROVED BY (INCIDENT COMMANDER)</b> Troy Floyd													

ORGANIZATION ASSIGNMENT LIST		9. Operations Section	
<b>1. Incident Name</b> <b>Honey Prairie Complex</b> GA-OKR-000001		Chief	Buck Kline 8/5 / Brent McCarty 8/2
		Planning	Steve Gray 8/1 / Heath Morton (t) 8/4
<b>2. Date</b> 7/25/2011	<b>3. Time</b> 1000 hrs	<b>a. Divisions/Groups</b>	
<b>4. Operational Period</b> 7/26/2011 0800 - 2000			
<b>5. Incident Commander and Staff</b>		Division	A-B-C-D-E-F-G Charles Arnold 8/1
Incident Commander	Troy Floyd 8/5	Division	T-V-Y-Z Mike Lee 8/2
Liason Officer			
Safety Officers	Tommy Hawkins 8/4 Mark Munns 8/5	Group	IA-WEST Trent Ingram 8/5
Information Officer	Jenny Lynn Bruner 8/4 Denise Croker 8/5	Division	H-I-J-K-L Tracy Mobley 8/1
<b>6a. Agency Administrators</b>		Division	M-N-O Tracy Mobley 8/1
FWS		Group	IA-EAST Rufus Crutchfield 8/4
FWS	Mindy Gautreaux	Group	Roads Bert Earley (THSP) 7/27
<b>6b. Agency Representatives</b>		<b>b. Divisions/Groups</b>	
GFC	Frank Sorrells		
FLDOF	James Karels		
FWS AREP	Mike Housh		
FWS-Refuge PAO	Art Webster		
GEMA AREP	Alan Robinson / Diane Adams		
USFS AREP	Ivan Greene		
<b>7. Planning Section</b>		<b>c. AIR OPERATIONS BRANCH - Honey Prairie</b>	
Chief	Greg Strenkowski 8/5	Air Operations Branch Director Joseph Bistrski 8/4	
Resource Advisors	Ron Phernetton, Jessica Bowen, Rocky Chesser	Air Support Group Supervisor Brian Campbell 8/7	
Resources Unit	Josh Burnette 8/5 Randy Lownes 7/28		
Situation Unit	Keith Murphy(T) 8/4		
IMET	John Franks 8/3		
FBAN	Keith Mousel 8/7	<b>d. AIR OPERATIONS BRANCH - Pogo</b>	
Demob Unit	Harold West 8/5	Pogo Helibase Manager	Lee Kessler 7/27
Documentation		ATGS-Pogo	Everett Wenigar 7/30
GIS	Charles Bailey 8/5		
CTSP	Rusty Brown 8/5		
SCKN	Mike Jones 8/5		
<b>8. Logistics Section</b>		<b>10. Finance Section</b>	
Chief	Willie Boston 8/5	Chief	Lila Johnson 8/5
Supply Unit	Amy Weaver (T) 8/5	Deputy	Amy Treadwell 8/5
GSUL	Tim Jones 8/5 Steve Blackwell 8/5	Time Unit	Darline Matheney 8/5
ORDM	Jim Grimes 8/5 / Tim Redick (t) 8/7	Procurement	John Watson 7/28
COML	Kelly Towe 8/5	Comp Claims Unit	Kurt Hinz 8/5
Medical Unit	Mark Millirons 8/5	Cost	Grace Reid 8/5 / Tom Steele 8/5
Facilities	Thomas Lambert 8/4 Dennis Evans 8/5 Jeremy Hughes 8/5	Buying Team	Judy Reddin 8/3
Food	Bob Kookan 8/2 / Chris Barnes 8/5		
SEC1	Don Cockman 7/28	IBA	James Meredith 7/30
COMT	Roy Fortenberry 8/5		
EQPM	Richard Young (T) 8/5 JohnnyBarwick 8/4 Kenneth Edge 8/5		
		Prepared by: R Lownes	RESL

DIVISION ASSIGNMENT LIST			1. Branch		2. Division <b>A, B, C, D, E, F, G</b>		
3. Incident Name: <b>Honey Prairie Complex</b>			4. Operational Period Date: 7/26/2011 Time: Day: 0800-2000				
5. Operations Personnel							
<b>Operations</b>	Buck Kline 8/5 / Brent McCarty 8/2		<b>Branch Director</b>				
<b>Planning Ops</b>	Steve Gray 8/1 / Heath Morton (t) 8/4		<b>Division Supervisor</b>		Charles Arnold 8/1		
<b>Safety Officer</b>	Tom Lail (O-1083) 8/11						
6. Resources Assigned this Period							
Strike Team/Task Force/ Resource Designator	Leader / Name / Designator	Last Shift Date	Num. Per.	Drop Off PT./Time	Crew Names		
<b>TFLD (O-960)</b>	<b>Paul Pelligrini</b>	8/1	1				
GA ENG6 (E-2) GAOKR	Tim Perron	7/29	3		R. Robinson, K. Holland		
ME ENG6 (E-405)	Fred Mason	8/7	2		J. Goetz,		
AR Eng 162 (E-939)	Ryan Bell	8/4	3		T. Vetter, J. Finklea		
Smith Excavator (E-505)	Don Murray	7/27	1	PVT			
MO Eng 9504 (E-1076) MOMTF	Tim Perren	7/29	3		<b>Out of Service 7/25-28</b>		
<b>EMTP (O-847)</b>	<b>Levi Clymer</b>	7/28	1		Assisting West IA		
7. Control Operations							
<ul style="list-style-type: none"> <li>Patrol and mop up within 100' of fire perimeter line.</li> <li>Monitor fire impacts to Stephen Foster State Park for rehab needs.</li> <li>Patrol and control reburn.</li> <li>Examine work area for fire weakened snags.</li> </ul>							
8. Special Instructions							
<ul style="list-style-type: none"> <li>Ensure LCES are in place before operations begin and stay hydrated.</li> <li>Additional resources will be available from GFC, Florida DOF, FWS, and local cooperators.</li> <li>Drive defensively and with lights on at all times.</li> <li>Rehab Nature trails and waterways in Stephan C. Foster State Park.</li> </ul>							
9. Division/Group Communication Summary							
Function	Frequency	System	Channel	Function	Frequency	System	Channel
Command N Okee Repeater	RX 164.5750/206.5 TX 163.150/206.5	KING NIFC	5	Logistics		KING NIFC	
Tactical Div/Group	RX 168.775 TX 168.7750	KING NIFC	9	Air to Ground	RX 166.9375 TX 166.9375	KING NIFC	6
Prepared by (Resource Unit Ldr.) Randy Lownes		Approved by (Planning Sect. Ch.) Greg Strenkowski			Date 7/25/2011		Time 1900

DIVISION ASSIGNMENT LIST				1. Branch		2. Division <b>T, V, Y, Z</b>	
3. Incident Name <b>Honey Prairie Complex</b>				4. Operational Period Date: <b>7/26/2011</b> Time: <b>0800-2000</b>			
5. Operations Personnel							
<b>Operations</b>	Buck Kline 8/5 / Brent McCarty 8/2			<b>Branch Director</b>			
<b>Planning Ops</b>	Steve Gray 8/1 / Heath Morton (t) 8/4			<b>Division Supervisor</b>		Mike Lee 8/2	
<b>Safety Officer</b>	Rodney Weeks 7/30 / Steve Holman 8/1						
6. Resources Assigned this Period							
Strike Team/Task Force/ Resource Designator	Leader / Name / Designator		Last Shift Date	Num. Per.	Drop Off PT./Time	Crew Names	
<b>READ (O-559) GAOKR</b>	<b>Jessica Bowen</b>			1		912-536-2995	
<b>READ/EQPM (O-5) GAOKR</b>	<b>Rocky Chesser</b>			1		912-276-3232	
<b>READ (O-560) GAOKR</b>	<b>Ron Phernetton</b>			1		912-276-2349	
<b>TFLD (O-942)</b>	<b>Ben Krupski</b>		8/1	1			
ENG6 (E-3) GAOKR	Unstaffed						
<b>TFLD (O-920)</b>	<b>Aaron Schneider</b>		7/26	1			
<b>TFLD</b>	<b>Blair Joiner</b>		<b>8/7</b>	1		See Check-in	
IL Eng 40 (E-392) ILSHF	Bobbi Archdale		8/4	3		J. Paukert, C. Mann	
MN Eng 6232 (E-838) MNMFC	Duane King		8/4	3		T. Elg, D. Lantz	
MN Eng 652(E-404) MNSUF	Andrew Drange		8/4	3		H. Severson, S. Westlin	
Hughes WAT2 (E-954)	Lester James		8/4	1	PVT		
Cat Grader (E-530)	Lucious Corbett		7/27	1	PVT		
<b>EMTP (E-1153)</b>	<b>Wes Lathen</b>		7/26	1			
<b>EMTP (E-1152)</b>	<b>Chad Simons</b>		7/26	1			
7. Control Operations <ul style="list-style-type: none"> <li>Recon potential control lines and examine area for snag removal</li> <li>Improve swamp break boundaries for fire breaks, work w/resource advisor</li> <li>Coordinate potential burn-out w/READ and refuge personnel</li> <li>Use refuge personnel for any burnout activities.</li> <li>Make contact with the Resource Advisor before using mechanical equipment.</li> <li>Safely push down with equipment all snags whether on fire or not that are a threat to success or tactical operations.</li> </ul>							
8. Special Instructions <ul style="list-style-type: none"> <li>Ensure LCES are in place before operations begin. Stay hydrated.</li> <li>Drive defensively and with lights on at all times.</li> <li>Boggy terrain: Be careful and aware when working around this type of area.</li> </ul>							
9. Division/Group Communication Summary							
Function	Frequency	System	Channel	Function	Frequency	System	Channel
Command N Okee Repeater	RX 164.5750/206.5 TX 163.150/206.5	KING NIFC	5	Logistics		KING NIFC	
Tactical Div/Group	RX 168.775 TX 168.775	KING NIFC	9	Air to Ground	RX 166.9375 TX 166.9375	KING NIFC	6
Prepared by (Resource Unit Ldr.) Randy Lownes		Approved by (Planning Sect. Ch.) Greg Strenkowski			Date July 25, 2011		Time 1800

DIVISION ASSIGNMENT LIST				1. Branch		2. Division <b>West - Initial Attack</b>	
3. Incident Name: <b>Honey Prairie Complex</b>				4. Operational Period Date: 7/26/2011		Time: 0800-2000	
5. Operations Personnel							
<b>Operations</b>	Buck Kline 8/5 / Brent McCarty 8/2			<b>Branch Director</b>			
<b>Planning Ops</b>	Steve Gray 8/1 / Heath Morton (t) 8/4			<b>Division Supervisor</b>		Trent Ingram 8/5	
<b>Safety Officer</b>	Tommy Lail 8/11 (R&R on 7/27,28)						
6. Resources Assigned this Period							
Strike Team/Task Force/ Resource Designator		Leader / Name / Designator		Last Shift Date	Num. Per.	Drop Off PT./Time	Crew Names
<b>TFLD (O-899)</b>		<b>Bob Schober</b>		8/2	1	FARGO	
GA ENG6 (E-1084) GAGAS		Chad Dorminy		8/4	2	FARGO	J. Price
TPL Appling 70 (E-1165) GAGAS		Joseph A. Smith Jr. (O-1116) (OOS?)		8/3	1	FARGO	
TPL Clinch 72 (E-1167) GAGAS		William A. Register (O-1117)		8/3	1	FARGO	
TPL Clinch 75 (E-1169) GAGAS		Christopher J. Henderson (O-1118)		8/3	1	FARGO	
TPL Glynn 72 (E-1175) GAGAS		Robert L. Danley (O-1121)		8/3	1	FARGO	
TPL Jeff Davis 70 (E-1177) GAGAS		Berry J. Bohannon (O-1122)		8/3	1	FARGO	
<b>EMT Needs</b>		Contact Honey Prairie Dispatch					
<b>SOF2 (O-1083)</b>		<b>Tommy Lail</b>		8/11	1		R&R 7/27,28
7. Control Operations							
<ul style="list-style-type: none"> <li>Respond to Initial Attack as requested</li> <li>Initial attack IC will communicate size up information to Honey Prairie incident communications.</li> <li>Additional Resource Requests go through Honey Prairie Operations.</li> </ul>							
8. Special Instructions							
<ul style="list-style-type: none"> <li>Ensure LCES are in place before operations begin. Stay hydrated.</li> <li>Drive defensively and with lights on at all times.</li> </ul>							
9. Division/Group Communication Summary							
Function	Frequency	System	Channel	Function	Frequency	System	Channel
Command N Okee Repeater	RX 164.5750/206.5 TX 163.150/206.5	KING NIFC	5	Logistics	See ICS 205	KING NIFC	
Tactical Div/Group	RX 154.280 TX 154,280/156.7	KING NIFC	8	Air to Ground	RX 166.9375 TX 166.9375	KING NIFC	6
Prepared by (Resource Unit Ldr.) Randy Lownes		Approved by (Planning Sect. Ch.) Greg Strenkowski			Date July 25, 2011		Time 1930

<b>DIVISION ASSIGNMENT LIST</b>				1. Branch		2. Division <b>H, I, J, K, L</b>	
3. Incident Name <b>Honey Prairie Complex</b>				4. Operational Period Date: <b>7/26/2011</b> Time: <b>0800-2000</b>			
5. Operations Personnel							
<b>Operations</b>		Buck Kline 8/5 / Brent McCarty 8/2		<b>Branch Director</b>			
<b>Planning Ops</b>		Steve Gray 8/1 / Heath Morton (t) 8/4				Tracy Mobley 8/1	
<b>Safety Officer</b>		Shane Barrow (O-1137) 8/8					
6. Resources Assigned this Period							
Strike Team/Task Force/ Resource Designator		Leader/ Name / Designator		Last Shift Date	Num. Per.	Drop Off PT./Time	Crew Names
<b>READ (O-560) GAOKR</b>		<b>Ron Phemetton</b>			1		912-276-2349
<b>READ (O-559) GAOKR</b>		<b>Jessica Bowen</b>			1		912-536-2995
<b>READ/EQPM (O-5) GAOKR</b>		<b>Rocky Chesser</b>			1		912-276-3232
<b>TFLD (O-937)</b>		<b>Kevin Elmstrom</b>		8/1	1		
<b>GA ENG 86 (E-77) GAGAS</b>		<b>Dean Cornett</b>		8/3	2		P. Floyd
<b>Pickens Eng 86 (E-76) GAGAS</b>		<b>Stacy Cantrell</b>		8/3	2		R. Williamson
<b>EMTB (O-1077)</b>		<b>Michael Graham</b>		7/26	1		
7. Control Operations							
<ul style="list-style-type: none"> <li>Contain all fires outside refuge boundary.</li> <li>Patrol and control reburn.</li> <li>Patrol and mop up all accessible fire line. Mop up all hot spots within 100' of the fire perimeter.</li> <li>Continue to back haul excess equipment from the line.</li> <li>Continue to work with resource advisors when conducting rehabilitation work.</li> </ul>							
8. Special Instructions							
<ul style="list-style-type: none"> <li>Ensure LCES are in place before operations begin. Stay hydrated.</li> <li>Drive defensively and with lights on at all times.</li> <li>See medical plan for EMT support</li> <li>Examine work area for fire weakened snags</li> </ul>							
9. Division/Group Communication Summary							
	Function	Frequency	Channel	Function	Frequency	System	Channel
Command E Okee Repeater	RX 164.6250/ 103.5 TX 163.150/ 103.5	KING	3	Logistics		KING NIFC	
DIV J Repeater	RX 170.4125 TX 165.9625/ 123.0	NIFC	14				
Tactical Div/Group	RX 168.350 TX 168.350	KING NIFC	12	Air to Ground	RX 166.9375 TX 166.9375	KING NIFC	6
Prepared by (Resource Unit Ldr.) <b>Randy Lownes</b>		Approved by (Planning Sect. Ch.) <b>Greg Strenkowski</b>			Date <b>July 25, 2011</b>		Time <b>1800</b>

DIVISION ASSIGNMENT LIST				1. Branch		2. Division <b>M, N, O</b>	
3. Incident Name <b>Honey Prairie Complex</b>				4. Operational Period Date: 7/26/2011 Time: 0800-2000			
5. Operations Personnel							
Operations	Buck Kline 8/5 / Brent McCarty 8/2			Branch Director			
Planning Ops	Steve Gray 8/1 / Heath Morton (t) 8/4			Division Supervisor		Tracy Mobley 8/1	
Safety Officer	Shane Barrow (O-1137) 8/8						
6. Resources Assigned this Period							
Strike Team/Task Force/ Resource Designator		Leader/ Name / Designator		Last Shift Date	Num. Per.	Drop Off PT./Time	Crew Names
READ (O-560)		Ron Phemetton					912-276-2349 cell
READ (O-559)		Jessica Bowen					912-536-2995
READ (O-5)		Rocky Chesser					912-276-3232
TRFD (O-1140)		Alton Anderson		8/7			
TRFD (O-941)		Shawn Denowh		7/26	1		
Murray Eng 86 (E-78) GAGAS		Adam Greeson		8/3	2		R Castoe
Putnam Eng 86 (E-80) GAGAS		Ricky Williams		8/3	2		D Wilkinson
Jones Eng 86 (E-81) GAGAS		Russell Fowler		8/3	2		B Christian
ID ENG 31 (E-977) IDIPF		Louie Feltman		7/26	4		P Montreuil, C Lewis, K Wise
ENG6 (E-1133)		Chris Wright		7/26	2		T Hawkins
Timberline Skidder (E-981)		Henry Tiner		TBA	1	PVT	
EMTB (O-1124)		Jackie Aultman		8/3	1		218-491-1351 cell
7. Control Operations							
<ul style="list-style-type: none"> <li>Patrol and mop up 100' inside fire perimeter.</li> <li>Recon potential control lines and examine area snag removal</li> <li>Keep fire within refuge boundary.</li> <li>Continue to work with resource advisors when conducting rehabilitation work</li> </ul>							
8. Special Instructions							
<ul style="list-style-type: none"> <li>If the fire reaches <b>Mgt Activity Line (MAL) 1</b> cooperators and adjacent landowners will be notified. If the fire reaches <b>MAL 2</b> a meeting will be held at the Swamp Park with adjacent landowners and cooperators.</li> <li>Safely push down with equipment all snags whether on fire or not that are a threat to success or tactical operations.</li> <li>Ensure LCES are in place before operations begin. Stay hydrated.</li> <li>See medical plan for EMT support.</li> <li>Drive defensively and with lights on at all times.</li> <li>Boggy terrain: Be careful and aware when working around this type of area.</li> </ul>							
9. Division/Group Communication Summary							
Function	Frequency	System	Channel	Function	Frequency	System	Channel
Command N Okee Repeater	RX 164.5750/206.5 TX 163.150/206.5	KING NIFC	5	Logistics		KING NIFC	
Tactical Div/Group	RX 168.200 TX 168.200	KING NIFC	11	Air to Ground	RX 166.9375 TX 166.9375	KING NIFC	6
Prepared by (Resource Unit Ldr.) Randy Lownes		Approved by (Planning Sect. Ch.) Greg Strenkowski			Date July 25, 2011		Time 1730



<b>DIVISION ASSIGNMENT LIST</b>			1. Branch		2. Division <b>East Initial Attack</b>		
3. Incident Name <b>Honey Prairie Complex</b>			4. Operational Period Date: <b>7/26/2011</b> Time: <b>0800-2000</b>				
5. Operations Personnel							
<b>Operations</b>	Buck Kline 8/5 / Brent McCarty 8/2			<b>Branch Director</b>			
<b>Planning Ops</b>	Steve Gray 8/1 / Heath Morton (t) 8/4			<b>Division Supervisor</b>		Rufus Crutchfield 8/4	
<b>Safety Officer</b>	Shane Barrow (O-1137) 8/8			<b>Division Supervisor</b>			
6. Resources Assigned this Period							
Strike Team/Task Force/ Resource Designator		Leader / Name / Designator		Last Shift Date	Num. Per.	Drop Off PT./Time	Crew Names
<b>TFLD (O-943)</b>		<b>Steven Clark</b>		8/1	1	Satilla D.O.	
<b>STEN (O-955)</b>		<b>Randy Scherr</b>		8/1	1	Satilla D.O.	
ID ENG 1161 (E-978) IDPLS		Dennis Gillmer		7/26	3	Satilla D.O.	R. Fearon, M. Guidry
ENG6 (E-1081) GAGAS		Rusty Carroll		8/3	2	Satilla D.O.	P.Bryant
ENG6 (E-1082) GAGAS		Tommy Williams		8/3	2	Satilla D.O.	B. Cox
ENG6 (E-1083) GAGAS		Wesley Sisk		8/3	2	Satilla D.O.	J. Davenport
HC2IA (C-14) Pat Rick NCNCF		Dustin Eldred		8/1	20	PVT	
TPL Camden 70 (E-1162) GAGAS		James D Armstrong (O-1115)		8/3	1	Satilla D.O.	
TPL Ware71 (E-1171) GAGAS		Barry H. Bennett (O-1119)		8/3	1	Satilla D.O.	
TPL Ware 72 (E-1173) GAGAS		Thomas D. Whitley (O-1120)		8/3	1	Satilla D.O.	
<b>EMT</b>		Contact Honey Prairie Dispatch				Satilla D.O.	
7. Control Operations							
<ul style="list-style-type: none"> <li>Respond to Initial Attack as requested</li> <li>Patrol and control return</li> <li>Initial attack IC will communicate sizeup information to the Honey Prairie communication.</li> </ul>							
8. Special Instructions							
<ul style="list-style-type: none"> <li>Ensure LCES are in place before operations begin. Stay hydrated.</li> </ul>							
9. Division/Group Communication Summary							
	Function	Frequency	Channel	Function	Frequency	System	Channel
Command E Okee Repeater	RX 164.625/103.5 TX 163.150/103.5	KING NIFC	3	Logistics		KING NIFC	
Tactical Div/Group	RX 168.775 TX 168.775	KING NIFC	9	Air to Ground	RX 166.9375 TX 166.9375	KING NIFC	6
Prepared by (Resource Unit Ldr.) Randy Lownes		Approved by (Planning Sect. Ch.) Greg Strenkowski			Date July 25, 2011		Time 1800

<b>DIVISION ASSIGNMENT LIST</b>			1. Branch		2. Division		<b>Roads Group</b>	
3. Incident Name: <b>Honey Prairie Complex</b>			4. Operational Period Date: 7/26/2011		Time: 0800-2000		Day: 0800-2000	
5. <b>Operations Personnel</b>								
<b>Operations</b>		Buck Kline 8/5 / Brent McCarty 8/2			<b>Branch Director</b>			
<b>Planning Ops</b>		Steve Gray 8/1 / Heath Morton (t) 8/4			<b>Division Supervisor</b>			
<b>Safety Officer</b>								
6. <b>Resources Assigned this Period</b>								
Strike Team/Task Force/ Resource Designator		Leader / Name / Designator		Last Shift Date	Num. Per.	Drop Off PT./Time		Pick Up PT./Time
<b>THSP (O-1088)</b>		<b>Bert Earley</b>		7/27	1			
<b>HEQB (O-1090)</b>		<b>Jonathan Luepke</b>		7/28	1			
<b>EQPM (O-1111.45)</b>		<b>Johnny Barwick</b>		8/4	1			
Clinch Co. Grader (E-228)		Steven Hendricks		7/25	1	CNTY, West Branch		<b>See Resources</b>
Smith Grader (E-597)		David Prooes		7/27	1	PVT, West Branch		
Smith Dump Truck (E-529)		Ron Watson		7/27	1	PVT, West Branch		
Smith Dump Truck (E-506)		Craig Smith		7/27	1	PVT, West Branch		
Hughes Grader (E-230)		Buddy Pittman		7/31	1	PVT, East Branch		
Kobelco Excavator (E-596)		Kenneth Enfinger		7/31	1	PVT, East Branch		
Lankford Dump Trk(E-1078)		Roy Hughes		8/20	1	PVT, East Branch		
Herbert Dump Truck (E-1079)		Dennis Kight		8/20	1	PVT, East Branch		
7. Control Operations								
<ul style="list-style-type: none"> <li>Coordinate efforts w/ resource advisor and logistics</li> <li>Notify Division Supervisor(s) when entering and leaving division.</li> </ul>								
8. Special Instructions								
<ul style="list-style-type: none"> <li>Ensure that tractors are cleaned and free of debris daily. Examine work area for fire weakened snags.</li> <li>Ensure LCES are in place before operations begin and stay hydrated.</li> <li>Additional resources will be available from GFC, Florida DOF, FWS, and local cooperators.</li> <li>Drive defensively and with lights on at all times.</li> <li>See Medical plan for EMT support.</li> <li>Implement MIST tactics</li> </ul>								
9. <b>Division/Group Communication Summary</b>								
Function		Frequency		System		Channel		
Command		See ICS 205		KING NIFC				
N.Okee Repeater						Logistics		See ICS 205
Tactical Div/Group		See ICS 205		KING NIFC		Air to Ground		See ICS 205
Prepared by (Resource Unit Ldr.)		Approved by (Planning Sect. Ch.)				Date		Time
Randy Lownes		Greg Strenkowski				7/25/2011		1930

# AIR OPERATIONS SUMMARY

Prepared By: Joe Bistryski, AOBD

Prepared Date: 7.25.2011

Prepared Time: 1800

<b>1. INCIDENT NAME:</b> Honey Prairie	<b>2. OPS PERIOD DATE:</b> July 26, 2011	<b>START TIME:</b> 0830	<b>END TIME:</b> 1900	<b>SUNRISE:</b> 0642	<b>SUNSET:</b> 2029
<b>3. REMARKS (Safety Notes, Hazards, Air Operations Special Equipment, etc.):</b> <i>Afternoon thunderstorms predicted. Discuss risk mitigations in morning briefings. Be alert to your environment and changing conditions. Ground resources monitor Air-to Ground frequency for ATGS contact.</i>					<b>5. TFR #:</b> 1/6931 (Box) 3000' MSL _ new 7/25
<b>NOTE: Latitude/Longitude format is "Degrees-Minutes-Decimal Minutes" (example: N30 41.42 W082 33.97)</b>					

PERSONNEL	NAME	PHONE #	FREQUENCIES	AM	FM	AIRTANKERS / LEAD PLANES - None Available Local ATGS AIRCRAFT- 57Z
AOBD	Joe Bistryski	Cell 801-518-2797 Desk 912-637-5254	AIR/ AIR FW	122.575		
ASGS	Brian Campbell	404-772-5405	AIR/ AIR RW-FF	122.375		OTHER: Waycross Airport Helibase: 912-287-4479
ATGS Waycross HB	Everett Weniger	406-381-4176	Georgia AIR/AIR	122.075		Waycross Airport Helibase Fax: 912-287-4458 Pogo Helibase: 912-496-4415 / FAX 912-496-2797 ICP Helispot is Waycross Airport Helibase Okfenokoe Dispatch: 912-496-7366 X230
HEB2 Waycorss HB	Lee Kessler	Desk 912-496-4415 Cell 218-398-2708	Georgia AIR/GRND (Smokey - Dozers)		159.285 W	Waycross Airport: N 31 16.16 10 W82 33.38
HEB2 T Pogo HB	Jeff McBath	858-357-3242	AIR/GROUND PRIMARY		166.9375	<b>BERGANZA HELISPOT N 31 07.22 W082 15.22 * don't use unless cleared with AOBD.</b>
			AIR/GROUND ALTERNATE		166.9000	<b>POGO HELIBASE: N30 44.03 W082 07.41</b>
			TOLC		168.0125	
			AIR GUARD		168.625 T110.9	

## 9. HELICOPTERS (Use Additional Sheets as Necessary)

FAA N#	TY	MAKE/ MODEL	BASE	AVAIL	MANAGER	FAA N#	T	MAKE/ MODEL	BASE	AVAIL	MANAGER
N36BH	1	S-70	Waycross	0830	Mike Ryan 406-925-1337	N818MC	3	AS-350B3	Pogo	0830	Juan Edar 307-330-8285
26MW	1	K-1200	Waycross	0830	Kirby Cook 406-381-1212	57Z	3	206-L4	Wycrs	0830	Cindy Austin 208-241-3957

## 10. TASK/ MISSION/ ASSIGNMENT (Type/ function includes: Air Tactical, Retardant, Recon, Personnel Transport, Bucket Operations, SAR, etc.)

TYPE/FUNCTION	NAME OF PERSONNEL OR CARGO (if applicable) or instructions for tactical aircraft	MISSION START	FLY FROM	FLY TO
Bucket Ops	N36BH, 26MW	As Requested	Waycross	
Air Tactical	57Z	1200 / As Requested	Waycross	
Recon	<b>All recon missions must have direct approval by the AOBD. 818MC, 57Z</b>	As Requested	Waycross/Pogo	
Medevac	N818MC	As Requested	Pogo	



# Fire Weather Forecast



**FORECAST NO:** 80

**NAME OF FIRE:** Honey Prairie Complex

**PREDICTION FOR:** Day Shift  
**SHIFT DATE:** Tuesday 7/26/11

**UNIT:** Okefenokee National Wildlife Refuge

**FORECAST ISSUED:** 7/25/11 at 1800

**SIGNED:** John Franks  
Incident Meteorologist

**WEATHER DISCUSSION:** A cold front will track through the southeastern United States and spark shower and thunderstorm activity over the region.

**TODAY:** Partly cloudy early with showers and thunderstorms developing.

**MAXIMUM TEMPERATURES:** 88-93 degrees  
**PM HEAT INDEX:** 96-101 degrees  
**MINIMUM HUMIDITY:** 45-55%  
**20 FT WINDS:** AM: SW 3-7 mph  
PM: SW 5-10 mph gusts to 15 mph. Higher gusts to 35 mph in storms.  
**STABILITY/INVERSION:** Inversion at 300 feet through 0800, rising to 5500 feet by 1400  
**TRANSPORT WINDS:** SW 16 mph  
**DISPERSION INDEX:** 45, Fair  
**CHANCE OF PRECIPITATION:** 60%  
**PRECIPITATION AMOUNTS:** Between a quarter and a third of an inch, higher in thunderstorms  
**LIGHTNING ACTIVITY LEVEL:** 4

**TONIGHT:** Partly cloudy. A 50% chance of showers and thunderstorms, mainly in the evening and increasing again towards daybreak. Winds SW 4-7 mph. Low temperatures 69-74. Max RH 90-100%. Rainfall up to a quarter of an inch.

**WEDNESDAY:** Mostly cloudy with showers and thunderstorms likely.

**MAXIMUM TEMPERATURES:** 87-92 degrees  
**PM HEAT INDEX:** Not applicable  
**MINIMUM HUMIDITY:** 55-65%  
**20 FT WINDS:** AM: SW 3-6 mph  
PM: W 5-9 mph  
**TRANSPORT WINDS:** SW 15 mph, gusts to 25 mph in storms.  
**DISPERSION INDEX:** 30, Fair  
**CHANCE OF PRECIPITATION:** 60% with amounts generally a quarter inch, higher in thunderstorms.  
**LIGHTNING ACTIVITY LEVEL:** 5

**EXTENDED FORECAST:**

	<b>THURSDAY</b>	<b>FRIDAY</b>	<b>SATURDAY</b>
<b>SKY/WEATHER</b>	Mostly Cloudy / Scattered Showers with some Thunder	Partly Cloudy / Scattered Showers	Partly Cloudy
<b>CHANCE PRECIP</b>	40%	30%	30%
<b>MINIMUM RH</b>	50-60%	48-58%	40-50%
<b>20 FT. WINDS</b>	AM: S 2-3 mph PM: S 4-8 mph	AM: SE 3-5 mph PM: SSE 6-10 mph	AM: SSW 2-3 mph PM: SSW 4-8 mph
<b>IN/MAX TEMPS</b>	71 / 92	73 / 92	72 / 95

**FIRE BEHAVIOR FORECAST**

<b>Fire: Honey Prairie Complex</b>	<b>Unit: GA-OKR-000001</b>	<b>Prediction for Day Shift</b>
<b>Forecast #79 Issued: 07/25/2011 1830 hrs</b>	<b>Signed: John Kern/Keith Mousel</b>	<b>Shift Date: Tuesday 07/26/11</b>

**GENERAL FIRE BEHAVIOR**

Fuels around the Okefenokee Wildlife Refuge are predominately Fuel Model 7 (Southern Rough). Large to moderate acreage tracts of commercial timberland are mixed in throughout the entire perimeter surrounding the refuge. Fast moving wildfires with extremely high flame lengths and rapid rates of spread occur within the swamp.

**Indicators/Threshold for Increased Fire Activity**

- Relative humidity dropping below 45%
- Winds **above** 10 mph
- **Heavy fuel loadings**
- **Fine dead fuel moisture 8% or less**
- Dispersion above 70
- **\* Items in BOLD are predicted to occur today\***

**SPECIFIC FIRE BEHAVIOR**

- **Fire behavior should be slow to develop today after the past few day's rains.**
- **Interior smoldering and some flare ups are possible, especially if winds increase.**
- **Expect fire to continue spreading through the shrub fuels with low rates of spread and minimal flame lengths. LAL 2**

Fuel Type	Rates of Spread	Flame Length	Spotting Distance	Firebrand Ignition
<b>Winds at 3 - 10 G 16 mph</b>				
Shrub Fuels – SH4	1 - 6 ch/hr	1 - 2 feet	1/10 – 2/10 mile	50%
Heavy Southern Rough- SH8	3 – 15 ch/hr	4 -8 feet	1/10 – 2/10 mile	50%
Timber Litter-Reburn TL8	1 - 5 ch/hr	1 - 3 feet	1/10 -2/10 mile	50%
Small Pine Plantation w/grasses GR5	3 – 16 ch/hr	2 - 5 feet	1/10 – 2/10 mile	50%

**One hour fine dead fuel moisture is at 7% for Tuesday.** Moisture from repeated rains has reduced the fire threat, HOWEVER some areas have dried out and burning continues. 1,000 hour fuels again drier than normal for this time of year. There is reburn potential in all divisions due to the amount of needle cast and fallen trees. Should wind become stronger than predicted, expect fire behavior to increase above predicted levels. **In areas where fuels have been herbicided, expect quick ignitions and extreme heat, quick rate-of –spread, and group tree torching producing spotting problems.**

**NOTE- FIRE BEHAVIOR CALCULATIONS ARE FOR FIRES IN UNBURNED FUELS INCLUDING NEW IA STARTS.**

West	A	<i>Fire is rather quite in this area. Watch for IA and Falling snags. <b>60% chance of rain</b></i>	East West	T/V	<i>Rains did fall in this area however fire will continue a slow spread to the North and west. Be heads-up for falling snags. <b>60% chance of rain</b></i>
	B-G	<i>Be heads-up for falling snags. <b>60% chance of rain</b></i>		H, I J, K L,M N,O	<i>Rains did fall in this area. Heads-up for falling snags. <b>60% chance of rain</b></i>
	Y Z	<i>Areas of heat will remain near Div Y/Z perimeter with possible flare-ups in moderate to high fuel loadings. Be heads-up for falling snags. <b>60% chance of rain</b></i>			

**Night Ops – No Night Operations are Planned.** Scattered showers and thunderstorms will continue with patchy fog developing after midnight.

**Air Operations:** Expect possible areas of heavy smoke especially on the east and north side of the fire.

**SAFETY:**

**WINDS –** Stay abreast of changing wx conditions throughout the entire shift. **THUNDERSTORMS -** these severe winds can create extreme fire behavior, with winds gusting over 30 mph. **SNAGS – Snags are falling in all Divisions – will be influenced by Thunderstorm outflow winds.** **FUELS:** Watch for pockets of cured shrubs or blankets of red needles beginning to cover the forest floor. 1,000 and 10,000 hour fuels as well as deep duff pockets are providing the heat source. Stay focused, and put LCES in place before starting operations. Watch for standing burning snags that can fall without warning. *Energy Release Component (ERC) is running near average for this time of year.*

# HEALTH AND SAFETY MESSAGE

*SAFETY* starts with *YOU*

We are ALL accountable for SAFE behaviors

INCIDENT: Honey Prairie Fire      DATE: 7/26/11      TIME: 0800

**Major Hazards and Risks:**      **Weather**  
   **Driving / Road Conditions**  
   **Air Operations**  
   **Communications**

**Weather** – Do Not let complacency set in on hydration due to any cloud cover today! Communicate observed weather changes throughout the day with all resources and be prepared to shelter in vehicles for protection from lightning. Look up to ensure you are not parked near a SNAG when sheltering in the vehicle!!!

**Driving/Road Conditions** – If rain is received on the perimeter or access roads, avoid the roads that are already known to have ruts. **Increase your standard following distance** (3 Second Plus Rule) to a minimum of 4 seconds plus (5 seconds in transports or engines). Driving speeds should be reduced to compensate for road conditions.

**Air Operations** – Communicate thunderstorm development to aircraft. If other aircraft are spotted near the fire area, report to Air Ops immediately.

**Communications** – Keep in mind that use of push to talk phones or private radio frequencies can limit awareness to all in the division. **Watch Outs , changes in weather or fire behavior should be discussed on handheld radios** to ensure it helps build to everyone’s situational awareness.

## Watch Out Situation of the Day



18. TAKING A NAP NEAR THE FIRELINE

## Aviation Watch Out Situations

- Is this flight necessary?
- Who is in charge?
- Are all hazards identified and have you made them known?
- Should you stop the operation or flight due to change in conditions?
  - Communications                      – Weather
  - Confusion                              – Turbulence
  - Conflicting Priorities              – Personnel
- Is there a better way to do it?
- Are you driven by an overwhelming sense of urgency?
- Can you justify your actions?
- Are there other aircraft in the area?
- Do you have an escape route?
- Are any rules being broken?
- Are communications getting tense?
- Are you deviating from the assigned operation or flight?

**Incident Safety Officers: Mark Munns, Tommy Hawkins, Steve Holman, Rodney Weeks, Shane Barrow and Tommy Lail**

1. Establish & maintain LCES. Report LCES checks twice daily to DIVS.
2. Look UP,DOWN and AROUND - Flag and Communicate.
3. Follow downhill fireline checklist.
4. Take plenty rest breaks and encourage to drink water NOW through briefings.
5. Watch out for complacency. Supervisors need to keep constant surveillance for early signs and address.
6. Observe 30/30 Rule: Reference Incident Response Pocket Guide. Look for new starts.
7. Post experienced Lookouts. Make sure LCES is in place and make known.
8. Utilize Fire Departments for structure protection. Tailgate briefings on urban interface hazards.
9. Defensive driving will be addressed in all briefings.
10. Utilize public "Community Meetings" to warn public of fire hazards/traffic.
11. All personnel must meet the 2:1 work/rest ratio. Safety Team will monitor closely.
12. Maintain LCES at all times.
13. Use Air Attack as Lookout.
14. Post lookout for Snags, Rolling Material, and Spot Fires below line.
15. Ensure Fireline is Anchored.
16. All Firefighters know current weather, predicted weather & fire behavior forecast.
17. Line Supervisors will provide clear, concise briefings.
18. Flag hazard trees & snags, post lookouts when working in vicinity of snags.
19. FBA/Meteorologist to develop weather watch system.
20. Keep Firefighters informed of any changes in predicted weather.
21. Recognize & Avoid Hazmat situations.
22. Utilize Hazmat Response Teams.
23. Use Spike Camps to limit travel times.
24. Ensure Traffic Planning is safe and enforced.
25. Use Helicopter transport when driving conditions warrant.
26. Review Structural "Watch Out" situations.
27. Abandon Structures before Safety is compromised.
28. Air Attack and/or lead plane will always be in the air to coordinate aircraft.
29. Pilots will be briefed on strategy and tactics.
30. Personnel on ground will stay out of drop zones.
31. Observe all traffic signals and speed limits.
32. Use spotter when backing vehicle(s).
33. Refer to Fireline Handbook on Power Line Hazards.
34. Burn aerial fuels & avoid as a safety zone.
35. Construct direct line with immediate burn out of fuels.





MEDICAL PLAN	Incident Name Honey Prairie Complex	Date Prepared 7/25/2011	Time Prepared 1800	Operational Period 7/26/2011
--------------	--	----------------------------	-----------------------	---------------------------------

**5. Incident Medical Aid Station**

<u>Medical Aid Stations</u>	<u>Location</u>	Paramedics Yes No	
MEDICAL UNIT (ICP)	Honey Prairie Complex ICP- Mark Millirons (EMT)MEDL (706)741-4216 (24 Hours) - Jameson Inn, Waycross (8-5)		X
WEST BRANCH (Line EMT)	Levi Clymer(EMT-P)(417)658-5155 (A,B,C,D,E,F,G DIV) – Econo Lodge, Waycross (7-29) Wes Lathen (EMT-P)(435)760-8481 (T,V DIV) – La Quinta, Valdosta (7-26) {Till Noon} Chad Simons (EMT-P)(404)772-5344/ (Y,Z DIV) – La Quinta, Valdosta (7-26) {Till Noon} Robert Carswell (EMT) MEDL (912)286-1648 (T,V,Y,Z) - Days Inn, Waycross (8-6) <b>(West IA) will be covered by line medic if needed</b>	X	
EAST BRANCH (Line EMT)	Michael Graham(EMT-B)(912)-286-1674 (H,I,J,K,L DIV) – Hampton Inn, Waycross (7-26) {Till Noon} Jackie Aultman 218-491-1351(EMT- B)(M,N,O DIV) - Comfort Inn, Waycross (8-3) (After Noon H,I,J,K,L also) <b>(East IA) will be covered by line medic if needed.</b>		X

**Ambulance Services**

Name	Address	Phone	Paramedic Yes No	
Clinch County EMS (WEST SIDE)	Homerville, GA (911 to activate)	912-487-5211 ext. 4567	Yes	
Ware County EMS (NORTHSIDE)	Waycross, Georgia (911 to activate)	912-281-9467	Yes	
Charlton County EMS (EAST SIDE)	Folkston, GA (911 to activate)	912-496-7321	Yes	

**Air Ambulance Service**

			Yes	No
Trauma 1	Lake City , FL (16 min/air to Fargo ICP)	1-800-223-4878(freq. 155.340)	Yes	
Trauma 1	Jacksonville, FL (26 min/air to Fargo ICP)	1-800-223-4878(freq. 155.340)	Yes	
AirMed	Augusta, GA (2 hrs/air to Fargo ICP)	1-888-792-9245(freq. 155.340)	Yes	
Lifeflight	Jacksonville, FL (35 min/air to Fargo ICP)	1-877-870-7779(freq. 155.340)	Yes	
Air Evac	Waycross, GA (17 min/air to Fargo ICP)	1-800-247-3822(freq. 155.340)	Yes	
US Coast Guard (Heli-Rescue)	Savannah GA	1-912-652-4646 (freq. 155.340)	Yes	

**7. Hospitals**

Name	Address	Travel Time		Phone	Helipad		Burn Center	
		Air	Ground		Yes	No	Yes	No
Satilla Regional	410 Darling Ave Waycross Ga N 31°13.56 W 82°21.058	18 min	45 min	912-283-3030	Yes			No
Clinch Memorial Hospital (WEST SIDE)	1050 Valdosta HWY Homerville, GA		25 min	912-487-5211 ext 4502	Yes			No
Charlton Memorial Hospital (EAST SIDE)	1203 3 <sup>rd</sup> St. Folkston, GA		50 min	912-496-2531	Yes			No
Memorial Hospital	Savannah, GA 4700 Waters 3200.7 8107.6	30 min		912-350-8999	Yes			No
Shands Hospital (level I)	Jacksonville, FL N 30°20'97 W 82° 13'992	26 min	1.5 hrs	800-223-4878	Yes		Yes	
Shands Burn Center	Gainesville, FL 38.33 N 082 20.73W	33 min	1.5 hrs	352-265-0300	Yes		Yes	

**8. Medical Emergency Procedures**

Identify any EMTs and Paramedics in your crews. All medical emergencies will be reported to the Division Supervisor who will assume command and notify Line Medics.

1. Provide medical care & stabilize patient.
2. Call 911
3. Notify Communications via radio over Command Channel.
4. Communications will clear radio traffic for medical emergency.
5. Notify the Field Ops Section Chief.
6. Com will notify ambulance and coordinate with IC, SOF, MEDL

**MAJOR EMERGENCIES – Secure the area and identify witness for later investigation. Keep an accurate log of events.**

**NOTE: Do not give Patients Name over the radio**

**HELISPOTS**

Pocket Helispot 30 47 30.02 x 82 22 39.5 (West side), mile marker 4, HWY 177 Steven C. Foster State Park  
Fargo Helispot 30 40.945 x 082 33.640 (West side), HWY 441- Steven C. Foster Visitor Center  
POGO Helibase 30.44.03 x 82.07.41 (East side)

**Evac Yankee**

Helispot 6  
Rd. 32 and 32A, N 30° 53.280 W 082° 33.880  
Helispot 7

Tatum Rd. Pond N 30° 50.280 W 082° 33.857

**\*Alternate site can be established following guidelines for safety found with IRPG and local EMS resources.**

INJURY REPORTING PROCESS:

Nature of Injury: \_\_\_\_\_

Location of Patient: \_\_\_\_\_

Transportation Requested by: Air \_\_\_ Ground \_\_\_

Pick Up Point: \_\_\_\_\_

Lat \_\_\_\_\_ Long \_\_\_\_\_

Patient Unit ID: \_\_\_\_\_

Is an EMT w/Patient: Yes \_\_\_ No \_\_\_

Age: \_\_\_\_\_ Sex: Male \_\_\_ Female \_\_\_

Prepared by: Mark Millirons (EMT)MEDL

10. Reviewed by: Mark Munns, SOF

INCIDENT RADIO COMMUNICATIONS PLAN ICS-205		Incident Name <b>Honey Prairie</b>		<b>GROUP 22</b>		Date/Time Prepared 07/25/2011-18:00		Operational Period Date/Time 7/26/2011 0800-2000			
Ch #	Function	Channel Name	Assignment	RX Freq	NW	RX Tone/NAC	TX Freq	NW	TX Tone/NAC	Mode A,D or M	Remarks
1	Command	West Okee Repeater	Sec West Branch CMD	167.1250	N	156.7	163.1500	N	156.7	A	Stephen Foster State Park
2	Command	South Okee Repeater	Sec East/West Branch CMD	164.7750	N	123.0	163.1500	N	123.0	A	Eddy Florida
3	Command	East Okee Repeater	PRIMARY East Branch CMD	164.6250	N	103.5	163.1500	N	103.5	A	Refuge Headquarters
4	Command	NIFC C2	PRIMARY West Branch CMD	168.100	N	CSQ	170.4500	N	123.0	A	NOT linked to OKEE System
5	Command	North Okee Repeater	PRIMARY North Branch CMD	164.5750	N	206.5	163.1500	N	206.5	A	Waycross
6	Air-Ground	Air to Ground	PRIMARY	166.9375	N	CSQ	166.9375	N	CSQ	A	
7	Tactical	MOB-MOB	GFC Contingency Structure Protection Group West I.A.	159.3900	W	CSQ	159.3900	W	156.7	A	
8	Tactical	V-Fire 21W WHITE	Protection Group West I.A.	154.2800	W	CSQ	154.2800	W	156.7	A	
9	Tactical	USFS 9	DIV A,B,C, D,E,F,G,T&V (East I/A)	168.7750	N	CSQ	168.7750	N	CSQ	A	
10	Tactical	S.E. Compact	DIV	159.2850	W	CSQ	159.2850	W	CSQ	A	
11	Tactical	USFS 11	DIV M,N,O	168.2000	N	CSQ	168.2000	N	CSQ	A	
12	Tactical	Refuge Tac 1	DIV H, I, J, K,L	168.3500	N	CSQ	168.3500	N	CSQ	A	
13	Tactical	FL 190	DIV Y,Z	151.2725	N	CSQ	151.2725	N	CSQ	A	
14	Command	DIV J RPT	East Branch	170.4125	N	CSQ	165.9625	N	123.0	A	NOT linked to OKEE System
15	Air-Ground	Air to Ground	SECONDARY	166.9000	N	CSQ	166.9000	N	CSQ	A	
16	EMERGENCY	AIR Guard	Air OPS.	168.6250	N	CSQ	168.6250	N	110.9	A	
Prepared by (Communications Unit) Kelly Towe, COML Incident Dispatcher: 912-286-1660											
<b>Cloning at ICP communications and briefings,</b>											

The convention calls for frequency lists to show four digits after the decimal place, followed by either an "N" or a "W", depending on whether the frequency is narrow or wide band. **Mode** refers to either "A" or "D" indicating analog or digital (e.g. Project 25) or "M" indicating mixed mode. All channels are shown as if programmed in a control station, base stations, mobile or portable radio.

## HONEY PRAIRIE PHONE LIST

07/26/11

**Incident**

**Communication**

**(Hours: 0700-2100)**

**912-286-1660**

AGENCY OFFICIALS			OPERATIONS		
Curt McCasland	602-359-0013	USFWS AA	Steve Gray	404-772-5389	Planning Operations
Mindy Gautreaux	912-282-7500	USFWS Deputy AA	Buck Kline	229-460-2062	Field Operations
Frank Sorrells	912-381-7503	GFC AA	Heath Morton (t)	423-240-7509	Planning Operations
James Karels	850-228-7763	FL DOF AA	Brent McCarty	229-938-8718	West Branch
Diane Adams	912-266-5421	GEMA	<b>DIVISIONS</b>		
Mike Housh	912-281-1575	USFWS AREP			
COMMAND			Charles Arnold	423-802-6507	DIVS A, B, C, D, E, F, G
Troy Floyd	706-676-0168	IC			
RESOURCE ADVISORS			Mike Lee	770-576-9594	DIVS T, V, Y, Z
Ron Phernetton	912-276-2349	Resource Advisor			
Jessica Bowen	912-536-2995	Resource Advisor	Trent Ingram	229-726-0285	West IA
Rocky Chesser	912-276-3232	Resource Advisor	DIVISIONS		
INFORMATION 912-496-2566					
Jenny Lyn Bruner	912-496-2566	Fire Information	Tracy Mobley	478-986-7466	DIVS H, I, J, K, L
Denise Croker	256-497-8334	PIO1	Tracy Mobley	478-986-7466	DIVS M, N, O
			Rufus Crutchfield	706-346-4052	East IA
			Bert Earley	229-854-5229	Roads Group
SAFETY					
Tommy Hawkins	706-676-7538	Safety Officer	AIR OPERATIONS		
Mark Munns	706-401-5903	Safety Officer	Joseph Bistryski	801-518-2797	Air Ops Branch
Jerry Burnsed	386-453-8453	Safety Officer			
Steve Barrow	706-699-2412	Safety Officer			
Mark Millirons	706-741-4216	Medical Unit Leader	Brian Campbell	404-712-5405	ASGS (cell)
Field EMT	912-286-1674	Medical Unit Leader	Evertt Weniger	406-381-4176	Waycross
Medical Unit	912-637-5236				
Tommy Lail	404-772-5338	Safety Officer	Lee Kessler	912-287-4479	HEB2 - WAYCROSS
DISPATCH			Jeff McBath	858-357-3242	HEB2 (t) - WAYCROSS
Okeefenokee Dsp	912-496-7366	Okeefenokee			
Suwannee Dispatch	386-758-5700	Fla wildfires, other	PLANNING 912-287-6557 FAX 912-287-6557		
Honey Prairie Dspth	912-286-1660	Honey Prairie ICP	Greg Strenkowski	478-951-2421	Planning Section Chief
Waycross Dispatch	912-287-4915	Ga wildfires, other	Keith Murphy (t)	912-637-5241	Situation Unit Leader
LOGISTICS West			John Franks	513-519-5818	IMET
Willie Boston	770-328-3186	LSC	Harold West	912-637-5241	DMOB
Thomas Lambert	912-287-6540	FACL	Keith Mousel	850-228-7756	FBAN
			FINANCE 912-287-6568 FAX 912-287-6564		
Hotel Mgr	912-287-6540	Lodging	Lila Johnson	770-658-6641	Finance Section Chief
Kevin Reish	404-276-1998	Security Manager	Judy Reddin	912-281-6876	Buying Team Leader
Tim Jones	912-387-6480	GSUL			
Steve Blackwell	404-772-5330				
Bob Kookan		Food Unit Leader	Kurt Hinz	507-206-2035	Comp Claims
Amy Weaver (t)	912-637-5239	SPUL	=	507-696-3669	(cell)
Kelly Towe	478-308-4770	COML	James Meredith	404-805-6806	IBA

<b>ORDERING</b>		
Jimmy Grimes	404-558-4476	Ordering Manager
		LSC
John Crain	404-772-5363	Base Camp Mgr
		Supply Unit Leader
Joe Hoisington	530-905-3715	EQPM
Bert Earley	229-854-5229	Roads THSP
	239-887-1817	Security Manager
<b>COOPERATORS</b>		
<b>COUNTY</b>		
	912-496-7229	Charlton County EMA
John F. Meyer - Chairman	912-496-2549	Charlton County Commissioners
Dobie Conner	912-496-7321	Charlton County Sheriff
Jesse Booth	912-520-0061	Clinch County EMA
Jonathan Daniel	912-281-5158	Ware County EMA
Jessie Jordan	912-816-6063	Ware County Fire Dept
Joe Morris	912-281-6020	Ware County Sheriff
Robbie Sutton	912-599-9027	Tri County 911
<b>STATE</b>		
GFC Fargo District Office	912-637-5270	
GFC Satilla District Office	912-287-4915	
Blair Joiner	229-237-9026	GFC Clinch Chief Ranger
Jason Gillis	912-314-9233 912-637-5504	GFC Satilla Assistant Mgr.
Brian Gray	229-894-4628 912-673-5274	Stephen Foster State Park
Travis Griffin	912-281-5790	Laura Walker State Park
Crystal Paulk-Buchanan	404-535-1048	GEMA PIO
Georgia Highway Patrol	912-287-6500	
<b>FEDERAL</b>		
Okefenokee Fire Shop	912-496-4181	
Okefenokee NWR HQ (East)	912-496-7366	
Okefenokee NWR (West)	912-637-5322	
Okefenokee Visitor Center	912-496-7836	

<b>LANDOWNERS</b>		
Jim Barrett	229-412-3133	Langdale/GOAL Chairman
Wesley Langdale	229-220-2602	Langdale
Hal Rowe	229-412-3133	Langdale
Langdale Office	229-242-7450	Langdale Office
Mike Conlon	386-365-3882	Rayonier Unit Supervisor
Ray Carter	386-288-6626	Rayonier
Ed Carter	386-288-6626	Rayonier
Doug Nuss	912-390-1037	Rayonier
Randall McCrady	912-283-4077 W	Rayonier
Colin Myerson	229-506-1565	Superior Pine Products Co
Robbie Lee	229-356-0526	Superior Pine Products Co
Superior Pine Office	912-637-5261	Superior Pine Products Co
Al Alexander	850-843-0104	The Forestry Co
Savell Schmidt	850-843-1181	The Forestry Co
John Bogue	850-843-1192	The Forestry Co
Joe Hopkins	912-276-0911	Toledo Timber
Chris Gowan	912-276-0965	Toledo Timber
Martin Bell	912-283-0583	Swamp Park
Crystal Peeples	352-316-0632	FIA
Steve Davis	912-614-1828	Davis Community
Trevor Fortner	912-599-9271	Little Suwannee
Tim Jarrell	912-223-7120	Hancock Forest Mgmt.
<b>RAILROADS</b>		
Norfolk Southern	800-453-2530	
Sid Moody	904-318-7983	Norfolk Southern Railroad
Chad Edwards	404-582-4909	Norfolk Southern Railroad
	540-797-9918	
Eric Sams	904-576-9907	
Norfolk So Emergency Dispatch	404-529-1597	
CSX Randy Dixon	912-270-0699	
CSX Dispatch	800-232-0144	

## Upcomming\_Demobs

Number	Name	Kind	Unit	Travel	Jetport	DemobDate
C-14.21	ADAMS, MATTHEW	FFT	NCNC	POV	AVL	07/26/2011
C-14.22	OAKES, DANIEL	FFT	NCNC	POV	AVL	07/26/2011
C-14.23	GORDON, BRIAN	ICT5	NCNC	POV	AVL	07/26/2011
C-14.24	ENGLE, DAVID	ICT5	NCNC	POV	AVL	07/26/2011
E-228	CLINCH COUNTY	GR	GAOK	AOV		07/26/2011
E-228.1	HENDRICKS, STEVEN	DRI	GAOK	AOV		07/26/2011
E-853	KALEIGH	WA		POV		07/26/2011
E-853.2	HATTON, TRENT	DRI		POV		07/26/2011
E-981	TIMBERLINE	SK	GAOK	POV		07/26/2011
E-981.1	TINER, HENRY	DRI	GAOK	POV		07/26/2011
O-998.14	KERN, JOHN	FBA	FLFLS	AOV	TPA	07/26/2011
E-977	ENGINE - T6 - IPF - D1	ENG	IDIPF	AOV		07/27/2011
E-977.5	FELTMANN, HAROLD	ENG	IDIPF		GEG	07/27/2011
E-977.6	MONTREUIL, PATRICK	ENG	IDIPF		GEG	07/27/2011
E-977.7	LEWIS, CODY	FFT	IDIPF			07/27/2011
E-977.8	WISE, KASARA	FFT	IDIPF		GEG	07/27/2011
E-978	ENGINE - T6 - PLS -	ENG	IDPLS	POV		07/27/2011
E-978.1	GILLMER, DENNIS	ENG	IDIPF	POV	GEG	07/27/2011
E-978.2	FEARON, RYAN	FFT	IDPLS	POV	GEG	07/27/2011
E-978.3	GUIDRY, MYKEL	FFT	IDSJS	POV	GEG	07/27/2011
E-1075	ENGINE - T6 - 6711	ENG	INBOR	AOV		07/27/2011
E-1075.1	JONES, DAVID H	ENG	INBOR	AOV	SDF	07/27/2011
E-1075.2	SMITH, BRANDON W	FFT	INBOR	AOV	SDF	07/27/2011
E-1075.3	WINCHELL, MAX	FFT	ININS	AOV	STL	07/27/2011
E-1133	ENGINE - T6 - FLMIR	ENG	FLMIR	AOV		07/27/2011
E-1133.1	WRIGHT,	ENG	FLMIR	AOV		07/27/2011
E-1152	ALS BAG WITH	MIS	UTNU	AIR	SLC	07/27/2011
E-1152.1	SIMONS, CHAD	EMT	UTNU	AIR	SLC	07/27/2011
E-1153	LATHEN, WES	EMT	UTNU	AIR	SLC	07/27/2011
E-1153	ALS BAG WITH	MIS	UTNU	AIR	SLC	07/27/2011
O-888	MURPHY, BRIAN	HEC	ILCOR	AIR	STL	07/27/2011
O-920	SCHNEIDER, AARON	TFL	ORSU	AIR	EUG	07/27/2011
O-941	DENOWH, SHAWN A	TFL	IDPAF	AIR	BOI	07/27/2011
O-1056	WRIGHT,	ENG	FLMIR	AOV	MCO	07/27/2011
O-1069	CHITWOOD, SANDI	EQT	ORSU	AIR	PDX	07/27/2011
O-1071	CRAIN, JOHN A	RCD	FLFLS	POV	TPA	07/27/2011
O-1077	GRAHAM, MICHAEL	EMT	ARAR	AIR	XNA	07/27/2011
O-1085	CASHDOLLAR,	EQP	FLFLS	AOV		07/27/2011
E-380	JOHNNY SMITH	GR	GAOK	OTH		07/28/2011
E-380.1	MERRITT, JASON	DRI	GAOK	OTH		07/28/2011
E-505	SMITH EXCAVATOR	EXC	GAOK	POV		07/28/2011
E-505.3	MURRAY, DON	DRI	GAOK	POV		07/28/2011
E-506	SMITH DUMP TRUCK	TDM	GAOK	POV		07/28/2011
E-506.1	SMITH, CRAIG	DRI	GAOK	POV		07/28/2011
E-529	SMITH DUMP TRUCK2	TDM	GAOK	POV		07/28/2011
E-529.2	WATSON, RON	DRI	GAOK	POV		07/28/2011
E-597	SMITH ROAD GRADER	GR	GAOK	POV		07/28/2011
E-597.1	PROPE, DAVID	DRI	GAOK	POV		07/28/2011
E-853.3	CASEY, BRIAN	DRI		POV		07/28/2011
O-1086	KESSLER, LELAND	HM	MNMN	A/R	HIB	07/28/2011
O-1088	EARLEY, BERT	THS	GAGA	AOV		07/28/2011
E-7.6	JOHNSON, CHARLES	TPO	GASA	AOV	SAV	07/29/2011
O-368	JOHNSON, HARDY	DRI	GAOK	POV		07/29/2011
O-560	PHERNETTON,	REA	GAOK	AOV		07/29/2011
O-847	CLYMER, BRETT L	EMT	MOMO	AIR	XNA	07/29/2011
O-857	EASTON, DEAN	THS	GAOK	AOV	JAX	07/29/2011
O-998.26	WATSON, JOHN F	PRO	FLFLS	AOV	TLH	07/29/2011
O-1087	PAFFORD, DAVID	TPO	NCPE	AOV	ORF	07/29/2011
O-1090	LUEPKE, JONATHAN	HEQ	MIHIF	AIR		07/29/2011

# Upcomming\_Demobs

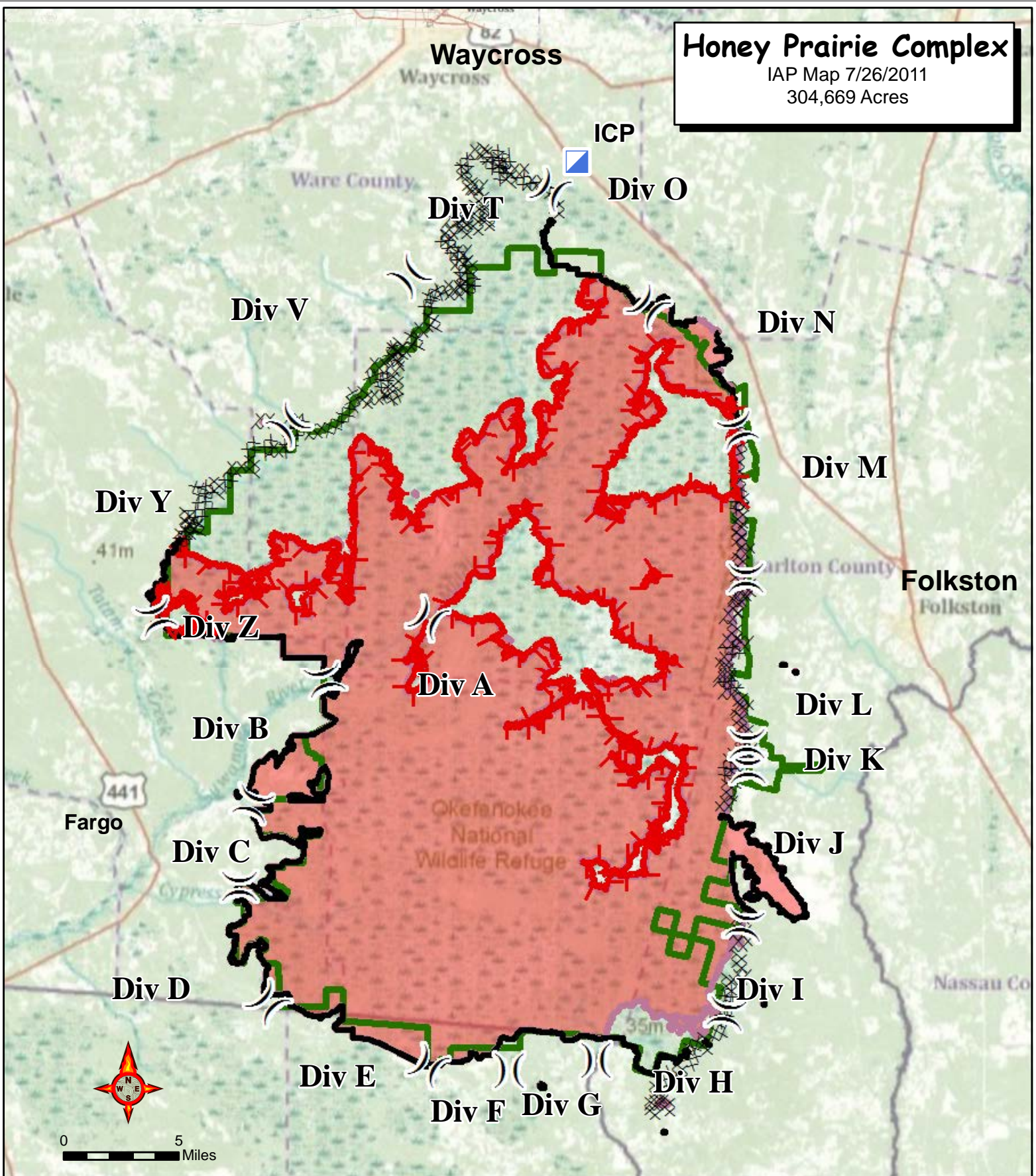
Number	Name	Kind	Unit	Travel	Jetport	DemobDate
O-1096	COCKMAN, DONALD	SEC	SCCR	AOV		07/29/2011
O-1110	LOWNES, RANDY	RES	CORY	AIR	COS	07/29/2011

**Record Count: 61**

# Honey Prairie Complex

IAP Map 7/26/2011

304,669 Acres



 Incident Command Post

 Completed Line

 Division

 Uncontrolled Fire Edge

 Refuge Boundary

 Fire Polygon

Perimeter as of 7/25/2011 1430  
C. Bailey GISS

**INCIDENT  
MANAGEMENT**  
T E A M



