

Honey Prairie Complex

GA-OKR-000001

Incident Action Plan

OPERATIONAL PERIOD

WEDNESDAY

July 27, 2011

0800-2000

Incident Commander
Troy Floyd

Accounting Codes

FWS – 9141-F25M-2J

NPS – 5023 F25M E11

BLM – F25M

USFS – PRF25M_1502

Initial Attack – F4PM



*An Equal Opportunity
Employer & Service Provider*

07/25/2011

Letter from GFC Incident Commander:

To: All Honey Prairie Incident Personnel

As Georgia Forestry Commission's Type 2 Incident Commander, I am committed to a policy of "zero tolerance" of inappropriate behavior during incident operations. Any form of harassment, discriminatory practices, or disrespectful behavior will not be tolerated.

Guidelines on in-appropriate behavior both "on Duty" and "off Duty" while assigned are addressed within each agencies policies. Our Team expects all incident personnel to follow established government policies for behavior along with all Illegal drug and alcohol directives.

Our Incident Management Team endorses and supports an attitude of mutual respect for all personnel and the public we serve.

We expect a strong work ethic and an attitude of Safety at all times!

Sincerely,

/s/ Troy E. Floyd Jr.

Incident Commander
Georgia Forestry Commission's Type 2 Incident Management Team

INCIDENT OBJECTIVES	1. INCIDENT NAME Honey Prairie Complex	2. DATE PREPARED 7/26/11	3. TIME PREPARED 1800												
4. OPERATIONAL PERIOD (DATE/TIME) Wednesday, July 27, 2011 0800 – 2000															
5. GENERAL CONTROL OBJECTIVES FOR THE INCIDENT (INCLUDE ALTERNATIVES) <ol style="list-style-type: none"> 1. Provide for safety of incident personnel and public in all incident operations. 2. Maintain a positive working relationship with all adjacent landowners, cooperators State and Federal partners. Inform, involve and communicate incident planning and operations with all partners. 3. Contain all fires that are within the Okefenokee National Wildlife Refuge, inside the Refuge and/or inside the swamp edge break if possible. 4. In cooperation with local timberland owners, use full suppression strategies and tactics to minimize damage to private timberlands and improvements and to prevent fires outside the Refuge from entering the Refuge. 5. Assist in management and suppression of additional fires (new starts or breakouts) in the vicinity as approved by Agency Administrators and Unified Incident Commanders. 6. Protect all cultural and archeological sites and structures within the refuge, with particular attention to facilities at Okefenokee Swamp Park. 7. Manage the fires cost-effectively consistent with the values at risk. 8. Implement structure protection as necessary for at-risk facilities and communities. 9. Coordinate suppression actions with assigned Refuge Resource Advisors 															
6. WEATHER FORECAST FOR OPERATIONAL PERIOD See attached forecast for area specific weather information.															
7. GENERAL SAFETY MESSAGE Drive defensively and use spotter when backing. Ensure LCES is in place and known by all personnel. Drink plenty of water and take frequent rest breaks. Ensure proper use of PPE during all operations.															
8. Attachments (☐ if attached) <table border="0" style="width: 100%;"> <tr> <td><input type="checkbox"/> Organization List (ICS 203)</td> <td><input type="checkbox"/> Incident Map</td> <td><input type="checkbox"/> Safety Message</td> </tr> <tr> <td><input type="checkbox"/> Assignment List (ICS 204)</td> <td><input type="checkbox"/> Traffic Plan</td> <td><input type="checkbox"/> Demobilization Procedures</td> </tr> <tr> <td><input type="checkbox"/> Communications Plan (ICS 205)</td> <td><input type="checkbox"/> Finance Message</td> <td><input type="checkbox"/> Unit Log</td> </tr> <tr> <td><input type="checkbox"/> Medical Plan (ICS 206)</td> <td><input type="checkbox"/> Phone List</td> <td></td> </tr> </table>				<input type="checkbox"/> Organization List (ICS 203)	<input type="checkbox"/> Incident Map	<input type="checkbox"/> Safety Message	<input type="checkbox"/> Assignment List (ICS 204)	<input type="checkbox"/> Traffic Plan	<input type="checkbox"/> Demobilization Procedures	<input type="checkbox"/> Communications Plan (ICS 205)	<input type="checkbox"/> Finance Message	<input type="checkbox"/> Unit Log	<input type="checkbox"/> Medical Plan (ICS 206)	<input type="checkbox"/> Phone List	
<input type="checkbox"/> Organization List (ICS 203)	<input type="checkbox"/> Incident Map	<input type="checkbox"/> Safety Message													
<input type="checkbox"/> Assignment List (ICS 204)	<input type="checkbox"/> Traffic Plan	<input type="checkbox"/> Demobilization Procedures													
<input type="checkbox"/> Communications Plan (ICS 205)	<input type="checkbox"/> Finance Message	<input type="checkbox"/> Unit Log													
<input type="checkbox"/> Medical Plan (ICS 206)	<input type="checkbox"/> Phone List														
9. PREPARED BY (PLANNING SECTION CHIEF) Greg Strenkowski		10. APPROVED BY (INCIDENT COMMANDER) Troy Floyd													

ORGANIZATION ASSIGNMENT LIST		9. Operations Section	
1. Incident Name Honey Prairie Complex GA-OKR-000001		Chief	Buck Kline 8/5 / Brent McCarty 8/2
		Planning	Steve Gray 8/1 / Heath Morton (t) 8/4
2. Date 7/26/2011	3. Time 1000 hrs	a. Divisions/Groups	
4. Operational Period 7/27/2011 0800 - 2000			
5. Incident Commander and Staff		Division	A-B-C-D-E-F-G Chuck Arnold 8/1 Paul Pelligrini (t) 8/1
Incident Commander	Troy Floyd 8/5	Division	T-V-Y-Z Mike Lee 8/2
Liason Officer			
Safety Officers	Tommy Hawkins 8/4 Mark Munns 8/5	Group	IA-WEST Trent Ingram 8/5
Information Officer	Jenny Lynn Bruner 8/4 Denise Croker 8/5	Division	H-I-J-K-L Tracy Mobley 8/1
6a. Agency Administrators		Division	M-N-O Tracy Mobley 8/1
FWS		Group	IA-EAST Rufus Crutchfield 8/4
FWS	Mindy Gautreaux	Group	Roads Bert Earley (THSP) 7/27
6b. Agency Representatives		b. Divisions/Groups	
GFC	Frank Sorrells		
FLDOF	James Karels		
FWS AREP	Mike Housh		
FWS-Refuge PAO	Art Webster		
GEMA AREP	Alan Robinson / Diane Adams		
USFS AREP	Ivan Greene		
7. Planning Section		c. AIR OPERATIONS BRANCH - Honey Prairie	
Chief	Greg Strenkowski 8/5	Air Operations Branch Director Joseph Bistriski 8/4	
Resource Advisors	Ron Phernetton, Jessica Bowen, Rocky Chesser	Air Support Group Supervisor Brian Campbell 8/7	
Resources Unit	Josh Burnette 8/5 Randy Lownes 8/2		
Situation Unit	Keith Murphy(T) 8/4		
IMET	John Franks 8/3		
FBAN	Keith Mousel 8/7	d. AIR OPERATIONS BRANCH - Pogo	
Demob Unit	Harold West 8/5	Pogo Helibase Manager	Lee Kessler 7/27
Documentation		ATGS-Pogo	Everett Wenigar 7/30
GIS	Charles Bailey 8/5		
CTSP	Rusty Brown 8/5		
SCKN	Mike Jones 8/5		
8. Logistics Section		10. Finance Section	
Chief	Willie Boston 8/5	Chief	Lila Johnson 8/5
Supply Unit	Amy Weaver (T) 8/5	Deputy	Amy Treadwell 8/5
GSUL	Tim Jones 8/5 Steve Blackwell 8/5	Time Unit	Darline Matheney 8/5
ORDM	Jim Grimes 8/5 / Tim Redick (t) 8/7	Procurement	John Watson 7/28
COML	Kelly Towe 8/5	Comp Claims Unit	Kurt Hinz 8/5
Medical Unit	Mark Millirons 8/5	Cost	Grace Reid 8/5 / Tom Steele 8/5
Facilities	Thomas Lambert 8/4 Dennis Evans 8/5 Jeremy Hughes 8/5	Buying Team	Judy Reddin 8/3
Food	Bob Kookan 8/2 / Chris Barnes 8/5		
SEC1	Don Cockman 7/28	IBA	James Meredith 7/30
COMT	Roy Fortenberry 8/5		
EQPM	Richard Young (T) 8/5 JohnnyBarwick 8/4 Kenneth Edge 8/5		
		Prepared by: R Lownes	RESL

DIVISION ASSIGNMENT LIST			1. Branch		2. Division A, B, C, D, E, F, G		
3. Incident Name: Honey Prairie Complex			4. Operational Period Date: 7/27/2011 Time: Day: 0800-2000				
5. Operations Personnel							
Operations	Buck Kline 8/5 / Brent McCarty 8/2		Branch Director				
Planning Ops	Steve Gray 8/1 / Heath Morton (t) 8/4		Division Supervisor		Chuck Arnold 8/1 / Paul Pelligrini (t) 8/1		
Safety Officer	Steve Holman 8/1						
6. Resources Assigned this Period							
Strike Team/Task Force/ Resource Designator	Leader / Name / Designator	Last Shift Date	Num. Per.	Drop Off PT./Time	Crew Names		
GA ENG6 (E-2) GAOKR	Tim Perron	7/29	3		R. Robinson, K. Holland		
ME ENG6 (E-405) (MEMHR)	Fred Mason (EMT)	8/7	3		J. Goetz, A. Currier		
KY Eng 162 (E-939) (KYLBF)	Bill Ryan	8/4	3		T. Vetter, J. Finklea		
Hughes Excavator (E-596)	Kenneth Enfinger	7/31	1	PVT			
MO Eng 9504 (E-1076) MOMTF	Tim Perren	7/29	3		Out of Service 7/25-28		
HC2IA (C-14) Pat Rick NCNCF	Derek Osborne	8/1	20	PVT			
EMTP (O-847)	Levi Clymer	7/28	1		Assisting West IA		
7. Control Operations							
<ul style="list-style-type: none"> Patrol and mop up within 100' of fire perimeter line. Monitor fire impacts to Stephen Foster State Park for rehab needs. Patrol and control reburn. Examine work area for fire weakened snags. 							
8. Special Instructions							
<ul style="list-style-type: none"> Ensure LCES are in place before operations begin and stay hydrated. Additional resources will be available from GFC, Florida DOF, FWS, and local cooperators. Drive defensively and with lights on at all times. Rehab Nature trails and waterways in Stephan C. Foster State Park. 							
9. Division/Group Communication Summary							
Function	Frequency	System	Channel	Function	Frequency	System	Channel
Command N Okee Repeater	RX 164.5750/206.5 TX 163.150/206.5	KING NIFC	5	Logistics		KING NIFC	
Tactical Div/Group	RX 168.775 TX 168.7750	KING NIFC	9	Air to Ground	RX 166.9375 TX 166.9375	KING NIFC	6
Prepared by (Resource Unit Ldr.) Randy Lownes		Approved by (Planning Sect. Ch.) Greg Strenkowski			Date 7/26/2011		Time 1900

DIVISION ASSIGNMENT LIST				1. Branch		2. Division T, V, Y, Z	
3. Incident Name Honey Prairie Complex				4. Operational Period Date: 7/27/2011 Time: 0800-2000			
5. Operations Personnel							
Operations	Buck Kline 8/5 / Brent McCarty 8/2			Branch Director			
Planning Ops	Steve Gray 8/1 / Heath Morton (t) 8/4			Division Supervisor		Mike Lee 8/2	
Safety Officer	Rodney Weeks 7/30						
6. Resources Assigned this Period							
Strike Team/Task Force/ Resource Designator	Leader / Name / Designator		Last Shift Date	Num. Per.	Drop Off PT./Time	Crew Names	
READ (O-559) GAOKR	Jessica Bowen			1		912-536-2995	
READ/EQPM (O-5) GAOKR	Rocky Chesser			1		912-276-3232	
READ (O-560) GAOKR	Ron Phernetton			1		912-276-2349	
TFLD (O-942)	Ben Krupski		8/1	1			
TFLD (O-1139)	Blair Joiner		8/7	1			
ENG6 (E-3)	GAOKR		Unstaffed				
IL Eng 40 (E-392)	ILSHF		Bobbi Archdale	8/4	3	J. Paukert, C. Mann	
MN Eng 6232 (E-838)	MNMFC		Duane King	8/4	3	T. Elg, D. Lantz	
MN Eng 652(E-404)	MNSUF		Andrew Drange	8/7	3	H. Severson, S. Westlin	
Hughes WAT2 (E-954)			Sonny Moore	8/4	1	PVT	
EMT (O-1125)	Robert Carswell		8/5	1			
7. Control Operations <ul style="list-style-type: none"> Recon potential control lines and examine area for snag removal Improve swamp break boundaries for fire breaks, work w/resource advisor Make contact with the Resource Advisor before using mechanical equipment. Safely push down with equipment all snags whether on fire or not that are a threat to success or tactical operations. 							
8. Special Instructions <ul style="list-style-type: none"> Ensure LCES are in place before operations begin. Stay hydrated. Drive defensively and with lights on at all times. Boggy terrain: Be careful and aware when working around this type of area. 							
9. Division/Group Communication Summary							
Function	Frequency	System	Channel	Function	Frequency	System	Channel
Command N Okee Repeater	RX 164.5750/206.5 TX 163.150/206.5	KING NIFC	5	Logistics		KING NIFC	
Tactical Div/Group	RX 168.775 TX 168.775	KING NIFC	9	Air to Ground	RX 166.9375 TX 166.9375	KING NIFC	6
Prepared by (Resource Unit Ldr.) Randy Lownes		Approved by (Planning Sect. Ch.) Greg Strenkowski			Date July 26, 2011		Time 1800

DIVISION ASSIGNMENT LIST				1. Branch		2. Division West - Initial Attack	
3. Incident Name: Honey Prairie Complex				4. Operational Period Date: 7/27/2011		Time: 0800-2000	
5. Operations Personnel							
Operations	Buck Kline 8/5 / Brent McCarty 8/2			Branch Director			
Planning Ops	Steve Gray 8/1 / Heath Morton (t) 8/4			Division Supervisor		Trent Ingram 8/5	
Safety Officer	Steve Holman 8/1						
6. Resources Assigned this Period							
Strike Team/Task Force/ Resource Designator		Leader / Name / Designator		Last Shift Date	Num. Per.	Drop Off PT./Time	Crew Names
TFLD (O-899)		Bob Schober		8/2	1	FARGO	
GA ENG6 (E-1084) GAGAS		Chad Dorminy		8/4	2	FARGO	J. Price
TPL Appling 70 (E-1165) GAGAS		Joseph A. Smith Jr. (O-1116)		8/3	1	FARGO	
TPL Clinch 72 (E-1167) GAGAS		William A. Register (O-1117)		8/3	1	FARGO	
TPL Clinch 75 (E-1169) GAGAS		Christopher J. Henderson (O-1118)		8/3	1	FARGO	
TPL Glynn 72 (E-1175) GAGAS		Robert L. Danley (O-1121)		8/3	1	FARGO	
TPL Jeff Davis 70 (E-1177) GAGAS		Berry J. Bohannon (O-1122)		8/3	1	FARGO	
EMT (O-847)		Levi Clymer		7/28	1		
7. Control Operations							
<ul style="list-style-type: none"> Respond to Initial Attack as requested Initial attack IC will communicate size up information to Honey Prairie incident communications. Additional Resource Requests go through Honey Prairie Operations. 							
8. Special Instructions							
<ul style="list-style-type: none"> Ensure LCES are in place before operations begin. Stay hydrated. Drive defensively and with lights on at all times. 							
9. Division/Group Communication Summary							
Function	Frequency	System	Channel	Function	Frequency	System	Channel
Command N Okee Repeater	RX 164.5750/206.5 TX 163.150/206.5	KING NIFC	5	Logistics	See ICS 205	KING NIFC	
Tactical Div/Group	RX 154.280 TX 154,280/156.7	KING NIFC	8	Air to Ground	RX 166.9375 TX 166.9375	KING NIFC	6
Prepared by (Resource Unit Ldr.) Randy Lownes		Approved by (Planning Sect. Ch.) Greg Strenkowski			Date July 26, 2011		Time 1930

DIVISION ASSIGNMENT LIST			1. Branch		2. Division H, I, J, K, L		
3. Incident Name Honey Prairie Complex			4. Operational Period Date: 7/27/2011 Time: 0800-2000				
5. Operations Personnel							
Operations	Buck Kline 8/5 / Brent McCarty 8/2			Branch Director			
Planning Ops	Steve Gray 8/1 / Heath Morton (t) 8/4			Division Supervisor		Tracy Mobley 8/1	
Safety Officer	Shane Barrow (O-1137) 8/8						
6. Resources Assigned this Period							
Strike Team/Task Force/ Resource Designator	Leader/ Name / Designator		Last Shift Date	Num. Per.	Drop Off PT./Time		Crew Names
READ (O-560) GAOKR	Ron Phemetton			1			912-276-2349
READ (O-559) GAOKR	Jessica Bowen			1			912-536-2995
READ/EQPM (O-5) GAOKR	Rocky Chesser			1			912-276-3232
TFLD (O-937)	Kevin Elmstrom		8/1	1			
GA ENG 86 (E-77) GAGAS	Dean Cornett		8/3	2			P. Floyd
Pickens Eng 86 (E-76) GAGAS	Stacy Cantrell		8/3	2			R. Williamson
7. Control Operations							
<ul style="list-style-type: none"> Contain all fires outside refuge boundary. Patrol and control reburn. Patrol and mop up all accessible fire line. Mop up all hot spots within 100' of the fire perimeter. Continue to back haul excess equipment from the line. Continue to work with resource advisors when conducting rehabilitation work. 							
8. Special Instructions							
<ul style="list-style-type: none"> Ensure LCES are in place before operations begin. Stay hydrated. Drive defensively and with lights on at all times. See medical plan for EMT support Examine work area for fire weakened snags 							
9. Division/Group Communication Summary							
	Function	Frequency	Channel	Function	Frequency	System	Channel
Command E Okee Repeater	RX 164.6250/ 103.5 TX 163.150/ 103.5	KING	3	Logistics		KING NIFC	
DIV J Repeater	RX 170.4125 TX 165.9625/ 123.0	NIFC	14				
Tactical Div/Group	RX 168.350 TX 168.350	KING NIFC	12	Air to Ground	RX 166.9375 TX 166.9375	KING NIFC	6
Prepared by (Resource Unit Ldr.) Randy Lownes		Approved by (Planning Sect. Ch.) Greg Strenkowski			Date July 26, 2011	Time 1800	

DIVISION ASSIGNMENT LIST			1. Branch		2. Division M, N, O		
3. Incident Name Honey Prairie Complex			4. Operational Period Date: 7/27/2011 Time: 0800-2000				
5. Operations Personnel							
Operations	Buck Kline 8/5 / Brent McCarty 8/2			Branch Director			
Planning Ops	Steve Gray 8/1 / Heath Morton (t) 8/4			Division Supervisor		Tracy Mobley 8/1	
Safety Officer	Shane Barrow (O-1137) 8/8						
6. Resources Assigned this Period							
Strike Team/Task Force/ Resource Designator		Leader/ Name / Designator		Last Shift Date	Num. Per.	Drop Off PT./Time	Crew Names
READ (O-560)		Ron Phemetton					912-276-2349 cell
READ (O-559)		Jessica Bowen					912-536-2995
READ (O-5)		Rocky Chesser					912-276-3232
TFLD (O-1140)		Alton Anderson		8/7			
Murray Eng 86 (E-78) GAGAS		Adam Greeson		8/3	2		R Castoe
Putnam Eng 86 (E-80) GAGAS		Ricky Williams		8/3	2		D Wilkinson
Jones Eng 86 (E-81) GAGAS		Russell Fowler		8/3	2		B Christian
Timberline Skidder (E-981)		Henry Tiner		TBA	1	PVT	
EMTB (O-1124)		Jackie Aultman		8/3	1		218-491-1351 cell
7. Control Operations							
<ul style="list-style-type: none"> Patrol and mop up 100' inside fire perimeter. Recon potential control lines and examine area snag removal Keep fire within refuge boundary. Continue to work with resource advisors when conducting rehabilitation work 							
8. Special Instructions							
<ul style="list-style-type: none"> If the fire reaches Mgt Activity Line (MAL) 1 cooperators and adjacent landowners will be notified. If the fire reaches MAL 2 a meeting will be held at the Swamp Park with adjacent landowners and cooperators. Safely push down with equipment all snags whether on fire or not that are a threat to success or tactical operations. Ensure LCES are in place before operations begin. Stay hydrated. See medical plan for EMT support. Drive defensively and with lights on at all times. Boggy terrain: Be careful and aware when working around this type of area. 							
9. Division/Group Communication Summary							
Function	Frequency	System	Channel	Function	Frequency	System	Channel
Command N Okee Repeater	RX 164.5750/206.5 TX 163.150/206.5	KING NIFC	5	Logistics		KING NIFC	
Tactical Div/Group	RX 168.200 TX 168.200	KING NIFC	11	Air to Ground	RX 166.9375 TX 166.9375	KING NIFC	6
Prepared by (Resource Unit Ldr.) Randy Lownes		Approved by (Planning Sect. Ch.) Greg Strenkowski			Date July 26, 2011		Time 1730

DIVISION ASSIGNMENT LIST			1. Branch		2. Division East Initial Attack		
3. Incident Name Honey Prairie Complex			4. Operational Period Date: 7/27/2011 Time: 0800-2000				
5. Operations Personnel							
Operations	Buck Kline 8/5 / Brent McCarty 8/2			Branch Director			
Planning Ops	Steve Gray 8/1 / Heath Morton (t) 8/4			Division Supervisor		Rufus Crutchfield 8/4	
Safety Officer	Shane Barrow (O-1137) 8/8			Division Supervisor			
6. Resources Assigned this Period							
Strike Team/Task Force/ Resource Designator		Leader / Name / Designator		Last Shift Date	Num. Per.	Drop Off PT./Time	Crew Names
TFLD (O-943)		Steven Clark		8/1	1	Satilla D.O.	
STEN (O-955)		Randy Scherr		8/1	1	Satilla D.O.	
ENG6 (E-1081) GAGAS		Rusty Carroll		8/3	2	Satilla D.O.	P.Bryant
ENG6 (E-1082) GAGAS		Tommy Williams		8/3	2	Satilla D.O.	B. Cox
ENG6 (E-1083) GAGAS		Wesley Sisk		8/3	2	Satilla D.O.	J. Davenport
TPL Camden 70 (E-1162) GAGAS		James D Armstrong (O-1115)		8/3	1	Satilla D.O.	
TPL Ware71 (E-1171) GAGAS		Barry H. Bennett (O-1119)		8/3	1	Satilla D.O.	
TPL Ware 72 (E-1173) GAGAS		Thomas D. Whitley (O-1120)		8/3	1	Satilla D.O.	
EMT(O-1124)		Jackie Aultman		8/3	1		
7. Control Operations							
<ul style="list-style-type: none"> Respond to Initial Attack as requested Patrol and control return Initial attack IC will communicate sizeup information to the Honey Prairie communication. 							
8. Special Instructions							
<ul style="list-style-type: none"> Ensure LCES are in place before operations begin. Stay hydrated. 							
9. Division/Group Communication Summary							
	Function	Frequency	Channel	Function	Frequency	System	Channel
Command E Okee Repeater	RX 164.625/103.5 TX 163.150/103.5	KING NIFC	3	Logistics		KING NIFC	
Tactical Div/Group	RX 168.775 TX 168.775	KING NIFC	9	Air to Ground	RX 166.9375 TX 166.9375	KING NIFC	6
Prepared by (Resource Unit Ldr.) Randy Lownes		Approved by (Planning Sect. Ch.) Greg Strenkowski			Date July 26, 2011		Time 1800

DIVISION ASSIGNMENT LIST			1. Branch		2. Division Roads Group		
3. Incident Name: Honey Prairie Complex			4. Operational Period Date: 7/27/2011		Time: Day: 0800-2000		
5. Operations Personnel							
Operations	Buck Kline 8/5 / Brent McCarty 8/2			Branch Director			
Planning Ops	Steve Gray 8/1 / Heath Morton (t) 8/4			Division Supervisor			
Safety Officer							
6. Resources Assigned this Period							
Strike Team/Task Force/ Resource Designator		Leader / Name / Designator		Last Shift Date	Num. Per.	Drop Off PT./Time	Pick Up PT./Time
THSP (O-1088)		Bert Earley		7/27	1		
HEQB (O-1090)		Jonathan Luepke		7/28	1		
EQPM (O-1111.45)		Johnny Barwick		8/4	1		
HEQB (O-1141)		Bill Weldon		8/8	1		
Smith Grader (E-597)		David Prooes		7/27	1	PVT, Westside	
Smith Dump Truck (E-529)		Ron Watson		7/27	1	PVT, Westside	
Smith Dump Truck (E-506)		Craig Smith		7/27	1	PVT, West side	
Hughes Grader (E-230)		Buddy Pittman		7/31	1	PVT, Eastside	
Cat Grader (E-530)		Lucious Corbett		7/27	1	PVT	
Smith Excavator (E-505)		Don Murray		7/27	1	PVT, Eastside	
Lankford Dump Trk(E-1078)		Roy Hughes		8/20	1	PVT, Westside	
Herbert Dump Truck (E-1079)		Dennis Kight		8/20	1	PVT, Westside	
7. Control Operations							
<ul style="list-style-type: none"> Coordinate efforts w/ resource advisor and logistics Notify Division Supervisor(s) when entering and leaving division. 							
8. Special Instructions							
<ul style="list-style-type: none"> Ensure that tractors are cleaned and free of debris daily. Examine work area for fire weakened snags. Ensure LCES are in place before operations begin and stay hydrated. Additional resources will be available from GFC, Florida DOF, FWS, and local cooperators. Drive defensively and with lights on at all times. See Medical plan for EMT support. Implement MIST tactics 							
9. Division/Group Communication Summary							
Function	Frequency	System	Channel	Function	Frequency	System	Channel
Command N.Okee Repeater	See ICS205	KING NIFC		Logistics	See ICS205	KING NIFC	
Tactical Div/Group	See ICS205	KING NIFC		Air to Ground	See ICS205	KING NIFC	
Prepared by (Resource Unit Ldr.) Randy Lownes		Approved by (Planning Sect. Ch.) Greg Strenowski			Date 7/26/2011		Time 1930

AIR OPERATIONS SUMMARY

Prepared By: Joe Bistryski, AOB

Prepared Date: 7.26.2011

Prepared Time: 1800

1. INCIDENT NAME: Honey Prairie	2. OPS PERIOD DATE: July 27, 2011	START TIME: 0830	END TIME: 1900	SUNRISE: 0642	SUNSET: 2029
3. REMARKS (Safety Notes, Hazards, Air Operations Special Equipment, etc.): <i>Afternoon thunderstorms predicted. Discuss risk mitigations in morning briefings. Be alert to your environment and changing conditions. Ground resources monitor Air-to Ground frequency for ATGS contact.</i>					5. TFR #: 1/6931 (Box) 3000' MSL
NOTE: Latitude/Longitude format is "Degrees-Minutes-Decimal Minutes" (example: N30 41.42 W082 33.97)					

PERSONNEL	NAME	PHONE #	FREQUENCIES	AM	FM	
AOBD	Joe Bistryski	Cell 801-518-2797	AIR/ AIR FW	122.575		AIRTANKERS / LEAD PLANES - None Available Local ATGS AIRCRAFT- 57Z
ASGS	Brian Campbell	404-772-5405	AIR/ AIR RW-FF	122.375		OTHER: Waycross Airport Helibase: 912-287-4479
ATGS Waycross HB	Everett Weniger	406-381-4176	Georgia AIR/AIR	122.075		Waycross Airport Helibase Fax: 912-287-4458 Pogo Helibase: 912-496-4415 / FAX 912-496-2797 ICP Helispot is Waycross Airport Helibase Okfenokoe Dispatch: 912-496-7366 X230
HEB2 Waycross HB	Lee Kessler	Desk 912-287-4479 Cell 218-398-2708	Georgia AIR/GRND (Smokey - Dozers)		159.285 W	Waycross Airport: N 31 16.16 10 W82 33.38
HEB2 T Pogo HB	Jeff McBath	Desk 912-496-4415 Cell 858-357-3242	AIR/GROUND PRIMARY		166.9375	BERGANZA HELISPOT N 31 07.22 W082 15.22 * don't use unless cleared with AOB.
			AIR/GROUND ALTERNATE		166.9000	POGO HELIBASE: N30 44.03 W082 07.41
			TOLC		168.0125	
			AIR GUARD		168.625 T110.9	

9. HELICOPTERS (Use Additional Sheets as Necessary)

FAA #	TY	MAKE/ MODEL	BASE	AVAIL	MANAGER	FAA #	T Y	MAKE/ MODEL	BASE	AVAIL	MANAGER		
N36BH	1	S-70	Waycross	0830	Mike Ryan 406-925-1337	N818MC	3	AS-350B3	Pogo	0830	Juan Edar 307-330-8285		
26MW	1	K-1200	Waycross	0830	Kirby Cook 406-381-1212	57Z	3	206-L4	Wycrs	0830	Cindy Austin 208-241-3957		
10. TASK/ MISSION/ ASSIGNMENT (Type/ function includes: Air Tactical, Retardant, Recon, Personnel Transport, Bucket Operations, SAR, etc.)													
TYPE/FUNCTION			NAME OF PERSONNEL OR CARGO (if applicable) or instructions for tactical aircraft						MISSION START		FLY FROM		FLY TO
Bucket Ops			N36BH, 26MW						As Requested		Waycross		
Air Tactical			57Z						1200 / As Requested		Waycross		
Recon			All recon missions must have direct approval by the AOBD, 818MC, 57Z						As Requested		Waycross/Pogo		
Medevac			N818MC						As Requested		Pogo		



Fire Weather Forecast



FORECAST NO: 81

NAME OF FIRE: Honey Prairie Complex

PREDICTION FOR: Day Shift
SHIFT DATE: Wednesday 7/27/11

UNIT: Okefenokee National Wildlife Refuge

FORECAST ISSUED: 7/26/11 at 1600

SIGNED: John Franks
Incident Meteorologist

WEATHER DISCUSSION: The cold front has stalled over the Georgia/Florida state line and fire perimeter early this morning. Showers with some thunder should be located in the immediate fire area for a good portion of the day. Locally heavy downpours with frequent lightning remains a very real threat today, particularly early this morning.

TODAY: Fog in the morning reducing visibility to under a mile at times. Showers and thunderstorms. Cloudy.

MAXIMUM TEMPERATURES: 86-91 degrees
PM HEAT INDEX: Not Applicable
MINIMUM HUMIDITY: 55-65%
20 FT WINDS: AM: SW 2-3 mph
PM: SW 4-8 mph. Higher gusts to 30 mph in storms.
STABILITY/INVERSION: Surface inversion at 0800, slowly rising to 4500 feet by 1400
TRANSPORT WINDS: SW 10 mph
DISPERSION INDEX: 20, Poor
CHANCE OF PRECIPITATION: 80%
PRECIPITATION AMOUNTS: Generally a third to a half inch, higher in thunderstorms
LIGHTNING ACTIVITY LEVEL: 5

TONIGHT: Mostly cloudy. A 40% chance of showers and thunderstorms, mainly through midnight. Winds SW 4-7 mph. Low temperatures 71-76. Max RH 90-100%. Rainfall up to a quarter of an inch.

THURSDAY: Mostly cloudy. Scattered showers and thunderstorms.

MAXIMUM TEMPERATURES: 88-93 degrees
PM HEAT INDEX: 95-100
MINIMUM HUMIDITY: 45-55%
20 FT WINDS: AM: S 2-3 mph
PM: S 4-8 mph
TRANSPORT WINDS: SW 12 mph.
DISPERSION INDEX: 25, Fair
CHANCE OF PRECIPITATION: 30%
LIGHTNING ACTIVITY LEVEL: 3

EXTENDED FORECAST:

	FRIDAY	SATURDAY	SUNDAY
SKY/WEATHER	Partly Cloudy / Scattered Showers and Thunderstorms	Partly Cloudy	Partly Cloudy / Scattered Showers and Thunderstorms
CHANCE PRECIP	30%	20%	30%
MINIMUM RH	42-52%	40-50%	40-50%
20 FT. WINDS	AM: S 2-3 mph PM: SSW 5-9 mph	AM: S 2-3 mph PM: SW 5-10 mph	AM: S 2-3 mph PM: S 6-12 mph
IN/MAX TEMPS	73 / 94	74 / 95	73 / 95

FIRE BEHAVIOR FORECAST

Fire: Honey Prairie Complex	Unit: GA-OKR-000001	Prediction for Day Shift
Forecast #80 Issued: 07/26/2011 1830 hrs	Signed: Keith Mousel	Shift Date: Wednesday 07/27/11

GENERAL FIRE BEHAVIOR

Fuels around the Okefenokee Wildlife Refuge are predominately Fuel Model 7 (Southern Rough). Large to moderate acreage tracts of commercial timberland are mixed in throughout the entire perimeter surrounding the refuge. Fast moving wildfires with extremely high flame lengths and rapid rates of spread occur within the swamp.

Indicators/Threshold for Increased Fire Activity

- Relative humidity dropping below 45%
- Winds **above** 10 mph
- **Heavy fuel loadings**
- **Fine dead fuel moisture 8% or less**
- Dispersion above 70
- *** Items in BOLD are predicted to occur today***

SPECIFIC FIRE BEHAVIOR

- **Fire behavior should be slow to develop today yesterdays rain.**
- **Interior smoldering and some flare ups are possible, especially if winds increase.**
- **Expect fire to continue spreading through the shrub fuels with low rates of spread and minimal flame lengths. LAL 5**

Fuel Type	Rates of Spread	Flame Length	Spotting Distance	Firebrand Ignition
Winds at 3 - 10 G 16 mph				
Shrub Fuels – SH4	1 - 16 ch/hr	1 - 3 feet	1/10 – 2/10 mile	40%
Heavy Southern Rough- SH8	2 – 33 ch/hr	3 -12 feet	1/10 – 2/10 mile	40%
Timber Litter-Reburn TL8	1 - 11 ch/hr	1 - 3 feet	1/10 -2/10 mile	40%
Small Pine Plantation w/grasses GR5	2 – 37 ch/hr	2 - 5 feet	1/10 – 2/10 mile	40%

One hour fine dead fuel moisture is at 8% for Wednesday. Moisture from rain has reduced the fire threat, HOWEVER some areas remain dry and burning continues. 1,000 hour fuels are drier than normal for this time of year. There is reburn potential in all divisions due to the amount of needle cast and fallen trees and scorched shrubs. Should wind become stronger than predicted, expect fire behavior to increase above predicted levels. **In areas where fuels have been herbicided, expect quick ignitions and extreme heat, quick rate-of –spread, and group tree torching producing spotting problems.**

NOTE- FIRE BEHAVIOR CALCULATIONS ARE FOR FIRES IN UNBURNED FUELS INCLUDING NEW IA STARTS.

All Divisions:

Rain has fallen on all Divisions *however fire will continue a slow spread through the thick bays and muck soils. Roots and fallen trees are protecting heat sources allowing the fire to burn organic soils from the bottom up. Be heads-up for falling snags. 80% chance of rain*

Night Ops – *No Night Operations are Planned. Scattered showers and thunderstorms will continue with patchy fog developing after midnight.*

Air Operations: Expect possible areas of heavy smoke especially on the east and north side of the fire.

SAFETY:

WINDS – Stay abreast of changing wx conditions throughout the entire shift. **THUNDERSTORMS** - these severe winds can create extreme fire behavior, with winds gusting over 30 mph. **SNAGS** – **Snags are falling in all Divisions** – will be influenced by Thunderstorm outflow winds. **FUELS:** Watch for pockets of cured shrubs or blankets of red needles beginning to cover the forest floor. 1,000 and 10,000 hour fuels as well as deep duff pockets are providing the heat source. Stay focused, and put LCES in place before starting operations. Watch for standing burning snags that can fall without warning. *Energy Release Component (ERC) is running near average for this time of year.*

HEALTH AND SAFETY MESSAGE

SAFETY starts with *YOU*

We are ALL accountable for SAFE behaviors

INCIDENT: Honey Prairie Fire

DATE: 7/27/11

TIME: 0800

Major Hazards and Risks:

WEATHER
DRIVING
COMPLACENCY
SANITATION

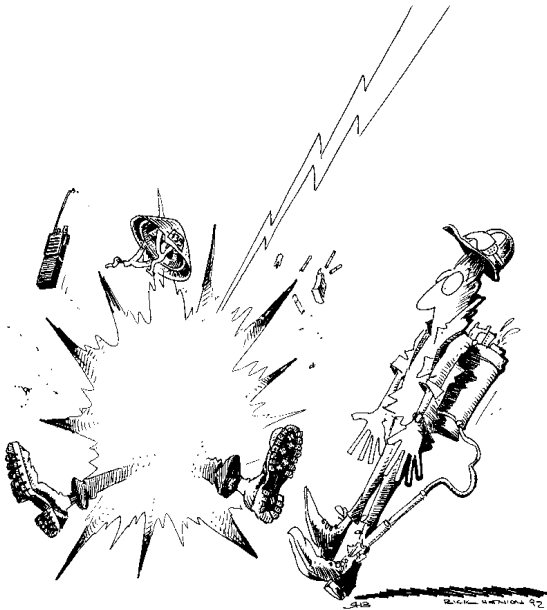
WEATHER – Keep an eye to the sky. If you see lightning or hear thunder utilize the 30/30 rule, You can reference the IRPG page 19. Locate a safe area to go to before it is needed. Develop a plan for severe weather and make it known to all personnel. **Watch for wind shifts** from approaching fronts.

DRIVING – Lights on while vehicle is in use. Use a spotter when backing on the fireline. Use caution on wet roads, increase following distance. Watch for wet areas on fireline breaks. Keep Windshields clean.

COMPLACENCY – Firelines are spread across a wide geographical area. Some of the areas received more precipitation/lightning than others. Snags, covered drainages, visibility, power poles, driving and many other hazards/risk still exist and need to be identified and communicated as you enter new areas.

SANITATION – Make sure that you sanitize your cooler. Wash your hands before eating. We are guest to this area, ensure you clean your area before leaving, and Do not leave loose trash in the back of trucks to blow out going down the road.

Watch Out Situation of the Day



4. UNFAMILIAR WITH WEATHER AND LOCAL FACTORS INFLUENCING FIRE BEHAVIOR

Look Up, Look Down, Look Around

***Look Up:** Check the sky for any weather changes such as building or approaching thunderstorms, wind shifts or increasing in speed. Watch for air operations and water drops. Look for snags.

***Look Down:** Watch your footing. Keep an eye out for snakes, bee's nests and observe fine fuels on the ground.

*** Look Around:** Check fuel loading in the area, general terrain, current fire behavior and ladder fuels. Keep an eye on fellow firefighters for signs of heat stress and smoke inhalation.

Incident Safety Officers: Mark Munns, Tommy Hawkins, Steve Holman, Rodney Weeks, Shane Barrow and Tommy Lail

1. Establish & maintain LCES. Report LCES checks twice daily to DIVS.
2. Look UP,DOWN and AROUND - Flag and Communicate.
3. Follow downhill fireline checklist.
4. Take plenty rest breaks and encourage to drink water NOW through briefings.
5. Watch out for complacency. Supervisors need to keep constant surveillance for early signs and address.
6. Observe 30/30 Rule: Reference Incident Response Pocket Guide. Look for new starts.
7. Post experienced Lookouts. Make sure LCES is in place and make known.
8. Utilize Fire Departments for structure protection. Tailgate briefings on urban interface hazards.
9. Defensive driving will be addressed in all briefings.
10. Utilize public "Community Meetings" to warn public of fire hazards/traffic.
11. All personnel must meet the 2:1 work/rest ratio. Safety Team will monitor closely.
12. Maintain LCES at all times.
13. Use Air Attack as Lookout.
14. Post lookout for Snags, Rolling Material, and Spot Fires below line.
15. Ensure Fireline is Anchored.
16. All Firefighters know current weather, predicted weather & fire behavior forecast.
17. Line Supervisors will provide clear, concise briefings.
18. Flag hazard trees & snags, post lookouts when working in vicinity of snags.
19. FBA/Meteorologist to develop weather watch system.
20. Keep Firefighters informed of any changes in predicted weather.
21. Recognize & Avoid Hazmat situations.
22. Utilize Hazmat Response Teams.
23. Use Spike Camps to limit travel times.
24. Ensure Traffic Planning is safe and enforced.
25. Use Helicopter transport when driving conditions warrant.
26. Review Structural "Watch Out" situations.
27. Abandon Structures before Safety is compromised.
28. Air Attack and/or lead plane will always be in the air to coordinate aircraft.
29. Pilots will be briefed on strategy and tactics.
30. Personnel on ground will stay out of drop zones.
31. Observe all traffic signals and speed limits.
32. Use spotter when backing vehicle(s).
33. Refer to Fireline Handbook on Power Line Hazards.
34. Burn aerial fuels & avoid as a safety zone.
35. Construct direct line with immediate burn out of fuels.

INCIDENT ACTION PLAN SAFETY ANALYSIS		1. Incident Name	2. Date	3. Time	
		Honey Prairie Fire	7/27/2011	Day Shift	
		Other Risk Analysis			
Branch	Indirect Fireline	LCES* Analysis of Tactical Applications Lookouts Communications Escape routes Safety zones LCES Mitigations	Smoke	Other Risk Mitigations	
	Strategic Firing Operations		Traffic/Driving		
	Power lines / Snags		Communications		
	Road Conditions		Structure Protection		
	Frontal Assault		Fatigue/Hydration		
	Extreme Conditions		Multi-aircraft		
	Railroad				
	Burnout Operations				
	Wildlife, Insects				
Branch West	1, 2, 3, 4, 5, 7, 8, 10, 14	1. Establish & maintain LCES. Report LCES checks twice daily to DIVS on line & staging. 2. Look UP, DOWN and AROUND 3. Post experienced Lookouts. Make sure LCES is in place and make known. 4. Use Aerial Resources as Lookout if available.	24 12 17 19 20 22 24 25	16 18 21 14 25	16. Take adequate rest breaks and encourage to drink water NOW through briefings. 17. Defensive driving will be addressed in all briefings. 18. All personnel must meet the 2:1 work/rest ratio. Line supervisors and Safety will monitor closely. 19. Notify Operation and Safety of Railroad track issues to ensure safety of firefighters.
Branch East	1, 2, 3, 4, 5, 7, 8, 10, 14	5. Flag escape routes on right side of escape route facing outward. Create new escape routes as you progress and identify Safety Zones on the ground and maps. 6. Identify, mark & mitigate. 7. FBAN/Meteorologist to monitor weather updates and advisories. 8. Ensure Fireline is Anchored to black or manmade/natural barrier. 10. Keep Firefighters informed of any changes in predicted weather, consider at least a two day weather pattern when planning Strategic Firing operations. 11. Refer to IRPG, pg. 12 on Power Line Hazards. 12. Observe all traffic signals and speed limits. Drive with lights on. 14. Ensure GOOD tailgate briefings with resources unable to attend Operational Briefing (Include Ops, Logs, Fin & Plans info.). 15. Scout ahead of tractor operations to avoid making contact with power poles and guide wires when tying into roads. Power companies are working in some DIVS, avoid all down lines as they may become charged.	24 12 17 19 20 22 24 25	16 18 21 14 25	20. Ensure Traffic Planning is safe and enforced. Heed Defensive Driving techniques noted in Safety Messages. 21. Relocate staggling area when driving conditions warrant. 22. Use spotter when backing vehicle(s). 23. Use protective spray with deet on skin (Not on Nomex), permethrin can be used on nomex clothing 24. Establish smoke/fog signs on roadways. Coordinate with Department of Transportation. 25. Follow establish communication plan, flight follow through dispatch 26. Trains speeds are reduced to 40 m.p.h between markers 210 and 218. Any damage to tracks, crossings or tie need to be reported immediately to ICP.
Prepared by (Name and Position)		Mark Munnis SOF2			

MEDICAL PLAN	Incident Name Honey Prairie Complex	Date Prepared 7/26/2011	Time Prepared 1800	Operational Period 7/27/2011	
5. Incident Medical Aid Station					
<u>Medical Aid Stations</u>	<u>Location</u>			Paramedics Yes No	
MEDICAL UNIT (ICP)	Honey Prairie Complex ICP- Mark Millirons (EMT)MEDL (706)741-4216 (24 Hours) - Jameson Inn, Waycross (8-5)			X	
WEST SIDE (Line EMT)	Levi Clymer(EMT-P)(417)658-5155 (A,B,C,D,E,F,G DIV) – Econo Lodge, Waycross (7-29) *Fred Mason(EMTB) Eng. 405 (A,B,C,D,E,F,G DIV) (8-7) Robert Carswell (EMT) MEDL (912)286-1648 (T,V,Y,Z) - Days Inn, Waycross (8-6) (West IA) will be covered by Levi Clymer if needed			X	
EAST SIDE (Line EMT)	Jackie Aultman 218-491-1351(EMT- B)(H,I,J,K,L,M,N,O DIV) - Comfort Inn, Waycross (8-3) (East IA) will be covered by Jackie Alutman or Mark Millirons if needed.			X	
Ambulance Services					
Name	Address	Phone	Paramedic Yes No		
Clinch County EMS (WEST SIDE)	Homerville, GA (911 to activate)	912-487-5211 ext. 4567	Yes		
Ware County EMS (NORTHSIDE)	Waycross, Georgia (911 to activate)	912-281-9467	Yes		
Charlton County EMS (EAST SIDE)	Folkston, GA (911 to activate)	912-496-7321	Yes		
Air Ambulance Service					
Trauma 1	Lake City , FL (16 min/air to Fargo ICP)	1-800-223-4878(freq. 155.340)	Yes		
Trauma 1	Jacksonville, FL (26 min/air to Fargo ICP)	1-800-223-4878(freq. 155.340)	Yes		
AirMed	Augusta, GA (2 hrs/air to Fargo ICP)	1-888-792-9245(freq. 155.340)	Yes		
Lifeflight	Jacksonville, FL (35 min/air to Fargo ICP)	1-877-870-7779(freq. 155.340)	Yes		
Air Evac	Waycross, GA (17 min/air to Fargo ICP)	1-800-247-3822(freq. 155.340)	Yes		
US Coast Guard (Heli-Rescue)	Savannah GA	1-912-652-4646 (freq. 155.340)	Yes		
7. Hospitals					
Name	Address	Travel Time Air Ground	Phone	Helipad Yes No	Burn Center Yes No
Satilla Regional	410 Darling Ave Waycross Ga N 31°13.56 W 82°21.058	18 min 45 min	912-283-3030	Yes	No
Clinch Memorial Hospital (WEST SIDE)	1050 Valdosta HWY Homerville, GA		912-487-5211 ext 4502	Yes	No
Charlton Memorial Hospital (EAST SIDE)	1203 3 rd St. Folkston, GA		912-496-2531	Yes	No
Memorial Hospital	Savannah, GA 4700 Waters 3200.7 8107.6	30 min	912-350-8999	Yes	No
Shands Hospital (level I)	Jacksonville, FL N 30°20'97 W 82° 13 992	26 min 1.5 hrs	800-223-4878	Yes	Yes
Shands Burn Center	Gainesville, FL 38.33 N 082 20.73W	33 min 1.5 hrs	352-265-0300	Yes	Yes
8. Medical Emergency Procedures					
Identify any EMTs and Paramedics in your crews. All medical emergencies will be reported to the Division Supervisor who will assume command and notify Line Medics. On scene personnel will: 1. Provide medical care & stabilize patient. 2. Call 911 if possible and provide the information requested. 3. Notify Communications via radio over Command Channel 4. Communications will clear radio traffic for medical emergency. 5. Communications will confirm 911 has been notified coordinate with IC, SOF, MEDL. 6. DIVS will notify the Field Ops Section Chief. MAJOR EMERGENCIES – Secure the area and identify witness for later investigation. Keep an accurate log of events. NOTE: Do not give Patients Name over the radio! HELISPOTS Pocket Helispot 30 47 30.02 x 82 22 39.5 (West side), mile marker 4, HWY 177 Steven C. Foster State Park Fargo Helispot 30 40.945 x 082 33.640 (West side), HWY 441- Steven C. Foster Visitor Center POGO Helibase 30.44.03 x 82.07.41 (East side) Evac Yankee Helispot 6 Rd. 32 and 32A, N 30° 53.280 W 082° 33.880 Helispot 7 Tatum Rd. Pond N 30° 50.280 W 082° 33.857 *Alternate site can be established following guidelines for safety found with IRPG and local EMS resources.			INJURY REPORTING PROCESS: Nature of Injury: _____ Location of Patient: _____ Transportation Requested by: Air___ Ground___ Pick Up Point: _____ Lat: _____ Long: _____ Patient Unit ID: _____ Is an EMT w/Patient: Yes___ No___ Age: _____ Sex: Male___ Female___ Weight (If Air Evac. is needed): _____		
Prepared by: Mark Millirons (EMT)MEDL			10. Reviewed by: Mark Munns, SOF		

INCIDENT RADIO COMMUNICATIONS PLAN ICS-205			Incident Name	GROUP 22		Date/Time Prepared	Operational Period Date/Time				
			Honey Prairie			07/25/2011-18:00	7/27/2011 0800-2000				
Ch #	Function	Channel Name	Assignment	RX Freq	NW	RX Tone/NAC	TX Freq	NW	TX Tone/NAC	Mode A,D or M	Remarks
1	Command	West Okee Repeater	Sec West Branch CMD	167.1250	N	156.7	163.1500	N	156.7	A	Stephen Foster State Park
2	Command	South Okee Repeater	Sec East/West Branch CMD	164.7750	N	123.0	163.1500	N	123.0	A	Eddy Florida
3	Command	East Okee Repeater	PRIMARY East Branch CMD	164.6250	N	103.5	163.1500	N	103.5	A	Refuge Headquarters
4	Command				N			N		A	NO Longer used
5	Command	North Okee Repeater	PRIMARY North Branch CMD	164.5750	N	206.5	163.1500	N	206.5	A	Waycross
6	Air-Ground	Air to Ground	PRIMARY	166.9375	N	CSQ	166.9375	N	CSQ	A	
7	Tactical	MOB-MOB	GFC Contingency	159.3900	W	CSQ	159.3900	W	156.7	A	
8	Tactical	V-Fire 21W WHITE	Structure Protection Group West I.A.	154.2800	W	CSQ	154.2800	W	156.7	A	
9	Tactical	USFS 9	DIV A,B,C, D,E,F,G,T&V (East I/A)	168.7750	N	CSQ	168.7750	N	CSQ	A	
10	Tactical	S.E. Compact	DIV	159.2850	W	CSQ	159.2850	W	CSQ	A	
11	Tactical	USFS 11	DIV M,N,O	168.2000	N	CSQ	168.2000	N	CSQ	A	
12	Tactical	Refuge Tac 1	DIV H, I, J, K,L	168.3500	N	CSQ	168.3500	N	CSQ	A	
13	Tactical	FL 190	DIV Y,Z	151.2725	N	CSQ	151.2725	N	CSQ	A	
14	Command	DIV J RPT	East Branch	170.4125	N	CSQ	165.9625	N	123.0	A	NOT linked to OKEE System
15	Air-Ground	Air to Ground	SECONDARY	166.9000	N	CSQ	166.9000	N	CSQ	A	
16	EMERGENCY	AIR Guard	AIR OPS.	168.6250	N	CSQ	168.6250	N	110.9	A	
Prepared by (Communications Unit) Kelly Towe, COML Roy Fortenberry, COMT/COML Incident Dispatcher: 912-286-1660											
Cloning at ICP communications and briefings,											

The convention calls for frequency lists to show four digits after the decimal place, followed by either an "N" or a "W", depending on whether the frequency is narrow or wide band. **Mode** refers to either "A" or "D" indicating analog or digital (e.g. Project 25) or "M" indicating mixed mode. All channels are shown as if programmed in a control station, base stations, mobile or portable radio.

INCIDENT RADIO COMMUNICATIONS PLAN ICS-205		Incident Name	GROUP 22		Date/Time Prepared	Operational Period	Date/Time				
		Honey Prairie			07/26/2011-17:00	7/27/2011	0800-2000				
Ch #	Function	Channel Name	Assignment	RX Freq	NW	RX Tone/NAC	TX Freq	NW	TX Tone/NAC	Mode A,D or M	Remarks
1	Command	West Okee Repeater	Sec West Branch CMD	167.1250	N	156.7	163.1500	N	156.7	A	Stephen Foster State Park
2	Command	South Okee Repeater	Sec East/West Branch CMD	164.7750	N	123.0	163.1500	N	123.0	A	Eddy Florida
3	Command	East Okee Repeater	PRIMARY East Branch CMD	164.6250	N	103.5	163.1500	N	103.5	A	Refuge Headquarters
4	Command	NIFC C2	PRIMARY West Branch CMD	168.100	N	CSQ	170.4500	N	123.0	A	NOT linked to OKEE System
5	Command	North Okee Repeater	PRIMARY North Branch CMD	164.5750	N	206.5	163.1500	N	206.5	A	Waycross
6	Air-Ground	Air to Ground	PRIMARY	166.9375	N	CSQ	166.9375	N	CSQ	A	
7	Tactical	MOB-MOB	GFC Contingency Structure Protection Group West I.A.	159.3900	W	CSQ	159.3900	W	156.7	A	
8	Tactical	V-Fire 21W WHITE	Protection Group West I.A.	154.2800	W	CSQ	154.2800	W	156.7	A	
9	Tactical	USFS 9	DIV A,B,C, D,E,F,G,T&V (East I/A)	168.7750	N	CSQ	168.7750	N	CSQ	A	
10	Tactical	S.E. Compact	DIV	159.2850	W	CSQ	159.2850	W	CSQ	A	
11	Tactical	USFS 11	DIV M,N,O	168.2000	N	CSQ	168.2000	N	CSQ	A	
12	Tactical	Refuge Tac 1	DIV H, I, J, K,L	168.3500	N	CSQ	168.3500	N	CSQ	A	
13	Tactical	FL 190	DIV Y,Z	151.2725	N	CSQ	151.2725	N	CSQ	A	
14	Command	DIV J RPT	East Branch	170.4125	N	CSQ	165.9625	N	123.0	A	NOT linked to OKEE System
15	Air-Ground	Air to Ground	SECONDARY	166.9000	N	CSQ	166.9000	N	CSQ	A	
16	EMERGENCY	AIR Guard	Air OPS.	168.6250	N	CSQ	168.6250	N	110.9	A	
Prepared by (Communications Unit) Kelly Towe, COML Incident Dispatcher: 912-286-1660											
Cloning at ICP communications and briefings,											

The convention calls for frequency lists to show four digits after the decimal place, followed by either an "N" or a "W", depending on whether the frequency is narrow or wide band. **Mode** refers to either "A" or "D" indicating analog or digital (e.g. Project 25) or "M" indicating mixed mode. All channels are shown as if programmed in a control station, base stations, mobile or portable radio.

HONEY PRAIRIE PHONE LIST

07/26/11

Incident

Communication

(Hours: 0700-2100)

912-286-1660

AGENCY OFFICIALS			OPERATIONS		
Curt McCasland	602-359-0013	USFWS AA	Steve Gray	404-772-5389	Planning Operations
Mindy Gautreaux	912-282-7500	USFWS Deputy AA	Buck Kline	229-460-2062	Field Operations
Frank Sorrells	912-381-7503	GFC AA	Heath Morton (t)	423-240-7509	Planning Operations
James Karels	850-228-7763	FL DOF AA	Brent McCarty	229-938-8718	West Branch
Diane Adams	912-266-5421	GEMA	DIVISIONS		
Mike Housh	912-281-1575	USFWS AREP			
COMMAND			Charles Arnold	423-802-6507	DIVS A, B, C, D, E, F, G
Troy Floyd	706-676-0168	IC			
RESOURCE ADVISORS			Mike Lee	770-576-9594	DIVS T, V, Y, Z
Ron Phernetton	912-276-2349	Resource Advisor			
Jessica Bowen	912-536-2995	Resource Advisor	Trent Ingram	229-726-0285	West IA
Rocky Chesser	912-276-3232	Resource Advisor	DIVISIONS		
INFORMATION 912-496-2566					
Jenny Lyn Bruner	912-496-2566	Fire Information	Tracy Mobley	706-346-4052	DIVS H, I, J, K, L
Denise Croker	256-497-8334	PIO1	Tracy Mobley	706-346-4052	DIVS M, N, O
			Rufus Crutchfield	478-986-7466	East IA
SAFETY			Bert Earley	229-854-5229	Roads Group
Tommy Hawkins	706-676-7538	Safety Officer			
Mark Munns	706-401-5903	Safety Officer	AIR OPERATIONS		
Jerry Burnsed	386-453-8453	Safety Officer	Joseph Bistryski	801-518-2797	Air Ops Branch
Steve Barrow	706-699-2412	Safety Officer			
Mark Millirons	706-741-4216	Medical Unit Leader	Brian Campbell	404-712-5405	ASGS (cell)
Field EMT	912-286-1674	Medical Unit Leader	Evertt Weniger	406-381-4176	Waycross
Medical Unit	912-637-5236				
Tommy Lail	404-772-5338	Safety Officer	Lee Kessler	912-287-4479	HEB2 - WAYCROSS
DISPATCH			Jeff McBath	858-357-3242	HEB2 (t) - WAYCROSS
Okeefenokee Dsp	912-496-7366	Okeefenokee			
Suwannee Dispatch	386-758-5700	Fla wildfires, other	PLANNING 912-287-6557 FAX 912-287-6557		
Honey Prairie Dspth	912-286-1660	Honey Prairie ICP	Greg Strenkowski	478-951-2421	Planning Section Chief
Waycross Dispatch	912-287-4915	Ga wildfires, other	Keith Murphy (t)	912-637-5241	Situation Unit Leader
LOGISTICS West			John Franks	513-519-5818	IMET
Willie Boston	770-328-3186	LSC	Harold West	912-637-5241	DMOB
Thomas Lambert	912-287-6540	FACL	Keith Mousel	850-228-7756	FBAN
			FINANCE 912-287-6568 FAX 912-287-6564		
Hotel Mgr	912-287-6540	Lodging	Lila Johnson	770-658-6641	Finance Section Chief
Kevin Reish	404-276-1998	Security Manager	Judy Reddin	912-281-6876	Buying Team Leader
Tim Jones	912-387-6480	GSUL			
Steve Blackwell	404-772-5330		Kurt Hinz	507-206-2035	Comp Claims
Bob Kookan		Food Unit Leader	=	507-696-3669	(cell)
Amy Weaver (t)	912-637-5239	SPUL	James Meredith	404-805-6806	IBA
Kelly Towe	478-308-4770	COML			

ORDERING		
Jimmy Grimes	404-558-4476	Ordering Manager
		LSC
John Crain	404-772-5363	Base Camp Mgr
		Supply Unit Leader
Joe Hoisington	530-905-3715	EQPM
Bert Earley	229-854-5229	Roads THSP
	239-887-1817	Security Manager
COOPERATORS		
COUNTY		
	912-496-7229	Charlton County EMA
John F. Meyer - Chairman	912-496-2549	Charlton County Commissioners
Dobie Conner	912-496-7321	Charlton County Sheriff
Jesse Booth	912-520-0061	Clinch County EMA
Jonathan Daniel	912-281-5158	Ware County EMA
Jessie Jordan	912-816-6063	Ware County Fire Dept
Joe Morris	912-281-6020	Ware County Sheriff
Robbie Sutton	912-599-9027	Tri County 911
STATE		
GFC Fargo District Office	912-637-5270	
GFC Satilla District Office	912-287-4915	
Blair Joiner	229-237-9026	GFC Clinch Chief Ranger
Jason Gillis	912-314-9233 912-637-5504	GFC Satilla Assistant Mgr.
Brian Gray	229-894-4628 912-673-5274	Stephen Foster State Park
Travis Griffin	912-281-5790	Laura Walker State Park
Crystal Paulk-Buchanan	404-535-1048	GEMA PIO
Georgia Highway Patrol	912-287-6500	
FEDERAL		
Okefenokee Fire Shop	912-496-4181	
Okefenokee NWR HQ (East)	912-496-7366	
Okefenokee NWR (West)	912-637-5322	
Okefenokee Visitor Center	912-496-7836	

LANDOWNERS		
Jim Barrett	229-412-3133	Langdale/GOAL Chairman
Wesley Langdale	229-220-2602	Langdale
Hal Rowe	229-412-3133	Langdale
Langdale Office	229-242-7450	Langdale Office
Mike Conlon	386-365-3882	Rayonier Unit Supervisor
Ray Carter	386-288-6626	Rayonier
Ed Carter	386-288-6626	Rayonier
Doug Nuss	912-390-1037	Rayonier
Randall McCrady	912-283-4077 W	Rayonier
Colin Myerson	229-506-1565	Superior Pine Products Co
Robbie Lee	229-356-0526	Superior Pine Products Co
Superior Pine Office	912-637-5261	Superior Pine Products Co
Al Alexander	850-843-0104	The Forestry Co
Savell Schmidt	850-843-1181	The Forestry Co
John Bogue	850-843-1192	The Forestry Co
Joe Hopkins	912-276-0911	Toledo Timber
Chris Gowan	912-276-0965	Toledo Timber
Martin Bell	912-283-0583	Swamp Park
Crystal Peeples	352-316-0632	FIA
Steve Davis	912-614-1828	Davis Community
Trevor Fortner	912-599-9271	Little Suwannee
Tim Jarrell	912-223-7120	Hancock Forest Mgmt.
RAILROADS		
Norfolk Southern	800-453-2530	
Sid Moody	904-318-7983	Norfolk Southern Railroad
Chad Edwards	404-582-4909	Norfolk Southern Railroad
	540-797-9918	
Eric Sams	904-576-9907	
Norfolk So Emergency Dispatch	404-529-1597	
CSX Randy Dixon	912-270-0699	
CSX Dispatch	800-232-0144	

FINANCE

07/27/11

EQUIPMENT

EVERYONE, PLEASE put E#'s on top right corner of shift ticket.
East side fuel supplier: Please send all fuel books to Finance daily.

TIME

O-1112 Darold Williams - No CTRs since 7/22
O-15 Fed Privett - No CTRs since 7/15

IF POSSIBLE, PLEASE COME BY FINANCE AND REVIEW YOUR TIME THE DAY BEFORE YOU DEMOB. ALSO, **BRING YOUR LAST CTR'S AND SHIFT TICKETS WITH YOU** TO FINANCE ***WHEN YOU DEMOB*** RATHER THAN TURNING IN AT THE BRIEFING IN THE MORNING. THIS WILL HELP AVOID DELAYS THE DAY OF DEMOB. THANKS.

WHEN DEMOBING FINANCE SHOULD BE THE NEXT TO THE LAST SECTION YOU GET SIGNED OFF ON YOUR CHECKOUT FORM WITH DEMOB UNIT BEING THE LAST. WE WILL CHECK YOUR TIME FOR YOU PRIOR TO EVERYTHING ELSE BEING SIGNED OFF, BUT WILL NOT SIGN OFF TIME UNTIL THE OTHER SECTIONS ARE DONE.

UPCOMING_DEMOB

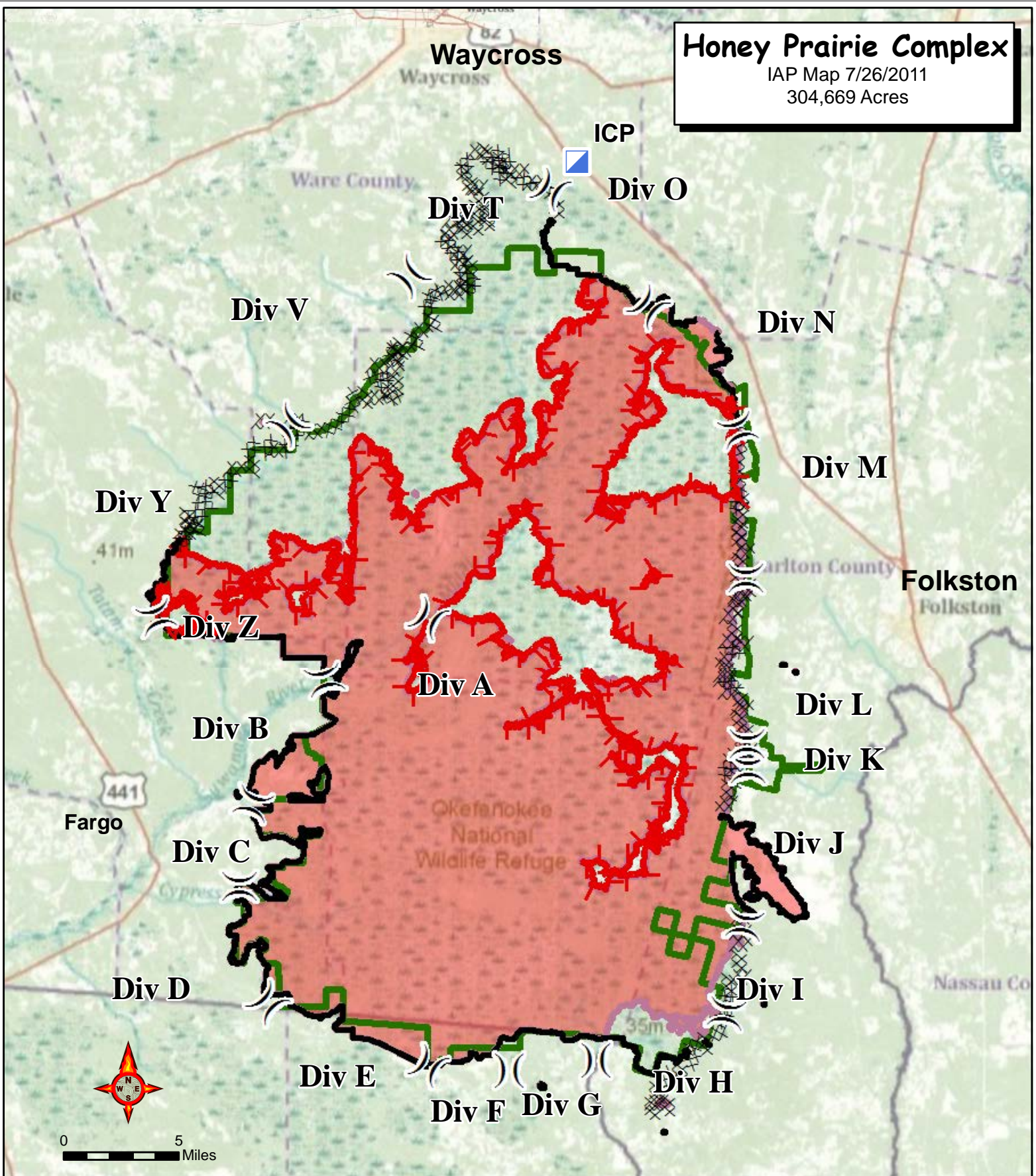
Number	Name	Kind	Unit	Travel	Jetport	DemobDate
E-978	ENGINE - T6 - PLS -	ENG	IDPLS	POV		07/27/2011
E-978.1	GILLMER, DENNIS	ENG	IDIPF	POV	GEG	07/27/2011
E-978.2	FEARON, RYAN	FFT	IDPLS	POV	GEG	07/27/2011
E-978.3	GUIDRY, MYKEL	FFT	IDSJS	POV	GEG	07/27/2011
O-888	MURPHY, BRIAN	HEC	ILCOR	AIR	STL	07/27/2011
O-920	SCHNEIDER, AARON	TFL	ORSU	AIR	EUG	07/27/2011
O-941	DENOWH, SHAWN A	TFL	IDPAF	AIR	BOI	07/27/2011
O-1069	CHITWOOD, SANDI	EQT	ORSU	AIR	PDX	07/27/2011
O-1071	CRAIN, JOHN A	RCD	FLFLS	POV	TPA	07/27/2011
O-1077	GRAHAM, MICHAEL	EMT	ARAR	AIR	XNA	07/27/2011
O-1085	CASHDOLLAR,	EQP	FLFLS	AOV		07/27/2011
E-380	JOHNNY SMITH	GR	GAOK	OTH		07/28/2011
E-380.1	MERRITT, JASON	DRI	GAOK	OTH		07/28/2011
E-505	SMITH EXCAVATOR	EXC	GAOK	POV		07/28/2011
E-505.3	MURRAY, DON	DRI	GAOK	POV		07/28/2011
E-506	SMITH DUMP TRUCK	TDM	GAOK	POV		07/28/2011
E-506.1	SMITH, CRAIG	DRI	GAOK	POV		07/28/2011
E-529	SMITH DUMP TRUCK2	TDM	GAOK	POV		07/28/2011
E-529.2	WATSON, RON	DRI	GAOK	POV		07/28/2011
E-597	SMITH ROAD GRADER	GR	GAOK	POV		07/28/2011
E-597.1	PROPE, DAVID	DRI	GAOK	POV		07/28/2011
O-1086	KESSLER, LELAND	HM	MNMN	A/R	HIB	07/28/2011
O-1088	EARLEY, BERT	THS	GAGA	AOV		07/28/2011
E-7.6	JOHNSON, CHARLES	TPO	GASA	AOV	SAV	07/29/2011
O-368	JOHNSON, HARDY	DRI	GAOK	POV		07/29/2011
O-560	PHERNETTON,	REA	GAOK	AOV		07/29/2011
O-847	CLYMER, BRETT L	EMT	MOMO	AIR	XNA	07/29/2011
O-857	EASTON, DEAN	THS	GAOK	AOV	JAX	07/29/2011
O-998.26	WATSON, JOHN F	PRO	FLFLS	AOV	TLH	07/29/2011
O-1087	PAFFORD, DAVID	TPO	NCPE	AOV	ORF	07/29/2011
O-1090	LUEPKE, JONATHAN	HEQ	MIHIF	AIR		07/29/2011
O-1096	COCKMAN, DONALD	SEC	SCCR	AOV		07/29/2011
E-968	CHEVY 2500 4X4	PU		POV		07/30/2011
E-968.1	SHARP, MICHAEL	DRI		POV		07/30/2011
E-1076	ENGINE - T6 - 9504	ENG	MOMT	AOV		07/30/2011
E-1076.4	PERREN, TIMOTHY	ENG	MOMT	AOV	STL	07/30/2011
E-1076.5	ROBINSON, RICHARD	ENG	MOMT	AOV	STL	07/30/2011
E-1076.6	HOLLAND, KEITH	FFT	MOMT	AOV	STL	07/30/2011
O-663	HANNANS, RICHARD	THS	GAOK	POV		07/30/2011
O-1089	MYRICK, SHEPHERD	RCD	FLFLS	AOV		07/30/2011
O-1091	SPEEGLE, DARRIN	SEC	ALWL	AOV		07/30/2011
O-1092	STONE, CURTIS	SEC	TNBS	AOV		07/30/2011
O-1106	PELT, GEORGE	ENG	FLLSR	AOV		07/30/2011

Record Count: 43

Honey Prairie Complex

IAP Map 7/26/2011


304,669 Acres



 Incident Command Post

 Completed Line

 Division

 Uncontrolled Fire Edge

 Refuge Boundary

 Fire Polygon

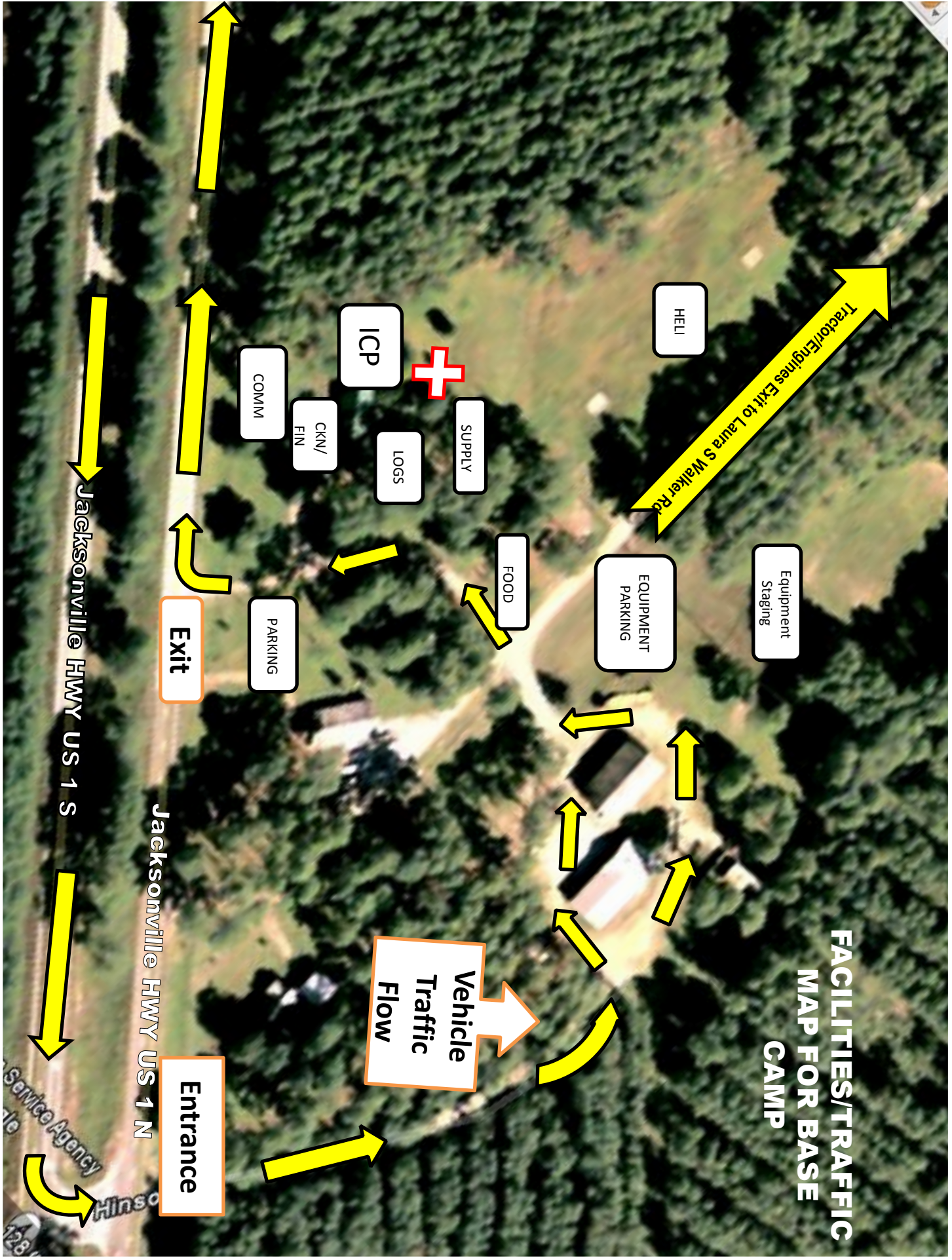
 Completed Dozer Line

Perimeter as of 7/25/2011 1430
C. Bailey GISS

**INCIDENT
MANAGEMENT**
T E A M



FACILITIES/TRAFFIC MAP FOR BASE CAMP



HELI

Equipment Staging

EQUIPMENT PARKING

FOOD

SUPPLY

LOGS

ICP

COMM

CKN/
FIN

PARKING

Exit

Vehicle Traffic Flow

Tractor/Engines Exit to Laura S Walker Rd

Jacksonville HWY US 1 S

Jacksonville HWY US 1 N

Service Agency
Hinsco

