

Honey Prairie Complex

GA-OKR-000001

Incident Action Plan

Operational Period

FRIDAY

July 29, 2011
0800-2000

Incident Commander
Troy Floyd

Accounting Codes

FWS – 9141-F25M-2J

NPS – 5023 F25M E11

BLM – F25M

USFS – PRF25M_1502

Initial Attack – F4PM



*An Equal Opportunity
Employer & Service Provider*

07/25/2011

Letter from GFC Incident Commander:

To: All Honey Prairie Incident Personnel

As Georgia Forestry Commission's Type 2 Incident Commander, I am committed to a policy of "zero tolerance" of inappropriate behavior during incident operations. Any form of harassment, discriminatory practices, or disrespectful behavior will not be tolerated.

Guidelines on in-appropriate behavior both "on Duty" and "off Duty" while assigned are addressed within each agencies policies. Our Team expects all incident personnel to follow established government policies for behavior along with all Illegal drug and alcohol directives.

Our Incident Management Team endorses and supports an attitude of mutual respect for all personnel and the public we serve.

We expect a strong work ethic and an attitude of Safety at all times!

Sincerely,

/s/ Troy E. Floyd Jr.

Incident Commander
Georgia Forestry Commission's Type 2 Incident Management Team

| | | | | | | | | | | | | | | | |
|---|---|---|---------------------------------|-------------------------------|----------------|------------------|-----------------------------|----------------|-----------------------------|---------------------------------|-------------------|------------|--------------------------|--------------|--|
| INCIDENT OBJECTIVES | 1. INCIDENT NAME Honey Prairie Complex | 2. DATE PREPARED 7/28/11 | 3. TIME PREPARED 1800 | | | | | | | | | | | | |
| 4. OPERATIONAL PERIOD (DATE/TIME) Friday, July 29, 2011 0800 – 2000 | | | | | | | | | | | | | | | |
| 5. GENERAL CONTROL OBJECTIVES FOR THE INCIDENT (INCLUDE ALTERNATIVES) <ol style="list-style-type: none"> 1. Provide for safety of incident personnel and public in all incident operations. 2. Maintain a positive working relationship with all adjacent landowners, cooperators State and Federal partners. Inform, involve and communicate incident planning and operations with all partners. 3. Contain all fires that are within the Okefenokee National Wildlife Refuge, inside the Refuge and/or inside the swamp edge break if possible. 4. In cooperation with local timberland owners, use full suppression strategies and tactics to minimize damage to private timberlands and improvements and to prevent fires outside the Refuge from entering the Refuge. 5. Assist in management and suppression of additional fires (new starts or breakouts) in the vicinity as approved by Agency Administrators and Unified Incident Commanders. 6. Protect all cultural and archeological sites and structures within the refuge, with particular attention to facilities at Okefenokee Swamp Park. 7. Manage the fires cost-effectively consistent with the values at risk. 8. Implement structure protection as necessary for at-risk facilities and communities. 9. Coordinate suppression actions with assigned Refuge Resource Advisors | | | | | | | | | | | | | | | |
| 6. WEATHER FORECAST FOR OPERATIONAL PERIOD See attached forecast for area specific weather information. | | | | | | | | | | | | | | | |
| 7. GENERAL SAFETY MESSAGE Drive defensively and use spotter when backing. Ensure LCES is in place and known by all personnel. Drink plenty of water and take frequent rest breaks. Ensure proper use of PPE during all operations. | | | | | | | | | | | | | | | |
| 8. Attachments (☐ if attached) <table border="0" style="width: 100%;"> <tr> <td>☐ Organization List (ICS 203)</td> <td>☐ Incident Map</td> <td>☐ Safety Message</td> </tr> <tr> <td>☐ Assignment List (ICS 204)</td> <td>☐ Traffic Plan</td> <td>☐ Demobilization Procedures</td> </tr> <tr> <td>☐ Communications Plan (ICS 205)</td> <td>☐ Finance Message</td> <td>☐ Unit Log</td> </tr> <tr> <td>☐ Medical Plan (ICS 206)</td> <td>☐ Phone List</td> <td></td> </tr> </table> | | | | ☐ Organization List (ICS 203) | ☐ Incident Map | ☐ Safety Message | ☐ Assignment List (ICS 204) | ☐ Traffic Plan | ☐ Demobilization Procedures | ☐ Communications Plan (ICS 205) | ☐ Finance Message | ☐ Unit Log | ☐ Medical Plan (ICS 206) | ☐ Phone List | |
| ☐ Organization List (ICS 203) | ☐ Incident Map | ☐ Safety Message | | | | | | | | | | | | | |
| ☐ Assignment List (ICS 204) | ☐ Traffic Plan | ☐ Demobilization Procedures | | | | | | | | | | | | | |
| ☐ Communications Plan (ICS 205) | ☐ Finance Message | ☐ Unit Log | | | | | | | | | | | | | |
| ☐ Medical Plan (ICS 206) | ☐ Phone List | | | | | | | | | | | | | | |
| 9. PREPARED BY (PLANNING SECTION CHIEF) Greg Strenkowski | | 10. APPROVED BY (INCIDENT COMMANDER) Troy Floyd | | | | | | | | | | | | | |

| ORGANIZATION ASSIGNMENT LIST | | 9. Operations Section | |
|---|--|---|--|
| 1. Incident Name Honey Prairie Complex GA-OKR-000001 | | Chief | Buck Kline 8/5 / Brent McCarty 8/2 |
| | | Planning | Steve Gray 8/1 / Heath Morton (t) 8/4 |
| 2. Date 7/28/2011 | 3. Time 1000 hrs | a. Divisions/Groups | |
| 4. Operational Period 7/29/2011 0800 - 2000 | | | |
| 5. Incident Commander and Staff | | Division | A-B-C-D-E-F-G Chuck Arnold 8/1 Paul Pelligrini (t) 8/1 |
| Incident Commander | Troy Floyd 8/5 | Division | T-V-Y-Z Mike Lee 8/2 |
| Liason Officer | | | |
| Safety Officers | Tommy Hawkins 8/4 Mark Munns 8/5 | Group | IA-WEST Trent Ingram 8/5 |
| Information Officer | Jenny Lynn Bruner 8/5 Denise Croker 8/5 | Division | H-I-J-K-L Tracy Mobley 8/1 |
| 6a. Agency Administrators | | Division | M-N-O Tracy Mobley 8/1 |
| FWS | | Group | IA-EAST Rufus Crutchfield 8/4 |
| FWS | Mindy Gautreaux | Group | Roads & Rehab Aaron Souto 8/10 |
| 6b. Agency Representatives | | b. Divisions/Groups | |
| | | | |
| GFC | Frank Sorrells | | |
| FLDOF | James Karels | | |
| FWS AREP | Mike Housh | | |
| FWS-Refuge PAO | Art Webster | | |
| GEMA AREP | Alan Robinson / Diane Adams | | |
| USFS AREP | Ivan Greene | | |
| 7. Planning Section | | c. AIR OPERATIONS BRANCH - Honey Prairie | |
| Chief | Greg Strenkowski 8/5 | Air Operations Branch Director Joseph Bistrzyski 8/4 | |
| Resource Advisors | Ron Phernetton, Jessica Bowen, Rocky Chesser | Air Support Group Supervisor Brian Campbell 7/30 | |
| Resources Unit | Josh Burnette 8/5 Randy Lownes 8/2 | | |
| Situation Unit | Keith Murphy(T) 8/4 | | |
| IMET | John Franks 8/3 | | |
| FBAN | Keith Mousel 8/7 | d. AIR OPERATIONS BRANCH - Pogo | |
| Demob Unit | Harold West 8/5 | Pogo Helibase Mgr | Jeff McBath 7/31 |
| Documentation | | ATGS-Waycross Helibase | Everett Wenigar 7/30 |
| GIS | Charles Bailey 7/30 | | |
| CTSP | Rusty Brown 8/5 | Waycross Helibase Mgr | Zev Hunting 7/31 |
| SCKN | Mike Jones 8/5 | | |
| 8. Logistics Section | | 10. Finance Section | |
| Chief | Willie Boston 8/5 | Chief | Lila Johnson 8/5 |
| Supply Unit | Amy Weaver (T) 8/5 | Deputy | Amy Treadwell 8/5 |
| GSUL | Tim Jones 8/5 Steve Blackwell 8/5 | Time Unit | Darline Matheney 8/5 John Sunday (t) 8/5 |
| ORDM | Jim Grimes 8/5 / Tim Redick (t) 8/7 | | |
| COML | Kelly Towe 8/5 | Comp Claims Unit | Kurt Hinz 8/5 |
| Medical Unit | Mark Millirons 8/5 | Cost | Grace Reid 8/5 |
| Facilities | Thomas Lambert 8/4 Dennis Evans 8/5 Jeremy Hughes 8/5 | Buying Team | Judy Reddin 8/3 |
| Food | Bob Kookan 8/2 / Chris Barnes 8/5 | | |
| SEC1 | | IBA | James Meredith 7/30 |
| COMT | Roy Fortenberry 8/5 | | |
| EQPM | Richard Young (T) 8/5 JohnnyBarwick 8/4 Kenneth Edge 8/5 | | |
| | | | |
| | | Prepared by: R Lownes | RESL |

| | | | | | | | |
|---|---------------------------------------|--|---|-------------------|--|--------------|--------------|
| DIVISION ASSIGNMENT LIST | | | 1. Branch | | 2. Division A, B, C, D, E, F, G | | |
| 3. Incident Name: Honey Prairie Complex | | | 4. Operational Period Date: 7/29/2011 Time: Day: 0800-2000 | | | | |
| 5. Operations Personnel | | | | | | | |
| Operations | Buck Kline 8/5 / Brent McCarty 8/2 | | Branch Director | | | | |
| Planning Ops | Steve Gray 8/1 / Heath Morton (t) 8/4 | | Division Supervisor | | Chuck Arnold 8/1 / Paul Pelligrini (t) 8/1 | | |
| Safety Officer | Steve Holman 8/1 | | | | | | |
| 6. Resources Assigned this Period | | | | | | | |
| Strike Team/Task Force/ Resource Designator | Leader / Name / Designator | Last Shift Date | Num. Per. | Drop Off PT./Time | Crew Names | | |
| | | | | | | | |
| MO Eng 9504 (E-1076) MOMTF | Tim Perron | 7/29 | 3 | | R. Robinson, K. Holland | | |
| ME ENG6 (E-405) (MEMHR) | Fred Mason (EMT) | 8/7 | 3 | | J. Goetz, A. Currier | | |
| KY Eng 162 (E-939) (KYLBF) | Bill Ryan | 8/4 | 3 | | T. Vetter, J. Finklea | | |
| | | | | | | | |
| Hughes Excavator (E-596) | Kenneth Einfinger | 7/31 | 1 | PVT | | | |
| | | | | | | | |
| | | | | | | | |
| | | | | | | | |
| GA ENG6 (E-2) GAOKR | UNSTAFFED | | | | | | |
| | | | | | | | |
| | | | | | | | |
| | | | | | | | |
| | | | | | | | |
| 7. Control Operations | | | | | | | |
| <ul style="list-style-type: none"> Patrol and mop up within 100' of fire perimeter line. Continue rehab work in Stephan C. Foster State Park. Patrol and control reburn. Examine work area for fire weakened snags. Continue to backhaul excess equipment from the line. | | | | | | | |
| 8. Special Instructions | | | | | | | |
| <ul style="list-style-type: none"> Ensure LCEs are in place before operations begin and stay hydrated. Drive defensively and with lights on at all times. Rehab Nature trails and waterways in Stephan C. Foster State Park. | | | | | | | |
| 9. Division/Group Communication Summary | | | | | | | |
| Function | Frequency | System | Channel | Function | Frequency | System | Channel |
| Command N Okee Repeater | RX 164.5750/206.5 TX 163.150/206.5 | KING NIFC | 5 | Logistics | | KING NIFC | |
| Tactical Div/Group | RX 168.775 TX 168.7750 | KING NIFC | 9 | Air to Ground | RX 166.9375 TX 166.9375 | KING NIFC | 6 |
| Prepared by (Resource Unit Ldr.) Randy Lownes | | Approved by (Planning Sect. Ch.) Greg Strenkowski | | | Date 7/28/2011 | | Time 1900 |

| DIVISION ASSIGNMENT LIST | | | | 1. Branch | | 2. Division T, V, Y, Z | |
|---|---------------------------------------|--|---------|--|----------------------------|----------------------------------|-------------------------|
| 3. Incident Name Honey Prairie Complex | | | | 4. Operational Period Date: 7/29/2011 Time: 0800-2000 | | | |
| 5. Operations Personnel | | | | | | | |
| Operations | Buck Kline 8/5 / Brent McCarty 8/2 | | | Branch Director | | | |
| Planning Ops | Steve Gray 8/1 / Heath Morton (t) 8/4 | | | Division Supervisor | | Mike Lee 8/2 | |
| Safety Officer | Rodney Weeks 7/30 Tom Lail 8/11 | | | | | | |
| 6. Resources Assigned this Period | | | | | | | |
| Strike Team/Task Force/ Resource Designator | | Leader / Name / Designator | | Last Shift Date | Num. Per. | Drop Off PT./Time | Crew Names |
| READ (O-559) | GAOKR | Jessica Bowen | | | 1 | | 912-536-2995 |
| | | | | | | | |
| | | | | | | | |
| | | | | | | | |
| TFLD (O-942) | | Ben Krupski | | 8/1 | 1 | | |
| TFLD (O-1139) | | Blair Joiner | | 8/7 | 1 | | |
| | | | | | | | |
| ENG6 (E-3) | GAOKR | Unstaffed | | | | | |
| | | | | | | | |
| | | | | | | | |
| IL Eng 40 (E-392) | ILSHF | Bobbi Archdale | | 8/4 | 3 | | J. Paukert, C. Mann |
| MN Eng 6232 (E-838) | MNMFC | Duane King | | 8/4 | 3 | | T. Elg, D. Lantz |
| MN Eng 652(E-404) | MNSUF | Andrew Drange | | 8/7 | 3 | | H. Severson, S. Westlin |
| | | | | | | | |
| Hughes WAT2 (E-954) | | Sonny Moore | | 8/4 | 1 | PVT | |
| | | | | | | | |
| | | | | | | | |
| | | | | | | | |
| EMT (O-1125) | | Robert Carswell | | 8/5 | 1 | | |
| | | | | | | | |
| 7. Control Operations <ul style="list-style-type: none"> Improve swamp break boundaries for fire breaks, work w/resource advisor Make contact with the Resource Advisor before using mechanical equipment. Safely push down with equipment all snags whether on fire or not that are a threat to success or tactical operations. Continue to backhaul excess equipment from the line. | | | | | | | |
| 8. Special Instructions <ul style="list-style-type: none"> Ensure LCES are in place before operations begin. Stay hydrated. Drive defensively and with lights on at all times. Boggy terrain: Be careful and aware when working around this type of area. | | | | | | | |
| 9. Division/Group Communication Summary | | | | | | | |
| Function | Frequency | System | Channel | Function | Frequency | System | Channel |
| Command N Okee Repeater | RX 164.5750/206.5 TX 163.150/206.5 | KING NIFC | 5 | Logistics | | KING NIFC | |
| Tactical Div/Group | RX 168.775 TX 168.775 | KING NIFC | 9 | Air to Ground | RX 166.9375 TX 166.9375 | KING NIFC | 6 |
| Prepared by (Resource Unit Ldr.) Randy Lownes | | Approved by (Planning Sect. Ch.) Greg Strenkowski | | | Date July 28, 2011 | | Time 1800 |

| DIVISION ASSIGNMENT LIST | | | 1. Branch | | 2. Division M, N, O | | |
|---|---------------------------------------|--|--|----------------------------|----------------------------|-------------------|--------------------------|
| 3. Incident Name Honey Prairie Complex | | | 4. Operational Period Date: 7/29/2011 Time: 0800-2000 | | | | |
| 5. Operations Personnel | | | | | | | |
| Operations | Buck Kline 8/5 / Brent McCarty 8/2 | | | Branch Director | | | |
| Planning Ops | Steve Gray 8/1 / Heath Morton (t) 8/4 | | | Division Supervisor | | Tracy Mobley 8/1 | |
| Safety Officer | Shane Barrow (O-1137) 8/8 | | | | | | |
| 6. Resources Assigned this Period | | | | | | | |
| Strike Team/Task Force/ Resource Designator | | Leader/ Name / Designator | | Last Shift Date | Num. Per. | Drop Off PT./Time | Crew Names |
| READ (O-559) | | Jessica Bowen | | | | | 912-536-2995 |
| TFLD (O-1140) | | Alton Anderson | | 8/7 | | | |
| Murray Eng 86 (E-78) GAGAS | | Adam Greeson | | 8/3 | 2 | | R Castoe |
| Jones Eng 86 (E-81) GAGAS | | Russell Fowler | | 8/3 | 3 | | B Christian, D Wilkinson |
| HC2IA (C-14) Pat Rick NCNCF | | Derek Osborne | | 8/1 | 20 | PVT | |
| 7. Control Operations | | | | | | | |
| <ul style="list-style-type: none"> Patrol and mop up 100' inside fire perimeter. Examine area for snag removal Keep fire within refuge boundary. Work with resource advisors when conducting rehabilitation work. Continue to backhaul excess equipment from the line. | | | | | | | |
| 8. Special Instructions | | | | | | | |
| <ul style="list-style-type: none"> If the fire reaches Mgt Activity Line (MAL) 1 cooperators and adjacent landowners will be notified. If the fire reaches MAL 2 a meeting will be held at the Swamp Park with adjacent landowners and cooperators to initiate appropriate actions. Safely push down with equipment all snags whether on fire or not that are a threat to success of tactical operations. Ensure LCES are in place before operations begin. Stay hydrated. Drive defensively and with lights on at all times. Boggy terrain: Be careful and aware when working around this type of area. | | | | | | | |
| 9. Division/Group Communication Summary | | | | | | | |
| Function | Frequency | System | Channel | Function | Frequency | System | Channel |
| Command N Okee Repeater | RX 164.5750/206.5 TX 163.150/206.5 | KING NIFC | 5 | Logistics | | KING NIFC | |
| Tactical Div/Group | RX 168.200 TX 168.200 | KING NIFC | 11 | Air to Ground | RX 166.9375 TX 166.9375 | KING NIFC | 6 |
| Prepared by (Resource Unit Ldr.) Randy Lownes | | Approved by (Planning Sect. Ch.) Greg Strenkowski | | | Date July 28, 2011 | | Time 1730 |

| | | | | | | | |
|---|--|--|--|----------------------------|--|-----------------------|-------------------|
| DIVISION ASSIGNMENT LIST | | | 1. Branch | | 2. Division East Initial Attack | | |
| 3. Incident Name Honey Prairie Complex | | | 4. Operational Period Date: 7/29/2011 Time: 0800-2000 | | | | |
| 5. Operations Personnel | | | | | | | |
| Operations | Buck Kline 8/5 / Brent McCarty 8/2 | | | Branch Director | | | |
| Planning Ops | Steve Gray 8/1 / Heath Morton (t) 8/4 | | | Division Supervisor | | Rufus Crutchfield 8/4 | |
| Safety Officer | Shane Barrow (O-1137) 8/8 | | | Division Supervisor | | | |
| 6. Resources Assigned this Period | | | | | | | |
| Strike Team/Task Force/ Resource Designator | | Leader/ Name / Designator | | Last Shift Date | Num. Per. | Drop Off PT./Time | Crew Names |
| TFLD (O-943) | | Steven Clark | | 8/1 | 1 | Satilla D.O. | |
| STEN (O-955) | | Randy Scherr | | 8/1 | 1 | Satilla D.O. | |
| TFLD (O-5) GAOKR | | Rocky Chesser | | | 1 | 912-276-3232 | Stage @ Refuge HQ |
| ENG6 (E-1081) | GAGAS | Rusty Carroll | | 8/3 | 2 | Satilla D.O. | P.Bryant |
| ENG6 (E-1082) | GAGAS | Tommy Williams | | 8/3 | 2 | Satilla D.O. | B. Cox |
| ENG6 (E-1083) | GAGAS | Wesley Ssk | | 8/3 | 2 | Satilla D.O. | J. Davenport |
| TPL SC 922 (E-7) SCSCC | | Adam McCullough (E-7.8) | | 8/11 | 1 | | Stage @ Refuge HQ |
| TPL GAOKR 56 (E-22) | | George Pelt (O-1106) GAOKR | | 7/30 | 1 | | Stage @ Refuge HQ |
| TPL Camden 70 (E-1162) GAGAS | | James D Armstrong (O-1115) | | 8/3 | 1 | Satilla D.O. | |
| TPL Ware 71 (E-1171) GAGAS | | Barry H. Bennett (O-1119) | | 8/3 | 1 | Satilla D.O. | |
| TPL Ware 72 (E-1173) GAGAS | | Thomas D. Whitley (O-1120) | | 8/3 | 1 | Satilla D.O. | |
| | | | | | | | |
| | | | | | | | |
| TPL GA OKR 54 (E-21) | | UNSTAFFED | | | 0 | | Stage @ Refuge HQ |
| TPL GAOKR 55 (E-23) | | UNSTAFFED | | | | | Stage @ Refuge HQ |
| | | | | | | | |
| | | | | | | | |
| 7. Control Operations | | | | | | | |
| <ul style="list-style-type: none"> Respond to Initial Attack as requested Patrol and control rebum Initial attack IC will communicate sizeup information to the Honey Prairie communication. Additional resource requests to go through Honey Prairie operations. | | | | | | | |
| 8. Special Instructions | | | | | | | |
| <ul style="list-style-type: none"> Ensure LCES are in place before operations begin. Stay hydrated. Drive defensively with lights on at all times. | | | | | | | |
| 9. Division/Group Communication Summary | | | | | | | |
| | Function | Frequency | Channel | Function | Frequency | System | Channel |
| Command E Okee Repeater | RX 164.625/ 103.5 TX 163.150/ 103.5 | KING NIFC | 3 | Logistics | | KING NIFC | |
| Tactical Div/Group | RX 168.775 TX 168.775 | KING NIFC | 9 | Air to Ground | RX 166.9375 TX 166.9375 | KING NIFC | 6 |
| Prepared by (Resource Unit Ldr.) Randy Lownes | | Approved by (Planning Sect. Ch.) Greg Strenkowski | | | Date July 28, 2011 | | Time 1800 |

AIR OPERATIONS SUMMARY

Prepared By: Joe Bistryski, AOBD

Prepared Date: 7.28.2011

Prepared Time: 1800

| | | | | | |
|--|---|----------------------------|--------------------------|-------------------------|--|
| 1. INCIDENT NAME: Honey Prairie | 2. OPS PERIOD DATE: July 29, 2011 | START TIME: 0830 | END TIME: 1900 | SUNRISE: 0644 | SUNSET: 2028 |
| 3. REMARKS (Safety Notes, Hazards, Air Operations Special Equipment, etc.): <i>Afternoon thunderstorms predicted insure flight following during mission using POGO and Waycross base radios and AFE.</i> | | | | | 5. TFR #: Canceled 7/27/11 SEE and AVOI Diii |
| NOTE: Latitude/Longitude format is "Degrees-Minutes-Decimal Minutes" (example: N30 41.42 W082 33.97) | | | | | |

| PERSONNEL | NAME | PHONE # | FREQUENCIES | AM | FM | |
|------------------|-----------------|--|------------------------------------|---------|----------------|--|
| AOBD | Joe Bistryski | Cell 801-518-2797 | AIR/ AIR FW | 122.575 | | AIRTANKERS / LEAD PLANES - None Available Local ATGS AIRCRAFT- 57Z |
| ASGS | Brian Campbell | 404-772-5405 | AIR/ AIR RW-FF | 122.375 | | OTHER: Waycross Airport Helibase: 912-287-4479 |
| ATGS Waycross HB | Everett Weniger | 406-381-4176 | Georgia AIR/AIR | 122.075 | | Waycross Airport Helibase Fax: 912-287-4458 |
| HEB2 Waycross HB | Zev Hunting | Desk 912-287-4479 Cell 218-398-2708 | Georgia AIR/GRND (Smokey - Dozers) | | 159.285 W | Pogo Helibase: 912-496-4415 / FAX 912-496-2797 |
| HEB2 T Pogo HB | Jeff McBath | Desk 912-496-4415 Cell 858-357-3242 | AIR/GROUND PRIMARY | | 166.9375 | ICP Helispot is Waycross Airport Helibase Okfeenokee Dispatch: 912-496-7366 X230 |
| | | | AIR/GROUND ALTERNATE | | 166.9000 | Waycross Airport: N 31 16.16 10 W82 33.38 |
| | | | TOLC | | 168.0125 | BERGANZA HELISPOT N 31 07.22 W082 15.22 * don't use unless cleared with AOBD. |
| | | | AIR GUARD | | 168.625 T110.9 | POGO HELIBASE: N30 44.03 W082 07.41 |

9. HELICOPTERS (Use Additional Sheets as Necessary)

| FAA N# | TY | MAKE/ MODEL | BASE | AVAIL | MANAGER | FAA N# | T | MAKE/ MODEL | BASE | AVAIL | MANAGER |
|--------|----|-------------|----------|-------|-------------------------|--------|---|-------------|-------|-------|-----------------------------|
| N36BH | 1 | S-70 | Waycross | 0830 | Mike Ryan 406-925-1337 | N818MC | 3 | AS-350B3 | Pogo | 0830 | Juan Edar 307-330-8285 |
| 26MW | 1 | K-1200 | Waycross | 0830 | Kirby Cook 406-381-1212 | 57Z | 3 | 206-L4 | Wycrs | 0830 | Robert Barrett 208-313-7837 |

10. TASK/ MISSION/ ASSIGNMENT (Type/ function includes: Air Tactical, Retardant, Recon, Personnel Transport, Bucket Operations, SAR, etc.)

| TYPE/FUNCTION | NAME OF PERSONNEL OR CARGO (if applicable) or instructions for tactical aircraft | MISSION START | FLY FROM | FLY TO |
|---------------|--|------------------|----------|--------|
| Bucket Ops/ | N36BH, 26MW | As Requested | Waycross | |
| Air Tactical | 57Z | As Requested | Waycross | |
| Recon | All recon missions must have direct approval by the AOBD, 818MC, 57Z | 1030 hours 3 pax | Pogo | |
| Medevac | N818MC | As Requested | Pogo | |



Fire Weather Forecast



FORECAST NO: 83

NAME OF FIRE: Honey Prairie Complex

PREDICTION FOR: Day Shift
SHIFT DATE: Friday 7/29/11

UNIT: Okefenokee National Wildlife Refuge

FORECAST ISSUED: 7/28/11 at 1600

SIGNED: John Franks
Incident Meteorologist

WEATHER DISCUSSION: High pressure will re-establish itself over the southeastern U.S. and bring a return to drier air. Afternoon showers and thunderstorms are not expected over the next few days, but an isolated storm cannot be ruled out entirely, especially as the sea breeze pushes in during the time of maximum afternoon heating.

TODAY: Partly cloudy.

MAXIMUM TEMPERATURES: 93-98 degrees
PM HEAT INDEX: 103-108
MINIMUM HUMIDITY: 45-55%
20 FT WINDS: AM: Variable 2 mph
PM: SSE 4-6 mph
STABILITY/INVERSION: 6300 feet by 1500
TRANSPORT WINDS: N 8 mph
DISPERSION INDEX: 35, Fair
CHANCE OF PRECIPITATION: 10%
PRECIPITATION AMOUNTS: None.
LIGHTNING ACTIVITY LEVEL: 0

TONIGHT: Clearing. Calm winds. Low temperatures 72-76. Max RH 90-100%.

SATURDAY: Partly cloudy. Isolated to widely scattered thunderstorms are possible in the afternoon.

MAXIMUM TEMPERATURES: 94-99 degrees
PM HEAT INDEX: 103-108
MINIMUM HUMIDITY: 42-52%
20 FT WINDS: AM: Calm
PM: N 5-8 mph
TRANSPORT WINDS: NW 10 mph
DISPERSION INDEX: 63, Good
CHANCE OF PRECIPITATION: 20%
LIGHTNING ACTIVITY LEVEL: 2

EXTENDED FORECAST:

| | SUNDAY | MONDAY | TUESDAY |
|----------------------|---|---|---|
| SKY/WEATHER | Partly Cloudy / Scattered Showers and Thunderstorms | Partly Cloudy / Scattered Showers and Thunderstorms | Partly Cloudy / Scattered Showers and Thunderstorms |
| CHANCE PRECIP | 30% | 40% | 50% |
| MINIMUM RH | 43-53% | 43-53% | 45-55% |
| 20 FT. WINDS | AM: S 2-3 mph PM: S 5-9 mph | AM: S 2-3 mph PM: S 5-10 mph | AM: S 2-3 mph PM: S 4-8 mph |
| IN/MAX TEMPS | 74 / 97 | 75 / 96 | 74 / 96 |

FIRE BEHAVIOR FORECAST

| | | |
|---|-----------------------------|-----------------------------------|
| Fire: Honey Prairie Complex | Unit: GA-OKR-000001 | Prediction for Day Shift |
| Forecast #82 Issued: 07/28/2011 1830 hrs | Signed: Keith Mousel | Shift Date: Friday 07/2911 |

GENERAL FIRE BEHAVIOR

Fuels around the Okefenokee Wildlife Refuge are predominately Fuel Model 7 (Southern Rough). Large to moderate acreage tracts of commercial timberland are mixed in throughout the entire perimeter surrounding the refuge. Fast moving wildfires with extremely high flame lengths and rapid rates of spread occur within the swamp.

Indicators/Threshold for Increased Fire Activity

- Relative humidity dropping below 45%
- Winds above 10 mph
- **Heavy fuel loadings**
- **Fine dead fuel moisture 8% or less**
- Dispersion above 70
- *** Items in BOLD are predicted to occur today***

SPECIFIC FIRE BEHAVIOR

- **Fire behavior should be slow to develop today yesterdays rain.**
- **Interior smoldering and some flare ups are possible, especially if winds increase.**
- **Expect fire to continue spreading through the shrub fuels with low rates of spread and minimal flame lengths. LAL 0**

| Fuel Type | Rates of Spread | Flame Length | Spotting Distance | Firebrand Ignition |
|-------------------------------------|-----------------|--------------|-------------------|--------------------|
| Winds at 3 - 10 G 16 mph | | | | |
| Shrub Fuels – SH4 | 1 - 4 ch/hr | 1 - 2 feet | 1/10 – 2/10 mile | 45% |
| Heavy Southern Rough- SH8 | 1 – 9 ch/hr | 3 -6 feet | 1/10 – 2/10 mile | 45% |
| Timber Litter-Reburn TL8 | 1 - 3 ch/hr | 1 - 3 feet | 1/10 -2/10 mile | 45% |
| Small Pine Plantation w/grasses GR5 | 1 – 8 ch/hr | 1 - 3 feet | 1/10 – 2/10 mile | 45% |

One hour fine dead fuel moisture is at 8% for Friday. Moisture from rain has reduced the fire threat, HOWEVER some areas remain dry and burning continues. 1,000 hour fuels are drier than normal for this time of year. There is reburn potential in all divisions due to the amount of needle cast and fallen trees and scorched shrubs. Should wind become stronger than predicted, expect fire behavior to increase above predicted levels. **In areas where fuels have been herbicided, expect quick ignitions and extreme heat, quick rate-of –spread, and group tree torching producing spotting problems.**

NOTE- FIRE BEHAVIOR CALCULATIONS ARE FOR FIRES IN UNBURNED FUELS INCLUDING NEW IA STARTS.

All Divisions:

*The fire continues a slow spread through the thick bays and muck soils. Roots and fallen trees are protecting heat sources allowing the fire to burn organic soils from the bottom up. Be heads-up for falling trees. **10% chance of rain.***

Night Ops – No Night Operations are Planned. Scattered showers and thunderstorms will continue.

Air Operations: Expect possible areas of heavy smoke especially on the east and north side of the fire.

SAFETY:

WINDS – Stay abreast of changing wx conditions throughout the entire shift. **THUNDERSTORMS -** these severe winds can create extreme fire behavior, with winds gusting over 30 mph. **Live Trees/SNAGS – are falling in all Divisions – will be influenced by Thunderstorm outflow winds.** **FUELS:** Watch for pockets of cured shrubs or blankets of red needles beginning to cover the forest floor reburn is still possible. 1,000 and 10,000 hour fuels as well as deep duff pockets are providing the heat source. Stay focused, and put LCES in place before starting operations. *Energy Release Component (ERC) is running near average for this time of year.*

Safety Message

INCIDENT: Honey Prairie Fire

DATE: 7/29/11

TIME: 0800

Major Hazards and Risks: **Communications**
 Driving
 Fatigue / Hydration

REMEMER TO
 STAY
 HYDRATED!

Maintain 3:1 water
 to sports drink
 ratio



Communication Responsibilities
 All firefighters have five communication responsibilities:

- Brief others as needed
- Debrief your actions
- Communicate hazards to others
- Acknowledge messages
- Ask if you don't know

D U T Y

Be proficient in your job, both technically and as a leader

- Take charge when in charge.
- Adhere to professional standard operating procedures.
- Develop a plan to accomplish given objectives.

Make sound and timely decisions

- Maintain situation awareness in order to anticipate needed actions.
- Develop contingencies and consider consequences.
- Improvise within the leader's intent to handle a rapidly changing environment.

Ensure that tasks are understood, supervised and accomplished

- Issue clear instructions.
- Observe and assess actions in progress without micro-managing.
- Use positive feedback to modify duties, tasks, and assignments when appropriate.

Develop your subordinates for the future

- Clearly state expectations.
- Delegate those tasks that you are not required to do personally.
- Consider individual skill levels and developmental needs when assigning tasks.

Tailgate Briefing



Motor Vehicle Operations

- ü Perform vehicle walk-around each shift
- ü Drive with seatbelts and lights on
- ü Follow speed limits
- ü Adjust speed for conditions
- ü Apply 3 second following distance rule
- ü Use chock blocks when parked
- ü Use spotters when backing
- ü Keep your vehicle clean and serviced

Safety Officers:

Mark Munns, Tommy Hawkins, Shane Barrow,
 Steve Holman, Rodney Weeks & Tommy Lail

1. Establish & maintain LCES. Report LCES checks twice daily to DIVS.
2. Look UP,DOWN and AROUND - Flag and Communicate.
3. Follow downhill fireline checklist.
4. Take plenty rest breaks and encourage to drink water NOW through briefings.
5. Watch out for complacency. Supervisors need to keep constant surveillance for early signs and address.
6. Observe 30/30 Rule: Reference Incident Response Pocket Guide. Look for new starts.
7. Post experienced Lookouts. Make sure LCES is in place and make known.
8. Utilize Fire Departments for structure protection. Tailgate briefings on urban interface hazards.
9. Defensive driving will be addressed in all briefings.
10. Utilize public "Community Meetings" to warn public of fire hazards/traffic.
11. All personnel must meet the 2:1 work/rest ratio. Safety Team will monitor closely.
12. Maintain LCES at all times.
13. Use Air Attack as Lookout.
14. Post lookout for Snags, Rolling Material, and Spot Fires below line.
15. Ensure Fireline is Anchored.
16. All Firefighters know current weather, predicted weather & fire behavior forecast.
17. Line Supervisors will provide clear, concise briefings.
18. Flag hazard trees & snags, post lookouts when working in vicinity of snags.
19. FBA/Meteorologist to develop weather watch system.
20. Keep Firefighters informed of any changes in predicted weather.
21. Recognize & Avoid Hazmat situations.
22. Utilize Hazmat Response Teams.
23. Use Spike Camps to limit travel times.
24. Ensure Traffic Planning is safe and enforced.
25. Use Helicopter transport when driving conditions warrant.
26. Review Structural "Watch Out" situations.
27. Abandon Structures before Safety is compromised.
28. Air Attack and/or lead plane will always be in the air to coordinate aircraft.
29. Pilots will be briefed on strategy and tactics.
30. Personnel on ground will stay out of drop zones.
31. Observe all traffic signals and speed limits.
32. Use spotter when backing vehicle(s).
33. Refer to Fireline Handbook on Power Line Hazards.
34. Burn aerial fuels & avoid as a safety zone.
35. Construct direct line with immediate burn out of fuels.

| | | | | |
|--------------|--|----------------------------|-----------------------|---------------------------------|
| MEDICAL PLAN | Incident Name Honey Prairie Complex | Date Prepared 7/28/2011 | Time Prepared 1800 | Operational Period 7/29/2011 |
|--------------|--|----------------------------|-----------------------|---------------------------------|

5. Incident Medical Aid Station

| <u>Medical Aid Stations</u> | <u>Location</u> | Paramedics Yes No | |
|-----------------------------|---|----------------------|---|
| MEDICAL UNIT (ICP) | Honey Prairie Complex ICP- (H,I,J,K,L,M,N,O DIV) Mark Millirons (EMT)MEDL (706)741-4216 (24 Hours) - Jameson Inn, Waycross (8-5) (East IA) will be covered by Mark Millirons if needed. | | X |
| WEST SIDE (Line EMT) | *Fred Mason(EMTB) Eng. 405 (A,B,C,D,E,F,G DIV) (8-7) Robert Carswell (EMT) MEDL (912)286-1648 (A,B,C,D,E,F,G,T,V,Y,Z) - Days Inn, Waycross (8-6) (West IA) will be covered by Robert Carswell if needed | X | |

Ambulance Services

| Name | Address | Phone | Paramedic Yes No | |
|---------------------------------|-------------------------------------|------------------------|---------------------|--|
| Clinch County EMS (WEST SIDE) | Homerville, GA (911 to activate) | 912-487-5211 ext. 4567 | Yes | |
| Ware County EMS (NORTHSIDE) | Waycross, Georgia (911 to activate) | 912-281-9467 | Yes | |
| Charlton County EMS (EAST SIDE) | Folkston, GA (911 to activate) | 912-496-7321 | Yes | |

Air Ambulance Service

| Trauma 1 | Address | Phone | Yes | No |
|------------------------------|--|--------------------------------|-----|----|
| Trauma 1 | Lake City, FL (16 min/air to Fargo ICP) | 1-800-223-4878(freq. 155.340) | Yes | |
| Trauma 1 | Jacksonville, FL (26 min/air to Fargo ICP) | 1-800-223-4878(freq. 155.340) | Yes | |
| AirMed | Augusta, GA (2 hrs/air to Fargo ICP) | 1-888-792-9245(freq. 155.340) | Yes | |
| Lifeflight | Jacksonville, FL (35 min/air to Fargo ICP) | 1-877-870-7779(freq. 155.340) | Yes | |
| Air Evac | Waycross, GA (17 min/air to Fargo ICP) | 1-800-247-3822(freq. 155.340) | Yes | |
| US Coast Guard (Heli-Rescue) | Savannah GA | 1-912-652-4646 (freq. 155.340) | Yes | |

7. Hospitals

| Name | Address | Travel Time | | Phone | Helipad | | Burn Center | |
|--|---|-------------|---------|--------------------------|---------|----|-------------|----|
| | | Air | Ground | | Yes | No | Yes | No |
| Satilla Regional | 410 Darling Ave Waycross Ga N 31°13.56 W 82°21.058 | 18 min | 45 min | 912-283-3030 | Yes | | | No |
| Clinch Memorial Hospital (WEST SIDE) | 1050 Valdosta HWY Homerville, GA | | 25 min | 912-487-5211 ext 4502 | Yes | | | No |
| Charlton Memorial Hospital (EAST SIDE) | 1203 3 rd St. Folkston, GA | | 50 min | 912-496-2531 | Yes | | | No |
| Memorial Hospital | Savannah, GA 4700 Waters 3200.7 8107.6 | 30 min | | 912-350-8999 | Yes | | | No |
| Shands Hospital (level I) | Jacksonville, FL N 30°20' 97 W 82° 13 992 | 26 min | 1.5 hrs | 800-223-4878 | Yes | | Yes | |
| Shands Burn Center | Gainesville, FL 38.33 N 082 20.73W | 33 min | 1.5 hrs | 352-265-0300 | Yes | | Yes | |

8. Medical Emergency Procedures

Identify any EMTs and Paramedics in your crews. All medical emergencies will be reported to the Division Supervisor who will assume command and notify Line Medics.

On scene personnel will:

1. Provide medical care & stabilize patient.
2. Call 911 if possible and provide the information requested.
3. Notify Communications via radio over Command Channel
4. Communications will clear radio traffic for medical emergency.
5. Communications will confirm 911 has been notified coordinate with IC, SOF, MEDL.
6. DIVS will notify the Field Ops Section Chief.

MAJOR EMERGENCIES – Secure the area and identify witness for later investigation. Keep an accurate log of events.

NOTE: Do not give Patients Name over the radio!

HELISPOTS

Pocket Helispot 30 47 30.02 x 82 22 39.5 (West side), mile marker 4, HWY 177 Steven C. Foster State Park

Fargo Helispot 30 40.945 x 082 33.640 (West side), HWY 441- Steven C. Foster Visitor Center

POGO Helibase 30.44.03 x 82.07.41 (East side)

Evac Yankee

Helispot 6

Rd. 32 and 32A, N 30° 53.280 W 082° 33.880

Helispot 7

Tatum Rd. Pond N 30° 50.280 W 082° 33.857

***Alternate site can be established following guidelines for safety found with IRPG and local EMS resources.**

INJURY REPORTING PROCESS:

Nature of Injury: _____

Location of Patient: _____

Transportation Requested by: Air___ Ground___

Pick Up Point: _____

Lat: _____ Long: _____

Patient Unit ID: _____

Is an EMT w/Patient: Yes___ No___

Age:___ Sex: Male___ Female___

Weight (If Air Evac. is needed): _____

Prepared by: Mark Millirons (EMT)MEDL

10. Reviewed by: Shane Barrow, SOF

| INCIDENT RADIO COMMUNICATIONS PLAN ICS-205 | | | | Incident Name | GROUP 22 | | Date/Time Prepared | Operational Period | | | |
|---|------------|---------------------|--|----------------------|----------|-------------|--------------------|------------------------|-------------|---------------|---------------------------|
| | | | | Honey Prairie | | | 07/28/2011-1720 | 7/29/2011 0800-2000 | | | |
| Ch # | Function | Channel Name | Assignment | RX Freq | NW | RX Tone/NAC | TX Freq | NW | TX Tone/NAC | Mode A,D or M | Remarks |
| 1 | Command | West Okee Repeater | Sec West Branch CMD | 167.1250 | N | 156.7 | 163.1500 | N | 156.7 | A | Stephen Foster State Park |
| 2 | Command | | | | | | | | | | |
| 3 | Command | East Okee Repeater | PRIMARY East Branch CMD | 164.6250 | N | 103.5 | 163.1500 | N | 103.5 | A | Refuge Headquarters |
| 4 | Command | | | | N | | | N | | A | NO Longer used |
| 5 | Command | North Okee Repeater | PRIMARYNorth Branch CMD | 164.5750 | N | 206.5 | 163.1500 | N | 206.5 | A | Waycross |
| 6 | Air-Ground | Air to Ground | PRIMARY | 166.9375 | N | CSQ | 166.9375 | N | CSQ | A | |
| 7 | Tactical | MOB-MOB | GFC Contingency Structure Protection Group West I.A. | 159.3900 | W | CSQ | 159.3900 | W | 156.7 | A | |
| 8 | Tactical | V-Fire 21W WHITE | | 154.2800 | W | CSQ | 154.2800 | W | 156.7 | A | |
| 9 | Tactical | USFS 9 | DIV A,B,C, D,E,F,G,T&V (East I/A) | 168.7750 | N | CSQ | 168.7750 | N | CSQ | A | |
| 10 | Tactical | S.E. Compact | DIV | 159.2850 | W | CSQ | 159.2850 | W | CSQ | A | |
| 11 | Tactical | USFS 11 | DIV M,N,O | 168.2000 | N | CSQ | 168.2000 | N | CSQ | A | |
| 12 | Tactical | Refuge Tac 1 | DIV H, I, J, K,L | 168.3500 | N | CSQ | 168.3500 | N | CSQ | A | |
| 13 | Tactical | FL 190 | DIV Y,Z | 151.2725 | N | CSQ | 151.2725 | N | CSQ | A | |
| 14 | Command | | | | | | | | | | |
| 15 | Air-Ground | Air to Ground | SECONDARY | 166.9000 | N | CSQ | 166.9000 | N | CSQ | A | |
| 16 | EMERGENCY | AIR Guard | Air OPS. | 168.6250 | N | CSQ | 168.6250 | N | 110.9 | A | |
| Prepared by (Communications Unit) Kelly Towe, COML Roy Fortenberry, COMT/COML Incident Dispatcher: 912-286-1660 | | | | | | | | | | | |
| Cloning at ICP communications and briefings, | | | | | | | | | | | |

The convention calls for frequency lists to show four digits after the decimal place, followed by either an "N" or a "W", depending on whether the frequency is narrow or wide band. **Mode** refers to either "A" or "D" indicating analog or digital (e.g. Project 25) or "M" indicating mixed mode. All channels are shown as if programmed in a control station, base stations, mobile or portable radio.

HONEY PRAIRIE PHONE LIST

07/29/11

Incident Communication (Hours: 0700-2100) 912-286-1660

| AGENCY OFFICIALS | | | OPERATIONS | | |
|--------------------------|--------------|----------------------|--|--------------|----------------------------|
| Curt McCasland | 602-359-0013 | USFWS AA | Steve Gray | 404-772-5389 | Planning Operations |
| Mindy Gautreaux | 912-282-7500 | USFWS Deputy AA | Buck Kline | 229-460-2062 | Field Operations |
| Frank Sorrells | 912-381-7503 | GFC AA | Heath Morton (t) | 423-240-7509 | Planning Operations |
| James Karels | 850-228-7763 | FL DOF AA | Brent McCarty | 229-938-8718 | West Branch |
| Diane Adams | 912-266-5421 | GEMA | DIVISIONS | | |
| Mike Housh | 912-281-1575 | USFWS AREP | | | |
| COMMAND | | | Charles Arnold | 423-802-6507 | DIVS A, B, C, D, E, F, G |
| Troy Floyd | 706-676-0168 | IC | | | |
| RESOURCE ADVISORS | | | Mike Lee | 770-576-9594 | DIVS T, V, Y, Z |
| Ron Phernetton | 912-276-2349 | Resource Advisor | | | |
| Jessica Bowen | 912-536-2995 | Resource Advisor | Trent Ingram | 229-726-0285 | West IA |
| Rocky Chesser | 912-276-3232 | Resource Advisor | DIVISIONS | | |
| INFORMATION 912-496-2566 | | | | | |
| Jenny Lyn Bruner | 912-496-2566 | Fire Information | Tracy Mobley | 706-346-4052 | DIVS H, I, J, K, L |
| Denise Croker | 256-497-8334 | PIO2 | Tracy Mobley | 706-346-4052 | DIVS M, N, O |
| | | | Rufus Crutchfield | 478-986-7466 | East IA |
| | | | Aaron Souto | 404-772-5393 | Roads & Fireline Rehab Grp |
| SAFETY | | | | | |
| Tommy Hawkins | 706-676-7538 | Safety Officer | AIR OPERATIONS | | |
| Mark Munns | 706-401-5903 | Safety Officer | Joseph Bistryski | 801-518-2797 | Air Ops Branch |
| Jerry Burnsed | 386-453-8453 | Safety Officer | | | |
| Shane Barrow | 706-699-2412 | Safety Officer | | | |
| Mark Millirons | 706-741-4216 | Medical Unit Leader | Brian Campbell | 404-712-5405 | ASGS (cell) |
| Field EMT | 912-286-1674 | Medical Unit Leader | Evertt Weniger | 406-381-4176 | Waycross |
| Medical Unit | 912-637-5236 | | | | |
| Tommy Lail | 404-772-5338 | Safety Officer | Zev Hunting | 912-287-4479 | HEB2 - WAYCROSS |
| DISPATCH | | | Jeff McBath | 912-496-4415 | HEB2 (t) - WAYCROSS |
| Okeefenokee Dsp | 912-496-7366 | Okeefenokee | | | |
| Suwannee Dispatch | 386-758-5700 | Fla wildfires, other | PLANNING 912-287-6557 FAX 912-287-6557 | | |
| Honey Prairie Dspth | 912-286-1660 | Honey Prairie ICP | Greg Strenkowski | 478-951-2421 | Planning Section Chief |
| Waycross Dispatch | 912-287-4915 | Ga wildfires, other | Keith Murphy (t) | 912-637-5241 | Situation Unit Leader |
| LOGISTICS West | | | John Franks | 513-519-5818 | IMET |
| Willie Boston | 770-328-3186 | LSC | Harold West | 912-637-5241 | DMOB |
| Thomas Lambert | 912-287-6540 | FACL | Keith Mousel | 850-228-7756 | FBAN |
| | | | FINANCE 912-287-6568 FAX 912-287-6564 | | |
| Hotel Mgr | 404-772-5336 | 24 hour lodging | Lila Johnson | 770-658-6641 | Finance Section Chief |
| Hotel Mgr | 912-287-6540 | Lodging | Judy Reddin | 912-281-6876 | Buying Team Leader |
| Kevin Reish | 404-276-1998 | Security Manager | | | |
| Tim Jones | 912-387-6480 | GSUL | Kurt Hinz | 912-287-6544 | Comp Claims |
| Steve Blackwell | 404-772-5330 | | | | |
| Bob Kookan | | Food Unit Leader | | | |
| Amy Weaver (t) | 912-637-5239 | SPUL | James Meredith | 404-805-6806 | IBA |
| Kelly Towe | 478-308-4770 | COML | | | |

| ORDERING | | |
|-----------------------------|------------------------------|-------------------------------|
| Jimmy Grimes | 404-558-4476 | Ordering Manager |
| | | |
| | | |
| | | LSC |
| John Crain | 404-772-5363 | Base Camp Mgr |
| | | Supply Unit Leader |
| Joe Hoisington | 530-905-3715 | EQPM |
| | | |
| | 239-887-1817 | Security Manager |
| | | |
| COOPERATORS | | |
| COUNTY | | |
| | 912-496-7229 | Charlton County EMA |
| John F. Meyer - Chairman | 912-496-2549 | Charlton County Commissioners |
| Dobie Conner | 912-496-7321 | Charlton County Sheriff |
| Jesse Booth | 912-520-0061 | Clinch County EMA |
| Jonathan Daniel | 912-281-5158 | Ware County EMA |
| Jessie Jordan | 912-816-6063 | Ware County Fire Dept |
| Joe Morris | 912-281-6020 | Ware County Sheriff |
| Robbie Sutton | 912-599-9027 | Tri County 911 |
| STATE | | |
| GFC Fargo District Office | 912-637-5270 | |
| GFC Satilla District Office | 912-287-4915 | |
| Blair Joiner | 229-237-9026 | GFC Clinch Chief Ranger |
| Jason Gillis | 912-314-9233 912-637-5504 | GFC Satilla Assistant Mgr. |
| Brian Gray | 229-894-4628 912-673-5274 | Stephen Foster State Park |
| Travis Griffin | 912-281-5790 | Laura Walker State Park |
| Crystal Paulk-Buchanan | 404-535-1048 | GEMA PIO |
| Georgia Highway Patrol | 912-287-6500 | |
| FEDERAL | | |
| Okefenokee Fire Shop | 912-496-4181 | |
| Okefenokee NWR HQ (East) | 912-496-7366 | |
| Okefenokee NWR (West) | 912-637-5322 | |
| Okefenokee Visitor Center | 912-496-7836 | |

| LANDOWNERS | | |
|----------------------------------|----------------|---------------------------|
| Jim Barrett | 229-412-3133 | Langdale/GOAL Chairman |
| Wesley Langdale | 229-220-2602 | Langdale |
| Hal Rowe | 229-412-3133 | Langdale |
| Langdale Office | 229-242-7450 | Langdale Office |
| Mike Conlon | 386-365-3882 | Rayonier Unit Supervisor |
| Ray Carter | 386-288-6626 | Rayonier |
| Ed Carter | 386-288-6626 | Rayonier |
| Doug Nuss | 912-390-1037 | Rayonier |
| Randall McCrady | 912-283-4077 W | Rayonier |
| Colin Myerson | 229-506-1565 | Superior Pine Products Co |
| Robbie Lee | 229-356-0526 | Superior Pine Products Co |
| Superior Pine Office | 912-637-5261 | Superior Pine Products Co |
| Al Alexander | 850-843-0104 | The Forestry Co |
| Savell Schmidt | 850-843-1181 | The Forestry Co |
| John Bogue | 850-843-1192 | The Forestry Co |
| Joe Hopkins | 912-276-0911 | Toledo Timber |
| Chris Gowan | 912-276-0965 | Toledo Timber |
| Martin Bell | 912-283-0583 | Swamp Park |
| Crystal Peeples | 352-316-0632 | FIA |
| Steve Davis | 912-614-1828 | Davis Community |
| Trevor Fortner | 912-599-9271 | Little Suwannee |
| Tim Jarrell | 912-223-7120 | Hancock Forest Mgmt. |
| RAILROADS | | |
| Norfolk Southern | 800-453-2530 | |
| Sid Moody | 904-318-7983 | Norfolk Southern Railroad |
| Chad Edwards | 404-582-4909 | Norfolk Southern Railroad |
| | 540-797-9918 | |
| Eric Sams | 904-576-9907 | |
| Norfolk So Emergency Dispatch | 404-529-1597 | |
| CSX Randy Dixon | 912-270-0699 | |
| CSX Dispatch | 800-232-0144 | |
| | | |
| | | |
| | | |
| | | |

FINANCE

07/28/11

EQUIPMENT

EVERYONE, PLEASE put E#'s on top right corner of shift ticket.

East side fuel supplier: Please send all fuel books to Finance daily.

E-1158 HH Construction- Please see Equipment Time

E-1084- Needs to see finance

TIME

| | |
|-------|------------------------------------|
| O-857 | Dean Easton-Please see Finance |
| O-20 | Frank Enright- Please see Finance |
| O-14 | Michael Housh- Please see Finanace |
| O-13 | Terri Jenkins- Please see Finance |

IF POSSIBLE, PLEASE COME BY FINANCE AND REVIEW YOUR TIME THE DAY BEFORE YOU DEMOB. ALSO, **BRING YOUR LAST CTR'S AND SHIFT TICKETS WITH YOU** TO FINANCE ***WHEN YOU DEMOB*** RATHER THAN TURNING IN AT THE BRIEFING IN THE MORNING. THIS WILL HELP AVOID DELAYS THE DAY OF DEMOB. THANKS.

WHEN DEMOBING FINANCE SHOULD BE THE NEXT TO THE LAST SECTION YOU GET SIGNED OFF ON YOUR CHECKOUT FORM WITH DEMOB UNIT BEING THE LAST. WE WILL CHECK YOUR TIME FOR YOU PRIOR TO EVERYTHING ELSE BEING SIGNED OFF, BUT WILL NOT SIGN OFF TIME UNTIL THE OTHER SECTIONS ARE DONE.

UPCOMING_DEMOB

| Number | Name | Kind | Unit | Travel | Jetport | DemobDate |
|-----------|--------------------|------|-------|--------|---------|------------|
| E-505 | SMITH EXCAVATOR | EXC | GAOK | POV | | 07/28/2011 |
| E-505.3 | MURRAY, DON | DRI | GAOK | POV | | 07/28/2011 |
| E-506 | SMITH DUMP TRUCK | TDM | GAOK | POV | | 07/28/2011 |
| E-506.1 | SMITH, CRAIG | DRI | GAOK | POV | | 07/28/2011 |
| E-529 | SMITH DUMP TRUCK2 | TDM | GAOK | POV | | 07/28/2011 |
| E-529.2 | WATSON, RON | DRI | GAOK | POV | | 07/28/2011 |
| E-597 | SMITH ROAD GRADER | GR | GAOK | POV | | 07/28/2011 |
| E-597.1 | PROPE, DAVID | DRI | GAOK | POV | | 07/28/2011 |
| O-1088 | EARLEY, BERT | THS | GAGA | AOV | | 07/28/2011 |
| E-7.6 | JOHNSON, CHARLES | TPO | GASA | AOV | | 07/29/2011 |
| O-368 | JOHNSON, HARDY | DRI | GAOK | POV | | 07/29/2011 |
| O-560 | PHERNETTON, | REA | GAOK | AOV | | 07/29/2011 |
| O-847 | CLYMER, BRETT L | EMT | MOMO | AIR | XNA | 07/29/2011 |
| O-857 | EASTON, DEAN | THS | GAOK | AOV | JAX | 07/29/2011 |
| O-1087 | PAFFORD, DAVID | TPO | NCPE | AOV | ORF | 07/29/2011 |
| O-1090 | LUEPKE, JONATHAN | HEQ | MIHIF | AIR | SAW | 07/29/2011 |
| O-1096 | COCKMAN, DONALD | SEC | SCCR | AOV | | 07/29/2011 |
| O-1099 | MOORE JR, DAN | RCD | MIMIS | AIR | SAW | 07/29/2011 |
| E-968.1 | SHARP, MICHAEL | DRI | | POV | | 07/30/2011 |
| E-1076 | ENGINE - T6 - 9504 | ENG | MOMT | AOV | | 07/30/2011 |
| E-1076.4 | PERREN, TIMOTHY | ENG | MOMT | AOV | STL | 07/30/2011 |
| E-1076.5 | ROBINSON, RICHARD | ENG | MOMT | AOV | STL | 07/30/2011 |
| E-1076.6 | HOLLAND, KEITH | FFT | MOMT | AOV | STL | 07/30/2011 |
| O-1089 | MYRICK, SHEPHERD | RCD | FLFLS | AOV | | 07/30/2011 |
| O-1091 | SPEEGLE, DARRIN | SEC | ALWL | AOV | | 07/30/2011 |
| O-1101 | WENIGER, EVERETT | ATG | MTLN | AIR | MSO | 07/30/2011 |
| O-1106 | PELT, GEORGE | ENG | FLLSR | AOV | | 07/30/2011 |
| A-35.3 | RYAN, MICHAEL | HM | MTHN | A/R | HLN | 07/31/2011 |
| O-1097 | WEEKS, RODNEY | SOF | IDIPF | AIR | GEG | 07/31/2011 |
| O-1103 | TAYLOR, FRANK | CO | GACH | AOV | | 07/31/2011 |
| O-1111.41 | MEREDITH, JAMES | IBA1 | AROU | A/R | LIT | 07/31/2011 |

Record Count: 31

Information

****Puzzle of the day on board beside steps****

“Wildland Fire Fighter”

Winners for Okefenokee Puzzle

Scott Bryant

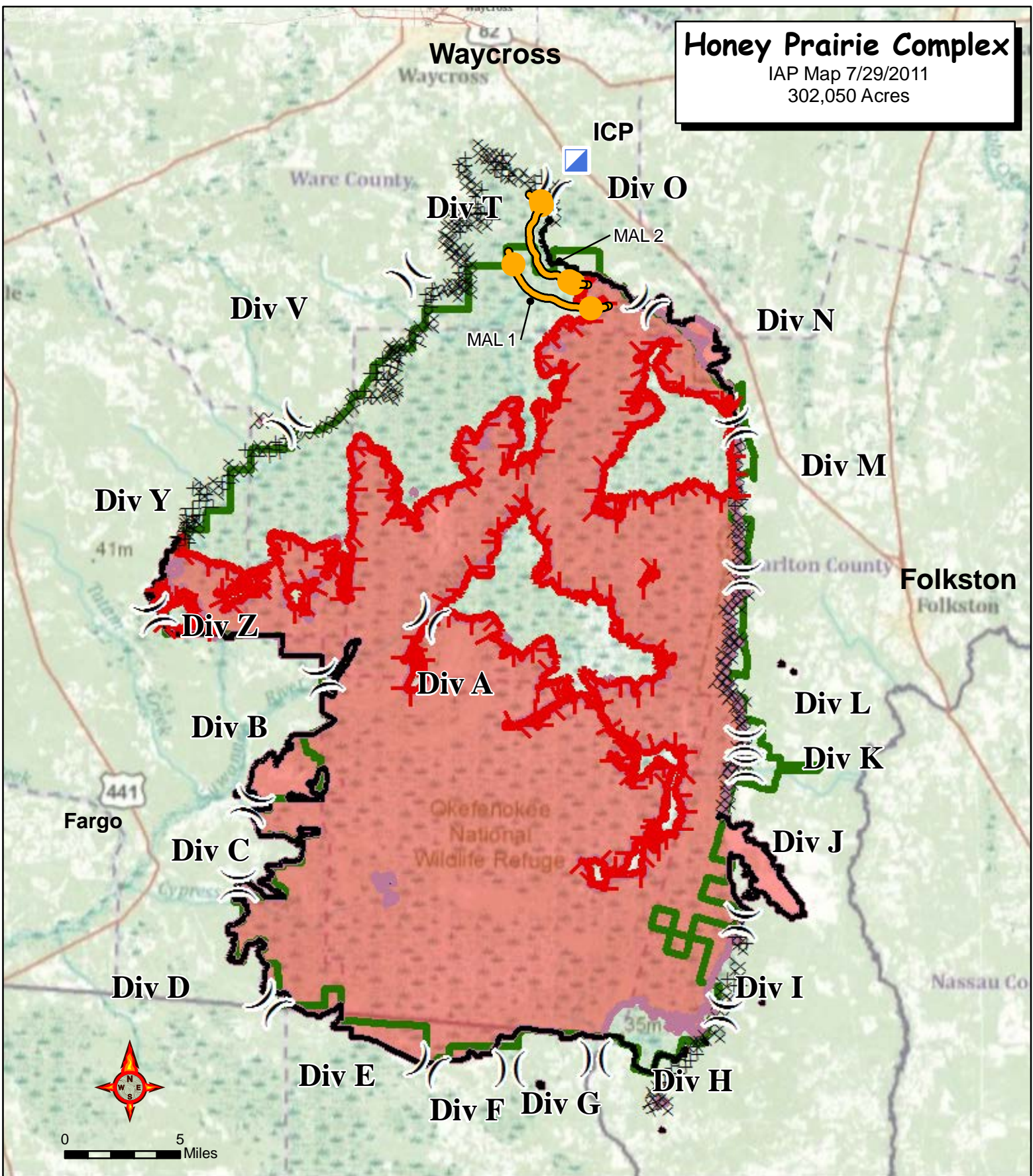
Derek Osborne

Useless Human Body Fact of the Day

THE SPACE BETWEEN YOUR EYEBROWS IS THE
GLABELLA

Honey Prairie Complex

IAP Map 7/29/2011
302,050 Acres



 Incident Command Post

 Completed Line

 Division

 Uncontrolled Fire Edge

 Refuge Boundary

 Completed Dozer Line

 FirePolygon

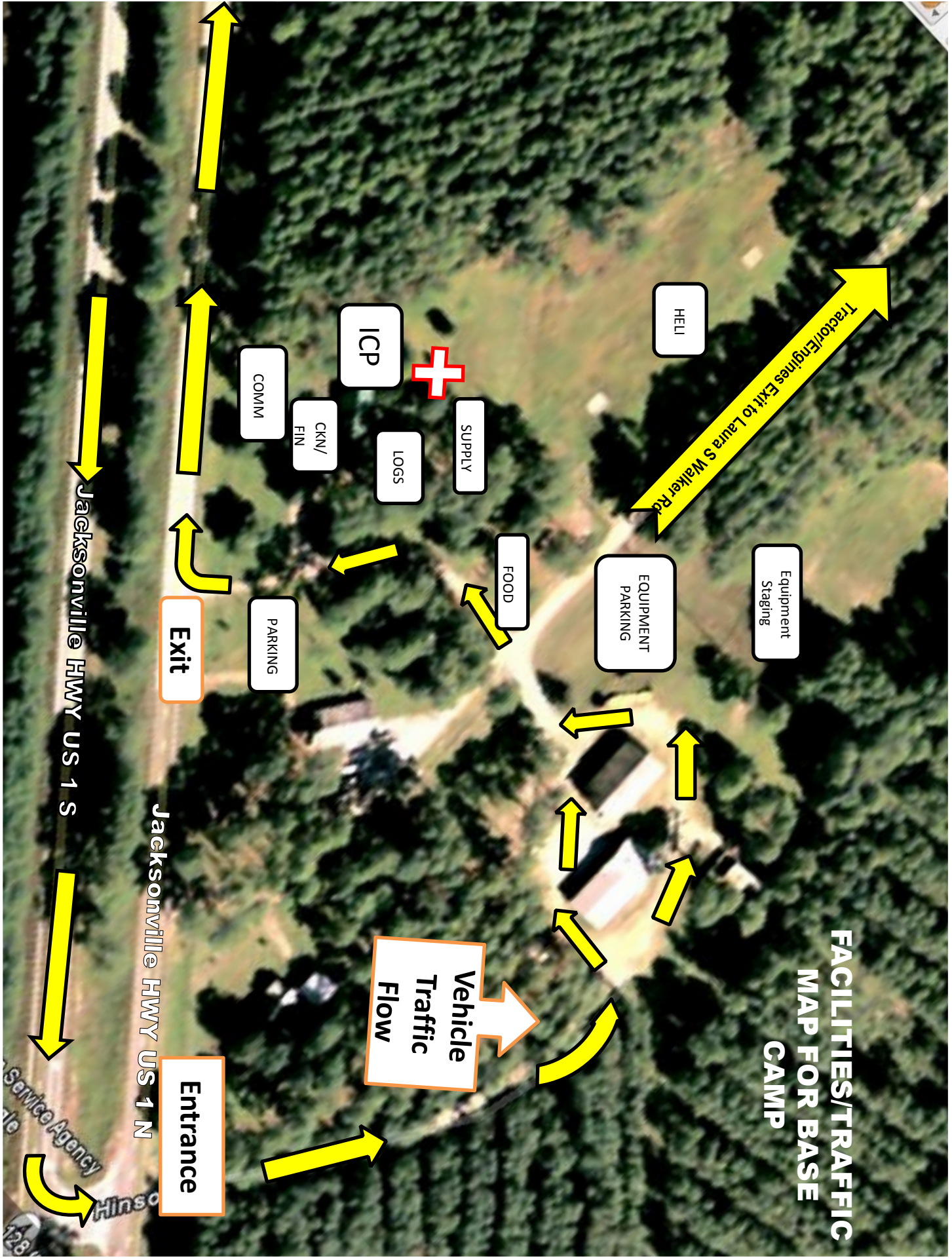
Perimeter as of 7/25/2011 1430
C. Bailey GISS

**INCIDENT
MANAGEMENT**
T E A M

GEORGIA FORESTRY
COMMISSION



FACILITIES/TRAFFIC MAP FOR BASE CAMP



HELI

Equipment Staging

EQUIPMENT PARKING

FOOD

SUPPLY

LOGS

ICP

COMM

CKN/
FIN

PARKING

Exit

Vehicle Traffic Flow

Tractor/Engines Exit to Laura S Walker Rd

Jacksonville HWY US 1 S

Jacksonville HWY US 1 N

Service Agency
Hinsco

