

Honey Prairie Complex

GA-OKR-000001

Incident Action Plan

Operational Period

SUNDAY

July 31, 2011

0800-2000

Incident Commander

Troy Floyd

Accounting Codes

FWS – 9141-F25M-2J

NPS – 5023 F25M E11

BLM – F25M

USFS – PRF25M_1502

Initial Attack – F4PM



*An Equal Opportunity
Employer & Service Provider*

07/25/2011

Letter from GFC Incident Commander:

To: All Honey Prairie Incident Personnel

As Georgia Forestry Commission's Type 2 Incident Commander, I am committed to a policy of "zero tolerance" of inappropriate behavior during incident operations. Any form of harassment, discriminatory practices, or disrespectful behavior will not be tolerated.

Guidelines on in-appropriate behavior both "on Duty" and "off Duty" while assigned are addressed within each agencies policies. Our Team expects all incident personnel to follow established government policies for behavior along with all Illegal drug and alcohol directives.

Our Incident Management Team endorses and supports an attitude of mutual respect for all personnel and the public we serve.

We expect a strong work ethic and an attitude of Safety at all times!

Sincerely,

/s/ Troy E. Floyd Jr.

Incident Commander
Georgia Forestry Commission's Type 2 Incident Management Team

INCIDENT OBJECTIVES	1. INCIDENT NAME Honey Prairie Complex	2. DATE PREPARED 7/29/11	3. TIME PREPARED 1700												
4. OPERATIONAL PERIOD (DATE/TIME) Saturday, July 30, 2011 0800 – 2000															
5. GENERAL CONTROL OBJECTIVES FOR THE INCIDENT (INCLUDE ALTERNATIVES) <ol style="list-style-type: none"> 1. Provide for safety of incident personnel and public in all incident operations. 2. Maintain a positive working relationship with all adjacent landowners, cooperators State and Federal partners. Inform, involve and communicate incident planning and operations with all partners. 3. Contain all fires that are within the Okefenokee National Wildlife Refuge, inside the Refuge and/or inside the swamp edge break if possible. 4. In cooperation with local timberland owners, use full suppression strategies and tactics to minimize damage to private timberlands and improvements and to prevent fires outside the Refuge from entering the Refuge. 5. Assist in management and suppression of additional fires (new starts or breakouts) in the vicinity as approved by Agency Administrators and Unified Incident Commanders. 6. Protect all cultural and archeological sites and structures within the refuge, with particular attention to facilities at Okefenokee Swamp Park. 7. Manage the fires cost-effectively consistent with the values at risk. 8. Implement structure protection as necessary for at-risk facilities and communities. 9. Coordinate suppression actions with assigned Refuge Resource Advisors 															
6. WEATHER FORECAST FOR OPERATIONAL PERIOD See attached forecast for area specific weather information.															
7. GENERAL SAFETY MESSAGE Drive defensively and use spotter when backing. Ensure LCES is in place and known by all personnel. Drink plenty of water and take frequent rest breaks. Ensure proper use of PPE during all operations.															
8. Attachments (☐ if attached) <table border="0" style="width: 100%;"> <tr> <td><input type="checkbox"/> Organization List (ICS 203)</td> <td><input type="checkbox"/> Incident Map</td> <td><input type="checkbox"/> Safety Message</td> </tr> <tr> <td><input type="checkbox"/> Assignment List (ICS 204)</td> <td><input type="checkbox"/> Traffic Plan</td> <td><input type="checkbox"/> Demobilization Procedures</td> </tr> <tr> <td><input type="checkbox"/> Communications Plan (ICS 205)</td> <td><input type="checkbox"/> Finance Message</td> <td><input type="checkbox"/> Unit Log</td> </tr> <tr> <td><input type="checkbox"/> Medical Plan (ICS 206)</td> <td><input type="checkbox"/> Phone List</td> <td></td> </tr> </table>				<input type="checkbox"/> Organization List (ICS 203)	<input type="checkbox"/> Incident Map	<input type="checkbox"/> Safety Message	<input type="checkbox"/> Assignment List (ICS 204)	<input type="checkbox"/> Traffic Plan	<input type="checkbox"/> Demobilization Procedures	<input type="checkbox"/> Communications Plan (ICS 205)	<input type="checkbox"/> Finance Message	<input type="checkbox"/> Unit Log	<input type="checkbox"/> Medical Plan (ICS 206)	<input type="checkbox"/> Phone List	
<input type="checkbox"/> Organization List (ICS 203)	<input type="checkbox"/> Incident Map	<input type="checkbox"/> Safety Message													
<input type="checkbox"/> Assignment List (ICS 204)	<input type="checkbox"/> Traffic Plan	<input type="checkbox"/> Demobilization Procedures													
<input type="checkbox"/> Communications Plan (ICS 205)	<input type="checkbox"/> Finance Message	<input type="checkbox"/> Unit Log													
<input type="checkbox"/> Medical Plan (ICS 206)	<input type="checkbox"/> Phone List														
9. PREPARED BY (PLANNING SECTION CHIEF) Greg Strenkowski		10. APPROVED BY (INCIDENT COMMANDER) Troy Floyd													

ORGANIZATION ASSIGNMENT LIST		9. Operations Section	
1. Incident Name Honey Prairie Complex GA-OKR-000001		Chief	Buck Kline 8/5 / Brent McCarty 8/2
		Planning	Steve Gray 7/31 / Heath Morton (t) 8/4
2. Date 7/30/2011	3. Time 1000 hrs	a. Divisions/Groups	
4. Operational Period 7/31/2011 0800 - 2000			
5. Incident Commander and Staff		Division	A-B-C-D-E-F-G Chuck Arnold 8/1 Paul Pelligrini (t) 8/1
Incident Commander	Troy Floyd 8/5	Division	T-V-Y-Z Mike Lee 8/2
Safety Officers	Tommy Hawkins 8/4 Mark Munns 8/5	Group	IA-WEST Trent Ingram 8/5
Information Officer	Jenny Lynn Bruner 8/5	Division	H-I-J-K-L-M-N-O Rufus Crutchfield 8/4 Tracy Mobley 8/1
6a. Agency Administrators			
FWS		Group	IA-EAST Rufus Crutchfield 8/4
FWS	Mindy Gautreaux	Group	Roads & Rehab Aaron Souto 8/10
6b. Agency Representatives			
IBA	James Meredith 7/31	b. Divisions/Groups	
GFC	Frank Sorrells		
FLDOF	James Karels		
FWS AREP	Mike Housh		
FWS-Refuge PAO	Art Webster		
GEMA AREP	Alan Robinson / Diane Adams		
USFS AREP	Ivan Greene		
7. Planning Section			
Chief	Greg Strenkowski 8/5	c. AIR OPERATIONS BRANCH - Honey Prairie	
Resource Advisors	Ron Phernetton, Jessica Bowen, Rocky Chesser	Air Operations Branch Director	Joseph Bistryski 8/4
Resources Unit	Randy Lownes 8/2		
Situation Unit	Keith Murphy(T) 8/4		
IMET	John Franks 8/3		
FBAN	Keith Mousel 8/7	d. AIR OPERATIONS BRANCH - Pogo	
Demob Unit	Harold West 8/5	Pogo Helibase Mgr	Jeff McBath 7/31
Documentation			
GIS	Charles Bailey / Josh Burnette 8/5		
CTSP	Rusty Brown 8/5	Waycross Helibase Mgr	Zev Hunting 7/31
SCKN	Mike Jones 8/5		
8. Logistics Section		10. Finance Section	
Chief	Willie Boston 8/5	Chief	Lila Johnson 8/5
Supply Unit	Amy Weaver (T) 8/5	Deputy	Amy Treadwell 8/5
GSUL	Tim Jones 8/5 Steve Blackwell 8/5	Time Unit	Darline Matheney 8/5 John Sunday (t) 8/5
ORDM	Jim Grimes 8/5 / Tim Redick (t) 8/7	PTRC	Marti Miller
COML	Kelly Towe 8/5	Comp Claims Unit	Kurt Hinz 8/5
Medical Unit	Mark Millirons 8/5	Cost	Grace Reid 8/5
Facilities	Thomas Lambert 8/4 Dennis Evans 8/5 Jeremy Hughes 8/5		
Food	Bob Kookan 8/2 / Chris Barnes 8/5		
SEC1		EQTR	Doug Chasseur
COMT	Roy Fortenberry 8/5	Buying Team	Judy Reddin 8/3
EQPM	Richard Young (T) 8/5 JohnnyBarwick 8/4 Kenneth Edge 8/5		
RCDM	Jeffrey Smith 8/12		
		Prepared by: R Lownes	RESL

DIVISION ASSIGNMENT LIST			1. Branch		2. Division A, B, C, D, E, F, G		
3. Incident Name: Honey Prairie Complex			4. Operational Period Date: 7/31/2011 Time: Day: 0800-2000				
5. Operations Personnel							
Operations	Buck Kline 8/5 / Brent McCarty 8/2		Branch Director				
Planning Ops	Steve Gray 7/31 / Heath Morton (t) 8/4		Division Supervisor		Chuck Arnold 8/1 / Paul Pelligrini (t) 8/1		
Safety Officer	Steve Holman 7/31						
6. Resources Assigned this Period							
Strike Team/Task Force/ Resource Designator	Leader / Name / Designator	Last Shift Date	Num. Per.	Drop Off PT./Time	Crew Names		
ME ENG6 (E-405)(MEMHR)FWS	Fred Mason (EMT)	8/7	3		J. Goetz, A. Currier		
KY Eng 162 (E-939) (KYLBF) FS	Bill Ryan	8/4	3		T. Vetter, J. Finklea		
GA ENG6 (E-2) GAOKR	UNSTAFFED						
7. Control Operations							
<ul style="list-style-type: none"> Patrol and mop up within 100' of fire perimeter line. Continue rehab work in Stephan C. Foster State Park. Patrol and control reburn. Examine work area for fire weakened snags. Continue to backhaul excess equipment from the line. 							
8. Special Instructions							
<ul style="list-style-type: none"> Ensure LCES are in place before operations begin and stay hydrated. Drive defensively and with lights on at all times. Rehab Nature trails and waterways in Stephan C. Foster State Park. 							
9. Division/Group Communication Summary							
Function	Frequency	System	Channel	Function	Frequency	System	Channel
Command N Okee Repeater	RX 164.5750/206.5 TX 163.150/206.5	KING NIFC	5	Logistics		KING NIFC	
Tactical Div/Group	RX 168.775 TX 168.7750	KING NIFC	9	Air to Ground	RX 166.9375 TX 166.9375	KING NIFC	6
Prepared by (Resource Unit Ldr.) Randy Lownes		Approved by (Planning Sect. Ch.) Greg Strenkowski			Date 7/30/2011		Time 1900

DIVISION ASSIGNMENT LIST				1. Branch		2. Division T, V, Y, Z	
3. Incident Name Honey Prairie Complex				4. Operational Period Date: 7/31/2011 Time: 0800-2000			
5. Operations Personnel							
Operations		Buck Kline 8/5 / Brent McCarty 8/2		Branch Director			
Planning Ops		Steve Gray 7/31 / Heath Morton (t) 8/4		Division Supervisor		Mike Lee 8/2 / Blair Joiner (t) 8/7	
Safety Officer		Tom Lail 8/11					
6. Resources Assigned this Period							
Strike Team/Task Force/ Resource Designator		Leader / Name / Designator		Last Shift Date	Num. Per.	Drop Off PT./Time	Crew Names
READ (O-559) GAOKR		Jessica Bowen			1		912-536-2995
TFLD (O-942)		Ben Krupski		8/1	1		
ENG6 (E-3) GAOKR FWS		Nathan Herron		8/13	2		T. Price
IL Eng 40 (E-392) ILSHF FS		Bobbi Archdale		8/4	3		J. Paukert, C. Mann
MN Eng 6232 (E-838) MNMFC FWS		Duane King		8/4	3		T. Elg, D. Lantz
MN Eng 652(E-404) MNSUF FS		Andrew Drange		8/7	3		H. Severson, S. Westlin
Hughes WAT2 (E-954)		Sonny Moore		8/4	1	PVT	
EMT (O-1125)		Robert Carswell		8/5	1		
7. Control Operations <ul style="list-style-type: none"> Improve swamp break boundaries for fire breaks, work w/resource advisor Make contact with the Resource Advisor before using mechanical equipment. Safely push down with equipment all snags whether on fire or not that are a threat to success or tactical operations. Continue to backhaul excess equipment from the line. 							
8. Special Instructions <ul style="list-style-type: none"> Ensure LCES are in place before operations begin. Stay hydrated. Drive defensively and with lights on at all times. Boggy terrain: Be careful and aware when working around this type of area. 							
9. Division/Group Communication Summary							
Function	Frequency	System	Channel	Function	Frequency	System	Channel
Command N Okee Repeater	RX 164.5750/206.5 TX 163.150/206.5	KING NIFC	5	Logistics		KING NIFC	
Tactical Div/Group	RX 168.775 TX 168.775	KING NIFC	9	Air to Ground	RX 166.9375 TX 166.9375	KING NIFC	6
Prepared by (Resource Unit Ldr.) Randy Lownes		Approved by (Planning Sect. Ch.) Greg Strenkowski			Date July 30, 2011		Time 1800

DIVISION ASSIGNMENT LIST			1. Branch	2. Division West - Initial Attack			
3. Incident Name: Honey Prairie Complex			4. Operational Period Date: 7/31/2011		Time: 0800-2000		
5. Operations Personnel							
Operations	Buck Kline 8/5 / Brent McCarty 8/2		Branch Director				
Planning Ops	Steve Gray 7/31 / Heath Morton (t) 8/4		Division Supervisor		Trent Ingram 8/5		
Safety Officer	Steve Holman 8/1						
6. Resources Assigned this Period							
Strike Team/Task Force/ Resource Designator	Leader / Name / Designator		Last Shift Date	Num. Per.	Drop Off PT./Time	Crew Names	
TFLD (O-899)	Bob Schober		8/2	1	FARGO		
Monroe 86 (E-1084) GAGAS	Chad Dorminy		8/4	2	FARGO	J. Price	
TPL Appling 70 (E-1165) GAGAS	Joseph A. Smith Jr. (O-1116)		8/3	1	FARGO		
TPL Clinch 72 (E-1167) GAGAS	William A. Register (O-1117)		8/3	1	FARGO		
TPL Clinch 75 (E-1169) GAGAS	Christopher J. Henderson (O-1118)		8/3	1	FARGO		
TPL Glynn 72 (E-1175) GAGAS	Robert L. Danley (O-1121)		8/3	1	FARGO		
TPL Jeff Davis 70 (E-1177) GAGAS	Berry J. Bohannon (O-1122)		8/3	1	FARGO		
7. Control Operations							
<ul style="list-style-type: none"> Respond to Initial Attack as requested Initial attack IC will communicate size up information to Honey Prairie incident communications. Additional Resource Requests go through Honey Prairie Operations. 							
8. Special Instructions							
<ul style="list-style-type: none"> Ensure LCES are in place before operations begin. Stay hydrated. Drive defensively and with lights on at all times. 							
9. Division/Group Communication Summary							
Function	Frequency	System	Channel	Function	Frequency	System	Channel
Command N Okee Repeater	RX 164.5750/206.5 TX 163.150/206.5	KING NIFC	5	Logistics	See ICS 205	KING NIFC	
Tactical Div/Group	RX 154.280 TX 154,280/156.7	KING NIFC	8	Air to Ground	RX 166.9375 TX 166.9375	KING NIFC	6
Prepared by (Resource Unit Ldr.) Randy Lownes		Approved by (Planning Sect. Ch.) Greg Strenkowski			Date July 30, 2011		Time 1930

DIVISION ASSIGNMENT LIST		1. Branch		2. Division H, I, J, K, L, M, N, O			
3. Incident Name Honey Prairie Complex		4. Operational Period Date: 7/31/2011 Time: 0800-2000					
5. Operations Personnel							
Operations	Buck Kline 8/5 / Brent McCarty 8/2			Branch Director			
Planning Ops	Steve Gray 7/31 / Heath Morton (t) 8/4			Division Supervisor		Rufus Crutchfield 8/4 / Tracy Mobley 8/1	
Safety Officer	Shane Barrow (O-1137) 8/8						
6. Resources Assigned this Period							
Strike Team/Task Force/ Resource Designator		Leader/ Name / Designator		Last Shift Date	Num. Per.	Drop Off PT./Time	Crew Names
READ (O-559) GAOKR		Jessica Bowen			1		912-536-2995
TFLD (O-937)		Kevin Elmstrom		8/1	1		
Chattooga 86 (E-77) GAGAS		Dean Cornett		8/3	2		P. Floyd
Murray Eng 86 (E-78) GAGAS		Adam Greeson		8/3	2		R Castoe
Jones Eng 86 (E-81) GAGAS		Russell Fowler		8/3	3		B Christian, D Wilkinson
7. Control Operations							
<ul style="list-style-type: none"> Patrol and control reburn. Patrol and mop up all accessible fire line. Mop up all hot spots within 100' of the fire perimeter. Continue to back haul excess equipment from the line. Continue to work with resource advisors when conducting rehabilitation work. 							
8. Special Instructions							
<ul style="list-style-type: none"> Ensure LCES are in place before operations begin. Stay hydrated. Drive defensively and with lights on at all times. See medical plan for EMT support Examine work area for fire weakened snags 							
9. Division/Group Communication Summary							
	Function	Frequency	Channel	Function	Frequency	System	Channel
Command E Okee Repeater	RX 164.6250/103.5 TX 163.150/103.5	KING	3	Logistics		KING NIFC	
DIV J Repeater	RX 170.4125 TX 165.9625/123.0	NIFC	14				
Tactical Div/Group	RX 168.350 TX 168.350	KING NIFC	12	Air to Ground	RX 166.9375 TX 166.9375	KING NIFC	6
Prepared by (Resource Unit Ldr.) Randy Lownes		Approved by (Planning Sect. Ch.) Greg Strenkowski			Date July 30, 2011		Time 1800

DIVISION ASSIGNMENT LIST			1. Branch		2. Division East Initial Attack		
3. Incident Name Honey Prairie Complex			4. Operational Period Date: 7/31/2011 Time: 0800-2000				
5. Operations Personnel							
Operations	Buck Kline 8/5 / Brent McCarty 8/2			Branch Director			
Planning Ops	Steve Gray 7/31 / Heath Morton (t) 8/4			Division Supervisor		Rufus Crutchfield 8/4	
Safety Officer	Shane Barrow (O-1137) 8/8			Division Supervisor			
6. Resources Assigned this Period							
Strike Team/Task Force/ Resource Designator		Leader/ Name / Designator		Last Shift Date	Num. Per.	Drop Off PT./Time	Crew Names
TFLD (O-943)		Steven Clark		8/1	1	Satilla D.O.	
STEN (O-955)		Randy Scherr		8/1	1	Satilla D.O.	
TFLD (O-5) GAOKR		Rocky Chesser			1	912-276-3232	OFF 7/31
Barrow 86 (E-1081) GAGAS		Rusty Carroll		8/3	2	Satilla D.O.	P.Bryant
Dawson 86 (E-1082) GAGAS		Tommy Williams		8/3	2	Satilla D.O.	B. Cox
Union 86 (E-1083) GAGAS		Wesley Ssk		8/3	2	Satilla D.O.	J. Davenport
TPL SC 922 (E-7) SCSCC		Adam McCullough (E-7.8)		8/11	1		Stage @ Refuge HQ
TPL GAOKR 56 (E-22)		Phed Pipett		8/12	1		Stage @ Refuge HQ
TPL Camden 70 (E-1162) GAGAS		James D Armstrong (O-1115)		8/3	1	Satilla D.O.	
TPL Ware 71 (E-1171) GAGAS		Barry H. Bennett (O-1119)		8/3	1	Satilla D.O.	
TPL Ware 72 (E-1173) GAGAS		Thomas D. Whitley (O-1120)		8/3	1	Satilla D.O.	
TPL GA OKR 54 (E-21)		UNSTAFFED			0		Stage @ Refuge HQ
TPL GAOKR 55 (E-23)		UNSTAFFED					Stage @ Refuge HQ
7. Control Operations							
<ul style="list-style-type: none"> Respond to Initial Attack as requested Patrol and control rebum Initial attack IC will communicate sizeup information to the Honey Prairie communication. Additional resource requests to go through Honey Prairie operations. 							
8. Special Instructions							
<ul style="list-style-type: none"> Ensure LCES are in place before operations begin. Stay hydrated. Drive defensively with lights on at all times. 							
9. Division/Group Communication Summary							
	Function	Frequency	Channel	Function	Frequency	System	Channel
Command E Okee Repeater	RX 164.625/ 103.5 TX 163.150/ 103.5	KING NIFC	3	Logistics		KING NIFC	
Tactical Div/Group	RX 168.775 TX 168.775	KING NIFC	9	Air to Ground	RX 166.9375 TX 166.9375	KING NIFC	6
Prepared by (Resource Unit Ldr.) Randy Lownes		Approved by (Planning Sect. Ch.) Greg Strenkowski			Date July 30, 2011		Time 1800

DIVISION ASSIGNMENT LIST			1. Branch		2. Division Roads and Fireline Rehab Group		
3. Incident Name: Honey Prairie Complex			4. Operational Period Date: 7/31/2011		Time: Day: 0800-2000		
5. Operations Personnel							
Operations	Buck Kline 8/5 / Brent McCarty 8/2		Branch Director				
Planning Ops	Steve Gray 8/1 / Heath Morton (t) 8/4		Division Supervisor				
Safety Officer							
6. Resources Assigned this Period							
Strike Team/Task Force/ Resource Designator	Leader / Name / Designator	Last Shift Date	Num. Per.	Drop Off PT./Time	Pick Up PT./Time		
READ (O-560)	Ron Phemetton				912-276-2349 cell		
THSP (O-1143)	Aaron Souto	8/10	1		404-772-5393 cell		
EQPM (O-1111.45)	Johnny Barwick	8/4	1				
HEQB (O-1141)	Bill Weldon	8/8	1				
HEQB (O-9)	Cory Bryant (t)	8/10	0		OFF 7/31		
HEQB	George Pelt		1	With Skidder			
Timberline Skidder (E-981)	Henry Tiner	8/11	1	PVT, Eastside			
H&H Excavating (E-1158)	Jackie Hedrick		1	PVT, Eastside			
Hughes Grader (E-230)	Buddy Pittman	7/31	1	PVT, Westside			
Cat Grader (E-530)	Lucious Corbett	8/11	1	PVT, Eastside			
7. Control Operations							
<ul style="list-style-type: none"> Coordinate efforts w/ resource advisor and logistics Notify Division Supervisor(s) when entering and leaving division. 							
8. Special Instructions							
<ul style="list-style-type: none"> Ensure that tractors are cleaned and free of debris daily. Examine work area for fire weakened snags. Ensure LCES are in place before operations begin and stay hydrated. Drive defensively and with lights on at all times. See Medical plan for EMT support. Implement MIST tactics 							
9. Division/Group Communication Summary							
Function	Frequency	System	Channel	Function	Frequency	System	Channel
Command N.Okee Repeater	See ICS205	KING NIFC		Logistics	See ICS205	KING NIFC	
Tactical Div/Group	See ICS205	KING NIFC		Air to Ground	See ICS205	KING NIFC	
Prepared by (Resource Unit Ldr.) Randy Lownes		Approved by (Planning Sect. Ch.) Greg Strenkowski			Date 7/30/2011		Time 1930

AIR OPERATIONS SUMMARY

Prepared By: Joe Bistryski, AOBD

Prepared Date: 7.30.2011

Prepared Time: 1800

1. INCIDENT NAME: Honey Prairie	2. OPS PERIOD DATE: July 31, 2011	START TIME: 0830	END TIME: 1900	SUNRISE: 0645	SUNSET: 2026
3. REMARKS (Safety Notes, Hazards, Air Operations Special Equipment, etc.): Decommission Pogo Helibase COB. Move all Helibase operations to Waycross. Continue to use POGO for periodic Refuge Mapping missions <i>Afternoon thunderstorms NOTE: Latitude/Longitude format is "Degrees-Minutes-Decimal Minutes" (example: N30 41.42 W082 33.97)</i>					5. TFR #: Canceled 7/27/11 SEE and AVOI Diii

PERSONNEL	NAME	PHONE #	FREQUENCIES	AM	FM	
AOBD	Joe Bistryski	Cell 801-518-2797	AIR/ AIR FW	122.575		AIRTANKERS / LEAD PLANES - None Available Local ATGS AIRCRAFT- 57Z
ASGS	None Assigned		AIR/ AIR RW-FF	122.375		OTHER: Waycross Airport Helibase: 912-287-4479 Waycross Airport Helibase Fax: 912-287-4458 Pogo Helibase: 912-496-4415 / FAX 912-496-2797 ICP Helispot is Waycross Airport Helibase Okfenokee Dispatch: 912-496-7366 X230 Waycross Airport: N 31 16.16 10 W82 33.38
ATGS	None assigned					
HEB2 Waycross HB	Zev Hunting	Desk 912-287-4479 Cell 218-398-2708	Georgia AIR/GRND (Smokey - Dozers)		159.285 W	
HEB2 T Pogo HB	Jeff McBath	Desk 912-496-4415 Cell 858-357-3242	AIR/GROUND PRIMARY		166.9375	
			AIR/GROUND ALTERNATE		166.9000	
			TOLC		168.0125	
			AIR GUARD		168.625 T110.9	

9. HELICOPTERS (Use Additional Sheets as Necessary)

FAA #	TY	MAKE/ MODEL	BASE	AVAIL	MANAGER	FAA #	T	MAKE/ MODEL	BASE	AVAIL	MANAGER		
26MW	1	K-1200	Waycross	0830	Kirby Cook 406-381-1212	N818MC	3	AS-350B3	Pogo	0830	Juan Edar 307-330-8285		
57Z	3	206-L4	Waycross	0830	Robert Barrett 208-313-7837								
10. TASK/ MISSION/ ASSIGNMENT (Type/ function includes: Air Tactical, Retardant, Recon, Personnel Transport, Bucket Operations, SAR, etc.) TYPE/FUNCTION													
NAME OF PERSONNEL OR CARGO (if applicable) or instructions for tactical aircraft						MISSION START			FLY FROM			FLY TO	
Bucket Ops/ 26MW						As Requested			Waycross				
Recon						As Requested			Waycross				
Medevac						As Requested			Pogo				
All recon missions must have direct approval by the AOBD. 818MC, 57Z N818MC													



Fire Weather Forecast



FORECAST NO: 85

NAME OF FIRE: Honey Prairie Complex

PREDICTION FOR: Day Shift
SHIFT DATE: Sunday 7/31/11

UNIT: Okefenokee National Wildlife Refuge

FORECAST ISSUED: 7/30/11 at 1600

SIGNED: John Franks
Incident Meteorologist

WEATHER DISCUSSION: High pressure over southeast Georgia will last one more day and bring partly cloudy skies with a small threat for afternoon thunderstorms. After this, a trough of low pressure will push in from the north and wash out over South Carolina. The remnants of the trough will then slide over southern Georgia and become a focus for showers and thunderstorms on Monday.

TODAY: Partly cloudy. Scattered afternoon showers and possibly a thunderstorm.

MAXIMUM TEMPERATURES: 94-99 degrees
PM HEAT INDEX: 102-107
MINIMUM HUMIDITY: 40-50%
20 FT WINDS: AM: W 2-4 mph
PM: S 5-8 mph
STABILITY/INVERSION: 7000 feet by 1500
TRANSPORT WINDS: SW 8 mph
DISPERSION INDEX: 40, Good
CHANCE OF PRECIPITATION: 20%
PRECIPITATION AMOUNTS: Generally under a tenth of an inch. A quarter to half inch in T-storms.
LIGHTNING ACTIVITY LEVEL: 2

TONIGHT: Partly cloudy early, increasing clouds overnight with a 30% chance of showers late. South winds 2-3 mph. Low temperatures 72-76. Max RH 90-100%.

MONDAY: Mostly cloudy. A 30% chance of showers early, then showers likely in the afternoon with a 60% chance. Scattered thunderstorms.

MAXIMUM TEMPERATURES: 89-94 degrees
PM HEAT INDEX: 95-100
MINIMUM HUMIDITY: 48-58%
20 FT WINDS: AM: W 2 mph
PM: SW 5-8 mph
TRANSPORT WINDS: SW 7 mph
DISPERSION INDEX: 25, Fair
CHANCE OF PRECIPITATION: 60%
LIGHTNING ACTIVITY LEVEL: 3

EXTENDED FORECAST:

	TUESDAY	WEDNESDAY	THURSDAY
SKY/WEATHER	Becoming Partly Cloudy / Scattered Showers and Thunderstorms early	Partly Cloudy / Isolated Showers and Thunderstorms	Partly Cloudy / Scattered Showers and Thunderstorms
CHANCE PRECIP	40%	20%	30%
MINIMUM RH	45-55%	40-50%	40-50%
20 FT. WINDS	AM: Variable 2 mph PM: E 3-6 mph	AM: Calm PM: S 3-7 mph	AM: S 2-4 mph PM: SW 5-9 mph
IN/MAX TEMPS	74 / 94	74 / 96	75 / 96

FIRE BEHAVIOR FORECAST

Fire: Honey Prairie Complex	Unit: GA-OKR-000001	Prediction for Day Shift
Forecast #84 Issued: 07/30/2011 1830 hrs	Signed: Keith Mousel	Shift Date: Sunday 07/31/2011

GENERAL FIRE BEHAVIOR

Fuels around the Okefenokee Wildlife Refuge are predominately Fuel Model 7 (Southern Rough). Large to moderate acreage tracts of commercial timberland are mixed in throughout the entire perimeter surrounding the refuge. Fast moving wildfires with extremely high flame lengths and rapid rates of spread occur within the swamp.

Indicators/Threshold for Increased Fire Activity

- **Relative humidity dropping below 45%**
- Winds above 10 mph
- **Heavy fuel loadings**
- **Fine dead fuel moisture 8% or less**
- Dispersion above 70
- *** Items in BOLD are predicted to occur today***

SPECIFIC FIRE BEHAVIOR

- Fire behavior should be slow to develop today.
- Interior smoldering and some flare ups are possible, especially if winds increase.
- Expect fire to continue spreading through the shrub fuels with low rates of spread and minimal flame lengths. LAL 2

Fuel Type	Rates of Spread	Flame Length	Spotting Distance	Firebrand Ignition
Winds at 3 - 8 mph				
Shrub Fuels – SH4	1 – 3 ch/hr	1 – 2 feet	1/10 mile	50 %
Heavy Southern Rough- SH8	1 – 7 ch/hr	3 – 6 feet	1/10 mile	50 %
Timber Litter-Reburn TL8	1 – 3 ch/hr	1 – 2 feet	1/10 mile	50 %
Small Pine Plantation w/grasses GR5	1 – 8 ch/hr	1 – 4 feet	1/10 mile	50 %

One hour fine dead fuel moisture is at 7% for Sunday. Moisture from rain has reduced the fire threat, HOWEVER some areas remain dry and burning continues. 1,000 hour fuels are drier than normal for this time of year. There is re-burn potential; mainly on the west side of the fire due to the amount of needle cast, fallen trees and scorched shrubs. Should wind become stronger than predicted, expect fire behavior to increase above predicted levels. **In areas where fuels have been herbicided, expect quick ignitions, extreme heat, quicker rates-of-spread, and possible group tree torching potentially producing spotting problems.**

NOTE- FIRE BEHAVIOR CALCULATIONS ARE FOR FIRES IN UNBURNED FUELS INCLUDING NEW IA STARTS.

All Divisions:

*The fire continues a slow spread through the thick bays and muck soils. Roots and fallen trees are protecting heat sources allowing the fire to burn organic soils from the bottom up. Be heads-up for falling trees. **20% chance of rain.***

Remember that most accidents occur on small fires or deceptively quiet areas of large fires.

Air Operations: Expect possible areas of smoke especially on the west and north side of the fire.

SAFETY:

WINDS – Stay abreast of changing wx conditions throughout the entire shift. **THUNDERSTORMS -** these severe winds can create extreme fire behavior, with winds gusting over 30 mph. **Live Trees/SNAGS – are falling in all Divisions – will be influenced by Thunderstorm outflow winds.** **FUELS:** Watch for pockets of cured shrubs or blankets of red needles beginning covering the forest floor re-burn is still possible. 1,000 and 10,000 hour fuels as well as deep duff pockets are providing the heat source. Stay focused, and put LCES in place before starting operations. *Energy Release Component (ERC) is running near average for this time of year.*

HEALTH AND SAFETY MESSAGE

SAFETY starts with *YOU*

We are ALL accountable for SAFE behaviors

INCIDENT: Honey Prairie Complex	DATE: 7/31/2011	TIME: 0800
----------------------------------------	-----------------	------------

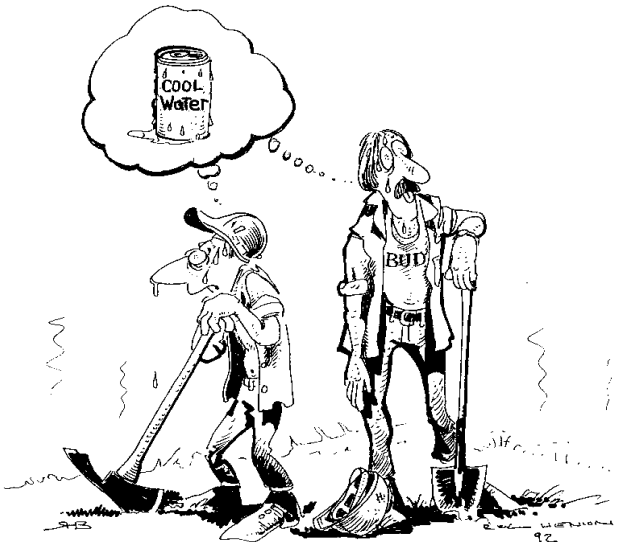
Major Hazards and Risks:	COMPLACENCY DRIVING WEATHER
---------------------------------	--------------------------------------------

COMPLACENCY – Firelines are spread across a wide geographical area. Do not forget to keep your Situational Awareness, many hazards/risk still exist and need to be identified and communicated as you enter new areas. With the increased fire activity yesterday inside the swamp, be prepared to respond to Initial Attack fires as requested. Remember that most accidents and injuries occur on small fires or deceptively quiet areas of large fires. Keep Your Head in the Game.

DRIVING – Maintain at least a 3 Second (Plus) Following Distance, add an additional second if driving an engine or transport and add an additional second for each road condition or environmental factors that affects stopping distance. Obey all traffic laws AT ALL TIMES. Remember that it is the weekend and most attraction are open, so there will be an increase of traffic and activity.

WEATHER – It is getting hotter, expected heat index around 105-108. PLEASE see the weather forecast for most current weather. Drink plenty of water and Gatorade with a 3 to 1 ratio. Take plenty of breaks, and find an area out of the sun to cool down.

Watch Out Situation of the Day



14. WEATHER IS GETTING HOTTER AND DRIER

Incident Safety Officers:
Mark Munns, Tommy Hawkins, Shane Barrow,
Tommy Lail, Steve Holman

Heat-Related Injuries

Heat-related injuries (heat cramps, heat exhaustion, and heat stroke) are most likely to occur when it's hot and humid, but can occur in any environmental condition.

Heat Cramps

Signs/Symptoms:

Sweating
Dehydration
Transient muscle cramps

Treatment:

Place in shade
Loosen clothing and stretch muscles
Slowly give fluids
Monitor

Heat Exhaustion

Signs/Symptoms:

Profuse sweating with cool, clammy skin
Dehydration
Persistent muscle cramps
Dizziness and headache
Decreased urine output

Treatment:

Place in shade
Loosen clothing and stretch muscles
Slowly give fluids
Monitor; medevac if no improvement

Heat Stroke

Signs/Symptoms:

Hot, dry skin
Rapid, weak pulse (100–120 at rest)
Hyperventilation
Vomiting

Involuntary bowel movement
Dizziness, confusion, and irritability
Seizures or loss of consciousness

Treatment:

Cool body as quickly as possible with water (river, fold-a-tank, canteens, etc.)

MEDEVAC IMMEDIATELY

INCIDENT ACTION PLAN SAFETY ANALYSIS

1. Incident Name
Honey Prairie Fire

2. Date
7/31/2011

3. Time
Day Shift

LCES* Analysis of Tactical Applications
Lookouts Communications Escape routes Safety zones

LCES Mitigations

Other Risk Analysis

Other Risk Mitigations

Branch	Indirect Fireline	Strategic Firing Operations	Power lines / Snags	Road Conditions	Frontal Assault	Extreme Conditions	Railroad	Burnout Operations	Wildlife, Insects	Smoke	Traffic/Driving	Communications	Structure Protection	Fatigue/Hydration	Multi-aircraft	Other Risk Mitigations
	1, 2, 3, 4, 5, 7, 8, 10, 14	1, 2, 3, 4, 5, 7, 8, 10, 15, 17	2, 6, 11, 15, 17	12, 20	1, 2, 3, 4, 5, 7, 8, 14	7, 10	26	1, 3, 7, 8, 10	2		12, 17, 19, 20, 22	1, 3, 10, 14, 19, 24, 25	1, 2, 3, 4, 5, 8, 10, 11, 14, 15	16, 18, 21	14, 25	16. Take adequate rest breaks and encourage to drink water NOW through briefings. 17. Defensive driving will be addressed in all briefings. 18. All personnel must meet the 2:1 work/rest ratio. Line supervisors and Safety will monitor closely. 19. Notify Operation and Safety of Railroad track issues to ensure safety of firefighters.
Branch West	1, 2, 3, 4, 5, 7, 8, 10, 14	1, 2, 3, 4, 5, 7, 8, 10, 15, 17	2, 6, 11, 15, 17	12, 20	1, 2, 3, 4, 5, 7, 8, 14	7, 10	26	1, 3, 7, 8, 10	2		12, 17, 19, 20, 22	1, 3, 10, 14, 19, 24, 25	1, 2, 3, 4, 5, 8, 10, 11, 14, 15	16, 18, 21	14, 25	20. Ensure Traffic Planning is safe and enforced. Heed Defensive Driving techniques noted in Safety Messages. 21. Relocate staggling area when driving conditions warrant. 22. Use spotter when backing vehicle(s). 23. Use protective spray with deet on skin (Not on Nomex), permethrin can be used on nomex clothing
Branch East	1, 2, 3, 4, 5, 7, 8, 10, 14	1, 2, 3, 4, 5, 7, 8, 10, 15, 17	2, 6, 11, 15, 17	12, 20	1, 2, 3, 4, 5, 7, 8, 14	7, 10	26	1, 3, 7, 8, 10	2		12, 17, 19, 20, 22	1, 3, 10, 14, 19, 24, 25	1, 2, 3, 4, 5, 8, 10, 11, 14, 15	16, 18, 21	14, 25	24. Establish smoke/fog signs on roadways. Coordinate with Department of Transportation. 25. Follow establish communication plan, flight follow through dispatch 26. Trains speeds are reduced to 40 m.p.h between markers 210 and 218. Any damage to tracks, crossings or tie need to be reported immediately to ICP.

Prepared by (Name and Position)										ICS 215A						Mark Munns SOF2
---------------------------------	--	--	--	--	--	--	--	--	--	----------	--	--	--	--	--	-----------------

MEDICAL PLAN	Incident Name Honey Prairie Complex	Date Prepared 7/30/2011	Time Prepared 1800	Operational Period 7/31/2011
--------------	----------------------------------------	----------------------------	-----------------------	---------------------------------

5. Incident Medical Aid Station

<u>Medical Aid Stations</u>	<u>Location</u>	Paramedics Yes No	
MEDICAL UNIT (ICP)	Honey Prairie Complex ICP- (H,I,J,K,L,M,N,O DIV) Mark Millirons (EMT)MEDL (706)741-4216 (24 Hours) - Jameson Inn, Waycross (8-5) (East IA) will be covered by Mark Millirons if needed.		X
WEST SIDE (Line EMT)	*Fred Mason(EMTB) Eng. 405 (A,B,C,D,E,F,G DIV) (8-7) Robert Carswell (EMT) MEDL (912)286-1648 (A,B,C,D,E,F,G,T,V,Y,Z) - Days Inn, Waycross (8-6) (West IA) will be covered by Robert Carswell if needed	X	

Ambulance Services

Name	Address	Phone	Paramedic Yes No	
Clinch County EMS (WEST SIDE)	Homerville, GA (911 to activate)	912-487-5211 ext. 4567	Yes	
Ware County EMS (NORTHSIDE)	Waycross, Georgia (911 to activate)	912-281-9467	Yes	
Charlton County EMS (EAST SIDE)	Folkston, GA (911 to activate)	912-496-7321	Yes	

Air Ambulance Service

Trauma 1	Address	Phone	Yes	No
Trauma 1	Lake City, FL (16 min/air to Fargo ICP)	1-800-223-4878(freq. 155.340)	Yes	
Trauma 1	Jacksonville, FL (26 min/air to Fargo ICP)	1-800-223-4878(freq. 155.340)	Yes	
AirMed	Augusta, GA (2 hrs/air to Fargo ICP)	1-888-792-9245(freq. 155.340)	Yes	
Lifeflight	Jacksonville, FL (35 min/air to Fargo ICP)	1-877-870-7779(freq. 155.340)	Yes	
Air Evac	Waycross, GA (17 min/air to Fargo ICP)	1-800-247-3822(freq. 155.340)	Yes	
US Coast Guard (Heli-Rescue)	Savannah GA	1-912-652-4646 (freq. 155.340)	Yes	

7. Hospitals

Name	Address	Travel Time		Phone	Helipad		Burn Center	
		Air	Ground		Yes	No	Yes	No
Satilla Regional	410 Darling Ave Waycross Ga N 31°13.56 W 82°21.058	18 min	45 min	912-283-3030	Yes			No
Clinch Memorial Hospital (WEST SIDE)	1050 Valdosta HWY Homerville, GA		25 min	912-487-5211 ext 4502	Yes			No
Charlton Memorial Hospital (EAST SIDE)	1203 3 rd St. Folkston, GA		50 min	912-496-2531	Yes			No
Memorial Hospital	Savannah, GA 4700 Waters 3200.7 8107.6	30 min		912-350-8999	Yes			No
Shands Hospital (level I)	Jacksonville, FL N 30°20' 97 W 82° 13 992	26 min	1.5 hrs	800-223-4878	Yes		Yes	
Shands Burn Center	Gainesville, FL 38.33 N 082 20.73W	33 min	1.5 hrs	352-265-0300	Yes		Yes	

8. Medical Emergency Procedures

Identify any EMTs and Paramedics in your crews. All medical emergencies will be reported to the Division Supervisor who will assume command and notify Line Medics.

On scene personnel will:

1. Provide medical care & stabilize patient.
2. Call 911 if possible and provide the information requested.
3. Notify Communications via radio over Command Channel
4. Communications will clear radio traffic for medical emergency.
5. Communications will confirm 911 has been notified coordinate with IC, SOF, MEDL.
6. DIVS will notify the Field Ops Section Chief.

MAJOR EMERGENCIES – Secure the area and identify witness for later investigation. Keep an accurate log of events.

NOTE: Do not give Patients Name over the radio!

HELISPOTS

Pocket Helispot 30 47 30.02 x 82 22 39.5 (West side), mile marker 4, HWY 177 Steven C. Foster State Park

Fargo Helispot 30 40.945 x 082 33.640 (West side), HWY 441- Steven C. Foster Visitor Center

POGO Helibase 30.44.03 x 82.07.41 (East side)

Evac Yankee

Helispot 6

Rd. 32 and 32A, N 30° 53.280 W 082° 33.880

Helispot 7

Tatum Rd. Pond N 30° 50.280 W 082° 33.857

***Alternate site can be established following guidelines for safety found with IRPG and local EMS resources.**

INJURY REPORTING PROCESS:

Nature of Injury: _____

Location of Patient: _____

Transportation Requested by: Air___ Ground___

Pick Up Point: _____

Lat: _____ Long: _____

Patient Unit ID: _____

Is an EMT w/Patient: Yes___ No___

Age:___ Sex: Male___ Female___

Weight (If Air Evac. is needed): _____

Prepared by: Mark Millirons (EMT)MEDL

10. Reviewed by: Shane Barrow, SOF

INCIDENT RADIO COMMUNICATIONS PLAN ICS-205			Incident Name	GROUP 22		Date/Time Prepared	Operational Period	Date/Time			
			Honey Prairie			07/30/2011-17:00	7/31/2011	0800-2000			
Ch #	Function	Channel Name	Assignment	RX Freq	NW	RX Tone/NAC	TX Freq	NW	TX Tone/NAC	Mode A,D or M	Remarks
1	Command	West Okee Repeater	Sec West Branch CMD	167.1250	N	156.7	163.1500	N	156.7	A	Stephen Foster State Park
2	Command	South Okee Repeater	Sec East/West Branch CMD	164.7750	N	123.0	163.1500	N	123.0	A	Eddy Florida
3	Command	East Okee Repeater	PRIMARY East Branch CMD	164.6250	N	103.5	163.1500	N	103.5	A	Refuge Headquarters
4					N			N		A	NO Longer used
5	Command	North Okee Repeater	PRIMARY North Branch CMD	164.5750	N	206.5	163.1500	N	206.5	A	Waycross
6	Air-Ground	Air to Ground	PRIMARY	166.9375	N	CSQ	166.9375	N	CSQ	A	
7	Tactical	MOB-MOB	GFC Contingency Structure Protection Group West I.A.	159.3900	W	CSQ	159.3900	W	156.7	A	
8	Tactical	V-Fire 21W WHITE		154.2800	W	CSQ	154.2800	W	156.7	A	
9	Tactical	USFS 9	DIV A,B,C, D,E,F,G,T&V (East I/A)	168.7750	N	CSQ	168.7750	N	CSQ	A	
10	Tactical	S.E. Compact	DIV	159.2850	W	CSQ	159.2850	W	CSQ	A	
11	Tactical	USFS 11	DIV M,N,O	168.2000	N	CSQ	168.2000	N	CSQ	A	
12	Tactical	Refuge Tac 1	DIV H, I, J, K,L	168.3500	N	CSQ	168.3500	N	CSQ	A	
13	Tactical	FL 190	DIV Y,Z	151.2725	N	CSQ	151.2725	N	CSQ	A	
14					N	CSQ		N		A	No Longer used
15	Air-Ground	Air to Ground	SECONDARY	166.9000	N	CSQ	166.9000	N	CSQ	A	
16	EMERGENCY	AIR Guard	Air OPS.	168.6250	N	CSQ	168.6250	N	110.9	A	
Prepared by (Communications Unit) Kelly Towe, COML Roy Fortenberry, COMT/COML Incident Dispatcher: 912-286-1660											
Cloning at ICP communications and briefings,											

The convention calls for frequency lists to show four digits after the decimal place, followed by either an "N" or a "W", depending on whether the frequency is narrow or wide band. **Mode** refers to either "A" or "D" indicating analog or digital (e.g. Project 25) or "M" indicating mixed mode. All channels are shown as if programmed in a control station, base stations, mobile or portable radio.

HONEY PRAIRIE PHONE LIST

07/31/11

Incident

Communication

(Hours: 0700-2100)

912-286-1660

AGENCY OFFICIALS			OPERATIONS		
Curt McCasland	602-359-0013	USFWS AA	Steve Gray	404-772-5389	Planning Operations
Mindy Gautreaux	912-282-7500	USFWS Deputy AA	Buck Kline	229-460-2062	Field Operations
Frank Sorrells	912-381-7503	GFC AA	Heath Morton (t)	423-240-7509	Planning Operations
James Karels	850-228-7763	FL DOF AA	Brent McCarty	229-938-8718	West Branch
Diane Adams	912-266-5421	GEMA	DIVISIONS		
Mike Housh	912-281-1575	USFWS AREP			
COMMAND			Charles Arnold	423-802-6507	DIVS A, B, C, D, E, F, G
Troy Floyd	706-676-0168	IC			
RESOURCE ADVISORS			Mike Lee	770-576-9594	DIVS T, V, Y, Z
Ron Phernetton	912-276-2349	Resource Advisor			
Jessica Bowen	912-536-2995	Resource Advisor	Trent Ingram	229-726-0285	West IA
Rocky Chesser	912-276-3232	Resource Advisor	DIVISIONS		
INFORMATION 912-496-2566					
Jenny Lyn Bruner	912-496-2566	Fire Information	Tracy Mobley	706-346-4052	DIVS H, I, J, K, L
Denise Croker	256-497-8334	PIO2	Tracy Mobley	706-346-4052	DIVS M, N, O
			Rufus Crutchfield	478-986-7466	East IA
SAFETY			Aaron Souto	404-772-5393	Roads & Fireline Rehab Grp
Tommy Hawkins	706-676-7538	Safety Officer			
Mark Munns	706-401-5903	Safety Officer	AIR OPERATIONS		
Jerry Burnsed	386-453-8453	Safety Officer	Joseph Bistryski	801-518-2797	Air Ops Branch
Shane Barrow	706-699-2412	Safety Officer			
Mark Millirons	706-741-4216	Medical Unit Leader			
Field EMT	912-286-1674	Medical Unit Leader			
Medical Unit	912-637-5236				
Tommy Lail	404-772-5338	Safety Officer	Zev Hunting	912-287-4479	HEB2 - WAYCROSS
DISPATCH			Jeff McBath	912-496-4415	HEB2 (t) - WAYCROSS
Okeefenokee Dsp	912-496-7366	Okeefenokee			
Suwannee Dispatch	386-758-5700	Fla wildfires, other			
Honey Prairie Dspth	912-286-1660	Honey Prairie ICP	PLANNING 912-287-6557 FAX 912-287-6557		
Waycross Dispatch	912-287-4915	Ga wildfires, other	Greg Strenkowski	478-951-2421	Planning Section Chief
LOGISTICS West			Keith Murphy (t)	912-637-5241	Situation Unit Leader
Willie Boston	770-328-3186	LSC	John Franks	513-519-5818	IMET
Thomas Lambert	912-287-6540	FACL	Harold West	912-637-5241	DMOB
			Keith Mousel	850-228-7756	FBAN
Hotel Mgr	404-772-5336	24 hour lodging	FINANCE 912-287-6568 FAX 912-287-6564		
Hotel Mgr	912-287-6540	Lodging	Lila Johnson	770-658-6641	Finance Section Chief
Kevin Reish	404-276-1998	Security Manager	Judy Reddin	912-281-6876	Buying Team Leader
Tim Jones	912-387-6480	GSUL			
Steve Blackwell	404-772-5330		Kurt Hinz	912-287-6544	Comp Claims
Bob Kookan		Food Unit Leader			
Amy Weaver (t)	912-637-5239	SPUL	James Meredith	404-805-6806	IBA
Kelly Towe	478-308-4770	COML			

ORDERING		
Jimmy Grimes	404-558-4476	Ordering Manager
		LSC
John Crain	404-772-5363	Base Camp Mgr
		Supply Unit Leader
Joe Hoisington	530-905-3715	EQPM
	239-887-1817	Security Manager
COOPERATORS		
COUNTY		
	912-496-7229	Charlton County EMA
John F. Meyer - Chairman	912-496-2549	Charlton County Commissioners
Dobie Conner	912-496-7321	Charlton County Sheriff
Jesse Booth	912-520-0061	Clinch County EMA
Jonathan Daniel	912-281-5158	Ware County EMA
Jessie Jordan	912-816-6063	Ware County Fire Dept
Joe Morris	912-281-6020	Ware County Sheriff
Robbie Sutton	912-599-9027	Tri County 911
STATE		
GFC Fargo District Office	912-637-5270	
GFC Satilla District Office	912-287-4915	
Blair Joiner	229-237-9026	GFC Clinch Chief Ranger
Jason Gillis	912-314-9233 912-637-5504	GFC Satilla Assistant Mgr.
Brian Gray	229-894-4628 912-673-5274	Stephen Foster State Park
Travis Griffin	912-281-5790	Laura Walker State Park
Crystal Paulk-Buchanan	404-535-1048	GEMA PIO
Georgia Highway Patrol	912-287-6500	
FEDERAL		
Okefenokee Fire Shop	912-496-4181	
Okefenokee NWR HQ (East)	912-496-7366	
Okefenokee NWR (West)	912-637-5322	
Okefenokee Visitor Center	912-496-7836	

LANDOWNERS		
Jim Barrett	229-412-3133	Langdale/GOAL Chairman
Wesley Langdale	229-220-2602	Langdale
Hal Rowe	229-412-3133	Langdale
Langdale Office	229-242-7450	Langdale Office
Mike Conlon	386-365-3882	Rayonier Unit Supervisor
Ray Carter	386-288-6626	Rayonier
Ed Carter	386-288-6626	Rayonier
Doug Nuss	912-390-1037	Rayonier
Randall McCrady	912-283-4077 W	Rayonier
Colin Myerson	229-506-1565	Superior Pine Products Co
Robbie Lee	229-356-0526	Superior Pine Products Co
Superior Pine Office	912-637-5261	Superior Pine Products Co
Al Alexander	850-843-0104	The Forestry Co
Savell Schmidt	850-843-1181	The Forestry Co
John Bogue	850-843-1192	The Forestry Co
Joe Hopkins	912-276-0911	Toledo Timber
Chris Gowan	912-276-0965	Toledo Timber
Martin Bell	912-283-0583	Swamp Park
Crystal Peeples	352-316-0632	FIA
Steve Davis	912-614-1828	Davis Community
Trevor Fortner	912-599-9271	Little Suwannee
Tim Jarrell	912-223-7120	Hancock Forest Mgmt.
RAILROADS		
Norfolk Southern	800-453-2530	
Sid Moody	904-318-7983	Norfolk Southern Railroad
Chad Edwards	404-582-4909	Norfolk Southern Railroad
	540-797-9918	
Eric Sams	904-576-9907	
Norfolk So Emergency Dispatch	404-529-1597	
CSX Randy Dixon	912-270-0699	
CSX Dispatch	800-232-0144	

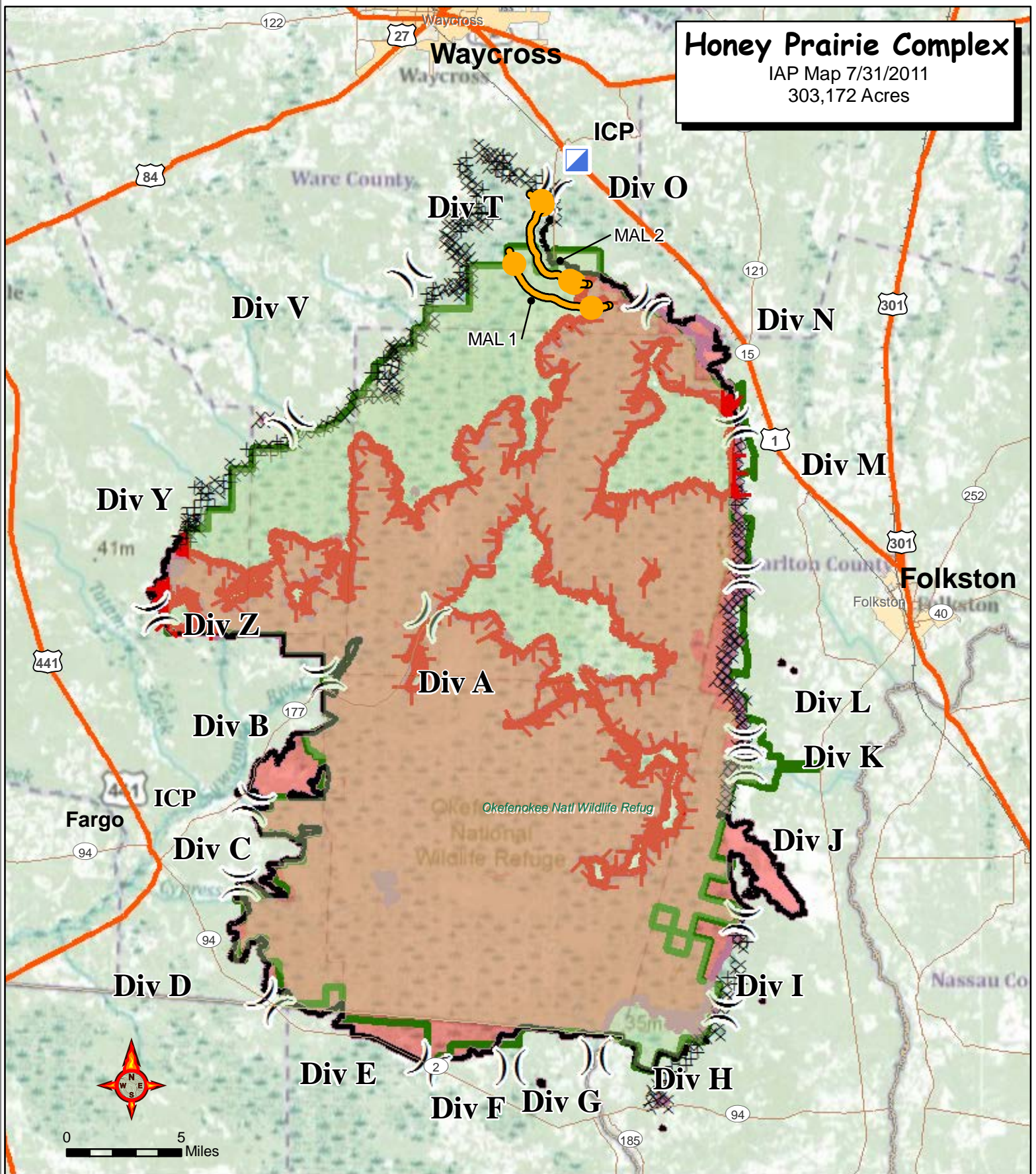
UPCOMING_DEMOB

Number	Name	Kind	Unit	Travel	Jetport	DemobDate
O-1111.36	BAILEY, CHARLES O	GIS	GAGA	AOV	ATL	07/31/2011
A-35.2	HUNTING, MARK ZEV	HM	MTHN	A/R	HLN	08/01/2011
A-42	HELICOPTER - T3S -	HEL	WYW	AOV		08/01/2011
A-42.14	EDER, JUAN LEE	HM	WYW	AOV	RIW	08/01/2011
A-42.15	FUNK, KYE RICHARD	HEC	WYW	AOV		08/01/2011
A-42.16	WESAW, MANUEL LEE	HEC	WYW	AOV		08/01/2011
A-42.20	MCBATH, JEFFREY	HM	WYW	AOV		08/01/2011
E-230	HUGHES JD 770 CH	GR	GAOK	POV		08/01/2011
E-939	KY ENG 162 (E-939)	ENG	KYLB	AOV		08/01/2011
E-939.9	BELL, RYAN	ENG	KYLB	AOV		08/01/2011
E-939.10	VETTER, TIMOTHY	ENG	KYLB	AOV		08/01/2011
E-939.11	FINKLEA, JUSTIN	FFT	KYLB	AOV		08/01/2011
E-1158	H&H CONSTRUCTION	EXC		POV		08/01/2011
E-1158.1	HENDRIX, JACKIE	DRI		POV		08/01/2011
E-1159	GAGAS GRAY DIVS	PU	GAGA	AOV		08/01/2011
O-559	BOWEN, JESSICA	REA	GAOK	AOV	JAX	08/01/2011
O-891	HOLMAN, HERSHEL	SOF	FLFLS	POV	JAX	08/01/2011
O-1092	STONE, CURTIS	SEC	TNBS	AOV		08/01/2011
O-1100	BUYING TEAM	BUY	CASN	AIR	FAT	08/01/2011
O-1100.1	REDDIN, JUDY	BUY	CASN	AIR	FAT	08/01/2011
O-1100.3	MORA, ILENE	BUY	CASN	AIR	FAT	08/01/2011
O-1100.4	MYERS, ROXIE J	BUY	CASN	AIR	FAT	08/01/2011
O-1100.5	BOESCH, JANICE	BUY	CASN	AIR	FAT	08/01/2011
O-1100.6	PROVONSHA,	BUY	CASN	AIR	CLE	08/01/2011
O-1100.7	WHEAT, CAMILLA	BUY	CASN	AIR	FAT	08/01/2011
O-1111.7	GRAY, JIMMY	DIV	GAGA	AOV		08/01/2011
O-1111.41	MEREDITH, JAMES	IBA1	AROU	A/R	LIT	08/01/2011
E-1160	GAGAS ARNOLD DIVS	ENG	GAGA	AOV		08/02/2011
O-937	ELMSTROM, KEVIN D	TFL	MTLN	AIR	MSO	08/02/2011
O-942	KRUPSKI, BEN J	TFL	IDCTF	AIR	IDA	08/02/2011
O-943	CLARK, STEVEN	TFL	CASH	AIR	RDD	08/02/2011
O-955	SCHERR, RANDY T	STE	CAMD	AIR	RNO	08/02/2011
O-960	PELLEGRINI, PAUL	DOZ	AKKKS	AIR	ENA	08/02/2011
O-1109	MILLER, MARTHA	PTR	FLFLS	AOV		08/02/2011
O-1111.8	ARNOLD, CHARLES	DIV	GAGA	AOV		08/02/2011
O-1111.9	MOBLEY, TRACY	DIV	GAGA	REN		08/02/2011

Record Count: 36

Honey Prairie Complex

IAP Map 7/31/2011
303,172 Acres



- Incident Command Post
- Uncontrolled Fire Edge
- Completed Dozer Line
- Completed Line
- Refuge Boundary
- FirePolygon

) (Division

Perimeter as of 7/30/2011 1200
C. Bailey GISS

**INCIDENT
MANAGEMENT**
T E A M



UNIT LOG	1. Incident Name Honey Prairie Complex	2. Date Prepared	3. Time Prepared
	4. Unit Name/Designators	5. Unit Leader (Name and Position)	6. Operational Period
7. Personnel Roster Assigned			
Name	ICS Position	Home Base	
8. Activity Log			
Time	Major Events		
9. Prepared by (Name and Position)			