

HONEY PRAIRIE COMPLEX

GA-OKR-000001

Incident Action Plan

Operational Period

MONDAY

**August 1, 2011
0800-2000**

**Incident Commander
Troy Floyd**

Accounting Codes

FWS – 9141-F25M-2J

NPS – 5023 F25M E11

BLM – F25M

USFS – PRF25M_1502

Initial Attack – F4PM



*An Equal Opportunity
Employer & Service Provider*

07/25/2011

Letter from GFC Incident Commander:

To: All Honey Prairie Incident Personnel

As Georgia Forestry Commission's Type 2 Incident Commander, I am committed to a policy of "zero tolerance" of inappropriate behavior during incident operations. Any form of harassment, discriminatory practices, or disrespectful behavior will not be tolerated.

Guidelines on in-appropriate behavior both "on Duty" and "off Duty" while assigned are addressed within each agencies policies. Our Team expects all incident personnel to follow established government policies for behavior along with all Illegal drug and alcohol directives.

Our Incident Management Team endorses and supports an attitude of mutual respect for all personnel and the public we serve.

We expect a strong work ethic and an attitude of Safety at all times!

Sincerely,

/s/ Troy E. Floyd Jr.

Incident Commander
Georgia Forestry Commission's Type 2 Incident Management Team

INCIDENT OBJECTIVES	1. INCIDENT NAME Honey Prairie Complex	2. DATE PREPARED 7/31/11	3. TIME PREPARED 1700												
4. OPERATIONAL PERIOD (DATE/TIME) Monday, August 1, 2011 0800 – 2000															
5. GENERAL CONTROL OBJECTIVES FOR THE INCIDENT (INCLUDE ALTERNATIVES) <ol style="list-style-type: none"> 1. Provide for safety of incident personnel and public in all incident operations. 2. Maintain a positive working relationship with all adjacent landowners, cooperators State and Federal partners. Inform, involve and communicate incident planning and operations with all partners. 3. Contain all fires that are within the Okefenokee National Wildlife Refuge, inside the Refuge and/or inside the swamp edge break if possible. 4. In cooperation with local timberland owners, use full suppression strategies and tactics to minimize damage to private timberlands and improvements and to prevent fires outside the Refuge from entering the Refuge. 5. Assist in management and suppression of additional fires (new starts or breakouts) in the vicinity as approved by Agency Administrators and Unified Incident Commanders. 6. Protect all cultural and archeological sites and structures within the refuge, with particular attention to facilities at Okefenokee Swamp Park. 7. Manage the fires cost-effectively consistent with the values at risk. 8. Implement structure protection as necessary for at-risk facilities and communities. 9. Coordinate suppression actions with assigned Refuge Resource Advisors 															
6. WEATHER FORECAST FOR OPERATIONAL PERIOD See attached forecast for area specific weather information.															
7. GENERAL SAFETY MESSAGE Drive defensively and use spotter when backing. Ensure LCES is in place and known by all personnel. Drink plenty of water and take frequent rest breaks. Ensure proper use of PPE during all operations.															
8. Attachments (☐ if attached) <table border="0" style="width: 100%;"> <tr> <td>☐ Organization List (ICS 203)</td> <td>☐ Incident Map</td> <td>☐ Safety Message</td> </tr> <tr> <td>☐ Assignment List (ICS 204)</td> <td>☐ Traffic Plan</td> <td>☐ Demobilization Procedures</td> </tr> <tr> <td>☐ Communications Plan (ICS 205)</td> <td>☐ Finance Message</td> <td>☐ Unit Log</td> </tr> <tr> <td>☐ Medical Plan (ICS 206)</td> <td>☐ Phone List</td> <td></td> </tr> </table>				☐ Organization List (ICS 203)	☐ Incident Map	☐ Safety Message	☐ Assignment List (ICS 204)	☐ Traffic Plan	☐ Demobilization Procedures	☐ Communications Plan (ICS 205)	☐ Finance Message	☐ Unit Log	☐ Medical Plan (ICS 206)	☐ Phone List	
☐ Organization List (ICS 203)	☐ Incident Map	☐ Safety Message													
☐ Assignment List (ICS 204)	☐ Traffic Plan	☐ Demobilization Procedures													
☐ Communications Plan (ICS 205)	☐ Finance Message	☐ Unit Log													
☐ Medical Plan (ICS 206)	☐ Phone List														
9. PREPARED BY (PLANNING SECTION CHIEF) Greg Strenkowski		10. APPROVED BY (INCIDENT COMMANDER) Troy Floyd													

ORGANIZATION ASSIGNMENT LIST		9. Operations Section	
1. Incident Name Honey Prairie Complex GA-OKR-000001		Chief	Buck Kline 8/5 / Brent McCarty 8/2
		Planning	Heath Morton (t) 8/4
2. Date 7/31/2011	3. Time 1000 hrs	a. Divisions/Groups	
4. Operational Period 8/01/2011 0800 - 2000			
5. Incident Commander and Staff		Division	A-B-C-D-E-F-G Chuck Arnold 8/1 Paul Pelligrini (t) 8/1
Incident Commander	Troy Floyd 8/5	Division	T-V-Y-Z Mike Lee 8/2
Safety Officers	Tommy Hawkins 8/4 Shane Barrow 8/8	Group	IA-WEST Trent Ingram 8/5
Information Officer	Jenny Lynn Bruner 8/5	Division	H-I-J-K-L-M-N-O Rufus Crutchfield 8/4
6a. Agency Administrators			
FWS		Group	IA-EAST Rufus Crutchfield 8/4
FWS	Mindy Gautreaux	Group	Roads & Rehab Aaron Souto 8/10
6b. Agency Representatives		b. Divisions/Groups	
GFC	Frank Sorrells		
FLDOF	James Karels		
FWS AREP	Mike Housh		
FWS-Refuge PAO	Art Webster		
GEMA AREP	Alan Robinson / Diane Adams		
USFS AREP	Ivan Greene		
7. Planning Section		c. AIR OPERATIONS BRANCH - Honey Prairie	
Chief	Greg Strenkowski 8/5	Air Operations Branch Director	Joseph Bistrzyski 8/4
Resource Advisors	Ron Phernetton, Jessica Bowen, Rocky Chesser		
Resources Unit	Randy Lownes 8/2		
Situation Unit	Keith Murphy(T) 8/4		
IMET	John Franks 8/3		
FBAN	Keith Mousel 8/7	d. AIR OPERATIONS BRANCH - Pogo	
Demob Unit	Harold West 8/5	Waycross Helibase Mgr	Melvin Tate 8/14 (O-1150)
Documentation			
GIS	Josh Burnette 8/5		
CTSP	Rusty Brown 8/5		
SCKN	Mike Jones 8/5		
8. Logistics Section		10. Finance Section	
Chief	Willie Boston 8/5	Chief	Amy Treadwell 8/5
Supply Unit	Amy Weaver (T) 8/5	Deputy	
GSUL	Tim Jones 8/5 Steve Blackwell 8/5	Time Unit	Darline Matheney 8/5 John Sunday (t) 8/5
ORDM	Jim Grimes 8/5 / Tim Redick (t) 8/7	PTRC	Marti Miller
COML	Kelly Towe 8/5	Comp Claims Unit	Kurt Hinz 8/5
Medical Unit	Mark Millirons 8/5	Cost	Grace Reid 8/5
Facilities	Thomas Lambert 8/4 Dennis Evans 8/5 Jeremy Hughes 8/5		
Food	Bob Kooken 8/2 / Chris Barnes 8/5		
SEC1		EQTR	Doug Chasseur
COMT	Roy Fortenberry 8/5	Buying Team	Judy Reddin 8/3
EQPM	Richard Young (T) 8/5 JohnnyBarwick 8/4 Kenneth Edge 8/5		
RCDM	Jeffrey Smith 8/12		
		Prepared by: R Lownes	RESL

DIVISION ASSIGNMENT LIST			1. Branch		2. Division A, B, C, D, E, F, G		
3. Incident Name: Honey Prairie Complex			4. Operational Period Date: 8/01/2011 Time: Day: 0800-2000				
5. Operations Personnel							
Operations	Buck Kline 8/5 / Brent McCarty 8/2			Branch Director			
Planning Ops	Heath Morton (t) 8/4			Division Supervisor		Chuck Arnold 8/1 / Paul Pelligrini (t) 8/1	
Safety Officer							
6. Resources Assigned this Period							
Strike Team/Task Force/ Resource Designator	Leader / Name / Designator	Last Shift Date	Num. Per.	Drop Off PT./Time	Crew Names		
ME ENG6 (E-405)(MEMHR)FWS	Fred Mason (EMT)	8/7	3		J. Goetz, A. Currier		
GA ENG6 (E-2) GAOKR	UNSTAFFED						
7. Control Operations							
<ul style="list-style-type: none"> Patrol and mop up within 100' of fire perimeter line. Continue rehab work in Stephan C. Foster State Park. Patrol and control reburn. Examine work area for fire weakened snags. Continue to backhaul excess equipment from the line. 							
8. Special Instructions							
<ul style="list-style-type: none"> Ensure LCES are in place before operations begin and stay hydrated. Drive defensively and with lights on at all times. Rehab Nature trails and waterways in Stephan C. Foster State Park. 							
9. Division/Group Communication Summary							
Function	Frequency	System	Channel	Function	Frequency	System	Channel
Command N Okee Repeater	RX 164.5750/206.5 TX 163.150/206.5	KING NIFC	5	Logistics		KING NIFC	
Tactical Div/Group	RX 168.775 TX 168.7750	KING NIFC	9	Air to Ground	RX 166.9375 TX 166.9375	KING NIFC	6
Prepared by (Resource Unit Ldr.) Randy Lownes		Approved by (Planning Sect. Ch.) Greg Strenkowski			Date 7/31/2011		Time 1900

DIVISION ASSIGNMENT LIST				1. Branch		2. Division T, V, Y, Z	
3. Incident Name Honey Prairie Complex				4. Operational Period Date: 8/01/2011 Time: 0800-2000			
5. Operations Personnel							
Operations		Buck Kline 8/5 / Brent McCarty 8/2		Branch Director			
Planning Ops		Heath Morton (t) 8/4		Division Supervisor		Mike Lee 8/2 / Blair Joiner (t) 8/7	
Safety Officer		Tom Lail 8/11					
6. Resources Assigned this Period							
Strike Team/Task Force/ Resource Designator		Leader / Name / Designator		Last Shift Date	Num. Per.	Drop Off PT./Time	Crew Names
READ (O-559) GAOKR		Jessica Bowen			1		912-536-2995
TFLD (O-942)		Ben Krupski		8/1	1		
ENG6 (E-3) GAOKR FWS		Nathan Herron		8/13	2		T. Price
IL Eng 40 (E-392) ILSHF FS		Bobbi Archdale		8/4	3		J. Paukert, C. Mann
MN Eng 6232 (E-838) MNMFC FWS		Duane King		8/4	3		T. Elg, D. Lantz
MN Eng 652(E-404) MNSUF FS		Andrew Drange		8/7	3		H. Severson, S. Westlin
Hughes WAT2 (E-954)		Sonny Moore		8/4	1	PVT	
EMT (O-1125)		Robert Carswell		8/5	1		
7. Control Operations <ul style="list-style-type: none"> Improve swamp break boundaries for fire breaks, work w/resource advisor Make contact with the Resource Advisor before using mechanical equipment. Safely push down with equipment all snags whether on fire or not that are a threat to success or tactical operations. Continue to backhaul excess equipment from the line. 							
8. Special Instructions <ul style="list-style-type: none"> Ensure LCES are in place before operations begin. Stay hydrated. Drive defensively and with lights on at all times. Boggy terrain: Be careful and aware when working around this type of area. 							
9. Division/Group Communication Summary							
Function	Frequency	System	Channel	Function	Frequency	System	Channel
Command N Okee Repeater	RX 164.5750/206.5 TX 163.150/206.5	KING NIFC	5	Logistics		KING NIFC	
Tactical Div/Group	RX 168.775 TX 168.775	KING NIFC	9	Air to Ground	RX 166.9375 TX 166.9375	KING NIFC	6
Prepared by (Resource Unit Ldr.) Randy Lownes		Approved by (Planning Sect. Ch.) Greg Strenkowski			Date July 31, 2011		Time 1800

DIVISION ASSIGNMENT LIST			1. Branch		2. Division West - Initial Attack		
3. Incident Name: Honey Prairie Complex			4. Operational Period Date: 8/01/2011		Time: 0800-2000		
5. Operations Personnel							
Operations	Buck Kline 8/5 / Brent McCarty 8/2			Branch Director			
Planning Ops	Heath Morton (t) 8/4			Division Supervisor		Trent Ingram 8/5	
Safety Officer							
6. Resources Assigned this Period							
Strike Team/Task Force/ Resource Designator	Leader / Name / Designator	Last Shift Date	Num. Per.	Drop Off PT./Time	Crew Names		
TFLD (O-899)	Bob Schober	8/2	1	FARGO			
Monroe 86 (E-1084) GAGAS	Chad Dorminy	8/4	2	FARGO	J. Price		
TPL Appling 70 (E-1165) GAGAS	Joseph A. Smith Jr. (O-1116)	8/3	1	FARGO			
TPL Clinch 72 (E-1167) GAGAS	William A. Register (O-1117)	8/3	1	FARGO			
TPL Clinch 75 (E-1169) GAGAS	Christopher J. Henderson (O-1118)	8/3	1	FARGO			
TPL Glynn 72 (E-1175) GAGAS	Robert L. Danley (O-1121)	8/3	1	FARGO			
TPL Jeff Davis 70 (E-1177) GAGAS	Berry J. Bohannon (O-1122)	8/3	1	FARGO			
7. Control Operations							
<ul style="list-style-type: none"> Respond to Initial Attack as requested Initial attack IC will communicate size up information to Honey Prairie incident communications. Additional Resource Requests go through Honey Prairie Operations. 							
8. Special Instructions							
<ul style="list-style-type: none"> Ensure LCES are in place before operations begin. Stay hydrated. Drive defensively and with lights on at all times. 							
9. Division/Group Communication Summary							
Function	Frequency	System	Channel	Function	Frequency	System	Channel
Command N Okee Repeater	RX 164.5750/206.5 TX 163.150/206.5	KING NIFC	5	Logistics	See ICS 205	KING NIFC	
Tactical Div/Group	RX 154.280 TX 154,280/156.7	KING NIFC	8	Air to Ground	RX 166.9375 TX 166.9375	KING NIFC	6
Prepared by (Resource Unit Ldr.) Randy Lownes		Approved by (Planning Sect. Ch.) Greg Strenkowski			Date July 31, 2011		Time 1930

DIVISION ASSIGNMENT LIST			1. Branch		2. Division H, I, J, K, L, M, N, O		
3. Incident Name Honey Prairie Complex			4. Operational Period Date: 8/012011 Time: 0800-2000				
5. Operations Personnel							
Operations	Buck Kline 8/5 / Brent McCarty 8/2			Branch Director			
Planning Ops	Heath Morton (t) 8/4			Division Supervisor		Rufus Crutchfield 8/4	
Safety Officer	Shane Barrow (O-1137) 8/8						
6. Resources Assigned this Period							
Strike Team/Task Force/ Resource Designator		Leader/ Name / Designator		Last Shift Date	Num. Per.	Drop Off PT./Time	Crew Names
READ (O-559)	GAOKR	Jessica Bowen			1		912-536-2995
TFLD (O-937)		Kevin Elmstrom		8/1	1		
Chattooga 86 (E-77) GAGAS		Dean Cornett		8/3	2		P. Floyd
Murray Eng 86 (E-78) GAGAS		Adam Greeson		8/3	2		R Castoe
Jones Eng 86 (E-81) GAGAS		Russell Fowler		8/3	3		B Christian, D Wilkinson
7. Control Operations							
<ul style="list-style-type: none"> Patrol and control reburn. Patrol and mop up all accessible fire line. Mop up all hot spots within 100' of the fire perimeter. Continue to back haul excess equipment from the line. Continue to work with resource advisors when conducting rehabilitation work. 							
8. Special Instructions							
<ul style="list-style-type: none"> Ensure LCES are in place before operations begin. Stay hydrated. Drive defensively and with lights on at all times. See medical plan for EMT support Examine work area for fire weakened snags 							
9. Division/Group Communication Summary							
	Function	Frequency	Channel	Function	Frequency	System	Channel
Command E Okee Repeater	RX 164.6250/103.5 TX 163.150/103.5	KING	3	Logistics		KING NIFC	
DIV J Repeater	RX 170.4125 TX 165.9625/123.0	NIFC	14				
Tactical Div/Group	RX 168.350 TX 168.350	KING NIFC	12	Air to Ground	RX 166.9375 TX 166.9375	KING NIFC	6
Prepared by (Resource Unit Ldr.) Randy Lownes		Approved by (Planning Sect. Ch.) Greg Strenkowski			Date July 31, 2011		Time 1800

DIVISION ASSIGNMENT LIST			1. Branch		2. Division East Initial Attack		
3. Incident Name Honey Prairie Complex			4. Operational Period Date: 8/01/2011 Time: 0800-2000				
5. Operations Personnel							
Operations	Buck Kline 8/5 / Brent McCarty 8/2			Branch Director			
Planning Ops	Heath Morton (t) 8/4			Division Supervisor		Rufus Crutchfield 8/4	
Safety Officer	Shane Barrow (O-1137) 8/8			Division Supervisor			
6. Resources Assigned this Period							
Strike Team/Task Force/ Resource Designator		Leader/ Name / Designator		Last Shift Date	Num. Per.	Drop Off PT./Time	Crew Names
TFLD (O-943)		Steven Clark		8/1	1	Satilla D.O.	
STEN (O-955)		Randy Scherr		8/1	1	Satilla D.O.	
TFLD (O-5) GAOKR		Rocky Chesser			1	912-276-3232	
Barrow 86 (E-1081)	GAGAS	Rusty Carroll		8/3	2	Satilla D.O.	P.Bryant
Dawson 86 (E-1082)	GAGAS	Tommy Williams		8/3	2	Satilla D.O.	B. Cox
Union 86 (E-1083)	GAGAS	Wesley Ssk		8/3	2	Satilla D.O.	J. Davenport
TPL SC 922 (E-7) SCSCC		Adam McCullough (E-7.8)		8/11	1		Stage @ Refuge HQ
TPL GAOKR 56 (E-22)		Phed Pipett		8/12	1		Stage @ Refuge HQ
TPL Camden 70 (E-1162) GAGAS		James D Armstrong (O-1115)		8/3	1	Satilla D.O.	
TPL Ware 71 (E-1171) GAGAS		Barry H. Bennett (O-1119)		8/3	1	Satilla D.O.	
TPL Ware 72 (E-1173) GAGAS		Thomas D. Whitley (O-1120)		8/3	1	Satilla D.O.	
TPL GA OKR 54 (E-21)		UNSTAFFED			0		Stage @ Refuge HQ
TPL GAOKR 55 (E-23)		UNSTAFFED					Stage @ Refuge HQ
7. Control Operations							
<ul style="list-style-type: none"> Respond to Initial Attack as requested Patrol and control rebum Initial attack IC will communicate sizeup information to the Honey Prairie communication. Additional resource requests to go through Honey Prairie operations. 							
8. Special Instructions							
<ul style="list-style-type: none"> Ensure LCES are in place before operations begin. Stay hydrated. Drive defensively with lights on at all times. 							
9. Division/Group Communication Summary							
	Function	Frequency	Channel	Function	Frequency	System	Channel
Command E Okee Repeater	RX 164.625/ 103.5 TX 163.150/ 103.5	KING NIFC	3	Logistics		KING NIFC	
Tactical Div/Group	RX 168.775 TX 168.775	KING NIFC	9	Air to Ground	RX 166.9375 TX 166.9375	KING NIFC	6
Prepared by (Resource Unit Ldr.) Randy Lownes		Approved by (Planning Sect. Ch.) Greg Strenkowski			Date July 31, 2011		Time 1800

DIVISION ASSIGNMENT LIST				1. Branch		2. Division Roads and Fireline Rehab Group	
3. Incident Name: Honey Prairie Complex				4. Operational Period Date: 8/01/2011		Time: Day: 0800-2000	
5. Operations Personnel							
Operations		Buck Kline 8/5 / Brent McCarty 8/2		Branch Director			
Planning Ops		Heath Morton (t) 8/4		Division Supervisor			
Safety Officer							
6. Resources Assigned this Period							
Strike Team/Task Force/ Resource Designator		Leader / Name / Designator	Last Shift Date	Num. Per.	Drop Off PT./Time		Pick Up PT./Time
READ (O-560)		Ron Phemetton					912-276-2349 cell
THSP (O-1143)		Aaron Souto	8/10	1			404-772-5393 cell
EQPM (O-1111.45)		Johnny Barwick	8/4	1			
HEQB (O-1141)		Bill Weldon	8/8	1			
HEQB (O-9)		Cory Bryant (t)	8/10	0	With Skidder		
HEQB		George Pelt		1			
Timberline Skidder (E-981)		Henry Tiner	8/11	1	PVT, Eastside		
H&H Excavating (E-1158)		Jackie Hedrick		1	PVT, Eastside		
Hughes Grader (E-230)		Buddy Pittman	7/31	1	PVT, Westside		
Cat Grader (E-530)		Lucious Corbett	8/11	1	PVT, Eastside		
7. Control Operations							
<ul style="list-style-type: none"> Coordinate efforts w/ resource advisor and logistics Notify Division Supervisor(s) when entering and leaving division. 							
8. Special Instructions							
<ul style="list-style-type: none"> Ensure that tractors are cleaned and free of debris daily. Examine work area for fire weakened snags. Ensure LCES are in place before operations begin and stay hydrated. Drive defensively and with lights on at all times. See Medical plan for EMT support. Implement MIST tactics 							
9. Division/Group Communication Summary							
Function	Frequency	System	Channel	Function	Frequency	System	Channel
Command	See ICS205	KING NIFC		Logistics	See ICS205	KING NIFC	
N.Okee Repeater				Air to Ground	See ICS205	KING NIFC	
Tactical Div/Group	See ICS205	KING NIFC					
Prepared by (Resource Unit Ldr.) Randy Lownes		Approved by (Planning Sect. Ch.) Greg Strenkowski			Date 7/31/2011		Time 1930

AIR OPERATIONS SUMMARY

Prepared By: Joe Bistryski, AOBD

Prepared Date: 7.31.2011

Prepared Time: 1800

1. INCIDENT NAME: Honey Prairie	2. OPS PERIOD DATE: August 1, 2011	START TIME: 0830	END TIME: 1900	SUNRISE: 0645	SUNSET: 2026
3. REMARKS (Safety Notes, Hazards, Air Operations Special Equipment, etc.): All helibase operations are now at Waycross airport. Utilize POGO as a heliport to pick-up recon pax from Refuge. <i>Afternoon thunderstorms NOTE: Latitude/Longitude format is "Degrees-Minutes-Decimal Minutes" (example: N30 41.42 W082 33.97)</i>					5. TFR #: Canceled 7/27/11 SEE and AVOI Diii

PERSONNEL	NAME	PHONE #	FREQUENCIES	AM	FM	
AOBD	Joe Bistryski	Cell 801-518-2797	AIR/ AIR FW	None assigned		AIRTANKERS / LEAD PLANES - None Available Local ATGS AIRCRAFT- 57Z
ASGS	None Assigned		AIR/ AIR RW-FF	122.375		OTHER: Waycross Airport Helibase: 912-287-4479 Waycross Airport Helibase Fax: 912-287-4458 ICP Heliport is Waycross Airport Helibase Okfenokee Dispatch: 912-496-7366 X230 Waycross Airport: N 31 16.16 10 W82 33.38
ATGS	None assigned					
HEB2 Waycross HB	Melvin Tate	Desk Cell 912-287-4479 850-849-0376	Georgia AIR/GRND (Smokey - Dozers)		159.285 W	BERGANZA HELISPOT N 31 07.22 W082 15.22 * don't use unless cleared with AOBD. POGO HELISPOT: N30 44.03 W082 07.41
			AIR/GROUND PRIMARY		166.9375	
			AIR/GROUND ALTERNATE		166.9000	
			TOLC		168.0125	
			AIR GUARD		168.625 T110.9	

9. HELICOPTERS (Use Additional Sheets as Necessary)

FAA N#	TY	MAKE/ MODEL	BASE	AVAIL	MANAGER	FAA N#	T	MAKE/ MODEL	BASE	AVAIL	MANAGER
26MW	1	K-1200	Waycross	0830	Kirby Cook 406-381-1212		Y				
57Z	3	206-L4	Waycross	0830	Robert Barrett 208-313-7837						

10. TASK/ MISSION/ ASSIGNMENT (Type/ function includes: Air Tactical, Retardant, Recon, Personnel Transport, Bucket Operations, SAR, etc.)

TYPE/FUNCTION	NAME OF PERSONNEL OR CARGO (if applicable) or instructions for tactical aircraft	MISSION START	FLY FROM	FLY TO
Bucket Ops/ Recon	26MW	As Requested	Waycross	
	All recon missions must have direct approval by the AOBD, 57Z	As Requested	Waycross/Pogo	
Medevac	57Z	As Requested	Waycross	



Fire Weather Forecast



FORECAST NO: 86

NAME OF FIRE: Honey Prairie Complex

PREDICTION FOR: Day Shift
SHIFT DATE: Monday 8/1/11

UNIT: Okefenokee National Wildlife Refuge

FORECAST ISSUED: 7/31/11 at 1600

SIGNED: John Franks
Incident Meteorologist

WEATHER DISCUSSION: A trough of low pressure is washing out over the area this morning and will be a focus for showers and some thunderstorms today. It will also bring more cloud cover which will lower high temperatures substantially this afternoon.

TODAY: Mostly cloudy. Showers and thunderstorms likely.

MAXIMUM TEMPERATURES: 89° - 94°
PM HEAT INDEX: 94° - 99°
MINIMUM HUMIDITY: 50-60%
20 FT WINDS: AM: SW 3-5 mph
PM: SW 4-7 mph

STABILITY/INVERSION: 4000 feet
TRANSPORT WINDS: SW 8 mph
DISPERSION INDEX: 25, Fair
CHANCE OF PRECIPITATION: 70%
PRECIPITATION AMOUNTS: Generally a quarter inch. T-storms will see amounts of 1-2 inches.
LIGHTNING ACTIVITY LEVEL: 4

TONIGHT: Becoming partly cloudy. Calm winds. Low temperatures 72° - 76°. Max RH 90-100%.

TUESDAY: Partly cloudy. A 20% chance of showers and thunderstorms.

MAXIMUM TEMPERATURES: 93° - 98°
PM HEAT INDEX: 98° - 103°
MINIMUM HUMIDITY: 44-54%
20 FT WINDS: AM: NW 2 mph
PM: N 5-8 mph shifting SE 5-8 mph.
TRANSPORT WINDS: N 7 mph
DISPERSION INDEX: 35, Good
CHANCE OF PRECIPITATION: 20%
LIGHTNING ACTIVITY LEVEL: 1

EXTENDED FORECAST:

	WEDNESDAY	THURSDAY	FRIDAY
SKY/WEATHER	Partly Cloudy / Isolated Showers and Thunderstorms	Partly Cloudy / Scattered Showers and Thunderstorms	Partly Cloudy / Scattered Showers and Thunderstorms
CHANCE PRECIP	20%	30%	40%
MINIMUM RH	42-52%	40-50%	45-55%
20 FT. WINDS	AM: Calm PM: SW 3-7 mph	AM: S 2 mph PM: SW 5-7 mph	AM: S 2 mph PM: S 5-8 mph
IN/MAX TEMPS	74 / 97	75 / 98	74 / 97

FIRE BEHAVIOR FORECAST

Fire: Honey Prairie Complex	Unit: GA-OKR-000001	Prediction for Day Shift
Forecast #85 Issued: 07/31/2011 1830 hrs	Signed: Keith Mousel	Shift Date: Monday 08/01/2011

GENERAL FIRE BEHAVIOR

Fuels around the Okefenokee Wildlife Refuge are predominately Fuel Model 7 (Southern Rough). Large to moderate acreage tracts of commercial timberland are mixed in throughout the entire perimeter surrounding the refuge. Fast moving wildfires with extremely high flame lengths and rapid rates of spread occur within the swamp.

Indicators/Threshold for Increased Fire Activity

- **Relative humidity dropping below 45%**
- **Fine dead fuel moisture 8% or less**
- Winds above 10 mph
- Dispersion above 70
- **Heavy fuel loadings**
- *** Items in BOLD are predicted to occur today***

SPECIFIC FIRE BEHAVIOR

- Fire behavior should be slow to develop today.
- Interior smoldering and some flare ups are possible, especially if winds increase.
- Expect fire to continue spreading through the shrub fuels with low rates of spread and minimal flame lengths. LAL 4

Fuel Type	Rates of Spread	Flame Length	Spotting Distance	Firebrand Ignition
Winds at 3 - 8 mph				
Shrub Fuels – SH4	1 – 3 ch/hr	1 – 2 feet	1/10 mile	44 %
Heavy Southern Rough- SH8	2 – 7 ch/hr	3 – 6 feet	1/10 mile	44 %
Timber Litter-Reburn TL8	1 – 3 ch/hr	1 – 2 feet	1/10 mile	44 %
Small Pine Plantation w/grasses GR5	1 – 7 ch/hr	1 – 3 feet	1/10 mile	44 %

One hour fine dead fuel moisture is at 8% for Monday. Moisture from rain has reduced the fire threat, HOWEVER some areas remain dry and burning continues. 1,000 hour fuels are drier than normal for this time of year. There is re-burn potential; mainly on the west side of the fire due to the amount of needle cast, fallen trees and scorched shrubs. Should wind become stronger than predicted, expect fire behavior to increase above predicted levels. **In areas where fuels have been herbicided, expect quick ignitions, extreme heat, quicker rates-of-spread, and possible group tree torching potentially producing spotting problems.**

NOTE- FIRE BEHAVIOR CALCULATIONS ARE FOR FIRES IN UNBURNED FUELS INCLUDING NEW IA STARTS.

All Divisions:

*The fire continues a slow spread through the thick bays and muck soils. Roots and fallen trees are protecting heat sources allowing the fire to burn organic soils from the bottom up. Be heads-up for falling trees. **70% chance of rain.***

Remember that most accidents occur on small fires or deceptively quiet areas of large fires.

Air Operations: Expect possible areas of smoke especially on the west and north side of the fire.

SAFETY:

WINDS – Stay abreast of changing wx conditions throughout the entire shift. **THUNDERSTORMS -** these severe winds can create extreme fire behavior, with winds gusting over 30 mph. **Live Trees/SNAGS – are falling in all Divisions – will be influenced by Thunderstorm outflow winds.** **FUELS:** Watch for pockets of cured shrubs or blankets of red needles beginning covering the forest floor re-burn is still possible. 1,000 and 10,000 hour fuels as well as deep duff pockets are providing the heat source. Stay focused, and put LCES in place before starting operations. *Energy Release Component (ERC) is running near average for this time of year.*

Safety Message

“You pay the most for safety when you try to do without it “

INCIDENT: Honey Prairie Complex **DATE:** 08/01/2011 **TIME:** 0800

Major Hazards and Risks: Communications
Driving
School Buses / Children
Complacency

Communications – Keep in constant communications with each other. Always make sure somebody knows exactly where you are and what your mission is. Notify your supervisor or safety immediately of any hazards or concerns.

Driving – Continue to use good judgment when driving in the fire areas and also in town. Sound decisions behind the wheel keep everyone safe. Remember to wear your seatbelts and be courteous to other drivers. Driving defensively is always the safest way.

School Buses / Children – Pay attention to speed limits, school crossings and unpredictable children, since these situations may require you to reduce your speed or stop.

Complacency – Once we get complacent, bad things can happen. Keep your head in the game and don't lose sight of our main objective -- **EVERYONE GOES HOME SAFE**

School Bus Safety

- *Avoid Harm. Obey the Stop Arm.*
- Leave adequate space between your vehicle and the bus.
- Stop for a stopped school bus when travelling either direction unless there is a divided median
- Remain stopped until the bus withdraws its Stop sign.
- Be on the lookout for kids around school bus loading and unloading areas.
- Obey all traffic signs and signals.
- Pay attention; avoid distractions.
- Do your part to make every school crossing a safe place for children to walk.

Watch-out Situation of the Day



Safety Officers: Mark Munns, Tommy Hawkins,
Shane Barrow & Tom Lail

INCIDENT ACTION PLAN SAFETY ANALYSIS		1. Incident Name	2. Date	3. Time
		Honey Prairie Fire	8/11/2011	Day Shift
LCES* Analysis of Tactical Applications Lookouts Communications Escape routes Safety zones LCES Mitigations		Other Risk Analysis		
Divisions	Indirect Fireline Power lines / Snags Road Conditions Frontal Assault Extreme Conditions Railroad Wildlife, Insects	Smoke	Traffic/Driving	Communications
All Divisions	1, 2, 3, 4, 5, 7, 8, 10, 14 2, 6, 11, 15, 17 12, 20, 26 1, 2, 3, 4, 5, 7, 8, 14 7, 10 1 2, 23	24	12, 17, 19, 20, 22, 26	1, 3, 10, 14, 19, 24, 25
	1. Establish & maintain LCES. Report LCES checks twice daily to DIVS on line & staging. 2. Look UP, DOWN and AROUND 3. Post experienced Lookouts. Make sure LCES is in place and make known. 4. Use Aerial Resources as Lookout if available. 5. Flag escape routes on right side of escape route facing outward. Create new escape routes as you progress and identify Safety Zones on the ground and maps. 6. Identify, mark & mitigate. 7. FBAN/Meteorologist to monitor weather updates and advisories. 8. Ensure Fireline is Anchored to black or manmade/natural barrier. 10. Keep Firefighters informed of any changes in predicted weather, consider at least a two day weather pattern when planning Strategic Firing operations. 11. Refer to IRPPG, pg. 12 on Power Line Hazards. 12. Observe all traffic signals and speed limits. Drive with lights on. 14. Ensure GOOD tailgate briefings with resources unable to attend Operational Briefing (Include Ops, Logs, Fin & Plans info.). 15. Scout ahead of tractor operations to avoid making contact with power poles and guide wires when tying into roads. Power companies are working in some DIVS, avoid all down lines as they may become charged.	16, 18, 21, 26	16, 18, 21, 26	16. Take adequate rest breaks and encourage to drink water NOW through briefings. 17. Defensive driving will be addressed in all briefings. 18. All personnel must meet the 2:1 work/rest ratio. Line supervisors and Safety will monitor closely. 19. Notify Operation and Safety of Railroad track issues to ensure safety of firefighters. 20. Ensure Traffic Planning is safe and enforced. Heed Defensive Driving techniques noted in Safety Messages. 21. Relocate staging area when driving conditions warrant. 22. Use spotter when backing vehicle(s). 23. Use protective spray with deet on skin (Not on Nomex), permethrin can be used on nomex clothing 24. Establish smoke/fog signs on roadways. Coordinate with Department of Transportation. 25. Follow establish communication plan, flight follow through dispatch
				26. Watch-out for school buses and for children along the edge of 27. Utilize headlamps and glow sticks or flashing lights on back to ensure visibility to equipment operators. Wear reflective fireline jacket if working near road shoulders. Keep lights on at ALL times.
Prepared by (Name and Position)		Reviewed by		
ICIS 215A		Tommy Hawkins		
Shane Barrow		SOF2		

MEDICAL PLAN	Incident Name Honey Prairie Complex	Date Prepared 7/31/2011	Time Prepared 1800	Operational Period 8/01/2011
--------------	--	----------------------------	-----------------------	---------------------------------

5. Incident Medical Aid Station

<u>Medical Aid Stations</u>	<u>Location</u>	Paramedics Yes No	
MEDICAL UNIT (ICP)	Honey Prairie Complex ICP- (H,I,J,K,L,M,N,O DIV) Mark Millirons (EMT)MEDL (706)741-4216 (24 Hours) - Jameson Inn, Waycross (8-5) (East IA) will be covered by Mark Millirons if needed.		X
WEST SIDE (Line EMT)	*Fred Mason(EMTB) Eng. 405 (A,B,C,D,E,F,G DIV) (8-7) Robert Carswell (EMT) MEDL (912)286-1648 (A,B,C,D,E,F,G,T,V,Y,Z) - Days Inn, Waycross (8-6) (West IA) will be covered by Robert Carswell if needed	X	

Ambulance Services

Name	Address	Phone	Paramedic Yes No	
Clinch County EMS (WEST SIDE)	Homerville, GA (911 to activate)	912-487-5211 ext. 4567	Yes	
Ware County EMS (NORTHSIDE)	Waycross, Georgia (911 to activate)	912-281-9467	Yes	
Charlton County EMS (EAST SIDE)	Folkston, GA (911 to activate)	912-496-7321	Yes	

Air Ambulance Service

Trauma 1	Address	Phone	Yes	No
Trauma 1	Lake City, FL (16 min/air to Fargo ICP)	1-800-223-4878(freq. 155.340)	Yes	
Trauma 1	Jacksonville, FL (26 min/air to Fargo ICP)	1-800-223-4878(freq. 155.340)	Yes	
AirMed	Augusta, GA (2 hrs/air to Fargo ICP)	1-888-792-9245(freq. 155.340)	Yes	
Lifeflight	Jacksonville, FL (35 min/air to Fargo ICP)	1-877-870-7779(freq. 155.340)	Yes	
Air Evac	Waycross, GA (17 min/air to Fargo ICP)	1-800-247-3822(freq. 155.340)	Yes	
US Coast Guard (Heli-Rescue)	Savannah GA	1-912-652-4646 (freq. 155.340)	Yes	

7. Hospitals

Name	Address	Travel Time		Phone	Helipad		Burn Center	
		Air	Ground		Yes	No	Yes	No
Satilla Regional	410 Darling Ave Waycross Ga N 31°13.56 W 82°21.058	18 min	45 min	912-283-3030	Yes			No
Clinch Memorial Hospital (WEST SIDE)	1050 Valdosta HWY Homerville, GA		25 min	912-487-5211 ext 4502	Yes			No
Charlton Memorial Hospital (EAST SIDE)	1203 3 rd St. Folkston, GA		50 min	912-496-2531	Yes			No
Memorial Hospital	Savannah, GA 4700 Waters 3200.7 8107.6	30 min		912-350-8999	Yes			No
Shands Hospital (level I)	Jacksonville, FL N 30°20' 97 W 82° 13 992	26 min	1.5 hrs	800-223-4878	Yes		Yes	
Shands Burn Center	Gainesville, FL 38.33 N 082 20.73W	33 min	1.5 hrs	352-265-0300	Yes		Yes	

8. Medical Emergency Procedures

Identify any EMTs and Paramedics in your crews. All medical emergencies will be reported to the Division Supervisor who will assume command and notify Line Medics.

On scene personnel will:

1. Provide medical care & stabilize patient.
2. Call 911 if possible and provide the information requested.
3. Notify Communications via radio over Command Channel
4. Communications will clear radio traffic for medical emergency.
5. Communications will confirm 911 has been notified coordinate with IC, SOF, MEDL.
6. DIVS will notify the Field Ops Section Chief.

MAJOR EMERGENCIES – Secure the area and identify witness for later investigation. Keep an accurate log of events.

NOTE: Do not give Patients Name over the radio!

HELISPOTS

Pocket Helispot 30 47 30.02 x 82 22 39.5 (West side), mile marker 4, HWY 177 Steven C. Foster State Park

Fargo Helispot 30 40.945 x 082 33.640 (West side), HWY 441- Steven C. Foster Visitor Center

POGO Helibase 30.44.03 x 82.07.41 (East side)

Evac Yankee

Helispot 6

Rd. 32 and 32A, N 30° 53.280 W 082° 33.880

Helispot 7

Tatum Rd. Pond N 30° 50.280 W 082° 33.857

***Alternate site can be established following guidelines for safety found with IRPG and local EMS resources.**

INJURY REPORTING PROCESS:

Nature of Injury: _____

Location of Patient: _____

Transportation Requested by: Air___ Ground___

Pick Up Point: _____

Lat: _____ Long: _____

Patient Unit ID: _____

Is an EMT w/Patient: Yes___ No___

Age:___ Sex: Male___ Female___

Weight (If Air Evac. is needed): _____

Prepared by: Mark Millirons (EMT)MEDL

10. Reviewed by: Shane Barrow, SOF

INCIDENT RADIO COMMUNICATIONS PLAN ICS-205			Incident Name	GROUP 22		Date/Time Prepared	Operational Period	Date/Time			
			Honey Prairie			07/31/2011-17:00	8/01/2011	0800-2000			
Ch #	Function	Channel Name	Assignment	RX Freq	NW	RX Tone/NAC	TX Freq	NW	TX Tone/NAC	Mode A,D or M	Remarks
1	Command	West Okee Repeater	Sec West Branch CMD	167.1250	N	156.7	163.1500	N	156.7	A	Stephen Foster State Park
2	Command	South Okee Repeater	Sec East/West Branch CMD	164.7750	N	123.0	163.1500	N	123.0	A	Eddy Florida
3	Command	East Okee Repeater	PRIMARY East Branch CMD	164.6250	N	103.5	163.1500	N	103.5	A	Refuge Headquarters
4					N			N		A	NO Longer used
5	Command	North Okee Repeater	PRIMARY North Branch CMD	164.5750	N	206.5	163.1500	N	206.5	A	Waycross
6	Air-Ground	Air to Ground	PRIMARY	166.9375	N	CSQ	166.9375	N	CSQ	A	
7	Tactical	MOB-MOB	GFC Contingency	159.3900	W	CSQ	159.3900	W	156.7	A	
8	Tactical	V-Fire 21W WHITE	Structure Protection Group West I.A.	154.2800	W	CSQ	154.2800	W	156.7	A	
9	Tactical	USFS 9	DIV A,B,C, D,E,F,G,T&V (East I/A)	168.7750	N	CSQ	168.7750	N	CSQ	A	
10	Tactical	S.E. Compact	DIV	159.2850	W	CSQ	159.2850	W	CSQ	A	
11	Tactical	USFS 11	DIV M,N,O	168.2000	N	CSQ	168.2000	N	CSQ	A	
12	Tactical	Refuge Tac 1	DIV H, I, J, K,L	168.3500	N	CSQ	168.3500	N	CSQ	A	
13	Tactical	FL 190	DIV Y,Z	151.2725	N	CSQ	151.2725	N	CSQ	A	
14					N	CSQ		N		A	No Longer used
15	Air-Ground	Air to Ground	SECONDARY	166.9000	N	CSQ	166.9000	N	CSQ	A	
16	EMERGENCY	AIR Guard	Air OPS.	168.6250	N	CSQ	168.6250	N	110.9	A	
Prepared by (Communications Unit) Kelly Towe, COML Roy Fortenberry, COMT/COML Incident Dispatcher: 912-286-1660											
Cloning at ICP communications and briefings,											

The convention calls for frequency lists to show four digits after the decimal place, followed by either an "N" or a "W", depending on whether the frequency is narrow or wide band. **Mode** refers to either "A" or "D" indicating analog or digital (e.g. Project 25) or "M" indicating mixed mode. All channels are shown as if programmed in a control station, base stations, mobile or portable radio.

HONEY PRAIRIE PHONE LIST			08/01/11		
Incident		Communication		(Hours: 0700-2000) 912-286-1660	
AGENCY OFFICIALS			OPERATIONS		
Curt McCasland	602-359-0013	USFWS AA			
Mindy Gautreaux	912-282-7500	USFWS Deputy AA		Buck Kline	229-460-2062 Field Operations
Frank Sorrells	912-381-7503	GFC AA		Heath Morton (t)	423-240-7509 Planning Operations
James Karels	850-228-7763	FL DOF AA		Brent McCarty	229-938-8718 West Branch
Diane Adams	912-266-5421	GEMA		DIVISIONS	
Mike Housh	912-281-1575	USFWS AREP			
COMMAND					
Troy Floyd	706-676-0168	IC		Charles Arnold	423-802-6507 DIVS A, B, C, D, E, F, G
RESOURCE ADVISORS					
Ron Phernetton	912-276-2349	Resource Advisor		Mike Lee	770-576-9594 DIVS T, V, Y, Z
Jessica Bowen	912-536-2995	Resource Advisor		Trent Ingram	229-726-0285 West IA
Rocky Chesser	912-276-3232	Resource Advisor		DIVISIONS	
INFORMATION 912-496-2566					
Jenny Lyn Bruner	912-496-2566	Fire Information		Tracy Mobley	706-346-4052 DIVS H, I, J, K, L, M, N, O
SAFETY					
Tommy Hawkins	706-676-7538	Safety Officer		Rufus Crutchfield	478-986-7466 East IA
Mark Munns	706-401-5903	Safety Officer		Aaron Souto	404-772-5393 Roads & Fireline Rehab Grp
Tommy Lail	404-772-5338	Safety Officer		AIR OPERATIONS	
Shane Barrow	706-699-2412	Safety Officer		Joseph Bistryski	801-518-2797 Air Ops Branch
Mark Millirons	706-741-4216	Medical Unit Leader		Melvin Tate	912-287-4479 HEB2 - WAYCROSS
Robert Carwell	912-286-1674	Medical Unit Leader			
Medical Unit	912-637-5236				
DISPATCH					
Okeefenokee Dsp	912-496-7366	Okeefenokee			
Suwannee Dispatch	386-758-5700	Fla wildfires, other			
Honey Prairie Dspth	912-286-1660	Honey Prairie ICP			
Waycross Dispatch	912-287-4915	Ga wildfires, other			
LOGISTICS West					
Willie Boston	770-328-3186	LSC			
Thomas Lambert	912-287-6540	FACL			
Hotel Mgr	404-772-5336	24 hour lodging			
Hotel Mgr	912-287-6540	Lodging			
Kevin Reish	404-276-1998	Security Manager			
Tim Jones	912-387-6480	GSUL			
Steve Blackwell	404-772-5330				
Bob Kookan		Food Unit Leader			
Amy Weaver (t)	912-637-5239	SPUL			
Kelly Towe	478-308-4770	COML			
			PLANNING 912-287-6557 FAX 912-287-6557		
				Greg Strenkowski	478-951-2421 Planning Section Chief
				Keith Murphy (t)	912-637-5241 Situation Unit Leader
				John Franks	513-519-5818 IMET
				Harold West	912-637-5241 DMOB
				Keith Mousel	850-228-7756 FBAN
			FINANCE 912-287-6568 FAX 912-287-6564		
				Amy Treadwell	770-658-6641 Finance Section Chief
					912-281-6876 Buying Team Leader
				Kurt Hinz	912-287-6544 Comp Claims

ORDERING		
Jim Grimes	404-558-4476	Ordering Manager
		LSC
John Crain	404-772-5363	Base Camp Mgr
		Supply Unit Leader
Joe Hoisington	530-905-3715	EQPM
COOPERATORS		
COUNTY		
	912-496-7229	Charlton County EMA
John F. Meyer - Chairman	912-496-2549	Charlton County Commissioners
Dobie Conner	912-496-7321	Charlton County Sheriff
Jesse Booth	912-520-0061	Clinch County EMA
Jonathan Daniel	912-281-5158	Ware County EMA
Jessie Jordan	912-816-6063	Ware County Fire Dept
Joe Morris	912-281-6020	Ware County Sheriff
Robbie Sutton	912-599-9027	Tri County 911
STATE		
GFC Fargo District Office	912-637-5270	
GFC Satilla District Office	912-287-4915	
Blair Joiner	229-237-9026	GFC Clinch Chief Ranger
Jason Gillis	912-314-9233 912-637-5504	GFC Satilla Assistant Mgr.
Brian Gray	229-894-4628 912-673-5274	Stephen Foster State Park
Travis Griffin	912-281-5790	Laura Walker State Park
Crystal Paulk-Buchanan	404-535-1048	GEMA PIO
Georgia Highway Patrol	912-287-6500	
FEDERAL		
Okefenokee Fire Shop	912-496-4181	
Okefenokee NWR HQ (East)	912-496-7366	
Okefenokee NWR (West)	912-637-5322	
Okefenokee Visitor Center	912-496-7836	

LANDOWNERS		
Jim Barrett	229-412-3133	Langdale/GOAL Chairman
Wesley Langdale	229-220-2602	Langdale
Hal Rowe	229-412-3133	Langdale
Langdale Office	229-242-7450	Langdale Office
Mike Conlon	386-365-3882	Rayonier Unit Supervisor
Ray Carter	386-288-6626	Rayonier
Ed Carter	386-288-6626	Rayonier
Doug Nuss	912-390-1037	Rayonier
Randall McCrady	912-283-4077 W	Rayonier
Colin Myerson	229-506-1565	Superior Pine Products Co
Robbie Lee	229-356-0526	Superior Pine Products Co
Superior Pine Office	912-637-5261	Superior Pine Products Co
Al Alexander	850-843-0104	The Forestry Co
Savell Schmidt	850-843-1181	The Forestry Co
John Bogue	850-843-1192	The Forestry Co
Joe Hopkins	912-276-0911	Toledo Timber
Chris Gowan	912-276-0965	Toledo Timber
Martin Bell	912-283-0583	Swamp Park
Crystal Peeples	352-316-0632	FIA
Steve Davis	912-614-1828	Davis Community
Trevor Fortner	912-599-9271	Little Suwannee
Tim Jarrell	912-223-7120	Hancock Forest Mgmt.
RAILROADS		
Norfolk Southern	800-453-2530	
Sid Moody	904-318-7983	Norfolk Southern Railroad
Chad Edwards	404-582-4909	Norfolk Southern Railroad
	540-797-9918	
Eric Sams	904-576-9907	
Norfolk So Emergency Dispatch	404-529-1597	
CSX Randy Dixon	912-270-0699	
CSX Dispatch	800-232-0144	

FINANCE

07/28/11

EQUIPMENT

EVERYONE, PLEASE put E#'s on top right corner of shift ticket.
East side fuel supplier: Please send all fuel books to Finance daily.
E-981- Please see Finance.

TIME

O-899 Robert Schober-See finance. Missing CTR and need some clarification.

IF POSSIBLE, PLEASE COME BY FINANCE AND REVIEW YOUR TIME THE DAY BEFORE YOU DEMOB.
ALSO, **BRING YOUR LAST CTR'S AND SHIFT TICKETS WITH YOU** TO FINANCE ***WHEN YOU DEMOB***
RATHER THAN TURNING IN AT THE BRIEFING IN THE MORNING. THIS WILL HELP AVOID DELAYS THE
DAY OF DEMOB. THANKS.

WHEN DEMOBING FINANCE SHOULD BE THE NEXT TO THE LAST SECTION YOU GET SIGNED OFF ON
YOUR CHECKOUT FORM WITH DEMOB UNIT BEING THE LAST. WE WILL CHECK YOUR TIME FOR YOU
PRIOR TO EVERYTHING ELSE BEING SIGNED OFF, BUT WILL NOT SIGN OFF TIME UNTIL THE OTHER
SECTIONS ARE DONE.

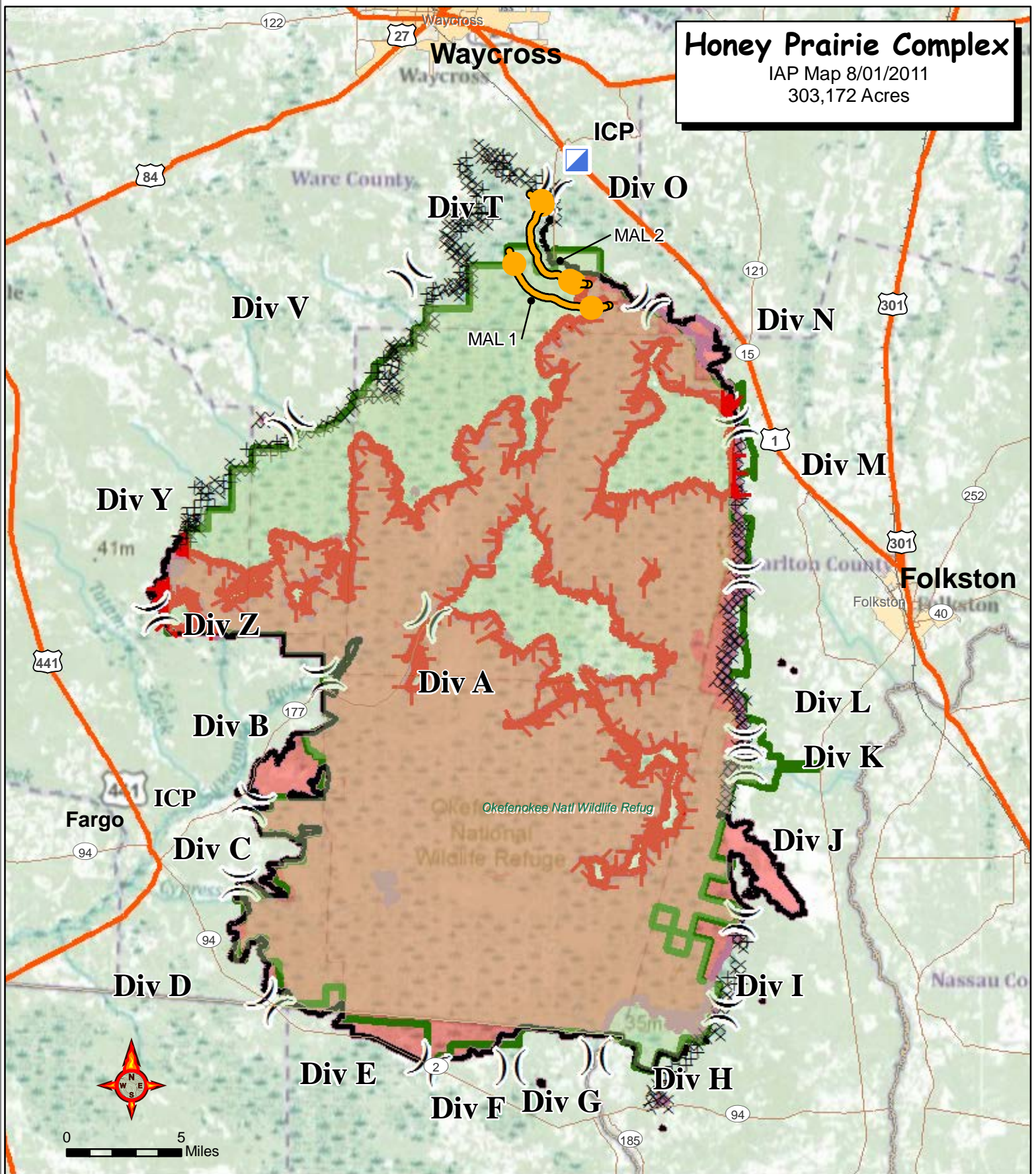
UPCOMING_DEMOB

Number	Name	Kind	Unit	Travel	Jetport	DemobDate
A-35.2	HUNTING, MARK ZEV	HM	MTHN	A/R	HLN	08/01/2011
A-42	HELICOPTER - T3S -	HEL	WYW	AOV		08/01/2011
A-42.14	EDER, JUAN LEE	HM	WYW	AOV	RIW	08/01/2011
A-42.15	FUNK, KYE RICHARD	HEC	WYW	AOV		08/01/2011
A-42.16	WESAW, MANUEL LEE	HEC	WYW	AOV		08/01/2011
A-42.20	MCBATH, JEFFREY	HM	WYW	AOV		08/01/2011
E-230	HUGHES JD 770 CH	GR	GAOK	POV		08/01/2011
E-1158	H&H CONSTRUCTION	EXC		POV		08/01/2011
E-1158.1	HENDRIX, JACKIE	DRI		POV		08/01/2011
E-1159	GAGAS GRAY DIVS	PU	GAGA	AOV		08/01/2011
O-559	BOWEN, JESSICA	REA	GAOK	AOV	JAX	08/01/2011
O-891	HOLMAN, HERSCHEL	SOF	FLFLS	POV	JAX	08/01/2011
O-1111.7	GRAY, JIMMY	DIV	GAGA	AOV		08/01/2011
E-1160	GAGAS ARNOLD DIVS	ENG	GAGA	AOV		08/02/2011
O-937	ELMSTROM, KEVIN D	TFL	MTLN	AIR	MSO	08/02/2011
O-942	KRUPSKI, BEN J	TFL	IDCTF	AIR	IDA	08/02/2011
O-943	CLARK, STEVEN	TFL	CASH	AIR	RDD	08/02/2011
O-955	SCHERR, RANDY T	STE	CAMD	AIR	RNO	08/02/2011
O-960	PELLEGRINI, PAUL	DOZ	AKKKS	AIR	ENA	08/02/2011
O-1109	MILLER, MARTHA	PTR	FLFLS	AOV		08/02/2011
O-1111.8	ARNOLD, CHARLES	DIV	GAGA	AOV		08/02/2011
O-1111.9	MOBLEY, TRACY	DIV	GAGA	REN		08/02/2011
A-42.17	VIOLANTE, GEORGE	HM	WYW	AIR	RIW	08/03/2011
A-42.18	KEENEN, KEITH	HEC	WYW	AOV	RIW	08/03/2011
A-42.19	ROBERTS, ADRIEN	HEC	WYW	AOV	RIW	08/03/2011
A-81.1	COOK, KIRBY	HM	MTBR	AOV	MSO	08/03/2011
E-1164	SUMTER 32 MCCARTY	ENG	GAGA	AOV		08/03/2011
O-872	KOOKEN, ROBERT	FDU	MTKN	AIR	GEG	08/03/2011
O-1110	LOWNES, RANDY	RES	CORY	AIR	COS	08/03/2011
O-1111.5	MCCARTY III,	OSC	GAGA	AOV	ALB	08/03/2011
O-1111.10	LEE, MICHAEL E	DIV	GAOK	POV	ATL	08/03/2011

Record Count: 31

Honey Prairie Complex

IAP Map 8/01/2011
303,172 Acres



- Incident Command Post
- Uncontrolled Fire Edge
- Completed Dozer Line
- Completed Line
- Refuge Boundary
- FirePolygon

Division

Perimeter as of 7/30/2011 1200
C. Bailey GISS



UNIT LOG		1. Incident Name Honey Prairie Complex	2. Date Prepared	3. Time Prepared
4. Unit Name/Designators		5. Unit Leader (Name and Position)		6. Operational Period
7. Personnel Roster Assigned				
Name		ICS Position		Home Base
8. Activity Log				
Time	Major Events			
9. Prepared by (Name and Position)				