

Honey Prairie Complex

GA-OKR-000001

INCIDENT ACTION PLAN

Operational Period

WEDNESDAY

August 3, 2011

0800-2000

Incident Commander

Troy Floyd

Accounting Codes

FWS – 9141-F25M-2J

NPS – 5023 F25M E11

BLM – F25M

USFS – PRF25M_1502

Initial Attack – F4PM



*An Equal Opportunity
Employer & Service Provider*

07/25/2011

Letter from GFC Incident Commander:

To: All Honey Prairie Incident Personnel

As Georgia Forestry Commission's Type 2 Incident Commander, I am committed to a policy of "zero tolerance" of inappropriate behavior during incident operations. Any form of harassment, discriminatory practices, or disrespectful behavior will not be tolerated.

Guidelines on in-appropriate behavior both "on Duty" and "off Duty" while assigned are addressed within each agencies policies. Our Team expects all incident personnel to follow established government policies for behavior along with all Illegal drug and alcohol directives.

Our Incident Management Team endorses and supports an attitude of mutual respect for all personnel and the public we serve.

We expect a strong work ethic and an attitude of Safety at all times!

Sincerely,

/s/ Troy E. Floyd Jr.

Incident Commander
Georgia Forestry Commission's Type 2 Incident Management Team

INCIDENT OBJECTIVES	1. INCIDENT NAME Honey Prairie Complex	2. DATE PREPARED 8/2/11	3. TIME PREPARED 1700
4. OPERATIONAL PERIOD (DATE/TIME) Wednesday, August 3, 2011 0800 – 2000			
5. GENERAL CONTROL OBJECTIVES FOR THE INCIDENT (INCLUDE ALTERNATIVES)			
<ol style="list-style-type: none"> 1. Provide for safety of incident personnel and public in all incident operations. 2. Maintain a positive working relationship with all adjacent landowners, cooperators State and Federal partners. Inform, involve and communicate incident planning and operations with all partners. 3. Contain all fires that are within the Okefenokee National Wildlife Refuge, inside the Refuge and/or inside the swamp edge break if possible. 4. In cooperation with local timberland owners, use full suppression strategies and tactics to minimize damage to private timberlands and improvements and to prevent fires outside the Refuge from entering the Refuge. 5. Assist in management and suppression of additional fires (new starts or breakouts) in the vicinity as approved by Agency Administrators and Incident Commander. 6. Protect all cultural and archeological sites and structures within the refuge, with particular attention to facilities at Okefenokee Swamp Park. 7. Manage the fires cost-effectively consistent with the values at risk. 8. Implement structure protection as necessary for at-risk facilities and communities. 9. Coordinate suppression actions with assigned Refuge Resource Advisors 			
6. WEATHER FORECAST FOR OPERATIONAL PERIOD See attached forecast for area specific weather information.			
7. GENERAL SAFETY MESSAGE Drive defensively and use spotter when backing. Ensure LCES is in place and known by all personnel. Drink plenty of water and take frequent rest breaks. Ensure proper use of PPE during all operations.			
8. Attachments <input checked="" type="checkbox"/> if attached			
<input checked="" type="checkbox"/> Organization List (ICS 203)	<input checked="" type="checkbox"/> Incident Map	<input checked="" type="checkbox"/> Safety Message	
<input checked="" type="checkbox"/> Assignment List (ICS 204)	<input type="checkbox"/> Traffic Plan	<input type="checkbox"/> Demobilization Procedures	
<input checked="" type="checkbox"/> Communications Plan (ICS 205)	<input checked="" type="checkbox"/> Finance Message	<input checked="" type="checkbox"/> Unit Log	
<input checked="" type="checkbox"/> Medical Plan (ICS 206)	<input checked="" type="checkbox"/> Phone List		
9. PREPARED BY (PLANNING SECTION CHIEF) Greg Strenkowski		10. APPROVED BY (INCIDENT COMMANDER) Troy Floyd	

ORGANIZATION ASSIGNMENT LIST		9. Operations Section	
1. Incident Name Honey Prairie Complex GA-OKR-000001		Chief	Buck Kline 8/5
2. Date 8/02/2011 3. Time 1000 hrs		a. Divisions/Groups	
4. Operational Period 8/03/2011 0800 - 2000			
5. Incident Commander and Staff			
Incident Commander	Troy Floyd 8/5	Division	A-B-C-E-F-G-T-V-Y-Z Heath Morton 8/4
Safety Officers	Tommy Hawkins 8/5 Mark Munns 8/5 Shane Barrow 8/8	Group	IA-WEST Trent Ingram 8/5
Information Officer	Jenny Lynn Bruner 8/5	Division	H-I-J-K-L-M-N-O Rufus Crutchfield 8/5
6a. Agency Administrators			
FWS		Group	IA-EAST Rufus Crutchfield 8/5
FWS	Mindy Gautreaux	Group	Roads & Rehab Aaron Souto 8/10
6b. Agency Representatives		b. Divisions/Groups	
GFC	Frank Sorrells		
FLDOF	James Karels		
FWS AREP	Mike Housh		
FWS-Refuge PAO	Art Webster		
GEMA AREP	Alan Robinson / Diane Adams		
USFS AREP	Ivan Greene		
7. Planning Section			
Chief	Greg Strenkowski 8/5	c. AIR OPERATIONS BRANCH - Honey Prairie	
Resource Advisors	Ron Phernetton, Jessica Bowen, Rocky Chesser	Air Operations Branch Director	Joseph Bistryski 8/4
Resources Unit	Josh Burnette 8/5		
Situation Unit	Keith Murphy(T) 8/5		
FBAN	Keith Mousel 8/9	d. AIR OPERATIONS BRANCH - Pogo	
Demob Unit	Harold West 8/5	Waycross Helibase Mgr	Melvin Tate 8/14 (O-1150)
Documentation			
GIS	Josh Burnette 8/5		
CTSP	Rusty Brown 8/5		
SCKN	Mike Jones 8/5		
8. Logistics Section		10. Finance Section	
Chief	Willie Boston 8/5	Chief	Amy Treadwell 8/5
Supply Unit	Amy Weaver (T) 8/5	Deputy	
GSUL	Tim Jones 8/5 Steve Blackwell 8/5	Time Unit	Darline Matheney 8/5 John Sunday (t) 8/5
ORDM	Jim Grimes 8/5 / Tim Redick (t) 8/7		
COML	Kelly Towe 8/5	Comp Claims Unit	Kurt Hinz 8/5
Medical Unit	Mark Millirons 8/5	Cost	Grace Reid 8/5
Facilities	Thomas Lambert 8/4 Dennis Evans 8/5 Jeremy Hughes 8/5	Purchasing Agent	Rhonda Vickerman 8/15 Anna Bryant 8/16
Food	Chris Barnes 8/5		
SEC1		EQTR	Doug Chasseur 8/6
COMT	Roy Fortenberry 8/5		
EQPM	Richard Young (T) 8/5 JohnnyBarwick 8/4 Kenneth Edge 8/5		
RCDM	Jeffrey Smith 8/12		
		Prepared by: R Lownes	RESL

DIVISION ASSIGNMENT LIST				1. Branch		2. Division A, B, C, D, E, F, G,T, V, Y, Z	
3. Incident Name Honey Prairie Complex				4. Operational Period Date: 8/03/2011 Time: 0800-2000			
5. Operations Personnel							
Operations		Buck Kline 8/5		Branch Director			
				Division Supervisor		Heath Morton 8/4	
Safety Officer		Tom Lail 8/11					
6. Resources Assigned this Period							
Strike Team/Task Force/ Resource Designator		Leader / Name / Designator		Last Shift Date	Num. Per.	Drop Off PT./Time	Crew Names
READ (O-559) GAOKR		Jessica Bowen			1		912-536-2995
TFLD (O-1139)		Blair Joiner		8/8	1		
ENG6 (E-3) GAOKR FWS		Nathan Herron		8/13	3		T. Price, T. Hawkins
IL Eng 40 (E-392) ILSHF FS		Bobbi Archdale		8/4	3		J. Paukert, C. Mann
MN Eng 6232 (E-838) MNMFC FWS		Duane King		8/4	3		T. Elg, D. Lantz
MN Eng 652(E-404) MNSUF FS		Andrew Drange		8/7	3		H. Severson, S. Westlin
ME ENG6 (E-405)(MEMHR)FWS		Fred Mason (EMT)		8/7	3		J. Goetz, A. Currier
GA ENG6 (E-2) GAOKR		UNSTAFFED					
Hughes WAT2 (E-954)		Sonny Moore		8/4	1	PVT	
EMT (O-1125)		Robert Carswell		8/5	1		
7. Control Operations							
<ul style="list-style-type: none"> • Improve swamp break boundaries for fire breaks, work w/resource advisor • Make contact with the Resource Advisor before using mechanical equipment. • Safely push down with equipment all snags whether on fire or not that are a threat to success or tactical operations. 							
8. Special Instructions							
<ul style="list-style-type: none"> • Ensure LCES are in place before operations begin. Stay hydrated. • Drive defensively and with lights on at all times. • Boggy terrain: Be careful and aware when working around this type of area. 							
9. Division/Group Communication Summary							
Function	Frequency	System	Channel	Function	Frequency	System	Channel
Command N Okee Repeater	RX 164.5750/206.5 TX 163.150/206.5	KING NIFC	5	Logistics		KING NIFC	
Tactical Div/Group	RX 168.775 TX 168.775	KING NIFC	9	Air to Ground	RX 166.9375 TX 166.9375	KING NIFC	6
Prepared by (Resource Unit Ldr.) Randy Lownes		Approved by (Planning Sect. Ch.) Greg Strenkowski			Date August 2, 2011		Time 1800

DIVISION ASSIGNMENT LIST			1. Branch		2. Division West - Initial Attack		
3. Incident Name: Honey Prairie Complex			4. Operational Period Date: 8/03/2011		Time: 0800-2000		
5. Operations Personnel							
Operations		Buck Kline 8/5	Branch Director				
			Division Supervisor		Trent Ingram 8/5		
Safety Officer		Tom Lail 8/11					
6. Resources Assigned this Period							
Strike Team/Task Force/ Resource Designator		Leader / Name / Designator	Last Shift Date	Num. Per.	Drop Off PT./Time	Crew Names	
TFLD (O-899)		Bob Schober	8/18	1	FARGO	R&R 8/3, 8/4	
Monroe 86 (E-1084) GAGAS		Chad Dorminy	8/4	2	FARGO	J. Price	
TPL Appling 70 (E-1165) GAGAS		Joseph A. Smith Jr. (O-1116)	8/3	1	FARGO		
TPL Clinch 72 (E-1167) GAGAS		William A. Register (O-1117)	8/3	1	FARGO		
TPL Clinch 75 (E-1169) GAGAS		Christopher J. Henderson (O-1118)	8/3	1	FARGO		
TPL Glynn 72 (E-1175) GAGAS		Robert L. Danley (O-1121)	8/3	1	FARGO		
TPL Jeff Davis 70 (E-1177) GAGAS		Berry J. Bohannon (O-1122)	8/3	1	FARGO		
7. Control Operations							
<ul style="list-style-type: none"> Respond to Initial Attack as requested Initial attack IC will communicate size up information to Honey Prairie incident communications. Additional Resource Requests go through Honey Prairie Operations. 							
8. Special Instructions							
<ul style="list-style-type: none"> Ensure LCES are in place before operations begin. Stay hydrated. Drive defensively and with lights on at all times. 							
9. Division/Group Communication Summary							
Function	Frequency	System	Channel	Function	Frequency	System	Channel
Command N Okee Repeater	RX 164.5750/206.5 TX 163.150/206.5	KING NIFC	5	Logistics	See ICS 205	KING NIFC	
Tactical Div/Group	RX 154.280 TX 154,280/156.7	KING NIFC	8	Air to Ground	RX 166.9375 TX 166.9375	KING NIFC	6
Prepared by (Resource Unit Ldr.) Randy Lownes			Approved by (Planning Sect. Ch.) Greg Strenkowski			Date August 2, 2011	Time 1930

DIVISION ASSIGNMENT LIST			1. Branch		2. Division H, I, J, K, L, M, N, O		
3. Incident Name Honey Prairie Complex			4. Operational Period Date: 8/03/2011 Time: 0800-2000				
5. Operations Personnel							
Operations		Buck Kline 8/5		Branch Director			
				Division Supervisor		Rufus Crutchfield 8/4	
Safety Officer		Shane Barrow (O-1137) 8/8					
6. Resources Assigned this Period							
Strike Team/Task Force/ Resource Designator		Leader/ Name / Designator		Last Shift Date	Num. Per.	Drop Off PT./Time	Crew Names
READ (O-559) GAOKR		Jessica Bowen			1		912-536-2995
TFLD (O-1156)		Seth Pierce		8/15	1		
Chattooga 86 (E-77) GAGAS		Dean Comett		8/3	2		P. Floyd
Murray Eng 86 (E-78) GAGAS		Adam Greeson		8/3	2		R Castoe
Jones Eng 86 (E-81) GAGAS		Russell Fowler		8/3	3		B Christian, D Wilkinson
7. Control Operations <ul style="list-style-type: none"> Patrol and control rebum. Patrol and mop up all accessible fire line. Mop up all hot spots within 100' of the fire perimeter. Continue to work with resource advisors when conducting rehabilitation work. 							
8. Special Instructions <ul style="list-style-type: none"> Ensure LCES are in place before operations begin. Stay hydrated. Drive defensively and with lights on at all times. See medical plan for EMT support Examine work area for fire weakened snags 							
9. Division/Group Communication Summary							
	Function	Frequency	Channel	Function	Frequency	System	Channel
Command E Okee Repeater	RX 164.6250/103.5 TX 163.150/103.5	KING	3				
DIV J Repeater	RX 170.4125 TX 165.9625/123.0	KING NIFC	14	Logistics		KING NIFC	
Tactical Div/Group	RX 168.350 TX 168.350	KING NIFC	12	Air to Ground	RX 166.9375 TX 166.9375	KING NIFC	6
Prepared by (Resource Unit Ldr.) Randy Lownes		Approved by (Planning Sect. Ch.) Greg Strenkowski			Date August 2, 2011		Time 1800

DIVISION ASSIGNMENT LIST			1. Branch		2. Division East Initial Attack		
3. Incident Name Honey Prairie Complex			4. Operational Period Date: 8/03/2011 Time: 0800-2000				
5. Operations Personnel							
Operations		Buck Kline 8/5		Branch Director			
				Division Supervisor		Rufus Crutchfield 8/4	
Safety Officer		Shane Barrow (O-1137) 8/8		Division Supervisor			
6. Resources Assigned this Period							
Strike Team/Task Force/ Resource Designator		Leader/ Name / Designator		Last Shift Date	Num. Per.	Drop Off PT./Time	Crew Names
TFD (O-5) GAOKR		Rocky Chesser		8/6	1	912-276-3232	
Barrow 86 (E-1081) GAGAS		Rusty Carroll		8/3	2	Satilla D.O.	P. Bryant
Dawson 86 (E-1082) GAGAS		Tommy Williams		8/3	2	Satilla D.O.	B. Cox
Union 86 (E-1083) GAGAS		Wesley Ssk		8/3	2	Satilla D.O.	J. Davenport
TPL SC 922 (E-7) SCSCC		Adam McCullough (E-7.8)		8/11	1		Stage @ Refuge HQ
TPL GAOKR 56 (E-22)		Phed Pipett		8/12	1		Stage @ Refuge HQ
TPL Camden 70 (E-1162) GAGAS		James D Armstrong (O-1115)		8/3	1	Satilla D.O.	
TPL Ware 72 (E-1173) GAGAS		Thomas D. Whitley (O-1120)		8/3	1	Satilla D.O.	
TPL GA OKR 54 (E-21)		UNSTAFFED			0		Stage @ Refuge HQ
TPL GAOKR 55 (E-23)		UNSTAFFED					Stage @ Refuge HQ
7. Control Operations							
<ul style="list-style-type: none"> Respond to Initial Attack as requested Patrol and control rebum Initial attack IC will communicate sizeup information to the Honey Prairie communication. Additional resource requests to go through Honey Prairie operations. 							
8. Special Instructions							
<ul style="list-style-type: none"> Ensure LCES are in place before operations begin. Stay hydrated. Drive defensively with lights on at all times. 							
9. Division/Group Communication Summary							
	Function	Frequency	Channel	Function	Frequency	System	Channel
Command E Okee Repeater	RX 164.625/ 103.5 TX 163.150/ 103.5	KING NIFC	3	Logistics		KING NIFC	
Tactical Div/Group	RX 168.775 TX 168.775	KING NIFC	9	Air to Ground	RX 166.9375 TX 166.9375	KING NIFC	6
Prepared by (Resource Unit Ldr.) Randy Lownes		Approved by (Planning Sect. Ch.) Greg Strenkowski			Date August 2, 2011		Time 1800

DIVISION ASSIGNMENT LIST				1. Branch		2. Division Roads and Fireline Rehab Group	
3. Incident Name: Honey Prairie Complex				4. Operational Period Date: 8/03/2011		Time: Day: 0800-2000	
5. Operations Personnel							
Operations		Buck Kline 8/5		Branch Director			
				Division Supervisor			
Safety Officer							
6. Resources Assigned this Period							
Strike Team/Task Force/ Resource Designator		Leader / Name / Designator	Last Shift Date	Num. Per.	Drop Off PT./Time		Pick Up PT./Time
READ (O-560)		Ron Phemetton					912-276-2349 cell
THSP (O-1143)		Aaron Souto	8/10	1			404-772-5393 cell
EQPM (O-1111.45)		Johnny Barwick	8/4	1			
HEQB (O-1141)		Bill Weldon	8/8	1			
HEQB (O-9)		Cory Bryant (t)	8/10	1	With Skidder		
HEQB		George Pelt		1			
Timberline Skidder (E-981)		Henry Tiner	8/11	1	PVT, Eastside		
H&H Excavating (E-1158)		Jackie Hedrick		1	PVT, Eastside		
Hughes Grader (E-230)		Buddy Pittman	8/13	1	PVT, Westside		
Cat Grader (E-530)		Lucious Corbett	8/11	1	PVT, Eastside		
7. Control Operations							
<ul style="list-style-type: none"> Coordinate efforts w/ resource advisor and logistics Notify Division Supervisor(s) when entering and leaving division. 							
8. Special Instructions							
<ul style="list-style-type: none"> Ensure that tractors are cleaned and free of debris daily. Examine work area for fire weakened snags. Ensure LCES are in place before operations begin and stay hydrated. Drive defensively and with lights on at all times. See Medical plan for EMT support. Implement MIST tactics 							
9. Division/Group Communication Summary							
Function	Frequency	System	Channel	Function	Frequency	System	Channel
Command	See ICS205	KING NIFC		Logistics	See ICS205	KING NIFC	
N.Okee Repeater	See ICS205	KING NIFC		Air to Ground	See ICS205	KING NIFC	
Tactical Div/Group	See ICS205	KING NIFC					
Prepared by (Resource Unit Ldr.) Randy Lownes		Approved by (Planning Sect. Ch.) Greg Strenkowski			Date 8/2/2011		Time 1930

AIR OPERATIONS SUMMARY

Prepared By: Joe Bistryski, AOBD Prepared Date: 8.02.2011

Prepared Time: 1800

1. INCIDENT NAME: Honey Prairie	2. OPS PERIOD DATE: August 3, 2011	START TIME: 0830	END TIME: 1900	SUNRISE: 0647	SUNSET: 2023
3. REMARKS (Safety Notes, Hazards, Air Operations Special Equipment, etc) <u>Recon requests can now be approved by either AOBD or HEBM directly. Afternoon thunderstorms NOTE: Latitude/Longitude format is "Degrees-Minutes-Decimal Minutes" (example: N30 41.42 W082 33.97) helibase convert if necessary</u>					5. TFR #: Canceled 7/27/11 SEE and AVOID!!!

PERSONNEL	NAME	PHONE #	FREQUENCIES	AM	FM	
AOBD	Joe Bistryski Cell	801-518-2797	AIR/ AIR FW	None assigned		AIRTANKERS / LEAD PLANES - None Available Local ATGS AIRCRAFT- 57Z OTHER: <u>Waycross Airport Helibase: 912-287-4479</u> <u>Waycross Airport Helibase Fax: 912-287-4458</u> <u>ICP Helispot is Waycross Airport Helibase Okefenokee Dispatch: 912-496-7366 X230</u> <u>Waycross Airport: N 31 16.16 10 W82 33.38</u> <u>BERGANZA HELISPOT N 31 07.22 W082 15.22 * don't use unless cleared with AOBD.</u> <u>POGO HELISPOT: N30 44.03 W082 07.41</u>
ASGS	None Assigned		AIR/ AIR RW-FF	122.375		
ATGS	None assigned					
HEB2 Waycross HB	Melvin Tate Desk Cell	912-287-4479 850-849-0405	Georgia AIR/GRND (Smokey - Dozers)		159.285 W	
			AIR/GROUND PRIMARY		166.9375	
			AIR/GROUND ALTERNATE		166.9000	
			TOLC		168.0125	
			AIR GUARD		168.625 T110.9	

9. HELICOPTERS (Use Additional Sheets as Necessary)

FAA N#	TY	MAKE/ MODEL	BASE	AVAIL	MANAGER	FAA N#	T Y	MAKE/ MODEL	BASE	AVAIL	MANAGER
26MW	1	K-1200	Waycross	0830	Kirby Cook 406-381-1212						
57Z	3	206-L4	Waycross	0830	Robert Barrett 208-313-7837						

10. TASK/ MISSION/ ASSIGNMENT (Type/ function includes: Air Tactical, Retardant, Recon, Personnel Transport, Bucket Operations, SAR, etc.)

TYPE/FUNCTION	NAME OF PERSONNEL OR CARGO (If applicable) or instructions for tactical aircraft	MISSION START	FLY FROM	FLY TO
Bucket Ops/	26MW	As Requested	Waycross	
Recon	All recon missions may call Helibase Direct 57Z	As Requested/scheduled	Waycross/Pogo	
Medevac	57Z	As Requested	Waycross	



Fire Weather Forecast



FORECAST NO: 88

NAME OF FIRE: Honey Prairie Complex

PREDICTION FOR: Day Shift
SHIFT DATE: Wednesday 8/3/11

UNIT: Okefenokee National Wildlife Refuge

FORECAST ISSUED: 8/2/11 at 1600

SIGNED: John Franks
Incident Meteorologist

WEATHER DISCUSSION: Dry air will remain over the fire, allowing partly cloudy skies with just a slight chance for afternoon thunderstorms. High temperatures approaching 100 degrees and humidity will push heat indices towards the 110 degree mark.

TODAY: Partly cloudy.

MAXIMUM TEMPERATURES: 95° - 100°
PM HEAT INDEX: 105° - 110°
MINIMUM HUMIDITY: 43-53%
20 FT WINDS: AM: Calm
PM: SSE 5 gusts to 10 mph.
STABILITY/INVERSION: 7000 feet
TRANSPORT WINDS: S 9 mph
DISPERSION INDEX: 55, Good
CHANCE OF PRECIPITATION: 10%
PRECIPITATION AMOUNTS: Less than a tenth of an inch.
LIGHTNING ACTIVITY LEVEL: 1

TONIGHT: Clear. Calm winds. Low temperatures 73° - 77°. Max RH 90-100%.

THURSDAY: Partly cloudy. A 20% chance of a late day shower or thunderstorm.

MAXIMUM TEMPERATURES: 95° - 100°
PM HEAT INDEX: 105° - 110°
MINIMUM HUMIDITY: 42-52%
20 FT WINDS: AM: Calm
PM: SSW 3-6 mph.
TRANSPORT WINDS: SW 12 mph
DISPERSION INDEX: 60, Good
CHANCE OF PRECIPITATION: 20%
LIGHTNING ACTIVITY LEVEL: 1

EXTENDED FORECAST:

	FRIDAY	SATURDAY	SUNDAY
SKY/WEATHER	Partly Cloudy / Scattered Showers and Thunderstorms	Partly Cloudy / Scattered Showers and Thunderstorms	Partly Cloudy / Scattered Showers and Thunderstorms
CHANCE PRECIP	30%	40%	50%
MINIMUM RH	43-53%	41-51%	46-56%
20 FT. WINDS	AM: S 2 mph PM: S 6-9 mph	AM: Variable 2 mph PM: SSE 4-7 mph	AM: SW 3-5 mph PM: W 7-10 mph
IN/MAX TEMPS	74 / 98	74 / 98	75 / 97

FIRE BEHAVIOR FORECAST

Fire: Honey Prairie Complex	Unit: GA-OKR-000001	Prediction for Day Shift
Forecast #87 Issued: 08/02/2011 1830 hrs	Signed: Keith Mousel	Shift Date: Wednesday 08/03/2011

GENERAL FIRE BEHAVIOR

Fuels around the Okefenokee Wildlife Refuge are predominately Fuel Model 7 (Southern Rough). Large to moderate acreage tracts of commercial timberland are mixed in throughout the entire perimeter surrounding the refuge. Fast moving wildfires with extremely high flame lengths and rapid rates of spread occur within the swamp.

Indicators/Threshold for Increased Fire Activity

- **Relative humidity dropping below 45%**
- Winds above 10 mph
- **Heavy fuel loadings**
- **Fine dead fuel moisture 8% or less**
- Dispersion above 70
- *** Items in BOLD are predicted to occur today***

SPECIFIC FIRE BEHAVIOR

- **Fire behavior should be slow to develop today.**
- **Interior smoldering and some flare ups are possible, especially if winds increase.**
- **Expect fire to continue spreading through the shrub fuels with low rates of spread and minimal flame lengths. LAL 1**

Fuel Type	Rates of Spread	Flame Length	Spotting Distance	Firebrand Ignition
Winds at 2 - 8 mph				
Shrub Fuels – SH4	1 – 4 ch/hr	1 – 2 feet	1/10 - 2/10 mile	52 %
Heavy Southern Rough- SH8	2 – 9 ch/hr	3 – 6 feet	1/10 – 2/10 mile	52 %
Timber Litter-Reburn TL8	1 – 3 ch/hr	1 – 2 feet	1/10 – 2/10 mile	52 %
Small Pine Plantation w/grasses GR5	1 – 9 ch/hr	1 – 4 feet	1/10 – 2/10 mile	52 %

One hour fine dead fuel moisture is at 7% for Wednesday. Moisture from rain has reduced the fire threat, HOWEVER some areas remain dry and burning continues. 1,000 hour fuels are drier than normal for this time of year. There is re-burn potential; mainly on the west side of the fire due to the amount of needle cast, fallen trees and scorched shrubs. Should wind become stronger than predicted, expect fire behavior to increase above predicted levels. **In areas where fuels have been herbicided, expect quick ignitions, extreme heat, quicker rates-of-spread, and possible group tree torching potentially producing spotting problems.**

NOTE- FIRE BEHAVIOR CALCULATIONS ARE FOR FIRES IN UNBURNED FUELS INCLUDING NEW IA STARTS.

All Divisions:

The fire continues a slow spread through the thick bays and muck soils. Roots and fallen trees are protecting heat sources allowing the fire to burn organic soils from the bottom up. Be heads-up for falling trees. 10% chance of rain.

Remember that most accidents occur on small fires or deceptively quiet areas of large fires.

**WATCHOUT SITUATION # 14
WEATHER IS GETTING HOTTER AND DRIER**

Air Operations: Expect possible areas of smoke especially on the west and north side of the fire.

SAFETY:

WINDS – Stay abreast of changing wx conditions throughout the entire shift. **THUNDERSTORMS -** these severe winds can create extreme fire behavior, with winds gusting over 30 mph. **Live Trees/SNAGS – are falling in all Divisions – will be influenced by Thunderstorm outflow winds. FUELS:** Watch for pockets of cured shrubs or blankets of red needles beginning covering the forest floor re-burn is still possible. 1,000 and 10,000 hour fuels as well as deep duff pockets are providing the heat source. Stay focused, and put LCES in place before starting operations. *Energy Release Component (ERC) is running near average for this time of year.*

Safety Message

INCIDENT: Honey Prairie Fire

DATE: 08/03/2011

TIME: 0800

Major Hazards and Risks:

Transition, Communications, Driving, Hydration, and Complacency

Transition – Plans and communications can change, so Ensure that all personnel receive good briefings. Use Briefing Checklist in I.R.P.G. and ask questions that you don't have answers to!

Communications – Keep in constant communications with each other. Always make sure somebody knows exactly where you are and know what your mission is. Notify your supervisor or a safety officer immediately of any hazards or concerns.

Driving – School buses and children along the roadway present a major driving hazard. Stay alert and scan the road ahead. Avoid distractions inside the vehicle and be prepared to stop.

Hydration – You lose water even with little or no physical activity in a hot and humid environment. Avoid emergencies by drinking water even when you don't feel thirsty.

Complacency – Once we get complacent, bad things can happen. Keep your head in the game and don't lose sight of our main objective -- **EVERYONE GOES HOME SAFE**

Tailgate Briefing – Dehydration

Dehydration is the result of the body trying to regulate its temperature naturally through sweating. Studies conducted on Wildland Firefighters indicate that during fire suppression activities firefighters need to drink a minimum of 1 quart of fluid each hour of work.

- **Hydrate before, during, and after work.**
- **Water is your greatest need while working in the heat**
- **Utilize 3:1 ratio of water to sports drinks**
- **Sports drinks help maintain sodium and potassium levels to prevent hyponatremia – water intoxication**
- **Thirst underestimates fluid needs – drink more than you feel you need**
- **Rapid heartbeat, weakness, weakness, excessive fatigue, and dizziness are signs of dehydration**
- **Dehydration can lead to heatstroke, muscle breakdown, and kidney failure**

Watch Out Situation of the Day!!!



14. WEATHER IS GETTING HOTTER AND DRIER

Safety Officers: Mark Munns, Tommy Hawkins, Shane Barrow, & Tom Lail

INCIDENT ACTION PLAN SAFETY ANALYSIS										1. Incident Name Honey Prairie Fire		2. Date 8/3/2011		3. Time Day Shift	
LCES* Analysis of Tactical Applications Lookouts Communications Escape routes Safety zones										Other Risk Analysis					
Divisions	Indirect Fireline	Power lines / Snags	Road Conditions	Frontal Assault	Extreme Conditions	Railroad	Wildlife, Insects	LCES Mitigations	Smoke	Traffic/Driving	Communications	Fatigue/Hydration	School Buses / Children	Other Risk Mitigations	
All Divisions	1, 2, 3, 4, 5, 7, 8, 10, 14	2, 6, 11, 15, 17	12, 20, 26	1, 2, 3, 4, 5, 7, 8, 14	7, 10	1	2, 23	1. Establish & maintain LCES. Report LCES checks twice daily to DIVS on line & staggings.	24	12, 17, 19, 20, 22, 26	1, 3, 10, 14, 19, 24, 25	16, 18, 21	26	16. Take adequate rest breaks and encourage to drink water NOW through briefings.	
								2. Look UP, DOWN and AROUND						17. Defensive driving will be addressed in all briefings.	
								3. Post experienced Lookouts. Make sure LCES is in place and make known.						18. All personnel must meet the 2:1 work/rest ratio. Line supervisors and Safety will monitor closely.	
								4. Use Aerial Resources as Lookout if available.						19. Notify Operation and Safety of Railroad track issues to ensure safety of firefighters.	
								5. Flag escape routes on right side of escape route facing outward. Create new escape routes as you progress and identify Safety Zones on the ground and maps.						20. Ensure Traffic Planning is safe and enforced. Heed Defensive Driving techniques noted in Safety Messages.	
								6. Identify, mark & mitigate.						21. Relocate staggings area when driving conditions warrant.	
								7. FBAN/Meteorologist to monitor weather updates and advisories.						22. Use spotter when backing vehicle(s).	
								8. Ensure Fireline is Anchored to black or manmade/natural barrier.						23. Use protective spray with deet on skin (Not on Nomex), permethrin can be used on nomex clothing	
								10. Keep Firefighters informed of any changes in predicted weather, consider at least a two day weather pattern when planning Strategic Firing operations.						24. Establish smoke/fog signs on roadways. Coordinate with Department of Transportation.	
								11. Refer to IRPG, pg. 12 on Power Line Hazards.						25. Follow establish communication plan, flight follow through dispatch	
							12. Observe all traffic signals and speed limits. Drive with lights on.								
							14. Ensure GOOD tailgate briefings with resources unable to attend Operational Briefing (Include Ops, Logs, Fin & Plans info.).								
								15. Scout ahead of tractor operations to avoid making contact with power poles and guide wires when tying into roads. Power companies are working in some DIVS, avoid all down lines as they may become charged.						26. Treat all school busses as moving intersections.	
														27. Utilize headlamps and glow sticks or flashing lights on back to ensure visibility to equipment operators. Wear reflective fireline jacket if working near road shoulders. Keep lights on at ALL times.	

Prepared by (Name and Position) ICS 215A Shane Barrow SOFR, Mark Munns SOF2

MEDICAL PLAN	Incident Name Honey Prairie Complex	Date Prepared 8/02/2011	Time Prepared 1800	Operational Period 8/03/2011
---------------------	---	-----------------------------------	------------------------------	--

5. Incident Medical Aid Station

<u>Medical Aid Stations</u>	<u>Location</u>	Paramedics Yes No	
MEDICAL UNIT (ICP)	Honey Prairie Complex ICP- (H,I,J,K,L,M,N,O DIV) Mark Millirons (EMT)MEDL (706)741-4216 (24 Hours) - Jameson Inn, Waycross (8-5) (East IA) will be covered by Mark Millirons if needed.		X
WEST SIDE (Line EMT)	*Fred Mason(EMTB) Eng. 405 (A,B,C,D,E,F,G DIV) (8-7) Robert Carswell (EMT) MEDL (912)286-1648 (A,B,C,D,E,F,G,T,V,Y,Z) - Days Inn, Waycross (8-6) (West IA) will be covered by Robert Carswell if needed	X	

Ambulance Services

Name	Address	Phone	Paramedic Yes No	
Clinch County EMS (WEST SIDE)	Homerville, GA (911 to activate)	912-487-5211 ext. 4567	Yes	
Ware County EMS (NORTHSIDE)	Waycross, Georgia (911 to activate)	912-281-9467	Yes	
Charlton County EMS (EAST SIDE)	Folkston, GA (911 to activate)	912-496-7321	Yes	

Air Ambulance Service

Trauma 1	Address	Phone	Yes	No
Trauma 1	Lake City , FL (16 min/air to Fargo ICP)	1-800-223-4878(freq. 155.340)	Yes	
Trauma 1	Jacksonville, FL (26 min/air to Fargo ICP)	1-800-223-4878(freq. 155.340)	Yes	
AirMed	Augusta, GA (2 hrs/air to Fargo ICP)	1-888-792-9245(freq. 155.340)	Yes	
Lifeflight	Jacksonville, FL (35 min/air to Fargo ICP)	1-877-870-7779(freq. 155.340)	Yes	
Air Evac	Waycross, GA (17 min/air to Fargo ICP)	1-800-247-3822(freq. 155.340)	Yes	
US Coast Guard (Heli-Rescue)	Savannah GA	1-912-652-4646 (freq. 155.340)	Yes	

7. Hospitals

Name	Address	Travel Time		Phone	Helipad		Burn Center	
		Air	Ground		Yes	No	Yes	No
Satilla Regional	410 Darling Ave Waycross Ga N 31°13.56 W 82°21.058	18 min	45 min	912-283-3030	Yes			No
Clinch Memorial Hospital (WEST SIDE)	1050 Valdosta HWY Homerville, GA		25 min	912-487-5211 ext 4502	Yes			No
Charlton Memorial Hospital (EAST SIDE)	1203 3 rd St. Folkston, GA		50 min	912-496-2531	Yes			No
Memorial Hospital	Savannah, GA 4700 Waters 3200.7 8107.6	30 min		912-350-8999	Yes			No
Shands Hospital (level I)	Jacksonville, FL N 30°20 97 W 82° 13 992	26 min	1.5 hrs	800-223-4878	Yes		Yes	
Shands Burn Center	Gainesville, FL 38.33 N 082 20.73W	33 min	1.5 hrs	352-265-0300	Yes		Yes	

8. Medical Emergency Procedures

Identify any EMTs and Paramedics in your crews. All medical emergencies will be reported to the Division Supervisor who will assume command and notify Line Medics.

On scene personnel will:

1. Provide medical care & stabilize patient.
2. Call 911 if possible and provide the information requested.
3. Notify Communications via radio over Command Channel
4. Communications will clear radio traffic for medical emergency.
5. Communications will confirm 911 has been notified coordinate with IC, SOF, MEDL.
6. DIVS will notify the Field Ops Section Chief.

MAJOR EMERGENCIES – Secure the area and identify witness for later investigation. Keep an accurate log of events.

NOTE: Do not give Patients Name over the radio!

HELISPOTS

Pocket Helispot 30 47 30.02 x 82 22 39.5 (West side), mile marker 4, HWY 177 Steven C. Foster State Park

Fargo Helispot 30 40.945 x 082 33.640 (West side), HWY 441- Steven C. Foster Visitor Center

POGO Helibase 30.44.03 x 82.07.41 (East side)

Evac Yankee

Helispot 6

Rd. 32 and 32A, N 30° 53.280 W 082° 33.880

Helispot 7

Tatum Rd. Pond N 30° 50.280 W 082° 33.857

***Alternate site can be established following guidelines for safety found with IRPG and local EMS resources.**

INJURY REPORTING PROCESS:

Nature of Injury: _____

Location of Patient: _____

Transportation Requested by: Air___ Ground___

Pick Up Point: _____

Lat: _____ Long: _____

Patient Unit ID: _____

Is an EMT w/Patient: Yes___ No___

Age:___ Sex: Male___ Female___

Weight (If Air Evac. is needed): _____

Prepared by: Mark Millirons (EMT)MEDL

10. Reviewed by: Shane Barrow, SOF

INCIDENT RADIO COMMUNICATIONS PLAN ICS-205			Incident Name Honey Prairie			GROUP 22		Date/Time Prepared 08/02/2011-17:00		Operational Period Date/Time 8/03/2011 0800-2000	
Ch #	Function	Channel Name	Assignment	RX Freq	NW	RX Tone/NAC	TX Freq	N W	TX Tone/NAC	Mode A,D or M	Remarks
1	Command	West Okee Repeater	Sec West Branch CMD	167.1250	N	156.7	163.1500	N	156.7	A	Stephen Foster State Park
2	Command	South Okee Repeater	Sec East/West Branch CMD	164.7750	N	123.0	163.1500	N	123.0	A	Eddy Florida
3	Command	East Okee Repeater	PRIMARY East Branch CMD	164.6250	N	103.5	163.1500	N	103.5	A	Refuge Headquarters
4					N			N		A	NO Longer used
5	Command	North Okee Repeater	PRIMARY North Branch CMD	164.5750	N	206.5	163.1500	N	206.5	A	Waycross
6	Air-Ground	Air to Ground	PRIMARY	166.9375	N	CSQ	166.9375	N	CSQ	A	
7	Tactical	MOB-MOB	GFC Contingency	159.3900	W	CSQ	159.3900	W	156.7	A	
8	Tactical	V-Fire 21W WHITE	Structure Protection Group West I.A.	154.2800	W	CSQ	154.2800	W	156.7	A	
9	Tactical	USFS 9	DIV A,B,C, D,E,F,G,T&V (East I/A)	168.7750	N	CSQ	168.7750	N	CSQ	A	
10	Tactical	S.E. Compact	DIV	159.2850	W	CSQ	159.2850	W	CSQ	A	
11	Tactical	USFS 11	DIV M,N,O	168.2000	N	CSQ	168.2000	N	CSQ	A	
12	Tactical	Refuge Tac 1	DIV H, I, J, K,L	168.3500	N	CSQ	168.3500	N	CSQ	A	
13	Tactical	FL 190	DIV Y,Z	151.2725	N	CSQ	151.2725	N	CSQ	A	
14					N	CSQ		N		A	No Longer used
15	Air-Ground	Air to Ground	SECONDARY	166.9000	N	CSQ	166.9000	N	CSQ	A	
16	EMERGENCY	AIR Guard	Air OPS.	168.6250	N	CSQ	168.6250	N	110.9	A	
Prepared by (Communications Unit) Kelly Towe, COML Roy Fortenberry, COMT/COML Incident Dispatcher: 912-286-1660					Cloning at ICP communications and briefings,						

The convention calls for frequency lists to show four digits after the decimal place, followed by either an "N" or a "W", depending on whether the frequency is narrow or wide band. **Mode** refers to either "A" or "D" indicating analog or digital (e.g. Project 25) or "M" indicating mixed mode. All channels are shown as if programmed in a control station, base stations, mobile or portable radio.

HONEY PRAIRIE PHONE LIST

08/03/11

Incident

Communication

(Hours: 0700-2000)

912-286-1660

AGENCY OFFICIALS			OPERATIONS		
Curt McCasland	602-359-0013	USFWS AA			
Mindy Gautreaux	912-282-7500	USFWS Deputy AA	Buck Kline	229-460-2062	Field Operations
Frank Sorrells	912-381-7503	GFC AA	Brent McCarty	229-938-8718	West Branch
James Karels	850-228-7763	FL DOF AA			
Diane Adams	912-266-5421	GEMA	DIVISIONS		
Mike Housh	912-281-1575	USFWS AREP			
COMMAND					
Troy Floyd	706-676-0168	IC	Heath Morton	423-240-7509	DIVS A, B, C, D, E, F, G, T,
			Trent Ingram	229-726-0285	West IA
RESOURCE ADVISORS			DIVISIONS		
Ron Phernetton	912-276-2349	Resource Advisor			
Jessica Bowen	912-536-2995	Resource Advisor			
Rocky Chesser	912-276-3232	Resource Advisor			
INFORMATION 912-496-2566					
Jenny Lyn Bruner	912-496-2566	Fire Information	Rufus Crutchfield	478-986-7466	DIVS H, I, J, K, L, M, N, O
			Rufus Crutchfield	478-986-7466	East IA
SAFETY			Aaron Souto	404-772-5393	Roads & Fireline Rehab Grp
Tommy Hawkins	706-676-7538	Safety Officer	AIR OPERATIONS		
Mark Munns	706-401-5903	Safety Officer	Joseph Bistryski	801-518-2797	Air Ops Branch
Tommy Lail	404-772-5338	Safety Officer			
Shane Barrow	706-699-2412	Safety Officer	Melvin Tate	912-287-4479	HEB2 - WAYCROSS
Mark Millirons	706-741-4216	Medical Unit Leader		850-849-0405 cell	
Robert Carwell	912-286-1674	Medical Unit Leader			
Medical Unit	912-637-5236				
DISPATCH			PLANNING 912-287-6557 FAX 912-287-6557		
Okeefenokee Dsp	912-496-7366	Okeefenokee	Greg Strenkowski	478-951-2421	Planning Section Chief
Suwannee Dispatch	386-758-5700	Fla wildfires, other	Keith Murphy (t)	912-637-5241	Situation Unit Leader
Honey Prairie Dspth	912-286-1660	Honey Prairie ICP	Harold West	912-637-5241	DMOB
Waycross Dispatch	912-287-4915	Ga wildfires, other	Keith Mousel	850-228-7756	FBAN
LOGISTICS West			FINANCE 912-287-6568 FAX 912-287-6564		
Willie Boston	770-328-3186	LSC	Amy Treadwell	770-658-6641	Finance Section Chief
Thomas Lambert	912-287-6540	FACL	Rhonda Vickerman	541-891-1067	Purchasing Agent
			Anna Bryant	540-520-1799	Purchasing Agent
Hotel Mgr	404-772-5336	24 hour lodging	Kurt Hinz	912-287-6544	Comp Claims
Hotel Mgr	912-287-6540	Lodging			
Kevin Reish	404-276-1998	Security Manager			
Tim Jones	912-387-6480	GSUL			
Steve Blackwell	404-772-5330				
Bob Kookan		Food Unit Leader			
Amy Weaver (t)	912-637-5239	SPUL			
Kelly Towe	478-308-4770	COML			

ORDERING		
Jim Grimes	404-558-4476	Ordering Manager
John Crain	404-772-5363	Base Camp Mgr
		Supply Unit Leader
Joe Hoisington	530-905-3715	EQPM
COOPERATORS		
COUNTY		
	912-496-7229	Charlton County EMA
John F. Meyer - Chairman	912-496-2549	Charlton County Commissioners
Dobie Conner	912-496-7321	Charlton County Sheriff
Jesse Booth	912-520-0061	Clinch County EMA
Jonathan Daniel	912-281-5158	Ware County EMA
Jessie Jordan	912-816-6063	Ware County Fire Dept
Joe Morris	912-281-6020	Ware County Sheriff
Robbie Sutton	912-599-9027	Tri County 911
STATE		
GFC Fargo District Office	912-637-5270	
GFC Satilla District Office	912-287-4915	
Blair Joiner	229-237-9026	GFC Clinch Chief Ranger
Jason Gillis	912-314-9233 912-637-5504	GFC Satilla Assistant Mgr.
Brian Gray	229-894-4628 912-673-5274	Stephen Foster State Park
Travis Griffin	912-281-5790	Laura Walker State Park
Crystal Paulk-Buchanan	404-535-1048	GEMA PIO
Georgia Highway Patrol	912-287-6500	
FEDERAL		
Okefenokee Fire Shop	912-496-4181	
Okefenokee NWR HQ (East)	912-496-7366	
Okefenokee NWR (West)	912-637-5322	
Okefenokee Visitor Center	912-496-7836	

LANDOWNERS		
Jim Barrett	229-412-3133	Langdale/GOAL Chairman
Wesley Langdale	229-220-2602	Langdale
Hal Rowe	229-412-3133	Langdale
Langdale Office	229-242-7450	Langdale Office
Mike Conlon	386-365-3882	Rayonier Unit Supervisor
Ray Carter	386-288-6626	Rayonier
Ed Carter	386-288-6626	Rayonier
Doug Nuss	912-390-1037	Rayonier
Randall McCrady	912-283-4077 W	Rayonier
Colin Myerson	229-506-1565	Superior Pine Products Co
Robbie Lee	229-356-0526	Superior Pine Products Co
Superior Pine Office	912-637-5261	Superior Pine Products Co
Al Alexander	850-843-0104	The Forestry Co
Savell Schmidt	850-843-1181	The Forestry Co
John Bogue	850-843-1192	The Forestry Co
Joe Hopkins	912-276-0911	Toledo Timber
Chris Gowan	912-276-0965	Toledo Timber
Martin Bell	912-283-0583	Swamp Park
Crystal Peeples	352-316-0632	FIA
Steve Davis	912-614-1828	Davis Community
Trevor Fortner	912-599-9271	Little Suwannee
Tim Jarrell	912-223-7120	Hancock Forest Mgmt.
RAILROADS		
Norfolk Southern	800-453-2530	
Sid Moody	904-318-7983	Norfolk Southern Railroad
Chad Edwards	404-582-4909	Norfolk Southern Railroad
	540-797-9918	
Eric Sams	904-576-9907	
Norfolk So Emergency Dispatch	404-529-1597	
CSX Randy Dixon	912-270-0699	
CSX Dispatch	800-232-0144	

UPCOMING_DEMOB

Number	Name	Kind	Unit	Travel	Jetport	DemobDate
E-1164	SUMTER 32 MCCARTY	ENG	GAGA	AOV		08/03/2011
O-872	KOOKEN, ROBERT	FDU	MTKN	AIR	GEG	08/03/2011
O-1111.5	MCCARTY III,	OSC	GAGA	AOV	ALB	08/03/2011
O-1111.10	LEE, MICHAEL E	DIV	GAOK	POV	ATL	08/03/2011
E-77.11	CORNETT, BRANDON	ENG	GAGA	AOV		08/04/2011
E-77.12	FLOYD, PATRICK	FFT	GAGA	AOV		08/04/2011
E-78.11	GREESON, ADAM	ENG	GAGA	AOV		08/04/2011
E-78.13	CASTOE, RICHARD	FFT	GAGA	AOV		08/04/2011
E-80.12	WILKINSON, DAMEON	FFT	GAGA	AOV		08/04/2011
E-81.11	FOWLER, RUSSELL	ENG	GAGA	AOV		08/04/2011
E-81.12	CHRISTIAN, BRANDON	FFT	GAGA	AOV		08/04/2011
E-1081	GA ENG6 (E-1081)	ENG	GAGA	POV		08/04/2011
E-1081.4	CARROLL, RUSSELL E	ENG	GAGA	AOV		08/04/2011
E-1081.5	BRYANT, PAUL	FFT	GAGA	AOV		08/04/2011
E-1082.3	WILLIAMS, TOMMY	ENG	GAGA	AOV		08/04/2011
E-1082.4	COX, BOBBY	FFT	GAGA	AOV		08/04/2011
E-1083	GA ENG6 (E-1083)	ENG	GAGA	POV		08/04/2011
E-1083.3	SISK, WESLEY	ENG	GAGA	AOV		08/04/2011
E-1083.4	DAVENPORT, JUSTIN	FFT	GAGA	AOV		08/04/2011
E-1162	CAMDEN 70 TPL2	TPL	GAGA	AOV		08/04/2011
E-1163	CAMDEN 60 LOWBOY	LO	GAGA	AOV		08/04/2011
E-1166	APPLING 60 LOWBOY	LO	GAGA	AOV		08/04/2011
E-1167	CLINCH 72 TPL2	TPL	GAGA	AOV		08/04/2011
E-1168	CLINCH 62 LOWBOY	LO	GAGA	AOV		08/04/2011
E-1169	CLINCH 75 TPL3	TPL	GAGA	AOV		08/04/2011
E-1170	GFC TRANSPORT FOR	TRT	GAGA	AOV		08/04/2011
E-1171	WARE 71 TPL2	TPL	GAGA	AOV		08/04/2011
E-1173	WARE 72 TPL3	TPL	GAGA	AOV		08/04/2011
E-1174	WARE 62 LOWBOY	LO	GAGA	AOV		08/04/2011
E-1176	GLYNN 62 LOWBOY	LO	GAGA	AOV		08/04/2011
E-1177	JEFF DAVIS 70 TPL2	TPL	GAGA	AOV		08/04/2011
E-1178	JEFF DAVIS 60	LO	GAGA	AOV		08/04/2011
O-1106	PELT, GEORGE	ENG	FLLSR	AOV		08/04/2011
O-1115	ARMSTRONG, JAMES	TPO	GAGA	AOV		08/04/2011
O-1117	REGISTER, WILLIAM	TPO	GAGA	AOV		08/04/2011
O-1118	HENDERSON, CHRIS	TPO	GAGA	AOV		08/04/2011
O-1119	BENNETT, BARRY	TPO	GAGA	AOV		08/04/2011
O-1120	WHITLEY, THOMAS	TPO	GAGA	AOV		08/04/2011
O-1122	BOHANNON, BERRY	TPO	GAGA	AOV		08/04/2011
C-25	PINEKNOT JC	CC	KYDBF	AOV		08/05/2011
C-25.1	SHEPHERD, RANDALL	CR	KYDBF	AOV		08/05/2011
C-25.2	WHITSON, JAMES R	CAC	KYDBF	AOV		08/05/2011
C-25.3	EASTHAM, KERRIE R	CC	KYDBF	AOV		08/05/2011
C-25.4	REED, JUSTIN	CC	KYDBF	AOV		08/05/2011
C-25.5	HAWKINS, THOMAS Q	CC	KYDBF	AOV		08/05/2011
C-25.6	BOATWRIGHT,	CC	KYDBF	AOV		08/05/2011
C-25.7	FREEMAN, K'I'TRIA L	CC	KYDBF	AOV		08/05/2011
C-25.8	DINKS, JR, TIMOTHY L	CC	KYDBF	AOV		08/05/2011
C-25.9	SWOBODA, WILLIAM J	CC	KYDBF	AOV		08/05/2011
C-25.10	PARSONS, EDDIE P	CC	KYDBF	AOV		08/05/2011
E-392	IL ENG #40 (E-392)	ENG	ILSHF	AOV		08/05/2011
E-392.13	ARCHDALE, BOBBI	ENG	ILSHF	AOV		08/05/2011
E-392.14	PAUKERT, JACKLYN	FFT	ILSHF	AOV		08/05/2011
E-838	MN ENG-6232 (E-838)	ENG	MNMF	AOV		08/05/2011
E-838.7	KING, DUANE	ENG	MNRL	AIR	MSP	08/05/2011
E-838.8	ELG, TREVOR	FFT	MNW	AIR	MSP	08/05/2011
E-838.9	LANTZ, DONALD	FFT	MNSB	AIR	MSP	08/05/2011
E-1184	JONES 31	ENG	GAGA	AOV		08/05/2011
E-1185	DADE 31	ENG	GAGA	AOV		08/05/2011

UPCOMING_DEMOB

Number	Name	Kind	Unit	Travel	Jetport	DemobDate
E-1186	DOUGHERTY 31	PU	GAGA	AOV		08/05/2011
E-1189	DECATUR 86	PU	GAGA	AOV		08/05/2011
O-1111.3	HAWKINS, TOMMY L	SOF	GAGA	AOV	CHA	08/05/2011
O-1111.12	MORTON, JUSTIN	DIV	GAGA	AOV	CHA	08/05/2011
O-1111.15	LAMBERT, THOMAS R	FAC	GAGA	AOV	ATL	08/05/2011
O-1111.45	BARWICK, JOHNNY C.	EQP	GAGA	AOV		08/05/2011
O-1113	BISTRYSKI, JOSEPH	AOB	UTCC	A/R	SGU	08/05/2011
O-1114	MORGAN, LLOYD	RAD	NCAL	AIR	ILM	08/05/2011

Record Count: 67

Information

Update on puppy!!!

Puppy found now

**has a new home and new owner thanks to one of our own –
Mark Munns**

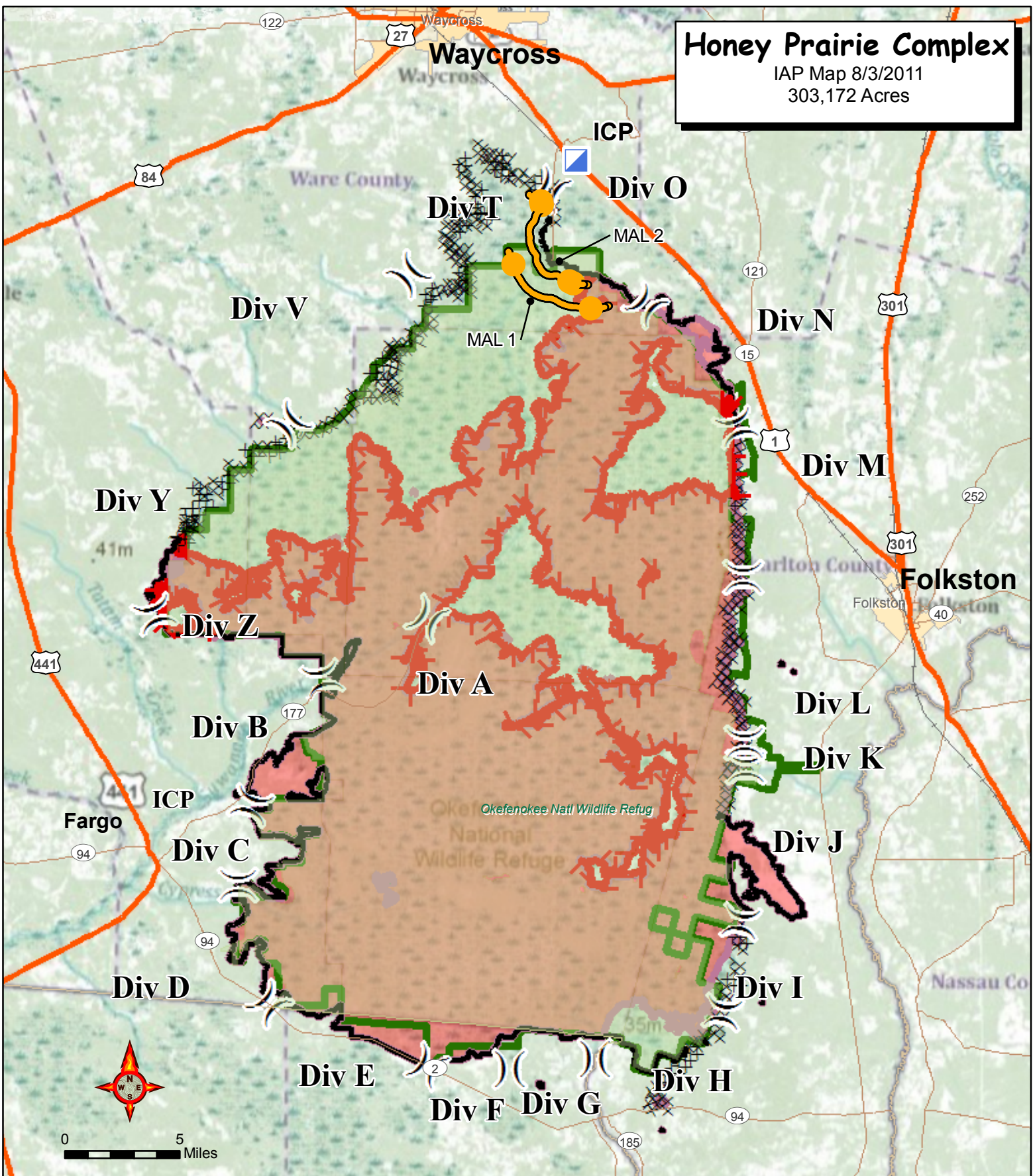
**Thank you Mark for being the proud owner of OKIE – the lost
puppy!**

Fire Information Update

- **The Honey Prairie fire is now up to 303,172 acres which is
473.70625 Square Miles**
- **Honey Prairie has had 3 months of fire suppression action
on it - 13 weeks -**

Honey Prairie Complex

IAP Map 8/3/2011
303,172 Acres



- Incident Command Post
- Uncontrolled Fire Edge
- Completed Dozer Line
- Completed Line
- Refuge Boundary
- FirePolygon

) (Division

Perimeter as of 7/30/2011 1200
C. Bailey GISS

**INCIDENT
MANAGEMENT**
T E A M



UNIT LOG		1. Incident Name Honey Prairie Complex	2. Date Prepared	3. Time Prepared
4. Unit Name/Designators		5. Unit Leader (Name and Position)		6. Operational Period
7. Personnel Roster Assigned				
Name		ICS Position		Home Base
8. Activity Log				
Time	Major Events			
9. Prepared by (Name and Position)				