

Honey Prairie Complex

GA-OKR-000001

Incident Action Plan

Operational Period
Sunday July 10, 2011

Day Shift (0800-2100)
Night Shift (1800-0600)

Accounting Codes

FWS – 9141-F25M-2J

NPS – 5023 F25M E11

BLM – F25M

USFS – PRF25M_1502

Initial Attack – F4PM

INCIDENT OBJECTIVES	1. INCIDENT NAME Honey Prairie Complex	2. DATE PREPARED 7/9/11	3. TIME PREPARED 1800
4. OPERATIONAL PERIOD (DATE/TIME) Sunday July10, 2011 Day (0800 – 2100) and Night (1800 – 0600)			
5. GENERAL CONTROL OBJECTIVES FOR THE INCIDENT (INCLUDE ALTERNATIVES) 1. Provide for safety of incident personnel and public in all incident operations. 2. Maintain a positive working relationship with all State and Federal partners and adjacent landowners and cooperators. Inform, involve and communicate incident planning and operations with all partners. 3. Contain all fires that are within the Okefenokee National Wildlife Refuge, inside the Refuge and/or inside the swamp edge break if possible. 4. Use full suppression strategies and tactics to minimize damage to private timberlands and improvements and to prevent fires outside the Refuge from entering the Refuge. 5. Assist in management and suppression of additional fires (new starts or breakouts) in the vicinity as approved by Agency Administrators and Unified Incident Commanders. 6. Manage the fires cost-effectively consistent with the values at risk. 7. Implement structure protection as necessary for at-risk facilities and communities.			
6. WEATHER FORECAST FOR OPERATIONAL PERIOD See attached forecast for area specific weather information.			
7. GENERAL SAFETY MESSAGE Drive defensively and use spotter when backing. Ensure LCES is in place and known by all personnel. Drink plenty of water and take frequent rest breaks. Ensure proper use of PPE during all operations.			
8. Attachments (☐ if attached) ☐ Organization List (ICS 203) ☐ Incident Map ☐ Safety Message ☐ Assignment List (ICS 204) ☐ Traffic Plan ☐ Demobilization Procedures ☐ Communications Plan (ICS 205) ☐ Human Resources ☐ Unit Log ☐ Medical Plan (ICS 206) ☐ Phone List			
9. PREPARED BY (PLANNING SECTION CHIEF) Ed Flowers	10. APPROVED BY (INCIDENT COMMANDER) /s/ Don West /s/Trent Ingram /s/Mike Dueitt		

ORGANIZATION ASSIGNMENT LIST		9. Operations Section	
1. Incident Name Honey Prairie Complex GA-OKR-000001		Chief	Rick Dolan 7/22, Butch Hall 7/22
		Planning	
2. Date 7/9/2011	3. Time 1000 hrs	a. WEST BRANCH - Divisions/Groups	
4. Operational Period 7/10/2011 Day (0800-2100) Night (1800 – 0600)		OPBD	Bob Schindelar 7/11 / Tom Donohoe 7/22
5. Incident Commander and Staff		Division	A, B, C Mike Almas 7/10 / Micah Johnson (t) 7/10
Incident Commander	Don West/Verne Reggal (Dep)/ Trent Ingram/Mike Dueitt	Division	D, E, F, G Thomas Herold 7/19
Liason Officer	Gary Beauchamp 7/14	Division	T Brian Rhodes 7/20 / Todd Haynes (t) 7/19
Safety Officers	Barry Coulliette 7/22 / Ray Durham 7/23	Division	V Shawn Duggar 7/22 Bryce Thomas (t) 7/22 Greg Suszek (t) 7/19
Information Officer	Ludie Bond 7/22	Division	Y (DAY) Gary Smith 7/19 / Dan Helterline (t) 7/19
6a. Agency Administrators		Division	V, Y (NIGHT) Jacquie Parks 7/21
FWS	Curt McCasland	Division	Z Larry Peabody 7/10 / Jesse Knox (t) 7/18
FWS	Mindy Gautreaux	Group	IA-WEST and Structure Group Don Hammack 7/19 / Bob Schober (t) 7/18
6b. Agency Representatives			
FWS Liason	Skippy Reeves	b. EAST BRANCH - Divisions/Groups	
GFC	Frank Sorrels	OPBD	Russ Lane 7/12
FLDOF	James Karels	Division	H, I, J, K Matt Filbert 7/18 / Dean Karlovich (t) 7/18
FWS AREP	Mike Housh	Division	L, M Ray Miller 7/20
FWS-Refuge PAO	Art Webster	Division	N, O Steve Griffin 7/19
GEMA AREP	Alan Robinson / Diane Adams	Group	IA-EAST John Huschke 7/12
USFS AREP	Ivan Greene	Group	Roads
7. Planning Section			
Chief	Ed Flowers 7/22	d. Air Operations Branch - Honey Prairie	
Resources Unit	Wilbur Priest 7/22/Fred Noack 7/19	Air Operations Branch Director	Tim Elder 7/22
Situation Unit	Scott Crosby 7/22	Air Support Group Supervisor	Don Nicholas
IMET	Joe Goudsward 7/21 / Mike Bettwy 7/21	ATGS-Lake City	Tim Caughlin 7/16 / Melanie Fullman (t) 7/11
Fire Behavior Analyst	Gary Brunk 7/13 / Steven Cobb (t) 7/15 / John Kern 7/22	d. Air Operations Branch-Waycross	
Demobilization Unit	Tim Wilkinson 7/22	Waycross Helibase Manger	Melvin Tate 7/10
GIS	Sue Leverette 7/22	d. Air Operations Branch - Fargo	
CTSP	Randy Fountain 7/22 / Charlie Bolen 7/17	Fargo Helibase Manager	Brain Campbell 7/22 / Steve Croy (t) 7/15
TNSP		ATGS-Fargo	Carl McGill 7/18
8. Logistics Section		10. Finance Section	
Chief	Shane Locke 7/21/Butch Mallet 7/22	Chief	Betty Palmiotto 7/22 / Linda Starling 7/22
Supply Unit	Rhonda Hughes 7/22	Time Unit	Frances Matheny 7/22
Ground Support Unit	James Thompson 7/22	Procurement	John Watson 7/22
ORDM	Abe Phillipson 7/22	Comp Claims Unit	Alvin Welch 7/21 / Katrina Bryant 7/22
Communications Unit	Brian Mathews 7/22	Cost	Lisa Ridley 7/22
Medical Unit	Joe Fowler 7/22/Mike Evers (t) 7/11	Buying Team	Rita Loper
Facilities	Mel Reese 7/22	IBA	Ron Knowles 7/19
Food	Nat Wright 7/22/Bob Kooken 7/17		
RCDM	Gary Sisson 7/22		
		Prepared by:	Wilbur Priest RESL

DIVISION ASSIGNMENT LIST			1. Branch West		2. Division A, B, C		
3. Incident Name: Honey Prairie Complex			4. Operational Period Date: 7/10/2011 Time: Day: 0800-2100				
5. Operations Personnel							
Operations	Rick Dolan 7/22		Branch Director		Bob Shindelar 7/11 Tom Donohoe 7/22		
Planning Ops			Division Supervisor		Mike Almas 7/10 / Micah Johnson (t) 7/10 / Bill Altman 7/19		
Safety Officer	Barry Coulliette 7/22						
6. Resources Assigned this Period							
Strike Team/Task Force/ Resource Designator	Leader / Name / Designator	Last Shift Date	Num. Per.	Drop Off PT./Time	Pick Up PT./Time		
TFLD (O-897)	Terry George	7/10	1				
TFLD (O-898)	Joel McCraw (t)	7/10	1				
TFLD (O-900)	Phill Millette	7/18	1				
TFLD (O-940)	Greg Jacobson	7/19	1				
TFLD (E-5017.9)	Keith Kelley (t)	7/10	1				
STEN (O-949)	Nikia Hernandez	7/19	1				
ENG6 (E-807)	Todd Caudill	7/24	3				
ENG6 (E-900)	Richard Kujawa	7/11	2				
ENG6 (E-907) Eagle Staff	Lance Eagle Staff	7/22	2				
ENG6 (E-994)	Pat Norquay	7/18	3				
ENG6 (E-1059)	Daniel Ross	7/22	3				
ENG6 (E-1065)	Mike Carnelli	7/22	3				
ENG6 (E-1066)	Eric Jones	7/21	3				
ENG6 (E-5002) Attack#1	Hank Kight	7/20	2	PVT			
ENG6 (E-5017) MOMTF 9504	Erin Yeoman	7/10	5				
DOZ3 (E-646)/E-723 trans	Phil Dueitt	7/19	1	PVT			
TPL3 (E-170) Francis Marion	John Christopher	7/11	2				
WAT2 (E-93)	William Davis	7/10	1	PVT			
SOF2 (O-702)	Bruce Barrett	7/11	1				
EMTB (O-984)	Bob Eaton	7/20	1				
7. Control Operations <ul style="list-style-type: none"> Patrol and mop up within 100' of fire perimeter line. Monitor fire impacts to Stephen Foster State Park. Patrol and control return. 							
8. Special Instructions <ul style="list-style-type: none"> Examine work area for fire weakened snags. Ensure LCES are in place before operations begin and stay hydrated. Additional resources will be available from GFC, Florida DOF, FWS, and local cooperators. Drive defensively and with lights on at all times. 							
9. Division/Group Communication Summary							
Function	Frequency	System	Channel	Function	Frequency	System	Channel
Command N Okee Repeater	RX 164.5750/206.5 TX 163.150/206.5	KING NIFC	5	Logistics		KING NIFC	
Tactical Div/Group	RX 168.775 TX 168.7750	KING NIFC	9	Air to Ground	RX 166.9375 TX 166.9375	KING NIFC	6
Prepared by (Resource Unit Ldr.) Fred Noack		Approved by (Planning Sect. Ch.) /s/ Ed Flowers			Date 7/9/2011		Time 1930

DIVISION ASSIGNMENT LIST			1. Branch West		2. Division D, E, F, G		
3. Incident Name Honey Prairie Complex			4. Operational Period Date: 7/10/2011 Time: 0800-2100				
5. Operations Personnel							
Operations	Rick Dolan 7/22			Branch Director		Bob Shindelar 7/11 Tom Donohoe 7/22	
Planning Ops				Division Supervisor		Toby Herold 7/20	
Safety Officer	Barry Coulliette 7/22						
6. Resources Assigned this Period							
Strike Team / Task Force / Resource Designator		Leader / Name / Designator		Last Shift Date	Num. Per.	Drop Off PT./Time	Pick Up PT./Time
TFLD (O-916)		Hans Ohme		7/18	1		
TFLD (O-926)		Matt Ingram		7/18	1		
HEQB (O-708)		Andy Murrin		7/12	2	PVT	
ENG6 (E-134)		Paul McDavid		7/20	3	PVT	
ENG5 (E-503)		Dean Vanderbleek		7/16	2	PVT	
ENG6 (E-709)		Jason Walker		7/16	3	PVT	
ENG6 (E-821)		Ryan Ricke		7/12	3		
ENG6 (E-824)		Joshua Morgan		7/12	3		
TPL3 (E-499)		Roy Rowan		7/14	2	PVT	
WT (E-700)		Lee Cahoon		7/17	1	PVT	
EMTB (O-849)		Kyle Meadows- Barber		7/11	1		
SOF2 (O-805)		Troy Shaddox		7/14	1		
7. Control Operations <ul style="list-style-type: none"> Monitor and patrol south end of West Branch. Mop up all hot spots within 100' of the fire perimeter. Patrol and control return. 							
8. Special Instructions <ul style="list-style-type: none"> Ensure LCES are in place before operations begin and stay hydrated. See medical plan for EMT support. Drive defensively and with lights on at all times. Examine work area for fire weakened snags. If communications needed with Impassable Bay Fire – use Channel 11 (168.2000) 							
9. Division/Group Communication Summary							
Function	Frequency	System	Channel	Function	Frequency	System	Channel
Command S Okee Repeater	RX 164.7750/123.0 TX 163.150/123.0	KING NIFC	2	Logistics		KING NIFC	
Tactical Div/Group	RX 151.2725 TX 151.2725	KING NIFC	13	Air to Ground	RX 166.9375 TX 166.9375	KING NIFC	6

DIVISION ASSIGNMENT LIST				1. Branch West		2. Division T	
3. Incident Name Honey Prairie Complex				4. Operational Period Date: 7/10/2011 Time: 0800-2100			
5. Operations Personnel							
Operations	Rick Dolan 7/22			Branch Director		Bob Shindelar 7/11 Tom Donohoe 7/22	
Planning Ops				Division		Brian Rhodes 7/20 / Todd Haynes (t) 7/19	
Safety Officer	Barry Coulliette 7/22						
6. Resources Assigned this Period							
Strike Team/Task Force/ Resource Designator		Leader / Name / Designator		Last Shift Date	Num. Per.	Drop Off PT./Time	Pick Up PT./Time
TFLD (O-946)		Stephen Filmore		7/19	1		
TFLD (E-831.8)		Jeff Hussey		7/23	1		
STEN (O-952)		Vincent Plummer		7/19	1		
S/T Type 6 OR TFLD (t) (E-831.9)		Deana Wall		7/23	1		
ENG6 (E-831.5)		Shane Thames		7/23	3		
ENG6 (E-831.1)		Ben Nichols		7/23	4		
ENG6 (E-831.4)		Eric Hahn		7/23	3		
ENG6 (E-831.6)		Tavis Fenske		7/23	3		
ENG6 (E-831.7)		Mike Towers		7/23	3		
ENG6 (E-815)		Matt Dillon		7/22	2		
ENG6 (E-816)		Jamie Remme		7/22	2		
ENG6 (E-817)		Mike Mattson		7/22	2		
ENG6 (E-818)		Scott Lindow		7/22	2		
ENG6 (E-1073)		Mike Schlitz		7/22	3		
WAT1 (E-1019)		Raymond Novello		7/21	1	PVT	
WAT2 (E-1021)		Charlie Brown		7/19	1	PVT	
TPL2 (E-986)		David Hauser		7/26	1	PVT	
TPL (E-988)		Jonathon Houser		7/30	1		
KG (E-989)		Mack Evans		7/30	1		
EMTP (O-982)		Jeff Halladay		7/22	1		
SOF2 (O-973)		Larry Dorshorst		7/20	1		
7. Control Operations							
<ul style="list-style-type: none"> Recon potential control lines and examine area for snag removal Improve swamp break boundaries for fire breaks, work w/resource advisor Coordinate potential burn-out w/READ and refuge personnel Use refuge personnel for any burn-out activities. 							
8. Special Instructions							
<ul style="list-style-type: none"> Make contact with the Resource Advisor before using mechanical equipment. Safely push down with equipment all snags whether on fire or not that are a threat to success or tactical operations. Ensure LCES are in place before operations begin. Stay hydrated. Drive defensively and with lights on at all times. Boggy terrain: Be careful and aware when working around this type of area. 							
9. Division/Group Communication Summary							
Function	Frequency	System	Channel	Function	Frequency	System	Channel
Command N Okee Repeater	RX 164.5750/206.5 TX 163.150/206.5	KING NIFC	5	Logistics		KING NIFC	
Tactical Div/Group	RX 168.775 TX 168.775	KING NIFC	9	Air to Ground	RX 166.9375 TX 166.9375	KING NIFC	6
Prepared by (Resource Unit Ldr.) Fred Noack		Approved by (Planning Sect. Ch.) /s/ Ed Flowers			Date July 9, 2011		Time 1800

DIVISION ASSIGNMENT LIST		1. Branch West		2. Division V		1 of 2	
3. Incident Name Honey Prairie Complex		4. Operational Period Date: 7/10/2011 Time: 0800-2100					
5. Operations Personnel							
Operations	Rick Dolan 7/22	Branch Director		Bob Shindelar 7/11 Tom Donohoe 7/22			
Planning Ops		Division Supervisor		Shawn Duggar 7/21 / Bryce Thomas (t) 7/22			
Safety Officer	Barry Coulliette 7/22	Division Supervisor		Greg Suszek 7/19			
6. Strike Team/Task Force/ Resource Designator							
	Leader / Name / Designator	Last Shift Date	Num. Per.	Drop Off PT./Time	Pick Up PT./Time		
TFLD (O-906)	Evan Karp	7/18	1				
TFLD (O-978)	Jacob Thelen (t)	7/19	1				
TFLD (O-942)	Ben Krupski	7/19	1				
STEN (O-948)	Glen Palfrey	7/20	1				
STEN (O-1000)	Waylon Meek (t)	7/20	1				
Feller-Buncher (E-524)	Josh Burdy	7/21	1	PVT			
Feller-Buncher (E-526)	James Marshall	7/16	1	PVT			
Grader (E-530)	Woody Bargeron	7/9	1	PVT			
TPL2 (E-606)	Cody Daniels	7/17	1				
ENG6 (E-2)	Eric Nelson	7/19	1	O-436			
ENG6 (E-3)	Angie Carl	7/10	2	O-851			
ENG6 (E-992)	Justin Dillon	7/20	3	PVT			
ENG6 (E-995)	Aaron Bailey	7/11	3				
ENG6 (E-996)	Dustin Pickering	7/11	3				
ENG6 (E-1085)	Don Crane	7/14	2	PVT			
ENG6 (E-1000)	Paul Rampinini	7/19	2	PVT			
ENG6 (E-1001)	Dick Sypher	7/19	2	PVT			
ENG6 (E-1053)	Timmerman	7/27	3	PVT			
ENG6 (E-1064)	Greg Nichols	7/21	3				
ENG6 (E-1062)	Tyler Quintano	7/22	3	PVT			
ENG6 (E-1063)	Brad Finch	7/22	3	PVT			
7. Control Operations							
<ul style="list-style-type: none"> Recon potential control lines and examine area for snag removal Improve swamp break boundaries for fire breaks, work w/resource advisor Coordinate potential burn-out w/READ and Refuge Personnel Use Refuge personnel for any burn-out activities. 							
8. Special Instructions							
<ul style="list-style-type: none"> Make contact with the Resource Advisor before using mechanical equipment. Safely push down with equipment all snags whether on fire or not that are a threat to success or tactical operations. Ensure LCES are in place before operations begin. Stay hydrated. Drive defensively and with lights on at all times. Boggy terrain: Be careful and aware when working around this type of area. 							
9. Division/Group Communication Summary							
Function	Frequency	System	Channel	Function	Frequency	System	Channel
Command N Okee Repeater	RX 164.5750/206.5 TX 163.150/206.5	KING NIFC	5	Logistics		KING NIFC	
Tactical Div/Group	RX 151.2725 TX 151.2725	KING NIFC	13	Air to Ground	RX 166.9375 TX 166.9375	KING NIFC	6
Prepared by (Resource Unit Ldr.) Fred Noack		Approved by (Planning Sect. Ch.) /s/ Ed Flowers			Date July 9, 2011		Time 1800

DIVISION ASSIGNMENT LIST			1. Branch West		2. Division V		2 of 2	
3. Incident Name Honey Prairie Complex			4. Operational Period Date: 7/10/2011 Time: 0800-2100					
5. Operations Personnel								
Operations		Rick Dolan 7/22			Branch Director		Bob Shindelar 7/11 Tom Donohoe 7/22	
Planning Ops					Division Supervisor		Shawn Duggar/Bryce Thomas (t) 7/22	
Safety Officer		Barry Coulliette 7/22			Division Supervisor		Greg Suszek 7/19	
6. Strike Team/Task Force/ Resource Designator								
Leader / Name / Designator		Last Shift Date	Num. Per.	Drop Off PT./Time		Pick Up PT./Time		
TFLD (O-986)		Mike Harnois	7/22	1				
DOZB (O-1001)		Roy Cribb	7/20	1				
KG Dozer		Need to check in						
KG Dozer		Need to check in						
Skidder (E-981)		Henry Tiner	7/25	1	PVT			
WT2 (E-1018)		Gary Waldron	7/18	1	PVT			
SOF2 (O-972)		Larry Bunge	7/19	1				
EMTP (O-767)		Evan Dean	7/12	1				
7. Control Operations								
<ul style="list-style-type: none"> Recon potential control lines and examine area for snag removal Improve swamp break boundaries for fire breaks, work w/resource advisor Coordinate potential burn-out w/READ and Refuge Personnel Use Refuge personnel for any burn-out activities. 								
8. Special Instructions								
<ul style="list-style-type: none"> Make contact with the Resource Advisor before using machanical equipment. Safely push down with equipment all snags whether on fire or not that are a threat to success or tactical operations. Ensure LCES are in place before operations begin. Stay hydrated. Drive defensively and with lights on at all times. Boggy terrain: Be careful and aware when working around this type of area. 								
9. Division/Group Communication Summary								
Function	Frequency	System	Channel	Function	Frequency	System	Channel	
Command N Okee Repeater	RX 164.5750/206.5 TX 163.150/206.5	KING NIFC	5	Logistics		KING NIFC		
Tactical Div/Group	RX 151.2725 TX 151.2725	KING NIFC	13	Air to Ground	RX 166.9375 TX 166.9375	KING NIFC	6	
Prepared by (Resource Unit Ldr.) Fred Noack		Approved by (Planning Sect. Ch.) /s/ Ed Flowers			Date July 9, 2011		Time 1800	

DIVISION ASSIGNMENT LIST			1. Branch West		2. Division Y - Day		1 of 2	
3. Incident Name Honey Prairie Complex			4. Operational Period Date: 7/10/2011 Time: 0800-2100					
5. Operations Personnel								
Operations		Rick Dolan 7/22		Branch Director		Bob Shindelar 7/11 Tom Donohoe 7/22		
Planning Ops				Division Supervisor		Gary Smith 7/19, Dan Helterline (t) 7/19		
Safety Officer		Barry Coulliette 7/22						
6. Resources Assigned this Period								
Strike Team/Task Force/ Resource Designator		Leader / Name / Designator		Last Shift Date	Num. Per.	Drop Off PT./Time		Pick Up PT./Time
TFLD (O-920)		Aaron Schneider		7/18	1			
TFLD (O-991)		Adam Wolf (t)		7/21	1			
STEN (O-739)		Rodney Weeks		7/11	1			
TFLD (O-954)		Brian Ebert (t)		7/20	1			
STEN (O-979)		Sam Lindblom (t)		7/20	1			
ENG6 (E-1071)		Brandon Morris		7/22	3			
ENG6 (E-584)		Cris Geidel		7/24	2			
ENG6 (E-838)		Chris Mursu		7/21	3			
ENG6 (E-997)		Jack Weer		7/20	2			
ENG6 (E-998)		John Stebner		7/20	2			
ENG6 (E-1004)		Doug Scott		7/19	2	PVT		
ENG6 (E-1005)		Dave Hardy		7/19	2	PVT		
ENG6 (E-1010)		Jene-Paul Matson		7/18	2	PVT		
ENG6 (E-1011)		Doug Williams		7/18	2	PVT		
ENG6 (E-1012)		Glenn Hill		7/18	2	PVT		
ENG6 (E-1014)		Doug Vankuiken		7/19	3	PVT		
ENG6 (E-1015)		Robert Burton		7/20	3	PVT		
ENG6 (E-1016)		James Mangine		7/20	3	PVT		
ENG5 (E-1036)		Nicholas Villa		7/10	3			
ENG5 (E-1046)		Karen Mobley		7/21	3			
ENG6 (E-1056)		John Wisecarver		7/28	3	PVT		
7. Control Operations <ul style="list-style-type: none"> Make contact with the Resource Advisor before using mechanical equipment. Recon potential controllines and examine area for snag removal Improve swamp break boundaries for fire breaks 								
8. Special Instructions <ul style="list-style-type: none"> Safely push down with equipment all snags whether on fire or not that are a threat to success or tactical operations. Ensure LCES are in place before operations begin. Stay hydrated. Drive defensively and with lights on at all times. Boggy terrain: Be careful and aware when working around this type of area. 								
9. Division/Group Communication Summary								
Function	Frequency	System	Channel	Function	Frequency	System	Channel	
Command N Okee Repeater	RX 164.5750/206.5 TX 163.150/206.5	KING NIFC	5	Logistics		KING NIFC		
Tactical Div/Group	RX 151.2725 TX 151.2725	KING NIFC	13	Air to Ground	RX 166.9375 TX 166.9375	KING NIFC	6	
Prepared by (Resource Unit Ldr.) Fred Noack		Approved by (Planning Sect. Ch.) /s/ Ed Flowers			Date July 9, 2011		Time 1730	

DIVISION ASSIGNMENT LIST			1. Branch West		2. Division Y - Day		2 of 2	
3. Incident Name Honey Prairie Complex			4. Operational Period Date: 7/10/2011 Time: 0800-2100					
5. Operations Personnel								
Operations		Rick Dolan 7/22		Branch Director		Bob Shindelar 7/11 Tom Donohoe 7/22		
Planning Ops				Division Supervisor		Gary Smith 7/19, Dan Helterline (t) 7/19		
Safety Officer		Barry Coulliette 7/22						
6. Resources Assigned this Period								
Strike Team/Task Force/ Resource Designator		Leader / Name / Designator		Last Shift Date	Num. Per.	Drop Off PT./Time		Pick Up PT./Time
HEQB (O-960)		Paul Pelligrini		7/20	1			
WT2 (E-512)		Ken Swane		7/11	1	PVT		
WT2 (E-560)		Woody Bargeron		7/24	1	PVT		
WTS1 (E-716)		Lee Tuten		7/26	1	PVT		
WT2 (E-1024)		Richard Jones		7/28	1	PVT		
WT (E-1017)		Gene Ball		7/24 ?	1	GAOKR		Need to check in
DOZB (O-843)		Joseph Chastain (t)		7/10	1			
DOZB (O-1004)		Derek Cooper		7/20	1			
DOZB (O-1008)		Zack Culver (t)		7/21	1			
TPL2 (E-497)		Leslie Jeter		7/22	1	PVT		
TPL3 (E-943)		Hugh Matchett		7/20	1	PVT		
TPL3 (E-984)		Junior House		7/27	1	PVT		
TPL2 (E-985)		Aaron Tipton		7/27	1	PVT		
SOF2 (O-891)		Steve Holman		7/17	1			
EMTP (O-766)		Peggy Miller		7/11	1			
7. Control Operations <ul style="list-style-type: none"> Make contact with the Resource Advisor before using mechanical equipment. Recon potential controllines and examine area for snag removal Improve swamp break boundaries for fire breaks 								
8. Special Instructions <ul style="list-style-type: none"> Safely push down with equipment all snags whether on fire or not that are a threat to success or tactical operations. Ensure LCES are in place before operations begin. Stay hydrated. Drive defensively and with lights on at all times. Boggy terrain: Be careful and aware when working around this type of area. 								
9. Division/Group Communication Summary								
Function	Frequency	System	Channel	Function	Frequency	System	Channel	
Command N Okee Repeater	RX 164.5750/206.5 TX 163.150/206.5	KING NIFC	5	Logistics		KING NIFC		
Tactical Div/Group	RX 151.2725 TX 151.2725	KING NIFC	13	Air to Ground	RX 166.9375 TX 166.9375	KING NIFC	6	

DIVISION ASSIGNMENT LIST				1. Branch West		2. Division V,Y Night	
3. Incident Name Honey Prairie Complex				4. Operational Period Date: 7/10/2011 Time: 1800-0600			
5. Operations Personnel							
Operations		Rick Dolan 7/22		Branch Director		Bob Shindelar 7/11 Tom Donohoe 7/22	
Planning Ops				Division Supervisor		Jacquie Parks 7/21	
Safety Officer		Barry Coulliette 7/22					
6. Resources Assigned this Period							
Strike Team/Task Force/ Resource Designator		Leader / Name / Designator		Last Shift Date	Num. Per.	Drop Off PT./Time	Pick Up PT./Time
TFLD (E-973.1)		Heath Serres		7/14	1		
TFLD (O-944)		Dave Marion		7/19	1		
STEN (t) (O-1018)		Greg Thomas		7/23	1		
ENG6 (E-76)		Chris Henderson		7/20	2		
ENG6 (E-78)		Kevin Cline		7/20	2		
ENG6 (E-80)		Dane Bass		7/20	2		
ENG6 (E-81)		Troy Helms		7/20	2		
ENG6 (E-973)		Rick Young		7/14	2	PVT	
ENG6 (E-975)		Nort Phillips		7/14	3	PVT	
ENG6 (E-1081)		Tim Joy		7/21	2		
ENG6 (E-1082)		Brad Gregory		7/21	2		
ENG6 (E-1083)		Tony Harkins		7/21	2		
WAT2 (E-954)		Jim Griffens		7/11	1	PVT	
SOF2 (O-997)		Bob Habeck		7/22	1		
EMTP (O-640)		Mike Fincham		7/10	1		
EMTB (O-983)		Dominic Burchett		7/22	1		
7. Control Operations <ul style="list-style-type: none"> Make contact with the Resource Advisor before using mechanical equipment. Recon potential controllines and examine area for snag removal Improve swamp break boundaries for fire breaks 							
8. Special Instructions <ul style="list-style-type: none"> Safely push down with equipment all snags whether on fire or not that are a threat to success or tactical operations. Ensure LCES are in place before operations begin. Stay hydrated. Drive defensively and with lights on at all times. Boggy terrain: Be careful and aware when working around this type of area. 							
9. Division/Group Communication Summary							
Function	Frequency	System	Channel	Function	Frequency	System	Channel
Command N Okee Repeater	RX 164.5750/206.5 TX 163.150/206.5	KING NIFC	5	Logistics		KING NIFC	
Tactical Div/Group	RX 151.2725 TX 151.2725	KING NIFC	13	Air to Ground	RX 166.9375 TX 166.9375	KING NIFC	6

DIVISION ASSIGNMENT LIST		1. Branch West	2. Division Z				
3. Incident Name: Honey Prairie Complex		4. Operational Period Date: 7/10/2011 Time: Day: 0800-2100					
5. Operations Personnel							
Operations	Rick Dolan 7/22	Branch Director	Bob Shindelar 7/11 Tom Donohoe 7/22				
Planning Ops		Division Supervisor	Larry Peabody 7/10 / Jesse Knox (t) 7/18				
Safety Officer	Barry Coulliette 7/22						
6. Resources Assigned this Period							
Strike Team/Task Force/ Resource Designator	Leader / Name / Designator	Last Shift Date	Num. Per.	Drop Off PT./Time	Pick Up PT./Time		
TFLD (O-889)	Kris Larson	7/19	1				
TFLD (O-792)	Dennis Wilson (t)	7/12	1				
TFLD (O-921)	Brad Hall (t)	7/18	1				
STEN (O-955)	Randy Scherr	7/19	1				
ENG6 (E-392)	Tyson Taylor	7/21	3				
ENG5(E-502)	Saul Irving	7/13	2	PVT			
ENG5(E-905)	Travis Bailey	7/23	3				
ENG6 (E-1047)	Thomas Sherman	7/21	3	PVT			
ENG6 (E-1051)	Kyle Zuehlke	7/21	3	PVT			
ENG6 (E-1052)	Ryan Schlater	7/28	3	PVT			
ENG6 (E-1057)	Troy Mueller	7/20	3				
ENG6 (E-1067)	Shaun Moore	7/28	3				
ENG6 (E-5007)	Jim Gipson	7/21	2	PVT			
ENG6 (E-5008)	Matt Stoneking	7/23	2	PVT			
ENG6 (E-5010)	C. Tevebaugh(E-5010.1)	7/12	3	PVT			
ENG6 (E-5011) Smokey Mt 209	Gary Barlett	7/10	2	PVT			
ENG6 (E-5012) Smokey Mt 301	Paul Shrimplin	7/11	2	PVT			
ENG6 (E-392)	Tyson Taylor	7/21	3				
HCT2IA (C-14) Pat Rick 20B	Dustin Eldred	R&R 7/10-11	20	PVT			
EMTP (O-847)	Levi Clymer	7/11	1				
SOF2 (O-892)	Steven Ripley	7/17	1				
7. Control Operations							
<ul style="list-style-type: none"> Contain all fires outside refuge boundary. Patrol and mop up within 100' of fire perimeter line. 							
8. Special Instructions							
<ul style="list-style-type: none"> Ensure that tractors are cleaned and free of debris daily. Examine work area for fire weakened snags. Ensure LCES are in place before operations begin and stay hydrated. Additional resources will be available from GFC, Florida DOF, FWS, and local cooperators. Drive defensively and with lights on at all times. See Medical plan for EMT support. Implement MIST tactics 							
9. Division/Group Communication Summary							
Function	Frequency	System	Channel	Function	Frequency	System	Channel
Command N Okee Repeater	RX 164.5750/206.5 TX 163.150/206.5	KING NIFC	5	Logistics		KING NIFC	
Tactical Div/Group	RX 168.200 TX 168.200	KING NIFC	11	Air to Ground	RX 166.9375 TX 166.9375	KING NIFC	6

DIVISION ASSIGNMENT LIST				1. Branch West	2. Division West - Initial Attack and Structure Protection 1 of 2		
3. Incident Name: Honey Prairie Complex				4. Operational Period Date: 7/10/2011 Time: Day: 0800-2100			
5. Operations Personnel							
Operations	Rick Dolan 7/22			Branch Director	Bob Shindelar 7/11 Tom Donohoe 7/22		
Planning Ops				Division Supervisor	Don Hammack 7/19 / Bob Schober (t) 7/18		
Safety Officer	Barry Coulliette 7/22						
6. Resources Assigned this Period							
Strike Team/Task Force/ Resource Designator	Leader / Name / Designator		Last Shift Date	Num. Per.	Drop Off PT./Time	Pick Up PT./Time	
STEN (O-947)	Jesse Register		7/20	1			
STEN (O-951)	Jerry Van Dyne		7/20	1			
STEN (O-990)	Joe Sampson		7/20	1			
STPL (O-809)	Todd Milam		7/10	1			
HEQB (O-958)	Tim Boyce		7/20	1			
ENG6 (E-404)	John Knapper		7/23	3			
ENG6 (E-906)	James Burk		7/23	3			
ENG6 (E-939)	Daniel Casto		7/23	3			
ENG6 (E-1013)	William Paulton		7/20	3	PVT		
ENG6 (E-1045)	Andrew English		7/28	3	PVT		
ENG6 (E-1048)	Joseph Jarrells		7/21	3			
ENG6 (E-1049)	James Dowd		7/20	3			
ENG6 (E-1054)	Shawn Kanouse		7/28	3	PVT		
ENG6 (E-1055)	Brian Kanouse		7/28	3	PVT		
ENG6 (E-1050)	Kyle Varel		7/20	3			
ENG6 (E-1075)	David Jones		7/20	3			
DOZ3 (E-650)	Danny Cerezo		7/22	1	PVT		
DOZ3 (E-651)	Bill Rimes		7/14	1	PVT		
WAT3 (E-233)	Isiah Moore		?	1	PVT	Needs to check in	
7. Control Operations							
<ul style="list-style-type: none"> Respond to Initial Attack as requested Initial attack IC will communicate size up information to Honey Prairie incident communications 							
8. Special Instructions							
Continue to monitor the Coal, Levy, and Shantee Fires.							
9. Division/Group Communication Summary							
Function	Frequency	System	Channel	Function	Frequency	System	Channel
Command N Okee Repeater	RX 164.5750/206.5 TX 163.150/206.5	KING NIFC	5	Logistics	See ICS 205	KING NIFC	
Tactical Div/Group	RX 154.280 TX 154,280/156.7	KING NIFC	8	Air to Ground	RX 166.9375 TX 166.9375	KING NIFC	6
Prepared by (Resource Unit Ldr.) Fred Noack		Approved by (Planning Sect. Ch.) /s/ Ed Flowers			Date July 9, 2011		Time 1930

DIVISION ASSIGNMENT LIST				1. Branch West	2. Division West - Initial Attack and Structure Protection 2 of 2			
3. Incident Name: Honey Prairie Complex				4. Operational Period Date: 7/10/2011 Time: Day: 0800-2100				
5. Operations Personnel								
Operations	Rick Dolan 7/22			Branch Director	Bob Shindelar 7/11 Tom Donohoe 7/22			
Planning Ops				Division Supervisor	Don Hammack 7/19 / Bob Schober (t) 7/18			
Safety Officer	Barry Coulliette 7/22							
6. Resources Assigned this Period								
Strike Team/Task Force/ Resource Designator	Leader / Name / Designator			Last Shift Date	Num. Per.	Drop Off PT./Time	Pick Up PT./Time	
TPL3 (E-1138)	Jim Reynolds			7/23	1			
TPL3	TBA							
TPL3	TBA							
TPL (E-987)	Butch Duiett			7/27	1	PVT		
WAT3 (E-517)	Larry Bartlett			7/12	1	PVT		
EMTP (O-730)	Shane Powers			7/10	1			
SOF2 (O-805)	Troy Shaddox			7/15	1			
7. Control Operations <ul style="list-style-type: none"> Respond to Initial Attack as requested Initial attack IC will communicate size up information to Honey Prairie incident communications 								
8. Special Instructions Continue to monitor the Coal, Levy, and Shantee Fires.								
9. Division/Group Communication Summary								
Function	Frequency	System	Channel	Function	Frequency	System	Channel	
Command N Okee Repeater	RX 164.5750/206.5 TX 163.150/206.5	KING NIFC	5	Logistics	See ICS 205	KING NIFC		
Tactical Div/Group	RX 154.280 TX 154,280/156.7	KING NIFC	8	Air to Ground	RX 166.9375 TX 166.9375	KING NIFC	6	
Prepared by (Resource Unit Ldr.) Fred Noack		Approved by (Planning Sect. Ch.) /s/ Ed Flowers			Date July 9, 2011		Time 1930	

DIVISION ASSIGNMENT LIST			1. Branch East		2. Division H/ I/J/K		
3. Incident Name Honey Prairie Complex			4. Operational Period Date: 7/10/2011 Time: 0800-2100				
5. Operations Personnel							
Operations	Butch Hall 7/22			Branch Director	Russ Lane 7/12		
Planning Ops				Division Supervisor	Matt Filbert 7/18		
Safety Officer	Ray Durham 7/22						
6. Resources Assigned this Period							
Strike Team/Task Force/ Resource Designator	Leader / Name / Designator	Last Shift Date	Num. Per.	Drop Off PT./Time	Pick Up PT./Time		
TFLD (O-945)	Walter Mendoza	7/20	1				
STEN (O-950)	Larry Larson	7/20	1				
ENG6 (E-77) GAGAS 86	Andrew Gamlin	7/20	2				
ENG6 (E-135) Attack-1	Billy Taylor (Erin Finnegan starting 7/11)	7/22	2	PVT			
ENG6 (E-136) Nat'l Fire	Jeremiah Cates	7/16	2	PVT			
ENG6 (E-179) Nat'l Fire #4	Ramey Hiers	7/19	2	PVT			
ENG6 (E-1069) Tallahassee E26	William Abbott	7/21	3				
WT (E-559)	Kevin Gray	7/26	1	PVT	Needs to check in		
Pump (E-293)		7/8	1		Pump is on a Trailer		
EMTP (O-981)	Kurt Berge	7/22	1				
7. Control Operations							
<ul style="list-style-type: none"> Contain all fires outside refuge boundary. Patrol and control reburn Provide initial attack for GFC and fires outside the refuge boundary. Patrol all spots outside refuge boundary. Patrol and mop up all accessible fire line. Mop up all hot spots within 100' of the fire perimeter. Continue to provide protection to the Chesser Homestead by maintaining an adequate water supply via portable pump at location. 							
8. Special Instructions							
<ul style="list-style-type: none"> Ensure LCES are in place before operations begin. Stay hydrated. Drive defensively and with lights on at all times. See medical plan for EMT support Examine work area for fire weakened snags 							
9. Division/Group Communication Summary							
	Function	Frequency	Channel	Function	Frequency	System	Channel
Command E Okee Repeater	RX 164.6250/103.5 TX 163.150/103.5	KING	3	Logistics		KING NIFC	
DIV J Repeater	RX 170.4125 TX 165.9625/123.0	NIFC	14				
Tactical Div /Group	RX 168.350 TX 168.350	KING NIFC	12	Air to Ground	RX 166.9375 TX 166.9375	KING NIFC	6
Prepared by (Resource Unit Ldr.) Fred Noack		Approved by (Planning Sect. Ch.) /s/ Ed Flowers			Date July 9, 2011		Time 1800

DIVISION ASSIGNMENT LIST		1. Branch East		2. Division L, M			
3. Incident Name Honey Prairie Complex		4. Operational Period Date: 7/10/2011 Time: 0800-2100					
5. Operations Personnel							
Operations	Butch Hall 7/22	Branch Director		Russ Lane 7/15			
Planning Ops		Division Supervisor		Ray Miller 7/20			
Safety Officer	Ray Durham 7/22						
6. Resources Assigned this Period							
Strike Team/Task Force/ Resource Designator	Leader / Name / Designator	Last Shift Date	Num. Per.	Drop Off PT./Time	Pick Up PT./Time		
TFLD (O-937)	Kevin Elmstrom	7/20	1				
TFLD (O-841)	James Flue (t)	7/10	1				
TFLD (O-993)	Drew Daily	7/22	1				
ENG6 (E-407) White Earth #2	Jesse Londo	7/22	3				
ENG6 (E-819)	Brett Eismann	7/21	3				
ENG6 (E-826)	Steve Melton	R&R	2	PVT	Return on 7/11 for 14 days		
ENG6 (E-893)MIHMF 251	Martel Knipe	7/23	3				
ENG6 (E-894) MOOZP 862	William Mier	7/22	3				
ENG6 (E-895) MOMTF 9505	Blake Knisley	7/22	3				
ENG6 (E-898) MDS #4	James Harris	7/13	2				
ENG6 (E-1061) SM36	Steve Woodrick	7/21	3				
ENG6 (E-5014) TX Fire 157	Steven Torske	7/23	3				
EMTP (O-731)	Keith Barker	7/10	1				
SOF2 (O-1021)	David Vitwar	7/23	1				
7. Control Operations							
<ul style="list-style-type: none"> Contain all fires outside refuge boundary. Patrol and control reburn Mop up all spots outside refuge boundary and within 100 feet of perimeter 							
8. Special Instructions							
<ul style="list-style-type: none"> Ensure LCES are in place before operations begin. Stay hydrated. Drive defensively and with lights on at all times. See medical plan for EMT support Examine work area for fire weakened snags. 							
9. Division/Group Communication Summary							
	Function	Frequency	Channel	Function	Frequency	System	Channel
Command E Okee Repeater	RX 164.625/103.5 TX 163.150/103.5	KING NIFC	3	Logistics		KING NIFC	
Tactical Div/Group	RX 168.775 TX 168.775	KING NIFC	9	Air to Ground	RX 166.9375 TX 166.9375	KING NIFC	6
Prepared by (Resource Unit Ldr.) Fred Noack	Approved by (Planning Sect. Ch.) /s/ Ed Flowers			Date July 9, 2011		Time 1800	

DIVISION ASSIGNMENT LIST				1. Branch East		2. Division N/O	
3. Incident Name Honey Prairie Complex				4. Operational Period Date: 7/10/2011 Time: 0800-2100			
5. Operations Personnel							
Operations		Butch Hall 7/22		Branch Director		Russ Lane 7/15	
Planning Ops				Division Supervisor		Steve Griffin 7/18, Ernest Schmitt (t) 7/19	
Safety Officer		Ray Durham 7/22					
6. Resources Assigned this Period							
Strike Team/Task Force/ Resource Designator		Leader / Name / Designator		Last Shift Date	Num. Per.	Drop Off PT./Time	Pick Up PT./Time
TFLD (O-807) (t)		Mark Whipps		7/19	1		
STEN (O-989)		Max Twombly		7/21	1		
TFLD (O-994)		Jim Edgar		7/21	1		
ENG6 (E-897) MDBWR		Ephraim Diefenderfer		7/22	2		
ENG6 (E-922)		Nathan Herron		7/22	1		
ENG6 (E-977) IPF E-31		Louie Feltman		7/23	4		
ENG6 (E-993) Bush Fire		Philips Quochoyewa		7/18	2	PVT	
ENG6 (E-1058)		Michael Keil		7/20	3		
ENG6 (E-1060)		Paul Amundson		7/21	3		
ENG6 (E-1068)		Wade Griffith		7/22	3		
ENG6 (E-1070)		Gregory Rock		7/21	3		
ENG6 (E-1072)		Butch Murphy		7/21	3		
ENG6 (E-1074)		Peter Stevenson		7/20	3		
ENG6 (E-5006) Wildlands #3		Keith Hawk		7/15	2	PVT	
EMTB (O-848)		Bert Hyde		7/11	1		
SOF2 (O-807)		Chuck Stanton		7/9	1		Two days off/ back 7/12
7. Control Operations <ul style="list-style-type: none"> Patrol and mop up 100' inside fire perimeter. Recon potential control lines and examine area snag removal Keep fire within refuge boundary. 							
8. Special Instructions <ul style="list-style-type: none"> Safely push down with equipment all snags whether on fire or not that are a threat to success or tactical operations. Ensure LCES are in place before operations begin. Stay hydrated. See medical plan for EMT support. Drive defensively and with lights on at all times. Boggy terrain: Be careful and aware when working around this type of area. If HP fire escapes the NE Break the Great Basin team will command suppression w/assistance from the GFC. If Race Pond escapes to the south GFC will command w/assistance by the Great Basin. DIVS should make daily contact w/ Race Pond DIVS on scene. STEN Twombly and Engines 1058, 1060, 1070, 1072, 1074 be ready to respond to IA in Swamp Park. 							
9. Division/Group Communication Summary							
Function	Frequency	System	Channel	Function	Frequency	System	Channel
Command N Okee Repeater	RX 164.5750/206.5 TX 163.150/206.5	KING NIFC	5	Logistics		KING NIFC	
Tactical Div/Group	RX 168.200 TX 168.200	KING NIFC	11	Air to Ground	RX 166.9375 TX 166.9375	KING NIFC	6

DIVISION ASSIGNMENT LIST			1. Branch East		2. Division East Initial Attack		
3. Incident Name Honey Prairie Complex			4. Operational Period Date: 7/10/2011 Time: 0800-2100				
5. Operations Personnel							
Operations	Butch Hall 7/22			Branch Director	Russ Lane 7/15		
Planning Ops				Division Supervisor	John Huschke 7/12, Shawn Denowh (t) 7/19		
Safety Officer	Ray Durham 7/22						
6. Resources Assigned this Period							
Strike Team/Task Force/ Resource Designator	Leader / Name / Designator		Last Shift Date	Num. Per.	Drop Off PT./Time	Pick Up PT./Time	
TFLD (O-943)	Steven Clark		7/22	1			
DOZB (O-959)	Zac Cogle		7/20	1			
STDZ (O-1014)	Dennis Huenergardt		7/10	1			
ENG6 (E-390) WICNF 461	T. Borman		7/10	2			
ENG6 (E-974)	Steve Shykes		7/10	3			
ENG6 (E-978)	Dennis Gillmer		7/10	3		2 days R&R on 7/11 and 7/12	
ENG6 (E-979)	Mark Smith		7/10	4			
ENG6 (E-976)	Roscoe Benoy		7/10	3			
ENG6 (E-1084)	Mike Dean		7/20	2			
TPL3 (E-500) NFFS	TBA				PVT		
TPL3 (E-649) Bear Co	Don Johnson		7/30	2	PVT		
WT3 (E-92)	Justin/Ellis			1	PVT	Need to check in	
SOF2 (O-703)	Larry Klock		7/11	1			
7. Control Operations							
<ul style="list-style-type: none"> Respond to Initial Attack as requested Patrol and control return Initial attack IC will communicate sizeup information to the Honey Prairie communication. 							
8. Special Instructions							
9. Division/Group Communication Summary							
	Function	Frequency	Channel	Function	Frequency	System	Channel
Command E Okee Repeater	RX 164.625/103.5 TX 163.150/103.5	KING NIFC	3	Logistics		KING NIFC	
Tactical Div/Group	RX 168.775 TX 168.775	KING NIFC	9	Air to Ground	RX 166.9375 TX 166.9375	KING NIFC	6
Prepared by (Resource Unit Ldr.) Fred Noack		Approved by (Planning Sect. Ch.) /s/ Ed Flowers			Date July 9, 2011		Time 1800

DIVISION ASSIGNMENT LIST				1. Branch ALL		2. Division Roads Group	
3. Incident Name: Honey Prairie Complex				4. Operational Period Date: 7/10/2011 Time: Day: 0800-2100			
5. Operations Personnel							
Operations		Butch Hall 7/22		Branch Director			
Planning Ops				Division Supervisor			
Safety Officer		Ray Durham 7/22					
6. Resources Assigned this Period							
Strike Team/Task Force/ Resource Designator		Leader / Name / Designator		Last Shift Date	Num. Per.	Drop Off PT./Time	Pick Up PT./Time
EQPM(O-746)		Gary Hurst (T) 912-387-6787		7/12	1		
DOZB (O-956)		Tony Zavalla		7/21	1		
Excavator (E-505)		Lee Douglas or Johnny Smith		7/8	1	PVT	
Dump Truck (E-506)		TBA				PVT	
Dump Truck (E-529)		Craig Smith		7/19	1	PVT	
Grader (E-230)		TBA			1		
Grader (E-380)		Jason Merrit		7/20	1	PVT	
Grader (E-597)		TBA			1		
WT2 (E-1086)		Bill Rounsaville		7/28	1		
7. Control Operations							
<ul style="list-style-type: none"> • Coordinate efforts w/ resource advisor and logistics 							
8. Special Instructions							
<ul style="list-style-type: none"> • Ensure that tractors are cleaned and free of debris daily. Examine work area for fire weakened snags. • Ensure LCES are in place before operations begin and stay hydrated. • Additional resources will be available from GFC, Florida DOF, FWS, and local cooperators. • Drive defensively and with lights on at all times. • See Medical plan for EMT support. • Implement MIST tactics 							
9. Division/Group Communication Summary							
Function		Frequency		System		Channel	
Command				KING NIFC			
N.Okee Repeater		See ICS 205				Logistics	
				KING NIFC			
Tactical Div/Group		See ICS 205				Air to Ground	
						See ICS 205	
						KING NIFC	

AIR OPERATIONS SUMMARY

Prepared By: Tim Elder, AOBD

Prepared Date: 7.9.2011

Prepared Time: 1800

1. INCIDENT NAME: Honey Prairie	2. OPS PERIOD DATE: July 10, 2011	START TIME: 0830	END TIME: 1900	SUNRISE: 0633	SUNSET: 2036
3. REMARKS (Safety Notes, Hazards, Air Operations Special Equipment, etc.): <i>No fire is ever the same. No flight is ever the same. The fire you fly today will not be the same as the fire you flew yesterday. Be alert to your environment and changing conditions.</i>					5. TFR #: 1/0249 (Box) 3000' MSL
NOTE: Latitude/Longitude format is "Degrees-Minutes-Decimal Minutes" (example: N30 41.42 W082 33.97)					

PERSONNEL	NAME	PHONE #	FREQUENCIES	AM	FM	
AOBD	Tim Elder Cell Desk FAX	863-243-1438 912-637-5254 912-637-5237	AIR/ AIR FW	122.575		AIRTANKERS / LEAD PLANES - None Available ATGS AIRCRAFT- 53L (C-337) OTHER: <u>Lake City Tanker Base: 386-758-9078 / FAX 752-8901</u> <u>Pogo Helibase: 912-496-4415 / FAX 496-7077</u> <u>Waycross Helibase 912-287-4479 / FAX 287-4458</u> <u>Fargo Helibase: 404-772-5317</u> FARGO HELIBASE: N30 41.42 W82 33.97 POGO HELIBASE: N30 44.03 W82 07.41 POCKET HELISPOT N30.48 W82.22 HOMERVILLE AIRPORT N31 03.35 W82 46.45 WAYCROSS AIRPORT N31 14.9 W82 23.7
ASGS(T)	Don Nicholas	218-360-1816	AIR/ AIR RW-FF	122.375		
ATGS Lake City	Tim Caughlin Melanie Fullman (T)	715-684-9862 406-529-4888	Georgia AIR/AIR	122.075		
ATGS Fargo HB	Carl Magill	541-519-0850	Georgia AIR/GRND (Smokey - Dozers)		159.285 W	
HEB2 Fargo HB	Brian Campbell Steve Croy (T)	404-772-5405 540-230-2568	AIR/GROUND PRIMARY		166.9375	
ABRO Fargo HB	Ken Malgren	208-830-6290	AIR/GROUND ALTERNATE		166.9000	
HEB2 Waycross HB	Jay Matsen	912-287-4479	Florida AIR/AIR IA	122.925		
			Florida AIR/GRND IA		170.4750 N	
			DECK		163.1000	
			AIR GUARD		168.625 T 110.9	

9. HELICOPTERS (Use Additional Sheets as Necessary)

FAA N#	TY	MAKE/ MODEL	BASE	AVAIL	MANAGER	FAA N#	TY	MAKE/ MODEL	BASE	AVAIL	MANAGER
N36BH	1	S-70	Waycross	0830	Zev Hunting 406-439-6768	N61SC	1	S-61	Fargo	0830	Ray Leppala 218-966-6443
206G	2	UH1H	Waycross	0830	Mike Yearwood 530-310-3511	26MW	1	K-1200	Fargo	0830	Kirby Cook 406-381-1212
06901	2	UH1H	Waycross	0830	Cindy Bradley	N662H	3	206-L4	Fargo	0830	Jeremy Beeson

					559-916-9355						208-507-1649	
N818MC	3	AS-350 B3	Waycross	0830	George Violante 307-330-5904	6JC	3	206B-3	Pogo	0830	Jeff McBath 858-357-3242 Reggie Forcine 912-614-4041	

10. TASK/ MISSION/ ASSIGNMENT (Type/ function includes: Air Tactical, Retardant, Recon, Personnel Transport, Bucket Operations, SAR, etc.)					
TYPE/FUNCTION	NAME OF PERSONNEL OR CARGO (If applicable) or instructions for tactical aircraft		MISSION START	FLY FROM	FLY TO
Bucket Ops			As Requested	Fargo/Waycross	
Air Tactical			1200 / As Requested	Lake City/Fargo	
Recon			As Requested	Fargo/Pogo	
Medevac	Fargo: N662H Waycross: N818MC		As Requested	Fargo/Waycross	



Fire Weather Forecast



FORECAST NO: 64

NAME OF FIRE: Honey Prairie Complex

PREDICTION FOR: Day and Night Shifts

SHIFT DATE: 7/10/11

UNIT: Okefenokee National Wildlife Refuge

FORECAST ISSUED: 7/9/11 at 1900

SIGNED: Mike Bettwy (T) / Joe Goudsward
Incident Meteorologists

WEATHER DISCUSSION: A weak frontal boundary will remain in the general vicinity today with deep gulf moisture still in place. The combination of these features, along with daytime heating and an unstable atmosphere, will result in mainly afternoon showers and thunderstorms. A repeat performance is expected for Monday as well although chances of precipitation will be slightly lower. Some of the thunderstorms could produce gusty outflow winds.

TODAY: Patchy morning fog, otherwise mostly cloudy with scattered showers and thunderstorms, especially in the afternoon.

MAXIMUM TEMPERATURES: 90-94 degrees

MINIMUM HUMIDITY: 45-55%

20 FT WINDS: AM: SW 3-7 mph

PM: SW 5-10 G15 mph

STABILITY/INVERSION: Morning inversion to 250 feet through 1000, then rising to 5000 feet by 1400

TRANSPORT WINDS: SW 10 mph

DISPERSION INDEX: 42, Average

CHANCE OF PRECIPITATION: 60%

PRECIPITATION AMOUNTS: 0.25"-0.50" with locally heavier amounts in thunderstorms

LIGHTNING ACTIVITY LEVEL: 3

TONIGHT: Mostly cloudy. A chance of mainly evening showers and thunderstorms. Patchy fog.

MINIMUM TEMPERATURES: 73-76 degrees

MAXIMUM HUMIDITY: 90-100%

20 FT WINDS: SW 2-5 mph

STABILITY/INVERSION: Inversion to 250 feet by 2200 hours

DISPERSION INDEX: 4, Poor

CHANCE OF PRECIPITATION: 40%

LIGHTNING ACTIVITY LEVEL: 2

OUTLOOK FOR MONDAY: Mostly cloudy with a chance of showers and thunderstorms. Winds SW 5-10G15 mph. High temperatures 90 to 94. Min RH 45-55%. Chance of Rain 50%. Dispersion 35, Fair.

EXTENDED FORECAST:

	TUESDAY	WEDNESDAY	THURSDAY
MINIMUM TEMP	75°	75°	76°
MAXIMUM TEMP	94°	95°	95°
MINIMUM RH	40-45%	35-40%	35-40%
20 FT. WINDS	AM: SSW 2-4 mph PM: ESE 5-8 mph	AM: SSW 4-7 mph PM: ESE 5-9 mph	AM: WSW 3-7 mph PM: SSE 5-9 mph
SKY	Partly Cloudy	Partly Cloudy	Partly Cloudy
WEATHER	Scattered T-Storms	Scattered T-Storms	Scattered T-Storms
CHANCE PRECIP	40%	40%	40%

GENERAL FIRE BEHAVIOR

Fuels around the Okefenokee Wildlife Refuge are predominately Fuel Model 7 (Southern Rough). Large to moderate acreage tracts of commercial timberland are mixed in throughout the entire perimeter surrounding the refuge. Fast moving wildfires with extremely high flame lengths and rapid rates of spread occur within the swamp. As fire transitions to the upland, torching and crown fires are common. Long Range spotting is possible.

Indicators/Threshold for Increased Fire Activity

- Relative humidity dropping below 45%
- **Winds above 10 mph**
- **Heavy fuel loadings**
- Fine dead fuel moisture 8% or less
- Dispersion above 70
- *** Items in BOLD are predicted to occur today***

SPECIFIC FIRE BEHAVIOR

- **Fire behavior will be influenced by precipitation. Areas on the East Branch have remained dry while areas on the West Branch have received up to 2+ inches of rain.**
- **Expect the fire to continue to move through the shrub fuels with low to moderate rates of spread and creep through the hardwood stands. Afternoon instability will lead to both T'storm development and more active smoke columns. (Wind gusts will temporarily increase fire intensities). LAL 3**

Fuel Type	Rates of Spread	Flame Length	Spotting Distance	Firebrand Ignition
Winds at 5 -10 G 15 mph				
Shrub Fuels	2 - 16 ch/hr	2 - 12 feet	1/10 – 3/10 mile	29%
Southern Rough	2 – 22 ch/hr	2 - 7 feet	1/10 – 3/10 mile	29%
Timber Litter-Reburn	1 - 2 ch/hr	1 - 2 feet	1/10 mile	29%
Small Pine Plantation w/grasses	2 - 20 ch/hr	2 - 7 feet	1/10 – 2/10 mile	29%

One hour fine dead fuel moisture is at 11% for Sunday. 1000 hour fuels are drier than normal for this time of year. There is reburn potential in all divisions due to the amount of needle cast. Should a fire run(s) occur, expect winds in the area to potentially increase above predicted levels. This would increase Flame Lengths and ROS above predictions. Heavier firebrands can also be lifted higher and further increasing likelihood of spots to max predictions. **In areas where fuels have been herbicided, expect quick ignitions and extreme heat, quick rate-if –spread, and group tree torching producing spotting problems.**

NOTE- FIRE BEHAVIOR CALCULATIONS ARE FOR FIRES IN UNBURNED FUELS INCLUDING NEW IA STARTS.

West	A	<i>Wetter wx reduces reburn potential. Falling snags still pose a threat to fire personnel and the boardwalk. 60% chance of rain</i>	West	T/V	<i>Fire spread to the North will be reduced due to higher fuel moistures and the possibility of more rain. Be heads-up for falling snags. 60% chance of rain</i>
	B-G	<i>Wetter wx decreases reburn potential from needle cast. Be heads-up for falling Snags. 60% chance of rain</i>			
	Y-Z	<i>Fire activity will remain low to moderate today as fuels have received moisture. Areas of heat will remain near Div Y/Z perimeter. Be heads-up for falling snags. 60% chance of rain</i>	East	H, I J, K L,M N,O	<i>Very little if any precipitation last 3 days. Div 0 – Interior fire movement will continue North, Northwest and may threaten Div perimeter. Div N - Interior fire will continue with low to moderate fire behavior in an easterly movement. Heads-up for falling snags. 60% chance of rain</i>

Night Ops – Expect another night of minimal fire behavior with areas of heavy smoke and patch of dense fog after 2200. Mostly cloudy with 40% chance of scattered showers and thunderstorms. Fire behavior after 2000 will primarily be limited to smoldering in heavy fuels in Divisions Y & Z and the interior. Winds over the entire fire are forecast from the SW 3-7 mph. Dispersion Index of 4 –poor for nighttime. LAL 2

Air Operations: Expect areas of heavy smoke all day especially in the North.

SAFETY:

WINDS – Stay abreast of changing wx conditions throughout the entire shift. **THUNDERSTORMS** - these severe winds can create extreme fire behavior, with winds gusting over 30 mph. **SNAGS – Snags are falling in all Divisions – will be influenced by Thunderstorm outflow winds.**

FUELS: Reburn is an issue. Watch for pockets of cured shrubs or blankets of red needles beginning to cover the forest floor. 1000 and 10,000 hour fuels as well as deep duff pockets are providing the heat source. Stay focused, and put LCES in place before starting operations. Watch for standing burning snags that can fall without warning. *Energy Release Component (ERC) continues to be above the 90th percentile for this area.*

LCES Analysis of Tactical Actions

Incident Name: Honey Prairie Complex			Date and Time Prepared: July 09, 2011 1600 hrs											Operational Period: Day and Night July 10, 2011		
TACTICAL HAZARDS	Location on Incident													Mitigations		
	Divisions/Groups															
A,B,C	D,E,F,G	H, I	J, K	L	M	N	O	T	V	Y	Z	ICP	PM Ops	Struct Prot Grp		
Powerlines	*	*	*	*	*	*	*	*	*	*	*	*			*	Assume all power lines are charged. Avoid all contact with downed lines.
Complacency	*	*	*	*	*	*	*	*	*	*	*	*	*		*	Follow work/rest guidelines.
Indirect Fireline								*	*	*	*	*				LCES; IRPG Pg. 10, Indirect Attack; Burnout as possible.
Anchor Points	*	*	*	*	*	*	*	*	*	*	*	*				Ensure fireline is anchored. Use natural features when possible. Use Local Resource Advisor
Extreme Conditions (Spotting, Wind)																LCES, Establish Trigger Points. Maintain Situational Awareness. Establish Lookouts as needed. Follow MAP actions.
Unburned Area Reburn Potential	*	*	*	*	*	*	*	*	*	*	*	*			*	LCES, Utilize Air Attack if Available. Know Predicted Weather and Fire Behavior Forecast.
Hazard Trees	*	*	*	*	*	*	*	*	*	*	*	*			*	IRPG Pg. 80, Identify and flag hazard trees. Look Up, Down and Around
Hazardous Materials	*	*	*	*	*	*	*	*	*	*	*	*			*	IRPG Pg. 26-27, HAZMAT. Identify and map propane tanks, electric lines, septic tanks and determine bridge wgt. limits prior to use.
Vehicle Use (Travel 1HR+, Roads)	*	*	*	*	*	*	*	*	*	*	*	*	*		*	Park vehicles for egress. Follow traffic plan. Use seat belts, drive with headlights on and keep windshields clean. Use spotters. Drive Defensively. Use multiple camp locations to reduce drive time.
Communications																Ensure radio is cloned with the current communications plan. LCES
Structure Protection		*		*	*		*		*	*	*					Use structure protection checklist, PPE, Triage. Utilize Local Fire Departments
Air Operations (multiple aircraft, line support)	*	*	*	*	*	*	*	*	*	*	*	*				Monitor Air Guard at all times. Flight follow through Dispatch. Keep drop areas clear of personnel.
Mechanical Equipment	*	*	*	*	*	*	*	*	*	*	*	*			*	Use PPE, ensure all safety devices are functional. Operator must see you before approaching equipment. Maintain proper distance away from equipment working in the area.
Escape Routes Safety Zones	*	*	*	*	*	*	*	*	*	*	*	*			*	LCES, Establish and identify safety zones & escape routes. Know where these are located and the route to them. IRPG p.7
Thunderstorm Safety	*	*	*	*	*	*	*	*	*	*	*	*	*		*	Keep an eye on changes in weather. Take hourly weather observations. Comms will provide weather updates when needed.
Wildlife	*	*	*	*	*	*	*	*	*	*	*	*	*		*	Keep food items off the line and use refuse containers around camp. Use insect repellent as needed. Use caution around water as wildlife is concentrated.
Sun Exposure	*	*	*	*	*	*	*	*	*	*	*	*	*		*	Use sunblock as needed.
Night Operations										*	*					Maintain situational awareness. Refer to pages 6 & 7 of IRPG. Ensure headlamps are available and working. Maintain spacing between resources.
Heat	*	*	*	*	*	*	*	*	*	*	*	*	*		*	Hydrate prior to going on line and all during the day. Recognize the signs of heat related injuries. Take frequent breaks throughout the work period.
Air Quality																Rotate personnel frequently out of smoke. Ensure off-line rest is clear of smoke.
Railroad Crossings	*	*	*	*	*	*	*	*	*	*	*	*			*	Visually check all railroad crossings to ensure track is safe to cross. Don't bunch up, leave room for other vehicles to cross. Don't try to beat the train.
													Safety Officer: Barry Coulliette SOF2			

SAFETY MESSAGE

JULY 10, 2011

Day / Night

Major Hazards and Risk

Driving

Thunderstorms

Complacency

Logging Operations

Wildlife

Dehydration

Mitigations

Drive times and conditions are challenging. Stay alert to changing conditions. Drive with headlights on and wear your seat belt when the vehicle is moving.

Thunderstorms produce strong winds heavy rain and frequent lightning. Take refuge to your vehicles and insure you are parked in a safe place. Any tree is capable of falling under strong wind events.

Seeing and doing the same things every day leads to complacency. Stay alert to the known hazards. Conduct tail gate safety sessions. Insure that TEN and EIGHTEEN are in place before starting work.

Logging operations will be on the increase. Pay attention to log trucks and logging equipment working in your environment and give them room.

Do not feed alligators, if they are residing in the water source you are using for a water supply post a lookout while working at the water's edge. Where the alligators are aggravated or showing aggressive behaviors evaluate those water sites to see if they are still necessary.

Temperatures above 90 degrees along with humidity will stress your body. Drink one bottle of water an hour and take frequent breaks to avoid complications.

Safety Officers

Barry Coulliette West Branch

Ray Durham East Branch

MEDICAL PLAN	Incident Name Honey Prairie Complex	Date Prepared 7/09/2011	Time Prepared 1800	Operational Period 7/10/2011 DAY SHIFT				
5. Incident Medical Aid Station								
<u>Medical Aid Stations</u>	<u>Location</u>				<u>Paramedics</u> Yes No			
Medical Unit (ICP)	Honey Prairie Complex ICP (Lodge 5) 912-637-5236 Joe Fowler MEDL 912-286-1648 Michael Evers MEDL (T) 912-286-1674				X			
WEST BRANCH (Line EMT)	Bob Eaton 919-423-1055 (A,B,C DIV) Kyle Barber 417-239-9135 (D,E,F,G DIV) Jefferson Halladay 801-518-9857 (T DIV) Evan Dean 503-975-6444 (V DIV) Peggy Miller 240-793-4238 (Y 0800-2000) Michael Fincham 530-859-8507 & Dominique Burchett 801-558-5444 (Y DIV Night) Levi Clymer 417-658-5155 (Z DIV) Shane Powers 907-388-3885 (West IA)				X			
EAST BRANCH (Line EMT)	Kurt Berge 801-404-6434 (H,I,J,K DIV) Keith Barker 224-330-7798 (L,M DIV) Bert Hyde 218-349-0934 (N,O DIV)				X			
Ambulance Services								
Name	Address	Phone		Paramedic Yes No				
Clinch County EMS (WEST SIDE)	West Branch Council Road & HWY 94	Channels 4, 11, 13 912-286-1673 EMS Incident Cell		Yes				
Ware County EMS (NORTHSIDE)	Waycross, Georgia (911 to activate)	912-281-9467		Yes				
Charlton County EMS (EAST SIDE)	Folkston, GA (911 to activate)	912-496-7321		Yes				
Air Ambulance Service								
Trauma 1	Lake City, FL (16 min/air to Fargo ICP)	1-800-223-4878(freq. 155.340)		Yes				
Trauma 1	Jacksonville, FL (26 min/air to Fargo ICP)	1-800-223-4878(freq. 155.340)		Yes				
AirMed	Augusta, GA (2 hrs/air to Fargo ICP)	1-888-792-9245(freq. 155.340)		Yes				
Lifeflight	Jacksonville, FL (35 min/air to Fargo ICP)	1-877-870-7779(freq. 155.340)		Yes				
Air Evac	Waycross, GA (17 min/air to Fargo ICP)	1-800-247-3822(freq. 155.340)		Yes				
US Coast Guard (Heli-Rescue)	Savannah GA	1-912-652-4646 (freq. 155.340)		Yes				
7. Hospitals								
Name	Address	Travel Time Air Ground		Phone	Helipad Yes No		Burn Center Yes No	
Satilla Regional	410 Darling Ave Waycross Ga N 31°13.56 W 82°21.058	18 min	45 min	912-283-3030	Yes			No
Clinch Memorial Hospital (WEST SIDE)	1050 Valdosta HWY Homerville, GA		25 min	912-487-5211 ext 4502	Yes			No
Charlton Memorial Hospital (EAST SIDE)	1203 3 rd St. Folkston, GA		50 min	912-496-2531	Yes			No
Memorial Hospital	Savannah, GA 4700 Waters 3200.7 8107.6	30 min		912-350-8999	Yes			No
Shands Hospital (level I)	Jacksonville, FL N 30°20 97 W 82° 13 992	26 min	1.5 hrs	800-223-4878	Yes		Yes	
Shands Burn Center	Gainesville, FL 38.33 N 082 20.73W	33 min	1.5 hrs	352-265-0300	Yes		Yes	
8. Medical Emergency Procedures								

<ol style="list-style-type: none"> 1. Notify DIVS of medical problem 2. DIVS notifies COML and MEDL 3. MEDL contacts POC for following <ol style="list-style-type: none"> a. # of pts b. Status of pts medical problem c. Location of pts d. Transport method e. Necessary resources 4. MEDL coordinates medevac/patient transport with SOF2, OPS2 and other relevant resources. <p><u>Life threatening injury</u>: an injury that could mean the loss of life, limb, or eyesight</p> <p><u>Minor injury</u>: an injury that results in the removal of a pt from the line but with less urgency as a life threatening injury</p> <p><u>Medevac</u>: the most urgent transport of a pt suffering from a life threatening injury</p> <p>Patient transport: transport for minor injuries</p> <p><u>Medical problem</u>: a physical or mental ailment that occurs to an individual; to include illnesses and traumatic injuries</p> <p><u>Point of contact (POC)</u>: individual who will be directly advocating for patient care and transport (line medic, crew boss, DIVS etc)</p> <p>*Request that FFTR/Engine crews or single resources let MEDL know if they have any EMTs or Paramedics and if they have equipment with them.</p>	<p><u>HELISPOTS</u></p> <p>Pocket Helispot 30 47 30.02 x 82 22 39.5 (West side), mile marker 4, HWY 177 Steven C. Foster State Park</p> <p>Fargo Helibase 30 41.42 x 82 33.97 (West side), HWY 441- Golf course, Fargo</p> <p>POGO Helibase 30.44.03 x 82.07.41 (East side)</p> <p><u>Evac Yankee</u></p> <p>Helispot 6 Rd. 32 and 32A, N 30° 53.280 W 082° 33.880</p> <p>Helispot 7 Tatum Rd. Pond N 30° 50.280 W 082° 33.857</p> <p>*Alternate site can be established following guidelines for safety found with IRPG and local EMS resources.</p>
<p>Prepared by: Michael Evers MEDL (T)/Joe Fowler MEDL</p>	<p>10. Reviewed by: Barry Coulliette SOF</p>

INCIDENT RADIO COMMUNICATIONS PLAN ICS-205			Incident Name Honey Prairie				GROUP 22		Date/Time Prepared 07/09/2011-18:00		Operational Period Date/Time 7/10/2011 0800-2100/1800-0600	
Ch #	Function	Channel Name	Assignment	RX Freq	NW	RX Tone/NAC	TX Freq	N W	TX Tone/NAC	Mode A,D or M	Remarks	
1	Command	West Okee Repeater	Sec West Branch CMD	167.1250	N	156.7	163.1500	N	156.7	A	Stephen Foster State Park	
2	Command	South Okee Repeater	Sec East/West Branch CMD	164.7750	N	123.0	163.1500	N	123.0	A	Eddy Florida	
3	Command	East Okee Repeater	PRIMARY East Branch CMD	164.6250	N	103.5	163.1500	N	103.5	A	Refuge Headquarters	
4	Command	NIFC C2	PRIMARY West Branch CMD	168.100	N	CSQ	170.4500	N	123.0	A	NOT linked to OKEE System	
5	Command	North Okee Repeater	PRIMARY North Branch CMD	164.5750	N	206.5	163.1500	N	206.5	A	Waycross	
6	Air-Ground	Air to Ground	PRIMARY	166.9375	N	CSQ	166.9375	N	CSQ	A		
7	Tactical	MOB-MOB	GFC Contingency	159.3900	W	CSQ	159.3900	W	156.7	A		
8	Tactical	V-Fire 21W WHITE	Structure Protection Group&I.A.	154.2800	W	CSQ	154.2800	W	156.7	A		
9	Tactical	USFS 9	DIV A,B,C, L, M T, M & (East I/A)	168.7750	N	CSQ	168.7750	N	CSQ	A		
10	Tactical	S.E. Compact	DIV	159.2850	W	CSQ	159.2850	W	CSQ	A		
11	Tactical	USFS 11	DIV Z, N, O	168.2000	N	CSQ	168.2000	N	CSQ	A		
12	Tactical	Refuge Tac 1	DIV H, I, J, K	168.3500	N	CSQ	168.3500	N	CSQ	A		
13	Tactical	FL 190	DIV D, E, F, G, V, Y	151.2725	N	CSQ	151.2725	N	CSQ	A		
14	Command	DIV J RPT	East Branch	170.4125	N	CSQ	165.9625	N	123.0	A	NOT linked to OKEE System	
15	Air-Ground	Air to Ground	SECONDARY	166.9000	N	CSQ	166.9000	N	CSQ	A		
16	EMERGENCY	AIR Guard	Air OPS.	168.6250	N	CSQ	168.6250	N	110.9	A		
Prepared by (Communications Unit) Brian Matthews Incident Dispatcher: 912-286-1660						Cloning at ICP communications and briefings,						

The convention calls for frequency lists to show four digits after the decimal place, followed by either an "N" or a "W", depending on whether the frequency is narrow or wide band. **Mode** refers to either "A" or "D" indicating analog or digital (e.g. Project 25) or "M" indicating mixed mode. All channels are shown as if programmed in a control station, base stations, mobile or portable radio.

FINANCE – EQUIPMENT/TIME

Tip for the day: 7/10/11



We Need Your HELP:

East side fuel supplier: please send all fuel books to finance daily!!!!

	Knight, Dennis	NO E# 7/6 thru 7/8
	Paul Amundson Westminster	NO E# 7/8
	Villa, Nick/MT dnrc	No E# for 7-5 thru 7-8
	Cerezo, danny Wildlands fire	NO E# for 7/8
E-819	Mtn View Fire	Missing Shift Tkt 6/28
E-915.2	Meadows, Derek	Need date on CTR
E-1067		Need end of shift time 7/7
E-5003/1085	Cranes wildfire	Please come close E5003 so we can start you on your new #
O-911	Miller, Ray	Why no meal breaks???

IF YOUR ARE GETTING CLOSE TO TIMING OUT PLEASE
SPEAK WITH YOUR FIRE LINE SUPERVISOR **ASAP.**

**DMOB for July 10 to July 13
Contact DMOB - Tim @ 912-637-5241**

IF YOU ARE TRAVELLING HOME BY AIR AND WILL BE TRANSPORTED TO JACKSONVILLE THE DAY BEFORE YOUR FLIGHT BY GROUND SUPPORT -
YOU NEED TO COMPLETE THE DEMOB PROCESS AND BE READY TO LEAVE ICP BY 1300 or 1700 HRS

IF YOU ARE TRAVELLING HOME BY AIR YOU NEED TO CONTRACT DMOB TO VERIFY I HAVE THE CORRECT NAME AS IT APPEARS
ON YOUR PICTURE ID YOU WILL USE TO GET THROUGH AIRPORT SECURITY AS WELL AS YOUR DATE OF BIRTH AND
DESTINATION JETPORT.

Number	Name	Kind	UnitID	TravelMethod	Jet- port	Travel Date
E-5032.2	PIERCE 60	TRT	GAGA	AOV		07/10/2011
E-5037.2	COOK 60	TRT	GAGA	AOV		07/10/2011
O-659	TRAPP, TERRY L	SOF	PANA	AIR	RHI	07/10/2011
E-157	ENG6 BLACKWATER	ENG	FLFLS	AOV		07/10/2011
E-980	ENGINE - T6 -	ENG	KYDBF	POV		07/10/2011
E-980.1	STONE, LARRY AMOS	ENG	KYDBF	POV	LEX	07/10/2011
E-980.2	METZMEIER JR,	FFT	KYDBF	POV	TYS	07/10/2011
E-13.12	CASEY, DAVID	FFT	NCNC		AVL	07/10/2011
E-759	JOHN DEER TRACTOR	TPL	GAOK	POV		07/10/2011
E-759.1	ENGLISH, ANDREW	TPO	GAOK	POV		07/10/2011
O-862.29	LYONS, BERNARD G	GSU	IDBOF	AIR	BOI	07/10/2011
O-862.36	PETERSON, STEVEN P	SEC	NVHT	AIR	RNO	07/10/2011
O-862.51	LANGFORD, JUSTIN	GSU	NVSP	AIR	RNO	07/10/2011
O-862.46	HALLISEY, NICOLE	DIV	IDFCD	AIR	BOI	07/10/2011
E-5014	ENG6 N TEXAS FIRE	ENG	TXTXF	AOV		07/10/2011
E-888.2	KELLER, RUDY	ENG	GAOK	POV	AVL	07/10/2011
E-888.3	DEMERS, MATTHEWS	FFT	GAOK	POV	AVL	07/10/2011
E-889.1	RAMPINI, PAUL	ENG	GAOK	OTH		07/10/2011
E-889.2	HAUSMAN, JOHNNY	ENO	GAOK	OTH		07/10/2011
E-889.3	HOPKINS, JEFFREY	ENO	GAOK	OTH		07/10/2011
E-939.4	HARSH, JOSEPH	ENG	ARWH	AOV		07/10/2011
E-939.5	HARRIS, ROBERT	FFT	ARWH	AOV		07/10/2011
E-890.1	BENNETT, GARTH	ENG	GAOK	POV	AVL	07/10/2011
E-385.7	JUAREZ, GILBERT	ENG	MNRL	AOV	BJI	07/10/2011
E-385.8	HARRIS, JOSEPH	FFT	MNRL	AOV	BJI	07/10/2011
E-385.9	AUGINASH, JUSTIN	FFT	MNRL	AOV	BJI	07/10/2011
E-407.7	LAFRINIERE, STEVEN	ENG	MNMN	AIR	BJI	07/10/2011
E-407.8	AUGINAUSH JR,	FFT	MNMN	AIR	BJI	07/10/2011
E-407.9	LARSON, CHAD	FFT	MNMN	AIR	BJI	07/10/2011
E-916	TRACTOR - PLOW - T2	TPL	GAGA	AOV		07/10/2011
E-916.1	TRANSPORT	TRT	GAGA	POV		07/10/2011
E-901	ENGINE - T6 - 631	ENG	UTFIF	AOV		07/10/2011
E-901.1	MATHESON, ROBERT	ENG	UTFIF	AOV	CDC	07/10/2011
E-901.2	LIMB, ZACHARY CHAD	FFT	UTFIF	AOV	SLC	07/10/2011
E-901.3	YARDLEY, STETSON	FFT	UTFIF	AOV	SLC	07/10/2011
E-901.4	PANKRATZ, NATHAN	FFT	TXTXF	AOV	IAH	07/10/2011
O-862.7	CHUNG, QUINCY	DIV	IDFCD	AIR	BOI	07/10/2011
O-862.1	WILDE, MICHAEL J	ICT2	NVHT	AIR	RNO	07/10/2011
O-862.2	DONDERO, MICHAEL L	DPI	NVNW	AIR	RNO	07/10/2011
O-838	OVERCASH, JESSE	RCD	VAVAF	AOV	ROA	07/10/2011
E-831.4.1	ISHIDA, MITCHELL	ENG	ORLA	AIR	RNO	07/10/2011
E-831.4.2	BRAZEAL, TREVOR	FFT	ORLA	AIR	RNO	07/10/2011
E-831.4.3	JOHNSON, KYLE	FFT	ORLA	AIR	RNO	07/10/2011
E-441.4	FLETCHER, JERRY	ENG	AROU	POV		07/10/2011
E-441.5	NOWLIN, RUPERT	FFT	AROU	POV		07/10/2011
E-441.6	MCCAIN, JACOB	FFT	AROU	POV		07/10/2011
O-802	WALLER, WILLIAM	GSU	MSMN	AOV	MEM	07/10/2011
E-888	PATRICK FIRE(#89)	ENG	GAOK	POV	AVL	07/10/2011
E-889	PATRICK FIRE(#90)	ENG	GAOK	OTH		07/10/2011
E-890	PATRICK FIRE (#91)	ENG	GAOK	POV	AVL	07/10/2011

E-831	ENGINE S/T - T6 -	ES4	ORBIC	AOV	RDM	07/10/2011
E-831.1	MOREFIELD, STEVEN	TFL	ORBU	AIR	RDM	07/10/2011
E-831.2	MONTGOMERY, JOHN	TFL	ORPR	AIR	RDM	07/10/2011
E-831.3	ENGINE - T6X -	ENG	ORMA	AOV	RDM	07/10/2011
E-831.3.1	DAVIES, BAXTER	FFT	ORMA	AIR	RDM	07/10/2011
E-831.3.2	DAVIS, DAMON	ENG	ORMA	AIR	RDM	07/10/2011
E-831.3.3	LUMLEY, BRIAN	ENG	ORBU	AIR	RDM	07/10/2011
E-831.3.4	DOBSON, ZACH	FFT	ORBU	AIR	RDM	07/10/2011
E-831.7	ENGINE - T6 - 3646	ENG	ORVA	AOV	RDM	07/10/2011
E-831.7.1	MASON, DANIEL	ENG	ORVA	AIR	BOI	07/10/2011
E-831.7.2	MCDANIEL, JORDAN J	FFT	ORVA	AIR	BOI	07/10/2011
E-831.7.3	DELONG, LUCILLE I	FFT	ORVA	AIR	BOI	07/10/2011
E-512.1	HONEYCUTT, JERRY	DRI	NCNC	POV		07/10/2011
E-701	TIPTON #2 WATER	WA		POV		07/10/2011
E-385	RED LAKE ENG6	ENG	MNMF	AOV		07/10/2011
E-831.4	ENGINE - T6 - 7673	ENG	ORLA	AOV	RDM	07/10/2011
E-831.5	ENGINE - T6 - 7676	ENG	ORLA	AOV	RDM	07/10/2011
E-831.5.1	HASKINS, MATTHEW	ENG	ORLA	AIR	RNO	07/10/2011
E-831.5.2	ATKINSON, STEVEN	FFT	ORLA	AIR	RNO	07/10/2011
E-831.5.3	CLEMENS, KASEY	FFT	ORLA	AIR	RNO	07/10/2011
E-831.6	ENGINE - T6 - 5629	ENG	ORPR	AOV	RDM	07/10/2011
E-831.6.1	SKAAR, KASEY	ENG	ORPR	AIR	RDM	07/10/2011
E-831.6.2	HARING, MICHAEL	FFT	ORPR	AIR	RDM	07/10/2011
E-831.6.3	KRAMER, BRANDON	FFT	ORPR	AIR	RDM	07/10/2011
O-837	BURNETTE, ROBERT	SEC	GACH	AOV	ATL	07/10/2011
E-893.4	LYDEN, PAUL J	ENG	MIHMF	AIR	MBS	07/10/2011
E-893.6	HEPLER, TERRY	FFT	MIHMF	AIR	MBS	07/10/2011
E-893.7	WHITE, AARON LEE	FFT	MIHMF	AIR	MBS	07/10/2011
E-890.2	SYPHERS, DICK	ENG	GAOK	POV	AVL	07/10/2011
E-890.3	WALTMAN, ROBERT	ENO	GAOK	POV	AVL	07/10/2011
E-530.2	BAY, ?	THS	GAOK	POV		07/10/2011
E-888.1	RIGDON, CODY	ENG	GAOK	POV	AVL	07/10/2011
E-13.11	EDWARDS, THOMAS	ENG	NCNC		AVL	07/10/2011
C-14	PATRICK CREW 20B	HC2	NCNC	POV	AVL	07/10/2011
A-38.2	GIGER, NICHOLAS S	HM	IDSCF	A/R	MSO	07/10/2011
E-404.7	SELMER, NICOLE	ENG	MNSU	AIR	DLH	07/10/2011
E-404.8	ROERICK, JAMES	FFT	MNSU	AIR	DLH	07/10/2011
E-404.9	SWANSON, SCOTT	FFT	MNSU	AIR	DLH	07/10/2011
E-906.1	WICKHAM, JAY	ENG	SDSD	AIR	RAP	07/10/2011
E-906.2	WARREN, DENYS	FFT	SDSD	AIR	RAP	07/10/2011
E-906.3	KEITH, NATHAN	FFT	SDSD	AIR	RAP	07/10/2011
E-915	TRACTOR - PLOW - T4	TPL	GAGA	AOV		07/10/2011
O-826	CHAPIN, RANDY	GSU	MSMS	AIR	JAN	07/10/2011
O-827	LIGONS, CLIFFORD D	BC	WAGP	AIR	PDX	07/10/2011
O-829	DISTEFANO, PETER	BC	NYNY	AIR	JFK	07/10/2011
O-693	JOHNSON,	PTR	MNCP	AIR	BJI	07/10/2011
O-694	THOMPSON,	PTR	MNCP	AIR	BJI	07/10/2011
E-93	WATER TENDER 10	WT	FLFNF	POV		07/11/2011
C-20	CREW - CAMP - PINE	CC	KYDBF	AOV	TYS	07/11/2011
C-20.1	NELSON, BOBBY R	CAC	KYDBF	AOV	TYS	07/11/2011
E-915.1	TRUCK - TRACTOR -	TRA	GAGA	AOV		07/11/2011
E-915.2	MEADOWS, DEREK	TPO	GAGA	AOV		07/11/2011
E-914.1	TRANSPORT	TRT	GAGA	AOV		07/11/2011
E-914.2	DURHAM, WILLIAM	TPO	GAGA	AOV	ALB	07/11/2011
O-820	OLIVE, HERSHEL	DRI	UTSLD	AOV	SLC	07/11/2011
O-731	BARKER, KEITH	EMT	COLA	AIR	ORD	07/11/2011
E-390	WISCONSIN ENG 461	ENG	WICN	AOV		07/11/2011
E-137.5	RADFORD, AARON	ENG	FLFNF	POV		07/11/2011
O-840	JOHNSON, MICAH	TFL	MIHMF	A/R	MBL	07/11/2011
E-413.7	PRATT, BRIAN	FFT	KYDBF	AOV	GEG	07/11/2011

E-413.8	EVANS, CODY LEE	ENG	KYCG		TYS	07/11/2011
O-752	ALMAS, MIKE	DIV	IDIPF	AIR	GEG	07/11/2011
E-5017	ENGT6 MARK TWAIN	ENG	MOMT	AOV		07/11/2011
O-730	POWERS, SHANE	EMT	AKLCS	AIR	FAI	07/11/2011
O-799	TATE, MELVIN L	HEB	FLFLS	POV	PFN	07/11/2011
E-808.2	TALBOT, PAUL J	ENG	MNMN	AIR	MSP	07/11/2011
O-841	FLUE, JAMES R	TFL	ALALF	AOV	MGM	07/11/2011
O-843	CHASTAIN, JOSEPH T	DOZ	GACH	AOV	ATL	07/11/2011
E-957	DECATU ENGINE 31-	ENG	GAGA	AOV		07/11/2011
E-916.2	TAYLOR, HARVEY	TPO	GAGA	AOV		07/11/2011
E-413.9	LEWIS, STEVE	FAL	KYCG	AOV	TYS	07/11/2011
O-809	MILAM, TODD M	STP	GAGA	AOV	ALB	07/11/2011
E-5012.6	SHRIMPLING,	ENO	NCNC	POV		07/11/2011
E-5021	NORTH FLINT	PU	GAGA	AOV		07/11/2011
O-419	RIPLEY, STEVEN	SOF	FLFNF	POV		07/11/2011
O-379	RENSHAW, JARED	DRI	GAOK	POV		07/11/2011
E-93.1	DAVIS, WILLIAM	DRI	FLFNF	POV		07/11/2011
E-5013.2	GORDON, RICH	ENG	TXTXF	AOV		07/11/2011
O-851	CARL, ANGELA	ENG	NCAL	POV	CLT	07/11/2011
E-5017.7	YEOMAN, ERIN	ENG	MOMT	AOV		07/11/2011
E-5017.8	OLIVER, DOUGLAS	FFT	MOMO	AIR	STL	07/11/2011
E-5017.9	KELLY, KEITH	FFT	MOMT	AOV		07/11/2011
E-5013.4	KANDLE, GAVIN	FFT	TXTXF	AOV		07/11/2011
O-711	HUENERGARDT,	HEQ	OREIC	AIR	EUG	07/11/2011
O-683	PEABODY, LARRY	DIV	CATN	AIR	SMF	07/11/2011
O-708	MURRIN, ANDY K	DOZ	ORRO	AIR	EUG	07/11/2011
C-20.2	KOHLER, LINDSEY	CA	KYDBF	AOV		07/11/2011
C-20.3	LANCE, ERICA	CA	KYDBF	AOV		07/11/2011
C-20.4	DOLLONS, ROBERT	CA	KYDBF	AOV		07/11/2011
C-20.5	ROSS, BRANDON	CA	KYDBF	AOV		07/11/2011
C-20.6	WELLMAN, JONATHAN	CA	KYDBF	AOV		07/11/2011
E-979	ENGINE - T6 - CMS -	ENG	IDCMS	AOV		07/11/2011
E-977	ENGINE - T6 - IPF - D1	ENG	IDIPF	AOV		07/11/2011
E-977.1	SMITH, LUKE	ENG	IDIPF	AIR	GEG	07/11/2011
E-977.2	NORRIS, PAUL	ENG	IDIPF	AIR	GEG	07/11/2011
E-977.3	RATCLIFFE, EVAN	FFT	IDIPF	AIR	GEG	07/11/2011
E-977.4	MILLER, JENNIFER	FFT	IDIPF	AIR	GEG	07/11/2011
E-978	ENGINE - T6 - PLS -	ENG	IDPLS	POV		07/11/2011
E-137	ENG6 WILDLANDS 8	ENG	FLFNF	POV		07/11/2011
C-20.9	MCCOMB, DANIEL	CA	KYDBF	AOV	TYS	07/11/2011
E-976.1	BENOY, ROSCOE	ENG	WIR09	POV		07/11/2011
E-1036.1	VILLA, NICHOLAS D	ENG	MTSW	AIR	BTM	07/11/2011
E-1036.2	SPEHAR, TRISTON R	FFT	MTSW	AIR	BTM	07/11/2011
E-1036.3	ORRINO, CORY L	FFT	MTSW	AIR	BTM	07/11/2011
O-1014	HUENERGARDT,	STD	ORWI	AIR	EUG	07/11/2011
O-635	RUMPH, CLAY	SEC	MNMN	AIR	DLH	07/11/2011
O-648	WILKERSON, DAVID L	PIO	OKOK	AIR	TUL	07/11/2011
E-584.2	EUCOLONO, JOE	ENO	WICN	AIR	DLH	07/11/2011
O-527	CURTIS, DOROTHY	EQT	WYCP	AIR	CPR	07/11/2011
E-584	ENG6 CNNF E161	ENG	WICN	AOV		07/11/2011
E-390.4	BORMANN, TYLER	ENG	WICN	AIR	RHI	07/11/2011
E-390.5	MOFFITT, ANDREW	ENG	WICN	AIR	RHI	07/11/2011
E-390.6	SLOAN II, DAVID	ENG	WICN	AIR	RHI	07/11/2011
E-826.3	TAYLOR, RICHARD	ENG	GAOK	POV		07/11/2011
E-826.4	ALYEA, BRANDON	ENO	GAOK	POV		07/11/2011
O-5057	MULLEN, BRENDAN	HM	MTBD	A/R	BTM	07/12/2011
O-537	LINDSAY, GLENDA	PTR	ORUP	AIR	EUG	07/12/2011
E-170	TP3 FRANCIS MARION	TPL	SCFM	AOV		07/12/2011
O-728	MULLEN, BRENDAN	ABR	MTBD	A/R	BTM	07/12/2011
O-703	KLOCK, LARRY JAMES	SOF	COPB	A/R	COS	07/12/2011

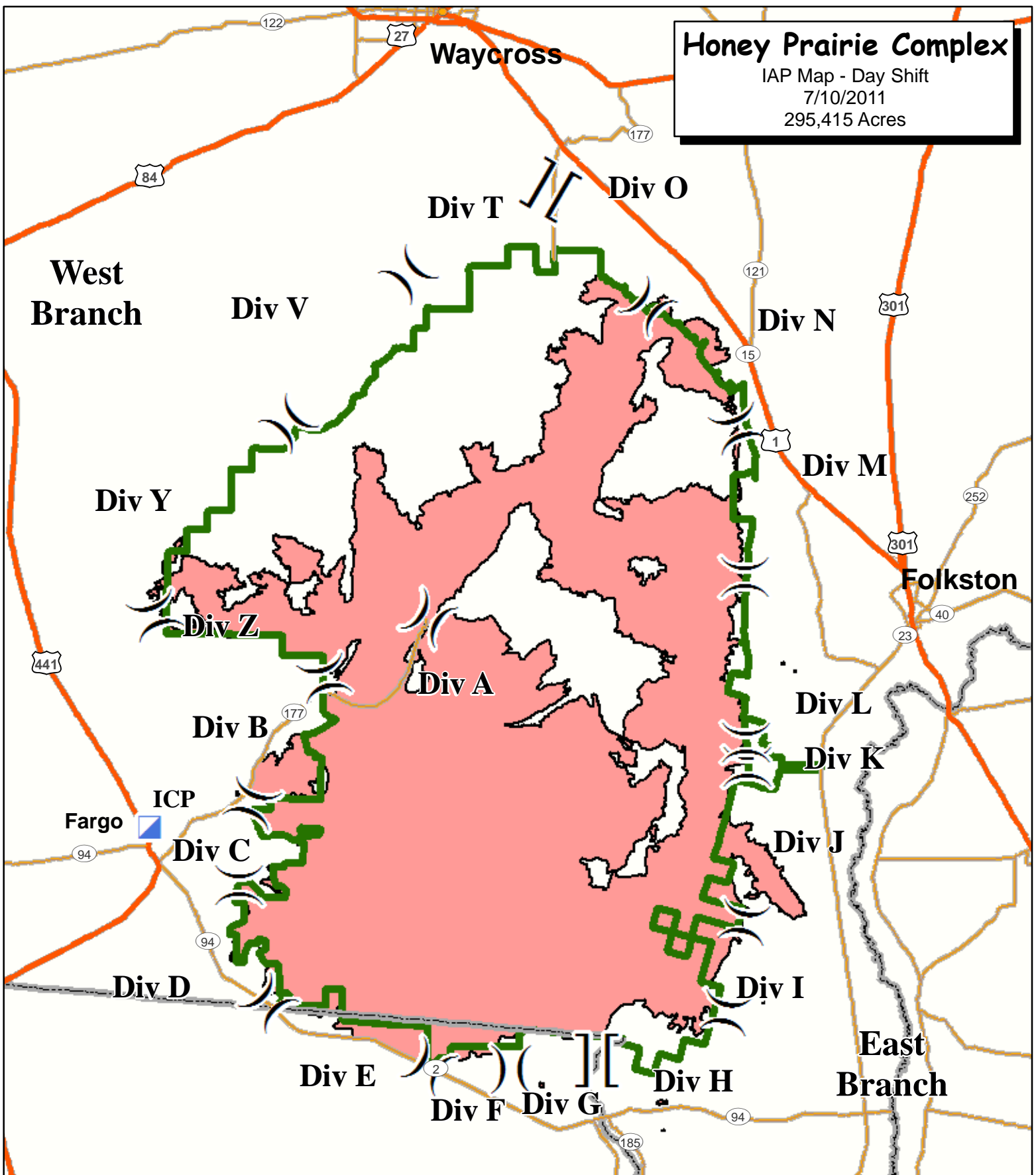
E-137.6	SILVESTRO, JASON	ENO	FLFNF	POV		07/12/2011
O-848	HYDE III, BERT	EMT	MNSU	AIR	DLH	07/12/2011
E-179.4	RATCHFORD,	ENO	FLFNF	POV		07/12/2011
E-653	JD 700 J DOZ	TPL	FLFLS	POV		07/12/2011
O-702	BARRETT, BRUCE	SOF	MNVO	AIR	INL	07/12/2011
O-847	CLYMER, BRETT L	EMT	MOMO	AIR	XNA	07/12/2011
O-849	MEADOWS BARBER,	EMT	MOMO	AIR	SGF	07/12/2011
E-900	ENGINE - T6 - GUN 622	ENG	MNMF	AOV		07/12/2011
E-900.1	KUJAWA, RICHARD	ENG	MNMF	AOV	DLH	07/12/2011
E-900.2	GOLDSMITH, CASEY	FFT	MNMF	AOV		07/12/2011
E-900.3	PORTER, JEREMY	FFT	MNMF	AOV	DLH	07/12/2011
E-653.1	DUGGER, EUSTON	DZO	FLFLS	POV		07/12/2011
E-954	HUGHESTREE	WA	GAOK	POV		07/12/2011
E-807	ENGINE - T6 - E-21 -	ENG	VAVAF	AOV		07/12/2011
E-179.3	WILLIS, JIMMY	ENG	FLFNF	POV		07/12/2011
O-749	SHINDELAR, BOBBY	OPB	IDBOF	A/R	SMF	07/12/2011
E-5006.4	DELAVERN, BILL	ENO	FLFNF	POV		07/12/2011
O-368	JOHNSON, HARDY	DRI	GAOK	POV		07/12/2011
E-5010	PATRICK ENG6	ENG	TNTN	POV		07/12/2011
O-775	HORNER, JR, JACK	PIO	COPB	A/R	EWN	07/12/2011
O-766	MILLER, PEGGY	EMT	MTFN	AIR	FCA	07/12/2011
O-771	PHELPS, RICH	PIO	CALPF	AIR	SMX	07/12/2011
O-835	COOK, CHAD	TFL	NCNC	AOV	CLT	07/12/2011
E-170.7	CHRISTOPHER, JOHN	TPO	SCFM	AOV	CHS	07/12/2011
E-170.8	MARSHALL,	FFT	SCFM	AOV	CHS	07/12/2011
O-924	FULLMAN, MELANIE	ATG	MIOTF	A/R	RHI	07/12/2011
E-995	ENGINE - T6 - MES	ENG	MEME	AOV		07/12/2011
E-995.4	LAVOIE, ARTHUR S	CR	MEME	AIR	BGR	07/12/2011
E-995.5	BAILEY, AARON J	FFT	MEME	AIR	BGR	07/12/2011
E-995.6	POTVIN, LUCIEN	FFT	MEME	AIR	BGR	07/12/2011
E-996	ENGINE - T6 - MES	ENG	MEME			07/12/2011
E-996.4	PICKERING, DUSTIN E	ENG	MEME	AIR	BGR	07/12/2011
E-996.5	HUNTER, ISAAC R	FFT	MEMH	AIR	BGR	07/12/2011
E-996.6	HAMILTON, CAMERON	FFT	MEME	AIR	BGR	07/12/2011
O-739	WEEKS, RODNEY JAY	STE	IDCDC	AIR	GEG	07/12/2011
E-5012.3	GIBBS, ROBBIE	ENO	NCNC	POV		07/12/2011
O-732	EVERS, MICHAEL R	EMT	COPB	AIR	COS	07/13/2011
E-821.1	RICKE, RYAN	ENG	SDRC	AIR	RAP	07/13/2011
E-821.2	O'CONNOR, ERIC L	ENG	SDRC	AIR	RAP	07/13/2011
E-821.3	MANINGAS, CALEN	FFT	SDRC	AIR	RAP	07/13/2011
E-824	ENGINE - T6 - RAPID	ENG	SDRC	AOV	RAP	07/13/2011
E-824.1	MORGAN, JOSHUA T	ENG	SDRC	AIR	RAP	07/13/2011
E-824.2	LAROCHE,	FFT	SDRC	AIR	RAP	07/13/2011
E-824.3	RASMUSSEN,	FFT	SDRC	AIR	RAP	07/13/2011
O-845	HUSCHKE, JOHN F	STE	MIHMF	A/R	GRR	07/13/2011
O-761	LANE, RUSSELL	OSC	OR582	AIR	PDX	07/13/2011
E-700.1	CAHOON, LEE	DRI		POV		07/13/2011
E-922	ENGINE - T6 - FWS	ENG	GAPD	AOV		07/13/2011
O-767	DEAN, EVAN	EMT	ORWS	A/R	PDX	07/13/2011
O-746	HURST, GARY L	EQP	MSMN	AIR	JAN	07/13/2011
O-854	SANDERS, DWAYNE	THS	SCAC	AOV	CHS	07/13/2011
E-499.3	WARING, CARLOS	DZO	FLFNF	POV		07/13/2011
O-577	GRIFFIS, WILLIE	DRI	GAOK	POV		07/13/2011
E-134.4	CRUCE, MIKE	ENO	FLFNF	POV		07/13/2011
E-499.4	WILLIAMS, DOUG	DZO	FLFNF	POV		07/13/2011
E-966	MIKE STOKES(EXC	GAOK	POV		07/13/2011
E-821	ENGINE - T6 - RAPID	ENG	SDRC	AOV	RAP	07/13/2011
E-992.1	SPANGLER, STEVE	ENG	GAR08	AOV		07/13/2011
E-5010.1	TEVEBAUGH,	ENG	TNTN	POV		07/13/2011

Honey Prairie Complex

IAP Map - Day Shift

7/10/2011

295,415 Acres



-][Branch Break
- ((Division Break
- Incident Command Post

- Highway
- Major Road
- State Boundary

- ▭ Refuge Boundary
- ▭ Fire Area

7/9/2011 1800
Sue Leverette

UNIT LOG	1. Incident Name Honey Prairie Complex	2. Date Prepared	3. Time Prepared
	4. Unit Name/Designators	5. Unit Leader (Name and Position)	6. Operational Period
7. Personnel Roster Assigned			
Name		ICS Position	Home Base
8. Activity Log			
Time	Major Events		
9. Prepared by (Name and Position)			