

Honey Prairie Complex

GA-OKR-000001

Incident Action Plan

Operational Period
Monday July 11, 2011

Day Shift (0800-2100)
Night Shift (1800-0600)

Accounting Codes

FWS – 9141-F25M-2J

NPS – 5023 F25M E11

BLM – F25M

USFS – PRF25M_1502

Initial Attack – F4PM

INCIDENT OBJECTIVES	1. INCIDENT NAME Honey Prairie Complex	2. DATE PREPARED 7/10/11	3. TIME PREPARED 1800												
4. OPERATIONAL PERIOD (DATE/TIME) Monday July 11, 2011 Day (0800 – 2100) and Night (1800 – 0600)															
5. GENERAL CONTROL OBJECTIVES FOR THE INCIDENT (INCLUDE ALTERNATIVES) <ol style="list-style-type: none"> 1. Provide for safety of incident personnel and public in all incident operations. 2. Maintain a positive working relationship with all adjacent landowners, cooperators State and Federal partners. Inform, involve and communicate incident planning and operations with all partners. 3. Contain all fires that are within the Okefenokee National Wildlife Refuge, inside the Refuge and/or inside the swamp edge break if possible. 4. In cooperation with local timberland owners, use full suppression strategies and tactics to minimize damage to private timberlands and improvements and to prevent fires outside the Refuge from entering the Refuge. 5. Assist in management and suppression of additional fires (new starts or breakouts) in the vicinity as approved by Agency Administrators and Unified Incident Commanders. 6. Protect all cultural and archeological sites and structures within the refuge, with particular attention to facilities at Okefenokee Swamp Park 7. Manage the fires cost-effectively consistent with the values at risk. 8. Implement structure protection as necessary for at-risk facilities and communities. 9. Coordinate suppression actions with assigned Refuge Resource Advisors 															
6. WEATHER FORECAST FOR OPERATIONAL PERIOD See attached forecast for area specific weather information.															
7. GENERAL SAFETY MESSAGE Drive defensively and use spotter when backing. Ensure LCES is in place and known by all personnel. Drink plenty of water and take frequent rest breaks. Ensure proper use of PPE during all operations.															
8. Attachments (☐ if attached) <table border="0" style="width: 100%;"> <tr> <td>☐ Organization List (ICS 203)</td> <td>☐ Incident Map</td> <td>☐ Safety Message</td> </tr> <tr> <td>☐ Assignment List (ICS 204)</td> <td>☐ Traffic Plan</td> <td>☐ Demobilization Procedures</td> </tr> <tr> <td>☐ Communications Plan (ICS 205)</td> <td>☐ Human Resources</td> <td>☐ Unit Log</td> </tr> <tr> <td>☐ Medical Plan (ICS 206)</td> <td>☐ Phone List</td> <td></td> </tr> </table>				☐ Organization List (ICS 203)	☐ Incident Map	☐ Safety Message	☐ Assignment List (ICS 204)	☐ Traffic Plan	☐ Demobilization Procedures	☐ Communications Plan (ICS 205)	☐ Human Resources	☐ Unit Log	☐ Medical Plan (ICS 206)	☐ Phone List	
☐ Organization List (ICS 203)	☐ Incident Map	☐ Safety Message													
☐ Assignment List (ICS 204)	☐ Traffic Plan	☐ Demobilization Procedures													
☐ Communications Plan (ICS 205)	☐ Human Resources	☐ Unit Log													
☐ Medical Plan (ICS 206)	☐ Phone List														

ORGANIZATION ASSIGNMENT LIST		9. Operations Section		
1. Incident Name Honey Prairie Complex GA-OKR-000001		Chief	Rick Dolan (West Branch) 7/22, Butch Hall (East Branch) 7/22	
		Planning	Roger Gil	
2. Date 7/10/2011	3. Time 1000 hrs	a. WEST BRANCH - Divisions/Groups		
4. Operational Period 7/11/2011 Day (0800-2100) Night (1800 – 0600)		OPBD	Bob Schindelar 7/11 / Tom Donohoe 7/22	
5. Incident Commander and Staff		Division	A, B, C	Bill Altman 7/19
Incident Commander	Don West/Verne Reggal (Dep)/ Trent Ingram/Mike Dueitt	Division	D, E, F, G	Thomas Herold 7/19
Liason Officer	Gary Beauchamp 7/14	Division	T	Brian Rhodes 7/20 / Todd Haynes (t) 7/19
Safety Officers	Barry Coulliette 7/22 / Ray Durham 7/23	Division	V	Shawn Duggar 7/22 Bryce Thomas (t) 7/13 Greg Suszek (t) 7/19
Information Officer	Ludie Bond 7/22	Division	Y (DAY)	Gary Smith 7/19 / Dan Helderline (t) 7/19
6a. Agency Administrators		Division	V, Y (NIGHT)	Jacquie Parks 7/21
FWS	Curt McCasland	Division	Z	Paul Pelligrini 7/20 / Jesse Knox (t) 7/18
FWS	Mindy Gautreaux	Group	IA-WEST and Structure Group	Don Hammack 7/19 / Bob Schober (t) 7/18
6b. Agency Representatives				
FWS Liason	Skippy Reeves	b. EAST BRANCH - Divisions/Groups		
GFC	Frank Sorrels	OPBD	Russ Lane 7/12	
FLDOF	James Karels	Division	H, I, J, K	Matt Filbert 7/18 / Dean Karlovich (t) 7/18
FWS AREP	Mike Housh	Division	L, M	Ray Miller 7/20
FWS-Refuge PAO	Art Webster	Division	N, O	Steve Griffin 7/19
GEMA AREP	Alan Robinson / Diane Adams	Group	IA-EAST	John Huschke 7/12
USFS AREP	Ivan Greene	Group	Roads	
7. Planning Section				
Chief	Ed Flowers 7/22	d. Air Operations Branch - Honey Prairie		
Resources Unit	Wilbur Priest 7/22/Fred Noack 7/19	Air Operations Branch Director		Tim Elder 7/22
Situation Unit	Scott Crosby 7/22	Air Support Group Supervisor		Don Nicholas 7/22
IMET	Joe Goudsward 7/21 / Mike Bettwy 7/21	ATGS-Lake City		Tim Caughlin 7/16 / Melanie Fullman (t) 7/11
Fire Behavior Analyst	Gary Brunk 7/13 / Steven Cobb (t) 7/15 / John Kern 7/22	d. Air Operations Branch-Waycross		
Demobilization Unit	Tim Wilkinson 7/22	Waycross Helibase Manger		
GIS	Sue Leverette 7/22	d. Air Operations Branch - Fargo		
CTSP	Randy Fountain 7/22 / Charlie Bolen 7/17	Fargo Helibase Manager		Brain Campbell 7/22 / Steve Croy (t) 7/15
TNSP	Larry Moore 7/24	ATGS-Fargo		Carl McGill 7/18
8. Logistics Section		10. Finance Section		
Chief	Shane Locke 7/21/Butch Mallet 7/22	Chief	Betty Palmiotto 7/22 / Linda Starling 7/22	
Supply Unit	Rhonda Hughes 7/22	Time Unit	Frances Matheny 7/22	
Ground Support Unit	James Thompson 7/22	Procurement	John Watson 7/22	
ORDM	Abe Phillipson 7/22	Comp Claims Unit	Alvin Welch 7/21 / Katrina Bryant 7/22	
Communications Unit	Brian Mathews 7/22	Cost	Lisa Ridley 7/22	
Medical Unit	Joe Fowler 7/22/Mike Evers (t) 7/11	Buying Team	Rita Loper	
Facilities	Mel Reese 7/22	IBA	Ron Knowles 7/19	
Food	Nat Wright 7/22/Bob Kooken 7/17			
RCDM	Gary Sisson 7/22			
		Prepared by:	Wilbur Priest RESL	

DIVISION ASSIGNMENT LIST		1. Branch West		2. Division A, B, C			
3. Incident Name: Honey Prairie Complex		4. Operational Period Date: 7/11/2011 Time: Day: 0800-2100					
5. Operations Personnel							
Operations	Rick Dolan 7/22	Branch Director	Bob Shindelar 7/11 Tom Donohoe 7/22				
Planning Ops	Roger Gil	Division Supervisor	Bill Altman 7/19 Gary Jacobson (t) 7/19				
Safety Officer	Barry Coulliette 7/22						
6. Resources Assigned this Period							
Strike Team/Task Force/ Resource Designator	Leader / Name / Designator	Last Shift Date	Num. Per.	Drop Off PT./Time	Pick Up PT./Time		
TFLD (O-897)	Terry George	7/14	1				
TFLD (O-898)	Joel McCraw (t)	7/14	1				
TFLD (O-900)	Phill Millette	7/18	1				
STEN (O-949)	Nikia Hernandez	7/19	1				
ENG6 (E-405)	Brett Gore	7/24	3				
ENG6 (E-807)	Todd Caudill	7/24	3				
ENG6 (E-900)	Richard Kujawa	7/11	2				
ENG6 (E-907) Eagle Staff	Brady Ward	7/22	2				
ENG6 (E-994)	Pat Norquay	7/18	3				
ENG6 (E-1059)	Daniel Ross	7/22	3				
ENG6 (E-1065)	Mike Carnelli	7/22	3				
ENG6 (E-1066)	Eric Jones	7/21	3				
ENG6 (E-5002) Attack#1	Hank Kight	7/20	2	PVT			
ENG6 (E-1076) MOMTF 9504	Tim Perren	7/24	3				
DOZ3 (E-646)/E-723 trans	Phil Dueitt	7/19	1	PVT			
TPL3 (E-170) Francis Marion	John Christopher	7/11	2				
WAT2 (E-93)	Steven Self		1	PVT			
SOF2 (O-702)	Bruce Barrett	7/11	1				
SOF2 (O-1068)	Jamey Burnsed	7/24	1				
EMTB (O-984)	Bob Eaton	7/20	1				
7. Control Operations <ul style="list-style-type: none"> Patrol and mop up within 100' of fire perimeter line. Monitor fire impacts to Stephen Foster State Park. Patrol and control return. 							
8. Special Instructions <ul style="list-style-type: none"> Examine work area for fire weakened snags. Ensure LCES are in place before operations begin and stay hydrated. Additional resources will be available from GFC, Florida DOF, FWS, and local cooperators. Drive defensively and with lights on at all times. 							
9. Division/Group Communication Summary							
Function	Frequency	System	Channel	Function	Frequency	System	Channel
Command N Okee Repeater	RX 164.5750/206.5 TX 163.150/206.5	KING NIFC	5	Logistics		KING NIFC	
Tactical Div/Group	RX 168.775 TX 168.7750	KING NIFC	9	Air to Ground	RX 166.9375 TX 166.9375	KING NIFC	6
Prepared by (Resource Unit Ldr.) Fred Noack		Approved by (Planning Sect. Ch.) /s/ Ed Flowers		Date 7/10/2011		Time 1930	

DIVISION ASSIGNMENT LIST			1. Branch West		2. Division D, E, F, G		
3. Incident Name Honey Prairie Complex			4. Operational Period Date: 7/11/2011 Time: 0800-2100				
5. Operations Personnel							
Operations	Rick Dolan 7/22			Branch Director		Bob Shindelar 7/11 Tom Donohoe 7/22	
Planning Ops	Roger Gil			Division Supervisor		Toby Herold 7/20	
Safety Officer	Barry Coulliette 7/22						
6. Resources Assigned this Period							
Strike Team / Task Force / Resource Designator		Leader / Name / Designator		Last Shift Date	Num. Per.	Drop Off PT./Time	Pick Up PT./Time
TFLD (O-916)		Hans Ohme		7/18	1		
TFLD (O-926)		Matt Ingram		7/18	1		
HEQB (O-708)		Andy Murrin		7/12	2	PVT	
ENG6 (E-134)		Paul McDavid		7/20	3	PVT	
ENG5 (E-503)		Dean Vanderbleek		7/18	2	PVT	
ENG6 (E-709)		Jason Walker		7/16	3	PVT	
ENG6 (E-821)		Josh Lange		7/24	3		
ENG6 (E-824)		Chris Brubaker		7/24	3		
TPL3 (E-499)		Roy Rowan		7/14	2	PVT	
WT (E-700)		Lee Cahoon		7/17	1	PVT	
EMTB (O-849)		Kyle Meadows- Barber		7/11	1		
SOF2 (O-805)		Troy Shaddox		7/14	1		
7. Control Operations							
<ul style="list-style-type: none"> Monitor and patrol south end of West Branch. Mop up all hot spots within 100' of the fire perimeter. Patrol and control reburn. 							
8. Special Instructions							
<ul style="list-style-type: none"> Ensure LCES are in place before operations begin and stay hydrated. See medical plan for EMT support. Drive defensively and with lights on at all times. Examine work area for fire weakened snags. If communications needed with Impassable Bay Fire – use Channel 11 (168.2000) 							
9. Division/Group Communication Summary							
Function	Frequency	System	Channel	Function	Frequency	System	Channel
Command S Okee Repeater	RX 164.7750/123.0 TX 163.150/123.0	KING NIFC	2	Logistics		KING NIFC	
Tactical Div/Group	RX 151.2725 TX 151.2725	KING NIFC	13	Air to Ground	RX 166.9375 TX 166.9375	KING NIFC	6

DIVISION ASSIGNMENT LIST				1. Branch West		2. Division T	
3. Incident Name Honey Prairie Complex				4. Operational Period Date: 7/11/2011 Time: 0800-2100			
5. Operations Personnel							
Operations	Rick Dolan 7/22			Branch Director	Bob Shindelar 7/11 Tom Donohoe 7/22		
Planning Ops	Roger Gil			Division	Brian Rhodes 7/20 / Todd Haynes (t) 7/19		
Safety Officer	Barry Coulliette 7/22						
6. Resources Assigned this Period							
Strike Team/Task Force/ Resource Designator		Leader / Name / Designator		Last Shift Date	Num. Per.	Drop Off PT./Time	Pick Up PT./Time
TFLD (O-946)		Stephen Filmore		7/19	1		
TFLD (E-831.8)		Jeff Hussey		7/23	1		
STEN (O-952)		Vincent Plummer		7/19	1		
S/T Type 6 OR TFLD (t) (E-831.9)		Deana Wall		7/23	1		
ENG6 (E-831.5)		Shane Thames		7/23	3		
ENG6 (E-831.1)		Ben Nichols		7/23	4		
ENG6 (E-831.4)		Eric Hahn		7/23	3		
ENG6 (E-831.6)		Tavis Fenske		7/23	3		
ENG6 (E-831.7)		Mike Towers		7/23	3		
ENG6 (E-815)		Matt Dillon		7/22	2		
ENG6 (E-816)		Jamie Remme		7/22	2		
ENG6 (E-817)		Mike Mattson		7/22	2		
ENG6 (E-818)		Scott Lindow		7/22	2		
ENG6 (E-1073)		Mike Schlitz		7/22	3		
WAT1 (E-1019)		Raymond Novello		7/21	1	PVT	
WAT2 (E-1021)		Charlie Brown		7/19	1	PVT	
TPL2 (E-986)		David Hauser		7/26	1	PVT	
TPL (E-988)		Jonathon Houser		7/30	1		
KG (E-989)		Cleo Simon		7/30	1		
EMTP (O-982)		Jeff Halladay		7/22	1		
SOF2 (O-973)		Larry Dorshorst		7/20	1		
7. Control Operations							
<ul style="list-style-type: none"> Recon potential control lines and examine area for snag removal Improve swamp break boundaries for fire breaks, work w/resource advisor Coordinate potential burn-out w/READ and refuge personnel Use refuge personnel for any burn-out activities. 							
8. Special Instructions							
<ul style="list-style-type: none"> Make contact with the Resource Advisor before using mechanical equipment. Safely push down with equipment all snags whether on fire or not that are a threat to success or tactical operations. Ensure LCES are in place before operations begin. Stay hydrated. Drive defensively and with lights on at all times. Boggy terrain: Be careful and aware when working around this type of area. 							
9. Division/Group Communication Summary							
Function	Frequency	System	Channel	Function	Frequency	System	Channel
Command N Okee Repeater	RX 164.5750/206.5 TX 163.150/206.5	KING NIFC	5	Logistics		KING NIFC	
Tactical Div/Group	RX 168.775 TX 168.775	KING NIFC	9	Air to Ground	RX 166.9375 TX 166.9375	KING NIFC	6
Prepared by (Resource Unit Ldr.) Fred Noack		Approved by (Planning Sect. Ch.) /s/ Ed Flowers			Date July 10, 2011		Time 1800

DIVISION ASSIGNMENT LIST		1. Branch West		2. Division V		1 of 2	
3. Incident Name Honey Prairie Complex		4. Operational Period Date: 7/11/2011 Time: 0800-2100					
5. Operations Personnel							
Operations	Rick Dolan 7/22	Branch Director		Bob Shindelar 7/11 Tom Donohoe 7/22			
Planning Ops	Roger Gil	Division Supervisor		Shawn Duggar 7/22 / Bryce Thomas (t) 7/13			
Safety Officer	Barry Coulliette 7/22	Division Supervisor		Greg Suszek (t) 7/19			
6. Strike Team/Task Force/ Resource Designator							
	Leader / Name / Designator	Last Shift Date	Num. Per.	Drop Off PT./Time	Pick Up PT./Time		
TFLD (O-906)	Evan Karp	7/18	1				
TFLD (O-978)	Jacob Thelen (t)	7/19	1				
TFLD (O-942)	Ben Krupski	7/19	1				
STEN (O-1000)	Waylon Meek (t)	7/20	1				
Feller-Buncher (E-524)	Josh Burdy	7/21	1	PVT			
Feller-Buncher (E-526)	James Marshall	7/16	1	PVT			
Grader (E-530)	Lucious Corbett	7/?	1	PVT	Need to check in		
TPL2 (E-606)	Cody Daniels	7/17	1				
ENG6 (E-2)	Eric Nelson	7/19	1	O-436			
ENG6 (E-3)	Daniel Angelo	7/24	2				
ENG6 (E-992)	Justin Dillon	7/20	3	PVT			
ENG6 (E-995)	Aaron Bailey	7/11	3				
ENG6 (E-996)	Dustin Pickering	7/11	3				
ENG6 (E-1085)	Don Crane	7/14	2	PVT			
ENG6 (E-1000)	Paul Rampinini	7/19	2	PVT			
ENG6 (E-1001)	Dick Sypher	7/19	2	PVT			
ENG6 (E-1053)	Timmerman	7/27	3	PVT			
ENG6 (E-1064)	Greg Nichols	7/21	3				
ENG6 (E-1062)	Tyler Quintano	7/22	3	PVT			
ENG6 (E-1063)	Brad Finch	7/22	3	PVT			
7. Control Operations							
<ul style="list-style-type: none"> Recon potential control lines and examine area for snag removal Improve swamp break boundaries for fire breaks, work w/resource advisor Coordinate potential burn-out w/READ and Refuge Personnel Use Refuge personnel for any burn-out activities. 							
8. Special Instructions							
<ul style="list-style-type: none"> Make contact with the Resource Advisor before using machanical equipment. Safely push down with equipment all snags whether on fire or not that are a threat to success or tactical operations. Ensure LCES are in place before operations begin. Stay hydrated. Drive defensively and with lights on at all times. Boggy terrain: Be careful and aware when working around this type of area. 							
9. Division/Group Communication Summary							
Function	Frequency	System	Channel	Function	Frequency	System	Channel
Command N Okee Repeater	RX 164.5750/206.5 TX 163.150/206.5	KING NIFC	5	Logistics		KING NIFC	
Tactical Div/Group	RX 151.2725 TX 151.2725	KING NIFC	13	Air to Ground	RX 166.9375 TX 166.9375	KING NIFC	6
Prepared by (Resource Unit Ldr.) Fred Noack		Approved by (Planning Sect. Ch.) /s/ Ed Flowers			Date July 10, 2011		Time 1800

DIVISION ASSIGNMENT LIST			1. Branch West		2. Division V		2 of 2	
3. Incident Name Honey Prairie Complex			4. Operational Period Date: 7/11/2011 Time: 0800-2100					
5. Operations Personnel								
Operations	Rick Dolan 7/22			Branch Director	Bob Shindelar 7/11 Tom Donohoe 7/22			
Planning Ops	Roger Gil			Division Supervisor	Shawn Duggar/Bryce Thomas (t) 7/22			
Safety Officer	Barry Coulliette 7/22			Division Supervisor	Greg Suszek (t) 7/19			
6. Strike Team/Task Force/ Resource Designator								
	Leader / Name / Designator	Last Shift Date	Num. Per.	Drop Off PT./Time	Pick Up PT./Time			
TFLD (O-986)	Mike Harnois	7/22	1					
DOZB (O-1001)	Roy Cribb	7/20	1					
KG Dozer	Need to check in							
KG Dozer	Need to check in							
Skidder (E-981)	Henry Tiner	7/25	1	PVT				
WT2 (E-1018)	Gary Waldron	7/18	1	PVT				
SOF2 (O-972)	Larry Bunge	7/19	1					
EMTP (O-767)	Evan Dean	7/12	1					
7. Control Operations								
<ul style="list-style-type: none"> Recon potential control lines and examine area for snag removal Improve swamp break boundaries for fire breaks, work w/resource advisor Coordinate potential burn-out w/READ and Refuge Personnel Use Refuge personnel for any burn-out activities. 								
8. Special Instructions								
<ul style="list-style-type: none"> Make contact with the Resource Advisor before using machanical equipment. Safely push down with equipment all snags whether on fire or not that are a threat to success or tactical operations. Ensure LCES are in place before operations begin. Stay hydrated. Drive defensively and with lights on at all times. Boggy terrain: Be careful and aware when working around this type of area. 								
9. Division/Group Communication Summary								
Function	Frequency	System	Channel	Function	Frequency	System	Channel	
Command N Okee Repeater	RX 164.5750/206.5 TX 163.150/206.5	KING NIFC	5	Logistics		KING NIFC		
Tactical Div/Group	RX 151.2725 TX 151.2725	KING NIFC	13	Air to Ground	RX 166.9375 TX 166.9375	KING NIFC	6	
Prepared by (Resource Unit Ldr.) Fred Noack		Approved by (Planning Sect. Ch.) /s/ Ed Flowers			Date July 10, 2011		Time 1800	

DIVISION ASSIGNMENT LIST			1. Branch West		2. Division Y - Day		1 of 2
3. Incident Name Honey Prairie Complex			4. Operational Period Date: 7/11/2011 Time: 0800-2100				
5. Operations Personnel							
Operations	Rick Dolan 7/22		Branch Director		Bob Shindelar 7/11 Tom Donohoe 7/22		
Planning Ops	Roger Gil		Division Supervisor		Gary Smith 7/19, Dan Helterline (t) 7/19		
Safety Officer	Barry Coulliette 7/22						
6. Resources Assigned this Period							
Strike Team/Task Force/ Resource Designator	Leader / Name / Designator	Last Shift Date	Num. Per.	Drop Off PT./Time	Pick Up PT./Time		
TFLD (O-920)	Aaron Schneider	7/18	1				
TFLD (O-991)	Adam Wolf (t)	7/21	1				
STEN (O-739)	Rodney Weeks	7/11	1				
TFLD (O-954)	Brian Ebert (t)	7/20	1				
STEN (O-979)	Sam Lindblom (t)	7/20	1				
ENG6 (E-1071)	Clayton Swanger	7/22	3				
ENG6 (E-584)	Cris Geidel	7/24	2				
ENG6 (E-838)	Chris Mursu	7/21	3				
ENG6 (E-997)	Jack Weer	7/20	2				
ENG6 (E-998)	John Stebner	7/20	2				
ENG6 (E-1004)	Doug Scott	7/19	2	PVT			
ENG6 (E-1005)	Dave Hardy	7/19	2	PVT			
ENG6 (E-1010)	Gene Matson	7/18	2	PVT			
ENG6 (E-1011)	Doug Williams	7/18	2	PVT			
ENG6 (E-1012)	Glenn Hill	7/18	2	PVT			
ENG6 (E-1014)	Doug Vankuiken	7/19	3	PVT			
ENG6 (E-1015)	Robert Burton	7/20	3	PVT			
ENG6 (E-1016)	James Mangine	7/20	3	PVT			
ENG5 (E-1036)	Tom Gates	7/23	3				
ENG5 (E-1046)	Karen Mobley	7/21	3				
ENG6 (E-1056)	John Wisecarver	7/28	3	PVT			
7. Control Operations <ul style="list-style-type: none"> Make contact with the Resource Advisor before using mechanical equipment. Recon potential controllines and examine area for snag removal Improve swamp break boundaries for fire breaks 							
8. Special Instructions <ul style="list-style-type: none"> Safely push down with equipment all snags whether on fire or not that are a threat to success or tactical operations. Ensure LCES are in place before operations begin. Stay hydrated. Drive defensively and with lights on at all times. Boggy terrain: Be careful and aware when working around this type of area. 							
9. Division/Group Communication Summary							
Function	Frequency	System	Channel	Function	Frequency	System	Channel
Command N Okee Repeater	RX 164.5750/206.5 TX 163.150/206.5	KING NIFC	5	Logistics		KING NIFC	
Tactical Div/Group	RX 151.2725 TX 151.2725	KING NIFC	13	Air to Ground	RX 166.9375 TX 166.9375	KING NIFC	6
Prepared by (Resource Unit Ldr.) Fred Noack		Approved by (Planning Sect. Ch.) /s/ Ed Flowers		Date July 10, 2011			Time 1730

DIVISION ASSIGNMENT LIST				1. Branch West		2. Division Y - Day		2 of 2	
3. Incident Name Honey Prairie Complex				4. Operational Period Date: 7/11/2011 Time: 0800-2100					
5. Operations Personnel									
Operations		Rick Dolan 7/22			Branch Director		Bob Shindelar 7/11 Tom Donohoe 7/22		
Planning Ops		Roger Gil			Division Supervisor		Gary Smith 7/19, Dan Helterline (t) 7/19		
Safety Officer		Barry Coulliette 7/22							
6. Resources Assigned this Period									
Strike Team/Task Force/ Resource Designator		Leader / Name / Designator		Last Shift Date	Num. Per.	Drop Off PT./Time		Pick Up PT./Time	
HEQB (E-960)		Paul Pelligrini		7/20	1				
WT2 (E-512)		Ken Swane		7/11	1	PVT			
WT2 (E-560)		Woody Bargeron		7/24	1	PVT			
WTS1 (E-716)		Lee Tuten		7/26	1	PVT			
WT2 (E-1024)		Richard Jones		7/28	1	PVT			
WT (E-1017)		Gene Ball		7/24 ?	1	GAOKR		Need to check in	
DOZB (O-1004)		Derek Cooper		7/20	1				
DOZB (O-1008)		Zack Culver (t)		7/21	1				
TPL2 (E-497)		Leslie Jeter		7/22	1	PVT			
TPL3 (E-943)		Hugh Matchett		7/20	1	PVT			
TPL3 (E-984)		Junior House		7/27	1	PVT			
TPL2 (E-985)		Aaron Tipton		7/27	1	PVT			
SOF2 (O-891)		Steve Holman		7/17	1				
EMTP (O-766)		Peggy Miller		7/11	1				
7. Control Operations <ul style="list-style-type: none"> Make contact with the Resource Advisor before using mechanical equipment. Recon potential controllines and examine area for snag removal Improve swamp break boundaries for fire breaks 									
8. Special Instructions <ul style="list-style-type: none"> Safely push down with equipment all snags whether on fire or not that are a threat to success or tactical operations. Ensure LCES are in place before operations begin. Stay hydrated. Drive defensively and with lights on at all times. Boggy terrain: Be careful and aware when working around this type of area. 									
9. Division/Group Communication Summary									
Function	Frequency	System	Channel	Function	Frequency	System	Channel		
Command N Okee Repeater	RX 164.5750/206.5 TX 163.150/206.5	KING NIFC	5	Logistics		KING NIFC			
Tactical Div/Group	RX 151.2725 TX 151.2725	KING NIFC	13	Air to Ground	RX 166.9375 TX 166.9375	KING NIFC	6		
Prepared by (Resource Unit Ldr.) Fred Noack		Approved by (Planning Sect. Ch.) /s/ Ed Flowers			Date July 10, 2011			Time 1730	

DIVISION ASSIGNMENT LIST				1. Branch West		2. Division V,Y Night	
3. Incident Name Honey Prairie Complex				4. Operational Period Date: 7/11/2011 Time: 1800-0600			
5. Operations Personnel							
Operations		Rick Dolan 7/22		Branch Director		Bob Shindelar 7/11 Tom Donohoe 7/22	
Planning Ops		Roger Gil		Division Supervisor		Jacquie Parks 7/20	
Safety Officer		Barry Coulliette 7/22					
6. Resources Assigned this Period							
Strike Team/Task Force/ Resource Designator		Leader / Name / Designator		Last Shift Date	Num. Per.	Drop Off PT./Time	Pick Up PT./Time
TFLD (E-973.1)		Heath Serres		7/14	1		
TFLD (O-944)		Dave Marion		7/19	1		
STEN (t) (O-1018)		Greg Thomas		7/23	1		
ENG6 (E-76)		Chris Henderson		7/20	2		
ENG6 (E-78)		Kevin Cline		7/20	2		
ENG6 (E-80)		Dane Bass		7/20	2		
ENG6 (E-81)		Troy Helms		7/20	2		
ENG6 (E-973)		Rick Young		7/14	2	PVT	
ENG6 (E-975)		Nort Phillips		7/14	3	PVT	
ENG6 (E-1081)		Tim Joy		7/21	2		
ENG6 (E-1082)		Brad Gregory		7/20	2		
ENG6 (E-1083)		Tony Harkins		7/20	2		
WAT2 (E-954)		Jim Griffens		7/11	1	PVT	
SOF2 (O-997)		Bob Habeck		7/22	1		
EMTP (O-640)		Mike Fincham		7/24	1		
EMTB (O-983)		Dominic Burchett		7/22	1		
7. Control Operations <ul style="list-style-type: none"> Make contact with the Resource Advisor before using mechanical equipment. Recon potential controllines and examine area for snag removal Improve swamp break boundaries for fire breaks 							
8. Special Instructions <ul style="list-style-type: none"> Safely push down with equipment all snags whether on fire or not that are a threat to success or tactical operations. Ensure LCES are in place before operations begin. Stay hydrated. Drive defensively and with lights on at all times. Boggy terrain: Be careful and aware when working around this type of area. 							
9. Division/Group Communication Summary							
Function	Frequency	System	Channel	Function	Frequency	System	Channel
Command N Okee Repeater	RX 164.5750/206.5 TX 163.150/206.5	KING NIFC	5	Logistics		KING NIFC	
Tactical Div/Group	RX 151.2725 TX 151.2725	KING NIFC	13	Air to Ground	RX 166.9375 TX 166.9375	KING NIFC	6
Prepared by (Resource Unit Ldr.) Fred Noack		Approved by (Planning Sect. Ch.) /s/ Ed Flowers			Date July 10, 2011		Time 1730

DIVISION ASSIGNMENT LIST			1. Branch West		2. Division Z		
3. Incident Name: Honey Prairie Complex			4. Operational Period Date: 7/11/2011 Time: Day: 0800-2100				
5. Operations Personnel							
Operations	Rick Dolan 7/22		Branch Director		Bob Shindelar 7/11 Tom Donohoe 7/22		
Planning Ops	Roger Gil		Division Supervisor		Glen Palfrey 7/20 / Jesse Knox (t) 7/18		
Safety Officer	Barry Coulliette 7/22						
6. Resources Assigned this Period							
Strike Team/Task Force/ Resource Designator		Leader / Name / Designator	Last Shift Date	Num. Per.	Drop Off PT./Time		Pick Up PT./Time
TFLD (O-889)		Kris Larson	7/19	1			
TFLD (O-792)		Dennis Wilson (t)	7/12	1			
TFLD (O-921)		Brad Hall (t)	7/18	1			
STEN (O-955)		Randy Scherr	7/19	1			
ENG6 (E-392)		Tyson Taylor	7/21	3			
ENG5(E-502)		Saul Irving	7/13	2	PVT		
ENG5(E-905)		Travis Bailey	7/23	3			
ENG6 (E-1047)		Thomas Sherman	7/21	3	PVT		
ENG6 (E-1051)		Kyle Zuehlke	7/21	3	PVT		
ENG6 (E-1052)		Ryan Schlater	7/28	3	PVT		
ENG6 (E-1057)		Troy Mueller	7/20	3			
ENG6 (E-1067)		Shaun Moore	7/28	3			
ENG6 (E-5007)		Jim Gipson	7/21	2	PVT		
ENG6 (E-5008)		Matt Stoneking	7/23	2	PVT		
ENG6 (E-5010)		C. Tevebaugh(E-5010.1)	7/12	3	PVT		
ENG6 (E-5011) Smokey Mt 209		James Searcy	7/21	2	PVT		
ENG6 (E-5012) Smokey Mt 301		Marshall Halford	7/29	2	PVT		
HCT2IA (C-14) Pat Rick 20B		Dustin Eldred	R&R 7/10-11	20	PVT		
EMTP (O-847)		Levi Clymer	7/11	1			
SOF2 (O-892)		Steven Ripley	7/17	1			
7. Control Operations							
<ul style="list-style-type: none"> Contain all fires outside refuge boundary. Patrol and mop up within 100' of fire perimeter line. 							
8. Special Instructions							
<ul style="list-style-type: none"> Ensure that tractors are cleaned and free of debris daily. Examine work area for fire weakened snags. Ensure LCES are in place before operations begin and stay hydrated. Additional resources will be available from GFC, Florida DOF, FWS, and local cooperators. Drive defensively and with lights on at all times. See Medical plan for EMT support. Implement MIST tactics 							
9. Division/Group Communication Summary							
Function	Frequency	System	Channel	Function	Frequency	System	Channel
Command N Okee Repeater	RX 164.5750/206.5 TX 163.150/206.5	KING NIFC	5	Logistics		KING NIFC	
Tactical Div/Group	RX 168.200 TX 168.200	KING NIFC	11	Air to Ground	RX 166.9375 TX 166.9375	KING NIFC	6
Prepared by (Resource Unit Ldr.) Fred Noack		Approved by (Planning Sect. Ch.) /s/ Ed Flowers			Date July 10, 2011		Time 1930

DIVISION ASSIGNMENT LIST				1. Branch West	2. Division West - Initial Attack and Structure Protection 1 of 2		
3. Incident Name: Honey Prairie Complex				4. Operational Period Date: 7/11/2011 Time: Day: 0800-2100			
5. Operations Personnel							
Operations	Rick Dolan 7/22			Branch Director	Bob Shindelar 7/11 Tom Donohoe 7/22		
Planning Ops	Roger Gil			Division Supervisor	Don Hammack 7/19 / Bob Schober (t) 7/18		
Safety Officer	Barry Coulliette 7/22						
6. Resources Assigned this Period							
Strike Team/Task Force/ Resource Designator	Leader / Name / Designator			Last Shift Date	Num. Per.	Drop Off PT./Time	Pick Up PT./Time
STEN (O-947)	Jess Register			7/20	1		
STEN (O-951)	Jerry Van Dyne			7/20	1		
STEN (O-990)	Joe Sampson			7/20	1		
STPL (O-1055)	Royce Davis			7/23	1		
HEQB (O-958)	Tim Boyce			7/20	1		
ENG6 (E-404)	John Knapper			7/23	3		
ENG6 (E-906)	James Burk			7/23	3		
ENG6 (E-939)	Chad Ingle			7/23	3		
ENG6 (E-1013)	William Paulton			7/20	3	PVT	
ENG6 (E-1045)	Andrew English			7/28	3	PVT	
ENG6 (E-1048)	Joseph Jarrells			7/21	3		
ENG6 (E-1049)	James Dowd			7/20	3		
ENG6 (E-1054)	Shawn Kanouse			7/28	3	PVT	
ENG6 (E-1055)	Brian Kanouse			7/28	3	PVT	
ENG6 (E-1050)	Kyle Varel			7/20	3		
ENG6 (E-1075)	David Jones			7/20	3		
DOZ3 (E-650)	Danny Cerezo			7/22	1	PVT	
DOZ3 (E-651)	Bill Rimes			7/14	1	PVT	
WAT3 (E-233)	Sonny Moore			7/27	1	PVT	
7. Control Operations							
<ul style="list-style-type: none"> Respond to Initial Attack as requested Initial attack IC will communicate size up information to Honey Prairie incident communications 							
8. Special Instructions							
Continue to monitor the Coal, Levy, and Shantee Fires.							
9. Division/Group Communication Summary							
Function	Frequency	System	Channel	Function	Frequency	System	Channel
Command N Okee Repeater	RX 164.5750/206.5 TX 163.150/206.5	KING NIFC	5	Logistics	See ICS 205	KING NIFC	
Tactical Div/Group	RX 154.280 TX 154,280/156.7	KING NIFC	8	Air to Ground	RX 166.9375 TX 166.9375	KING NIFC	6
Prepared by (Resource Unit Ldr.) Fred Noack		Approved by (Planning Sect. Ch.) /s/ Ed Flowers			Date July 10, 2011		Time 1930

DIVISION ASSIGNMENT LIST				1. Branch West		2. Division West - Initial Attack and Structure Protection 2 of 2	
3. Incident Name: Honey Prairie Complex				4. Operational Period Date: 7/11/2011 Time: Day: 0800-2100			
5. Operations Personnel							
Operations	Rick Dolan 7/22			Branch Director	Bob Shindelar 7/11 Tom Donohoe 7/22		
Planning Ops	Roger Gil			Division Supervisor	Don Hammack 7/19 / Bob Schober (t) 7/18		
Safety Officer	Barry Coulliette 7/22						
6. Resources Assigned this Period							
Strike Team/Task Force/ Resource Designator	Leader / Name / Designator			Last Shift Date	Num. Per.	Drop Off PT./Time	Pick Up PT./Time
TPL3 (E-1138)	Jim Reynolds			7/23	1		
TPL3 (E-1139)	Stan Jackson			7/23	1		
TPL3 (E-914)	Fred Robinson			7/23	1		
TPL (E-987)	Butch Duiett			7/28	1	PVT	
WAT3 (E-517)	Larry Bartlett			7/12	1	PVT	
EMTP (O-1057)	Matthew Stivers			7/23	1		
SOF2 (O-805)	Troy Shaddox			7/14	1		
7. Control Operations <ul style="list-style-type: none"> Respond to Initial Attack as requested Initial attack IC will communicate size up information to Honey Prairie incident communications 							
8. Special Instructions Continue to monitor the Coal, Levy, and Shantee Fires.							
9. Division/Group Communication Summary							
Function	Frequency	System	Channel	Function	Frequency	System	Channel
Command N Okee Repeater	RX 164.5750/206.5 TX 163.150/206.5	KING NIFC	5	Logistics	See ICS 205	KING NIFC	
Tactical Div/Group	RX 154.280 TX 154,280/156.7	KING NIFC	8	Air to Ground	RX 166.9375 TX 166.9375	KING NIFC	6
Prepared by (Resource Unit Ldr.) Fred Noack		Approved by (Planning Sect. Ch.) /s/ Ed Flowers			Date July 10, 2011		Time 1930

DIVISION ASSIGNMENT LIST			1. Branch East		2. Division H/ I/J/K		
3. Incident Name Honey Prairie Complex			4. Operational Period Date: 7/11/2011 Time: 0800-2100				
5. Operations Personnel							
Operations	Butch Hall 7/22			Branch Director	Russ Lane 7/14		
Planning Ops	Roger Gil			Division Supervisor	Matt Filbert 7/18		
Safety Officer	Ray Durham 7/22						
6. Resources Assigned this Period							
Strike Team/Task Force/ Resource Designator	Leader / Name / Designator		Last Shift Date	Num. Per.	Drop Off PT./Time		Pick Up PT./Time
TFLD (O-945)	Walter Mendoza		7/20	1			
STEN (O-950)	Larry Larson		7/20	1			
ENG6 (E-77) GAGAS 86	Andrew Gamlin		7/20	2			
ENG6 (E-135) Attack-1	Billy Taylor (Erin Finnegan starting 7/11)		7/22	2	PVT		
ENG6 (E-136) Nat'l Fire	Jeremiah Cates		7/16	2	PVT		
ENG6 (E-179) Nat'l Fire #4	Ramey Hiers		7/19	2	PVT		
ENG6 (E-1069) Tallahassee E26	William Abbott		7/21	3			
WT (E-559)	Kevin Gray		7/15	1	PVT		
Pump (E-293)			7/8	1			Pump is on a Trailer
EMTP (O-981)	Kurt Berge		7/22	1			
SOF2 (O-808)	Charles Severson		7/24	1			
7. Control Operations							
<ul style="list-style-type: none"> Contain all fires outside refuge boundary. Patrol and control reburn Provide initial attack for GFC and fires outside the refuge boundary. Patrol all spots outside refuge boundary. Patrol and mop up all accessible fire line. Mop up all hot spots within 100' of the fire perimeter. Continue to provide protection to the Chesser Homestead by maintaining an adequate water supply via portable pump at location. 							
8. Special Instructions							
<ul style="list-style-type: none"> Ensure LCES are in place before operations begin. Stay hydrated. Drive defensively and with lights on at all times. See medical plan for EMT support Examine work area for fire weakened snags 							
9. Division/Group Communication Summary							
	Function	Frequency	Channel	Function	Frequency	System	Channel
Command E Okee Repeater	RX 164.6250/103.5 TX 163.150/103.5	KING	3	Logistics		KING NIFC	
DIV J Repeater	RX 170.4125 TX 165.9625/123.0	NIFC	14				
Tactical Div/Group	RX 168.350 TX 168.350	KING NIFC	12	Air to Ground	RX 166.9375 TX 166.9375	KING NIFC	6
Prepared by (Resource Unit Ldr.) Fred Noack		Approved by (Planning Sect. Ch.) /s/ Ed Flowers			Date July 10, 2011		Time 1800

DIVISION ASSIGNMENT LIST		1. Branch East		2. Division L, M			
3. Incident Name Honey Prairie Complex		4. Operational Period Date: 7/11/2011 Time: 0800-2100					
5. Operations Personnel							
Operations	Butch Hall 7/22		Branch Director		Russ Lane 7/14		
Planning Ops	Roger Gil		Division Supervisor		Ray Miller 7/20		
Safety Officer	Ray Durham 7/22						
6. Resources Assigned this Period							
Strike Team/Task Force/ Resource Designator	Leader / Name / Designator	Last Shift Date	Num. Per.	Drop Off PT./Time	Pick Up PT./Time		
TFLD (O-937)	Kevin Elmstrom	7/20	1				
TFLD (O-993)	Drew Daily	7/22	1				
ENG6 (E-407) White Earth #2	Jesse Londo	7/22	3				
ENG6 (E-819)	Brett Eismann	7/21	3				
ENG6 (E-826)	Steve Melton	7/24	2	PVT			
ENG6 (E-893) MIHMF 251	Martel Knipe	7/23	3				
ENG6 (E-894) MOOZP 862	William Mier	7/22	3				
ENG6 (E-895) MOMTF 9505	Blake Knisley	7/22	3				
ENG6 (E-898) MDS #4	James Harris	7/13	2				
ENG6 (E-1061) SM36	Steve Woodrick	7/21	3				
ENG6 (E-5014) TX Fire 157	Steven Torske	7/23	3				
EMTP (O-731)	Keith Barker	R&R	1		Back on 7/13		
EMTP (O-1059)	John Oker-Blom	7/23	1				
SOF2 (O-1021)	David Vitwar	7/23	1				
7. Control Operations							
<ul style="list-style-type: none"> Contain all fires outside refuge boundary. Patrol and control reburn Mop up all spots outside refuge boundary and within 100 feet of perimeter 							
<ul style="list-style-type: none"> 8. Special Instructions Ensure LCES are in place before operations begin. Stay hydrated. Drive defensively and with lights on at all times. See medical plan for EMT support Examine work area for fire weakened snags. 							
9. Division/Group Communication Summary							
	Function	Frequency	Channel	Function	Frequency	System	Channel
Command E Okee Repeater	RX 164.625/103.5 TX 163.150/103.5	KING NIFC	3	Logistics		KING NIFC	
Tactical Div/Group	RX 168.775 TX 168.775	KING NIFC	9	Air to Ground	RX 166.9375 TX 166.9375	KING NIFC	6
Prepared by (Resource Unit Ldr.) Fred Noack	Approved by (Planning Sect. Ch.) /s/ Ed Flowers			Date July 10, 2011		Time 1800	

DIVISION ASSIGNMENT LIST				1. Branch East		2. Division N/O	
3. Incident Name Honey Prairie Complex				4. Operational Period Date: 7/11/2011 Time: 0800-2100			
5. Operations Personnel							
Operations		Butch Hall 7/22		Branch Director		Russ Lane 7/14	
Planning Ops		Roger Gil		Division Supervisor		Steve Griffin 7/18, Ernest Schmitt (t) 7/19	
Safety Officer		Ray Durham 7/22					
6. Resources Assigned this Period							
Strike Team/Task Force/ Resource Designator		Leader / Name / Designator		Last Shift Date	Num. Per.	Drop Off PT./Time	Pick Up PT./Time
TFLD (O-807) (t)		Mark Whipps		7/19	1		
STEN (O-989)		Max Twombly		7/21	1		
TFLD (O-994)		Jim Edgar		7/21	1		
ENG6 (E-897) MDBWR		Ephraim Diefenderfer		7/22	2		
ENG6 (E-922)		Nathan Herron		7/22	1		
ENG6 (E-977) IPF E-31		Louie Feltman		7/23	4		
ENG6 (E-993) Bush Fire		Philip Quochytewa		7/18	2	PVT	
ENG6 (E-1058)		Michael Keil		7/20	3		
ENG6 (E-1060)		Paul Amundson		7/21	3		
ENG6 (E-1068)		Wade Griffith		7/22	3		
ENG6 (E-1070)		Gregory Rock		7/21	3		
ENG6 (E-1072)		Butch Murphy		7/21	3		
ENG6 (E-1074)		Peter Stevenson		7/20	3		
ENG6 (E-5006) Wildlands #3		Keith Hawk		7/15	2	PVT	
EMTB (O-848)		Bert Hyde		7/11	1		
SOF2 (O-807)		Chuck Stanton		R&R	1		Two days off/ back 7/12
7. Control Operations <ul style="list-style-type: none"> Patrol and mop up 100' inside fire perimeter. Recon potential control lines and examine area snag removal Keep fire within refuge boundary. 							
8. Special Instructions <ul style="list-style-type: none"> Safely push down with equipment all snags whether on fire or not that are a threat to success or tactical operations. Ensure LCES are in place before operations begin. Stay hydrated. See medical plan for EMT support. Drive defensively and with lights on at all times. Boggy terrain: Be careful and aware when working around this type of area. If HP fire escapes the NE Break the Great Basin team will command suppression w/assistance from the GFC. If Race Pond escapes to the south GFC will command w/assistance by the Great Basin. DIVS should make daily contact w/ Race Pond DIVS on scene. STEN Twombly and Engines 1058, 1060, 1070, 1072, 1074 be ready to respond to IA in Swamp Park. 							
9. Division/Group Communication Summary							
Function	Frequency	System	Channel	Function	Frequency	System	Channel
Command N Okee Repeater	RX 164.5750/206.5 TX 163.150/206.5	KING NIFC	5	Logistics		KING NIFC	
Tactical Div/Group	RX 168.200 TX 168.200	KING NIFC	11	Air to Ground	RX 166.9375 TX 166.9375	KING NIFC	6
Prepared by (Resource Unit Ldr.) Fred Noack		Approved by (Planning Sect. Ch.) /s/ Ed Flowers			Date July 10, 2011		Time 1730

DIVISION ASSIGNMENT LIST		1. Branch East		2. Division East Initial Attack			
3. Incident Name Honey Prairie Complex		4. Operational Period Date: 7/11/2011 Time: 0800-2100					
5. Operations Personnel							
Operations	Butch Hall 7/22	Branch Director		Russ Lane 7/14			
Planning Ops	Roger Gil	Division Supervisor		John Huschke 7/12, Shawn Denowh (t) 7/19			
Safety Officer	Ray Durham 7/22						
6. Resources Assigned this Period							
Strike Team/Task Force/ Resource Designator	Leader / Name / Designator	Last Shift Date	Num. Per.	Drop Off PT./Time	Pick Up PT./Time		
TFLD (O-943)	Steven Clark	7/22	1				
DOZB (O-959)	Zac Cogle	7/20	1				
ENG6 (E-390) WICNF 461	Lloyd Pete	7/24	2				
ENG6 (E-974)	Steve Shykes	7/19	3				
ENG6 (E-976)	Roscoe Benoy	7/21	3		Benoy on R&R 7/12 and 7/13		
ENG6 (E-978)	Dennis Gillmer	R&R	3		Back on 7/13		
ENG6 (E-979)	Mark Smith	7/19	4				
ENG6 (E-1084)	Mike Dean	7/20	2				
TPL3 (E-500) NFFS	TBA			PVT			
TPL3 (E-649) Bear Co	Don Johnson	7/30	2	PVT			
WT3 (E-92)	Justin Ennis / Jeff Ellis	7/28	1	PVT			
SOF2 (O-703)	Larry Klock	7/11	1				
SOF2 (O-1067)	Larry Morris	7/?	1				
7. Control Operations							
<ul style="list-style-type: none"> Respond to Initial Attack as requested Patrol and control return Initial attack IC will communicate sizeup information to the Honey Prairie communication. 							
8. Special Instructions							
9. Division/Group Communication Summary							
	Function	Frequency	Channel	Function	Frequency	System	Channel
Command E Okee Repeater	RX 164.625/103.5 TX 163.150/103.5	KING NIFC	3	Logistics		KING NIFC	
Tactical Div/Group	RX 168.775 TX 168.775	KING NIFC	9	Air to Ground	RX 166.9375 TX 166.9375	KING NIFC	6
Prepared by (Resource Unit Ldr.) Fred Noack		Approved by (Planning Sect. Ch.) /s/ Ed Flowers		Date July 10, 2011		Time 1800	

DIVISION ASSIGNMENT LIST				1. Branch ALL	2. Division Roads Group		
3. Incident Name: Honey Prairie Complex				4. Operational Period			
				Date: 7/11/2011	Time: 0800-2100	Day: 0800-2100	
5. Operations Personnel							
Operations	Butch Hall 7/22			Branch Director			
Planning Ops	Roger Gil			Division Supervisor			
Safety Officer	Ray Durham 7/22						
6. Resources Assigned this Period							
Strike Team/Task Force/ Resource Designator	Leader / Name / Designator			Last Shift Date	Num. Per.	Drop Off PT./Time	Pick Up PT./Time
EQPM(O-746)	Gary Hurst (T) 912-387-6787			7/12	1		
DOZB (O-956)	Tony Zavalla			7/21	1		
Excavator (E-505)	Lee Douglas or Johnny Smith				1	PVT	
Dump Truck (E-506)	TBA					PVT	
Dump Truck (E-529)	Craig Smith			7/19	1	PVT	
Grader (E-230)	TBA				1		
Grader (E-380)	Jason Merrit			7/20	1	PVT	
Grader (E-597)	TBA				1		
WT2 (E-1086)	Bill Rounsaville			7/28	1		
7. Control Operations <ul style="list-style-type: none"> Coordinate efforts w/ resource advisor and logistics 							
8. Special Instructions <ul style="list-style-type: none"> Ensure that tractors are cleaned and free of debris daily. Examine work area for fire weakened snags. Ensure LCES are in place before operations begin and stay hydrated. Additional resources will be available from GFC, Florida DOF, FWS, and local cooperators. Drive defensively and with lights on at all times. See Medical plan for EMT support. Implement MIST tactics 							
9. Division/Group Communication Summary							
Function	Frequency	System	Channel	Function	Frequency	System	Channel
Command N.Okee Repeater	See ICS 205	KING NIFC		Logistics	See ICS 205	KING NIFC	
Tactical Div/Group	See ICS 205	KING NIFC		Air to Ground	See ICS 205	KING NIFC	
Prepared by (Resource Unit Ldr.) Fred Noack		Approved by (Planning Sect. Ch.) /s/ Ed Flowers			Date 7/10/2011		Time 1930

AIR OPERATIONS SUMMARY

Prepared By: Tim Elder, AOBD

Prepared Date: 7.10.2011

Prepared Time: 1800

1. INCIDENT NAME: Honey Prairie	2. OPS PERIOD DATE: July 11, 2011	START TIME: 0830	END TIME: 1900	SUNRISE: 0633	SUNSET: 2036
3. REMARKS (Safety Notes, Hazards, Air Operations Special Equipment, etc.): No fire is ever the same. No flight is ever the same. The fire you fly today will not be the same as the fire you flew yesterday. Be alert to your environment and changing conditions.					5. TFR #: 1/0249 (Box) 3000' MSL

NOTE: Latitude/Longitude format is "Degrees-Minutes-Decimal Minutes" (example: N30 41.42 W082 33.97)

PERSONNEL	NAME	PHONE #	FREQUENCIES	AM	FM	
AOBD	Tim Elder	Cell 863-243-1438 Desk 912-637-5254 FAX 912-637-5237	AIR/ AIR FW	122.575		AIRTANKERS / LEAD PLANES - None Available
ASGS(T)	Don Nicholas	218-360-1816	AIR/ AIR RW-FF	122.375		ATGS AIRCRAFT- 53L (C-337)
ATGS Lake City	Tim Caughlin Melanie Fullman (T)	715-684-9862 906-364-0413	Georgia AIR/AIR	122.075		OTHER: Lake City Tanker Base: 386-758-9078 / FAX 752-8901 Pogo Helibase: 912-496-4415 / FAX 496-7077 Waycross Helibase 912-287-4479 / FAX 287-4458 Fargo Helibase: 404-772-5317 Okfehenokoe Dispatch: 912-496-7366 X230
ATGS Fargo HB	Carl Magjill	541-519-0850	Georgia AIR/GRND (Smokey - Dozers)		159.285 W	
HEB2 Fargo HB	Brian Campbell Steve Croy (T)	404-772-5405 540-230-2568	AIR/GROUND PRIMARY		166.9375	FARGO HELIBASE: N30 41.42 W82 33.97 POGO HELIBASE: N30 44.03 W82 07.41
ABRO Fargo HB	Ken Malgren	208-830-6290	AIR/GROUND ALTERNATE		166.9000	POCKET HELISPOT N30.48 W82.22
HEB2 Waycross HB	Jay Matsen Desk Cell	912-287-4479 206-218-8230	Florida AIR/AIR IA	122.925		HOMERVILLE AIRPORT N31 03.35 W82 46.45 WAYCROSS AIRPORT N31 14.9 W82 23.7
			Florida AIR/GRND IA		170.4750 N	
			DECK		163.1000	
			AIR GUARD		168.625 T 110.9	

9. HELICOPTERS (Use Additional Sheets as Necessary)

FAA N#	TY	MAKE/ MODEL	BASE	AVAIL	MANAGER	FAA N#	TY	MAKE/ MODEL	BASE	AVAIL	MANAGER
N36BH	1	S-70	Waycross	0830	Zev Hunting 406-439-6768	N61SC	1	S-61	Fargo	0830	Ray Leppala 218-966-6443
206G	2	UH1H	Waycross	0830	Jerick Dominguez 530-319-3517	26MW	1	K-1200	Fargo	0830	Brenden Mullen 406-491-0873
06901	2	UH1H	Waycross	0830	Cindy Bradley	N662H	3	206-L4	Fargo	0830	Jeremy Beeson

				559-916-9355						208-507-1649		
N818MC	3	AS-350 B3	Waycross	0830	George Violante 307-330-5904							
10. TASK/ MISSION/ ASSIGNMENT (Type/ function includes: Air Tactical, Retardant, Recon, Personnel Transport, Bucket Operations, SAR, etc.												
TYPE/FUNCTION			NAME OF PERSONNEL OR CARGO (if applicable) or instructions for tactical aircraft						MISSION START		FLY FROM	FLY TO
Bucket Ops									As Requested		Fargo/Waycross	
Air Tactical									1200 / As Requested		Lake City/Fargo	
Recon									As Requested		Fargo/Pogo	
Medevac			Fargo: N662H Waycross: N818MC						As Requested		Fargo/Waycross	
Aerial Ignition									1200		Fargo	



Fire Weather Forecast



FORECAST NO: 65

NAME OF FIRE: Honey Prairie Complex

PREDICTION FOR: Day and Night Shifts
SHIFT DATE: 7/11/11

UNIT: Okefenokee National Wildlife Refuge

FORECAST ISSUED: 7/10/11 at 1900

SIGNED: Mike Bettwy (T) / Joe Goudsward
Incident Meteorologists

WEATHER DISCUSSION: A weak front and broad area of low pressure will gradually shift off to the east today. Slightly drier air will work into the region from the northeast, but daytime heating and instability should still be sufficient to produce scattered afternoon showers and thunderstorms. High pressure will slowly build into the region Tuesday through Wednesday with lower chances of precipitation.

TODAY: Patchy morning fog, otherwise partly to mostly cloudy with scattered showers and thunderstorms, especially in the afternoon.

MAXIMUM TEMPERATURES: 93-98 degrees

PM HEAT INDEX: 102-108 degrees

MINIMUM HUMIDITY: 40-50%

20 FT WINDS: AM: SW 2-5 mph

PM: SSW 5-10 G15 mph

STABILITY/INVERSION: Morning inversion to 250 feet through 1000, then rising to 5500 feet by 1500

TRANSPORT WINDS: WSW 11 mph

DISPERSION INDEX: 43, Average

CHANCE OF PRECIPITATION: 40%

PRECIPITATION AMOUNTS: 0.25"-0.50" with locally heavier amounts in thunderstorms

LIGHTNING ACTIVITY LEVEL: 3

TONIGHT: Partly cloudy. A slight chance of showers and thunderstorms, mainly before 8 P.M. Patchy fog developing after 10 P.M. and becoming locally dense.

MINIMUM TEMPERATURES: 73-76 degrees

MAXIMUM HUMIDITY: 90-100%

20 FT WINDS: SW 2-5 mph

STABILITY/INVERSION: Inversion to 250 feet by 2200 hours

DISPERSION INDEX: 3, Poor

CHANCE OF PRECIPITATION: 20%

LIGHTNING ACTIVITY LEVEL: 2

OUTLOOK FOR TUESDAY: Partly cloudy with a 30% chance of showers and thunderstorms. Winds SW 6-10G15 mph, becoming ESE. High temperatures 93 to 98. Min RH 40-45%. Dispersion 45, Average.

EXTENDED FORECAST:

	WEDNESDAY	THURSDAY	FRIDAY
MINIMUM TEMP	75°	76°	75°
MAXIMUM TEMP	96°	96°	95°
MINIMUM RH	35-40%	35-40%	40-45%
20 FT. WINDS	AM: SSW 3-6 mph PM: ESE 6-10 mph	AM: WSW 3-6 mph PM: ESE 7-11 mph	AM: WSW 3-7 mph PM: SSE 5-9 mph
SKY	Partly Cloudy	Partly Cloudy	Mostly Cloudy
WEATHER	Scattered T-Storms	Scattered T-Storms	Scattered T-Storms
CHANCE PRECIP	30%	40%	50%

GENERAL FIRE BEHAVIOR

Fuels around the Okefenokee Wildlife Refuge are predominately Fuel Model 7 (Southern Rough). Large to moderate acreage tracts of commercial timberland are mixed in throughout the entire perimeter surrounding the refuge. Fast moving wildfires with extremely high flame lengths and rapid rates of spread occur within the swamp. As fire transitions to the upland, torching and crown fires are common. Long Range spotting is possible.

Indicators/Threshold for Increased Fire Activity

- Relative humidity dropping below 45%
- **Winds above 10 mph**
- **Heavy fuel loadings**
- Fine dead fuel moisture 8% or less
- Dispersion above 70
- *** Items in BOLD are predicted to occur today***

SPECIFIC FIRE BEHAVIOR

- **Fire behavior will be influenced by precipitation. Much, but not all, of the fire has received 1 to 2 inches of rain in the last two days with the central and south areas receiving the most.**
- **Expect the fire to continue to move through the shrub fuels with low to moderate rates of spread and creep through the hardwood stands. Any sunlight on fire will increase fire intensity leading to column development. (Wind gusts will temporarily increase fire intensities). LAL 3**

Fuel Type	Rates of Spread	Flame Length	Spotting Distance	Firebrand Ignition
Winds at 5 -10 G 15 mph				
Shrub Fuels	8 - 16 ch/hr	2 - 12 feet	1/10 – 3/10 mile	33%
Southern Rough	2 – 23 ch/hr	2 - 7 feet	1/10 – 3/10 mile	33%
Timber Litter-Reburn	1 - 2 ch/hr	1 - 2 feet	1/10 - 3/10 mile	34%
Small Pine Plantation w/grasses	2 - 21 ch/hr	2 - 7 feet	1/10 – 2/10 mile	34%

One hour fine dead fuel moisture is at 10% for Monday. 1000 hour fuels are drier than normal for this time of year. There is reburn potential in all divisions due to the amount of needle cast. Should a fire run(s) occur, expect winds in the area to potentially increase above predicted levels. This would increase Flame Lengths and ROS above predictions. Heavier firebrands can also be lifted higher and further increasing likelihood of spots to max predictions. **In areas where fuels have been herbicided, expect quick ignitions and extreme heat, quick rate-if –spread, and group tree torching producing spotting problems.**

NOTE- FIRE BEHAVIOR CALCULATIONS ARE FOR FIRES IN UNBURNED FUELS INCLUDING NEW IA STARTS.

West	A	Wetting rains have moistened fuels. Falling snags still pose a threat to fire personnel and the boardwalk. 40% chance of rain	West	T/V	Fire spread to the North will be reduced with more favorable weather conditions. Be heads-up for falling snags. 40% chance of rain
	B-G	Wetting rains have moistened fuels. Be heads-up for falling Snags. 40% chance of rain			
	Y Z	Fire activity will remain low to moderate today as fuels have received moisture. Areas of heat will remain near Div Y/Z perimeter. Be heads-up for falling snags. 40% chance of rain	East	H, I J, K L,M N,O	Much needed rain has fallen all along the East Branch. Interior fire in Divs N and O will continue to smolder with low to moderate fire behavior with any PM drying. Heads-up for falling snags. 40% chance of rain

Night Ops – Expect another night of minimal fire behavior with areas of heavy smoke and patch of dense fog after 2200 hr. Partly cloudy with a slight chance of showers and thunderstorms mainly before 2200 hrs. Fire behavior after 2200 will primarily be limited to smoldering in heavy fuels near firelines and interior in Divisions B,Y & Z. Winds are forecast from the SW 2 - 5 mph. Dispersion Index of 3 –poor for nighttime. LAL 2

Air Operations: Expect areas of heavy smoke all day especially in the Northeast area of the fire.

SAFETY:

WINDS – Stay abreast of changing wx conditions throughout the entire shift. **THUNDERSTORMS** - these severe winds can create extreme fire behavior, with winds gusting over 30 mph. **SNAGS** – Snags are falling in all Divisions – will be influenced by Thunderstorm outflow winds.**FUELS:** Reburn is an issue. Watch for pockets of cured shrubs or blankets of red needles beginning to cover the forest floor. 1000 and 10,000 hour fuels as well as deep duff pockets are providing the heat source. Stay focused, and put LCES in place before starting operations. Watch for standing burning snags that can fall without warning. Energy Release Component (ERC) continues to hover near the 90th percentile.

LCES Analysis of Tactical Actions

Incident Name: Honey Prairie Complex				Date and Time Prepared: July 10, 2011 1600 hrs										Operational Period: Day and Night July 11, 2011		
TACTICAL HAZARDS	Location on Incident													Mitigations		
	Divisions/Groups															
A,B,C	D,E,F,G	H, I	J, K	L	M	N	O	T	V	Y	Z	ICP	PM Ops	Struct Prot Grp		
Powerlines	*	*	*	*	*	*	*	*	*	*	*	*			*	Assume all power lines are charged. Avoid all contact with downed lines.
Complacency	*	*	*	*	*	*	*	*	*	*	*	*	*		*	Follow work/rest guidelines.
Indirect Fireline								*	*	*	*	*				LCES; IRPG Pg. 10, Indirect Attack; Burnout as possible.
Anchor Points	*	*	*	*	*	*	*	*	*	*	*	*				Ensure fireline is anchored. Use natural features when possible. Use Local Resource Advisor
Extreme Conditions (Spotting, Wind)																LCES, Establish Trigger Points. Maintain Situational Awareness. Establish Lookouts as needed. Follow MAP actions.
Unburned Area Reburn Potential	*	*	*	*	*	*	*	*	*	*	*	*			*	LCES, Utilize Air Attack if Available. Know Predicted Weather and Fire Behavior Forecast.
Hazard Trees	*	*	*	*	*	*	*	*	*	*	*	*			*	IRPG Pg. 80, Identify and flag hazard trees. Look Up, Down and Around
Hazardous Materials	*	*	*	*	*	*	*	*	*	*	*	*			*	IRPG Pg. 26-27, HAZMAT. Identify and map propane tanks, electric lines, septic tanks and determine bridge wgt. limits prior to use.
Vehicle Use (Travel 1HR+, Roads)	*	*	*	*	*	*	*	*	*	*	*	*	*		*	Park vehicles for egress. Follow traffic plan. Use seat belts, drive with headlights on and keep windshields clean. Use spotters. Drive Defensively. Use multiple camp locations to reduce drive time.
Communications																Ensure radio is cloned with the current communications plan. LCES
Structure Protection		*		*	*	*	*	*	*	*	*	*				Use structure protection checklist, PPE, Triage. Utilize Local Fire Departments
Air Operations (multiple aircraft, line support)	*	*	*	*	*	*	*	*	*	*	*	*				Monitor Air Guard at all times. Flight follow through Dispatch. Keep drop areas clear of personnel.
Mechanical Equipment	*	*	*	*	*	*	*	*	*	*	*	*			*	Use PPE, ensure all safety devices are functional. Operator must see you before approaching equipment. Maintain proper distance away from equipment working in the area.
Escape Routes Safety Zones	*	*	*	*	*	*	*	*	*	*	*	*			*	LCES, Establish and identify safety zones & escape routes. Know where these are located and the route to them. IRPG p.7
Thunderstorm Safety	*	*	*	*	*	*	*	*	*	*	*	*	*		*	Keep an eye on changes in weather. Take hourly weather observations. Comms will provide weather updates when needed.
Wildlife	*	*	*	*	*	*	*	*	*	*	*	*	*		*	Keep food items off the line and use refuse containers around camp. Use insect repellent as needed. Use caution around water as wildlife is concentrated.
Sun Exposure	*	*	*	*	*	*	*	*	*	*	*	*	*		*	Use sunblock as needed.
Night Operations										*	*					Maintain situational awareness. Refer to pages 6 & 7 of IRPG. Ensure headlamps are available and working. Maintain spacing between resources.
Heat	*	*	*	*	*	*	*	*	*	*	*	*	*		*	Hydrate prior to going on line and all during the day. Recognize the signs of heat related injuries. Take frequent breaks throughout the work period.
Air Quality																Rotate personnel frequently out of smoke. Ensure off-line rest is clear of smoke.
Railroad Crossings	*	*	*	*	*	*	*	*	*	*	*	*			*	Visually check all railroad crossings to ensure track is safe to cross. Don't bunch up, leave room for other vehicles to cross. Don't try to beat the train.
													Safety Officer: Barry Coulliette SOF2			

SAFETY MESSAGE

JULY 11, 2011 Day / Night



Major Hazards and Risk

Wildlife

Thunderstorms

Complacency

Logging Operations

Driving

Dehydration

Mitigations

Do not feed or harass alligators.

Wear your seat belt when the vehicle is moving.

Thunderstorms produce strong winds heavy rain and frequent lightning. Take refuge into your vehicles and insure you are parked in a safe place. Any tree is capable of falling under strong wind events.

Seeing and doing the same things every day leads to complacency. Stay alert to the known hazards. Conduct tail gate safety sessions. Insure that TEN and EIGHTEEN are in place before starting work.

Logging operations will be on the increase. Pay attention to log trucks and logging equipment working in your division and increased truck traffic on the highways.

The heat index for today is predicted to be 109 today. Mitigate this by drinking water and taking frequent breaks. Drink one bottle of water an hour.

Safety Officers

Barry Coulliette

West Branch

Ray Durham

East Branch

MEDICAL PLAN	Incident Name Honey Prairie Complex	Date Prepared 7/10/2011	Time Prepared 1800	Operational Period 7/11/2011 DAY SHIFT			
5. Incident Medical Aid Station							
<u>Medical Aid Stations</u>	<u>Location</u>			Paramedics Yes No			
Medical Unit (ICP)	Honey Prairie Complex ICP (Lodge 5) 912-637-5236 Joe Fowler MEDL 912-286-1648 Michael Evers MEDL (T) 912-286-1674			X			
WEST BRANCH (Line EMT)	Bob Eaton 919-423-1055 (A,B,C DIV) Kyle Barber 417-239-9135 (D,E,F,G DIV) Jefferson Halladay 801-518-9857 (T DIV) Evan Dean 503-975-6444 (V DIV) Peggy Miller 240-793-4238 (Y 0800-2000) Michael Fincham 530-859-8507 & Dominique Burchett 801-558-5444 (Y DIV Night) Levi Clymer 417-658-5155 (Z DIV) Matthew Stivers 256-375-4260 (West IA)			X			
EAST BRANCH (Line EMT)	Kurt Berge 801-404-6434 (H,I,J,K DIV) John Oker-Blom 404-558-4476 (L,M DIV) Bert Hyde 218-349-0934 (N,O DIV)			X			
Ambulance Services							
Name	Address	Phone	Paramedic Yes No				
Clinch County EMS (WEST SIDE)	West Branch Council Road & HWY 94	Channels 4, 11, 13 912-286-1673 EMS Incident Cell	Yes				
Ware County EMS (NORTHSIDE)	Waycross, Georgia (911 to activate)	912-281-9467	Yes				
Charlton County EMS (EAST SIDE)	Folkston, GA (911 to activate)	912-496-7321	Yes				
Air Ambulance Service							
Trauma 1	Lake City, FL (16 min/air to Fargo ICP)	1-800-223-4878(freq. 155.340)	Yes				
Trauma 1	Jacksonville, FL (26 min/air to Fargo ICP)	1-800-223-4878(freq. 155.340)	Yes				
AirMed	Augusta, GA (2 hrs/air to Fargo ICP)	1-888-792-9245(freq. 155.340)	Yes				
Lifeflight	Jacksonville, FL (35 min/air to Fargo ICP)	1-877-870-7779(freq. 155.340)	Yes				
Air Evac	Waycross, GA (17 min/air to Fargo ICP)	1-800-247-3822(freq. 155.340)	Yes				
US Coast Guard (Heli-Rescue)	Savannah GA	1-912-652-4646 (freq. 155.340)	Yes				
7. Hospitals							
Name	Address	Travel Time Air Ground	Phone	Helipad Yes No	Burn Center Yes No		
Satilla Regional	410 Darling Ave Waycross Ga N 31°13.56 W 82°21.058	18 min 45 min	912-283-3030	Yes		No	
Clinch Memorial Hospital (WEST SIDE)	1050 Valdosta HWY Homerville, GA		912-487-5211 ext 4502	Yes		No	
Charlton Memorial Hospital (EAST SIDE)	1203 3 rd St. Folkston, GA		912-496-2531	Yes		No	
Memorial Hospital	Savannah, GA 4700 Waters 3200.7 8107.6	30 min	912-350-8999	Yes		No	
Shands Hospital (level I)	Jacksonville, FL N 30°20' 97 W 82° 13 992	26 min 1.5 hrs	800-223-4878	Yes		Yes	
Shands Burn Center	Gainesville, FL 38.33 N 082 20.73W	33 min 1.5 hrs	352-265-0300	Yes		Yes	
8. Medical Emergency Procedures							

<ol style="list-style-type: none"> 1. Notify DIVS of medical problem 2. DIVS notifies COML and MEDL 3. MEDL contacts POC for following <ol style="list-style-type: none"> a. # of pts b. Status of pts medical problem c. Location of pts d. Transport method e. Necessary resources 4. MEDL coordinates medevac/patient transport with SOF2, OPS2 and other relevant resources. <p><u>Life threatening injury</u>: an injury that could mean the loss of life, limb, or eyesight</p> <p><u>Minor injury</u>: an injury that results in the removal of a pt from the line but with less urgency as a life threatening injury</p> <p><u>Medevac</u>: the most urgent transport of a pt suffering from a life threatening injury</p> <p>Patient transport: transport for minor injuries</p> <p><u>Medical problem</u>: a physical or mental ailment that occurs to an individual; to include illnesses and traumatic injuries</p> <p><u>Point of contact (POC)</u>: individual who will be directly advocating for patient care and transport (line medic, crew boss, DIVS etc)</p> <p>*Request that FFTR/Engine crews or single resources let MEDL know if they have any EMTs or Paramedics and if they have equipment with them.</p>	<p><u>HELISPOTS</u></p> <p>Pocket Helispot 30 47 30.02 x 82 22 39.5 (West side), mile marker 4, HWY 177 Steven C. Foster State Park</p> <p>Fargo Helibase 30 41.42 x 82 33.97 (West side), HWY 441- Golf course, Fargo</p> <p>POGO Helibase 30.44.03 x 82.07.41 (East side)</p> <p><u>Evac Yankee</u></p> <p>Helispot 6 Rd. 32 and 32A, N 30° 53.280 W 082° 33.880</p> <p>Helispot 7 Tatum Rd. Pond N 30° 50.280 W 082° 33.857</p> <p>*Alternate site can be established following guidelines for safety found with IRPG and local EMS resources.</p>
<p>Prepared by: Michael Evers MEDL (T)/Joe Fowler MEDL</p>	<p>10. Reviewed by: Barry Coulliette SOF</p>

INCIDENT RADIO COMMUNICATIONS PLAN ICS-205		Incident Name Honey Prairie		GROUP 22		Date/Time Prepared 07/10/2011-18:00		Operational Period Date/Time 7/11/2011 0800-2100/1800-0600			
Ch #	Function	Channel Name	Assignment	RX Freq	NW	RX Tone/NAC	TX Freq	N W	TX Tone/NAC	Mode A,D or M	Remarks
1	Command	West Okee Repeater	Sec West Branch CMD	167.1250	N	156.7	163.1500	N	156.7	A	Stephen Foster State Park
2	Command	South Okee Repeater	Sec East/West Branch CMD	164.7750	N	123.0	163.1500	N	123.0	A	Eddy Florida
3	Command	East Okee Repeater	PRIMARY East Branch CMD	164.6250	N	103.5	163.1500	N	103.5	A	Refuge Headquarters
4	Command	NIFC C2	PRIMARY West Branch CMD	168.100	N	CSQ	170.4500	N	123.0	A	NOT linked to OKEE System
5	Command	North Okee Repeater	PRIMARYNorth Branch CMD	164.5750	N	206.5	163.1500	N	206.5	A	Waycross
6	Air-Ground	Air to Ground	PRIMARY	166.9375	N	CSQ	166.9375	N	CSQ	A	
7	Tactical	MOB-MOB	GFC Contingency	159.3900	W	CSQ	159.3900	W	156.7	A	
8	Tactical	V-Fire 21W WHITE	Structure Protection Group&I.A.	154.2800	W	CSQ	154.2800	W	156.7	A	
9	Tactical	USFS 9	DIV A,B,C, L, M T, M & (East I/A)	168.7750	N	CSQ	168.7750	N	CSQ	A	
10	Tactical	S.E. Compact	DIV	159.2850	W	CSQ	159.2850	W	CSQ	A	
11	Tactical	USFS 11	DIV Z, N, O	168.2000	N	CSQ	168.2000	N	CSQ	A	
12	Tactical	Refuge Tac 1	DIV H, I, J, K	168.3500	N	CSQ	168.3500	N	CSQ	A	
13	Tactical	FL 190	DIV D, E, F, G, V, Y	151.2725	N	CSQ	151.2725	N	CSQ	A	
14	Command	DIV J RPT	East Branch	170.4125	N	CSQ	165.9625	N	123.0	A	NOT linked to OKEE System
15	Air-Ground	Air to Ground	SECONDARY	166.9000	N	CSQ	166.9000	N	CSQ	A	
16	EMERGENCY	AIR Guard	Air OPS.	168.6250	N	CSQ	168.6250	N	110.9	A	
Prepared by (Communications Unit) Brian Matthews Incident Dispatcher: 912-286-1660											
Cloning at ICP communications and briefings,											

The convention calls for frequency lists to show four digits after the decimal place, followed by either an "N" or a "W", depending on whether the frequency is narrow or wide band. Mode refers to either "A" or "D" indicating analog or digital (e.g. Project 25) or "W" indicating mixed mode. All channels are shown as if programmed in a control station, base stations, mobile or portable radio.

FINANCE – EQUIPMENT/TIME

Tip for the day: 7/11/11



We Need Your HELP:

East side fuel supplier: please send all fuel books to finance daily!!!!

E-818	Lindow, Scott	Skipped date on shift ticket
E-505	J Smith & Co.	Need to show odometer reading on shift ticket
E-819	Mtn View Fire	Missing Shift Ticket 7/7
E-982 & 983	Tim Prep Co. (Mike Stokes)	Shift ticket questions
O-911	Miller, Ray	Why no meal breaks???

IF YOUR ARE GETTING CLOSE TO TIMING OUT PLEASE
SPEAK WITH YOUR FIRE LINE SUPERVISOR **ASAP.**

**DMOB for July 10 to July 13
Contact DMOB - Tim @ 912-637-5241**

IF YOU ARE TRAVELLING HOME BY AIR AND WILL BE TRANSPORTED TO JACKSONVILLE THE DAY BEFORE YOUR FLIGHT BY GROUND SUPPORT - YOU NEED TO COMPLETE THE DEMOB PROCESS AND BE READY TO LEAVE ICP BY 1300 or 1700 HRS

IF YOU ARE TRAVELLING HOME BY AIR YOU NEED TO CONTRACT DMOB TO VERIFY I HAVE THE CORRECT NAME AS IT APPEARS ON YOUR PICTURE ID YOU WILL USE TO GET THROUGH AIRPORT SECURITY AS WELL AS YOUR DATE OF BIRTH AND DESTINATION JETPORT.

Number	Name	Kind	UnitID	Travel Method	Jetport	Travel Date
C-20	CREW - CAMP - PINE	CC	KYDBF	AOV	TYS	07/11/2011
C-20.1	NELSON, BOBBY R	CAC	KYDBF	AOV	TYS	07/11/2011
C-20.2	KOHLER, LINDSEY	CA	KYDBF	AOV		07/11/2011
C-20.4	DOLLONS, ROBERT	CA	KYDBF	AOV		07/11/2011
C-20.5	ROSS, BRANDON	CA	KYDBF	AOV		07/11/2011
C-20.6	WELLMAN, JONATHAN	CA	KYDBF	AOV		07/11/2011
C-20.9	MCCOMB, DANIEL	CA	KYDBF	AOV	TYS	07/11/2011
E-93	WATER TENDER 10	WT	FLFNF	POV		07/11/2011
E-93.1	DAVIS, WILLIAM	DRI	FLFNF	POV		07/11/2011
E-390.4	BORMANN, TYLER	ENG	WICN	AIR	RHI	07/11/2011
E-390.5	MOFFITT, ANDREW	ENG	WICN	AIR	RHI	07/11/2011
E-390.6	SLOAN II, DAVID	ENG	WICN	AIR	RHI	07/11/2011
E-584	ENG6 CNNF E161	ENG	WICN	AOV	DLH	07/11/2011
E-584.2	EUCOLONO, JOE	ENO	WICN	AIR	DLH	07/11/2011
E-826.3	TAYLOR, RICHARD	ENG	GAOK	POV		07/11/2011
E-826.4	ALYEA, BRANDON	ENO	GAOK	POV		07/11/2011
E-914.1	TRANSPORT	TRT	GAGA	AOV		07/11/2011
E-957	DECATU ENGINE 31-	ENG	GAGA	AOV		07/11/2011
E-976.1	BENOY, ROSCOE	ENG	WIR09	POV		07/11/2011
E-977.1	SMITH, LUKE	ENG	IDIPF	AIR	GEG	07/11/2011
E-977.2	NORRIS, PAUL	ENG	IDIPF	AIR	GEG	07/11/2011
E-977.3	RATCLIFFE, EVAN	FFT	IDIPF	AIR	GEG	07/11/2011
E-977.4	MILLER, JENNIFER	FFT	IDIPF	AIR	GEG	07/11/2011
E-978	ENGINE - T6 - PLS -	ENG	IDPLS	POV		07/11/2011
E-979	ENGINE - T6 - CMS -	ENG	IDCMS	AOV		07/11/2011
E-1036.1	VILLA, NICHOLAS D	ENG	MTSW	AIR	BTM	07/11/2011
E-1036.2	SPEHAR, TRISTON R	FFT	MTSW	AIR	BTM	07/11/2011
E-1036.3	ORRINO, CORY L	FFT	MTSW	AIR	BTM	07/11/2011
E-1076.1	YEOMAN, ERIN	ENG	MOMT	AOV	SGF	07/11/2011
E-1076.2	KELLEY, KEITH P	FFT	MOMT	AOV	STL	07/11/2011
E-1076.3	OLIVER, DOUGLAS F	FFT	MOMT	AOV	STL	07/11/2011
E-5012.6	SHRIMPLING,	ENO	NCNC	POV		07/11/2011
O-379	RENSHAW, JARED	DRI	GAOK	POV		07/11/2011
O-683	PEABODY, LARRY	DIV	CATN	AIR	SMF	07/11/2011
O-708	MURRIN, ANDY K	DOZ	ORRO	AIR	EUG	07/11/2011
O-711	HUENERGARDT,	STD	OREIC	AIR	EUG	07/11/2011
O-752	ALMAS, MIKE	DIV	IDIPF	AIR	GEG	07/11/2011
O-799	TATE, MELVIN L	HEB	FLFLS	POV	PFN	07/11/2011
O-840	JOHNSON, MICAH	TFL	MIHMF	A/R	MBL	07/11/2011
O-841	FLUE, JAMES R	TFL	ALALF	AOV	MGM	07/11/2011
O-843	CHASTAIN, JOSEPH T	DOZ	GACH	AOV	ATL	07/11/2011

Number	Name	Kind	UnitID	Travel Method	Jetport	Travel Date
O-851	CARL, ANGELA	ENG	NCAL	POV	CLT	07/11/2011
E-170	TP3 FRANCIS MARION	TPL	SCFM	AOV		07/12/2011
E-170.7	CHRISTOPHER, JOHN	TPO	SCFM	AOV	CHS	07/12/2011
E-170.8	MARSHALL,	FFT	SCFM	AOV	CHS	07/12/2011
E-807	ENGINE - T6 - E-21 -	ENG	VAVAF	AOV		07/12/2011
E-900	ENGINE - T6 - GUN 622	ENG	MNMF	AOV		07/12/2011
E-900.1	KUJAWA, RICHARD	ENG	MNMF	AOV	DLH	07/12/2011
E-900.2	GOLDSMITH, CASEY	FFT	MNMF	AOV		07/12/2011
E-900.3	PORTER, JEREMY	FFT	MNMF	AOV	DLH	07/12/2011
E-995	ENGINE - T6 - MES	ENG	MEME	AOV		07/12/2011
E-996	ENGINE - T6 - MES	ENG	MEME			07/12/2011
E-996.4	PICKERING, DUSTIN E	ENG	MEME	AIR	BGR	07/12/2011
E-996.5	HUNTER, ISAAC R	FFT	MEMH	AIR	BGR	07/12/2011
E-996.6	HAMILTON, CAMERON	FFT	MEME	AIR	BGR	07/12/2011
E-5010	PATRICK ENG6	ENG	TNTN	POV		07/12/2011
E-5012.3	GIBBS, ROBBIE	ENO	NCNC	POV		07/12/2011
O-368	JOHNSON, HARDY	DRI	GAOK	POV		07/12/2011
O-702	BARRETT, BRUCE	SOF	MNVO	AIR	INL	07/12/2011
O-703	KLOCK, LARRY JAMES	SOF	COPB	A/R	COS	07/12/2011
O-728	MULLEN, BRENDAN	ABR	MTBD	A/R	BTM	07/12/2011
O-749	SHINDELAR, BOBBY	OPB	IDBOF	A/R	SMF	07/12/2011
O-766	MILLER, PEGGY	EMT	MTFN	AIR	FCA	07/12/2011
O-835	COOK, CHAD	TFL	NCNC	AIR	CLT	07/12/2011
O-848	HYDE III, BERT	EMT	MNSU	AIR	DLH	07/12/2011
O-849	MEADOWS BARBER,	EMT	MOMO	AIR	SGF	07/12/2011
E-134.4	CRUCE, MIKE	ENO	FLFNF	POV		07/13/2011
E-700.1	CAHOON, LEE	DRI		POV		07/13/2011
E-821.1	RICKE, RYAN	ENG	SDRC	AIR	RAP	07/13/2011
E-821.2	O'CONNOR, ERIC L	ENG	SDRC	AIR	RAP	07/13/2011
E-821.3	MANINGAS, CALEN	FFT	SDRC	AIR	RAP	07/13/2011
E-824.1	MORGAN, JOSHUA T	ENG	SDRC	AIR	RAP	07/13/2011
E-824.2	LAROCHE,	FFT	SDRC	AIR	RAP	07/13/2011
E-824.3	RASMUSSEN,	FFT	SDRC	AIR	RAP	07/13/2011
E-922	ENGINE - T6 - FWS	ENG	GAPD	AOV		07/13/2011
E-5010.1	TEVEBAUGH,	ENG	TNTN	POV		07/13/2011
O-537	LINDSAY, GLENDA	PTR	ORUP	AIR	EUG	07/13/2011
O-577	GRIFFIS, WILLIE	DRI	GAOK	POV		07/13/2011
O-732	EVERS, MICHAEL R	EMT	COPB	AIR	COS	07/13/2011
O-746	HURST, GARY L	EQP	MSMN	AIR	JAN	07/13/2011
O-761	LANE, RUSSELL	OSC	OR582	AIR	PDX	07/13/2011
O-767	DEAN, EVAN	EMT	ORWS	A/R	PDX	07/13/2011
O-845	HUSCHKE, JOHN F	STE	MIHMF	A/R	GRR	07/13/2011
E-502	WILDLAND FIRE SEC	ENG	FLFNF	POV		07/14/2011
E-502.6	IRVIN, SAUL	ENG	FLFNF	POV		07/14/2011
E-898	ENGINE - TYPE 6 -	ENG	MDMD	AOV		07/14/2011
E-898.1	HARRIS, JAMES	ENG	MDMD	AOV	BWI	07/14/2011
E-898.2	STUPAK, BRIAN	ENG	MDMD	AOV	BWI	07/14/2011
O-868	BRUNK, GARY E	FBA	VAVAF	A/R	ROA	07/14/2011

Joint Information Center Fire Update

Fire Update for Sunday, July 10, 2011 ~ 10 a.m.

Fire Information: www.inciweb.org



Honey Prairie Fire Complex: 295,415 acres, 70% contained
Sweat Farm Again Fire: 19,169 acres, 75% contained
Racepond Fire: 20,934 acres, 75% contained

Fire growth on the Honey Prairie Fire was minimal yesterday with an increase of only 233 acres. Precipitation was limited to a quarter to a half inch in the central and southwestern area of the fire. The north area received little if any rain. Sunday's operations will continue to focus on holding and patrolling the fire lines around the fire's perimeter as well as mop up.

The Sweat Farm Again and Racepond Fires were mostly quiet on Saturday with some scattered rain. Fire crews continue to patrol the fire lines and extinguish hot spots. Crews remain vigilant for the possibility of new lightning fires. Resources from the Sweat Farm Again Fire also assisted the Georgia Forestry Commission on a new fire, the Dozer Bluff Road Fire, in Camden County on Saturday.

A Hazardous Weather Outlook has been issued by the National Weather Service: "Smoke from the Honey Prairie Fire will push to the northeast of the fire location including Waycross, Nahunta, Jesup and possibly Brunswick. Visibilities may be reduced to less than a mile at times and possibly mix with fog both this morning and Monday morning."

Okefenokee National Wildlife Refuge remains closed. During the early morning hours of low fire activity, firefighters staged at the Visitor Center are clearing downed trees and cutting down hazardous trees along the Deer Stand and Ridley's Island Trails.

georgiafireinformationcenter@gmail.com

912-496-2566

Assigned Resources

160 Engines
19 Dozers
19 Water Tenders
8 Helicopters
1 Crew
886 Personnel

www.inciweb.org
www.fws.gov/okefenokee
www.gatrees.org

The Georgia Fire Information Center will be open from 8 a.m. – 7 p.m. daily to help assist the public and media with up to date information on all fires across Southeast Georgia and Okefenokee National Wildlife Refuge. Please contact us at 912-496-2566 or georgiafireinformationcenter@gmail.com.

Cooperators: Okefenokee National Wildlife Refuge; Georgia Forestry Commission; Florida Division of Forestry; U.S. Forest Service; Greater Okefenokee Association of Landowners (GOAL); Georgia Emergency Management Agency; Rayonier; Superior Pine; Langdale; GDOT; GSP; FLDOT; Georgia DNR; Georgia Aviation Authority; Georgia National Guard; Georgia DOC; County Fire Departments; Toledo Manufacturing Company; Charlton, Ware and Clinch Counties; and the Cities of Folkston and Homerville.

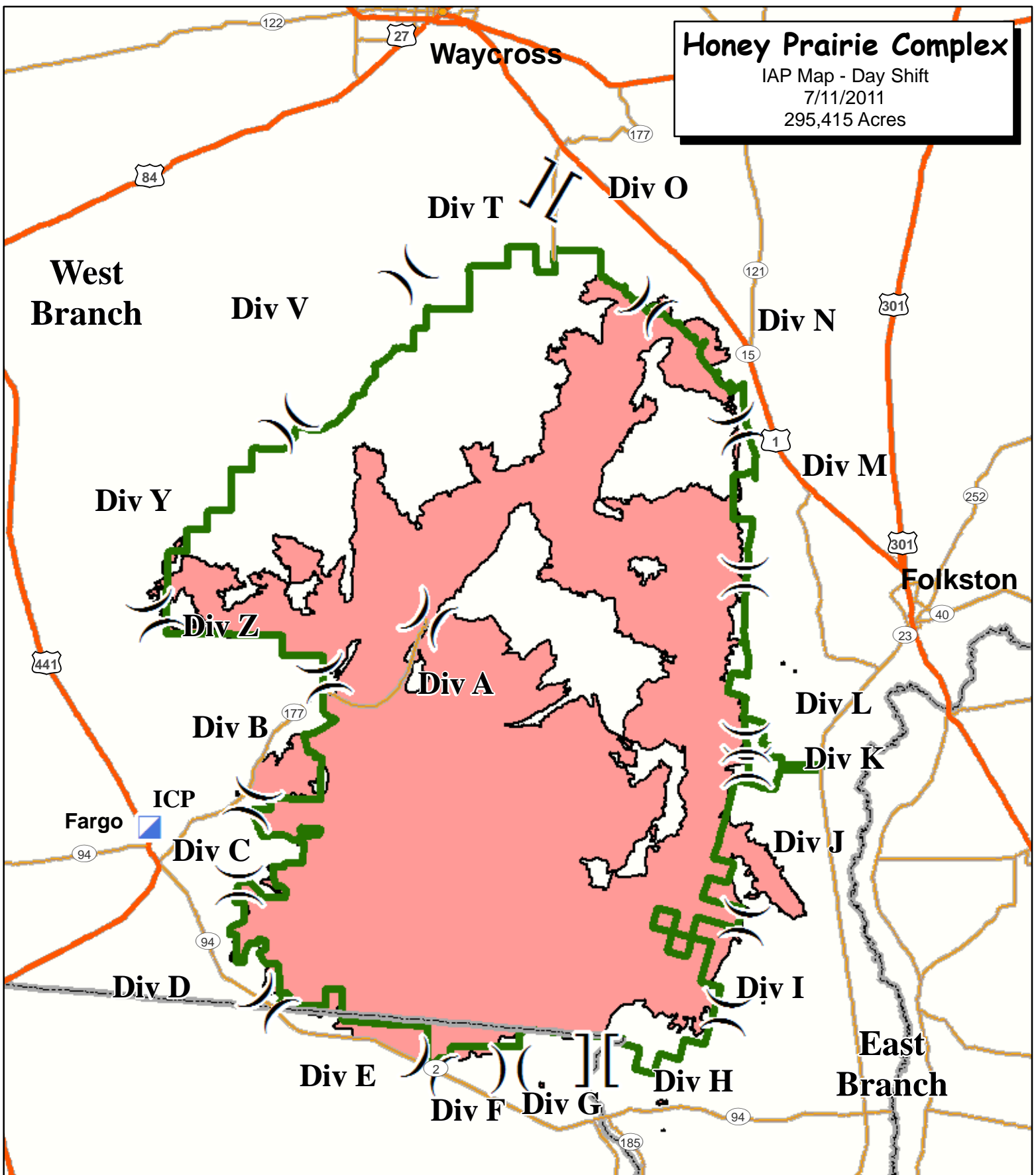
Closures: All entrances into Okefenokee National Wildlife Refuge are closed. All visitor activities are suspended until the threat of fire is over. For status updates on visitor activities, contact: Okefenokee National Wildlife Refuge, 912-496-7366; Okefenokee Swamp Park, 912-283-0583; or the Stephen C. Foster State Park, 912-637-5274.

Honey Prairie Complex

IAP Map - Day Shift

7/11/2011

295,415 Acres



Branch Break

Division Break

Incident Command Post

- Highway
- Major Road
- State Boundary

- Refuge Boundary
- Fire Area



7/9/2011 1800
Sue Leverette

