

Honey Prairie Complex

GA-OKR-000001

Incident Action Plan

Operational Period
Tuesday July 12, 2011

Day Shift (0800-2100)
Night Shift (1800-0600)

Accounting Codes

FWS – 9141-F25M-2J

NPS – 5023 F25M E11

BLM – F25M

USFS – PRF25M_1502

Initial Attack – F4PM

| | | | | | | | | | | | | | | | |
|--|---|------------------------------------|---------------------------------|-------------------------------|----------------|------------------|-----------------------------|----------------|-----------------------------|---------------------------------|-------------------|------------|--------------------------|--------------|--|
| INCIDENT OBJECTIVES | 1. INCIDENT NAME Honey Prairie Complex | 2. DATE PREPARED 7/11/11 | 3. TIME PREPARED 1800 | | | | | | | | | | | | |
| 4. OPERATIONAL PERIOD (DATE/TIME) Tuesday July 12, 2011 Day (0800 – 2100) and Night (1800 – 0600) | | | | | | | | | | | | | | | |
| 5. GENERAL CONTROL OBJECTIVES FOR THE INCIDENT (INCLUDE ALTERNATIVES) <ol style="list-style-type: none"> 1. Provide for safety of incident personnel and public in all incident operations. 2. Maintain a positive working relationship with all adjacent landowners, cooperators State and Federal partners. Inform, involve and communicate incident planning and operations with all partners. 3. Contain all fires that are within the Okefenokee National Wildlife Refuge, inside the Refuge and/or inside the swamp edge break if possible. 4. In cooperation with local timberland owners, use full suppression strategies and tactics to minimize damage to private timberlands and improvements and to prevent fires outside the Refuge from entering the Refuge. 5. Assist in management and suppression of additional fires (new starts or breakouts) in the vicinity as approved by Agency Administrators and Unified Incident Commanders. 6. Protect all cultural and archeological sites and structures within the refuge, with particular attention to facilities at Okefenokee Swamp Park 7. Manage the fires cost-effectively consistent with the values at risk. 8. Implement structure protection as necessary for at-risk facilities and communities. 9. Coordinate suppression actions with assigned Refuge Resource Advisors | | | | | | | | | | | | | | | |
| 6. WEATHER FORECAST FOR OPERATIONAL PERIOD See attached forecast for area specific weather information. | | | | | | | | | | | | | | | |
| 7. GENERAL SAFETY MESSAGE Drive defensively and use spotter when backing. Ensure LCES is in place and known by all personnel. Drink plenty of water and take frequent rest breaks. Ensure proper use of PPE during all operations. | | | | | | | | | | | | | | | |
| 8. Attachments (☐ if attached) <table border="0" style="width: 100%;"> <tr> <td>☐ Organization List (ICS 203)</td> <td>☐ Incident Map</td> <td>☐ Safety Message</td> </tr> <tr> <td>☐ Assignment List (ICS 204)</td> <td>☐ Traffic Plan</td> <td>☐ Demobilization Procedures</td> </tr> <tr> <td>☐ Communications Plan (ICS 205)</td> <td>☐ Human Resources</td> <td>☐ Unit Log</td> </tr> <tr> <td>☐ Medical Plan (ICS 206)</td> <td>☐ Phone List</td> <td></td> </tr> </table> | | | | ☐ Organization List (ICS 203) | ☐ Incident Map | ☐ Safety Message | ☐ Assignment List (ICS 204) | ☐ Traffic Plan | ☐ Demobilization Procedures | ☐ Communications Plan (ICS 205) | ☐ Human Resources | ☐ Unit Log | ☐ Medical Plan (ICS 206) | ☐ Phone List | |
| ☐ Organization List (ICS 203) | ☐ Incident Map | ☐ Safety Message | | | | | | | | | | | | | |
| ☐ Assignment List (ICS 204) | ☐ Traffic Plan | ☐ Demobilization Procedures | | | | | | | | | | | | | |
| ☐ Communications Plan (ICS 205) | ☐ Human Resources | ☐ Unit Log | | | | | | | | | | | | | |
| ☐ Medical Plan (ICS 206) | ☐ Phone List | | | | | | | | | | | | | | |

| ORGANIZATION ASSIGNMENT LIST | | 9. Operations Section | | |
|---|---|---|--|--|
| 1. Incident Name Honey Prairie Complex GA-OKR-000001 | | Chief | Roger Gill (West Branch) 7/25, Butch Hall (East Branch) 7/22 | |
| | | Planning | Rick Dolan 7/22 | |
| 2. Date 7/11/2011 | 3. Time 1000 hrs | a. WEST BRANCH - Divisions/Groups | | |
| 4. Operational Period 7/12/2011 Day (0800 - 2100) Night (1800 - 0600) | | OPBD | Tom Donohoe 7/22 | |
| 5. Incident Commander and Staff | | Division | A, B, C | Bill Altman / Greg Jacobson (t) |
| Incident Commander | Don West/Verne Riggall (Dep)/ Trent Ingram/Mike Dueitt | Division | D, E, F, G | Thomas Herold 7/19 |
| Liason Officer | Gary Beauchamp 7/14 | Division | T | Brian Rhodes 7/20 / Todd Haynes (t) 7/19 |
| Safety Officers | Barry Coulliette 7/22 / Ray Durham 7/23 | Division | V | Shawn Duggar 7/22 Bryce Thomas (t) 7/13 Greg Suszek (t) 7/19 |
| Information Officer | Ludie Bond 7/22 | Division | Y (DAY) | Gary Smith 7/19 / Dan Helderline (t) 7/19 |
| 6a. Agency Administrators | | Division | V, Y (NIGHT) | Jacquie Parks 7/21 |
| FWS | Curt McCasland | Division | Z | Glen Palfrey 7/20 / Jesse Knox (t) 7/18 |
| FWS | Mindy Gautreaux | Group | IA-WEST and Structure Group | Don Hammack 7/19 / Bob Schober (t) 7/18 |
| 6b. Agency Representatives | | b. EAST BRANCH - Divisions/Groups | | |
| FWS Liason | Skippy Reeves | OPBD | Russ Lane 7/12 | |
| GFC | Frank Sorrels | Division | H, I, J, K | Matt Filbert 7/18 |
| FLDOF | James Karels | Division | L, M | Ray Miller 7/20 |
| FWS AREP | Mike Housh | Division | N, O | Steve Griffin 7/19 |
| FWS-Refuge PAO | Art Webster | Group | IA-EAST | John Huschke 7/12 |
| GEMA AREP | Alan Robinson / Diane Adams | Group | Roads | |
| USFS AREP | Ivan Greene | | | |
| 7. Planning Section | | c. AIR OPERATIONS BRANCH - Honey Prairie | | |
| Chief | Ed Flowers 7/22 | | | |
| Dep Chief | Steve Budd-Jack 7/25 | | | |
| Resources Unit | Wilbur Priest 7/22 / Fred Noack 7/19 | Air Operations Branch Director | Tim Elder 7/22 | |
| Situation Unit | Scott Crosby 7/22 | Air Support Group Supervisor | Don Nicholas 7/22 | |
| IMET | Joe Goudsward 7/21 / Mike Bettwy 7/21 | ATGS-Lake City | Tim Caughlin 7/16 | |
| FBAN | Gary Brunk 7/13 / John Kern 7/22 | d. AIR OPERATIONS BRANCH-Waycross | | |
| Demob Unit | Tim Wilkinson 7/22 | Waycross Helibase Manager | | |
| GIS | Sue Leverette 7/22 | e. AIR OPERATIONS BRANCH - Fargo | | |
| CTSP | Randy Fountain 7/22 / Charlie Bolen 7/17 | Fargo Helibase Manager | Brain Campbell 7/22 / Steve Croy (t) 7/15 | |
| TNSP | Larry Moore 7/24 | ATGS-Fargo | Carl MaGill 7/18 | |
| 8. Logistics Section | | 10. Finance Section | | |
| Chief | Shane Locke 7/21/Butch Mallet 7/22 | Chief | Betty Palmiotto 7/22 / Linda Starling 7/22 | |
| Supply Unit | Rhonda Hughes 7/22 | Time Unit | Frances Matheny 7/22 | |
| GSUL | James Thompson 7/22 | Procurement | John Watson 7/22 | |
| ORDM | Abe Phillipson 7/22 / Cindy Tisdale 7/24 | Comp Claims Unit | Alvin Welch 7/21 / Katrina Bryant 7/22 | |
| COML | Brian Mathews 7/22 | Cost | Lisa Ridley 7/22 | |
| Medical Unit | Joe Fowler 7/22/Mike Evers (t) 7/12 | Buying Team | Rita Loper | |
| Facilities | Bill Hitt 7/22 / Mel Reese(t) 7/22 | IBA | Ron Knowles 7/19 | |
| Food | Nat Wright 7/22/Bob Kookan 7/17 | | | |
| RCDM | Gary Sisson 7/22 | | | |
| BCMG | Carl Taylor 7/25 | | | |
| | | Prepared by: | Wilbur Priest RESL | |

| DIVISION ASSIGNMENT LIST | | | 1. Branch West | | 2. Division A, B, C | | |
|--|---------------------------------------|--|---|-------------------|---|--------------|--------------|
| 3. Incident Name: Honey Prairie Complex | | | 4. Operational Period Date: 7/12/2011 Time: Day: 0800-2100 | | | | |
| 5. Operations Personnel | | | | | | | |
| Operations | Roger Gill 7/25 | | Branch Director | | Tom Donohoe 7/22 | | |
| Planning Ops | Rick Dolan 7/22 | | Division Supervisor | | Bill Altman 7/19 Greg Jacobson (t) 7/19 | | |
| Safety Officer | Barry Coulliette 7/22 | | | | | | |
| 6. Resources Assigned this Period | | | | | | | |
| Strike Team/Task Force/ Resource Designator | Leader / Name / Designator | Last Shift Date | Num. Per. | Drop Off PT./Time | Pick Up PT./Time | | |
| TFLD (O-897) | Terry George | 7/14 | 1 | | | | |
| TFLD (O-898) | Joel McCraw (t) | 7/14 | 1 | | | | |
| TFLD (O-900) | Phill Millette | 7/18 | 1 | | | | |
| TFLD (E-838.6) | Darren Franco (t) | 7/21 | 1 | | | | |
| STEN (O-949) | Nikia Hernandez | 7/19 | 1 | | | | |
| ENG6 (E-405) | Brett Gore | 7/24 | 3 | | | | |
| | | | | | | | |
| | | | | | | | |
| ENG6 (E-907) Eagle Staff | Brady Ward | 7/22 | 2 | | | | |
| ENG6 (E-994) | Pat Norquay | 7/18 | 3 | | | | |
| ENG6 (E-1059) | Daniel Ross | 7/22 | 3 | | | | |
| ENG6 (E-1065) | Mike Carnelli | 7/22 | 3 | | | | |
| ENG6 (E-1066) | Eric Jones | 7/21 | 3 | | | | |
| ENG6 (E-5002) Attack#1 | Hank Kight | 7/20 | 2 | PVT | | | |
| ENG6 (E-1076) MOMTF 9504 | Tim Perren | 7/24 | 3 | | | | |
| | | | | | | | |
| | | | | | | | |
| WAT2 (E-93) | Steven Self | | 1 | PVT | | | |
| | | | | | | | |
| SOF2 (O-1068) | Jamey Burnsed | 7/24 | 1 | | | | |
| EMTB (O-984) | Bob Eaton | 7/20 | 1 | | | | |
| 7. Control Operations | | | | | | | |
| <ul style="list-style-type: none"> Patrol and mop up within 100' of fire perimeter line. Monitor fire impacts to Stephen Foster State Park. Patrol and control return. | | | | | | | |
| 8. Special Instructions | | | | | | | |
| <ul style="list-style-type: none"> Examine work area for fire weakened snags. Ensure LCES are in place before operations begin and stay hydrated. Additional resources will be available from GFC, Florida DOF, FWS, and local cooperators. Drive defensively and with lights on at all times. | | | | | | | |
| 9. Division/Group Communication Summary | | | | | | | |
| Function | Frequency | System | Channel | Function | Frequency | System | Channel |
| Command N Okee Repeater | RX 164.5750/206.5 TX 163.150/206.5 | KING NIFC | 5 | Logistics | | KING NIFC | |
| Tactical Div/Group | RX 168.775 TX 168.7750 | KING NIFC | 9 | Air to Ground | RX 166.9375 TX 166.9375 | KING NIFC | 6 |
| Prepared by (Resource Unit Ldr.) Fred Noack | | Approved by (Planning Sect. Ch.) /s/ Ed Flowers | | | Date 7/11/2011 | | Time 1930 |

| | | | | | | | |
|---|---------------------------------------|----------------------------|--|----------------------------|----------------------------------|-------------------|------------------|
| DIVISION ASSIGNMENT LIST | | | 1. Branch West | | 2. Division D, E, F, G | | |
| 3. Incident Name Honey Prairie Complex | | | 4. Operational Period Date: 7/12/2011 Time: 0800-2100 | | | | |
| 5. Operations Personnel | | | | | | | |
| Operations | Roger Gill 7/25 | | | Branch Director | | Tom Donohoe 7/22 | |
| Planning Ops | Rick Dolan 7/22 | | | Division Supervisor | | Toby Herold 7/20 | |
| Safety Officer | Barry Coulliette 7/22 | | | | | | |
| 6. Resources Assigned this Period | | | | | | | |
| Strike Team / Task Force / Resource Designator | | Leader / Name / Designator | | Last Shift Date | Num. Per. | Drop Off PT./Time | Pick Up PT./Time |
| TFLD (O-916) | | Hans Ohme | | 7/18 | 1 | | |
| TFLD (O-926) | | Matt Ingram | | 7/18 | 1 | | |
| HEQB (O-708) | | Andy Murrin | | 7/12 | 2 | PVT | |
| ENG6 (E-134) | | Paul McDavid | | 7/20 | 3 | PVT | |
| ENG5 (E-503) | | Dean Vanderbleek | | 7/18 | 2 | PVT | |
| ENG6 (E-709) | | Jason Walker | | 7/16 | 3 | PVT | |
| ENG6 (E-821) | | Josh Lange | | 7/24 | 3 | | |
| ENG6 (E-824) | | Chris Brubaker | | 7/24 | 3 | | |
| | | | | | | | |
| TPL3 (E-499) | | Roy Rowan | | 7/14 | 2 | PVT | |
| WT (E-700) | | Lee Cahoon | | 7/17 | 1 | PVT | |
| | | | | | | | |
| | | | | | | | |
| EMTB (O-984) | | Paul Smith | | 7/24 | 1 | | |
| SOF2 (O-805) | | Troy Shaddox | | 7/14 | 1 | | |
| | | | | | | | |
| | | | | | | | |
| | | | | | | | |
| | | | | | | | |
| | | | | | | | |
| 7. Control Operations | | | | | | | |
| <ul style="list-style-type: none"> Monitor and patrol south end of West Branch. Mop up all hot spots within 100' of the fire perimeter. Patrol and control return. | | | | | | | |
| 8. Special Instructions | | | | | | | |
| <ul style="list-style-type: none"> Ensure LCES are in place before operations begin and stay hydrated. See medical plan for EMT support. Drive defensively and with lights on at all times. Examine work area for fire weakened snags. If communications needed with Impassable Bay Fire – use Channel 11 (168.2000) | | | | | | | |
| 9. Division/Group Communication Summary | | | | | | | |
| Function | Frequency | System | Channel | Function | Frequency | System | Channel |
| Command S Okee Repeater | RX 164.7750/123.0 TX 163.150/123.0 | KING NIFC | 2 | Logistics | | KING NIFC | |
| Tactical Div/Group | RX 151.2725 TX 151.2725 | KING NIFC | 13 | Air to Ground | RX 166.9375 TX 166.9375 | KING NIFC | 6 |

| DIVISION ASSIGNMENT LIST | | | | 1. Branch West | | 2. Division T | |
|--|---------------------------------------|--|---------|--|--|-------------------|------------------|
| 3. Incident Name Honey Prairie Complex | | | | 4. Operational Period Date: 7/12/2011 Time: 0800-2100 | | | |
| 5. Operations Personnel | | | | | | | |
| Operations | Roger Gill 7/25 | | | Branch Director | Tom Donohoe 7/22 | | |
| Planning Ops | Rick Dolan 7/22 | | | Division | Brian Rhodes 7/20 / Todd Haynes (t) 7/19 | | |
| Safety Officer | Barry Coulliette 7/22 | | | | | | |
| 6. Resources Assigned this Period | | | | | | | |
| Strike Team/Task Force/ Resource Designator | | Leader / Name / Designator | | Last Shift Date | Num. Per. | Drop Off PT./Time | Pick Up PT./Time |
| TFLD (O-946) | | Stephen Filmore | | 7/19 | 1 | | |
| TFLD (E-831.8) | | Jeff Hussey | | 7/23 | 1 | | |
| STEN (O-952) | | Vincent Plummer | | 7/19 | 1 | | |
| S/T Type 6 OR TFLD (t) (E-831.9) | | Deana Wall | | 7/23 | 1 | | |
| ENG6 (E-831.5) | | Shane Thames | | 7/23 | 3 | | |
| ENG6 (E-831.1) | | Ben Nichols | | 7/23 | 4 | | |
| ENG6 (E-831.4) | | Eric Hahn | | 7/23 | 3 | | |
| ENG6 (E-831.6) | | Tavis Fenske | | 7/23 | 3 | | |
| ENG6 (E-831.7) | | Mike Towers | | 7/23 | 3 | | |
| ENG6 (E-815) | | Matt Dillon | | 7/22 | 2 | | |
| ENG6 (E-816) | | Jamie Remme | | 7/22 | 2 | | |
| ENG6 (E-817) | | Mike Mattson | | 7/22 | 2 | | |
| ENG6 (E-818) | | Scott Lindow | | 7/22 | 2 | | |
| ENG6 (E-1073) | | Mike Schlitz | | 7/22 | 3 | | |
| WAT1 (E-1019) | | Raymond Novello | | 7/21 | 1 | PVT | |
| WAT2 (E-1021) | | Charlie Brown | | 7/19 | 1 | PVT | |
| TPL2 (E-986) | | David Hauser | | 7/26 | 1 | PVT | |
| TPL2 (E-988) | | Jonathon Houser | | 7/30 | 1 | | |
| KG (E-989) | | Cleo Simon | | 7/30 | 1 | | |
| EMTP (O-982) | | Jeff Halladay | | 7/22 | 1 | | |
| SOF2 (O-973) | | Larry Dorshorst | | 7/20 | 1 | | |
| 7. Control Operations | | | | | | | |
| <ul style="list-style-type: none"> Recon potential control lines and examine area for snag removal Improve swamp break boundaries for fire breaks, work w/resource advisor Coordinate potential burn-out w/READ and refuge personnel Use refuge personnel for any burn-out activities. | | | | | | | |
| 8. Special Instructions | | | | | | | |
| <ul style="list-style-type: none"> If the fire reaches Mgt Activity Line (MAL) 1 cooperators and adjacent landowners will be notified. If the fire reaches MAL 2 a meeting will be held at the Swamp Park with adjacent landowners and cooperators. Make contact with the Resource Advisor before using mechanical equipment. Safely push down with equipment all snags whether on fire or not that are a threat to success or tactical operations. Ensure LCES are in place before operations begin. Stay hydrated. Drive defensively and with lights on at all times. Boggy terrain: Be careful and aware when working around this type of area. | | | | | | | |
| 9. Division/Group Communication Summary | | | | | | | |
| Function | Frequency | System | Channel | Function | Frequency | System | Channel |
| Command N Okee Repeater | RX 164.5750/206.5 TX 163.150/206.5 | KING NIFC | 5 | Logistics | | KING NIFC | |
| Tactical Div/Group | RX 168.775 TX 168.775 | KING NIFC | 9 | Air to Ground | RX 166.9375 TX 166.9375 | KING NIFC | 6 |
| Prepared by (Resource Unit Ldr.) Fred Noack | | Approved by (Planning Sect. Ch.) /s/ Ed Flowers | | | Date July 11, 2011 | | Time 1800 |

| DIVISION ASSIGNMENT LIST | | 1. Branch West | | 2. Division V | | 1 of 2 | |
|--|---------------------------------------|--|-----------|---|----------------------------|--------------|---------|
| 3. Incident Name Honey Prairie Complex | | 4. Operational Period Date: 7/12/2011 Time: 0800-2100 | | | | | |
| 5. Operations Personnel | | | | | | | |
| Operations | Roger Gill 7/25 | Branch Director | | Tom Donohoe 7/22 | | | |
| Planning Ops | Rick Dolan 7/22 | Division Supervisor | | Shawn Duggar 7/22 / Bryce Thomas (t) 7/13 | | | |
| Safety Officer | Barry Coulliette 7/22 | Division Supervisor | | Greg Suszek (t) 7/19 | | | |
| 6. Strike Team/Task Force/ Resource Designator | | | | | | | |
| | Leader / Name / Designator | Last Shift Date | Num. Per. | Drop Off PT./Time | Pick Up PT./Time | | |
| TFLD (O-906) | Evan Karp | 7/18 | 1 | | | | |
| TFLD (O-978) | Jacob Thelen (t) | 7/19 | 1 | | | | |
| TFLD (O-942) | Ben Krupski | 7/19 | 1 | | | | |
| TFLD(O-1000) | Waylon Meek (t) | 7/20 | 1 | | | | |
| Feller-Buncher (E-524) | Josh Burdy | 7/21 | 1 | PVT | | | |
| Feller-Buncher (E-526) | James Marshall | 7/16 | 1 | PVT | | | |
| Grader (E-530) | Lucious Corbett | 7/? | 1 | PVT | Need to check in | | |
| TPL2 (E-606) | Cody Daniels | 7/17 | 1 | | | | |
| ENG6 (E-2) | Eric Nelson | 7/19 | 1 | O-436 | | | |
| ENG6 (E-3) | Daniel Angelo | 7/24 | 2 | | | | |
| ENG6 (E-992) | Justin Dillon | 7/20 | 3 | PVT | | | |
| ENG6 (E-995) | Mike Daigle | 7/25 | 3 | | | | |
| ENG6 (E-996) | TBA | | | | | | |
| ENG6 (E-1000) | Paul Rampinini | 7/19 | 3 | PVT | | | |
| ENG6 (E-1001) | Dick Sypher | 7/19 | 3 | PVT | | | |
| ENG6 (E-1053) | Timmerman | 7/27 | 3 | PVT | | | |
| ENG6 (E-1064) | Greg Nichols | 7/21 | 3 | | | | |
| ENG6 (E-1062) | Tyler Quintano | 7/22 | 3 | PVT | | | |
| ENG6 (E-1063) | Brad Finch | 7/22 | 3 | PVT | | | |
| ENG6 (E-1085) | Don Crane | 7/14 | 2 | PVT | | | |
| 7. Control Operations <ul style="list-style-type: none"> Recon potential control lines and examine area for snag removal Improve swamp break boundaries for fire breaks, work w/resource advisor Coordinate potential burn-out w/READ and Refuge Personnel Use Refuge personnel for any burn-out activities. | | | | | | | |
| 8. Special Instructions <ul style="list-style-type: none"> If the fire reaches Mgt Activity Line (MAL) 1 cooperators and adjacent landowners will be notified. If the fire reaches MAL 2 a meeting will be held at the Swamp Park with adjacent landowners and cooperators. Make contact with the Resource Advisor before using mechanical equipment. Safely push down with equipment all snags whether on fire or not that are a threat to success or tactical operations. Ensure LCES are in place before operations begin. Stay hydrated. Drive defensively and with lights on at all times. Boggy terrain: Be careful and aware when working around this type of area. | | | | | | | |
| 9. Division/Group Communication Summary | | | | | | | |
| Function | Frequency | System | Channel | Function | Frequency | System | Channel |
| Command N Okee Repeater | RX 164.5750/206.5 TX 163.150/206.5 | KING NIFC | 5 | Logistics | | KING NIFC | |
| Tactical Div/Group | RX 151.2725 TX 151.2725 | KING NIFC | 13 | Air to Ground | RX 166.9375 TX 166.9375 | KING NIFC | 6 |
| Prepared by (Resource Unit Ldr.) Fred Noack | | Approved by (Planning Sect. Ch.) /s/ Ed Flowers | | Date July 11, 2011 | | Time 1800 | |

| | | | | | | | | | |
|--|---------------------------------------|-----------------------|--|-------------------|----------------------------|----------------------------|---|--------------|--|
| DIVISION ASSIGNMENT LIST | | | 1. Branch West | | 2. Division V | | 2 of 2 | | |
| 3. Incident Name Honey Prairie Complex | | | 4. Operational Period Date: 7/12/2011 Time: 0800-2100 | | | | | | |
| 5. Operations Personnel | | | | | | | | | |
| Operations | | Roger Gill 7/25 | | | Branch Director | | Tom Donohoe 7/22 | | |
| Planning Ops | | Rick Dolan 7/22 | | | Division Supervisor | | Shawn Duggar 7/22 / Bryce Thomas (t) 7/13 | | |
| Safety Officer | | Barry Coulliette 7/22 | | | Division Supervisor | | Greg Suszek (t) 7/19 | | |
| 6. Strike Team/Task Force/ Resource Designator | | | | | | | | | |
| Leader / Name / Designator | | Last Shift Date | Num. Per. | Drop Off PT./Time | | Pick Up PT./Time | | | |
| TFLD (O-986) | | Mike Harnois | 7/22 | 1 | | | | | |
| DOZB (O-1001) | | Roy Cribb | 7/20 | 1 | | | | | |
| KG Dozer | | Need to check in | | | | | | | |
| KG Dozer | | Need to check in | | | | | | | |
| Skidder (E-981) | | Henry Tiner | 7/25 | 1 | PVT | | | | |
| WT2 (E-1018) | | Gary Waldron | 7/18 | 1 | PVT | | | | |
| SOF2 (O-972) | | Larry Bunge | 7/19 | 1 | | | | | |
| EMTP (O-767) | | Evan Dean | 7/12 | 1 | | | | | |
| 7. Control Operations | | | | | | | | | |
| <ul style="list-style-type: none"> Recon potential control lines and examine area for snag removal Improve swamp break boundaries for fire breaks, work w/resource advisor Coordinate potential burn-out w/READ and Refuge Personnel Use Refuge personnel for any burn-out activities. | | | | | | | | | |
| 8. Special Instructions | | | | | | | | | |
| <ul style="list-style-type: none"> If the fire reaches Mgt Activity Line (MAL) 1 cooperators and adjacent landowners will be notified. If the fire reaches MAL 2 a meeting will be held at the Swamp Park with adjacent landowners and cooperators. Make contact with the Resource Advisor before using machanical equipment. Safely push down with equipment all snags whether on fire or not that are a threat to success or tactical operations. Ensure LCES are in place before operations begin. Stay hydrated. Drive defensively and with lights on at all times. Boggy terrain: Be careful and aware when working around this type of area. | | | | | | | | | |
| 9. Division/Group Communication Summary | | | | | | | | | |
| Function | Frequency | | System | Channel | Function | Frequency | | System | |
| Command N Okee Repeater | RX 164.5750/206.5 TX 163.150/206.5 | | KING NIFC | 5 | Logistics | | | KING NIFC | |
| Tactical Div/Group | RX 151.2725 TX 151.2725 | | KING NIFC | 13 | Air to Ground | RX 166.9375 TX 166.9375 | | KING NIFC | |
| Prepared by (Resource Unit Ldr.) Fred Noack | | | Approved by (Planning Sect. Ch.) /s/ Ed Flowers | | | Date July 11, 2011 | | Time 1800 | |

| DIVISION ASSIGNMENT LIST | | | | 1. Branch West | | 2. Division Y - Day | | 1 of 2 | |
|---|---------------------------------------|--|---------|--|----------------------------|----------------------------|--|------------------|--|
| 3. Incident Name Honey Prairie Complex | | | | 4. Operational Period Date: 7/12/2011 Time: 0800-2100 | | | | | |
| 5. Operations Personnel | | | | | | | | | |
| Operations | | Roger Gill 7/25 | | | Branch Director | | Tom Donohoe 7/22 | | |
| Planning Ops | | Rick Dolan 7/22 | | | Division Supervisor | | Gary Smith 7/19, Dan Helterline (t) 7/19 | | |
| Safety Officer | | Barry Coulliette 7/22 | | | | | | | |
| 6. Resources Assigned this Period | | | | | | | | | |
| Strike Team/Task Force/ Resource Designator | | Leader / Name / Designator | | Last Shift Date | Num. Per. | Drop Off PT./Time | | Pick Up PT./Time | |
| TFLD (O-920) | | Aaron Schneider | | 7/18 | 1 | | | | |
| TFLD (O-991) | | Adam Wolf (t) | | 7/21 | 1 | | | | |
| TFLD (O-954) | | Brian Ebert (t) | | 7/20 | 1 | | | | |
| STEN (O-979) | | Sam Lindblom (t) | | 7/20 | 1 | | | | |
| ENG6 (E-584) | | Cris Geidel | | 7/24 | 2 | | | | |
| ENG6 (E-838) | | Chris Mursu | | 7/21 | 2 | | | | |
| ENG6 (E-997) | | Jack Weer | | 7/20 | 2 | | | | |
| ENG6 (E-998) | | John Stebner | | 7/20 | 2 | | | | |
| ENG6 (E-1004) | | Doug Scott | | 7/19 | 2 | PVT | | | |
| ENG6 (E-1005) | | Dave Hardy | | 7/19 | 2 | PVT | | | |
| ENG6 (E-1010) | | Gene-Paul Matson | | 7/18 | 2 | PVT | | | |
| ENG6 (E-1011) | | Greg Curry | | 7/18 | 2 | PVT | | | |
| ENG6 (E-1012) | | Glenn Hill | | 7/18 | 2 | PVT | | | |
| ENG6 (E-1014) | | Doug Vankuiken | | 7/19 | 3 | PVT | | | |
| ENG6 (E-1015) | | Robert Burton | | 7/20 | 3 | PVT | | | |
| ENG6 (E-1016) | | James Mangine | | 7/20 | 3 | PVT | | | |
| ENG5 (E-1036) | | Tom Gates | | 7/23 | 3 | | | | |
| ENG5 (E-1046) | | Karen Mobley | | 7/21 | 3 | | | | |
| ENG6 (E-1056) | | John Wisecarver | | 7/28 | 3 | PVT | | | |
| ENG6 (E-1071) | | Clayton Swanger | | 7/22 | 3 | | | | |
| 7. Control Operations <ul style="list-style-type: none"> Make contact with the Resource Advisor before using mechanical equipment. Recon potential controllines and examine area for snag removal Improve swamp break boundaries for fire breaks | | | | | | | | | |
| 8. Special Instructions <ul style="list-style-type: none"> If the fire reaches Mgt Activity Line (MAL) 1 cooperators and adjacent landowners will be notified. If the fire reaches MAL 2 a meeting will be held at the Swamp Park with adjacent landowners and cooperators. Safely push down with equipment all snags whether on fire or not that are a threat to success or tactical operations. Ensure LCES are in place before operations begin. Stay hydrated. Drive defensively and with lights on at all times. Boggy terrain: Be careful and aware when working around this type of area. | | | | | | | | | |
| 9. Division/Group Communication Summary | | | | | | | | | |
| Function | Frequency | System | Channel | Function | Frequency | System | Channel | | |
| Command N Okee Repeater | RX 164.5750/206.5 TX 163.150/206.5 | KING NIFC | 5 | Logistics | | KING NIFC | | | |
| Tactical Div/Group | RX 151.2725 TX 151.2725 | KING NIFC | 13 | Air to Ground | RX 166.9375 TX 166.9375 | KING NIFC | 6 | | |
| Prepared by (Resource Unit Ldr.) Fred Noack | | Approved by (Planning Sect. Ch.) /s/ Ed Flowers | | | Date July 11, 2011 | | Time 1730 | | |

| DIVISION ASSIGNMENT LIST | | | | 1. Branch West | | 2. Division V,Y Night | |
|---|---------------------------------------|--|---------|--|----------------------------|------------------------------|------------------|
| 3. Incident Name Honey Prairie Complex | | | | 4. Operational Period Date: 7/12/2011 Time: 1800-0600 | | | |
| 5. Operations Personnel | | | | | | | |
| Operations | | Roger Gill 7/25 | | Branch Director | | Tom Donohoe 7/22 | |
| Planning Ops | | Rick Dolan 7/22 | | Division Supervisor | | Jacquie Parks 7/20 | |
| Safety Officer | | Barry Coulliette 7/22 | | | | | |
| 6. Resources Assigned this Period | | | | | | | |
| Strike Team/Task Force/ Resource Designator | | Leader / Name / Designator | | Last Shift Date | Num. Per. | Drop Off PT./Time | Pick Up PT./Time |
| TFLD (E-973.1) | | Heath Serres | | 7/14 | 1 | | |
| TFLD (O-944) | | Dave Marion | | 7/19 | 1 | | |
| STEN (t) (O-1018) | | Greg Thomas | | 7/23 | 1 | | |
| ENG6 (E-76) | | Chris Henderson | | 7/20 | 2 | | |
| ENG6 (E-78) | | Kevin Cline | | 7/20 | 2 | | |
| ENG6 (E-80) | | Dane Bass | | 7/20 | 2 | | |
| ENG6 (E-81) | | Troy Helms | | 7/20 | 2 | | |
| ENG6 (E-973) | | Rick Young | | 7/14 | 2 | PVT | |
| ENG6 (E-975) | | Nort Phillips | | 7/14 | 3 | PVT | |
| ENG6 (E-1081) | | Tim Joy | | 7/21 | 2 | | |
| ENG6 (E-1082) | | Brad Gregory | | 7/20 | 2 | | |
| ENG6 (E-1083) | | Tony Harkins | | 7/20 | 2 | | |
| WAT2 (E-954) | | TBA | | | 1 | PVT | |
| | | | | | | | |
| SOF2 (O-997) | | Bob Habeck | | 7/22 | 1 | | |
| EMTP (O-640) | | Mike Fincham | | 7/24 | 1 | | |
| EMTB (O-983) | | Dominic Burchett | | 7/22 | 1 | | |
| | | | | | | | |
| | | | | | | | |
| | | | | | | | |
| | | | | | | | |
| | | | | | | | |
| | | | | | | | |
| 7. Control Operations <ul style="list-style-type: none"> Make contact with the Resource Advisor before using mechanical equipment. Recon potential controllines and examine area for snag removal Improve swamp break boundaries for fire breaks | | | | | | | |
| 8. Special Instructions <ul style="list-style-type: none"> Safely push down with equipment all snags whether on fire or not that are a threat to success or tactical operations. Ensure LCES are in place before operations begin. Stay hydrated. Drive defensively and with lights on at all times. Boggy terrain: Be careful and aware when working around this type of area. | | | | | | | |
| 9. Division/Group Communication Summary | | | | | | | |
| Function | Frequency | System | Channel | Function | Frequency | System | Channel |
| Command N Okee Repeater | RX 164.5750/206.5 TX 163.150/206.5 | KING NIFC | 5 | Logistics | | KING NIFC | |
| Tactical Div/Group | RX 151.2725 TX 151.2725 | KING NIFC | 13 | Air to Ground | RX 166.9375 TX 166.9375 | KING NIFC | 6 |
| Prepared by (Resource Unit Ldr.) Fred Noack | | Approved by (Planning Sect. Ch.) /s/ Ed Flowers | | | Date July 11, 2011 | | Time 1730 |

| | | | | | | | |
|--|---------------------------------------|--|---|----------------------------|---|-------------------|------------------|
| DIVISION ASSIGNMENT LIST | | | 1. Branch West | | 2. Division Z | | |
| 3. Incident Name: Honey Prairie Complex | | | 4. Operational Period Date: 7/12/2011 Time: Day: 0800-2100 | | | | |
| 5. Operations Personnel | | | | | | | |
| Operations | Roger Gill 7/25 | | | Branch Director | Tom Donohoe 7/22 | | |
| Planning Ops | Rick Dolan 7/22 | | | Division Supervisor | Glen Palfrey 7/20 / Jesse Knox (t) 7/18 | | |
| Safety Officer | Barry Coulliette 7/22 | | | | | | |
| 6. Resources Assigned this Period | | | | | | | |
| Strike Team/Task Force/ Resource Designator | | Leader / Name / Designator | | Last Shift Date | Num. Per. | Drop Off PT./Time | Pick Up PT./Time |
| TFLD (O-889) | | Kris Larson | | 7/19 | 1 | | |
| TFLD (O-792) | | Dennis Wilson (t) | | 7/12 | 1 | | |
| TFLD (O-921) | | Brad Hall (t) | | 7/18 | 1 | | |
| STEN (O-955) | | Randy Scherr | | 7/19 | 1 | | |
| ENG6 (E-392) | | Tyson Taylor | | 7/21 | 3 | | |
| ENG5 (E-502) | | Saul Irvin | | 7/13 | 2 | PVT | |
| ENG6 (E-850) | | Mike Haisten | | 7/21 | 3 | | |
| ENG5 (E-905) | | Travis Bailey | | 7/23 | 3 | | |
| ENG6 (E-1047) | | Thomas Sherman | | 7/21 | 3 | PVT | |
| ENG6 (E-1051) | | Kyle Zuehlke | | 7/21 | 3 | PVT | |
| ENG6 (E-1052) | | Ryan Schlater | | 7/28 | 3 | PVT | |
| ENG6 (E-1057) | | Troy Mueller | | 7/20 | 3 | | |
| ENG6 (E-1067) | | Shaun Moore | | 7/28 | 3 | | |
| ENG6 (E-5007) | | Jim Gipson | | 7/21 | 2 | PVT | |
| ENG6 (E-5008) | | Matt Stoneking | | 7/23 | 2 | PVT | |
| ENG6 (E-5010) | | C. Tevebaugh(E-5010.1) | | 7/12 | 3 | PVT | |
| ENG6 (E-5011) Smokey Mt 209 | | James Searcy | | 7/21 | 2 | PVT | |
| ENG6 (E-5012) Smokey Mt 301 | | Marshall Halford | | 7/29 | 2 | PVT | |
| EMTP (O-847) | | Levi Clymer | | 7/12 | 1 | | R&R 7/13-14 |
| SOF2 (O-892) | | Steven Ripley | | 7/17 | 1 | | |
| 7. Control Operations | | | | | | | |
| <ul style="list-style-type: none"> Contain all fires outside refuge boundary. Patrol and mop up within 100' of fire perimeter line. | | | | | | | |
| 8. Special Instructions | | | | | | | |
| <ul style="list-style-type: none"> Ensure that tractors are cleaned and free of debris daily. Examine work area for fire weakened snags. Ensure LCES are in place before operations begin and stay hydrated. Additional resources will be available from GFC, Florida DOF, FWS, and local cooperators. Drive defensively and with lights on at all times. See Medical plan for EMT support. Implement MIST tactics | | | | | | | |
| 9. Division/Group Communication Summary | | | | | | | |
| Function | Frequency | System | Channel | Function | Frequency | System | Channel |
| Command N Okee Repeater | RX 164.5750/206.5 TX 163.150/206.5 | KING NIFC | 5 | Logistics | | KING NIFC | |
| Tactical Div/Group | RX 168.200 TX 168.200 | KING NIFC | 11 | Air to Ground | RX 166.9375 TX 166.9375 | KING NIFC | 6 |
| Prepared by (Resource Unit Ldr.) Fred Noack | | Approved by (Planning Sect. Ch.) /s/ Ed Flowers | | | Date July 11, 2011 | | Time 1930 |

| DIVISION ASSIGNMENT LIST | | | | 1. Branch West | | 2. Division West - Initial Attack and Structure Protection 1 of 2 | |
|---|---------------------------------------|--|---------|---|---|--|------------------|
| 3. Incident Name: Honey Prairie Complex | | | | 4. Operational Period Date: 7/12/2011 Time: Day: 0800-2100 | | | |
| 5. Operations Personnel | | | | | | | |
| Operations | Roger Gill 7/25 | | | Branch Director | Tom Donohoe 7/22 | | |
| Planning Ops | Rick Dolan 7/22 | | | Division Supervisor | Don Hammack 7/19 / Bob Schober (t) 7/18 | | |
| Safety Officer | Barry Coulliette 7/22 | | | | | | |
| 6. Resources Assigned this Period | | | | | | | |
| Strike Team/Task Force/ Resource Designator | Leader / Name / Designator | | | Last Shift Date | Num. Per. | Drop Off PT./Time | Pick Up PT./Time |
| STEN (O-947) | Jess Register | | | 7/20 | 1 | | |
| STEN (O-951) | Jerry Van Dyne | | | 7/20 | 1 | | |
| STEN (O-990) | Joe Sampson | | | 7/20 | 1 | | |
| STPL (O-1055) | Royce Davis | | | 7/23 | 1 | | |
| HEQB (O-958) | Tim Boyce | | | 7/20 | 1 | | |
| ENG6 (E-404) | John Knapper | | | 7/23 | 3 | | |
| ENG6 (E-906) | James Burk | | | 7/23 | 3 | | |
| ENG6 (E-939) | Chad Ingle | | | 7/23 | 3 | | |
| ENG6 (E-1013) | William Paulton | | | 7/20 | 3 | PVT | |
| ENG6 (E-1045) | Andrew English | | | 7/28 | 3 | PVT | |
| ENG6 (E-1048) | Joseph Jarrells | | | 7/21 | 3 | | |
| ENG6 (E-1049) | James Dowd | | | 7/20 | 3 | | |
| ENG6 (E-1054) | Shawn Kanouse | | | 7/28 | 3 | PVT | |
| ENG6 (E-1055) | Brian Kanouse | | | 7/28 | 3 | PVT | |
| ENG6 (E-1050) | Kyle Varell | | | 7/20 | 3 | | |
| ENG6 (E-1075) | David Jones | | | 7/20 | 3 | | |
| DOZ3 (E-646)/E-723 trans | Phil Dueitt | | | 7/19 | 1 | PVT | |
| DOZ3 (E-650) | Danny Cerezo | | | 7/22 | 1 | PVT | |
| DOZ3 (E-651) | Bill Rimes | | | 7/14 | 1 | PVT | |
| WAT3 (E-233) | Sonny Moore | | | 7/27 | 1 | PVT | |
| 7. Control Operations <ul style="list-style-type: none"> Respond to Initial Attack as requested Initial attack IC will communicate size up information to Honey Prairie incident communications | | | | | | | |
| 8. Special Instructions Continue to monitor the Coal, Levy, and Shantee Fires. | | | | | | | |
| 9. Division/Group Communication Summary | | | | | | | |
| Function | Frequency | System | Channel | Function | Frequency | System | Channel |
| Command N Okee Repeater | RX 164.5750/206.5 TX 163.150/206.5 | KING NIFC | 5 | Logistics | See ICS 205 | KING NIFC | |
| Tactical Div/Group | RX 154.280 TX 154,280/156.7 | KING NIFC | 8 | Air to Ground | RX 166.9375 TX 166.9375 | KING NIFC | 6 |
| Prepared by (Resource Unit Ldr.) Fred Noack | | Approved by (Planning Sect. Ch.) /s/ Ed Flowers | | | Date July 11, 2011 | | Time 1930 |

| | | | | | | | |
|--|--|--|--|----------------------------|--------------------------------|--------------|----------------------|
| DIVISION ASSIGNMENT LIST | | | 1. Branch East | | 2. Division H/ I/J/K | | |
| 3. Incident Name Honey Prairie Complex | | | 4. Operational Period Date: 7/12/2011 Time: 0800-2100 | | | | |
| 5. Operations Personnel | | | | | | | |
| Operations | Butch Hall 7/22 | | | Branch Director | Russ Lane 7/14 | | |
| Planning Ops | Rick Dolan 7/22 | | | Division Supervisor | Matt Filbert 7/18 | | |
| Safety Officer | Ray Durham 7/22 | | | | | | |
| 6. Resources Assigned this Period | | | | | | | |
| Strike Team/Task Force/ Resource Designator | Leader / Name / Designator | | Last Shift Date | Num. Per. | Drop Off PT./Time | | Pick Up PT./Time |
| TFLD (O-945) | Walter Mendoza | | 7/20 | 1 | | | |
| STEN (O-950) | Larry Larson | | 7/20 | 1 | | | |
| ENG6 (E-77) GAGAS 86 | Andrew Gamlin | | 7/20 | 2 | | | |
| ENG6 (E-135) Attack-1 | Billy Taylor (Erin Finnegan starting 7/11) | | 7/22 | 2 | PVT | | |
| ENG6 (E-136) Nat'l Fire | Jeremiah Cates | | 7/16 | 2 | PVT | | |
| ENG6 (E-179) Nat'l Fire #4 | Ramey Hiers | | 7/19 | 2 | PVT | | |
| ENG6 (E-1069) Tallahassee E26 | William Abbott | | 7/21 | 3 | | | |
| WT2 (E-559) | Kevin Gray | | 7/15 | 1 | PVT | | |
| Pump (E-293) | | | ? | 1 | | | Pump is on a Trailer |
| | | | | | | | |
| EMTP (O-981) | Kurt Berge | | 7/22 | 1 | | | |
| SOF2 (O-808) | Charles Severson | | 7/24 | 1 | | | |
| | | | | | | | |
| | | | | | | | |
| 7. Control Operations | | | | | | | |
| <ul style="list-style-type: none"> Contain all fires outside refuge boundary. Patrol and control reburn Provide initial attack for GFC and fires outside the refuge boundary. Patrol all spots outside refuge boundary. Patrol and mop up all accessible fire line. Mop up all hot spots within 100' of the fire perimeter. Continue to provide protection to the Chesser Homestead by maintaining an adequate water supply via portable pump at location. | | | | | | | |
| 8. Special Instructions | | | | | | | |
| <ul style="list-style-type: none"> Ensure LCES are in place before operations begin. Stay hydrated. Drive defensively and with lights on at all times. See medical plan for EMT support Examine work area for fire weakened snags | | | | | | | |
| 9. Division/Group Communication Summary | | | | | | | |
| | Function | Frequency | Channel | Function | Frequency | System | Channel |
| Command E Okee Repeater | RX 164.6250/103.5 TX 163.150/103.5 | KING | 3 | Logistics | | KING NIFC | |
| DIV J Repeater | RX 170.4125 TX 165.9625/123.0 | NIFC | 14 | | | | |
| Tactical Div/Group | RX 168.350 TX 168.350 | KING NIFC | 12 | Air to Ground | RX 166.9375 TX 166.9375 | KING NIFC | 6 |
| Prepared by (Resource Unit Ldr.) Fred Noack | | Approved by (Planning Sect. Ch.) /s/ Ed Flowers | | | Date July 11, 2011 | | Time 1800 |

| | | | | | | | |
|---|--------------------------------------|--|-----------|----------------------------|----------------------------|--------------|---------|
| DIVISION ASSIGNMENT LIST | | 1. Branch East | | 2. Division L, M | | | |
| 3. Incident Name Honey Prairie Complex | | 4. Operational Period Date: 7/12/2011 Time: 0800-2100 | | | | | |
| 5. Operations Personnel | | | | | | | |
| Operations | Butch Hall 7/22 | Branch Director | | Russ Lane 7/14 | | | |
| Planning Ops | Rick Dolan 7/22 | Division Supervisor | | Ray Miller 7/20 | | | |
| Safety Officer | Ray Durham 7/22 | | | | | | |
| 6. Resources Assigned this Period | | | | | | | |
| Strike Team/Task Force/ Resource Designator | Leader / Name / Designator | Last Shift Date | Num. Per. | Drop Off PT./Time | Pick Up PT./Time | | |
| TFLD (O-937) | Kevin Elmstrom | 7/20 | 1 | | | | |
| TFLD (O-993) | Drew Daily | 7/22 | 1 | | | | |
| | | | | | | | |
| ENG6 (E-407) White Earth #2 | Jesse Londo | 7/22 | 3 | | | | |
| ENG6 (E-819) | Brett Eismann | 7/21 | 3 | | | | |
| ENG6 (E-826) | Steve Melton | 7/24 | 2 | PVT | | | |
| ENG6 (E-893) MIHMF 251 | Martel Knipe | 7/23 | 3 | | | | |
| ENG6 (E-894) MOOZP 862 | William Mier | 7/22 | 3 | | | | |
| ENG6 (E-895) MOMTF 9505 | Blake Knisley | 7/22 | 3 | | | | |
| ENG6 (E-898) MDS #4 | James Harris | 7/13 | 2 | | | | |
| ENG6 (E-1061) SM36 | Steve Woodrick | 7/21 | 3 | | | | |
| ENG6 (E-5014) TX Fire 157 | Steven Torske | 7/23 | 3 | | | | |
| | | | | | | | |
| EMTP (O-731) | Keith Barker | R&R | 1 | | Back on 7/13 | | |
| EMTP (O-1059) | John Oker-Blom | 7/23 | 1 | | | | |
| SOF2 (O-1021) | David Vitwar | 7/23 | 1 | | | | |
| | | | | | | | |
| 7. Control Operations | | | | | | | |
| <ul style="list-style-type: none"> Contain all fires outside refuge boundary. Patrol and control reburn Mop up all spots outside refuge boundary and within 100 feet of perimeter | | | | | | | |
| <ul style="list-style-type: none"> 8. Special Instructions Ensure LCES are in place before operations begin. Stay hydrated. Drive defensively and with lights on at all times. See medical plan for EMT support Examine work area for fire weakened snags. | | | | | | | |
| 9. Division/Group Communication Summary | | | | | | | |
| | Function | Frequency | Channel | Function | Frequency | System | Channel |
| Command E Okee Repeater | RX 164.625/103.5 TX 163.150/103.5 | KING NIFC | 3 | Logistics | | KING NIFC | |
| Tactical Div/Group | RX 168.775 TX 168.775 | KING NIFC | 9 | Air to Ground | RX 166.9375 TX 166.9375 | KING NIFC | 6 |
| Prepared by (Resource Unit Ldr.) Fred Noack | | Approved by (Planning Sect. Ch.) /s/ Ed Flowers | | Date July 11, 2011 | | Time 1800 | |

| DIVISION ASSIGNMENT LIST | | | | 1. Branch East | | 2. Division N/O | |
|--|---------------------------------------|----------------------------|---------|--|---|------------------------|------------------|
| 3. Incident Name Honey Prairie Complex | | | | 4. Operational Period Date: 7/12/2011 Time: 0800-2100 | | | |
| 5. Operations Personnel | | | | | | | |
| Operations | Butch Hall 7/22 | | | Branch Director | Russ Lane 7/14 | | |
| Planning Ops | Rick Dolan 7/22 | | | Division Supervisor | Steve Griffin 7/18, Ernest Schmitt (t) 7/19 | | |
| Safety Officer | Ray Durham 7/22 | | | | | | |
| 6. Resources Assigned this Period | | | | | | | |
| Strike Team/Task Force/ Resource Designator | | Leader / Name / Designator | | Last Shift Date | Num. Per. | Drop Off PT./Time | Pick Up PT./Time |
| TFLD (O-807) (t) | | Mark Whipps | | 7/19 | 1 | | |
| STEN (O-989) | | Max Twombly | | 7/21 | 1 | | |
| TFLD (O-994) | | Jim Edgar | | 7/21 | 1 | | |
| ENG6 (E-897) MDBWR | | Ephraim Diefenderfer | | 7/22 | 2 | | |
| ENG6 (E-922) | | Nathan Herron | | 7/22 | 1 | | |
| ENG6 (E-977) IPF E-31 | | Louie Feltman | | 7/23 | 4 | | |
| ENG6 (E-993) Bush Fire | | Philip Quochytewa | | 7/18 | 2 | PVT | |
| ENG6 (E-1058) | | Michael Keil | | 7/20 | 3 | | |
| ENG6 (E-1060) | | Paul Amundson | | 7/21 | 3 | | |
| ENG6 (E-1068) | | Wade Griffith | | 7/22 | 3 | | |
| ENG6 (E-1070) | | Gregory Rock | | 7/21 | 3 | | |
| ENG6 (E-1072) | | Butch Murphy | | 7/21 | 3 | | |
| ENG6 (E-1074) | | Peter Stevenson | | 7/20 | 3 | | |
| ENG6 (E-5006) Wildlands #3 | | Keith Hawk | | 7/15 | 2 | PVT | |
| HCT2IA (C-14) Pat Rick 20B | | Dustin Eldred | | 7/25 | 20 | PVT | |
| Excavator (E-596) | | TBA | | ? | 1 | | |
| GyroTrack (E-1147) | | Alan Eason | | 7/25 | 1 | | |
| GyroTrack (E-1148) | | Willard Turner | | 7/25 | 1 | | |
| EMTB (O-848) | | Bert Hyde | | R&R | 1 | | R&R on 7/12-13 |
| SOF2 (O-807) | | Chuck Stanton | | 7/25 | 1 | | |
| EMTP (O-1060) | | James Brown | | 7/24 | 1 | | |
| 7. Control Operations <ul style="list-style-type: none"> Patrol and mop up 100' inside fire perimeter. Recon potential control lines and examine area snag removal Keep fire within refuge boundary. | | | | | | | |
| 8. Special Instructions <ul style="list-style-type: none"> If the fire reaches Mgt Activity Line (MAL) 1 cooperators and adjacent landowners will be notified. If the fire reaches MAL 2 a meeting will be held at the Swamp Park with adjacent landowners and cooperators. Safely push down with equipment all snags whether on fire or not that are a threat to success or tactical operations. Ensure LCES are in place before operations begin. Stay hydrated. See medical plan for EMT support. Drive defensively and with lights on at all times. Boggy terrain: Be careful and aware when working around this type of area. If HP fire escapes the NE Break the Great Basin team will command suppression w/assistance from the GFC. If Race Pond escapes to the south GFC will command w/assistance by the Great Basin. DIVS should make daily contact w/ Race Pond DIVS on scene. STEN Twombly and Engines 1058, 1060, 1070, 1072, 1074 be ready to respond to IA in Swamp Park. | | | | | | | |
| 9. Division/Group Communication Summary | | | | | | | |
| Function | Frequency | System | Channel | Function | Frequency | System | Channel |
| Command N Okee Repeater | RX 164.5750/206.5 TX 163.150/206.5 | KING NIFC | 5 | Logistics | | KING NIFC | |
| Tactical Div/Group | RX 168.200 TX 168.200 | KING NIFC | 11 | Air to Ground | RX 166.9375 TX 166.9375 | KING NIFC | 6 |

| DIVISION ASSIGNMENT LIST | | 1. Branch East | | 2. Division East Initial Attack | | | |
|--|--|--|----------------------------|--|----------------------------|---------------------|---------|
| 3. Incident Name Honey Prairie Complex | | 4. Operational Period Date: 7/12/2011 Time: 0800-2100 | | | | | |
| 5. Operations Personnel | | | | | | | |
| Operations | Butch Hall 7/22 | | Branch Director | Russ Lane 7/14 | | | |
| Planning Ops | Rick Dolan 7/22 | | Division Supervisor | John Huschke 7/12, Shawn Denowh (t) 7/19 | | | |
| Safety Officer | Ray Durham 7/22 | | | | | | |
| 6. Resources Assigned this Period | | | | | | | |
| Strike Team/Task Force/ Resource Designator | Leader / Name / Designator | Last Shift Date | Num. Per. | Drop Off PT./Time | Pick Up PT./Time | | |
| TFLD (O-943) | Steven Clark | 7/22 | 1 | | | | |
| DOZB (O-959) | Zac Cogle | 7/20 | 1 | | | | |
| ENG6 (E-390) WICNF 461 | Lloyd Pete | 7/24 | 2 | | | | |
| ENG6 (E-974) | Steve Shykes | 7/19 | 3 | | | | |
| ENG6 (E-976) | Roscoe Benoy | 7/21 | 3 | | Benoy on R&R 7/12 and 7/13 | | |
| ENG6 (E-978) | Dennis Gillmer | R&R | 3 | | Back on 7/13 | | |
| ENG6 (E-1084) | Mike Dean | 7/20 | 2 | | | | |
| TPL3 (E-500) NFFS | TBA | | | PVT | | | |
| TPL3 (E-649) Bear Co | Don Johnson | 7/30 | 2 | PVT | | | |
| WT3 (E-92) | Justin Ennis / Jeff Ellis | 7/28 | 1 | PVT | | | |
| | | | | | | | |
| SOF2 (O-1067) | Larry Morse | 7/24 | 1 | | | | |
| | | | | | | | |
| | | | | | | | |
| | | | | | | | |
| | | | | | | | |
| | | | | | | | |
| | | | | | | | |
| | | | | | | | |
| | | | | | | | |
| | | | | | | | |
| 7. Control Operations <ul style="list-style-type: none"> Respond to Initial Attack as requested Patrol and control reburn Initial attack IC will communicate sizeup information to the Honey Prairie communication. | | | | | | | |
| 8. Special Instructions | | | | | | | |
| 9. Division/Group Communication Summary | | | | | | | |
| | Function | Frequency | Channel | Function | Frequency | System | Channel |
| Command E Okee Repeater | RX 164.625/103.5 TX 163.150/103.5 | KING NIFC | 3 | Logistics | | KING NIFC | |
| Tactical Div/Group | RX 168.775 TX 168.775 | KING NIFC | 9 | Air to Ground | RX 166.9375 TX 166.9375 | KING NIFC | 6 |
| Prepared by (Resource Unit Ldr.) Fred Noack | Approved by (Planning Sect. Ch.) /s/ Ed Flowers | | | Date July 11, 2011 | | Time 1800 | |

| | | | | | | | | |
|--|------------------------------------|--------------|--|---|--------------------------------|-------------------|---------|------------------|
| DIVISION ASSIGNMENT LIST | | | | 1. Branch ALL | 2. Division Roads Group | | | |
| 3. Incident Name: Honey Prairie Complex | | | | 4. Operational Period Date: 7/12/2011 Time: Day: 0800-2100 | | | | |
| 5. Operations Personnel | | | | | | | | |
| Operations | Butch Hall 7/22 | | | Branch Director | | | | |
| Planning Ops | Rick Dolan 7/22 | | | Division Supervisor | | | | |
| Safety Officer | Ray Durham 7/22 | | | | | | | |
| 6. Resources Assigned this Period | | | | | | | | |
| Strike Team/Task Force/ Resource Designator | Leader / Name / Designator | | | Last Shift Date | Num. Per. | Drop Off PT./Time | | Pick Up PT./Time |
| EQPM(O-746) | Gary Hurst (T) 912-387-6787 | | | 7/12 | 1 | | | |
| DOZB (O-956) | Tony Zavalla | | | 7/21 | 1 | | | |
| Excavator (E-505) | Lee Douglas or Johnny Smith | | | ? | 1 | PVT | | |
| Dump Truck (E-506) | TBA | | | | | PVT | | |
| Dump Truck (E-529) | Craig Smith | | | 7/19 | 1 | PVT | | |
| Dump Truck (E-1074) | Dennis Kight | | | 7/20 | 1 | | | |
| Grader (E-230) | TBA | | | | 1 | | | |
| Grader (E-380) | Jason Merrit | | | 7/20 | 1 | PVT | | |
| Grader (E-597) | TBA | | | | 1 | | | |
| Grader (E-228) | Steven Hendrick | | | ? | 1 | | | |
| 7. Control Operations | | | | | | | | |
| <ul style="list-style-type: none"> Coordinate efforts w/ resource advisor and logistics | | | | | | | | |
| 8. Special Instructions | | | | | | | | |
| <ul style="list-style-type: none"> Ensure that tractors are cleaned and free of debris daily. Examine work area for fire weakened snags. Ensure LCES are in place before operations begin and stay hydrated. Additional resources will be available from GFC, Florida DOF, FWS, and local cooperators. Drive defensively and with lights on at all times. See Medical plan for EMT support. Implement MIST tactics | | | | | | | | |
| 9. Division/Group Communication Summary | | | | | | | | |
| Function | Frequency | System | Channel | Function | Frequency | System | Channel | |
| Command N.Okee Repeater | See ICS 205 | KING NIFC | | Logistics | See ICS 205 | KING NIFC | | |
| Tactical Div/Group | See ICS 205 | KING NIFC | | Air to Ground | See ICS 205 | KING NIFC | | |
| Prepared by (Resource Unit Ldr.) Fred Noack | | | Approved by (Planning Sect. Ch.) /s/ Ed Flowers | | | Date 7/11/2011 | | Time 1930 |

AIR OPERATIONS SUMMARY

Prepared By: Tim Elder, AOBD

Prepared Date: 7.11.2011

Prepared Time: 1800

| | | | | | |
|---|---|----------------------------|--------------------------|-------------------------|--|
| 1. INCIDENT NAME: Honey Prairie | 2. OPS PERIOD DATE: July 12, 2011 | START TIME: 0830 | END TIME: 1900 | SUNRISE: 0634 | SUNSET: 2036 |
| 3. REMARKS (Safety Notes, Hazards, Air Operations Special Equipment, etc.): No fire is ever the same. No flight is ever the same. The fire you fly today will not be the same as the fire you flew yesterday. Be alert to your environment and changing conditions. | | | | | 5. TFR #: 1/0249 (Box) 3000' MSL |

NOTE: Latitude/Longitude format is "Degrees-Minutes-Decimal Minutes" (example: N30 41.42 W082 33.97)

| PERSONNEL | NAME | PHONE # | FREQUENCIES | AM | FM | AIRTANKERS / LEAD PLANES - None Available |
|---------------------|----------------------------------|--|---------------------------------------|---------|--------------------|--|
| AOBD | Tim Elder | Cell 863-243-1438 Desk 912-637-5254 FAX 912-637-5237 | AIR/ AIR FW | 122.575 | | ATGS AIRCRAFT- 53L (C-337) |
| ASGS(T) | Don Nicholas | 218-360-1816 | AIR/ AIR RW-FF | 122.375 | | OTHER: Lake City Tanker Base: 386-758-9078 / FAX 752-8901 Pogo Helibase: 912-496-4415 / FAX 496-7077 Waycross Helibase 912-287-4479 / FAX 287-4458 Fargo Helibase: 404-772-5317 Okfehenokoe Dispatch: 912-496-7366 X230 |
| ATGS Lake City | Tim Caughlin | 715-684-9862 | Georgia AIR/AIR | 122.075 | | FARGO HELIBASE: N30 41.42 W082 33.97 |
| ATGS Fargo HB | Carl Magjill | 541-519-0850 | Georgia AIR/GRND (Smokey - Dozers) | | 159.285 W | POGO HELIBASE: N30 44.03 W082 07.41 |
| HEB2 Fargo HB | Brian Campbell Steve Croy (T) | 404-772-5405 540-230-2568 | AIR/GROUND PRIMARY | | 166.9375 | POCKET HELISPOT N30.48 W082.22 |
| ABRO Fargo HB | Ken Malgren | 208-830-6290 | AIR/GROUND ALTERNATE | | 166.9000 | HOMERVILLE AIRPORT N31 03.35 W082 46.45 |
| HEB2 Waycross HB | Jay Matsen | Desk 912-287-4479 Cell 206-218-8230 | Florida AIR/AIR IA | 122.925 | | WAYCROSS AIRPORT N31 14.9 W082 23.7 |
| ABRO Pogo HB | Karen Jacobi- Yeaton | 912-496-4415 | Florida AIR/GRND IA | | 170.4750 N | BERGANZA HELISPOT N 31 07.22 W082 15.22 |
| | | | DECK | | 163.1000 | |
| | | | AIR GUARD | | 168.625 T 110.9 | |

9. HELICOPTERS (Use Additional Sheets as Necessary)

| FAA # | TY | MAKE/ MODEL | BASE | AVAIL | MANAGER | FAA # | TY | MAKE/ MODEL | BASE | AVAIL | MANAGER |
|-------|----|-------------|----------|-------|----------------------------------|-------|----|-------------|-------|-------|--------------------------------|
| N36BH | 1 | S-70 | Waycross | 0830 | Zev Hunting 406-439-6768 | N61SC | 1 | S-61 | Fargo | 0830 | Ray Leppala 218-966-6443 |
| 206G | 2 | UH1H | Waycross | 0830 | Jerick Dominguez 530-319-3517 | 26MW | 1 | K-1200 | Fargo | 0830 | Brenden Mullen 406-491-0873 |
| 06901 | 2 | UH1H | Waycross | 0830 | Cindy Bradley | N662H | 3 | 206-14 | Fargo | 0830 | Jeremy Beeson |

| | | | | | | | | | | | |
|---|---|-----------|---|--------------|---------------------------------|--|----------------------|--|-----------------|--------------|----------------------------|
| | | | | 559-916-9355 | | | | | | 208-507-1649 | |
| N818MC | 3 | AS-350 B3 | Waycross | 0830 | George Violante 307-330-5904 | | | | | | |
| 10. TASK/ MISSION/ ASSIGNMENT (Type/ function includes: Air Tactical, Retardant, Recon, Personnel Transport, Bucket Operations, SAR, etc. | | | | | | | | | | | |
| TYPE/FUNCTION | | | NAME OF PERSONNEL OR CARGO (if applicable) or instructions for tactical aircraft | | | | MISSION START | | FLY FROM | | FLY TO |
| Bucket Ops | | | | | | | As Requested | | Fargo/Waycross | | |
| Air Tactical | | | | | | | 1200 / As Requested | | Lake City/Fargo | | |
| Recon | | | | | | | As Requested | | Fargo/Pogo | | |
| Medevac | | | Fargo: N662H Waycross: N818MC | | | | As Requested | | Fargo/Waycross | | |
| Aerial Ignition | | | Firing boss will brief personnel involved at Fargo HB prior to commencing operations. ATGS will provide oversight and direct bucket ops to hold burnout SSE of airboat trail. | | | | TBA | | Fargo | | Interior SSW of Division O |
| | | | | | | | | | | | |
| | | | | | | | | | | | |



Fire Weather Forecast



FORECAST NO: 66

NAME OF FIRE: Honey Prairie Complex

PREDICTION FOR: Day and Night Shifts
SHIFT DATE: 7/12/11

UNIT: Okefenokee National Wildlife Refuge

FORECAST ISSUED: 7/11/11 at 1900

SIGNED: Mike Bettwy (T) / Joe Goudsward
Incident Meteorologists

WEATHER DISCUSSION: High pressure aloft will build into the region today through Wednesday with lower chances of precipitation, mainly driven by diurnal heating and the sea breeze. Moisture will gradually increase Thursday and Friday as a weak frontal boundary moves south toward the region.

TODAY: Patchy morning fog, otherwise partly cloudy with isolated to scattered afternoon showers and thunderstorms.

MAXIMUM TEMPERATURES: 94-99 degrees

PM HEAT INDEX: 106-111 degrees

AVERAGE SKY COVER: 55

MINIMUM HUMIDITY: 40-50%

20 FT WINDS: AM: WSW 3-6 mph

PM: ESE 4-8 G13 mph

STABILITY/INVERSION: Morning inversion to 250 feet through 1000, then rising to 5900 feet by 1500

TRANSPORT WINDS: WSW 10 mph

DISPERSION INDEX: 51, Average

CHANCE OF PRECIPITATION: 30%

PRECIPITATION AMOUNTS: Less than 0.10", except locally higher in thunderstorms

LIGHTNING ACTIVITY LEVEL: 3

TONIGHT: Partly cloudy. A slight chance of showers and thunderstorms, mainly before 9 P.M. Patchy fog developing after 11 P.M. and becoming locally dense.

MINIMUM TEMPERATURES: 74-78 degrees

MAXIMUM HUMIDITY: 90-100%

20 FT WINDS: SSW 2-5 mph

STABILITY/INVERSION: Inversion to 250 feet by 2200 hours

DISPERSION INDEX: 3, Poor

CHANCE OF PRECIPITATION: 20%

LIGHTNING ACTIVITY LEVEL: 2

OUTLOOK FOR WEDNESDAY: Partly cloudy with a 30% chance of showers and thunderstorms. Winds SSW 6-10G14 mph, becoming ESE. High temperatures 94 to 98. Min RH 35-45%. Dispersion 50, Average.

EXTENDED FORECAST:

| | THURSDAY | FRIDAY | SATURDAY |
|----------------------|-------------------------------------|-------------------------------------|-------------------------------------|
| MINIMUM TEMP | 76° | 75° | 75° |
| MAXIMUM TEMP | 95° | 93° | 92° |
| MINIMUM RH | 40-50% | 45-55% | 40-50% |
| 20 FT. WINDS | AM: WSW 2-5 mph PM: ESE 7-11 mph | AM: WSW 2-5 mph PM: SSW 6-10 mph | AM: WSW 3-6 mph PM: SSW 6-10 mph |
| SKY | Partly Cloudy | Mostly Cloudy | Mostly Cloudy |
| WEATHER | Scattered T-Storms | Scattered T-Storms | Scattered T-Storms |
| CHANCE PRECIP | 50% | 50% | 50% |

GENERAL FIRE BEHAVIOR

Fuels around the Okefenokee Wildlife Refuge are predominately Fuel Model 7 (Southern Rough). Large to moderate acreage tracts of commercial timberland are mixed in throughout the entire perimeter surrounding the refuge. Fast moving wildfires with extremely high flame lengths and rapid rates of spread occur within the swamp. As fire transitions to the upland, torching and crown fires are common. Long Range spotting is possible.

Indicators/Threshold for Increased Fire Activity

- Relative humidity dropping below 45%
- Winds above 10 mph
- **Heavy fuel loadings**
- Fine dead fuel moisture 8% or less
- Dispersion above 70
- *** Items in BOLD are predicted to occur today***

SPECIFIC FIRE BEHAVIOR

- **Fire behavior will be influenced by past precipitation. Much, but not all, of the fire has received 1 to 2 inches plus of rain in the last few days with the central and south areas receiving the most.**
- **Expect the fire to continue to move through the shrub fuels with low to moderate rates of spread and creep through the hardwood stands. Any sunlight on fire will increase fire intensity leading to column development. (Wind gusts will temporarily increase fire intensities). LAL 3**

| Fuel Type | Rates of Spread | Flame Length | Spotting Distance | Firebrand Ignition |
|---------------------------------|-----------------|--------------|-------------------|--------------------|
| Winds at 4 - 8 G 13 mph | | | | |
| Shrub Fuels | 1 - 13 ch/hr | 2 - 11 feet | 2/10 mile | 33 - 55% |
| Southern Rough | 1 - 27 ch/hr | 2 - 8 feet | 1/10 - 3/10 mile | 33 - 52% |
| Timber Litter-Reburn | 1 - 2 ch/hr | 1 - 2 feet | 1/10 - 2/10 mile | 33 - 53% |
| Small Pine Plantation w/grasses | 1 - 18 ch/hr | 2 - 7 feet | 1/10 mile | 33 - 53% |

One hour fine dead fuel moisture is at 7% & 10% for Tuesday. 1000 hour fuels are drier than normal for this time of year. There is reburn potential in all divisions due to the amount of needle cast. Should a fire run(s) occur, expect winds in the area to potentially increase above predicted levels. This would increase Flame Lengths and ROS above predictions. Heavier firebrands can also be lifted higher and further increasing likelihood of spots to max predictions. **In areas where fuels have been herbicided, expect quick ignitions and extreme heat, quick rate-if –spread, and group tree torching producing spotting problems.**

NOTE- FIRE BEHAVIOR CALCULATIONS ARE FOR FIRES IN UNBURNED FUELS INCLUDING NEW IA STARTS.

| | | | | | |
|------|--------|---|------|------------------------------|--|
| West | A | Wetting rains have moistened fuels. Falling snags still pose a threat to fire personnel and the boardwalk. 30% chance of rain | West | T/V | Fire will continue a slow spread to the North due to more moist weather conditions. Be heads-up for falling snags. 30% chance of rain |
| | B-G | Wetting rains have moistened fuels. Be heads-up for falling Snags. 30% chance of rain | | | |
| | Y Z | Fire activity will remain low to moderate today as fuels have received moisture. Areas of heat will remain near Div Y/Z perimeter. Be heads-up for falling snags. 30% chance of rain | East | H, I J, K L, M N, O | Much needed rain has fallen all along the East Branch. Interior fire in Divs N and O will continue to smolder with low to moderate fire behavior with spread to the north and northwest. Heads-up for falling snags. 30% chance of rain |

Night Ops – Expect another night of minimal fire behavior with areas of heavy smoke and patch of dense fog after 2200 hr. Partly cloudy with a slight chance of showers and thunderstorms mainly before 2100 hrs. Fire behavior after 2200 will primarily be limited to smoldering in heavy fuels near firelines and interior in Divisions B, V, Y, V, and O. Winds are forecast from the SSW 2 - 5 mph. Dispersion Index of 3 –poor for nighttime. LAL 2.

Air Operations: Expect areas of heavy smoke all day especially in the Northeast area of the fire.

SAFETY:

WINDS – Stay abreast of changing wx conditions throughout the entire shift. **THUNDERSTORMS** - these severe winds can create extreme fire behavior, with winds gusting over 30 mph. **SNAGS** – Snags are falling in all Divisions – will be influenced by Thunderstorm outflow winds. **FUELS:** Reburn is an issue. Watch for pockets of cured shrubs or blankets of red needles beginning to cover the forest floor. 1000 and 10,000 hour fuels as well as deep duff pockets are providing the heat source. Stay focused, and put LCES in place before starting operations. Watch for standing burning snags that can fall without warning. Energy Release Component (ERC) continues to hover near the 90th percentile.

LCES Analysis of Tactical Actions

| Incident Name: Honey Prairie Complex | | | | Date and Time Prepared: July 11, 2011 1600 hrs | | | | | | | | | | Operational Period: Day and Night July 12, 2011 | | |
|--|-------|---------|------|--|---|---|---|---|---|---|---|---|-----|---|-----------------|--|
| Location on Incident | | | | | | | | | | | | | | | | |
| Divisions/Groups | | | | | | | | | | | | | | | | |
| TACTICAL HAZARDS | A,B,C | D,E,F,G | H, I | J, K | L | M | N | O | T | V | Y | Z | ICP | PM Ops | Struct Prot Grp | Mitigations |
| Powerlines | * | * | * | * | * | * | * | * | * | * | * | * | | | * | Assume all power lines are charged. Avoid all contact with downed lines. |
| Complacency | * | * | * | * | * | * | * | * | * | * | * | * | * | | * | Follow work/rest guidelines. |
| Indirect Fireline | | | | | | | | * | * | * | * | * | | | | LCES; IRPG Pg. 10, Indirect Attack; Burnout as possible. |
| Anchor Points | * | * | * | * | * | * | * | * | * | * | * | * | | | | Ensure fireline is anchored. Use natural features when possible. Use Local Resource Advisor |
| Extreme Conditions (Spotting, Wind) | | | | | | | | | | | | | | | | LCES, Establish Trigger Points. Maintain Situational Awareness. Establish Lookouts as needed. Follow MAP actions. |
| Unburned Area Reburn Potential | * | * | * | * | * | * | * | * | * | * | * | * | | | * | LCES, Utilize Air Attack if Available. Know Predicted Weather and Fire Behavior Forecast. |
| Hazard Trees | * | * | * | * | * | * | * | * | * | * | * | * | | | * | IRPG Pg. 80, Identify and flag hazard trees. Look Up, Down and Around |
| Hazardous Materials | * | * | * | * | * | * | * | * | * | * | * | * | | | * | IRPG Pg. 26-27, HAZMAT. Identify and map propane tanks, electric lines, septic tanks and determine bridge wt. limits prior to use. |
| Vehicle Use (Travel 1HR+, Roads) | * | * | * | * | * | * | * | * | * | * | * | * | * | | * | Park vehicles for egress. Follow traffic plan. Use seat belts, drive with headlights on and keep windshields clean. Use spotters. Drive Defensively. Use multiple camp locations to reduce drive time. |
| Communications | | | | | | | | | | | | | | | | Ensure radio is cloned with the current communications plan. LCES |
| Structure Protection | | * | | * | * | | * | * | * | * | * | * | | | | Use structure protection checklist, PPE, Triage. Utilize Local Fire Departments |
| Air Operations (multiple aircraft, line support) | * | * | * | * | * | * | * | * | * | * | * | * | | | | Monitor Air Guard at all times. Flight follow through Dispatch. Keep drop areas clear of personnel. |
| Mechanical Equipment | * | * | * | * | * | * | * | * | * | * | * | * | | | * | Use PPE, ensure all safety devices are functional. Operator must see you before approaching equipment. Maintain proper distance away from equipment working in the area. |
| Escape Routes Safety Zones | * | * | * | * | * | * | * | * | * | * | * | * | | | * | LCES, Establish and identify safety zones & escape routes. Know where these are located and the route to them. IRPG p.7 |
| Thunderstorm Safety | * | * | * | * | * | * | * | * | * | * | * | * | * | | * | Keep an eye on changes in weather. Take hourly weather observations. Comms will provide weather updates when needed. |
| Wildlife | * | * | * | * | * | * | * | * | * | * | * | * | * | | * | Keep food items off the line and use refuse containers around camp. Use insect repellent as needed. Use caution around water as wildlife is concentrated. |
| Sun Exposure | * | * | * | * | * | * | * | * | * | * | * | * | * | | * | Use sunblock as needed. |
| Night Operations | | | | | | | | | | * | * | | | | | Maintain situational awareness. Refer to pages 6 & 7 of IRPG. Ensure headlamps are available and working. Maintain spacing between resources. |
| Heat | * | * | * | * | * | * | * | * | * | * | * | * | * | | * | Hydrate prior to going on line and all during the day. Recognize the signs of heat related injuries. Take frequent breaks throughout the work period. |
| Air Quality | | | | | | | | | | | | | | | | Rotate personnel frequently out of smoke. Ensure off-line rest is clear of smoke. |
| Railroad Crossings | * | * | * | * | * | * | * | * | * | * | * | * | | | * | Visually check all railroad crossings to ensure track is safe to cross. Don't bunch up, leave room for other vehicles to cross. Don't try to beat the train. |
| | | | | | | | | | | | | | | | | |
| | | | | | | | | | | | | | | | | |
| Safety Officer: | | | | | | | | | | | | | | | | |
| Barry Coulliette SOF2 | | | | | | | | | | | | | | | | |

SAFETY MESSAGE

JULY 12, 2011

Day / Night

Major Hazards and Risk

High Temperatures

Dehydration

Driving

Thunder Storms

Complacency

Logging Operations

Wildlife

Hygiene

Mitigations

It is predicted that the temperature is going to be over 100 degrees today. Stay hydrated take frequent breaks.

Expect more active fire behavior in the afternoon.

Driving conditions are challenging. Stay alert Drive with headlights on and wear your seat belt when the vehicle is moving.

Thunderstorms produce strong winds heavy rain and frequent lightning. Take refuge to your vehicles and insure you are parked in a safe place. Any tree is capable of falling under strong wind events.

Seeing and doing the same things every day leads to complacency. Stay alert to the known hazards. Conduct tail gate safety sessions. Insure that TEN and EIGHTEEN are in place before starting work.

Logging operations will be on the increase. Pay attention to log trucks and logging equipment working in your environment and give them room.

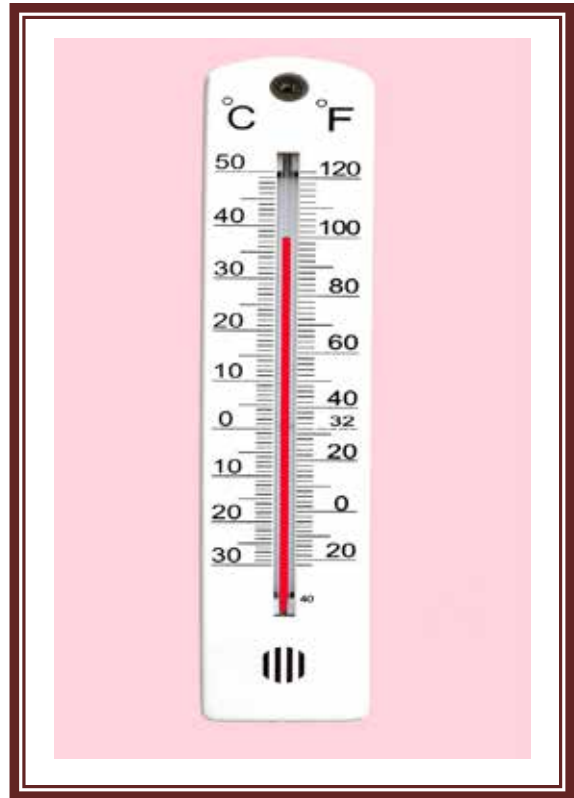
Do not feed or harass alligators.

To prevent the spreading of germs wash your hands often.

Safety Officers,

Barry Coulliette

West Branch



| MEDICAL PLAN | Incident Name Honey Prairie Complex | Date Prepared 7/11/2011 | Time Prepared 1800 | Operational Period 7/12/2011 DAY SHIFT | | | | |
|--|---|--|-----------------------|---|-------------------|--|-----------------------|----|
| 5. Incident Medical Aid Station | | | | | | | | |
| <u>Medical Aid Stations</u> | <u>Location</u> | | | Paramedics Yes No | | | | |
| Medical Unit (ICP) | Honey Prairie Complex ICP (Lodge 5) 912-637-5236 Joe Fowler MEDL 912-286-1648 Michael Evers MEDL (T) 912-286-1674 | | | X | | | | |
| WEST BRANCH (Line EMT) | Bob Eaton 919-423-1055 (A,B,C DIV) Paul Smith (D,E,F,G DIV) Jefferson Halladay 801-518-9857 (T DIV) Evan Dean 503-975-6444 (V DIV) Peggy Miller 240-793-4238 (Y 0800-2000) Michael Fincham 530-859-8507 & Dominique Burchett 801-558-5444 (Y DIV Night) Levi Clymer 417-658-5155 (Z DIV) Matthew Stivers 256-375-4260 (West IA) | | | X | | | | |
| EAST BRANCH (Line EMT) | Kurt Berge 801-404-6434 (H,I,J,K DIV) John Oker-Blom 404-558-4476 (L,M DIV) James Brown 360-775-5413 (N,O DIV) | | | X | | | | |
| Ambulance Services | | | | | | | | |
| Name | Address | Phone | Paramedic Yes No | | | | | |
| Clinch County EMS (WEST SIDE) | West Branch Council Road & HWY 94 | Channels 4, 11, 13 912-286-1673 EMS Incident Cell | Yes | | | | | |
| Ware County EMS (NORTHSIDE) | Waycross, Georgia (911 to activate) | 912-281-9467 | Yes | | | | | |
| Charlton County EMS (EAST SIDE) | Folkston, GA (911 to activate) | 912-496-7321 | Yes | | | | | |
| Air Ambulance Service | | | | | | | | |
| Trauma 1 | Lake City, FL (16 min/air to Fargo ICP) | 1-800-223-4878(freq. 155.340) | Yes | | | | | |
| Trauma 1 | Jacksonville, FL (26 min/air to Fargo ICP) | 1-800-223-4878(freq. 155.340) | Yes | | | | | |
| AirMed | Augusta, GA (2 hrs/air to Fargo ICP) | 1-888-792-9245(freq. 155.340) | Yes | | | | | |
| Lifeflight | Jacksonville, FL (35 min/air to Fargo ICP) | 1-877-870-7779(freq. 155.340) | Yes | | | | | |
| Air Evac | Waycross, GA (17 min/air to Fargo ICP) | 1-800-247-3822(freq. 155.340) | Yes | | | | | |
| US Coast Guard (Heli-Rescue) | Savannah GA | 1-912-652-4646 (freq. 155.340) | Yes | | | | | |
| 7. Hospitals | | | | | | | | |
| Name | Address | Travel Time Air Ground | | Phone | Helipad Yes No | | Burn Center Yes No | |
| Satilla Regional | 410 Darling Ave Waycross Ga N 31°13.56 W 82°21.058 | 18 min | 45 min | 912-283-3030 | Yes | | | No |
| Clinch Memorial Hospital (WEST SIDE) | 1050 Valdosta HWY Homerville, GA | | 25 min | 912-487-5211 ext 4502 | Yes | | | No |
| Charlton Memorial Hospital (EAST SIDE) | 1203 3 rd St. Folkston, GA | | 50 min | 912-496-2531 | Yes | | | No |
| Memorial Hospital | Savannah, GA 4700 Waters 3200.7 8107.6 | 30 min | | 912-350-8999 | Yes | | | No |
| Shands Hospital (level I) | Jacksonville, FL N 30°20 97 W 82° 13 992 | 26 min | 1.5 hrs | 800-223-4878 | Yes | | Yes | |
| Shands Burn Center | Gainesville, FL 38.33 N 082 20.73W | 33 min | 1.5 hrs | 352-265-0300 | Yes | | Yes | |
| 8. Medical Emergency Procedures | | | | | | | | |

| | |
|---|---|
| <ol style="list-style-type: none"> 1. Notify DIVS of medical problem 2. DIVS notifies COML and MEDL 3. MEDL contacts POC for following <ol style="list-style-type: none"> a. # of pts b. Status of pts medical problem c. Location of pts d. Transport method e. Necessary resources 4. MEDL coordinates medevac/patient transport with SOF2, OPS2 and other relevant resources. <p><u>Life threatening injury</u>: an injury that could mean the loss of life, limb, or eyesight</p> <p><u>Minor injury</u>: an injury that results in the removal of a pt from the line but with less urgency as a life threatening injury</p> <p><u>Medevac</u>: the most urgent transport of a pt suffering from a life threatening injury</p> <p>Patient transport: transport for minor injuries</p> <p><u>Medical problem</u>: a physical or mental ailment that occurs to an individual; to include illnesses and traumatic injuries</p> <p><u>Point of contact (POC)</u>: individual who will be directly advocating for patient care and transport (line medic, crew boss, DIVS etc)</p> <p>*Request that FFTR/Engine crews or single resources let MEDL know if they have any EMTs or Paramedics and if they have equipment with them.</p> | <p><u>HELISPOTS</u></p> <p>Pocket Helispot 30 47 30.02 x 82 22 39.5 (West side), mile marker 4, HWY 177 Steven C. Foster State Park</p> <p>Fargo Helibase 30 41.42 x 82 33.97 (West side), HWY 441- Golf course, Fargo</p> <p>POGO Helibase 30.44.03 x 82.07.41 (East side)</p> <p><u>Evac Yankee</u></p> <p>Helispot 6 Rd. 32 and 32A, N 30° 53.280 W 082° 33.880</p> <p>Helispot 7 Tatum Rd. Pond N 30° 50.280 W 082° 33.857</p> <p>*Alternate site can be established following guidelines for safety found with IRPG and local EMS resources.</p> |
| <p>Prepared by: Michael Evers MEDL (T)/Joe Fowler MEDL</p> | <p>10. Reviewed by: Barry Coulliette SOF</p> |

| INCIDENT RADIO COMMUNICATIONS PLAN ICS-205 | | Incident Name Honey Prairie | | GROUP 22 | | Date/Time Prepared 07/14/2011-18:00 | Operational Period Date/Time 7/12/2011 0800-2100/1800-0600 | | | | |
|---|------------|---------------------------------------|-----------------------------------|-----------------|----|--|--|-----|-------------|---------------|---------------------------|
| Ch # | Function | Channel Name | Assignment | RX Freq | NW | RX Tone/NAC | TX Freq | N W | TX Tone/NAC | Mode A,D or M | Remarks |
| 1 | Command | West Okee Repeater | Sec West Branch CMD | 167.1250 | N | 156.7 | 163.1500 | N | 156.7 | A | Stephen Foster State Park |
| 2 | Command | South Okee Repeater | Sec East/West Branch CMD | 164.7750 | N | 123.0 | 163.1500 | N | 123.0 | A | Eddy Florida |
| 3 | Command | East Okee Repeater | PRIMARY East Branch CMD | 164.6250 | N | 103.5 | 163.1500 | N | 103.5 | A | Refuge Headquarters |
| 4 | Command | NIFC C2 | PRIMARY West Branch CMD | 168.100 | N | CSQ | 170.4500 | N | 123.0 | A | NOT linked to OKEE System |
| 5 | Command | North Okee Repeater | PRIMARYNorth Branch CMD | 164.5750 | N | 206.5 | 163.1500 | N | 206.5 | A | Waycross |
| 6 | Air-Ground | Air to Ground | PRIMARY | 166.9375 | N | CSQ | 166.9375 | N | CSQ | A | |
| 7 | Tactical | MOB-MOB | GFC Contingency | 159.3900 | W | CSQ | 159.3900 | W | 156.7 | A | |
| 8 | Tactical | V-Fire 21W WHITE | Structure Protection Group&I.A. | 154.2800 | W | CSQ | 154.2800 | W | 156.7 | A | |
| 9 | Tactical | USFS 9 | DIV A,B,C, L, M T, M & (East I/A) | 168.7750 | N | CSQ | 168.7750 | N | CSQ | A | |
| 10 | Tactical | S.E. Compact | DIV | 159.2850 | W | CSQ | 159.2850 | W | CSQ | A | |
| 11 | Tactical | USFS 11 | DIV Z, N, O | 168.2000 | N | CSQ | 168.2000 | N | CSQ | A | |
| 12 | Tactical | Refuge Tac 1 | DIV H, I, J, K | 168.3500 | N | CSQ | 168.3500 | N | CSQ | A | |
| 13 | Tactical | FL 190 | DIV D, E, F, G, V, Y | 151.2725 | N | CSQ | 151.2725 | N | CSQ | A | |
| 14 | Command | DIV J RPT | East Branch | 170.4125 | N | CSQ | 165.9625 | N | 123.0 | A | NOT linked to OKEE System |
| 15 | Air-Ground | Air to Ground | SECONDARY | 166.9000 | N | CSQ | 166.9000 | N | CSQ | A | |
| 16 | EMERGENCY | AIR Guard | Air OPS. | 168.6250 | N | CSQ | 168.6250 | N | 110.9 | A | |
| Prepared by (Communications Unit) Brian Matthews Incident Dispatcher: 912-286-1660 | | | | | | | | | | | |
| Cloning at ICP communications and briefings, | | | | | | | | | | | |

The convention calls for frequency lists to show four digits after the decimal place, followed by either an "N" or a "W", depending on whether the frequency is narrow or wide band. Mode refers to either "A" or "D" indicating analog or digital (e.g. Project 25) or "W" indicating mixed mode. All channels are shown as if programmed in a control station, base stations, mobile or portable radio.

HONEY PRAIRE COMPLEX CONTACT LIST – 07.12.11
Incident Communications (24 Hour Dispatch) - 912-286-1660

| AGENCY OFFICIALS | | | OPERATIONS 912-637-5248 | | |
|----------------------------------|--------------|------------------------|---|--------------|-----------------------------|
| Curt McCasland | 602-359-0013 | USFWS AA | Rick Dolan | 352-353-5101 | Field Operations |
| Mindy Gautreaux | 912-282-7500 | USFWS Deputy AA | Butch Hall | 352-225-1280 | Field Operations |
| Frank Sorrells | 912-381-7503 | GFC AA | | 912-286-1658 | Planning Operations |
| James Karels | 850-228-7763 | FL DOF AA | WEST BRANCH | | |
| Diane Adams | 912-266-5421 | GEMA | Tom Donohoe | 404-772-5384 | West Branch |
| Mike Housh | 912-281-1575 | USFWS AREP | Greg Jacobson | 208-642-7587 | DIVS A, B, C |
| COMMAND | | | Toby Herold | 530-598-4195 | DIVS D, E, F, G |
| Don West | 352-353-5044 | IC | Brian Rhodes | 619-318-1623 | DIVS T |
| Verne Reggal | 386-547-7293 | Deputy IC | Shawn Duggar | 850-508-7736 | DIVS V |
| Trent Ingram | 229-726-0285 | Unified IC (GA) | Bryce Thomas | 850-625-6634 | DIVS V (T) |
| Gary Beauchamp | 352-620-4424 | Unified IC (FL) | Gary Smith | 417-455-3391 | DIVS Y |
| Mike Dueitt | 850-228-0320 | Unified IC (FWS) | Dan Helterline | 406-241-1467 | DIVS Y (T) |
| LIAISON | | | Don Hammack | 406-253-2535 | IA/Structure Protection |
| Skippy Reeves | 912-387-5923 | Liaison Officer FWS | Bob Schober | 907-978-6894 | IA/Structure Protection (T) |
| INFORMATION | | | EAST BRANCH | | |
| Ludie Bond | 352-258-6084 | Fire Information | Russ Lane | 503-910-2353 | East Branch |
| Greg Heule | 719-640-6735 | Fire Information | Matt Filbert | 208-481-1068 | DIVS H, I, J, K |
| Kristen Miller | 904-710-5677 | Fire Information | Steve Griffin | 760-417-0728 | DIVS N, O |
| Tom Krull | 320-533-0206 | Fire Information | Ernest Schmidt | 320-760-4781 | DIVS N, O |
| Mark Wurdeman | 912-496-2566 | Fire Information (JIC) | John Huschke | 231-342-1233 | East IA (until 7/12) |
| SAFETY | | | Shawn Denowh | 208-724-0827 | East IA |
| Barry Couliette | 404-772-5406 | Safety Officer | AIR OPERATIONS 912-637-5254 FAX 912-637-5237 | | |
| Ray Durham | 770-280-7684 | Safety Officer | Tim Elder | 863-243-1438 | Air Ops Branch |
| Joe Fowler | 912-286-1648 | Medical Unit Leader | Don Nicholas | 218-360-1816 | ASGS(t) |
| Mike Evers | 912-286-1674 | Medical Unit Leader | Ken Malgren | 404-772-5317 | Fargo Helibase |
| Medical Unit | 912-637-5236 | | Carl Magill | 541-519-0850 | ATGS – Fargo |
| | | | Steve Croy | 540-230-2560 | HEB2 (T) – Fargo |
| DISPATCH | | | Brian Campbell | 404-772-5405 | HEB2 – Fargo |
| Okeefenokee Dsp | 912-496-7366 | Okeefenokee | Jay Matsen | 912-287-4479 | HEB2 – Waycross |
| Suwannee Dispatch | 386-758-5700 | Fla wildfires, other | | 206-218-8230 | |
| Waycross Dispatch | 912-287-4915 | Ga wildfires, other | Tim Caughlin | 715-684-9862 | ATGS – Lake City |
| LOGISTICS West | | | Melanie Fullman | 906-364-0413 | ATGS(t) - Lake City |
| Shane Locke | 404-772-5399 | LSC | PLANNING 912-637-5241 FAX 912-637-5237 | | |
| Butch Mallet | 404-772-5319 | LSC | Ed Flowers | 912-286-4643 | Planning Section Chief |
| Bill Hitt | | FACL | Scott Crosby | 912-637-5241 | Situation Unit Leader |
| Cliff Liggons | 912-637-5251 | Lodging | Joe Goudsward | 240-778-5279 | IMET |
| Kevin Reish | 404-276-1998 | Security Manager | Mike Bettwy | 240-778-5019 | IMET |
| JV Thompson | 404-772-5380 | GSUL | Gary Brunk | 404-772-5385 | FBAN |
| Dennis | 404-772-5389 | GSUL(t) | John Kern | 404-772-5393 | FBAN |
| Nat Wright/Bob Kookan | 404-772-5318 | Food Unit Leader | FINANCE 912-637-5244 FAX 912-496-4710 | | |
| Linda Bruss | 912-637-5239 | SPUL | | | Finance Section Chief |
| Rhonda Hughes | 770-658-6641 | SPUL(t) | Rita Loper | 912-281-6876 | Buying Team Leader |
| Brian Mathews | 912-286-1660 | Communications | Ron Knowles | 907-230-4945 | Business Advisor |
| ORDERING FAX 912-637-5240 | | | Duane Welch | 404-844-7042 | Comp Claims |
| | 912-637-5262 | Ordering Manager | | | |
| | 912-637-5239 | Ordering Manager | | | |

| LOGISTICS | | |
|--------------------------------|------------------------------|-------------------------------|
| | 912-496-2111 | East |
| | 912-496-4710 | |
| | Fax | |
| Dave Klym | 256-497-8490 | LSC |
| Duane Stephens | 912-496-2111 | Base Camp Mgr |
| John Kaupa | 256-497-8388 | Supply Unit Leader |
| Kelly Helget | 256-497-8334 | GSUL |
| Medical Unit | 912-387-6787 | |
| EAST MSG CTR | 912-496-4698 | |
| | | |
| COOPERATORS | | |
| COUNTY | | |
| | 912-496-7229 | Charlton County EMA |
| John F. Meyer - Chairman | 912-496-2549 | Charlton County Commissioners |
| Dobie Conner | 912-496-7321 | Charlton County Sheriff |
| Jesse Booth | 912-520-0061 | Clinch County EMA |
| Jonathan Daniel | 912-281-5158 | Ware County EMA |
| Jessie Jordan | 912-816-6063 | Ware County Fire Dept |
| Joe Morris | 912-281-6020 | Ware County Sheriff |
| Robbie Sutton | 912-599-9027 | Tri County 911 |
| STATE | | |
| GFC Fargo District Office | 912-637-5270 | |
| GFC Satilla District Office | 912-287-4915 | |
| Blair Joiner | 229-237-9026 | GFC Clinch Chief Ranger |
| Jason Gillis | 912-314-9233 912-637-5504 | GFC Satilla Assistant Mgr. |
| Brian Gray | 229-894-4628 912-673-5274 | Stephen Foster State Park |
| Travis Griffin | 912-281-5790 | Laura Walker State Park |
| Crystal Paulk- Buchanan | 404-535-1048 | GEMA PIO |
| Georgia Highway Patrol | 912-287-6500 | |
| | | |
| FEDERAL | | |
| Okefenokee Fire Shop | 912-496-4181 | |
| Okefenokee NWR HQ (East) | 912-496-7366 | |
| Okefenokee NWR (West) | 912-637-5322 | |
| Okefenokee Visitor Center | 912-496-7836 | |

| LANDOWNERS | | |
|----------------------------------|----------------------------------|---------------------------|
| Jim Barrett | 229-412-3133 | Langdale/GOAL Chairman |
| Wesley Langdale | 229-220-2602 | Langdale |
| Hal Rowe | 229-412-3133 | Langdale |
| Langdale Office | 229-242-7450 | Langdale Office |
| Mike Conlon | 386-365-3882 | Rayonier Unit Supervisor |
| Ray Carter | 386-288-6626 | Rayonier |
| Ed Carter | 386-288-6626 | Rayonier |
| Doug Nuss | 912-390-1037 | Rayonier |
| Randall McCrady | 912-283-4077 W 912-288-0877 C | Rayonier |
| Colin Myerson | 229-506-1565 | Superior Pine Products Co |
| Robbie Lee | 229-356-0526 | Superior Pine Products Co |
| Eric Harris | 912-637-5597 | Superior Pine Products Co |
| Superior Pine Office | 912-637-5261 | Superior Pine Products Co |
| Al Alexander | 850-843-0104 | The Forestry Co |
| Savell Schmidt | 850-843-1181 | The Forestry Co |
| John Bogue | 850-843-1192 | The Forestry Co |
| Joe Hopkins | 912-276-0911 | Toledo Timber |
| Chris Gowan | 912-276-0965 | Toledo Timber |
| Martin Bell | 912-283-0583 | Swamp Park |
| Crystal Peeples | 352-316-0632 | FIA |
| Steve Davis | 912-614-1828 | Davis Community |
| Trevor Fortner | 912-599-9271 | Little Suwannee |
| Tim Jarrell | 912-223-7120 | Hancock Forest Mgmt. |
| | | |
| RAILROADS | | |
| Norfolk Southern | 800-453-2530 | |
| Sid Moody | 904-318-7983 | Norfolk Southern Railroad |
| Chad Edwards | 404-582-4909 | Norfolk Southern Railroad |
| | 540-797-9918 | |
| Eric Sams | 904-576-9907 | |
| Norfolk So Emergency Dispatch | 404-529-1597 | |
| CSX Randy Dixon | 912-270-0699 | |
| CSX Dispatch | 800-232-0144 | |

FINANCE – EQUIPMENT/TIME

Tip for the day: 7/12/11



We Need Your HELP:

PLEASE put E #'s on top right corner of shift ticket.

East side fuel supplier: please send all fuel books to finance daily!!!!

| | | |
|--------|----------------|---|
| E-818 | Lindow, Scott | Skipped date on shift ticket |
| | | |
| E-505 | J Smith & Co. | Need to show odometer reading on shift ticket |
| | | |
| E-1014 | Hightower Flre | Fuel Issue – Can't read fuel slip |
| | | |
| | | |

IF YOUR ARE GETTING CLOSE TO TIMING OUT PLEASE
SPEAK WITH YOUR FIRE LINE SUPERVISOR **ASAP.**

DMOB for July 12 to July 14
Contact DMOB - Tim @ 912-637-5241

IF YOU ARE TRAVELLING HOME BY AIR AND WILL BE TRANSPORTED TO JACKSONVILLE THE DAY BEFORE YOUR FLIGHT BY GROUND SUPPORT - YOU NEED TO COMPLETE THE DEMOB PROCESS AND BE READY TO LEAVE ICP BY 1300 or 1700 HRS

IF YOU ARE TRAVELLING HOME BY AIR YOU NEED TO CONTRACT DMOB TO VERIFY I HAVE THE CORRECT NAME AS IT APPEARS ON YOUR PICTURE ID YOU WILL USE TO GET THROUGH AIRPORT SECURITY AS WELL AS YOUR DATE OF BIRTH AND DESTINATION JETPORT.

| Number | Name | Kind | UnitID | Travel Method | Jetport | Travel Date |
|----------|----------------------|------|--------|---------------|---------|-------------|
| E-170 | TP3 FRANCIS MARION | TPL | SCFM | AOV | | 07/12/2011 |
| E-170.7 | CHRISTOPHER, JOHN | TPO | SCFM | AOV | CHS | 07/12/2011 |
| E-170.8 | MARSHALL, | FFT | SCFM | AOV | CHS | 07/12/2011 |
| E-807 | ENGINE - T6 - E-21 - | ENG | VAVAF | AOV | | 07/12/2011 |
| E-807.1 | CAUDILL, TODD | ENG | VAVAF | AOV | | 07/12/2011 |
| E-821.1 | RICKE, RYAN | ENG | SDRC | AIR | RAP | 07/12/2011 |
| E-824.1 | MORGAN, JOSHUA T | ENG | SDRC | AIR | RAP | 07/12/2011 |
| E-824.3 | RASMUSSEN, | FFT | SDRC | AIR | RAP | 07/12/2011 |
| E-995.4 | LAVOIE, ARTHUR S | CR | MEME | AIR | BGR | 07/12/2011 |
| E-995.5 | BAILEY, AARON J | FFT | MEME | AIR | BGR | 07/12/2011 |
| E-995.6 | POTVIN, LUCIEN | FFT | MEME | AIR | BGR | 07/12/2011 |
| E-996 | ENGINE - T6 - MES | ENG | MEME | AOV | BGR | 07/12/2011 |
| E-996.4 | PICKERING, DUSTIN E | ENG | MEME | AIR | BGR | 07/12/2011 |
| E-996.5 | HUNTER, ISAAC R | FFT | MEMH | AIR | BGR | 07/12/2011 |
| E-996.6 | HAMILTON, CAMERON | FFT | MEME | AIR | BGR | 07/12/2011 |
| E-5010 | PATRICK ENG6 | ENG | TNTN | POV | | 07/12/2011 |
| E-5010.1 | TEVEBAUGH, | ENG | TNTN | POV | | 07/12/2011 |
| E-5012.3 | GIBBS, ROBBIE | ENO | NCNC | POV | | 07/12/2011 |
| O-368 | JOHNSON, HARDY | DRI | GAOK | POV | | 07/12/2011 |
| O-640 | FINCHAM, MICHAEL D | EMT | CASH | AIR | RDD | 07/12/2011 |
| O-702 | BARRETT, BRUCE | SOF | MNVO | AIR | INL | 07/12/2011 |
| O-703 | KLOCK, LARRY JAMES | SOF | COPB | A/R | COS | 07/12/2011 |
| O-728 | MULLEN, BRENDAN | ABR | MTBD | A/R | BTM | 07/12/2011 |
| O-739 | WEEKS, RODNEY JAY | STE | IDCDC | AIR | GEG | 07/12/2011 |
| O-746 | HURST, GARY L | EQP | MSMN | AIR | JAN | 07/12/2011 |
| O-749 | SHINDELAR, BOBBY | OPB | IDBOF | A/R | BOI | 07/12/2011 |
| O-771 | PHELPS, RICH | PIO | CALPF | AIR | SMX | 07/12/2011 |
| O-835 | COOK, CHAD | TFL | NCNC | AIR | CLT | 07/12/2011 |

| Number | Name | Kind | UnitID | Travel Method | Jetport | Travel Date |
|---------|-------------------|------|--------|---------------|---------|-------------|
| O-847 | CLYMER, BRETT L | EMT | MOMO | AIR | XNA | 07/12/2011 |
| O-848 | HYDE III, BERT | EMT | MNSU | AIR | DLH | 07/12/2011 |
| O-849 | MEADOWS BARBER, | EMT | MOMO | AIR | SGF | 07/12/2011 |
| O-924 | FULLMAN, MELANIE | ATG | MIOTF | A/R | RHI | 07/12/2011 |
| E-134.4 | CRUCE, MIKE | ENO | FLFNF | POV | | 07/13/2011 |
| E-821.2 | O'CONNOR, ERIC L | ENG | SDRC | AIR | RAP | 07/13/2011 |
| E-821.3 | MANINGAS, CALEN | FFT | SDRC | AIR | RAP | 07/13/2011 |
| E-824.2 | LAROCHE, | FFT | SDRC | AIR | RAP | 07/13/2011 |
| E-922 | ENGINE - T6 - FWS | ENG | GAPD | AOV | | 07/13/2011 |
| E-992.1 | SPANGLER, STEVE | ENG | GAR08 | AOV | | 07/13/2011 |
| O-537 | LINDSAY, GLENDA | PTR | ORUP | AIR | EUG | 07/13/2011 |
| O-577 | GRIFFIS, WILLIE | DRI | GAOK | POV | | 07/13/2011 |
| O-732 | EVERS, MICHAEL R | EMT | COPB | AIR | COS | 07/13/2011 |
| O-761 | LANE, RUSSELL | OSC | OR582 | AIR | PDX | 07/13/2011 |
| O-845 | HUSCHKE, JOHN F | STE | MIHMF | A/R | GRR | 07/13/2011 |
| E-93.2 | SELF, STEVEN | DRI | FLFNF | POV | | 07/14/2011 |
| E-502 | WILDLAND FIRE SEC | ENG | FLFNF | POV | | 07/14/2011 |
| E-502.6 | IRVIN, SAUL | ENG | FLFNF | POV | | 07/14/2011 |
| E-898 | ENGINE - TYPE 6 - | ENG | MDMD | AOV | | 07/14/2011 |
| E-898.1 | HARRIS, JAMES | ENG | MDMD | AOV | BWI | 07/14/2011 |
| E-898.2 | STUPAK, BRIAN | ENG | MDMD | AOV | BWI | 07/14/2011 |
| O-868 | BRUNK, GARY E | FBA | VAVAF | AIR | TVC | 07/14/2011 |
| O-922 | LEPPALA, RAY E | HM | MNMN | A/R | DLH | 07/14/2011 |

Joint Information Center Fire Update

Fire Update for Monday, July 11, 2011 ~ 10 a.m.

Fire Information: www.inciweb.org



Honey Prairie Fire Complex: 295,415 acres, 70% contained
Sweat Farm Again Fire: 19,169 acres, 80% contained
Racepond Fire: 20,934 acres, 80% contained

There was no fire growth on the Honey Prairie Fire Sunday. The northeast area of the Honey Prairie Fire near Swamp Park received approximately two and a half inches of rain along with multiple lightning strikes. Significant rain was also received on the fire in an area northeast of Fargo estimated at four and a half inches. Today's activities will consist of a planned strategic firing operation of approximately 650 acres southeast of Swamp Park and south of the air boat trail in an effort to prevent fire activity from jumping containment lines in that area. Crews will continue to focus on holding and patrolling the fire lines around the fire's perimeter as well as mop up operations.

Both the Sweat Farm Again and Racepond Fires received rain in addition to numerous lightning strikes on Sunday. Crews remain vigilant for the possibility of new lightning fires. Fire crews continue to patrol the fire lines and extinguish remaining hot spots.

A Hazardous Weather Outlook has been issued by the National Weather Service: "Smoke from the Honey Prairie Fire will push to the northeast of the fire location impacting a portion of inland southeast Georgia including Waycross, Nahunta, Jesup, Woodbine and possibly Brunswick. Visibilities may be reduced to less than a mile at times and will mix with fog both this morning and Tuesday morning."

Okefenokee National Wildlife Refuge remains closed. During the early morning hours of low fire activity, firefighters staged at the Visitor Center are clearing downed trees and cutting down hazardous trees along the Ridley's Island Trail.

georgiafireinformationcenter@gmail.com

912-496-2566

Assigned Resources

142 Engines
18 Dozers
19 Water Tenders
9 Helicopters
1 Crew
882 Personnel

www.inciweb.org
www.fws.gov/okefenokee
www.gatrees.org

The Georgia Fire Information Center will be open from 8 a.m. – 7 p.m. daily to help assist the public and media with up to date information on all fires across Southeast Georgia and Okefenokee National Wildlife Refuge. Please contact us at 912-496-2566 or georgiafireinformationcenter@gmail.com.

Cooperators: Okefenokee National Wildlife Refuge; Georgia Forestry Commission; Florida Division of Forestry; U.S. Forest Service; Greater Okefenokee Association of Landowners (GOAL); Georgia Emergency Management Agency; Rayonier; Superior Pine; Langdale; GDOT; GSP; FLDOT; Georgia DNR; Georgia Aviation Authority; Georgia National Guard; Georgia DOC; County Fire Departments; Toledo Manufacturing Company; Charlton, Ware and Clinch Counties; and the Cities of Folkston and Homerville.

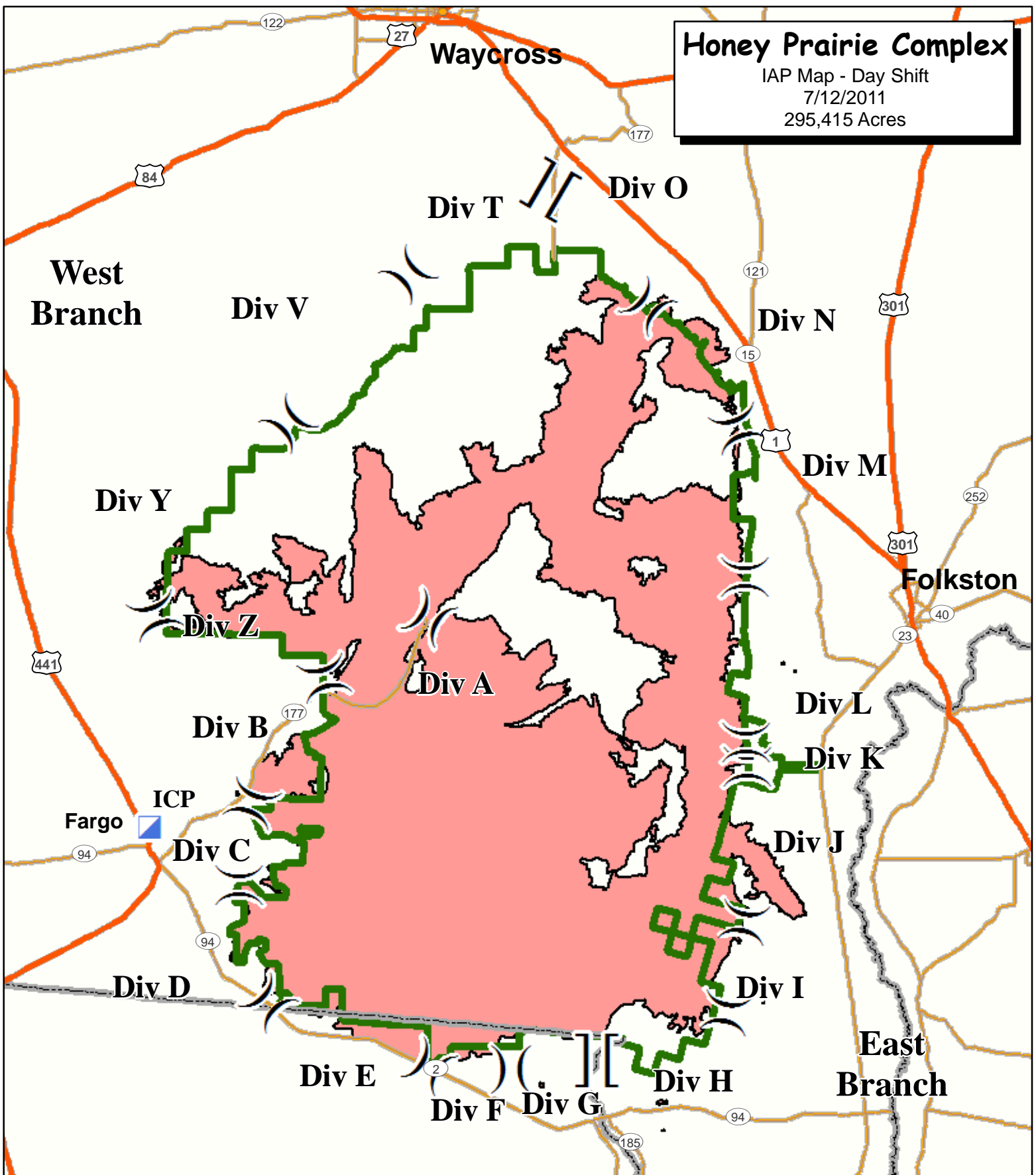
Closures: All entrances into Okefenokee National Wildlife Refuge are closed. All visitor activities are suspended until the threat of fire is over. For status updates on visitor activities, contact: Okefenokee National Wildlife Refuge, 912-496-7366; Okefenokee Swamp Park, 912-283-0583; or the Stephen C. Foster State Park, 912-637-5274.

Honey Prairie Complex

IAP Map - Day Shift

7/12/2011

295,415 Acres



Branch Break



Division Break



Incident Command Post

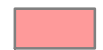
Highway

Major Road

State Boundary



Refuge Boundary



Fire Area



7/9/2011 1800
Sue Leverette

