

# Honey Prairie Complex

*GA-OKR-000001*

## Incident Action Plan

Operational Period  
Wednesday July 13, 2011

Day Shift (0800-2100)  
Night Shift (1800-0600)

### **Accounting Codes**

FWS – 9141-F25M-2J

NPS – 5023 F25M E11

BLM – F25M

USFS – PRF25M\_1502

Initial Attack – F4PM

<b>INCIDENT OBJECTIVES</b>	<b>1. INCIDENT NAME</b> Honey Prairie Complex	<b>2. DATE PREPARED</b> 7/12/11	<b>3. TIME PREPARED</b> 1800
<b>4. OPERATIONAL PERIOD (DATE/TIME)</b> Wednesday July 13, 2011 Day (0800 – 2100) and Night (1800 – 0600)			
<b>5. GENERAL CONTROL OBJECTIVES FOR THE INCIDENT (INCLUDE ALTERNATIVES)</b> 1. Provide for safety of incident personnel and public in all incident operations. 2. Maintain a positive working relationship with all adjacent landowners, cooperators State and Federal partners. Inform, involve and communicate incident planning and operations with all partners. 3. Contain all fires that are within the Okefenokee National Wildlife Refuge, inside the Refuge and/or inside the swamp edge break if possible. 4. In cooperation with local timberland owners, use full suppression strategies and tactics to minimize damage to private timberlands and improvements and to prevent fires outside the Refuge from entering the Refuge. 5. Assist in management and suppression of additional fires (new starts or breakouts) in the vicinity as approved by Agency Administrators and Unified Incident Commanders. 6. Protect all cultural and archeological sites and structures within the refuge, with particular attention to facilities at Okefenokee Swamp Park. 7. Manage the fires cost-effectively consistent with the values at risk. 8. Implement structure protection as necessary for at-risk facilities and communities. 9. Coordinate suppression actions with assigned Refuge Resource Advisors			
<b>6. WEATHER FORECAST FOR OPERATIONAL PERIOD</b> See attached forecast for area specific weather information.			
<b>7. GENERAL SAFETY MESSAGE</b> Drive defensively and use spotter when backing. Ensure LCES is in place and known by all personnel. Drink plenty of water and take frequent rest breaks. Ensure proper use of PPE during all operations.			
<b>8. Attachments (☐ if attached)</b> ☐ Organization List (ICS 203)                      ☐ Incident Map                                      ☐ Safety Message ☐ Assignment List (ICS 204)                      ☐ Traffic Plan    ☐ Demobilization Procedures ☐ Communications Plan (ICS 205)                      ☐ Human Resources                                      ☐ Unit Log ☐ Medical Plan (ICS 206)                      ☐ Phone List			
<b>9. PREPARED BY (PLANNING SECTION CHIEF)</b> Ed Flowers		<b>10. APPROVED BY (INCIDENT COMMANDER)</b> /s/ Don West /s/Trent Ingram /s/Mike Dueitt	

ORGANIZATION ASSIGNMENT LIST		9. Operations Section		
<b>1. Incident Name</b> <b>Honey Prairie Complex</b> GA-OKR-000001		Chief	Roger Gill (West Branch) 7/25, Butch Hall (East Branch) 7/22	
		Planning	Rick Dolan 7/22	
<b>2. Date</b> 7/12/2011	<b>3. Time</b> 1000 hrs	<b>a. WEST BRANCH - Divisions/Groups</b>		
<b>4. Operational Period</b> 7/13/2011 Day (0800 - 2100) Night (1800 - 0600)		OPBD	Tom Donohoe 7/22	
<b>5. Incident Commander and Staff</b>		Division	A, B, C	Bill Altman / Greg Jacobson (t)
Incident Commander	Don West/Verne Riggall (Dep)/ Trent Ingram/Mike Dueitt	Division	D, E, F, G	Thomas Herold 7/19
Liason Officer	Gary Beauchamp 7/14	Division	T	Brian Rhodes 7/20 / Todd Haynes (t) 7/19
Safety Officers	Barry Coulliette 7/22 / Ray Durham 7/23	Division	V	Shawn Duggar 7/22 Bryce Thomas (t) 7/13 Greg Suszek (t) 7/19
Information Officer	Ludie Bond 7/22	Division	Y (DAY)	Gary Smith 7/19 / Dan Helderline (t) 7/19
<b>6a. Agency Administrators</b>		Division	V, Y (NIGHT)	Jacquie Parks 7/20
FWS	Curt McCasland	Division	Z	Glen Palfrey 7/20 / Jesse Knox (t) 7/18
FWS	Mindy Gautreaux	Group	IA-WEST and Structure Group	Don Hammack 7/19 / Bob Schober (t) 7/18
<b>6b. Agency Representatives</b>		<b>b. EAST BRANCH - Divisions/Groups</b>		
FWS Liason	Skippy Reeves	OPBD	Brett Waters 7/25	
GFC	Frank Sorrels	Division	H, I, J, K	Matt Filbert 7/18
FLDOF	James Karels	Division	L, M	Ray Miller 7/20
FWS AREP	Mike Housh	Division	N, O	Steve Griffin 7/19
FWS-Refuge PAO	Art Webster	Group	IA-EAST	Billy Taylor 7/26
GEMA AREP	Alan Robinson / Diane Adams	Group	Roads	
USFS AREP	Ivan Greene			
<b>7. Planning Section</b>		<b>c. AIR OPERATIONS BRANCH - Honey Prairie</b>		
Chief	Ed Flowers 7/22			
Dep Chief	Steve Budd-Jack 7/25			
Resources Unit	Wilbur Priest 7/22 / Fred Noack 7/19	Air Operations Branch Director	Tim Elder 7/22	
Situation Unit	Scott Crosby 7/22	Air Support Group Supervisor	Don Nicholas 7/22	
IMET	Joe Goudsward 7/21 / Mike Bettwy 7/21	ATGS-Lake City	Tim Caughlin 7/16	
FBAN	Gary Brunk 7/13 / John Kern 7/22	<b>d. AIR OPERATIONS BRANCH-Waycross</b>		
Demob Unit	Tim Wilkinson 7/22	Waycross Helibase Manager		
GIS	Sue Leverette 7/22	<b>e. AIR OPERATIONS BRANCH - Fargo</b>		
CTSP	Randy Fountain 7/22 / Charlie Bolen 7/17	Fargo Helibase Manager	Brain Campbell 7/22 / Steve Croy (t) 7/15	
TNSP	Larry Moore 7/24	ATGS-Fargo	Carl McGill 7/18	
<b>8. Logistics Section</b>		<b>10. Finance Section</b>		
Chief	Shane Locke 7/21/Butch Mallet 7/22	Chief	Betty Palmiotto 7/22 / Linda Starling 7/22	
Supply Unit	Rhonda Hughes 7/22	Time Unit	Frances Matheny 7/22	
GSUL	James Thompson 7/22	Procurement	John Watson 7/22	
ORDM	Abe Phillipson 7/22 / Cindy Tisdale 7/24	Comp Claims Unit	Alvin Welch 7/21 / Katrina Bryant 7/22	
COML	Brian Mathews 7/22	Cost	Lisa Ridley 7/22	
Medical Unit	Joe Fowler 7/22	Buying Team	Rita Loper	
Facilities	Bill Hitt 7/22 / Mel Reese(t) 7/22	IBA	Ron Knowles 7/19	
Food	Nat Wright 7/22/Bob Kookan 7/17			
RCDM	Gary Sisson 7/22			
BCMG	Carl Taylor 7/25			
		Prepared by:	Wilbur Priest RESL	

<b>DIVISION ASSIGNMENT LIST</b>			1. Branch <b>West</b>	2. Division <b>A, B, C</b>			
3. Incident Name: <b>Honey Prairie Complex</b>			4. Operational Period Date: 7/13/2011 Time: Day: 0800-2100				
5. Operations Personnel							
<b>Operations</b>	Roger Gill 7/25		<b>Branch Director</b>		Tom Donohoe 7/22		
<b>Planning Ops</b>	Rick Dolan 7/22		<b>Division Supervisor</b>		Bill Altman 7/19 Greg Jacobson (t) 7/19		
<b>Safety Officer</b>	Barry Coulliette 7/22						
6. Resources Assigned this Period							
Strike Team/Task Force/ Resource Designator	Leader / Name / Designator		Last Shift Date	Num. Per.	Drop Off PT./Time	Pick Up PT./Time	
<b>TFLD (O-897)</b>	<b>Terry George</b>		7/14	1			
<b>TFLD (O-898)</b>	<b>Joel McCraw (t)</b>		7/14	1			
<b>TFLD (O-900)</b>	<b>Phill Millette</b>		7/18	1			
<b>TFLD (E-838.6)</b>	<b>Darren Franco (t)</b>		7/21	1			
<b>STEN (O-949)</b>	<b>Nikia Hernandez</b>		7/19	1			
ENG6 (E-405)	Brett Gore		7/24	3			
ENG6 (E-907) Eagle Staff	Brady Ward		7/22	2			
ENG6 (E-994)	Pat Norquay		7/18	3			
ENG6 (E-1059)	Daniel Ross		7/22	3			
ENG6 (E-1065)	Mike Carnelli		7/22	3			
ENG6 (E-1066)	Eric Jones		7/21	3			
ENG6 (E-5002) Attack#1	Hank Kight		7/20	2	PVT		
ENG6 (E-1076) MOMTF 9504	Tim Perren		7/24	3			
WAT2 (E-93)	Steven Self			1	PVT		
<b>SOF2 (O-1068)</b>	<b>Jamey Burnsed</b>		7/24	1			
<b>EMTB (O-984)</b>	<b>Bob Eaton</b>		7/20	1			
7. Control Operations							
<ul style="list-style-type: none"> <li>Patrol and mop up within 100' of fire perimeter line.</li> <li>Monitor fire impacts to Stephen Foster State Park.</li> <li>Patrol and control return.</li> </ul>							
8. Special Instructions							
<ul style="list-style-type: none"> <li>Examine work area for fire weakened snags.</li> <li>Ensure LCES are in place before operations begin and stay hydrated.</li> <li>Additional resources will be available from GFC, Florida DOF, FWS, and local cooperators.</li> <li>Drive defensively and with lights on at all times.</li> </ul>							
9. Division/Group Communication Summary							
Function	Frequency	System	Channel	Function	Frequency	System	Channel
Command N Okee Repeater	RX 164.5750/206.5 TX 163.150/206.5	KING NIFC	5	Logistics		KING NIFC	
Tactical Div/Group	RX 168.775 TX 168.7750	KING NIFC	9	Air to Ground	RX 166.9375 TX 166.9375	KING NIFC	6
Prepared by (Resource Unit Ldr.) Fred Noack		Approved by (Planning Sect. Ch.) /s/ Ed Flowers			Date 7/12/2011		Time 1930

<b>DIVISION ASSIGNMENT LIST</b>			1. Branch <b>West</b>		2. Division <b>D, E, F, G</b>		
3. Incident Name <b>Honey Prairie Complex</b>			4. Operational Period Date: 7/13/2011 Time: 0800-2100				
5. Operations Personnel							
<b>Operations</b>		Roger Gill 7/25		<b>Branch Director</b>		Tom Donohoe 7/22	
<b>Planning Ops</b>		Rick Dolan 7/22		<b>Division Supervisor</b>		Toby Herold 7/20 / Paul Pelligrini (t) 7/20	
<b>Safety Officer</b>		Barry Coulliette 7/22					
6. Resources Assigned this Period							
Strike Team / Task Force / Resource Designator		Leader / Name / Designator		Last Shift Date	Num. Per.	Drop Off PT./Time	Pick Up PT./Time
<b>TFLD (O-916)</b>		<b>Hans Ohme</b>		7/18	1		
<b>TFLD (O-926)</b>		<b>Matt Ingram</b>		7/18	1		
<b>STPL (O-1055)</b>		<b>Royce Davis</b>		7/23	1		
ENG6 (E-134)		Paul McDavid		7/20	3	PVT	
ENG5 (E-503)		Dean Vanderbleek		7/18	2	PVT	
ENG6 (E-709)		Jason Walker		7/16	3	PVT	
ENG6 (E-821)		Josh Lange		7/24	3		
ENG6 (E-824)		Chris Brubaker		7/24	3		
TPL3 (E-1138)		Jim Reynolds		7/23	1		
TPL3 (E-1139)		Stan Jackson		7/23	1		
TPL3 (E-914)		Fred Robinson		7/23	1		
WT (E-700)		Lee Cahoon		7/17	1	PVT	
<b>EMTB (O-984)</b>		<b>Paul Smith</b>		7/24	1		
<b>SO2 (O-805)</b>		<b>Troy Shaddox</b>		7/14	1		
7. Control Operations <ul style="list-style-type: none"> <li>Monitor and patrol south end of West Branch.</li> <li>Mop up all hot spots within 100' of the fire perimeter.</li> <li>Patrol and control reburn.</li> </ul>							
8. Special Instructions <ul style="list-style-type: none"> <li>Ensure LCES are in place before operations begin and stay hydrated.</li> <li>See medical plan for EMT support.</li> <li>Drive defensively and with lights on at all times.</li> <li>Examine work area for fire weakened snags.</li> <li>If communications needed with Impassable Bay Fire - use Channel 11 (168.2000)</li> </ul>							
9. Division/Group Communication Summary							
Function	Frequency	System	Channel	Function	Frequency	System	Channel
<b>Command</b> <b>S Okee Repeater</b>	RX 164.7750/123.0 TX 163.150/123.0	KING NIFC	2	Logistics		KING NIFC	
Tactical Div/Group	RX 151.2725 TX 151.2725	KING NIFC	13	Air to Ground	RX 166.9375 TX 166.9375	KING NIFC	6
Prepared by (Resource Unit Ldr.) Fred Noack		Approved by (Planning Sect. Ch.) /s/ Ed Flowers			Date July 12, 2011		Time 1930

DIVISION ASSIGNMENT LIST				1. Branch West		2. Division T	
3. Incident Name <b>Honey Prairie Complex</b>				4. Operational Period Date: 7/13/2011 Time: 0800-2100			
5. Operations Personnel							
Operations	Roger Gill 7/25			Branch Director	Tom Donohoe 7/22		
Planning Ops	Rick Dolan 7/22			Division	Brian Rhodes 7/20 / Todd Haynes (t) 7/19		
Safety Officer	Barry Coulliette 7/22						
6. Resources Assigned this Period							
Strike Team/Task Force/ Resource Designator		Leader / Name / Designator		Last Shift Date	Num. Per.	Drop Off PT./Time	Pick Up PT./Time
TFLD (O-946)		Stephen Filmore		7/19	1		
TFLD (E-831.8)		Jeff Hussey		7/23	1		
STEN (O-952)		Vincent Plummer		7/19	1		
S/T Type 6 OR TFLD (t) (E-831.9)		Deana Wall		7/23	1		
ENG6 (E-831.5)		Shane Thames		7/23	3		
ENG6 (E-831.1)		Ben Nichols		7/23	4		
ENG6 (E-831.4)		Eric Hahn		7/23	3		
ENG6 (E-831.6)		Tavis Fenske		7/23	3		
ENG6 (E-831.7)		Mike Towers		7/23	3		
ENG6 (E-815)		Matt Dillon		7/22	2		
ENG6 (E-816)		Jamie Remme		7/22	2		
ENG6 (E-817)		Mike Mattson		7/22	2		
ENG6 (E-818)		Scott Lindow		7/22	2		
ENG6 (E-1073)		Mike Schlitz		7/22	3		
WAT1 (E-1019)		Frank Durrance		7/21	1	PVT	
WAT2 (E-1021)		Charlie Brown		7/19	1	PVT	
TPL2 (E-986)		David Hauser		7/26	1	PVT	
TPL2 (E-988)		Jonathon Houser		7/30	1		
KG (E-989)		Cleo Simon		7/30	1		
EMTP (O-982)		Jeff Halladay		7/22	1		
SOF2 (O-973)		Larry Dorshorst		7/20	1		
7. Control Operations							
<ul style="list-style-type: none"> <li>Recon potential control lines and examine area for snag removal</li> <li>Improve swamp break boundaries for fire breaks, work w/resource advisor</li> <li>Coordinate potential burn-out w/READ and refuge personnel</li> <li>Use refuge personnel for any burn-out activities.</li> </ul>							
8. Special Instructions							
<ul style="list-style-type: none"> <li>If the fire reaches <b>Mgt Activity Line (MAL) 1</b> cooperators and adjacent landowners will be notified. If the fire reaches <b>MAL 2</b> a meeting will be held at the Swamp Park with adjacent landowners and cooperators.</li> <li>Make contact with the Resource Advisor before using mechanical equipment.</li> <li>Safely push down with equipment all snags whether on fire or not that are a threat to success or tactical operations.</li> <li>Ensure LCES are in place before operations begin. Stay hydrated.</li> <li>Drive defensively and with lights on at all times.</li> <li>Boggy terrain: Be careful and aware when working around this type of area.</li> </ul>							
9. Division/Group Communication Summary							
Function	Frequency	System	Channel	Function	Frequency	System	Channel
Command N Okee Repeater	RX 164.5750/206.5 TX 163.150/206.5	KING NIFC	5	Logistics		KING NIFC	
Tactical Div/Group	RX 168.775 TX 168.775	KING NIFC	9	Air to Ground	RX 166.9375 TX 166.9375	KING NIFC	6
Prepared by (Resource Unit Ldr.) Fred Noack		Approved by (Planning Sect. Ch.) /s/ Ed Flowers			Date July 12, 2011		Time 1800

DIVISION ASSIGNMENT LIST		1. Branch <b>West</b>		2. Division <b>V</b>		1 of 2	
3. Incident Name <b>Honey Prairie Complex</b>		4. Operational Period Date: <b>7/13/2011</b> Time: <b>0800-2100</b>					
5. Operations Personnel							
<b>Operations</b>	Roger Gill 7/25	<b>Branch Director</b>		Tom Donohoe 7/22			
<b>Planning Ops</b>	Rick Dolan 7/22	<b>Division Supervisor</b>		Shawn Duggar 7/22 / Bryce Thomas (t) 7/13			
<b>Safety Officer</b>	Barry Coulliette 7/22	<b>Division Supervisor</b>		Greg Suszek (t) 7/19			
6. Strike Team/Task Force/ Resource Designator							
	Leader / Name / Designator	Last Shift Date	Num. Per.	Drop Off PT./Time	Pick Up PT./Time		
<b>TFLD (O-906)</b>	<b>Evan Karp</b>	7/18	1				
<b>TFLD (O-978)</b>	<b>Jacob Thelen (t)</b>	7/19	1				
<b>TFLD (O-942)</b>	<b>Ben Krupski</b>	7/19	1				
<b>TFLD(O-1000)</b>	<b>Waylon Meek (t)</b>	7/20	1				
Feller-Buncher (E-524)	Josh Burdy	7/21	1	PVT			
Feller-Buncher (E-526)	James Marshall	7/16	1	PVT			
Grader (E-530)	Lucious Corbett	7/?	1	PVT	Need to check in		
TPL2 (E-606)	Cody Daniels	7/17	1				
ENG6 (E-2)	Eric Nelson	7/19	1	O-436			
ENG6 (E-3)	Daniel Angelo	7/24	2				
ENG6 (E-992)	Justin Dillon	7/20	3	PVT			
ENG6 (E-995)	Mike Daigle	7/25	3				
ENG6 (E-996)	John Cousins	7/25	3				
ENG6 (E-1000)	Paul Rampinini	7/19	3	PVT			
ENG6 (E-1001)	Dick Sypher	7/19	3	PVT			
ENG6 (E-1053)	Timmerman	7/27	3	PVT			
ENG6 (E-1064)	Greg Nichols	7/21	3				
ENG6 (E-1062)	Tyler Quintano	7/22	3	PVT			
ENG6 (E-1063)	Brad Finch	7/22	3	PVT			
ENG6 (E-1085)	Don Crane	7/14	2	PVT			
7. Control Operations <ul style="list-style-type: none"> <li>Recon potential control lines and examine area for snag removal</li> <li>Improve swamp break boundaries for fire breaks, work w/resource advisor</li> <li>Coordinate potential burn-out w/READ and Refuge Personnel</li> <li>Use Refuge personnel for any burn-out activities.</li> </ul>							
8. Special Instructions <ul style="list-style-type: none"> <li>If the fire reaches <b>Mgt Activity Line (MAL) 1</b> cooperators and adjacent landowners will be notified. If the fire reaches <b>MAL 2</b> a meeting will be held at the Swamp Park with adjacent landowners and cooperators.</li> <li>Make contact with the Resource Advisor before using mechanical equipment.</li> <li>Safely push down with equipment all snags whether on fire or not that are a threat to success or tactical operations.</li> <li>Ensure LCES are in place before operations begin. Stay hydrated.</li> <li>Drive defensively and with lights on at all times.</li> <li>Boggy terrain: Be careful and aware when working around this type of area.</li> </ul>							
9. Division/Group Communication Summary							
Function	Frequency	System	Channel	Function	Frequency	System	Channel
Command N Okee Repeater	RX 164.5750/206.5 TX 163.150/206.5	KING NIFC	5	Logistics		KING NIFC	
Tactical Div/Group	RX 151.2725 TX 151.2725	KING NIFC	13	Air to Ground	RX 166.9375 TX 166.9375	KING NIFC	6
Prepared by (Resource Unit Ldr.) Fred Noack		Approved by (Planning Sect. Ch.) /s/ Ed Flowers		Date July 12, 2011		Time 1800	





DIVISION ASSIGNMENT LIST				1. Branch <b>West</b>		2. Division <b>Y - Day</b>		1 of 2	
3. Incident Name <b>Honey Prairie Complex</b>				4. Operational Period Date: <b>7/13/2011</b> Time: <b>0800-2100</b>					
5. Operations Personnel									
Operations		Roger Gill 7/25			Branch Director		Tom Donohoe 7/22		
Planning Ops		Rick Dolan 7/22			Division Supervisor		Gary Smith 7/19, Dan Helterline (t) 7/19		
Safety Officer		Barry Coulliette 7/22							
6. Resources Assigned this Period									
Strike Team/Task Force/ Resource Designator		Leader / Name / Designator		Last Shift Date	Num. Per.	Drop Off PT./Time		Pick Up PT./Time	
TFLD (O-920)		Aaron Schneider		7/18	1				
TFLD (O-991)		Adam Wolf (t)		7/21	1				
TFLD (O-954)		Brian Ebert (t)		7/20	1				
STEN (O-979)		Sam Lindblom (t)		7/20	1				
ENG6 (E-584)		Cris Geidel		7/24	2				
ENG6 (E-838)		Chris Mursu		7/21	2				
ENG6 (E-997)		Jack Weer		7/20	2				
ENG6 (E-998)		John Stebner		7/20	2				
ENG6 (E-1004)		Doug Scott		7/19	2	PVT			
ENG6 (E-1005)		Dave Hardy		7/19	2	PVT			
ENG6 (E-1010)		Gene-Paul Matson		7/18	2	PVT			
ENG6 (E-1011)		Greg Curry		7/18	2	PVT			
ENG6 (E-1012)		Glenn Hill		7/18	2	PVT			
ENG6 (E-1014)		Doug Vankuiken		7/19	3	PVT			
ENG6 (E-1015)		Robert Burton		7/20	3	PVT			
ENG6 (E-1016)		James Mangine		7/20	3	PVT			
ENG5 (E-1036)		Tom Gates		7/23	3				
ENG5 (E-1046)		Karen Mobley		7/21	3				
ENG6 (E-1056)		John Wisecarver		7/28	3	PVT			
ENG6 (E-1071)		Clayton Swanger		7/22	3				
7. Control Operations <ul style="list-style-type: none"> <li>Make contact with the Resource Advisor before using mechanical equipment.</li> <li>Recon potential controllines and examine area for snag removal</li> <li>Improve swamp break boundaries for fire breaks</li> </ul>									
8. Special Instructions <ul style="list-style-type: none"> <li>If the fire reaches <b>Mgt Activity Line (MAL) 1</b> cooperators and adjacent landowners will be notified. If the fire reaches <b>MAL 2</b> a meeting will be held at the Swamp Park with adjacent landowners and cooperators.</li> <li>Safely push down with equipment all snags whether on fire or not that are a threat to success or tactical operations.</li> <li>Ensure LCES are in place before operations begin. Stay hydrated.</li> <li>Drive defensively and with lights on at all times.</li> <li>Boggy terrain: Be careful and aware when working around this type of area.</li> </ul>									
9. Division/Group Communication Summary									
Function	Frequency	System	Channel	Function	Frequency	System	Channel		
Command N Okee Repeater	RX 164.5750/206.5 TX 163.150/206.5	KING NIFC	5	Logistics		KING NIFC			
Tactical Div/Group	RX 151.2725 TX 151.2725	KING NIFC	13	Air to Ground	RX 166.9375 TX 166.9375	KING NIFC	6		
Prepared by (Resource Unit Ldr.) Fred Noack		Approved by (Planning Sect. Ch.) /s/ Ed Flowers			Date July 12, 2011		Time 1730		

DIVISION ASSIGNMENT LIST			1. Branch <b>West</b>		2. Division <b>Y - Day</b>		2 of 2		
3. Incident Name <b>Honey Prairie Complex</b>			4. Operational Period Date: <b>7/13/2011</b> Time: <b>0800-2100</b>						
5. Operations Personnel									
<b>Operations</b>		Roger Gill 7/25		<b>Branch Director</b>		Tom Donohoe 7/22			
<b>Planning Ops</b>		Rick Dolan 7/22		<b>Division Supervisor</b>		Gary Smith 7/19, Dan Helterline (t) 7/19			
<b>Safety Officer</b>		Barry Coulliette 7/22							
6. Resources Assigned this Period									
Strike Team/Task Force/ Resource Designator		Leader / Name / Designator		Last Shift Date	Num. Per.	Drop Off PT./Time		Pick Up PT./Time	
WT2 (E-512)		Mack Evans		7/31	1	PVT			
WT2 (E-560)		Woody Bargeron		7/24	1	PVT			
WTS1 (E-716)		Donnie Griffis		7/26	1	PVT			
WT2 (E-1024)		Richard Jones		7/28	1	PVT			
WT2 (E-1017)		Jean Ball		7/25	1	GAOKR			
<b>DOZB (O-1004)</b>		<b>Derek Cooper</b>		7/20	1				
<b>DOZB (O-1008)</b>		<b>Zack Culver (t)</b>		7/21	1				
TPL2 (E-497)		Leslie Jeter		7/22	1	PVT			
TPL3 (E-943)		Hugh Matchett		7/20	1	PVT			
TPL3 (E-984)		Junior House		7/27	1	PVT			
TPL2 (E-985)		Aaron Tipton		7/27	1	PVT			
<b>SOF2 (O-891)</b>		<b>Steve Holman</b>		7/17	1				
<b>EMTP (E-766)</b>		<b>Peggy Miller</b>		R&R	1			Return on 7/15	
<b>EMTB (E-1077)</b>		<b>Michael Graham</b>		7/26	1				
7. Control Operations <ul style="list-style-type: none"> <li>Make contact with the Resource Advisor before using mechanical equipment.</li> <li>Recon potential controllines and examine area for snag removal</li> <li>Improve swamp break boundaries for fire breaks</li> </ul>									
8. Special Instructions <ul style="list-style-type: none"> <li>If the fire reaches <b>Mgt Activity Line (MAL) 1</b> cooperators and adjacent landowners will be notified. If the fire reaches <b>MAL 2</b> a meeting will be held at the Swamp Park with adjacent landowners and cooperators.</li> <li>Safely push down with equipment all snags whether on fire or not that are a threat to success or tactical operations.</li> <li>Ensure LCES are in place before operations begin. Stay hydrated.</li> <li>Drive defensively and with lights on at all times.</li> <li>Boggy terrain: Be careful and aware when working around this type of area.</li> </ul>									
9. Division/Group Communication Summary									
Function	Frequency	System	Channel	Function	Frequency	System	Channel		
Command N Okee Repeater	RX 164.5750/206.5 TX 163.150/206.5	KING NIFC	5	Logistics		KING NIFC			
Tactical Div/Group	RX 151.2725 TX 151.2725	KING NIFC	13	Air to Ground	RX 166.9375 TX 166.9375	KING NIFC	6		
Prepared by (Resource Unit Ldr.) Fred Noack		Approved by (Planning Sect. Ch.) /s/ Ed Flowers			Date July 12, 2011		Time 1730		

DIVISION ASSIGNMENT LIST				1. Branch <b>West</b>		2. Division <b>V,Y Night</b>	
3. Incident Name <b>Honey Prairie Complex</b>				4. Operational Period Date: <b>7/13/2011</b> Time: <b>1800-0600</b>			
5. Operations Personnel							
<b>Operations</b>		Roger Gill 7/25		<b>Branch Director</b>		Tom Donohoe 7/22	
<b>Planning Ops</b>		Rick Dolan 7/22		<b>Division Supervisor</b>		Jacquie Parks 7/20	
<b>Safety Officer</b>		Barry Coulliette 7/22					
6. Resources Assigned this Period							
Strike Team/Task Force/ Resource Designator		Leader / Name / Designator		Last Shift Date	Num. Per.	Drop Off PT./Time	Pick Up PT./Time
<b>TFLD (E-973.1)</b>		<b>Heath Serres</b>		7/14	1		
<b>TFLD (O-944)</b>		<b>Dave Marion</b>		7/19	1		
<b>STEN (t) (O-1018)</b>		<b>Greg Thomas</b>		7/23	1		
ENG6 (E-76)		Chris Henderson		7/20	2		
ENG6 (E-78)		Kevin Cline		7/20	2		
ENG6 (E-80)		Dane Bass		7/20	2		
ENG6 (E-81)		Troy Helms		7/20	2		
ENG6 (E-973)		Rick Young		7/14	2	PVT	
ENG6 (E-975)		Nort Phillips		7/14	3	PVT	
ENG6 (E-1081)		Tim Joy		7/21	2		
ENG6 (E-1082)		Brad Gregory		7/21	2		
ENG6 (E-1083)		Tony Harkins		7/21	2		
WAT2 (E-954)		Jim Griffin		7/23	1	PVT	
<b>SOF2 (O-997)</b>		<b>Bob Habeck</b>		7/22	1		
<b>EMTP (O-640)</b>		<b>Mike Fincham</b>		R&R	1		Return 7/15
<b>EMTP (O-1076)</b>		<b>Wes Lathen</b>		7/26	1		
<b>EMTB (O-983)</b>		<b>Dominic Burchett</b>		7/22	1		
7. Control Operations <ul style="list-style-type: none"> <li>Make contact with the Resource Advisor before using mechanical equipment.</li> <li>Recon potential controllines and examine area for snag removal</li> <li>Improve swamp break boundaries for fire breaks</li> </ul>							
8. Special Instructions <ul style="list-style-type: none"> <li>Safely push down with equipment all snags whether on fire or not that are a threat to success or tactical operations.</li> <li>Ensure LCES are in place before operations begin. Stay hydrated.</li> <li>Drive defensively and with lights on at all times.</li> <li>Boggy terrain: Be careful and aware when working around this type of area.</li> </ul>							
9. Division/Group Communication Summary							
Function		Frequency		System	Channel	Function	Frequency
Command N Okee Repeater		RX 164.5750/206.5 TX 163.150/206.5		KING NIFC	5	Logistics	KING NIFC
Tactical Div/Group		RX 151.2725 TX 151.2725		KING NIFC	13	Air to Ground	RX 166.9375 TX 166.9375
KING NIFC							6
Prepared by (Resource Unit Ldr.) Fred Noack			Approved by (Planning Sect. Ch.) /s/ Ed Flowers			Date July 12, 2011	
						Time 1730	

<b>DIVISION ASSIGNMENT LIST</b>			1. Branch <b>West</b>		2. Division <b>Z</b>		
3. Incident Name: <b>Honey Prairie Complex</b>			4. Operational Period Date: 7/13/2011 Time: Day: 0800-2100				
5. Operations Personnel							
<b>Operations</b>	Roger Gill 7/25			<b>Branch Director</b>	Tom Donohoe 7/22		
<b>Planning Ops</b>	Rick Dolan 7/22			<b>Division Supervisor</b>	Glen Palfrey 7/20 / Jesse Knox (t) 7/18		
<b>Safety Officer</b>	Barry Coulliette 7/22						
6. Resources Assigned this Period							
Strike Team/Task Force/ Resource Designator		Leader / Name / Designator		Last Shift Date	Num. Per.	Drop Off PT./Time	Pick Up PT./Time
<b>TFLD (O-889)</b>		<b>Kris Larson</b>		7/19	1		
<b>TFLD (O-921)</b>		<b>Brad Hall (t)</b>		7/18	1		
<b>STEN (O-955)</b>		<b>Randy Scherr</b>		7/19	1		
ENG6 (E-392)		Tyson Taylor		7/21	3		
ENG5 (E-502)		Saul Irvin		7/13	2	PVT	
ENG6 (E-850)		Mike Haisten		7/21	3		
ENG5 (E-905)		Travis Bailey		7/23	3		
ENG6 (E-1047)		Thomas Sherman		7/21	3	PVT	
ENG6 (E-1051)		Kyle Zuehlke		7/21	3	PVT	
ENG6 (E-1052)		Ryan Schlater		7/28	3	PVT	
ENG6 (E-1057)		Troy Mueller		7/20	3		
ENG6 (E-1067)		Shaun Moore		7/21	3		
ENG6 (E-5007)		Jim Gipson		7/21	2	PVT	
ENG6 (E-5008)		Matt Stoneking		7/23	2	PVT	
ENG6 (E-5011) Smokey Mt 209		James Searcy		7/21	2	PVT	
ENG6 (E-5012) Smokey Mt 301		Marshall Halford		7/29	2	PVT	
<b>EMTP (O-1075)</b>		<b>Chad Simons</b>		7/26	1		
<b>EMTP (O-847)</b>		<b>Levi Clymer</b>		R&R	1		Return 7/15, last shift 7/28
<b>SOF2 (O-892)</b>		<b>Steven Ripley</b>		7/17	1		
7. Control Operations							
<ul style="list-style-type: none"> <li>Contain all fires outside refuge boundary.</li> <li>Patrol and mop up within 100' of fire perimeter line.</li> </ul>							
8. Special Instructions							
<ul style="list-style-type: none"> <li>Ensure that tractors are cleaned and free of debris daily. Examine work area for fire weakened snags.</li> <li>Ensure LCES are in place before operations begin and stay hydrated.</li> <li>Additional resources will be available from GFC, Florida DOF, FWS, and local cooperators.</li> <li>Drive defensively and with lights on at all times.</li> <li>See Medical plan for EMT support.</li> <li>Implement MIST tactics</li> </ul>							
9. Division/Group Communication Summary							
Function	Frequency	System	Channel	Function	Frequency	System	Channel
Command N Okee Repeater	RX 164.5750/206.5 TX 163.150/206.5	KING NIFC	5	Logistics		KING NIFC	
Tactical Div/Group	RX 168.200 TX 168.200	KING NIFC	11	Air to Ground	RX 166.9375 TX 166.9375	KING NIFC	6
Prepared by (Resource Unit Ldr.) Fred Noack		Approved by (Planning Sect. Ch.) /s/ Ed Flowers			Date July 12, 2011		Time 1930

<b>DIVISION ASSIGNMENT LIST</b>				1. Branch <b>West</b>		2. Division <b>West - Initial Attack and Structure Protection</b> 1 of 2	
3. Incident Name: <b>Honey Prairie Complex</b>				4. Operational Period Date: 7/13/2011 Time: Day: 0800-2100			
5. Operations Personnel							
<b>Operations</b>	Roger Gill 7/25			<b>Branch Director</b>	Tom Donohoe 7/22		
<b>Planning Ops</b>	Rick Dolan 7/22			<b>Division Supervisor</b>	Don Hammack 7/19 / Bob Schober (t) 7/18		
<b>Safety Officer</b>	Barry Coulliette 7/22						
6. Resources Assigned this Period							
Strike Team/Task Force/ Resource Designator	Leader / Name / Designator		Last Shift Date	Num. Per.	Drop Off PT./Time	Pick Up PT./Time	
<b>STEN (O-947)</b>	<b>Jess Register</b>		7/20	1			
<b>STEN (O-951)</b>	<b>Jerry Van Dyne</b>		7/20	1			
<b>STEN (O-990)</b>	<b>Joe Sampson</b>		7/20	1			
<b>HEQB (O-958)</b>	<b>Tim Boyce</b>		7/20	1			
ENG6 (E-404)	John Knapper		7/23	3			
ENG6 (E-906)	James Burk		7/23	3			
ENG6 (E-939)	Chad Ingle		7/23	3			
ENG6 (E-1013)	William Paulton		7/20	3	PVT		
ENG6 (E-1045)	Andrew English		7/28	3	PVT		
ENG6 (E-1048)	Joseph Jarrells		7/21	3			
ENG6 (E-1049)	James Dowd		7/20	3			
ENG6 (E-1054)	Shawn Kanouse		7/28	3	PVT		
ENG6 (E-1055)	Brian Kanouse		7/28	3	PVT		
ENG6 (E-1050)	Kyle Varel		7/20	3			
ENG6 (E-1075)	David Jones		7/20	3			
DOZ3 (E-646)/E-723 trans	Phil Dueitt		7/19	1	PVT		
DOZ3 (E-650)	Paul Funderburk		7/22	1	PVT		
DOZ3 (E-651)	Bill Rimes		7/14	1	PVT		
WAT3 (E-233)	Sonny Moore		7/27	1	PVT		
7. Control Operations							
<ul style="list-style-type: none"> <li>Respond to Initial Attack as requested</li> <li>Initial attack IC will communicate size up information to Honey Prairie incident communications</li> </ul>							
8. Special Instructions							
Continue to monitor the Coal, Levy, and Shantee Fires.							
9. Division/Group Communication Summary							
Function	Frequency	System	Channel	Function	Frequency	System	Channel
Command N Okee Repeater	RX 164.5750/206.5 TX 163.150/206.5	KING NIFC	5	Logistics	See ICS 205	KING NIFC	
Tactical Div/Group	RX 154.280 TX 154,280/156.7	KING NIFC	8	Air to Ground	RX 166.9375 TX 166.9375	KING NIFC	6
Prepared by (Resource Unit Ldr.) Fred Noack		Approved by (Planning Sect. Ch.) /s/ Ed Flowers		Date July 12, 2011		Time 1930	



<b>DIVISION ASSIGNMENT LIST</b>			1. Branch <b>East</b>		2. Division <b>H/ I/J/K</b>		
3. Incident Name <b>Honey Prairie Complex</b>			4. Operational Period Date: 7/13/2011 Time: 0800-2100				
5. Operations Personnel							
<b>Operations</b>	Butch Hall 7/22			<b>Branch Director</b>	Brett Waters 7/25		
<b>Planning Ops</b>	Rick Dolan 7/22			<b>Division Supervisor</b>	Matt Filbert 7/18		
<b>Safety Officer</b>	Ray Durham 7/22						
6. Resources Assigned this Period							
Strike Team/Task Force/ Resource Designator	Leader / Name / Designator		Last Shift Date	Num. Per.	Drop Off PT./Time	Pick Up PT./Time	
<b>TFLD (O-945)</b>	<b>Walter Mendoza</b>		7/20	1			
<b>STEN (O-950)</b>	<b>Larry Larson</b>		7/20	1			
ENG6 (E-77) GAGAS 86	Andrew Gamlin		7/20	2			
ENG6 (E-135) Attack-1	Erin Finnegan		7/24	2	PVT		
ENG6 (E-136) Nat'l Fire	Jeremiah Cates		7/16	2	PVT		
ENG6 (E-179) Nat'l Fire #4	Ramey Hiers		7/19	2	PVT		
ENG6 (E-1069) Tallahassee E26	William Abbott		7/21	3			
WT2 (E-559)	Kevin Gray		7/15	1	PVT		
Pump (E-293)			?	1		Pump is on a Trailer	
<b>EMTP (O-981)</b>	<b>Kurt Berge</b>		7/22	1			
<b>SOF2 (O-808)</b>	<b>Charles Severson</b>		7/24	1			
7. Control Operations							
<ul style="list-style-type: none"> <li>Contain all fires outside refuge boundary.</li> <li>Patrol and control reburn</li> <li>Provide initial attack for GFC and fires outside the refuge boundary.</li> <li>Patrol all spots outside refuge boundary.</li> <li>Patrol and mop up all accessible fire line. Mop up all hot spots within 100' of the fire perimeter.</li> <li>Continue to provide protection to the Chesser Homestead by maintaining an adequate water supply via portable pump at location.</li> </ul>							
8. Special Instructions							
<ul style="list-style-type: none"> <li>Ensure LCES are in place before operations begin. Stay hydrated.</li> <li>Drive defensively and with lights on at all times.</li> <li>See medical plan for EMT support</li> <li>Examine work area for fire weakened snags</li> </ul>							
9. Division/Group Communication Summary							
	Function	Frequency	Channel	Function	Frequency	System	Channel
Command E Okee Repeater	RX 164.6250/103.5 TX 163.150/103.5	KING	3				
DIV J Repeater	RX 170.4125 TX 165.9625/123.0	NIFC	14	Logistics		KING NIFC	
Tactical Div/Group	RX 168.350 TX 168.350	KING NIFC	12	Air to Ground	RX 166.9375 TX 166.9375	KING NIFC	6
Prepared by (Resource Unit Ldr.) Fred Noack		Approved by (Planning Sect. Ch.) /s/ Ed Flowers			Date July 12, 2011		Time 1800

<b>DIVISION ASSIGNMENT LIST</b>		1. Branch <b>East</b>		2. Division <b>L, M</b>			
3. Incident Name <b>Honey Prairie Complex</b>		4. Operational Period Date: 7/13/2011 Time: 0800-2100					
5. Operations Personnel							
<b>Operations</b>	Butch Hall 7/22	<b>Branch Director</b>		Brett Waters 7/25			
<b>Planning Ops</b>	Rick Dolan 7/22	<b>Division Supervisor</b>		Ray Miller 7/20			
<b>Safety Officer</b>	Ray Durham 7/22						
6. Resources Assigned this Period							
Strike Team/Task Force/ Resource Designator	Leader / Name / Designator	Last Shift Date	Num. Per.	Drop Off PT./Time	Pick Up PT./Time		
<b>TFLD (O-937)</b>	<b>Kevin Elmstrom</b>	7/20	1				
<b>TFLD (O-993)</b>	<b>Drew Daily</b>	7/22	1				
ENG6 (E-407) White Earth #2	Jesse Londo	7/22	3				
ENG6 (E-819)	Brett Eismann	7/21	3				
ENG6 (E-826)	Steve Melton	7/24	2	PVT			
ENG6 (E-893) MIHMF 251	Martel Knipe	7/23	3				
ENG6 (E-894) MOOZP 862	William Mier	7/22	3				
ENG6 (E-895) MOMTF 9505	Blake Knisley	7/22	3				
ENG6 (E-898) MDS #4	James Harris	7/13	2				
ENG6 (E-1061) SM36	Steve Woodrick	7/21	3				
ENG6 (E-5014) TX Fire 157	Steven Torske	7/23	3				
<b>EMTP (O-731)</b>	<b>Keith Barker</b>	7/26	1				
<b>EMTP (O-1059)</b>	<b>John Oker-Blom</b>	7/23	1				
<b>SOF2 (O-1021)</b>	<b>David Vitwar</b>	7/23	1				
7. Control Operations							
<ul style="list-style-type: none"> <li>Contain all fires outside refuge boundary.</li> <li>Patrol and control reburn</li> <li>Mop up all spots outside refuge boundary and within 100 feet of perimeter</li> </ul>							
<ul style="list-style-type: none"> <li>8. Special Instructions</li> <li>Ensure LCES are in place before operations begin. Stay hydrated.</li> <li>Drive defensively and with lights on at all times.</li> <li>See medical plan for EMT support</li> <li>Examine work area for fire weakened snags.</li> </ul>							
9. Division/Group Communication Summary							
	Function	Frequency	Channel	Function	Frequency	System	Channel
Command E Okee Repeater	RX 164.625/103.5 TX 163.150/103.5	KING NIFC	3	Logistics		KING NIFC	
Tactical Div/Group	RX 168.775 TX 168.775	KING NIFC	9	Air to Ground	RX 166.9375 TX 166.9375	KING NIFC	6
Prepared by (Resource Unit Ldr.) Fred Noack	Approved by (Planning Sect. Ch.) /s/ Ed Flowers		Date July 12, 2011			Time 1800	



DIVISION ASSIGNMENT LIST				1. Branch <b>East</b>		2. Division <b>N/O</b>	
3. Incident Name <b>Honey Prairie Complex</b>				4. Operational Period Date: 7/13/2011 Time: 0800-2100			
5. Operations Personnel							
<b>Operations</b>		Butch Hall 7/22		<b>Branch Director</b>		Brett Waters 7/25	
<b>Planning Ops</b>		Rick Dolan 7/22		<b>Division Supervisor</b>		Steve Griffin 7/18, Ernest Schmitt (t) 7/19	
<b>Safety Officer</b>		Ray Durham 7/22					
6. Resources Assigned this Period							
Strike Team/Task Force/ Resource Designator		Leader / Name / Designator		Last Shift Date	Num. Per.	Drop Off PT./Time	Pick Up PT./Time
<b>TFLD (O-807) (t)</b>		<b>Mark Whipps</b>		7/19	1		
<b>TFLD (O-994)</b>		<b>Jim Edgar</b>		7/21	1		
<b>STEN (O-989)</b>		<b>Max Twombly</b>		7/21	1		
ENG6 (E-897) MDBWR		Ephraim Diefenderfer		7/22	2		
ENG6 (E-1133)		Chris Wright		7/26	2		
ENG6 (E-977) IPF E-31		Louie Feltman		7/23	4		
ENG6 (E-993) Bush Fire		Philip Quochytewa		7/18	2	PVT	
ENG6 (E-1058)		Michael Keil		7/20	3		
ENG6 (E-1060)		Paul Amundson		7/21	3		
ENG6 (E-1068)		Wade Griffith		7/22	3		
ENG6 (E-1070)		Gregory Rock		7/21	3		
ENG6 (E-1072)		Butch Murphy		7/21	3		
ENG6 (E-1074)		Peter Stevenson		7/20	3		
ENG6 (E-5006) Wildlands #3		Keith Hawk		7/13	2	PVT	
HCT2IA (C-14) Pat Rick 20B		Dustin Eldred		7/25	20	PVT	
Excavator (E-596)		Enfinger		?	1		
GyroTrack (E-1147)		Alan Eason		7/25	1		
GyroTrack (E-1148)		Willard Turner		7/25	1		
<b>EMTB (O-848)</b>		<b>Bert Hyde</b>		R&R	1		R&R on 7/12-13
<b>SOF2 (O-807)</b>		<b>Chuck Stanton</b>		7/25	1		
<b>EMTP (O-1060)</b>		<b>James Brown</b>		7/24	1		
7. Control Operations <ul style="list-style-type: none"> <li>Patrol and mop up 100' inside fire perimeter.</li> <li>Recon potential control lines and examine area snag removal</li> <li>Keep fire within refuge boundary.</li> </ul>							
8. Special Instructions <ul style="list-style-type: none"> <li>If the fire reaches <b>Mgt Activity Line (MAL) 1</b> cooperators and adjacent landowners will be notified. If the fire reaches <b>MAL 2</b> a meeting will be held at the Swamp Park with adjacent landowners and cooperators.</li> <li>Safely push down with equipment all snags whether on fire or not that are a threat to success or tactical operations.</li> <li>Ensure LCES are in place before operations begin. Stay hydrated.</li> <li>See medical plan for EMT support.</li> <li>Drive defensively and with lights on at all times.</li> <li>Boggy terrain: Be careful and aware when working around this type of area.</li> <li>If HP fire escapes the NE Break the Great Basin team will command suppression w/assistance from the GFC. If Race Pond escapes to the south GFC will command w/assistance by the Great Basin. DIVS should make daily contact w/ Race Pond DIVS on scene.</li> <li><b>STEN Twombly and Engines 1058, 1060, 1070, 1072, 1074 be ready to respond to IA in Swamp Park.</b></li> </ul>							
9. Division/Group Communication Summary							
Function	Frequency	System	Channel	Function	Frequency	System	Channel
Command N Okee Repeater	RX 164.5750/206.5 TX 163.150/206.5	KING NIFC	5	Logistics		KING NIFC	
Tactical Div/Group	RX 168.200 TX 168.200	KING NIFC	11	Air to Ground	RX 166.9375 TX 166.9375	KING NIFC	6



<b>DIVISION ASSIGNMENT LIST</b>				1. Branch <b>ALL</b>	2. Division <b>Roads Group</b>			
3. Incident Name: <b>Honey Prairie Complex</b>				4. Operational Period Date: 7/13/2011 Time: Day: 0800-2100				
5. Operations Personnel								
<b>Operations</b>	Butch Hall 7/22			<b>Branch Director</b>				
<b>Planning Ops</b>	Rick Dolan 7/22			<b>Division Supervisor</b>				
<b>Safety Officer</b>	Ray Durham 7/22							
6. Resources Assigned this Period								
Strike Team/Task Force/ Resource Designator	Leader / Name / Designator			Last Shift Date	Num. Per.	Drop Off PT./Time		Pick Up PT./Time
<b>DOZB (O-956)</b>	<b>Tony Zavalla</b>			7/21	1			
Excavator (E-505)	Lee Douglas or Johnny Smith			?	1	PVT		Need to check in
Dump Truck (E-506)	TBA			?		PVT		Need to check in
Dump Truck (E-529)	Craig Smith			7/19	1	PVT		
Dump Truck (E-1074)	Dennis Kight			7/20	1			
Grader (E-228)	Steven Hendrick			?	1			Need to check in
Grader (E-230)	TBA			?	1			Need to check in
Grader (E-380)	Jason Merrit			7/20	1	PVT		
Grader (E-597)	TBA			?	1			Need to check in
7. Control Operations								
<ul style="list-style-type: none"> <li>Coordinate efforts w/ resource advisor and logistics</li> </ul>								
8. Special Instructions								
<ul style="list-style-type: none"> <li>Ensure that tractors are cleaned and free of debris daily. Examine work area for fire weakened snags.</li> <li>Ensure LCES are in place before operations begin and stay hydrated.</li> <li>Additional resources will be available from GFC, Florida DOF, FWS, and local cooperators.</li> <li>Drive defensively and with lights on at all times.</li> <li>See Medical plan for EMT support.</li> <li>Implement MIST tactics</li> </ul>								
9. Division/Group Communication Summary								
Function	Frequency	System	Channel	Function	Frequency	System	Channel	
Command N.Okee Repeater	See ICS 205	KING NIFC		Logistics	See ICS 205	KING NIFC		
Tactical Div/Group	See ICS 205	KING NIFC		Air to Ground	See ICS 205	KING NIFC		
Prepared by (Resource Unit Ldr.) Fred Noack			Approved by (Planning Sect. Ch.) /s/ Ed Flowers			Date 7/12/2011		Time 1930

# AIR OPERATIONS SUMMARY

Prepared By: Tim Elder, AOB

Prepared Date: 7.12.2011

Prepared Time: 1800

<b>1. INCIDENT NAME:</b> Honey Prairie	<b>2. OPS PERIOD DATE:</b> July 13, 2011	<b>START TIME:</b> 0830	<b>END TIME:</b> 1900	<b>SUNRISE:</b> 0635	<b>SUNSET:</b> 2036
---	---	----------------------------	--------------------------	-------------------------	------------------------

**3. REMARKS (Safety Notes, Hazards, Air Operations Special Equipment, etc.):**  
*No fire is ever the same. No flight is ever the same. The fire you fly today will not be the same as the fire you flew yesterday. Be alert to your environment and changing conditions.*

**5. TFR #:** 1/0249  
(Box) 3000' MSL

**NOTE: Latitude/Longitude format is "Degrees-Minutes-Decimal Minutes" (example: N30 41.42 W082 33.97)**

PERSONNEL	NAME	PHONE #	FREQUENCIES	AM	FM	AIRTANKERS / LEAD PLANES - None Available
AOBD	Tim Elder	Cell 863-243-1438 Desk 912-637-5254 FAX 912-637-5237	AIR/ AIR FW	122.575		ATGS AIRCRAFT- 53L (C-337)
ASGS(T)	Don Nicholas	218-360-1816	AIR/ AIR RW-FF	122.375		OTHER: Lake City Tanker Base: 386-758-9078 / FAX 752-8901 Pogo Helibase: 912-496-4415 / FAX 496-7077 Waycross Helibase 912-287-4479 / FAX 287-4458 Fargo Helibase: 404-772-5317 Okfehenokoe Dispatch: 912-496-7366 X230
ATGS Lake City	Tim Caughlin	715-684-9862	Georgia AIR/AIR	122.075		FARGO HELIBASE: N30 41.42 W082 33.97
ATGS Fargo HB	Carl Magjill	541-519-0850	Georgia AIR/GRND (Smokey - Dozers)		159.285 W	POGO HELIBASE: N30 44.03 W082 07.41
HEB2 Fargo HB	Brian Campbell Steve Croy (T)	404-772-5405 540-230-2568	AIR/GROUND PRIMARY		166.9375	POCKET HELISPOT N30.48 W082.22
ABRO Fargo HB	Ken Malgren	404-772-5317	AIR/GROUND ALTERNATE		166.9000	HOMERVILLE AIRPORT N31 03.35 W082 46.45
HEB2 Waycross HB	Jay Matsen	Desk 912-287-4479 Cell 206-218-8230	Florida AIR/AIR IA	122.925		WAYCROSS AIRPORT N31 14.9 W082 23.7
ABRO Pogo HB	Karen Jacobi- Yeaton	912-496-4415	Florida AIR/GRND IA		170.4750 N	BERGANZA HELISPOT N 31 07.22 W082 15.22
			TOLC		168.0125	
			AIR GUARD		168.625 T 110.9	

## 9. HELICOPTERS (Use Additional Sheets as Necessary)

FAA #	TY	MAKE/ MODEL	BASE	AVAIL	MANAGER	FAA #	TY	MAKE/ MODEL	BASE	AVAIL	MANAGER
N36BH	1	S-70	Waycross	0830	Zev Hunting 406-439-6768	N61SC	1	S-61	Fargo	0830	Ray Leppala 218-966-6443
206G	2	UH1H	Waycross	0830	Jerick Dominguez 530-319-3517	26MW	1	K-1200	Fargo	0830	Kirby Cook 406-381-1212
06901	2	UH1H	Waycross	0830	Cindy Bradley	N662H	3	206-14	Fargo	0830	Jeremy Beeson





# Fire Weather Forecast



**FORECAST NO:** 67

**NAME OF FIRE:** Honey Prairie Complex

**PREDICTION FOR:** Day and Night Shifts  
**SHIFT DATE:** 7/13/11

**UNIT:** Okefenokee National Wildlife Refuge

**FORECAST ISSUED:** 7/12/11 at 1900

**SIGNED:** Mike Bettwy (T) / Joe Goudsward  
Incident Meteorologists

**WEATHER DISCUSSION:** High pressure aloft will remain in place today with hot temperatures and afternoon heat index values peaking around 110 degrees. A frontal boundary will move south and closer to the area Thursday through Saturday with increasing chances of precipitation.

**TODAY:** Patchy morning fog, otherwise partly cloudy with isolated to scattered afternoon showers and thunderstorms. Very hot.

**MAXIMUM TEMPERATURES:** 94-99 degrees

**PM HEAT INDEX:** 106-111 degrees

**AVERAGE SKY COVER:** 50

**MINIMUM HUMIDITY:** 45-55%

**20 FT WINDS:** AM: SSW 3-6 mph

PM: SW 4-7 G14 mph

**STABILITY/INVERSION:** Morning inversion to 250 feet through 0900, then rising to 6700 feet by 1600

**TRANSPORT WINDS:** WSW 11 mph

**DISPERSION INDEX:** 59, Average

**CHANCE OF PRECIPITATION:** 30%

**PRECIPITATION AMOUNTS:** Less than 0.15", except locally higher in thunderstorms

**LIGHTNING ACTIVITY LEVEL:** 3

**TONIGHT:** Partly cloudy. A slight chance of showers and thunderstorms, mainly before 11 P.M. Patchy fog developing after 10 P.M. and becoming locally dense.

**MINIMUM TEMPERATURES:** 73-77 degrees

**MAXIMUM HUMIDITY:** 90-100%

**20 FT WINDS:** SW 2-4 mph

**STABILITY/INVERSION:** Inversion to 250 feet by 2200 hours

**DISPERSION INDEX:** 2, Poor

**CHANCE OF PRECIPITATION:** 20%

**LIGHTNING ACTIVITY LEVEL:** 2

**OUTLOOK FOR THURSDAY:** Partly cloudy with a 40% chance of showers and thunderstorms. Winds WSW 7-11G15 mph. High temperatures 93-97. Min RH 45-55%. Dispersion 46, Average.

**EXTENDED FORECAST:**

	FRIDAY	SATURDAY	SUNDAY
<b>MINIMUM TEMP</b>	76°	75°	74°
<b>MAXIMUM TEMP</b>	92°	91°	91°
<b>MINIMUM RH</b>	50-60%	50-60%	50-60%
<b>20 FT. WINDS</b>	AM: WSW 2-5 mph PM: SW 6-10 mph	AM: ENE 3-6 mph PM: ENE 7-11 mph	AM: ENE 3-6 mph PM: ENE 6-10 mph
<b>SKY</b>	Mostly Cloudy	Mostly Cloudy	Mostly Cloudy
<b>WEATHER</b>	Showers/T-Storms	Scattered T-Storms	Scattered T-Storms
<b>CHANCE PRECIP</b>	60%	50%	50%

-end-

**GENERAL FIRE BEHAVIOR**

Fuels around the Okefenokee Wildlife Refuge are predominately Fuel Model 7 (Southern Rough). Large to moderate acreage tracts of commercial timberland are mixed in throughout the entire perimeter surrounding the refuge. Fast moving wildfires with extremely high flame lengths and rapid rates of spread occur within the swamp. As fire transitions to the upland, torching and crown fires are common. Long Range spotting is possible.

**Indicators/Threshold for Increased Fire Activity**

- Relative humidity dropping below 45%
- Winds above 10 mph
- **Heavy fuel loadings**
- **Fine dead fuel moisture 8% or less**
- Dispersion above 70
- **\* Items in BOLD are predicted to occur today\***

**SPECIFIC FIRE BEHAVIOR**

- **Fire behavior will be influenced by past precipitation. Central and South portions of fire area remain moist. North half is in a drying trend.**
- **Expect fire to continue moving through the shrub fuels with low to moderate rates of spread, low to very active flame lengths, and creep through the hardwood stands. Expect areas with high heat concentrations to increase fire intensity leading to column development early afternoon. (Wind gusts will temporarily increase fire intensities). LAL 3**

Fuel Type	Rates of Spread	Flame Length	Spotting Distance	Firebrand Ignition
<b>Winds at 4 - 7 G 14 mph</b>				
Shrub Fuels	1 - 13 ch/hr	2 - 10 feet	1/10 - 2/10 mile	46%
Southern Rough	1 - 27 ch/hr	2 - 7 feet	1/10 - 2/10 mile	46%
Timber Litter-Reburn	1 - 2 ch/hr	1 - 2 feet	1/10 - 2/10 mile	46%
Small Pine Plantation w/grasses	1 - 16 ch/hr	2 - 7 feet	1/10 mile	44%

**One hour fine dead fuel moisture is at 8% for Wednesday.** 1000 hour fuels are drier than normal for this time of year. There is reburn potential in all divisions due to the amount of needle cast. Should a fire run(s) occur, expect winds in the area to potentially increase above predicted levels. This would increase Flame Lengths and ROS above predictions. Heavier firebrands can also be lifted higher and further increasing likelihood of spots to max predictions. **In areas where fuels have been herbicided, expect quick ignitions and extreme heat, quick rate-if –spread, and group tree torching producing spotting problems.**

**NOTE- FIRE BEHAVIOR CALCULATIONS ARE FOR FIRES IN UNBURNED FUELS INCLUDING NEW IA STARTS.**

West	A	Wetting rains have moistened fuels. Falling snags still pose a threat to fire personnel and the boardwalk. <b>30% chance of rain</b>	West	T/V	Fire will continue a slow spread to the North. Fuels have begun a trying trend. Expect active fire with column development in areas having intense heat. Be heads-up for falling snags. <b>30% chance of rain</b>
	B-G	Wetting rains have moistened fuels. Be heads-up for falling Snags. <b>30% chance of rain</b>			
	Y Z	Fuels are in a drying trend. Areas of heat will remain near Div Y/Z perimeter with possible flare-ups in moderate to high areas of fuel. Be heads-up for falling snags. <b>30% chance of rain</b>	East	H, I J, K L, M N, O	Fuels drying North half of branch. Areas of interior fire in Divs N and O will continue to have very active fire with column development early PM. Heads-up for falling snags. <b>30% chance of rain</b>

**Night Ops** – Expect another night of minimal fire behavior with areas of heavy smoke and patch of fog after 2200 hrs. Partly cloudy with a slight chance of showers and thunderstorms mainly before 2300 hrs. Fire behavior after 2200 will primarily be limited to smoldering in heavy fuels near firelines and interior in Divisions B,V,Y,V, and O. Winds are forecast from the SW 2 - 4 mph. Dispersion Index 2 –poor for nighttime. LAL 2.

**Air Operations:** Expect areas of heavy smoke all day especially in the Northeast area of the fire.

**SAFETY:**

**WINDS** – Stay abreast of changing wx conditions throughout the entire shift. **THUNDERSTORMS** - these severe winds can create extreme fire behavior, with winds gusting over 30 mph. **SNAGS** – Snags are falling in all Divisions – will be influenced by Thunderstorm outflow winds.**FUELS:** Reburn is an issue. Watch for pockets of cured shrubs or blankets of red needles beginning to cover the forest floor. 1000 and 10,000 hour fuels as well as deep duff pockets are providing the heat source. Stay focused, and put LCES in place before starting operations. Watch for standing burning snags that can fall without warning. Energy Release Component (ERC) continues to hover near the 90<sup>th</sup> percentile.

**LCES Analysis of Tactical Actions**

Incident Name: Honey Prairie Complex				Date and Time Prepared: July 12, 2011 1600 hrs										Operational Period: Day and Night July 13, 2011		
Location on Incident																
Divisions/Groups																
TACTICAL HAZARDS	A,B,C	D,E,F,G	H, I	J, K	L	M	N	O	T	V	Y	Z	ICP	PM Ops	Struct Prot Grp	Mitigations
Powerlines	*	*	*	*	*	*	*	*	*	*	*	*			*	Assume all power lines are charged. Avoid all contact with downed lines.
Complacency	*	*	*	*	*	*	*	*	*	*	*	*	*		*	Follow work/rest guidelines.
Indirect Fireline								*	*	*	*	*				LCES; IRPG Pg. 10, Indirect Attack; Burnout as possible.
Anchor Points	*	*	*	*	*	*	*	*	*	*	*	*				Ensure fireline is anchored. Use natural features when possible. Use Local Resource Advisor
Extreme Conditions (Spotting, Wind)																LCES, Establish Trigger Points. Maintain Situational Awareness. Establish Lookouts as needed. Follow MAP actions.
Unburned Area Reburn Potential	*	*	*	*	*	*	*	*	*	*	*	*			*	LCES, Utilize Air Attack if Available. Know Predicted Weather and Fire Behavior Forecast.
Hazard Trees	*	*	*	*	*	*	*	*	*	*	*	*			*	IRPG Pg. 80, Identify and flag hazard trees. Look Up, Down and Around
Hazardous Materials	*	*	*	*	*	*	*	*	*	*	*	*			*	IRPG Pg. 26-27, HAZMAT. Identify and map propane tanks, electric lines, septic tanks and determine bridge wt. limits prior to use.
Vehicle Use (Travel 1HR+, Roads)	*	*	*	*	*	*	*	*	*	*	*	*	*		*	Park vehicles for egress. Follow traffic plan. Use seat belts, drive with headlights on and keep windshields clean. Use spotters. Drive Defensively. Use multiple camp locations to reduce drive time.
Communications																Ensure radio is cloned with the current communications plan. LCES
Structure Protection		*		*	*		*	*	*	*	*	*				Use structure protection checklist, PPE, Triage. Utilize Local Fire Departments
Air Operations (multiple aircraft, line support)	*	*	*	*	*	*	*	*	*	*	*	*				Monitor Air Guard at all times. Flight follow through Dispatch. Keep drop areas clear of personnel.
Mechanical Equipment	*	*	*	*	*	*	*	*	*	*	*	*			*	Use PPE, ensure all safety devices are functional. Operator must see you before approaching equipment. Maintain proper distance away from equipment working in the area.
Escape Routes Safety Zones	*	*	*	*	*	*	*	*	*	*	*	*			*	LCES, Establish and identify safety zones & escape routes. Know where these are located and the route to them. IRPG p.7
Thunderstorm Safety	*	*	*	*	*	*	*	*	*	*	*	*	*		*	Keep an eye on changes in weather. Take hourly weather observations. Comms will provide weather updates when needed.
Wildlife	*	*	*	*	*	*	*	*	*	*	*	*	*		*	Keep food items off the line and use refuse containers around camp. Use insect repellent as needed. Use caution around water as wildlife is concentrated.
Sun Exposure	*	*	*	*	*	*	*	*	*	*	*	*	*		*	Use sunblock as needed.
Night Operations										*	*					Maintain situational awareness. Refer to pages 6 & 7 of IRPG. Ensure headlamps are available and working. Maintain spacing between resources.
Heat	*	*	*	*	*	*	*	*	*	*	*	*	*		*	Hydrate prior to going on line and all during the day. Recognize the signs of heat related injuries. Take frequent breaks throughout the work period.
Air Quality																Rotate personnel frequently out of smoke. Ensure off-line rest is clear of smoke.
Railroad Crossings	*	*	*	*	*	*	*	*	*	*	*	*			*	Visually check all railroad crossings to ensure track is safe to cross. Don't bunch up, leave room for other vehicles to cross. Don't try to beat the train.
Safety Officer:																
Barry Coulliette SOF2																



# SAFETY MESSAGE

JULY 13, 2011

Day / Night

## Major Hazards and Risk

Driving  
High Temperatures  
Dehydration  
Thunder Storms  
Complacency  
Logging Operations  
Wildlife  
Hygiene



## Mitigations

Wearing your seat belt will save your life. It is also the law in most states. The use of seat belts is policy on all federal assignments. So arrive alive wear your seat belt.

It is going to be over 100 degrees again today. Stay hydrated take frequent breaks.

Be prepared for active fire behavior in the afternoon.

Thunderstorms have the ability produce strong winds heavy rain and frequent lightning. Take refuge to your vehicles and insure you are parked in a safe place. Any tree is capable of falling under strong wind events.

Seeing and doing the same things every day leads to complacency. Stay alert to all the known hazards. Conduct tail gate safety sessions.

Logging operations are on the increase. Pay attention to log trucks and logging equipment working in your environment and give them room. Avoid logging operations if at all possible.

Do not feed or harass alligators.

To prevent the spreading of germs wash your hands often.

Safety Officers,

MEDICAL PLAN	Incident Name Honey Prairie Complex	Date Prepared 7/12/2011	Time Prepared 1800	Operational Period 7/13 geww/2011 DAY SHIFT			
<b>5. Incident Medical Aid Station</b>							
<u>Medical Aid Stations</u>	<u>Location</u>			Paramedics Yes No			
Medical Unit (ICP)	Honey Prairie Complex ICP (Lodge 5) 912-637-5236 Joe Fowler MEDL 912-286-1648 MEDL 912-286-1674			X			
WEST BRANCH (Line EMT)	Bob Eaton (EMTB)919-423-1055 (A,B,C DIV) Paul Smith (EMT B)(D,E,F,G DIV) Jefferson Halladay (Para)801-518-9857 (T DIV) Evan Dean(Para) 503-975-6444 (V DIV) Michel Graham(Y 0800-2000) Wes Lathem(Para)& Dominc Burcheett (Para)(912)286-1644(V/Y DIV Night) Chad Simmons (Z DIV) Matthew Stivers (EMT B)256-375-4260 (West IA)			X			
EAST BRANCH (Line EMT)	Kurt Berge (Para)801-404-6434 (H,I,J,K DIV) John Oker-Blom(Para)404-558-4476(L,M DIV) James Brown 360-775-5413 (N,O DIV)			X			
<b>Ambulance Services</b>							
Name	Address	Phone	Paramedic Yes No				
Clinch County EMS (WEST SIDE)	West Branch Council Road & HWY 94	Channels 4, 11, 13 912-286-1673 EMS Incident Cell	Yes				
Ware County EMS (NORTHSIDE)	Waycross, Georgia (911 to activate)	912-281-9467	Yes				
Charlton County EMS (EAST SIDE)	Folkston, GA (911 to activate)	912-496-7321	Yes				
<b>Air Ambulance Service</b>							
Trauma 1	Lake City, FL (16 min/air to Fargo ICP)	1-800-223-4878(freq. 155.340)	Yes				
Trauma 1	Jacksonville, FL (26 min/air to Fargo ICP)	1-800-223-4878(freq. 155.340)	Yes				
AirMed	Augusta, GA (2 hrs/air to Fargo ICP)	1-888-792-9245(freq. 155.340)	Yes				
Lifeflight	Jacksonville, FL (35 min/air to Fargo ICP)	1-877-870-7779(freq. 155.340)	Yes				
Air Evac	Waycross, GA (17 min/air to Fargo ICP)	1-800-247-3822(freq. 155.340)	Yes				
US Coast Guard (Heli-Rescue)	Savannah GA	1-912-652-4646 (freq. 155.340)	Yes				
<b>7. Hospitals</b>							
Name	Address	Travel Time Air Ground	Phone	Helipad Yes No	Burn Center Yes No		
Satilla Regional	410 Darling Ave Waycross Ga N 31°13.56 W 82°21.058	18 min 45 min	912-283-3030	Yes		No	
Clinch Memorial Hospital (WEST SIDE)	1050 Valdosta HWY Homerville, GA		912-487-5211 ext 4502	Yes		No	
Charlton Memorial Hospital (EAST SIDE)	1203 3 <sup>rd</sup> St. Folkston, GA		912-496-2531	Yes		No	
Memorial Hospital	Savannah, GA 4700 Waters 3200.7 8107.6	30 min	912-350-8999	Yes		No	
Shands Hospital (level I)	Jacksonville, FL N 30°20 97 W 82° 13 992	26 min 1.5 hrs	800-223-4878	Yes		Yes	
Shands Burn Center	Gainesville, FL 38.33 N 082 20.73W	33 min 1.5 hrs	352-265-0300	Yes		Yes	
<b>8. Medical Emergency Procedures</b>							

<ol style="list-style-type: none"> <li>1. Notify DIVS of medical problem</li> <li>2. DIVS notifies COML and MEDL</li> <li>3. MEDL contacts POC for following <ol style="list-style-type: none"> <li>a. # of pts</li> <li>b. Status of pts medical problem</li> <li>c. Location of pts</li> <li>d. Transport method</li> <li>e. Necessary resources</li> </ol> </li> <li>4. MEDL coordinates medevac/patient transport with SOF2, OPS2 and other relevant resources.</li> </ol> <p><u>Life threatening injury</u>: an injury that could mean the loss of life, limb, or eyesight</p> <p><u>Minor injury</u>: an injury that results in the removal of a pt from the line but with less urgency as a life threatening injury</p> <p><u>Medevac</u>: the most urgent transport of a pt suffering from a life threatening injury</p> <p>Patient transport: transport for minor injuries</p> <p><u>Medical problem</u>: a physical or mental ailment that occurs to an individual; to include illnesses and traumatic injuries</p> <p><u>Point of contact (POC)</u>: individual who will be directly advocating for patient care and transport (line medic, crew boss, DIVS etc)</p> <p><b>*Request that FFTR/Engine crews or single resources let MEDL know if they have any EMTs or Paramedics and if they have equipment with them.</b></p>	<p><b><u>HELISPOTS</u></b></p> <p>Pocket Helispot 30 47 30.02 x 82 22 39.5 (West side), mile marker 4, HWY 177 Steven C. Foster State Park</p> <p>Fargo Helibase 30 41.42 x 82 33.97 (West side), HWY 441- Golf course, Fargo</p> <p>POGO Helibase 30.44.03 x 82.07.41 (East side)</p> <p><b><u>Evac Yankee</u></b></p> <p>Helispot 6 Rd. 32 and 32A, N 30° 53.280 W 082° 33.880</p> <p>Helispot 7 Tatum Rd. Pond N 30° 50.280 W 082° 33.857</p> <p>*Alternate site can be established following guidelines for safety found with IRPG and local EMS resources.</p>
<p>Prepared by: Michael Evers MEDL (T)/Joe Fowler MEDL</p>	<p>10. Reviewed by: Barry Coulliette SOF</p>

INCIDENT RADIO COMMUNICATIONS PLAN ICS-205				Incident Name <b>Honey Prairie</b>		<b>GROUP 22</b>		Date/Time Prepared 07/12/2011-18:00	Operational Period Date/Time 7/13/2011 0800-2100/1800-0600		
Ch #	Function	Channel Name	Assignment	RX Freq	NW	RX Tone/NAC	TX Freq	N W	TX Tone/NAC	Mode A,D or M	Remarks
1	Command	West Okee Repeater	Sec West Branch CMD	167.1250	N	156.7	163.1500	N	156.7	A	Stephen Foster State Park
2	Command	South Okee Repeater	Sec East/West Branch CMD	164.7750	N	123.0	163.1500	N	123.0	A	Eddy Florida
3	Command	East Okee Repeater	PRIMARY East Branch CMD	164.6250	N	103.5	163.1500	N	103.5	A	Refuge Headquarters
4	Command	NIFC C2	PRIMARY West Branch CMD	168.100	N	CSQ	170.4500	N	123.0	A	NOT linked to OKEE System
5	Command	North Okee Repeater	PRIMARYNorth Branch CMD	164.5750	N	206.5	163.1500	N	206.5	A	Waycross
6	Air-Ground	Air to Ground	PRIMARY	166.9375	N	CSQ	166.9375	N	CSQ	A	
7	Tactical	MOB-MOB	GFC Contingency	159.3900	W	CSQ	159.3900	W	156.7	A	
8	Tactical	V-Fire 21W WHITE	Structure Protection Group&I.A.	154.2800	W	CSQ	154.2800	W	156.7	A	
9	Tactical	USFS 9	DIV A,B,C, L, M T, M & (East I/A)	168.7750	N	CSQ	168.7750	N	CSQ	A	
10	Tactical	S.E. Compact	DIV	159.2850	W	CSQ	159.2850	W	CSQ	A	
11	Tactical	USFS 11	DIV Z, N, O	168.2000	N	CSQ	168.2000	N	CSQ	A	
12	Tactical	Refuge Tac 1	DIV H, I, J, K	168.3500	N	CSQ	168.3500	N	CSQ	A	
13	Tactical	FL 190	DIV D, E, F, G, V, Y	151.2725	N	CSQ	151.2725	N	CSQ	A	
14	Command	DIV J RPT	East Branch	170.4125	N	CSQ	165.9625	N	123.0	A	NOT linked to OKEE System
15	Air-Ground	Air to Ground	SECONDARY	166.9000	N	CSQ	166.9000	N	CSQ	A	
16	EMERGENCY	AIR Guard	Air OPS.	168.6250	N	CSQ	168.6250	N	110.9	A	
Prepared by (Communications Unit) <b>Brian Matthews</b> Incident Dispatcher: 912-286-1660											
<b>Cloning at ICP communications and briefings,</b>											

The convention calls for frequency lists to show four digits after the decimal place, followed by either an "N" or a "W", depending on whether the frequency is narrow or wide band. Mode refers to either "A" or "D" indicating analog or digital (e.g. Project 25) or "W" indicating mixed mode. All channels are shown as if programmed in a control station, base stations, mobile or portable radio.

<b>HONEY PRAIRE</b>					
<b>AGENCY OFFICIALS</b>			<b>OPERATIONS 912-637-5248</b>		
Curt McCasland	602-359-0013	USFWS AA	Rick Dolan	352-353-5101	Field Operations
Mindy Gautreaux	912-282-7500	USFWS Deputy AA	Butch Hall	352-225-1281	Field Operations
Frank Sorrells	912-381-7503	GFC AA		912-286-1658	Planning Operations
James Karels	850-228-7763	FL DOF AA	<b>WEST BRANCH</b>		
Diane Adams	912-266-5421	GEMA	Tom Donohoe	404-772-5384	West Branch
Mike Housh	912-281-1575	USFWS AREP	Greg Jacobson	208-642-7587	DIVS A, B, C
<b>COMMAND</b>			Toby Herold	530-598-4195	DIVS D, E, F, G
Don West	352-353-5044	IC	Brian Rhodes	619-318-1623	DIVS T
Verne Reggal	386-547-7293	Deputy IC	Shawn Duggar	850-508-7736	DIVS V
Trent Ingram	229-726-0285	Unified IC (GA)	Bryce Thomas	850-625-6634	DIVS V (T)
Gary Beauchamp	352-620-4424	Unified IC (FL)	Gary Smith	417-455-3391	DIVS Y
Mike Dueitt	850-228-0320	Unified IC (FWS)	Dan Helterline	406-241-1467	DIVS Y (T)
<b>LIAISON</b>			Don Hammack	406-253-2535	IA/Structure Protection
Skippy Reeves	912-387-5923	Liaison Officer FWS	Bob Schober	907-978-6894	IA/Structure Protection (T)
<b>INFORMATION</b>			<b>EAST BRANCH</b>		
Ludie Bond	352-258-6084	Fire Information	Russ Lane	503-910-2353	East Branch
Greg Heule	719-640-6735	Fire Information	Matt Filbert	208-481-1068	DIVS H, I, J, K
Kristen Miller	904-710-5677	Fire Information	Steve Griffin	760-417-0728	DIVS N, O
Tom Krull	320-533-0206	Fire Information	Ernest Schmidt	320-760-4781	DIVS N, O
Mark Wurdeman	912-496-2566	Fire Information (JIC)	John Huschke	231-342-1233	East IA (until 7/12)
<b>SAFETY</b>			Shawn Denowh	208-724-0827	East IA
Barry Couliette	404-772-5406	Safety Officer	<b>AIR OPERATIONS 912-637-5254 FAX 912-637-5237</b>		
Ray Durham	770-280-7684	Safety Officer	Tim Elder	863-243-1438	Air Ops Branch
Joe Fowler	912-286-1648	Medical Unit Leader	Don Nicholas	218-360-1816	ASGS(t)
Mike Evers	912-286-1674	Medical Unit Leader	Ken Malgren	404-772-5317	Fargo Helibase
Medical Unit	912-637-5236		Carl Magill	541-519-0850	ATGS – Fargo
			Steve Croy	540-230-2560	HEB2 (T) – Fargo
<b>DISPATCH</b>			Brian Campbell	404-772-5405	HEB2 – Fargo
Okeefenokee Dsp	912-496-7366	Okeefenokee	Jay Matsen	912-287-4479	HEB2 – Waycross
Suwannee Dispatch	386-758-5700	Fla wildfires, other	=	206-218-8230	(cell)
Waycross Dispatch	912-287-4915	Ga wildfires, other	Tim Caughlin	715-684-9862	ATGS – Lake City
<b>LOGISTICS West</b>			Melanie Fullman	906-364-0413	ATGS(t) - Lake City
Shane Locke	404-772-5399	LSC	<b>PLANNING 912-637-5241 FAX 912-637-5237</b>		
Butch Mallet	404-772-5319	LSC	Ed Flowers	912-286-4643	Planning Section Chief
Bill Hitt		FACL	Scott Crosby	912-637-5241	Situation Unit Leader
Melvin Reese	352-442-7891	FACL(t)	Joe Goudsward	240-778-5279	IMET
Gary Sisson	386-983-2474	RCDM	Mike Bettwy	240-778-5019	IMET (T)
Cliff Liggons	912-637-5251	Lodging	Gary Brunk	404-772-5385	FBAN
Kevin Reish	404-276-1998	Security Manager	John Kern	404-772-5393	FBAN
JV Thompson	404-772-5380	GSUL	<b>FINANCE 912-637-5244 FAX 912-496-4710</b>		
Dennis Spear	404-772-5389	GSUL(t)	Linda Starling	770-658-6641	Finance Section Chief
Nat Wright/Bob Kookan	404-772-5318	Food Unit Leader	Rita Loper	912-281-6876	Buying Team Leader
Linda Bruss	912-637-5239	SPUL	Ron Knowles	907-230-4945	Business Advisor
Rhonda Hughes		SPUL(t)	Duane Welch	404-844-7042	Comp Claims
Brian Mathews	561-914-7206	COML			

<b>ORDERING</b>		<b>FAX 912-637-5240</b>
Christy Englesby/ Cindy Tisdell	912-637-5262	Ordering Manager
Abe Philipson	912-637-5239	Ordering Manager
<b>LOGISTICS</b>	<b>912-496-2111</b>	<b>East</b>
	<b>912-496-4710</b>	
	<b>Fax</b>	
Dave Klym	256-497-8490	LSC
Duane Stephens	912-496-2111	Base Camp Mgr
John Kaupa	256-497-8388	Supply Unit Leader
Joe Hoisington	256-497-8334	GSUL
Kelly Helget	256-497-8334	GSUL
Tom Fink	218-236-1436	Security Manager
Medical Unit	912-387-6787	
EAST MSG CTR	912-496-4698	
<b>COOPERATORS</b>		
<b>COUNTY</b>		
	912-496-7229	Charlton County EMA
John F. Meyer - Chairman	912-496-2549	Charlton County Commissioners
Dobie Conner	912-496-7321	Charlton County Sheriff
Jesse Booth	912-520-0061	Clinch County EMA
Jonathan Daniel	912-281-5158	Ware County EMA
Jessie Jordan	912-816-6063	Ware County Fire Dept
Joe Morris	912-281-6020	Ware County Sheriff
Robbie Sutton	912-599-9027	Tri County 911
<b>STATE</b>		
GFC Fargo District Office	912-637-5270	
GFC Satilla District Office	912-287-4915	
Blair Joiner	229-237-9026	GFC Clinch Chief Ranger
Jason Gillis	912-314-9233 912-637-5504	GFC Satilla Assistant Mgr.
Brian Gray	229-894-4628 912-673-5274	Stephen Foster State Park
Travis Griffin	912-281-5790	Laura Walker State Park
Crystal Paulk- Buchanan	404-535-1048	GEMA PIO
Georgia Highway Patrol	912-287-6500	
<b>FEDERAL</b>		
Okefenokee Fire Shop	912-496-4181	
Okefenokee NWR HQ (East)	912-496-7366	
Okefenokee NWR (West)	912-637-5322	
Okefenokee Visitor Center	912-496-7836	

<b>LANDOWNERS</b>		
Jim Barrett	229-412-3133	Langdale/GOAL Chairman
Wesley Langdale	229-220-2602	Langdale
Hal Rowe	229-412-3133	Langdale
Langdale Office	229-242-7450	Langdale Office
Mike Conlon	386-365-3882	Rayonier Unit Supervisor
Ray Carter	386-288-6626	Rayonier
Ed Carter	386-288-6626	Rayonier
Doug Nuss	912-390-1037	Rayonier
Randall McCrady	912-283-4077 W 912-288-0877 C	Rayonier
Colin Myerson	229-506-1565	Superior Pine Products Co
Robbie Lee	229-356-0526	Superior Pine Products Co
Eric Harris	912-637-5597	Superior Pine Products Co
Superior Pine Office	912-637-5261	Superior Pine Products Co
Al Alexander	850-843-0104	The Forestry Co
Savell Schmidt	850-843-1181	The Forestry Co
John Bogue	850-843-1192	The Forestry Co
Joe Hopkins	912-276-0911	Toledo Timber
Chris Gowan	912-276-0965	Toledo Timber
Martin Bell	912-283-0583	Swamp Park
Crystal Peoples	352-316-0632	FIA
Steve Davis	912-614-1828	Davis Community
Trevor Fortner	912-599-9271	Little Suwannee
Tim Jarrell	912-223-7120	Hancock Forest Mgmt.
<b>RAILROADS</b>		
Norfolk Southern	800-453-2530	
Sid Moody	904-318-7983	Norfolk Southern Railroad
Chad Edwards	404-582-4909	Norfolk Southern Railroad
	540-797-9918	
Eric Sams	904-576-9907	
Norfolk So Emergency Dispatch	404-529-1597	
CSX Randy Dixon	912-270-0699	
CSX Dispatch	800-232-0144	

## **FINANCE**

**07/13/11**

### **EQUIPMENT**

PLEASE put E#'s on top right corner of shift ticket.

East side fuel supplier: Please send all fuel books to Finance daily.

E-93	Wildland Fire - Remember to put E# on shift ticket
E-824	Rapid City - No ending time for 7/11/11
E-1005	Wildland Fire - Need to clarify dates on shift ticket
E-1045	Attack One Fire - Please put stop time on shift ticket

### **TIME**

Please check back tomorrow.

IF YOU ARE GETTING CLOSE TO TIMING OUT, PLEASE SPEAK WITH YOUR FIRE LINE SUPERVISOR **ASAP**. ALSO, PLEASE COME BY FINANCE AND REVIEW YOUR TIME THE DAY BEFORE YOU DEMOB TO AVOID DELAYS THE DAY OF DEMOB. THANKS.

**DMOB for July 13 to July 17**  
**Contact DMOB - Tim @ 912-637-5241**

IF YOU ARE TRAVELLING HOME BY AIR AND WILL BE TRANSPORTED TO JACKSONVILLE THE DAY BEFORE YOUR FLIGHT BY GROUND SUPPORT - YOU NEED TO COMPLETE THE DEMOB PROCESS AND BE READY TO LEAVE ICP BY 1300 or 1700 HRS

IF YOU ARE TRAVELLING HOME BY AIR YOU NEED TO CONTRACT DMOB TO VERIFY I HAVE THE CORRECT NAME AS IT APPEARS ON YOUR PICTURE ID YOU WILL USE TO GET THROUGH AIRPORT SECURITY AS WELL AS YOUR DATE OF BIRTH AND DESTINATION JETPORT.

Number	Name	Kind	UnitID	Travel Method	Jetport	Travel Date
E-134.4	CRUCE, MIKE	ENO	FLFNF	POV		07/13/2011
E-922	ENGINE - T6 - FWS	ENG	GAPD	AOV		07/13/2011
O-537	LINDSAY, GLENDA	PTR	ORUP	AIR	EUG	07/13/2011
O-792	WILSON, DENNIS	TFL	KYLB	AOV	BNA	07/13/2011
E-93	WATER TENDER 10	WT	FLFNF	POV		07/14/2011
E-93.2	SELF, STEVEN	DRI	FLFNF	POV		07/14/2011
E-502.6	IRVIN, SAUL	ENG	FLFNF	POV		07/14/2011
E-502.7	WEIDEMILLER, MATT	ENO	FLFNF	POV		07/14/2011
E-502.8	PETER, BILL	ENG	FLFNF	POV		07/14/2011
E-502.9	JOHNSON, BILLIE	ENO	FLFNF	POV		07/14/2011
E-850.1	MARTIN, COLT LOGAN	FFT	GAGIC	AOV		07/14/2011
E-898	ENGINE - TYPE 6 -	ENG	MDMD	AOV		07/14/2011
E-898.1	HARRIS, JAMES	ENG	MDMD	AOV	BWI	07/14/2011
E-898.2	STUPAK, BRIAN	ENG	MDMD	AOV	BWI	07/14/2011
E-7.5	MCCULLOUGH, ADAM	TPO	GASA	AOV	SAV	07/15/2011
E-650.2	VANI, STEVE	DRI	FLFNF	POV		07/15/2011
E-651	JOHN DEERE TP3	TPL	GAOK	POV		07/15/2011
E-651.2	RIMES, WILLIAMS	DRI	GAOK	POV		07/15/2011
E-969	KALEIGH	TRA	GAOK			07/15/2011
E-969.1	TOMLINSON, KERRY	GR	GAOK	POV		07/15/2011
E-1085.1	CRANE, DONALD	ENG	FLFNF	POV		07/15/2011
E-1085.2	THOMAS, MICHAEL	ENO	FLFNF	POV		07/15/2011
E-5008	LANGLEY # 6 ENG6	ENG	FLFNF	POV		07/15/2011
E-5008.2	ATKINS, JOSH	ENO	FLFNF	POV		07/15/2011
O-663	HANNANS, RICHARD	THS	GAOK			07/15/2011
O-803	FINK, THOMAS	SEC	MNMN	A/R	HIB	07/15/2011



Number	Name	Kind	UnitID	Travel Method	Jetport	Travel Date
O-805	SHADDOX, TROY L	SOF	WAO	AIR	EAT	07/15/2011
O-853	SMITH, HERMAN	TPO	GAPD	AOV	ATL	07/15/2011
O-861	MATHISEN, JAMES	SEC	FLJNR	AOV	RSW	07/15/2011
O-863	BISHOP, ARNOLD	SEC	KYDBF	AOV	LEX	07/15/2011
O-865	ENGLESBY, CHRISTIE	OR	IDBOD	AIR	BOI	07/15/2011
O-870	BEAUCHAMP, GARY T	ICT2	FLFLS	POV	GNV	07/15/2011
O-879	MCCULLOUGH, JOHN	CA	GAOK			07/15/2011
E-559	MULLENIX WATER	WA	ARAO	POV		07/16/2011
E-559.2	GRAY, KEVIN	THS	AROU	POV		07/16/2011
E-717	RIGONI LOWBOY	LO	GAOK	POV		07/16/2011
E-5006	ENG6 WILDLANDS #3	ENG	FLFNF	POV		07/16/2011
E-5006.5	HAWK, KEITH	ENG	FLFNF	POV		07/16/2011
O-1006	CROY, STEVE	HEB	VAVAF	POV	ROA	07/16/2011
O-871	PARKER, MARK	THS	SCCR	AOV	CAE	07/16/2011
O-897	GEORGE, TERRY	STE	ORW	AIR	BOI	07/16/2011
O-898	MCCRAW, JOEL	STE	ORW	AIR	BOI	07/16/2011
E-136	ENG6 #5	ENG	FLFNF	POV		07/17/2011
E-136.5	CATES, JEREMIAH	ENG	FLFNF	POV		07/17/2011
E-136.6	KERR, TERR	ENO	FLFNF	POV		07/17/2011
E-526	PIERCE-TIMBER-	FEL	GAOK	POV		07/17/2011
E-646	CAT D4 LGP TYPE3	DOZ	MSMN	POV		07/17/2011
E-649	BEAR COUNTRY TP3	TPL	FLFNF	POV		07/17/2011
E-649.2	KIKENDALL, MIKE	TPO	FLFNF	POV		07/17/2011
E-709	ENGINE - T6 - E952 -	ENG	IAIAS	AOV		07/17/2011
E-709.4	WALKER, JASON	ENG	IAIAS	OTH		07/17/2011
E-709.5	THOMAS, JOE	FFT	IAIAS	OTH		07/17/2011
E-709.6	VANDERBERG, BRADY	FFT	IAIAS	OTH	SUX	07/17/2011
E-723	SEMI LOWBOY	LO	MSMN	POV		07/17/2011
E-5007	ENG6 LANGLEY #7	ENG	FLFNF	POV		07/17/2011
O-869	CUPIT, MARK	SEC	MSSC	AOV	AEX	07/17/2011
O-877	REGAN, RONALD	CO	NCBR	AOV	AVL	07/17/2011
O-883	SIAM, STEVEN B	RCD	OHOH	AIR	CMH	07/17/2011
O-902	CAUGHLIN, TIM	ATG	WIR09	A/R	MKE	07/17/2011

# Joint Information Center Fire Update

Fire Update for Tuesday, July 12, 2011~ 10 a.m.

Fire Information: [www.inciweb.org](http://www.inciweb.org)



**Honey Prairie Fire Complex: 295,415 acres, 70% contained**  
**Sweat Farm Again Fire: 19,169 acres, 80% contained**  
**Racepond Fire: 20,934 acres, 80% contained**

Heavy smoke and limited surface fire spread occurred along the northeast area of the Honey Prairie Fire yesterday. In addition, mowing activity to reduce flammable vegetation began around the Swamp Park area. Yesterday's planned strategic firing operation of approximately 650 acres southwest of Swamp Park and south of the air boat trail was re-scheduled for today. The goal of the operation is to prevent fire activity from jumping containment lines in that area. Crews will continue to focus on holding and patrolling the fire lines around the fire's perimeter as well as mop up operations. A water tanker operator assisting with fire suppression efforts sustained minor injuries yesterday in an automobile accident. Crews will continue to focus on holding and patrolling the fire lines around the fire's perimeter as well as mop up operations.

The Sweat Farm Again Fire received rain on Monday (primarily on the west side). Scattered and spotty showers impacted the Racepond Fire. Crews remain on the lookout for new lightning strikes from Sunday's thunderstorm event. Firefighters continue to patrol the fire lines and extinguish remaining hot spots.

A Hazardous Weather Outlook has been issued by the National Weather Service: "A smoke plume emanating from the honey prairie wildfire will affect areas to the northeast of the wildfire today. Visibilities may be reduced to 2 miles or less at times in smoke. The smoke may also mix with light fog across some areas, causing further visibility restrictions. The smoke will affect US Hwys 1, 301, and 82. Communities affected include Folkston, Woodbine, Nahunta, Jesup and I-95 from Woodbine to Brunswick."

Okefenokee National Wildlife Refuge remains closed. During the early morning hours of low fire activity, firefighters staged at the Visitor Center are clearing downed trees and cutting down hazardous trees along the Ridley's Island Trail.

The Georgia Fire Information Center will be open from 8 a.m. – 7 p.m. daily to help assist the public and media with up to date information on all fires across Southeast Georgia and Okefenokee National Wildlife Refuge. Please contact us at 912-496-2566 or [georgiafireinformationcenter@gmail.com](mailto:georgiafireinformationcenter@gmail.com).

**Cooperators:** Okefenokee National Wildlife Refuge; Georgia Forestry Commission; Florida Division of Forestry; U.S. Forest Service; Greater Okefenokee Association of Landowners (GOAL); Georgia Emergency Management Agency; Rayonier; Superior Pine; Langdale; GDOT; GSP; FLDOT; Georgia DNR; Georgia Aviation Authority; Georgia National Guard; Georgia DOC; County Fire Departments; Toledo Manufacturing Company; Charlton, Ware and Clinch Counties; and the Cities of Folkston and Homerville.

**Closures:** All entrances into Okefenokee National Wildlife Refuge are closed. All visitor activities are suspended until the threat of fire is over. For status updates on visitor activities, contact: Okefenokee National Wildlife Refuge, 912-496-7366; Okefenokee Swamp Park, 912-283-0583; or the Stephen C. Foster State Park, 912-637-5274.

[georgiafireinformationcenter@gmail.com](http://georgiafireinformationcenter@gmail.com)

**912-496-2566**

#### Assigned Resources

143 Engines  
18 Dozers  
20 Water Tenders  
7 Helicopters  
1 Crew  
849 Personnel

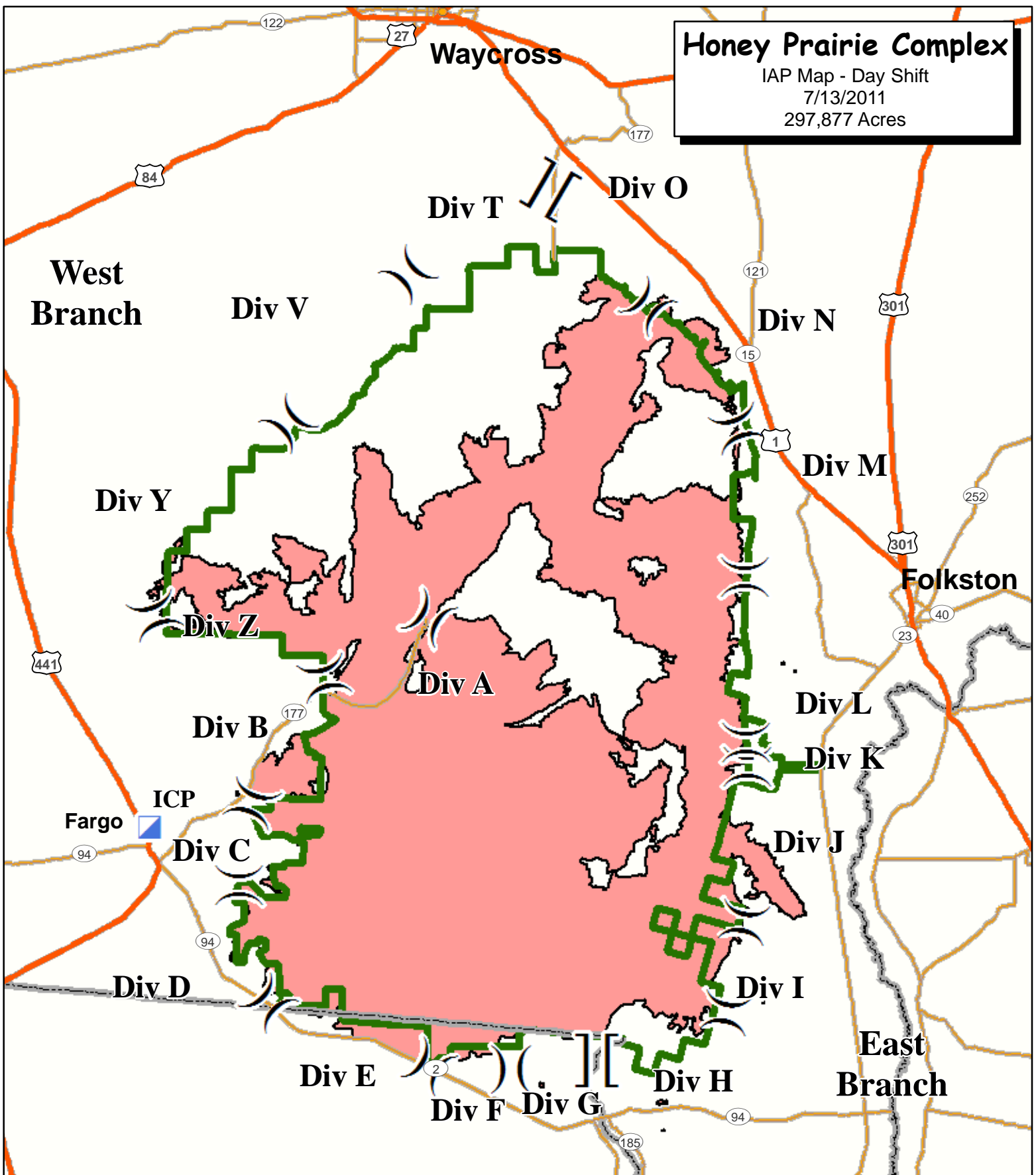
[www.inciweb.org](http://www.inciweb.org)  
[www.fws.gov/okefenokee](http://www.fws.gov/okefenokee)  
[www.gatrees.org](http://www.gatrees.org)

# Honey Prairie Complex

IAP Map - Day Shift

7/13/2011

297,877 Acres



- ]] Branch Break
- ) ( Division Break
- Incident Command Post

0 5 10 Miles

- Highway
- Major Road
- State Boundary

- ▭ Refuge Boundary
- Fire Area



7/12/2011 1400  
S. Leverette

