

# Honey Prairie Complex

*GA-OKR-000001*

## Incident Action Plan

Operational Period  
Friday July 15, 2011

Day Shift (0800-2100)  
Night Shift (1800-0600)

### **Accounting Codes**

FWS – 9141-F25M-2J

NPS – 5023 F25M E11

BLM – F25M

USFS – PRF25M\_1502

Initial Attack – F4PM

<b>INCIDENT OBJECTIVES</b>	<b>1. INCIDENT NAME</b> Honey Prairie Complex	<b>2. DATE PREPARED</b> 7/14/11	<b>3. TIME PREPARED</b> 1800												
<b>4. OPERATIONAL PERIOD (DATE/TIME)</b> Friday July 15, 2011 Day (0800 – 2100) and Night (1800 – 0600)															
<b>5. GENERAL CONTROL OBJECTIVES FOR THE INCIDENT (INCLUDE ALTERNATIVES)</b> <ol style="list-style-type: none"> <li>1. Provide for safety of incident personnel and public in all incident operations.</li> <li>2. Maintain a positive working relationship with all adjacent landowners, cooperators State and Federal partners. Inform, involve and communicate incident planning and operations with all partners.</li> <li>3. Contain all fires that are within the Okefenokee National Wildlife Refuge, inside the Refuge and/or inside the swamp edge break if possible.</li> <li>4. In cooperation with local timberland owners, use full suppression strategies and tactics to minimize damage to private timberlands and improvements and to prevent fires outside the Refuge from entering the Refuge.</li> <li>5. Assist in management and suppression of additional fires (new starts or breakouts) in the vicinity as approved by Agency Administrators and Unified Incident Commanders.</li> <li>6. Protect all cultural and archeological sites and structures within the refuge, with particular attention to facilities at Okefenokee Swamp Park.</li> <li>7. Manage the fires cost-effectively consistent with the values at risk.</li> <li>8. Implement structure protection as necessary for at-risk facilities and communities.</li> <li>9. Coordinate suppression actions with assigned Refuge Resource Advisors</li> </ol>															
<b>6. WEATHER FORECAST FOR OPERATIONAL PERIOD</b> See attached forecast for area specific weather information.															
<b>7. GENERAL SAFETY MESSAGE</b> Drive defensively and use spotter when backing. Ensure LCES is in place and known by all personnel. Drink plenty of water and take frequent rest breaks. Ensure proper use of PPE during all operations.															
<b>8. Attachments (☐ if attached)</b> <table border="0" style="width: 100%;"> <tr> <td>☐ Organization List (ICS 203)</td> <td>☐ Incident Map</td> <td>☐ Safety Message</td> </tr> <tr> <td>☐ Assignment List (ICS 204)</td> <td>☐ Traffic Plan</td> <td>☐ Demobilization Procedures</td> </tr> <tr> <td>☐ Communications Plan (ICS 205)</td> <td>☐ Human Resources</td> <td>☐ Unit Log</td> </tr> <tr> <td>☐ Medical Plan (ICS 206)</td> <td>☐ Phone List</td> <td></td> </tr> </table>				☐ Organization List (ICS 203)	☐ Incident Map	☐ Safety Message	☐ Assignment List (ICS 204)	☐ Traffic Plan	☐ Demobilization Procedures	☐ Communications Plan (ICS 205)	☐ Human Resources	☐ Unit Log	☐ Medical Plan (ICS 206)	☐ Phone List	
☐ Organization List (ICS 203)	☐ Incident Map	☐ Safety Message													
☐ Assignment List (ICS 204)	☐ Traffic Plan	☐ Demobilization Procedures													
☐ Communications Plan (ICS 205)	☐ Human Resources	☐ Unit Log													
☐ Medical Plan (ICS 206)	☐ Phone List														
<b>9. PREPARED BY (PLANNING SECTION CHIEF)</b> Ed Flowers		<b>10. APPROVED BY (INCIDENT COMMANDER)</b> /s/ Don West /s/Trent Ingram /s/Mike Dueitt													

ORGANIZATION ASSIGNMENT LIST		9. Operations Section		
1. Incident Name <b>Honey Prairie Complex</b> GA-OKR-000001		Chief	Roger Gill (West Branch) 7/25, Butch Hall (East Branch) 7/22	
		Planning	Rick Dolan 7/22	
2. Date 7/14/2011	3. Time 1000 hrs	<b>a. WEST BRANCH - Divisions/Groups</b>		
4. Operational Period 7/15/2011 Day (0800 - 2100) Night (1800 - 0600)		OPBD	Tom Donohoe 7/22	
5. Incident Commander and Staff		Division	A, B, C	Bill Altman / Greg Jacobson (t)
Incident Commander	Don West/Verne Riggall (Dep)/ Trent Ingram/Mike Dueitt	Division	D, E, F, G	Thomas Herold 7/19/ Paul Pelligrini (t) 7/20
Liason Officer	Gary Beauchamp 7/29	Division	T	Brian Rhodes 7/20 / Todd Haynes (t) 7/19
Safety Officers	Barry Coulliette 7/22 / Ray Durham 7/23	Division	V	Shawn Duggar 7/22 / Greg Suszek (t) 7/19
Information Officer	Ludie Bond 7/22	Division	Y (DAY)	Gary Smith 7/19 / Dan Helterline (t) 7/19
<b>6a. Agency Administrators</b>		Division	V, Y (NIGHT)	Jacque Parks 7/20
FWS	Curt McCasland	Division	Z	Glen Palfrey 7/20 / Jesse Knox (t) 7/18
FWS	Mindy Gautreaux	Group	IA-WEST and Structure Group	Don Hammack 7/19 / Bob Schober (t) 7/18
<b>6b. Agency Representatives</b>		<b>b. EAST BRANCH - Divisions/Groups</b>		
FWS Liason	Skippy Reeves	OPBD	Brett Waters 7/25	
GFC	Frank Sorrels	Division	H, I, J, K	Matt Filbert 7/18
FLDOF	James Karels	Division	L, M	Ray Miller 7/20
FWS AREP	Mike Housh	Division	N, O	Steve Griffin 7/19
FWS-Refuge PAO	Art Webster	Group	IA-EAST	Billy Taylor 7/26
GEMA AREP	Alan Robinson / Diane Adams	Group	Roads	
USFS AREP	Ivan Greene			
<b>7. Planning Section</b>		<b>c. AIR OPERATIONS BRANCH - Honey Prairie</b>		
Chief	Ed Flowers 7/22	Air Operations Branch Director		Tim Elder 7/22
Dep Chief	Steve Budd-Jack 7/25	Air Support Group Supervisor		Don Nicholas 7/22
Resources Unit	Wilbur Priest 7/22	ATGS-Lake City		Tim Caughlin 7/16
Situation Unit	Scott Crosby 7/22	<b>d. AIR OPERATIONS BRANCH-Waycross</b>		
IMET	Joe Goudsward 7/21 / Mike Bettwy 7/21	Waycross Helibase Manager		
FBAN	John Kern 7/22	<b>e. AIR OPERATIONS BRANCH - Fargo</b>		
Demob Unit	Tim Wilkinson 7/22	Fargo Helibase Manager		Brain Campbell 7/22 / Steve Croy (t) 7/15
Documentation	Fred Noack 7/19	ATGS-Fargo		Carl McGill 7/18
GIS	Sue Leverette 7/22	<b>8. Logistics Section</b>		
CTSP	Randy Fountain 7/22 / Charlie Bolen 7/17	<b>10. Finance Section</b>		
TNSP	Larry Moore 7/24	Chief	Betty Palmiotto 7/22 / Linda Starling 7/22	
8. Logistics Section		Supply Unit	Linda Bruss/7/18 / Rhonda Hughes(t) 7/22	
Chief	Shane Locke 7/21/Butch Mallet 7/22	GSUL	James Thompson 7/22	
Supply Unit	Linda Bruss/7/18 / Rhonda Hughes(t) 7/22	ORDM	Abe Phillipson(t) 7/22 / Cindy Tisdell 7/24	
GSUL	James Thompson 7/22	COML	Brian Mathews 7/22	
ORDM	Abe Phillipson(t) 7/22 / Cindy Tisdell 7/24	Medical Unit	Joe Fowler 7/22	
COML	Brian Mathews 7/22	Facilities	Bill Hitt 7/22 / Mel Reese(t) 7/22	
Medical Unit	Joe Fowler 7/22	Food	Nat Wright 7/22/Bob Kookan 7/17	
Facilities	Bill Hitt 7/22 / Mel Reese(t) 7/22	RCDM	Gary Sisson(t) 7/22 / Jamie Chopp 7/17	
Food	Nat Wright 7/22/Bob Kookan 7/17	BCMG	Carl Taylor 7/25	
RCDM	Gary Sisson(t) 7/22 / Jamie Chopp 7/17			
BCMG	Carl Taylor 7/25			
		Prepared by:	Wilbur Priest RESL	

<b>DIVISION ASSIGNMENT LIST</b>			1. Branch <b>West</b>	2. Division <b>A, B, C</b>			
3. Incident Name: <b>Honey Prairie Complex</b>			4. Operational Period Date: 7/15/2011 Time: Day: 0800-2100				
5. Operations Personnel							
<b>Operations</b>	Roger Gill 7/25			<b>Branch Director</b>	Tom Donohoe 7/22		
<b>Planning Ops</b>	Rick Dolan 7/22			<b>Division Supervisor</b>	Bill Altman 7/19 Greg Jacobson (t) 7/19		
<b>Safety Officer</b>	Barry Coulliette 7/22						
6. Resources Assigned this Period							
Strike Team/Task Force/ Resource Designator	Leader / Name / Designator	Last Shift Date	Num. Per.	Drop Off PT./Time	Pick Up PT./Time		
<b>TFLD (O-900)</b>	<b>Phil Millette</b>	7/18	1				
<b>TFLD (E-838.6)</b>	<b>Darren Franco (t)</b>	7/21	1				
<b>STEN (O-949)</b>	<b>Nikia Hernandez</b>	7/19	1				
ENG6 (E-405)	Brett Gore	7/24	3				
ENG6 (E-907) Eagle Staff	Brady Ward	7/22	2				
ENG6 (E-994)	Pat Norquay	7/18	3				
ENG6 (E-1059)	Daniel Ross	7/22	3				
ENG6 (E-1065)	Mike Carnelli	7/22	3				
ENG6 (E-1066)	Eric Jones	7/21	3				
ENG6 (E-1076) MOMTF 9504	Tim Perren	7/24	3				
ENG6 (E-5002) Attack#1	Hank Kight	7/20	2	PVT			
Excavator (E-596)	Kenneth Enfinger	?	1				
WAT2 (E-93)	William Davis		1	PVT			
<b>SOF2 (O-1068)</b>	<b>Jamey Burnsed</b>	7/25	1				
<b>EMTB (O-984)</b>	<b>Bob Eaton</b>	7/20	1				
7. Control Operations							
<ul style="list-style-type: none"> <li>Patrol and mop up within 100' of fire perimeter line.</li> <li>Monitor fire impacts to Stephen Foster State Park.</li> <li>Patrol and control reburn.</li> </ul>							
8. Special Instructions							
<ul style="list-style-type: none"> <li>Examine work area for fire weakened snags.</li> <li>Ensure LCES are in place before operations begin and stay hydrated.</li> <li>Additional resources will be available from GFC, Florida DOF, FWS, and local cooperators.</li> <li>Drive defensively and with lights on at all times.</li> </ul>							
9. Division/Group Communication Summary							
Function	Frequency	System	Channel	Function	Frequency	System	Channel
Command N Okee Repeater	RX 164.5750/206.5 TX 163.150/206.5	KING NIFC	5	Logistics		KING NIFC	
Tactical Div/Group	RX 168.775 TX 168.7750	KING NIFC	9	Air to Ground	RX 166.9375 TX 166.9375	KING NIFC	6
Prepared by (Resource Unit Ldr.) Fred Noack		Approved by (Planning Sect. Ch.) /s/ Ed Flowers			Date 7/14/2011		Time 1930

<b>DIVISION ASSIGNMENT LIST</b>			1. Branch <b>West</b>		2. Division <b>D, E, F, G</b>		
3. Incident Name <b>Honey Prairie Complex</b>			4. Operational Period Date: 7/15/2011 Time: 0800-2100				
5. Operations Personnel							
<b>Operations</b>		Roger Gill 7/25		<b>Branch Director</b>		Tom Donohoe 7/22	
<b>Planning Ops</b>		Rick Dolan 7/22		<b>Division Supervisor</b>		Toby Herold 7/20 / Paul Pelligrini (t) 7/20	
<b>Safety Officer</b>		Barry Coulliette 7/22					
6. Resources Assigned this Period							
Strike Team / Task Force / Resource Designator		Leader / Name / Designator		Last Shift Date	Num. Per.	Drop Off PT./Time	Pick Up PT./Time
<b>TFLD (O-916)</b>		<b>Hans Ohme</b>		7/18	1		
<b>TFLD (O-926)</b>		<b>Matt Ingram</b>		7/18	1		
<b>STPL (O-1055)</b>		<b>Royce Davis</b>		7/23	1		
ENG6 (E-134)		Paul McDavid		7/20	3	PVT	
ENG5 (E-503)		Dean Vanderbleek		7/23	2	PVT	
ENG6 (E-709)		Jason Walker		7/16	3	PVT	
ENG6 (E-821)		Robert Thompson		7/24	3		
ENG6 (E-824)		Chris Brubaker		7/24	3		
TPL3 (E-914)		Fred Robinson		7/23	1		
TPL3 (E-1138)		Jim Reynolds		7/23	1		
TPL3 (E-1139)		Stan Jackson		7/23	1		
<b>EMTB (O-1058)</b>		<b>Paul Smith</b>		7/24	1		
<b>SOF2 (O-1083)</b>		<b>Tommy Lail</b>		7/26	1		
7. Control Operations <ul style="list-style-type: none"> <li>Monitor and patrol south end of West Branch.</li> <li>Mop up all hot spots within 100' of the fire perimeter.</li> <li>Patrol and control reburn.</li> </ul>							
8. Special Instructions <ul style="list-style-type: none"> <li>Ensure LCES are in place before operations begin and stay hydrated.</li> <li>See medical plan for EMT support.</li> <li>Drive defensively and with lights on at all times.</li> <li>Examine work area for fire weakened snags.</li> <li>If communications needed with Impassable Bay Fire – use Channel 11 (168.2000)</li> </ul>							
9. Division/Group Communication Summary							
Function	Frequency	System	Channel	Function	Frequency	System	Channel
<b>Command</b> <b>S Okee Repeater</b>	RX 164.7750/123.0 TX 163.150/123.0	KING NIFC	2	Logistics		KING NIFC	
Tactical Div/Group	RX 151.2725 TX 151.2725	KING NIFC	13	Air to Ground	RX 166.9375 TX 166.9375	KING NIFC	6
Prepared by (Resource Unit Ldr.) Fred Noack		Approved by (Planning Sect. Ch.) /s/ Ed Flowers			Date July 14, 2011		Time 1930

<b>DIVISION ASSIGNMENT LIST</b>				1. Branch <b>West</b>		2. Division <b>T</b>	
3. Incident Name <b>Honey Prairie Complex</b>				4. Operational Period Date: <b>7/15/2011</b> Time: <b>0800-2100</b>			
5. Operations Personnel							
<b>Operations</b>	Roger Gill 7/25			<b>Branch Director</b>		Tom Donohoe 7/22	
<b>Planning Ops</b>	Rick Dolan 7/22			<b>Division</b>		Brian Rhodes 7/18 / Todd Haynes (t) 7/19	
<b>Safety Officer</b>	Barry Coulliette 7/22						
6. Resources Assigned this Period							
Strike Team/Task Force/ Resource Designator		Leader / Name / Designator		Last Shift Date	Num. Per.	Drop Off PT./Time	Pick Up PT./Time
<b>TFLD (O-946)</b>		<b>Stephen Filmore</b>		7/19	1		
<b>TFLD (E-831.8)</b>		<b>Jeff Hussey</b>		7/23	1		
<b>STEN (O-952)</b>		<b>Vincent Plummer</b>		7/19	1		
<b>S/T Type 6 OR TFLD (t) (E-831.9)</b>		<b>Deana Wall</b>		7/23	1		
ENG6 (E-831.1)		Ben Nichols		7/23	4		
ENG6 (E-831.4)		Eric Hahn		7/23	3		
ENG6 (E-831.5)		Shane Thames		7/23	3		
ENG6 (E-831.6)		Tavis Fenske		7/23	3		
ENG6 (E-831.7)		Mike Towers		7/23	3		
ENG6 (E-815)		Matt Dillon		7/22	2		
ENG6 (E-816)		Jamie Remme		7/22	2		
ENG6 (E-817)		Mike Mattson		7/22	2		
ENG6 (E-818)		Scott Lindow		7/22	2		
ENG6 (E-1073)		Mike Schlitz		7/22	3		
WAT1 (E-1019)		Frank Durrance		7/18	1	PVT	
WAT2 (E-1021)		Charlie Brown		7/19	1	PVT	
TPL2 (E-986)		David Hauser		7/26	1	PVT	
TPL2 (E-988)		Jonathon Houser		7/30	1	PVT	
KG (E-989)		Cleo Simon		7/30	1	PVT	
<b>EMTP (E-1134)</b>		<b>Jeff Halladay</b>		7/21	1		
<b>SOF2 (O-973)</b>		<b>Larry Dorshorst</b>		7/20	1		
7. Control Operations <ul style="list-style-type: none"> <li>Recon potential control lines and examine area for snag removal</li> <li>Improve swamp break boundaries for fire breaks, work w/resource advisor</li> <li>Coordinate potential burn-out w/READ and refuge personnel</li> <li>Use refuge personnel for any burn-out activities.</li> </ul>							
8. Special Instructions <ul style="list-style-type: none"> <li>Make contact with the Resource Advisor before using mechanical equipment.</li> <li>Safely push down with equipment all snags whether on fire or not that are a threat to success or tactical operations.</li> <li>Ensure LCES are in place before operations begin. Stay hydrated.</li> <li>Drive defensively and with lights on at all times.</li> <li>Boggy terrain: Be careful and aware when working around this type of area.</li> </ul>							
9. Division/Group Communication Summary							
Function	Frequency	System	Channel	Function	Frequency	System	Channel
Command N Okee Repeater	RX 164.5750/206.5 TX 163.150/206.5	KING NIFC	5	Logistics		KING NIFC	
Tactical Div/Group	RX 168.775 TX 168.775	KING NIFC	9	Air to Ground	RX 166.9375 TX 166.9375	KING NIFC	6
Prepared by (Resource Unit Ldr.) Fred Noack		Approved by (Planning Sect. Ch.) /s/ Ed Flowers			Date July 14, 2011		Time 1800

<b>DIVISION ASSIGNMENT LIST</b>			1. Branch <b>West</b>		2. Division <b>V</b>		1 of 2
3. Incident Name <b>Honey Prairie Complex</b>			4. Operational Period Date: <b>7/15/2011</b> Time: <b>0800-2100</b>				
5. Operations Personnel							
<b>Operations</b>	Roger Gill 7/25			<b>Branch Director</b>	Tom Donohoe 7/22		
<b>Planning Ops</b>	Rick Dolan 7/22			<b>Division Supervisor</b>	Shawn Duggar 7/22 / Greg Suszek (t) 7/19		
<b>Safety Officer</b>	Barry Coulliette 7/22						
6. Strike Team/Task Force/ Resource Designator							
	Leader / Name / Designator	Last Shift Date	Num. Per.	Drop Off PT./Time	Pick Up PT./Time		
<b>TFLD (O-906)</b>	<b>Evan Karp</b>	7/18	1				
<b>TFLD (O-978)</b>	<b>Jacob Thelen (t)</b>	7/19	1				
<b>TFLD (O-942)</b>	<b>Ben Krupski</b>	7/19	1				
<b>TFLD(O-1000)</b>	<b>Waylon Meek (t)</b>	7/19	1				
<b>ENG6 (E-2)</b>	Eric Nelson	7/19	1	O-436			
<b>ENG6 (E-3)</b>	Daniel Angelo	7/25	2				
<b>ENG6 (E-992)</b>	Justin Dillon	7/29	3	PVT			
<b>ENG6 (E-995)</b>	Mike Daigle	7/25	3				
<b>ENG6 (E-996)</b>	John Cousins	7/25	3				
<b>ENG6 (E-1000)</b>	Paul Rampinini	7/19	3	PVT			
<b>ENG6 (E-1001)</b>	Dick Sypher	7/19	3	PVT			
<b>ENG6 (E-1053)</b>	Timmerman	7/27	3	PVT			
<b>ENG6 (E-1062)</b>	Tyler Quintano	7/22	3	PVT			
<b>ENG6 (E-1063)</b>	Brad Finch	7/22	3	PVT			
<b>ENG6 (E-1064)</b>	Greg Nichols	7/21	3				
<b>ENG6 (E-1085)</b>	Don Crane	R&R	2	PVT	R&R 7/15-16		
7. Control Operations							
<ul style="list-style-type: none"> <li>Recon potential control lines and examine area for snag removal</li> <li>Improve swamp break boundaries for fire breaks, work w/resource advisor</li> <li>Coordinate potential burn-out w/READ and Refuge Personnel</li> <li>Use Refuge personnel for any burn-out activities.</li> </ul>							
8. Special Instructions							
<ul style="list-style-type: none"> <li>Make contact with the Resource Advisor before using machanical equipment.</li> <li>Safely push down with equipment all snags whether on fire or not that are a threat to success or tactical operations.</li> <li>Ensure LCES are in place before operations begin. Stay hydrated.</li> <li>Drive defensively and with lights on at all times.</li> <li>Boggy terrain: Be careful and aware when working around this type of area.</li> </ul>							
9. Division/Group Communication Summary							
Function	Frequency	System	Channel	Function	Frequency	System	Channel
Command N Okee Repeater	RX 164.5750/206.5 TX 163.150/206.5	KING NIFC	5	Logistics		KING NIFC	
Tactical Div/Group	RX 151.2725 TX 151.2725	KING NIFC	13	Air to Ground	RX 166.9375 TX 166.9375	KING NIFC	6
Prepared by (Resource Unit Ldr.) Fred Noack		Approved by (Planning Sect. Ch.) /s/ Ed Flowers			Date July 14, 2011		Time 1800

DIVISION ASSIGNMENT LIST		1. Branch <b>West</b>		2. Division <b>V</b>		2 of 2	
3. Incident Name <b>Honey Prairie Complex</b>		4. Operational Period Date: <b>7/15/2011</b> Time: <b>0800-2100</b>					
5. Operations Personnel							
<b>Operations</b>	Roger Gill 7/25	<b>Branch Director</b>		Tom Donohoe 7/22			
<b>Planning Ops</b>	Rick Dolan 7/22	<b>Division Supervisor</b>		Shawn Duggar 7/22 / Greg Suszek (t) 7/19			
<b>Safety Officer</b>	Barry Coulliette 7/22						
6. Strike Team/Task Force/ Resource Designator							
	Leader / Name / Designator	Last Shift Date	Num. Per.	Drop Off PT./Time	Pick Up PT./Time		
<b>TFLD (O-986)</b>	<b>Mike Harnois</b>	7/22	1				
<b>DOZB (O-1001)</b>	<b>Roy Cribb</b>	7/20	1				
KG Dozer (E-982)	Richard Nevits	?	1	PVT			
KG Dozer (E-983)	Jody Rienhart	?	1	PVT			
TPL2 (E-606)	Cody Daniels	7/17	1				
Skidder (E-981)	Henry Tiner	7/25	1	PVT			
Feller-Buncher (E-524)	Josh Burdy	7/21	1	PVT			
Feller-Buncher (E-526)	James Marshall	7/16	1	PVT			
Grader (E-530)	Lucious Corbett	?	1	PVT			
WT2 (E-1018)	Gary Waldron	7/21	1	PVT			
<b>SOF2 (O-972)</b>	<b>Larry Bunge</b>	7/19	1				
<b>EMTP (O-767)</b>	<b>Evan Dean</b>	R&R	1		Back on 7/16. Last shift 7/29		
<b>EMTP (O-1059)</b>	<b>John Oker-Bloom</b>	7/23	1				
7. Control Operations							
<ul style="list-style-type: none"> <li>Recon potential control lines and examine area for snag removal</li> <li>Improve swamp break boundaries for fire breaks, work w/resource advisor</li> <li>Coordinate potential burn-out w/READ and Refuge Personnel</li> <li>Use Refuge personnel for any burn-out activities.</li> </ul>							
8. Special Instructions							
<ul style="list-style-type: none"> <li>Make contact with the Resource Advisor before using mechanical equipment.</li> <li>Safely push down with equipment all snags whether on fire or not that are a threat to success or tactical operations.</li> <li>Ensure LCES are in place before operations begin. Stay hydrated.</li> <li>Drive defensively and with lights on at all times.</li> <li>Boggy terrain: Be careful and aware when working around this type of area.</li> </ul>							
9. Division/Group Communication Summary							
Function	Frequency	System	Channel	Function	Frequency	System	Channel
Command N Okee Repeater	RX 164.5750/206.5 TX 163.150/206.5	KING NIFC	5	Logistics		KING NIFC	
Tactical Div/Group	RX 151.2725 TX 151.2725	KING NIFC	13	Air to Ground	RX 166.9375 TX 166.9375	KING NIFC	6
Prepared by (Resource Unit Ldr.) Fred Noack		Approved by (Planning Sect. Ch.) /s/ Ed Flowers		Date July 14, 2011		Time 1800	



DIVISION ASSIGNMENT LIST			1. Branch <b>West</b>		2. Division <b>Y - Day</b>		1 of 2
3. Incident Name <b>Honey Prairie Complex</b>			4. Operational Period Date: <b>7/15/2011</b> Time: <b>0800-2100</b>				
5. Operations Personnel							
<b>Operations</b>		Roger Gill 7/25		<b>Branch Director</b>		Tom Donohoe 7/22	
<b>Planning Ops</b>		Rick Dolan 7/22		<b>Division Supervisor</b>		Gary Smith 7/19, Dan Helterline (t) 7/19	
<b>Safety Officer</b>		Barry Coulliette 7/22					
6. Resources Assigned this Period							
Strike Team/Task Force/ Resource Designator		Leader / Name / Designator		Last Shift Date	Num. Per.	Drop Off PT./Time	Pick Up PT./Time
<b>TFLD (O-920)</b>		<b>Aaron Schneider</b>		7/18	1		
<b>TFLD (O-991)</b>		<b>Adam Wolf (t)</b>		7/21	1		
<b>TFLD (O-954)</b>		<b>Brian Ebert (t)</b>		7/20	1		
<b>STEN (O-979)</b>		<b>Sam Lindblom (t)</b>		7/20	1		
ENG6 (E-584)		Cris Geidel		7/24	2		
ENG6 (E-838)		Chris Mursu		7/21	2		
ENG6 (E-997)		Jack Weer		7/20	2		
ENG6 (E-998)		John Stebner		7/20	2		
ENG6 (E-1004)		Doug Scott		7/19	2	PVT	
ENG6 (E-1005)		Dave Hardy		7/19	2	PVT	
ENG6 (E-1010)		Gene-Paul Matson		7/18	2	PVT	
ENG6 (E-1011)		Greg Curry		7/19	2	PVT	
ENG6 (E-1012)		Glenn Hill		7/19	2	PVT	
<b>ENG6 (E-1014)</b>		<b>Doug Vankuiken</b>		<b>7/19</b>	<b>3</b>	<b>PVT</b>	<b>Demob 7/14</b>
ENG6 (E-1015)		Robert Burton		7/20	3	PVT	
ENG6 (E-1016)		James Mangine		7/20	3	PVT	
ENG5 (E-1036)		Tom Gates		7/24	3		
ENG5 (E-1046)		Karen Mobley		7/21	3		
ENG6 (E-1056)		John Wisecarver		7/28	3	PVT	
ENG6 (E-1071)		Clayton Swanger		7/22	3		
7. Control Operations <ul style="list-style-type: none"> <li>Make contact with the Resource Advisor before using mechanical equipment.</li> <li>Recon potential controllines and examine area for snag removal</li> <li>Improve swamp break boundaries for fire breaks</li> </ul>							
8. Special Instructions <ul style="list-style-type: none"> <li>Safely push down with equipment all snags whether on fire or not that are a threat to success or tactical operations.</li> <li>Ensure LCES are in place before operations begin. Stay hydrated.</li> <li>Drive defensively and with lights on at all times.</li> <li>Boggy terrain: Be careful and aware when working around this type of area.</li> </ul>							
9. Division/Group Communication Summary							
Function	Frequency	System	Channel	Function	Frequency	System	Channel
Command N Okee Repeater	RX 164.5750/206.5 TX 163.150/206.5	KING NIFC	5	Logistics		KING NIFC	
Tactical Div/Group	RX 151.2725 TX 151.2725	KING NIFC	13	Air to Ground	RX 166.9375 TX 166.9375	KING NIFC	6
Prepared by (Resource Unit Ldr.) Fred Noack		Approved by (Planning Sect. Ch.) /s/ Ed Flowers			Date July 14, 2011		Time 1730

DIVISION ASSIGNMENT LIST			1. Branch <b>West</b>		2. Division <b>Y - Day</b>		2 of 2	
3. Incident Name <b>Honey Prairie Complex</b>			4. Operational Period Date: <b>7/15/2011</b> Time: <b>0800-2100</b>					
5. Operations Personnel								
<b>Operations</b>		Roger Gill 7/25		<b>Branch Director</b>		Tom Donohoe 7/22		
<b>Planning Ops</b>		Rick Dolan 7/22		<b>Division Supervisor</b>		Gary Smith 7/19, Dan Helterline (t) 7/19		
<b>Safety Officer</b>		Barry Coulliette 7/22						
6. Resources Assigned this Period								
Strike Team/Task Force/ Resource Designator		Leader / Name / Designator		Last Shift Date	Num. Per.	Drop Off PT./Time		Pick Up PT./Time
WT2 (E-512)		Mack Evans		7/31	1	PVT		
WT2 (E-560)		Woody Bargeron		7/24	1	PVT		
WTS1 (E-716)		Donnie Griffis		7/25	1	PVT		
WT2 (E-1017)		Rick Selph		7/25	1	GAOKR		
WT2 (E-1024)		Richard Jones		7/28	1	PVT		
<b>DOZB (O-1004)</b>		<b>Derek Cooper</b>		7/20	1			
<b>DOZB (O-1008)</b>		<b>Zack Culver (t)</b>		7/21	1			
TPL2 (E-497)		Leslie Jeter		7/22	1	PVT		
TPL3 (E-943)		Hugh Matchett		7/20	1	PVT		
TPL3 (E-984)		Junior House		7/31	1	PVT		
TPL2 (E-985)		Aaron Tipton		7/27	1	PVT		
<b>SOF2 (O-891)</b>		<b>Steve Holman</b>		7/16	1			
<b>EMTP (O-766)</b>		<b>Peggy Miller</b>		7/28	1			
<b>EMTB (O-1077)</b>		<b>Michael Graham</b>		7/26	1			
7. Control Operations <ul style="list-style-type: none"> <li>Make contact with the Resource Advisor before using mechanical equipment.</li> <li>Recon potential controllines and examine area for snag removal</li> <li>Improve swamp break boundaries for fire breaks</li> </ul>								
8. Special Instructions <ul style="list-style-type: none"> <li>Safely push down with equipment all snags whether on fire or not that are a threat to success or tactical operations.</li> <li>Ensure LCES are in place before operations begin. Stay hydrated.</li> <li>Drive defensively and with lights on at all times.</li> <li>Boggy terrain: Be careful and aware when working around this type of area.</li> </ul>								
9. Division/Group Communication Summary								
Function	Frequency	System	Channel	Function	Frequency	System	Channel	
Command N Okee Repeater	RX 164.5750/206.5 TX 163.150/206.5	KING NIFC	5	Logistics		KING NIFC		
Tactical Div/Group	RX 151.2725 TX 151.2725	KING NIFC	13	Air to Ground	RX 166.9375 TX 166.9375	KING NIFC	6	
Prepared by (Resource Unit Ldr.) Fred Noack		Approved by (Planning Sect. Ch.) /s/ Ed Flowers			Date July 14, 2011		Time 1730	

<b>DIVISION ASSIGNMENT LIST</b>				1. Branch <b>West</b>		2. Division <b>V,Y Night</b>		
3. Incident Name <b>Honey Prairie Complex</b>				4. Operational Period Date: 7/15/2011 Time: 1800-0600				
5. Operations Personnel								
<b>Operations</b>		Roger Gill 7/25		<b>Branch Director</b>		Tom Donohoe 7/22		
<b>Planning Ops</b>		Rick Dolan 7/22		<b>Division Supervisor</b>		Jacquie Parks 7/20 / Tony Harkins (t) 7/20		
<b>Safety Officer</b>		Barry Coulliette 7/22						
6. Resources Assigned this Period								
Strike Team/Task Force/ Resource Designator		Leader / Name / Designator		Last Shift Date	Num. Per.	Drop Off PT./Time	Pick Up PT./Time	
<b>TFLD (O-944)</b>		<b>Dave Marion</b>		7/19	1			
<b>STEN (t) (O-1018)</b>		<b>Greg Thomas</b>		7/23	1			
ENG6 (E-76)		Chris Henderson		7/20	2			
ENG6 (E-78)		Kevin Cline		7/20	2			
ENG6 (E-80)		Dane Bass		7/20	2			
ENG6 (E-81)		Troy Helms		7/20	2			
ENG6 (E-1081)		Tim Joy		7/20	2			
ENG6 (E-1082)		Brad Gregory		7/20	2			
ENG6 (E-1083)		Tony Harkins		7/20	2			
WAT2 (E-954)		Danny Holmes		7/23	1	PVT		
<b>SOF2 (O-997)</b>		<b>Bob Habeck</b>		7/21	1			
<b>EMTP (O-640)</b>		<b>Mike Fincham</b>		7/28	1			
<b>EMTP (E-1153)</b>		<b>Wes Lathen</b>		7/26	1			
<b>EMTB (E-1135)</b>		<b>Dominic Burchett</b>		7/21	1			
7. Control Operations								
<ul style="list-style-type: none"> <li>Make contact with the Resource Advisor before using mechanical equipment.</li> <li>Recon potential controllines and examine area for snag removal</li> <li>Improve swamp break boundaries for fire breaks</li> </ul>								
8. Special Instructions								
<ul style="list-style-type: none"> <li>Safely push down with equipment all snags whether on fire or not that are a threat to success or tactical operations.</li> <li>Ensure LCES are in place before operations begin. Stay hydrated.</li> <li>Drive defensively and with lights on at all times.</li> <li>Boggy terrain: Be careful and aware when working around this type of area.</li> </ul>								
9. Division/Group Communication Summary								
Function	Frequency	System	Channel	Function	Frequency	System	Channel	
Command N Okee Repeater	RX 164.5750/206.5 TX 163.150/206.5	KING NIFC	5	Logistics		KING NIFC		
Tactical Div/Group	RX 151.2725 TX 151.2725	KING NIFC	13	Air to Ground	RX 166.9375 TX 166.9375	KING NIFC	6	
Prepared by (Resource Unit Ldr.) Fred Noack			Approved by (Planning Sect. Ch.) /s/ Ed Flowers			Date July 14, 2011		Time 1730

<b>DIVISION ASSIGNMENT LIST</b>			1. Branch <b>West</b>		2. Division <b>Z</b>		
3. Incident Name: <b>Honey Prairie Complex</b>			4. Operational Period Date: 7/15/2011 Time: Day: 0800-2100				
5. Operations Personnel							
<b>Operations</b>	Roger Gill 7/25			<b>Branch Director</b>	Tom Donohoe 7/22		
<b>Planning Ops</b>	Rick Dolan 7/22			<b>Division Supervisor</b>	Glen Palfrey 7/20 / Jesse Knox (t) 7/18		
<b>Safety Officer</b>	Barry Coulliette 7/22						
6. Resources Assigned this Period							
Strike Team/Task Force/ Resource Designator		Leader / Name / Designator		Last Shift Date	Num. Per.	Drop Off PT./Time	Pick Up PT./Time
<b>TFLD (O-889)</b>		<b>Kris Larson</b>		7/19	1		
<b>TFLD (O-921)</b>		<b>Brad Hall (t)</b>		7/18	1		
<b>STEN (O-955)</b>		<b>Randy Scherr</b>		7/19	1		
ENG6 (E-392)		Tyson Taylor		7/21	3		
ENG5 (E-502)		Bill Peter		7/27	2	PVT	
ENG6 (E-850)		Mike Haisten		7/21	3		
ENG5 (E-905)		Travis Bailey		7/23	3		
ENG6 (E-1047)		Thomas Sherman		7/21	3	PVT	
ENG6 (E-1051)		Kyle Zuehlke		7/21	3	PVT	
ENG6 (E-1052)		Ryan Schlater		7/28	3	PVT	
ENG6 (E-1057)		Troy Mueller		7/20	3		
ENG6 (E-1067)		Shaun Moore		7/21	3		
ENG6 (E-5007)		Jim Gipson		7/22	2	PVT	
ENG6 (E-5008)		Matt Stoneking		7/22	2	PVT	
ENG6 (E-5011) Smokey Mt 209		James Searcy		7/29	2	PVT	
ENG6 (E-5012) Smokey Mt 301		Marshall Halford		7/29	2	PVT	
<b>EMTP (E-1152)</b>		<b>Chad Simons</b>		7/26	1		
<b>EMTP (O-847)</b>		<b>Levi Clymer</b>		7/28	1		
<b>SOF2 (O-892)</b>		<b>Steven Ripley</b>		7/16	1		
7. Control Operations <ul style="list-style-type: none"> <li>Contain all fires outside refuge boundary.</li> <li>Patrol and mop up within 100' of fire perimeter line.</li> </ul>							
8. Special Instructions <ul style="list-style-type: none"> <li>Ensure that tractors are cleaned and free of debris daily. Examine work area for fire weakened snags.</li> <li>Ensure LCES are in place before operations begin and stay hydrated.</li> <li>Additional resources will be available from GFC, Florida DOF, FWS, and local cooperators.</li> <li>Drive defensively and with lights on at all times.</li> <li>See Medical plan for EMT support.</li> <li>Implement MIST tactics</li> </ul>							
9. Division/Group Communication Summary							
Function	Frequency	System	Channel	Function	Frequency	System	Channel
Command N Okee Repeater	RX 164.5750/206.5 TX 163.150/206.5	KING NIFC	5	Logistics		KING NIFC	
Tactical Div/Group	RX 168.200 TX 168.200	KING NIFC	11	Air to Ground	RX 166.9375 TX 166.9375	KING NIFC	6
Prepared by (Resource Unit Ldr.) Fred Noack		Approved by (Planning Sect. Ch.) /s/ Ed Flowers			Date July 14, 2011		Time 1930

<b>DIVISION ASSIGNMENT LIST</b>				1. Branch <b>West</b>	2. Division <b>West - Initial Attack and Structure Protection</b> 1 of 2		
3. Incident Name: <b>Honey Prairie Complex</b>				4. Operational Period Date: 7/15/2011 Time: Day: 0800-2100			
5. Operations Personnel							
<b>Operations</b>	Roger Gill 7/25			<b>Branch Director</b>	Tom Donohoe 7/22		
<b>Planning Ops</b>	Rick Dolan 7/22			<b>Division Supervisor</b>	Don Hammack 7/18 / Bob Schober (t) 7/18		
<b>Safety Officer</b>	Barry Coulliette 7/22						
6. Resources Assigned this Period							
Strike Team/Task Force/ Resource Designator	Leader / Name / Designator		Last Shift Date	Num. Per.	Drop Off PT./Time	Pick Up PT./Time	
<b>STEN (O-947)</b>	<b>Jess Register</b>		7/20	1			
<b>STEN (O-951)</b>	<b>Jerry Van Dyne</b>		7/20	1			
<b>STEN (O-990)</b>	<b>Joe Sampson</b>		7/20	1			
<b>HEQB (O-958)</b>	<b>Tim Boyce</b>		7/20	1			
ENG6 (E-404)	John Knapper		7/23	3			
ENG6 (E-906)	James Burk		7/23	3			
ENG6 (E-939)	Chad Ingle		7/23	3			
ENG6 (E-1013)	William Paulton		7/20	3	PVT		
ENG6 (E-1045)	Andrew English		7/28	3	PVT		
ENG6 (E-1048)	Joseph Jarrells		7/21	3			
ENG6 (E-1049)	James Dowd		7/20	3			
ENG6 (E-1050)	Kyle Varell		7/20	3			
ENG6 (E-1054)	Shawn Kanouse		7/28	3	PVT		
ENG6 (E-1055)	Brian Kanouse		7/28	3	PVT		
ENG6 (E-1075)	David Jones		7/20	3			
TPL3 (E-499)	Roy Rowan		7/19	2	PVT		
TPL3 (E-646)/E-723 trans	Phil Dueitt		7/19	1	PVT		
TPL3 (E-650)	Paul Funderburk		7/22	1	PVT		
TPL3 (E-651)	Bill Rimes		7/19	1	PVT		
TPL2 (E-987)	Butch Duiett		7/28	1	PVT		
7. Control Operations <ul style="list-style-type: none"> <li>Respond to Initial Attack as requested</li> <li>Initial attack IC will communicate size up information to Honey Prairie incident communications</li> </ul>							
8. Special Instructions							
9. Division/Group Communication Summary							
Function	Frequency	System	Channel	Function	Frequency	System	Channel
Command N Okee Repeater	RX 164.5750/206.5 TX 163.150/206.5	KING NIFC	5	Logistics	See ICS 205	KING NIFC	
Tactical Div/Group	RX 154.280 TX 154,280/156.7	KING NIFC	8	Air to Ground	RX 166.9375 TX 166.9375	KING NIFC	6
Prepared by (Resource Unit Ldr.) Fred Noack		Approved by (Planning Sect. Ch.) /s/ Ed Flowers		Date July 14, 2011		Time 1930	

<b>DIVISION ASSIGNMENT LIST</b>				1. Branch <b>West</b>	2. Division <b>West - Initial Attack and Structure Protection</b> 2 of 2			
3. Incident Name: <b>Honey Prairie Complex</b>				4. Operational Period Date: 7/15/2011 Time: Day: 0800-2100				
5. Operations Personnel								
<b>Operations</b>	Roger Gill 7/25			<b>Branch Director</b>	Tom Donohoe 7/22			
<b>Planning Ops</b>	Rick Dolan 7/22			<b>Division Supervisor</b>	Don Hammack 7/19 / Bob Schober (t) 7/18			
<b>Safety Officer</b>	Barry Coulliette 7/22							
6. Resources Assigned this Period								
Strike Team/Task Force/ Resource Designator	Leader / Name / Designator			Last Shift Date	Num. Per.	Drop Off PT./Time	Pick Up PT./Time	
WAT3 (E-233)	Sonny Moore			7/27	1	PVT		
WAT3 (E-517)	Larry Bartlett			7/29	1	PVT		
<b>EMTB (O-1057)</b>	<b>Matthew Stivers</b>			7/23	1			
<b>SOF2 (O-1083)</b>	<b>Tommy Lail</b>			7/26	1			
7. Control Operations								
<ul style="list-style-type: none"> <li>Respond to Initial Attack as requested</li> <li>Initial attack IC will communicate size up information to Honey Prairie incident communications</li> </ul>								
8. Special Instructions								
9. Division/Group Communication Summary								
Function	Frequency	System	Channel	Function	Frequency	System	Channel	
Command N Okee Repeater	RX 164.5750/206.5 TX 163.150/206.5	KING NIFC	5	Logistics	See ICS 205	KING NIFC		
Tactical Div/Group	RX 154.280 TX 154,280/156.7	KING NIFC	8	Air to Ground	RX 166.9375 TX 166.9375	KING NIFC	6	
Prepared by (Resource Unit Ldr.) Fred Noack			Approved by (Planning Sect. Ch.) /s/ Ed Flowers		Date July 14, 2011		Time 1930	

<b>DIVISION ASSIGNMENT LIST</b>			1. Branch <b>East</b>		2. Division <b>H/ I/J/K</b>		
3. Incident Name <b>Honey Prairie Complex</b>			4. Operational Period Date: 7/15/2011 Time: 0800-2100				
5. Operations Personnel							
<b>Operations</b>	Butch Hall 7/22			<b>Branch Director</b>	Brett Waters 7/25		
<b>Planning Ops</b>	Rick Dolan 7/22			<b>Division Supervisor</b>	Matt Filbert 7/18		
<b>Safety Officer</b>	Ray Durham 7/22						
6. Resources Assigned this Period							
Strike Team/Task Force/ Resource Designator	Leader / Name / Designator		Last Shift Date	Num. Per.	Drop Off PT./Time		Pick Up PT./Time
<b>TFLD (O-945)</b>	<b>Walter Mendoza</b>		7/20	1			
<b>STEN (O-950)</b>	<b>Larry Larson</b>		7/20	1			
ENG6 (E-77) GAGAS 86	Andrew Gamlen		7/20	2			
ENG6 (E-135) Attack-1	Erin Finnegan		7/24	2	PVT		
ENG6 (E-136) Nat'l Fire	Jeremiah Cates		7/16	2	PVT		
ENG6 (E-179) Nat'l Fire #4	Ramey Hiers		7/19	2	PVT		
ENG6 (E-1069) Tallahassee E26	William Abbott		7/21	3			
WT2 (E-559)	Kevin Gray		?	1	PVT		
<b>EMTP (E-1136)</b>	<b>Kurt Berge</b>		7/21	1			
<b>SOF2 (O-808)</b>	<b>Charles Severson</b>		7/24	1			
7. Control Operations							
<ul style="list-style-type: none"> <li>Contain all fires outside refuge boundary.</li> <li>Patrol and control reburn</li> <li>Provide initial attack for GFC and fires outside the refuge boundary.</li> <li>Patrol all spots outside refuge boundary.</li> <li>Patrol and mop up all accessible fire line. Mop up all hot spots within 100' of the fire perimeter.</li> <li>Continue to provide protection to the Chesser Homestead by maintaining an adequate water supply via portable pump at location.</li> </ul>							
8. Special Instructions							
<ul style="list-style-type: none"> <li>Ensure LCES are in place before operations begin. Stay hydrated.</li> <li>Drive defensively and with lights on at all times.</li> <li>See medical plan for EMT support</li> <li>Examine work area for fire weakened snags</li> </ul>							
9. Division/Group Communication Summary							
	Function	Frequency	Channel	Function	Frequency	System	Channel
Command E Okee Repeater	RX 164.6250/103.5 TX 163.150/103.5	KING	3				
DIV J Repeater	RX 170.4125 TX 165.9625/123.0	NIFC	14	Logistics		KING NIFC	
Tactical Div/Group	RX 168.350 TX 168.350	KING NIFC	12	Air to Ground	RX 166.9375 TX 166.9375	KING NIFC	6
Prepared by (Resource Unit Ldr.) Fred Noack		Approved by (Planning Sect. Ch.) /s/ Ed Flowers			Date July 14, 2011		Time 1800

<b>DIVISION ASSIGNMENT LIST</b>		1. Branch <b>East</b>		2. Division <b>L, M</b>		
3. Incident Name <b>Honey Prairie Complex</b>		4. Operational Period Date: 7/15/2011 Time: 0800-2100				
5. Operations Personnel						
<b>Operations</b>	Butch Hall 7/22	<b>Branch Director</b>		Brett Waters 7/25		
<b>Planning Ops</b>	Rick Dolan 7/22	<b>Division Supervisor</b>		Ray Miller 7/20		
<b>Safety Officer</b>	Ray Durham 7/22					
6. Resources Assigned this Period						
Strike Team/Task Force/ Resource Designator	Leader / Name / Designator	Last Shift Date	Num. Per.	Drop Off PT./Time	Pick Up PT./Time	
<b>TFLD (O-937)</b>	<b>Kevin Elmstrom</b>	7/20	1			
<b>TFLD (O-993)</b>	<b>Drew Daily</b>	7/21	1			
ENG6 (E-407) White Earth #2	Jesse Londo	7/22	3			
ENG6 (E-819)	Brett Eismann	7/21	3			
ENG6 (E-826)	Steve Melton	7/24	2	PVT		
ENG6 (E-893) MIHMF 251	Martel Knipe	7/23	3			
ENG6 (E-894) MOOZP 862	William Mier	7/22	3			
ENG6 (E-895) MOMTF 9505	Blake Knisley	7/22	3			
ENG6 (E-1061) SM36	Steve Woodrick	7/21	3			
ENG6 (E-5014) TX Fire 157	Steven Torske	7/24	3			
<b>EMTP (O-731)</b>	<b>Keith Barker</b>	7/26	1			
<b>SOF2 (O-1021)</b>	<b>David Vitwar</b>	7/23	1			
7. Control Operations						
<ul style="list-style-type: none"> <li>Contain all fires outside refuge boundary.</li> <li>Patrol and control reburn</li> <li>Mop up all spots outside refuge boundary and within 100 feet of perimeter</li> </ul>						
8. Special Instructions						
<ul style="list-style-type: none"> <li>Ensure LCES are in place before operations begin. Stay hydrated.</li> <li>Drive defensively and with lights on at all times.</li> <li>See medical plan for EMT support</li> <li>Examine work area for fire weakened snags.</li> </ul>						
9. Division/Group Communication Summary						
	Function	Frequency	Channel	Function	Frequency	System Channel
Command E Okee Repeater	RX 164.625/103.5 TX 163.150/103.5	KING NIFC	3	Logistics		KING NIFC
Tactical Div/Group	RX 168.775 TX 168.775	KING NIFC	9	Air to Ground	RX 166.9375 TX 166.9375	KING NIFC 6
Prepared by (Resource Unit Ldr.) Fred Noack	Approved by (Planning Sect. Ch.) /s/ Ed Flowers		Date July 14, 2011	Time 1800		



<b>DIVISION ASSIGNMENT LIST</b>				1. Branch <b>East</b>		2. Division <b>N/O</b>	
3. Incident Name <b>Honey Prairie Complex</b>				4. Operational Period Date: 7/15/2011 Time: 0800-2100			
5. Operations Personnel							
<b>Operations</b>		Butch Hall 7/22		<b>Branch Director</b>		Brett Waters 7/25	
<b>Planning Ops</b>		Rick Dolan 7/22		<b>Division Supervisor</b>		Steve Griffin 7/18, Ernest Schmitt (t) 7/19	
<b>Safety Officer</b>		Ray Durham 7/22					
6. Resources Assigned this Period							
Strike Team/Task Force/ Resource Designator		Leader / Name / Designator	Last Shift Date	Num. Per.	Drop Off PT./Time	Pick Up PT./Time	
<b>TFLD (O-807) (t)</b>		<b>Mark Whipps</b>	7/19	1			
<b>TFLD (O-994)</b>		<b>Jim Edgar</b>	7/21	1			
<b>STEN (O-989)</b>		<b>Max Twombly</b>	7/21	1			
ENG6 (E-897) MDBWR		Ephraim Diefenderfer	7/22	2			
ENG6 (E-993) Bush Fire		Philip Quochoytewa	7/18	2	PVT		
ENG6 (E-977) IPF E-31		Louie Feltman	7/23	4			
ENG6 (E-1133)		Chris Wright	7/26	2			
ENG6 (E-1058)		Michael Keil	7/20	3			
ENG6 (E-1060)		Paul Amundson	7/21	3			
ENG6 (E-1068)		Wade Griffith	7/22	3			
ENG6 (E-1070)		Gregory Rock	7/21	3			
ENG6 (E-1072)		Butch Murphy	7/21	3			
ENG6 (E-1074)		Peter Stevenson	7/21	3			
HCT2IA (C-14) Pat Rick 20B		Dustin Eldred	7/25	20	PVT		
GyroTrack (E-1147)		Alan Eason	7/25	1			
GyroTrack (E-1148)		Willard Turner	7/25	1			
<b>EMTB (O-848)</b>		<b>Bert Hyde</b>	7/27	1			
<b>SOF2 (O-807)</b>		<b>Chuck Stanton</b>	7/25	1			
7. Control Operations <ul style="list-style-type: none"> <li>Patrol and mop up 100' inside fire perimeter.</li> <li>Recon potential control lines and examine area snag removal</li> <li>Keep fire within refuge boundary.</li> </ul>							
8. Special Instructions <ul style="list-style-type: none"> <li>If the fire reaches <b>Mgt Activity Line (MAL) 1</b> cooperators and adjacent landowners will be notified. If the fire reaches <b>MAL 2</b> a meeting will be held at the Swamp Park with adjacent landowners and cooperators.</li> <li>Safely push down with equipment all snags whether on fire or not that are a threat to success or tactical operations.</li> <li>Ensure LCES are in place before operations begin. Stay hydrated.</li> <li>See medical plan for EMT support.</li> <li>Drive defensively and with lights on at all times.</li> <li>Boggy terrain: Be careful and aware when working around this type of area.</li> <li>If HP fire escapes the NE Break the Great Basin team will command suppression w/assistance from the GFC. If Race Pond escapes to the south GFC will command w/assistance by the Great Basin. DIVS should make daily contact w/ Race Pond DIVS on scene.</li> <li><b>STEN Twombly and Engines 1058, 1060, 1070, 1072, 1074 be ready to respond to IA in Swamp Park.</b></li> </ul>							
9. Division/Group Communication Summary							
Function	Frequency	System	Channel	Function	Frequency	System	Channel
Command N Okee Repeater	RX 164.5750/206.5 TX 163.150/206.5	KING NIFC	5	Logistics		KING NIFC	
Tactical Div/Group	RX 168.200 TX 168.200	KING NIFC	11	Air to Ground	RX 166.9375 TX 166.9375	KING NIFC	6
Prepared by (Resource Unit Ldr.) Fred Noack		Approved by (Planning Sect. Ch.) /s/ Ed Flowers			Date July 14, 2011		Time 1730

DIVISION ASSIGNMENT LIST		1. Branch <b>East</b>		2. Division <b>East Initial Attack</b>			
3. Incident Name <b>Honey Prairie Complex</b>		4. Operational Period Date: <b>7/15/2011</b> Time: <b>0800-2100</b>					
5. Operations Personnel							
<b>Operations</b>	Butch Hall 7/22		<b>Branch Director</b>		Brett Waters 7/25		
<b>Planning Ops</b>	Rick Dolan 7/22		<b>Division Supervisor</b>		Billy Taylor 7/26, Shawn Denowh (t) 7/19		
<b>Safety Officer</b>	Ray Durham 7/22						
6. Resources Assigned this Period							
Strike Team/Task Force/ Resource Designator	Leader / Name / Designator	Last Shift Date	Num. Per.	Drop Off PT./Time	Pick Up PT./Time		
<b>TFLD (O-943)</b>	<b>Steven Clark</b>	7/21	1				
<b>DOZB (O-959)</b>	<b>Zac Cogle</b>	7/20	1				
ENG6 (E-390) WICNF 461	Lloyd Pete	7/24	3				
ENG6 (E-974)	Steve Shykes	7/19	3				
ENG6 (E-976)	Brian Hodges	7/21	3				
ENG6 (E-978)	Dennis Gillmer	7/26	3				
ENG6 (E-1084)	Mike Dean	7/20	2				
TPL3 (E-500) NFFS	Don Johnson	7/20	2	PVT	Driver Mike Walker		
TPL3 (E-649) Bear Co	Mike Kikendale	7/30	2	PVT	Driver Parker Barrett		
WT3 (E-92)	Justin Ennis / Jeff Ellis	7/27	1	PVT			
<b>SOF2 (O-1067)</b>	<b>Larry Morse</b>	7/24	1				
<b>EMTP (O-1060)</b>	<b>James Brown</b>	7/24	1				
7. Control Operations							
<ul style="list-style-type: none"> <li>Respond to Initial Attack as requested</li> <li>Patrol and control return</li> <li>Initial attack IC will communicate sizeup information to the Honey Prairie communication.</li> </ul>							
8. Special Instructions							
9. Division/Group Communication Summary							
	Function	Frequency	Channel	Function	Frequency	System	Channel
Command E Okee Repeater	RX 164.625/103.5 TX 163.150/103.5	KING NIFC	3	Logistics		KING NIFC	
Tactical Div/Group	RX 168.775 TX 168.775	KING NIFC	9	Air to Ground	RX 166.9375 TX 166.9375	KING NIFC	6
Prepared by (Resource Unit Ldr.) Fred Noack		Approved by (Planning Sect. Ch.) /s/ Ed Flowers		Date <b>July 14, 2011</b>		Time 1800	

<b>DIVISION ASSIGNMENT LIST</b>				1. Branch <b>ALL</b>	2. Division <b>Roads Group</b>			
3. Incident Name: <b>Honey Prairie Complex</b>				4. Operational Period Date: 7/15/2011 Time: Day: 0800-2100				
5. Operations Personnel								
<b>Operations</b>	Butch Hall 7/22			<b>Branch Director</b>				
<b>Planning Ops</b>	Rick Dolan 7/22			<b>Division Supervisor</b>				
<b>Safety Officer</b>	Ray Durham 7/22							
6. Resources Assigned this Period								
Strike Team/Task Force/ Resource Designator	Leader / Name / Designator			Last Shift Date	Num. Per.	Drop Off PT./Time		Pick Up PT./Time
<b>EQPM (O-928)</b>	<b>Ray Helget</b>			7/21	1	East Branch		
<b>THSP (O-1088)</b>	<b>Bert Early</b>			7/27	1			
Excavator (E-505)	Don Murray			?	1	PVT, West Branch		
Dump Truck (E-506)	Craig Smith			?	1	PVT, West Branch		
Dump Truck (E-529)	Ron Watson			?	1	PVT, West Branch		
Dump Truck (E-1074)				?	1	PVT, West Branch		
Dump Truck (E-1079)	Dennis Kight			?	1	PVT, West Branch		
Grader (E-228)	Steven Hendricks			?	1	CNTY, West Branch		
Grader (E-230)	Buddy Pittman			?	1	PVT, East Branch		
Grader (E-380)	Jason Merrit			?	1	PVT, East Branch		
Grader (E-597)	David Prpoes			?	1	PVT, West Branch		
WT (E-1022)	Lee Tuten			?	1	PVT, East Branch		
7. Control Operations								
<ul style="list-style-type: none"> <li>Coordinate efforts w/ resource advisor and logistics</li> </ul>								
8. Special Instructions								
<ul style="list-style-type: none"> <li>Ensure that tractors are cleaned and free of debris daily. Examine work area for fire weakened snags.</li> <li>Ensure LCES are in place before operations begin and stay hydrated.</li> <li>Additional resources will be available from GFC, Florida DOF, FWS, and local cooperators.</li> <li>Drive defensively and with lights on at all times.</li> <li>See Medical plan for EMT support.</li> <li>Implement MIST tactics</li> </ul>								
9. Division/Group Communication Summary								
Function	Frequency	System	Channel	Function	Frequency	System	Channel	
Command N.Okee Repeater	See ICS 205	KING NIFC		Logistics	See ICS 205	KING NIFC		
Tactical Div/Group	See ICS 205	KING NIFC		Air to Ground	See ICS 205	KING NIFC		
Prepared by (Resource Unit Ldr.) Fred Noack			Approved by (Planning Sect. Ch.) /s/ Ed Flowers			Date 7/14/2011		Time 1930

# AIR OPERATIONS SUMMARY

Prepared By: Tim Elder, AOB

Prepared Date: 7.14.2011

Prepared Time: 1800

<b>1. INCIDENT NAME:</b> Honey Prairie	<b>2. OPS PERIOD DATE:</b> July 15, 2011	<b>START TIME:</b> 0830	<b>END TIME:</b> 1900	<b>SUNRISE:</b> 0635	<b>SUNSET:</b> 2036
<b>3. REMARKS (Safety Notes, Hazards, Air Operations Special Equipment, etc.):</b> <i>Be alert to rapidly changing weather conditions.</i>					<b>5. TFR #:</b> 1/0249 (Box) 3000' MSL
<b>NOTE: Latitude/Longitude format is "Degrees-Minutes-Decimal Minutes" (example: N30 41.42 W082 33.97)</b>					

PERSONNEL	NAME	PHONE #	FREQUENCIES	AM	FM	
AOBD	Tim Elder	Cell 863-243-1438 Desk 912-637-5254	AIR/ AIR FW	122.575		AIRTANKERS / LEAD PLANES - None Available ATGS AIRCRAFT- 53L (C-337)
ASGS(T)	Don Nicholas	218-360-1816	AIR/ AIR RW-FF	122.375		OTHER: Lake City Tanker Base: 386-758-9078 / FAX 752-8901 Pogo Helibase: 912-496-4415 / FAX 496-7077 Waycross Helibase 912-287-4479 / FAX 287-4458 Fargo Helibase: 404-772-5317 Oketenoee Dispatch: 912-496-7366 X230
ATGS Lake City	Tim Caughlin	715-684-9862	Georgia AIR/AIR	122.075		FARGO HELIBASE: N30 41.42 W082 33.97
ATGS Fargo HB	Carl Magill	541-519-0850	Georgia AIR/GRND (Smokey - Dozers)		159,285 W	POGO HELIBASE: N30 44.03 W082 07.41
HEB2 Fargo HB	Brian Campbell Steve Croy (T)	404-772-5405 540-230-2568	AIR/GROUND PRIMARY		166.9375	HOMERVILLE AIRPORT N31 03.35 W082 46.45
HEB2 Waycross HB	Jay Matsen	Desk 912-287-4479 Cell 206-218-8230	AIR/GROUND ALTERNATE		166.9000	WAYCROSS AIRPORT N31 14.9 W082 23.7
			TOLC		168.0125	BERGANZA HELISPOT N 31 07.22 W082 15.22
			AIR GUARD		168.625 T110.9	

## 9. HELICOPTERS (Use Additional Sheets as Necessary)

FAA N#	TY	MAKE/ MODEL	BASE	AVAIL	MANAGER	FAA N#	TY	MAKE/ MODEL	BASE	AVAIL	MANAGER				
N36BH	1	S-70	Waycross	0830	Zev Hunting 406-439-6768	N61SC	1	S-61	Fargo	0830	Lee Kessler 218-398-2708				
206G	2	UH1H	Waycross	0830	J. Dominguez 530-319-3517	26MW	1	K-1200	Fargo	0830	Kirby Cook 406-381-1212				
06901	2	UH1H	Waycross	0830	Kerry Koskela 559-359-2122	N662H	3	206-L4	Fargo	0830	Jeremy Beeson 208-507-1649				
N818MC	3	AS-350B3	Waycross	0830	George Violante 307-330-5904										
<b>10. TASK/ MISSION/ ASSIGNMENT (Type/ function includes: Air Tactical, Retardant, Recon, Personnel Transport, Bucket Operations, SAR, etc.)</b>															
<b>TYPE/FUNCTION</b>			<b>NAME OF PERSONNEL OR CARGO (if applicable)</b> or instructions for tactical aircraft						<b>MISSION START</b>			<b>FLY FROM</b>		<b>FLY TO</b>	
Bucket Ops			N36BH, 206G, 6901, 61SC, 26MW						As Requested			Fargo/Waycross			
Air Tactical			53L, 662H						1200 / As Requested			Lake City/Fargo			



# Fire Weather Forecast



**FORECAST NO:** 69

**NAME OF FIRE:** Honey Prairie Complex

**PREDICTION FOR:** Day and Night Shifts  
**SHIFT DATE:** 7/15/11

**UNIT:** Okefenokee National Wildlife Refuge

**FORECAST ISSUED:** 7/14/11 at 1900

**SIGNED:** Mike Bettwy (T) / Joe Goudsward  
Incident Meteorologists

**WEATHER DISCUSSION:** Developing low pressure and a frontal boundary over the Southeast coast will result in increased moisture and higher precipitation chances Friday through Saturday. Somewhat drier air may work back into the region on Sunday.

**TODAY:** Patchy morning fog, otherwise mostly cloudy. Showers and thunderstorms likely, especially in the afternoon.

**MAXIMUM TEMPERATURES:** 86-91 degrees

**PM HEAT INDEX:** 95-101 degrees

**AVERAGE SKY COVER:** 80

**MINIMUM HUMIDITY:** 55-65%

**20 FT WINDS:** AM: ESE 3-7 mph

PM: E 7-10 G14 mph

**STABILITY/INVERSION:** Morning inversion to 250 feet through 0900, then rising to 4900 feet by 1500

**TRANSPORT WINDS:** E 17 mph

**DISPERSION INDEX:** 49, Average

**CHANCE OF PRECIPITATION:** 70%

**PRECIPITATION AMOUNTS:** 0.25"-0.75", with locally higher amounts

**LIGHTNING ACTIVITY LEVEL:** 4

**TONIGHT:** Mostly cloudy. A good chance of showers and thunderstorms, especially before midnight. Patchy fog developing after midnight.

**MINIMUM TEMPERATURES:** 72-76 degrees

**MAXIMUM HUMIDITY:** 90-100%

**20 FT WINDS:** ENE 4-7 mph

**STABILITY/INVERSION:** Inversion to 250 feet by 0100 hours

**DISPERSION INDEX:** 3, Poor

**CHANCE OF PRECIPITATION:** 50%

**LIGHTNING ACTIVITY LEVEL:** 3

**OUTLOOK FOR SATURDAY:** Mostly cloudy with a 50% chance of showers and thunderstorms. Winds E 7-11 G17 mph. High temperatures 86-90. Min RH 55-65%. Dispersion 51, Average.

**EXTENDED FORECAST:**

	SUNDAY	MONDAY	TUESDAY
<b>MINIMUM TEMP</b>	72°	72°	73°
<b>MAXIMUM TEMP</b>	90°	91°	94°
<b>MINIMUM RH</b>	50-60%	50-60%	45-55%
<b>20 FT. WINDS</b>	AM: ENE 4-7 mph PM: ENE 7-11 mph	AM: ENE 3-6 mph PM: ENE 6-10 mph	AM: NE 2-5 mph PM: N 5-9 mph
<b>SKY</b>	Partly Cloudy	Partly Cloudy	Partly Cloudy
<b>WEATHER</b>	Scattered T-Storms	Scattered T-Storms	Scattered T-Storms
<b>CHANCE PRECIP</b>	40%	30%	30%

-end-

**GENERAL FIRE BEHAVIOR**

Fuels around the Okefenokee Wildlife Refuge are predominately Fuel Model 7 (Southern Rough). Large to moderate acreage tracts of commercial timberland are mixed in throughout the entire perimeter surrounding the refuge. Fast moving wildfires with extremely high flame lengths and rapid rates of spread occur within the swamp. As fire transitions to the upland, torching and crown fires are common. Long Range spotting is possible.

**Indicators/Threshold for Increased Fire Activity**

- Relative humidity dropping below 45%
- Winds above 10 mph
- **Heavy fuel loadings**
- Fine dead fuel moisture 8% or less
- Dispersion above 70
- **\* Items in BOLD are predicted to occur today\***

**SPECIFIC FIRE BEHAVIOR**

- **Fire behavior will be influenced by past precipitation. Central and South portions of fire area remain moist. North half have received varying amounts of precipitation.**
- **Expect fire to continue spreading through the shrub fuels with low to moderate rates of spread, low to moderate flame lengths, and creep through the hardwood stands. Expect areas with high heat concentrations to increase fire intensity with less than 60% RH, leading to column development early afternoon. (Wind gusts will temporarily increase fire intensities). LAL 3**

Fuel Type	Rates of Spread	Flame Length	Spotting Distance	Firebrand Ignition
<b>Winds at 5 - 10 G 15 mph</b>				
Shrub Fuels – SH4	5 - 16 ch/hr	5 - 8 feet	1/10 - 2/10 mile	23%
Heavy Southern Rough	9 – 29 ch/hr	6 -12 feet	1/10 -2/10 mile	23%
Timber Litter-Reburn	1 - 4 ch/hr	1 - 3 feet	1/10 - 2/10 mile	23%
Small Pine Plantation w/grasses	2 – 8 ch/hr	2 - 3 feet	1/10 – 2/10 mile	23%

**One hour fine dead fuel moisture is at 12% for Friday.** 1,000 hour fuels are drier than normal for this time of year. There is reburn potential in all divisions due to the amount of needle cast. Should a winds become stronger than predicted, expect fire behavior to increase above predicted levels. Heavier firebrands can also be lifted higher and further increasing likelihood of spots to max predictions. **In areas where fuels have been herbicided, expect quick ignitions and extreme heat, quick rate-of – spread, and group tree torching producing spotting problems.**

**NOTE- FIRE BEHAVIOR CALCULATIONS ARE FOR FIRES IN UNBURNED FUELS INCLUDING NEW IA STARTS.**

West	A	Wetting rains have moistened fuels. Falling snags still pose a threat to fire personnel and the boardwalk. <b>70% chance of rain</b>	West	T/V	Fire will continue a slow spread to the North and west. Expect active fire with column development in areas having intense heat. Be heads-up for falling snags. <b>70% chance of rain</b>
	B-G	Wetting rains have moistened fuels. Be heads-up for falling snags. <b>70% chance of rain</b>			
	Y Z	Some fuels were missed by rain. Areas of heat will remain near Div Y/Z perimeter with possible flare-ups in moderate to high fuel loadings. Be heads-up for falling snags. <b>70% chance of rain</b>	East	H, I J, K L,M N,O	Fuels drying North half of branch. Areas of interior fire in Divs N and O will continue to burn with possible column development early PM. Heads-up for falling snags. <b>70% chance of rain</b>

**Night Ops** – Expect another night of minimal fire behavior, with areas of heavy smoke and patch of fog after 2200 hrs. with fog becoming locally dense. Partly cloudy with a good chance of showers and thunderstorms mainly before 2300 hrs. Fire behavior after midnight will primarily be limited to smoldering in heavy fuels near firelines and interior in Divisions B,V,Y,V, and O. Winds are forecast from the ENE 4 - 7 mph. Dispersion Index 3 –poor for nighttime. LAL 3.

**Air Operations:** Expect possible areas of heavy smoke especially on the west side of the fire.

**SAFETY:**

**WINDS** – Stay abreast of changing wx conditions throughout the entire shift. **THUNDERSTORMS** - these severe winds can create extreme fire behavior, with winds gusting over 30 mph. **SNAGS** – Snags are falling in all Divisions – will be influenced by Thunderstorm outflow winds. **FUELS:** Reburn is an issue. Watch for pockets of cured shrubs or blankets of red needles beginning to cover the forest floor. 1,000 and 10,000 hour fuels as well as deep duff pockets are providing the heat source. Stay focused, and put LCES in place before starting operations. Watch for standing burning snags that can fall without warning. Energy Release Component (ERC) continues to hover near the 90<sup>th</sup> percentile.

**LCES Analysis of Tactical Actions**

Incident Name: Honey Prairie Complex			Date and Time Prepared: July 14, 2011 1600 hrs											Operational Period: Day and Night July 15, 2011		
TACTICAL HAZARDS	Location on Incident													Mitigations		
	Divisions/Groups															
	A,B,C	D,E,F,G	H, I	J, K	L	M	N	O	T	V	Y	Z	ICP	PM Ops	Struct Prot Grp	
Powerlines	*	*	*	*	*	*	*	*	*	*	*	*			*	Assume all power lines are charged. Avoid all contact with downed lines.
Complacency	*	*	*	*	*	*	*	*	*	*	*	*		*	*	Follow work/rest guidelines.
Indirect Fireline								*	*	*	*	*				LCES; IRPG Pg. 10, Indirect Attack; Burnout as possible.
Anchor Points	*	*	*	*	*	*	*	*	*	*	*	*				Ensure fireline is anchored. Use natural features when possible. Use Local Resource Advisor
Extreme Conditions (Spotting, Wind)																LCES, Establish Trigger Points. Maintain Situational Awareness. Establish Lookouts as needed. Follow MAP actions.
Unburned Area Reburn Potential	*	*	*	*	*	*	*	*	*	*	*	*			*	LCES, Utilize Air Attack if Available. Know Predicted Weather and Fire Behavior Forecast.
Hazard Trees	*	*	*	*	*	*	*	*	*	*	*	*			*	IRPG Pg. 80, Identify and flag hazard trees. Look Up, Down and Around
Hazardous Materials	*	*	*	*	*	*	*	*	*	*	*	*			*	IRPG Pg. 26-27, HAZMAT. Identify and map propane tanks, electric lines, septic tanks and determine bridge wgt. limits prior to use.
Vehicle Use (Travel 1HR+, Roads)	*	*	*	*	*	*	*	*	*	*	*	*		*	*	Park vehicles for egress. Follow traffic plan. Use seat belts, drive with headlights on and keep windshields clean. Use spotters. Drive Defensively. Use multiple camp locations to reduce drive time.
Communications																Ensure radio is cloned with the current communications plan. LCES
Structure Protection		*		*	*		*	*	*	*	*	*				Use structure protection checklist, PPE, Triage. Utilize Local Fire Departments
Air Operations (multiple aircraft, line support)	*	*	*	*	*	*	*	*	*	*	*	*				Monitor Air Guard at all times. Flight follow through Dispatch. Keep drop areas clear of personnel.
Mechanical Equipment	*	*	*	*	*	*	*	*	*	*	*	*			*	Use PPE, ensure all safety devices are functional. Operator must see you before approaching equipment. Maintain proper distance away from equipment working in the area.
Escape Routes Safety Zones	*	*	*	*	*	*	*	*	*	*	*	*			*	LCES, Establish and identify safety zones & escape routes. Know where these are located and the route to them. IRPG p.7
Thunderstorm Safety	*	*	*	*	*	*	*	*	*	*	*	*		*	*	Keep an eye on changes in weather. Take hourly weather observations. Comms will provide weather updates when needed.
Wildlife	*	*	*	*	*	*	*	*	*	*	*	*		*	*	Keep food items off the line and use refuse containers around camp. Use insect repellent as needed. Use caution around water as wildlife is concentrated.
Sun Exposure	*	*	*	*	*	*	*	*	*	*	*	*		*	*	Use sunblock as needed.
Night Operations										*	*					Maintain situational awareness. Refer to pages 6 & 7 of IRPG. Ensure headlamps are available and working. Maintain spacing between resources.
Heat	*	*	*	*	*	*	*	*	*	*	*	*		*	*	Hydrate prior to going on line and all during the day. Recognize the signs of heat related injuries. Take frequent breaks throughout the work period.
Air Quality																Rotate personnel frequently out of smoke. Ensure off-line rest is clear of smoke.
Railroad Crossings	*	*	*	*	*	*	*	*	*	*	*	*			*	Visually check all railroad crossings to ensure track is safe to cross. Don't bunch up, leave room for other vehicles to cross. Don't try to beat the train.
													Safety Officer: Barry Coulliette SOF2			

# SAFETY MESSAGE

JULY 15, 2011

Day / Night

## Major Hazards and Risk

### Hygiene

Driving

High Temperatures

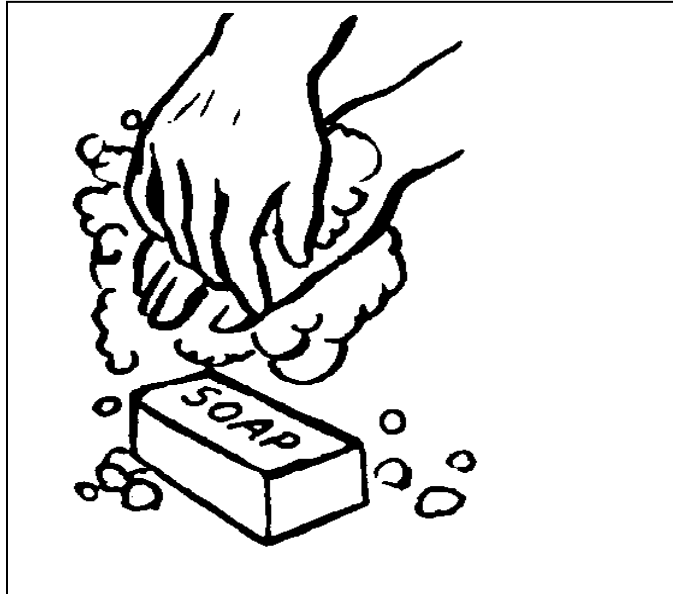
Dehydration

Thunder Storms

Complacency

Logging Operations

Wildlife



## Mitigations

To prevent the spreading of germs wash your hands often. It is especially important before you eat.

Wearing your seat belt will save your life. It is also the law in most states. The use of seat belts is policy on all federal assignments. So arrive alive wear your seat belt. Drive at the posted speed limit or less.

The heat index is again going to be over 100 degrees today. Stay hydrated take frequent breaks.

Be prepared for active fire behavior in the afternoon.

Thunderstorms have the ability produce strong winds heavy rain and frequent lightning. Take refuge to your vehicles and insure you are parked in a safe place. Any tree is capable of falling under strong wind events.

Seeing and doing the same things every day leads to complacency. Stay alert to all the known hazards. Conduct tail gate safety sessions.

Logging operations are on the increase. Pay attention to log trucks and logging equipment working in your environment and give them room. Avoid logging operations if at all possible.

Do not feed or harass alligators.

Safety Officers,



<b>MEDICAL PLAN</b>	<b>Incident Name</b> Honey Prairie Complex	<b>Date Prepared</b> 7/14/2011	<b>Time Prepared</b> 1800	<b>Operational Period</b> 7/15 /2011 DAY SHIFT				
<b>5. Incident Medical Aid Station</b>								
<b>Medical Aid Stations</b>	<b>Location</b>				<b>Paramedics</b> Yes No			
Medical Unit (ICP)	Honey Prairie Complex ICP (Lodge 5) 912-637-5236 Joe Fowler (EMT) MEDL (912)-286-1648 MEDL (912)-286-1674					X		
WEST BRANCH (Line EMT)	Bob Eaton (EMT)919-423-1055 (A,B,C DIV) Paul Smith (EMT)(D,E,F,G DIV) Jefferson Halladay (Para)801-518-9857 (T DIV) John Oker-Blom(Para)404-558-4476 (V DIV) Michael Graham(EMT)(912)-286-1674 (Y 0800-2000) Wes Lathem(Para)(435)760-8481&Dominic Burchett (Para)(912)286-1644(V/Y DIV Night) Chad Simmons (Para)Levi Cumer(Para)(Z DIV) Matthew Stivers (EMT B)256-375-4260 (West IA)				X			
EAST BRANCH (Line EMT)	Kurt Berge (Para)801-404-6434 (H,I,J,K DIV) James Brown (Para)(360)-775-5413(IA East) Keith Barker(Para)(244)330-7798 (L,M DIV) Bert Hyde(EMT)(218)394-0934 (N,O DIV)				X			
<b>Ambulance Services</b>								
<b>Name</b>	<b>Address</b>	<b>Phone</b>		<b>Paramedic</b> Yes No				
Clinch County EMS (WEST SIDE)	West Branch Council Road & HWY 94	Channels 4, 11, 13 912-286-1673 EMS Incident Cell		Yes				
Ware County EMS (NORTHSIDE)	Waycross, Georgia (911 to activate)	912-281-9467		Yes				
Charlton County EMS (EAST SIDE)	Folkston, GA (911 to activate)	912-496-7321		Yes				
<b>Air Ambulance Service</b>								
Trauma 1	Lake City , FL (16 min/air to Fargo ICP)	1-800-223-4878(freq. 155.340)		Yes				
Trauma 1	Jacksonville, FL (26 min/air to Fargo ICP)	1-800-223-4878(freq. 155.340)		Yes				
AirMed	Augusta, GA (2 hrs/air to Fargo ICP)	1-888-792-9245(freq. 155.340)		Yes				
Lifeflight	Jacksonville, FL (35 min/air to Fargo ICP)	1-877-870-7779(freq. 155.340)		Yes				
Air Evac	Waycross, GA (17 min/air to Fargo ICP)	1-800-247-3822(freq. 155.340)		Yes				
US Coast Guard (Heli-Rescue)	Savannah GA	1-912-652-4646 (freq. 155.340)		Yes				
<b>7. Hospitals</b>								
<b>Name</b>	<b>Address</b>	<b>Travel Time</b> Air Ground		<b>Phone</b>	<b>Helipad</b> Yes No		<b>Burn Center</b> Yes No	
Satilla Regional	410 Darling Ave Waycross Ga N 31°13.56 W 82°21.058	18 min	45 min	912-283-3030	Yes			No
Clinch Memorial Hospital (WEST SIDE)	1050 Valdosta HWY Homerville, GA		25 min	912-487-5211 ext 4502	Yes			No
Charlton Memorial Hospital (EAST SIDE)	1203 3 <sup>rd</sup> St. Folkston, GA		50 min	912-496-2531	Yes			No
Memorial Hospital	Savannah, GA 4700 Waters 3200.7 8107.6	30 min		912-350-8999	Yes			No
Shands Hospital (level I)	Jacksonville, FL N 30°20' 97 W 82° 13 992	26 min	1.5 hrs	800-223-4878	Yes		Yes	
Shands Burn Center	Gainesville, FL 38.33 N 082 20.73W	33 min	1.5 hrs	352-265-0300	Yes		Yes	
<b>8. Medical Emergency Procedures</b>								

<ol style="list-style-type: none"> <li>1. Notify DIVS of medical problem</li> <li>2. DIVS notifies COML and MEDL</li> <li>3. MEDL contacts POC for following <ol style="list-style-type: none"> <li>a. # of pts</li> <li>b. Status of pts medical problem</li> <li>c. Location of pts</li> <li>d. Transport method</li> <li>e. Necessary resources</li> </ol> </li> <li>4. MEDL coordinates medevac/patient transport with SOF2, OPS2 and other relevant resources.</li> </ol> <p><u>Life threatening injury</u>: an injury that could mean the loss of life, limb, or eyesight</p> <p><u>Minor injury</u>: an injury that results in the removal of a pt from the line but with less urgency as a life threatening injury</p> <p><u>Medevac</u>: the most urgent transport of a pt suffering from a life threatening injury</p> <p>Patient transport: transport for minor injuries</p> <p><u>Medical problem</u>: a physical or mental ailment that occurs to an individual; to include illnesses and traumatic injuries</p> <p><u>Point of contact (POC)</u>: individual who will be directly advocating for patient care and transport (line medic, crew boss, DIVS etc)</p> <p><b>*Request that FFTR/Engine crews or single resources let MEDL know if they have any EMTs or Paramedics and if they have equipment with them.</b></p>	<p><b><u>HELISPOTS</u></b></p> <p>Pocket Helispot 30 47 30.02 x 82 22 39.5 (West side), mile marker 4, HWY 177 Steven C. Foster State Park</p> <p>Fargo Helibase 30 41.42 x 82 33.97 (West side), HWY 441- Golf course, Fargo</p> <p>POGO Helibase 30.44.03 x 82.07.41 (East side)</p> <p><b><u>Evac Yankee</u></b></p> <p>Helispot 6 Rd. 32 and 32A, N 30° 53.280 W 082° 33.880</p> <p>Helispot 7 Tatum Rd. Pond N 30° 50.280 W 082° 33.857</p> <p>*Alternate site can be established following guidelines for safety found with IRPG and local EMS resources.</p>
<p>Prepared by: Michael Evers MEDL (T)/Joe Fowler MEDL</p>	<p>10. Reviewed by: Barry Coulliette SOF</p>

INCIDENT RADIO COMMUNICATIONS PLAN ICS-205		Incident Name <b>Honey Prairie</b>		<b>GROUP 22</b>		Date/Time Prepared 07/14/2011-18:00	Operational Period Date/Time 7/15/2011 0800-2100/1800-0600				
Ch #	Function	Channel Name	Assignment	RX Freq	NW	RX Tone/NAC	TX Freq	NW	TX Tone/NAC	Mode A,D or M	Remarks
1	Command	West Okee Repeater	Sec West Branch CMD	167.1250	N	156.7	163.1500	N	156.7	A	Stephen Foster State Park
2	Command	South Okee Repeater	Sec East/West Branch CMD	164.7750	N	123.0	163.1500	N	123.0	A	Eddy Florida
3	Command	East Okee Repeater	PRIMARY East Branch CMD	164.6250	N	103.5	163.1500	N	103.5	A	Refuge Headquarters
4	Command	NIFC C2	PRIMARY West Branch CMD	168.100	N	CSQ	170.4500	N	123.0	A	NOT linked to OKEE System
5	Command	North Okee Repeater	PRIMARYNorth Branch CMD	164.5750	N	206.5	163.1500	N	206.5	A	Waycross
6	Air-Ground	Air to Ground	PRIMARY	166.9375	N	CSQ	166.9375	N	CSQ	A	
7	Tactical	MOB-MOB	GFC Contingency	159.3900	W	CSQ	159.3900	W	156.7	A	
8	Tactical	V-Fire 21W WHITE	Structure Protection Group&I.A.	154.2800	W	CSQ	154.2800	W	156.7	A	
9	Tactical	USFS 9	DIV A,B,C, L, M T, M & (East I/A)	168.7750	N	CSQ	168.7750	N	CSQ	A	
10	Tactical	S.E. Compact	DIV	159.2850	W	CSQ	159.2850	W	CSQ	A	
11	Tactical	USFS 11	DIV Z, N, O	168.2000	N	CSQ	168.2000	N	CSQ	A	
12	Tactical	Refuge Tac 1	DIV H, I, J, K	168.3500	N	CSQ	168.3500	N	CSQ	A	
13	Tactical	FL 190	DIV D, E, F, G, V, Y	151.2725	N	CSQ	151.2725	N	CSQ	A	
14	Command	DIV J RPT	East Branch	170.4125	N	CSQ	165.9625	N	123.0	A	NOT linked to OKEE System
15	Air-Ground	Air to Ground	SECONDARY	166.9000	N	CSQ	166.9000	N	CSQ	A	
16	EMERGENCY	AIR Guard	AIR OPS.	168.6250	N	CSQ	168.6250	N	110.9	A	
Prepared by (Communications Unit) <b>Brian Matthews</b> Incident Dispatcher: 912-286-1660											
<b>Cloning at ICP communications and briefings,</b>											

The convention calls for frequency lists to show four digits after the decimal place, followed by either an "N" or a "W", depending on whether the frequency is narrow or wide band. Mode refers to either "A" or "D" indicating analog or digital (e.g. Project 25) or "W" indicating mixed mode. All channels are shown as if programmed in a control station, base stations, mobile or portable radio.

## HONEY PRAIRIE PHONE LIST

07/15/11

**Incident      Communication      (24 Hour Dispatch)      912-286-1660**

AGENCY OFFICIALS			OPERATIONS      912-637-5248		
Curt McCasland	602-359-0013	USFWS AA	Rick Dolan	352-353-5101	Planning Operations
Mindy Gautreaux	912-282-7500	USFWS Deputy AA	Butch Hall	352-225-1280	Field Operations
Frank Sorrells	912-381-7503	GFC AA	Roger Gill	386-963-9496	Field Operations
James Karels	850-228-7763	FL DOF AA	<b>WEST BRANCH</b>		
Diane Adams	912-266-5421	GEMA	Tom Donohoe	404-772-5384	West Branch
Mike Housh	912-281-1575	USFWS AREP	Greg Jacobson	208-642-7587	DIVS A, B, C
COMMAND			Toby Herold	530-598-4195	DIVS D, E, F, G
Don West	352-353-5044	IC	Paul Pellegrini	907-299-0108	DIVS D, E, F, G (T)
Verne Reggal	386-547-7293	Deputy IC	Brian Rhodes	619-318-1623	DIVS T
Trent Ingram	229-726-0285	Unified IC (GA)	Shawn Duggar	850-508-7736	DIVS V
Gary Beauchamp	352-620-4424	Unified IC (FL)	Gary Smith	417-455-3391	DIVS Y
Mike Dueitt	850-228-0320	Unified IC (FWS)	Dan Helterline	406-241-1467	DIVS Y (T)
LIAISON			Glen Palfrey	208-290-4663	DIVS Z
Skippy Reeves	912-387-5923	Liaison Officer FWS	Jesse Knox	707-498-8936	DIVS Z (T)
INFORMATION      912-637-5247			Don Hammack	406-253-2535	IA/Structure Protection
Ludie Bond	352-258-6084	Fire Information	Bob Schober	907-978-6894	IA/Structure Protection (T)
Greg Heule	719-640-6735	Fire Information	<b>EAST BRANCH</b>		
Kristen Miller	904-710-5677	Fire Information	Brett Waters	406-581-6198	East Branch
Tom Kroll	320-533-0206	Fire Information	Matt Filbert	208-481-1068	DIVS H, I, J, K
Mark Wurdeman	912-496-2566	Fire Information (JIC)	Steve Griffin	760-417-0728	DIVS N, O
SAFETY			Ernest Schmidt	320-760-4781	DIVS N, O
Barry Couliette	404-772-5406	Safety Officer	Billy Taylor	850-544-2229	East IA
Ray Durham	770-280-7684	Safety Officer	Shawn Denowh	208-724-0827	East IA
Joe Fowler	912-286-1648	Medical Unit Leader	<b>AIR OPERATIONS      912-637-5254      FAX 912-637-5237</b>		
Field EMT	912-286-1674	Medical Unit Leader	Tim Elder	863-243-1438	Air Ops Branch
Medical Unit	912-637-5236		Don Nicholas	218-360-1816	ASGS(t)
Tom Lail	404-772-5338	Safety Officer	Ken Malgren	404-772-5317	Fargo Helibase
DISPATCH			Carl Magill	541-519-0850	ATGS – Fargo
Okeefenokee Dsp	912-496-7366	Okeefenokee	Steve Croy	540-230-2560	HEB2 (T) – Fargo
Suwannee Dispatch	386-758-5700	Fla wildfires, other	Brian Campbell	404-772-5405	HEB2 – Fargo
Waycross Dispatch	912-287-4915	Ga wildfires, other	Jay Matsen	912-287-4479	HEB2 – Waycross
LOGISTICS		West	=	206-218-8230	(cell)
Shane Locke	404-772-5399	LSC	Tim Caughlin	715-684-9862	ATGS – Lake City
Butch Mallet	404-772-5319	LSC	Melanie Fullman	906-364-0413	ATGS(t) - Lake City
Bill Hitt	912-637-5251	FACL	<b>PLANNING      912-637-5241      FAX 912-637-5237</b>		
Melvin Reese	352-442-7891	Base Camp Mgr	Ed Flowers	912-286-4643	Planning Section Chief
Gary Sisson	386-983-2474	RCDM	Scott Crosby	912-637-5241	Situation Unit Leader
Hotel Mgr	912-637-5251	Lodging	Joe Goudsward	240-778-5279	IMET
Kevin Reish	404-276-1998	Security Manager	Mike Bettwy	240-778-5019	IMET (T)
JV Thompson	404-772-5380	GSUL	John Kern	404-772-5393	FBAN
Dennis Spear	404-772-5389	GSUL(t)	<b>FINANCE      912-637-5244      FAX 912-496-4710</b>		
Nat Wright/Bob Kooken	404-772-5318	Food Unit Leader	Linda Starling	770-658-6641	Finance Section Chief
Linda Bruss	912-637-5239	SPUL	Rita Loper	912-281-6876	Buying Team Leader
Rhonda Hughes		SPUL(t)	Ron Knowles	907-230-4945	Business Advisor
Brian Mathews	561-914-7206	COML	Duane Welch	404-844-7042	Comp Claims

<b>ORDERING</b>		<b>FAX 912-637-5240</b>	<b>LANDOWNERS</b>		
Christy Englesby/ Cindy Tisdell	912-637-5262	Ordering Manager	Jim Barrett	229-412-3133	Langdale/GOAL Chairman
Abe Philipson	912-637-5239	Ordering Manager	Wesley Langdale	229-220-2602	Langdale
<b>LOGISTICS</b>		<b>912-496-2111</b>	<b>East</b>		
		<b>912-496-4710</b>			
		<b>Fax</b>			
Dave Klym	256-497-8490	LSC	Langdale Office	229-242-7450	Langdale Office
Duane Stephens	912-496-2111	Base Camp Mgr	Mike Conlon	386-365-3882	Rayonier Unit Supervisor
John Kaupa	256-497-8388	Supply Unit Leader	Ray Carter	386-288-6626	Rayonier
Joe Hoisington	256-497-8334	GSUL	Ed Carter	386-288-6626	Rayonier
Kelly Helget	256-497-8334	GSUL	Doug Nuss	912-390-1037	Rayonier
Tom Fink	218-236-1436	Security Manager	Randall McCrady	912-283-4077 W 912-288-0877 C	Rayonier
Medical Unit	912-387-6787		Colin Myerson	229-506-1565	Superior Pine Products Co
EAST MSG CTR	912-496-4698		Robbie Lee	229-356-0526	Superior Pine Products Co
<b>COOPERATORS</b>			Eric Harris	912-637-5597	Superior Pine Products Co
<b>COUNTY</b>			Superior Pine Office	912-637-5261	Superior Pine Products Co
	912-496-7229	Charlton County EMA	Al Alexander	850-843-0104	The Forestry Co
John F. Meyer - Chairman	912-496-2549	Charlton County Commissioners	Savell Schmidt	850-843-1181	The Forestry Co
Dobie Conner	912-496-7321	Charlton County Sheriff	John Bogue	850-843-1192	The Forestry Co
Jesse Booth	912-520-0061	Clinch County EMA	Joe Hopkins	912-276-0911	Toledo Timber
Jonathan Daniel	912-281-5158	Ware County EMA	Chris Gowan	912-276-0965	Toledo Timber
Jessie Jordan	912-816-6063	Ware County Fire Dept	Martin Bell	912-283-0583	Swamp Park
Joe Morris	912-281-6020	Ware County Sheriff	Crystal Peeples	352-316-0632	FIA
Robbie Sutton	912-599-9027	Tri County 911	Steve Davis	912-614-1828	Davis Community
<b>STATE</b>			Trevor Fortner	912-599-9271	Little Suwannee
GFC Fargo District Office	912-637-5270		Tim Jarrell	912-223-7120	Hancock Forest Mgmt.
GFC Satilla District Office	912-287-4915		<b>RAILROADS</b>		
Blair Joiner	229-237-9026	GFC Clinch Chief Ranger	Norfolk Southern	800-453-2530	
Jason Gillis	912-314-9233 912-637-5504	GFC Satilla Assistant Mgr.	Sid Moody	904-318-7983	Norfolk Southern Railroad
Brian Gray	229-894-4628 912-673-5274	Stephen Foster State Park	Chad Edwards	404-582-4909	Norfolk Southern Railroad
Travis Griffin	912-281-5790	Laura Walker State Park		540-797-9918	
Crystal Paulk- Buchanan	404-535-1048	GEMA PIO	Eric Sams	904-576-9907	
Georgia Highway Patrol	912-287-6500		Norfolk So Emergency Dispatch	404-529-1597	
<b>FEDERAL</b>			CSX Randy Dixon	912-270-0699	
Okefenokee Fire Shop	912-496-4181		CSX Dispatch	800-232-0144	
Okefenokee NWR HQ (East)	912-496-7366				
Okefenokee NWR (West)	912-637-5322				
Okefenokee Visitor Center	912-496-7836				

# **FINANCE**

**07/15/11**

## **EQUIPMENT**

PLEASE put E#'s on top right corner of shift ticket.

East side fuel supplier: Please send all fuel books to Finance daily.

E-93	Wildland Fire - Remember to put E# on shift ticket
E-526	Pierce Timber - Missing Tickets 6/29 - 7/02
E-815	Mellen Engine 9244 - Missing 7/07 shift ticket
E-816	Wisconsin - DNR - Missing several blue copies of shift tickets
E-817	Wisconsin - Dells 9593 - Missing shift tickets for 7/07 & 7/08
E-1091	Florida Forest Service - Need to show Operational Period 800-2000 12 hours
E-1151	Florida Forest Service - Need to show Operational Period 800-2000 12 hours

## **TIME**

O-945	Walter Mendoza - Need clarification on times for 7/06
-------	---

## **DEMOB NOTES**

IF YOU ARE GETTING CLOSE TO TIMING OUT, PLEASE SPEAK WITH YOUR FIRE LINE SUPERVISOR  
**ASAP.**

IF POSSIBLE, PLEASE COME BY FINANCE AND REVIEW YOUR TIME THE DAY BEFORE YOU DEMOB.  
ALSO, *BRING YOUR LAST CTR'S AND SHIFT TICKETS WITH YOU* TO FINANCE WHEN YOU DEMOB  
RATHER THAN TURNING IN AT THE BRIEFING IN THE MORNING. THIS WILL HELP AVOID DELAYS THE  
DAY OF DEMOB. THANKS.

**DMOB for July 16 to July 20**  
**Contact DMOB-Tim @ 912-637-5241**

**ALL RESOURCES - START YOUR DEMOB PROCESS THE DAY BEFORE YOUR DEMOB DAY. YOU NEED TO COMPLETE THE DEMOB PROCESS AND BE READY TO LEAVE ICP BY 1300 or 1700 HRS -**

NUMBER	NAME	KIND	UNIT	TRAVEL	JETPORT	DEMOB DATE
E-559	MULLENIX WATER TENDER T2	WAT2	ARAOC	POV		07/16/2011
E-559.2	GRAY, KEVIN	THSP	AROUF	POV		07/16/2011
E-717	RIGONI LOWBOY	LOWB	GAOKR	POV		07/16/2011
E-5006	ENG6 WILDLANDS #3	ENG6	FLFNF	POV		07/16/2011
E-5006.5	HAWK, KEITH	ENGB	FLFNF	POV		07/16/2011
O-871	PARKER, MARK	THSP	SCCRR	AOV	CAE	07/16/2011
O-1006	CROY, STEVE	HEB1	VAVAF	POV	ROA	07/16/2011
E-136.5	CATES, JEREMIAH	ENGB	FLFNF	POV		07/17/2011
E-136.6	KERR, TERR	ENOP	FLFNF	POV		07/17/2011
E-526	PIERCE-TIMBER- FELLER-BUNCHER	FELL	GAOKR	POV		07/17/2011
E-646	CAT D4 LGP TYPE3 DOZER	DOZ3	MSMNF	POV		07/17/2011
E-649	BEAR COUNTRY TP3	TPL3	FLFNF	POV		07/17/2011
E-649.2	KIKENDALL, MIKE	TPOP	FLFNF	POV		07/17/2011
E-709	ENGINE - T6 - E952 - IOWA	ENG6	IAIAS	AOV		07/17/2011
E-709.4	WALKER, JASON	ENGB	IAIAS	OTH		07/17/2011
E-709.5	THOMAS, JOE	FFT2	IAIAS	AIR		07/17/2011
E-709.6	VANDERBERG, BRADY	FFT2	IAIAS	OTH	SUX	07/17/2011
E-723	SEMI LOWBOY TRANSPORT	LOWB	MSMNF	POV		07/17/2011
O-869	CUPIT, MARK	SEC1	MSSCR	AOV	AEX	07/17/2011
O-877	REGAN, RONALD	COMT	NCBRP	AOV	AVL	07/17/2011
O-883	SIAM, STEVEN B	RCDM	OHOHS	AIR	CMH	07/17/2011
O-892	RIPLEY, STEVEN J	SOF2	FLFLS	POV	GNV	07/17/2011
O-902	CAUGHLIN, TIM	ATGS	WIR09	A/R	MKE	07/17/2011
O-964	STEPHENS, JAMES D	BCMG	IDNPF	AIR	LWS	07/17/2011
A-35	POGO TYPE 1 T1C 136BH	HMOD				07/18/2011
E-135.2	HARRELL, DAVID	ENOP	FLFNF	AOV		07/18/2011
E-606	CAMBRIDGE DOZER 3	DOZ3	MDBWRC	AIR	BWI	07/18/2011
E-606.5	DANIELS, CHARLES CODY	DZOP	VAGDR	AIR	ORF	07/18/2011
E-606.6	CARMON JR, BOBBY GENE	DZOP	VAGDR	AIR	ORF	07/18/2011
O-872	KOOKEN, ROBERT	FDUL	MTKNF	AIR	GEG	07/18/2011
O-887	BOLEN, CHARLEY	CTSP	NCNCF	AOV	AVL	07/18/2011
O-882	CHOPP, JAMIE RYAN	RCDM	MNSUF	AIR	HIB	07/18/2011
O-884	POWDRELL, JAN M	RCDM	COR02	AIR	DEN	07/18/2011
E-503.1	VANDERBLEEK, RAYMOND "DEAN"	ENGB	FLFNF	POV		07/19/2011
E-992.2	CECIL, BRYAN	ENOP	GAR08	AOV		07/19/2011
E-993.2	TRUETT, JAMES	ENOP	GAR08	AOV		07/19/2011
E-992.3	CAMACHO, DAVID	ENOP	GAR08	AOV		07/19/2011
E-993	ENGINE - T6 - BUSH FIRE SERVIC	ENG6	GAR08	AOV		07/19/2011
E-993.1	QUOCHYTENA, PHILLIP	ENGB	GAR08	AOV		07/19/2011
E-994	ENGINE - T6 - MNRLA - I452537	ENG6	MNRLA			07/19/2011
E-994.1	NORQUAY, PATRICK	ENGB	MNRLA			07/19/2011
E-1010	ENGINE - T6 - VA-1 (MILES CONT	ENG6	GAR08	POV		07/19/2011
E-1010.1	MATSON, GENE	ENGB	GAR08	POV		07/19/2011
E-1010.2	HAWTHORNE, ROGER	ENOP	GAR08	POV		07/19/2011
E-1019	WILDLANDS FIRE SERVICES	WAT1	GAOKR	POV		07/19/2011
E-1019.2	DURRANCE, FRANK	DRIV	GAOKR	POV		07/19/2011
O-609	MAGILL, CARL A	ATGS	ORBMC	AIR	BOI	07/19/2011
O-861	MATHISEN, JAMES	SEC1	FLJNR	AOV	RSW	07/19/2011
O-874	SCOTT, JOHN WESLEY	HECM	MNSUF	AIR	DLH	07/19/2011
O-880	DUEITT, MICHAEL W	ICT2	GAR4R	AOV	TLH	07/19/2011
O-885	BRUSS, LINDA K	SPUL	MNMNS	AIR	STC	07/19/2011
O-886	INGRAM, TRENT F	ICT3	GAGAS	AOV	ALB	07/19/2011

NUMBER	NAME	KIND	UNIT	TRAVEL	JETPORT	DEMOB DATE
O-899	SCHOBER, ROBERT	DOZB	AKAKD	AIR	FAI	07/19/2011
O-900	MILLETTE, PHILIP J	TFLD	MNBNR	AIR	FAR	07/19/2011
O-904	FILBERT, MATT	STEN	IDSTF	AIR	SUN	07/19/2011
O-906	KARP, EVAN ELLIOT	DOZB	AKAKD	AIR	FAI	07/19/2011
O-912	RHODES, BRIAN	DIVS	CACNF	AIR	SAN	07/19/2011
O-916	OHME, HANS	TFLD	IDPAF	AIR	BOI	07/19/2011
O-919	KNOX, JESSE D	TFLD	CASRF	AIR	ACV	07/19/2011
O-920	SCHNEIDER, AARON	TFLD	ORSUF	AIR	EUG	07/19/2011
O-921	HALL, BRADLEY L	TFLD	ALALF	AOV	MGM	07/19/2011
O-926	INGRAM, MATTHEW	TFLD	IDPAF	AIR	EUG	07/19/2011
E-77	GAS ENG6 CHATTOOGA 86	ENG6	GAGAS	AOV		07/20/2011
E-179	ENG6 #4	ENG6	FLFNF	POV		07/20/2011
E-179.5	HIERS, RAMEY	ENGB	FLFNF	POV		07/20/2011
E-179.6	CASH, MIKE	FFT2	FLFNF	POV		07/20/2011
E-380	JOHNNY SMITH GRADER	GRD	GAOKR	OTH		07/20/2011
E-380.1	MERRITT, JASON	OPBD	GAOKR	OTH		07/20/2011
E-499	WILDLANDS FIRE JD650H	TPL3	FLFNF	POV		07/20/2011
E-499.2	ROWAN, ROY	DRIV	FLFNF	POV		07/20/2011
E-529	DUMP TRUCK	TDMP	GAOKRC	POV		07/20/2011
E-646.2	DUEITT, PHILIP	DZOP	MSMNF	POV		07/20/2011
E-651.2	RIMES, WILLIAMS	DRIV	GAOKR	POV		07/20/2011
E-973	ENG6- NAX-7-4	ENG6	WYCPS	AOV		07/20/2011
E-973.1	SERRES, HEATH	ENGB	WYCPS	AOV		07/20/2011
E-973.2	YOUNG, RICK	ENOP	WYCPS	AOV		07/20/2011
E-973.3	PEPPLE, DARIN	FFT2	WYCPS	AOV		07/20/2011
E-974	ENG6 RED ROCK FIRE MN	ENG6	WIR09	POV		07/20/2011
E-974.4	SHYKES, STEVEN	ENGB	WIR09	POV		07/20/2011
E-974.5	HOFFMAN, MATTHEW	FFT2	WIR09	POV		07/20/2011
E-974.6	PLUSKWIK II, MICHAEL	FFT2	WIR09	POV		07/20/2011
E-975	ENGINE - T6 - FIRE MANAGEMENT	ENG6	MENEC	POV		07/20/2011
E-975.1	PHILLIPS, THOMAS (NORT)	ENGB	MENEC	POV		07/20/2011
E-975.2	REDIN, RICK	ENOP	MENEC	POV		07/20/2011
E-978.1	GILLMER, DENNIS ARNOLD	ENGB	IDIPF	POV	GEG	07/20/2011
E-978.2	FEARON, RYAN	FFT2	IDPLS	POV	GEG	07/20/2011
E-978.3	GUIDRY, MYKEL	FFT2	IDSJS	POV	GEG	07/20/2011
E-1000	PATRIK FIRE	ENG6	NCNCC	POV		07/20/2011
E-1000.1	RAMPININI, PAUL	ENGB	NCNCC	POV		07/20/2011
E-1000.2	BOLDMAN, MICHAEL	ENOP	NCNCC	POV		07/20/2011
E-1000.3	FORRISTALL, ANDREW	FFT2	NCNCC	POV		07/20/2011
E-1001	PATRIK FIRE	ENG6	NCNCC	POV		07/20/2011
E-1001.1	SYPHERS, DICK	ENGB	NCNCC	POV		07/20/2011
E-1001.2	DIGBY, RAYMOND	ENOP	NCNCC	POV		07/20/2011
E-1001.3	FORD, KOLBE P	FFT2	NCNCC	POV		07/20/2011
E-1004	ENGINE-T6 -WILDLANDS FIRE #1	ENG6	GAOKR			07/20/2011
E-1004.1	SCOTT, DOUG	ENGB	GAOKR	POV		07/20/2011
E-1004.2	PARKER, HEATH	ENOP	GAOKR			07/20/2011
E-1005	ENGINE-T6- WILDLANDS FIRE #4	ENG6	GAOKR			07/20/2011
E-1005.1	HARDY, DAVE	ENGB	GAOKR	BUS		07/20/2011
E-1005.2	MCCARTY, PATRISHA	ENOP	GAOKR			07/20/2011
E-1011	ENG6 WILDLANDS FIRE SERVICES	ENG6	GAOKR	POV		07/20/2011
E-1011.1	WILLIAMS, DOUG	ENGB	GAOKR	POV		07/20/2011
E-1011.2	WILLOUGHBY, JEREMY	ENOP	GAOKR	POV		07/20/2011
E-1011.3	CURRY, GREG	ENGB	GAOKR	POV		07/20/2011
E-1012	ENG6 WILDLANDS FIRE SERVICES	ENG6	GAOKR	POV		07/20/2011
E-1012.1	HILL, GLENN	ENGB	GAOKR	POV		07/20/2011
E-1012.2	GIORDANO, STEPHEN	ENOP	GAOKR	POV		07/20/2011
E-1014	ENGINE - T6 - HIGHTOWER-FIRE L	ENG6	WIR09	POV		07/20/2011



NUMBER	NAME	KIND	UNIT	TRAVEL	JETPORT	DEMOB DATE
E-1014.1	VANKUIKEN, DOUG	ENGB	WIR09	POV		07/20/2011
E-1014.2	OCHS, STEVE	FFT2	WIR09	POV		07/20/2011
E-1014.3	CRONK, JOE	FFT2	WIR09	POV		07/20/2011
E-1021	TIPTON & YOUNG	WAT2	GAOKR	POV		07/20/2011
E-1021.1	BROWN, CHARLES	DRIV	GAOKR	POV		07/20/2011
E-1078	LANKFORD METAL WORKS(GMC 3500+	TDMP	GAOKR			07/20/2011
E-1079	DENNIS KIGHT	TDMP	GAOKR			07/20/2011
E-1080	PU-ACS28584	PU	FLFL11			07/20/2011
E-1080.1	CRIBB, ROY	DRVP	FLFL11			07/20/2011
E-5002.1	KIGHT, HANK	ENGB	FLFNF	POV		07/20/2011
O-436	NELSON, ERIC	ENGB	MNAGR	A/R	GFK	07/20/2011
O-642	COOPER, BARBARA J	THSP	AROUF	AIR	LIT	07/20/2011
O-858	MITCHELL, LAURA R	READ	MDBWR	AOV	BWI	07/20/2011
O-875	STELLON, JAMES C	HECM	MNMNS	AIR	MSP	07/20/2011
O-876	KNOWLES, RONALD	IBA1	AKR10	A/R	JNU	07/20/2011
O-889	LARSON, KRIS	HECM	MNLFR	AIR	MSP	07/20/2011
O-910	HAMMACK, DONALD L	DIVS	MTKNF	AIR	GPI	07/20/2011
O-915	SUSZEK, GREGORY	DIVS	FLFPR	AOV	RSW	07/20/2011
O-917	HELTERLINE, DAN	TFLD	MTR01	AIR	MSO	07/20/2011
O-918	GRIFFIN, STEVEN	TFLD	CASQF	AIR	BFL	07/20/2011
O-925	HAYNES, CHRISTOPHER TODD	DIVS	IDPAF	AIR	BOI	07/20/2011
O-929	NOACK, FRED K	RESL	UTR04	AIR	COS	07/20/2011
O-930	MCDUGAL, LEIGH A	SCKN	GAR08	REN	ATL	07/20/2011
O-936	SCHMITT, ERNEST T	TFLD	MNMNS	AIR	MSP	07/20/2011
O-938	ALTMAN, WILLIAM D	DIVS	MOMOS	AIR	STL	07/20/2011
O-940	JACOBSON, GREG	TFLD	IDCWF	AIR	LWS	07/20/2011
O-941	DENOWH, SHAWN A	TFLD	IDPAF	AIR	BOI	07/20/2011
O-942	KRUPSKI, BEN J	TFLD	IDCTF	AIR	IDA	07/20/2011
O-944	MARION, DAVE	TFLD	CAR05		RNO	07/20/2011
O-946	FILLMORE, STEPHEN D	TFLD	CACNF	AIR	SAN	07/20/2011
O-949	HERNANDEZ, NIKIA L	STEN	MTKNF	AIR	FCA	07/20/2011
O-952	PLUMMER, VINCENT B	STEN	CASNF	AIR	FAT	07/20/2011
O-955	SCHERR, RANDY T	STEN	CAMDF	AIR	RNO	07/20/2011
O-965	WILEY, JUDY	PTRC	MTBRF	AIR	IDA	07/20/2011
O-968	BATT, JENNIFER	EQTR	NHWMF	AIR	MHT	07/20/2011
O-969	WEBER, CHARLES (CHIP)	EQTR	MTFNF	AIR	GPI	07/20/2011
O-972	BUNGE, LARRY B	SOF2	MNSUF	AIR	BRD	07/20/2011
O-977	WHIPPS, MARK	TFLD	MSNAP	AOV	TUP	07/20/2011
O-978	THELEN, JACOB	TFLD	ALALF		BHM	07/20/2011
O-909	SMITH, GARY L	DIVS	MOMOS	AIR	SGF	07/20/2011
O-1000	MEEK, WAYLON HERBERT	STEN	IDIPF	AIR	GEG	07/20/2011

# Joint Information Center Fire Update

Fire Update for Thursday, July 14, 2011~ 10 a.m.

Fire Information: [www.inciweb.org](http://www.inciweb.org)



**Honey Prairie Fire Complex: 298,526 acres, 70% contained**  
**Sweat Farm Again Fire: 19,169 acres, 84% contained**  
**Racepond Fire: 20,934 acres, 84% contained**

Very little rain fell on the north end of the Honey Prairie Fire for the last 4 days and consequently fuels are continuing to dry. The strategic firing operation from Tuesday was successful and accomplished the set objectives. Mowing equipment and a chain saw crew are reducing fuel loads to protect the boardwalks and structures at Swamp Park. Day and night crews will continue to widen and patrol the firelines.

The hot dry weather the past two days kept fire crews on the Sweat Farm Again and Racepond fires busy putting out rekindled hotspots. Two of these spots caused returns before crews located and extinguished them. Dead needles (needle cast) from scorched trees continues to fall across existing firelines. Mop up and patrolling the hotspots and cleaning up firelines continues on both fires. Structure protection and hazardous fuel reduction continues in Swamp Park.

A Hazardous Weather Outlook has been issued by the National Weather Service: "Smoke from the Honey Prairie Fire will affect areas northeast and east of the wildfire through early afternoon, including the communities near Nahunta, Folkston, Woodbine, to near Hilliard. The smoke plume may lift northward into Waycross and Blackshear by late afternoon. Visibilities may be reduced to 3 miles or less at times across these areas especially in the morning hours. Area roads that may be impacted over Charlton County include US Highway 301, Hwy 1 and Hwys 121 and 252."

Okefenokee National Wildlife Refuge remains closed. During the early morning hours of low fire activity, firefighters staged at the Visitor Center are clearing downed trees and cutting down hazardous trees along the Ridley's Island Trail.

[georgiafireinformationcenter@gmail.com](http://georgiafireinformationcenter@gmail.com)

**912-496-2566**

#### Assigned Resources

137 Engines  
17 Dozers  
19 Water Tenders  
7 Helicopters  
1 Crew  
805 Personnel

[www.inciweb.org](http://www.inciweb.org)  
[www.fws.gov/okefenokee](http://www.fws.gov/okefenokee)  
[www.gatrees.org](http://www.gatrees.org)

The Georgia Fire Information Center will be open from 8 a.m. – 7 p.m. daily to help assist the public and media with up to date information on all fires across Southeast Georgia and Okefenokee National Wildlife Refuge. Please contact us at 912-496-2566 or [georgiafireinformationcenter@gmail.com](mailto:georgiafireinformationcenter@gmail.com).

**Cooperators:** Okefenokee National Wildlife Refuge; Georgia Forestry Commission; Florida Forest Service; U.S. Forest Service; Greater Okefenokee Association of Landowners (GOAL); Georgia Emergency Management Agency; Rayonier; Superior Pine; Langdale; GDOT; GSP; FLDOT; Georgia DNR; Georgia Aviation Authority; Georgia National Guard; Georgia DOC; County Fire Departments; Toledo Manufacturing Company; Charlton, Ware and Clinch Counties; and the Cities of Folkston and Homerville.

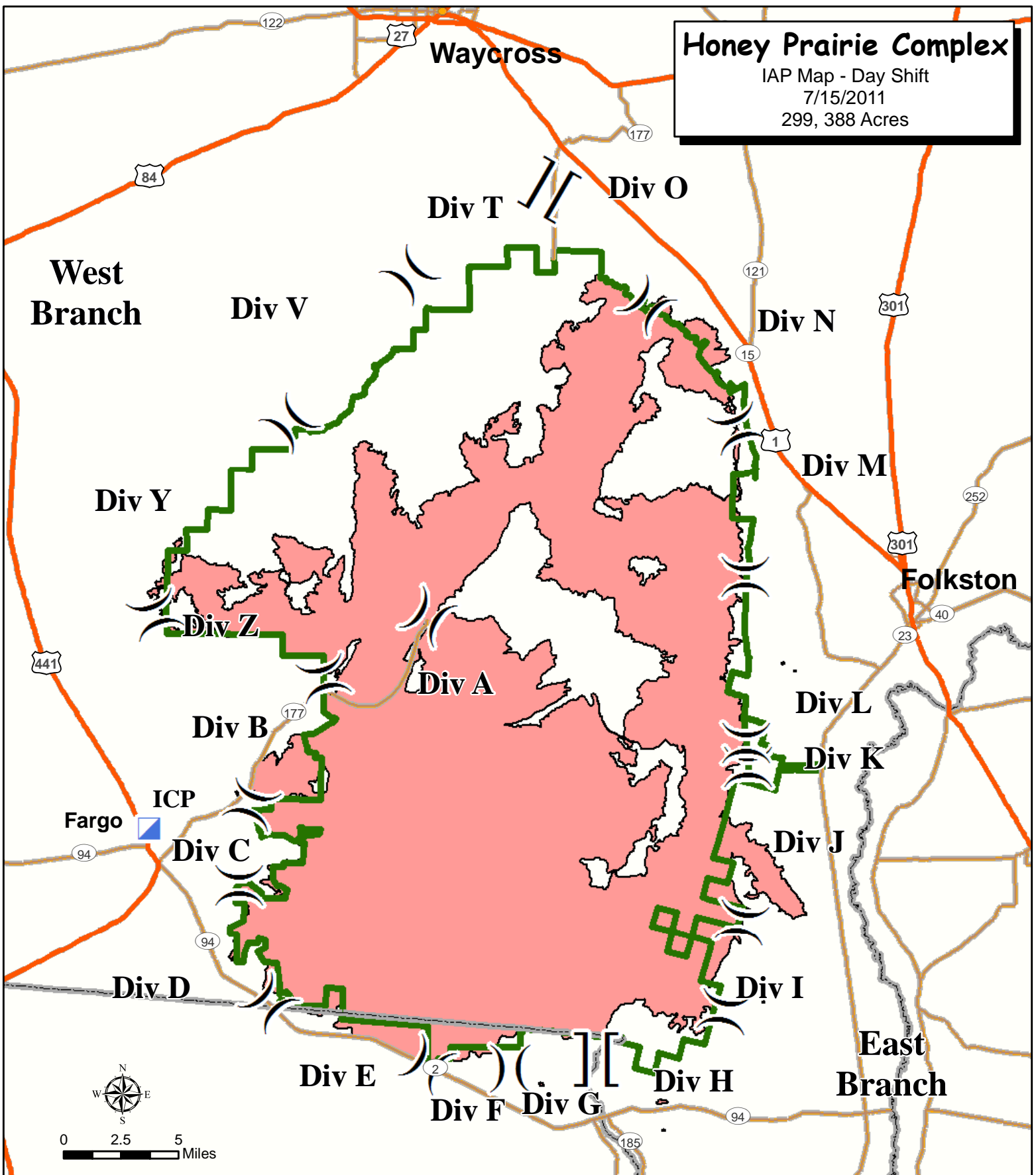
**Closures:** All entrances into Okefenokee National Wildlife Refuge are closed. All visitor activities are suspended until the threat of fire is over. For status updates on visitor activities, contact: Okefenokee National Wildlife Refuge, 912-496-7366; Okefenokee Swamp Park, 912-283-0583; or the Stephen C. Foster State Park, 912-637-5274.

# Honey Prairie Complex

IAP Map - Day Shift

7/15/2011

299,388 Acres



Highway  
Major Road  
State Boundary

Refuge Boundary  
Fire Area



Perimeter as of  
7/14/2011 1200  
S. Leverette

<b>UNIT LOG</b>	1. Incident Name	2. Date Prepared	3. Time Prepared
	Honey Prairie Complex		
4. Unit Name/Designators	5. Unit Leader (Name and Position)		6. Operational Period
<b>7. Personnel Roster Assigned</b>			
Name	ICS Position		Home Base
<b>8. Activity Log</b>			
Time	Major Events		
9. Prepared by (Name and Position)			