

Honey Prairie Complex

GA-OKR-000001

Incident Action Plan

Operational Period
Saturday July 16, 2011

Day Shift (0800-2100)
Night Shift (1800-0600)

Accounting Codes

FWS – 9141-F25M-2J

NPS – 5023 F25M E11

BLM – F25M

USFS – PRF25M_1502

Initial Attack – F4PM

| | | | | | | | | | | | | | | | |
|---|---|--|---------------------------------|-------------------------------|----------------|------------------|-----------------------------|----------------|-----------------------------|---------------------------------|-------------------|------------|--------------------------|--------------|--|
| INCIDENT OBJECTIVES | 1. INCIDENT NAME Honey Prairie Complex | 2. DATE PREPARED 7/15/11 | 3. TIME PREPARED 1800 | | | | | | | | | | | | |
| 4. OPERATIONAL PERIOD (DATE/TIME) Saturday July16, 2011 Day (0800 – 2100) and Night (1800 – 0600) | | | | | | | | | | | | | | | |
| 5. GENERAL CONTROL OBJECTIVES FOR THE INCIDENT (INCLUDE ALTERNATIVES) <ol style="list-style-type: none"> 1. Provide for safety of incident personnel and public in all incident operations. 2. Maintain a positive working relationship with all adjacent landowners, cooperators State and Federal partners. Inform, involve and communicate incident planning and operations with all partners. 3. Contain all fires that are within the Okefenokee National Wildlife Refuge, inside the Refuge and/or inside the swamp edge break if possible. 4. In cooperation with local timberland owners, use full suppression strategies and tactics to minimize damage to private timberlands and improvements and to prevent fires outside the Refuge from entering the Refuge. 5. Assist in management and suppression of additional fires (new starts or breakouts) in the vicinity as approved by Agency Administrators and Unified Incident Commanders. 6. Protect all cultural and archeological sites and structures within the refuge, with particular attention to facilities at Okefenokee Swamp Park. 7. Manage the fires cost-effectively consistent with the values at risk. 8. Implement structure protection as necessary for at-risk facilities and communities. 9. Coordinate suppression actions with assigned Refuge Resource Advisors | | | | | | | | | | | | | | | |
| 6. WEATHER FORECAST FOR OPERATIONAL PERIOD See attached forecast for area specific weather information. | | | | | | | | | | | | | | | |
| 7. GENERAL SAFETY MESSAGE Drive defensively and use spotter when backing. Ensure LCES is in place and known by all personnel. Drink plenty of water and take frequent rest breaks. Ensure proper use of PPE during all operations. | | | | | | | | | | | | | | | |
| 8. Attachments (☐ if attached) <table border="0" style="width: 100%;"> <tr> <td>☐ Organization List (ICS 203)</td> <td>☐ Incident Map</td> <td>☐ Safety Message</td> </tr> <tr> <td>☐ Assignment List (ICS 204)</td> <td>☐ Traffic Plan</td> <td>☐ Demobilization Procedures</td> </tr> <tr> <td>☐ Communications Plan (ICS 205)</td> <td>☐ Human Resources</td> <td>☐ Unit Log</td> </tr> <tr> <td>☐ Medical Plan (ICS 206)</td> <td>☐ Phone List</td> <td></td> </tr> </table> | | | | ☐ Organization List (ICS 203) | ☐ Incident Map | ☐ Safety Message | ☐ Assignment List (ICS 204) | ☐ Traffic Plan | ☐ Demobilization Procedures | ☐ Communications Plan (ICS 205) | ☐ Human Resources | ☐ Unit Log | ☐ Medical Plan (ICS 206) | ☐ Phone List | |
| ☐ Organization List (ICS 203) | ☐ Incident Map | ☐ Safety Message | | | | | | | | | | | | | |
| ☐ Assignment List (ICS 204) | ☐ Traffic Plan | ☐ Demobilization Procedures | | | | | | | | | | | | | |
| ☐ Communications Plan (ICS 205) | ☐ Human Resources | ☐ Unit Log | | | | | | | | | | | | | |
| ☐ Medical Plan (ICS 206) | ☐ Phone List | | | | | | | | | | | | | | |
| 9. PREPARED BY (PLANNING SECTION CHIEF) Ed Flowers | | 10. APPROVED BY (INCIDENT COMMANDER) /s/ Don West /s/Trent Ingram /s/Mike Dueitt | | | | | | | | | | | | | |

| ORGANIZATION ASSIGNMENT LIST | | 9. Operations Section | | |
|---|---|---|--|--|
| 1. Incident Name Honey Prairie Complex GA-OKR-000001 | | Chief | Roger Gill (West Branch) 7/25, Butch Hall (East Branch) 7/22 | |
| | | Planning | Rick Dolan 7/22 | |
| 2. Date 7/15/2011 | 3. Time 1000 hrs | a. WEST BRANCH - Divisions/Groups | | |
| 4. Operational Period 7/16/2011 Day (0800 - 2100) Night (1800 - 0600) | | OPBD | Tom Donohoe 7/22 | |
| 5. Incident Commander and Staff | | Division | A, B, C | Bill Altman / Greg Jacobson (t) |
| Incident Commander | Don West/Verne Riggall (Dep)/ Trent Ingram/Mike Dueitt | Division | D, E, F, G | Thomas Herold 7/19/ Paul Pelligrini (t) 7/20 |
| Liason Officer | Gary Beauchamp 7/29 | Division | T | Brian Rhodes 7/20 / Todd Haynes (t) 7/19 |
| Safety Officers | Barry Coulliette 7/22 / Ray Durham 7/23 | Division | V | Shawn Duggar 7/22 / Greg Suszek (t) 7/19 |
| Information Officer | Ludie Bond 7/22 | Division | Y (DAY) | Gary Smith 7/19 / Dan Helterline (t) 7/19 |
| 6a. Agency Administrators | | Division | V, Y (NIGHT) | Jacque Parks 7/20 |
| FWS | Curt McCasland | Division | Z | Glen Palfrey 7/20 / Jesse Knox (t) 7/18 |
| FWS | Mindy Gautreaux | Group | IA-WEST and Structure Group | Don Hammack 7/19 / Bob Schober (t) 7/18 |
| 6b. Agency Representatives | | b. EAST BRANCH - Divisions/Groups | | |
| FWS Liason | Skippy Reeves | OPBD | Brett Waters 7/25 | |
| GFC | Frank Sorrels | Division | H, I, J, K | Matt Filbert 7/18 |
| FLDOF | James Karels | Division | L, M | Ray Miller 7/20 |
| FWS AREP | Mike Housh | Division | N, O | Steve Griffin 7/19 |
| FWS-Refuge PAO | Art Webster | Group | IA-EAST | Billy Taylor 7/26 |
| GEMA AREP | Alan Robinson / Diane Adams | Group | Roads | |
| USFS AREP | Ivan Greene | | | |
| 7. Planning Section | | c. AIR OPERATIONS BRANCH - Honey Prairie | | |
| Chief | Ed Flowers 7/22 | Air Operations Branch Director | | Tim Elder 7/22 |
| Dep Chief | Steve Budd-Jack 7/25 | Air Support Group Supervisor | | Don Nicholas 7/22 |
| Resources Unit | Wilbur Priest 7/22 | ATGS-Lake City | | Tim Caughlin 7/16 |
| Situation Unit | Scott Crosby 7/22 | d. AIR OPERATIONS BRANCH-Waycross | | |
| IMET | Joe Goudsward 7/21 / Mike Bettwy 7/21 | Waycross Helibase Manager | | |
| FBAN | John Kern 7/22 | e. AIR OPERATIONS BRANCH - Fargo | | |
| Demob Unit | Tim Wilkinson 7/22 | Fargo Helibase Manager | | Brain Campbell 7/22 / |
| Documentation | Fred Noack 7/19 | ATGS-Fargo | | Carl MaGill 7/25 |
| GIS | Sue Leverette 7/22 | 8. Logistics Section | | |
| CTSP | Randy Fountain 7/22 / Charlie Bolen 7/17 | 10. Finance Section | | |
| TNSP | Larry Moore 7/24 | Chief | Betty Palmiotto 7/22 / Linda Starling 7/22 | |
| 8. Logistics Section | | Supply Unit | Linda Bruss/7/18 / Rhonda Hughes(t) 7/22 | |
| Chief | Shane Locke 7/21/Butch Mallet 7/22 | Time Unit | Frances Matheny 7/22 | |
| Supply Unit | Linda Bruss/7/18 / Rhonda Hughes(t) 7/22 | Procurement | John Watson 7/22 | |
| GSUL | James Thompson 7/22 | Comp Claims Unit | Alvin Welch 7/21 | |
| ORDM | Abe Phillipson(t) 7/22 / Cindy Tisdell 7/24 | Cost | Lisa Ridley 7/22 | |
| COML | Brian Mathews 7/22 | Buying Team | Rita Loper | |
| Medical Unit | Joe Fowler 7/22 | IBA | Ron Knowles 7/19 | |
| Facilities | Bill Hitt 7/22 / Mel Reese(t) 7/22 | | | |
| Food | Nat Wright 7/22/Bob Kookan 7/17 | | | |
| RCDM | Gary Sisson(t) 7/22 / Jamie Chopp 7/17 | | | |
| BCMG | Carl Taylor 7/25 | | | |
| | | Prepared by: | Wilbur Priest RESL | |

| DIVISION ASSIGNMENT LIST | | | 1. Branch West | | 2. Division A, B, C | | |
|--|--|--------------------|---|-------------------|---|--------------|---------|
| 3. Incident Name: Honey Prairie Complex | | | 4. Operational Period Date: 7/16/2011 Time: Day: 0800-2100 | | | | |
| 5. Operations Personnel | | | | | | | |
| Operations | Roger Gill 7/25 | | Branch Director | | Tom Donohoe 7/22 | | |
| Planning Ops | Rick Dolan 7/22 | | Division Supervisor | | Bill Altman 7/19 Greg Jacobson (t) 7/19 | | |
| Safety Officer | Barry Coulliette 7/22 | | | | | | |
| 6. Resources Assigned this Period | | | | | | | |
| Strike Team/Task Force/ Resource Designator | Leader / Name / Designator | Last Shift Date | Num. Per. | Drop Off PT./Time | Pick Up PT./Time | | |
| TFLD (O-900) | Phil Millette | 7/18 | 1 | | | | |
| TFLD (E-838.6) | Darren Franco (t) | 7/21 | 1 | | | | |
| STEN (O-949) | Nikia Hernandez | 7/19 | 1 | | | | |
| | | | | | | | |
| ENG6 (E-405) | Brett Gore | 7/24 | 3 | | | | |
| ENG6 (E-907) Eagle Staff | Brady Ward | 7/22 | 2 | | | | |
| ENG6 (E-994) | Pat Norquay | 7/18 | 3 | | | | |
| ENG6 (E-1059) | Daniel Ross | 7/22 | 3 | | | | |
| ENG6 (E-1065) | Mike Carnelli | 7/22 | 3 | | | | |
| ENG6 (E-1066) | Eric Jones | 7/21 | 3 | | | | |
| ENG6 (E-1076) MOMTF 9504 | Tim Perren | 7/24 | 3 | | | | |
| ENG6 (E-5002) Attack#1 | Hank Kight | 7/20 | 2 | PVT | | | |
| | | | | | | | |
| WAT2 (E-93) | William Davis | | 1 | PVT | | | |
| | | | | | | | |
| SOF2 (O-1068) | Jamey Burnsed | 7/25 | 1 | | | | |
| EMTB (O-984) | Bob Eaton | 7/20 | 1 | | | | |
| 7. Control Operations | | | | | | | |
| <ul style="list-style-type: none"> Patrol and mop up within 100' of fire perimeter line. Monitor fire impacts to Stephen Foster State Park. Patrol and control return. | | | | | | | |
| 8. Special Instructions | | | | | | | |
| <ul style="list-style-type: none"> Examine work area for fire weakened snags. Ensure LCES are in place before operations begin and stay hydrated. Additional resources will be available from GFC, Florida DOF, FWS, and local cooperators. Drive defensively and with lights on at all times. | | | | | | | |
| 9. Division/Group Communication Summary | | | | | | | |
| Function | Frequency | System | Channel | Function | Frequency | System | Channel |
| Command N Okee Repeater | RX 164.5750/206.5 TX 163.150/206.5 | KING NIFC | 5 | Logistics | | KING NIFC | |
| Tactical Div/Group | RX 168.775 TX 168.7750 | KING NIFC | 9 | Air to Ground | RX 166.9375 TX 166.9375 | KING NIFC | 6 |
| Prepared by (Resource Unit Ldr.) Fred Noack | Approved by (Planning Sect. Ch.) /s/ Ed Flowers | | | Date 7/15/2011 | Time 1930 | | |

| | | | | | | | |
|---|---------------------------------------|----------------------------|--|-----------------|---|-------------------|------------------|
| DIVISION ASSIGNMENT LIST | | | 1. Branch West | | 2. Division D, E, F, G | | |
| 3. Incident Name Honey Prairie Complex | | | 4. Operational Period Date: 7/16/2011 Time: 0800-2100 | | | | |
| 5. Operations Personnel | | | | | | | |
| Operations | Roger Gill 7/25 | | Branch Director | | Tom Donohoe 7/22 | | |
| Planning Ops | Rick Dolan 7/22 | | Division Supervisor | | Toby Herold 7/20 / Paul Pelligrini (t) 7/20 | | |
| Safety Officer | Barry Coulliette 7/22 | | | | | | |
| 6. Resources Assigned this Period | | | | | | | |
| Strike Team / Task Force / Resource Designator | | Leader / Name / Designator | | Last Shift Date | Num. Per. | Drop Off PT./Time | Pick Up PT./Time |
| TFLD (O-916) | | Hans Ohme | | 7/18 | 1 | | |
| TFLD (O-926) | | Matt Ingram (t) | | 7/18 | 1 | | |
| STPL (O-1055) | | Royce Davis | | 7/23 | 1 | | |
| ENG6 (E-134) | | Tom Rowe | | 7/20 | 3 | PVT | |
| ENG5 (E-503) | | Dean Vanderbleek | | 7/23 | 2 | PVT | |
| ENG6 (E-709) | | Jason Walker | | 7/16 | 3 | PVT | |
| ENG6 (E-821) | | Robert Thompson | | 7/24 | 3 | | |
| ENG6 (E-824) | | Chris Brubaker | | 7/24 | 3 | | |
| TPL3 (E-914) | | Fred Robinson | | 7/23 | 1 | | |
| TPL3 (E-1138) | | Jim Reynolds | | 7/23 | 1 | | |
| TPL3 (E-1139) | | Stan Jackson | | 7/23 | 1 | | |
| EMTB (O-1058) | | Paul Smith | | 7/24 | 1 | | |
| EMTP (O-847) | | Levi Clymer | | 7/28 | 1 | | |
| SOF2 (O-1083) | | Tommy Lail | | 7/26 | 1 | | |
| 7. Control Operations <ul style="list-style-type: none"> Monitor and patrol south end of West Branch. Mop up all hot spots within 100' of the fire perimeter. Patrol and control return. | | | | | | | |
| 8. Special Instructions <ul style="list-style-type: none"> Ensure LCES are in place before operations begin and stay hydrated. See medical plan for EMT support. Drive defensively and with lights on at all times. Examine work area for fire weakened snags. If communications needed with Impassable Bay Fire – use Channel 11 (168.2000) | | | | | | | |
| 9. Division/Group Communication Summary | | | | | | | |
| Function | Frequency | System | Channel | Function | Frequency | System | Channel |
| Command S Okee Repeater | RX 164.7750/123.0 TX 163.150/123.0 | KING NIFC | 2 | Logistics | | KING NIFC | |
| Tactical Div/Group | RX 151.2725 TX 151.2725 | KING NIFC | 13 | Air to Ground | RX 166.9375 TX 166.9375 | KING NIFC | 6 |
| Prepared by (Resource Unit Ldr.) Fred Noack | | | Approved by (Planning Sect. Ch.) /s/ Ed Flowers | | Date July 15, 2011 | | Time 1930 |

| DIVISION ASSIGNMENT LIST | | | | 1. Branch West | | 2. Division T | |
|--|---------------------------------------|--|-----------|--|--|------------------|--------------|
| 3. Incident Name Honey Prairie Complex | | | | 4. Operational Period Date: 7/16/2011 Time: 0800-2100 | | | |
| 5. Operations Personnel | | | | | | | |
| Operations | Roger Gill 7/25 | | | Branch Director | Tom Donohoe 7/22 | | |
| Planning Ops | Rick Dolan 7/22 | | | Division | Brian Rhodes 7/18 / Todd Haynes (t) 7/19 | | |
| Safety Officer | Barry Coulliette 7/22 | | | | | | |
| 6. Resources Assigned this Period | | | | | | | |
| Strike Team/Task Force/ Resource Designator | Leader / Name / Designator | Last Shift Date | Num. Per. | Drop Off PT./Time | Pick Up PT./Time | | |
| TFLD (O-946) | Stephen Filmore | 7/19 | 1 | | | | |
| TFLD (E-831.8) | Jeff Hussey | 7/23 | 1 | | | | |
| STEN (O-952) | Vincent Plummer | 7/19 | 1 | | | | |
| S/T Type 6 OR TFLD (t) (E-831.9) | Deana Wall | 7/23 | 1 | | | | |
| ENG6 (E-831.1) | Ben Nichols | 7/23 | 4 | | | | |
| ENG6 (E-831.4) | Eric Hahn | 7/23 | 3 | | | | |
| ENG6 (E-831.5) | Shane Thames | 7/23 | 3 | | | | |
| ENG6 (E-831.6) | Tavis Fenske | 7/23 | 3 | | | | |
| ENG6 (E-831.7) | Mike Towers | 7/23 | 3 | | | | |
| ENG6 (E-815) | Matt Dillon | 7/22 | 2 | | | | |
| ENG6 (E-816) | Jamie Remme | 7/22 | 2 | | | | |
| ENG6 (E-817) | Mike Mattson | 7/22 | 2 | | | | |
| ENG6 (E-818) | Scott Lindow | 7/22 | 2 | | | | |
| ENG6 (E-1073) | Mike Schlitz | 7/22 | 3 | | | | |
| WAT1 (E-1019) | Frank Durrance | 7/18 | 1 | PVT | | | |
| WAT2 (E-1021) | Charlie Brown | 7/19 | 1 | PVT | | | |
| TPL2 (E-986) | David Hauser | 7/26 | 1 | PVT | | | |
| TPL2 (E-988) | Jonathon Houser | 7/30 | 1 | PVT | | | |
| KG (E-989) | Cleo Simon | 7/30 | 1 | PVT | | | |
| EMTP (E-1134) | Jeff Halladay | 7/21 | 1 | | | | |
| SOF2 (O-973) | Larry Dorshorst | 7/20 | 1 | | | | |
| 7. Control Operations | | | | | | | |
| <ul style="list-style-type: none"> Recon potential control lines and examine area for snag removal Improve swamp break boundaries for fire breaks, work w/resource advisor Coordinate potential burn-out w/READ and refuge personnel Use refuge personnel for any burn-out activities. | | | | | | | |
| 8. Special Instructions | | | | | | | |
| <ul style="list-style-type: none"> Make contact with the Resource Advisor before using mechanical equipment. Safely push down with equipment all snags whether on fire or not that are a threat to success or tactical operations. Ensure LCES are in place before operations begin. Stay hydrated. Drive defensively and with lights on at all times. Boggy terrain: Be careful and aware when working around this type of area. | | | | | | | |
| 9. Division/Group Communication Summary | | | | | | | |
| Function | Frequency | System | Channel | Function | Frequency | System | Channel |
| Command N Okee Repeater | RX 164.5750/206.5 TX 163.150/206.5 | KING NIFC | 5 | Logistics | | KING NIFC | |
| Tactical Div/Group | RX 168.775 TX 168.775 | KING NIFC | 9 | Air to Ground | RX 166.9375 TX 166.9375 | KING NIFC | 6 |
| Prepared by (Resource Unit Ldr.) Fred Noack | | Approved by (Planning Sect. Ch.) /s/ Ed Flowers | | | Date July 15, 2011 | | Time 1800 |

| DIVISION ASSIGNMENT LIST | | | | 1. Branch West | | 2. Division V | | 1 of 2 | | | |
|--|--|---------------------------------------|--|--|----------------------------|----------------------|--|----------------------------|--------------|--------------|--|
| 3. Incident Name Honey Prairie Complex | | | | 4. Operational Period Date: 7/16/2011 Time: 0800-2100 | | | | | | | |
| 5. Operations Personnel | | | | | | | | | | | |
| Operations | | Roger Gill 7/25 | | | Branch Director | | Tom Donohoe 7/22 | | | | |
| Planning Ops | | Rick Dolan 7/22 | | | Division Supervisor | | Shawn Duggar 7/22 / Greg Suszek (t) 7/19 | | | | |
| Safety Officer | | Barry Coulliette 7/22 | | | | | | | | | |
| 6. Strike Team/Task Force/ Resource Designator | | | | | | | | | | | |
| | | Leader / Name / Designator | | Last Shift Date | Num. Per. | Drop Off PT./Time | | Pick Up PT./Time | | | |
| TFLD (O-906) | | Evan Karp | | 7/18 | 1 | | | | | | |
| TFLD (O-978) | | Jacob Thelen (t) | | 7/19 | 1 | | | | | | |
| TFLD (O-942) | | Ben Krupski | | 7/19 | 1 | | | | | | |
| TFLD(O-1000) | | Waylon Meek (t) | | 7/19 | 1 | | | | | | |
| ENG6 (E-2) | | Eric Nelson | | 7/19 | 1 | O-436 | | | | | |
| ENG6 (E-3) | | Daniel Angelo | | 7/25 | 2 | | | | | | |
| ENG6 (E-992) | | Justin Dillon | | 7/20 | 3 | PVT | | | | | |
| ENG6 (E-995) | | Mike Daigle | | 7/25 | 3 | | | | | | |
| ENG6 (E-996) | | John Cousins | | 7/25 | 3 | | | | | | |
| ENG6 (E-1000) | | Paul Rampinini | | 7/19 | 3 | PVT | | | | | |
| ENG6 (E-1001) | | Dick Sypher | | 7/19 | 3 | PVT | | | | | |
| ENG6 (E-1053) | | Timmerman | | 7/27 | 3 | PVT | | | | | |
| ENG6 (E-1062) | | Tyler Quintano | | 7/22 | 3 | PVT | | | | | |
| ENG6 (E-1063) | | Brad Finch | | 7/22 | 3 | PVT | | | | | |
| ENG6 (E-1064) | | Greg Nichols | | 7/21 | 3 | | | | | | |
| ENG6 (E-1085) | | Don Crane | | R&R | 2 | PVT | | R&R 7/15-16 | | | |
| 7. Control Operations | | | | | | | | | | | |
| <ul style="list-style-type: none"> Recon potential control lines and examine area for snag removal Improve swamp break boundaries for fire breaks, work w/resource advisor Coordinate potential burn-out w/READ and Refuge Personnel Use Refuge personnel for any burn-out activities. | | | | | | | | | | | |
| 8. Special Instructions | | | | | | | | | | | |
| <ul style="list-style-type: none"> Make contact with the Resource Advisor before using mechanical equipment. Safely push down with equipment all snags whether on fire or not that are a threat to success or tactical operations. Ensure LCES are in place before operations begin. Stay hydrated. Drive defensively and with lights on at all times. Boggy terrain: Be careful and aware when working around this type of area. | | | | | | | | | | | |
| 9. Division/Group Communication Summary | | | | | | | | | | | |
| Function | | Frequency | | System | Channel | Function | | Frequency | System | Channel | |
| Command N Okee Repeater | | RX 164.5750/206.5 TX 163.150/206.5 | | KING NIFC | 5 | Logistics | | | KING NIFC | | |
| Tactical Div/Group | | RX 151.2725 TX 151.2725 | | KING NIFC | 13 | Air to Ground | | RX 166.9375 TX 166.9375 | KING NIFC | 6 | |
| Prepared by (Resource Unit Ldr.) Fred Noack | | | | Approved by (Planning Sect. Ch.) /s/ Ed Flowers | | | | Date July 15, 2011 | | Time 1800 | |

| DIVISION ASSIGNMENT LIST | | | 1. Branch West | | 2. Division V | | 2 of 2 | |
|--|---------------------------------------|--|--|----------------------------|----------------------------|--|--------------|--|
| 3. Incident Name Honey Prairie Complex | | | 4. Operational Period Date: 7/16/2011 Time: 0800-2100 | | | | | |
| 5. Operations Personnel | | | | | | | | |
| Operations | | Roger Gill 7/25 | | Branch Director | | Tom Donohoe 7/22 | | |
| Planning Ops | | Rick Dolan 7/22 | | Division Supervisor | | Shawn Duggar 7/22 / Greg Suszek (t) 7/19 | | |
| Safety Officer | | Barry Coulliette 7/22 | | | | | | |
| 6. Strike Team/Task Force/ Resource Designator | | | | | | | | |
| Leader / Name / Designator | | Last Shift Date | Num. Per. | Drop Off PT./Time | | Pick Up PT./Time | | |
| TFLD (O-986) | | Mike Harnois | 7/22 | 1 | | | | |
| DOZB (O-1001) | | Roy Cribb | 7/20 | 1 | | | | |
| KG Dozer (E-982) | | Richard Nevits | ? | 1 | PVT | | | |
| KG Dozer (E-983) | | Jody Rienhart | ? | 1 | PVT | | | |
| TPL2 (E-606) | | Cody Daniels | 7/17 | 1 | | | | |
| Skidder (E-981) | | Henry Tiner | 7/25 | 1 | PVT | | | |
| Feller-Buncher (E-524) | | Josh Burdy | 7/21 | 1 | PVT | | | |
| Feller-Buncher (E-526) | | James Marshall | 7/16 | 1 | PVT | | | |
| Grader (E-530) | | Lucious Corbett | 7/27 | 1 | PVT | | | |
| WT2 (E-1018) | | Gary Waldron | 7/21 | 1 | PVT | | | |
| SOF2 (O-972) | | Larry Bunge | 7/19 | 1 | | | | |
| EMTP (O-767) | | Evan Dean | 7/29 | 1 | | | | |
| EMTP (O-1059) | | John Oker-Bloom | 7/23 | 1 | | | | |
| EMTB (O-1077) | | Michael Graham | 7/26 | 1 | | | | |
| 7. Control Operations | | | | | | | | |
| <ul style="list-style-type: none"> Recon potential control lines and examine area for snag removal Improve swamp break boundaries for fire breaks, work w/resource advisor Coordinate potential burn-out w/READ and Refuge Personnel Use Refuge personnel for any burn-out activities. | | | | | | | | |
| 8. Special Instructions | | | | | | | | |
| <ul style="list-style-type: none"> Make contact with the Resource Advisor before using mechanical equipment. Safely push down with equipment all snags whether on fire or not that are a threat to success or tactical operations. Ensure LCES are in place before operations begin. Stay hydrated. Drive defensively and with lights on at all times. Boggy terrain: Be careful and aware when working around this type of area. | | | | | | | | |
| 9. Division/Group Communication Summary | | | | | | | | |
| Function | Frequency | System | Channel | Function | Frequency | System | Channel | |
| Command N Okee Repeater | RX 164.5750/206.5 TX 163.150/206.5 | KING NIFC | 5 | Logistics | | KING NIFC | | |
| Tactical Div/Group | RX 151.2725 TX 151.2725 | KING NIFC | 13 | Air to Ground | RX 166.9375 TX 166.9375 | KING NIFC | 6 | |
| Prepared by (Resource Unit Ldr.) Fred Noack | | Approved by (Planning Sect. Ch.) /s/ Ed Flowers | | | Date July 15, 2011 | | Time 1800 | |

| DIVISION ASSIGNMENT LIST | | | | 1. Branch West | | 2. Division Y - Day | | 1 of 2 | |
|---|---------------------------------------|--|---------|--|----------------------------|----------------------------|--|------------------|--|
| 3. Incident Name Honey Prairie Complex | | | | 4. Operational Period Date: 7/16/2011 Time: 0800-2100 | | | | | |
| 5. Operations Personnel | | | | | | | | | |
| Operations | | Roger Gill 7/25 | | | Branch Director | | Tom Donohoe 7/22 | | |
| Planning Ops | | Rick Dolan 7/22 | | | Division Supervisor | | Gary Smith 7/19, Dan Helterline (t) 7/19 | | |
| Safety Officer | | Barry Coulliette 7/22 | | | | | | | |
| 6. Resources Assigned this Period | | | | | | | | | |
| Strike Team/Task Force/ Resource Designator | | Leader / Name / Designator | | Last Shift Date | Num. Per. | Drop Off PT./Time | | Pick Up PT./Time | |
| TFLD (O-920) | | Aaron Schneider | | 7/18 | 1 | | | | |
| TFLD (O-991) | | Adam Wolf (t) | | 7/21 | 1 | | | | |
| TFLD (O-954) | | Brian Ebert (t) | | 7/20 | 1 | | | | |
| STEN (O-979) | | Sam Lindblom (t) | | 7/20 | 1 | | | | |
| ENG6 (E-584) | | Cris Geidel | | 7/24 | 2 | | | | |
| ENG6 (E-838) | | Chris Mursu | | 7/21 | 2 | | | | |
| ENG6 (E-997) | | Jack Weer | | 7/20 | 2 | | | | |
| ENG6 (E-998) | | John Stebner | | 7/20 | 2 | | | | |
| ENG6 (E-1004) | | Doug Scott | | 7/19 | 2 | PVT | | | |
| ENG6 (E-1005) | | Dave Hardy | | 7/19 | 2 | PVT | | | |
| ENG6 (E-1010) | | Gene-Paul Matson | | 7/18 | 2 | PVT | | | |
| ENG6 (E-1011) | | Greg Curry | | 7/19 | 2 | PVT | | | |
| ENG6 (E-1012) | | Glenn Hill | | 7/19 | 2 | PVT | | | |
| ENG6 (E-1015) | | Robert Burton | | 7/20 | 3 | PVT | | | |
| ENG6 (E-1016) | | James Mangine | | 7/20 | 3 | PVT | | | |
| ENG5 (E-1036) | | Tom Gates | | 7/24 | 3 | | | | |
| ENG5 (E-1046) | | Karen Mobley | | 7/21 | 3 | | | | |
| ENG6 (E-1056) | | John Wisecarver | | 7/28 | 3 | PVT | | | |
| ENG6 (E-1071) | | Clayton Swanger | | 7/22 | 3 | | | | |
| 7. Control Operations <ul style="list-style-type: none"> Make contact with the Resource Advisor before using mechanical equipment. Recon potential controllines and examine area for snag removal Improve swamp break boundaries for fire breaks | | | | | | | | | |
| 8. Special Instructions <ul style="list-style-type: none"> Safely push down with equipment all snags whether on fire or not that are a threat to success or tactical operations. Ensure LCES are in place before operations begin. Stay hydrated. Drive defensively and with lights on at all times. Boggy terrain: Be careful and aware when working around this type of area. | | | | | | | | | |
| 9. Division/Group Communication Summary | | | | | | | | | |
| Function | Frequency | System | Channel | Function | Frequency | System | Channel | | |
| Command N Okee Repeater | RX 164.5750/206.5 TX 163.150/206.5 | KING NIFC | 5 | Logistics | | KING NIFC | | | |
| Tactical Div/Group | RX 151.2725 TX 151.2725 | KING NIFC | 13 | Air to Ground | RX 166.9375 TX 166.9375 | KING NIFC | 6 | | |
| Prepared by (Resource Unit Ldr.) Fred Noack | | Approved by (Planning Sect. Ch.) /s/ Ed Flowers | | | Date July 15, 2011 | | | Time 1730 | |

| DIVISION ASSIGNMENT LIST | | | | 1. Branch West | | 2. Division Y - Day | | 2 of 2 | |
|---|---------------------------------------|--|---------|--|----------------------------|----------------------------|--|------------------|--|
| 3. Incident Name Honey Prairie Complex | | | | 4. Operational Period Date: 7/16/2011 Time: 0800-2100 | | | | | |
| 5. Operations Personnel | | | | | | | | | |
| Operations | | Roger Gill 7/25 | | | Branch Director | | Tom Donohoe 7/22 | | |
| Planning Ops | | Rick Dolan 7/22 | | | Division Supervisor | | Gary Smith 7/19, Dan Helterline (t) 7/19 | | |
| Safety Officer | | Barry Coulliette 7/22 | | | | | | | |
| 6. Resources Assigned this Period | | | | | | | | | |
| Strike Team/Task Force/ Resource Designator | | Leader / Name / Designator | | Last Shift Date | Num. Per. | Drop Off PT./Time | | Pick Up PT./Time | |
| WT2 (E-512) | | Mack Evans | | 7/31 | 1 | PVT | | | |
| WT2 (E-560) | | Woody Bargeron | | 7/24 | 1 | PVT | | | |
| WTS1 (E-716) | | Donnie Griffis | | 7/25 | 1 | PVT | | | |
| WT2 (E-1017) | | Rick Selph | | 7/25 | 1 | GAOKR | | | |
| WT2 (E-1024) | | Richard Jones | | 7/28 | 1 | PVT | | | |
| | | | | | | | | | |
| | | | | | | | | | |
| DOZB (O-1004) | | Derek Cooper | | 7/20 | 1 | | | | |
| DOZB (O-1008) | | Zack Culver (t) | | 7/21 | 1 | | | | |
| TPL2 (E-497) | | Leslie Jeter | | 7/22 | 1 | PVT | | | |
| TPL3 (E-943) | | Hugh Matchett | | 7/20 | 1 | PVT | | | |
| TPL3 (E-984) | | Junior House | | 7/31 | 1 | PVT | | | |
| TPL2 (E-985) | | Aaron Tipton | | 7/27 | 1 | PVT | | | |
| | | | | | | | | | |
| SOF2 (O-891) | | Steve Holman | | 7/16 | 1 | | | | |
| EMTP (O-766) | | Peggy Miller | | 7/28 | 1 | | | | |
| EMTP (E-1153) | | Wes Lathen | | 7/26 | 1 | | | | |
| | | | | | | | | | |
| | | | | | | | | | |
| 7. Control Operations <ul style="list-style-type: none"> Make contact with the Resource Advisor before using mechanical equipment. Recon potential controllines and examine area for snag removal Improve swamp break boundaries for fire breaks | | | | | | | | | |
| 8. Special Instructions <ul style="list-style-type: none"> Safely push down with equipment all snags whether on fire or not that are a threat to success or tactical operations. Ensure LCES are in place before operations begin. Stay hydrated. Drive defensively and with lights on at all times. Boggy terrain: Be careful and aware when working around this type of area. | | | | | | | | | |
| 9. Division/Group Communication Summary | | | | | | | | | |
| Function | Frequency | System | Channel | Function | Frequency | System | Channel | | |
| Command N Okee Repeater | RX 164.5750/206.5 TX 163.150/206.5 | KING NIFC | 5 | Logistics | | KING NIFC | | | |
| Tactical Div/Group | RX 151.2725 TX 151.2725 | KING NIFC | 13 | Air to Ground | RX 166.9375 TX 166.9375 | KING NIFC | 6 | | |
| Prepared by (Resource Unit Ldr.) Fred Noack | | Approved by (Planning Sect. Ch.) /s/ Ed Flowers | | | Date July 15, 2011 | | | Time 1730 | |

| | | | | | | | |
|--|---------------------------------------|--|-----------|---|---|--------------|--------------|
| DIVISION ASSIGNMENT LIST | | | | 1. Branch West | 2. Division Z | | |
| 3. Incident Name: Honey Prairie Complex | | | | 4. Operational Period Date: 7/16/2011 Time: Day: 0800-2100 | | | |
| 5. Operations Personnel | | | | | | | |
| Operations | Roger Gill 7/25 | | | Branch Director | Tom Donohoe 7/22 | | |
| Planning Ops | Rick Dolan 7/22 | | | Division Supervisor | Glen Palfrey 7/20 / Jesse Knox (t) 7/18 | | |
| Safety Officer | Barry Coulliette 7/22 | | | | | | |
| 6. Resources Assigned this Period | | | | | | | |
| Strike Team/Task Force/ Resource Designator | Leader / Name / Designator | Last Shift Date | Num. Per. | Drop Off PT./Time | Pick Up PT./Time | | |
| TFLD (O-889) | Kris Larson | 7/19 | 1 | | | | |
| TFLD (O-921) | Brad Hall (t) | 7/18 | 1 | | | | |
| STEN (O-955) | Randy Scherr | 7/19 | 1 | | | | |
| ENG6 (E-392) | Tyson Taylor | 7/21 | 3 | | | | |
| ENG5 (E-502) | Bill Peter | 7/27 | 2 | PVT | | | |
| ENG6 (E-850) | Mike Haisten | 7/21 | 3 | | | | |
| ENG5 (E-905) | Travis Bailey | 7/23 | 3 | | | | |
| ENG6 (E-1047) | Thomas Sherman | 7/21 | 3 | PVT | | | |
| ENG6 (E-1051) | Kyle Zuehlke | 7/21 | 3 | PVT | | | |
| ENG6 (E-1052) | Ryan Schlater | 7/28 | 3 | PVT | | | |
| ENG6 (E-1057) | Troy Mueller | 7/20 | 3 | | | | |
| ENG6 (E-1067) | Shaun Moore | 7/21 | 3 | | | | |
| ENG6 (E-5007) | Jim Gipson | 7/22 | 2 | PVT | | | |
| ENG6 (E-5008) | Matt Stoneking | 7/22 | 2 | PVT | | | |
| ENG6 (E-5011) Smokey Mt 209 | James Searcy | 7/29 | 2 | PVT | | | |
| ENG6 (E-5012) Smokey Mt 301 | Marshall Halford | 7/29 | 2 | PVT | | | |
| EMTP (E-1152) | Chad Simons | 7/26 | 1 | | | | |
| SOF2 (O-891) | Steve Holman | 7/16 | 1 | 7/16 only! | | | |
| SOF2 (O-892) | Steven Ripley | R&R | 1 | | R&R 7/16-17 | | |
| 7. Control Operations | | | | | | | |
| <ul style="list-style-type: none"> Contain all fires outside refuge boundary. Patrol and mop up within 100' of fire perimeter line. | | | | | | | |
| 8. Special Instructions | | | | | | | |
| <ul style="list-style-type: none"> Ensure that tractors are cleaned and free of debris daily. Examine work area for fire weakened snags. Ensure LCES are in place before operations begin and stay hydrated. Additional resources will be available from GFC, Florida DOF, FWS, and local cooperators. Drive defensively and with lights on at all times. See Medical plan for EMT support. Implement MIST tactics | | | | | | | |
| 9. Division/Group Communication Summary | | | | | | | |
| Function | Frequency | System | Channel | Function | Frequency | System | Channel |
| Command N Okee Repeater | RX 164.5750/206.5 TX 163.150/206.5 | KING NIFC | 5 | Logistics | | KING NIFC | |
| Tactical Div/Group | RX 168.200 TX 168.200 | KING NIFC | 11 | Air to Ground | RX 166.9375 TX 166.9375 | KING NIFC | 6 |
| Prepared by (Resource Unit Ldr.) Fred Noack | | Approved by (Planning Sect. Ch.) /s/ Ed Flowers | | | Date July 15, 2011 | | Time 1930 |

| DIVISION ASSIGNMENT LIST | | | 1. Branch West | | 2. Division West - Initial Attack and Structure Protection | | |
|---|---------------------------------------|--|---|---------------|---|------------------|--------------|
| 3. Incident Name: Honey Prairie Complex | | | 4. Operational Period Date: 7/16/2011 Time: Day: 0800-2100 | | | | |
| 5. Operations Personnel | | | | | | | |
| Operations | Roger Gill 7/25 | | Branch Director | | Tom Donohoe 7/22 | | |
| Planning Ops | Rick Dolan 7/22 | | Division Supervisor | | Don Hammack 7/18 / Bob Schober (t) 7/18 (R&R 7/19-20; 14 day extension) | | |
| Safety Officer | Barry Coulliette 7/22 | | | | | | |
| 6. Resources Assigned this Period | | | | | | | |
| Strike Team/Task Force/ Resource Designator | Leader / Name / Designator | | Last Shift Date | Num. Per. | Drop Off PT./Time | Pick Up PT./Time | |
| STEN (O-947) | Jess Register | | 7/20 | 1 | | | |
| STEN (O-951) | Jerry Van Dyne | | 7/20 | 1 | | | |
| STEN (O-990) | Joe Sampson | | 7/20 | 1 | | | |
| HEQB (O-958) | Tim Boyce | | 7/20 | 1 | | | |
| ENG6 (E-404) | John Knapper | | 7/23 | 3 | | | |
| ENG6 (E-906) | James Burk | | 7/23 | 3 | | | |
| ENG6 (E-939) | Chad Ingle | | 7/23 | 3 | | | |
| ENG6 (E-1013) | William Paulton | | 7/20 | 3 | PVT | | |
| ENG6 (E-1045) | Andrew English | | 7/28 | 3 | PVT | | |
| ENG6 (E-1048) | Joseph Jarrells | | 7/21 | 3 | | | |
| ENG6 (E-1049) | James Dowd | | 7/20 | 3 | | | |
| ENG6 (E-1050) | Kyle Varel | | 7/20 | 3 | | | |
| ENG6 (E-1054) | Shawn Kanouse | | 7/28 | 3 | PVT | | |
| ENG6 (E-1055) | Brian Kanouse | | 7/28 | 3 | PVT | | |
| ENG6 (E-1075) | David Jones | | 7/20 | 3 | | | |
| TPL3 (E-499) | Roy Rowan | | 7/19 | 2 | PVT | | |
| TPL3 (E-646)/E-723 trans | Phil Dueitt | | 7/19 | 1 | PVT | | |
| TPL3 (E-650) | Paul Funderburk | | 7/31 | 1 | PVT | | |
| TPL3 (E-651) | Bill Rimes | | 7/19 | 1 | PVT | | |
| TPL2 (E-987) | Butch Duiett | | 7/28 | 1 | PVT | | |
| WAT2 (E-954) | Danny Holmes | | 7/23 | 1 | PVT | | |
| WAT3 (E-517) | Larry Bartlett | | 7/29 | 1 | PVT | | |
| EMTB (O-1057) | Matthew Stivers | | 7/23 | 1 | | | |
| SOF2 (O-1083) | Tommy Lail | | 7/26 | 1 | | | |
| 7. Control Operations <ul style="list-style-type: none"> Respond to Initial Attack as requested Initial attack IC will communicate size up information to Honey Prairie incident communications | | | | | | | |
| 8. Special Instructions | | | | | | | |
| 9. Division/Group Communication Summary | | | | | | | |
| Function | Frequency | System | Channel | Function | Frequency | System | Channel |
| Command N Okee Repeater | RX 164.5750/206.5 TX 163.150/206.5 | KING NIFC | 5 | Logistics | See ICS 205 | KING NIFC | |
| Tactical Div/Group | RX 154.280 TX 154,280/156.7 | KING NIFC | 8 | Air to Ground | RX 166.9375 TX 166.9375 | KING NIFC | 6 |
| Prepared by (Resource Unit Ldr.) Fred Noack | | Approved by (Planning Sect. Ch.) /s/ Ed Flowers | | | Date July 15, 2011 | | Time 1930 |

| | | | | | | | |
|--|--|--|--|---------------|------------------------------------|------------------|--------------|
| DIVISION ASSIGNMENT LIST | | | 1. Branch East | | 2. Division H/ I/J/K | | |
| 3. Incident Name Honey Prairie Complex | | | 4. Operational Period Date: 7/16/2011 Time: 0800-2100 | | | | |
| 5. Operations Personnel | | | | | | | |
| Operations | Butch Hall 7/22 | | Branch Director | | Brett Waters 7/25 / Bob Habeck (t) | | |
| Planning Ops | Rick Dolan 7/22 | | Division Supervisor | | Matt Filbert 7/18 | | |
| Safety Officer | Ray Durham 7/22 / Dave Marion (t) 7/21 | | | | | | |
| 6. Resources Assigned this Period | | | | | | | |
| Strike Team/Task Force/ Resource Designator | Leader / Name / Designator | | Last Shift Date | Num. Per. | Drop Off PT./Time | Pick Up PT./Time | |
| TFLD (O-945) | Walter Mendoza | | 7/20 | 1 | | | |
| STEN (O-950) | Larry Larson | | 7/20 | 1 | | | |
| ENG6 (E-77) GAGAS 86 | Andrew Gamlen | | 7/20 | 2 | | | |
| ENG6 (E-135) Attack-1 | Erin Finnegan | | 7/24 | 2 | PVT | | |
| ENG6 (E-136) Nat'l Fire | Jeremiah Cates | | 7/16 | 2 | PVT | | |
| ENG6 (E-179) Nat'l Fire #4 | Ramey Hiers | | 7/19 | 2 | PVT | | |
| ENG6 (E-1069) Tallahassee E26 | William Abbott | | 7/21 | 3 | | | |
| | | | | | | | |
| WT2 (E-559) | Kevin Gray | | ? | 1 | PVT | | |
| | | | | | | | |
| | | | | | | | |
| EMTP (E-1136) | Kurt Berge | | 7/21 | 1 | | | |
| SOF2 (O-808) | Charles Severson | | 7/24 | 1 | | | |
| 7. Control Operations | | | | | | | |
| <ul style="list-style-type: none"> Contain all fires outside refuge boundary. Patrol and control return Provide initial attack for GFC and fires outside the refuge boundary. Patrol all spots outside refuge boundary. Patrol and mop up all accessible fire line. Mop up all hot spots within 100' of the fire perimeter. Continue to provide protection to the Chesser Homestead by maintaining an adequate water supply via portable pump at location. | | | | | | | |
| 8. Special Instructions | | | | | | | |
| <ul style="list-style-type: none"> Ensure LCES are in place before operations begin. Stay hydrated. Drive defensively and with lights on at all times. See medical plan for EMT support Examine work area for fire weakened snags | | | | | | | |
| 9. Division/Group Communication Summary | | | | | | | |
| | Function | Frequency | Channel | Function | Frequency | System | Channel |
| Command E Okee Repeater | RX 164.6250/103.5 TX 163.150/103.5 | KING | 3 | Logistics | | KING NIFC | |
| DIV J Repeater | RX 170.4125 TX 165.9625/123.0 | NIFC | 14 | | | | |
| Tactical Div/Group | RX 168.350 TX 168.350 | KING NIFC | 12 | Air to Ground | RX 166.9375 TX 166.9375 | KING NIFC | 6 |
| Prepared by (Resource Unit Ldr.) Fred Noack | | Approved by (Planning Sect. Ch.) /s/ Ed Flowers | | | Date July 15, 2011 | | Time 1800 |

| | | | | | | | |
|--|--|--|----------------------------|----------------------------|------------------------------------|--------------|---------|
| DIVISION ASSIGNMENT LIST | | 1. Branch East | | 2. Division L, M | | | |
| 3. Incident Name Honey Prairie Complex | | 4. Operational Period Date: 7/16/2011 Time: 0800-2100 | | | | | |
| 5. Operations Personnel | | | | | | | |
| Operations | Butch Hall 7/22 | | Branch Director | | Brett Waters 7/25 / Bob Habeck (t) | | |
| Planning Ops | Rick Dolan 7/22 | | Division Supervisor | | Ray Miller 7/20 | | |
| Safety Officer | Ray Durham 7/22 / Dave Marion (t) 7/21 | | | | | | |
| 6. Resources Assigned this Period | | | | | | | |
| Strike Team/Task Force/ Resource Designator | Leader / Name / Designator | Last Shift Date | Num. Per. | Drop Off PT./Time | Pick Up PT./Time | | |
| TFLD (O-937) | Kevin Elmstrom | 7/20 | 1 | | | | |
| TFLD (O-993) | Drew Daily | 7/21 | 1 | | | | |
| ENG6 (E-407) White Earth #2 | Jesse Londo | 7/22 | 3 | | | | |
| ENG6 (E-819) | Brett Eismann | 7/21 | 3 | | | | |
| ENG6 (E-826) | Steve Melton | 7/24 | 2 | PVT | | | |
| ENG6 (E-893) MIHMF 251 | Martel Knipe | 7/23 | 3 | | | | |
| ENG6 (E-894) MOOZP 862 | William Mier | 7/22 | 3 | | | | |
| ENG6 (E-895) MOMTF 9505 | Blake Knisley | 7/22 | 3 | | | | |
| ENG6 (E-1061) SM36 | Steve Woodrick | 7/21 | 3 | | | | |
| ENG6 (E-5014) TX Fire 157 | Steven Torske | 7/24 | 3 | | | | |
| EMTP (O-731) | Keith Barker | 7/26 | 1 | | | | |
| SOF2 (O-1021) | David Vitwar | 7/23 | 1 | | | | |
| 7. Control Operations | | | | | | | |
| <ul style="list-style-type: none"> Contain all fires outside refuge boundary. Patrol and control reburn Mop up all spots outside refuge boundary and within 100 feet of perimeter | | | | | | | |
| 8. Special Instructions | | | | | | | |
| <ul style="list-style-type: none"> Ensure LCES are in place before operations begin. Stay hydrated. Drive defensively and with lights on at all times. See medical plan for EMT support Examine work area for fire weakened snags. | | | | | | | |
| 9. Division/Group Communication Summary | | | | | | | |
| | Function | Frequency | Channel | Function | Frequency | System | Channel |
| Command E Okee Repeater | RX 164.625/103.5 TX 163.150/103.5 | KING NIFC | 3 | Logistics | | KING NIFC | |
| Tactical Div/Group | RX 168.775 TX 168.775 | KING NIFC | 9 | Air to Ground | RX 166.9375 TX 166.9375 | KING NIFC | 6 |
| Prepared by (Resource Unit Ldr.) Fred Noack | Approved by (Planning Sect. Ch.) /s/ Ed Flowers | | Date July 15, 2011 | | Time 1800 | | |

| DIVISION ASSIGNMENT LIST | | | 1. Branch East | | 2. Division N/O | | |
|--|--|--|--|---------------|---|------------------|--------------|
| 3. Incident Name Honey Prairie Complex | | | 4. Operational Period Date: 7/16/2011 Time: 0800-2100 | | | | |
| 5. Operations Personnel | | | | | | | |
| Operations | Butch Hall 7/22 | | Branch Director | | Brett Waters 7/25 / Bob Habeck (t) | | |
| Planning Ops | Rick Dolan 7/22 | | Division Supervisor | | Steve Griffin 7/19, Ernest Schmitt (t) 7/19 | | |
| Safety Officer | Ray Durham 7/22 / Dave Marion (t) 7/21 | | | | | | |
| 6. Resources Assigned this Period | | | | | | | |
| Strike Team/Task Force/ Resource Designator | | Leader / Name / Designator | Last Shift Date | Num. Per. | Drop Off PT./Time | Pick Up PT./Time | |
| TFLD (O-807) (t) | | Mark Whipps | 7/19 | 1 | | | |
| TFLD (O-994) | | Jim Edgar | 7/21 | 1 | | | |
| STEN (O-989) | | Max Twombly | 7/21 | 1 | | | |
| ENG6 (E-897) MDBWR | | Ephraim Diefenderfer | 7/22 | 2 | | | |
| ENG6 (E-993) Bush Fire | | Philip Quochoytewa | 7/18 | 2 | PVT | | |
| ENG6 (E-977) IPF E-31 | | Louie Feltman | 7/23 | 4 | | | |
| ENG6 (E-1133) | | Chris Wright | 7/26 | 2 | | | |
| ENG6 (E-1058) | | Michael Keil | 7/20 | 3 | | | |
| ENG6 (E-1060) | | Paul Amundson | 7/21 | 3 | | | |
| ENG6 (E-1068) | | Wade Griffith | 7/22 | 3 | | | |
| ENG6 (E-76) | | Chris Henderson | 7/20 | 2 | | | |
| ENG6 (E-78) | | Kevin Cline | 7/20 | 2 | | | |
| ENG6 (E-80) | | Dane Bass | 7/20 | 2 | | | |
| ENG6 (E-81) | | Troy Helms | 7/20 | 2 | | | |
| SOF2 (O-807) | | Chuck Stanton | 7/25 | 1 | | | |
| EMTB (O-848) | | Bert Hyde | 7/27 | 1 | | | |
| 7. Control Operations <ul style="list-style-type: none"> Patrol and mop up 100' inside fire perimeter. Recon potential control lines and examine area snag removal Keep fire within refuge boundary. | | | | | | | |
| 8. Special Instructions <ul style="list-style-type: none"> If the fire reaches Mgt Activity Line (MAL) 1 cooperators and adjacent landowners will be notified. If the fire reaches MAL 2 a meeting will be held at the Swamp Park with adjacent landowners and cooperators. Safely push down with equipment all snags whether on fire or not that are a threat to success or tactical operations. Ensure LCES are in place before operations begin. Stay hydrated. See medical plan for EMT support. Drive defensively and with lights on at all times. Boggy terrain: Be careful and aware when working around this type of area. If HP fire escapes the NE Break the Great Basin team will command suppression w/assistance from the GFC. If Race Pond escapes to the south GFC will command w/assistance by the Great Basin. DIVS should make daily contact w/ Race Pond DIVS on scene. STEN Twombly and Engines 1058, 1060, 1070, 1072, 1074 be ready to respond to IA in Swamp Park. | | | | | | | |
| 9. Division/Group Communication Summary | | | | | | | |
| Function | Frequency | System | Channel | Function | Frequency | System | Channel |
| Command N Okee Repeater | RX 164.5750/206.5 TX 163.150/206.5 | KING NIFC | 5 | Logistics | | KING NIFC | |
| Tactical Div/Group | RX 168.200 TX 168.200 | KING NIFC | 11 | Air to Ground | RX 166.9375 TX 166.9375 | KING NIFC | 6 |
| Prepared by (Resource Unit Ldr.) Fred Noack | | Approved by (Planning Sect. Ch.) /s/ Ed Flowers | | | Date July 15, 2011 | | Time 1730 |

| DIVISION ASSIGNMENT LIST | | 1. Branch East | | 2. Division East Initial Attack | | | |
|--|--|--|----------------------------|--|----------------------------|---------------------|---------|
| 3. Incident Name Honey Prairie Complex | | 4. Operational Period Date: 7/16/2011 Time: 0800-2100 | | | | | |
| 5. Operations Personnel | | | | | | | |
| Operations | Butch Hall 7/22 | | Branch Director | Brett Waters 7/25 / Bob Habeck (t) | | | |
| Planning Ops | Rick Dolan 7/22 | | Division Supervisor | Billy Taylor 7/26, Shawn Denowh (t) 7/19 | | | |
| Safety Officer | Ray Durham 7/22 / Dave Marion (t) 7/21 | | | | | | |
| 6. Resources Assigned this Period | | | | | | | |
| Strike Team/Task Force/ Resource Designator | Leader / Name / Designator | Last Shift Date | Num. Per. | Drop Off PT./Time | Pick Up PT./Time | | |
| TFLD (O-943) | Steven Clark | 7/21 | 1 | | | | |
| DOZB (O-959) | Zac Cogle | 7/20 | 1 | | | | |
| STEN (t) (O-1018) | Greg Thomas | 7/23 | 1 | | | | |
| ENG6 (E-390) WICNF 461 | Lloyd Pete | 7/24 | 3 | | | | |
| | | | | | | | |
| ENG6 (E-978) | Dennis Gillmer | 7/26 | 3 | | | | |
| ENG6 (E-1084) | Mike Dean | 7/20 | 2 | | | | |
| ENG6 (E-1081) | Tim Joy | 7/20 | 2 | | | | |
| ENG6 (E-1082) | Brad Gregory | 7/20 | 2 | | | | |
| ENG6 (E-1083) | Tony Harkins | 7/20 | 2 | | | | |
| HCT2IA (C-14) Pat Rick 20B | Dustin Eldred | 7/25 | 20 | PVT | | | |
| WT3 (E-92) | Justin Ennis / Jeff Ellis | 7/27 | 1 | PVT | | | |
| TPL3 (E-500) NFFS | Don Johnson | 7/20 | 2 | PVT | Driver Mike Walker | | |
| TPL3 (E-649) Bear Co | Mike Kikendale | 7/30 | 2 | PVT | Driver Parker Barrett | | |
| SOF2 (O-1067) | Larry Morse | 7/24 | 1 | | | | |
| EMTP (O-1060) | James Brown | 7/24 | 1 | | | | |
| | | | | | | | |
| | | | | | | | |
| 7. Control Operations <ul style="list-style-type: none"> Respond to Initial Attack as requested Patrol and control return Initial attack IC will communicate sizeup information to the Honey Prairie communication. | | | | | | | |
| 8. Special Instructions | | | | | | | |
| 9. Division/Group Communication Summary | | | | | | | |
| | Function | Frequency | Channel | Function | Frequency | System | Channel |
| Command E Okee Repeater | RX 164.625/103.5 TX 163.150/103.5 | KING NIFC | 3 | Logistics | | KING NIFC | |
| Tactical Div/Group | RX 168.775 TX 168.775 | KING NIFC | 9 | Air to Ground | RX 166.9375 TX 166.9375 | KING NIFC | 6 |
| Prepared by (Resource Unit Ldr.) Fred Noack | | Approved by (Planning Sect. Ch.) /s/ Ed Flowers | | Date July 15, 2011 | | Time 1800 | |

| | | | | | | | | | | | | | | | |
|--|--|--|--|--|--------------------------------|-------------------|--|-------------------|--|-------------|--|--------------|--|---------|--|
| DIVISION ASSIGNMENT LIST | | | | 1. Branch ALL | 2. Division Roads Group | | | | | | | | | | |
| 3. Incident Name: Honey Prairie Complex | | | | 4. Operational Period Date: 7/16/2011 | | Time: 0800-2100 | | Day: 0800-2100 | | | | | | | |
| 5. Operations Personnel | | | | | | | | | | | | | | | |
| Operations | | Butch Hall 7/22 | | | Branch Director | | | | | | | | | | |
| Planning Ops | | Rick Dolan 7/22 | | | Division Supervisor | | | | | | | | | | |
| Safety Officer | | Ray Durham 7/22 / Dave Marion (t) 7/21 | | | | | | | | | | | | | |
| 6. Resources Assigned this Period | | | | | | | | | | | | | | | |
| Strike Team/Task Force/ Resource Designator | | Leader / Name / Designator | | Last Shift Date | Num. Per. | Drop Off PT./Time | | Pick Up PT./Time | | | | | | | |
| EQPM (O-928) | | Ray Helget | | 7/21 | 1 | East Branch | | | | | | | | | |
| THSP (O-1088) | | Bert Early | | 7/27 | 1 | | | | | | | | | | |
| HEQB (O-1090) | | Jonathan Luepke | | 7/28 | 1 | | | | | | | | | | |
| Excavator (E-505) | | Don Murray | | ? | 1 | PVT, West Branch | | | | | | | | | |
| Excavator (E-596) | | Kenneth Enfinger | | ? | 1 | | | | | | | | | | |
| Dump Truck (E-506) | | Craig Smith | | ? | 1 | PVT, West Branch | | | | | | | | | |
| Dump Truck (E-529) | | Ron Watson | | ? | 1 | PVT, West Branch | | | | | | | | | |
| Dump Truck (E-1074) | | | | ? | 1 | PVT, West Branch | | | | | | | | | |
| Dump Truck (E-1079) | | Dennis Kight | | ? | 1 | PVT, West Branch | | | | | | | | | |
| Grader (E-228) | | Steven Hendricks | | ? | 1 | CNTY, West Branch | | | | | | | | | |
| Grader (E-230) | | Buddy Pittman | | ? | 1 | PVT, East Branch | | | | | | | | | |
| Grader (E-380) | | Jason Merrit | | ? | 1 | PVT, East Branch | | | | | | | | | |
| Grader (E-597) | | David Prpoes | | ? | 1 | PVT, West Branch | | | | | | | | | |
| WT (E-1022) | | Louis Butler | | ? | 1 | PVT, East Branch | | | | | | | | | |
| 7. Control Operations | | | | | | | | | | | | | | | |
| <ul style="list-style-type: none"> Coordinate efforts w/ resource advisor and logistics | | | | | | | | | | | | | | | |
| 8. Special Instructions | | | | | | | | | | | | | | | |
| <ul style="list-style-type: none"> Ensure that tractors are cleaned and free of debris daily. Examine work area for fire weakened snags. Ensure LCES are in place before operations begin and stay hydrated. Additional resources will be available from GFC, Florida DOF, FWS, and local cooperators. Drive defensively and with lights on at all times. See Medical plan for EMT support. Implement MIST tactics | | | | | | | | | | | | | | | |
| 9. Division/Group Communication Summary | | | | | | | | | | | | | | | |
| Function | | Frequency | | System | | Channel | | Function | | Frequency | | System | | Channel | |
| Command | | See ICS 205 | | KING NIFC | | | | Logistics | | See ICS 205 | | KING NIFC | | | |
| Tactical Div/Group | | See ICS 205 | | KING NIFC | | | | Air to Ground | | See ICS 205 | | KING NIFC | | | |
| Prepared by (Resource Unit Ldr.) Fred Noack | | | | Approved by (Planning Sect. Ch.) /s/ Ed Flowers | | | | Date 7/15/2011 | | | | Time 1930 | | | |

AIR OPERATIONS SUMMARY

Prepared By: Tim Elder, AOBD

Prepared Date: 7.15.2011

Prepared Time: 1800

| | | | | | |
|--|---|----------------------------|--------------------------|--|------------------------|
| 1. INCIDENT NAME: Honey Prairie | 2. OPS PERIOD DATE: July 16, 2011 | START TIME: 0830 | END TIME: 1900 | SUNRISE: 0636 | SUNSET: 2034 |
| 3. REMARKS (Safety Notes, Hazards, Air Operations Special Equipment, etc.): <i>Be alert to rapidly changing weather conditions.</i> <i>NOTE: Latitude/Longitude format is "Degrees-Minutes-Decimal Minutes" (example: N30 41.42 W082 33.97)</i> | | | | 5. TFR #: 1/0249 (Box) 3000' MSL | |

| PERSONNEL | NAME | PHONE # | FREQUENCIES | AM | FM | |
|---------------------|----------------|---|---------------------------------------|---------|----------------|---|
| AOBD | Tim Elder | 863-243-1438 Desk 912-637-5254 | AIR/ AIR FW | 122.575 | | AIRTANKERS / LEAD PLANES - None Available ATGS AIRCRAFT- 53L (C-337) |
| ASGS(T) | Don Nicholas | 218-360-1816 | AIR/ AIR RW-FF | 122.375 | | OTHER: Lake City Tanker Base: 386-758-9078 / FAX 752-8901 Pogo Helibase: 912-496-4415 / FAX 496-7077 Waycross Helibase 912-287-4479 / FAX 287-4458 |
| ATGS Lake City | Tim Caughlin | 715-684-9862 | Georgia AIR/AIR | 122.075 | | ICP Helispot: 404-772-5317 Oketfenokee Dispatch: 912-496-7366 X230 |
| ATGS Fargo HB | Carl Magill | 541-519-0850 | Georgia AIR/GRND (Smokey - Dozers) | | 159.285 W | ICP HELISPOT: N30 40.945 W082 33.640 |
| HEB2 Pogo HB | Brian Campbell | 404-772-5405 | AIR/GROUND PRIMARY | | 166.9375 | POGO HELIBASE: N30 44.03 W082 07.41 |
| HEB2 Waycross HB | Jay Matsen | 912-287-4479 Desk 206-218-8230 Cell | AIR/GROUND ALTERNATE | | 166.9000 | HOMERVILLE AIRPORT N31 03.35 W082 46.45 |
| | | | TOLC | | 168.0125 | WAYCROSS AIRPORT N31 14.9 W082 23.7 |
| | | | AIR GUARD | | 168.625 T110.9 | BERGANZA HELISPOT N 31 07.22 W082 15.22 |

9. HELICOPTERS (Use Additional Sheets as Necessary)

| FAA # | TY | MAKE/ MODEL | BASE | AVAIL | MANAGER | FAA # | TY | MAKE/ MODEL | BASE | AVAIL | MANAGER |
|--------|----|-------------|----------|-------|----------------------------|-------|----|-------------|------|-------|----------------------------|
| N36BH | 1 | S-70 | Waycross | 0830 | Zev Hunting 406-439-6768 | 26MW | 1 | K-1200 | Pogo | 0830 | Kirby Cook 406-381-1212 |
| 206G | 2 | UH1H | Waycross | 0830 | J. Dominguez 530-319-3517 | 57Z | 3 | 206-L4 | Pogo | 0830 | Cindy Austin 208-241-3957 |
| 06901 | 2 | UH1H | Waycross | 0830 | Kerry Koskela 559-359-2122 | N662H | 3 | 206-L4 | Pogo | 0830 | Jeremy Beeson 208-507-1649 |
| N818MC | 3 | AS-350B3 | Waycross | 0830 | Don Mitchell 307-330-8285 | | | | | | |

10. TASK/ MISSION/ ASSIGNMENT (Type/ function includes: Air Tactical, Retardant, Recon, Personnel Transport, Bucket Operations, SAR, etc.)

| TYPE/FUNCTION | NAME OF PERSONNEL OR CARGO (if applicable) or instructions for tactical aircraft | MISSION START | FLY FROM | FLY TO |
|---------------|---|---------------------|-----------------|--------|
| Bucket Ops | N36BH, 206G, 6901, 61SC, 26MW | As Requested | Fargo/Waycross | |
| Air Tactical | 53L, 662H | 1200 / As Requested | Lake City/Fargo | |
| Recon | All recon missions must have direct approval by the AOBD. 662H, 818MC, 57Z | As Requested | Fargo/Pogo | |
| Medevac | Fargo: N662H Waycross: N818MC | As Requested | Fargo/Waycross | |



Fire Weather Forecast



FORECAST NO: 70

NAME OF FIRE: Honey Prairie Complex

PREDICTION FOR: Day Shift
SHIFT DATE: 7/16/11

UNIT: Okefenokee National Wildlife Refuge

FORECAST ISSUED: 7/15/11 at 1900

SIGNED: Mike Bettwy (T) / Joe Goudsward
Incident Meteorologists

WEATHER DISCUSSION: A weak cold front will remain over the area through tonight before dissipating Sunday. Additional showers and thunderstorms will be possible today with locally heavy rainfall amounts. Somewhat drier air may work back into the region on Sunday with a drying trend after that.

TODAY: Patchy morning fog, otherwise mostly cloudy. Scattered showers and thunderstorms expected, especially in the afternoon.

MAXIMUM TEMPERATURES: 88-93 degrees

PM HEAT INDEX: 94-98 degrees

AVERAGE SKY COVER: 80

MINIMUM HUMIDITY: 60-70%

20 FT WINDS: AM: E 3-7 mph

PM: NE 7-10 G14 mph

STABILITY/INVERSION: Morning inversion to 500 feet through 0900, then rising to 4400 feet by 1500

TRANSPORT WINDS: E 17 mph

DISPERSION INDEX: 55, Average

CHANCE OF PRECIPITATION: 60%

PRECIPITATION AMOUNTS: 0.50"-0.75", with locally higher amounts

LIGHTNING ACTIVITY LEVEL: 4

TONIGHT: Mostly cloudy. Scattered showers and thunderstorms, especially before midnight. Patchy fog developing after midnight.

MINIMUM TEMPERATURES: 72-76 degrees

MAXIMUM HUMIDITY: 90-100%

20 FT WINDS: ENE 4-7 mph

STABILITY/INVERSION: Inversion to 500 feet by 0100 hours

DISPERSION INDEX: 3, Poor

CHANCE OF PRECIPITATION: 50% early, decreasing to 30% by morning

LIGHTNING ACTIVITY LEVEL: 3

OUTLOOK FOR SUNDAY: Variable clouds with a 40% chance of showers and thunderstorms. Winds E 10-15 mph. High temperatures 89-94. Min RH 50-60%. Dispersion 55, Average.

EXTENDED FORECAST:

| | MONDAY | TUESDAY | WEDNESDAY |
|----------------------|-------------------------------------|-----------------------------------|----------------------------------|
| MINIMUM TEMP | 72° | 72° | 73° |
| MAXIMUM TEMP | 93° | 95° | 97° |
| MINIMUM RH | 50-60% | 45-55% | 43-53% |
| 20 FT. WINDS | AM: ENE 4-7 mph PM: ENE 7-11 mph | AM: ENE 3-6 mph PM: E 6-10 mph | AM: SE 2-5 mph PM: S 5-10 mph |
| SKY | Partly Cloudy | Partly Cloudy | Partly Cloudy |
| WEATHER | Scattered T-Storms | Scattered T-Storms | Isolated T-Storms |
| CHANCE PRECIP | 40% | 30% | 20% |

-end-

FIRE BEHAVIOR FORECAST

| | | |
|---|-----------------------------|--------------------------------------|
| Fire: Honey Prairie Complex | Unit: GA-OKR-000001 | Prediction for Day Shift |
| Forecast #69 Issued: 07/15/2011 1830 hrs | Signed: /S/John Kern | Shift Date: Saturday 07/16/11 |

GENERAL FIRE BEHAVIOR

Fuels around the Okefenokee Wildlife Refuge are predominately Fuel Model 7 (Southern Rough). Large to moderate acreage tracts of commercial timberland are mixed in throughout the entire perimeter surrounding the refuge. Fast moving wildfires with extremely high flame lengths and rapid rates of spread occur within the swamp. As fire transitions to the upland, torching and crown fires are common. Long Range spotting is possible.

Indicators/Threshold for Increased Fire Activity

- Relative humidity dropping below 45%
- Winds above 10 mph
- **Heavy fuel loadings**
- Fine dead fuel moisture 8% or less
- Dispersion above 70
- *** Items in BOLD are predicted to occur today***

SPECIFIC FIRE BEHAVIOR

- **Fire behavior will be influenced by past precipitation. Central and South portions of fire area remain moist. North half have received varying amounts of precipitation.**
- **Expect fire to continue spreading through the shrub fuels with low to moderate rates of spread, low to moderate flame lengths, and creep through the hardwood stands. Expect areas with high heat concentrations to increase fire intensity with less than 60% RH, leading to column development early afternoon. (Wind gusts will temporarily increase fire intensities). LAL 4**

| Fuel Type | Rates of Spread | Flame Length | Spotting Distance | Firebrand Ignition |
|-------------------------------------|-----------------|--------------|-------------------|--------------------|
| Winds at 5 - 10 G 15 mph | | | | |
| Shrub Fuels – SH5 | 5 - 17 ch/hr | 3 - 5 feet | 1/10 - 2/10 mile | 23% |
| Heavy Southern Rough- SH8 | 5 - 16 ch/hr | 5 - 8 feet | 1/10 - 2/10 mile | 23% |
| Timber Litter-Reburn TL8 | 1 - 4 ch/hr | 1 - 3 feet | 1/10 - 2/10 mile | 23% |
| Small Pine Plantation w/grasses GR5 | 2 - 8 ch/hr | 1 - 3 feet | 1/10 - 2/10 mile | 23% |

One hour fine dead fuel moisture is at 12% for Saturday. 1,000 hour fuels are drier than normal for this time of year. There is reburn potential in all divisions due to the amount of needle cast. Should a winds become stronger than predicted, expect fire behavior to increase above predicted levels. Heavier firebrands can also be lifted higher and further increasing likelihood of spots to max predictions. In areas where fuels have been herbicided, expect quick ignitions and extreme heat, quick rate-of – spread, and group tree torching producing spotting problems.

NOTE- FIRE BEHAVIOR CALCULATIONS ARE FOR FIRES IN UNBURNED FUELS INCLUDING NEW IA STARTS.

| | | | | | |
|-------------|------------|---|-------------|--|---|
| West | A | <i>Wetting rains have moistened fuels. Falling snags still pose a threat to fire personnel and the boardwalk. 60% chance of rain</i> | West | T/V | <i>Rains did fall in this area however fire will continue a slow spread to the North and west. Be heads-up for falling snags. 60% chance of rain</i> |
| | B-G | <i>Wetting rains have moistened fuels. Be heads-up for falling snags. 60% chance of rain</i> | | | |
| | Y Z | <i>Rains did fall in this area however areas of heat will remain near Div Y/Z perimeter with possible flare-ups in moderate to high fuel loadings. Be heads-up for falling snags. 60% chance of rain</i> | East | H, I J, K L, M N, O | <i>Rains did fall in this area however some areas of interior fire in Divs N and O will continue to burn. Heads-up for falling snags. 60% chance of rain</i> |

Night Ops – No Night Operations are Planned. Scattered showers and thunderstorms will continue with patchy fog developing after midnight.

Air Operations: Expect possible areas of heavy smoke especially on the west side of the fire.

SAFETY:

WINDS – Stay abreast of changing wx conditions throughout the entire shift. **THUNDERSTORMS -** these severe winds can create extreme fire behavior, with winds gusting over 30 mph. **SNAGS – Snags are falling in all Divisions – will be influenced by Thunderstorm outflow winds. FUELS:** Watch for pockets of cured shrubs or blankets of red needles beginning to cover the forest floor. 1,000 and 10,000 hour fuels as well as deep duff pockets are providing the heat source. Stay focused, and put LCES in place before starting operations. Watch for standing burning snags that can fall without warning. *Energy Release Component (ERC) will be dropping as rain fall is recorded.*

LCES Analysis of Tactical Actions

| Incident Name: Honey Prairie Complex | | | | Date and Time Prepared: July 15, 2011 1600 hrs | | | | | | | | Operational Period: Day and Night July 16, 2011 | | | |
|--|-------|---------|------|--|---|---|---|---|---|---|---|---|-----|-----------------|--|
| Location on Incident | | | | | | | | | | | | | | | |
| Divisions/Groups | | | | | | | | | | | | | | | |
| TACTICAL HAZARDS | A,B,C | D,E,F,G | H, I | J, K | L | M | N | O | T | V | Y | Z | ICP | Struct Prot Grp | Mitigations |
| Powerlines | * | * | * | * | * | * | * | * | * | * | * | * | * | * | Assume all power lines are charged. Avoid all contact with downed lines. |
| Complacency | * | * | * | * | * | * | * | * | * | * | * | * | * | * | Follow work/rest guidelines. |
| Indirect Fireline | | | | | | | | * | * | * | * | * | | | LCES; IRPG Pg. 10, Indirect Attack; Burnout as possible. |
| Anchor Points | * | * | * | * | * | * | * | * | * | * | * | * | | | Ensure fireline is anchored. Use natural features when possible. Use Local Resource Advisor |
| Extreme Conditions (Spotting, Wind) | | | | | | | | | | | | | | | LCES, Establish Trigger Points. Maintain Situational Awareness. Establish Lookouts as needed. Follow MAP actions. |
| Unburned Area Reburn Potential | * | * | * | * | * | * | * | * | * | * | * | * | | * | LCES, Utilize Air Attack if Available. Know Predicted Weather and Fire Behavior Forecast. |
| Hazard Trees | * | * | * | * | * | * | * | * | * | * | * | * | | * | IRPG Pg. 80, Identify and flag hazard trees. Look Up, Down and Around |
| Hazardous Materials | * | * | * | * | * | * | * | * | * | * | * | * | | * | IRPG Pg. 26-27, HAZMAT. Identify and map propane tanks, electric lines, septic tanks and determine bridge wgt. limits prior to use. |
| Vehicle Use (Travel 1HR+, Roads) | * | * | * | * | * | * | * | * | * | * | * | * | | * | Park vehicles for egress. Follow traffic plan. Use seat belts, drive with headlights on and keep windshields clean. Use spotters. Drive Defensively. Use multiple camp locations to reduce drive time. |
| Communications | * | * | * | * | * | * | * | * | * | * | * | * | | | Ensure radio is cloned with the current communications plan. LCES |
| Structure Protection | | * | | * | * | * | * | * | * | * | * | * | | | Use structure protection checklist, PPE, Triage. Utilize Local Fire Departments |
| Air Operations (multiple aircraft, line support) | * | * | * | * | * | * | * | * | * | * | * | * | | | Monitor Air Guard at all times. Flight follow through Dispatch.Keep drop areas clear of personnel. |
| Mechanical Equipment | * | * | * | * | * | * | * | * | * | * | * | * | | * | Use PPE, ensure all safety devices are functional. Operator must see you before approaching equipment. Maintain proper distance away from equipment working in the area. |
| Escape Routes Safety Zones | * | * | * | * | * | * | * | * | * | * | * | * | | * | LCES, Establish and identify safety zones & escape routes. Know where these are located and the route to them. IRPG p.7 |
| Thunderstorm Safety | * | * | * | * | * | * | * | * | * | * | * | * | | * | Keep an eye on changes in weather. Take hourly weather observations. Comms will provide weather updates when needed. |
| Wildlife | * | * | * | * | * | * | * | * | * | * | * | * | | * | Keep food items off the line and use refuse containers around camp. Use insect repellent as needed. Use caution around water as wildlife is |
| Sun Exposure | * | * | * | * | * | * | * | * | * | * | * | * | | * | Use sunblock as needed. |
| Heat | * | * | * | * | * | * | * | * | * | * | * | * | | * | Hydrate prior to going on line and all during the day. Recognize the signs of heat related injuries. Take frequent breaks throughout the work period. |
| Air Quality | * | | | | | | | * | * | * | * | * | | * | Rotate personnel frequently out of smoke. Ensure off-line rest is clear of smoke. |
| Railroad Crossings | * | * | * | * | * | * | * | * | * | * | * | * | | * | Visually check all railroad crossings to ensure track is safe to cross. Don't bunch up, leave room for other vehicles to cross. Don't try to beat the train. |
| | | | | | | | | | | | | | | | |
| | | | | | | | | | | | | | | | |
| Safety Officer: Barry Coulliette SOF2 | | | | | | | | | | | | | | | |

SAFETY MESSAGE

JULY 16, 2011

Major Hazards and Risk

Lifting

Driving

High Temperatures

Dehydration

Thunder Storms

Complacency

Logging Operations

Wildlife



Mitigations

As we start picking up and transporting hose pumps back to ICP use proper lifting techniques.

To prevent the spreading of germs wash your hands often. It is especially important before you eat.

Wearing your seat belt will save your life. It is also the law in most states. The use of seat belts is policy on all federal assignments. So arrive alive wear your seat belt. Drive at the posted speed limit or less.

The heat index is again going to be over 100 degrees today. Stay hydrated take frequent breaks.

Thunderstorms have the ability produce strong winds heavy rain and frequent lightning. Take refuge to your vehicles and insure you are parked in a safe place. Any tree is capable of falling under strong wind events.

Seeing and doing the same things every day leads to complacency. Stay alert to all the known hazards. Conduct tail gate safety sessions.

Logging operations are on the increase. Pay attention to log trucks and logging equipment working in your environment and give them room. Avoid logging operations if at all possible.

Do not feed or harass alligators.

Safety Officers,

Barry Coulliette

West Branch

Ray Durham

East Branch

| MEDICAL PLAN | Incident Name Honey Prairie Complex | Date Prepared 7/15/2011 | Time Prepared 1800 | Operational Period 7/16/2011 DAY SHIFT | |
|---|---|--|---|---|-----------------------|
| 5. Incident Medical Aid Station | | | | | |
| <u>Medical Aid Stations</u> | <u>Location</u> | | | Paramedics Yes No | |
| Medical Unit (ICP) | Honey Prairie Complex ICP (Lodge 5) 912-637-5236 Joe Fowler (EMT) MEDL (912)-286-1648 Dominic Burchett (Para) MEDL(t) (912)-286-1674 Evan Dean (Para)(503)975-6444 | | | X | |
| WEST BRANCH (Line EMT) | Bob Eaton (EMT)919-423-1055 (A,B,C DIV) Jefferson Halladay (Para)801-518-9857 (T DIV) Paul Smith (EMT) (360)775-4513 Levi Cumer(Para)(417)658-5155 (D,E,F,G DIV) Johnny Oker-Blom(Para)404-558-4476/ Michael Graham(EMT)(912)-286-1674 (V DIV) Wes lathen (Para)(435)760-8481Peggy Miller(Para)(240)793-4238(Y 0800-2000) Chad Simmons (Para)(404)772-5344(Z DIV) Matthew Stivers (EMT B)256-375-4260 (West IA) | | | X | |
| EAST BRANCH (Line EMT) | Kurt Berge (Para)801-404-6434 (H,I,J,K DIV) James Brown (Para)(360)-775-5413(IA East) Keith Barker(Para)(244)330-7798 (L,M DIV) Bert Hyde(EMT)(218)394-0934 (N,O DIV) | | | X | |
| Ambulance Services | | | | | |
| Name | Address | Phone | Paramedic Yes No | | |
| Clinch County EMS (WEST SIDE) | West Branch Council Road & HWY 94 | Channels 4, 11, 13 912-286-1673 EMS Incident Cell | Yes | | |
| Ware County EMS (NORTHSIDE) | Waycross, Georgia (911 to activate) | 912-281-9467 | Yes | | |
| Charlton County EMS (EAST SIDE) | Folkston, GA (911 to activate) | 912-496-7321 | Yes | | |
| Air Ambulance Service | | | | | |
| Trauma 1 | Lake City, FL (16 min/air to Fargo ICP) | 1-800-223-4878(freq. 155.340) | Yes | | |
| Trauma 1 | Jacksonville, FL (26 min/air to Fargo ICP) | 1-800-223-4878(freq. 155.340) | Yes | | |
| AirMed | Augusta, GA (2 hrs/air to Fargo ICP) | 1-888-792-9245(freq. 155.340) | Yes | | |
| Lifeflight | Jacksonville, FL (35 min/air to Fargo ICP) | 1-877-870-7779(freq. 155.340) | Yes | | |
| Air Evac | Waycross, GA (17 min/air to Fargo ICP) | 1-800-247-3822(freq. 155.340) | Yes | | |
| US Coast Guard (Heli-Rescue) | Savannah GA | 1-912-652-4646 (freq. 155.340) | Yes | | |
| 7. Hospitals | | | | | |
| Name | Address | Travel Time Air Ground | Phone | Helipad Yes No | Burn Center Yes No |
| Satilla Regional | 410 Darling Ave Waycross Ga N 31°13.56 W 82°21.058 | 18 min 45 min | 912-283-3030 | Yes | No |
| Clinch Memorial Hospital (WEST SIDE) | 1050 Valdosta HWY Homerville, GA | 25 min | 912-487-5211 ext 4502 | Yes | No |
| Charlton Memorial Hospital (EAST SIDE) | 1203 3 rd St. Folkston, GA | 50 min | 912-496-2531 | Yes | No |
| Memorial Hospital | Savannah, GA 4700 Waters 3200.7 8107.6 | 30 min | 912-350-8999 | Yes | No |
| Shands Hospital (level I) | Jacksonville, FL N 30°20'97 W 82° 13'992 | 26 min 1.5 hrs | 800-223-4878 | Yes | Yes |
| Shands Burn Center | Gainesville, FL 38.33 N 082 20.73W | 33 min 1.5 hrs | 352-265-0300 | Yes | Yes |
| 8. Medical Emergency Procedures | | | | | |
| <ol style="list-style-type: none"> Notify DIVS of medical problem DIVS notifies COML and MEDL MEDL contacts POC for following <ol style="list-style-type: none"> # of pts Status of pts medical problem Location of pts Transport method Necessary resources MEDL coordinates medevac/patient transport with SOF2, OPS2 and other relevant resources. <p><u>Life threatening injury</u>: an injury that could mean the loss of life, limb, or eyesight <u>Minor injury</u>: an injury that results in the removal of a pt from the line but with less urgency as a life threatening injury <u>Medevac</u>: the most urgent transport of a pt suffering from a life threatening injury Patient transport: transport for minor injuries <u>Medical problem</u>: a physical or mental ailment that occurs to an individual; to include illnesses and traumatic injuries <u>Point of contact (POC)</u>: individual who will be directly advocating for patient care and transport (line medic, crew boss, DIVS etc) *Request that FFTR/Engine crews or single resources let MEDL know if they have any EMTs or Paramedics and if they have equipment with them.</p> | | | HELISPOTS Pocket Helispot 30 47 30.02 x 82 22 39.5 (West side), mile marker 4, HWY 177 Steven C. Foster State Park Fargo Helispot 30 40.945 x 82 33.640 (West side), HWY 441- Steven C. Foster Visitor Center POGO Helibase 30.44.03 x 82.07.41 (East side) <u>Evac Yankee</u> Helispot 6 Rd. 32 and 32A, N 30° 53.280 W 082° 33.880 Helispot 7 Tatum Rd. Pond N 30° 50.280 W 082° 33.857 *Alternate site can be established following guidelines for safety found with IRPG and local EMS resources. | | |
| Prepared by: Michael Evers MEDL (T)/Joe Fowler MEDL | | | 10. Reviewed by: Barry Coulliette SOF | | |

| INCIDENT RADIO COMMUNICATIONS PLAN ICS-205 | | Incident Name | GROUP 22 | | Date/Time Prepared | Operational Period | Date/Time | | | | |
|--|------------|---------------------|----------------------------------|------------------|--------------------|------------------------|-----------|----|-------------|---------------|---------------------------|
| | | Honey Prairie | | 07/15/2011-18:00 | | 7/16/2011 0800-2100 | | | | | |
| Ch # | Function | Channel Name | Assignment | RX Freq | NW | RX Tone/NAC | TX Freq | NW | TX Tone/NAC | Mode A,D or M | Remarks |
| 1 | Command | West Okee Repeater | Sec West Branch CMD | 167.1250 | N | 156.7 | 163.1500 | N | 156.7 | A | Stephen Foster State Park |
| 2 | Command | South Okee Repeater | Sec East/West Branch CMD | 164.7750 | N | 123.0 | 163.1500 | N | 123.0 | A | Eddy Florida |
| 3 | Command | East Okee Repeater | PRIMARY East Branch CMD | 164.6250 | N | 103.5 | 163.1500 | N | 103.5 | A | Refuge Headquarters |
| 4 | Command | NIFC C2 | PRIMARY West Branch CMD | 168.100 | N | CSQ | 170.4500 | N | 123.0 | A | NOT linked to OKEE System |
| 5 | Command | North Okee Repeater | PRIMARY North Branch CMD | 164.5750 | N | 206.5 | 163.1500 | N | 206.5 | A | Waycross |
| 6 | Air-Ground | Air to Ground | PRIMARY | 166.9375 | N | CSQ | 166.9375 | N | CSQ | A | |
| 7 | Tactical | MOB-MOB | GFC Contingency | 159.3900 | W | CSQ | 159.3900 | W | 156.7 | A | |
| 8 | Tactical | V-Fire 21W WHITE | Structure Protection Group&I.A. | 154.2800 | W | CSQ | 154.2800 | W | 156.7 | A | |
| 9 | Tactical | USFS 9 | DIV A,B,C,L, M T, M & (East I/A) | 168.7750 | N | CSQ | 168.7750 | N | CSQ | A | |
| 10 | Tactical | S.E. Compact | DIV | 159.2850 | W | CSQ | 159.2850 | W | CSQ | A | |
| 11 | Tactical | USFS 11 | DIV Z, N, O | 168.2000 | N | CSQ | 168.2000 | N | CSQ | A | |
| 12 | Tactical | Refuge Tac 1 | DIV H, I, J, K | 168.3500 | N | CSQ | 168.3500 | N | CSQ | A | |
| 13 | Tactical | FL 190 | DIV D, E, F, G, V, Y | 151.2725 | N | CSQ | 151.2725 | N | CSQ | A | |
| 14 | Command | DIV J RPT | East Branch | 170.4125 | N | CSQ | 165.9625 | N | 123.0 | A | NOT linked to OKEE System |
| 15 | Air-Ground | Air to Ground | SECONDARY | 166.9000 | N | CSQ | 166.9000 | N | CSQ | A | |
| 16 | EMERGENCY | AIR Guard | AIR OPS. | 168.6250 | N | CSQ | 168.6250 | N | 110.9 | A | |
| Prepared by (Communications Unit) Brian Matthews Incident Dispatcher: 912-286-1660 | | | | | | | | | | | |
| Cloning at ICP communications and briefings, | | | | | | | | | | | |

The convention calls for frequency lists to show four digits after the decimal place, followed by either an "N" or a "W", depending on whether the frequency is narrow or wide band. **Mode** refers to either "A" or "D" indicating analog or digital (e.g. Project 25) or "M" indicating mixed mode. All channels are shown as if programmed in a control station, base stations, mobile or portable radio.

HONEY PRAIRIE PHONE LIST

07/16/11

Incident Communication (24 Hour Dispatch) 912-286-1660

| AGENCY OFFICIALS | | | OPERATIONS 912-637-5248 | | |
|---------------------------------|--------------|------------------------|---|--------------|-----------------------------|
| Curt McCasland | 602-359-0013 | USFWS AA | Rick Dolan | 352-353-5101 | Planning Operations |
| Mindy Gautreaux | 912-282-7500 | USFWS Deputy AA | Butch Hall | 352-225-1280 | Field Operations |
| Frank Sorrells | 912-381-7503 | GFC AA | Roger Gill | 386-963-9496 | Field Operations |
| James Karels | 850-228-7763 | FL DOF AA | WEST BRANCH | | |
| Diane Adams | 912-266-5421 | GEMA | Tom Donohoe | 404-772-5384 | West Branch |
| Mike Housh | 912-281-1575 | USFWS AREP | Greg Jacobson | 208-642-7587 | DIVS A, B, C |
| COMMAND | | | Toby Herold | 530-598-4195 | DIVS D, E, F, G |
| Don West | 352-353-5044 | IC | Paul Pellegrini | 907-299-0108 | DIVS D, E, F, G (T) |
| Verne Reggal | 386-547-7293 | Deputy IC | Brian Rhodes | 619-318-1623 | DIVS T |
| Trent Ingram | 229-726-0285 | Unified IC (GA) | Shawn Duggar | 850-508-7736 | DIVS V |
| Gary Beauchamp | 352-620-4424 | Unified IC (FL) | Gary Smith | 417-455-3391 | DIVS Y |
| Mike Dueitt | 850-228-0320 | Unified IC (FWS) | Dan Helterline | 406-241-1467 | DIVS Y (T) |
| LIAISON | | | Glen Palfrey | 208-290-4663 | DIVS Z |
| Skippy Reeves | 912-387-5923 | Liaison Officer FWS | Jesse Knox | 707-498-8936 | DIVS Z (T) |
| INFORMATION 912-637-5247 | | | Don Hammack | 406-253-2535 | IA/Structure Protection |
| Ludie Bond | 352-258-6084 | Fire Information | Bob Schober | 907-978-6894 | IA/Structure Protection (T) |
| Greg Heule | 719-640-6735 | Fire Information | EAST BRANCH | | |
| Tom Kroll | 320-533-0206 | Fire Information | Brett Waters | 406-581-6198 | East Branch |
| Mark Wurdeman | 912-496-2566 | Fire Information (JIC) | Matt Filbert | 208-481-1068 | DIVS H, I, J, K |
| SAFETY | | | Steve Griffin | 760-417-0728 | DIVS N, O |
| Barry Couliette | 404-772-5406 | Safety Officer | Ernest Schmidt | 320-760-4781 | DIVS N, O |
| Ray Durham | 770-280-7684 | Safety Officer | Billy Taylor | 850-544-2229 | East IA |
| Joe Fowler | 912-286-1648 | Medical Unit Leader | Shawn Denowh | 208-724-0827 | East IA |
| Field EMT | 912-286-1674 | Medical Unit Leader | AIR OPERATIONS 912-637-5254 FAX 912-637-5237 | | |
| Medical Unit | 912-637-5236 | | Tim Elder | 863-243-1438 | Air Ops Branch |
| Tom Lail | 404-772-5338 | Safety Officer | Don Nicholas | 218-360-1816 | ASGS(t) |
| DISPATCH | | | Ken Malgren | 404-772-5317 | Fargo Helibase |
| Okeefenokee Dsp | 912-496-7366 | Okeefenokee | Carl Magill | 541-519-0850 | ATGS – Fargo |
| Suwannee Dispatch | 386-758-5700 | Fla wildfires, other | Brian Campbell | 404-772-5405 | HEB2 – Fargo |
| Waycross Dispatch | 912-287-4915 | Ga wildfires, other | Jay Matsen | 912-287-4479 | HEB2 – Waycross |
| LOGISTICS West | | | = | 206-218-8230 | (cell) |
| Shane Locke | 404-772-5399 | LSC | Tim Caughlin | 715-684-9862 | ATGS – Lake City |
| Butch Mallet | 404-772-5319 | LSC | PLANNING 912-637-5241 FAX 912-637-5237 | | |
| Bill Hitt | 912-637-5251 | FACL | Ed Flowers | 912-286-4643 | Planning Section Chief |
| Melvin Reese | 352-442-7891 | Base Camp Mgr | Scott Crosby | 912-637-5241 | Situation Unit Leader |
| Gary Sisson | 386-983-2474 | RCDM | DEMOB | 912-637-5241 | |
| Hotel Mgr | 912-637-5251 | Lodging | Joe Goudsward | 240-778-5279 | IMET |
| Kevin Reish | 404-276-1998 | Security Manager | Mike Bettwy | 240-778-5019 | IMET (T) |
| JV Thompson | 404-772-5380 | GSUL | John Kern | 404-772-5393 | FBAN |
| Dennis Spear | 404-772-5389 | GSUL(t) | FINANCE 912-637-5244 FAX 912-496-4710 | | |
| Nat Wright/Bob Kookan | 404-772-5318 | Food Unit Leader | Linda Starling | 770-658-6641 | Finance Section Chief |
| Linda Bruss | 912-637-5239 | SPUL | Rita Loper | 912-281-6876 | Buying Team Leader |
| Rhonda Hughes | | SPUL(t) | Ron Knowles | 907-230-4945 | Business Advisor |
| Brian Mathews | 561-914-7206 | COML | Duane Welch | 404-558-8859 | Comp Claims |

| ORDERING | | FAX 912-637-5240 |
|-----------------------------|------------------------------|-------------------------------|
| Cindy Tisdell | 912-637-5262 | Ordering Manager |
| Abe Philipson | 912-637-5239 | Ordering Manager |
| LOGISTICS | | East |
| 912-496-2111 | | |
| 912-496-4710 | | |
| Fax | | |
| Dave Klym | 256-497-8490 | LSC |
| Duane Stephens | 912-496-2111 | Base Camp Mgr |
| John Kaupa | 256-497-8388 | Supply Unit Leader |
| Joe Hoisington | 530-905-3715 | EQM |
| Kelly Helget | 256-497-8334 | Roads / HEQM |
| | 239-887-1817 | Security Manager |
| Medical Unit | 912-387-6787 | |
| EAST MSG CTR | 912-496-4698 | |
| COOPERATORS | | |
| COUNTY | | |
| | 912-496-7229 | Charlton County EMA |
| John F. Meyer - Chairman | 912-496-2549 | Charlton County Commissioners |
| Dobie Conner | 912-496-7321 | Charlton County Sheriff |
| Jesse Booth | 912-520-0061 | Clinch County EMA |
| Jonathan Daniel | 912-281-5158 | Ware County EMA |
| Jessie Jordan | 912-816-6063 | Ware County Fire Dept |
| Joe Morris | 912-281-6020 | Ware County Sheriff |
| Robbie Sutton | 912-599-9027 | Tri County 911 |
| STATE | | |
| GFC Fargo District Office | 912-637-5270 | |
| GFC Satilla District Office | 912-287-4915 | |
| Blair Joiner | 229-237-9026 | GFC Clinch Chief Ranger |
| Jason Gillis | 912-314-9233 912-637-5504 | GFC Satilla Assistant Mgr. |
| Brian Gray | 229-894-4628 912-673-5274 | Stephen Foster State Park |
| Travis Griffin | 912-281-5790 | Laura Walker State Park |
| Crystal Paulk-Buchanan | 404-535-1048 | GEMA PIO |
| Georgia Highway Patrol | 912-287-6500 | |
| FEDERAL | | |
| Okefenokee Fire Shop | 912-496-4181 | |
| Okefenokee NWR HQ (East) | 912-496-7366 | |
| Okefenokee NWR (West) | 912-637-5322 | |
| Okefenokee Visitor Center | 912-496-7836 | |

| = | 404-844-7042 | (cell) |
|----------------------------------|----------------------------------|---------------------------|
| LANDOWNERS | | |
| Jim Barrett | 229-412-3133 | Langdale/GOAL Chairman |
| Wesley Langdale | 229-220-2602 | Langdale |
| Hal Rowe | 229-412-3133 | Langdale |
| Langdale Office | 229-242-7450 | Langdale Office |
| Mike Conlon | 386-365-3882 | Rayonier Unit Supervisor |
| Ray Carter | 386-288-6626 | Rayonier |
| Ed Carter | 386-288-6626 | Rayonier |
| Doug Nuss | 912-390-1037 | Rayonier |
| Randall McCrady | 912-283-4077 W 912-288-0877 C | Rayonier |
| Colin Myerson | 229-506-1565 | Superior Pine Products Co |
| Robbie Lee | 229-356-0526 | Superior Pine Products Co |
| Eric Harris | 912-637-5597 | Superior Pine Products Co |
| Superior Pine Office | 912-637-5261 | Superior Pine Products Co |
| Al Alexander | 850-843-0104 | The Forestry Co |
| Savell Schmidt | 850-843-1181 | The Forestry Co |
| John Bogue | 850-843-1192 | The Forestry Co |
| Joe Hopkins | 912-276-0911 | Toledo Timber |
| Chris Gowan | 912-276-0965 | Toledo Timber |
| Martin Bell | 912-283-0583 | Swamp Park |
| Crystal Peeples | 352-316-0632 | FIA |
| Steve Davis | 912-614-1828 | Davis Community |
| Trevor Fortner | 912-599-9271 | Little Suwannee |
| Tim Jarrell | 912-223-7120 | Hancock Forest Mgmt. |
| RAILROADS | | |
| Norfolk Southern | 800-453-2530 | |
| Sid Moody | 904-318-7983 | Norfolk Southern Railroad |
| Chad Edwards | 404-582-4909 | Norfolk Southern Railroad |
| | 540-797-9918 | |
| Eric Sams | 904-576-9907 | |
| Norfolk So Emergency Dispatch | 404-529-1597 | |
| CSX Randy Dixon | 912-270-0699 | |
| CSX Dispatch | 800-232-0144 | |
| | | |
| | | |
| | | |
| | | |

FINANCE

07/16/11

EQUIPMENT

PLEASE put E#'s on top right corner of shift ticket.

East side fuel supplier: Please send all fuel books to Finance daily.

| | |
|--------|--|
| E-93 | Wildland Fire - Remember to put E# on shift ticket |
| E-526 | Pierce Timber - Missing Tickets 6/29 - 7/02 |
| E-815 | Mellen Engine 9244 - Missing 7/07 shift ticket |
| E-1016 | Wildland Warehouse - No time for 7/12 |
| E-817 | Wisconsin - Dells 9593 - Missing shift tickets for 7/07 & 7/08 |
| E-1091 | Florida Forest Service - Need to show Operational Period 800-2000 12 hours |
| E-1151 | Florida Forest Service - Need to show Operational Period 800-2000 12 hours |
| E-982 | Tim-Prep - Time only up through 7/8 -- Turn in Time |
| E-983 | Tim-Prep - Time only up through 7/8 -- Turn in Time |

TIME

| | |
|-------|---|
| O-4 | Sarah Sorenson - Missing CTRs for 7/11-7/14 |
| O-5 | Rocky Chesser - Missing CTRs for 7/10-7/14 |
| O-7 | Robert Alonso - Missing CTRs for 7/10-7/14 |
| O-8 | Thomas Crews - Missing CTRs for 7/07, 7/11-7/14 |
| O-9 | Cory Bryant - Missing CTR for 7/14 |
| O-10 | Reggie Forcine - Missing CTR for 7/14 |
| O-11 | Howard McCullough Jr - Missing CTRs for 7/09-7/14 |
| O-20 | Frank Enright - Missing CTRs for 7/10-7/14 |
| O-21 | Sara Aicher - Missing CTRs for 7/02-7/14 |
| O-31 | Richard Boatwright - Missing CTRs for 7/09-7/14 |
| O-51 | Mindy Gautreaux - Missing CTRs for 7/07-7/14 |
| O-71 | Arthur Webster - Missing CTRs for 7/08-7/14 |
| O-289 | Nicholas Hawkins - Missing CTRs for 7/11-7/14 |

(Continued)

TIME (Continued)

O-368 BJ Johnson - Missing CTRs for 7/13-7/14
O-436 Eric Nelson - Missing CTRs for 7/12-7/14
O-534 Mike Rogers - Missing CTRs for 7/07-7/08
O-559 Jessica Bowen - Missing CTRs for 7/09-7/14
O-560 Ronald Phernetton - Missing CTRs for 7/09-7/14
O-663 Richard Hannans - Missing CTR for 7/14
O-665 Skippy Reeves - Missing CTRs for 7/13-7/14
O-767 Evan Dean - Missing CTRs for 7/13-7/14
O-818 Sheryl Rogers - Missing CTR for 7/14
O-819 Mindy Blanton - Missing CTRs for 7/08-7/09, 7/13-7/14
O-857 Dean Easton - Missing CTRs for 7/07-7/12, 7/14
O-858 Laura Mitchell - Missing CTRs for 7/10-7/14
O-872 Robert Kookan - Missing CTR for 7/14
O-876 Donald Knowles - Missing CTRs for 7/11-7/14
O-878 Charlene Carter - Missing CTRs for 7/09-7/10
O-880 Michael Dueitt - Missing CTRs for 7/13-7/14
O-883 Steven Siam - Missing CTR for 7/14
O-945 Walter Mendoza - Need clarification on times for 7/06

DEMOB NOTES

IF YOU ARE GETTING CLOSE TO TIMING OUT, PLEASE SPEAK WITH YOUR FIRE LINE SUPERVISOR
ASAP.

IF POSSIBLE, PLEASE COME BY FINANCE AND REVIEW YOUR TIME THE DAY BEFORE YOU DEMOB.
ALSO, *BRING YOUR LAST CTR'S AND SHIFT TICKETS WITH YOU* TO FINANCE WHEN YOU DEMOB
RATHER THAN TURNING IN AT THE BRIEFING IN THE MORNING. THIS WILL HELP AVOID DELAYS THE
DAY OF DEMOB. THANKS.

WHEN DEMOBING FINANCE SHOULD BE THE NEXT TO THE LAST SECTION YOU GET SIGNED OFF ON
YOUR CHECKOUT FORM WITH DEMOB UNIT BEING THE LAST. WE WILL CHECK YOUR TIME FOR YOU
PRIOR TO EVERYTHING ELSE BEING SIGNED OFF, BUT WILL NOT SIGN OFF TIME UNTIL THE OTHER
SECTIONS ARE DONE.

DMOB for July 16 to July 20 Contact DMOB-Tim @ 912-637-5241

ALL RESOURCES - START YOUR DEMOB PROCESS THE DAY BEFORE YOUR DEMOB DAY. YOU NEED TO COMPLETE THE DEMOB PROCESS AND BE READY TO LEAVE ICP BY 1300 or 1700 HRS -

| NUMBER | NAME | KIND | UNIT | TRAVEL | JETPORT | DEMOB DATE |
|---------------|-----------------------|-------------|-------------|---------------|----------------|-------------------|
| E-136.5 | CATES, JEREMIAH | ENG | FLFNF | POV | | 07/17/2011 |
| E-136.6 | KERR, TERR | ENO | FLFNF | POV | | 07/17/2011 |
| E-526 | PIERCE-TIMBER- | FEL | GAOK | POV | | 07/17/2011 |
| E-646 | CAT D4 LGP TYPE3 | DOZ | MSMN | POV | | 07/17/2011 |
| E-649 | BEAR COUNTRY TP3 | TPL | FLFNF | POV | | 07/17/2011 |
| E-649.2 | KIKENDALL, MIKE | TPO | FLFNF | POV | | 07/17/2011 |
| E-709 | ENGINE - T6 - E952 - | ENG | IAIAS | AOV | | 07/17/2011 |
| E-709.4 | WALKER, JASON | ENG | IAIAS | OTH | | 07/17/2011 |
| E-709.6 | VANDERBERG, BRADY | FFT | IAIAS | OTH | SUX | 07/17/2011 |
| E-723 | SEMI LOWBOY | LO | MSMN | POV | | 07/17/2011 |
| O-869 | CUPIT, MARK | SEC | MSSC | AOV | AEX | 07/17/2011 |
| O-877 | REGAN, RONALD | CO | NCBR | AOV | AVL | 07/17/2011 |
| O-883 | SIAM, STEVEN B | RCD | OHOH | AIR | CMH | 07/17/2011 |
| O-892 | RIPLEY, STEVEN J | SOF | FLFLS | POV | GNV | 07/17/2011 |
| O-902 | CAUGHLIN, TIM | ATG | WIR09 | A/R | MKE | 07/17/2011 |
| O-964 | STEPHENS, JAMES D | BC | IDNPF | AIR | LWS | 07/17/2011 |
| O-1023 | KROLL, THOMAS J | PIO | MNMN | AIR | STC | 07/17/2011 |
| E-135.2 | HARRELL, DAVID | ENO | FLFNF | AOV | | 07/18/2011 |
| E-606 | CAMBRIDGE DOZER 3 | DOZ | MDBW | AOV | BWI | 07/18/2011 |
| E-606.5 | DANIELS, CHARLES | DZO | VAGD | AOV | ORF | 07/18/2011 |
| E-606.6 | CARMON JR, BOBBY | DZO | VAGD | AIR | ORF | 07/18/2011 |
| O-609 | MAGILL, CARL A | ATG | ORBM | AIR | BOI | 07/18/2011 |
| O-882 | CHOPP, JAMIE RYAN | RCD | MNSU | AIR | HIB | 07/18/2011 |
| O-884 | POWDRELL, JAN M | RCD | COR0 | AIR | DEN | 07/18/2011 |
| O-887 | BOLEN, CHARLEY | CTS | NCNC | AOV | AVL | 07/18/2011 |
| E-992.2 | CECIL, BRYAN | ENO | GAR08 | AOV | | 07/19/2011 |
| E-992.3 | CAMACHO, DAVID | ENO | GAR08 | AOV | | 07/19/2011 |
| E-993 | ENGINE - T6 - BUSH | ENG | GAR08 | AOV | | 07/19/2011 |
| E-993.1 | QUOCHYTENA, | ENG | GAR08 | AOV | | 07/19/2011 |
| E-993.2 | TRUETT, JAMES | ENO | GAR08 | AOV | | 07/19/2011 |
| E-994 | ENGINE - T6 - MNRLA - | ENG | MNRL | | | 07/19/2011 |
| E-994.1 | NORQUAY, PATRICK | ENG | MNRL | | | 07/19/2011 |
| E-1001 | PATRICK FIRE | ENG | NCNC | POV | | 07/20/2011 |
| E-1010 | ENGINE - T6 - VA-1 | ENG | GAR08 | POV | | 07/19/2011 |
| E-1010.1 | MATSON, GENE | ENG | GAR08 | POV | | 07/19/2011 |
| E-1010.2 | HAWTHORNE, ROGER | ENO | GAR08 | POV | | 07/19/2011 |
| E-1019 | WILDLANDS FIRE | WA | GAOK | POV | | 07/19/2011 |
| E-1019.2 | DURRANCE, FRANK | DRI | GAOK | POV | | 07/19/2011 |
| O-861 | MATHISEN, JAMES | SEC | FLJNR | AOV | RSW | 07/19/2011 |
| O-875 | STELLON, JAMES C | HEC | MNMN | AIR | MSP | 07/19/2011 |
| O-880 | DUEITT, MICHAEL W | ICT2 | GAR4 | AOV | TLH | 07/19/2011 |
| O-886 | INGRAM, TRENT F | ICT3 | GAGA | AOV | ALB | 07/19/2011 |
| O-899 | SCHOBER, ROBERT | DOZ | AKAK | AIR | FAI | 07/19/2011 |
| O-900 | MILLETTE, PHILIP J | TFL | MNBN | AIR | FAR | 07/19/2011 |
| O-904 | FILBERT, MATT | STE | IDSTF | AIR | SUN | 07/19/2011 |
| O-906 | KARP, EVAN ELLIOT | DOZ | AKAK | AIR | FAI | 07/19/2011 |
| O-910 | HAMMACK, DONALD L | DIV | MTKN | AIR | GPI | 07/19/2011 |
| O-912 | RHODES, BRIAN | DIV | CACN | AIR | SAN | 07/19/2011 |
| O-916 | OHME, HANS | TFL | IDPAF | AIR | BOI | 07/19/2011 |

| NUMBER | NAME | KIND | UNIT | TRAVEL | JETPORT | DEMOB DATE |
|----------|-------------------|------|-------|--------|---------|------------|
| O-919 | KNOX, JESSE D | TFL | CASR | AIR | ACV | 07/19/2011 |
| O-920 | SCHNEIDER, AARON | TFL | ORSU | AIR | EUG | 07/19/2011 |
| O-921 | HALL, BRADLEY L | TFL | ALALF | AOV | MGM | 07/19/2011 |
| O-926 | INGRAM, MATTHEW | TFL | IDPAF | AIR | BOI | 07/19/2011 |
| E-77 | GAS ENG6 | ENG | GAGA | AOV | | 07/20/2011 |
| E-179 | ENG6 #4 | ENG | FLFNF | POV | | 07/20/2011 |
| E-179.5 | HIERS, RAMEY | ENG | FLFNF | POV | | 07/20/2011 |
| E-179.6 | CASH, MIKE | FFT | FLFNF | POV | | 07/20/2011 |
| E-499 | WILDLANDS FIRE | TPL | FLFNF | POV | | 07/20/2011 |
| E-499.2 | ROWAN, ROY | DRI | FLFNF | POV | | 07/20/2011 |
| E-646.2 | DUEITT, PHILIP | DZO | MSMN | POV | | 07/20/2011 |
| E-651.2 | RIMES, WILLIAMS | TPO | GAOK | POV | | 07/20/2011 |
| E-974.4 | SHYKES, STEVEN | ENG | WIR09 | POV | | 07/20/2011 |
| E-1000 | PATRICK FIRE | ENG | NCNC | POV | | 07/20/2011 |
| E-1000.1 | RAMPININI, PAUL | ENG | NCNC | POV | | 07/20/2011 |
| E-1000.2 | BOLDMAN, MICHAEL | ENO | NCNC | POV | | 07/20/2011 |
| E-1000.3 | FORRISTALL, | FFT | NCNC | POV | | 07/20/2011 |
| E-1001.2 | DIGBY, RAYMOND | ENO | NCNC | POV | | 07/20/2011 |
| E-1001.3 | FORD, KOLBE P | FFT | NCNC | POV | | 07/20/2011 |
| E-1004 | ENGINE-T6 | ENG | GAOK | | | 07/20/2011 |
| E-1004.1 | SCOTT, DOUG | ENG | GAOK | POV | | 07/20/2011 |
| E-1004.2 | PARKER, HEATH | ENO | GAOK | | | 07/20/2011 |
| E-1005 | ENGINE-T6- | ENG | GAOK | | | 07/20/2011 |
| E-1005.1 | HARDY, DAVE | ENG | GAOK | POV | | 07/20/2011 |
| E-1005.2 | MCCARTY, PATRISHA | ENO | GAOK | | | 07/20/2011 |
| E-1011 | ENG6 WILDLANDS | ENG | GAOK | POV | | 07/20/2011 |
| E-1011.1 | WILLAMS, DOUG | ENG | GAOK | POV | | 07/20/2011 |
| E-1011.2 | WILLOUGHBY, | ENO | GAOK | POV | | 07/20/2011 |
| E-1011.3 | CURRY, GREG | ENG | GAOK | POV | | 07/20/2011 |
| E-1012 | ENG6 WILDLANDS | ENG | GAOK | POV | | 07/20/2011 |
| E-1012.1 | HILL, GLENN | ENG | GAOK | POV | | 07/20/2011 |
| E-1012.2 | GIORDANO, STEPHEN | ENO | GAOK | POV | | 07/20/2011 |
| E-1021 | TIPTON & YOUNG | WA | GAOK | POV | | 07/20/2011 |
| E-1021.1 | BROWN, CHARLES | DRI | GAOK | POV | | 07/20/2011 |
| E-1078 | LANKFORD METAL | TDM | GAOK | | | 07/20/2011 |
| E-1079 | DENNIS KIGHT | TDM | GAOK | | | 07/20/2011 |
| E-1080 | PU-ACS28584 | PU | FLFL1 | | | 07/20/2011 |
| E-1080.1 | CRIBB, ROY | DRV | FLFL1 | | | 07/20/2011 |
| E-5002 | ATTACK 1 ENG6 | ENG | FLFNF | POV | | 07/20/2011 |
| E-5002.1 | KIGHT, HANK | ENG | FLFNF | POV | | 07/20/2011 |
| O-436 | NELSON, ERIC | ENG | MNAG | A/R | GFK | 07/20/2011 |
| O-642 | COOPER, BARBARA J | THS | AROU | AIR | LIT | 07/20/2011 |
| O-858 | MITCHELL, LAURA R | REA | MDBW | AOV | BWI | 07/20/2011 |
| O-876 | KNOWLES, RONALD | IBA1 | AKR10 | A/R | JNU | 07/20/2011 |
| O-889 | LARSON, KRIS | HEC | MNLF | AIR | MSP | 07/20/2011 |
| O-909 | SMITH, GARY L | DIV | MOMO | AIR | SGF | 07/20/2011 |
| O-915 | SUSZEK, GREGORY | DIV | FLFPR | AOV | RSW | 07/20/2011 |
| O-917 | HELTERLINE, DAN | TFL | MTR01 | AIR | MSO | 07/20/2011 |
| O-918 | GRIFFIN, STEVEN | TFL | CASQ | AIR | BFL | 07/20/2011 |
| O-925 | HAYNES, | DIV | IDPAF | AIR | BOI | 07/20/2011 |
| O-929 | NOACK, FRED K | RES | UTR04 | AIR | COS | 07/20/2011 |
| O-930 | MCDUGAL, LEIGH A | SCK | GAR08 | REN | ATL | 07/20/2011 |
| O-936 | SCHMITT, ERNEST T | TFL | MNMN | AIR | MSP | 07/20/2011 |

| NUMBER | NAME | KIND | UNIT | TRAVEL | JETPORT | DEMOB DATE |
|---------|--------------------|------|-------|--------|---------|------------|
| O-938 | ALTMAN, WILLIAM D | DIV | MOMO | AIR | STL | 07/20/2011 |
| O-940 | JACOBSON, GREG | TFL | IDCW | AIR | LWS | 07/20/2011 |
| O-941 | DENOWH, SHAWN A | TFL | IDPAF | AIR | BOI | 07/20/2011 |
| O-942 | KRUPSKI, BEN J | TFL | IDCTF | AIR | IDA | 07/20/2011 |
| O-944 | MARION, DAVE | TFL | CAR05 | AIR | RNO | 07/20/2011 |
| O-946 | FILLMORE, STEPHEN | TFL | CACN | AIR | SAN | 07/20/2011 |
| O-949 | HERNANDEZ, NIKIA L | STE | MTKN | AIR | FCA | 07/20/2011 |
| O-952 | PLUMMER, VINCENT B | STE | CASN | AIR | FAT | 07/20/2011 |
| O-955 | SCHERR, RANDY T | STE | CAMD | AIR | RNO | 07/20/2011 |
| O-965 | WILEY, JUDY | PTR | MTBR | AIR | IDA | 07/20/2011 |
| O-968 | BATT, JENNIFER | EQT | NHWM | AIR | MHT | 07/20/2011 |
| O-969 | WEBER, CHARLES | EQT | MTFN | AIR | GPI | 07/20/2011 |
| O-972 | BUNGE, LARRY B | SOF | MNSU | AIR | BRD | 07/20/2011 |
| O-977 | WHIPPS, MARK | TFL | MSNA | AOV | TUP | 07/20/2011 |
| O-978 | THELEN, JACOB | TFL | ALALF | | BHM | 07/20/2011 |
| O-1000 | MEEK, WAYLON | STE | IDIPF | AIR | GEG | 07/20/2011 |
| C-21 | CREW - CAMP - PINE | CC | KYDBF | AOV | TYS | 07/21/2011 |
| C-21.1 | BRYANT, DONALD | CAC | KYDBF | AOV | TYS | 07/21/2011 |
| C-21.2 | HAMLIN, CATHLEEN | CAC | KYDBF | AOV | | 07/21/2011 |
| C-21.3 | DOWNS, GERALD | CA | KYDBF | AOV | | 07/21/2011 |
| C-21.4 | PFOUTZ, ELERON | CA | KYDBF | AOV | | 07/21/2011 |
| C-21.5 | HASKELL, STEPHEN | CA | KYDBF | AOV | | 07/21/2011 |
| C-21.6 | HICKSON, DARIUS | CA | KYDBF | AOV | | 07/21/2011 |
| C-21.7 | FREELS, JAMIE | CA | KYDBF | AOV | | 07/21/2011 |
| C-21.8 | ZAMBARD, FORCIN | CA | KYDBF | AOV | | 07/21/2011 |
| E-76 | GAS ENG6 PICKENS | ENG | GAGA | AOV | | 07/21/2011 |
| E-76.10 | KEENE, ANTHONY R | FFT | GAGA | POV | CHA | 07/21/2011 |
| E-76.9 | HENDERSON, CHRIS | ENG | GAGA | | CHA | 07/21/2011 |
| E-77.10 | RENTZ, LEVY | FFT | GAGA | | | 07/21/2011 |
| E-77.9 | GAMLEN, ANDREW | ENG | GAGA | | CHA | 07/21/2011 |
| E-78 | GAS ENG6 MURRAY | ENG | GAGA | AOV | | 07/21/2011 |
| E-78.10 | BISHOP, SIMON | FFT | GAGA | AOV | | 07/21/2011 |
| E-78.9 | CLINE, KEVIN | ENG | GAGA | AOV | CHA | 07/21/2011 |
| E-80 | GAS ENG6 PUTNAM 86 | ENG | GAGA | AOV | | 07/21/2011 |
| E-81.10 | DURDEN, MARVIN | FFT | GAGA | | | 07/21/2011 |
| E-134 | ENG6 TRAIL RIDGE | ENG | FLFNF | POV | | 07/21/2011 |
| E-134.1 | MOUSEL, JOSH | THS | FLFNF | POV | | 07/21/2011 |
| E-134.2 | MCDAVID, PAUL | ENO | FLFNF | POV | | 07/21/2011 |
| E-134.5 | ROWE, TOM | ENO | FLFNF | POV | | 07/21/2011 |
| E-80.10 | BOLES, JESSE | FFT | GAGA | | | 07/21/2011 |
| E-80.9 | BASS, DANE A | ENG | GAGA | AOV | ATL | 07/21/2011 |
| E-81 | GAS ENG6 JONES 86 | ENG | GAGA | AOV | | 07/21/2011 |
| E-81.9 | HELMS JR, TROY L | ENG | GAGA | | ATL | 07/21/2011 |
| E-500 | NFFS- | TPL | FLFNF | POV | | 07/21/2011 |
| E-943.1 | MATCHETT, HUGH | TPO | GAOK | POV | | 07/21/2011 |
| E-992.4 | DILLON, JUSTIN | ENG | GAR08 | AOV | | 07/21/2011 |
| E-997 | ENGINE - T6 - 605 | ENG | FLEVP | AOV | | 07/21/2011 |
| E-997.1 | WEER, JACK | ENG | FLEVP | AOV | | 07/21/2011 |
| E-997.2 | MARKSON, SAM | ENO | FLEVP | AOV | | 07/21/2011 |
| E-998 | ENGINE - T6 - 606 | ENG | FLEVP | AOV | | 07/21/2011 |
| E-998.1 | STEBNER, JOHN | ENG | FLEVP | AOV | | 07/21/2011 |
| E-998.2 | DENSEL, DARRELL | ENO | FLEVP | AOV | | 07/21/2011 |
| E-1013 | ENGINE - T6 - | ENG | COR0 | POV | | 07/21/2011 |

| NUMBER | NAME | KIND | UNIT | TRAVEL | JETPORT | DEMOB DATE |
|----------|----------------------|------|-------|--------|---------|------------|
| E-1013.1 | PAULTON, WILLIAM | ENG | COR0 | POV | | 07/21/2011 |
| E-1013.2 | ALANA, LILLY | ENG | COR0 | POV | | 07/21/2011 |
| E-1013.3 | BRENDA, CHORD | FFT | COR0 | POV | | 07/21/2011 |
| E-1015 | ENGINE - T6 - ROBERT | ENG | WIR09 | POV | | 07/21/2011 |
| E-1015.1 | BARTON, ROBERT | ENG | MNSU | POV | | 07/21/2011 |
| E-1015.2 | KUIKEN, TYLER | FFT | MNSU | POV | | 07/21/2011 |
| E-1015.3 | KOSCHAK, DANIEL | FFT | WIR09 | POV | | 07/21/2011 |
| E-1015.4 | ZUPEC, MIKE | FFT | MNSU | POV | | 07/21/2011 |
| E-1016 | ENGINE - T6 - | ENG | WIR09 | POV | | 07/21/2011 |
| E-1016.1 | MANGINE, JAMES | ENG | WIR09 | POV | | 07/21/2011 |
| E-1016.2 | KRYSA, JUSTIN | FFT | WIR09 | POV | | 07/21/2011 |
| E-1016.3 | GARCIA, STEVE | FFT | WIR09 | POV | | 07/21/2011 |
| E-1049 | ENGINE - T6 - | ENG | DEDE | AOV | | 07/21/2011 |
| E-1049.1 | DOWD, JAMES D | ENG | DEDE | AOV | PHL | 07/21/2011 |
| E-1049.2 | POOLE, HENRY D | ENG | DEDE | AOV | PHL | 07/21/2011 |
| E-1049.3 | HANSEN, MATTHEW | FFT | DEDE | AOV | PHL | 07/21/2011 |
| E-1050 | ENGINE - T6 - KY-LBF | ENG | KYLBF | AOV | | 07/21/2011 |
| E-1050.1 | MITCHELL, RANDALL | ENG | KYLBF | AOV | BNA | 07/21/2011 |
| E-1050.2 | VAREL, KYLE | ENG | KYLBF | AOV | BNA | 07/21/2011 |
| E-1050.3 | BOYER, TEDERELL | FFT | KYLBF | AOV | BNA | 07/21/2011 |
| E-1057.1 | MUELLER, TROY D | ENG | KSKSS | POV | ICT | 07/21/2011 |
| E-1057.2 | BRITTAN, LUKE | FFT | KSKSS | POV | ICT | 07/21/2011 |
| E-1057.3 | FLOYD, SAM | FFT | KSKSS | POV | ICT | 07/21/2011 |
| E-1058 | ENGINE - T6 - | ENG | COPB | AOV | | 07/21/2011 |
| E-1058.1 | KEIL, MICHAEL L | ENG | COPB | AOV | DEN | 07/21/2011 |
| E-1058.2 | O'BRIEN, JOESPH | ENG | COFAI | AOV | | 07/21/2011 |
| E-1058.3 | PIWKO, DARIUSZ J | FFT | COPB | AOV | DEN | 07/21/2011 |
| E-1075 | ENGINE - T6 - 6711 | ENG | INBOR | AOV | | 07/21/2011 |
| E-1075.1 | JONES, DAVID H | ENG | INBOR | AOV | SDF | 07/21/2011 |
| E-1075.2 | SMITH, BRANDON W | FFT | INBOR | AOV | SDF | 07/21/2011 |
| E-1075.3 | WINCHELL, MAX | FFT | ININS | AOV | STL | 07/21/2011 |
| E-1081 | ENGINE - T6 - | ENG | GAGA | POV | | 07/21/2011 |
| E-1081.1 | JOY, TIMMOTHY S | ENG | GAGA | POV | ATL | 07/21/2011 |
| E-1081.2 | MOSS, WESLEY | FFT | GAGA | POV | | 07/21/2011 |
| E-1082 | ENGINE - TYPE 6 - | ENG | GAGA | POV | | 07/21/2011 |
| E-1082.1 | GREGORY, LEE B | ENG | GAGA | AOV | ALB | 07/21/2011 |
| E-1082.2 | SHIRLEY, ADAM | FFT | GAGA | AOV | | 07/21/2011 |
| E-1083 | ENGINE - TYPE 6 - | ENG | GAGA | POV | | 07/21/2011 |
| E-1083.1 | HARKINS, TONY | ENG | GAGA | POV | ATL | 07/21/2011 |
| E-1083.2 | MELTON, JARRETT B | FFT | GAGA | POV | ATL | 07/21/2011 |
| E-1084 | ENGINE - T6 - | ENG | GAGA | AOV | | 07/21/2011 |
| E-1084.1 | DEAN, MICHAEL L | ENG | GAGA | AOV | ATL | 07/21/2011 |
| E-1084.2 | HOLLAND, SETH | FFT | GAGA | AOV | ATL | 07/21/2011 |
| O-911 | MILLER, RAY E | DIV | PAPAS | AIR | MDT | 07/21/2011 |
| O-913 | HEROLD, THOMAS P | DIV | CAKN | AIR | MFR | 07/21/2011 |
| O-927 | SPEAR, DENNIS | GSU | ARAR | AIR | XNA | 07/21/2011 |
| O-935 | MONROE, JASON | RAD | IDIPF | AIR | GEG | 07/21/2011 |
| O-937 | ELMSTROM, KEVIN D | TFL | MTLN | AIR | MSO | 07/21/2011 |
| O-939 | PARKS, JACQUIE | TFL | MTBR | AIR | MSO | 07/21/2011 |
| O-945 | MENDOZA, WALTER R | TFL | CAAN | AIR | BUR | 07/21/2011 |
| O-947 | REGISTER, JESS | STE | MOMT | AIR | SGF | 07/21/2011 |
| O-948 | PALFREY, GLEN | STE | IDIPF | AIR | GEG | 07/21/2011 |
| O-950 | LARSON, LARRY LEE | STE | ORWI | AIR | EUG | 07/21/2011 |

| NUMBER | NAME | KIND | UNIT | TRAVEL | JETPORT | DEMOB DATE |
|---------|---------------------|------|-------|--------|---------|------------|
| O-951 | VAN DYNE, JERRY | STE | ORWI | AIR | EUG | 07/21/2011 |
| O-954 | EBERT, BRIAN C | STE | CAEN | AIR | SMF | 07/21/2011 |
| O-958 | BOYCE II, TIMOTHY A | DOZ | ORMA | AIR | BOI | 07/21/2011 |
| O-959 | COGLE, ZACHARY | HEQ | CAPN | AIR | SAC | 07/21/2011 |
| O-960 | PELLEGRINI, PAUL | DOZ | AKKKS | AIR | ENA | 07/21/2011 |
| O-961 | WURDEMAN, MARK A | PIO | MNMN | AIR | MSP | 07/21/2011 |
| O-963 | PANTSAR, MARK A | EQP | MNMN | AIR | DLH | 07/21/2011 |
| O-966 | JOHNSON, DELL | PTR | COWR | AIR | GJT | 07/21/2011 |
| O-973 | DORSHORST, LARRY | SOF | AKDA | AIR | FAI | 07/21/2011 |
| O-979 | LINDBLOM, SAM G | STE | VAVAF | AIR | CHO | 07/21/2011 |
| O-984 | EATON, ROBERT J | EMT | NCSR | AOV | RDU | 07/21/2011 |
| O-990 | SAMPSON, JOSEPH | STE | MTBD | | BTM | 07/21/2011 |
| O-998.4 | MATTHEWS, BRIAN W | CO | FLFLS | AOV | PBI | 07/21/2011 |
| O-1001 | CRIBB JR, ROY L | DOZ | FLFLS | AOV | TPA | 07/21/2011 |

Joint Information Center Fire Update

Fire Update for Friday, July 15, 2011~ 10 a.m.

Fire Information: www.inciweb.org



Honey Prairie Fire Complex: 299,389 acres, 70% contained
Sweat Farm Again Fire: 19,169 acres, 86% contained
Racepond Fire: 20,934 acres, 86% contained

The Honey Prairie Fire grew by only 863 acres on July 14 due to light winds. All of the expansion was inside the Okefenokee National Wildlife Refuge Wilderness Area. Stronger winds from the east are expected from July 15 through July 17, with rain accompanying the winds on Friday and Saturday. Over the past few days, areas burned saw nearly total consumption of the large diameter timber inside the wilderness area indicating how very dry the unburned fuel remains. Fire line preparation and patrolling continues on the north half of the Refuge boundaries.

Thunderstorms and rain over the Sweat Farm Again and Racepond Fires slowed efforts of firefighters to put out the remaining hot spots. Crews did respond to and contain 2 small reburn areas on the Sweat Farm Again Fire. Mop up, patrolling the hotspots and cleaning up firelines continues on both fires. Structure protection and hazardous fuel reduction continues in Swamp Park.

A Hazardous Weather Outlook has been issued by the National Weather Service: "A weak surface boundary will be the focus for storms this period. Slow storm movement will result in locally heavy rainfall. A few storms could become strong, especially in the afternoon, producing gusty winds and frequent lightning.

Patchy smoke from the Honey Prairie Fire could reduce visibilities over communities west of the fire, including Fargo and Homerville."

Okefenokee National Wildlife Refuge remains closed to the public. During the early morning hours of low fire activity, firefighters staged at the Visitor Center are clearing downed trees and cutting down hazardous trees along the Ridley's Island Trail.

Stephen C Foster State Park reports that it is open with very limited access to the public. The office, picnic area, and museum are open to the public. The trails, boat rentals, camping, and cabins remain closed the public.

georgiafireinformationcenter@gmail.com

912-496-2566

Assigned Resources

127 Engines
17 Dozers
18 Water Tenders
7 Helicopters
1 Crew
785 Personnel

www.inciweb.org
www.fws.gov/okefenokee
www.gatrees.org

The SE Georgia Fires Information Center will be open from 8 a.m. – 7 p.m. daily to help assist the public and media with up to date information on all fires across Southeast Georgia and in the Okefenokee National Wildlife Refuge. Please contact us at 912-496-2566 or georgiafireinformationcenter@gmail.com.

Cooperators: Okefenokee National Wildlife Refuge; Georgia Forestry Commission; Florida Forest Service; U.S. Forest Service; Greater Okefenokee Association of Landowners (GOAL); Georgia Emergency Management Agency; Rayonier; Superior Pine; Langdale; GDOT; GSP; FLDOT; Georgia DNR; Georgia Aviation Authority; Georgia National Guard; Georgia DOC; County Fire Departments; Toledo Manufacturing Company; Charlton, Ware and Clinch Counties; and the Cities of Folkston and Homerville.

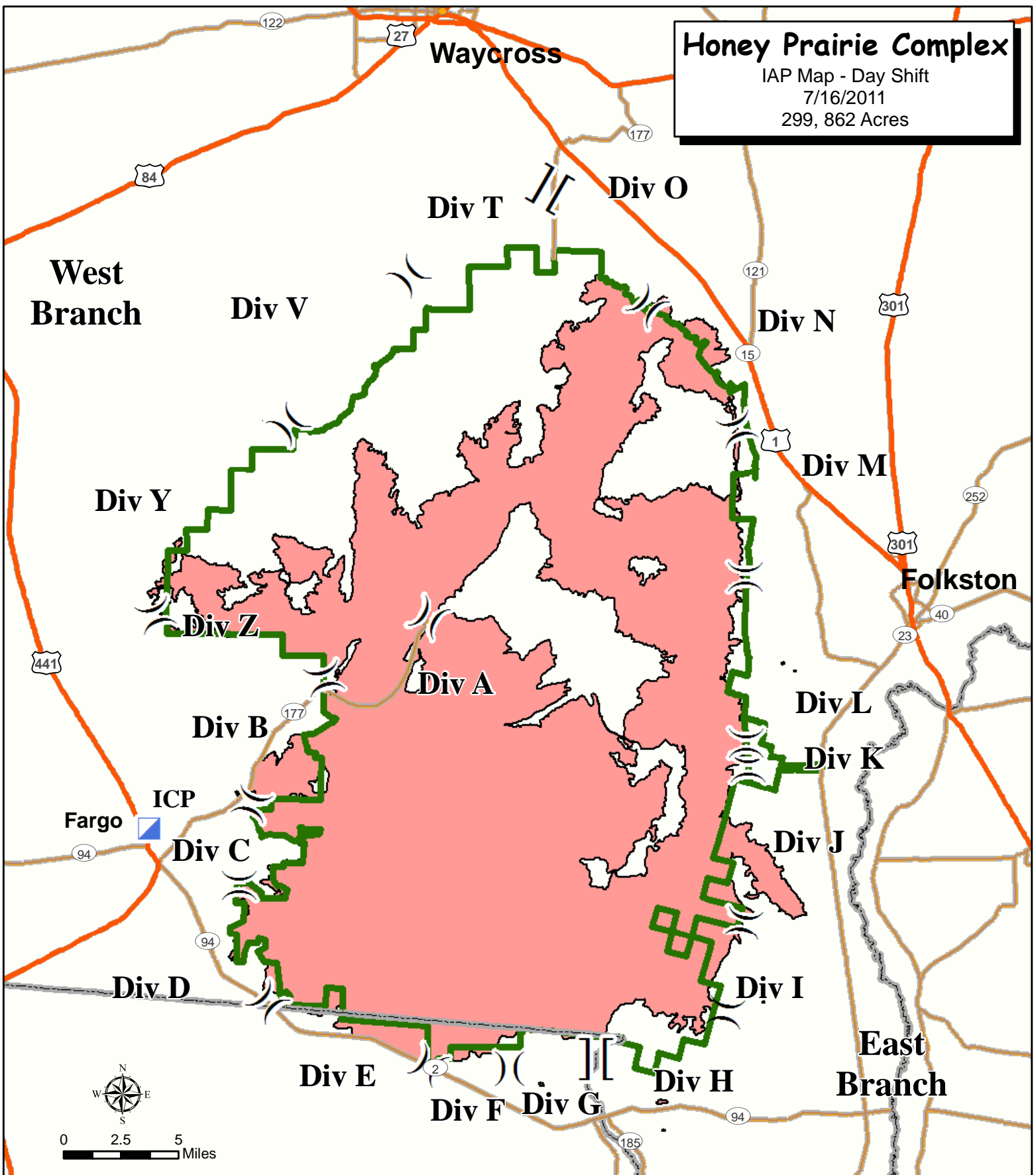
Closures: All entrances into Okefenokee National Wildlife Refuge are closed. All visitor activities are suspended until the threat of fire is over. For current status on visitor activities, contact: Okefenokee National Wildlife Refuge, 912-496-7366; Okefenokee Swamp Park, 912-283-0583; or the Stephen C. Foster State Park, 912-637-5274.

Honey Prairie Complex

IAP Map - Day Shift

7/16/2011

299, 862 Acres



Branch Break

Highway



Refuge Boundary



Division Break

Major Road



Fire Area



Incident Command Post

State Boundary



Perimeter as of
7/15/2011 1130
S. Leverette

| | | | | |
|------------------------------------|--------------|---|------------------|-----------------------|
| UNIT LOG | | 1. Incident Name Honey Prairie Complex | 2. Date Prepared | 3. Time Prepared |
| 4. Unit Name/Designators | | 5. Unit Leader (Name and Position) | | 6. Operational Period |
| 7. Personnel Roster Assigned | | | | |
| Name | | ICS Position | | Home Base |
| | | | | |
| | | | | |
| | | | | |
| | | | | |
| | | | | |
| | | | | |
| | | | | |
| | | | | |
| | | | | |
| | | | | |
| | | | | |
| | | | | |
| | | | | |
| | | | | |
| | | | | |
| | | | | |
| | | | | |
| | | | | |
| 8. Activity Log | | | | |
| Time | Major Events | | | |
| | | | | |
| | | | | |
| | | | | |
| | | | | |
| | | | | |
| | | | | |
| | | | | |
| | | | | |
| | | | | |
| | | | | |
| | | | | |
| | | | | |
| | | | | |
| | | | | |
| | | | | |
| | | | | |
| | | | | |
| | | | | |
| | | | | |
| | | | | |
| | | | | |
| | | | | |
| | | | | |
| | | | | |
| | | | | |
| | | | | |
| | | | | |
| | | | | |
| 9. Prepared by (Name and Position) | | | | |