

# Honey Prairie Complex

*GA-OKR-000001*

## Incident Action Plan

Operational Period  
Sunday July 17, 2011

0800-2100

### **Accounting Codes**

FWS – 9141-F25M-2J

NPS – 5023 F25M E11

BLM – F25M

USFS – PRF25M\_1502

Initial Attack – F4PM

<b>INCIDENT OBJECTIVES</b>	<b>1. INCIDENT NAME</b> Honey Prairie Complex	<b>2. DATE PREPARED</b> 7/16/11	<b>3. TIME PREPARED</b> 1800												
<b>4. OPERATIONAL PERIOD (DATE/TIME)</b>  Sunday July17, 2011 0800 – 2100															
<b>5. GENERAL CONTROL OBJECTIVES FOR THE INCIDENT (INCLUDE ALTERNATIVES)</b> <ol style="list-style-type: none"> <li>1. Provide for safety of incident personnel and public in all incident operations.</li> <li>2. Maintain a positive working relationship with all adjacent landowners, cooperators State and Federal partners. Inform, involve and communicate incident planning and operations with all partners.</li> <li>3. Contain all fires that are within the Okefenokee National Wildlife Refuge, inside the Refuge and/or inside the swamp edge break if possible.</li> <li>4. In cooperation with local timberland owners, use full suppression strategies and tactics to minimize damage to private timberlands and improvements and to prevent fires outside the Refuge from entering the Refuge.</li> <li>5. Assist in management and suppression of additional fires (new starts or breakouts) in the vicinity as approved by Agency Administrators and Unified Incident Commanders.</li> <li>6. Protect all cultural and archeological sites and structures within the refuge, with particular attention to facilities at Okefenokee Swamp Park.</li> <li>7. Manage the fires cost-effectively consistent with the values at risk.</li> <li>8. Implement structure protection as necessary for at-risk facilities and communities.</li> <li>9. Coordinate suppression actions with assigned Refuge Resource Advisors</li> </ol>															
<b>6. WEATHER FORECAST FOR OPERATIONAL PERIOD</b> See attached forecast for area specific weather information.															
<b>7. GENERAL SAFETY MESSAGE</b> Drive defensively and use spotter when backing. Ensure LCES is in place and known by all personnel. Drink plenty of water and take frequent rest breaks. Ensure proper use of PPE during all operations.															
<b>8. Attachments (☐ if attached)</b> <table border="0" style="width: 100%;"> <tr> <td><input type="checkbox"/> Organization List (ICS 203)</td> <td><input type="checkbox"/> Incident Map</td> <td><input type="checkbox"/> Safety Message</td> </tr> <tr> <td><input type="checkbox"/> Assignment List (ICS 204)</td> <td><input type="checkbox"/> Traffic Plan</td> <td><input type="checkbox"/> Demobilization Procedures</td> </tr> <tr> <td><input type="checkbox"/> Communications Plan (ICS 205)</td> <td><input type="checkbox"/> Human Resources</td> <td><input type="checkbox"/> Unit Log</td> </tr> <tr> <td><input type="checkbox"/> Medical Plan (ICS 206)</td> <td><input type="checkbox"/> Phone List</td> <td></td> </tr> </table>				<input type="checkbox"/> Organization List (ICS 203)	<input type="checkbox"/> Incident Map	<input type="checkbox"/> Safety Message	<input type="checkbox"/> Assignment List (ICS 204)	<input type="checkbox"/> Traffic Plan	<input type="checkbox"/> Demobilization Procedures	<input type="checkbox"/> Communications Plan (ICS 205)	<input type="checkbox"/> Human Resources	<input type="checkbox"/> Unit Log	<input type="checkbox"/> Medical Plan (ICS 206)	<input type="checkbox"/> Phone List	
<input type="checkbox"/> Organization List (ICS 203)	<input type="checkbox"/> Incident Map	<input type="checkbox"/> Safety Message													
<input type="checkbox"/> Assignment List (ICS 204)	<input type="checkbox"/> Traffic Plan	<input type="checkbox"/> Demobilization Procedures													
<input type="checkbox"/> Communications Plan (ICS 205)	<input type="checkbox"/> Human Resources	<input type="checkbox"/> Unit Log													
<input type="checkbox"/> Medical Plan (ICS 206)	<input type="checkbox"/> Phone List														
<b>9. PREPARED BY (PLANNING SECTION CHIEF)</b> Ed Flowers		<b>10. APPROVED BY (INCIDENT COMMANDER)</b> /s/ Don West /s/Trent Ingram /s/Mike Dueitt													

ORGANIZATION ASSIGNMENT LIST		9. Operations Section	
<b>1. Incident Name</b> <b>Honey Prairie Complex</b> GA-OKR-000001		Chief	Roger Gill (West Branch) 7/25, Butch Hall (East Branch) 7/22
		Planning	Rick Dolan 7/22
<b>2. Date</b> 7/16/2011	<b>3. Time</b> 1000 hrs	<b>a. WEST BRANCH - Divisions/Groups</b>	
<b>4. Operational Period</b> 7/17/2011	0800 - 2100	OPBD	Tom Donohoe 7/22
<b>5. Incident Commander and Staff</b>		Division	A, B, C
Incident Commander	Don West/Verne Riggall (Dep)/ Trent Ingram/Mike Dueitt	Division	D, E, F, G
Liason Officer	Gary Beauchamp 7/29	Division	T
Safety Officers	Barry Coulliette 7/22 / Ray Durham 7/23	Division	V
Information Officer	Ludie Bond 7/22	Division	Y
<b>6a. Agency Administrators</b>		Division	Z
FWS	Curt McCasland	Group	IA-WEST and Structure Group
FWS	Mindy Gautreaux		
<b>6b. Agency Representatives</b>		<b>b. EAST BRANCH - Divisions/Groups</b>	
FWS Liason	Skippy Reeves	OPBD	Brett Waters 7/25
GFC	Frank Sorrels	Division	H, I, J, K
FLDOF	James Karels	Division	L, M
FWS AREP	Mike Housh	Division	N, O
FWS-Refuge PAO	Art Webster	Group	IA-EAST
GEMA AREP	Alan Robinson / Diane Adams	Group	Roads
USFS AREP	Ivan Greene		
<b>7. Planning Section</b>		<b>c. AIR OPERATIONS BRANCH - Honey Prairie</b>	
Chief	Ed Flowers 7/22	Air Operations Branch Director	Tim Elder 7/22
Dep Chief	Steve Budd-Jack 7/25	Air Support Group Supervisor	Don Nicholas 7/22
Resources Unit	Wilbur Priest 7/22		
Situation Unit	Scott Crosby 7/22		
IMET	Joe Goudsward 7/21 / Mike Bettwy 7/21		
FBAN	John Kern 7/22	<b>d. AIR OPERATIONS BRANCH - Waycross</b>	
Demob Unit	Tim Wilkinson 7/22	Waycross Helibase Manager	Jay Matsen 7/23
Documentation	Fred Noack 7/17		
GIS	Sue Leverette 7/22	<b>e. AIR OPERATIONS BRANCH - Pogo</b>	
CTSP	Randy Fountain 7/22 / Charlie Bolen 7/17	Pogo Helibase Manager	Brain Campbell 7/22
TNSP	Larry Moore 7/24	ATGS-Pogo	Everett Winegar 7/30
<b>8. Logistics Section</b>		<b>10. Finance Section</b>	
Chief	Shane Locke 7/21/Butch Mallet 7/22	Chief	Linda Starling 7/22
Supply Unit	Linda Bruss/7/18 / Rhonda Hughes(t) 7/22	Time Unit	Frances Matheny 7/22
GSUL	James Thompson 7/22	Procurement	John Watson 7/22
ORDM	Abe Phillipson(t) 7/22 / Cindy Tisdell 7/24	Comp Claims Unit	Alvin Welch 7/21
COML	Brian Mathews 7/22	Cost	Lisa Ridley 7/22
Medical Unit	Joe Fowler 7/22	Buying Team	Rita Loper
Facilities	Bill Hitt 7/22 / Mel Reese(t) 7/22	IBA	Ron Knowles 7/19
Food	Nat Wright 7/22/Bob Kookan 7/17		
RCDM	Gary Sisson(t) 7/22 / Jamie Chopp 7/17		
BCMG	Carl Taylor 7/25		
		Prepared by:	Wilbur Priest RESL

DIVISION ASSIGNMENT LIST			1. Branch <b>West</b>		2. Division <b>A, B, C</b>		
3. Incident Name: <b>Honey Prairie Complex</b>			4. Operational Period Date: 7/17/2011 Time: Day: 0800-2100				
5. Operations Personnel							
<b>Operations</b>	Roger Gill 7/25		<b>Branch Director</b>		Tom Donohoe 7/22		
<b>Planning Ops</b>	Rick Dolan 7/22		<b>Division Supervisor</b>		Bill Altman 7/19 Greg Jacobson (t) 7/19		
<b>Safety Officer</b>	Barry Coulliette 7/22						
6. Resources Assigned this Period							
Strike Team/Task Force/ Resource Designator	Leader / Name / Designator	Last Shift Date	Num. Per.	Drop Off PT./Time	Pick Up PT./Time		
<b>TFLD (O-900)</b>	<b>Phil Millette</b>	7/18	1				
<b>TFLD (E-838.6)</b>	<b>Darren Franco (t)</b>	7/21	1				
<b>STEN (O-949)</b>	<b>Nikia Hernandez</b>	7/19	1				
ENG6 (E-405)	Brett Gore	7/24	3				
ENG6 (E-907) Eagle Staff	Brady Ward	7/22	2				
ENG6 (E-994)	Pat Norquay	7/18	3				
ENG6 (E-1059)	Daniel Ross	7/22	3				
ENG6 (E-1065)	Mike Carnelli	7/22	3				
ENG6 (E-1066)	Eric Jones	7/21	3				
ENG6 (E-1076) MOMTF 9504	Tim Perren	7/24	3				
ENG6 (E-5002) Attack#1	Hank Kight	<b>7/17</b>	2	PVT			
WAT2 (E-93)	William Davis	<b>7/17</b>	1	PVT			
<b>SOF2 (O-1068)</b>	<b>Jamey Burnsed</b>	7/25	1				
<b>EMTP (O-847)</b>	<b>Levi Clymer</b>	7/28	1				
<b>EMTB (O-984)</b>	<b>Bob Eaton</b>	7/20	1				
7. Control Operations <ul style="list-style-type: none"> <li>Patrol and mop up within 100' of fire perimeter line.</li> <li>Monitor fire impacts to Stephen Foster State Park.</li> <li>Patrol and control return.</li> </ul>							
8. Special Instructions <ul style="list-style-type: none"> <li>Examine work area for fire weakened snags.</li> <li>Ensure LCES are in place before operations begin and stay hydrated.</li> <li>Additional resources will be available from GFC, Florida DOF, FWS, and local cooperators.</li> <li>Drive defensively and with lights on at all times.</li> </ul>							
9. Division/Group Communication Summary							
Function	Frequency	System	Channel	Function	Frequency	System	Channel
Command N Okee Repeater	RX 164.5750/206.5 TX 163.150/206.5	KING NIFC	5	Logistics		KING NIFC	
Tactical Div/Group	RX 168.775 TX 168.7750	KING NIFC	9	Air to Ground	RX 166.9375 TX 166.9375	KING NIFC	6
Prepared by (Resource Unit Ldr.) Fred Noack		Approved by (Planning Sect. Ch.) /s/ Ed Flowers		Date 7/16/2011		Time 1930	

<b>DIVISION ASSIGNMENT LIST</b>			1. Branch <b>West</b>		2. Division <b>D, E, F, G</b>		
3. Incident Name <b>Honey Prairie Complex</b>			4. Operational Period Date: 7/17/2011 Time: 0800-2100				
5. Operations Personnel							
<b>Operations</b>		Roger Gill 7/25		<b>Branch Director</b>		Tom Donohoe 7/22	
<b>Planning Ops</b>		Rick Dolan 7/22		<b>Division Supervisor</b>		Toby Herold 7/20	
<b>Safety Officer</b>		Barry Coulliette 7/22					
6. Resources Assigned this Period							
Strike Team / Task Force / Resource Designator		Leader / Name / Designator		Last Shift Date	Num. Per.	Drop Off PT./Time	Pick Up PT./Time
TFLD (O-916)		Hans Ohme		7/18	1		
TFLD (O-926)		Matt Ingram (t)		7/18	1		
TFLD (O-960)		Paul Pelligrini		R&R	1		R&R 7/17-18
STPL (O-1055)		Royce Davis		7/23	1		
ENG6 (E-134)		Tom Rowe		7/20	3	PVT	
ENG5 (E-503)		Dean Vanderbleek		7/17	2	PVT	
ENG6 (E-821)		Robert Thompson		7/24	3		
ENG6 (E-824)		Chris Brubaker		7/24	3		
TPL3 (E-914)		Fred Robinson		7/23	1		
TPL3 (E-1138)		Jim Reynolds		7/23	1		
TPL3 (E-1139)		Stan Jackson		7/23	1		
EMTB (O-1058)		Paul Smith		7/24	1		
SOF2 (O-1083)		Tommy Lail		7/26	1		
7. Control Operations							
<ul style="list-style-type: none"> <li>Monitor and patrol south end of West Branch.</li> <li>Mop up all hot spots within 100' of the fire perimeter.</li> <li>Patrol and control reburn.</li> </ul>							
8. Special Instructions							
<ul style="list-style-type: none"> <li>Ensure LCES are in place before operations begin and stay hydrated.</li> <li>See medical plan for EMT support.</li> <li>Drive defensively and with lights on at all times.</li> <li>Examine work area for fire weakened snags.</li> <li>If communications needed with Impassable Bay Fire - use Channel 11 (168.2000)</li> </ul>							
9. Division/Group Communication Summary							
Function	Frequency	System	Channel	Function	Frequency	System	Channel
Command S Okee Repeater	RX 164.7750/123.0 TX 163.150/123.0	KING NIFC	2	Logistics		KING NIFC	
Tactical Div/Group	RX 151.2725 TX 151.2725	KING NIFC	13	Air to Ground	RX 166.9375 TX 166.9375	KING NIFC	6
Prepared by (Resource Unit Ldr.) Fred Noack		Approved by (Planning Sect. Ch.) /s/ Ed Flowers			Date July 16, 2011		Time 1930

DIVISION ASSIGNMENT LIST				1. Branch West		2. Division T	
3. Incident Name <b>Honey Prairie Complex</b>				4. Operational Period Date: 7/17/2011 Time: 0800-2100			
5. Operations Personnel							
Operations	Roger Gill 7/25			Branch Director	Tom Donohoe 7/22		
Planning Ops	Rick Dolan 7/22			Division	Brian Rhodes 7/18 / Todd Haynes (t) 7/19		
Safety Officer	Barry Coulliette 7/22						
6. Resources Assigned this Period							
Strike Team/Task Force/ Resource Designator	Leader / Name / Designator		Last Shift Date	Num. Per.	Drop Off PT./Time	Pick Up PT./Time	
TFLD (O-946)	Stephen Filmore		7/19	1			
TFLD (E-831.8)	Jeff Hussey		7/23	1			
STEN (O-952)	Vincent Plummer		7/19	1			
S/T Type 6 OR TFLD (t) (E-831.9)	Deana Wall		7/23	1			
ENG6 (E-831.3)	Ben Nichols		7/23	4			
ENG6 (E-831.4)	Eric Hahn		7/23	3			
ENG6 (E-831.5)	Shane Thames		7/23	3			
ENG6 (E-831.6)	Tavis Fenske		7/23	3			
ENG6 (E-831.7)	Mike Towers		7/23	3			
ENG6 (E-1073)	Mike Schlitz		7/22	3			
WAT1 (E-1019)	Frank Durrance		7/18	1	PVT		
TPL2 (E-986)	David Hauser		7/26	1	PVT		
TPL2 (E-988)	Jonathon Houser		7/30	1	PVT		
KG (E-989)	Cleo Simon		7/30	1	PVT		
EMTP (E-1134)	Jeff Halladay		7/21	1			
SOF2 (O-973)	Larry Dorshorst		7/20	1			
7. Control Operations							
<ul style="list-style-type: none"> <li>Recon potential control lines and examine area for snag removal</li> <li>Improve swamp break boundaries for fire breaks, work w/resource advisor</li> <li>Coordinate potential burn-out w/READ and refuge personnel</li> <li>Use refuge personnel for any burn-out activities.</li> </ul>							
8. Special Instructions							
<ul style="list-style-type: none"> <li>Make contact with the Resource Advisor before using mechanical equipment.</li> <li>Safely push down with equipment all snags whether on fire or not that are a threat to success or tactical operations.</li> <li>Ensure LCES are in place before operations begin. Stay hydrated.</li> <li>Drive defensively and with lights on at all times.</li> <li>Boggy terrain: Be careful and aware when working around this type of area.</li> </ul>							
9. Division/Group Communication Summary							
Function	Frequency	System	Channel	Function	Frequency	System	Channel
Command N Okee Repeater	RX 164.5750/206.5 TX 163.150/206.5	KING NIFC	5	Logistics		KING NIFC	
Tactical Div/Group	RX 168.775 TX 168.775	KING NIFC	9	Air to Ground	RX 166.9375 TX 166.9375	KING NIFC	6
Prepared by (Resource Unit Ldr.) Fred Noack		Approved by (Planning Sect. Ch.) /s/ Ed Flowers			Date July 16, 2011		Time 1800

DIVISION ASSIGNMENT LIST		1. Branch <b>West</b>		2. Division <b>V</b>		1 of 2	
3. Incident Name <b>Honey Prairie Complex</b>		4. Operational Period Date: <b>7/17/2011</b> Time: <b>0800-2100</b>					
5. Operations Personnel							
<b>Operations</b>	Roger Gill 7/25	<b>Branch Director</b>		Tom Donohoe 7/22			
<b>Planning Ops</b>	Rick Dolan 7/22	<b>Division Supervisor</b>		Shawn Duggar 7/22 / Greg Suszek (t) 7/19			
<b>Safety Officer</b>	Barry Coulliette 7/22						
6. Strike Team/Task Force/ Resource Designator							
	Leader / Name / Designator	Last Shift Date	Num. Per.	Drop Off PT./Time	Pick Up PT./Time		
<b>TFLD (O-906)</b>	<b>Evan Karp</b>	7/18	1				
<b>TFLD (O-978)</b>	<b>Jacob Thelen (t)</b>	7/19	1				
<b>TFLD (O-942)</b>	<b>Ben Krupski</b>	R&R	1		R&R 7/17-18		
<b>TFLD(O-1000)</b>	<b>Waylon Meek (t)</b>	7/19	1				
ENG6 (E-2)	Eric Nelson	7/19	1	O-436			
ENG6 (E-3)	Daniel Angelo	7/25	2				
ENG6 (E-992)	Justin Dillon	<b>7/17</b>	3	PVT			
ENG6 (E-995)	Mike Daigle	7/25	3				
ENG6 (E-996)	John Cousins	7/25	3				
ENG6 (E-1000)	Paul Rampinini	<b>7/17</b>	3	PVT			
ENG6 (E-1001)	Dick Sypher	<b>7/17</b>	3	PVT			
ENG6 (E-1053)	Timmerman	<b>7/17</b>	3	PVT			
ENG6 (E-1062)	Tyler Quintano	<b>7/17</b>	3	PVT			
ENG6 (E-1063)	Brad Finch	<b>7/17</b>	3	PVT			
ENG6 (E-1064)	Greg Nichols	7/21	3				
ENG6 (E-1085)	Don Crane	<b>7/17</b>	2	PVT			
7. Control Operations							
<ul style="list-style-type: none"> <li>Recon potential control lines and examine area for snag removal</li> <li>Improve swamp break boundaries for fire breaks, work w/resource advisor</li> <li>Coordinate potential burn-out w/READ and Refuge Personnel</li> <li>Use Refuge personnel for any burn-out activities.</li> </ul>							
8. Special Instructions							
<ul style="list-style-type: none"> <li>Make contact with the Resource Advisor before using machanical equipment.</li> <li>Safely push down with equipment all snags whether on fire or not that are a threat to success or tactical operations.</li> <li>Ensure LCES are in place before operations begin. Stay hydrated.</li> <li>Drive defensively and with lights on at all times.</li> <li>Boggy terrain: Be careful and aware when working around this type of area.</li> </ul>							
9. Division/Group Communication Summary							
Function	Frequency	System	Channel	Function	Frequency	System	Channel
Command N Okee Repeater	RX 164.5750/206.5 TX 163.150/206.5	KING NIFC	5	Logistics		KING NIFC	
Tactical Div/Group	RX 151.2725 TX 151.2725	KING NIFC	13	Air to Ground	RX 166.9375 TX 166.9375	KING NIFC	6
Prepared by (Resource Unit Ldr.) Fred Noack		Approved by (Planning Sect. Ch.) /s/ Ed Flowers			Date July 16, 2011		Time 1800

DIVISION ASSIGNMENT LIST		1. Branch <b>West</b>		2. Division <b>V</b>		2 of 2	
3. Incident Name <b>Honey Prairie Complex</b>		4. Operational Period Date: <b>7/17/2011</b> Time: <b>0800-2100</b>					
5. Operations Personnel							
<b>Operations</b>	Roger Gill 7/25	<b>Branch Director</b>		Tom Donohoe 7/22			
<b>Planning Ops</b>	Rick Dolan 7/22	<b>Division Supervisor</b>		Shawn Duggar 7/22 / Greg Suszek (t) 7/19			
<b>Safety Officer</b>	Barry Coulliette 7/22						
6. Strike Team/Task Force/ Resource Designator							
	Leader / Name / Designator	Last Shift Date	Num. Per.	Drop Off PT./Time	Pick Up PT./Time		
<b>TFLD (O-986)</b>	<b>Mike Harnois</b>	7/22	1				
<b>DOZB (O-1001)</b>	<b>Roy Cribb</b>	7/20	1				
KG Dozer (E-982)	Richard Nevits	?	1	PVT			
KG Dozer (E-983)	Jody Rienhart	?	1	PVT			
Skidder (E-981)	Henry Tiner	7/25	1	PVT			
Feller-Buncher (E-524)	Josh Burdy	?	1	PVT	Check with PLANS		
Feller-Buncher (E-526)	James Marshall	7/16	1	PVT	Check with PLANS		
Grader (E-530)	Lucious Corbett	7/27	1	PVT			
<b>SOF2 (O-972)</b>	<b>Larry Bunge</b>	7/19	1				
<b>EMTP (O-1059)</b>	<b>John Oker-Bloom</b>	7/23	1				
7. Control Operations <ul style="list-style-type: none"> <li>Recon potential control lines and examine area for snag removal</li> <li>Improve swamp break boundaries for fire breaks, work w/resource advisor</li> <li>Coordinate potential burn-out w/READ and Refuge Personnel</li> <li>Use Refuge personnel for any burn-out activities.</li> </ul>							
8. Special Instructions <ul style="list-style-type: none"> <li>Make contact with the Resource Advisor before using machanical equipment.</li> <li>Safely push down with equipment all snags whether on fire or not that are a threat to success or tactical operations.</li> <li>Ensure LCES are in place before operations begin. Stay hydrated.</li> <li>Drive defensively and with lights on at all times.</li> <li>Boggy terrain: Be careful and aware when working around this type of area.</li> </ul>							
9. Division/Group Communication Summary							
Function	Frequency	System	Channel	Function	Frequency	System	Channel
Command N Okee Repeater	RX 164.5750/206.5 TX 163.150/206.5	KING NIFC	5	Logistics		KING NIFC	
Tactical Div/Group	RX 151.2725 TX 151.2725	KING NIFC	13	Air to Ground	RX 166.9375 TX 166.9375	KING NIFC	6
Prepared by (Resource Unit Ldr.) Fred Noack		Approved by (Planning Sect. Ch.) /s/ Ed Flowers			Date July 16, 2011		Time 1800



DIVISION ASSIGNMENT LIST			1. Branch <b>West</b>		2. Division <b>Y</b>		
3. Incident Name <b>Honey Prairie Complex</b>			4. Operational Period Date: 7/17/2011 Time: 0800-2100				
5. Operations Personnel							
Operations	Roger Gill 7/25		Branch Director		Tom Donohoe 7/22		
Planning Ops	Rick Dolan 7/22		Division Supervisor		Gary Smith 7/19, Dan Helterline (t) 7/19		
Safety Officer	Barry Coulliette 7/22						
6. Resources Assigned this Period							
Strike Team/Task Force/ Resource Designator	Leader / Name / Designator		Last Shift Date	Num. Per.	Drop Off PT./Time	Pick Up PT./Time	
<b>TFLD (O-920)</b>	<b>Aaron Schneider</b>		R&R	1		R&R 7/17-18	
<b>TFLD (O-991)</b>	<b>Adam Wolf (t)</b>		7/21	1			
<b>TFLD (O-954)</b>	<b>Brian Ebert (t)</b>		R&R	1		R&R 7/17-18	
<b>STEN (O-979)</b>	<b>Sam Lindblom (t)</b>		7/20	1			
ENG6 (E-584)	Cris Geidel		7/24	2			
ENG6 (E-838)	Chris Mursu		7/21	2			
ENG6 (E-997)	Jack Weer		7/20	2			
ENG6 (E-998)	John Stebner		7/20	2			
ENG5 (E-1036)	Tom Gates		7/20	3			
ENG5 (E-1046)	Karen Mobley		7/21	3			
ENG6 (E-1071)	Clayton Swanger		7/22	3			
<b>DOZB (O-1004)</b>	<b>Derek Cooper</b>		7/20	1			
<b>DOZB (O-1008)</b>	<b>Zack Culver (t)</b>		7/21	1			
TPL2 (E-497)	Leslie Jeter		7/22	1	PVT		
TPL3 (E-943)	Hugh Matchett		7/20	1	PVT		
TPL3 (E-984)	Junior House		7/31	1	PVT		
TPL2 (E-985)	Aaron Tipton		7/27	1	PVT		
WT2 (E-1018)	Gary Waldron		7/21	1	PVT		
<b>SOF2 (O-1097)</b>	<b>Rodney Weeks</b>		7/30	1			
<b>SOF2 (O-891)</b>	<b>Steve Holman</b>		R&R	1		R&R 7/17-18, return 7/19 for 14 days	
<b>EMTP (O-766)</b>	<b>Peggy Miller</b>		7/28	1			
<b>EMTP (E-1153)</b>	<b>Wes Lathen</b>		7/26	1			
7. Control Operations							
<ul style="list-style-type: none"> <li>Make contact with the Resource Advisor before using mechanical equipment.</li> <li>Recon potential controllines and examine area for snag removal</li> <li>Improve swamp break boundaries for fire breaks</li> </ul>							
8. Special Instructions							
<ul style="list-style-type: none"> <li>Safely push down with equipment all snags whether on fire or not that are a threat to success or tactical operations.</li> <li>Ensure LCES are in place before operations begin. Stay hydrated.</li> <li>Drive defensively and with lights on at all times.</li> <li>Boggy terrain: Be careful and aware when working around this type of area.</li> </ul>							
9. Division/Group Communication Summary							
Function	Frequency	System	Channel	Function	Frequency	System	Channel
Command N Okee Repeater	RX 164.5750/206.5 TX 163.150/206.5	KING NIFC	5	Logistics		KING NIFC	
Tactical Div/Group	RX 151.2725 TX 151.2725	KING NIFC	13	Air to Ground	RX 166.9375 TX 166.9375	KING NIFC	6
Prepared by (Resource Unit Ldr.) Fred Noack		Approved by (Planning Sect. Ch.) /s/ Ed Flowers			Date July 16, 2011		Time 1730

<b>DIVISION ASSIGNMENT LIST</b>			1. Branch <b>West</b>		2. Division <b>Z</b>		
3. Incident Name: <b>Honey Prairie Complex</b>			4. Operational Period Date: 7/17/2011 Time: Day: 0800-2100				
5. Operations Personnel							
<b>Operations</b>	Roger Gill 7/25			<b>Branch Director</b>	Tom Donohoe 7/22		
<b>Planning Ops</b>	Rick Dolan 7/22			<b>Division Supervisor</b>	Glen Palfrey 7/20 / Jesse Knox (t) 7/18		
<b>Safety Officer</b>	Barry Coulliette 7/22						
6. Resources Assigned this Period							
Strike Team/Task Force/ Resource Designator		Leader / Name / Designator		Last Shift Date	Num. Per.	Drop Off PT./Time	Pick Up PT./Time
<b>TFLD (O-889)</b>		<b>Kris Larson</b>		7/19	1		
<b>TFLD (O-921)</b>		<b>Brad Hall (t)</b>		7/18	1		
<b>STEN (O-955)</b>		<b>Randy Scherr</b>		R&R	1		R&R 7/17-18
ENG6 (E-392)		Tyson Taylor		7/21	3		
ENG6 (E-850)		Mike Haisten		7/21	3		
ENG5 (E-905)		Travis Bailey		7/23	3		
ENG6 (E-1057)		Troy Mueller		7/20	3		
ENG6 (E-1067)		Shaun Moore		7/21	3		
<b>EMTP (E-1152)</b>		<b>Chad Simons</b>		7/26	1		
<b>SOF2 (O-1097)</b>		<b>Rodney Weeks</b>		7/30	1		
<b>SOF2 (O-892)</b>		<b>Steven Ripley</b>		R&R	1		R&R 7/16-17
7. Control Operations							
<ul style="list-style-type: none"> <li>Contain all fires outside refuge boundary.</li> <li>Patrol and mop up within 100' of fire perimeter line.</li> </ul>							
8. Special Instructions							
<ul style="list-style-type: none"> <li>Ensure that tractors are cleaned and free of debris daily. Examine work area for fire weakened snags.</li> <li>Ensure LCES are in place before operations begin and stay hydrated.</li> <li>Additional resources will be available from GFC, Florida DOF, FWS, and local cooperators.</li> <li>Drive defensively and with lights on at all times.</li> <li>See Medical plan for EMT support.</li> <li>Implement MIST tactics</li> </ul>							
9. Division/Group Communication Summary							
Function	Frequency	System	Channel	Function	Frequency	System	Channel
Command N Okee Repeater	RX 164.5750/206.5 TX 163.150/206.5	KING NIFC	5	Logistics		KING NIFC	
Tactical Div/Group	RX 168.200 TX 168.200	KING NIFC	11	Air to Ground	RX 166.9375 TX 166.9375	KING NIFC	6
Prepared by (Resource Unit Ldr.) Fred Noack		Approved by (Planning Sect. Ch.) /s/ Ed Flowers			Date July 16, 2011		Time 1930

DIVISION ASSIGNMENT LIST			1. Branch <b>West</b>		2. Division <b>West - Initial Attack and Structure Protection</b>		
3. Incident Name: <b>Honey Prairie Complex</b>			4. Operational Period Date: 7/17/2011 Time: Day: 0800-2100				
5. Operations Personnel							
<b>Operations</b>	Roger Gill 7/25		<b>Branch Director</b>		Tom Donohoe 7/22		
<b>Planning Ops</b>	Rick Dolan 7/22		<b>Division Supervisor</b>		Don Hammack 7/18 / Bob Schober (t) 7/18 (R&R 7/19-20; 14 day extension)		
<b>Safety Officer</b>	Barry Coulliette 7/22						
6. Resources Assigned this Period							
Strike Team/Task Force/ Resource Designator	Leader / Name / Designator		Last Shift Date	Num. Per.	Drop Off PT./Time	Pick Up PT./Time	
<b>STEN (O-947)</b>	<b>Jess Register</b>		7/20	1			
<b>STEN (O-951)</b>	<b>Jerry Van Dyne</b>		7/20	1			
<b>STEN (O-990)</b>	<b>Joe Sampson</b>		7/20	1			
<b>HEQB (O-958)</b>	<b>Tim Boyce</b>		7/20	1			
ENG6 (E-404)	John Knapper		7/23	3			
ENG6 (E-906)	James Burk		7/23	3			
ENG6 (E-939)	Chad Ingle		7/23	3			
ENG6 (E-1048)	Joseph Jarrells		7/21	3			
ENG6 (E-1049)	James Dowd		7/20	3			
ENG6 (E-1050)	Kyle Varel		7/20	3			
ENG6 (E-1075)	David Jones		7/20	3			
TPL3 (E-499)	Roy Rowan		7/19	2	PVT		
TPL3 (E-646)/E-723 trans	Phil Dueitt		7/19	1	PVT		
TPL3 (E-650)	Paul Funderburk		7/31	1	PVT		
TPL3 (E-651)	Bill Rimes		7/19	1	PVT		
TPL2 (E-987)	Butch Dueitt		7/28	1	PVT		
WAT2 (E-954)	Danny Holmes		7/23	1	PVT		
WAT3 (E-517)	Larry Bartlett		<b>7/17</b>	1	PVT		
<b>EMTB (O-1057)</b>	<b>Matthew Stivers</b>		7/23	1			
<b>SOF2 (O-1083)</b>	<b>Tommy Lail</b>		7/26	1			
7. Control Operations <ul style="list-style-type: none"> <li>Respond to Initial Attack as requested</li> <li>Initial attack IC will communicate size up information to Honey Prairie incident communications</li> </ul>							
8. Special Instructions							
9. Division/Group Communication Summary							
Function	Frequency	System	Channel	Function	Frequency	System	Channel
Command N Okee Repeater	RX 164.5750/206.5 TX 163.150/206.5	KING NIFC	5	Logistics	See ICS 205	KING NIFC	
Tactical Div/Group	RX 154.280 TX 154,280/156.7	KING NIFC	8	Air to Ground	RX 166.9375 TX 166.9375	KING NIFC	6
Prepared by (Resource Unit Ldr.) Fred Noack		Approved by (Planning Sect. Ch.) /s/ Ed Flowers			Date July 16, 2011		Time 1930

<b>DIVISION ASSIGNMENT LIST</b>			1. Branch <b>East</b>		2. Division <b>H/ I/J/K</b>		
3. Incident Name <b>Honey Prairie Complex</b>			4. Operational Period Date: <b>7/17/2011</b> Time: <b>0800-2100</b>				
5. Operations Personnel							
<b>Operations</b>	Butch Hall 7/22		<b>Branch Director</b>		Brett Waters 7/25 / Bob Habeck (t) 7/21		
<b>Planning Ops</b>	Rick Dolan 7/22		<b>Division Supervisor</b>		Matt Filbert 7/18		
<b>Safety Officer</b>	Ray Durham 7/22 / Dave Marion (t) 7/21						
6. Resources Assigned this Period							
Strike Team/Task Force/ Resource Designator	Leader / Name / Designator		Last Shift Date	Num. Per.	Drop Off PT./Time	Pick Up PT./Time	
<b>TFLD (O-945)</b>	<b>Walter Mendoza</b>		7/20	1			
<b>STEN (O-950)</b>	<b>Larry Larson</b>		7/20	1			
ENG6 (E-77) GAGAS 86	Andrew Gamlen		7/20	2			
ENG6 (E-1069) Tallahassee E26	William Abbott		7/21	3			
<b>EMTP (E-1136)</b>	<b>Kurt Berge</b>		7/21	1			
<b>SOF2 (O-808)</b>	<b>Charles Severson</b>		7/24	1			
7. Control Operations							
<ul style="list-style-type: none"> <li>Contain all fires outside refuge boundary.</li> <li>Patrol and control reburn</li> <li>Provide initial attack for GFC and fires outside the refuge boundary.</li> <li>Patrol all spots outside refuge boundary.</li> <li>Patrol and mop up all accessible fire line. Mop up all hot spots within 100' of the fire perimeter.</li> <li>Continue to provide protection to the Chesser Homestead by maintaining an adequate water supply via portable pump at location.</li> </ul>							
8. Special Instructions							
<ul style="list-style-type: none"> <li>Ensure LCES are in place before operations begin. Stay hydrated.</li> <li>Drive defensively and with lights on at all times.</li> <li>See medical plan for EMT support</li> <li>Examine work area for fire weakened snags</li> </ul>							
9. Division/Group Communication Summary							
	Function	Frequency	Channel	Function	Frequency	System	Channel
Command E Okee Repeater	RX 164.6250/103.5 TX 163.150/103.5	KING	3	Logistics		KING NIFC	
DIV J Repeater	RX 170.4125 TX 165.9625/123.0	NIFC	14				
Tactical Div/Group	RX 168.350 TX 168.350	KING NIFC	12	Air to Ground	RX 166.9375 TX 166.9375	KING NIFC	6
Prepared by (Resource Unit Ldr.) Fred Noack		Approved by (Planning Sect. Ch.) /s/ Ed Flowers			Date <b>July 16, 2011</b>		Time 1800

<b>DIVISION ASSIGNMENT LIST</b>		1. Branch <b>East</b>		2. Division <b>L, M</b>			
3. Incident Name <b>Honey Prairie Complex</b>		4. Operational Period Date: 7/17/2011 Time: 0800-2100					
5. Operations Personnel							
<b>Operations</b>	Butch Hall 7/22	<b>Branch Director</b>		Brett Waters 7/25 / Bob Habeck (t) 7/21			
<b>Planning Ops</b>	Rick Dolan 7/22	<b>Division Supervisor</b>		Ray Miller 7/20			
<b>Safety Officer</b>	Ray Durham 7/22 / Dave Marion (t) 7/21						
6. Resources Assigned this Period							
Strike Team/Task Force/ Resource Designator	Leader / Name / Designator	Last Shift Date	Num. Per.	Drop Off PT./Time	Pick Up PT./Time		
<b>TFLD (O-937)</b>	<b>Kevin Elmstrom</b>	R&R	1		R&R 7/17-18		
<b>TFLD (O-993)</b>	<b>Drew Daily</b>	7/21	1				
ENG6 (E-407) White Earth #2	Jesse Londo	7/22	3				
ENG6 (E-819)	Brett Eismann	7/21	3				
ENG6 (E-893) MIHMF 251	Martel Knipe	7/23	3				
ENG6 (E-894) MOOZP 862	William Mier	7/22	3				
ENG6 (E-895) MOMTF 9505	Blake Knisley	7/22	3				
ENG6 (E-1061) SM36	Steve Woodrick	7/21	3				
ENG6 (E-5014) TX Fire 157	Steven Torske	7/24	3				
<b>EMTB (O-1077)</b>	<b>Michael Graham</b>	7/26	1				
<b>EMTP (O-731)</b>	<b>Keith Barker</b>	7/26	1				
<b>SOF2 (O-1021)</b>	<b>David Vitwar</b>	7/23	1				
7. Control Operations							
<ul style="list-style-type: none"> <li>Contain all fires outside refuge boundary.</li> <li>Patrol and control reburn</li> <li>Mop up all spots outside refuge boundary and within 100 feet of perimeter</li> </ul>							
8. Special Instructions							
<ul style="list-style-type: none"> <li>Ensure LCES are in place before operations begin. Stay hydrated.</li> <li>Drive defensively and with lights on at all times.</li> <li>See medical plan for EMT support</li> <li>Examine work area for fire weakened snags.</li> </ul>							
9. Division/Group Communication Summary							
	Function	Frequency	Channel	Function	Frequency	System	Channel
Command E Okee Repeater	RX 164.625/103.5 TX 163.150/103.5	KING NIFC	3	Logistics		KING NIFC	
Tactical Div/Group	RX 168.775 TX 168.775	KING NIFC	9	Air to Ground	RX 166.9375 TX 166.9375	KING NIFC	6
Prepared by (Resource Unit Ldr.) Fred Noack	Approved by (Planning Sect. Ch.) /s/ Ed Flowers			Date July 16, 2011		Time 1800	

DIVISION ASSIGNMENT LIST			1. Branch <b>East</b>		2. Division <b>N/O</b>		
3. Incident Name <b>Honey Prairie Complex</b>			4. Operational Period Date: 7/17/2011 Time: 0800-2100				
5. Operations Personnel							
<b>Operations</b>	Butch Hall 7/22		<b>Branch Director</b>		Brett Waters 7/25 / Bob Habeck (t) 7/21		
<b>Planning Ops</b>	Rick Dolan 7/22		<b>Division Supervisor</b>		Steve Griffin 7/19, Ernest Schmitt (t) 7/19		
<b>Safety Officer</b>	Ray Durham 7/22 / Dave Marion (t) 7/21						
6. Resources Assigned this Period							
Strike Team/Task Force/ Resource Designator		Leader / Name / Designator	Last Shift Date	Num. Per.	Drop Off PT./Time	Pick Up PT./Time	
<b>TFLD (O-807) (t)</b>		<b>Mark Whipps</b>	7/19	1			
<b>TFLD (O-941)</b>		<b>Shawn Denowh</b>	R&R	1		R&R 7/17-18	
<b>TFLD (O-994)</b>		<b>Jim Edgar</b>	R&R	1		R&R 7/17-18	
<b>STEN (O-989)</b>		<b>Max Twombly</b>	7/21	1			
ENG6 (E-76)		Chris Henderson	7/20	2			
ENG6 (E-78)		Kevin Cline	7/20	2			
ENG6 (E-80)		Dane Bass	7/20	2			
ENG6 (E-81)		Troy Helms	7/20	2			
ENG6 (E-897) MDBWR		Ephraim Diefenderfer	7/22	2			
ENG6 (E-977) IPF E-31		Louie Feltman	7/23	4			
ENG6 (E-1133)		Chris Wright	7/26	2			
ENG6 (E-1058)		Michael Keil	7/20	3			
ENG6 (E-1060)		Paul Amundson	7/21	3			
ENG6 (E-1068)		Wade Griffith	7/22	3			
<b>SOF2 (O-807)</b>		<b>Chuck Stanton</b>	7/25	1			
<b>EMTP (O-1060)</b>		<b>James Brown</b>	7/24	1			
<b>EMTB (O-848)</b>		<b>Bert Hyde</b>	7/27	1			
7. Control Operations <ul style="list-style-type: none"> <li>Patrol and mop up 100' inside fire perimeter.</li> <li>Recon potential control lines and examine area snag removal</li> <li>Keep fire within refuge boundary.</li> </ul>							
8. Special Instructions <ul style="list-style-type: none"> <li>If the fire reaches <b>Mgt Activity Line (MAL) 1</b> cooperators and adjacent landowners will be notified. If the fire reaches <b>MAL 2</b> a meeting will be held at the Swamp Park with adjacent landowners and cooperators.</li> <li>Safely push down with equipment all snags whether on fire or not that are a threat to success or tactical operations.</li> <li>Ensure LCES are in place before operations begin. Stay hydrated.</li> <li>See medical plan for EMT support.</li> <li>Drive defensively and with lights on at all times.</li> <li>Boggy terrain: Be careful and aware when working around this type of area.</li> <li>If HP fire escapes the NE Break the Great Basin team will command suppression w/assistance from the GFC. If Race Pond escapes to the south GFC will command w/assistance by the Great Basin. DIVS should make daily contact w/ Race Pond DIVS on scene.</li> </ul>							
9. Division/Group Communication Summary							
Function	Frequency	System	Channel	Function	Frequency	System	Channel
Command N Okee Repeater	RX 164.5750/206.5 TX 163.150/206.5	KING NIFC	5	Logistics		KING NIFC	
Tactical Div/Group	RX 168.200 TX 168.200	KING NIFC	11	Air to Ground	RX 166.9375 TX 166.9375	KING NIFC	6
Prepared by (Resource Unit Ldr.) Fred Noack		Approved by (Planning Sect. Ch.) /s/ Ed Flowers			Date July 16, 2011		Time 1730

DIVISION ASSIGNMENT LIST		1. Branch <b>East</b>		2. Division <b>East Initial Attack</b>			
3. Incident Name <b>Honey Prairie Complex</b>		4. Operational Period Date: <b>7/17/2011</b> Time: <b>0800-2100</b>					
5. Operations Personnel							
<b>Operations</b>	Butch Hall 7/22	<b>Branch Director</b>		Brett Waters 7/25 / Bob Habeck (t) 7/21			
<b>Planning Ops</b>	Rick Dolan 7/22	<b>Division Supervisor</b>		Billy Taylor 7/26			
<b>Safety Officer</b>	Ray Durham 7/22 / Dave Marion (t) 7/21	<b>Division Supervisor</b>					
6. Resources Assigned this Period							
Strike Team/Task Force/ Resource Designator	Leader / Name / Designator	Last Shift Date	Num. Per.	Drop Off PT./Time	Pick Up PT./Time		
<b>TFLD (O-943)</b>	<b>Steven Clark</b>	R&R	1		R&R 7/17-18		
<b>DOZB (O-959)</b>	<b>Zac Cogle</b>	7/20	1				
<b>STEN (t) (O-1018)</b>	<b>Greg Thomas</b>	7/23	1				
ENG6 (E-390) WICNF 461	Lloyd Pete	7/24	3				
ENG6 (E-978)	Dennis Gillmer	7/26	3				
ENG6 (E-1081)	Tim Joy	7/20	2				
ENG6 (E-1082)	Brad Gregory	7/20	2				
ENG6 (E-1083)	Tony Harkins	7/20	2				
ENG6 (E-1084)	Mike Dean	7/20	2				
HCT2IA (C-14) Pat Rick 20B	Dustin Eldred	7/25	20	PVT			
WT3 (E-92)	Justin Ennis / Jeff Ellis	7/27	1	PVT			
TPL3 (E-500) NFFS	Don Johnson	7/20	2	PVT	Driver Mike Walker		
TPL3 (E-649) Bear Co	Mike Kikendale	7/30	2	PVT	R&R on 7/17 - 18		
<b>SOF2 (O-1067)</b>	<b>Larry Morse</b>	7/24	1				
<b>EMTP (O-640)</b>	<b>Mike Fincham</b>	7/19	1				
7. Control Operations <ul style="list-style-type: none"> <li>Respond to Initial Attack as requested</li> <li>Patrol and control return</li> <li>Initial attack IC will communicate sizeup information to the Honey Prairie communication.</li> </ul>							
8. Special Instructions							
9. Division/Group Communication Summary							
	Function	Frequency	Channel	Function	Frequency	System	Channel
Command E Okee Repeater	RX 164.625/103.5 TX 163.150/103.5	KING NIFC	3	Logistics		KING NIFC	
Tactical Div/Group	RX 168.775 TX 168.775	KING NIFC	9	Air to Ground	RX 166.9375 TX 166.9375	KING NIFC	6
Prepared by (Resource Unit Ldr.) Fred Noack		Approved by (Planning Sect. Ch.) /s/ Ed Flowers		Date <b>July 16, 2011</b>		Time <b>1800</b>	

<b>DIVISION ASSIGNMENT LIST</b>			1. Branch <b>ALL</b>		2. Division <b>Roads Group</b>		
3. Incident Name: <b>Honey Prairie Complex</b>			4. Operational Period Date: <b>7/17/2011</b>		Time: Day: <b>0800-2100</b>		
5. Operations Personnel							
<b>Operations</b>	Butch Hall 7/22			<b>Branch Director</b>			
<b>Planning Ops</b>	Rick Dolan 7/22			<b>Division Supervisor</b>			
<b>Safety Officer</b>	Ray Durham 7/22 / Dave Marion (t) 7/21						
6. Resources Assigned this Period							
Strike Team/Task Force/ Resource Designator	Leader / Name / Designator	Last Shift Date	Num. Per.	Drop Off PT./Time	Pick Up PT./Time		
<b>EQPM (O-928)</b>	<b>Ray Helget</b>	7/21	1	East Branch			
<b>THSP (O-1088)</b>	<b>Bert Early</b>	7/27	1				
<b>HEQB (O-1090)</b>	<b>Jonathan Luepke</b>	7/28	1				
Excavator (E-505)	Don Murray	?	1	PVT, West Branch			
Excavator (E-596)	Kenneth Enfinger	?	1				
Dump Truck (E-506)	Craig Smith	?	1	PVT, West Branch			
Dump Truck (E-529)	Ron Watson	?	1	PVT, West Branch			
Dump Truck (E-1074)		?	1	PVT, West Branch			
Dump Truck (E-1079)	Dennis Kight	?	1	PVT, West Branch			
Grader (E-228)	Steven Hendricks	?	1	CNTY, West Branch			
Grader (E-230)	Buddy Pittman	?	1	PVT, East Branch			
Grader (E-380)	Jason Merrit	?	1	PVT, East Branch			
Grader (E-597)	David Prpoes	?	1	PVT, West Branch			
WT (E-1022)	Louis Butler	?	1	PVT, East Branch			
7. Control Operations							
<ul style="list-style-type: none"> <li>Coordinate efforts w/ resource advisor and logistics</li> </ul>							
8. Special Instructions							
<ul style="list-style-type: none"> <li>Ensure that tractors are cleaned and free of debris daily. Examine work area for fire weakened snags.</li> <li>Ensure LCES are in place before operations begin and stay hydrated.</li> <li>Additional resources will be available from GFC, Florida DOF, FWS, and local cooperators.</li> <li>Drive defensively and with lights on at all times.</li> <li>See Medical plan for EMT support.</li> <li>Implement MIST tactics</li> </ul>							
9. Division/Group Communication Summary							
Function	Frequency	System	Channel	Function	Frequency	System	Channel
Command N.Okee Repeater	See ICS 205	KING NIFC		Logistics	See ICS 205	KING NIFC	
Tactical Div/Group	See ICS 205	KING NIFC		Air to Ground	See ICS 205	KING NIFC	
Prepared by (Resource Unit Ldr.) Fred Noack		Approved by (Planning Sect. Ch.) /s/ Ed Flowers			Date 7/16/2011		Time 1930



# AIR OPERATIONS SUMMARY

Prepared By: Tim Elder, AOBD

Prepared Date: 7.16.2011

Prepared Time: 1800

<b>1. INCIDENT NAME:</b> Honey Prairie	<b>2. OPS PERIOD DATE:</b> July 17, 2011	<b>START TIME:</b> 0830	<b>END TIME:</b> 1900	<b>SUNRISE:</b> 0637	<b>SUNSET:</b> 2034
<b>3. REMARKS (Safety Notes, Hazards, Air Operations Special Equipment, etc.):</b> <i>Be alert to rapidly changing weather conditions.</i> <i>NOTE: Latitude/Longitude format is "Degrees-Minutes-Decimal Minutes" (example: N30 41.42 W082 33.97)</i>				<b>5. TFR #:</b> 1/0249 (Box) 3000' MSL	

PERSONNEL	NAME	PHONE #	FREQUENCIES	AM	FM	
AOBD	Tim Elder	863-243-1438 Desk	AIR/ AIR FW	122.575		AIRTANKERS / LEAD PLANES - None Available ATGS AIRCRAFT- 57Z
ASGS(T)	Don Nicholas	218-360-1816	AIR/ AIR RW-FF	122.375		OTHER: Lake City Tanker Base: 386-758-9078 / FAX 752-8901 Pogo Helibase: 912-496-4415 / FAX 496-7077 Waycross Helibase 912-287-4479 / FAX 287-4458
ATGS Pogo	Everett Weniger	406-381-4176	Georgia AIR/AIR	122.075		ICP Helispot: 404-772-5317 Oketfenokee Dispatch: 912-496-7366 X230
ATGS Pogo	Carl Magill	541-519-0850	Georgia AIR/GRND (Smokey - Dozers)		159.285 W	ICP HELISPOT: N30 40.945 W082 33.640
HEB2 Pogo HB	Brian Campbell	404-772-5405	AIR/GROUND PRIMARY		166.9375	POGO HELIBASE: N30 44.03 W082 07.41
HEB2 Waycross HB	Jay Matsen	912-287-4479 Desk	AIR/GROUND ALTERNATE		166.9000	HOMERVILLE AIRPORT N31 03.35 W082 46.45
		206-218-8230 Cell	TOLC		168.0125	WAYCROSS AIRPORT N31 14.9 W082 23.7
			AIR GUARD		168.625 T110.9	BERGANZA HELISPOT N 31 07.22 W082 15.22

## 9. HELICOPTERS (Use Additional Sheets as Necessary)

FAA N#	TY	MAKE/ MODEL	BASE	AVAIL	MANAGER	FAA N#	TY	MAKE/ MODEL	BASE	AVAIL	MANAGER
N36BH	1	S-70	Waycross	0830	Zev Hunting 406-439-6768	26MW	1	K-1200	Pogo	0830	Kirby Cook 406-381-1212
206G	2	UH1H	Waycross	0830	J. Dominguez 530-310-3517	57Z	3	206-L4	Pogo	0830	Cindy Austin 208-241-3957
06901	2	UH1H	Waycross	0830	Kerry Koskela 559-359-2122						
N818MC	3	AS-350B3	Waycross	0830	Don Mitchell 307-330-8285						

## 10. TASK/ MISSION/ ASSIGNMENT (Type/ function includes: Air Tactical, Retardant, Recon, Personnel Transport, Bucket Operations, SAR, etc.)

TYPE/FUNCTION	NAME OF PERSONNEL OR CARGO (if applicable) or instructions for tactical aircraft	MISSION START	FLY FROM	FLY TO
Bucket Ops	N36BH, 206G, 6901, 26MW	As Requested	Fargo/Waycross	
Air Tactical	57Z	1200 / As Requested	Lake City/Fargo	
Recon	All recon missions must have direct approval by the AOBD. 818MC, 57Z	As Requested	Fargo/Pogo	
Medevac	N818MC	As Requested	Fargo/Waycross	



# Fire Weather Forecast



**FORECAST NO:** 71

**NAME OF FIRE:** Honey Prairie Complex

**PREDICTION FOR:** Day Shift  
**SHIFT DATE:** 7/17/11

**UNIT:** Okefenokee National Wildlife Refuge

**FORECAST ISSUED:** 7/16/11 at 1900

**SIGNED:** Mike Bettwy (T) / Joe Goudsward  
Incident Meteorologists

**WEATHER DISCUSSION:** A frontal boundary will dissipate south of the region today, resulting in just scattered precipitation. High pressure will build in aloft through mid week with a continued drying trend.

**TODAY:** Patchy morning fog, otherwise mostly cloudy with scattered showers and thunderstorms.

**MAXIMUM TEMPERATURES:** 87-92 degrees

**PM HEAT INDEX:** 94-99 degrees

**MINIMUM HUMIDITY:** 50-60%

**20 FT WINDS:** AM: E 3-8 mph  
PM: NE 8-12 G20 mph

**STABILITY/INVERSION:** Morning inversion to 300 feet through 0900, then rising to 5600 feet by 1500

**TRANSPORT WINDS:** ENE 21 mph

**DISPERSION INDEX:** 64, Good

**CHANCE OF PRECIPITATION:** 40%

**PRECIPITATION AMOUNTS:** 0.10"- 0.25", with locally higher amounts

**LIGHTNING ACTIVITY LEVEL:** 3

**TONIGHT:** Partly cloudy. A 20% chance of showers and thunderstorms until midnight. Patchy fog developing after midnight. Winds E 2-5 mph. Low temperatures 67-72. Max RH 90-100%.

**MONDAY:** Patchy early morning fog, otherwise partly cloudy. Isolated showers and thunderstorms in the afternoon.

**MAXIMUM TEMPERATURES:** 90-95 degrees

**PM HEAT INDEX:** 97-102 degrees

**MINIMUM HUMIDITY:** 45-55%

**20 FT WINDS:** AM: SE 3-7 mph  
PM: NE 7-11 G16 mph

**TRANSPORT WINDS:** E 17 mph

**DISPERSION INDEX:** 63, Good

**CHANCE OF PRECIPITATION:** 20%

**LIGHTNING ACTIVITY LEVEL:** 2

**EXTENDED FORECAST:**

	<b>TUESDAY</b>	<b>WEDNESDAY</b>	<b>THURSDAY</b>
<b>SKY/WEATHER</b>	Partly Cloudy / Isolated Thunderstorms	Mostly Sunny / Isolated Thunderstorms	Partly Cloudy / Scattered T-Storms
<b>CHANCE PRECIP</b>	20%	20%	30%
<b>MINIMUM RH</b>	40-50%	40-50%	45-55%
<b>20 FT. WINDS</b>	AM: NE 2-4 mph PM: NE 5-8 mph	AM: SSW 2-5 mph PM: SW 6-10 mph	AM: SSW 2-5 mph PM: SSW 6-10 mph
<b>MIN/MAX TEMPS</b>	70 / 95	73 / 97	75 / 97

-end-

**FIRE BEHAVIOR FORECAST**

<b>Fire: Honey Prairie Complex</b>	<b>Unit: GA-OKR-000001</b>	<b>Prediction for Day Shift</b>
<b>Forecast #70 Issued: 07/16/2011 1830 hrs</b>	<b>Signed: /S/John Kern</b>	<b>Shift Date: Sunday 07/17/11</b>

**GENERAL FIRE BEHAVIOR**

Fuels around the Okefenokee Wildlife Refuge are predominately Fuel Model 7 (Southern Rough). Large to moderate acreage tracts of commercial timberland are mixed in throughout the entire perimeter surrounding the refuge. Fast moving wildfires with extremely high flame lengths and rapid rates of spread occur within the swamp. As fire transitions to the upland, torching and crown fires are common. Long Range spotting is possible.

**Indicators/Threshold for Increased Fire Activity**

- Relative humidity dropping below 45%
- Winds above 10 mph
- **Heavy fuel loadings**
- Fine dead fuel moisture 8% or less
- Dispersion above 70
- **\* Items in BOLD are predicted to occur today\***

**SPECIFIC FIRE BEHAVIOR**

- **Fire behavior will be influenced by past precipitation. All portions of the fire have received significant rainfall recently.**
- **Expect fire to continue spreading through the shrub fuels with low rates of spread and minimal flame lengths. Expect areas with high heat concentrations to increase fire intensity with less than 60% RH, leading to column development early afternoon. (Wind gusts will temporarily increase fire intensities). LAL 3**

Fuel Type	Rates of Spread	Flame Length	Spotting Distance	Firebrand Ignition
<b>Winds at 5 - 12 G 20 mph</b>				
Shrub Fuels – SH5	5 - 24 ch/hr	3 - 6 feet	1/10 - 3/10 mile	23%
Heavy Southern Rough- SH8	5 – 22 ch/hr	5 -10 feet	1/10 -3/10 mile	23%
Timber Litter-Reburn TL8	1 - 5 ch/hr	1 - 3 feet	1/10 - 3/10 mile	23%
Small Pine Plantation w/grasses GR5	2 – 12 ch/hr	1 - 3 feet	1/10 – 3/10 mile	23%

**One hour fine dead fuel moisture is at 12% for Sunday.** Moisture from repeated rains have reduced the fire threat. 1,000 hour fuels are no longer drier than normal for this time of year. There is reburn potential in all divisions due to the amount of needle cast. Should a winds become stronger than predicted, expect fire behavior to increase above predicted levels. Heavier firebrands can also be lifted higher and further increasing likelihood of spots to max predictions. **In areas where fuels have been herbicided, expect quick ignitions and extreme heat, quick rate-of –spread, and group tree torching producing spotting problems.**

**NOTE- FIRE BEHAVIOR CALCULATIONS ARE FOR FIRES IN UNBURNED FUELS INCLUDING NEW IA STARTS.**

<b>West</b>	<b>A</b>	<i>Wetting rains have moistened fuels. Falling snags still pose a threat to fire personnel and the boardwalk. <b>40% chance of rain</b></i>	<b>West</b>	<b>T/V</b>	<i>Rains did fall in this area however fire will continue a slow spread to the North and west. Be heads-up for falling snags. <b>40% chance of rain</b></i>
	<b>B-G</b>	<i>Wetting rains have moistened fuels. Be heads-up for falling snags. <b>40% chance of rain</b></i>			
	<b>Y Z</b>	<i>Rains did fall in this area however areas of heat will remain near Div Y/Z perimeter with possible flare-ups in moderate to high fuel loadings. Be heads-up for falling snags. <b>40% chance of rain</b></i>	<b>East</b>	<b>H, I J, K L,M N,O</b>	<i>Rains did fall in this area however some areas of interior fire in Divs N and O will continue to burn. Heads-up for falling snags. <b>40% chance of rain</b></i>

**Night Ops – No Night Operations are Planned.** Scattered showers and thunderstorms will continue with patchy fog developing after midnight.

**Air Operations:** Expect possible areas of heavy smoke especially on the west side of the fire.

**SAFETY:**

**WINDS –** Stay abreast of changing wx conditions throughout the entire shift. **THUNDERSTORMS -** these severe winds can create extreme fire behavior, with winds gusting over 30 mph. **SNAGS – Snags are falling in all Divisions – will be influenced by Thunderstorm outflow winds. FUELS:** Watch for pockets of cured shrubs or blankets of red needles beginning to cover the forest floor. 1,000 and 10,000 hour fuels as well as deep duff pockets are providing the heat source. Stay focused, and put LCES in place before starting operations. Watch for standing burning snags that can fall without warning. *Energy Release Component (ERC) has dropped below the 50<sup>th</sup> percentile as rain fall is recorded.*

**LCES Analysis of Tactical Actions**

Incident Name: Honey Prairie Complex				Date and Time Prepared: July 16, 2011 1600 hrs				Operational Period: Day and Night July 17, 2011							
Location on Incident															
Divisions/Groups															
TACTICAL HAZARDS	A,B,C	D,E,F,G	H, I	J, K	L	M	N	O	T	V	Y	Z	ICP	Struct Prot Grp	Mitigations
Powerlines	*	*	*	*	*	*	*	*	*	*	*	*	*	*	Assume all power lines are charged. Avoid all contact with downed lines.
Complacency	*	*	*	*	*	*	*	*	*	*	*	*	*	*	Follow work/rest guidelines.
Indirect Fireline								*	*	*	*	*			LCES; IRPG Pg. 10, Indirect Attack; Burnout as possible.
Anchor Points	*	*	*	*	*	*	*	*	*	*	*	*			Ensure fireline is anchored. Use natural features when possible. Use Local Resource Advisor
Extreme Conditions (Spotting, Wind)															LCES, Establish Trigger Points. Maintain Situational Awareness. Establish Lookouts as needed. Follow MAP actions.
Unburned Area Reburn Potential	*	*	*	*	*	*	*	*	*	*	*	*		*	LCES, Utilize Air Attack if Available. Know Predicted Weather and Fire Behavior Forecast.
Hazard Trees	*	*	*	*	*	*	*	*	*	*	*	*		*	IRPG Pg. 80, Identify and flag hazard trees. Look Up, Down and Around
Hazardous Materials	*	*	*	*	*	*	*	*	*	*	*	*		*	IRPG Pg. 26-27, HAZMAT. Identify and map propane tanks, electric lines, septic tanks and determine bridge wgt. limits prior to use.
Vehicle Use (Travel 1HR+, Roads)	*	*	*	*	*	*	*	*	*	*	*	*		*	Park vehicles for egress. Follow traffic plan. Use seat belts, drive with headlights on and keep windshields clean. Use spotters. Drive Defensively. Use multiple camp locations to reduce drive time.
Communications	*	*	*	*	*	*	*	*	*	*	*	*			Ensure radio is cloned with the current communications plan. LCES
Structure Protection		*	*	*	*	*	*	*	*	*	*	*			Use structure protection checklist, PPE, Triage. Utilize Local Fire Departments
Air Operations (multiple aircraft, line support)	*	*	*	*	*	*	*	*	*	*	*	*			Monitor Air Guard at all times. Flight follow through Dispatch. Keep drop areas clear of personnel.
Mechanical Equipment	*	*	*	*	*	*	*	*	*	*	*	*		*	Use PPE, ensure all safety devices are functional. Operator must see you before approaching equipment. Maintain proper distance away from equipment working in the area.
Escape Routes Safety Zones	*	*	*	*	*	*	*	*	*	*	*	*		*	LCES, Establish and identify safety zones & escape routes. Know where these are located and the route to them. IRPG p.7
Thunderstorm Safety	*	*	*	*	*	*	*	*	*	*	*	*		*	Keep an eye on changes in weather. Take hourly weather observations. Comms will provide weather updates when needed.
Wildlife	*	*	*	*	*	*	*	*	*	*	*	*		*	Keep food items off the line and use refuse containers around camp. Use insect repellent as needed. Use caution around water as wildlife is concentrated.
Sun Exposure	*	*	*	*	*	*	*	*	*	*	*	*		*	Use sunblock as needed.
Heat	*	*	*	*	*	*	*	*	*	*	*	*		*	Hydrate prior to going on line and all during the day. Recognize the signs of heat related injuries. Take frequent breaks throughout the work period.
Air Quality	*							*	*	*	*	*		*	Rotate personnel frequently out of smoke. Ensure off-line rest is clear of smoke.
Railroad Crossings	*	*	*	*	*	*	*	*	*	*	*	*		*	Visually check all railroad crossings to ensure track is safe to cross. Don't bunch up, leave room for other vehicles to cross. Don't try to beat the train.
Safety Officer:													Barry Coulliette SOF2		

# SAFETY MESSAGE

JULY 17, 2011

## Major Hazards and Risk

### Thunder Storms

Lifting

Driving

Hygiene

Dehydration

Complacency

Logging Operations

Wildlife

### Mitigations



Thunderstorms have the ability produce strong winds heavy rain and frequent lightning. Take refuge to your vehicles and insure you are parked in a safe place. Any of these storms are capable of producing strong winds. All trees are capable of falling under strong wind events.

When we are picking up and transporting hose pumps back to ICP use proper lifting techniques.

To prevent the spreading of germs wash your hands often. It is especially important before you eat.

Wearing your seat belt will save your life. It is also the law in most states. The use of seat belts is policy on all federal assignments. So arrive alive wear your seat belt. Drive at the posted speed limit or less.

The heat index is again going to be high today. Stay hydrated take frequent breaks.

Seeing and doing the same things every day leads to complacency. Stay alert to all the known hazards. Conduct tail gate safety sessions.

Logging operations are going to be on the decrease because of taking Sunday off. They will be on the increase tomorrow. Pay attention to log trucks and logging equipment working in your environment and give them room. Avoid logging operations if at all possible.

Do not feed or harass alligators.

Safety Officers,

Barry Coulliette

West Branch

Ray Durham

East Branch

MEDICAL PLAN	Incident Name Honey Prairie Complex	Date Prepared 7/16/2011	Time Prepared 1800	Operational Period 7/17/2011 DAY SHIFT	
<b>5. Incident Medical Aid Station</b>					
<u>Medical Aid Stations</u>	<u>Location</u>			Paramedics Yes No	
MEDICAL UNIT (ICP)	Honey Prairie Complex ICP- Lodge 5 (912)-637-5236 Joe Fowler (EMT-B) MEDL (912)-286-1648/Dominic Burchett (EMT-P) MEDL(t) (912)-286-1644 Evan Dean (EMT-P)(503)975-6444			X	
WEST BRANCH (Line EMT)	Bob Eaton (EMT-B)919-423-1055/ Levi Clymer(EMT-P)(417)658-5155 (A,B,C DIV) Paul Smith (EMT-B) (360)775-4513 (D,E,F,G DIV) Jefferson Halladay (EMT-P)801-518-9857 (T DIV) Johnny Oker-Blom(EMT-P)404-558-4476 (V DIV) Wes Lathen (EMT-P)(435)760-8481/Peggy Miller(EMT-P)(240)793-4238(Y DIV) Chad Simmons (EMT-P)(404)772-5344 (Z DIV) Matthew Stivers (EMT B)256-375-4260 (West IA)			X	
EAST BRANCH (Line EMT)	Kurt W. Berge (EMT-P)801-404-6434 (H,I,J,K DIV) Mike Fincham(EMT-P)(530)-859-8507 (East IA) Keith Barker(EMT-P)(244)330-7798/ Michael Graham(EMT-B)(912)-286-1674 (L,M DIV) Bert Hyde(EMT-B)(218)394-0934 / James Brown (EMT-P)(360)-775-5413 (N,O DIV)			X	
<b>Ambulance Services</b>					
Name	Address	Phone	Paramedic Yes No		
Clinch County EMS (WEST SIDE)	West Branch Council Road & HWY 94	Channels 4, 11, 13 912-286-1673 EMS Incident Cell	Yes		
Ware County EMS (NORTHSIDE)	Waycross, Georgia (911 to activate)	912-281-9467	Yes		
Charlton County EMS (EAST SIDE)	Folkston, GA (911 to activate)	912-496-7321	Yes		
<b>Air Ambulance Service</b>					
Trauma 1	Lake City , FL (16 min/air to Fargo ICP)	1-800-223-4878(freq. 155.340)	Yes		
Trauma 1	Jacksonville, FL (26 min/air to Fargo ICP)	1-800-223-4878(freq. 155.340)	Yes		
AirMed	Augusta, GA (2 hrs/air to Fargo ICP)	1-888-792-9245(freq. 155.340)	Yes		
Lifeflight	Jacksonville, FL (35 min/air to Fargo ICP)	1-877-870-7779(freq. 155.340)	Yes		
Air Evac	Waycross, GA (17 min/air to Fargo ICP)	1-800-247-3822(freq. 155.340)	Yes		
US Coast Guard (Heli-Rescue)	Savannah GA	1-912-652-4646 (freq. 155.340)	Yes		
<b>7. Hospitals</b>					
Name	Address	Travel Time Air Ground	Phone	Helipad Yes No	Burn Center Yes No
Satilla Regional	410 Darling Ave Waycross Ga N 31°13.56 W 82°21.058	18 min 45 min	912-283-3030	Yes	No
Clinch Memorial Hospital (WEST SIDE)	1050 Valdosta HWY Homerville, GA		912-487-5211 ext 4502	Yes	No
Charlton Memorial Hospital (EAST SIDE)	1203 3 <sup>rd</sup> St. Folkston, GA		912-496-2531	Yes	No
Memorial Hospital	Savannah, GA 4700 Waters 3200.7 8107.6	30 min	912-350-8999	Yes	No
Shands Hospital (level I)	Jacksonville, FL N 30°20'97 W 82° 13'992	26 min 1.5 hrs	800-223-4878	Yes	Yes
Shands Burn Center	Gainesville, FL 38.33 N 082 20.73W	33 min 1.5 hrs	352-265-0300	Yes	Yes
<b>8. Medical Emergency Procedures</b>					
<ol style="list-style-type: none"> <li>Notify DIVS of medical problem</li> <li>DIVS notifies COML and MEDL</li> <li>MEDL contacts POC for following <ol style="list-style-type: none"> <li># of pts</li> <li>Status of pts medical problem</li> <li>Location of pts</li> <li>Transport method</li> <li>Necessary resources</li> </ol> </li> <li>MEDL coordinates medevac/patient transport with SOF2, OPS2 and other relevant resources.</li> </ol> <p><u>Life threatening injury</u>: an injury that could mean the loss of life, limb, or eyesight  <u>Minor injury</u>: an injury that results in the removal of a pt from the line but with less urgency as a life threatening injury  <u>Medevac</u>: the most urgent transport of a pt suffering from a life threatening injury  Patient transport: transport for minor injuries  <u>Medical problem</u>: a physical or mental ailment that occurs to an individual; to include illnesses and traumatic injuries  <u>Point of contact (POC)</u>: individual who will be directly advocating for patient care and transport (line medic, crew boss, DIVS etc)  *Request that FFTR/Engine crews or single resources let MEDL know if they have any EMTs or Paramedics and if they have equipment with them.</p>			<b>HELISPOTS</b> Pocket Helispot 30 47 30.02 x 82 22 39.5 (West side), mile marker 4, HWY 177 Steven C. Foster State Park Fargo Helispot 30 40.945 x 082 33.640 (West side), HWY 441- Steven C. Foster Visitor Center POGO Helibase 30.44.03 x 82.07.41 (East side) <u>Evac Yankee</u> Helispot 6 Rd. 32 and 32A, N 30° 53.280 W 082° 33.880 Helispot 7 Tatum Rd. Pond N 30° 50.280 W 082° 33.857 *Alternate site can be established following guidelines for safety found with IRPG and local EMS resources.		
Prepared by: Joe Fowler MEDL/Dominic Burchett MEDL(t)			10. Reviewed by: Barry Coulliette SOF		

INCIDENT RADIO COMMUNICATIONS PLAN ICS-205		Incident Name	Honey Prairie		GROUP 22	Date/Time Prepared	Operational Period Date/Time				
						07/16/2011-18:00	7/17/2011 0800-2100				
Ch #	Function	Channel Name	Assignment	RX Freq	NW	RX Tone/NAC	TX Freq	NW	TX Tone/NAC	Mode A,D or M	Remarks
1	Command	West Okee Repeater	Sec West Branch CMD	167.1250	N	156.7	163.1500	N	156.7	A	Stephen Foster State Park
2	Command	South Okee Repeater	Sec East/West Branch CMD	164.7750	N	123.0	163.1500	N	123.0	A	Eddy Florida
3	Command	East Okee Repeater	PRIMARY East Branch CMD	164.6250	N	103.5	163.1500	N	103.5	A	Refuge Headquarters
4	Command	NIFC C2	PRIMARY West Branch CMD	168.100	N	CSQ	170.4500	N	123.0	A	NOT linked to OKEE System
5	Command	North Okee Repeater	PRIMARY North Branch CMD	164.5750	N	206.5	163.1500	N	206.5	A	Waycross
6	Air-Ground	Air to Ground	PRIMARY	166.9375	N	CSQ	166.9375	N	CSQ	A	
7	Tactical	MOB-MOB	GFC Contingency	159.3900	W	CSQ	159.3900	W	156.7	A	
8	Tactical	V-Fire 21W WHITE	Structure Protection Group&I.A.	154.2800	W	CSQ	154.2800	W	156.7	A	
9	Tactical	USFS 9	DIV A,B,C,L, M T, M & (East I/A)	168.7750	N	CSQ	168.7750	N	CSQ	A	
10	Tactical	S.E. Compact	DIV	159.2850	W	CSQ	159.2850	W	CSQ	A	
11	Tactical	USFS 11	DIV Z, N, O	168.2000	N	CSQ	168.2000	N	CSQ	A	
12	Tactical	Refuge Tac 1	DIV H, I, J, K	168.3500	N	CSQ	168.3500	N	CSQ	A	
13	Tactical	FL 190	DIV D, E, F, G, V, Y	151.2725	N	CSQ	151.2725	N	CSQ	A	
14	Command	DIV J RPT	East Branch	170.4125	N	CSQ	165.9625	N	123.0	A	NOT linked to OKEE System
15	Air-Ground	Air to Ground	SECONDARY	166.9000	N	CSQ	166.9000	N	CSQ	A	
16	EMERGENCY	AIR Guard	AIR OPS.	168.6250	N	CSQ	168.6250	N	110.9	A	
Prepared by (Communications Unit) Brian Matthews Incident Dispatcher: 912-286-1660											
<b>Cloning at ICP communications and briefings,</b>											

The convention calls for frequency lists to show four digits after the decimal place, followed by either an "N" or a "V", depending on whether the frequency is narrow or wide band. **Mode** refers to either "A" or "D" indicating analog or digital (e.g. Project 25) or "M" indicating mixed mode. All channels are shown as if programmed in a control station, base stations, mobile or portable radio.

# HONEY PRAIRIE PHONE LIST

07/17/11

**Incident      Communicatation      (24 Hour Dispatch)      912-286-1660**

AGENCY OFFICIALS			OPERATIONS      912-637-5248		
Curt McCasland	602-359-0013	USFWS AA	Rick Dolan	352-353-5101	Planning Operations
Mindy Gautreaux	912-282-7500	USFWS Deputy AA	Butch Hall	352-225-1280	Field Operations
Frank Sorrells	912-381-7503	GFC AA	Roger Gill	386-963-9496	Field Operations
James Karels	850-228-7763	FL DOF AA	<b>WEST BRANCH</b>		
Diane Adams	912-266-5421	GEMA	Tom Donohoe	404-772-5384	West Branch
Mike Housh	912-281-1575	USFWS AREP	Greg Jacobson	208-642-7587	DIVS A, B, C
<b>COMMAND</b>			Toby Herold	530-598-4195	DIVS D, E, F, G
Don West	352-353-5044	IC	Paul Pellegrini	907-299-0108	DIVS D, E, F, G (T)
Verne Reggal	386-547-7293	Deputy IC	Brian Rhodes	619-318-1623	DIVS T
Trent Ingram	229-726-0285	Unified IC (GA)	Shawn Duggar	850-508-7736	DIVS V
Gary Beauchamp	352-620-4424	Unified IC (FL)	Gary Smith	417-455-3391	DIVS Y
Mike Dueitt	850-228-0320	Unified IC (FWS)	Dan Helterline	406-241-1467	DIVS Y (T)
<b>LIAISON</b>			Glen Palfrey	208-290-4663	DIVS Z
Skippy Reeves	912-387-5923	Liaison Officer FWS	Jesse Knox	707-498-8936	DIVS Z (T)
<b>INFORMATION      912-637-5247</b>			Don Hammack	406-253-2535	IA/Structure Protection
Ludie Bond	352-258-6084	Fire Information	Bob Schober	907-978-6894	IA/Structure Protection (T)
			<b>EAST BRANCH</b>		
			Brett Waters	406-581-6198	East Branch
			Matt Filbert	208-481-1068	DIVS H, I, J, K
Mark Wurdeman	912-496-2566	Fire Information (JIC)	Steve Griffin	760-417-0728	DIVS N, O
<b>SAFETY</b>			Ernest Schmidt	320-760-4781	DIVS N, O
Barry Couliette	404-772-5406	Safety Officer	Billy Taylor	850-544-2229	East IA
Ray Durham	770-280-7684	Safety Officer	Shawn Denowh	208-724-0827	East IA
Joe Fowler	912-286-1648	Medical Unit Leader	<b>AIR OPERATIONS      912-637-5254      FAX 912-637-5237</b>		
Field EMT	912-286-1674	Medical Unit Leader	Tim Elder	863-243-1438	Air Ops Branch
Medical Unit	912-637-5236		Don Nicholas	218-360-1816	ASGS(t)
Tom Lail	404-772-5338	Safety Officer	Ken Malgren	404-772-5317	Fargo Helibase
<b>DISPATCH</b>			Carl Magill	541-519-0850	ATGS – Fargo
Okeefenokee Dsp	912-496-7366	Okeefenokee	Brian Campbell	404-772-5405	HEB2 – Fargo
Suwannee Dispatch	386-758-5700	Fla wildfires, other	Jay Matsen	912-287-4479	HEB2 – Waycross
Waycross Dispatch	912-287-4915	Ga wildfires, other	=	206-218-8230	(cell)
<b>LOGISTICS      West</b>			<b>PLANNING      912-637-5241      FAX 912-637-5237</b>		
Shane Locke	404-772-5399	LSC	Ed Flowers	912-286-4643	Planning Section Chief
Butch Mallet	404-772-5319	LSC	Scott Crosby	912-637-5241	Situation Unit Leader
Bill Hitt	912-637-5251	FACL	DEMOB	912-637-5241	
Melvin Reese	352-442-7891	Base Camp Mgr	Joe Goudsward	240-778-5279	IMET
Gary Sisson	386-983-2474	RCDM	Mike Bettwy	240-778-5019	IMET (T)
Hotel Mgr	912-637-5251	Lodging	John Kern	404-772-5393	FBAN
Kevin Reish	404-276-1998	Security Manager	<b>FINANCE      912-637-5244      FAX 912-496-4710</b>		
JV Thompson	404-772-5380	GSUL	Linda Starling	770-658-6641	Finance Section Chief
Dennis Spear	404-772-5389	GSUL(t)	Rita Loper	912-281-6876	Buying Team Leader
Nat Wright/Bob Kookan	404-772-5318	Food Unit Leader	Ron Knowles	907-230-4945	Business Advisor
Linda Bruss	912-637-5239	SPUL	Duane Welch	404-558-8859	Comp Claims
Rhonda Hughes		SPUL(t)	=	404-844-7042	(cell)
Brian Mathews	561-914-7206	COML			



ORDERING		FAX 912-637-5240	LANDOWNERS		
Cindy Tisdell	912-637-5262	Ordering Manager	Jim Barrett	229-412-3133	Langdale/GOAL Chairman
Abe Philipson	912-637-5239	Ordering Manager	Wesley Langdale	229-220-2602	Langdale
LOGISTICS		912-496-2111	East		
		912-496-4710	Fax		
Dave Klym	256-497-8490	LSC	Mike Conlon	386-365-3882	Rayonier Unit Supervisor
Duane Stephens	912-496-2111	Base Camp Mgr	Ray Carter	386-288-6626	Rayonier
John Kaupa	256-497-8388	Supply Unit Leader	Ed Carter	386-288-6626	Rayonier
Joe Hoisington	530-905-3715	EQM	Doug Nuss	912-390-1037	Rayonier
Kelly Helget	256-497-8334	Roads / HEQM	Randall McCrady	912-283-4077 W 912-288-0877 C	Rayonier
	239-887-1817	Security Manager	Colin Myerson	229-506-1565	Superior Pine Products Co
Medical Unit	912-387-6787		Robbie Lee	229-356-0526	Superior Pine Products Co
EAST MSG CTR	912-496-4698		Eric Harris	912-637-5597	Superior Pine Products Co
COOPERATORS			Superior Pine Office	912-637-5261	Superior Pine Products Co
COUNTY			Al Alexander	850-843-0104	The Forestry Co
	912-496-7229	Charlton County EMA	Savell Schmidt	850-843-1181	The Forestry Co
John F. Meyer - Chairman	912-496-2549	Charlton County Commissioners	John Bogue	850-843-1192	The Forestry Co
Dobie Conner	912-496-7321	Charlton County Sheriff	Joe Hopkins	912-276-0911	Toledo Timber
Jesse Booth	912-520-0061	Clinch County EMA	Chris Gowan	912-276-0965	Toledo Timber
Jonathan Daniel	912-281-5158	Ware County EMA	Martin Bell	912-283-0583	Swamp Park
Jessie Jordan	912-816-6063	Ware County Fire Dept	Crystal Peeples	352-316-0632	FIA
Joe Morris	912-281-6020	Ware County Sheriff	Steve Davis	912-614-1828	Davis Community
Robbie Sutton	912-599-9027	Tri County 911	Trevor Fortner	912-599-9271	Little Suwannee
STATE			Tim Jarrell	912-223-7120	Hancock Forest Mgmt.
GFC Fargo District Office	912-637-5270		RAILROADS		
GFC Satilla District Office	912-287-4915		Norfolk Southern	800-453-2530	
Blair Joiner	229-237-9026	GFC Clinch Chief Ranger	Sid Moody	904-318-7983	Norfolk Southern Railroad
Jason Gillis	912-314-9233 912-637-5504	GFC Satilla Assistant Mgr.	Chad Edwards	404-582-4909	Norfolk Southern Railroad
Brian Gray	229-894-4628 912-673-5274	Stephen Foster State Park		540-797-9918	
Travis Griffin	912-281-5790	Laura Walker State Park	Eric Sams	904-576-9907	
Crystal Paulk- Buchanan	404-535-1048	GEMA PIO	Norfolk So Emergency Dispatch	404-529-1597	
Georgia Highway Patrol	912-287-6500		CSX Randy Dixon	912-270-0699	
FEDERAL			CSX Dispatch	800-232-0144	
Okefenokee Fire Shop	912-496-4181				
Okefenokee NWR HQ (East)	912-496-7366				
Okefenokee NWR (West)	912-637-5322				
Okefenokee Visitor Center	912-496-7836				

# FINANCE

07/16/11

## EQUIPMENT

PLEASE put E#'s on top right corner of shift ticket.

East side fuel supplier: Please send all fuel books to Finance daily.

E-93	Wildland Fire - Remember to put E# on shift ticket
E-136	National Fire Contracting, Inc. - Turn in tickets for 7/14-7/16
E-526	Pierce Timber - Missing Tickets 6/29 - 7/02
E-983	Tim-Prep - Shift Tickets for 7/11&12 need signatures and no Shift Ticket for 7/13
E-996	Maine - Need ending time on shift ticket for 7/14
E-1000	PatRick - Need Invoices for Motel Rooms that were paid for by the Crew to get reimbursed
E-1016	Wildland Warehouse - No time for 7/12
E-1083	GFC - Missing CTR's for 7/12&7/13, Engine Tickets need to be turned in after 7/13
E-1085	Cranes Wildfire - Need time brought up to date for demob
E-1091	Florida Forest Service - Need to show Operational Period 800-2000 12 hours

## TIME

O-4	Sarah Sorenson - Missing CTRs for 7/11-7/14
O-8	Thomas Crews - Missing CTRs for 7/07, 7/11-7/14
O-9	Cory Bryant - Missing CTR for 7/14
O-11	Howard McCullough Jr - Missing CTRs for 7/09-7/14
O-20	Frank Enright - Missing CTRs for 7/10-7/14
O-51	Mindy Gautreaux - Missing CTRs for 7/07-7/14
O-289	Nicholas Hawkins - Missing CTRs for 7/11-7/14
O-390.3	Lloyd Pete - Missing CTRs, Might be Days Off - Please see Finance
O-405.4	Brett Gore - Missing CTRs for 7/07-7/08
O-436	Eric Nelson - Missing CTRs for 7/12-7/14

(Continued)

## **TIME (Continued)**

O-883	Steven Siam - Missing CTR for 7/14
O-945	Walter Mendoza - Need clarification on times for 7/06
E-831.8	Jeffrey Hussey - Missing CTRs for 7/11
E-1046.1	Karen Mobley - Missing CTRs for 7/10-7/12 - Days Off? See Finance.
E-1046.2	David Avernheimer - Missing CTRs for 7/10-7/12 - Days Off? See Finance.
E-1046.3	Karl Gaillard - Missing CTRs for 7/10-7/12 - Days Off? Please see Finance.

## **DEMOB NOTES**

IF YOU ARE GETTING CLOSE TO TIMING OUT, PLEASE SPEAK WITH YOUR FIRE LINE SUPERVISOR  
**ASAP.**

IF POSSIBLE, PLEASE COME BY FINANCE AND REVIEW YOUR TIME THE DAY BEFORE YOU DEMOB.  
ALSO, *BRING YOUR LAST CTR'S AND SHIFT TICKETS WITH YOU* TO FINANCE WHEN YOU DEMOB  
RATHER THAN TURNING IN AT THE BRIEFING IN THE MORNING. THIS WILL HELP AVOID DELAYS THE  
DAY OF DEMOB. THANKS.

WHEN DEMOBING FINANCE SHOULD BE THE NEXT TO THE LAST SECTION YOU GET SIGNED OFF ON  
YOUR CHECKOUT FORM WITH DEMOB UNIT BEING THE LAST. WE WILL CHECK YOUR TIME FOR YOU  
PRIOR TO EVERYTHING ELSE BEING SIGNED OFF, BUT WILL NOT SIGN OFF TIME UNTIL THE OTHER  
SECTIONS ARE DONE.

**DMOB for July 16 to July 21 Contact DMOB-Tim @ 912-637-5241**

**ALL RESOURCES - START YOUR DEMOB PROCESS THE DAY BEFORE YOUR DEMOB DAY. YOU NEED TO COMPLETE THE DEMOB PROCESS AND BE READY TO LEAVE ICP BY 1300 or 1700 HRS -**

Number	Name	Kind	UnitID	Travel Method	Jetport	Travel Date
E-717	RIGONI LOWBOY	LOWBOY	GAOK	POV		07/16/2011
O-869	CUPIT, MARK	SEC	MSSC	AOV	AEX	07/16/2011
E-136	ENG6 #5	ENG	FLFNF	POV		07/17/2011
E-136.5	CATES,	ENG	FLFNF	POV		07/17/2011
E-136.6	KERR, TERR	ENO	FLFNF	POV		07/17/2011
E-179	ENG6 #4	ENG	FLFNF	POV		07/17/2011
E-502	WILDLAND FIRE	ENG	FLFNF	POV		07/17/2011
E-512	TIPTON &	WA	NCNC	POV		07/17/2011
E-526	PIERCE-TIMBER-	FEL	GAOK	POV		07/17/2011
E-560	TIPTON &	WA	NCNC	POV		07/17/2011
E-646	CAT D4 LGP	DOZ	MSMN	POV		07/17/2011
E-649	BEAR COUNTRY	TPL	FLFNF	POV		07/17/2011
E-649.2	KIKENDALL,	TPO	FLFNF	POV		07/17/2011
E-716	TIM-PREP	WT	GAOK			07/17/2011
E-723	SEMI LOWBOY	LO	MSMN	POV		07/17/2011
E-816	WISCONSIN ENG	ENG	WIWIS	AOV		07/17/2011
E-817	WISCONSIN	ENG	WIWIS	AOV	RHI	07/17/2011
E-818	BABCOCK ENG6-	ENG	WIWIS	AOV	CWA	07/17/2011
E-826	2003 FORD F-350	ENG	GAOK	POV		07/17/2011
E-993	ENGINE - T6 -	ENG	GAR08	AOV		07/17/2011
E-1012	ENG6	ENG	GAOK	POV		07/17/2011
E-1021	TIPTON &	WA	GAOK	POV		07/17/2011
E-1024	TIPTON &	WA	GAOK	POV		07/17/2011
E-1045	ATTACK ONE	ENG	GAOK	POV		07/17/2011
E-1047	ENGINE - T6 -	ENG	WIR09	POV		07/17/2011
E-1051	ENGINE - T6 -	ENG	WIR09	POV		07/17/2011
E-1052	ENGINE - T6 -	ENG	MOMO	POV		07/17/2011
E-5007	ENG6 LANGLEY	ENG	FLFNF	POV		07/17/2011
E-5008	LANGLEY # 6	ENG	FLFNF	POV		07/17/2011
E-5011	ENG6 SMOKEY	ENG	NCNC	POV		07/17/2011
E-5012	ENG6 SMOKEY	ENG	NCNC	POV		07/17/2011
O-892	RIPLEY, STEVEN	SOF	FLFLS	POV	GNV	07/17/2011
O-902	CAUGHLIN, TIM	ATG	WIR09	A/R	MKE	07/17/2011
A-35	POGO TYPE 1	HM				07/18/2011
E-93	WATER TENDER	WT	FLFNF	POV		07/18/2011
E-503	WILDLANDS	ENG	FLFNF	POV		07/18/2011
E-517	SMOKEY	WT	NCNC	POV		07/18/2011
E-606	CAMBRIDGE	DOZ	MDBW	AOV	BWI	07/18/2011
E-606.5	DANIELS,	DZO	VAGD	AOV	ORF	07/18/2011
E-606.6	CARMON JR,	DZO	VAGD	AIR	ORF	07/18/2011
E-992	ENGINE - T6 -	ENG	GAR08	AOV		07/18/2011
E-1000	PATRICK FIRE	ENG	NCNC	POV		07/18/2011
E-1001	PATRICK FIRE	ENG	NCNC	POV		07/18/2011
E-1053	ENGINE - T6 -	ENG	MOMO	POV		07/18/2011
E-1062	ENGINE - T6 -	ENG	COR0	POV		07/18/2011
E-1063	ENGINE - T6 -	ENG	COR0	POV		07/18/2011
E-1085	CRANE	ENG	FLFNF	POV		07/18/2011
E-5002	ATTACK 1 ENG6	ENG	FLFNF	POV		07/18/2011
O-767	DEAN, EVAN	EMT	ORWS	A/R	RDM	07/18/2011
O-848	HYDE III, BERT	EMT	MNSU	AIR	DLH	07/18/2011
O-882	CHOPP, JAMIE	RCD	MNSU	AIR	HIB	07/18/2011
O-884	POWDRELL, JAN	RCD	COR0	AIR	DEN	07/18/2011
O-887	BOLEN,	CTS	NCNC	AOV	AVL	07/18/2011

Number	Name	Kind	UnitID	Travel Method	Jetport	Travel Date
O-929	NOACK, FRED K	RES	UTR04	AIR	COS	07/18/2011
E-992.2	CECIL, BRYAN	ENO	GAR08	AOV		07/19/2011
E-992.3	CAMACHO,	ENO	GAR08	AOV		07/19/2011
E-993.1	QUOCHYTENA,	ENG	GAR08	AOV		07/19/2011
E-993.2	TRUETT, JAMES	ENO	GAR08	AOV		07/19/2011
E-994	ENGINE - T6 -	ENG	MNRL			07/19/2011
E-1019	WILDLANDS	WA	GAOK	POV		07/19/2011
E-1019.2	DURRANCE,	DRI	GAOK	POV		07/19/2011
E-994.1	NORQUAY,	ENG	MNRL			07/19/2011
O-731	BARKER, KEITH	EMT	COLA	AIR	ORD	07/19/2011
O-808	SEVERSON,	SOF	ORSU	AIR	EUG	07/19/2011
O-861	MATHISEN,	SEC	FLJNR	AOV	RSW	07/19/2011
O-875	STELLON,	HEC	MNMN	AIR	MSP	07/19/2011
O-880	DUEITT,	ICT2	GAR4	AOV	TLH	07/19/2011
O-886	INGRAM, TRENT	ICT3	GAGA	AOV	ALB	07/19/2011
O-899	SCHOBER,	DOZ	AKAK	AIR	FAI	07/19/2011
O-900	MILLETTE,	TFL	MNBN	AIR	MSP	07/19/2011
O-904	FILBERT, MATT	STE	IDSTF	AIR	SUN	07/19/2011
O-906	KARP, EVAN	DOZ	AKAK	AIR	FAI	07/19/2011
O-910	HAMMACK,	DIV	MTKN	AIR	GPI	07/19/2011
O-912	RHODES, BRIAN	DIV	CACN	AIR	SAN	07/19/2011
O-916	OHME, HANS	TFL	IDPAF	AIR	BOI	07/19/2011
O-919	KNOX, JESSE D	TFL	CASR	AIR	ACV	07/19/2011
O-920	SCHNEIDER,	TFL	ORSU	AIR	EUG	07/19/2011
O-921	HALL, BRADLEY	TFL	ALALF	AOV	MGM	07/19/2011
O-926	INGRAM,	TFL	IDPAF	AIR	BOI	07/19/2011
O-972	BUNGE, LARRY	SOF	MNSU	AIR	BRD	07/19/2011
O-973	DORSHORST,	SOF	AKDA	AIR	FAI	07/19/2011
O-1021	VITWAR, DAVID	SOF	COPB	AIR	COS	07/19/2011
E-77	GAS ENG6	ENG	GAGA	AOV		07/20/2011
E-179.5	HIERS, RAMEY	ENG	FLFNF	POV		07/20/2011
E-179.6	CASH, MIKE	FFT	FLFNF	POV		07/20/2011
E-499	WILDLANDS	TPL	FLFNF	POV		07/20/2011
E-499.2	ROWAN, ROY	DRI	FLFNF	POV		07/20/2011
E-5002.1	KIGHT, HANK	ENG	FLFNF	POV		07/20/2011
E-646.2	DUEITT, PHILIP	DZO	MSMN	POV		07/20/2011
E-651.2	RIMES,	TPO	GAOK	POV		07/20/2011
E-1000.1	RAMPININI,	ENG	NCNC	POV		07/20/2011
E-1000.2	BOLDMAN,	ENO	NCNC	POV		07/20/2011
E-1000.3	FORRISTALL,	FFT	NCNC	POV		07/20/2011
E-1000.5	RIDDLE, JASON	FFT	NCNC	POV		07/20/2011
E-1000.6	GARRETT, JEFF	FFT	NCNC	POV		07/20/2011
E-1001.2	DIGBY,	ENO	NCNC	POV		07/20/2011
E-1001.3	FORD, KOLBE P	FFT	NCNC	POV		07/20/2011
E-1012.1	HILL, GLENN	ENG	GAOK	POV		07/20/2011
E-1012.2	GIORDANO,	ENO	GAOK	POV		07/20/2011
E-1078	LANKFORD	TDM	GAOK			07/20/2011
E-1079	DENNIS KIGHT	TDM	GAOK			07/20/2011
E-1080	PU-ACS28584	PU	FLFL1			07/20/2011
E-1080.1	CRIBB, ROY	DRV	FLFL1			07/20/2011
O-436	NELSON, ERIC	ENG	MNAG	A/R	GFK	07/20/2011
O-640	FINCHAM,	EMT	CASH	AIR	RDD	07/20/2011
O-858	MITCHELL,	REA	MDBW	AOV	BWI	07/20/2011
O-876	KNOWLES,	IBA1	AKR10	A/R	JNU	07/20/2011
O-889	LARSON, KRIS	HEC	MNLF	AIR	MSP	07/20/2011
O-909	SMITH, GARY L	DIV	MOMO	AIR	SGF	07/20/2011
O-915	SUSZEK,	DIV	FLFPR	AOV	RSW	07/20/2011
O-917	HELTERLINE,	TFL	MTR01	AIR	MSO	07/20/2011
O-918	GRIFFIN,	TFL	CASQ	AIR	BFL	07/20/2011

Number	Name	Kind	UnitID	Travel Method	Jetport	Travel Date
O-925	HAYNES,	DIV	IDPAF	AIR	BOI	07/20/2011
O-930	MCDUGAL,	SCK	GAR08	REN	ATL	07/20/2011
O-935	MONROE,	RAD	IDIPF	AIR	GEG	07/20/2011
O-936	SCHMITT,	TFL	MNMN	AIR	MSP	07/20/2011
O-938	ALTMAN,	DIV	MOMO	AIR	STL	07/20/2011
O-940	JACOBSON,	TFL	IDCW	AIR	LWS	07/20/2011
O-941	DENOWH,	TFL	IDPAF	AIR	BOI	07/20/2011
O-944	MARION, DAVE	TFL	CAR05	AIR	RNO	07/20/2011
O-946	FILLMORE,	TFL	CACN	AIR	SAN	07/20/2011
O-949	HERNANDEZ,	STE	MTKN	AIR	FCA	07/20/2011
O-952	PLUMMER,	STE	CASN	AIR	FAT	07/20/2011
O-955	SCHERR, RANDY	STE	CAMD	AIR	RNO	07/20/2011
O-965	WILEY, JUDY	PTR	MTBR	AIR	IDA	07/20/2011
O-969	WEBER,	EQT	MTFN	AIR	GPI	07/20/2011
O-977	WHIPPS, MARK	TFL	MSNA	AOV	TUP	07/20/2011
O-978	THELEN, JACOB	TFL	ALALF		BHM	07/20/2011
O-1000	MEEK, WAYLON	STE	IDIPF	AIR	GEG	07/20/2011
C-21	CREW - CAMP -	CC	KYDBF	AOV	TYS	07/21/2011
C-21.1	BRYANT,	CAC	KYDBF	AOV	TYS	07/21/2011
C-21.2	HAMLIN,	CAC	KYDBF	AOV		07/21/2011
C-21.3	DOWNNS,	CA	KYDBF	AOV		07/21/2011
C-21.4	PFOUTZ,	CA	KYDBF	AOV		07/21/2011
C-21.5	HASKELL,	CA	KYDBF	AOV		07/21/2011
C-21.6	HICKSON,	CA	KYDBF	AOV		07/21/2011
C-21.7	FREELS, JAMIE	CA	KYDBF	AOV		07/21/2011
C-21.8	ZAMBARD,	CA	KYDBF	AOV		07/21/2011
E-76	GAS ENG6	ENG	GAGA	AOV		07/21/2011
E-76.10	KEENE,	FFT	GAGA	POV	CHA	07/21/2011
E-76.9	HENDERSON,	ENG	GAGA		CHA	07/21/2011
E-77.10	RENTZ, LEVY	FFT	GAGA			07/21/2011
E-77.9	GAMLEN,	ENG	GAGA		CHA	07/21/2011
E-78	GAS ENG6	ENG	GAGA	AOV		07/21/2011
E-78.10	BISHOP, SIMON	FFT	GAGA	AOV		07/21/2011
E-78.9	CLINE, KEVIN	ENG	GAGA	AOV	CHA	07/21/2011
E-80	GAS ENG6	ENG	GAGA	AOV		07/21/2011
E-80.10	BOLES, JESSE	FFT	GAGA			07/21/2011
E-80.9	BASS, DANE A	ENG	GAGA	AOV	ATL	07/21/2011
E-81	GAS ENG6	ENG	GAGA	AOV		07/21/2011
E-81.10	DURDEN,	FFT	GAGA			07/21/2011
E-81.9	HELMS JR, TROY	ENG	GAGA		ATL	07/21/2011
E-134	ENG6 TRAIL	ENG	FLFNF	POV		07/21/2011
E-134.1	MOUSEL, JOSH	THS	FLFNF	POV		07/21/2011
E-134.2	MCDAVID, PAUL	ENO	FLFNF	POV		07/21/2011
E-134.5	ROWE, TOM	ENO	FLFNF	POV		07/21/2011
E-500	NFFS-	TPL	FLFNF	POV		07/21/2011
E-943.1	MATCHETT,	TPO	GAOK	POV		07/21/2011
E-992.4	DILLON, JUSTIN	ENG	GAR08	AOV		07/21/2011
E-997	ENGINE - T6 -	ENG	FLEVP	AOV		07/21/2011
E-997.1	WEER, JACK	ENG	FLEVP	AOV		07/21/2011
E-997.2	MARKSON, SAM	ENO	FLEVP	AOV		07/21/2011
E-998	ENGINE - T6 -	ENG	FLEVP	AOV		07/21/2011
E-998.1	STEBNER, JOHN	ENG	FLEVP	AOV		07/21/2011
E-998.2	DENSEL,	ENO	FLEVP	AOV		07/21/2011
E-1049	ENGINE - T6 -	ENG	DEDE	AOV		07/21/2011
E-1049.1	DOWD, JAMES D	ENG	DEDE	AOV	PHL	07/21/2011
E-1049.2	POOLE, HENRY	ENG	DEDE	AOV	PHL	07/21/2011
E-1049.3	HANSEN,	FFT	DEDE	AOV	PHL	07/21/2011
E-1050	ENGINE - T6 - KY-	ENG	KYLBF	AOV		07/21/2011
E-1050.1	MITCHELL,	ENG	KYLBF	AOV	BNA	07/21/2011
E-1050.2	VAREL, KYLE	ENG	KYLBF	AOV	BNA	07/21/2011

Number	Name	Kind	UnitID	Travel Method	Jetport	Travel Date
E-1050.3	BOYER,	FFT	KYLBF	AOV	BNA	07/21/2011
E-1057.1	MUELLER, TROY	ENG	KSKSS	POV	ICT	07/21/2011
E-1057.2	BRITTAN, LUKE	FFT	KSKSS	POV	ICT	07/21/2011
E-1057.3	FLOYD, SAM	FFT	KSKSS	POV	ICT	07/21/2011
E-1058	ENGINE - T6 -	ENG	COPB	AOV		07/21/2011
E-1058.1	KEIL, MICHAEL L	ENG	COPB	AOV	DEN	07/21/2011
E-1058.2	O'BRIEN,	ENG	COFAI	AOV		07/21/2011
E-1058.3	PIWKO,	FFT	COPB	AOV	DEN	07/21/2011
E-1075	ENGINE - T6 -	ENG	INBOR	AOV		07/21/2011
E-1075.1	JONES, DAVID H	ENG	INBOR	AOV	SDF	07/21/2011
E-1075.2	SMITH,	FFT	INBOR	AOV	SDF	07/21/2011
E-1075.3	WINCHELL, MAX	FFT	ININS	AOV	STL	07/21/2011
E-1081	ENGINE - T6 -	ENG	GAGA	POV		07/21/2011
E-1081.1	JOY, TIMMOTHY	ENG	GAGA	POV	ATL	07/21/2011
E-1081.2	MOSS, WESLEY	FFT	GAGA	POV		07/21/2011
E-1082	ENGINE - TYPE 6	ENG	GAGA	POV		07/21/2011
E-1082.1	GREGORY, LEE	ENG	GAGA	AOV	ALB	07/21/2011
E-1082.2	SHIRLEY, ADAM	FFT	GAGA	AOV		07/21/2011
E-1083	ENGINE - TYPE 6	ENG	GAGA	POV		07/21/2011
E-1083.1	HARKINS, TONY	ENG	GAGA	POV	ATL	07/21/2011
E-1083.2	MELTON,	FFT	GAGA	POV	ATL	07/21/2011
E-1084	ENGINE - T6 -	ENG	GAGA	AOV		07/21/2011
E-1084.1	DEAN, MICHAEL	ENG	GAGA	AOV	ATL	07/21/2011
E-1084.2	HOLLAND, SETH	FFT	GAGA	AOV	ATL	07/21/2011
O-642	COOPER,	THS	AROU	AIR	LIT	07/21/2011
O-911	MILLER, RAY E	DIV	PAPAS	AIR	MDT	07/21/2011
O-913	HEROLD,	DIV	CAKN	AIR	MFR	07/21/2011
O-927	SPEAR, DENNIS	GSU	ARAR	AIR	XNA	07/21/2011
O-945	MENDOZA,	TFL	CAAN	AIR	BUR	07/21/2011
O-947	REGISTER, JESS	STE	MOMT	AIR	SGF	07/21/2011
O-948	PALFREY, GLEN	STE	IDIPF	AIR	GEG	07/21/2011
O-950	LARSON, LARRY	STE	ORWI	AIR	EUG	07/21/2011
O-951	VAN DYNE,	STE	ORWI	AIR	EUG	07/21/2011
O-958	BOYCE II,	DOZ	ORMA	AIR	BOI	07/21/2011
O-959	COGLE,	HEQ	CAPN	AIR	SAC	07/21/2011
O-960	PELLEGRINI,	DOZ	AKKKS	AIR	ENA	07/21/2011
O-961	WURDEMAN,	PIO	MNMN	AIR	MSP	07/21/2011
O-963	PANTSAR, MARK	EQP	MNMN	AIR	DLH	07/21/2011
O-979	LINDBLOM, SAM	STE	VAVAF	AIR	CHO	07/21/2011
O-984	EATON, ROBERT	EMT	NCSR	AOV	RDU	07/21/2011
O-990	SAMPSON,	STE	MTBD	AIR	BTM	07/21/2011
O-998.4	MATTHEWS,	CO	FLFLS	AOV	PBI	07/21/2011
O-1001	CRIBB JR, ROY L	DOZ	FLFLS	AOV	TPA	07/21/2011
O-1027	WEER,	ENG	FLEVP	AOV	MIA	07/21/2011
O-1028	MARKSON, SAM	FFT	FLEVP		MIA	07/21/2011
O-1031	DENSEL,	ENG	FLEVP	AOV	MIA	07/21/2011
O-1032	STEBNER, JOHN	ENG	FLEVP	AOV	FLL	07/21/2011

# Joint Information Center Fire Update

Fire Update for Saturday, July 16, 2011~ 10 a.m.

Fire Information: [www.inciweb.org](http://www.inciweb.org)



*Note: Due to the current moist weather pattern and moderated fire behavior, this fire update will be prepared on an as needed basis. You can still call 912-496-2566 for current information.*

**Honey Prairie Fire Complex: 299,863 acres, 70% contained**  
**Sweat Farm Again Fire: 19,169 acres, 86% contained**  
**Racepond Fire: 20,934 acres, 86% contained**

Honey Prairie Fire: Smoke may be present on the west side of the fire as winds are expected to come from the east for July 16 and 17. Rain is predicted again today for the fire area. Fire line preparation and patrolling continues on the north half of the Refuge boundaries. Due to lower fire activity, future updates for the Honey Prairie Fire will be on an as needed basis.

Sweat Farm Again and Racepond Fires: Thunderstorms and rain returned on Friday over both fires averaging 1 – 2.5 inches of rain, with local areas receiving more. Firefighters are repairing damaged fence and completing other fire related rehabilitation projects as suppression operations wind down on these two fires. Structure protection continues in Swamp Park.

A Hazardous Weather Outlook has been issued by the National Weather Service: “A slow moving surface trough will be the focus for showers and Storms this period as it advances south across the forecast area. Any storms which do develop are expected to be slow movers, producing locally heavy rainfall. A few strong storms with gusty winds and frequent lightning are also possible.”

Okefenokee National Wildlife Refuge remains closed to the public. During the early morning hours of low fire activity, firefighters staged at the Visitor Center are clearing downed trees and cutting down hazardous trees along the Ridley’s Island Trail.

Stephen C. Foster State Park reports that it is open with very limited access to the public. The office, picnic area, and museum are open to the public. The trails, boat rentals, camping, and cabins remain closed the public.

[georgiafireinformationcenter@gmail.com](http://georgiafireinformationcenter@gmail.com)

**912-496-2566**

#### Assigned Resources

- 130 Engines
- 17 Dozers
- 19 Water Tenders
- 7 Helicopters
- 1 Crew
- 774 Personnel

[www.inciweb.org](http://www.inciweb.org)  
[www.fws.gov/okefenokee](http://www.fws.gov/okefenokee)  
[www.gatrees.org](http://www.gatrees.org)

The SE Georgia Fires Information Center will be open from 8 a.m. – 6 p.m. daily to help assist the public and media with up to date information on all fires across Southeast Georgia and in the Okefenokee National Wildlife Refuge. Please contact us at **912-496-2566** or [georgiafireinformationcenter@gmail.com](mailto:georgiafireinformationcenter@gmail.com).

**Cooperators:** Okefenokee National Wildlife Refuge; Georgia Forestry Commission; Florida Forest Service; U.S. Forest Service; Greater Okefenokee Association of Landowners (GOAL); Georgia Emergency Management Agency; Rayonier; Superior Pine; Langdale; GDOT; GSP; FLDOT; Georgia DNR; Georgia Aviation Authority; Georgia National Guard; Georgia DOC; County Fire Departments; Toledo Manufacturing Company; Charlton, Ware and Clinch Counties; and the Cities of Folkston and Homerville.

**Closures:** All entrances into Okefenokee National Wildlife Refuge are closed. All visitor activities are suspended until the threat of fire is over. For current status on visitor activities, contact: Okefenokee National Wildlife Refuge, 912-496-7366; Okefenokee Swamp Park, 912-283-0583; or the Stephen C. Foster State Park, 912-637-5274.

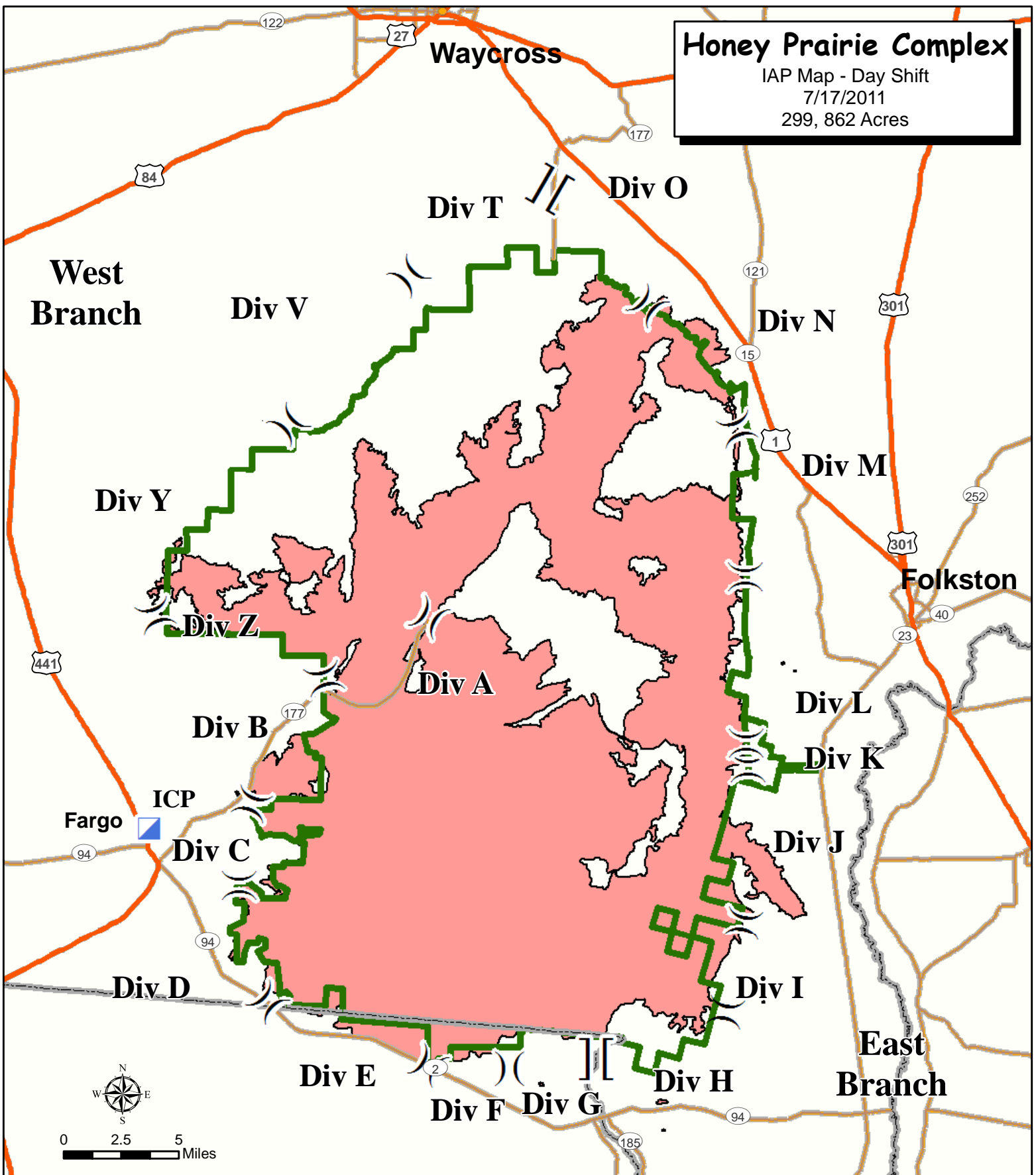


# Honey Prairie Complex

IAP Map - Day Shift

7/17/2011

299, 862 Acres



Branch Break



Highway



Refuge Boundary



Division Break



Major Road



Fire Area



Incident Command Post



State Boundary



Perimeter as of  
7/15/2011 1130  
S. Leverette

