

Honey Prairie Complex

GA-OKR-000001

Incident Action Plan

Operational Period
Tuesday July 19, 2011

0800-2000

Accounting Codes

FWS – 9141-F25M-2J

NPS – 5023 F25M E11

BLM – F25M

USFS – PRF25M_1502

Initial Attack – F4PM

INCIDENT OBJECTIVES	1. INCIDENT NAME Honey Prairie Complex	2. DATE PREPARED 7/18/11	3. TIME PREPARED 1800												
4. OPERATIONAL PERIOD (DATE/TIME) Tuesday July 19, 2011 0800 – 2000															
5. GENERAL CONTROL OBJECTIVES FOR THE INCIDENT (INCLUDE ALTERNATIVES) <ol style="list-style-type: none"> 1. Provide for safety of incident personnel and public in all incident operations. 2. Maintain a positive working relationship with all adjacent landowners, cooperators State and Federal partners. Inform, involve and communicate incident planning and operations with all partners. 3. Contain all fires that are within the Okefenokee National Wildlife Refuge, inside the Refuge and/or inside the swamp edge break if possible. 4. In cooperation with local timberland owners, use full suppression strategies and tactics to minimize damage to private timberlands and improvements and to prevent fires outside the Refuge from entering the Refuge. 5. Assist in management and suppression of additional fires (new starts or breakouts) in the vicinity as approved by Agency Administrators and Unified Incident Commanders. 6. Protect all cultural and archeological sites and structures within the refuge, with particular attention to facilities at Okefenokee Swamp Park. 7. Manage the fires cost-effectively consistent with the values at risk. 8. Implement structure protection as necessary for at-risk facilities and communities. 9. Coordinate suppression actions with assigned Refuge Resource Advisors 															
6. WEATHER FORECAST FOR OPERATIONAL PERIOD See attached forecast for area specific weather information.															
7. GENERAL SAFETY MESSAGE Drive defensively and use spotter when backing. Ensure LCES is in place and known by all personnel. Drink plenty of water and take frequent rest breaks. Ensure proper use of PPE during all operations.															
8. Attachments (☐ if attached) <table border="0" style="width: 100%;"> <tr> <td><input type="checkbox"/> Organization List (ICS 203)</td> <td><input type="checkbox"/> Incident Map</td> <td><input type="checkbox"/> Safety Message</td> </tr> <tr> <td><input type="checkbox"/> Assignment List (ICS 204)</td> <td><input type="checkbox"/> Traffic Plan</td> <td><input type="checkbox"/> Demobilization Procedures</td> </tr> <tr> <td><input type="checkbox"/> Communications Plan (ICS 205)</td> <td><input type="checkbox"/> Human Resources</td> <td><input type="checkbox"/> Unit Log</td> </tr> <tr> <td><input type="checkbox"/> Medical Plan (ICS 206)</td> <td><input type="checkbox"/> Phone List</td> <td></td> </tr> </table>				<input type="checkbox"/> Organization List (ICS 203)	<input type="checkbox"/> Incident Map	<input type="checkbox"/> Safety Message	<input type="checkbox"/> Assignment List (ICS 204)	<input type="checkbox"/> Traffic Plan	<input type="checkbox"/> Demobilization Procedures	<input type="checkbox"/> Communications Plan (ICS 205)	<input type="checkbox"/> Human Resources	<input type="checkbox"/> Unit Log	<input type="checkbox"/> Medical Plan (ICS 206)	<input type="checkbox"/> Phone List	
<input type="checkbox"/> Organization List (ICS 203)	<input type="checkbox"/> Incident Map	<input type="checkbox"/> Safety Message													
<input type="checkbox"/> Assignment List (ICS 204)	<input type="checkbox"/> Traffic Plan	<input type="checkbox"/> Demobilization Procedures													
<input type="checkbox"/> Communications Plan (ICS 205)	<input type="checkbox"/> Human Resources	<input type="checkbox"/> Unit Log													
<input type="checkbox"/> Medical Plan (ICS 206)	<input type="checkbox"/> Phone List														
9. PREPARED BY (PLANNING SECTION CHIEF) Ed Flowers		10. APPROVED BY (INCIDENT COMMANDER) Don West													

ORGANIZATION ASSIGNMENT LIST		9. Operations Section	
1. Incident Name Honey Prairie Complex GA-OKR-000001		Chief	Roger Gill (West Branch) 7/25, Butch Hall (East Branch) 7/22
		Planning	Rick Dolan 7/22
2. Date 7/18/2011	3. Time 1000 hrs	a. WEST BRANCH - Divisions/Groups	
4. Operational Period 7/19/2011	0800 - 2000	OPBD	Tom Donohoe 7/22
5. Incident Commander and Staff		Division	A-B-C-D-E-F-G Thomas Herold 7/20 / Tracey Mobley 8/1
Incident Commander	Don West/Verne Riggall (Dep)	Division	T-V Shawn Duggar 7/22 / Greg Suszek (t) 7/19 Todd Haynes (t) 7/19
Liason Officer	Gary Beauchamp 7/29		
Safety Officers	Barry Coulliette 7/22 / Ray Durham 7/23	Division	Y-Z Gary Smith 7/19 / Dan Helterline (t) 7/19 / Glen Palfrey 7/20
Information Officer	Ludie Bond 7/22		
6a. Agency Administrators		Group	IA-WEST and Structure Group Billy Taylor 7/26
FWS	Curt McCasland		
FWS	Mindy Gautreaux		
6b. Agency Representatives		b. EAST BRANCH - Divisions/Groups	
FWS Liason	Skippy Reeves	OPBD	Brett Waters 7/25 / Bob Habeck (t) 7/21
GFC	Frank Sorrels	Division	H-I-J-K-L Ray Miller 7/20 / Steve Gray 8/1
FLDOF	James Karels		
FWS AREP	Mike Housh	Division	M-N-O Steve Griffin 7/19 / Ernie Schmitt 7/19 / Charles Arnold 8/1
FWS-Refuge PAO	Art Webster		
GEMA AREP	Alan Robinson / Diane Adams	Group	IA-EAST Billy Taylor 7/26
USFS AREP	Ivan Greene	Group	Roads
7. Planning Section		c. AIR OPERATIONS BRANCH - Honey Prairie	
Chief	Ed Flowers 7/22	Air Operations Branch Director	Tim Elder 7/22
Dep Chief	Steve Budd-Jack 7/25	Air Support Group Supervisor	Don Nicholas 7/22
Resources Unit	Wilbur Priest 7/22		
Situation Unit	Scott Crosby 7/22		
IMET	Joe Goudsward 7/21 / Mike Bettwy 7/21		
FBAN	John Kern 7/22	d. AIR OPERATIONS BRANCH - Waycross	
Demob Unit	Tim Wilkinson 7/22	Waycross Helibase Manager	Jay Matsen 7/23
Documentation			
GIS	Sue Leverette 7/22	e. AIR OPERATIONS BRANCH - Pogo	
CTSP	Randy Fountain 7/22	Pogo Helibase Manager	Brian Campbell 7/22
TNSP	Larry Moore 7/24	ATGS-Pogo	Everett Wenigar 7/30
8. Logistics Section		10. Finance Section	
Chief	Shane Locke 7/21/Butch Mallet 7/22	Chief	Linda Starling 7/22
Supply Unit	Linda Bruss/7/21 / Rhonda Hughes(t) 7/22	Time Unit	Darline Matheny 7/22
GSUL	James Thompson 7/22	Procurement	John Watson 7/22
ORDM	Abe Phillipson(t) 7/22 / Cindy Tisdell 7/24	Comp Claims Unit	Alvin Welch 7/21
COML	Brian Mathews 7/22	Cost	Lisa Ridley 7/22
Medical Unit	Joe Fowler 7/22	Buying Team	Rita Loper
Facilities	Bill Hitt 7/22 / Mel Reese(t) 7/22	IBA	Ron Knowles 7/19
Food	Nat Wright 7/22/Bob Kookan 8/2		
RCDM	Gary Sisson(t) 7/22		
BCMG	Carl Taylor 7/25		
		Prepared by:	Wilbur Priest RESL

DIVISION ASSIGNMENT LIST			1. Branch West		2. Division A, B, C, D, E, F, G		
3. Incident Name: Honey Prairie Complex			4. Operational Period Date: 7/19/2011 Time: Day: 0800-2000				
5. Operations Personnel							
Operations	Roger Gill 7/25		Branch Director		Tom Donohoe 7/22		
Planning Ops	Rick Dolan 7/22		Division Supervisor		Toby Herold 7/20 Tracy Mobley 8/1		
Safety Officer	Barry Coulliette 7/22						
6. Resources Assigned this Period							
Strike Team/Task Force/ Resource Designator	Leader / Name / Designator	Last Shift Date	Num. Per.	Drop Off PT./Time	Pick Up PT./Time		
TFLD (O-960)	Paul Pelligrini	8/1	1				
STPL (O-1055)	Royce Davis	7/23	1				
TFLD (E-838.6)	Darren Franco (t)	7/21	1				
STEN (O-949)	Nikia Hernandez	7/19	1				
ENG6 (E-405)	Brett Gore	7/24	3				
ENG6 (E-907) Eagle Staff	Brady Ward	7/22	2				
ENG6 (E-1059)	Daniel Ross	7/22	3				
ENG6 (E-1065)	Mike Carnelli	7/22	3				
ENG6 (E-1066)	Eric Jones	7/21	3				
ENG6 (E-1076) MOMTF 9504	Tim Perren	7/24	3				
ENG6 (E-821)	Robert Thompson	7/24	3				
ENG6 (E-824)	Chris Brubaker	7/24	3				
TPL3 (E-914)	Fred Robinson	7/23	1				
TPL3 (E-1138)	Jim Reynolds	7/23	1				
TPL3 (E-1139)	Stan Jackson	7/23	1				
SOF2 (O-1068)	Jamey Burnsed	7/25	1				
EMTP (O-847)	Levi Clymer	7/28	1				
7. Control Operations							
<ul style="list-style-type: none"> Patrol and mop up within 100' of fire perimeter line. Monitor fire impacts to Stephen Foster State Park. Patrol and control return. 							
8. Special Instructions							
<ul style="list-style-type: none"> Examine work area for fire weakened snags. Ensure LCES are in place before operations begin and stay hydrated. Additional resources will be available from GFC, Florida DOF, FWS, and local cooperators. Drive defensively and with lights on at all times. Continue to complete Suppression Damage Assessment Survey. 							
9. Division/Group Communication Summary							
Function	Frequency	System	Channel	Function	Frequency	System	Channel
Command N Okee Repeater	RX 164.5750/206.5 TX 163.150/206.5	KING NIFC	5	Logistics		KING NIFC	
Tactical Div/Group	RX 168.775 TX 168.7750	KING NIFC	9	Air to Ground	RX 166.9375 TX 166.9375	KING NIFC	6
Prepared by (Resource Unit Ldr.) Wilbur Priest		Approved by (Planning Sect. Ch.) /s/ Ed Flowers		Date 7/18/2011		Time 1930	

DIVISION ASSIGNMENT LIST				1. Branch West		2. Division T, V 1 OF 2	
3. Incident Name Honey Prairie Complex				4. Operational Period Date: 7/19/2011 Time: 0800-2000			
5. Operations Personnel							
Operations	Roger Gill 7/25			Branch Director		Tom Donohoe 7/22	
Planning Ops	Rick Dolan 7/22			Division Supervisor		Shawn Duggar 7/22 Todd Haynes (t) 7/19	
Safety Officer	Barry Coulliette 7/22			Division Supervisor		Greg Suszek (t) 7/19	
6. Resources Assigned this Period							
Strike Team/Task Force/ Resource Designator		Leader / Name / Designator		Last Shift Date	Num. Per.	Drop Off PT./Time	Pick Up PT./Time
TFLD (O-946)		Stephen Filmore		7/19	1		
TFLD (E-831.8)		Jeff Hussey		7/23	1		
STEN (O-952)		Vincent Plummer		7/19	1		
S/T Type 6 OR TFLD (t) (E-831.9)		Deana Wall		7/23	1		
ENG6 (E-831.3)		Ben Nichols		7/23	4		
ENG6 (E-831.4)		Eric Hahn		7/23	3		
ENG6 (E-831.5)		Shane Thames		7/23	3		
ENG6 (E-831.6)		Tavis Fenske		7/23	3		
ENG6 (E-831.7)		Mike Towers		7/23	3		
ENG6 (E-1073)		Mike Schlitz		7/22	3		
ENG6 (E-2)		Eric Nelson		7/19?	1	O-436	
ENG6 (E-3)		George Pelt		7/25	2		
ENG6 (E-995)		Mike Daigle		7/25	3		
ENG6 (E-996)		John Cousins		7/25	3		
ENG6 (E-1064)		Greg Nichols		7/21	3		
7. Control Operations							
<ul style="list-style-type: none"> Recon potential control lines and examine area for snag removal Improve swamp break boundaries for fire breaks, work w/resource advisor Coordinate potential burn-out w/READ and refuge personnel Use refuge personnel for any burn-out activities. 							
8. Special Instructions							
<ul style="list-style-type: none"> Make contact with the Resource Advisor before using mechanical equipment. Safely push down with equipment all snags whether on fire or not that are a threat to success or tactical operations. Ensure LCES are in place before operations begin. Stay hydrated. Drive defensively and with lights on at all times. Boggy terrain: Be careful and aware when working around this type of area. Continue to complete Suppression Damage Assessment Survey. 							
9. Division/Group Communication Summary							
Function	Frequency	System	Channel	Function	Frequency	System	Channel
Command N Okee Repeater	RX 164.5750/206.5 TX 163.150/206.5	KING NIFC	5	Logistics		KING NIFC	
Tactical Div/Group	RX 168.775 TX 168.775	KING NIFC	9	Air to Ground	RX 166.9375 TX 166.9375	KING NIFC	6
Prepared by (Resource Unit Ldr.) Wilbur Priest		Approved by (Planning Sect. Ch.) /s/ Ed Flowers			Date July 18, 2011		Time 1800

DIVISION ASSIGNMENT LIST			1. Branch West		2. Division T, V		2 of 2	
3. Incident Name Honey Prairie Complex			4. Operational Period Date: 7/19/2011 Time: 0800-2000					
5. Operations Personnel								
Operations	Roger Gill 7/25			Branch Director	Tom Donohoe 7/22			
Planning Ops	Rick Dolan 7/22			Division Supervisor	Shawn Duggar 7/22 / Todd Haynes (t) 7/19			
Safety Officer	Barry Coulliette 7/22			Division Supervisor	Greg Suszek (t) 7/19			
6. Strike Team/Task Force/ Resource Designator								
	Leader / Name / Designator		Last Shift Date	Num. Per.	Drop Off PT./Time		Pick Up PT./Time	
TFLD (O-978)	Jacob Thelen (t)		7/19	1				
TFLD (O-942)	Ben Krupski		8/1	1				
TFLD(O-1000)	Waylon Meek (t)		7/19	1				
TPL2 (E-986)	David Hauser		7/26	1	PVT	TPL2 (E-986)		
TPL2 (E-988)	Jonathon Houser		7/30	1	PVT			
WAT1 (E-1019)	Frank Durrance		?	1	PVT			
TFLD (O-986)	Mike Harnois		7/22	1				
DOZB (O-1001)	Roy Cribb		7/20	1				
Skidder (E-981)	Henry Tiner		7/25	1	PVT			
Feller-Buncher (E-524)	Josh Burdy		?	1	PVT	Check with PLANS		
Feller-Buncher (E-526)	James Marshall		?	1	PVT	Check with PLANS		
Grader (E-530)	Lucious Corbett		7/27	1	PVT			
SOF2 (O-891)	Steve Holman		8/1	1				
EMTP (E-1134)	Jeff Halladay		7/21	1				
EMTP (O-1059)	John Oker-Bloom		7/23	1				
7. Control Operations								
<ul style="list-style-type: none"> Recon potential control lines and examine area for snag removal Improve swamp break boundaries for fire breaks, work w/resource advisor Coordinate potential burn-out w/READ and Refuge Personnel Use Refuge personnel for any burn-out activities. 								
8. Special Instructions								
<ul style="list-style-type: none"> Make contact with the Resource Advisor before using mechanical equipment. Safely push down with equipment all snags whether on fire or not that are a threat to success or tactical operations. Ensure LCES are in place before operations begin. Stay hydrated. Drive defensively and with lights on at all times. Boggy terrain: Be careful and aware when working around this type of area. Continue to complete Suppression Damage Assessment Survey. 								
9. Division/Group Communication Summary								
Function	Frequency	System	Channel	Function	Frequency	System	Channel	
Command N Okee Repeater	RX 164.5750/206.5 TX 163.150/206.5	KING NIFC	5	Logistics		KING NIFC		
Tactical Div/Group	RX 151.2725 TX 151.2725	KING NIFC	13	Air to Ground	RX 166.9375 TX 166.9375	KING NIFC	6	
Prepared by (Resource Unit Ldr.) Willbur Priest		Approved by (Planning Sect. Ch.) /s/ Ed Flowers			Date July 18, 2011		Time 1800	

DIVISION ASSIGNMENT LIST				1. Branch West		2. Division Y, Z		1 of 2	
3. Incident Name Honey Prairie Complex				4. Operational Period Date: 7/19/2011 Time: 0800-2000					
5. Operations Personnel									
Operations		Roger Gill 7/25			Branch Director		Tom Donohoe 7/22		
Planning Ops		Rick Dolan 7/22			Division Supervisor		Gary Smith 7/19, Dan Helterline (t) 7/19		
Safety Officer		Barry Coulliette 7/22			Division Supervisor		Glen Palfrey 7/20		
6. Resources Assigned this Period									
Strike Team/Task Force/ Resource Designator		Leader / Name / Designator		Last Shift Date	Num. Per.	Drop Off PT./Time		Pick Up PT./Time	
TFLD (O-920)		Aaron Schneider		8/1	1				
TFLD (O-991)		Adam Wolf (t)		7/21	1				
TFLD (O-954)		Brian Ebert (t)		8/1	1				
STEN (O-979)		Sam Lindblom (t)		7/20	1				
TFLD (O-889)		Kris Larson		7/19	1				
STEN (O-955)		Randy Scherr		8/1	1				
ENG6 (E-997)		Jack Weer		7/20	2				
ENG6 (E-998)		John Stebner		7/20	2				
ENG6 (E-392)		Tyson Taylor		7/21	3				
ENG6 (E-838)		Chris Mursu		7/21	2				
ENG6 (E-1071)		Clayton Swanger		7/22	3				
ENG6 (E-850)		Mike Haisten		7/21	3				
ENG6 (E-1057)		Troy Mueller		7/20	3				
ENG6 (E-1067)		Shaun Moore		7/21	3				
ENG6 (E-404)		John Knapper		7/23	3				
ENG6 (E-906)		James Burk		7/23	3				
ENG6 (E-939)		Chad Ingle		7/23	3				
7. Control Operations <ul style="list-style-type: none"> Make contact with the Resource Advisor before using mechanical equipment. Recon potential controllines and examine area for snag removal Improve swamp break boundaries for fire breaks 									
8. Special Instructions <ul style="list-style-type: none"> Safely push down with equipment all snags whether on fire or not that are a threat to success or tactical operations. Ensure LCES are in place before operations begin. Stay hydrated. Drive defensively and with lights on at all times. Boggy terrain: Be careful and aware when working around this type of area. Continue to complete Suppression Damage Assessment Survey. 									
9. Division/Group Communication Summary									
Function	Frequency	System	Channel	Function	Frequency	System	Channel		
Command N Okee Repeater	RX 164.5750/206.5 TX 163.150/206.5	KING NIFC	5	Logistics		KING NIFC			
Tactical Div/Group	RX 151.2725 TX 151.2725	KING NIFC	13	Air to Ground	RX 166.9375 TX 166.9375	KING NIFC	6		
Prepared by (Resource Unit Ldr.) Wilbur Priest		Approved by (Planning Sect. Ch.) /s/ Ed Flowers			Date July 18, 2011			Time 1730	

DIVISION ASSIGNMENT LIST				1. Branch	West	2. Division	Y, Z	2 of 2
3. Incident Name: Honey Prairie Complex				4. Operational Period Date: 7/19/2011 Time: Day: 0800-2000				
5. Operations Personnel								
Operations	Roger Gill 7/25			Branch Director	Tom Donohoe 7/22			
Planning Ops	Rick Dolan 7/22			Division Supervisor	Gary Smith 7/19 Dan Helterline (t) 7/19			
Safety Officer	Barry Coulliette 7/22			Division Supervisor	Glen Palfrey 7/20			
6. Resources Assigned this Period								
Strike Team/Task Force/ Resource Designator	Leader / Name / Designator	Last Shift Date	Num. Per.	Drop Off PT./Time	Pick Up PT./Time			
DOZB (O-1004)	Derek Cooper	7/20	1					
DOZB (O-1008)	Zack Culver (t)	7/21	1					
TPL2 (E-497)	Leslie Jeter	7/22	1	PVT				
TPL3 (E-943)	Hugh Matchett	7/20	1	PVT				
TPL3 (E-984)	Junior House	7/31	1	PVT				
TPL2 (E-985)	Aaron Tipton	7/27	1	PVT				
WT2 (E-1018)	Gary Waldron	7/21		PVT				
SOF2 (O-1097)	Rodney Weeks	7/30	1					
EMTP (E-1152)	Chad Simons	7/26	1					
EMTP (E-1153)	Wes Lathen	7/26	1					
7. Control Operations								
<ul style="list-style-type: none"> Contain all fires outside refuge boundary. Patrol and mop up within 100' of fire perimeter line. 								
8. Special Instructions								
<ul style="list-style-type: none"> Ensure that tractors are cleaned and free of debris daily. Examine work area for fire weakened snags. Ensure LCES are in place before operations begin and stay hydrated. Additional resources will be available from GFC, Florida DOF, FWS, and local cooperators. Drive defensively and with lights on at all times. See Medical plan for EMT support. Implement MIST tactics Continue to complete Suppression Damage Assessment Survey. 								
9. Division/Group Communication Summary								
Function	Frequency	System	Channel	Function	Frequency	System	Channel	
Command N Okee Repeater	RX 164.5750/206.5 TX 163.150/206.5	KING NIFC	5	Logistics		KING NIFC		
Tactical Div/Group	RX 168.200 TX 168.200	KING NIFC	11	Air to Ground	RX 166.9375 TX 166.9375	KING NIFC	6	
Prepared by (Resource Unit Ldr.) Wilbur Priest		Approved by (Planning Sect. Ch.) /s/ Ed Flowers			Date July 18, 2011		Time 1930	

DIVISION ASSIGNMENT LIST				1. Branch West	2. Division West - Initial Attack and Structure Protection		
3. Incident Name: Honey Prairie Complex				4. Operational Period Date: 7/19/2011 Time: Day: 0800-2000			
5. Operations Personnel							
Operations	Roger Gill 7/25			Branch Director	Tom Donohoe 7/22		
Planning Ops	Rick Dolan 7/22			Division Supervisor	Billy Taylor		
Safety Officer	Barry Coulliette 7/22						
6. Resources Assigned this Period							
Strike Team/Task Force/ Resource Designator	Leader / Name / Designator		Last Shift Date	Num. Per.	Drop Off PT./Time	Pick Up PT./Time	
STEN (O-947)	Jess Register		7/20	1			
STEN (O-951)	Jerry Van Dyne		7/20	1			
STEN (O-990)	Joe Sampson		7/20	1			
HEQB (O-958)	Tim Boyce		7/20	1			
ENG6 (E-1048)	Joseph Jarrells		7/21	3			
ENG6 (E-1049)	James Dowd		7/20	3			
ENG6 (E-1050)	Kyle Varel		7/20	3			
ENG6 (E-1075)	David Jones		7/20	3			
TPL3 (E-499)	Roy Rowan		7/24	2	PVT		
TPL3 (E-646)/E-723 trans	Phil Dueitt		7/24	1	PVT		
TPL3 (E-650)	Paul Funderburk		7/24	1	PVT		
TPL3 (E-651)	Bill Rimes		7/24	1	PVT		
TPL2 (E-987)	Butch Duiett		7/24	1	PVT		
WAT2 (E-954)	Sonny Moore		7/23	1	PVT		
EMTB (O-1057)	Matthew Stivers		7/23	1			
SOF2 (O-1083)	Tommy Lail		7/26	1			
7. Control Operations <ul style="list-style-type: none"> Respond to Initial Attack as requested Initial attack IC will communicate size up information to Honey Prairie incident communications 							
8. Special Instructions							
9. Division/Group Communication Summary							
Function	Frequency	System	Channel	Function	Frequency	System	Channel
Command N Okee Repeater	RX 164.5750/206.5 TX 163.150/206.5	KING NIFC	5	Logistics	See ICS 205	KING NIFC	
Tactical Div/Group	RX 154.280 TX 154,280/156.7	KING NIFC	8	Air to Ground	RX 166.9375 TX 166.9375	KING NIFC	6
Prepared by (Resource Unit Ldr.) Wilbur Priest		Approved by (Planning Sect. Ch.) /s/ Ed Flowers		Date July 18, 2011		Time 1930	

DIVISION ASSIGNMENT LIST			1. Branch East		2. Division H, I, J, K, L		
3. Incident Name Honey Prairie Complex			4. Operational Period Date: 7/19/2011 Time: 0800-2000				
5. Operations Personnel							
Operations	Butch Hall 7/22		Branch Director		Brett Waters 7/25 / Bob Habeck (t) 7/21		
Planning Ops	Rick Dolan 7/22		Division Supervisor		Ray Miller 7/20 / Steve Gray 8/1		
Safety Officer	Ray Durham 7/22 / Dave Marion (t) 7/21						
6. Resources Assigned this Period							
Strike Team/Task Force/ Resource Designator	Leader / Name / Designator		Last Shift Date	Num. Per.	Drop Off PT./Time	Pick Up PT./Time	
TFLD (O-945)	Walter Mendoza		7/20	1			
STEN (O-950)	Larry Larson		7/20	1			
TFLD (O-937)	Kevin Elmstrom		8/1	1			
TFLD (O-993)	Drew Daily		7/21	1			
ENG6 (E-77) GAGAS 86	Andrew Gamlen		7/20	2			
ENG6 (E-407) White Earth #2	Jesse Londo		7/22	3			
ENG6 (E-893) MIHMF 251	Martel Knipe		7/23	3			
ENG6 (E-894) MOOZP 862	William Mier		7/22	3			
ENG6 (E-895) MOMTF 9505	Blake Knisley		7/22	3			
EMTP (E-1136)	Kurt Berge		7/21	1			
SOF2 (O-892)	Steve Ripley		7/31	1			
7. Control Operations							
<ul style="list-style-type: none"> Contain all fires outside refuge boundary. Patrol and control reburn Provide initial attack for GFC and fires outside the refuge boundary. Patrol all spots outside refuge boundary. Patrol and mop up all accessible fire line. Mop up all hot spots within 100' of the fire perimeter. 							
8. Special Instructions							
<ul style="list-style-type: none"> Ensure LCES are in place before operations begin. Stay hydrated. Drive defensively and with lights on at all times. See medical plan for EMT support Examine work area for fire weakened snags Continue to complete Suppression Damage Assessment Survey. 							
9. Division/Group Communication Summary							
	Function	Frequency	Channel	Function	Frequency	System	Channel
Command E Okee Repeater	RX 164.6250/103.5 TX 163.150/103.5	KING	3	Logistics		KING NIFC	
DIV J Repeater	RX 170.4125 TX 165.9625/123.0	NIFC	14				
Tactical Div/Group	RX 168.350 TX 168.350	KING NIFC	12	Air to Ground	RX 166.9375 TX 166.9375	KING NIFC	6
Prepared by (Resource Unit Ldr.) Wilbur Priest		Approved by (Planning Sect. Ch.) /s/ Ed Flowers			Date July 18, 2011		Time 1800

DIVISION ASSIGNMENT LIST				1. Branch East		2. Division M, N, O	
3. Incident Name Honey Prairie Complex				4. Operational Period Date: 7/19/2011 Time: 0800-2000			
5. Operations Personnel							
Operations	Butch Hall 7/22			Branch Director	Brett Waters 7/25 / Bob Habeck (t) 7/21		
Planning Ops	Rick Dolan 7/22			Division Supervisor	Steve Griffin 7/19, Ernest Schmitt (t) 7/19		
Safety Officer	Ray Durham 7/22 / Dave Marion (t) 7/21			Division Supervisor	Charles Arnold 8/1		
6. Resources Assigned this Period							
Strike Team/Task Force/ Resource Designator		Leader / Name / Designator		Last Shift Date	Num. Per.	Drop Off PT./Time	Pick Up PT./Time
TFLD (O-807) (t)		Mark Whipps		7/19	1		
TFLD (O-941)		Shawn Denowh		8/1	1		
TFLD (O-994)		Jim Edgar		8/1	1		
STEN (O-989)		Max Twombly		7/21	1		
ENG6 (E-76)		Chris Henderson		7/20	2		
ENG6 (E-78)		Kevin Cline		7/20	2		
ENG6 (E-80)		Dane Bass		7/20	2		
ENG6 (E-81)		Troy Helms		7/20	2		
ENG6 (E-897) MDBWR		Ephraim Diefenderfer		7/22	2		
ENG6 (E-977) IPF E-31		Louie Feltman		7/23	4		
ENG6 (E-1133)		Chris Wright		7/26	2		
EMTP (O-1060)		James Brown		7/24	1		
SOF2 (O-1067)		Larry Morse		7/24	1		
7. Control Operations <ul style="list-style-type: none"> Patrol and mop up 100' inside fire perimeter. Recon potential control lines and examine area snag removal Keep fire within refuge boundary. 							
8. Special Instructions <ul style="list-style-type: none"> If the fire reaches Mgt Activity Line (MAL) 1 cooperators and adjacent landowners will be notified. If the fire reaches MAL 2 a meeting will be held at the Swamp Park with adjacent landowners and cooperators. Safely push down with equipment all snags whether on fire or not that are a threat to success or tactical operations. Ensure LCES are in place before operations begin. Stay hydrated. See medical plan for EMT support. Drive defensively and with lights on at all times. Boggy terrain: Be careful and aware when working around this type of area. If HP fire escapes the NE Break the Great Basin team will command suppression w/assistance from the GFC. If Race Pond escapes to the south GFC will command w/assistance by the Great Basin. DIVS should make daily contact w/ Race Pond DIVS on scene. Continue to complete Suppression Damage Assessment Survey. 							
9. Division/Group Communication Summary							
Function	Frequency	System	Channel	Function	Frequency	System	Channel
Command N Okee Repeater	RX 164.5750/206.5 TX 163.150/206.5	KING NIFC	5	Logistics		KING NIFC	
Tactical Div/Group	RX 168.200 TX 168.200	KING NIFC	11	Air to Ground	RX 166.9375 TX 166.9375	KING NIFC	6
Prepared by (Resource Unit Ldr.) Wilbur Priest		Approved by (Planning Sect. Ch.) /s/ Ed Flowers			Date July 18, 2011		Time 1730

DIVISION ASSIGNMENT LIST			1. Branch East		2. Division East Initial Attack		
3. Incident Name Honey Prairie Complex			4. Operational Period Date: 7/19/2011 Time: 0800-2000				
5. Operations Personnel							
Operations	Butch Hall 7/22			Branch Director	Brett Waters 7/25 / Bob Habeck (t) 7/21		
Planning Ops	Rick Dolan 7/22			Division Supervisor	Billy Taylor 7/26		
Safety Officer	Ray Durham 7/22 / Dave Marion (t) 7/21			Division Supervisor			
6. Resources Assigned this Period							
Strike Team/Task Force/ Resource Designator	Leader / Name / Designator		Last Shift Date	Num. Per.	Drop Off PT./Time	Pick Up PT./Time	
TFLD (O-943)	Steven Clark		8/1	1			
DOZB (O-959)	Zac Cogle		7/20	1			
STEN (t) (O-1018)	Greg Thomas		7/23	1			
ENG6 (E-390) WICNF 461	Lloyd Pete		7/24	3			
ENG6 (E-978)	Dennis Gillmer		7/26	3			
ENG6 (E-1081)	Tim Joy		7/20	2			
ENG6 (E-1082)	Brad Gregory		7/20	2			
ENG6 (E-1083)	Tony Harkins		7/20	2			
ENG6 (E-1084)	Mike Dean		7/20	2			
HCT2IA (C-14) Pat Rick 20B	Dustin Eldred		7/25	20	PVT		
WT3 (E-92)	Justin Ennis / Jeff Ellis		7/27	1	PVT		
TPL3 (E-500) NFFS	Don Johnson		7/20	2	PVT		
TPL3 (E-649) Bear Co	Mike Kikendale		8/1	2	PVT		
EMTB (O-1058)	Paul Smith		7/24	1			
7. Control Operations							
<ul style="list-style-type: none"> Respond to Initial Attack as requested Patrol and control return Initial attack IC will communicate sizeup information to the Honey Prairie communication. 							
8. Special Instructions							
9. Division/Group Communication Summary							
	Function	Frequency	Channel	Function	Frequency	System	Channel
Command E Okee Repeater	RX 164.625/103.5 TX 163.150/103.5	KING NIFC	3	Logistics		KING NIFC	
Tactical Div/Group	RX 168.775 TX 168.775	KING NIFC	9	Air to Ground	RX 166.9375 TX 166.9375	KING NIFC	6
Prepared by (Resource Unit Ldr.) Wilbur Priest		Approved by (Planning Sect. Ch.) /s/ Ed Flowers			Date July 18, 2011		Time 1800

DIVISION ASSIGNMENT LIST			1. Branch ALL	2. Division Roads Group			
3. Incident Name: Honey Prairie Complex			4. Operational Period Date: 7/19/2011 Time: Day: 0800-2000				
5. Operations Personnel							
Operations	Butch Hall 7/22	Branch Director					
Planning Ops	Rick Dolan 7/22	Division Supervisor					
Safety Officer	Ray Durham 7/22 / Dave Marion (t) 7/21						
6. Resources Assigned this Period							
Strike Team/Task Force/ Resource Designator	Leader / Name / Designator	Last Shift Date	Num. Per.	Drop Off PT./Time	Pick Up PT./Time		
EQPM (O-928)	Ray Helget	7/21	1	East Branch			
THSP (O-1088)	Bert Early	7/27	1				
HEQB (O-1090)	Jonathan Luepke	7/28	1				
Excavator (E-505)	Don Murray	?	1	PVT, West Branch			
Excavator (E-596)	Kenneth Enfinger	?	1				
Dump Truck (E-506)	Craig Smith	?	1	PVT, West Branch			
Dump Truck (E-529)	Ron Watson	?	1	PVT, West Branch			
Dump Truck (E-1074)		?	1	PVT, West Branch			
Dump Truck (E-1079)	Dennis Kight	?	1	PVT, West Branch			
Grader (E-228)	Steven Hendricks	?	1	CNTY, West Branch			
Grader (E-230)	Buddy Pittman	?	1	PVT, East Branch			
Grader (E-380)	Jason Merrit	?	1	PVT, East Branch			
Grader (E-597)	David Prpoes	?	1	PVT, West Branch			
WT (E-1022)	Louis Butler	?	1	PVT, East Branch			
7. Control Operations							
<ul style="list-style-type: none"> Coordinate efforts w/ resource advisor and logistics 							
8. Special Instructions							
<ul style="list-style-type: none"> Ensure that tractors are cleaned and free of debris daily. Examine work area for fire weakened snags. Ensure LCES are in place before operations begin and stay hydrated. Additional resources will be available from GFC, Florida DOF, FWS, and local cooperators. Drive defensively and with lights on at all times. See Medical plan for EMT support. Implement MIST tactics 							
9. Division/Group Communication Summary							
Function	Frequency	System	Channel	Function	Frequency	System	Channel
Command	See ICS 205	KING		Logistics	See ICS 205	KING	
N.Okee Repeater		NIFC					
Tactical Div/Group	See ICS 205	KING		Air to Ground	See ICS 205	KING	
		NIFC				NIFC	
Prepared by (Resource Unit Ldr.) Wilbur Priest		Approved by (Planning Sect. Ch.) /s/ Ed Flowers		Date 7/18/2011		Time 1930	

AIR OPERATIONS SUMMARY

Prepared By: Tim Elder, AOBD

Prepared Date: 7.18.2011

Prepared Time: 1800

1. INCIDENT NAME: Honey Prairie	2. OPS PERIOD DATE: July 19, 2011	START TIME: 0830	END TIME: 1900	SUNRISE: 0638	SUNSET: 2033
---	---	----------------------------	--------------------------	-------------------------	------------------------

3. REMARKS (Safety Notes, Hazards, Air Operations Special Equipment, etc.):
Be alert to rapidly changing weather conditions.

5. TFR #: 1/0249
(Box) 3000' MSL

NOTE: Latitude/Longitude format is "Degrees-Minutes-Decimal Minutes" (example: N30 41.42 W082 33.97)

PERSONNEL	NAME	PHONE #	FREQUENCIES	AM	FM	
AOBD	Tim Elder	Cell 863-243-1438 Desk 912-637-5254	AIR/ AIR FW	122.575		AIRTANKERS / LEAD PLANES - None Available ATGS AIRCRAFT- 57Z
ASGS(T)	Don Nicholas	218-360-1816	AIR/ AIR RW-FF	122.375		OTHER: Lake City Tanker Base: 386-758-9078 / FAX 752-8901 Pogo Helibase: 912-496-4415 / FAX 496-7077 Waycross Helibase 912-287-4479 / FAX 287-4458
ATGS Pogo	Everett Weniger	406-381-4176	Georgia AIR/AIR	122.075		ICP Helispot: 404-772-5317 Oketfenokee Dispatch: 912-496-7366 X230
HEB2 Waycross HB	Jay Matsen Desk 912-287-4479 206-218-8230	404-772-5405	AIR/GROUND PRIMARY		159.285 W	ICP HELISPOT: N30 40.945 W082 33.640 POGO HELIBASE: N30 44.03 W082 07.41
HEB2 Pogo HB	Brian Campbell		AIR/GROUND ALTERNATE		166.9375	HOMERVILLE AIRPORT N31 03.35 W082 46.45 WAYCROSS AIRPORT N31 14.9 W082 23.7
			TOLC		166.9000	BERGANZA HELISPOT N 31 07.22 W082 15.22
			AIR GUARD		168.0125	
					168.625 T110.9	

9. HELICOPTERS (Use Additional Sheets as Necessary)

FAA N#	TY	MAKE/ MODEL	BASE	AVAIL	MANAGER	FAA N#	TY	MAKE/ MODEL	BASE	AVAIL	MANAGER
N36BH	1	S-70	Waycross	0830	Zev Hunting 406-439-6768	26MW	1	K-1200	Pogo	0830	Kirby Cook 406-381-1212
206G	2	UH1H	Waycross	0830	J. Dominguez 530-310-3517	57Z	3	206-L4	Pogo	0830	Cindy Austin 208-241-3957
06901	2	UH1H	Waycross	0830	Kerry Koskela 559-359-2122						
N818MC	3	AS-350B3	Waycross	0830	Juan Edar 307-330-8285						

10. TASK/ MISSION/ ASSIGNMENT (Type/ function includes: Air Tactical, Retardant, Recon, Personnel Transport, Bucket Operations, SAR, etc.)

TYPE/FUNCTION	NAME OF PERSONNEL OR CARGO (if applicable) or instructions for tactical aircraft	MISSION START	FLY FROM	FLY TO
Bucket Ops	N36BH, 206G, 6901, 26MW	As Requested	Fargo/Waycross	
Air Tactical	57Z	1200 / As Requested	Lake City/Fargo	
Recon	All recon missions must have direct approval by the AOBD. 818MC, 57Z	As Requested	Fargo/Pogo	
Medevac	N818MC	As Requested	Fargo/Waycross	



Fire Weather Forecast



FORECAST NO: 73

NAME OF FIRE: Honey Prairie Complex

PREDICTION FOR: Day Shift
SHIFT DATE: 7/19/11

UNIT: Okefenokee National Wildlife Refuge

FORECAST ISSUED: 7/18/11 at 1900

SIGNED: Mike Bettwy (T) / Joe Goudsward
Incident Meteorologists

WEATHER DISCUSSION: High pressure to the north will continue to bring mainly dry and hot conditions through mid week. Only isolated showers and thunderstorms are expected through at least Wednesday.

TODAY: Patchy morning fog, otherwise partly cloudy. An isolated shower or thunderstorm possible.

MAXIMUM TEMPERATURES: 91-95 degrees

PM HEAT INDEX: 94-98 degrees

MINIMUM HUMIDITY: 28-38%

20 FT WINDS: AM: W 4-7 mph

PM: W 7-10 G15 mph

STABILITY/INVERSION: Morning inversion to 300 feet through 0800, then rising to 6500 feet by 1600

TRANSPORT WINDS: WNW 10 mph

DISPERSION INDEX: 57, Average

CHANCE OF PRECIPITATION: 20%

PRECIPITATION AMOUNTS: Less than 0.10"

LIGHTNING ACTIVITY LEVEL: 2

TONIGHT: Partly cloudy. A 20% chance of an evening shower or thunderstorm. Patchy fog developing after midnight. Winds SSW 2-5 mph. Low temperatures 67-72. Max RH 90-100%.

WEDNESDAY: Patchy morning fog, otherwise partly cloudy with isolated afternoon showers and thunderstorms.

MAXIMUM TEMPERATURES: 94-98 degrees

PM HEAT INDEX: 100-104 degrees

MINIMUM HUMIDITY: 36-46%

20 FT WINDS: AM: SSW 4-7 mph

PM: WSW 7-11 G15 mph

TRANSPORT WINDS: W 12 mph

DISPERSION INDEX: 59, Average

CHANCE OF PRECIPITATION: 20%

LIGHTNING ACTIVITY LEVEL: 2

EXTENDED FORECAST:

	THURSDAY	FRIDAY	SATURDAY
SKY/WEATHER	Partly Cloudy / Isolated Thunderstorms	Partly Cloudy/ Scattered T-Storms	Partly Cloudy/ Scattered T-Storms
CHANCE PRECIP	20%	30%	30%
MINIMUM RH	40-50%	45-55%	50-60%
20 FT. WINDS	AM: SSW 2-5 mph PM: SW 5-9 mph	AM: SSW 2-5 mph PM: SW 6-10 mph	AM: SSW 2-5 mph PM: WSW 6-10 mph
MIN/MAX TEMPS	72 / 97	74 / 96	75 / 95

FIRE BEHAVIOR FORECAST

Fire: Honey Prairie Complex	Unit: GA-OKR-000001	Prediction for Day Shift
Forecast #72 Issued: 07/18/2011 1830 hrs	Signed: /S/John Kern	Shift Date: Tuesday 07/19/11

GENERAL FIRE BEHAVIOR

Fuels around the Okefenokee Wildlife Refuge are predominately Fuel Model 7 (Southern Rough). Large to moderate acreage tracts of commercial timberland are mixed in throughout the entire perimeter surrounding the refuge. Fast moving wildfires with extremely high flame lengths and rapid rates of spread occur within the swamp.

Indicators/Threshold for Increased Fire Activity

- **Relative humidity dropping below 45%**
- **Winds above 10 mph**
- **Heavy fuel loadings**
- **Fine dead fuel moisture 8% or less**
- Dispersion above 70
- *** Items in BOLD are predicted to occur today***

SPECIFIC FIRE BEHAVIOR

- **Fire behavior will be influenced by past precipitation. All portions of the fire have received significant rainfall recently.**
- **Expect fire to continue spreading through the shrub fuels with low rates of spread and minimal flame lengths. Expect areas with high heat concentrations to increase fire intensity over the next few days. LAL 2**

Fuel Type	Rates of Spread	Flame Length	Spotting Distance	Firebrand Ignition
Winds at 4 - 10 G 15 mph				
Shrub Fuels – SH4	2 - 7 ch/hr	1 - 2 feet	1/10 - 2/10 mile	57%
Heavy Southern Rough- SH8	4 – 15 ch/hr	4 -8 feet	1/10 -2/10 mile	56%
Timber Litter-Reburn TL8	2 - 5 ch/hr	2 - 3 feet	1/10 - 2/10 mile	56%
Small Pine Plantation w/grasses GR5	4 – 17 ch/hr	3 - 5 feet	1/10 – 2/10 mile	56%

One hour fine dead fuel moisture is at 6% for Tuesday. Moisture from repeated rains have reduced the fire threat, HOWEVER fine fuels are drying out quickly. 1,000 hour fuels again drier than normal for this time of year. There is reburn potential in all divisions due to the amount of needle cast. Should wind become stronger than predicted, expect fire behavior to increase above predicted levels. Heavier firebrands can also be lifted higher and further increasing likelihood of spots to max predictions. **In areas where fuels have been herbicided, expect quick ignitions and extreme heat, quick rate-of –spread, and group tree torching producing spotting problems.**

NOTE- FIRE BEHAVIOR CALCULATIONS ARE FOR FIRES IN UNBURNED FUELS INCLUDING NEW IA STARTS.

West	A	<i>Rains have moistened fuels in this area. Falling snags still pose a threat to fire personnel and the boardwalk. 20% chance of rain</i>	West	T/V	<i>Rains did fall in this area however fire will continue a slow spread to the North and west. Be heads-up for falling snags. 20% chance of rain</i>
	B-G	<i>Wetting rains have moistened fuels. Be heads-up for falling snags. 20% chance of rain</i>		East	H, I J, K L,M N,O
	Y Z	<i>Fine Fuels are drying out quickly. Rains did fall in this area however areas of heat will remain near Div Y/Z perimeter with possible flare-ups in moderate to high fuel loadings. Be heads-up for falling snags. 20% chance of rain</i>	Race Pond		

Night Ops – No Night Operations are Planned. Scattered showers and thunderstorms will continue with patchy fog developing after midnight.

Air Operations: Expect possible areas of heavy smoke especially on the west side of the fire.

SAFETY:

WINDS – Stay abreast of changing wx conditions throughout the entire shift. **THUNDERSTORMS -** these severe winds can create extreme fire behavior, with winds gusting over 30 mph. **SNAGS – Snags are falling in all Divisions – will be influenced by Thunderstorm outflow winds. FUELS:** Watch for pockets of cured shrubs or blankets of red needles beginning to cover the forest floor. 1,000 and 10,000 hour fuels as well as deep duff pockets are providing the heat source. Stay focused, and put LCES in place before starting operations. Watch for standing burning snags that can fall without warning. *Energy Release Component (ERC) has come back up and is again approaching the 90th percentile with the lower RH.*

LCES Analysis of Tactical Actions

Incident Name: Honey Prairie Complex		Date and Time Prepared: July 18, 2011 1600 hrs							Operational Period: Day July 19, 2011	
		Location on Incident								
		Divisions/Groups								
TACTICAL HAZARDS	A, B, C, D, E, F, G	H, I, J, K, L	M, N, O	T, V	Y, Z	Roads Group	ICP	Initial Attack	Mitigations	
Powerlines	*	*	*	*	*	*	*	*	Assume all power lines are charged. Avoid all contact with downed lines.	
Complacency	*	*	*	*	*	*	*	*	Follow work/rest guidelines.	
Indirect Fireline				*	*			*	LCES; IRPG Pg. 10, Indirect Attack; Burnout as possible.	
Anchor Points	*	*	*	*	*			*	Ensure fireline is anchored. Use natural features when possible. Use Local Resource Advisor	
Extreme Conditions (Spotting, Wind)									LCES, Establish Trigger Points. Maintain Situational Awareness. Establish Lookouts as needed. Follow MAP actions.	
Unburned Area Reburn Potential	*	*	*	*	*			*	LCES, Utilize Air Attack if Available. Know Predicted Weather and Fire Behavior Forecast.	
Hazard Trees	*	*	*	*	*			*	IRPG Pg. 80, Identify and flag hazard trees. Look Up, Down and Around	
Hazardous Materials	*	*	*	*	*	*		*	IRPG Pg. 26-27, HAZMAT. Identify and map propane tanks, electric lines, septic tanks and determine bridge wgt. limits prior to use.	
Vehicle Use (Travel 1HR+, Roads)	*	*	*	*	*	*		*	Park vehicles for egress. Follow traffic plan. Use seat belts, drive with headlights on and keep windshields clean. Use spotters. Drive Defensively. Use multiple camp locations to reduce drive time.	
Communications	*	*	*	*	*	*			Ensure radio is cloned with the current communications plan. LCES	
Structure Protection			*	*				*	Use structure protection checklist, PPE, Triage. Utilize Local Fire Departments	
Air Operations (multiple aircraft, line support)	*	*	*	*	*			*	Monitor Air Guard at all times. Flight follow through Dispatch. Keep drop areas clear of personnel.	
Mechanical Equipment	*	*	*	*	*			*	Use PPE, ensure all safety devices are functional. Operator must see you before approaching equipment. Maintain proper distance away from equipment working in the area.	
Escape Routes Safety Zones	*	*	*	*	*			*	LCES, Establish and identify safety zones & escape routes. Know where these are located and the route to them. IRPG p.7	
Thunderstorm Safety	*	*	*	*	*			*	Keep an eye on changes in weather. Take hourly weather observations. Comms will provide weather updates when needed.	
Wildlife	*	*	*	*	*			*	Keep food items off the line and use refuse containers around camp. Use insect repellent as needed. Use caution around water as wildlife is concentrated.	
Sun Exposure	*	*	*	*	*			*	Use sunblock as needed.	
Heat	*	*	*	*	*			*	Hydrate prior to going on line and all during the day. Recognize the signs of heat related injuries. Take frequent breaks throughout the work period.	
Air Quality	*			*	*	*		*	Rotate personnel frequently out of smoke. Ensure off-line rest is clear of smoke.	
Railroad Crossings	*	*	*	*	*	*		*	Visually check all railroad crossings to ensure track is safe to cross. Don't bunch up, leave room for other vehicles to cross. Don't try to beat the train.	
							Safety Officer: Barry Coulliette SOF2			

SAFETY MESSAGE

JULY 19, 2011

Major Hazards and Risk

Dehydration

Logging Operations

Thunder Storms

Lifting

Driving

Hygiene

Complacency

Wildlife



Mitigations

The heat index is again going to be high today. Drink water frequently to stay hydrated take frequent breaks. Keep an eye on your physical condition and that of your coworkers. Some of the symptoms to look for:

Heavy Sweating * Extreme Weakness * Nausea * Muscle cramps * Elevated Body Temperature

Dizziness * Confusion * Clammy * Pale Complexion Fast and Shallow Breathing

Logging operations are going to be on the increase. Pay attention to log trucks and logging equipment working in your environment and give them room. Avoid logging operations if at all possible.

When thunderstorms approach take refuge in your vehicle.

When we are picking up and transporting equipment back to ICP use proper lifting techniques.

To prevent the spreading of germs wash your hands often. It is especially important before you eat.

Wearing your seat belt will save your life. So arrive alive wear your seat belt. Drive at the posted speed limit or less.

Seeing and doing the same things every day leads to complacency. Stay alert to all the hazards. Conduct tail gate safety sessions.

Do not feed or harass alligators.

Safety Officers,

Barry Coulliette West Branch

Ray Durham East Branch

MEDICAL PLAN	Incident Name Honey Prairie Complex	Date Prepared 7/18/2011	Time Prepared 1800	Operational Period 7/19/2011	
5. Incident Medical Aid Station					
<u>Medical Aid Stations</u>	<u>Location</u>			Paramedics Yes No	
MEDICAL UNIT (ICP)	Honey Prairie Complex ICP- Lodge 5 (912)-637-5236 Joe Fowler (EMT-B) MEDL (912)-286-1648 Dominic Burchett (EMT-P) MEDL(t) (912)-286-1644			X	
WEST BRANCH (Line EMT)	Levi Clymer(EMT-P)(417)658-5155 (A,B,C,D,E,F,G DIV) Jefferson Halladay (EMT-P)801-518-9857/Johnny Oker-Blom(EMT-P)404-558-4476 (T,V DIV) Chad Simons (EMT-P)(404)772-5344/Wes Lathen (EMT-P)(435)760-8481 (Y,Z DIV) Matthew Stivers (EMT B)256-375-4260 (West IA)			X	
EAST BRANCH (Line EMT)	Kurt W. Berge (EMT-P)801-404-6434/ Michael Graham(EMT-B)(912)-286-1674 (H,I,J,K,L DIV) James Brown (EMT-P)(360)-775-5413 (M,N,O DIV) Paul Smith (EMT-B) (360)775-4513 (East IA)			X	
Ambulance Services					
Name	Address	Phone	Paramedic Yes No		
Clinch County EMS (WEST SIDE)	West Branch Council Road & HWY 94	Channels 4, 11, 13 912-286-1673 EMS Incident Cell	Yes		
Ware County EMS (NORTHSIDE)	Waycross, Georgia (911 to activate)	912-281-9467	Yes		
Charlton County EMS (EAST SIDE)	Folkston, GA (911 to activate)	912-496-7321	Yes		
Air Ambulance Service					
Trauma 1	Lake City , FL (16 min/air to Fargo ICP)	1-800-223-4878(freq. 155.340)	Yes		
Trauma 1	Jacksonville, FL (26 min/air to Fargo ICP)	1-800-223-4878(freq. 155.340)	Yes		
AirMed	Augusta, GA (2 hrs/air to Fargo ICP)	1-888-792-9245(freq. 155.340)	Yes		
Lifeflight	Jacksonville, FL (35 min/air to Fargo ICP)	1-877-870-7779(freq. 155.340)	Yes		
Air Evac	Waycross, GA (17 min/air to Fargo ICP)	1-800-247-3822(freq. 155.340)	Yes		
US Coast Guard (Heli-Rescue)	Savannah GA	1-912-652-4646 (freq. 155.340)	Yes		
7. Hospitals					
Name	Address	Travel Time Air Ground	Phone	Helipad Yes No	Burn Center Yes No
Satilla Regional	410 Darling Ave Waycross Ga N 31°13.56 W 82°21.058	18 min 45 min	912-283-3030	Yes	No
Clinch Memorial Hospital (WEST SIDE)	1050 Valdosta HWY Homerville, GA	25 min	912-487-5211 ext 4502	Yes	No
Charlton Memorial Hospital (EAST SIDE)	1203 3 rd St. Folkston, GA	50 min	912-496-2531	Yes	No
Memorial Hospital	Savannah, GA 4700 Waters 3200.7 8107.6	30 min	912-350-8999	Yes	No
Shands Hospital (level I)	Jacksonville, FL N 30°20' 97 W 82° 13 992	26 min 1.5 hrs	800-223-4878	Yes	Yes
Shands Burn Center	Gainesville, FL 38.33 N 082 20.73W	33 min 1.5 hrs	352-265-0300	Yes	Yes
8. Medical Emergency Procedures					
<ol style="list-style-type: none"> Notify DIVS of medical problem DIVS notifies COML and MEDL MEDL contacts POC for following <ol style="list-style-type: none"> # of pts Status of pts medical problem Location of pts Transport method Necessary resources MEDL coordinates medevac/patient transport with SOF2, OPS2 and other relevant resources. <p><u>Life threatening injury</u>: an injury that could mean the loss of life, limb, or eyesight <u>Minor injury</u>: an injury that results in the removal of a pt from the line but with less urgency as a life threatening injury <u>Medevac</u>: the most urgent transport of a pt suffering from a life threatening injury Patient transport: transport for minor injuries <u>Medical problem</u>: a physical or mental ailment that occurs to an individual; to include illnesses and traumatic injuries <u>Point of contact (POC)</u>: individual who will be directly advocating for patient care and transport (line medic, crew boss, DIVS etc) *Request that FFTR/Engine crews or single resources let MEDL know if they have any EMTs or Paramedics and if they have equipment with them.</p>			HELISPOTS Pocket Helispot 30 47 30.02 x 82 22 39.5 (West side), mile marker 4, HWY 177 Steven C. Foster State Park Fargo Helispot 30 40.945 x 082 33.640 (West side), HWY 441- Steven C. Foster Visitor Center POGO Helibase 30.44.03 x 82.07.41 (East side) <u>Evac Yankee</u> Helispot 6 Rd. 32 and 32A, N 30° 53.280 W 082° 33.880 Helispot 7 Tatum Rd. Pond N 30° 50.280 W 082° 33.857 *Alternate site can be established following guidelines for safety found with IRPG and local EMS resources.		
Prepared by: Joe Fowler MEDL/Dominic Burchett MEDL(t)			10. Reviewed by: Barry Coulliette SOF		

INCIDENT RADIO COMMUNICATIONS PLAN ICS-205		Incident Name Honey Prairie		GROUP 22		Date/Time Prepared 07/18/2011-18:00		Operational Period Date/Time 7/19/2011 0800-2100			
Ch #	Function	Channel Name	Assignment	RX Freq	NW	RX Tone/NAC	TX Freq	NW	TX Tone/NAC	Mode A,D or M	Remarks
1	Command	West Okee Repeater	Sec West Branch CMD	167.1250	N	156.7	163.1500	N	156.7	A	Stephen Foster State Park
2	Command	South Okee Repeater	Sec East/West Branch CMD	164.7750	N	123.0	163.1500	N	123.0	A	Eddy Florida
3	Command	East Okee Repeater	PRIMARY East Branch CMD	164.6250	N	103.5	163.1500	N	103.5	A	Refuge Headquarters
4	Command	NIFC C2	PRIMARY West Branch CMD	168.100	N	CSQ	170.4500	N	123.0	A	NOT linked to OKEE System
5	Command	North Okee Repeater	PRIMARY North Branch CMD	164.5750	N	206.5	163.1500	N	206.5	A	Waycross
6	Air-Ground	Air to Ground	PRIMARY	166.9375	N	CSQ	166.9375	N	CSQ	A	
7	Tactical	MOB-MOB	GFC Contingency	159.3900	W	CSQ	159.3900	W	156.7	A	
8	Tactical	V-Fire 21W WHITE	Structure Protection Group&I.A.	154.2800	W	CSQ	154.2800	W	156.7	A	
9	Tactical	USFS 9	DIV A,B,C,L, M T, M & (East I/A)	168.7750	N	CSQ	168.7750	N	CSQ	A	
10	Tactical	S.E. Compact	DIV	159.2850	W	CSQ	159.2850	W	CSQ	A	
11	Tactical	USFS 11	DIV Z, N, O	168.2000	N	CSQ	168.2000	N	CSQ	A	
12	Tactical	Refuge Tac 1	DIV H, I, J, K	168.3500	N	CSQ	168.3500	N	CSQ	A	
13	Tactical	FL 190	DIV D, E, F, G, V, Y	151.2725	N	CSQ	151.2725	N	CSQ	A	
14	Command	DIV J RPT	East Branch	170.4125	N	CSQ	165.9625	N	123.0	A	NOT linked to OKEE System
15	Air-Ground	Air to Ground	SECONDARY	166.9000	N	CSQ	166.9000	N	CSQ	A	
16	EMERGENCY	AIR Guard	AIR OPS.	168.6250	N	CSQ	168.6250	N	110.9	A	
Prepared by (Communications Unit) Brian Matthews Incident Dispatcher: 912-286-1660											
Cloning at ICP communications and briefings,											

The convention calls for frequency lists to show four digits after the decimal place, followed by either an "N" or a "V", depending on whether the frequency is narrow or wide band. **Mode** refers to either "A" or "D" indicating analog or digital (e.g. Project 25) or "M" indicating mixed mode. All channels are shown as if programmed in a control station, base stations, mobile or portable radio.

HONEY PRAIRIE PHONE LIST

07/19/11

Incident Communication (24 Hour Dispatch) 912-286-1660

AGENCY OFFICIALS			OPERATIONS 912-637-5248		
Curt McCasland	602-359-0013	USFWS AA	Rick Dolan	352-353-5101	Planning Operations
Mindy Gautreaux	912-282-7500	USFWS Deputy AA	Butch Hall	352-225-1281	Field Operations
Frank Sorrells	912-381-7503	GFC AA	Roger Gill	386-963-9496	Field Operations
James Karels	850-228-7763	FL DOF AA	WEST BRANCH		
Diane Adams	912-266-5421	GEMA	Tom Donohoe	404-772-5384	West Branch
Mike Housh	912-281-1575	USFWS AREP	Greg Jacobson	208-642-7587	DIVS A, B, C
COMMAND			Toby Herold	530-598-4195	DIVS D, E, F, G
Don West	352-353-5044	IC	Shawn Duggar	850-508-7736	DIVS V
Verne Reggal	386-547-7293	Deputy IC	Gary Smith	417-455-3391	DIVS Y
Mike Dueitt	850-228-0320	Unified IC (FWS)	Dan Helterline	406-241-1467	DIVS Y (T)
			Glen Palfrey	208-290-4663	DIVS Z
LIAISON			EAST BRANCH		
Skippy Reeves	912-387-5923	Liaison Officer FWS	Brett Waters	406-581-6198	East Branch
Gary Beauchamp	352-620-4424	Unified IC (FL)	Bob Haback	406-431-1359	East Branch (t)
					DIVS H, I, J, K
			Ray Miller	717-830-3607	DIVS L, M
			Steve Griffin	760-417-0728	DIVS N, O
			Ernest Schmidt	320-760-4781	DIVS N, O
			Billy Taylor	850-544-2229	East IA
					East IA
INFORMATION 912-637-5247			AIR OPERATIONS 912-637-5254 FAX 912-637-5237		
Ludie Bond	352-258-6084	Fire Information	Tim Elder	863-243-1438	Air Ops Branch
Mark Wurdeman	912-496-2566	Fire Information (JIC)	Don Nicholas	218-360-1816	ASGS(t)
			Evertt Weniger	406-381-4176	Fargo Helibase
			Carl Magill	541-519-0850	ATGS – Fargo
			Brian Campbell	404-772-5405	HEB2 – Fargo
			Jay Matsen	912-287-4479	HEB2 – Waycross
			=	206-218-8230	(cell)
SAFETY			PLANNING 912-637-5241 FAX 912-637-5237		
Barry Couliette	404-772-5406	Safety Officer	Ed Flowers	912-286-4643	Planning Section Chief
Ray Durham	770-280-7684	Safety Officer	Scott Crosby	912-637-5241	Situation Unit Leader
Joe Fowler	912-286-1648	Medical Unit Leader	DEMOB		
Field EMT	912-286-1674	Medical Unit Leader	Joe Goudsward	240-778-5279	IMET
Medical Unit	912-637-5236		Mike Bettwy	240-778-5019	IMET (T)
Tom Lail	404-772-5338	Safety Officer	John Kern	404-772-5393	FBAN
DISPATCH			FINANCE 912-637-5244 FAX 912-496-4710		
Okeefenokee Dsp	912-496-7366	Okeefenokee	Linda Starling	770-658-6641	Finance Section Chief
Suwannee Dispatch	386-758-5700	Fla wildfires, other	Rita Loper	912-281-6876	Buying Team Leader
Waycross Dispatch	912-287-4915	Ga wildfires, other	Ron Knowles	907-230-4945	Business Advisor
LOGISTICS West			Duane Welch	404-558-8859	Comp Claims
Shane Locke	404-772-5399	LSC	=	404-844-7042	(cell)
Butch Mallet	404-772-5319	LSC			
Bill Hitt	912-637-5251	FACL			
Melvin Reese	352-442-7891	Base Camp Mgr			
Gary Sisson	386-983-2474	RCDM			
Hotel Mgr	912-637-5251	Lodging			
Kevin Reish	404-276-1998	Security Manager			
JV Thompson	404-772-5380	GSUL			
Dennis Spear	404-772-5389	GSUL(t)			
Nat Wright/Bob Kookan	404-772-5318	Food Unit Leader			
Linda Bruss	912-637-5239	SPUL			
Rhonda Hughes		SPUL(t)			
Brian Mathews	561-914-7206	COML			

ORDERING		FAX 912-637-5240
Cindy Tisdell	912-637-5262	Ordering Manager
Abe Philipson	912-637-5239	Ordering Manager
LOGISTICS		East
912-496-2111		
912-496-4710		
Fax		
Dave Klym	256-497-8490	LSC
Duane Stephens	912-496-2111	Base Camp Mgr
John Crain	404-772-5363	Base Camp Mgr
John Kaupa	256-497-8388	Supply Unit Leader
Joe Hoisington	530-905-3715	EQM
Kelly Helget	256-497-8334	Roads / HEQM
	239-887-1817	Security Manager
Medical Unit	912-387-6787	
EAST MSG CTR	912-496-4698	
COOPERATORS		
COUNTY		
	912-496-7229	Charlton County EMA
John F. Meyer - Chairman	912-496-2549	Charlton County Commissioners
Dobie Conner	912-496-7321	Charlton County Sheriff
Jesse Booth	912-520-0061	Clinch County EMA
Jonathan Daniel	912-281-5158	Ware County EMA
Jessie Jordan	912-816-6063	Ware County Fire Dept
Joe Morris	912-281-6020	Ware County Sheriff
Robbie Sutton	912-599-9027	Tri County 911
STATE		
GFC Fargo District Office	912-637-5270	
GFC Satilla District Office	912-287-4915	
Blair Joiner	229-237-9026	GFC Clinch Chief Ranger
Jason Gillis	912-314-9233 912-637-5504	GFC Satilla Assistant Mgr.
Brian Gray	229-894-4628 912-673-5274	Stephen Foster State Park
Travis Griffin	912-281-5790	Laura Walker State Park
Crystal Paulk- Buchanan	404-535-1048	GEMA PIO
Georgia Highway Patrol	912-287-6500	
FEDERAL		
Okefenokee Fire Shop	912-496-4181	
Okefenokee NWR HQ (East)	912-496-7366	
Okefenokee NWR (West)	912-637-5322	
Okefenokee Visitor Center	912-496-7836	

LANDOWNERS		
Jim Barrett	229-412-3133	Langdale/GOAL Chairman
Wesley Langdale	229-220-2602	Langdale
Hal Rowe	229-412-3133	Langdale
Langdale Office	229-242-7450	Langdale Office
Mike Conlon	386-365-3882	Rayonier Unit Supervisor
Ray Carter	386-288-6626	Rayonier
Ed Carter	386-288-6626	Rayonier
Doug Nuss	912-390-1037	Rayonier
Randall McCrady	912-283-4077 W 912-288-0877 C	Rayonier
Colin Myerson	229-506-1565	Superior Pine Products Co
Robbie Lee	229-356-0526	Superior Pine Products Co
Eric Harris	912-637-5597	Superior Pine Products Co
Superior Pine Office	912-637-5261	Superior Pine Products Co
Al Alexander	850-843-0104	The Forestry Co
Savell Schmidt	850-843-1181	The Forestry Co
John Bogue	850-843-1192	The Forestry Co
Joe Hopkins	912-276-0911	Toledo Timber
Chris Gowan	912-276-0965	Toledo Timber
Martin Bell	912-283-0583	Swamp Park
Crystal Peeples	352-316-0632	FIA
Steve Davis	912-614-1828	Davis Community
Trevor Fortner	912-599-9271	Little Suwannee
Tim Jarrell	912-223-7120	Hancock Forest Mgmt.
RAILROADS		
Norfolk Southern	800-453-2530	
Sid Moody	904-318-7983	Norfolk Southern Railroad
Chad Edwards	404-582-4909	Norfolk Southern Railroad
	540-797-9918	
Eric Sams	904-576-9907	
Norfolk So Emergency Dispatch	404-529-1597	
CSX Randy Dixon	912-270-0699	
CSX Dispatch	800-232-0144	

DMOB for July 19 to July 22 Contact DMOB-Tim @ 912-637-5241**ALL RESOURCES - START YOUR DEMOB PROCESS THE DAY BEFORE YOUR DEMOB DAY. YOU NEED TO COMPLETE THE DEMOB PROCESS AND BE READY TO LEAVE ICP BY 1300 or 1700 HRS -**

NUMBER	NAME	KIND	UNIT	TRAVEL	JETPORT	DEMOB DATE
E-134	ENG6 TRAIL RIDGE	ENG	FLFNF	POV		07/19/2011
E-134.1	MOUSEL, JOSH	THS	FLFNF	POV		07/19/2011
E-134.2	MCDAVID, PAUL	ENO	FLFNF	POV		07/19/2011
E-134.5	ROWE, TOM	ENO	FLFNF	POV		07/19/2011
E-1046	ENG-T6_9504	ENG	MOMTF	AOV		07/19/2011
E-1046.1	MOBLEY, KAREN	ENG	MOMTF	AOV		07/19/2011
E-1046.2	AVERNHEIMER, DAVID	FFT	MOMTF	AOV		07/19/2011
E-1046.3	GAILLARD, KARL	FFT	MOMTF	AOV		07/19/2011
E-584	ENG6	ENG				07/19/2011
E-819	MOUNTAIN VIEW FIRE	ENG	COFT	AOV		07/19/2011
E-819.4	EISMANN, BRETT A	ENG	COFT		DEN	07/19/2011
E-819.5	WOOD, JAMES T	FFT	COFT		DEN	07/19/2011
E-819.6	CARTER, BEN	FFT	COMV			07/19/2011
E-838	ENG6	ENG				07/19/2011
E-905	ENG6	ENG				07/19/2011
E-992.2	CECIL, BRYAN	ENO	GAR08	AOV		07/19/2011
E-992.3	CAMACHO, DAVID	ENO	GAR08	AOV		07/19/2011
E-1019	WILDLANDS FIRE	WA	GAOK	POV		07/19/2011
E-1019.2	DURRANCE, FRANK	DRI	GAOK	POV		07/19/2011
E-1036	ENG6	ENG				07/19/2011
E-1057	ENGINE - T6 - KSS	ENG	KSKSS	POV		07/19/2011
E-1058	ENGINE - T6 -	ENG	COPB	AOV		07/19/2011
E-1060	ENGINE - T6 -	ENG	COPB	AOV		07/19/2011
E-1060.1	AMUNDSON, PAUL A	ENG	COPB	AOV	DEN	07/19/2011
E-1060.2	HELD, JEFFREY L	FFT	COPB	AOV	DEN	07/19/2011
E-1060.3	ROACH, TIRAS J	FFT	COPB	AOV	DEN	07/19/2011
E-1061	ENG6	ENG				07/19/2011
E-1067	ENGINE - T6 - GRTR	ENG	COGJ	POV		07/19/2011
E-1067.1	MOORE, SHAUN M	ENG	COGJ	POV	EGE	07/19/2011
E-1067.2	GARVIN, BRIAN	ICT5	COGJ	POV	DEN	07/19/2011
E-1067.3	MOSHER, ERIC L	FFT	COGJ	POV	EGE	07/19/2011
E-1068	ENG6	ENG				07/19/2011
E-1069	ENG6	ENG				07/19/2011
E-5014	ENG6	ENG				07/19/2011
O-731	BARKER, KEITH	EMT	COLA	AIR	ORD	07/19/2011
O-808	SEVERSON, CHARLES	SOF	ORSU	AIR	EUG	07/19/2011
O-861	MATHISEN, JAMES	SEC	FLJNR	AOV	RSW	07/19/2011
O-875	STELLON, JAMES C	HEC	MNMN	AIR	MSP	07/19/2011
O-880	DUEITT, MICHAEL W	ICT2	GAR4	AOV	TLH	07/19/2011
O-887	BOLEN, CHARLEY	CTS	NCNC	AOV	AVL	07/19/2011
O-886	INGRAM, TRENT F	ICT3	GAGA	AOV	ALB	07/19/2011
O-899	SCHOBER, ROBERT	DOZ	AKAK	AIR	FAI	07/19/2011
O-900	MILLETTE, PHILIP J	TFL	MNBN	AIR	MSP	07/19/2011
O-904	FILBERT, MATT	STE	IDSTF	AIR	SUN	07/19/2011
O-906	KARP, EVAN ELLIOT	DOZ	AKAK	AIR	FAI	07/19/2011
O-910	HAMMACK, DONALD L	DIV	MTKN	AIR	GPI	07/19/2011
O-912	RHODES, BRIAN	DIV	CACN	AIR	SAN	07/19/2011
O-916	OHME, HANS	TFL	IDPAF	AIR	BOI	07/19/2011
O-919	KNOX, JESSE D	TFL	CASR	AIR	ACV	07/19/2011
O-921	HALL, BRADLEY L	TFL	ALALF	AOV	MGM	07/19/2011
O-926	INGRAM, MATTHEW	TFL	IDPAF	AIR	BOI	07/19/2011
O-972	BUNGE, LARRY B	SOF	MNSU	AIR	BRD	07/19/2011

O-973	DORSHORST, LARRY	SOF	AKDA	AIR	FAI	07/19/2011
O-1021	VITWAR, DAVID A	SOF	COPB	AIR	COS	07/19/2011
C-21	CREW - CAMP - PINE	CC	KYDBF	AOV	TYS	07/20/2011
C-21.1	BRYANT, DONALD	CAC	KYDBF	AOV	TYS	07/20/2011
C-21.2	HAMLIN, CATHLEEN	CAC	KYDBF	AOV		07/20/2011
C-21.3	DOWNS, GERALD	CA	KYDBF	AOV		07/20/2011
C-21.4	PFOUTZ, ELERON	CA	KYDBF	AOV		07/20/2011
C-21.5	HASKELL, STEPHEN	CA	KYDBF	AOV		07/20/2011
C-21.6	HICKSON, DARIUS	CA	KYDBF	AOV		07/20/2011
C-21.7	FREELS, JAMIE	CA	KYDBF	AOV		07/20/2011
C-21.8	ZAMBARD, FORCIN	CA	KYDBF	AOV		07/20/2011
E-77	GAS ENG6	ENG	GAGA	AOV		07/20/2011
E-499	WILDLANDS FIRE	TPL	FLFNF	POV		07/20/2011
E-499.2	ROWAN, ROY	DRI	FLFNF	POV		07/20/2011
E-651.2	RIMES, WILLIAMS	TPO	GAOK	POV		07/20/2011
E-646.2	DUEITT, PHILIP	DZO	MSMN	POV		07/20/2011
E-1000.1	RAMPININI, PAUL	ENG	NCNC	POV		07/20/2011
E-1000.2	BOLDMAN, MICHAEL	ENO	NCNC	POV		07/20/2011
E-1000.3	FORRISTALL,	FFT	NCNC	POV		07/20/2011
E-1000.5	RIDDLE, JASON	FFT	NCNC	POV		07/20/2011
E-1000.6	GARRETT, JEFF	FFT	NCNC	POV		07/20/2011
E-1001.2	DIGBY, RAYMOND	ENO	NCNC	POV		07/20/2011
E-1001.3	FORD, KOLBE P	FFT	NCNC	POV		07/20/2011
E-1080	PU-ACS28584	PU	FLFL1			07/20/2011
E-1080.1	CRIBB, ROY	DRV	FLFL1			07/20/2011
E-5002.1	KIGHT, HANK	ENG	FLFNF	POV		07/20/2011
O-436	NELSON, ERIC	ENG	MNAG	A/R	GFK	07/20/2011
O-640	FINCHAM, MICHAEL D	EMT	CASH	AIR	RDD	07/20/2011
O-858	MITCHELL, LAURA R	REA	MDBW	AOV	BWI	07/20/2011
O-876	KNOWLES, RONALD	IBA1	AKR10	A/R	JNU	07/20/2011
O-889	LARSON, KRIS	HEC	MNLF	AIR	MSP	07/20/2011
O-909	SMITH, GARY L	DIV	MOMO	AIR	SGF	07/20/2011
O-915	SUSZEK, GREGORY	DIV	FLFPR	AOV	RSW	07/20/2011
O-917	HELTERLINE, DAN	TFL	MTR01	AIR	MSO	07/20/2011
O-918	GRIFFIN, STEVEN	TFL	CASQ	AIR	BFL	07/20/2011
O-925	HAYNES,	DIV	IDPAF	AIR	BOI	07/20/2011
O-930	MCDUGAL, LEIGH A	SCK	GAR08	REN	ATL	07/20/2011
O-935	MONROE, JASON	RAD	IDIPF	AIR	GEG	07/20/2011
O-936	SCHMITT, ERNEST T	TFL	MNMN	AIR	MSP	07/20/2011
O-938	ALTMAN, WILLIAM D	DIV	MOMO	AIR	STL	07/20/2011
O-944	MARION, DAVE	TFL	CAR05	AIR	RNO	07/20/2011
O-946	FILLMORE, STEPHEN	TFL	CACN	AIR	SAN	07/20/2011
O-949	HERNANDEZ, NIKIA L	STE	MTKN	AIR	FCA	07/20/2011
O-952	PLUMMER, VINCENT B	STE	CASN	AIR	FAT	07/20/2011
O-965	WILEY, JUDY	PTR	MTBR	AIR	MSO	07/20/2011
O-969	WEBER, CHARLES	EQT	MTFN	AIR	GPI	07/20/2011
O-977	WHIPPS, MARK	TFL	MSNA	AOV	TUP	07/20/2011
O-978	THELEN, JACOB	TFL	ALALF		BHM	07/20/2011
O-1000	MEEK, WAYLON	STE	IDIPF	AIR	GEG	07/20/2011
E-76	GAS ENG6 PICKENS	ENG	GAGA	AOV		07/21/2011
E-76.10	KEENE, ANTHONY R	FFT	GAGA	POV	CHA	07/21/2011
E-76.9	HENDERSON, CHRIS	ENG	GAGA		CHA	07/21/2011
E-77.10	RENTZ, LEVY	FFT	GAGA			07/21/2011
E-77.9	GAMLEN, ANDREW	ENG	GAGA		CHA	07/21/2011
E-78	GAS ENG6 MURRAY	ENG	GAGA	AOV		07/21/2011
E-78.10	BISHOP, SIMON	FFT	GAGA	AOV		07/21/2011
E-78.9	CLINE, KEVIN	ENG	GAGA	AOV	CHA	07/21/2011
E-80	GAS ENG6 PUTNAM 86	ENG	GAGA	AOV		07/21/2011

E-80.10	BOLES, JESSE	FFT	GAGA				07/21/2011
E-80.9	BASS, DANE A	ENG	GAGA	AOV	ATL		07/21/2011
E-81	GAS ENG6 JONES 86	ENG	GAGA	AOV			07/21/2011
E-81.10	DURDEN, MARVIN	FFT	GAGA				07/21/2011
E-81.9	HELMS JR, TROY L	ENG	GAGA		ATL		07/21/2011
E-500	NFFS-	TPL	FLFNF	POV			07/21/2011
E-943.1	MATCHETT, HUGH	TPO	GAOK	POV			07/21/2011
E-992.4	DILLON, JUSTIN	ENG	GAR08	AOV			07/21/2011
E-997	ENGINE - T6 - 605	ENG	FLEVP	AOV			07/21/2011
E-997.1	WEER, JACK	ENG	FLEVP	AOV			07/21/2011
E-997.2	MARKSON, SAM	ENO	FLEVP	AOV			07/21/2011
E-998	ENGINE - T6 - 606	ENG	FLEVP	AOV			07/21/2011
E-998.1	STEBNER, JOHN	ENG	FLEVP	AOV			07/21/2011
E-998.2	DENSEL, DARRELL	ENO	FLEVP	AOV			07/21/2011
E-1049	ENGINE - T6 -	ENG	DEDE	AOV			07/21/2011
E-1049.1	DOWD, JAMES D	ENG	DEDE	AOV	PHL		07/21/2011
E-1049.2	POOLE, HENRY D	ENG	DEDE	AOV	PHL		07/21/2011
E-1049.3	HANSEN, MATTHEW	FFT	DEDE	AOV	PHL		07/21/2011
E-1050	ENGINE - T6 - KY-LBF	ENG	KYLBF	AOV			07/21/2011
E-1050.1	MITCHELL, RANDALL	ENG	KYLBF	AOV	BNA		07/21/2011
E-1050.2	VAREL, KYLE	ENG	KYLBF	AOV	BNA		07/21/2011
E-1050.3	BOYER, TEDERELL	FFT	KYLBF	AOV	BNA		07/21/2011
E-1057.1	MUELLER, TROY D	ENG	KSKSS	POV	ICT		07/21/2011
E-1057.2	BRITTAN, LUKE	FFT	KSKSS	POV	ICT		07/21/2011
E-1057.3	FLOYD, SAM	FFT	KSKSS	POV	ICT		07/21/2011
E-1058.1	KEIL, MICHAEL L	ENG	COPB	AOV	DEN		07/21/2011
E-1058.2	O'BRIEN, JOESPH	ENG	COFAI	AOV			07/21/2011
E-1058.3	PIWKO, DARIUSZ J	FFT	COPB	AOV	DEN		07/21/2011
E-1075	ENGINE - T6 - 6711	ENG	INBOR	AOV			07/21/2011
E-1075.1	JONES, DAVID H	ENG	INBOR	AOV	SDF		07/21/2011
E-1075.2	SMITH, BRANDON W	FFT	INBOR	AOV	SDF		07/21/2011
E-1075.3	WINCHELL, MAX	FFT	ININS	AOV	STL		07/21/2011
E-1081	ENGINE - T6 -	ENG	GAGA	POV			07/21/2011
E-1081.1	JOY, TIMMOTHY S	ENG	GAGA	POV	ATL		07/21/2011
E-1081.2	MOSS, WESLEY	FFT	GAGA	POV			07/21/2011
E-1082	ENGINE - TYPE 6 -	ENG	GAGA	POV			07/21/2011
E-1082.1	GREGORY, LEE B	ENG	GAGA	AOV	ALB		07/21/2011
E-1082.2	SHIRLEY, ADAM	FFT	GAGA	AOV			07/21/2011
E-1083	ENGINE - TYPE 6 -	ENG	GAGA	POV			07/21/2011
E-1083.1	HARKINS, TONY	ENG	GAGA	POV	ATL		07/21/2011
E-1083.2	MELTON, JARRETT B	FFT	GAGA	POV	ATL		07/21/2011
E-1084	ENGINE - T6 -	ENG	GAGA	AOV			07/21/2011
E-1084.1	DEAN, MICHAEL L	ENG	GAGA	AOV	ATL		07/21/2011
E-1084.2	HOLLAND, SETH	FFT	GAGA	AOV	ATL		07/21/2011
O-642	COOPER, BARBARA J	THS	AROU	AIR	LIT		07/21/2011
O-911	MILLER, RAY E	DIV	PAPAS	AIR	MDT		07/21/2011
O-913	HEROLD, THOMAS P	DIV	CAKN	AIR	MFR		07/21/2011
O-927	SPEAR, DENNIS	GSU	ARAR	AIR	XNA		07/21/2011
O-945	MENDOZA, WALTER R	TFL	CAAN	AIR	BUR		07/21/2011
O-947	REGISTER, JESS	STE	MOMT	AIR	SGF		07/21/2011
O-948	PALFREY, GLEN	STE	IDIPF	AIR	GEG		07/21/2011
O-950	LARSON, LARRY LEE	STE	ORWI	AIR	EUG		07/21/2011
O-951	VAN DYNE, JERRY	STE	ORWI	AIR	EUG		07/21/2011
O-958	BOYCE II, TIMOTHY A	DOZ	ORMA	AIR	BOI		07/21/2011
O-959	COGLE, ZACHARY	HEQ	CAPN	AIR	RNO		07/21/2011
O-963	PANTSAR, MARK A	EQP	MNMN	AIR	DLH		07/21/2011
O-979	LINDBLOM, SAM G	STE	VAVAF	AIR	PNS		07/21/2011
O-990	SAMPSON, JOSEPH	STE	MTBD	AIR	BTM		07/21/2011

O-998.4	MATTHEWS, BRIAN W	CO	FLFLS	AOV	PBI	07/21/2011
O-1001	CRIBB JR, ROY L	DOZ	FLFLS	AOV	TPA	07/21/2011
O-1027	WEER, JACKSON W	ENG	FLEVP	AOV	MIA	07/21/2011
O-1028	MARKSON, SAM I	FFT	FLEVP		MIA	07/21/2011
O-1031	DENSEL, DARRELL L	ENG	FLEVP	AOV	MIA	07/21/2011
O-1032	STEBNER, JOHN	ENG	FLEVP	AOV	FLL	07/21/2011
E-392	IL-SHF #40 ENGINE	ENG	ILSHF	AOV		07/22/2011
E-392.10	TAYLOR, TYSON	ENG	ILSHF	AOV		07/22/2011
E-392.11	MANN, CODY	FFT	ILSHF	AOV		07/22/2011
E-392.12	BRADLEY, MALLORY	FFT	ILSHF		MWA	07/22/2011
E-850	GACHF	ENG	GACH	AOV		07/22/2011
E-850.4	ELLIOTT, WILLIAM	ENG	GACH	AOV	ATL	07/22/2011
E-1046	ENGINE - T6 - 9504	ENG	MOMT	AOV		07/22/2011
E-1046.1	MOBLEY, KAREN	ENG	MOMT	AOV	SGF	07/22/2011
E-1046.2	AVERNHEIMER, DAVID	FFT	MOMT	AOV	STL	07/22/2011
E-1046.3	GAILLARD, KARL	FFT	MOMT	AOV	STL	07/22/2011
E-1048	ENGINE - T6 - SHP - 41	ENG	VASH	AOV		07/22/2011
E-1048.1	JARRELLS, JOSEPH	ENG	VASH	AOV		07/22/2011
E-1048.2	JENKINS, ERIC	FFT	VASH	AOV		07/22/2011
E-1048.3	GOODE, ALBERT	FFT	VASH	AOV		07/22/2011
E-1061	ENGINE - T6 - SOUTH	ENG	COPB	AOV		07/22/2011
E-1061.1	WOODRICK, STEVE A	ENG	COPB	AOV	DEN	07/22/2011
E-1061.2	GROGAN, BRYAN	ENG	COPB	AOV	DEN	07/22/2011
E-1061.3	NATION, JEFF	FFT	COPB	AOV	PUB	07/22/2011
E-1064	ENGINE - T6 -	ENG	COFT	POV		07/22/2011
E-1064.1	NICHOLS, GREGORY	ENG	COFT	POV	DEN	07/22/2011
E-1064.2	SAVOIE, JUSTIN C	ENG	COFT	POV	DEN	07/22/2011
E-1064.3	SCHWARTZ, IAN	FFT	COFT	POV	DEN	07/22/2011
E-1066	ENGINE - T6 - DSP-681	ENG	CODS	AOV		07/22/2011
E-1066.1	JONES, ERIC	ENG	CODS	AOV	DEN	07/22/2011
E-1066.2	SPIESS, JEREMY	FFT	CODS	AOV	DEN	07/22/2011
E-1066.3	STAHL, TODD	FFT	CODS	AOV	DEN	07/22/2011
E-1069	ENGINE - T6 -	ENG	COPB	AOV		07/22/2011
E-1069.1	ABBOTT, WILLIAM T	ENG	COPB	AOV	PUB	07/22/2011
E-1069.2	JOHNSON, CLINT M	FFT	COPB	AOV	PUB	07/22/2011
E-1069.3	ELLIOTT, SCOTT	FFT	COPB	AOV	PUB	07/22/2011
E-1134	HALLADAY,	EMT	GAOK	AIR	SLC	07/22/2011
E-1134	UNIFIED FIRE	MIS	GAOK	AIR	SLC	07/22/2011
E-1135	BURCHETT, DOMINIC	EMT	GAOK	AIR	SLC	07/22/2011
E-1135	UNIFIED FIRE	MIS	GAOK	AIR	SLC	07/22/2011
E-1136	UNIFIED FIRE	MIS	GAOK	AIR	SLC	07/22/2011
E-1136	BERGE, KURT	EMT	GAOK	AIR	SLC	07/22/2011
O-1002	COOK, KIRBY R	HM	MTBR	AOV	MSO	07/22/2011
O-1004	COOPER, DEREK NEIL	DOZ	ORW	AIR	BOI	07/22/2011
O-1007	MALGREN, KENNETH	ABR	IDBOD	AIR	BOI	07/22/2011
O-1008	CULVER, ZACHARY	HEQ	ORW	AIR	BOI	07/22/2011
O-1011	NOLAN, PATRICK K	BC	CALPF	AIR	SBA	07/22/2011
O-885	BRUSS, LINDA K	SPU	MNMN	AIR	BRD	07/22/2011
O-894	GOUDSWARD, JOE	IME	ARAO	A/R	LIT	07/22/2011
O-923	BETTWY, MIKE	IME		AOV	MIA	07/22/2011
O-928	HELGET, KELLY	EQP	MNMN	AIR	HIB	07/22/2011
O-953	HOARD, BOB A	STE	CASTF	AIR	SMF	07/22/2011
O-962	KLYM, DAVID	LSC	ORDE	AIR	RDM	07/22/2011
O-967	CRANE, BARBARA	PTR	GAR08	AIR	ATL	07/22/2011
O-970	ESTRADA, JESSICA	EQT	CAAN	AIR	BUR	07/22/2011
O-988	JOHNSON, NICK	DRI	GAOK			07/22/2011
O-989	TWOMBLY, MAX J	STE	COFT	AIR	DEN	07/22/2011
O-991	WOLF, ADAM LEN	STE	IDFCA	AIR	MSO	07/22/2011

O-993	DAILY, DREW C	STE	ININS	AIR	STL	07/22/2011
O-997	HABECK, ROBERT J	SOF	MTCE	AIR	HLN	07/22/2011
O-999	DOBBS JR, ROBERT E	BC	IDBOF	AIR	BOI	07/22/2011
	FLORIDA GREEN TEAM					07/23/2011
O-998.1	ELDER, TIMOTHY J	AOB	FLFLS	AOV	RSW	07/23/2011
O-998.11	DUGGAR, ELLIOTT S	DIV	FLFLS	AOV	TLH	07/23/2011
O-998.12	REESE JR, MELVIN	FAC	FLFLS	AOV	TPA	07/23/2011
O-998.14	KERN, JOHN	FBA	FLFLS	AOV	TPA	07/23/2011
O-998.15	WRIGHT, NATHANIEL	FDU	FLFLS	AOV	MCO	07/23/2011
O-998.18	WEST, DONALD E	ICT2	FLFLS	AOV	GNV	07/23/2011
O-998.19	RIGGALL, VERNE E	ICT2	FLFLS	AOV	SRQ	07/23/2011
O-998.20	LOCKE, SHANE P	LSC	FLFLS	AOV	GNV	07/23/2011
O-998.21	MALLET, WALTER J	LSC	FLFLS	AOV	TPA	07/23/2011
O-998.22	FOWLER, JOSEPH A	ME	FLFLS	AOV	TPA	07/23/2011
O-998.23	DOLAN, RICHARD W	OSC	FLFLS	AOV	GNV	07/23/2011
O-998.24	PHILIPSON, ABRAHAM	OR	FLFLS	AOV	TPA	07/23/2011
O-998.25	FLOWERS, EDWARD L	PSC	FLFLS	AOV	SRQ	07/23/2011
O-998.26	WATSON, JOHN F	PRO	FLFLS		TLH	07/23/2011
O-998.27	BOND, LUDIE A	PIO	FLFLS	AOV	GNV	07/23/2011
O-998.28	SISSON, GARY	RCD	FLFLS	AOV	GNV	07/23/2011
O-998.29	WILKINSON, TIMOTHY	DMOB	FLFLS	PAS	JAX	07/23/2011
O-998.30	COULLIETTE, BARRY L	SOF	FLFLS	AOV	JAX	07/23/2011
O-998.31	CROSBY, SCOTT A	SITL	FLFLS	AOV	GNV	07/23/2011
O-998.32	HUGHES, RHONDA G	SPU	FLFLS	AOV	PNS	07/23/2011
O-998.34	HALL, THEODORE J	OSC	FLFLS	AOV	TLH	07/23/2011
O-998.35	STARLING, LINDA G	FSC	FLFLS	AOV	JAX	07/23/2011
O-998.37	PRIEST, WILBUR C	RES	FLFLS	AOV	TPA	07/23/2011
O-998.5	WELCH JR, ALVIN D	CO	FLFLS	AOV	TPA	07/23/2011
O-998.6	FOUNTAIN, RANDALL	CTS	FLFLS	AOV	TLH	07/23/2011
O-998.7	RIDLEY, LISA G	COS	FLFLS	AOV	PBI	07/23/2011
O-998.8	DONOHUE, TOM F	OPB	FLFLS		MCO	07/23/2011

Joint Information Center Fire Update

Fire Update for Monday, July 18, 2011~ 10 a.m.

Fire Information: www.inciweb.org



Note: Due to the current moist weather pattern and moderated fire behavior, this fire update will be prepared on an as needed basis. You can still call 912-496-2566 for current information.

Honey Prairie Fire Complex: 299,909 acres, 70% contained
Sweat Farm Again Fire: 19,169 acres, 86% contained
Racepond Fire: 20,934 acres, 86% contained



Honey Prairie Fire: The Honey Prairie Fire grew by only 520 acres in the last 48 hours. Heat is still being detected on the west area of the fire complex. Two and a half inches and possibly up to four inches of rain fell on most areas of the fire complex. Minimal fire activity has been observed over the last 48 hours, but that could change as the weather forecasts are predicting a hotter dryer week ahead.

Sweat Farm Again and Racepond Fires: Fires are still staffed and monitored. No additional updates unless significant activity occurs.

A Hazardous Weather Outlook has been issued by the National Weather Service: "Isolated thunderstorms will be possible over central Florida today. A few of these storms may be strong with gusty winds and heavy rainfall. Patchy smoke from the Honey Prairie wildfire may affect visibility near and to the west of the complex."

Okefenokee National Wildlife Refuge remains closed to the public. During the early morning hours of low fire activity, firefighters staged at the Visitor Center are clearing downed trees and cutting down hazardous trees along the Ridley's Island Trail. For the latest information on activities in the refuge, visit: <http://www.fws.gov/okefenokee/>

For information on Okefenokee Swamp Park, visit: <http://www.okeswamp.com/>

Stephen C. Foster State Park reports that it is open with very limited access to the public. The office, picnic area, and museum are open to the public. The trails, boat rentals, camping, and cabins remain closed the public. For the latest on the park, visit: <http://www.gastateparks.org/StephenCFoster>

georgiafireinformationcenter@gmail.com

912-496-2566

Assigned Resources

- 93 Engines
- 13 Dozers
- 12 Water Tenders
- 6 Helicopters
- 1 Crew
- 664 Personnel

www.inciweb.org
www.fws.gov/okefenokee
www.qatrees.org

The SE Georgia Fires Information Center will be open from 8 a.m. – 6 p.m. daily to help assist the public and media with up to date information on all fires across Southeast Georgia and in the Okefenokee National Wildlife Refuge. Please contact us at **912-496-2566** or georgiafireinformationcenter@gmail.com.

Cooperators: Okefenokee National Wildlife Refuge; Georgia Forestry Commission; Florida Forest Service; U.S. Forest Service; Greater Okefenokee Association of Landowners (GOAL); Georgia Emergency Management Agency; Rayonier; Superior Pine; Langdale; GDOT; GSP; FLDOT; Georgia DNR; Georgia Aviation Authority; Georgia National Guard; Georgia DOC; County Fire Departments; Toledo Manufacturing Company; Charlton, Ware and Clinch Counties; and the Cities of Folkston and Homerville.

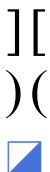
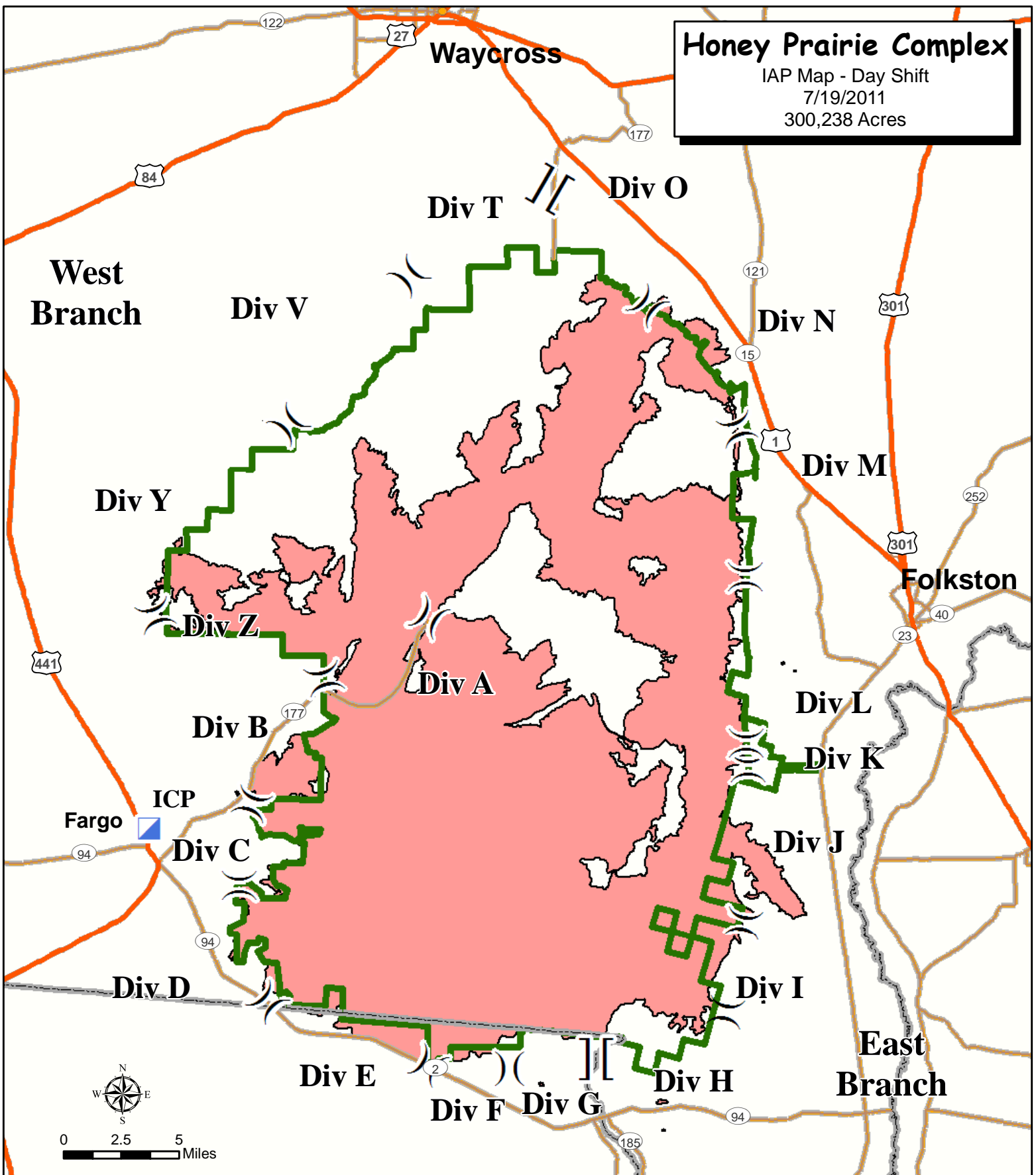
Closures: All entrances into Okefenokee National Wildlife Refuge are closed. All visitor activities are suspended until the threat of fire is over. For current status on visitor activities, contact: Okefenokee National Wildlife Refuge, 912-496-7366; Okefenokee Swamp Park, 912-283-0583; or the Stephen C. Foster State Park, 912-637-5274.

Honey Prairie Complex

IAP Map - Day Shift

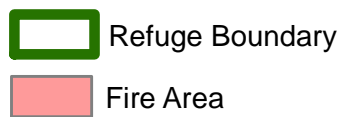
7/19/2011

300,238 Acres



Branch Break
Division Break
Incident Command Post

Highway
Major Road
State Boundary



Refuge Boundary
Fire Area



Interagency Incident Management
GREEN TEAM
Perimeter as of
7/1/2011 1800
S. Leverette

