

Honey Prairie Complex

GA-OKR-000001

INCIDENT ACTION PLAN

Operational Period
T h u r s d a y
J u l y 2 1 , 2 0 1 1

0800-2000

Accounting Codes

FWS – 9141-F25M-2J

NPS – 5023 F25M E11

BLM – F25M

USFS – PRF25M_1502

Initial Attack – F4PM

INCIDENT OBJECTIVES	1. INCIDENT NAME Honey Prairie Complex	2. DATE PREPARED 7/20/11	3. TIME PREPARED 1800												
4. OPERATIONAL PERIOD (DATE/TIME) Thursday July 21, 2011 0800 – 2000															
5. GENERAL CONTROL OBJECTIVES FOR THE INCIDENT (INCLUDE ALTERNATIVES) <ol style="list-style-type: none"> 1. Provide for safety of incident personnel and public in all incident operations. 2. Maintain a positive working relationship with all adjacent landowners, cooperators State and Federal partners. Inform, involve and communicate incident planning and operations with all partners. 3. Contain all fires that are within the Okefenokee National Wildlife Refuge, inside the Refuge and/or inside the swamp edge break if possible. 4. In cooperation with local timberland owners, use full suppression strategies and tactics to minimize damage to private timberlands and improvements and to prevent fires outside the Refuge from entering the Refuge. 5. Assist in management and suppression of additional fires (new starts or breakouts) in the vicinity as approved by Agency Administrators and Unified Incident Commanders. 6. Protect all cultural and archeological sites and structures within the refuge, with particular attention to facilities at Okefenokee Swamp Park. 7. Manage the fires cost-effectively consistent with the values at risk. 8. Implement structure protection as necessary for at-risk facilities and communities. 9. Coordinate suppression actions with assigned Refuge Resource Advisors 															
6. WEATHER FORECAST FOR OPERATIONAL PERIOD See attached forecast for area specific weather information.															
7. GENERAL SAFETY MESSAGE Drive defensively and use spotter when backing. Ensure LCES is in place and known by all personnel. Drink plenty of water and take frequent rest breaks. Ensure proper use of PPE during all operations.															
8. Attachments (☐ if attached) <table border="0" style="width: 100%;"> <tr> <td><input type="checkbox"/> Organization List (ICS 203)</td> <td><input type="checkbox"/> Incident Map</td> <td><input type="checkbox"/> Safety Message</td> </tr> <tr> <td><input type="checkbox"/> Assignment List (ICS 204)</td> <td><input type="checkbox"/> Traffic Plan</td> <td><input type="checkbox"/> Demobilization Procedures</td> </tr> <tr> <td><input type="checkbox"/> Communications Plan (ICS 205)</td> <td><input type="checkbox"/> Finance Message</td> <td><input type="checkbox"/> Unit Log</td> </tr> <tr> <td><input type="checkbox"/> Medical Plan (ICS 206)</td> <td><input type="checkbox"/> Phone List</td> <td></td> </tr> </table>				<input type="checkbox"/> Organization List (ICS 203)	<input type="checkbox"/> Incident Map	<input type="checkbox"/> Safety Message	<input type="checkbox"/> Assignment List (ICS 204)	<input type="checkbox"/> Traffic Plan	<input type="checkbox"/> Demobilization Procedures	<input type="checkbox"/> Communications Plan (ICS 205)	<input type="checkbox"/> Finance Message	<input type="checkbox"/> Unit Log	<input type="checkbox"/> Medical Plan (ICS 206)	<input type="checkbox"/> Phone List	
<input type="checkbox"/> Organization List (ICS 203)	<input type="checkbox"/> Incident Map	<input type="checkbox"/> Safety Message													
<input type="checkbox"/> Assignment List (ICS 204)	<input type="checkbox"/> Traffic Plan	<input type="checkbox"/> Demobilization Procedures													
<input type="checkbox"/> Communications Plan (ICS 205)	<input type="checkbox"/> Finance Message	<input type="checkbox"/> Unit Log													
<input type="checkbox"/> Medical Plan (ICS 206)	<input type="checkbox"/> Phone List														
9. PREPARED BY (PLANNING SECTION CHIEF) Ed Flowers		10. APPROVED BY (INCIDENT COMMANDER) Don West													

ORGANIZATION ASSIGNMENT LIST		9. Operations Section	
1. Incident Name Honey Prairie Complex GA-OKR-000001		Chief	Roger Gill (West Branch) 7/25, Butch Hall (East Branch) 7/22 / Brent McCarty 8/2
		Planning	Rick Dolan 7/22
2. Date 7/20/2011	3. Time 1000 hrs	a. WEST BRANCH - Divisions/Groups	
4. Operational Period 7/21/2011 0800 - 2000		OPBD	Tom Donohoe 7/22 / Bob Habeck (t) 7/21
5. Incident Commander and Staff		Division	A-B-C-D-E-F-G Charles Arnold 8/1
Incident Commander	Don West/Verne Riggall (Dep) 7/22	Division	T-V Shawn Duggar 7/22
Liason Officer	Gary Beauchamp 7/29		
Safety Officers	Barry Coulliette 7/22 / Ray Durham 7/23	Division	Y-Z Mike Lee 8/2
Information Officer	Ludie Bond 7/22		
6a. Agency Administrators			
FWS	Curt McCasland	Group	IA-WEST and Structure Group Billy Taylor 7/26
FWS	Mindy Gautreaux		
6b. Agency Representatives			
FWS Liason	Skippy Reeves	b. EAST BRANCH - Divisions/Groups	
GFC	Frank Sorrels	OPBD	Brett Waters 7/25
FLDOF	James Karels	Division	H-I-J-K-L Steve Gray 8/1
FWS AREP	Mike Housh		
FWS-Refuge PAO	Art Webster	Division	M-N-O Tracy Mobley 8/1
GEMA AREP	Alan Robinson / Diane Adams	Group	IA-EAST Billy Taylor 7/26
USFS AREP	Ivan Greene	Group	Roads
7. Planning Section			
Chief	Ed Flowers 7/22	c. AIR OPERATIONS BRANCH - Honey Prairie	
Dep Chief	Steve Budd-Jack 7/25	Air Operations Branch Director	Tim Elder 7/22
Resources Unit	Wilbur Priest 7/22 Randy Lownes 8/2	Air Support Group Supervisor	Don Nicholas 7/22
Situation Unit	Scott Crosby 7/22		
IMET	Joe Goudsward 7/21 / Mike Bettwy 7/21		
FBAN	John Kern 7/22	d. AIR OPERATIONS BRANCH - Waycross	
Demob Unit	Tim Wilkinson 7/22	Waycross Helibase Manager	Jay Matsen 7/23
Demob Unit	Andy Lacey 7/22		
GIS	Sue Leverette 7/22	e. AIR OPERATIONS BRANCH - Pogo	
CTSP	Randy Fountain 7/22	Pogo Helibase Manager	Brian Campbell 7/22
TNSP	Larry Moore 7/24	ATGS-Pogo	Everett Wenigar 7/30
8. Logistics Section		10. Finance Section	
Chief	Shane Locke 7/21/Butch Mallet 7/22	Chief	Linda Starling 7/22
Supply Unit	Linda Bruss/7/21 / Rhonda Hughes(t) 7/22	Time Unit	Darline Matheny 7/22
GSUL	James Thompson 7/22	Procurement	John Watson 7/22
ORDM	Abe Phillipson(t) 7/22 / Cindy Tisdell 7/24	Comp Claims Unit	Alvin Welch 7/21
COML	Brian Mathews 7/22	Cost	Lisa Ridley 7/22
Medical Unit	Joe Fowler 7/22	Buying Team	Judy Reddin
Facilities	Bill Hitt 7/22 Carl Taylor 7/25	IBA	Ron Knowles
Food	Nat Wright 7/22/Bob Kookan 8/2		
RCDM	Gary Sisson(t) 7/22		
BCMG	Mel Reese(t) 7/22		
		Prepared by:	Wilbur Priest RESL

DIVISION ASSIGNMENT LIST			1. Branch West		2. Division A, B, C, D, E, F, G		
3. Incident Name: Honey Prairie Complex			4. Operational Period Date: 7/21/2011 Time: Day: 0800-2000				
5. Operations Personnel							
Operations	Roger Gill 7/25 / Brent McCarty 8/2		Branch Director		Tom Donohoe 7/22 Bob Habeck (t) 7/21		
Planning Ops	Rick Dolan 7/22		Division Supervisor		Charles Arnold 8/1		
Safety Officer	Barry Coulliette 7/22						
6. Resources Assigned this Period							
Strike Team/Task Force/ Resource Designator	Leader / Name / Designator	Last Shift Date	Num. Per.	Drop Off PT./Time	Pick Up PT./Time		
TFLD (O-960)	Paul Pelligrini	8/1	1				
STPL (O-1055)	Royce Davis	7/23	1				
ENG6 (E-821)	Robert Thompson	7/24	3				
ENG6 (E-824)	Chris Brubaker	7/24	3				
ENG6 (E-405)	Brett Gore	7/24	3				
ENG6 (E-907) Eagle Staff	Brady Ward	7/22	2				
ENG6 (E-1059)	Daniel Ross	7/22	3				
ENG6 (E-1065)	Mike Carnelli	7/22	3				
ENG6 (E-1066)	Eric Jones	7/21	3				
ENG6 (E-1076) MOMTF 9504	Tim Perren	7/24	3				
TPL3 (E-914)	Fred Robinson	7/23	1				
TPL3 (E-1138)	Jim Reynolds	7/23	1				
TPL3 (E-1139)	Stan Jackson	7/23	1				
SOF2 (O-1068)	Jamey Burnsed	7/25	1				
EMTP (O-847)	Levi Clymer	7/28	1				
7. Control Operations							
<ul style="list-style-type: none"> Patrol and mop up within 100' of fire perimeter line. Monitor fire impacts to Stephen Foster State Park. Patrol and control reburn. 							
8. Special Instructions							
<ul style="list-style-type: none"> Examine work area for fire weakened snags. Ensure LCES are in place before operations begin and stay hydrated. Additional resources will be available from GFC, Florida DOF, FWS, and local cooperators. Drive defensively and with lights on at all times. Continue to complete Suppression Damage Assessment Survey. 							
9. Division/Group Communication Summary							
Function	Frequency	System	Channel	Function	Frequency	System	Channel
Command N Okee Repeater	RX 164.5750/206.5 TX 163.150/206.5	KING NIFC	5	Logistics		KING NIFC	
Tactical Div/Group	RX 168.775 TX 168.7750	KING NIFC	9	Air to Ground	RX 166.9375 TX 166.9375	KING NIFC	6
Prepared by (Resource Unit Ldr.) Wilbur Priest	Approved by (Planning Sect. Ch.) /s/ Ed Flowers			Date 7/20/2011	Time 1930		

DIVISION ASSIGNMENT LIST				1. Branch West		2. Division T, V	
3. Incident Name Honey Prairie Complex				4. Operational Period Date: 7/21/2011 Time: 0800-2000			
5. Operations Personnel							
Operations	Roger Gill 7/25 / Brent McCarty 8/2			Branch Director		Tom Donohoe 7/22 Bob Habeck (t) 7/21	
Planning Ops	Rick Dolan 7/22			Division Supervisor		Shawn Duggar 7/22	
Safety Officer	Barry Coulliette 7/22			Division Supervisor			
6. Resources Assigned this Period							
Strike Team/Task Force/ Resource Designator		Leader / Name / Designator		Last Shift Date	Num. Per.	Drop Off PT./Time	Pick Up PT./Time
TFLD (O-942)		Ben Krupski		8/1	1		
ENG6 (E-1073)		Mike Schlitz		7/22	3		
ENG6 (E-2)		Eric Nelson		?	1	O-436	
ENG6 (E-3)		George Pelt		?	2		
ENG6 (E-995)		Mike Daigle		7/25	3		
ENG6 (E-996)		John Cousins		7/25	3		
ENG6 (E-1064)		Greg Nichols		7/21	3		
TPL2 (E-986)		Cleo Simons		?	1	PVT	Operator 7/20-21
TPL2 (E-988)		Jonathon Houser		7/30	1	PVT	
WAT1 (E-1019)		Frank Durrance		?	1	PVT	
TFLD (O-986)		Mike Harnois		7/22	1		
Skidder (E-981)		Henry Tiner		7/25	1	PVT	
Grader (E-530)		Lucious Corbett		7/27	1	PVT	
SOF2 (O-891)		Steve Holman		8/1	1		
EMTP (O-1059)		John Oker-Bloom		7/23	1		
7. Control Operations							
<ul style="list-style-type: none"> Recon potential control lines and examine area for snag removal Improve swamp break boundaries for fire breaks, work w/resource advisor Coordinate potential burn-out w/READ and refuge personnel Use refuge personnel for any burn-out activities. 							
8. Special Instructions							
<ul style="list-style-type: none"> Make contact with the Resource Advisor before using mechanical equipment. Safely push down with equipment all snags whether on fire or not that are a threat to success or tactical operations. Ensure LCES are in place before operations begin. Stay hydrated. Drive defensively and with lights on at all times. Boggy terrain: Be careful and aware when working around this type of area. Continue to complete Suppression Damage Assessment Survey. 							
9. Division/Group Communication Summary							
Function	Frequency	System	Channel	Function	Frequency	System	Channel
Command N Okee Repeater	RX 164.5750/206.5 TX 163.150/206.5	KING NIFC	5	Logistics		KING NIFC	
Tactical Div/Group	RX 168.775 TX 168.775	KING NIFC	9	Air to Ground	RX 166.9375 TX 166.9375	KING NIFC	6
Prepared by (Resource Unit Ldr.) Wilbur Priest		Approved by (Planning Sect. Ch.) /s/ Ed Flowers			Date July 20, 2011		Time 1800

DIVISION ASSIGNMENT LIST				1. Branch West		2. Division Y, Z	
3. Incident Name Honey Prairie Complex				4. Operational Period Date: 7/21/2011 Time: 0800-2000			
5. Operations Personnel							
Operations	Roger Gill 7/25 / Brent McCarty 8/2			Branch Director		Tom Donohoe 7/22 Bob Habeck (t) 7/21	
Planning Ops	Rick Dolan 7/22			Division Supervisor		Mike Lee 8/2	
Safety Officer	Barry Coulliette 7/22						
6. Resources Assigned this Period							
Strike Team/Task Force/ Resource Designator	Leader / Name / Designator		Last Shift Date	Num. Per.	Drop Off PT./Time	Pick Up PT./Time	
TFLD (O-920)	Aaron Schneider		8/1	1			
TFLD (O-991)	Adam Wolf (t)		7/21	1			
TFLD (O-954)	Brian Ebert (t)		8/1	1			
STEN (O-955)	Randy Scherr		8/1	1			
DOZB (O-1004)	Derek Cooper		7/21	1			
DOZB (O-1008)	Zack Culver (t)		7/21	1			
TPL2 (E-497)	Leslie Jeter		7/22	1	PVT		
TPL3 (E-943)	Hugh Matchett		7/20	1	PVT		
TPL3 (E-984)	Daniel Cole		7/31	1	PVT		
TPL2 (E-985)	Junior House		7/27	1	PVT		
ENG6 (E-392)	Tyson Taylor		7/21	3			
ENG6 (E-838)	Chris Mursu		7/21	2			
ENG6 (E-1071)	Clayton Swanger		7/22	3			
ENG6 (E-850)	Mike Haisten		7/21	3			
ENG6 (E-404)	John Knapper		7/23	3			
ENG6 (E-906)	James Burk		7/22	3			
ENG6 (E-939)	Chad Ingle		7/23	3			
WAT2 (E-954)	Sonny Moore		7/23	1	PVT		
SOF2 (O-1097)	Rodney Weeks		7/30	1			
EMTP (E-1152)	Chad Simons		7/26	1			
7. Control Operations <ul style="list-style-type: none"> Make contact with the Resource Advisor before using mechanical equipment. Recon potential controllines and examine area for snag removal Improve swamp break boundaries for fire breaks 							
8. Special Instructions <ul style="list-style-type: none"> Safely push down with equipment all snags whether on fire or not that are a threat to success or tactical operations. Ensure LCES are in place before operations begin. Stay hydrated. Drive defensively and with lights on at all times. Boggy terrain: Be careful and aware when working around this type of area. Continue to complete Suppression Damage Assessment Survey. 							
9. Division/Group Communication Summary							
Function	Frequency	System	Channel	Function	Frequency	System	Channel
Command N Okee Repeater	RX 164.5750/206.5 TX 163.150/206.5	KING NIFC	5	Logistics		KING NIFC	
Tactical Div/Group	RX 151.2725 TX 151.2725	KING NIFC	13	Air to Ground	RX 166.9375 TX 166.9375	KING NIFC	6
Prepared by (Resource Unit Ldr.) Wilbur Priest		Approved by (Planning Sect. Ch.) /s/ Ed Flowers			Date July 20, 2011		Time 1730

DIVISION ASSIGNMENT LIST				1. Branch West	2. Division West - Initial Attack and Structure Protection		
3. Incident Name: Honey Prairie Complex				4. Operational Period Date: 7/21/2011 Time: 0800-2000			
5. Operations Personnel							
Operations	Roger Gill 7/25 / Brent McCarty 8/2			Branch Director	Tom Donohoe 7/22 Bob Habeck (t) 7/21		
Planning Ops	Rick Dolan 7/22			Division Supervisor	Billy Taylor 7/26		
Safety Officer	Barry Coulliette 7/22						
6. Resources Assigned this Period							
Strike Team/Task Force/ Resource Designator	Leader / Name / Designator		Last Shift Date	Num. Per.	Drop Off PT./Time	Pick Up PT./Time	
TFLD (O-899)	Bob Schober		8/2	1			
ENG6 (E-1075)	David Jones		7/25	3			
TPL Appling 70 (E-1165)	Joseph A. Smith Jr. (O-1115)		8/3	1			
TPL Clinch 72 (E-1167)	William A. Register (O-1117)		8/3	1			
TPL Clinch 75 (E-1169)	Christopher J. Henderson (O-1118)		8/3	1			
TPL Glynn 72 (E-1175)	Robert L. Danley (O-1121)		8/3	1			
TPL Jeff Davis 70 (E-1177)	Berry J. Bohannon (O-1122)		8/3	1			
EMTB (O-1057)	Matthew Stivers		7/23	1			
SO2 (O-1083)	Tommy Lail		7/26	1			
7. Control Operations							
<ul style="list-style-type: none"> Respond to Initial Attack as requested Initial attack IC will communicate size up information to Honey Prairie incident communications 							
8. Special Instructions							
9. Division/Group Communication Summary							
Function	Frequency	System	Channel	Function	Frequency	System	Channel
Command N Okee Repeater	RX 164.5750/206.5 TX 163.150/206.5	KING NIFC	5	Logistics	See ICS 205	KING NIFC	
Tactical Div/Group	RX 154.280 TX 154,280/156.7	KING NIFC	8	Air to Ground	RX 166.9375 TX 166.9375	KING NIFC	6
Prepared by (Resource Unit Ldr.) Wilbur Priest		Approved by (Planning Sect. Ch.) /s/ Ed Flowers			Date July 20, 2011		Time 1930

DIVISION ASSIGNMENT LIST		1. Branch East		2. Division H, I, J, K, L			
3. Incident Name Honey Prairie Complex		4. Operational Period Date: 7/21/2011 Time: 0800-2000					
5. Operations Personnel							
Operations	Butch Hall 7/22	Branch Director	Brett Waters 7/25				
Planning Ops	Rick Dolan 7/22	Division Supervisor	Steve Gray 8/1				
Safety Officer	Ray Durham 7/22 / Dave Marion (t) 7/21						
6. Resources Assigned this Period							
Strike Team/Task Force/ Resource Designator	Leader / Name / Designator	Last Shift Date	Num. Per.	Drop Off PT./Time	Pick Up PT./Time		
TFLD (O-937)	Kevin Elmstrom	8/1	1				
TFLD (O-993)	Drew Daily	7/21	1				
ENG6 (E-77) GAGAS 86	Dean Cornett	7/20	2				
ENG6 (E-407) White Earth #2	Jesse Londo	8/3	3				
ENG6 (E-893) MIHMF 251	Martel Knipe	7/23	3				
ENG6 (E-894) MOOZP 862	William Mier	7/22	3				
ENG6 (E-895) MOMTF 9505	Blake Knisley	7/22	3				
EMTB (O-1077)	Michael Graham	7/26	1				
SOF2 (O-892)	Steve Ripley	7/21	1				
7. Control Operations							
<ul style="list-style-type: none"> Contain all fires outside refuge boundary. Patrol and control reburn. Patrol and mop up all accessible fire line. Mop up all hot spots within 100' of the fire perimeter. Continue to back haul excess equipment from the line. Continue to work with resource advisors when conducting rehabilitation work. 							
8. Special Instructions							
<ul style="list-style-type: none"> Ensure LCES are in place before operations begin. Stay hydrated. Drive defensively and with lights on at all times. See medical plan for EMT support Examine work area for fire weakened snags Continue to complete Suppression Damage Assessment Survey. 							
9. Division/Group Communication Summary							
	Function	Frequency	Channel	Function	Frequency	System	Channel
Command E Okee Repeater	RX 164.6250/103.5 TX 163.150/103.5	KING	3	Logistics		KING NIFC	
DIV J Repeater	RX 170.4125 TX 165.9625/123.0	NIFC	14				
Tactical Div/Group	RX 168.350 TX 168.350	KING NIFC	12	Air to Ground	RX 166.9375 TX 166.9375	KING NIFC	6
Prepared by (Resource Unit Ldr.) Wilbur Priest		Approved by (Planning Sect. Ch.) /s/ Ed Flowers		Date July 20, 2011		Time 1800	

DIVISION ASSIGNMENT LIST			1. Branch East		2. Division M, N, O		
3. Incident Name Honey Prairie Complex			4. Operational Period Date: 7/21/2011 Time: 0800-2000				
5. Operations Personnel							
Operations	Butch Hall 7/22		Branch Director		Brett Waters 7/25		
Planning Ops	Rick Dolan 7/22		Division Supervisor		Tracy Mobley 8/1		
Safety Officer	Ray Durham 7/22 / Dave Marion (t) 7/21						
6. Resources Assigned this Period							
Strike Team/Task Force/ Resource Designator	Leader / Name / Designator	Last Shift Date	Num. Per.	Drop Off PT./Time	Pick Up PT./Time		
TFLD (O-941)	Shawn Denowh	8/1	1				
TFLD (O-994)	Jim Edgar	8/1	1				
STEN (O-989)	Max Twombly	7/21	1				
ENG6 (E-76)	Stacy Cantrell	8/3	2				
ENG6 (E-78)	Adam Greeson	8/3	2				
ENG6 (E-80)	Ricky Williams	8/3	2				
ENG6 (E-81)	Russell Fowler	8/3	2				
ENG6 (E-897) MDBWR	Ephraim Diefenderfer	7/22	2				
ENG6 (E-977) IPF E-31	Louie Feltman	7/23	4				
ENG6 (E-1133)	Chris Wright	7/26	2				
EMTP (O-1060)	James Brown	7/24	1				
SOF2 (O-1067)	Larry Morse	7/24	1				
7. Control Operations							
<ul style="list-style-type: none"> Patrol and mop up 100' inside fire perimeter. Recon potential control lines and examine area snag removal Keep fire within refuge boundary. Continue to back haul excess equipment from the fire line. Continue to work with resource advisors when conducting rehabilitation work 							
8. Special Instructions							
<ul style="list-style-type: none"> If the fire reaches Mgt Activity Line (MAL) 1 cooperators and adjacent landowners will be notified. If the fire reaches MAL 2 a meeting will be held at the Swamp Park with adjacent landowners and cooperators. Safely push down with equipment all snags whether on fire or not that are a threat to success or tactical operations. Ensure LCES are in place before operations begin. Stay hydrated. See medical plan for EMT support. Drive defensively and with lights on at all times. Boggy terrain: Be careful and aware when working around this type of area. Continue to complete Suppression Damage Assessment Survey. 							
9. Division/Group Communication Summary							
Function	Frequency	System	Channel	Function	Frequency	System	Channel
Command N Okee Repeater	RX 164.5750/206.5 TX 163.150/206.5	KING NIFC	5	Logistics		KING NIFC	
Tactical Div/Group	RX 168.200 TX 168.200	KING NIFC	11	Air to Ground	RX 166.9375 TX 166.9375	KING NIFC	6
Prepared by (Resource Unit Ldr.) Wilbur Priest		Approved by (Planning Sect. Ch.) /s/ Ed Flowers			Date July 20, 2011		Time 1730

DIVISION ASSIGNMENT LIST			1. Branch East		2. Division East Initial Attack		
3. Incident Name Honey Prairie Complex			4. Operational Period Date: 7/21/2011 Time: 0800-2000				
5. Operations Personnel							
Operations	Butch Hall 7/22			Branch Director	Brett Waters 7/25		
Planning Ops	Rick Dolan 7/22			Division Supervisor	Billy Taylor 7/26		
Safety Officer	Ray Durham 7/22 / Dave Marion (t) 7/21			Division Supervisor			
6. Resources Assigned this Period							
Strike Team/Task Force/ Resource Designator	Leader / Name / Designator		Last Shift Date	Num. Per.	Drop Off PT./Time	Pick Up PT./Time	
TFLD (O-943)	Steven Clark		8/1	1			
STEN (t) (O-1018)	Greg Thomas		7/23	1			
ENG6 (E-978)	Dennis Gillmer		7/26	3			
ENG6 (E-390) WICNF 461	Lloyd Pete		7/24	3			
ENG6 (E-1081)	Paul Bryant		8/3	2			
ENG6 (E-1082)	Tommy Williams		8/3	2			
ENG6 (E-1083)	Wesley Sisk		8/3	2			
ENG6 (E-1084)	Mike Dean		7/22	2			
HCT2IA (C-14) Pat Rick 20B	Dustin Eldred		7/25	20	PVT		
WT3 (E-92)	Justin Ennis / Jeff Ellis		7/27	1	PVT		
TPL Camden 70 (E-1162)	James D Armstrong (O-1115)		8/3	1			
TPL Ware71 (E-1171)	Barry H. Bennett (O-1119)		8/3	1			
TPL Ware 72 (E-1173)	Thomas D. Whitley (O-1120)		8/3	1			
EMTB (O-1058)	Paul Smith		7/24	1			
7. Control Operations							
<ul style="list-style-type: none"> Respond to Initial Attack as requested Patrol and control return Initial attack IC will communicate sizeup information to the Honey Prairie communication. 							
8. Special Instructions							
9. Division/Group Communication Summary							
	Function	Frequency	Channel	Function	Frequency	System	Channel
Command E Okee Repeater	RX 164.625/103.5 TX 163.150/103.5	KING NIFC	3	Logistics		KING NIFC	
Tactical Div/Group	RX 168.775 TX 168.775	KING NIFC	9	Air to Ground	RX 166.9375 TX 166.9375	KING NIFC	6
Prepared by (Resource Unit Ldr.) Wilbur Priest		Approved by (Planning Sect. Ch.) /s/ Ed Flowers			Date July 20, 2011		Time 1800

AIR OPERATIONS SUMMARY

Prepared By: Tim Elder, AOBD

Prepared Date: 7.20.2011

Prepared Time: 1800

1. INCIDENT NAME: Honey Prairie	2. OPS PERIOD DATE: July 21, 2011	START TIME: 0830	END TIME: 1900	SUNRISE: 0640	SUNSET: 2032
3. REMARKS (Safety Notes, Hazards, Air Operations Special Equipment, etc.): <i>No fire is ever the same. No flight is ever the same. The fire you fly today will not be the same as the fire you flew yesterday. Be alert to your environment and changing conditions.</i>					5. TFR #: 1/02249 (Box) 3000' MSL
NOTE: Latitude/Longitude format is "Degrees-Minutes-Decimal Minutes" (example: N30 41.42 W082 33.97)					

PERSONNEL	NAME	PHONE #	FREQUENCIES	AM	FM	
AOBD	Tim Elder	Cell 863-243-1438 Desk 912-637-5254	AIR/ AIR FW	122.575		AIRTANKERS / LEAD PLANES - None Available Local ATGS AIRCRAFT- 57Z
ASGS(T)	Don Nicholas	218-360-1816	AIR/ AIR RW-FF	122.375		OTHER: Pogo Helibase: 912-496-4415 / FAX 496-7077 ICP Helispot: 404-772-5317 Okfenokoe Dispatch: 912-496-7366 X230
ATGS Pogo	Everett Weniger	406-381-4176	Georgia AIR/AIR	122.075		ICP HELISPOT: N30 40.945 W082 33.640 BERGANZA HELISPOT N 31 07.22 W082 15.22 POGO HELIBASE: N30 44.03 W082 07.41
HEB1 Pogo HB	Jay Matsen Desk 912-287-4479 Cell 206-218-8230		Georgia AIR/GRND (Smokey - Dozers)	159.285 W		
			AIR/GROUND PRIMARY	166.9375		
			AIR/GROUND ALTERNATE	166.9000		
			TOLC	168.0125		
			AIR GUARD	168.625	T110.9	

9. HELICOPTERS (Use Additional Sheets as Necessary)

FAA N#	TY	MAKE/ MODEL	BASE	AVAIL	MANAGER	FAA N#	T	MAKE/ MODEL	BASE	AVAIL	MANAGER
N36BH	1	S-70	Pogo	0830	Zev Hunting 406-439-6768	N818MC	3	AS-350B3	Pogo	0830	Juan Edar 307-330-8285
26MW	1	K-1200	Pogo	0830	Kirby Cook 406-381-1212	57Z	3	206-L4	Pogo	0830	Cindy Austin 208-241-3957
10. TASK/ MISSION/ ASSIGNMENT (Type/ function includes: Air Tactical, Retardant, Recon, Personnel Transport, Bucket Operations, SAR, etc.)											
TYPE/FUNCTION						NAME OF PERSONNEL OR CARGO (if applicable) or instructions for tactical aircraft					
Bucket Ops			N36BH, 26MW			As Requested			Fargo/Waycross		
Air Tactical			57Z			1200 / As Requested			Lake City/Fargo		
Recon			All recon missions must have direct approval by the AOBD . 818MC, 57Z			As Requested			Fargo/Pogo		
Medevac			N818MC			As Requested			Fargo/Waycross		



Fire Weather Forecast



FORECAST NO: 75

NAME OF FIRE: Honey Prairie Complex

PREDICTION FOR: Day Shift
SHIFT DATE: 7/21/11

UNIT: Okefenokee National Wildlife Refuge

FORECAST ISSUED: 7/20/11 at 1900

SIGNED: Mike Bettwy (T) / Joe Goudsward
Incident Meteorologists

WEATHER DISCUSSION: Upper level high pressure will dominate the area through Friday while a broad area of surface low pressure remains centered to the north. Isolated to scattered thunderstorms are possible, otherwise hot conditions will prevail with afternoon heat index values in excess of 105 degrees.

TODAY: Patchy early morning fog, otherwise partly cloudy and hot. Isolated showers and thunderstorms developing in the afternoon.

MAXIMUM TEMPERATURES: 96-100 degrees

PM HEAT INDEX: 105-109 degrees

MINIMUM HUMIDITY: 39-49%

20 FT WINDS: AM: WSW 3-6 mph

PM: SW 6-10 G16 mph

STABILITY/INVERSION: Morning inversion to 300 feet through 0800, then rising to 7400 feet by 1600

TRANSPORT WINDS: WSW 14 mph

DISPERSION INDEX: 65, Good

CHANCE OF PRECIPITATION: 20%

PRECIPITATION AMOUNTS: Less than 0.10"

LIGHTNING ACTIVITY LEVEL: 2

TONIGHT: Partly cloudy. A 20% chance of evening showers and thunderstorms. Patchy fog developing after midnight. Winds SSW 2-4 mph. Low temperatures 72-76. Max RH 90-100%.

FRIDAY: Patchy early morning fog, otherwise partly cloudy and hot with scattered afternoon showers and thunderstorms.

MAXIMUM TEMPERATURES: 95-99 degrees

PM HEAT INDEX: 105-109 degrees

MINIMUM HUMIDITY: 41-51%

20 FT WINDS: AM: SSW 3-6 mph

PM: SW 6-10 G16 mph

TRANSPORT WINDS: SW 15 mph

DISPERSION INDEX: 66, Good

CHANCE OF PRECIPITATION: 30%

LIGHTNING ACTIVITY LEVEL: 3

EXTENDED FORECAST:

	SATURDAY	SUNDAY	MONDAY
SKY/WEATHER	Partly Cloudy / Scattered T-Storms	Partly Cloudy / Scattered T-Storms	Partly Cloudy / Scattered T-Storms
CHANCE PRECIP	30%	30%	30%
MINIMUM RH	45-55%	45-55%	47-57%
20 FT. WINDS	AM: SW 2-5 mph PM: SW 5-9 mph	AM: SW 3-6 mph PM: WSW 6-10 mph	AM: SSW 2-5 mph PM: WSW 6-10 mph
IN/MAX TEMPS	74 / 97	75 / 97	75 / 96

FIRE BEHAVIOR FORECAST

Fire: Honey Prairie Complex	Unit: GA-OKR-000001	Prediction for Day Shift
Forecast #73 Issued: 07/20/2011 1830 hrs	Signed: /S/John Kern	Shift Date: Thursday 07/21/11

GENERAL FIRE BEHAVIOR

Fuels around the Okefenokee Wildlife Refuge are predominately Fuel Model 7 (Southern Rough). Large to moderate acreage tracts of commercial timberland are mixed in throughout the entire perimeter surrounding the refuge. Fast moving wildfires with extremely high flame lengths and rapid rates of spread occur within the swamp.

Indicators/Threshold for Increased Fire Activity

- **Relative humidity dropping below 45%**
- **Winds above 10 mph**
- **Heavy fuel loadings**
- **Fine dead fuel moisture 8% or less**
- Dispersion above 70
- *** Items in BOLD are predicted to occur today***

SPECIFIC FIRE BEHAVIOR

- **Fire behavior will begin to show greater reburn (needlecast, shrubs, and downed trees). All portions of the fire have received significant rainfall recently.**
- **Expect fire to continue spreading through the shrub fuels with low rates of spread and minimal flame lengths. Expect areas with high heat concentrations to increase fire intensity over the next few days. LAL 2**

Fuel Type	Rates of Spread	Flame Length	Spotting Distance	Firebrand Ignition
Winds at 3 - 10 G 16 mph				
Shrub Fuels – SH4	1 - 7 ch/hr	1 - 2 feet	1/10 - 2/10 mile	57%
Heavy Southern Rough- SH8	3 – 16 ch/hr	4 -8 feet	1/10 -2/10 mile	56%
Timber Litter-Reburn TL8	2 - 6 ch/hr	2 - 3 feet	1/10 - 2/10 mile	56%
Small Pine Plantation w/grasses GR5	3 – 19 ch/hr	2 - 6 feet	1/10 – 2/10 mile	56%

One hour fine dead fuel moisture is at 6% for Wednesday. Moisture from repeated rains have reduced the fire threat, HOWEVER fine fuels are drying out quickly. 1,000 hour fuels again drier than normal for this time of year. There is reburn potential in all divisions due to the amount of needle cast. Should wind become stronger than predicted, expect fire behavior to increase above predicted levels. Heavier firebrands can also be lifted higher and further increasing likelihood of spots to max predictions. **In areas where fuels have been herbicided, expect quick ignitions and extreme heat, quick rate-of –spread, and group tree torching producing spotting problems.**

NOTE- FIRE BEHAVIOR CALCULATIONS ARE FOR FIRES IN UNBURNED FUELS INCLUDING NEW IA STARTS.

West	A	<i>Rains have moistened fuels in this area. Falling snags still pose a threat to fire personnel and the boardwalk. 20% chance of rain</i>	West	T/V	<i>Rains did fall in this area however fire will continue a slow spread to the North and west. Be heads-up for falling snags. 20% chance of rain</i>
	B-G	<i>Wetting rains have moistened fuels. Be heads-up for falling snags. 20% chance of rain</i>	East	H, I J, K L,M N,O	<i>Rains did fall in this area. Heads-up for falling snags. 20% chance of rain</i>
	Y Z	<i>Fine Fuels are drying out quickly. Rains did fall in this area however areas of heat will remain near Div Y/Z perimeter with possible flare-ups in moderate to high fuel loadings. Be heads-up for falling snags. 20% chance of rain</i>			

Night Ops – No Night Operations are Planned. Scattered showers and thunderstorms will continue with patchy fog developing after midnight.

Air Operations: Expect possible areas of heavy smoke especially on the west side of the fire.

SAFETY:

WINDS – Stay abreast of changing wx conditions throughout the entire shift. **THUNDERSTORMS -** these severe winds can create extreme fire behavior, with winds gusting over 30 mph. **SNAGS – Snags are falling in all Divisions – will be influenced by Thunderstorm outflow winds. FUELS:** Watch for pockets of cured shrubs or blankets of red needles beginning to cover the forest floor. 1,000 and 10,000 hour fuels as well as deep duff pockets are providing the heat source. Stay focused, and put LCES in place before starting operations. Watch for standing burning snags that can fall without warning. *Energy Release Component (ERC) has come back up and is again approaching the 90th percentile with the lower RH.*

LCES Analysis of Tactical Actions

Incident Name: Honey Prairie Complex		Date and Time Prepared: July 20, 2011 1600 hrs							Operational Period: Day July 21, 2011	
		Location on Incident								
		Divisions/Groups								
TACTICAL HAZARDS	A, B, C, D, E, F, G	H, I, J, K, L	M, N, O	T, V	Y, Z	Roads Group	ICP	Initial Attack	Mitigations	
Powerlines	*	*	*	*	*	*	*	*	Assume all power lines are charged. Avoid all contact with downed lines.	
Complacency	*	*	*	*	*	*	*	*	Follow work/rest guidelines.	
Indirect Fireline				*	*			*	LCES; IRPG Pg. 10, Indirect Attack; Burnout as possible.	
Anchor Points	*	*	*	*	*			*	Ensure fireline is anchored. Use natural features when possible. Use Local Resource Advisor	
Extreme Conditions (Spotting, Wind)									LCES, Establish Trigger Points. Maintain Situational Awareness. Establish Lookouts as needed. Follow MAP actions.	
Unburned Area Reburn Potential	*	*	*	*	*			*	LCES, Utilize Air Attack if Available. Know Predicted Weather and Fire Behavior Forecast.	
Hazard Trees	*	*	*	*	*			*	IRPG Pg. 80, Identify and flag hazard trees. Look Up, Down and Around	
Hazardous Materials	*	*	*	*	*	*		*	IRPG Pg. 26-27, HAZMAT. Identify and map propane tanks, electric lines, septic tanks and determine bridge wgt. limits prior to use.	
Vehicle Use (Travel 1HR+, Roads)	*	*	*	*	*	*		*	Park vehicles for egress. Follow traffic plan. Use seat belts, drive with headlights on and keep windshields clean. Use spotters. Drive Defensively. Use multiple camp locations to reduce drive time.	
Communications	*	*	*	*	*	*			Ensure radio is cloned with the current communications plan. LCES	
Structure Protection			*	*				*	Use structure protection checklist, PPE, Triage. Utilize Local Fire Departments	
Air Operations (multiple aircraft, line support)	*	*	*	*	*			*	Monitor Air Guard at all times. Flight follow through Dispatch. Keep drop areas clear of personnel.	
Mechanical Equipment	*	*	*	*	*			*	Use PPE, ensure all safety devices are functional. Operator must see you before approaching equipment. Maintain proper distance away from equipment working in the area.	
Escape Routes Safety Zones	*	*	*	*	*			*	LCES, Establish and identify safety zones & escape routes. Know where these are located and the route to them. IRPG p.7	
Thunderstorm Safety	*	*	*	*	*			*	Keep an eye on changes in weather. Take hourly weather observations. Comms will provide weather updates when needed.	
Wildlife	*	*	*	*	*			*	Keep food items off the line and use refuse containers around camp. Use insect repellent as needed. Use caution around water as wildlife is concentrated.	
Sun Exposure	*	*	*	*	*			*	Use sunblock as needed.	
Heat	*	*	*	*	*			*	Hydrate prior to going on line and all during the day. Recognize the signs of heat related injuries. Take frequent breaks throughout the work period.	
Air Quality	*			*	*	*		*	Rotate personnel frequently out of smoke. Ensure off-line rest is clear of smoke.	
Railroad Crossings	*	*	*	*	*	*		*	Visually check all railroad crossings to ensure track is safe to cross. Don't bunch up, leave room for other vehicles to cross. Don't try to beat the train.	
							Safety Officer: Barry Coulliette SOF2			

SAFETY MESSAGE

JULY 21, 2011

Major Hazards and Risk

Wildlife

Hygiene

Dehydration

Logging Operations

Thunder Storms

Lifting

Driving

Complacency



Mitigations

Alligators are on the move now as well as other wildlife. Pay attention to your environment give all wildlife an opportunity to leave do not feed or harass any animals especially alligators.

To prevent the spreading of germs wash your hands often. By washing your hands, you rinse away germs, protecting yourself and others. In addition to washing your hands, you might want to take some extra precautions when you're in a public restroom. The fewer surfaces you touch, the better. It is especially important before you eat.

The heat index is again going to be over 100 degrees again today. Drink water frequently to stay hydrated take frequent breaks. Keep an eye on your physical condition and that of your coworkers. Some of the symptoms to look for:

Heavy Sweating * Extreme Weakness * Nausea * Muscle cramps * Elevated Body Temperature

Dizziness * Confusion * Clammy * Pale Complexion * Fast and Shallow Breathing

Logging operations are on the increase. Pay attention to log trucks and logging equipment working in your environment and give them room. Avoid logging operations if at all possible.

When thunderstorms approach take refuge in your vehicle.

When we are picking up and transporting equipment back to ICP use proper lifting techniques.

Wearing your seat belt will save your life. So arrive alive wear your seat belt. Drive at the posted speed limit or less.

Seeing and doing the same things every day leads to complacency. Stay alert to all the hazards. Conduct tail gate safety sessions.

Safety Officers,

Barry Coulliette

West Branch

Ray Durham

East Branch

MEDICAL PLAN	Incident Name Honey Prairie Complex	Date Prepared 7/20/2011	Time Prepared 1800	Operational Period 7/21/2011	
5. Incident Medical Aid Station					
<u>Medical Aid Stations</u>	<u>Location</u>			Paramedics Yes No	
MEDICAL UNIT (ICP)	Honey Prairie Complex ICP- Lodge 5 (912)-637-5236 Joe Fowler (EMT-B) MEDL (912)-286-1648 Wes Lathen (EMT-P)(435)760-8481			X	
WEST BRANCH (Line EMT)	Levi Clymer(EMT-P)(417)658-5155 (A,B,C,D,E,F,G DIV) Johnny Oker-Blom(EMT-P)404-558-4476 (T,V DIV) Chad Simons (EMT-P)(404)772-5344/ (Y,Z DIV) Matthew Stivers (EMT B)256-375-4260 (West IA)			X	
EAST BRANCH (Line EMT)	Michael Graham(EMT-B)(912)-286-1674 (H,I,J,K,L DIV) James Brown (EMT-P)(360)-775-5413 (M,N,O DIV) Paul Smith (EMT-B) (360)775-4513 (East IA)			X	
Ambulance Services					
Name	Address	Phone	Paramedic Yes No		
Clinch County EMS (WEST SIDE)	West Branch Council Road & HWY 94	Channels 4, 11, 13 912-286-1673 EMS Incident Cell	Yes		
Ware County EMS (NORTHSIDE)	Waycross, Georgia (911 to activate)	912-281-9467	Yes		
Charlton County EMS (EAST SIDE)	Folkston, GA (911 to activate)	912-496-7321	Yes		
Air Ambulance Service					
Trauma 1	Lake City , FL (16 min/air to Fargo ICP)	1-800-223-4878(freq. 155.340)	Yes		
Trauma 1	Jacksonville, FL (26 min/air to Fargo ICP)	1-800-223-4878(freq. 155.340)	Yes		
AirMed	Augusta, GA (2 hrs/air to Fargo ICP)	1-888-792-9245(freq. 155.340)	Yes		
Lifeflight	Jacksonville, FL (35 min/air to Fargo ICP)	1-877-870-7779(freq. 155.340)	Yes		
Air Evac	Waycross, GA (17 min/air to Fargo ICP)	1-800-247-3822(freq. 155.340)	Yes		
US Coast Guard (Heli-Rescue)	Savannah GA	1-912-652-4646 (freq. 155.340)	Yes		
7. Hospitals					
Name	Address	Travel Time Air Ground	Phone	Helipad Yes No	Burn Center Yes No
Satilla Regional	410 Darling Ave Waycross Ga N 31°13.56 W 82°21.058	18 min 45 min	912-283-3030	Yes	No
Clinch Memorial Hospital (WEST SIDE)	1050 Valdosta HWY Homerville, GA	25 min	912-487-5211 ext 4502	Yes	No
Charlton Memorial Hospital (EAST SIDE)	1203 3 rd St. Folkston, GA	50 min	912-496-2531	Yes	No
Memorial Hospital	Savannah, GA 4700 Waters 3200.7 8107.6	30 min	912-350-8999	Yes	No
Shands Hospital (level I)	Jacksonville, FL N 30°20'97 W 82° 13'992	26 min 1.5 hrs	800-223-4878	Yes	Yes
Shands Burn Center	Gainesville, FL 38.33 N 082 20.73W	33 min 1.5 hrs	352-265-0300	Yes	Yes
8. Medical Emergency Procedures					
<ol style="list-style-type: none"> Notify DIVS of medical problem DIVS notifies COML and MEDL MEDL contacts POC for following <ol style="list-style-type: none"> # of pts Status of pts medical problem Location of pts Transport method Necessary resources MEDL coordinates medevac/patient transport with SOF2, OPS2 and other relevant resources. <p><u>Life threatening injury:</u> an injury that could mean the loss of life, limb, or eyesight <u>Minor injury:</u> an injury that results in the removal of a pt from the line but with less urgency as a life threatening injury <u>Medevac:</u> the most urgent transport of a pt suffering from a life threatening injury <u>Patient transport:</u> transport for minor injuries <u>Medical problem:</u> a physical or mental ailment that occurs to an individual; to include illnesses and traumatic injuries <u>Point of contact (POC):</u> individual who will be directly advocating for patient care and transport (line medic, crew boss, DIVS etc) *Request that FFTR/Engine crews or single resources let MEDL know if they have any EMTs or Paramedics and if they have equipment with them.</p>			HELISPOTS Pocket Helispot 30 47 30.02 x 82 22 39.5 (West side), mile marker 4, HWY 177 Steven C. Foster State Park Fargo Helispot 30 40.945 x 082 33.640 (West side), HWY 441- Steven C. Foster Visitor Center POGO Helibase 30.44.03 x 82.07.41 (East side) Evac Yankee Helispot 6 Rd. 32 and 32A, N 30° 53.280 W 082° 33.880 Helispot 7 Tatum Rd. Pond N 30° 50.280 W 082° 33.857 *Alternate site can be established following guidelines for safety found with IRPG and local EMS resources.		
Prepared by: Joe Fowler MEDL/Dominic Burchett MEDL(t)			10. Reviewed by: Barry Coulliette SOF		

INCIDENT RADIO COMMUNICATIONS PLAN ICS-205			Incident Name	GROUP 22		Date/Time Prepared	Operational Period Date/Time				
			Honey Prairie			07/20/2011-18:00	7/21/2011 0800-2000				
Ch #	Function	Channel Name	Assignment	RX Freq	NW	RX Tone/NAC	TX Freq	NW	TX Tone/NAC	Mode A,D or M	Remarks
1	Command	West Okee Repeater	Sec West Branch CMD	167.1250	N	156.7	163.1500	N	156.7	A	Stephen Foster State Park
2	Command	South Okee Repeater	Sec East/West Branch CMD	164.7750	N	123.0	163.1500	N	123.0	A	Eddy Florida
3	Command	East Okee Repeater	PRIMARY East Branch CMD	164.6250	N	103.5	163.1500	N	103.5	A	Refuge Headquarters
4	Command	NIFC C2	PRIMARY West Branch CMD	168.100	N	CSQ	170.4500	N	123.0	A	NOT linked to OKEE System
5	Command	North Okee Repeater	PRIMARY North Branch CMD	164.5750	N	206.5	163.1500	N	206.5	A	Waycross
6	Air-Ground	Air to Ground	PRIMARY	166.9375	N	CSQ	166.9375	N	CSQ	A	
7	Tactical	MOB-MOB	GFC Contingency Structure Protection Group West I.A.	159.3900	W	CSQ	159.3900	W	156.7	A	
8	Tactical	V-Fire 21W WHITE		154.2800	W	CSQ	154.2800	W	156.7	A	
9	Tactical	USFS 9	DIV A,B,C, D,E,F,G,T&V (East I/A)	168.7750	N	CSQ	168.7750	N	CSQ	A	
10	Tactical	S.E. Compact	DIV	159.2850	W	CSQ	159.2850	W	CSQ	A	
11	Tactical	USFS 11	DIV M,N,O	168.2000	N	CSQ	168.2000	N	CSQ	A	
12	Tactical	Refuge Tac 1	DIV H, I, J, K,L	168.3500	N	CSQ	168.3500	N	CSQ	A	
13	Tactical	FL 190	DIV Y,Z	151.2725	N	CSQ	151.2725	N	CSQ	A	
14	Command	DIV J RPT	East Branch	170.4125	N	CSQ	165.9625	N	123.0	A	NOT linked to OKEE System
15	Air-Ground	Air to Ground	SECONDARY	166.9000	N	CSQ	166.9000	N	CSQ	A	
16	EMERGENCY	AIR Guard	Air OPS.	168.6250	N	CSQ	168.6250	N	110.9	A	
Prepared by (Communications Unit) Brian Matthews Incident Dispatcher: 912-286-1660											
Cloning at ICP communications and briefings,											

The convention calls for frequency lists to show four digits after the decimal place, followed by either an "N" or a "W", depending on whether the frequency is narrow or wide band. **Mode** refers to either "A" or "D" indicating analog or digital (e.g. Project 25) or "M" indicating mixed mode. All channels are shown as if programmed in a control station, base stations, mobile or portable radio.

HONEY PRAIRIE PHONE LIST

07/21/11

Incident

Communication

(Hours: 0700-2100)

912-286-1660

AGENCY OFFICIALS			OPERATIONS 912-637-5248		
Curt McCasland	602-359-0013	USFWS AA	Rick Dolan	352-353-5101	Planning Operations
Mindy Gautreaux	912-282-7500	USFWS Deputy AA	Butch Hall	352-225-1281	Field Operations
Frank Sorrells	912-381-7503	GFC AA	Roger Gill	386-963-9496	Field Operations
James Karels	850-228-7763	FL DOF AA			
Diane Adams	912-266-5421	GEMA	WEST BRANCH		
Mike Housh	912-281-1575	USFWS AREP	Tom Donohoe	404-772-5384	West Branch
COMMAND			Bob Haback	406-431-1359	West Branch (t)
Don West	352-353-5044	IC	Charles Arnold	423-802-6507	DIVS A, B, C, D, E, F, G
Verne Reggal	386-547-7293	Deputy IC	Shawn Duggar	850-508-7736	DIVS V, T
		Unified IC (FWS)	Mike Lee	770-576-9594	DIVS Y, Z
LIAISON			EAST BRANCH		
Skippy Reeves	912-387-5923	Liaison Officer FWS	Brett Waters	406-581-6198	East Branch
Gary Beauchamp	352-620-4424	Liaison Officer (FL)	Steve Gray	770-655-8002	DIVS H, I, J, K, L
INFORMATION 912-637-5247			Tracy Mobley	706-346-4052	DIVS M, N, O
Ludie Bond	352-258-6084	Fire Information			
Mark Wurdeman	912-496-2566	Fire Information (JIC)	Billy Taylor	850-544-2229	East IA
Art Webster	912-286-3110	Fire Information – East			
SAFETY			AIR OPERATIONS 912-637-5254 FAX 912-637-5237		
Barry Couliette	404-772-5406	Safety Officer	Tim Elder	863-243-1438	Air Ops Branch
Ray Durham	770-280-7684	Safety Officer	Don Nicholas	218-360-1816	ASGS(t)
Joe Fowler	912-286-1648	Medical Unit Leader	Evertt Weniger	406-381-4176	Fargo Helibase
Field EMT	912-286-1674	Medical Unit Leader	Carl Magill	541-519-0850	ATGS – Fargo
Medical Unit	912-637-5236		Brian Campbell	404-772-5405	HEB2 – Fargo
Tom Lail	404-772-5338	Safety Officer	Jay Matsen	912-287-4479	HEB2 – Waycross
DISPATCH			=	206-218-8230	(cell)
Okeefenokee Dsp	912-496-7366	Okeefenokee	PLANNING 912-637-5241 FAX 912-637-5237		
Suwannee Dispatch	386-758-5700	Fla wildfires, other	Ed Flowers	912-286-1643	Planning Section Chief
Waycross Dispatch	912-287-4915	Ga wildfires, other	Scott Crosby	912-637-5241	Situation Unit Leader
LOGISTICS West			DEMOB	912-637-5241	
Shane Locke	404-772-5399	LSC	Joe Goudsward	240-778-5279	IMET
Butch Mallet	404-772-5319	LSC	Mike Bettwy	240-778-5019	IMET (T)
Bill Hitt	912-637-5251	FACL	John Kern	404-772-5393	FBAN
Melvin Reese	352-442-7891	Base Camp Mgr			
Gary Sisson	386-983-2474	RCDM	FINANCE 912-637-5244 FAX 912-496-4710		
Hotel Mgr	912-637-5251	Lodging	Linda Starling	770-658-6641	Finance Section Chief
Kevin Reish	404-276-1998	Security Manager	Rita Loper	912-281-6876	Buying Team Leader
JV Thompson	404-772-5380	GSUL	Ron Knowles	907-230-4945	Business Advisor
			Duane Welch	404-558-8859	Comp Claims
Nat Wright/Bob Kookan	404-772-5318	Food Unit Leader	=	404-844-7042	(cell)
Linda Bruss	912-637-5239	SPUL			
Rhonda Hughes		SPUL(t)			
Brian Mathews	561-914-7206	COML			

ORDERING		FAX 912-637-5240
Cindy Tisdell	912-637-5262	Ordering Manager
Abe Philipson	912-637-5239	Ordering Manager
LOGISTICS		East
912-496-4710 Fax		
Dave Klym	256-497-8490	LSC
John Crain	404-772-5363	Base Camp Mgr
John Kaupa	256-497-8388	Supply Unit Leader
Joe Hoisington	530-905-3715	EQPM
Kelly Helget	256-497-8334	Roads / HEQM
	239-887-1817	Security Manager
Medical Unit	912-387-6787	
Tim Cashdollar	912-387-6787	EQPM
EAST MSG CTR	912-496-4698	
COOPERATORS		
COUNTY		
	912-496-7229	Charlton County EMA
John F. Meyer - Chairman	912-496-2549	Charlton County Commissioners
Dobie Conner	912-496-7321	Charlton County Sheriff
Jesse Booth	912-520-0061	Clinch County EMA
Jonathan Daniel	912-281-5158	Ware County EMA
Jessie Jordan	912-816-6063	Ware County Fire Dept
Joe Morris	912-281-6020	Ware County Sheriff
Robbie Sutton	912-599-9027	Tri County 911
STATE		
GFC Fargo District Office	912-637-5270	
GFC Satilla District Office	912-287-4915	
Blair Joiner	229-237-9026	GFC Clinch Chief Ranger
Jason Gillis	912-314-9233 912-637-5504	GFC Satilla Assistant Mgr.
Brian Gray	229-894-4628 912-673-5274	Stephen Foster State Park
Travis Griffin	912-281-5790	Laura Walker State Park
Crystal Paulk- Buchanan	404-535-1048	GEMA PIO
Georgia Highway Patrol	912-287-6500	
FEDERAL		
Okefenokee Fire Shop	912-496-4181	
Okefenokee NWR HQ (East)	912-496-7366	
Okefenokee NWR (West)	912-637-5322	
Okefenokee Visitor Center	912-496-7836	

LANDOWNERS		
Jim Barrett	229-412-3133	Langdale/GOAL Chairman
Wesley Langdale	229-220-2602	Langdale
Hal Rowe	229-412-3133	Langdale
Langdale Office	229-242-7450	Langdale Office
Mike Conlon	386-365-3882	Rayonier Unit Supervisor
Ray Carter	386-288-6626	Rayonier
Ed Carter	386-288-6626	Rayonier
Doug Nuss	912-390-1037	Rayonier
Randall McCrady	912-283-4077 W 912-288-0877 C	Rayonier
Colin Myerson	229-506-1565	Superior Pine Products Co
Robbie Lee	229-356-0526	Superior Pine Products Co
Eric Harris	912-637-5597	Superior Pine Products Co
Superior Pine Office	912-637-5261	Superior Pine Products Co
Al Alexander	850-843-0104	The Forestry Co
Savell Schmidt	850-843-1181	The Forestry Co
John Bogue	850-843-1192	The Forestry Co
Joe Hopkins	912-276-0911	Toledo Timber
Chris Gowan	912-276-0965	Toledo Timber
Martin Bell	912-283-0583	Swamp Park
Crystal Peeples	352-316-0632	FIA
Steve Davis	912-614-1828	Davis Community
Trevor Fortner	912-599-9271	Little Suwannee
Tim Jarrell	912-223-7120	Hancock Forest Mgmt.
RAILROADS		
Norfolk Southern	800-453-2530	
Sid Moody	904-318-7983	Norfolk Southern Railroad
Chad Edwards	404-582-4909	Norfolk Southern Railroad
	540-797-9918	
Eric Sams	904-576-9907	
Norfolk So Emergency Dispatch	404-529-1597	
CSX Randy Dixon	912-270-0699	
CSX Dispatch	800-232-0144	

FINANCE

07/21/11

EQUIPMENT

EVERYONE, PLEASE put E#'s on top right corner of shift ticket.

East side fuel supplier: Please send all fuel books to Finance daily.

E-526	Pierce Timber - Missing Tickets 6/29 - 7/02, 7/16
E-1158	H&H Construction - Need time on Shift Ticket for Ticket and needs signed for 7/19
E-1175	GFC needs to check in equipment
E-1176	GFC needs to check in equipment

TIME

A-54.2	Kerry Koskela - Please check in with Finance
O-9	Cory Bryant - Missing CTR for 7/14-7/19

IF POSSIBLE, PLEASE COME BY FINANCE AND REVIEW YOUR TIME THE DAY BEFORE YOU DEMOB. ALSO, *BRING YOUR LAST CTR'S AND SHIFT TICKETS WITH YOU* TO FINANCE WHEN YOU DEMOB RATHER THAN TURNING IN AT THE BRIEFING IN THE MORNING. THIS WILL HELP AVOID DELAYS THE DAY OF DEMOB. THANKS.

WHEN DEMOBING FINANCE SHOULD BE THE NEXT TO THE LAST SECTION YOU GET SIGNED OFF ON YOUR CHECKOUT FORM WITH DEMOB UNIT BEING THE LAST. WE WILL CHECK YOUR TIME FOR YOU PRIOR TO EVERYTHING ELSE BEING SIGNED OFF, BUT WILL NOT SIGN OFF TIME UNTIL THE OTHER SECTIONS ARE DONE.

Upcomming Demobs

Number	Name	Kind	Unit	Travel	Jetport	DemobDate
E-76	GAS ENG6 PICKENS	ENG6	GAGAS	AOV		07/21/2011
E-76.9	HENDERSON, CHRIS	ENGB	GAGAS		CHA	07/21/2011
E-76.10	KEENE, ANTHONY R	FFT2	GAGAS	POV	CHA	07/21/2011
E-77.9	GAMLEN, ANDREW	ENGB	GAGAS		CHA	07/21/2011
E-77.10	RENTZ, LEVY	FFT2	GAGAS			07/21/2011
E-78	GAS ENG6 MURRAY	ENG6	GAGAS	AOV		07/21/2011
E-78.9	CLINE, KEVIN	ENGB	GAGAS	AOV	CHA	07/21/2011
E-78.10	BISHOP, SIMON	FFT2	GAGAS	AOV		07/21/2011
E-80	GAS ENG6 PUTNAM 86	ENG6	GAGAS	AOV		07/21/2011
E-80.9	BASS, DANE A	ENGB	GAGAS	AOV	ATL	07/21/2011
E-80.10	BOLES, JESSE	FFT2	GAGAS			07/21/2011
E-81	GAS ENG6 JONES 86	ENG6	GAGAS	AOV		07/21/2011
E-81.9	HELMS JR, TROY L	ENGB	GAGAS		ATL	07/21/2011
E-81.10	DURDEN, MARVIN	FFT2	GAGAS			07/21/2011
E-943.1	MATCHETT, HUGH	TPOP	GAOKR	POV		07/21/2011
E-1050.1	MITCHELL, RANDALL	ENGB	KYLBF	AOV	BNA	07/21/2011
E-1050.2	VAREL, KYLE	ENGB	KYLBF	AOV	BNA	07/21/2011
E-1050.3	BOYER, TEDERELL	FFT2	KYLBF	AOV	BNA	07/21/2011
E-1081	ENGINE - T6 -	ENG6	GAGAS	POV		07/21/2011
E-1082	ENGINE - TYPE 6 -	ENG6	GAGAS	POV		07/21/2011
E-1083	ENGINE - TYPE 6 -	ENG6	GAGAS	POV		07/21/2011
E-1084	ENGINE - T6 -	ENG6	GAGAS	AOV		07/21/2011
E-1084.1	DEAN, MICHAEL L	ENGB	GAGAS	AOV	ATL	07/21/2011
E-1084.2	HOLLAND, SETH	FFT2	GAGAS	AOV	ATL	07/21/2011
O-892	RIPLEY, STEVEN J	SOF2	FLFLS	POV	GNV	07/21/2011
O-913	HEROLD, THOMAS P	DIVS	CAKNF	AIR	MFR	07/21/2011
O-948	PALFREY, GLEN	STEN	IDIPF	AIR	GEG	07/21/2011
O-951	VAN DYNE, JERRY	STEN	ORWIF	AIR	EUG	07/21/2011
O-963	PANTSAR, MARK A	EQPM	MNMNS	AIR	DLH	07/21/2011
O-1001	CRIBB JR, ROY L	DOZB	FLFLS	AOV	TPA	07/21/2011
O-1027	WEER, JACKSON W	ENGB	FLEVP	AOV	MIA	07/21/2011
O-1028	MARKSON, SAM I	FFT1	FLEVP		MIA	07/21/2011
O-1031	DENSEL, DARRELL L	ENGB	FLEVP	AOV	MIA	07/21/2011
O-1032	STEBNER, JOHN	ENGB	FLEVP	AOV	FLL	07/21/2011
A-54.2	KOSKELA, KERRY R	HMGB	CASQF	AIR	BFL	07/22/2011
E-392	IL-SHF #40 ENGINE	ENG6	ILSHF	AOV		07/22/2011
E-392.10	TAYLOR, TYSON	ENGB	ILSHF	AOV		07/22/2011
E-392.12	BRADLEY, MALLORY	FFT2	ILSHF		MWA	07/22/2011
E-838.4	MURSU, CHRIS	ENGB	MNBGR	AIR	MSP	07/22/2011
E-838.5	BADEN, TAMMY	ENGB	MNWWR	AIR	FSD	07/22/2011
E-838.6	FRANCO, DARRIN	FFT1	MNRYR	AIR	TVF	07/22/2011
E-850	GACHF	ENG6	GACHF	AOV		07/22/2011
E-850.4	ELLIOTT, WILLIAM	ENGB	GACHF	AOV	ATL	07/22/2011
E-1064	ENGINE - T6 -	ENG6	COFTS	POV		07/22/2011
E-1064.1	NICHOLS, GREGORY	ENGB	COFTS	POV	DEN	07/22/2011
E-1064.2	SAVOIE, JUSTIN C	ENGB	COFTS	POV	DEN	07/22/2011
E-1064.3	SCHWARTZ, IAN	FFT2	COFTS	POV	DEN	07/22/2011
E-1066	ENGINE - T6 - DSP-681	ENG6	CODSP	AOV		07/22/2011
E-1066.1	JONES, ERIC	ENGB	CODSP	AOV	DEN	07/22/2011
E-1066.2	SPIESS, JEREMY	FFT1	CODSP	AOV	DEN	07/22/2011
E-1066.3	STAHL, TODD	FFT2	CODSP	AOV	DEN	07/22/2011
E-1090	FLFLS COULLIETTE	PU	FLFLS			07/22/2011
E-1091	FLFLS DURHAM PU	PU	FLFLS			07/22/2011
E-1092	FLFLS DOLAN PU	PU	FLFLS			07/22/2011
E-1093	FLFLS HALL PU	PU	FLFLS			07/22/2011
E-1094	FLFLS GILL PU	PU	FLFLS			07/22/2011
E-1095	FLFLS DONOHOE PU	PU	FLFLS			07/22/2011
E-1096	FLFLS THOMAS PU	PU	FLFLS			07/22/2011
E-1097	FLFLS PRIEST PU	PU	FLFLS	AOV		07/22/2011

Upcomming Demobs

Number	Name	Kind	Unit	Travel	Jetport	DemobDate
E-1098	FLFLS CROSBY PU	PU	FLFLS			07/22/2011
E-1099	FLFLS LOCKE PU	PU	FLFLS			07/22/2011
E-1100	FLFLS MALLETT PU	PU	FLFLS			07/22/2011
E-1101	FLFLS HUGHES PU	PU	FLFLS			07/22/2011
E-1102	FLFLS REESE PU	PU	FLFLS			07/22/2011
E-1103	FLFLS DUGGER PU	PU	FLFLS			07/22/2011
E-1104	FLFLS WRIGHT PU	PU	FLFLS			07/22/2011
E-1105	FLFLS THOMPSON PU	PU	FLFLS			07/22/2011
E-1106	FLFLS FOWLER PU	PU	FLFLS			07/22/2011
E-1107	FLFLS ELDER PU	PU	FLFLS			07/22/2011
E-1108	FLFLS FLOWERS SUV	SUV	FLFLS			07/22/2011
E-1109	FLFLS KERN SUV	SUV	FLFLS			07/22/2011
E-1110	FLFLS WEST SUV	PU	FLFLS			07/22/2011
E-1111	FLFLS BOND SUV	SUV	FLFLS			07/22/2011
E-1112	FLFLS RIGGALL SUV	SUV	FLFLS			07/22/2011
E-1113	FLFLS FOUNTAIN SUV	SUV	FLFLS			07/22/2011
E-1114	FLFLS RIDLEY VAN	VAN	FLFLS			07/22/2011
E-1115	FLFLS PALMIOTTO	AUTO	FLFLS			07/22/2011
E-1119	FLFLS MATTHEWS	VAN	FLFLS			07/22/2011
E-1120	FLFLS WATSON VAN	VAN	FLFLS			07/22/2011
E-1121	FLFLS PHILIPSON PU	PU	FLFLS			07/22/2011
E-1122	FLFLS SISSON PU	PU	FLFLS			07/22/2011
E-1124	FLFLS STARLING SUV	SUV	FLFLS			07/22/2011
E-1125	FLFLS MATHENY SUV	SUV	FLFLS			07/22/2011
E-1126	FLFLS WELCH SUV	SUV	FLFLS			07/22/2011
O-807	STANTON, CHARLES E	SOF2	WAOWF	AIR	EAT	07/22/2011
O-885	BRUSS, LINDA K	SPUL	MNMNS	AIR	BRD	07/22/2011
O-894	GOUDSWARD, JOE	IMET	ARAOC	A/R	LIT	07/22/2011
O-923	BETTWY, MIKE	IMET	FLSMR	AOV	MIA	07/22/2011
O-928	HELGET, KELLY	EQPM	MNMNS	AIR	HIB	07/22/2011
O-953	HOARD, BOB A	STEN	CASTF	AIR	SMF	07/22/2011
O-962	KLYM, DAVID JAMES	LSC2	ORDEF	AIR	RDM	07/22/2011
O-967	CRANE, BARBARA	PTRC	GAR08	AIR	ATL	07/22/2011
O-968	BATT, JENNIFER	EQTR	NHWMF	AIR	MHT	07/22/2011
O-970	ESTRADA, JESSICA	EQTR	CAANF	AIR	BUR	07/22/2011
O-988	JOHNSON, NICK	DRIV	GAOKR			07/22/2011
O-989	TWOMBLY, MAX J	STEN	COFTS	AIR	DEN	07/22/2011
O-991	WOLF, ADAM LEN	STEN	IDFCA	AIR	MSO	07/22/2011
O-993	DAILY, DREW	STEN	ININS	AIR	IND	07/22/2011
O-997	HABECK, ROBERT	SOF2	MTCES	AIR	HLN	07/22/2011
O-998.1	ELDER, TIMOTHY J	AOBD	FLFLS	AOV	RSW	07/22/2011
O-998.4	MATTHEWS, BRIAN W	COML	FLFLS	AOV	PBI	07/22/2011
O-998.6	FOUNTAIN, RANDALL	CTSP	FLFLS	AOV	TLH	07/22/2011
O-998.7	RIDLEY, LISA G	COST	FLFLS	AOV	PBI	07/22/2011
O-998.8	DONOHUE, TOM F	OPBD	FLFLS		MCO	07/22/2011
O-998.11	DUGGAR, ELLIOTT S	DIVS	FLFLS	AOV	TLH	07/22/2011
O-998.12	REESE JR, MELVIN	BCMG	FLFLS	AOV	TPA	07/22/2011
O-998.14	KERN, JOHN	FBAN	FLFLS	AOV	TPA	07/22/2011
O-998.15	WRIGHT, NATHANIEL	FDUL	FLFLS	AOV	MCO	07/22/2011
O-998.18	WEST, DONALD E	ICT2	FLFLS	AOV	GNV	07/22/2011
O-998.19	RIGGALL, VERNE E	ICT2	FLFLS	AOV	SRQ	07/22/2011
O-998.20	LOCKE, SHANE P	LSC2	FLFLS	AOV	GNV	07/22/2011
O-998.21	MALLETT, WALTER J	LSC2	FLFLS	AOV	TPA	07/22/2011
O-998.22	FOWLER, JOSEPH A	MEDL	FLFLS	AOV	TPA	07/22/2011
O-998.23	DOLAN, RICHARD W	OSC2	FLFLS	AOV	GNV	07/22/2011
O-998.24	PHILIPSON, ABRAHAM	ORDM	FLFLS	AOV	TPA	07/22/2011
O-998.25	FLOWERS, EDWARD L	PSC2	FLFLS	AOV	SRQ	07/22/2011
O-998.27	BOND, LUDIE A	PIO2	FLFLS	AOV	GNV	07/22/2011
O-998.28	SISSON, GARY	RCDM	FLFLS	AOV	GNV	07/22/2011

Upcomming Demobs

Number	Name	Kind	Unit	Travel	Jetport	DemobDate
O-998.29	WILKINSON, TIMOTHY	RESL	FLFLS	PAS	JAX	07/22/2011
O-998.30	COULLIETTE, BARRY L	SOF2	FLFLS	AOV	JAX	07/22/2011
O-998.31	CROSBY, SCOTT A	SITL	FLFLS	AOV	GNV	07/22/2011
O-998.32	HUGHES, RHONDA G	SPUL	FLFLS	AOV	PNS	07/22/2011
O-998.34	HALL, THEODORE J	OSC2	FLFLS	AOV	TLH	07/22/2011
O-998.35	STARLING, LINDA G	FSC2	FLFLS	AOV	JAX	07/22/2011
O-998.37	PRIEST, WILBUR C	RESL	FLFLS	AOV	TPA	07/22/2011
O-999	DOBBS JR, ROBERT	BCMGM	IDBOF	AIR	BOI	07/22/2011
O-1004	COOPER, DEREK NEIL	DOZB	ORWWF	AIR	BOI	07/22/2011
O-1007	MALGREN, KENNETH	ABRO	IDBOD	AIR	BOI	07/22/2011
O-1008	CULVER, ZACHARY	HEQB	ORWWF	AIR	BOI	07/22/2011
O-1011	NOLAN, PATRICK K	BCMGM	CALPF	AIR	SBA	07/22/2011
C-22	CREW - CAMP #11016	CC	AROZF	AOV	FSM	07/23/2011
C-22.1	MCCLAIN, HENRY	CACB	AROZF	AIR	FSM	07/23/2011
C-22.2	SCOTT, MICHAEL	CAMP	AROZF	AIR	FSM	07/23/2011
C-22.4	SPARKS, CRYSTAL	CAMP	AROZF	AIR	FSM	07/23/2011
C-22.5	CAMPBELL, JOHN W	CAMP	AROZF	AIR	FSM	07/23/2011
C-22.6	CRAWFORD, LACEY	CAMP	AROZF	AIR	FSM	07/23/2011
C-22.7	LAYMON, JAMES	CAMP	AROZF	AIR	FSM	07/23/2011
C-22.8	MARITT, DANNY	CAMP	AROZF	AIR	FSM	07/23/2011
C-22.9	LOCUST, BRIAN S	CAMP	AROZF	AIR	FSM	07/23/2011
C-22.10	COLLINS, DAVID W	CAMP	AROZF	AIR	FSM	07/23/2011
E-407	WHITE EARTH #2	ENG6	MNMNA	AOV	BJI	07/23/2011
E-407.10	LONDO, JESSE	ENGB	MNMNA		BJI	07/23/2011
E-407.11	LONDO, CORVIN	FFT2	MNMNA		BJI	07/23/2011
E-407.12	WARREN, TIMOTHY	FFT1	MNMNA		BJI	07/23/2011
E-497	ORANGE SPRINGS #1	TPL3	FLFNF	POV		07/23/2011
E-497.2	JETER, LESLIE	DRIV	FLFNF	POV		07/23/2011
E-894	ENGINE - T6 - 862	ENG6	MOOZP	AOV		07/23/2011
E-894.4	MIER, WILLIAM	ENGB	MOOZP		SGF	07/23/2011
E-894.5	SOKOLOWSKI,	FFT2	MOOZP	AOV	STL	07/23/2011
E-894.6	COLE, BRITTANY	FFT2	MOOZP		STL	07/23/2011
E-895	ENGINE - T6 - 9505	ENG6	MOMTF	AOV		07/23/2011
E-895.4	KNISLEY, BLAKE	ENGB	IAWTR		FSD	07/23/2011
E-895.5	OAK, JOSHUA	FFT1	MOMTF		BZN	07/23/2011
E-895.6	BODIMER, WILLIAM R	FFT1	MOMTF		STL	07/23/2011
E-897	ENGINE - T6 -	ENG6	MDBWR	AOV		07/23/2011
E-897.3	STACK, STEPHEN	ENGB	MDBWR		BWI	07/23/2011
E-897.4	HAWKINSSON, COLBY	FFT2	MDBWR		BWI	07/23/2011
E-897.5	DIEFENDERFER,	ENOP	MDBWR	AIR	BWI	07/23/2011
E-906.4	BURK, JAMES B	ENGB	SDSDS	AOV	RAP	07/23/2011
E-907	ENGINE - T6 - CRA -	ENG6	SDCRA	AOV		07/23/2011
E-907.3	WARD, BRADY B	ENGB	SDCRA		RAP	07/23/2011
E-907.4	SWORD, DOREEN M	FFT1	SDSIA		ABR	07/23/2011
E-1059	ENGINE - T6 - PLATTE	ENG6	COPBS	AOV		07/23/2011
E-1059.1	ROSS, DANIEL	ENGB	COPBS	AOV	DEN	07/23/2011
E-1059.2	COX, CODY	FFT1	COPBS	AOV	DEN	07/23/2011
E-1059.3	ROBINSON, LUCAS	FFT1	COPBS	AOV	DEN	07/23/2011
E-1065	T6-BOULDER CITY	ENG6	COFTS			07/23/2011
E-1065.1	EVANS, MARK E	ENGB	COFTS		DEN	07/23/2011
E-1065.2	CARNELLI, MICHAEL	ENGB	COFTS		DEN	07/23/2011
E-1065.3	SPURR, TIMOTHY	FFT2	COFTS		DEN	07/23/2011
E-1071	ENGINE - T6 - 01 -	ENG6	AROUF	AOV		07/23/2011
E-1071.4	MORRIS, BRANDON R	ENGB	AROUF	AOV	FSM	07/23/2011
E-1071.5	MULLENIX, JEFFERY J	FFT2	AROUF	AOV	LIT	07/23/2011
E-1071.6	STROTHER, TOMMY	FFT2	AROUF	AOV	FSM	07/23/2011
E-1073	ENGINE - T6 - TOF 671	ENG6	MNSUF	AOV		07/23/2011
E-1073.1	WYMAN, JOHN M	FFT2	MNSUF	AOV	DLH	07/23/2011
E-1073.2	SCHLITZ, MICHAEL	ENGB	MNSUF	AOV	DLH	07/23/2011

Upcomming Demobs

Number	Name	Kind	Unit	Travel	Jetport	DemobDate
E-1073.3	CASPERSON, HANS	FFT1	MNSUF	AOV		07/23/2011
O-862.61	KAUPA, JOHN	SPUL	WAMSF	AIR	SEA	07/23/2011
O-986	HARNOIS, MICHAEL W	STEN	WICNF	AIR	RHI	07/23/2011
O-998.2	NICHOLAS, DONALD	ASGS	MNMNS	AIR	BRD	07/23/2011
O-998.38	DURHAM, RAYMOND A	SOF2	FLFLS	AOV	DAB	07/23/2011
O-1003	DOMINGUES, JERICK	HMGB	CALNF	A/R	RNO	07/23/2011
O-1012	SKRABA, JEROME A	EQPM	MNMNS	AIR	DLH	07/23/2011
O-1015	SWANGER, CLAYTON	ENGB	AROUF	AOV	LIT	07/23/2011
O-1016	HUMMEL, BRENT N	FFT2	AROUF	AOV	LIT	07/23/2011
O-1017	PIPPIN, BRIAN	FFT2	FLSMR	AOV	TLH	07/23/2011
O-1024	LEVERETTE, SUSAN E	GISS	FLFLS	AOV	TLH	07/23/2011
O-1025	SCOTT, JAMES P	INCM	SCFMF	POV	CAE	07/23/2011
O-1026	SCHLOSBERG,	RADO	COCOS	AIR	COS	07/23/2011
O-1043	LANG, EDWARD J	SEC2	GACHF	AOV	ATL	07/23/2011
O-1064	HITT, WILLIAM E	TFLD	WYCDC	AIR	RIW	07/23/2011
O-1073	TAYLOR, CARL L	FACL	FLFLS	AOV	GNV	07/23/2011
O-1074	BUDD-JACK, STEVE	PSC2	FLFLS	POV		07/23/2011
O-1078	COLLEY, KYLE J	DRIV	FLFLS	AOV	JAX	07/23/2011
O-1111.28	STEELE, THOMAS	EQTR	GACHF	POV		07/23/2011
O-1111.35	LACEY, ANDREW	DMOB	ORUMF	AIR	ALW	07/23/2011
A-42.3	MCBATH, JEFF	HMGB	WYWRA	AIR	CPR	07/24/2011
A-42.6	WARFEL, CHESTER	HECM	WYWRA	AIR	RIW	07/24/2011
A-42.9	SMITH, THEODORE D	HECM	WYWRA	AIR	RIW	07/24/2011
E-404	MINNESOTA ENG6	ENG6	MNSUF	AOV	DLH	07/24/2011
E-404.10	SAUMER, ZACH	FFT1	MNSUF		DLH	07/24/2011
E-404.11	KNAPPER, JON	ENGB	MNSUF		DLH	07/24/2011
E-404.12	MACHO, LUKE PAUL	ENGB	MNSUF		DLH	07/24/2011
E-850.3	HAISTEN, MICHAEL C	ENGB	GAGIC	AOV	ATL	07/24/2011
E-853	KALEIGH	WAT3		POV		07/24/2011
E-853.2	HATTON, TRENT	DRIV		POV		07/24/2011
E-893	ENGINE - T6 - E251	ENG6	MIHMF	AOV	MBS	07/24/2011
E-893.8	KNIFE, MARTEL	ENGB	MIHMF		TVC	07/24/2011
E-893.9	SMITH, AARON	FFT2	MIHMF		MBS	07/24/2011
E-893.10	FELSKE, MATTHEW	FFT2	MIHMF		MBS	07/24/2011
E-906	ENGINE - T6 - SDS 660	ENG6	SDSDS	AOV		07/24/2011
E-906.5	LEWIS, LUKE	FFT2	SDSDS		RAP	07/24/2011
E-906.6	STRONG, DILLON	FFT2	SDSDS		RAP	07/24/2011
E-914	TRACTOR - PLOW - T2	TPL2	GAGAS	AOV		07/24/2011
E-914.4	ROBINSON, FRED	DRIV	GAGAS	AOV		07/24/2011
E-939	ENGINE - T6 - KY-LBF	ENG6	ARWHR	AOV		07/24/2011
E-939.6	CASTO, DANIEL	ENGB	KYLBF	AOV	BNA	07/24/2011
E-939.7	INGLE, CHAD G	ENGB	KYLBF	AOV	BNA	07/24/2011
E-939.8	KENNEDY, ANDREW J	FFT2	KYLBF	AOV	BNA	07/24/2011
E-954	GRIFFIN, JIM	DRIV	GAOKR	POV		07/24/2011
E-954	HUGHESTREE	WAT2	GAOKR	POV		07/24/2011
E-969.1	TOMLINSON, KERRY	GRD	GAOKR	POV		07/24/2011
E-977	ENGINE - T6 - IPF - D1	ENG6	IDIPF	AOV		07/24/2011
E-977.5	FELTMANN, HAROLD	ENGB	IDIPF		GEG	07/24/2011
E-977.6	MONTREUIL, PATRICK	ENGB	IDIPF		GEG	07/24/2011
E-977.7	LEWIS, CODY	FFT1	IDIPF			07/24/2011
E-977.8	WISE, KASARA	FFT2	IDIPF		GEG	07/24/2011
E-1137	ENGINE - T7 -	ENG7	GAGAS	AOV		07/24/2011
E-1138	TRACTOR - PLOW - T3	TPL3	GAGAS	AOV		07/24/2011
E-1138.1	TRUCK - TRACTOR -	PU	GAGAS	AOV		07/24/2011
E-1138.2	REYNOLDS, JIM	TPOP	GAGAS	AOV	ALB	07/24/2011
E-1139	TRACTOR - PLOW - T2	TPL2	GAGAS	AOV		07/24/2011
E-1139.1	TRUCK - TRACTOR -	PU	GAGAS	AOV		07/24/2011
E-1139.2	JACKSON, STAN	TPOP	GAGAS	AOV		07/24/2011
O-534	ROGERS, MIKE	DRIV	GAOKR	POV		07/24/2011

Upcomming Demobs

Number	Name	Kind	Unit	Travel	Jetport	DemobDate
O-895	LAMENT, ELIZABETH	RADO	VAVAF	AOV	ROA	07/24/2011
O-961	WURDEMAN, MARK A	PIO1	MNMNS	AIR	MSP	07/24/2011
O-1013	HOISINGTON,	EQPM	CAKNF	AIR		07/24/2011
O-1018	THOMAS, GREG	STEN	TNTNS	AIR	CHA	07/24/2011
O-1020	MATSEN, JAY	HEB1	WAMSF	AIR	SEA	07/24/2011
O-1041	REISH, KEVIN	SECM	NYUDP	AIR	AVP	07/24/2011
O-1042	WALDROOP, STEVEN	SEC1	NCNCF	AOV	AVL	07/24/2011
O-1054	MOORE JR,	TNSP	MSMNF	POV	JAN	07/24/2011
O-1055	DAVIS, ROYCE A	STPL	GAGAS	AOV	ALB	07/24/2011
O-1057	STIVERS, MATTHEW	EMTB	ALALF	AIR	BHM	07/24/2011
O-1059	OKER-BLOM, JOHN	EMTP	MNMNS	AIR	MSP	07/24/2011

Record Count: 247

Joint Information Center Fire Update

Fire Update for Wednesday, July 20, 2011 ~ 10 a.m.

Fire Information: www.inciweb.org



Note: Due to the current moist weather pattern and moderated fire behavior, this fire update will be prepared on an as needed basis. You can still call 912-496-2566 for current information.

Honey Prairie Fire Complex: 300,443 acres, 70% contained

As winds shift from the east to the west, smoke from the Honey Prairie Fire could affect communities on the east side of the fire such as Hoboken, Nahunta and Folkston. No precipitation has occurred on the fire complex in the last 48 hours. As the predicted relative humidity decreases and temperature increases, there is the possibility of re-burn. As pine needles in the trees are scorched during a wildfire, they will drop to the forest floor below within a few days. If the ground still holds heat, fires could flare up once more.

georgiafireinformationcenter@gmail.com

912-496-2566

Assigned Resources

46 Engines

13 Dozers

5 Water Tenders

6 Helicopters

1 Crew

450 Personnel

www.inciweb.org

www.fws.gov/okefenokee

www.gatrees.org

The northern and eastern accesses to the Okefenokee National Wildlife Refuge remain closed to the public. During the early morning hours of low fire activity, firefighters staged at the Visitor Center are clearing downed trees and cutting down hazardous trees along the Ridley's Island Trail. For the latest information on activities in the refuge, visit: <http://www.fws.gov/okefenokee/>

For information on Okefenokee Swamp Park, visit: <http://www.okeswamp.com/>

Stephen C. Foster State Park reports that it is open with very limited access to the public. The office, picnic area, and museum are open to the public. The trails, boat rentals, camping, and cabins remain closed to the public. For the latest on the park, visit: <http://www.gastateparks.org/StephenCFoster>

The Georgia Fire Information Center will be open from 8 a.m. – 7 p.m. daily to help assist the public and media with up to date information on all fires across Southeast Georgia and Okefenokee National Wildlife Refuge. Please contact us at 912-496-2566 or georgiafireinformationcenter@gmail.com.

Cooperators: Okefenokee National Wildlife Refuge; Georgia Forestry Commission; Florida Forest Service; U.S. Forest Service; Greater Okefenokee Association of Landowners (GOAL); Georgia Emergency Management Agency; Rayonier; Superior Pine; Langdale; GDOT; GSP; FLDOT; Georgia DNR; Georgia Aviation Authority; Georgia National Guard; Georgia DOC; County Fire Departments; Toledo Manufacturing Company; Charlton, Ware and Clinch Counties; and the Cities of Folkston and Homerville.

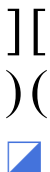
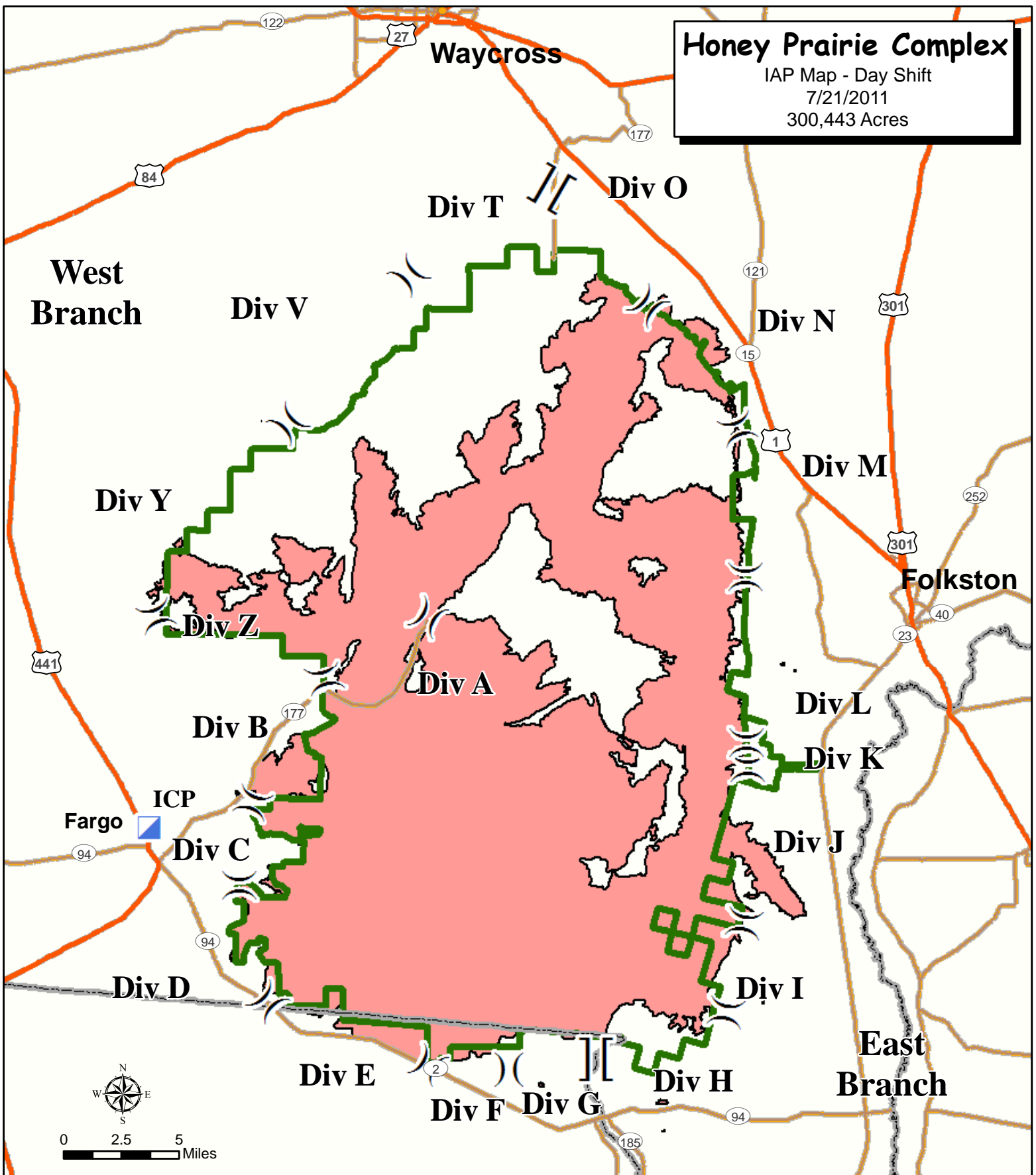
Closures: The northern and eastern entrances into Okefenokee National Wildlife Refuge remain closed. Visitor activities will be suspended until the threat of fire is over. For current status on visitor activities, contact: Okefenokee National Wildlife Refuge, 912-496-7366; Okefenokee Swamp Park, 912-283-0583; or the Stephen C. Foster State Park, 912-637-5274.

Honey Prairie Complex

IAP Map - Day Shift

7/21/2011

300,443 Acres



Branch Break
Division Break
Incident Command Post

Highway
Major Road
State Boundary

Refuge Boundary
Fire Area

Interagency Incident Management
GREEN TEAM
Perimeter as of
7/19/2011 1800
S. Leverette

