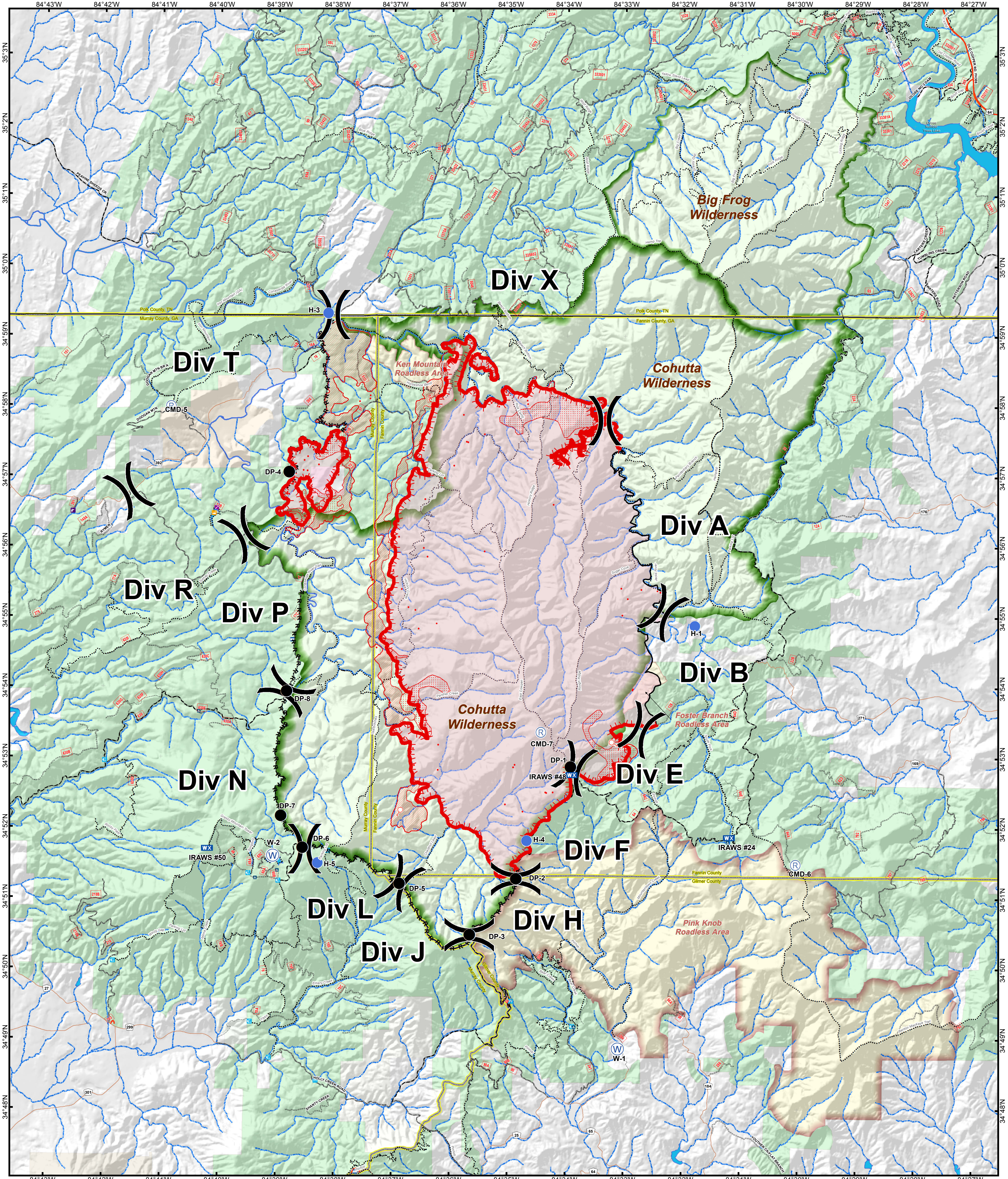


Rough Ridge Briefing



- | | | | | | |
|--|---|---|---|--|---|
| <ul style="list-style-type: none"> ● Fire Point ● Drop Point ● Helispot WX Mobile Weather Unit | <ul style="list-style-type: none"> Ⓡ Repeater ○ Spot Fire Ⓜ Water Source | <ul style="list-style-type: none"> ⌋ Assignment Break ⌋ Division ⬮ Uncontrolled Fire Edge ⬮ Completed Dozer Line — Completed Line ⋯ Hand Line R - Road as Completed Line | <ul style="list-style-type: none"> ● RoughRidge_IsolatedHeatSource ■ RoughRidge_HeatIntenseHeat ■ RoughRidge_HeatPerimeter ■ RoughRidge_ScatteredHeat | <ul style="list-style-type: none"> ESRoads — 1 - BASIC CUSTODIAL CARE (CLOSED) — 2 - HIGH CLEARANCE VEHICLES — 3 - SUITABLE FOR PASSENGER CARS — 4 - MODERATE DEGREE OF USER COMFORT — 5 - HIGH DEGREE OF USER COMFORT ⋯ Trail Ⓜ Trailhead | <ul style="list-style-type: none"> Public Roads — US Highway — County Road; State Highway Forest Service State Boundary County Boundary Wilderness Roadless Areas |
|--|---|---|---|--|---|

