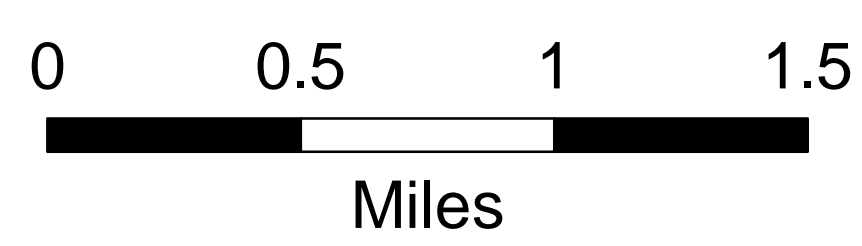
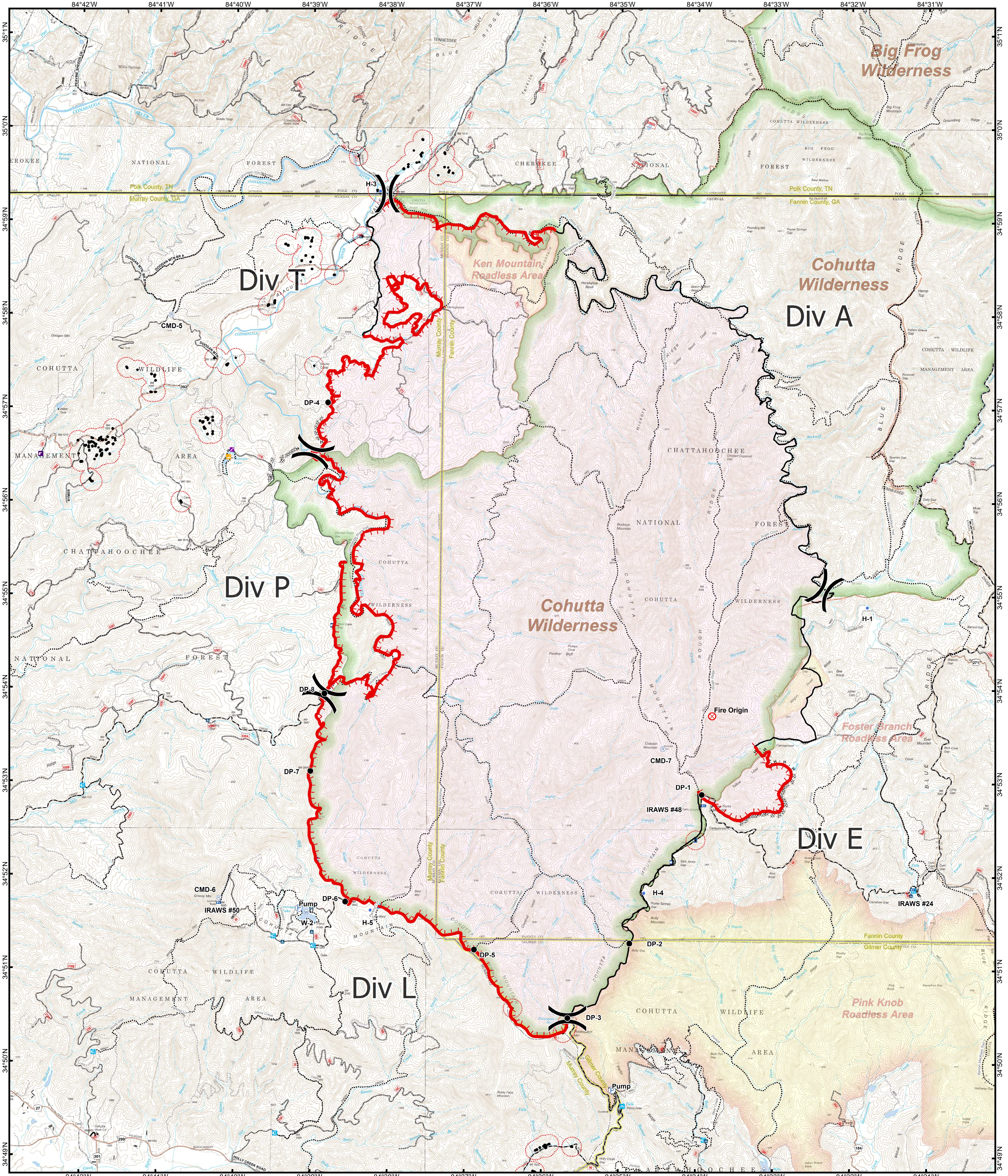


# Rough Ridge Operations



- |  |  |  |   |   |
|--|--|--|---|---|
| <ul style="list-style-type: none"> <li>■ Structures - Digitized 11/09/2016</li> <li>■ Structures - 200 Yd Buffer</li> <li>BreakType</li> <li>) ( Division</li> <li>○ Completed Dozer Line</li> <li>— Completed Line</li> </ul> | <ul style="list-style-type: none"> <li>— Hand Line</li> <li>— Uncontrolled Fire Edge</li> <li>● FirePoint</li> <li>● Drop Point</li> <li>● Fire Origin</li> <li>● Helispot</li> <li>● Mobile Weather Unit</li> </ul> | <ul style="list-style-type: none"> <li>● Pump</li> <li>● Repeater</li> <li>● Water Source</li> <li>■ FirePolygon</li> <li>■ State Boundary</li> <li>■ County Boundary</li> </ul> | <ul style="list-style-type: none"> <li>FSRoads</li> <li>OPER_MAINT</li> <li>— Closed</li> <li>— High Clearance Veh.</li> <li>— Suitable For Cars</li> <li>— Improved Surface</li> <li>— Hard Surface</li> </ul> | <ul style="list-style-type: none"> <li>..... Trail</li> <li>— Public Roads</li> <li>— County Road; State Hwy</li> </ul> |
|--|--|--|---|---|

