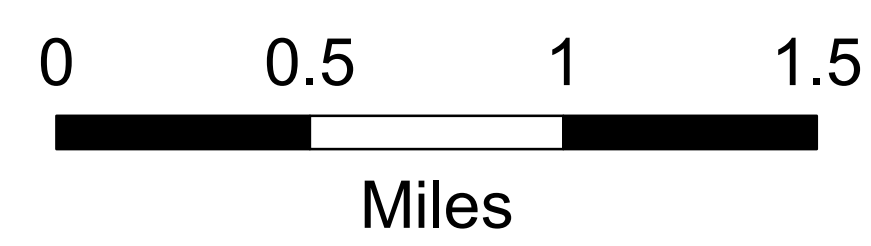
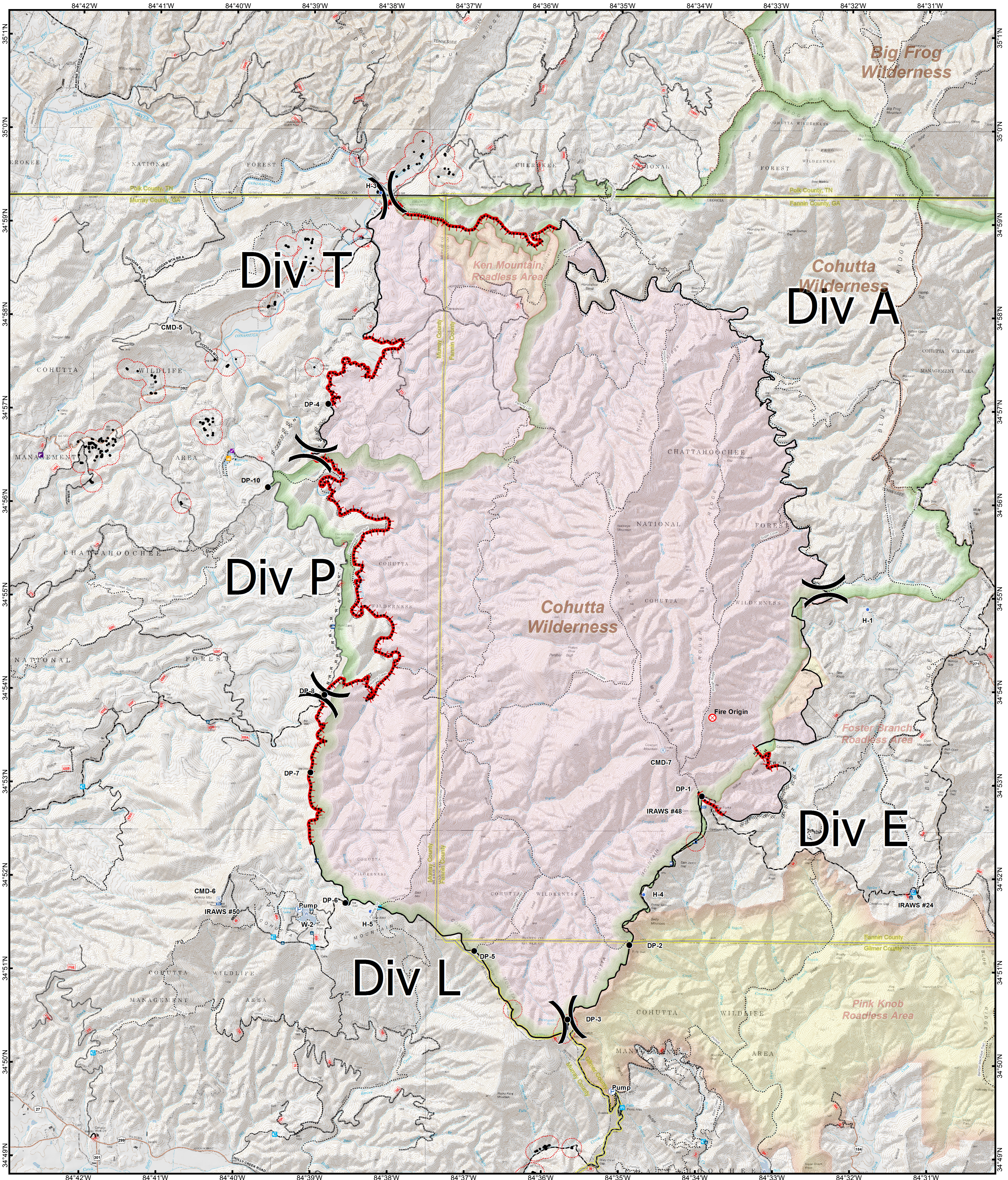


Rough Ridge Operations



- | | | | | |
|--|---|--|--|--|
| <ul style="list-style-type: none"> ■ Structures - Digitized 11/09/2016 ⋯ Structures - 200 Yd Buffer ⋯ BreakType ⌘ Division ⋯ Completed Dozer Line — Controlled Line ⌘ Hand Line | <ul style="list-style-type: none"> ⋯ Road as Completed Line ⋯ Contained Line ⋯ Contained Line ● FirePoint ● Drop Point ● Fire Origin ● Helispot ● Mobile Weather Unit | <ul style="list-style-type: none"> ⊕ Pump ⊕ Repeater ⊕ Water Source ■ FirePolygon □ State Boundary ▭ County Boundary | <ul style="list-style-type: none"> FSR Roads OPER_MAINT — Closed — High Clearance Veh. — Suitable For Cars — Improved Surface — Hard Surface ⋯ Trail | <ul style="list-style-type: none"> Public Roads — County Road; State Hwy |
|--|---|--|--|--|

